

The CROWN

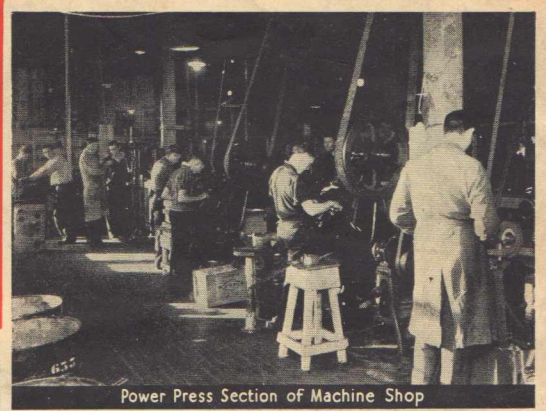
37 CATALOGUE



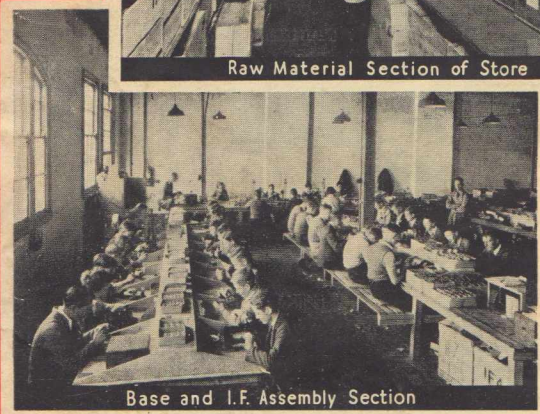
Managing Directors Office



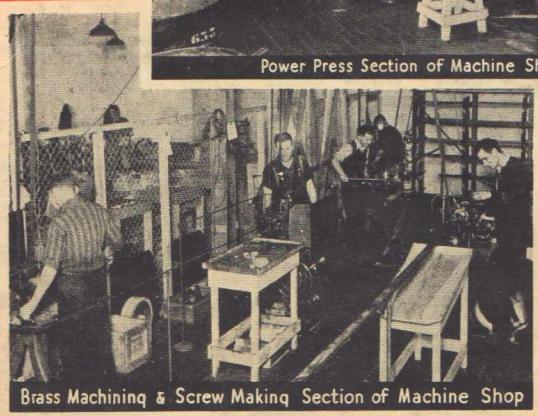
Raw Material Section of Store



Power Press Section of Machine Shop



Base and I.F. Assembly Section



Brass Machining & Screw Making Section of Machine Shop



Dial Making Department

CROWN RADIO Mfg. Co. Pty. Ltd.
51-53 MURRAY ST., PYRMONT, SYDNEY.

1937 RANGE DIALS

STANDARDISED PROVEN DESIGN

Every one of these new dials has been built around the standard design of friction drive, one which has been evolved only after years of experience with different styles of actions.

POWER PLUS RESERVE

The basic principle has proved itself to be 100% efficient and fool proof under all working conditions, having loads of reserve power, even when turning the largest gang.

FINGERTIP CONTROL

The lightest touch of the fingertips is ample for operation at any time, due to the velvety smoothness of the new improved friction drive.

EYE APPEAL

Great attention has been paid to the appearance and eye-appeal of every model.

The movement of each is obviously a faultlessly designed and beautifully engineered piece of mechanism, whilst the scales and escutcheons are so designed as to enhance the value of the finest cabinet work.

CALIBRATIONS

All scales are accurately calibrated to the one standard, being so designed to suit all Crown coils in current production. Particular attention has been paid to this point in order to overcome one of the set builders' greatest difficulties, that of being able to obtain readily a coil kit and dial that WILL match.

IMPROVED ILLUMINATION

The outstanding feature of all Crown glass “edgelit” dials is the vastly improved lighting system. The use of spring fitting lamp holders in preference to rubber grommets, together with the Crown exclusive design light boxes, enables easy access at all times to dial lamps.

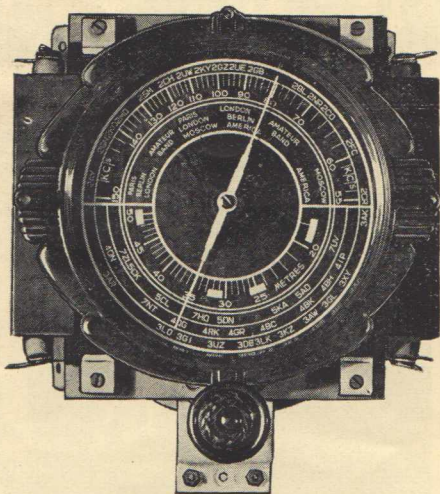
In addition, all lamp holders are provided with retaining rubber bushes, which serve the dual purpose of insulating the holder and lamp from the metal parts of the dial, at the same time gripping the lamp around its base to prevent it working loose in the holder.

COLOUR SCHEME

All “edgelit” D/W dials light up green on B/C band and amber on S/W band, whilst the B/C models light up green.

TYPE FD7G.

Price 21/-



SCALES—“Edgelit” Glass either D/W or B/C only. Fully calibrated on both bands.

MOVEMENT—This is the ever popular friction plate action which has proved itself over a period of years to be 100% efficient and reliable. In the new and improved FD7G and FD7 the drive is more velvety than before and at the same time more powerful.

ESCUTCHEON—No. 4 Bakelite, diameter of aperture 4 $\frac{3}{4}$ ”.

CENTRES—Knob spindle to needle and gang spindle: 3 $\frac{7}{16}$ ”.

OVERALL DIMENSIONS—6 $\frac{3}{4}$ ” x 7 $\frac{1}{2}$ ”.

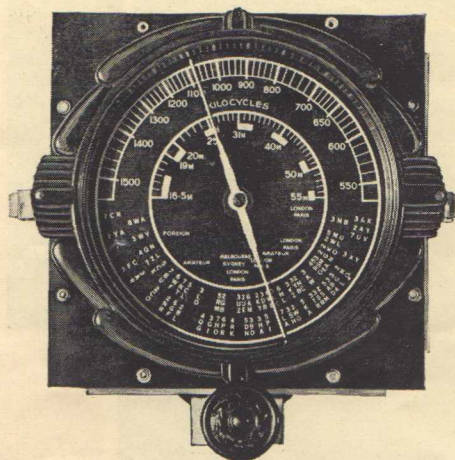
RATIO—180 degrees needle travel, and 16/1 knob to gang.

TYPE FD7. Price 15/9

SCALES and ESCUTCHEON—Same as FD5. Other details same as FD7G.

TYPE FD5.

Price 15/9



This model has met with great approval, due to its adaptability to any chassis. It was designed to permit the gang to mount directly on to the chassis, without the necessity of cutting a wide hole in the chassis, or alternatively mounting the gang on brackets or spacers as is required with the FD7, FD7G and FD8G dials.

SCALE—Black celluloid—D/W, calibrated on both bands.

ESCUTCHEON—No. 4 Bakelite, diameter of aperture, 4 $\frac{3}{4}$ ”.

CENTRES—Knob spindle to gang spindle: 1 $\frac{1}{2}$ ”.

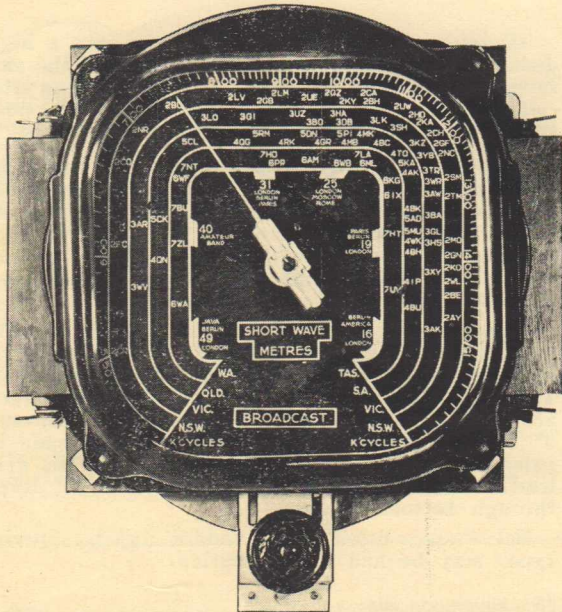
OVERALL DIMENSIONS—6 $\frac{3}{4}$ ” x 6 $\frac{3}{4}$ ”.

RATIO—180 degrees needle travel and 8/1 knob to gang.

TYPE FD5G. Price 21/-

SCALES and ESCUTCHEON—As per FD7G. Other details same as FD5.

1937 RANGE DIALS



TYPE FD8G.

Price 35/-

SCALE—7" Square Glass available as D/W or B/C only. Fully and accurately calibrated on both bands.

ESCUTCHEON—7" square walnut, with 6" square opening. Two types available.

No. 1: With name plate suitable for private brand chassis manufacturers, where it is desired to incorporate any special name. This may be done by inserting a small celluloid name plate measuring $1\frac{1}{2}$ " x $\frac{1}{2}$ " in the window from the back, which may also be illuminated.

No. 2: Features the plain top as illustrated.

MOVEMENT—The FD7 movement is incorporated, together with a simple intermediate anti-backlash gear train increasing the needle travel to 290 degrees.

CENTRES—Knob spindle to gang spindle: $3\frac{1}{2}$ ".
" " " needle " : $4\frac{1}{8}$ ".

OVERALL DIMENSIONS—9" x $8\frac{3}{4}$ " wide.

RATIO—280 degrees needle travel and 16/1 knob to gang.

TYPE FD3G. **Price** ... 27/6

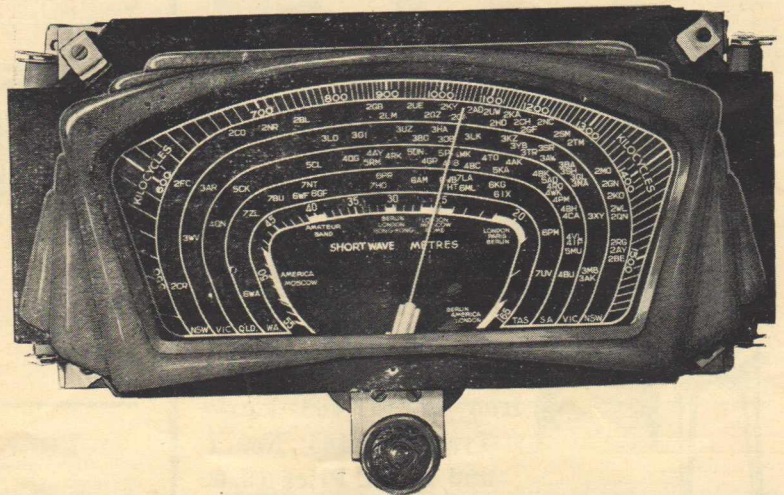
SCALE—2 glass "Edgelit," lighting up Green and Amber.

ESCUTCHEON—Walnut Bakelite, 9" x $4\frac{1}{2}$ " aperture.

CENTRES—Knob spindle to gang and needle spindle: $1\frac{1}{2}$ ".

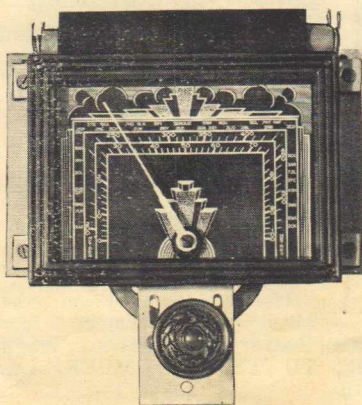
OVERALL DIMENSIONS—12" long x $7\frac{1}{2}$ " high.

RATIO—180 degrees needle travel and 8/1 knob to gang.



TYPE FD3. **Price** ... 21/-

SCALE—Black celluloid. D/W. Showing all Australian stations. Other details same as FD3G.



TYPE FD1G. **Price** ... 13/6

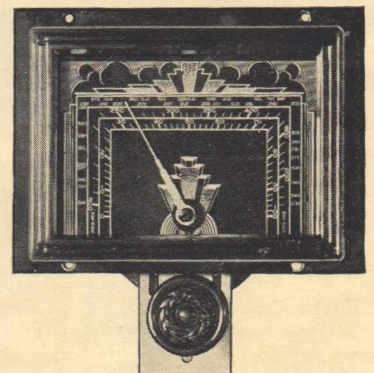
SCALE—Glass "Edgelit," lighting up Green. B/C only.

ESCUTCHEON—Black bakelite, 4" x $2\frac{3}{4}$ " opening.

CENTRES—Knob spindle to gang and needle spindle: $1\frac{1}{2}$ ".

OVERALL DIMENSIONS— $5\frac{3}{4}$ " wide x $6\frac{1}{2}$ " high.

RATIO—180 degrees needle travel and 8/1 knob to gang.



TYPE FD1. **Price** ... 9/6

SCALE—Black celluloid, B/C only showing all Australian stations. Other details same as FD1G.

1937 Range I.F. Transformers

All I.F. Transformers are thoroughly impregnated, using the same exclusive process as for coils. They may also be specially treated for TROPICAL CONDITIONS. A small extra charge is made for this treatment, which must be specified on the order.

The coils are universally wound by modern machines, using only the highest grades of wire. Only the best impregnating materials are used, and all moisture is extracted before impregnating, therefore resulting in a coil having a very high “Q” factor.

Frequentite insulation is used exclusively for all the trimmers, and only the best grade ruby mica is used for dielectric. Plates are of spring hardened nickel silver, accurately curved so as to hold their adjustment once set. Every part used in the manufacturing of the trimmer base is thoroughly cleaned in a special solution to remove all dirt, grease and moisture. No part or complete base is handled with bare hands after cleaning, and as an extra precaution each base is sealed against the possible effect of dirt or moisture by the use of a high-grade electrical lacquer.

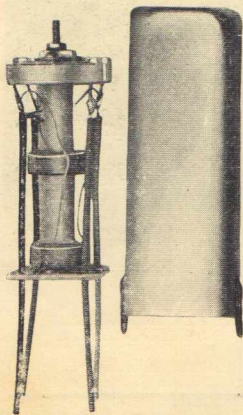
All intermediates using square cans have a high dielectric terminal plate at the bottom of the can to prevent connecting leads twisting around the coil. Single strand wire is used to obviate the possibility of movement of the wire inside the can.

The IRON CORED transformers are radically different from any other transformer available. These transformers have their coils wound directly on the iron core without making electrical contact with it. By doing this the full value of the iron core is obtained, making it possible to design the units with less loss and higher “Q” factor.

Transformers are available for 175 k.c. or 465 k.c. operation, and may be used with both American and Continental and also Australian tubes. Three standard sizes of cans are available. They are 4" x 1 3/8" square, 4 1/2" x 2" round, and 3" x 2 1/4" round. All transformers are made in pairs marked No. 1 and No. 2. No. 1 has the grid lead through top of can, and No. 2 has all leads through bottom of can.

Below are listed all standard types. Special types may be had on application.

SQUARE CAN TYPES (4" x 1 3/8")



Solid Wire 175 k.c.—
Type ISS-175 No. 1
and No. 2. Price, 5/9.

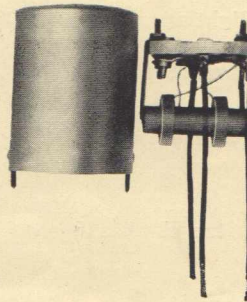
Litz Wire 465 k.c.—
Type ISL-465 No. 1
and No. 2. Price, 7/6.

Iron Cored 465 k.c.—
Type ISC-465 No. 1
and No. 2. Price 10/6.

STANDARD COLOUR CODE

No. 1		No. 2	
Plate	Green	Plate	Green
B+	Red	B+	Red
Grid	Black (through can)	Grid	Brown
Earth	Black	Earth	Black

ROUND CAN TYPES (3" x 2 1/4")



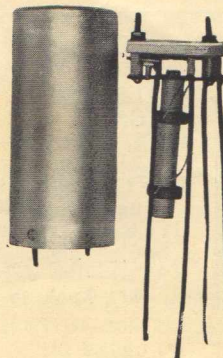
SOLID WIRE 175 k.c.—Type
IRS-175, No. 1 and No. 2.
Price 5/9.

LITZ WIRE 175 k.c.—Type
IRL-175, No. 1 and No. 2.
Price 7/6.

LITZ WIRE 465 k.c.—Type
IRL-465, No. 1 and No. 2.
Price 7/6.

SOLID WIRE 465 k.c.—Type
IRS-465, No. 1, No. 2 and
No. 3. Price 5/9.

ROUND CAN TYPES (4 1/2" x 2")



IRON CORED 465 k.c.—
Type IRC-465, No. 1 and
No. 2. Price 10/6.

NOTE: Iron Cored I.F.
Transformers are not avail-
able for 175 k.c.

If desired, any of the
above transformers are
available for use with battery type tubes. When
ordering, ADD “B” TO TYPE NUMBER, i.e.,
ISC-465B No. 1, etc.

1937 Range Tuning Coils

BROADCAST BAND 200 TO 550 METRES

Tuning coils are available in three different types—Iron Cored type “CI”, Pye Wound type “CP”, and Solenoid Wound type “CS”.

Crown coils are thoroughly impregnated, using the highest grade wax available. Immediately the coils are wound they are placed in a special low-temperature “air-conditioning” DRYING OVEN specially constructed to remove all moisture from the coils. When the drying process is complete, the coils are immersed in wax sufficiently hot to cover the coil without detriment. When the coils are cold they are “flash-dipped” so as to give them a protective covering.

Where coils are required for use under tropical conditions or in very humid climates, a special impregnation is available at a small extra charge. However, unless otherwise specified, standard finish will be supplied.

Every coil is made for use with a Stromberg-Carlson “F” type condenser (9 to 400 mmf.) under which conditions they will match any CROWN STANDARD DIAL. Trimmers will be required for each section (3 to 30 mmf.).

Stromberg-Carlson type “G” condenser (18 to 385 mmf.) may be used satisfactorily, but will not exactly match all Crown dials.

All coils are matched to one standard, so that they are interchangeable, although it is recommended that all of one

type be used. A standard dial calibration is available, specially suitable to any standard type of coil. However, if switching is incorporated for dual wave operation, care should be taken to make all leads as short as possible, and that all unnecessary capacities are eliminated, otherwise the dial calibrations may vary.

NOTE: All Crown calibrations have been made using a Stromberg-Carlson type “F” Condenser (9 to 400 mmf.), a trimming capacity of 3 to 30 mmf., and an intermediate frequency of 465 k.c. or 175 k.c. All types of tubes may be used satisfactorily, either battery or A.C., Pentagrid or Octode. Special coils are available on application.

IMPORTANT:—

When ordering coils for Octode valves, add “O” to type number thus: 465 k.c. Osc. coil to suit iron cored Aerial and/or R.F.—CI/O465 Osc.

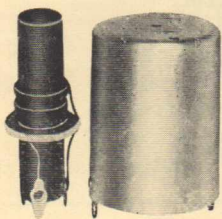
For battery tubes add “B” thus: 465 k.c. osc. coil to suit Pye wound aerial and/or R.F. coil.—CP/B465 osc.

For battery Octode add “OB” thus: 465 k.c. osc. coil to suit Pye wound aerial and/or R.F. coil.—CP/OB465 osc.

Unless definitely specified otherwise, oscillator coils will be supplied to suit Pentagrid converter.

Aerial and R.F. coils of all types are standard for either 465 k.c. or 175 k.c., whether A.C. or Battery.

PYE WOUND COILS



Pye wound coils are wound with 7/41 Litz wire on special 3/4" ground formers. They are fitted with solder lugs on the end of the former for connection and are fully colour coded.

High impedance-capacity coupling is used, adjusted to give high signal to noise ratio, so essential in modern receivers. They are mounted in 2 3/4" x 2" round cans and are suitable for the majority of medium priced receivers.

TYPES AVAILABLE

The oscillator coils are intended for use with A.C. Pentagrid converter tubes.

DETAILS:—	Type No.	Price.
Pye Wound Coils	CP/Aer.	
	CP/R.F.	
	CP/465 osc.	
	CP/175 osc.	5/9 ea.
Magnetic Band Pass Aer.	CP/BP	7/6 ea.

IRON CORED COILS



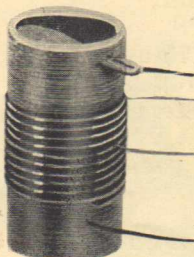
Iron cored coils are wound with 7/41 Litz wire on Ferrocart iron cores. They are fitted with a high dielectric terminal base with solder lugs and are completely colour coded. High impedance-capacity coupling is used, adjusted to give the high signal to noise ratio so essential in modern radio receivers. They are mounted in 2 3/4" x 1 3/4" square cans, making an ideal coil for dual wave receivers, midget sets, and auto radios.

TYPES AVAILABLE

The oscillator coils are intended for use with A.C. Pentagrid converter tubes.

DETAILS:—	Type No.	Price.
Iron Cored Coils	CI/Aer.	
	CI/R.F.	
	CI/465 osc.	
	CI/175 osc.	7/6 ea.

SHORT WAVE TUNING COILS



All short wave tuning coils are wound on ground 3/4" dia. formers, finely grooved to permit accurate spacing of turns—both primary and secondary.

The former material is the best obtainable, and only heavy gauge enamel wire is used for all secondaries and double silk coated wire for all primaries. The coils are supplied without cans, a “Strongback” or tapped mounting plate being fitted in the former at the LOW potential end of the coil for mounting.

All leads are brought out DIRECT, therefore eliminating solder lugs and

losses pertaining to them.

When used in dual wave receivers with Stromberg-Carlson “F” type condenser, the coils will track with any Standard Crown dial. The Oscillator coil requires a padding capacity of .005 mfd. (Fixed Mica Condenser). They are for use with an I.F. of 465 k.c. and trimming condensers of approx. 3 to 30 mmf. capacity. Under these conditions the band covered is from 16 to 52 metres.

Type No.	Price	
CX/Aer.	2/6	each
CX/R.F.	2/6	”
CX/465 osc.	2/6	”

SOLENOID WOUND COILS



Solenoid wound coils are wound on 1" dia. ground formers with enamel wire. Standard primaries are used, adjusted for the best all-round performance. They are fitted with solder lugs on the end of the former for connections, and are fully colour coded. They are mounted in 2 3/4" x 2" round cans and are suitable for the lower priced receivers.

TYPES AVAILABLE

The oscillator coils are intended for use with A.C. Pentagrid converter tubes.

DETAILS:—	Type No.	Price.
Solenoid Wound Coils	CS/Aer.	
	CS/R.F.	
	CS/465 osc.	
	CS/175 osc.	4/- ea.
Preselector Coil	CS/PS	4/- ea.

1937 Range Coil Kits

The following combination of standard coils and I.F. Trans. are available, complete with padder and full circuit diagrams.

All kits are matched to suit the Crown dials listed in this Catalogue. All Crown Kits (B/C and D/W) and dial scales are co-ordinated to track accurately, subject to ordinary care being taken in wiring in respect to length of leads, etc.

Model Number.	Comprising.	Price.
CKI/54 (465 k.c.) (Iron Cored)	1-CI/Aer. 1-CI/465 osc. 2-ISC-465 I.F. Transformers (No. 1 & No. 2) 1-P-7 padder	37/6
CKI/64 (465 k.c.) (Iron Cored)	1-CI/Aer. 1-CI/R.F. 1-CI/465 osc. 2-ISC-465 I.F. Transformers (No. 1 & No. 2) 1-P-7 padder	45/-
CKP/54 (465 k.c.) (Pye Wound)	1-CP/Aer. 1-CP/465 osc. 2-ISL-465 I.F. Transformers (No. 1 & No. 2) 1-P-7 padder	28/6
CKP/64 (465 k.c.) (Pye Wound)	1-CP/Aer. 1-CP/R.F. 1-CP/465 osc. 2-ISL-465 I.F. Transformers (No. 1 & No. 2) 1-P-7 padder	35/-
CKP/67 (175 k.c.) (Pye Wound)	1-CP/Aer. 1-CP/R.F. 1-CP/175 osc. 2-ISS-175 I.F. Transformers (No. 1 & No. 2) 1-P-11 padder	30/-
CKP/57BP (Magnetic Band Pass Coil Kit, 175 k.c.) (Pye Wound)	1-CP/BP Aer. 1-CP/175 osc. 2-ISS-175 I.F. Transformers (No. 1 & No. 2) 1-P-11 padder	27/6
CKS/54 (465 k.c.) (Solenoid Wound)	1-CS/Aer. 1-CS/465 osc. 2-IRL-465 I.F. Transformers (No. 1 & No. 2) 1-P-7 padder	25/-
CKS/64 (465 k.c.) (Solenoid Wound)	1-CS/Aer. 1-CS/R.F. 1-CS/465 osc. 2-IRL-465 I.F. Transformers (No. 1 & No. 2) 1-P-7 padder	30/-
CKS/67 (175 k.c.) (Solenoid Wound)	1-CS/Aer. 1-CS/R.F. 1-CS/175 osc. 2-IRS-175 I.F. Transformers (No. 1 & No. 2) 1-P-11 padder	25/-
CKS/57PS Pre Selector Coil Kit (175 k.c.) (Solenoid Wound)	1-CS/Aer. 1-CS/PS. 1-CS/175 osc. 2-IRS-175 I.F. Transformers (No. 1 & No. 2) 1-P-11 padder	25/-

NOTE:—All the above kits are for use with a Pentagrid converter. If it is desired to use the Octode, add “O” to the type number, thus CKS/640. If for battery Pentagrid use, add “B”, and if for battery Octode add “OB”.

1937 Range Coil Kits

DUAL WAVE COIL KITS

Model Number.	Comprising.	Price.
CKI/54 DW.	1-CKI/54 Coil Kit. 1-CX/Aer. 1-CX/465 osc. 2-BS-15 double trimmers	47/6
CKI/64 DW.	1-CKI/64 Coil Kit. 1-CX/Aer. 1-CX/R.F. 1-CX/465 osc. 3-BS-15 double trimmers.	60/-
CKP/54 DW.	1-CKP/54 Coil Kit. 1-CX-Aer. 1-CX/465 osc. 2-BS-15 double trimmers.	38/6
CKP/64 DW.	1-CKP/64 Coil Kit. 1-CX/Aer. 1-CX/R.F. 1-CX/465 osc. 3-BS-15 double trimmers	50/-
CKS/54 DW.	1-CKS/54 Coil Kit. 1-CX/Aer. 1-CX/465 osc. 2-BS-15 double trimmers.	35/-

Model Number.	Comprising.	Price.
CKS/64 DW.	1-CKS/64 Coil Kit. 1-CX/Aer. 1-CX/R.F. 1-CX/465 osc. 3-BS-15 double trimmers.	45/-

CONNECTIONS

AERIAL COIL Top Sec. Grid.
 Bot. Sec. A.V.C.
 Top Pry. Aerial
 Bot. Pry. Earth
R.F. COIL Top Sec. Grid.
 Bot. Sec. A.V.C.
 Top Pry. Plate
 Bot. Pry. B+
OSC. COIL Top Sec. Osc. Grid
 Bot. Sec. Padder
 Top Pry. B+
 Bot. Pry. Osc. Plate

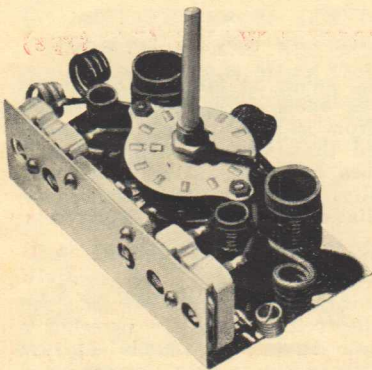
“BOTTOM” of coil is the end nearest the “Strongback.”

1937 Range Dual & Triple Wave Coil Assemblies

MODEL ID-2

GENERAL DESCRIPTION

MODEL ID-2 is a complete self-contained dual wave coil assembly, thoroughly tested on the air and ready for instant installation in any suitable receiver. It may be used in new receivers or as a conversion unit for converting present B/C receivers to Dual Wave operation. Complete colour code and recommended circuit is supplied.



OUTSTANDING FEATURES INCORPORATED IN MODEL ID-2

FERROCART IRON CORED COILS (B/C)

The B/C coils use Ferrocart iron cores and are wound in 3 narrow pyes, using multi-strand Litz wire. They are accurately matched to track with any STANDARD CROWN dial when used with a Stromberg-Carlson TYPE “F” 2 gang condenser (9-400 mmf.). The band coverage under these conditions is well over the 200 to 550 metre band required. Only the best material obtainable is used, resulting in maximum efficiency.

1937 Range Dual & Triple Wave Coil Assemblies--Continued

HIGH EFFICIENCY SHORT WAVE COILS

The S/W coils are wound with special large size enamel insulated wire on grooved former of high “Q” material, which, combined with high-grade workmanship, produces a coil of remarkable efficiency. Due to the accurate spacing of turns and a special impregnation material, it is possible to obtain a larger band coverage than has been possible to date. When used with a Stromberg-Carlson 2 gang Type F. Condenser, a band coverage of from 16 TO 52 METRES is obtained and correct tracking with any STANDARD CROWN DIAL is possible.

FREQUENTITE TRIMMING AND PADDING CONDENSERS

The assembly is made complete with Frequentite trimming and padding condensers for both bands. As is well known, Frequentite is the most efficient insulation material obtainable, especially for High Frequency use, and its use is exclusive to Crown Radio. The trimmers and padder are treated with an exclusive material to exclude all dirt and moisture without in any way affecting the properties of the Frequentite. A special low capacity trimmer is used for Short Wave. All trimmers are easily accessible from under the chassis.

DIAL LIGHT SWITCHING

Dial light switching is incorporated in every model, making it unnecessary to purchase and fit extra switches.

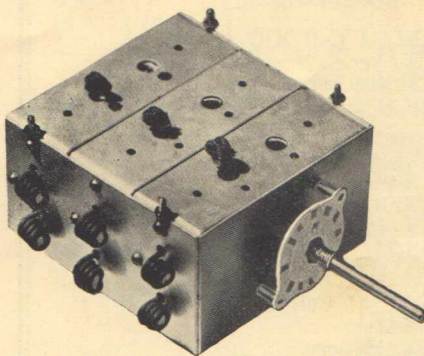
SIZE: 2 3/4" high, 4 1/2" wide, 1 1/2" deep overall.
Fits under standard 3" chassis.

RECOMMENDATIONS

Model ID-2 may be used with American or Continental tubes, either Battery or A.C., separate models being available for each type of converter tube (see below). 465 k.c. Intermediate Transformers must be used. Recommended I.F. Transformers are the Crown Iron Cored type fitted in square cans. Model No. ISC-465 No. 1 and No. 2 for A.C. tubes, and ISC-465B No. 1 and No. 2 for Battery tubes. (Further details, see under “Intermediate Frequency Transformers”). It is important that all leads be kept as short as possible, otherwise dial calibrations may vary.

MODEL NUMBERS	IDP-2	For Pentagrid	A.C.
	IDP-2B	”	Batt.
	IDO-2	” Octode	A.C.
	IDO-2B	”	Batt.
PRICE	Each	£2/9/6
	With 2 Iron Cored I.F.’s	£3/10/6
	With “F” 2 S/C gang	£3/3/-
	With “F” 2 gang cond. and 2 iron cored I.F.’s	£4/4/-

MODEL ID-3 DUAL WAVE (5/6 type)



General Description:—

Model ID-3 is radically different from any coil assembly at present available. Each section is individually constructed and assembled, and may be simply removed for servicing. It is strongly made of cadmium plated

steel and is completely shielded. All trimming and padding condensers use Frequentite bases, and are contained in the unit. All connections are made to coloured leads, a code for which is supplied.

Model ID-3 is extremely small in size (5 1/2" long (including switch), 4 1/2" wide, and 2 1/2" high overall), and may be used as a complete D/W coil assembly in any suitable receiver or it may be used for converting present B/C receivers to dual wave operation.

Dial light switching is incorporated, and the A.V.C. by-pass condensers are wired INSIDE the case. The same coils are used as in Model ID-2, but each coil has a separate trimmer base. The same recommendations as Model ID-2 hold for Model ID-3.

MODEL NUMBERS.	IDP-3	For Pentagrid	A.C.
	IDP-3B	”	Batt.
	IDO-3	” Octode	A.C.
	IDO-3B	”	Batt.
PRICE	Each	£3/19/6
	With 2 iron cored I.F.T.	£5/-/-
	With “F” 3 gang S/C cond.	£4/19/6
	With “F” 3 gang cond. and 2 iron cored I.F.T.	£6/-/-

MODEL IT-3 TRIPLE WAVE (5/6 type)

Model IT-3 is the same as Model ID-3 except that the short wave band coverage is extended. Model IT-3 covers from 10 to 80 metres in 2 bands.

It is recommended that, where possible, American metal type tubes be used. Other tubes can be used, but difficulty may be experienced in obtaining steady oscillation below 11 or 12 metres.

MODEL NUMBERS.	ITP-3	For Pentagrid	A.C.
	ITP-3B	”	Batt.
	ITO-3	” Octode	A.C.
	ITO-3B	”	Batt.
PRICE	Each	£4/19/6
	With 2 iron cored I.F.T.	£6/-/-
	With “F” 3 gang S/C cond.	£5/19/-
	With “F” 3 gang cond. and 2 iron cored I.F.T.	£7/-/-

1937 Range Foundation Kits

ORIGIN

FOUNDATION KITS are specially designed for the home constructor or small manufacturer. They are the result of years of experience in the manufacturing of components, and endless experimenting in the Crown Laboratories. They are the logical sequel to Kit Sets, incorporating all the advantages of Kit Sets at a lower cost. Each and every Foundation Kit is thoroughly tried and tested before release, assuring the purchaser of maximum efficiency.

All components comprising a Foundation Kit are actually tested in their respective receivers on a Signal Generator and also “on the air” under working conditions before leaving the factory.

ADVANTAGES

(1) ACCURATELY MATCHED COMPONENTS.

The kits are accurately matched to the dials and are actually tested “on the air” before despatch.

(2) ECONOMY PLUS QUALITY.

The Kits are economical because only the essential components are included; all other parts are left to the discretion of the constructor. Unlike “Kit Sets”—which permit the constructor no choice of circuit, Foundation Kits may be fitted to any desired circuit.

(3) SIMPLICITY IN CONSTRUCTION.

A ready punched chassis, complete with precise instructions and hints gathered from years of experience in association with modern set design and construction, is supplied to further simplify and aid in adapting any Foundation Kit to your favourite circuit. To the newcomer in radio these details will be of infinite value and should be kept for future reference.

(4) EYE APPEAL.

The modern trend toward a smarter appearance in the finished article has prompted Crown Radio to apply all their expert knowledge in the layout of the chassis, so as to give fine appearance together with maximum working efficiency.

(5) FREEDOM FROM SERVICE TROUBLES.

With Foundation Kits so accurately designed and tested, it is fitting that only the best components available should be used in the finishing of the receiver. If this procedure is followed, service troubles will be reduced to a minimum.

CO-ORDINATION OF ESSENTIAL COMPONENTS

In the past it has been the custom to purchase one part from one manufacturer and another from a different manufacturer, resulting in uncertainty of correct matching. With Foundation Kits there is no uncertainty, as every component is perfectly matched.

For description of separate components see classified sections of this Catalogue.

MODELS AVAILABLE

MODEL KP-2 - 4/5 DUAL WAVE

SUPERHET. Price, £6/17/6.

FOUR TYPES AVAILABLE.

Model—KP-2	For Pentagrid	A.C.
KP-2B	„ „	Batt.
KO-2	„ Octode	A.C.
KO-2B	„ „	Batt.

EACH KIT COMPRISES—

- 1-Dual Wave Coil assembly type (IDP-2 IDO-2)
(IDP-2B IDO-2B)
- 2-465 k.c. Iron Cored I.F. Trans. No. 1, No. 2 type.
(ISC-465)
(ISC-465B)

- 1-DW “Edgelit” dial type FD8G.
- 1-Chassis, ready punched and sprayed Silver.
- 1-Stromberg-Carlson F2 Gang Condenser.

MODEL KP-3 - 5/6 DUAL WAVE

SUPERHET. Price, £8/12/6.

FOUR TYPES AVAILABLE.

Model—KP-3	For Pentagrid	A.C.
KP-3B	„ „	Batt.
KO-3	„ Octode	A.C.
KO-3B	„ „	Batt.

EACH KIT COMPRISES—

- 1-Dual Wave coil assembly type (IDP-3 IDO-3)
(IDP-3B IDO-3B)
- 2-Iron Core 465 k.c. I.F. Trans. No. 1 and No. 2.
Type (ISC-465)
(ISC-465B)

- 1-DW “Edgelit” dial type FD8G.
- 1-Stromberg-Carlson F3 Gang Condenser.
- 1-Chassis, ready punched of cadmium plated steel.

MODEL KP-4 FOR 5/6 TRIPLE WAVE

SUPERHET. Price, £9/12/6.

FOUR TYPES AVAILABLE.

Model—KP-4	For Pentagrid	A.C.
KP-4B	„ „	Batt.
KO-4	„ Octode	A.C.
KO-4B	„ „	Batt.

EACH KIT COMPRISES—

- 1-Triple Wave coil assembly type (ITP-3 ITO-3)
(ITP-3B ITO-3B)
- 2-Iron cored 465 k.c. I.F. Trans. Type (ISC-465)
(ISC-465B)

- 1-TW “Edgelit” dial, type FD8G/TW.
- 1-Chassis, ready punched, of cadmium plated steel.
- 1-Stromberg-Carlson F3 Gang Condenser.

1937 Range Padding & Trimming Condensers

Featuring **FREQUENTITE** insulation and high-grade **RUBY MICA** dielectric.
(See I.F. Transformers)

For many years Crown Radio have been supplying the bulk of trimming and padding condensers to Australian Manufacturers. During this time no expense has been spared in the perfection of their condensers. Crown Radio are now in the happy position of being able to supply an unlimited quantity of any size or type of condenser, ranging in capacity from 3 to 1,500 mmf.

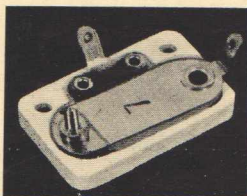
All operations incidental to the manufacture of these condensers are carried out by highly skilled operatives. No component is touched by bare hands, and all components are thoroughly cleaned in 100% alcohol. As

each base is completed, it is tested rigidly for breakdown and “Q” factor, thus ensuring the rejection of any faulty component. After testing, the condenser is wrapped and sealed against further handling, making absolutely certain that the condenser when received is the same high quality as when it left the final test.

As an extra precaution we would suggest that when the condensers are unwrapped, the unwrapping be done by the operative concerned, and that the tissue paper be used to hold the base until secured in position. Then, and then only, will you have a condenser absolutely identical with that which left the factory.

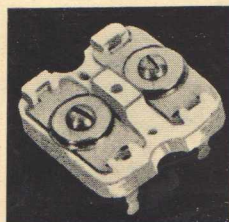
CAUTION: USE ONLY RESIN FLUX WHEN SOLDERING

PADDING CONDENSERS



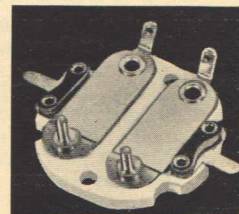
Type.	Plates.	Min. Cap.	Max. Cap.	Price.
P-7	7	300 mmf.	600 mmf.	2/6
P-11	11	600 „	1,500 „	3/-
P-2	2	10 „	100 „	2/6
P-2S	2	5 „	25 „	2/6

SQUARE BASES



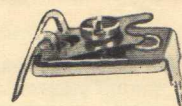
Type.	Plates.	Min. Cap.	Max. Cap.	Price.
BS-15	1½/1½	5 mmf.	60 mmf.	2/6
BS-2	2/2	12 „	110 „	2/6
BS-3	3/3	55 „	220 „	2/6
BS-215	2/1½	for D/W. trimming.		2/6

ROUND BASES (Dual Trimmers)



Type.	Plates.	Min. Cap.	Max. Cap.	Price.
BR-2	2/2	10 mmf.	100 mmf.	2/6
BR-3	3/3	50 „	220 „	3/-
BR-15	1½/1½	2SM—Pretuned Sets.		2/6
BR-2	2/2	2CH, 2UW, 2KY. Pretuned Sets.		2/6
BR-3	3/3	2UE—Pretuned Sets.		3/-
BR-35	3½/3½	2GB, 2BL „	„	3/-
BR-4	4/4	2FC „	„	3/-

MIDGET TRIMMING CONDENSERS



Type.	Min. Cap.	Max. Cap.	Price.
MEB.	3	30	1/-

Also available in 2-3-4 to 6 gang if required.

1937 Range Resistors & Dividers



Crown wire wound resistors are guaranteed accurate, both as regards resistance and current capacity. The former is specially treated against moisture and heat. Each resistor is fitted with 2 end clips and heavy gauge pigtails. Below is a list of standard sizes. Other sizes may be had on application. All resistors are finished with green insulating lacquer.

Type.	Resistance.	Current Cap.	Max. Sizes.	Price.	Type.	Resistance.	Current Cap.	Max. Sizes.	Price.
RA.	Up to 500 ohms.	100 m/a	2" x 3/8"	9d.	RD.	2100 to 5000 ohms.	15 m/a	1" x 3/8"	1/-
RB.	550 to 1000 "	50 "	1 5/8" x 3/8"	9d.	RE.	5100 to 10,000 "	10 "	2" x 3/8"	1/6
RC.	1100 to 2000 "	25 "	1" x 3/8"	9d.	RG.	Air Cell Battery.	Size to order.	2" x 3/8"	1/-

CENTRE TAPPED RESISTORS

Type.	Resistance.	Size.	Price.
RT. 20	20 ohms.	1" x 3/8"	9d.
RT. 50	50 "	1" x 3/8"	9d.
RT.100	100 "	1" x 3/8"	9d.

Ordering Procedure :

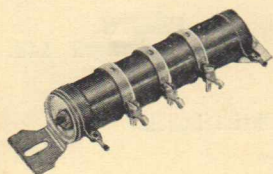
R.—Code Letter.

A.B.C.—Current Capacity.

Therefore, a resistor 950 ohms to carry 50 m/a would be RB950, or a resistor .64 ohm to carry .5 Amp. would be RG.64.

When ordering non-standard resistors, be sure to state current capacity required.

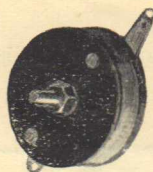
VOLTAGE DIVIDERS



Voltage dividers are available in two sizes—15,000 ohms and 25,000 ohms. They are fitted with 2 fixed clips, 3 adjustable clips, and 2 strong mounting brackets. Like the resistors, all dividers are finished with green insulating lacquer. Careful selection of metal and a patent clip makes adjustment and soldering a quick and simple matter.

Type.	Resistance.	Current Capacity.	Size.	Price.
VD.15	15,000 ohms.	25 m/a.	3 3/4" x 7/8"	2/6
VD.25	25,000 ohms.	20 m/a.	3 3/4" x 7/8"	3/6

RADIO FREQUENCY CHOKES



Two designs are available, a 1,000 turn Honeycomb wound and a 5 section slot wound type. The H.C. choke uses double cotton covered wire, whereas the 5 section slot wound choke is wound with enamel wire. Both chokes are designed to give the best possible filtering and are well impregnated.

Type HF.-2.	1,000 turn HC chokes	Price, 1/-.
„ HF.-3.	5 section slot wound choke	Price, 1/-.

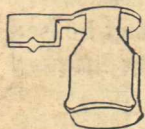


Manufacturers' Sundries

TO MANUFACTURERS

Our Machine Shop is now equipped with the most modern repetition brass turning and automatic screw making machinery. Your enquiry for machined parts to your own requirements will receive special attention.

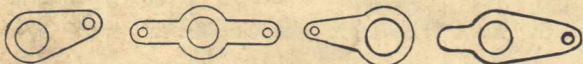
GRID CLIPS



As illustrated, made from tinned steel to ensure good soldering surface and spring grip.

Type SGC. Price, 6/- per gross.

SOLDER LUGS



Type SL-1, SL-2, SL-3, SL-4. Price, 6/- per 1,000.

HOLE SIZES: SL1. $\frac{3}{16}$ " dia.
 SL2. $\frac{1}{8}$ " dia.
 SL3. $\frac{1}{8}$ " dia., also $\frac{3}{32}$ " dia.
 SL4. $\frac{1}{8}$ " dia.

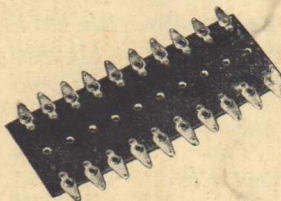
MOUNTING BRACKETS



Type MBI. Price, 7/6 per gross.

A right angle bracket for mounting coils to chassis, provided with a $\frac{1}{8}$ " dia. hole for eyeletting to former and a $\frac{7}{16}$ " x $\frac{1}{8}$ " slot for mounting on the chassis.

BAKELITE RESISTOR PANELS



Type RP-8 with 8 prs. lugs

Price 1/-

„ RP-12 „ 12 prs. lugs

Price 1/6

„ RP-18 „ 18 prs. lugs

Price 2/-

„ RP 24 „ 24 prs. lugs

Price 3/-

Special sizes on application.

EYE BOLTS



Price 4/6 grs.

Indispensable for mounting coil cans and coils, or as terminal posts. Machine cut threads $\frac{1}{8}$ " Whit.

SHAFT EXTENSIONS

Available for $\frac{1}{4}$ " or $\frac{3}{8}$ " shafts, with $\frac{1}{4}$ " diameter extension $1\frac{1}{4}$ " long.

FLEXIBLE COUPLINGS

For coupling $\frac{1}{4}$ " dia. shafts and insulating them from each other. Invaluable for experiments and test equipment.

FACTORY REPRESENTATIVES

MELBOURNE:
G. P. Embelton & Co.

BRISBANE:
A. E. Harrold.

ADELAIDE:
A. M. Ralph.

PERTH:
J. G. Pritchard Ltd.

NEW ZEALAND:

Arnold & Wright,

Levy's Buildings, Manners St., Wellington. Also 183 Cashel St., Christchurch.

DISTRIBUTORS

N.S.W.:

Bloch & Gerber Pty. Ltd.
 Fox & MacGillycuddy Ltd.
 Martin de Launay Ltd.
 United Radio Distributors Ltd.
 John Martin Ltd.
 Lawrence & Hanson Ltd.

ADELAIDE:

A. G. Healing Ltd.

MELBOURNE:

A. J. Veall Pty. Ltd.

TASMANIA:

W. & G. Genders Ltd.

NEW ZEALAND:

AUCKLAND:
D. J. Reid.

WELLINGTON:
F. J. W. Fear & Co.

DUNEDIN:
A. & W. McCarthy Ltd.

PERTH:

J. W. R. Gardam & Co.
 Atkins (W.A.) Ltd.

BRISBANE:

Trackson Bros. Pty. Ltd.
 J. B. Chandler & Co.

CHRISTCHURCH:
Tricity House.

All prices subject to alteration, of which due notice will be given.

Deliveries will be made as quickly as circumstances permit, but no responsibility will be accepted for any delay due to causes beyond our control.

All previous price lists are cancelled.

CROWN RADIO MFG. CO. PTY. LTD.

51-53 MURRAY STREET, PYRMONT, N.S.W.

'Phone MW 2628.

Cables and Telegrams: "Crownradio, Sydney."