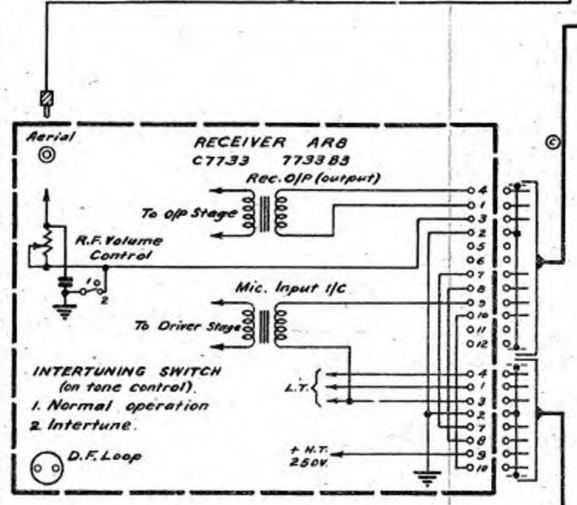
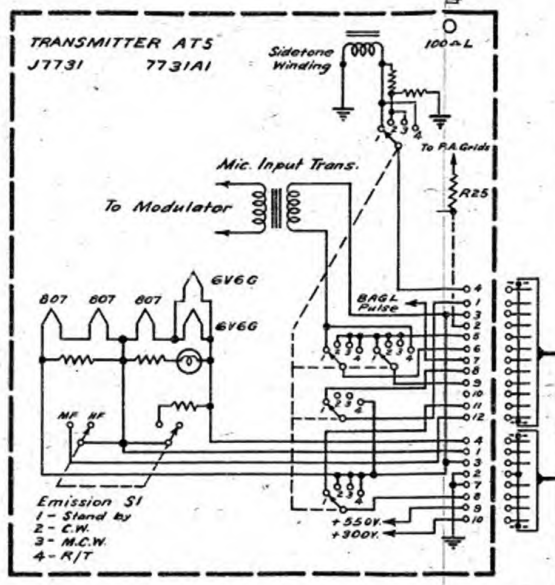


7730C3	APPROVED	DATE	2	ADD CHANGES TO CERTIFIED SCHEM.
	CHANGES	10.12.41		
	Redrawn & M. added. Previously Drg N8703B1.			
	4.7.48. 10.12.41 Cable F plus details added. I.C. Chd. 1000 10.2.42 4.			
				Shielding of Cable 'D' prev. earthed to lead 2 of Trans. cable at both ends Tag 2 in Trans. mitter; & Tag 3 of Trans. mitter; group in Junction Box were previously earthed. Modified in Units with Serial Nos over 754 to provide Remote Control of CH Tag 3 (3.3.45). Chd: 1000 2.7.4 31.7.42 15 Microphones plug re-drawn. Chd: 1000 10.12.41 15 Es-e-43 e





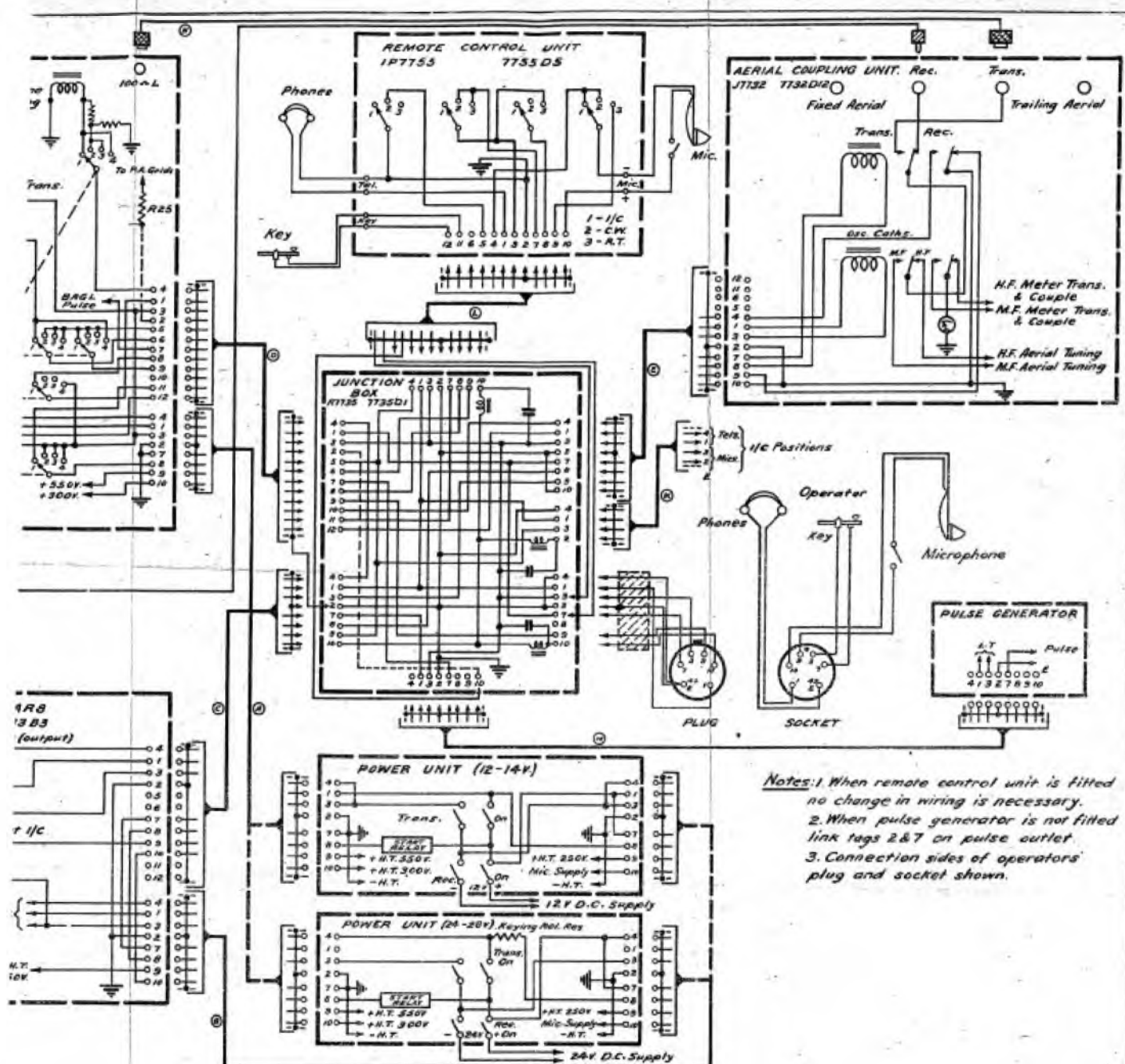
ADD CHANGES TO GESTETNER STENCIL

7730C4

APPROVED

DATE 18-8-42

CHANGES

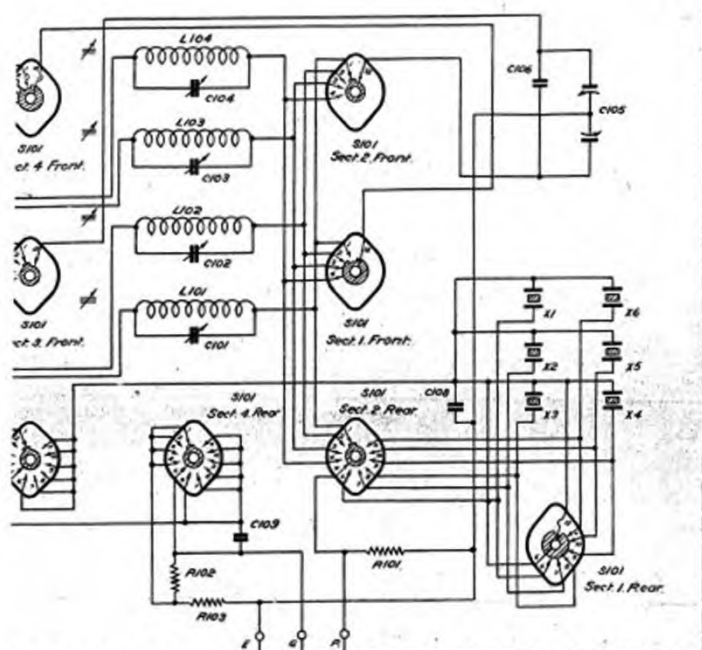


Notes: 1. When remote control unit is fitted no change in wiring is necessary.  
 2. When pulse generator is not fitted link tags 2 & 7 on pulse outlet.  
 3. Connection sides of operators' plug and socket shown.

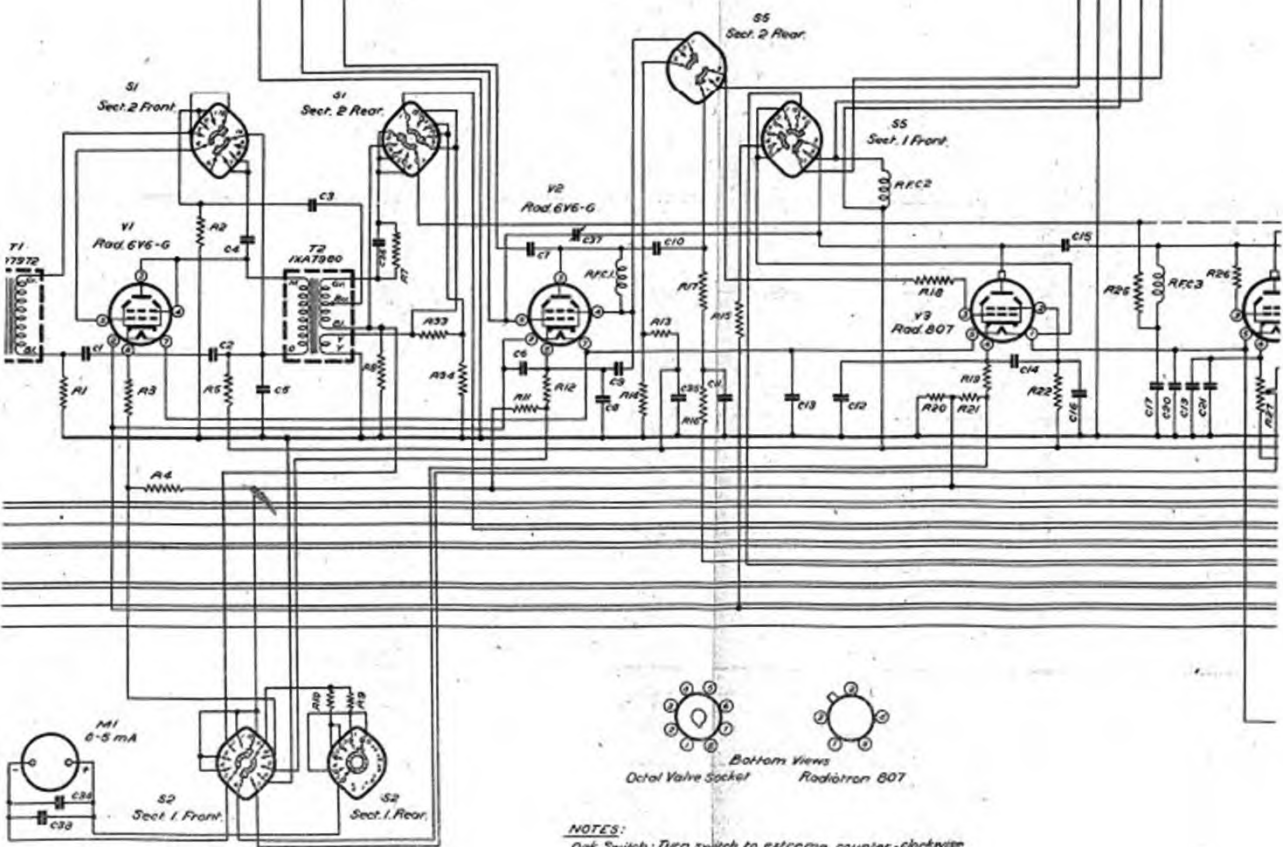
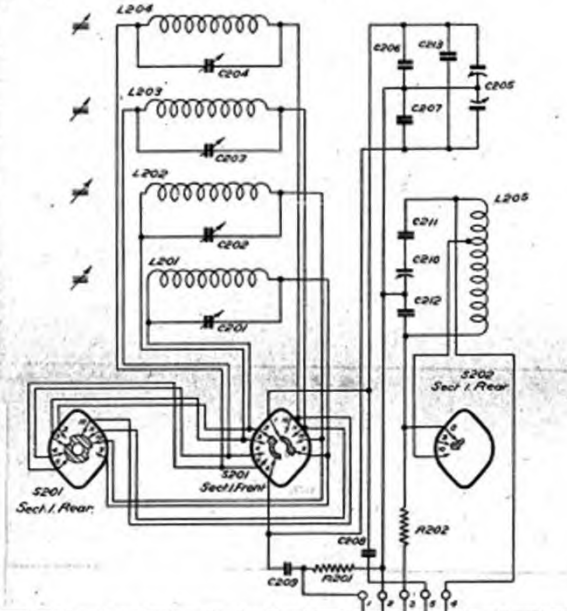
RETRER STENCIL

THIS DIAGRAM APPLIES TO INSTALLATIONS USING R.C. UNIT 1P7755

AMALGAMATED WIRELESS (AUSTRALASIA) LTD. - SYDNEY		RET.	1ST SHEET
INTERWIRING SCHEMATIC DIAGRAM		AWG.	REF.
AT5/AR8 AIRCRAFT EQUIPMENT		DRN.	
		THRD.	
		CD.	
		APP.	
			<b>TYPE J7730</b>
			<b>DWG. 7730C4</b>



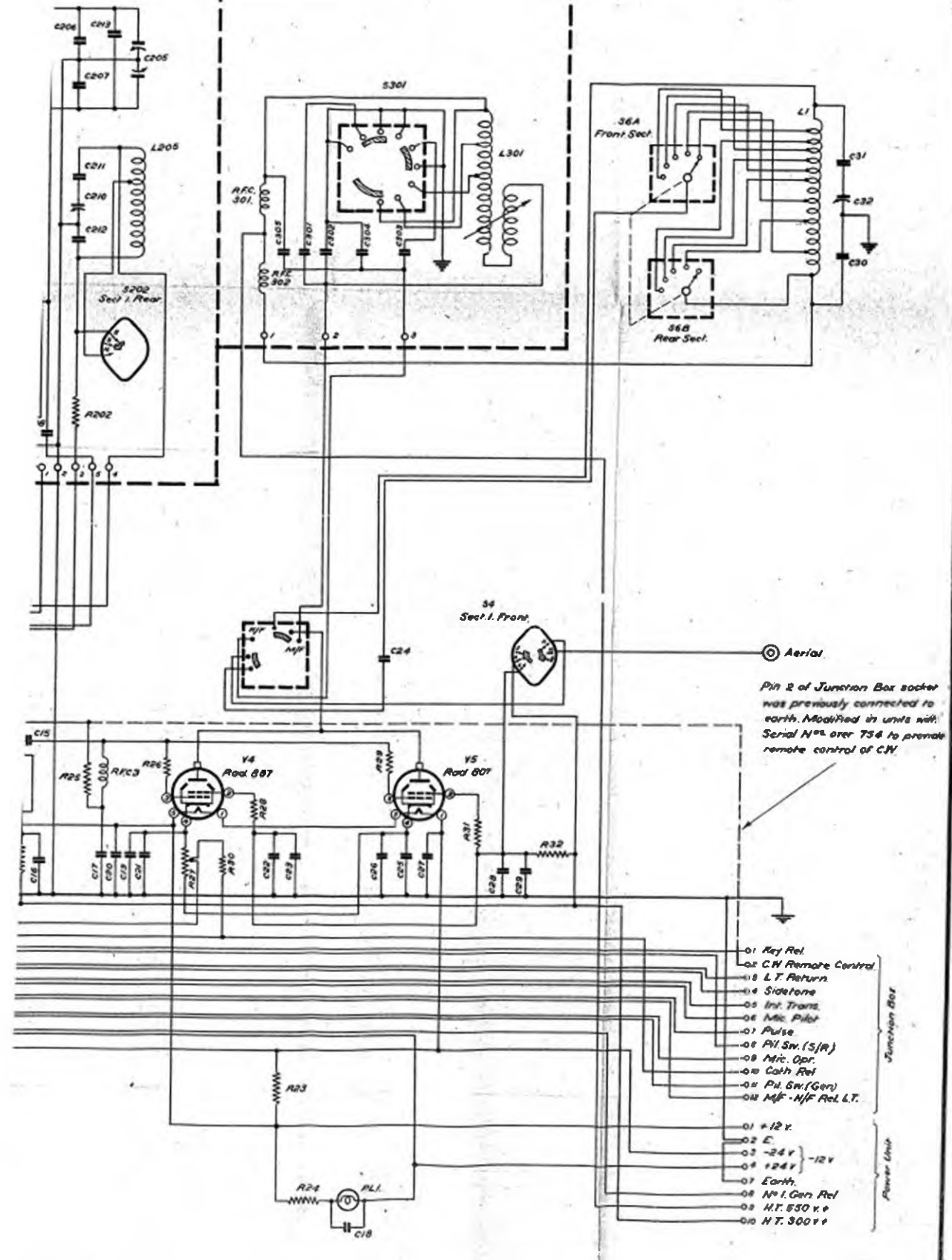
**H.F. BA & MF MD TUNING SECTION.**  
**TYPE: J7758**  
**(1100/10226)**



**NOTES:**  
 Oak Switch: Turn switch to extreme counter-clockwise position when looking at front of unit, then wire from back of switch as shown.

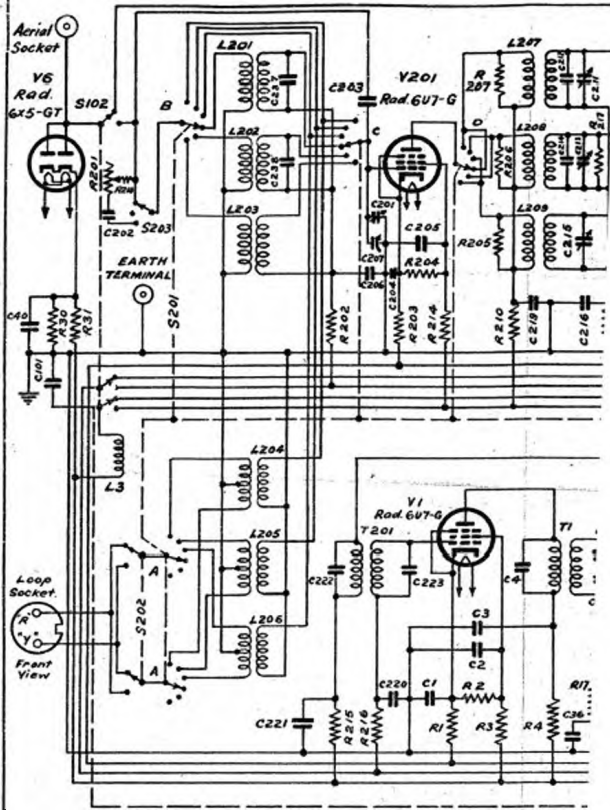
**M.F. PA SECTION**  
**TYPE 37753**  
**(1100/10257)**

**H.F. TUNING SECTION**  
**TYPE 17758**  
**(1100 958)**



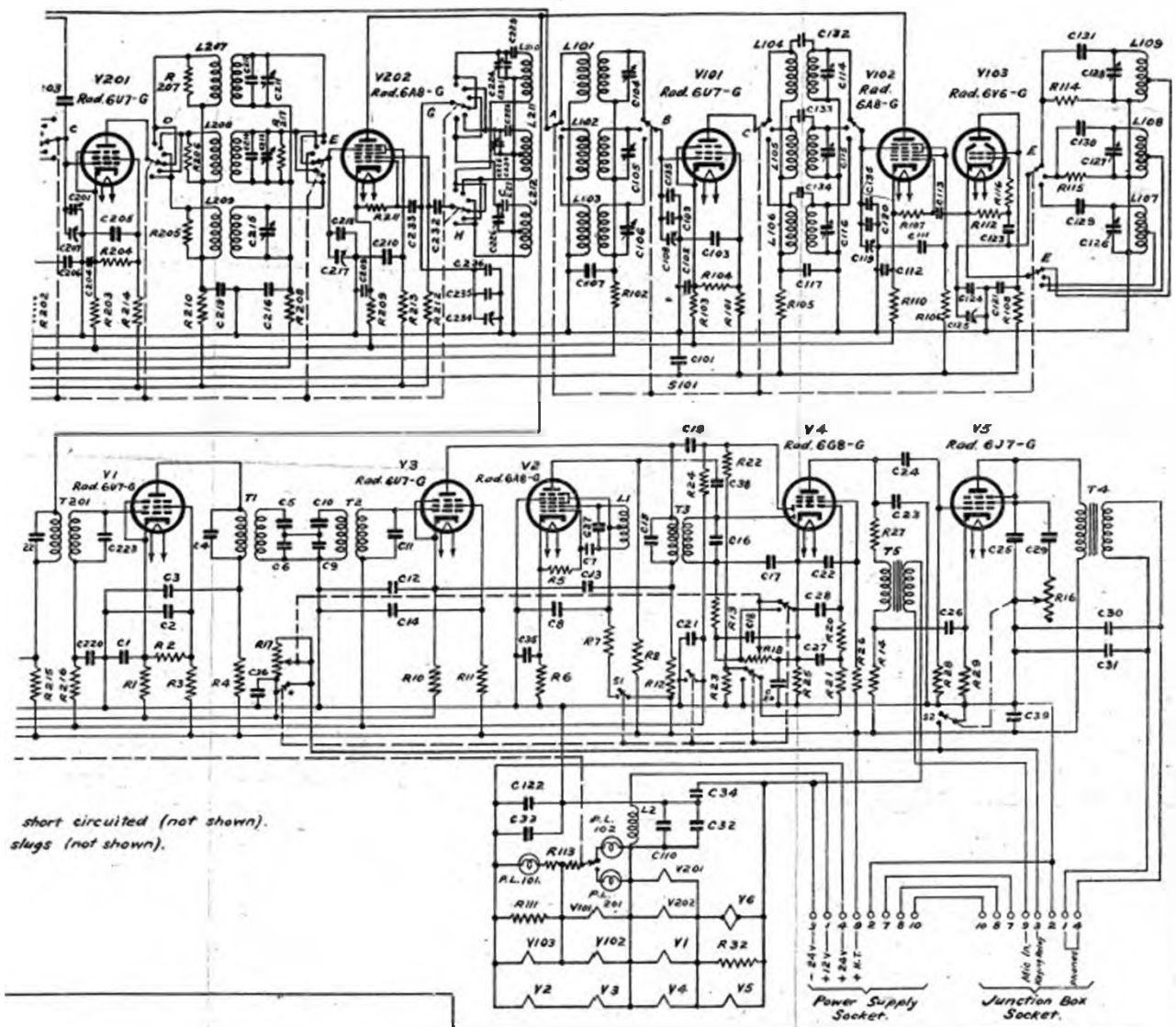
Pin 2 of Junction Box socket was previously connected to earth. Modified in units with Serial Nos over 754 to promote remote control of C.W.

- 01 Key Rel
  - 02 C.W. Remote Control
  - 03 L.T. Return
  - 04 Side Phone
  - 05 Int. Trans.
  - 06 Mic. Pilot
  - 07 Pulse
  - 08 P.W. Sw. (S/R)
  - 09 Mic. Opr.
  - 10 Cath. Rel
  - 11 P.W. Sw. (Gen)
  - 12 M.F. - H.F. Rel. L.T.
- Junction Box
- 01 +12 v.
  - 02 E.
  - 03 -24 v.
  - 04 +24 v.
  - 05 -12 v.
  - 06 Earth.
  - 07 No. 1. Gen. Rel
  - 08 H.T. 550 v. ±
  - 09 H.T. 300 v. ±
- Power Unit



All unused R.F. Coils are short circuited (not shown).  
 All R.F. Coils have iron slugs (not shown).

7733 CI  
 APPROVED BY DATE 15 12 41  
 CHANGES  
 R218 added to  
 units with Serial  
 Nos. above 1161.  
 C.O. B. 990.  
 7201-40222, etc.  
 1-1-43

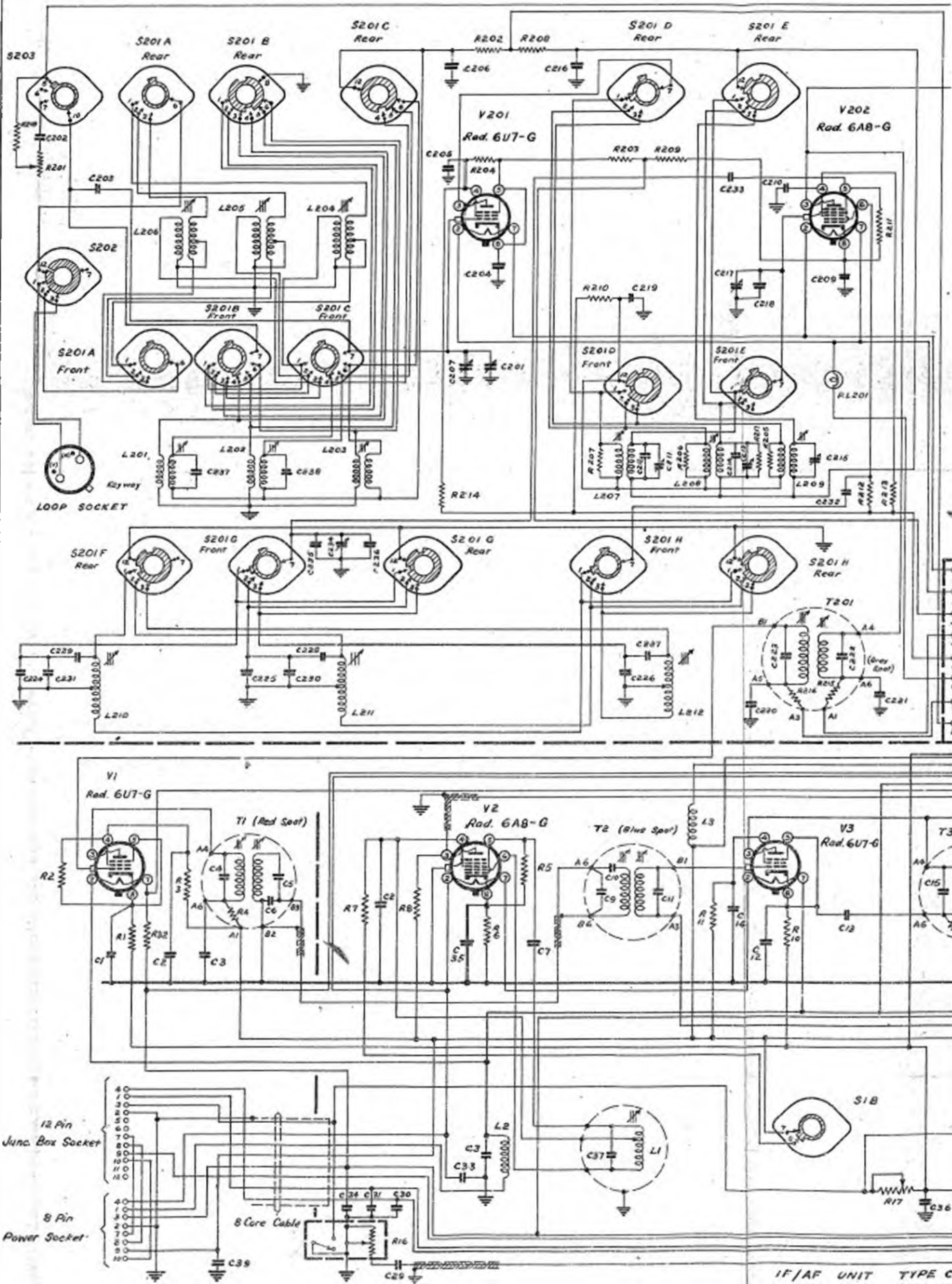


short circuited (not shown).  
slugs (not shown).

AMALGAMATED WIRELESS (AUSTRALASIA) LTD. — SYDNEY		REF.	
SCHEMATIC DIAGRAM		ARG.	
RECEIVER AR8		DRN.	
(Y101/70213)		TECO.	
		CKD.	16/12
		APP.	4-6
		SHEET	2
		TYPE C7733	
		DWG. 7733 C1	

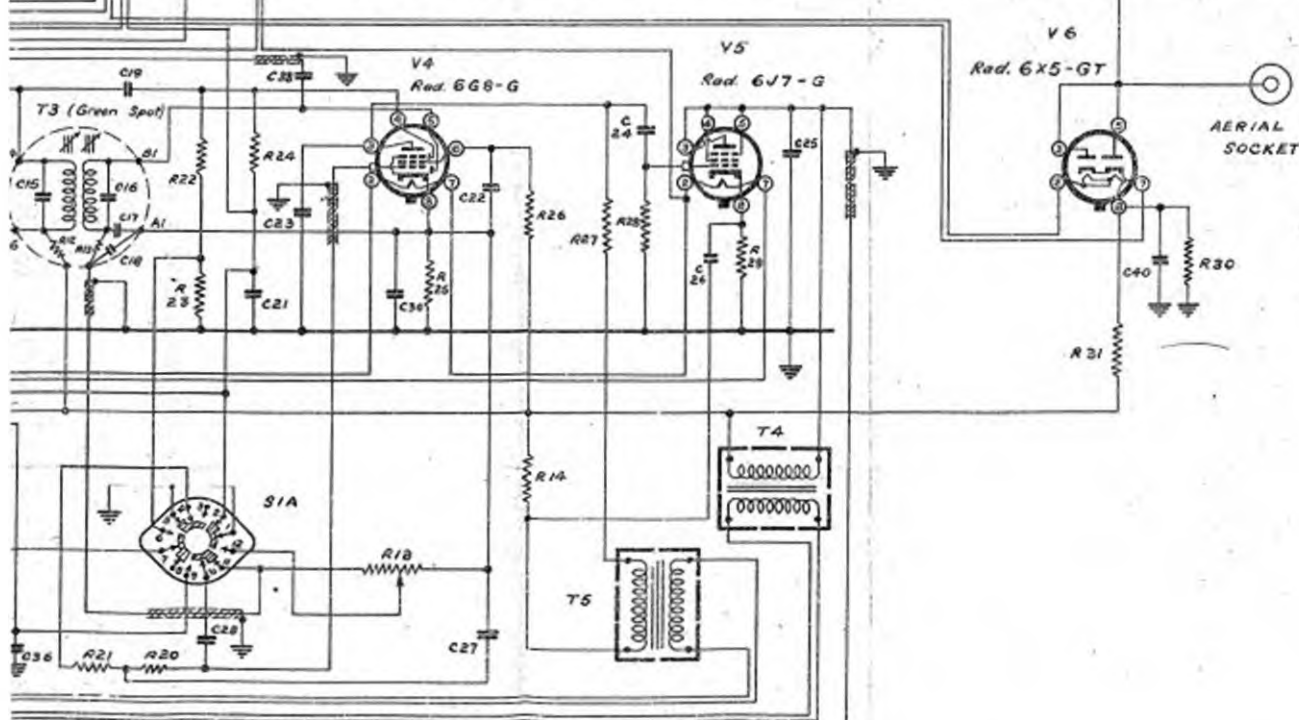
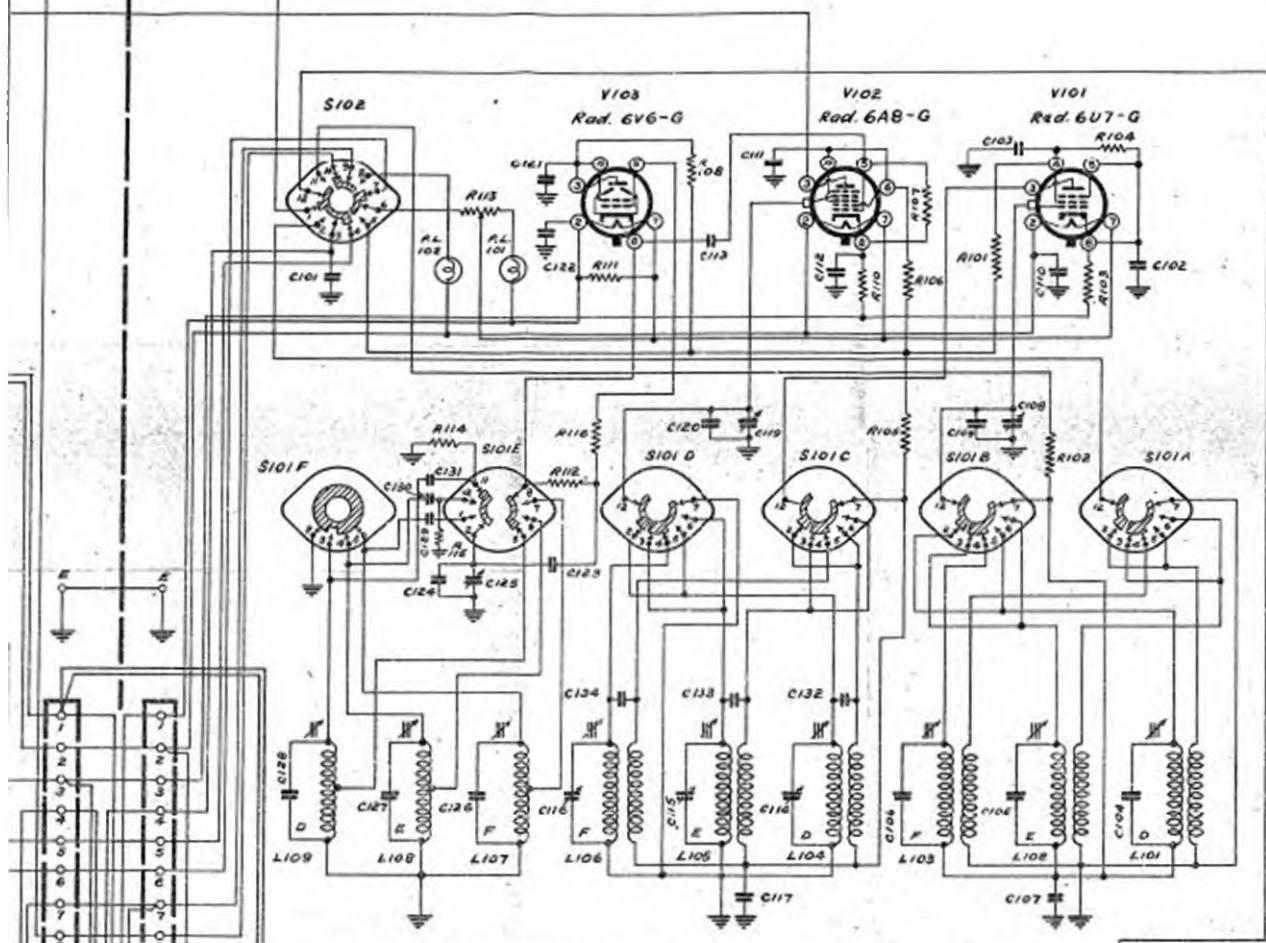


M/F. UNIT TYPE C774B (Y100/70220)



IF/AF UNIT TYPE C

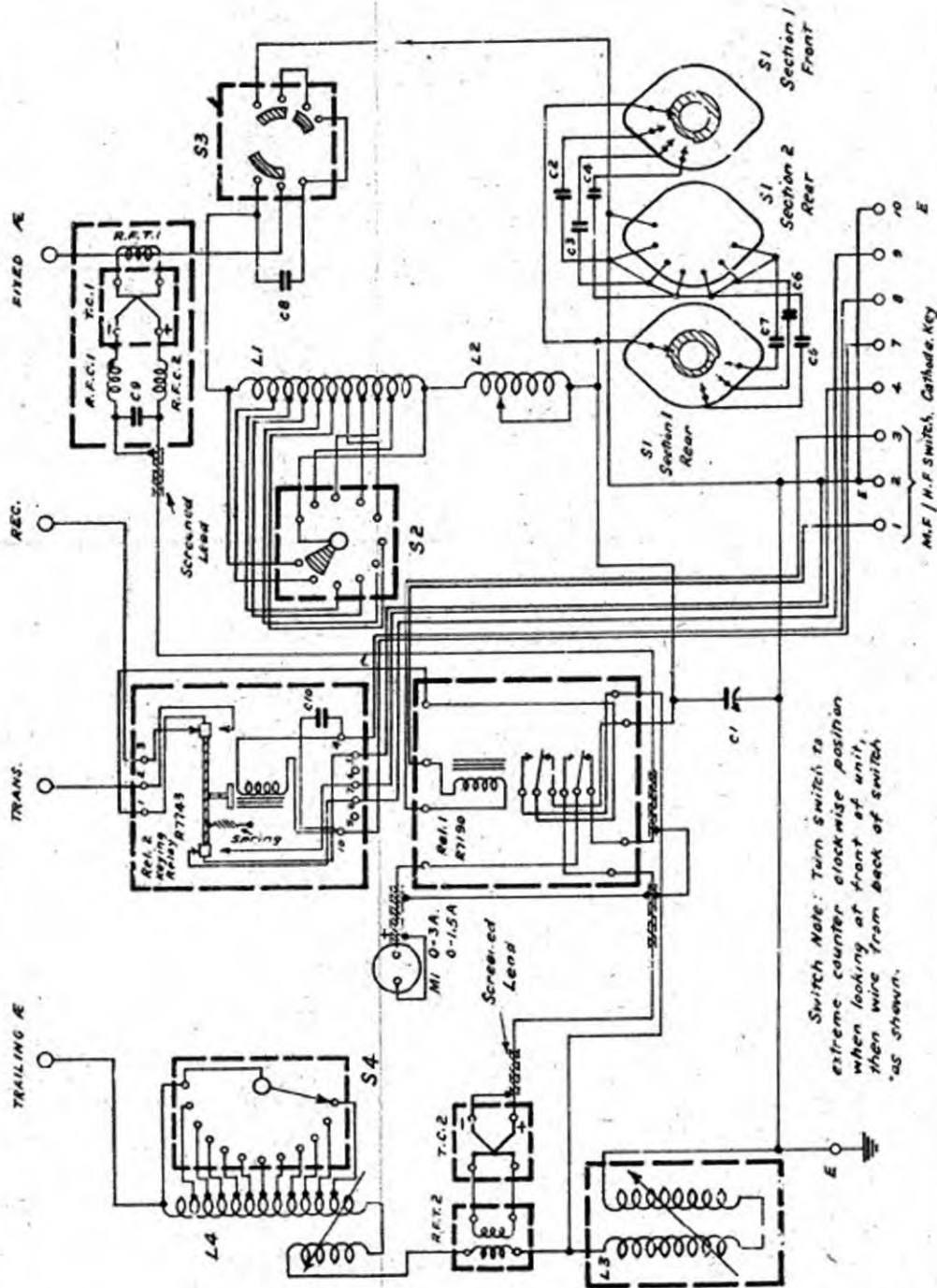
H/F. UNIT TYPE C7747 (Y100/70219)



DE C7920 (Y100/70267)

7732 D12

APPROVED	DATE
<i>[Signature]</i>	30-12-41
TRACED	CHANGES
<i>[Signature]</i>	30-12-41 4



AMALGAMATED WIRELESS (AUSTRALASIA) LTD. - SYDNEY

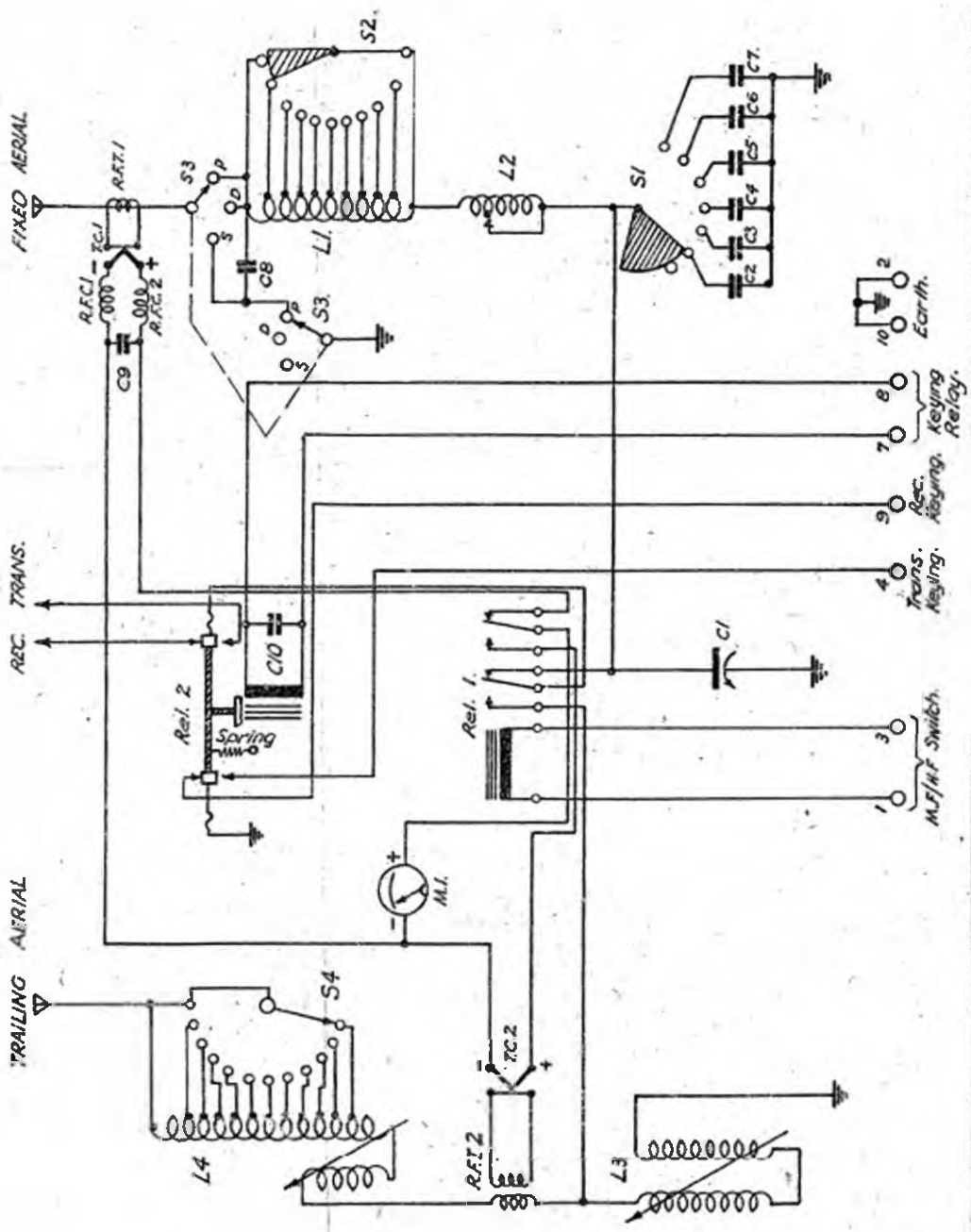
WIRING DIAGRAM  
AERIAL COUPLING UNIT  
FOR AT5 (Y10D/70212)

REF	
ARGT	<i>[Signature]</i>
DRN	<i>[Signature]</i> 30/12/41
TRCD	<i>[Signature]</i> 30/12/41
CKD	<i>[Signature]</i> 30/12/41
APP	<i>[Signature]</i> 30/12/41

1ST SHEET REF  
TYPE J 7732  
DWG. 7732 D12

7732D13

APPROVED	DATE	CHANGES
F. A. J.	1/5/41	0



AMALGAMATED WIRELESS (AUSTRALASIA) LTD. - SYDNEY

**SCHEMATIC DIAGRAM  
AERIAL COUPLING UNIT  
FOR AT5 (Y10D/70212)**

REF.	
ARGT.	<i>[Signature]</i>
DRN.	<i>B. G. [Signature]</i>
TRCD.	<i>Stacey</i>
CKD.	<i>atg</i>
APP.	<i>atg</i>

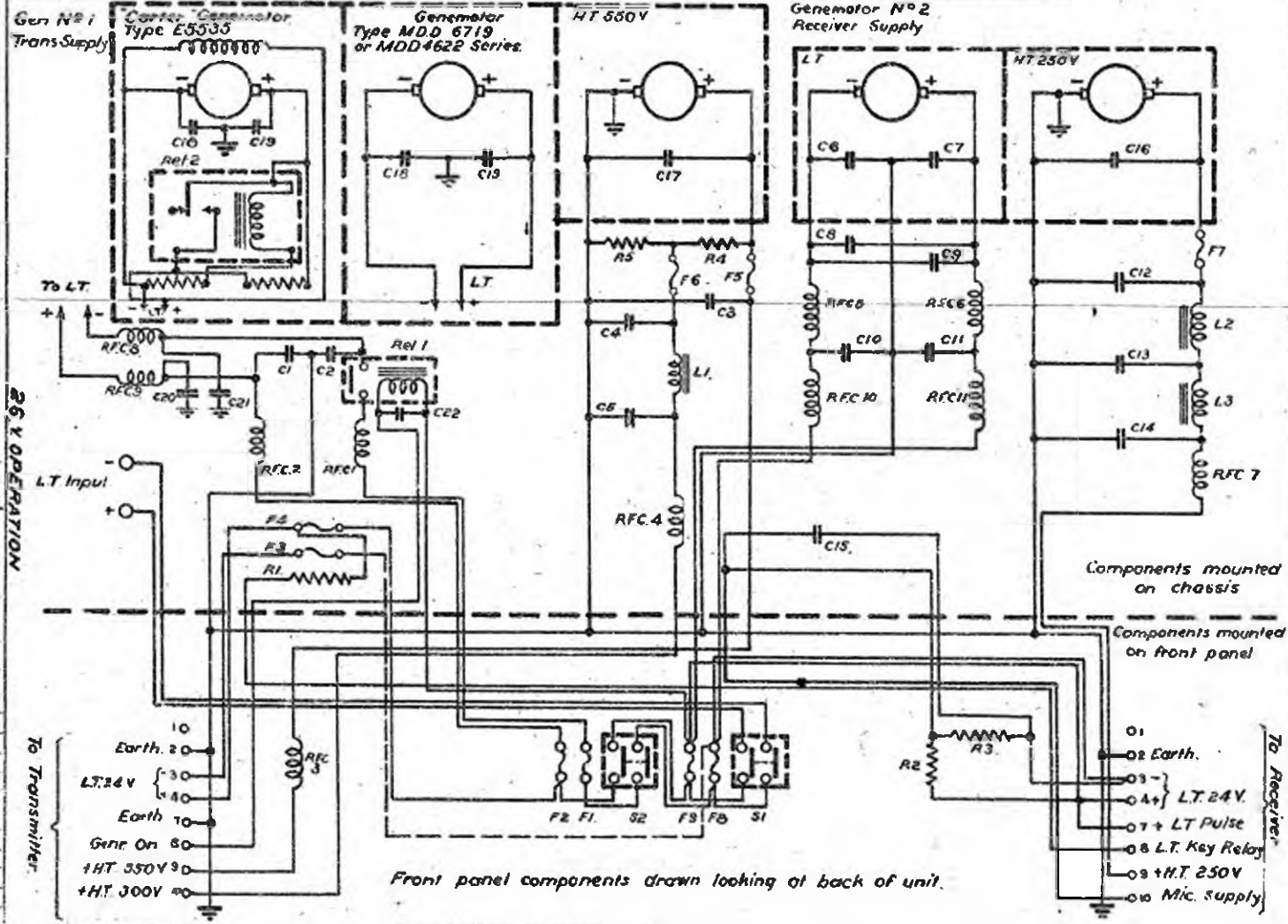
1ST SHEET REF.	
TYPE	J7732
DWG.	7732D13

773406

SCHEMATIC DIAGRAM  
POWER SUPPLY UNIT  
TYPE G (Y10D/70P14)

AMALGAMATED WIRELESS  
(AUSTRALASIA) LTD. SYDNEY

26 V OPERATION



Front panel components drawn looking at back of unit.

773406

APPROVED <i>D.L.T.</i>	DATE 15-12-41
ORDERED 8 MAY 1942	
F3 P.W. wired to F1. Modified in units with serial N.W. 8002 over, to reduce microphonic circuit noise from receiver machine.	
C.F.D. 2/3	
27-6	11-9-42 1
RFC 4. prev. mounted on front panel. C26H	
Tel. 24. Ckd. W.S.	
27-6	14-10-42 2

REF	ARG1	DNR	TRCD	TRF	TRM	TRN	TRP	TRQ	TRR	TRS	TRT	TRU	TRV	TRW	TRX	TRY	TRZ

1ST SHEET	REF.

To Transmitter:  
10 Earth  
11 LT 24V  
12 Earth  
13 Earth  
14 Earth  
15 Gen On  
16 HT 550V  
17 +HT 300V

To Receiver:  
01  
02 Earth  
03 -  
04 + LT 24V  
05 + LT Pulse  
06 LT Key Relay  
07 +HT 250V  
08 Mic. supply

TYPE H7734  
DWG. 773406

7734D9

APPROVED

DATE

13-2-42

REVISION

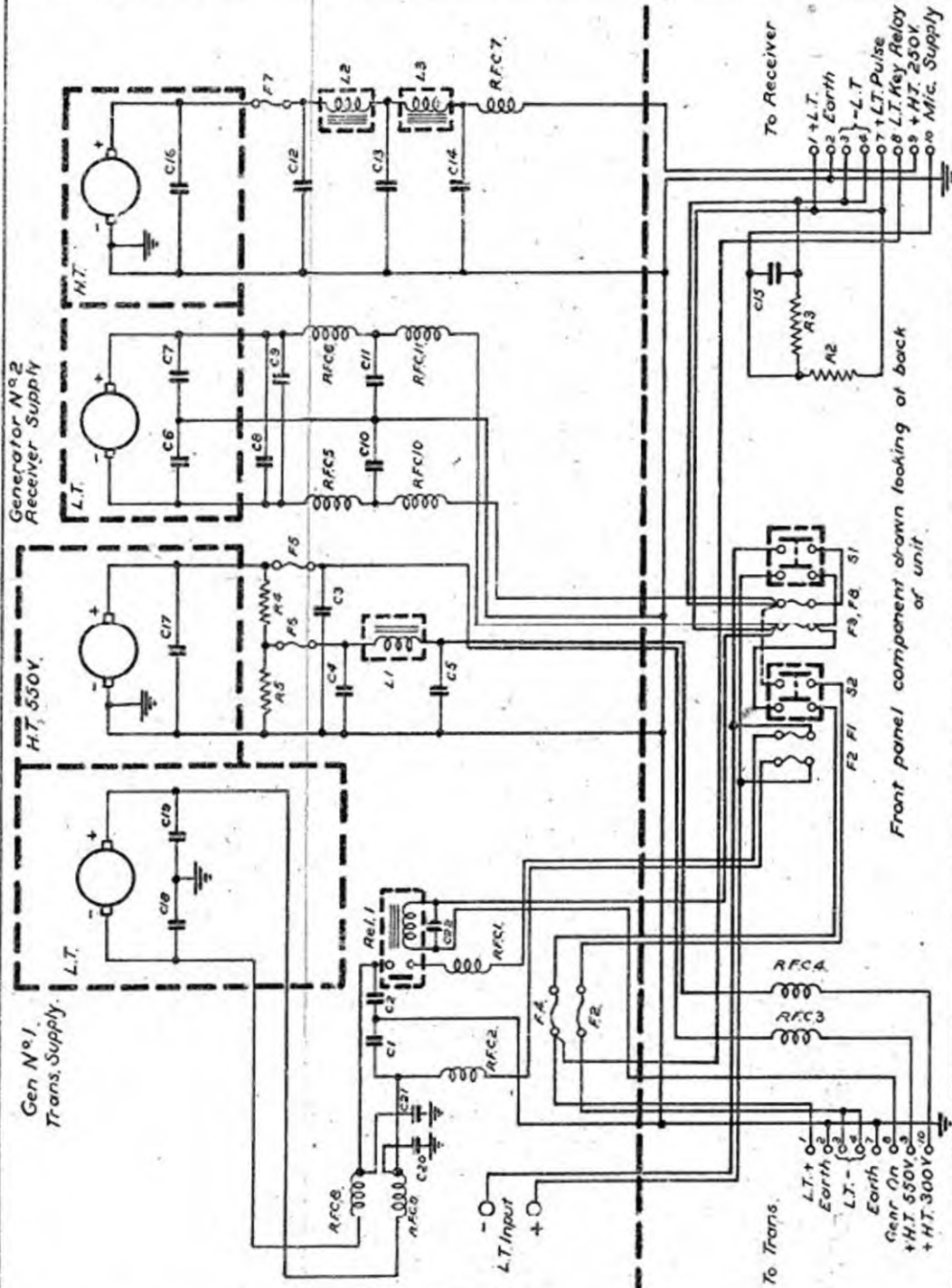
8 MAY 1942

52 pres. wired to bottom end of F8 modified in wiring with serial N1880 lever, to reduce microphone stream noise from receiver machine.

C.K.D.

11-9-42

1942



13 V OPERATION.

AMALGAMATED WIRELESS (AUSTRALASIA) LTD. - SYDNEY

SCHEMATIC DIAGRAM.  
POWER SUPPLY UNIT.  
TYPE L (Y10D/70355)

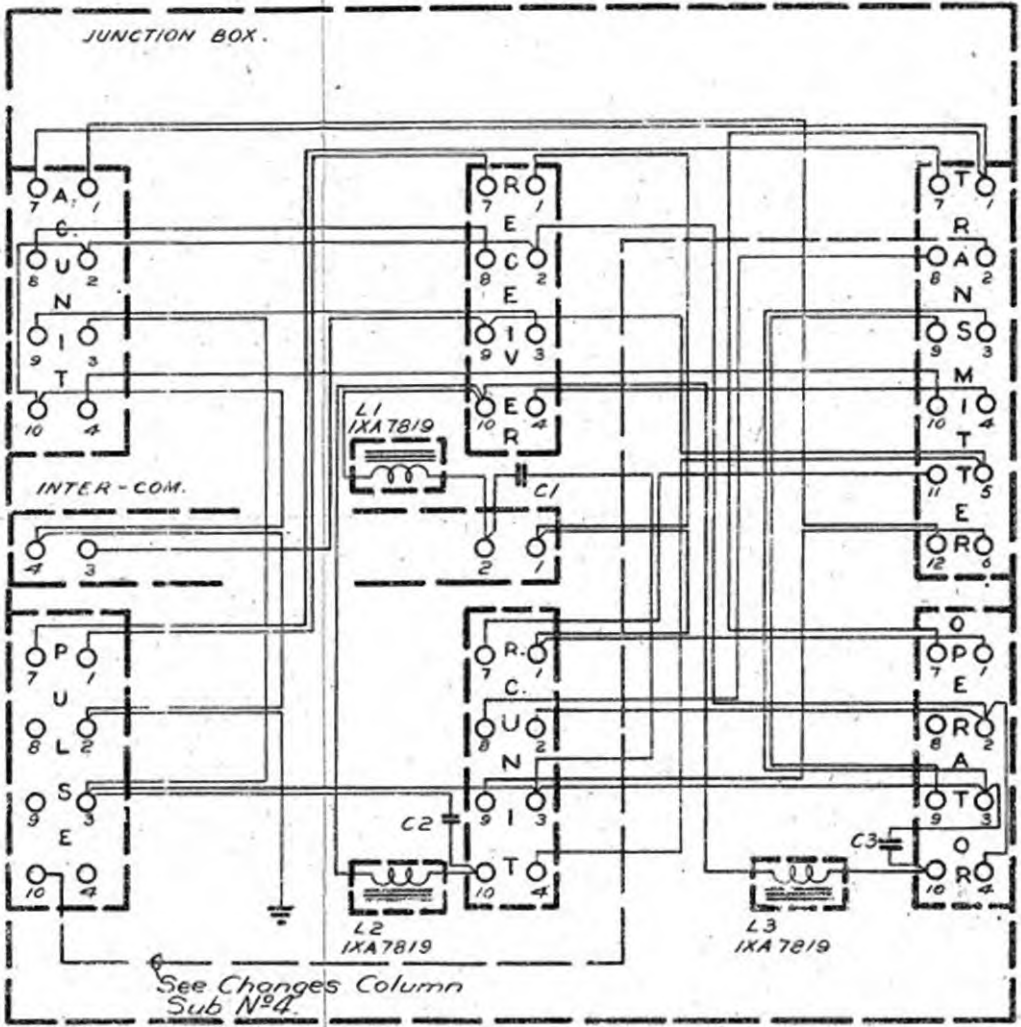
REF.	
ARGT.	
DRN.	
TRCD.	R. P. T. 13-2-42
CKD.	13/2/42
APP.	

1ST SHEET REF.  
TYPE 1H7734  
DWG. 7734D9.

7735 DI

APPROVED 18.12.41 3  
 DATE 18.12.41 3  
 Tag 2 changes group previously wired to Egr 1th Mod. in units with Serial Nos over 754 to provide remote con. of 1st Ch. Ckd. E. Smith

18.12.41 3



See Changes Column Sub N<sup>o</sup> 4.

NOTE:-  
 Wiring side of terminal panel shown.

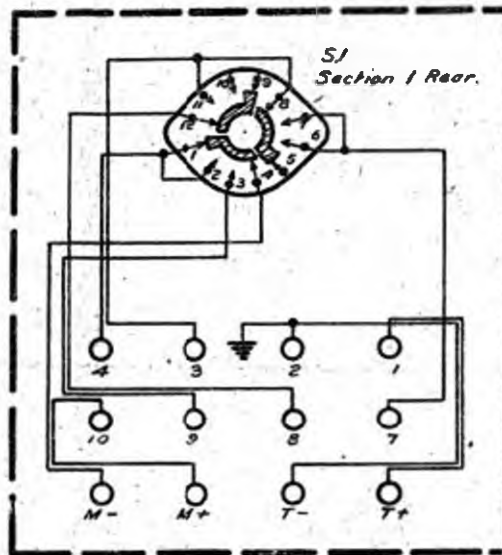
AMALGAMATED WIRELESS  
 (AUSTRALASIA) LTD. - SYDNEY

SCHEMATIC DIAGRAM  
 JUNCTION BOX  
 FOR AT5/AR8 (Y10D/70215)

REF		1st SHEET	1/2
ARGT	<i>E. Smith</i>	REF	
DRN	<i>E. Smith</i>	TYPE R7735	
TRCD	<i>E. Smith</i>	DWG. 7735 DI	
CXD	<i>E. Smith</i>		
APP	<i>E. Smith</i>		

ADD CHANGES TO GESTETNER STENCIL

APPROVED  
A.A.H. 2/12/61  
CHANGES



*Oak Switch Note - Turn switch to extreme counter-clockwise position when looking at front of unit, then wire from back of switch as shown.*

<b>AMALGAMATED WIRELESS</b> (AUSTRALASIA) LTD. - SYDNEY	REF.		1st SHEET						
	ARGT.	<i>[Signature]</i>	REF.						
<b>SCHEMATIC DIAGRAM</b> <b>REMOTE CONTROL UNIT</b> <b>FOR AT5/AR8(Y10D/70216)</b>	DRN.	<i>[Signature]</i>	DATE	1954	<b>TYPE P7755</b>				
	TRCD.	<i>[Signature]</i>	DATE	1954	<b>DWG. 7755D2</b>				
	CKD.	<i>[Signature]</i>	DATE	1954					
	APP.	<i>[Signature]</i>	DATE	1954					



7755D5

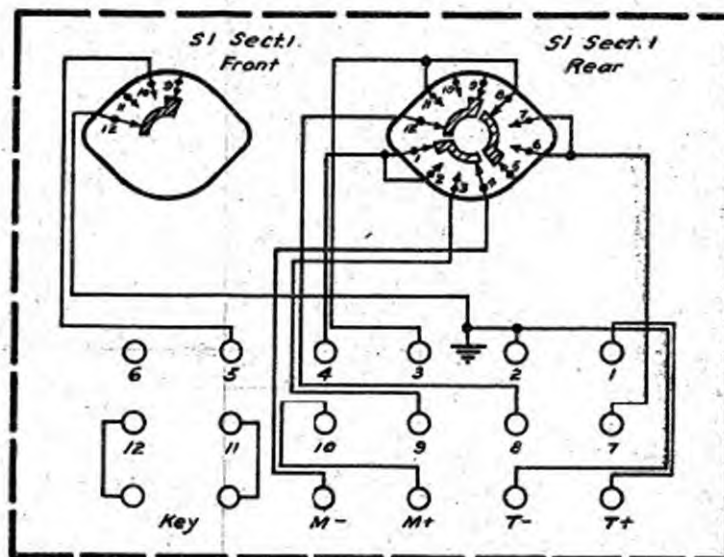
APPROVED: *D.A.V.*

DATE

31-7-42

CHANGES

ADD CHANGES TO GESTETNER STENCIL



*Oak Switch Note: Turn switch to extreme counter-clockwise position when looking at front of unit, then wire from back of switch as shown.*

AMALGAMATED WIRELESS  
(AUSTRALASIA) LTD. - SYDNEY

REF.	
ARGT.	
DRN.	<i>[Signature]</i> 31-7-42
TRCD.	<i>[Signature]</i> 31-7-42
CKD.	<i>[Signature]</i> 31-7-42
APP.	<i>[Signature]</i> 31-7-42

1ST SHEET REF.	
----------------	--

**SCHEMATIC DIAGRAM  
REMOTE CONTROL UNIT**

**TYPE 1P7755**

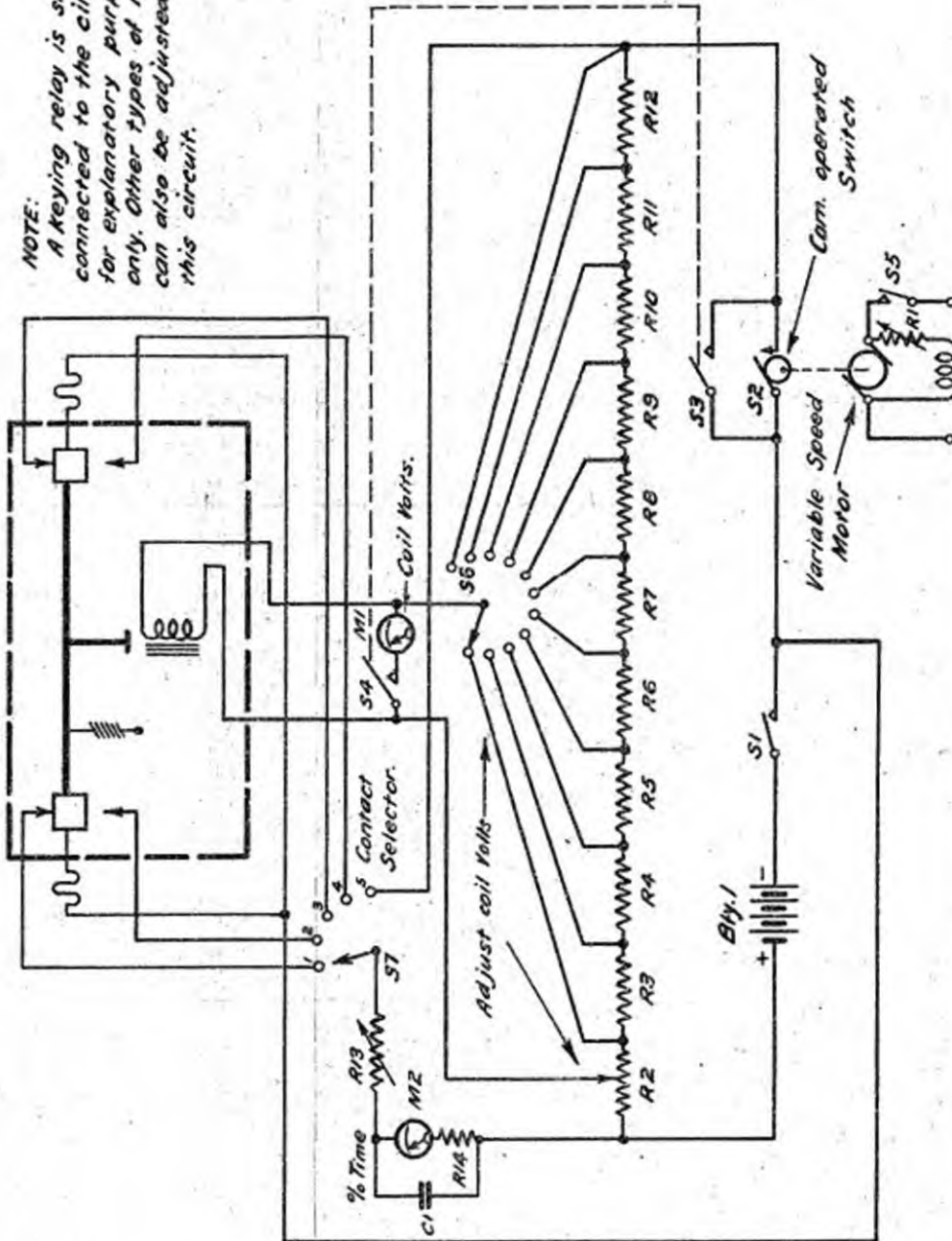
**DWG. 7755 D5**

8641DI

APPROVED	DATE	CHANGES
D. M'N.	6.2.42	
Retraced, 25-5-42		
C.D. C. P. (22/4/42)		
18.2.43		

ADD CHANGES TO GESTETNER STENCIL

NOTE:  
A Keying relay is shown connected to the circuit for explanatory purposes only. Other types of relays can also be adjusted on this circuit.



AMALGAMATED WIRELESS  
(AUSTRALASIA) LTD. - SYDNEY

SIMPLIFIED SCHEMATIC  
DIAGRAM  
RELAY TEST UNIT

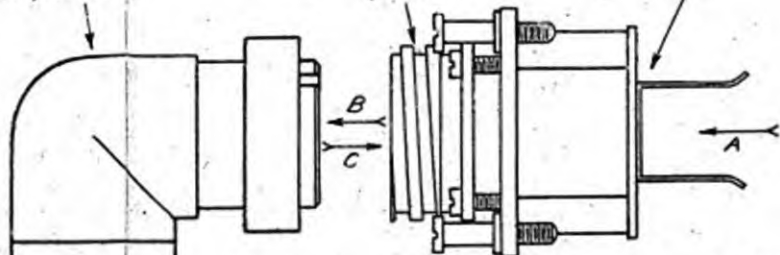
REF		
ARGT		
DRN.		
TRCD	G. Smith	6242
CKD.	A.J.C.	6242
APP.	A.J.C.	6242

1st SHEET	1
REF.	
TYPE A8641	
DWG. 8641DI	

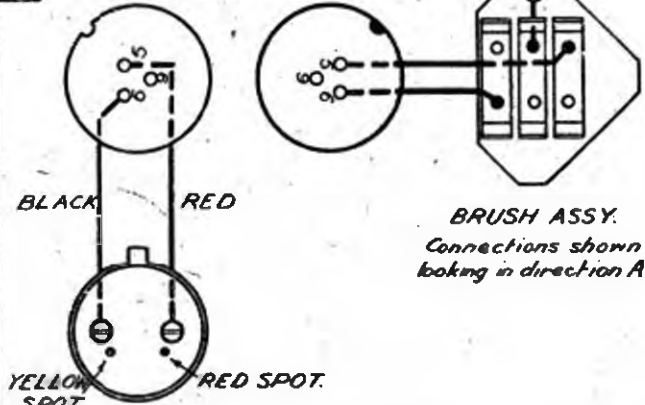
8401DI

APPROVED	DATE	0
<i>[Signature]</i>	22.12.41	0
CHANGES		

CABLE ASSY 8401U1 Y10H/90124      SOCKET ASSY 8401T16 Y10H/90121      BRUSH ASSY 8401T33



PLUG Connections, SOCKET Connections shown looking along B shown looking along C



BRUSH ASSY. Connections shown looking in direction A.

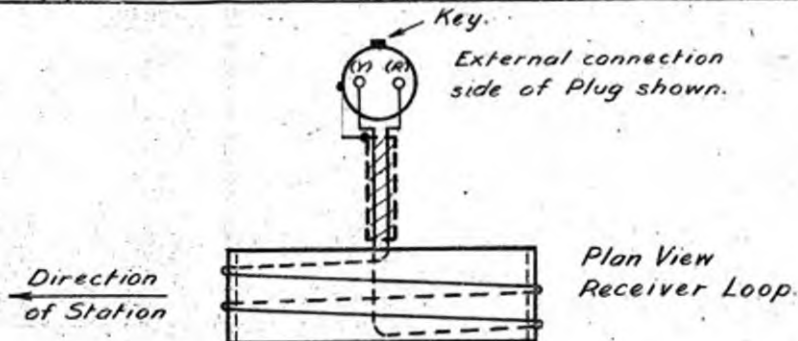
PLUG Connections shown looking in direction D.

Metal screening is bonded to metal bodies of both plugs.



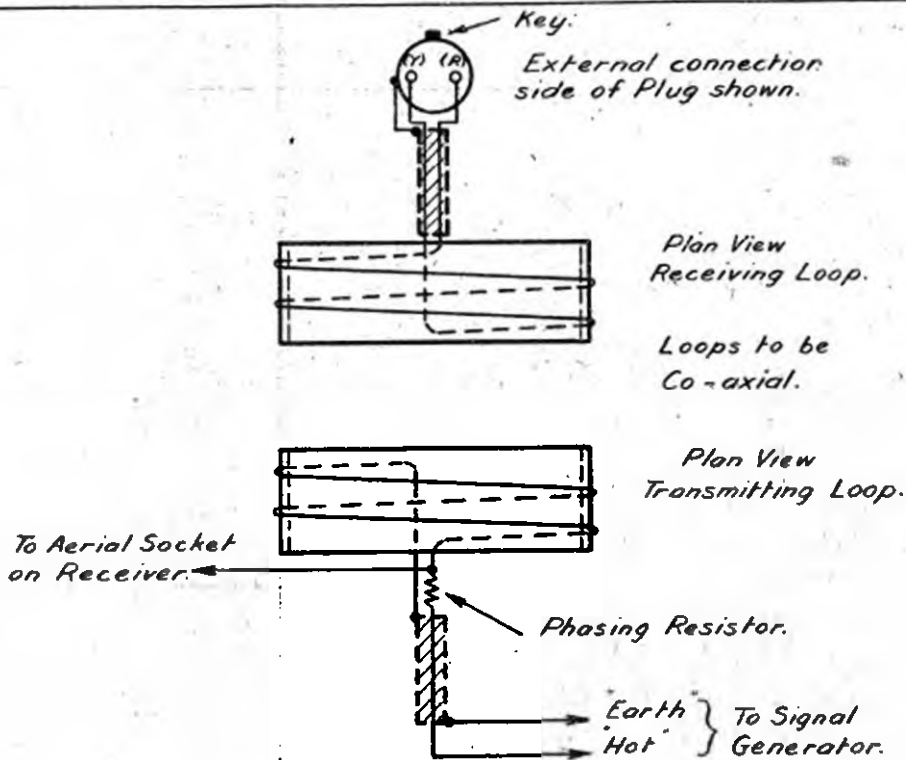
AMALGAMATED WIRELESS (AUSTRALASIA) LTD. - SYDNEY	REF.		1ST SHEET	1
	ARGY.	<i>[Signature]</i>	REF:	
CABLE "N" FOR CONNECTING BENDIX LOOP TO A.R.8 RECEIVER IN HUDSON INSTALLATION.	DRN.	<i>[Signature]</i>		
	TRCD.	<i>[Signature]</i>		
	CKD.	<i>JB</i>	22/12	
	APP.	<i>afg</i>	22/40	
			TYPE B8401	
			DWG. 8401DI	

APPROVED	DATE	1
4/1	17-12-47	
APPLICD	CHANGES	
None added.		
	11-2-43	



Open aerial to be effectively vertical and to be above the loop with connection to receiver at base of aerial.

**AERIAL CONDITION.**



**SIGNAL GENERATOR CONDITION.**

NOTE - With orientation and connections as shown correct sense should be obtained when connected to a receiver, i.e. minimum output should be obtained in the "Bearing" position of the loop reversing switch.

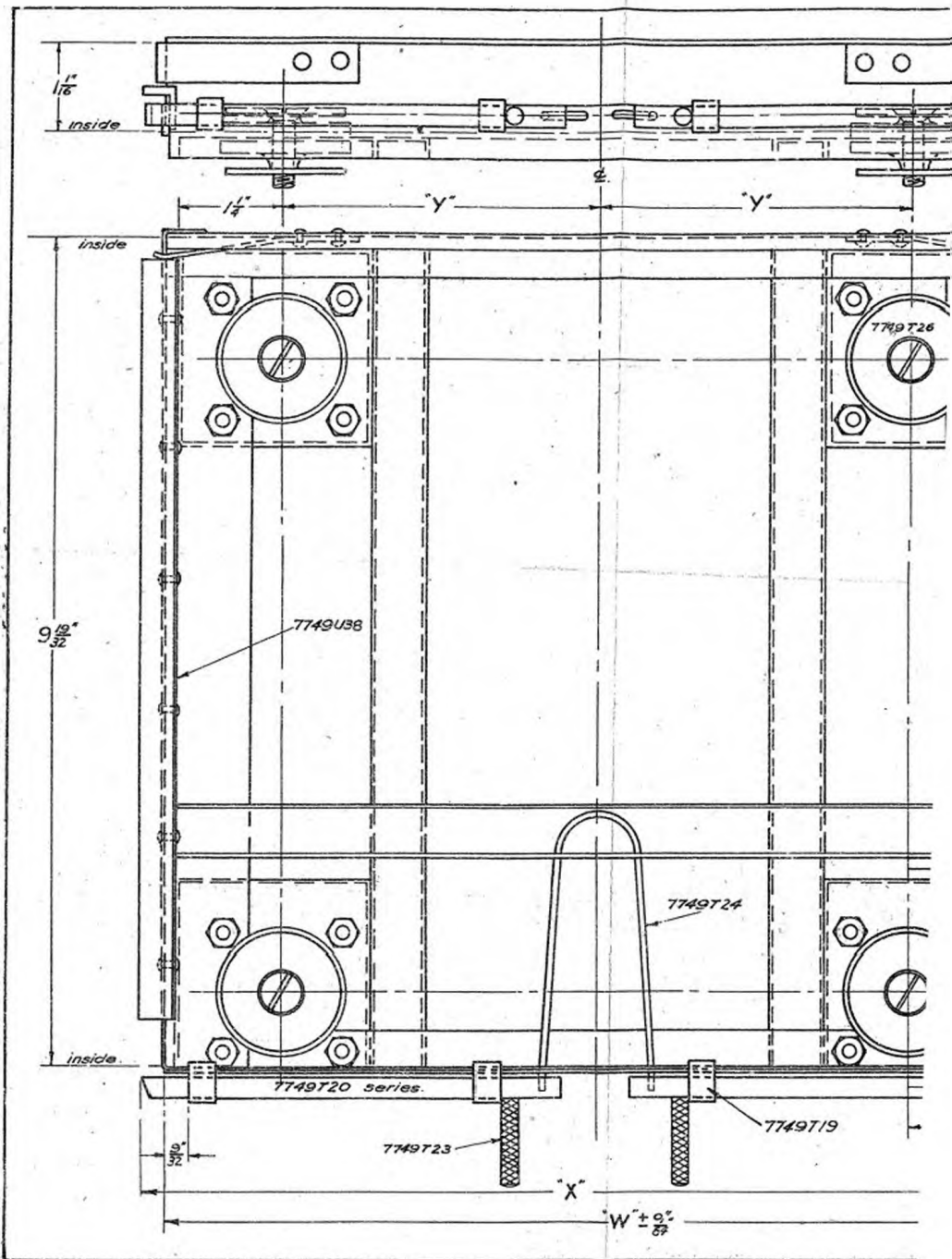
AMALGAMATED WIRELESS  
(AUSTRALASIA) LTD. - SYDNEY

CONDITIONS FOR SENSE CHECK  
ON AR8 RECEIVER

REF.		
ARGT.		
DRN.		
TRCD.		
CKD.		
APP.		

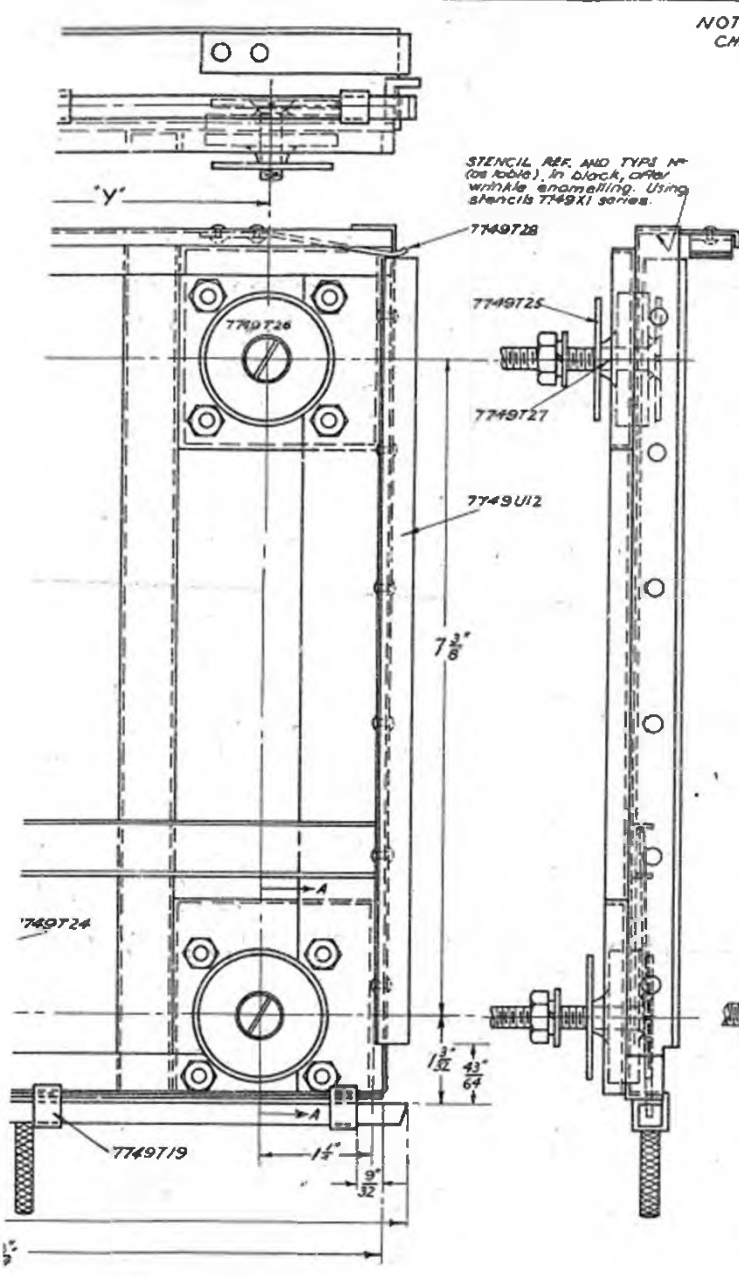
1ST SHEET	1/2
REF.	

TYPE  
DWG. 7730D1



NOTE :-  
CHECK ALL TYPES IN ACCORDANCE WITH TEST SPEC. 7749.P.

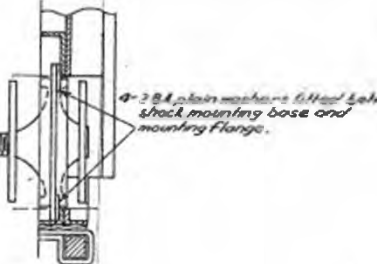
PART & STENCIL NO.	REF. & TYPE NO.	FOR	DM. W.	DM. X	DM. Y	BASI ASSY	MAKE
7749X1	REF. NO. 7749/7749 TYPE 2, 7749	A.C.U.	9 1/8"	10 1/2"	3 1/2"	774976	
7749X1-1	REF. NO. 7749/7749 TYPE 1, 7749	REC.	11 1/8"	11 1/2"	4 1/8"	774976-1	
7749X1-2	REF. NO. 7749/7749 TYPE 2, 7749	TRANS.	11 1/8"	12 1/2"	4 1/8"	774976-2	



NOTE  
Jig to be used for locating Shock Absorbers before tightening screws.

FINISH  
Gray wrinkle enamel before fitting rubber mountings, locking bars and springs, masking all bearing surfaces of runners, rubber mountings and inside of locking bar bearings.

NOTE  
For drawing of base assembly refer table.  
Springs, locking bars, runners, etc. to be fitted by Main Assy. Section.  
All screws and nuts (excepting 4-3 B.S.F. screws and nuts) to be soaked.  
Latch bars to be lubricated with anti freeze lubricant DTD 1+3C



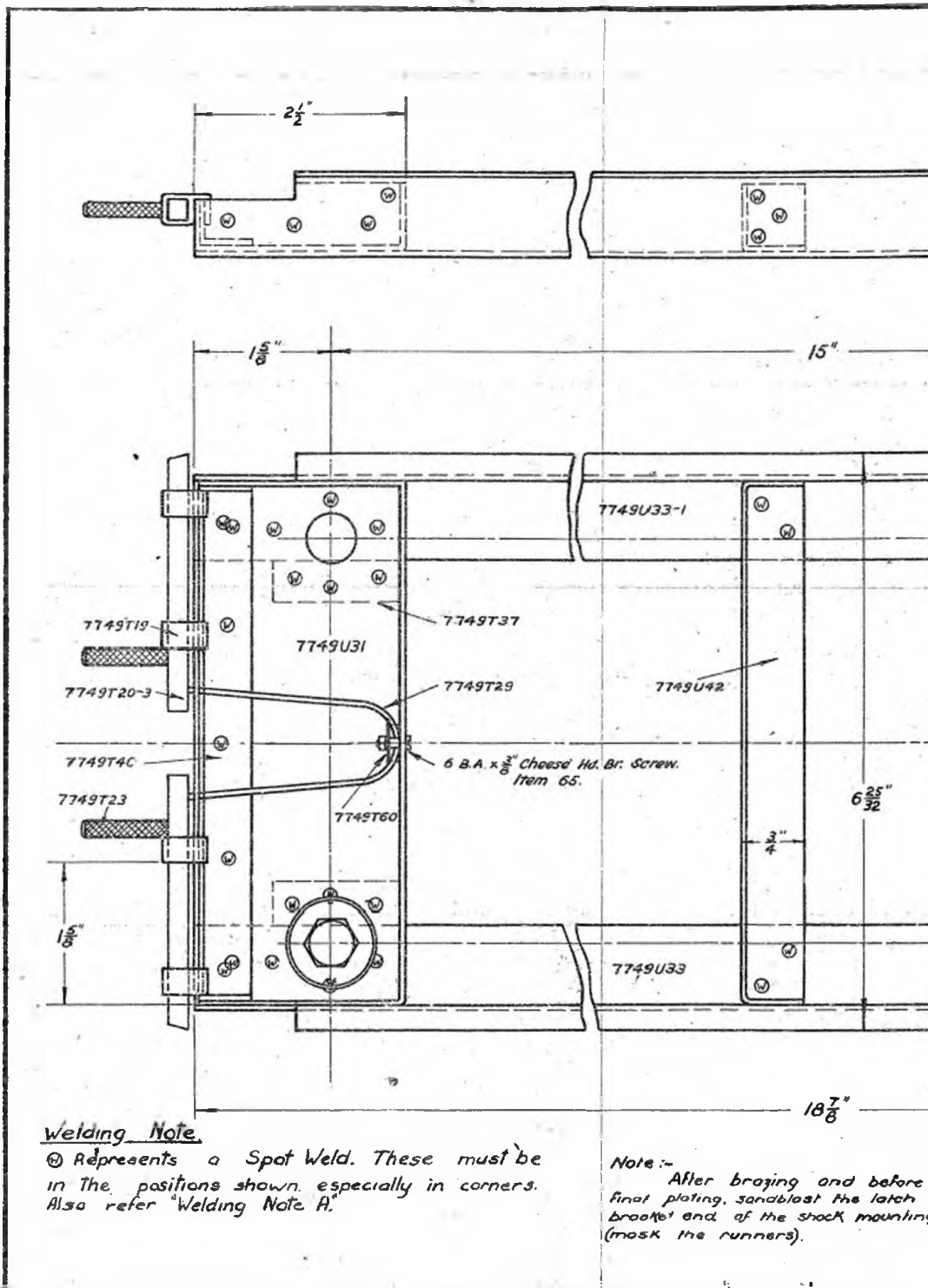
7749X1 SERIES  
7749X1  
7749X1-1  
7749X1-2

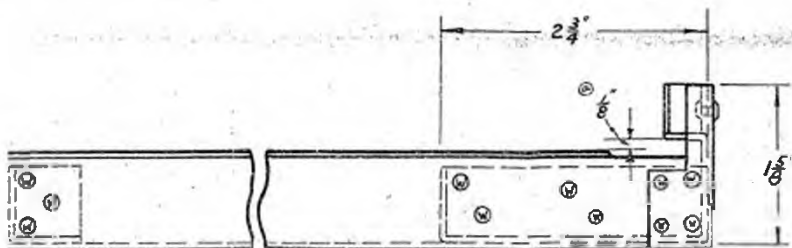
1 edge Gauge  
3 welding jigs  
7749X1-1  
1 edge Gauge  
3 welding jigs  
7749X1-1  
1 edge Gauge  
3 welding jigs  
7749X1-2

MATERIALS  
ASSY.  
QTY. PER JOB.

PRINT  
See note.

ITEM No.  
ISSUE No.  
JOB No.  
MAKE  
A.W.A. LTD.





**STENCIL**

Ref. N<sup>o</sup> Y10D/70286  
Type 327749

in block where indicated  
after wrinkle enamelling,  
with stencil N<sup>o</sup> 7749X30

### FINISH

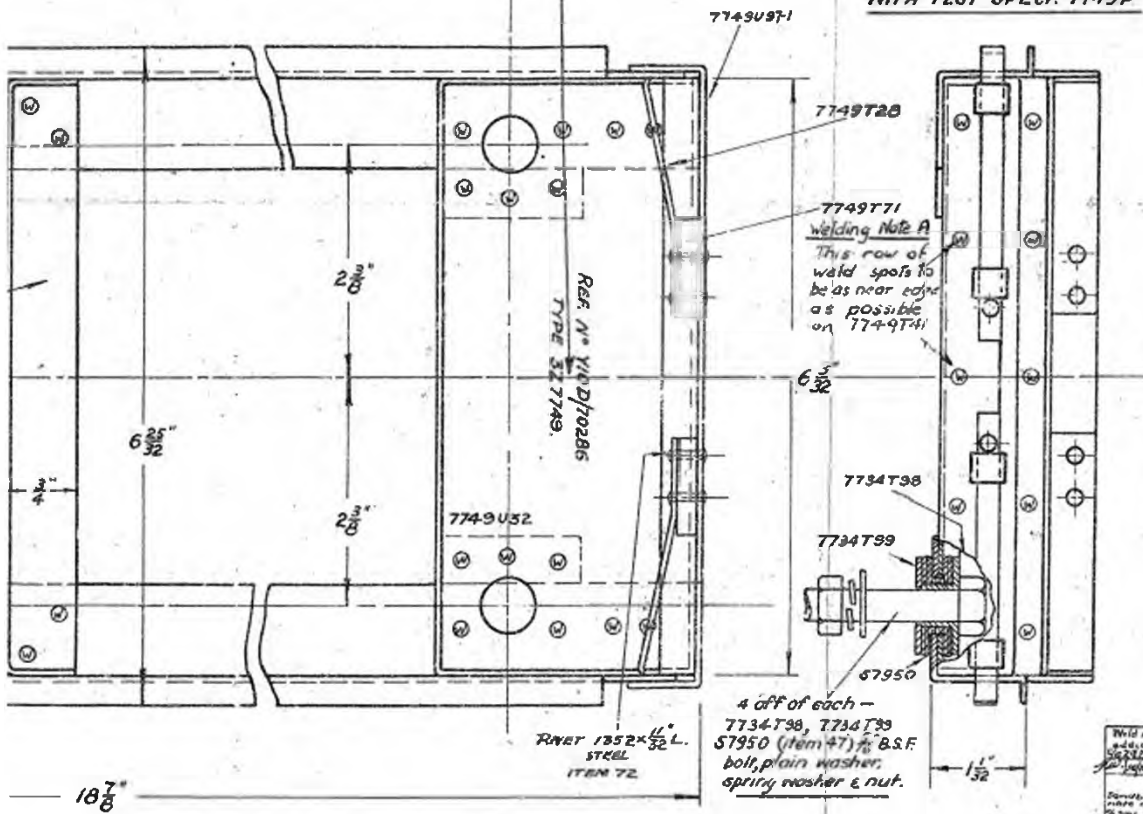
① Plate to Process Spec. 7.345J ISSUE 0.  
Then grey wrinkle enamel after masking  
all bearing surfaces of runners, shock  
mountings and inside of locking bar  
bearings.  
Complete final assembly. See note.

### DRILLING

4 Holes  $\frac{7}{8}$ " dia.

### NOTE

TEST IN ACCORDANCE  
WITH TEST SPECI. 7749P



ozing and before  
andblast the latch  
& the shock mounting  
ners).

### NOTE

All screws and nuts (excepting 4- $\frac{1}{4}$ " B.S.F.  
screws and nuts) to be sealed.

Latch bars to be lubricated with anti freeze  
lubricant DTD 143c.

### NOTE

Springs, locking bars, a rubber  
mountings to be fitted by main  
Assembly Section.  
Issue two prints -  
1 for Sheet Metal Workers  
1 for Main Assembly Sections

7749X30

518 NUMBER 10

Traced.

W 2030 Cast Roll

APPROVAL DATE 4

A.M.

Name of Shop

7749X30

7749X30

7749X30

7749X30

7749X30

7749X30

7749X30

7749X30

7749X30

7749X30

7749X30

7749X30

7749X30

7749X30

7749X30

7749X30

7749X30

7749X30

7749X30

7749X30

7749X30

7749X30

7749X30

7749X30

7749X30

7749X30

7749X30

7749X30

7749X30

7749X30

7749X30

7749X30

7749X30

7749X30

7749X30

7749X30

7749X30

7749X30

7749X30

7749X30

7749X30

7749X30

7749X30

7749X30

7749X30

7749X30

7749X30

7749X30

7749X30

7749X30

7749X30

7749X30

7749X30

7749X30

7749X30

7749X30

7749X30

7749X30

7749X30

7749X30

7749X30

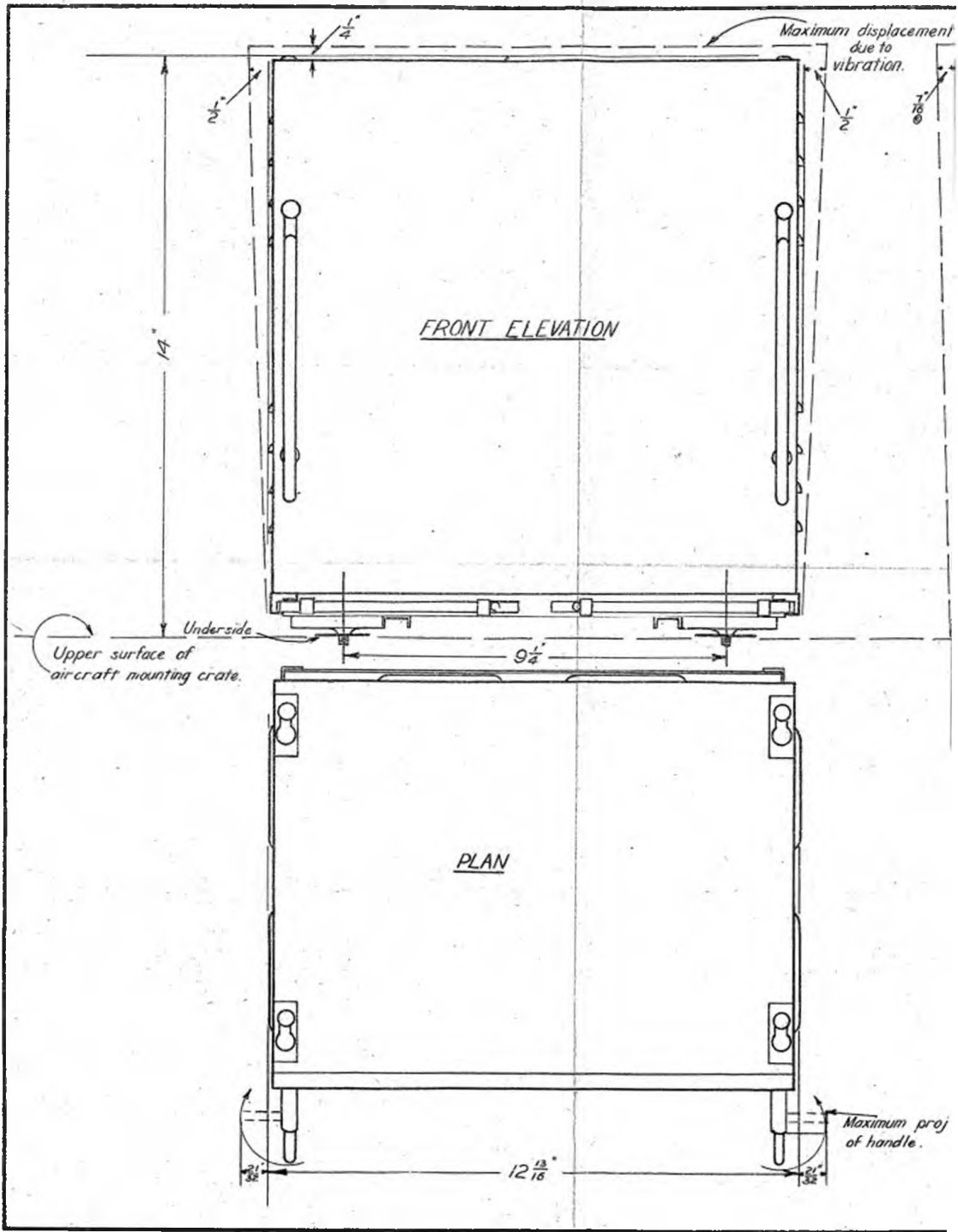
7749X30

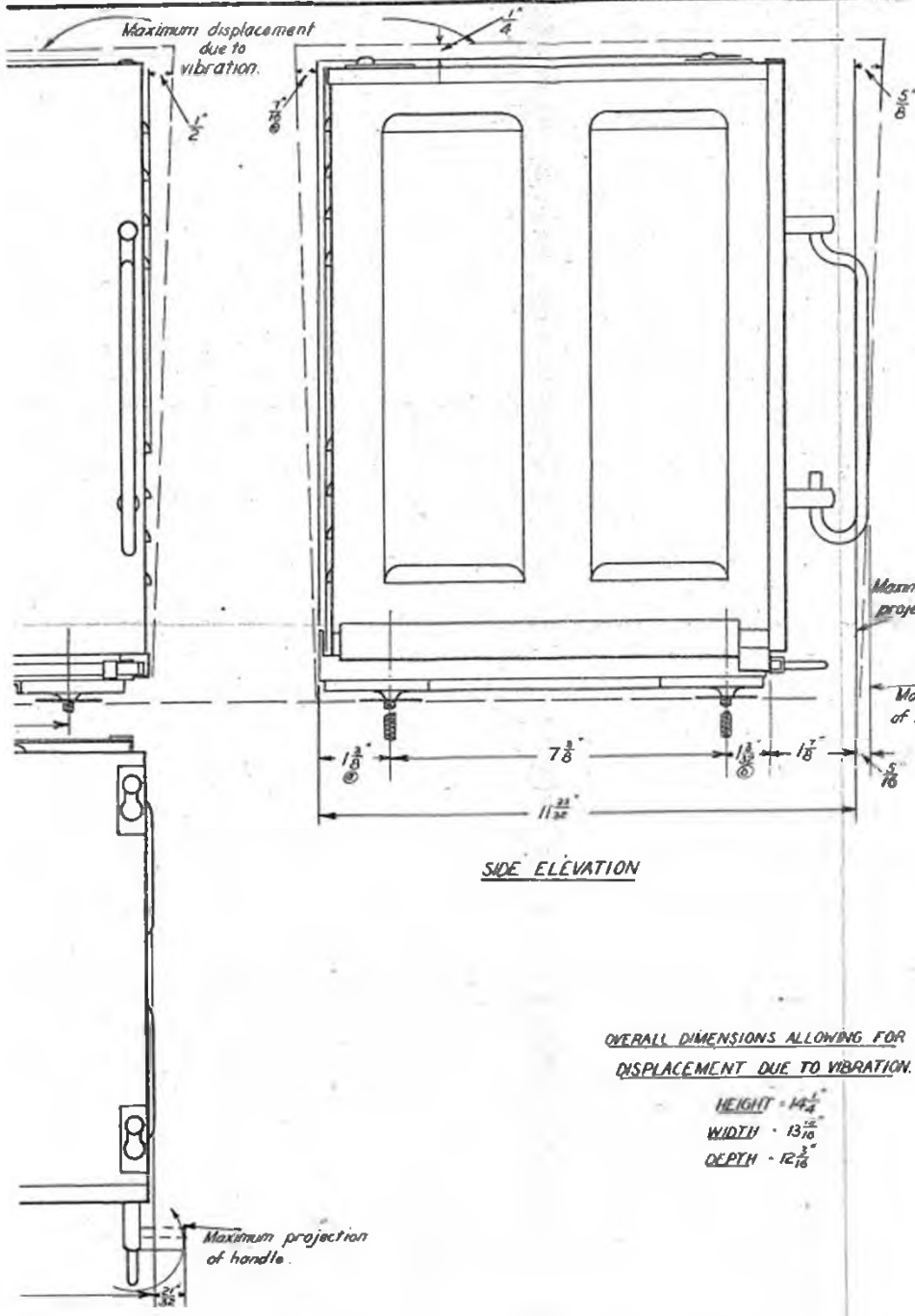
7749X30

7749X30

7749X30







TRANSMITTER TYPE AT.5  
 TYPE J773I  
 IDENT No. Y10D/10211

SIDE ELEVATION

OVERALL DIMENSIONS ALLOWING FOR  
 DISPLACEMENT DUE TO VIBRATION.

HEIGHT - 14 1/4"  
 WIDTH - 13 1/16"  
 DEPTH - 12 3/16"

DRWG. N°  
 773/BI

APPROVED	DATE	BY
APR 28-7-41	1	
Note re overall dim. added from cover.		
APR 30-7-41	2	
Note re overall dim. added.		
APR 10-9-41	3	
Traced 20-10-41		
Tcd & h. l. l. d.		
27-3-22-10-41		
SHEETS 1/1		
SCALE		
MATL.		
QTY. PER JOB.		
FINISH		
ITEM No.		
ISSUE No.		
JOB No.		
MAKE		
DESIG. CMB.		
A. W. A. LTD.		

773381

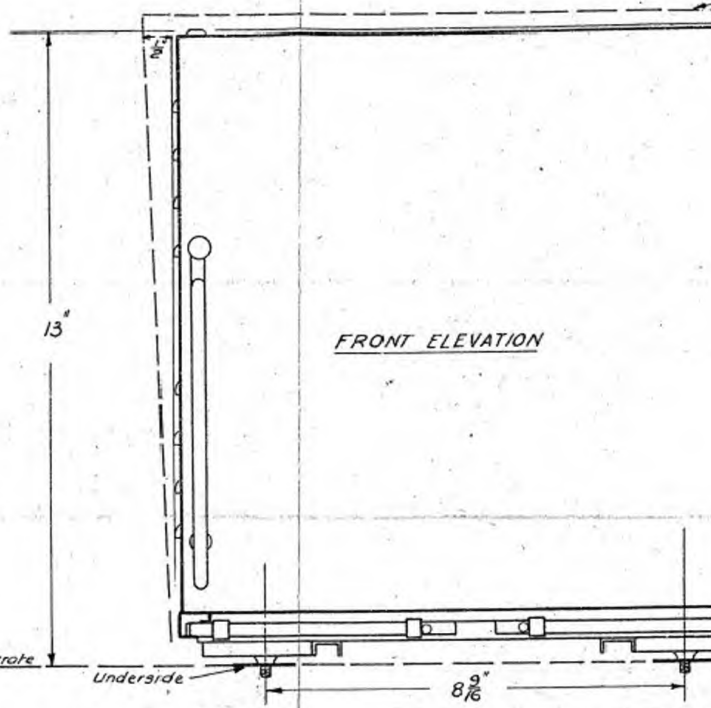
① nos 14"		
② nos 14"		
6.7.4	28.7.41	1
③ Same displacement Dim. nos 8 from cover		
6.7.4	30.7.41	2
Note: Overall dim. added.		
6.7.4	10.9.41	3
...		

A.W.A. LTD.

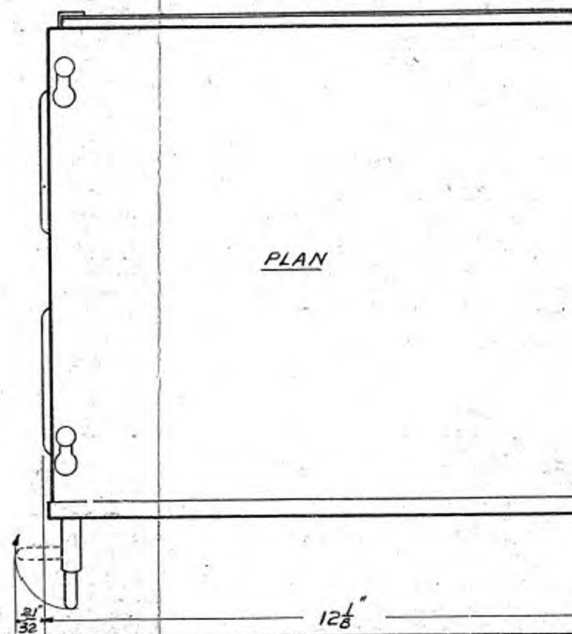
RECEIVER, TYPE AR8  
IDENT. No Y10D/70213

Approved  
Checked  
Manufactured  
Inspected  
Serialized

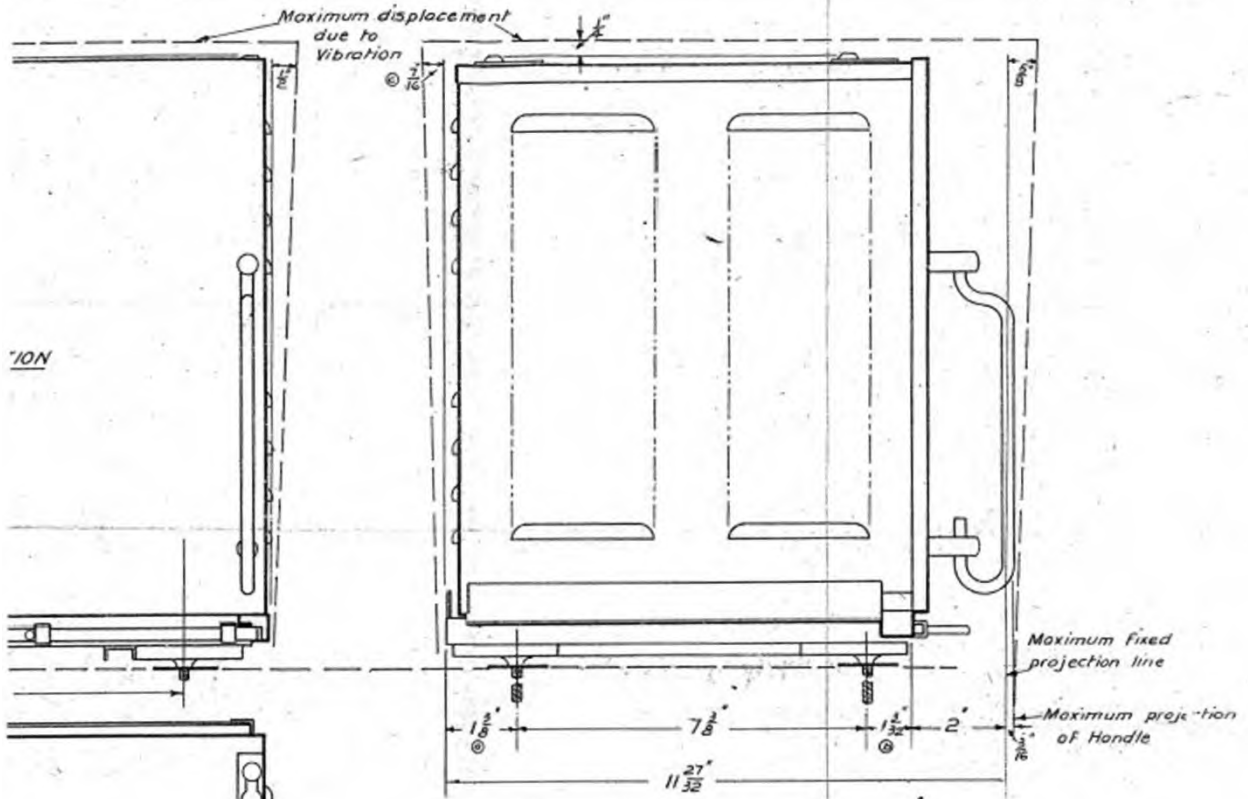
TYPE C7733  
773381



FRONT ELEVATION



PLAN



SIDE ELEVATION

Overall Dimensions allowing for Displacement due to Vibration

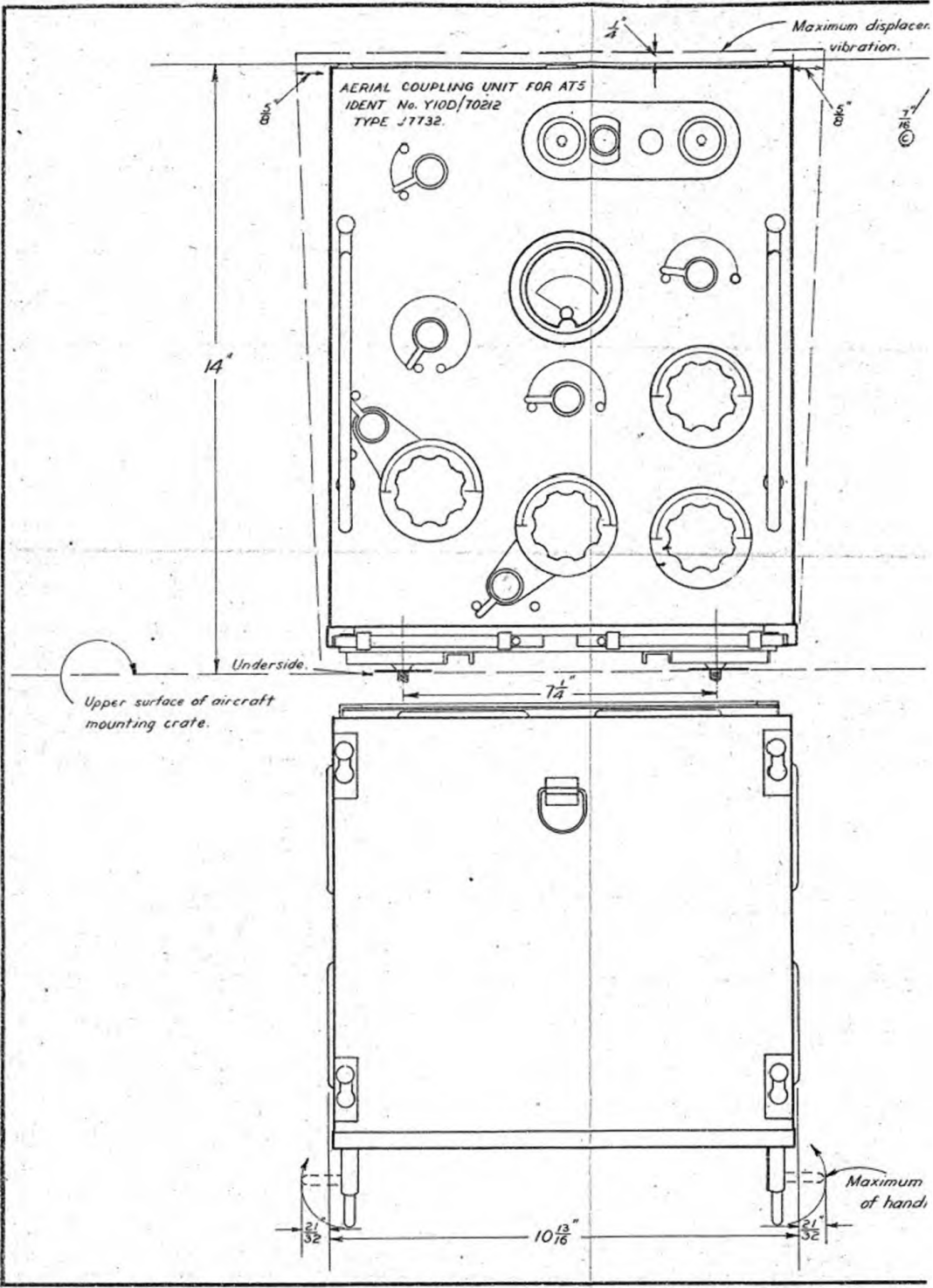
HEIGHT = 13 1/4"

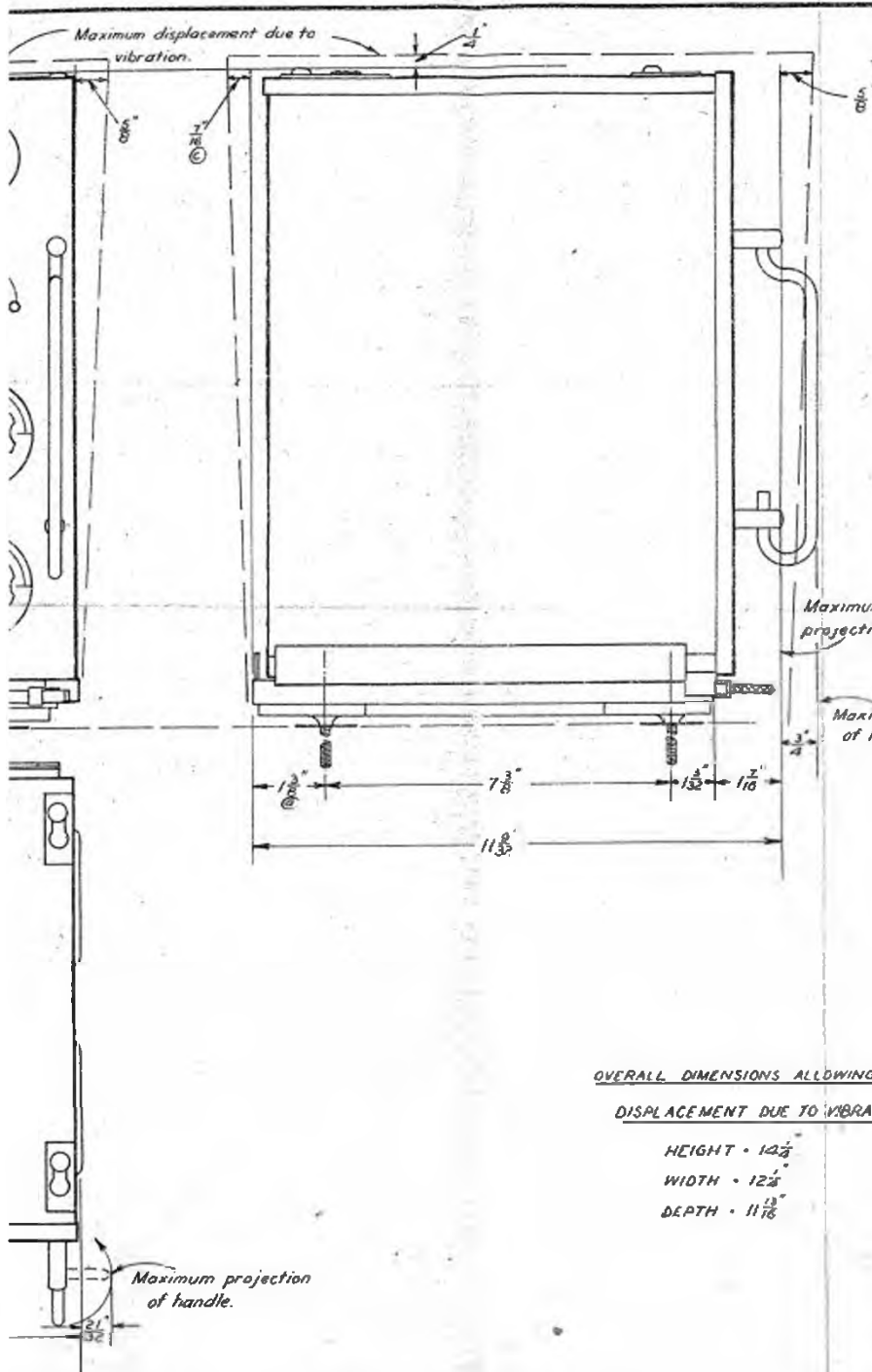
WIDTH = 13 5/8"

DEPTH = 12 3/8"

Scale = Half Full Size.

Maximum projection of Handle.





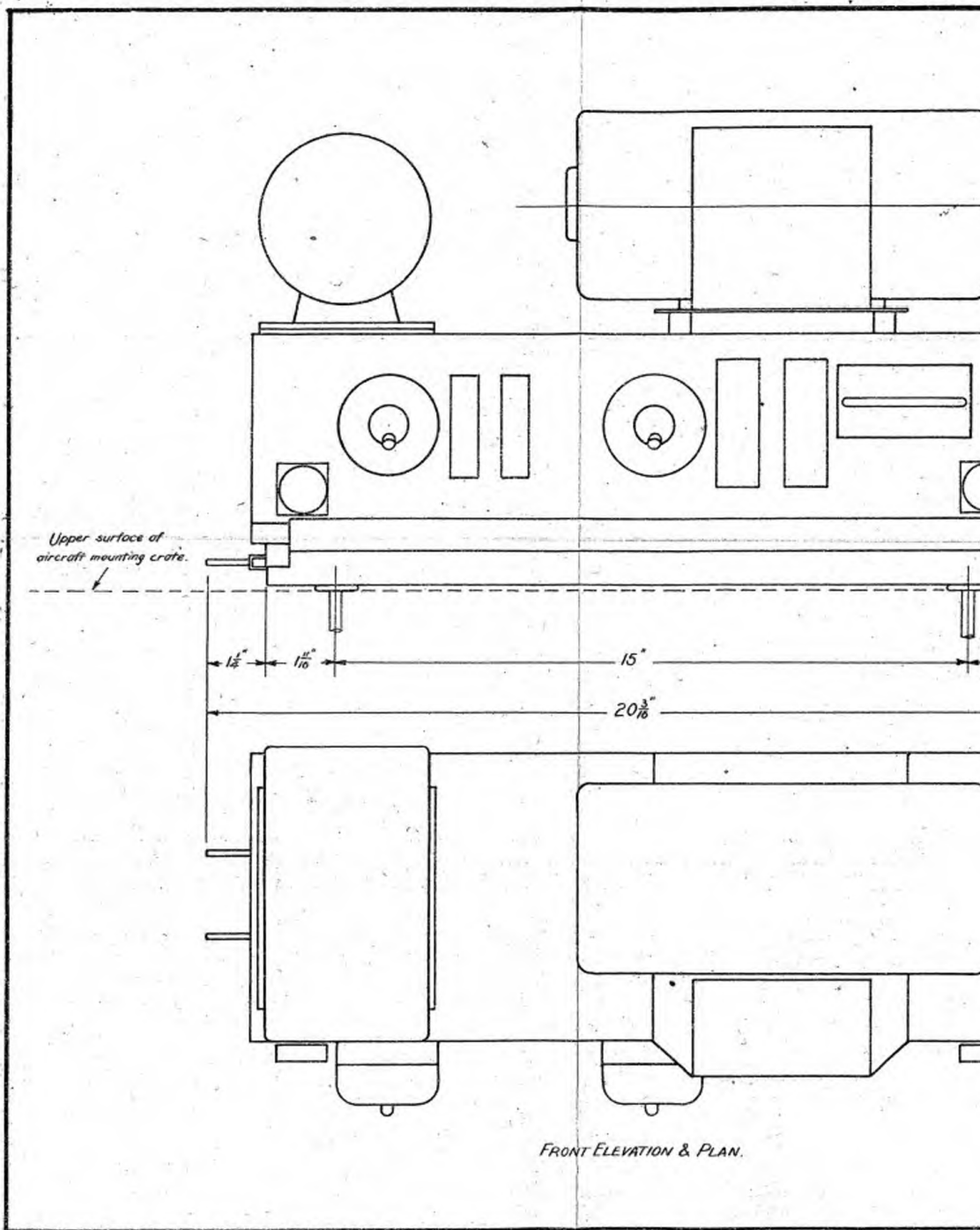
**AERIAL COUPLING UNIT FOR A.T.5**  
**TYPE J7732**  
**IDENT. No. Y100/70212**

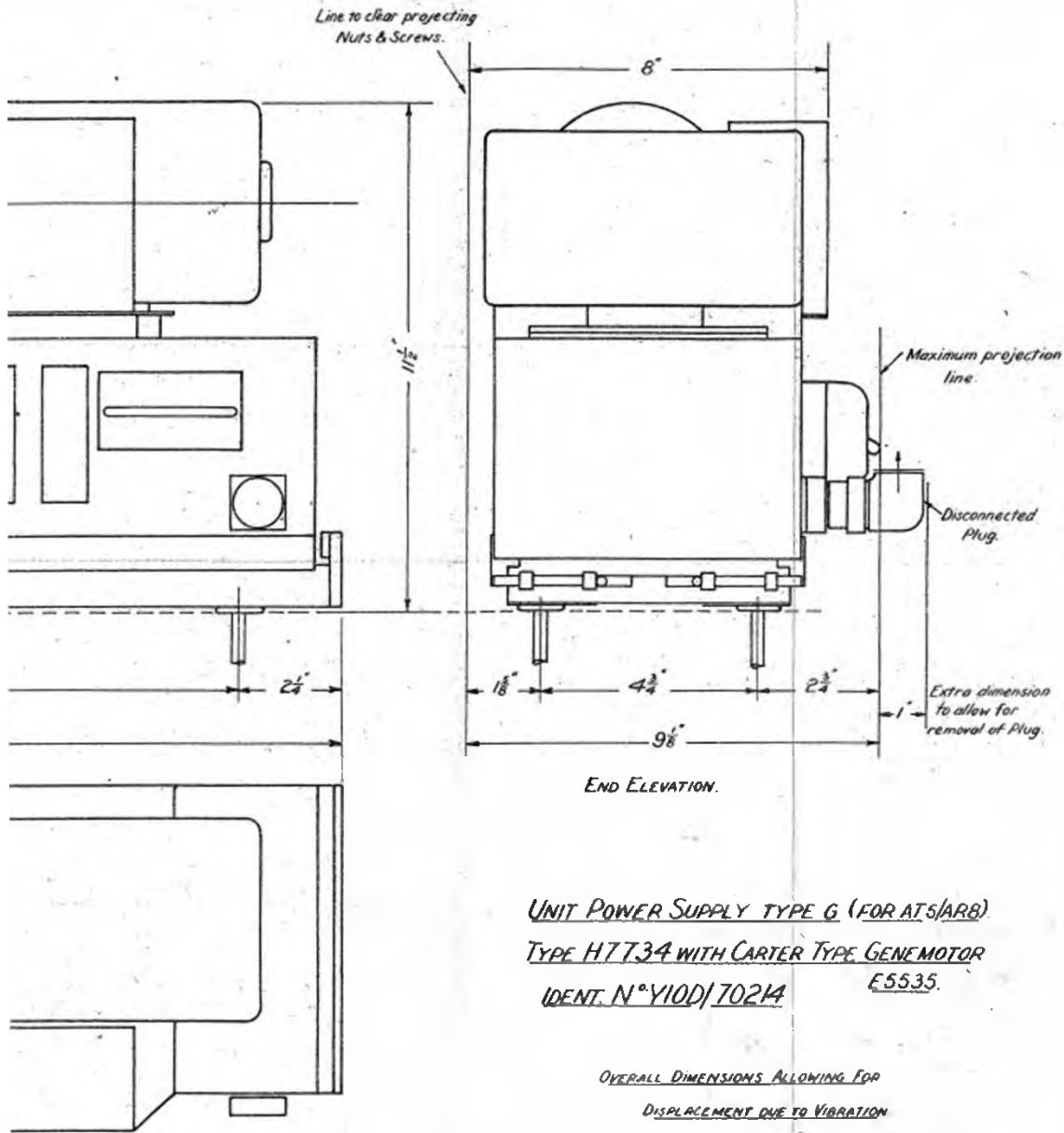
**DRWG NO**  
**7732B2**

**OVERALL DIMENSIONS ALLOWING FOR**  
**DISPLACEMENT DUE TO VIBRATION.**

**HEIGHT -  $12\frac{1}{2}$ "**  
**WIDTH -  $12\frac{1}{2}$ "**  
**DEPTH -  $11\frac{13}{16}$ "**

**A. W. A. LTD.**





UNIT POWER SUPPLY TYPE G (FOR AT5/ARB)  
 TYPE H7734 WITH CARTER TYPE GENEMOTOR  
 IDENT. N°Y10D/70214 E5535.

OVERALL DIMENSIONS ALLOWING FOR  
 DISPLACEMENT DUE TO VIBRATION

HEIGHT - 11 1/2"  
 WIDTH - 20 1/2"  
 DEPTH - 10 1/2"

DRWG. N°

7734 B2

NUMBER 0

Note re overall dim. added C.N.M.

APP. 10-3-41

Traced 17-10-41

Tcd. CKD

DATE 17-10-41

2

0

0

0

0

0

0

0

0

0

0

0

0

0

0

0

0

0

0

0

0

0

0

0

0

0

0

0

0

0

0

0

0

0

0

0

0

0

0

0

0

0

0

0

0

0

0

0

0

0

0

0

0

0

0

0

0

0

0

0

0

0

0

TOOL & PATTERN L&E  
 REPAIR TOLERANCES  
 FOR FLAT AND  
 SHEET WORK

BASIC FRACT DEC

0-25 1/1000

20 1/50

1/50

1/50

1/50

1/50

1/50

1/50

1/50

1/50

1/50

1/50

1/50

1/50

1/50

1/50

1/50

1/50

1/50

1/50

1/50

1/50

1/50

1/50

1/50

1/50

1/50

1/50

1/50

1/50

1/50

1/50

1/50

1/50

1/50

1/50

1/50

1/50

1/50

1/50

1/50

1/50

1/50

1/50

1/50

SCALE  
 0 - 1 Foot.

MATL.

QTY. PER JOB.

FINISH

ITEM No.

ISSUE No.

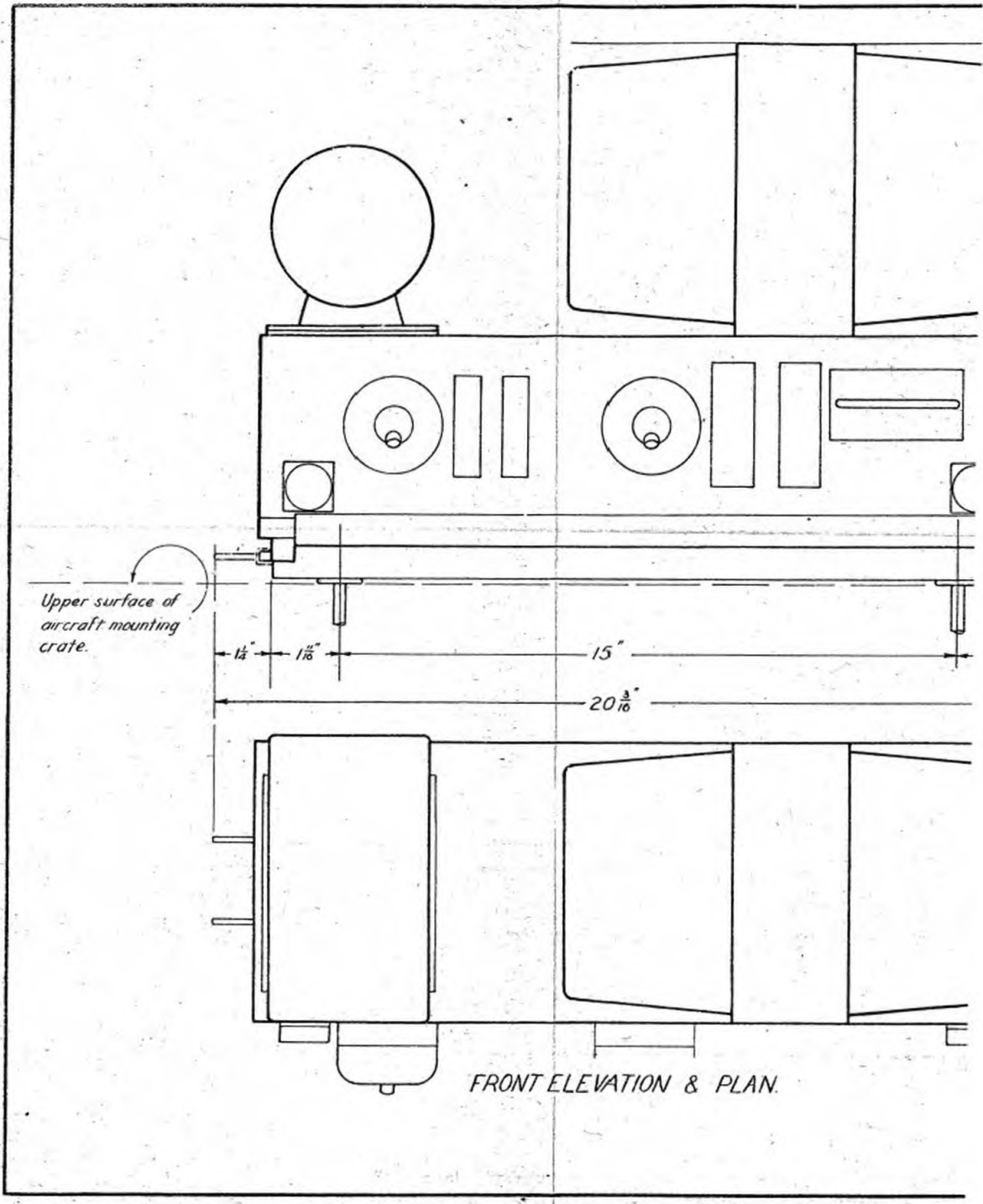
JOB No.

MAKE

ISSUED TO

A. W. A. LTD.





Upper surface of aircraft mounting crate.

$1\frac{1}{2}$ "

$1\frac{1}{8}$ "

$15$ "

$20\frac{3}{16}$ "

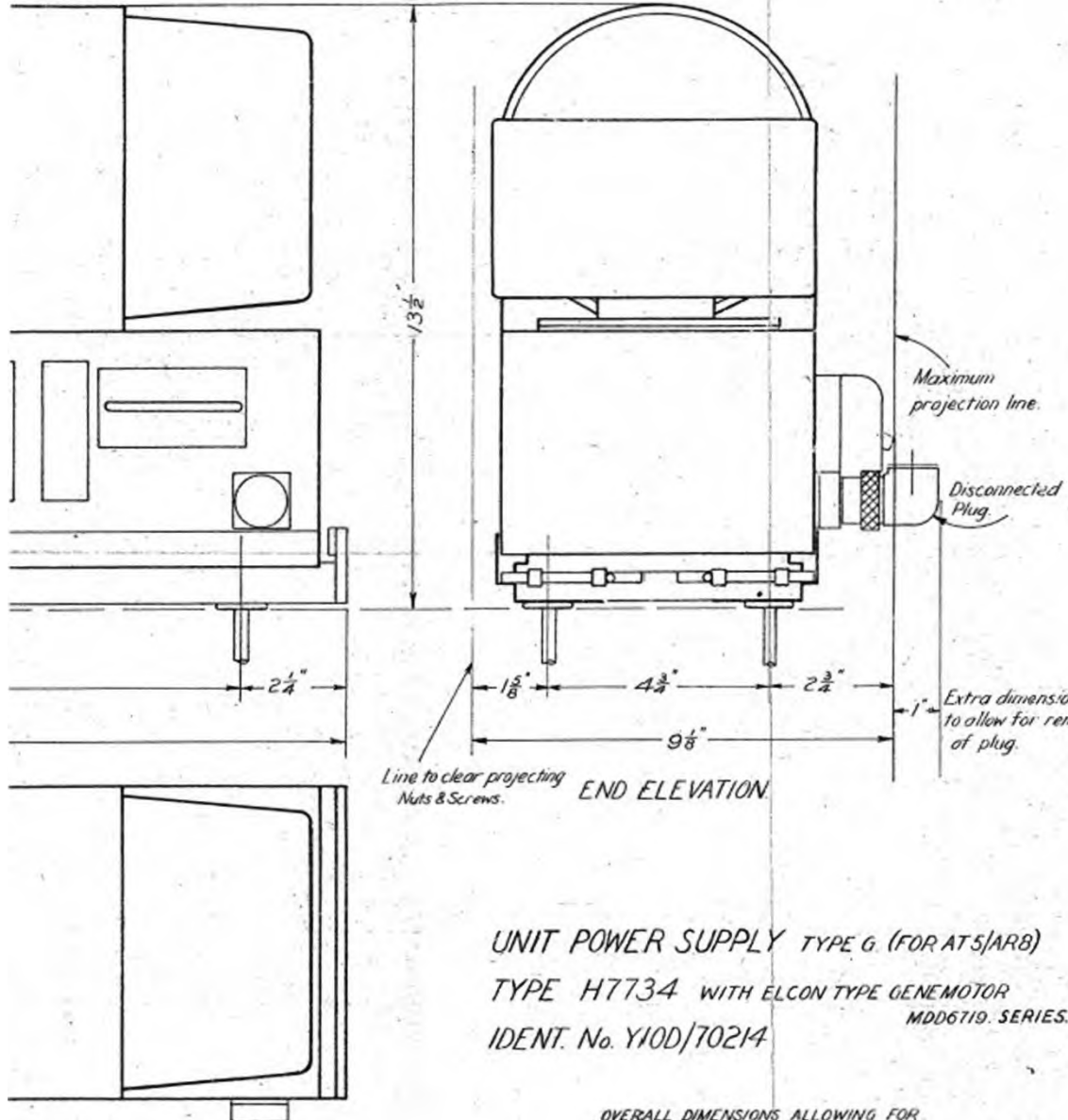
FRONT ELEVATION & PLAN.

DRWG. N<sup>o</sup>  
7734B1.

Note re overall  
dim. called out  
6/19/45, D. 41/1  
Traced  
Ckd. B.S.D.  
1/23/47, 10-41/2

SHEETS 1 2 3 4 5 6 7 8 9 10 11 12 13 14 15 16 17 18 19 20 21 22 23 24 25 26 27 28 29 30 31 32 33 34 35 36 37 38 39 40 41 42 43 44 45 46 47 48 49 50

Approved  
E. W. A. LTD.  
19-10-41  
D. H. L. L.



UNIT POWER SUPPLY TYPE G. (FOR AT5/AR8)  
TYPE H7734 WITH ELCON TYPE GENEMOTOR  
MDD6719. SERIES.  
IDENT. No. Y10D/70214

OVERALL DIMENSIONS ALLOWING FOR  
DISPLACEMENT DUE TO VIBRATION.  
HEIGHT -  $13\frac{5}{8}$ "  
WIDTH -  $20\frac{1}{4}$ "  
DEPTH -  $10\frac{3}{4}$ "

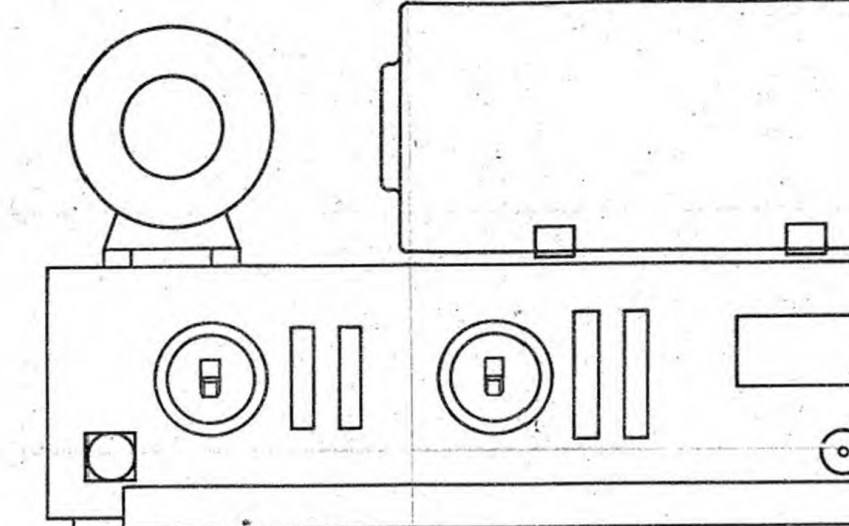
A.W.A. LTD.

AN.

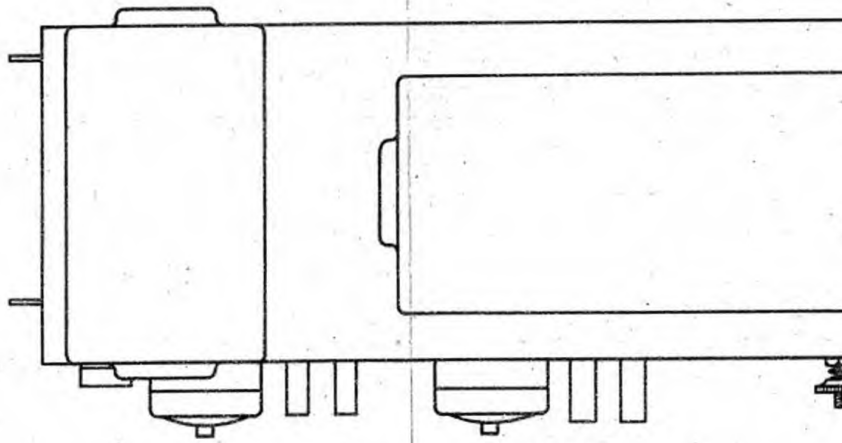
7734 B3

APP. CWS DATE 10.5.43

CHANGES ORIGINAL 0



15"  
20 <sup>3</sup>/<sub>16</sub>"  
*FRONT ELEVATION*



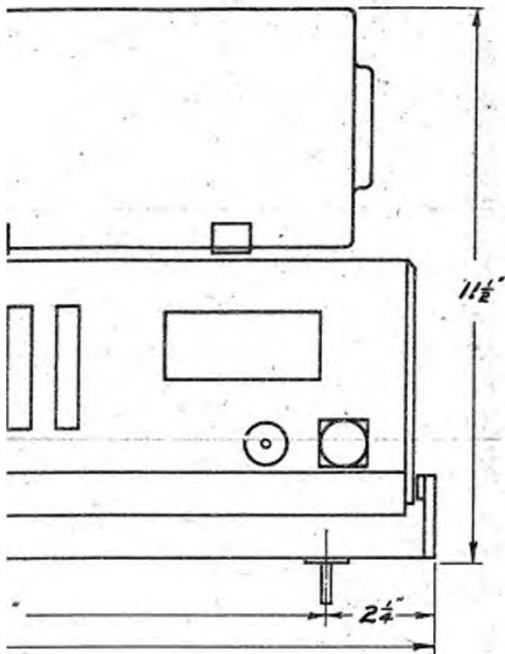
*PLAN.*

AMALGAMATED WIRELESS  
(AUSTRALASIA) LTD. - SYDNEY  
UNIT POWER SUPPLY  
(FOR AT5/AR8)

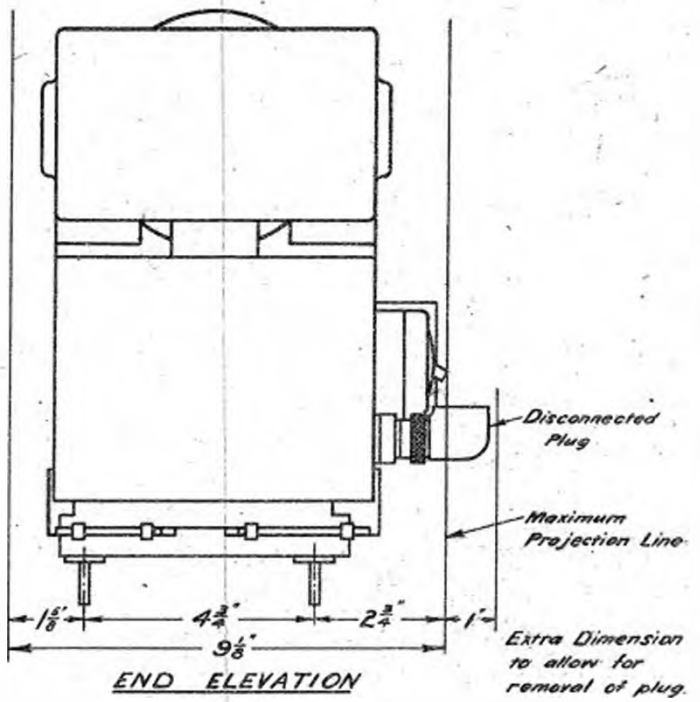
REF.	ANGI.	DIR.	TRCD.	APP.
(6, 7)	A. Gray	S. Gray	(A, B)	(A, B)

NO.	SHEET
1	
2	
3	
4	
5	
6	
7	
8	
9	
10	
11	
12	
13	
14	
15	

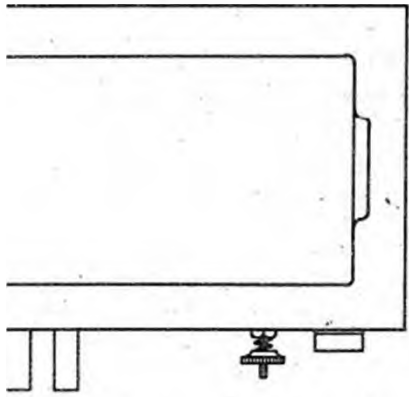
TYPE H734  
SERIES  
DRG. 7734 B3



FRONT



END ELEVATION



VIEW

TYPE "G"      H7734    110D/70214.  
 TYPE "L"      1H7734    110D/70355.  
 Employing M.D. 4622 Series Machines.

OVERALL DIMENSIONS ALLOWING FOR  
 DISPLACEMENT DUE TO VIBRATION:  
 HEIGHT - 11 1/2"  
 WIDTH - 20 5/8"  
 DEPTH - 10 1/2"

8811B1

APP. *GW* DATE *12.5.43*

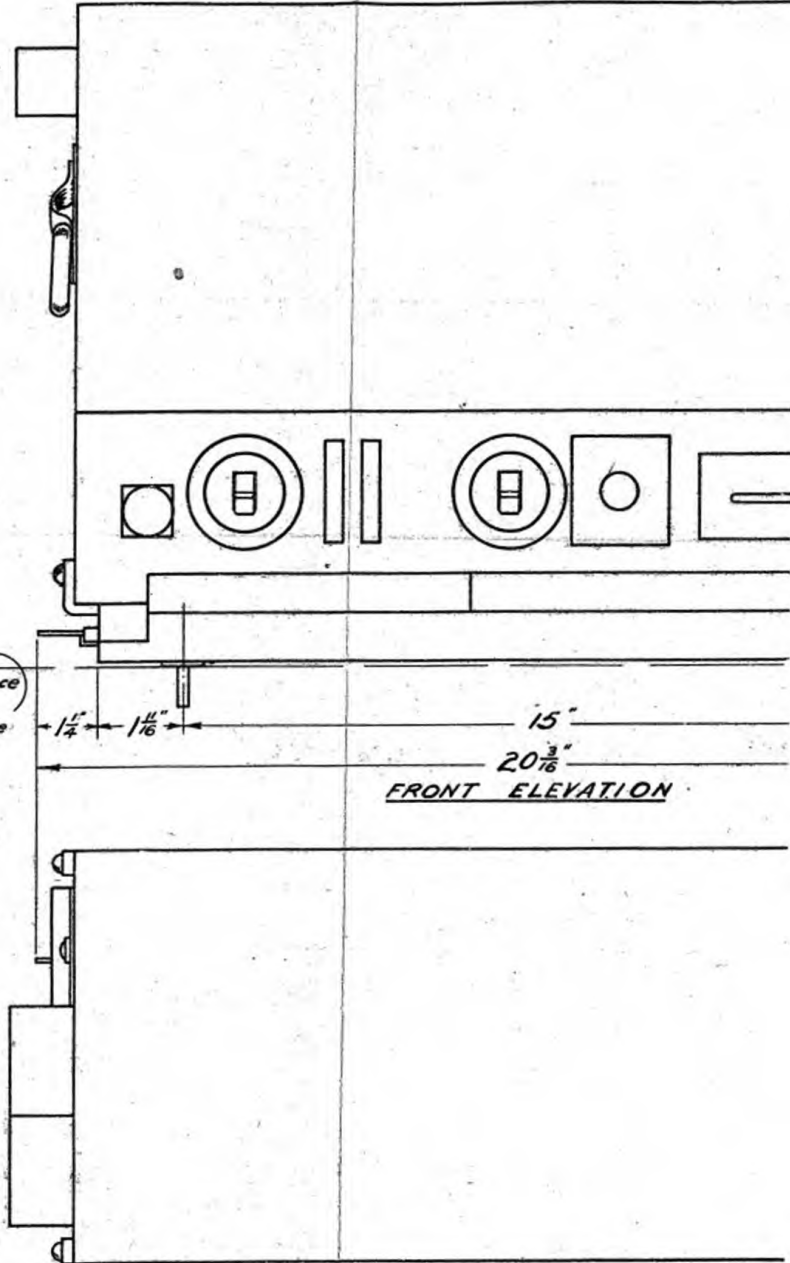
CHANGES No. ORIGINAL 0

AMALGAMATED WIRELESS  
(AUSTRALASIA) LTD. - SYDNEY  
UNIT POWER SUPPLY  
TYPE S (FOR AT5/AR6)  
IDENT. N° Y10D/70486

REF. *(M)*  
DIN. *B. Gray*  
TECH. *8/2/43*  
CD. *12/10/43*  
APP. *GW*

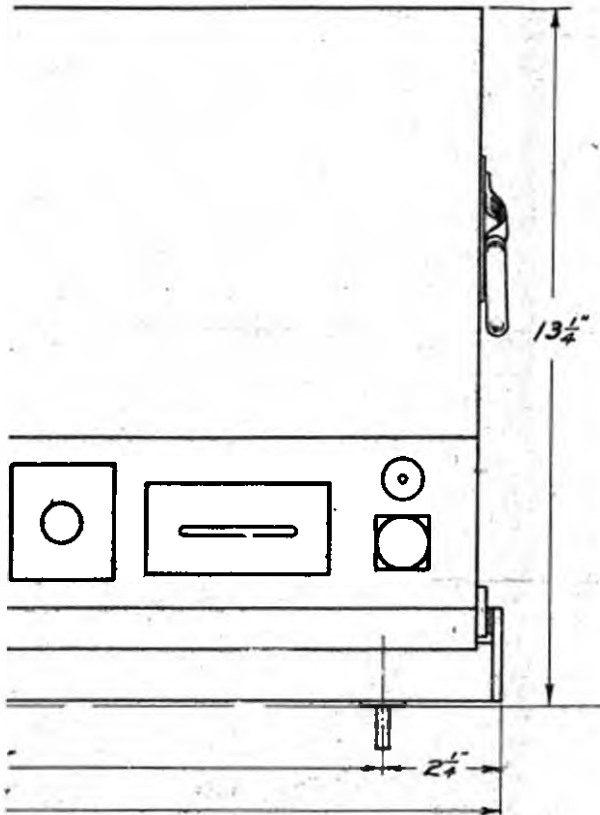
SHEET 1  
TYPE H8811  
DRG. 8811B1

*Upper surface  
of aircraft  
mounting crate*

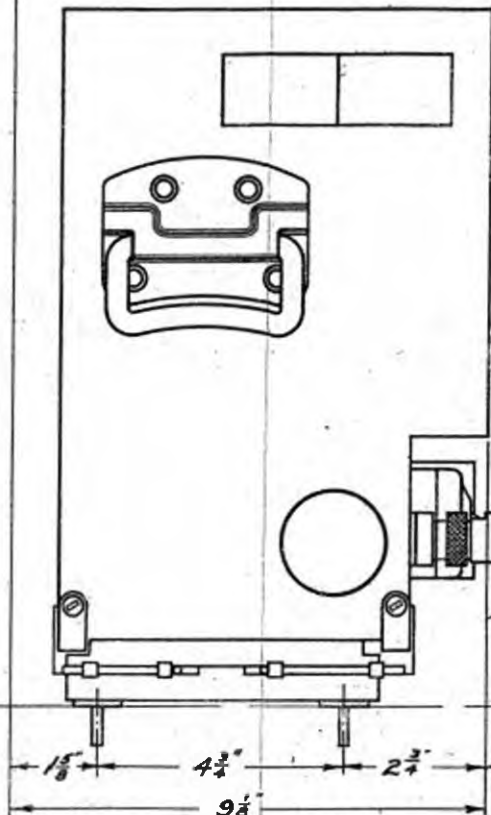
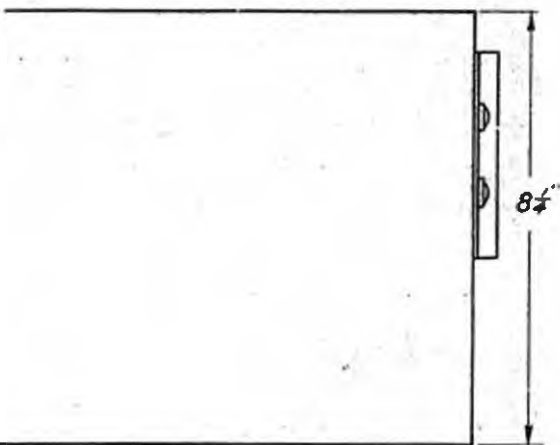


15"  
20 <sup>3</sup>/<sub>16</sub>"  
FRONT ELEVATION

PLAN.



**VIBRATION**



Disconnected Plug

Maximum Projection Line

Extra Dimension to allow for removal of plug.

**END ELEVATION.**


OVERALL DIMENSIONS ALLOWING FOR DISPLACEMENT DUE TO VIBRATION.

HEIGHT - 13 5/8"

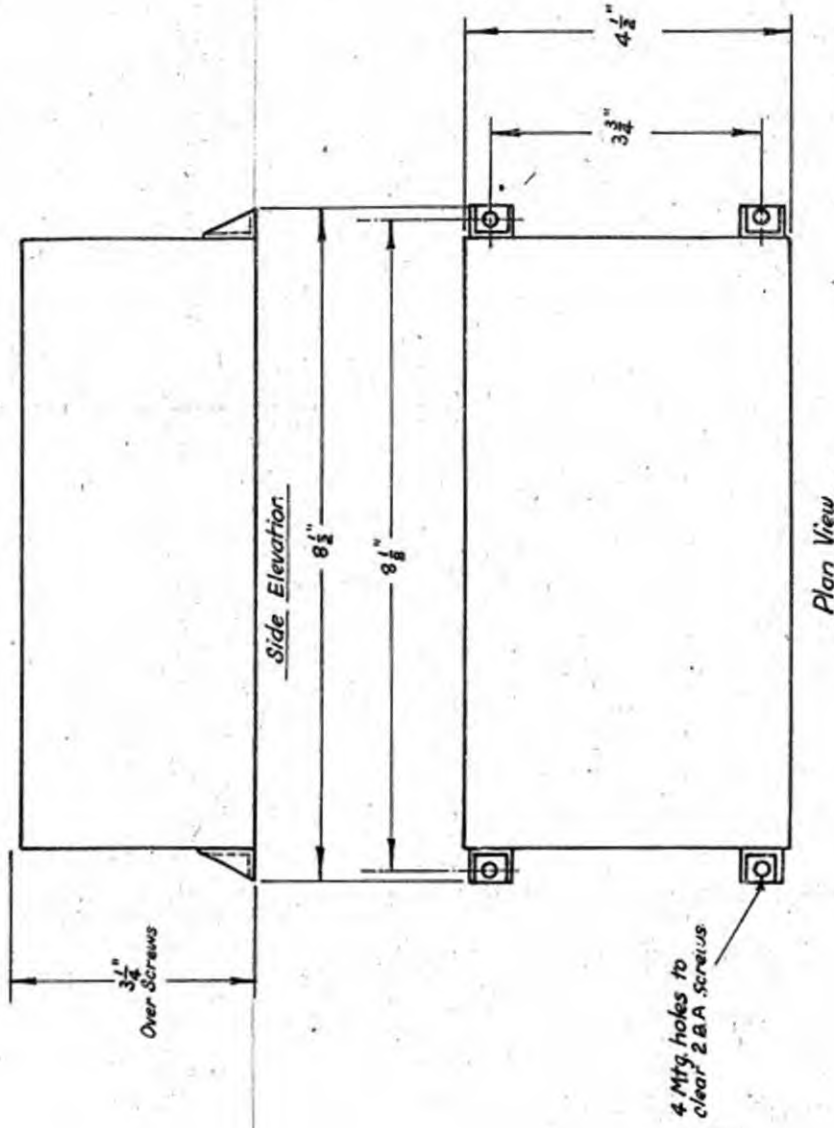
WIDTH - 20 1/4"

DEPTH - 10 1/4"

7735D2


APPROVED  DATE 22.12.41  
CHANGES

ADD CHANGES TO GEBSTNER SPECIFICATION



AMALGAMATED WIRELESS  
(AUSTRALASIA) LTD. - SYDNEY

DIMENSIONAL DIAGRAM  
JUNCTION BOX  
FOR AT5/AR8 (Y100/70215)

REF		
ARGT		22.11.41
DRN	J. Good	22.11.41
TRCD	J. Good	22.11.41
CKD		22.11.41
APP	A/L	22.11.41

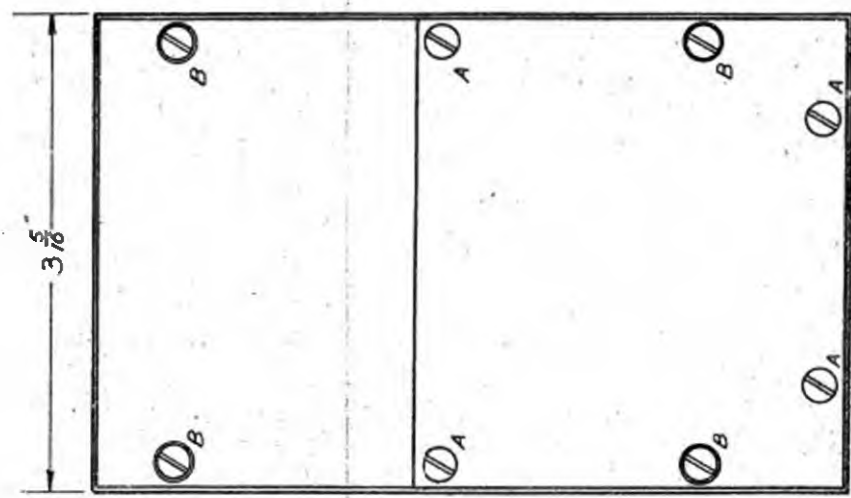
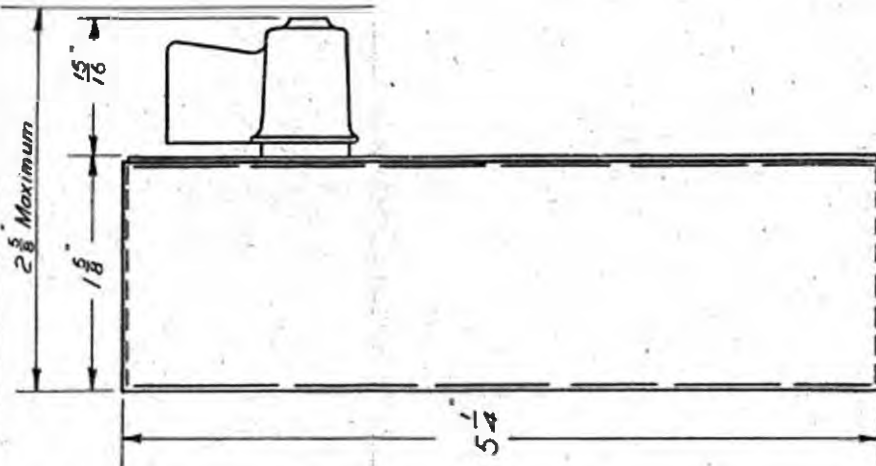
1st  
SHEET  
REF.

TYPE R7735

DWG. 7735D2

7755D3

APPROVED	DATE	CHANGES
<i>[Signature]</i>	12.12.41	0



A Indicates terminal cover screws.  
B Indicates Case mounting screws.

Scale: Full Size.

AMALGAMATED WIRELESS  
(AUSTRALASIA) LTD. SYDNEY

DIMENSIONAL DIAGRAM

REMOTE CONTROL UNIT  
FOR AT5/AR6 (Y100/70216)

REF	
ARGT	
DRN	<i>[Signature]</i>
TRCD	<i>[Signature]</i>
CKD	<i>[Signature]</i>
APP	<i>[Signature]</i>

1ST SHEET REF	
TYPE	P7755
DWG.	7755D3

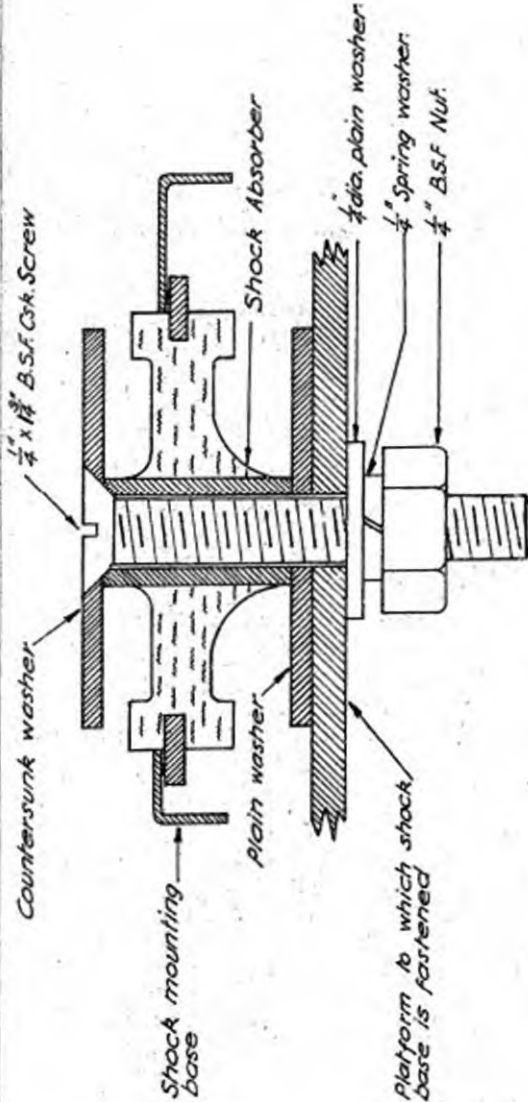


7749DI

APPROVED: *[Signature]* DATE: 10-12-41  
*[Signature]*  
 C.A. Screws was  
 B.S.F. x 1/2" C.O. 11/17/42  
 Ted G. aka. *[Signature]*  
 16-5-42

SCALE:- Twice full size.

The sketch shows the correct assembly of shock absorber, washers, and bolt for the normal method of mounting of Type Z 7749 series shock bases.



AMALGAMATED WIRELESS (AUSTRALASIA) LTD. - SYDNEY

SHOCK ABSORBER ASSEMBLY AND MOUNTING DETAILS

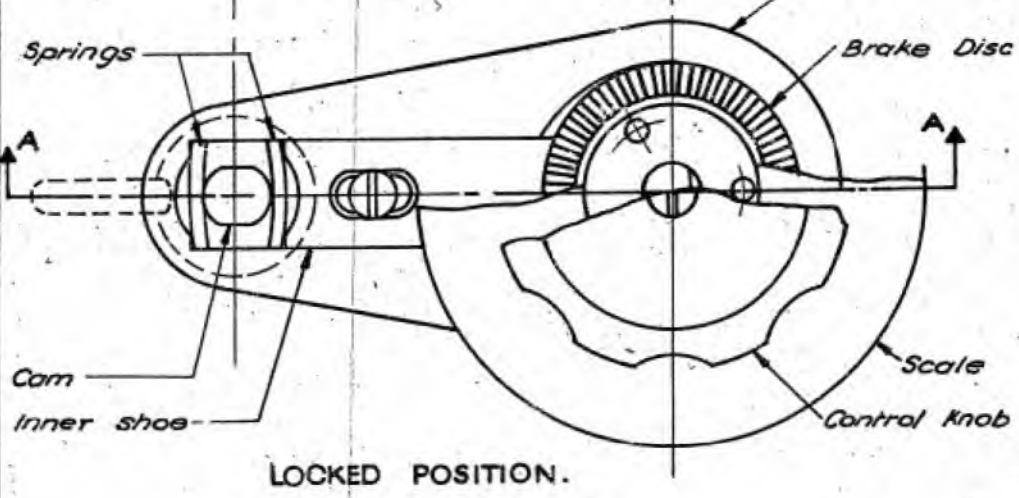
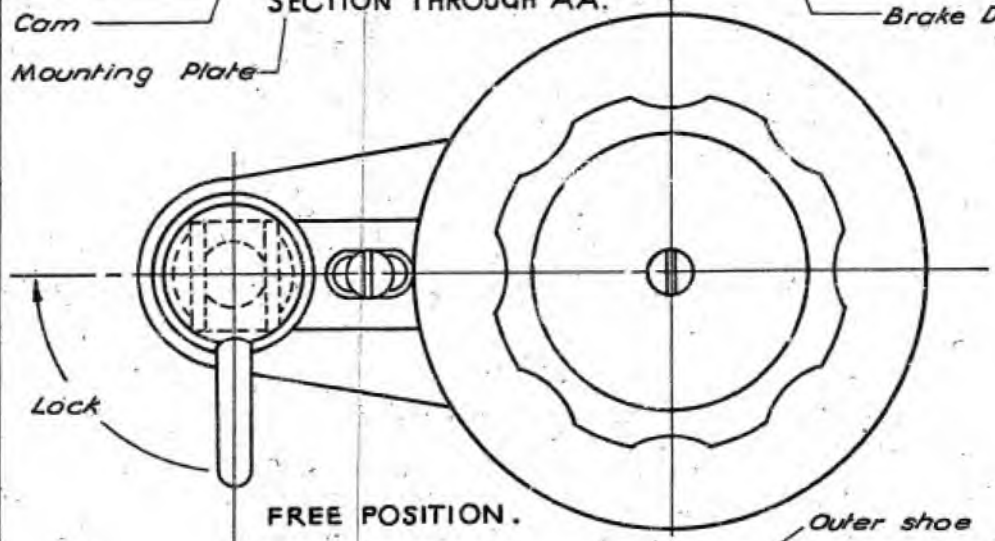
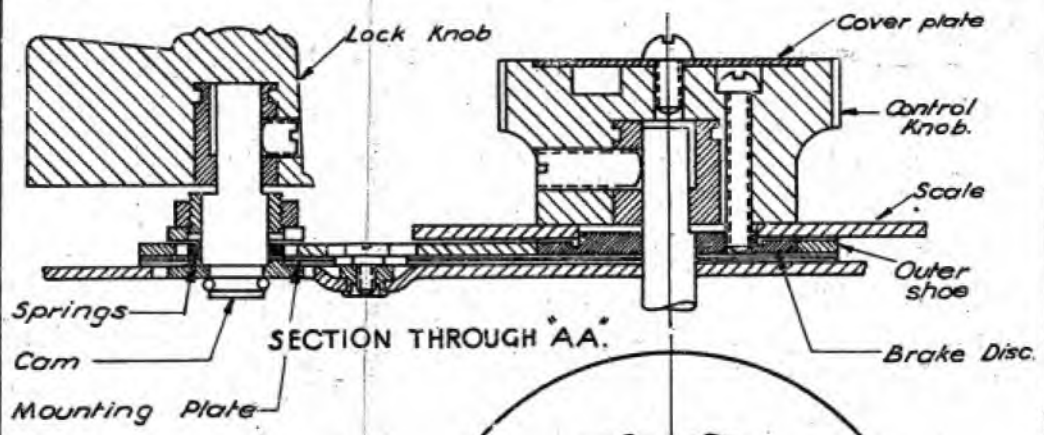
REF.	
ARGT.	<i>[Signature]</i> 12.10
DRN.	<i>[Signature]</i> 12.10
TRCD.	<i>[Signature]</i> 12.10
CKD.	
APP.	<i>[Signature]</i> 12.10

1ST SHEET	1
REF	

TYPE

DWG. 7749DI

7752 D1  
 APPROVED  
 DATE 9.2.42  
 CHANGES 1



AMALGAMATED WIRELESS  
 (AUSTRALASIA) LTD. - SYDNEY

SCALE LOCKING DEVICE

REF.		1st SHEET	1
AMT.	<i>Frederick</i>	REP.	
DRN.	<i>E. P. 42</i>		
TRD.	<i>Orson</i>		
	<i>W. P.</i>		
	<i>2.7.42</i>		
		<b>TYPE R7752</b>	
		<b>DWG. 7752 D1</b>	