

#### AT5. AR8. EQUIPMENT SHOWING

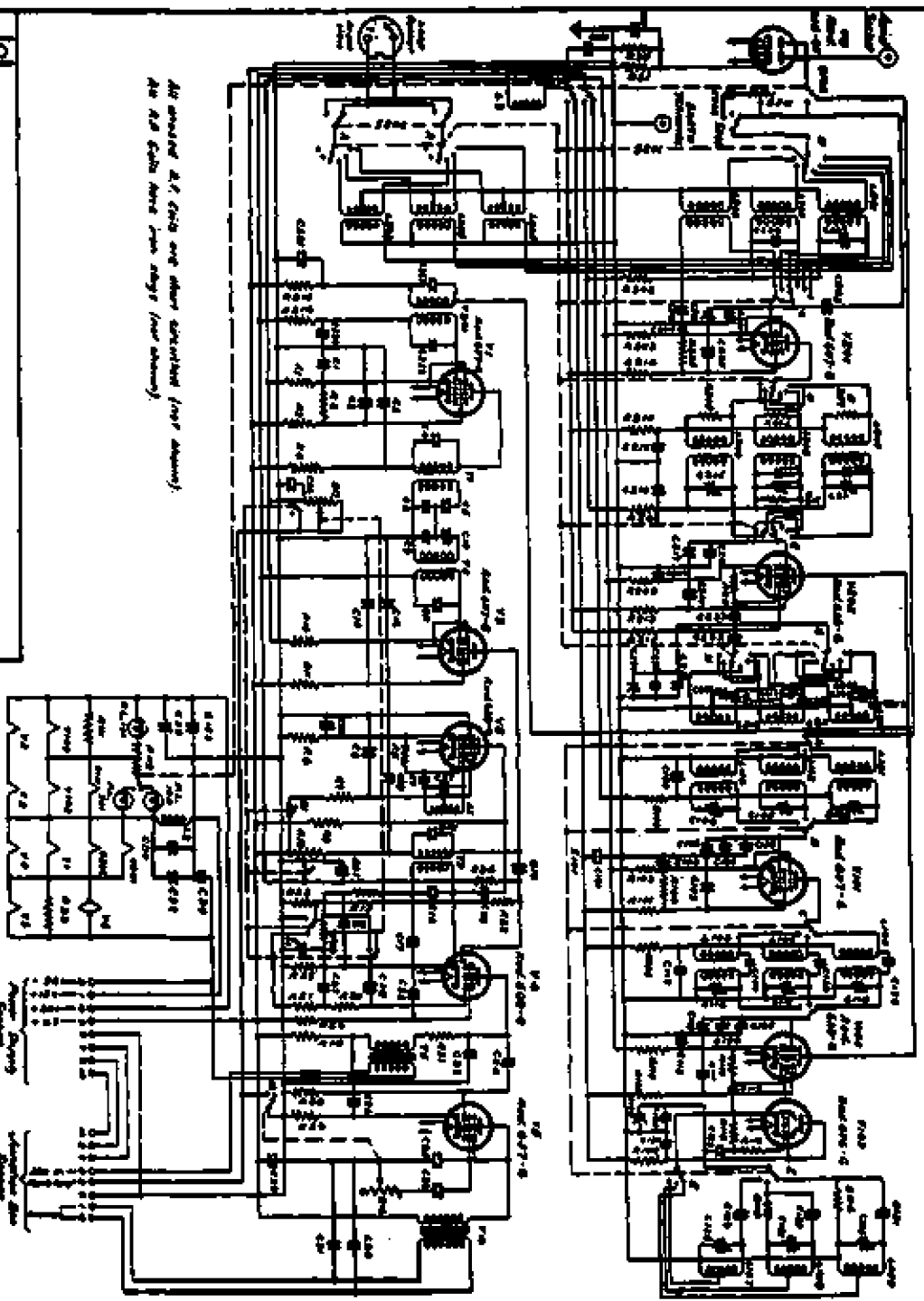
- a *Basic Installation*:- Rec, Trans, Aerial Coupling Unit, Power Unit, Junction Box, Interconnecting cables.  
 b *Additional Units and facilities, which can be added when required*. Remote Control Unit, Pulse Unit, i/c for 3 outlets in addition to operator and Remote Control Point.

*Note*:- Cable Identification. Letters A.B.C. etc are assigned to each cable for identifying its position in the interwiring scheme. Various standard lengths are available in each instance. Ref to schedule of cables. Indent No corresponding to each standard length. (Sect 3 Para. 102 Instruction Book.)

MF/HF AIRCRAFT COMMUNICATION  
 INSTALLATION AT5/AP8  
 PHOTO N° 1704

7733C1  
 7733C1

All ground A.C. C's are shown connected (first shown).  
 All A.C. C's have iron cores (not shown).



AMALGAMATED WIRELESS  
 WORKS LTD. - STONEY  
 SCHEMATIC DIAGRAM  
 RECEIVER ARG

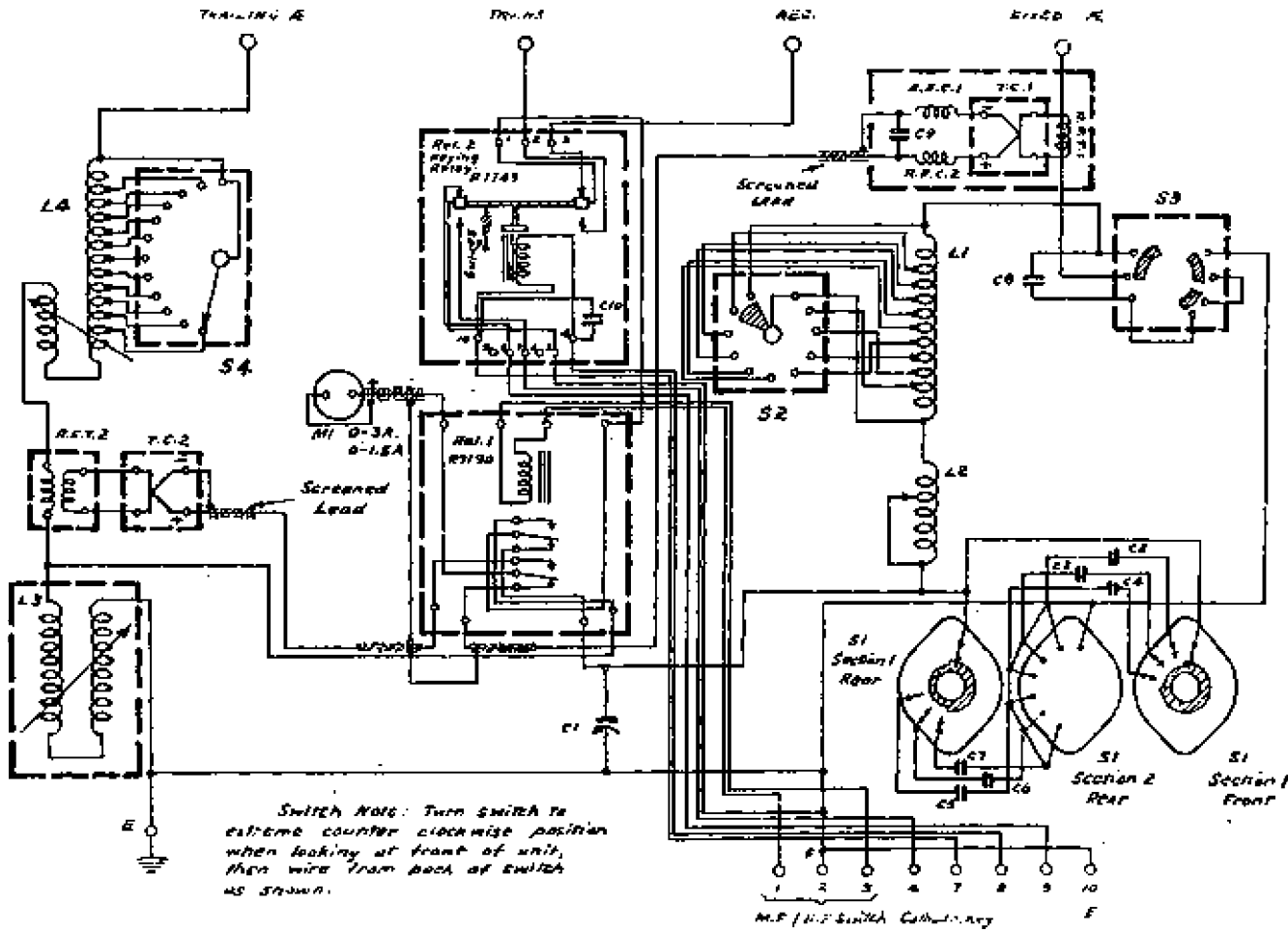
NO.	REV.	DATE	BY	CHKD.	APPROVED
1					
2					
3					
4					
5					
6					
7					
8					
9					
10					

TYPE C7733  
 DWG 7733C1

WIRING DIAGRAM  
AERIAL COUPLING UNIT

*Handwritten notes:*  
 Revision 3012  
 3/17/51  
 7732 D12

7732  
7732D12



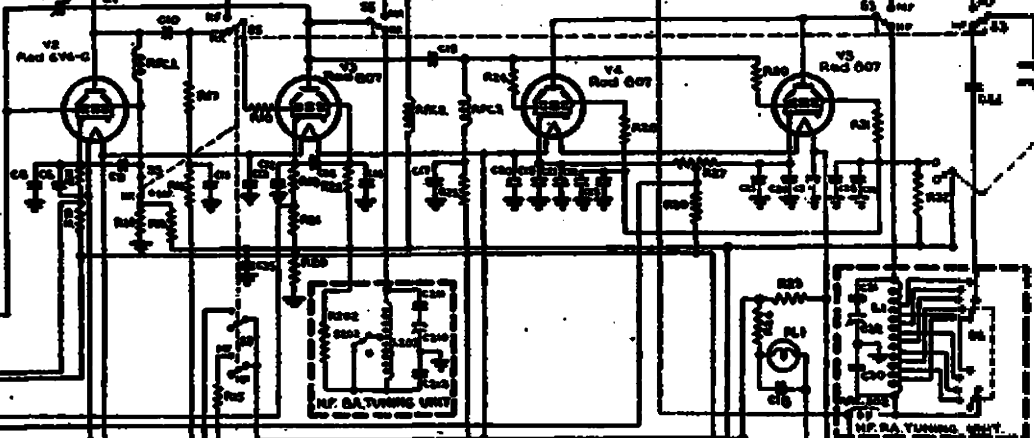
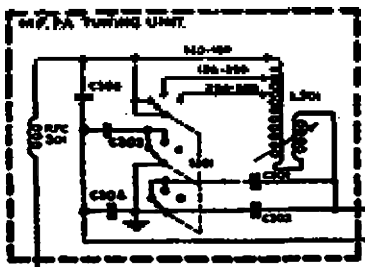
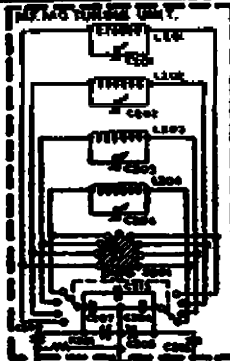
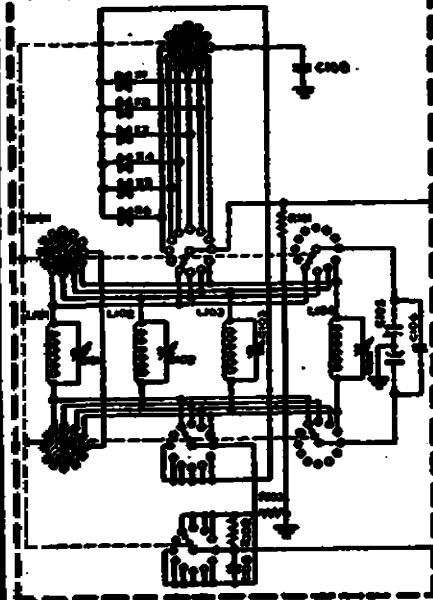
Switch Note: Turn switch to extreme counter clockwise position when looking at front of unit, then wire from back of switch as shown.

7732 D12

G.A.T. 3012.31

TRACAD  
G.A.T. 3012.31

MF OSCILLATOR SECTION



All Switch Contacts  
 1. 2. 3. 4. 5. 6. 7. 8. 9. 10. 11. 12. 13. 14. 15. 16. 17. 18. 19. 20. 21. 22. 23. 24. 25. 26. 27. 28. 29. 30. 31. 32. 33. 34. 35. 36. 37. 38. 39. 40. 41. 42. 43. 44. 45. 46. 47. 48. 49. 50. 51. 52. 53. 54. 55. 56. 57. 58. 59. 60. 61. 62. 63. 64. 65. 66. 67. 68. 69. 70. 71. 72. 73. 74. 75. 76. 77. 78. 79. 80. 81. 82. 83. 84. 85. 86. 87. 88. 89. 90. 91. 92. 93. 94. 95. 96. 97. 98. 99. 100.

- 01 MF PA Motor
- 02 PA Motor
- 03 L.F. Relay
- 04 L.F. Relay
- 05 M.F. Relay
- 06 M.F. Relay
- 07 M.F. Relay
- 08 M.F. Relay
- 09 M.F. Relay
- 10 M.F. Relay
- 11 M.F. Relay
- 12 M.F. Relay
- 13 M.F. Relay
- 14 M.F. Relay
- 15 M.F. Relay
- 16 M.F. Relay
- 17 M.F. Relay
- 18 M.F. Relay
- 19 M.F. Relay
- 20 M.F. Relay
- 21 M.F. Relay
- 22 M.F. Relay
- 23 M.F. Relay
- 24 M.F. Relay
- 25 M.F. Relay
- 26 M.F. Relay
- 27 M.F. Relay
- 28 M.F. Relay
- 29 M.F. Relay
- 30 M.F. Relay
- 31 M.F. Relay
- 32 M.F. Relay
- 33 M.F. Relay
- 34 M.F. Relay
- 35 M.F. Relay
- 36 M.F. Relay
- 37 M.F. Relay
- 38 M.F. Relay
- 39 M.F. Relay
- 40 M.F. Relay
- 41 M.F. Relay
- 42 M.F. Relay
- 43 M.F. Relay
- 44 M.F. Relay
- 45 M.F. Relay
- 46 M.F. Relay
- 47 M.F. Relay
- 48 M.F. Relay
- 49 M.F. Relay
- 50 M.F. Relay
- 51 M.F. Relay
- 52 M.F. Relay
- 53 M.F. Relay
- 54 M.F. Relay
- 55 M.F. Relay
- 56 M.F. Relay
- 57 M.F. Relay
- 58 M.F. Relay
- 59 M.F. Relay
- 60 M.F. Relay
- 61 M.F. Relay
- 62 M.F. Relay
- 63 M.F. Relay
- 64 M.F. Relay
- 65 M.F. Relay
- 66 M.F. Relay
- 67 M.F. Relay
- 68 M.F. Relay
- 69 M.F. Relay
- 70 M.F. Relay
- 71 M.F. Relay
- 72 M.F. Relay
- 73 M.F. Relay
- 74 M.F. Relay
- 75 M.F. Relay
- 76 M.F. Relay
- 77 M.F. Relay
- 78 M.F. Relay
- 79 M.F. Relay
- 80 M.F. Relay
- 81 M.F. Relay
- 82 M.F. Relay
- 83 M.F. Relay
- 84 M.F. Relay
- 85 M.F. Relay
- 86 M.F. Relay
- 87 M.F. Relay
- 88 M.F. Relay
- 89 M.F. Relay
- 90 M.F. Relay
- 91 M.F. Relay
- 92 M.F. Relay
- 93 M.F. Relay
- 94 M.F. Relay
- 95 M.F. Relay
- 96 M.F. Relay
- 97 M.F. Relay
- 98 M.F. Relay
- 99 M.F. Relay
- 100 M.F. Relay

7731C1  
 1. 2. 3. 4. 5. 6. 7. 8. 9. 10. 11. 12. 13. 14. 15. 16. 17. 18. 19. 20. 21. 22. 23. 24. 25. 26. 27. 28. 29. 30. 31. 32. 33. 34. 35. 36. 37. 38. 39. 40. 41. 42. 43. 44. 45. 46. 47. 48. 49. 50. 51. 52. 53. 54. 55. 56. 57. 58. 59. 60. 61. 62. 63. 64. 65. 66. 67. 68. 69. 70. 71. 72. 73. 74. 75. 76. 77. 78. 79. 80. 81. 82. 83. 84. 85. 86. 87. 88. 89. 90. 91. 92. 93. 94. 95. 96. 97. 98. 99. 100.

AMALGAMATED WIRELESS (AUSTRALASIA) LTD. — SYDNEY

SCHEMATIC DIAGRAM TRANSMITTER ATS

TYPE J7731  
 DWG. 7731C1

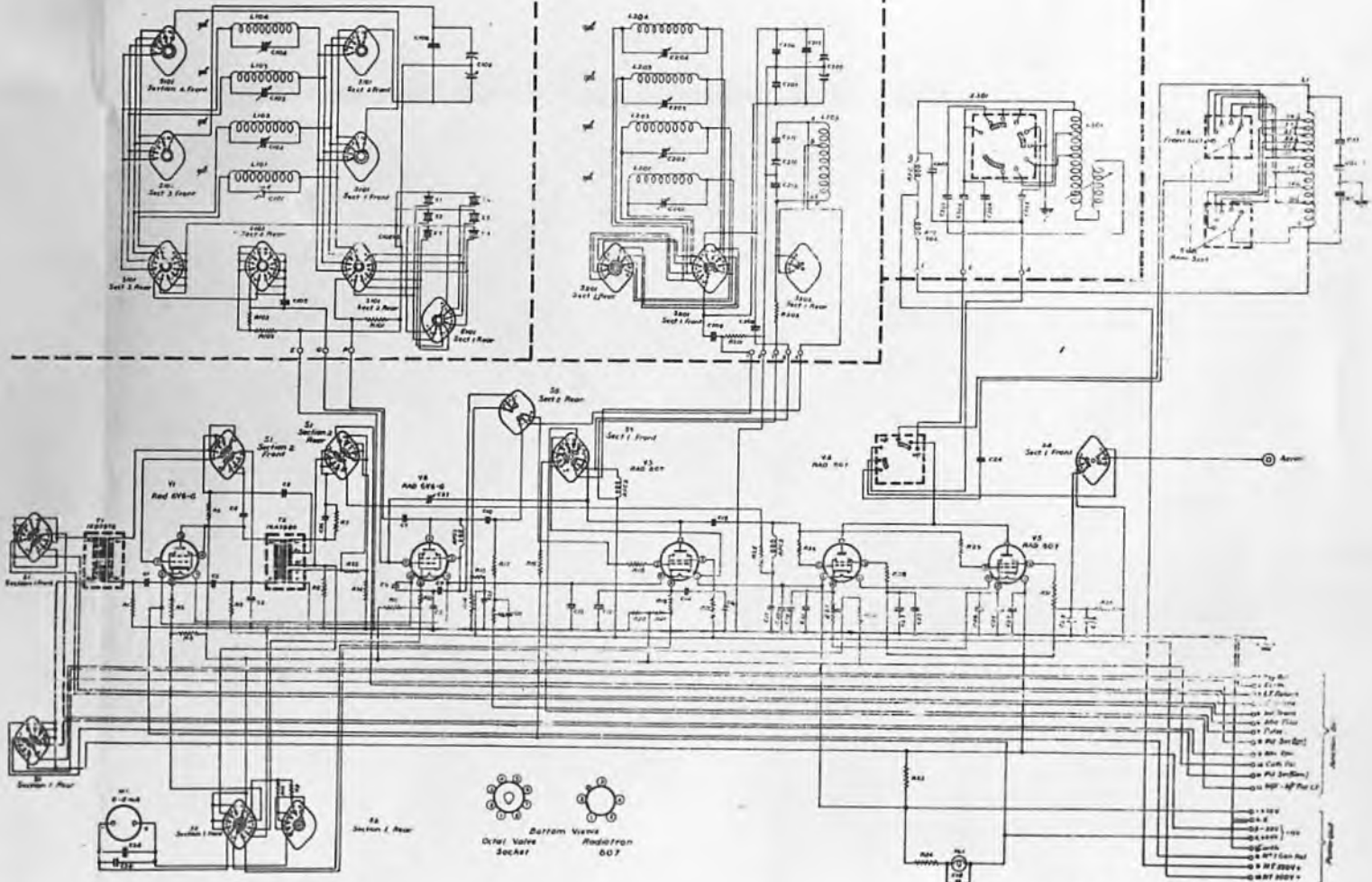
|       |  |  |  |  |  |  |  |  |  |
|-------|--|--|--|--|--|--|--|--|--|
| REF.  |  |  |  |  |  |  |  |  |  |
| ADD.  |  |  |  |  |  |  |  |  |  |
| DEL.  |  |  |  |  |  |  |  |  |  |
| TRCD. |  |  |  |  |  |  |  |  |  |
| CLD.  |  |  |  |  |  |  |  |  |  |
| APP.  |  |  |  |  |  |  |  |  |  |

HF OSCILLATOR SECTION  
TYPE J773D

HF BA LMF MID TUNING SECTION  
TYPE J773D

MF PA SECTION  
TYPE J773D

HF PA TUNING SECTION  
TYPE V773D

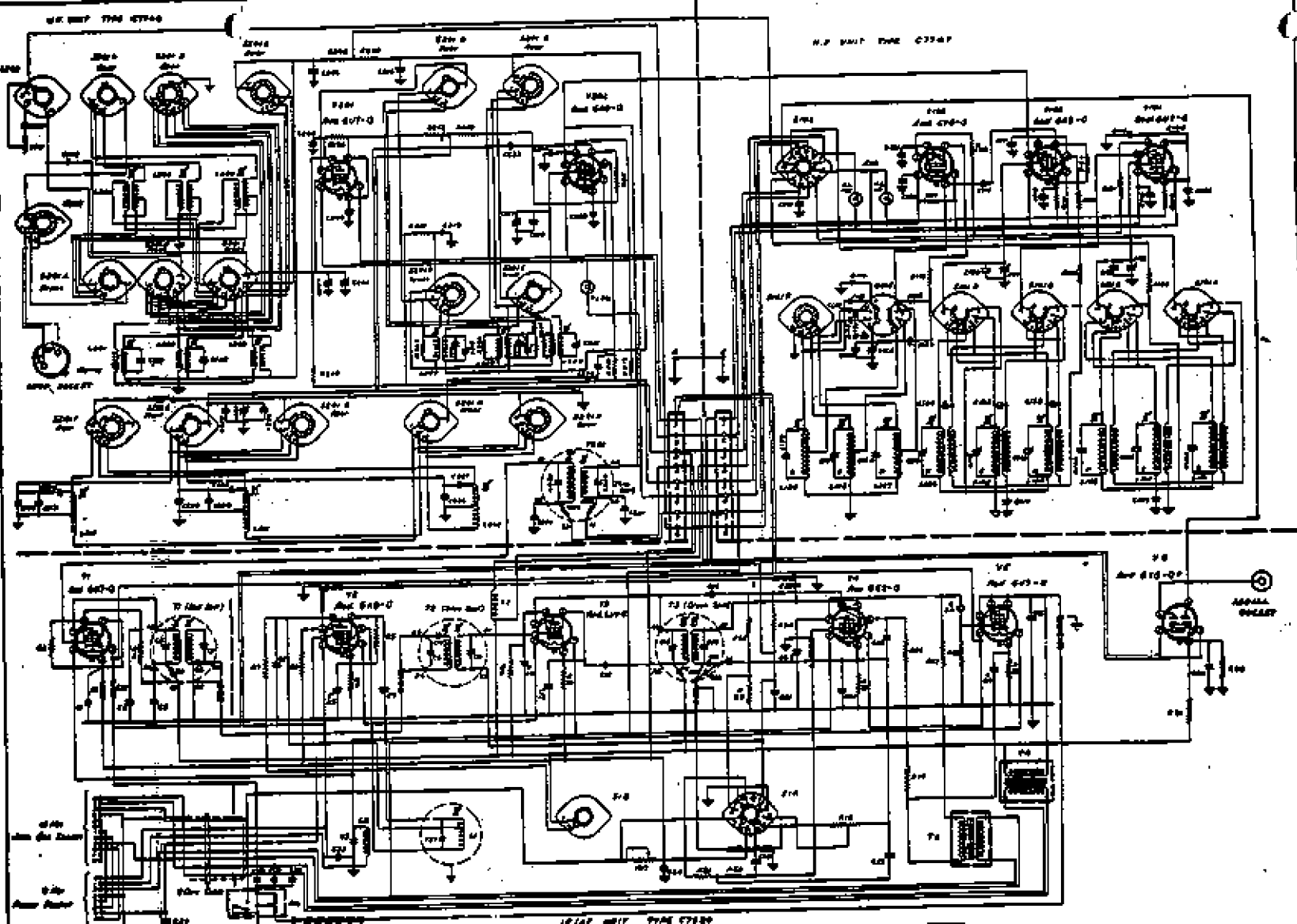


NOTE: 1. Onk Switch Turn switch to extreme counter-clockwise position when at front of unit than wire from back of switch as shown.

|        |   |   |   |   |   |   |   |   |   |    |    |    |    |    |    |    |    |    |    |    |    |    |    |    |    |    |    |    |    |    |    |    |    |    |    |    |    |    |    |    |    |    |    |    |    |    |    |    |    |    |    |    |    |    |    |    |    |    |    |    |    |    |    |    |    |    |    |    |    |    |    |    |    |    |    |    |    |    |    |    |    |    |    |    |    |    |    |    |    |    |    |    |    |    |    |    |    |    |    |     |
|--------|---|---|---|---|---|---|---|---|---|----|----|----|----|----|----|----|----|----|----|----|----|----|----|----|----|----|----|----|----|----|----|----|----|----|----|----|----|----|----|----|----|----|----|----|----|----|----|----|----|----|----|----|----|----|----|----|----|----|----|----|----|----|----|----|----|----|----|----|----|----|----|----|----|----|----|----|----|----|----|----|----|----|----|----|----|----|----|----|----|----|----|----|----|----|----|----|----|----|----|-----|
| 7731A1 | 1 | 2 | 3 | 4 | 5 | 6 | 7 | 8 | 9 | 10 | 11 | 12 | 13 | 14 | 15 | 16 | 17 | 18 | 19 | 20 | 21 | 22 | 23 | 24 | 25 | 26 | 27 | 28 | 29 | 30 | 31 | 32 | 33 | 34 | 35 | 36 | 37 | 38 | 39 | 40 | 41 | 42 | 43 | 44 | 45 | 46 | 47 | 48 | 49 | 50 | 51 | 52 | 53 | 54 | 55 | 56 | 57 | 58 | 59 | 60 | 61 | 62 | 63 | 64 | 65 | 66 | 67 | 68 | 69 | 70 | 71 | 72 | 73 | 74 | 75 | 76 | 77 | 78 | 79 | 80 | 81 | 82 | 83 | 84 | 85 | 86 | 87 | 88 | 89 | 90 | 91 | 92 | 93 | 94 | 95 | 96 | 97 | 98 | 99 | 100 |
|--------|---|---|---|---|---|---|---|---|---|----|----|----|----|----|----|----|----|----|----|----|----|----|----|----|----|----|----|----|----|----|----|----|----|----|----|----|----|----|----|----|----|----|----|----|----|----|----|----|----|----|----|----|----|----|----|----|----|----|----|----|----|----|----|----|----|----|----|----|----|----|----|----|----|----|----|----|----|----|----|----|----|----|----|----|----|----|----|----|----|----|----|----|----|----|----|----|----|----|----|-----|

WIRING DIAGRAM  
TRANSMITTER ATS

TYF J773D  
DWL 7731A1



REVISIONS  
 1. ORIGINAL DESIGN  
 2. REVISIONS  
 3. REVISIONS  
 4. REVISIONS  
 5. REVISIONS  
 6. REVISIONS  
 7. REVISIONS  
 8. REVISIONS  
 9. REVISIONS  
 10. REVISIONS

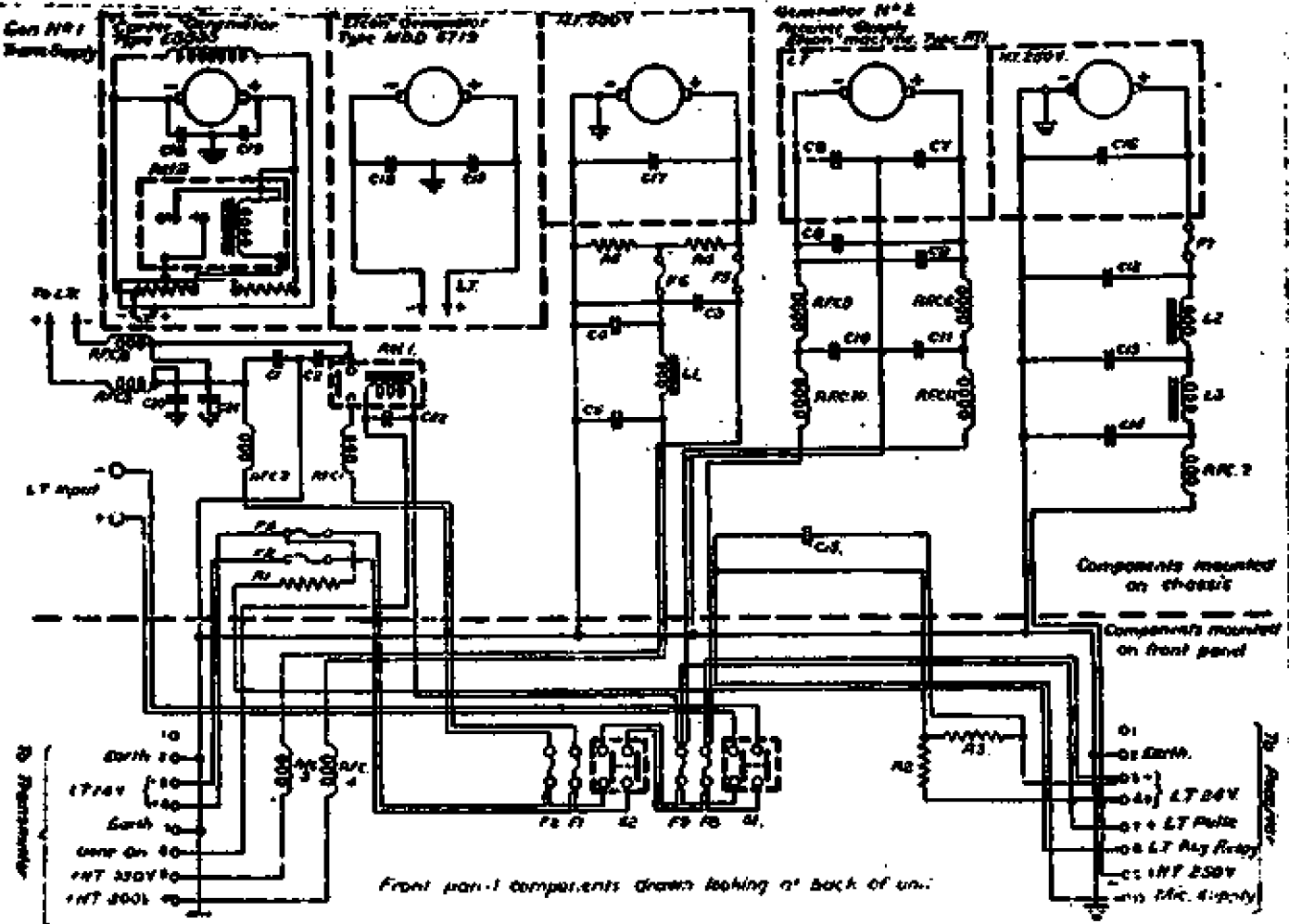
ANALOGOUS WIRING  
 SUBSTITUTION - NONE  
**WIRING DIAGRAM**  
**RECEIVER ARE**  
 TYPE C7748  
 DOW 9743A1

773406

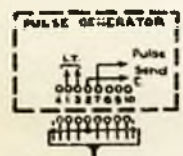
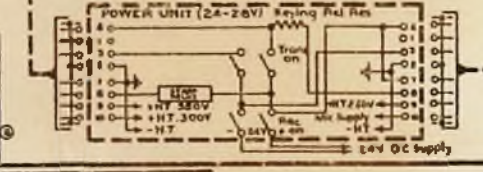
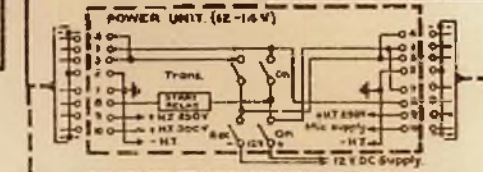
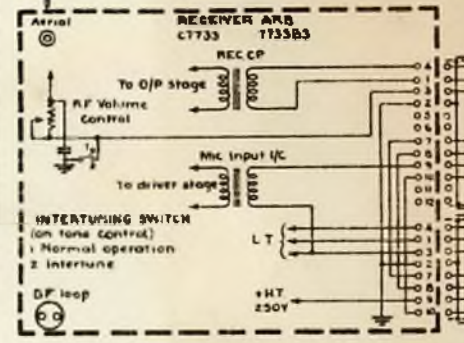
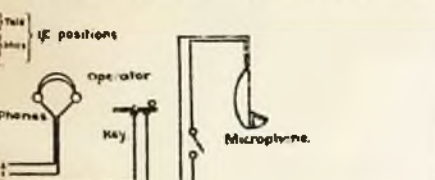
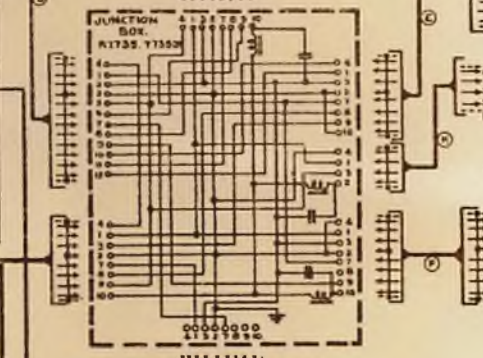
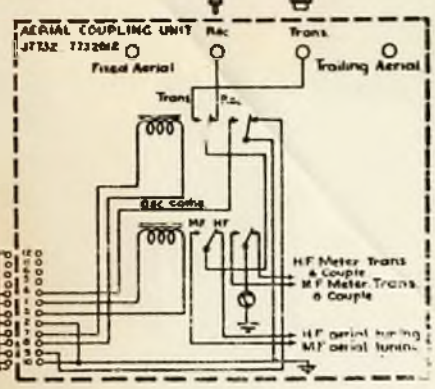
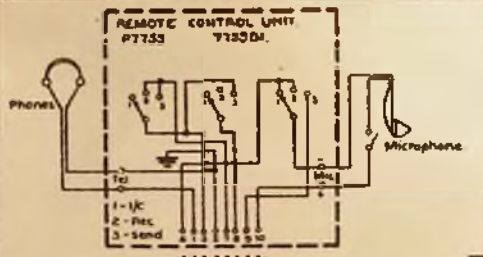
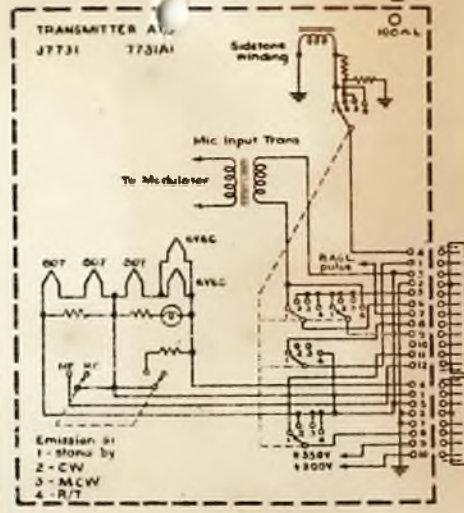
*Q. R. O. M.*

**SCHEMATIC DIAGRAM  
POWER SUPPLY UNIT**

AMALGAMATED WIRELESS  
AUSTRALASIA LTD. SYDNEY



TYPE H734  
D.N. 773406



**NOTES**  
 1 When remote control unit is fitted no change in wiring is necessary  
 2 When pulse generator is not fitted link tags 2 & 7 on pulse outlet  
 3 Connection code for Plug, Y10H/00007, Terminal Connecting Cable F



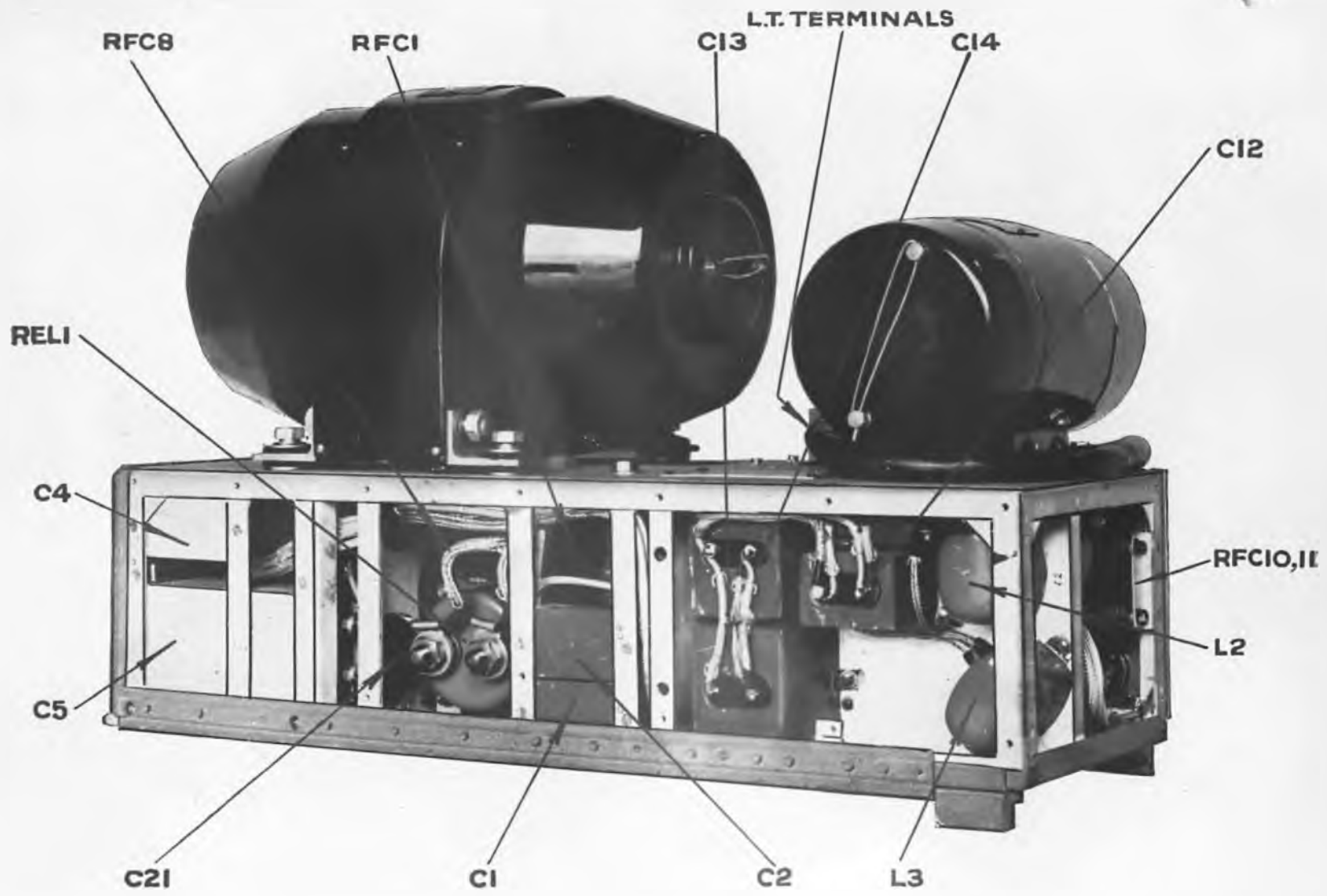
Connection Side of Plug Shown  
 Pin 1 Tel., Pin 2 & 4 Tel. Pin 3 Key, Pin 7 Key.  
 Pin 6 - Mic, Pin 10 - Mic. Numbers indicate leads of Cable F which connect to pin positions shown

7730C3

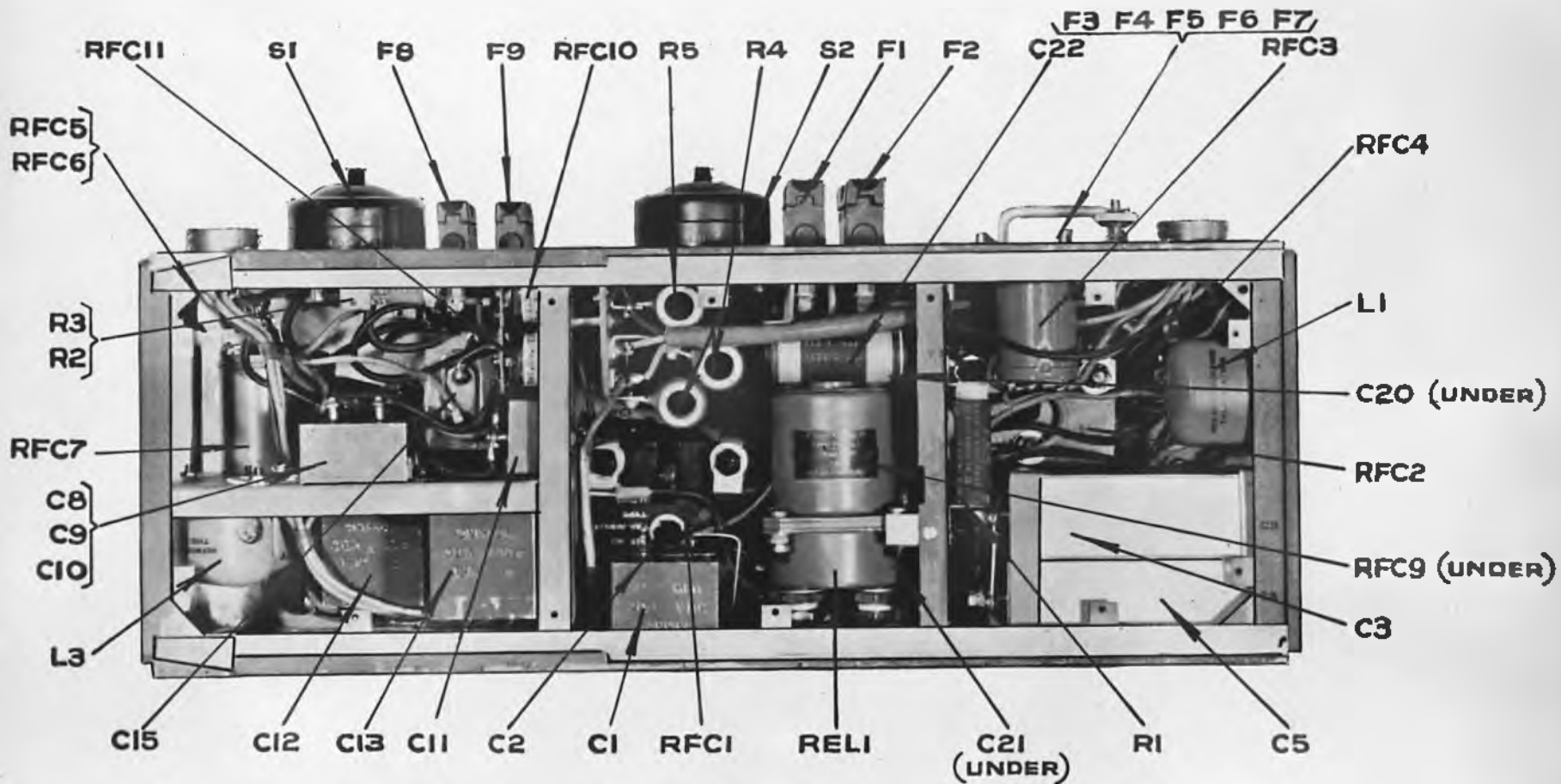
|                     |          |   |
|---------------------|----------|---|
| DATE                | 10.12.51 | 2 |
| CHANGED             |          |   |
| Reasons & M. added  |          |   |
| Previously Dwg. No. | 7730B1   |   |
| A/S                 | 10.12.51 | 3 |
| Cable F plug attach |          |   |
| Tested              |          |   |
| Chd. Wp.            |          |   |
| To 1, 2, 4, 5       |          |   |

|  |                              |                    |
|--|------------------------------|--------------------|
| AMALGAMATED WIRELESS (AUSTRALASIA) LTD. - SYDNEY | REP. ARGENT. <i>M. J. J.</i> | SH SHEET           |
| INTERWIRING SCHEMATIC DIAGRAM                    | ORIG. <i>C. J. J.</i>        | REF.               |
| ATS, ARB AIRCRAFT EQUIPMENT                      | INCR. <i>K. P. J.</i>        | <b>TYPE J7730</b>  |
|  | CKD. <i>R. F. T.</i>         | <b>DWG. 7730C3</b> |
|  | APP. <i>R. F. T.</i>         |                    |





**UNIT POWER SUPPLY**  
PHOTO N° 1706 (Ref. also 1696)

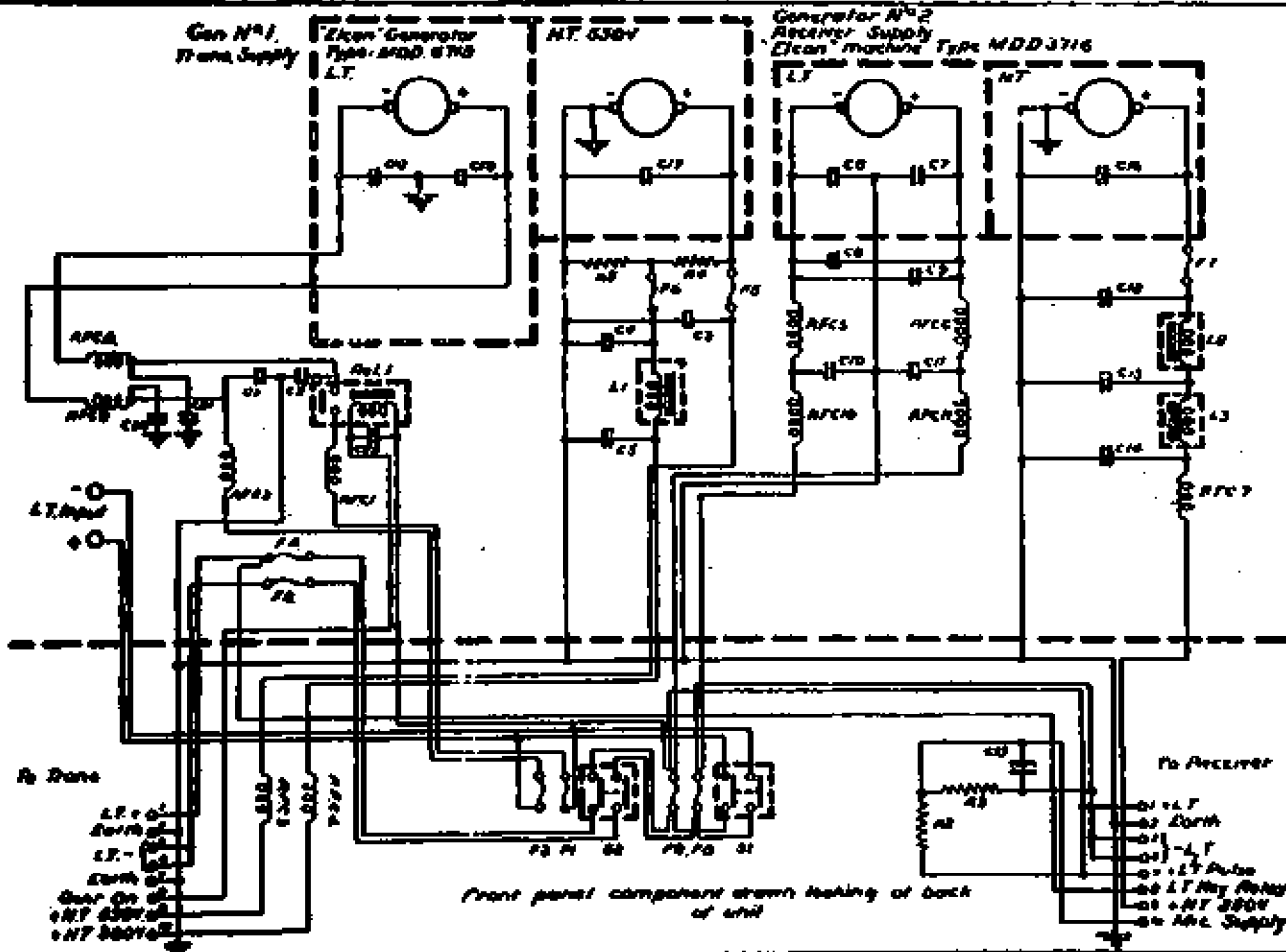


UNIT POWER SUPPLY

PHOTO N° 1813 (Ref. also 1706)

773409

REVISED DATE 12-8-43  
 CHANGES



Front panel component drawn looking of back of unit

AMALGAMATED WIRELESS  
 (AUSTRALASIA) LTD. STONEY  
 CREEK, AUSTRALIA

SCHEMATIC DIAGRAM  
 POWER SUPPLY UNIT  
 IN USE OPERATION.

|    |    |    |    |    |    |    |    |    |    |
|----|----|----|----|----|----|----|----|----|----|
| 1  | 2  | 3  | 4  | 5  | 6  | 7  | 8  | 9  | 10 |
| 11 | 12 | 13 | 14 | 15 | 16 | 17 | 18 | 19 | 20 |
| 21 | 22 | 23 | 24 | 25 | 26 | 27 | 28 | 29 | 30 |
| 31 | 32 | 33 | 34 | 35 | 36 | 37 | 38 | 39 | 40 |

TYPE IH7734  
 DNR 773409

Pin Data  
 L1 + L  
 L2 + L  
 L3 + L  
 L4 + L  
 L5 + L  
 L6 + L  
 L7 + L  
 L8 + L  
 L9 + L  
 L10 + L

Pin Receiver  
 01 - L1  
 02 - L2  
 03 - L3  
 04 - L4  
 05 - L5  
 06 - L6  
 07 - L7  
 08 - L8  
 09 - L9  
 10 - L10

① M.F. Oscillator Range  
Switch and Tuning  
140 - 185 kc.  
185 - 260  
260 - 370  
370 - 500

② H.F. Range Selector

③ M.F. H.F. Channel  
Selector Switches

④ H.F. Buffer Range.  
2 - 5 M.C.  
5 - 10 M.c.

⑤ H.F. P.A. Range Switch  
and Tuning.  
2 - 3.5 Mc.  
3.5 - 6.5  
6.5 - 10  
10 - 20 M.c.

⑥ M.F. P.A. Range Switch  
and Tuning.  
140 - 180 k.c.  
180 - 290  
290 - 500

⑦ H.F. Aerial Tuning

⑧ H.F. Aerial Coupling.

⑨ M.F. Aerial Tuning

⑩ M.F. Aerial Coupling

⑪ Meter Switch.

⑫ Operators functional  
Control Switch

⑬ H.F. Osc. Ranges and  
Crystal selector  
2 - 5 Mc.

⑭ Plug in crystals  
mount behind  
hinged cover

⑮ Beat Osc. Tuning

⑯ Tone Control and  
intertuning switch

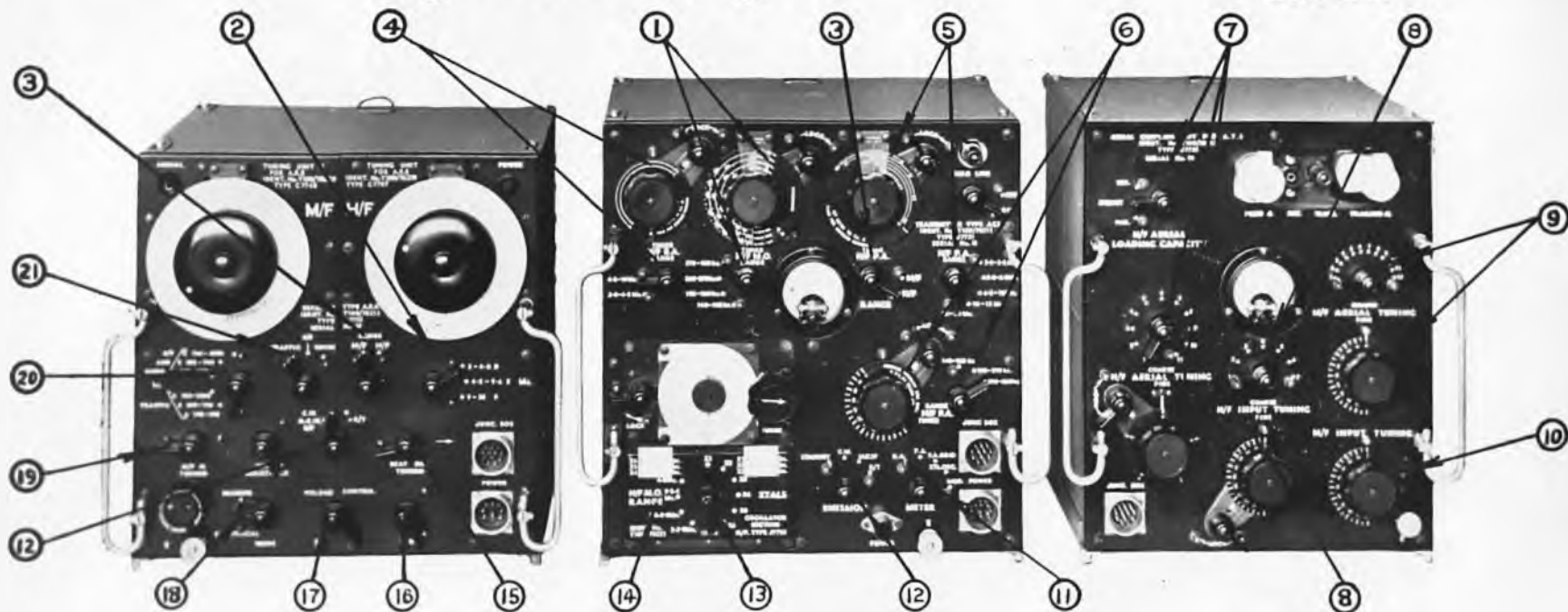
⑰ Volume Control

⑱ Bearing reciprocal  
switch

⑲ M.F. Aerial Tuning  
Cond.

⑳ M.F. Range  
Selector Switch

㉑ D.F. Traffic  
Selector



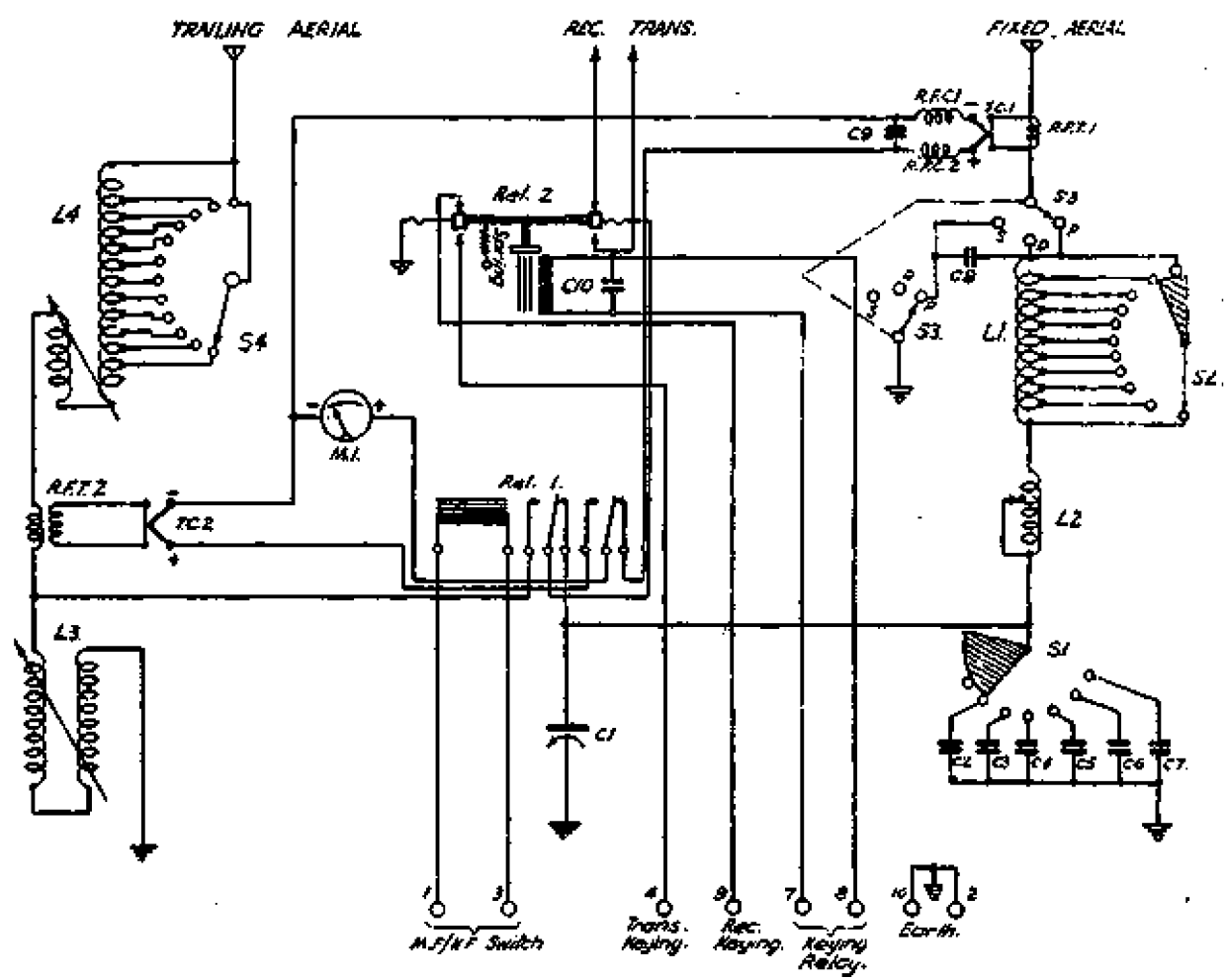
RECEIVER

TRANSMITTER

AERIAL COUPLING UNIT

PHOTO N° 1776

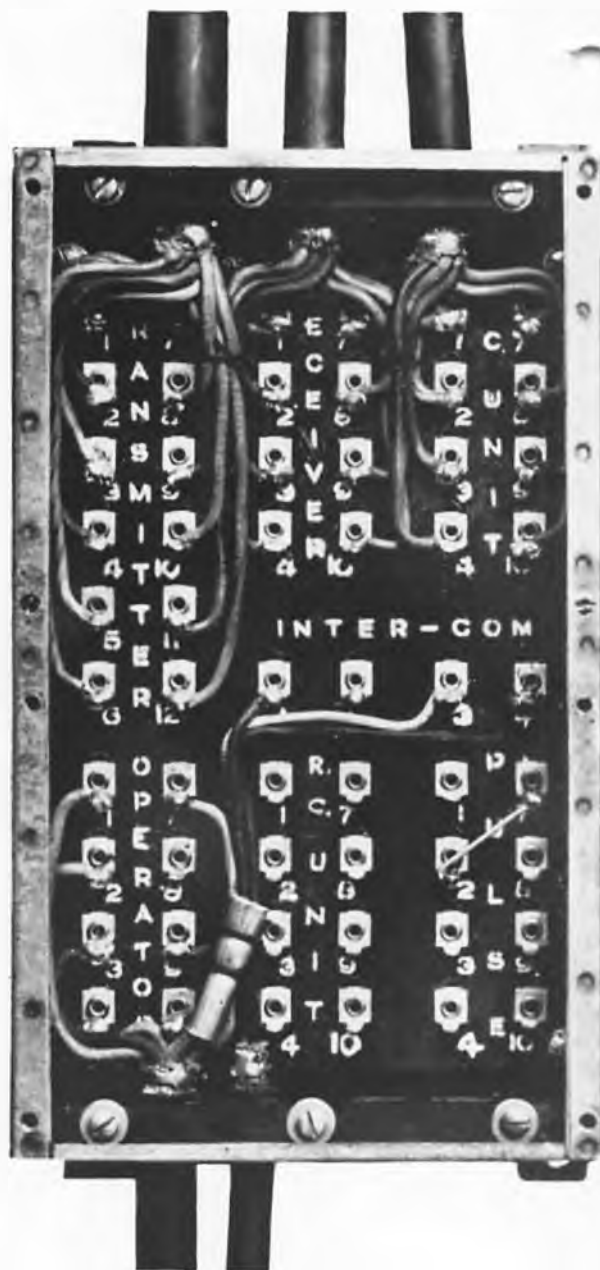
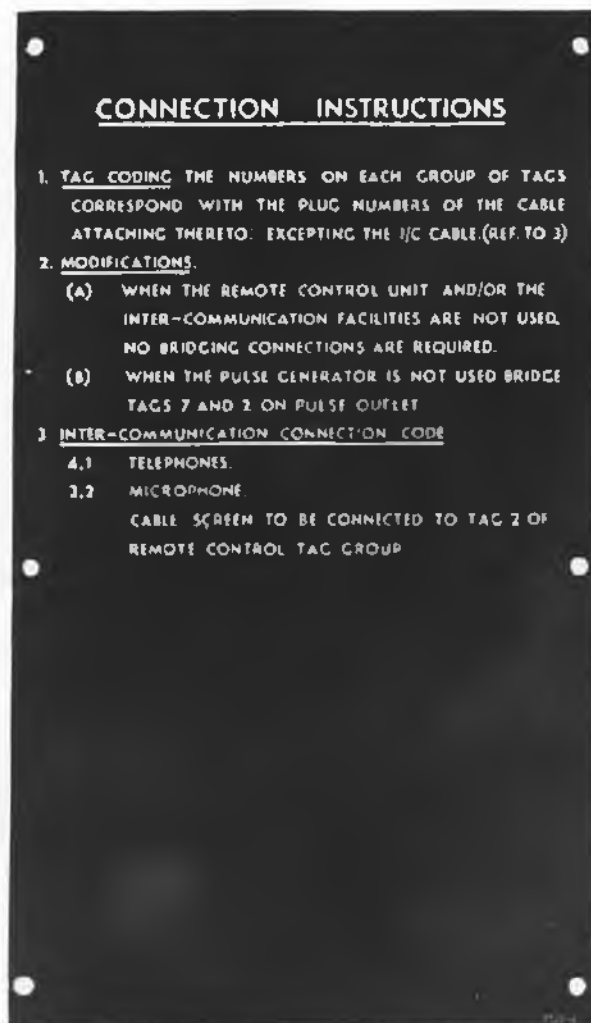
7732D13



AMALGAMATED WIRELESS  
AUSTRALASIA, LTD. - SYDNEY

**SCHEMATIC DIAGRAM  
AERIAL COUPLING UNIT.**

|              |      |    |       |
|--------------|------|----|-------|
| REV.         | DATE | BY | CHKD. |
| 1            |      |    |       |
| TYPE J7732   |      |    |       |
| DWG. 7732D13 |      |    |       |



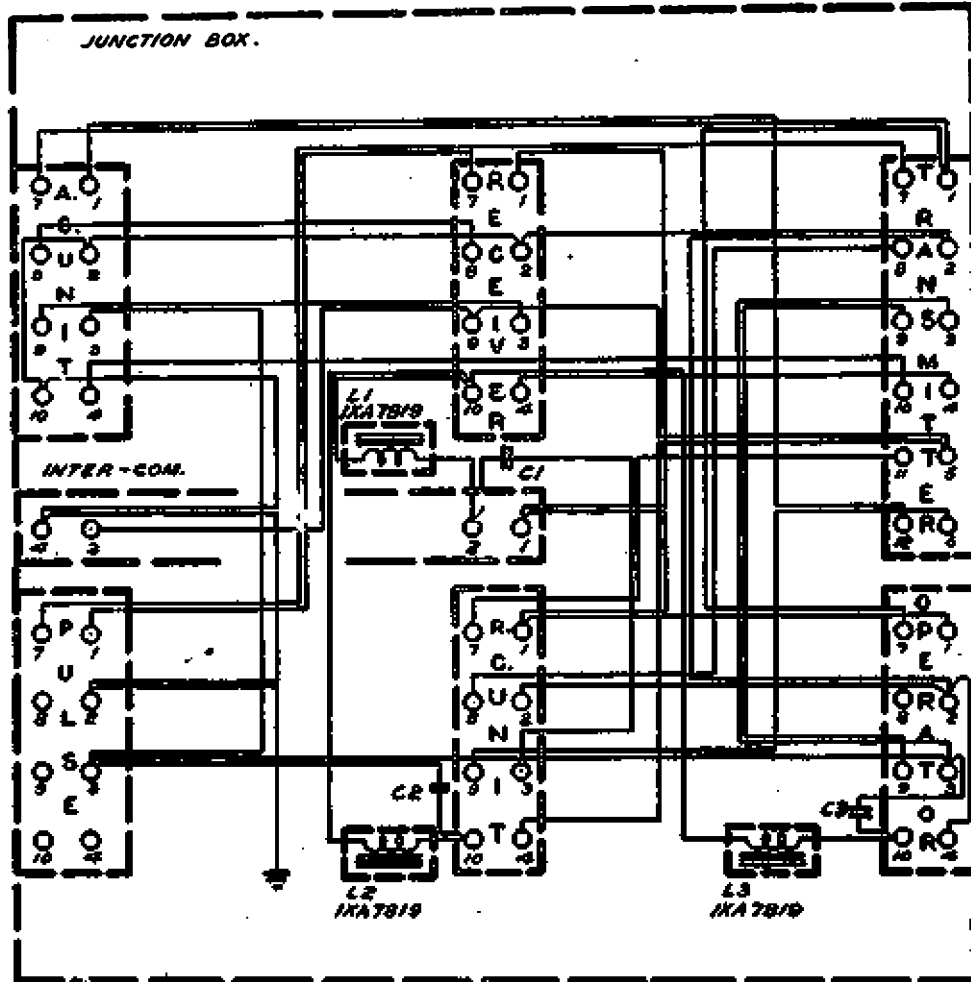
*Top view showing inside of cover.*

**JUNCTION BOX**

**PHOTO N° 1709 (Ref. also 1705)**

7735DI

18 12 41



**NOTE:-**  
Wiring side of terminal panel shown.

AMALGAMATED WIRELESS  
(AUSTRALASIA) LTD. - SYDNEY

**SCHEMATIC DIAGRAM  
JUNCTION BOX**

|                    |      |
|--------------------|------|
| REF                | 1/21 |
| DATE               |      |
| CYR.               |      |
| APP                |      |
| <b>TYPE 7735</b>   |      |
| <b>DWG. 7735DI</b> |      |