

# BE

May 2001  
An INTERTEC®/PRIMEDIA Publication  
www.beradio.com

# Radio®

**The Radio Technology Leader**



# The Transition To Digital

**Also:**  
Audio Consoles  
The Center of the Studio



# AUDIOARTS DIGITAL D-70



The D-70 digital console from AUDIOARTS not only utilizes the latest in digital technology and chip sets, it can be ordered with a serial interface that lets it integrate with most popular automation systems and station routers; it even has WHEATSTONE's exclusive VDIPTM software system.

Plug-in modules let you have any combination of mic, analog or digital line inputs, and the 4 stereo buses give you plenty of flexibility (each has both digital and analog outputs). With sample rate conversion on all digital inputs plus selectable console clock rates of 32, 44.1 or 48KHz (and an optional external house sync) the D-70 can fit right in with all your facility's present equipment.



**WHEATSTONE'S VDIPTM** Virtual Dipswitch Software lets you configure D-70 input channels with a laptop computer. Once configured console runs stand-alone.

With a compact, tabletop-mount footprint and a modular rear connector system that utilizes plug-in submodules for easy analog-to-digital field switches, the D-70 can be configured onsite quickly and easily. On the functional side, fullscale digital peak plus simultaneous VU metering, LED illumination everywhere, built-in machine interface, automatic timer and clock (stand-alone or ESE slave) all come standard, along with separate source selection for control room and studio plus built in talk-back. You can even order the D-70 console with a SUPERPHONE module to support two callers with automatic digitally generated mix-minus. Both digital and analog line selector panels are also available.



**THE D-70 DIGITAL AUDIO CONSOLE** —benefit from WHEATSTONE's experience— at an AUDIOARTS price!

# Juggling Too Much? Harris Can Help!

Taking care of today's broadcasting needs while moving toward a digital future is a tough juggling act. You need to maintain and, perhaps, upgrade current systems. Maybe you're even contemplating complete station makeovers. Fortunately there's a company with the resources and dexterity to help you maintain your balance: Harris.

## **Automation**

Whether you need single-channel, multi-channel, or news solutions, Harris has a scalable automation solution to fit your precise requirements.

## **Transmission**

Harris has everything from replacement parts for your current transmitter to a new analog or digital transmission system.

- TV - UHF, VHF, DTV, DVB-T
- Radio - AM, FM, IBOC, DAB
- STL - single to multiple site linking

## **Systems**

Who but Harris offers everything from a single console to the design and installation of entire radio, TV, and mobile studios? Come see our line of DTV products to help you manage your entire system.

## **Service**

Harris installs, maintains and repairs everything it sells. And our broadcast training centers are available to make your team as self-reliant as possible.

## **Don't Drop the Ball**

Let us show you our newest solutions.

*next level solutions*

SERVICE

SYSTEMS

AUTOMATION

TRANSMISSION

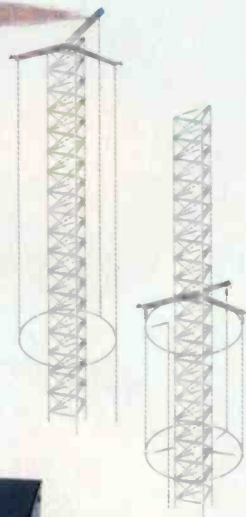
## FEATURES

- 30 The Transition to Digital**  
*by Chriss Scherer*  
Prepare for the digital future.
- 37 Trends in Technology: Audio Consoles**  
*by Barry Thomas*  
Piloting the station's control point
- 42 On Location: Presidential Inauguration**  
*by Chriss Scherer*  
NPR coverage of the grand ceremony

**10**

## COLUMNS

- 08 Viewpoint**  
*by Chriss Scherer*  
An end to Internet radio?
- 10 Contract Engineering**  
*by Mark Krieger*  
Cover yourself and your business.
- 14 E-casting**  
*by Ken Nosé*  
The basics of TCP/IP
- 18 RF Engineering**  
*by John Battison*  
Tune-out can be a good thing.
- 22 Networks**  
*by Kevin McNamara*  
Determining network access needs
- 26 FCC Update**  
*by Harry C. Martin*  
New regulatory fees
- 62 The Last Byte**  
*by Skip Pizzi*  
Riding the radio roller coaster

**18****37****42**

## DEPARTMENTS

- 06 Online at www.beradio.com**
- 49 New Products**
- 56 Demo Room Showcase**
- 59 Classifieds**

**ON THE COVER:** The transition to digital is occurring globally. How and when a facility chooses to upgrade, however, remains largely the decision of individual stations. Cover design by Michael J. Knust.

# Our Secret is Behind the Scenes!



- Integrated platform concept
- Fiber optic networking
- Any audio source, anywhere

KLOTZ DIGITAL's unique VADIS Platform provides the perfect solution for facilities searching for the ultimate in digital audio integration. From single studio build-outs to new mega-facility operations, KLOTZ DIGITAL provides a cost effective and time saving option to traditional analog and digital facility installations. *Our secret is behind the scenes.* Fiber optic based, the VADIS Platform integrates all audio functions, combining operator tasks, reducing the need for

traditional wiring, and paving the way for effortless future expansion. And, the elimination of a central router means distribution of "any audio source anywhere at any time!"

Compare the costs for yourself. When it comes to savings, quality and performance...nobody even comes close. That's why the most sophisticated and technologically advanced facilities throughout the world choose KLOTZ DIGITAL.

**KLOTZ DIGITAL GERMANY** Phone: +49-89-45672-300  
**KLOTZ DIGITAL FRANCE** Phone: +33-1-48874681  
**KLOTZ DIGITAL ASIA** Phone: +60-3-5193233  
**KLOTZ DIGITAL AUSTRALIA** Phone: +61-2-95186795

**KLOTZ DIGITAL**  
 5875 Peachtree Industrial Blvd.  
 Bldg. 340  
 Norcross, Georgia 30092  
 Phone: +1-678-966-9200  
[www.klotzdigital.com](http://www.klotzdigital.com)

**KLOTZ**  
 DIGITAL

Your Online Source  
for current radio broadcast news



Digital Media **NET**  
Where the Creative Community Meets

**BE Radio**  
The Radio Technology Leader

A Digital Media Net Community

- Home
- Search
- Forum
- Currents
- Features
- Viewpoint
- Departments
- Spotlight
- Tip of the Week
- New Products
- Reader Services
- Subscription
- Media Kit
- Contact
- Webmaster

## Currents

- [Steelman Joins Broadcast Electronics](#)
- [Harris To Acquire Hirschmann Multimedia](#)
- [Digigram and Peak Audio Ally](#)
- [FCC Releases EAS NPRM](#)
- [SBE Hires Frequency Coordination Director](#)
- [Orban/CRL Appoints Mensinga](#)
- [Gentner Sells Remote Facilities Biz to Burk](#)
- [Ad Insertion Circumvents AFTRA](#)
- [FCC Adopts Revised LPFM Order](#)
- [Neumannusa.com Redesigned](#)
- [BSW to distribute BSI](#)
- [Optimod-FM 8200 Marks 10 Years](#)
- [Broadcast Richardson Increases Staff](#)

## Web Contents

<h3>Currents</h3> <p>News updated daily as it happens</p>	<h3>New Products</h3> <p>With links to the manufacturers</p>
<h3>Demo Room</h3> <p>Online product demos right now</p>	<h3>Studio Spotlight</h3> <p>Tour a new facility</p>
<h3>Weekly E-Mail</h3> <p>Have the headlines sent to you via e-mail each week. Send a message to <a href="mailto:beradio@intertec.com">beradio@intertec.com</a>.</p>	<h3>May Issue</h3> <p>Read it online. Plus, technical tips, streaming stations, and more.</p>

We thank the Gospel Music Association and the National Christian Radio Association for honoring our station with their Major Market Station of the Year Award. Just being nominated is an awesome honor. We thank everyone on our staff for so much support.

# No matter who wins the Major Market Station of the Year Dove Award, Scott Studios' SS32 gets an honorable mention!

Our station owners, Allison Langer, Suzanne Williams, Ronald Lunkey, Ed Marshall, Irpins, Derek Starns, Ed Marshall, and Scott Studios for their DJ-friendly digital system - our SS32!!

Acceptance speech simulated. Winner not announced when ad went to press.

**All** nominees for 2000 Dove Awards for **Major Market Station of the Year** use **Scott Studios'** digital audio systems. These stations obviously have *extremely* talented air staffs! However, it's more than an *amazing* coincidence that *all* of them use Scott Studios' *DJ-friendly* touchscreen digital audio systems. Announcers designed SS32, so it's the *most intuitive*, *most user-friendly* and *most popular* digital air studio. Help your station sound like "Station of the Year".



**Scott Studios**  
888 • Get • Scott

## Caught up in a Web

Is there a future for Internet radio? It depends on whom you ask. The news in mid-April certainly put a damper on all things audio on the Internet.

First, stations were faced with impending fees for simulcasting their on-air program. While stations are already paying fees for on-air play, these additional costs made many stations reconsider the value of the online service. For many stations, these costs easily outweigh any income potential.

The next blow came from AFTRA, who wants stations to pay talent fees that are up to 300 times the standard radio rate for spots played over the Internet. I'm all for fair compensation, but this is extreme.

After the AFTRA announcement was made, a new push for ad insertion technology and products began in a classic action/reaction fashion.

In a move that seemed to seal the fate of Internet radio, 3Com pulled the plug on the Kerbango Internet radio appliance. I was surprised by this, considering how much attention and interest the product has already received. I guess that 3Com decided

to cut its losses on a project that was likely becoming a significant money pit.

It seems like almost every station has shut down its online stream until the royalty and payment situation is resolved. Since no one knows how it will end or if retroactive fees will be imposed, this is a smart action for stations to simply cover themselves.

Is Internet radio finished? I don't think so. While everyone is pointing at the failure of the dot-bombs, it just goes to show that old methods don't always work for new technologies. In the end, I expect stations will pay additional monies to play music online even if it is simulcast on air. The rates will be negotiated and a satisfactory solution will be reached. The same is true for AFTRA. Contracts will be written that automatically cover the rights for Internet play. A higher talent fee may be the result, but fair compensation is warranted.

What we have seen is a growing phase for Internet radio. A recent Consumer Electronics Association study showed that consumers want free content. We all know that nothing in radio is really free. Whether it's commercials, underwriting or subscription, money is changing hands. I'll modify the statement above and say that consumers want the perception of free content. If they

don't know they're paying for it, they will accept it as free. Like the business end on webcasting, the listener side needs to grow as well.

If you're a baseball fan, you have likely seen that this is changing already. Major League Baseball has changed how it provides game broadcasts online. To listen, you must now subscribe to listen. The fee is not excessive—\$10 for the season to listen to any game. Some may see this as greedy, but subscription services do succeed. If you wonder who will pay to hear something that has traditionally been free, look at the satellite radio services coming from XM and Sirius.

I doubt that many stations are generating any revenue from webcasts. The cost of business is too high for the current technology to show more than break-even results. Multicast and other streaming advances, ad insertion and targeted ad insertion are all part of the evolution of Internet radio's forthcoming success and advancement.



*Chris Scherer*

**Chriss Scherer, editor**  
**chriss\_scherer@intertec.com**

*Are you streaming audio online? Tell us about your experiences and how you're dealing with these issues at [beradio@Intertec.com](mailto:beradio@Intertec.com).*





There's Nothing Remotely Like It.



## Matrix Codec - Pots/ISDN/Wireless

The Matrix is a versatile, compact codec with the ability to send high quality audio over POTS (PSTN), ISDN, or wireless services.

Call today for details!  
**(800) 237-1776**

Comrex Corporation, 65 Nonset Path, Acton, MA 01720  
Tel: (978) 263-1800 Fax: (978) 635-0401 Toll Free (800) 237-1776 in North America  
Email: [info@comrex.com](mailto:info@comrex.com) [www.comrex.com](http://www.comrex.com)  
Circle (107) on Free Info Card or go to [www.beradio.com](http://www.beradio.com)

**COMREX**

## Professional liability – limiting your exposure

By Mark Krieger, CBT

**B**roadcast engineers are an eclectic bunch. Put a few of them together at a social function, and you're likely to hear a discussion about almost anything - with the notable exception of professional liability. This isn't surprising, since bringing up the subject of one's professional slip-ups is likely to clear the table faster than the bar tab's arrival. Simply stated, no one likes to dwell on his mistakes in either past or future tense, much less the potentially devastating legal consequences. But professional liability is a serious matter, particularly for the contract engineer. Let's consider the following issues.

### General liability

In the most basic terms, your potential liability as a contract engineer or consultant can take two forms: professional negligence and general liability, with which most of us are familiar. Liability is a legal responsibility for personal injury or property damage that may occur as a result of negligence.

For example, let's say you pay a service call to a transmitter installation in the elevator penthouse of a commercial building. While you are moving a toolbox, it falls and damages a piece of equipment belonging to another tenant in the space, making you responsible for the cost of repairs. Or, perhaps you run an extension cord across an aisle, and someone trips, resulting in an injury. Again, you may be held responsible for compensating the victim for related expenses. Though a legal determination of what constitutes negligence is not immutably fixed, the standard is fairly straightforward and is generally consistent from state to state.

### Professional negligence

Less familiar to most of us, however, are potential liabilities arising from professional malpractice, which Black's law dictionary defines as "Professional misconduct or unreasonable lack of skill". Though the term is usually used in reference to cases in the legal or medical field, it

is nearly interchangeable with the broader term "professional negligence." Either way, it's a concept every contract engineer needs to understand. What it means is that you, as a practicing professional, may be held liable for damages or losses a client suffers as a result of your (commission of) errors or omissions. Suppose, for example, you lay out a plan for new studios at a medium-market radio station, specifying a network-based audio server system that you believe will be adequate to the task. Upon migration to the new studios, however, your client finds that the system is too slow to get the entire commercial inventory on air as scheduled. The client loses revenue and decides to sue you for professional negligence as a result of your error in calculating needed capacity.

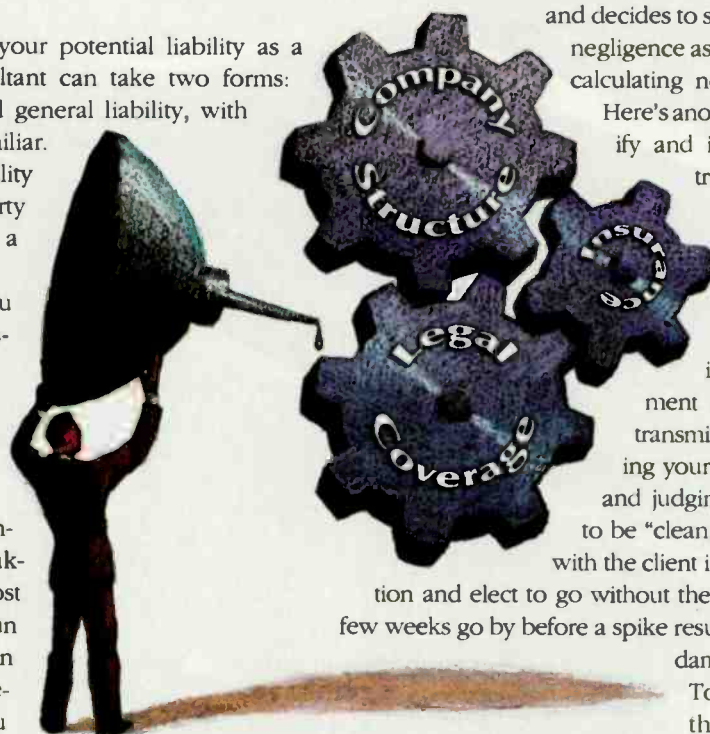
Here's another scenario: You specify and install a solid-state FM transmitter for a client. In

the process, you see that the manufacturer calls for a certain type of power surge suppression system to be installed as a requirement of certification of the transmitter's warranty. Knowing your client's limited budget, and judging the available power to be "clean," you discuss the issue

with the client in an informal conversation and elect to go without the suppression system. A few weeks go by before a spike results in extensive internal damage to the transmitter.

To make matters worse, the manufacturer demands to inspect the installation before honoring warranty claims. Finding

no suppression system installed, the manufacturer denies the warranty, and the client demands that you pay for all repairs, claiming that you never explicitly advised him regarding the conditional nature of the warranty. You counter that the client was provided a copy of the warranty when the transmitter was purchased, and decline to pay for the damage. The client sues you for professional negligence stemming from your failure to provide an explicit statement that the warranty would be voided if no suppression system were installed.



Attention to these areas ensures your business will run like a well-oiled machine.

# THEY'RE ONLY AT BSI

SO IF SOMEONE ELSE CLAIMS TO HAVE ONE, JUST SAY...

**IF YOU HAVE BEEN EAGER TO RIDE THE MP3 WAVE** BUT DIDN'T WANT TO COMPROMISE AUDIO QUALITY, NOW YOU CAN HAVE PROFESSIONAL SOUND WITH THE FLEXIBILITY OF MP3.

**SHOW ME THE CARD!**

**THE ONLY PROFESSIONAL MP3 AUDIO CARDS** ARE THE NEW ASI 4344 AND THE ASI 4346 FROM AUDIOSCIENCE. TWO CARDS THAT GIVE YOU THE POWER AND FREEDOM OF MP3. SLOW OR STUTTERING SOUND IS A THING OF THE PAST WHEN THE AUDIO IS PROCESSED ON THE CARD INSTEAD OF YOUR PC'S CPU. THE WORLD'S FIRST PROFESSIONAL MP3 AUDIO CARDS ARE CAPABLE OF FOUR SIMULTANEOUS MP3 PLAYBACKS ON A SINGLE CARD. NOW YOU CAN HAVE THE TRANSPORTABILITY OF THE UNIVERSALLY POPULAR MP3 FORMAT COMBINED WITH PROFESSIONAL FIDELITY, BALANCED AUDIO AND I/O INTERFACE.

ONLY \$2795



JUST \$2095

**CALL 888-BSIUSA1  
OR VISIT OUR WEBSITE FOR MORE DETAILS.**



**www.bsiusa.com  
info@bsiusa.com**

**888-bsiusa1  
541-338-8588**

**Broadcast Software International**

Circle (108) on Free Info Card or go to [www.beradlo.com](http://www.beradlo.com)

## Contract Engineering

If the case is not settled and goes to trial, a judge or jury will likely rely on expert witnesses to determine the professional standard to which your performance will be held. Referring back to Black's law dictionary, the standard is "that degree of skill and learning applied under all circumstances in the community by the average, prudent, reputable member of the profession..." Thus, the definition is amorphous, particularly if an abundance of applicable case law isn't available. In our hypothetical case, that uncertainty could work for—or against you.

Clearly, this is the stuff that broadcast engineer's bad dreams are made of. Worst of all, it's the plausibility of such scenarios that makes them so scary. How, then, do you best protect yourself and your company?

### A proactive approach

To begin with, consider your company's structure. Being incorporated may provide some insulation for personal assets should the worst case occur. However, the degree of protection offered by the "corporate veil" will vary from state to state and in no way indemnifies your company. Thus, it should be considered strictly as an addition to, and not a substitute for, other protections.

Secondly, the old adage, "put it in writing" applies in spades. Retain a reputable attorney skilled in professional liability, and have him review your contracts before signing to see if additions or changes in language can minimize your

exposure. While some contractors and consultants feel they can dance around potential professional liability claims by working directly from proposals and avoiding contracts altogether, this only muddies the waters in a legal dispute. Avoid the tendency to rely on "conventional wisdom" when considering any legal issue.

Finally, invest in general liability and professional errors and omissions insurance. These policies are available from a number of reputable carriers and cover the types of issues we've discussed here. Take a look at the program available to members through the SBE. Details are available at [www.sbe.org](http://www.sbe.org). Typically, these policies offer coverage upward of \$1 million, often at modest premiums. Remember that the cost of this insurance is a deductible business expense. Furthermore, some companies will require you to hold such a policy before they'll do business with you, so it can also be seen as a competitive and prudent investment.

We all make mistakes. But by better understanding professional risks, and adopting strategies to compensate for them, you'll be better able to get a good night's sleep after a hard day's work.

*Mark Krieger, BE Radio's consultant on contract engineering, can be reached [mkrieger@drfast.net](mailto:mkrieger@drfast.net). He is based in Cleveland.*

**Contract Engineering in July:  
Establishing a Client Base**

## Two Studio Digital System, On Air & Production Digilink IV System II

**\$7,995**

**Live On Air**  
Live Assist  
Automation  
Jingles, Phoners

### The DL4 System II

comes complete with a

Triple Play and Record DL4 Workstation, 105 Hours of audio storage, 7 input play switcher, 7 input record switcher, DL4-AUTO software for On Air, and DL4-SCHED for Production and Scheduling. This powerful (2) studio system requires only 2 customer supplied PC's and installation.

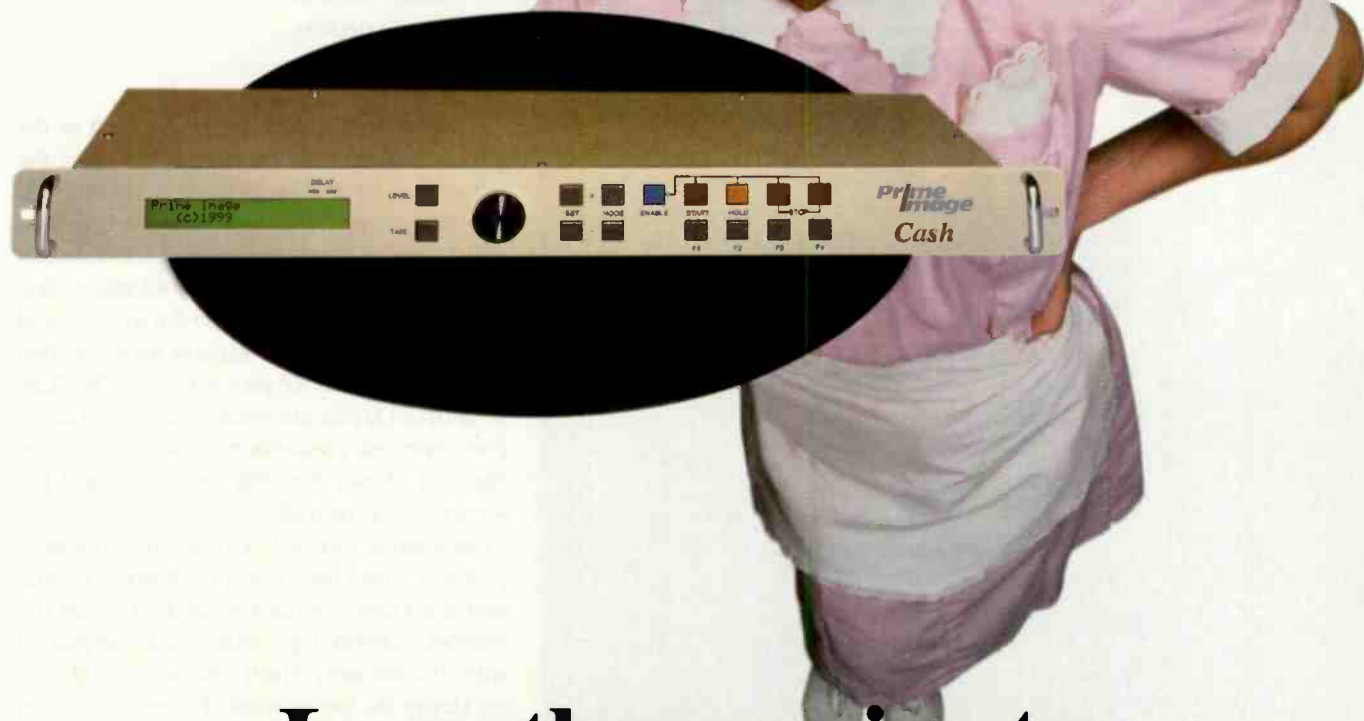
**Production**  
Recording  
Editing  
Scheduling

**Arrakis Systems inc.** Phone: (970) 224-2248 Web: [arrakis-systems.com](http://arrakis-systems.com)



Circle (109) on Free Info Card or go to [www.beradio.com](http://www.beradio.com)

# Introducing the Cash™ miracle diet.



## Lose three minutes in an hour!

Gone are the days of hunt-and-cut editing, warbling time compression, and sped-up chipmunk audio. Now overstuffed, overtime audio productions can be reduced through a real-time, undetectable process that can cut up to one minute of audio from every twenty without reducing program content.

The Cash audio time machine from Prime Image is a fully digital, easy-to-operate device that utilizes a patented system of random "micro-edits" to reduce the length of any production, whether voices, sound effects, or music. And Cash works automatically, in one pass, with no additional processing. Simply enter the amount of time you want to lose and the period of time over which to lose it. Then push the start button and find

something more important to do. Like kicking back and enjoying a cup of coffee—but, in the interest of your waistline, take a pass on the donuts.

For specifications, information, or orders contact Prime Image:  
[www.primeimageinc.com](http://www.primeimageinc.com)  
408-867-6519

**Prime  
Image**

The Digital Video People  
Tel (408) 867-6519 Fax (408) 926-7294  
[www.primeimageinc.com](http://www.primeimageinc.com)

## TCP/IP primer

By Ken Nosé

The Web pages you visit, the e-mail you read, the music you download and the radio stations you listen to on the Internet are all delivered to you by applications using TCP/IP. TCP/IP makes it possible for different types of computers and devices to talk to each other across multiple networks. TCP/IP is what makes the Internet work, and does so invisibly to the user.

change or improve how things are done at any layer without having to change anything in the other layers. For example, when you visit a Web page, you don't need to know anything about how you are connected to the Internet. You just type in the Web address of the site you want to visit, and your browser works in the same way whether you are using a laptop with a wireless modem or a computer with an Ethernet connection.

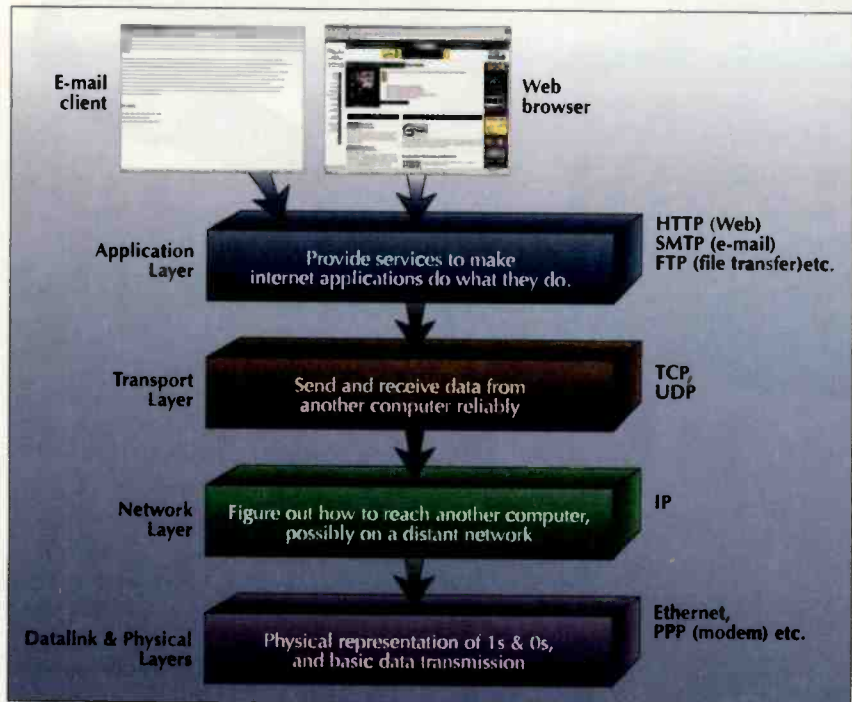


Figure 1. TCP/IP protocols and their responsibilities.

TCP/IP stands for Transmission Control Protocol/Internet Protocol. TCP/IP actually consists of several protocols: TCP, IP and other support protocols. The specifications are in the public domain, so there are no license fees for their use, and any company is free to use TCP/IP in their products. Because it is an open standard, just about every computer system, and an increasing number of devices, can speak TCP/IP and can therefore talk to each other.

TCP/IP works with the *Open Systems Interconnect* (OSI) layered model. Its operation is broken down into layers with specific responsibilities. The concept of a layered model is fundamental to the ease-of-use and widespread adoption of technologies like e-mail and the World Wide Web. Each layer hides the details of the layers below it and provides additional services to the layer above it.

Using this type of approach may seem arbitrary at first, but the advantages are significant. For instance, it is possible to

### Piling on

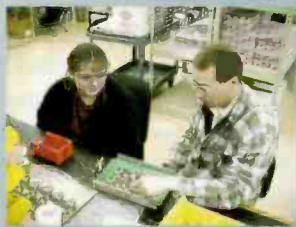
In the layered model, programs such as the Web browser are at the application layer, the uppermost layer. The bottom layers manage raw data transmission over the physical link, which can be anything from a direct Ethernet connection to a modem over a telephone line or wireless link. In the middle are the TCP and IP protocols, and other support protocols that are part of the TCP/IP protocol suite. The TCP/IP protocol layers are what hide the details of your network connection from the browser. Figure 1 shows the different layers and the services they provide.

The Internet Protocol, or IP, is a network layer protocol, which has the responsibility of routing data from one computer to another across the Internet. Network layer routing is accomplished with IP addresses, which uniquely identify every device on the network. To send data from one device to another, you only need to specify the IP address of the destination device. An IP address is a 32-bit value, often expressed in *dotted decimal* form, for example 208.40.66.168. If the two machines are on the same physical network, the IP layer sends data to the destination directly. If the destination computer is on a distant network, the IP layer uses routers to find a path from the source to the destination.

The Internet consists of thousands of computer networks connected through routers and can be thought of as a network of networks. Routers transfer data from one network to another using complex algorithms and protocols to determine routes and optimal paths across networks. The IP layer handles routing invisibly, so that routers and the details of their operation are hidden to the upper layers. IP also hides the details of the underlying network architecture, so that sending data across dial-up connections, high-speed leased lines, or microwave links all looks the same at the higher level protocols.

*Our address has changed*

*...our commitment  
is the same*



FM 30



FM 100



FM 250



FM 500

## CROWN BROADCAST ANNOUNCES FMX SERIES TRANSMITTERS AT NAB

### Digital System Management (DSM) structure

- Menu-driven digital control system and display
- Monitor and set transmitter functions at front panel
- Password protection of system control
- Sophisticated fault alert and logging

### Remote System Management (RSM) option

- DSM structure accessible from any phone
- Natural voice communication from transmitter
- Password protected
- System operating functions evaluated and reset remotely
- Alert by phone in the event of system faults.

Crown FMX Series Transmitter models include the FMX 30, FMX 100, FMX 250, and FMX 500. DSM structure and the RSM option can also be retrofitted to current Crown transmitter models.

In keeping with an illustrious legacy, Crown Broadcast has begun adding a new chapter to the rich history of the Crown name. To meet the needs of broadcasters worldwide, Crown Broadcast has taken a proactive approach in researching and developing new technology.

We are committed to ushering in the Twenty-First Century with a range of technically innovative products designed to anticipate

the changing dynamics of world broadcasting, while keeping the heritage of rugged reliability that is Crown.

In the coming months, visit our website to see new ideas, new products and new directions. Crown Broadcast is committed to keeping your investment paying off year after year.

Visit us at

[www.crownbroadcast.com](http://www.crownbroadcast.com)



**Crown Broadcast**  
25166 Leer Drive  
Elkhart, IN 46514-5425  
219-262-8900

*A division of  
International Radio & Electronics Corp.*

## E casting

### Improving transmission

TCP/IP is a packet-switched protocol, which means that when you send a continuous stream or large file across the network, it is broken down into smaller pieces called packets before it is sent. The network layer may choose to route the packets that make up a single transmission along different paths to avoid network congestion or take advantage of optimal routes along the way. While the network layer pro-

vides services for routing data from one place to another invisibly, it doesn't offer any guarantees that the data won't get lost along the way, or that the packets will arrive in the same order in which they were sent. These are the responsibilities of the next layer up, called the transport layer.

In the TCP/IP protocol suite, the Transport Control Protocol provides reliable data transmission on top of IP. The TCP layer takes care of retransmis-



The OSI model defines a standard set of network operating parameters. Each layer is built on the layer below it.

sion of any lost packets, and puts packets back together in order so that the receiver gets an exact copy of what was sent. Applications that can't tolerate lost data typically make use of TCP. UDP, or *User Datagram Protocol*, is another transport layer protocol that is part of TCP/IP. While UDP is referred to as a transport layer protocol, it is just an interface for sending data over IP directly. UDP doesn't offer any additional services beyond the best effort delivery attempts provided by IP, so it doesn't guarantee that the data will arrive in the order it was transmitted, or that it will arrive at all. Applications such as Web browsers or e-mail clients use the reliable delivery service of TCP so that the Web pages you visit and the e-mail you receive are exact copies of what was sent.

As a user, you don't need to know anything about TCP, UDP or IP addresses to use the Internet. IP addresses are invisible to the user in most cases because of a support protocol called Domain Name Service or DNS. DNS can translate a human readable hostname into IP address. When you access a website by typing a Web address like [www.beradio.com](http://www.beradio.com) into your browser, you're telling your browser to contact a specific computer with the hostname "www.beradio.com." The Web browser gives DNS that hostname and DNS returns the IP address, which allows the browser to connect to the Web server running on that machine.

*Ken Nosé is chief software architect of NeoSonic Industries, Cleveland.*

Radio Systems'

# Lowest Pick up some today! Prices Ever



Radio Systems  
has lowered the prices on all  
studio consoles, timers, distribution  
amplifiers—  
even their new digital hybrid.

Call your distributor  
or Radio Systems today!

601 Heron Drive, Bridgeport, New Jersey 08014  
(856) 467-8000 voice, (856) 467-3044 fax  
[www.radiosystems.com](http://www.radiosystems.com)

radio SYSTEMS

Circle (112) on Free Info Card or go to [www.beradio.com](http://www.beradio.com)

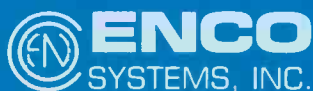




## Standard equipment on every model.

If any digital audio delivery system could have a "trust" button, DAD<sub>PRO32</sub> is it. Live assist or automation, single radio station or regional cluster, you can trust DAD<sub>PRO32</sub> to deliver 24/7/365. Put your mind at ease, choose DAD<sub>PRO32</sub>—from ENCO Systems.

Smarter. Faster. Better.



800. ENCO. SYS

[www.enco.com](http://www.enco.com)

Circle (113) on Free Info Card or go to [www.beradio.com](http://www.beradio.com)

## Detuning unwanted reradiators

By John Battison, P.E., technical editor, RF

Like mushrooms after a heavy rain, unwanted reradiators sometimes appear almost overnight in the near field of AM antennas. Legally and technically speaking, this should not happen. All construction permit applicants are required to identify AM antennas located within a certain distance from the proposed tower, and a condition that requires detuning is made a part of the subsequent construction permit. Unfortunately, this is not always done, and field strength measurements are made

$\frac{1}{4} \lambda$  only after the construction. Verifying RF field distortion is not possible without preconstruction measurements.

Although cooperation

such an offending reradiator. To identify the offending reradiator, orient the field intensity meter (FIM) at a right angle to the transmitter while facing the suspected reradiator. Look for minimum direct line station pickup and maximum parasitic reradiated signal. Approach the object, and watch the meter reading. Place the vertical edge of the lid adjacent to it. A large increase in signal strength is a good indication of parasitic reradiation.

The method of detuning a reradiator depends on the electrical length of the reradiator and its location. Let's examine coaxial line theory and see how it is applied to tower detuning.

Although the electrical effects of coaxial lines were well known prior to WWII, it took radar's development to illuminate and exhibit the rather unusual properties of quarter-wavelength coaxial cable.

If one end of a quarter-wavelength coaxial transmission line is shorted, the other end will present an open circuit. Consider Figure 1a. Expand this idea into a quarter-wavelength antenna that has a skirt of wires hanging down from the top, as in Figure 1b. This really forms a section of coaxial cable and will resemble a folded unipole AM antenna. But instead of driving this device through the bottom of the skirt, a tuning circuit to ground provides fine adjustment to tune the array for maximum impedance at the bottom of the skirt.

This high impedance at the operating frequency places an RF electrical open circuit at the base of the tower, thus floating it at the operating frequency. Operating as an ungrounded tower, the parasite will not develop any significant voltage and will not reradiate the station's signal to any great extent. However, it must be remembered that at frequencies other than the desired one, the tower will reradiate as before; although, any off-frequency radiation will not affect the fundamental signal.

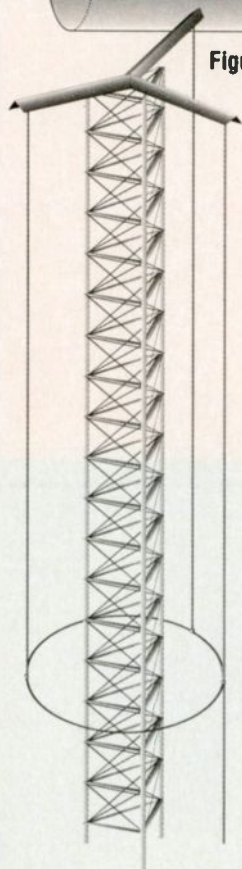
One theoretical point to consider: assume a badly tuned directional array with a very large 10kHz sideband impedance rise. This sideband frequency may be reradiated by a tower detuned for the fundamental frequency. Audio distortion can result as the off-fundamental frequency impedance increases with a very steep impedance slope.

### Detuning installation

It is customary to use three or more dropwires to form the skirt. These are suspended from cross arms placed at the top of the tower. Stand-off insulators are placed as needed down the tower to prevent shorting to it in high winds. At the lower ends, a loop of wire connects them



Figure 1. Applications of the quarter-wave section.



and pre-construction measurements are the responsibility of the new tower owner, it is frequently a source of acrimony and litigation when the proper measurements are not performed prior to construction. For this reason, it behooves chief engineers to maintain a close watch on FCC releases and new local construction so that ignorant or uncaring operators can be contacted in time to ensure that proper procedures are followed, and the owner of the disturbing tower pays his due part of the costs.

### Review on reradiation

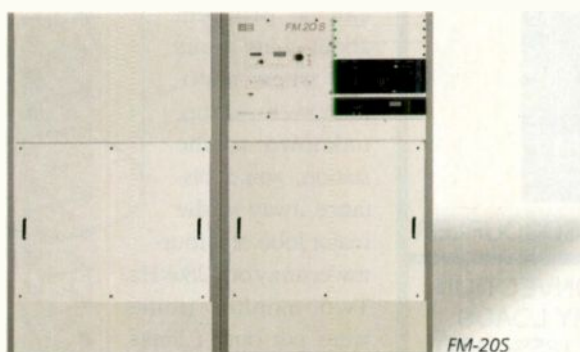
Parasitic reradiation was discussed in the January 2001 *RF Engineering* column on parasitics, and it was noted that the longer the reradiator, the greater the reradiation. Visual inspection will often pinpoint the possible culprit by its location with reference to the antenna system. If in the major lobe, reradiators located farther than one mile away can sometimes cause directional pat-

tern problems such as out-of-tolerance monitor points. When in doubt, the field strength meter is invaluable in identifying such sources. In my opinion, when problems of unexpected RF levels emerge, it is best to suspect any and all protrusions above the ground until the culprit is found.

Quite often, an out-of-tolerance monitor point is the first intimation that an engineer has of the presence of

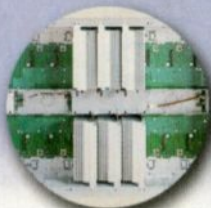


Our FM-10S is cool but...



our FM-20S is way cool!

**HOT-PLUGGABLE IPA/PAs**



*Go ahead and mess with it. PA modules can be removed while on the air without damaging the module or perceptible carrier interruption.*

**MAXIMUM Power Control**



*Regardless of AC line voltage, RF drive level, or antennae loads as poor as 3 to 1 VSWR, our sophisticated proportional feedback system will keep you on the air.*

**REDUNDANT Power Supplies**



*Four standard modular PA power supplies, (a fifth is optional) will keep you on the air, as long as one supply is online.*

Among all solid state FM transmitters, our new FM-20S is the most innovative, most reliable, and easiest to service. From 10 to 20kW, the new FM-10S and 20S guarantee big performance at a great price. And they're engineered

to the same exacting standards that every Broadcast Electronics transmitter must meet. We wouldn't deliver anything less.

***Only one company delivers radio like this...***





Call **888-232-3268** for a complete list of specs and features, or see us at NAB 2001, Booth R2505 in Las Vegas.

[www.bdcast.com](http://www.bdcast.com)

**YOUR SOURCE FOR  
QUALITY AM ANTENNA  
SYSTEMS AND  
ACCESSORIES**

**KINTRONIC**



**LABS, Inc.**  

**NEW PRODUCT!  
BROADBAND, LOW COST  
STL ISOCOUPLER  
IN STOCK!**



MODEL FMC-0.2P ISOCOUPLER

**FULL LINE OF CONVECTION  
COOLED DUMMY LOADS  
RATED 1-20KW + 125% MOD**



MODEL: DL-20-CC158

**WIDE RANGE OF  
WEATHERPROOF 19" STANDARD  
EQUIPMENT RACKS**



MODEL MRH-1-48

ONLINE SHOPPING NOW AVAILABLE!

[www.kintronic.com](http://www.kintronic.com)

Click On **LOGIN**\*\*

Click On **SHOPPING**

\*\* PRIOR APPROVAL IS REQUIRED FOR ACCESS

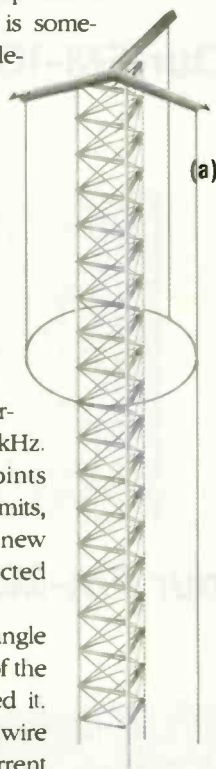
Circle (115) on Free Info Card  
or go to [www.beradlo.com](http://www.beradlo.com)

## RF Engineering

together and is insulated from the tower and securely anchored to the ground. It is unusual for a tower to be perfectly detuned in this manner, and a parallel tuned circuit is connected to ground from the loop and is adjusted to produce very high capacitive or inductive reactance. The system is thus antiresonated, and reradiation is reduced to a minimum.

Although three dropwires are usually needed, it is sometimes possible to detune a parasitic radiator with a single dropwire. I recall a problem about thirty years ago where a police tower went up, unknown to the station, some distance away in the major lobe of a four-tower array on 1280kHz. Two monitor points were put out of limits, and eventually the new tower was suspected and "convicted."

We dropped a single wire from the top of the tower and insulated it. We then tuned this wire for maximum current



(a)

down each side corner leg, insulated and spaced away from the tower leg down to the splayed-base supports, will work well. Although, in the case of tall towers (much more than a half-wavelength), it is usually best to build the tower in sections insulated from each other.

A tall multi-section tower would have tuning networks inserted between several insulated sections to isolate them electrically and make the tower non-reradiating.

Most engineers are familiar with the use of an RF choke in the ground line

of a wooden electric supply pole to detune the vertical ground wire. We can compare this to the use and effect of a quarter-wave line. In each case, the detuning component effectively opens the RF circuit to ground

and floats the tower. It is important to remember that ground wire continuity on wooden power line poles must never be broken.

The quarter-wavelength choke effect is not limited to the base end of a tower.

Many times it is practical

to use a quarter-wave section down from the top of a tower to detune a section, as shown in Figure 2.

As a matter of interest, ungrounded half-wave (quarter-wave plus) towers can be detuned by constructing a quarter-wave section that is grounded to the tower at the bottom. The top end of the wire skirt is left open. This effectively produces a high impedance up the tower at the open skirt and suppresses reradiation.

E-mail John at [batcom@bright.net](mailto:batcom@bright.net).

**FOR MORE INFORMATION**

**Circle (202) on Free Info Card  
or go to [www.beradlo.com](http://www.beradlo.com)**

**Figure 2. The tower can be longer than the tuning skirt and placed at the top (a) or inverted at the bottom (b).**

with the method described above. The two monitor points came back in. Although it worked that time, it is usually best to plan on using a minimum of three wires to be certain of adequate suppression.

Guy wires must always be handled with care. Usually, the standard breaking up of guy sections to suitable electrical lengths will be sufficient. However, sometimes it becomes necessary to use Phillystran or similar non-metallic lines for guys. Such circumstances are rare in normal installations, but it is a good idea to be aware of all possibilities when erecting antennas or towers.

Sometimes, on large self-supporting towers, individual wires placed

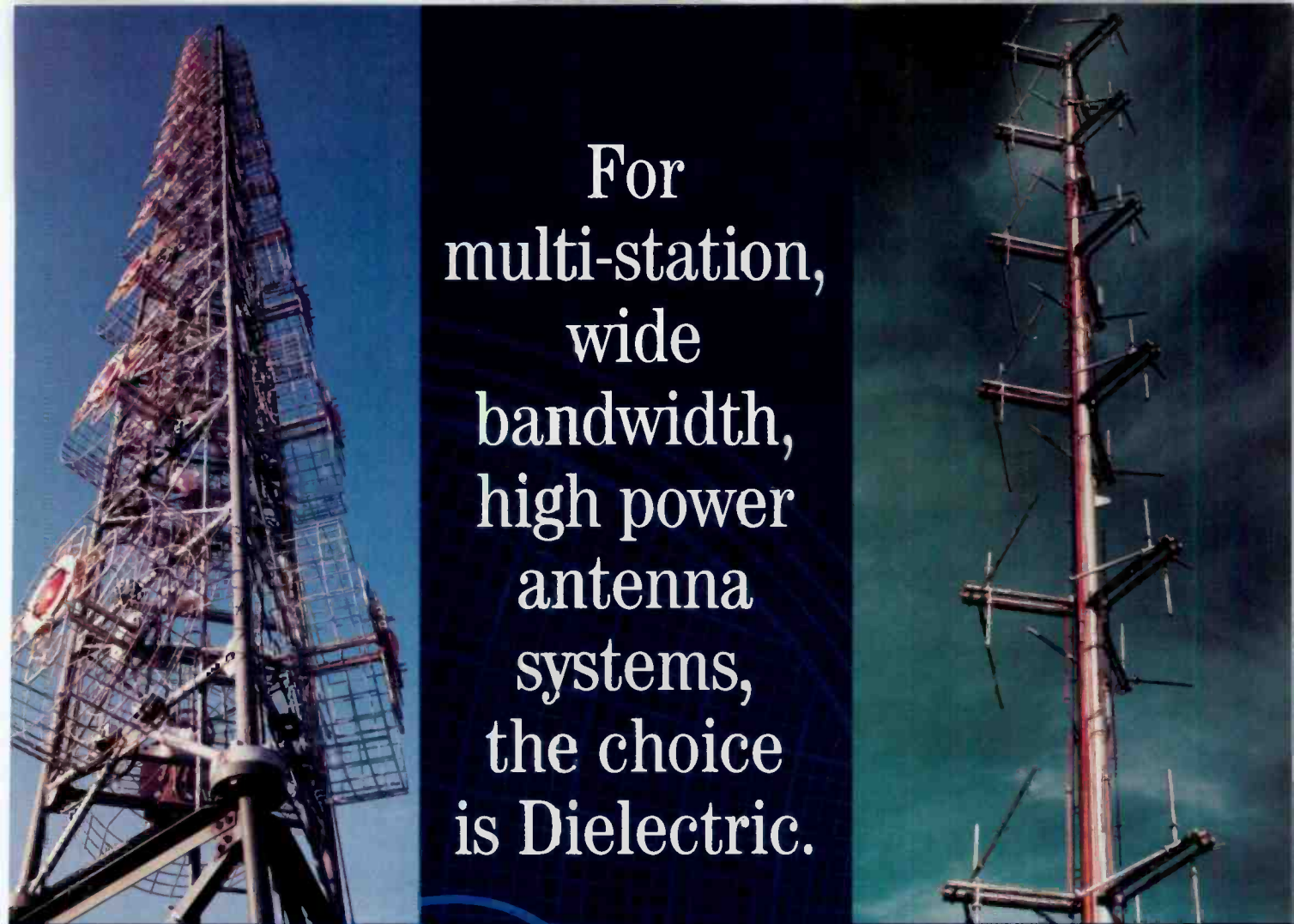
down each side corner leg, insulated and spaced away from the tower leg down to the splayed-base supports, will work well. Although, in the case of tall towers (much more than a half-wavelength), it is usually best to build the tower in sections insulated from each other.

A tall multi-section tower would have tuning networks inserted between several insulated sections to isolate them electrically and make the tower non-reradiating.

Most engineers are familiar with the use of an RF choke in the ground line of a wooden electric supply pole to detune the vertical ground wire. We can compare this to the use and effect of a quarter-wave line. In each case, the detuning component effectively opens the RF circuit to ground and floats the tower. It is important to remember that ground wire continuity on wooden power line poles must never be broken.

The quarter-wavelength choke effect is not limited to the base end of a tower. Many times it is practical to use a quarter-wave section down from the top of a tower to detune a section, as shown in Figure 2.

As a matter of interest, ungrounded half-wave (quarter-wave plus) towers can be detuned by constructing a quarter-wave section that is grounded to the tower at the bottom. The top end of the wire skirt is left open. This effectively produces a high impedance up the tower at the open skirt and suppresses reradiation.



For  
multi-station,  
wide  
bandwidth,  
high power  
antenna  
systems,  
the choice  
is Dielectric.



**D**ielectric has the most complete broadband product line including side mount and top mount arrays, transmission line, combining systems, and monitoring systems. We also offer custom engineered towers, installation, and rigging services. Add over 800 years of combined engineering experience on staff and you know that a partnership with Dielectric is *the choice to make.*

See us at NAB Booth # R2343

**Dielectric**  
COMMUNICATIONS

*Engineering Excellence Since 1942*

Call your TEAM today! • Toll free 1-866-DIELECTRIC • [www.dielectric.com](http://www.dielectric.com) • Raymond, Maine C4071

Circle (116) on Free Info Card or go to [www.beradio.com](http://www.beradio.com)

## Remote access: determining needs (part 1 of 2)

By Kevin McNamara, CNE

**F**undamentally, data communications networks provide a means to access and deliver information to users over a common infrastructure. The need to access internal company LANs from remote locations is on the rise as more employees work away from the office.

Remote access is a means for a PC located in any remote location to connect to your LAN or Wide Area Network (WAN). Assuming the remote user has the proper rights, he can access files, run applications or print, similar to a PC connected locally; however, the speed of the connection may limit the remote user's ability to use certain resources.

### Remote access methods

Remote access to your LAN can be achieved using any of three general methods: a dedicated dial-up connection, an extranet or a virtual private network (VPN). Each method has advantages based on the level of service required as influenced by factors such as speed, security and number of simultaneous users.

**Dedicated dial-up.** Dedicated dial-up connections are the most popular and easiest to implement. A single dedicated telephone line is connected to a modem, or several lines are connected to a bank of modems. The modems are connected to a *remote access server* (RAS). Some manufacturers integrate modems within the RAS; in fact, larger ISPs use an RAS that accepts a T1, which will provide 24 separate dial-in connections. The RAS manages the data flow between the modem and the local network server. Most dial-in services use the *Internet Protocol* (IP) over the *Point-to-Point Protocol* (PPP).

The PPP is layered, consisting of several protocols including the *Link Control Protocol* (LCP) that is used for the initial establishment of the link. Once connected, one or more *Network Control Protocols* (NCP) are used to transport data for a particular protocol, typically IP. Other protocols permit secure-password authorization, IP-address notification and link monitoring. The *Serial Line IP* (SLIP)

protocol also was designed to transport IP over a dial-up connection; however, it has been replaced by the PPP.

**Extranets.** An extranet is considered a private network; however, it can be thought of as a secure website, generally requiring authorization in the form of a username and password. A properly designed extranet allows you to access information through any standard Web browser or FTP program. Similar to local networks, access can be

limited for each user based on the specific rights granted. For example, a company that wants to allow its employees to view certain private information can control who may read it and under what conditions, such as time of day, length of time or ability to download to another PC. Needless to say, extranets require a great deal of security, not only from employees within the organization, but from outside hackers who are always ready to find "holes" in your server. Most extranets are protected behind a *firewall*, a device that performs filtering and routing of incoming data packets. Due to the constantly changing traffic patterns encountered on the Internet, firewalls have limitations and are subject to sophisticated hacking. An unauthorized user that types in the address of an extranet, located behind a firewall, will usually receive a "Site Not Found" message.

**Virtual Private Networks.** The virtual private network, or VPN, provides a private and secure connection between a remote user and a network over a public network. VPNs can be created through a standard Internet connection or, in some cases, a private

WAN. A VPN is designed to work exclusively over the IP protocol; however, it will transport other protocols such as NetBEUI and IPX. In reality, the concept behind the VPN has been around for several years, known as IP Tunneling. The principle behind IP Tunneling is fairly simple: the data is encapsulated within the IP packets and has the ability to be secured using data encryption and authentication methods.



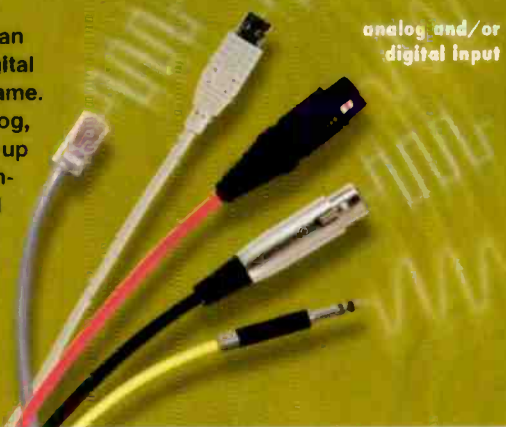
S A S 6 4 0 0 0   A U D I O   R O U T I N G   S Y S T E M

I N C O M I N G

If the migration to digital is in your future, then this is the route to take. Introducing the large size, big performance analog router that also speaks fluent digital, the SAS64000 Audio Routing System. The SAS64000 is a true hybrid that allows you to scale the number of analog and digital ports as needed, now and in the future. Best of all, the SAS64000 creates a path to AES/EBU digital audio without creating analog obsolescence.

This means you can mix your analog and digital I/O in the same router frame. Go direct analog to analog, or digital to digital. Mix it up with automatic 24-bit conversion analog to digital and vice versa.

Either way, this unique architecture sports uninterrupted signal integrity and non-blocking flexibility.



analog and/or digital input

- 256 x 256 Large
- Mono/stereo with stereo linking
- Wide variety of control panels
- 118 dB analog dynamic range
- Distributed multi-processor architecture

S A S 6 4 0 0 0   A U D I O   R O U T I N G   S Y S T E M

S A S 6 4 0 0 0   A U D I O   R O U T I N G   S Y S T E M

O U T G O I N G

- Digital or analog inputs and outputs
- PC or automation control
- +28 dBu max. input/output levels
- Superb broadcast-quality performance
- Automatic 24-bit analog to digital conversion



analog and/or digital output

And the SAS64000 is simple to integrate, upgrade and put into service. Just plug in our new digital port expander and that's it. Welcome to digital!—co-existing flawlessly with analog—and all in the same framework. Interested? There's much more to tell.

Call 818 840 6749; or e-mail sales@sasaudio.com; or check our website at sasaudio.com.

If you're moving into digital, then the SAS64000 Audio Routing System is your conduit to the future.



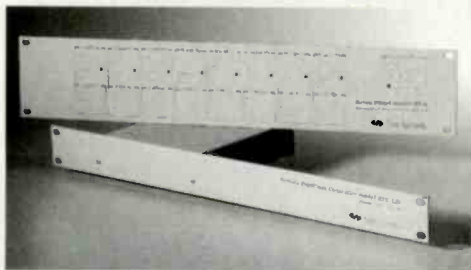
SIERRA  
AUTOMATED  
SYSTEMS

sasaudio.com

Circle (117) on Free Info Card or go to www.beradto.com

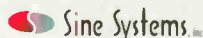
## Model RFC-1/B Remote Facilities Controller

it's the most affordable, fully-featured transmitter remote control system available. it's flexible. it's expandable. it has a well-deserved reputation for being very reliable. and it's not difficult on the eyes. what other reasons do you need?



### FEATURES

transmitter control from any telephone  
8-64 channels of telemetry and control  
programmable control by time and date  
automatic adjustments based on telemetry  
optional printer and modem adapters  
programmable telemetry alarms  
full-featured, affordable, reliable  
Integrated rack panel



visit our web site for more information on our products  
nashville, tennessee • 615.228.3500 voice • 615.227.2393 fax-on-demand • www.sinesystems.com

Circle (118) on Free Info Card or go to [www.beradio.com](http://www.beradio.com)

**Blue 5c**

On-Air Anywhere

Remote Starts, Muting, Tally

2 Stereo Buses  
1 Mono Bus

5 Stereo Channels  
10 Stereo Inputs

Manufacturing Professional Broadcast Equipment Since 1960

Made in USA

1.610.644.1123 • Fax: 610.644.8651 • [www.blue5c.com](http://www.blue5c.com)

Circle (119) on Free Info Card or go to [www.beradio.com](http://www.beradio.com)

## Networks

Originally, the VPN was based on either the *Point-to-Point Tunneling Protocol* (PPTP) developed by Microsoft for PC-to-LAN connections or the *Layer 2 Forwarding* protocol (L2F) developed by Cisco to support LAN-to-LAN communications. Currently, the features of both protocols are combined into a standard known as *Layer 2 Tunneling Protocol* (L2TP). L2TP supports multiple simultaneous tunnel connections. Other VPN protocols include *IP Security* (IPSec), a technology developed for firewalls and designed to support the secure transmission of only IP packets, and SOCKS5, which provides a higher level of control, but requires special software running on an independent server and at the client PC location.

If you have an investment in an Internet infrastructure, such as a Web server and dedicated high-speed connection, a VPN may be the least costly solution to hook-up remote users.

### Applications

The broadcast business presents applications for remote access such as programming, sales, marketing, technical and other business function efforts. Personnel at remote broadcasts can have access to your servers, allowing control over a station's digital audio storage system or the transfer of produced audio tracks. VPNs can connect remotely located kiosks, permitting the station to provide targeted marketing information at high-traffic locations. A sales force can access contact information, presentations, spot availability, etc. while in the field, saving time and potential sales.

The uses of a well-implemented remote access solution are endless. Next month I'll discuss some of the hardware required to achieve remote access at your facility.

Kevin McNamara, BE Radio's consultant on computer technology, is president of Applied Wireless Inc., New Market, MD.

All of the Networks articles have been approved by the SBE Certification Committee as suitable study material that may assist your preparation for the SBE Certified Broadcast Networking Technologist exam. Contact the SBE at (317) 846-9000 or go to [www.sbe.org](http://www.sbe.org) for more information on SBE Certification.



AT CCA YOU HAVE THE POWER!



COMMERCIAL COMMUNICATION ASSOCIATES, INC. PH:770.964.3530 Fx:770.964.2222

AT CCA YOU CAN REST ASSURED THAT YOU HAVE THE POWER OF OUR COMMITMENT TO QUALITY, VALUE AND SUPERIOR SERVICE. YOU HAVE THE POWER OF HONEST PRICING THAT IS BASED ON OUR COST TO MANUFACTURE, NOT THE VOLUME OF BUSINESS THAT YOU DO WITH OUR COMPANY EACH YEAR.

YOU HAVE THE POWER TO CHOOSE YOUR OWN LEVEL OF DISCOUNT. AT CCA ALL OF OUR CUSTOMERS HAVE THE POWER OF OUR RESPECT. YOU HAVE THE POWER OF A 3-YEAR WARRANTY AND 24-HR SUPPORT.



*Go Blue!*

*and*

*Feel The Power.*

**SPECIAL DISCOUNTS FOR CHRISTIAN AND EDUCATIONAL BROADCASTERS!**

GROUNDING GRID FM TRANSMITTERS  
SOLID STATE/GROUNDING GRID FM TRANSMITTERS  
PLATE MODULATED AM AND SHORT-WAVE TRANSMITTERS  
DIGITAL SOLID STATE AM AND SHORT-WAVE TRANSMITTERS  
ANTENNAS, TOWERS, TRANSMISSION LINE, INPUT EQUIPMENT,  
MONITOR AND CONTROL, LTU/ATU, GENERATORS AND BUILDINGS

SEE OUR "NO HAGGLE" PRICE LIST AT [WWW.CCA.WS](http://WWW.CCA.WS)

Circle (120) on Free Info Card or go to [www.beradlo.com](http://www.beradlo.com)

## 2001 Regulatory Fees

By Harry Martin

The FCC has proposed a new schedule of annual regulatory fees. While still subject to public comment, the differences in fees between last year and 2001 will likely be as follows:

loss. Indeed, a successful bidder who cannot follow through for technical reasons would be responsible for 100% of the difference between its bid and the ultimate sale price of the permit, plus a 3% penalty. If no

Population Served	AM Class A		AM Class B		AM Class C		AM Class D		FM Classes A, B1 & C3		FM Classes B, C, C1 & C2	
	2001	2000	2001	2000	2001	2000	2001	2000	2001	2000	2001	2000
Year	2001	2000	2001	2000	2001	2000	2001	2000	2001	2000	2001	2000
< 20,000	450	400	350	300	250	200	300	250	350	300	450	400
20,001-50,000	850	800	675	625	350	300	475	425	675	625	850	800
50,001-125,000	1375	1325	900	850	475	425	700	650	900	850	1375	1325
125,001 - 400,000	2050	1950	1450	1350	725	625	875	775	1450	1350	2050	1950
400,001-1,000,000	2850	2725	2300	2200	1300	1200	1550	1450	2300	2200	2850	2725
> 1,000,000	4550	4375	3750	3575	1900	1725	2400	2225	3750	3575	4550	4375

AM construction permittees would pay \$280.00; FM permittees would pay \$925.00; and the Part 74 auxiliary stations fee will be \$10.00.

permittee ultimately emerges, the first winning applicant would have to pay 100% of its winning bid and the 3% penalty.

### FM auction postponed

The FCC has postponed until December 5, 2001, the FM auction that was scheduled to commence on May 9, 2001. Although the FCC did not officially provide a reason for the postponement, the decision is said to be in response to a Motion for Stay filed by National Public Radio (NPR). NPR asked the FCC to postpone the auction until a federal court rules on NPR's appeal of new FCC rules requiring noncommercial educational FM applicants to bid in the auction against commercial applicants.

The new filing window for FM auction applications will run from September 24, 2001 until October 5, 2001. Upfront payments will be due November 5, 2001, and the auction will commence on December 5, 2001.

The six-month hiatus gives participants an opportunity to review further the list of markets and permits involved in the auction and conduct due diligence on them.

Of particular concern for some of the allocations to be auctioned is the availability of a suitable transmitter site. FCC spacing constraints, FAA clearances and local zoning considerations all should be addressed in advance by would-be bidders. The inability to locate a suitable site post-auction could result in a substantial financial

### FCC designates license revocation hearing

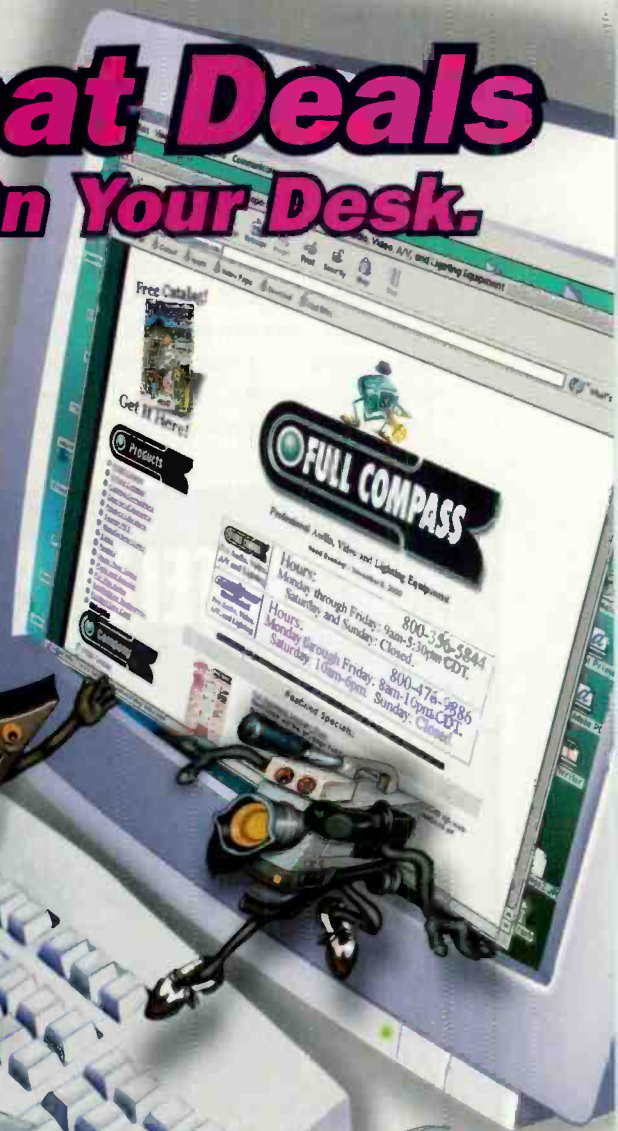
The FCC has set a license revocation hearing against an AM/FM licensee on the basis of repeated rule violations. FCC agents raided the studios and transmitters of the stations six times in five years and found continuing noncompliance with the FCC's regulations.

The agents discovered both the AM and FM transmitters were located at the same site, even though the FM transmitter should have been located elsewhere. Moreover, the FCC noted the stations were operating at reduced power levels and without locked fences around transmitters, without operating EAS equipment and without a properly maintained public file.

In their initial raid, agents interviewed local business people and determined that the licensee had been evicted from its FM transmitter location. The licensee later filed documents admitting that it had been experiencing difficulty in renegotiating the lease for the FM transmitter site. The FCC claims that the licensee, upon losing its lease, co-located its FM transmitter at its AM site. Four more searches by FCC agents revealed that the FM transmitter remained co-located with the AM station. Following a sixth visit from the agents, the licensee finally applied for special temporary authority

# Find Great Deals ...Online or On Your Desk.

Mics, Amps,  
Mixers,  
Speakers,  
Keyboards,  
DJ Gear,  
Video, Software  
and More!



Call for the best catalog  
in the business!

**800-356-5844**



**AUDIO • VIDEO • A/V • LIGHTS**

608-831-7330 • Fax: 608-831-6330

8001 Terrace Ave. • Middleton, WI 53562



The Xpress order division of Full Compass.  
Call 800-476-9886 from 8 a.m. to 10 p.m. CST weekdays  
and 10 a.m. to 6 p.m. CST weekends!



Check  
[www.fullcompass.com](http://www.fullcompass.com)  
for the latest sales  
and closeouts!

## FCC Update

to operate its FM transmitter from the AM location. In its application for temporary authority, the licensee claimed that both the AM and FM transmitters were operating at variance from their licenses due to a 1999 hurricane. The FCC granted special temporary authority in order to allow the station to continue operating; however, the FCC noted that the station's actions prior to the issuance

of the STA were not exempt from future enforcement actions.

The raids also revealed that the stations, at first, did not have proper EAS equipment and that while the equipment was eventually ordered, it was never installed. Further, the licensee had not been maintaining a public file, nor were its licenses properly posted. Finally, the FCC agents observed that the transmit-

**The raids also revealed that the stations, at first, did not have proper EAS equipment and that while the equipment was eventually ordered, it was never installed.**

ter towers were not properly fenced and that attempts to fence them were inadequate.

Citing the two key elements of FCC character qualifications—truthfulness and reliability—the FCC charged that the licensee may lack both. The licensee's truthfulness is subject to scrutiny because, when the licensee applied for special temporary authority, it falsely claimed that the FM transmitter relocation was a result of a hurricane in 1999. In addition, the FCC found that the licensee's reliability was questionable as a result of its continued failure to maintain a public file, install and operate EAS equipment, and properly secure its transmitters. The FCC also referenced several unanswered letters and notices sent to the licensee.

Every licensee must operate within the parameters that are established by their FCC licenses or promptly seek an STA. In addition, every licensee must honestly and completely answer FCC inquiries regarding their stations. Failure to respond to the FCC was a significant factor that led the FCC to this potential revocation of license.

The licensee's apparent lack of candor with the agency left little room for a graceful escape.

*Harry Martin is an attorney with Fletcher, Heald & Hildreth, PLC., Arlington, VA. E-mail martin@fhh-telcomlaw.com.*

# SATELLITE READY

## ASI4336

- RS422 bitstream input for direct MPEG recording.
- Eight relay closures
- Sixteen optoisolated inputs
- Seven stereo input, four stereo output digital mixer.
- Four MPEG play streams, one MPEG record stream.
- Balanced audio input and output.
- Windows multimedia driver.

The ASI4336 from AudioScience is a fully featured sound card that integrates everything required to connect to a satellite receiver. An RS422 input provides direct MPEG recording eliminating transcoding, while GPIO allows event sensing and channel control. Multi-streaming MPEG record and playback with digital mixing and balanced I/O complete the functionality. So get satellite ready and choose the ASI4336 for your station automation system.



[www.audioscience.com](http://www.audioscience.com) 1-302-324-5333

**AUDIOSCIENCE**  
Sound Engineering  
Sonic Excellence

## Dateline

Radio stations in the following locations must file their biennial ownership reports on or before June 1, 2001: Arizona, DC, Idaho, Maryland, Michigan, Nevada, New Mexico, Ohio, Utah, Virginia, West Virginia and Wyoming.

Circle (122) on Free Info Card or go to [www.beradio.com](http://www.beradio.com)

**Everything**  
you've ever wanted.

**Everything**  
you've ever needed.

**Everything**  
you'd expect from PR&E's legacy.

**And...it even looks better  
than Jennifer Lopez.**

**BMX***digital*

*next level solutions*

SERVICE

SYSTEMS

AUTOMATION

TRANSMISSION

**HARRIS**

Circle (123) on Free Info Card or go to [www.beradio.com](http://www.beradio.com)

# The Transition To Digital

By Chriss Scherer, editor

## From the announcer's mic to the antenna

How digital is your facility? For most stations, the transition began some time ago. A few have resisted the change and are still holding on to as much analog as possible. In time, all facilities will install digital equipment—mainly because most of the analog equipment is disappearing. In most equipment cases, some type of digital replacement already exists. Perhaps the best way to consider the situation is not to think about *if* you will have a completely digital facility, but *when* you will have one.

It's probably safe to say that every station has a piece of digital equipment. With so many high-quality consumer formats available—such as CDs, DATs, MiniDiscs, MP3s—there is bound to be something digital in use. Let's start with a clean slate and move forward from here. Where do you begin?

### Start small

I don't think any facility is immune from gradual equipment additions. When minor facility modifications are required, there is usually a need to add the associated audio and control wiring. This is the easiest and best place to begin. A well-planned facility has an established wiring and wire-type standard. If yours relies on non-digital-ready wiring, make the change now. The cost of wire capable of high-speed data and digital audio is not much more expensive than its analog counterpart. What's better is that digital wire and cable is the best analog wire you can get. Digital wire must meet specific criteria for data; criteria which easily cover analog applications.

Incrementally or all at once, the transition is coming.

Professional digital audio equipment uses the AES3 digital audio standard. AES3, the balanced signal standard, also has an unbalanced version, AES3-ID. The data information is the same. The difference is the characteristic impedance (110Ω for AES3 and 75Ω for AES3-ID) and the signal voltage. One or the other should be chosen for the house standard. If necessary, converters are available.

The standard also supports different sampling rates. It is best to select one standard for your facility and stick with it. Avoid converting signal as much as possible, as this creates such problems as overshoot. Once the infrastructure has been upgraded, upgrading the audio equipment is a simpler task.

Digital audio storage and playback systems and digital editing workstations are inherently digital. Connecting these devices to other equipment can be done through analog or digital connections, but digital connection provides greater functionality.

Digital connectivity between all the devices allows you to consider the entire facility as a single entity. When the consoles, audio routers, automation systems, DAWs and other equipment can communicate, audio can pass through the system, but so can *program-associated data* (PAD). While the current analog transmission system does not provide a practical method of including PAD, Internet radio and IBOC do. (Analog FM has RBDS, but there are not enough stations fully utilizing it, nor are there a significant number of RBDS receivers in consumer use.) A digital facility also shifts the design of the studio facility from an audio-based facility to a data-based one.

# There is something out there.

The WaveForm logo features the word "WaveForm" in a stylized, bold, sans-serif font. The letters are white with a blue outline and are set against a dark blue, wavy background that resembles a signal or a wave.

Delivered **FREE** to your e-mail box with the latest news and information from the broadcast industry.

News from:

**[BroadcastEngineering.com](http://BroadcastEngineering.com)**

**[DTVProfessional.com](http://DTVProfessional.com)**

**[WBEOnline.com](http://WBEOnline.com)**

**[BERadio.com](http://BERadio.com)**

A satellite with multiple solar panels and antennas is shown in orbit above the Earth's blue and white horizon. The satellite is illuminated from the side, highlighting its complex structure.

**The search is over, sign up now!**  
**<http://www.waveformnewsletter.com>**

Digital Media **NET**   
Where the Creative Community Meets

[WWW.digitalmedianet.com](http://WWW.digitalmedianet.com)

The WaveForm logo, identical to the one at the top of the page, featuring the word "WaveForm" in a stylized font with a blue wavy background.

The Newsletter For the Broadcast Industry

# Transition To Digital

The integration of consoles and routers has continued its evolution. In multistation facilities, this approach offers savings in several areas. By locating all the audio engines in one room, the audio wiring needs are dramatically reduced. Cable prepara-



For some stations, the transition to digital will be time-consuming.

tion, a major part of the labor required to construct a facility, is reduced, resulting in a time and labor savings, labor that can be used in other areas.

## From hear to there

Because the United States does not yet have a digital radio transmission standard, each station's transmission facilities are likely in very different states of technology. The audio processor, really part of the audio chain, is the most sensitive issue in a station. Creating a signature sound is a personal goal for many people. The debate between an analog or a digital processor is one that is best saved for an entire afternoon. As far as the transition to digital is concerned, completely digital, and even digitally controlled analog, processors provide stations with a means to create, modify, store and recall preferred settings. As the facility migrates toward being completely digital, the processor can fit into this "total facility" method.

Digital studio-to-transmitter links (STLs) can be wired or wireless. Most offer greater bandwidth than their analog predecessors. The wired versions typically provide a bi-directional path,

which works well with audio sources located at the transmitter site, such as satellite feeds and RPU receivers.

Since an IBOC standard is not ready, there isn't much replacement that stations can do to continue the transition, but stations can take preparatory measures. The *BE Radio* October 2000 cover-story discussed some of the costs that a station can expect. These costs can extend to just more than \$40,000 or more. What about stations that need to replace facilities today? You can't buy an IBOC transmitter, but you can buy one that will likely be able to handle an IBOC signal. While some of the specific details are resolved and methods refined, the safest approach for a transmission system is to allow greater headroom than you would for analog. This sounds vague, but each application will be different. The best advice is to talk to your transmitter manufacturer. iBiquity Digital also offers an evaluation to stations as part of the iBiquity EASE program.

# Flex-Studio

Modulux is the #1 selling furniture system

- One Size fits all modular design
- Assembles quickly & easily in minutes
- Highest quality laminates & wood
- World famous Modulux cabinetry
- In-stock for immediate delivery

The Modulux Flex-Studio is a complete modular studio package that can be configured in dozens of different ways to meet nearly any studio design. It can be assembled left or right handed as well as in all of our standard configurations: Short L, Long L, and Unbalanced U. Far superior to custom cabinetry, Modulux engineered studio systems are precision factory mass manufactured. Quality, strength, durability and appearance are all improved over custom built cabinets.



**\$4,995**  
a \$6,200 value

**Arrakis Systems inc.**

Phone: (970) 224-2248 Web: [arrakis-systems.com](http://arrakis-systems.com)



Circle (124) on Free Info Card or go to [www.beradio.com](http://www.beradio.com)



# NEW Digital MARTI Transmitters



New PNP 150

## Plug N Play 150

The latest in digital and RF technology combined with Broadcast Electronics' exciter technology—accepts analog or digital input (AES/EBU, SPDIF, TOSLINK) from an STL, ISDN or direct feed.

## Plug N Play 1000

All-new PNP 1000 produces 1000 watts of super clean FM signal from any analog or digital source. Easily rack mounted and easy on the budget.

## Digital Cellcast

The new digital version of our popular Cellcast transmitter is easier to use, lighter and more rugged. Just turn it on and go!

See MARTI's new digital transmitter line at NAB 2001, Broadcast Electronics' booth R2505.

[www.martielelectronics.com](http://www.martielelectronics.com)

**(817) 645-9163**

# MARTI™

A Broadcast Electronics Company

©2001 Broadcast Electronics, Inc. Marti is a registered trademark of Broadcast Electronics, Inc. • 301BER/RWD

Circle (125) on Free Info Card or go to [www.beradlo.com](http://www.beradlo.com)

PLUG N PLAY

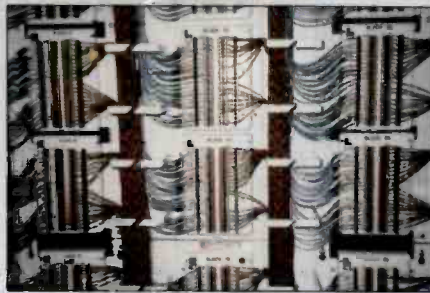
...a greater  
you going  
question  
anning

# Transition To Digital

## Rebuild or replace?

A long-term facility plan should exist as part of a station's capital plan. This will dictate which approach is best for the station.

Stations planning a new construction should future-proof as much of the facility as possible. There are many unknowns, but current-trend observation can guide you very well. Plan enough physical space for the continu-



Integrated routers can reduce the amount of audio wiring required within a facility.

## The Perfect Arrangement for Your Audio

Digital doesn't have to mean difficult. With Logitek, your studio wiring and configurations are beautifully simple – and completely flexible. Combine analog and digital sources easily and control them from anywhere. Centrally locate a lot of your audio sources, share them throughout your facility, network your audio with high speed optical connections and easily manage your audio distribution, routing and mixing.

Find out how at 800.231.5870 or [www.logitekaudio.com](http://www.logitekaudio.com)



Circle (126) on Free Info Card or go to [www.beradio.com](http://www.beradio.com)

## Mc piper's Jill Active CBT



However, there is a question: how are you going to "go digital?" This really begs the issue of planning your digital transition.

Often, when asked about plans for investment in new technology, managers will talk about how much money they are spending. The implication is that the greater the cost, the better the investment. While this approach is great news for broadcast equipment vendors, it can also result in too much money spent for too little return. This is why we need to adopt a strategic planning process for converting to digital.

Strategic planning can be incredibly practical. A strategic plan is all about deliverables—what you should achieve from your investment. There are many ways to design a strategic plan. If you have time for nothing else, follow this simple four-step model, and you will be on the fast track toward investing your capital dollars wisely:

*Establish a purpose for your transition. Why are you really making this transition? Do you need to improve your on-air sound? Are you trying to reduce operational costs? Do you want facilities that are better than your competition? Unless you have been blessed with unlimited funding, you will face difficult choices between competing deliverables. If everybody on your team agrees or why you are investing your money, you will have an easier time designing achievable goals.*

*Establish goals that can be measured. It's too easy to write a goal that says "install a cost-effective digital audio routing system." How will you know if your routing system is cost-effective? Instead, consider writing*

# RADIO AND TV RADIATING SYSTEMS

**STRETCH YOUR BUCKS  
WITHOUT LOSING QUALITY**

## **FM Antennas Medium power circular polarization**

SGP-1	\$690	4Kw
SGP-2	\$2,690	8Kw
SGP-3	\$3,595	10Kw
SGP-4	\$4,500	10Kw
SGP-5	\$5,300	10Kw
SGP-6	\$6,100	10Kw

## **FM Antennas Educational circular polarization**

MP-1	\$250	0.6Kw
MP-2	\$680	0.8Kw
MP-3	\$980	0.8Kw
MP-4	\$1,280	0.8Kw
MP2-4	\$1,820	2Kw
MP3-5	\$2,270	3Kw
MP3-6	\$2,740	3kw

## **FM Antennas Low power circular polarization**

GP-1	\$350	1.5Kw
GP-2	\$1,350	3Kw
GP-3	\$1,900	5Kw
GP-4	\$2,600	6Kw
GP-5	\$3,150	6Kw
GP-6	\$3,700	6kw

Other power configurations contact OMB America



3100 NW 72 Ave # 112  
Miami, Fl. 33122  
Tel:305-477 0974  
Fax:305-4770611  
ombusa@bellsouth.com

[www.omb.com](http://www.omb.com)

# Transition To Digital

a goal to "install a digital audio routing system that every staff member can operate with one day of training."

*Prioritize your goals.* Every capital project brings with it the unexpected. Most unexpected issues consume additional funding. Ask your staff, "If we run into problems—and run out of money—what are the most important goals that we must achieve?"

*Publicize your plan.* Keep your plan out of the file cabinet—and on the wall, where it belongs. Make sure that everyone sees your goals regularly. We tend to achieve goals in direct proportion to the amount of time we spend thinking about them. Therefore, wise managers look for every opportunity to encourage their staff to *think digital*.

*Jim Paluzzi, Ph. D., is general manager of Boise State Radio, Boise, ID, Professor of Broadcast Technology at Boise State University, and serves on the National Public Radio Board of Directors.*

ing increase of computers. Studio furniture should be able to handle additional monitors and possibly house more computer cases. Don't forget to consider the additional airflow and noise suppression. Rack rooms and server areas will require additional space. "Add another PC" is often the answer given when a new need arises.



New facility installations can be designed for digital from the beginning.

In a new installation, the wiring plan should be digital ready. AES3 and CAT5 cable (or better) should be

used. It is also likely that house sync signals will increase usage, so an extra coaxial cable should be added to each room.

The integrated router approach allows you to design the entire facility as a single system. This design can be fulfilled with separate system components or a complete package. Be sure to consider any file-sharing needs. A fully digital studio router does not only route audio. Information from DAWs, automation, music scheduling and traffic systems, and other sources can be shared and used.

For facilities that are not planning a complete change, the transition can be made incrementally. By starting with a few key pieces of equipment, the financial load can be distributed over time while the benefits of the change can be realized.

*Photo of WLTV-FM on page 36 by John Farrell and courtesy of Meridian Design Associates.*

PROPHET SYSTEMS INNOVATIONS

## Every 96 Hours...

### NexGen DIGITAL

Own a  
Prophet  
for under  
\$20,000

## Another NexGen Digital System is Installed.

What do Clear Channel, CBS/Infinity, Sirius Satellite Radio, and the largest private group of stations in Mexico have in common?

NexGen Digital.

What sets Prophet Systems apart from our competitors? Our attitude towards service and support!

NexGen Digital, the latest generation in a long line of cutting-edge digital audio systems.

### PSi

PROPHET SYSTEMS  
INNOVATIONS

877/774-1010

www.prophetsys.com  
sales@prophetsys.com

ONCE YOU GO PROPHET, YOU'LL NEVER GO BACK.

Circle (128) on Free Info Card or go to [www.beradio.com](http://www.beradio.com)

## Trends in Technology

# The center of control

By Barry Thomas, CSRE

*The station's pilot seat is behind the audio console.*

**T**he most critical focal point in a radio studio is the audio console. From day one, the audio console must serve several masters: The engineer wants easy installation and maintenance, high audio quality, flexibility and physical resilience. The announcers want the ease of baby's first radio, and the ability to forget about equipment and think about their shows. Station management generally wants anything inexpensive that will keep the announcers from complaining.

While radio operations have become more streamlined, radio control rooms and production studios have become more complex. More mixes, feeds, sources and controls are needed than ever before. One reason for this is the lack of engineers who have the time or resources to build all the custom devices needed in a radio studio. We have come to expect off-the-shelf solutions to the myriad of technical challenges. Most of those solutions are best integrated with the radio operator's primary control point: the main audio console.

Manufacturers have risen admirably to the task with a wide variety of product options and features that should satisfy almost everyone. It's interesting that when you see an inge-

nious, home-made device attached to or around the console, you can expect to see a production version of that device in a manufacturer's product line in short order. As a result of all these advances those in a position to replace the station's audio console or build a new studio have some great choices.

### Production

Radio production has changed so remarkably over the past few years that the studios in many stations bear no resemblance to the standard on-air radio studio. The key to production studios is flexibility. Most stations have invested in digital production/editing systems and equipment so that standard broadcast consoles simply aren't flexible enough. As a result, engineers have taken the cue from the pro sound industry and have installed recording consoles with channel equalizers, multiple sends, effects returns and other previously unknown-to-radio-console enhancements. Others have invested in mixing technology that simply augments their digital editing system, leaving the mixing tasks to computer programs and specialized hardware.

# The center of control

## What's available?

Mackie has a broad product line of analog mixers that have become a mainstay of radio production rooms, but it is by no means the only player. A visit to your local music store will give you an idea of the broad range of manufacturers that offer mixers—like Soundcraft, Studiomaster, Yamaha and Behringer. When planning the size of this type of mixer, don't forget that

**Non-traditional radio consoles are finding wide acceptance in many studios.**




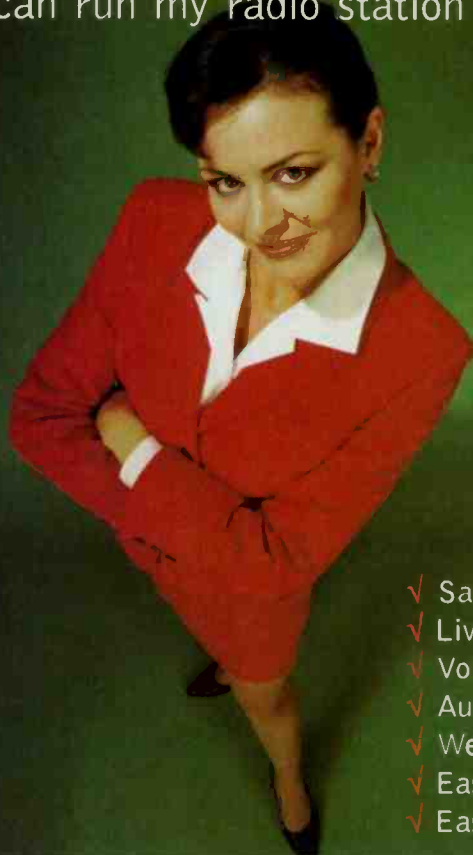
the inputs are typically mono and that input-channel second or B inputs can be problematic. While usually easy to install, these consoles are often extremely difficult to repair. Fortunately, they are frequently priced so that replacement after a few years is not a major expense.

At the other end of the pro sound spectrum are digital production con-

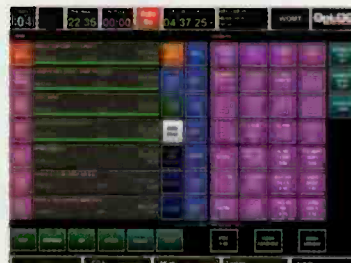
soles. Mackie and Soundcraft have impressive digital audio consoles, but the Yamaha O2R and Panasonic DA7 have proved effective studio centerpieces. Digital mixers offer all the advantages of their analog counterparts but have the ability to save and recall *scenes* or mix settings, automate mixdowns, and use internal third-party processing *plug-ins* instead of outboard equipment for effects and dynamics processing. Digital consoles present an entirely new set of wiring conventions that most radio engineers aren't accustomed to, but wiring a purely digital studio can be simpler than a full-featured analog room.

There are problems with using this sort of console for your production facility. Pro-sound studios and the recording-grade consoles are complicated to operate. The biggest disadvantage is the lack of control features and ease of use that a broadcast console would have. Speaker muting and warning lights are often

 can run my radio station for \$995.



- ✓ Satellite
- ✓ Live assist
- ✓ Voicetrack
- ✓ Automation
- ✓ Web-Ready
- ✓ Easy to use
- ✓ Easy to install



Now, download and install the new iMediaTouch yourself!

[www.imediatouch.com](http://www.imediatouch.com)

**MediaTouch**

(888) 665-0501

Circle (129) on Free Info Card or go to [www.beradio.com](http://www.beradio.com)

a problem as well as equipment remote controls. If the production room serves as a standby on-air studio, it's hard to imagine using a concert-sound audio mixer to run your station. There are add-on products that can solve many of the problems, but they aren't ideal solutions if you want true broadcast functionality.

Fortunately, broadcast console manufacturers have taken some of the best features of the pro sound world and added them to their lines of proven products. Harris/Pacific offers the Production mixer and X-series production consoles, which are extremely flexible for stereo and multitrack production. Wheatstone also offers analog production consoles but also has the D-600/D-700 digital audio consoles, which are excellent production tools. These consoles are essentially a routing switcher with console controls and features. Just like the pro-sound digital consoles, console setups, equalization and internal processing settings can be saved as scenes so that precise settings can be duplicated.

## On air

The main studio console is the bottleneck of your entire station. It must have all the features and controls to handle every eventuality, yet be so simple and easy to understand that there are no on-air mistakes. The lion's share of development in broadcast consoles is directed to this function.

Console manufacturers have migrated to the sloped-top, slide-fader form factor. This can sometimes create a problem for operators who can't or won't adapt. Many engineers know of Rick Dees' RCA console. LPB and Autogram still offer the classic audio console style and functionality in addition to the now-standard slide-fader consoles. Proven analog designs are still the basis for consoles from Radio Systems and Ward-Beck. Advances and enhancements to analog consoles continue despite the increased presence of digital equipment.

The greatest recent advances have been made in the digital arena. The industry has long been calling for a means to mix and control all of the

digital sources in the studio without subjecting the audio to repeated analog-to-digital-to-analog conversions. Console manufacturers have invested an incredible amount of energy and money into developing digital technology, but the evolution of the console has still been comparatively slow. We are now to the point where the digital audio console can more than satisfy a broadcaster's expectations.

Digital on-air consoles can be separated into two general types: those

that follow classic broadcast console construction and function, and those that are controls for a routing switcher. The control-surface form factor of both types is similar, but the underlying architecture is vastly different.

The classic construction is a self-contained mixing system that includes analog-to-digital converters for individual analog sources and is built around a wiring architecture that is similar to its analog counterpart. These consoles have most, if not all, of the

control is good.  
IP2 is better.



Now you can monitor and control multiple RS-232 and logic devices from anywhere in the world, using any web browser or telnet client. Connect via local or wide-area network, modem, or the Internet. IP2port is your complete remote control solution in one reliable, easily-configured rack mount unit.

- ◊ Ethernet router and serial ports for network and local control
- ◊ Built-in three-port Ethernet hub to integrate other TCP/IP equipment.
- ◊ Eight programmable serial ports, eight output relays, and 16 logic-level inputs.
- ◊ Built-in password-protected servers for web browsers, FTP, telnet, and Simple Network Management Protocol (SNMP).
- ◊ Servers can provide multiple users with real-time monitoring and control.
- ◊ Send e-mails, SNMP traps, and HTTP database requests over the network. Any event detected by IP2port can trigger these messages.
- ◊ Embedded operating system designed for real-time control.
- ◊ OEM board and PCI04 versions available for integration.

DIGIGRAM INC  
TEL: +1 703 875 9100 ◊ FAX: +1 703 875 9161  
E-MAIL: INPUT@DIGIGRAM.COM ◊ WWW.DIGIGRAM.COM

NETWORKING SOLUTIONS FOR DIGITAL AUDIO AND REMOTE MANAGEMENT



# The center of control

features of analog radio consoles but suffer from the same limitations of expandability and flexibility. These consoles have offered stations an easy upgrade patch to digital mixing.

Studer radio consoles, Fidelipac, and Audioarts and Wheatstone D-series consoles work on this principle. These consoles can be configured for muting and channel assignments by com-

puter on the fly and can even control external routers, switches and automation systems using serial data.

For some time, Harris/Pacific has offered the Integrity, Impulse and Airwave Digital, and has introduced the BMX Digital console, which offers classic console design features with multiple mix and send buses.

The router-type digital console is different. All audio is connected to a completely configurable digital audio engine that is managed through a console-like control surface. This architecture lends

itself to expansion and configuration options that blur the line between console and routing system.

The Arrakis digital console looks and feels like an analog console, but there is no audio inside.

Instead, there is an audio engine that handles all audio inputs and outputs. The console is simply a control panel.

Auditronics, Logitek and Klotz have developed a systems approach to the audio console. Their consoles also depend on a router engine, but they are designed to be part of a greater system. These engines can be networked with multiple control surfaces attached so that studio inputs can be accessed from multiple locations.

With the router systems concept, a digital audio frame supports all inputs and outputs. These frames are linked like a network, and each studio has an appropriate control surface. These studios have the ability to control and route sources in other rooms. This networking can be extended off-site with computer networking so that studio sources can be controlled remotely over a WAN. Imagine a remote where the announcer runs his own board at the site. All the manufacturers offer a range of control surface options from

The FICA console used by Rick Dees. Photo by Mike Callaghan of KIIS.



## Digital systems got you to the breaking point?

Music programming a major hassle?

Traffic & billing piling up?

Need reliable digital audio?

Want to link your stations together?

Look for the SMART Solution  
at

[www.smartsbroadcast.com](http://www.smartsbroadcast.com)

Broadcast Intelligence.  
Digital radio that makes sense.



800-74 SMART (800-747-6278)

[info@smartsbroadcast.com](mailto:info@smartsbroadcast.com)

2508 West Main Street • PO Box 284 • Emmetsburg, Iowa USA 50536

Circle (131) on Free Info Card or go to [www.beradio.com](http://www.beradio.com)



Pre-built Transmitter Sites

Solid-State Transmitters

Single-Tube Transmitters

Low Power Transmitters

RF Amplifiers

FM Exciters

Digital T1 STL Systems

Digital Spread Spectrum

Digital Stereo Generators

Modulation Monitors



# The center of control

small and simple to large and elaborate to manage their routing systems.

Console systems like this are ideal for complete studio build-



but make sure that it satisfies the users and their priorities. If the new

The integrated-router design offers many advantages.

outs but can be a challenge to integrate into an existing digital/analog facility. If a single engine and console are added, long-range planning is important to insure that the system can be expanded and integrated properly. In any digital console installation, a new set of rules must be learned. Concepts common to video or computer networking, such as clock sync, fiber-optic networking and wiring im-

pedance, become applicable to radio facilities.

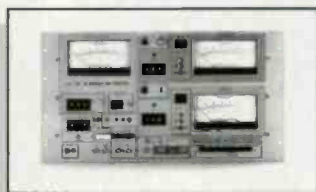
While the basic functions of the broadcast audio console are unchanged, the methods and operations have changed remarkably with industry needs and new products. Investigate all the consoles available,

console is a replacement, make a note of all of the work-arounds the current users have attached, and make sure your new choice includes these as part of its design.

Barry Thomas is president of Media Systems Design, Los Angeles.

### FOR MORE INFORMATION

Circle (201) on Free Info Card or go to [www.beradio.com](http://www.beradio.com)



Modulation Monitors

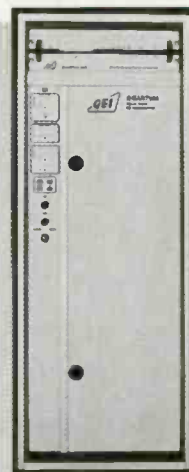
## Meeting The Broadcaster's Present And Future Needs



Digital STL / TSL Systems



Transportable Pre-Built Transmitter Sites



Solid-State and Single Tube High Power Transmitters



Low Power Transmitters

QEI Corporation  
One Airport Drive, P.O. Box 805  
Williamstown, NJ 08094  
e-mail: [qeisales@qei-broadcast.com](mailto:qeisales@qei-broadcast.com)

Toll-free Sales (800) 334-9154  
Fax (856) 629-1751  
Emergency Service (856) 728-2020  
Web Site: <http://www.qei-broadcast.com>

For More Information Call Us Toll-Free At (800) 334-9154

Circle (132) on Free Info Card or go to [www.beradio.com](http://www.beradio.com)



# The Presidential inauguration coverage

By Chris Scherer, editor

**W**hen NPR planned its coverage of the Presidential inauguration in January, the details of the election itself were the top headlines. These issues played no part in the remote broadcast—the focus was on getting clean audio on the air.

National Public Radio had three locations for the inauguration ceremonies. The main location was on the steps leading up to the Capitol building. The other two locations, Lafayette Park and the Canadian Embassy, were along the parade route.

A three-location remote is a major undertaking, but it is not unheard of. What complicates this event is the heightened security for two locations. The third location is unique in that it is technically on foreign soil.

## Along the route

NPR typically uses mono with ISDN feeds, but for the inauguration, Layer III joint stereo at 64kb/s, 32kHz was planned. The stereo feed would provide better ambience from the surrounding activity. Like any live situation, not everything went as planned.

Both Lafayette Park and the Canadi-

an Embassy used two POTS lines and one ISDN line. The ISDN carried the main program feed back to NPR's master control. The POTS lines were used for data feeds and communication.

Security clearances were required for anyone and anything inside the secured area—both people and equipment. As the final event approached, security measures increased. Five days before the inauguration, it took about three minutes to pass through the security check. On the day of the ceremony, it took 30 minutes.

For the Lafayette Park location, the ISDN circuit was tested and checked out on Monday. Unfortunately, the equipment could not be set up on Friday, as was originally planned. On Saturday, the day of the event, the ISDN line only had one bearer channel available for use, so LIII joint stereo was not possible. Despite all efforts, it could not be corrected, so a 64kb/s mono Layer II (LII) feed was used. Stereo was preferred to capture the parade ambience, but it was not to be. For the stereo feed, Earthworks omnidirectional mics were set up in a spaced-omni pair.

A similar non-stereo fate was suffered at the Canadian Embassy. A

casualty of the rain, the Neumann RSM 160 stereo mic got wet and was unusable. A substitute mic was placed, and the codec was set to 128kb/s LII mono (the NPR standard). Without the stereo audio, there was no need to provide a stereo feed.

Security at the Canadian Embassy was no problem. All the equipment was set up on Saturday. In fact, the security clearances required for the people and equipment on the Capitol steps and in Lafayette Park did not apply to the Embassy because it is foreign soil. Security efforts were taken, but the scope was much smaller.

# The Presidential inauguration

In addition to the fixed locations, there were reporters with cell phones stationed along the parade route. While cell phones don't provide the same quality, mobility was an important requirement. Washington, DC, is rich with RF usage, and a major event like this only increases the demand for frequencies. Cell phones do not require frequency coordination and are by nature compact and portable. Qualcomm and StarTec phones were used.



The Capitol Building setup overlooking the podium where the President was sworn in and delivered his speech

## Stepping up

The broadcast location on the Capitol Building steps was the main point of activity. A two-tier platform was built to house all the media covering the event. NPR was at one end of the platform, to the extreme right of the speaker's podium.

The telephone setup on the steps had two ISDN lines and one POTS line. A Prima 220 was used for the main audio feed. The other ISDN line was for data transmission using the ENPS software. The POTS line was for communication.

A Mackie 1202-VLZ mixer was the center of activity. Headset mics were slated for use, but proved too sensitive to the noise in the area. They also got wet and could not be used. Instead, Neumann KMR81 shotgun mics were used to try to eliminate some of the unwanted ambient sounds.



Placement of the DPA90 stereo mic used to capture ambient during the ceremony

musicmusicmusic inc. presents

## BBC Worldwide IN CONCERT SERIES

Legendary live performances  
recorded by the BBC

The Power of the BBC  
on Your Web Site

30 years

of

music history

Virtually at your fingertips

Choose any show  
from the classic  
1971

Led Zeppelin  
performance  
to recent engagements  
by the likes of

Alanis Morissette  
or

Radiohead

Tailor your shows  
to fit your audience's  
preference

Maximize  
the popularity  
of your web site

The  
possibilities  
are  
endless

Geri Rockstein  
Manager, Broadcast Services

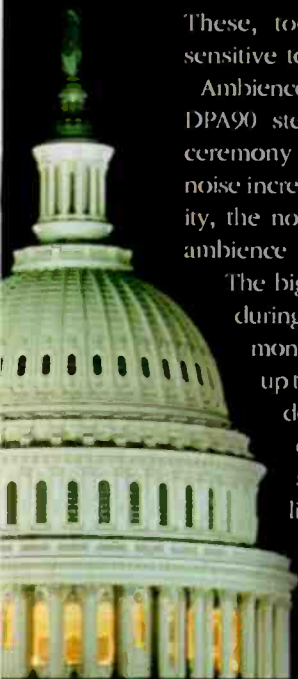
geri@musicmusicmusic.com  
phone 1-877-874-0911

www.musicmusicmusic.com

powered by  
musicmusicmusic inc.

BBC word mark and logo are trade marks of the  
British Broadcasting Corporation and are used under licence.  
BBC logo © BBC 1998. Licensed By BBC Worldwide

# The Presidential inauguration



These, too, proved to be overly sensitive to the surrounding sound.

Ambience was picked up with a DPA90 stereo microphone. As the ceremony proceeded, the ambient noise increased. At the height of activity, the noise level was so high, the ambience mic was turned off.

The biggest obstacle was the rain during the morning of the ceremony. Equipment that was set up the night before was soaked, despite the efforts to seal everything. Since security is so important at an event like this, replacement equipment brought in that morning was subject to an intense round of checks and rechecks to pass through the gate. The main casualties of the rainwater were some of the microphones, the timers for time posts

and some of the data hubs. However, each site worked, although not entirely as planned.

Scheduling equipment setup to meet the security schedule was a challenge. Like Lafayette Park, the Capitol Building broadcast platform is a secured area. As the event approached, security concerns increased, as did the time required to pass through the checkpoints.

On Monday, it took five minutes to clear security to get to the broadcast stand. On Saturday morning, it took nearly two hours.

In case of rain during the ceremony, there was a backup plan for the Capitol steps. The ceremony would have been in the Capitol Rotunda. NPR has an ISDN line in the Senate hall, and a four-wire cable would have been run between the two locations, with a Shure FP11 mic-to-line amplifier and FP22



**Despite the less-than-ideal weather, the entire event was considered a success. Sufficient back-up plans were in place for almost any circumstance.**

headphone driver feeding the codec.

The broadcast covered six hours of programming. While this is a major event, it is not the largest location broadcast during the election season. Planning for this event began three months before the ceremony. Planning for the 2004 election will begin in November 2003.

*Thanks to Shawn Fox, election technical director of NPR, for information in preparing this article. All event photos by Shawn Fox.*

From  
**\$2,495**

## 1200 Series Console

### Rugged & Reliable



1200-10S  
\$3,495

5, 10, & 15 channel models  
Fully DC Controlled for Reliability  
Ultra-high Audio Performance  
Easy Connectorized Installation  
Telephone Mix-Minus



1200-5S  
\$2,495



1200-15S  
\$4,495

The 1200 series of radio broadcast consoles were engineered and built for the challenges of the new millennium. High performance electronic design makes the 1200 console transparent to the best digital source audio. Only the highest quality components are used throughout, such as P&G faders, and ITT Schadow switches. The 1/8" hardened aluminum chassis with epoxy paint and solid oak trim will make the 1200 attractive for years to come. A rugged design, the 1200 is ideal for On Air, Production, & News applications.

**Arrakis Systems inc.**

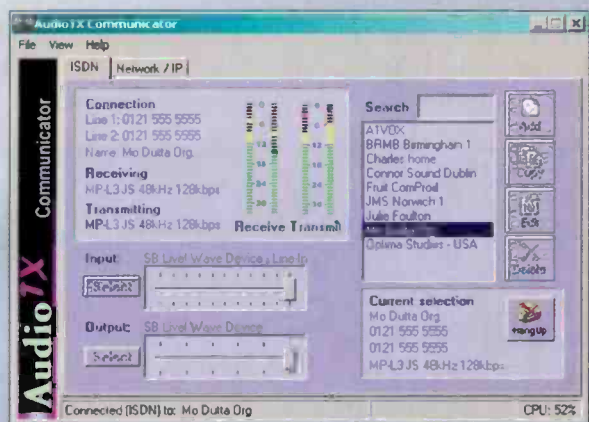
Phone: (970) 224-2248 Web: [arrakis-systems.com](http://arrakis-systems.com)

Circle (134) on Free Info Card or go to [www.beradio.com](http://www.beradio.com)



# New Products

## Software codec Audio TX



configures itself. The system provides live audio links over IP networks using a standard IP network port by default, but this can be changed to suit the local network configuration. AudioTX will run over private leased lines and allows a live audio connection over the Internet using your choice of high-speed connection. The unit uses the existing networking setup of the PC on which it runs for audio transport. Or you can use specialized ATM hardware—as long as it presents an IP network connection capable of carrying TCP packets on the PC. Audio TX is distributed by MusicamUSA in North America.

+44 121 248 0200; [www.audiotx.com](http://www.audiotx.com); [sales@audiotx.com](mailto:sales@audiotx.com)  
Circle (253) on Free Info Card or go to [www.beradio.com](http://www.beradio.com)

## Website features Access Broadcasting

**Internet services:** Each revenue module solves a specific need for the station's Web strategy while providing a new source of revenue. The modules include: advertiser business directories tied to full-page Web ad and online discounts and coupons; a promotion/contest/news/event manager with tile ad sponsorship tool built in to create sponsorship opportunities for each of the categories; and opt-in e-mail, local classifieds and personals, and listener management tool to increase TSL and interactivity with a station's P-1s and P-2s while generating revenue from tile ads and e-mail sponsorships. In addition, with flat monthly pricing, stations can increase their bottom line significantly. Also among the new tools is the expanded version of Access Broadcasting's *Loyal Listener* e-mail and promotion tools.

541-431-0036; fax 541-431-3408  
[www.accessbroadcasting.com](http://www.accessbroadcasting.com)  
[sales@accessbroadcasting.com](mailto:sales@accessbroadcasting.com)  
Circle (250) on Free Info Card  
or go to [www.beradio.com](http://www.beradio.com)

## Stereo rackmount mixer Studiomaster

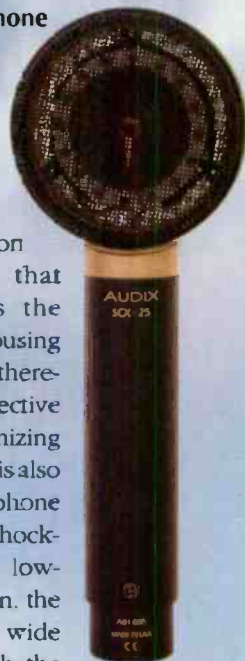


band EQ with mid sweep, channel direct outputs, inserts, two discreet auxiliary sends, LED overload indicator, PFL listen and 60mm faders. Channels 15 and 16 provide the same features with the exception of a two-band channel EQ, but with the ability to use the XLR microphone and the stereo line inputs simultaneously. Other features include: 48V global phantom power, balanced XLR outputs, output inserts, 12-segment LED metering, stereo playback bus with independent level control, stereo record bus with independent level control, and headphone bus with level and 60mm master faders. The 162BP also features back patching, which keeps the cables tucked away from the front panel controls.

714-998-2102; fax 714-998-2086  
[www.studiomaster.com](http://www.studiomaster.com); [us-info@studiomaster.com](mailto:us-info@studiomaster.com)  
Circle (264) on Free Info Card or go to [www.beradio.com](http://www.beradio.com)

## Condenser microphone Audix USA

▶ **SCX25:** A brass condenser microphone with a 25mm gold sputtered diaphragm, the SCX25 features a suspension mounting system that effectively isolates the capsule from the housing and the electronics, thereby minimizing reflective surfaces and maximizing phase coherence. This also means that the microphone does not require a shock-mount clip. With a low-noise pre-amp design, the SCX25 provides a wide cardioid pattern with the open-air sound quality found in classic microphones.



800-966-8261; fax 503-682-7114  
[www.audixusa.com](http://www.audixusa.com); [info@audixusa.com](mailto:info@audixusa.com)  
Circle (255) on Free Info Card  
or go to [www.beradio.com](http://www.beradio.com)

# New Products



**POTS codec  
Musicam USA**

◀ **Voyager:** This POTS codec/mixer achieves 15kHz mono audio over a standard analog telephone line. Low (100ms) delay even at bit rates as low

as 24kb/s, means Voyager covers the full frequency range of FM. A custom-designed modem enables broadcasters to keep the sound flowing, regardless of changing conditions on the POTS line connection. Voyager allows users to renegotiate their connection or re-equalize the line for complete stability within 1.5 seconds. Audio frequency response degrades smoothly as line connections fall below 24kb/s, with Voyager improving on regular analog line quality down to 9.6kb/s. Voyager's built-in telephone coupler can be used to connect in standard telephone mode. The bi-directional Voyager extends the expertise of studio personnel to the remote location.

732-739-5600; fax 732-739-1818

[www.musicamusa.com](http://www.musicamusa.com); [sales@musicamusa.com](mailto:sales@musicamusa.com)

Circle (259) on Free Info Card or go to [www.beradio.com](http://www.beradio.com)



**CD recorder/player  
TASCAM/Teac Professional**

▼ **CD-RW2000:** Features include comprehensive audio I/O, word sync input, call function for checking play cues, incremental play function, auto ready (single play) mode, input monitoring, digital gain adjustment and digital fade in and fade out. The CD-RW2000 is made for professional use. A RAM buffer is included



to ensure tight ID markers without danger of clipping the start of the track, and the SCMS code can be set via the user menu. Digital gain adjustment allows you to boost level adjustments without going back to the analog source, and the adjustable auto cue function lets you locate right to the start of actual audio, rather than the track ID.

323-726-0303; fax 323-727-7635

[www.tascam.com](http://www.tascam.com); [tascamlit@tascam.com](mailto:tascamlit@tascam.com)

Circle (265) on Free Info Card or go to [www.beradio.com](http://www.beradio.com)



## RF Specialties®

EAST: Pittsburgh 866-736-3736, Philadelphia 888-260-9298

WEST: California-North 888-737-7321, South 800-346-6434

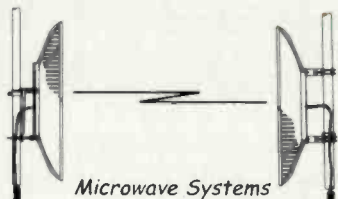
NORTHWEST: Seattle 800-735-7051

SOUTHWEST: Texas 800-537-1801, 888-839-7373

CENTRAL: Missouri 800-467-7373

SOUTH: Florida, 800-476-8943

- Microphones
- Mic Processors
- Cable & Connectors



Microwave Systems

Consoles •  
Analog and Digital



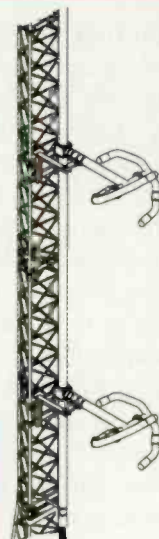
- Recording Equipment
- Monitor Amps and Speakers
- Headphones

[www.rfspec.com](http://www.rfspec.com)

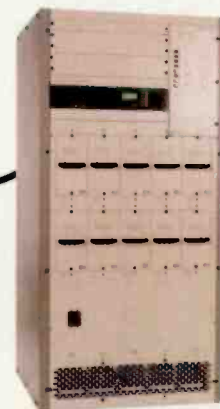
"RF is GOOD for You!"

Our name says **RF**,  
but we have **EVERYTHING**  
from the **microphone** to the **antenna**.

- Antennas
- Towers
- Transmission Lines & Accessories
- Copper Strap & Screen



Audio Processors • Analog and Digital



- Transmitters
- Exciters
- Remote Control Systems
- RF Amplifiers

Circle (135) on Free Info Card or go to [www.beradio.com](http://www.beradio.com)

## New Products

### FM stereo transmitter/exciter Ramsey Electronics

► **PX1:** This transmitter is designed for worldwide service and operates on 110 or 240VAC power. The PX1 can also run on 12VDC for remote or emergency operation and is appropriate for use as an exciter for higher power broadcast stations. Features include an 8x oversampled stereo generator with true analog filters. The power amplifier is over-temperature and VSWR protected. A five-button user interface gives the user access to all operating parameters and adjustments. The two-line vacuum florescent display provides verification of all parameters. The PX1's microprocessor continuously monitors, and makes subtle adjustments to various circuit parameters based upon frequency, temperature, power, audio level, and deviation. The PX 1 is housed in a 2RU case.

800-446-2295; fax 716-924-4555  
www.highpowerfm.com

Circle (260) on Free Info Card  
or go to [www.beradio.com](http://www.beradio.com)

### Software module and user interface ENCO Systems

**AirPlay:** A new virtual machine within DADPRO32 intended for live assist use. With easy to read cut information and many customizable features, AirPlay is a fourth-generation user interface designed for the most intensive live on-air usage, with features based on dozens of user interviews. Nearly everything on the AirPlay machine can be customized by the end user, from number of playback slots to the background and foreground colors of slots while playing and while in ready mode. AirPlay takes advantage of higher screen resolutions available on larger monitors and can be used on its own or together with other DAD machines such as Mini-Array or Script.

800-362-6797; fax 248-476-5712  
www.enco.com; support@enco.com

Circle (257) on Free Info Card  
or go to [www.beradio.com](http://www.beradio.com)

**www.beradio.com**  
The *Online* Radio Technology Leader



**54 Years!**

**Strong  
Stable  
Focused  
Reliable**

*Continental Electronics*

**WE ARE PLANNING OUR  
NEXT 54 YEARS!**

**WHERE WILL YOU BE?**

[www.contelec.com](http://www.contelec.com) 800.733.5011  
AN IDT COMPANY

Circle (136) on Free Info Card or go to [www.beradio.com](http://www.beradio.com)

# New Products

Straight-arm turntable  
Stanton Magnetics



◀ **STR8-80:** Features of this turntable include reverse and motor-off functions; 3.5mm line input built-in cable; key adjustment (master tempo); quartz lock (zero pitch); three speeds: 33, 45, 78 rpm; selectable pitch

adjustment ( $\pm 8\%$ ,  $12\%$ ); skip-proof straight tone arm; blue LEDs; remote start; adjustable feet; and dust cover and slipmat. The STR8-80 comes with a Stanton 520 SK cartridge pre-mounted on a silver headshell, S/PDIF digital output, a direct drive motor, an aluminum platter, a target light and a blue strobe indicator.

954-929-8999; fax 954-929-0333  
www.stantonmagnetics.com; info@stantonmagnetics.com  
Circle (263) on Free Info Card or go to www.beradio.com

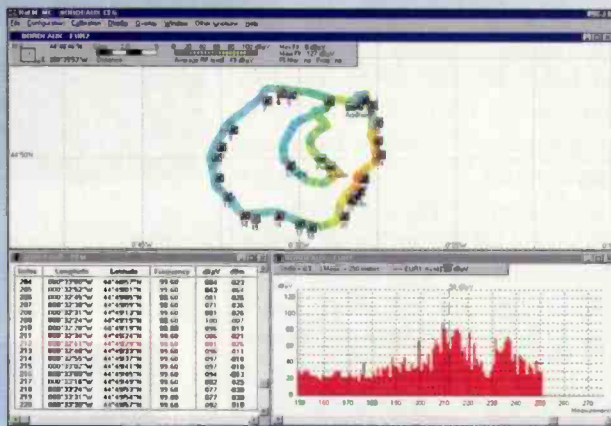
## Internet broadcasting service

RealNetworks

**Radio Business Applications, v2.0:** An Internet broadcasting service for traditional radio broadcasters that enables them to generate in-stream advertising as well as e-commerce revenues through CD sales; verify advertising and traffic numbers through third party measurement firms; Use RealNetworks' ad sales force to represent and sell broadcasters' ad inventory; offer custom-filtered digital content—local and national news, sports and weather to end-users; and provide an on-line end user experience featuring such enhancements as Now Playing details with album, song title and artist name as each song is broadcast online.

206-674-2700; fax 206-674-2698; www.realnetworks.com  
Circle (261) on Free Info Card or go to www.beradio.com

## RF field-strength measurement Audemat



▲ **Fieldstar:** This mobile RF field-strength measuring unit can automatically measure up to 99 stations simultaneously. Fieldstar measures, and immediately displays on geographical maps, the effective coverage area of all stations received in a target market. Fieldstar includes a GPS receiver and RDS decoder, easy operation and user-friendly ergonomics, high performance professional FM receiver and an optional cartographic (map) display. Fieldstar is an evolution of the Audemat FM-MC-3.2.

866-AUDEMAT; fax 703-433-5452  
www.audemat.com; info@audemat.com  
Circle (252) on Free Info Card or go to www.beradio.com



The RF People

# Silicon Valley POWER AMPLIFIERS

Our growing product line.

SATISFACTION GUARANTEED



Phone:- (408) 986 9700  
Fax:- (408) 986 1438

e-mail:- sales@svpa.com  
website www.svpa.com

Circle (137) on Free Info Card or go to www.beradio.com



## New Products

Stereo effects processor  
Eventide



▲ **DSP7000:** A new design, evolving from Eventide's DSP4000 series processors, the 7000 has four times the processing power of the previous-generation DSP4000, plus a host of new features and capabilities. More than 500 factory presets are included for lush reverbs and accurate, high-quality pitch change programs. Features 24-bit conversion at 96kHz. The DSP7000 provides analog and digital I/O with separate gain controls and metering for each domain. Offers the user extensive programmability and remote control capability. More than 150 user presets can be stored internally, and hundreds more can be stored on removable PCMCIA cards. Accommodates presets and preset library cards developed for the DSP4000 series Ultra-Harmonizer units.

201-641-1200; fax 201-641-1640

[www.eventide.com](http://www.eventide.com); [postmaster@eventide.com](mailto:postmaster@eventide.com)

Circle (258) on Free Info Card or go to [www.beradio.com](http://www.beradio.com)

Voice editing system  
Audion Laboratories

► **VoxPro PC:** This PC version has the same look, feel and functionality of the Mac VoxPro but includes many new features. Some of these include: a large re-sizable sound window that displays

seven to 15 seconds of a recording, the ability to import and export

.WAV, AIFF, MP3 and other file formats, unlimited undo, unlimited hot keys, and the ability to run on any Pentium II or higher, Windows 98, ME and 2000. Mac versions released in Q3 2000 run on the G3 and G4 platforms.

206-842-5202; fax 206-842-6029

[www.voxpro.net](http://www.voxpro.net)

Circle (254) on Free Info Card or go to [www.beradio.com](http://www.beradio.com)



## Is your radio station ready for the C-5/GE-8 switch?

All C-5 programming will stop by  
March 2001

Let Satellite Export prepare you for the upcoming digital conversion with our complete Patriot Antenna package. Program providers recommend a solid antenna, with a minimum size of 3.8 meters for best reception. The Patriot Antenna is 2<sup>nd</sup> compliant and will not warp like most mesh or fiberglass dishes. Upgrade your station with the **BEST** -

PLL LNBS

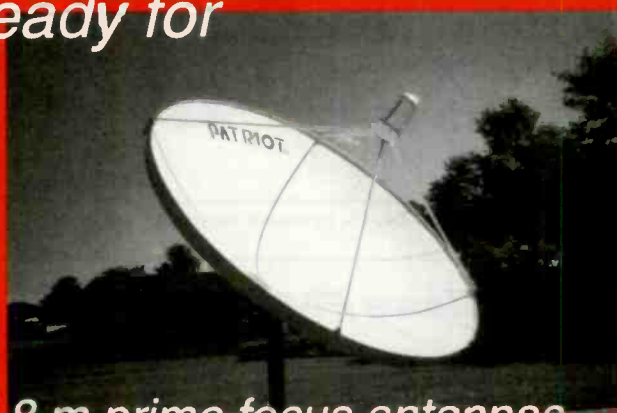
C-Band Feeds



Satellite Export & Engineering, Inc.

704 North Clark Street, Albion, MI 49224

800.470.3510 • 517.629.5990 • 517.629.6690 fax



3.8 m prime focus antennas

Order Online Today!

**PATRIOT**  
COMMERCIAL ANTENNA SYSTEMS

[www.sepatriot.com](http://www.sepatriot.com) • [info@sepatriot.com](mailto:info@sepatriot.com)

Circle (138) on Free Info Card or go to [www.beradio.com](http://www.beradio.com)

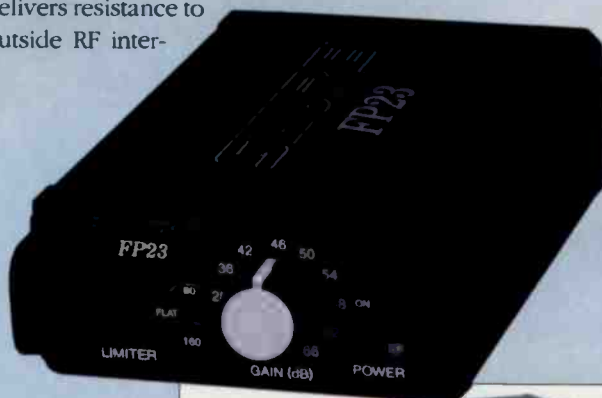
## New Products

Mic pre-amp and mixer

Shure

► **FP23 and FP24:** A battery-powered mic pre-amp suited for on-location recording or broadcast environments, the FP23 offers 24 hours of operating life with two AA batteries. Features include all-metal construction, special filtering and transformer isolation. The FP23 offers a maximum of 66dB of gain, adjustable in 11 discrete steps,

delivers resistance to outside RF inter-



ference, features a selectable low-frequency roll-off, and input and output transformers. The FP24 is outfit-



ted has up to 66 dB of gain, transformer-balanced inputs (assignable to the L-C-R outputs), a built-in slate microphone, 1 kHz tone oscillator, and a headphone monitoring amplifier. Input transformers provide quiet operation and freedom from RF interference, while high-current, balanced output drivers maintain signal integrity. The FP24 features: a dynamic range exceeding 110 dB; a bandwidth extending from 10 Hz to 50 kHz; and low distortion characteristics.

800-25-SHURE; fax 847-866-2279; www.shure.com; sales@shure.com

Circle (262) on Free Info Card or go to [www.beradio.com](http://www.beradio.com)

Operate From  
Across the Desk or  
Across the Country...

**MixMax!**



- ★ 6 CHANNEL STEREO MIXER
- ★ On Board CPU and RS-232 Port
- ★ 8 Presettable Macros / 8 TTL Outputs
- ★ Computer Control or Stand Alone Operation

**NAB Show  
BOOTH 1758**

**Get Details**

**Jim Withers 314-345-1030  
[www.radiomax.com](http://www.radiomax.com)**

Circle (139) on Free Info Card or go to [www.beradio.com](http://www.beradio.com)

## World Class FM Antennas

We at Armstrong constantly strive to bring you the best RF products, the best 24/7 support and the best prices ...because you deserve nothing less!

That is why our FM antennas are designed to provide maximum signal coverage and the ultimate in signal penetration. Built to withstand even the bleakest weather conditions, our bays are constructed of 100% heavy-duty brass for long life and superior performance.

When you think antennas, **Think Armstrong.**  
We're not just a transmitter company.

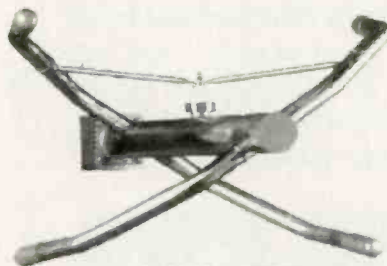


**ARMSTRONG**  
TRANSMITTER CORPORATION

**Total RF Systems Solutions**

Marcellus, NY Tel 315-673-1269 Fax 315-673-9972  
e-mail: sales@armstrongtx.com

Circle (141) on Free Info Card or go to [www.beradio.com](http://www.beradio.com)



**FMA-737**

*Available in numerous configurations and power levels, including directional patterns, at amazingly competitive prices.*

**ARMSTRONG**  
TRANSMITTER CORPORATION

## New Products

### Reference monitor

Alesis/GT Electronics

▼ **Monitor One Mk2:** The monitor's updated voice coil provides improved performance and longer throw. Additionally, an industrial cabinet design offers longer and more rigid porting tubes for a punchier sound, while rounded corners reduce edge diffraction and improve the quality of sound. Monitor One Mk2's cross-over point has been adjusted to 2kHz, which provides a truer, flatter frequency response than the original unit. The renovated 6.5 inch low-frequency driver provides a more detailed and controlled low-end. Mk2 also features the next generation of the Alesis exclusive SuperPort venting technology, which eliminates the choking effects of smaller, shorter ports.



800-5-ALESIS; fax 310-255-3401  
www.alesis.com

Circle (251) on Free Info Card or go to [www.beradio.com](http://www.beradio.com)

### Magnetic data storage EMTEC Pro Media

► **DLT series:** The three new products in this line have a configuration to fit every need. The EMTEC DLT III tape can store between 2.6GB and 10GB of uncompressed data on Quantum and HP

DLT drives, up to 20GB of compressed data on a DLT 2000 drive. The EMTEC DLT III XT tape can store 15GB (uncompressed) or 30GB (compressed) of data. The EMTEC DLT IV can handle between 20GB and 40GB of uncompressed data, and up to 80GB of compressed data on a DLT 8000 drive. All three products in the DLT series of linear data backup media have lifetime usability estimated at up to one million write/read cycles—at least 15,000 hours of use, with a storage lifetime estimated at up to 30 years. Precision of writing and recalling data is assured with EMTEC's leader block with enhanced guidance and spool control mechanisms for consistent tape tension.

888-295-5551; fax 661-295-5554  
www.emtec-usa.com; info@emtec-usa.com

Circle (255) on Free Info Card or go to [www.beradio.com](http://www.beradio.com)



## FM - LPFM - TV - LPTV Transmitters - Antennas - STL's [www.superiorbroadcast.com](http://www.superiorbroadcast.com)

### HOT SUMMER PRICES

FM STL Transmitter & Receiver ..3,500.00	50 watt FM Stereo Exciter/Transmitter .....	1,500.00
100 watt FM Stereo Transmitter 2,500.00	300 watt FM Stereo Transmitter .....	3,500.00
100 watt FM Amplifier .....	300 watt FM Amplifier .....	1,799.00
500 watt FM Amplifier .....	2,500 watt FM Transmitter .....	10,000.00
10,000 watt FM Transmitter ....	Six Channel Stereo Audio Console .....	2,200.00
Stereo Generator with	FM Antennas as low as .....	395.00
composite clipper.....	20 FM Translator .....	2,500.00
995,00		

Contact **Jimmie Joynt Superior Broadcast Products Inc.**

Ph. 800/279-3326 Fax 800/644-59587194 Preston Rd #123-297 Dallas, TX 75249

## [www.lowpowerradio.to](http://www.lowpowerradio.to)

Complete system, 300 watt Transmitter, with Stereo Generator,

Antenna and Transmission Line ..... **\$4,500.00**

Ph. 800/279-3326 Fax 800/644-59587194

Circle (140) on Free Info Card or go to [www.beradio.com](http://www.beradio.com)



# See online product demonstrations for these hot products.

Now you can see the industry's hottest products on *your* computer. Every advertisement and new product announcement

featuring the Demo Room logo has a streamed demonstration online. You can also view archived demos of previous Demo Room stars from the entire Intertec Entertainment Division.



Visit the Demo Room today!  
www.beradio.com



## Audion Laboratories

### VoxPro PC

Features include a re-sizable sound window that displays 7 to 15 seconds of a recording; the ability to import and export .WAV, AIFF, MP3 and other file formats; unlimited undo; unlimited hot keys. Runs on any Pentium II or higher, Windows 98, ME or 2000.



## Studiomaster

### 162BP

Rack-mount mixer with 48V phantom power, balanced XLR outputs and inputs, LED metering, stereo output bus with independent level control, stereo record bus with independent level control, headphone bus with level and 60 mm master faders.



## Musicam USA

### Voyager

POTS codec capable of 15kHz mono audio. Users can renegotiate a connection or re-equalize the line. As line connections fall below 24kb/s, audio frequency response degrades smoothly. The telephone coupler can connect in standard telephone mode.

## Switcher tools

Designed by broadcast engineers for broadcasters, our audio and digital audio switchers offer excellent sonic quality, removable I/O connections, contact closures, serial remote control capabilities and flexible mounting accessories.



### SS 12.4

Active crosspoint switcher/router with 12 stereo inputs and 4 stereo outputs.



### 10X1

Passive switcher/router with 10 stereo inputs and one stereo output or vice-versa.



### 3X2

Active crosspoint switcher with 3 stereo inputs and 2 stereo outputs.



### SS 8.2

Active crosspoint switcher with 8 stereo inputs, 2 stereo plus 2 mono outputs.



### 8x1 DAS

Routes any one of eight AES/EBU digital inputs to 3 common outputs.



### SS 3.1

Passive switcher/router with 3 stereo inputs and one stereo output or vice-versa.



### ACS 4.1

Active crosspoint switcher with 4 balanced/unbalanced stereo inputs and one stereo output with Visual Audio Level Control.



### 6X1

Passive switcher/router with 6 stereo inputs and one stereo output, or vice-versa.



### SS 2.1/BNC

Passive switcher/router with 2 composite audio, video, or AES/EBU inputs to 2 composite audio, video, or AES/EBU outputs, or vice-versa.



### 8X2

Active crosspoint switcher with 8 stereo inputs, 2 stereo and 2 mono outputs



### SM-6

Stereo mixer with 6 stereo inputs, a stereo output and front panel on/off switches.



### SS 2.1/TERM

Passive switcher/router with 2 stereo inputs to one stereo output or vice-versa.

Check out our web site for product information, list pricing and a list of distributors!

Internet: [www.broadcasttools.com](http://www.broadcasttools.com) E-mail: [btli@broadcasttools.com](mailto:btli@broadcasttools.com)

Voice: 360 . 854 . 9559  
Fax: 360 . 854 . 9479

**BROADCAST**  
**t o o l s** inc.  
Innovative Problem Solving Tools For Broadcast

Circle (142) on Free Info Card or go to [www.beradio.com](http://www.beradio.com)

## Incredibly Flexible DTMF Control



### The DS-8 Programmable DTMF decoder

**The DS-8 features include:**

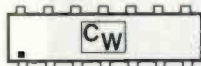
- Each of the eight relays may be independently programmed for codes and mode.
- Program it with any DTMF phone.
- High quality metal enclosure can be wall or table mounted. Inexpensive Optional (shown) rack mount available.
- All connections on screw terminals
- Retains settings after a power failure
- List price is just \$299.

Call your favorite dealer or visit our web site for the latest info and downloadable tech manuals!



**CircuitWerkes**

3716 SW 3<sup>rd</sup> Place, Gainesville, Florida 32607  
(352) 335-6555 / fax 380-0230 <http://www.circuitwerkes.com>



Bridge the DS-8 across your audio source and get eight individually programmable relay outputs. Each closure is activated by its own code of one to four digits long. Each relay can be set up as momentary, latching or interlocked with other relays! Use the DS-8 for remote audio switching, automated program recording, secured remote EAS control, you name it! Optional rack mount (pictured) is available. Two unit R.M. also available. Silencer option removes tones from program lines.

Circle 143 on Free Info Card or go to [www.beradio.com](http://www.beradio.com).

## TOWER



- Fabrication
- Design
- Engineering
- Installation
- Service
- Maintenance

Swager is your worldwide turnkey tower company.

Phone  
1-800-968-5601  
or Fax  
1-800-882-3414

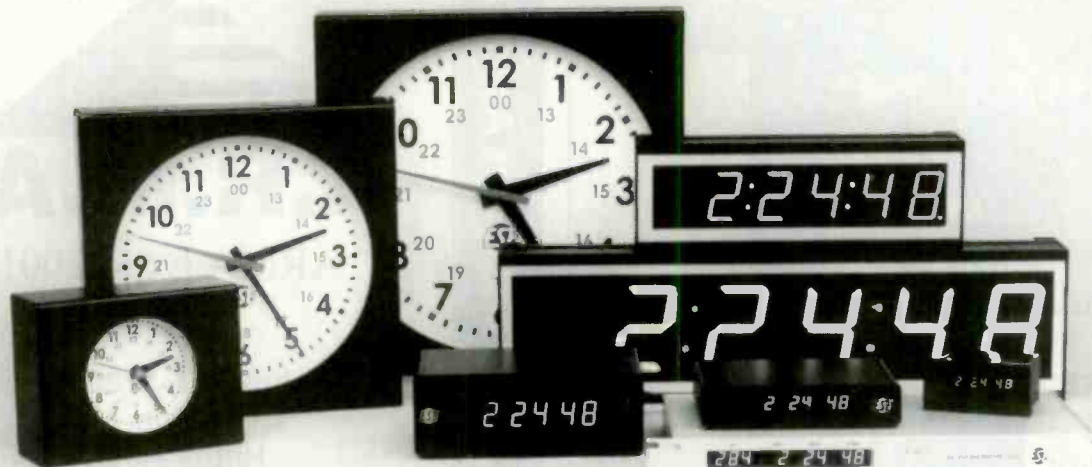


**SWAGER**  
Communications, Inc.

P.O. Box 656  
501 East Swager Drive  
Fremont, IN 46737 USA  
Phone 1-800-968-5601 • 219-495-2515  
Fax 1-800-882-3414 • 219-495-4205  
E-mail: [sales@swager.com](mailto:sales@swager.com)  
Internet: [www.swager.com](http://www.swager.com)

Circle 144 on Free Info Card or go to [www.beradio.com](http://www.beradio.com).

## When you require the ultimate in accurate timing



**W**HEN you require the best, most accurate in precision timing look only to ESE. Designed for "Precision Timing", ESE Master Clocks & Accessories have been the industry standard for over three decades.

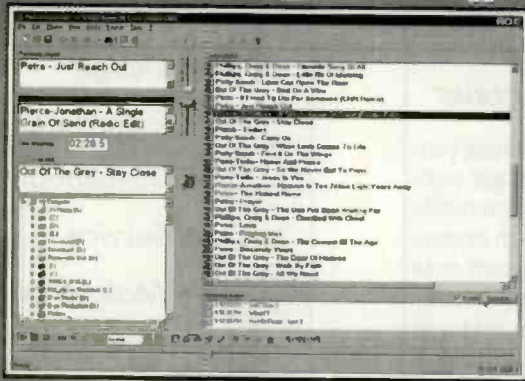
Whether using GPS, WWV, Modem, Crystal or line

frequency accuracy – all ESE Master Clocks can drive digital or analog slave clocks, as well as interface with video and/or computer based systems.



142 Sierra Street  
El Segundo, CA 90245 USA  
Phone: (310) 322-2136  
Fax: 310.322.8127  
[www.ese-web.com](http://www.ese-web.com)

# Powerfully Simple



- F** \* Plays mp3, wav and many other p-poller audio formats  
**E** \* Plays many video formats  
**A** \* Automatic Overlap (segues) and Fade outs  
**T** \* Schedule Spots and Liners  
**U** \* Only Requires One Soundcard (any brand)  
**R** \* Plays Live Satellite Feeds  
**E** \* Full Broken Automation or Live Assist  
**S** \* Logs time and date of files played  
 \* Silence Detection for on-air security  
 \* Windows 95/98

- B** \* Easy to Use  
**E** \* Free Support  
**N** \* Up and running in minutes  
**E** \* Many features, little training required  
**F**  
**I**  
**T**  
**S**

Download Free Demo  
<http://www.raduga.net>  
 Or call for more info  
**813-887-0714**

Finally, a software package for radio that doesn't require a degree in computers.

**Raduga**  
 Radio Station Automation Software



Circle 146 on Free Info Card or go to [www.beradio.com](http://www.beradio.com).

# Affordable Digital Automation

Our WaveStation 3.0 has all the features of "super expensive" systems, but is priced reasonably like software, not



gold-plated broadcast hardware. We often hear, "It can't be true!" Over 3000 satisfied users prove the **24 Hour** contrary. WaveStation uses **FREE** Tech Support linear or compressed audio files. Features include WebCast ability, on-screen voice-track editing, time-shift recording and serial port control. Offers full automation, satellite, voice-track and live assist. Works with Windows 2000, 95, 98 or NT.

**888-BSIUSA1**  
 Try Before You Buy.  
 Download The Actual Software!  
[www.bsiusa.com](http://www.bsiusa.com)



Circle 147 on Free Info Card or go to [www.beradio.com](http://www.beradio.com).

## Affordable Custom Broadcast Furniture



Delivered and installed by

**STUDIO TECHNOLOGY**  
 32 Pennsylvania Avenue,  
 Malvern, PA 19355  
 TEL: 610-640-1229 • FAX: 610-296-3402  
 email: [sales@studiotechology.com](mailto:sales@studiotechology.com)  
[www.studiotechology.com](http://www.studiotechology.com)

Circle 150 on Free Info Card or go to [www.beradio.com](http://www.beradio.com).

## American Radio Manufacturers Association

Attendance is **FREE!**



ARMA Expo 2001  
 is here!

June 4 & 5, 2001  
 Columbia, MD  
 Hilton Hotel

Call 610-640-1229  
 today for information.

Or register online at:  
[www.armagroup.org](http://www.armagroup.org)

Circle 151 on Free Info Card or go to [www.beradio.com](http://www.beradio.com).

## Transcom Corporation

### AM & FM Transmitters

Visit our site at [www.fmamtv.com](http://www.fmamtv.com)  
 Email us at [transcom@fmamtv.com](mailto:transcom@fmamtv.com) for more information

Fine Used AM & FM Transmitters. Authorized Representatives for all major equipment manufactures. Let us send you a customized quote!

FM TRANS-MITTERS	Power	Year	Model
300 W	FM	1988	Harris FM 300K Solid State Sgl. Phase
1 KW	FM	1981	Harris FM 1K Single Phase
1 KW	FM	1978	RCA BTF 1E1
2.5 KW	FM	1984	Harris FM 2.5K Single Phase
2.5 KW	FM	1980	Harris FM 2.5K Single Phase
2.5 KW	FM	1976	Collins 831D Single Phase
3.8 KW	FM	1994	Continental 814J-Solid State, Sgl. Phase
5 KW	FM	1985	BE FM 5A
5 KW	FM	1967	Collins 830E
6 KW	FM	1994	Henry 6000D Single Phase
10 KW	FM	1974	Harris FM10H/K
25 KW	FM	1982	Harris FM25K

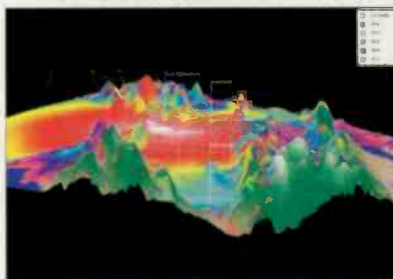
AM TRANS-MITTERS	Power	Year	Model
1 KW	AM	1976	Harris MW1
1 KW	AM	1981	Harris MW1A
1 KW	AM	1981	Harris MW1A
1 KW	AM	1981	Collins 828C-1
5 KW	AM	1982	Continental 315R-1
5 KW	AM	1980	Harris MW5A
10 KW	AM	1983	Continental 316F
10 KW	AM	1986	Harris MW10B
25 KW	AM	1985	CSI T-25-A
50 KW	AM	1978	Continental 317C-1
50 KW	AM	1982	Harris MW-50B

**MISC. EQUIP.**  
 Belar AMM2B Mod Monitor (1200KHz)  
 Belar FM Mod Monitor  
 Belar FM Stereo Monitor  
 CRL SMP-900 AM Stereo Matrix Processor  
 CRL MDF 800 Stereo De-Emphasis Filter  
 CRL SEC 800 Compressor  
 TFT AM Modulation Monitor (1990) 1200KHz

P.O. Box 26744, Elkins Park, PA 19027  
 800-441-8454 (215-938-7304) Fax 215-938-7361

Circle 148 on Free Info Card or go to [www.beradio.com](http://www.beradio.com).

## BROADCAST ENGINEERING CONSULTING SOFTWARE



Longley-Rice over 3-D Terrain

Professional software packages for preparing FCC applications & plotting coverage. For Windows & NT.

- Create "real-world" coverage maps & interference studies with Longley-Rice, TIREM, PTP, FCC & other models using polygon map features.
- Search for AM, FM, TV, DTV, & LPTV channels with graphics oriented programs and FCC databases.
- Plot STL paths in 3-D using 3-Arc second terrain databases...and more!

**VSoft**  
**COMMUNICATIONS**  
 Broadcast Communications Software and Engineering Consulting

800-743-3684 • [www.v-soft.com](http://www.v-soft.com)

Circle 149 on Free Info Card or go to [www.beradio.com](http://www.beradio.com).

CLASSIFIED

# BE Radio

### PROFESSIONAL SERVICES

**RUSS BERGER DESIGN GROUP INC**

INDEPENDENT CONSULTANTS 4006 BELTLINE  
 SPECIALIZING IN: SUITE 160  
 RECORDING & BROADCAST FACILITY DALLAS TEXAS  
 DESIGN & PLANNING, 75001  
 ARCHITECTURAL ACOUSTICS, 972/661-5222  
 NOISE & VIBRATION CONTROL, FAX  
 & TECHNICAL SYSTEMS DESIGN 972/934-3935

**JOHN H. BATTISON P.E.**  
**CONSULTING BROADCAST ENGINEER,**  
 FCC APPLICATIONS AM, FM, TV, LPTV  
 Antenna Design, Proofs, Fieldwork  
 2684 State Route 60 RD #1  
 Loudonville, OH 44842  
 419-994-3849 FAX 419-994-5419

### FOR SALE

**VIF IDLERS**  
**HOLD DOWN KNOBS**  
**SEQUOIA ELECTRONICS**  
 (800) 848-4428 Fax (408) 363-0957

**AW Applied Wireless, Inc**  
 ... providing options.

PO Box 926  
 New Market, MD 21774  
 tel.: 301.865.1011  
 fax.: 301.865.4422  
 email: kevinmc@appliedwirelessinc.com  
 www.appliedwirelessinc.com

Kevin McNamara  
 President & CEO

**D.L. MARKLEY & Associates, Inc.**  
**CONSULTING ENGINEERS**  
 2104 West Moss Ave.  
 Peoria, Illinois 61604  
 (309) 673-7511  
 FAX (309) 673-8128  
 Member AFCCE

A.M. Radio Station  
 For Sale or Lease.  
 So. Calif. Location.  
 Sale \$1.8 Million/  
 Lease \$20,000. mo  
 Broker Co-operation  
 Call Marc 949/975-0544

[www.beradio.com](http://www.beradio.com)

BE Radio GALLERY

## EDITORIAL

Chriss Scherer, CSRE, Editor  
Skip Pizzi, Contributing Editor  
John Battison, P.E., CPBE, Technical Editor, RF  
Cindy Holst, Associate Editor

[www.beradio.com](http://www.beradio.com)  
[beradio@intertec.com](mailto:beradio@intertec.com)

## ART

Michael J. Knust, Art Director

# BE Radio

## BUSINESS

Dennis Triola, Group Publisher  
Jennifer Weir, Marketing Director  
Vicki Inman, Advertising Coordinator  
Mary Mitchell, Classified Advertising Coordinator  
David Williams, Corporate Circulation Director  
Gayle Hutchens, Circulation Manager  
Customer Service: 913-967-1711 or 800-441-0294

## TECHNICAL CONSULTANTS

Harry C. Martin, Legal  
Kevin McNamara, CNE, Computers and Networks  
Mark Krieger, CBT, Contract Engineering  
Russ Berger, Broadcast Acoustics  
Donald L. Markley, P.E., Transmission Facilities  
Yasmin Hashmi, International Correspondent  
Stella Plumbridge, European Correspondent

## MEMBER ORGANIZATIONS

Sustaining Members of the following:

- Acoustical Society of America
- ARMA
- Audio Engineering Society
- Society of Broadcast Engineers
- Member, American Business Media
- Member, BPA International



## Intertec Publishing Corporation

Tim Andrews, CEO  
Ron Wall, President  
John Torrey, Vice President, Entertainment Division  
Tom Cook, Director of Editorial Development  
Stephanie Hanaway, Div. Dir. of Marketing  
Doug Coonrod, Corporate Creative Director

## PRIMEDIA Business-to-Business Group

David G. Fern, President and CEO  
Craig Reiss, Chief Creative Officer

## PRIMEDIA Inc.

Tom Rogers, Chairman and CEO  
Charles McCurdy, President  
Beverly C. Chell, Vice Chairman

**BE RADIO** (ISSN 1081-3357) is published monthly and mailed free to qualified recipients by INTERTEC, 9800 Metcalf, Overland Park, KS 66212-2215. Non-qualified persons may subscribe at the following rates: USA and Canada, one year, \$45.00; all other countries, one year, \$60.00 (surface mail), \$100.00 (air mail). Single copy price, \$10.00. Periodicals postage paid at Shawnee Mission, KS, and additional mailing offices. Canada Post International Publications Mail (Canadian Distribution) Sales Agreement No. 0956244. POSTMASTER: Send address changes to *BE Radio*, P.O. Box 12937, Overland Park, KS 66282-2937.

*BE Radio* is edited for corporate management, technical management/engineering and operations and station management at radio stations and recording studios. Qualified persons also include consultants, contract engineers and dealer/distributors of radio broadcast equipment.

Intertec Publishing makes portions of our subscriber lists available to carefully screened companies that offer products and services directly related to the industries we cover. Any subscriber who does not want to receive mailings from third-party companies should contact the Intertec subscriber service department at 800-441-0294 or 913-967-1707.

## PHOTOCOPY RIGHTS

Authorization to photocopy items for internal or personal use, or the internal or personal use of specific clients, is granted by INTERTEC provided that the base fee of U.S. \$2.25 per copy, plus U.S. \$00.00 per page is paid to Copyright Clearance Center, 222 Rosewood Drive, Danvers, MA 01923. The fee code for users of the Transactional Reporting Service is ISSN 1081-3357/2000\$2.25+00.00.

For those organizations that have been granted a photocopy license by CCC, a separate system of payment has been arranged. Prior to photocopying items for educational classroom use, contact CCC at 978-750-8400.

Organizations or individuals with large quantity photocopy or reprint requirements should contact Reprint Management Services, 717-399-1900. Microfilm copies of *BE Radio* are available by calling/writing Bell & Howell Info & Learning, 300 N. Zeeb Rd, P.O. Box 1346, Ann Arbor, MI 48106-1346. Phone: 313-761-4700 or 800-521-0600.

## CORRESPONDENCE

Editorial and Advertising: 9800 Metcalf, Overland Park, KS 66212-2215. Phone: 913-341-1300, Edit. Fax: 913-967-1905. Advt. Fax: 913-967-1904. © 2001 by INTERTEC. All rights reserved.

**INTERTEC**  
PUBLISHING  
A PRIMEDIA COMPANY

## Sales Offices

### NATIONAL & INTERNATIONAL

**Steven Bell**  
9800 Metcalf Avenue  
Overland Park, KS 66212-2215  
Telephone: (913) 967-1848  
Fax: (913) 967-7249  
E-mail: [steven\\_bell@intertec.com](mailto:steven_bell@intertec.com)

### REGIONAL MARKETING MANAGER

**Anna Bannister**  
9800 Metcalf  
Overland Park, KS 66212-2215  
Telephone: (913) 967-1947  
Fax: (913) 967-1905  
E-mail: [anna\\_bannister@intertec.com](mailto:anna_bannister@intertec.com)

### CLASSIFIED ADVERTISING

**Jennifer Shafer**  
Telephone: (800) 896-9939  
(913) 967-1732  
Fax: (913) 967-1735  
E-mail: [jennifer\\_shafer@intertec.com](mailto:jennifer_shafer@intertec.com)

### LIST RENTAL SERVICES

**Lisa Dinkel**  
Telephone: (913) 967-1872  
Fax: (913) 967-1897  
E-mail: [lisa\\_dinkel@intertec.com](mailto:lisa_dinkel@intertec.com)

### EDITORIAL REPRINTS

**Reprint Management Services**  
Telephone: (717) 399-1900  
Fax: (717) 399-8900



View an online  
product demo  
whenever you see  
this logo.

[www.beradio.com](http://www.beradio.com)



# Advertiser Index

	Page Number	Reader Service Number	Advertiser Hotline	Advertiser Website
Arma	58	151	610-640-1229	www.armagroup.org
Armstrong Transmitters Corp.	54	141	315-673-1269	www.armstrongtx.com
Arrakis Systems Inc.	12	109	970-224-2248	www.arrakis-systems.com
Arrakis Systems Inc.	32	124	970-224-2248	www.arrakis-systems.com
Arrakis Systems Inc.	48	134	970-224-2248	www.arrakis-systems.com
Audioscience	28	122	302-324-5333	www.audioscience.com
Broadcast Electronics, Inc.	19	114	217-224-9600	www.bdcast.com
Broadcast Electronics, Inc.	33	125	217-224-9600	www.bdcast.com
Broadcast Software Intl	11	108	888-BSI-USA1	www.bsiusa.com
Broadcast Software Intl	58	147	888-BSI-USA1	www.bsiusa.com
Broadcast Tools Inc	56	142	360-854-9559	www.broadcasttools.com
CCA Electronics	25	120	770-964-3530	www.cca.ws
Circuitwerkes	57	143	352-335-6555	www.circuitwerkes.com
Comrex Corp	9	107	978-263-1800	www.comrex.com
Continental Electronics	51	136	214-381-7161	www.contelec.com
Crown Broadcast	15	111	219-262-8900	www.crownbroadcast.com
Dielectric	21	116	207-655-4555	www.dielectric.com
Digigram USA	39	130	703-875-9100	www.digigram.com
Digital Media Net	31		714-384-3058	www.DigitalMediaNet.com
Enco Systems Inc.	17	113	248-476-5711	www.enco.com
ESE	57	145	310-322-2136	www.esweb.com
Full Compass Systems	27	121	800-356-5844	www.compassexpress.com
Harris Corp	3	104	513-459-3400	www.harris.com
Harris Corp	29	123	513-459-3400	www.harris.com
Intermax	54	139	314-345-1030	www.radiomax.com
Kintronic Labs Inc.	20	115	423-878-3141	www.kintronic.com

	Page Number	Reader Service Number	Advertiser Hotline	Advertiser Website
Klotz Digital	5	105	678-966-9900	www.klotzdigital.com
Logitek	34	126	800-231-5870	www.logitekaudio.com
LPB Inc.	24	119	610-644-1123	www.lpbinc.com
Mgmt Data Media Syst	63	102	540-341-8807	www.mdata-us.com
Mediatouch	38	129	302-894-1999	www.mediatouch.net
MusicMusicMusic	47	133	416-537-2165	www.musicmusicmusic.com
OMB America	35	127	305-477-0974	www.omb.com
Prime Image, Inc.	13	110	408-867-6519	www.primeimageinc.com
Prophet Systems Inc	36	128	877-774-1010	www.prophetsys.com
QEI Corporation	40-41	132	800-334-9154	www.qei-broadcast.com
Radio Systems	16	112	856-467-8000	www.radiosystems.com
Raduga	58	146	513-887-0714	www.raduga.net
RF Specialties	50	135	816-628-5959	www.rfspec.com
Satellite Export	53	138	517-629-5990	www.sepatriot.com
Scott Studios Corp	7	106	800-726-8877	www.scottstudios.com
Sierra Automated Systems	23	117	818-840-6749	www.sasaudio.com
Silicon Valley Pwr Amplifier	52	137	408-986-9700	www.svpa.com
Sine Systems	24	118	615-228-3500	www.sinesys.com
Smarts Broadcast Systems	40	131	800-747-6278	www.smartsbroadcast.com
Studio Technology	58	150	800-676-0216	www.studiotechology.com
Superior Broadcast Products	55	140	972-473-2577	www.superiorbroadcast.com
Swager Communications	57	144	800-968-5601	www.swager.com
Transcom Corporation	59	148	800-441-8454	www.trcorp.com
V-Soft Communications	59	149	319-266-8402	www.vsoft.com
Wheatstone Corporation	2	101	252-638-7000	www.wheatstone.com
Wheatstone Corporation	64	103	252-638-7000	www.wheatstone.com

Request free information with the Free Info card or go to [www.beradio.com](http://www.beradio.com).

## Ups and downs

By Skip Pizzi, contributing editor

**A**s with any business, the radio industry must weather cyclical variations in economic conditions. The volatility of this environment can often mask more fundamental long-term indicators, however. Consider the following big-picture analysis of radio's current situation:

The short-term fortunes of commercial radio are ruled by the overall advertising industry's climate. Advertising is, in turn, strongly indexed to the overall economy. When Wall Street is booming, radio does as well or better than other advertising sectors, but the opposite is also true.



In the long term, radio is experiencing a slow, downward trend, based essentially on changing user behavior. Like all traditional broadcast services, there are simply more services competing for audiences than ever before. When compared to the number of new services, radio is holding its own fairly well, but the overall negative trend remains inexorable. If nothing is done to counteract this trend, it will eventually drive the medium into serious difficulty.

On the other side of the ledger sheet are the liabilities, which have also changed in important ways. The consolidation process that radio owners have undertaken in recent years was executed at a time in which station values were inflated to double-digit multiples of cash flow. The belief that radio could only compete by eating its competition as soon as it was allowed to do so caused most broadcasters to violate the cardinal rule of buying low and selling high. Now these groups are saddled with debt and the corporate inertia that accompanies monolithic structure and massive size.

### Worst-case scenario

The picture just painted provides a uniquely bleak outlook: Radio is in desperate need of something new, yet its current economic environment is hampered by high risk, making it unwilling to invest in speculative ventures.

To some broadcasters, the mirage of IBOC DAB seems to be the answer. In fact, IBOC may prove to be a continuing distraction, and ironically dangerous to radio's health. To wit, during the 1980s, IBOC lured broadcasters to believe they needed no spectrum for new services. In the 2000s, it may tempt them to spend precious resources

toward developing an ultimately unsuccessful delivery format, which may serve only to accelerate the medium's downward spiral. It's been noted here before: purely *qualitative* improvement to existing services is not what radio needs to stem the tide of departing audiences and

**Radio has been resilient enough to recover from every downturn it has experienced with an even higher subsequent peak. This time around, the bounce will have to be particularly strong.**

advertisers. Instead, new and expanded services with increased personalization and added value are required. The main-

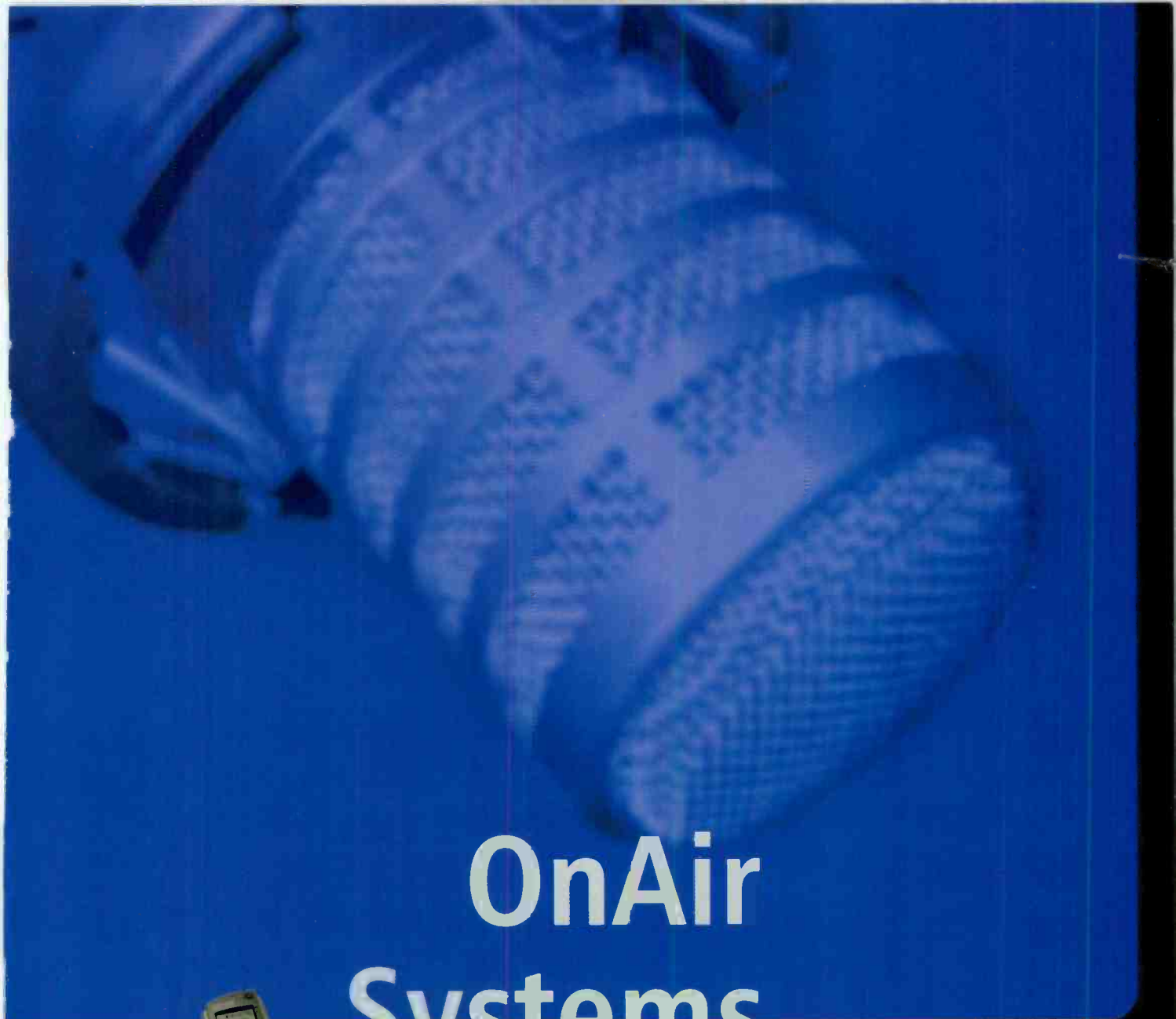
stream radio industry's current approach toward DAB (IBOC or otherwise) is not yet providing such a solution, as the lackluster results in other DAB-deploying countries are proving.

### Piling on

If this weren't enough, new environmental changes are making life ever more difficult for radio broadcasters. The additional assessment of music performance royalty fees for streaming services could have a serious chilling effect on development of new media at radio stations. Recent actions by AFTRA regarding online services also indicate that even this kind of streaming media programming may be prohibitively expensive to produce for broadcasters.

Meanwhile, the movement towards marketing direct, online listener subscriptions and corresponding broadcast-affiliate streaming blackouts by some network and syndicated content providers also does not bode well for local radio stations' online future. Popular national programs such as Rush Limbaugh and Major League Baseball have started down this path, blocking stations from repeating their on-air signals in the stations' streaming online services when airing that content. These program originators have established alliances instead with non-broadcast streaming aggregators to offer this content directly to online listeners.

The handwriting is on the wall: radio will need to make a play for enhanced content and new media services soon, or it will be too late to stop the bleeding that will eventually become a red-ink hemorrhage. Simple survival is not enough. Aggressive growth and staking new territory is required. Increased local programming and revised deals with providers of externally acquired content are key components of this strategy. *Quantitative* growth and exclusivity of content on new media services will be required to drive audiences to radio's next frontier.



# OnAir Systems



**DigaSystem**

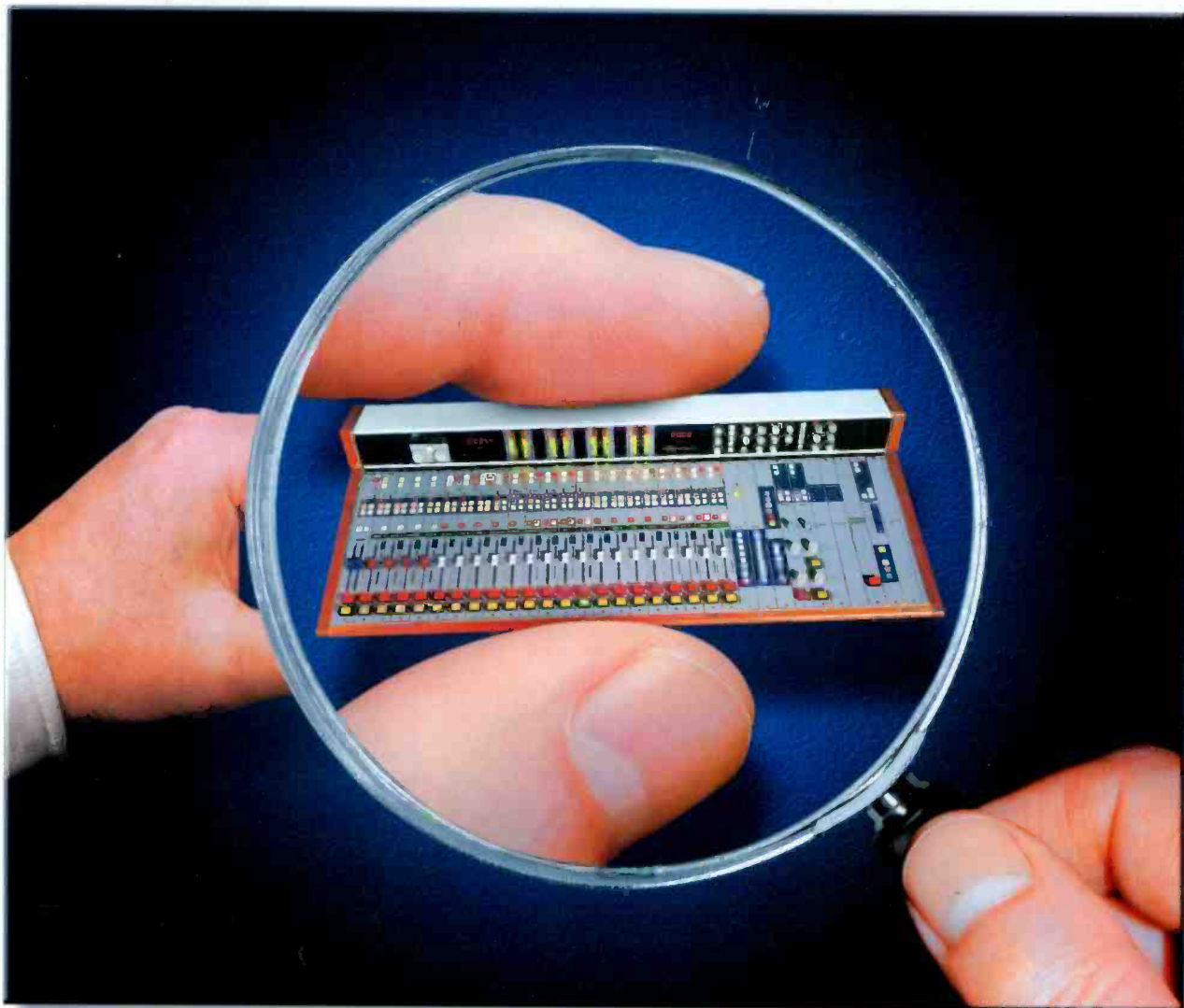


MANAGEMENT DATA  
MEDIA SYSTEMS N C

[mdata-us.com](http://mdata-us.com)

6193 Finchingfield Rd Warrenton VA 20187  
Tel 540.341.8550 Fax 540.341.8565 Email [info@mdata-us.com](mailto:info@mdata-us.com)  
Circle (102) on Free Info Card or go to [www.beradio.com](http://www.beradio.com)

# *PACKED WITH* *FEATURES*



## *FEATURES YOU'LL NEED FOR DIGITAL RADIO*

Features like PRESET SNAPSHOTS, direct ROUTER SOURCE ACCESS, AUTOMATION SYSTEM INTEGRATION and easy SOFTWARE CONFIGURATION. You can choose from 32, 44.1 or 48KHz clock rates to accommodate your system standard—and with four stereo outputs plus two stereo aux sends (each with simultaneous digital and analog outputs), automatic mix-minus support for

up to four callers, individual channel EQ and dynamics processing plus eight-character source/cut ID displays, you'll be able to handle ANY format.

With the D-700 your digital console, your digital hard disk, your automation system, and your station's audio router can work as ONE! **CONTACT WHEATSTONE, THE CONSOLE EXPERTS!**

 *Wheatstone Corporation*

tel 252-638-7000/fax 252-635-4857/sales@wheatstone.com / [www.wheatstone.com](http://www.wheatstone.com)

copyright © 2001 by Wheatstone Corporation  
specifications and features subject to change without notice

Circle (103) on Free Info Card or go to [www.beradio.com](http://www.beradio.com)