

Radio

THE RADIO TECHNOLOGY LEADER

May 2009
RadioMagOnline.com

NHPR Expands

Twice
the space
and room
to grow



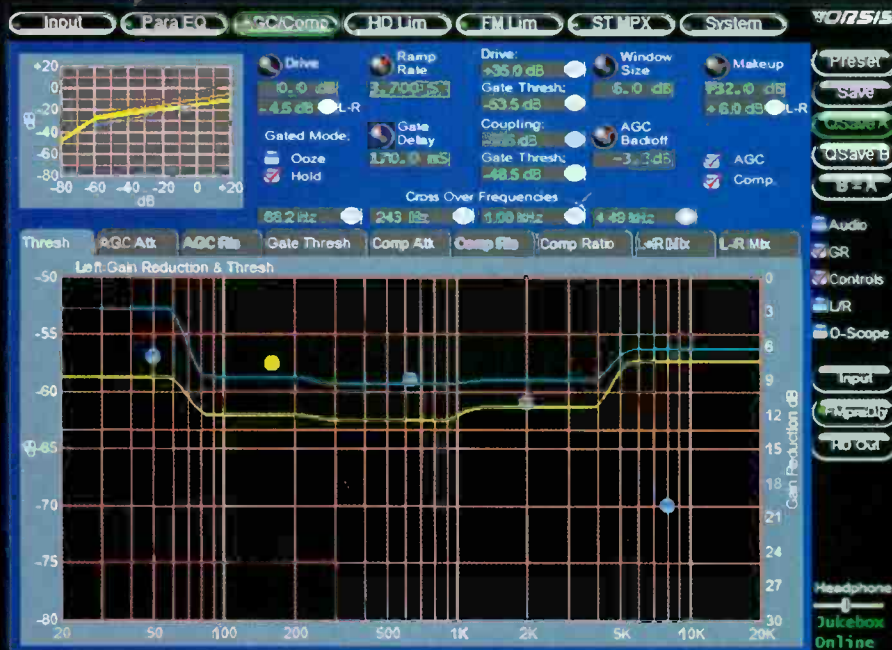
INSIGHT TO IBOC

HD Radio
EPG explained

FIELD REPORT

JK Audio Bluepack
& Nautel NV20

A Penton Media Publication



"VORSIS MAKES RADIO COME TO LIFE"

CHIP MORGAN
BROADCAST CONSULTANT
www.cmbe.com



"I work with radio clients worldwide who love their stations and want the very best sound possible. My job is to make each station special - to bring out all the nuances of the audio and still be loud. When I recommend a specific processor to achieve the sonic goals of a client, expectations are high.

"When Wheatstone came to me with Vorsis, I thought, 'how good can this be?' We installed the Vorsis to blind test with existing processing. Using Vorsis' presets, the difference was already amazing (and I typically don't like presets).

"Working with the full Vorsis toolset, I can get much better fidelity and faster transients with no smear. Detail in recorded music is as good as a higher end home system. I am able to get a vocal presence for announcers that makes listening to them almost compulsive.

"Vorsis' complete array of tools including its 31-band limiter, five-band intelligent AGC, SST (Sweet-Spot Technology), its superior stereo enhancement as well as its bass and voice management systems makes radio come to life. And, Vorsis is smart enough to not double-process music that's already been overprocessed.

"The revolutionary concepts of the Vorsis architecture put all the controls in the sweet spots and give a wide range of adjustments that make it easier to create the magic that my clients demand."



W H E A T S T O N E
VORSIS

Radio has evolved. Your sound should too.

phone 1.252.638-7000 | www.vorsis.com | sales@wheatstone.com



Your Studio – Wherever YOU Are

Take BluePack On The Road – Keep BlueKeeper At Your Desk



BluePack

Bluetooth

Conducting interviews from your desktop or in the field is now easier than ever. With JK Audio's new BlueKeeper and BluePack, it's as simple as making a phone call. Using your Bluetooth™-equipped cell phone, you just pair and go (or stay). Effortlessly capture your voice and the caller on separate channels of your flash recorder or computer. Perfect for broadcast production.

The versatile BluePack (with a convenient beltclip) gives you a balanced mic input with a high-performance microphone preamp, stereo line-out, and an aux send. Together with your Bluetooth-equipped cell phone and a compact portable recorder or computer, it provides an incredibly compact production solution for interviews from wherever you happen to be. OR use it to send live man-on-the-street interviews back to your facility FROM your cell phone.

BlueKeeper gives you the power to mix mic and line level signals with calls from your wireless right at your desktop. It gives you a balanced XLR input with a professional mic preamp for superior sound quality and an XLR output. Mini jacks provide stereo lines in and out, a mono mic-out and a stereo headphone out. As with BluePack, use it to capture an interview or call in a story from Your Studio, wherever that might be.

Whether your interviews are in the field or at your desk, JK Audio's BlueKeeper and BluePack are an integral part of your studio.



BlueKeeper

Bluetooth

www.jkaudio.com

JK Audio
TOOLS FOR SUCCESSFUL RADIO

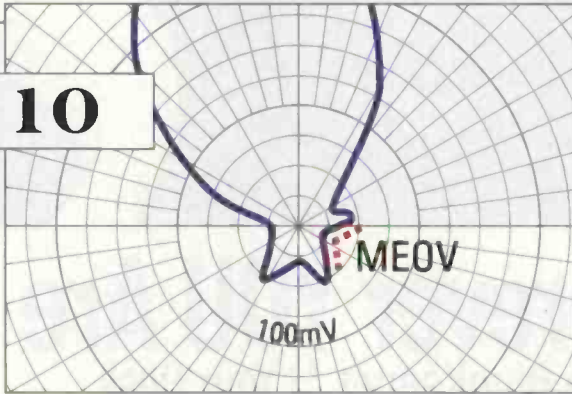
JK Audio, Inc. Sandwich, IL 60548 USA • Tel: +1-815-786-2929 • Fax: +1-815-786-8502 • www.jkaudio.com • info@jkaudio.com

CONTENTS

28



10



40



ON THE COVER

When New Hampshire Public Radio made the switch from classical music to news/talk, it's 10-year-old facility wasn't cutting it. Read the story on page 28.

Cover design by Michael J. Knust.



Features

- 22** Trends in Technology: Legacy Let-Go
by Doug Irwin
Say goodbye to analog and hello to IP STLs
- 28** Facility Showcase: NH Public Radio
by Chriss Scherer
A needed expansion in the news/talk realm
- 38** Tech Tips
by Chriss Scherer
Tips, tricks, hints and more

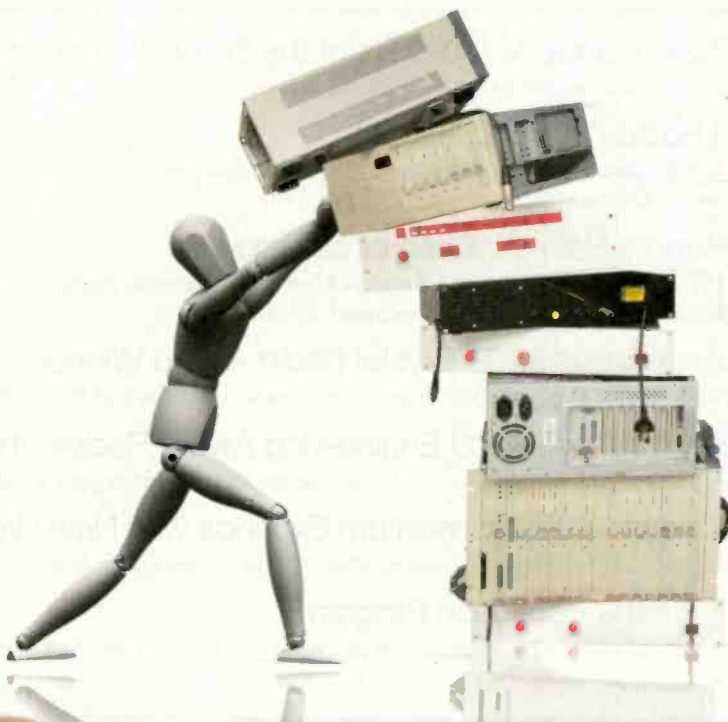
Columns

- 8** Viewpoint
by Chriss Scherer
The show is over
- 10** RF Engineering
by John Battison
Do you remember MEOV?
- 20** FCC Update
by Harry C. Martin
Relaxation of LPFM interference standards

Departments

- 6** Online
at www.RadioMagOnline.com
- 40** Field Report: JK Audio Bluepack
by Mark Nootbaar
- 42** Field Report: Nautel NV20
by Bill Eisenhamer
- 44** New Products
by Erin Shipps
- 56** Classifieds
- 57** Contributor Pro-File
Meet Mark Nootbaar
- 58** Sign Off
by Erin Shipps
NAB Show attendance through the years

How do you fit an entire remote broadcast truck in a single box?



Just choose Tieline...

The Tieline i-Mix G3 IP Codec includes:

- A wireless-capable 6-input digital mixer with a cross point digital matrix router
- Bi-directional audio & simultaneous communications circuits with 4 headphone controls/outputs
- On-board PA output control with a built-in telephone hybrid
- IP and POTS Codecs with wireless 3G/3.5GIP, ISDN, X.21, GSM and Satellite Codec capability
- On-board relay and RS-232 with full studio remote control

**GET A LIVE
VIDEO DEMO
RIGHT NOW**

www.tieline.com/videos

OR CALL:

800-950-0750

Tieline[®] 

www.tieline.com

Currents Online

Selected headlines from the past month.

The *Radio* magazine Pick Hits of the 2009 NAB Show

15 new products are chosen by the Pick Hits judges.

Digital Radio Continues Growth

The worldwide market for digital radio experienced year-over-year growth of 85 percent between 2007 and 2008, reports In-Stat.

SBE Honors Heimerl, Scherer as Fellows

John Heimerl of Hampton Roads Educational Telecommunications Association and Chris Scherer, of *Radio* magazine were bestowed with the honor.

NAB Announces 2009 Crystal Radio Award Winners

The National Association of Broadcasters has named 10 winners of the NAB Crystal Radio Awards

APRE Announces 2009 Engineering Award Recipients

John Kean of NPR Labs and Don Danko of Cincinnati Public Radio get the pub radio tech nod.

Broadcaster Traffic Consortium Expands with New Broadcasting Partners

Journal Broadcasting, Regent Communications, Saga Communications and Corus Entertainment join the traffic data effort.

SBE Expands Education Program

The organization will triple its education programs and hire an education director to oversee the plan.



Find the mic and win!

Tell us where you think the mic icon is placed on this issue's cover and you could win a Heil mic courtesy of Heil Sound.

We'll award a different Heil mic each month during 2009.



This month, enter to win a Heil Sound PR-30.

Enter by June 10. Send your entry to

radio@penton.com

Include your name, job title, company name, mailing address and phone number.



www.heilsound.com

No purchase necessary. For complete rules, go to RadioMagOnline.com.

Site Features

2009 NAB Show Photo Blog

See what happened at the convention through the camera lenses of the *Radio* magazine floor reporters.

- RadioMagOnline.com/nab/photoblog2009



Podcasts Keep You Informed

Download the weekly *Radio Currents* Podcast and stay on top of current radio events, or the monthly *Radio Mag Online* Podcast where you can hear more about APT selling its hardware manufacturing business to Audemat.

- RadioMagOnline.com/podcast



Industry Insight in Talkback

The blog from *Radio* magazine Editor Chriss Scherer is updated throughout the week. It's commentary and views on radio events and news.

- blog.RadioMagOnline.com/talkback



RSS, Facebook and Twitter

All the content at RadioMagOnline.com is available as an RSS feed, and through Facebook and Twitter.

- RadioMagOnline.com/rssfeeds
- facebook.com/pages/RadioMagazine/57886938975
- twitter.com/Radiomagazine



ON THE AIR

SANITIZED FOR YOUR PROTECTION

SOME WORDS SHOULD BE OBSCENE AND NOT HEARD



Eventide Broadcast Delays are designed to keep profanity off your air, and angry listeners, embarrassed advertisers, and the FCC off your back. We invented the obscenity delay and have a solution for stations large and small that provides up to 80 seconds of the highest quality revenue and listener-protecting delay.

Our new HD compatible BD600, 24-bit delay, comes standard with AES/EBU, and provides up to 80 seconds of memory — twice as much as other delays. There are fully adjustable Delay and Dump functions, and a Sneeze function which “edits” audio entering the delay, allowing the host to sneeze, cough, or make a short comment without being heard on air.

The BD600 offers two different methods of delay buildup and

reduction: Eventide’s catch-up and catch-down system, and an exclusive fast-entry-and-exit feature which allows starting a broadcast with the delay already built up to a safe amount and ending it with a rapid reduction of delay.

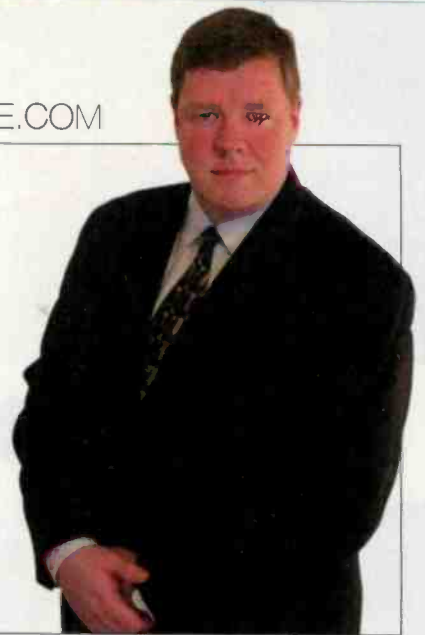
For HD, the BD600 offers MicroPrecision Delay™ mode which allows up to 10 seconds of delay to be adjusted in real time in 100 nanosecond increments. This is useful for synchronizing analog and digital signals while on-air, without audible artifacts, to maintain a seamless user experience.

Whatever your size, whatever your format, you can’t expect to protect the integrity of your air and the foundation of your business without an Eventide Broadcast Delay in your rack.

Eventide®

HD COMPATIBLE

Eventide is a registered trademark and MicroPrecision Delay is a trademark of Eventide Inc. ©2005 Eventide Inc.



The show is over

It's in the books now, the 2009 NAB Show is behind us. As an attendee, your preparation for the convention was probably limited to making some notes about sessions to attend and exhibitors to visit. That's important as an attendee. For the exhibitors and trade press, our planning started months ago. For *Radio* magazine, some of that started last November.

Now that it's over, we can look back and review and analyze it. The general verdict? The NAB touts it as a huge success. Most of the exhibitors I talked to agree. Despite the fact that attendance was down – there were almost 84,000 registered attendees compared to 105,000 last year – it seems like it was a good show. (Keep in mind that attendance figure is registered, not actual.)

With 21,000 fewer people there, the exhibit floor was obviously lighter on traffic this year. Before the show, people told me they were only going for two or three days, not four or five. That contributes to the look of the thinner crowd. Traffic on the floor was less dense. Keep in mind that a person in the door counts in overall attendance. A shorter stay at the show just means less crowd density on the floor, so the combination of a smaller crowd and a shorter stay makes the exhibit hall look sparse.

Some people remarked that the aisles were wider. Some main aisles were very wide, I agree. Most aisles looked to be about the typical 10' to me, but I didn't measure them.

For years exhibitors have been talking about the quality of the attendees being good even though quantity had slipped. This year was the ultimate example of that. Those attending were very serious equipment and service buyers. There were few if any tire kickers.

As one exhibitor told me, "I don't care if attendance is 100,000 or 10,000. As long as I get 150 good leads from the show, I'm happy."

I think he got his wish, and he had more time to see those 150 people thanks to the 20 percent drop in attendance.

The lighter crowd also made it easier for me to work through the floor. While I made other adjustments to my schedule to increase the efficiency

of my time on the exhibit floor this year, fewer attendees made it easier for me to see the people I needed to see. Exhibitors weren't as busy. Fewer people were stopping me en route. Fewer people were clustered into traffic jams. I even had some extra time to explore for new ideas and products that I might have otherwise missed.

As far as new products go, there were some interesting technology applications to be found. As in previous years, I would classify most of the new products as enhancements and refinements to existing products, but there were some unique ideas to be found. I posted some of my own picks online in Talkback.

If you weren't at the show, you missed the in-person experience. But don't worry, we'll help you catch up on what you missed. We'll have lots of convention details in next month's issue. But in the meantime, there's lots of NAB info at RadioMagOnline.com. The *Radio* magazine Pick Hits – now in their 25th year – are posted online. We'll have the complete details on all 15 posted soon. Also, take a look at our Photo Blog, the NAB Insider newsletters, and Talkback posts from during and after the show.

Chris Scherer



- *Photo Blog*
RadioMagOnline.com/nab/photoblog2009
- *Talkback*
blog.RadioMagOnline.com/talkback

The Metropolitan Opera sets the standard for great sound.

And it's chosen ACCESS to let the world listen in.



Photo: Jonathan Tichler/Metropolitan Opera



"Opera is one of the most challenging musical genres to do complete justice to in a broadcast, but ACCESS makes it easy."

—Matthew Galek, Broadcast Engineer for The Metropolitan Opera

The Met's Matthew Galek is a Real-World Super Hero

Not content to rest on its laurels, the most renowned and respected opera company in the world is determined to connect with the widest possible audience—in the highest audio fidelity. With engineer Matthew Galek at the transmission helm, the Metropolitan Opera broadcasts its Saturday matinee to an ever growing number of affiliates using ACCESS (and the optional AAC suite) in multistreaming mode. With ACCESS, the Met's broadcasts offer all the sonic richness it's famous for—over the most challenging IP networks.

ACCESS delivers mono or stereo over DSL, Cable, Wi-Fi, 3G cellular, satellite, POTS (yep, ACCESS is a full featured POTS codec and works seamlessly with Matrix, Vector and Bluebox)—plus some services you may not have even heard of. Given the challenges of the public Internet, it's no small boast to say that ACCESS will perform in real time over most available IP connections.

Contact Comrex today and find out how ACCESS can help you become a Real-World Super Hero—wherever you are!



◀ ACCESS ▶

Put Comrex On The Line.
COMREX

Do you remember MEOV?

By John Battison,
P.E., technical editor, RF

Maximum Expected Operating Voltage (MEOV) is a relic of the earlier days of directional antenna design and proofing. It died about 30 years ago. I'll cover some history since the concept formed a very important part of current antenna design work and led to the development of the standard pattern. The term also became very important in the professional life of the consulting engineer whose directional antenna system failed to operate as planned. It can also be important to today's engineer who might encounter the term in an old proof and be puzzled by its meaning and application.

The value of MEOV proved to be immeasurable to consulting engineers who had the foresight to use it. Some directional antenna patterns proposed to the FCC had specified zero radiation in a pattern null. The FCC's engineers very wisely, in my opinion, eventually said it is almost impossible – and maybe impossible – to reduce radiation nulls completely to zero in view of the environment in which the antenna system has to operate. This led to development of the standard pattern, which basically imposes a built-in minimum radiation of about 6mV.

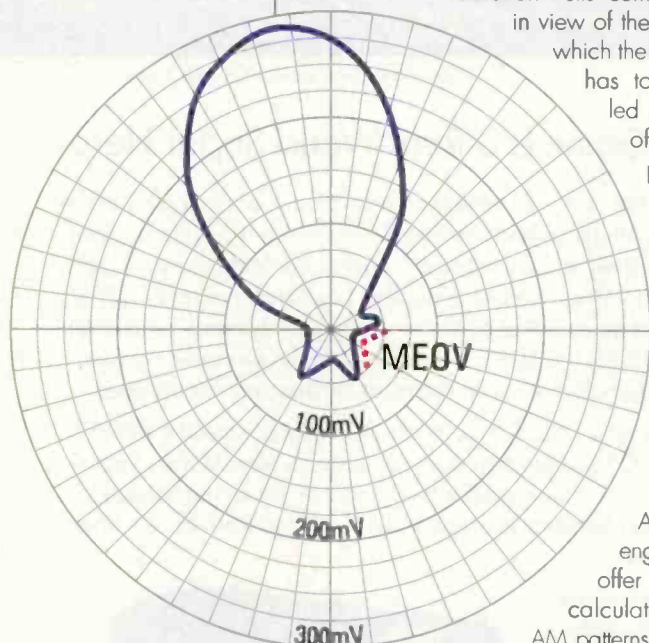


Fig. 1. Typical DA polar plot of a theoretical pattern with MEOV protection

After the first excitement over the Commission's approval of the first directional AM pattern, other engineers began to offer mathematically calculated directional AM patterns. Some of these relied solely on mathematics in presenting theoretical antenna designs. These theoretical antennas required actual construction in order to be tested and prove that the radiation field would do exactly what the design engineers said it would. Sometimes, much to the embarrassment of the designer, it was found impossible to achieve the promised radiation pattern. Occasionally large

changes had to be made in the already-constructed antenna systems in order to satisfy the Commission's requirements for licensing.

changes had to be made in the already-constructed antenna systems in order to satisfy the Commission's requirements for licensing.

Knowing limits

The Commission's procedure for licensing requires the antenna pattern and radiation obtained in the proof of performance measurements to always be within the limits of the proposed antenna pattern. The usual problem delaying license approval was probably the presence of unexpected measured radiation that was greater than the proposed and approved, radiation value in the pattern nulls. The solution quickly became apparent. It seems that troublesome, larger-than-acceptable, measured null values could be acceptable if they were covered in the application by an acceptable caveat.

The approved pattern was generally the theoretical pattern, if this pattern could be easily obtained. In the higher-level areas, a small deviation in the null region could probably be written into the pattern so it passed the pattern proof. In many cases it seemed impossible to get closer than plus 3 percent to 5 percent of the theoretical value shown in the application. Sometimes filing an amended Form 301 could satisfy the condition and allow licensing to proceed. Unfortunately this procedure would involve another application showing the obtainable allowable radiation, presumably more legal fees, additional delay and professional embarrassment for the consulting engineer.

The new application would show a new value in the offending null that amounted to a few percent. Some very bright person conceived the idea of filing an original application, showing the desired theoretical pattern with a broken line outside this pattern, at the potentially offending null showing the maximum expected operating value in that area.

Thus MEOV was born. It offered a wonderful means of providing a way around a potential difficulty in meeting the approved radiation pattern. So the wise thing to do whenever a directional antenna pattern was filed was to add a few percent more than the theoretical pattern in any potentially

Insight to IBOC

May 2009

Part of the *Radio* magazine DAB Answer Series

The Electronic Program Guide

By Rick Ducey

What's on the radio? As more stations not only go digital but also offer multicast services, this question gets harder and harder for listeners to answer. As of March 2009, according to BIA Advisory Services, there were 1,887 HD Radio stations on the air. Many of these digital stations also offer one or more multicast services. Digital subscription services such as cable and satellite TV, and radio all offer guide services. Most homes subscribe to a cable or satellite service and get the benefit of the service's program guide for broadcast television stations carried on these services. In addition, broadcast digital television signals carry over-the-air guide information the stations transmit themselves. In stark contrast, radio sends its signal right to the listeners' receivers with no intermediary to produce a master program guide. Radio broadcasters must provide their own guide information. Among the electronic media, broadcast radio may be the hardest for the audience to answer the simple question, "What's on?"

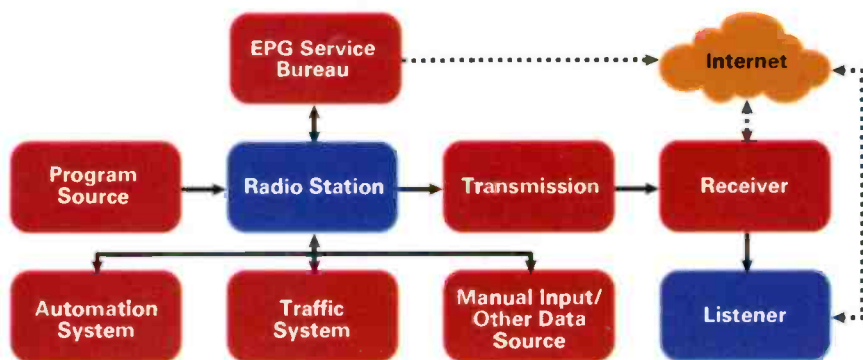


Figure 1. Possible EPG data flow

Without a guide, the three most common tools radio listeners use to figure out what's available are their self-programmed tuning buttons (which narrows the listener's options to a half dozen or so pre-programmed channels), and the seek and scan buttons. To make the most of these tools, listeners must practice enough patience to listen through the undesirable content before they pick the station with the desirable content. Even then, a listener may be immediately satisfied by the current offering on a new-found channel, but must spend time with the channel to get a sense of its programming format and style. And unlike television, radio receivers and their displays are more limited in how they convey information. Finally, unlike all but the most cutting-edge TV services, radio is a mobile medium – what exactly is receivable at any

Open Mic

Elevated sidebands

The idea of increasing the power level of the digital sideband carriers in the hybrid HD Radio signal was introduced just more than a year ago. In the time since, debates have ensued about the idea itself and the specific power level. With the issue outstanding, some stations have decided to place their HD Radio transition plans on hold pending the outcome. *Radio* magazine talked to Jeff R. Detweiler director, broadcast business development at Ibiquity Digital.



Radio: Where do we stand with the proposed digital level increase in relation to NPR actions and the FCC?

JD: Ibiquity and the broadcasters have proposed that the FCC move forward immediately with a power increase for commercial stations where there is support for an immediate power increase. So, it's with the FCC.

NPR Labs tells us that it is supportive of and committed to a power increase. They have questions about the appropriate amount of the increase and want to have what they call a "managed increase." NPR Labs is currently planning

continued on page 6

Inside

Multicast Milestones 6

The *DAB Answer Series* is an ongoing series of supplements that covers the technology of digital audio broadcasting.

Insight to IBOC - a supplement to *Radio magazine*, May 2009, © 2009 Penton Media. All rights reserved.

A special supplement to

Radio
THE RADIO TECHNOLOGY LEADER

"Show me a handheld RF tool that can help me do more out there."



We'll show you three.

Your field work is increasing, not decreasing. You need an analyzer that can keep up. Ultra-fast Agilent handheld RF analyzers can help you test and monitor more sites in less time. With significantly faster

Handheld RF Testers:

- RF Cable and Antenna Tester (N9330B)
- FieldFox RF Analyzer (N9912A) – cable/antenna, spectrum analyzer, power meter and more
- Spectrum Analyzer (N9340B)

measurement speeds, longer battery life, streamlined data transfer and optional built-in calibration you'll spend less time waiting and more time doing. Field-rugged, backlit keys, bright screens. Go Agilent. Do more.

**Choose a FREE Option*
and order a FREE Poster**
www.agilent.com/find/rfhandheld



Program Guide

given location varies, placing a new design constraint on a digital radio program guide. Listeners will not want to be burdened with a list of all stations in the market, half of which are out of the receiver's range. Television viewers enjoy the benefits of on-screen electronic program guides featuring the usual day/time program grids as well as search, bookmarking, digital recording and even sorting by content type among other features. Television as a medium offers its viewers far more transparency and control in finding content than radio can provide its listeners.

Getting started

To jump start an industry solution, the NAB Fastroad technology initiative, funded by the National Association of Broadcasters, decided that the problem of letting listeners know what's on HD Radio was significant enough to merit further research and development. BIA Advisory Services and Broadcast Signal Lab jointly submitted the winning proposal for developing an Electronic Program Guide (EPG) for HD Radio. BIA and BSL teamed with the British software firm, Unique Interactive, which has extensive experience in developing a commercially deployed electronic program guide for DAB in Europe. Ibiquity Digital has also provided critical technical support for this project.

NAB Fastroad divided work on the EPG into two phases to design, develop and test an Electronic Program Guide (EPG) solution for HD Radio broadcasting. Phase 1 was completed fall 2008. The goals for Phase 1 were to (1) develop and document a set of comprehensive business requirements; (2) develop preliminary and then a final EPG architecture, and (3) recommend a market for field trials. The project team has completed Phase 1 work in researching business and functional requirements and developing specifications. The business requirements document is publicly available at the Fastroad website, and the project team invites industry review and input. The field trial will be conducted with the cooperation of radio stations supporting this effort in the Boston radio market, including Worcester, MA, and Providence, RI.

Phase 2 efforts to develop EPG software and then lab test it before conducting field trials are now underway with the goal of completion by the fall of 2009. Once the project team started tackling the problem of developing a radio EPG service, however, it quickly became apparent that to create a successful business and technical model for a universal radio program guide service is more complicated than it appears on the surface. For example, in the case of television, a cable or satellite operator obtains and provides a

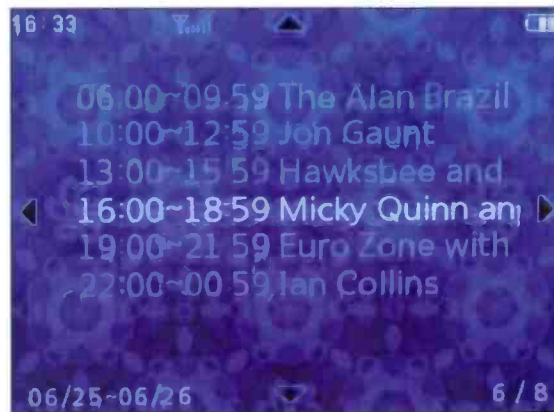
Figure 2



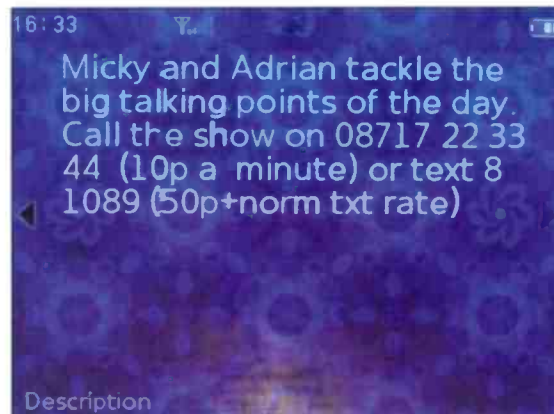
EPG displays from an EPG application in the UK. First, select a channel.



Then select the date.



Then select the time and program.



The listener receives details about the program.

Program Guide

common program guide for all of its services. Also, there are national program schedule databases for television programming that are routinely fed program guide information from the individual stations and networks. Finally, there are third parties who provide and operate program guide services. None of this infrastructure exists for radio.

Because radio is a medium that serves its audience directly rather than via a cable or satellite distribution platform the way most broadcast TV is watched, radio stations must take primary responsibility for delivering program information for what's on radio. And since the locations of radio transmitters are so geographically diverse, the radio signals received on the northern side of a market will be significantly different from the signals received on the southern side. Who will transmit all this program data and how will the receiver make sense of it?

The BIA/Broadcast Signal Lab/Unique Interactive project team envisions four possible models for EPG data delivery.

Four Models for EPG Delivery

Parochial Model – each station transmits only its own EPG data.

Shared Model – each station transmits all market EPG data (at least high level data without details).

Master Station Model – one or more stations transmit market level EPG data for all other stations.

Network Model – stations transmit "pointers" to EPG data sources which can include over the air sources as well as other sources such as Internet-based program guides.

Figure 1 (page 1) shows how the Electronic Program Guide data could flow from source to listener. Program guide data can be provided by the program source (network or program syndicator), automation systems, traffic systems or input manually by station personnel. A third-party EPG service bureau can provide some or all of these services. Another function of a service bureau is to scrub the data for consistency, accuracy and formatting. Once the EPG data has been acquired and prepared for delivery to the listeners, it can be sent either over-the-air or over the Internet to receivers for display to listeners.

The listener experience

How might this look to listeners? The examples in Figure 2 (page 3) are actual displays from a Unique Interactive commercial deployment of an EPG service in the United Kingdom. In this example of a live service, a listener can drill down for EPG

information on a favorite station. Starting from the top left, the listener first selects a station (Talksport), then selects a day (25 June - 26 June), then selects a time period (16:00-18:59), then finally selects the program. The receiver displays show some program-related information. The user can then directly tune to the station, or set up a reminder to listen or a recorder to capture the program.

Notice also that the EPG display can be used for a call to action. The example here shows a call to action inviting the listener to call the show (on a telephone number that costs the listener 10 pence (15 cents) per minute) or send a text message to the show (with a 50-pence (74 cents) charge plus any other applicable text fees for that listener's mobile phone service plan). Hot links to websites or social networking services can be selected to connect the listener to information about the program or its sponsors.

Unique Interactive's experience is that about 10 percent of the DAB receivers in the U.K. market are currently equipped with EPG capability, and the results are encouraging. The BBC uses an EPG service both via the Internet and over the air that makes possible a type of multicast programming and scheduling promotion that would not otherwise be possible.

The benefits of an HD Radio EPG service from a listener's perspective makes the radio more convenient to use. EPGs will enable a recording solution that will introduce time-shifting to radio, something television viewers have long enjoyed. For receiver manufacturers, EPG receivers offer an opportunity to increase profit margin on unit sales by providing value-added features and functionality. EPGs can help broadcasters by supporting forward promotion and helping listeners discover their stations and program more effectively.

To succeed, an EPG must appear as a coordinated service. Its power will come from the collective information it provides about all stations in a market. The EPG service for HD Radio stations can be a rising tide that lifts all radio broadcasters, giving a new face to an old medium, at a time when it can use a good competitive boost.

The author recognizes other members of the project team: David Maxson, Broadcast Signal Lab; Skip Pizzi, EPG consultant to BIA; and Adrian Cross, Unique Interactive. David Layer of the NAB is the NAB Fastroad HD Radio EPG program manager.

Ducey is the chief strategy officer for BIA Advisory Services.

Links

www.nabfastroad.org
www.bia.com

IF ARBITRON™ CAN'T HEAR YOU, YOU'RE OFF THE AIR.



Failure is not an option. You need failsafe power!

In this business, nothing is worse than dead air. And if your Arbitron PPM™ encoder quits, you're dead in the ratings. That's why we built the PowerSwitch, our new automatic AC power controller. It will seamlessly switch between your Main and Backup PPM™ Encoders, so you get the ratings you've earned!

PowerSwitch sports two standard AC outlets to supply power to Main and Backup equipment. You can also use it to remotely re-boot PCs or turn anything on or off. PowerSwitch is remarkably easy to use.

You can operate it with its convenient front panel pushbuttons or remotely control it via external GPI contact closures. It will sound an audible alarm to alert nearby staff whenever it switches to Backup mode, while vivid LEDs indicate its status. You'll barely know it's there. Until you need it.

As long as we're talking power, check out our PowerClamp series of Transient Voltage Surge Suppression (TVSS) units.

Designed specifically for broadcast applications, these are the most advanced TVSS units in the industry.



They'll get rid of the nasty power spikes that can knock you off the air.

Nothing else out there comes close.

WE BUILD SOLUTIONS.

DIGITAL SOLUTIONS. ANALOG SOLUTIONS. FUNCTIONAL. RELIABLE. AFFORDABLE.

Visit www.henryeng.com for all of Henry's solutions!



Henry Engineering • 503 Key Vista Drive, • Sierra Madre, CA 91024 USA • T: 626.355.3656 • F: 626.355.0077 • email: Info@henryeng.com
Arbitron™ and Arbitron PPM™ are trademarks of Arbitron Inc. Used with permission.

Sample and Hold

1,000 multicasts and counting

By Chriss Scherer, editor

There are several enhancements to terrestrial radio that HD Radio offers, and each has its own merits to help further the technology and its acceptance. Despite these

stations. The 1,000 multicast streams are spread across 1,600 FM stations.

The Ibiqity website lists all the stations currently transmitting HD Radio signals, and according to this list, of the 1,000 multicasts 900 of them are on HD2 signals. The remainder are on HD3 slots. The Ibiqity list shows no multicasts on HD3 channels.

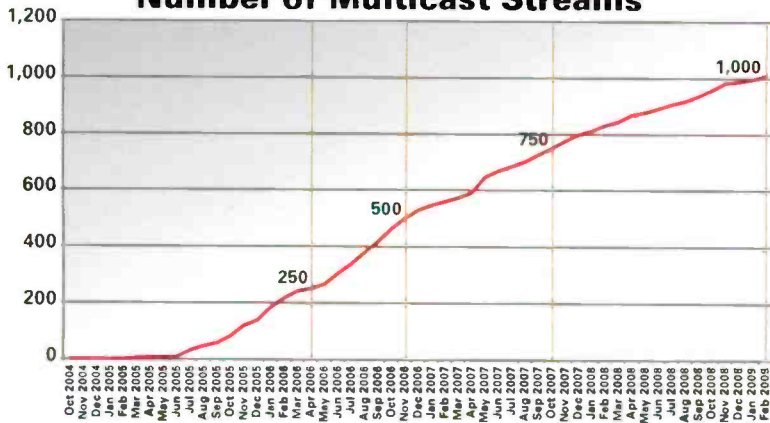
The first multicast streams were launched at the end of 2004. By the end of 2005, there were 21 multicast streams. The multicast adoption has seen a steady increase ever since, albeit with a few growth spurts. The 250th stream went live in April 2006. The 500th stream was activated in November 2006, and the 750th stream was launched in October 2007.

Multicast formats span a variety of formats. Many of them are unique niches in some way, such as deep cuts, all live, all acoustic or other similarly focused aspects of a traditional radio format. Some multicast streams are rebroadcasts of AM stations. The BBC World Service and NPR programs are also popular multicast offerings.

So with 1,000 multicast streams and counting, it appears that it has established a firm foot hold.

Data for charts courtesy of Ibiqity Digital and the HD Digital Radio Alliance.

Number of Multicast Streams



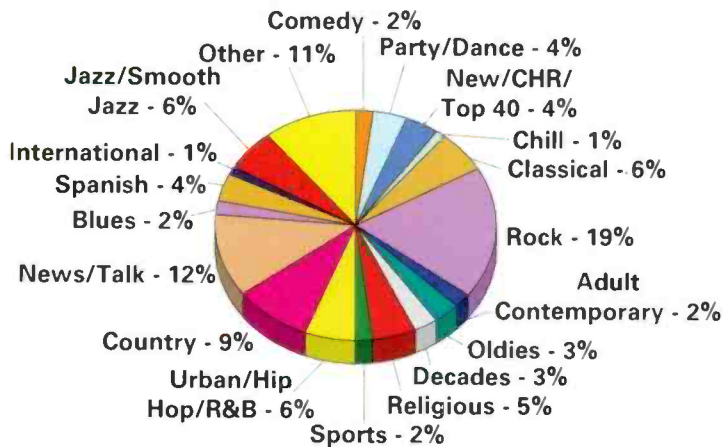
enhancements, many stations have difficulty identifying the return on investment. But for one FM enhancement, the return is obvious.

Multicasting, the ability to transmit more than one program stream on the FM HD Radio path, is one enhancement that can show a direct result right now. The added program streams are an immediate outlet for an additional revenue stream. And while the main program stream provides the main source of revenue, multicast stream formats can be tested and evaluated with little effort at the start.

In February, the 1,000th multicast stream was turned on. According to the HD Digital Radio Alliance, CBS-owned WODS-FM Boston launched the 1,000th multicast stream on its HD2 with the format Soft Hits - Love Songs. But there are more statistics related to multicasting than the overall quantity.

There are currently nearly 1,900 stations transmitting an HD Radio signal. Of those, almost 300 are AM

Multicast Format Breakdown



Open Mic

continued from page 1

more testing to determine the appropriate power increase for NPR member stations and Ibiqity has offered to provide input on and help support these tests. Ibiqity continues to work directly with public radio stations to ensure they are fully educated about the benefits of a power increase.

Radio: Is there an expected date when the FCC will finalize it?

JD: With a new administration and an acting commissioner, this is very difficult question to answer. We're hopeful

that we'll see some action in the next several months.

Radio: The actual digital power level has been debated to a range from -20 to -10dB. Do you expect a fixed-level ruling, a stations-can-choose level, or a value based on certain criteria?

JD: The commercial broadcasters are asking for approval to go to -10dBc. If additional testing demonstrates that less power for non-commercial stations would be appropriate, then a suitable algorithm will be developed to fix the appropriate levels.

Introducing the NV Series

3.5kW – 44kW FM

more **POWER**
more **CONTROL**
more **OPTIONS**

Following the extremely successful launch of the NV40 FM transmitter, broadcasters asked when they could get the advanced features of an NV40 in a midrange power transmitter? The answer is now. Introducing the NV Series of FM transmitters with power outputs of 3.5kW to 44kW. All NV transmitters come complete with an integral advanced digital exciter, Nautel's Advanced User Interface, built in instrumentation and all of the redundancy, hot-swap serviceability and reliable rugged design that you have come to expect from Nautel.

Learn more at nautel.com/expectmore
902.823.5131



Advanced User Interface



HD Radio
Pure Digital. Clear Radio.

Making Digital Radio Work.

nautel

Its Nautel's 40th anniversary: all NV and NX Series transmitters purchased in 2009 will receive a 5 year warranty

If your equipment
budget looks like this...



give us a call.

JETSTREAM (MINI)

A reduced equipment budget doesn't mean you have to cancel your studio project, or even give up the features you want. Logitek's cost-effective IP audio solutions give you the flexibility you need for audio routing, distribution and mixing – for about a third of the price you've come to expect. Our advanced hardware designs and networking protocols not only make your project less expensive, they make it easier to implement.

Call us at **800.231.5870**

or check out **JetStream IP Audio** routing
solutions at **logitekaudio.com**

The logo features a stylized red and black arc above the text.
Logitek
Console Router Systems



troublesome areas. As time passed it became very unusual to see a proposed DA pattern without an MEOV. As a matter of fact, several consulting engineers have been known to put an MEOV around the full 360 degrees of a pattern. Actually, this is not quite as strange as it sounds. The electronic environment surrounding directional antenna stations is still changing for the worse, and presenting more tower structures than there were 80 years ago. It was becoming more difficult every year to construct and proof a new directional when proposing a new antenna system. In much the same way as MEOV was developed, time passed and another problem involving theoretical patterns and MEOVs began to develop.

Meoving, I mean moving on

Around the end of the 1970s it became apparent that some confusion would often exist for both FCC engineers and consulting engineers; it was often difficult to determine looking through the files whether an MEOV or the theoretical pattern had been used in the final operation. To avoid this increasing confusion the Commission decided to introduce the standard pattern for directional antenna applications. The standard pattern was

produced by adding a term representing the minimum allowable radiation to the generally used equation in directional antenna design. Thus was born an acceptable antenna pattern that could never decrease to zero in a null.

The Commission generated and provided a list of standard patterns for all licensed AM directional stations in the early 1980s. Later it issued the edict that all applications involving directional antennas must be based on the standard pattern. It was inevitable, of course, that there would be instances when the standard pattern just couldn't fit due to excessive radiation on one or more azimuths. To take care of these situations, augmentation was allowed as described in the commission's rules. Provided that the excessive radiation did not produce unallowable interference the pattern could be augmented over the pertinent arc. Appropriate information concerning the degree of augmentation used is noted in the directional antenna data. Thus any engineer can easily and accurately obtain precise information on any licensed directional station or applicant and the theoretical DA pattern with MEOV is no longer used.

E-mail Battison at batcom@ohio.net.

KINTRONIC LABS

YOUR TOTAL SOLUTION SOURCE FOR AM/HD READY ANTENNA SYSTEMS

COMPLETE SYSTEMS

PRE-FAB BUILDINGS

FM/STL ISO-COUPLERS

DIPLEXERS/TRIPLEXERS

UNIPOLE KITS & DETUNE SKIRT KITS

ATU's

INDOOR DUMMY LOAD

PHASORS

COMBINERS

DUMMY LOADS OUTDOOR/INDOOR

PRE-FAB TRANSMITTER BUILDINGS

SPECIALIZED MOBILE ANTENNA SYSTEMS

- RF FEEDER SYSTEMS DESIGNS
- SITE PLAN DEVELOPMENT
- GROUND SYSTEM DESIGNS
- **FIELD SUPPORT & INSTALLATION**

IN STOCK!
PRICES AVAILABLE ON SOME MODELS LIKE NEVER BEFORE

PowerAIM 120
AM, HF, FM
ANTENNA
ANALYZER

EVERY
FIELD ENGINEER'S
DREAM!
CALL FOR DETAILS

KinStar ANTENNA

CAN YOU FIND THE KinStar?

- * LOW COST
- * LOW VULNERABILITY TO LIGHTNING
- * SHORT INSTALLATION TIME
- * MEETS LOCAL ZONING HEIGHT RESTRICTIONS
- * WIDE-BAND FOR HD RADIO
- * HIGH RADIATING EFFICIENCY

www.kintronic.com

1.423.878.3141

Relaxation of LPFM interference standards

By Harry Martin

Two bills (H.R. 1147 and S. 592) have been introduced in Congress that could lead to a wave of new LPFM stations – possibly thousands of them. The bills would statutorily eliminate LPFM's third-adjacent channel protections to full-power FM stations. The House version has garnered the support of 22 Representatives, including members from both sides of the aisle.

The new legislative initiatives are part of a back-and-forth struggle over third-adjacent channel protections, which has been going on since the LPFM service was initiated in 2000. The bills have new momentum as a result of

Washington's interest in localism in the radio service. This interest, in turn, has been fueled by the consolidation of the radio industry and the resulting diminution in local ownership of stations. The economic downturn has contributed to the problem by causing the elimination of news and informational programs on radio.

Dateline

June 1 is the deadline for submission of biennial ownership reports by radio stations in Arizona, DC, Idaho, Maryland, New Mexico, Nevada, Utah, Virginia, West Virginia and Wyoming.

June 1 is the deadline for radio stations in Arizona, Idaho, New Mexico, Nevada, Utah and Wyoming with more than 10 full-time employees to electronically file their Broadcast EEO Mid-Term Reports (Form 397) with the FCC.

June 1 is the deadline for radio stations licensed in the following states to place their annual EEO Reports in their public files: Arizona, DC, Idaho, Maryland, Michigan, New Mexico, Nevada, Ohio, Utah, Virginia, West Virginia and Wyoming.

As originally conceived, LPFM stations were not expected to protect third-adjacent channel full-power FM stations from interference. Such protections were thought to be unnecessary due to the relatively small geographic areas where interference might occur (i.e., immediately adjacent to the LPFM's transmitter site). But radio industry concerns about the interference that could be caused by a large number of new LPFM stations triggered Congress to step in and overrule the Commission by amending the Communications Act to maintain third-adjacent protections. Acknowledging some

doubt as to the extent that such interference would pose a threat, Congress directed that the FCC study the issue further.

That in turn led to the 2003 Mitre Report, prepared for the Commission by the Mitre Corporation at a cost of more than \$2 million. Mitre concluded that third-adjacent channel interference would not be a significant problem. The broadcast industry disputed these findings.

In 2004 the FCC, based in part on Mitre, asked Congress to delete the third-adjacent provision that had been added in 2000, but no action was taken on that request. Then, in late 2007 the FCC adopted interim processing rules that would permit LPFM stations to seek waivers of the second-adjacent channel protection requirements. At the same time the FCC proposed to do away with the second-adjacent channel protections now included in the LPFM rules. These actions caused the FCC and Congress to focus anew on the third-adjacent channel interference issue.

As noted above, the bills are viewed as bolstering the Commission's efforts to promote localism in broadcasting generally and have language in them to that effect. The bills also suggest that increasing the number of LPFM stations will increase minority and female ownership in broadcasting and will enhance communications during local or national emergencies. Nevertheless, the new bills, while generally de-regulatory, provide that third-adjacent protections must be maintained for full-service noncommercial FM stations that provide radio reading services (RRS) on their SCAs.

If the bills pass and third-adjacent protections are eliminated, and if the FCC then pursues its 2007 initiatives and adopts final rules eliminating the second-adjacent channel protections as well, full-power FM stations will be protected only from co-channel and first-adjacent channel LPFM interference. Because the FCC is planning to open a window for new LPFM stations later this year, adoption of all the pending proposals by Congress and the FCC would make spectrum available for thousands of new LPFM stations. ♣

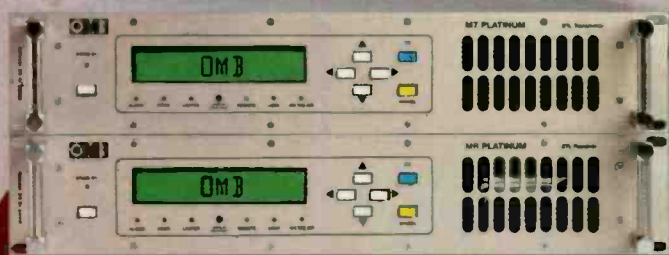
Martin is a member of Fletcher, Heald & Hildreth, PLC, Arlington, Virginia. E-mail: martin@fhhlaw.com



B R O A D C A S T

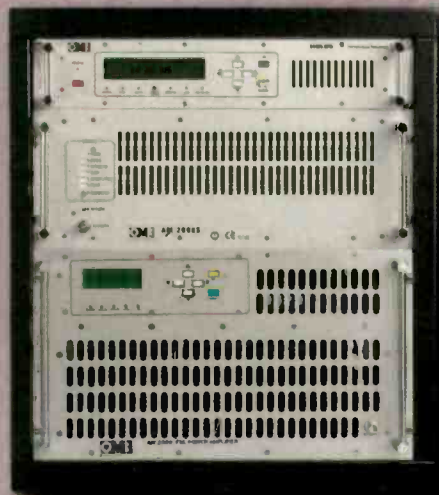
FM TRANSMITTERS

All transmitter powers with the best quality price ratio



MT/MR PLATINUM

> 1GHz
is a high-performance Studio-to-Transmitter Link. It is made up of the 5W MT transmitter externally synthesized in 10MHz sub-bands with a step of 100KHz, and the MR double conversion receiver, that is externally synthesized, too. The MT is microprocessor controlled, and includes LCD display for the visualization of the most relevant transmission parameters (frequency (6-digit), forward and reflected power, modulation level), balanced Mono, Stereo (MPX). The MR receiver has the same visualization system as the transmitter. It includes balanced Mono and Stereo (MPX) outputs. Furthermore, the MT/MR Platinum STL includes a jumper in order to get a proper operation with digital signals.



EM 2000

is a 2000W FM transmitter made up of the EM 25 DIG exciter (or EM 20/30 exciter) and the AM 2000 FM amplifier. AM 2000 includes eight 300W high-efficiency MOSFET technology amplifying modules, fed by 2 independent switching power supplies, which are made to withstand the working conditions. The amplifying modules work independently thanks to a power combining structure that provides high isolation between them.

EM 10000

is a 10000W FM transmitter made up of the EM 250 COMPACT DIG exciter and three control units which combine the power of six AM 2000 FM amplifiers. AM 2000 includes eight 300W high-efficiency MOSFET technology amplifying modules, fed by 2 independent switching power supplies, which are made to withstand the working conditions. The amplifying modules work independently thanks to a power combining structure that provides high isolation between them.

www.omb.com

OMB AMERICA

factory and laboratories
phone. (305) 477-0973
(305) 477-0974
fax. (305) 477-0611
3100 NW 72nd. Ave. Unit 112
MIAMI, Florida 33122 USA

OMB EUROPA

departamento comercial
teléfono. 902-187878
fax. 902-187878
Avda. San Antonio, 41
CUARTE DE HUERVA
50410 Zaragoza, ESPAÑA

From september in:

fábrica y laboratorio
teléfono. 902-187878
fax. 902-187878
Pol. Ind. Centrovía C/Paraguay, 6
LA MUELA
50196 Zaragoza, ESPAÑA



Letting GO of Legacy

Goodbye analog
(and some digital)
STLs, hello IP

By Doug Irwin,
CPBE AMD DRB



By now you know I'm a big fan of new technology. However, I also know there is still an important role in a radio station's technical facility for legacy equipment. Like many, I find it difficult to retire a piece of equipment that has served its purpose reliably over a 10- or 20-year (or maybe even longer) period of time. Some equipment is truly classic. It seemed very expensive when new, but easily proved its worth over the years. However, time and technology move on, and those classics' original design specs – good as they were then – are in many cases simply inadequate today.

Analog STL systems fit into this category well. While we've moved on to the current state-of-the-art in our STL systems here in New York, we still hold on to our old reliable STL systems as backups.

Perhaps you find the time has come to relegate your old analog STLs to backup status as well. There are too many advantages to ignore in a digital STL, such as constant audio performance over a varying receive level, or the ability to extend a local area network from the studio to the transmitter site. There are various radio systems available for any need in a broadcast facility.

Basic change from analog to digital

The digital STL systems for our 950MHz band will of course work on a channel that you currently have licensed, but because they use more bandwidth, you'll have to essentially relicense the channel to reflect the change. For example, a Moseley PCL 6010 has an FCC emission designator of 300KF8E (which essentially means it has analog modulation with 300kHz of bandwidth) while a Moseley Starlink (using 64 QAM) has an emission designator of 500KD7W (digital modulation with 500kHz of bandwidth). You will have to re-coordinate with local users in the same band. The good news is that a digital STL transmitter is less likely to interfere with co-channel or first adjacent channel analog receivers (since whatever happens to be heard by the other receiver pretty much sounds like incoherent noise). Conversely, a digital receiver is more likely to be interfered with by an analog transmitter, because any analog modulation heard by the digital receiver has the potential to degrade its BER since it is essentially incoherent noise.

My experience is that digital STL systems are very good at ignoring other co-channel digital systems; some experiments showed that co-channel systems would ignore each other as long as the desired-to-undesired ratio exceeded 15dB. Your mileage may vary, but don't forget to consider fade margins if you put more than one system locally on the same channel.

The well-known STL manufacturers of course have mature digital STL products available.

TFT makes the Model 460 digital STL. This radio system will carry up to six channels of uncompressed digital audio, with the modulation scheme (and bandwidth) depending upon the number of channels

actually used. For example: six channels of audio (at a 32kHz sample rate) calls for the 256 QAM modulation scheme. In that case the receiver (according to their published specs) requires, at minimum, a -84dBm signal to operate at a BER of 10^{-6} . This system has both analog inputs and outputs, along with AES ins and outs. Configuration is done by way of a GUI that runs on a PC (serial connection).

For those who remain unconvinced that there are advantages to using a digital STL, let's consider those specs for just a moment. This type of radio system is carrying the equivalent of what three analog radio systems would carry; at the same time, its audio specs are way beyond what the best analog radio could ever do, and the receiver needs less signal to do it.

In a nutshell, the digital radio systems are way more efficient in terms of the bandwidth they need, along with the amount of power they need, and oh by the way – the audio is better too.

Moseley offers the Starlink SL9003Q, which will also carry up to six channels of digital audio; the bandwidth and modulation scheme depend upon the number of audio channels specified by the end-user. The Starlink has both analog inputs and outputs along with AES inputs (built-in SRC) and outputs. As you would expect from a digital radio, the audio specs are great with a dynamic range of 90dB and a THD spec of less than 0.01 percent. The Starlink can also be configured to use up some of its native bandwidth for a simplex LAN extension which will deliver UDP data streams (up to a total of 544kb/s).

Other configurations

The trend in technology for audio transport (along with most other forms of communication) is certainly more and more based on IP. So, though you may simply need one AES data stream for your analog transmitter, there may very well be many other pieces of gear at the transmitter site that want to communicate with you by means of a LAN. These would include RBDS encoders, remote controls, computers, remote cameras, VoIP phones, satellite receivers, and on and on.

As mentioned above, the Starlink can send UDP data streams to a transmitter site, but most of the items you would place at the transmitter site are going to require a duplex link so they can communicate via

Letting Go

TCP (as opposed to UDP). What's the practical way to accomplish that, assuming there are no other options at your transmitter site?

Fortunately for us broadcasters there is the 900MHz ISM band (which actually extends from 902 to 928MHz). Unlicensed channels can be used in this band (subject to FCC parts 18 and 15) for the purpose of carrying digital data, to and from the transmitter site. The relative

proximity to the 950 band we're accustomed to using means that we can re-use the antennas already in place easily enough. This is done by adding duplexers to an already established link. (When you fill out the 601 for your new digital STL system make sure you add in the additional loss incurred due to the duplexer on the transmit side.)

Moseley makes a system called Lanlink that works in exactly this fashion. The ISM band transceivers that

are the heart of the system can deliver 512kb/s of data, 10base-T Ethernet. (In addition to the Ethernet connection, it also provides two RS-232 serial links that can be configured for a data rate between 1200 and 115,200 baud.)

With the explosion in networking, though, there may be other options for you to check. A quick search online is all that is needed to find other manufacturers of 900MHz ISM band radios that transport Ethernet. You could even avoid the cost of the 900MHz duplexers by purchasing separate antennas for the ISM band. And, obviously with this method, there is no effect upon your current 950MHz system.

Higher ISM bands

So far we've covered the 900MHz ISM band mainly because it was close to our familiar 950MHz STL band. You're probably aware that there are quite a few other ISM bands (2.4, 5.3 and 5.8GHz) and there are multiple manufacturers that make gear for use thereupon. Again, the explosion of networking has had a positive effect for end-users in the sense that there are more and more players making the gear and antennas, since the potential market is so big.

Of course the down side to that same explosion is that the potential for interference, even while using the spread-spectrum (frequency-hopping) radios, is real and substantial. Proper engineering of the link will be



TFT Model 46



Moseley Lanlink and Starlink SL9003Q



Bliss Communications Radio



Spanish Broadcast Systems-Miami



Spanish Broadcast Systems-Miami

LET RAM DESIGN A BROADCAST FURNITURE PACKAGE TO FIT YOUR BUDGET.....

OVER 40 YEARS EXPERIENCE

Specializing in Broadcast Furniture & Integration



Journal Broadcast Group-Milwaukee



PRN-Concord, N.C.



800.779.7575

RAM Broadcast Systems
www.ramsyscom.com



PRN-Concord, N.C.



BE Big Pipe LT



Adtran 4205 and 5045

necessary to minimize the effects of interference from other unlicensed users: highly directional antennas are a must. (Be sure to adjust the TPO of each transmitter so that the ERP remains within legal limits.) Obviously you can also change the polarity of the link to minimize the effects of interference.

Broadcast Electronics makes the Big Pipe LT, which is a radio system that works in the ISM bands mentioned. The entire system is made up of eight components: the program interface (single rack unit that goes in the technical center); a managed Ethernet switch; the IDU (indoor unit) which also goes in the tech center; and finally the ODU (outdoor unit) which mounts near or upon the antenna used on either end. The far end is a duplicate of the near end.

The interface unit has both analog inputs (A/D conversion of up to 24-bit, 96kHz sample rate) and AES inputs

(with clock source selectable between its internal clock, AES derived, or word-clock). Additionally, the unit has provision for four GPI/O ins/outs and status, along with an RS-232 data path. By means of the managed Ethernet switch, all the TCP connections necessary for HD Radio (including one representing the analog audio and MPS), the SPS (from a local importer), and the PAD information will be aggregated and trunked over to the IDU. The IDU and ODU

are connected by way of a coaxial cable; and finally the ODU communicates with the far end via the selected ISM band RF link. The radio link itself can be managed by way of SNMP, RS-232, HTTP or Telnet.

Perhaps you just want to build a high-bandwidth LAN connection to your transmitter site. After all, you have quite a few choices today in choosing boxes that take audio (analog or digital) in, and put TCP out. As I wrote earlier, almost everything communicates in that fashion today.

Take, for example, the Adtran Tracer series 4205. This radio operates in the 5.8GHz ISM band, and the system consists of only two units – one transceiver on either end. (No IDU/ODU combo.) It has a 50ohm female N output (so plan on using some very good transmission line). The interface for DS-3 data is a 75-ohm BNC so, if you were to elect this type of radio system, you would probably opt to aggregate all of your host TCP sources by means of a managed switch that has a 75-ohm BNC DS-3 interface.



YOU OWN THE STYLE. NOW PERSONALIZE THE JUICE.

Experience the new Kowa PX-10 hotkey flash memory audio player that can play audio clips at the touch of a button. Create playlists on your PC and store them on a USB drive or compact flash card. Then plug the USB or flash card into the PX-10 and take control.



PX-10

Kowa Optimed, Inc.
20001 S. Vermont Avenue, Torrance, CA 90502
310.327.1913 tel • 310.327.4177 fax • www.kowa-usa.com

Letting Go



**Airmux
200**



**Dragonwave
Air Pair 100**



Radio Systems IPConnect

The Adtran 5045 is a similar radio system, but includes a built-in Layer 2 switch on both ends, and so obviously the data interface is strictly Ethernet. Both systems are specified to have a maximum TPO of +20dBm, and will achieve a BER of 10^{-9} with a -78dBm receive level signal.

The options are nearly boundless but for a system that is more economical than the Adtran you may want to

consider the Airmux 200 system. Like the other radios I've mentioned, it operates in the high ISM bands. One feature of interest in the Airmux 200 is that in addition to the 100base-T Ethernet port, it has up to two separate T1 inputs; so in the event that T1 must be transported for a legacy TDM system, it can be sent along with the Ethernet transport. The total data throughput of the 200 system is specified at 48Mb/s.

Another option available to broadcasters is a portion of the 1.8GHz band that can be licensed for STL use under Part 101. If this makes more sense for you then there are at least two options out there right now. Radio Systems offers a microwave radio link called IPConnect. Hardware configuration is ODU and IDU (single rack unit with all interfaces). It's very configurable, giving the following options: Ethernet up to 250Mb/s, or up to 32 T1s, or 2 DS3s, or 2 STM1 (155Mb/s) plus 2 T1s. Management of the system is done via a Web browser, SNMP or Telnet.

Axia users have made use of various Ethernet radios such as the Dragonwave Air Pair 100. This system also makes use of the ODU/IDU configuration. The native interface of the system is gigabit Ethernet, and it provides for full-duplex 100baseT (200Mb/s of bandwidth). It can also be configured to transport T1s if so desired - that way TDM systems can be kept during a transition period (or maybe forever). Management of the system is done via SNMP.

Shively Labs®

Radio is our main line, not just a side-line.

State-of-the-art design

Proven reliability

***Cool and blue - no boring black or
gray here!***

P. O. Box 389, 188 Harrison Rd., Bridgton, Maine USA 04009
(207) 647-3327 (888) SHIVELY FAX (207) 647-8273
sales@shively.com www.shively.com

- An Employee-Owned Company -
ISO-9001:2000 Certified



Resource Guide

Airmux

888-785-7393
www.airmux.com

Armstrong Transmitter

315-673-1269
www.armstrongtx.com

Bext

619-239-8462
www.bext.com

Bitrage

904-808-0656
www.bitrage.com

Broadcast Electronics

217-224-9600
www.bdcast.com

Dragonwave

613-599-9991
www.dragonwaveinc.com

Energy-Onix

888-324-6649
www.energy-onix.com

Harris

800-622-0022
www.broadcast.harris.com

Marti Electronics

217-224-9600
www.martielelectronics.com

Moseley Associates

805-968-9621
www.moseleysb.com

Nicom

619-477-6298
www.nicomusa.com

OMB America

800-662-4872
www.omb.com

Radio Systems

856-467-8000
www.radiosystems.com

Superior Broadcast


800-279-3326
www.superiorbroadcast.com

TFT

800-347-3383
www.tftinc.com

Trango Systems

888-400-8886
www.trangosys.com

So there you have it. The original digital STLs are themselves practically in the class of legacy equipment today. Carriage of Ethernet is the primary function of all the radios mentioned herein. So many of the devices we find in a broadcast plant today communicate by way of IP; what was once kind of a luxury (LAN at the transmitter site) has now pretty much become a necessity. If you haven't already jumped on the bandwagon, then in my (humble) opinion, you need to do so as soon as you can. Fortunately there are many, many options today that'll make the job a little easier. 

Irwin is transmission systems supervisor for Clear Channel NYC and chief engineer of WKTU, New York. Contact him at doug@douglirwin.net.



A Perfect Fit

Designed for Quality, Function, and Beauty

We started a revolution in broadcast furniture, and now our designs are the industry standard. They remain in the forefront of high tech engineering and manufacturing design with thousands of satisfied customers worldwide.

Our Master craftsman, the finest materials, and computerized machines ensure precise cutting and a seamless fit for any studio. Our commitment to service, quality and a fair price have made us the number one broadcast studio furniture manufacturer in the world. Join us.

—Rod Graham, President



GRAHAM STUDIOS

Broadcast Furniture...System Integration...Automation

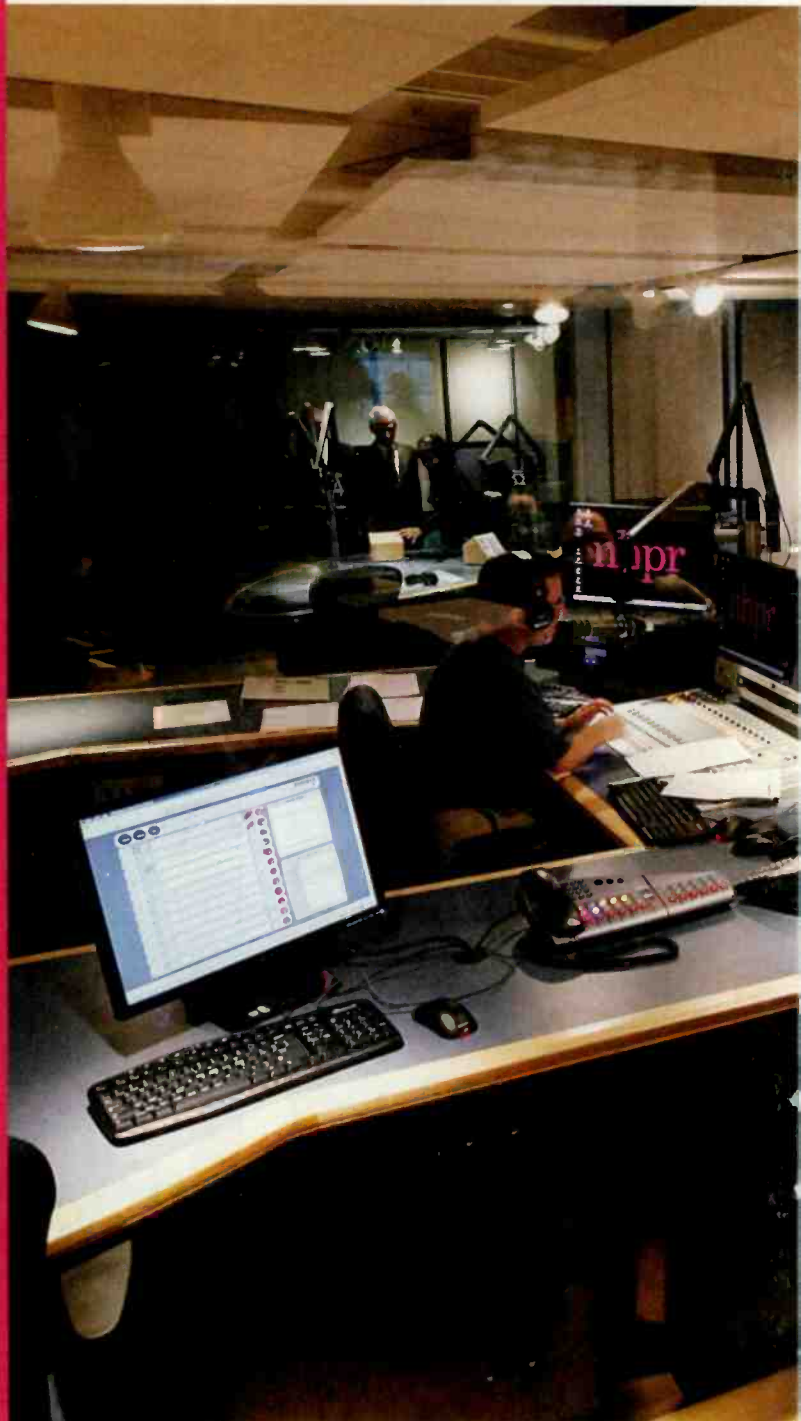
www.graham-studios.com • Toll Free 866.481.6696

New Hampshire Public Radio

By Chriss Scherer, editor

Twice the
space and
an open road
to future
expansion

nhpr



expands



Dan Colgan broadcasts the first show from NHPR's new studios.

Every station move or rebuild project is set into motion because of some fundamental need. Sometimes the equipment has fulfilled its useful lifespan. Sometimes a format change makes the facility inefficient. Sometimes simply more room is needed. For New Hampshire Public Radio, it was all of the above.

In the spring 2001, NHPR had been in a facility that was only 10 years old. When it was built in 1991, the network was producing a classical music format, and the sit-down studios and analog routing served the needs adequately. But after a format change in 2001 to a news/talk format, it was quickly realized that the music-centric facility had severe limitations. It was just not going to meet the long-term business and programming needs.

The first step: Conduct a needs assessment study. NHPR worked with its board of directors to plan what was desired and how it would be funded. The realization that the North Main Street facility was not ready to serve NHPR's future needs was a primary point. The plans were set into motion for a facility upgrade.

NHPR now distributes programming to six full-power stations and six translators in the state. While all the transmitter facilities carry the same programming, the ability to distribute different material to different sites was a desired option. Likewise, as the stations adopt HD Radio, providing various multicast streams was a consideration. Flexible routing was also a checklist item.

Like any station, being off the air is an unacceptable circumstance, so multiple levels of redundancy were built into the plan. Finally, additional space was needed to accommodate the growth of the network.

A new building

Once the needs were determined, the process of finding a new location began. It didn't take long to find one. An office condominium on Pillsbury Street was looking for tenants. This was almost a new building in some ways, even though the previous owner – Blue Cross Blue Shield – had moved out in 1990.

The building sat vacant for many years because of asbestos building materials within.

In 2003 and 2004 a developer worked with the city to remove the asbestos and prepare the building for new tenants. NHPR then began raising money for its relocation project, and in spring 2006 purchased the sixth floor (top floor) of the building. But NHPR wasn't ready to begin building. It would be two more years before that would happen.

Plans were further refined while funds were being raised. In April 2008, NHPR issued a request for construction bids. By May, the bids were received and the station selected North Branch Construction. On June 2, 2008, the initial construction began.



(Left to right) Bob Smith and Mark Bisbee, Technet; Dan Colgan, Scott McPherson and Michael Saffell, NHPR.

Advantages and challenges

The plan was to have the new facility ready for its first broadcast on Dec. 31, 2008. NHPR had already worked with Russ Berger Design Group (RBDG) on the layout of the studio core in the new 20,000-square-foot space (about twice the size of the previous facility). The general architect, C.N. Carley and Associates, took the RBDG plans and designed the office and operations space around it.

One advantage to the new location is that it is about 2.5 miles from the main transmitter

Step up to a Crown

CROWN BROADCAST

- FM Transmitters from 30 watts to 10kW with optional built in audio processor
- FM Translators with built in receivers
- Frequency agile from the front panel
- 3-Year warranty
- Compact—small footprint
- Low power (up to 600 watts) able to now monitor VSWR and control power via remote control.



Current Crown Users—You can take advantage of Crown Broadcast's exclusive unit upgrade program. With this program you will be able to send in your current functioning Crown product and have the unit renewed to like-new condition complete with 2-year warranty. You can also have the units powered up from 30w to 300w and from 100w to 300w. Upgrades are also available for the receiver board and audio processor. This program allows for a long-term investment in your current product without the investment in a new product.

Crown Broadcast IREC, 25166 Leer Drive, Elkhart, IN, 46514 www.crownbroadcast.com ph 866-262-8972



Read about NHPR's acoustical design at RadioMagOnline.com

The blocks on the walls and ceiling are to support the acoustic treatments that will be applied.

site for WEVO. The tower can be seen from the new studios. This was good news for the station, because that STL hop would be a single-hop. The previous studio location required a double-hop STL.

One challenge with the new facility was presented by the city zoning board. NHPR planned to install its satellite uplink/downlink antenna and a small tower for STL and other antennas on the roof. The city wanted the rooftop items to be concealed from view. A compromise was made by erecting a 20' x 40' steel enclosure around three sides of the antenna farm and HVAC cooling tower. The open side allows the needed line of site for the antennas.

Inside the empty shell sixth floor space, there were



Studio B just as the final installation is nearly completed.

some additional challenges. The elevator lobby and restroom areas were fixed positions, but they were not difficult to incorporate in the design. The top-floor location, however, required some fire codes to be observed for roof protection. There was also some roof drainage plumbing that had to be left in place. RBDG and NHPR

NEW!
for
STREAMING



www.orban.com



orban crl

Professional Audio Processor / Sound Card

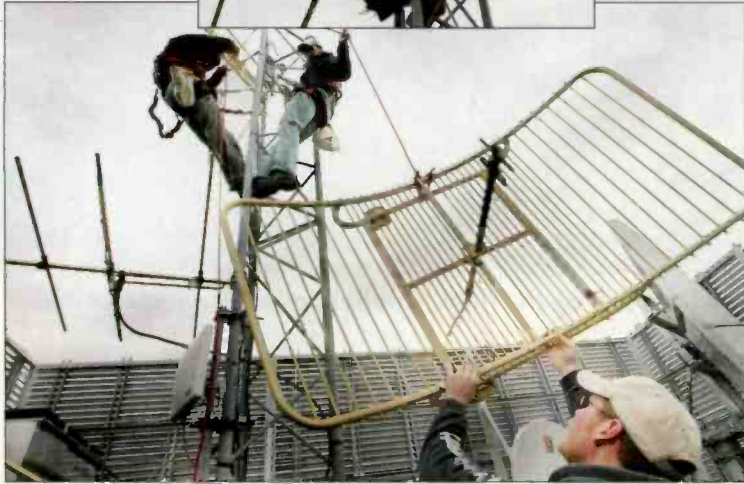
**Optimod-PC
1101**

- Compact size for broader CPU selection
- A professional soundcard with a full featured OPTIMOD audio processor...the ultimate DAB streaming and mastering sound card
- Word Clock Support - Separate BNC clock sync input
- Full Windows mixer and metering support makes the 1101 the ideal sound card for Windows based playout systems designated for digital applications



Contact SCMS
at any of its offices
to discuss your needs
1.800.438.6040
Bob, Ernie, Matt, Mike or Andy
HQ in Pineville, NC

Mid South	1.877.391.2650	Bob Mayben
Central	1.731.695.1714	Bernie O'Brien
West Coast	1.866.673.9267	Doug Tharp
Mid West	1.513.899.3036	Mary Schnelle
South Atlantic	1.770.632.1295	Art White
North East	1.315.623.7655	Jim Peck
South West	1.210.775.2725	John Lackness
North Central	1.513.376.8600	Pam Leffler
Pro Audio	1.877.640.8205	Ric Goldstein
Latin America	1.760.650.1427	Lily Massari
Bradley Division	1.800.732.7665	Art Reed/Bob Eburg



Installing the STL dishes on the roof

planned to build the studio core on a floating, elevated base. Wiring could be run in the 6" floor space underneath. HVAC would run above the floating ceiling. Despite these challenges, the studios have sufficient headroom, although it is tight in the space above the studios.

Studio core

As the plans for the facility were being drawn, it's important to note that the studio core was designed first, and then the offices were designed around that. You probably know of a station that was designed with the owner's or GM's office first, then sales, then some programming, and then finally a few closets for studios. This was not the case at NHPR. The studios – the area where the network's valuable product is created – came first. Even so, the offices are still comfortable and practical.

One advantage of locating the studio core in the center of the facility is that it reinforces the focal point of the operation. Even those staff members not directly involved with on-air operations feel attached to the prime purpose. No matter where you are, a studio is nearby.

The studio core is comprised of six control rooms (four smaller and two larger). The larger control rooms have studios attached to them. In addition, a small studio is available for voice tracking.

A larger multipurpose studio is available for live performances or producing a show with a live audience. An audience of up to 70 can be accommodated here. This works well for a town-hall meeting or membership drives. The multipurpose room is also wired for video.

USB Audio Interface

NEW



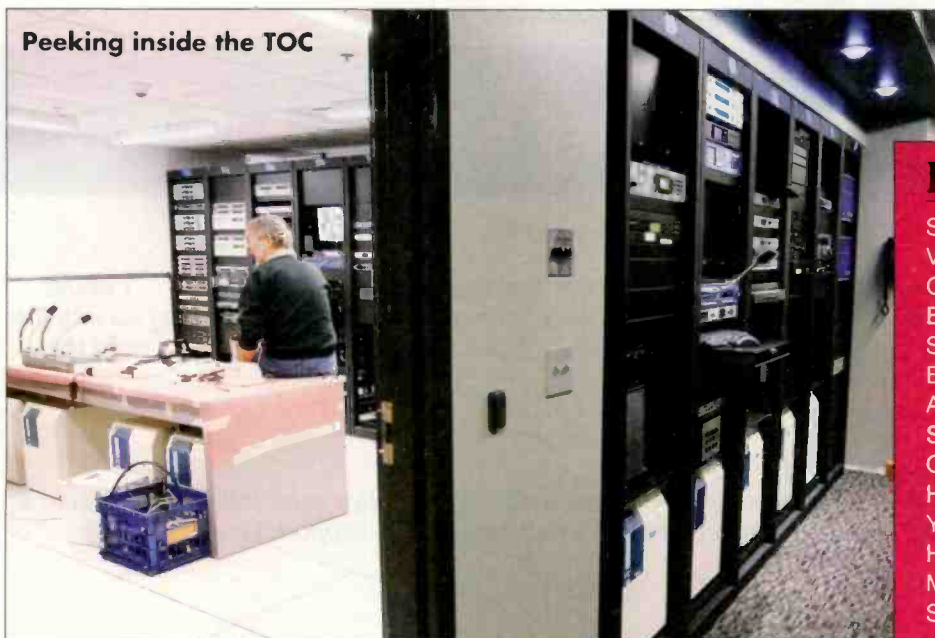
Now with everything on board: Incredible audio performance. PC and MAC support. AES3 and balanced analog. Fully USB powered. Precision aluminum body. Broadcast ready. Just PUC'n'PLAY. German engineering made affordable. Check today!



Heinrich-Hertz-Str. 1-3, D-40789 Monheim, Germany, Phone +49 2173 96730, www.yellowtec.com

YELLOWTEC

Peeking inside the TOC



A technical operations center, engineering shop and IT work area round out the space. The racks in the TOC were integrated into the cooling system to provide a constant airflow for the equipment.

As mentioned before, the studio core is built on a 6" raised floor, which is built from two layers of plywood sandwiching three layers of sheet rock. This solid mass is then supported on rubber blocks to isolate it from the building floor. The studio walls are then built onto this foundation.

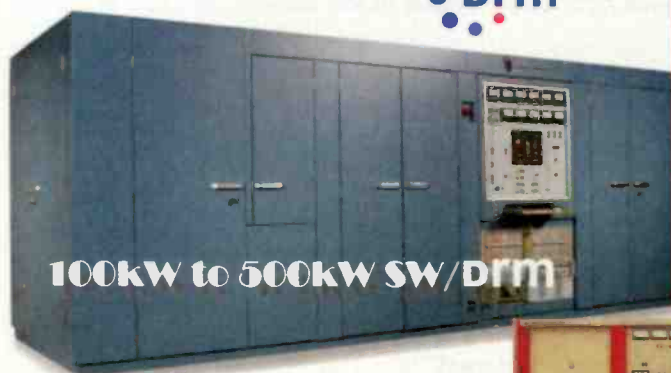
Near the studios is a newsroom that houses about 20 people. NHPR produces two daily talk shows and regular new inserts, and the desks in the newsroom are arranged into team groups.

Redundancy

Redundancy was an important consideration for the project. The entire facility is supported by a 150kW generator

Equipment List

- SAS 32KD, consoles
- Vorsis M1 mic processors
- Comrex STAC
- E-V RE-20
- Sony 7506 headphones
- Broadcast Electronics Audio Vault
- Avocent 5010 KVM
- Studio Technology furniture
- Genelec 8030, 8040
- Harris World Feed Panels
- Yellowtec Mika
- Heil Sound mic mounts
- Middle Atlantic racks
- Signal Transport wiring interface boxes for customized connector access
- Moseley SL9003Q



100kW to 500kW SW/DRM



CAN YOU HEAR ME NOW?

**REALLY HIGH POWER
RF SOLUTIONS -
ONLY FROM...**



**10KW TO 30KW ANALOG
10KW TO 60KW ANALOG/HD**



Continental Electronics

www.contelec.com

sales@contelec.com

(214) 381-7161

Read what our users say...

KPSM/KBUB, Brownwood, TX

When asked how things were going with his Xtreme Automation Systems he replied, "Real well! . . . I would definitely recommend it . . . it's trouble free . . . I never hear any complaints . . . I believe in keeping up with the newest & best equipment . . . I've had other automation systems . . . this is our 3rd & I believe in having the best equipment in our stations!"

Jack Ruth (owner)

KIQS, Four Corners Broadcasting, Durango, CO

"I love the flexibility (of Xtreme). The switching capability of the bridge is great. I've used (other automation) & Xtreme is much more user-friendly. I have recommended it for cost, capability & support. I always get an answer from your support guys!"

Ward Holmes, Regional Manager

WHFT, Avon Park, FL

"The tech support is a huge help. Nothing but good things to say, they've always been great & resolved any issues quickly."

Tony Scott, Program Director

WJQS, Jackson Mississippi

"Everything's GREAT with the Xtreme! I'm running 3 Xtremes. I love it because I can run it remotely from home. I would definitely recommend it because it's easy to work with & once you get started you can't break it!"

Monte Lyons, Operations Manager

WMER, Meridian, MS

"I love (Xtreme)! I'm a one man show . . . & it does the work of four people! Support is wonderful & very patient! Even when they're busy they always call back right away! I have made several referrals to my friends."

Mike Glass, owner

Woodland Hills, CA Internet Radio

"You bet I'd recommend it for the ease of use & it's robust. I learned the software in about 15 mins."

John Tobin

KIKO-FM/KIKO-AM, Claypool, AZ

"I rate (Xtreme) at a 10 for ease of use. It's very simple, with limited engineering experience needed. You open the software & it's all self-explanatory."

"The manual is great! When I have a basic question I can open it & find the answer."

"It's inexpensive & does EVERYTHING! I'm still finding new features!"

Shelly Harrison, General Manager

and MANY more...

Join the hundreds...

... of others on air with Digilink-Xtreme, the best automation system in Radio. Full featured, it is easy to install, use, and maintain. Best of all, it is easy to buy. Choose from either the no contract \$100 per month 'Solutions Program' from Arrakis Systems or buy 'Xtreme-Complete' outright for only \$6,500 from Broadcast Supply Worldwide (BSW).

WHY PAY A FORTUNE FOR AUTOMATION ?



1-870-461-0730 ext 302 www.arabids-systems.com

DELL

Digilink-Xtreme

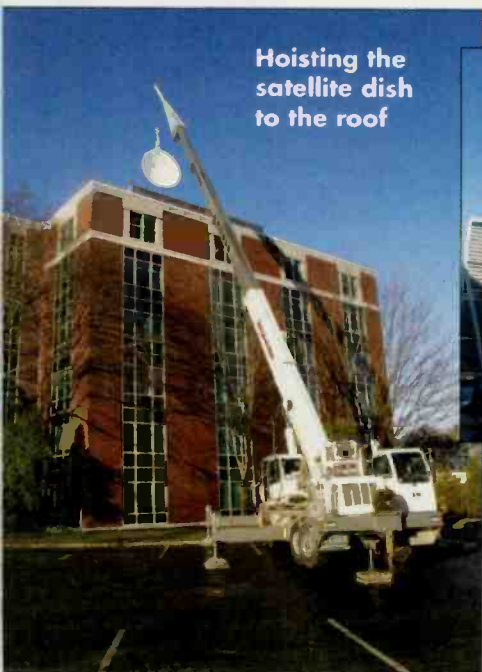
only \$100 per month

support, training, upgrades

the best automation in Radio, period !

970-461-0730 ext 309

Hoisting the
satellite dish
to the roof



Installation of the satellite dish



Photo by Scott McPherson

supplemented by a 35kVA UPS. The UPS will power the facility for about eight minutes at full load. Equipment loads are also distributed among the power system to minimize an outage. Even the HVAC system for the sixth floor has a backup

system in case of an extended power outage.

The redundancy plan is also applied to the audio network. The SAS 32KD with two frames is the heart of the routing system. Audio sources and destinations

are distributed between the two frames to reduce the chance of an audio failure if one frame were to fail. The built-in nature of the audio router provides many options to distribute audio as needed to route around a problem. While all the transmitters carry the same programming, this routing flexibility allows NHPR to deliver any source to any transmitter as it may need.

Even the STLs have redundancy. The satellite system is the primary STL for all the transmitters located around the state. These are all backed up by Moseley Starlink SL9003Q systems. As a tertiary backup, the station uses the Comrex Access or Matrix.

Future-ready

While the new facility has some changes, such as stand-up furniture instead of sit-down and an integrated routing system, other aspects are familiar. The Comrex STAC was chosen for on-air phones because the staff had been using a Gentner TS612 previously. The STAC operates similarly, which simplified training on at least one piece of equipment.

There is one corner of the sixth floor space that was left unfinished. This area of about 2,000 square feet is part of the plan to accommodate future needs. Its exact purpose has yet to be planned, but possibilities

STEREO HEADPHONE AMPLIFIER



Shown in AFM-DC1N tabletop chassis

THE ALL NEW AF-SH1 FEATURES:

- Integral Long-Life VCA Stereo Level Control
- Balanced or Unbalanced Inputs
- Switch-Selectable Input Sensitivity
- Switch-Selectable Mono (Left) or Stereo Operation
- Amplifier To Drive High or Low Impedance Headsets
- Convenience of APPFLEX™ Mounting Possibilities

The AF-SH1 is part of the group of versatile APPFLEX products from Radio Design Labs. These modules combine advanced circuitry, durable all-metal construction, attractive RDL ULTRASTYLE™ colors and versatile mounting possibilities. APPFLEX modules are ready to drop in a cabinet, chassis or panel cutout. Numerous ULTRASTYLE wall mounting accessories and tabletop chassis are optionally available to facilitate system design.

**SYSTEMS
SOLUTIONS**

www.rdl.net.com
RDL • 659 N. 6th Street • Prescott, AZ • 86301

RDL
Radio Design Labs



Word of Mouth host Virginia Prescott primes for the first show from the new facility.

include new media, alternative programming streams, partnership with TV stations, or possibly subletting it to another tenant. The facility was built to be future-ready. This space allows for that.

Although the timeline for the construction project was to be on the air from the new facility by Dec. 31, 2008, in an almost unheard of turn of events, NHPR originated its first broadcast from the facility at 2 p.m. on Dec. 15. NHPR credits the efforts of Technet Systems Group, the system integrator, for staying ahead of schedule. Once the on-air operation was in place, the office and administration moved in on Dec. 19. These four days

allowed the network to address any on-air problems before the office staff moved in.

And while the project progressed like clockwork, the final days were not without some frustration. The move on Dec. 15 was three days after a major ice storm passed through the area. Several of the transmitter sites were still on emergency power. Still, the on-air transfer went well. But even on Dec. 19 as the staff moved in, a snow storm passed through.

One added benefit to the new facility is that it has inspired the air talent to improve their games. The new facility is a modern technology showcase. Some members of the air staff have commented that they feel they have to live up to the look and feel of the new space, and this is reflected in their on-air performances.

NHPR planned a campaign to raise \$6.5 million, which was met in March 2009.

Thanks to Scott McPherson, assistant general manager, and Michael Saffell, director of engineering, at NHPR for their assistance in preparing this article.

Photos by Cheryl Senter unless noted.

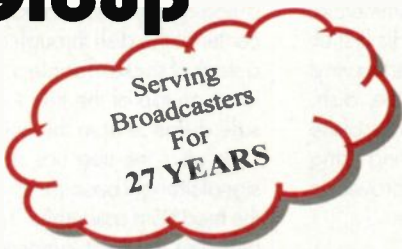


More images and a floor plan are posted at RadioMagOnline.com.

www.rfspecialties.com



RF Specialties Group



**Transmitters
Antennas
Audio Processing
Consoles & Racks
STL / RPU Systems
Microphones**

**Audio Cable
Combiners / Phasers / ATUs
T-1 and IP Audio CODECS
Racks / Cable Ladders
Copper and Grounding Systems**

**HD Monitoring
RF Analyzers
Remote Control Systems
Telephone Hybrids
And MUCH more...**



"RF" IS GOOD FOR YOU!

Call your nearest RF Specialties Office:

RFSCA San Diego CA Steve 619-501-3936
 RFSCA Las Vegas NV Bill 888-737-7321
 RFSCA San Francisco CA Paul 925-270-8939
 RFSWA Mukilteo WA Walt 425-210-9198
 RFSWA Vancouver WA Bob 800-735-7051
 RFSTX Amarillo TX Don & Mo 800-537-1801
 RFSTX Dallas TX Wray 888-839-7373
 RFSMO Kansas City MO Chris 800-467-7373

RFSMO Raymore MO John 877-331-4930
 RFSMO Richmond IN Rick 888-966-1990
 RFSPA Ebersburg PA Dave 866-736-3736
 RFSPA Pittsburgh PA Ed 866-412-7373
 RFSPA Philadelphia PA Phil 888-737-4452
 RFSGA Thomasville GA Chris 800-476-8943
 RFSGA Crestview FL Bill 850-621-3680
 RFSGA Murray KY Dave 270-787-7644

Fine Print: : The FIRST customer to call their favorite RFS office, and mention this AD, wins a \$10 Gift Card from Starbucks. Limit of ONE card from each of the above listed office. Previous winners not eligible.

Tips, tricks, hints and more

By Chriss Scherer

The pressure is on

Glenn Williams is the chief engineer of KJJC in Kansas City. He submitted two ideas to Tech Tips. The first one addresses a common problem when using nitrogen bottles to pressurize a transmission line.

You probably have a line pressure monitor to indicate when it drops below the typical 6psi. When the pressure gets too low, it's usually time to replace the bottle. Depending on the integrity of the transmission lines seals, the <6psi warning may not offer enough advance notice.

To provide his desired advance warning, Williams uses a dual regulator system with two pressure monitors. He set the bottle regulator to provide an output of 100psi. This intermediate pressure line feeds a second low-pressure regulator and a pressure switch. The switch is set so that when the output of the first regulator drops below 80 psi it activates a tally on the remote control.

This two-step process gives him a 74psi cushion before the line pressure is affected. He says this



Williams' double regulator in use. The compressor switch, pressure transducer and low-pressure regulator are mounted on a board. A relief valve is installed

to protect the transducer in case of excessive pressure.

buffer could buy several days or several weeks to get a new bottle in place depending on how leaky the line is. He also notes that the two-stage regulator maintains a more stable line pressure because the bottle regulator is not trying to regulate an incoming pressure of more than 1,000psi to 6psi in just a single stage.

The broom alternative

Williams' second tip lets him stay warm and inside when snow falls on the satellite dish. He was tired of taking a broom to sweep the dish when it snowed, and the cost of a commercial deicing system was not in the budget. His first effort was to install a vinyl cover over the dish. This worked most of the time, but during icing conditions it proved to be ineffective.

The light tree keeping things warm

What he needed was a method to keep the cover warm. For this, he placed a tree of six 250W heat lamps in the center of the dish between the dish and the vinyl cover. The tree base is the female end of a heavy-duty extension cord inserted through the center of the dish through a collar. The tree itself is a stack of socket adapters. He places a burned-out lamp on top of the tree to keep the vinyl cover a safe distance from the heat lamps.

He says the tree has no measurable effect on signal strength because it is largely in the shadow of the feed horn assembly. The station remote control activates the heat lamps when the transmitter-site deicers are activated. He reports that setup has kept KJJC snow and ice-free for four seasons. He also likes the added effect of the eerie red glow.

Timing is everything

Because of the time delay in the digital portion of the HD Radio audio path, the analog audio component of the hybrid signal has to be delayed to match the digital. When the alignment is just right, the transitional blend from analog to digital or back can be almost transparent. However, if the alignment is off by even 1 millisecond, listeners will hear the transition. Likewise, a difference in audio level between the two signals can cause problems.

Brian Beezley has documented the audible effects of misaligned time delay and mismatched

audio to show the effects. He has even written a small program to compare the analog and digital signals so the best alignment can be found. His program runs in DOS or from the command line. It uses the computer's sound card and an HD Radio tuner than can split the audio into analog on one channel and digital on the other. The results of the program indicate time alignment, level differences and phase relationship.

Beezley's site has lots of useful information, so look around while you're there.

ham-radio.com/k0sti/roster.htm



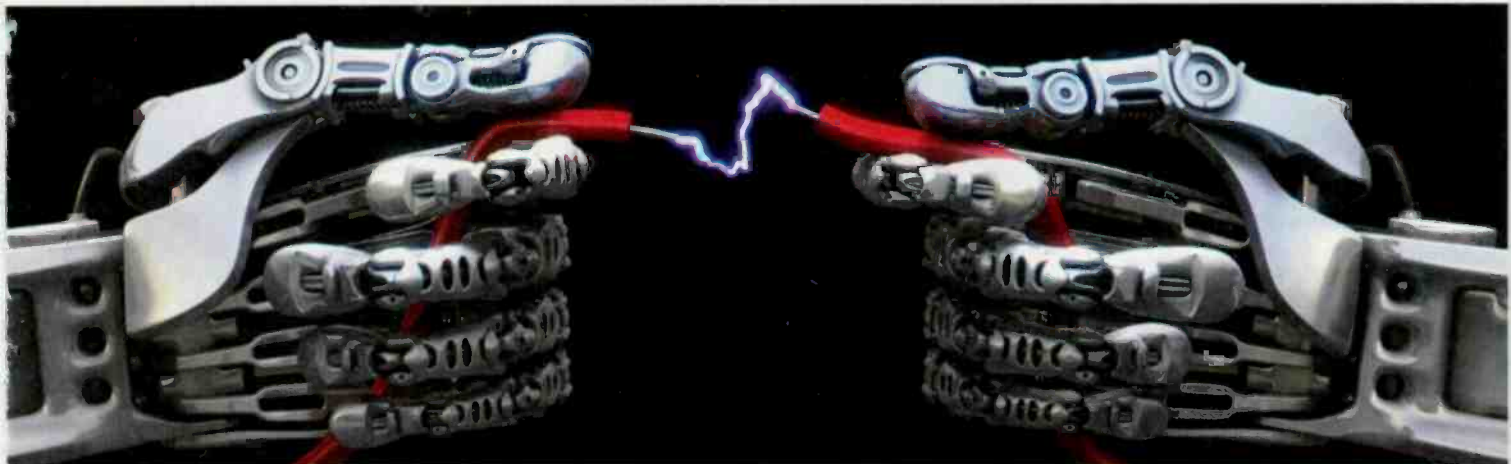
The power cord inserted through a collar on the back of the dish



Do you have a tech tip?
Send it to us at
radio@RadioMagOnline.com

Automation

Simple • Powerful • Redundant



Not since Axia audio-over-IP was introduced to the broadcast industry have we at BGS been so excited! It is with great enthusiasm we'd like to invite you to take a look at the new Op-X Radio Automation delivery system for any single or multi-station cluster. Op-X works seamlessly with Axia IP-Audio networks or as a stand-alone system.



"The merging of traffic and music logs takes a mere :30 seconds, making it among the easiest I have ever worked with. Once you get used to your adjustable personal color scheme, everything is pretty easy to follow. The best part about this system is the LACK of "dead-air" or "hangups" during automation. PD's will breathe a sigh of relief at this. Another thing that stands out is the absolute ease with which you can build your personal hot keys for each air talent. If you organize your show properly ahead of time and know where you are going, this system will make your show much easier and let you concentrate on *sounding good* on the air."

~ Jim Franklin, Program Director
WVBO, Appleton/Oshkosh - Wisconsin



"Finally, an automation system that keeps in mind that not every jock is also a computer whiz. This system is easy to operate from the word go.... yet offers all the bells and whistles that help make your station sound great. The clock builder option makes interfacing with satellite shows very easy. Plus, it has the best voice-tracking capabilities available."

~ Matt Scurry, Operations Manager
WWFN/WHLZ, Florence - SC



"A fast paced station needs a system that can keep up and is easy to use. Op-X gives us the tools we need to deliver the sound Houstonians have come to expect from KRBE."

~ Leslie Whittle, Program Director
KRBE, Houston - TX

If you're looking for an audio delivery system~
you owe it to yourself to find out more about Op-X.
Give us a call or email info@bgs.cc!



Broadcasters General Store
352-622-7700 • www.bgs.cc





JK Audio Bluepack

By Mark Nootbaar

For years, the WDUQ news department, with the help of our engineering department, has been looking for something for live field reporting that did not include holding a cell phone up to a speaker. Our stable of Marti units worked well for big events, in fixed locations (that were not too far from our studios or transmitter), but that was very limiting. Web-based products had too much delay for live reports and other mixing units were too cumbersome. Nothing else seemed to fit the bill. Then, just a few days before the 2008 election, our engineer handed me a pair of JK Audio Bluepack wireless cell phone interfaces and his timing could not have been better.

The Bluepack provides an audio input/output interface that connects to a cell phone via a Bluetooth connection. To a cell phone, it looks like a wireless headset. To the audio equipment, it is a compact mixer and headphone amplifier that can be worn on a belt. While designed for use with a cell phone, it can be used to connect to any Bluetooth-capable device.

The device

The back of the unit features XLR mic and 1/8" stereo line level inputs (labeled aux send) along with a 1/4" headphone jack and a 1/8" stereo line out. The front of the unit has three simple thumbwheel

The device quickly linked to my cell phone with a solid Bluetooth connection, and as soon as I plugged in a mic, a pair of headphones and my Marantz PMD660 field recorder (using the headphone out from the 660 to the line in of the Bluepack) I had a little mobile studio. A few test calls showed me this was going to be a great tool. The device was combining my voice and recorded sound without me having to juggle a bunch of knobs on a pile of equipment. At the same time the cues were coming back to me from the studio all on the same device and without any detectable delay. I could tell that from now on I was going to be able to focus on the reporting aspects of my job rather than the technical duties. The sound back at the studio was clean and the line coming back to me was as crisp as you could expect from a cell phone. And the headphone output was clearly going to be strong enough to hear over the din of a room full of election-night celebrants.

Trial by fire

A few days later I was bouncing back and forth between two election night headquarters, cell phone clipped to one hip and the Bluepack on the other. I was feeding live reports every half hour despite a 15-minute drive from one location to the other. By using a microphone headset I had full hands-free operation so I could hold notes in one hand and my recorder in the other. A quick phone call back to the station right before my live shot and I was ready to go. By plugging a mic into the recorder, and feeding the recorder's output into the Bluepack, I was able to feed live on-air interviews. The device can also be used to record cell phone interviews simply by running the output from the Bluepack to a field recorder. Battery life has not been a problem. The manufacturer says to expect 10 hours of use.

Performance at a glance

Line and mic inputs and outputs

Thumbwheel level controls

One button coupling with Bluetooth-enabled cell phones

Lightweight and small

Powerful headphone output

volume controls (mic, aux send, headphones), a power button and a button that couples the device with a cell phone via a Bluetooth connection. There are a few lights on the front as well. One to indicate power on, two to indicate the Bluetooth status, and one to indicate audio clipping. The entire device is powered by a 9V battery and has a handy metal belt clip. It measures just 4.7" x 3.75" x 1.65" and weighs less than a pound. The manufacturer says the device can be used up to 25' from the cell phone. I can't vouch for that but it does work across a crowded room about 18' away.

Give a reporter a piece of equipment and he will figure out a way to screw it up. Every problem encountered so far can be traced back to operator error. First, remember to prepare the cell phone to accept a new Bluetooth device. The Bluepack comes with instructions on what steps need to be taken (a single button) to associate with a new phone, but if you have forgotten how to use your own phone that could be a longer

JK Audio

P 800-582-8346

W www.jkaudio.com

E info@jkaudio.com



will have to couple the phone and the unit each morning. With those few issues in mind expect a great deal of flexibility and usability from the JK Audio Bluepack.

Nootbaar is the assistant news director at WDUQ-FM, Pittsburgh.

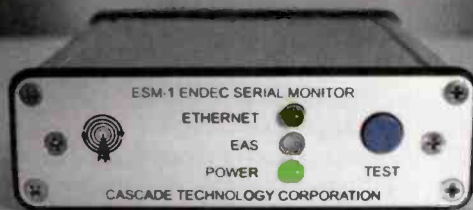
Editor's note: Field Reports are an exclusive Radio magazine feature for radio broadcasters. Each report is prepared by well-qualified staff at a radio station, production facility or consulting company.

These reports are performed by the industry, for the industry. Manufacturer support is limited to providing loan equipment and to aiding the author if requested.

It is the responsibility of Radio magazine to publish the results of any device tested, positive or negative. No report should be considered an endorsement or disapproval by Radio magazine.

task than you expected. Also, if there are other Bluetooth devices associated with the phone make sure they are not turned on. The two devices will fight for control of the phone. You could also run into a problem if you want to have several reporters using one unit. The Bluepack can only be coupled with one phone at a time. So if a different reporter will use the unit each day he

MEET THE ESM-1



Multi-site EAS remote logging made simple
Now Available with Broadcast Confirmation
www.easwatch.com/esm



THYME FOR A NEW ENDEC

EAS ENCODER / DECODER (COMING MAY 2009) THYME2009.COM

(PCI) EXPRESS YOURSELF.



PCI EXPRESS

Now, and in the future. Our speedy ASI5644 linear PCI Express sound card gives you 4 stereo analog and 4 AES/EBU inputs and outputs so you'll never be at a loss for words (or music). Great features, too, like +24dBu analog levels, SoundGuard surge protection and SSX surround sound. And the PCI Express connector guarantees your card will work with today's computers, and tomorrow's. Analog-only (ASI5640) and AES/EBU-only (ASI5641) cards also available. To learn more, call us at +1-302-324-5333 or go to www.audioscience.com.



www.audioscience.com





Nautel NV20

Bill Eisenhamer

When we started the plan to install HD Radio in 2008, we allowed ourselves a year to meet the deadlines. The 2008 NAB Show was around the corner, so we looked at what manufacturers had available or might be planned. Our needs sounded simple: two stations (KIFM and KBZT), two HD Radio transmitters.

The usual thoughts of tube vs. solid-state were considered, but we had more direct concerns. The transmitter had to be the right size physically and produce 10kW of analog power with digital. Combined solid-state looked likely, but the external combiner presented some space issues. Were we going to have to give up one, maybe two, full-powered analog backups? I did not like that prospect.

A group from Lincoln Financial Media met with Nautel to see the new NV40 solid-state transmitter. After seeing the unit, I began to lose focus on the talk. The talk ended and I said, "Cut that in half and we will get two of them." Though the comment was not a sale, when Nautel said our end-of-year deadline of having the transmitters on site could be met, the off-the-cuff comment became reality. We took delivery of the first NV20s on Dec. 24, 2008.

Planned installation

Working with pre-installation documentation based on the NV40, our electrician prepared the wiring. When the transmitters arrived, they were a perfect physical fit in our tight space. To the surprise of Nautel I had the first transmitter operating into a dummy load by lunch time. I poked around the Advanced User Interface (AUI) and found the AUI

In a short time we learned how to balance the power modules via their own bias settings to make the HD Radio mask perfect. We discovered that the factory swapped the bias settings between the KIFM and KBZT transmitters by accident. When all was said and done, KBZT was on the air in digital and we had the ability to put KIFM on the air in digital.

The transmitter

The Nautel NV20 is a solid-state FM transmitter capable of running in analog, digital and hybrid modes. The footprint of this box is amazingly small for the power levels attained.

Centered in the front door is the 17" touch-screen AUI display. There are no buttons on the front; all operations are performed through the AUI or with switches accessible on the controller board when the door is open. Ethernet access also displays the same information as the AUI and both run independently.

The remote interface board is buffered by optocouplers on the controller board. The remote-control wiring is sectioned to eight-pin screw headers making it easy to connect. All remote functions are user-configurable through the AUI.

The reject load assemblies are behind the plate that supports the controller board. Below these are the eight RF power modules. Below these are the 20 power supplies. Two supplies power each hot-swappable power module for redundancy. The other four run the IPAs and the fans, two each. Below these are the low-voltage power supplies, again two each for redundancy.

Up to two NVE300 exciters fit inside beside the power supply bays. In our installation we feed AES audio to the exciter, and we feed the RBDS and subcarrier client separately via the SCA 2 and SCA 3 BNC jacks, but the exciter also provides SCA, RBDS and analog audio inputs on a DB connector configured through the AUI. The exciter interfaces with the controller and AUI through a standard CAT-5 cable. A pilot/MPX sample port is provided on a BNC.

A Web server is built in for monitoring and rare configuration changes. If a second exciter is installed, the transmitter will recognize it as soon as it is connected and powered. The AUI can be configured to run from either exciter or failover automatically. An RS-232 connection is provided for troubleshooting to a deeper level.

Performance at a glance

Occupies less than one square yard

Advanced User Interface software control

Up to 22kW maximum analog

Ethernet accessible

more intuitive to navigate than expected. By the end of the day I had both transmitters running into their respective dummy loads at full TPO of 10kW, analog-only mode. Not bad for a day's work.

The remote interface wiring to the Burk remote control system was easy to install as the pre-configured interface on the NV20 had all the inputs and outputs I planned to use. We ran our AES audio feeds to the new NVE300 exciters. These exciters are based on the M50 core, but are redesigned to fit within the transmitter.

More on the AUI

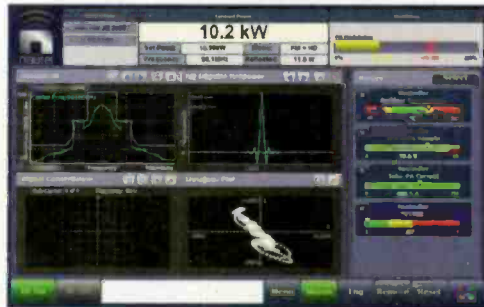
Welcome to a fully software-controlled transmitter. The display is intuitive and took little coaching to navigate the main parameters. The main display shows the power settings, modulation metering, a group of instrumentation panels, user-configurable real-time meters, and a row of control and menu buttons. The status button is multicolored depending on the state of certain parameters with green being normal, yellow a warning, and red as trouble.

The menu button provides a graphical list of options to access the presets, hardware configuration, software configurations, remote input/output configuration and change-over configurations. The AUI can be configured with user accounts allowing for different levels of access to the system. Event logging is phenomenal.

The presets are where all the station-specific parameters are entered. Much of this information is preconfigured and other presets can be built on.

After the learning curve and the excellent support Nautel has provided I have been quite satisfied by the operation and very confident the transmitters will hold their own.

We needed a box to fit our small space. With that, we also have the issue of heat generated by a solid-state transmitter running in hybrid mode. As I write, an improvement to the efficiency of the transmitter is one of Nautel's concerns. As these boxes are so new, a couple of



The NV20's AUI display

Nautel

P 207-947-8200

W www.nautel.com

E info@nautel.com

minor issues were found with the controller. There are things to be said about a software-controlled transmitter, and the fixes were all software-based. I could not have asked for a better transmitter for our application.

Eisenhamer is the chief engineer of Lincoln Financial Media Co. of CA.

Editor's note: Field Reports are an exclusive Radio magazine feature for radio broadcasters. Each report is prepared by well-qualified staff at a radio station, production facility or consulting company.

These reports are performed by the industry, for the industry. Manufacturer support is limited to providing loan equipment and to aiding the author if requested.

It is the responsibility of Radio magazine to publish the results of any device tested, positive or negative. No report should be considered an endorsement or disapproval by Radio magazine.

m!ka MICROPHONE AND MONITOR ARMS

New accessories! Yellowtec's award winning product line for positioning microphones and monitors continues its growth. The modular system has been expanded by some new mounting options: VESA 75 Adapter for Genelec near field monitors, Ceiling Mounting Kit, Wall Mounting Bar and Board No. 1 (20"x12").



www.yellowtec.com

YELLOWTEC

Heinrich-Hertz-Strasse, 1-3
40789 Monheim, Germany
Phone +49-2173-967 315
e-mail: info@yellowtec.com

by Erin Shipps, associate editor



Volume control TC Electronic

Level Pilot: With many DAW setups, control of monitors is dependent on the computer being powered up, and even then volume levels are often set with a mouse. This inhibits the ability to control levels easily and at crucial times – like when a computer crashes or if the user needs to mute or lower levels fast. Level Pilot fits into any active speaker setup. It is a simple way to control levels, a high quality, analogue, stereo volume control that works independently of the computer or audio interface, so no matter what happens, the user has complete control over their volume levels. Level Pilot features a slip-free design that fits into any active desktop (or even live set-up) without the need for an extra power supply, and employs quad-core cabling to minimize untidy cabling.

818-665-4900; www.tcelectronic.com
info@tcelectronic.com

Dynamic vocal mic AKG

D7: Like its popular predecessor the D5, the D7 additionally features an improved capsule design with a humbucking coil and a high-pass filter along with a sleek new look. AKG's newest dynamic microphone features a humbucking coil that greatly reduces electrical interference and stage feedback. The D7 also features an integrated high-pass filter that cuts out low frequencies, eliminates handling noise and provides better audio clarity. The result is a higher-quality microphone that offers complete control for singers and announcers and, therefore, a better audio experience for audiences.



818-920-3212; www.akg.com
akgusa@harman.com



Cable Clark Wire and Cable

CAT5-Flex: The CAT5-Flex cable is a truly distinctive product. The black pressure extruded polyurethane jacket makes this cable extremely resistant to cuts and abrasions, while maintaining unbelievable flexibility. The stranded conductors give a very high flex life minimizing breakdowns. A true field cable, it is resistant to sunlight, oil and water. Compatible with standard RJ45 connectors (stranded conductor rated).

800-222-5348; www.clarkwc.com; sales@clarkwc.com

Multi-purpose amplification Alesis



Transactive 50: The Transactive 50 is a portable 50W (RMS) multi-purpose mixer/speaker/amplifier, featuring two input channels plus an aux input and selection of internal digital effects. It is driven by a 5" LF driver and a 1" tweeter for full-range sound reproduction. Channel 1 features an XLR microphone input and 1/4" stereo inputs, while Channel 2 offers two 1/4" stereo inputs. The master section of the Transactive 50 features a high, mid, and low frequency EQ, plus selectable digital effects (reverb, chorus, delays and rotary).

800-5-ALESIS; www.alesis.com; info@alesis.com

IT and broadcast monitoring Dalet Digital Media

Dalet Dashboard: Based on award-winning technology from open source Web infrastructure management provider, Hyperic, Dalet Dashboard offers system operators and administrators comprehensive analysis tools for monitoring and managing the performance of Dalet solutions across the entire workflow. More than a standard IT monitoring system, Dalet Dashboard incorporates the language and concepts of broadcast into the system giving administrators and users the ability to swiftly interpret, analyze and respond with immediate results. Customers can add Dalet Dashboard to the existing Dalet workflow or include it in their new deployments.

212-825-3322; www.dalet.com
sales@us.dalet.com

NEW PRODUCTS



X/Y stereo field recording mic Audio-Technica

BP4025: Both the AT8022 and the BP4025 are ruggedly constructed to protect against damage from day-to-day use during field recording. The microphones are also fully RoHS-compliant (free from all substances specified in the EU directive on the Reduction of Hazardous Substances). Each mic offers an 80Hz high-pass filter

for easy switching from a flat frequency response to a low-end roll-off. Each comes equipped with a professional stand clamp, a windscreen and a soft, protective pouch. The AT8022 X/Y Stereo Microphone is designed for easy use with either consumer or professional gear. The microphone operates on either a 1.5V AA battery or 11-52V DC phantom power and is supplied with two cables (one balanced, one unbalanced) for use with either pro equipment offering XLR inputs or with consumer gear equipped with 3.5 mm TRS input. This mic is ideal for use with handheld digital recording devices, and its compact, lightweight design is perfect for video camera-mount use as well as for stereo field recording, interviews and home recording. Its innovative capsule configuration produces an accurate stereo image in a smaller housing.

330-686-2600; www.audio-technica.com; sales@atus.com

broadcast gear from people you trust



Lowest Prices and Largest Inventory on EVERYTHING For Broadcast

BSWUSA.COM 800-426-8434



Analog on-air console AEQ

Opera: Based on the BC-500 audio console, AEQ is now launching its replacement—the Opera.

While Opera has the same basic features as the BC-500, it now provides the audio engineer with superb sound quality, reliable all-day, every-day operation.

The modular design of Opera offers the possibility of configuring the console according to specific requirements. There are equalized microphone/line modules, stereo dual line modules, input/output modules and output modules. Using the standard configuration, Opera can be easily upgraded by adding new modules. Outstanding among the modules is the digital telephone hybrid with frequency extension and multiplex option. This modular design permits the extraction for repair or replacement of each module in minutes without influence in the on-air signal.

800-728-0536; www.aeqbroadcast.com; sales@aeqbroadcast.com

Speaker stand Ultimate Support

TS-100B: The TS-100 air-powered speaker stand lifts 50 lbs. The gas spring is under a 50 lb. preload: When the speaker is safely loaded on the stand, turn the telescoping knob and raise any speaker weighing less than 50 lbs. with zero effort. If your speaker is more than 50 lbs., little effort is required to raise the speaker to the proper height.

800-525-5628; www.ultimatesupport.com; music.customersupport@ultimatesupport.com

31,845 products in
stock at press time!

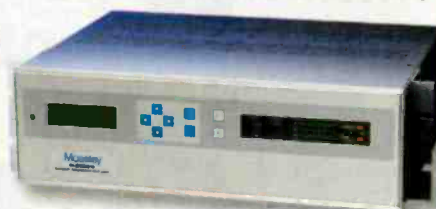
Your Top STL Source: BSW

Industry-Leading Harris Intraplex STL HD: Transmit Program Audio, Data and Telephone Over T1 or IP

- Specifically designed for IBOC conversion for HD Radio
- Point-to-point or point-to-multipoint setups
- Uncompressed audio or apt-X algorithm for highest quality compressed audio
- Software or hardware control
- Get the lowest price quote now at BSW

HARRIS

Call BSW For Lowest Price: 800-426-8434



Moseley StarLink SL9003T1 Digital STL System Over T1

Moseley

- All-digital modular system provides great flexibility in configuring multiple channel STL/TSL
- Choose 16-bit PCM linear digital audio, ISO/MPEG layer II or apt-X source coding, drop/insert and variable-rate digital mux, speech/fax/data cards, T1/E1 and more
- A building block "any-card, any-slot" approach results in lower cost and greater flexibility
- Prepacked models make purchase easy at BSW

Call BSW For Lowest Price: 800-426-8434

Call for All the Top Brands!

APT

MARTI

Tieline
TECHNOLOGY

TFT

BARIX

COMREX

broadcast gear from people you trust



Broadcast Supply Worldwide

Knowledgeable Sales Staff

BSW's sales professionals have decades of real-world broadcast experience to offer expert help with your purchase.

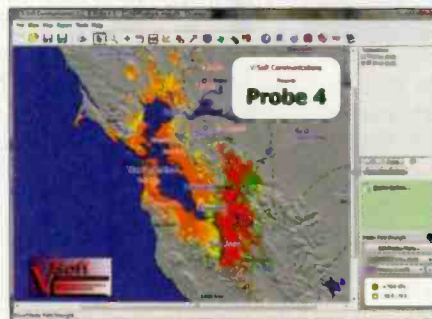


**True condenser mic
Avlex**

Superlux PRO238MKII: Featuring a modular design with a removable capsule, high SPL characteristics, a hidden low-cut switch, and a warm, detailed sound, the new Superlux PRO238MKII utilizes a 1" gold-plated thin film diaphragm in a protected capsule that delivers a wide frequency range with emphasis in the mid-high band. Featuring a cardioid polar pattern, the mic has a frequency response that extends from 20Hz-20 kHz. To accommodate a wide range of sound sources, the PRO238MKII has a switchable 100Hz/12dB per octave low cut filter that can be used to eliminate low frequency rumble caused by wind that may occur during outdoor performances. This switch is hidden in the chamber that houses the microphone's capsule to protect it from being accidentally changed during performances. The PRO238MKII's maximum level is 136dB SPL and the noise floor is only 16dB SPL A-weighted.

877-447-9216; www.avlex.com
sales@avlex.com

**Terrain analysis software
V-Soft Communications**



Probe 4: This program update includes several new tools and program enhancements. A new Calculation Engine takes advantage of multiple computing cores for faster calculation times. The updated Profile Tool makes units, line types, number of divisions and other setting user-configurable. Also new is the display of the path broken into multiple line-of-sight paths, multiple Fresnel zones, and the ability to edit the hard copy output to add custom user labels, arrows, legends and logos. Other updates include display enhancements, improved search functions, IBOC interference tools, and expanded plotting and contour displays. Probe 4 is bundled with a variety of database information as well.

800-743-3684; www.v-soft.com
info@v-soft.com

**THE BEST FM Translator
Receiver, HANDS DOWN!**

Composite/MPX and L/R audio outputs.

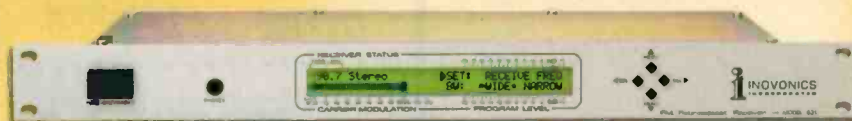
Passes RDS and SCA subcarriers.

Wide/narrow IF bandwidth selection.

Accurate front-panel metering of total-mod, L/R program audio, signal strength and multipath.

Carrier-loss muting and built-in overdeviation protection.

'Tally' outputs for remote alarms of carrier loss and program audio channel loss.



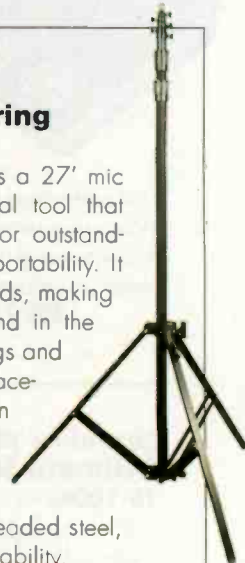
Get your hands on one!
www.inovon.com

Inovonics
1305 Fair Ave. • Santa Cruz, CA 95060
TEL: (831) 458-0552 • FAX: (831) 458-0554
www.inovon.com • e-mail: info@inovon.com

**Mic stand
Audio Engineering
Associates**

FW27: The FW27 is a 27' mic stand that is an ideal tool that collapses to just 5' for outstanding range and easy portability. It weighs only 9.5 pounds, making it the lightest tall stand in the market. Articulated legs and a bubble level allow placement of the stand on uneven surfaces. The microphone mount is constructed of heavy-duty 5/8-27 threaded steel, ensuring long-term reliability.

626-798-9128; www.wesdooley.com
stereoms@aol.com

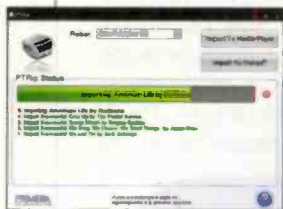


**Strategic programming
Media Monitors**

Mscore Series: The Mscore Series will be a new way for radio programmers of all formats to understand how radio listeners use radio. The first in the series, Mscore Switching, calculates an index of switching when radio panelists react to songs on the radio. The Mscore is derived from looking at what happened during many spins of the song on a specific station and then displayed on the Media Monitors Web service. Mscore can also be downloaded into RCS' GSelector so that music scheduling is enhanced even further.

800-676-3342; www.mediamonitors.com
info@mediamonitors.com

**Equipment rental for CD
collections
Primera Technology**



Rent and Rip: Under the terms of Primera's Rent and Rip Program for Personal CD Collections, customers can rent a Primera Bravo SE Disc Publisher along with the company's PTRip software for just \$299 per week. The Bravo SE's built-in robotics will load personal music CDs into the unit and rip tracks into Apple iTunes or Windows Media Player – automatically and "hands-free." Round-trip transportation is included in the rental fee. The process repeats until all CDs in the input bin are processed. Simply remove the ripped discs from the output bin, reload the input bin and click the import button again to continue.

800-797-2772; www.primera.com
sales@primera.com

**Power management/light modules
Furman Sound**



Classic Export Series: The Classic Export Series provides increased protection and filtration to 220V-240V countries. Just like their domestic counterparts, the models feature Linear Filtering Technology, Series Multi-Stage Protection, automatic Extreme Voltage Shutdown, and Smooth Track LED retractable lights. The series includes two 10-amp models, the PL-8C E and the PL-PLUS C E, and one 16-amp model, the PL-PRO DMC E. All Classic Export models provide 10 filtered and protected rear-panel IEC outlets with a front-panel convenience outlet and Protection OK indicator light. The PL-PLUS C E adds a segmented LED voltmeter that monitors and displays incoming line voltage while the PL-PRO DMC E features a large digital voltmeter/ammeter with a discrete dimmer button that displays line voltage and true RMS current draw with a color-coded voltage indicator. In addition, the PL-PRO DMC E provides a front-panel charger for small USB-powered electronics or to power a USB lamp. At a capacity of 16 amps, the PL-PRO DMC E also features a high-inrush-capable magnetic circuit breaker for added protection.

707-763-1010; www.furmansound.com
info@furmansound.com

**For Performance Spaces
or Production Places**

Acoustics First

Materials to Control Sound and Eliminate Noise™



From practice spaces to professional recording studios, we can help you get the materials you need to fit your application and budget. Our products include acoustical foams, fiberglass panels, diffusers, bass and corner traps, vibration control, acoustical wall fabrics, ceiling tiles, modular enclosures and various other acoustical materials.

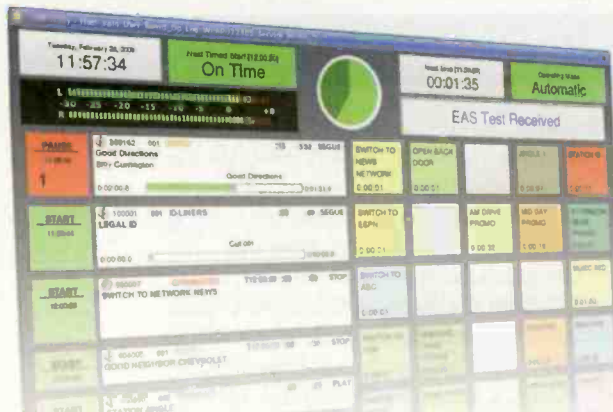
Toll Free **1-888-765-2900**

Web: <http://www.acousticsfirst.com>

Rivendell

RADIO AUTOMATION

Don't Sacrifice Performance to Meet Your Budget



Full Software Package and Hardware from \$3,995 per studio
Includes Rivendell Software, Workstation with ASI card and 1 year of Technical Support

Come see us at the NAB Show • Booth N8315



www.paravelsystems.com • (877) 44-PARAVEL • (877) 447-2728

NEW PRODUCTS

Digital voice recorder Olympus

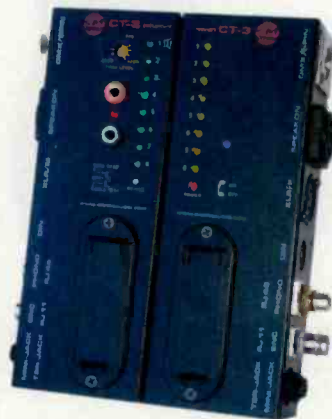
WS-400S: The WS-400S offers 1GB of internal flash memory to capture up to 272 hours of Windows Media Audio files on its built-in stereo microphone. It now features two new higher-quality recording modes and super standard play. Easily store and organize files and transfer them to a PC with "USB Direct" design. Simply plug the recorder into a computer, with no USB cable necessary, for easy downloading of audio files, documents, image files and more. Extend recording time and save memory by setting the device to only record when the built-in stereo microphones sense sound.



888-553-4448; www.olympusamerica.com

Cable tester SM Pro Audio

CT3: Simple to operate, the CT3 tests a plethora of cable and connector types from BNC through to RJ45. Connect each end of a cable to the appropriate connector and the CT3 will automatically report the status of the cable's integrity. Many cable testers usually require access to



both ends of a cable to test. The CT3 also has a unique two-part design enabling testing over long distances, just split the chassis in two. The tester features 8x automatic LED test indicators, the ability to test a multitude of cable and connector formats, banana connectors for continuity, road-ready construction and durability, 2x MIDI, BNC, RCA, XLR, MIDI, Speakon, 1/4" TRS/TS, RCA Phono, RJ45 and RJ11.

+61 3 9555 8081

www.smproaudio.com
sales@smproaudio.com

MAKE WAVES

EXPECT MORE FROM YOUR AM TRANSMITTER

Presenting the Armstrong Transmitter X-1000B

Bring major market sound to your radio station with the dual, hot-swappable 600 Watt RF modules capable of 150% modulation in Armstrong Transmitter's X-1000B, (1KW HD & DRM ready AM transmitter).

Engineered with the latest technology advances, X-1000B offers high reliability and built-in redundancy. Get ready to save money while improving your sound and reliability. Call us today!



MADE IN USA



ARMSTRONG
TRANSMITTER CORPORATION

Tel 315-673-1269 ▲ sales@armstrongtx.com ▲ www.armstrongtx.com

Find the mic winner March issue

Congratulations to

Rich Archut

of WKDN Family Stations, Camden, NJ. His name was drawn from the correct entries for the March issue. He won a Heil Sound PR-40 from Heil Sound.



The mic icon was inside the B on the puzzle piece.

www.heilsound.com

No purchase necessary. For complete rules, go to RadioMagOnline.com.

NEW PRODUCTS

Musilux mic cable with Neutrik Convertcon Wireworks

BG Cable Assemblies: BG Cable Assemblies feature Wireworks super flexible Musilux microphone cable or AES/EBU digital cable teamed with Neutrik's Convertcon connector. They can be used in both microphone and line level applications. Convertcon is a 3-pin male and female cable connector in a single housing. The assemblies are available in four configurations: XLR Male to Convertcon, XLR Female to Convertcon, Convertcon to Convertcon and quarter-inch TRS to Convertcon. They are offered in a variety of standard lengths with custom lengths available upon request. Musilux's ultra flexible PVC satin finish outer jacket is available in black, brown, red, orange, yellow, green, blue, violet, grey and white, to match studio décor or for signal identification. BG Assemblies are also available with Wireworks 110Ω AES/EBU compliant transmission cable for use in digital applications.



800-642-9473; www.wireworks.com
info@wireworks.com

IP Controlled, Full-Featured Dynamic RDS/RBDS Encoder

Supports ALL RDS/RBDS features – not just some.



- Latest processor technology – DSP and ARM
- Scrolling PS text for real time title & artist
- Remote access and control via TCP/IP or serial ports
- Local control using LCD screen and jogwheel
- User friendly configuration and operation
- Intuitive software
- External remote control contacts and I/O's
- Superior after sales support

via RADIO

321.242.0001 • www.viaRadio.com
Advanced Communication Via Advanced Design

NAGRA LB

Two channel digital audio recorder

NEW!

- Bluetooth / Ethernet / USB 2.0 file transmission
- Full audio editing system
- Internal flash & removable compact flash
- Pre-record buffer
- "Hot Swap" card capable
- Linear PCM, MP2, MP3 recording



Sales: 800 813-1663
www.nagraaudio.com

NAGRA

Surge protectors
L-com Global Connectivity



Isolator Wall Plates: L-com's Ethernet Isolator wall plates are fully self-contained devices that protect valuable network equipment from damaging surges and power anomalies that commonly occur across network cabling. Operation and installation is quick and easy. Simply plug these devices in-line between the cabling behind the wall and the patch cable that normally attaches the equipment to the network. Choose from models that support 10/100Mb/s or 10/100/1000Mb/s data rates. These isolators are available in Stainless Steel or Beige High Impact ABS Plastic. Each unit is fully RoHS compliant and has been certified to meet the IEC 6060-1 Medical Device Safety Standard making them ideal for hospital and medical laboratory environments.

800-341-5266; www.l-com.com
sales@l-com.com

Ceiling and wall tiles
Pinta Acoustic/Sonex

Phonstop: Eligible for LEED credits, Phonstop ceiling and wall tiles are made from 100 percent recycled glass that has been sintered to form rigid, lightweight and porous sound absorbers. Phonstop V and E tiles are ASTM E84 Class 1 (A) fire-rated. Non-fibrous, lightweight and durable, the tiles are simple to saw, drill, sand and more. Easy to clean, the tiles are also suitable for use with anti-graffiti systems and can withstand power washing. Phonstop V tiles can be directly installed to wall or ceiling surfaces using Phonstop Primer and Adhesive. Each tile offers a choice of edge options, one face has chamfered beveled edges and the other face has square edges. Phonstop V provides a highly effective Noise Reduction Coefficient (NRC) up to 0.90. The tiles can be custom colored on-site using a non-bridging paint.

800-662-0032; www.pinta-acoustic.com
sales@pinta-acoustic.com

Advanced Watchman Monitor®/Alarm
For Analog and Digital Broadcasting




The Model 81094 is the first in a series of Internet/Intranet accessible Advanced Watchman® Wattmeter/Alarm systems that will monitor both forward and reflected power in two transmission lines with only one controller. Unlike previously available systems that needed one controller for each transmission line, the Advanced Watchman® will monitor two lines (4 ports). The front panel display shows power on both systems simultaneously. Operating conditions may also be displayed on a PC from any location on the Internet/Intranet.

It is designed to work with a series of specialized line sections from 7/8" to 6-1/8" and standard Coaxial Dynamics elements for either analog or digital applications.


Coaxial Dynamics 6800 Lake Abram Drive • Middleburg Hts, OH 44130
Phone: 440-243-1100 Toll Free: 800-COAXIAL Fax: 440-243-1101
sales@coaxial.com • www.coaxial.com

Come see us at NAB Booth # N4831


ON AIR LIGHTS




OAL-1 RYG
ON-AIR LIGHT




OAL-1 RRR
ON-AIR LIGHT




OAL-101B
ON-AIR LIGHT



OAL-101R
ON-AIR LIGHT




OAL-3LB-RYG
ON-AIR LIGHT



OAL-3LB-RRR
ON-AIR LIGHT

BY



800.779.7575
www.ramsyscom.com

UPGRADES and UPDATES

Working with Silicon Laboratories, Global Security Systems has debuted FM radio data chips plus RBDS-based protocol for cell phones and consumer electronics. (www.gssnet.us)...**APT-X** has introduced Apt-X Lossless, which offers up to 96kHz sampling rates and sample resolutions up to 24 bits. The codec can operate in a special hybrid mode to use near-lossless coding mode. (www.aptx.com)...The **RCS HD Importer** has been retooled to match the latest software release from Ibiquity in software release 4.2. (www.rcscommunity.com)...**Stream the World** now offers in-stream targeted ad replacement to all of its clients when combined with Ando Media's Targeted Ad Injector. (www.streamtheworld.com)...**Adobe** has issued an update to Audition 3 labeled 3.C.1. The downloadable patch is designed to increase the overall performance of Audition 3. Key updates include multi-core processor support, Windows Vista 64-bit SP1 compliance and overall stability improvements. (www.adobe.com)

**Stereo SDHC flash recorder
Fostex**



UR-2: The UR-2 is a 1RU stereo audio recorder using SD card and USB storage device. It uses two SD cards (SDHC compatible) and a USB storage device as the recording media. The recording/playback file format is BWF (WAV). It offers high quality recording of up to 24bit/96kHz. Employing FAT 32 disc format, it is easy to process the file transfer to a PC based DAW. The analog input and output are balanced XLR/+4dBu and un-balanced RCA/-10dBV, the digital input and output complies to AES/EBU and S/P DIF digital signal. The playback function includes Chain Play and Timer Play, it is suitable for live stage performance and sound installation. In addition to the external control via parallel remote with D-Sub 25pin and RS-232C serial remote, a USB keyboard and 10-key keyboard can trigger the instant playback start. The mic input located on the front panel offers 48V phantom power.

800-7-FOSTEX; www.fostexusa.com
sales@fostex.com

DIGITAL AUDIO SWITCHING



**THE LOGICAL WAY
3-DRX**

Automatically switches between two AES Digital Audio signals or a stereo analog signal. Analyzes digital signal errors (CRC, bit, framing, etc.) and checks for loss of audio on the digital signal. User programmable.

TITUS TECHNOLOGICAL LABORATORIES

800.806.8851

WWW.TITUSLABS.COM

Check Out Our Family Of Consoles... 20 versions available!



MX8R List \$5,200



MX18E List \$8,600

DYNAMAX consoles have been a reliable product for small to medium sized Radio Stations since 1991.

- 3 to 18 channel configurations
- 24 or 36 inch wide frames
- 2" or 3" wide module options
- 4 Output Buss (two Stereo and two Mono)
- Metering for all 4 Outputs
- 2 - 4X1 auxiliary inputs standard
- Mic preamp on first two channels



MX8L List \$5,200



MX12L List \$6,300

SANDIES

215-547-2570
www.sandiesusa.com

**DYNAMAX
MX SERIES**

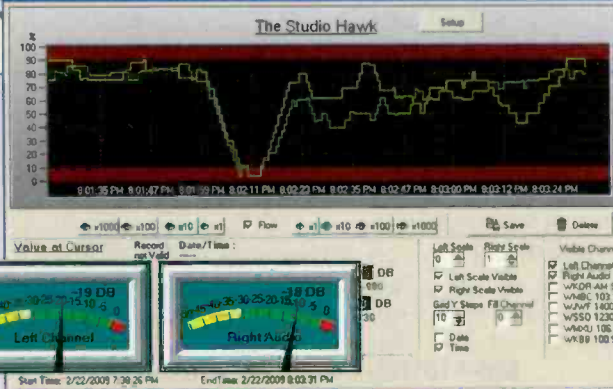
THE STUDIO HAWK

EAS Received: 2/19/2009 7:26:12 AM

[Studio Hawk]public@TheStudioHawk.com

To: m_address@mystation.com

A Broadcast station or cable system has issued a Required Weekly Test for Jefferson, NJ and Jefferson, NJ Studio Hawk by IntrinsicNet Trend Chart



FREE demo at
www.TheStudioHawk.com

Your **Low Cost** Solution
for **Monitoring Audio**
and **EAS Receivers**

Until
June 1 **\$499**

- + Monitors 8 status channels, 8 analog channels and 3 relays
- + **Expandable** to 24 channels
- + **Emails** or **text messages** of alarms
- + **Multiple contacts** for each alarm with delays between text messages
- + Receive a **daily dead air report pdf** by email
- + Receive a **Monday morning EAS verification report**.
- + **Trigger audible alarms** via signaling devices
- + **Records EAS data** (transmitted and received)
- + **Filters EAS alerts** that can be emailed or sent via text message

by **IntrinsicNet**



MOORETRONIX
BROADCAST & INDUSTRIAL ELECTRONICS

Our 5th Year

Our client list continues to grow. Thank you for your confidence and equipment purchases.

We Re-Condition

Pacifi Recorders BMX I-II-III, AMX, ABX and RMX, Stereo-Mixer and Mixer News-Mixer products.

Now available, the MOORETRONIX GPI interface.



This is a direct replacement for the PR&E CI-2 interface. Use where OPTO ISOLATION is needed between your device and console logic. Each module comes with connectors, pins and instructions. Optional mounting panel for 8 modules and 2 Warning Light relays.

Tel: 800-300-0733 Fax: 231-924-7812
WWW.MOORETRONIX.COM

The Ultimate IBOC Receiver/Translator

Designed to accommodate "full envelope" baseband signals (IBOC and analog), **Fanfare's** new age receiver/translator, the **TRO-1**, is fully self-contained and does not require an IBOC exciter. In fact, it arrives ready for full deployment under all existing FM modulation forms. The TRO-1 offers considerable versatility requiring only connection to the receiving antenna and a linearized PA.

At the heart of the TRO design is patented NTP-based technology, which enables the TRO to establish a noise floor that is often below normal measure. Such significant noise reduction manifests itself in significantly increased sensitivity and adjacent noise rejection.



fanfare fm

1-800-268-8637

FAX - 866-791-7443

P.O. Box 386 Lancaster NY 14086
Website "www.fanfarefm.com"

Email "proinfo@fanfarefm.com"

OMNIRAX *The Engineer's Choice!* BROADCAST FURNITURE

What if you could get more than you expect and still get the lowest possible price?

What if you could easily enhance your radio station's stature and image?

What if you could finally make your "furniture headache" go away?



By choosing Omnix as your preferred furniture provider, you can!



Call for free CD Presentation!

P. O. Box 1792 Sausalito, CA 94966
800.332.3393 415.332.3392

www.omnix.com info@omnix.com

Transcom Corporation

Fine Used AM & FM Transmitters
Authorized Representatives for all major equipment manufacturers

USED FM TRANSMITTERS

1 KW	2009	Crown FM1000E (demo), solid state
3.5 KW	1986	BE FM3.5A
7+HD	2005	Harris Z16HDC IBOC, solid state
14+5 KW	2005	BE Fm1405 (IBOC) HD, solid state
20 KW	2005	BE FM20S, solid state
20 KW	1985	Harris FM20K
20 KW	1996	Harris HT20CD
21.5 KW	1989	Continental 816R-2B
27.5 KW	1984	Continental 816R-4B
30 KW	1994	Harris HT30CD
50 KW	1982	Harris Combiner w/ auto exciter-transmitter switcher

USED AM TRANSMITTERS

5 KW	1982	Harris MW5A
5 KW	1987	Harris MW5B
5 KW	1987	Harris SX5A, solid state
10 KW	1985	Continental 316F
10 KW	1985	Harris MW10B
12 KW	2000	Nautel XL12, solid state

EXCITERS

New 30 W synthesized exciters
Used Harris 2nd Generation Digit Exciter
Used Nautel NE-50 exciter

NEW TV TRANSMITTERS

Visit our website for the latest sales
Special Discount Pricing On:
VHF and UHF TV Antennas (10w to 10kW)
TV STL

Please visit our web site, www.fmatmtv.com for current listings or
CALL US FOR A QUOTE!

2655 Philmont Ave. Suite 200, Huntingdon Valley, PA 19006
800-441-8454 215-938-7304 Fax: 215-938-7361

Remote Control Power!



Sicon-8 - Web & Dial-up Remote Control

The Sicon-8 lets you control your site via Internet with its Internal Web server, via telephone, auto-answering cell phone or our free software. Setup is a breeze using the Siconcontroller software that also includes scripting, e-mail alerts, multi-site management, virtual metering & more!



Includes
Action
Sequences!



DT-232 - Multi Purpose Dial-up Controller

An inexpensive dial-up remote control with amazing capabilities! Gives you DTMF access to 3, programmable relays that respond to any DTMF tone or sequence. Serial data outputs in your, user-defined, format for interfacing to virtually any piece of hardware. Accepts ASCII input from its serial port to generate tones. Includes free setup & control software.



Silence Sentinel - Silence Monitor w/Web

Silence Sentinel ushers in a new era of analog audio monitoring. Monitor your audio from any Web browser. When silence is detected, it can perform user-programmed, automated, sequences of actions & can also respond to user control via the network or via external status inputs.

Get info on these & other great remote control products at www.circuitwerkes.com

Consulting Professional Engineers

● Expert Witness Testimony

- FCC Applications
- Frequency Searches
- Co-location Studies
- Coverage Modeling & Maps
- Interference Analysis Studies
- RF Exposure Studies & Reports
- Custom Map Preparation



**Call us now
to discuss your
project needs.**

352-367-1725

RFEngineers, Inc.
alex@rfengineers.com



See the rest of the story at www.jkaudio.com

See us at
NAB Booth N2125

JK Audio



Your #1 Source For Quality Used Radio Broadcast Equipment

View our latest list of equipment on-line at:
www.baycountry.com
or call and we'll fax it to you.

All equipment sold with a 15 day return gurantee.

7117 Olivia Rd.
Baltimore, MD 21220
Ph: 877-722-1031
Fax: 443-596-0212
www.baycountry.com
email: sales@baycountry.com

PHASETEK, INC.

PHASETEK'S manufacturing facility and components expertise are available to design and fabricate any type of inductor or special R.F. component.

Our experienced staff of engineers and production personnel are dedicated to provide the broadcast industry the highest quality custom designed phasing equipment.



CUSTOM PHASOR INSTALLATION

RADIO STATION WXYT, DETROIT, MICHIGAN
9 TOWER, 50 KW DA-2 PHASOR SYSTEM

PHASETEK, INC.
550 CALIFORNIA RD, UNIT 11
QUAKERTOWN PA 18951
PHONE: 215-536-6648 FAX: 215-536-7180
TOLL-FREE: 800-742-7383

From **MILLIWATTS to KILOWATTS**



Transmitting & Audio Tubes
Semiconductors

Taylor Eimac Amperex MA/Com
Immediate Shipment from Stock
Motorola Toshiba Thompson Mitsubishi

• Se Habla Español • We Export

760-744-0700 • 800-737-2787
Fax: 760-744-1943


www.rfparts.com

E-mail: rftparts.com




nott ltd 3801 La Plata Hwy Farmington, NM 87401
Phone 505-327-5646 Fax 505-325-1142


Folded Unipole Antennas



Detuning Systems



Gilstat Lightning Dissipation Systems



Nello Towers

Radian/Rohn Towers

www.nottltd.com
info@nottltd.com

REALLY SIMPLE INEXPENSIVE POINT-TO-POINT AUDIO-OVER-IP (AND POINT-TO-MULTIPLE POINTS) THAT ROCKS.



BRIC-Link

- Works on T1, WAN, LAN, ISM band IP radios and satellite data links.
- AAC and HE-AAC, FLAC lossless compression.
- Multistream capability! Send one-way, high quality audio to up to four locations.

Put Comrex on the Line

COMREX

www.comrex.com

The ARES-MII

Hand-held audio recorder / player with all functions and controls at your fingertips

- High quality solid-state audio recorder
- 2GB internal memory
- Internal non-destructive graphic audio editor
- Voice activated recording
- Linear PCM, MP2, MP3 recording



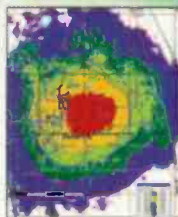
357 Riverside Dr • Franklin TN 37064
Sales: 800 813-1663 • www.nagraaudio.com

Investigator V3 FM

Now Included:

- 3-second USGS Terrain Block Level census data
- The Antenna Structure Registry Database
- One set of National Geographic TOPOI Maps

Things are no longer locked together. With multiple monitors, move the job control, station table, and other tool boxes to one screen then, expand the map to full size on another. The map is now a resizable rectangle.



It is easier than ever to keep your clients informed or to create your FCC engineering exhibits. Just create the contours and show the cities put some labels and arrows on to identify everything, save map to clipboard, and paste it into your word processing program. You can also export the contours as KML files to display on Google Earth.

Our White/Gray tool is the latest development in the program. We try to give our clients the tools they need and have requested.

rfSoftware, Inc.

innovative engineering tools

alex@www.rfsoftware.com

352-367-1700

FCC Certified FM Stereo Transmitters



GET ON-THE-AIR. STAY ON-THE-AIR!

- ✓ 50W RF output continuous duty!
- ✓ Auto protect, auto soft fail, auto restore!
- ✓ Automatic battery backup!
- ✓ Digital display of all parameters!
- ✓ Simple to install!

What's the bottom line? To stay on the air! The PX50 was designed with that in mind! Auto monitoring of all parameters, with automatic power reduction and restore on VSWR and temperature errors! No more down time AND no more trips to the tower site! Plus the PX50 is FCC Certified under parts 2, 73, & 74 (PF3PX50) and Industry Canada approved (IC: 4318A-PX50) so you never have to worry about non compliance! Make your life easy with the PX50 from Ramsey!



THE ORIGINAL... "STATION-IN-A-BOX"

Since the introduction of our "Station-In-A-Box" hundreds have been put in service worldwide! From temporary locations, rapid deployment installations, to emergency broadcast facilities, there is no quicker way to get on the air!

Custom designs include full audio production and control, record and playback of CD's, CD-R's, MP3's, MD's, and cassettes. Quick deployment antennas with LMR cable make installation a breeze. When you simply have to get on the air anywhere, rely on the proven and original "Station-In-A-Box" from Ramsey!



RAMSEY ELECTRONICS, LLC
590 Fishers Station Drive, Victor, NY 14564
800-446-2295 • 585-924-4560
www.ramseybroadcast.com

Leading the HD Radio Revolution!



NAB booth N6424

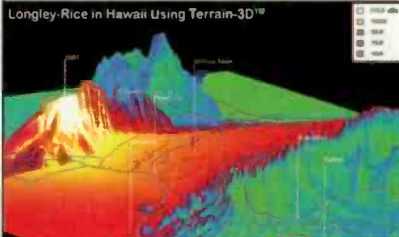
- FM Antennas
- Combiners
- Filters
- HD Radio

Shively Labs

www.shively.com
sales@shively.com

888-SHIVELY Fax (207)647-8273

Broadcast Engineering Propagation Software



NAB Booth #LV1741

Professional software packages for FCC applications and predicting coverage.

- Create stunning "real-world" coverage maps and interference studies using Longley-Rice, TIREM, ITU-R P.1546-1, PTP, FCC and others with Probe 3™
- Search FM channels under spacings and contour protection using FMCommander™
- Prepare AM skywave and groundwave allocations studies and map FCC contour coverage using AM-Pro 2™
- Plot STL paths and coverage over 3D terrain with Terrain-3D™



The leader in broadcast engineering consulting software.

www.v-soft.com 800 743-3684

The Perfect Trio for Studio Control

1- The Studio "Slave" Auxiliary Relay Pack

8 form C contacts for switching functions ranging from low level audio up to 2 amps of AC or DC. Momentary, continuous and DC input control. Steady state and flashing Solid State Relay driver voltages and more.

2- The Studio Solid State Relay Pack

A switching interface that can switch up to 5 amps of 120 VAC for powering "ON AIR" or "RECORDING" signs, or any other incandescent light alerting indicators. May be driven directly from the DME Studio "SLAVE" or "MIC PRO".

3- The "Mic Pro" & "Mic Pro 2" Microphone ON-OFF Controllers

The Mic Pro is a lighted switching interface for the SLAVE, the Solid State Relay Pack, and other competitive products, while the Mic Pro 2 is a stand alone microphone ON-OFF controller. Both are designed for mic control of low cost mixing boards.

For details on these and other innovative products for the broadcaster please visit us on the web at:

www.dmeengineering.com



2174 Chandler St. Camarillo, CA 93010
805-987-7881 800-249-0487

CLASSIFIEDS

FOR SALE

 **Acoustics First**
Toll-Free Number. **888-765-2900**
Materials to Control Sound and Eliminate Noise™
<http://www.acousticsfirst.com>

 Running to the site?
Time to Remote the site!

Stackley Devices, LLC
(809) 647-9677
www.remote-outlet.com

Get your own copy!

Each month, the Radio Technology Leader brings you the latest must-read information:

- Managing Technology
- Trends in Technology
- Facility Showcase
- RF Engineering
- Field Reports
- New Products
- FCC Update



Radio
THE RADIO TECHNOLOGY LEADER

To start your own FREE subscription, go to
subscribe.RadioMagOnline.com?tc=nn6007
and complete the online form TODAY!

Radio

THE RADIO TECHNOLOGY LEADER

www.RadioMagOnline.com • radio@penton.com

Editor – Chriss Scherer, CPBE CBNT, chriss.scherer@penton.com

Technical Editor, RF – John Battison, P.E., batcom@ohio.net

Associate Editor – Erin Shipp, erin.shipps@penton.com

Senior Art Director – Michael J. Knust, mike.knust@penton.com

Art Director – Robin Metheny, robin.metheny@penton.com

Senior Digital Content Specialist – Brad Erpelding, brad.erpelding@penton.com

Digital Content Specialist – Chris Flenker, chris.flenker@penton.com

Technical Consultants

Harry C. Martin, Legal

Kevin McNamara, CNE, Computers and Networks

Mark Krieger, CBT, IBOC and Contract Engineering

Russ Berger, Broadcast Acoustics

Donald L. Markley, P.E., Transmission Facilities

Contributors

Doug Irwin, CPBE AMD; Chris Wygal, CBRE; John Landry, CSRE

Group Publisher – Wayne Madden, wayne.madden@penton.com

Associate Publisher – Steven Bell, steven.bell@penton.com

Marketing Director – Kirby Asplund, kirby.asplund@penton.com

Marketing Coordinator – Crystal Shires, crystal.shires@penton.com

Vice President of Production – Lisa Parks, lisa.parks@penton.com

Senior Director of Production – Curt Pordes, curt.pordes@penton.com

Group Production Mgr. – Melissa Langstaff, melissa.langstaff@penton.com

Production Coordinator – Steven Kapp, steven.kapp@penton.com

Client Services Coordinator – Jesse West, jesse.west@penton.com

Classified Ad Coordinator – Sarah Maxey, sarah.maxey@penton.com

VP Audience Development – Geoff Smith, geoff.smith@penton.com

Audience Marketing Director – Barbara Kummer, barbara.kummer@penton.com

Audience Marketing Manager – Sonja Cheadle, sonja.cheadle@penton.com

MEMBER ORGANIZATIONS

Sustaining Member of:

• Audio Engineering Society

• Society of Broadcast Engineers  **missouri association of publications**

Member: American Business Media, The Missouri Association of Publishers

A PENTON MEDIA PUBLICATION

 **Penton Media**

Penton Media, Inc.
249 West 17th Street
New York, NY 10011

Chief Executive Officer – Sharon Rowlands, sharon.rowlands@penton.com

SUBSCRIPTIONS: Free and controlled circulation to qualified subscribers. Non-qualified persons may subscribe at the following rates (Prices subject to change): USA and Canada, 1 year, \$66.00, 2 years, \$116.00, 3 years, \$165.00. Outside the USA and Canada, 1 year, \$83.00, 2 years, \$149.00, 3 years, \$215.00 surface mail (1 year, \$127.00, 2 years, \$237.00, 3 years, \$347.00 airmail delivery). For subscriber services or to order single copies, write to Radio magazine, 2104 Harvell Circle, Bellevue, NE 68005 USA; call 866-505-7173 or 402-505-7173; or visit RadioMagOnline.com.

POSTMASTER: Send address changes to Radio, P.O. Box 2100, Skokie, IL 60076-7800 USA.

ARCHIVES & MICROFORM: This magazine is available for research and retrieval of selected archived articles from leading electronic databases and online search services, including Factiva, LexisNexis, and Proquest. For microform availability, contact National Archive Publishing Company at 800-521-0600 or 734-761-4700, or search the Serials in Microform listings at napubco.com.

REPRINTS: Contact Fostereprints to purchase quality custom reprints or e-reprints of articles appearing in this publication at 866-436-8366 (219-879-8366 outside the U.S. and Canada). Instant reprints and permissions may be purchased directly from our website; look for the RSCopyright tag appended to the end of each article.

PHOTOCOPIES: Authorization to photocopy articles for internal corporate, personal, or instructional use may be obtained from the Copyright Clearance Center (CCC) at 978-750-8400. Obtain further information at copyright.com.

PRIVACY POLICY: Your privacy is a priority to us. For a detailed policy statement about privacy and information dissemination practices related to Penton Media, Inc. products, please visit our website at penton.com.

EDITORIAL and BUSINESS OFFICE: Penton Media, Inc. 9800 Metcalf, Overland Park, KS, 66212; 913-341-1300; RadioMagOnline.com, penton.com.

Copyright 2008, Penton Media, Inc. All Rights Reserved.

List Rental Services - Curvin Lovejoy

Curvin Lovejoy
Phone: 845-732-7262
Fax: 845-620-1885
curvin.lovejoy@walterkarl.infousa.com

Editorial Reprints

Penton Reprints
Phone: 877-763-2303
Website: www.pentonreprints.com
E-mail: diane.mason@penton.com

Sales Offices

Associate Publisher

Steven Bell

Phone: 913-967-7221; Fax: 913-514-6848
E-mail: steven.bell@penton.com

Europe/UK

Richard Woolley

Phone: +44 1295 278 407
Fax: +44 1295 278 408
E-mail: richardwoolley@btclick.com

Classified Advertising

Julie Dahlstrom

Phone: 312-840-8436; Fax: 312-595-1983
E-mail: julie.dahlstrom@penton.com

Online Sales & Marketing

Angie Gates

Phone: 913-967-7516; Fax: 913-514-7516
E-mail: angie.gates@penton.com

Contributor Pro-file

Meet the professionals who write
for *Radio* magazine.
This month:
Field Report, page 40.

Mark Nootbaar
Assistant
News Director
WDUQ-FM,
Pittsburgh

Before joining WDUQ in 1996, Nootbaar was an anchor/reporter at KEDT-FM in Corpus Christi, TX, and WSOY-AM/FM in Decatur, IL. He often serves as station guinea pig for testing new field equipment and has been spearheading WDUQ's Web 2.0 efforts. He has a bachelors degree from Western Illinois University. He is also a frequent contributor to National Public Radio.



Written by radio professionals
Written for radio professionals

Radio, Volume 15, Number 5, ISSN 1542-0620 is published monthly and mailed free to qualified recipients by Penton Media, Inc. 9800 Metcalf, Overland Park, KS 66212-2216 (www.penton.com). Periodicals postage paid at Shawnee Mission, KS, and additional mailing offices. Canadian Post Publications Mail Agreement No. 40612608. Canada return address: Bleuchip International, P.O. Box 25542, London, ON N6C 6B2. Additional resources, including subscription request forms and an editorial calendar are available online at www.RadioMagOnline.com. To order single copies call 866-505-7173 or 402-505-7173.

POSTMASTER: Send address changes to Radio P.O. Box 2100, Skokie, IL 60076-7800 USA.

ADVERTISER INDEX

	Page Number	Advertiser Hotline	Advertiser Website
Acoustics First	47	888-765-2900	www.acousticsfirst.com
Agilent Technologies	12	800-829-4444	www.agilent.com
Armstrong Transmitter Corp.	48	315-573-1269	www.armstrongtx.com
Arrakis Systems	34-35, 59	970-224-2248	www.arrakis-systems.com
AudioScience	41	302-324-5333	www.audioscience.com
Bay Country Broadcast Equipment	54	877-722-1031	www.baycountry.com
Broadcast Software International	39	888-3SIUSA1	www.bsiusa.com
Broadcast Supply Worldwide	45	800-426-8434	www.bswusa.com
Cascade	41	360-988-0459	www.easwatch.com/esm
Circuitwerkes	53	352-335-6555	www.circuitwerkes.com
Coaxial Dynamics	50	440-243-1100	www.coaxial.com
Comrex	9, 54	978-784-1717	www.comrex.com
Continental Electronics	33	800-733-5011	www.contelec.com
Crown Broadcast/IREC	30	866-262-8972	www.crownbroadcast.com
DM Engineering	55	800-249-0487	www.dengineering.com
Eventide	7	201-641-1200	www.eventide.com
Fanfare FM	52	800-268-8637	www.fanfarefm.com
Graham Studios	27	866-481-6696	www.graham-studios.com
Henry Engineering	15	626-355-3656	www.henryeng.com
Inovonics	46	831-458-0552	www.inovon.com
JK Audio	3, 54	800-552-8346	www.jkaudio.com
Kintronic Labs	19	423-878-3141	www.kintronic.com
Kowa Optimed, Inc.	25	310-327-1913	www.kowa-usa.com
Logitek	18	800-231-5870	www.logitekaudio.com
Mooretronix	52	800-300-0733	www.mooretronix.com
Nagra	49, 55	800-813-1663	www.nagraaudio.com
Nautel Electronics	17	902-823-2233	www.nautel.com
Nott Ltd.	54	505-327-5646	www.nottltd.com
OMB America	21	305-477-0973	www.omb.com
Paravel Systems	48	877-447-2728	www.paravelsystems.com
Phasetek	54	800-742-7383	www.phasetekinc.com
Radio Design Labs	36	217-352-3498	www.rdinet.com
RAM Broadcast Systems	24, 50	800-779-7575	www.ramsys.com
Ramsey Electronics	55	800-446-2295	www.ramseybroadcast.com
RF Engineers	53	352-367-1725	www.rfengineers.com
RF Parts	54	800-737-2787	www.rfparts.com
RF Software, Inc.	55	352-367-1700	www.rfsoftware.com
RF Specialties	37	816-628-5959	www.rfspec.com
Sondies USA	51	215-547-2570	www.sandiesusa.com
SCMS, Inc.	31	800-438-6040	www.scmsinc.com
Shively Labs	26, 55	888-SHIVELY	www.shively.com
The Studio Hawk	52	662-324-2769	www.thestudiohawk.com
TieLine Technology	5	888-211-6989	www.tieline.com
Titus Technological Labs	51	800-806-8851	www.tituslabs.com
Transcom Corp.	53	800-441-8545	www.fmamtv.com
Via Radic	49	321-242-0001	www.viaradio.com
V-Soft Communications	55	800-743-3684	www.vsoft.com
Wheatstone	2, 60	252-638-7000	www.wheatstone.com
Yellowtec	32, 43	+49-2173-967-315	www.yellowtec.com

This index is a service to readers. Every effort is made to ensure accuracy, but Radio magazine cannot assume responsibility for errors or omissions.

by Erin Shipps, associate editor

Do you remember?

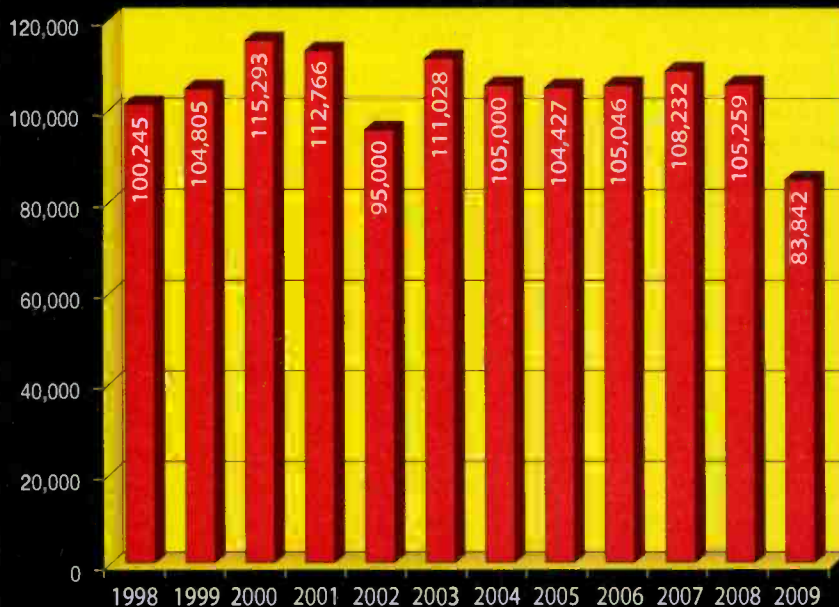
Two weeks ago, NAB President and CEO David Rehr pushed for Apple to begin including FM radio capabilities in future iPhone and iPods. A 2008 NAB Fastroad study (www.nabfastroad.org) concluded that mobile phone service providers, radio broadcasters and handset manufacturers all stand to benefit from FM-capable mobile phones. At least one mobile phone integrated with FM capacities, Motorola's ROKR EM35, was featured at the 2009 NAB Show.

But this isn't the first time radio has tried to put itself in our palms. Transistor radios, like this RCA Victor model from a 1961 ad, look a little familiar, dare I say, like an iPod.

What will it take to get FM receivers back in our palms? And are we willing to pay for it? The RCA Victor at \$24.95 in 1961 would cost about \$177 today. That's just about the price of a 16GB iPod Nano as it is now. Will added capabilities up the price? We may, or may not find out.



Sample and Hold NAB Attendance Through the Years



Historically, attendance for the NAB Show has reflected the U.S. economic state. This year's registered attendance marked the lowest number in more than 10 years at 83,842. The last time numbers were near this low was the last marked recession of 2001-2002, after which attendance rebounded very well. Following the statistics at left, gathered as accurately as possible, the NAB Show reached a peak before and after the 2001-2002 recession and has maintained a slightly lower number since 2003. This year's low number can obviously be attributed to the current recession; but, if history repeats itself, we should be looking forward to at least bouncing back above 100,000 for 2010 or 2011.

Other notable numbers: 39,000 in 1986, 51,217 in 1991 and 54,000 in 1992.

Source: NAB???

NEW

full featured, professional consoles at amazing prices from **ARRAKIS**

MEM

NEW

M.A.R.C-15

from \$4,999

ARC-15

\$3,495

ARC-10U

\$1,599

modular
3 buses
2 inputs per ch
supports 2 phones
PC interface module
control room & studio

If you think that you
can't afford a new console,
then you can think again!

The Arrakis 'Advanced Radio Console' series (A.R.C.) features analog electronics, ultra-low profile tabletop design, all electronic switching with LED lighted switches, a powerful telephone hybrid interface, a PC sound card channel for digital playback and recording directly to a PC, and RJ45 ID connectors (with cables) for fast installation.

www.arrakis-systems.com

970.461.0730

"WOW, I COULDA HAD A VP-8!"

—RECENTLY DOWNSIZED STATION MANAGER



VORSIS VP-8 IS THE BEST AUDIO PROCESSOR FOR UNDER \$3K. PERIOD.

The Vorsis VP-8 Digital Audio Processor delivers clean detailed sound at a great price. In fact, you can easily spend two to three times more and still not match the VP-8's performance.

Installation and setup takes only minutes. The VP-8 is loaded and ready to go for FM, AM, FM-HD, AM-HD, streaming, and studio processing. It's great sounding presets are carefully tailored for your format and media. No need to spend endless hours tweaking, the VP-8 will make your station sound great, right out of the box.

For FM stations, expect a sound that easily holds its own with your high-power major market competitors. Listeners comment that with the VP-8 they now hear the rest of the music! AM stations often experience a dramatic increase in coverage area along with greatly improved intelligibility and sound quality.

The VP-8 is also ideal for streaming audio, studio processing, as a versatile backup processor or as an STL protection limiter.

Of course, if tweaking is your thing, VP-8 lets you under the hood with a complete toolset – in the VP-8, nothing is hidden. With its 4-band AGC/compressor and 8-band limiter, the VP-8 boasts more bands than any other processor in its price range to give you a very clean, loud, competitive sound that doesn't destroy the music.

It also includes features rarely found even on top-of-the-line processors: a reference-grade stereo encoder for FM, built-in test oscillator, diversity delay, multi-point headphone monitoring, and extensive metering.

The bottom line? The Vorsis VP-8 gives more bang per buck than any other audio processor in its class (and then some). And since Vorsis is designed and built by Wheatstone here in the US, you know it'll hold up and be supported 24/7 for years and years.

Intrigued? Call us or visit us on the web to learn more or set up a demo. You'll be happy you did. Vorsis—more listeners listening more.

W H E A T S T O N E
VORSIS

Radio has evolved. Your sound should too.™

phone 1.252.638-7000 | www.vorsis.com | sales@wheatstone.com