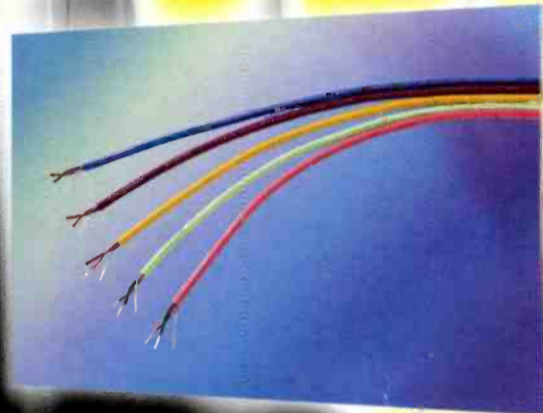
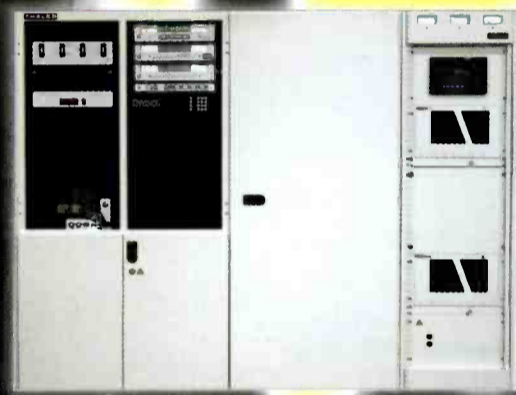
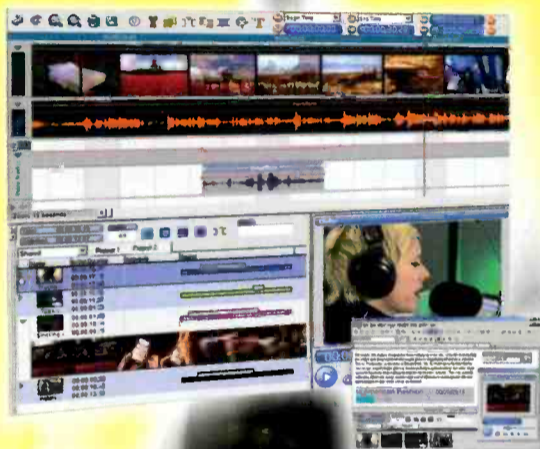


NEWS SPECIAL ABR REPORT

NEW PRODUCTS



from
NAB2004



#BXNPKO*****CAR-RT LOT**C-068
#5768490129# GI 100
THOMAS SMITH
ENGINEERING TECHNICIAN
821 UNIVERSITY AVE
MADISON WI 53706-1412

attendees
think

Digital Audio Network Router

The Bridge

The Bridge Router can hold all the electronics you'll need for a small console: I/O cards, mix engines, and DSP processors. Naturally it can also have automatic fail-over DSP and CPU cards to keep you on-air. You can expand the system with a simple cage-to-cage interconnect.



It's not just a Digital Console, IT'S AN ENTIRE AUDIO INFRASTRUCTURE

YOU CAN START with a simple AES router with analog and digital inputs and outputs. From there you can add logic I/O cards and scheduling software; you can link multiple master bridge cages together to achieve thousands and thousands of I/O ports; you can create a custom system that includes multiple smaller remote satellite cages— with everything interconnected via CAT5 or fiberoptic links.

BUT THAT'S JUST THE BEGINNING: you can also add mix engine cards, interface to your automation system; you can choose from two different WHEATSTONE series control surfaces (D-5.1 or D-9), each specially configured for production room, on-air or remote truck applications. We also provide a full complement of Ethernet protocol remote router control panels, as well as a complete family of plug-in modules that interface the routing system to existing Wheatstone digital and analog standalone consoles.



**The D-9 is
Compact yet Powerful:**

It can route, generate and monitor 5.1 surround signals and produce simultaneous 5.1 and stereo master signals for your dual broadcast chain. The console also provides extensive, rapid communication paths throughout your entire Bridge system. Motorized faders and control setting storage and recall make show-to-show transitions fast, easy and accurate.



Wheatstone Knows Live Audio. The D-5.1 is loaded with MXMs, foldbacks, and clear easy-to-read displays. You'll have all the power you need when the news breaks! Its intuitive layout helps your operators work error-free, and it can handle and generate all the 5.1 content and simultaneous stereo capability any large or medium market station could need.

 **Wheatstone**

the digital audio leaders

600 Industrial Drive, New Bern, North Carolina, USA 28562
tel 252-638-7000 / fax 252-635-4857 / sales@wheatstone.com

 Made in USA

www.wheatstone.com

Copyright © 2003 by Wheatstone Corporation

Great Innovators In Engineering History.



Phil at Harris integrates Workflow Process Manager into the new Digital Ingest system.

Announcing a breakthrough in media ingest and transfer: New Digital Ingest from Harris.

Yes, our guy Phil was pretty excited about the whole Digital Ingest thing. But now it's your turn to discover the latest innovation from Harris, the leader in broadcast technology. **Digital Ingest completely automates your front-end media ingest and transfer process,**

hrs | harris resource suite
FOR INGEST-TO-BROADCAST WORKFLOW MANAGEMENT

whether you're talking about a single facility or a whole enterprise. Until now, when digital media was acquired from delivery services — such as Media DVX or DG Systems — distribution throughout the broadcast facility required manual transfer to tape and video file servers. All of that has changed. Now, with Digital Ingest — part of the Harris Resource Suite — you eliminate the error-prone busy work of manually entering metadata, give your operation virtual “real time” ingest-to-plaintext (great for those last-minute, gotta-get-this-on-the-air requests), and better allocate your engineering resources.

Designed to integrate seamlessly with your Media Client station, Digital Ingest has intelligent and customizable “rules” to adapt workflow processes to your operation. Plus, (as Phil will proudly tell you), Digital Ingest includes Workflow Process Manager (WPM) — an integrated software module that allows the system to manage automated and manual tasks and processes. With Digital Ingest, you can even search, browse, and approve content from desktops anywhere in your enterprise (your Program Manager will love you). So go ahead. Make Phil happy. Call about Digital Ingest today.

For more information about Digital Ingest and the entire Harris Resource Suite of products, call **1-408-990-8200** or visit us online at www.broadcast.harris.com/automation.

www.broadcast.harris.com/automation

HARRIS

One magazine couldn't hold it all.

To help readers gain access to as many new products from the 2004 NAB show as possible, we at *Broadcast Engineering* magazine developed the "NAB Special Report."

This report includes almost 300 new products and services from a wide variety of exhibitors. The coverage was developed by our team of engineers and reporters who canvassed the entire convention center — almost two million square feet of exhibition space. That's a lot of walking!

Because of the show's size in both exhibitors and attendees, it's no longer possible for one person to see everything. That's where this special report can help. Contained in this report are some of the hottest new products and technology on display at NAB2004.

Plus, complete contact details are included with each new product announcement so you can follow up directly with the manufacturer.

Hundreds of new solutions are just a page turn away, so read on and enjoy!

Brad Dick

Editorial Director

Editorial Director:
Brad Dick, bdick@primediabusiness.com

International Editor:
Jerry Walker, jwalker@primediabusiness.com

Technical Editor:
Donald Keller, dkeller@primediabusiness.com

Sr. Assoc. Editor:
Susan Anderson, sanderson@primediabusiness.com

Sr. Assoc. Editor:
Laura (Collins) Dixon, ldixon@primediabusiness.com

Asst. Editor:
Chevonn Payton, cpayton@primediabusiness.com

Asst. Editor:
Heidi Hueseman, hhueseman@primediabusiness.com

Sr. Art Director:
Michael J. Knust, mknust@primediabusiness.com

Assoc. Art Director:
Robin Morsbach, rmorsbach@primediabusiness.com

Technical Consultants:
Computers & Networking – Brad Gilmer
Antennas/Radiation – John H. Battison
Digital Video – Michael Robin
Transmission Facilities – Donald L. Markley
Legal – Harry C. Martin
New Technology – John Luff
Industry Watcher – Paul McGoldrick
New Media – Craig Birkmaier
International Technology – Sypha

Sr. VP:
Peter L. May, pmay@primediabusiness.com

Group Publisher:
Dennis Triola, dtriola@primediabusiness.com

Marketing Dir.:
Christina Heil, cheil@primediabusiness.com

Vice President of Production
Lisa Parks, lparks@primediabusiness.com

Sr. Ad Prod. Coord.:
Sonja Shaffer, sshaffer@primediabusiness.com

Classified Ad Coord.:
Michelle Hooper, mhooper@primediabusiness.com

Dir., Audience Marketing:
Barbara Kummer, bkummer@primediabusiness.com

Group Show Director/LDI:
Sharon Morabito, smorabito@primediabusiness.com

PRIMEDIA
Business Magazines & Media
COO: Jack Condon, jcondon@primediabusiness.com
Executive Vice President:
John French, jfrench@primediabusiness.com
Corp. Comm/Mkg.:
Karen Garrison, kgarrison@primediabusiness.com

Primedia Business to Business Group -
745 Fifth Ave., NY, NY 10151
Chief Executive Officer:
Martin Maleska, martin.maleska@primedia.com

Primedia Inc.
Chairman: Dean Nelson, dean.nelson@primedia.com
President and CEO:
Kelly Conlin, kelly.conlin@primedia.com

Customer Service: 913-967-1707 or 800-441-0294

Sales Offices

US/CANADA

WEST
George Watts III
(360) 546-0379; Fax: (360) 546-0388
georgeww3@aol.com

EAST
Josh Gordon
(718) 802-0488; Fax: (718) 522-4751
jgordon5@bellatlantic.net

EAST/MIDWEST
Joanne Melton
(212) 462-3344; Fax: (913) 514-9249
jmelton@primediabusiness.com

INTERNATIONAL

EUROPE
Richard Woolley
+44-1295-278-407
Fax: +44-1295-278-408
richardwoolley@btclick.com

EUROPE
Tony Chapman
+44-1635-578-874
Fax: +44-1635-578-874
ARCintect@aol.com

ISRAEL
Asa Talbar
Talbar Media
+972-3-5629565; Fax: +972-3-5629567
talbar@inter.net.il

BROADCAST ENGINEERING (ISSN 0007-1994) is published monthly and mailed free to qualified persons by Primedia Business, 9800 Metcalf Ave., Overland Park, KS 66212-2216. Periodicals postage paid at Shawnee Mission, KS, and additional mailing offices. Canadian Post Publications Mail Agreement No. 40597023. Canada return address: DP Global Mail, 4960-2 Walker Road, Windsor, ON N9A 6J3. POSTMASTER: Send address changes to *Broadcast Engineering*, P.O. Box 2100, Skokie, IL 60076-7800 USA. CORRESPONDENCE: Editorial and Advertising: 9800 Metcalf, Overland Park, KS 66212-2216 Phone: 913-341-1300; Edit. fax: 913-967-1905. Advert. fax: 913-967-1904. © 2004 by Primedia Business. All rights reserved.

Vice Chairman & General Counsel:
Beverly Chell, beverly.chell@primedia.com

MEMBER ORGANIZATIONS
Sustaining Member of:
• Society of Broadcast Engineers
Member, American Business Media;
Member, BPA International



BROADCAST ENGINEERING, ISSN 0007-1994, is published monthly (except semi-monthly in June and December) by PRIMEDIA Business Magazines & Media Inc., 9800 Metcalf Ave., Overland Park, KS 66212 (primediabusiness.com). Current and back issues and additional resources, including subscription request forms and an editorial calendar, are available on the World Wide Web at broadcastengineering.com.

SUBSCRIPTION RATES: Free and controlled circulation to qualified subscribers. Non-qualified persons may subscribe at the following rates (Prices subject to change): USA and Canada, 1 year, \$70.00, 2 years, \$135.00, 3 years, \$200.00; Outside USA and Canada, 1 year, \$85.00, 2 years, \$165.00, 3 years, 245.00 surface mail (1 year, 155.00, 2 years, \$295.00, 3 years, \$440.00 airmail delivery). For subscriber services or to order single copies, write to *Broadcast Engineering*, 2104 Harvell Circle, Bellevue, NE 68005 USA; call 866-505-7173 (USA) or 402-505-7173 (outside USA); or visit www.broadcastengineering.com.

ARCHIVES AND MICROFORM: This magazine is available for research and retrieval of selected archived articles from leading electronic databases and online search services, including Factiva, LexisNexis and Proquest. For microform availability, contact ProQuest at 800-521-0600 or 734-761-4700, or search the Serials in Microform listings at proquest.com.

REPRINTS: Contact Wright's Reprints to purchase quality custom reprints or e-prints of articles appearing in this publication at 877-652-5295 (281-419-5725 outside the U.S. and Canada). Instant reprints and permissions may be purchased directly from our Web site; look for the iCopyright tag appended to the end of each article.

PHOTOCOPIES: Authorization to photocopy articles for internal corporate, personal, or instructional use may be obtained from the Copyright Clearance Center (CCC) at 978-750-8400. Obtain further information at copyright.com.

PRIVACY POLICY: Your privacy is a priority to us. For a detailed policy statement about privacy and information dissemination practices related to Primedia Business Magazines and Media products, please visit our Web site at www.primediabusiness.com.

CORPORATE OFFICE: Primedia Business Magazines & Media, 9800 Metcalf, Overland Park, Kansas 66212 • 913-341-1300 • primediabusiness.com

Copyright 2004, PRIMEDIA Business Magazines & Media Inc. All rights reserved.

NAB SPECIAL REPORT

NEW PRODUCTS



1. DaletPlus News Suite
2. Thales DCX Paragon
3. Gepco 61801EZ
4. Panasonic AJ-SPX800
5. Image Video VxV-16

6. Leitch Nexio NXMTS server
7. Thomson Grass Valley
LDK 6200 HD Super SloMo
8. Hamlet Flexiscope
9. Sony DigitalMaster DVCAM tape

Automate Loudness and Event History



The award-winning Dolby® LM100 Broadcast Loudness Meter gives you the unprecedented ability to measure the subjective loudness levels of your television broadcast and cable channels accurately. Now we're making it even easier—our new LM100 Remote Software Application automates collection of this loudness data on your analog and digital services. To further maintain a high standard of audio quality, the software also includes an event log that continuously monitors and records several types of input status, alarm, and error conditions.

Once you've measured and analyzed television loudness, you're ready to control it—and make your viewers happy. For complete information on the Dolby LM100, the new remote software application, and for dealer information, visit our website.



LM100 Remote Software Application

www.dolby.com/professional



NAB04: What attendees think

By Brad Dick, Editorial Director

AT NAB, I quickly become an “expert.” How do I know that? Because literally everyone asks me what I think is the hottest thing at the show, what’s drawing all the attention, how many attendees are there and a whole bunch of other questions that don’t matter. For some reason, exhibitors and attendees believe,

have is a lot of information from a lot of sources fed to me over five days. This, combined with the hundreds of new product releases I’ve read and worked on while developing the March and April issues of the magazine, gives me a pretty good idea of trends and themes of the show.

This year, instead of just giving you my viewpoint on what’s hot at the show, we decided to let our readers tell us what they found most interesting. Because of the large number of new products contained in this issue, there isn’t space for all the research. A complete presentation of the data and summary is available at www.broadcastengineering.com.

With that, let’s see what they found.

Attendees viewpoint

We contracted with a survey company to conduct on-site attendee interviews in various locations throughout the show. Coupled with an after-show e-mail survey form, we’ve developed some insightful data on what the attendees saw and liked.

Here are some of those thoughts.

The survey asked attendees for what they found most interesting at the show. After the data was tabulated, it was searched for common terms. One of the technologies mentioned most



often was HD. Many comments focused on the improved image quality from earlier and the broader range of products. Right behind the number of HD mentions was the phrase HDV. Attendees see this as an affordable high-definition system. They

said it could be used in smaller markets, for news and for lower-cost productions.

The most commonly mentioned technology was Panasonic’s P2. Number one reader justification for mentioning the P2 technology was “no moving parts.” Funny, no one used the phrase “Tape is dead,” but clearly, this survey shows that attendees see solid-state recording as more than just another format.

All I want from NAB04 is....

Audio accessories	30.0
Audio consoles	25.2
Automation	18.3
Cameras/lenses	28.3
Graphics/animation	20.9
Microphones	24.5
Microwave/FO/telco	20.4
Production switchers/effects	22.2
Recording media	22.0
Facility support	14.3
Satellite equipment	15.0
TBC/frame sync	21.9
Test and measurement	28.7
Video routing	25.5
Video editing	35.5
Video storage	34.5
Wire/cable	31.7

Figure 1. Data shows a relatively high percentage of NAB2004 attendees plan to purchase equipment in 2004. Numbers represent percent responding “yes” to the above equipment purchase categories.

perhaps not without some justification, that by the time the NAB convention opens, I’ve already read, seen or at least heard about every new product, trend, development and technology demonstration that’s at the show.

Truth is, I’m not the expert. At least not in the sense that I know all of the above.

However, over the days, I’m involved in a lot of interviews, press conferences and meetings. These events get me one-on-one access to the real experts in broadcast and production technology — the engineers and directors at the companies that make the technology you use in your facilities. These are the people are the real experts. All I do is sort through what



I’m told, trying to make some sense of it all.

Sure, I can understand the basics of how it works, just like you do. But my goal isn’t to know as much as *Broadcast Engineering’s* average reader probably does about company X’s new video server or company Y’s new MPEG-4 encoder, it’s to get a 20,000-foot viewpoint of the products and technologies I’m introduced to. The advantage I therefore



PERFORMANCE

What's the Best Video Jack for HD?

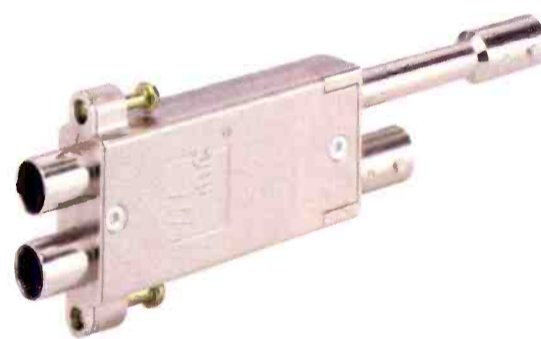
All Mobile Video chose ADC's MVJ-3.

AMV integrated ADC's MVJ-3 Midsize Super Video Jack into the world's only HD/SD mobile production fly-pack system, AMV's Matrix. The MVJ-3 was chosen for its durability, superior HD video performance and 3+ GHz bandwidth. This premium jack includes a host of patented features that make it the industry's leading HD jack:

- Sealed switch & solderless design prevents contamination
- Ultem® precision insulators help ensure true 75 Ohm performance
- Wide variety of high density options, including 3x32 panels with monitor
- Meets MIL-STD-202F for environmental and mechanical reliability

ADC's broad range of copper and fiber audio, video and data products are designed to deliver the highest performance and withstand the rigors of real world use. With ADC you'll get:

- Superior quality & performance
- Pre/Post-sale engineering and support
- Wide selection of cable sizes, tools & accessories
- Competitive pricing and the industry's longest product warranty

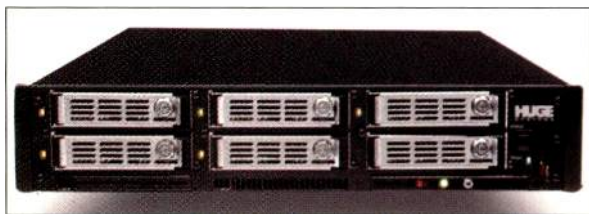


MVJ-3 Midsize Super Video Jack



Call today for fast delivery!

For a free copy of ADC's 12th edition broadcast product catalog, call 1.800.366.3891 ext. 2000. Or visit adc.com/broadcast.



DISK ARRAY

HUGE SYSTEMS SANSTREAM
818-991-1188;
www.hugesystems.com

1RU disk array capable of supporting 10 streams of uncompressed eight-bit SD video; designed for storing and sharing high-bandwidth, high-resolution media; ensures crossplatform plug and play; supports all major operating systems; up to six ports of built-in gigabit Ethernet; true file-level sharing for all clients. □



MULTIPLE-SCREEN LCD DISPLAY

MARSHALL ELECTRONICS V-R18PSDI
800-800-6608; www.mars-cam.com

Offers eight high-resolution 1.8-inch LCD color TFT displays in a 1RU space; designed for use with digital signals; display face can be tilted up to 90°; active loop feature; includes universal voltage power supply and signal confidence for multiple transmission, data ingest, cable and satellite feeds. □

VHF TRANSMITTER

AXCERA INNOVATOR HX
800-215-2614;
www.axcera.com

High-power solid-state VHF transmitter; uses RF power devices in high-gain, broadband power amplifiers, a frequency-agile exciter/driver, and an advanced in-circuit programmable control system. □



FULL-DUPLEX UNLICENSED BAND RADIO

MOSELEY BROADCAST DTV LICENSE FREE
805-968-9621; www.MoseleySB.com

ATSC/DVB-ASI/Ethernet band radio; capable of operating at aggregate rates of more than 300Mb/s in the 5.7- to 5.8GHz ISM band for distances up to 30 miles; consists of an indoor and outdoor unit, as well as integrated digital video/audio/data multiplexers; allows users to convert, integrate, groom and multiplex multiple streams. □

Product Source

HD ROUTER

NETWORK ELECTRONICS VIKINX HD128M
800-420-5909;
www.network-electronics.com

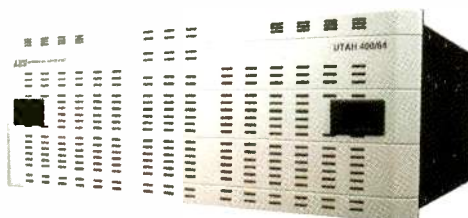
Provides multirate support from 19.4- to 1485Mb/s and full expansion to 128x128; features low power consumption and low fan noise; 9RU frame; all components are hot-swappable; completely front loaded; TCP/IP control interface and TCP/IP interconnectivity with VikinX.128 control panels. □



FIELD PRODUCTION BAG

IDX IDX-UPB
310-891-2800; www.idxtek.com

Has see-through mesh pockets, four removable and user-configurable inside pouches, and outside and flat pockets; features reflective stripping and four D-rings located around the bag for accessories; high-density padded shoulder strap and padding on all sides of the bag. □



ANALOG I/O OPTION

UTAH SCIENTIFIC UTAH-400
801-575-8801;
www.utahscientific.com

All UTAH-400 switchers now can be ordered with analog I/O modules; the eight-channel option modules are fully compatible with the other SD, HD and AES I/O options for the switcher, allowing the analog ports to be freely added to any UTAH-400. □

ELEVATING CAMERA PEDESTAL

TELEMETRICS EP-PT-S3 TELEVATOR II
201-848-9818;
www.telemetryinc.com

Can be controlled by a wide variety of Telemetry control panels and control software; 27.5-inch range; can be employed in a variety of configurations for use on a folding floor dolly or Telemetry's motorized track systems. □

TRANSMITTER PACKAGE

MICROWAVE RADIO COMMUNICATIONS REPORTER
978-671-5700;
www.mrcbroadcast.com

Compact, lightweight, mobile transmitter package can be belt or robot-mounted; transmits live video from enclosed and confined areas; provides critical video surveillance capability; simultaneous ASI, SDI, NTSC composite signal output; selectable COFDM bandwidth; encryption option. □

MAINTENANCE PROGRAM

PROFESSIONAL COMMUNICATIONS SYSTEMS FULL PROTECTION
800-447-4714; www.pcomsys.com

Full protection includes all parts and labor required to maintain equipment, regularly scheduled preventive maintenance visits, on-site service visits, loaner equipment if necessary during repair period, and priority phone support and service; incorporates a regular schedule of on-site inspection, cleaning, lubrication and adjustment of equipment. □



HDTV DECODER

DIGITAL VISION BITLINK
818-769-8111; www.digitalvision.se

Decoder for use in ATSC/DVB contribution and professional network monitoring applications; video decoding formats cover interlaced and progressive HDTV formats, as well as SDTV for 50Hz and 60Hz systems; digital and analog video outputs are available; support for up- and downconversions; up to four digital PCM and analog audio pairs; closed caption support. □



ROUTER

PRO-BEL SIRIUS FUSION
631-549-5159; www.pro-bel.com

Features audio connectivity via ATM using the AES47 standard; signals can be routed in real time between multiple routers using network-based tie lines; supports any combination of analog and digital signals for all audio and video formats. □

On-Air With Max Air

Digital Audio For Broadcast

Reliable

Powerful

Affordable

Easy to Learn and Use

Packed with Features

Be Sure

www.euphonix.com

Max Air at KRON
Local News Studio
San Francisco

Max Air
Large Format Console Technology
Mix Foundation TEC Awards Nominee



Euphonix

digital emotion

©2003 Euphonix, Inc. All rights reserved • 220 Portage Avenue • Palo Alto, CA 94306 • Phone: (650) 855-3400 • Fax: (650) 855-0410
Audio Engineering Society Convention • Booth E26 • Oct 10th - Oct 13th • Jacob K. Javits Convention Center, NY

EDITING OPTION**EDITWARE FASTRACK SE LINEAR OPTION**530-477-4300; www.editware.com

Combines control of VTRs and video-server channels for a hybrid system using video switchers, audio mixers and other post-production tools; controlled through an intuitive graphical timeline interface. □

CAMERA ROBOTICS**RADAMEC RP2AVR**732-846-0500;
www.radamecbroadcast.co.uk

For virtual studios where 3-D virtual sets are used; mobile camera system with sensors combines accurate position sensing and remote control; on-board optical-navigation system calculates the exact position of the pedestal, referencing bar codes attached to the studio wall, and transfers the data to the SPI to help define a complete 3-D position. □

HD/SD CONVERTER**COBALT DIGITAL 8022**800-669-1691;
www.cobaltdigital.com

HD/SD tool features advanced 10-bit format conversion; accepts dual-rate HD/SD SMPTE 292/259M-C digital inputs and can up/downconvert incoming signals and switch to 4:3, 16:9 or a user-programmable aspect ratio; can crossconvert HD signals between 1080i and 720p. □

**WIRELESS HAND CONTROL****BDL-AUTOSCRIPT RAT**+44 20 7538 1427;
www.bdlautoscript.com

Designed to give TV producers new freedom for shooting in the virtual studio environment; has a range of 90 feet; has 10 user-selectable channels; works in the license-free band; multiple RATs can be used to control a single prompter base station. □

ENG TRUCK**TEC ENG EXPRESS**573-860-4700;
www.tvengineering.com

In ongoing production to allow for a delivery time of four to six weeks; features compact power panel, mast-ignition interlock, quality materials, modular construction, and HiloMast serviceability. □

MULTICHANNEL, MULTI-INTERFACE CODEC**APT WORLDNET OSLO**+44 28 9037 1110; www.aptx.com

Comes as a 3RU, 19-inch rack-mounted unit; delivers up to 24 channels of audio; supports E1, T1, X.21, ISDN and TCP/IP data interfaces; can deliver packetized audio through an Ethernet port or connect LANs/WANs over time slots on a synchronous network. □

**SWITCHER****EXTRON SYSTEM 5 IP**714-491-1500; www.extron.com

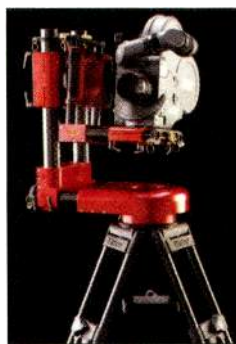
Two new nonamplified models join the current amplified models; the new models are designed to provide cost savings for integrators who need many of the switcher's features but want the option of using it with an external amplifier, with a distributed audio system or where an amplifier may not be required at all. □

HD-SDI MIXER**EYEHEIGHT IRISHD**+44 1923 256 000;
www.eyeheight.com

Offers up to eight inputs; features include full 10-bit mixing with programmable mix times and automatic or manual transitions; incorporates an input synchronizer and an internal wipe generator providing all commonly used wipe patterns. □

CAMERA CONTROL**MARK ROBERTS MOTION CONTROL ULTI-HEAD**+44 1342 334 700;
www.mrmoco.com

High-stability platform designed to support heavyweight film cameras and the new generation of high-definition cameras; operates on battery power. □

**VIDEO SERVER CONTROL MODULE****DNF CONTROLS FLEX CONTROL CLIP CONTROL MODULE**818-898-3380;
www.dnfcontrols.com

For the Flex Control Network line of integrated machine-control building blocks; offers individual or simultaneous control over one or more video-server channels; operators can load and play a clip on a single channel or load and synchronously play fill-clip and key-clip combinations on multiple channels. □

HD ROUTING SWITCHER**FOR-A CLEAN SWITCH CS-HD1602**212-861-2758; www.for-a.com

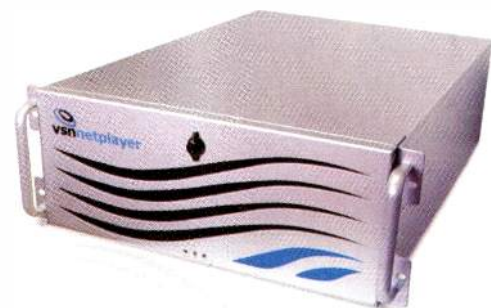
Allows error-free switching and signal distribution of HD video signals, with eight channels of embedded audio; can be used for simple cut switching and as a backup router in emergency situations; supports 1080/59.94i and 60i, 720/59.94p, and 720/60p. □

**BREAKOUT BOX****GEPSCO HBB HYBRID FIBER BREAKOUT BOX**847-795-9555; www.gepco.com

Each Lemo SMPTE 304M hybrid fiber connector breaks out to two ST connectors on a recessed, protective metal top plate; this allows for a quick and robust breakout to a standard-format connector that can be interfaced with existing single-mode fiber tie lines. □

FIELD MIXER**AZDEN FMX-2**516-328-7500; www.azdencorp.com

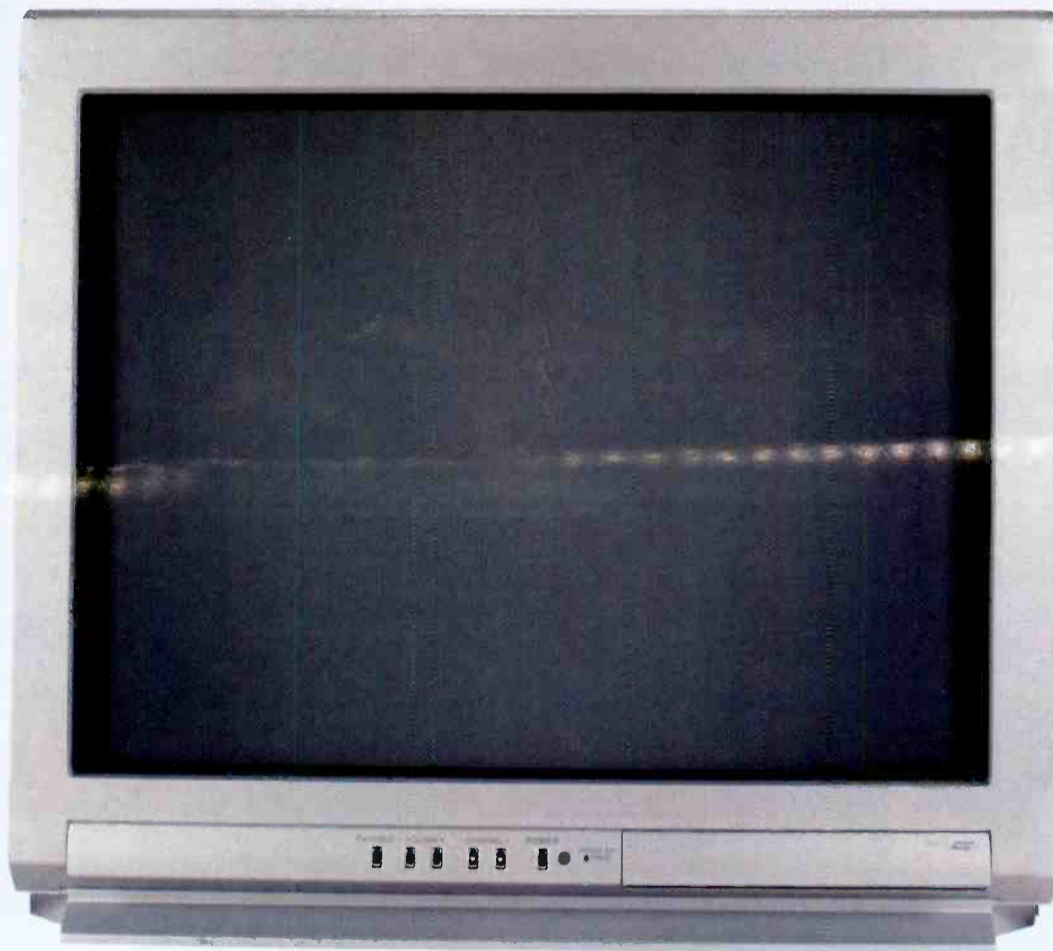
Portable, two-channel mixer can be attached directly to a camera or attached to the belt using the included three-position belt clip; has XLR inputs and outputs for larger cameras, in addition to a miniplug output for high-quality MiniDV cameras; designed with configurable output. □

**AUTOMATED AND DIGITIZED TV SYSTEM****JUST EDIT VSN**+34 902 353 739; www.justedit.es

Made up of 20 software applications that allow a TV station to migrate, in a modular and expandable way, to a system that is completely digital; allows users to build an entire automated TV station without videotapes. □

What can you REALLY do with

19.39 Mbps?



A lot. And, you can make changes

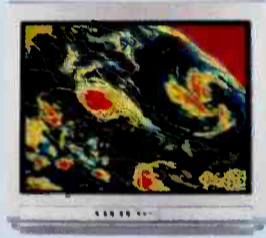
06:21:42.04

13:47:00.11

NETWORK



WEATHER / TRAFFIC



KIDS ENTERTAINMENT



EDUCATION



PAID PROGRAMMING



LOCAL ACCESS



NETWORK



KIDS ENTERTAINMENT



EDUCATION



from time to time.

20:35:07.29

01:18:44.15

NETWORK



SYNDICATED PROGRAMMING



EDUCATION



PAID PROGRAMMING



Deliver More Content with the Best Picture Quality at Your Bit-Rate.



DiviCom[®] MV 100

- Highest performing standard definition (SD) encoder in the industry delivers beautiful digital video at ultra low bit-rates.
- Advanced noise reduction technology improves picture quality and further reduces bit-rate.
- Platform for the future supporting MPEG-2 as well as MPEG-4/AVC and Windows Media 9 (VC9).



DiviCom MV 450

- Flexible, low bit-rate, high definition (HD) digital video encoder delivers an exceptional HD experience.
- Provides standards-based HD digital program insertion (DPI).
- Supports up to two Dolby E passthroughs and 4:2:2.



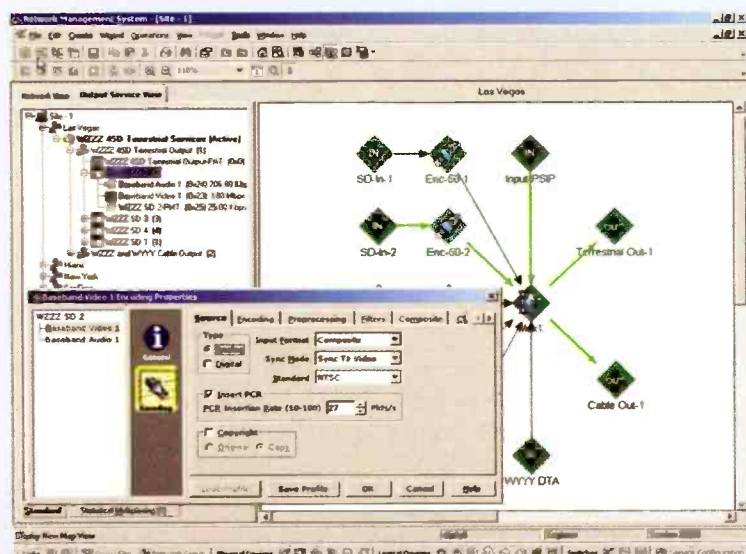
DiviTrackXE[™]

- Third generation closed-loop statistical multiplexer maximizes channel carrying capacity while preserving picture quality.
- Supports a mix of SD and HD VBR and CBR encoders along with data in the same pool.
- Offers a variety of input/output options to integrate with virtually any environment.



Broadcast Network Gateway[™] (BNG)

- Gigabit Ethernet output enables efficient IP-based transport of HD and SD digital video to carrier headends.



NMX Digital Service Manager[™]

- Manages video infrastructure as a series of services rather than discrete hardware and software components.
- Enables seamless change in system mode according to time-of-day and day-of-week.
- Interfaces with third party conditional access, PSI/SI and automation systems.
- Supports a wide range of redundancy designs and automatically reprovisions the infrastructure, ensuring the highest levels of service reliability and availability.
- Permits centralized and distributed service management.



AUTOMATION INTERFACE

CRISPIN PSIP UPDATING INTERFACE

Crispin: 919-845-7744;
www.crispincorp.com

Link Electronics:
573-334-4433;
www.linkelectronics.com

Dynamic PSIP-updating interface works with Link Electronics' TVLinX and a station's traffic software for real-time PSIP based on actual on-air events at master control. ■

TWO-CHANNEL HD SERVER

EVS HD MAXS
+32 4 361 7000;
www.evs.tv

Features two I/O-configurable channels and supports 1080i, 720p, 625i and 525i, at 50Hz or 59.94Hz; all commonly used RS-422 protocols are also implemented, and can be driven by an existing VTR/edit controller, switcher, graphics engine or station automation. ■

REMOTE CONTROL SYSTEM

VIDEOFRAME VF1000
530-477-2000;
www.videoframesystems.com

Can control the Terayon BP-5100 ASI splicer from any distance; key functions, positions and tallies are user-configurable; features a control interface from a master control/automation system and a CAT5/Ethernet interconnect backbone; is used at the local level in master control to operate the Terayon box and show its status. ■

EVENT CONTROLLERS

LEIGHTRONIX NET SERIES

800-243-5589; www.leightronix.com

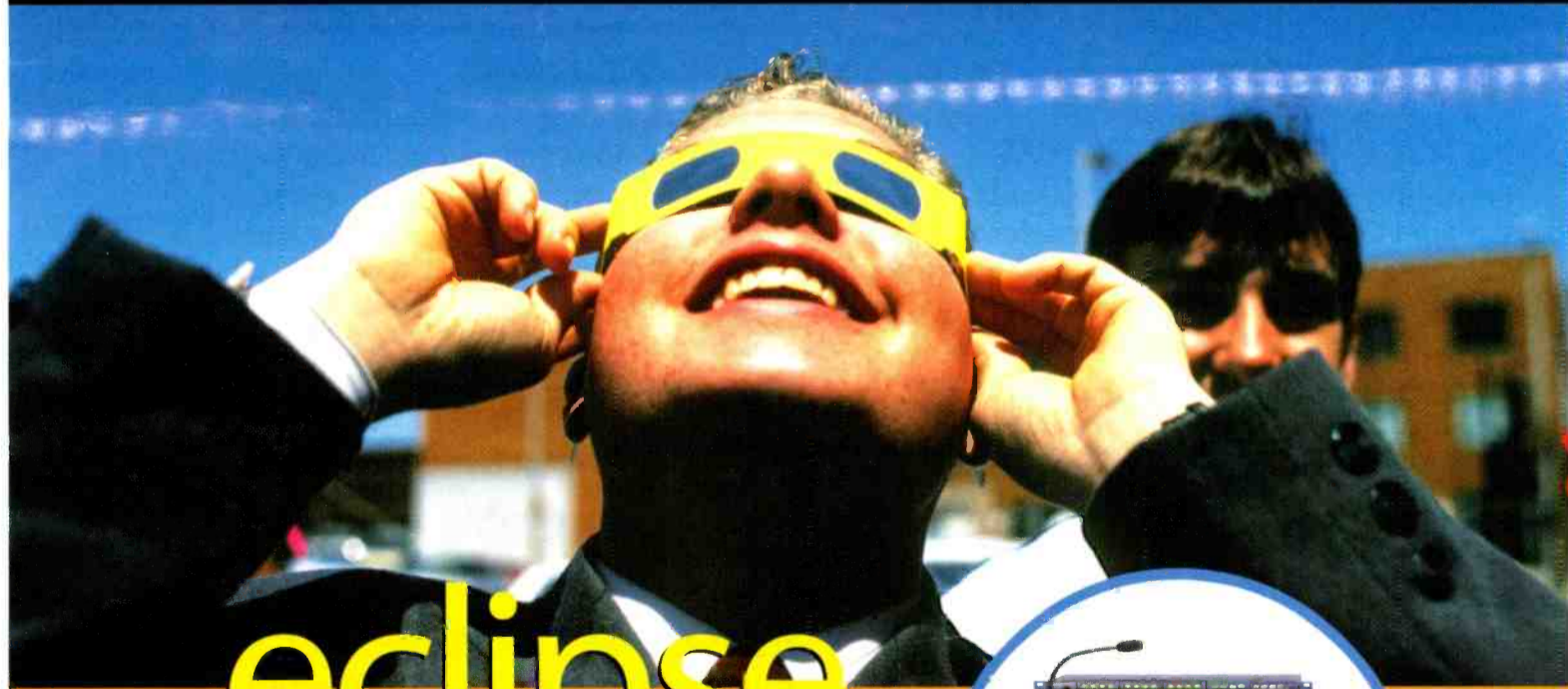
Three new controllers build on the Leightronix PRO line, adding integrated network management; features include event date selection, comprehensive logging, e-mail notifications and all-hours events; controlled by a real-time clock; integrated 10/100 Ethernet port facilitates management via LAN, WAN or the Internet; designed for stand-alone operation. ■

IP VIDEO ROUTER

PATH 1 NETWORK TECHNOLOGIES CHAMELEON VIDXWAN

877-ONE-PATH; www.path1.com

Multiport, bidirectional real-time IP video router enables broadcasters to distribute live MPEG-2 video in SD and HD; features standards-based encapsulation and forward error correction; supports the Pro-MPEG code of practice for live broadcast applications; can be software-configured and upgraded in the field. ■



eclipse

A new generation of intercoms that just made your life a whole lot easier!

Introducing the advanced digital matrix intercom that offers up to 208 communications ports in 6RU—the highest port density of any existing system—PLUS intelligent linking; expandable system architecture; modular, configurable stations; and powerful, transparent interfacing.



www.clearcom.com

Clear-Com
COMMUNICATION SYSTEMS

**MPEG-2 TRANSPORT-
STREAM MONITORING SYSTEM****K-WILL TSI-2000**

310-297-9205;

www.kwillcorporation.com

Uses the company's Video DNA technology to monitor actual video quality down to the macroblock level in real time on an MPEG-2 compressed video stream; also examines TS headers. □

AUDIO PRODUCTION SYSTEM**FAIRLIGHT VIRTUAL STUDIO RUNNER**
631-265-4499; www.fairlightau.com

New featureset for the QDC-XT engine enhances file handling and conversion; allows for rapid exchange of formats; can be used by QDC-based systems with MediaLink Node access; OMF, AIFF, AES31, WAV and MP3 files placed in a studio inbox are automatically converted for use in the QDC environment; delivers files automatically to registered contacts. □

**INTEGRATED RECEIVER/DECODER****SCOPUS NETWORK
TECHNOLOGIES IRD-2900**609-987-8090; www.scopus.net

Front-end options include ASI transport-stream I/O supporting rates greater than 155Mb/s, up to four QPSK L-band inputs and up to four pairs of balanced outputs; features a dual decoder and graphical front-panel display. □



**Thinking Blue?
Join the Club!**

Here's what some of our Club Members say ...

"We outfitted six of our news cameras with the ENDURA System and the photojournalists love them. They can't believe the amount of runtime they get before needing a recharge Needless to say the overall light weight is a plus as well. The only gripe I've heard is the crews using the old battery system want to know when they are getting ENDURA's".

Mark Schaefer, Director of Engineering
WFLA-TV

"We are pleased with the power to weight ratio and reliable performance of the IDX Lithium Ion batteries. The quality of their products and exceptional service and support we get from IDX, gives us the best return on our investment".

Peter Larson, Vice President
Broadcast Sports Technology

"While compact and amazingly lightweight, the IDX ENDURA System has proved itself completely durable with tremendous holding power. I have taken IDX ENDURA batteries into extremely difficult environments for commercials, features, and documentaries...the batteries have performed flawlessly."

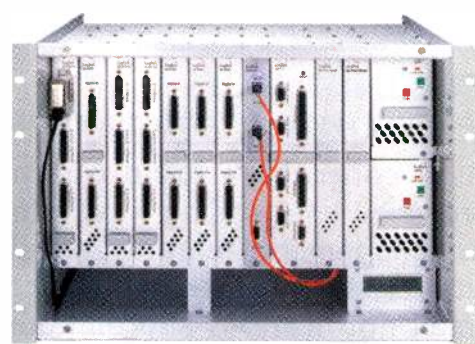
Matthew J. Siegel
Director of Photography



**endura
SYSTEM**

Leading the World
Lithium Ion
Technology

IDX System Technology, Inc.
1602 Lockness Place, Torrance, CA 90501
Phone (310) 891-2800 Fax: (310) 891-3600
Email idx_usa@idx.tv WWW www.idx.tv

**AUDIO ROUTER****LOGITEK AUDIO
ENGINE OPTICAL STL**

800-231-5870;

www.logitekaudio.com

Uses one audio engine with a NetA-LX network card at each end of the transmission path; engines are connected through single-mode fiber and can be separated by more than six miles; up to 64 channels of uncompressed 24-bit audio may be passed in each direction. □

MULTIFORMAT CONVERTER**DOREMI XDVI**818-562-1101; www.doremilabs.com

Converts video between different computer scan rates, HD SDI and SD; features DVI, SDI and HD SDI I/O; any input can be converted to any output format. □

**DIGITAL WIRELESS
CAMERA SYSTEM****LINK RESEARCH LINKXP**562-698-8560; www.linkres.co.uk

New reverse-video version, the LinkXPRV, allows the cameraman to see the live picture from a second camera or the position of overlay graphics; also new is a wideband transmitter that operates over the entire 2GHz band. □

**SUBTITLE, DATA AND
LOGO GENERATOR****SCREEN SUBTITLING
POLISTREAM G5000**

+44 1473 831700;

www.screen.subtitling.com

Allows the creation of animated logos, rolls and scrolls, as well as broadcast-quality subtitles, all generated using only one box. □

HDTV MULTIVIEWER**ZANDAR PREDATOR HD4**

+353 1 2808 945;

www.zandar.com

New stand-alone, high-resolution MultiViewer Series features four auto-sensing inputs so HDTV and legacy SDI (270Mb/s) signals can be used simultaneously; provides multiple output resolutions and supports a wide range of display devices, including plasma and LCD. □

SMALL BASE STUDIO PEDESTAL**VINTEN QUATTRO S**+44 1284 752121; www.vinten.com

Its patented triangular column design offers torsional stiffness, minimizing unwanted rotational movement; can track through any 75cm doorway or set restriction; features a small steering ring, tactile direction indicators and low-friction wheels. □

**SERVER****QUVIS ACUITY**785-272-3656; www.quvis.com

Available in 2K and 4K versions; offers a single platform with Virtual Tape architecture; includes standard professional video I/Os, as well as high-speed data I/Os including gigabit Ethernet and QSDTI. □

MONITORING SYSTEM**AUDEMAT-AZTEC GOLDENEAGLE TV**

305-692-7555;

www.audemat-aztec.com

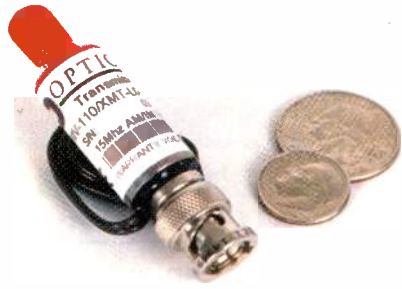
Designed to provide off-air monitoring with remote control; system automatically monitors the quality and continuity of up to 40 TV programs from one antenna and sends alarms when needed; offers functions such as audio and video streaming, audio recording, picture storage, and automatic scanning. □

**LCD DISPLAYS****CLARITY VISUAL SYSTEMS
LION AND PUMA**

503-570-0700;

www.clarityvisual.com

Features new electronics engine and redundant 200W lamps; offers UXGA resolution; accommodates 12 inputs; 30-inch cabinet depths; high-contrast and wide-view screen options are available; screen technologies and thin mullions produce seamless images across any configuration. □



Micro Fiber Optic Video Transmitter

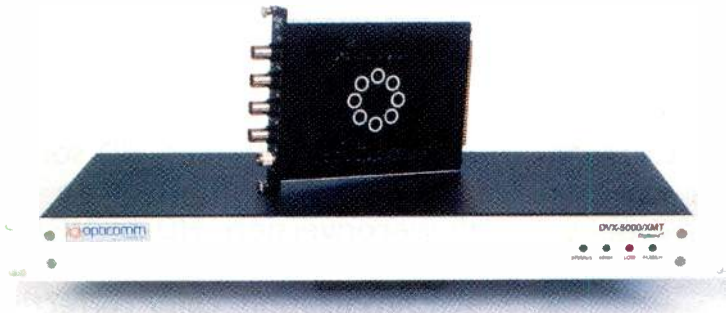
MMV-110 Micro Series



**RGB Video, Stereo Audio,
Keyboard, Mouse
& Duplex Data**

Over ONE Fiber

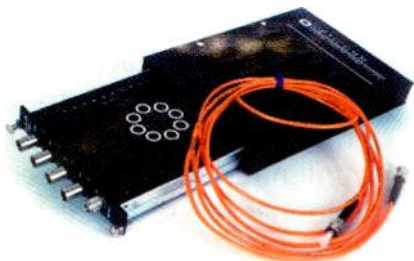
RGB-4000 Series



**4 Uncompressed HD-SDI
Channels (143 Mbps – 1.485 Gbps; SMPTE 259/292M)**

Over ONE Fiber

DVX-6400 Series



**4 and 8 Uncompressed
Channels (270 Mbps;
SMPTE 259)**

Over ONE Fiber

DVX-5400 & 5800 Series



**Video/Audio/Data and CWDM Multiple Division
Multiplexers**

- * 1-128 Channels of Video
- * 1-256 Channels of Audio
- * 1-256 Channels of Data

Over ONE Fiber

MDM-7000 Series

Come to us for your fiber optic communication needs.

We can help.



www.opticomm.com | info@opticomm.com | 1.800.8.OPTICOMM
(1.800.867.8426)

**REAL-TIME HD EDITING SYSTEM**

BOXX TECHNOLOGIES HD [PRO] RT
877-877-2699; www.boxxtech.com

Eight-bit to 10-bit uncompressed HD input and output 4:2:2, and HDV input and output over 1394 firewire; features multiformat capture, edit and playback; includes real-time HD editing and a real-time interactive timeline; supports multichannel audio editing and mixing; has EDL support. □

MULTIFORMAT CONVERTER

TERANEX VOLARE 220
407-858-6000; www.teranex.com

Offers SD and HD format conversion, HD-to-HD crossconversions, and noise reduction in a single 2RU form; features Teranex's PixelMotion de-interlacing, 3:2 insertion and deletion, and scene-change detection. □

VIDEO CARDS

DIGITAL VOODOO SD | EDIT
+61 3 9682 9477;
www.digitalvoodoo.net

Supports 10-bit compressed video; has six channels of AES/EBU digital audio with built-in audio sample-rate converters and genlock input; supports Final Cut Pro 4's RT Extreme architecture as well as desktop preview that allows the SD SDI monitor to function as a second desktop. □

**AUDIO MIXER**

EVERTZ 7720AM-AES4
905-335-3700; www.evertz.com

Accepts four AES/EBU digital stereo audio inputs and routes them to any of four AES outputs; does channel swapping, over mixes, mix downs and on-air breakaways. □

VOD CARDS

SCIENTIFIC-ATLANTA PRISMA IP
770-236-5000;
www.sciatl.com

Cards feature new 10Gb/s video-on-demand transport cards; use a single fiber to transport up to 240,000 VOD streams; widely tunable lasers are able to tune more than 100 optical channels of the entire ITU C-band at 100GHz spacing. □

CONTENT ENCODING SOLUTION

ENTONE TECHNOLOGIES ENCODING STUDIO
650-378-1215;
www.entone.com

Integrates components such as Sony's videotape recorders, TANDBERG Television's encoders and Entone video servers; runs on standard server platforms; uses TANDBERG's professional video-compression engine; supports MPEG-2 and WM9 video formats; produces assets with a wide range of bit rates; available in SD and HD. □

TRANSMISSION AUTOMATION SYSTEM

OMNIBUS SYSTEMS TXPLAY
704-319-2231; www.omnibus.tv

Transmission-automation system based on G3 technology; scalable system for facilities operating from one to eight channels; complements OmniBus Colossus large-scale multichannel transmission automation. □

**HD CARDS FOR SYNAPSE**

AXON DIGITAL DESIGN
+31 13 511 6666; www.axon.tv

Modular card solutions fit into existing Synapse card frames; HD solutions that can be added include up- and downconversion, HD to VGA/DVI solutions, embedding, de-embedding, frame synchronization, color correction and fiber solutions. □

VIDEO STORAGE SYSTEM

NVERIZON TERASTORE
801-485-8420; www.nverizon.com

Video library packs terabytes of near-line storage into an affordable, compact, rack-mountable unit; modular system allows unlimited number of TeraStores to be combined into a single system; allows for seamless transition to existing video-server systems; network-based server expansion system gives facilities the option of storing a massive amount of content. □

**CONSOLE**

TBC CONSOLES INTELLITRAC
631-293-4068;
www.tbconsoles.com

New console design features interchangeable and movable rack turrets; front and rear monitor tracks offer maximum flexibility in LCD placement; off-the-floor base offers increased leg room and venting; systems available in all configurations — from three-bay nonlinear edit console to complete production control room. □

The Next BIG THING from *Sundance Digital* The Big Idea

Titan was designed to make automating high channel count and central casting facilities easy and affordable.

The Big Easy

Titan's distributed architecture means it can control more channels than the FCC will ever let you own!

The Big Payoff

Consolidated tasks, less overhead, and fewer mistakes mean higher profits!

SUNDANCE DIGITAL
10th Anniversary
Sundance Digital, Inc. 972-444-8442 www.SundanceDigital.com

Innovated by Canon. Customized by you.

e

Enhanced Features
Environmental Design



PERSONALIZATION

Canon's e-technology lets you program the digital tools on our portable IFxs and HDxs lenses for a wide range of situations, allowing you pre-set zoom and framing speeds, focus, movement sensitivity, and many more benefits that will enhance your production value.

INSTANT VIEW

Memorized settings of up to nine operator patterns are communicated instantly via an LCD "window into the lens." Data can be transmitted from lens to lens.



eHDxs

eIFxs

For a lens you can call your own, request our **FREE CD** at bctv@cusa.canon.com and learn more about this exciting technology.



Maximize Your Camera's Performance.

Canon KNOW HOW®

Find out more at canonbroadcast.com

1-800-321-HDTV (Canada: 905-795-2012)

Canon and Canon Know How are registered trademarks of Canon Inc. ©2004 Canon USA, Inc.

SATA ARRAY

CIPRICO FIBRESTORE 2212A
800-727-4669; www.ciprico.com

2GB Fibre Channel solution; complete dual, hot-swappable fans, power supplies and RAID controllers; preconfigured and factory-tested out of the box; easy-to-use Web-based storage management; 2RU with 12 drives; storage capacity of up to 3TB using 250GB drives; flexible logical drive and RAID configurations. ■



INTERCOM KEYBOARD

TELEX KANJI
952-884-4051; www.telex.com

User stations provide full functionality, with support for Kanji, Katakana, Hiragana and English language displays; desktop, rackmount and handset models are available; fully programmable and supported on the full line of RTX matrix intercoms. ■

LIVE MEDIA CAPTURE SOFTWARE

TELESTREAM MAPREVIEW
877-257-6245; www.telestream.net

Can automatically record one or more live video feeds; content may be viewed live or on-demand after the event/program; securely captures multiple channels of media based on user-defined or EPG schedules. ■

INTEGRATED RESTORATION SOLUTION

TERANEX IMAGERESTORE
407-858-6000; www.teranex.com

Real-time restoration of film-based SD and HD content; interactive image restoration through integration with MTI's CORRECT film-mastering system. ■

MONITORING AND LOGGING PLATFORM

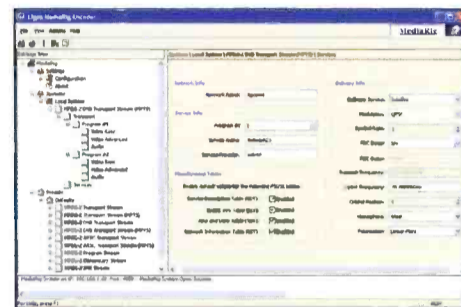
MEDIAPROXY ENIGMA 5
+61 3 9549 1100;
www.mediaproxy.com

Features a simple-to-use Web-based client interface (allowing users to jump to any channel/date/time reference point or view the live stream), enhanced remote management capabilities and backward integration to legacy data systems. ■

PORTABLE HD LCD MONITOR

MARSHALL ELECTRONICS V-R65P-HD
800-800-6608; www.mars-cam.com

Standard inputs with active loop through on each connection for HD SDI/SDI (SMPTE 259M, SMPTE 292M); composite video with PAL/NTSC automatic recognition; multiformat connector for HD or SD analog component signals; includes zoom function for camera focus and six frame marker overlays. ■



MPEG-2 ENCODING SYSTEM

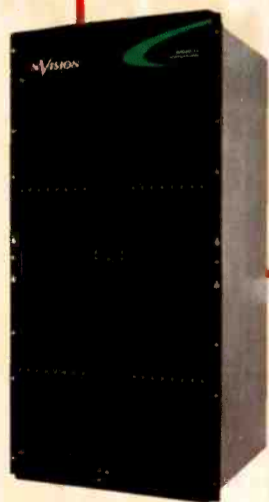
LIGOS MEDIARIG
415-249-0100; www.ligos.com

Transforms a single PC into a real-time, MPEG-2 ATSC/DVB SDTV encoder; has static PSIP and PSI/SI control tables; includes constant and variable bit rates, 1- to 50Mb/s, MP@ML and 4:2:2P@ML; has MPEG level II audio with optional Dolby digital two-channel encoding. ■

GET CONNECTED

WITH OUR COMPLETE LINE OF SIGNAL MANAGEMENT SYSTEMS

Regardless of whether your facility is large or small, new or old, digital or analog, we can provide a signal management system to address your current and your future needs. High performance routing switchers from 16x16 to 2048x2048, cost effective multi channel master control switchers, and flexible control systems that seamlessly integrate it all. Get connected and stay connected with NVISION.



Large Video and Audio Routers



Flexible Router Control Systems



Compact Multi Format Routers



Multi Channel Master Control



Masters in Digital Audio, Pioneers in HDTV



The New Balance of Power

STASIS™

Power Support System

IT'S ALWAYS BEEN ABOUT BALANCE...

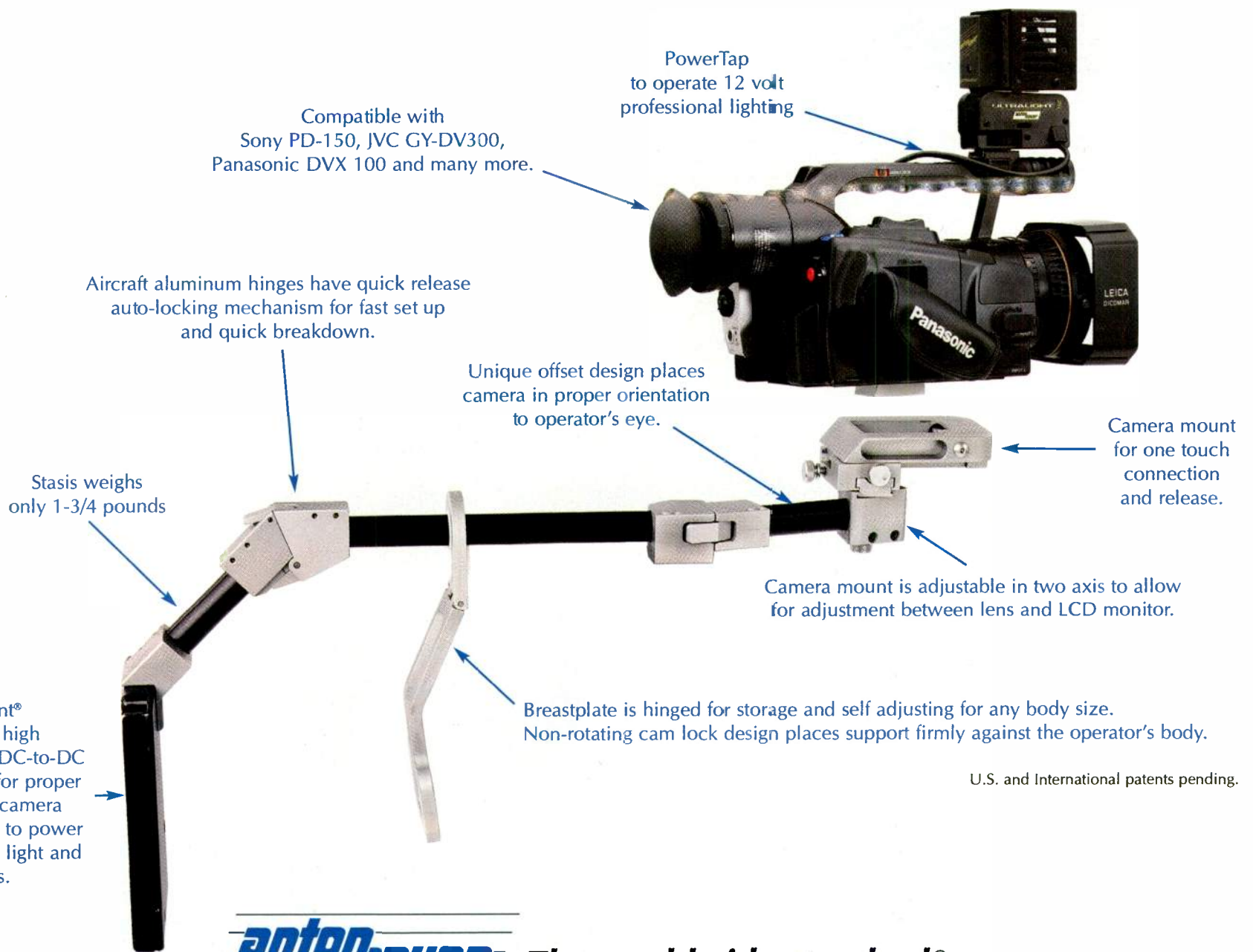
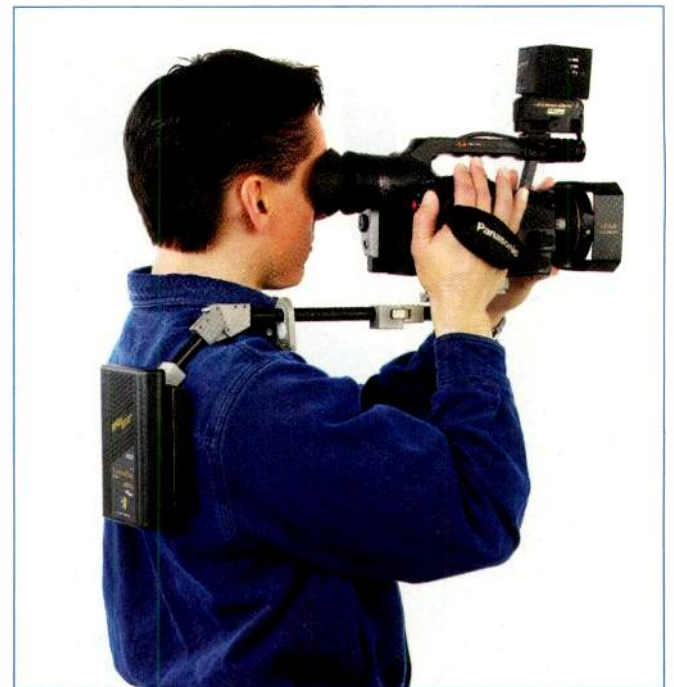
Balancing the weight of a handheld camera is the key to fatigue free shooting

3 POUNDS IS A HEAVY LOAD TO HOLD IN ONE HAND...

Even a "lightweight" mini-DV camcorder puts the same weight as a full size camera "out front" where it causes fatigue.

NOW IT'S ABOUT CREATING A STATE OF EQUILIBRIUM...

A **STASIS** to redirect the geometry of the camera to the most stable platform there is... the operator's body.



U.S. and International patents pending.

antonbauer The worldwide standard®

STASIS is not just a camera support – it's the core of an all new camera **Power plus Support System**.

For information contact Anton/Bauer or any Anton/Bauer dealer or distributor worldwide.

Anton/Bauer, Inc. 14 Progress Drive, Shelton, Connecticut 06484 USA • (203) 929-1100 • Fax (203) 925-4988 • www.antonbauer.com
 Anton/Bauer Europe, B.V. Eurode Business Center, Eurode-Park 1, 6461 KB Kerkrade, The Netherlands • (+31) 45 5639220 • Fax (+31) 45 5639222
 Singapore Office - Anton/Bauer 6 New Industrial Road, # 02-02 Hoe Huat Ind. Bld., Singapore 536199 • (65) 2975784 • Fax (65) 2825235



7 YEAR POWERTRAIN WARRANTY

MXF

Video as data files



Edit in camcorder

PDW-53C Camcorder

XDCAM
HERE AND NOW!

SUPPORTED BY: AVID, EVS, INCITE,
LEITCH, OMNEON VIDEO NETWORKS,

© 2004 Sony Electronics Inc. All rights reserved. Reproduction in whole or in part without written permission is prohibited. Features and specifications are subject to change without notice. Sony, DVCAM, MPEG IMX, Professional Disc, Vegas, XDCAM, XPRi and their respective logos are trademarks of Sony. *Offer is subject to credit approval by Sony Financial Services LLC.

SONY®

THE XDCAM SYSTEM. AN INNOVATION THAT COMPLETELY REDEFINES THE WAY WE WORK.

After decades of recording on tape, professionals are discovering the sweeping significance of the XDCAM™ Professional Disc™ system.

XDCAM recording redefines "speed," with the ability to edit in the camcorder. Not to mention the power of the proxy. A frame-accurate low-resolution copy of your material, proxy AV is an incredible tool for browsing, editing and transferring your footage virtually anywhere. Across the studio or across the world. You can rush proxy into an editor at up to 50x real time. So your office staff can start editing even before the disc arrives!

The XDCAM system redefines "video" by recording your clips as MXF data files, inherently friendly to IT networks and IT storage. Use your PC to browse the contents of an XDCAM disc located on another continent. Then transfer just the clips you need across the data network. Your workflow efficiency goes way up. Your cost of ownership goes way down.

And XDCAM recording redefines "robust" with a laser transport that resists bumps, jolts, shocks, temperature swings and humidity. The laser transport is so robust, it's protected by Sony's 7-year "Powertrain" warranty. (See actual warranty for details).

There's so much more to the story. You'll be amazed by the revolutionary, affordable, reusable Professional Disc media. You'll choose from DVCAM™ or MPEG IMX® codecs, shooting in interlace, progressive or 24PsF. You'll command multi-megabytes of metadata. And you'll leverage a world of compatible products from leading manufacturers.

You owe it to yourself to experience this powerful innovation. XDCAM. Here and Now.

FOR DETAILS, VISIT WWW.SONY.COM/XDCAM

Finish faster with Proxy AV



0 Dollars Down
Percent Financing
Payments*

*Until January 2005 (on approved credit)***

OMNIBUS SYSTEMS LTD., PINNACLE SYSTEMS, QUANTEL, SGI,
SWE-DISH, TELESTREAM, THOMSON / GVG, VEGAS, AND XPRI.

**To be eligible for the 0% program, purchase any XDCAM PDW-series model between March 1, 2004 and September 30, 2004. No interest charges assessed if amount is paid in full by January 2, 2005. If payment in full is not received by then, the unpaid balance will be converted to a 24-month principal and interest term loan.

DIGITAL NONLINEAR ACCELERATOR

AVID NITRIS

978 640 6789; www.avid.com

Facilitates editing, conforming and finishing of all types of projects in multiple compressed and uncompressed SD and HD formats; delivers hardware-guaranteed real-time performance for up to eight streams of SD media and two streams of 10-bit HD supporting real-time effects; supports eight- and 10-bit SMPTE 292M SDI for HD I/O and SMPTE 259M SDI for SD I/O. ■



WIRELESS INTERCOM SYSTEM

DRAKE FREESPEAK LITE

+44 1223 815 000;
www.drake-uk.com

Provides the Drake PiCo 4000 Series II matrix with FreeSpeak connectivity; interface has four RJ45 four-wire and data connections with Ethernet to allow full intelligent networking with any Drake 4000 matrix including the PiCo; rear panel comes with two E1 connections for up to 10 FreeSpeak active antennas through the splitters. ■

VIDEO SWITCHERS

ROSS VIDEO SYNERGY 100 MD

613-652-4886; www.rossvideo.com

Single-M/E production switcher family features systemwide still stores and M/E-based still stores; MediaCache feature allows for animated logos and short clip payout; FlexiClean clean-feed feature provides a positionable clean feed; AuxKeys feature offers branding capabilities; UltraChrome provides super-fine chroma key quality with automatic setup and easy-to-use controls. ■

MEDIA-MANAGEMENT SOFTWARE

SGT MEDIA MANAGER

+33 6473 7474; www.sgt.fr

Media Manager is made up of sets of modules that are directly accessible through an HTML interface; all users, regardless of their physical location, can easily access their workspace and the modules they need; deployment on a large number of workstations is immediate; system operates equally well on a local-area (LAN) or wide-area network (WAN). ■

MICROPHONE

DPA MICROPHONES 4071-BM

+45 4814 2828;
www.dpamicrophones.com

Body-worn microphone has a maximum sound pressure level (SPL) of 144dB before clipping; can be used with the DAD6024 adapter and DAK4071-F accessory kit for miniature microphones; omnidirectional microphone inherently cuts down wind and pop noise, keeping the proximity effect low; features a fixed soft-boost grid, giving the microphone a 5dB boost between 4kHz and 6kHz. ■

FIBER PANEL

ADC TELECOMMUNICATIONS FIBER NORMAL THROUGH PANEL

952-917-0231; www.adc.com

New fiber panel is designed to provide patch-by-exception and normal-through functionality, similar to copper-based patch panels; rather than requiring a fiber jumper to be in place at all times, all fiber in and out connections are on the rear of the panel, with a normal-through connection between the ports; patch and monitoring capabilities are accessed on the front of the panel; 3RU panel provides 24 in and out fiber pairs. ■



HD from Marshall Electronics

The World's Most Affordable Portable HD Monitor

HD/SD/Analog/Digital Included

Introducing the world's most affordable portable 6.5-inch Wide Screen HD monitor. The V-R65-HD is compact and lightweight, can be camera mounted and accepts any type of HDSDI/SDI or Analog HD/SD signal.

HD/SD Screen Formats

Signal Formats

- 1080-60/50i
- 720P-24/25/30/60
- PAL or NTSC
- 480P-24/25/30/60
- 1080 30/24/25P

- HDSDI (Digital)
- SDI (Digital)
- Y-Pb-Pr (Analog)
- RGB/RGBHV (Analog)
- Composite (Analog)
- XGA

- Operates on 12-17 Volt D.C.
- Bright-380 nit High Resolution Display
- 6 Frame marker overlays
- Zoom for focus function
- Monochrome function
- Direct access for all adjustments
- Three LED tally
- 110-220V power supply included
- Optional Battery Pack

\$3799



We offer over 50 models of LCD monitors designed to meet virtually any application

The World's Lightest Wide Screen 17" HD Monitor with Universal Input feature

Occupying only 6 SRU and weighing just 12 pounds, the V-R171P-HD features a 17" High Resolution LCD Display and includes our universal input configuration.



- Accepts all HDSDI/SDI and analog HD/SD signals
- Direct access for all adjustments
- CRT style 170° viewing angles
- XGA with automatic scaling
- 6 Frame marker overlays
- Three LED tally
- Zoom for focus function
- Rackmount or Desktop Configurations
- Monochrome function
- 110-220V power supply included

HD/SD Screen Formats

Signal Formats

- 525-(NTSC)59.94i, 60i
- 625 (PAL) 50i,
- 640 x 480-59.94i, 60i, 30P, 29.97P, 59.94P, 60P
- 640 x 575-50i, 25P, 50P
- 1280 x 720-23.97P, 24P, 25P, 29.97P, 30P, 59.96P, 60P
- 1920 x 1080 - 23.97P, 24P, 25P, 29.97P, 30P, 50i, 59.94i, 60i

- HDSDI (Digital)
- SDI (Digital)
- Y-Pb-Pr (Analog)
- RGB/RGBHV (Analog)
- Composite (Analog)
- Y/C-S-Video (Analog)
- XGA

Marshall

Tel.: 800-800-6608 • Fax: 310-333-0688

LCDRACKS.COM



The Most Versatile IOT Transmitter Available



Axcera's Visionary transmitters lead the industry in versatility. These amazing transmitters offer broadcasters the choice of single- or multi-collector IOT amplifiers from various manufacturers, with air, oil, water, or water/glycol cooling, for analog or digital operation, all in the same transmitter design. And to protect your investment into the future, systems can be configured for easy field conversion between analog and digital operation and between various tube technologies with nearly 100% re-use. Industry leading technology and the ability to choose - from Axcera, the RF experts.





BROADCAST CONSOLE

EUPHONIX SYSTEM 5-B 650-855-0400; euphonix.com

Multiple-CPU system runs low-level VX Works OS for reliability; offers flexible, modular surface and I/O design, with eight knobs and a 100mm touch-sensitive moving fader per channel; features snapshot recall of all console settings. □

UHF ANTENNA

DIELECTRIC TFU-WB 207-655-4555; www.dielectric.com

Designed for bandwidth requirements of up to 30 channels; typical configuration is a directional array with a directivity of 1.9 times; available in high power (20- to 80kW) and low power (5- to 20kW) with configurations of eight to 32 bays; is supplied with a full radome and can be used in top- or side-mounted configurations. □



DIGITAL MATRIX INTERCOM

CLEAR-COM ECLIPSE 800-877-1771; www.clearcom.com

Matrix cards support 16 ports of communication, allowing up to 208 ports in the 6RU card frame; frames can be intelligently linked via Ethernet; features dual-redundant processors and power supplies, and graphical views of the frames and stations. □



NETWORKING SYSTEM

HARRIS NETVX 513-459-3400; www.broadcast.harris.com

New gigabit Ethernet interface capable of high-speed file transfer and transporting 64 real-time bidirectional video channels; features packet-based architecture; allows video, audio and data to be transported over ATM or IP networks, including E3 and DS3 microwave networks, simultaneously; upgradeable system supports standard telecommunications protocols. □



DATA MANAGEMENT SYSTEM

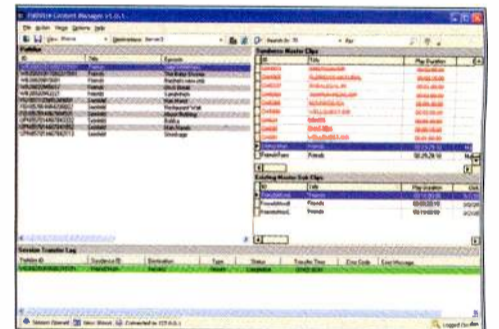
MICROFIRST DIGITAL AUTOMATION SYSTEM (D.A.S.) 201-651-9300; www.microfirst.com

Has a real-time, multitasking preemptive operating system (the WinMOS); fully scalable, real-time, frame-accurate, IP-based automation and data management system that includes a suite of schedule editing and data management applications designed to run on Windows NT/XP/2000 PC workstations. □

VIDEO AND DATA STORAGE APPLICATION

MAXELL DVD-R PLUS SERIES 858-503-3300; www.maxell.com

Has a 4.7GB capacity; supports 8x write speeds; has a prerecorded shelf and archival life of more than 50 years; discs are write-compatible with almost any manufacturer's general-purpose DVD-R drives and recorders; after recording, the discs are read-compatible with DVD-ROM, DVD-video and DVD-audio players. □



DELIVERY INTERFACE

SUNDANCE DIGITAL PATHFIRE CONTENT MANAGER 972-444-8442; www.sundancedigital.com

Interfaces with Pathfire's Automation Connect gateway to manage the transfer of new media from Pathfire's cache server to the facility's transmission server; also updates the Sundance media database with the metadata available from Pathfire, including frame-accurate segment timings. □

MULTI-IMAGE DISPLAY PROCESSOR

MIRANDA KALEIDO-ALTO 514-333-1772; www.miranda.com

Designed for simpler and smaller monitoring environments requiring fewer inputs; uses the same high-quality image display technology as the Kaleido-K2 processor; features auto-sensing SDI/analog inputs and display clocks/timers, UMDs, tallies and audio metering. □

network
The Innovator



VIKINX

World leading compact router program

- All signal formats (Broadcast, Telecom and Multimedia)
- 16x2, 8x8, 16x16, 32x32, 64x64
- Modular Router 32x32 to 128x128
- Special RGBHV Multimedia Routers
- THOR Router Management System
- Advanced Control Panels
- All 3rd party interfaces

Network Electronics US Inc • 11075 South State Street Ste27 • Salt Lake City UT 84070 • Phone: (800) 420-5909 • Fax: (800) 420-5911

www.network-electronics.com/US

MULTISTREAM NLE

LEITCH VELOCITYQ 2X4 859-371-5533; www.leitch.com

Combines Velocity software interface with the Quattrus multistream real-time hardware for an integrated, advanced multilayer NLE solution; both models feature real-time playback of four streams of video in any combination of compressed or uncompressed and up to six graphics streams; features Q3DX2 dual-channel 3-D DVE. □

UTAH-400

It Just Keeps Getting Better...and Better



The UTAH-400 High-Density Digital Routing Switcher, already the world's most advanced switcher, now offers even more:

Automatic crosspoint redundancy in all matrix sizes UTAH-400

The UTAH-400 allows you to protect your critical signal paths against interruption with *AUTOMATIC* internal redundancy.

Three Frame Sizes -- 64x64, 144x144, and 288x288

You can use the UTAH-400 for any digital router application from the smallest utility router to the largest central matrix.

In any size, all UTAH-400 systems offer the same set of world-class features -- and the industry's lowest prices:

- Full time Input / Output Signal Monitoring
- Reduced Power Consumption and Rack Space Requirements
- SD/HD Compatibility

**US UTAH
SCIENTIFIC**

New Directions in Digital Switching

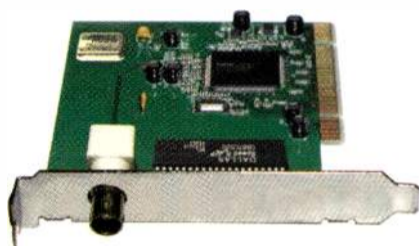
4750 Wiley Post Way, Suite 150, Salt Lake City, UT 84116 USA
Ph: 801.575.8801 • Fax: 801.537.3099 • Email: sales@utahscientific.com

CAMERA-STABILIZATION SYSTEM

SACHTLER ARTEMIS

516-867-4900; www.sachtler.com

Artemis SDI Pro's connection cable is able to handle high-data transfer; offers dual-dynamic balance, including a third battery that can be independently adjusted; focus remote receivers can be mounted on both sides to improve the camera's center-of-gravity balance; Artemis Cine/HD system features three video lines so operators can use HD-RGB video cameras without downconverters. □



TIME-CODE INTERFACE CARD

ESE PC-471PCI

310-322-2136; www.ese-web.com

PCI card receives SMPTE, EBU or ESE time code; automatically synchronizes the PC's internal time-of-day clock; time code input is provided via rear-mounted BNC connector. □

REMOTE MONITORING SOFTWARE

THOMSON GRASS VALLEY
NETCENTRAL IV530-478-3000;
www.thomsongrassvalley.com

Upgraded software uses SNMP and Syslog; links any electronic document with device alerts; agents run monitored products; manager monitors products. □

ELECTRONICS RESEARCH, INC.

EL Series
UHF Antenna

The EL Series UHF Transmitting Antenna for either DTV or NTSC applications



ERI Your Single Source for Broadcast Solutions
Sales@ERInc.com | +1 (812) 925-6000 | www.ERInc.com



VIDEO DISPLAY PROCESSOR

ZANDAR FUSIONPRO

321-939-0457; www.zandar.com

Supports a range of plug-in processor cards; enables users to combine input formats in one system and display them on plasma, LCD or projection screens; new HD SDI processor card accepts 720p and 1080i formats; features dual redundant, hot-swappable power supplies and front-loading cards. □

WAVEFORM RASTERIZER

TEKTRONIX WVR600

800-426-2200; www.tektronix.com

Supports mixed analog and digital video and audio; fitted with alarm and logging capabilities; uses Flex Vu technology and comprehensive error alarms and logging. □

PROGRAM INSERTION MONITOR

SENCORE DPI MONTIOR

800-SENCORE; www.sencore.com

Provides an analysis of each ad message sent and received; provides SCTE 35 message syntax analysis, in detail, for each DPI message sent; monitors up to eight ASI transport streams simultaneously, and logs SCTE 3 activities for 25 programs per transport stream; displays, in real time, the bit rates of the different components (PIDs) present in the MPEG-2 transport stream. □

AUTOMATION CONTROL

PEBBLE BEACH NEPTUNE

+44 1737 821 522;
www.pebble.tv

Neptune automation system has been integrated with Sony's PetaSite S Series tape libraries and S-AIT drives; allows users to achieve direct control of S-AIT drives in the heart of the automation system. □

STEREO MONITORING SYSTEM

GENELEC TRIPLE PLAY

508-652-0900; www.genelec.com

Consists of two Genelec 1029A two-way, bi-amplified active monitors and Genelec 7050A LSE active subwoofer; has in-room flat frequency response; each component features an integrated active balanced crossover, driver protection circuit and dedicated amplifier; can produce peak acoustic levels of more than 110dB SPL at one meter. □

DIGITAL AUDIO NETWORK ROUTER

WHEATSTONE BRIDGE ROUTER

252-638-7000;
www.wheatstone.com

Design consists of 7-inch rack-mount digital routing cages capable of handling 512 simultaneous audio channels on its backplane; features bidirectional fiber-optic or CAT5 interlocation connectivity, all-digital domain AES switching, analog or digital inputs, both analog and AES digital outputs, and serial control and display with Wheatstone consoles. □

AUDIO DELAY FOR
LIP SYNC CORRECTION

PIXEL INSTRUMENTS AD-3000

408-871-1975;
www.pixelinstruments.tv

Built-in pitch corrector allows rapid delay change without introducing unwanted artifacts; inputs and outputs are stereo analog, AES/EBU digital (balanced) and SMPTE digital (unbalanced); accepts any input sample rate from 25kHz to 48kHz; output sample rate can be derived from an internal crystal oscillator or can be frequency locked to the digital input. □

DIGITAL ROUTING SYSTEM

SALZBRENNER STAGETEC NEXUS

+49 9545 440 0; www.stagetec.com

Designed for routing-center and broadcasting-complex networking, remote trucks, and sound reinforcement; provides for audio-format conversion, A/D and D/A converter systems, audio processing, data transmission, routing interface, multichannel metering, and power-amplifier control; can span distances of up to 70km without any deterioration in audio quality, or clock deviations. □



DIGITAL AUDIO MIXING CONSOLE

WHEATSTONE D-9

252-638-7000;
www.wheatstone.com

Features 5.1 digital surround, multiple mix-minus clean feed outputs, individual channel bus-minus outputs, six-band digital equalization, digital dynamic processing and integrated routing; depth is 25 inches. □

NETWORK TECHNOLOGY BREAKTHROUGH FOR ROUTERS

Fusion

Pro-Bel has announced the development of Sirius Fusion, a new concept in signal distribution that combines the flexibility of the network with the economics of the crosspoint.

Pro-Bel's Fusion technology is a hybrid solution where multiple crosspoint routers can be connected together by a robust and deterministic network. The first implementation of this concept is Sirius Fusion. An extension to the already powerful Sirius router range, the Fusion technology adds audio connectivity via ATM using the AES47 standard. Signals can be routed in real time between multiple routers using network-based tie-lines. This technology provides clear advantages in terms of the distance over which those signals can be carried and the number of signals that can be carried over a single connection.

Neil Maycock, chief technology officer, says, "For many years now the use of networks in place of routing switchers has been predicted, however the economics have never quite added up. We see Fusion as providing our customers with the best of both worlds and when combined with the existing flexibility of Sirius, Pro-Bel has a uniquely powerful solution."

ADVANCED NEW TFT PICTURE MONITORS JOIN VUTRIX RANGE

The brand new VX range significantly extends the number of input formats provided as standard and introduces the innovative VX Box. This accommodates the processing electronics common to the various screen sizes and is packaged in a removable rear section.

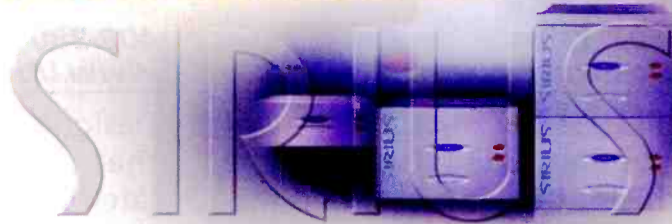
The monitors, which range from 15" to 40" are all high resolution, high brightness, wide-angle types and are ideally suited to the demanding broadcast environment. All SD types support composite, Y/C, analog component, SDI, DVI and extended VGA inputs while the HDTV versions additionally accept HD-SDI. A re-formatted SDI output from the standard definition types provides an output converted from any of the television inputs, optionally cropped and bordered. In addition to comprehensive picture controls and a number of further options, the displays are equipped with onscreen embedded audio presence indicators, stereo audio line outputs, safe area indication and adjustable audio delay of up to four seconds.



CONFUSED ABOUT WHICH ROUTE TO TAKE?



PROBLEM SOLVED



It's hard to know what your future routing needs will be, but whichever direction you choose, SIRIUS can take you there.

- Built-in analog & digital conversion for audio & video signals
- Mix & match different formats in the same chassis including HD
- Modular architecture for up to 256 x 256 in blocks of 8

pro-bel



www.pro-bel.com

USA +1 631 549 5159 UK +44 (0) 1189 866 123 France +33 (0) 1 45 18 39 80 Asia +852 2850 8383

MORPHEUS REVOLUTIONIZES AUTOMATION

Pro-Bel has announced the full launch of Morpheus, a revolutionary, fourth generation automation system. Taking automated playout back to the drawing board, Pro-Bel has designed an architecture that not only supports advanced playout of conventional content, but a wide range of multi-media and data-based material.

At the core of Morpheus is the Media Ball™ concept, a new technology allowing complex sequences of events to be packaged together, instantly providing a simple presentation for the operator and easy manipulation within a schedule. Media Ball also facilitates the introduction of enhanced content to operations where the business and traffic systems may not natively support the new types of material or programming.

Morpheus brings new levels of intelligence to the sharing of playout devices and transmission resources between channels, using sophisticated management software. Devices can be allocated to playout streams manually or automatically according to user-defined parameters.



Device usage is constantly monitored, ensuring scheduling conflicts are instantly reported and centrally managed across multiple channels.

Morpheus is based on a Microsoft.Net backbone which is used to provide network resilience and automatic failover in the event of hardware or network problems. Morpheus supports Pro-Bel's powerful master control system allowing manual intervention of a running schedule by operators directly manipulating the mixer desk and having their actions reflected in the automation schedule.

IF ONLY EVERYTHING WAS AS EASY TO CONTROL AS PROCION



Some things take a lot of discipline and hard work, but our PC-based router control system is just so easy. With total flexibility in screen design, simple configuration and useful drag and drop features, Procion makes router control effortless.

Procion



- Unlimited screen design capabilities
- Powerful router control
- Object orientated XML file format
- Integrates fully with existing Pro-Bel control systems

pro-bel



www.pro-bel.com

UK +44 (0) 1189 866 123 USA +1 631 549 5159 France +33 (0) 1 45 18 39 80 Asia +852 2850 8383

MANAGEMENT SYSTEM

PHAROS PILOT MCR

+44 1189 502 323;
www.pharos-comms.com

Enables full desktop management of broadcast systems; integrates with the established Pilot RT network-based matrix control system; allows users to configure new device control displays; two new panels will be introduced; Intercom Conference Call Manager interfaces to most intercom systems; Router Labels allow operators to label signal routing configurations from the touch screen and display these throughout the system. □

LIVE NEWS PLAYBACK SYSTEM

CRISPIN NEWSPLAYX

919-845-7744; www.crispincorp.com

Works in conjunction with most news automation systems; translates the rundown and executes the playback while controlling video servers, switchers, tape machines and many other devices; maps the news system rundown to different server channels to allow back-to-back video-transition overlapping. □

AUTOMATION SYSTEM

HARRIS ADC-25

513-459-3400;
www.broadcast.harris.com

Offers the functionality of the ADC-100 in a cost-effective package for small-market stations; enables users to schedule and control programming on a wide range of playout devices; can be expanded to a full-scale playout and control system with additional modules. □

WORKFLOW SYSTEM

BBC TECHNOLOGY COLLEDIA

408-380-1504;
www.bbctechnology.com

Designed to ensure that media and related production activities are more efficiently and cost-effectively managed — from the initial concept through to ingest, distribution and archive; now features Apple's Final Cut Pro HD editing software. □



IP-BASED CONTENT DELIVERY AND SCHEDULING SYSTEM

PANASONIC BB-S700PD MEDIA PLAYER AND BB-SMG700 MEDIA SERVER

201-392-4127;
www.panasonic.com/broadcast

Teams with Panasonic 6 Series plasma displays; features network management, media distribution, schedule creation for individual or groups of plasmas; provides locally or remotely controlled playback, data encryption, and terminal management. □

WORKFLOW AUTOMATION SYSTEM

HARRIS MEDIA INGEST

513-459-3400;
www.broadcast.harris.com

Part of Harris' Resource Suite automation system; provides advanced features such as batch capture (tape to disk), scene recognition and proxy creation. □

CAMERA

IKEGAMI HDK-79EX HD CAMERA

201-368-9171; www.ikegami.com

Compact, portable HD camera weighs just under 12 pounds; integral fiber adapter makes camera compatible with any Ikegami fiber base station. □



ING SYSTEM

PANASONIC DVCPRO P2 SERIES

201-392-4127;
www.panasonic.com/broadcast

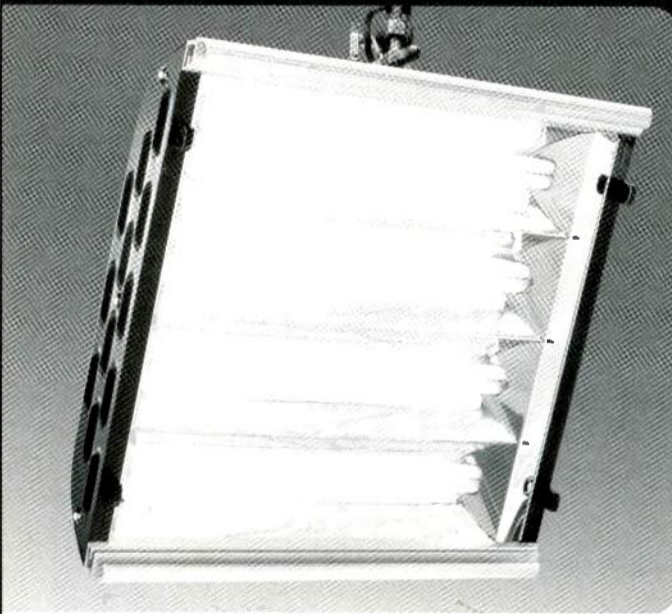
Features full compatibility with DVCPRO; includes high-speed file transfer, laptop field editing without requirement for proxy videos, and compatibility with off-the-shelf data storage drives for archiving; resistance to environmental stress; features P2 solid-state memory card. □

HD SDI DIGITAL CINEMA CAMERA MUX

TELECAST FIBER SYSTEMS COPPERHEAD CINE


508-754-4858;
www.telecast-fiber.com

Includes all of the features of the HD SDI CopperHead with four additional return audio channels for HD and 24p production; optimized for use in digital cinematography applications; new version is nearly half as wide as the original, improving camera balance. □



The New Look of Kino Flo®

Kino Flo® unveils a dazzling luminaire guaranteed to raise your IQ (illumination quotient). The ParaBeam® 400 look is hip. The light is cool. A smart choice for studios, the ParaBeam can dish out more than a 3K softlight on less than two amps! Its intense beam of True Match® light can focus into the far corners of a set. All ParaBeams come complete with flicker-free DMX dimming, gel frame, egg crate louver and diffuser.



www.kinoflo.com

10848 Cantara Street Sun Valley CA 91352
818 767 6528 voice • 818 767 7517 fax



NEWSROOM AUTOMATION SYSTEM

INSCRIBER INCA AUTOCCG

519-570-9111;
www.inscriber.com

Allows for the broadcast of multilayer graphics, clocks, logos and real-time clip-to-clip transitions on a single channel; interface automatically reflects changes within the news service provider, with new content created instantly; in unattended mode, it automatically broadcasts new content. □

Colledia™

80 years in the making



Now ahead of its time

Colledia™ integrates vendor technology across the entire production workflow and enterprise. Now and into the future.

Colledia™ is currently supporting ESPN's digital conversion.

Ready to be your media creation and broadcast management solution.

Make. Work. **Flow.**

BBC Technology

US: 1 888 222 3820; UK: + 44 20 7765 4748
e-mail: bbctechnology-sales@bbc.co.uk
www.bbctechnology.com



CAMERA

PANASONIC AJ-SDC905
201-392-4127;
www.panasonic.com/broadcast

Dual-mode DVCPRO50 has IEEE 1394 I/O to assure the lossless transfer of 50Mb/s digital video for NLE; features three 2/3-inch 520,000-pixel IT CCDs; equipped with 12-bit A/D DSP circuits; outfitted with a Super Gain function with a maximum gain of 48dB and a time-accumulate Digital Super Gain; offers as standard a pre-recording function to capture spontaneous scenes. □

LIGHT

KINO FLO PARABEAM
818-767-6528; www.kinoflo.com

24-inch by 24-inch; can light a four-person news desk from approximately 15 feet away; lights the foreground without washing out the background on the set; with a simple rotation of the fixture, it can focus on just one of the four subjects. □

USB2.0/FIREWIRE DOCKING STATION

HNB
860-434-9190; www.hnb.co.uk

Accepts the PORTADrive's removable HD caddy via a slot in the front panel; delivers fast file transfer with Mac and PC-based post-production systems; features a universal power supply for global operation; comes with both USB and firewire cables for connection to DAWs. □



CAMERA LIGHT

KINO FLO KAMIO 6
818-767-6528; www.kinoflo.com

Offers a soft-light alternative for cinematographers working with studio cameras or compact Steadi-Cam rigs; its design combines a two-stage matte box with Kino Flo True Match ring light system; is flicker-free and can run off the camera battery or AC power. □

MPEG-2 ENCODER

HARMONIC DIVICOM MV 100
800-828-5521;
www.harmonicinc.com

Ultra-low-bit-rate compression; multipass LookAhead CBR/VBR encoding; advanced filtering and processing; supports DiviTrackXE statistical multiplexing. □



MULTIFORMAT SWITCHER

SONY MFS-2000
800-686-SONY;
www.sony.com/professional

Designed for broadcast, corporate, educational, live and post-production applications, as well as mobile news units; available in 1- or 1.5M/E configurations; three control panels are offered; packaged in a compact 3RU frame; features preset pattern effects with a variety of pattern modifiers for easy operation. □

NONLINEAR EDITOR

AJA IO-LD
800-251-4224; www.aja.com

Designed to work with SDI digital systems; provides an audio/video interface to Final Cut Pro on Mac OS X; supports full 10-bit uncompressed video on both digital and analog inputs and outputs; can be used in a desktop configuration or mounted in an optional 1RU mounting bracket. □



AUDIO EMBEDDER

ENSEMBLE DESIGNS BRIGHT EYE 20
560-478-1830;
www.ensembledesigns.com

Provides audio mux/demux with SDI video I/O, both analog and AES I/O; audio mixing, level adjustments and channel shuffling modes available. □

NONLINEAR EDITING AND FINISHING SYSTEM

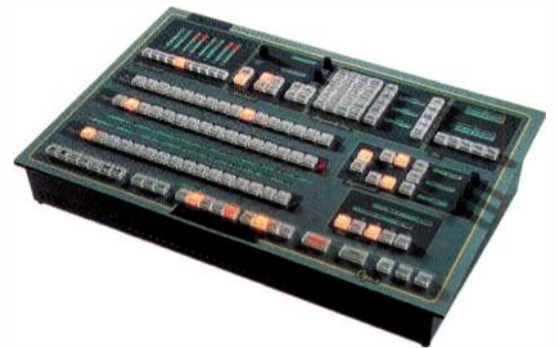
DISCREET SMOKE 6 SD FOR IBM LINUX
514-393-1616; www.discreet.com

Works with Linux operating system; offers advanced conforming and 3-D capabilities; features OpenGL graphics, uncompressed SD video I/O, and a choice of Discreet's stone Fibre Channel storage arrays; offers the option for fully redundant hardware RAID 5 solutions; features multiformat capture and playback including PAL and NTSC, real-time 4:4:4 editing, and unlimited vertical timeline editing. □

DIGITAL VIDEO EFFECTS SYSTEM

ACCOM ABEKAS DVEOUS/MX
650-328-3818; www.accom.com

Can work as a dual twin or quad twin system in SD (525 or 625) or in HD (720, 1035 or 1080 at all known frame rates) with a simple setting change; features include UltraWarp, SurfaceFX, SuperShadow, TimeFrame Effects Editor, reTouch color correctors, OrbitalFX, Supermatte, SpiralFX, Target FrameStore, Wide-range Defocus, Solid Builder. □



DIGITAL MASTER CONTROL SWITCHER

LEITCH OPUS
859-371-5533; www.leitch.com

Comes feature-rich in a multichannel, multiformat SD/HD environment; provides dual-channel effects/squeezes, audio processing capabilities, keys, audio overs and quick selects; supports both HD and SD signals. □

EDITING SYSTEM

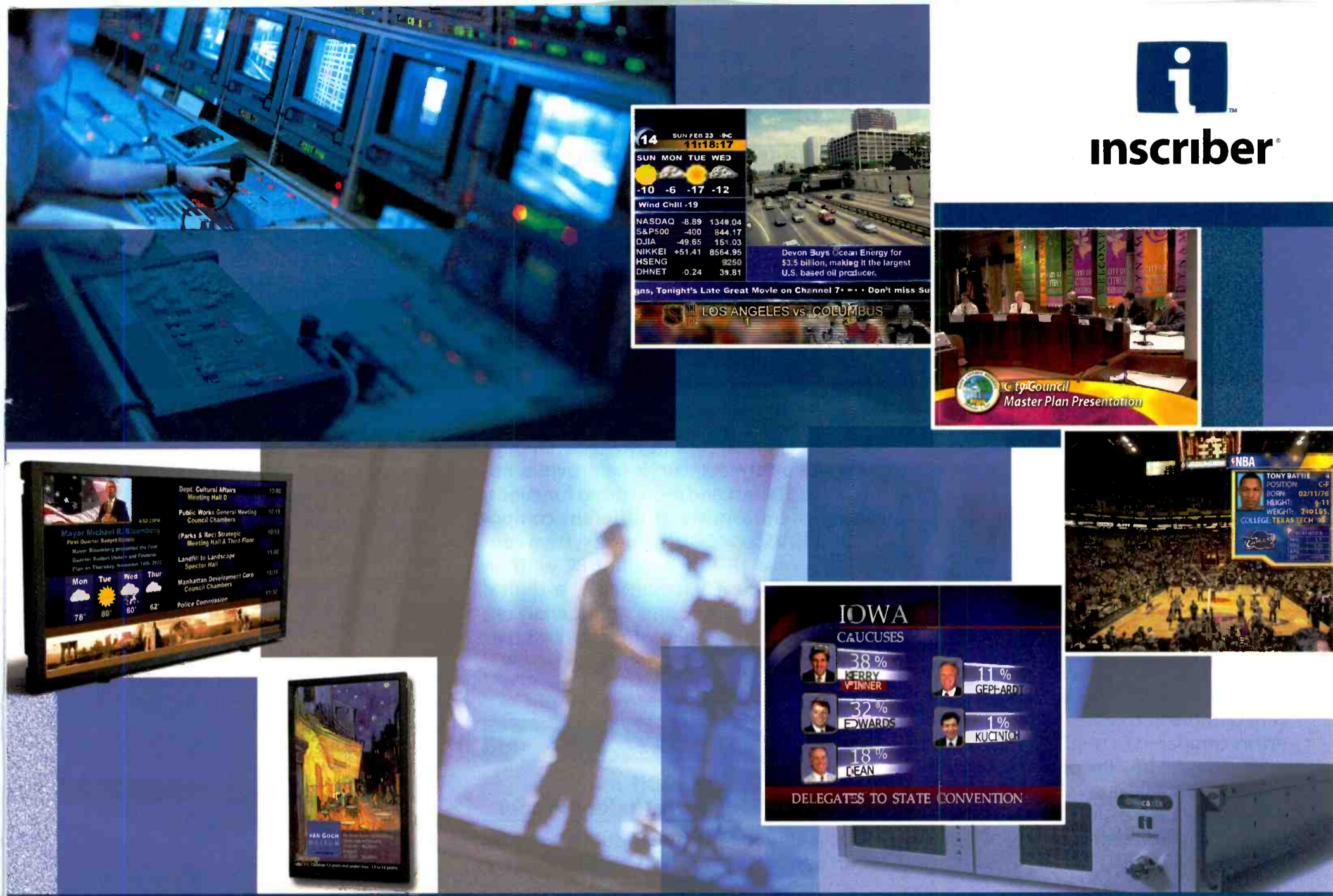
PINNACLE SYSTEMS LIQUID 5.6
650-526-1600;
www.pinnaclesys.com

Extensive upgrade to Liquid blue and Liquid silver video editing systems; supports Liquid blue for multiformat broadcast environments, Liquid chrome for real-time post settings and Liquid silver for MPEG-2 post editing; offers integrated DVD authoring directly from the Liquid 5.6 timeline; features an enhanced MPEG encoder and MXF support. □

CONSOLE

SOLID STATE LOGIC C200
212-315-1111;
www.solidstatellogic.com

Provides dedicated knob-per-function control surface; suitable where hands-on access to a large number of controls is needed; offers in-line versatility and the provision of both snapshot and dynamic automation; special mobile configuration also available for compact studio or mobile installations. □



We Don't Just Think About the Future of Broadcasting, We Are the Future of Broadcasting.

- character generators
- newsroom automation
- digital signage
- HDTV solutions
- master control branding
- video servers
- real-time 2D/3D graphics

For almost 20 years, Inscriber has been a driving force in the television broadcasting industry and has established a worldwide customer base of over 200,000 installations. Inscriber's longstanding reputation for providing high quality, innovative products with exceptional service and the ability to adapt to a changing market have been the power behind Inscriber's success.

Inscriber is the future of broadcasting. Our Inca products for broadcast and post production have set a new standard in on-air graphics capabilities. Based on breakthrough technology developed by Inscriber, multi-layer graphics, effects and video playback are achieved on a single channel. This is why innovative broadcasters like CBC/Radio-Canada have selected Inscriber as their national supplier of character generator equipment.

InfoCaster, the digital signage solution for the next-generation of broadcasting, combines the same quality graphics and ease of use as our traditional broadcast products with the advanced network management needs of this dynamic field.

With these and other groundbreaking products, it is easy to see why customers like ABC, NBC, CNN, CBC, BBC and Rogers Sportsnet trust Inscriber for their broadcast graphics solutions.

See the future of broadcasting at www.inscriber.com, www.infocaster.tv

CONSOLE SYSTEM

FORECAST CONSOLES MASTERAIL 2.0
800-735-2070;
www.forecast-consoles.com

New version of MASTERail modular console system is easily modified to match a facility's ever-changing equipment. □



VIDEOTAPE

SONY DIGITALMASTER DVCAM
800-686-SONY;
www.sony.com/professional

Reduces the rate of dropouts by 50 percent or more and causes 90 percent fewer errors compared to MiniDV tape; features a dual layer of 100 percent magnetic material to deliver a 2dB increase in the carrier-to-noise ratio; 30 percent more DLC coating; comes in a variety of lengths, including 32-, 40-, 64-, 124- and 184-minute cassettes. □

INFRASTRUCTURE SYSTEM

SNELL & WILCOX IQ MODULAR
408-260-1000; www.snellwilcox.com

Expanded infrastructure system adds converters, synchronizers, DAs, routers and audio modules, all capable of operating in either SD or HD; all new modules have built-in signal integrity protection to guarantee that the output of each IQ Modular product is continuous, even when the input fails. □

NTSC DECODER

FORTEL DEC-510
800-530-5542; www.fortelDTV.com

Modular card provides optimal conversion from NTSC to SDI using QuadraComb filtering. □

DISPLAY AND ANALYSIS TOOL

PIXELMETRIX DVSCOPE
866-749-3587; www.Pixelmetrix.com

Supports all SDTV and HDTV serial digital video formats; DVScope provides advanced SDI test and monitoring functions; the system consists of different components: DVScope SDI, the base system consisting of a 1RU rack-mount PC with an SDI interface; DVScope View, a digital waveform monitor and signal analyzer; DVScope Gen, a full-motion SDI test pattern and sequence generator. □

MSDC-IOT UHF DIGITAL TRANSMITTER

THALES DCX PARAGON
413-998-1116; www.thales-bm.com

Available in oil- and liquid-cooled versions for both NTSC and DTV operation; for high-power UHF stations; can be twice as efficient as a conventional IOT and four times as efficient as a solid-state transmitter; uses Soft Arc technology instead of a crow bar for increased reliability. □

DEPRESSED-COLLECTOR IOT

ACRODYNE INDUSTRIES (AI) QUANTUM
888-881-4447; www.acrodyne.com

De-ionized water cooling eliminates hazards associated with circulating oil systems; eliminates glycol from the cabinet environment; uses three- and five-stage plug-in-style MSDC IOTs; supports global standards, such as analog (NTSC/PAL/SECAM) and digital (ATSC and DVB-T). □

SINGLE-PAIR AUDIO CABLE

GEPSCO 61801EZ
800-966-0069;
www.gepco.com

Available in 20 colors; includes a new riser-rated PVC jacket; features stranded, tinned-copper conductors that facilitate quick soldering or punch-down, and a high-grade polyethylene dielectric; each pair is shielded with an easy-to-strip, bonded foil shield with drain wire. □

ANALOG TRANSMITTER TUBE

L-3 COMMUNICATIONS CEA 80
570-326-3561; www-edd.tw.l-3com.com

Modified version of the Constant Efficiency Amplifier tube; works in common mode; performance is equal to an IOT; gain, linearity, sync compression; capable of 55 percent efficiency in analog service. □

DIGITAL ROUTING SWITCHER

SIERRA VIDEO SYSTEMS SHASTA 1602HD-LS
530-478-1000; www.sierravideo.com

Switches HD video with embedded audio without pops or clicks; can be depopulated to 4x2 or 8x2 configurations; features include route locking, manual chop, tally and adjustable fade in a 1RU frame; built with an auto-timer feature that automatically time-aligns inputs within a 2H window. □

VIDEO/AUDIO SWITCHER

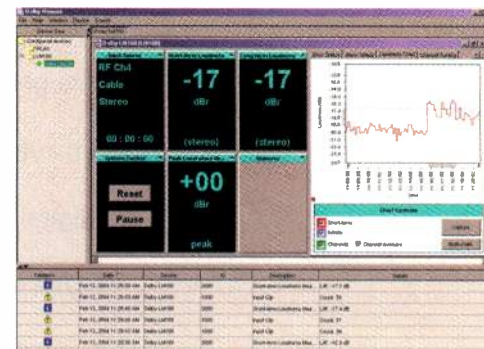
KROMA TELECOM XP3000
+34 9166 145 14;
www.kromatelecom.com

1RU module switches up to 48x2 video and audio signals; crosspoints can be configured as separate video and audio or audio follows video. □

VIDEO ROUTER

QUARTZ ELECTRONICS TOPAZ
888-638-8745; www.quartzus.com

Family of compact, low-cost routers in 16x16 and 32x32 sizes; handles SDI and HD SDI as well as analog video and audio; can stand alone or integrate into larger system. □



LOUDNESS METER OPTION

DOLBY LM100 SOFTWARE REMOTE APPLICATION
415-558-0200; www.dolby.com

Software remote application offers new logging features and enhanced error reporting; users can continuously log short- and long-term speech loudness values in real time, and store loudness history data for later analysis; controls the LM100-NTSC's tuner module and digital cable set-top box tuners. □

MicroFirst™
Automation that Works

DIGITAL Automation SYSTEM

"Flexible, reliable, & stable!"
— Mike McGraw, Dir. Development, Clear Channel Spectacular

"Easy to use!"
— Paul Byers, Dir. Eng. & Ops, WQED

"It really works!"
— Bill Ziegler, CTO WLVT

"Far more efficient!"
— Joe Glynn, VP Eng, WVIA

Modular Expandability: Schedules, Devices, Workstations

Comprehensive Intuitive G.U.I.

Context Sensitive On-Line Help

Remote Control, Diagnostics, and Upgrades

Dynamic Logging, Error Checking, and Alarming

24/7/365 Technical Support

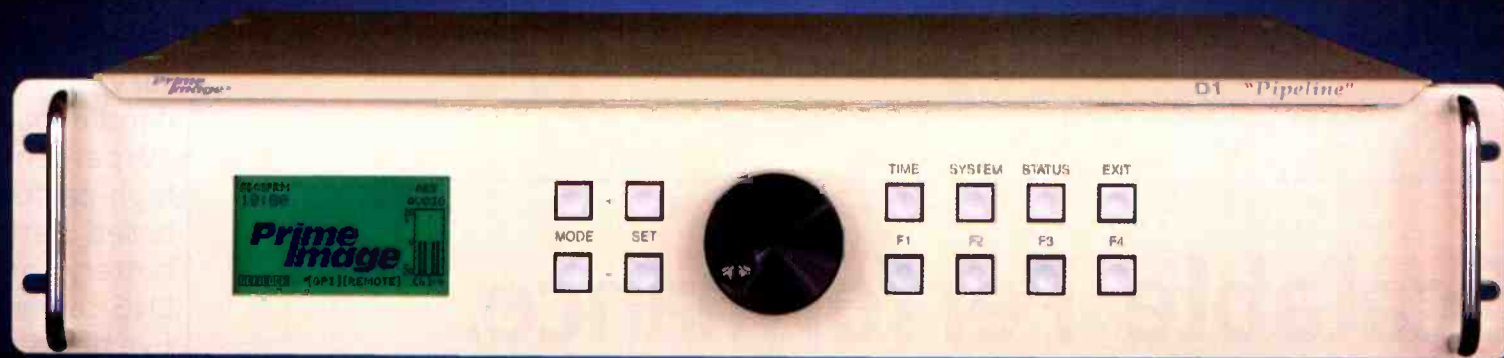
Interface to any Traffic System

Automation that Works!

www.microfirst.com

A Simple Solution For Wardrobe Malfunctions

HD/SD Audio
Video Delay



The D1 Pipeline Delay

Live broadcasts are full of surprises. Some are welcomed, some aren't. Put an end to the unwanted shocking language, actions and wardrobe malfunctions that can plague some live events with Prime Image's popular Pipeline delay device.

With Pipeline, delaying audio and video for up to 10 seconds is as easy as pushing a button. Delaying everything for as long as an additional 20 seconds is also an option.

The D1 Pipeline is Prime Image's popular Pipeline audio/video delay device, but with a serial digital interface. D1 Pipeline features 10-bit video processing with a primary as well as an auxiliary/alternate video input. Audio processing is 24-bit, with four channels in and out; select AES/EBU, digital or analog. Four auxiliary/alternate audio channels (also AES/EBU, digital analog) can be switched with, or independent of, auxiliary video.

All that, in a rack-mounted unit just 2U high.

D1 Pipeline. It's about time — delaying it, utilizing the latest video technology.

**HD/SD Standards
Converters**

**HD/SD
Time Machine**

HD/SD Trimmer

**HD/SD Time Base
Correctors/
Synchronizers**

**Prime
Image**

The Digital Video People
Tel (408) 867-6519 • Fax (408) 926-7294
www.primeimageinc.com

MINIATURE COAX CABLE

BELDEN BRILLIANCE DIGITRUCK 179DT800-235-3361; www.belden.com

Lightweight RG-179 type 75Ω coaxial cable; weighs 7.25 pounds per 1000 feet; requires approximately 40 percent less space than mini-RG-59/U type coax; for analog, SDI, HD and AES/EBU digital audio transmissions; incorporates foil/braid shield and Duobond tape. ■

DIGITAL CONSOLE

LAWO MC² BROADCAST+49 7222 1002 48, www.lawo.de

Digital mixing console with modular control panel and user/project-oriented interface, 180 DSP channels, and 120 summing channels; inputs user-definable and routeable; surround mix with joystick control; HD core provides 3072 crosspoints; remote interface option with fiber interconnect. ■



LITHIUM-ION CAMERA BATTERY

ANTON/BAUER DIONIC 160

203-929-1100;

www.antonbauer.com

Originally designed for high-power military applications; can handle loads up to 140W; 30 percent lighter than high-performance, nickel-based batteries; 160Whr battery can run a typical ENG camera for well over five hours and can handle on-camera lights. ■

Scalable Performance.



The portable DVM 400

High performance and flexibility for MPEG2 transport stream analysis.

The new DVM family of MPEG 2 instruments lets you know exactly what's going on, with powerful analysis capabilities. It gives you:

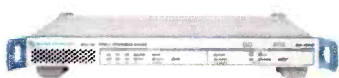
- Real-time monitoring
- In-depth analysis
- Networkability (SNMP)
- Scalability up to 20 signals

It's also a very flexible family that lets you get the configuration you need, and then add to it as your needs grow. We even offer a portable version.

So don't spend time puzzling over your MPEG2 transport streams. Ask us about the DVM family – with the performance you need, and the scalability you've been looking for.



The DVM 100/120 monitoring system



The single/dual-stream DVM 50

ROHDE & SCHWARZ

8661-A Robert Fulton Drive Columbia, Maryland 21046 • 1-888-TEST-RSA • www.rohde-schwarz.com

PORTABLE HD PLAYER/RECORDER

JVC CU-VH1U

800-582-5825;

www.jvc.com/pro

Records and plays back HD media adhering to the ATSC HD broadcast standard using MiniDV cassettes; features a 3.5-inch LCD monitor, a digital iLink interface for nonlinear editing and dubbing, component outputs for multiformat playback, and an SD memory card slot for capturing stills from tape. ■

VIRTUAL MONITOR WALL

AVITECH MEDIA COMMAND CENTER

877-284-8324;

www.avitechvideo.com

Capable of handling 120 video sources on a single display and up to 960 video sources in a single system; output resolution can vary from 800x600 to 1600x1200. ■

MULTI-IMAGE DISPLAY SYSTEM

IMAGE VIDEO VXV-16

416-750-8872;

www.imagevideo.com

Combines up to 16 multiformat video sources on any high-resolution display; software-selectable inputs for composite or digital formats. ■

CONNECTOR CATALOG

FISCHER CONNECTOR CATALOG

800-551 0121;
www.fischerconnectors.com

More than 100 pages of detailed information on connectors, assemblies, plugs and jacks; provides complete details on hundreds of types of connectors and interfaces; includes triax, coax and multi-conductor fittings; free catalog also available online. ■

VIDEO PATCH ACCESSORIES

SWITCHCRAFT PATCH BAY AND BNC ADAPTERS

773-792-2700;
www.switchcraft.com

Adapter and looping plugs in both standard and mid-size versions; allows single or dual-isolated video jacks to normal a path through; adapters allow quick BNC access to a patchbay; available in both 75Ω terminated or nonterminated versions. ■

SATELLITE RECEIVER

WEGENER UNITY 4650

770-814-4000;
www.wegener.com

Provides both 4:2:0 and 4:2:2 decoding; includes a DVB-compliant QPSK demod with a wide symbol rate range enabling both SCPC and MCPC operation; balanced stereo audio outputs with front-panel audio/video monitors; includes four-port RF switch and 10/100/Base-T Ethernet interface. ■

DISPLAY PROCESSOR

LEITCH NEO SUITEVIEW

859-371-5533;
www.leitch.com

Renders multiple video and computer signals in real time to high-resolution computer monitors, plasma displays or projection display systems; fully integrated with Leitch's Command Control System (CCS); allows users to create a customized, systemwide monitoring solution for round-the-clock operation. ■

QUAD 8-VSB FREQUENCY-AGILE DEMODULATOR

VIDEOTEK DDM-800

610-327-2292; www.videotek.com

Receives HD and SD 8-VSB DTV signals and converts them to standard DVB-ASI output format; base unit has the flexibility to add up to three independent DTV receiver/demodulators via optional modules; the MPEG-2 ASI output streams can then be locally processed, multiplexed, passed to a data distribution network or sent to cable facilities via QAM modulators. ■

RECORDER

SONY HDCAM SR

800-686-SONY;
www.sony.com/professional

Works with the new HDC-F950 camera and the BCT-SR series of digital videocassettes; new SRW-1 field recorder and SRW-5000 studio recorder can record either RGB 4:4:4 or component 4:2:2 HD video at approximately 440Mb/s; captures full detail of the Common Image Format 1920x1080 sampling structure without prefiltering or subsampling. ■

visit the
world
of content
creation • management • delivery

ib
2004

40k+ attendees from Europe
and 120 countries worldwide

1,000 exhibitors including all
the key technology suppliers

The world's best electronic
media conference

Exhibition 10 - 14 September
Conference 9 - 13 September
RAI Amsterdam

www.ibc.org

NETWORK-ATTACHED STORAGE

FASTORA NAS FAMILY

626-581-3232; www.fastora.com

Features 8 x ATA-133 hot-swap HDD bays, redundant hot-swap power supplies and dual 10/100Mb/s Ethernet with failover capability; supports RAID 0, 1 and 5 with hot spare; offers hardware monitoring, auto-notifications and logging. □



CONNECTOR

ADC TELECOMMUNICATIONS
FORMAT-REVERSIBLE PROAX952-917-0231; www.adc.com

Can be reversed between U.S. and global formats in seconds; comes in U.S. and four European (Fischer and Lemo 4A, 3T and 4E) versions; fits standard U.S. triax cables, as well as global metric 8mm, 11mm and 14mm cables; features a field-repairable center conductor. □

MPEG-4 ENCODER

OPTIBASE MPEG MOVIE MAKER 400

800-451-5101; www.optibase.com

Simultaneously generates three encoded streams with different bit rate settings for each input source; supports live streaming over IP; can detect varying levels of motion, as well as scene changes, in a stream; supports horizontal cropping. □

ENG SYSTEM

TELEX ENG 100-UHF

800-392-3497; www.telex.com

Suited for portable TV and video cameras; portable battery-operated diversity receiver mounts right to a camera, several optional mounting accessories are available; 100-channel frequency agile system allows quick setup, transmitter matching, and new channel selection if RF conditions change; two bands A (TV channel 47/48) and B (TV channel 58/59); UT-102 plug-on transmitter is compatible with two channels on the ENG-100 receiver. □

COFDM RECEIVERS

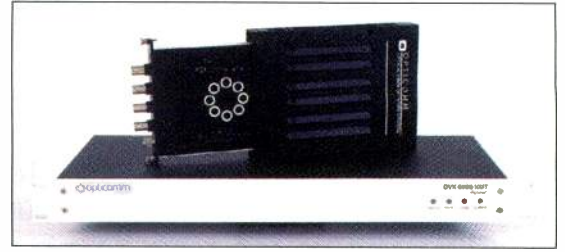
BROADCAST MICROWAVE SERVICES
CARRY-DECODER II800-669-9667; www.bms-inc.com

Portable for wireless reception of video, audio and data signals; can be tripod mounted for mobility; can be stand-alone MPEG decoder; ASI out; SDI output embedded with audio; high luminosity fluorescent display; remote control port; PIN code for security; automatically recognizes transmit parameters. □

HDTV ENCODER

RADYNE
COMSTREAM
THE 15A602-437-9620;
www.radynecomstream.com

Provides compliant ATSC or MPEG-2 transport streams; when operating under the MPEG-2 profile, supports transport stream rates of up to 108Mb/s; supports one HDTV service in 1080i, 720p or 480p; video input is a 1.5Gb/s SD, per SMPTE 292M; video encoding process provides motion estimation across all picture areas; factory configurable for 4:2:2/4:2:0. □



TRANSPORT UNIT

OPTICOMM DVX-5400

800-867-8426; www.opticomm.com

Four-channel transport unit used for input rates of 270Mb/s only; incorporates a single laser and one single-mode fiber-optic cable for transmission of up to four uncompressed SDI channels and/or ASI; saves bandwidth by outputting only one wavelength; maximizes usage of existing fiber cabling. □



MPEG-2 MEASUREMENT PLATFORM

ROHDE & SCHWARZ DVM400

888-837-8772;

www.rsa.rohde-schwarz.com

MPEG-2 measurement platform and analysis options for data broadcasting, including multiprotocol encapsulation, and data and object carousel; computer-based system includes broadband recorder and generator-ready slots, leaving three slots open for MPEG-2 analyzer cards. □

CHANNEL BRANDING PROCESSOR

MIRANDA IMAGESTORE HDTV

514-333-1772; www.miranda.com

Has an integrated automated character generator plus easy-to-use gallery graphics preparation and data interfacing software; expandable HD processor that provides capabilities ranging from logo insertion to fully featured master control switching and channel-branding graphics. □

WIRELESS HEADSET

EARTEC TD 900

800-399-5994; www.eartec.com

A full-duplex wireless system; provides hands-free two-way communication; available as a stand-alone system; can interface with wired intercoms such as Clear-Com, RTS and Telex; operates without base station repeaters; powered by rechargeable NiCad batteries; has a 1/4-mile range; no FCC license required. □

Over
946,080,000 seconds
of precision timing



WHEN you require the best, most accurate in precision timing look only to ESE. Designed for "Precision Timing", ESE Master Clocks & Accessories have been the industry standard for over three decades.

Whether using GPS, WWV, Modem, Crystal or line frequency accuracy – all ESE Master Clocks can drive digital or analog slave clocks, as well as interface with video and/or computer based systems. Call or visit our web site for more details.

• 3-Year Warranty •

142 Sierra Street • El Segundo, CA 90245 USA
Phone: (310) 322-2136 • Fax: 310.322.8127www.eseweb.com

CUSTOM DTV PLANNING

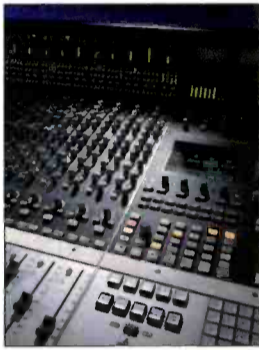
THE SYSTEMS GROUP MASTER PLAN
201-795-4672;
www.tsg-hoboken.com

Tailored program evaluates trends and opportunities, budgets, goals and organization's immediate needs to develop a custom design solution for a broadcast facility's conversion to DTV. ■

AUDIO WORKSTATION

SOLID STATE LOGIC AWS 900
212-315-1111;
www.solidstatellogic.com

Combined SSL console and DAW controller; it includes SuperAnalogue mic pre's and signal processing; full monitoring system up to 5.1 surround; direct control of DAW recording, editing and mixing functions; flexible signal routing; user-definable controls on every channel. ■



RACK-MOUNTED AUDIO MONITOR

TSL SLS-1P
+44 1628 687 228;
www.televisionssystem.ltd.uk

1RU loudspeaker unit is self-powered, rack or freestanding; features one stereo pair of analog inputs, headphone output volume control, a power indicator and XLR connectors; 2x15W output. ■



IT INFRASTRUCTURE

SILICON GRAPHICS CXFS
800-800-7441; www.sgi.com

InfiniteStorage CXFS SAN server; system includes fabric and storage systems; 64-bit journaled file system with maximum file size of 9MTB and a maximum file system size of 18MTB; interfaces and supports a wide variety of third-party applications. ■

TELESTRATOR SYSTEM

E-MEDIAVISION POINT
+44 2087 552 014;
www.e-mediavision.com

Suited to live productions, allowing the user to instantly draw freehand, place animated arrows, and recall previously saved graphics and animation; upgrades include Holo screen with touch-screen capability. ■

TELEVISION AUDIO PROCESSOR

MODULATION SCIENCES MSI-3300
800-826-2603; www.modsci.com

Multifunction unit combines analog-to-AES3 and AES3 (with automatic speed detection)-to-analog conversion with high-quality gain riding and a transmission audio processor; conditions audio for transmission in a variety of media, including cable modulators, satellite uplinks and fiber modulators. ■

UHF PANEL ANTENNA

RADIO FREQUENCY SYSTEMS FULLY RADOMED UHF ANTENNA
203-630-3311; www.rfsworld.com

Radome protects and provides structural support for antenna; suitable for deployment in harsh environments; ladders inside the radome provide internal access to the antenna and top of cylinder; smooth profile reduces the effect of ice buildup and improves wind resistance. ■



MONITORING AND CONTENT MANAGEMENT SYSTEM

VIRAGE VS NEWS MONITORING
650-573-3210;
www.virage.com

Automatically tracks content for time-sensitive, strategically significant events; new features include real-time data access and advanced concept-based retrieval; proactively alerts users to broadcast news and delivers related internal content and information from Web sites. ■

DISK ARRAY

MEDÉA VIDEORAID XTRM
818-880-0303;
www.medeia.com

Features support for five, 10 or 15 SATA drives, full performance with downed drives, background data reconstruction and redundant power supply modules; scales from 640GB to 4.8TB in 3RU. ■

DUAL-HEAD SUPER-SUN GUN KIT

FREZZI SSGK2-200
800-345-1030; www.Frezza.com

At a distance of 10 feet, produces up to two times the output of a 400W par HMI fixture with a wide-angle lens; kit includes two light heads, two Barn Door accessories, two lamps (200W MSR/HMI), two AC ballasts with auto voltage selection (30V DC ballast also available), two soft boxes and transport case. ■

IP TRANSMISSION APPLICATION

TELESTREAM MAPONE
877-257-6245; www.telestream.net

Personal newsgathering application provides transmission of broadcast-quality media from any laptop news-editing application via any standard or wireless IP network; flexible automation settings optimize delivery time and media quality; Telestream HyperMAP speeds delivery by removing transmission bottlenecks. ■

Zandar


TECHNOLOGIES

THINK MULTIVIEWER, THINK ZANDAR

Zandar offer a wide range of proven MultiViewer solutions, with numerous input formats, output display resolutions, and control options.

Think Zandar for:

- Command & Control
- Master Control Rooms
- Broadcast multi-video & audio monitoring
- AV Presentations
- Video-conferencing
- Mosaic & Interactive Channels
- Security & Surveillance

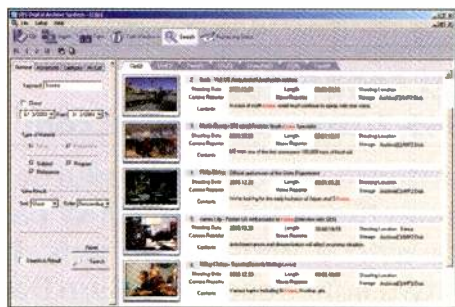


IRELAND:
TrioTech House, Abbey Road,
Deansgrange, Co. Dublin, Ireland.
Tel: +353 1 280 8945
Fax: +353 1 280 8956
E-mail: sales@zandar.com

USA:
1970 E. Osceola Parkway, No. 330,
Kissimmee, FL 34743, USA.
Tel: 321 939 0457
Fax: 321 939 0458
E-mail: advancedms@msn.com

www.zandar.com

**Visit Us at InfoComm, June 9-11, Booth #3795
or
Broadcast Asia, June 15-18, Booth #2G2-7**



DIGITAL ASSET-MANAGEMENT SYSTEM

KONAN DIGITALARCHIVE
+82 2 3489 1000;
www.konantech.co.kr

Features screen capturing, indexing, archiving, text and image searching, and MPEG streaming functions; enables easy retrieval of specific frames from the storage server. □

ROYALTY-FREE GRAPHICS TOOLKIT

12 INCH DESIGN POWERBLOX UNIT 01
602-953-6650;
www.12inchdesign.com

Includes hundreds of motion graphics elements and other content; features 20 animated transitions, 20 animated displays, 10 corner pin animated displays, seven earth content animations, 10 animated simple shapes, 25 moving textures and 10 sets of DVD menu templates. □

ARCHIVING SYSTEM

NVERZION TERASTORE
801-485-8420; www.nverzion.com

Modular, network-based server expansion system offers terabytes of near-line storage in a compact, rack-mountable unit; works with Nverzion's automation products to make media readily available for retrieving and managing. □

GRAPHICS AUTOMATION SYSTEM

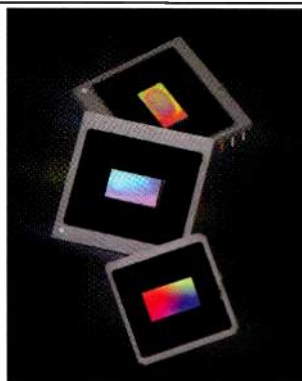
VERTIGOXMEDIA MULTICHANNEL CONTROL SYSTEM
514-397-0955;
www.vertigoxmedia.com

Provides station groups and large networks with a flexible, soft-panel approach for managing and deploying graphics; Xpanel on-air control system lets operators manage data-linked graphics from asset ingest to final broadcast. □

CMOS HDTV IMAGE SENSORS

ALTASENS PROCAMHD
805-373-4044; www.altasens.com

Offers high optical fill for enhanced sensitivity and reduced noise; supports interlaced frame rates up to 60fps and/or progressive frame rates to 30fps at full HD resolution; the active image-sensing area is 1936x1086 pixels. □



DIGITAL ASSET MANAGEMENT SYSTEM

ARTESIA TEAMS 5.1
301-548-7850; www.artesia.com

New version features enhanced integration with EMC Centera content-addressed storage, certified support for Safari Web browser from Apple and availability of German localization; Artesia benchmarks performance of DAM solutions for all customers. □

DUAL SDI FRAME SYNCHRONIZER

BRICK HOUSE VIDEO NEPTUNE
+44 23 8067 6026;
www.brickhousevideo.com

Comprises two fully independent SDI frame store synchronizers in a 1RU chassis; designed with standard 10-bit SDI inputs and a range of analog and digital input options for flexible signal acquisition; SDI and composite analog (monitoring) outputs are included as standard. □

WIRELESS INTERCOM SYSTEM

ASG HME PRO850
888-810-1001; www.audiospec.com

Features include frequency-agile 470-to-740MHz UHF operation, automatic frequency scanning for interference-free operation, automatic power-output control for exceptional range, and longer belt pack battery life. □

REMOTE HEAD

PANTHER BROADCAST CABLE HEAD
+49 8961 390 033; www.panther.tv

Camera can be controlled remotely in two axes; works without electricity; can be mounted on all Pixy crane versions overslung or underslung; cables with nonstick coating enable smooth camera movements; cables available in various lengths. □



CONTENT TRACKING SYSTEM

NEXTAMP WATERMARK READER
+33 2 99 22 61 62;
www.nextamp.com

Watermarking can be used to track content for management of broadcast rights and airtime sales; interfaces with traffic and automation systems; provides continuous multichannel monitoring; collects watermark information and provides a video thumbnail as transition clip and storyboard for each detection. □

DIGITAL MODULATOR

SCREEN SERVICE ITALIA "DUAL-MODE"
+39 0303 582 225; www.screen.it

Software enables users to switch between analog and digital transmission with no alignment or tuning; can be switched manually with a dry-contact switch, by remote control and/or by a command inserted into the feeding transport stream. □

intelliTrac™

open "off-the-floor" design

movable + interchangeable rack turrets

3-BAY EDIT VERSION

multiple track system

Broadcast Consoles
creating space for new technology

TBC
tbconsoles.com

SHARED STORAGE NETWORK

STUDIO NETWORK SOLUTIONS GLOBALSAN

877-537-2094;

www.studionetworksolutions.com

Built on the iSANmp volume-sharing software; designed with the iSCSI IP-based storage networking standard, which enables the transport of block-level I/O data over high-speed Ethernet; features an iSCSI initiator. ■

INTERNET NEWS DELIVERY

THE ASSOCIATED PRESS SNAPFEED 2.0

202-736-1100;

www.apbroadcast.com

Field journalists can now automatically forward multimedia content to production playout servers or other SNAPfeed servers located at different newsrooms and stations within the organization. ■

CONSOLE UPGRADE

YAMAHA COMMERCIAL AUDIO V2

714-522-9011;

www.yamaha.com/proaudio

Upgrade for the DM2000 and DM1000 mixing consoles; DM2000V2 can run Yamaha's new add-on effects packages and offers expanded DAW control and advanced surround functions; DM1000V2 features ESAM II editor control and global paste. ■

3GHZ VIDEO LAPTOP

1 BEYOND DV PRO 3216-X

617-591-2200;

www.1beyond.com

Features include DDR 800MHz memory, 16-inch SXGA TFT LCD, TV tuner with TiVo functions, MPEG-2 recording in real time, removable MP3 player, and noise-canceling headphones; compatible with all 1 Beyond desktop NLE systems. ■

CONDITIONAL-ACCESS DECODER

BROADCAST TECHNOLOGY DTCA 3000

+44 1264 332 633;

www.btl.uk.com

Designed to unscramble multiple encrypted DVB MPEG-2 services; subject to smart card and multiservice CAM, the module can unscramble up to 50Mb/s of service content; occupies a single slot in the 3RU DTRS 3000 chassis. ■

ASSET MANAGEMENT SYSTEM

ASCENT MEDIA GROUP MEDIA TRACKER

310-434-7025;

www.ascentmedia.com

Internet-based system for DAM and distribution organizes, securely stores and accurately tracks digital/physical media assets; serves as a secure central repository and distribution site; increases efficiency by reducing time spent searching for content and by allowing for reuse of content. ■

Signal Acquisition Solution | SERIES

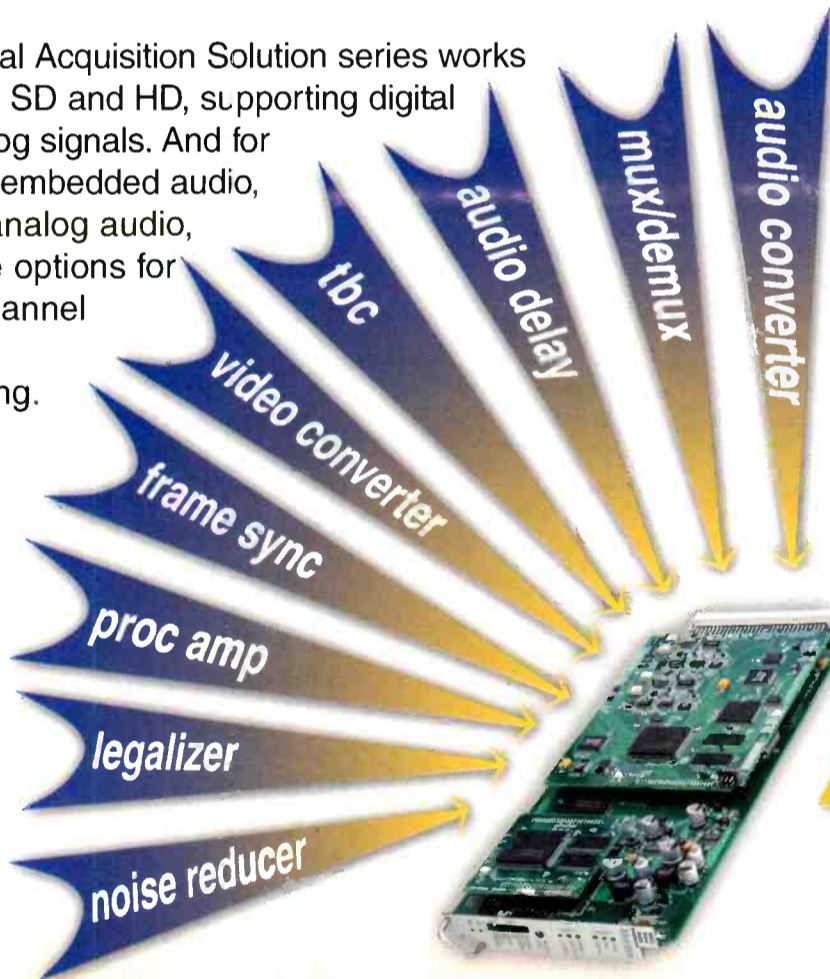
For incoming satellite feeds, ingest areas and remote trucks

Video Processing Frame Syncs:

▲ 7500 - HD SDI I/O ▲ 8400 - SD SDI I/O

▲ 8500 - SD SDI and Analog I/O

The Signal Acquisition Solution series works for you in SD and HD, supporting digital and analog signals. And for handling embedded audio, AES or analog audio, there are options for 4 or 8 channel audio processing.



These modules cleanly accept hot switched digital inputs and if there is a loss of input, the module will freeze or go to black.

The new Express Panel gives you control over all module parameters and has dedicated knobs for proc adjustments.



New Express Control Panel

AVENUETM
Signal
Integration
System



ENSEMBLE

D E S I G N S

Tel +1 530.478.1830 ▲ Fax +1 530.478.1832

www.ensembledesigns.com

info@endes.com

FO Box 993 Grass Valley CA 95945 USA

MULTIPLATFORM SCENIC DATASETS

DEVLIN DESIGN GROUP SOFTSET
970-668-2772; www.ddgtv.com

Run on all virtual operating systems; can be customized with a station's logo and graphic branding, or a custom set can be designed; integrates with a station's current studio system setup. ■



DIGITAL CAMERA

ARRI D-20
+49 89 3809-0; www.izzi.com

Single-chip camera with a rotating mirror shutter and optical viewfinder; based on a single, custom-designed six million pixel CMOS sensor; features an image area comparable to that of 35mm full aperture negative; sensor has high dynamic range and color fidelity with a bayer color-mask. ■

Product Source



HD 4:4:4 MONITORING SOLUTION

BLACKMAGIC DESIGN HDLINK
781-388-7900;
www.blackmagic-design.com

Supports SDI 4:2:2 and 4:4:4 formats; HDTV format support at 1080 lines at 24p, 25p, 30p, 48i, 50i and 60i; automatic adjustment to native display resolution using VESA E-EDID1.3; analog 24-bit audio output using RCA connectors; functions as a stand-alone audio decoder if no display is attached. ■

MULTICODEC COMPRESSION SYSTEM

BROADCAST INTERNATIONAL CODECSYS
801-567-3287; www.brin.com

Cuts bandwidth significantly with full-screen, full-motion video, including HD quality under 3MB, DVD quality at 512K and VHS quality at 256K; switches between codecs on the fly for most efficient video processing; enables 50 percent to 75 percent reductions in bandwidth compared to single-codec solutions. ■

BROADCAST GRAPHICS CREATION

CURIOUS SOFTWARE
CURIOUS GFX BROADCAST
+44 20 7428 0288;
www.curious-software.com

Delivers high-quality broadcast graphics creation to the desktop environment; designed for the needs of TV broadcasters; includes text manipulation and live out-to-video; can be used with Curious World maps or as a stand-alone product. ■



MONITORING AND VERIFICATION SYSTEM

IDEAS UNLIMITED CONTENT PROBE
+44 870 162 7200;
www.ideasunlimited.tv

Uses patented Media FingerPrinting technology to generate a small digital fingerprint of any video picture, which it uses to monitor and compare other video sources with the source signal; three central applications: FaultTracker, Verification and Compliance. ■

Product Source - Ad Index

Company

- ADC
- Anton-Bauer
- Axcera
- BBC Technology
- Canon USA Broadcast Lens
- Clear-Com Intercom Systems
- Dolby Labs Inc.
- Ensemble Designs
- ERI Electronics Research Inc.
- ESE
- Euphonix
- Evertz Microsystems Ltd.
- Harmonic
- Harris Corp. Broadcast Div.
- IBC
- IDX Technologies
- Inscriber Technology
- Kino Flo Inc.
- Leitch Incorporated
- Marshall Electronics Inc.
- Microfirst Inc.
- Network Electronics AS
- NVISION Inc
- Opticomm Corp.
- Prime Image Inc.
- Pro-Bel
- Rohde & Schwarz
- Sony Business Systems
- Sundance Digital
- TBC Consoles, Inc.
- Utah Scientific
- Wheatstone Corporation
- Zandar Technologies

Page #

- 7
- 21
- 25
- 31
- 19
- 15
- 5
- 41
- 28
- 38
- 9
- IBC
- 11-14
- 3
- 37
- 16
- 33
- 30
- BC
- 24
- 34
- 26
- 20
- 17
- 35
- 29
- 36
- 22-23
- 18
- 40
- 27
- IFC
- 39

Phone #

- 800-366-3891
- 203-929-1100
- 724-873-8100
- 888-222-3820
- 800-321-HDTV
- 510-496-6666
- 415-558-0200
- 530-478-1830
- 812-925-6000
- 310-322-2136
- 650-855-0400
- 905-335-3700
- 408-452-2559
- 800-4HARRIS
-
- 310-891-2800
- 800-363-3400
- 818-767-6528
- 800-231-9673
- 800-800-6608
- lcdRACKS.com
- 800-420-5909
-
- 800-8678426
- 408-867-6519
- +44119866123
- 888-837-8772
-
- 972-444-8442
-
- 801-575-8801
- 252-638-7000
- +353 1280 8945

Website

- adc.com/broadcast
- antonbauer.com
- axcera.com
- bbctechology.com
- canonbroadcast.com
- clear-com.com
- dolby.com
-
- errinc.com
- ese-web.com
- euphonix.com
- evertz.com
- harmonicinc.com/broadcast
- harris.com
-
- idx.tv
- inscriber.com
- kinoflo.com
- leitch.com
-
- network-electronics.com
- nvision1.com
- opticomm.com
- primeimageinc.com
- pro-bel.com
- rohde-schwarz.com
- sony.com/xdccan-dv
- sundancedigital.com
- tbconsoles.com
- utahscientific.com
- wheatstone.com
- zandar.com

MVP™

Multi-Image Video Processor



Experience the Dawn of Evertz MVP™ ...The One to Watch!

The Most Advanced and Comprehensive Multi-Image Display System Today!

See Us At InfoCOMM 2004 - Booth #470
Tel: 1-905-335-3700 Toll Free 1-877-995-3700 www.evertz.com

evertz®

[Arid Environment]

PANACEA

Dual 4x4 to 32x32
16x1 to 256x1
HD/SDI clean switching
AES/EBU quiet switching
Digital 3.172 MB/s to 1.5 GB/s
Analog 250 MHz wideband
Analog stereo audio
AES digital audio
SDI/ASI
DS3/E3



[Cool Price]

Panacea: Intelligent Routing
High-performance Leitch routing
at unbeatable prices to
connect your Integrated
Content Environment (ICE)

PANACEA - Chosen by Panasonic for the 2004 Athens Games

An Oasis in the desert — Relief from scorching prices for high-performance routing

- On-air quality of Panacea offered at a refreshing price
- Vast control flexibility spanning coaxial to serial to Ethernet — with intelligent control using our award-winning control and monitoring software, CCS Navigator™
- Advanced routing capabilities: A comprehensive array of routing matrices in 1 and 2RU frames in all signal formats to meet your production, operational, monitoring, mobile, or institutional requirements.

Invigorate your Integrated Content Environment.
www.leitch.com/panacea

Free Integrated Content Environment Poster:
www.leitch.com/freeposter

USA	+1 (800) 231 9673
Canada	+1 (800) 387 0233
Europe	+44 (0) 1344 446000
France	+33 (0) 1 42 87 09 09
Italy	+39 02 3655 3450
Hong Kong	+852 2776 0628
China	+86 10 6801 3663
Japan	+81 (3) 5423-3632

 **LEITCH**

www.leitch.com