

TOP 40 AIRPLAY Monitor

• We Listen To Radio •

October 2, 1998 \$4.95 Volume 6 • No. 40

TOP 40 HIGHLIGHTS

MAINSTREAM TOP 40

#1

AEROSMITH

I Don't Want To Miss A Thing (COLUMBIA)

★ ★ ★ AIRPOWER ★ ★ ★

THIRD EYE BLIND • *Jumper* (ELEKTRA/EEG)
ALANIS MORISSETTE • *Thank U* (MAVERICK/REPRISE)
SHERYL CROW • *My Favorite Mistake* (A&M)

GOING FOR AIRPLAY

BRANDY • *Have You Ever* (ATLANTIC)
R. KELLY & CELINE DION • *I'm Your Angel* (JIVE)
L.F.O. (LYTE FUNKY ONES) FEAT. KAYO OF LE CLICK • *If I Can't Have You* (LOGIC)
NATALIE MERCHANT • *Break Your Heart* (ELEKTRA/EEG)
BILLIE MYERS • *A Few Words Too Many* (UNIVERSAL)
PHANTOM PLANET • *So I Fall Again* (Geffen)

RHYTHMIC TOP 40

#1

AALIYAH

Are You That Somebody? (BLACKGROUND/ATLANTIC)

★ ★ ★ AIRPOWER ★ ★ ★

DRU HILL FEATURING REDMAN • *How Deep Is Your Love* (ISLAND/DEF JAM/MERCURY)

CROSSOVER

#1

LAURYN HILL

Doo Wop (That Thing) (RUFFHOUSE/COLUMBIA)

★ ★ ★ AIRPOWER ★ ★ ★

DMX (FEATURING FAITH EVANS) • *How's It Goin' Down* (RUFF RYDERS/DEF JAM/MERCURY)
JAGGED EDGE • *Gotta Be (So So Def)* (COLUMBIA)

GOING FOR AIRPLAY

BRANDY • *Have You Ever* (ATLANTIC)
DESTINY'S CHILD (FEAT. TIMBALAND) • *Get On The Bus* (WARNER SUNSET/EASTWEST/EEG)
L.F.O. (LYTE FUNKY ONES) FEAT. KAYO OF LE CLICK • *If I Can't Have You* (LOGIC)

ADULT TOP 40

#1

GOO GOO DOLLS

Iris (WARNER SUNSET/REPRISE)

★ ★ ★ AIRPOWER ★ ★ ★

ALANIS MORISSETTE • *Thank U* (MAVERICK/REPRISE)
THIRD EYE BLIND • *Jumper* (ELEKTRA/EEG)
SHAWN MULLINS • *Lullaby* (SMG/COLUMBIA)

ADULT CONTEMPORARY

#1

CELINE DION

To Love You More (550 MUSIC)

★ ★ ★ AIRPOWER ★ ★ ★

NO RECORDS QUALIFIED FOR AIRPOWER THIS WEEK

GOING FOR AIRPLAY

ACE OF BASE • *Whenever You're Near Me* (ARISTA)
BRANDY • *Have You Ever* (ATLANTIC)
R. KELLY & CELINE DION • *I'm Your Angel* (JIVE)
BILLIE MYERS • *A Few Words Too Many* (UNIVERSAL)
WILLIE NELSON • *The Maker* (ISLAND)
BIC RUNGA • *Sway* (COLUMBIA)

Marriage And Morning Shows Mix Well For Some On-Air Duos

by Chuck Taylor and
Dylan Siegler

They're both hard work: successful marriages and successful morning-show partnerships. Perhaps that's why only a handful of brave couples are willing to tackle both challenges, and their attendant tensions, at once.

Around the country, across all formats, Monitor found only a handful of husband-and-wife duos, evenly divided over current music formats, including news/talk. "We're kind of a close-knit fraternity," says Chuck Johnson, half of Johnson and Johnson, who does mornings with wife Debbie at country WKXC Augusta, Ga. "We al-

ways run into other couples at conventions, and we look at each with this sort of knowing look in our eyes.

"At [the annual morning-show] boot camp [convention]," he adds with a laugh, "we listen to radio duos complain and say, 'Well, you don't have to live with it. Your problems could be worse, pal.'"

Among most couples surveyed, radio came before romance, leaving a budding affair to open up in front of the microphone.

For Jagger and Kristi, who handle afternoon drive for modern adult KFMB-FM (Star 100.7) San Diego, the tangle began after she had been doing

Continued on page 8

"Destined to cement her reputation as one of the industry's boldest, most vital music makers. A multifaceted gem of an album."—Billboard

"An American original with an exalted sense of the everyday, a singer who can conjure rare atmospheres."
—Rolling Stone

"Beautiful. Merchant is in a league all her own."
—Newsweek

NATALIE MERCHANT

BREAK YOUR HEART

FEATURING N'DEA DAVENPORT

THE NEW SINGLE AND VIDEO FROM *OPHELIA* AND
THE FOLLOW-UP TO THE HIT "KIND & GENEROUS"
ONE OF THE MOST PLAYED SUMMER SONGS OF '98!!

**MOST ADDED
TWO WEEKS IN A ROW
AT ADULT TOP 40!!**

www.natalie-merchant.com
Management: Gary Smith for Fort Apache
Engineered by Todd Vos / mixed by Jim Scott

IMPACTING TOP 40 THIS WEEK!

© 1998 Elektra Entertainment Group, a division of Warner Communications Inc., a Time Warner Company.
\$ On Elektra compact discs and cassettes www.elektra.com

Billie Myers

a few words too many

**“Couldn’t wait to get it on the air...
great mass appeal song...
lyrically brilliant!”**

Jim Schaefer, PD - KSTZ/Des Moines

**AIRPLAY
NOW!**



the new single from the album 'Growing Pains'

PRODUCED BY DESMOND CHILD • MANAGEMENT: DIGGIT! ENTERTAINMENT / BILL DIGGINS

World Radio History



Next Week: The Detection Revolution

The revolution, as we all know by now, will not be televised. But it will be in your mailbox next week, as Airplay Monitor celebrates its



fifth anniversary with an expanded special issue, "The Detection Revolution."

Featuring extensive interviews with pro-

grammers and label executives from all formats, the special—which will mail a day later than regular issues of Top 40 and Country Airplay Monitor—takes an in-depth look at the impact of monitored airplay on the music industry, as well as the inner workings of Broadcast Data Systems and its plans for the future. There'll also be numerous pages of charts, including country's most-spun songs, artists, and labels of the past five years, as well as the most-spun artists and labels for all of Monitor's formats combined. This special combined issue will also contain the regular weekly charts and features of all four Airplay Monitor publications: Country, R&B, Rock, and Top 40.

Look for "The Detection Revolution"—five years and millions of detections in the making—in next week's Airplay Monitor.

Scott & Todd Concentrate On NYC

No confirmation yet from the folks at WPLJ New York, but at least one affiliate of 'PJ's syndicated **Scott Shannon** and **Todd Pettengill** show confirms that he's been told that the show's national distribution will end Oct. 16 so the duo can concentrate on New York. The show's six affiliates include WFLV Tallahassee, Fla.; WKLI/WKBE Albany, N.Y.; and WQZQ Nashville.

FORMATS: HAYES A 'POINT' PERSON

KMJZ Minneapolis drops jazz for modern AC as "the Point" under new owner CBS. Overseeing KMJZ for the past week has been KAMX (Mix 94.7) Austin, Texas, PD **Dusty Hayes**.

WMJQ Buffalo, N.Y., is segueing from AC to adult top 40 under new OM **Sue O'Neil**.

KLZK Lubbock, Texas, flips from classic rock to rhythmic top 40 as Kiss 104.4 under PD **Ram Rodrigues**.

Bangor, Maine, now has its second mainstream top 40, as WWBX flips from hot AC to "the new B97." PD **Michael W. Hale** and the air staff remain.

Abilene, Texas, loses its second top 40, as The M Street Journal reports that KFQX's frequency is being taken over by classic rock KHXS. KFQX resurfaces on KHXS' frequency as an AC outlet.

M Street also reports that WKXJ Chattanooga, Tenn.'s simulcast partner, WSGC, ends that programming arrangement for classic country.

WXRW Fort Myers, Fla., flipped from soft AC Warm 100 to modern adult Star 100 Sept. 21. **Jim Radford** remains PD. The station is patterned after sister WSSR (Star 95.7) Tampa, Fla.

PROGRAMMING: IT'S OFFICIAL

Interim PD **Kathy Nakagawa** gets the official duties at KQMQ Honolulu, as morning team **Cliff and Erica** are replaced by market vet **Scotty B.** and partner **Bridget Sarchino**.

Soft AC WLWG Long Island, N.Y., PD **Stef Rybak** is upped to sales and programming director.

With **Nikki Nite** off to WFBC-FM Greenville, S.C., Root Communications taps **More 94.9** Nassau, Bahamas, OM/PD **Scrap Jackson** as OM of its four-station Myrtle Beach, S.C., group, with **Mike Ward** officially upped from P/T to PD/afternoons at top 40 WWXM (Mix 97.7).

J.P. Marks, PD of rhythmic top 40 WOWB/WOWZ Utica, N.Y., adds OM duties there and for satellite country sister WBUG-AM-FM/WLFH.

Steve Smith picks up a new consulting client: **KKSS** (Kiss FM) Albuquerque, N.M.

Chris Cair, PD of top 40 KLRS (Colors 92.7) Chico, Calif., becomes the new night host at **KDND** (the End) Sacramento, Calif. In addition, **KBOS** (B95) Fresno, Calif., midday host **Heather** gets similar duties at **KDND**.

BUSINESS: FIELDS OF GOLD

David Field, COO of Entercom Broadcasting for the past two years, is upped to president.

Joseph Field remains chairman/CEO.

In State College, Pa., the Department of Justice has blocked the sale of adult top 40 **WIKN**, album **WQWK**, and their AMs from Citadel to Tallahassee, owner of AC rival **WZWW**.

Jacor acquires top 40 **KGRS** and sister **KBUR** Burlington, Iowa, for \$5.7 million.

Over the protests of rival owner Cox Communications, the FCC has given **WPEZ** Macon, Ga., the right to apply for a new CP that would allow it to switch its city of license to Hampton, Ga., and move closer to Atlanta.

PEOPLE: MORNING MOVES

WKRQ (Q102) Cincinnati OM **Mike Marino** brings together **WBBM-FM** (B96) Chicago's **Jeff Andrews** and **WDJX** Louisville, Ky.'s **Shelli Sexton** for mornings.

Rhythmic top 40 **WDRQ** Detroit bids adieu to morning co-hosts **Joe Mama** and **Shawn Dion**.

Trixie DeLuxe stays on and is joined by night-timer **Domino** on a temporary basis.

R&B **KPWR** (Power 106) L.A. night jock **Ricky Fuentes** segues to P/T, while Funkdoobiest member **Sondobie** takes on the night shift.

Last week's AC-to-top 40 convert **WVAF** (V100) Charleston,

W.Va., has a new air staff. Sister **WVAQ** Morgantown, W.Va.'s **Eric McGuire** is syndicated in mornings; former **WRVZ** (the Planet) Charleston PD **the Major** has middays. PD **Chris Moran** does afternoons; former V100 morning producer **Whipping Boy** is in nights.

AC **WRMF** West Palm Beach, Fla., morning host **Robert Murphy** joins R&B oldies **WXXY/WYXX** Chicago for the same shift, returning him to the market where he oversaw a.m. drive on **WKQX** (Q101) for years.

Programming assistant **Alisa Hashimoto** is MD at Adult top 40 **KPLZ** (Star 101.5) Seattle.

WPST Trenton, N.J., MD **Chris Puorro** assumes p.m. drive from **Jason Barsky**.

Doc Holiday exits **WNAX** Sioux City, Iowa, for mornings at **WDBR** Springfield, Ill.

Mike Macho is P/T at **WSTR** (Star 94) Atlanta.

Jillian Fontaine is the new morning producer at **KZZU** Spokane, Wash.

KCAQ (Q104.7) Oxnard, Calif., afternooner **Corn Dog** segues to middays, with **Joey Boy** joining for afternoons.

New adult top 40 **KSTJ** (Star 105.5) Las Vegas morning host **Big Kahuna** exits for oldies rival **KQOL** (Kool 93.1).

WKRZ Wilkes-Barre, Pa., P/T **Kelly K.** joins modern adult **WBMX** (Mix 98.5) Boston for same.

WJET Erie, Pa., PD/p.m. driver **Dino Robettaile** joins the morning team. MD **Joe Arnold** moves from overnights to afternoons. Promotion assistant **Michael Ray** goes to overnights, meaning that P/T **Chuck Demko** adds those duties.

WKTI Milwaukee taps promotion director **Kevin Schneider** from country rival **WMIL**.



The SPIN BY THEDA SANDIFORD-WALLER

212-536-5053 • theda@airplaymonitor.com

Airpower For Alanis On Three Charts

This issue **Alanis Morissette's** "Thank U" (Maverick/Reprise) bows as an Airpower track on three separate Airplay Monitor charts: the mainstream top 40 chart, at No. 19 with 2,173 spins; the adult top 40 chart, at No. 13 with 1,520 spins; and the modern adult chart, at No. 7 with 1,316 spins. "Thank U" is the highest debut on both the adult top 40 and modern adult charts this year. Morissette fell three positions short of tying her label boss **Madonna's** "Frozen" as the highest debut on the mainstream top 40 chart this year. Despite this being the first official week of airplay, Morissette's new record made last week's Monitor on the strength of leaked airplay, with 274 spins at 22 mainstream top 40s and 136 spins at 11 adult top 40 stations.

FOR THE RECORD: **WFKS** (Kiss FM) Daytona Beach, Fla. (PD **Bruce Cherry**, MD **Rob Tracy**, 904-672-9210), is added to the adult top 40 panel. There are now 79 adult top 40 reporters.

MUSICAL CHAIRS: All-American Music Group (formerly Scotti Bros.) senior director of national promotion **Steve Lake** exits his post after 18 years to pursue other opportunities. Reach him at 310-477-9507.

Their Ship Has Sailed



Shown, from left, are **KKRZ** (Z100) Portland, Ore., PD **Tommy Austin** and promotion assistant **Bryan Morgan** sending off vertically challenged contest winners on their short cruise. In reality, listeners were trying to guess how long the boat would take to sink for a "Titanic" promotion.

M Street Format Monitor

N/T, Adult Top 40 Showed Most Growth In September Format Tally

RANK		The M Street FORMATS	STATION COUNT		
THIS MONTH	LAST MONTH		SEPT '98	AUGUST '98	NET GAIN OR LOSS
1	1	Country	2,388	2,395	-7
2	2	News/Talk	1,124	1,113	11
3	3	Adult Contemporary	852	855	-3
4	4	Oldies	784	786	-2
5	5	Religion (Music)	716	718	-2
6	6	Adult Standards	558	563	-5
7	7	Spanish	489	489	0
8	8	Classic Rock/Hits	463	463	0
9	9	Soft AC/Easy Listening	401	403	-2
10	10	Top-40/Mainstream/Rhythm	379	378	1
11	11	Religion (Talk)	359	357	2
12	12	Top-40/Adult	277	269	8
13	13	Mainstream Rock	267	265	2
14	14	Sports	245	237	8
15	15	R&B Adult/Oldies	180	179	1
16	16	R&B	168	168	0
17	17	Miscellaneous	175	165	10
18	18	Modern Rock	146	145	1
19	19	Triple-A	96	97	-1
20	20	Jazz	89	89	0
21	21	Modern AC	75	73	2
22	22	Classical	42	42	0
Total commercial operating stations			10,273	10,249	
Stations off the air			99	119	

M Street Corp. is a Nashville-based provider of radio station information to the radio and music industries. Call 615-251-1525 for more information.

RADIO CONCERT MONITOR

DATE	CALL LETTERS	EVENT	SCHEDULED TO APPEAR
Oct. 4	KBXX Houston	Los Magnificos' Car Show	No Limit Soldiers: Snoop Dogg, Mystikal, C-Murder; Mya; Kane & Able; more
Oct. 9	WSTR Atlanta	Listeners-only Concert	Hootie & the Blowfish
Oct. 9	WXXP Long Island, N.Y.	Friday Freestyle Explosion	TBA
Oct. 10-11	WBMX Boston	Mixfest	Barenaked Ladies, Elvis Costello, Bruce Hornsby, Edwin McCain, Anggun, Heather Nova
Oct. 23	WXXP	Friday Freestyle Explosion	LFO
Oct. 26	KDMX Dallas	Fall Cha Cha	Goo Goo Dolls, Athenaeum, Everything
Nov. 6	KDON Monterey, Calif.	Concert	Montell Jordan, Tyrese, more
Nov. 13	KPWR Los Angeles	Superstar Power Party	Next, Mack 10, Mya, Pras, Monifah, Shaquille O'Neal, TQ, Korrupt, Jayo Felony, Jermaine Dupri

Let us monitor your event! Call Jeff Silberman at 323-525-2303 or E-mail jsilberman@airplaymonitor.com

Dressed In Style



Admiring KKFR (Power 92) Phoenix, Ariz., PD Bruce St. James as he models the new Bill Clinton T-shirt, from left, are Danesha Starr, RCA recording artist Rome, St. James, RCA recording artist Sylk-E. Fyne, and Lawman promo guy Greg Lawley.

The Fine Print



KMXB (Mix 94.1) Las Vegas morning co-hosts Mark Speers, left, and Mercedes, right, were shocked after a listener, center, had their names tattooed on her derriere for front-row Savage Garden tickets.

MONITOR PROFILE

Jamie Hyatt Discovers That The Kids Are Alright On Xtreme Honolulu

"The late Rick Carroll's slogan for KROQ was 'Rock of the '80s and '90s,'" KXME (Xtreme Radio) Honolulu PD Jamie Hyatt notes. "We believe Xtreme is the top 40 of the next millennium."

What makes Xtreme so cutting edge? Start with an adventurous music mix—a blend of rhythmic, rap, reggae, and modern hits, with an emphasis on reaction records, whose powers spin more than 100 times a week. Its full-bore recruitment of teens (and males at that) is a stark contrast to the hordes of more conservative top 40s gunning for adult females.

Originally hired as MD, Hyatt became interim PD when Byron Kennedy left, eventually becoming co-PD with Kid Leo Baldwin. "We're both on the air every day, and we have a lot of proactive stuff to do, with a lot of promotions," Hyatt notes. "I'm not quite sure one guy could handle programming Xtreme Radio. It's a special station with an incredible vibe."

Hyatt didn't really know what he was getting into when consultant/owner Jerry Clifton and New Planet Radio's Jay Stone called him

Next, "Too Close"; Naturalites, "Picture On The Wall"; and 2Pac, "I Get Around."

The high frequency of spins prompts the question of burn. "I haven't seen it," Hyatt says. "The high rotations are helping people find us. If they punch us in on the dial, odds are they'll hear a big hit. It has built our cume up to 140,000 without using TV or billboards. It has just been straight street marketing and playing the hits."

Hyatt's reference to Carroll brings up a complaint currently lodged against Xtreme, which KROQ also heard during Carroll's heyday: "People say that our unique blend of music could only work in this market, but the idea of playing youth-oriented music is as old as top 40 radio. Xtreme is actually an old idea brought back again. Someone always takes advantage of that when top 40 becomes too safe and bland and caters too much to adults."

So much for worrying about not attracting the coveted 25-49 female demo: "We're targeting youth, which is what top 40 is supposed to be," Hyatt says. "A lot of people have forgotten that; look at the mainstream top 40 chart next to the adult top 40 and AC charts. It's hard to tell the difference. What's even more ironic about all this is that the same labels that complain that our 'radical playlist' shouldn't be part of the top 40 panel are bitching that top 40 isn't breaking their artists."

Getting clients for the young target demo hasn't been a problem. "We're No. 1 in men 18-34, which gets us a lot of beer buys, as well as sporting goods, surf shops, and soft drinks. And we're running car dealerships, too. I don't know why everyone assumes that as soon as people hit 25, they stop listening to what they liked when they were 24. People in their early 30s still want to think young, and they'd much rather listen to youth-oriented music than an AC song."

Xtreme runs eight spots an hour, all in one cluster, and charges higher rates to generate the same amount of money as stations running 10 or more spots. Nontraditional revenue comes from a 900-number date line. Advertisers are also heavily tied into several high-profile promotions, such as boat "booze" cruises and beach-house remotes. "We rented a beach house and broadcast from it all summer," he says. "We brought in a crew of interns and partied with hundreds of our listeners."

Surprisingly, the high-profile parties and the jocks' often risqué banter has met with little resistance from the politically correct. "We beep out swear words when the DJs talk about things that young people talk about—sex, drugs, and rock'n'roll," Hyatt says. "But we've hardly had any negative feedback. We did get negative press on the beach house. A local TV station talked about all the noise and partying going on, but it fit our image so, gee, thanks a lot."

"We want to be troublemakers. It's unconventional, but conventional top 40 is dull when all you hear is nice, antiseptic talk on the air. No one has a bad day? That's not being real. We make jokes with each other and talk about fun things."

With distinct versions of Xtreme in Honolulu and at KPIY Phoenix, whose version of the format leans more toward modern rock, the next question is, Can it catch on nationwide? (Clifton-consulted WXYV Baltimore briefly tried an "extreme"-like approach before.) "I'd like to see Xtreme radio spread all over America," Hyatt says. "No one thought rhythm-crossover would get very far in the mid-'80s; now there's almost 40 stations. Xtreme could work, too, as long as it's tailored for the market." **JEFF SILBERMAN**



Jamie Hyatt
Program Director
KXME Honolulu

"We want to be troublemakers. It's unconventional, but conventional top 40 is dull"

after he was cut loose from rival KQMQ. "When I signed on, I, like everyone else, thought Xtreme would be rhythmic," he says. "Once I got here, I caught on pretty fast. We're doing something really different—a teen-oriented mainstream top 40 that doesn't sound like an AC station. I mean, even rhythmic top 40s are playing AC ballads."

In the spring Arbitron survey, KXME was up 5.0-6.5 12-plus, just inches behind rhythmic K1K1 (194), which was off 8.8-6.6, and ahead of former rhythmic outlet KQMQ, which was off 5.7-5.4 and which has since switched to a more mainstream top 40 format.

Some pundits look at Xtreme and see Channel X, the short-lived modern/rap hybrid format pioneered by Keith Clark more than five years ago. Hyatt cites one big difference: "We only play the hits, and we turn them over a lot faster. A power can get over 100 spins a week. We're solely focused on jamming the hits, not trying to break a million new songs."

One type of hit music not heard on KXME: "bubblegum" product by Spice Girls, Backstreet Boys, and 'N Sync. "They just don't fit in with our Xtreme image," Hyatt says. "Our listeners want to hear music that their parents don't like."

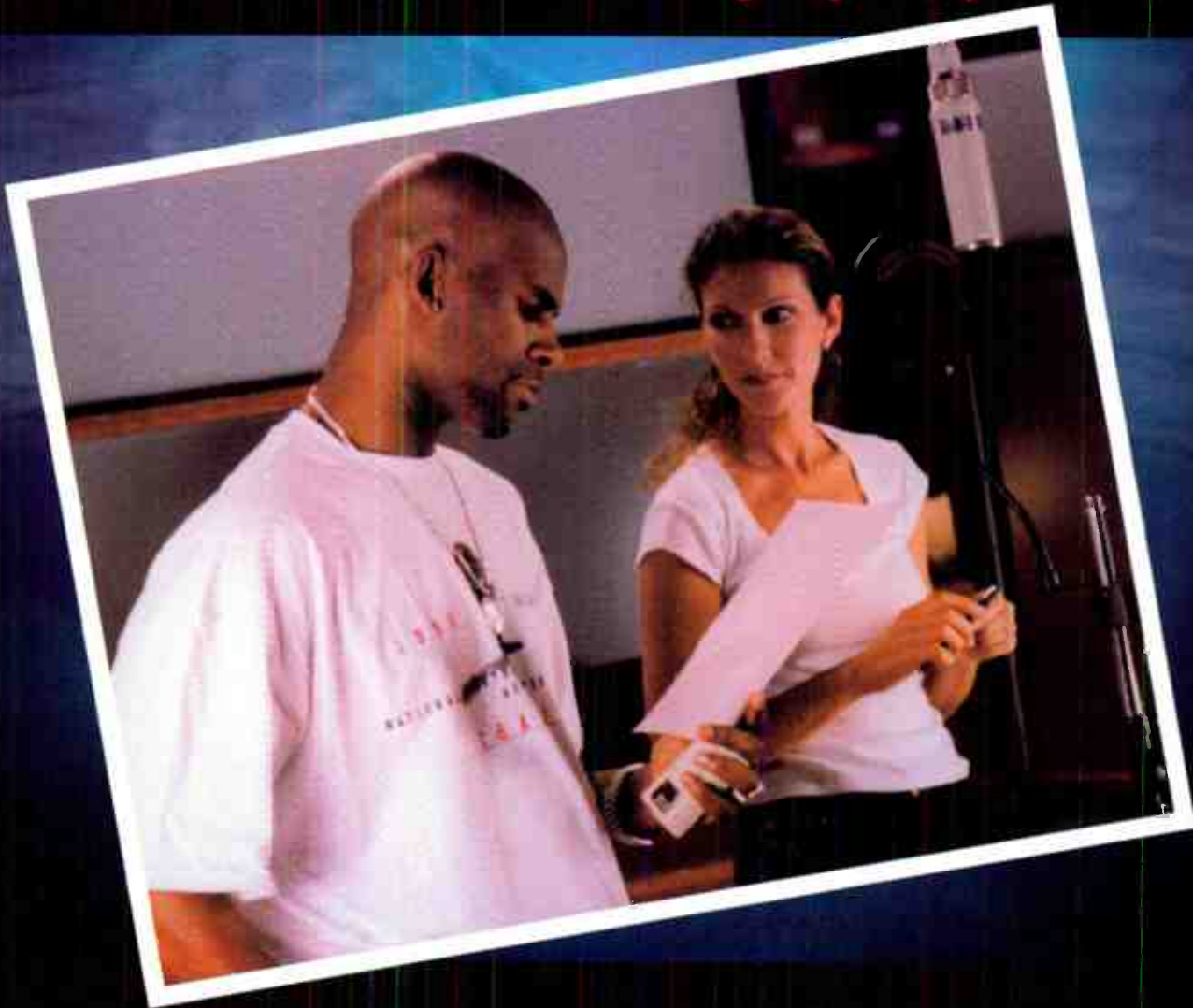
Heavy on reaction records, KXME's list includes reggae songs and some novelties that aren't always found on its Broadcast Data Systems or reported playlist, including "South Park's" "Cartman's Mom Is A Big Fat Bitch" song. A sample hour on Xtreme (and judging by spin counts, this could be used for almost every hour): Chaka Demus, "Witness Stand"; Nicole, "Make It Hot"; Beastie Boys, "Intergalactic"; TQ, "Westside"; Adam Sandler, "Ode To My Car"; Pras, "Blue Angels"; Aerosmith, "I Don't Want To Miss A Thing"; Lauryn Hill, "Can't Take My Eyes Off Of You"; Macka B., "Bob"; Aaliyah, "Are You That Somebody?"; MxPx, "I'm OK, You're OK";

Two sensational voices, two classic artists, one timeless duet!

R. Kelly & Celine Dion

"I'm your angel"

Produced, written and arranged by R. Kelly



Impacting Radio and Your Listeners: October 12th

Digital Download: October 6th via satellite

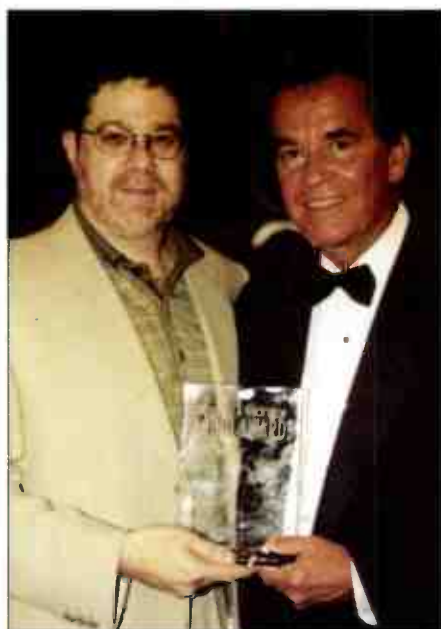
(Details to follow via fax)

Taken from the upcoming albums:

R. Kelly **R.** and Celine Dion **These Are Special Times**

SCENES FROM THE 1998

Billboard Monitor
RADIO
seminar & awards



Billboard Music Group president Howard Lander, left, presents Dick Clark with the Alison Steele Lifetime Achievement Award at the Billboard/Airplay Monitor Radio Awards.



Mainstream top 40's finest programmers prepare for their panel. Shown, from left, are WZJM (Jammin' 92) Cleveland PD Big Dave Eubanks, KRBE Houston PD John Peake, KVMX (Mix 93) Kansas City PD Jon Zellner, consultant Dan Vallie, WHTZ (Z100) New York PD Tom Poleman, consultant Bill Richards, and KIIS-FM Los Angeles PD Dan Kieley.



Looking for a ride to the rhythmic top 40 panel, from left, are KYLD (Wild 94.9) San Francisco PD Michael Martin; KQKS (KS107.5) Denver PD Cat Collins; Epic Records Group's Michael Ellis; WJMN (Jam'n 94.5) Boston PD Cadillac Jack McCartney; Airplay Monitor director of charts Theda Sandiford-Waller; WKSS (Kiss 95.7) Hartford, Conn., PD Jay Beau Jones; KKFR (Power 92) Phoenix PD Bruce St. James; and WBBM-FM (B96) Chicago MD Erik Bradley.



Speaking at the adult top 40 panel, from left, were WQAL (Q104) Cleveland PD Mary Ellen Kachinske; KAMX (Mix 94.7) Austin, Texas, PD Dusty Hayes; Zapoleon Media Strategies consultant Pat Paxton; KHMV (Mix 96.5) Houston PD-turned-ZMS-consultant Lorrin Palagi; Airplay Monitor adult chart manager Steve Graybow; and WBAM Montgomery, Ala., PD Trish Carpenter.



Offering their insight on increasing radio's label revenue during the "Dialing For Dollars" panel, from left, were A&M Records' Max Tolkoff, KFMB-FM (Star 100.7) San Diego GM/OM WRZX Indianapolis PD Scott Jameson, KIIS-FM Los Angeles promotion/marketing director Von Freeman, Geffen Records' Bob Catania, Bill Rusch of MusicAmerica Promotions, veteran programmer Paul Drew, and McVay Media consultant Bob Moody.



KIIS-FM Los Angeles PD Dan Kieley snares the major-market top 40 PD of the year award.



DMX

FEATURING FAITH EVANS

How's It Goin' Down?

IT'S GOIN' DOWN AT:

HOT 97	35x	KBOS	8x
WWKX	24x	KKFR	8x
WPGC	32x	KSFM	10x
KMEL	27x	XHTZ	8x
WJMH	49x	KYLZ	7x
WERQ	15x	KYLD	9x
WJMN	11x	WHHH	10x
KOHT	36x	KDGS	25x
KQKS	9x	WBHJ	49x

(21) BILLBOARD HOT R&B SINGLES

(7) ★★★GREATEST GAINER★★★
BILLBOARD TOP R&B ALBUMS

TOP 10 PHONES AND RESEARCH AT:

HOT 97	WJMH
WERQ	WWKX
WPGC	

GOING FOR AIRPLAY POW

"IT'S DARK AND HELL IS HOT" OVER 1.5 MILLION SOLD,
APPROACHING DOUBLE PLATINUM



IT'S DARK AND HELL IS HOT



a Polygram company

AIRPLAY Monitor ADULT PANELS

ADULT TOP 40 (79)

Akron, Ohio	WKDD	New Orleans	WLTS
Albuquerque, N.M.	KKOB	New York	WBIX
	KPEK		WPLJ
Austin, Texas	KAMX	Norfolk, Va.	WPTE
Bakersfield, Calif.	KLLY		WWDE
Baltimore	WWMX	Oklahoma City	KYIS
Boston	WBMX	Omaha, Neb.	KTNP
Charleston, W.Va.	WVAF	Orlando, Fla.	WOMX
Charlotte, N.C.	WLNK		WSHE
Chicago	WTMX	Philadelphia, Pa.	WXXM
Cincinnati	WVMX		WYXR
Cleveland	WMVX	Phoenix	KZZP
	WQAL	Pittsburgh	WDRV
Colorado Springs, Colo.	KVUU	Portland, Ore.	KBBT
Dallas	KDMX		KKRH
Dayton, Ohio	WMMX	Providence, R.I.	WSNE
Daytona Beach, Fla.	WFKS*	Raleigh, N.C.	WRAL
Des Moines, Iowa	KMXD	Richmond, Va.	WMXB
	KSTZ	Rochester	WVOR
Detroit	WKQI		WZNE
El Paso, Texas	KSII	St. Louis	KYKY
Fresno, Calif.	KALZ	Sacramento, Calif.	KZZO
	KVSR	Saginaw, Mich.	WIOG
Green Bay, Wis.	WQLH	Salt Lake City	KBEE
Greensboro, N.C.	WKZL		KISN
Hartford, Conn.	WTIC	San Antonio, Texas	KQMB
Houston	KHMX	San Diego	KSMG
Indianapolis	WENS	San Francisco	KFMB
Kansas City	KOZN	San Jose, Calif.	KLLC
Las Vegas	KMXB	Santa Barbara, Calif.	KEZR
Lexington, Ky.	WMXL	Savannah, Ga.	KRUZ
Little Rock, Ark.	KURB	Seattle	WAEV
Los Angeles	KYSR	Spokane, Wash.	KPLZ
Memphis	WMC	Tampa, Fla.	KHTQ
Miami	WPLL		WAKS
Milwaukee	WTKI	Toledo, Ohio	WSSR
	WMYX	Washington, D.C.	WWWM
Minneapolis	WPNT	West Palm Beach, Fla.	WRQX
Montgomery, Ala.	KSTP		WMBX
	WBAM		

ADULT CONTEMPORARY (65)

Albany, N.Y.	WYJB	Las Vegas	KMZQ
Albuquerque, N.M.	KMGA		KSNE
Allentown, Pa.	WLEV	Long Island, N.Y.	WALK
Atlanta	WPCH	Los Angeles	KBIG
Augusta, Ga.	WBBQ		KOST
Baltimore	WLIF	Miami	WFLC
Birmingham, Ala.	WMJJ	Milwaukee	WLTV
Buffalo, N.Y.	WMJQ	Minneapolis	WLTE
Burlington, Vt.	WEZF	Mobile, Ala.	WMXC*
Chattanooga, Tenn.	WDEF	Montgomery, Ala.	WMXS
Chicago	WLIT	New Orleans	WLMG
	WNND	New York	WLTW
Cincinnati	WRRM	Omaha, Neb.	KEFM
Cleveland	WDOK	Philadelphia	WBEB
Columbia, S.C.	WTCB	Phoenix	KESZ
Columbus, Ga.	WGSY	Pittsburgh	WSSH
Columbus, Ohio	WSNY	Portland, Ore.	KKCW
Dallas	KVIL	Raleigh, N.C.	WRSN
Denver	KIMN	Richmond, Va.	WTVR
	KOSI	Roanoke, Va.	WLSQ
Ft. Myers, Fla.	WINK	Sacramento, Calif.	KGBY
Grand Rapids, Mich.	WLHT	Salt Lake City	KSFI
Greensboro, N.C.	WMAG	San Francisco	KIOI
Greenville, S.C.	WMYI	Seattle	KLSY
Harrisburg, Pa.	WARM	Spokane, Wash.	KISC
Hartford, Conn.	WRCH	Springfield, Mo.	KGBX
Honolulu	KSSK	St. Louis	KEZK
Huntsville, Ala.	WAHR	Toledo, Ohio	WRVF
Jackson, Miss.	WJDX	Washington, D.C.	WASH
Johnson City, Tenn.	WTFM	West Palm Beach, Fla.	WRMF
Kansas City	KUDL	Wichita, Kan.	KRBB*
Knoxville, Tenn.	WJXB	Wilkes Barre, Pa.	WMGS
Lafayette, La.	KTDY		

MODERN ADULT (45)

Albany, N.Y.	WXLE	Norfolk, Va.	WPTE
Albuquerque, N.M.	KPEK	Oklahoma City	KYIS
Austin, Texas	KAMX	Omaha, Neb.	KTNP
Bakersfield, Calif.	KLLY	Orlando, Fla.	WSHE
Boston	WBMX	Philadelphia, Pa.	WXXM
	WBOS		KZON
Charlotte, N.C.	WLNK	Phoenix	KZZP
Chicago	WTMX	Pittsburgh	WDRV
Cincinnati	WKRQ	Portland, Ore.	KBTT
Columbus, Ohio	WWCD	Raleigh, N.C.	WDCG
Dallas	KDMX	Richmond, Va.	WMXB
Denver	KALC	Sacramento, Calif.	KZZO
	KXPK	Salt Lake City	KENZ
Detroit	WPLT		KQMB
Ft. Myers, Fla.	WJBX	San Diego	KFMB
Fresno, Calif.	KVSR	San Francisco	KLLC
Greensboro, N.C.	WKZL	Santa Barbara, Calif.	KRUZ*
Hartford, Conn.	WTIC	Spokane, Wash.	KAEP
Kansas City	KOZN	St. Louis	WVRV
Las Vegas	KMXB	Tampa, Fla.	WHPT
Los Angeles	KYSR		WSSR
Milwaukee	WPNT	West Palm Beach, Fla.	WMBX
Montgomery, Ala.	WBAM		

*Added to panel

Marriage And Morning Shows Mix Well For On-Air Duos

Continued from page 1

traffic for Jagger's show for about a year. "We got a crush on each other," Jagger says, as he began to pull her more into the show as an integral element. Months later, they revealed to listeners that they had become a couple, thanks to a Valentine's Day promotion for which they pretended to get married.

"We weren't sure how listeners would accept it, but they seem to like the fact that we're a couple. I think they sense some kind of sexual tension," says Kristi.

"We worked together for seven or eight months before anything remotely started happening," says Debbie of Johnson and Johnson. The pair began working together in mid-'92 at a station in Waco, Texas, and "we kept it secret there, though it was hard to keep it under wraps because we were always together. We thought that management would ultimately frown upon it."

Not so now, however; most married duos allow last night's pork chops to become part of the banter if it fits in. "I think most stations view a married couple as an inviting concept," says Davin of rhythmic top 40 KKXX (X96.5) Bakersfield, Calif., morning team Davin and Ana Fesmire. "You don't have to hope that a duo will develop good chemistry—it's already there."

"Of course, if your partner sucks," he adds, "you're both out of a job."

"People really seem to love it," says Stephanie Porter of the duo Billy Dee and Stephanie Porter at R&B WAGH Columbus, Ga. "They love to see the positive family image, especially in the black community, where there's so much talk of the disarray of the family. They can see where a man loves his wife and she loves him."

They also offer a program feature called "Dear Stephanie," where listeners call in with personal and marital problems. "We'll talk about things that work or don't work for us, things that parents face, things we love," says Porter. "They call us on the air and off. We love to share our experiences where it could help somebody else."

AGAINST THE GRAIN

In the modern rock arena, the concept of a married couple on-air might appear to go against the determinedly cynical nature of the format. Not so, according to Ernie and Jane Mills of "The Morning Edge" at KMYZ (Z104.5) Tulsa, Okla.

"We weren't sure what to expect with the modern rock format. Would I be less appealing because I wasn't a single chick anymore?" says Jane. "But the audience has embraced the whole situation. It's kind of blown us away."

"It's been like a coming of age for all of us," Ernie says. "We came up with the angst-ridden generation, and now we're getting on with life. The generation is growing up."

Their audience has also seen the couple through the birth of their first child, Fritz, and, in fact, Ernie now works from the studio, while Jane co-hosts over ISDN lines from home.

"People have embraced the whole situation. They've heard about Fritz since he was a bean," Ernie says. "Fritz said his first words over the air during our shift; he said, 'Mommy and Daddy.'"

While Eric Ferguson, half of the morning duo at modern adult WTMX (101.9, the Mix) Chicago, doesn't share mornings with fiancée Dr. Jennifer Moran, a local dentist, his relationship with

her has been a regular topic of discussion with his a.m. partner on the "Eric And Kathy Show" for two years. Again, listeners have grown to care about the couple and their business.

"On the first date, I ended up kissing Jen at the end of the night," says Ferguson. The next morning on the air, he expressed second thoughts about the kiss to the Greater Chicago area. "I said, 'She's gotta hate me,'" says Ferguson, "and then she called in and said, 'No, it wasn't bad.'"

Ferguson's romance soon became a stock subject on the morning show. "It's nothing that's contrived to appeal to the [station's 18-34 target] demo," says Ferguson. "But since Jen and I are both in the demo, our listeners are living the same circumstances that we are. We're just living our life in a public forum."

PRE-EXISTING BOND

Those who share their professional and personal lives on-air also claim that their pre-existing emotional bond has an impact in how they do their jobs.

"It can either help or hurt a lot," offers KKXX's Davin Fesmire. "I think there are instances where some married morning shows are restricted and lame because one partner is afraid they're going to piss off the other and then they'll take it home."

"We just tend to piss each other off at home," jokes partner Ana.

Davin adds, "In order to have a really good show with a spouse, you've got to have a really good, solid relationship."

"It helps that we were good friends before we started dating," adds Chuck Johnson. "Who doesn't want to spend time with their best friend?"

"There you are sitting in the hot tub at 10 o'clock at night, and you have the advantage of talking about the show right there," says Kristi of Jagger and Kristi.

Adds Jagger, "But there are limits, too. When we're home at 7 on a Friday night, we'll say, 'OK, is there anything we need to talk about before the weekend? Then that's it; it becomes just the two of us and not the radio persona.'"

OUR LIVES ARE SHOW PREP

For N/T WLS Chicago morning duo Don Wade and Roma, "our lives are show prep," Wade says. "I can't imagine finding anyone willing to be married to me that could live these hours."

The couple wakes at midnight; Wade goes through the news and entertainment programming he recorded throughout the day and night on a multitude of VCRs. By 2:30 a.m., they get ready for work. They hit the street at 3 to catch a bus to the station ("It keeps life real," Roma says).

And what about the disadvantages of sharing personal and professional lives? There are none, insist each of the couples.

"I highly recommend it," says Kristi of Jagger and Kristi. "We get to spend time together, and we're really compatible domestically and professionally. We enjoy each other, and that's the basis of it all. It's fun to be together so much."

Johnson and Johnson's Chuck sees a plus even if the personal relationship were to crumble: "What more compelling radio than to have a marriage fall apart on your radio station?"

Chuck Taylor is Billboard's radio editor. Dylan Siegler is a Billboard staff writer.

Publisher: Jon Guynn

Editor: Sean Ross

Managing Editor: Jeff Silberman

Director of Charts: Theda Sandiford-Waller

Associate Director of Charts: Steven Graybow

Chart Production Manager: Michael Cusson

Associate Chart Production Manager: Alex Vitoullis

Editorial Production Managers: Barry Bishin, Marcia Repinski

Editorial Production: Susan Chicola, Marc Giacquinto,

Juliana Koo, Maria Manilic, Sandra Watanabe

Copy Editor: Carl Rosen

Advertising Production Manager: Lydia Mikulko

Advertising Production Coordinator: Paul Page

Art Director: Ray Carlson

Advertising Production Artist: Karen Platt

National Advertising Manager: Hank Spann

Account Managers: Jeff Somerstein, Sharon White

Advertising Services Manager: Alyse Zigman

Sales Assistants: Evelyn Aszodi, Erica Bengtson,

Candace Gil

Editorial Adviser: Timothy White

Director of Production & Manufacturing: Marie Gombert

Circulation Director: Jeanne Jamin

Marketing Manager: Rob Accatino

Billboard Music Group

President: Howard Lander

Senior VP/General Counsel: Georgina Challis

Vice Presidents: Irwin Kornfeld, Karen Oertley, Adam White

Director of Strategic Development: Ken Schlager

Business Manager: Joellen Sommer

1515 Broadway, New York, NY 10036 212-764-7300

5055 Wilshire Blvd., 7th floor, Los Angeles, CA 90036 323-525-2300

For subscriptions call: 800-745-8922

Airplay Monitor reporting panels are based solely on a station's musical content.

©1998 BPI Communications Inc. No part of this publication may be reproduced, stored in any retrieval system, or transmitted, in any form or by any means, electronic, mechanical, photocopying, recording, or otherwise, without the prior written permission of the publisher.



TOP 40 TOPICS BY SEAN ROSS

212-536-5264 • sross@airplaymonitor.com

Teen Groups Aren't Going Away Yet

A lot has been made recently of the fact that mainstream top 40's teen idol acts are no longer testing across the board with both moms and daughters as they did 18-24 months ago, at the onset of **Spice Girls/Backstreet Boys** mania. For some PDs, the decline of those records is proof that the industry is headed into another cycle of extreme music—**Master P** and **Marilyn Manson**—that won't be very good for top 40.

We'll talk more below about the notion that so many people now believe top 40 is predestined for a cycle of decline, even before most of us get to enjoy the up cycle. But first, a few thoughts about the teen groups.

1. What may be, at worst, indifference on the part of some adults is not the same as a backlash. The backlash may exist among your own staffers, but there's no evidence that adults have been antagonized by the teen groups in the same way that some were by hip-hop. These are still songs with hooks and melodies, a key difference between the teen groups and the most polarizing of hip-hop or modern rock crossovers. And because those acts have been the subject of so much on-air bashing, one has to consider the possibility that some adults haven't stopped liking those songs; they're just no longer willing to admit it in public.

2. On last week's **Billboard 200**, **'N Sync** was No. 3 and the **Backstreet Boys** were in the top 10. This suggests that teens, who remain the single best way of promoting top 40 among adult women, don't yet have a problem with the genre. So would the fact that of **Jerry Clifton's** three attempts to super-serve 12-24 without the teen acts, only one, **KXME Honolulu**, has borne fruit (see Monitor Profile, page 4). **KPTY Phoenix** is still in a period of transition, while **WXYV Baltimore** has already put the **All Saints** and **'N Sync** records back in.

3. While it's tempting to view the teen acts as one more musical cycle that will be destroyed by the industry's tendency to sign too many acts from any genre, it's important to note that in the U.K., a considerably more trend-driven market than our own, the boy and girl groups haven't gone away yet. In fact, teen acts never really went away in the U.S., even after the **New Kids On The Block** backlash; they just moved over to the R&B charts, as evidenced by **Boyz II Men, Silk, Shai**, etc. (The connection becomes even clearer when you consider that British boy groups have remade both "If I Ever Fall In Love Again" and "Freak Me" in recent years.)

4. Although top 40 PDs seem all too willing

to bail on any genre from time to time, few genres really go away. Witness last year's resurgence of hip-hop with even the most determinedly mainstream PDs. Witness the sudden success of "Fly," "Semi-Charmed Life," etc., just months after some top 40 PDs had been tempted to ditch modern rock crossovers altogether.

5. When Marilyn Manson finally comes up with the mass-appeal power ballad that top 40 has to play, remember, PDs accommodated **Alice Cooper** and the **Osmonds** on the same top 40 station in 1971, and while you may regard that as a remnant of a less fragmented time, most markets *did* have album rock stations by then.

6. Nobody ever said that the boy/girl groups were supposed to be the only music that top 40 can own. It's just worked out that way in recent years, exacerbated by the tendency of so many top 40 PDs to let label promotion priorities determine both what they play and when they play it. Consider the seven weeks **Barenaked Ladies** spent on the modern chart before "One Week" finally cracked the mainstream top 40. PDs who are worried about overloading their station with teen acts are responsible for finding something else to supplement them with, rather than allowing more extreme music to develop elsewhere.

Throughout the 3½-year history of this column, I've tried to be an advocate of mainstream top 40 without resorting to boosterism. During the format's early '90s decline, other trades strained visibly to find some good news, something I've always sworn to avoid doing. Still, it's a little disheartening to see even some of the format's proponents predicting a decline before top 40 has even recovered much of its previous lost ground. One doesn't want to deny that the potential for a problem exists, but neither should a decline become a self-fulfilling prophecy.

Perception tends to lag at least six to 18 months behind reality for top 40 listeners these days, as evidenced by the year or so in which it looked like **WHTZ (Z.100)** New York would never recover. Adults have started to figure out only over the last year that they enjoy top 40 again. In a worst-case scenario, it will take them at least another year to decide that they've changed their mind. So if top 40 PDs are already convinced that there's less mass-appeal hit music than there was, say, a year ago, there's still plenty of time to do something about it. But that requires being musically proactive.

They Think They Love Him



WOMX (Mix 105.1) Orlando, Fla., morning duo Erica Lee, left, and Scott Mackenzie, right, play along with singer/former teen idol David Cassidy and look for his psychedelic bus.

Schedule to Meet Us at IAB Booth #2209 - Limited Availability

JONES RADIO

CONSULTING AND PROGRAMMING

"You dream it...we build it"

THE INDUSTRY'S TOP CONSULTANTS ARE READY TO GO TO WORK FOR YOU TODAY - FOR BARTER OR CASH!

A complete, full-service Consulting Company offering:

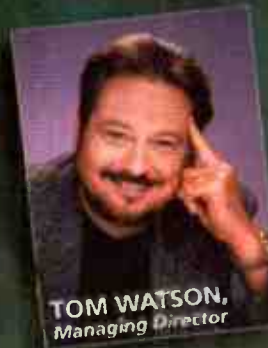
- Hands-on, one-on-one consulting in: Format Turnarounds, Music Programming, Contests and Promotional Planning
- Identify Format Opportunities in YOUR Market
- Complete Format Development
- Work with YOUR Management Team in Implementation
- Complete Research - Perceptual and Music Testing
- Strategic Planning
- Air Check Critiques
- Market Visits
- Weekly Music Calls
- Competitive Music Analysis
- Music Libraries
- Marketing & Positioning
- Station "Image" Voicing
- Custom Playlist
- Daily Scheduling of Your Music Playlist

Jones Radio Consulting & Programming is a FULL SERVICE, TOP QUALITY consulting service available to you for BARTER OR CASH!

For more information, call

JONES RADIO CONSULTING & PROGRAMMING

303-784-8770



JONES RADIO NETWORK

Strongest Increase In Airplay This Week

MAINSTREAM TOP 40

	INCREASE IN PLAYS
ALANIS MORISSETTE • Thank U (MAVERICK/REPRISE) KZZU +68, WWHT +67, WXKS +40, KBKS +39, KKRD +39, KQKQ +39, WKRO +38, WRVW +37, WSTR +36, KMXV +35	+1899
AALIYAH • Are You That Somebody? (BLACKGROUND/ATLANTIC) KPTY +24, WEZB +24, WWZZ +20, KZQZ +15, WHTZ +15, WDJX +14, WGTZ +14, WKKS +13, KSMB +12, KQMQ +11	+358
SHAWN MULLINS • Lullaby (SMG/COLUMBIA) WFLZ +25, WNOK +18, WKSZ +17, WWCK +17, WQSL +14, KSMB +13, WXSX +12, KBKS +12, WYCR +12, WXXX +11	+334
MATCHBOX 20 • Back 2 Good (LAVA/ATLANTIC) KBKS +22, WKSL +20, KQKQ +19, WWCK +17, KKRD +17, WDCG +16, WABB +16, WXIS +15, WPXY +14, WYOY +13	+314
THIRD EYE BLIND • Jumper (ELEKTRA/JEOP) WBLI +27, WGTZ +23, WXIS +18, KQKQ +16, WEZB +14, KBKS +13, WJBQ +11, WXKB +9, WDCG +9, WSSX +9	+264
MONICA • The First Night (ARISTA) KZQZ +28, KHYS +19, WGTZ +19, KDND +18, WXKB +15, KOAR +13, WLKT +12, WDJX +12, KDWB +10, KQKQ +8	+261
EVE 6 • Inside Out (RCA) WEZB +27, WABB +16, WXIS +13, WNKS +13, WFBC +13, KXME +10, WYCR +10, WLKT +9, WSSX +9, WCIL +8	+259
REPUBLICA • Ready To Go (RCA) KALC +19, WKSL +18, KHYS +15, WDDJ +12, KSMB +11, KBKS +11, WBHT +11, KSLZ +10, WXIS +10, WFLY +10	+201
ALL SAINTS • Never Ever (LONDON/ISLAND) WNTQ +27, WSSX +27, KHYS +25, KMXV +23, WNCI +22, KQKQ +19, WXKB +18, KDND +14, WXXX +12, WXYV +11	+192
JANET • Go Deep (VIRGIN) WGTZ +27, KSLZ +25, KOAR +21, WZPL +21, WLSS +18, WWCK +14, KDWB +14, KRUF +12, WNOK +11, WYCR +10	+184

RHYTHMIC TOP 40

	INCREASE IN PLAYS
MONIFAH • Touch It (UPTOWN/UNIVERSAL) KTFM +26, KYLD +25, WWKX +25, KSFM +17, WNVZ +16, KDON +12, KZFM +11, KKFR +11, WJJS +10, KQKS +10	+190
LAURYN HILL • Doo Wop (That Thing) (RUFFHOUSE/COLUMBIA) KISV +26, KSFM +19, KUBE +19, KKSS +15, WPOW +12, KIOX +10, KYLZ +8, KYLD +8, WBTT +7, KPRR +7	+176
MYA FEAT. SILKK THE SHOCKER • Movin' On (UNIVERSITY/INTERSCOPE) KZFM +22, WBBM +21, KISV +19, KKSS +17, KQKS +16, KGGI +14, KYLZ +13, KIKI +12, WNVZ +11, KUBE +9	+154
DIVINE • Lately (PENDULUM/RED ANT) KQKS +27, KYLZ +23, WWKX +18, KIKI +13, WJJS +11, WHHH +10, KBOS +8, KZFM +7, WPOW +5, WBTT +4	+128
TQ • Westside (CLOCKWORK/EPIC) KQKS +27, KTFM +14, KISV +11, KLUC +11, WHHH +10, KUBE +10, KSFM +9, KBOS +8, KYLZ +7, KOHT +7	+115
XSCAPE • My Little Secret (SO SO DEF/COLUMBIA) KISV +32, WPOW +24, KKFR +13, KZFM +8, KYLZ +7, KOHT +7, KBOS +7, KSFM +7, WJJS +6, KYLD +5	+111
VOICES OF THEORY • Wherever You Go (H.O.L.A./RED ANT) KIKI +33, KYLZ +25, KSFM +16, KZFM +14, KTFM +7, KPRR +6, WWKX +2, WKTU +1, KDGS +1, KCAQ +1	+100
FAITH EVANS • Love Like This (BAD BOY/ARISTA) WWKX +28, KBOS +16, KCAQ +14, KDGS +11, KIOX +11, KKSS +3, XHTZ +3, KKFR +3, WPOW +3, WJJS +2	+92
NICOLE • I Can't See (THE GOLD MIND/EASTWEST/EEG) KIOX +31, KBOS +24, WJJS +8, KDGS +6, WBTT +5, WHHH +5, KCAQ +4, WWKX +3, KKSS +2, XHTZ +1	+87
DRU HILL FEAT. REDMAN • How Deep Is Your Love (ISLAND/DEF JAM/MERCURY) KIKI +24, WHHH +17, KBOS +17, KSFM +17, KISV +8, WWKX +8, KDON +7, KOHT +5, KYLD +4, KTFM +4	+84

CROSSOVER

	INCREASE IN PLAYS
FAITH EVANS • Love Like This (BAD BOY/ARISTA) WJMH +46, WWKX +28, WFXA +21, WENN +21, WUSL +21, KBOS +16, WVEE +16, KCAQ +14, WERQ +14, WBLX +14	+386
112 (FEAT. MASE) • Love Me (BAD BOY/ARISTA) XHTZ +24, WQUE +21, WWWZ +19, WJHM +19, KGBT +18, WWKX +16, WHTA +15, WUSL +15, WQHT +12, WFXA +11	+272
MARY J. BLIGE • Beautiful (MCA) WBLX +40, WQUE +24, WPGC +20, WYOK +19, WHTA +17, WJHM +16, WUSL +13, KDKS +10, KTBT +9, KDGS +9	+215
DIVINE • Lately (PENDULUM/RED ANT) KQKS +27, KYLZ +23, WWKX +18, WQUE +15, KBXX +14, KIKI +13, WPEG +12, WJJS +11, WJMI +10, WHHH +10	+213
LAURYN HILL • Doo Wop (That Thing) (RUFFHOUSE/COLUMBIA) KISV +26, KUBE +19, KKSS +15, WJBT +14, WQUE +12, WENN +11, WGCI +11, WJMI +9, KPWR +9, KYLZ +8	+205

MODERN ADULT

	INCREASE IN PLAYS
ALANIS MORISSETTE • Thank U (MAVERICK/REPRISE) KFMB +60, WKZL +52, WSHE +51, KPEK +48, WVRV +42, KOZN +39, WKRO +38, KYSR +37, KRUZ +36, KYIS +36	+1205
SHAWN MULLINS • Lullaby (SMG/COLUMBIA) KFMB +23, KVSF +18, KYSR +17, WSSR +16, WLX +14, WKZL +14, KAEP +13, WVRV +12, WPTE +11, KAMX +10	+193
MATCHBOX 20 • Back 2 Good (LAVA/ATLANTIC) KZZP +24, WMBX +18, WDCG +16, KOZN +14, KAEP +13, WKRO +10, WBAM +7, WLX +7, KMXB +7, KRUZ +6	+132
U2 • The Sweetest Thing (ISLAND) KZON +17, KOZN +14, KAEP +13, KFMB +12, KZZP +8, WPNT +7, WPLT +7, KENZ +6, WBOS +5, KBBT +4	+111
FASTBALL • Fire Escape (HOLLYWOOD) KBBT +27, KVSF +25, KDMX +20, WVRV +10, KAEP +8, KOZN +7, WMBX +6, KLLC +6, WDCG +6, KLLY +5	+105

ADULT TOP 40

	INCREASE IN PLAYS
ALANIS MORISSETTE • Thank U (MAVERICK/REPRISE) KFMB +60, WKZL +52, WSHE +51, KPEK +48, KOZN +39, WZNE +38, KYSR +37, KRUZ +36, KYIS +36, WTMX +36	+1384
SHAWN MULLINS • Lullaby (SMG/COLUMBIA) KFMB +23, KPLZ +19, KVSF +18, KYSR +17, WSSR +16, WKZL +14, WMLX +13, WPTE +11, WZNE +10, KAMX +10	+222
EVERYTHING • Hooch (BLACKBIRD/SIRE) KSTP +29, WPNT +28, WRAL +22, WRQX +20, KBBT +19, WVAF +15, KSTZ +15, KLLY +11, KOMB +10, WMBX +9	+176
FASTBALL • Fire Escape (HOLLYWOOD) KBBT +27, KVSF +25, KDMX +20, KHYS +18, WMMX +13, WZNE +10, KOZN +7, WMBX +6, KLLC +6, KLLY +5	+136
MATCHBOX 20 • Back 2 Good (LAVA/ATLANTIC) KZZP +24, WMBX +18, KOZN +14, KHYS +13, WQLH +11, WVAF +10, WAKS +9, WBAM +7, KMXB +7, KRUZ +6	+134

ADULT CONTEMPORARY

	INCREASE IN PLAYS
PHIL COLLINS • True Colors (FACE VALUE/ATLANTIC) WRVF +19, WBBQ +15, WTFM +15, KTDY +12, WMLJ +12, WJMG +12, KESZ +11, WLIF +11, WRSN +11, WLEV +10	+293
SHANIA TWAIN • From This Moment On (MERCURY) KLSY +26, WLTE +12, KEFM +11, WTCB +10, KSNE +9, KRBB +9, WLHT +8, WRCH +7, WALK +7, KIMN +6	+169
BETTE MIDLER • My One True Friend (WARNER BROS.) WSNY +10, WMGS +9, WTVR +8, KTDY +7, WMYI +7, WRSN +7, WTCB +6, KISC +6, WPCB +6, KMGA +4	+126
FAITH HILL • This Kiss (WARNER BROS.) WMLJ +17, KEZK +14, KFSI +10, WINK +10, KSSK +10, WMMX +8, WRVF +7, KESZ +6, WEZF +5, WRMF +5	+92
GEORGE BENSON • Standing Together (GRP) WMLJ +11, KEFM +10, WLTE +10, KRBB +9, WTVR +7, KSNE +4, WARM +4, KMGA +3, WLTW +3, WJXB +3	+83

FRESH RESEARCH!
Z104/WASHINGTON D.C.
#11 OVERALL
58% FAMILIAR
180+ SPINS

SINGLE SALES EXPLODING IN THESE MARKETS: SEATTLE (#34), PORTLAND, OR (#20), MILWAUKEE (#34), TAMPA (#19), LOS ANGELES (#37), ST. LOUIS (#38), SAN DIEGO (#26), GREENVILLE (#30), SALT LAKE (#27), PROVIDENCE (#38), GREEN BAY (#25), SPOKANE (#38), FT. MYERS (#23)

CBS/STREET

P.M. Dawn
I HAD NO RIGHT

THE NEW HIT SINGLE AND VIDEO FROM THEIR ALBUM, DEAREST CHRISTIAN, I'M SO VERY SORRY FOR BRINGING YOU HERE, LOVE, DAD.

ALBUMS IN STORES OCTOBER 6TH

36 MAINSTREAM TOP 40 MONITOR
30 MAINSTREAM TOP 40 R&R

CHECK OUT THESE MAJOR COMMITMENTS:

- KMXV KANSAS CITY
- KDWB MINNEAPOLIS
- B97 NEW ORLEANS
- WNVZ NORFOLK
- WFLY ALBANY
- WKFS CINCINNATI
- WKEE HUNTINGTON
- WWST KNOXVILLE
- WKSL MEMPHIS

AND MORE!

TOO MANY PHONE STORIES TO LIST!

MAJOR MARKET SPIN LEADERS:

- 42X WFLZ/TAMPA
- 25X WZJM/CLEVELAND
- 38X KHYS/SAN DIEGO
- 28X WXYV/BALTIMORE
- 33X Z104/WASHINGTON
- 20X Y100/MIAMI
- 33X KZHT/SALT LAKE CITY
- 43X KSLZ/ST. LOUIS
- 26X B94/PITTSBURGH

MUCH MUSIC

Have You Ever?

Heard of such a true
multi-media superstar...

TV

Star of MOESHA, watched by over 4 million people weekly,
and CINDERELLA, viewed by over 60 million.
Performed on the 1998 Emmy Awards,
MTV Video Music Awards and Lady of Soul Awards

MOVIES

Starring with Jennifer Love Hewitt in the
much anticipated sequel
"I Still Know What You Did Last Summer"

MAGAZINES

Adorned the covers of TV Guide, Teen People,
Seventeen, Vibe, Ebony and more

MULTIMEDIA

Starring in Advertising for Cover Girl & Candies

MUSIC

Has already sold more than 8 million albums worldwide

"The Boy Is Mine"

#1 pop single on the Billboard Hot 100 chart for 13 weeks

#1 single on the Hot R&B singles chart for 8 weeks

Sold over 2 million units

*Have
You
Ever?*

brandy

The follow up to the #1 smash hits
"The Boy Is Mine"
and "Top of the World"
from the double platinum album
NEVER SAY NEVER

IMPACTING NOW!



www.atlantic-records.com
THE ATLANTIC GROUP
© 1998 ATLANTIC RECORDING CORP.
A TIME WARNER COMPANY

Written by Diane Warren
Produced and arranged by David Foster for Chartmaker, Inc.
Executive Producers: Brandy, Craig Kallman, Paris Davis & Rodney Jerkins

WHTZ New York PD: Tom Poleman APD: Kid Kelly MD: Paul Bryant 201-867-5000 Chanceller

WJLA-TV MUSIC TELEVISION

WJLA-TV MUSIC TELEVISION

KIIS Los Angeles PD: Dan Kieley APD/MD: Tracy Austin 818-845-1027 201-867-5000 Jacor

KHKS Dallas OM: John Cook PD: Mr. Ed Lambert MD: John Reynolds 214-891-3400 Chanceller

KRBE Houston PD: John Peake APD: Scott Sparks MD: Jay Michaels 713-266-1000 Susquehanna

WXKS Boston PD: John Ivey APD/MD: Kid David Corey AMD: Skip Kelly 617-396-1430 Chanceller

WIOQ Philadelphia OM: Glenn Kalina APD: Robyn Bentley AMD: Skip Kelly 610-667-8100 Chanceller

WSTR Atlanta PD: Dan Bowen MD: J.R. Ammons 404-261-2970 Jefferson Pilot

WFLZ Tampa OM: B.J. Harris APD/MD: Dom Theodore 813-839-9393 Jacor

KDWB Minneapolis PD: Rob Morris APD/MD: Rich Davis 612-340-9000 Chanceller

KZQZ San Francisco PD: Mark Adams MD: Lara 415-777-0965 Bonneville

WWZZ Washington, DC PD: Dale O'Brian APD/MD: Ron Ross 703-522-1041 Bonneville

WHYI Miami PD: Rob Roberts APD: Al Chio MD: Deirdre Poyner 954-463-9299 Clear Channel

WBZZ Pittsburgh OM: Keith Clark PD: David Edgar 412-920-9400 CBS

WKSS Hartford PD: Jay Beau Jones MD: Mike McGowan 860-723-6160 Capstar

KKRZ Portland PD: Tommy Austin 503-226-0100 Jacor

KBKS Seattle PD: Mike Preston APD: L.A. Reid MD: Paul Anthony 206-282-5477 CBS

Songs ranked by number of spins in monitored week. Playlists are listed in order of TBA weekly, starting with the highest-ranking station. Curators are updated twice yearly following the release of the spring and fall Arbitron surveys. The number of stations shown each week varies depending upon spots.

WEZB New Orleans
PD: Rob Wagman
MD: J. Love
504-834-9587
Sinclair
B97.1

WZVY Huntsville
PD: Bill Hunt
MD: Stu Gray
205-430-0110
Athens
WZVY

KRQQ Tucson
PD: Tim Richards
MD: Randy Williams
520-623-7556
Capstar
KRQQ

WHOT Yappstown
PD: Tom Pappas
MD: Mike Thomas
330-783-1000
Connisseur
HOT 101

WLXK Roanoke
OM/ PD: Russ Brown
540-774-9200
Mel Wheeler Inc.
K92

WNTQ Syracuse
PD: Tom Mitchell
MD: Jimmy Olsen
315-472-0200
Pilot
93.0

WRVQ Richmond
PD: Lisa McKay
804-756-6400
Clear Channel
Q94

KQKQ Omaha
PD: Wayne Coy
MD: J.J. Morgan
402-342-2000
Mitchell
93.7

WQZQ Nashville
Consultant: Bryan Krysz
APD: Mike Gibson
615-399-1029
Cromwell
93.7

WABB Mobile
OM: Jay Hastings
PD/MD: Darin Stone
334-432-5572
Dittman
WABB 97.1

WKCI New Haven
PD/MD: Kelly Nash
203-248-8814
Clear Channel
104.5

WLKT Lexington
PD: Jill Meyer
606-252-6694
Jacor
104.5

KKMG Colorado Springs
PD: Bobby Irwin
APD: Paul Johnson
MD: Rob Ryan
719-593-2700
Citadel
93.7

WWHT Syracuse
PD: J.J. Rice
AMD: Beth Hall
315-472-9797
Cox
104.7

WNOK Columbia
PD: Jonathan Rush
APD: T.J. McKay
803-771-0105
Capstar
104.7

WNNK Harrisburg
PD/MD: John O'Dea
717-238-1402
Capstar
WINK 104

WYCR York
OM: Rick McCauslin
PD: Davy Crockett
717-637-3831
Radio Hanover
93.7

KQMQ Honolulu
MD: Cathy Nakagawa
MC: Eric "Kool E." Bunda
808-591-9369
Caribou
93.1

WXKB Fort Myers PD: Chris Cue MD: Randy Sherwin 941-495-2100 Beasley

WLSS Baton Rouge PD: Robert Elman MD: Todd Chase 504-231-1860 Gulfstar

WVTI Grand Rapids PD/MD: Jeff Andrews 616-459-1919 Clear Channel

WLAN Lancaster PD: Vince D'Amrosio 717-295-9700 Clear Channel

KRUF Shreveport PD/MD: Catfish Kelly 318-688-1130 Progressive United

KXME Honolulu PD: Jamie Hyatt/Kid Leo 808-254-3596 New Planet Radio

Table with 2 columns: Rank and Song/Artist. Top songs include 'Meat, Too Close', 'Will Smith, Just The Two Of Us', 'Aerosmith, I Don't Want To Miss A Thing'.

Table with 2 columns: Rank and Song/Artist. Top songs include 'Aerosmith, I Don't Want To Miss A Thing', 'Go Go Dolls, Iris', 'Baronakad Ladies, One Week'.

Table with 2 columns: Rank and Song/Artist. Top songs include 'Baronakad Ladies, One Week', 'Meat, Too Close', 'Aerosmith, I Don't Want To Miss A Thing'.

Table with 2 columns: Rank and Song/Artist. Top songs include 'Baronakad Ladies, One Week', 'Westball, The Way', 'Matchbox 20, Real World'.

Table with 2 columns: Rank and Song/Artist. Top songs include 'N Sync, Tearin' Up My Heart', 'Jennifer Paige, Crush', 'All Saints, Never Ever'.

Table with 2 columns: Rank and Song/Artist. Top songs include 'Laurny Hill, Don't Wop', 'Jennifer Paige, Crush', 'All Saints, Never Ever'.

WWST Knoxville PD: Rich Bailey MD: Jake Edwards 423-693-1020 Journal

KKRD Wichita GM/OM/PD: Jack Oliver MD: Craig Hubbard 316-823-9600 Capstar

WKSZ Green Bay PD/MD: Miles Ryker 920-733-6639 Woodward

WBHT Wilkes Barre PD: Steve McKay MD: Mark McCarthy 717-824-9000 Citadel

WXSS Milwaukee PD: Brian Kelly MD: Jolo Martinez 414-529-1250 Sinclair

WSTW Wilmington PD: John Wilson Assoc. PD/MD: Mike Rossi 302-478-2700 Delmarva

Table with 2 columns: Rank and Song/Artist. Top songs include 'Jennifer Paige, Crush', 'Aerosmith, I Don't Want To Miss A Thing', 'Matchbox 20, Real World'.

Table with 2 columns: Rank and Song/Artist. Top songs include 'Jennifer Paige, Crush', 'Semisonic, Closing Time', 'Matchbox 20, Real World'.

Table with 2 columns: Rank and Song/Artist. Top songs include 'Baronakad Ladies, One Week', 'Go Go Dolls, Iris', 'Aerosmith, I Don't Want To Miss A Thing'.

Table with 2 columns: Rank and Song/Artist. Top songs include 'N Sync, Tearin' Up My Heart', 'Baronakad Ladies, One Week', 'Jennifer Paige, Crush'.

Table with 2 columns: Rank and Song/Artist. Top songs include 'Go Go Dolls, Iris', 'Edwin McCain, I'll Be', 'Jennifer Paige, Crush'.

Table with 2 columns: Rank and Song/Artist. Top songs include 'Everything, Hocho', 'Eagle Eye Cherry, Save Tonight', 'Baronakad Ladies, One Week'.

WIBQ Portland, ME PD: Tim Moore APD/MD: Keith Scott 207-775-6321 Fuller-Jeffery

KQAR Little Rock PD: Gary Robinson APD: Rob Tanner 501-372-7740 Clear Channel

KZZU Spokane PD: Ken Hopkins APD: Paul Gray 509-325-6300 Spokane Television

WWCK Flint PD: Scott Seipel MD: Nathan Reed 810-238-7300 Conissuer

WROX Norfolk PD: Bill Thorman MD: E.Z. Street 757-640-8500 Sinclair Communications

KSMB Lafayette PD: Larry LeBlanc APD/MD: Brad Newman 318-232-2632 Powell

Table with 2 columns: Rank and Song/Artist. Top songs include 'Baronakad Ladies, One Week', 'N Sync, Tearin' Up My Heart', 'Semisonic, Closing Time'.

Table with 2 columns: Rank and Song/Artist. Top songs include 'Aerosmith, I Don't Want To Miss A Thing', 'Backstreet Boys, I'll Never Break Your Heart'.

Table with 2 columns: Rank and Song/Artist. Top songs include 'Baronakad Ladies, One Week', 'Alanis Morissette, Thank U', 'Aerosmith, I Don't Want To Miss A Thing'.

Table with 2 columns: Rank and Song/Artist. Top songs include 'N Sync, Tearin' Up My Heart', 'Baronakad Ladies, One Week', 'Jennifer Paige, Crush'.

Table with 2 columns: Rank and Song/Artist. Top songs include 'Aerosmith, I Don't Want To Miss A Thing', 'Aaliyah, Are You That Somebody?'.

Table with 2 columns: Rank and Song/Artist. Top songs include 'Hootie & The Blowfish, I Will Wait', 'Baronakad Ladies, One Week', 'Natalie Imbruglia, Wishing I Was There'.

Total Plays/Gain Total Plays/Gain Total Plays/Gain Total Plays/Gain Total Plays/Gain

98 DEGREES 1285/172
Because Of You (Motown)

Table with columns: Station, DW, LW, 2W, 3W, TP, Chart Move, 36-35. Lists stations like New York, L.A., San Fran., etc. and their respective play counts and chart positions for 'Because Of You'.

AALIYAH 3068/358
Are You That Somebody? (Background/Atlantic)

Table with columns: Station, DW, LW, 2W, 3W, TP, Chart Move, 14-10. Lists stations like New York, L.A., San Fran., etc. and their respective play counts and chart positions for 'Are You That Somebody?'.

ALL SAINTS 3825/192
Never Ever (London/Island)

Table with columns: Station, DW, LW, 2W, 3W, TP, Chart Move, 8-6. Lists stations like New York, L.A., San Fran., etc. and their respective play counts and chart positions for 'Never Ever'.

BACKSTREET BOYS 3911/142
I'll Never Break Your Heart (Jive)

Table with columns: Station, DW, LW, 2W, 3W, TP, Chart Move, 5-5. Lists stations like New York, L.A., San Fran., etc. and their respective play counts and chart positions for 'I'll Never Break Your Heart'.

BARENAKED LADIES 5010/140
One Week (Reprise)

Table with columns: Station, DW, LW, 2W, 3W, TP, Chart Move, 3-2. Lists stations like New York, L.A., San Fran., etc. and their respective play counts and chart positions for 'One Week'.

BIG PUNISHER FEAT. JOE 768/18
Still Not A Player (Loud/RCA)

Table with columns: Station, DW, LW, 2W, 3W, TP, Chart Move, 5-4. Lists stations like New York, L.A., San Fran., etc. and their respective play counts and chart positions for 'Still Not A Player'.

BRANDY (FEAT. MASE) 357/6
Top Of The World (Atlantic)

Table with columns: Station, DW, LW, 2W, 3W, TP, Chart Move, 19. Lists stations like New York, L.A., San Fran., etc. and their respective play counts and chart positions for 'Top Of The World'.

THE BRIAN SETZER ORCHESTRA 1822/115
Jump Jive An' Wall (Interscope)

Table with columns: Station, DW, LW, 2W, 3W, TP, Chart Move, 28-27. Lists stations like New York, L.A., San Fran., etc. and their respective play counts and chart positions for 'Jump Jive An' Wall'.

EAGLE-EYE CHERRY 1658/151
Save Tonight (WORX)

Table with columns: Station, DW, LW, 2W, 3W, TP, Chart Move, 30-28. Lists stations like New York, L.A., San Fran., etc. and their respective play counts and chart positions for 'Save Tonight'.

SHERYL CROW 2102/131
My Favorite Mistake (A&M)

Table with columns: Station, DW, LW, 2W, 3W, TP, Chart Move, 23-21. Lists stations like New York, L.A., San Fran., etc. and their respective play counts and chart positions for 'My Favorite Mistake'.

EVE 6 1394/259
Inside Out (RCA)

Table with columns: Station, DW, LW, 2W, 3W, TP, Chart Move, 35-32. Lists stations like New York, L.A., San Fran., etc. and their respective play counts and chart positions for 'Inside Out'.

EVERYTHING 1942/29
Hooch (Blackbird/Sire)

Table with columns: Station, DW, LW, 2W, 3W, TP, Chart Move, 25-25. Lists stations like New York, L.A., San Fran., etc. and their respective play counts and chart positions for 'Hooch'.

GOO GOO DOLLS 576/156
Slide (Warner Bros.)

Table with columns: Station, DW, LW, 2W, 3W, TP, Chart Move, 49. Lists stations like New York, L.A., San Fran., etc. and their respective play counts and chart positions for 'Slide'.

FAITH HILL 2225/55
This Kiss (Warner Bros.)

Table with columns: Station, DW, LW, 2W, 3W, TP, Chart Move, 19-17. Lists stations like New York, L.A., San Fran., etc. and their respective play counts and chart positions for 'This Kiss'.

JANET 2799/184
Go Deep (Virgin)

Table with columns: Station, DW, LW, 2W, 3W, TP, Chart Move, 15-14. Lists stations like New York, L.A., San Fran., etc. and their respective play counts and chart positions for 'Go Deep'.

Detailed tracking for songs with increased spins this week. Total Plays/Gain does not include video play. Markets listed in order of population.

MADONNA 1447/91 The Power Of Good-Bye (Maverick/Warner Bros.)

MATCHBOX 20 367/314 Back 2 Good (Lava/Atlantic)

JOHN MELLENCAMP 987/90 Your Life Is Now (Columbia)

IDINA MENZEL 378/85 Minuet (Hollywood)

MONICA 1354/261 The First Night (Arista)

MONIFAH 773/130 Touch It (Uptown/Universal)

ALANIS MORISSETTE 2173/1899 Thank U (Maverick/Reprise)

SHAWN MULLINS 1061/334 Lullaby (SMG/Columbia)

NICOLE FEAT. MISSY ELLIOTT & MOCHA 624/80 Make It Hot (The Gold Mind/EastWest/EEG)

P.M. DAWN 1253/106 I Had No Right (Gee Street/V2)

REPUBLICA 482/201 Ready To Go (deConstruction/RCA)

SHAGGY FEAT. JANET 664/73 Luv Me, Luv Me (Flyte Tyme/MCA)

SWEETBOX 600/29 Everything's Gonna Be Alright (RCA)

THIRD EYE BLIND 2210/264 Jumper (Elektra/EEG)

SHANIA TWAIN 956/3 From This Moment On (Mercury)

Songs ranked by number of plays in monitored week. Playlists are listed in order of TRM weekly score, beginning with the highest scoring station. Cumulative scores are updated weekly following the release of the spring and fall Arbitron surveys. The number of stations which each week varies depending upon space.

WKTU New York PD: Frankie Blue APD/MD: Andy Shane 201-420-3700 Chancellor

WBBM Chicago PD: Todd Cavanah APD/MD: Eric Bradley 312-944-6000 CBS

WJMN Boston PD: Cadillac Jack APD/MD: Danny Ocean 781-663-2500 Chancellor

KYLD San Francisco PD: Michael Martin MD: "Jazzy" Jim Archer 415-391-1077 Chancellor

WPOW Miami PD: Kid Curry APD: Tony The Tiger 305-653-6796 Beasley

WDRQ Detroit PD: Alex Tarr MD: Jimi Jamm 248-354-9300 ABC/Disney

KUBE Seattle PD: Eric Powers MD: Julie Pilat 206-285-2295 Ackerley

KGGI Riverside PD: Diana Laird APD: Jesse Duran MC: Ricky Fuentes 909-684-1991 Chancellor

KFSM Sacramento PD: Bob West MD: John E. Kage 916-920-1025 CBS

KTFM San Antonio PD: Cliff Tredway MD: Steve Chavez 210-599-5500 Waterman

KKFR Phoenix PD/MD: Bruce St. James APD: Krazy Kid Stevens MD: Mark Medina 602-258-6161 The Broadcast Group

XHTZ San Diego OM/PO: Lisa Valquez MD: Dale Soliz 619-585-9090 Noventa FM 90

KQKS Denver PD: Cat Collins MD: Jennifer Wilde 303-321-0950 Jefferson-Pilot

WNVZ Norfolk PD: Don London APD/MD: Jay West 757-497-2000 Sinclair

KLUC Las Vegas PD: Cat Thomas MD: Melissa Stetas 702-364-8400 CBS

KPRR El Paso PD/MD: John Candelaria 915-566-9301 Clear Channel

KBOS Fresno PD: Steve Wall MD: Travis Loughran 209-243-4300 Capstar

WWKX Providence PD: Jerry McKenna MD: Sandy B. 401-723-1063 Back Bay Broadcasters

13 - 8
CROSSOVER MONITOR

24 - 18
★★★AIRPOWER★★★
RHYTHMIC TOP 40
MONITOR

NEW AT:

KSFM 28x
KIKI 28x
B95 30x
KQBT
KISV
KWWV
WOWZ

KYLD 41x Top 10 Callout,
#1 Phones

KPWR 45x Top 20 Callout
1st Week,
Top 10 Phones



How
Deep
is
Your
Love
for
the
Drum?

#1
PHONES @:
Z90
92Q
KTA

#2
PHONES @:
KMEL
KKSS
KSEQ

TOP 10
PHONES @:
KBMB
WWKX
KLUC
KKXA
KWIN
KHTN
KCAQ
WOCI



"HOW DEEP IS YOUR LOVE" IS YOUR INVITATION TO ENTER THE DRU
ENTER THE DRU on 10.27.98

EXECUTIVE PRODUCERS: WILLIAM WICKS, JIM HILL,
KEVIN PECK, KENNETH CREAM & BOB ELMAN

TO HEAR SELECTIONS FROM THE SLAMMIN' SOPHOMORE RELEASE...
LOG ON TO WWW.ISLANDBLACKMUSIC.COM OR WWW.POLYGRAM.COM

SINGLE JUST IN STORES
MUSICLAND DEBUT TOP 5
COMBINED AUDIENCE
OVER 29 MILLION
COMBINED DETECTIONS
OVER 2200

ACTIVE
TOP 10
REQUESTS

TOP 20
REQUESTS

MEDIUM



©1998 ISLAND RECORDS, INC.



Upward-moving songs ranked in order of spin count. Songs are removed if they lose more than 5% of their detections from previous week or if their spin count declines for two consecutive weeks.

MOST NEW STATIONS

Songs detecting six or more spins at new stations this week

NEW STATIONS

FAITH EVANS <i>Love Like This (Bad Boy/Arista)</i>	6
TAMIA <i>So Into You (Qwest/Warner Bros.)</i>	4
VOICES OF THEORY <i>Wherever You Go (H.O.L.A./Red Ant)</i>	4



Total Plays/Gain

DRU HILL FEAT. REDMAN 661/84
How Deep Is Your Love (Island/Def Jam/Mercury)
Total Stations: 29/Chart Move: 24-18
Heavy (40+ plays): 4 KKSS, KQKS, KYLD, WWKX
Medium (20-39): 13 KBOS, KCAQ, KDGS, KDON, KIKI, KXXX, KLUC, KOHT, KSFM, KTFM, WDRQ, WHHH, XHTZ
Light (Under 20): 12
New Airplay This Week: 3 KIKI, KISV, KKFR



Total Plays/Gain

AEROSMITH 488/41
I Don't Want To Miss A Thing (Columbia)
Total Stations: 11/Chart Move: 28-25
Heavy (40+): 7 KLUC, KPRR, KTFM, KZFM, WBBM, WFHN, WPOW
Medium (20-39): 2 WBTT, WJJS
Light (Under 20): 2

MO THUGS FAMILY FEAT. FELECIA & KRATZIE BONE 463/-7
All Good (Mo Thugs/Relativity)
Total Stations: 16/Chart Move: 29-28
Heavy (40+): 5 KBOS, KKSS, KOHT, KQKS, KYLD
Medium (20-39): 4 KDON, KISV, KKFR, KSFM
Light (Under 20): 7

JENNIFER PAIGE 453/47
Crush (Edel America/Hollywood)
Total Stations: 15/Chart Move: 31-29
Heavy (40+): 6 KDON, WBTT, WDRQ, WFHN, WJJS, WNVZ
Medium (20-39): 3 KDGS, KZFM, WKTU
Light (Under 20): 6
New Airplay This Week: 1 KTFM

MASE FEAT. PUFF DADDY 428/7
Lookin' At Me (Bad Boy/Arista)
Total Stations: 24/Chart Move: 33-30
Heavy (40+): 3 KKFR, KQKS, KSFM
Medium (20-39): 4 KIKI, KKSS, KYLD, WBBM
Light (Under 20): 17

SWEETBOX 426/22
Everything's Gonna Be Alright (RCA)
Total Stations: 19/Chart Move: 34-31
Heavy (40+): 2 KLUC, WBBM

★ Initial impact: records appearing on this page for the first time.

Medium (20-39): 9 KDGS, KGGI, KQKS, KZFM, WDRQ, WHHH, WJJS, WKTU, WNVZ
Light (Under 20): 8
New Airplay This Week: 1 WBTT

R. KELLY 407/74
Half On A Baby (Jive)
Total Stations: 21/Chart Move: 38-32
Heavy (40+): 3 KDGS, KKSS, KYLZ
Medium (20-39): 5 KCAQ, KKFR, KXXX, KOHT, WHHH
Light (Under 20): 13
New Airplay This Week: 3 KKSS, KLUC, WWKX

JD & MARIAH CAREY 367/8
Sweetheart (So So Def/Columbia)
Total Stations: 24/Chart Move: 37-36
Heavy (40+): 1 KXXX
Medium (20-39): 7 KCAQ, KDGS, KISV, KLUC, KOHT, KYLZ, WHHH
Light (Under 20): 16
New Airplay This Week: 3 KYLD, KZFM, XHTZ

SNOOP DOGG 358/-7
Still A G Thang (No Limit/Priority)
Total Stations: 20/Chart Move: 36-37
Heavy (40+): 3 KBOS, KCAQ, KXXX
Medium (20-39): 5 KDGS, KISV, KKFR, KOHT, KQKS
Light (Under 20): 12

TAMIA 305/38
So Into You (Qwest/Warner Bros.)
Total Stations: 21/Chart Move: 40-39
Heavy (40+): 0
Medium (20-39): 6 KDGS, KXXX, KOHT, KSFM, KYLD, XHTZ
Light (Under 20): 15
New Airplay This Week: 4 KIKI, KTFM, KYLZ, WPOW

ALL SAINTS 289/20
Never Ever (London/Island)
Total Stations: 11/Chart Move: 39-40
Heavy (40+): 2 WBBM, WBTT
Medium (20-39): 4 KDON, WDRQ, WFHN, WNVZ
Light (Under 20): 5



Total Plays/Gain

BIZZY BONE 270/34
Thugs Cry (Mo Thugs/Ruthless/Relativity)
Total Stations: 14
Heavy (40+): 0
Medium (20-39): 7 KBOS, KCAQ, KIKI, KKFR, KXXX, KOHT, KYLD
Light (Under 20): 7
New Airplay This Week: 1 KIKI

NASTYBOY KLICK 252/45
Lost In Love (NastyBoy/Upstairs)
Total Stations: 13
Heavy (40+): 3 KPRR, KTFM, KYLD
Medium (20-39): 4 KCAQ, KSFM, KZFM, WPOW
Light (Under 20): 6

TYRESE 232/47
Nobody Else (RCA)
Total Stations: 15
Heavy (40+): 1 KDGS
Medium (20-39): 4 KXXX, KOHT, WHHH, XHTZ
Light (Under 20): 10
New Airplay This Week: 1 KKSS

QUEEN WITH WYCLEF JEAN FEAT. PRAS AND FREE 214/36
Another One Bites The Dust (DreamWorks/Geffen)
Total Stations: 22
Heavy (40+): 1 KBOS
Medium (20-39): 3 KCAQ, KXXX, XHTZ
Light (Under 20): 18

KURUPT 206/42
We Can Freak It (Antra/A&M)
Total Stations: 13
Heavy (40+): 3 KBOS, KCAQ, KXXX
Medium (20-39): 1 KKFR
Light (Under 20): 9

VOICES OF THEORY 203/100
Wherever You Go (H.O.L.A./Red Ant)
Total Stations: 12
Heavy (40+): 0
Medium (20-39): 4 KIKI, KSFM, KTFM, KYLZ
Light (Under 20): 8
New Airplay This Week: 4 KIKI, KYLZ, KZFM, WHHH

GOO GOO DOLLS 200/20
Iris (Warner Sunset/Reprise)
Total Stations: 9
Heavy (40+): 4 KPRR, KTFM, WBBM, WFHN
Medium (20-39): 0
Light (Under 20): 5

PRAS 194/56
Blue Angels (Ruffhouse/Columbia)
Total Stations: 15
Heavy (40+): 0
Medium (20-39): 4 KIKI, KYLZ, WWKX, XHTZ
Light (Under 20): 11
New Airplay This Week: 3 KCAQ, KDGS, WHHH

WC FROM WESTSIDE CONNECTION FEAT. JON B. 171/15
Better Days (Payday/London/Island)
Total Stations: 12
Heavy (40+): 0
Medium (20-39): 4 KCAQ, KXXX, KOHT, XHTZ
Light (Under 20): 8
New Airplay This Week: 1 KKFR

FUNKMASTER FLEX PRESENTS KHADJA FEAT. PRODUCT 162/30
Here We Go (Loud/RCA)
Total Stations: 14
Heavy (40+): 1 WPOW
Medium (20-39): 2 WWKX, XHTZ
Light (Under 20): 11

JAYO FELONY (FEAT. METHOD MAN & DMX) 152/5
Whatcha Gonna Do (Yab Yum/550 Music)
Total Stations: 21
Heavy (40+): 0
Medium (20-39): 2 KBOS, KOHT
Light (Under 20): 19

P.M. DAWN 143/35
I Had No Right (Gee Street/V2)
Total Stations: 8
Heavy (40+): 0
Medium (20-39): 4 KDON, WBTT, WFHN, WNVZ
Light (Under 20): 4
New Airplay This Week: 1 WNVZ

BABYFACE 128/24
You Were There (Epic)
Total Stations: 9
Heavy (40+): 0
Medium (20-39): 1 WNVZ
Light (Under 20): 8
New Airplay This Week: 2 WBTT, WWKX

★ NICOLE (FEAT. MOCHA) 121/87
I Can't See (The Gold Mind/EastWest/EEG)
Total Stations: 11
Heavy (40+): 0
Medium (20-39): 3 KBOS, KDGS, KXXX
Light (Under 20): 8
New Airplay This Week: 3 KXXX, WBTT, WJJS

★ FAITH EVANS 119/92
Love Like This (Bad Boy/Arista)
Total Stations: 16
Heavy (40+): 0
Medium (20-39): 1 WWKX
Light (Under 20): 15
New Airplay This Week: 6 KBOS, KCAQ, KDGS, KXXX, WWKX, XHTZ

MADONNA 116/15
The Power Of Good-Bye (Maverick/Warner Bros.)
Total Stations: 8
Heavy (40+): 0
Medium (20-39): 4 WDRQ, WFHN, WKTU, WNVZ
Light (Under 20): 4
New Airplay This Week: 1 WNVZ

112 (FEAT. MASE) 115/58
Love Me (Bad Boy/Arista)
Total Stations: 14
Heavy (40+): 0
Medium (20-39): 2 WJMN, XHTZ
Light (Under 20): 12
New Airplay This Week: 1 WWKX

STARDUST 113/56
Music Sounds Better With You (Virgin)
Total Stations: 14
Heavy (40+): 0
Medium (20-39): 2 WBBM, WDRQ
Light (Under 20): 12
New Airplay This Week: 3 KDGS, KYLD, WPOW

DMX (FEAT. FAITH EVANS) 112/9
How's It Goin' Down (Ruff Ryders/Def Jam/Mercury)
Total Stations: 14
Heavy (40+): 0
Medium (20-39): 3 KDGS, KOHT, WWKX
Light (Under 20): 11

WILLIE MAX FEAT. RAPHAEL SADDIQ 107/23
Can't Get Enough (Pookie/Motown)
Total Stations: 12
Heavy (40+): 0
Medium (20-39): 1 KDGS
Light (Under 20): 11
New Airplay This Week: 3 KDON, KOHT, KYLZ

98 DEGREES 98/12
Because Of You (Motown)
Total Stations: 6
Heavy (40+): 0

Medium (20-39): 2 WFHN, WJJS
Light (Under 20): 4

SILKK THE SHOCKER FEAT. MYSTIKAL 90/11
It Ain't My Fault (No Limit/Priority)
Total Stations: 12
Heavy (40+): 0
Medium (20-39): 1 WPOW
Light (Under 20): 11
New Airplay This Week: 1 KBOS

CYNTHIA 90/0
If I Had The Chance (Timber!/Tommy Boy)
Total Stations: 5
Heavy (40+): 0
Medium (20-39): 2 KTFM, WKTU
Light (Under 20): 3

BARENAKED LADIES 89/24
One Week (Reprise)
Total Stations: 6
Heavy (40+): 1 WFHN
Medium (20-39): 0
Light (Under 20): 5

CYPRESS HILL 85/17
Tequila Sunrise (Ruffhouse/Columbia)
Total Stations: 10
Heavy (40+): 0
Medium (20-39): 2 KCAQ, KOHT
Light (Under 20): 8

★ LINK 79/43
I Really Wanna Sex Your Body (Relativity)
Total Stations: 12
Heavy (40+): 0
Medium (20-39): 1 XHTZ
Light (Under 20): 11
New Airplay This Week: 3 KISV, KXXX, KTFM

PRESSHA 79/28
Splackavellie (Tony Mercedes/LaFace/Arista)
Total Stations: 5
Heavy (40+): 1 KSFM
Medium (20-39): 0
Light (Under 20): 4
New Airplay This Week: 2 KBOS, KKFR

ANDREA MARTIN 78/5
Let Me Return The Favor (Arista)
Total Stations: 10
Heavy (40+): 0
Medium (20-39): 1 KDGS
Light (Under 20): 9
New Airplay This Week: 1 WHHH

STARS ON 54: ULTRA NATE, AMBER, JOCELYN ENRIQUEZ 78/12
If You Could Read My Mind (Tommy Boy)
Total Stations: 8
Heavy (40+): 0
Medium (20-39): 1 WKTU
Light (Under 20): 7
New Airplay This Week: 1 WPOW

★ 2PAC 77/26
Unconditional Love (Death Row/Breakaway)
Total Stations: 8
Heavy (40+): 0
Medium (20-39): 2 KCAQ, KOHT
Light (Under 20): 6
New Airplay This Week: 3 KCAQ, KYLZ, XHTZ

CEO

MACK 10

the recipe

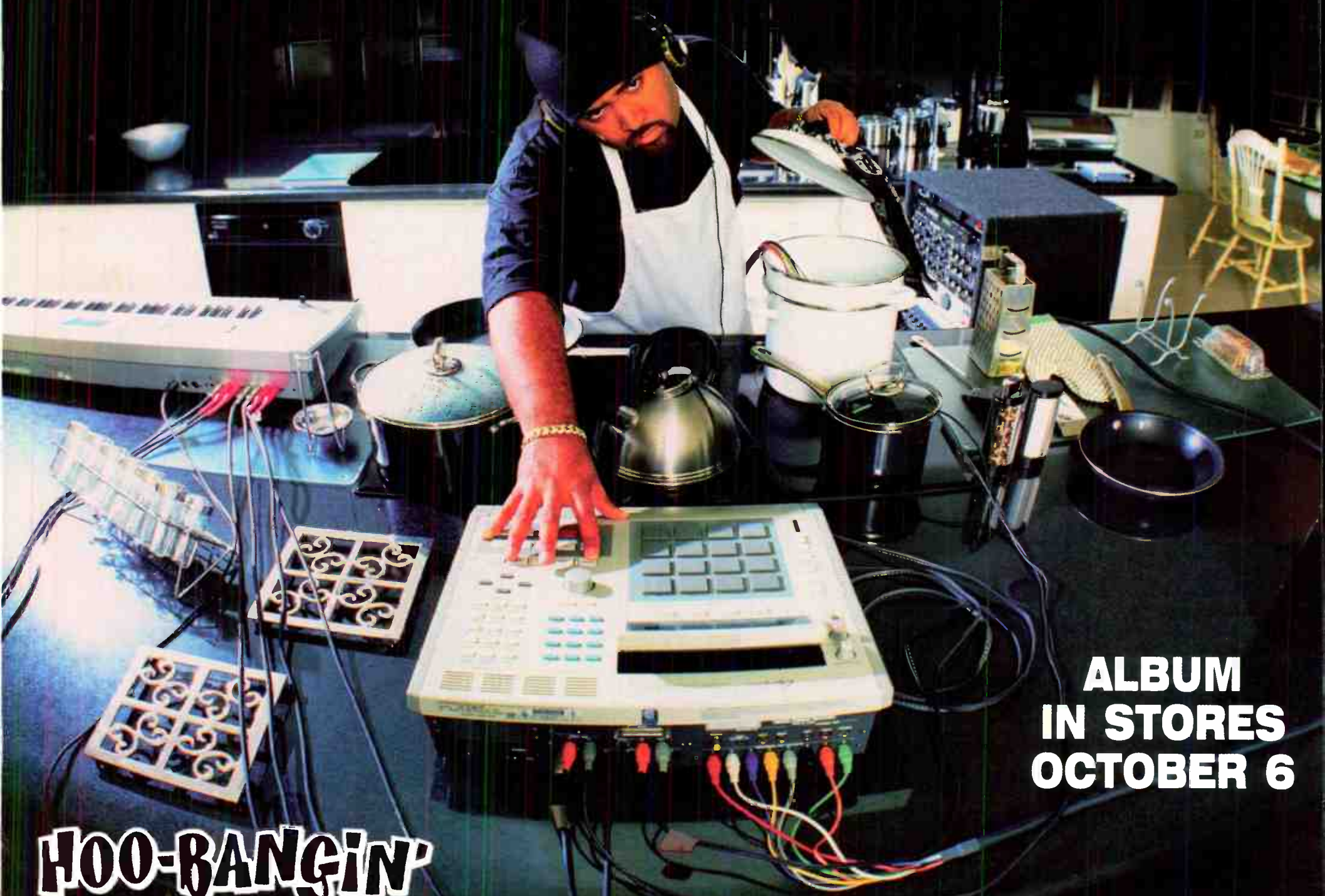


includes the new single presents...
"Money's Just A-Touch Away" featuring Gerald Levert

**KPWR
KMEL
WBHJ
KSEQ**

**MOST ADDED!
KDGS KBMB
KQBT KYLD
WHHH Z90
KWNZ KHTN
& MANY MORE!**

**KBOS
WJBT
KCAQ
KTAA**



**ALBUM
IN STORES
OCTOBER 6**

HOOBANGIN'

RECORDS

© Hoobangin Records 1998

World Radio History

**PRIORITY
RECORDS**

Detailed tracking for songs with increased spins this week. Total Plays/Gain does not include video play. Markets listed in order of population.

Table for AALIYAH - 1766/15. Song: Are You That Somebody? (Background/Atlantic). Total Stations: 32. Chart Move: 1-1.

Table for AEROSMITH - 488/41. Song: I Don't Want To Miss A Thing (Columbia). Total Stations: 11. Chart Move: 28-25.

Table for ALL SAINTS - 289/20. Song: Never Ever (London/Island). Total Stations: 11. Chart Move: 39-40.

Table for BIZZY BONE - 270/34. Song: Thugs Cry (Mo Thugs/Ruthless/Relativity). Total Stations: 14. Chart Move: 1-1.

Table for DIVINE - 804/158. Song: Lately (Pendulum/Red Ant). Total Stations: 26. Chart Move: 21-13.

Table for DRU HILL FEAT. REDMAN - 661/84. Song: How Deep Is Your Love (Island/Def Jam/Mercury). Total Stations: 29. Chart Move: 24-18.

Table for FUNKMASTER FLEX PRESENTS KHADEJA FEAT. PRODUCT - 162/30. Song: Here We Go (Loud/RCA). Total Stations: 14. Chart Move: 1-1.

Table for GOO GOO DOLLS - 200/20. Song: Iris (Warner Sunset/Reprise). Total Stations: 9. Chart Move: 1-1.

Table for LAURYN HILL - 974/176. Song: Doo Wop (That Thing) (Ruffhouse/Columbia). Total Stations: 29. Chart Move: 13-7.

Table for JD & MARIAH CAREY - 367/8. Song: Sweethearts (So So Def/Columbia). Total Stations: 24. Chart Move: 37-36.

Table for JAY FELONY (FEAT. METHOD MAN & DMX) - 152/5. Song: Whatcha Gonna Do (Yab Yum/550 Music). Total Stations: 21. Chart Move: 1-1.

Table for R. KELLY - 407/74. Song: Half On A Baby (Jive). Total Stations: 21. Chart Move: 38-32.

Table for KURUPT - 206/42. Song: We Can Freak It (Antra/A&M). Total Stations: 13. Chart Move: 1-1.

Table for MASE FEAT. PUFF DADDY - 428/7. Song: Lookin' At Me (Bad Boy/Arista). Total Stations: 24. Chart Move: 33-30.

Table for MONICA - 1338/40. Song: The First Night (Arista). Total Stations: 32. Chart Move: 2-2.

Table for MONIFAH - 1220/190. Song: Touch It (Uptown/Universal). Total Stations: 31. Chart Move: 5-4.

Table for MYA FEAT. SILKK THE SHOKCER - 1237/154. Song: Movin' On (University/Interscope). Total Stations: 32. Chart Move: 4-3.

Table for NASTYBOY KLICK - 252/45. Song: Lost In Love (Nastyboy/Upstairs). Total Stations: 13. Chart Move: 1-1.

Table for NEXT - 638/29. Song: I Still Love You (Arista). Total Stations: 27. Chart Move: 23-22.

Table for JENNIFER PAIGE - 453/47. Song: Crush (Ede! America/Hollywood). Total Stations: 15. Chart Move: 31-29.

Table for PRAS - 194/56. Song: Blue Angels (Ruffhouse/Columbia). Total Stations: 15. Chart Move: 1-1.

Table for QUEEN WITH WYCLEF JEAN FEAT. PRAS AND FREE - 214/36. Song: Another One Bites The Dust (DreamWorks/Geffen). Total Stations: 22. Chart Move: 1-1.

Table for KEITH SWEAT FEAT. SNOOP DOGG - 636/11. Song: Come Get Wit Me (Elektra/EEG). Total Stations: 30. Chart Move: 22-23.

Table for SWEETBOX - 426/22. Song: Everything's Gonna Be Alright (RCA). Total Stations: 19. Chart Move: 34-31.

Table for TAMIA - 305/38. Song: So Into You (Qwest/Warner Bros.). Total Stations: 21. Chart Move: 40-39.

Table for TQ - 870/126. Song: Westside (ClockWork/Epic). Total Stations: 25. Chart Move: 17-9.

Table for TYRESE - 232/47. Song: Nobody Else (RCA). Total Stations: 15. Chart Move: 1-1.

Table for VOICES OF THEORY - 203/100. Song: Wherever You Go (H.O.L.A./Red Ant). Total Stations: 12. Chart Move: 1-1.

Table for WC FROM WESTSIDE CONNECTION FEAT. JON B. - 171/15. Song: Better Days (Payday/London/Island). Total Stations: 12. Chart Move: 1-1.

Table for XSCAPE - 771/111. Song: My Little Secret (So So Def/Columbia). Total Stations: 24. Chart Move: 20-14.

Monitor CROSSOVER **SUN & AGY REPORTS** FOR WEEK ENDING SEPTEMBER 27, 1998

Detailed tracking for songs with increased spins this week. Total Plays/Gain does not include video play. Markets listed in order of population.

112 (FEAT. MASE) 549/272 Love Me (Bad Boy/Arista) Total Stations: 41 Chart Move: Debut 40

DIVINE 1239/213 Lately (Pendulum/Red Ant) Total Stations: 52 Chart Move: 21-15

DMX (FEAT. FAITH EVANS) 984/126 How's It Goin' Down (Ruff Ryders/Def Jam/Mercury) Total Stations: 50 Chart Move: 26-21

DRU HILL FEAT. REDMAN 1467/174 How Deep Is Your Love (Island/Def Jam/Mercury) Total Stations: 59 Chart Move: 13-8

FAITH EVANS 795/386 Love Like This (Bad Boy/Arista) Total Stations: 52 Chart Move: Debut 28

KIRK FRANKLIN 566/88 Lean On Me (Gospo Centric/Interscope) Total Stations: 38 Chart Move: Debut 38

LAURYN HILL 2750/205 Doo Wop (That Thing) (Ruffhouse/Columbia) Total Stations: 60 Chart Move: 2-1

JD & MARIAH CAREY 620/19 Sweathart (So So Def/Columbia) Total Stations: 46 Chart Move: 39-36

JAGGED EDGE 901/26 Gotta Be (So So Def/Columbia) Total Stations: 36 Chart Move: 25-23

JON B. 657/80 I Do (Whatcha Say Boo) (Yab Yum/550 Music/Epic) Total Stations: 35 Chart Move: Debut 35

R. KELLY 1717/76 Half On A Baby (Jive) Total Stations: 55 Chart Move: 7-6

MONICA 2431/46 The First Night (Arista) Total Stations: 60 Chart Move: 4-3

MONIFAH 1389/85 Touch It (Uptown/Universal) Total Stations: 49 Chart Move: 12-10

NEXT 1307/29 I Still Love You (Arista) Total Stations: 54 Chart Move: 14-14

PRESSHA 871/80 Splackavellie (Tony Mercedes/LaFace/Arista) Total Stations: 35 Chart Move: 29-27

KEITH SWEAT FEAT. SNOOP DOGG 1089/49 Come Get Wit Me (Elektra/EEG) Total Stations: 55 Chart Move: 20-16

TAMIA 875/43 So Into You (Qwest/Warner Bros.) Total Stations: 44 Chart Move: 28-26

TQ 893/132 Westside (ClockWork/Epic) Total Stations: 36 Chart Move: 31-24

TYRESE 676/16 Nobody Else (RCA) Total Stations: 36 Chart Move: 34-33

XSCAPE 2030/14 My Little Secret (So So Def/Columbia) Total Stations: 58 Chart Move: 5-5



MOST NEW STATIONS

Songs detecting six or more spins at new stations this week

NEW STATIONS

- ALANIS MORISSETTE 47 Thank U (Maverick/Reprise)
BRUCE HORNSBY 8 Great Divide (RCA)
MATCHBOX 20 8 Back 2 Good (Lava/Atlantic)



Total Plays/Gain

ALANIS MORISSETTE 1520/1384 Thank U (Maverick/Reprise)

Total Stations: 64/Chart Move: Debut 13
Heavy (30+ plays): 24 KAMX, KBBT, KDMX, KFMB, KKRH, KMXB, KOZN, KPEK, KRUZ, KTNP, KYIS, KYSR, KZZO, KZZP, WBAM, WDRV, WKZL, WMBX, WPNT, WPTE, WQAL, WSHE, WTMX, WXXM

THIRD EYE BLIND 1016/127 Jumper (Elektra/EEG)

Total Stations: 54/Chart Move: 26-22
Heavy (30+): 13 KAMX, KLLY, KMXB, KQMB, KRUZ, KSTZ, KTNP, KYSR, WBAM, WPTE, WSHE, WXXM, WZNE

SHAWN MULLINS 960/222 Lullaby (SMG/Columbia)

Total Stations: 42/Chart Move: 29-23
Heavy (30+): 9 KAMX, KOZN, KTNP, KYIS, WBAM, WKZL, WPNT, WTIC, WTMX

AIRPOWER BOUND

Total Plays/Gain

JOHN MELLENCAMP 882/-18 Your Life Is Now (Columbia)

Total Stations: 51/Chart Move: 25-25
Heavy (30+): 3 KHTQ, WPLJ, WTMX
Medium (15-29): 32 KALZ, KBBT, KHMV, KISN, KPEK, KPLZ, KSTZ, KURB, KVUU, KYIS, KYKY, WAEV, WAKS, WBIX, WENS, WIOG, WKDD, WKQI, WKTI, WLNK, WLTS, WMC, WMMX, WMBX, WMXL, WQAL, WQLH, WSHE, WSSR, WVAF, WVOR, WWMX

BACKSTREET BOYS 550/-24 I'll Never Break Your Heart (Jive)

Total Stations: 31/Chart Move: 31-30
Heavy (30+): 9 KHMV, KISN, KKRH, KSII, WAKS, WIOG, WQLH, WVAF, WYXR
Medium (15-29): 8 KURB, KYKY, KZZP, WAEV, WKDD, WLTS, WMYX, WSNE
Light (Under 15): 14
New Airplay This Week: 1 WMC

HARVEY DANGER 524/46 Flagpole Sitta (Slash/London/Island)

Total Stations: 40/Chart Move: 33-31
Heavy (30+): 5 KFMB, KSTZ, KTNP, KZZO, WPTE
Medium (15-29): 10 KBBT, KLLC, KOZN, KZZP, WKZL, WMBX, WPNT, WSHE, WSSR, WTMX
Light (Under 15): 25
New Airplay This Week: 1 WVAF

EVE 6 515/90 Inside Out (RCA)

Total Stations: 40/Chart Move: 34-32
Heavy (30+): 7 KLLY, KOZN, KTNP, KVSR, WIOG, WPTE, WZNE
Medium (15-29): 8 KAMX, KHTQ, KLLC, KQMB, KYSR, WLNK, WPNT, WSHE
Light (Under 15): 25
New Airplay This Week: 3 KZZP, WLNK, WVAF

SHANIA TWAIN 463/69 From This Moment On (Mercury)

Total Stations: 30/Chart Move: 35-33
Heavy (30+): 2 KHMV, KKRH
Medium (15-29): 15 KMXD, KPLZ, KURB, WAKS, WBAM, WENS, WIOG, WKDD, WLNK, WLTS, WMC, WVAF, WMMX, WQAL, WSSR, WTMX
Light (Under 15): 13
New Airplay This Week: 4 KBEE, WMXL, WSNE, WTIC

GOO GOO DOLLS 454/77 Slide (Warner Bros.)

Total Stations: 28/Chart Move: 36-34
Heavy (30+): 3 KZZO, WTMX, WXXM
Medium (15-29): 12 KAMX, KBBT, KHTQ, KLLY, KMXB, KOZN, KPEK, KRUZ, KSTZ, KTNP, WIOG, WPNT
Light (Under 15): 13
New Airplay This Week: 4 KAMX, KTNP, WMBX, WQAL

FASTBALL 327/136 Fire Escape (Hollywood)

Total Stations: 22/Chart Move: Debut 36
Heavy (30+): 3 KBBT, KLLY, KYSR
Medium (15-29): 7 KAMX, KDMX, KHTQ, KOZN, KYSR, KYIS, WSSR
Light (Under 15): 12
New Airplay This Week: 6 KDMX, KLLC, KYSR, WMBX, WMMX, WZNE

'N SYNC 245/17 Tearin' Up My Heart (RCA)

Total Stations: 13/Chart Move: Debut 39
Heavy (30+): 5 KSII, WAEV, WAKS, WIOG, WQLH
Medium (15-29): 2 KALZ, WKDD
Light (Under 15): 6
New Airplay This Week: 1 WKTI

MICHELLE LEWIS 240/-6 Nowhere And Everywhere (Giant/Warner Bros.)

Total Stations: 18/Chart Move: Debut 40
Heavy (30+): 2 WMBX, WPTE
Medium (15-29): 6 KHTQ, KLLC, WIOG, WMBX, WQAL, WTMX
Light (Under 15): 10
New Airplay This Week: 1 KDMX

CHART BOUND

Total Plays/Gain

SIXPENCE NONE THE RICHER 233/19 Kiss Me (Squint)

Total Stations: 16
Heavy (30+): 2 KLLC, WPNT

Medium (15-29): 6 KPEK, KQMB, KRUZ, KTNP, KYSR, KZZO
Light (Under 15): 8
New Airplay This Week: 1 WMBX

MATCHBOX 20 216/134 Back 2 Good (Lava/Atlantic)

Total Stations: 21
Heavy (30+): 1 KZZO
Medium (15-29): 5 KHMV, KHTQ, KZZP, WMBX, WXXM
Light (Under 15): 15
New Airplay This Week: 8 KMXB, KOZN, KRUZ, KZZP, WAKS, WMBX, WQLH, WVAF

ALL SAINTS 180/48 Never Ever (London/Island)

Total Stations: 17
Heavy (30+): 2 WBAM, WIOG
Medium (15-29): 2 KHMV, WQLH
Light (Under 15): 13
New Airplay This Week: 2 KSII, WVAF

BRUCE HORNSBY 172/131 Great Divide (RCA)

Total Stations: 19
Heavy (30+): 0
Medium (15-29): 5 KBBT, KHTQ, KPEK, WBMV, WKDD
Light (Under 15): 14
New Airplay This Week: 8 KFMB, KHMV, KISN, KPEK, WAKS, WKDD, WQAL, WSSR

CHRIS ISAAK 160/-3 Please (Reprise)

Total Stations: 12
Heavy (30+): 1 WMBX
Medium (15-29): 4 KBBT, KHTQ, KLLC, WPTE
Light (Under 15): 7

FUEL 141/3 Shimmer (550 Music)

Total Stations: 9
Heavy (30+): 1 WPNT
Medium (15-29): 4 KOZN, KPEK, WPTE, WXXM
Light (Under 15): 4

CHANTAL KREVIASZUK 139/3 Leaving On A Jet Plane (Columbia)

Total Stations: 12
Heavy (30+): 1 KZZO
Medium (15-29): 2 KHTQ, WSSR
Light (Under 15): 9
New Airplay This Week: 1 WPLJ

MADONNA 130/2 The Power Of Good-Bye (Maverick/Warner Bros.)

Total Stations: 13
Heavy (30+): 0
Medium (15-29): 2 KISN, WIOG
Light (Under 15): 11
New Airplay This Week: 1 KDMX

STEVIE NICKS 106/10 If You Ever Did Believe (Reprise)

Total Stations: 11
Heavy (30+): 0
Medium (15-29): 2 KBBT, WMBX
Light (Under 15): 9
New Airplay This Week: 1 WLTS

DUNCAN SHEIK 98/39 Bite Your Tongue (Atlantic)

Total Stations: 12
Heavy (30+): 0
Medium (15-29): 3 KHTQ, WBAM, WTMX
Light (Under 15): 9
New Airplay This Week: 2 KRUZ, WBIX

JANET 95/10 Go Deep (Virgin)

Total Stations: 13
Heavy (30+): 1 WIOG
Medium (15-29): 2 WKDD, WQLH
Light (Under 15): 10

LUCINDA WILLIAMS 93/-2 Right In Time (Mercury)

Total Stations: 14
Heavy (30+): 0
Medium (15-29): 0
Light (Under 15): 14
New Airplay This Week: 3 KHMV, KMXD, WMBX

INOJ 91/3 Time After Time (So So Def/Columbia)

Total Stations: 11
Heavy (30+): 0
Medium (15-29): 3 KISN, KSII, WQLH
Light (Under 15): 8
New Airplay This Week: 1 WVAF

Table with columns: THIS WEEK, LAST WEEK, WEEKS ON, TITLE/IMPRINT/PROMOTION LABEL, ARTIST, TW, LW. Contains chart data for 40 songs.

Records showing an increase in detections over the previous week, regardless of chart movement. A record that has been on the chart for more than 20 weeks will not receive a bullet, even if it registers an increase in detections.

EVERCLEAR 90/4 Everything To Everyone (Capitol)

Total Stations: 6
Heavy (30+): 1 KBBT
Medium (15-29): 0
Light (Under 15): 5

SARAH MCLACHLAN 85/26 Angel (Arista)

Total Stations: 6
Heavy (30+): 0
Medium (15-29): 3 KAMX, KOZN, KYSR
Light (Under 15): 3

STRETCH PRINCESS 77/22 Sorry (Wind-up)

Total Stations: 7
Heavy (30+): 0

NEXT 75/4 Too Close (Arista)

Total Stations: 5
Heavy (30+): 1 KSII
Medium (15-29): 1 WQLH
Light (Under 15): 3
New Airplay This Week: 1 WVAF

REPUBLICA 71/19 Ready To Go (deConstruction/RCA)

Total Stations: 9
Heavy (30+): 0
Medium (15-29): 0
Light (Under 15): 9
New Airplay This Week: 4 KTNP, KYSR, WSSR, WVAF

ADULT TOP 40 FOR WEEK ENDING SEPTEMBER 27, 1998

ADULT CONTEMPORARY

BARENAKED LADIES 2349/80

One Week (Reprise)
Total Stations: 75 **Chart Move: 4-4**

Station	WLW	WZL	TP
New York	31	1	1
L.A.	16	1	1
Chicago	23	1	1
San Fran.	44	1	1
Phila.	54	1	1

EAGLE-EYE CHERRY 1321/103

Save Tonight (WORK)
Total Stations: 56 **Chart Move: 18-18**

Station	WLW	WZL	TP
New York	17	1	1
L.A.	10	1	1
Chicago	31	1	1
San Fran.	38	1	1
Phila.	44	1	1

SHERLY CROW 1928/113

My Favorite Mistake (A&M)
Total Stations: 73 **Chart Move: 11-9**

Station	WLW	WZL	TP
New York	25	1	1
L.A.	13	1	1
Chicago	16	1	1
San Fran.	22	1	1
Phila.	35	1	1

AEROSMITH 521/50

I Don't Want To Miss A Thing (Columbia)
Total Stations: 42 **Chart Move: 21-16**

Station	WLW	WZL	TP
New York	36	37	39
L.A.	10	10	9
Chicago	20	19	20
San Fran.	18	18	19
Phila.	26	24	25

BACKSTREET BOYS 1274/18

I'll Never Break Your Heart (Jive)
Total Stations: 62 **Chart Move: 2-2**

Station	WLW	WZL	TP
New York	14	14	15
L.A.	21	19	8
Chicago	18	18	19
San Fran.	26	25	15
Phila.	25	24	15

EVE 6 515/90

Inside Out (RCA)
Total Stations: 40 **Chart Move: 34-32**

Station	WLW	WZL	TP
New York	23	18	88
L.A.	16	14	7
Chicago	25	18	14
San Fran.	25	18	14
Phila.	25	18	14

EVERYTHING 1370/176

Hooch (Blackbird/Sire)
Total Stations: 67 **Chart Move: 19-16**

Station	WLW	WZL	TP
New York	22	20	133
L.A.	21	19	40
Chicago	20	23	171
San Fran.	20	23	171
Phila.	20	23	171

HARVEY DANGER 524/46

Flagpole Sitta (Slash/London/Island)
Total Stations: 40 **Chart Move: 35-31**

Station	WLW	WZL	TP
New York	30	29	35
L.A.	21	19	40
Chicago	20	23	171
San Fran.	20	23	171
Phila.	20	23	171

GEORGE BENSON 399/83

Standing Together (GRP)
Total Stations: 58 **Chart Move: 24-22**

Station	WLW	WZL	TP
New York	6	3	122
L.A.	11	10	128
Chicago	10	10	128
San Fran.	10	10	128
Phila.	10	10	128

ANNE COCHRAN & JIM BRICKMAN 687/47

After All These Years (Renegade/Windham Hill)
Total Stations: 56 **Chart Move: 12-12**

Station	WLW	WZL	TP
New York	3	3	5
L.A.	3	3	5
Chicago	3	3	5
San Fran.	3	3	5
Phila.	3	3	5

FAITH HILL 1073/32

This Kiss (Warner Bros.)
Total Stations: 49 **Chart Move: 22-21**

Station	WLW	WZL	TP
New York	33	20	19
L.A.	23	18	88
Chicago	20	18	14
San Fran.	20	18	14
Phila.	20	18	14

HOOTIE & THE BLOWFISH 2269/59

I Will Wait (Atlantic)
Total Stations: 77 **Chart Move: 5-5**

Station	WLW	WZL	TP
New York	19	19	107
L.A.	28	25	178
Chicago	28	25	178
San Fran.	28	25	178
Phila.	28	25	178

ALANIS MORISSETTE 1520/1384

Thank U (Maverick/Reprise)
Total Stations: 64 **Chart Move: Debut 13**

Station	WLW	WZL	TP
New York	23	23	23
L.A.	23	23	23
Chicago	23	23	23
San Fran.	23	23	23
Phila.	23	23	23

PHIL COLLINS 371/293

True Colors (Face Value/Atlantic)
Total Stations: 50 **Chart Move: Debut 23**

Station	WLW	WZL	TP
New York	12	13	38
L.A.	12	13	38
Chicago	12	13	38
San Fran.	12	13	38
Phila.	12	13	38

DAKOTA MOON 435/32

Another Day Goes By (Elektra/EEG)
Total Stations: 48 **Chart Move: 22-21**

Station	WLW	WZL	TP
New York	16	17	122
L.A.	16	17	122
Chicago	16	17	122
San Fran.	16	17	122
Phila.	16	17	122

SHAWN MULLINS 960/222

Lullaby (SMG/Columbia)
Total Stations: 42 **Chart Move: 29-23**

Station	WLW	WZL	TP
New York	28	25	53
L.A.	28	25	53
Chicago	28	25	53
San Fran.	28	25	53
Phila.	28	25	53

JENNIFER PAIGE 1193/87

Crush (Edel America/Hollywood)
Total Stations: 57 **Chart Move: 21-19**

Station	WLW	WZL	TP
New York	31	31	31
L.A.	31	31	31
Chicago	31	31	31
San Fran.	31	31	31
Phila.	31	31	31

THIRD EYE BLIND 1016/127

Juniper (Elektra/EEG)
Total Stations: 54 **Chart Move: 26-22**

Station	WLW	WZL	TP
New York	21	21	24
L.A.	21	21	24
Chicago	21	21	24
San Fran.	21	21	24
Phila.	21	21	24

FAITH HILL 1025/92

This Kiss (Warner Bros.)
Total Stations: 58 **Chart Move: 6-5**

Station	WLW	WZL	TP
New York	10	12	10
L.A.	10	12	10
Chicago	10	12	10
San Fran.	10	12	10
Phila.	10	12	10

BETTE MIDLER 305/126

My One True Friend (Warner Bros.)
Total Stations: 46 **Chart Move: Debut 24**

Station	WLW	WZL	TP
New York	5	5	6
L.A.	5	5	6
Chicago	5	5	6
San Fran.	5	5	6
Phila.	5	5	6

JOHN TESH 564/54

Mother I Miss You (GTSP/Mercury)
Total Stations: 56 **Chart Move: 18-14**

Station	WLW	WZL	TP
New York	1	1	4
L.A.	1	1	4
Chicago	1	1	4
San Fran.	1	1	4
Phila.	1	1	4

SHANIA TWAIN 821/169

From This Moment On (Mercury)
Total Stations: 60 **Chart Move: 11-9**

Station	WLW	WZL	TP
New York	15	14	83
L.A.	15	14	83
Chicago	15	14	83
San Fran.	15	14	83
Phila.	15	14	83

MOST NEW STATIONS

Songs detecting six or more spins at new stations this week

- PHIL COLLINS 20 NEW STATIONS
True Colors (Face Value/Atlantic)
EDWIN MCCAIN 6
I'll Be (Lava/Atlantic)
AMY GRANT 5
I Will Be Your Friend (A&M)



NO RECORDS QUALIFIED FOR AIRPOWER THIS WEEK

AIRPOWER BOUND

- GEORGE BENSON 399/83 Standing Together (GRP)
PHIL COLLINS 371/293 True Colors (Face Value/Atlantic)
AMY GRANT 219/18 I Will Be Your Friend (A&M)

CHART BOUND

- LIGHTHOUSE FAMILY 177/17 High (Island)
JENNIFER PAIGE 149/9 Crush (Edel America/Hollywood)
NATALIE MERCHANT 131/20 Kind & Generous (Elektra/EEG)
GOO GOO DOLLS 122/11 Iris (Warner Sunset/Reprise)
LIONEL RICHIE 74/59 I Hear Your Voice (Mercury)

Table with columns: THIS WEEK, LAST WEEK, WEEKS ON, TITLE/IMP/PRMOTION LABEL, ARTIST, TW, LW. Includes No. 1 hit TO LOVE YOU MORE by CELINE DION.

Records showing an increase in detections over the previous week, regardless of chart movement. A record that has been on the chart for more than 20 weeks will not receive a bullet...

ADULT CONTEMPORARY POWER PLAYLISTS

Grid of 12 radio station playlists including: WLTW New York, KOST Los Angeles, KBIG Los Angeles, WLIT Chicago, WBEB Philadelphia, WNND Chicago, KIOI San Francisco, KVIL Dallas, WASH Washington, DC, WPCB Atlanta, WFLC Miami, WLTE Minneapolis.

Impact tracks upward-moving songs ranked in order of spin count. Songs are removed if they lose more than 5% of their detections from previous week or if their spin count declines for two consecutive weeks.

MOST NEW STATIONS

Songs detecting six or more spins at new stations this week

Table with 3 columns: Artist Name, Station Count, and Album/Label. Includes Phil Collins (20), Edwin McCain (6), and Amy Grant (5).



NO RECORDS QUALIFIED FOR AIRPOWER THIS WEEK



Table listing stations and their chart moves for various artists like George Benson, Phil Collins, and Amy Grant.

CHART BOUND

Total Plays/Gain

LIGHTHOUSE FAMILY 177/17 High (Island) Total Stations: 27 Heavy (21+): 0 Medium (14-20): 2 KESZ, KSSK Light (Under 14): 25 New Airplay This Week: 1 WLTO

HOOTIE & THE BLOWFISH 160/20 I Will Wait (Atlantic) Total Stations: 14 Heavy (21+): 2 KLSY, WMJQ Medium (14-20): 3 KGBY, KTDY, WTCB Light (Under 14): 9 New Airplay This Week: 2 KSSK, WMXS

JENNIFER PAIGE 149/9 Crush (Edel America/Hollywood) Total Stations: 12 Heavy (21+): 3 WMJQ, WRMF, WTCB Medium (14-20): 2 WALK, WMXS Light (Under 14): 7

NATALIE MERCHANT 131/20 Kind & Generous (Elektra/EEG) Total Stations: 11 Heavy (21+): 1 KLSY Medium (14-20): 3 KGBY, KTDY, WMXS Light (Under 14): 7 New Airplay This Week: 1 KGBY

GOO GOO DOLLS 122/11 Iris (Warner Sunset/Reprise) Total Stations: 10 Heavy (21+): 2 WFLC, WMJQ Medium (14-20): 2 KBIG, WMXS Light (Under 14): 6 New Airplay This Week: 1 KIMN

BABYFACE 77/3 You Were There (Epic) Total Stations: 10 Heavy (21+): 1 WRVF Medium (14-20): 1 KTDY Light (Under 14): 8 New Airplay This Week: 1 WMGS

LIONEL RICHIE 74/59 I Hear Your Voice (Mercury) Total Stations: 13 Heavy (21+): 0 Medium (14-20): 1 WLIT Light (Under 14): 12 New Airplay This Week: 4 WLIF, WRCH, WTCB, WTVR

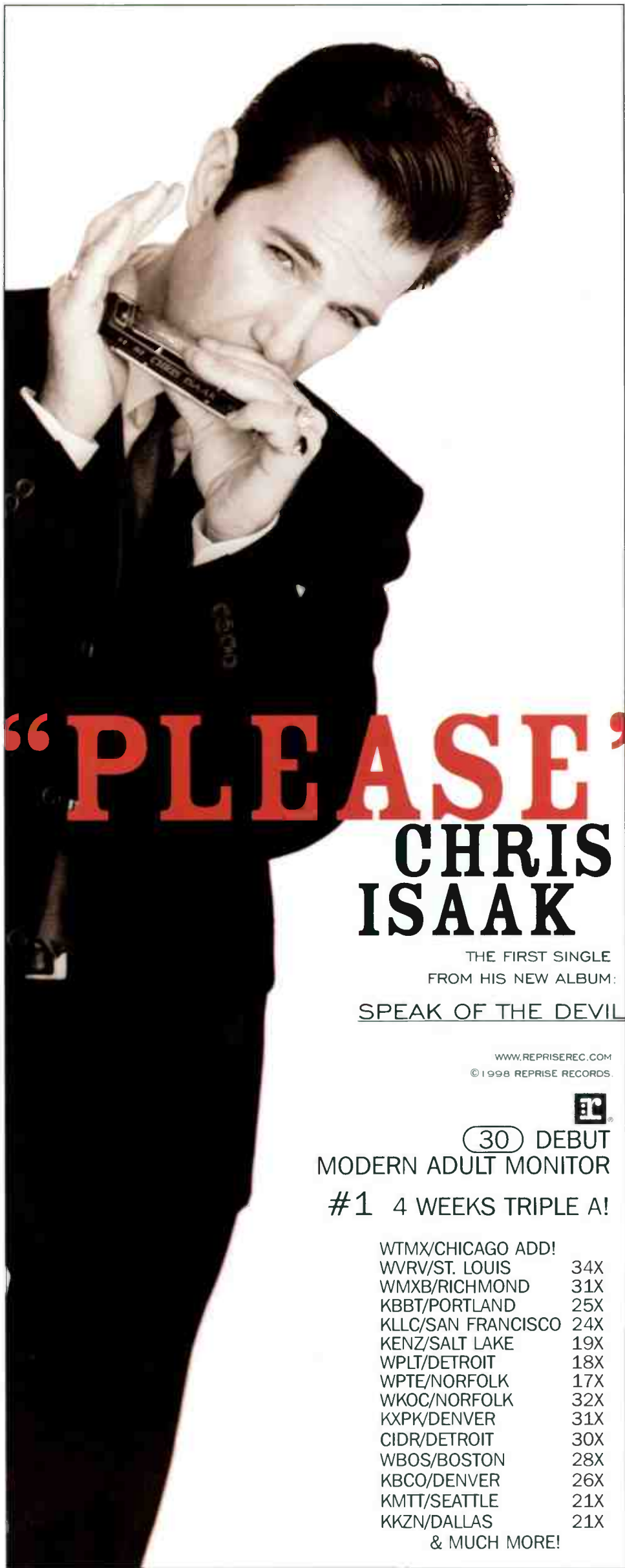
Main chart table with columns: Rank, Last Week, Weeks On, Title/Imp/Label, Artist, TW, LW. Includes Celine Dion's 'To Love You More' at No. 1.

Records showing an increase in detections over the previous week, regardless of chart movement. A record that has been on the chart for more than 20 weeks will not receive a bullet, even if it registers an increase in detections.

ADULT CONTEMPORARY POWER PLAYLISTS

Grid of 12 station-specific playlists including WLTV New York, KOST Los Angeles, KBIG Los Angeles, WLIT Chicago, WBEB Philadelphia, WNND Chicago, KIOI San Francisco, KVIL Dallas, WASH Washington, DC, WPCB Atlanta, WFLC Miami, and WLTE Minneapolis.

Impact tracks upward-moving songs ranked in order of spin count. Songs are removed if they lose more than 5% of their detections from previous week or if their spin count declines for two consecutive weeks.



“PLEASE”

CHRIS ISAAK

THE FIRST SINGLE
FROM HIS NEW ALBUM:
SPEAK OF THE DEVIL

WWW.REPRISEREC.COM
© 1998 REPRISERECORDS.



(30) DEBUT
MODERN ADULT MONITOR
#1 4 WEEKS TRIPLE A!

- WTMX/CHICAGO ADD!
WVRV/ST. LOUIS 34X
WMXB/RICHMOND 31X
KBBT/PORTLAND 25X
KLLC/SAN FRANCISCO 24X
KENZ/SALT LAKE 19X
WPLT/DETROIT 18X
WPTE/NORFOLK 17X
WKOC/NORFOLK 32X
KXPK/DENVER 31X
CIDR/DETROIT 30X
WBOS/BOSTON 28X
KBCO/DENVER 26X
KMTT/SEATTLE 21X
KKZN/DALLAS 21X
& MUCH MORE!

MODERN ADULT AIRPLAY

AIRPLAY
Monitor

FOR WEEK ENDING SEPTEMBER 27, 1998



THIS WEEK	LAST WEEK	WKS. ON CHART	TITLE/IMPRINT/PROMOTION LABEL	ARTIST	DETECTIONS		
					TW	LW	
			★★★ No. 1 ★★★				
(1)	1	17	ONE WEEK REPRISE <small>4 weeks at No. 1</small>	BARENAKED LADIES	1929	1921	
2	2	25	IRIS WARNER SUNSET/REPRISE	GOO GOO DOLLS	1646	1684	
3	3	27	REAL WORLD LAVA/ATLANTIC	MATCHBOX 20	1468	1499	
(4)	4	7	I WILL WAIT ATLANTIC	HOOTIE & THE BLOWFISH	1464	1429	
(5)	5	6	MY FAVORITE MISTAKE A&M	SHERYL CROW	1437	1398	
(6)	8	11	SAVE TONIGHT WORK	EAGLE-EYE CHERRY	1350	1267	
			★★★ AIRPOWER ★★★				
(7)	NEW		THANK U <small>MUSIC/REPRISE</small>	ALANIS MORISSETTE	1316	111	
8	7	12	JUMP JIVE AN' WAIL INTERSCOPE	THE BRIAN SETZER ORCHESTRA	1296	1351	
9	6	24	CLOSING TIME MCA	SEMISONIC	1276	1366	
(10)	12	13	HOOCHEE BLACKBIRD/SIRE	EVERYTHING	1116	1062	
(11)	18	5	LULLABY COLUMBIA	SHAWN MULLINS	1112	919	
12	10	43	TIME OF YOUR LIFE (GOOD RIDDANCE) REPRISE	GREEN DAY	1087	1173	
13	9	22	KIND & GENEROUS ELEKTRA/VEEG	NATALIE MERCHANT	1076	1178	
(14)	13	10	I DON'T WANT TO MISS A THING COLUMBIA	AEROSMITH	1017	1001	
15	11	32	THE WAY HOLLYWOOD	FASTBALL	993	1063	
16	14	35	TORN RCA	NATALIE IMBRUGLIA	950	992	
17	17	37	I'LL BE LAVA/ATLANTIC	EDWIN MCCAIN	945	920	
(18)	21	6	JUMPER ELEKTRA/VEEG	THIRD EYE BLIND	912	819	
19	15	14	WISHING I WAS THERE RCA	NATALIE IMBRUGLIA	906	974	
20	16	17	STAY (WASTING TIME) RCA	DAVE MATTHEWS BAND	821	934	
21	19	15	CAN'T GET ENOUGH OF YOU BABY ELEKTRA/VEEG	SMASH MOUTH	791	869	
22	22	23	I WILL BUY YOU A NEW LIFE CAPITOL	EVERCLEAR	738	788	
(23)	25	8	FLAGPOLE SITTA SLASH/LONDON/ISLAND	HARVEY DANGER	663	592	
(24)	24	14	SNOW ON THE SAHARA EPIC	ANGGUN	636	623	
(25)	26	7	INSIDE OUT RCA	EVE 6	634	557	
(26)	27	2	SLIDE WARNER BROS.	GOO GOO DOLLS	631	535	
27	23	9	PERFECT VIRGIN	THE SMASHING PUMPKINS	531	651	
(28)	NEW		FIRE ESCAPE HOLLYWOOD	FASTBALL	465	360	
29	28	18	YOU'RE STILL THE ONE MERCURY	SHANIA TWAIN	388	465	
(30)	NEW		PLEASE REPRISE	CHRIS ISAAK	314	309	

Records showing an increase in detections over the previous week, regardless of chart movement. A record that has been on the chart for more than 20 weeks will not receive a bullet, even if it registers an increase in detections. Airpower is awarded to those records that attain 800 detections for the first time. If two records are tied in number of plays, the record being played on more stations is placed first. ©1998, Billboard/BPI Communications.

POWER PLAYLISTS™

WLNK Charlotte
PD: Mike Edwards
MD: Patty Vaughn
704-374-3500
Jefferson Pilot



WSHE Orlando
PD: Katherine Brown
MD: Shark
407-916-7790
Clear Channel



WPNT Milwaukee
PD/MD: Justin Case
414-454-0800
Saga Communications



WLNK Charlotte		WSHE Orlando		WPNT Milwaukee			
TW	LW	TW	LW	TW	LW		
1	Fastball, The Way	48	49	1	Barenaked Ladies, One Week	47	37
2	Semisonic, Closing Time	46	45	2	Matchbox 20, Real World	46	40
3	Natalie Imbruglia, Torn	45	45	3	Dave Matthews Band, Slay	44	37
4	Matchbox 20, Real World	45	47	4	Goo Goo Dolls, Iris	42	32
5	Goo Goo Dolls, Iris	45	48	5	Fuel, Shimmer	41	27
6	Green Day, Time Of Your Life	42	33	6	Brian Setzer Orchestra, Jump Jive An' Wail	37	28
7	Barenaked Ladies, One Week	33	35	7	Hootie & The Blowfish, I Will Wait	36	29
8	Brian Setzer Orchestra, Jump Jive An' Wail	32	28	8	Semisonic, Closing Time	36	27
9	Hootie & The Blowfish, I Will Wait	32	48	9	Everclear, I Will Buy You A New Life	36	23
10	Sheryl Crow, My Favorite Mistake	32	28	10	Shawn Mullins, Lullaby	35	27
11	Natalie Merchant, Kind & Generous	31	28	11	Sheryl Crow, My Favorite Mistake	35	27
12	Everything, Hooch	31	30	12	Alanis Morissette, Thank U	35	28
13	Aerosmith, I Don't Want To Miss A Thing	29	30	13	Natalie Imbruglia, Wishing I Was There	35	32
14	Third Eye Blind, Jumper	29	29	14	Green Day, Time Of Your Life	34	38
15	Edwin McCain, I'll Be	28	28	15	Alanis Morissette, Thank U	34	0
16	Falch Hill, This Kiss	28	19	16	Patty Griffin, One Big Love	32	23
17	Vonda Shepard, Searchin' My Soul	28	17	17	New Radicals, You Get What You Give	31	24
18	Alanis Morissette, Thank U	24	0	18	Suspense None The Richer, Kiss Me	30	27
19	Matchbox 20, 3 AM	24	25	19	Third Eye Blind, How's It Going To Be	28	32
20	Eagle Eye Cherry, Save Tonight	23	24	20	Harvey Danger, Flagpole Sitta	28	23
21	Shania Twain, From This Moment On	23	16	21	Third Eye Blind, Jumper	28	20
22	Eve 6, Inside Out	21	0	22	Everything, Hooch	28	0
23	John Mellencamp, Your Life Is Now	21	23	23	Goo Goo Dolls, Slide	27	18
24	Goo Goo Dolls, Slide	13	20	24	Eve 6, Inside Out	24	15
25	Natalie Imbruglia, Wishing I Was There	13	16	25	Edwin McCain, I'll Be	22	36
26	Smash Mouth, Walkin' On The Sun	10	10	26	Dishwalla, Counting Blue Cars	22	13
27	Marcy Playground, Sex & Candy	10	10	27	Smash Mouth, Can't Get Enough Of You Baby	20	15
28	Sister Hazel, All For You	9	9	28	Fastball, The Way	20	15
29	Tonic, If You Could Only See	9	9	29	The Cranberries, Dreams	19	13
30	Sarah McLachlan, Aida	9	31	30	Sarah McLachlan, Possession	18	11

"Top 15 phones after 3 weeks of airplay. Sounds great on KTU!"
- Andy Shane, APD/MD, WKTU

**"The most radio-friendly house record since DAFT PUNK's 'Around The World'.
Todd and I are expecting big things from Stardust."**
- Erik Bradley, MD, B96

"This sounds great on the air!"
- Kid Curry, PD, WPOW

**"Hottest record in the San Francisco clubs right now! Hands go up and
all you hear are screams!"**
- Jazzy Jim Archer, APD/MD, KYLD

STARDUST

"MUSIC SOUNDS BETTER WITH YOU"

CD single and cassette single in stores September 22
Includes 12" Club Mix, Bob Sinclar Remix
and Chateau Flight Remix.

Produced by Thomas Bangalter for Roule
Recorded at Daft House in Paris

<http://www.virginrecords.com>
AOL Keyword: Virgin Records

©1998 Roule Music under exclusive license to Virgin France
Issued in the United States by Virgin Records America, Inc.



IN ROTATION

WKTU/New York	15 spins	KTFM/San Antonio	10 spins
WBBM/Chicago	22 spins	KDGS/Wichita	13 spins
Groove 103.1/Los Angeles	21 spins	WOCQ/Ocean City	14 spins
KYLD/San Francisco	39 spins	WOWB/Utica	25 spins
WDRQ/Detroit	26 spins	KNTN/Modesto	10 spins
WPOW/Miami	15 spins	KWNZ/Reno	10 spins
WXXP/Long Island	19 spins	KWIN/Stockton	10 spins

IN THE MIX:

**WKSS, WHTZ, WFLY, WIOQ, WXXL, WZJM, KSLZ, KRBE, KBFM, KZFM,
KZQZ, KDON, KUBE, KIIS, KGGI, KISV**

#1 BILLBOARD CLUB PLAY 2 WEEKS IN A ROW!

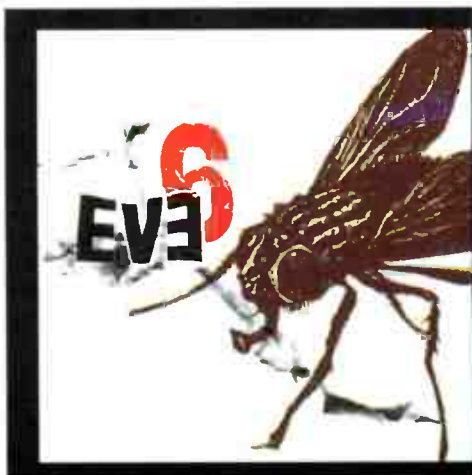
Compiled from a national sample of airplay supplied by Broadcast Data Systems' Radio Track service to Top 40 Airplay Monitor, 103 metropolitan top 40 and 33 rhythmic top 40 stations are electronically monitored 24 hours a day, 7 days a week. Songs are ranked by number of detections. © 1998 Broadcast Data Systems.



THIS WEEK	LAST WEEK	WKS. ON CHART	DETECTIONS	
			TW	LW
MAINSTREAM TOP 40				
★★★★ No. 1 ★★★★★				
1	1	19	I DON'T WANT TO MISS A THING COLUMBIA	8 weeks at No. 1 AEROSMITH 5400 5611
(2)	3	10	ONE WEEK REPRISE	BARENAKED LADIES 5010 4870
3	2	24	IRIS WARNER SUNSET/REPRISE	GOO GOO DOLLS 4881 5071
4	4	15	CRUSH EDEL AMERICA/HOLLYWOOD	JENNIFER PAIGE 4269 4399
(5)	5	13	I'LL NEVER BREAK YOUR HEART JIVE	BACKSTREET BOYS 3911 3769
(6)	8	18	NEVER EVER LONDON/ISLAND	ALL SAINTS 3825 3633
7	6	14	TEARIN' UP MY HEART RCA	'N SYNC 3622 3689
8	7	20	REAL WORLD LAVA/ATLANTIC	MATCHBOX 20 3423 3662
9	9	22	TOO CLOSE ARISTA	NEXT 3099 3295
(10)	14	7	ARE YOU THAT SOMEBODY? BLACKGROUND/ATLANTIC	AALIYAH 3068 2710
11	11	30	I'LL BE LAVA/ATLANTIC	EDWIN MCCAIN 2959 3053
12	10	18	CLOSING TIME MCA	SEMISONIC 2896 3167
13	12	17	JUST THE TWO OF US COLUMBIA	WILL SMITH 2889 2943
(14)	15	11	GO DEEP VIRGIN	JANET 2799 2615
15	13	19	THE BOY IS MINE ATLANTIC	BRANDY & MONICA 2531 2840
16	16	6	I WILL WAIT ATLANTIC	HOOTIE & THE BLOWFISH 2366 2475
(17)	19	9	THIS KISS WARNER BROS.	FAITH HILL 2225 2170
★★★★ AIRPOWER ★★★★★				
(18)	24	5	JUMPER ELEKTRA/VEEG	THIRD EYE BLIND 2210 1946
★★★★ AIRPOWER ★★★★★				
(19)	NEW		THANK U MASSIVE/REPRISE	ALANIS MORISSETTE 2173 274
20	20	33	TORN RCA	NATALIE IMBRUGLIA 2104 2155
★★★★ AIRPOWER ★★★★★				
(21)	23	4	MY FAVORITE MISTAKE A&M	SHERYL CROW 2102 1971
22	21	24	THE WAY HOLLYWOOD	FASTBALL 2076 2139
23	17	17	WHEN THE LIGHTS GO OUT ARISTA	FIVE 2008 2410
24	22	9	TIME AFTER TIME SO SO DEF/COLUMBIA	INOJ 1982 2099
(25)	25	7	HOOSH BLACKBIRD/SIRE	EVERYTHING 1942 1913
26	18	11	WISHING I WAS THERE RCA	NATALIE IMBRUGLIA 1863 2239
(27)	28	10	JUMP JIVE AN' WAIL INTERSCOPE	THE BRIAN SETZER ORCHESTRA 1822 1707
(28)	30	5	SAVE TONIGHT WORK	EAGLE-EYE CHERRY 1658 1507
29	27	12	MY WAY LAFACE/ARISTA	USHER 1651 1813
(30)	31	3	THE POWER OF GOOD-BYE MAVERICK/WARNER BROS.	MADONNA 1447 1356
31	29	14	GHETTO SUPASTAR (THAT IS WHAT YOU ARE) INTERSCOPE	PRAS MICHEL FEAT. OL' DIRTY BASTARD & INTRODUCING MYA 1437 1589
(32)	35	4	INSIDE OUT RCA	EVE 6 1394 1135
(33)	37	2	THE FIRST NIGHT ARISTA	MONICA 1354 1093
34	26	25	UNINVITED WARNER SUNSET/REPRISE	ALANIS MORISSETTE 1332 1828
(35)	36	3	BECAUSE OF YOU MOTOWN	98 DEGREES 1285 1113
(36)	34	4	I HAD NO RIGHT GEE STREET/V2	P.M. DAWN 1253 1147
(37)	NEW		LULLABY SMG/COLUMBIA	SHAWN MULLINS 1061 727
38	33	6	FLAGPOLE SITTA SLASH/LONDON/ISLAND	HARVEY DANGER 1047 1182
(39)	NEW		YOUR LIFE IS NOW COLUMBIA	JOHN MELLENCAMP 987 897
(40)	40	2	FROM THIS MOMENT ON MERCURY	SHANIA TWAIN 956 953

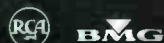
THIS WEEK	LAST WEEK	WKS. ON CHART	DETECTIONS	
			TW	LW
RHYTHMIC TOP 40				
★★★★ No. 1 ★★★★★				
(1)	1	15	ARE YOU THAT SOMEBODY? BLACKGROUND/ATLANTIC	8 weeks at No. 1 AALIYAH 1766 1751
(2)	2	11	THE FIRST NIGHT ARISTA	MONICA 1338 1298
(3)	4	9	MOVIN' ON UNIVERSITY/INTERSCOPE	MYA FEATURING SILKK THE SHOCKER 1237 1083
(4)	5	10	TOUCH IT UPTOWN/UNIVERSAL	MONIFAH 1220 1030
5	3	14	DAYDREAMIN' MJJ/WORK	TATYANA ALI 1098 1149
6	6	17	MAKE IT HOT THE GOLD MIND/EASTWEST/VEEG	NICOLE FEAT. MISSY "MISDEMEANOR" ELLIOTT & MOCHA 1001 1025
(7)	13	5	DOO WOP (THAT THING) RUFFHOUSE/COLUMBIA	LAURYN HILL 974 798
8	7	18	CAN'T TAKE MY EYES OFF OF YOU RUFFHOUSE/COLUMBIA	LAURYN HILL 903 986
(9)	17	6	WESTSIDE CLOCKWORK/EPIC	TQ 870 744
10	9	13	TIME AFTER TIME SO SO DEF/COLUMBIA	INOJ 867 877
11	8	36	TOO CLOSE ARISTA	NEXT 859 936
12	10	21	STILL NOT A PLAYER LOUD/RCA	BIG PUNISHER FEATURING JOE 804 882
(13)	21	5	LATELY PENDULUM/RED ANT	DIVINE 804 646
(14)	20	6	MY LITTLE SECRET SO SO DEF/COLUMBIA	XSCAPE 771 660
15	12	10	SAME OL' G BLACKGROUND/ATLANTIC	GINUWINE 762 804
16	14	23	MY WAY LAFACE/ARISTA	USHER 749 780
17	11	22	THE BOY IS MINE ATLANTIC	BRANDY & MONICA 730 834
★★★★ AIRPOWER ★★★★★				
(18)	24	4	HOW DEEP IS YOUR LOVE (L.A. AND BET) IMMERCURY	DRU HILL FEAT. REDMAN 661 577
19	16	14	TOP OF THE WORLD ATLANTIC	BRANDY (FEATURING MASE) 657 740
20	18	12	I'LL NEVER BREAK YOUR HEART JIVE	BACKSTREET BOYS 652 666
21	15	22	GHETTO SUPASTAR (THAT IS WHAT YOU ARE) INTERSCOPE	PRAS MICHEL FEAT. OL' DIRTY BASTARD & INTRODUCING MYA 640 760
(22)	23	9	I STILL LOVE YOU ARISTA	NEXT 638 609
(23)	22	5	COME GET WIT ME ELEKTRA/VEEG	KEITH SWEAT FEATURING SNOOP DOGG 636 625
24	19	11	TEARIN' UP MY HEART RCA	'N SYNC 583 638
(25)	28	6	I DON'T WANT TO MISS A THING COLUMBIA	AEROSMITH 488 447
26	26	20	JUST THE TWO OF US COLUMBIA	WILL SMITH 479 517
27	25	16	GO DEEP VIRGIN	JANET 464 534
28	29	14	ALL GOOD MO THUGS/RELATIVITY	MO THUGS FAMILY FEAT. FELECIA & KRAYZIE BONE 463 470
(29)	31	6	CRUSH EDEL AMERICA/HOLLYWOOD	JENNIFER PAIGE 453 406
(30)	33	8	LOOKIN' AT ME BAD BOY/ARISTA	MASE FEATURING PUFF DADDY 428 421
(31)	34	4	EVERYTHING'S GONNA BE ALRIGHT RCA	SWEETBOX 426 404
(32)	38	4	HALF ON A BABY JIVE	R. KELLY 407 333
33	30	20	THEY DON'T KNOW YAB YUM/550 MUSIC	JON B. 402 484
34	27	11	HORSE & CARRIAGE ENTERTAINMENT/EPIC	CAM'RON FEATURING MASE 384 526
35	35	10	MONEY AIN'T A THANG SO SO DEF/COLUMBIA	JD FEATURING JAY-Z 383 397
(36)	37	3	SWEETHEART SO SO DEF/COLUMBIA	JD & MARIAH CAREY 367 359
37	36	5	STILL A G THANG NO LIMIT/PRIORITY	SNOOP DOGG 358 365
38	32	10	LUV ME, LUV ME FLYTE TYME/MCA	SHAGGY FEATURING JANET 355 432
(39)	40	2	SO INTO YOU QWEST/WARNER BROS.	TAMIA 305 267
(40)	39	15	NEVER EVER LONDON/ISLAND	ALL SAINTS 289 269

Records showing an increase in detections over the previous week, regardless of chart movement. A record that has been on either chart for more than 20 weeks will not receive a bullet, even if it registers an increase in detections. Airpower awarded to those records that attain 2,000 detections (mainstream) or 600 detections (rhythm) for the first time. If two records are tied in number of plays, the record being played on more stations is placed first. Records below the top 20 are removed from the chart after 26 weeks.



EVE 6
Inside Out
From the self-titled debut album EVE 6

Produced, Engineered and Mixed by Don Gilmore
Management: Arthur Spivak and Stuart Sobol for Spivak Entertainment
WWW.bugjulce.com



Coming this fall:



presents Eve 6 & Third Eye Blind Tour!



G-FUNK THE NEW MILLENNIUM
MULTI PLATINUM ARTIST WARREN G PRESENTS THE FIRST RELEASE FROM HIS NEW LABEL

Reel Tight

**MOST ADDED AT
RHYTHMIC TOP 40 RADIO!**

"(DO YOU) WANNA RIDE"

Produced by: Corey "Co-T" Tatum



From the forthcoming album:

BACK TO THE REAL

Album In Stores November 24

Single In Stores October 12

Produced By Warren G, Reel Tight, Co-T, Larry Dunn for Cherubim Source Productions, Inc., Vincent Herbert & Rob Fusari, Arvel McClinton III for III A.M. Entertainment & Sauce for Nothing Personal Productions, Speedy & Taka for Designated Nitters, and Younglord for the 1080 Corporation & Bad Boy Entertainment and co-produced by Brian "Bmore" Allmore for Belltree Music, Mechalie Jamison for Big Slim Entertainment, and Ernest Straughter and David Straughter for Khamillion Entertainment.

EXECUTIVE PRODUCER: WARREN G



A Regency
Enterprises Company

Photography: Yariv Milchan

World Radio History

**IMPACTING TOP 40
OCTOBER 6TH**

Russel Carter Artist Management · www.hollywoodrec.com/fastball

produced by Julian Raymond and Fastball · mixed by Chris Lord-Alge

Fastball

Fire Escape

The follow up to *The Way* from the platinum album *All The Pain Money Can Buy*