

COUNTRY AIRPLAY Monitor

• We Listen To Radio •

April 25, 1997

\$ 4.95

Volume 5 • No. 17

COUNTRY HIGHLIGHTS

★ ★ ★ NO. 1 ★ ★ ★

#1

GEORGE STRAIT

One Night At A Time (MCA)

★ ★ ★ AIRPOWER ★ ★ ★

LEANN RIMES • *The Light In Your Eyes (CURB)*

ALAN JACKSON • *Who's Cheatin' Who (ARISTA)*

GOING FOR AIRPLAY

BAILLIE & THE BOYS • *The God's Honest Truth (INTER SOUND)*

RICH MCCREADY • *That Just About Covers It (MAGNATONE)*

TIM MCGRAW • *It's Your Love (CURB)*

RIVER ROAD • *I Broke It, I'll Fix It (CAPITOL NASHVILLE)*

CLAY WALKER • *One, Two, I Love You (GIANT)*

Duopoly, Fewer Tours Have Reduced Friction Over Concert 'Presents'

by Phyllis Stark

Two years ago, one of the most controversial issues in country was that of rival stations battling over the right to present concerts in their markets. Programmers in some markets, by their own admission, were behaving badly, and it was often the artists who paid the price when stations withheld airplay if they didn't get the "presents."

While the issue hasn't died down completely, artist managers and radio programmers say the situation is much better now than at the height of the controversy. That is due, they say, partly to the fact that so many stations that were once bitter rivals are now co-owned, partly because there are fewer touring acts to fight over, partly because radio has learned to behave better, and partly because labels and managers have learned to anticipate rivalry situations before they get out of hand.

"A lot of folks in the competitive situations started to realize that it didn't do anybody any good, that it was hurting more than it helped," says WIVK-FM Knoxville, Tenn., MD Chris Huff, who was in the middle of a heated three-way battle in Dallas at the height of the controversy. "Concert sponsorship, when you get right down to it, wasn't that big of a deal. It was an ego issue for most stations. In markets where you saw two or three stations battling to have the rights, [they] have kind of reached an understanding."

"We went through a large period of time when there was a lot of that going on," says WTDR Charlotte, N.C., PD Loyd Ford. "There was a lot of stress and strain, and sometimes almost juvenile behavior over that kind of stuff. . . . People were acting like it was the end of the world, and it wasn't." Now, he says, "in Charlotte, [WSOC PD] Paul Johnson and I are fairly mature about it and have learned to position our radio stations differently. Sometimes they get con-

certs, and sometimes we get concerts. . . . If we show up together, they do what they think is entertaining to their audience, and we do what we think is entertaining to our audience. We try to be respectful of each other, [although] it doesn't always happen."

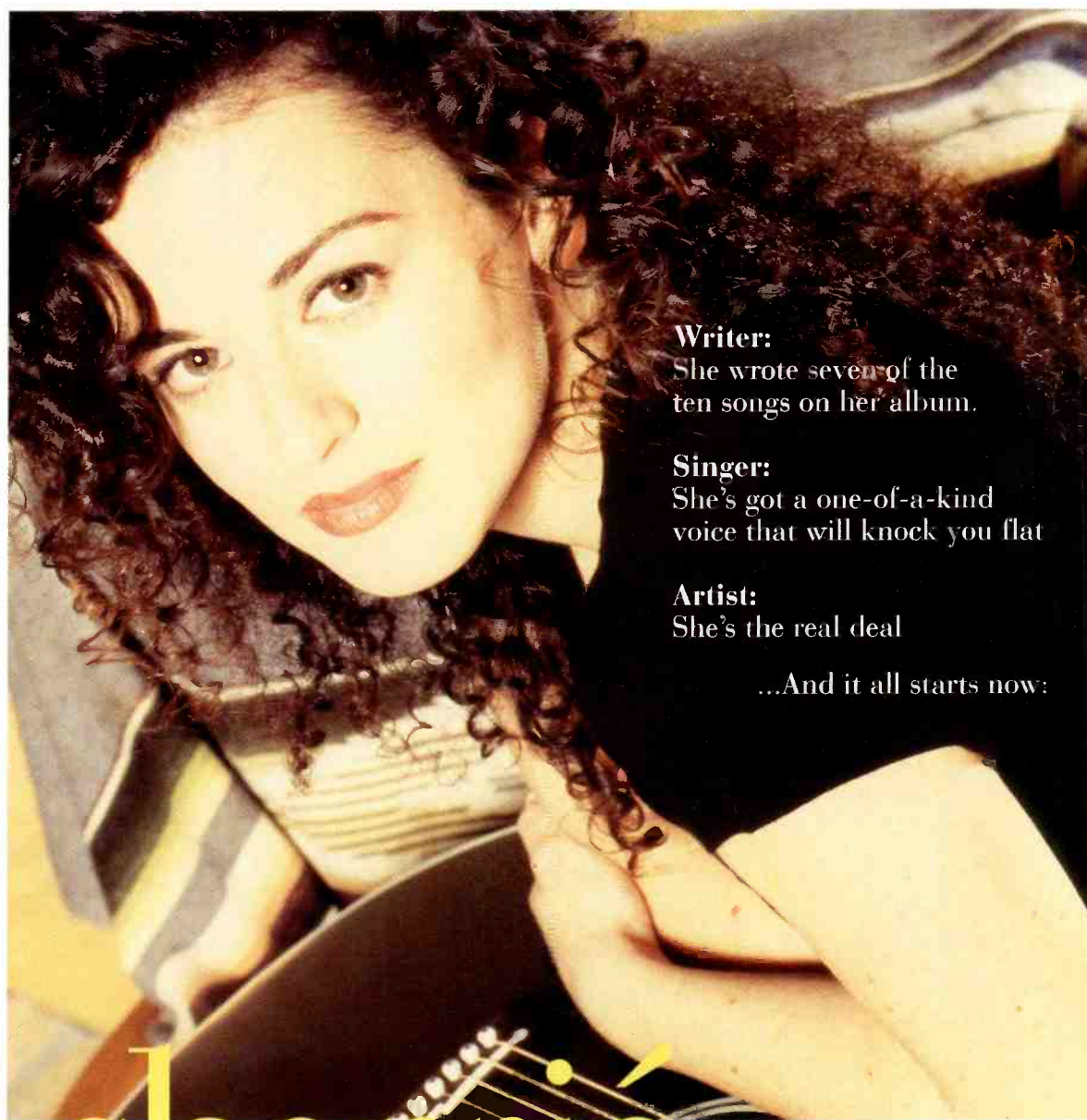
TURNING DOWN THE HEAT

Most managers agree that the problem has gotten better. "Certainly, there's still some problems out there, but it's died down," says Mike Robertson, who manages Pam Tillis, Lee Roy Parnell, Wade Hayes, and Kris Tyler. "Some of the duopoly situations have made it less of an issue. In a lot of markets now, it's one group owning all the stations. I also get a little bit of a sense that the immediate heat in a lot of these markets has died down a little bit. . . . At one point it seemed like everyone [wanted a country act]. It wouldn't matter if it was a chili cookoff or a radio appreciation show or a basketball game, they wanted a country artist for it. A lot of city festivals that had never done country suddenly wanted to do four nights of country."

Robertson says the touring environment has contributed to the issue dying down. "The traffic to a certain degree has slowed down," he says. "The touring climate out there has gotten so much tougher. If you are a headliner, and you are playing the big building in town, you have some options, but for a new or mid-level act you just have to take what's there. In the past we tried to work around markets that were problems. Now there are so many acts and not enough work for everyone. It's really hard this year to pass on a paying date."

"My impression is it's not as big of an [issue], although there are still a few markets where the rivalry is so strong we do separate meet and greets," says Woody Bowles, who manages Terri Clark. "My impression is that people are getting along a lot better. Maybe

Continued on page 6



Writer:

She wrote seven of the ten songs on her album.

Singer:

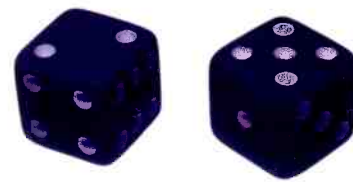
She's got a one-of-a-kind voice that will knock you flat

Artist:

She's the real deal

...And it all starts now:

sherrie laurie lucky in love



Official Airplay Date: May 12th

The lead single from her forthcoming debut album, *Words*.

Produced by Ed Seay and Will Rameaux
Management: Fitzgerald-Hartley, Nashville, TN

ARISTA
NASHVILLE © 1997 Arista Records, Inc., a unit of BMG Entertainment

*It's what
they're all saying
that continues
to make*
LITTLE THINGS
*such a **big** record...*

*"With determination and passion,
Tanya Tucker still reveals
the heart and pain of what
country music is all about."*

—OPRAH WINFREY

*"Tucker has now released
the best album of a long career,
Complicated."*

—WASHINGTON POST

*"A breathtaking CD...
Complicated is one of the
most stunning of her career."*

—NEWSWEEK

*"Tucker remains one of the
most distinctive stylists in
country music. Complicated
is one of the best albums
of her career."*

—BOB OERMANN

*"Not only can she sing,
Tanya Tucker is smart,
funny, sexy and beneath that
'Tucker Tough' exterior,
a remarkably sensitive person.*

*She was one of my favorite
'Dateline' interviews."*

—STONE PHILLIPS/
DATELINE NBC

*"Tucker has always had
one of country music's
most distinctive voices, and
she shines on this warm,
sweet ballad, Little Things."*

—BILLBOARD

TANYA TUCKER



©1997 Capitol Nashville
www.capitol-nashville.com

Management:
Tanya Tucker, Inc.

Letter: 'Courageous PDs' Shouldn't 'Add' Records

To the editor:

I read with great interest [the column] "Going For Adds' Or The Real Story" in the April 11 Country Airplay Monitor. What a great konk on the head for people. I agree with your comments. Our chart is largely driven by record company priorities. Many songs are simply puffed-up hits because our format is so hung up on the chart position of a record, rather than with the impact a song is having with [the] audience.

What is an add? I think they are outdated. Here at WDSY we may "add" a record only to pull it the next week because of someone else's impact record. Then it shows as a drop. We move songs all the time from medium to power—and back again—several times. We may even move a recurrent back to power. Is that an add? We might "spike" a song because of a news

story or television appearance and then never play it again. Did I "add" the record because it was topical and we played it for a week?

Adds are outdated. I like for the record companies to make me aware of their airplay dates, but I don't concern myself with how many "adds" a record had, only with how great the record is. If it's great, I'll be playing it regardless of the airplay date, or who is ahead of it, or where it is on the chart. But, by the same token, I won't come off a record that is great—and doing great—just because it's fallen off the charts. What will stations do with "One Night At A Time" when it starts to fall after hitting No. 1 after just seven or eight weeks? Is that record really over? Courageous PDs... will know the real story.

Justin Case
Program Director
WDSY (Y108) Pittsburgh



RADIOACTIVE BY PHYLLIS STARK

Capstar Is Back In Action In Jackson

SFX Broadcasting has entered into two separate transactions in which it will sell its Jackson and Biloxi, Miss., properties to Capstar Broadcasting Partners for \$60 million and swap its Daytona, Fla., property and two Wichita, Kan., stations for Capstar's three Greenville, S.C., stations, WESC-AM-FM and WFNQ. The Jackson stations were once owned by the original Capstar. SFX already owns four stations in Greenville, including WESC's country rival, WSSL. Also, Capstar has acquired Patterson Broadcasting's 36 stations for \$215 million and Knight Quality's eight stations for \$70 million.

Overshadowed by WBOB Minneapolis' flip from country to rock April 14 is the news that sister AM station KTCJ, which had been simulcasting triple-A KTCZ, flipped April 21 to classic country programmed locally by sister KEEY (K102) PD Gregg Swedberg. Pete Stevens, who left KEEY a year ago to join Net Radio, returns to host a live morning show at KTCJ, which is expected to change calls. In other fallout from the WBOB change, PD Bob Wood is staying on to program the new format, at least for now; he may end up transferred within Chancellor. WBOB overnigher Joe Boxer joins K102 for that shift, replacing the syndicated "After MidNite With Blair Garner." WBOB morning news host Disney Dayton joins K102 in that capacity. Also, KEEY/WBOB promotion director Charlie Dean exits to work for Universal Music and Video Distribution in Minneapolis and hasn't been replaced.

KRAK Sacramento, Calif., PD/midday host Ray Knight exits to join KASH Anchorage, Ala., as PD. He replaces Dennis Carter.

WHOK/WHQK Columbus, Ohio, PD Jim

Hayes exits to be OM at WWFG and sister rock station WOSC (the Coast) Ocean City, Md. Don Christi, who most recently programmed KKAT Salt Lake City, replaces Hayes.

MD/afternoon jock Buzz Jackson is upped to PD at WROO Jacksonville, Fla., and retains his air shift. Jackson succeeds Tom Kelly, who steps down from programming to concentrate on his morning show.

Joe Montione, who most recently was with SJS Entertainment in New York, is named PD/morning man at WWGR Fort Myers, Fla. He replaces Rick McGee, who exits.

Former WQHK (K105) Fort Wayne, Ind., OM Jeff Davis moves to WITL Lansing, Mich., in that capacity. He replaces Barry Mardit, who can be reached at 810-548-5361. Also, K105 morning man Scott Miller moves to WITL in the same capacity.

Thom King, last the GSM at oldies KOOL Phoenix, is the new GM at country KHAY Oxnard, Calif., and its duopoly partners, replacing Joe Schwartz.

WKKG Columbus, Ind., PD/p.m. driver John Paul adds programming duties at newly acquired top 40 sister WINN North Vernon, Ind. WKKG P/T Fritz Moser joins WINN for mornings.

Night jock Aaron Corkins adds MD duties at KKJG San Luis Obispo, Calif. PD Andy Morris had been handling those duties.

Billboard Bulletin reports that Paul Robinson, GM of London's Talk Radio, adds GM duties for that market's Country 103.5, replacing Paul Kerriage.

Syndicator SuperRadio ups GM Robin Barbaro to COO. Senior rep E.J. Gore becomes VP/director of sales.



COUNTRY CONFIDENTIAL BY WADE JESSEN

Hits By Unknown Acts Vs. Star Equity

Not unlike the Reese's Peanut Butter Cups ad campaigns of yesteryear, which never resolved whether chocolate was inserted into peanut butter, or peanut butter inserted into chocolate, the country format remains fiercely divided over whether we're a song-driven or artist-driven format. Like the candy bar, we're actually both, and the debate is part of a much bigger predicament, thanks to our explosive growth in the early '90s.

If country radio were totally driven by artists, Deana Carter's "Strawberry Wine" would not have made the huge impact that it did. However, it's disconcerting to me to see a song like George Strait's "King Of The Mountain" being given a relative thumbs down. In this time in which we're thirstily searching for format-image songs, the Strait song had the earmarks of a powerful image record by an established superstar. My sense is that it got the shaft simply because it was "too country" and not because there was any concrete, widespread evidence that it was, in fact, a stiff.

Prior to country's early '90s boom, the format was pretty much considered unworthy of scholarly notice. Once we started basking in the limelight of the Garth Brooks and SoundScan era, everyone suddenly found us interesting. A huge number of country celebs wrote their memoirs, and Ralph Emery made The New York Times best-sellers list. Even before the commercial explosion, the successful films

"Coal Miner's Daughter" and "Sweet Dreams" proved that country had no lack of colorful stories.

The mainstream media focused unprecedented attention on the country community primarily because the artists were interesting, not necessarily because the songs had changed all that much, proving that no individual song ever outshined a real superstar personality in this format. But all this new attention drove us into an identity crisis from which we have yet to recover.

Like the country girl who gets invited to a shindig on the cape-and-gown side of town, we scrambled to make ourselves appear unnaturally sophisticated, and we're sweating over which fork to pick up first at our glitzy new dinner table. It's one thing to embrace a super hit by an unknown artist—otherwise we'd be without important songs like "Strawberry Wine" and "Harper Valley P.T.A.," and we'd close ourselves off to the next long-term hit-makers. However, to devalue the importance of making ongoing investments in the careers of established stars simply because they occasionally turn in a song that may make us feel like the farm girl at the uptown soiree is a terrible mistake.

Fact is, we're at the uptown party whether we like it or not, so we should strive to strike a balance between the equity we've built in established stars and the value of undeniable hits by unknowns.

Something In Red



Lorrie Morgan models the "Peanuts Auto Parts" thong bikini following her guest appearance on SW Networks' "Country's Most Wanted." Pictured, from left, are host Carl P. Mayfield; Morgan; and Mayfield's sidekick, "P. Team Dean" Warfield.

Mason Tours BDS Facility



Atlantic artist Mila Mason and her lead guitarist/road manager Dino Zimmerman recently toured the Broadcast Data Systems facility in Kansas City. She is pictured with BDS VP of operations Paul Gorup, left, and BDS music ID supervisor John Lindsay.

ON THE ROW

Baumgartner Joins Decca; Travis Exits WB

Rick Baumgartner exits the national director of promotion post at Warner Bros. to join Decca Records as VP of national promotion May 1. He replaces John Lytle, who exits at the end of April to open a management company. Decca artist Gary Allan is his first client. Brad Howell replaces

Baumgartner at Warner Bros. He was the label's Atlanta-based Southeast regional promotion manager and will be relocating to Nashville.

Randy Travis has parted ways with his longtime label, Warner Bros. Travis is now shopping for a new deal; Asylum Records is reportedly among those he is considering. That label is working the current Travis single, "King Of The Road," which appears on the Asylum soundtrack to the film "Traveller," as well as on Travis' last WB album.

New York native Victoria Shaw will be the opening act at the Garth Brooks concert in New York's Central Park Aug. 7. She is Brooks' longtime friend and songwriting partner.

Toby Keith and his wife, Tricia, welcomed son Stelen Keith Covel into the world April 17 in Oklahoma. The couple also has two daughters.

WINTER '97 ARBITRONS

12-plus overall average quarter hour shares. (#) indicates Arbitron market rank. Copyright 1997, Arbitron Ratings Co. May not be quoted or reproduced without the prior written permission of Arbitron.

Call	Format	'96	'96	'96	'96	'97
NEW YORK—(1)						
WQHT	R&B	5.4	5.8	6.3	5.7	6.1
WLTW	AC	5.4	5.1	4.5	5.9	5.7
WKTU	top 40/rhythm	3.4	6.7	6.8	6.2	4.8
WCBS-FM	oldies	4.9	5.0	4.9	4.5	4.4
WSKQ	Spanish	4.4	3.6	4.2	4.3	4.4
WRKS	R&B adult	5.1	4.7	4.0	4.3	4.3
WINS	N/T	3.8	3.6	3.7	3.4	3.7
WXRK	modern	2.9	3.0	3.4	3.6	3.6
WCBS-AM	N/T	3.7	3.1	3.2	3.0	3.4
WOR	N/T	2.8	3.8	3.4	3.4	3.4
WPAT-FM	Spanish	3.3	2.8	3.2	2.9	3.4
WABC	N/T	3.6	3.4	3.3	2.9	3.1
WHITZ	top 40	3.1	2.8	2.7	2.5	3.1
WQCD	jazz	3.5	2.9	3.0	3.3	3.1
WQXR	classical	2.8	2.8	2.1	3.0	3.0
WBLS	R&B adult	2.8	2.9	3.2	3.0	2.9
WPLJ	AC	3.4	3.4	2.9	3.0	2.6
WFAN	sports	2.6	2.3	2.7	2.9	2.5
WAXQ	cls rock	1.8	1.7	2.0	2.3	2.1
WADO	Spanish	2.0	1.9	1.6	1.9	2.0
WNEW	cls rock	1.7	1.9	1.7	1.2	1.8
WQEW	adult std	2.2	1.9	2.1	1.9	1.8
WDBZ	AC	3.1	2.4	2.4	1.9	1.5
WALK-FM	AC	1.1	1.1	1.0	1.0	1.0
WLIB	N/T	1.2	1.0	1.1	1.0	1.0

Call	Format	'96	'96	'96	'96	'97
LOS ANGELES—(2)						
KLVE	Spanish	7.1	7.2	7.1	6.9	6.0
KKBT	R&B	4.2	5.0	5.0	4.9	5.5
KPWR	top 40/rhythm	5.0	5.4	5.0	4.6	4.6
KFI	N/T	4.3	4.0	4.0	4.3	4.3
KTWV	jazz	3.7	3.5	3.5	3.6	3.8
KSCA	Spanish	1.2	1.4	1.2	1.1	3.5
KROQ	modern	3.8	3.3	3.1	2.9	3.4
KRTH	oldies	3.6	3.8	3.8	3.7	3.3
KIIS-AM-FM	top 40	3.7	3.6	3.4	3.2	3.2
KLAX	Spanish	3.2	3.3	3.4	3.1	3.2
KOST	AC	3.9	3.2	3.2	3.9	3.2
KABC	N/T	3.0	3.1	3.3	3.2	3.0
KCBS-FM	cls rock	2.3	2.4	2.3	1.9	2.8
KFWB	N/T	2.1	2.2	1.9	1.9	2.8
KBIG	AC	3.1	3.0	2.9	2.5	2.7
KLAC	adult std	2.9	2.7	2.4	2.2	2.4
KNX	N/T	2.8	2.1	2.1	2.5	2.4
KLOS	album	2.6	2.7	2.5	2.0	2.3
KTQK	Spanish	1.4	1.8	2.8	2.1	2.1
KYSR	AC	2.9	2.9	2.6	2.3	2.1
KZLA	country	2.6	2.0	2.1	2.9	2.1
KBUE	Spanish	1.8	1.6	2.2	1.7	2.0
KLXS	N/T	2.0	2.1	1.7	2.5	1.9
KIBB	top 40/rhythm	1.8	1.6	1.6	1.2	1.8
KULH	R&B adult	1.1	1.1	1.3	1.2	1.7
KKGO	classical	1.8	1.6	1.5	2.1	1.6
KKHJ	Spanish	1.8	1.4	1.6	1.2	1.1
KWKW	Spanish	1.3	1.2	1.6	1.7	1.1
KXMG	Spanish	1.1	8	8	1.0	1.1
KLYI	modern	—	1.2	1.3	1.2	1.0
KRLA	R&B oldies	1.2	1.4	1.2	1.3	1.0

Call	Format	'96	'96	'96	'96	'97
CHICAGO—(3)						
WGN	N/T	6.2	6.1	6.8	6.6	6.2
WGCI-FM	R&B	6.1	5.8	6.3	6.5	5.5
WLIT	AC	4.4	4.8	4.0	4.2	5.1
WBMM-FM	top 40/rhythm	4.0	3.9	4.4	4.7	4.8
WVAZ	R&B adult	4.6	4.2	4.3	3.9	4.5
WBMM-AM	N/T	3.7	3.6	3.6	3.5	4.1
WLS	N/T	3.0	3.7	4.1	3.3	4.0
WUSN	country	3.6	3.6	3.0	3.7	3.7
WNUA	jazz	3.6	3.4	3.3	3.5	3.5
WJMK	oldies	3.0	4.1	4.2	3.4	3.3
WRXC	album	3.2	3.4	3.4	3.2	3.3
WSCR	sports	1.6	1.6	2.1	2.5	2.9
WVRT	triple-A	3.0	2.8	2.8	2.8	2.9
WKQX	modern	3.2	3.4	3.5	3.1	2.8
WJOL	Spanish	3.4	3.1	2.8	3.2	2.7
WAIT	adult std	3.3	2.1	2.0	2.6	2.6
WCKG	cls rock	2.3	2.1	2.8	2.6	2.6
WMAQ	N/T	2.8	2.9	2.1	2.7	2.2
WTMX	AC	2.5	2.7	3.0	2.6	2.2
WLUP	AC	2.5	2.6	2.2	2.1	2.1
WEJM-FM	R&B	1.8	1.9	2.3	2.5	2.0
WPNT	AC	2.1	2.2	2.6	2.2	2.0
WYSY	'70's oldies	1.7	1.7	1.8	1.3	1.9
WNIB/WNIZ	classical	1.5	1.8	1.4	1.6	1.6
WFMT	classical	1.4	1.1	1.2	1.6	1.4
WGCI-AM	R&B oldies	1.5	1.4	1.3	1.1	1.2
WKKK	country	1.4	1.3	1.3	1.4	1.2
WMVP	N/T	.9	.8	.3	1.0	1.1

Call	Format	'96	'96	'96	'96	'97
SAN FRANCISCO—(4)						
KGO	N/T	6.8	6.8	6.6	6.9	7.0
KCBS	N/T	4.8	4.8	4.8	4.6	4.5
KYLD	top 40/rhythm	3.7	3.8	4.2	4.3	4.8
KMEL	top 40/rhythm	4.1	4.2	4.3	4.3	4.1
KFRC-AM-FM	oldies	3.5	3.9	4.2	3.5	3.8
KOIT-AM-FM	AC	4.0	3.4	3.8	4.0	3.8
KIST-FM	jazz	3.5	3.9	3.5	3.3	3.7
KIOI	AC	3.3	3.7	3.2	3.3	3.3
KBXL	R&B adult	3.0	2.8	2.7	3.3	3.2
KNBR	sports	3.6	4.5	3.6	3.5	3.1
KFOG/KFFG	triple-A	2.9	3.7	3.2	3.3	3.0
KLLC	AC	1.6	1.3	2.2	2.1	2.7
KDFC-FM	classical	2.8	2.7	2.7	2.8	2.6
KBGG	cls rock	2.0	2.1	2.1	2.2	2.4
KSFO	N/T	1.8	2.2	2.8	2.4	2.2
KABL	adult std	2.3	1.9	2.0	1.8	2.1
KOME	modern	2.1	1.7	1.9	2.0	2.0
KSJO	album	2.0	1.6	2.2	2.4	2.0
KSAN	country	1.9	1.7	2.4	1.6	1.8
KITS	modern	2.8	2.5	2.4	2.4	1.8
KNSL/KZOL	Spanish	2.3	2.1	1.5	2.3	1.5
KBAY	AC	1.7	1.9	1.7	1.6	1.4
KEZR	AC	1.5	1.4	1.4	1.1	1.3
KLOK	Spanish	1.6	2.0	1.5	1.1	1.3
KYCY	country	1.7	1.4	1.4	1.2	1.2

Call	Format	'96	'96	'96	'96	'97
KPLZ	AC	4.0	4.7	3.6	3.6	3.7
KJR-FM	'70's oldies	4.7	3.6	3.5	3.4	3.6
KNWJ	jazz	2.5	2.3	2.9	2.4	3.0
KRPM/KBKS	AC	2.2	1.8	3.0	2.6	2.8
KRWV	AC	2.2	2.7	2.0	2.9	2.8
KOMO	N/T	4.3	3.9	3.1	3.6	2.7
KJR-AM	sports	2.4	2.9	1.8	2.0	2.5
KIRO-FM	N/T	2.1	2.1	2.1	2.5	2.3
KCMS	religious	1.9	1.4	1.6	1.8	1.5
KNWX	N/T	.7	.9	1.0	1.0	1.3

Call	Format	'96	'96	'96	'96	'97
SAN DIEGO—(14)						
KYYX	AC	6.4	6.4	6.8	7.0	6.4
XHTZ	top 40/rhythm	6.8	6.6	6.2	5.6	5.2
KSDO	N/T	4.8	4.1	4.6	4.2	4.9
KIFM	jazz	3.3	3.2	2.7	4.4	4.3
KSON-AM-FM	country	7.3	7.3	6.0	6.2	4.3
KFMB-AM	N/T	3.6	5.6	6.1	4.6	4.2
KFMB-FM	AC	4.6	4.4	4.1	4.0	4.1
KBZT	oldies	3.6	4.3	4.4	4.1	3.8
KHTS	top 40/rhythm	.5	.7	1.5	3.3	3.6
KIOZ	album	2.7	3.6	3.2	2.7	3.5
KKLQ	top 40	4.5	4.1	3.3	3.6	3.5
XETRA-FM	modern	4.8	3.6	4.2	2.9	3.5
KPOP	adult std	3.2	2.8	2.2	2.5	3.2
KGB	cls rock	2.8	2.8	2.8	2.7	2.8
KFI	N/T	3.0	3.0	3.0	2.3	2.5
KXGL	cls rock	3.6	3.4	3.7	4.2	2.5
KPLN	cls rock	1.3	1.7	2.3	2.8	2.4
XETRA-AM	sports	2.1	1.9	2.2	2.4	2.2
KFSO	classical	.9	.8	.8	1.0	2.0
XHRM	modern	2.4	2.4	1.8	1.6	2.0
KRBH	AC	1.5	1.9	1.7	2.3	1.7
KUPR	country	1.1	1.1	1.1	.8	1.6
KXHY	Spanish	1.9	1.5	2.0	1.1	1.5
KSPA	adult std.	1.2	1.1	1.0	1.3	1.4
XTIM	Spanish	.9	1.0	1.3	1.1	1.3
XLTN	Spanish	.7	.8	1.3	1.3	1.2
KOGO	N/T	2.0	1.9	1.6	1.9	1.1
KXST	triple-A	1.2	1.1	1.0	1.1	1.1
KIX	N/T	1.1	1.0	.9	1.1	1.0

Call	Format	'96	'96	'96	'96	'97
NASSAU-SUFFOLK, N.Y.—(15)						
WALK-FM	AC	7.3	6.7	6.2	6.1	6.1
WXRK	modern	3.6	3.5	3.9	4.8	5.2
WKTU	top 40/rhythm	4.0	7.4	7.0	6.2	4.9
WCBS-AM	N/T	4.7	4.3	4.0	3.7	4.8
WHTZ	top 40	4.4	3.4	3.6	3.4	4.2
WOR	N/T	3.0	4.3	4.4	3.6	4.0
WBLI	top 40	3.4	3.3	3.3	3.3	3.9
WCBS-FM	oldies	4.0	4.0	4.6	3.6	3.9
WHLI	adult std	3.6	2.7	2.7	3.7	3.8
WLTW	AC	3.2	3.0	2.4	4.0	3.7
WABC	N/T	3.7	3.6	3.7	2.7	3.4
WQHT	R&B	3.0	3.1	2.7	3.4	3.2
WFAN	sports	3.9	3.6	3.8	4.1	3.1
WBZO	oldies	2.3	3.0	2.6	3.2	2.9
WBAW/WHFM	album	3.2	3.3	3.2	3.0	2.8
WPLJ	AC	3.6	4.1	2.8	3.5	2.8
WQCD	jazz					

This is the Band your Mama Warned you About



"YOUR MAMA WON'T LET ME"

The new single from **Little Texas**
Going for airplay May 5



Duopoly, Fewer Tours Have Reduced Friction Over Concert 'Presents'

Continued from page 1

the issue has been talked about enough that people are realizing when they do that it hurts the artist. . . A lot of artists did kind of have to pull in and not get into those situations. What it meant for them was, in markets where these situations were occurring, you either had to do everything for everybody or nothing for anybody." Bowles believes the primary reason the situation has improved is that "more than anything, stations are becoming aware of how unfair it is to put that pressure on the artist."

"It used to be bad, but it's gotten to a point where so many stations have been bought up by one group owner that it immediately alleviates the war factor, because everybody's told to toe the line," says Mavericks manager Frank Callari of FCC Management. "I think they've calmed down a little bit."

STILL AS COMPETITIVE AS EVER?

Not everyone agrees that the station-rivalry issue has died down. TKO Management's T.K. Kimbrell, whose clients include Sawyer Brown and Toby Keith, is among them. "There's probably less shows right now. You may hear a little less about it because [of that, but] it's still as competitive as ever," he says. "There are some people out there who play heavy-duty hardball."

In Harrisburg, Pa., the rivalry issue has resurfaced recently thanks to the arrival of new country station WRBT. Country market leader WRKZ PD Mitch Mahan says, "There are still assholes out there. I wouldn't say they are as bad as ever, but there are some programmers that will do nasty things and try to undercut whatever we've established."

"It has died down in a lot of markets because one company owns both the competitors, so they have built-in neutrality," says WESC Greenville, S.C., OM Ron Brooks. "Here, with vigorously competing [stations], it's a battle to see who can throw the most extras at it to grab the presents. We've had some smaller shows where lines weren't clearly drawn and both stations showed up; we had a case of speaker and van wars." WESC was purchased last week by SFX Broadcasting, parent company of rival WSSL.

LINGERING PROBLEMS

There still seems to be some lingering problems created by radio from the days when the rivalry issue was at its peak. Programmers say artists are still not as accessible as they were before the issue erupted, and managers have learned to be more cautious.

"A lot of the managers have become so sensitive to all of it that they eliminate a lot of possible problems before they have an opportunity to exist," says WTDR's Ford. "It tends to make things more generic. They've learned to steer away from those areas, and it makes their artists less accessible. In some cases they won't do an inter-

view over the phone, even if it's your show, because they don't want to offend the other station. I think that situation will correct itself in time. Case by case they'll figure it out. Like everything else, it kind of ebbs and flows."

"They're still gun-shy in the respect that they all have people carefully screening liner requests and looking for statements or images too strongly targeted toward one station or another," says WESC's Brooks. "The labels and artist management are doing a real good job of filtering that out before it even gets to the artist."

"Artist managers are all wary and gun-shy," says WRKZ's Mahan, but they are also no longer afraid to say no to radio requests. "There's no waffling and hedging. They are just saying no. . . In the radio industry, we are all egomaniacs, and we all feel it's our way or the highway," adds Mahan. "The problem is, that closed a lot of doors."

BABYSITTING THE CONTRACT

Managers admit they are now a lot more savvy about how to handle potentially explosive situations. "It's a big part of the job looking at each market and babysitting the contract and the agreement and the presents and the liners and the whole thing to make sure we don't get in hot water," says Robertson. "The last thing I want to have to do as a manager is to be sitting at No. 3 with what should be a No. 1 record and telling my client it didn't happen because we didn't do something right in a presents situation."

"We've all learned lessons, some the hard way, because it's so competitive out there among radio and among acts and tours," says Kimbrell. "You still should do everything you can for radio, [but] it's always a good idea to look at the liners and make sure there is not a liner in there that's going to offend another radio station."

Bowles says what managers have learned to do is "work more closely with promotions staffs at the record labels . . . because they know where trouble spots could occur." Clark is currently on tour with three other artists, and because the four acts are on different labels with different managers, Bowles says that prior to the tour, all involved parties met to "lay out parameters for everyone," in part to ensure that no incidents would occur with radio.

In what may prove to be a byproduct of the new environment in which both country stations in a market are co-owned, a situation flared up in Oklahoma City last week, when a concert promoter rejected the presents package offered by sister stations KXXY and KTST for Alan Jackson's April 26 show in Norman, Okla., and instead gave the "welcome" package to the Oklahoma Ford Dealers Assn. The stations responded by pulling Jackson's product off the air until the issue could be resolved. None of the parties involved in that dispute would comment on the record.

ON THE AIR

WBOB-FM Minneapolis has been removed from the country radio panel due to a format change. The panel now totals 160 reporters.

EDITOR-IN-CHIEF: HESTON HOSTEN
 EDITOR: SEAN ROSS
 MANAGING EDITOR: PHYLLIS STARK
 DIRECTOR OF CHARTS: WADE JESSEN
 CHARTS ASSISTANT: MARY DECROCE
 REPORTER: DANA HALL
 CHART PRODUCTION MANAGER: MICHAEL CUSSON
 ASST. CHART PRODUCTION MANAGER: ALEX VITOULIS
 EDITORIAL PRODUCTION MANAGER: BARRY BISHIN
 ASSOC. EDITORIAL PRODUCTION MANAGER: MARCIA REPINSKI
 EDITORIAL PRODUCTION: SUSAN CHICOLA, MARC GIAQUINTO
 SARAH JOHNSON, MARIA MANLICLIC
 COPY EDITOR: CARL ROSEN
 ADVERTISING PRODUCTION MANAGER: LEN DURHAM
 ADVERTISING ART DIRECTOR: RAY CARLSON

GENERAL MANAGER: JON GUYNN
 ADVERTISING SALES: LEE ANN PHOTOGLO
 CLASSIFIED ADVERTISING: LAURA RIVCHUN
 SALES ASSISTANT: HOLLIE ADAMS

EDITORIAL ADVISER: TIMOTHY WHITE
 PRODUCTION DIRECTOR: MARIE GOMBERT
 DIRECTOR OF MARKETING: ELISSA TOMASETTI
 CIRCULATION MANAGER: JEANNE JAMIN



PRESIDENT: HOWARD LANDER
 SENIOR VP/GENERAL COUNSEL: GEORGINA CHALLIS
 VICE PRESIDENTS: KAREN OERTLEY, ADAM WHITE
 DIRECTOR OF STRATEGIC DEVELOPMENT: KEN SCHLAGER
 BUSINESS MANAGER: JOELLEN SOMMER

©1997 BPI Communications, 49 Music Square W., Nashville, TN 37203
 615-321-4290 fax: 615-320-0454
 For subscriptions call: 800-722-2346

MONITOR PROFILE

Country Mornings Will Never Be The Same As Steve And D.C. Switch Formats

When Steve and D.C. switched from mornings at top 40 WKBQ St. Louis to the same shift at country sister WKKX Jan. 28, it was with mixed emotions. They were pleased to be moving from WKBQ's 39,000 watts to WKKX's full-market signal, but the longtime rock jocks had never worked country before. Steve, an Alabama native, grew up on country and was "thrilled" with the format, but says the rest of the eight-person morning show "had to come around."

D.C. says the switch was made because new parent Emmis Broadcasting's market research indicated that 20% of Steve and D.C.'s audience listened to country outside of mornings. Their show has been syndicated by SupeRadio for about six months, and they have five other affiliates, all top 40 or rock stations. Recently, however, they decided to sign up only country outlets as new affiliates.

Since going country, D.C. says, "the biggest thing that's changed is we're not afraid of the

trons, WKKX went from seventh to second place 18-34 in mornings, and the jocks are just two-tenths of a share away from No. 1 in that demo. In the 18-49 demo, WKKX's morning share went from tenth to second place, and the station went from No. 13 to No. 5 25-54.

The jocks say the basis of their appeal is that their show is a "real slice of real life." The eight-person team is composed of strong, varied personalities. D.C., for instance, is married and a devout Christian who has been known to pray on-air with callers facing surgery. Steve is single and has talked on-air about his preference for large women. The show's sports host is a Mensa member reminiscent of "Cheers" Cliff Claven.

"I guess the show's a little schizophrenic, but it's real," says Steve. "There are rough spots because there are rough spots in life. It's not a real slick show. . . We're like a family on the air. It sounds like a bunch of brothers and sisters that happen to have a radio show. We fight and give each other hell and praise each other. It stands out like a sore thumb when you listen to other shows that sound really fake and contrived."

That "real" feeling, they say, is exactly why they connect with their listeners. "The audience is like extended family," says Steve. "They send us postcards when they go on vacations." In what has inadvertently become a regular bit, Steve says, "not a week goes by that we don't get a call from a woman in the labor room having a baby."

Recently, a woman called the show after learning from doctors that her baby had a 5% chance of survival. While Steve says that in a similar situation, it would never occur to him to call a radio show, he believes calls like that are "flattering. . . It makes us feel really good, but it puts our job in perspective." Adds D.C., "There are a lot of people out there who are really lonely, but they do feel like they have a friend, and it's us."

Both jocks are flattered and more than a little surprised by this kind of following. "We're not nearly smart enough to sit down and say, 'What can we do to develop this loyalty?' We just got on the radio and were lucky enough to have [management] that let us be ourselves," says Steve.

Most surprising about the team's success is the fact that four years ago they were run out of St. Louis for using the word "nigger" on-air. That not only got them fired from WKBQ the first time they worked there, but the fallout followed them to their next job at KAZY Denver and got them fired there, too. They returned to St. Louis humbled and set about successfully making amends with the NAACP, and were then rehired at WKBQ. Today, Steve says, "the issue is dead." But during a long period of unemployment while the situation was hot, he says, "we thought we were going to be selling shoes for a living. At one point someone recommended we change our names and split up and take a year off. It looked really grim."

With a renewed appreciation for radio, they returned to the air and quickly regained the ratings success they had enjoyed prior to the incident. Now, they are tackling syndication with the same energy. Steve says, "We want to have as many affiliates as Bob Kingsley."

The team is also coming around on the issue of country music. The sports host, an avowed alternative fan, now sings along to John Michael Montgomery's "Sold." D.C. is finding that the new format is a better fit with his lifestyle. "Being a Christian on a rock station, there were a lot of times that stood out," he says. "The other day I was invited to do something on the Internet with Collin Raye and two other [country] artists talking about sharing our faith, and I thought I probably wouldn't have been invited to go [online] with Aerosmith and talk about my faith."

PHYLLIS STARK



WKKX St. Louis' Steve and D.C.

show to talk about Garth Brooks." But both jocks say they've always taken a mass-appeal approach to the show, modeled after "The Tonight Show" and "Late Show With David Letterman," where Rod Stewart may be a guest one night and Shania Twain the next. As for content, Steve says they recently talked about Vince Gill's divorce on-air, "but if something happens with Michael Jackson [the next day], we'll talk about that, too."

The jocks went to Country Radio Seminar this year, where they came to the decision that with so many rock and top 40 shows being pitched, there was a real void in mornings at country. "We thought it was smart business," says Steve. "When we decided to focus and not be all things to all people, it was like a load was lifted." Before, he says, "we were more preoccupied with the fact that we were on some rock stations and how the people who listen to Metallica [would] react when you come on and talk about Garth Brooks."

But the more dramatic change in the show was the addition of three songs an hour to what had been a talk show for years. "I thought we'd lose some time we'd devoted to content," says Steve, who admits the jocks "screamed, fought, and yelled" about the change. Now, he says, "if we had it to do over again, I [wouldn't] even argue the point." With the addition of music, "the show is more focused. It gives us a chance to regroup."

While much of their audience at WKBQ was already listening to country, the jocks say that since taking the show to WKKX, they've broadened the format's appeal in St. Louis, citing as proof many calls, faxes, and E-mails from listeners who say they never listened to country before the jocks' move, but now stick with it all day. They had the benefit of being able to talk about their move on WKBQ for six weeks prior to the actual change, but Steve says it was still "nerve-racking" for them wondering if their audience would move with them. Early indications are that many listeners have. In the winter Arbi-

Things To Do / Notes

PRIORITY
A
BC
CATEGORY
TO DO

Spring, 1997

- 1 Get off of that fast lane
- 2 Slow down to a dirt road pace
- 3 Get out of them corporate clothes
- 4 Grab a fishin' pole
- 5 Let down hair
- 6 Walk barefoot in the evening air



→ Move Out To The Country!!!

DEERY
DODD

"Movin' Out To The Country"

Airplay May 5

RD

SERVICES

VOICEOVERS

IMAGE LINERS • PROMOS • IDS

Versatile Voiceover Actor

All Formats • National Credits • ISDN
Delivery via CDQ Prima 220 and DGS

For quality service call
JTB Productions for demo
(818) 907-5621

TOBY BROWNING VOICEOVER

CARTER DAVIS

VOICE AND
PRODUCTION
FOR RADIO AND TV

Phone:
(901) 681-0650

HELP WANTED

**KLASSY
100 FM**

AFTERNOON DRIVE IN LAS VEGAS

KMZQ/KLASSY 100-Las Vegas, looking for afternoon drive personality to join our winning team. Send T&R to: Jeff Cochran, PD, 6655 West Sahara, Suite C-216, Las Vegas, NV 89102. No Calls Please. EOE/MF. KLASSY 100 is an American Radio Systems station so be ready to work hard, have fun and win!

EOE



DYNAMIC MORNING PERSONALITY

WSPT-FM in the Central Wisconsin market is looking for someone who wants to work in a major market someday, but is willing to work hard for us for 2-3 years, take us to number 1, all while polishing your act. You need to be able to prep hard, and we'll give you the tools to win. We're a Hot AC in a cold climate, so bring a parka! Send T&R to Keith Collins, 500 Division Street, Stevens Point, WI 54481 or call 715-341-9800. EOE

Top 40 Airplay Monitor Country Airplay Monitor R&B Airplay Monitor Rock Airplay Monitor

The only radio publications based exclusively on electronically monitored airplay from Broadcast Data Systems.

- Airplay Charts • Power Playlists • Biggest Gainers • New Releases • Song Activity Reports • Impact Pages • Monitored Video Playlists • Plus all the latest radio and music industry news every week.

Call 1-800-722-2346 to subscribe.

Part of the Billboard Music Group.

HELP WANTED

PROMOTIONS DIRECTOR

Major market west coast station seeks experienced Promotions Director to run a high profile Promotion Dept. 3+ years Promo Director exp. required, also must be highly creative, able to put together marketing plans and operational budgets. Send resume w/references by 4/25/97 to:

HR-PR0297
5745 Kearny Villa Rd. Ste. M
San Diego, CA 92123.
EOE

Here's what voiceover talent Sean Caldwell said about advertising in Airplay Monitor's Classified Section:

"Since we started advertising with Monitor, we've increased the amount of calls and leads generated each month. Monitor has been an effective tool to reach the decision maker as well as establish our name in the industry as a leader in voice-over services and production effects."

BE SURE YOUR CLASSIFIED AD APPEARS IN THESE BLOCKBUSTER ISSUES OF AIRPLAY MONITOR:

EVENT/ISSUE	ISSUE DATE	CLASSIFIED AD DEADLINE
■ Nomination Ballots Inserted for 1997 Billboard/Airplay Monitor Radio Awards	May 2	April 23
■ Mid West Conclave (July 16 - 20)	July 18	July 9
■ Final Ballots Inserted for 1997 Billboard/Airplay Monitor Radio Awards		
■ NAB Show (Sept. 17 - 20)	Sept. 19	Sept. 10
■ Billboard/Airplay Monitor Radio Seminar and Awards (Oct. 16 - 18)	Oct. 17	Oct. 8
■ Combined Year End Special Issue	Dec. 26	Dec. 15

For More Information Contact:

Laura Rivchun

Phone: (212) 536-5058

Fax: (212) 536-8864

AIRPLAY
Monitor

TOP 40 • COUNTRY • R&B • ROCK

CLASSIFIED ADVERTISING RATES

HELP WANTED:

1 WEEK	\$25.00 PER INCH
2 WEEKS	\$20.00 PER INCH

BOX NUMBER: Add \$5.00

SERVICES:

4 WEEKS	\$75.00 PER INCH
13 WEEKS	\$60.00 PER INCH
26 WEEKS	\$55.00 PER INCH
52 WEEKS	\$50.00 PER INCH

DEADLINE (ALL CLASSIFIED):
Each Wednesday 3 pm EST, 9 day leadtime.

• Classified ads are non-commissionable •

SUBMIT ALL AD COPY TO:

LAURA RIVCHUN
AIRPLAY MONITOR CLASSIFIED
1515 BROADWAY
NEW YORK, NY 10036

Phone: 212 536-5058

Fax: 212 536-8864



Paxson Communications
Corporation

PROGRAM DIRECTORS/ AIR TALENT

Paxson Communications, Florida's largest radio company, is seeking qualified program director candidates for current openings and future expansion. Be on the fun side of consolidation. If you're strategic, can create and implement a plan, and don't mind 80 degrees and sunshine all winter, send your resume, tape and list of successes to:

Marilyn Bieber
Corporate Programming Dept.
Paxson Communications
601 Clearwater Park Rd
West Palm Beach, FL 33401
EOE

AIRPLAY Monitor® GREATEST GAINERS



Strongest Increase In Airplay This Week

INCREASE
IN PLAYS

ALAN JACKSON • <i>Who's Cheatin' Who</i> (ARISTA)	+991
WKTF +21, WGRL +20, WYNN +19, KRMD +16, WXBQ +15, WCHY +15, KAJA +15, KFRG +14, WCOS +14, KUZZ +14	
REBA MCENTIRE • <i>I'd Rather Ride Around With You</i> (MCA)	+531
WBCT +24, KWJL +18, KASE +13, WYAY +17, WXBQ +14, WKIX +12, WSTH +12, KKCS +12, WBBS +11, WGAR +11	
TY HERNDON • <i>Loved Too Much</i> (EPIC)	+529
KIKK +25, WWGR +22, KTST +19, KCCY +13, KYCW +13, WMSI +12, WCHY +12, WESC +12, KJJY +11, WYNN +11	
TRAVIS TRITT • <i>She's Going Home With Me</i> (WARNER BROS.)	+433
WKXC +22, KBEQ +15, KXKT +14, WTQR +14, KWJL +13, KWNR +12, KRTY +11, WCHY +10, KRMD +10, KZSN +10	
RICK TREVINO • <i>I Only Get This Way With You</i> (COLUMBIA)	+416
KPLX +20, KWNR +14, KHEY +13, KNIX +14, WQMX +13, WQDR +13, WGH +13, WJCL +13, KIKK +13, WYCD +12	
ALABAMA • <i>Sad Lookin' Moon</i> (RCA)	+407
WKXK +17, WPOC +16, KXKT +15, WCOS +15, WRBQ +15, WYNN +13, WZZK +13, WCOL +12, KRST +12, WGH +12	
MARK CHESNUTT • <i>Let It Rain</i> (DECCA)	+367
WGRL +21, KMLE +17, KCCY +15, WGGY +14, WKSF +13, KIIM +13, WYNN +13, WMSI +12, WNCY +11, KRST +11	
PATTY LOVELESS • <i>The Trouble With The Truth</i> (EPIC)	+352
KASE +25, KPLX +20, KDDK +15, KBEQ +14, WYCD +13, WKCN +13, WQBE +13, WFLS +13, WPOC +13, WQXK +12	
TANYA TUCKER • <i>Little Things</i> (CAPITOL NASHVILLE)	+323
KIKK +19, WGGY +16, WCHY +15, WKLB +12, KSKS +12, WFRE +12, WWGR +11, WCTK +11, KYCW +10, WKHX +10	
LORRIE MORGAN • <i>Good As I Was To You</i> (BNA)	+320
KIKK +28, WWKA +20, WQYK +17, WKCN +16, WIOV +15, KWJL +14, WBEE +12, KTOM +11, KSKS +11, KUZZ +11	
PAM TILLIS • <i>All The Good Ones Are Gone</i> (ARISTA)	+318
KTTS +19, KYCY +15, WLWI +12, KKCS +12, KKAT +12, WKIX +11, KOUL +11, WUSY +11, WWGR +10, WHYL +10	
TRACE ADKINS • <i>I Left Something Turned On At Home</i> (CAPITOL NASHVILLE)	+315
KMLE +19, WPOC +17, WDRM +15, WYGY +14, WXBQ +14, WESC +14, KWEN +14, WQBE +12, WYAY +12, WSTH +10	
DEANA CARTER • <i>Count Me In</i> (CAPITOL NASHVILLE)	+314
KRTY +18, WKTF +16, WYNN +12, KTEX +10, WGNM +10, KTOM +9, WIVK +9, KVOO +9, KZLA +9, WMJC +8	
MINDY MCCREADY • <i>A Girl's Gotta Do (What A Girl's Gotta Do)</i> (BNA)	+296
KRYL +14, KRST +14, WPOC +14, WCLB +13, WKXC +12, WDSY +12, WCOL +11, KHEY +11, KKQB +11, WMJC +10	
LEANN RIMES • <i>The Light In Your Eyes</i> (CURB)	+276
KTEX +16, KFKF +14, KXXY +13, WBUB +12, WGNM +11, KIKK +11, WKCN +10, KRYL +10, WDAF +10, WYRK +10	

MOST NEW AIRPLAY THIS WEEK

	No. Of Stations		No. Of Stations
REBA MCENTIRE <i>I'd Rather Ride Around With You</i> (MCA)	29	MARK CHESNUTT <i>Let It Rain</i> (Decca)	21
TRAVIS TRITT <i>She's Going Home With Me</i> (Warner Bros.)	29	RICK TREVINO <i>I Only Get This Way With You</i> (Columbia)	21
PATTY LOVELESS <i>The Trouble With The Truth</i> (Epic)	26	TRACE ADKINS <i>I Left Something Turned On At Home</i> (Capitol Nashville)	20
PAM TILLIS <i>All The Good Ones Are Gone</i> (Arista)	26	LEE ROY PARNELL <i>Lucky Me, Lucky You</i> (Career)	18
TY HERNDON <i>Loved Too Much</i> (Epic)	24	CLAY WALKER <i>One, Two, I Love You</i> (Giant)	18
JOHN BERRY <i>I Will, If You Will</i> (Capitol Nashville)	21		

VIDEO PLAYLISTS



	TW	LW		TW	LW		
1	Terri Clark, Emotional Girl	5	4	14	MY MARIA BROOKS & DUNN (ARISTA)		
2	Collin Raye, On The Verge	4	4	15	1113	1132	THE FEAR OF BEING ALONE REBA MCENTIRE (MCA)
3	Tracy Byrd, Don't Take Her She's All I Got	4	5	16	1084	1168	BIG LOVE TRACY BYRD (MCA)
4	Kevin Sharp, She's Sure Taking It Well	4	3	17	1078	1113	DADDY'S MONEY RICOCHET (COLUMBIA)
5	Alan Jackson, Who's Cheatin' Who	4	0	18	1051	1109	EVERY LIGHT IN THE HOUSE TRACE ADKINS (CAPITOL NASHVILLE)
6	Martina McBride, Cry On The Shoulder Of The Road	3	4	19	1038	1037	STRAWBERRY WINE DEANA CARTER (CAPITOL NASHVILLE)
7	John Michael Montgomery, I Miss You A Little	3	4	20	980	1043	FRIENDS JOHN MICHAEL MONTGOMERY (ATLANTIC)
8	Bill Engvall With Special Guest Travis Tritt, Here's Your Sign (Get The Picture)	3	3	21	957	951	I LIKE IT, I LOVE IT TIM MCGRAW (CURB)
9	Lorrie Morgan, Good As I Was To You	3	3	22	953	957	HER MAN GARY ALLAN (DECCA)
10	Kathy Mattea, 455 Rocket	3	3	23	942	952	LIKE THE RAIN CLINT BLACK (RCA)
11	Sawyer Brown, Six Days On The Road	3	3	24	930	915	CHECK YES OR NO GEORGE STRAIT (MCA)
12	Tracy Lawrence, Better Man, Better Off	3	4	25	910	889	BLUE CLEAR SKY GEORGE STRAIT (MCA)
13	John & Audrey Wiggins, Somewhere In Love	3	3				
14	James Bonamy, The Swing	3	3				
15	George Jones, I Don't Need Your Rockin' Chair	3	0				
16	The Bellamy Brothers, She's Awesome	3	2				
17	LeAnn Rimes, The Light In Your Eyes	2	3				
18	Mary Chapin Carpenter, The Better To Dream Of You	2	0				
19	Deana Carter, Count Me In	2	0				
20	Mark Chesnutt, Let It Rain	2	1				
21	Mila Mason, Dark Horse	2	3				
22	Big House, Cold Outside	2	1				
23	Lee Ann Womack, Never Again, Again	2	4				
24	Vince Gill, A Little More Love	2	4				
25	Little Texas, Bad For Us	2	4				
26	Mark Wills, Places I've Never Been	2	1				
27	Cledus "T." Judd, Cledus Went Down To Florida	2	2				
28	Tanya Tucker, Little Things	2	1				
29	Sons Of The Desert, Whatever Comes First	2	2				
30	Patty Loveless, The Trouble With The Truth	2	4				

COUNTRY RECURRENT AIRPLAY

RANK	TW	LW	TITLE	ARTIST (LABEL)	RANK	TW	LW	TITLE	ARTIST (LABEL)
1	2369	2627	SHE'S TAKEN A SHINE	JOHN BERRY (CAPITOL NASHVILLE)	14	1154	1155	MY MARIA	BROOKS & DUNN (ARISTA)
2	2349	2729	HOLDIN'	DIAMOND RIO (ARISTA)	15	1113	1132	THE FEAR OF BEING ALONE	REBA MCENTIRE (MCA)
3	1700	1811	WE DANCED ANYWAY	DEANA CARTER (CAPITOL NASHVILLE)	16	1084	1168	BIG LOVE	TRACY BYRD (MCA)
4	1604	1680	IT'S A LITTLE TOO LATE	MARK CHESNUTT (DECCA)	17	1078	1113	DADDY'S MONEY	RICOCHET (COLUMBIA)
5	1552	1601	NOBODY KNOWS	KEVIN SHARP (143/ASYLUM)	18	1051	1109	EVERY LIGHT IN THE HOUSE	TRACE ADKINS (CAPITOL NASHVILLE)
6	1536	1817	ME TOO	TOBY KEITH (MERCURY NASHVILLE)	19	1038	1037	STRAWBERRY WINE	DEANA CARTER (CAPITOL NASHVILLE)
7	1442	1478	ONE WAY TICKET (BECAUSE I CAN)	LEANN RIMES (CURB)	20	980	1043	FRIENDS	JOHN MICHAEL MONTGOMERY (ATLANTIC)
8	1438	1539	RUNNING OUT OF REASONS TO RUN	RICK TREVINO (COLUMBIA)	21	957	951	I LIKE IT, I LOVE IT	TIM MCGRAW (CURB)
9	1406	1456	LITTLE BITTY	ALAN JACKSON (ARISTA)	22	953	957	HER MAN	GARY ALLAN (DECCA)
10	1349	1388	AMEN KIND OF LOVE	DARLYE SINGLETARY (GIANT)	23	942	952	LIKE THE RAIN	CLINT BLACK (RCA)
11	1311	1459	WHERE CORN DON'T GROW	TRAVIS TRITT (WARNER BROS.)	24	930	915	CHECK YES OR NO	GEORGE STRAIT (MCA)
12	1297	1409	A MAN THIS LONELY	BROOKS & DUNN (ARISTA)	25	910	889	BLUE CLEAR SKY	GEORGE STRAIT (MCA)
13	1236	1304	IS THAT A TEAR	TRACY LAWRENCE (ATLANTIC)					

Recurrents are titles which have appeared on the Hot Country Singles chart for 20 weeks and have dropped below the top 20.

KEEP IT REAL

FROM THE TRADE PUBLICATION THAT INVENTED REAL.

Playlists supplied by Broadcast Data Systems' Radio Track service...

Main table containing 24 columns of station playlists (KZLA, WUSN, WXTU, WKHX, WMZQ, KSCS, KKBQ, KILT, KYGO, KYNG, WWWW, WIL, KIKK, WYCD, KPLX, KMPS, KEYE, WGAR, WDSY, KNIX, WYAY, KMLE, WPOC, WKXX) with columns for station name, PD, MD, and song lists with TW and LW ratings.

POWER PLAYLISTS



Playlists supplied by Broadcast Data Systems' Radio Track service. Songs ranked by number of plays in monitored week. Playlists are listed in order of TSA weekly cumes, beginning with the highest-cuming station. Cumes are updated twice yearly following the release of the Spring and Fall Arbitron surveys. The number of stations shown each week varies depending upon space.

For Week Ending April 20, 1997

COUNTRY

WFMS		WQYK		KFRG		WTQR		WIVK		WUBE	
Indianapolis	PD: David Wood MD: J.D. Cannon	Tampa	PD: Beecher Martin MD: Jay Roberts	San Bernardino	OM: Ray Massie MD: Don Jefferies	Greensboro	PD: Paul Franklin MD: Deano	Knoxville	PD: Les Acree MD: Chris Huff	Cincinnati	PD: Tim Closson MD: Duke Hamilton
TW	LW	TW	LW	TW	LW	TW	LW	TW	LW	TW	LW
1	Alabama, Sad Lookin' Moon	1	George Strait, One Night At A Time	1	George Strait, One Night At A Time	1	George Strait, One Night At A Time	1	Kenny Chesney, When I Close My Eyes	1	Lorrie Morgan, Good As I Was To You
2	Kenny Chesney, When I Close My Eyes	2	Clay Walker, Rumor Has It	2	Brooks & Dunn, A Man This Time	2	Kenny Chesney, When I Close My Eyes	2	Lorrie Morgan, Good As I Was To You	2	Tracy Byrd, Don't Take Her She's All I G
3	Tracy Lawrence, Better Man, Better Off	3	Collin Raye, On The Verge	3	Collin Raye, On The Verge	3	Trace Adkins, (This Ain't) No Thinkin' T	3	Alan Jackson, Who's Cheatin' Who	3	Clay Walker, Rumor Has It
4	Lorrie Morgan, Good As I Was To You	4	Trace Adkins, (This Ain't) No Thinkin' T	4	Diamond Rio, Holdin'	4	Clay Walker, Rumor Has It	4	George Strait, One Night At A Time	4	George Strait, One Night At A Time
5	David Kersh, Another You	5	Lorrie Morgan, Good As I Was To You	5	Trace Adkins, (This Ain't) No Thinkin' T	5	Alan Jackson, Everything I Love	5	Tracy Lawrence, Better Man, Better Off	5	Mindy McCready, A Girl's Gotta Do
6	George Strait, One Night At A Time	6	David Kersh, Another You	6	Tracy Byrd, Don't Take Her She's All I G	6	Lorrie Morgan, Good As I Was To You	6	John Michael Montgomery, I Miss You A Li	6	Trace Adkins, (This Ain't) No Thinkin' T
7	Collin Raye, On The Verge	7	Tracy Lawrence, Better Man, Better Off	7	Reba McEntire, How Was I To Know	7	John Michael Montgomery, I Miss You A Li	7	David Kersh, Another You	7	Kenny Chesney, When I Close My Eyes
8	Tracy Byrd, Don't Take Her She's All I G	8	Alabama, Sad Lookin' Moon	8	Bill Engvall, Here's Your Sign	8	Kevin Sharp, Nobody Knows	8	Collin Raye, On The Verge	8	Bryan White, Sittin' On Go
9	Diamond Rio, Holdin'	9	Kenny Chesney, When I Close My Eyes	9	Kenny Chesney, When I Close My Eyes	9	Toby Keith, Me Too	9	Sawyer Brown, Six Days On The Road	9	David Kersh, Another You
10	Buffalo Club, If She Don't Love You	10	Bill Engvall, Here's Your Sign	10	Clay Walker, Rumor Has It	10	Tracy Lawrence, Better Man, Better Off	10	Vince Gill, A Little More Love	10	Sawyer Brown, Six Days On The Road
11	Mila Mason, Dark Horse	11	Bryan White, Sittin' On Go	11	Terri Clark, Emotional Girl	11	Vince Gill, A Little More Love	11	Joe Diffie, This Is Your Brain	11	Tanya Tucker, Little Things
12	Kathy Mattea, 455 Rocket	12	Sawyer Brown, Six Days On The Road	12	Buffalo Club, If She Don't Love You	12	Brooks & Dunn, Why Would I Say Goodbye	12	Lee Ann Womack, Never Again, Again	12	Lee Ann Womack, Never Again, Again
13	John Michael Montgomery, I Miss You A Li	13	Buffalo Club, If She Don't Love You	13	Alabama, Sad Lookin' Moon	13	Mark Willis, Places I've Never Been	13	Brooks & Dunn, Why Would I Say Goodbye	13	Mark Willis, Places I've Never Been
14	Bryan White, Sittin' On Go	14	Diamond Rio, Holdin'	14	Kippi Brannon, Daddy's Little Girl	14	Collin Raye, On The Verge	14	Deana Carter, Count Me In	14	Tracy Lawrence, Better Man, Better Off
15	Clay Walker, Rumor Has It	15	LeAnn Rimes, The Light In Your Eyes	15	Martina McBride, The Light In Your Eyes	15	Alabama, Sad Lookin' Moon	15	Buffalo Club, If She Don't Love You	15	Collin Raye, On The Verge
16	LeAnn Rimes, The Light In Your Eyes	16	Alan Jackson, Who's Cheatin' Who	16	Bryan White, Sittin' On Go	16	Alan Jackson, Who's Cheatin' Who	16	LeAnn Rimes, The Light In Your Eyes	16	Kathy Mattea, 455 Rocket
17	Trace Adkins, (This Ain't) No Thinkin' T	17	Vince Gill, A Little More Love	17	Vince Gill, A Little More Love	17	Vince Gill, A Little More Love	17	LeAnn Rimes, The Light In Your Eyes	17	LeAnn Rimes, The Light In Your Eyes
18	Mark Willis, Places I've Never Been	18	Brooks & Dunn, Why Would I Say Goodbye	18	Brooks & Dunn, Why Would I Say Goodbye	18	Brooks & Dunn, Why Would I Say Goodbye	18	Bryan White, Sittin' On Go	18	John Berry, She's Taken A Shine
19	Kevin Sharp, She's Sure Taking It Well	19	Tracy Byrd, Don't Take Her She's All I G	19	Mark Chesnut, It's A Little Too Late	19	Trisha Yearwood, I Need You	19	Kevin Sharp, She's Sure Taking It Well	19	Kevin Sharp, She's Taken A Shine
20	Mindy McCready, A Girl's Gotta Do	20	John Michael Montgomery, I Miss You A Li	20	Rick Trevino, Running Out Of Reasons To	20	Bryan White, Sittin' On Go	20	Pam Tillis, All The Good Ones Are Gone	20	Alan Jackson, Who's Cheatin' Who
21	Brooks & Dunn, Why Would I Say Goodbye	21	Deana Carter, Count Me In	21	Lorrie Morgan, Good As I Was To You	21	Clay Walker, Rumor Has It	21	Tracy Lawrence, Better Man, Better Off	21	John Michael Montgomery, I Miss You A Li
22	Brooks & Dunn, Why Would I Say Goodbye	22	Tanya Tucker, Little Things	22	Tanya Tucker, Little Things	22	Burnin' Daylight, Say Yes	22	Tracy Adkins, (This Ain't) No Thinkin' T	22	John Michael Montgomery, I Miss You A Li
23	Alan Jackson, Who's Cheatin' Who	23	John Michael Montgomery, I Miss You A Li	23	Kevin Sharp, Nobody Knows	23	Kevin Sharp, Nobody Knows	23	Reba McEntire, How Was I To Know	23	Mark Chesnut, It's A Little Too Late
24	John Berry, She's Taken A Shine	24	Kevin Sharp, She's Sure Taking It Well	24	Ricochet, Daddy's Money	24	Ricochet, Daddy's Money	24	Clay Walker, Rumor Has It	24	Clay Walker, Rumor Has It
25	Mark Chesnut, It's A Little Too Late	25	Burnin' Daylight, Say Yes	25	Collin Raye, On The Verge	25	Collin Raye, On The Verge	25	Tracy Byrd, Don't Take Her She's All I G	25	Mark Chesnut, It's A Little Too Late
26	Gene Watson, Change Her Mind	26	Deana Carter, We Danced Anyway	26	Deana Carter, We Danced Anyway	26	Deana Carter, We Danced Anyway	26	Terri Clark, Emotional Girl	26	Gene Watson, Change Her Mind
27	Travis Tritt, She's Going Home With Me	27	Pam Tillis, All The Good Ones Are Gone	27	Pam Tillis, All The Good Ones Are Gone	27	Neal McCoy, Then You Can Tell Me Goodbye	27	James Bonamy, The Swing	27	Mila Mason, Dark Horse
28	Vince Gill, A Little More Love	28	John Berry, She's Taken A Shine	28	John Berry, She's Taken A Shine	28	LeAnn Rimes, The Light In Your Eyes	28	Alan Jackson, Who's Cheatin' Who	28	Vince Gill, A Little More Love
29	Sawyer Brown, Six Days On The Road	29	Reba McEntire, How Was I To Know	29	Reba McEntire, How Was I To Know	29	John Michael Montgomery, Friends	29	Sammy Kershaw, Meant To Be	29	Faith Hill, I Can't Do That Anymore
30	Ty Herndon, She Wants To Be Wanted Again	30	Patty Loveless, She Drew A Broken Heart	30	Patty Loveless, She Drew A Broken Heart	30	Tim McGraw, Can't Be Realized	30	Ty Herndon, She Wants To Be Wanted Again	30	Rick Trevino, Running Out Of Reasons To

COUNTRY AIRPLAY

★ ★ ★ **AIRPOWER** ★ ★ ★
(Minimum 3200 detections for the first time)

LEANA RIMES **3384/276**
The Light In Your Eyes (Curb)
Total Stations: 159/Chart Move: 20-18
Heavy (35+ plays): 3 KIKK, KTEX, KYNG
Medium (25-34): 40 KASE, KCCY, KDDK, KEEY, KFKF, KKCS, KMDL, KNIX, KRMD, KTST, KUZZ, KWNR, KYCW, KYCY, KZLA, KZSN, WAMZ, WBBS, WBCT, WBUB, WFLS, WGAR, WGR, WHYL, WKCN, WKIS, WKIX, WKXX, WKXC, WNCY, WQBE, WQDR, WRNS, WTGE, WWGR, WXB, WXQ, WYAY, WYRK, WYWD
Light (Under 25): 116
New Airplay This Week: 2 KSCS, KWJJ

ALAN JACKSON **3338/991**
Who's Cheatin' Who (Arista)
Total Stations: 156/Chart Move: 26-20
Heavy (35+): 6 KIKK, KUPL, KWJJ, KYCY, KYNG, WIVK
Medium (25-34): 36 KAJA, KASE, KEEY, KHAY, KIKF, KKCS, KMLE, KNIX, KOUL, KRMD, KSN, KSCS, KSON, KWNR, KXKC, KXKT, KZSN, WBCT, WBUB, WCOL, WEZL, WKHK, WKXX, WKSF, WKTF, WQXK, WRBQ, WRNS, WSOC, WSTH, WTGE, WWGR, WWW, WYAY, WYGY, WYWD
Light (Under 25): 114
New Airplay This Week: 11 KFRG, WBBS, WGR, WKKO, WKTF, WOKO, WQBE, WQIK, WQMX, WXBQ, WYNK

Medium (25-34): 2 KKBQ, KMLE
Light (Under 25): 101
New Airplay This Week: 26 KAJA, KCCY, KIKF, KJJY, KKAT, KKCS, KOUL, KSCS, KTTS, KUBL, KZSN, WCOL, WCOB, WEZL, WHSL, WHYL, WKCN, WKIX, WKLB, WKXC, WLWI, WOW, WQXK, WSSL, WUSY, WWGR

REBA MCENTIRE **748/531**
I'd Rather Ride Around With You (MCA)
Total Stations: 114/Chart Move: 68-47
Heavy (35+): 1 KIKK
Medium (25-34): 1 KYNG
Light (Under 25): 112
New Airplay This Week: 29 KASE, KATM, KCCY, KILT, KKAT, KKBQ, KKCS, KMLE, KOUL, KVET, KWJJ, WBBS, WBCT, WFMS, WGH, WHYL, WKIX, WML, WPOR, WQBE, WQMX, WROO, WSIX, WSSL, WSTH, WUBE, WWKA, WYAY, WYRK

JOHN BERRY **713/274**
I Will, If You Will (Capitol Nashville)
Total Stations: 97/Chart Move: 54-48
Heavy (35+): 0
Medium (25-34): 1 KASE
Light (Under 25): 96
New Airplay This Week: 21 KBEQ, KDRK, KEEY, KHAY, KMDL, KNIX, KRMD, KRST, KSN, KSOP, KXKT, KZLA, WFMS, WFR, WGH, WGN, WMJC, WNOE, WSM, WTGE, WUSY

JAMES BONAMY **649/204**
The Swing (Epic)
Total Stations: 91/Chart Move: 53-49
Heavy (35+): 0
Medium (25-34): 0
Light (Under 25): 91
New Airplay This Week: 14 KSKS, KTOM, KUPL, KVOO, KXKT, KYGO, WKXX, WKXX, WMSI, WNOE, WOW, WPOC, WRKZ, WTGE

SAMMY KERSHAW **599/106**
Fit To Be Tied Down (Mercury Nashville)
Total Stations: 88/Chart Move: 49-50
Heavy (35+): 0
Medium (25-34): 0
Light (Under 25): 88
New Airplay This Week: 11 KAJA, KDDK, KPLX, KTST, WDAF, WFLS, WKSF, WLWI, WRKZ, WUBE, WWKA

PATTY LOVELESS **595/352**
The Trouble With The Truth (Epic)
Total Stations: 71/Chart Move: 66-52
Heavy (35+): 0
Medium (25-34): 2 KASE, KUPL
Light (Under 25): 69
New Airplay This Week: 26 KASE, KBEQ, KCYY, KDDK, KFDI, KKAT, KMPS, KPLX, KSCS, KSON, KVET, KXKC, KZLA, WFLS, WFR, WHSL, WHYL, WIOV, WKCN, WKJN, WPOC, WPOR, WSIX, WTD, WWGR, WYCD

LEE ROY PARNELL **547/263**
Lucky Me, Lucky You (Career)
Total Stations: 90/Chart Move: 63-53
Heavy (35+): 0
Medium (25-34): 2 KASE, KYNG
Light (Under 25): 88
New Airplay This Week: 18 KCCY, KDDK, KFDI, KMDL, KTOM, KTST, KTT, KWN, WHYL, WIOV, WKSF, WKSJ, WPOC, WSIX, WSTH, WYD, WYZZ

GARY ALLAN **521/146**
From Where I'm Sitting (Decca)
Total Stations: 73/Chart Move: 56-54
Heavy (35+): 0
Medium (25-34): 0
Light (Under 25): 73
New Airplay This Week: 14 KIKF, KRYS, KSKS, KVOO, KYNG, KZSN, WAMZ, WFMS, WJCL, WKSF, WLWI, WMJC, WQDR, WSIX

499 - 75 DETECTIONS

TRACE ADKINS **451/315**
I Left Something Turned On At Home (Capitol Nashville)
Total Stations: 82/Chart Move: 73-55
Heavy (35+): 0
Medium (25-34): 2 KMLE, WYAY
Light (Under 25): 80
New Airplay This Week: 20 KCCY, KHAY, KMDL, KPLX, KSON, KSOP, KUBL, KUZZ, KWEN, KYNG, WCOL, WDRM, WESC, WGH, WIVK, WPOC, WQBE, WSTH, WXBQ, WYGY

CLAY WALKER **438/245**
One, Two, I Love You (Giant)
Total Stations: 76/Chart Move: 70-56
Heavy (35+): 2 KIKK, KKBQ

Medium (25-34): 1 KMLE
Light (Under 25): 73
New Airplay This Week: 18 KRMD, KSKS, KSOP, KUBL, KWEN, KWJJ, WCMS, WDRM, WFR, WIVK, WKJN, WQXK, WSTH, WTGE, WTQR, WUBE, WYGY, WYRK

RANDY TRAVIS **421/100**
King Of The Road (Asylum)
Total Stations: 55/Chart Move: 59-57
Heavy (35+): 0
Medium (25-34): 4 KHEY, KMPS, KWJJ, WWGR
Light (Under 25): 51
New Airplay This Week: 10 KSN, KTEX, KWJJ, WBBS, WBEE, WFLS, WGH, WHYL, WIOV, WLWI

JOHN & AUDREY WIGGINS **394/39**
Somewhere In Love (Mercury Nashville)
Total Stations: 52/Chart Move: 58-58
Heavy (35+): 0
Medium (25-34): 0
Light (Under 25): 52
New Airplay This Week: 2 KEEY, KRTY

SUZIE BOGGUSS **393/25**
She Said, He Heard (Capitol Nashville)
Total Stations: 57/Chart Move: 57-59
Heavy (35+): 0
Medium (25-34): 0
Light (Under 25): 57
New Airplay This Week: 5 KRST, KVOO, KXKT, WAMZ, WIOV

JEFF CARSON **387/73**
Do It Again (Curb)
Total Stations: 55/Chart Move: 61-60
Heavy (35+): 0
Medium (25-34): 1 WYAY
Light (Under 25): 54
New Airplay This Week: 6 KASE, KMDL, KNIX, WKXC, WLWI, WRKZ

LONESTAR **283/254**
Come Cryin' To Me (BNA)
Total Stations: 68/Chart Move: Debut 62
Heavy (35+): 0
Medium (25-34): 2 KYNG, WYAY
Light (Under 25): 66
New Airplay This Week: 12 KKCS, KSOP, KUBL, WBCT, WIVK, WKIX, WOW, WQXK, WSTH, WUSY, WWKA, WYCD

RICOCHE **274/190**
He Left A Lot To Be Desired (Columbia)
Total Stations: 105/Chart Move: Debut 63
Heavy (35+): 0
Medium (25-34): 0
Light (Under 25): 105
New Airplay This Week: 10 KFDI, KSOP, KUBL, KYCY, WKCN, WKIX, WNCY, WRKZ, WWKA, WYAY

JO DEE MESSINA **254/132**
He'd Never Seen Julie Cry (Curb)
Total Stations: 59/Chart Move: Debut 65
Heavy (35+): 0
Medium (25-34): 0
Light (Under 25): 59
New Airplay This Week: 7 KBEQ, KFDI, KSOP, KTST, WKCN, WKKX, WUSY

MARY CHAPIN CARPENTER **211/87**
The Better To Dream Of You (Columbia)
Total Stations: 41/Chart Move: 75-66
Heavy (35+): 0
Medium (25-34): 0
Light (Under 25): 41
New Airplay This Week: 8 KPLX, WBBS, WHYL, WKLB, WKSF, WNCY, WPOC, WWYD

AARON TIPPIN **200/36**
A Door (RCA)
Total Stations: 63/Chart Move: 71-67
Heavy (35+): 0
Medium (25-34): 0
Light (Under 25): 63
New Airplay This Week: 4 KDDK, WHYL, WQYK, WTQR

SKIP EWING **197/102**
Mary Go Round (Word Nashville)
Total Stations: 31/Chart Move: Re-entry 68
Heavy (35+): 0
Medium (25-34): 0
Light (Under 25): 31
New Airplay This Week: 12 KBEQ, KFDI, KIKF, KPLX, KSKS, KTST, KZLA, KZSN, WFMS, WKXK, WSM, WXTU

GEORGE STRAIT **194/98**
Don't You Come Home (And Talk To A Stranger) (MCA)
Total Stations: 86/Chart Move: Debut 70
Heavy (35+): 0
Medium (25-34): 1 KIKK
Light (Under 25): 85

★ **GEORGE STRAIT** **186/176**
Round About Way (MCA)
Total Stations: 92/Chart Move: Debut 71
Heavy (35+): 0
Medium (25-34): 1 KYNG
Light (Under 25): 91
New Airplay This Week: 6 KCYY, KIKF, KIKK, KKBQ, KNIX, KYNG

★ **GEORGE STRAIT** **183/181**
Carrying Your Love With Me (MCA)
Total Stations: 62/Chart Move: Debut 72
Heavy (35+): 0
Medium (25-34): 1 KYCY
Light (Under 25): 61
New Airplay This Week: 7 KCYY, KIKF, KIKK, KKBQ, KMLE, KSN, KYCY

★ **GEORGE STRAIT** **143/130**
The Nerve (MCA)
Total Stations: 79
Heavy (35+): 0
Medium (25-34): 0
Light (Under 25): 79
New Airplay This Week: 3 KKBQ, KMLE, KSCS

KRIS TYLER **132/7**
Keeping Your Kisses (Rising Tide)
Total Stations: 17
Heavy (35+): 0
Medium (25-34): 0
Light (Under 25): 17
New Airplay This Week: 2 WKCN, WKSF

RAY VEGA **117/13**
I Can Dream (BNA)
Total Stations: 18
Heavy (35+): 0
Medium (25-34): 0
Light (Under 25): 18
New Airplay This Week: 1 WCTK

★ **GEORGE STRAIT** **116/116**
That's Me (MCA)
Total Stations: 78
Heavy (35+): 0
Medium (25-34): 0
Light (Under 25): 78
New Airplay This Week: 1 KKBQ

★ **GEORGE STRAIT** **115/109**
Today My World Slipped Away (MCA)
Total Stations: 71
Heavy (35+): 0
Medium (25-34): 0
Light (Under 25): 71
New Airplay This Week: 2 KKBQ, KYCY

★ **GEORGE STRAIT** **113/109**
I've Got A Funny Feeling (MCA)
Total Stations: 80
Heavy (35+): 0
Medium (25-34): 0
Light (Under 25): 80
New Airplay This Week: 1 KCYY

★ **GEORGE STRAIT** **107/103**
She'll Leave You With A Smile (MCA)
Total Stations: 71
Heavy (35+): 0
Medium (25-34): 0
Light (Under 25): 71
New Airplay This Week: 3 KCYY, KIKF, KIKK

★ **KIM RICHEY** **101/29**
I Know (Mercury Nashville)
Total Stations: 19
Heavy (35+): 0
Medium (25-34): 0
Light (Under 25): 19
New Airplay This Week: 5 KHAY, KSOP, KTEX, KYCW, WKCN

BILLY YATES **87/12**
Flowers (Almo Sounds)
Total Stations: 9
Heavy (35+): 0
Medium (25-34): 2 KKBQ, KMLE
Light (Under 25): 7
New Airplay This Week: 1 WKSF

★ **GEORGE STRAIT** **86/80**
A Real Good Place To Start (MCA)
Total Stations: 66
Heavy (35+): 0
Medium (25-34): 0
Light (Under 25): 66

★ **JOE DIFFIE** **82/79**
Houston We Have A Problem (Epic)
Total Stations: 22
Heavy (35+): 1 KIKK
Medium (25-34): 1 KKBQ
Light (Under 25): 20
New Airplay This Week: 2 KIKK, KKBQ

3199 - 1000 DETECTIONS

TANYA TUCKER **2744/323**
Little Things (Capitol Nashville)
Total Stations: 158/Chart Move: 25-23
Heavy (35+ plays): 1 KYNG
Medium (25-34): 21 KAJA, KBEQ, KIKK, KPLX, KTST, KUPL, KWN, KYCW, KYCY, WCKT, WCTK, WGGY, WGH, WJCL, WKCN, WQBE, WRBQ, WRKZ, WUBE, WWGR, WYAY
Light (Under 25): 136
New Airplay This Week: 5 KJY, WFR, WGN, WKXK, WNCY

DEANA CARTER **2559/314**
Count Me In (Capitol Nashville)
Total Stations: 159/Chart Move: 27-24
Heavy (35+): 0
Medium (25-34): 16 KIKK, KMLE, KNIX, KTST, KWN, KXKC, KYNG, WCOL, WFR, WGR, WIVK, WKCN, WQXK, WRNS, WWGR, WYGY
Light (Under 25): 143
New Airplay This Week: 8 KILT, KNAX, KRTY, WKTF, WOKO, WQIK, WYK, WYNK

LEE ANN WOMACK **2186/226**
Never Again, Again (Decca)
Total Stations: 153/Chart Move: 28-26
Heavy (35+): 1 WXBQ
Medium (25-34): 18 KMDL, KXKC, KYCY, WBUB, WCOL, WCTK, WFR, WGAR, WHYL, WIVK, WQBE, WQDR, WQXK, WRKZ, WSM, WSOC, WUBE, WWGR
Light (Under 25): 134
New Airplay This Week: 11 KMPS, KYCW, KYGO, KYNG, WCKT, WCOB, WIRK, WQMX, WUSY, WYNK, WYRK

TY HERNDON **2129/529**
Loved Too Much (Epic)
Total Stations: 151/Chart Move: 33-27
Heavy (35+): 3 KIKK, KTST, KYNG
Medium (25-34): 7 KASE, KXKC, WBCT, WKCN, WRNS, WWGR, WYAY
Light (Under 25): 141
New Airplay This Week: 24 KILT, KJJY, KMPS, KNAX, KTEX, KYCW, WAMZ, WBBS, WCKT, WCOB, WCUZ, WDAF, WFKX, WHSL, WJCL, WKLB, WKSJ, WKTF, WQMX, WRBQ, WWGR, WWKA, WYNK, WYRK

MARK CHESNUTT **1820/367**
Let It Rain (Decca)
Total Stations: 146/Chart Move: 36-28
Heavy (35+): 1 KIKK
Medium (25-34): 3 KMLE, KTST, WWGR
Light (Under 25): 142
New Airplay This Week: 21 KIIM, KNCI, KNIX, KRST, KXKC, KZLA, WBEE, WBUB, WCHY, WDAF, WESC, WGGY, WGXK, WGR, WKHX, WMSI, WQYK, WRBQ, WUSN, WYNK, WYD

MARK WILLS **1790/172**
Places I've Never Been (Mercury Nashville)
Total Stations: 153/Chart Move: 34-29
Heavy (35+): 1 KTST
Medium (25-34): 7 KAJA, KBEQ, KFMS, KMDL, KUZZ, WIVK, WUSY
Light (Under 25): 145
New Airplay This Week: 7 KSON, KYNG, WBEE, WIL, WPOC, WQDR, WQMX

JOE DIFFIE **1746/85**
This Is Your Brain (Epic)
Total Stations: 148/Chart Move: 32-31
Heavy (35+): 0
Medium (25-34): 4 WIVK, WKSF, WRKZ, WYAY
Light (Under 25): 144
New Airplay This Week: 9 KFKF, KIIM, WBUB, WCKT, WGGY, WHSL, WSOC, WTQR, WYD

SONS OF THE DESERT **1625/238**
Whatever Comes First (Epic)

Total Stations: 152/Chart Move: 37-32
Heavy (35+): 0
Medium (25-34): 10 KBEQ, KMDL, KTST, WKCN, WKIX, WQBE, WRNS, WWGR, WXBQ, WYAY
Light (Under 25): 142
New Airplay This Week: 14 KGM, KOUL, KRTY, KVOO, WBUB, WCKT, WCUZ, WDSY, WJCL, WKKO, WNOE, WSOC, WTQR, WUSN

RICK TREVINO **1390/416**
I Only Get This Way With You (Columbia)
Total Stations: 131/Chart Move: 43-33
Heavy (35+): 0
Medium (25-34): 6 KAJA, KASE, KHEY, KYCY, KYNG, WKIX
Light (Under 25): 125
New Airplay This Week: 21 KIKK, KNIX, KPLX, KSON, KWN, KXXY, WAMZ, WFMS, WGGY, WGH, WGR, WIRK, WIVK, WJCL, WML, WOKO, WQDR, WRBQ, WUSN, WYCD, WYD

TRAVIS TRITT **1205/433**
She's Going Home With Me (Warner Bros.)
Total Stations: 118/Chart Move: 46-37
Heavy (35+): 0
Medium (25-34): 3 WBCT, WWGR, WYAY
Light (Under 25): 115
New Airplay This Week: 29 KBEQ, KHEY, KNCI, KRMD, KRST, KRTY, KSKS, KSOP, KVOO, KWJJ, KWN, KXKT, KXXY, KYCY, KYGO, KZSN, WCHY, WEZL, WFMS, WHYL, WIOV, WKXK, WKIS, WKXC, WMJC, WNOE, WSTH, WTQR, WUSN

BURNIN' DAYLIGHT **1109/108**
Say Yes (Curb)
Total Stations: 109/Chart Move: 42-39
Heavy (35+): 2 KIKK, WRBQ
Medium (25-34): 5 KBEQ, WRNS, WWGR, WYD, WYAY
Light (Under 25): 102
New Airplay This Week: 5 KATM, KDRK, KMDL, KTTS, WCHY

TAMMY GRAHAM **1015/133**
A Dozen Red Roses (Career)
Total Stations: 109/Chart Move: 44-41
Heavy (35+): 0
Medium (25-34): 2 KIKK, KWJJ
Light (Under 25): 107
New Airplay This Week: 11 KAJA, KDDK, KFKF, KGM, KOUL, KXXY, WEZL, WIL, WKSJ, WNOE, WYNK

999 - 500 DETECTIONS

KIPPI BRANNON **905/57**
Daddy's Little Girl (Curb/Universal)
Total Stations: 99/Chart Move: 45-42
Heavy (35+): 1 WGGY
Medium (25-34): 1 WJCL
Light (Under 25): 97
New Airplay This Week: 4 KDRK, KMDL, KTEX, KUZZ

PAUL BRANDT **849/170**
Take It From Me (Reprise)
Total Stations: 93/Chart Move: 47-43
Heavy (35+): 0
Medium (25-34): 2 WGR, WQBE
Light (Under 25): 91
New Airplay This Week: 13 KGM, KIKF, KKCS, KRST, KSOP, KVOO, KYGO, WCHY, WKIS, WRKZ, WSM, WUSN, WYCD

PAM TILLIS **768/318**
All The Good Ones Are Gone (Arista)
Total Stations: 103/Chart Move: 52-45
Heavy (35+): 0

Total Plays/Gain

Total Plays/Gain

Swing
into the
Spring with
**James
Bonamy's**
debut single from
the upcoming release
roots and wings

“The Swing”

- An instant most requested single!
- The video for “The Swing” was added as a CMT “PICK HIT.”
- James is an Academy of Country Music Top New Male Vocalist nominee.

epic nashville

© 1997 Sony Music Entertainment Inc.



Compiled from a national sample of airplay supplied by Broadcast Data Systems' Radio Track Service to Country Airplay Monitor. 160 country stations are electronically monitored 24 hours a day, 7 days a week. Songs are ranked by number of detections. © 1997 Billboard/BPI Communications.

THIS WEEK	LAST WEEK	WKS. ON CHART	TITLE/LABEL/PROMOTION LABEL	ARTIST	DETECTIONS	
					TW	LW
*** No. 1 ***						
1	1	8	ONE NIGHT AT A TIME MCA 2 weeks at No. 1	GEORGE STRAIT	5793	5555
2	3	11	ON THE VERGE EPIC	COLLIN RAYE	5354	5155
3	5	16	ANOTHER YOU CURB	DAVID KERSH	4899	5084
4	8	10	SAD LOOKIN' MOON RCA	ALABAMA	4886	4479
5	7	11	BETTER MAN, BETTER OFF ATLANTIC	TRACY LAWRENCE	4826	4632
6	4	14	RUMOR HAS IT GIANT	CLAY WALKER	4437	5158
7	2	20	WHEN I CLOSE MY EYES BNA	KENNY CHESNEY	4373	5393
8	10	15	GOOD AS I WAS TO YOU BNA	LORRIE MORGAN	4242	3922
9	11	16	IF SHE DON'T LOVE YOU RISING TIDE	THE BUFFALO CLUB	3990	3850
10	12	10	I MISS YOU A LITTLE ATLANTIC	JOHN MICHAEL MONTGOMERY	3968	3766
11	13	10	SITTIN' ON GO ASYLUM	BRYAN WHITE	3893	3666
12	15	10	A GIRL'S GOTTA DO (WHAT A GIRL'S GOTTA DO) BNA	MINDY MCCREADY	3821	3525
13	14	13	SHE'S SURE TAKING IT WELL 143/ASYLUM	KEVIN SHARP	3821	3627
14	16	6	A LITTLE MORE LOVE MCA	VINCE GILL	3733	3460
15	6	15	DON'T TAKE HER SHE'S ALL I GOT MCA	TRACY BYRD	3680	4657
16	9	15	(THIS AIN'T) NO THINKIN' THING CAPITOL NASHVILLE	TRACE ADKINS	3403	4222
17	19	10	SIX DAYS ON THE ROAD CURB	SAWYER BROWN	3390	3165
*** AIRPOWER ***						
18	20	7	THE LIGHT IN YOUR EYES CURB	LEANN RIMES	3384	3108
19	17	7	WHY WOULD I SAY GOODBYE ARISTA	BROOKS & DUNN	3353	3256
*** AIRPOWER ***						
20	26	4	WHO'S CHEATIN' WHO ARISTA	ALAN JACKSON	3338	2347
21	22	13	DARK HORSE ATLANTIC	MILA MASON	3038	3078
22	21	16	455 ROCKET MERCURY NASHVILLE	KATHY MATTEA	3001	3091
23	25	10	LITTLE THINGS CAPITOL NASHVILLE	TANYA TUCKER	2744	2421
24	27	6	COUNT ME IN CAPITOL NASHVILLE	DEANA CARTER	2559	2245
25	18	19	HOW WAS I TO KNOW MCA	REBA MCENTIRE	2358	3214
26	28	8	NEVER AGAIN, AGAIN DECCA	LEE ANN WOMACK	2186	1960
27	33	7	LOVED TOO MUCH EPIC	TY HERNDON	2129	1600
28	36	8	LET IT RAIN DECCA	MARK CHESNUTT	1820	1453
29	34	10	PLACES I'VE NEVER BEEN MERCURY NASHVILLE	MARK WILLS	1790	1618
30	23	17	EMOTIONAL GIRL MERCURY NASHVILLE	TERRI CLARK	1781	3067
31	32	9	THIS IS YOUR BRAIN EPIC	JOE DIFFIE	1746	1661
32	37	9	WHATEVER COMES FIRST EPIC	SONS OF THE DESERT	1625	1387
33	43	7	I ONLY GET THIS WAY WITH YOU COLUMBIA	RICK TREVINO	1390	974
34	30	13	COLD OUTSIDE MCA	BIG HOUSE	1377	1794
35	35	20	SHE DREW A BROKEN HEART EPIC	PATTY LOVELESS	1300	1513
36	38	10	I NEED YOU MCA	TRISHA YEARWOOD	1225	1317
37	46	3	SHE'S GOING HOME WITH ME WARNER BROS.	TRAVIS TRITT	1205	772
38	40	20	UNCHAINED MELODY CURB	LEANN RIMES	1155	1210

THIS WEEK	LAST WEEK	WKS. ON CHART	TITLE/LABEL/PROMOTION LABEL	ARTIST	DETECTIONS	
					TW	LW
39	42	12	SAY YES CURB	BURNIN' DAYLIGHT	1109	1001
40	39	15	HERE'S YOUR SIGN (GET THE PICTURE) WARNER BROS.	BILL ENGVALL WITH SPECIAL GUEST TRAVIS TRITT	1025	1262
41	44	7	A DOZEN RED ROSES CAREER	TAMMY GRAHAM	1015	882
42	45	13	DADDY'S LITTLE GIRL CURB/UNIVERSAL	KIPPI BRANNON	905	848
43	47	6	TAKE IT FROM ME REPRISE	PAUL BRANDT	849	679
44	41	16	EVERYTHING I LOVE ARISTA	ALAN JACKSON	793	1214
45	52	2	ALL THE GOOD ONES ARE GONE ARISTA	PAM TILLIS	768	450
46	31	15	CRY ON THE SHOULDER OF THE ROAD RCA	MARTINA MCBRIDE	765	1789
47	68	4	I'D RATHER RIDE AROUND WITH YOU MCA	REBA MCENTIRE	748	217
48	54	3	I WILL, IF YOU WILL CAPITOL NASHVILLE	JOHN BERRY	713	439
49	53	5	THE SWING EPIC	JAMES BONAMY	649	445
50	49	4	FIT TO BE TIED DOWN MERCURY NASHVILLE	SAMMY KERSHAW	599	493
51	48	8	THE USED TO BE'S GIANT	DARYLE SINGLETARY	596	631
52	66	2	THE TROUBLE WITH THE TRUTH EPIC	PATTY LOVELESS	595	243
53	63	3	LUCKY ME, LUCKY YOU CAREER	LEE ROY PARNELL	547	284
54	56	4	FROM WHERE I'M SITTING DECCA	GARY ALLAN	521	375
55	73	2	I LEFT SOMETHING TURNED ON AT HOME CAPITOL NASHVILLE	TRACE ADKINS	451	136
56	70	2	ONE, TWO, I LOVE YOU GIANT	CLAY WALKER	438	193
57	59	2	KING OF THE ROAD (FROM "TRAVELLER") ASYLUM	RANDY TRAVIS	421	321
58	58	5	SOMEWHERE IN LOVE MERCURY NASHVILLE	JOHN & AUDREY WIGGINS	394	355
59	57	7	SHE SAID, HE HEARD CAPITOL NASHVILLE	SUZY BOGGUSS	393	368
60	61	5	DO IT AGAIN CURB	JEFF CARSON	387	314
61	55	8	USE MINE IMPRINT	JEFF WOOD	379	414
*** HOT SHOT DEBUT ***						
62	NEW		COME CRYIN' TO ME BNA	LONESTAR	283	29
63	NEW		HE LEFT A LOT TO BE DESIRED COLUMBIA	RICOCHET	274	84
64	NEW		HE'D NEVER SEEN JULIE CRY CURB	JO DEE MESSINA	254	122
65	64	6	FIRE WHEN READY CURB	PERFECT STRANGER	221	253
66	75	3	THE BETTER TO DREAM OF YOU COLUMBIA	MARY CHAPIN CARPENTER	211	124
67	71	2	A DOOR RCA	AARON TIPPIN	200	164
68	RE-ENTRY		MARY GO ROUND WORD NASHVILLE	SKIP EWING	197	95
69	60	6	TRUE LIES RCA	SARA EVANS	196	317
70	NEW		WON'T YOU COME HOME (AND TALK TO A STRANGER) MCA	GEORGE STRAIT	194	96
71	NEW		ROUND ABOUT WAY MCA	GEORGE STRAIT	186	10
72	NEW		CARRYING YOUR LOVE WITH ME MCA	GEORGE STRAIT	183	2
73	67	15	CHANGE HER MIND STEP ONE	GENE WATSON	177	224
74	50	10	BAD FOR US WARNER BROS.	LITTLE TEXAS	165	493
75	69	16	EASE MY TROUBLED MIND COLUMBIA	RICOCHET	158	197

Records showing an increase in detections over the previous week, regardless of chart movement. Airpower awarded to those records which attain 3200 detections for the first time. If two records are tied in number of plays, the record being played on more stations is placed first. Records below the top 20 that are decreasing in plays are removed from the chart after 20 weeks.

Reach
the
World's
Greatest
Radio
Minds...

AIRPLAY Monitor

CLASSIFIED

CONTACT: Laura Rivchun - 212-536-5058