

COUNTRY AIRPLAY Monitor

• We Listen To Radio •

June 19, 1998 \$ 4.95 Volume 6 • No. 25

COUNTRY HIGHLIGHTS

★★★★ NO. 1 ★★★★★

#1

REBA/BROOKS & DUNN

If You See Him/If You See Her (MCA NASHVILLE/ARISTA NASHVILLE)

★★★★ AIRPOWER ★★★★★

MARTINA MCBRIDE • *Happy Girl* (RCA)

FAITH HILL (WITH TIM MCGRAW) • *Just To Hear You Say That You Love Me* (WARNER BROS.)

GOING FOR AIRPLAY

BILLY DEAN • *Real Man* (CAPITOL NASHVILLE)

THE CHARLIE DANIELS BAND • *Texas* (BLUE HAT)

WADE HAYES • *How Do You Sleep At Night* (COLUMBIA)

LONESTAR • *Everything's Changed* (BNA)

KEN MELLONS • *Ladies Night* (CURB)

KEVIN SHARP • *If She Only Knew* (143/ASYLUM)

Artist Web Sites Become Launch Pad For Fan-Club 'Militias'

by Phyllis Stark

The advent of artist and station World Wide Web sites, E-mail, and other new technologies has given programmers a new reason to carefully scrutinize listener requests. Official and unofficial Web sites for many artists, including Billy Ray Cyrus, Dwight Yoakam, and Vince Gill, among others, list radio station call letters, request line numbers, and E-mail addresses and encourage fans to call or write to request new singles by those artists. As a result, stations are getting calls and E-mails more frequently from fans far outside their listening area—even from across the country—requesting songs or complaining when they're not playing something.

WILL DWIGHT SITE CHANGE THINGS?

A Dwight Yoakam site (www.dwightyoakam.com) contains a list of dozens of call letters and phone numbers, along with links to many of the stations' own Web sites for requesting convenience. Some of the stations on the list are identified as "those which report their playlists to music industry publications used in compiling charts, such as Billboard. In other words," the site says, "if we want to contribute to Dwight's success on the charts, these stations are most important."

The station list on the Yoakam site falls under the headline "Let's Shake Up Country Radio" and a note encouraging Yoakam fans to "call your local station and request 'Things Change.' Let's make them aware that we Dwight fans want to hear some awesome sounds come across those airwaves." The Web site also notes that "if your station is already playing 'Things Change,' call 'em and say 'thanks.'"

GETTING UNDER THE INDUSTRY'S HOOD

Even when they don't list station call letters and contact information, many fan-club sites keep their members up to date on exactly what is happening with their artist at radio, often using industry jargon and references to trade publications and charts. The official Billy Ray Cyrus site, for example, tells fans that "the release of Billy's new single, 'Under The Hood,' has been delayed temporarily" and explains that "Mercury executives recently found a ballad which they believe would be a much bigger hit for Billy. They plan on releasing it sometime in July followed by 'Under The Hood.'" The Cyrus site also lists chart positions in Billboard/Airplay Monitor and other trades for Cyrus' singles.

Vince Gill's official site doesn't include station information but

Continued on page 6

THIS WEEK In Country Airplay Monitor

- 3 Curb/Universal Folded Into Curb Group
- 4 David Lee Murphy Exits MCA Roster
- 6 Profile: WSSL's Bruce Logan

RANDY TRAVIS

THE HOLE

the
UP-TEMPO SMASH
follow up to the #1 single

OUT
of my BONES

#1
most added
EVERYWHERE



©1998 SMOG MUSIC NASHVILLE LLC

“...You would be making a big mistake if you don't pay attention to this one.”

— Bob Moody, *McVay Media*

“Little lady, big hit, huge commitment”

— Tim DuBois, *President, Arista/Nashville*

sherrie austin
innocent man

from her album,
words

official airplay date
july 6

Don't miss Sherrie in the current issue of *Elle*, as well as upcoming issues of *YM* (August) and *Esquire* (August) "PrimeTime Country" (June 23) and "CMT's Hit Trip" (August) and on the road with Trace Adkins, Clint Black, Vince Gill, Wade Hayes and Collin Raye

ARISTA
NASHVILLE
WHERE THE
FUTURE
LOOKS
BRIGHT

Curb/Universal Folded Into Curb Group

Curb/Universal Records, a Nashville-based joint venture between the two companies, is being folded back into the Curb Group, as Universal bows out of the partnership. Curb will take over the marketing and promotion of the Curb/Universal roster, which includes Wynonna, Lyle Lovett, Cactus Choir, Seminole, Brad Hawkins, and Shane McAnally.

Curb/Universal VPs John Curb and Gerrie McDowell will remain VPs of the Curb Group. Also making the transition back to Curb will be

promotion executive Gaylen Adams, who recently segued from Curb/MCG to Curb/Universal, and promotion coordinators Amy Johnston and Adam Starr. Three Curb/Universal regionals will exit at the end of the month. West Coast regional Anne Sarosdy, Southwest regional Tami DeVito, and Northeast/Midwest regional Rhonda Beasley are all looking for a new opportunity and can be reached at the Curb/Universal office through June 30.

PHYLLIS STARK

Dick Clark To Host Radio Awards Show

Radio icon Dick Clark will join the Billboard/Airplay Monitor Radio Seminar and Awards as host of the closing-night awards dinner and show. The seminar is to be held Sept. 17-19 at the Pointe Hilton Resort at Tapatio Cliffs in Phoenix.

Clark, one of the world's best-known entertainment personalities, comes to the program with a rich history as a radio innovator, TV host, and business executive. He hosts two nationally syndicated radio shows, "Dick Clark's Rock, Roll And Remember" and "Dick Clark's U.S. Music Survey," and the live "Good Ol' Rock'n'Roll" show.

He has written several books, including "Rock, Roll And Remember" and, with Billboard's Fred Bronson, "Dick Clark's American Bandstand," a coffee-table book that follows his role as host of the long-running "American Bandstand" (1952-89), which maintains the record as TV's longest-running music/variety program. It is also the winner of two Emmy Awards.



CLARK

Clark's recent honors include induction into the Rock And Roll Hall of Fame and the Distinguished Service Award from the National Assn. of Broadcasters, along with a total of seven Emmys—three as host of his "\$20,000 Pyramid" and \$25,000 Pyramid" game shows—a special Emmy Lifetime Achievement Award, and a Grammy Award. He also won the 1991 Billboard Radio Award for his syndicated "Countdown America." Clark has the unique distinction of being the only personality to host series on all three networks and in syndication at the same time.

He is chairman/CEO of publicly owned dick clark productions and hosts TV's annual "Dick Clark New Year's Rockin' Eve" specials, "Bloopers" series and specials, and numerous retrospectives centered on "American Bandstand," which now airs on VH1. He also produces the annual American Music Awards.

Clark began his career at the age of 17 at WRUN Utica, N.Y.

For information about the Billboard/Airplay Monitor Radio Seminar and Awards, call Michele Quigley at 212-536-5088.

Plug Pulled On Phoenix's 'Wild Country'

OwensMac Radio's Michael Owens pulled the plug on his 10-month-old KWCY (Wild Country) Phoenix June 12 after getting back research three days earlier that indicated the market could not support three country stations. PD Scott Johnson is one of about 20 staffers who have been let go. Morning hosts Tim Hattrick and Willy D. Loon, who scored high in the research study, move to sister station KNIX, along with their supporting players. They replace Steve Harmon and three other KNIX morning-show members, who exit. KWCY is still airing country music, run by board operators. Owens says he will conduct a format search and also explore the option of selling the station.

Jones Radio Network and WSIX Nashville are set to debut a syndicated evening show, "Nashville Nights," July 20. WSIX evening personality Dallas Turner will host the show solo for the moment, although JRN has lined up celebrities to sit in for the first few weeks, including Faith Hill, Travis Tritt, Sammy Kershaw, and Terri Clark.

KPLX Dallas morning man Cody Alan, who had been set to co-host, has now backed out of the deal. No affiliates have yet been announced.

BP Consulting Group has cut its current country music list by seven songs to 30 titles. BP consultants Ken Moultrie and L.J. Smith say the changes resulted from several research projects that convinced them to "focus on the hits and play only the strongest titles available." Two songs were cut in the power current category, which now totals seven titles that rotate at an average of 3:30, up from 4:30. Two were cut in the secondary current category, which now includes 13 records rotating at 6:30, up from 7:30. Three songs were cut

in the consulting firm's C category for new music, which now encompasses 10 songs that rotate an average of every 10 hours, as opposed to the previous 13 hours.

Dan Seeman is named director of marketing for Chancellor's seven-station cluster in Minneapolis, including country KEEY (K102). Seeman most recently was GM of Nationwide's cross-town KSGS/KMJZ and previously was station manager of K102 and sister KFAN.

Bobby Quinn, formerly of KFKF Kansas City, joins WOW Omaha, Neb., for mornings, where he is using the moniker the Lone Ranch Hand. He replaces Ken Brooks, who moves to middays at the Tucson, Ariz.-based network Family Life Communications, and Shari Stone, who joins a crosstown classic rock station.

Arbitron incorrectly listed WKIX and WKXU Raleigh, N.C., as simulcast in the winter book and has issued a statement recanting that simulcast listing. Arbitron claims Don Curtis, president of the stations' parent company, Curtis Media, "misrepresented the broadcasting of different content throughout each day on the two frequencies."

RADIO ACTIVE

by Phyllis Stark

615-321-4284 • pstark@airplaymonitor.com



Having Fireworks For The Fourth?

With the Fourth of July fast approaching, Airplay Monitor wants to know if your station is planning special programming for that weekend. Playing patriotic music timed to fireworks? Counting down the biggest summertime hits? Or just letting the regular programming roll? Share your plans with Airplay Monitor: E-mail lsilver@airplaymonitor.com or phone national chart manager Linda Silver at 212-536-5074.



COUNTRY CONFIDENTIAL BY WADE JESSEN

615-321-4291 • wjessen@airplaymonitor.com

Duet Jumps In Plays To Top Wills' 'I Do'

During the tracking week, all eyes were on the No. 1 battle on our country airplay list, where the Reba McEntire/Brooks & Dunn duet faced off with Mark Wills. While Wills' "I Do (Cherish You)" posts a respectable increase of 85 plays, "If You See Him/If You See Her" is up 273 spins to shoot from No. 3 to No. 1. Wills' ballad holds at No. 2. Next issue, either Wills or the trio may reign, but keep an eye on Clint Black, who posts the second-largest gain in the top 10 (458 plays).

COUNTRY MUSIC-LOVING men, unite. There's so little in today's current music mix for adult male listeners it's scary.

I've done some chart analysis that suggests male listeners in the country life group are being dramatically underserved. Of the 75 titles on our country airplay list, only 18 titles have obvious male appeal, compared with 36 titles that are clearly aimed at adult females. Twenty one songs on the list either have varying amounts of dual appeal or nothing that particularly slants the selection toward either sex.

I picture an average adult guy hopping into his automobile after a long day's work (which may be the most liberating few moments of his entire day), ready to enhance the euphoria that the 5 o'clock bell brings. He tunes to his country radio station, but odds have it that he's in for some serious pop music aimed at women.

Of course, we know that adult women are the "money demo" for country radio listenership, and they're courted vigorously by many of the format's decision makers. However, the current abundance of positive, non-offensive love songs and syrupy dirges has the potential to turn country from a mass-appeal adult format into an homogeneous format designed to appeal to a singular portion of the audience.

On the flip side, it would be equally dangerous to tilt the music scale too far in the other direction. Could this be part of the reason that a

substantial number of stations have renewed their vows with the gold library? Perhaps, but it's time for radio to be more receptive to meatier material that better reflects working-class values and lifestyles. My observation isn't without its notable exceptions, either. Recent releases such as Tracy Byrd's "I'm From The Country," Joe Diffie's "Texas Size Heartache," and Garth Brooks' "Two Piña Colodas" have been carrying the torch for male listeners.

As Rodney Crowell's 1992 album title says, "Life Is Messy," and no amount of musical Novocain will make it seem otherwise. It's time for our new music to become a little more ragged around the edges.

I TOLD YOU ONCE, you son of a bitch, I'm the best that's ever been." That controversial line in the Charlie Daniels Band's 1978 pop/country crossover has sent executives at Epic scrambling. Senior promotion VP Jack Lameier tells Country Confidential that the rock version (which uses the expletive) was mistakenly mailed to country stations and to CDX to commemorate the song's 20th anniversary. The gleamingly tidy country version, which changes "son of a bitch" to "son of a gun," was the take intended to be sent out, and a new mailing of the country version is apparently in the works. That track is at No. 64 on this week's country airplay tabulation.

COUNTRY RADIO BROADCASTERS has announced that seats are still available for the June 25 Country DJ Hall of Fame induction ceremony and dinner (Country Airplay Monitor, May 29), for which I serve on the event committee. That ceremony, to be held in Nashville, will enshrine living and posthumous inductees, including ABC Radio's Bob Kingsley and Frank Page, longtime PD at the venerable KWKH Shreveport, La. For more info, contact the CRB office in Nashville.

ON THE ROW

Murphy Leaves MCA Nashville Roster

David Lee Murphy has exited the MCA Nashville artist roster. Murphy recorded three albums for the label. "Out With A Bang" peaked at No. 10 on Billboard's Top Country Albums chart in 1995. "Gettin' Out The Good Stuff" peaked at No. 12 in '96, and "We Can't All Be Angels" peaked at No. 39 last year. Murphy charted 11 singles, four of which went top 10, including the No. 1 "Dust On The Bottle" and the No. 2 "Every Time I Get Around You."

As long expected, Lyric Street has signed former RCA artist Aaron Tippin to its artist roster, which also includes Lari White, Sonya Isaacs, and the sister trio Shedasia K. Tippin has three gold and one platinum album to his credit. He is co-producing his debut Lyric Street set, due in the fall. A single will be released in July.

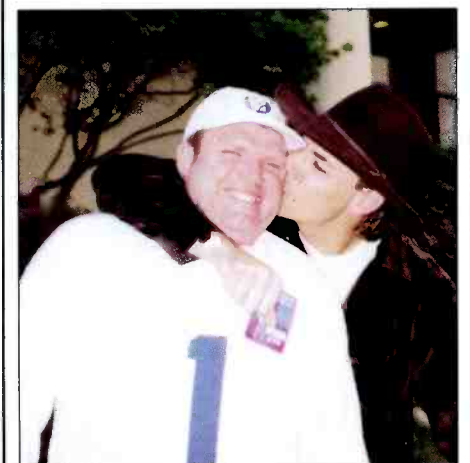
DreamWorks surprised Linda Davis by signing her to a contract after her performance on-stage June 15 at Fan Fair in Nashville. She previously had only a singles deal with the label.

Lucky Dog act Asleep At The Wheel has signed a deal with DreamWorks Records to record an "All Star Tribute To The Music Of Bob Wills, Vol. 2" album. The project will feature Merle Haggard, the Manhattan Transfer, and a Shawn Colvin/Lyle Lovett duet. In other

DreamWorks news, Steve Dorff joins as a non-exclusive producer. In addition to those duties, he will arrange music for the "Prince Of Egypt" film and work as a talent scout for the label.

Gibson Guitars has purchased prominent downtown Nashville venue Caffe Milano and plans to expand the concept to a chain of music clubs worldwide.

Too Good To Be True?



Reprise artist Michael Peterson, right, is pictured displaying a touching affection for WLWI Montgomery, Ala., afternoon personality Big Bubba. The moment occurred at WLWI's Memorial Day outdoor concert, where Peterson, Clint Black, and the Kinleys performed in front of 55,000 fans.

RADIO CONCERT MONITOR

DATE	CALL LETTERS	EVENT	SCHEDULED TO APPEAR
June 20	WWYZ Hartford, Conn.	Great American Music Fest	Ty Hemdon, Patty Loveless, Jo Dee Messina, John Michael Montgomery, Ricochet
June 21	WMZQ Washington, D.C.	Bull Run Country Concert	Patty Loveless, Ricochet, Sons Of The Desert, Travis Tritt
June 25	KIZN Boise, Idaho	River Festival	Tracy Byrd, Shane Stockton
June 27	KHKI Des Moines, Iowa	Hawkfest '98	Big House, Mark Chesnutt, David Kersh, Matt King, Pam Tillis, Randy Travis
June 27	WGNA Albany, N.Y.	CountryFest '98	Wade Hayes, Lonestar, Clay Walker, Steve Wariner
July 4	WIOV Lancaster, Pa.	July 4 Spectacular	Gary Allan, John Berry, Thompson Brothers
July 4	WROO Jacksonville, Fla.	SkyBlast '98	Brad Hawkins, Randy Travis
July 5	WKIS Miami	Independence Jam	Charlie Daniels, Keith Harling, Mila Mason, Martina McBride, Shana Petrone
July 9- Aug. 27	WWXY New York	Live Lunch Concert Series	Hal Ketchum (July 9), Gary Allan and Mark Wills (July 16) Bryan White (July 23), Dixie Chicks and Gil Grand (July 30), Lari White (Aug. 6), Big House and David Kersh (Aug. 13), Suzy Bogguss and Steve Wariner (Aug. 20), Jo Dee Messina and Chely Wright (Aug. 27)
July 25	KUPL Portland, Ore.	KUPL Country Fest	Suzy Bogguss, Billy Dean, Mila Mason, Randy Travis
Aug. 8	KYGO Denver	Country Summer Celebration	John Berry, Anita Cochran, Joe Diffie
Sept. 12	KEEY Minneapolis	K102 Fan Jam	Trace Adkins, Lonestar, Martina McBride, Collin Raye
Oct. 4	WIOV Lancaster, Pa.	Fall Music Fest	Rhett Akins, Jeff Carson, Hal Ketchum, the Kinleys, Lee Roy Parnell

Let us monitor your event! Call Phyllis Stark at 615-321-4284 or E-mail pstark@airplaymonitor.com

They Honestly Love Her



MCA Nashville artist Olivia Newton-John recently visited WSIX Nashville's morning show to promote her new album and single. Pictured, from left, are morning co-host Mike Bohan, morning man Gerry House, Newton-John, and morning producer Devon O'Day.

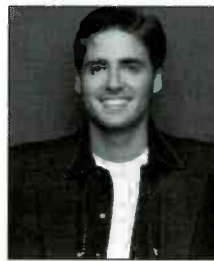
AIRBORNE

Instant information on Country's new artists

Clint Daniels

"A FOOL'S PROGRESS"
(ARISTA/NASHVILLE)

Clint Daniels, 24, grew up in Panama City, Fla., in a musical family and spent the better part of his life singing and performing. He learned guitar at the age of 12 and played in bands during his teens. After high school, trying his luck in Nashville seemed like an inevitability. He came and went several times, eventually attracting the attention of Arista A&R staffers, who traveled to Florida to hear him play a showcase. The club



he was scheduled to appear in nearly burned down during a rehearsal for the showcase, but the fire was extinguished in time and the show went on as scheduled, landing Daniels a deal with Arista. He wrote or co-wrote seven of the songs on his debut album, including this debut single. The album is due in September.

Keith Harling

"PAPA BEAR" (MCA NASHVILLE)

The video for this single was directed by TV's "Lois & Clark" star Dean Cain. It is one of six songs written by Keith Harling on his debut album, "Write It In Stone," which includes a cover of Lefty Frizzell's '74 hit "I Never Go Around Mirrors." Born in Greenwood, S.C., Harling grew up in Florida and Chattanooga, Tenn. In the fourth grade, he built a drum set and taught himself to play by watching drummers on TV. Through high school and college he played bass, saxophone, and trumpet in rock bands all over Florida and later spent two years as an MC in a Florida theater. After moving back to Chattanooga, Harling spent seven years writing and performing in clubs and VFW halls while trying to land a label deal in Nashville. Several times he became so discouraged that he sold all of his equipment. In '96, he was signed as a songwriter to MCA's music publishing company, which helped him land a recording deal.

Monty Holmes

"WHY'D YOU START LOOKIN' SO GOOD"
(BANG II)

Lubbock, Texas, native Monty Holmes had all but given up on his dream of being a country artist when his songwriting career began to flourish. He penned the George Strait hits "When Did You Stop Loving Me" and "I Know She Still Loves Me," plus Lee Ann Womack's "Never Again, Again." This year, he was given a chance to rekindle his dream when he signed as the flagship artist for the new Bang II Records. His debut album, "All I Ever Wanted," includes a country cover of the Bee Gees' "Alone."



Allison Moorer

"A SOFT PLACE TO FALL"
(MCA NASHVILLE)

After moving to Nashville from her native Alabama in '93, Allison Moorer began developing a career as a background singer but later decided to try stepping into the spotlight. She was signed to a publishing deal at Wind-

swept Pacific and was discovered by booking agent Bobby Cudd when she performed at a tribute to the late Walter Hyatt. Cudd hooked her up with MCA. This single is from the soundtrack to the Robert Redford film "The Horse Whisperer." Moorer appears in the movie performing this song, which she co-wrote. Redford directed the music video for the single.

Mark Nesler

"USED TO THE PAIN" (ASYLUM)

Best known as a songwriter before now, Mark Nesler had his greatest success with Tim McGraw's "Just To See You Smile." He's also had songs cut by Mark Chesnutt, Trace Adkins, Rhett Akins, Lee Greenwood, Ed Bruce, and Tammy Wynette and written or co-written nine songs recorded by Tracy Byrd, including "Heaven In My Woman's Eyes."



Those Byrd cuts helped him land a publishing deal with MCA Music Publishing, and he joined Byrd's touring band as a guitarist a short time later. Hailing from Buna, Texas, north of Beaumont, Nesler formed his first band at 16. He started playing the Beaumont area after high school and, in 1982, hit all 50 states in a three-month span as part of the band backing contestants in the national Wrangler Star Search. In 1991, he hit the road again. Working as Mark Nesler & the \$2 Pistols, he and his band played all over the country.

Shana Petrone

"HEAVEN BOUND" (EPIC)

A native of Hollywood, Fla., Shana Petrone has worked as a dishwasher, waitress, bartender, and model. She met music publisher Alex Torrez while on location for a Tracy Lawrence music video shoot on a boat in Key West, Fla. To keep from getting seasick, Petrone would sing to herself between takes. Torrez heard her singing, and she told him that's what she did for a living. They



kept in touch over the next year, during which time Torrez went to work in A&R at Sony Music. His introduction of her to Sony and Epic executives eventually led to her record deal. On her way to Nashville, Petrone's car broke down 100 miles outside of town, and she had to be towed the rest of the way. She still has the tower's card and plans to send him a copy of her first album.

The Wilkinsons

"26 CENTS" (GIANT)

Although they originally hail from Belleville, Ontario, the Wilkinsons have made Nashville their home. The group consists of father Steve Wilkinson, a former construction worker, plus daughter Amanda, 16, and son Tyler, 13, who have been singing together for years. Their debut album, "Nothing But Love," is due Aug. 11. Steve Wilkinson co-wrote seven of the album's tracks.

Airborne features those artists who are making their debut chart runs in Country Airplay Monitor.

THERE'S A STAR IN
EVERY ONE OF US
JUST WAITING TO BE BORN,

TAKE THAT CHANCE,
DANCE THE DANCE,

IT'S WHAT YOU'VE
WAITED FOR,

"SHINE ON"

LIGHT UP
THE WORLD WITH
JEFF CARSON
IMPACT: JUNE 29



Music for the 21st Century

does contain a bulletin board on which the majority of postings revolve around which stations aren't playing the new single and how to reach them. In an unofficial Vince Gill site called Ginger's Vincenet.com, fans can read that "Vince's latest single has hit the airwaves and is quite a success. Tune in to your favorite country station to hear 'If You Ever Have Forever In Mind.'"

Robynn Jaymes, PD at WYYD and WJLM Roanoke/Lynchburg, Va., says, "Vince Gill's fans have annoyed the hell out of me for the new single before we even got it."

WHYL Harrisburg, Pa., GM Lincoln Zeve says, "We have had several occasions where we had an inordinate amount of phone activity on a specific song and eventually tracked it down to their fan club."

Ron Brooks, PD at WESC Greenville, S.C., says, "We have a computer-junkie listener who is always faxing us about Clay Walker releases. She lists her E-mail address and a Web site."

And WBEE Rochester, N.Y., PD Loyd Ford says, "We get it all the time. These fans are usually members of several fan clubs that suggest to them that they call the station and the PD."

POPULAR E-MAIL MILITIA . . .

WIVK-FM Knoxville, Tenn., MD Chris Huff says that some of the fan clubs are "organized like militia" to gain airplay and that many of these fan sites "have weekly [chart] tracking that is better than what some of the labels have."

When fans do write to stations, Huff says, the E-mails always follow the same pattern. First, there is always a reference to "me and my friends" wanting to hear the song, which Huff says actually means "me and the other fan-club members." Second, they usually contain what he calls "grave threats" to tune out if the station doesn't start playing the song.

Here's two recent examples of E-mails sent to WIVK about the current Gill single, "If You Ever Have Forever In Mind":

"I just wanted to let you know how disappointed I am (and many of mine [sic] friends too) that your radio station is refusing to play Vince's new song, 'If You Ever Have Forever In Mind.' I have heard it one time. That is the same attitude that radio stations took when 'Go Rest High On That Mountain' came out. While I am E-mail [sic] you, I want to tell you that Shania is about [as] country as Madonna, and I hear her music constantly. I hope that your radio station will have a change of heart, but if you don't, I have a very nice CD player in my car without commercials."

"I just wanted to write to find out if you will be playing Vince Gill's new song on the air. I am a WIVK fan, but I am an even bigger fan of Vince and have been disappointed that WIVK has not played the new song . . . I also know of quite a few other Vince Gill fans that have been disappointed and have thought about switching stations so they can hear the latest from him. Thank you for your time."

Huff says he responded to both fans by

explaining that the station "has to please a large audience with varied tastes, and we can't play every single release. One responded by saying, 'Thanks, I listen to [rival WQBB-FM] Kix now. They're a great station.'"

Huff says such organized activity is "not something that happens with every single release, but when the Vince [single] came out, and there was some resistance, they summoned the troops." He recalls working at KPLX Dallas a few years ago when "we'd get dozens of postcards from Marty Stuart fans asking us to play his singles. This is kind of the modern-day version of that."

. . . OR FAN-CLUB CONSPIRACY THEORY?

Many PDs report similar correspondence from overzealous fans. WXTU Philadelphia PD Ken Johnson says, "This is the first time I've worked for a station with a Web site, [and] since I came to WXTU in January, I have received E-mail from fans regarding new releases by artists. What is interesting is many of these average 'fans' will quote numbers from trade magazines as justification for why we should be playing the songs. They will also use trade jargon like 'adds' and 'spins' that normal, everyday fans do not have in their vernacular. I recall rather suspicious notes from fans for Linda Davis, Ty Herndon, Collin Raye, and Billy Ray Cyrus."

WOKQ Dover, N.H., PD Mark Ericson says, "I don't know exactly how they are organized, but I do know we get a lot of calls from Billy Ray Cyrus fans who all seem to spout the same rhetoric about how country radio hasn't been fair to Billy Ray, he deserves more airplay, we're not listening to the public, I should go wax Billy Ray's car, etc."

"Just recently we've been inundated with E-mail in support of Olivia Newton-John," says WIRK West Palm Beach, Fla., PD Mitch Mahan. "We can usually tell when they are an organized group trying to influence airplay. They know too much. I remember one time a regional group played for an Amway convention and, as part of their arrangement with Amway, their album/single information was sent to every distributor in the Midwest with instructions to call their local country station on June 3 and ask for the song. We didn't get the single until June 4, so immediately we knew something was up."

WE'VE CAUGHT ON

Unfortunately for the fan clubs, such organized activity seems to make programmers less, rather than more, willing to play the song.

"Obviously, if it's just a concerted effort by a fan club to solicit airplay for their artist and that's the only thing pushing the single, it makes you wonder how worthy of airplay of it is," says Huff. "It's great that these people have such loyal fans. At the same time, it's very difficult dealing with these fans that won't take no for an answer."

"My advice to any organized effort outside of the regular channels is, [It's] not really a great way to do business," says Mahan.

MONITOR PROFILE

Bruce Logan Stops The Panic, Reworks The Library At Whistle 100

When Bruce Logan joined WSSL (Whistle 100) Greenville, S.C., as PD in December 1996, "everybody was panicking over the station," which, he says, was "in desperate need of focus. It has a great staff with everything it could have going for it, but the music was in shambles. There was no flow to it. The categories didn't make sense. There were recurrences that were several years old and 4- or 5-month-old records that were in gold. WSSL is this big radio station that had all kinds of arms out in the community and was thought of real well, but when you listened to it, it just didn't sound good."

Logan's first priority was to realign the music and refocus the station and the jocks on its 12-in-a-row position. And although the Capstar-owned station is off 12.1-10.7 from where it was a year ago in

should, but it really freshens the sound of the station."

Here's a recent afternoon hour on WSSL: LeAnn Rimes, "Commitment"; George Strait, "Baby's Gotten Good At Goodbye"; Tim McGraw (with Faith Hill), "It's Your Love"; Alan Jackson, "Summertime Blues"; Garth Brooks, "To Make You Feel My Love"; Clint Black, "Nothin' But The Taillights"; Faith Hill, "This Kiss"; Toby Keith, "Double Wide Paradise"; Lee Roy Parnell, "When A Woman Loves A Man"; Mindy McCready, "Ten Thousand Angels"; Shane Stockton, "What If I'm Right"; Shania Twain, "You're Still The One"; Tim McGraw "Indian Outlaw"; Terri Clark, "Now That I Found You"; and John Michael Montgomery, "How Was I To Know."

Because WSSL does weekly call-out research, Logan says, "that tends to make us move our records a little slower." But as a result, he believes that musically WESC is "more unfamiliar than us. They seem to be more chart-driven." Logan will, however, go early on new releases from superstars and will even take a chance on an unknown if it's testing. For example, he says, "What If I'm Right," Shane Stockton's debut single, "made it all the way up to power for us, and [WESC] never touched the record because it wasn't doing well nationally."

WSSL has been through some recent changes with the departures of GM Barbara Allen and afternoon jock Paul Koffy, neither of whom had been replaced at press time. But most of its jocks are veterans. Morning hosts Bill Ellis and Chris James are celebrating their 10th year together at the station this summer. APD/MD/midday host Kerry Owen and overnight jock Stanley Clarke are also longtime WSSL employees.

Shortly after his arrival at WSSL, Logan hired Koffy, who lasted just 11 months, and "Crying, Loving, Laughing, Or Leaving" evening-show host Lizz McCarter, who previously did middays at the station in the early '90s. McCarter replaced John Crenshaw locally when he sat out a noncompete for a year, but she now goes up against, and is beating, Crenshaw's syndicated "Country Heartlines" show on WESC. "The shows are very similar," says Logan. "Our challenge here is John Crenshaw's name. The biggest difference is [Crenshaw is] now national and can't focus on local problems" like McCarter did when a local student was raped.

Another WSSL advantage is its promotion staff, headed by Sandra Dill, who Logan says is "absolutely incredible. They have WSSL involved in just everything. You can't go anywhere without seeing our call letters." With Dill's large roster of volunteers, Logan says, he'll frequently go to a concert and find "20 people I've never seen before" handing out WSSL merchandise.

Logan got started in radio running the Rick Dees countdown at WJYL Louisville, Ky., and got his first country experience at crosstown WCII, where he became part of the morning show. He later handled APD/MD and production director duties at WMPI Scottsburg, Ind., while working P/T at top 40 WDJX Louisville. When WDJX LMA'd its competition and took it country, Logan became PD of what became WHKW, where he remained until 1995. A 10-month stint in the PD chair at WCHY Savannah, Ga., led to the WSSL job.

PHYLLIS STARK



Bruce Logan
Program Director
WSSL Greenville, S.C.

We were playing the same 300 records that every other station had been playing for four years'

the winter Arbitrons, it was up half a share from last fall's 10.2, taking the market's No. 1 slot 12-plus and making it one of the few country winter book success stories. Rival WESC-FM, at No. 3 overall, was also up (7.9-9.0) in the winter.

Logan plays 31 currents, with an hourly mix of four gold titles, five recurrences, and five currents. Like many country programmers, he recently expanded the gold library and added some new titles. Although most of the gold is from 1988 forward, some "odd things," like "Smoky Mountain Rain" and "The Devil Went Down To Georgia," were recently added back in with older Judds, Reba McEntire, George Strait, and other Alabama titles, plus newer gold like Clint Black's "Where Are You Now," Faith Hill's "Wild One," Garth Brooks' "Much Too Young To Feel This Damn Old," and Travis Tritt's "Here's A Quarter (Call Someone Who Cares)."

The gold changes came about after Logan "went a little deeper in music research. We were basically playing the same 300 records that every other station in the country had been playing for four years. We relaxed the numbers we thought we had to hit as far as scores went on call-out and added about 60 to 70 titles, and it really freshened the sound of the station. We had this feeling that the 'like a lot' score had to be just monstrous and were ignoring the fact that some of the passion scores were just great."

Logan compared music test notes with the PD at his AC sister station and found the AC PD cutting his "like a lot" scores off at 20 or 30, compared with Logan's 58. "There is just a bigger passion [for] and knowledge of country music, so we found we could go a little deeper and still be playing rock-solid hits." As a result of the new additions, Logan says, "the secondary golds rotate a little slower than what they

PUBLISHER: JON GUYNN
 EDITOR: SEAN ROSS
 MANAGING EDITOR: PHYLLIS STARK
 NATIONAL CHART MANAGER: LINDA SILVER
 DIRECTOR OF CHARTS: WADE JESSEN
 CHARTS ASSISTANT: MARY DECROCE
 WRITER/REPORTER: DANA HALL
 CHART PRODUCTION MANAGER: MICHAEL CUSSON
 ASST. CHART PRODUCTION MANAGER: ALEX VITOULOS
 EDITORIAL PRODUCTION MANAGERS: BARRY BISHIN, MARCIA REPINSKI
 EDITORIAL PRODUCTION: SUSAN CHICOLA, MARC GIAQUINTO,
 MARIA MANLICIC, LISA RATHGEB
 COPY EDITOR: CARL ROSEN
 ADVERTISING PRODUCTION MANAGER: LEN DURHAM
 ART DIRECTOR: RAY CARLSON
 ADVERTISING PRODUCTION ARTIST: KAREN PLATT
 49 Music Square W., Nashville, TN 37203
 615-321-4290 fax: 615-320-0454
 For subscriptions call: 800-745-8922
 ©1998 BPI Communications Inc. No part of this publication may be reproduced, stored in any retrieval system, or transmitted, in any form or by any means, electronic, mechanical, photocopying, recording, or otherwise, without the prior written permission of the publisher.

NATIONAL ADVERTISING MANAGER: HANK SPANN
 NATIONAL ACCOUNT MANAGER: LEE ANN PHOTOGLO
 ADVERTISING SERVICES MANAGER: ALYSE ZIGMAN
 SALES ASSISTANT: HOLLIE ADAMS
 EDITORIAL ADVISER: TIMOTHY WHITE
 DIRECTOR OF PRODUCTION & MANUFACTURING: MARIE GOMBERT
 CIRCULATION DIRECTOR: JEANNE JAMIN
 MARKETING MANAGER: ROB ACCATINO

Billboard Music Group

PRESIDENT: HOWARD LANDER
 SENIOR VP/GENERAL COUNSEL: GEORGINA CHALLIS
 VICE PRESIDENTS: IRWIN KORNFIELD, KAREN OERTLEY, ADAM WHITE
 DIRECTOR OF STRATEGIC DEVELOPMENT: KEN SCHLAGER
 BUSINESS MANAGER: JOELLEN SOMMER

AIRPLAY Monitor® GREATEST GAINERS



Strongest Increase In Airplay This Week

INCREASE
IN PLAYS

RANDY TRAVIS • The Hole (DREAMWORKS)	+779
KHEY +23, KTTS +19, WRNS +18, KYCW +18, KCCY +16, WQMX +16, KGMV +16, WKXC +16, KPLX +16, KFMS +15	
JOHN MICHAEL MONTGOMERY • Cover You In Kisses (ATLANTIC)	+632
KBEQ +20, WGYY +18, KSCS +17, KHEY +15, WFXG +14, KYCY +14, KFMS +14, KTST +13, KGMV +13, WESC +13	
VINCE GILL • If You Ever Have Forever In Mind (MCA NASHVILLE)	+547
WKTF +22, WCOL +17, WYRK +17, WZZK +15, KTEX +14, KHEY +14, WSOC +13, KCCY +12, KUZZ +12, KZLA +12	
JO DEE MESSINA • I'm Alright (CURB)	+529
KYNG +29, KJYJ +21, KMLE +18, WNCY +17, KSSN +17, WCMS +17, WQMX +15, KCCY +14, WKXX +14, KRMD +13	
THE WILKINSONS • 26 Cents (GIANT)	+511
KHEY +20, KMLE +19, KBEQ +18, WKXC +16, WSM +15, KKAT +15, WGNE +14, WQBE +14, WGH +14, WMJC +12	
FAITH HILL (WITH TIM MCGRAW) • Just To Hear You Say That You Love Me (WARNER BROS.)	+504
KYNG +21, WWGR +18, WGNM +16, KRKY +15, KJYJ +13, KYCY +12, KFMS +12, WYYD +11, WFMS +11, KUJL +10	
TY HERNDON • A Man Holdin' On (To A Woman Lettin' Go) (EPIC)	+488
KYCY +19, WGH +19, WXKT +16, WBBS +16, KDRK +15, WHOK +15, WQBE +14, WFMS +13, KXXY +12, WXCT +11	
DWIGHT YOAKAM • Things Change (REPRISE)	+468
WKXC +17, KSSN +17, KDDK +16, KDRK +16, KRYS +14, KZSN +14, KIIM +14, WESC +13, KYGO +13, WCTO +12	
CLINT BLACK • The Shoes You're Wearing (RCA)	+458
KIIM +21, KDRK +19, WKSJ +18, WGH +18, KGMV +17, KTTS +17, KXKT +15, KIKK +15, WCTO +14, WKTF +14	
PAM TILLIS • I Said A Prayer (ARISTA NASHVILLE)	+426
KIKK +22, KYNG +20, KDRK +15, KSSN +15, WGH +12, WUBE +12, WQXX +11, WGNM +11, WMIL +11, KYCW +11	
GARY ALLAN • It Would Be You (DECCA)	+370
WQMX +18, WQYK +17, KZSN +14, WKCC +13, WKSJ +13, WQIK +13, KILT +13, WCOS +12, WEZL +12, WNOE +12	
COLLIN RAYE • I Can Still Feel You (EPIC)	+359
WKSF +21, WCMS +15, KTST +13, WKXX +12, KILT +12, WFXG +11, WXKT +11, KYCY +11, WKIS +11, WHOK +11	
MARTINA MCBRIDE • Happy Girl (RCA)	+333
WWKA +22, WYCD +18, WCTO +13, WKSJ +13, WRKZ +13, KMLE +13, WOKO +12, KHEY +12, WGNE +11, WWGR +10	
PATTY LOVELESS • High On Love (EPIC)	+330
WCOL +16, WGNM +14, WKSF +13, WMZQ +12, WFXG +11, WNCY +11, KXKT +11, KZSN +10, WDAF +10, WRNS +9	
KENNY CHESNEY • That's Why I'm Here (BNA)	+321
KYNG +18, KYCW +14, KMDL +13, KRYS +12, WSTH +11, WBEE +11, WDSY +11, WYCD +10, WXTU +10, KUZZ +9	

MOST NEW STATIONS

	No. Of Stations		No. Of Stations
RANDY TRAVIS <i>The Hole (DreamWorks)</i>	63	DWIGHT YOAKAM <i>Things Change (Reprise)</i>	17
JOHN MICHAEL MONTGOMERY <i>Cover You In Kisses (Atlantic)</i>	36	MINDY MCCREADY <i>The Other Side (BNA)</i>	16
THE WILKINSONS <i>26 Cents (Giant)</i>	36	TRACY BYRD <i>I Wanna Feel That Way Again (MCA Nashville)</i>	15
PATTY LOVELESS <i>High On Love (Epic)</i>	24	CLINT DANIELS <i>A Fool's Progress (Arista Nashville)</i>	15
DIAMOND RIO <i>You're Gone (Arista Nashville)</i>	18	CLAY WALKER <i>Ordinary People (Giant)</i>	15
JO DEE MESSINA <i>I'm Alright (Curb)</i>	18		

VIDEO PLAYLISTS



	TW	LW		TW	LW		
1	Diamond Rio, You're Gone	37	9	1	David Kersh, Wonderful Tonight	33	28
2	Gary Allan, It Would Be You	34	30	2	Kenny Chesney, That's Why I'm Here	29	28
3	Faith Hill, This Kiss	33	35	3	Mark Wills, I Do [Cherish You]	28	19
4	John Michael Montgomery, Love Working On You	31	27	4	Tracy Byrd, I'm From The Country	26	32
5	Tracy Byrd, I Wanna Feel That Way Again	31	8	5	Jo Dee Messina, I'm Alright	26	20
6	Terri Clark, Now That I Found You	30	17	6	Terri Clark, Now That I Found You	26	32
7	Tim McGraw, One Of These Days	29	27	7	Collin Raye, I Can Still Feel You	26	29
8	Kenny Chesney, That's Why I'm Here	28	28	8	Rhett Akins, Drivin' My Life Away	25	22
9	Mark Wills, I Do [Cherish You]	28	28	9	Reba/Brooks & Dunn, If You See Him/If You See Her	25	26
10	Steve Wariner, Holes In The Floor Of Heaven	28	28	10	Tim McGraw, One Of These Days	24	24
11	LeAnn Rimes, Commitment	28	28	11	Lila McCann, Almost Over You	24	25
12	Reba/Brooks & Dunn, If You See Him/If You See Her	28	29	12	Gary Allan, It Would Be You	24	26
13	Dwight Yoakam, Things Change	28	24	13	Shania Twain, You're Still The One	23	20
14	Garth Brooks, To Make You Feel My Love	28	28	14	LeAnn Rimes, Commitment	23	21
15	Clint Black, The Shoes You're Wearing	27	34	15	Trisha Yearwood, There Goes My Baby	23	19
16	Shania Twain, You're Still The One	25	29	16	Allison Moorer, A Soft Place To Fall	22	19
17	The Mavericks, Dance The Night Away	22	20	17	John Berry, Over My Shoulder	22	20
18	Keith Harling, Papa Bear	21	21	18	Clint Black, Cadillac Jack Favor	20	17
19	Randy Travis, The Hole	21	37	19	Mila Mason, The Strong One	20	21
20	Mindy McCreedy, The Other Side	21	32	20	Randy Travis, The Hole	20	15
21	Shana Petrone, Heaven Bound	21	21	21	Steve Wariner, Holes In The Floor Of Heaven	20	20
22	Olivia Newton-John, I Honestly Love You	20	21	22	David Lee Murphy, We Can't All Be Angels	19	23
23	Jo Dee Messina, I'm Alright	20	21	23	Dixie Chicks, There's Your Trouble	19	21
24	David Kersh, Wonderful Tonight	20	20	24	Ty Herndon, A Man Holdin' On (To A Woman Lettin' Go)	19	30
25	Wilkinsons, 26 Cents	20	5	25	Jeff Foxworthy, Totally Committed	19	20
26	Various Artists, One Heart At A Time	19	20	26	Monty Holmes, Why'd You Start Lookin' So Good	19	19
27	Vince Gill, If You Ever Have Forever In Mind	19	22	27	Chely Wright, I Already Do	18	19
28	Ty Herndon, A Man Holdin' On (To A Woman Lettin' Go)	16	14	28	Sammy Kershaw, Matches	18	15
29	Sammy Kershaw, Matches	15	13	29	Shane Stockton, What If I'm Right	18	24
30	LeAnn Rimes, Looking Through Your Eyes	15	14	30	Hal Ketchum, I Saw The Light	18	22
31	Joe Diffie, Texas Size Heartache	15	13	31	Mark Nesler, Used To The Pain	18	19
32	John Berry, Over My Shoulder	15	19	32	Earl Thomas Conley, Scared Money Never Wins	18	5
33	Linda Davis, I Wanna Remember This	15	14	33	Clint Black, The Shoes You're Wearing	17	18
34	Monty Holmes, Why'd You Start Lookin' So Good	15	14	34	Jo Dee Messina, Bye Bye	17	18
35	Trisha Yearwood, There Goes My Baby	15	14	35	Keith Harling, Papa Bear	17	20
36	The Charlie Daniels Band, Texas	14	4	36	Faith Hill, This Kiss	17	15
37	Shana Petrone, Heaven Bound	14	14	37	Shana Petrone, Heaven Bound	17	17
38	Chely Wright, I Already Do	14	14	38	Clay Walker, Then What?	16	23
39	Dixie Chicks, There's Your Trouble	14	14	39	Joe Diffie, Texas Size Heartache	16	16
40	The Thompson Brothers Band, Back On The Farm	14	14	40	Linda Davis, I Wanna Remember This	16	21

Playlist Tracking Week From June 5-11, 1998

COUNTRY RECURRENT AIRPLAY

RANK	TW PLAYS	LW PLAYS	TITLE ARTIST (IMPRINT/PROMOTION LABEL)	RANK	TW PLAYS	LW PLAYS	TITLE ARTIST (IMPRINT/PROMOTION LABEL)
1	2052	2178	THEN WHAT? CLAY WALKER (GIANT)	14	1022	1095	LOVE GETS ME EVERY TIME SHANIA TWAIN (MERCURY)
2	1938	1997	NOTHIN' BUT THE TAILLIGHTS CLINT BLACK (RCA)	15	1020	1124	YOU'VE GOT TO TALK TO ME LEE ANN WOMACK (DECCA)
3	1906	1985	DREAM WALKIN' TOBY KEITH (MERCURY)	16	985	1005	WHAT IF I SAID ANITA COCHRAN (DUET WITH STEVE WARINER) (WARNER BROS.)
4	1893	1952	PERFECT LOVE TRISHA YEARWOOD (MCA NASHVILLE)	17	950	956	THE SHAKE NEAL MCCOY (ATLANTIC)
5	1666	1844	IF I NEVER STOP LOVING YOU DAVID KERSH (CURB)	18	949	940	SHE'S GOT IT ALL KENNY CHESNEY (BNA)
6	1624	1629	JUST TO SEE YOU SMILE TIM MCGRAW (CURB)	19	924	969	HE'S GOT YOU BROOKS & DUNN (ARISTA NASHVILLE)
7	1345	1336	LITTLE RED RODEO COLLIN RAYE (EPIC)	20	896	1058	THE DAY THAT SHE LEFT TULSA (IN A CHEVY) WADE HAYES (COLUMBIA)
8	1286	2730	SAY WHEN LONESTAR (BNA)	21	889	877	HOW YOUR LOVE MAKES ME FEEL DIAMOND RIO (ARISTA NASHVILLE)
9	1223	1288	I WANNA FALL IN LOVE LILA MCCANN (ASYLUM)	22	887	990	SHE'S GONNA MAKE IT GARTH BROOKS (CAPITOL/CAPITOL NASHVILLE)
10	1188	1296	LOVE OF MY LIFE SAMMY KERSHAW (MERCURY)	23	873	865	HOW DO I GET THERE DEANA CARTER (CAPITOL NASHVILLE)
11	1173	1251	TOO GOOD TO BE TRUE MICHAEL PETERSON (REPRISE)	24	860	928	ROUND ABOUT WAY GEORGE STRAIT (MCA NASHVILLE)
12	1164	1190	I CAN LOVE YOU BETTER DIXIE CHICKS (MONUMENT)	25	860	829	A BROKEN WING MARTINA MCBRIDE (RCA)
13	1077	1127	IMAGINE THAT DIAMOND RIO (ARISTA NASHVILLE)				

Recurrents are titles which have appeared on the Country Airplay chart for 20 weeks and have dropped below the top 30.

8-28-98 10:00 PM

Playlists supplied by Broadcast Data Systems' Radio Track service. Songs ranked by number of plays in monitored week.

COUNTRY

KZLA Los Angeles PD: Bill Fink MD: Bill Fink 93.9 KZLA 1 Reba/Brooks & Dunn, If You See Him/Her...

WUSN Chicago PD: Alan Sledge MD: Tricia Biondo 96.3 KSCS The Country Leader 1 George Strait, I Just Want To Dance With...

WKHX Atlanta PD: Neil McGinley MD: Johnny Gray 96.3 KSCS The Country Leader 1 Collin Raye, I Can Still Feel You...

WXTU Philadelphia PD: Ken Johnson MD: Jim Radler 92.5 WXTU 1 Mark Willis, I Do...

WMZQ Washington, DC PD: Mac Daniels MD: Jon Anthony 98.7 WMZQ 1 Terri Clark, Now That I Found You...

KEEY Minneapolis PD: Gregg Swedberg MD: Travis Moon 102.1 KEEY 1 Reba/Brooks & Dunn, If You See Him/Her...

KILT Houston PD/MD: Debbie Brazier 93.0 KILT 1 Kenny Chesney, That's Why I'm Here...

KKBQ Houston PD: Dene Hallam MD: Steve Giuttari 93.0 KILT 1 Mark Willis, I Do...

WIL St. Louis PD: Bob Barnett MD: Mark Langston 101.1 WIL 1 Tracy Byrd, I'm From The Country...

KYNG Dallas PD/MD: Dan Pearman 105.3 KYNG 1 Shania Twain W/Bryan White, From This Mo...

KYGO Denver OM/MD: John St. John MD: Tad Svendsen 98.5 KYGO 1 Kenny Chesney, That's Why I'm Here...

WWWW Detroit PD: Tim Roberts MD: Cadillac Jack 104.1 WWWW 1 LeAnn Rimes, Commitment...

WIVK Knoxville PD: Les Acree MD: Chris Huff 107.7 WIVK 1 George Strait, I Just Want To Dance With...

WYCD Detroit PD: Eddie Haskell MD: Katie Marroso 107.7 WIVK 1 Lonestar, Say When...

KNIX Phoenix OM: Larry Daniels MD: Buddy Owens 102.5 KNIX 1 Mark Chesnut, I Might Even Quit Lovin'...

KPLX Dallas PD: Brian Phillips MD: Smokey Rivers 99.5 KPLX 1 Collin Raye, I Can Still Feel You...

KFRG San Bernardino OM: Ray Massie MD: Don Jeffrey 99.5 KFRG 1 Faith Hill, This Kiss...

WQYK Tampa PD: Beecher Martin MD: Jay Roberts 104.1 WQYK 1 Gary Allan, It Would Be You...

WTQR Greensboro PD: Paul Franklin MD: Deano 104.1 WQYK 1 Tracy Byrd, I'm From The Country...

WUCI Cincinnati PD: Tim Closson MD: Duke Hamilton 104.1 WQYK 1 George Strait, I Just Want To Dance With...

WYAY Atlanta PD: Neil McGinley MD: Johnny Gray 106.7 WYAY 1 Clint Black, The Shoes You're Wearing...

WGAR Cleveland PD: Denny Nugent MD: Chuck Collier 106.7 WYAY 1 Collin Raye, I Can Still Feel You...

WFMS Indianapolis OM: Sam McGuire MD: J.D. Cannon 106.7 WYAY 1 Gary Allan, It Would Be You...

Playlists supplied by Broadcast Data Systems' Radio Track service. Songs ranked by number of plays in monitored week.

COUNTRY

WDAF Kansas City PD/MD: Ted Cramer. Playlist with 30 items including Collin Raye, I Can Still Feel You.

WCOL Columbus, OH Acting PD: John Crenshaw. Playlist with 30 items including Tracy Byrd, I'm From The Country.

WRBQ Tampa PD: Ronnie Lane. Playlist with 30 items including Tracy Byrd, I'm From The Country.

WQDR Raleigh OM: Len Shackelford. Playlist with 30 items including LeAnn Rimes, Commitment.

WGNA Albany, NY PD: Buzz Brindle MD: Bill Earley. Playlist with 30 items including Mark Wills, I Do.

KYCY San Francisco PD: Eric Logan APPD/MD: Steve Jordan. Playlist with 30 items including Terri Clark, Now That I Found You.

WESC Greenville OM: Ron Brooks MD: John Landrum. Playlist with 30 items including LeAnn Rimes, Commitment.

KWJJ Portland, OR PD/MD: Robin Mitchell. Playlist with 30 items including Collin Raye, I Can Still Feel You.

KFKF Kansas City PD: Dale Carter MD: Tony Stevens. Playlist with 30 items including Collin Raye, I Can Still Feel You.

WDRM Huntsville PD: Mark Donovan MD: Dan McClain. Playlist with 30 items including Clint Black, The Shoes You're Wearing.

KAJA San Antonio PD: Keith Montgomery MD: Jennie James. Playlist with 30 items including George Strait, I Just Want To Dance With.

WLK Lexington PD: Damon Moberly. Playlist with 30 items including Reba/Brooks & Dunn, If You See Him/If.

WNOE New Orleans PD/MD: Eddie Edwards. Playlist with 30 items including Clint Black, The Shoes You're Wearing.

KCYC San Antonio PD: R.J. Curtis MD: Cody Robbins. Playlist with 30 items including Shania Twain, You're Still The One.

WBXQ Johnson City PD: Bill Hagy MD: Reggie Neel. Playlist with 30 items including Keith Harling, Papa Bear.

KSSN Little Rock Acting PD: Bill Dotson. Playlist with 30 items including LeAnn Rimes, Commitment.

WYRK Buffalo PD: Justin Case. Playlist with 30 items including George Strait, I Just Want To Dance With.

KWEN Tulsa PD: Dave Block MD: Tim Howard. Playlist with 30 items including Faith Hill, This Kiss.

KASE Austin PD: Michael Cruise MD: Steve Gary. Playlist with 30 items including Shania Twain, You're Still The One.

KTST Oklahoma City PD: Herb Crowe MD: Phil Williams. Playlist with 30 items including George Strait, I Just Want To Dance With.

KIIM Tucson PD: Herb Crowe MD: Phil Williams. Playlist with 30 items including LeAnn Rimes, Commitment.

WKIX Raleigh OM: Mike Sleyman MD: Morgan Thomas. Playlist with 30 items including Reba/Brooks & Dunn, If You See Him/If.

KNCI Sacramento PD: Mark Evans APPD: Jennifer Wood. Playlist with 30 items including Reba/Brooks & Dunn, If You See Him/If.

WBEE Rochester, NY PD: Loyd Ford MD: Coyote Collins. Playlist with 30 items including Reba/Brooks & Dunn, If You See Him/If.

Monitor AIRPLAY **SONG ACTIVITY REPORTS**

For Week Ending June 14, 1998

Broadcast Data Systems
Detailed song tracking information for the last 3 weeks for all songs showing increased play this week. Total plays and gain do not include video play. Markets listed in order of population.

COUNTRY

TRACE ADKINS 1995/120					GARY ALLAN 4412/370					CLINT BLACK 4928/458					SUZY BOGGUSS 1509/134					GARTH BROOKS 3631/166									
Big Time (Capitol Nashville)					It Would Be You (Decca)					The Shoes You're Wearing (RCA)					Somebody To Love (Capitol Nashville)					To Make You Feel My Love (Capitol/Capitol Nashville)									
Total Stations: 148					Total Stations: 163					Total Stations: 163					Total Stations: 146					Total Stations: 162									
Chart Move: 34-31					Chart Move: 8-7					Chart Move: 7-5					Chart Move: 37-35					Chart Move: 14-12									
City	Station	PL	W	WZ	TP	City	Station	PL	W	WZ	TP	City	Station	PL	W	WZ	TP	City	Station	PL	W	WZ	TP	City	Station	PL	W	WZ	TP
L.A.	CMT	28	28	27	48	L.A.	CMT	28	28	27	48	L.A.	CMT	28	28	27	48	L.A.	CMT	28	28	27	48	L.A.	CMT	28	28	27	48
L.A.	GAC	17	11	11	113	L.A.	GAC	17	11	11	113	L.A.	GAC	17	11	11	113	L.A.	GAC	17	11	11	113	L.A.	GAC	17	11	11	113
L.A.	KIFK	17	12	11	113	L.A.	KIFK	17	12	11	113	L.A.	KIFK	17	12	11	113	L.A.	KIFK	17	12	11	113	L.A.	KIFK	17	12	11	113
Chicago	KZLA	10	6	9	25	Chicago	KZLA	10	6	9	25	Chicago	KZLA	10	6	9	25	Chicago	KZLA	10	6	9	25	Chicago	KZLA	10	6	9	25
San Fran.	WUSN	17	12	11	113	San Fran.	WUSN	17	12	11	113	San Fran.	WUSN	17	12	11	113	San Fran.	WUSN	17	12	11	113	San Fran.	WUSN	17	12	11	113
Phil.	WXTU	3	6	1	10	Phil.	WXTU	3	6	1	10	Phil.	WXTU	3	6	1	10	Phil.	WXTU	3	6	1	10	Phil.	WXTU	3	6	1	10
Detroit	WWWW	3	6	1	10	Detroit	WWWW	3	6	1	10	Detroit	WWWW	3	6	1	10	Detroit	WWWW	3	6	1	10	Detroit	WWWW	3	6	1	10
Dallas	KPLX	1	2	2	10	Dallas	KPLX	1	2	2	10	Dallas	KPLX	1	2	2	10	Dallas	KPLX	1	2	2	10	Dallas	KPLX	1	2	2	10
Dallas	KSCS	1	2	2	10	Dallas	KSCS	1	2	2	10	Dallas	KSCS	1	2	2	10	Dallas	KSCS	1	2	2	10	Dallas	KSCS	1	2	2	10
Wash. DC	KYNG	1	1	1	10	Wash. DC	KYNG	1	1	1	10	Wash. DC	KYNG	1	1	1	10	Wash. DC	KYNG	1	1	1	10	Wash. DC	KYNG	1	1	1	10
Houston	WZLZ	1	1	1	10	Houston	WZLZ	1	1	1	10	Houston	WZLZ	1	1	1	10	Houston	WZLZ	1	1	1	10	Houston	WZLZ	1	1	1	10
Houston	WZLZ	1	1	1	10	Houston	WZLZ	1	1	1	10	Houston	WZLZ	1	1	1	10	Houston	WZLZ	1	1	1	10	Houston	WZLZ	1	1	1	10

KENNY CHESNEY 4885/321					TERRI CLARK 3844/191					DIAMOND RYAN 1125/313					JOE DIFFIE 3340/153					DIXIE CHICKS 3493/290									
That's Why I'm Here (BNA)					Now That I Found You (Mercury)					You're Gone (Arista Nashville)					Texas Size Heartache (Epic)					There's Your Trouble (Monument)									
Total Stations: 163					Total Stations: 162					Total Stations: 119					Total Stations: 161					Total Stations: 161									
Chart Move: 6-6					Chart Move: 13-11					Chart Move: 43-38					Chart Move: 19-17					Chart Move: 18-14									
City	Station	PL	W	WZ	TP	City	Station	PL	W	WZ	TP	City	Station	PL	W	WZ	TP	City	Station	PL	W	WZ	TP	City	Station	PL	W	WZ	TP
L.A.	CMT	28	28	27	48	L.A.	CMT	28	28	27	48	L.A.	CMT	28	28	27	48	L.A.	CMT	28	28	27	48	L.A.	CMT	28	28	27	48
L.A.	GAC	17	11	11	113	L.A.	GAC	17	11	11	113	L.A.	GAC	17	11	11	113	L.A.	GAC	17	11	11	113	L.A.	GAC	17	11	11	113
L.A.	KIFK	17	12	11	113	L.A.	KIFK	17	12	11	113	L.A.	KIFK	17	12	11	113	L.A.	KIFK	17	12	11	113	L.A.	KIFK	17	12	11	113
Chicago	KZLA	10	6	9	25	Chicago	KZLA	10	6	9	25	Chicago	KZLA	10	6	9	25	Chicago	KZLA	10	6	9	25	Chicago	KZLA	10	6	9	25
San Fran.	WUSN	17	12	11	113	San Fran.	WUSN	17	12	11	113	San Fran.	WUSN	17	12	11	113	San Fran.	WUSN	17	12	11	113	San Fran.	WUSN	17	12	11	113
Phil.	WXTU	3	6	1	10	Phil.	WXTU	3	6	1	10	Phil.	WXTU	3	6	1	10	Phil.	WXTU	3	6	1	10	Phil.	WXTU	3	6	1	10
Detroit	WWWW	3	6	1	10	Detroit	WWWW	3	6	1	10	Detroit	WWWW	3	6	1	10	Detroit	WWWW	3	6	1	10	Detroit	WWWW	3	6	1	10
Dallas	KPLX	1	2	2	10	Dallas	KPLX	1	2	2	10	Dallas	KPLX	1	2	2	10	Dallas	KPLX	1	2	2	10	Dallas	KPLX	1	2	2	10
Dallas	KSCS	1	2	2	10	Dallas	KSCS	1	2	2	10	Dallas	KSCS	1	2	2	10	Dallas	KSCS	1	2	2	10	Dallas	KSCS	1	2	2	10
Wash. DC	KYNG	1	1	1	10	Wash. DC	KYNG	1	1	1	10	Wash. DC	KYNG	1	1	1	10	Wash. DC	KYNG	1	1	1	10	Wash. DC	KYNG	1	1	1	10
Houston	WZLZ	1	1	1	10	Houston	WZLZ	1	1	1	10	Houston	WZLZ	1	1	1	10	Houston	WZLZ	1	1	1	10	Houston	WZLZ	1	1	1	10
Houston	WZLZ	1	1	1	10	Houston	WZLZ	1	1	1	10	Houston	WZLZ	1	1	1	10	Houston	WZLZ	1	1	1	10	Houston	WZLZ	1	1	1	10

AIRPLAY Monitor **SING A COUNTRY REPORTS**

For Week Ending June 14, 1998

Country

WWW
Broadcast Data Systems
Detailed song tracking information for the last 3 weeks for all songs showing increased play this week. Total plays and gain do not include video play. Markets listed in order of population.

COUNTRY

VINCE GILL 2669/547 <i>If You Ever Have Forever In Mind (MCA Nashville)</i> Total Stations: 160 Chart Move: 30-22															TY HERNDON 3884/488 <i>A Man Herdin' On (To A Woman Lettin' Go) (Epic)</i> Total Stations: 160 Chart Move: 15-10															FAITH HILL (WITH TIM MCGRAW) 3127/504 <i>Just To Hear You Say That You Love Me (Warner Bros.)</i> Total Stations: 162 Chart Move: 25-20															TOBY KEITH 1027/71 <i>Double Wide Paradise (Mercury)</i> Total Stations: 108 Chart Move: 40-40															PATTY LOVELESS 1022/330 <i>High On Love (Epic)</i> Total Stations: 111 Chart Move: 45-41														
City	Stn	TP	City	Stn	TP	City	Stn	TP	City	Stn	TP	City	Stn	TP	City	Stn	TP	City	Stn	TP	City	Stn	TP	City	Stn	TP	City	Stn	TP	City	Stn	TP	City	Stn	TP																																							
L.A.	GAC	18	Austin	KASE	18	Austin	KASE	18	Austin	KASE	18	Austin	KASE	18	Austin	KASE	18	Austin	KASE	18	Austin	KASE	18	Austin	KASE	18	Austin	KASE	18	Austin	KASE	18																																										

MARTINA MCBRIDE 3221/333 <i>Happy Girl (RCA)</i> Total Stations: 162 Chart Move: 21-19															JO DEE MESSINA 2252/529 <i>I'm Alright (Curb)</i> Total Stations: 152 Chart Move: 35-28															JOHN MICHAEL MONTGOMERY 1578/632 <i>Cover You In Kisses (Atlantic)</i> Total Stations: 143 Chart Move: 41-34															COLLIN RAYE 4164/359 <i>I Can Still Feel You (Epic)</i> Total Stations: 162 Chart Move: 11-8															REBA BROOKS & DUNN 5452/273 <i>If You See Him/If You See Her (MCA Nashville/Arista Nashville)</i> Total Stations: 163 Chart Move: 3-1														
City	Stn	TP	City	Stn	TP	City	Stn	TP	City	Stn	TP	City	Stn	TP	City	Stn	TP	City	Stn	TP	City	Stn	TP	City	Stn	TP	City	Stn	TP	City	Stn	TP	City	Stn	TP																																							
L.A.	GAC	18	Austin	KASE	18	Austin	KASE	18	Austin	KASE	18	Austin	KASE	18	Austin	KASE	18	Austin	KASE	18	Austin	KASE	18	Austin	KASE	18	Austin	KASE	18	Austin	KASE	18																																										

COUNTRY AIRPLAY

★ ★ ★ **AIRPOWER** ★ ★ ★
(Minimum 3000 detections for the first time)

MARTINA MCBRIDE 3221/333
Happy Girl (RCA)
Total Stations: 162/Chart Move: 21-19
Heavy (35+ plays): 2 KYNG, WSTH
Medium (25-34): 33 KATM, KBEQ, KCCY, KDDK, KMDL, KMLE, KNCI, KRST, KSSN, KTST, KUZZ, KZSN, WBCT, WCTK, WHYL, WKCN, WKHK, WKLB, WKTF, WLWI, WMUS, WMZQ, WNKT, WOKO, WQBE, WRKZ, WRNS, WWGR, WWKA, WXBW, WXBQ, WXKT, WYAY
Light (Under 25): 127
New Airplay This Week: 3 KJYY, WWKA, WYRK

FAITH HILL (WITH TIM MCGRAW) 3127/504
Just To Hear You Say That You Love Me (Warner Bros.)
Total Stations: 162/Chart Move: 25-20
Heavy (35+): 2 KMPS, KYNG
Medium (25-34): 26 KCCY, KDDK, KKCS, KMDL, KMLE, KSCS, KUPL, KWJJ, WBBS, WESC, WFMS, WGH, WHYL, WKCN, WKIX, WKTF, WMZQ, WNCY, WQIK, WROO, WSTH, WWGR, WXBW, WXBQ, WXKT, WYGY
Light (Under 25): 134
New Airplay This Week: 5 KFMS, KTEX, WGN, WGR, WYCD

2999 - 1000 DETECTIONS

LARI WHITE 1741/196
Stepping Stone (Lyric Street)
Total Stations: 155/Chart Move: 36-33
Heavy (35+): 0
Medium (25-34): 3 KIKK, WKCT, WJCL
Light (Under 25): 152
New Airplay This Week: 12 KDRK, KKCS, KSSN, KTEX, KUZZ, WCOL, WCOS, WDRM, WGN, WGRX, WQDR, WQXK

JOHN MICHAEL MONTGOMERY 1578/632
Cover You In Kisses (Atlantic)
Total Stations: 143/Chart Move: 41-34
Heavy (35+): 0
Medium (25-34): 5 KDDK, WGH, WGR, WRNS, WSIX
Light (Under 25): 138
New Airplay This Week: 36 KBEQ, KEEY, KFMS, KGM, KILT, KJYY, KNCI, KRST, KSCS, KSKS, KTEX, KTST, KTTS, KUPL, KUPL, KYCY, KZLA, KZSN, WAMZ, WESC, WGGY, WIRK, WKO, WKHK, WKLB, WKTF, WOKO, WQDR, WQDR, WQIK, WRKZ, WVLK, WXCT, WXKT, WYCD, WYGD

SUZY BOGGUSS 1509/134
Somebody To Love (Capitol Nashville)
Total Stations: 146/Chart Move: 37-35
Heavy (35+): 2 KIKK, KYNG
Medium (25-34): 6 KBEQ, KILT, KYCY, WKIX, WRNS, WUSN
Light (Under 25): 138
New Airplay This Week: 8 KATM, KGM, KJYY, KTST, KYGO, WKJN, WQDR, WXKT

CLAY WALKER 1200/226
Ordinary People (Giant)
Total Stations: 121/Chart Move: 39-36
Heavy (35+): 0
Medium (25-34): 5 KBEQ, KHEY, KIKK, KYCY, WDRM
Light (Under 25): 116
New Airplay This Week: 15 KATM, KDDK, KILT, KKAT, KRYS, KUZZ, WEZL, WFLS, WGR, WJCL, WNOE, WQDR, WSTH, WTQR, WXCT

RANDY TRAVIS 1175/779
The Hole (DreamWorks)
Total Stations: 124/Chart Move: 52-37
Heavy (35+): 0
Medium (25-34): 2 KSCS, WRNS
Light (Under 25): 122
New Airplay This Week: 63 KCCY, KDDK, KFMS, KGM, KHEY, KIKF, KKAT, KNCI, KOU, KPLX, KTTS, KUPL, KUZZ, KVET, KWJJ, KXKC, KYCW, KYCY, KYGO, KZSN, WAMZ, WCMS, WCOS, WCTK, WDAF, WDRM, WESC, WEZL, WFMS, WFRE, WGH, WGRX, WKIX, WKJN, WKKT, WKX, WKLB, WKSF, WKSJ, WKXC, WMIL, WMJC, WMSI, WMUS, WMZQ, WNCY, WOKO, WOV, WPOR, WQMX, WQXK, WRKZ, WROO, WSM, WSSL, WUSN, WUSY, WVLK, WWGR, WYGY, WXBW, WXCT

DIAMOND RIO 1125/313
You're Gone (Arista Nashville)
Total Stations: 119/Chart Move: 43-38
Heavy (35+): 0

Medium (25-34): 3 KBEQ, WJCL, WKCN
Light (Under 25): 116
New Airplay This Week: 18 KMDL, KOU, KRMD, KRTY, WCTK, WCTO, WGX, WGN, WHOK, WKCO, WMJC, WNKT, WOKQ, WPZM, WQIK, WSTH, WYGY, WYD

RESTLESS HEART 1071/165
No End To This Road (RCA)
Total Stations: 125/Chart Move: 42-39
Heavy (35+): 0
Medium (25-34): 2 KYCY, WXBQ
Light (Under 25): 123
New Airplay This Week: 8 KMDL, WCTK, WFLS, WKIS, WMSI, WNKT, WOGY, WXBW

TOBY KEITH 1027/71
Double Wide Paradise (Mercury)
Total Stations: 108/Chart Move: 40-40
Heavy (35+): 1 WGR
Medium (25-34): 2 WKCN, WRNS
Light (Under 25): 105
New Airplay This Week: 10 KDDK, KRST, WEZL, WIRK, WKIS, WKIX, WKKT, WROO, WYCD, WYNK

PATTY LOVELESS 1022/330
High On Love (Epic)
Total Stations: 111/Chart Move: 45-41
Heavy (35+): 0
Medium (25-34): 1 WRNS
Light (Under 25): 110
New Airplay This Week: 24 KHEY, KNCI, KOU, KRMD, KSKS, KSON, KXKT, KZSN, WBEE, WCOL, WCTK, WCTO, WDAF, WHOK, WJCL, WKIS, WKX, WMIL, WMJC, WNCY, WOV, WQY, WXF, WYD

999 - 500 DETECTIONS

THE WILKINSONS 894/511
26 Cents (Giant)
Total Stations: 109/Chart Move: 54-43
Heavy (35+): 0
Medium (25-34): 3 KMLE, WBCT, WQBE
Light (Under 25): 106
New Airplay This Week: 36 KATM, KBEQ, KFDI, KHEY, KIKF, KILT, KKAT, KSKS, KVOO, KXKC, KXKT, KYCY, KZSN, WBBS, WBEE, WGH, WGN, WHYL, WIRK, WKJN, WKXC, WMJC, WMUS, WNKT, WOV, WPOR, WQXK, WRKZ, WRNS, WSM, WTQR, WWGR, WXF, WXKT, WYCD, WYD

DAVID KERSH 726/109
Wonderful Tonight (Curb)
Total Stations: 83/Chart Move: 47-45
Heavy (35+): 1 KYNG
Medium (25-34): 1 WKKT
Light (Under 25): 81
New Airplay This Week: 6 KILT, KOU, WESC, WPOC, WSTH, WXKT

MONTY HOLMES 609/89
Why'd You Start Lookin' So Good (Bang II)
Total Stations: 75/Chart Move: 48-46
Heavy (35+): 1 WQBE
Medium (25-34): 2 WSOC, WXBQ
Light (Under 25): 72
New Airplay This Week: 7 KMDL, WBCT, WDAF, WKSF, WPZM, WRBQ, WROO

MICHAEL PETERSON 598/142
When The Bartender Cries (Reprise)
Total Stations: 83/Chart Move: 50-47
Heavy (35+): 0
Medium (25-34): 1 KEEY
Light (Under 25): 82
New Airplay This Week: 13 KBEQ, KWRN, KZSN, WESC, WKHK, WKSF, WKXC, WLWI, WYGY, WXCT, WXF, WXKT, WYGY

LINDA DAVIS 542/96
I Wanna Remember This (DreamWorks)
Total Stations: 103/Chart Move: 51-49
Heavy (35+): 0
Medium (25-34): 0
Light (Under 25): 103
New Airplay This Week: 8 KATM, KMDL, WGN, WGR, WNKT, WRKZ, WRNS, WXF

MINDY MCCREADY 536/146
The Other Side (BNA)
Total Stations: 70/Chart Move: 53-50
Heavy (35+): 0
Medium (25-34): 0
Light (Under 25): 70
New Airplay This Week: 16 KFKF, KFRG, KHEY, KRST, KRYS, KYCW, WGN, WKIX, WKTF, WMJC, WQXK, WRKZ, WUSY, WWGR, WXKT, WYNK

GEORGE STRAIT 438/147
True (MCA Nashville)
Total Stations: 43/Chart Move: 56-51
Heavy (35+): 2 KIKK, KYNG
Medium (25-34): 3 KKBC, KMLE, KWJJ
Light (Under 25): 38
New Airplay This Week: 9 KCCY, KOU, KSOP, KUPL, KVET, KWJJ, WBCT, WNKT, WSSL

DOUG STONE 374/135
Gone Out Of My Mind (Columbia)
Total Stations: 59/Chart Move: 61-52
Heavy (35+): 0
Medium (25-34): 0
Light (Under 25): 59
New Airplay This Week: 12 KHAY, KHEY, KMDL, KPLX, KTTS, WBCT, WFMS, WOKQ, WQXK, WUSN, WXTU, WYNK

MARK NESLER 316/49
Used To The Pain (Asylum)
Total Stations: 44/Chart Move: 58-53
Heavy (35+): 0
Medium (25-34): 0
Light (Under 25): 44
New Airplay This Week: 5 WKSF, WPZM, WSTH, WYGY, WXKT

CLINT DANIELS 306/180
A Fool's Progress (Arista Nashville)
Total Stations: 52/Chart Move: 64-55
Heavy (35+): 0
Medium (25-34): 1 WXBQ
Light (Under 25): 51
New Airplay This Week: 15 KEEY, KFDI, KFKF, KFRG, KHEY, KIKF, KRTY, KXKT, WBCT, WFLS, WFMS, WGH, WJCL, WKCN, WSIX

TRACY BYRD 266/183
I Wanna Feel That Way Again (MCA Nashville)
Total Stations: 64/Chart Move: 75-57
Heavy (35+): 0
Medium (25-34): 0
Light (Under 25): 64
New Airplay This Week: 15 KDDK, KSOP, KXKC, KYGO, WFMS, WFRE, WKCN, WKSJ, WMSI, WNCY, WNKT, WRNS, WSIX, WSM, WWGR

SHANE STOCKTON 209/167
Gonna Have To Fall (Decca)
Total Stations: 58/Chart Move: Debut 58
Heavy (35+): 0
Medium (25-34): 0
Light (Under 25): 58
New Airplay This Week: 7 KHAY, KUZZ, KXKT, WCKT, WHYL, WMUS, WXBW

STEVE WARINER 163/108
Road Trippin' (Capitol Nashville)
Total Stations: 39/Chart Move: Debut 61
Heavy (35+): 0
Medium (25-34): 0
Light (Under 25): 39
New Airplay This Week: 11 KHAY, KIKF, KTTS, WBCT, WGR, WHYL, WKCN, WQMX, WRNS, WSM, WXKT

CHRIS LEDOUX 157/66
Runaway Love (Capitol Nashville)
Total Stations: 52/Chart Move: 71-62
Heavy (35+): 0
Medium (25-34): 0
Light (Under 25): 52
New Airplay This Week: 3 KBEQ, KDRK, WCTO

THE MAVERICKS 157/58
Dance The Night Away (MCA Nashville)
Total Stations: 28/Chart Move: 68-63
Heavy (35+): 0
Medium (25-34): 1 WXBQ
Light (Under 25): 27
New Airplay This Week: 4 KHEY, WCTK, WGH, WKIS

SARA EVANS 125/52
Cryin' Game (RCA)
Total Stations: 31/Chart Move: Re-entry 67
Heavy (35+): 0
Medium (25-34): 0
Light (Under 25): 31
New Airplay This Week: 3 KMDL, WOKO, WQMX

NEAL MCCOY 117/41
Love Happens Like That (Atlantic)
Total Stations: 20/Chart Move: Debut 69
Heavy (35+): 0
Medium (25-34): 0
Light (Under 25): 20
New Airplay This Week: 6 KMDL, KSKS, KSOP, WEZL, WRNS, WSIX

BRADY SEALS 109/33
I Fell (Warner Bros.)
Total Stations: 19/Chart Move: Re-entry 70
Heavy (35+): 0
Medium (25-34): 0
Light (Under 25): 19
New Airplay This Week: 2 WAMZ, WKKT

SHANA PETRONE 105/64
Heaven Bound (Epic)
Total Stations: 25/Chart Move: Debut 71
Heavy (35+): 0
Medium (25-34): 0
Light (Under 25): 25
New Airplay This Week: 7 KNCI, WCOL, WHYL, WKLB, WPOR, WRNS, WXCT

KEVIN SHARP 102/99
If She Only Knew (143/Asylum)
Total Stations: 52/Chart Move: Debut 72
Heavy (35+): 0
Medium (25-34): 0
Light (Under 25): 52
New Airplay This Week: 2 KMDL, WEZL

SAMMY KERSHAW 100/91
Honky Tonk America (Mercury)
Total Stations: 40/Chart Move: Debut 73
Heavy (35+): 0
Medium (25-34): 0
Light (Under 25): 40
New Airplay This Week: 4 KMDL, KRMD, WKKO, WRNS

Airpower awarded to those records which attain 3000 detections for the first time. New airplay lists those stations registering six or more detections per week on a record for the first time. ★ Initial impact: records appearing on this page for the first time.



MIDWEST

	TW	LW
1	Reba/Brooks & Dunn, If You See Him/If	1118 1074
2	George Strait, I Just Want To Dance With	1073 1183
3	Mark Wills, I Do	1067 1059
4	LeAnn Rimes, Commitment	1004 1007
5	Clint Black, The Shoes You're Wearing	987 931
6	Kenny Chesney, That's Why I'm Here	916 872
7	Collin Raye, I Can Still Feel You	896 830
8	Gary Allan, It Would Be You	865 741
9	Garth Brooks, To Make You Feel My Love	791 741
10	Terri Clark, Now That I Found You	787 758
11	Shania Twain W/Bryan White, From This Mo	766 754
12	Tim McGraw, One Of These Days	761 996
13	Ty Herndon, A Man Holdin' On	742 678
14	Tracy Byrd, I'm From The Country	731 779
15	Dixie Chicks, There's Your Trouble	722 626
16	Trisha Yearwood, There Goes My Baby	716 714
17	Joe Diffie, Texas Size Heartache	679 637
18	Martina McBride, Happy Girl	633 755
19	Faith Hill, This Kiss	600 740
20	Steve Wariner, Holes In The Floor Of Hea	586 491
21	Pam Tillis, I Said A Prayer	580 504
22	Faith Hill W/Tim McGraw, Just To Hear Yo	520 414
23	Dwight Yoakam, Things Change	513 449
24	Vince Gill, If You Ever Have Forever In	510 387
25	Jo Dee Messina, I'm Alright	507 557
26	Joe De Messina, Bye Bye	495 513
27	Garth Brooks, Two Pina Coladas	483 418
28	Trace Adkins, Big Time	440 538
29	Keith Harling, Papa Bear	418 527
30	Mark Chesnutt, I Might Even Quit Lovin'	

NORTHEAST

	TW	LW
1	LeAnn Rimes, Commitment	674 665
2	Reba/Brooks & Dunn, If You See Him/If	666 627
3	George Strait, I Just Want To Dance With	656 691
4	Mark Wills, I Do	602 605
5	Kenny Chesney, That's Why I'm Here	591 533
6	Clint Black, The Shoes You're Wearing	588 535
7	Collin Raye, I Can Still Feel You	533 480
8	Tracy Byrd, I'm From The Country	486 505
9	Gary Allan, It Would Be You	486 461
10	Tim McGraw, One Of These Days	485 613
11	Ty Herndon, A Man Holdin' On	480 428
12	Steve Wariner, Holes In The Floor Of Hea	454 569
13	Trisha Yearwood, There Goes My Baby	438 419
14	Shania Twain W/Bryan White, From This Mo	429 389
15	Terri Clark, Now That I Found You	415 408
16	Joe Diffie, Texas Size Heartache	406 381
17	Martina McBride, Happy Girl	403 338
18	Garth Brooks, To Make You Feel My Love	398 376
19	Faith Hill W/Tim McGraw, Just To Hear Yo	390 318
20	Faith Hill, This Kiss	379 487
21	Dixie Chicks, There's Your Trouble	369 356
22	Garth Brooks, Two Pina Coladas	354 365
23	Vince Gill, If You Ever Have Forever In	333 232
24	Clay Walker, Then What?	320 338
25	Shania Twain, You're Still The One	312 294
26	Pam Tillis, I Said A Prayer	304 264
27	Mark Chesnutt, I Might Even Quit Lovin'	303 386
28	Dwight Yoakam, Things Change	303 242
29	Trisha Yearwood, Perfect Love	291 299
30	Toby Keith, Dream Walkin'	290 291

WEST

	TW	LW
1	Mark Wills, I Do	895 884
2	Reba/Brooks & Dunn, If You See Him/If	887 832
3	George Strait, I Just Want To Dance With	842 912
4	Kenny Chesney, That's Why I'm Here	822 758
5	LeAnn Rimes, Commitment	770 780
6	Clint Black, The Shoes You're Wearing	751 641
7	Tim McGraw, One Of These Days	718 850
8	Gary Allan, It Would Be You	717 676
9	Collin Raye, I Can Still Feel You	641 630
10	Steve Wariner, Holes In The Floor Of Hea	625 743
11	Trisha Yearwood, There Goes My Baby	625 610
12	Terri Clark, Now That I Found You	622 616
13	Ty Herndon, A Man Holdin' On	613 520
14	Shania Twain W/Bryan White, From This Mo	596 630
15	Tracy Byrd, I'm From The Country	595 639
16	Dixie Chicks, There's Your Trouble	573 522
17	Garth Brooks, To Make You Feel My Love	547 551
18	Martina McBride, Happy Girl	536 508
19	Faith Hill W/Tim McGraw, Just To Hear Yo	532 399
20	Faith Hill, This Kiss	531 622
21	Joe Diffie, Texas Size Heartache	513 509
22	Jo Dee Messina, Bye Bye	464 475
23	Mark Chesnutt, I Might Even Quit Lovin'	457 525
24	Shania Twain, You're Still The One	436 424
25	Jo Dee Messina, I'm Alright	428 306
26	Dwight Yoakam, Things Change	426 307
27	Clint Black, Nothin' But The Taillights	380 373
28	Toby Keith, Dream Walkin'	379 384
29	Keith Harling, Papa Bear	371 452
30	Pam Tillis, I Said A Prayer	355 292

SOUTHWEST

	TW	LW
1	Reba/Brooks & Dunn, If You See Him/If	911 853
2	George Strait, I Just Want To Dance With	875 852
3	Mark Wills, I Do	835 826
4	Clint Black, The Shoes You're Wearing	788 697
5	Kenny Chesney, That's Why I'm Here	728 645
6	LeAnn Rimes, Commitment	695 637
7	Gary Allan, It Would Be You	645 613
8	Ty Herndon, A Man Holdin' On	633 543
9	Tim McGraw, One Of These Days	630 824
10	Terri Clark, Now That I Found You	590 578
11	Collin Raye, I Can Still Feel You	576 500
12	Dixie Chicks, There's Your Trouble	534 489
13	Garth Brooks, To Make You Feel My Love	530 496
14	Joe Diffie, Texas Size Heartache	480 456
15	Faith Hill, This Kiss	476 549
16	Shania Twain W/Bryan White, From This Mo	461 380
17	Steve Wariner, Holes In The Floor Of Hea	456 547
18	Faith Hill W/Tim McGraw, Just To Hear Yo	453 401
19	Martina McBride, Happy Girl	438 392
20	Trisha Yearwood, There Goes My Baby	427 411
21	Vince Gill, If You Ever Have Forever In	398 307
22	Jo Dee Messina, Bye Bye	385 406
23	Tracy Byrd, I'm From The Country	372 413
24	Pam Tillis, I Said A Prayer	363 271
25	Mark Chesnutt, I Might Even Quit Lovin'	349 464
26	Shania Twain, You're Still The One	346 339
27	Dwight Yoakam, Things Change	321 287
28	Garth Brooks, Two Pina Coladas	307 313
29	Clint Black, Nothin' But The Taillights	301 315
30	Trisha Yearwood, Perfect Love	290 286

SOUTHEAST

	TW	LW
1	LeAnn Rimes, Commitment	1878 1888
2	Mark Wills, I Do	1823 1790
3	Reba/Brooks & Dunn, If You See Him/If	1796 1721
4	George Strait, I Just Want To Dance With	1775 1910
5	Kenny Chesney, That's Why I'm Here	1744 1674
6	Clint Black, The Shoes You're Wearing	1728 1589
7	Gary Allan, It Would Be You	1618 1480
8	Collin Raye, I Can Still Feel You	1455 1317
9	Tim McGraw, One Of These Days	1379 1694
10	Terri Clark, Now That I Found You	1364 1239
11	Ty Herndon, A Man Holdin' On	1346 1180
12	Garth Brooks, To Make You Feel My Love	1306 1249
13	Dixie Chicks, There's Your Trouble	1242 1158
14	Trisha Yearwood, There Goes My Baby	1234 1133
15	Shania Twain W/Bryan White, From This Mo	1226 1131
16	Joe Diffie, Texas Size Heartache	1195 1158
17	Tracy Byrd, I'm From The Country	1182 1301
18	Martina McBride, Happy Girl	1132 1002
19	Faith Hill W/Tim McGraw, Just To Hear Yo	1127 982
20	Steve Wariner, Holes In The Floor Of Hea	1054 1291
21	Vince Gill, If You Ever Have Forever In	1046 841
22	Mark Chesnutt, I Might Even Quit Lovin'	1007 1167
23	Pam Tillis, I Said A Prayer	979 849
24	Faith Hill, This Kiss	956 1190
25	Dwight Yoakam, Things Change	929 797
26	Keith Harling, Papa Bear	887 974
27	Jo Dee Messina, Bye Bye	873 873
28	Jo Dee Messina, I'm Alright	808 642
29	Garth Brooks, Two Pina Coladas	723 747
30	Trace Adkins, Big Time	713 700

NATIONAL AIRPLAY BY AUDIENCE

THIS WEEK	LAST WEEK	WKS. ON CHART	TITLE/IMPRINT/PROMOTION LABEL	ARTIST	AUDIENCE (millions)	
					TW	LW
1	1	11	★ ★ ★ No. 1 ★ ★ ★ I JUST WANT TO DANCE WITH YOU MCA NASHVILLE	GEORGE STRAIT	46.7465	49.9826
2	2	13	I DO [CHERISH YOU] MERCURY	MARK WILLS	45.9459	44.7694
3	3	9	IF YOU SEE HIM/IF YOU SEE HER MCA NASHVILLE/ARISTA NASHVILLE	REBA/BROOKS & DUNN	45.9167	44.0436
4	5	13	COMMITMENT CURB/MCG	LEANN RIMES	42.0586	40.0829
5	6	13	THAT'S WHY I'M HERE BNA	KENNY CHESNEY	40.2091	37.6817
6	7	11	THE SHOES YOU'RE WEARING RCA	CLINT BLACK	40.0195	36.2104
7	9	16	IT WOULD BE YOU DECCA	GARY ALLAN	36.9130	33.7155
8	4	12	ONE OF THESE DAYS CURB	TIM MCGRAW	35.5263	43.7135
9	12	7	I CAN STILL FEEL YOU EPIC	COLLIN RAYE	33.9385	29.9817
10	14	11	A MAN HOLDIN' ON (TO A WOMAN LETTIN' GO) EPIC	TY HERNDON	32.3032	27.7646
11	13	10	NOW THAT I FOUND YOU MERCURY	TERRI CLARK	31.9550	29.9645
12	11	17	I'M FROM THE COUNTRY MCA NASHVILLE	TRACY BYRD	30.5147	32.4342
13	8	15	HOLES IN THE FLOOR OF HEAVEN CAPITOL NASHVILLE	STEVE WARINER	30.2761	36.0246
14	16	6	TO MAKE YOU FEEL MY LOVE CAPITOL/CAPITOL NASHVILLE	GARTH BROOKS	29.3028	26.6795
15	17	6	THERE GOES MY BABY MCA NASHVILLE	TRISHA YEARWOOD	28.6712	26.4314
16	15	6	FROM THIS MOMENT ON MERCURY	SHANIA TWAIN (WITH BRYAN WHITE)	28.4424	26.7307
17	19	7	THERE'S YOUR TROUBLE MONUMENT	DIXIE CHICKS	27.1913	24.1575
18	10	18	THIS KISS WARNER BROS.	FAITH HILL	26.7363	32.7520
19	24	4	JUST TO HEAR YOU SAY THAT YOU LOVE ME WARNER BROS.	FAITH HILL (WITH TIM MCGRAW)	25.0682	20.6579
20	21	7	TEXAS SIZE HEARTACHE EPIC	JOE DIFFIE	24.3144	23.3022

THIS WEEK	LAST WEEK	WKS. ON CHART	TITLE/IMPRINT/PROMOTION LABEL	ARTIST	AUDIENCE (millions)	
					TW	LW
21	23	5	HAPPY GIRL RCA	MARTINA MCBRIDE	23.6131	21.3287
22	18	22	BYE BYE CURB	JO DEE MESSINA	22.6584	24.3448
23	30	3	IF YOU EVER HAVE FOREVER IN MIND MCA NASHVILLE	VINCE GILL	20.9479	16.1841
24	26	19	YOU'RE STILL THE ONE MERCURY	SHANIA TWAIN	20.3822	19.9979
25	25	15	TWO PINA COLADAS CAPITOL/CAPITOL NASHVILLE	GARTH BROOKS	18.8933	20.4497
26	31	5	I SAID A PRAYER ARISTA NASHVILLE	PAM TILLIS	18.1689	14.4698
27	22	12	I MIGHT EVEN QUIT LOVIN' YOU DECCA	MARK CHESNUTT	17.9926	22.5582
28	32	5	THINGS CHANGE REPRISE	DWIGHT YOAKAM	17.8429	14.1981
29	35	3	I'M ALRIGHT CURB	JO DEE MESSINA	16.0253	11.8296
30	28	10	PAPA BEAR MCA NASHVILLE	KEITH HARLING	15.8651	18.2734
31	29	17	OUT OF MY BONES DREAMWORKS	RANDY TRAVIS	15.8049	18.1570
32	36	4	SOMEBODY TO LOVE CAPITOL NASHVILLE	SUZY BOGGUSS	13.4074	11.6877
33	34	4	BIG TIME CAPITOL NASHVILLE	TRACE ADKINS	12.4230	12.1479
34	39	2	COVER YOU IN KISSES ATLANTIC	JOHN MICHAEL MONTGOMERY	11.1800	6.2828
35	37	2	STEPPING STONE LYRIC STREET	LARI WHITE	10.8215	9.4203
36	NEW		THE HOLE DREAMWORKS	RANDY TRAVIS	8.7386	3.8448
37	40	2	ORDINARY PEOPLE GIANT	CLAY WALKER	7.6577	6.2270
38	NEW		HIGH ON LOVE EPIC	PATTY LOVELESS	6.9773	4.3846
39	NEW		YOU'RE GONE ARISTA NASHVILLE	DIAMOND RIO	6.6359	5.0361
40	NEW		26 CENTS GIANT	THE WILKINSONS	6.5349	3.4643

Bullets are awarded to those titles which increase in audience impressions and do not decrease in rank. Records are removed from this chart in conjunction with the country airplay chart.

Compiled from a national sample of airplay supplied by Broadcast Data Systems' Radio Track service to Country Airplay Monitor. 163 country stations are electronically monitored 24 hours a day, 7 days a week. Songs are ranked by number of detections. © 1998 Billboard/BPI Communications.

THIS WEEK	LAST WEEK	WKS. ON CHART	TITLE/IMPRINT/PROMOTION LABEL	ARTIST	DETECTIONS		
					TW	LW	
			★ ★ ★ No. 1 ★ ★ ★				
1	3	9	IF YOU SEE HIM/IF YOU SEE HER MCA NASHVILLE/ARISTA NASHVILLE 1 week at No. 1	REBA/BROOKS & DUNN	5452	5179	
2	2	18	I DO [CHERISH YOU] MERCURY	MARK WILLS	5337	5252	
3	1	11	I JUST WANT TO DANCE WITH YOU MCA NASHVILLE	GEORGE STRAIT	5313	5747	
4	5	14	COMMITMENT CURB/MCG	LEANN RIMES	5086	5057	
5	7	12	THE SHOES YOU'RE WEARING RCA	CLINT BLACK	4928	4470	
6	6	17	THAT'S WHY I'M HERE BNA	KENNY CHESNEY	4885	4564	
7	8	20	IT WOULD BE YOU DECCA	GARY ALLAN	4412	4042	
8	11	10	I CAN STILL FEEL YOU EPIC	COLLIN RAYE	4164	3805	
9	4	16	ONE OF THESE DAYS CURB	TIM MCGRAW	4070	5083	
10	15	14	A MAN HOLDIN' ON (TO A WOMAN LETTIN' GO) EPIC	TY HERNDON	3884	3396	
11	13	13	NOW THAT I FOUND YOU MERCURY	TERRI CLARK	3844	3653	
12	14	7	TO MAKE YOU FEEL MY LOVE CAPITOL/CAPITOL NASHVILLE	GARTH BROOKS	3631	3465	
13	17	24	FROM THIS MOMENT ON MERCURY SHANIA TWAIN (WITH BRYAN WHITE)		3506	3310	
14	18	12	THERE'S YOUR TROUBLE MONUMENT	DIXIE CHICKS	3493	3203	
15	16	8	THERE GOES MY BABY MCA NASHVILLE	TRISHA YEARWOOD	3489	3331	
16	10	21	I'M FROM THE COUNTRY MCA NASHVILLE	TRACY BYRD	3424	3815	
17	19	13	TEXAS SIZE HEARTACHE EPIC	JOE DIFFIE	3340	3187	
18	9	17	HOLES IN THE FLOOR OF HEAVEN CAPITOL NASHVILLE	STEVE WARINER	3242	3977	
			★ ★ ★ AIRPOWER ★ ★ ★				
19	21	10	HAPPY GIRL RCA	MARTINA MCBRIDE	3221	2888	
			★ ★ ★ AIRPOWER ★ ★ ★				
20	25	5	JUST TO HEAR YOU SAY THAT YOU LOVE ME WARNER BROS. FAITH HILL (WITH TIM MCGRAW)		3127	2623	
21	12	18	THIS KISS WARNER BROS.	FAITH HILL	3017	3672	
22	30	5	IF YOU EVER HAVE FOREVER IN MIND MCA NASHVILLE	VINCE GILL	2669	2122	
23	28	7	I SAID A PRAYER ARISTA NASHVILLE	PAM TILLIS	2622	2196	
24	20	16	I MIGHT EVEN QUIT LOVIN' YOU DECCA	MARK CHESNUTT	2546	3105	
25	33	9	THINGS CHANGE REPRISE	DWIGHT YOAKAM	2542	2074	
26	23	24	BYE BYE CURB	JO DEE MESSINA	2516	2682	
27	24	17	PAPA BEAR MCA NASHVILLE	KEITH HARLING	2258	2648	
28	35	6	I'M ALRIGHT CURB	JO DEE MESSINA	2252	1723	
29	27	23	YOU'RE STILL THE ONE MERCURY	SHANIA TWAIN	2251	2232	
30	26	28	TWO PINA COLADAS CAPITOL/CAPITOL NASHVILLE	GARTH BROOKS	2221	2336	
31	34	8	BIG TIME CAPITOL NASHVILLE	TRACE ADKINS	1995	1875	
32	32	17	OUT OF MY BONES DREAMWORKS	RANDY TRAVIS	1781	2077	
33	36	7	STEPPING STONE LYRIC STREET	LARI WHITE	1741	1545	
34	41	5	COVER YOU IN KISSES ATLANTIC JOHN MICHAEL MONTGOMERY		1578	946	
35	37	12	SOMEBODY TO LOVE CAPITOL NASHVILLE	SUZY BOGGUSS	1509	1375	
36	39	9	ORDINARY PEOPLE GIANT	CLAY WALKER	1200	974	
37	52	3	THE HOLE DREAMWORKS	RANDY TRAVIS	1175	396	

Records showing an increase in detections over the previous week, regardless of chart movement. Airpower awarded to those records which attain 3000 detections for the first time. If two records are tied in number of plays, the record being played on more stations is placed first. Records below the top 30 that are decreasing in plays are removed from the chart after 20 weeks.

THIS WEEK	LAST WEEK	WKS. ON CHART	TITLE/IMPRINT/PROMOTION LABEL	ARTIST	DETECTIONS		
					TW	LW	
38	43	5	YOU'RE GONE ARISTA NASHVILLE	DIAMOND RIO	1125	812	
39	42	7	NO END TO THIS ROAD RCA	RESTLESS HEART	1071	906	
40	40	6	DOUBLE WIDE PARADISE MERCURY	TOBY KEITH	1027	956	
41	45	4	HIGH ON LOVE EPIC	PATTY LOVELESS	1022	692	
42	31	13	BUCKAROO DECCA	LEE ANN WOMACK	946	2085	
43	54	3	26 CENTS GIANT	THE WILKINSONS	894	383	
44	38	14	I ALREADY DO MCA NASHVILLE	CHELY WRIGHT	795	1275	
45	47	15	WONDERFUL TONIGHT CURB	DAVID KERSH	726	617	
46	48	7	WHY'D YOU START LOOKIN' SO GOOD BANG II	MONTY HOLMES	609	520	
47	50	5	WHEN THE BARTENDER CRIES REPRISE	MICHAEL PETERSON	598	456	
48	44	16	LOVE WORKING ON YOU ATLANTIC JOHN MICHAEL MONTGOMERY		586	750	
49	51	7	I WANNA REMEMBER THIS DREAMWORKS	LINDA DAVIS	542	446	
50	53	4	THE OTHER SIDE BNA	MINDY MCCREADY	536	390	
51	56	5	TRUE MCA NASHVILLE	GEORGE STRAIT	438	291	
52	61	2	GONE OUT OF MY MIND COLUMBIA	DOUG STONE	374	239	
53	58	4	USED TO THE PAIN ASYLUM	MARK NESLER	316	267	
54	46	16	MATCHES MERCURY	SAMMY KERSHAW	308	689	
55	64	3	A FOOL'S PROGRESS ARISTA NASHVILLE	CLINT DANIELS	306	126	
56	49	9	DANCE IN THE BOAT EPIC	THE KINLEYS	291	497	
57	75	2	I WANNA FEEL THAT WAY AGAIN MCA NASHVILLE	TRACY BYRD	266	83	
			★ ★ ★ HOT SHOT DEBUT ★ ★ ★				
58	NEW		GONNA HAVE TO FALL DECCA	SHANE STOCKTON	209	42	
59	60	6	HOW DO I LET GO COLUMBIA	LISA BROKOP	179	242	
60	57	6	THE STRONG ONE ATLANTIC	MILA MASON	176	276	
61	NEW		ROAD TRIPPIN' CAPITOL NASHVILLE	STEVE WARINER	163	55	
62	71	2	RUNAWAY LOVE CAPITOL NASHVILLE	CHRIS LEDOUX	157	91	
63	68	3	DANCE THE NIGHT AWAY MCA NASHVILLE	THE MAVERICKS	157	99	
64	62	16	THE DEVIL WENT DOWN TO GEORGIA EPIC THE CHARLIE DANIELS BAND		154	168	
65	59	18	I SAW THE LIGHT CURB/MCG	HAL KETCHUM	129	257	
66	55	10	ALWAYS WILL CURB/UNIVERSAL	WYNONNA	125	340	
67	RE-ENTRY		CRYIN' GAME RCA	SARA EVANS	125	73	
68	63	6	FAITH MCA NASHVILLE	BIG HOUSE	122	133	
69	NEW		LOVE HAPPENS LIKE THAT ATLANTIC	NEAL MCCOY	117	76	
70	RE-ENTRY		I FELL WARNER BROS.	BRADY SEALS	109	76	
71	NEW		HEAVEN BOUND EPIC	SHANA PETRONE	105	41	
72	NEW		IF SHE ONLY KNEW 143/ASYLUM	KEVIN SHARP	102	3	
73	NEW		HONKY TONK AMERICA MERCURY	SAMMY KERSHAW	100	9	
74	72	4	ONE HEART AT A TIME ATLANTIC	VARIOUS ARTISTS	84	88	
75	69	9	HOLDING HER AND LOVING YOU ABC RADIO NETWORKS (LIVE TRACK)	CLAY WALKER	83	94	

THE 1999 RADIO POWER BOOK

from the publishers of

Billboard & Monitor

THE 1999 RADIO POWER BOOK IS BEING FINE-TUNED AND ALMOST READY TO HIT THE STREET!

Now is your chance to impact leaders in the radio and record industries by delivering a powerful advertising message in what has become the indispensable companion to Airplay Monitor.

For rates and positioning, call your Airplay Monitor account manager or Alyse Zigman @ 323.525.2308 or e-mail: azigman@airplaymonitor.com

