

COUNTRY AIRPLAY Monitor

• We Listen To Radio •

OCTOBER 11, 2002

CMA Names Broadcast
Award Winners p. 3
Conrad To Mercury/MCA
In Key A&R Role p. 3



VOLUME 10 • NO. 41

\$6.95

NO. 1 THIS WEEK:

KEITH URBAN

Somebody Like You (CAPITOL)

GREATEST GAINER

SHANIA TWAIN

I'm Gonna Getcha Good! (MERCURY)

AIRPLAY ADDS

SHANIA TWAIN

I'm Gonna Getcha Good! (MERCURY)

AUDIENCE

KEITH URBAN

Somebody Like You (CAPITOL)

The Male PD/ Female Listener Gap

■ by Phyllis Stark

Do male PDs and air personalities really understand the female audience they're targeting?

Well, as one female air personality puts it, if she wasn't part of her country station's morning show, it would be "all fart humor or lesbian jokes."

Country consultant Jaye Albright agrees. "The woman's role in a morning show is to make sure that the 13-year-olds in men's bodies don't become so juvenile that they don't appeal to women at all."

At last month's National Assn. of Broadcasters Radio Show in Seattle, panelists including syndicated morning hosts Bob & Sheri and Joint Communications' John Parikh lamented PDs' limited understanding of their female audiences and encouraged air personalities to better tap into the needs of their women listeners.

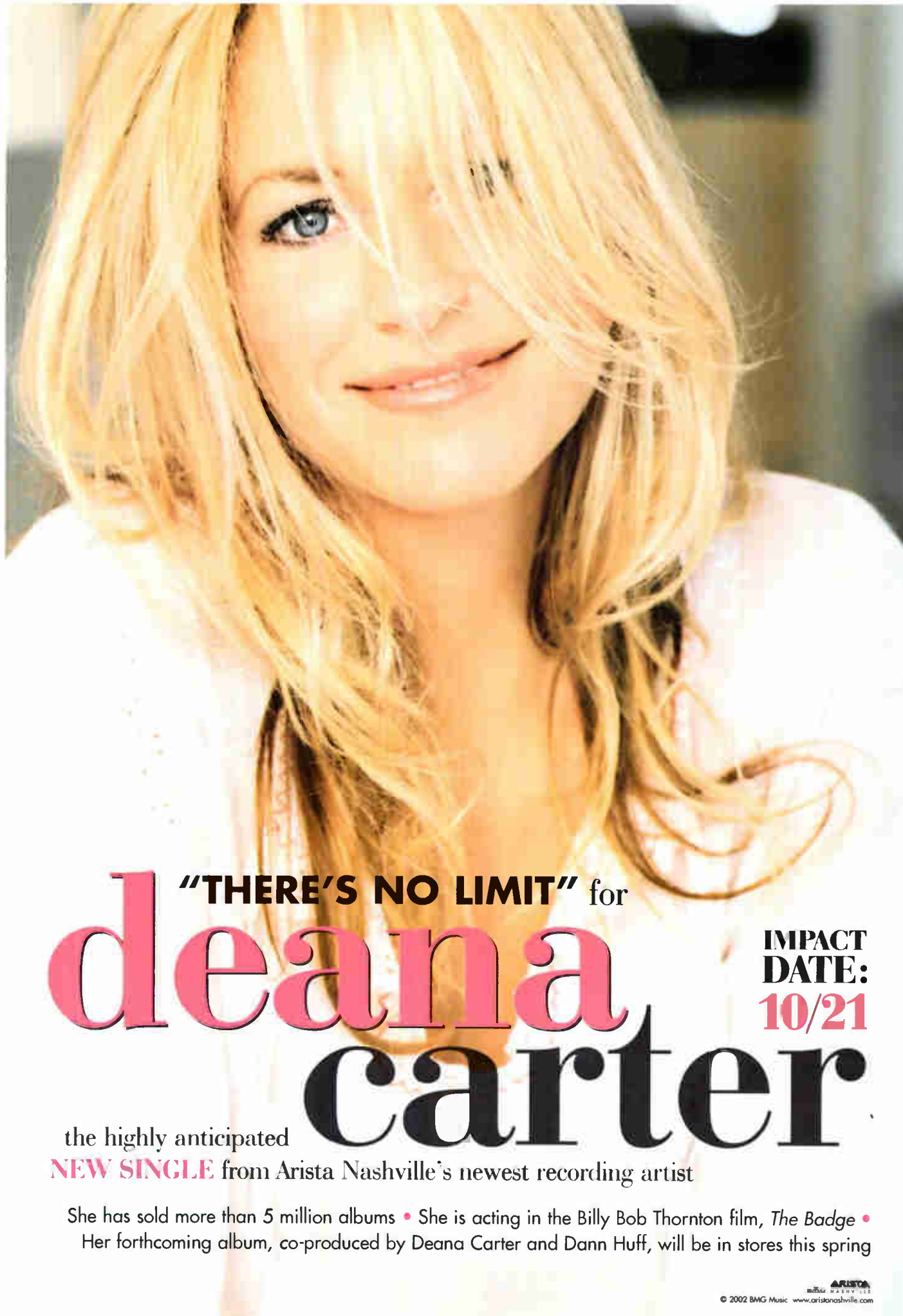
Sheri Lynch of Bob & Sheri said, "It's understood in radio that there are all kinds of men: men who want sports, who want politics, who want shock jocks, right-wing diatribes, or even smooth jazz. It has become equally certain that there is only one kind of woman." Lynch described that lone female as a minivan-driving soccer mom who works in an office cubicle and listens to Josh Groban while driving five miles per hour below the speed limit and checking carefully before changing lanes.

That description, while extreme, isn't that different from the typical female listener that male PDs are taught to envision. "We give her music appropriate for a bubble bath, and we talk to her like she has been dropped on her head," Lynch said, noting that "there are women out there who want to be stimulated . . . Why do [men] assume that the moment a woman has a child her brain softens? We live in the real world. We



McKAY

Continued on page 4

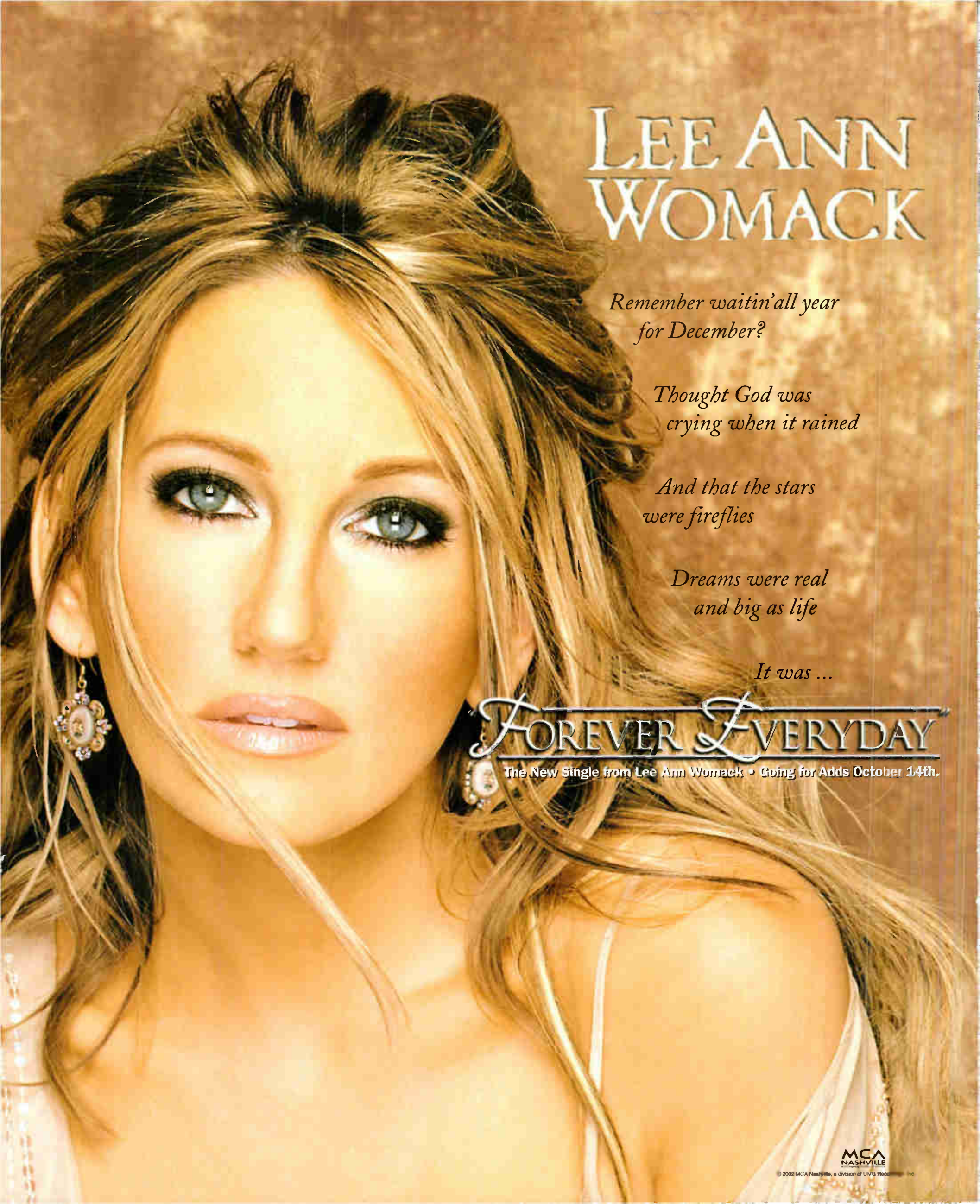


"THERE'S NO LIMIT" for deana carter

IMPACT
DATE:
10/21

the highly anticipated
NEW SINGLE from Arista Nashville's newest recording artist

She has sold more than 5 million albums • She is acting in the Billy Bob Thornton film, *The Badge* • Her forthcoming album, co-produced by Deana Carter and Dann Huff, will be in stores this spring



LEE ANN WOMACK

*Remember waitin' all year
for December?*

*Thought God was
crying when it rained*

*And that the stars
were fireflies*

*Dreams were real
and big as life*

It was ...

FOREVER EVERYDAY

The New Single from Lee Ann Womack • Going for Adds October 14th.

MCA
NASHVILLE

© 2002 MCA Nashville, a division of UMG Records, Inc.

BY PHYLLIS STARK
& KEN TUCKER

615-321-4284 • pstark@airplaymonitor.com
615-321-4286 • kentucker@airplaymonitor.com



Chesney's CMA-Winning Wolf Call

Winners in the Country Music Assn.'s (CMA) station of the year and broadcast personality of the year categories were notified by a surprise on-air phone call from **Kenny Chesney** Oct. 7. Winners for station of the year are **KPLX** (the Wolf) Dallas (major market); **WTQR** Winston-Salem, N.C. (large); **KUZZ** Bakersfield, Calif. (medium); and **WIXY** Champaign, Ill. (small).

The broadcast personality winners are **Kelly Ford**, **Jonathan Wilde**, and **Mudflap McGrew** at **KYGO** Denver (major); **Eddie Stubbs** at **WSM-AM** Nashville (large); **Andy Ritchie** and **Alison Randall** at **WIVK** Knoxville, Tenn. (medium); and **Bill Barrett** and **Tim Fox** at **KKNU** Eugene, Ore. (small).

Westwood One's **Lon Helton** is the winner of the national broadcast personality award. All winners will be recognized during the CMA Awards airing live from Nashville Nov. 6.

PROGRAMMING: CC RVP APPOINTMENTS CONTINUE

Joining the list of new Clear Channel regional VPs of programming are **Dave LeFrois** for the trading zone that includes New York, Connecticut, Western Massachusetts, and Vermont. He had been operations director for **CC/Rochester, N.Y.**, and **AC** brand manager. **Mary Fleenor** is now regional VP of programming for the Midwest trading zone that includes Dayton, Ohio, and Huntington, W.Va. She remains OM for **CC/Dayton**. The pair join **CC/Phoenix** director of programming operations **Alan Sledge**—who now oversees 33 stations in Arizona, Nevada, and Utah—and **CC/Albuquerque, N.M.**, director of programming **Bill May**, who is now working with 19 stations in New Mexico.

WGH Norfolk, Va., has repositioned itself as "Today's Country, 97.3 the Eagle." It was previously known as "New Country Eagle 97.3." Meanwhile, the syndicated *Lia* show moves from **WGH** to heritage country sister **WCMS**.

Gary Greenwood has been named PD/afternoon driver at **KIXK** (the Bull) Longview, Texas, which signed on in May under PD **Jay Kelly**. Greenwood was PD at **KHOZ** Branson, Mo. Kelly is now doing weekends at **KSCS** Dallas.

Darrin Arriens is named OM for NextMedia/Decatur, Ill., with oversight for country **WDZQ**. He was previously with adult top 40 sister **WSOY-FM** and helped launch rhythmic top



Big Swig



Some of **WFMS** Indianapolis MD **J.D. Cannon's** label friends threw a surprise party to celebrate his recent **Country DJ Hall of Fame** induction. Among the highlights were bobblehead likenesses of Cannon.

40 sister **WCZQ** in March.

WSSH/WZSH (Bob Country) Brattleboro, Vt., flips from satellite **AC** to live-and-local country under PD/midday host **Heath Cole**. He is also PD for oldies sister **WODD** and had been PD of **WSSH/WZSH** under its previous format. MD/promotion director/afternoon driver **Doug McKenzie** previously worked at **WDSY** Pittsburgh and, more recently, classic rock **WTPA** Harrisburg, Pa. The station needs record service.

WSM-AM Nashville has returned the syndicated program *The Gospel Greats* to its Sunday-morning lineup. The show previously aired from 1988 to 2000.

SALES: QUASS IS BACK

NewRadio Group has purchased 22 stations in Wisconsin and Illinois and the Goetz Networks from Marathon Media. NewRadio has already begun working with the stations under a consulting agreement while the deal is pending FCC approval. NewRadio is a newly formed company with offices in Wisconsin and Iowa. It will focus on small and medium markets, primarily in the upper Midwest. It's run by former AMFM/Central Star Communications executives **Mary Quass**, who will be NewRadio's CEO, plus **CFO Tami Gillmore** and **COO Lindsay Wood Davis**.

Salem has closed on its \$45 million sale of country **WYGY** Cincinnati to **Susquehanna**. **Dan Swensson**, **Susquehanna's** market manager, adds those duties at **WYGY**.

PEOPLE: TEN HUT

Afternoon driver **Hut Ralston** adds MD stripes at **KTOM** Monterey, Calif.

Former **WKHX** (Kicks 101.5) Atlanta morning man **Moby** hints to fans visiting his Web site that he may be back on the air in the market soon. "I truly thank the 'Moby in the Morning' radio family for your support and your patience during this time of uncertainty and indecision in my life and career. Your wait is almost over," he writes. "For now, that's all I can say . . . I promise to tell you more the moment that I can, and that moment is quickly approaching . . . I want my radio family to know it's anything but over. I pledge to keep this radio family together (assuming you call this together) well into the early part of the 21st century." *The Atlanta Journal-Constitution* speculates that **Moby** may be headed to classic rock **WZGC** (Z93), where morning host **Dave Marino** just exited.

Ally-Marie Clark resigns as promotions director for **WBEE** Rochester, N.Y., effective Oct. 18. She is moving to Nashville to pursue opportunities in the music business. She may be reached at ally_marieclark@hotmail.com.

Star Michaels joins **WHKR** Melbourne, Fla., for nights from **AC** **WHLG** Fort Pierce, Fla. **WHKR** previously carried the syndicated *Lia* show in that time slot.

Rod Thompson joins **KIZN** Boise, Idaho, for nights. He replaces **Justin Pierce**, who went to afternoons at **KASH** Anchorage, Alaska, last April. Thompson was doing TV weather in Twin Falls, Idaho.

Lisa Webber joins **WFRG** Utica, N.Y., as morning-show co-host with **Matt Herkimer**. Webber comes from Regent sister station **WGNA** Albany, N.Y., where she was known as **Lisa Reily**. **WFRG** PD **Matt Raisman** (aka **Bullfrog**) moves to afternoons, replacing **John "Hopalong" Raspante**, who recently exited for law school.

CRB SETS DEADLINES

Country Radio Broadcasters (CRB) has set a Dec. 16 deadline for receipt of station entries for the group's Humanitarian Award and its Promotion Award, both of which are given out during the annual Country Radio Seminar in Nashville. More details are available at crb.org.

BY WADE JESSEN

615-321-4291 • wjessen@airplaymonitor.com



Twain Among Few With Top 25 Debut

As **Shania Twain's** "I'm Gonna Getcha Good" (Mercury) bows on the Country Airplay chart at No. 24, Twain becomes one of only three artists to debut inside the top 25 in the almost 13-year-old Nielsen BDS era. With slightly more than three days of airplay, Twain turns the tiny top 25 debut club co-ed, joining **Garth Brooks** and **Alan Jackson**. Brooks' "The Thunder Rolls" continues its reign as the highest Nielsen BDS-era debut—it opened at No. 19 in May 1991. Jackson's "Where Were You (When the World Stopped Turning)" entered at No. 25 last November.

Twain collects 1,929 detections and tops recent superstar lead-single debuts by **Faith Hill**, **Tim McGraw**, and **Dixie Chicks**. Hill's "Cry" opened at No. 32 (1,066 plays), McGraw's "Red Rag Top" arrived at No. 34 (909 spins), and Dixie Chicks' "Long Time Gone" debuted at No. 37 (872 spins).

Twain's new single tops her previous high debut, set in October 1997 when "Love Gets Me Every Time" came in at No. 29. On the Country Audience chart, "I'm Gonna Getcha Good" enters at No. 19 with 16.6 million estimated audience impressions.

With 6,187 detections, **Keith Urban's** "Somebody Like You" (Capitol) is the first No. 1 in more than a year to collect at least 6,000 plays in a single week. The last such chart-topper was **Blake Shelton's** "Austin," which garnered 6,077 spins in its fourth of five weeks at No. 1 in the Aug. 31, 2001, issue. Urban's single collects the most spins at No. 1 since **Lonestar's** "I'm Already There" claimed 6,306 detections in its fifth of six weeks atop the chart in the July 14, 2001, issue.

Elsewhere on the Country Airplay chart, five titles recover from spin losses last issue. Four of those titles are on independent labels. Recapturing bullets are **Aaron Tippin's** "If Her Lovin' Don't Kill Me" (Lyric Street) (46-43), **Radney Foster's** "Everyday Angel" (Dual-tone) (45-44), **Hometown News' "Wheels"** (VFR) (50-49), **Daryle Singletary's** "I'd Love to Lay You Down" (Audium) (53-50), and **Nickel Creek's** "This Side" (Sugar Hill) (56-57).

THANKYOUVERYMUCH: Elvis Presley's new collection, *Elvis 30 #1 Hits* (RCA), dominates **The Billboard** 200 album chart with more than 500,000 copies sold. It also opens atop the magazine's Top Country Albums chart (see Highlights, page 6), pushing **Dixie Chicks' Home** (Monument) to No. 2 on both charts.

The Presley package is eligible to appear on the country chart because 16 of the songs impacted the *Billboard* country singles charts as currents. The new album sports seven of Presley's 11 No. 1 country singles, four other top five songs, and five other country chart entries.

To date, the Country Music Hall of Fame member has charted 51 titles on Top Country Albums, including seven No. 1 albums. This new collection is his first album to debut at No. 1 on either of the aforementioned *Billboard* charts.

EFFECTIVE THIS ISSUE, WOGI Pittsburgh joins the country reporting panel (VP of programming: **Frank Bell**, PD/MD: **Matt Albritton**, phone: 412-279-5400, fax: 412-279-5500).

WXBM Pensacola, Fla., returns to the panel following a brief hiatus because of technical concerns. There are now 150 reporting stations.

ON THE ROW

Conrad Joins Universal Labels

David Conrad joins Mercury Records and MCA Nashville as executive VP of A&R. Conrad previously was senior VP of **Almo Irving/Rondor Music** in Nashville, where he worked for more than 20 years. In related news, Mercury executive VP of A&R **Keith Stegall** exits the label, for which he had also been a recording artist. Also exiting is Mercury VP of A&R **Mary Martin**. **Mark Wright** remains on board as executive VP of A&R at MCA Nashville, reporting to Conrad. Look for several more new hires at the Universal labels in the coming weeks.



CONRAD

Meanwhile, **Bobby Rymer** has been appointed VP of **Almo Irving/Rondor Music**, replacing Conrad. Rymer has been with the company since 1990 and was creative direc-

tor for the past six years.

Southeast regional **Jody Van-Alin** exits **DreamWorks Records** and starts **JVA Promotions**, an independent promotion company. He may be reached at 706-507-1697 or jvapromo@knology.net. The label is seeking his replacement.

Spark Entertainment, parent company of **VFR Records**, has broadened the focus of the label to provide services for non-VFR artists in addition to VFR's current roster. The first non-roster project VFR will work is for **Pacific Records/E-92** act **the Great Divide**. VFR's promotion team will begin working that group's single, "Lost in the Night," to radio Oct. 21.

Sony Music Nashville has signed former **MCA Nashville** artist **Marty Stuart** to its roster. He's currently in the studio working on his first project for the label, due next year.

John Rolfe Jr. has been named VP of business and legal affairs at **Compendia Music Group** in Nashville. He previously was director of international and business affairs at **Acuff-Rose Music Publishing**.

April Taylor has been promoted to manager of artist development and marketing at **Arista Nashville**. She previously was administrator in the department. Her new duties include overseeing all syndicated radio opportunities for Arista artists.

New **Lyric Street** artist **Deric Ruttan** signs with **Bill Mayne's** **Mayne Entertainment** for management.

The Male PD/Female Listener Gap

Continued from page 1

don't get to go to some alternate, pink universe.

"You watch *The View* and it's like a four-person morning show that is enormously successful," Lynch continued. "Then you turn on radio, which is targeted at the same women, and you get the same tired, hackneyed radio bits that have been pounded into the ground for the past 12 years, [done by a jock] who no more knows the women he's talking to than can be a woman himself. I guarantee you somewhere in some market this morning, 'Skip & Buffy' did Battle of the Sexes... Is there anybody in this room who is just learning that men stand up to pee and women's purses are full of crap? Let's stop [talking about] that."

Laurie DeYoung, morning host of WPOC Baltimore, agrees, calling the Battle of the Sexes feature old and tired. She says, "Why do they want to



DeYOUNG

do that? There aren't any black-and-white lines for men and women. Every time I think someone's trying to put me in a box, I hate it. I'm not a shopper. I like to work with a chainsaw in my yard. That's a stress reliever for me. Not all men want to talk about fast cars and sports. Not all women want to talk about shopping and makeup. People want to talk about what matters. Everybody cares about their health, being treated fairly, not getting ripped off, what's happening to mom-and-pop businesses. Men care about that as much as women."

"I do wonder if every radio station that is adult-targeted isn't missing the boat on the stock market," says WQDR Raleigh, N.C., PD Lisa McKay, who thinks that kind of information appeals equally to men and women. "Financial news has gotten pretty cool."

At the NAB panel, Parikh pointed out that for women, "relationships are important," including relationships with air personalities. That, Parikh said, runs counter to the beliefs of the "task-driven men" who program stations and host the majority of the shows.

"Because there are so many [male] program directors, that's how they are looking at it, through their lens," DeYoung says. "Guy PDs are thinking, 'What do the women out there want?'"

Parikh told the NAB audience that in recent focus groups he has seen many women asking, "Why do people do things so fast on the radio?" Male jocks, Parikh said, take the attitude, "I don't want to waste any time, so I can get back to the best of the '80s, '90s, and today." They want to give you 18 minutes of news in 16 minutes... Paul Harvey's genius was 'the rest of the story,' which Parikh says appeals to women.

ONE-DIMENSIONAL RESPONSE

After scanning the dial and hearing what she describes as "five conservative, in-your-face communicators" on the air, Albright recently came to the realization that "the only place women can go for information without that extra bit of testosterone is NPR.

"[Syndicated shows] *Delilah* and *Lia* are both excellent shows, but that's all there is for women in the evening," Albright continues. "Women's concerns are much more broad than relationships and love.

"It seems like people respond in a very one-dimensional way to their female listeners," she adds. "Women have to learn to speak the language of men to be successful in our society. Men don't have to bother to learn the language

of women to be successful."

DeYoung says, "Women are tired of female sidekicks who laugh at all the jokes, let someone debase her on-air, or sexualize her. We want to be entertained and laugh. We think practically. What is the person doing on the radio to be real?"

"Men spend so much time thinking about sex, I'm not surprised they spend so much of their shows talking about it," she continues. "Women think about sex, but they are also thinking about so many other things.

"I talk about things that are interesting to me, what upsets me, what generates an emotional response, what do I think is funny," DeYoung adds. "Those are things I talk about with other women I'm with, but I don't just try to address the women in my audience. Men care about their children. So do women. I shy away from things viewed as solely for women, like beauty tips."

McKay believes even radio production must be different to appeal to women, who "respond more to subtlety and engaging their mind with sweepers rather than flag waving. You have to be more creative with sweepers."

But McKay also believes the country format has "got to have some teeth to it," to appeal to both men and women. "I don't want to take the balls out of country, and I don't think women want that either," she says, "but I think it needs to engage minds a little bit more."

Then again, some format observers feel country has been too female-targeted for several years. KFKF Kansas City morning co-host Mary McKenna says, "Women are equally served in country music, probably more than any other format. Country music, in and of itself, appeals so broadly to both sexes that you can't help but form your content to cater to both audiences."

McKenna also believes that most country PDs "either take the women's psyche in mind when they program their radio stations or they keep someone in their inner circle who does."

LIFETIME RADIO FOR WOMEN?

Tonya Campos, APD/MD at KZLA Los Angeles, points out that "we are currently in the midst of a huge transition involving the perception of women and their place in society. In the '50s, it was always assumed that the man went out and

worked hard and the woman had his dinner on the table when he got home. That is becoming a thing of the past. However, most views of the world have not been updated to keep up. For instance, if you watch the Lifetime channel, [which is billed as] 'television for women,' the majority of the movies on there deal with

and being cheated on, which are all topics that are around today, but how about programs about sports, travel, how to get ahead at work, etc.?"

"The same is true with radio," she continues. "I have been in radio for over 25 years, and it has always been and still is a mostly male-dominated business. When you mostly have males programming stations and anchoring the best time slots on the air, yes, I believe the programming will lean more male. However, recently I have not only noticed more females beginning to enter the programming realm of radio, [but] I have also noticed a slightly edgier product being released to cater to the female audience.

"I loved Sheri's comment about the fact that we don't get to go to some 'alternate, pink universe,'" Campos adds. "You know what? A lot of women don't want to go there. But I think this transition will take a little while. But look at the bright side, we have a lot to look forward to."

Additional reporting by Angela King.

ACCESS NASHVILLE

Wariner To Launch Label

Look for Steve Wariner to launch his own label late next month with the release of a new album containing 10 new songs and seven of his hits. Wariner previously recorded for RCA, MCA, Arista Nashville, and Capitol.

The Country Music Assn. (CMA) presented Brad Paisley with its Connie B. Gay Award Oct. 2 at a luncheon in Los Angeles. The award, established by the CMA board of directors in 1963 and named for the group's founding president, recognizes a non-board member who has rendered outstanding service to the CMA in the past year. Meanwhile, Paisley, Brooks & Dunn, and show host Vince Gill have been added to the list of performers scheduled for the CMA Awards, which will be broadcast live from Nashville Nov. 6.

Martina McBride will embark on a 17-city holiday tour, dubbed Martina McBride's the Joy of Christmas, Nov. 26 in Philadelphia. The show is

described as a "multimedia theatrical event" with 10 actors in tow. The tour runs through Dec. 22.

Terri Clark has been nominated for a Gemini Award, the Canadian equivalent of an Emmy Award, for her performance of "No Fear" on last year's Canadian Country Music Assn. Awards. The nomination is in the category of best performance or host in a variety program special. The awards will be handed out over three nights, Nov. 2-4, in Toronto.

Numerous artists have been lined up to participate in the Academy of Country Music's annual Bill Boyd Celebrity Golf Classic Oct. 14 in Burbank, Calif. Participating acts will include Trick Pony, Diamond Rio's Marty Roe, Lonestar's Dean Sams, the Bellamy Brothers, Chris Cagle, Darryl Worley, Mark Wills, Joe Nichols, Brad Martin, and Steve Holy. The event benefits various charities, including the Montgomery Gentry National Future Farmers Assn. Foundation Scholarship Fund. As previously announced, Montgomery Gentry will host the event.

Dixie Chicks' "Landslide" will be worked to adult top 40 and modern AC radio stations beginning Oct. 28.

Jo Dee Messina recently taped a guest-starring role in an episode of *Touched by an Angel* in Salt Lake City. It is scheduled to air in November. She previously appeared on the show in 2000.

WMZ-Cute Tee



Lee Ann Womack sported the right attire for a visit to WMZQ Washington, D.C. Pictured, from left, are morning co-host Ben Campbell, Womack, OM Jeff Wyatt, and morning co-host Brian Egan.

RADIO CONCERT MONITOR

DATE	STATION	EVENT	PROMOTIONS DIRECTOR
Oct. 12	KZLA Los Angeles	Country Bash	Steve Lee
	APPEARING: Chris Cagle, Emerson Drive, Sara Evans, Hank Floyd, Fanny Grace, Pat Green, Shannon Lawson, Lonestar, Montgomery Gentry, Willie Nelson, Shedaisy, Cyndi Thomson, Phil Vassar, Darryl Worley		
Oct. 14	WUSN Chicago	St. Jude Benefit Concert	Pam Mills
	APPEARING: Keith Urban		

Let us monitor your event! Call Phyllis Stark at 615-321-4284 or e-mail pstark@airplaymonitor.com

Group Editor: Sean Ross
Nashville Bureau Chief/Managing Editor: Phyllis Stark
Director of Charts-Country: Wade Jessen
Copy Editor: Chris Woods
Chart Assistant: Mary DeCroce (Nashville)
Special Contributor: Ken Tucker
Chart Production Manager: Michael Cusson
Associate Chart Production Manager: Alex Vitoulis
Administrative Assistant: Gordon Murray
Senior Editorial Production Manager: Barry Bishin
Editorial Production Manager: Susan Chicola
Editorial Production: Marc Giaquinto, Rodger Leonard, Maria Manlicic, Leilla Sivey, Sandra Watanabe
Advertising Production Director: Lydia Mikulko
Assistant Advertising Production Manager: Chris Dexter
Art Director: Ray Carlson
Advertising Production Artists: Ken Diamond, James Babbin
Senior Account Manager: Lee Ann Photoglo
Office Assistant: Jeff Matteuzzi

49 Music Square W. Nashville, TN 37203
615-321-4290 fax: 615-320-0454
For subscriptions call: 800-745-8922 or email: bld@kable.com
Order online @ www.orderbillboard.com

©2002 VNU Business Media, Inc. All rights reserved. No part of this publication may be reproduced, stored in any retrieval system, or transmitted, in any form or by any means, electronic, mechanical, photocopying, recording, or otherwise, without the prior written permission of the publisher.

Director of Production & Manufacturing: Marie Gombert
Circulation Director: Jeanne Jamin
Marketing Manager: Omark Holmes

Director of Charts: Silvio Pietrolungo

Publisher: Jon Guynn



President: Howard Lander
Vice Presidents: Howard Appelbaum, Marie Gombert, Irwin Kornfeld, Karen Dertley, Ken Schlager, Joellen Sommer

VNU BUSINESS PUBLICATIONS USA
President and CEO: Michael Marchesano Chief Operating Officer: Howard Lander
Executive Vice Presidents: Mark Dacey (Marketing, Media & Retail), Richard O'Connor (Travel, Performance, Real Estate/Design and Food Service)
Senior Vice President: Toni Nevitt (Marketing Information)
Vice Presidents: Joellen Sommer (Business Management), Joanne Wheatley (Circulation)

VNU BUSINESS MEDIA
President and CEO: Michael Marchesano Chief Operating Officer: Howard Lander
Vice President/Business Development: John van der Valk Vice President/Human Resources: Sharon Sheer Chief Financial Officer: Joseph Furey
President, Exhibitions: Greg Farrar President, eMedia: Jeremy Grayzel



“Way Too Deep”

Time to add

sixwire



GREATEST GAINERS COUNTRY

SHANIA TWAIN • <i>I'm Gonna Getcha Good!</i> (MERCURY) +1929 WUSN +34, KUBL +33, KBQI +31, KKCS +30, KMLE +30, WGAR +30, KZLA +29, KCCY +28, KEEY +28, WWYZ +28
PHIL VASSAR • <i>American Child</i> (ARISTA NASHVILLE) +404 KSD +26, KMLE +22, KTEX +21, WCKT +20, KZSN +19, KDRK +16, WBUL +16, WBBS +15, KHEY +13, WRBT +12
BROOKS & DUNN • <i>Every River</i> (ARISTA NASHVILLE) +388 KTEX +21, KPLX +17, WKHX +17, WGY +17, WSTH +15, KILT +14, WKSJ +14, KOOY +13, WDSY +13, KSON +9
MARK WILLS • <i>Nineteen Somethin'</i> (MERCURY) +386 WYUU +42, WXBQ +19, WWQM +17, KBQI +16, WGNE +14, WOBE +14, KCCY +13, WGGY +13, WKCN +13, KYGO +13
MONTGOMERY GENTRY • <i>My Town</i> (COLUMBIA) +373 KTEX +19, WYUU +17, WXBM +17, WBUL +16, WWGR +16, WCOL +15, WUSY +14, WPOR +13, WVK +13, KRKY +12

COUNTRY AUDIENCE

Compiled from a national sample of data supplied by Broadcast Data Systems to Country Airplay Monitor. 150 country stations are electronically monitored 24 hours a day, 7 days a week. © 2002 VNU Business Media, Inc. All rights reserved.

THIS WEEK	LAST WEEK	WKS. ON CHART	TITLE/IMPRINT/PROMOTION LABEL	ARTIST	AUDIENCE (millions)	
					TW	LW
			★ ★ ★ No. 1 ★ ★ ★			
1	1	16	SOMEBODY LIKE YOU CAPITOL	KEITH URBAN	46.385	43.459
2	2	25	BEAUTIFUL MESS ARISTA NASHVILLE	DIAMOND RIO	42.738	43.026
3	3	28	THE IMPOSSIBLE UNIVERSAL SOUTH	JOE NICHOLS	35.127	39.483
4	6	21	WHERE WOULD YOU BE RCA	MARTINA MCBRIDE	33.176	31.032
5	8	23	AMERICAN CHILD ARISTA NASHVILLE	PHIL VASSAR	32.110	30.158
6	4	25	TEN ROUNDS WITH JOSE CUERVO RCA	TRACY BYRD	31.919	37.326
7	7	16	WORK IN PROGRESS ARISTA NASHVILLE	ALAN JACKSON	31.245	30.737
8	10	7	LANDSLIDE MONUMENT/EMN	DIXIE CHICKS	30.081	27.685
9	11	16	MY TOWN COLUMBIA	MONTGOMERY GENTRY	29.765	27.302
10	5	23	THE GOOD STUFF BNA	KENNY CHESNEY	29.705	32.176
11	13	15	THESE DAYS LYRIC STREET	RASCAL FLATTS	27.361	24.965
12	15	7	SHE'LL LEAVE YOU WITH A SMILE MCA NASHVILLE	GEORGE STRAIT	25.998	23.464
13	14	8	WHO'S YOUR DADDY? DREAMWORKS	TOBY KEITH	25.032	24.137
14	9	29	I MISS MY FRIEND DREAMWORKS	DARRYL WORLEY	24.223	27.771
15	16	5	RED RAG TOP CURB	TIM MCGRAW	24.202	21.968
16	12	9	CRY WARNER BROS./WRN	FAITH HILL	24.130	25.286
17	19	18	FORGIVE MCA NASHVILLE	REBECCA LYNN HOWARD	21.394	20.036
18	18	30	I KEEP LOOKING RCA	SARA EVANS	19.840	21.772
19	NEW		I'M GONNA GETCHA GOOD! MERCURY	SHANIA TWAIN	16.647	0.000
20	22	11	STRONG ENOUGH TO BE YOUR MAN COLUMBIA	TRAVIS TRITT	15.649	13.079
21	20	20	LONG TIME GONE MONUMENT/EMN	DIXIE CHICKS	14.827	16.986
22	24	6	EVERY RIVER ARISTA NASHVILLE	BROOKS & DUNN	14.776	11.732
23	23	14	LIFE HAPPENED EPIC/EMN	TAMMY COCHRAN	14.202	12.874
24	21	18	THICKER THAN BLOOD CAPITOL	GARTH BROOKS	14.020	15.587
25	25	6	I JUST WANNA BE MAD MERCURY	TERRI CLARK	13.259	11.132
26	26	11	FALL INTO ME DREAMWORKS	EMERSON DRIVE	12.921	11.084
27	27	4	A LOT OF THINGS DIFFERENT BNA	KENNY CHESNEY	11.716	9.201
28	28	10	'TIL NOTHING COMES BETWEEN US WARNER BROS./WRN	JOHN MICHAEL MONTGOMERY	10.616	8.798
29	29	7	I WISH YOU'D STAY ARISTA NASHVILLE	BRAD PAISLEY	9.393	8.290
30	30	5	UNUSUALLY UNUSUAL BNA	LONESTAR	8.998	7.627
31	32	6	YOU CAN'T HIDE BEAUTIFUL RCA	AARON LINES	8.764	7.224
32	31	9	ONE DAY CLOSER TO YOU ARISTA NASHVILLE	CAROLYN DAWN JOHNSON	8.229	7.581
33	34	8	AT THE END OF THE DAY BNA	KELLIE COFFEY	6.514	5.515
34	35	4	ON A MISSION WARNER BROS./WRN	TRICK PONY	5.945	5.005
35	36	2	NINETEEN SOMETHIN' MERCURY	MARK WILLS	5.941	3.587
36	NEW		MAN TO MAN MCA NASHVILLE	GARY ALLAN	4.508	2.882
37	37	3	I'M NOT BREAKIN' CURB	STEVE HOLY	4.069	3.470
38	40	3	WAITIN' ON JOE MERCURY	STEVE AZAR	3.742	3.023
39	39	3	BEAUTIFUL GOODBYE CAPITOL	JENNIFER HANSON	3.530	3.192
40	38	2	A MEMORY LIKE I'M GONNA BE TUCKERTIME	TANYA TUCKER	3.294	3.339

Songs ranked by audience, computed by cross-referencing exact times of airplay with Arbitron listener data. ○ Songs showing an increase in audience over the previous week, regardless of chart movement. A song will also receive a bullet if its percentage loss in audience does not exceed the percentage of monitored station downtime for the format. A song with a gain in audience over the previous week is placed first if tied with a song with a decline over the same period. When tied songs are each gaining in audience or each losing in audience, the song being played on more stations is placed first. Songs become re-entries and are removed from this chart in conjunction with the Country Airplay chart.

Billboard Top Country Singles Sales

THE CHART, REPRINTED FROM BILLBOARD MAGAZINE, IS BASED ON SALES DATA COMPILED BY Nielsen SoundScan

BILLBOARD ISSUE DATE: OCTOBER 12, 2002

THIS WEEK	LAST WEEK	WKS. ON CHART	TITLE/IMPRINT & NUMBER/DISTRIBUTING LABEL	ARTIST
			◀ No. 1 ▶	
1	1	8	LONG TIME GONE MONUMENT 79790/CRG	DIXIE CHICKS
2	2	51	GOD BLESS THE USA CURB 73128	LEE GREENWOOD
3	4	111	CAN'T FIGHT THE MOONLIGHT ● CURB 73116	LEANN RIMES
4	5	20	THE IMPOSSIBLE UNIVERSAL SOUTH 172241/JMRG	JOE NICHOLS
5	7	31	I SHOULD BE SLEEPING DREAMWORKS 450362/INTERSCOPE	EMERSON DRIVE
6	6	127	ROCKY TOP '96 DECCA 155274/MCA NASHVILLE	THE OSBORNE BROTHERS
7	9	53	WHERE THE STARS AND STRIPES AND THE EAGLE FLY LYRIC STREET 164059/HOLLYWOOD	AARON TIPPIN
8	RE-ENTRY		HOW DO I LIVE ▲ ³ CURB 73022	LEANN RIMES
9	3	30	THAT'S JUST JESSIE LYRIC STREET 164063/HOLLYWOOD	KEVIN DENNEY
10	RE-ENTRY		OSAMA-YO' MAMA CURB 73130	RAY STEVENS

○ Records with the greatest sales gains this week. ● Recording Industry Assn. of America certification for sales of 500,000 units. ▲ RIAA certification for sales of 1 million units, with multimillion titles indicated by a numeral following the symbol. © 2002 VNU Business Media, Inc. and Nielsen SoundScan, Inc. All rights reserved.

Billboard TOP COUNTRY ALBUMS

THE CHART, REPRINTED FROM BILLBOARD MAGAZINE, IS BASED ON SALES DATA COMPILED BY Nielsen SoundScan

BILLBOARD ISSUE DATE: OCTOBER 12, 2002

THIS WEEK	LAST WEEK	2 WKS. AGO	WKS. ON CHART	ARTIST IMPRINT & CATALOG NUMBER/DISTRIBUTING LABEL (SUGGESTED LIST PRICE)	TITLE	PEAK POSITION
				◀ No. 1 ▶		
1	NEW		1	ELVIS PRESLEY RCA 68079* (12.98/19.98)	ELVIS 30 #1 HITS	1
2	1	1	5	DIXIE CHICKS ▲ MONUMENT/COLUMBIA 86840*/CRG (12.98 EQ/18.98)	HOME	1
3	2	2	10	TOBY KEITH ▲ DREAMWORKS 450254/INTERSCOPE (11.98/18.98)	UNLEASHED	1
4	NEW		1	TRAVIS TRITT COLUMBIA 86660/SONY (12.98 EQ/18.98)	STRONG ENOUGH	4
5	3	4	23	KENNY CHESNEY ▲ BNA 67038/RLG (12.98/18.98)	NO SHOES, NO SHIRT, NO PROBLEMS	1
6	4	6	95	SOUNDTRACK ▲ ⁶ LOST HIGHWAY 170069/MERCURY (12.98/19.98)	O BROTHER, WHERE ART THOU?	1
7	NEW		1	STEVE EARLE SHERIDAN SQUARE 751147/ARTEMIS (17.98 CD)	JERUSALEM	7
8	5	3	37	ALAN JACKSON ▲ ³ ARISTA NASHVILLE 67039/RLG (12.98/18.98)	DRIVE	1
9	6	8	54	MARTINA MCBRIDE ▲ RCA 67012/RLG (12.98/18.98)	GREATEST HITS	1
10	8	9	7	NICKEL CREEK SUGAR HILL 3941/18.98 CD	THIS SIDE	2
11	9	11	6	DIAMOND RIO ARISTA NASHVILLE 67046/RLG (11.98/17.98)	COMPLETELY	3
12	NEW		1	DELBERT MCCLINTON NEW WEST 6042 (17.98 CD)	ROOM TO BREATHE	12
13	7	7	6	LEE ANN WOMACK MCA NASHVILLE 170287 (12.98/18.98)	SOMETHING WORTH LEAVING BEHIND	2
14	10	5	3	REBECCA LYNN HOWARD MCA NASHVILLE 170288 (11.98/18.98)	FORGIVE	5
15	11	12	5	MONTGOMERY GENTRY COLUMBIA 86520/SONY (11.98 EQ/17.98)	MY TOWN	3
16	12	13	97	TIM MCGRAW ▲ ⁹ CURB 77978 (12.98/18.98)	GREATEST HITS	1
17	NEW		1	VARIOUS ARTISTS COLUMBIA 86310/CRG (18.98 EQ CD)	KINDRED SPIRITS: A TRIBUTE TO THE SONGS OF JOHNNY CASH	17
18	13	14	11	DARRYL WORLEY DREAMWORKS 450351/INTERSCOPE (11.98/17.98)	I MISS MY FRIEND	1
19	NEW		1	LINDA RONSTADT ELEKTRA 76109/RHINO (17.98 CD)	THE VERY BEST OF LINDA RONSTADT	19
20	18	24	47	GEORGE STRAIT ● MCA NASHVILLE 170220 (11.98/18.98)	THE ROAD LESS TRAVELED	1
21	15	16	57	TOBY KEITH ▲ ² DREAMWORKS 450297/INTERSCOPE (12.98/18.98)	PULL MY CHAIN	1
22	17	18	75	TIM MCGRAW ▲ ² CURB 78711 (12.98/18.98)	SET THIS CIRCUS DOWN	1
23	21	22	10	JOE NICHOLS UNIVERSAL SOUTH 170285 (11.98/17.98)	MAN WITH A MEMORY	12
24	20	20	70	BRAD PAISLEY ▲ ARISTA NASHVILLE 67008/RLG (11.98/17.98)	PART II	3
25	19	17	61	BLAKE SHELTON ● WARNER BROS. 24731/WRN (11.98/17.98)	BLAKE SHELTON	3
				◀ GREATEST GAINER ▶		
26	32	29	12	DOLLY PARTON BLUE EYE 3946/SUGAR HILL (10.98/18.98)	HOLDY & HOLDY	4
27	23	19	104	TRAVIS TRITT ▲ COLUMBIA 62165/SONY (11.98 EQ/17.98)	DOWN THE ROAD I GO	8
28	22	23	59	ALISON KRAUSS + UNION STATION ● ROUNDER 610495/DJMG (11.98/17.98)	NEW FAVORITE	3
29	16	10	3	AARON TIPPIN LYRIC STREET 165033/HOLLYWOOD (12.98/18.98)	STARS & STRIPES	10
30	25	26	52	GARY ALLAN ● MCA NASHVILLE 170201 (11.98/17.98)	ALRIGHT GUY	4

○ Albums with the greatest sales gains. ● Recording Industry Assn. of America (RIAA) certification for sales of 500,000 album units. ▲ RIAA certification for sales of 1 million units (Platinum). ● RIAA certification for net shipment of 10 million units (Diamond). Numeral following Platinum or Diamond symbol indicates album's multi-platinum level. Greatest Gainer shows chart's largest unit increase. Pacesetter indicates biggest percentage growth. © 2002 VNU Business Media, Inc. and Nielsen SoundScan, Inc. All rights reserved.



Songs ranked by number of detections. Playlists are listed in order of TSA weekly came, beginning with the highest-cuming station. Comes are updated twice yearly following the release of the spring and fall Arbltron surveys. The number of stations shown each week varies depending upon space.

AIRPLAY LEADERBOARD

Table with 2 columns: Rank and Station/Artist. #1 WKHX Atlanta, GA (MD: Johnny Gray). #2 KCCY Colorado Springs, CO (PD: Travis Daily). #3 WSIX Nashville, TN (PD/MD: Moore/Greenwood). #4 KKCS Colorado Springs, CO (PD/MD: Stone/Franklin).

VIDEO PLAYLIST TRACKING PERIOD: SEPT. 27 - OCT. 3, 2002. CMT PD: Chris Parr. CBS Cable 615-457-8500. List of songs and stations.

Great American Country PD: Jim Murphy. Jones Int'l Networks 303-792-3111. List of songs and stations.

KZLA Los Angeles OM: R.J. Curtis. APD/MD: Tony Campos. Emmis 323-882-8000. List of songs and stations.

KPLX Dallas PD: Paul Williams. APD: Smokey Rivers. MD: Cody Alan. Susquehanna 214-526-2400. List of songs and stations.

WUSN Chicago OM: Eric Logan. PD/MD: Justin Case. Infinity 312-649-0099. List of songs and stations.

KSCS Dallas OM: Ted Stecker. APD/MD: Chris Huff. ABC/Disney 817-695-0800. List of songs and stations.

WXTU Philadelphia PD: Bob McKay. APD/MD: Cadillac Jack. Beasley 610-667-9000. List of songs and stations.

WKHX Atlanta MD: Johnny Gray. ABC/Disney 770-955-0101. List of songs and stations.

KFRG San Bernardino OM: Ray Massie. MD: Don Jeffrey. Infinity 909-825-9525. List of songs and stations.

WMQZ Washington, DC VP/Ops: Jeff Wyatt. APD/MD: Jon Anthony. Clear Channel 301-231-8231. List of songs and stations.

KMPS Seattle OM/PD: Becky Brenner. MD: Tony Thomas. Infinity 206-805-0941. List of songs and stations.

WYCD Detroit PD: Mac Daniels. APD/MD: Ron Chatman. Infinity 248-799-0600. List of songs and stations.

KEYE Minneapolis PD: Gregg Swedberg. APD/MD: Travis Moon. Clear Channel 952-820-4200. List of songs and stations.

KYGO Denver PD: Joel Burke. MD: Tad Svendsen. Jefferson Pilot 303-321-0950. List of songs and stations.

KNIX Phoenix PD: George King. MD: Gwen Foster. Clear Channel 480-966-6236. List of songs and stations.

KILT Houston APD/MD: John Trapano. Infinity 713-881-5100. List of songs and stations.

WIL St Louis PD: Russ Schell. MD: Dan Montana. Sinclair 314-983-6000. List of songs and stations.

WIVK Knoxville OM: Mike Hammond. MD: Colleen Adair. Citadel 865-588-6511. List of songs and stations.

WPOC Baltimore Dir. of Operations: Scott Lindy. APD/MD: Michael J. Fox. Clear Channel 410-366-3693. List of songs and stations.

WTQR Greensboro OM: Tim Satterfield. PD: Bill Dotson. APD/MD: Angie Ward. Clear Channel 336-822-2000. List of songs and stations.

KMLE Phoenix PD: Jeff Garrison. APD/MD: Chris Loss. Infinity 602-258-8181. List of songs and stations.

WFMS Indianapolis OM: David Wood. PD: Bob Richards. MD: J.D. Cannon. Susquehanna 317-842-9550. List of songs and stations.

WSOC Charlotte OM/PD: Jeff Roper. APD/MD: Rick McCracken. Infinity 704-522-1103. List of songs and stations.

WYAT Atlanta
PD: Steve Mitchell
MD: Johnny Gray
ABC/Disney 770-955-0106

TW	LW	Song	Artist
1	1	Diamond Rio Beautiful Mess	Diamond Rio
2	2	Joe Nichols The Impossible	Joe Nichols
3	3	Montgomery Gentry My Town	Montgomery Gentry
4	4	Keith Urban Somebody Like You	Keith Urban
5	5	Travis Byrd Ten Rounds With Jose Cuervo	Travis Byrd
6	6	Alan Jackson Work In Progress	Alan Jackson
7	7	Rascal Flatts These Days	Rascal Flatts
8	8	Travis Tritt Strong Enough To Be Your Man	Travis Tritt
9	9	Brooks & Dunn Every River	Brooks & Dunn
10	10	Shania Twain I'm Gonna Getcha Good!	Shania Twain
11	11	George Strait She'll Leave You With A S	George Strait
12	12	Rebecca Lynn Howard Forgive	Rebecca Lynn Howard
13	13	Brooks & Dunn Every River	Brooks & Dunn
14	14	Alan Jackson Work In Progress	Alan Jackson
15	15	Montgomery Gentry My Town	Montgomery Gentry
16	16	Travis Tritt Strong Enough To Be Your Man	Travis Tritt
17	17	Brooks & Dunn Every River	Brooks & Dunn
18	18	Shania Twain I'm Gonna Getcha Good!	Shania Twain
19	19	George Strait She'll Leave You With A S	George Strait
20	20	Rebecca Lynn Howard Forgive	Rebecca Lynn Howard
21	21	Brooks & Dunn Every River	Brooks & Dunn
22	22	Alan Jackson Work In Progress	Alan Jackson
23	23	Montgomery Gentry My Town	Montgomery Gentry
24	24	Travis Tritt Strong Enough To Be Your Man	Travis Tritt
25	25	Brooks & Dunn Every River	Brooks & Dunn
26	26	Shania Twain I'm Gonna Getcha Good!	Shania Twain
27	27	George Strait She'll Leave You With A S	George Strait
28	28	Rebecca Lynn Howard Forgive	Rebecca Lynn Howard
29	29	Brooks & Dunn Every River	Brooks & Dunn
30	30	Alan Jackson Work In Progress	Alan Jackson

WGAR Cleveland
PD: Meg Stevens
MD: Chuck Collier
Clear Channel 216-520-2600

TW	LW	Song	Artist
1	1	Keith Urban Somebody Like You	Keith Urban
2	2	Diamond Rio Beautiful Mess	Diamond Rio
3	3	Travis Byrd Ten Rounds With Jose Cuervo	Travis Byrd
4	4	Martina McBride Where Would You Be	Martina McBride
5	5	Joe Nichols The Impossible	Joe Nichols
6	6	Phil Vassar American Child	Phil Vassar
7	7	Alan Jackson Work In Progress	Alan Jackson
8	8	Dixie Chicks Landside	Dixie Chicks
9	9	Shania Twain I'm Gonna Getcha Good!	Shania Twain
10	10	George Strait She'll Leave You With A S	George Strait
11	11	Rebecca Lynn Howard Forgive	Rebecca Lynn Howard
12	12	Brooks & Dunn Every River	Brooks & Dunn
13	13	Alan Jackson Work In Progress	Alan Jackson
14	14	Montgomery Gentry My Town	Montgomery Gentry
15	15	Travis Tritt Strong Enough To Be Your Man	Travis Tritt
16	16	Brooks & Dunn Every River	Brooks & Dunn
17	17	Shania Twain I'm Gonna Getcha Good!	Shania Twain
18	18	George Strait She'll Leave You With A S	George Strait
19	19	Rebecca Lynn Howard Forgive	Rebecca Lynn Howard
20	20	Brooks & Dunn Every River	Brooks & Dunn
21	21	Alan Jackson Work In Progress	Alan Jackson
22	22	Montgomery Gentry My Town	Montgomery Gentry
23	23	Travis Tritt Strong Enough To Be Your Man	Travis Tritt
24	24	Brooks & Dunn Every River	Brooks & Dunn
25	25	Shania Twain I'm Gonna Getcha Good!	Shania Twain
26	26	George Strait She'll Leave You With A S	George Strait
27	27	Rebecca Lynn Howard Forgive	Rebecca Lynn Howard
28	28	Brooks & Dunn Every River	Brooks & Dunn
29	29	Alan Jackson Work In Progress	Alan Jackson
30	30	Montgomery Gentry My Town	Montgomery Gentry

WKLB Boston
PD: Mike Brophy
APD/MD: Ginny Rogers
Greater Media 617-822-9600

TW	LW	Song	Artist
1	1	Keith Urban Somebody Like You	Keith Urban
2	2	Diamond Rio Beautiful Mess	Diamond Rio
3	3	Martina McBride Where Would You Be	Martina McBride
4	4	Phil Vassar American Child	Phil Vassar
5	5	Travis Byrd Ten Rounds With Jose Cuervo	Travis Byrd
6	6	Montgomery Gentry My Town	Montgomery Gentry
7	7	Rascal Flatts These Days	Rascal Flatts
8	8	Dixie Chicks Landside	Dixie Chicks
9	9	Emerson Drive Fall Into Me	Emerson Drive
10	10	Alan Jackson Work In Progress	Alan Jackson
11	11	Joe Nichols The Impossible	Joe Nichols
12	12	Shania Twain I'm Gonna Getcha Good!	Shania Twain
13	13	George Strait She'll Leave You With A S	George Strait
14	14	Rebecca Lynn Howard Forgive	Rebecca Lynn Howard
15	15	Brooks & Dunn Every River	Brooks & Dunn
16	16	Shania Twain I'm Gonna Getcha Good!	Shania Twain
17	17	Brooks & Dunn Every River	Brooks & Dunn
18	18	Alan Jackson Work In Progress	Alan Jackson
19	19	Montgomery Gentry My Town	Montgomery Gentry
20	20	Travis Tritt Strong Enough To Be Your Man	Travis Tritt
21	21	Brooks & Dunn Every River	Brooks & Dunn
22	22	Shania Twain I'm Gonna Getcha Good!	Shania Twain
23	23	George Strait She'll Leave You With A S	George Strait
24	24	Rebecca Lynn Howard Forgive	Rebecca Lynn Howard
25	25	Brooks & Dunn Every River	Brooks & Dunn
26	26	Alan Jackson Work In Progress	Alan Jackson
27	27	Montgomery Gentry My Town	Montgomery Gentry
28	28	Travis Tritt Strong Enough To Be Your Man	Travis Tritt
29	29	Brooks & Dunn Every River	Brooks & Dunn
30	30	Shania Twain I'm Gonna Getcha Good!	Shania Twain

WQYK Tampa
OM: Mike Culotta
APD: Beecher Martin
MD: Jay Roberts
Infinity 813-287-0995

TW	LW	Song	Artist
1	1	Diamond Rio Beautiful Mess	Diamond Rio
2	2	Travis Byrd Ten Rounds With Jose Cuervo	Travis Byrd
3	3	Keith Urban Somebody Like You	Keith Urban
4	4	Phil Vassar American Child	Phil Vassar
5	5	Darryl Worley I Miss My Friend	Darryl Worley
6	6	Alan Jackson Work In Progress	Alan Jackson
7	7	Keith Urban Somebody Like You	Keith Urban
8	8	Martina McBride Where Would You Be	Martina McBride
9	9	Joe Nichols The Impossible	Joe Nichols
10	10	Montgomery Gentry My Town	Montgomery Gentry
11	11	Toby Keith Courtesy Of The Red, White & Blue	Toby Keith
12	12	Sara Evans I Keep Looking	Sara Evans
13	13	Mark Willis Nineteen Something	Mark Willis
14	14	George Strait Living And Loving Well	George Strait
15	15	Terrill Clark I Just Wanna Be Mad	Terrill Clark
16	16	Rebecca Lynn Howard Forgive	Rebecca Lynn Howard
17	17	Dixie Chicks Landside	Dixie Chicks
18	18	Kenny Chesney The Good Stuff	Kenny Chesney
19	19	Toby Keith Who's Your Daddy?	Toby Keith
20	20	Travis Tritt Strong Enough To Be Your Man	Travis Tritt
21	21	Gary Allan The One	Gary Allan
22	22	Darryl Worley I Miss My Friend	Darryl Worley
23	23	Alan Jackson Work In Progress	Alan Jackson
24	24	Montgomery Gentry My Town	Montgomery Gentry
25	25	Travis Tritt Strong Enough To Be Your Man	Travis Tritt
26	26	Brooks & Dunn Every River	Brooks & Dunn
27	27	Shania Twain I'm Gonna Getcha Good!	Shania Twain
28	28	George Strait Living And Loving Well	George Strait
29	29	Brooks & Dunn Every River	Brooks & Dunn
30	30	Trick Pony On A Mission	Trick Pony

WDSY Pittsburgh
VP/Pgm: Keith Clark
APD/MD: Stoney Richards
Infinity 412-920-9400

TW	LW	Song	Artist
1	1	Travis Byrd Ten Rounds With Jose Cuervo	Travis Byrd
2	2	Phil Vassar American Child	Phil Vassar
3	3	Kenny Chesney The Good Stuff	Kenny Chesney
4	4	Tim McGraw Red Rag Top	Tim McGraw
5	5	George Strait Living And Loving Well	George Strait
6	6	Keith Urban Somebody Like You	Keith Urban
7	7	Toby Keith Who's Your Daddy?	Toby Keith
8	8	Montgomery Gentry My Town	Montgomery Gentry
9	9	Sara Evans I Keep Looking	Sara Evans
10	10	Darryl Worley I Miss My Friend	Darryl Worley
11	11	Diamond Rio Beautiful Mess	Diamond Rio
12	12	Martina McBride Where Would You Be	Martina McBride
13	13	Joe Nichols The Impossible	Joe Nichols
14	14	Emerson Drive Fall Into Me	Emerson Drive
15	15	Brooks & Dunn Every River	Brooks & Dunn
16	16	Rebecca Lynn Howard Forgive	Rebecca Lynn Howard
17	17	Dixie Chicks Landside	Dixie Chicks
18	18	Alan Jackson Work In Progress	Alan Jackson
19	19	Montgomery Gentry My Town	Montgomery Gentry
20	20	Rascal Flatts These Days	Rascal Flatts
21	21	Dixie Chicks Landside	Dixie Chicks
22	22	Dixie Chicks Landside	Dixie Chicks
23	23	Brad Paisley I'm Gonna Miss Her (The Fi)	Brad Paisley
24	24	Travis Tritt Strong Enough To Be Your Man	Travis Tritt
25	25	Steve Azar I Don't Have To Be Me (Til)	Steve Azar
26	26	Tim McGraw Red Rag Top	Tim McGraw
27	27	Mark Chesnut She Was	Mark Chesnut
28	28	Steve Hoyle I'm Not Broken	Steve Hoyle
29	29	Toby Keith Who's Your Daddy?	Toby Keith
30	30	Travis Tritt Strong Enough To Be Your Man	Travis Tritt

KIKK Houston
APD/MD: John Trapani
Infinity 713-881-5957

TW	LW	Song	Artist
1	1	George Strait She'll Leave You With A S	George Strait
2	2	Tim McGraw Red Rag Top	Tim McGraw
3	3	Keith Urban Somebody Like You	Keith Urban
4	4	Dixie Chicks Landside	Dixie Chicks
5	5	Gary Allan The One	Gary Allan
6	6	Radney Foster Everyday Angel	Radney Foster
7	7	Pat Green You're So Close	Pat Green
8	8	Alan Jackson Work In Progress	Alan Jackson
9	9	Toby Keith Who's Your Daddy?	Toby Keith
10	10	Montgomery Gentry My Town	Montgomery Gentry
11	11	Kenny Chesney A Lot Of Things Different	Kenny Chesney
12	12	Trick Pony On A Mission	Trick Pony
13	13	Brian Burns I've Been Everywhere (In L)	Brian Burns
14	14	Tanya Tucker A Memory Like I'm Gonna Be	Tanya Tucker
15	15	Brooks & Dunn Every River	Brooks & Dunn
16	16	Brad Paisley I Wish You'd Stay	Brad Paisley
17	17	Travis Byrd Ten Rounds With Jose Cuervo	Travis Byrd
18	18	Charlie Robison My Hometown	Charlie Robison
19	19	Jerry Jeff Walker Up Against The Wall	Jerry Jeff Walker
20	20	Jack Ingram Walk Into Me	Jack Ingram
21	21	Charlie Robison My Hometown	Charlie Robison
22	22	Pat Green Carry On	Pat Green
23	23	The Charlie Daniels Band Long Haired Co	The Charlie Daniels Band
24	24	Tommy Alverson Una Mas Cerveza	Tommy Alverson
25	25	Alison Krauss + Union Station Let Me To	Alison Krauss
26	26	Radney Foster Everyday Angel	Radney Foster
27	27	Jerry Jeff Walker A Freeway	Jerry Jeff Walker
28	28	Pat Green & Cory Morrow Stuck In The M	Pat Green
29	29	Jack Ingram Walk Into Me	Jack Ingram
30	30	The Marshall Tucker Band Heard It In A	The Marshall Tucker Band

WAMZ Louisville
OM: Kelly Caris
PD/MD: Coyote Calhoun
Clear Channel 502-582-7840

TW	LW	Song	Artist
1	1	Diamond Rio Beautiful Mess	Diamond Rio
2	2	Keith Urban Somebody Like You	Keith Urban
3	3	Joe Nichols The Impossible	Joe Nichols
4	4	Dixie Chicks Landside	Dixie Chicks
5	5	Montgomery Gentry My Town	Montgomery Gentry
6	6	Martina McBride Where Would You Be	Martina McBride
7	7	George Strait She'll Leave You With A S	George Strait
8	8	Kenny Chesney The Good Stuff	Kenny Chesney
9	9	Rascal Flatts These Days	Rascal Flatts
10	10	Phil Vassar American Child	Phil Vassar
11	11	Toby Keith Who's Your Daddy?	Toby Keith
12	12	Rebecca Lynn Howard Forgive	Rebecca Lynn Howard
13	13	Alan Jackson Work In Progress	Alan Jackson
14	14	Travis Byrd Ten Rounds With Jose Cuervo	Travis Byrd
15	15	Brooks & Dunn Every River	Brooks & Dunn
16	16	Kellie Coffey At The End Of The Day	Kellie Coffey
17	17	Travis Tritt Strong Enough To Be Your Man	Travis Tritt
18	18	John Michael Montgomery 'Til Nothing Co	John Michael Montgomery
19	19	Emerson Drive Fall Into Me	Emerson Drive
20	20	Tammy Cochran Life Happened	Tammy Cochran
21	21	Trick Pony On A Mission	Trick Pony
22	22	Brooks & Dunn Every River	Brooks & Dunn
23	23	Kenny Chesney A Lot Of Things Different	Kenny Chesney
24	24	Sara Evans I Keep Looking	Sara Evans
25	25	Alan Jackson Work In Progress	Alan Jackson
26	26	Darryl Worley I Miss My Friend	Darryl Worley
27	27	Dixie Chicks Landside	Dixie Chicks
28	28	Terrill Clark I Just Wanna Be Mad	Terrill Clark
29	29	Garth Brooks Thicker Than Blood	Garth Brooks
30	30	Darryl Worley I Miss My Friend	Darryl Worley

WKKA Orlando
PD: Len Shackelford
MD: Shadow Stevens
Cox 407-298-9292

TW	LW	Song	Artist
1	1	Alan Jackson Work In Progress	Alan Jackson
2	2	Kenny Chesney The Good Stuff	Kenny Chesney
3	3	Keith Urban Somebody Like You	Keith Urban
4	4	Martina McBride Blessed	Martina McBride
5	5	Joe Nichols The Impossible	Joe Nichols
6	6	Doa Messina With Tim McGraw Bring On T	Doa Messina
7	7	Terrill Clark I Just Wanna Be Mad	Terrill Clark
8	8	Dixie Chicks Landside	Dixie Chicks
9	9	Diamond Rio Beautiful Mess	Diamond Rio
10	10	Darryl Worley I Miss My Friend	Darryl Worley
11	11	Joe Nichols The Impossible	Joe Nichols
12	12	Martina McBride Where Would You Be	Martina McBride
13	13	Alan Jackson Drive (For Daddy Gene)	Alan Jackson
14	14	Brad Paisley I'm Gonna Miss Her (The Fi)	Brad Paisley
15	15	Kenny Chesney A Lot Of Things Different	Kenny Chesney
16	16	Toby Keith Courtesy Of The Red, White & Blue	Toby Keith
17	17	Andy Griggs Tonight I Wanna Be Your Man	Andy Griggs
18	18	Steve Hoyle I'm Not Broken	Steve Hoyle
19	19	Travis Byrd Ten Rounds With Jose Cuervo	Travis Byrd
20	20	Phil Vassar American Child	Phil Vassar
21	21	Phil Vassar American Child	Phil Vassar
22	22	Emerson Drive Fall Into Me	Emerson Drive
23	23	Rascal Flatts These Days	Rascal Flatts
24	24	Alan Jackson Work In Progress	Alan Jackson
25	25	Alan Jackson Drive (For Daddy Gene)	Alan Jackson
26	26	Alan Tippin Where The Stars And Stripe	Alan Tippin
27	27	Travis Tritt It's A Great Day To Be Alive	Travis Tritt
28	28	Montgomery Gentry My Town	Montgomery Gentry
29	29	George Strait I Cross My Heart	George Strait
30	30	Sara Evans I Keep Looking	Sara Evans

KSD St. Louis
MD: Mark Langston
Clear Channel 314-436-9370

TW	LW	Song	Artist
1	1	Kenny Chesney The Good Stuff	Kenny Chesney
2	2	Sara Evans I Keep Looking	Sara Evans
3	3	Joe Nichols The Impossible	Joe Nichols
4	4	Kenny Chesney The Good Stuff	Kenny Chesney
5	5	Diamond Rio Beautiful Mess	Diamond Rio
6	6	Keith Urban Somebody Like You	Keith Urban
7	7	Phil Vassar American Child	Phil Vassar
8	8	Tim McGraw Red Rag Top	Tim McGraw
9	9	Nelly Furtado I'm Not Broken	Nelly Furtado
10	10	Brad Martin Before I Knew Better	Brad Martin
11	11	Toby Keith Who's Your Daddy?	Toby Keith
12	12	Steve Azar I Don't Have To Be Me (Til)	Steve Azar
13	13	Martina McBride Where Would You Be	Martina McBride
14	14	Martina McBride Blessed	Martina McBride
15	15	Alan Jackson Work In Progress	Alan Jackson
16	16	Brad Paisley I Wish You'd Stay	Brad Paisley
17	17	Darryl Worley I Miss My Friend	Darryl Worley
18	18	Rascal Flatts These Days	Rascal Flatts
19	19	Emerson Drive Fall Into Me	Emerson Drive
20	20	Alan Jackson Work In Progress	Alan Jackson
21	21	Alan Jackson Drive (For Daddy Gene)	Alan Jackson
22	22	Alan Tippin Where The Stars And Stripe	Alan Tippin
23	23	Travis Tritt It's A Great Day To Be Alive	Travis Tritt
24	24	Alan Jackson Work In Progress	Alan Jackson
25	25	Alan Jackson Drive (For Daddy Gene)	Alan Jackson
26	26	Alan Tippin Where The Stars And Stripe	Alan Tippin
27	27	Travis Tritt It's A Great Day To Be Alive	Travis Tritt
28	28	Diamond Rio Beautiful Mess	Diamond Rio
29	29	George Strait I Cross My Heart	George Strait
30	30	Tim McGraw Red Rag Top	Tim McGraw

WWYZ Hartford
PD: Jay McCarthy
MD: Jay Thomas
Clear Channel 860-723-6000

TW	LW	Song	Artist
1	1	Keith Urban Somebody Like You	Keith Urban
2	2	Travis Byrd Ten Rounds With Jose Cuervo	Travis Byrd
3	3	Martina McBride Where Would You Be	Martina McBride
4	4	Kenny Chesney The Good Stuff	Kenny Chesney
5	5	Rascal Flatts These Days	Rascal Flatts
6	6	Diamond Rio Beautiful Mess	Diamond Rio
7	7	Dixie Chicks Landside	Dixie Chicks
8	8	Shania Twain	

IMPACT!

Monitor Nielsen Broadcast Data Systems

Upward-moving songs ranked in order of detections. Songs are removed if they lose more than 5% of their detections from previous week.

AIRPOWER

Total Detections/Gain

TRAVIS TRITT 2461/242

Strong Enough To Be Your Man (Columbia)
Total Stations: 148/Chart Move: 21-19
Heavy (45+): 0
Medium (25-44): 19 KAJA, KBQI, KGY, KHKI, KTOM, KTTS, KUZZ, KXKC, KZSN, WBCT, WBEE, WKHX, WKIS, WKSJ, WRNS, WSIX, WSLC, WWQM, WYUU
Light (Under 25): 129
Airplay Adds: 5 KSON, WDSY, WGKX, WMZQ, WOGK

AIRPLAY LEADER

(FIRST STATION TO 150 PLAYS)

WKHX • Atlanta, GA
PD: Johnny Gray
Date: 08/11/02



2399 - 1000 DETECTIONS

Total Detections/Gain

TAMMY COCHRAN 2301/187

Life Happened (Epic/EMN)
Total Stations: 148/Chart Move: 22-21
Heavy (45+): 0
Medium (25-44): 12 KFDI, KHEY, KSON, KXXY, KYGO, WBCT, WCMS, WDRM, WKYQ, WQMX, WSLC, WTQR
Light (Under 25): 136
Airplay Adds: 2 WLWI, WMZQ

BROOKS & DUNN 2226/388

Every River (Arista Nashville)
Total Stations: 148/Chart Move: 24-22
Heavy (45+): 1 KILT
Medium (25-44): 10 KBQI, KMPS, KNCI, KTTS, KUZZ, KVOO, WKSJ, WQBE, WSLC, WXBQ
Light (Under 25): 137
Airplay Adds: 16 KNIX, KPLX, KTEX, WBUL, WDSY, WJCL, WKHK, WKHX, WNOE, WOGI, WQDR, WRBT, WSTH, WWKA, WYGY, WYUD

EMERSON DRIVE 2114/243

Fail Into Me (DreamWorks)
Total Stations: 148/Chart Move: 25-23
Heavy (45+): 0
Medium (25-44): 17 KBQI, KBQI, KFKF, KFRG, KHKI, KNIX, WDSY, WGH, WGN, WKLB, WKSJ, WOGI, WQBE, WQMX, WWQM, WXBQ, WYUU
Light (Under 25): 131
Airplay Adds: 7 KHEY, KTTS, WDRM, WKHX, WLWI, WMSI, WNOE

★ SHANIA TWAIN 1929/1929

I'm Gonna Getcha Good! (Mercury)
Total Stations: 143/Chart Move: Debut 24
Heavy (45+): 0
Medium (25-44): 19 KATM, KBQI, KCCY, KDRK, KEEY, KXCS, KMLE, KNIX, KSKS, KUBL, KZLA, KZSN, WGAR, WIRK, WKIS, WTGE, WUSN, WYUZ, WYCD
Light (Under 25): 124
Airplay Adds: 114 KAJA, KATM, KBQI, KCCY, KCY, KDRK, KEEY, KFDI, KFKF, KFRG, KGM, KHAY, KHEY, KIIM, KILT, KKAT, KKCS, KMDL, KMLE, KMPS, KNCI, KNIX, KPLX, KRST, KSCS, KSD, KSKS, KSON, KSOP, KSSN, KTOM, KTST, KUBL, KUPL, KUZZ, KWJ, KWRN, KXKT, KYGO, KZLA, KZSN, WAMZ, WBBS, WBCT, WBUL, WCAT, WCMS, WCOL, WCOS, WCTK, WCTO, WDRM, WDSY, WEZL, WFLS, WFR, WGAR, WGGY, WGH, WGKX, WGN, WGN, WHOK, WIL, WIRK, WIVK, WKCO, WKDF, WKHK, WKHX, WKIS, WKKO, WKKT, WKLB, WKSJ, WKXC, WKYQ, WMIL, WMSI, WMUS, WMZQ, WNCY, WNK, WNOE, WOGI, WOKO, WOKQ, WPOC, WPOR, WQDR, WQIK, WQK, WQYK, WRBT, WRNS, WSIX, WSM, WSOC, WSSL, WTGE, WUBE, WUSN, WUSY, WVLK, WWGR, WWKA, WWQM, WYUZ, WXTU, WYCD, WYNK, WYUU, WYUD

TERRI CLARK 1853/322

I Just Wanna Be Mad (Mercury)
Total Stations: 147/Chart Move: 26-25
Heavy (45+): 0
Medium (25-44): 15 KAJA, KBQI, KCY, KKCS, KMLE, KPLX, KRTY, KSOP, KUZZ, WCTK, WCTO, WSLC, WWKA, WYGY, WYUU
Light (Under 25): 132
Airplay Adds: 17 KRYS, KSKS, KSON, KTEX, KUPL, KXXY, WDAF, WESC, WKKT, WLWI, WMSI, WOGI, WRBT, WWKA, WYCD, WYRK, WYUD

KENNY CHESNEY 1782/354

A Lot Of Things Different (BNA)
Total Stations: 138/Chart Move: 28-27
Heavy (45+): 0
Medium (25-44): 10 KMLE, KTTS, KVOO, KXKT, WBCT, WIRK, WSIX, WTGE, WTQR, WWQM
Light (Under 25): 128
Airplay Adds: 25 KASE, KFRG, KHAY, KILT, KKAT, KRMD, KRYS, KSSN, KTST, KXXY, WCAT, WCMS, WFR, WGAR, WJCL, WKCO, WKLB, WPOC, WQXK, WSLC, WSM, WSOC, WVLK, WXTU, WYRK

JOHN MICHAEL MONTGOMERY 1768/302

Til Nothing Comes Between Us (Warner Bros./WRN)
Total Stations: 146/Chart Move: 27-28
Heavy (45+): 0
Medium (25-44): 6 KVOO, WKKO, WKYQ, WQBE, WQMX, WXBQ
Light (Under 25): 140
Airplay Adds: 12 KSKS, KUPL, KUZZ, KYGO, WCMS, WIL, WKCQ, WMSI, WPOC, WYUZ, WYGY, WYRK

BRAD PAISLEY 1542/161

I Wish You'd Stay (Arista Nashville)
Total Stations: 139/Chart Move: 30-29
Heavy (45+): 0
Medium (25-44): 8 KIIM, KMLE, KSD, KTTS, WNCY, WSIX, WSLC, WWQM
Light (Under 25): 131
Airplay Adds: 9 KIKK, KNCI, KUPL, KWRN, WBCT, WMSI, WTGE, WWKA, WYUD

CAROLYN DAWN JOHNSON 1442/77

One Day Closer To You (Arista Nashville)
Total Stations: 139/Chart Move: 29-30
Heavy (45+): 0
Medium (25-44): 6 KHKI, KMLE, WGGY, WQMX, WSLC, WYUU
Light (Under 25): 133
Airplay Adds: 4 KILT, KRYS, WMIL, WXBM

LONESTAR 1394/192

Unusually Unusual (BNA)
Total Stations: 134/Chart Move: 31-31
Heavy (45+): 0
Medium (25-44): 6 KBQI, KHKI, KPLX, WRNS, WSLC, WWQM
Light (Under 25): 128
Airplay Adds: 9 KAJA, KNIX, KWRN, WDAF, WDRM, WESC, WOKQ, WPCV, WYUD

AARON LINES 1192/219

You Can't Hide Beautiful (RCA)
Total Stations: 138/Chart Move: 34-32
Heavy (45+): 1 KPLX
Medium (25-44): 4 KBQI, KMLE, WGGY, WTGE
Light (Under 25): 133
Airplay Adds: 14 KAJA, KZSN, WCOS, WDRM, WFLS, WFMS, WHOK, WIL, WKCQ, WKXC, WPOC, WRBT, WSLC, WVLK

KELLIE COFFEY 1116/145

At The End Of The Day (BNA)
Total Stations: 136/Chart Move: 35-33
Heavy (45+): 0
Medium (25-44): 1 WGGY
Light (Under 25): 135
Airplay Adds: 6 KAJA, WGH, WKLB, WMIL, WOGI, WXBM

TRICK PONY 1096/111

On A Mission (Warner Bros./WRN)
Total Stations: 126/Chart Move: 33-34
Heavy (45+): 0

Medium (25-44): 5 KHKI, KKCS, KSKS, WIRK, WYUU
Light (Under 25): 121
Airplay Adds: 8 KAJA, WESC, WFLS, WMIL, WOGI, WSOC, WYRK, WYUD

999 - 500 DETECTIONS

Total Detections/Gain

MARK WILLS 929/386

Nineteen Somethin' (Mercury)
Total Stations: 98/Chart Move: 39-35
Heavy (45+): 1 WYUU
Medium (25-44): 3 KCCY, WGGY, WUSY
Light (Under 25): 94
Airplay Adds: 31 KBQI, KBQI, KEEY, KFKF, KIIM, KRTY, KSCS, KXKT, KYGO, WBEE, WCKT, WDRM, WEZL, WGN, WGN, WIRK, WKCO, WKDF, WKLB, WKSJ, WKYQ, WNCY, WNK, WOKO, WFOR, WQBE, WSOC, WWGR, WWKA, WWQM, WXBQ

STEVE AZAR 811/94

Waitin' On Joe (Mercury)
Total Stations: 127/Chart Move: 36-36
Heavy (45+): 0
Medium (25-44): 1 WWQM
Light (Under 25): 126
Airplay Adds: 5 KRYS, KSKS, WQYK, WUSJ, WXBM

STEVE HOLY 806/94

I'm Not Breakin' (Curb)
Total Stations: 123/Chart Move: 37-37
Heavy (45+): 0
Medium (25-44): 2 WQBE, WXBQ
Light (Under 25): 121
Airplay Adds: 4 KRYS, KZSN, WFOR, WRNS

GARY ALLAN 786/293

Man To Man (MCA Nashville)
Total Stations: 93/Chart Move: 41-38
Heavy (45+): 1 KIKK
Medium (25-44): 1 WGGY
Light (Under 25): 91
Airplay Adds: 29 KAJA, KBQI, KCY, KDRK, KFDI, KHAY, KKAT, KKCS, KMPS, KNCI, KRTY, KUBL, KXKT, WCAT, WCKT, WFLS, WFMS, WGH, WGN, WIL, WIRK, WKCN, WKLB, WNCY, WFOR, WRNS, WVLK, WWGR

JENNIFER HANSON 701/96

Beautiful Goodbye (Capitol)
Total Stations: 84/Chart Move: 38-39
Heavy (45+): 0
Medium (25-44): 1 WGGY
Light (Under 25): 83
Airplay Adds: 10 KAJA, KBQI, KSSN, KUZZ, WAMZ, WBCT, WGN, WHOK, WKCO, WKDF

TRACE ADKINS 634/114

Chrome (Capitol)
Total Stations: 77/Chart Move: 40-40
Heavy (45+): 0
Medium (25-44): 3 WIRK, WKYQ, WWQM
Light (Under 25): 74
Airplay Adds: 9 KAJA, KXXY, WFMS, WGN, WOKO, WSLC, WXTU, WYNK, WYUU

499 - 40 DETECTIONS

Total Detections/Gain

ANDY GRIGGS WITH MARTINA MCBRIDE 476/21

Practice Life (RCA)
Total Stations: 74/Chart Move: 42-41
Heavy (45+): 0
Medium (25-44): 0
Light (Under 25): 74
Airplay Adds: 5 KBQI, WIRK, WKLB, WPCV, WSLC

TANYA TUCKER 440/66

A Memory Like I'm Gonna Be (Tuckertime)
Total Stations: 47/Chart Move: 44-42
Heavy (45+): 1 KPLX

Medium (25-44): 0
Light (Under 25): 46
Airplay Adds: 6 KATM, KIKK, KTOM, WIRK, WYNK, WYUD

AARON TIPPIN 368/38

If Her Lovin' Don't Kill Me (Lyric Street)
Total Stations: 46/Chart Move: 46-43
Heavy (45+): 0
Medium (25-44): 2 WIVK, WNCY
Light (Under 25): 44
Airplay Adds: 7 KASE, KHKI, WIL, WIRK, WSM, WUSJ, WZZK

RADNEY FOSTER 351/12

Everyday Angel (Dualtone)
Total Stations: 53/Chart Move: 45-44
Heavy (45+): 0
Medium (25-44): 5 KIKK, KPLX, KSKS, WQBE, WXBQ
Light (Under 25): 48
Airplay Adds: 2 KMDL, KUBL

ANTHONY SMITH 315/88

John J. Blanchard (Mercury)
Total Stations: 35/Chart Move: 49-45
Heavy (45+): 0
Medium (25-44): 3 WBCT, WGGY, WIRK
Light (Under 25): 32
Airplay Adds: 5 KPLX, WEZL, WKCO, WKDF, WYNK

RODNEY ATKINS 273/72

My Old Man (Curb)
Total Stations: 47/Chart Move: 51-47
Heavy (45+): 0
Medium (25-44): 1 WKYQ
Light (Under 25): 46
Airplay Adds: 7 KFKF, WCAT, WIRK, WSM, WTGE, WXBM, WYUU

JOSH TURNER 268/30

She'll Go On You (MCA Nashville)
Total Stations: 46/Chart Move: 48-48
Heavy (45+): 0
Medium (25-44): 0
Light (Under 25): 46
Airplay Adds: 5 KFDI, KKCS, KWRN, WGGY, WXBM

HOMETOWN NEWS 243/36

Wheels (VFR)
Total Stations: 31/Chart Move: 50-49
Heavy (45+): 0
Medium (25-44): 0
Light (Under 25): 31
Airplay Adds: 2 KSKS, WMUS

DARYLE SINGLETARY 223/66

I'd Love To Lay You Down (Audium)
Total Stations: 21/Chart Move: 53-50
Heavy (45+): 0
Medium (25-44): 1 KILT
Light (Under 25): 20
Airplay Adds: 5 KVOO, WDSY, WFRY, WIVK, WQYK

KID ROCK FEATURING SHERYL CROW 215/93

Picture (Lava)
Total Stations: 47/Chart Move: 57-51
Heavy (45+): 0
Medium (25-44): 3 KTST, WCTO, WGGY
Light (Under 25): 44
Airplay Adds: 1 WYUD

TOMMY SHANE STEWART WITH BRIDGETTE WILSON-SAMPRAAS 187/94

What We're Gonna Do About It (RCA)
Total Stations: 53/Chart Move: 59-52
Heavy (45+): 0
Medium (25-44): 1 WKHX
Light (Under 25): 52
Airplay Adds: 3 KATM, KUZZ, WKCN

DARRYL WORLEY 183/121

Family Tree (DreamWorks)
Total Stations: 35/Chart Move: Debut 53
Heavy (45+): 0

Medium (25-44): 0
Light (Under 25): 35
Airplay Adds: 10 KCCY, KFKF, KKCS, KMPS, KPLX, KSOP, KTTS, KUZZ, KVOO, WWQM

NEAL MCCOY 183/59

The Luckiest Man In The World (Warner Bros./WRN)
Total Stations: 31/Chart Move: 55-54
Heavy (45+): 0
Medium (25-44): 0
Light (Under 25): 31
Airplay Adds: 6 KBQI, KFKF, KNCI, KUBL, KUPL, WUSY

NICKEL CREEK 154/30

This Side (Sugar Hill)
Total Stations: 14/Chart Move: 56-57
Heavy (45+): 0
Medium (25-44): 1 WGGY
Light (Under 25): 13

CRAIG MORGAN 124/111

Almost Home (Broken Bow)
Total Stations: 47/Chart Move: Debut 59
Heavy (45+): 0
Medium (25-44): 0
Light (Under 25): 47
Airplay Adds: 5 KATM, KNIX, KTOM, WCOS, WWYZ

BRAD MARTIN 117/0

Rub Me The Right Way (Epic/EMN)
Total Stations: 47/Chart Move: 58-60
Heavy (45+): 0
Medium (25-44): 0
Light (Under 25): 47
Airplay Adds: 5 KDRK, KTOM, WCAT, WCOL, WNK

MARK CHESNUTT 98/50

I Want My Baby Back (Columbia)
Total Stations: 20
Heavy (45+): 0
Medium (25-44): 0
Light (Under 25): 20
Airplay Adds: 4 KDRK, KNCI, WCKT, WVLK

KELLY CLARKSON 69/9

A Moment Like This (RCA)
Total Stations: 8
Heavy (45+): 0
Medium (25-44): 0
Light (Under 25): 8
Airplay Adds: 2 WCTO, WUSN

SHANE MINOR 56/14

Don't Ask Why (770/EMICMG)
Total Stations: 18
Heavy (45+): 0
Medium (25-44): 0
Light (Under 25): 18
Airplay Adds: 1 KIIM

LEANN RIMES 51/6

Life Goes On (Curb)
Total Stations: 7
Heavy (45+): 0
Medium (25-44): 0
Light (Under 25): 7
Airplay Adds: 1 WCTO

★ KEITH URBAN 43/43

Song For Dad (Capitol)
Total Stations: 39
Heavy (45+): 0
Medium (25-44): 0
Light (Under 25): 39

★ LEANN RIMES 42/26

No Way Out (Curb)
Total Stations: 35
Heavy (45+): 0
Medium (25-44): 0
Light (Under 25): 35

Airpower awarded to songs appearing in the top 20 on both the Airplay and Audience charts for the first time with increases in both detections and audience. ★ Initial impact: songs appearing on this page for the first time. Airplay Adds are songs with 6 or more detections at new stations this week. The Airplay Leaderboard ranks taste-maker stations that have been the most successful in identifying future hit songs as measured by the amount of AIRPOWER titles for which they were Airplay Leaders. Refer to each format's Power Playlists page to see this week's Airplay Leaders.

DIXIE CHICKS 3866/264

Landslide (Monument/EMN)

Total Stations: 150		Chart Move: 11-9	
TW	LW	ID	Green.
CMT	33	36	35
GAC	43	41	43
KZLA	41	38	258
WUSN	41	36	284
KTUD	20	22	120
KPLX	52	51	52
KSCS	20	19	121
WYCD	14	8	1
WBLB	30	20	130
WZLQ	28	28	225
KIKK	30	32	30
KILT	24	29	243
KWHX	33	26	195
WYAY	17	9	3
WWSW	20	21	99
KMPS	32	41	37
KSDN	35	34	24
KMLE	50	29	231
KMX	36	29	17
KEYE	26	25	24
WZLQ	28	28	225
WIL	26	27	16
WPOC	33	25	134
WYUJ	15	17	131
WDSY	22	24	19
KYGO	28	19	125
WGAR	16	18	6
KUPL	33	32	190
KWJL	46	50	46
WUBE	23	24	111
WYGY	41	42	171
KRTY	14	7	26
KFRG	9	5	3
KNCI	24	21	25
KBEQ	31	28	18
KFFK	13	18	95
WDAF	6	10	48
WMIL	24	26	115
KAJA	35	26	115
KCY	57	41	1149
KWOL	23	22	120
WCOL	23	22	136
WHOK	26	22	251
KKAT	22	20	161
KSP	24	21	166
KUBL	48	48	244
WCMG	23	23	61
WGH	21	23	138
WNCI	36	24	205
WSDC	43	32	134
WFMS	39	19	202
WPCA	39	29	164
WKWA	29	23	164
KWNR	19	16	15
WNOE	23	23	18
WTR	10	13	57
KWDF	20	22	107
WSIX	26	27	185
WSM	24	19	69
WYZY	20	20	169
WYRK	20	24	22
WGL	20	22	93
WDR	20	18	100
KASE	24	22	170
WIRK	37	25	188
WQIK	9	8	6
WROD	2	1	5
WAMZ	23	21	107
KTST	26	25	165
KXXY	29	28	25
WDXB	28	23	53
WZZK	3	3	22
WKHK	11	10	13

REBECCA LYNN HOWARD 3217/176

Forgive (MCA Nashville)

Total Stations: 150		Chart Move: 17-16	
TW	LW	ID	Green.
CMT	31	18	103
GAC	26	20	212
KZLA	13	11	232
WUSN	24	23	190
KTUD	17	18	238
KPLX	16	14	276
KSCS	1	1	15
WYCD	5	6	3
WBLB	24	26	237
WZLQ	17	9	83
KIKK	3	4	1
KILT	7	4	5
KWHX	33	26	143
WYAY	2	1	8
WWSW	25	25	346
KMPS	23	19	209
KSDN	28	32	605
KMLE	32	36	251
KMX	7	6	5
KEYE	14	15	14
KSD	14	15	14
WIL	28	12	138
WPOC	19	15	14
WYUJ	27	20	155
WDSY	19	13	57
KYGO	45	35	510
WGAR	15	14	9
KUPL	19	21	202
KWJL	19	21	391
WUBE	19	21	391
WYGY	25	29	486
KRTY	34	27	249
KFRG	29	33	370
KNCI	22	17	158
KBEQ	17	17	158
KFFK	20	11	9
WDAF	20	11	9
WMIL	25	24	125
KAJA	32	34	35
KCY	26	24	215
KWOL	24	24	112
WCOL	24	24	112
WHOK	27	26	242
KKAT	19	14	124
KSP	27	23	441
KUBL	26	28	212
WCMG	27	14	149
WGH	26	28	26
WNCI	16	20	149
WSDC	25	24	196
WFMS	21	15	244
WPCA	23	24	186
WKWA	7	6	5
KWNR	22	16	126
WNOE	22	16	126
WTR	25	24	234
KWDF	38	19	594
WSIX	37	37	486
WSM	18	14	233
WYZY	22	22	203
WYRK	29	19	101
WGL	20	18	100
WDR	20	18	100
KASE	13	16	141
WIRK	27	22	300
WQIK	12	12	135
WROD	2	1	5
WAMZ	22	15	82
KTST	31	25	104
KXXY	17	13	79
WDXB	17	10	45
WZZK	3	3	22
WKHK	9	11	8

ALAN JACKSON 4612/264

Work In Progress (Arista Nashville)

Total Stations: 149		Chart Move: 6-5	
TW	LW	ID	Green.
CMT	33	34	32
GAC	45	41	350
KZLA	10	15	78
WUSN	26	25	126
KTUD	39	37	264
KPLX	44	44	454
KSCS	44	42	583
WYCD	13	12	192
WBLB	28	24	320
WZLQ	8	26	443
KIKK	31	30	263
KILT	28	26	234
KWHX	31	31	429
WYAY	24	23	214
WWSW	25	24	320
KMPS	42	43	353
KSDN	26	27	98
KMLE	13	28	31
KMX	38	31	274
KEYE	31	31	198
KSD	14	13	188
WIL	34	31	283
WPOC	35	30	312
WYUJ	31	36	291
WDSY	46	49	366
WOGI	23	23	69
KYGO	26	27	204
WGAR	24	24	236
KUPL	24	23	310
KWJL	24	23	310
WUBE	23	23	331
WYGY	32	39	374
KRTY	28	20	270
KFRG	28	24	261
KNCI	38	34	308
KBEQ	29	26	138
KFFK	34	32	367
WDAF	22	23	279
WMIL	30	32	275
KAJA	47	35	365
KCY	35	34	365
KWOL	36	34	369
WCOL	32	29	203
WHOK	26	23	268
KKAT	10	10	86
KSP	29	28	460
KUBL	32	31	58
WCMG	24	24	265
WGH	25	29	392
WNCI	22	20	251
WSDC	22	20	307
WFMS	28	13	245
WPCA	34	33	366
WKWA	45	32	294
KWNR	25	16	197
WNOE	24	25	194
WTR	39	37	412
KWDF	37	26	226
WSIX	36	27	266
WSM	19	16	148
WYZY	16	10	124
WYRK	35	25	225
WGL	18	15	82
WDR	28	23	243
KASE	21	17	291
WIRK	37	34	363
WQIK	26	24	322
WROD	2	1	5
WAMZ	22	15	82
KTST	35	25	104
KXXY	29	34	328
WDXB	12	11	94
WZZK	3	3	22
WKHK	15	25	413

TOBY KEITH 3530/177

Who's Your Daddy? (DreamWorks)

Total Stations: 150		Chart Move: 14-11	
TW	LW	ID	Green.
CMT	36	28	74
GAC	44	29	91
KZLA	13	6	3
WUSN	26	25	124
KTUD	20	19	178
KPLX	32	24	176
KSCS	38	28	176
WYCD	21	20	49
WBLB	19	9	5
WZLQ	31	30	225
KIKK	31	32	229
KILT	49	30	189
KWHX	42	37	211
WYAY	19	9	5
WWSW	22	18	127
KMPS	28	24	120
KSDN	21	19	62
KMLE	27	20	170
KMX	30	35	238
KEYE	30	27	129
KSD	14	16	183
WIL	19	17	144
WPOC	17	14	66
WYUJ	17	15	110
WDSY	29	28	172
WOGI	22	22	4
KYGO	3	3	16
WGAR	23	22	97
KUPL	17	16	96
KWJL	32	28	133
WUBE	24	22	107
WYGY	24	24	105
KRTY	36	34	157
KFRG	8	9	21
KNCI	38	29	238
KBEQ	29	26	138
KFFK	34	32	344
WDAF	22	21	239
WMIL	28	25	144
KAJA	34	32	152
KCY	32	24	129
KWOL	29	24	191
WCOL	24	21	81
WHOK	23	21	132
KKAT	10	10	86
KSP	32	27	458
KUBL	31	29	58
WCMG	16	16	110
WGH	26	20	128
WNCI	30	21	99
WSDC	27	21	131
WFMS	38	36	375
WPCA	26	22	190
WKWA	20	11	138
KWNR	24	21	84
WNOE	17	14	61
WTR	39	39	393
KWDF	19	18	103
WSIX	29	28	239
WSM	18	18	88
WYZY	28	21	112
WYRK	25	24	105
WGL	18	13	110
WDR	22	18	102
KASE	23	21	136
WIRK	34	31	220
WQIK	26	24	322
WROD	2	1	5
WAMZ	22	14	61
KTST	35	28	196
KXXY	13	17	15
WDXB	12	11	94
WZZK	3	3	22
WKHK	7	9	12

MARTINA MCBRIDE 4861/220

Where Would You Be (RCA)

Total Stations: 149		Chart Move: 5-3	
TW	LW	ID	Green.
CMT	23	30	412
GAC	42	46	364
KZLA	32	42	364
WUSN	18	20	315
KTUD	39	41	424
KPLX	39	41	424
KSCS	40	22	138
WYCD	40	22	138
WBLB	39	35	291
WZLQ	43	44	516
KIKK	3	2	27
KILT	10	8	116
KWHX	28	13	416
WYAY	14	15	33
WWSW	37	36	357
KMPS	16	21	329
KSDN	10	20	492
KMLE	29	36	843
KMX	28	28	165
KEYE	9	10	89
KSD	32	31	313
WIL	35	36	294
WPOC	34	27	210
WYUJ	28	15	257
WDSY	25	25	355
WOGI	31	28	54
KYGO	29	26	342
WGAR	41	25	222
KUPL	19	20	285
KWJL	37	60	336
WUBE	41	25	172
WYGY	34	32	378
KRTY	36	31	324
KFRG	30	30	405
KNCI	38	26	473
KBEQ	37	30	516
KFFK	15	34	457
WDAF	18	21	266
WMIL	36	35	452
KAJA	47	45	417
K			

Compiled from a national sample of airplay supplied by Broadcast Data Systems' Radio Track service to Country Airplay Monitor. 150 country stations are electronically monitored 24 hours a day, 7 days a week. © 2002 VNU Business Media, Inc. All rights reserved.

THIS WEEK	LAST WEEK	WKS. ON CHART	TITLE/IMPRINT/PROMOTION LABEL	ARTIST	DETECTIONS		
					TW	LW	
			★★★★ NO. 1 ★★★★★				
1	2	16	SOMEBODY LIKE YOU <small>CAPITOL</small>	KEITH URBAN	6187	5818	
2	1	28	BEAUTIFUL MESS <small>ARISTA NASHVILLE</small>	DIAMOND RIO	5857	5927	
3	5	24	WHERE WOULD YOU BE <small>RCA</small>	MARTINA MCBRIDE	4861	4641	
4	3	31	THE IMPOSSIBLE <small>UNIVERSAL SOUTH</small>	JOE NICHOLS	4787	5332	
5	6	17	WORK IN PROGRESS <small>ARISTA NASHVILLE</small>	ALAN JACKSON	4612	4348	
6	7	25	AMERICAN CHILD <small>ARISTA NASHVILLE</small>	PHIL VASSAR	4472	4068	
7	4	29	TEN ROUNDS WITH JOSE CUERVO <small>RCA</small>	TRACY BYRD	4372	5180	
8	10	20	MY TOWN <small>COLUMBIA</small>	MONTGOMERY GENTRY	4161	3788	
9	11	7	LANDSLIDE <small>MONUMENT/EMN</small>	DIXIE CHICKS	3866	3602	
10	12	17	THESE DAYS <small>LYRIC STREET</small>	RASCAL FLATTS	3826	3545	
11	14	10	WHO'S YOUR DADDY? <small>DREAMWORKS</small>	TOBY KEITH	3530	3353	
12	9	25	THE GOOD STUFF <small>BNA</small>	KENNY CHESNEY	3497	3896	
13	16	7	SHE'LL LEAVE YOU WITH A SMILE <small>MCA NASHVILLE</small>	GEORGE STRAIT	3422	3086	
14	13	9	CRY <small>WARNER BROS./WRN</small>	FAITH HILL	3394	3511	
15	8	31	I MISS MY FRIEND <small>DREAMWORKS</small>	DARRYL WORLEY	3286	4006	
16	17	24	FORGIVE <small>MCA NASHVILLE</small>	REBECCA LYNN HOWARD	3217	3041	
17	18	5	RED RAG TOP <small>CURB</small>	TIM MCGRAW	3040	2859	
18	15	32	I KEEP LOOKING <small>RCA</small>	SARA EVANS	2623	3180	
			★★ AIRPOWER ★★				
19	21	16	STRONG ENOUGH TO BE YOUR MAN <small>COLUMBIA</small>	TRAVIS TRITT	2461	2219	
20	20	20	THICKER THAN BLOOD <small>CAPITOL</small>	GARTH BROOKS	2379	2581	
21	22	20	LIFE HAPPENED <small>EPIC/EMN</small>	TAMMY COCHRAN	2301	2114	
22	24	7	EVERY RIVER <small>ARISTA NASHVILLE</small>	BROOKS & DUNN	2226	1838	
23	25	15	FALL INTO ME <small>DREAMWORKS</small>	EMERSON DRIVE	2114	1871	
			★★ HOT SHOT DEBUT/MOST AIRPLAY ADDS/GREATEST GAINER ★★				
24	NEW		I'M GONNA GETCHA GOOD! <small>MERCURY</small>	SHANIA TWAIN	1929	0	
25	26	8	I JUST WANNA BE MAD <small>MERCURY</small>	TERRI CLARK	1853	1531	
26	23	20	LONG TIME GONE <small>MONUMENT/EMN</small>	DIXIE CHICKS	1838	2014	
27	28	10	A LOT OF THINGS DIFFERENT <small>BNA</small>	KENNY CHESNEY	1782	1428	
28	27	13	TIL NOTHING COMES BETWEEN US <small>WARNER BROS./WRN</small>	JOHN MICHAEL MONTGOMERY	1768	1466	
29	30	10	I WISH YOU'D STAY <small>ARISTA NASHVILLE</small>	BRAD PAISLEY	1542	1381	
30	29	14	ONE DAY CLOSER TO YOU <small>ARISTA NASHVILLE</small>	CAROLYN DAWN JOHNSON	1442	1365	
31	31	10	UNUSUALLY UNUSUAL <small>BNA</small>	LONESTAR	1394	1202	
32	34	10	YOU CAN'T HIDE BEAUTIFUL <small>RCA</small>	AARON LINES	1192	973	
33	35	11	AT THE END OF THE DAY <small>BNA</small>	KELLIE COFFEY	1116	971	
34	33	8	ON A MISSION <small>WARNER BROS./WRN</small>	TRICK PONY	1096	985	
35	39	3	NINETEEN SOMETHIN' <small>MERCURY</small>	MARK WILLS	929	543	
36	36	12	WAITIN' ON JOE <small>MERCURY</small>	STEVE AZAR	811	717	
37	37	7	I'M NOT BREAKIN' <small>CURB</small>	STEVE HOLY	806	712	

THIS WEEK	LAST WEEK	WKS. ON CHART	TITLE/IMPRINT/PROMOTION LABEL	ARTIST	DETECTIONS	
					TW	LW
38	41	3	MAN TO MAN <small>MCA NASHVILLE</small>	GARY ALLAN	786	493
39	38	11	BEAUTIFUL GOODBYE <small>CAPITOL</small>	JENNIFER HANSON	701	605
40	40	4	CHROME <small>CAPITOL</small>	TRACE ADKINS	634	520
41	42	5	PRACTICE LIFE <small>RCA</small>	ANDY GRIGGS WITH MARTINA MCBRIDE	476	455
42	44	9	A MEMORY LIKE I'M GONNA BE <small>TUCKERTIME</small>	TANYA TUCKER	440	374
43	46	10	IF HER LOVIN' DON'T KILL ME <small>LYRIC STREET</small>	AARON TIPPIN	368	330
44	45	12	EVERYDAY ANGEL <small>DUALTONE</small>	RADNEY FOSTER	351	339
45	49	3	JOHN J. BLANCHARD <small>MERCURY</small>	ANTHONY SMITH	315	227
46	43	16	THE LAST MAN COMMITTED <small>DREAMWORKS</small>	ERIC HEATHERLY	280	431
47	51	3	MY OLD MAN <small>CURB</small>	RODNEY ATKINS	273	201
48	48	5	SHE'LL GO ON YOU <small>MCA NASHVILLE</small>	JOSH TURNER	268	238
49	50	6	WHEELS <small>VFR</small>	HOMETOWN NEWS	243	207
50	53	4	I'D LOVE TO LAY YOU DOWN <small>AUDIUM</small>	DARYLE SINGLETARY	223	157
51	57	2	PICTURE <small>LAVA</small>	KID ROCK FEATURING SHERYL CROW	215	122
52	59	2	WHAT WE'RE GONNA DO ABOUT IT <small>RCA</small>	TOMMY SHANE STEINER WITH BRIDGETTE WILSON-SAMPRAS	187	93
53	NEW		FAMILY TREE <small>DREAMWORKS</small>	DARRYL WORLEY	183	62
54	55	2	THE LUCKIEST MAN IN THE WORLD <small>WARNER BROS./WRN</small>	NEAL MCCOY	183	124
55	52	6	THESE ARE THE DAYS <small>UNIVERSAL SOUTH</small>	HOLLY LAMAR	179	193
56	47	19	CADILLAC TEARS <small>LYRIC STREET</small>	KEVIN DENNEY	164	314
57	56	5	THIS SIDE <small>SUGAR HILL</small>	NICKEL CREEK	154	124
58	54	4	YOU DA MAN <small>CAPITOL</small>	JAMESON CLARK	135	147
59	NEW		ALMOST HOME <small>BROKEN BOW</small>	CRAIG MORGAN	124	13
60	58	2	RUB ME THE RIGHT WAY <small>EPIC/EMN</small>	BRAD MARTIN	117	117

Songs are ranked by number of detections. **○** Songs showing an increase in detections over the previous week, regardless of chart movement. A song will also receive a bullet if its percentage loss in detections does not exceed the percentage of monitored station downtime for the format. **Airpower** awarded to songs appearing in the top 20 on both the Airplay and Audience charts for the first time with increases in both detections and audience. **Greatest Gainer** awarded to the song with the largest increase in detections. **Most Airplay Adds** awarded to the song registering six or more detections at the most stations for the first time this week. A song with a gain in detections over the previous week is placed first if tied with a song with a decline over the same period. When tied songs are each gaining detections or each losing detections, the song being played on more stations is placed first. Songs below the top 20 are removed from the chart after 20 weeks.

AIRPLAY Monitor RECURRENTS COUNTRY

RANK	TITLE ARTIST (IMPRINT/PROMOTION LABEL)	DETECTIONS	
		TW	LW
1	UNBROKEN TIM MCGRAW (CURB)	2361	2827
2	COURTESY OF THE RED, WHITE AND BLUE (THE ANGRY AMERICAN) TOBY KEITH (DREAMWORKS)	2302	2415
3	LIVING AND LIVING WELL GEORGE STRAIT (MCA NASHVILLE)	2056	2257
4	I DON'T HAVE TO BE ME (TIL MONDAY) STEVE AZAR (MERCURY)	1792	1877
5	DRIVE (FOR DADDY GENE) ALAN JACKSON (ARISTA NASHVILLE)	1746	1877
6	MY LIST TOBY KEITH (DREAMWORKS)	1656	1634
7	I'M GONNA MISS HER (THE FISHIN' SONG) BRAD PAISLEY (ARISTA NASHVILLE)	1546	1555
8	SHE WAS MARK CHESNUTT (COLUMBIA)	1417	1517

RANK	TITLE ARTIST (IMPRINT/PROMOTION LABEL)	DETECTIONS	
		TW	LW
9	GOOD MORNING BEAUTIFUL STEVE HOLY (CURB)	1250	1299
10	NOT A DAY GOES BY LONESTAR (BNA)	1231	1211
11	YOUNG KENNY CHESNEY (BNA)	1178	1165
12	WHAT IF SHE'S AN ANGEL TOMMY SHANE STEINER (RCA)	1122	1176
13	BLESSED MARTINA MCBRIDE (RCA)	1108	1108
14	I SHOULD BE SLEEPING EMERSON DRIVE (DREAMWORKS)	1070	1072
15	THAT'S WHEN I LOVE YOU PHIL VASSAR (ARISTA NASHVILLE)	1061	1228
16	THE ONE GARY ALLAN (MCA NASHVILLE)	1003	1089
17	WHERE THE STARS AND STRIPES AND THE EAGLE FLY AARON TIPPIN (LYRIC STREET)	971	988
18	ONLY IN AMERICA BROOKS & DUNN (ARISTA NASHVILLE)	963	982
19	AIN'T NOTHING 'BOUT YOU BROOKS & DUNN (ARISTA NASHVILLE)	925	908
20	I BREATHE IN, I BREATHE OUT CHRIS CAGLE (CAPITOL)	921	952

Recurrents are titles that have appeared on the Country Airplay chart for 20 weeks and have dropped below the top 20.

PINMONKEY on your desk now!

"I DROVE ALL NIGHT"

IMPACT DATE: OCTOBER 28

album in stores now!

©2002 BMG Music www.bmgrecords.com www.pinmonkey.net **BNA** BNA RECORDS LABEL