

R&B AIRPLAY Monitor

• We Listen To Radio •

NOVEMBER 1, 2002

WBLS New York Adds More 'Love' To Nights p. 3

'Bonnie & Clyde,' Busta, And Snoop Head Airplay Adds p. 24



JAY-Z

VOLUME 10 • NO. 44

\$6.95

NO. 1 THIS WEEK:

R&B/HIP-HOP:

LL COOL J

Luv U Better (DEF JAM/IDJMG)

ADULT R&B:

RUFF ENDZ

Someone To Love You (EPIC)

RAP:

MISSY "MISDEMEANOR" ELLIOTT

Work It (THE GOLD MIND/ELEKTRA/EEG)

Rap No Dilemma For Some Adult R&B PDs

by Dana Hall

Each year, adult R&B PDs wonder if it's finally time to acknowledge that even listeners in their early 40s grew up with hip-hop. While some adult R&Bs already play some classic rap, especially in weekend old-school shows, that's as far as most have gone. Until now. For the week ending Oct. 27, "Dilemma" by Nelly Featuring Kelly Rowland had risen to No. 19 on the adult R&B chart, increasing by 42 spins.

It's not the first time a rap artist has charted. Erick Sermon's "Music" peaked at No. 5 on the chart last year, albeit with a non-rap version that featured only Marvin Gaye's vocals. And from 1992-94, when *Airplay Monitor* organized its panels differently, some adult-leaning mainstream outlets reported to the adult chart, allowing Heavy D, Salt-N-Pepa, Warren G & Nate Dogg, Ini Kamoze, and Shabba Ranks to make the adult R&B chart.

Of the 41 stations on the *Airplay Monitor* adult R&B chart, eight are playing "Dilemma" in significant rotation, while two others have played it sporadically. Of those eight stations, six are Clear Channel

outlets. In fact, for KJMS (V101.1) Memphis and KHHT (Hot 92.3 Jamz) Los Angeles, it's the No. 1 record, getting 71 and 39 spins, respectively. At the other Clear Channel adult R&B outlets that are playing it, the song ranks in the top 10.

"It's a power for us at WSVY [Norfolk, Va.]," says OM Daisy Davis, who also oversees WOWI. "It tested really well—in fact, it came back No. 2 with the demo, behind 'The Battle Is the Lord's' by Yolanda Adams . . . We all put it in our callout, and the stations that got back the best response started to roll with it. I think the reason it does so well is because it's not only a really big hit among the masses, but it's also a familiar hook to the older listeners, using the Patti LaBelle melody [from "Love, Need, and



DAVIS

Continued on page 4

JARULE
Thug Lovin'
featuring BOBBY BROWN

impacting
11/4 & 11/5

new album
in stores
Nov. 19th

Executive Producer: Irv Gotti & Ua Rule
www.murderintherecords.com www.jarule.net

RADIO THUG LOVIN':

WKPO	52x
WXIS	51x
WJNH	50x
WEDR	38x
WZMX	38x
WPEG	37x
KBBT	37x
WQHT	35x
WPHI	35x
WWBZ	34x
KBOS	34x
WBTF	33x
WJMN	33x
WIIZ	32x
WUSL	30x
WEAS	25x
WWPR	25x
WDXK	25x
WJMH	25x
WJWZ	24x
KPWR	23x
WERQ	22x
WFXE	20x
WCHH	18x
WIZF	17x
WEMX	17x
WZHT	16x
WVEE	15x
WAJZ	14x
WOWI	14x
WJTT	12x

Who is HEATHER HEADLEY? this is who i am...

8 MONITOR ADULT R&B
★GREATEST GAINER★

OVER 1100 SPINS!

APPROACHING 11 MILLION IN AUDIENCE!

ALMOST 50,000 ALBUM
SCANNED IN 2 WEEKS!

WHUR	POWER	WDAS	#10
WWIN	#11	KMJJ	#6
WVAZ	POWER	WZAK	#15
WMCS	POWER	WTLC	#9
WJMR	#11	KRNB	POWER
KMJQ	#11	WLVH	#10
WCFB	#8	WYLD	#16
WBLS		WMMJ	#13
KMJM	#15	KSOC	POWER
WMCS	POWER	WKXI	#11
KOKY	#12	WYLD	#15
WBAV	#7	WFXC	#9

NEW ADDS:

KKDA / DALLAS
KJMS / MEMPHIS

WKJS / NORFOLK
TOM JOYNER

PERFORMANCES ON:

SHOWTIME AT THE APOLLO, SOUL TRAIN
GOOD MORNING AMERICA, THE WAYNE BRADY SHOW,
AND MORE!

FEATURES IN:

VIBE, ESSENCE, JET, EBONY, USA TODAY
THE NEW YORK TIMES, CHICAGO SUN-TIMES,
ATLANTA JOURNAL CONSTITUTION, ENTERTAINMENT WEEKLY,
ELLE MAGAZINE, INTERVIEW
AND MANY MORE!



h |

"HE IS,"
the first single from
her debut album,
THIS IS WHO I AM.

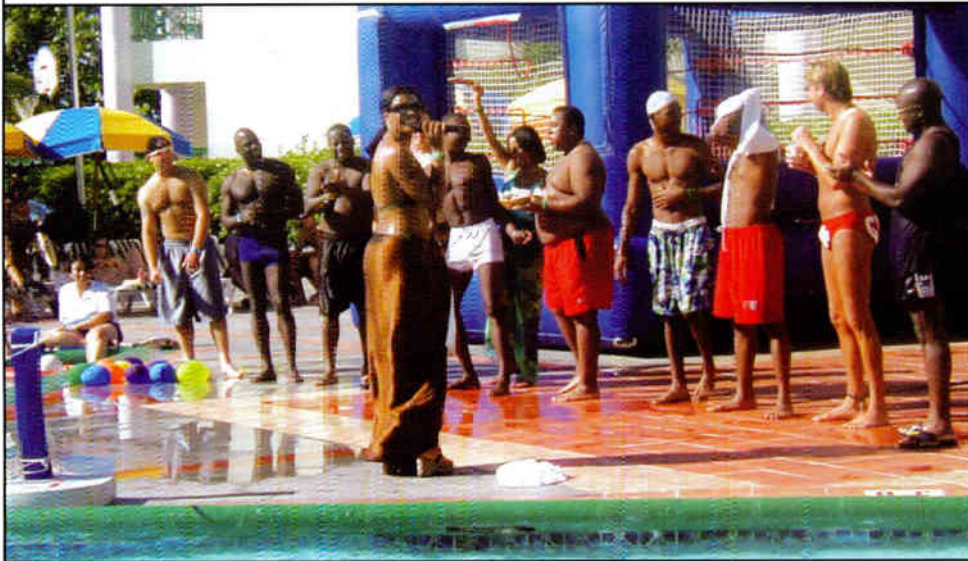
Produced by Joshua Nile and The Phantom / Additional Production and Mixing / Cover Art / Under Sound
Studios North, Universal, CA / Executive Producer / A&R Director / Jason Ferris
Management: Hoffman Entertainment, Inc. 1997/2002

www.heatherheadley.com www.rcarecordsllc.com

... The RCA Records logo is a stylized 'RCA' inside a circle. ... WorldRadioHistory

WorldRadioHistory

Oh, What A Day



WKKV (V100) Milwaukee treated listeners to a one-day trip to Jamaica, with its annual Phat Flight. The day featured performances by Avant, Floetry, and Syleena Johnson, in addition to jet skiing, snorkeling, and a pool party. Pictured here is Johnson, judging the male finalists in the best-body contest.

RADIOACTIVE

BY DANA HALL 646-654-4711 • dhall@airplaymonitor.com

Emmis/NYC Vet Ellis To Exit In 2003

Emmis Communications/New York senior VP/market manager Judy Ellis has overseen WQHT (Hot 97) New York as long as Emmis has owned that station. Ellis joined in August 1986, when WQHT was launched as dance-driven rhythmic outlet Hot 103.5. After overseeing the station's transition to an influential R&B/hip-hop outlet and sister WRKS' transition to adult R&B, Ellis will not renew her contract, which expires Feb. 28, 2003.

In other news from Emmis/New York, Hot 97 p.m. driver/Elektra artist Angie Martinez becomes the fourth judge for the upcoming *American Idol* competition, set to air in January 2003. She joins returning judges Paula Abdul, Randy Jackson, and Simon Cowell.



MARTINEZ

MANAGEMENT & BUSINESS

Tama Broadcasting, which owns WTMP-AM-FM Tampa, Fla., and recently acquired WHJX Jacksonville, Fla., picks up the latter market's adult top 40 WXGV/WYGA from Exosphere Broadcasting for \$8.5 million.

Interop will hold its fifth "Power of Urban Radio: Reaching a \$646 Billion African American Marketplace" seminar Feb. 13, 2003, in Atlanta. For more information, contact Interop VP/director of urban radio Sherman Kizart at 312-616-7204 or sherman_kizart@interop.com.

PROGRAMMING: NEW ADULT SHOW IN LAS VEGAS

KVGS (V108) Las Vegas shifts to adult R&B as "today's R&B and old school." PD Vic Clemmons remains, along with most of the airstaff, but mix-show coordinator Pretty Boy A.D. exits.

Rhythmic top 40 WJFX Fort Wayne, Ind., taps Beau Derek from WNDV (U93) South Bend, Ind., as PD, replacing Phil Becker, now the PD of CKEY (Wild 101) Buffalo, N.Y.

American Urban Radio Networks is launching the American Smooth Jazz Network in January. Veteran New York personality Ken "Spider" Webb will host the program *Jazz Masters* on the

network, while former BET news correspondent and current WQCD New York personality Angela Stribling will host *Jazz Notes*.

Syndication veteran Walt "Baby" Love extends his deal with Excelsior Radio Networks through 2009, covering *The Countdown*, *Urban AC Countdown*, *Gospel Traxx*, and a new prep service to launch in 2003.

ABC Radio Networks' syndicated *Tom Joyner Morning Show* is set to broadcast live from Harlem's legendary Apollo Theater, Nov. 4. During the second hour of the show, Joyner will simulcast with National Public Radio and Tavis Smiley, to discuss Election Day, Nov. 5.

Also, ABC Radio has partnered with Ford Motor Co. to become the official vehicles of the *Doug Banks Morning Show*. As part of the partnership, the Banks program will be giving away a customized Ford SUV every three months.

PEOPLE: IT'S TIME FOR LOVE

Eddie Love joins WBLS New York for nights, as that station takes a softer tack in early evenings, leading into the Quiet Storm. He was last in nights at XHTZ (Z90) San Diego. WBLS is still playing some adult-leaning hip-hop during the day but has also been heard throwing in the likes of "Saving All My Love for You" by Whitney Houston.



LOVE

Top 40 WKSC (Kiss 103.5) Chicago p.m. driver Rick Party exits, replaced by his KZHT Salt Lake City counterpart, Scott Tyler. Party is hoping to return to morning drive in R&B radio; he may be reached at 312-933-1856 or rickparty@sizzleproductions.com.

WERQ (92Q) Baltimore ups assistant production director Hazmat to the production director gig left vacant by Ray Thomas, now PD at WKQB Fayetteville, N.C.

KATZ (100.3 the Beat) St. Louis MD Wreck 1 exits.

Adult R&B WALR Atlanta overnigher Todd Franklin moves to p.m. drive at similarly format-

THE SPIN

BY MINAL PATEL 646-654-4623 • mpatel@airplaymonitor.com



Badu Represents R&B With 'Hip-Hop'

For those who've been wondering if there's still room for an R&B artist on the R&B/hip-hop chart, there's good news this week, as neo-soul pioneer Erykah Badu earns her sixth top 10 on that chart. Then again, it's with a song called "Love of My Life (An Ode to Hip-Hop)" (Fox/MCA) and the help of rapper Common. Badu's last appearance in the top 10 was in September 2000, when "Bag Lady" peaked at No. 2. Her only No. 1 was 1997's "Tyrone." Badu was also featured on the remix of "The Light" by Common, which peaked at No. 5. The un-Common rapless version of "Love of My Life" moves 14-12 on the adult R&B chart.

Earning its second consecutive top 10, *Clipse* moves 11-9 on both the R&B/hip-hop and rap charts with "When the Last Time" (Star Trak/Arista). This eclipses the duo's previous single, "Grindin'," which peaked at No. 10 in August.

AS REPORTED IN *Billboard Bulletin*, MTV will air a 90-minute, commercial-free concert on World AIDS Day, Dec. 1. The special will feature footage from two concerts: a Nov. 7 show in Seattle with Missy "Missdeemeanor" Elliott and others and a Nov. 23 concert in Capetown, South Africa, with Alicia Keys, P. Diddy, and local artists. The concert footage will be intertwined with AIDS/HIV-awareness PSAs. The MTV special will be offered rights-free to broadcasters worldwide and distributed via Westwood One's MTV Radio Network.

The Boyz Are Makin' Magic Again



WMMJ (Majic 102.3) Washington, D.C., relaxed with Boyz II Men during their recent promotional tour. Pictured in the back, from left, are Boyz II Men's Shawn Stockman, Nathan Morris, and Wanya Morris; WMMJ's Chris Harris; and the group's Michael McCary. In the front, from left, are the station's Tim Smith, El Jay DeShield, and Natalie Case.

ted WKZJ Columbus, Ga., replacing Chet James, who exited earlier this year.

WJBT/WSOL Jacksonville, Fla., taps Mechelle Morgan as promotion director.

WPAL-FM Charleston, S.C., debuts its on-air crew, now that the Frank Ski morning show is up and running, via ISDN. The all-female (outside mornings) lineup includes Leslie in mid-days, former KDKS Shreveport, La., personality Diva in afternoons, and new talent Mary Jane at night.

WWDM (the Big DM) Columbia, S.C., has added BET *Comic View* regular Akintunde as morning co-host, joining Lori Mack. Mid-dayer Vanessa Pendergrass is promoted to community affairs director and moves to P/T, while adult R&B WSOL P/T Parkethia joins for middays as Lisa Mitchell. Also, p.m. driver Tony G. exits. PD Mike Love is accepting T&Rs only.

Former WBOT/WILD Boston production director Kyle Stewart joins WMBX/WJBW West Palm Beach, Fla., for the same duties, replacing Kipp Kelly, now at WOWI Norfolk, Va.

KKUU (U92) Palm Springs, Calif., PD Ant Dog moves from his 12 p.m.-3 p.m. shift to mornings, along with staffers Arianne "the Babygirl" and Big D. Erin Devoe extends her midday shift to 10 a.m.-3 p.m.

Rhythmic top 40 WOCQ (OC104) Ocean City, Md., PD Wookie is back in mornings—permanently this time—replacing Gizmo, who exited last month. Wookie is still searching for a morning co-host diva. Other changes include night jock Dee-Lite moving to afternoons, P/T Poot taking on nights, and new

He Is Her Sirius Man



Broadway star-turned-RCA songstress Heather Headley stopped by Sirius Satellite Radio to promote her debut RCA single, "He Is." Pictured with Headley, right, is R&B format manager B.J. Stone.

talent Babealicious joining for P/T.

Karen Wild is the interim MD at rhythmic top 40 KUBE Seattle, following last week's news that Julie Pilat will transfer to the MD job at KIIS Los Angeles.

You Can Always Go Home



Which is what Dru Hill did when it appeared on *The Big Phat Morning Show* at WERQ (92Q) Baltimore. The group, along with new member Ruscola, is preparing its reunion album, due Nov. 26. Pictured clockwise, from left, are Dru Hill's Jazz; WERQ's Troy Johnson and Marva; the group's Woody, Nokio, and Ruscola; Def Jam president Kevin Liles; Dru Hill's Sisqó; and the station's Marc Clarke.

RADIO CONCERT MONITOR

DATE	STATION	EVENT	PROMOTIONS DIRECTOR
Oct. 31	WFUN St. Louis <i>APPEARING:</i> Juvenile	Halloween Concert	Blu Bolden
Nov. 2	WFUN St. Louis <i>APPEARING:</i> TBA	Nelly Birthday Bash	Blu Bolden
Nov. 2	WCDX Richmond, Va. <i>APPEARING:</i> Avant	Gold Bowl	June Grant
Nov. 8	CISS Toronto <i>APPEARING:</i> Kelly Rowland, Angie Martinez, Snow, more	Fans' Choice Awards	David Wannan
Nov. 8	WVEE Atlanta <i>APPEARING:</i> Jaheim, Dru Hill, Vivian Green, Smokey Norful	Frank Ski Fourth Anniversary	Tara Thomas
Nov. 10	KKWD Oklahoma City <i>APPEARING:</i> Nelly, Ashanti, Amanda Perez, Isyss, Primary Colorz	Wild 97.9 Fall Ball	Don Sweeny
Nov. 14	WWPR New York <i>APPEARING:</i> Ashanti, Ja Rule, Busta Rhymes, Fat Joe, Erick Sermon, Sean Paul, Doug E. Fresh	PowerHouse 1	Darren Pfeffer
Nov. 23	WHUR Washington, D.C. <i>APPEARING:</i> Al Jarreau, Brian Culbertson	Fall Concert Series	Zeke Zanders
Dec. 11	WXKS-FM Boston <i>APPEARING:</i> Kelly Rowland, more	Jingle Ball	Dennis O'Herron
Dec. 14	WNPL Nashville <i>APPEARING:</i> TBA	Jingle Jam	Darryl Johnson
Dec. 15	WERQ Baltimore <i>APPEARING:</i> TBA	92Q Jingle Jam	Anthony Horn
Dec. 28	WHJX Jacksonville, Fla. <i>APPEARING:</i> Nelly, Musiq, B2K, iMX, LL Cool J, Syleena Johnson, more	Players Ball	Michael Tee
Dec. 29	WGCI-FM Chicago <i>APPEARING:</i> TBA	Big Jam	Angela Fleming

Let us monitor your event! Call Dana Hall at 646-654-4711 or e-mail dhall@airplaymonitor.com

Group Editor: Sean Ross
Managing Editor: Dana Hall
Director of Charts: Silvio Pietroluongo
R&B Chart Manager: Minal Patel
Copy Editor: Chris Woods
Chart Production Manager: Michael Cusson
Associate Chart Production Manager: Alex Vitoulis
Administrative Assistant: Gordon Murray
Senior Editorial Production Manager: Barry Bishin
Editorial Production Manager: Susan Chicola
Editorial Production: Marc Giaquinto, Rodger Leonard, Maria Manlicic, Leilla Sivey, Sandra Watanabe
Advertising Production Director: Lydia Mikulko
Assistant Advertising Production Manager: Chris Dexter
Art Director: Ray Carlson
Advertising Production Artists: James Babbin, Ken Diamond, William Tracy
Account Manager: Johnna Johnson
Sales Assistant: Rosa Jaquez, Eric Vitoulis
Office Assistant: Jeff Matteuzzi

Director of Production & Manufacturing: Marie Gombert
Circulation Director: Jeanne Jamin
Marketing Manager: Omark Holmes

Publisher: Jon Guynn

President: Howard Lander
Vice Presidents: Howard Appelbaum, Marie Gombert, Irwin Kornfeld, Karen Oertley, Ken Schlager, Joellen Sommer

VNU BUSINESS PUBLICATIONS USA
President and CEO: Michael Marchesano **Chief Operating Officer:** Howard Lander
Executive Vice Presidents: Mark Dacey (Marketing, Media & Retail), Richard O'Connor (Travel, Performance, Real Estate/Design and Food Service)
Senior Vice President: Toni Nevitt (Marketing Information)
Vice Presidents: Joellen Sommer (Business Management), Joanne Wheatley (Circulation)

VNU BUSINESS MEDIA
President and CEO: Michael Marchesano **Chief Operating Officer:** Howard Lander
Vice President/Business Development: John van der Valk **Vice President/Human Resources:** Sharon Sheer **Chief Financial Officer:** Joseph Furey
President, Expositions: Greg Farrar **President, eMedia:** Jeremy Grayzel

770 Broadway, New York, NY 10003 646-654-4696
 5055 Wilshire Blvd., 7th floor, Los Angeles, CA 90036 323-525-2300
 For subscriptions call: 800-745-8922 or email: blbd@kable.com
 Order online: www.orderbillboard.com

©2002 VNU Business Media, Inc. All rights reserved. No part of this publication may be reproduced, stored in any retrieval system, or transmitted, in any form or by any means, electronic, mechanical, photocopying, recording, or otherwise, without the prior written permission of the publisher.

Rap No Dilemma For Some Adult R&B PDs

Continued from page 1

Want You"]]. And even though we are geared toward the older demo, there will always be some younger-ended music that appeals to that demo."

Eileen Collier, APD of KJMS and mainstream sister WHRK, says, "We started playing it a couple of weeks ago, and the research went through the roof immediately with the 25-34 demo. The song is very melodic, and he's such a likable artist that it's not a negative to play the song. I even have some ministers who call to request it."

There's also the question of whether Nelly's sing-song vocal would even be considered rap if it was coming from another non-rap-imaged artist. Chuck Atkins, VP of operations for Clear Channel in Nelly's hometown of St. Louis, says, "It's not just that Nelly is from here. You can clearly see in the callout that the adults, even the upper end of our demo, are passionate for this song. Even though it has rap in it, Kelly Rowland's singing softens it considerably. I don't know if I would even consider it rap."

Mike James, PD of WFLM Port St. Lucie, Fla., one of the few non-Clear Channel stations playing "Dilemma," says, "To me, it has always been an adult record because of the hook and because it's so mass appeal. It's not hard rap; in fact, I feel it's more of a Kelly Rowland record than it is a Nelly record. He just happens to have the bigger name right now." But James admits he was hesitant to play it, "until I started to get a great deal of requests. Adult stations don't generally get a lot of requests to begin with, so when you start to see calls, you should pay attention." James also played Mary J. Blige Featuring Ja Rule's "Rainy Dayz," which he calls "a similar type of record."

But only three other non-Clear Channel stations at press time were playing "Dilemma," and only Emmis' WRKS New York was doing so significantly, with 22 spins during a seven-day period. Almost all the other programmers we spoke with are not now considering "Dilemma."

Ken Johnson, Cumulus director of urban programming, says, "I consider it to be a hip-hop record but not necessarily a rap record, because the sound is pretty soft. But that being said, I don't think it's a record my adult listeners expect to hear on adult radio stations." He adds that he hasn't yet put it into callout, because "I haven't seen any requests on it at the adult stations, like I saw when Erick Sermon had 'Music' out, which we did play. It's just a different scenario."

Derrick Brown, PD of Cox-owned WHQT (Hot 105) Miami, says that while "the research on the record shows a decent number, I still would not play it on Hot, because I don't need to. The fact is I have a mainstream R&B sister, WEDR, which is a hip-hop station. They are in a battle with another station, [WPOW] Power 96, as well as a top 40 that plays hip-hop. They're all playing 'Dilemma' heavily. Why would I play it as well? I would also be concerned about the burn factor of the record in the market, because of that exposure on the other stations."

Brown admits, however, that "I don't really consider it a rap record. If it weren't so overexposed, I might be looking at it now. When you have three or four other stations playing it literally every hour, then I need to be the alternative."

Jay Dixon, PD of Cox's WBHK (98.7 Kiss FM) Birmingham, Ala., asks, "If that's what your listeners want, then you should play it. But is it really what they want? I recently played Mario's 'Braid My Hair' to see if listeners would respond. One caller in particular stands out in my mind. She said, 'Sure, I like the song, but I expect to hear that on [sister station] WBHJ, not on Kiss.'"

Dixon continues, "The problem is, if you look at the adult R&B chart today, you see a lot of records that aren't really hits. That's why you have a record like Ruff Endz's 'Someone to Love You' or Maxwell's 'Lifetime' stay at No. 1 forever, because they are so good. But a lot of those other records in the top 10, it's as if programmers are just grasping for records to

move up, to freshen up their sound. And in the process they are moving up mediocre records or records that don't really fit the demo, like 'Dilemma.'

"You have to be careful in research as well," Dixon adds. "There are some gospel records that research very well—but does their sound fit your station? It's like going to McDonald's today and you see pizza on the menu."

READY FOR A CHANGE?

But is it time for a menu change at a format whose target demo now includes people who weren't even listening to radio yet when "Rapper's Delight" came out in 1979? Clear Channel/New Orleans OM Carla Boatner believes so. "The adult R&B format is changing," she says. "It's not just an artist-driven format anymore." She too is considering adding "Dilemma" at WYLD-FM.

Davis agrees that what is happening with Nelly "could be a very good indication that things are ready to change. It's really about the song now and not who the artist is. I consider Nelly to be a rap artist, but this song is not a rap record. And honestly, it's not something I would normally seek out to play on WSVY. But maybe we need to look at things with a new perspective."

Davis adds that "things have changed so much in the past year or two. There are core adult R&B artists who can't even get airplay at the format now. Unfortunately, there is something that happens in R&B that once an artist reaches a certain age, it's very hard for them to still be accepted. I don't think they are producing music of a lesser quality, it's more of a stigma that the industry puts on them."

Another industry professional remarked that he feels adult R&B stations are playing more current artist like Nelly because "there is just less hit adult R&B music to play overall. Labels are releasing less of that type of music, so programmers have to turn to the mainstream artists—either that or they go more gold."

Atkins adds, "A couple of years ago, if Luther Vandross or Michael Jackson put out a record to adult radio, it was an automatic add. Today, you can't do that. It's not about the name value of the artist—it has to be about whether or not the song is a hit. And if the hits come in the form of Nelly's 'Dilemma,' that's what you play."

He continues, "Our format needs new blood. The heritage artists only put out so much material; that's why we are looking to the Musiqs and Jill Scotts to be the next generation of adult artists."

Collier agrees. "I see the doors opening up for rap acts like LL Cool J and others—who this demo has grown up listening to—to have current music heard on adult R&B radio. You've also got artists like Will Smith or Common who might have different nuances of rap that could appeal to adults."

And James adds that "the demo that is accepting of rap has grown older. They are 35-40 now. They are not turned off by rap, as maybe the 40-plus listeners are. So you can definitely play the classic hip-hop and the softer stuff like 'Dilemma.' It makes sense."

Even those who aren't playing the St. Louis rapper say the format will continue to evolve. Johnson says the format "should first embrace more of the old-school hip-hop, like Sugar Hill Gang, Heavy D, and LL Cool J, because a lot of that stuff is being ignored by R&B and hip-hop stations anyway. It still keeps you in your niche."

And Dixon says, "Rap will eventually make it onto adult R&B if your station is branded in the right way and that's what your listeners expect. There is room for a hot adult R&B AC format in many markets—like Atlanta, Chicago, or New York—but it may not be right for every market. If people want to hear smooth R&B and oldies, that's all they want. They don't want all that other mess, especially if they can already get it somewhere else."


More Mario From Coast To Coast



J Records' Mario, on tour promoting current single "Braid My Hair," has finally made it to the West Coast and KKBT (the Beat) Los Angeles. Pictured, from left, are J Records VP Ken Wilson, PD Scorpio, Mario, and J Records regional Antero "Ant" Fail.

M Street Format Monitor

R&B, Jazz Grew In October Format Tally

RANK		The M Street  FORMAT MONITOR	STATION COUNT			
THIS MONTH	LAST MONTH		OCT. '02	SEPT. '02	OCT. '01	
		FORMATS			NET GAIN OR LOSS THIS MONTH	
1	2	Country	2,129	2,124	2,177	5
2	1	News/Talk	1,193	1,198	1,143	-5
3	3	Oldies	796	805	803	-9
4	4	Religion (Music)	696	703	721	-7
5	5	Adult Contemporary	692	688	720	4
6	6	Classic Rock/Hits	654	656	609	-2
7	7	Spanish	621	614	573	7
8	8	Adult Standards	527	535	568	-8
9	9	Top 40	489	480	470	9
10	11	Sports	404	392	363	12
11	10	Top 40 Adult	395	404	375	-9
12	12	Soft AC/Easy Listening	365	363	386	2
13	13	Religion (Talk)	340	337	353	3
14	14	Mainstream Rock	275	272	280	3
15	16	Miscellaneous	196	196	187	0
16	15	R&B Adult/Oldies	192	193	210	-1
17	17	R&B	189	188	186	1
18	18	Modern Rock	162	156	141	6
19	19	Triple-A	94	95	93	-1
20	20	Jazz	86	85	87	1
21	21	Modern AC	54	56	60	-2
22	22	Classical	32	32	33	0
Total commercial operating stations			10,598	10,588	10,539	
Stations off the air			108	110	117	

M Street Corp. is a Nashville-based provider of radio station information to the radio and music industries. Call 615-251-1525 for more information.

MONITOR PROFILE

OM Boatner Boosts Morale, Momentum, And Imaging In New Orleans

As one of the few female OMs in R&B radio, Carla Boatner oversees four stations for Clear Channel's New Orleans urban cluster—WQUE (Q93), adult R&B WYLD-FM, gospel WYLD-AM, and blues WODT. Within Clear Channel, she's among a growing number of female programmers who are taking center stage as the leaders in some of the company's most competitive markets.

Boatner's journey in radio began in 1990 as the morning producer for then-mainstream R&B KMJQ Houston. Her responsibilities grew to include promotions, and she eventually became APD/MD. Boatner was also part of the team headed by PD Carl Connor and then-GM Ernest Jackson when the station segued to adult

I] worked really hard at redefining the station by changing the image." Boatner uses Dr. Dave Ferguson as voice talent for WQUE and Jim Snowden on WYLD.

"The biggest problem with being No. 1," Boatner says, "is growing complacent, comfortable, and cocky in your position. But with new competition in the market in recent years, that has kept WQUE and WYLD on point."

She continues, "WYLD has a formidable competitor in KMEZ, so we have to watch that race closely. They are all old-school, whereas WYLD plays currents, but they still share a great deal of artists. We are still ahead of them 25-54." In fact, WYLD is ranked second in 25-54, KMEZ is third, and WQUE is first.



CARLA BOATNER
Operations Manager

Clear Channel/New Orleans

'The biggest problem with being No. 1 is growing complacent, comfortable, and cocky'



Musiq, "dontchange"
Missy "Misdemeanor" Elliott, "Work It"
2Pac, "Keep Ya Head Up"
Nelly Feat. Kelly Rowland, "Dilemma"
LL Cool J, "Luv U Better"
Eve Feat. Alicia Keys, "Gangsta Lovin' "
Ashanti, "Baby"
Master P, "Rock It"
Jay-Z Feat. Beyoncé Knowles, "'03 Bonnie & Clyde"
Ja Rule, "Down A** Chick"

R&B. In 2001, Clear Channel called her home to Chicago, as APD/MD of WGCI-AM-FM and adult R&B sister WVAZ (V103), under OM Elroy Smith. In June, Clear Channel VP of urban programming Doc Wynter, along with newly appointed New Orleans GM Muriel Funches, brought her on board to head the team there.

Boatner says, "When I first arrived, what I noticed immediately was the longevity of the talent on our stations. Many had been there for five, 10, or even more years. Also, the heritage value of the call letters for both WQUE and WYLD meant a lot to the New Orleans listener."

While both WQUE and WYLD-FM had long-standing personalities on-air, the two stations had been through several transitions on the programming and management side during the past two years. Boatner observes that "the morale of the staff was affected during that time. It's normal for people to feel uneasy when upper management is going through changes. You must wonder about your job security, and things might get a little uncomfortable, especially when they hadn't had changes before that for a number of years. So Muriel and I made sure we sat down with everyone to spell out our plans."

The greater challenge for Boatner was how to keep the momentum of her stations while not losing ground to new competitors. She concedes, "WQUE is the No. 1 station, and WYLD is right behind it. You have to ask yourself, 'If it ain't broke, why try to fix it?' But that being said, I knew I wanted to do some things to raise the bar and to grow in areas we never had to before. I did that by reworking the imaging. I wanted the image on WQUE to be a little more hip, more contemporary. We made it more aggressive to fit the hip-hop format. On WQUE, we are 'No. 1 for hip-hop and R&B,' and the secondary statement is 'nothing but jamz.' For WYLD, it's 'the best from back in the day and today.'"

Boatner explains, "I'm an imaging nut—I like to come up with creative names for contests and events. I want to make sure the personalities are always selling the image and product that is the radio station. A big part of that is selling the music and artists. That's what I helped to do in Chicago at WGCI. [Elroy and

"It's not really a concern for me," Boatner adds. "In fact, it's a good problem to have and one that I dealt with before in Chicago at WVAZ where [sister] WGCI led in the 25-54 demo. Our goal is to get WYLD to the top [of] 25-54 but at the same time not lose any headway for WQUE [in] 12-plus or 18-34."

Boatner explains that "[what] I have noticed about the music here is that it doesn't burn as fast as it did in Chicago." With regard to musical style, she also notes that "we have more in common with Houston in terms of having a distinct local sound and a bigger local hip-hop scene. Artists like the 504 Boyz, Master P, Cash Money Crew, and unsigned acts like Choppa are all huge here and might get more play than in other markets. But overall, the big hits in Chicago or New York or D.C., like 'Baby' by Ashanti or 'Dilemma' by Nelly, are also the biggest hits here."

On the adult side, Boatner adds that "WYLD plays a little more jazz than maybe other adult stations, but hey, this is New Orleans after all. We spotlight it in our *Mellow Moods* show at night, and we have a jazz show on Sunday mornings." Blues, on the other hand, will air on sister WODT, while the majority of gospel is heard on WYLD-AM. "But we do share some songs and artists across all the stations."

With the many annual activities in New Orleans—such as the Essence Music Festival, Mardi Gras, and the Bayou Classic—Boatner says there is always a concert, after-party, or community function that keeps the stations busy in promotions. "We also have signature events that have been going on for 10 and 20 years. WQUE has its annual Teen Summit that is both a concert as well as a forum for teens to talk about issues that affect them, like drugs, sex, education, and peer pressure. And WYLD has been holding its annual talent contest for over 20 years. The PDs at each of my stations—Angela Watson at WQUE, A.J. Appleberry at WYLD, and Chris McCoy at WYLD-AM—help me a great deal in making everything come together. They are great because they don't have these big egos. This is totally a team effort."

DANA HALL

Little Things Like . . .



Visiting radio in person means a lot to Motown songstress India.Arie, who stopped by WVEE (V103) Atlanta. Pictured, from left, are Arie, Motown regional Travis Johnson, air personality Porsche Fox, and Arie's mom, Ms. Simpson.

SUMMER '02 ARBITRONS

12-plus overall average quarter-hour shares. (#) indicates Arbitron market rank. Copyright 2002, Arbitron Ratings Co. May not be quoted or reproduced without the prior written permission of Arbitron.

City	Rank	Call	Format	'01	'01	'02	'02	'02	Call	Format	'01	'01	'02	'02	'02	Call	Format	'01	'01	'02	'02	'02								
DALLAS	(5)	KODA-FM	RBB	5.5	5.7	5.4	6.2	6.4	KSFN	top 40/rhythm	3.8	4.8	4.1	5.6	5.2	KRVL	country	4.1	5.2	4.4	4.7									
		HOUSTON	(7)	KUTV	Spanish	4.6	5.6	5.8	6.7	6.5	KRBE	top 40	6.7	4.6	4.8	4.4	5.1	KRBE	top 40	6.7	4.6	4.8	4.4	5.1						
				MEMPHIS	(47)	WRBK	RBB	7.1	7.8	8.7	7.6	11.3	KRZQ	country	2.7	2.8	4.4	3.5	4.3	KRZQ	country	2.7	2.8	4.4	3.5	4.3				
						TUCSON, ARIZ.	(63)	KMOZ	AC	7.8	7.9	10.4	8.0	8.8	KRIM	country	7.1	7.2	7.8	7.4	7.1	KRIM	country	7.1	7.2	7.8	7.4	7.1		
								LOS ANGELES	(53)	KRZQ	country	7.3	5.8	7.4	6.9	7.9	KRZQ	country	7.3	5.8	7.4	6.9	7.9	KRZQ	country	7.3	5.8	7.4	6.9	7.9
										KRZQ	country	7.3	5.8	7.4	6.9	7.9	KRZQ	country	7.3	5.8	7.4	6.9	7.9	KRZQ	country	7.3	5.8	7.4	6.9	7.9

THE NEW HIT SINGLE

TANK

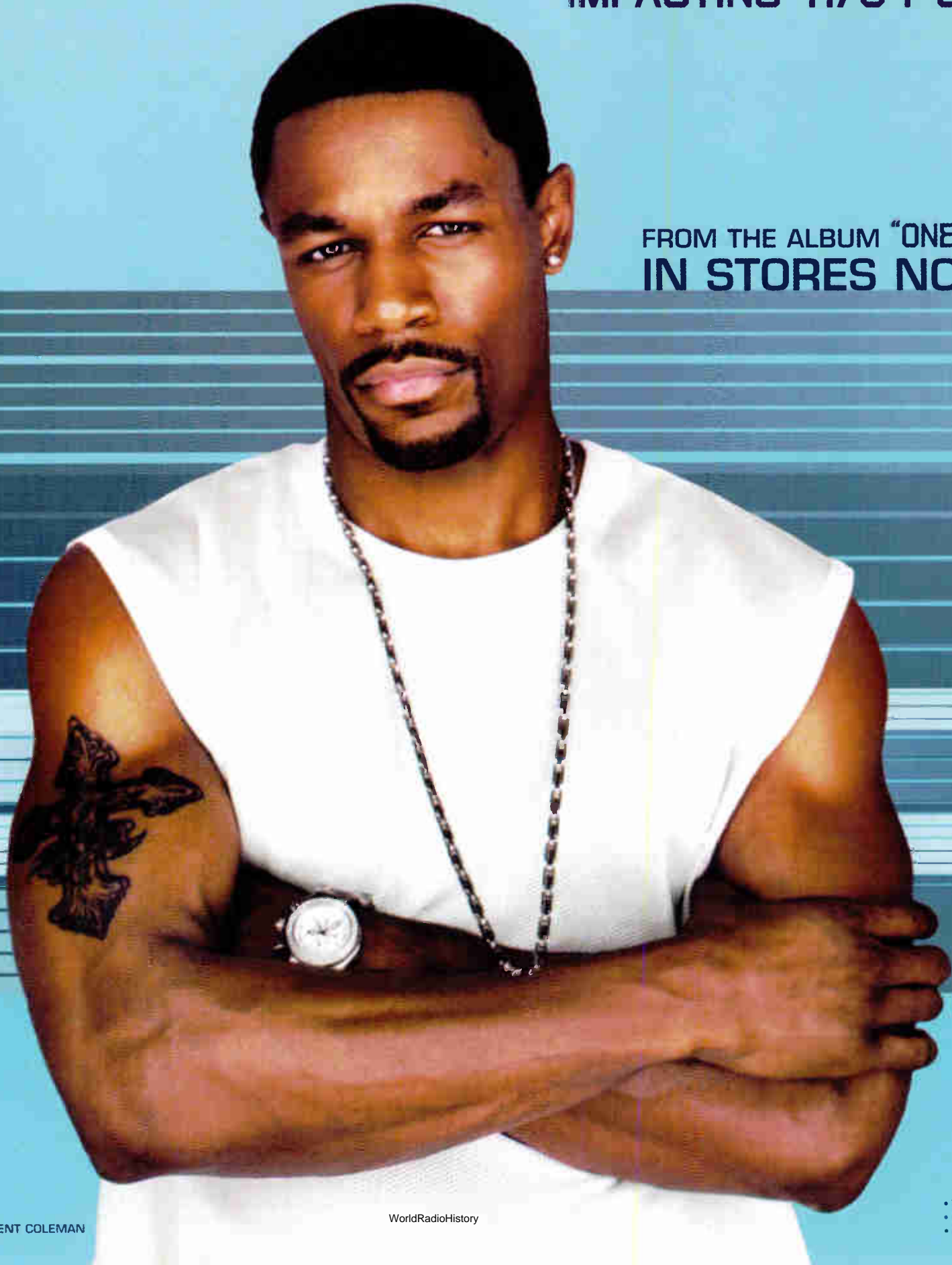
LET ME LIVE

feat. Mannie Fresh

PRODUCED BY CASH MONEY

IMPACTING 11/04 & 11/05

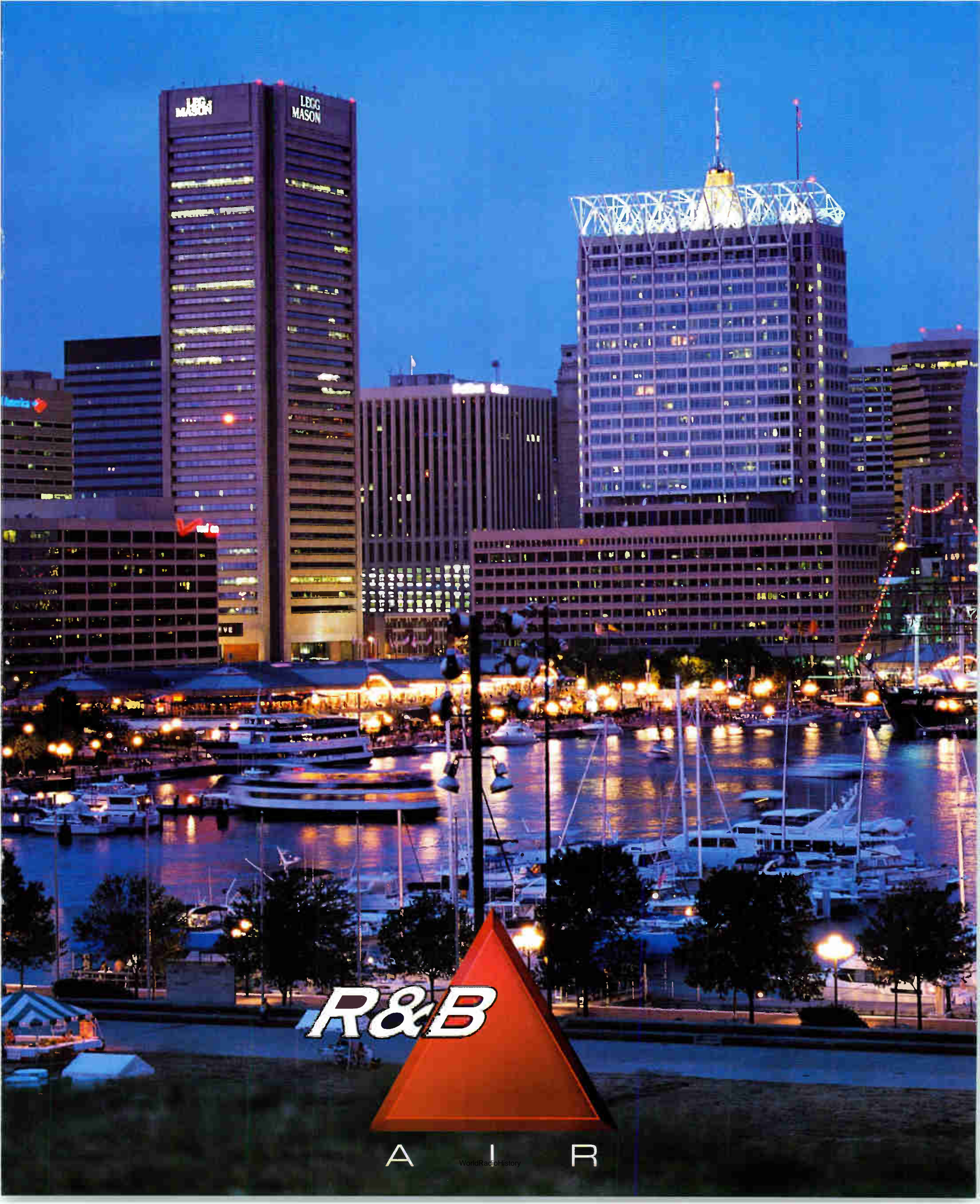
FROM THE ALBUM "ONE MAN"
IN STORES NOW



EXECUTIVE PRODUCERS:
BARRY & JOMO HANKERSON, TANK, FLENT COLEMAN

WorldRadioHistory

• WWW.TANKWEBSITE.COM
• WWW.BLACKGROUND.COM
• WWW.UNIVERSALRECORDS.COM



LEGG
MASON

LEGG
MASON

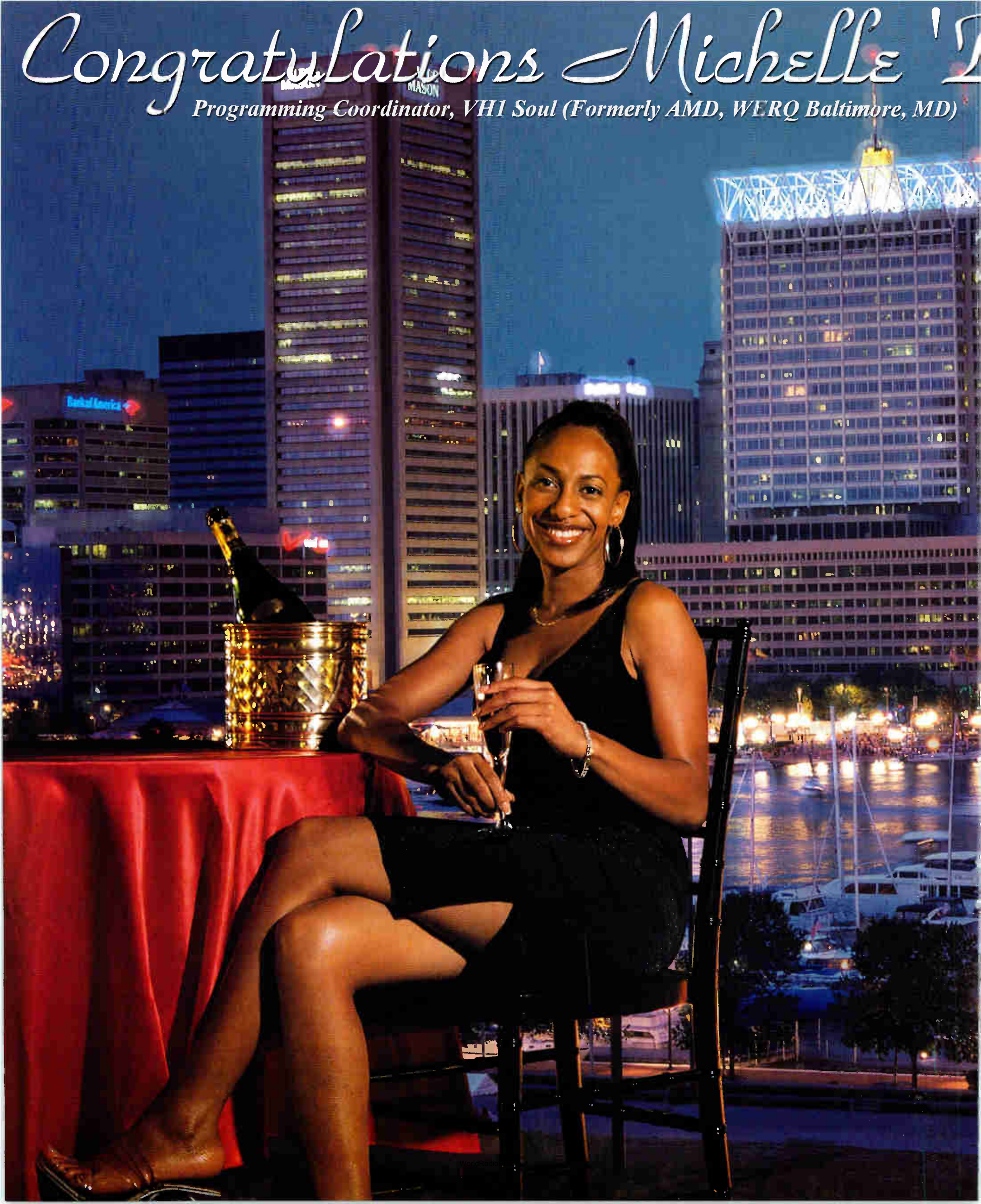
R&B

A I R

WorldRadioHistory

Congratulations Michelle '15

Programming Coordinator, VH1 Soul (Formerly AMD, WERQ Baltimore, MD)



Breeze' Johnson

R&B Competition 2 Grand Prize Winner

"Wow...the fruits of perseverance are sweet! Here I am just working hard in Radio, doing what I love to do and along comes a competition that exercises my ear for music. Since this was my first time competing, I would have been satisfied to just have placed. I was NOT at all prepared to get the Winners Call. I'm still in shock that I actually won and that I'm being recognized alongside the peers that I admire and respect. I must give all the praise and glory to GOD for blessing me beyond my wildest dreams...this has truly been my year! I want to thank my parents for their unconditional love and support. I'm definitely grateful to Nate Anderson and AIR for allowing me the opportunity to compete and for helping to dispel the perception that Assistant Music Directors are disposable. On the even playing field that AIR provides, it's anyone's ballgame. I'd like to thank my new VH1 family as well as my 92Q & Radio One family especially Kathy Brown (KB) for her invaluable advice, lessons in programming and for being my personal mentor. Buttahman, Neke Howse and Baby Sam I am truly blessed to have worked with all of you and to have a life-long bond with all of you. The four of us must continue to shoot for the stars, strive for success and never forget our Pinky Pack."

- Michelle 'Breeze' Johnson



Grand Prize: Jaguar S-Type

R&B

A I R

Congratulations to all our R&B Winners



2

Nate Quick

WPEG, Charlotte, NC

The AIR Competition is great! It gives me a good insight on what's happening in the industry. I was shocked to hear that I'm a back-to-back second place winner. I look forward to voting on new songs every week. The people at AIR are great and very knowledgeable. It's so much more than a competition; it's a programming tool!



3

Neke Howse

WERQ, Baltimore, MD

"It is an honor to be part of the AIR Competition. The people there are all wonderful and I look forward to their phone call. AIR keeps me abreast of what's hot, what's working well in other markets and it also lets me know the over all scope of current records. I want to thank AIR for everything they do for us programmers. Thank You!"



4

Ibrahim 'Ebro' Jamil
Formerly of KBMB,
Sacramento, CA



5

Mickey Johnson
WBHJ, Birmingham, AL



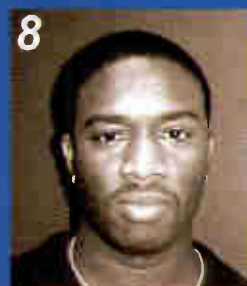
6

Traci Latrelle
XM-The Flow, National



7

Barbara McDowell
WPWX, Chicago, IL



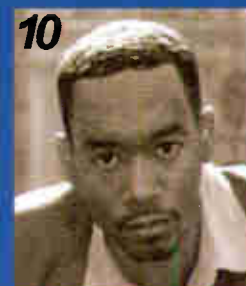
8

Raphael George
WPHI, Philadelphia, PA



9

Dorsey Fuller
KKBT, Los Angeles, CA



10

LBD
WBOT, Boston, MA



11

Buttahman
MTV, National



12

Moshay Strickland
WFUN, St. Louis, MO



13

Leo G Pryor
XM-Raw, National



14

Da Lil' Homie
WBHJ, Birmingham, AL
Formerly of WRJH



15

Stan Branson
WJMI, Jackson, MS



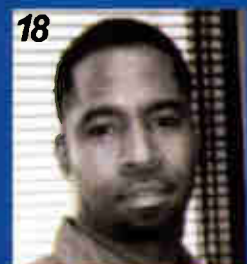
16

Michael Soul
WFEX, Columbus, GA



17

Jay Alexander
WBTF, Lexington, KY



18

Aaron Bernard
KJMM, Tulsa, OK



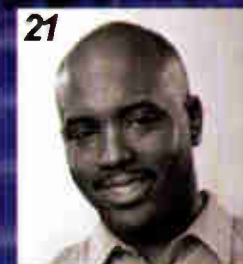
19

Doug Davis
WJMZ, Greenville, SC



20

Cedric Hollywood
WEDR, Miami, FL



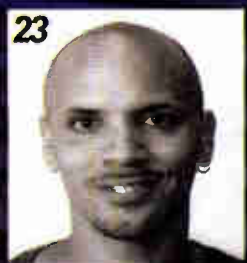
21

Kelly G
BET, National



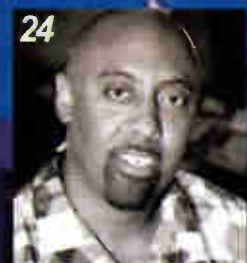
22

Big Nat
WRHH, Richmond, VA



23

Derek Harper
Formerly of WFXM,
Macon, GA



24

Darryl Huckaby
WKYS, Washington, DC



25

Liz Dixon
Formerly of WHHH,
Indianapolis, IN



26

Eddie Brasco
KVSP, Oklahoma City, OK



27

Prince Ice
WVDM, Columbia, SC



28

Tabari Daniels
WJZD, Biloxi, MS



29

Boogie D
WCHH, Charlotte, NC



30

Justin Tyme
MTV, National

Second Half Winners:

1 - Raphael George
WPHI, Philadelphia, PA

2 - Michelle "Breeze" Johnson
VH1, National
Formerly of WERQ

3 - Derek Harper
Formerly of WFXM,
Macon, GA



WWW.AIRCOMPETITION.COM

Active Industry Research, Inc. - 9851 Broken Land Pkwy., Suite 200A - Columbia, MD 21046 - Tel: (410) 381-6800 - Fax: (410) 381-4942
Active Industry Research of California, Inc. - 2425 Colorado Ave., Suite 310 - Santa Monica, CA 90404 - Tel: (310) 453-8500 - Fax: (310) 264-2120

POWER PLAYLIST



Songs ranked by number of detections. Playlists are listed in order of TSA weekly cumes, beginning with the highest-cuming station. Cumes are updated twice yearly following the release of the spring and fall Arbitron surveys. The number of stations shown each week varies depending upon space.

WJLB Detroit PD: K.J. Holiday APD/MD: Kris Kelly Clear Channel 313-965-2000

KKDA Dallas PD: Skip Cheatham Service 972-263-9911

WDTJ Detroit PD: Charles 'Spudd' Spence Radio One 313-259-2000

KBFB Dallas PD: John Candelaria Interim MD: Big Bink Radio One 972-331-5400

WZMX Hartford PD: Victor Starr APD: David Simpson Infinity 860-677-6700

WHTA Atlanta PD: Jerry Smokin' B APD: Dimitrios Stevens MD: Ramona DeBreaux Radio One 404-765-9750

WJHM Orlando PD: Stevie DeMann APD: Keith Memory MD: Jay Love Infinity 407-919-1000

KKFR Phoenix PD: Bruce St. James APD/MD: Joey Boy MD: J. Phyllis Emmis 602-274-6200

WERQ Baltimore PD: Dion Summers APD/MD: Neke Howse Radio One 410-332-8200

WQUE New Orleans OM: Carla Boatner APD/MD: Upton Angela Clear Channel 504-827-6000

WPEG Charlotte PD: Terry Avery APD/MD: Nate Quick Infinity 704-333-0131

WENZ Cleveland OM/PD: Hurricane Dave Smith Radio One 216-579-1111

KKQS Denver PD: Cat Collins MD: John E. Kage Jefferson-Pilot 303-321-0950

WJMH Greensboro OM/PD: Brian Douglas MD: Tap Money Entercom 336-605-5200

WKYV Baltimore PD/MD: Thea Mitchem Infinity 410-828-7722

KPTY Houston PD/MD: Marco Arias Hispanic 713-407-1415

WQOK Raleigh OM: Cy Young MD: Shawn Alexander Radio One 919-848-9736

WHRK Memphis PD: Nate Bell APD: Eileen Collier MD: Devin Steel Clear Channel 901-529-4300



Songs ranked by number of detections. Playlists are listed in order of TSA weekly cume, beginning with the highest-cuming station. Cumes are updated twice yearly following the release of the spring and fall Arbitron surveys. The number of stations shown each week varies depending upon space.

denotes songs with 6 or more detections at station for first time this week.

WUBT Nashville PD/MD: Kiki Henson Clear Channel 615-664-2400

Table with 2 columns: Rank and Song/Artist. Includes songs like 'LL Cool J Liv U Better', 'Nelly Featuring Kelly Rowland Dilemma', etc.

WOWI Norfolk OM: Daisy Davis APD/MD: Heart Attack Clear Channel 757-466-9116

Table with 2 columns: Rank and Song/Artist. Includes songs like 'Sean Paul Gimme The Light', 'LL Cool J Liv U Better', etc.

WMBX West Palm Beach, Fla. PD/MD: Mark McCray Infinity 561-686-9505

Table with 2 columns: Rank and Song/Artist. Includes songs like 'Missy "Misdemeanor" Elliott Work It', 'LL Cool J Liv U Better', etc.

KPRS Kansas City PD: Andre Carson PD: Myron D. Carter 816-763-2040

Table with 2 columns: Rank and Song/Artist. Includes songs like 'Missy "Misdemeanor" Elliott Work It', 'LL Cool J Liv U Better', etc.

WBOT Boston Interim PD: Mike Johnson APD/MD: Lamar Robinson Radio One 617-427-2222

Table with 2 columns: Rank and Song/Artist. Includes songs like 'LL Cool J Liv U Better', 'Missy "Misdemeanor" Elliott Work It', etc.

KATZ St. Louis VP Operations/PD: Chuck Atkins APD: Dwight Stone Clear Channel 314-692-5108

Table with 2 columns: Rank and Song/Artist. Includes songs like 'Yang Yang Twins Featuring Mr. By Myself', 'LL Cool J Liv U Better', etc.

KBMB Sacramento PD: "D. Rock" Williams Diamond 916-440-9500

Table with 2 columns: Rank and Song/Artist. Includes songs like 'Erykah Badu Featuring Common Love Of My', 'Missy "Misdemeanor" Elliott Work It', etc.

WKV Milwaukee PD: Jamillah Muhammad MD: Doc Love Clear Channel 414-321-1007

Table with 2 columns: Rank and Song/Artist. Includes songs like 'Ginuwine Stinky', 'LL Cool J Liv U Better', etc.

WBHJ Birmingham PD: Mickey Muhammad APD/MD: Mary K. Cox 205-322-2987

Table with 2 columns: Rank and Song/Artist. Includes songs like 'Lil' Flip The Way We Ball', 'Nelly Featuring Kelly Rowland Dilemma', etc.

WCKX Columbus PD: Paul Strong APD: Warren Stevens Radio One 614-487-1444

Table with 2 columns: Rank and Song/Artist. Includes songs like 'LL Cool J Liv U Better', 'Missy "Misdemeanor" Elliott Work It', etc.

WFUN St. Louis PD: Mo'Shay APD: Craig Blac MD: Koa Koa Thai Radio One 314-989-9550

Table with 2 columns: Rank and Song/Artist. Includes songs like 'LL Cool J Liv U Better', 'Missy "Misdemeanor" Elliott Work It', etc.

WAMO Pittsburgh Interim PD: D.J. Boogie Sheridan 412-471-2181

Table with 2 columns: Rank and Song/Artist. Includes songs like 'Missy "Misdemeanor" Elliott Work It', 'LL Cool J Liv U Better', etc.

WZFX Fayetteville PD: Jeff Anderson MD: Taylor Morgan Beasley 910-486-4991

Table with 2 columns: Rank and Song/Artist. Includes songs like 'LL Cool J Liv U Better', 'Erykah Badu Featuring Common Love Of My', etc.

WHHH Indianapolis PD: Brian Wallace Radio One 317-293-9600

Table with 2 columns: Rank and Song/Artist. Includes songs like 'LL Cool J Liv U Better', 'Sean Paul Gimme The Light', etc.

WIZF Cincinnati PD: Terri Thomas Radio One 513-679-6000

Table with 2 columns: Rank and Song/Artist. Includes songs like 'Musiq Don't Change', 'Ashanti Baby', etc.

WBLX Mobile PD/MD: Myrona Reuben Cumulus 334-432-7609

Table with 2 columns: Rank and Song/Artist. Includes songs like 'Missy "Misdemeanor" Elliott Work It', 'Nelly Featuring Kelly Rowland Dilemma', etc.

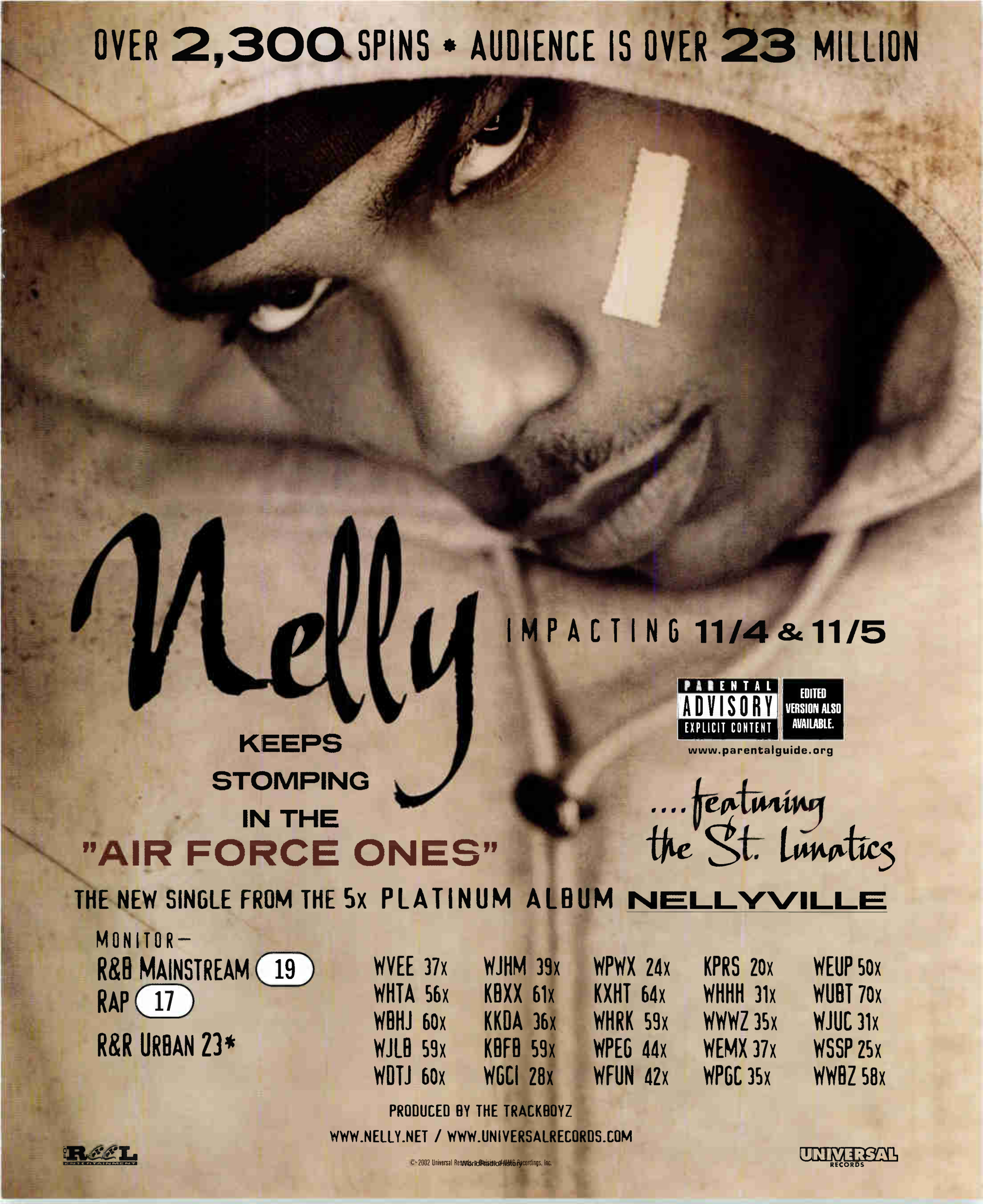
WDDM Columbia PD: Mike Love APD: Vanessa Pendergrass Inner City 803-776-1013

Table with 2 columns: Rank and Song/Artist. Includes songs like 'LL Cool J Liv U Better', 'Missy "Misdemeanor" Elliott Work It', etc.

WCDX Richmond PD: Terry Fox MC: Reggie B Radio One 804-672-9299

Table with 2 columns: Rank and Song/Artist. Includes songs like 'LL Cool J Liv U Better', 'Missy "Misdemeanor" Elliott Work It', etc.

OVER 2,300 SPINS * AUDIENCE IS OVER 23 MILLION



Nelly

IMPACTING 11/4 & 11/5

KEEPS
STOMPING
IN THE
"AIR FORCE ONES"

PARENTAL
ADVISORY
EXPLICIT CONTENT

EDITED
VERSION ALSO
AVAILABLE.

www.parentalguide.org

....featuring
the St. Lunatics

THE NEW SINGLE FROM THE 5x PLATINUM ALBUM NELLYVILLE

MONITOR -

R&B MAINSTREAM (19)

RAP (17)

R&R URBAN 23*

WVEE 37x

WJHM 39x

WPWX 24x

KPRS 20x

WEUP 50x

WHTA 56x

KBXX 61x

KXHT 64x

WHHH 31x

WUBT 70x

WBHJ 60x

KKDA 36x

WHRK 59x

WWWZ 35x

WJUC 31x

WJLB 59x

KBFB 59x

WPEG 44x

WEMX 37x

WSSP 25x

WDTJ 60x

WGCI 28x

WFUN 42x

WPGC 35x

WWBZ 58x

PRODUCED BY THE TRACKBOYZ

WWW.NELLY.NET / WWW.UNIVERSALRECORDS.COM



© 2002 Universal Records/Atlantic Recordings, Inc.



SONG ACTIVITY REPORTS

Monitor AIRPLAY Nielsen Broadcast Data Systems Detailed tracking for upward-moving songs. Total Detections/Gain does not include video play. Tracking week for video play reflects a Fri - Tu cycle. Markets listed in order of population.

Total Detections/Gain Total Detections/Gain Total Detections/Gain Total Detections/Gain

AMERIE 1268/150 Talkin' To Me (Rise/Columbia) Total Stations: 78 Chart Move: 32-30

ASHANTI 3255/25 Baby (Murder Inc./A&M/IDJMG) Total Stations: 97 Chart Move: 6-6

BABY FEATURING P. DIDDY 816/240 Do That... (Cash Money/Universal/UMRG) Total Stations: 86 Chart Move: Debut 40

ERYKAH BADU FEATURING COMMON 2867/409 Love Of My Life (An Ode To Hip Hop) (Fox/MCA) Total Stations: 83 Chart Move: 14-7

BENZINO 935/14 Rock The Party (Surrender/Elektra/EEG) Total Stations: 80 Chart Move: 39-37

TONI BRAXTON FEATURING LOON 589/186 Hit The Freeway (Arista) Total Stations: 69

BUSTA RHYMES FEAT. SPLIFF STAR 804/294 Make It Clap (J) Total Stations: 78

CLIPSE 2756/161 When The Last Time (Star Trak/Arista) Total Stations: 97 Chart Move: 11-9

DRU HILL 1014/130 I Should Be... (Def Soul/IDJMG) Total Stations: 70 Chart Move: Debut 35

MISSY "MISDEMEANOR" ELLIOTT 5039/171 Work It (The Gold Mind/Elektra/EEG) Total Stations: 98 Chart Move: 2-2

EMINEM 1863/376 Lose Yourself (Shady/Interscope) Total Stations: 80 Chart Move: 24-18

FABOLOUS 560/91 This Is My Party (Desert Storm/Elektra/EEG) Total Stations: 70

FAT JOE FEATURING GINUWINE 1091/81 Crush Tonight (Terror Squad/Atlantic) Total Stations: 87 Chart Move: 36-34

FIELD MOB 1160/90 Sick Of Being Lonely (MCA) Total Stations: 68 Chart Move: 35-33

JAHEIM FEATURING THA RAYNE 1449/166 Fabulous (Divine MIII/Warner Bros.) Total Stations: 71 Chart Move: 29-26



Detailed tracking for upward-moving songs. Total Detections/Gain does not include video play. Tracking week for video play reflects a Fri - Thu cycle. Markets listed in order of population.

*Indicates station experienced between 24 and 56 hours of monitored downtime during the chart week.

Total Detections/Gain

JAYZ FEATURING BEYONCÉ KNOWLES '03 Bonnie & Clyde (Roc-A-Fella/Def Jam/IDJMG)

Table with columns for Market, Station, and Detections/Gain for Jay-Z's '03 Bonnie & Clyde. Total Stations: 94. Chart Move: 19-11.

Total Detections/Gain

LIL' FLIP 788/28 The Way We Ball (Suckafree/Loud/Columbia)

Table with columns for Market, Station, and Detections/Gain for Lil' Flip's 'The Way We Ball'. Total Stations: 65. Chart Move: 7-1.

Total Detections/Gain

LL COOL J 5102/228 Luv U Better (Def Jam/IDJMG)

Table with columns for Market, Station, and Detections/Gain for LL Cool J's 'Luv U Better'. Total Stations: 98. Chart Move: 1-1.

Total Detections/Gain

JENNIFER LOPEZ FEAT. JADAKISS & STYLES 1541/265 Jenny From The Block (Epic)

Table with columns for Market, Station, and Detections/Gain for Jennifer Lopez's 'Jenny From The Block'. Total Stations: 81. Chart Move: 30-24.

Total Detections/Gain

MARIO 2299/163 Braid My Hair (3rd Street/J)

Table with columns for Market, Station, and Detections/Gain for Mario's 'Braid My Hair'. Total Stations: 89. Chart Move: 15-14.

MUSIQ 3426/56 Dontchange (Def Soul/IDJMG)

Table with columns for Market, Station, and Detections/Gain for Musiq's 'Dontchange'. Total Stations: 88. Chart Move: 4-5.

NELLY FEATURING ST. LUNATICS 1812/495 Air Force Ones (Fo' Reel/Universal/UMRG)

Table with columns for Market, Station, and Detections/Gain for Nelly's 'Air Force Ones'. Total Stations: 82. Chart Move: 28-19.

NEVA FEATURING BRIAN & BRANDON CASEY 705/20 Don't Mess With My Man (Jive)

Table with columns for Market, Station, and Detections/Gain for Neva's 'Don't Mess With My Man'. Total Stations: 48. Chart Move: 2-2.

SEAN PAUL 3809/445 Gimme The Light (2 Hard/VP/Atlantic)

Table with columns for Market, Station, and Detections/Gain for Sean Paul's 'Gimme The Light'. Total Stations: 95. Chart Move: 5-3.

KELLY ROWLAND 1177/103 Stole (Music World/Columbia)

Table with columns for Market, Station, and Detections/Gain for Kelly Rowland's 'Stole'. Total Stations: 79. Chart Move: 34-32.

ERICK SERMON FEATURING REDMAN 1701/37 React (J)

Table with columns for Market, Station, and Detections/Gain for Erick Sermon's 'React'. Total Stations: 93. Chart Move: 22-22.

SMILEZ & SOUTHWEST 799/162 Tell Me (What's Goin' On) (ARTISTdirect)

Table with columns for Market, Station, and Detections/Gain for Smilez & Southwest's 'Tell Me'. Total Stations: 62. Chart Move: 7-1.

SNOOP DOGG 796/210 From Tha Chuuchu To Da Palace (Doggystyle/Priority/Capitol)

Table with columns for Market, Station, and Detections/Gain for Snoop Dogg's 'From Tha Chuuchu To Da Palace'. Total Stations: 82. Chart Move: 3-14.

TLC 1708/73 Girl Talk (Arista)

Table with columns for Market, Station, and Detections/Gain for TLC's 'Girl Talk'. Total Stations: 92. Chart Move: 23-21.

WC FEATURING NATE DOGG 585/46 The Streets (Def Jam/IDJMG)

Table with columns for Market, Station, and Detections/Gain for WC's 'The Streets'. Total Stations: 46. Chart Move: 1-1.

Updated every week... Detailed tracking... Copyright 2002...

AIRPOWER

NO RECORDS QUALIFIED FOR AIRPOWER THIS WEEK

AIRPOWER BOUND

Total Detections/Gain

NELLY FEATURING KELLY ROWLAND 276/42 Dilemma (Fo' Reel/Universal/UMRG) Total Stations: 11/Chart Move: 21-19 Heavy (30+ detections): 5 KHHT, KJMS, KMJM, WSOL, WSVY Medium (15-29): 2 WLWH, WRKS Light (Under 15): 4

DAVE HOLLISTER 275/31 Baby Do Those Things (Motown/UMRG) Total Stations: 25/Chart Move: 20-20 Heavy (30+): 0 Medium (15-29): 11 KJMS, KMJK, KMJM, KOKY, WFLM, WHQT, WJMR, WLWH, WMGL, WQOK, WSVY Light (Under 15): 14 Airplay Adds: 1 WZAK

GLENN JONES 258/10 I Wonder Why (Peak/Concord) Total Stations: 26/Chart Move: 19-21 Heavy (30+): 1 KOKY Medium (15-29): 7 KMJK, WBHK, WFLM, WKXI, WMGL, WSVY, WWIN Light (Under 15): 18

BRIAN MCKNIGHT 244/19 Let Me Love You (Motown/UMRG) Total Stations: 25/Chart Move: 22-22 Heavy (30+): 0 Medium (15-29): 5 KJMS, KMJM, WHQT, WMGL, WSVY Light (Under 15): 20 Airplay Adds: 1 WQOK

JAHEIM FEATURING THA RAYNE 207/11 Fabulous (Divine Mill/Warner Bros.) Total Stations: 19/Chart Move: 25-23 Heavy (30+): 0 Medium (15-29): 2 KJMS, KOKY Light (Under 15): 17 Airplay Adds: 2 KQXL, WQOK

VIVIAN GREEN 202/67 Emotional Rollercoaster (Columbia) Total Stations: 25/Chart Move: 29-24 Heavy (30+): 0 Medium (15-29): 2 KMJK, WJMR Light (Under 15): 23 Airplay Adds: 6 KJMS, KMJQ, KOKY, WDLT, WHQT, WKXI

DRU HILL 167/36 I Should Be... (Def Soul/IDJMG) Total Stations: 19/Chart Move: 31-28 Heavy (30+): 0 Medium (15-29): 3 KMJM, WFLM, WHQT Light (Under 15): 16 Airplay Adds: 2 WHUR, WJMR

AL JARREAU 164/-3 Secrets Of Love (GRP/Verve) Total Stations: 28/Chart Move: 28-29 Heavy (30+): 1 KOKY Medium (15-29): 2 KMJK, WMGL Light (Under 15): 25 Airplay Adds: 1 KQXL

KENNY LATTIMORE & CHANTE MOORE 152/20 Loveable (From Your Head To Your Toes) (Arista) Total Stations: 21/Chart Move: 30-31 Heavy (30+): 0 Medium (15-29): 1 WLWH Light (Under 15): 20 Airplay Adds: 2 WFLM, WFXC

THEO 149/21 Get Your Groove On (Triumph) Total Stations: 28/Chart Move: 33-32 Heavy (30+): 1 KOKY Medium (15-29): 4 KMJK, WFLM, WKXI, WMGL Light (Under 15): 23

GINUWINE 130/13 Stingy (Epic) Total Stations: 17/Chart Move: 35-33 Heavy (30+): 1 WJMR

Medium (15-29): 3 KMJM, WHQT, WRKS Light (Under 15): 13 Airplay Adds: 1 WALR

SYLEENA JOHNSON 122/18 Guess What (Jive) Total Stations: 7/Chart Move: 36-34 Heavy (30+): 1 WHQT Medium (15-29): 3 WJMR, WVAZ, WYLD Light (Under 15): 3 Airplay Adds: 1 KMJK

STREETWIZE FEATURING KIM WATERS 121/-6 Rock The Boat (Shanachie) Total Stations: 33/Chart Move: 34-35 Heavy (30+): 1 WHQT Medium (15-29): 1 WMGL Light (Under 15): 31

JEFF MAJORS FEAT. JEAN CARNE 117/47 Somebody Bigger (NAS/Music One) Total Stations: 10/Chart Move: Debut 37 Heavy (30+): 0 Medium (15-29): 3 WFXC, WMMJ, WWIN Light (Under 15): 7 Airplay Adds: 3 KSOC, WKJS, WTLC

MARIAH CAREY 106/16 Through The Rain (MonarC/Island/IDJMG) Total Stations: 14/Chart Move: 39-38 Heavy (30+): 0 Medium (15-29): 1 KHHT Light (Under 15): 13 Airplay Adds: 2 KOKY, WHQT

WHITNEY HOUSTON 100/65 One Of Those Days (Arista) Total Stations: 14/Chart Move: Debut 39 Heavy (30+): 0 Medium (15-29): 2 WQOK, WRKS Light (Under 15): 12 Airplay Adds: 5 KJLH, KMJQ, WFLM, WMCS, WQOK

TYRESE 90/43 How You Gonna Act Like That (J) Total Stations: 12/Chart Move: Debut 40 Heavy (30+): 0 Medium (15-29): 2 KHHT, KOKY Light (Under 15): 10 Airplay Adds: 3 KMJK, WJMR, WKXI

CHART BOUND

Total Detections/Gain

AMERIE 49/9 Talkin' To Me (Rise/Columbia) Total Stations: 5 Heavy (30+): 0 Medium (15-29): 2 KHHT, WFLM Light (Under 15): 3

KENNY G FEAT. BRIAN MCKNIGHT 39/19 All The Way (Arista) Total Stations: 8 Heavy (30+): 0 Medium (15-29): 0 Light (Under 15): 8 Airplay Adds: 1 WBVA

THE KENOLY BROTHERS 38/11 Too Close (Next Generation Ministry) Total Stations: 5 Heavy (30+): 0 Medium (15-29): 0 Light (Under 15): 5 Airplay Adds: 1 KOKY

SOUNDS OF BLACKNESS 34/10 Don't You Ever Give Up (Sounds Of Blackness) Total Stations: 3 Heavy (30+): 0 Medium (15-29): 1 KMJM Light (Under 15): 2 Airplay Adds: 1 WBVA

TLC 34/0 Girl Talk (Arista) Total Stations: 2 Heavy (30+): 1 KHHT Medium (15-29): 0 Light (Under 15): 1

MARVIN SAPP 33/29 Standing On The Rock (Verity/Jive) Total Stations: 30 Heavy (30+): 0 Medium (15-29): 0 Light (Under 15): 30

Total Detections/Gain

Table for AALIYAH I Care 4 U (Blackground) with columns for stations and detections.

Table for DRU HILL I Should Be... (Def Soul/IDJMG) with columns for stations and detections.

Table for HEATHER HEADLEY He Is (RCA) with columns for stations and detections.

Table for INDIA.ARIE Little Things (Motown/UMRG) with columns for stations and detections.

Table for GLENN JONES I Wonder Why (Peak/Concord) with columns for stations and detections.

Table for JEFF MAJORS FEAT. JEAN CARNE Somebody Bigger (NAS/Music One) with columns for stations and detections.

Table for NELLY FEATURING KELLY ROWLAND Dilemma (Fo' Reel/Universal/UMRG) with columns for stations and detections.

Total Detections/Gain

Table for ERYKAH BADU Love Of My Life (An Ode To Hip Hop) (Fox/MCA) with columns for stations and detections.

Table for GINUWINE Stingy (Epic) with columns for stations and detections.

Table for DAVE HOLLISTER Baby Do Those Things (Motown/UMRG) with columns for stations and detections.

Table for JAHEIM FEATURING THA RAYNE Fabulous (Divine Mill/Warner Bros.) with columns for stations and detections.

Table for KENNY LATTIMORE & CHANTE MOORE Loveable (From Your Head To Your Toes) (Arista) with columns for stations and detections.

Table for BRIAN MCKNIGHT Let Me Love You (Motown/UMRG) with columns for stations and detections.

Table for ANGIE STONE & JOE More Than A Woman (J) with columns for stations and detections.

Total Detections/Gain

Table for MARIAH CAREY Through The Rain (MonarC/Island/IDJMG) with columns for stations and detections.

Table for VIVIAN GREEN Emotional Rollercoaster (Columbia) with columns for stations and detections.

Table for WHITNEY HOUSTON One Of Those Days (Arista) with columns for stations and detections.

Table for SYLEENA JOHNSON Guess What (Jive) with columns for stations and detections.

Table for GERALD LEVERT Funny (Elektra/EEG) with columns for stations and detections.

Table for MUSIQ Dontchange (Def Soul/IDJMG) with columns for stations and detections.

Table for THEO Get Your Groove On (Triumph) with columns for stations and detections.

Airpower awarded to songs appearing in the top 20 on both the Airplay and Audience charts for the first time with increases in both detections and audience. Initial impact: songs appearing on this page for the first time. Airplay Adds are songs with 6 or more detections at new stations this week. The Airplay Leaderboard ranks taste-maker stations that have been the most successful in identifying future hit songs as measured by the amount of AIRPOWER titles for which they were Airplay Leaders. Refer to each format's Power Playlists page to see this week's Airplay Leaders.

ADULT R&B

POWER PLAYLISTS

AIRPLAY adds

AIRPLAY Monitor Nielsen Broadcast Data Systems A SONG RECEIVES AN AIRPLAY ADD WHEN IT REACHES SIX OR MORE DETECTIONS ON A STATION FOR THE FIRST TIME DURING A CHART WEEK

FOR WEEK ENDING OCTOBER 27, 2002

most airplay adds ADULT R&B

NEW STATIONS

VIVIAN GREEN Emotional Rollercoaster (Columbia) 6
Total Stations With Six Or More Detections: 17
TOTAL DETECTIONS BY DAYPART: 6-10 3%, 10-3 20%, 3-7 15%, 7-12 25%, 12-6A 38%
WHITNEY HOUSTON One Of Those Days (Arista) 5
Total Stations With Six Or More Detections: 7
TOTAL DETECTIONS BY DAYPART: 6-10 3%, 10-3 26%, 3-7 27%, 7-12 22%, 12-6A 22%
HEATHER HEADLEY He Is (RCA) 3
Total Stations With Six Or More Detections: 31
TOTAL DETECTIONS BY DAYPART: 6-10 13%, 10-3 23%, 3-7 20%, 7-12 18%, 12-6A 27%
TYRESE How You Gonna Act Like That (J) 3
Total Stations With Six Or More Detections: 6
TOTAL DETECTIONS BY DAYPART: 6-10 6%, 10-3 17%, 3-7 13%, 7-12 34%, 12-6A 30%
JEFF MAJORS FEATURING JEAN CARNE Somebody Bigger (NAS/Music One) 3
Total Stations With Six Or More Detections: 8
TOTAL DETECTIONS BY DAYPART: 6-10 8%, 10-3 21%, 3-7 19%, 7-12 18%, 12-6A 34%

AIRPLAY LEADERBOARD THE STATIONS THAT BREAK THE HITS #1 KMKJ Kansas City, MO (PD/MD: Love/Michaels) Airplay Leader Designations: 2

WRKS New York DM: John Mullen PD: Toya Beasley MC: Julie Gustines Emmis 212-242-9870

KHHT Los Angeles PD: Michelle Santosuosso MD: Rick Nuhn Clear Channel 818-845-1027

WDAS Philadelphia VP/GM/PD: Joe Tamburro MD: Jo Gamble Clear Channel 610-617-8500

WVAZ Chicago OM: Elroy C. Smith APD/MD: Armando Rivera Clear Channel 312-360-9000

WHUR Washington, DC PD/MD: David A. Dickinson Howard Univ. 202-806-3500

WHQT Miami PD: Derrick Brown APD/MD: Karen Vaughn Cox 954-584-7117

KMJQ Houston PD: Carl Conner MD: Sam Choche Radio One 713-623-2108

KJLH Los Angeles PD/MD: Cliff Winston TAXI 310-330-2200

WALR Atlanta PD: Ron Davis APD: Stephanie Williams Cox 404-897-7500

WMMJ Washington, DC PD: Kathy Brown MD: Mike Chase Radio One 301-306-1111

WWIN Baltimore Heather Headley He Is 12

WZAK Cleveland DM: Kim Johnson Radio One 216-579-1111

WYLD New Orleans DM: Caria Boatner PD: AJ Appleberry Clear Channel 504-827-6000

WWIN Baltimore PD: Tim Watts MD: Keith Fisher Radio One 410-332-8200

KJMS Memphis PD: Nate Bell APD/MD: Eileen Nathaniel Clear Channel 901-529-4300

WFXC Raleigh DM: Cy Young APD/MD: Jodi Berry Radio One 919-848-9736

WCFB Orlando PD: Steve Holbrook MD: Jo Davis Cox 407-297-0945

WALR Atlanta Syleena Johnson If You Play Your Cards 9

WGPR Detroit No Airplay Adds This Week

KJLH Los Angeles Whitney Houston One Of Those Days 8

WVVK Norfolk, Va. Tank One Man 11

WMXD Detroit No Airplay Adds This Week

WQMG Greensboro, N.C. Heather Headley He Is 6

KJMS Memphis Vivian Green Emotional Rollercoaster 6

WCFB Orlando, Fla. Heather Headley He Is 11

WQXL Baton Rouge, La. Kenny G Featuring Chante 6

KMJJ Houston Vivian Green Emotional Rollercoaster 10

WHQT Miami Musiq Newness 9

WDAS Philadelphia No Airplay Adds This Week

WBK Birmingham, Ala. No Airplay Adds This Week

WTLC Indianapolis Jeff Majors Featuring Jean Somebody 11

WJMR Milwaukee Tyrese How You Gonna Act Like That 10

WFXC Raleigh, N.C. Kenny Lattimore & Chante Loveable 6

WILD Boston No Airplay Adds This Week

WKKI Jackson, Miss. Willie Clayton Drowning In The Sea 13

WMGL Charleston, S.C. No Airplay Adds This Week

WVVK Norfolk, Va. No Airplay Adds This Week

WBAV Charlotte, N.C. Sounds D Blackness Don't You Ever 12

WSOL Jacksonville, Fla. India Arie Little Things 23

WDLT Mobile, Ala. Vivian Green Emotional Rollercoaster 6

WVVK Norfolk, Va. No Airplay Adds This Week

WVWZ Chicago No Airplay Adds This Week

KMKJ Kansas City Syleena Johnson Guess What 13

WYLD New Orleans No Airplay Adds This Week

WMMJ Washington, D.C. No Airplay Adds This Week

WZAK Cleveland Dave Hollister Baby Do Those Things 7

KOKY Little Rock, Ark. Mariah Carey Through The Rain 10

WRKS New York No Airplay Adds This Week

WFLM West Palm Beach Kenny Lattimore & Chante Loveable 10

