

ROCK AIRPLAY Monitor

• We Listen To Radio •

November 17, 1995 \$ 4.95 Volume 2 • No. 47

ROCK HIGHLIGHTS

MAINSTREAM ROCK

#1

GOO GOO DOLLS

Name (METAL BLADE/WARNER BROS.)

★★★ AIRPOWER ★★★

ROLLING STONES • *Like A Rolling Stone* (VIRGIN)

COLLECTIVE SOUL • *The World I Know* (ATLANTIC)

NEW RELEASES

1000 MONA LISAS • *How Would You Know* (RCA)

AC/DC • *Cover You In Oil* (EASTWEST/EEG)

THE BEATLES • *Free As A Bird* (CAPITOL)

ELEVEN • *Tomorrow* (HOLLYWOOD)

TOM PETTY • *Waiting For Tonight* (MCA)

THE PRESIDENTS OF THE UNITED STATES OF AMERICA • *Kitty* (COLUMBIA)

QUEEN • *Too Much Love Will Kill You* (HOLLYWOOD)

SOUL ASYLUM • *Promises Broken* (COLUMBIA)

MODERN ROCK

#1

RED HOT CHILI PEPPERS

My Friends (WARNER BROS.)

★★★ AIRPOWER ★★★

SILVERCHAIR • *Pure Massacre* (EPIC)

NATALIE MERCHANT • *Wonder* (ELEKTRA/EEG)

EVERCLEAR • *Santa Monica (Watch The World Die)* (CAPITOL)

NEW RELEASES

1000 MONA LISAS • *How Would You Know* (RCA)

ASH • *Kung Fu* (REPRISE)

THE BEATLES • *Free As A Bird* (CAPITOL)

THE FLAMING LIPS • *Christmas At The Zoo* (WARNER BROS.)

LUNA • *Hedgehog* (ELEKTRA/EEG)

MARIANA TRENCH • *Cold Stones* (ACME)

SOUL ASYLUM • *Promises Broken* (COLUMBIA)

TRAE • *Fear No Less Than You* (CABANA BOY)

PUBLISHER: MICHAEL ELLIS
EDITOR: SEAN ROSS
DIRECTOR OF CHARTS: JERRY MCKENNA
MAINSTREAM ROCK CHART MANAGER: ANTHONY COLOMBO
MODERN ROCK CHART MANAGER: MARIE MARCHE
CHART PRODUCTION MANAGER: MICHAEL CUSSON
ASST. CHART PRODUCTION MANAGER: PAUL PAGE
EDITORIAL PRODUCTION MANAGER: BARRY BISHOP
ASSOC. EDITORIAL PRODUCTION MANAGER: MARCIA REPINSKI
EDITORIAL PRODUCTION: MARC GAQUINTO, MORRIS KLEGMAN
ADVERTISING PRODUCTION MANAGER: LYDIA MIKULKO
ADVERTISING PRODUCTION ASST.: CINDEE WEISS
ADVERTISING ART DIRECTOR: RAY CARLSON

NATIONAL ADVERTISING MANAGER: JON GUIN
ADVERTISING SALES: ART PHILLIPS, ANDREA THOMPSON
CLASSIFIED ADVERTISING: LAURA RIVCHUN
ADVERTISING SERVICES MGR.: MICHELE JACANGELO
SALES ASSISTANTS: EVELYN ASZODI, ERICA BENIGNON
JEF LESTINGI, ALYSE SIGMUND
EDITORIAL ADVISER: TIMOTHY WHITE
PRODUCTION DIRECTOR: MARIE GOMBERT
DIRECTOR OF MARKETING: ELISSA TOMASETTI
CIRCULATION MANAGER: JEANNE JAMM

©1995 BPI Communications, 1515 Broadway, New York, NY 10036
212-536-6039 For subscriptions call 800-722-2346

Billboard Music Group
PRESIDENT: HOWARD LANDER

<http://www.hollywoodrec.com>

Hollywood
RECORDS

featuring the single "Too Much Love Will Kill You" add dates - november 20/21

QUEEN

cleven new tracks
Freddie Mercury's final recordings

*The people gave their blessing to crimes of passion
It was a dark, dark night of the collective soul*

(-THE GARDEN OF ALLAH)

DON HENLEY

"The Garden of ALLAH"

THE ALL-NEW TRACK

FROM THE FORTHCOMING ALBUM ACTUAL MILES - HENLEY'S GREATEST HITS

FEATURING TEN CLASSICS:

- "DIRTY LAUNDRY"
- "THE BOYS OF SUMMER"
- "ALL SHE WANTS TO DO IS DANCE"
- "NOT ENOUGH LOVE IN THE WORLD"
- "SUNSET GRILL"
- "THE END OF THE INNOCENCE"
- "THE LAST WORTHLESS EVENING"
- "NEW YORK MINUTE"
- "I WILL NOT GO QUIETLY"
- "THE HEART OF THE MATTER"

TWO ALL-NEW TRACKS:

- "THE GARDEN OF ALLAH"
- "YOU DON'T KNOW ME AT ALL"

AND ONE SPECIAL BONUS TRACK

PRODUCED BY DON HENLEY, STAN LYNCH AND JOHN COREY
PERSONAL MANAGEMENT: IRVING AZOFF

KSHE	28x	KTYD	16x
WKLS	27x	WZZR	16x
KEZO	25x	KMOD	15x
KTAL	25x	KLAQ	15x
WEGR	23x	WROV	14x
KXUS	22x	WIXV	14x
KFRQ	22x	WVRK	13x
WCMF	21x	WAQX	13x
WMMR	20x	WTUE	12x
WEZX	19x	WAPL	11x
WRXR	19x	WBAB	10x
WRXK	19x	KQRS	10x
WKLC	18x	WRXL	10x
WIOT	18x	WXRC	10x
WFBQ	17x	WIZN	10x

AND MANY, MANY MORE

**DEBUT! (26)
MAINSTREAM
ROCK CHART**

675 SPINS!

A bold, new musical work from one of America's premier artists.



Strongest Increase In Airplay This Week

MAINSTREAM ROCK

INCREASE
IN PLAYS

- DON HENLEY • The Garden Of Allah (Geffen)** +442
KSHE +26, KFRQ +20, WKLS +19, WEGR +18, WRXR +17, WCMF +17, WZZR +15, WIOT +14, WROV +13, KLAQ +13
- ROLLING STONES • Like A Rolling Stone (Virgin)** +351
KTYD +17, WIOT +17, KLAQ +14, WPLR +14, KMJX +13, WIXV +12, WEGR +12, KRZZ +11, KLPX +11, KXUS +10
- SMASHING PUMPKINS • Bullet With Butterfly Wings (Virgin)** +186
KICT +14, WLZR +13, WIYY +12, KLBj +11, KBER +11, KZRQ +9, WXRA +9, WZAT +8, KATT +8, KUPD +8
- BUSH • Glycerine (Trauma/Interscope)** +185
WAVF +22, KTUX +19, WKLQ +16, KHOP +15, WKDF +13, WFYV +11, WLLZ +11, WARQ +9, KIOZ +9, WZAT +8
- RED HOT CHILI PEPPERS • My Friends (Warner Bros.)** +159
KTUX +18, KQRS +13, WAXQ +12, WRXL +12, WRXC +11, KRXQ +10, KSHE +10, KZRQ +7, WEZX +7, WKLQ +7
- LOUD LUCY • Ticking (DGC/Geffen)** +116
WZAT +15, WARQ +12, KRZR +12, WAXQ +11, KHOP +9, WJST +7, KBPI +7, KTYD +6, KLBj +6, KTUX +5
- CANDLEBOX • Understanding (Maverick/Warner Bros.)** +108
WKDF +15, KZRQ +11, KICT +10, WTFX +8, WKLQ +8, WZAT +6, KZRR +6, KMOD +6, WEBN +6, WAAF +6
- TESLA • Steppin' Over (Geffen)** +105
KILO +18, KHOP +18, KBER +15, KTUX +10, KMJX +10, WTUE +9, WKLQ +9, KRXQ +8, KOMP +5, KGGG +4
- LENNY KRAVITZ • Circus (Virgin)** +103
WXTB +25, WXRC +19, KTUX +10, WRXC +8, WAPL +7, WKLS +7, WFYV +6, KISS +6, KTYD +5, WNEW +4
- SPACEHOG • In The Meantime (Sire/EEG)** +103
WZAT +13, WAXQ +12, KHOP +10, KRZR +10, WRXC +9, KTUX +9, KBER +9, KISS +9, KZRQ +6, WRIF +5

MODERN ROCK

INCREASE
IN PLAYS

- SMASHING PUMPKINS • 1979 (Virgin)** +310
KBBT +30, KEGE +27, KFRR +15, KNRK +14, WEND +13, KGDE +13, KISF +11, WHFS +11, XTRA +11, KEDG +10
- BUSH • Glycerine (Trauma/Interscope)** +274
KNRK +23, KNNC +17, WQXA +16, KISF +15, WQNF +14, WENZ +14, KEDJ +13, KTCL +13, WRXQ +12, KDGE +11
- OASIS • Wonderwall (Epic)** +272
KEGE +26, KPNT +19, WKQX +15, CIMX +14, KDGE +14, WFNX +14, WMRQ +13, WXWX +13, WNNX +12, KLZR +10
- DAVE MATTHEWS BAND • Satellite (RCA)** +188
WEND +32, WROX +18, WRXQ +18, WWCD +12, WHFS +12, WCHZ +11, WGRD +9, WBRU +9, KMYZ +9, KTOZ +7
- MR. MIRAINGA • Burnin' Rubber (Way Cool Music/MCA Soundtracks/MCA)** +161
KWOD +15, WRXZ +14, WRLG +13, KNNC +13, KMYZ +11, KITS +10, WHFS +9, WROX +8, WKOC +7, WCHZ +7
- EVERCLEAR • Santa Monica (Watch The World Die) (Capitol)** +156
KGDE +29, WCYY +17, KNNC +15, KISF +12, XTRA +12, KEDJ +11, KMYZ +11, KNRK +10, KBBT +10, WCHZ +9
- JOAN OSBORNE • One Of Us (Blue Gorilla/Mercury)** +156
KFRR +25, WENZ +22, WHFS +20, KBBT +19, KGDE +16, KEDJ +14, CIMX +14, KITS +14, WLUM +13, KKND +12
- COLLECTIVE SOUL • The World I Know (Atlantic)** +150
KGDE +26, KNNC +19, KDGE +18, KITS +17, KFRR +12, WENZ +11, WMRQ +10, WMMS +9, KRRK +8, WSHE +8
- THE PRESIDENTS OF THE UNITED STATES OF AMERICA • Kitty (Columbia)** +142
KFRR +27, KEGE +17, XTRA +16, WBRU +13, KNNC +12, WENZ +11, WXDX +10, WEDG +10, KXKR +9, WNVE +8
- SILVERCHAIR • Pure Massacre (Epic)** +137
WHYT +24, KKND +18, KRRK +13, WEND +9, WCYY +8, WDRE +8, KFRR +7, KOME +7, WMMS +7, WZRH +6



• ROCK ROUNDUP •

by Mark Marone

THERE HAVE BEEN VERY FEW ALBUMS I remember feeling compelled to tell everyone about. When Jane's Addiction's first set came out on Triple XXX Records and Nirvana's "Bleach" was released, I couldn't help but begin almost every conversation "Have you heard so and so yet?" The recent album by the Jayhawks, "Tomorrow The Green Grass," was another one. It was so amazing, possessing lush melodies and fantastic harmonies. Rarely had an album experienced such industry buzz without the slightest trace of hype. This unilateral adulation shared by PD, record executives, critics, and music fans should have been enough for the Jayhawks to reach the level of success of Jane's Addiction and Nirvana.

Instead, the Jayhawks have broken up. Guitarist/singer Mark Olsen will pursue other songwriting interests, according to the St. Paul Pioneer Press, effectively putting an end to a great "American" band after a 10-year run. One could speculate that things may have been different if the band's last album had done better. Given the left-field success at modern rock radio of acoustic-based, H.O.R.D.E.-style bands, such as Dave Matthews, Rusted Root, and Blues Traveler, one would think there'd be room for the Jayhawks with the 18-34 demo. Instead, in one week's time, the Cleveland Browns are moving to Baltimore and Hootie & the Blowfish are collecting plaques for 10 million records sold. Maybe Hootie was just less challenging. Or maybe the Jayhawks might have fared better if they'd worn their baseball caps backward. Still, I'll never forget those wonderful harmonies.

SINCE THIS COLUMN was on hiatus last week for a special Airplay Monitor report, here's the official announcement that WPLY (Y100) Philadelphia, WKOC Norfolk, Va., and WDXD Pittsburgh have been added to the modern rock panel, bringing the total to 66. Full panel listings appear in this week's issue on page 17. Look for more new stations next week, too!

MTV PLAYLIST

Most-Played Rock Tracks

	TW	LW		TW	LW		
1	Presidents Of The United State, Lump	28	23	21	Rancid, Ruby Soho	10	0
2	Bush, Come Down	26	19	22	Sophie B. Hawkins, As I Lay Me Down	9	5
3	Goo Goo Dolls, Name	26	21	23	Silverchair, Tomorrow	7	2
4	Red Hot Chili Peppers, My Friends	26	23	24	Deep Blue Something, Breakfast At Tiffan	7	10
5	Smashing Pumpkins, Bullet With Butterfly	22	19	25	Ozzy Osbourne, Perry Mason	7	7
6	Alanis Morissette, Hand In My Pocket	21	17	26	Alice In Chains, Grind	7	0
7	Melissa Etheridge, Your Little Secret	17	13	27	Blues Traveler, Hook	6	4
8	Hootie & The Blowfish, Time	16	14	28	Edwin McCain, Solitude	6	6
9	Lisa Loeb & Nine Stories, Do You Sleep?	16	9	29	Alanis Morissette, You Oughta Know	5	3
10	Green Day, Geek Stink Breath	16	15	30	Seven Mary Three, Cumbersome	5	4
11	Joan Osborne, One Of Us	15	10	31	311, Don't Stay Home	5	4
12	Collective Soul, The World I Know	15	8	32	Edwyn Collins, A Girl Like You	5	7
13	Garbage, Queer	13	13	33	Rolling Stones, Like A Rolling Stone	5	2
14	Rentals, Friends Of P.	13	11	34	Bon Jovi, Lie To Me	5	0
15	Toadies, Possum Kingdom	12	11	35	Stone Temple Pilots, Interstate Love Song	4	4
16	R.E.M., Tongue	12	11	36	White Zombie, More Human Than Human	4	4
17	Foo Fighters, I'll Stick Around	11	15	37	Ruth Ruth, Uninvited	4	2
18	AC/DC, Hard As A Rock	11	11	38	Red Hot Chili Peppers, Warped	4	2
19	Heather Nova, Walk This World	11	11	39	Stone Temple Pilots, Plush	4	3
20	Meat Loaf, I'd Lie For You	10	8	40	Aerosmith, Janie's Got A Gun	3	2



SPACEHOG

IN THE MEANTIME

THE PREMIERE SINGLE FROM THE DEBUT ALBUM RESIDENT ALIEN
ALBUM IN STORES NOW

PRODUCED BY SPACEHOG AND BRYCE GOGGIN • MANAGEMENT: DAS COMMUNICATIONS, LTD.

ON SIRE COMPACT DISCS AND CASSETTES. WORLD WIDE WEB: [HTTP://WWW.ELEKTRA.COM](http://www.elektra.com)



"THROW YOUR HATRED DOWN"*

NEW THIS WEEK:
WFYV WBLM WGIR WIQB KOZE WBXQ



ALSO ON:
KLOS • WDV • KYYS • KOMP • WXRC • CILQ • WROQ • KJOT
WDRK • WWBR • KFMX • KTAL • WHMH • KWBR • KCLB
WKQZ • WIZN • WKGB • WTAO • WAPL • KTYD • KMKF
WQBZ • WQKK • WEZX • AND MORE!

*FROM THE NEIL YOUNG ALBUM
MIRROR BALL ON REPRISE

VISIT THE WEB SITE:
[HTTP://WWW.REPRISE-REC.COM/NEIL-YOUNG](http://www.reprise-rec.com/neil-young)

©1995 REPRISE RECORDS

MAINSTREAM ROCK

POWER PLAYLISTS™

AAA
 Broadcast Data Systems
 1-800-343-2222

AIRPLAY
Monitor

For Week Ending
 November 12, 1995

Playlists supplied by Broadcast Data Systems' Radio
 Track service. Stations selected from panel of leading
 broadcasters in 125 radio markets, electronically
 monitored 24 hours a day, 7 days a week. Songs
 ranked by number of plays in monitored week.

KLOS		WNEW		WAXQ	
Los Angeles PD: Carey Curelop MD: Rita Wilde		New York PD: Ted Edwards MD: Amy Winslow		New York PD: Ron Valeri APD/MD: Vinny Marino	
TW	LW	TW	LW	TW	LW
1	30	1	21	1	44
2	28	2	22	2	41
3	27	3	18	3	40
4	26	4	17	4	39
5	25	5	17	5	37
6	24	6	20	6	36
7	24	7	21	7	34
8	21	8	19	8	32
9	21	9	17	9	29
10	21	10	18	10	29
11	20	11	18	11	25
12	19	12	16	12	24
13	18	13	16	13	22
14	18	14	15	14	23
15	16	15	15	15	20
16	16	16	15	16	20
17	16	17	14	17	18
18	16	18	17	18	18
19	14	19	13	19	17
20	13	20	13	20	16
21	13	21	12	21	17
22	11	22	12	22	17
23	11	23	12	23	15
24	11	24	11	24	15
25	11	25	11	25	13
26	11	26	11	26	14
27	10	27	10	27	14
28	10	28	8	28	14
29	10	29	8	29	14
30	9	30	8	30	12

WMMR		WRCX		KQRS	
Philadelphia PD: Joe Bonadonna MD: Riki Hofberg		Chicago PD: Dave Richards MD: Jo Robinson		Minneapolis PD: Dave Hamilton APD/MD: Reed Collins	
TW	LW	TW	LW	TW	LW
1	26	1	44	1	14
2	25	2	43	2	14
3	23	3	42	3	13
4	23	4	34	4	13
5	23	5	38	5	10
6	23	6	22	6	10
7	22	7	22	7	10
8	22	8	21	8	11
9	22	9	20	9	9
10	21	10	19	10	9
11	21	11	19	11	8
12	20	12	18	12	8
13	19	13	18	13	8
14	18	14	18	14	8
15	18	15	17	15	8
16	18	16	17	16	7
17	17	17	16	17	7
18	17	18	17	18	7
19	16	19	15	19	6
20	16	20	14	20	6
21	16	21	14	21	6
22	16	22	13	22	5
23	15	23	13	23	5
24	15	24	13	24	5
25	15	25	12	25	4
26	14	26	12	26	4
27	14	27	11	27	4
28	14	28	11	28	4
29	12	29	10	29	4
30	11	30	10	30	4

WWDC		WDVE		WRIF	
Washington, DC PD: Dave Brown MD: Buddy Rizer		Pittsburgh PD: Gene Romano		Detroit PD: Doug Poddell MD: Mark Thompson	
TW	LW	TW	LW	TW	LW
1	26	1	20	1	32
2	26	2	20	2	31
3	24	3	20	3	29
4	23	4	17	4	29
5	23	5	16	5	29
6	23	6	16	6	27
7	23	7	16	7	26
8	22	8	16	8	22
9	22	9	15	9	22
10	21	10	15	10	21
11	21	11	15	11	19
12	20	12	15	12	18
13	20	13	14	13	17
14	20	14	14	14	17
15	20	15	14	15	16
16	20	16	14	16	16
17	20	17	14	17	16
18	19	18	13	18	15
19	19	19	13	19	15
20	19	20	11	20	14
21	19	21	11	21	14
22	17	22	9	22	10
23	17	23	9	23	10
24	17	24	9	24	8
25	17	25	7	25	10
26	17	26	7	26	10
27	15	27	6	27	9
28	15	28	6	28	9
29	11	29	6	29	9
30	8	30	6	30	9

WAAF		WFBQ		KLOL	
Boston PD: Dave Douglas MD: John Osterlind		Indianapolis PD: Marty Bender MD: Ace Cosby		Houston PD: Andy Beaubien APD: Dayna Steele	
TW	LW	TW	LW	TW	LW
1	39	1	20	1	36
2	35	2	20	2	30
3	34	3	19	3	31
4	34	4	18	4	26
5	34	5	18	5	19
6	33	6	17	6	17
7	33	7	15	7	17
8	32	8	15	8	19
9	32	9	14	9	15
10	31	10	13	10	14
11	29	11	12	11	13
12	29	12	11	12	13
13	29	13	11	13	10
14	28	14	10	14	9
15	28	15	9	15	8
16	27	16	8	16	8
17	26	17	7	17	7
18	26	18	7	18	7
19	25	19	6	19	7
20	25	20	6	20	7
21	25	21	6	21	7
22	25	22	6	22	6
23	25	23	6	23	6
24	25	24	5	24	6
25	25	25	5	25	6
26	25	26	5	26	6
27	25	27	5	27	6
28	25	28	5	28	6
29	25	29	5	29	6
30	25	30	5	30	6

Table for station KEGL in Dallas. PD: Duane Doherty, MD: Cindy Scull. Lists top 30 songs with TW and LW ratings.

Table for station WKLS in Atlanta. PD: Michael Hughes, MD: Beth Kepple. Lists top 30 songs with TW and LW ratings.

Table for station WLLZ in Detroit. GM/PD: Ozzie Sattler, APD: Todd Thomas. Lists top 30 songs with TW and LW ratings.

Table for station KSHE in St. Louis. MD: Al Hofer. Lists top 30 songs with TW and LW ratings.

Table for station KTXQ in Dallas. OM: Andy Lockridge, MD: Redbeard. Lists top 30 songs with TW and LW ratings.

Table for station WHJY in Providence. PD: Bill Weston, MD: Sharon Schifano. Lists top 30 songs with TW and LW ratings.

Table for station WEBN in Cincinnati. PD: Tim Dukes, MD: Brad Hardin. Lists top 30 songs with TW and LW ratings.

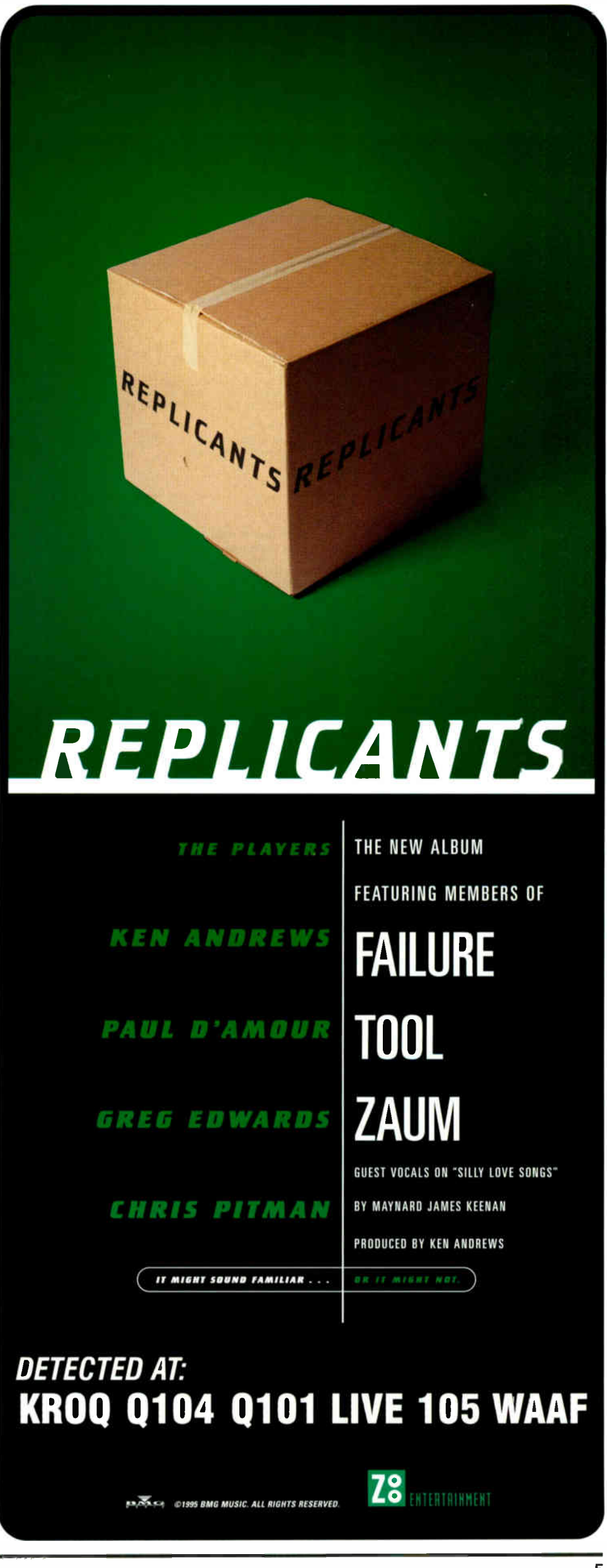
Table for station KSJO in San Jose. PD: Dana Jang, MD: Laurie Free. Lists top 30 songs with TW and LW ratings.

Table for station WIYY in Baltimore. PD: Rick Strauss, MD: Rob Heckman. Lists top 30 songs with TW and LW ratings.

Table for station WZTA in Miami. PD: Gregg Steele, MD: Heidi Hess. Lists top 30 songs with TW and LW ratings.

Table for station WXTB in Tampa. OM: Greg Mull, MD: Brian Medlin. Lists top 30 songs with TW and LW ratings.

Table for station KUFO in Portland. PD: Dave Numme, APD: Al Scott. Lists top 30 songs with TW and LW ratings.



REPLICANTS

THE NEW ALBUM FEATURING MEMBERS OF KEN ANDREWS, PAUL D'AMOUR, GREG EDWARDS, CHRIS PITMAN. THE PLAYERS. GUEST VOCALS ON "SILLY LOVE SONGS" BY MAYNARD JAMES KEENAN. PRODUCED BY KEN ANDREWS.

DETECTED AT: KROQ Q104 Q101 LIVE 105 WAAF

©1995 BMG MUSIC. ALL RIGHTS RESERVED.



AIRPLAY
Monitor

BDS IMPACT

DETECTIONS



★ ★ ★ AIRPOWER ★ ★ ★

Total Plays/Gain

Total Plays/Gain

ROLLING STONES 972/351
Like A Rolling Stone (Virgin)
Total Stations: 71/Chart Move: 29-16
Heavy (21+ plays): 15 KMJX, KSHE, KTYD, KXUS, WAPL, WIOT, WIYY, WKLS, WMMR, WNCD, WPLR, WRXK, WVRK, WWDC, WZZR
Medium (14-20): 18 KFRQ, KLAQ, KMOD, KRZZ, WBAB, WDOE, WEGR, WEZK, WFBQ, WHJY, WIMZ, WIZN, WKLC, WLVO, WPYX, WRDU, WRXR, WAFX
Light (Under 14): 38
New Airplay This Week: 20 KATT, KCAL, KGGO, KICT, KISS, KLAQ, KLB, KLOL, KLPX, KMOD, KRZZ, KTXQ, KZRR, WAQX, WCCC, WCKW, WEBN, WEGR, WIXV, WNEW

COLLECTIVE SOUL 884/99
The World I Know (Atlantic)
Total Stations: 65/Chart Move: 20-18
Heavy (21+): 13 KEGL, KHOP, KICT, KRAB, KRXQ, KRZR, KZRO, WARG, WDI, WIYY, WJST, WXTB, WZAT
Medium (14-20): 17 KLAQ, KMOD, KSJO, KTUX, WCKW, WDOE, WEBN, WEZK, WHJY, WMMR, WNOR, WPLR, WSTZ, WTPA, WTUE, WVRK, WWDC
Light (Under 14): 35
New Airplay This Week: 8 KLOL, KLPX, KTAL, WLLZ, WQFM, WRXK, WTAK, WXR

AIRPOWER BOUND

Total Plays/Gain

KENNY WAYNE SHEPHERD 759/84
Deja Voodoo (Giant)
Total Stations: 60/Chart Move: 22-21
Heavy (21+ plays): 9 KDKB, KLOS, KRXQ, KTUX, WIXV, WMMR, WRXK, WRXL, WXRC
Medium (14-20): 15 KEZO, KFRQ, KILO, KLPX, KMJX, KNCN, KTAL, WCMF, WDOE, WFCN, WHJY, WIOT, WPLR, WROV, WZZR
Light (Under 14): 36
New Airplay This Week: 5 KCAL, KEGL, KILO, KSJO, WNCD

SILVERCHAIR 718/64
Pure Massacre (Epic)
Total Stations: 57/Chart Move: 26-22
Heavy (21+): 11 KILQ, KIOZ, KRAB, KRZR, KTXU, KUPD, WAAF, WIYY, WJST, WKLO, WLLZ, WLZR, WZAT
Medium (14-20): 12 KBER, KEGL, KICT, KLOS, KNCN, KSJO, KTYD, KZRO, WKDF, WQFM, WRXK, WZTA
Light (Under 14): 32
New Airplay This Week: 6 KLOL, KTXQ, KZRR, WARG, WEBN, WXR

BOB SEGER & THE SILVER BULLET BAND 689/17
Lock And Load (Capitol)
Total Stations: 47/Chart Move: 24-24
Heavy (21+): 11 KDKB, KLPX, KMJX, KTAL, KXUS, KYYS, WAQX, WIOT, WKLC, WNCD, WRXK
Medium (14-20): 16 KEZO, KTYD, WAPL, WBAB, WEGR, WEZK, WFBQ, WHJY, WIMZ, WPLR, WRDU, WRXR, WSTZ, WVRK, WAFX, WZZR
Light (Under 14): 20
New Airplay This Week: 1 WKLS

BROTHER CANE 678/25
Breadmaker (Virgin)
Total Stations: 62/Chart Move: 27-25
Heavy (21+): 4 KISS, KTUX, WQFM, WZAT
Medium (14-20): 16 KBER, KCAL, KEGL, KEZO, KICT, KLAQ, KLOL, KLPX, KQRC, KXUS, WAAF, WFVY, WIXV, WPLR, WTPA, WXR
Light (Under 14): 42
New Airplay This Week: 6 KEZO, KISW, KOMP, WRDU, WRIF, WSTZ

DON HENLEY 645/442
The Garden Of Allah (Geffen)
Total Stations: 54/Chart Move: Debut 26
Heavy (21+): 6 KEZO, KSHE, KTAL, KXUS, WKLS, WRXK
Medium (14-20): 15 KFRQ, KLAQ, KMOD, KTYD, WCMF, WEGR, WEZK, WFBQ, WIOT, WKLC, WMMR, WRDU, WRXR, WVRK, WZZR
Light (Under 14): 33
New Airplay This Week: 28 KATT, KFRQ, KGGO, KLAQ, KMJX, KRZZ, KSHE, KYYS, WAPL, WAQX, WCCC, WCMF, WEGR, WIOT, WIXV, WIZN, WKQO, WNCD, WRDU, WROV, WRXL, WRXR, WSTZ, WTAK, WTUE, WAFX, WXR, WZZR

TOM PETTY 579/38
Cabin Down Below (Warner Bros.)
Total Stations: 43/Chart Move: 34-29
Heavy (21+): 9 KFRQ, KTYD, KXUS, KZRR, WEZK, WKLC, WKLS, WRXK, WRXR
Medium (14-20): 10 KICT, KLPX, KMJX, KTAL, WAPL, WIOT, WMMR, WSTZ, WTAK, WZZR
Light (Under 14): 24
New Airplay This Week: 4 KLAQ, KNCN, WPYX, WTAK

BUSH 575/185
Glycerine (Trauma/Interscope)
Total Stations: 55/Chart Move: Debut 32
Heavy (21+): 10 KILQ, KRAB, KRZR, KTUX, WARG, WAFV, WAXQ, WKLO, WLLZ, WZAT
Medium (14-20): 13 KHOP, KICT, KUFO, KZRO, WCKW, WDOE, WEBN, WFVY, WIYY, WRXK, WRIF, WTUE, WXR
Light (Under 14): 32
New Airplay This Week: 7 KHOP, KIOZ, KTUX, WAFV, WKDF, WKLO, WZZR

STEVIE RAY VAUGHAN 476/34
Taxman (Epic)
Total Stations: 43/Chart Move: 36-36
Heavy (21+): 4 KFRQ, KLPX, WEZK, WPLR
Medium (14-20): 11 KLAQ, KMJX, KMOD, KNCN, KTAL, KTYD, WAQX, WIYY, WRDU, WROV, WRXL
Light (Under 14): 28
New Airplay This Week: 4 KLOL, WNCD, WAFX, WZZR

CANDLEBOX 450/108
Understanding (Maverick/Warner Bros.)
Total Stations: 49/Chart Move: Debut 37
Heavy (21+): 3 KRXQ, WXTB, WZAT
Medium (14-20): 12 KILQ, KIOZ, KRZR, KTUX, KUFO, KUPD, KZRO, KZRR, WKDF, WKLO, WTFX, WTPA
Light (Under 14): 34
New Airplay This Week: 7 KICT, KMOD, KZRO, WAAF, WEBN, WKDF, WVRK

DOWN 416/14
Stone The Crow (EastWest/EEG)
Total Stations: 35/Chart Move: Debut 40
Heavy (21+): 7 KILQ, KIOZ, KRXQ, KTUX, KUPD, WAXQ, WXTB
Medium (14-20): 3 KBER, KRZR, WZAT
Light (Under 14): 25
New Airplay This Week: 1 KLAQ

CHART BOUND

Total Plays/Gain

JOAN OSBORNE 400/7
One Of Us (Blue Gorilla/Mercury)
Total Stations: 41
Heavy (21+): 4 KEZE, KZRR, WARG, WMMR
Medium (14-20): 3 KDKB, KICT, WKLS
Light (Under 14): 34
New Airplay This Week: 1 WWDC

MOST NEW AIRPLAY THIS WEEK

No. Of Stations

DON HENLEY 28
The Garden Of Allah (Geffen)
ROLLING STONES 20
Like A Rolling Stone (Virgin)
LENNY KRAVITZ 9
Circus (Virgin)
COLLECTIVE SOUL 8
The World I Know (Atlantic)
GREN 8
She Shines (I.R.S.)
TESLA 8
Steppin' Over (Geffen)

THE NIXONS 397/5
Happy Song (Make It Rain) (MCA)
Total Stations: 39
Heavy (21+): 3 KILQ, KTUX, WZAT
Medium (14-20): 7 KICT, KRXQ, KZRO, WAAF, WARG, WAXQ, WIXV
Light (Under 14): 29
New Airplay This Week: 3 KHOP, KQRC, WAXQ

THE BADLEES 390/15
Fear Of Falling (Atlas/A&M)
Total Stations: 39
Heavy (21+): 3 KFRQ, WXRC, WZAT
Medium (14-20): 8 KISS, KLAQ, KTYD, KZRR, WAFV, WFVY, WIXV, WMMR
Light (Under 14): 28
New Airplay This Week: 3 KOMP, WCKW, WROV

RUTH RUTH 373/74
Uninvited (Ventrue/American/Warner Bros.)
Total Stations: 35
Heavy (21+): 2 WAAF, WLLZ
Medium (14-20): 10 KBER, KBPI, KILO, KRXQ, KTXU, KUPD, WAXQ, WKLO, WLZR, WWDC
Light (Under 14): 23
New Airplay This Week: 5 KRZR, WKDF, WRXK, WRIF, WRXL

FIG DISH 369/54
Seeds (Atlas/A&M)
Total Stations: 41
Heavy (21+): 1 WAAF
Medium (14-20): 6 KEGL, KUPD, KZRO, WAXQ, WJST, WZAT
Light (Under 14): 34
New Airplay This Week: 3 KICT, KLOL, WCMF

SEAWEED 334/42
Start With (Hollywood)
Total Stations: 37
Heavy (21+): 3 KUPD, WAAF, WZAT
Medium (14-20): 4 KICT, KLOS, WAXQ, WLLZ
Light (Under 14): 30
New Airplay This Week: 1 WAVF

AC/DC 310/76
Cover You In Oil (EastWest/EEG)
Total Stations: 39
Heavy (21+): 3 KEGL, WTUE, WXTB
Medium (14-20): 5 KHOP, KIOZ, KSJO, KUPD, WAXQ
Light (Under 14): 31
New Airplay This Week: 4 KMJX, KNCN, WFBQ, WXR

SELF 307/14
Cannon (Spongebath/Zoo)
Total Stations: 36
Heavy (21+): 0
Medium (14-20): 8 KBER, KHOP, KILO, KRXQ, KTUX, KZRO, WLLZ, WZAT
Light (Under 14): 28
New Airplay This Week: 2 KLB, WKDF

SPACEHOG 278/103
In The Meantime (Sire/EEG)
Total Stations: 32
Heavy (21+): 2 KEGL, WZAT

Medium (14-20): 6 KBER, KILO, KTUX, KZRO, WAXQ, WRXK
Light (Under 14): 24
New Airplay This Week: 4 KHOP, KISS, KRZR, WXRC

GOD LIVES UNDERWATER 249/44
All Wrong (American/Reprise)
Total Stations: 27
Heavy (21+): 3 KEGL, KUPD, WZAT
Medium (14-20): 3 KISW, WAXQ, WLLZ
Light (Under 14): 21
New Airplay This Week: 3 KLB, KRXQ, WVRK

JAWBREAKER 226/2
Fireman (DGC/Geffen)
Total Stations: 26
Heavy (21+): 0
Medium (14-20): 7 KBER, KQRC, KTUX, KZRO, WARG, WRXK, WZAT
Light (Under 14): 19
New Airplay This Week: 1 WIYY

★ TESLA 221/105
Steppin' Over (Geffen)
Total Stations: 27
Heavy (21+): 3 KBER, KHOP, KILO
Medium (14-20): 3 KRXQ, KUFO, KUPD
Light (Under 14): 21
New Airplay This Week: 8 KGGO, KHOP, KILO, KMJX, KTUX, WKLO, WTUE, WXR

★ LOUD LUCY 216/116
Ticking (DGC/Geffen)
Total Stations: 32
Heavy (21+): 3 WAAF, WJST, WZAT
Medium (14-20): 1 WAXQ
Light (Under 14): 28
New Airplay This Week: 7 KHOP, KLB, KRZR, KTYD, KZRR, WARG, WLZR

JOHN HIATT 206/2
Cry Love (Capitol)
Total Stations: 22
Heavy (21+): 2 KTYD, WMMR
Medium (14-20): 4 WAPL, WIOT, WPLR, WQFM
Light (Under 14): 16
New Airplay This Week: 1 WCMF

SMASHING PUMPKINS 191/62
1979 (Virgin)
Total Stations: 27
Heavy (21+): 1 KLOS
Medium (14-20): 3 KEZE, KILO, WNEW
Light (Under 14): 23
New Airplay This Week: 5 KRAB, KZRO, WAFV, WBAB, WLZR

★ WHITE ZOMBIE 190/78
Super-Charger Heaven (Geffen)
Total Stations: 26
Heavy (21+): 0
Medium (14-20): 2 KBPI, KISW
Light (Under 14): 24
New Airplay This Week: 7 KEGL, KICT, KSJO, WAXQ, WRXK, WRIF, WTPA

★ ALICE IN CHAINS 187/65
Heaven Beside You (Columbia)
Total Stations: 63
Heavy (21+): 2 KTXQ, WIYY
Medium (14-20): 0
Light (Under 14): 61
New Airplay This Week: 2 KISS, WEBN

★ LENNY KRAVITZ 187/103
Circus (Virgin)
Total Stations: 24
Heavy (21+): 2 WXRC, WXTB
Medium (14-20): 0
Light (Under 14): 22
New Airplay This Week: 9 KISS, KTUX, KTYD, WAPL, WFVY, WKLS, WRXK, WXRC, WXTB

BONNIE RAITT WITH BRYAN ADAMS 183/13
Rock Steady (Capitol)
Total Stations: 17
Heavy (21+): 1 KTYD
Medium (14-20): 5 KDKB, WAPL, WBAB, WFBQ, WMMR
Light (Under 14): 11
New Airplay This Week: 2 WCCC, WPYX

★ ALANIS MORISSETTE 181/68
All I Really Want (Maverick/Reprise)
Total Stations: 19
Heavy (21+): 2 KTXQ, WZTA
Medium (14-20): 5 KICT, KZRO, WARG, WWDC, WXTB
Light (Under 14): 12
New Airplay This Week: 4 KRAB, KRXQ, KTXQ, WARG

★ FOR SQUIRRELS 167/72
Mighty K.C. (550 Music)
Total Stations: 18
Heavy (21+): 4 WARG, WAXQ, WDI, WZAT
Medium (14-20): 0
Light (Under 14): 14
New Airplay This Week: 2 WDI, WXR

OZZY OSBOURNE 166/40
See You On The Other Side (Epic)
Total Stations: 25
Heavy (21+): 0
Medium (14-20): 5 KILO, WCMF, WKLO, WLVO, WTUE
Light (Under 14): 20
New Airplay This Week: 4 KILO, KQRC, WAXQ, WLVO

★ EVERCLEAR 162/56
Santa Monica (Watch The World Die) (Capitol)
Total Stations: 18
Heavy (21+): 2 WAAF, WLLZ
Medium (14-20): 5 KBPI, KICT, KISS, KUFO, WAFV
Light (Under 14): 11
New Airplay This Week: 2 KISS, WLLZ

★ GREN 157/76
She Shines (I.R.S.)
Total Stations: 31
Heavy (21+): 0
Medium (14-20): 4 KEGL, KZRO, WAXQ, WKLO
Light (Under 14): 27
New Airplay This Week: 8 KHOP, KISS, KTUX, KZRO, WAXQ, WKDF, WSTZ, WZAT

ANTHRAX 145/10
Fueled (Elektra/EEG)
Total Stations: 20
Heavy (21+): 1 KUPD
Medium (14-20): 2 KEGL, KILO
Light (Under 14): 17
New Airplay This Week: 1 KILO

THE TEA PARTY 145/17
The Bazaar (Chrysalis/EMI)
Total Stations: 16
Heavy (21+): 3 KISS, KISW, WAAF
Medium (14-20): 1 KTYD
Light (Under 14): 12

Airpower awarded to those records which attain 800 detections for the first time. New airplay lists those stations registering six or more detections per week on a record for the first time. ★ Initial impact: records appearing on this page for the first time.



“Free As A Bird”

**The first new Beatles song
in 25 years.**

THE
BEATLES

ANTHOLOGY

1

World Wide Web: <http://hollywoodandvine.com>

© 1995 Apple Corps, Ltd. Under Exclusive License to EMI Records Ltd.



Produced by: Jeff Lynne



SONG ACTIVITY REPORTS



For Week Ending November 12, 1995

Detailed song tracking information for the last 3 weeks for all songs showing increased play this week. Total plays and gain do not include video play. Markets listed in order of population.

Table with 12 columns: Artist, Title, Total Plays/Gain, Chart Move, and 12 radio markets (New York, L.A., Chicago, etc.). Rows include Alice in Chains, Blues Traveler, Brother Cane, Bush, and Candlebox.

Table with 12 columns: Artist, Title, Total Plays/Gain, Chart Move, and 12 radio markets. Rows include Collective Soul, Down, Melissa Etheridge, Foo Fighters, and Don Henley.

Take Another Step With The One And Only...

Meat Loaf



Welcome
TO THE
NEIGHBORHOOD

The Adventure Is Just Beginning!

The Album

In Stores November 14

The Single

"I'd Lie For You
(And That's The Truth)"

Produced by Ron Nevison

Top 10 Soundscan

The Video



The Airwaves

"Amnesty Is Granted"

At Rock Radio

Today Show

November 13

Album Network Radio Special

November 14

VH-1 Concert Special

November 14

Regis And Kathy Lee

November 15

David Letterman

November 16

Tonight Show

December 13

The Internet

Exclusive Website

(<http://www.meatloaf.mca.com>)



MCA



SONG ACTIVITY REPORTS



For Week Ending November 12, 1995

Detailed song tracking information for the last 3 weeks for all songs showing increased play this week. Total plays and gains do not include video play. Markets listed in order of population.

Main table containing song activity reports for artists like JOAN OSBORNE, TOM PETTY, RED HOT CHILI PEPPERS, ROLLING STONES, BOB SEGER & SILVER BULLET BAND, SEVEN MARY THREE, KENNY WAYNE SHEPHERD, SILVERCHAIR, SMASHING PUMPKINS, and STEVIE RAY VAUGHAN. Each entry includes station codes, play counts, and chart positions.

MODERN ROCK

POWER PLAYLISTS™



AIRPLAY Monitor

For Week Ending November 12, 1995

Playlists supplied by Broadcast Data Systems' Radio Track service...

KROQ Los Angeles PD: Kevin Weatherly APD: Gene Sandbloom

WKQX Chicago PD: Bill Gamble APD/MD: Mary Shuminas

WPLY Philadelphia PD: Garrett Michaels APD/MD: Chuck Tisa

WDRE Long Island OM: Jim McGuinn PD: Ted Taylor

WBCN Boston VP/Programming: Oedipus MD: Carter Alan

WHYT Detroit PD: Rick Gillette MD: Alex Tear

KDGE Dallas PD: Joel Folger MD: Jay Michaels

WHFS Washington, DC PD: Robert Benjamin APD: Bob Waugh

KITS San Francisco VP/Prgrm.: Richard Sands MD: Roland West

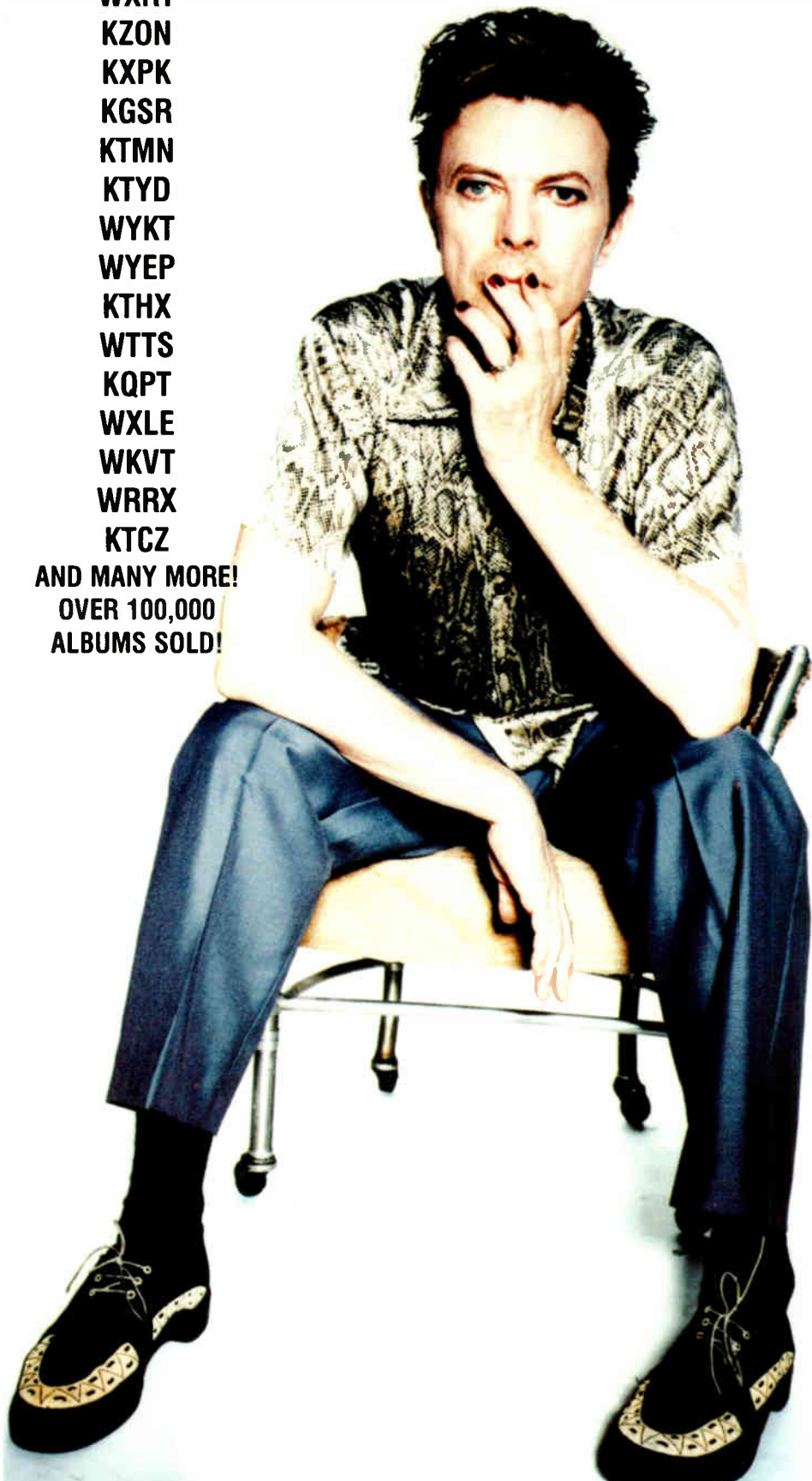
WNNX Atlanta PD: Brian Philips APD: Leslie Fram

KEGE Minneapolis PD: John Lassman MD: Wade Linder

WMMS Cleveland OM/PD: John Gorman APD/MD: Doug Kubinski

KSCA WDST WUNX WXRT KZON KXPB KGSR KTMN KTYD WYKT WYEP KTHX WTTS KQPT WXLE WKVT WRRX KTCZ

AND MANY MORE! OVER 100,000 ALBUMS SOLD!



DAVID BOWIE STRANGERS WHEN WE MEET

FROM THE NEW ALBUM OUTSIDE PRODUCED BY DAVID BOWIE AND BRIAN ENO

© 1995 David Bowie under exclusive license in the United States and Canada to Virgin Records America, Inc.



BLUES TRAVELER

"HOOK"

Their Audience Is Your Audience

Massive

RETURN-PATH: <DMERKLE@XXX.XXX.EDU>
 NAME: THE FATHER OF OUR COUNTRY
 ADDRESS: ROW AA, SEATS 1&2, MILE HIGH STADIUM
 AGE: BUZZ OFF

- TOP 10 REASONS TO POUND THE LIVING DAYLIGHTS OUT OF HOOK:
1. FOUR HAS SOLD 2.5 MILLION TO DATE
 2. FOUR CONTINUES TO SOUNDSCAN TOP 20 AFTER 22 WEEKS
 3. HOOK 7* AOR
 4. 10* ALTERNATIVE
 5. JUST ADDED BY KOME, AND AN ADDITIONAL 10 REALLY SMART STATIONS. JAY TAYLOR SAYS, "I AM ADDING."
 6. TOP 10 CALL OUT AT Q101 CHICAGO, 99X ATLANTA, AND WPLY PHILLY, AND CONSISTENT PHONES AT Z100 NYC
 7. PERFORMANCES ON MTV MOVIE AWARDS, SATURDAY NIGHT LIVE SEASON PREMIERE, AND MORE TAPINGS OF LETTERMAN THAN WE COULD COUNT
 8. BAND PLAYING TO OVER 200,000 PEOPLE ON THEIR FALL TOUR
 9. BAND HAS HEADLINED IN ALL 50 STATES
 10. POPPER COLLECTS GUNS. I'M FRIENDS WITH POPPER...

13 MODERN ROCK MONITOR
 10* R&R NEW ROCK
 1,117 MODERN ROCK SPINS!

"HOOK"
 from the multi-platinum
 album "four"



Produced & Mixed by Steve Thompson & Michael Barbiero • Engineered by Michael Barbiero
 Management: Dave Frey, assisted by Debi Burdick in association w/BGP



© 1995 A&M Records, Inc. All rights reserved.

MODERN ROCK

POWER PLAYLISTS™

AIRPLAY Monitor

For Week Ending
 November 12, 1995

Playlists supplied by Broadcast Data Systems' Radio
 Track service. Stations selected from panel of leading
 broadcasters in 129 radio markets, electronically
 monitored 24 hours a day, 7 days a week. Songs
 ranked by number of plays in monitored week.

Station	PD/M	Artist	Plays	Station	PD/M	Artist	Plays	Station	PD/M	Artist	Plays
KOME San Jose	OM: Ron Nenni PD/MD: Jay Taylor	1 Smashing Pumpkins, Bullet With Butterfly	39 36	KNDD Seattle	PD: Rick Lambert MD: Marco Collins	1 Smashing Pumpkins, Bullet With Butterfly	38 37	CIMX Detroit	Prgm. Mng.: Murray Brookshaw PD/MD: Vince Cannova	1 Toadies, Possum Kingdom	50 56
		2 Folk Implosion, Natural One	38 40			2 Toadies, Possum Kingdom	36 38			2 Green Day, Geek Stink Breath	50 55
		3 Goo Goo Dolls, Name	37 35			3 Presidents Of The United States, Kitty	34 28			3 Folk Implosion, Natural One	49 51
		4 Rancid, Time Bomb	34 26			4 Oasis, Wonderwall	31 27			4 311, Don't Stay Home	48 39
		5 Smashing Pumpkins, 1979	33 32			5 Bush, Glycerine	30 32			5 Red Hot Chili Peppers, My Friends	48 35
		6 Red Hot Chili Peppers, My Friends	31 38			6 Everclear, Santa Monica	29 31			6 Smashing Pumpkins, Bullet With Butterfly	43 47
		7 Bush, Glycerine	28 23			7 Joan Osborne, One Of Us	27 28			7 Presidents Of The United States, Kitty	32 26
		8 Foo Fighters, I'll Stick Around	28 31			8 Green Day, Brain Stew	27 28			8 The Rentals, Friends Of P	32 33
		9 Radiohead, High And Dry	27 18			9 Sonic Youth, The Diamond Sea	27 24			9 Goo Goo Dolls, Name	31 32
		10 Presidents Of The United States, Lump	27 24			10 Alice In Chains, Grnd	26 24			10 Mr. Miraianga, Burnin' Rubber	30 32
		11 Nine Inch Nails, Dead Souls	25 13			11 Folk Implosion, Natural One	26 24			11 Joan Osborne, One Of Us	30 16
		12 Elastica, Slutter	24 18			12 Green Day, Geek Stink Breath	25 27			12 Jawbreaker, Fireman	30 23
		13 Silverchair, Pure Massacre	23 16			13 The Rentals, Friends Of P	24 25			13 For Squirrels, Mighty K.C.	29 10
		14 Seven Mary Three, Cumbersome	23 24			14 Foo Fighters, Big Me	24 25			14 Pearl Jam, Immortality	29 29
		15 No Doubt, Just A Grl	23 25			15 Red Hot Chili Peppers, My Friends	24 25			15 Smashing Pumpkins, 1979	28 28
		16 The Rentals, Friends Of P	23 24			16 Jawbreaker, Fireman	23 24			16 Garbage, Queer	28 27
		17 For Squirrels, Mighty K.C.	22 26			17 Presidents Of The United States, Lump	23 24			17 Alice In Chains, Grnd	28 28
		18 Toadies, Possum Kingdom	22 33			18 Oasis, Morning Glory	22 22			18 Foo Fighters, I'll Stick Around	27 30
		19 Oasis, Wonderwall	21 19			19 Ruth Ruth, Uninvited	22 23			19 Bush, Glycerine	27 25
		20 Edwyn Collins, A Girl Like You	19 24			20 Sweet Water, Superstar	22 22			20 Silverchair, Pure Massacre	27 28
		21 Bush, Comedown	18 15			21 Alanis Morissette, All I Really Want	22 16			21 Natalie Merchant, Wonder	27 26
		22 Heather Nova, Walk This World	18 21			22 Blur, Country House	21 13			22 Radiohead, Just	26 28
		23 Silverchair, Tomorrow	17 12			23 Presidents Of The United States, Stranger	21 25			23 Rancid, Ruby Soho	25 26
		24 Mr. Miraianga, Burnin' Rubber	17 24			24 Garbage, Queer	21 22			24 Seven Mary Three, Cumbersome	25 8
		25 Presidents Of The United States, Kitty	16 21			25 Mr. Miraianga, Burnin' Rubber	20 23			25 Alanis Morissette, Hand In My Pocket	25 49
		26 Garbage, Queer	15 14			26 Elastica, Car Song	20 22			26 Thrush Hermit, Hated It	23 25
		27 Collective Soul, The World I Know	15 21			27 Spacohog, In The Meantime	19 12			27 Seaweed, Start With	23 26
		28 Stone Temple Pilots, Vasoline	15 14			28 Natalie Merchant, Wonder	18 18			28 Alanis Morissette, All I Really Want	22 22
		29 Alanis Morissette, All I Really Want	15 23			29 Bush, Bubbles	18 15			29 Inbreeds, Any Sense Of Time	22 25
		30 Natalie Merchant, Wonder	14 18			30 Loud Lucy, Ticking	17 11			30 Our Lady Peace, Supersatellite	22 22
KTBBZ Houston	PD: Cruze MD: David Sadoff	1 Toadies, Possum Kingdom	40 42	WJRR Orlando	PD: John Frost MD: Steve Robertson	1 Silverchair, Pure Massacre	30 27	XTRA San Diego	PD/MD: Mike Halloran APD: Scott Struber	1 311, Don't Stay Home	33 35
		2 Smashing Pumpkins, Bullet With Butterfly	40 42			2 Bush, Machinehead	29 28			2 Oasis, Wonderwall	33 31
		3 Presidents Of The United States, Lump	39 38			3 Goo Goo Dolls, Name	28 27			3 Presidents Of The United States, Kitty	30 14
		4 Bush, Comedown	37 39			4 Bush, Glycerine	28 24			4 Smashing Pumpkins, Bullet With Butterfly	30 31
		5 Goo Goo Dolls, Name	36 38			5 Blind Melon, Galaxe	27 27			5 Goo Goo Dolls, Name	28 31
		6 Folk Implosion, Natural One	31 27			6 Smile, Staring At The Sun	27 29			6 Toadies, Possum Kingdom	28 29
		7 Natalie Merchant, Carnival	31 31			7 Seaweed, Start With	27 22			7 Foo Fighters, I'll Stick Around	27 22
		8 Tripping Daisy, PiAha	26 26			8 Smashing Pumpkins, Bullet With Butterfly	27 29			8 Red Hot Chili Peppers, My Friends	26 28
		9 Seven Mary Three, Cumbersome	26 21			9 Red Hot Chili Peppers, My Friends	27 12			9 Natalie Merchant, Wonder	26 28
		10 Foo Fighters, I'll Stick Around	25 19			10 Raacharound, Big Chair	26 27			10 Ruggburns, War	20 22
		11 The Rentals, Friends Of P	25 23			11 Green Day, Geek Stink Breath	26 29			11 Green Day, Geek Stink Breath	19 18
		12 Radiohead, Just	24 24			12 Folk Implosion, Natural One	20 26			12 Bush, Glycerine	19 18
		13 Alanis Morissette, All I Really Want	23 36			13 Toadies, Possum Kingdom	20 17			13 Tripping Daisy, PiAha	18 20
		14 Collective Soul, The World I Know	23 21			14 Monster Magnet, Negasonic Teenage Warhead	19 14			14 Rancid, Ruby Soho	17 9
		15 Green Day, Geek Stink Breath	23 24			15 Presidents Of The United States, Lump	17 19			15 For Squirrels, Mighty K.C.	16 23
		16 No Doubt, Just A Grl	23 15			16 Soul Asylum, Just Like Anyone	17 24			16 The Rentals, Friends Of P	16 24
		17 Red Hot Chili Peppers, My Friends	22 14			17 Foo Fighters, I'll Stick Around	17 12			17 Silverchair, Pure Massacre	15 22
		18 Heather Nova, Walk This World	21 21			18 CIV, Can't Wait One Minute More	17 21			18 Better Than Ezra, Roselia	15 6
		19 Smashing Pumpkins, 1979	21 15			19 Alanis Morissette, Hand In My Pocket	16 25			19 Black Grape, In The Name Of The	14 17
		20 Alanis Morissette, Hand In My Pocket	20 12			20 Everclear, Santa Monica	16 24			20 Hum, Stars	13 14
		21 Red Hot Chili Peppers, Warped	20 21			21 Ruth Ruth, Uninvited	16 20			21 Weezer, Say It Ain't So	13 15
		22 Garbage, Queer	19 22			22 Garbage, Queer	16 25			22 Silverchair, Tomorrow	13 13
		23 Blind Melon, Galaxe	18 19			23 Our Lady Peace, Naveed	16 16			23 Bush, Little Things	13 8
		24 Tears For Fears, God's Mistake	18 14			24 Foo Fighters, I'll Stick Around	16 18			24 Meat Puppets, Scum	12 9
		25 Better Than Ezra, In The Blood	17 22			25 Silverchair, Tomorrow	15 16			25 Better Than Ezra, In The Blood	12 23
		26 Better Than Ezra, Good	17 19			26 Live, All Over You	15 13			26 Green Day, J.A.R.	12 9
		27 311, Don't Stay Home	17 16			27 Live, White, Discussion	14 16			27 Matthew Sweet, Super Baby	12 1
		28 Live, All Over You	16 22			28 Collective Soul, The World I Know	14 14			28 Everclear, Santa Monica	12 0
		29 Stone Temple Pilots, Vasoline	16 11			29 Sponga, Plowed	14 14			29 Blues Traveler, Hook	11 14
		30 Alice In Chains, Grnd	16 16			30 Live, Ins	14 11			30 Smashing Pumpkins, 1979	11 0
WSHE Miami	PD: Bill Pugh MD: John Rozz	1 Joan Osborne, One Of Us	23 23	KPNT St. Louis	PD: Alex Luke MD: Eric Schmidt	1 Green Day, Geek Stink Breath	34 31	KXPX Denver	PD: Doug Clifton MD: Bruce Jones	1 Oasis, Wonderwall	28 24
		2 Goo Goo Dolls, Name	21 20			2 Deep Blue Something, Breakfast At Tiffany's	33 34			2 Goo Goo Dolls, Name	28 26
		3 Red Hot Chili Peppers, My Friends	20 22			3 Presidents Of The United States, Lump	32 32			3 Blues Traveler, Hook	27 27
		4 Alanis Morissette, Hand In My Pocket	20 23			4 Red Hot Chili Peppers, My Friends	32 32			4 Red Hot Chili Peppers, My Friends	26 27
		5 Deep Blue Something, Breakfast At Tiffany's	20 23			5 Melissa Etheridge, Your Little Secret	32 32			5 Toad The Wet Sprocket, Good Intentions	26 26
		6 Smashing Pumpkins, 1979	17 13			6 Smashing Pumpkins, Bullet With Butterfly	31 29			6 Smashing Pumpkins, 1979	25 26
		7 Freddy Jones Band, Waitress	13 13			7 Alanis Morissette, Hand In My Pocket	30 34			7 Edwin McCain, Solitude	24 25
		8 Chris Isaak, Go Walking Down There	13 10			8 Toad The Wet Sprocket, Good Intentions	30 26			8 Garbage, Queer	16 15
		9 Edwyn Collins, A Girl Like You	13 21			9 Rancid, Time Bomb	27 36			9 Rancid, Time Bomb	15 13
		10 Rusted Root, Ecstasy	12 6			10 The Rentals, Friends Of P	24 18			10 Spacohog, In The Meantime	12 15
		11 Spacohog, In The Meantime	12 11			11 Ruth Ruth, Uninvited	24 18			11 Joan Osborne, One Of Us	14 23
		12 Collective Soul, The World I Know	12 4			12 The Dixons, Happy Song	23 20			12 Julian Cope, Try Try Try	14 0
		13 Edwin McCain, Solitude	11 10			13 Everclear, Santa Monica	23 22			13 Deep Blue Something, Breakfast At Tiffany's	14 13
		14 Tears For Fears, God's Mistake	11 12			14 Foo Fighters, I'll Stick Around	23 23			14 Alanis Morissette, All I Really Want	14 13
		15 Folk Implosion, Natural One	11 6			15 Silverchair, Pure Massacre	22 20			15 David Bowie, Strangers When We Meet	13 13
		16 Garbage, Queer	11 11			16 Bush, Glycerine	21 17			16 Hootie & The Blowfish, Time	12 9
		17 Lenny Kravitz, Circus	11 3			17 Joan Osborne, One Of Us	21 18			17 P.M. Dawn, In My Mind	12 15
		18 Dave Matthews Band, Typical Situation	11 11			18 Garbage, Queer	21 16			18 Lisa Loeb & Nine Stories, Do You Sleep?	12 15
		19 Heather Nova, Walk This World	11 13			19 Seven Mary Three, Cumbersome	21 22			19 Tears For Fears, God's Mistake	12 22
		20 Melissa Etheridge, Your Little Secret	11 11			20 Oasis, Wonderwall	20 1			20 Folk Implosion, Natural One	12 0
		21 Toad The Wet Sprocket, Good Intentions	11 13			21 Alice In Chains, Grnd	20 18			21 Collective Soul, The World I Know	11 15
		22 Lisa Loeb & Nine Stories, Do You Sleep?	10 12			22 Toadies, I Come From The Water	18 0			22 Natalie Merchant, Wonder	10 22
		23 Blues Traveler, Hook	10 5			23 Radiohead, Just	18 13			23 Alanis Morissette, Hand In My Pocket	10 7
		24 Hootie & The Blowfish, Drowning	10 11			24 Elastica, Car Song	18 16			24 Chris Isaak, Got' Home	10 7
		25 Blues Traveler, Hook	10 12			25 Folk Implosion, Natural One	17 14			25 Collective Soul, The World I Know	10 7
		26 Julian Cope, Try Try Try	10 6			26 Tripping Daisy, PiAha	17 9			26 Stone Temple Pilots, Dancing Days	9 6
		27 Red Hot Chili Peppers, Walkabout	9 8			27 Blues Traveler, Hook	16 19			27 Melissa Etheridge, Your Little Secret	9 11
		28 Indigo Girls, Bury My Heart At Wounded Knee	9 4			28 Toadies, Possum Kingdom	16 21			28 Worldbeat, Peter Gabriel, Party Man	9 14
		29 Sponga, Rainin'	8 12			29 Sponga, Rainin'	16 16			29 Pretenders, Sense Of Purpose	9 11
		30 Modern English, I Melt With You	8 2			30 Poe, Trigger Happy Jack	16 1			30 Sponga, Rainin'	9 7
WMRQ Hartford	PD/MD: John Knapp	1 Goo Goo Dolls, Name	41 37	WFNX Boston	PD: Troy Smith MD: Laurie Gail	1 Sonic Youth, The Diamond Sea	35 29	XHRM San Diego	OM: Bryan Jones PD: Kelli Cluque	1 Edwyn Collins, A Girl Like You	28 23
		2 Dave Matthews Band, Ants Marching	41 39			2 My Life With The Thrill KIM, Hit & Run	32 27			2 Goo Goo Dolls, Name	26 25
		3 Bush, Comedown	41 40			3 Black Grape, In The Name Of The	32 24			3 Deep Blue Something, Breakfast At Tiffany's	25 23
		4 Presidents Of The United States, Lump	40 41			4 Letters To Cleo, Demon Rock	31 23			4 Toad The Wet Sprocket, Good Intentions	24 14
		5 Toad The Wet Sprocket, Good Intentions	40 37			5 Folk Implosion, Natural One					

POWER PLAYLISTS

For Week Ending November 12, 1995



Playlists supplied by Broadcast Data Systems' Radio Track service. Stations selected from panel of leading broadcasters in 125 radio markets, electronically monitored 24 hours a day, 7 days a week. Songs ranked by number of plays in monitored week.



WENZ Cleveland PD: Rick Bennett MD: Sean Robertson. Playlist table with 30 items including 'Alanis Morissette, Hand In My Pocket' and 'Natalie Merchant, Wonder'.

WLUM Milwaukee PD: Ron Bunce MD: Zerrin Bulut. Playlist table with 30 items including 'Alanis Morissette, All I Really Want' and 'Toadies, Possum Kingdom'.

KWOD Sacramento PD/MD: Alex Cosper. Playlist table with 30 items including 'Deep Blue Something, Breakfast At Tiffany's' and 'Smashing Pumpkins, Bullet With Butterly'.

WBRU Providence PD: Alexa Tobin MD: Stephanie Findley. Playlist table with 30 items including 'The Rentals, Friends Of P.' and 'Goo Goe Dolls, Name'.

KISF Kansas City PD: Chuck Geiger MD: Booker Madison. Playlist table with 30 items including 'Presidents Of The United States, Lump' and 'Smashing Pumpkins, Bullet With Butterly'.

WXDX Pittsburgh PD: Cris Winter MD: Steve Frankenberg. Playlist table with 30 items including 'Alanis Morissette, All I Really Want' and 'Toadies, Possum Kingdom'.

WEDG Buffalo PD: Vince Richards MD: Rich Wall. Playlist table with 30 items including 'Heather Nova, Walk This World' and 'Goo Goe Dolls, Name'.

KNRK Portland, OR PD: Mark Hamilton MD: Matt Souther. Playlist table with 30 items including 'Goo Goe Dolls, Name' and 'Toadies, Possum Kingdom'.

KEDJ Phoenix PD: John Clay MD: Christopher 'The Minister'. Playlist table with 30 items including 'Toadies, Possum Kingdom' and 'Alanis Morissette, Hand In My Pocket'.

WGRD Grand Rapids PD: Allan Fee MD: Leann Curtis. Playlist table with 30 items including 'Smashing Pumpkins, Bullet With Butterly' and 'The Rentals, Friends Of P.'.

WKOC Norfolk PD: Mark Bradley MD: Dal Hunter. Playlist table with 30 items including 'Alanis Morissette, All I Really Want' and 'Goo Goe Dolls, Name'.

WROX Norfolk PD: Chris Corley MD: Al Mitchell. Playlist table with 30 items including 'Alanis Morissette, All I Really Want' and 'Green Day, Geek Slink Breath'.

WNVE Rochester PD/MD: Erick Anderson. Playlist table with 30 items including 'Toadies, Possum Kingdom' and 'Alanis Morissette, Hand In My Pocket'.

KMYZ Tulsa PD: Paul Kreigler MD: Greg Kocsack. Playlist table with 30 items including 'Green Day, Geek Slink Breath' and 'Presidents Of The United States, Lump'.

KGDE Omaha PD: Michael Steele MD: Tim Virgin. Playlist table with 30 items including 'Toadies, Possum Kingdom' and 'Green Day, Geek Slink Breath'.

KTCL Denver PD: John Hayes MD: Mary Moses. Playlist table with 30 items including 'Sonia Dada, Screaming John' and 'Alanis Morissette, All I Really Want'.

KEDG Las Vegas PD: John Griffin MD: Freddy Snakeskin. Playlist table with 30 items including 'Goo Goe Dolls, Name' and 'Smashing Pumpkins, Bullet With Butterly'.

WAQZ Cincinnati PD/MD: Matt Harris APD: Sterling Schiessler. Playlist table with 30 items including 'Toad The Wet Sprocket, Good Intentions' and 'Presidents Of The United States, Lump'.

KXKR Salt Lake City PD: Mike Summers MD: Sean Ziebarth. Playlist table with 30 items including 'Smashing Pumpkins, Bullet With Butterly' and 'Alice In Chains, Grind'.

WQXA Harrisburg PD: John Moschitta MD: Scott McFadden. Playlist table with 30 items including 'Goo Goe Dolls, Name' and 'Alanis Morissette, Hand In My Pocket'.

WWCD Columbus PD: Jane Purcell MD: Andy Davis. Playlist table with 30 items including 'Deep Blue Something, Breakfast At Tiffany's' and 'Lisa Loeb & Nine Stories, Do You Sleep?'.

KTEG Albuquerque PD: Sandy Horowitz MD: Julie Hoyt. Playlist table with 30 items including 'Toadies, Possum Kingdom' and 'Presidents Of The United States, Lump'.

WZRH New Orleans PD: Jack Snyder MD: Darren Gauthier. Playlist table with 30 items including 'Blues Traveler, Hook' and 'Smashing Pumpkins, Bullet With Butterly'.

WEND Charlotte PD: Jack Daniel MD: Kim Monroe. Playlist table with 30 items including 'Blues, Comedown' and 'Seven Mary Three, Cumberson'.



*** **AIRPOWER** ***
(Minimum 900 detections for the first time)

Total Plays/Gain	Total Plays/Gain	Total Plays/Gain
SILVERCHAIR 993/137 <i>Pure Massacre (Epic)</i> Total Stations: 54/Chart Move: 24-17 Heavy (30+ plays): 5 KBBT, KFRR, KKND, KTOZ, WJRR Medium (15-29): 31 CIMX, KEDG, KEGE, KGDE, KLZR, KMYZ, KNNC, KOME, KPNT, KROQ, KRRK, KTEG, KWOD, KXKR, WBER, WBRU, WCY, WEDG, WEND, WENZ, WGRD, WHY, WKQX, WMMS, WNNX, WRLG, WRX, WXDX, WXWX, WZRH, XTRA Light (Under 15): 18 New Airplay This Week: 1 WHY	NATALIE MERCHANT 967/110 <i>Wonder (Elektra/EEG)</i> Total Stations: 56/Chart Move: 23-19 Heavy (30+): 6 KKND, WAQZ, WENZ, WEQX, WLUM, WQXA Medium (15-29): 27 CIMX, CKEY, KBBT, KDGE, KEDJ, KEGE, KFRR, KGDE, KITS, KMYZ, KNDD, KNRK, KTCL, KTEG, KTOZ, WCHZ, WCY, WHFS, WMMS, WMRQ, WNNX, WQNF, WROX, WRXQ, WWCD, WZRH, XTRA Light (Under 15): 23 New Airplay This Week: 3 KEDG, WPLY, WQNF	EVERCLEAR 903/156 <i>Santa Monica (Watch The World Die) (Capitol)</i> Total Stations: 52/Chart Move: 26-20 Heavy (30+): 5 KBBT, KISF, KNNC, KNRK, WLUM Medium (15-29): 26 CIMX, KFRR, KGDE, KITS, KKND, KNDD, KPNT, KRRK, KTOZ, KXKR, WBCN, WBER, WBRU, WCHZ, WCY, WEND, WEQX, WGRD, WHY, WJRR, WMMS, WNNX, WQNF, WRLG, WROX, WRXQ Light (Under 15): 21 New Airplay This Week: 7 KEDJ, KGDE, KMYZ, WCY, WMRQ, WZRH, XTRA

MOST NEW AIRPLAY THIS WEEK

	No. Of Stations
SMASHING PUMPKINS 15 <i>1979 (Virgin)</i>	15
OASIS 14 <i>Wonderwall (Epic)</i>	14
DAVE MATTHEWS BAND 13 <i>Satellite (RCA)</i>	13
BLACK GRAPE 10 <i>In The Name Of The Father (Radioactive/MCA)</i>	10
ELASTICA 8 <i>Car Song (DGC/Geffen)</i>	8

Medium (15-29): 8 KBBT, KLZR, KROQ, WBCN, WENZ, WFNX, WKQX, XTRA
Light (Under 15): 18
New Airplay This Week: 4 KBBT, WBCN, WGRD, WKQX

*** CANDLEBOX 270/113**
Understanding (Maverick/Warner Bros.)
Total Stations: 38
Heavy (30+): 0
Medium (15-29): 7 KBBT, KEGE, KFRR, KTOZ, WCHZ, WKQX, WLUM
Light (Under 15): 31
New Airplay This Week: 6 KEDG, KRRK, WCY, WHY, WNVE, WQNF

SONIC YOUTH 269/18
The Diamond Sea (DGC/Geffen)
Total Stations: 27
Heavy (30+): 1 WFNX
Medium (15-29): 7 KBBT, KLZR, KNDD, KNNC, KTCL, WBCN
Light (Under 15): 19
New Airplay This Week: 1 KROQ

*** DAVE MATTHEWS BAND 222/188**
Satellite (RCA)
Total Stations: 31
Heavy (30+): 1 WEND
Medium (15-29): 2 WROX, WRXQ
Light (Under 15): 28
New Airplay This Week: 13 KMYZ, KTOZ, WBER, WBRU, WCHZ, WEND, WENZ, WGRD, WHFS, WROX, WRXQ, WWCD, WZRH

*** PASSENGERS 201/84**
Miss Sarajevo (Island)
Total Stations: 33
Heavy (30+): 0
Medium (15-29): 5 WBRU, WCHZ, WEQX, WKOC, WROX
Light (Under 15): 28
New Airplay This Week: 6 KLZR, KTCL, KXKR, WEQX, WMMS, WWCD

BECKY SHARP 188/5
Beach Ball (Way Cool Music/MCA)
Total Stations: 20
Heavy (30+): 0
Medium (15-29): 2 KNNC, WNNX
Light (Under 15): 18

MENSWEAR 173/10
Daydreamer (London/Island)
Total Stations: 22
Heavy (30+): 1 CKEY
Medium (15-29): 5 KBBT, KITS, KNNC, WKQX, WMMS
Light (Under 15): 16

SELF 166/16
Cannon (Spongebath/Zoo)
Total Stations: 20
Heavy (30+): 0
Medium (15-29): 4 KBBT, KGDE, KRRK, WRLG
Light (Under 15): 16
New Airplay This Week: 2 KEGE, KTOZ

Light (Under 15): 29
New Airplay This Week: 8 CKEY, KITS, KMYZ, KNNC, WAQZ, WHY, WRLG, XTRA

POE 420/114
Trigger Happy Jack (Modern/Antalantic)
Total Stations: 29
Heavy (30+): 0
Medium (15-29): 14 KBBT, KEDJ, KFRR, KNNC, KNRK, KPNT, KXKR, WAQZ, WEND, WENZ, WKQX, WMMS, WOXY, WRLG
Light (Under 15): 15
New Airplay This Week: 5 KPNT, WBER, WHY, WROX, WXWX

FOR SQUIRRELS 381/95
Mighty K.C. (550 Music)
Total Stations: 35
Heavy (30+): 1 KFRR
Medium (15-29): 11 CIMX, KKND, KOME, KROQ, WCHZ, WEDG, WEND, WHY, WKQX, WLUM, XTRA
Light (Under 15): 23
New Airplay This Week: 4 WLUM, WRLG, WRXQ, WSHE

CHRIS ISAAK 364/55
Go Walking Down There (Reprise)
Total Stations: 35
Heavy (30+): 0
Medium (15-29): 9 KEDJ, KITS, KNRK, WENZ, WEQX, WMMS, WQXA, WRXQ, XHRM
Light (Under 15): 26
New Airplay This Week: 4 KDGE, KNRK, WRLG, WRXQ

SPACEHOG 321/80
In The Meantime (Sire/EEG)
Total Stations: 27
Heavy (30+): 1 KGDE
Medium (15-29): 9 KBBT, KKND, KMYZ, KNDD, KNRK, KTCL, KTCL, KXPK, WDRE
Light (Under 15): 17
New Airplay This Week: 4 KEGE, KISF, KNRK, KTOZ

RANCID 301/108
Ruby Soho (Epitaph)
Total Stations: 27
Heavy (30+): 1 KFRR

AIRPOWER BOUND

COLLECTIVE SOUL 892/150
The World I Know (Atlantic)
Total Stations: 54/Chart Move: 27-21
Heavy (30+ plays): 3 KDGE, KTOZ, WMMS
Medium (15-29): 28 KBBT, KEDG, KFRR, KGDE, KISF, KITS, KMYZ, KNNC, KOME, KTCL, KWOD, WCHZ, WDRE, WEND, WEQX, WGRD, WHFS, WHY, WKQX, WLUM, WMRQ, WNNX, WPLY, WROX, WXDX, WXWX, XHRM
Light (Under 15): 23
New Airplay This Week: 4 KEDJ, KGDE, WENZ, WSHE

SMASHING PUMPKINS 837/310
1979 (Virgin)
Total Stations: 51/Chart Move: Debut 24
Heavy (30+): 9 KBBT, KGDE, KISF, KOME, KROQ, WBCN, WHFS, WHY, WLUM
Medium (15-29): 14 CIMX, KEGE, KFRR, KITS, KLZR, KNRK, KTCL, KXPK, WDRE, WFNX, WKQX, WSHE, WWCD
Light (Under 15): 28
New Airplay This Week: 15 KBBT, KEDG, KEGE, KNNC, KNRK, WAQZ, WEND, WENZ, WNVE, WROX, WRXQ, WXDX, WZRH, XHRM, XTRA

RUTH RUTH 707/5
Uninvited (Venture/American/Warner Bros.)
Total Stations: 47/Chart Move: 29-28
Heavy (30+): 1 KNNC
Medium (15-29): 24 CKEY, KBBT, KEDG, KGDE, KKND, KLZR, KNDD, KPNT, KRRK, KTCL, KXKR, WBCN, WCY, WEND, WEQX, WJRR, WKQX, WLUM, WMMS, WRLG, WROX, WRXQ, WXDX, WZRH
Light (Under 15): 22
New Airplay This Week: 1 WXDX

NO DOUBT 698/58
Just A Girl (Trauma/Interscope)
Total Stations: 46/Chart Move: 33-29
Heavy (30+): 3 KISF, KTOZ, WHY
Medium (15-29): 16 KBBT, KEDG, KEDJ, KFRR, KITS, KKND, KNRK, KOME, KROQ, KTCL, KWOD, KXKR, WCHZ, WNNX, WQNF, WROX
Light (Under 15): 27
New Airplay This Week: 5 WBER, WEDG, WEND, WKOC, WOXY

311 691/21
Don't Stay Home (Capricorn)
Total Stations: 48/Chart Move: 31-30
Heavy (30+): 5 CIMX, KISF, WHY, WLUM, XTRA
Medium (15-29): 15 CKEY, KEGE, KNNC, KRRK, KTCL, WBCN, WCY, WHFS, WMMS, WMRQ, WNNX, WNVE, WOXY, WRLG, WROX
Light (Under 15): 28
New Airplay This Week: 2 KEGE, WMRQ

THE PRESIDENTS OF THE USA 671/142
Kitty (Columbia)
Total Stations: 42/Chart Move: Debut 32
Heavy (30+): 5 CIMX, KEDG, KNDD, WLUM, XTRA
Medium (15-29): 18 KBBT, KEGE, KFRR, KITS, KKND, KNNC, KNRK, KOME, KRRK, KXKR, WBCN, WEDG, WENZ, WFNX, WHY, WMMS, WROX, WXDX
Light (Under 15): 19
New Airplay This Week: 7 KDGE, KEGE, KFRR, WBRU, WEDG, WNVE, WZRH

OASIS 625/272
Wonderwall (Epic)
Total Stations: 43/Chart Move: Debut 35
Heavy (30+): 3 KDGE, KNDD, XTRA
Medium (15-29): 17 CIMX, KEGE, KISF, KITS, KLZR, KOME, KPNT, KROQ, KXPK, WDRE, WEDG, WENZ, WFNX, WHFS, WKQX, WLUM, WMRQ
Light (Under 15): 23
New Airplay This Week: 14 CIMX, KEGE, KPNT, KTCL, WAQZ, WEQX, WKQX, WMMS, WNNX, WPLY, WROX, WSHE, WXWX, XHRM

TRIPPING DAISY 598/20
PirANha (Island)
Total Stations: 47/Chart Move: 36-36
Heavy (30+): 1 KDGE
Medium (15-29): 20 KBBT, KEDJ, KITS, KLZR, KMYZ, KNDD, KNNC, KPNT, KTCL, KTEG, WBRU, WDRE, WEDG, WEND, WGRD, WRLG, WXDX, WXWX, WZRH, XTRA
Light (Under 15): 26
New Airplay This Week: 1 WENZ

BETTER THAN EZRA 579/6
Rosealia (Elektra/EEG)
Total Stations: 50/Chart Move: 37-37
Heavy (30+): 0

Medium (15-29): 18 KBBT, KEDJ, KISF, KKND, KMYZ, KTCL, KTEG, KTOZ, WAQZ, WBCN, WBRU, WENZ, WEQX, WKOC, WQNF, WQXA, WRXQ, XTRA
Light (Under 15): 32
New Airplay This Week: 4 KEDJ, WCY, WEDG, WRLG

MR. MIRAINGA 570/161
Bumin' Rubber (Way Cool Music/MCA Soundtracks/MCA)
Total Stations: 49/Chart Move: Debut 40
Heavy (30+): 1 CIMX
Medium (15-29): 15 KBBT, KITS, KMYZ, KNDD, KNNC, KOME, KTOZ, KWOD, KXKR, WEND, WHFS, WHY, WNNX, WROX, WRXQ
Light (Under 15): 33
New Airplay This Week: 7 KISF, WCHZ, WDRE, WEQX, WGRD, WKOC, WRLG

CHART BOUND

JAWBREAKER 522/16
Fireman (DGC/Geffen)
Total Stations: 45
Heavy (30+): 1 CIMX
Medium (15-29): 10 KBBT, KGDE, KLZR, KNDD, KNRK, KPNT, KWOD, WMRQ, WRLG, WROX
Light (Under 15): 34
New Airplay This Week: 2 WEND, WXDX

BLACK GRAPE 490/76
In The Name Of The Father (Radioactive/MCA)
Total Stations: 43
Heavy (30+): 2 CKEY, WFNX
Medium (15-29): 12 KBBT, KEDG, KKND, KNNC, KNRK, WAQZ, WDRE, WEQX, WOXY, WRLG, WROX, WZRH
Light (Under 15): 29
New Airplay This Week: 10 KDGE, KISF, KNDD, KRRK, WBCN, WGRD, WHY, WKOC, WQNF, WWCD

ELASTICA 429/104
Car Song (DGC/Geffen)
Total Stations: 39
Heavy (30+): 0
Medium (15-29): 10 KBBT, KLZR, KNDD, KPNT, KWOD, WBRU, WENZ, WHFS, WQXA, WROX

Airpower awarded to those records which attain 900 detections for the first time. New airplay lists those stations registering six or more detections per week on a record for the first time. * Initial impact: records appearing on this page for the first time.

BETTER THAN EZRA

Rosealia

The new single and video from the gold debut album Deluxe
Dan Rothchild produced it. Shalom Aberle mixed it. Management: Jeffrey Levinson/Themz Twoz

On Elektra compact discs and cassettes...

Soundscan To Date 600,000 Units

37 Monitor Modern Rock

3.6 Million Listeners

613 Spins On 52 Stations Including:

KROQ
99X
KITS
WBCN
WHFS
91X

Monitor
AIRPLAY

SONG ACTIVITY REPORTS

For Week Ending November 12, 1995



BLUES TRAVELER				BUSH				COLLECTIVE SOUL				EVERCLEAR				FOLK IMPLOSION													
1094/20				1244/274				892/150				903/156				1438/132													
Hook (A&M)				Glycerine (Trauma/Interscope)				The World I Know (Atlantic)				Santa Monica (Watch The World Die) (Capitol)				Natural One (London/Island)													
Total Stations: 53				Total Stations: 58				Total Stations: 54				Total Stations: 52				Total Stations: 63													
Chart Move: 13-13				Chart Move: 15-10				Chart Move: 27-21				Chart Move: 26-20				Chart Move: 10-7													
City	Station	TW	LW	ZW	IP	City	Station	TW	LW	ZW	IP	City	Station	TW	LW	ZW	IP	City	Station	TW	LW	ZW	IP	City	Station	TW	LW	ZW	IP
L.A.	KROQ	6	4	3	30	L.A.	KROQ	21	18	22	69	L.A.	KROQ	11	14	15	179	L.A.	KROQ	5	6	11	56	L.A.	KROQ	37	33	37	304
Chicago	WKQX	9	17	26	222	Chicago	WKQX	41	45	40	382	Chicago	WKQX	16	25	25	215	Chicago	WKQX	10	18	12	42	Chicago	WKQX	28	28	32	239
San Fran	KITS	-	-	-	-	San Fran	KITS	26	17	13	59	San Fran	KITS	23	6	100	-	San Fran	KITS	20	17	19	100	San Fran	KITS	16	18	19	178
Phila.	WPLY	29	18	28	325	Phila.	WPLY	-	-	-	-	Phila.	WPLY	15	13	13	42	Phila.	WPLY	-	-	-	-	Phila.	WPLY	9	1	1	1
Detroit	CIMX	-	-	-	-	Detroit	CIMX	27	25	11	140	Detroit	CIMX	4	-	-	-	Detroit	CIMX	17	8	-	25	Detroit	CIMX	49	51	41	224
Dallas	KDGE	46	38	28	290	Dallas	KDGE	29	18	6	53	Dallas	KDGE	32	14	-	46	Dallas	KDGE	22	11	12	62	Dallas	KDGE	22	11	12	62
Wash., DC	WHFS	8	10	15	121	Wash., DC	WHFS	-	-	-	-	Wash., DC	WHFS	28	28	21	131	Wash., DC	WHFS	11	13	9	33	Wash., DC	WHFS	34	34	24	242
Boston	WBGN	15	16	15	86	Boston	WBGN	32	25	-	57	Boston	WBGN	10	11	-	21	Boston	WBGN	22	22	22	136	Boston	WBGN	22	24	25	135
Houston	WFNX	-	-	-	-	Houston	WFNX	-	-	-	-	Houston	WFNX	10	11	-	21	Houston	WFNX	2	2	6	129	Houston	WFNX	31	30	31	192
Miami	KTBT	-	-	-	-	Miami	KTBT	16	10	3	30	Miami	KTBT	23	21	18	130	Miami	KTBT	-	-	-	-	Miami	KTBT	16	24	26	149
Atlanta	WSHE	10	12	12	141	Atlanta	WSHE	1	-	-	-	Atlanta	WSHE	12	4	1	17	Atlanta	WSHE	7	4	3	16	Atlanta	WSHE	11	6	9	61
Seattle	KNDD	22	23	24	171	Seattle	KNDD	24	23	13	69	Seattle	KNDD	25	29	27	163	Seattle	KNDD	21	11	2	28	Seattle	KNDD	10	12	11	93
Long Isl.	WDRF	10	13	6	73	Long Isl.	WDRF	27	38	31	116	Long Isl.	WDRF	21	20	3	44	Long Isl.	WDRF	8	7	3	18	Long Isl.	WDRF	23	1	1	25
San Diego	XHRM	23	6	1	83	San Diego	XHRM	19	18	17	49	San Diego	XHRM	15	15	11	47	San Diego	XHRM	-	-	-	-	San Diego	XHRM	19	11	11	97
Minn.	KEGE	-	-	-	-	Minn.	KEGE	30	29	13	73	Minn.	KEGE	1	-	-	-	Minn.	KEGE	1	-	-	-	Minn.	KEGE	45	29	33	243
St. Louis	KPNT	16	19	19	231	St. Louis	KPNT	21	17	13	54	St. Louis	KPNT	14	15	3	32	St. Louis	KPNT	23	22	15	174	St. Louis	KPNT	17	14	13	54
Pitts.	WXDX	17	22	2	41	Pitts.	WXDX	18	22	19	59	Pitts.	WXDX	20	23	21	68	Pitts.	WXDX	-	-	-	-	Pitts.	WXDX	22	24	15	61
Phoenix	KEDJ	19	16	15	95	Phoenix	KEDJ	14	1	-	17	Phoenix	KEDJ	10	5	2	20	Phoenix	KEDJ	12	1	-	13	Phoenix	KEDJ	32	27	19	121
Cleveland	WMMS	15	33	40	376	Cleveland	WMMS	11	14	16	68	Cleveland	WMMS	11	11	-	11	Cleveland	WMMS	22	28	23	135	Cleveland	WMMS	19	13	11	98
Denver	KTCL	23	23	24	164	Denver	KTCL	23	10	-	33	Denver	KTCL	15	15	3	79	Denver	KTCL	2	2	-	2	Denver	KTCL	23	25	17	170
Cincinnati	KXPK	27	14	13	115	Cincinnati	KXPK	11	15	2	28	Cincinnati	KXPK	11	15	2	28	Cincinnati	KXPK	12	-	-	-	Cincinnati	KXPK	12	-	-	-
Port., OR	WOXY	1	-	-	-	Port., OR	WOXY	20	19	14	55	Port., OR	WOXY	3	1	-	4	Port., OR	WOXY	10	8	11	55	Port., OR	WOXY	21	13	15	59
Milwaukee	WLUM	29	30	31	194	Milwaukee	WLUM	41	18	-	59	Milwaukee	WLUM	15	19	26	258	Milwaukee	WLUM	33	33	36	173	Milwaukee	WLUM	32	32	30	207
Sacram.	KWDD	21	26	13	146	Sacram.	KWDD	29	31	26	102	Sacram.	KWDD	29	24	26	394	Sacram.	KWDD	13	15	29	67	Sacram.	KWDD	21	25	25	90
Kan City	KISF	25	22	14	84	Kan City	KISF	34	19	13	93	Kan City	KISF	23	24	13	141	Kan City	KISF	30	18	8	57	Kan City	KISF	25	28	19	124

NATALIE MERCHANT				ALANIS MORISSETTE				NO DOUBT				JOAN OSBORNE				THE RENTALS													
1967/110				1045/131				698/58				1205/156				1426/66													
Wonder (Elektra/EEG)				All I Really Want (Maverick/Reprise)				Just A Girl (Trauma/Interscope)				One Of Us (Blue Gorilla/Mercury)				Friends Of P. (Maverick/Reprise)													
Total Stations: 56				Total Stations: 56				Total Stations: 46				Total Stations: 60				Total Stations: 61													
Chart Move: 23-19				Chart Move: 17-15				Chart Move: 33-29				Chart Move: 14-11				Chart Move: 8-8													
City	Station	TW	LW	ZW	IP	City	Station	TW	LW	ZW	IP	City	Station	TW	LW	ZW	IP	City	Station	TW	LW	ZW	IP	City	Station	TW	LW	ZW	IP
L.A.	KROQ	10	13	12	122	L.A.	KROQ	9	16	11	203	L.A.	KROQ	22	19	22	109	L.A.	KROQ	15	10	9	51	L.A.	KROQ	13	11	6	37
Chicago	WKQX	11	18	15	81	Chicago	WKQX	29	24	28	149	Chicago	WKQX	20	16	47	-	Chicago	WKQX	11	19	21	223	Chicago	WKQX	14	28	17	118
San Fran	KITS	16	11	11	81	San Fran	KITS	9	15	3	84	San Fran	KITS	21	18	20	81	San Fran	KITS	21	18	20	81	San Fran	KITS	16	18	18	178
Phila.	WPLY	12	5	3	20	Phila.	WPLY	3	1	1	6	Phila.	WPLY	-	-	-	-	Phila.	WPLY	14	14	12	140	Phila.	WPLY	-	-	-	-
Detroit	CIMX	27	26	8	61	Detroit	CIMX	22	25	17	179	Detroit	CIMX	22	16	83	-	Detroit	CIMX	30	16	2	48	Detroit	CIMX	33	33	31	228
Dallas	KDGE	22	13	5	48	Dallas	KDGE	7	9	13	83	Dallas	KDGE	10	17	16	83	Dallas	KDGE	12	10	8	67	Dallas	KDGE	21	26	35	177
Wash., DC	WHFS	22	25	34	340	Wash., DC	WHFS	14	15	15	118	Wash., DC	WHFS	5	6	-	12	Wash., DC	WHFS	23	3	1	29	Wash., DC	WHFS	27	34	35	123
Boston	WBGN	-	-	-	-	Boston	WBGN	14	15	15	118	Boston	WBGN	5	6	-	12	Boston	WBGN	14	14	15	52	Boston	WBGN	17	16	16	86
Houston	WFNX	12	11	6	56	Houston	WFNX	22	15	-	37	Houston	WFNX	10	11	-	9	Houston	WFNX	6	5	4	15	Houston	WFNX	15	13	10	77
Miami	KTBT	-	-	-	-	Miami	KTBT	23	26	25	111	Miami	KTBT	23	15	14	65	Miami	KTBT	16	13	8	53	Miami	KTBT	25	23	24	114
Atlanta	WSHE	7	12	9	68	Atlanta	WSHE	8	8	4	26	Atlanta	WSHE	19	17	18	55	Atlanta	WSHE	23	23	21	229	Atlanta	WSHE	16	16	20	100
Seattle	KNDD	18	18	13	92	Seattle	KNDD	22	16	13	85	Seattle	KNDD	8	11	8	37	Seattle	KNDD	27	28	20	200	Seattle	KNDD	24	25	26	197
Long Isl.	WDRF	7	8	6	98	Long Isl.	WDRF	28	33	109	Long Isl.	WDRF	7	8	1	16	Long Isl.	WDRF	24	14	8	139	Long Isl.	WDRF	33	20	17	89	
San Diego	XHRM	13	12	7	72	San Diego	XHRM	12	9	13	38	San Diego	XHRM	1	-	-	-	San Diego	XHRM	11	13	10	64	San Diego	XHRM	17	6	13	105
Minn.	KEGE	18	7	6	180	Minn.	KEGE	1	1	-	2	Minn.	KEGE	1	1	-	2	Minn.	KEGE	5	12	13	139	Minn.	KEGE	16	24	13	107
St. Louis	KPNT	1	-	-	-	St. Louis	KPNT	11	8	-	23	St. Louis	KPNT	1	-	-	-	St. Louis	KPNT	21	18	19	118	St. Louis	KPNT	14	19	19	174
Pitts.	WXDX	1	-	-	-	Pitts.	WXDX	25	18	16	61	Pitts.	WXDX	1	-	-	-	Pitts.	WXDX	10	10	10	157	Pitts.	WXDX	14	19	2	35
Phoenix	KEDJ	18	14	1	34	Phoenix	KEDJ	6	5	5	187	Phoenix	KEDJ	16	18	16	158	Phoenix	KEDJ	31	17	15	84	Phoenix	KEDJ	27	17	17	86
Cleveland	WMMS	39	29	16	55	Cleveland	WMMS	38	30	22	114	Cleveland	WMMS	1	-	-	-	Cleveland	WMMS	36	14	20	95	Cleveland	WMMS	25	23	24	126
Denver	KTCL	25	21	26	141	Denver	KTCL	26	18	18	83	Denver	KTCL	14	15	10	76	Denver	KTCL	16	15	11	113	Denver	KTCL	24	15	16	98
Cincinnati	KXPK	45	28	22	132	Cincinnati	KXPK	14	13	14	72	Cincinnati	KXPK	14	15	10	76	Cincinnati	KXPK	14	23	27	237	Cincinnati	KXPK	10	4	2	74
Port., OR	WOXY	1	2	3	79	Port., OR	WOXY	18	9	5	93	Port., OR	WOXY	10	8	1	18	Port., OR	WOXY	12	40	47	378	Port., OR	WOXY	17	20	21	135
Milwaukee	WLUM	44	44	34	252	Milwaukee	WLUM	22	16	18	66	Milwaukee	WLUM	10	5	1	16	Milwaukee	WLUM	3	2	3	143	Milwaukee	WLUM	29	13	-	42
Sacram.	KWDD	-	-	-	-	Sacram.	KWDD	27	29	22	86	Sacram.	KWDD	16	11	3	30	Sacram.	KWDD	12	40	21	105	Sacram.	KWDD	36	37	24	167
Kan City	KISF	9	9	-	36	Kan City	KISF	27	21	21	87	Kan City	KISF	30	23	7	60	Kan City	KISF	19	12	21	166	Kan City	KISF	26	26	24	137

RUTH RUTH				SEVEN MARY THREE				SILVERCHAIR				SMASHING PUMPKINS			
-----------	--	--	--	------------------	--	--	--	-------------	--	--	--	-------------------	--	--	--

HELP WANTED

WUSY (US-101)

ACCEPTING T/R'S FOR MORNING SHOW AIR TALENT AT "R&R" #5 RATED AM-DRIVE DRIVETIME DOMINATOR. WE WANT A PERSON WHO KNOWS MORNING SHOW HOT BUTTONS AND HOW TO PUSH THEM. IF YOU KNOW HOW TO ENTERTAIN MORNING SHOW AUDIENCES, ACT IMMEDIATELY!!! THIS IS NOT AN ENTRY LEVEL POSITION. WE WANT THE BEST TO WORK AT THE CMA MEDIUM MARKET STATION OF THE YEAR.

PREVIOUS COUNTRY EXPERIENCE IS A NECESSITY!

NO CALLS!!!

TAPES & RESUMES TO:

US-101, BOB STERLING
P.O. BOX 8799

CHATTANOOGA, TN 37414

COLONIAL BROADCASTING/WUSY (US-101)
IS AN EQUAL OPPORTUNITY EMPLOYER.

The music matters most, but it's what happens in-between that makes the difference. Nation's top two Rock/ACs seeking talent for future openings and acquisitions. If you understand preparation, concentration and moderation, rush your T&R to: Tom Benson, Dame Media, WRVW/WRVE, P.O. Box 6477, Harrisburg, PA 17112. EOE

WIBW-FM Topeka, KS 97 COUNTRY is looking for 7-Midnight personality. Heavy use of phones and lots of public appearances. Send Tape & Resume to: Personnel Dept. WIBW-FM, Box 1818 Topeka, KS 66601 Deadline 12/1/95 EOE

SERVICES

STATION I.D.

ID Jingles
CHR & Rhythmic

"They are FAT."- Jay Stevens P.D. WPGC
"You HAVE to hear these!"- Mike Tierney P.D. KUBE 93

ReelWorld Productions
Call for demo (206) 713.3044

VOICEOVERS

You get what you pay for

▲
Sean Caldwell
PRODUCTIONS
Y100 Young Country
B-96 K188-FM 2100
New Country K188108

● Country CHR Rock Hot AC
voice-over • production effects
(810) 840-5899 FAX 892-7890

WE JUST WANT TO FIND OUT WHAT READERS WANT & GIVE IT TO THEM

Rock Airplay Monitor becomes a full-service trade publication in January. If you have a working knowledge of album rock, modern rock, and triple-A programming, can write anything more complicated than promo copy, and know enough to discard clichés like the one in the headline, we'd like to hear from you. Send resume, writing samples (promo copy, okay), and your suggestions for this publication to:

Sean Ross
Rock Airplay Monitor
1515 Broadway
New York, NY 10036
EOE

ROCK AIRPLAY
Monitor

Tune in to Britain's music.
Music Monitor

Incisive editorial coverage of the U.K. music scene addressing the key issues in music, marketing, programming and promotion • Unique charts based on BDS airplay and Gallup retail data • Radio station playlists • Summaries of each record's performance • Top 20 greatest airplay gainers • The latest music news from around the globe.

Call Sue Dowman at
(0171) 323-6686 to subscribe.
(In the U.S. call (212) 536-5261.)

Part of the Billboard Music Group.

TOP 40 AIRPLAY MONITOR
COUNTRY AIRPLAY MONITOR
R&B AIRPLAY MONITOR
ROCK AIRPLAY MONITOR

The only radio publications based exclusively on electronically monitored airplay from Broadcast Data Systems.

- Airplay Charts • Power Playlists • Biggest Gainers
- New Releases • Song Activity Reports • Impact Pages
- Monitored Video Playlists • Plus all the latest radio and music industry news every week.

Call 1-800-722-2346 to subscribe.

Part of the Billboard Music Group.

CLASSIFIED ADVERTISING RATES

HELP WANTED:		SERVICES:	
1 WEEK	\$75.00 per inch	1 WEEK	\$75.00 per inch
2 WEEKS	\$65.00 per inch	6 WEEKS	\$65.00 per inch
POSITION WANTED AND BULLETIN BOARD:		13 WEEKS	\$60.00 per inch
\$45.00 per inch		26 WEEKS	\$55.00 per inch
BOX NUMBER: Add \$20.00		51 WEEKS	\$50.00 per inch

DEADLINE (ALL CLASSIFIED):
Each Wednesday 3pm EST, 9 day leadtime.

• Classified ads are non-commissionable •

SUBMIT ALL AD COPY TO:
Laura Rivchun
Airplay Monitor Classified
1515 Broadway
New York, NY 10036
Phone: 212-536-5058
Fax: 212-536-5055

Name _____
Address _____
City _____ State _____ Zip _____
Company Name _____
Phone _____

PAYMENT MUST ACCOMPANY ORDER

Payment of \$ _____ enclosed for _____ Insertion(s)
Charge to American Express Visa Mastercard
Account Number _____
Expiration Date _____
Signature _____

UPDATED FOR THE FALL!

Experience The Power!

Brought to you by Billboard and Monitor, the most comprehensive guide to radio and record promotion -- *THE POWER BOOK - The New Fall Edition!*

JAMPACKED WITH LISTINGS: • Radio Stations -- Country, Rock, R&B, Top 40 • Record Company Promotion Personnel • Radio Syndicators • Top 100 Arbitron Markets
The most important tool for music, radio and promotion executives to use every day!

Order your copy now for just \$75 (plus \$5 shipping and handling, \$12 for international orders).

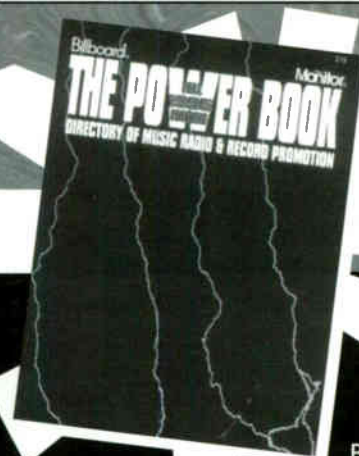
2 DIRECTORY PACKAGE: The Power Book Fall 1995 Edition AND the Power Book Spring 1996 Edition for \$119 -

Order NOW & SAVE more than 40% on the Spring edition! (Spring Directory will automatically mail in March 1996).

Please add appropriate sales tax in NY, NJ, PA, CA, TN, MA, IL & DC. Orders payable in U.S. funds only. All sales are final.

To order, or for more information call (800) 344-7119 or (800) 223-7524. In NY call (212) 536-5174. In NJ call (908) 363-4156.

Or mail this ad with your payment to: Billboard Directories, P.O. Box 2016, Lakewood, NJ 08701.



BDPB3095

POWER PLAYLISTS



For Week Ending
November 12, 1995

Playlists supplied by Broadcast Data Systems Radio
Track service. Stations selected from panel of leading
broadcasters in 125 radio markets, electronically
monitored 24 hours a day, 7 days a week. Songs
ranked by number of plays in monitored week.

WXRT
Chicago
VP/Programming: Norm Winer
MD: Patty Martin

	TW	LW
1 Tears For Fears, God's Mistake	14	11
2 Smashing Pumpkins, 1979	13	9
3 John Hiatt, Cry Love	13	13
4 Natalie Merchant, Wonder	13	11
5 Freddy Jones Band, Watress	13	11
6 Urge Overkill, The Break	12	11
7 Red Hot Chili Peppers, My Friends	11	9
8 Joan Osborne, One Of Us	11	11
9 Del Amitri, Roll To Me	10	11
10 Goo Goo Dolls, Name	10	12
11 Toad The Wet Sprocket, Good Intentions	9	12
12 Chris Isaak, Go Walking Down There	9	14
13 Melissa Etheridge, Your Little Secret	9	12
14 Rolling Stones, Like A Rolling Stone	9	17
15 Don Henley, Everybody Knows	9	8
16 Francis Dunery, Too Much Saturn	9	9
17 Ben Harper, Crows	9	8
18 Joe Satriani, (You're) My World	9	7
19 Son Volt, Drown	9	10
20 Bodeans, Fadeaway	9	8
21 Pretenders, Sense Of Purpose	8	8
22 David Bowie, Strangers When We Meet	8	8
23 Hootie & The Blowfish, Time	8	8
24 Urge Overkill, Somebody Else's Body	8	8
25 Jude Cole, Speed Of Life	8	6
26 Better Than Ezra, In The Blood	8	8
27 Kenny Wayne Shepherd, Deja Voodoo	8	3
28 John Hiatt, Whole It Down And Burned It	7	4
29 Gin Blossoms, Til I Hear It From You	7	10
30 Joe Ely, All Hell To Get To You	7	7

KFOG
San Francisco
PD: Paul Marszalek
MD: Bill Evans

	TW	LW
1 Joe Satriani, (You're) My World	17	19
2 Joan Osborne, St. Teresa	13	9
3 Tears For Fears, God's Mistake	16	20
4 Tracy Chapman, Give Me One Reason	15	20
5 Van Morrison, Perfect Fit	14	14
6 Melissa Etheridge, Your Little Secret	14	15
7 John Hiatt, Cry Love	13	16
8 Natalie Merchant, Jealousy	12	5
9 Rolling Stones, Like A Rolling Stone	11	13
10 Toad The Wet Sprocket, Good Intentions	10	14
11 Natalie Merchant, Wonder	9	17
12 Dave Matthews Band, Ants Marching	9	3
13 Pretenders, Sense Of Purpose	8	10
14 Lisa Loeb & Nine Stories, Do You Sleep?	8	15
15 Jude Cole, Speed Of Life	7	9
16 Red Hot Chili Peppers, My Friends	7	8
17 Jonathan Demme, The Story, Nothing Sacred	7	6
18 Bonnie Raitt W/Bryan Adams, Rock Steady	7	10
19 k.d. lang, If I Were You	7	5
20 Goo Goo Dolls, Name	6	8
21 Heather Nova, Walk This World	6	7
22 Edwin McCain, Solitude	6	7
23 Freddy Jones Band, Watress	6	7
24 Drivin' N' Cryin', Talking Stones	6	6
25 Francis Dunery, Too Much Saturn	5	5
26 Passengers, Miss Sarajevo	5	8
27 Pretty & Twisted, Ride	4	8
28 Paul Brady, The World Is What You Make It	3	9
29 Billy Pilgrim, Sweet Louisiana Sound	3	2
30 Joan Osborne, One Of Us	3	2

KSCA
Los Angeles
PD: Mike Morrison
MD: Merilee Kelly

	TW	LW
1 Red Hot Chili Peppers, My Friends	25	20
2 Lisa Loeb & Nine Stories, Do You Sleep?	24	20
3 Hootie & The Blowfish, Time	22	21
4 Melissa Etheridge, Your Little Secret	22	20
5 Goo Goo Dolls, Name	22	24
6 Alanis Morissette, All I Really Want	20	11
7 Edwyn Collins, A Girl Like You	15	13
8 Heather Nova, Walk This World	14	14
9 Garbage, Queer	14	11
10 Toad The Wet Sprocket, Good Intentions	14	13
11 Natalie Merchant, Wonder	14	14
12 Collective Soul, The World I Know	13	11
13 Smashing Pumpkins, 1979	13	14
14 Tears For Fears, God's Mistake	13	11
15 John Hiatt, Cry Love	13	9
16 Bonnie Raitt W/Bryan Adams, Rock Steady	12	20
17 Chris Isaak, Go Walking Down There	12	10
18 Ben Folds Five, Where's Summer?	12	10
19 Rusted Root, Send Me On My Way	11	9
20 Joan Osborne, One Of Us	11	11
21 Pretenders, Sense Of Purpose	11	11
22 Better Than Ezra, Roseoka	11	12
23 Deep Blue Something, Breakfast At Tiffany's	11	13
24 Collective Soul, December	10	6
25 Joe Satriani, (You're) My World	9	6
26 Freddy Jones Band, Watress	9	6
27 Don Henley, The Garden Of Allah	9	1
28 Del Amitri, Roll To Me	9	8
29 Jude Cole, Speed Of Life	9	10
30 Blues Traveler, Hook	9	11

WHPT
Tampa
PD: Chuck Beck
APD/MD: Chris Taylor

	TW	LW
1 Natalie Merchant, Wonder	24	22
2 Joan Osborne, One Of Us	23	19
3 Goo Goo Dolls, Name	23	21
4 Toad The Wet Sprocket, Good Intentions	22	16
5 Melissa Etheridge, Your Little Secret	22	20
6 Alanis Morissette, Hand In My Pocket	21	19
7 Deep Blue Something, Breakfast At Tiffany's	18	14
8 Bonnie Raitt W/Bryan Adams, Rock Steady	18	22
9 John Hiatt, Cry Love	16	12
10 Tracy Chapman, Give Me One Reason	16	8
11 Son Volt, Drown	16	14
12 k.d. lang, If I Were You	15	14
13 Pretenders, Sense Of Purpose	15	13
14 Red Hot Chili Peppers, My Friends	15	17
15 Alanis Morissette, You Dugta Know	14	7
16 Hootie & The Blowfish, Time	14	7
17 Don Henley, Everybody Knows	14	9
18 Smashing Pumpkins, 1979	14	5
19 Lisa Loeb & Nine Stories, Do You Sleep?	14	14
20 Dave Matthews Band, Satellite	12	0
21 Pretty & Twisted, Ride	11	9
22 Sheryl Crow, All I Wanna Do	11	7
23 Collective Soul, December	10	6
24 Edwyn Collins, A Girl Like You	10	7
25 Del Amitri, Roll To Me	10	7
26 Joe Satriani, (You're) My World	10	13
27 Hootie & The Blowfish, Let Her Cry	9	8
28 The Cranberries, Linger	9	8
29 Dave Matthews Band, Ants Marching	9	8
30 Dave Matthews Band, What Would You Say	9	8

KTCZ
Minneapolis
PD: Lauren MacLeash
MD: Jane Fredricksen

	TW	LW
1 Goo Goo Dolls, Name	21	19
2 Joe Satriani, (You're) My World	21	20
3 Tracy Chapman, Give Me One Reason	20	19
4 Deep Blue Something, Breakfast At Tiffany's	19	21
5 The Cranberries, Linger	19	14
6 Jude Cole, Speed Of Life	18	17
7 Toad The Wet Sprocket, Good Intentions	18	17
8 Edwin McCain, Solitude	18	21
9 Pretenders, Sense Of Purpose	17	14
10 Natalie Merchant, Wonder	17	22
11 Joan Osborne, Ladder	17	15
12 Chris Isaak, Go Walking Down There	16	13
13 Tears For Fears, God's Mistake	15	14
14 John Hiatt, Cry Love	15	21
15 Anders Osborne, Pleasin' You	13	0
16 Son Volt, Drown	13	13
17 Freddy Jones Band, Watress	13	11
18 Lowen & Hararro, Cry	13	10
19 Mike Scott, Bring 'Em All In	12	7
20 Indigo Girls, Bury My Heart At Wounded Knee	12	10
21 Rolling Stones, Like A Rolling Stone	12	8
22 Stevie Ray Vaughan, Tauxman	11	11
23 Melissa Etheridge, Your Little Secret	11	11
24 David Bowie, Strangers When We Meet	10	16
25 The Cranberries, Linger	10	8
26 Francis Dunery, Too Much Saturn	6	6
27 Natalie Merchant, Carnival	6	5
28 Alanis Morissette, Hand In My Pocket	6	6
29 Blues Traveler, Hook	5	3
30 Wilco, Box Full Of Letters	5	3

KBCO
Denver
PD: Mike D'Connor
MD: Scott Arbrough

	TW	LW
1 Hootie & The Blowfish, Time	30	26
2 Toad The Wet Sprocket, Good Intentions	29	29
3 Natalie Merchant, Wonder	29	19
4 Edwin McCain, Solitude	27	28
5 Chris Isaak, Go Walking Down There	22	22
6 Collective Soul, The World I Know	22	11
7 John Hiatt, Cry Love	21	19
8 Melissa Etheridge, Your Little Secret	20	22
9 Bruce Hornsby, Spider Fingers	20	23
10 Red Hot Chili Peppers, My Friends	20	30
11 Dave Matthews Band, Satellite	18	20
12 Lisa Loeb & Nine Stories, Do You Sleep?	17	21
13 Sonia Dada, Planes & Satellites	17	24
14 Tears For Fears, God's Mistake	17	11
15 Wakeland, Half Of You	16	1
16 Sarah McLachlan, Dear God	16	20
17 Jude Cole, Speed Of Life	15	5
18 Better Than Ezra, Roseoka	15	19
19 Rusted Root, Ecstasy	11	19
20 Smashing Pumpkins, 1979	11	0
21 k.d. lang, If I Were You	10	7
22 Rolling Stones, Like A Rolling Stone	8	0
23 U2, Where The Streets Have No Name	7	3
24 Son Volt, Drown	7	4
25 Blues Traveler, Run Around	7	4
26 Simple Minds, She's A River	6	6
27 Del Amitri, Here And Now	6	4
28 R.E.M., It's The End Of The World	6	4
29 Stevie Ray Vaughan & Double, Tightrope	6	3
30 Simple Minds, Don't You	5	3

KMTT
Seattle
PD: Chris Mays
MD: Dean Carlson

	TW	LW
1 Natalie Merchant, Carnival	12	8
2 k.d. lang, If I Were You	12	10
3 John Hiatt, Native Son	11	10
4 Dave Matthews Band, Ants Marching	11	11
5 k.d. lang, Sentimental Street	9	9
6 Collective Soul, December	10	9
7 John Hiatt, Cry Love	10	14
8 Edwyn Collins, A Girl Like You	10	10
9 Joan Osborne, Ladder	9	7
10 Joe Satriani, (You're) My World	9	10
11 Edwin McCain, Solitude	9	7
12 Dave Matthews Band, Jimi Thing	9	11
13 Joan Osborne, One Of Us	9	8
14 Natalie Merchant, Wonder	9	10
15 Colin James, Freedom	9	8
16 Toad The Wet Sprocket, Good Intentions	9	6
17 Goo Goo Dolls, Name	8	8
18 Emmylou Harris, Where Will I Be	8	9
19 Tears For Fears, Falling Down	8	8
20 Red Hot Chili Peppers, My Friends	8	10
21 Indigo Girls, Bury My Heart At Wounded Knee	8	7
22 Tracy Chapman, Give Me One Reason	8	4
23 Alanis Morissette, Hand In My Pocket	7	10
24 Tears For Fears, God's Mistake	7	12
25 Southern Culture On The Skids, Voodoo	7	9
26 Chris Isaak, Go Walking Down There	7	9
27 Francis Dunery, Too Much Saturn	6	6
28 Melissa Etheridge, Your Little Secret	6	7
29 Blue Rodeo, Better Off As We Are	6	1
30 Bruce Hornsby, Spider Fingers	6	8

KZON
Phoenix
PD: Chris Ebbott
MD: Erika Smith

	TW	LW
1 Smashing Pumpkins, 1979	27	14
2 Tears For Fears, God's Mistake	25	19
3 Alanis Morissette, Hand In My Pocket	24	18
4 Folk Implosion, Natural One	24	12
5 Goo Goo Dolls, Name	22	21
6 Red Hot Chili Peppers, My Friends	22	21
7 Natalie Merchant, Wonder	20	20
8 Deep Blue Something, Breakfast At Tiffany's	20	22
9 Lisa Loeb & Nine Stories, Do You Sleep?	17	12
10 Joe Satriani, (You're) My World	16	11
11 Toad The Wet Sprocket, Good Intentions	14	10
12 Spacopop, In The Meantime	13	0
13 The Cranberries, Linger	13	11
14 Chris Isaak, Go Walking Down There	13	2
15 The Rentals, Friends Of P	13	2
16 Heather Nova, Walk This World	13	11
17 Live, Top	13	11
18 Better Than Ezra, Roseoka	13	12
19 For Squirrels, Mighty K C	12	8
20 Sonia Dada, Planes & Satellites	12	12
21 Green Apple Quick Step, Duzzy	12	11
22 Pretenders, Sense Of Purpose	12	12
23 Jennifer Tynan, Better Than Nothing	12	12
24 Freddy Jones Band, Watress	11	12
25 Gin Blossoms, Til I Hear It From You	11	12
26 Collective Soul, December	11	10
27 Jewel, Who Will Save Your Soul	11	11
28 Hootie & The Blowfish, I Go Bland	11	13
29 Catherine Wheel, Judy Staring At The Sun	10	11
30 Seven Mary Three, Cumbersome	10	12

KQPT
Sacramento
PD: Jim Trapp
MD: Carrie Dwens

	TW	LW
1 The Cranberries, Liar	20	19
2 Hootie & The Blowfish, Time	20	20
3 Toad The Wet Sprocket, Good Intentions	20	18
4 Goo Goo Dolls, Name	20	18
5 Alanis Morissette, Hand In My Pocket	20	21
6 Heather Nova, Walk This World	20	22
7 Red Hot Chili Peppers, My Friends	19	19
8 Peter Murphy, The Scarlet Thing In You	19	19
9 Folk Implosion, Natural One	19	18
10 The Mother Hips, Shut The Door	18	16
11 Better Than Ezra, In The Blood	18	18
12 Pretty & Twisted, Ride	17	18
13 Edwyn Collins, A Girl Like You	17	17
14 Tears For Fears, God's Mistake	16	19
15 Joan Osborne, One Of Us	16	18
16 Chris Isaak, Go Walking Down There	16	13
17 Lisa Loeb & Nine Stories, Do You Sleep?	14	14
18 David Bowie, Strangers When We Meet	14	8
19 Smashing Pumpkins, 1979	13	13
20 Edwin McCain, Solitude	12	12
21 Pretenders, Sense Of Purpose	12	12
22 Natalie Merchant, Wonder	12	10
23 Deep Blue Something, Breakfast At Tiffany's	11	12
24 Better Than Ezra, Roseoka	11	11
25 Urge Overkill, The Break	11	14
26 Gin Blossoms, Til I Hear It From You	10	19
27 Counting Crows, A Murder Of One	10	10
28 Counting Crows, Rain King	9	6
29 Del Amitri, Roll To Me	8	3
30 Hootie & The Blowfish, Only Wanna Be With	8	7

WVRV
St. Louis
PD: Scott Strong
MD: Mike Richter

	TW	LW
1 Deep Blue Something, Breakfast At Tiffany's	32	31
2 Edwin McCain, Solitude	31	32
3 Melissa Etheridge, Your Little Secret	30	14
4 Toad The Wet Sprocket, Good Intentions	28	17
5 Blues Traveler, Hook	25	18
6 Goo Goo Dolls, Name	18	14
7 John Hiatt, Cry Love	16	11
8 Red Hot Chili Peppers, My Friends	15	12
9 Bonnie Raitt W/Bryan Adams, Rock Steady	13	11
10 Joan Osborne, One Of Us	13	12
11 Freddy Jones Band, Watress	12	13
12 Lisa Loeb & Nine Stories, Do You Sleep?	12	11
13 Heather Nova, Walk This World	12	12
14 Natalie Merchant, Wonder	12	13
15 Rolling Stones, Like A Rolling Stone	12	12
16 Alanis Morissette, Hand In My Pocket	9	30
17 Sonia Dada, Planes & Satellites	9	9
18 Rusted Root, Send Me On My Way	7	6
19 Jesus Jones, Right Here, Right Now	7	4
20 Simple Minds, Don't You	7	2
21 Freddy Jones Band, In A Daydream	7	4
22 The Black Crowes, Hard To Handle	6	4
23 Del Amitri, Roll To Me	6	7
24 Jimmy Buffet, Mexico	6	5
25 Tears For Fears, Everybody Wants To Rule	6	2
26 Steady Dan, Jose	6	7
27 The Clash, Rock The Casbah	6	5
28 Natalie Merchant, Carnival	6	4
29 The Bottle Rockets, Radar Gun	6	1
30 Son Volt, Drown	6	11

WTTS
Indianapolis
PD/MD: Rich Anton

	TW	LW
1 Deep Blue Something, Breakfast At Tiffany's	17	18
2 Joe Satriani, (You're) My World	17	17
3 Goo Goo Dolls, Name	17	17
4 Red Hot Chili Peppers, My Friends	16	15
5 Natalie Merchant, Wonder	16	13
6 Edwin McCain, Solitude	15	8
7 Toad The Wet Sprocket, Good Intentions	15	8
8 Melissa Etheridge, Your Little Secret	15	12
9 Alanis Morissette, Hand In My Pocket	14	8
10 Edwyn Collins, A Girl Like You	11	17
11 Southern Culture On The Skids, Voodoo	10	8
12 Jude Cole, Speed Of Life	10	9
13 Bruce Hornsby, Cruise Control	9	6
14 Kenny Wayne Shepherd, Deja Voodoo	9	7
15 Lisa Loeb & Nine Stories, Do You Sleep?	9	7
16 Heather Nova, Walk This World	9	7
17 Don Henley, Everybody Knows	9	7
18 John Hiatt, Native Son	9	9
19 Bonaparte, Where The Water's Deep	9	9
20 Stevie Ray Vaughan, Tauxman	9	9
21 The Badlives, Fear Of Falling	8	2
22 Rolling Stones, Like A Rolling Stone	8	2
23 David Bowie, Strangers When We Meet	8	6
24 Freddy Jones Band, Watress	8	16
25 John Hiatt, Cry Love	8	11
26 Joan Osborne, One Of Us	8	11
27 Patty Larkin, Johnny Was A Pyro	8	9
28 The Badlives, Fear Of Falling	8	9
29 Son Volt, Drown	8	9
30 Indigo Girls, Bury My Heart At Wounded Knee	7	9

KFMG
Des Moines
PD: Mark Vos
GM/MD: Ron Sorenson

	TW	LW
1 Alanis Morissette, Hand In My Pocket	17	

For Week Ending November 12, 1995

COMBINED ROCK MONITOR AIRPLAY								AIRPLAY THIS WEEK BY FORMAT										
TW	LW	WKS	TITLE (LABEL)	ARTIST	THIS WEEK			LAST WEEK			MAINSTREAM			MODERN			TRIPLE A	
					Audience (millions)	Detections No.	Rank	Audience (millions)	Detections No.	Rank	Audience (millions)	Detections No.	Rank	Audience (millions)	Detections No.	Rank	Audience (millions)	Detections No.
1	1	14	NAME (METAL BLADE/WARNER BROS.)	GOO GOO DOLLS	35.1092	4335	1	35.6160	4421	1	17.6272	2310	1	15.6675	1817	3	1.8145	208
2	2	9	MY FRIENDS (WARNER BROS.)	RED HOT CHILI PEPPERS	34.4942	4124	2	32.3276	3977	2	17.4587	2017	2	15.2425	1913	1	1.7930	194
3	3	6	BULLET WITH BUTTERFLY WINGS (VIRGIN)	SMASHING PUMPKINS	28.8176	3423	3	28.0677	3264	3	13.0185	1527	5	15.7639	1883	2	0.0352	13
4	4	14	POSSUM KINGDOM (INTERSCOPE)	TOADIES	22.6861	2642	7	22.7732	2657	8	8.6612	960	17	14.0186	1676	4	0.0063	6
5	5	14	COMEDOWN (TRAUMA/INTERSCOPE)	BUSH	21.4108	2380	9	22.5167	2699	7	11.6151	1382	8	9.7879	992	18	0.0078	6
6	6	14	LUMP (COLUMBIA)	THE PRESIDENTS OF THE UNITED STATES OF AMERICA	19.9019	2678	4	21.8947	2972	4	7.8591	1207	11	12.0262	1460	6	0.0166	11
7	8	8	GEEK STINK BREATH (REPRISE)	GREEN DAY	19.0106	2668	5	21.2185	2914	6	7.6684	1066	12	11.3372	1597	5	0.0050	5
8	9	10	I'LL STICK AROUND (ROSWELL/CAPITOL)	FOO FIGHTERS	18.8247	2309	11	18.5740	2318	11	8.9813	1034	14	9.8382	1268	9	0.0052	7
9	7	14	HAND IN MY POCKET (MAVERICK/REPRISE)	ALANIS MORISSETTE	18.6768	2642	6	21.5199	2971	5	8.8330	1328	10	8.8726	1166	12	0.9712	148
10	11	7	CUMBERSOME (MAMMOTH/ATLANTIC)	SEVEN MARY THREE	18.5355	2535	8	16.1078	2355	10	11.9765	1501	6	6.4573	1011	16	0.1017	23
11	13	6	GRIND (COLUMBIA)	ALICE IN CHAINS	16.0584	2303	12	15.8347	2237	12	10.6732	1412	7	5.3823	887	22	0.0029	4
12	12	6	YOUR LITTLE SECRET (ISLAND)	MELISSA ETHERIDGE	15.8750	2360	10	16.0444	2383	9	11.1274	1561	4	2.8865	577	38	1.8611	222
13	15	3	GLYCERINE (TRAUMA/INTERSCOPE)	BUSH	15.8568	1819	16	13.5148	1361	24	5.1263	575	32	10.7305	1244	10	—	—
14	10	14	TOMORROW (EPIC)	SILVERCHAIR	15.5475	1844	14	18.0842	2129	13	8.9008	1053	13	6.6361	784	26	0.0106	7
15	14	9	HOOK (A&M)	BLUES TRAVELER	14.2838	2158	13	13.6608	2101	14	6.3143	983	15	7.4095	1094	13	0.5600	81
16	17	3	THE WORLD I KNOW (ATLANTIC)	COLLECTIVE SOUL	14.2616	1829	15	13.0559	1563	19	6.0435	884	18	7.6257	892	21	0.5924	53
17	19	5	NATURAL ONE (LONDON/ISLAND)	FOLK IMPLOSION	13.7671	1489	22	12.2345	1343	25	—	—	—	13.5296	1438	7	0.2375	51
18	28	3	1979 (VIRGIN)	SMASHING PUMPKINS	13.3550	1136	31	9.7166	718	61	2.2914	191	—	10.0125	837	24	1.0511	108
19	20	9	ONE OF US (BLUE GORILLA/MERCURY)	JOAN OSBORNE	13.0366	1768	18	11.8960	1615	18	2.7116	400	—	9.0968	1205	11	1.2282	163
20	18	7	PERRY MASON (EPIC)	OZZY OSBOURNE	12.8751	1660	20	12.5611	1685	16	12.8751	1660	3	—	—	—	—	—
21	16	7	GOOD INTENTIONS (COLUMBIA/REPRISE)	TOAD THE WET SPROCKET	12.7321	1818	17	13.1250	1887	15	5.1617	702	23	5.6116	862	23	1.9588	254
22	24	4	PURE MASSACRE (EPIC)	SILVERCHAIR	12.4367	1713	19	10.9958	1517	20	5.2705	718	22	7.1650	993	17	.0012	2
23	23	14	ALL OVER YOU (RADIOACTIVE/MCA)	LIVE	11.0572	1149	29	11.0143	1171	29	4.9680	577	30	6.0048	560	—	0.0844	12
24	30	4	WONDER (ELEKTRA/EEG)	NATALIE MERCHANT	10.4644	1236	27	9.6732	1139	30	0.9959	46	—	7.6370	967	19	1.8315	223
25	29	3	ALL I REALLY WANT (MAVERICK/REPRISE)	ALANIS MORISSETTE	10.4451	1256	25	9.6793	1050	36	1.9550	181	—	8.0881	1045	15	0.4020	30
26	21	10	HARD AS A ROCK (EASTWEST/EEG)	AC/DC	9.9864	1374	24	11.7146	1615	17	9.9864	1374	9	—	—	—	—	—
27	25	5	FRIENDS OF P. (MAVERICK/REPRISE)	THE RENTALS	9.5910	1556	21	10.2793	1440	21	1.1310	110	—	8.3773	1426	8	0.0827	20
28	26	12	A GIRL LIKE YOU (BAR NONE/A&M)	EDWYN COLLINS	9.4949	1105	32	10.2742	1308	26	2.4807	190	—	6.2180	814	25	0.7962	101
29	22	14	IN THE BLOOD (ELEKTRA/EEG)	BETTER THAN EZRA	9.3289	1242	26	11.0639	1399	23	4.5011	558	33	4.3973	634	33	0.4305	50
30	27	14	DECEMBER (ATLANTIC)	COLLECTIVE SOUL	9.1474	1138	30	9.8651	1207	28	5.3568	670	—	3.1767	409	—	0.6139	59
31	31	14	GOOD (ELEKTRA/EEG)	BETTER THAN EZRA	8.6535	1043	36	8.7501	1052	35	4.1584	557	—	4.3181	464	—	0.1770	22
32	NEW		WONDERWALL (EPIC)	OASIS	8.5755	711	61	5.0298	397	138	0.9787	75	—	7.5799	625	35	0.0169	11
33	NEW		LIKE A ROLLING STONE (VIRGIN)	ROLLING STONES	8.3275	1092	33	6.6023	718	60	7.3757	972	16	0.0180	1	—	0.9338	119
34	33	4	RAININ' (WORK)	SPONGE	8.1136	1374	23	8.5766	1437	22	4.7181	785	19	3.3301	574	39	0.0654	15
35	NEW		UNINVITED (VENTRUE/AMERICAN/WARNER BROS.)	RUTH RUTH	7.8332	1086	34	6.8160	1004	38	3.3222	373	—	4.5023	707	28	0.0087	6
36	32	13	WARPED (WARNER BROS.)	RED HOT CHILI PEPPERS	7.7097	715	60	8.6888	806	50	4.2208	390	—	3.4703	316	—	0.0186	9
37	RE-ENTRY		INTERSTATE LOVE SONG (ATLANTIC)	STONE TEMPLE PILOTS	7.6764	884	44	7.3652	903	45	4.1981	492	—	3.3676	374	—	0.1107	18
38	37	9	LIGHTNING CRASHES (RADIOACTIVE/MCA)	LIVE	7.5358	899	40	7.9372	960	42	3.7452	493	—	3.5656	383	—	0.2250	23
39	35	10	TIME BOMB (EPITAPH)	RANCID	7.3447	932	38	8.1870	1070	34	0.6223	154	—	6.6679	760	27	0.0545	18
40	RE-ENTRY		BETTER MAN (EPIC)	PEARL JAM	7.2331	802	49	7.0488	805	51	3.0326	395	—	3.9391	378	—	0.2614	29

Records showing an increase in audience over the previous week, regardless of chart movement. Rankings broken down by mainstream and modern formats (on right side of this page) correspond to 40-position charts printed in this week's Monitor and therefore rankings do not exist for recurrenents and records below No. 40. Rankings are not listed for triple A because there is no chart yet. Audience* computed by cross-referencing exact times of airplay with Arbitron listener data. ©1995, Billboard/BPI Communications.



FEATURING THE SINGLE "DON'T STAY HOME"

30 MODERN ROCK MONITOR
91X (33 SPINS) #1 FOR SECOND WEEK

WDRE 35x KLZR 35x KGDE 48x
Q101 18x WMMS 19x WHFS 15x
KNNC 20x KEGE 19x KTBZ 27x
KXRK 28x 99X 15x WHYT 26x
CIMX 39x KWOD 24x



Mr. Mirainga "Burnin' Rubber"

**FILM OPENED
AT #1**

**\$40.3 MILLION
BOX OFFICE**

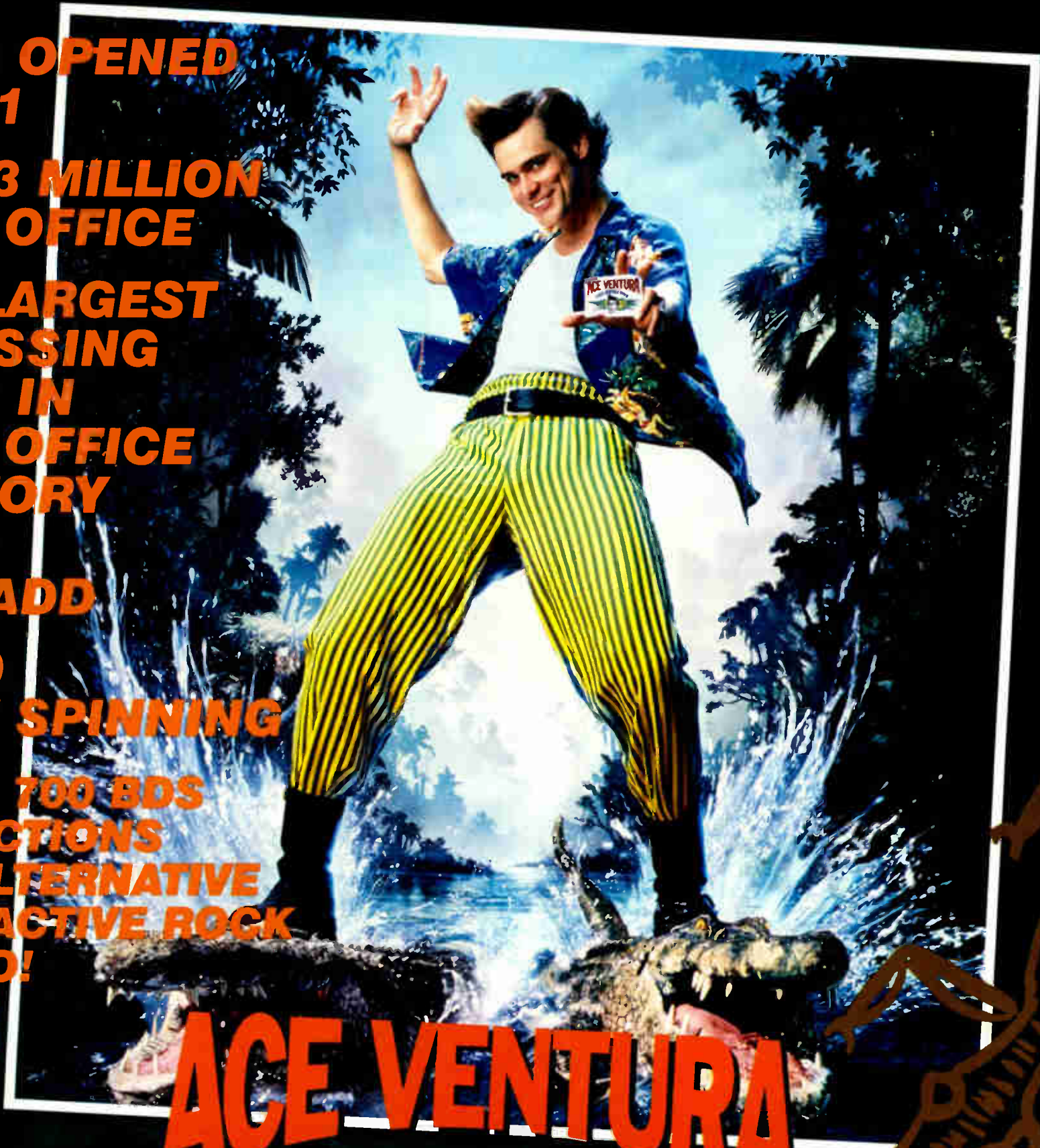
**6th LARGEST
GROSSING
FILM IN
BOX OFFICE
HISTORY**



ADD

**Z100
NOW SPINNING**

**OVER 700 BDS
DETECTIONS
ON ALTERNATIVE
AND ACTIVE ROCK
RADIO!**



ACE VENTURA WHEN NATURE CALLS

**The Debut Of The Way Cool Music/MCA Band
From The Original Motion Picture Soundtrack**



Produced By Mr. Mirainga And "Jungle" Jim Goodwin
Get AMPed: http://www.mca.com/mca_records



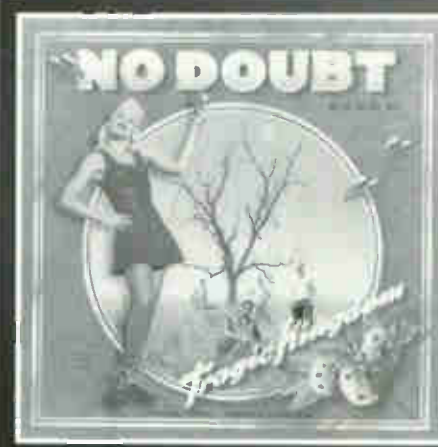
THIS WEEK	LAST WEEK	WKS. ON CHART	MAINSTREAM		DETECTIONS		
			TITLE/LABEL/DISTRIBUTING LABEL	ARTIST	TW	LW	
			*** NO. 1 ***				
1	1	12	NAME METAL BLADE/WARNER BROS. 4 weeks at No. 1	GOO GOO DOLLS	2310	2335	
(2)	2	8	MY FRIENDS WARNER BROS.	RED HOT CHILI PEPPERS	2017	1858	
3	3	7	PERRY MASON EPIC	OZZY OSBOURNE	1660	1685	
(4)	6	5	YOUR LITTLE SECRET ISLAND	MELISSA ETHERIDGE	1561	1521	
(5)	10	6	BULLET WITH BUTTERFLY WINGS VIRGIN	SMASHING PUMPKINS	1527	1341	
(6)	7	11	CUMBERSOME MAMMOTH/ATLANTIC	SEVEN MARY THREE	1501	1424	
(7)	11	6	GRIND COLUMBIA	ALICE IN CHAINS	1412	1315	
8	5	16	COMEDOWN TRAUMA/INTERSCOPE	BUSH	1382	1562	
9	4	10	HARD AS A ROCK EASTWEST/EEG	AC/DC	1374	1615	
10	8	8	HAND IN MY POCKET MAVERICK/REPRISE	ALANIS MORISSETTE	1328	1397	
11	9	11	LUMP COLUMBIA THE PRESIDENTS OF THE UNITED STATES OF AMERICA		1207	1372	
12	13	8	GEEK STINK BREATH REPRISE	GREEN DAY	1066	1185	
13	12	21	TOMORROW EPIC	SILVERCHAIR	1053	1234	
(14)	14	8	I'LL STICK AROUND ROSWELL/CAPITOL	FOO FIGHTERS	1034	990	
(15)	16	9	HOOK A&M	BLUES TRAVELER	983	958	
(16)	29	2	*** AIRPOWER *** LIKE A ROLLING STONE VIRGIN	ROLLING STONES	972	621	
17	15	25	POSSUM KINGDOM INTERSCOPE	TOADIES	960	987	
(18)	20	3	*** AIRPOWER *** THE WORLD I KNOW ATLANTIC	COLLECTIVE SOUL	884	785	
19	18	7	RAININ' WORK	SPONGE	785	830	
20	17	22	AND FOOLS SHINE ON VIRGIN	BROTHER CANE	778	831	
(21)	22	5	DEJA VOODOO GIANT	KENNY WAYNE SHEPHERD	759	675	
(22)	26	4	PURE MASSACRE EPIC	SILVERCHAIR	718	654	
23	19	7	GOOD INTENTIONS COLUMBIA/REPRISE	TOAD THE WET SPROCKET	702	802	
(24)	24	4	LOCK AND LOAD CAPITOL	BOB SEGER & THE SILVER BULLET BAND	689	672	
(25)	27	5	BREADMAKER VIRGIN	BROTHER CANE	678	653	
(26)	NEW		THE GARDEN OF ALLAH GEFKEN	DON HENLEY	645	203	
27	23	7	DROWNING ATLANTIC	HOOTIE & THE BLOWFISH	620	672	
28	28	4	RADAR GUN ESD/TAG/ATLANTIC	THE BOTTLE ROCKETS	613	627	
(29)	34	3	CABIN DOWN BELOW WARNER BROS.	TOM PETTY	579	541	
30	31	26	ALL OVER YOU RADIOACTIVE/MCA	LIVE	577	586	
31	21	11	SIMPLE LESSONS MAVERICK/WARNER BROS.	CANDLEBOX	577	762	
(32)	NEW		GLYCERINE TRAUMA/INTERSCOPE	BUSH	575	390	
33	25	18	IN THE BLOOD ELEKTRA/EEG	BETTER THAN EZRA	558	671	
34	32	4	(YOU'RE) MY WORLD RELATIVITY	JOE SATRIANI	505	552	
35	33	17	YOU OUGHTA KNOW MAVERICK/REPRISE	ALANIS MORISSETTE	497	550	
(36)	36	2	TAXMAN EPIC	STEVIE RAY VAUGHAN	476	442	
(37)	NEW		UNDERSTANDING MAVERICK/WARNER BROS.	CANDLEBOX	450	342	
38	35	2	PIRANHA ISLAND	TRIPPING DAISY	435	452	
39	30	16	TIL I HEAR IT FROM YOU A&M	GIN BLOSSOMS	427	607	
(40)	40	2	STONE THE CROW EASTWEST/EEG	DOWN	416	402	

THIS WEEK	LAST WEEK	WKS. ON CHART	MODERN		DETECTIONS		
			TITLE/LABEL/DISTRIBUTING LABEL	ARTIST	TW	LW	
			*** NO. 1 ***				
1	1	9	MY FRIENDS WARNER BROS. 2 weeks at No. 1	RED HOT CHILI PEPPERS	1913	1921	
2	2	6	BULLET WITH BUTTERFLY WINGS VIRGIN	SMASHING PUMPKINS	1883	1905	
3	3	16	NAME METAL BLADE/WARNER BROS.	GOO GOO DOLLS	1817	1880	
(4)	5	13	POSSUM KINGDOM INTERSCOPE	TOADIES	1676	1665	
5	4	8	GEEK STINK BREATH REPRISE	GREEN DAY	1597	1726	
6	6	15	LUMP COLUMBIA THE PRESIDENTS OF THE UNITED STATES OF AMERICA		1460	1586	
(7)	10	6	NATURAL ONE LONDON/ISLAND	FOLK IMPLOSION	1438	1306	
(8)	8	6	FRIENDS OF P. MAVERICK/REPRISE	THE RENTALS	1426	1360	
9	9	10	I'LL STICK AROUND ROSWELL/CAPITOL	FOO FIGHTERS	1268	1319	
(10)	15	3	GLYCERINE TRAUMA/INTERSCOPE	BUSH	1244	970	
(11)	14	9	ONE OF US BLUE GORILLA/MERCURY	JOAN OSBORNE	1205	1049	
12	7	14	HAND IN MY POCKET MAVERICK/REPRISE	ALANIS MORISSETTE	1166	1391	
(13)	13	8	HOOK A&M	BLUES TRAVELER	1094	1074	
14	12	10	QUEER ALMO SOUNDS/GEFFEN	GARBAGE	1055	1098	
(15)	17	5	ALL I REALLY WANT MAVERICK/REPRISE	ALANIS MORISSETTE	1045	914	
(16)	19	5	CUMBERSOME MAMMOTH/ATLANTIC	SEVEN MARY THREE	1011	912	
(17)	24	3	*** AIRPOWER *** PURE MASSACRE EPIC	SILVERCHAIR	993	856	
18	11	19	COMEDOWN TRAUMA/INTERSCOPE	BUSH	992	1128	
(19)	23	6	*** AIRPOWER *** WONDER ELEKTRA/EEG	NATALIE MERCHANT	967	857	
(20)	26	3	*** AIRPOWER *** SANTA MONICA (WATCH THE WORLD DIE) CAPITOL	EVERCLEAR	903	747	
(21)	27	2	THE WORLD I KNOW ATLANTIC	COLLECTIVE SOUL	892	742	
22	18	5	GRIND COLUMBIA	ALICE IN CHAINS	887	913	
23	22	7	GOOD INTENTIONS COLUMBIA/REPRISE	TOAD THE WET SPROCKET	862	869	
(24)	NEW		1979 VIRGIN	SMASHING PUMPKINS	837	527	
25	16	14	A GIRL LIKE YOU BAR NONE/A&M	EDWYN COLLINS	814	967	
26	20	23	TOMORROW EPIC	SILVERCHAIR	784	885	
27	25	14	TIME BOMB EPITAPH	RANCID	760	848	
(28)	29	6	UNINVITED VENTRUE/AMERICAN/WARNER BROS.	RUTH RUTH	707	702	
(29)	33	2	JUST A GIRL TRAUMA/INTERSCOPE	NO DOUBT	698	640	
(30)	31	5	DON'T STAY HOME CAPRICORN		311	691	
31	21	13	WALK THIS WORLD BIG CAT/WORK	HEATHER NOVA	677	877	
(32)	NEW		KITTY COLUMBIA THE PRESIDENTS OF THE UNITED STATES OF AMERICA		671	529	
33	30	23	IN THE BLOOD ELEKTRA/EEG	BETTER THAN EZRA	634	672	
34	28	11	DO YOU SLEEP? GEFKEN	LISA LOEB & NINE STORIES	628	706	
(35)	NEW		WONDERWALL EPIC	OASIS	625	353	
(36)	36	3	PIRANHA ISLAND	TRIPPING DAISY	598	578	
(37)	37	3	ROSEALIA ELEKTRA/EEG	BETTER THAN EZRA	579	573	
38	32	5	YOUR LITTLE SECRET ISLAND	MELISSA ETHERIDGE	577	651	
39	35	4	RAININ' WORK	SPONGE	574	605	
(40)	NEW		BURNIN' RUBBER WAY COOL MUSIC/MCA SOUNDTRACKS/MCA	MR. MIRAINGA	570	409	

Records showing an increase in detections over the previous week, regardless of chart movement. A record which has been on either chart for more than 20 weeks will not receive a bullet, even if it registers an increase in detections. Airpower awarded to those records which attain 800 detections (mainstream) or 900 (modern) for the first time. If two records are tied in number of plays, the record being played on more stations is placed first. Records below the top 20 are removed from the chart after 26 weeks.



BUSH
"Glycerine"
from the **DOUBLE platinum** album, **SIXTEEN STONE** 52531
Produced by Clive Langer, Alan Winstanley & BUSH
Billboard Monitor 15 - (10)
Big spins at Q101, KROQ, WBCN, KTCL, KISF, WLUM, KTOZ, WCHZ and MORE!
Already **TOP PHONES** at **CIMX & KROQ!**



NO DOUBT
"Just A Girl"
from the album, **TRAGIC KINGDOM** 52500
Produced by Matthew Wilder
Mixed by Holman & Paul Palmer
Billboard Monitor 33 - (29)
On over **60** stations!
New adds include: **WFNN, KZON, WCYY** and more!
On **TOUR NOW!!**