

# ROCK AIRPLAY Monitor

• We Listen To Radio •

August 4, 1995 \$ 4.95 Volume 2 • No. 32

## ROCK HIGHLIGHTS

### ALBUM ROCK

#1

**BROTHER CANE**  
And Fools Shine On (VIRGIN)

★ ★ ★ AIRPOWER ★ ★ ★

ALANIS MORISSETTE • *You Oughta Know* (MAVERICK/REPRISE)

### NEW RELEASES

ELASTICA • *Stutter* (DGC/GEFFEN)

THE PRESIDENTS OF THE UNITED STATES OF AMERICA • *Lump* (COLUMBIA)

SUGAR RAY • *10 Seconds Down* (ATLANTIC)

UGLY KID JOE • *Milkman's Son* (MERCURY)

WHITE ZOMBIE • *Electric Head Pt. 2 (The Ecstasy)* (GEFFEN)

### MODERN ROCK

#1

**ALANIS MORISSETTE**  
*You Oughta Know* (MAVERICK/REPRISE)

★ ★ ★ AIRPOWER ★ ★ ★

GIN BLOSSOMS • *Til I Hear It From You* (A&M)

### NEW RELEASES

BLOODHOUND GANG • *K.I.D.S. Incorporated* (CHEESE FACTORY/UNDERDOG/COLUMBIA)

GREGORY GRAY • *The Pope Does Not Smoke Dope* (EMI)

PJ HARVEY • *Long Snake Moan* (ISLAND)

THE JAYHAWKS • *I'd Run Away* (AMERICAN/REPRISE)

THE MUFFS • *Agony* (REPRISE)

HEATHER NOVA • *Walk This World* (BIG CAT/WORK)

THE PRESIDENTS OF THE UNITED STATES OF AMERICA • *Lump* (COLUMBIA)

SUGAR RAY • *10 Seconds Down* (ATLANTIC)

SUPERSUCKERS • *Born With A Tail* (SUB POP)

PUBLISHER: MICHAEL ELLIS  
EDITOR: SEAN ROSS  
DIRECTOR OF CHARTS: JERRY MCKENNA  
ALBUM ROCK CHART MANAGER: ANTHONY COLOMBO  
MODERN ROCK CHART MANAGER: MARK MARONE  
CHART PRODUCTION MANAGER: MICHAEL CUSSON  
ASST. CHART PRODUCTION MANAGER: PAUL PAGE  
EDITORIAL PRODUCTION MANAGER: BARRY BISHIN  
ASSOC. EDITORIAL PRODUCTION MANAGER: MARCIA REPINSKI  
EDITORIAL PRODUCTION: AARC GIAGUINIO, MORRIS KLIEGMAN  
ADVERTISING PRODUCTION MANAGER: LYDIA MIKULKO  
ADVERTISING PRODUCTION ASST.: CINDEE WEISS  
ADVERTISING ART DIRECTOR: RAY CARLSON

NATIONAL ADVERTISING MANAGER: JON GUINN  
ADVERTISING SALES: ART PHILLIPS, ANDREA THOMPSON  
ADVERTISING SERVICES MGR.: MICHELE JACANGELO  
SALES ASSISTANTS: EVELYN ASZODI, ERICA BENGTSO, JEFF LESTINGI, ALYSE ZIGMAN  
EDITORIAL ADVISOR: TIMOTHY WHITE  
PRODUCTION DIRECTOR: NARE GOMBERT  
DIRECTOR OF MARKETING: ELISSA TOMASETTI  
CIRCULATION MANAGER: JEANNE JAMIN  
DIRECTOR OF RESEARCH: JANE RANZMAN

©1995 BPI Communications, 1515 Broadway, New York, NY 10036  
212-536-5039 For subscriptions call: 800-722-2346

Billboard Music Group  
PRESIDENT: HOWARD LANDER

# BETTER THAN EZRA in the blood

The new single and video from the debut album *DELUXE*  
and the follow-up to the smash single "Good"<sup>TM</sup>

DAVE ROTHCHILD PRODUCED BY MANAGEMENT • JEFFREY LEVINSON/THEEZ TWOZ

25 - 22 ALBUM CHART  
OVER 65 STATIONS  
750+ SPINS  
6 MILLION LISTENERS!

9 - 6 MODERN CHART  
56 MODERN STATIONS  
1300 SPINS  
10 MILLION LISTENERS!



BUZZ CLIP

SOUNSCAN OVER 300,000

ON TOUR THIS SUMMER

On Elektra compact discs and cassette tapes.

ORWELL  
PRODUCE







## Strongest Increase In Airplay This Week

### ALBUM ROCK

INCREASE  
IN PLAYS

<b>GIN BLOSSOMS • <i>Til I Hear It From You</i> (A&amp;M)</b>	<b>+372</b>
KISS +20, WAVF +18, WRDU +17, KTYD +12, KTUX +12, WAPL +12, KLPX +12, KRZR +12, WKLQ +12, WGCX +11	
<b>COLLECTIVE SOUL • <i>Smashing Young Man</i> (ATLANTIC)</b>	<b>+257</b>
KZRR +16, KHOP +15, KNCN +14, WTPA +14, WZTA +12, W'UE +12, KLQL +12, KTUX +11, KRZR +11, WKLQ +10	
<b>ALANIS MORISSETTE • <i>You Oughta Know</i> (MAVERICK/REPRISE)</b>	<b>+255</b>
WLLZ +18, KIOZ +15, WKDF +15, WNOR +15, WXTB +13, KLPX +13, KLAQ +10, WAVF +10, WROC +9, WXRA +9	
<b>BLIND MELON • <i>Galaxie</i> (CAPITOL)</b>	<b>+241</b>
WKDF +16, WROC +13, WLLZ +13, WARQ +12, KICT +12, KZRR +12, KFRQ +11, WKLQ +10, WAAF +10, KTXQ +10	
<b>GREEN DAY • <i>J.A.R.</i> (REPRISE)</b>	<b>+200</b>
WARQ +19, WKDF +16, WROC +15, KUFO +11, KRXQ +11, WXRC +10, KTUX +9, KICT +9, WAVF +9, WIYY +9	
<b>BUSH • <i>Comedown</i> (TRAUMA/INTERSCOPE)</b>	<b>+186</b>
WRIF +21, WQFM +15, KHOP +12, WIYY +12, KICT +11, WLRZ +11, KNCN +10, WZAT +10, KTUX +10, KIOZ +10	
<b>R.E.M. • <i>Crush With Eyeliner</i> (WARNER BROS.)</b>	<b>+172</b>
KZRR +16, WIWX +15, WPLR +15, KEGL +15, WXRC +13, WRXL +13, KICT +12, WARQ +11, KATT +11, WMMR +10	
<b>SILVERCHAIR • <i>Tomorrow</i> (EPIC)</b>	<b>+168</b>
WXTB +18, WWDC +15, WROC +14, WKLQ +14, WTFX +11, WXRA +10, KRAB +8, WEBN +8, KICT +7, WAXQ +6	
<b>FOO FIGHTERS • <i>This Is A Call</i> (ROSWELL/CAPITOL)</b>	<b>+131</b>
WXTB +16, WTUE +16, WRCX +12, KRAB +10, WROC +9, KTUX +8, KRZR +7, WNOR +7, WTPA +6, KZRR +6	
<b>EDWIN MCCAIN • <i>Solitude</i> (LAVA/ATLANTIC)</b>	<b>+126</b>
WRXR +16, WXRC +15, WARQ +14, WNOR +11, WNEW +10, WMMR +9, WKQX +8, WZZR +8, WIWX +7, WXTB +6	

### MODERN ROCK

INCREASE  
IN PLAYS

<b>BLIND MELON • <i>Galaxie</i> (CAPITOL)</b>	<b>+435</b>
KRRK +24, KTOZ +22, WOXY +22, KEGE +21, CIMX +20, KBBT +18, KNNC +18, KNDD +17, WEQX +17, KWOD +15	
<b>GIN BLOSSOMS • <i>Til I Hear It From You</i> (A&amp;M)</b>	<b>+434</b>
WLUM +24, WHYT +22, KDBG +20, WNVE +17, KJYK +17, KTOZ +16, KWOD +16, KFRR +15, WROX +15, KLZR +15	
<b>GREEN DAY • <i>J.A.R.</i> (REPRISE)</b>	<b>+249</b>
WCHZ +27, KTOZ +23, KJYK +16, KEDG +13, KMYZ +13, CFNY +12, KFRR +11, WRLG +11, KEDJ +11, WGRD +11	
<b>SILVERCHAIR • <i>Tomorrow</i> (EPIC)</b>	<b>+179</b>
WENZ +17, WAQZ +14, KEGE +14, XTRA +14, CKEY +13, KTBZ +13, WMMS +13, KROQ +12, WROX +10, KOME +10	
<b>GOO GOO DOLLS • <i>Name</i> (METAL BLADE/WARNER BROS.)</b>	<b>+149</b>
KXRK +20, WKQX +20, KPNT +18, KBBT +15, WXWX +11, KMYZ +11, WEQX +8, KEGE +8, KTCL +7, CKEY +6	
<b>BUSH • <i>Come Down</i> (TRAUMA/INTERSCOPE)</b>	<b>+148</b>
KEGE +18, WROX +14, WHYT +14, KTCL +13, WZRH +12, KTOZ +11, KBBT +10, WCHZ +9, KRRK +9, WDRE +8	
<b>LETTERS TO CLEO • <i>Awake</i> (GIANT)</b>	<b>+138</b>
KISF +19, WLUM +15, WDRE +13, KLZR +11, KPNT +10, WWCD +9, WNVE +8, WBER +8, WAQZ +8, WZRH +6	
<b>HOLE • <i>Softer, Softest</i> (DGC/GEFFEN)</b>	<b>+128</b>
KNNC +21, WROX +14, KROQ +10, WDRE +9, WENZ +9, KFRR +8, KWOD +8, WLUM +7, WCHZ +6, KPNT +6	
<b>THE PRESIDENTS OF THE UNITED STATES OF AMERICA • <i>Lump</i> (COLUMBIA)</b>	<b>+124</b>
WHYT +17, WNVE +16, WROX +15, CIMX +15, KTBZ +11, KNDD +9, KITS +9, KRRK +8, XTRA +8, KISF +6	
<b>ELASTICA • <i>Stutter</i> (DGC/GEFFEN)</b>	<b>+112</b>
KJYK +22, KEGE +20, WKQX +18, WDRE +13, WBCN +13, WAQZ +10, WROX +5, WRLG +5, WZRH +5, WOXY +5	



## • ROCK ROUNDUP •

by Mark Marone

**PROGRESS REPORT:** In addition to Airplay Monitor's recent readership survey, BDS surveyed its record-label customers, and 85% of those responding gave favorable ratings to the modern rock panel, with the album rock panel right behind. We are pleased to note that the rock panels have received some of the highest satisfaction ratings, and we are even more pleased to inform you of some new features in the works. We are planning a new chart that will combine album, modern, and triple-A formats. In addition to the number of plays, it will include audience totals for each song. Also, more modern rock stations are coming to the panel. Currently, BDS is employing a comprehensive technology in monitored markets that will allow us to add stations that were not previously available because of capacity restraints in those markets.

**ADULT ALBUM ALTERNATIVE ROCK:** Call it what you will. We'll all be getting a look at these stations soon. Look for us to debut a triple-A playlist page later this month that will consist of 12 playlists from the format's leading stations.

**MONITOR ADDS CLASSIFIED:** As part of our efforts to become a full-service trade magazine, Airplay Monitor will introduce a classified advertising section in the Sept. 1 issue that will run in all four Monitors. The section, which will be identical in all of the Monitors, will offer traditional help-wanted listings as well as advertising for services directed at our radio readership. It will also contain a unique Bulletin Board, where advertisers can print creative, distinctive notices directed to individuals or the whole industry. Contact classified account manager Laura Rivchun at 212-536-5058.

## MTV PLAYLIST

### Most-Played Rock Tracks

	TW	LW		TW	LW		
1	Alanis Morissette, <i>You Oughta Know</i>	29	26	21	Hootie & The Blowfish, <i>Let Her Cry</i>	11	10
2	Seal, <i>Kiss From A Rose</i>	25	20	22	Stone Temple Pilots, <i>Interstate Love Song</i>	10	11
3	Blues Traveler, <i>Run Around</i>	25	24	23	Chris Isaak, <i>Somebody's Crying</i>	10	10
4	White Zombie, <i>More Human Than Human</i>	24	19	24	Primus, <i>Wynona's Big Brown Beaver</i>	10	11
5	U2, <i>Hold Me, Thrill Me, Kiss</i>	24	25	25	Blind Melon, <i>Galaxie</i>	9	0
6	Hootie & The Blowfish, <i>Only Wanna Be With</i>	23	24	26	Jennifer Trynin, <i>Better Than Nothing</i>	8	4
7	The Rembrandts, <i>I'll Be There For You</i>	21	18	27	The Cranberries, <i>Ridiculous Thoughts</i>	7	11
8	Sponge, <i>Molly</i>	20	12	28	Silverchair, <i>Tomorrow</i>	7	2
9	Spearhead, <i>Hole In The Bucket</i>	16	15	29	Gin Blossoms, <i>Til I Hear It From You</i>	7	0
10	Sheryl Crow, <i>Can't Cry Anymore</i>	15	12	30	The Ramones, <i>I Don't Want To Grow Up</i>	7	4
11	Collective Soul, <i>December</i>	15	21	31	Luscious Jackson, <i>Here</i>	6	13
12	Neil Young, <i>Downtown</i>	15	10	32	Nirvana, <i>Heart-Shaped Box</i>	5	2
13	Live, <i>White, Discussion</i>	14	12	33	Melissa Etheridge, <i>Come To My Window</i>	5	6
14	Weezer, <i>Say It Ain't So</i>	14	16	34	Hootie & The Blowfish, <i>Hold My Hand</i>	5	1
15	Soul Asylum, <i>Misery</i>	14	21	35	Rusted Root, <i>Send Me On My Way</i>	5	5
16	Live, <i>Lightning Crashes</i>	14	12	36	Toadies, <i>Possum Kingdom</i>	5	1
17	Dave Matthews Band, <i>Ants Marching</i>	13	9	37	Bush, <i>Come Down</i>	5	0
18	Filter, <i>Hey Man Nice Shot</i>	13	15	38	Red Hot Chili Peppers, <i>Give It Away</i>	4	3
19	R.E.M., <i>Crush With Eyeliner</i>	12	15	39	Pearl Jam, <i>Jeremy</i>	4	4
20	Better Than Ezra, <i>In The Blood</i>	12	10	40	Aerosmith, <i>Cryin'</i>	4	3

**Jewel**  
pieces of you

what we call human nature in actuality is human habit

Featuring: "Who Will Save Your Soul"  
"I'm Sensitive"

**Jewel**  
pieces of you  
ON TOUR NOW!

1  
VH  
MUSIC FIRST  
CUSTOM ROTATION

**HEARD ON:**  
WHFS-Washington, D.C.  
KNNC-Austin  
WENZ-Cleveland  
KPNT-St. Louis  
WGRD-Grand Rapids

**ADDED ON:**  
WXRT-Chicago



# ROCK AIRPLAY POWER PLAYLISTS

Playlists supplied by Broadcast Data Systems' Radio Track service. Stations selected from panel of leading broadcasters in 125 radio markets, electronically monitored 24 hours a day, 7 days a week. Songs ranked by number of plays in monitored week.

FOR WEEK ENDING  
JULY 30, 1995

KLOS		WNEW		WAXQ		WRCX		WMMR		KQRS	
Los Angeles PD: Carey Curelop MD: Rita Wilde		New York PD: Ted Edwards MD: Amy Winslow		New York PD: Ron Valeri APD/MD: Vinny Marino		Chicago PD: Dave Richards MD: Jo Robinson		Philadelphia PD: Joe Bonadonna MD: Riki Hofberg		Minneapolis PD: Dave Hamilton MD: Reed Collins	
TW	LW	TW	LW	TW	LW	TW	LW	TW	LW	TW	LW
1	Toadies, Possum Kingdom	1	Better Than Ezra, Good	1	Primus, Wynona's Big Brown Beaver	1	White Zombie, More Human Than Human	1	Live, All Over You	1	U2, Hold Me, Thrill Me, Kiss Me, Kill Me
2	Better Than Ezra, In The Blood	2	U2, Hold Me, Thrill Me, Kiss Me, Kill Me	2	Hum, Stars	2	Live, All Over You	2	Hootie & The Blowfish, Only Wanna Be With	2	Neil Young, Downtown
3	Bush, Comedown	3	Dave Matthews Band, Ants Marching	3	Silverchair, Tomorrow	3	Neil Young, Downtown	3	Oel Amiri, Roll To Me	3	The Black Crowes, Wisner Time
4	Alanis Morissette, You Oughta Know	4	Live, All Over You	4	Foo Fighters, This Is A Call	4	Bush, Little Things	4	Neil Young, Downtown	4	Blues Traveler, Hook
5	Elastica, Slutter	5	Natalie Merchant, Carnival	5	Filter, Hey Man Nice Shot	5	Brother Cane, And Fools Shine On	5	Counting Crows, Give Him The Beach	5	Hootie & The Blowfish, Let Her Cry
6	Blues Traveler, Run-Around	6	Hootie & The Blowfish, Only Wanna Be With	6	Pearl Jam, Immateriality	6	U2, Hold Me, Thrill Me, Kiss Me, Kill Me	6	Tom Petty, A Higher Place	6	Bruce Hornsby, Cruise Control
7	Offspring, Smash It Up	7	Alanis Morissette, You Oughta Know	7	Catherine Wheel, Waydown	7	Hum, Stars	7	Alanis Morissette, You Oughta Know	7	Billy Pilgrim, Sweet Louisiana Sound
8	Brother Cane, And Fools Shine On	8	Edwin McCain, Solitude	8	Live, All Over You	8	Pearl Jam, Immateriality	8	Pearl Jam, Immateriality	8	Van Morrison, Days Like This
9	Neil Young, Throw Your Hatred Down	9	Phish, Bouncing Around The Room	9	Quicksand, Thorn In My Side	9	Mad Season, I Don't Know Anything	9	Brother Cane, And Fools Shine On	9	Tom Petty, A Higher Place
10	Foo Fighters, This Is A Call	10	Wanderlust, I Walked	10	White Zombie, More Human Than Human	10	Toadies, Possum Kingdom	10	Beggars, Falling Down	10	Soul Asylum, Misery
11	Go Go Dolls, Flat Top	11	Bin Blossoms, Till I Hear It From You	11	Nine Inch Nails, Hurt	11	Filter, Hey Man Nice Shot	11	Blues Traveler, Hook	11	Ian Moore, Muddy Jesus
12	Live, All Over You	12	Pearl Jam, Immateriality	12	Soundgarden, Superunknown	12	Blues Traveler, Run-Around	12	Counting Crows, The Ghost In You	12	Tom Petty & The Heartbreakers, American
13	Filter, Hey Man Nice Shot	13	Seal, Kiss From A Rose	13	Bush, Comedown	13	Sponge, Molly	13	Vigilantes Of Love, Real Down Town	13	Simple Minds, Don't You
14	Our Lady Peace, Naveed	14	Counting Crows, The Ghost In You	14	Green Day, J.A.R.	14	Green Day, J.A.R.	14	Little Feat, Roll & Roll Evernight	14	Charlie Sexton Sextet, Everyone Will Cra
15	Maidis Of Gravity, Only Dreaming	15	Soul Asylum, Misery	15	Toadies, Possum Kingdom	15	Silverchair, Tomorrow	15	Soul Asylum, Hopes Up	15	Boneyone, Where The Water's Deep
16	Paw, Hugs I Don't Want	16	Toad The Wet Sprocket, Stupid	16	Alanis Morissette, You Oughta Know	16	Tom Petty, A Higher Place	16	Natalie Merchant, Carnival	16	U2, Pride (In The Name Of Love)
17	U2, Hold Me, Thrill Me, Kiss Me, Kill Me	17	Jennifer Trynin, Better Than Nothing	17	Mad Season, I Don't Know Anything	17	Tripping Daisy, I Got A Girl	17	Soul Asylum, Misery	17	Bruce Springsteen, Born To Run
18	Collective Soul, December	18	Sheryl Crow, Can't Cry Anymore	18	Soul Asylum, Just Like Anyone	18	Tripping Daisy, I Got A Girl	18	Collective Soul, Shine	18	Ian Morrison, Wild Night
19	Gin Blossoms, Till I Hear It From You	19	Neil Young, Downtown	19	Tripping Daisy, I Got A Girl	19	Bush, Everything Zen	19	Vigilantes Of Love, Real Down Town	19	Collective Soul, Shine
20	Sponge, Ploved	20	Seal, Kiss From A Rose	20	Smashing Pumpkins, Drown	20	U2, Lightening Grashes	20	Stone Temple Pilots, Interstate Love Song	20	Golden Earring, Twilight Zone
21	White Zombie, More Human Than Human	21	Tom Petty, A Higher Place	21	The Nixons, Head	21	Green Day, J.A.R.	21	Police, Roxanne	21	Police, Roxanne
22	Green Day, J.A.R.	22	Del Amiri, Roll To Me	22	Better Than Ezra, In The Blood	22	Green Day, When I Come Around	22	Dave Matthews Band, Ants Marching	22	Pink Floyd, Another Brick In The Wall
23	Hootie & The Blowfish, Only Wanna Be With	23	Alanis Morissette, Hand In My Pocket	23	Rusty, Wake Me	23	Van Halen, Don't Tell Me	23	Phish, Bouncing Around The Room	23	Eagles, The Long Run
24	Corrosion Of Conformity, Clean My Wounds	24	Collective Soul, December	24	Corrosion Of Conformity, Clean My Wounds	24	Van Halen, Don't Tell Me	24	Meat Puppets, Backbeat	24	Pink Floyd, Hey You
25	Canduban, You	25	Neil Young, Peace And Love	25	Live, White, Discussion	25	Van Halen, Don't Tell Me	25	Blues Traveler, Run-Around	25	Pink Floyd, Learning To Fly
26	Sponge, Molly	26	Blues Traveler, Run-Around	26	Neil Young, Peace And Love	26	Van Halen, Don't Tell Me	26	Blues Traveler, Run-Around	26	Eagles, Hotel California
27	Catherine Wheel, Waydown	27	Matthew Sweet, Sick Of Myself	27	Mad Season, River Of Deceit	27	Van Halen, Don't Tell Me	27	Blues Traveler, Run-Around	27	Aerosmith, Walk This Way
28	White Zombie, Super-Charger Heaven	28	Mad Season, River Of Deceit	28	Better Than Ezra, In The Blood	28	Smile, Staring At The Sun	28	Pearl Jam, Better Man	28	Eagles, Desperado
29	Soundgarden, Spoonman	29	Better Than Ezra, In The Blood	29	Better Than Ezra, In The Blood	29	Better Than Ezra, In The Blood	29	Pete D'Angelo, Northern Bound Train	29	ZZ Top, Cheap Slop
30	Van Halen, Feelin'	30	Better Than Ezra, In The Blood	30	Better Than Ezra, In The Blood	30	Better Than Ezra, In The Blood	30	Jennifer Trynin, Better Than Nothing	30	Eric Clapton, I Shot The Sheriff



WHITE ZOMBIE

★ OVER 1,000,000 HEADS ALREADY PLUGGED IN ★



ELECTRIC HEAD  
PT. 2 [THE ECSTASY]



THE NEW TRACK FROM THE PLATINUM ALBUM

# ASTRO-CREEP: 2000

songs of love, destruction and other synthetic delusions of the Electric Head

<http://geffen.com/planetzombie>  
ON THE INTERNET



PRODUCED BY TERRY DATE  
AND WHITE ZOMBIE

WORLDWIDE  
REPRESENTATION:  
ANDY GOULD AND  
WALTER O'BRIEN FOR  
CONCRETE MANAGEMENT

World Radio History



# ROCK AIRPLAY **Monitor** POWER PLAYLISTS

Playlists supplied by Broadcast Data Systems' Radio Track service. Stations selected from panel of leading broadcasters in 125 radio markets, electronically monitored 24 hours a day, 7 days a week. Songs ranked by number of plays in monitored week.

FOR WEEK ENDING  
JULY 30, 1995

## A L B U M R O C K

KEGL		KSHE		WKLS		WLLZ		KTXQ		WEBN	
Dallas PD: Duane Doherty MD: Cindy Scull		St. Louis PD: Jim Owen MD: Al Hoffer		Atlanta PD: Michael Hughes MD: Beth Kepple		Detroit GM/MD: Ozzie Sattler APD: Todd Thomas		Dallas OM: Andy Lockridge MD: Redbeard		Cincinnati PD: Marc Chase MD: Brad Harlow	
TW	LW	TW	LW	TW	LW	TW	LW	TW	LW	TW	LW
1	Toadies, Possum Kingdom	1	Collective Soul, December	1	Dave Matthews Band, Ants Marching	1	Eleven, Why	1	Filter, Hey Man Nice Shot	1	Collective Soul, December
2	Live, All Over You	2	Live, Lightning Crashes	2	Blues Traveler, Run-Around	2	Collective Soul, December	2	Live, All Over You	2	Live, All Over You
3	Soul Asylum, Misery	3	Pearl Jam, Yellow Ledbetter	3	Neil Young, Downtown	3	Neil Young, Downtown	3	Dave Matthews Band, Ants Marching	3	Hootie & The Blowfish, Only Wanna Be With
4	Green Day, She	4	Van Halen, Don't Tell Me	4	Live, All Over You	4	Bush, Little Things	4	Ian Moore, Muddy Jesus	4	Mad Season, River Of Deceit
5	R.E.M., Crush With Eyeliner	5	Alanis Morissette, You Oughta Know	5	Collective Soul, December	5	Sponge, Mully	5	Alanis Morissette, You Oughta Know	5	Pearl Jam, Immaterial
6	Bush, Little Things	6	Brother Cane, And Fools Shine On	6	Brother Cane, And Fools Shine On	6	Soul Asylum, Misery	6	Hootie & The Blowfish, Only Wanna Be With	6	Bush, Everything Zen
7	Brother Cane, And Fools Shine On	7	Jeff Healey Band, Sluck In The Middle	7	Jeff Healey Band, Sluck In The Middle	7	U2, Hold Me, Thrill Me, Kiss Me, Kill Me	7	Blues Traveler, Run-Around	7	Matthew Sweet, Sick Of Myself
8	Foo Fighters, This Is A Call	8	Hootie & The Blowfish, Let Her Cry	8	R.E.M., Strange Currencies	8	The Ramones, I Don't Want To Grow Up	8	Spot, Moon June Spoo	8	Bush, Little Things
9	Silverchair, Tomorrow	9	Stone Temple Pilots, Interstate Love Song	9	Brother Cane, And Fools Shine On	9	Garbage, Vow	9	Silverchair, Tomorrow	9	Toadies, I Come From The Water
10	Collective Soul, Smashing Young Man	10	Ian Moore, Muddy Jesus	10	Mad Season, River Of Deceit	10	White Zombie, More Human Than Human	10	Tripping Daisy, I Got A Girl	10	Brother Cane, And Fools Shine On
11	Pearl Jam, Immaterial	11	Bush, Everything Zen	11	The Black Crowes, Wisner Time	11	Brother Cane, And Fools Shine On	11	Brother Cane, And Fools Shine On	11	Foo Fighters, This Is A Call
12	Tripping Daisy, I Got A Girl	12	Soundgarden, The Day I Tried To Live	12	Ian Moore, Muddy Jesus	12	Alanis Morissette, You Oughta Know	12	Soul Asylum, Just Like Anyone	12	Soundgarden, The Day I Tried To Live
13	Hootie & The Blowfish, Only Wanna Be With	13	Tom Petty, A Higher Place	13	Gov't Mule, Monkey Hill	13	Hootie & The Blowfish, Only Wanna Be With	13	Foo Fighters, This Is A Call	13	Pearl Jam, Better Man
14	Hum, Stars	14	Hootie & The Blowfish, Only Wanna Be With	14	U2, Hold Me, Thrill Me, Kiss Me, Kill Me	14	Blues Traveler, Run-Around	14	Green Day, J.A.R.	14	Pearl Jam, Yellow Ledbetter
15	Hagfish, Stamp	15	Soul Asylum, Misery	15	Better Than Ezra, Good	15	Toadies, Possum Kingdom	15	Green Day, J.A.R.	15	Live, Ins
16	Mad Season, I Don't Know Anything	16	Bon Jovi, Hey God	16	Bon Jovi, Hey God	16	Tom Petty, A Higher Place	16	Deep Blue Something, Breakfast At Tiffany's	16	Soundgarden, Fell On Black Days
17	Better Than Ezra, In The Blood	17	Collective Soul, Gel	17	U2, Hold Me, Thrill Me, Kiss Me, Kill Me	17	Bush, Comedown	17	Deep Blue Something, Halo	17	Stone Temple Pilots, Still Remains
18	Green Apple Quick Step, Los Vargos	18	Rush, Fly By Night	18	Slane Temple Pilots, Interstate Love Song	18	Blues Traveler, Run-Around	18	Blues Traveler, Run-Around	18	Candlebox, Far Behind
19	Sponge, Mully	19	Hootie & The Blowfish, Hold My Hand	19	Pink Floyd, A Great Day For Freedom	19	Silverchair, Tomorrow	19	Blind Melon, Galazie	19	Blind Melon, Galazie
20	White Zombie, Electric Head Pt. 2	20	Tom Petty, A Higher Place	20	The Black Crowes, Hard To Handle	20	Primus, Wynona's Big Brown Beaver	20	Live, Lightning Crashes	20	Tom Petty, A Higher Place
21	Filter, Hey Man Nice Shot	21	U2, Hold Me, Thrill Me, Kiss Me, Kill Me	21	Pearl Jam, Immaterial	21	Mad Season, I Don't Know Anything	21	Toadies, Possum Kingdom	21	Filter, Hey Man Nice Shot
22	The Nixons, Head	22	Aerosmith, Back In The Saddle	22	Toadies, Possum Kingdom	22	Blind Melon, Galazie	22	Matthew Sweet, Sick Of Myself	22	Silverchair, Tomorrow
23	Alanis Morissette, You Oughta Know	23	Rush, Closer To The Heart	23	John Cougar Mellencamp, Authority Song	23	John Cougar Mellencamp, Authority Song	23	Live, All Over You	23	Blues Traveler, Run-Around
24	White Zombie, More Human Than Human	24	Collective Soul, Shine	24	John Cougar Mellencamp, Authority Song	24	John Cougar Mellencamp, Authority Song	24	Collective Soul, December	24	Blues Traveler, Run-Around
25	Sweet Water, Superstar	25	Tom Petty, You Wreck Me	25	Collective Soul, Shine	25	U2, Hold Me, Thrill Me, Kiss Me, Kill Me	25	Green Day, When I Come Around	25	Soul Asylum, Crashes
26	Matthew Sweet, Sick Of Myself	26	Aerosmith, Walk This Way	26	Eagles, Life In The Fast Lane	26	Candlebox, Far Behind	26	Soundgarden, Fell On Black Days	26	Offspring, Self Esteem
27	Collective Soul, December	27	Primus, Wynona's Big Brown Beaver	27	Primus, Wynona's Big Brown Beaver	27	Sponge, Mully	27	White Zombie, More Human Than Human	27	White Zombie, More Human Than Human
28	Corrosion Of Conformity, Seven Days	28	Nazareth, Hair Of The Dog	28	U2, I'm Bad, I'm Nationwide	28	U2, I'm Bad, I'm Nationwide	28	Candlebox, Far Behind	28	White Zombie, More Human Than Human
29	Mad Season, River Of Deceit	29	Pink Floyd, Money	29	Dave Matthews Band, What Would You Say	29	Hum, Stars	29	R.E.M., Bang And Blame	29	The Nixons, Head
30	Offspring, Gotta Get Away	30	Filter, Hey Man Nice Shot	30	Phish, Bouncing Around The Room	30	Stone Temple Pilots, Vasoline	30	Oasis, Live Forever	30	Soul Asylum, Mully

KSJO		WXTB		WYYY		WZTA		KUFO		WHJY	
San Jose PD: Dana Jang MD: Laurie Free		Tampa OM: Greg Mull MD: Brian Medlin		Baltimore PD: Rick Strauss MD: Rob Heckman		Miami PD: Gregg Steele MD: Heidi Hess		Portland PD: Dave Numme APD: Al Scott		Providence PD: Bill Weston MD: Sharon Schifino	
TW	LW	TW	LW	TW	LW	TW	LW	TW	LW	TW	LW
1	Live, All Over You	1	U2, Hold Me, Thrill Me, Kiss Me, Kill Me	1	Wanderlust, I Walked	1	Live, All Over You	1	Tom Petty, Money Bee	1	Collective Soul, December
2	U2, Hold Me, Thrill Me, Kiss Me, Kill Me	2	Monster Magnet, Negasonic Teenage Warhead	2	Neil Young, Downtown	2	Toadies, Possum Kingdom	2	Better Than Ezra, Good	2	Soul Asylum, Misery
3	Collective Soul, December	3	Better Than Ezra, Good	3	Hootie & The Blowfish, Only Wanna Be With	3	Hootie & The Blowfish, Only Wanna Be With	3	Collective Soul, December	3	U2, Hold Me, Thrill Me, Kiss Me, Kill Me
4	Bush, Little Things	4	Better Than Ezra, In The Blood	4	Brother Cane, And Fools Shine On	4	Brother Cane, And Fools Shine On	4	Live, All Over You	4	Hootie & The Blowfish, Only Wanna Be With
5	Brother Cane, And Fools Shine On	5	Pearl Jam, Immaterial	5	Green Day, J.A.R.	5	Silverchair, Tomorrow	5	Van Halen, Amsterdam	5	Alanis Morissette, You Oughta Know
6	Green Day, She	6	Toadies, Possum Kingdom	6	Toadies, Possum Kingdom	6	Better Than Ezra, In The Blood	6	Bush, Little Things	6	Bush, Comedown
7	Ian Moore, Muddy Jesus	7	Stone Temple Pilots, Unglued	7	Foo Fighters, This Is A Call	7	Pearl Jam, Immaterial	7	Brother Cane, And Fools Shine On	7	Filter, Hey Man Nice Shot
8	Toadies, Possum Kingdom	8	Live, Ins	8	Tom Petty, A Higher Place	8	Blind Melon, Galazie	8	Brother Cane, And Fools Shine On	8	Pearl Jam, Better Man
9	Silverchair, Tomorrow	9	Ian Moore, Muddy Jesus	9	Better Than Ezra, In The Blood	9	Neil Young, Downtown	9	U2, Hold Me, Thrill Me, Kiss Me, Kill Me	9	Dave Matthews Band, Ants Marching
10	Sponge, Mully	10	Phish, Bouncing Around The Room	10	Blues Traveler, Run-Around	10	Sponge, Mully	10	Silverchair, Tomorrow	10	Brother Cane, And Fools Shine On
11	Filter, Hey Man Nice Shot	11	Nirvana, Lake Of Fire	11	The Black Crowes, Wisner Time	11	R.E.M., Crush With Eyeliner	11	Queensryche, Damaged	11	Tom Petty, A Higher Place
12	Foo Fighters, This Is A Call	12	White Zombie, More Human Than Human	12	Ian Moore, Muddy Jesus	12	Bush, Comedown	12	Neil Young, Downtown	12	Neil Young, Downtown
13	Collective Soul, December	13	White Zombie, More Human Than Human	13	Soul Asylum, Just Like Anyone	13	Alanis Morissette, You Oughta Know	13	Foo Fighters, This Is A Call	13	Jeff Healey Band, Sluck In The Middle
14	Pearl Jam, Immaterial	14	Brother Cane, And Fools Shine On	14	U2, Hold Me, Thrill Me, Kiss Me, Kill Me	14	U2, Hold Me, Thrill Me, Kiss Me, Kill Me	14	Green Day, She	14	Sponge, Mully
15	Mad Season, I Don't Know Anything	15	Shudder To Think, X-French Tee Shirt	15	U2, Hold Me, Thrill Me, Kiss Me, Kill Me	15	Blues Traveler, Run-Around	15	Green Day, She	15	White Zombie, More Human Than Human
16	The Stone Roses, Love Spreads	16	Alice In Chains, I Stay Away	16	Live, White, Discussion	16	Collective Soul, December	16	Sweet Water, Superstar	16	White Zombie, More Human Than Human
17	Hootie & The Blowfish, Only Wanna Be With	17	Our Lady Peace, Ninned	17	U2, Hold Me, Thrill Me, Kiss Me, Kill Me	17	Hole, Violet	17	Green Day, J.A.R.	17	White Zombie, More Human Than Human
18	Better Than Ezra, In The Blood	18	Fury In The Slaughterhouse, Dancing In T	18	Live, All Over You	18	Primus, Wynona's Big Brown Beaver	18	Green Day, J.A.R.	18	White Zombie, More Human Than Human
19	Catherine Wheel, Waydown	19	Tom Petty, A Higher Place	19	Soul Asylum, Just Like Anyone	19	Hum, Stars	19	Soul Asylum, Misery	19	White Zombie, More Human Than Human
20	Soul Asylum, Misery	20	Foo Fighters, This Is A Call	20	Mad Season, River Of Deceit	20	Tom Petty, A Higher Place	20	Monster Magnet, Negasonic Teenage Warhead	20	Offspring, Self Esteem
21	R.E.M., Crush With Eyeliner	21	Toadies, I Come From The Water	21	Bush, Comedown	21	Collective Soul, December	21	Hum, Stars	21	Live, White, Discussion
22	Bad Religion, Insected	22	Sponge, Mully	22	Bush, Little Things	22	Soul Asylum, Just Like Anyone	22	Offspring, Gotta Get Away	22	White Zombie, More Human Than Human
23	Primus, Wynona's Big Brown Beaver	23	Primus, Wynona's Big Brown Beaver	23	U2, Hold Me, Thrill Me, Kiss Me, Kill Me	23	Collective Soul, December	23	Green Day, J.A.R.	23	White Zombie, More Human Than Human
24	Tom Petty, Honey Bee	24	Live, White, Discussion	24	Green Day, She	24	Soul Asylum, Just Like Anyone	24	Offspring, Gotta Get Away	24	White Zombie, More Human Than Human
25	Corrosion Of Conformity, Albattross	25	Daisy, Live Forgive	25	Silverchair, Tomorrow	25	Stone Temple Pilots, Dancing Days	25	Collective Soul, Smashing Young Man	25	White Zombie, More Human Than Human
26	Green Day, J.A.R.	26	Alice In Chains, Got Me Wrong	26	Green Day, She	26	Soundgarden, Fell On Black Days	26	Offspring, Gotta Get Away	26	White Zombie, More Human Than Human
27	Stone Temple Pilots, Interstate Love Song	27	Bush, Little Things	27	R.E.M., Bang And Blame	27	U2, Hold Me, Thrill Me, Kiss Me, Kill Me	27	Doan, Top High To Fly	27	White Zombie, More Human Than Human
28	Better Than Ezra, Good	28	Offspring, Gotta Get Away	28	Stone Temple Pilots, Interstate Love Song	28	Stone Temple Pilots, Interstate Love Song	28	Go Go Go Dolls, Flat Top	28	White Zombie, More Human Than Human
29	Nirvana, About A Girl	29	Hum, Stars	29	Tom Petty, It's Good To Be King	29	Live, White, Discussion	29	Candlebox, Cover Me	29	White Zombie, More Human Than Human
30	Stone Temple Pilots, Unglued	30	White Zombie, Electric Head Pt. 2	30	Dave Matthews Band, What Would You Say	30	White Zombie, More Human Than Human	30	Soundgarden, Spoonman	30	White Zombie, More Human Than Human

WBAB		KBPI		WKDF		KQRC		KISW		WONE	
Long Island PD: Jeff Levine MD: Ralph Tortora		Denver PD: Bob Richards		Nashville PD: Kidd Redd MD: Sheri Sexton		Kansas City PD: Doug Sorenson MD: Valorie Knight		Seattle PD: Steve Young MD: Cathy Faulkner		Akron PD: J.D. MD: Erin Carmen	
TW	LW	TW	LW	TW	LW	TW	LW	TW	LW	TW	LW
1	Collective Soul, December	1	Live, All Over You	1	Silverchair, Tomorrow	1	Collective Soul, December	1	Foo Fighters, This Is A Call	1	Pink Floyd, What Do You Want From Me
2	Hootie & The Blowfish, Only Wanna Be With	2	Collective Soul, December	2	Bush, Little Things	2	Nirvana, Lake Of Fire	2	Primus, Wynona's Big Brown Beaver	2	U2, Hold Me, Thrill Me, Kiss Me, Kill Me
3	U2, Hold Me, Thrill Me, Kiss Me, Kill Me	3	Filter, Hey Man Nice Shot	3	Brother Cane, And Fools Shine On	3	Toadies, Possum Kingdom	3	Filter, Hey Man Nice Shot	3	Neil Young, Downtown
4	Blues Traveler, Run-Around	4	Green Day, She	4	Live, All Over You	4	Soundgarden, The Day I Tried To Live	4	White Zombie, More Human Than Human	4	Hootie & The Blowfish, Only Wanna Be With
5	Soul Asylum, Misery	5	Better Than Ezra, Good	5	Better Than Ezra, In The Blood	5	White Zombie, More Human Than Human	5	Monster Magnet, Negasonic Teenage Warhead	5	Blues Traveler, Run-Around
6	Live, Lightning Crashes	6	Better Than Ezra, Good	6	Better Than Ezra, In The Blood	6	Silverchair, Tomorrow	6	Sweet Water, Superstar	6	Blues Traveler, Run-Around
7	Natalie Merchant, Carnival	7	Toadies, Possum Kingdom	7	Green Day, She	7	Foo Fighters, This Is A Call	7	Peter Murphy, The Scarlet Thing In You	7	Tom Petty, A Higher Place
8	Phish, Bouncing Around The Room	8	Brother Cane, And Fools Shine On	8	Filter, Hey Man Nice Shot	8	The Stone Roses, Driving South	8	Green Apple Quick Step, Los Vargos	8	Collective Soul, December
9	Matthew Sweet, Sick Of Myself	9	Brother Cane, And Fools Shine On	9	Pearl Jam, Immaterial	9	U2, Hold Me, Thrill Me, Kiss Me, Kill Me	9	Corrosion Of Conformity, Seven Days	9	Soul Asylum, Misery
10	Jennifer Tryn, Better Than Nothing	10	Offspring, Self Esteem	10	Soundgarden, The Day I Tried To Live	10	Pearl Jam, Immaterial	10	Green Day, J.A.R.	10	The Black Crowes, Wisner Time
11	Bin Blossoms, Til I Hear It From You	11	Sweet Water, Superstar	11	Live, White, Discussion	11	Bush, Little Things	11	Mad Season, I'm Above	11	Brother Cane, And Fools Shine On
12	Tom Petty, A Higher Place	12	Offspring, Gotta Get Away	12	Bush, Little Things	12	Brother Cane, And Fools Shine On	12	The Tea Party, Fire In The Head	12	Eagles, Learn To Be Still
13	Neil Young, Downtown	13	Collective Soul, Gel	13	Sponge, Mully	13	Hootie & The Blowfish, Only Wanna Be With	13	Mad Season, I Don't Know Anything	13	Bad Company, Down And Dirty
14	Off Amiri, Roll To Me	14	Hootie & The Blowfish, Hey Hey What Can	14	Nirvana, Lake Of Fire	14	Tom Petty, Honey Bee	14	Sponge, Mully	14	Van Halen, Can't Stop Lovin' You
15	Alanis Morissette, You Oughta Know	15	Alice In Chains, Got Me Wrong	15	Alice In Chains, Got Me Wrong	15	U2, Hold Me, Thrill Me, Kiss Me, Kill Me	15	Green Day, J.A.R.	15	Bad Company, Abandoned And Alone
16	The Black Crowes, Wisner Time	16	U2, Hold Me, Thrill Me, Kiss Me, Kill Me	16	Better Than Ezra, Good	16	Sponge, Mully	16	Mad Season, I Don't Know Anything	16	Tom Petty, You Don't Know How It Feels
17	Bruce Hornsby, Cruise Control	17	U2, Hold Me, Thrill Me, Kiss Me, Kill Me	17	Collective Soul, Gel	17	Live, All Over You	17	Tom Petty, A Higher Place	17	Rolling Stones, Out Of Tears
18	Van Halen, Not Enough	18	Bush, Little Things	18	Stone Temple Pilots, Unglued	18	Bush, Everything Zen	18	Green Day, J.A.R.	18	Bon Jovi, Hey God
19	Better Than Ezra, Good	19	Offspring, Gotta Get Away	19	Mad Season, I Don't Know Anything	19	Mad Season, I Don't Know Anything	19	Mad Season, I Don't Know Anything	19	Live, White, Discussion
20	Rusted Root, Send Me On My Way	20	Corrosion Of Conformity, Albattross	20	Green Day, J.A.R.	20	Mad Season, River Of Deceit	20	Brother Cane, And Fools Shine On	20	Rolling Stones, You Got Me Rocking
21	Rod Stewart, Love Virginia Alone	21	Stone Temple Pilots, Unglued	21	Green Day, J.A.R.	21	Stone Temple Pilots, Unglued	21	Paw, High I Q Tonight	21	John Cougar Mellencamp, Crumbly Down
22	Dave Matthews Band, Ants Marching	22	Go Go Go Dolls, Flat Top	22	Foo Fighters, This Is A Call	22	R.E.M., Crush With Eyeliner	22	Go Go Go Dolls, Flat Top	22	Rush, Fly By Night
23	Van Morrison, Days Like This	23	Soundgarden, Fell On Black Days	23	Alanis Morissette, You Oughta Know	23	Go Go Go Dolls, Flat Top	23	Go Go Go Dolls, Flat Top	23	John Cougar Mellencamp, Small Town
24	Soul Asylum, Promises Broken	24	White Zombie, More Human Than Human	24	Bush, Everything Zen	24	Sweet Water, Superstar	24	Queensryche, Someone Else?	24	Soul Asylum, Misery
25	Blues Traveler, The Mountains Win Again										



CLASSIC VOICE. CLASSIC SONG.  
TOGETHER, A DRAMATIC NEW IMPACT...

*Annie Lennox*

A WHITER SHADE OF PALE

THE FOLLOW-UP TO HER TOP 5 SMASH "NO MORE 'I LOVE YOU'S'"  
FROM THE ACCLAIMED PLATINUM-PLUS ALBUM MEDUSA  
HER SPELL CONTINUES...

**ARISTA** © 1995 ARISTA RECORDS, INC.  
World Radio History



Detailed song tracking information for the last 3 weeks for all songs showing increased play this week. Total plays and gain do not include video play. Markets listed in order of population.

### ALBUM ROCK

Total Plays/Gain		Total Plays/Gain		Total Plays/Gain		Total Plays/Gain		Total Plays/Gain											
BETTER THAN EZRA In The Blood (Elektra/EEG)		747/125		BLUES TRAVELER Run-Around (A&M)		1067/31		BROTHER CANE And Fools Shine On (Virgin)		1980/56		BUSH Comedown (Trauma/Interscope)		645/186		FOO FIGHTERS This Is A Call (Roswell/Capitol)		1219/131	
Total Stations: 65		Chart Move: 25-22		Total Stations: 76		Chart Move: 15-13		Total Stations: 99		Chart Move: 4-1		Total Stations: 54		Chart Move: Debut 28		Total Stations: 80		Chart Move: 12-8	
TW LW 2W IP		TW LW 2W IP		TW LW 2W IP		TW LW 2W IP		TW LW 2W IP		TW LW 2W IP		TW LW 2W IP		TW LW 2W IP		TW LW 2W IP		TW LW 2W IP	
New York	MTV	12	10	Jacksonv.	WFVY	25	24	Jacksonv.	WFVY	25	18	Jacksonv.	WFVY	5	7	Jacksonv.	WFVY	15	11
	WAXQ	21	18	Olda.City	KATT	2	5		WAXQ	21	21	Olda.City	KATT	1	4		WAXQ	37	33
	WNEW	10	11	Louisv.	WTFX	-	-		WNEW	8	9	Louisv.	WTFX	-	1		WNEW	14	10
L.A.	KLDB	30	18	Rai./Dur.	WRDU	-	-	L.A.	KLDB	21	21	Rai./Dur.	WRDU	-	-	L.A.	KLDB	17	14
	WRXC	14	13	Austin	KLBJ	9	5	Chicago	WRXC	31	40	Austin	KLBJ	6	4	Chicago	WRXC	12	-
Chicago	WMMR	11	10	Richmond	WRXL	-	-	Phila.	WMMR	20	16	Richmond	WRXL	4	-	Phila.	WMMR	1	-
Phila.	WLLZ	20	21	Albany	WPYX	2	-	Detroit	WLLZ	24	23	Albany	WPYX	9	13	Detroit	WLLZ	17	15
Detroit	WRIF	13	4	Las Vegas	KDMP	-	-		WRIF	23	21	Las Vegas	KDMP	-	-		WRIF	23	21
Dallas	KEGL	16	13	Scranton	WEZX	5	7	Dallas	KEGL	34	34	Scranton	WEZX	5	4	Dallas	KEGL	22	18
	KTXQ	5	9	Tulsa	KMDD	3	-		KTXQ	25	23	Tulsa	KMDD	-	-		KTXQ	24	23
Wash., DC	WWDC	14	8	Tucson	KLPX	9	1	Wash., DC	WWDC	9	-	Tucson	KLPX	-	-	Wash., DC	WWDC	14	13
Boston	WAFF	9	8	Fresno	KRZR	20	19	Boston	WAFF	11	9	Fresno	KRZR	20	20	Boston	WAFF	31	21
Houston	KLDL	9	8	Gr.Rap.	WKLO	4	2	Houston	KLDL	20	27	Gr.Rap.	WKLO	30	41	Houston	KLDL	13	14
Miami	WZTA	22	20	Syracuse	WAQX	2	-	Miami	WZTA	31	27	Syracuse	WAQX	9	8	Miami	WZTA	21	21
Atlanta	WKLS	6	1	McAllen	KFRQ	-	-	Atlanta	WKLS	19	15	McAllen	KFRQ	-	-	Atlanta	WKLS	-	-
Seattle	KISW	-	-	Albuq.	KZRR	2	1	Seattle	KISW	-	-	Albuq.	KZRR	1	-	Seattle	KISW	25	23
Long Isl.	WBAB	-	-	Omaha	KEZO	-	-	Long Isl.	WBAB	-	-	Omaha	KEZO	10	6	Long Isl.	WBAB	-	-
San Diego	KIDZ	-	-	Knov.	WIMZ	-	-	San Diego	KIDZ	17	7	Knov.	WIMZ	-	-	San Diego	KIDZ	4	1
Minn.	KORS	-	-	Harrisb.	WTPA	16	18	Minn.	KORS	-	-	Harrisb.	WTPA	34	30	Minn.	KORS	-	-
St. Louis	KSHE	1	1	Toledo	WIDT	22	16	St. Louis	KSHE	-	-	Toledo	WIDT	-	-	St. Louis	KSHE	1	1
Balt.	WIYY	21	16	El Paso	KLAQ	1	1	Balt.	WIYY	12	-	El Paso	KLAQ	1	-	Balt.	WIYY	22	13
Pitts.	WDVE	-	-	L.Rock	KMJX	-	-	Pitts.	WDVE	7	6	L.Rock	KMJX	13	15	Pitts.	WDVE	-	-
Phoenix	KDKB	16	14	Charl., SC	WAVF	4	-	Phoenix	KDKB	27	25	Charl., SC	WAVF	17	18	Phoenix	KDKB	-	-
	KUPD	5	-	Bakersf.	KRAB	1	-		KUPD	13	8	Bakersf.	KRAB	-	-		KUPD	21	17
Tampa	WXTB	31	30	Youngst.	WNCD	7	5	Tampa	WXTB	26	27	Youngst.	WNCD	29	29	Tampa	WXTB	6	4
Cleveland	WDNE	-	-	Wichita	KICT	6	6	Cleveland	WDNE	11	13	Wichita	KICT	23	12	Cleveland	WDNE	5	-
Denver	KBPI	-	-	Crzz	KRZZ	6	7	Denver	KBPI	20	18	Crzz	KRZZ	18	17	Denver	KBPI	9	12
Cincinnati	WEBN	-	-	Mobile	WGXC	12	16	Cincinnati	WEBN	16	10	Mobile	WGXC	20	24	Cincinnati	WEBN	15	16
Port., OR	KUPD	-	-	Col., SC	WARQ	16	11	Port., OR	KUPD	14	9	Col., SC	WARQ	26	25	Port., OR	KUPD	11	8
Rivers.	KCAL	-	-	New Haven	WPLR	14	12	Rivers.	KCAL	11	8	New Haven	WPLR	1	-	Rivers.	KCAL	8	8
Milwaukee	WLZR	7	6	Spokane	KEZE	4	6	Milwaukee	WLZR	22	21	Spokane	KEZE	14	12	Milwaukee	WLZR	20	21
	WOFM	15	1	Roanoke	WRDV	-	-		WOFM	15	-	Roanoke	WRDV	-	-		WOFM	17	12
Sacram.	KRXQ	18	19	Col.Spr.	KILD	27	25	Sacram.	KRXQ	31	33	Col.Spr.	KILD	25	27	Sacram.	KRXQ	31	30
Kan.City	KQRC	-	-	Hunts.	WTAK	24	27	Kan.City	KQRC	19	17	Hunts.	WTAK	24	24	Kan.City	KQRC	21	16
	KYYS	-	-	D.Moines	KGDD	1	2		KYYS	17	9	D.Moines	KGDD	10	18		KYYS	-	-
San Jose	KSDJ	13	4	Aug., GA	WRXR	20	22	San Jose	KSDJ	23	17	Aug., GA	WRXR	12	7	San Jose	KSDJ	17	16
Provid.	WHJY	-	-	Jackson	WSTZ	2	1	Provid.	WHJY	17	10	Jackson	WSTZ	10	11	Provid.	WHJY	20	18
Norfolk	WNDR	-	-	Modesto	KHDP	-	-	Norfolk	WNDR	16	17	Modesto	KHDP	33	29	Norfolk	WNDR	-	-
Colum., OH	WLVO	-	-	Fl. Myers	WRDC	1	-	Colum., OH	WLVO	-	-	Fl. Myers	WRDC	13	12	Colum., OH	WLVO	-	-
San Anton.	KISS	1	3	Lex., KY	WKQQ	1	-	San Anton.	KISS	37	36	Lex., KY	WKQQ	1	-	San Anton.	KISS	38	38
Salt Lake	KBER	-	-	Shrev.	KTAL	4	3	Salt Lake	KBER	-	-	Shrev.	KTAL	10	10	Salt Lake	KBER	-	-
Indian.	WFBO	25	22	Charl., NC	KTXU	32	30	Indian.	WFBO	9	9	Charl., NC	KTXU	32	30	Indian.	WFBO	-	-
Charl., NC	WXRC	25	22	Chrsti	KNCN	-	-	Charl., NC	WXRC	25	24	Chrsti	KNCN	11	10	Charl., NC	WXRC	14	17
New Or.	WKCW	16	17	Montgom.	WXFX	1	1	New Or.	WKCW	7	6	Montgom.	WXFX	1	-	New Or.	WKCW	10	9
Buffalo	WUFX	-	-	Savannah	WXIV	9	8	Buffalo	WUFX	14	15	Savannah	WXIV	9	9	Buffalo	WUFX	13	14
Orlando	WDIZ	31	26	WZAT	27	25	Orlando	WDIZ	31	26	WZAT	25	10	Orlando	WDIZ	21	16		
Hartford	WCCC	11	6	Charl., WV	WKLC	1	1	Hartford	WCCC	23	21	Charl., WV	WKLC	1	-	Hartford	WCCC	11	11
	WHCN	-	-	Spring, MO	KXUS	10	8		WHCN	17	17	Spring, MO	KXUS	10	8		WHCN	-	-
Greensb.	WXRA	9	12	Col., GA	WVRK	4	1	Greensb.	WXRA	22	23	Col., GA	WVRK	20	22	Greensb.	WXRA	33	32
Memphis	WEGR	-	-	Port., ME	WBLM	1	-	Memphis	WEGR	-	-	Port., ME	WBLM	-	-	Memphis	WEGR	-	-
Rochest.	WCME	13	19	Port., ME	WBLM	1	-	Rochest.	WCME	9	8	Port., ME	WBLM	-	-	Rochest.	WCME	8	7
Nashv.	WKDF	28	27	Santa Barb.	KTYD	1	1	Nashv.	WKDF	31	26	Santa Barb.	KTYD	13	7	Nashv.	WKDF	16	15
Dayton	WTUE	8	7	Gr.Bay	WAPL	12	8	Dayton	WTUE	38	32	Gr.Bay	WAPL	10	13	Dayton	WTUE	14	9
W.P.Beach	WZZR	20	23	Burling.	WIZN	7	8	W.P.Beach	WZZR	27	24	Burling.	WIZN	7	8	W.P.Beach	WZZR	23	22

Total Plays/Gain		Total Plays/Gain		Total Plays/Gain		Total Plays/Gain		Total Plays/Gain											
GIN BLOSSOMS Til I Hear It From You (A&M)		748/372		GREEN DAY J.A.R. (Reprise)		667/200		HOOTIE & THE BLOWFISH Only Wanna Be With You (Atlantic)		1759/33		HUM Stars (RCA)		597/37		LIVE White, Discussion (Radioactive/MCA)		573/105	
Total Stations: 68		Chart Move: Debut 21		Total Stations: 62		Chart Move: Debut 25		Total Stations: 90		Chart Move: 5-5		Total Stations: 53		Chart Move: 30-28		Total Stations: 60		Chart Move: 40-30	
TW LW 2W IP		TW LW 2W IP		TW LW 2W IP		TW LW 2W IP		TW LW 2W IP		TW LW 2W IP		TW LW 2W IP		TW LW 2W IP		TW LW 2W IP		TW LW 2W IP	
New York	MTV	7	-	Jacksonv.	WFVY	14	9	New York	MTV	23	24	Jacksonv.	WFVY	25	24	New York	MTV	14	12
	WAXQ	-	-	Olda.City	KATT	1	-		WAXQ	-	-	Olda.City	KATT	-	-		WAXQ	19	15
	WNEW	15	7	Louisv.	WTFX	1	1		WNEW	18	21	Louisv.	WTFX	8	9		WNEW	-	-
L.A.	KLDB	14	8	Rai./Dur.	WRDU	19	2	L.A.	KLDB	12	18	Rai./Dur.	WRDU	6	7	L.A.	KLDB	2	3
Chicago	WRXC	14	13	Austin	KLBJ	-	-	Chicago	WRXC	10	17	Austin	KLBJ	30	28	Chicago	WRXC	4	5
Phila.	WMMR	11	10	Richmond	WRXL	-	-	Phila.	WMMR	26	24	Richmond	WRXL	24	22	Phila.	WMMR	1	-
Detroit	WLLZ	20	21	Albany	WPYX	10	-	Detroit	WLLZ	13	13	Albany	WPYX	25	20	Detroit	WLLZ	-	-
	WRIF	13	4	Las Vegas	KDMP	-	-		WRIF	10	3	Las Vegas	KDMP	26	22		WRIF	12	7
Dallas	KEGL	16	13	Scranton	WEZX	5	7	Dallas	KEGL	22	25	Scranton	WEZX	16	15	Dallas	KEGL	17	-
	KTXQ	5	9	Tulsa	KMDD	3	-		KTXQ	38	39	Tulsa	KMDD	15	11		KTXQ	-	-
Wash., DC	WWDC	15	10	Tucson	KLPX	9	1	Wash., DC	WWDC	33	27	Tucson	KLPX	33	25	Wash., DC	WWDC	-	-
Boston	WAFF	-	-	Fresno	KRZR	17	13	Boston	WAFF	11	9	Fresno	KRZR	30	30	Boston	WAFF	22	20
Houston	KLDL	9	8	Gr.Rap.	WKLO	4	2	Houston	KLDL	12	13	Gr.Rap.	WKLO	12	13	Houston	KLDL	14	10
Miami	WZTA	19	14	Syracuse	WAQX	2	-	Miami	WZTA	32	32	Syracuse	WAQX	23	24	Miami	WZTA	13	15
Atlanta	WKLS	6																	

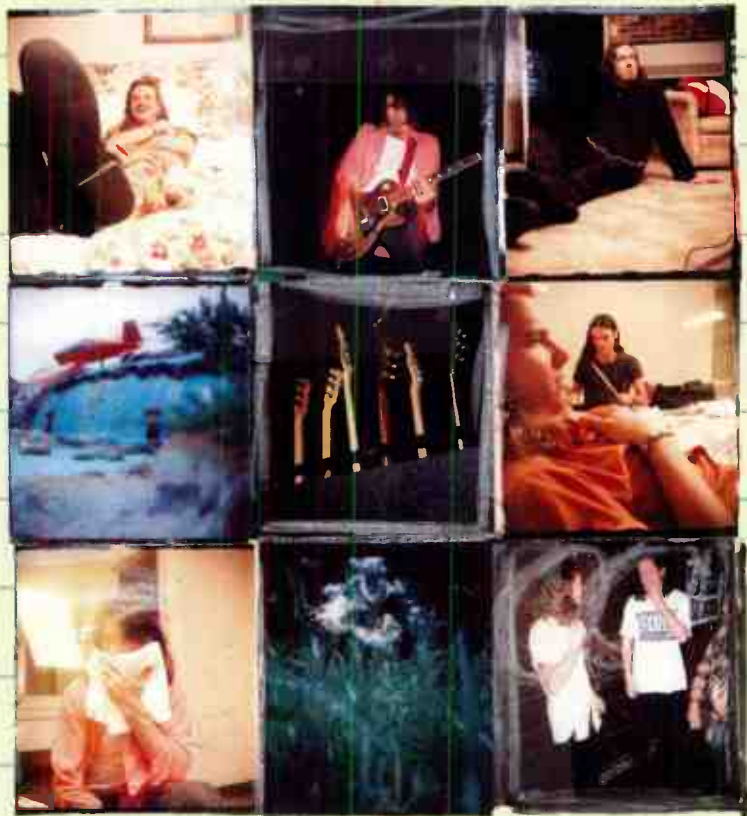


# 1 ALBUM ROCK CHART (1,980 SPINS)!!!

## BROTHER CANE AND FOOLS SHINE ON

#1 MOST REQUESTED AGAIN!

#1 MOST AIRPLAY!



### On tour forever

August	4	Long Island NY	13	Rochester NY
	5	Albany NY	14	Live on Rockline
	6	St. Catharines ONT	15	Live on Conan O' Brien
	8	Toronto ONT	16	Portland ME
	10	Boston MA	17	Providence RI
	11	Milton PA	18	New Windsor CT
	12	Old Bridge NJ	19	Hartford CT

More To Follow

from the new album SEEDS

Produced by Marti Frederiksen and Brother Cane  
Mixed by Tim Palmer for World's End (America), Inc.  
Management: Conrad Rafield and Jay Wilson for New Era Management, Inc.



©1995 Virgin Records America, Inc.



ALBUM ROCK

Table with 12 columns: Artist, Album, Total Plays/Gain, and 12 market columns (MTV, WAXQ, WNEW, etc.). Rows include MAD SEASON, DAVE MATTHEWS BAND, IAN MOORE, ALANIS MORISSETTE, and PEARL JAM.

Table with 12 columns: Artist, Album, Total Plays/Gain, and 12 market columns (MTV, WAXQ, WNEW, etc.). Rows include TOM PETTY, PRIMUS, R.E.M., SILVERCHAIR, and VAN HALEN.



# Monitor **SONG ACTIVITY REPORTS**

For Week Ending July 30, 1995

## MODERN ROCK

BETTER THAN EZRA										BLIND MELON										BUFFALO TOM										BUSH										EDWYN COLLINS													
1240/110										643/435										363/37										1030/148										380/48													
In The Blood (Elektra/EEG)										Galaxie (Capitol)										Summer (EastWest/EEG)										Comedown (Trauma/Interscope)										A Girl Like You (Bar None)													
Total Stations: 55										Total Stations: 48										Total Stations: 31										Total Stations: 50										Total Stations: 26													
Chart Move: 9-6										Chart Move: Debut 25										Chart Move: 16-11										Chart Move: 16-11																							
L.A.	MTV	12	10	22	Sacram	KWDD	26	15	24	104	L.A.	MTV	9	11	11	Sacram	KWDD	22	7	49	L.A.	MTV	1	1	2	Sacram	KWDD	21	5	26	L.A.	MTV	5	16	25	Sacram	KWDD	24	18	64	L.A.	MTV	2	1	3	Sacram	KWDD	26	15	24			
Chicago	KROQ	14	14	16	Kan City	KISF	29	33	23	171	Chicago	KROQ	2	2	2	Kan City	KISF	3	1	4	Chicago	KROQ	17	16	25	Kan City	KISF	16	11	29	Chicago	KROQ	17	16	25	Kan City	KISF	16	11	29	Chicago	KROQ	2	1	3	Kan City	KISF	3	1	4			
San Fran.	WCRB	27	3	2	San Jose	KLZR	29	23	23	171	San Fran.	WCRB	4	4	4	San Jose	KLZR	3	3	3	San Fran.	WCRB	8	8	53	San Jose	KLZR	8	8	8	San Fran.	WCRB	6	6	6	San Jose	KLZR	6	6	6	San Fran.	WCRB	2	2	2	San Jose	KLZR	2	2	2			
Detroit	WXRT	9	9	39	Provid.	WBUR	26	23	25	251	Detroit	WXRT	6	4	10	Provid.	WBUR	17	12	29	Detroit	WXRT	1	1	5	Provid.	WBUR	10	10	67	Detroit	WXRT	25	22	13	Provid.	WBUR	27	13	54	Detroit	WXRT	1	1	1	Provid.	WBUR	1	1	1			
Dallas	KITS	17	9	11	Norfolk	WROX	31	27	19	111	Dallas	KITS	11	1	1	Norfolk	WROX	15	11	15	65	Dallas	KITS	21	25	138	Norfolk	WROX	10	6	43	Dallas	KITS	21	25	138	Norfolk	WROX	10	6	43	Dallas	KITS	11	1	1	Norfolk	WROX	15	11	15	65	
Wash., DC	WHYY	4	7	55	Salt Lake	KYRK	14	20	127	Wash., DC	WHYY	1	1	1	Salt Lake	KYRK	24	15	49	Wash., DC	WHYY	4	28	22	Salt Lake	KYRK	14	20	127	Wash., DC	WHYY	4	28	22	Salt Lake	KYRK	14	20	127	Wash., DC	WHYY	1	1	1	Salt Lake	KYRK	24	15	49				
Boston	KDGE	13	14	13	New Or.	WZRH	20	12	105	203	Boston	KDGE	2	2	2	New Or.	WZRH	14	5	19	Boston	KDGE	16	15	11	New Or.	WZRH	14	5	19	Boston	KDGE	2	2	2	New Or.	WZRH	14	5	19	Boston	KDGE	13	14	13	New Or.	WZRH	20	12	105	203		
Houston	WFNS	29	27	28	Buffalo	CFNY	16	19	21	92	Houston	WFNS	7	6	23	Buffalo	CFNY	6	1	7	Houston	WFNS	27	24	25	Buffalo	CFNY	19	17	61	Houston	WFNS	27	24	25	Buffalo	CFNY	19	17	61	Houston	WFNS	16	15	11	New Or.	WZRH	14	5	19			
Miami	WBCN	19	13	25	Orlando	CKEY	15	15	30	92	Miami	WBCN	3	3	10	Orlando	CKEY	2	2	4	Miami	WBCN	18	20	17	Orlando	CKEY	19	2	22	Miami	WBCN	18	20	17	Orlando	CKEY	19	2	22	Miami	WBCN	19	13	25	Orlando	CKEY	15	15	30	92		
Atlanta	WFNX	23	24	23	Hartford	WJRR	19	20	16	126	Atlanta	WFNX	15	4	19	Orlando	WJRR	13	1	4	Atlanta	WFNX	18	20	17	Orlando	WJRR	19	2	22	Atlanta	WFNX	18	20	17	Orlando	WJRR	19	2	22	Atlanta	WFNX	23	24	23	Hartford	WJRR	19	20	16	126		
Seattle	WSHE	12	11	42	Memphis	WRXQ	12	6	31	63	Seattle	WSHE	1	1	1	Memphis	WRXQ	17	11	28	Seattle	WSHE	12	11	42	Memphis	WRXQ	12	6	31	63	Seattle	WSHE	12	11	42	Memphis	WRXQ	12	6	31	63	Seattle	WSHE	12	11	42	Memphis	WRXQ	12	6	31	63
Phoenix	WNNX	13	12	16	Roche.	WBUR	4	8	51	Phoenix	WNNX	2	2	2	Roche.	WBUR	25	14	55	Phoenix	WNNX	20	15	11	Roche.	WBUR	25	14	55	Phoenix	WNNX	20	15	11	Roche.	WBUR	25	14	55	Phoenix	WNNX	13	12	16	Roche.	WBUR	4	8	51				
Cleveland	KNDD	27	25	198	Nashv.	WVEV	22	25	102	Cleveland	KNDD	27	25	198	Nashv.	WVEV	12	4	16	Cleveland	KNDD	27	25	198	Nashv.	WVEV	12	4	16	Cleveland	KNDD	27	25	198	Nashv.	WVEV	12	4	16	Cleveland	KNDD	27	25	198	Nashv.	WVEV	12	4	16				
San Diego	WDRS	28	17	25	Nashv.	WRMG	22	22	123	San Diego	WDRS	13	4	2	Nashv.	WRMG	11	2	14	San Diego	WDRS	28	17	25	Nashv.	WRMG	22	22	123	San Diego	WDRS	28	17	25	Nashv.	WRMG	22	22	123	San Diego	WDRS	28	17	25	Nashv.	WRMG	22	22	123				
Portland, OR	XHRM	23	14	12	Louisv.	WONF	24	12	102	Portland, OR	XHRM	11	10	1	Louisv.	WONF	10	10	10	Portland, OR	XHRM	23	14	12	Louisv.	WONF	24	12	102	Portland, OR	XHRM	23	14	12	Louisv.	WONF	24	12	102	Portland, OR	XHRM	23	14	12	Louisv.	WONF	24	12	102				
Milwaukee	XTRA	18	25	16	Austin	KNCC	29	22	101	Milwaukee	XTRA	26	11	3	Austin	KNCC	25	7	32	Milwaukee	XTRA	18	25	16	Austin	KNCC	29	22	101	Milwaukee	XTRA	18	25	16	Austin	KNCC	29	22	101	Milwaukee	XTRA	18	25	16	Austin	KNCC	29	22	101				

DANDELION										ELASTICA										GIN BLOSSOMS										GOO GOO DOLLS										GREEN DAY														
642/96										1094/112										1024/434										432/149										1437/249														
Weird-Out (Ruffhouse/Columbia)										Stutter (DGC/Geffen)										Til I Hear It From You (A&M)										Name (Metal Blade/Warner Bros.)										J.A.R. (Reprise)														
Total Stations: 43										Total Stations: 52										Total Stations: 52										Total Stations: 29										Total Stations: 54														
Chart Move: 30-26										Chart Move: 14-10										Chart Move: 27-12										Chart Move: Debut 40										Chart Move: 7-3														
L.A.	MTV	1	1	1	Sacram	KWDD	22	29	9	60	L.A.	MTV	1	1	1	Sacram	KWDD	27	24	16	38	L.A.	MTV	19	17	36	Kan City	KISF	28	18	46	L.A.	MTV	1	1	1	Sacram	KWDD	21	5	26	L.A.	MTV	39	43	41	Kan City	KISF	17	23	53			
Chicago	KROQ	4	5	15	Kan City	KISF	18	8	5	11	Chicago	KROQ	22	20	229	Kan City	KISF	20	13	27	Chicago	KROQ	19	17	36	Kan City	KISF	28	18	46	Chicago	KROQ	1	1	1	Kan City	KISF	17	23	53	Chicago	KROQ	4	5	15	Kan City	KISF	18	8	5	11			
San Fran.	WCRB	43	41	38	San Jose	KLZR	29	23	23	171	San Fran.	WCRB	21	20	147	San Jose	KLZR	30	33	29	138	San Fran.	WCRB	20	8	28	San Jose	KLZR	26	16	43	San Fran.	WCRB	43	41	38	San Jose	KLZR	29	23	23	171	San Fran.	WCRB	21	20	147	San Jose	KLZR	30	33	29	138	
Detroit	WXRT	9	9	39	Provid.	WBUR	26	23	25	251	Detroit	WXRT	9	9	39	Provid.	WBUR	9	11	9	30	Detroit	WXRT	20	8	28	Provid.	WBUR	17	10	27	Detroit	WXRT	9	9	39	Provid.	WBUR	26	23	25	251	Detroit	WXRT	9	9	39	Provid.	WBUR	9	11	9	30	
Dallas	KITS	13	11	13	Norfolk	WROX	31	27	19	111	Dallas	KITS	9	17	23	Norfolk	WROX	23	18	24	181	Dallas	KITS	14	12	26	Norfolk	WROX	16	11	17	Dallas	KITS	13	11	13	Norfolk	WROX	31	27	19	111	Dallas	KITS	9	17	23	Norfolk	WROX	23	18	24	181	
Wash., DC	WHYY	4	7	55	Salt Lake	KYRK	14	20	127	Wash., DC	WHYY	19	22	31	Salt Lake	KYRK	10	10	66	Wash., DC	WHYY	31	9	40	Salt Lake	KYRK	12	8	20	Wash., DC	WHYY	4	7	55	Salt Lake	KYRK	14	20	127	Wash., DC	WHYY	19	22	31	Salt Lake	KYRK	10	10	66					
Boston	KDGE	13	14	13	New Or.	WZRH	20	12	105	203	Boston	KDGE	10	9	2	New Or.	WZRH	24	19	23	182	Boston	KDGE	34	27	6	Buffalo	CFNY	3	3	3	Boston	KDGE	13	14	13	New Or.	WZRH	20	12	105	203	Boston	KDGE	10	9	2	New Or.	WZRH	24	19	23	182	
Houston	WFNS	29	27	28	Buffalo	CFNY	16	19	21	92	Houston	WFNS	39	36	18	Buffalo	CFNY	30	28	31	154	Houston	WFNS	16	12	28	Buffalo	CFNY	3	3	3	Houston	WFNS	29	27	28	Buffalo	CFNY	16	19	21	92	Houston	WFNS	39	36	18	Buffalo	CFNY	30	28	31	154	
Miami	WBCN	19	13	25	Orlando	CKEY	15	15	30	92	Miami	WBCN	39	36	18	Orlando	CKEY	26	26	91	Miami	WBCN	16	12	28	Orlando	CKEY	1	1	1	Miami	WBCN	19	13	25	Orlando	CKEY	15	15	30	92	Miami	WBCN	39	36	18	Orlando	CKEY	26	26	91	154		
Atlanta	WFNX	23	24	23	Hartford	WJRR	19	20	16	126	Atlanta	WFNX	19	19	9	Orlando	WJRR	16	12	10	122	Atlanta	WFNX	11	8	19	Orlando	WJRR	16	12	10	122	Atlanta	WFNX	23	24	23	Hartford	WJRR	19	20	16	126	Atlanta	WFNX	19	19	9	Orlando	WJRR	16	12	10	122
Seattle	WSHE	12	11	42	Memphis	WRXQ	12	6	31	63	Seattle	WSHE	19	6	8	Memphis	WRXQ	21	20	97	Seattle	WSHE	20	21	41	Hartford	WJRR	29	21	50	Seattle	WSHE	12	11	42	Memphis	WRXQ	12	6	31	63	Seattle	WSHE	19	6	8	Memphis	WRXQ	21	20	97			
Phoenix	WNNX	13	12	16	Roche.	WBUR	4	8	51	Phoenix	WNNX	32	32	31	Roche.	WBUR	1	1	7	Phoenix	WNNX	2	2	2	Roche.	WBUR	18	11	19	Phoenix	WNNX	13	12	16	Roche.	WBUR	4	8	51	Phoenix	WNNX	32	32	31	Roche.	WBUR	1	1	7					
Cleveland	KNDD	27	25	198	Nashv.	WVEV	22	25	102	Cleveland	KNDD	32	32	31	Nashv.	WVEV	26	27	21	73	Cleveland	KNDD	21	16	37	Nashv.	WVEV	18	11	19	Cleveland	KNDD	27	25	198	Nashv.	WVEV	22	25	102	Cleveland	KNDD	32	32	31	Nashv.	WVEV	26	27	21	73			
San Diego	WDRS	28	17	25	Nashv.	WRMG	22	22	123	San Diego	WDRS	10	9	2	Nashv.	WRMG	24	19	23	182	San Diego	WDRS	26	26	54	Louisv.	WONF	12	7	19	San Diego	WDRS	28	17	25	Nashv.	WRMG	22	22	123	San Diego	WDRS	10	9	2	Nashv.	WRMG	24	19	23	182			
Portland, OR	XHRM	23	14	12	Louisv.	WONF	24	12	102	Portland, OR	XHRM	12	12	6	Louisv.	WONF	22	20	170	Portland, OR	XHRM	27	17	44	Louisv.	WONF</																												



## MODERN ROCK AIRPLAY

### \*\*\* AIRPOWER \*\*\*

(Minimum 700 detections for the first time)

Total Plays/Gain

#### GIN BLOSSOMS 1024/434

*Til I Hear It From You (A&M)*

Total Stations: 52/Chart Move: 27-12

Heavy (30+ plays): 7 KEGE, KFRR, KJYK, KTOZ, WCHZ, WHFS, WHYT

Medium (15-29): 32 KBBT, KDGE, KEDJ, KISF, KLZR, KMYZ, KNDD, KNNC, KOME, KPNT, KROQ, KTCL, KWOD, KXPK, WBCN, WBRU, WDRE, WENZ, WEQX, WGRD, WKQX, WLUM, WMMS, WMRQ, WNVE, WROX, WRXQ, WXWX, WZRH, XHRM, XTRA

Light (Under 15): 13

New Airplay This Week: 10 KEDG, KLZR, KWOD, WAQZ, WLUM, WMMS, WNVE, WOXY, WROX, WWCD

### AIRPOWER BOUND

Total Plays/Gain

#### LIVE 679/107

*White, Discussion (Radioactive/MCA)*

Total Stations: 51/Chart Move: 29-24

Heavy (30+ plays): 3 CIMX, KNNC, KRRK

Medium (15-29): 18 KISF, KITS, KLZR, KNDD, KPNT, KWOD, WBCN, WBRU, WEQX, WFNX, WHFS, WHYT, WKQX, WLUM, WMMS, WROX, WRXQ, XTRA

Light (Under 15): 30

New Airplay This Week: 2 KEDG, WGRD

#### BLIND MELON 643/435

*Galaxie (Capitol)*

Total Stations: 48/Chart Move: Debut 25

Heavy (30+): 2 CIMX, KEGE

Medium (15-29): 17 KBBT, KMYZ, KNDD, KNNC, KPNT, KRRK, KTCL, KTOZ, KWOD, KXKR, WLUM, WEQX, WFNX, WMRQ, WOXY, XTRA

Light (Under 15): 29

New Airplay This Week: 20 CFNY, KITS, KRRK, KTOZ, WAQZ, WBCN, WCHZ, WDRE, WENZ, WEQX, WFNX, WGRD, WJRR, WKQX, WMMS, WNVE, WOXY, WRLG, WXRT, WZRH

#### DANDELION 642/96

*Weird-Out (Ruffhouse/Columbia)*

Total Stations: 43/Chart Move: 30-26

Heavy (30+): 4 KFRR, KTOZ, WKQX, WLUM

Medium (15-29): 14 CIMX, KBBT, KEGE, KLZR, KNDD, KNNC, KRRK, KTCL, KWOD, WCHZ, WENZ, WFNX, WHFS, WMRQ

Light (Under 15): 25

New Airplay This Week: 5 KISF, KITS, KMYZ, WMMS, WNVE

#### LETTERS TO CLEO 569/138

*Awake (Giant)*

Total Stations: 37/Chart Move: 38-30

Heavy (30+): 0

Medium (15-29): 21 KBBT, KEGE, KISF, KLZR, KMYZ, KNNC, KRRK, KTCL, KWOD, WAQZ, WBCN, WBER, WBRU, WENZ, WFNX, WGRD, WLUM, WMRQ, WNVE, WROX, WXWX

Light (Under 15): 16

New Airplay This Week: 5 KEDJ, KISF, KPNT, WDRE, WWCD

#### PEARL JAM 494/10

*Immortality (Epic)*

Total Stations: 34/Chart Move: 33-33

Heavy (30+): 1 KEDG

Medium (15-29): 17 CFNY, CKEY, KISF, KLZR, KPNT, KTCL, KWOD, WAQZ, WBCN, WBRU, WDRE, WENZ, WEQX, WFNX, WRLG, WXWX, XTRA

Light (Under 15): 16

#### RUSTY 475/35

*Wake Me (Handsome Boy/TAG/Atlantic)*

Total Stations: 44/Chart Move: 36-36

Heavy (30+): 0

Medium (15-29): 12 CIMX, KBBT, KITS, KNDD, KTCL, KTOZ, KWOD, WBCN, WJRR, WLUM, WNNX, WNVE

Light (Under 15): 32

New Airplay This Week: 3 KNDD, WGRD, WHFS

#### R.E.M. 463/97

*Crush With Eyeliner (Warner Bros.)*

Total Stations: 42/Chart Move: Debut 37

Heavy (30+): 1 WRLG

Medium (15-29): 15 CFNY, KBBT, KNNC, KPNT, KTCL, WAQZ, WBRU, WDRE, WGRD, WJRR, WMMS, WMRQ, WZRH, XHRM, XTRA

Light (Under 15): 26

New Airplay This Week: 2 CFNY, KMYZ

#### SEAL 445/45

*Kiss From A Rose (ZTT/Sire/Warner Bros.)*

Total Stations: 24/Chart Move: Debut 38

Heavy (30+): 6 KDGE, KISF, KTOZ, WAQZ, WCHZ, WHYT

Medium (15-29): 4 KPNT, KROQ, WNNX, XHRM

Light (Under 15): 14

New Airplay This Week: 2 KOME, WKQX

#### MATTHEW SWEET 443/20

*We're The Same (Zoo)*

Total Stations: 30/Chart Move: Debut 39

Heavy (30+): 3 KNNC, WBER, WCHZ

Medium (15-29): 8 CFNY, CKEY, KPNT, WDRE, WEQX, WHFS, WMRQ, WRLG

Light (Under 15): 19

New Airplay This Week: 3 CFNY, WGRD, WXRT

#### GOO GOO DOLLS 432/149

*Name (Metal Blade/Warner Bros.)*

Total Stations: 29/Chart Move: Debut 40

Heavy (30+): 1 KEGE

Medium (15-29): 15 CKEY, KBBT, KISF, KMYZ, KNDD, KNNC, KOME, KPNT, KTCL, KXKR, WAQZ, WDRE, WEQX, WKQX  
Light (Under 15): 13  
New Airplay This Week: 8 KBBT, KPNT, KRRK, KTOZ, KXKR, WBCN, WKQX, WXWX

### CHART BOUND

Total Plays/Gain

#### HOLE 403/128

*Softest, Softest (DGC/Geffen)*

Total Stations: 33

Heavy (30+): 0

Medium (15-29): 10 KEGE, KMYZ, KNNC, KWOD, WHFS, WKQX, WLUM, WNVE, WRLG, WRXQ

Light (Under 15): 23

New Airplay This Week: 7 KFRR, KNNC, KROQ, WDRE, WENZ, WROX, WZRH

#### EDWYN COLLINS 380/48

*A Girl Like You (Bar None)*

Total Stations: 26

Heavy (30+): 0

Medium (15-29): 14 KEDG, KTOZ, KXPK, WBCN, WBER, WBRU, WENZ, WEQX, WFNX, WHFS, WHYT, WLUM, WOXY, WROX

Light (Under 15): 12

New Airplay This Week: 3 KEDG, KPNT, WQNF

#### BUFFALO TOM 363/37

*Summer (EastWest/EEG)*

Total Stations: 31

Heavy (30+): 0

Medium (15-29): 12 CFNY, CKEY, KBBT, KJYK, KMYZ, WBCN, WBER, WFNX, WHFS, WMRQ, WOXY, WROX

Light (Under 15): 19

New Airplay This Week: 3 CKEY, WQNF, WZRH

#### DEL AMITRI 352/23

*Roll To Me (A&M)*

Total Stations: 27

Heavy (30+): 3 KEGE, KTOZ, WAQZ

Medium (15-29): 3 WENZ, WEQX, WZRH

Light (Under 15): 21

New Airplay This Week: 4 KNNC, KPNT, WDRE, WHYT

#### THE PRESIDENTS OF THE UNITED STATES OF AMERICA 350/124

*Lump (Columbia)*

Total Stations: 29

Heavy (30+): 0

Medium (15-29): 14 CIMX, KISF, KITS, KNDD, KOME, KROQ, KXKR, WFNX, WHFS, WHYT, WLUM, WNNX, WNVE, WROX

Light (Under 15): 15

New Airplay This Week: 6 KRRK, KTCL, WHYT, WNVE, WROX, XTRA

#### PRICK 334/8

*Animal (Nothing/Interscope)*

Total Stations: 33

Heavy (30+): 1 KLZR

Medium (15-29): 6 KBBT, WAQZ, WBER, WLUM, WMMS, WNVE

Light (Under 15): 26

New Airplay This Week: 3 KTCL, WHFS, WNNX

#### OUR LADY PEACE 303/13

*Naveed (Relativity)*

Total Stations: 27

Heavy (30+): 0

### MOST NEW AIRPLAY THIS WEEK

No. Of Stations

**BLIND MELON** 20  
*Galaxie (Capitol)*

**GIN BLOSSOMS** 10  
*Til I Hear It From You (A&M)*

**GOO GOO DOLLS** 8  
*Name (Metal Blade/Warner Bros.)*

**THE INNOCENCE MISSION** 8  
*Bright As Yellow (A&M)*

**HOLE** 7  
*Softest, Softest (DGC/Geffen)*

Medium (15-29): 8 CIMX, KMYZ, KTCL, KXKR, WAQZ, WJRR, WNNX, WQNF  
Light (Under 15): 19  
New Airplay This Week: 1 KITS

**SOUL ASYLUM** 255/55  
*Just Like Anyone (Columbia)*

Total Stations: 21

Heavy (30+): 1 KEGE

Medium (15-29): 6 KFRR, KLZR, KNDD, WFNX, WKQX, WLUM

Light (Under 15): 14

New Airplay This Week: 2 CIMX, WHFS

**CATHERINE WHEEL** 255/69  
*Judy Staring At The Sun (Mercury)*

Total Stations: 25

Heavy (30+): 0

Medium (15-29): 9 KITS, KNDD, KOME, KROQ, KTCL, WFNX, WMRQ, WNNX, WROX

Light (Under 15): 16

New Airplay This Week: 4 KTCL, WBCN, WROX, WZRH

**DEEP BLUE SOMETHING** 253/45  
*Breakfast At Tiffany's (RainMaker/Interscope)*

Total Stations: 18

Heavy (30+): 2 KISF, KMYZ

Medium (15-29): 5 KNNC, WAQZ, WBER, WEQX, WRXQ

Light (Under 15): 11

New Airplay This Week: 1 WQNF

**THE INNOCENCE MISSION** 240/95  
*Bright As Yellow (A&M)*

Total Stations: 22

Heavy (30+): 1 KFRR

Medium (15-29): 4 WEQX, WHYT, WKQX, XTRA

Light (Under 15): 17

New Airplay This Week: 8 KITS, KTCL, KTOZ, WHYT, WLUM, WMMS, WQNF, WROX

**ALANIS MORISSETTE** 239/65  
*Hand In My Pocket (Maverick/Reprise)*

Total Stations: 15

Heavy (30+): 0

Medium (15-29): 8 CIMX, KEGE, KFRR, KISF, KOME, KROQ, WHYT, WLUM

Light (Under 15): 7

New Airplay This Week: 4 KEGE, KFRR, KTCL, WROX

**PENNYWISE** 228/15  
*Same Old Story (Epitaph)*

Total Stations: 26

Heavy (30+): 0

Medium (15-29): 4 CIMX, KNDD, WRLG, XTRA

Light (Under 15): 22

New Airplay This Week: 2 KEDJ, WROX

**TOADIES** 217/48  
*Possum Kingdom (Interscope)*

Total Stations: 16

Heavy (30+): 2 KISF, KJYK

Medium (15-29): 4 KNNC, KWOD, KXKR, WJRR

Light (Under 15): 10

New Airplay This Week: 5 KEGE, KFMG, KNNC, KWOD, WBER

**DANCE HALL CRASHERS** 202/58  
*Enough (510/MCA)*

Total Stations: 21

Heavy (30+): 0

Medium (15-29): 5 KFRR, KNNC, KTCL, WHYT, WZRH

Light (Under 15): 16

New Airplay This Week: 6 KWOD, KXKR, WENZ, WKQX, WMMS, WOXY

**TRICKY** 188/41  
*Black Steel (Island)*

Total Stations: 16

Heavy (30+): 2 CIMX, KFRR

Medium (15-29): 3 KEGE, KNDD, WKQX

Light (Under 15): 11

New Airplay This Week: 2 KEGE, KLZR

★ **311** 180/83  
*Don't Stay Home (Capricorn)*

Total Stations: 19

Heavy (30+): 2 KLZR, KXKR

Medium (15-29): 2 KMYZ, KTOZ

Light (Under 15): 15

New Airplay This Week: 5 WBRU, WCBR, WNNX, WROX, WZRH

★ **FOO FIGHTERS** 162/39  
*I'll Stick Around (Roswell/Capitol)*

Total Stations: 16

Heavy (30+): 1 KOME

Medium (15-29): 4 CIMX, KBBT, KITS, KROQ

Light (Under 15): 11

New Airplay This Week: 1 KBBT

Airpower awarded to those records which attain 700 detections for the first time. New airplay lists those stations registering six or more detections per week on a record for the first time. ★ Initial Impact: records appearing on this page for the first time.

# PM DAWN

## "Downtown Venus"

GEE STREET



# PJ HARVEY

## "Long Snake Moan"





# add weed!

**“start with”**  
adds august 8

the first single from seaweed's new album **spanaway** in-stores 8/22



World Radio History





## ALBUM ROCK AIRPLAY

### ★ ★ ★ AIRPOWER ★ ★ ★

(Minimum 800 detections for the first time)

Total Plays/Gain

#### ALANIS MORISSETTE 822/255

*You Oughta Know (Maverick/Reprise)*

Total Stations: 59/Chart Move: 29-19  
 Heavy (21+ plays): 16 KICT, KLOS, KLPX, KRAB, KTUX, KTXQ, WARQ, WAXQ, WHJY, WIXV, WKLO, WLLZ, WMMR, WTPA, WWDC, WZTA  
 Medium (14-20): 14 KATT, KIOZ, KISS, KLAQ, WAVF, WIOT, WKDF, WNEW, WNOR, WUFX, WVRK, WXR, WZAT, WZZR  
 Light (Under 14): 29  
 New Airplay This Week: 10 KIOZ, WAAF, WCCC, WKDF, WKLS, WLLZ, WNOR, WROC,

### AIRPOWER BOUND

Total Plays/Gain

#### MAD SEASON 761/47

*I Don't Know Anything (Columbia)*

Total Stations: 59/Chart Move: 21-20  
 Heavy (21+ plays): 9 KLOL, KRZR, KTUX, WAAF, WAXQ, WLZR, WRIF, WTFX, WZAT  
 Medium (14-20): 18 KBER, KEGL, KICT, KIOZ, KISW, KNCN, KRAB, KSJO, WARQ, WFYV, WEZK, WGCX, WHCN, WKLS, WKQ, WNCN, WNEW, WRXC, WRDU, WTPA, WWDC, WZTA  
 Light (Under 14): 32  
 New Airplay This Week: 1 WXR

#### GIN BLOSSOMS 748/372

*Til I Hear It From You (A&M)*

Total Stations: 68/Chart Move: Debut 21  
 Heavy (21+): 5 KISS, KTXQ, KTYD, WIOT, WIXV  
 Medium (14-20): 22 KDKB, KLOS, KLPX, KRXQ, KRZR, KTAL, KZRR, WAVF, WCCC, WCKW, WDIZ, WFBQ, WFYV, WKLO, WLLZ, WMMR, WNEW, WRXC, WRDU, WTPA, WWDC, WZTA  
 Light (Under 14): 41  
 New Airplay This Week: 20 KFRQ, KISS, KLAQ, KLPX, KMJX, KTUX, KXUS, WAPL, WARQ, WAVF, WEZK, WGCX, WHCN, WKLS, WKQ, WNCN, WPLR, WPYX, WRDU, WRIF

#### BETTER THAN EZRA 747/125

*In The Blood (Elektra/EEG)*

Total Stations: 65/Chart Move: 25-22  
 Heavy (21+): 12 KICT, KILO, KLOS, KTUX, WAXQ, WDIZ, WIYY, WKDF, WXR, WXTB, WZAT, WZTA  
 Medium (14-20): 13 KDKB, KEGL, KRXQ, KRZR, KTYD, WARQ, WCKW, WIOT, WPLR, WQFM, WTPA, WWDC, WZZR  
 Light (Under 14): 40  
 New Airplay This Week: 6 KLB, KLPX, KSJO, WNCN, WNEW, WSTZ

#### PRIMUS 712/55

*Wymona's Big Brown Beaver (Interscope)*

Total Stations: 62/Chart Move: 23-24  
 Heavy (21+): 10 KILO, KISW, KRAB, KRZR, KTAL, KTUX, WAAF, WAXQ, WXTB, WZAT  
 Medium (14-20): 10 KICT, KIOZ, KRXQ, WARQ, WIXV, WKDF, WKLO, WLLZ, WROC, WZTA  
 Light (Under 14): 42  
 New Airplay This Week: 2 KATT, WZTA

#### GREEN DAY 667/200

*J.A.R. (Reprise)*

Total Stations: 62/Chart Move: Debut 25  
 Heavy (21+): 7 KICT, KILO, KTXQ, WAAF, WAXQ, WDIZ, WIYY  
 Medium (14-20): 13 KBPI, KISW, KRXQ, KRZR, WARQ, WCCC, WFYV, WKDF, WLZR, WQFM, WROC, WUF, WWDC  
 Light (Under 14): 42  
 New Airplay This Week: 15 KCAL, KEGL, KGGO, KQRC, KTUX, KTYD, KUFO, WARQ, WAVF, WCKW, WKDF, WRIF, WROC, WXR, WXTB

#### BUSH 645/186

*Comedown (Trauma/Interscope)*

Total Stations: 54/Chart Move: Debut 26  
 Heavy (21+): 12 KHOP, KICT, KILO, KLOS, KRXQ, WAAF, WAXQ, WDIZ, WLLZ, WRIF, WZAT, WZTA

Medium (14-20): 8 KIOZ, KRZR, WAVF, WHJY, WLZR, WQFM, WTUE, WUFX  
 Light (Under 14): 34  
 New Airplay This Week: 9 KLB, KNCN, KTUX, WIXV, WIYY, WQFM, WRXC, WWDC, WXTB

#### VAN HALEN 609/124

*Not Enough (Warner Bros.)*

Total Stations: 53/Chart Move: 38-27  
 Heavy (21+): 4 KBER, KFRQ, KHOP, WSTZ  
 Medium (14-20): 18 KEZE, KGGO, KIOZ, KLAQ, KMJX, KTAL, KXUS, WAQX, WBLM, WHCN, WIMZ, WKLC, WLVO, WONE, WRXL, WRXR, WTFX, WZZR  
 Light (Under 14): 31  
 New Airplay This Week: 6 KRZZ, WEGR, WGCX, WNCN, WROV, WRXL

#### HUM 597/37

*Stars (RCA)*

Total Stations: 53/Chart Move: 30-28  
 Heavy (21+): 8 KILO, KTUX, KUPD, KZRR, WAAF, WAXQ, WDIZ, WROC  
 Medium (14-20): 9 KEGL, KICT, KRXQ, KRZR, WKLO, WLLZ, WRCX, WXR, WXTB  
 Light (Under 14): 36  
 New Airplay This Week: 2 KEGL, WIXV

#### LIVE 573/105

*White, Discussion (Radioactive/MCA)*

Total Stations: 60/Chart Move: 40-30  
 Heavy (21+): 6 KHOP, KILO, KZRR, WDIZ, WXTB, WZAT  
 Medium (14-20): 12 KICT, KISW, KLOL, KRXQ, KRZR, KTUX, KUPD, WAXQ, WIYY, WKDF, WTUE, WWDC  
 Light (Under 14): 42  
 New Airplay This Week: 9 KDKB, KTYD, WGCX, WIXV, WQFM, WVRK, WWDC, WXR, WZZR

#### DAVE MATTHEWS BAND 534/15

*Ants Marching (RCA)*

Total Stations: 38/Chart Move: 36-32  
 Heavy (21+): 8 KDKB, KTXQ, KTYD, KZRR, WIXV, WKLS, WTK, WZAT  
 Medium (14-20): 11 KICT, KTUX, WBLM, WHJY, WIOT, WMMR, WNEW, WROV, WWDC, WXR, WZZR  
 Light (Under 14): 19  
 New Airplay This Week: 2 KYYS, WSTZ

#### R.E.M. 447/172

*Crush With Eyeliner (Warner Bros.)*

Total Stations: 43/Chart Move: Debut 39  
 Heavy (21+): 3 KEGL, KTYD, WZTA  
 Medium (14-20): 9 KICT, KZRR, WAXQ, WDIZ, WIXV, WKLO, WPLR, WRXL, WTUE  
 Light (Under 14): 31  
 New Airplay This Week: 11 KATT, KOMP, KUPD, WARQ, WBLM, WIXV, WMMR, WPLR, WRXL, WVRK, WXR

#### JENNIFER TRYNNIN 428/3

*Better Than Nothing (Squint/Warner Bros.)*

Total Stations: 49/Chart Move: Re-Entry 40  
 Heavy (21+): 5 KICT, WARQ, WIXV, WVRK, WZAT  
 Medium (14-20): 3 WDIZ, WNEW, WPLR  
 Light (Under 14): 41  
 New Airplay This Week: 1 WIZN

### CHART BOUND

Total Plays/Gain

#### BLIND MELON 372/241

*Galaxie (Capitol)*

Total Stations: 47  
 Heavy (21+): 2 WAAF, WZTA  
 Medium (14-20): 10 KRXQ, KTXQ, KTYD, KZRR, WCCC, WDIZ, WIYY, WKDF, WLLZ, WROC  
 Light (Under 14): 35  
 New Airplay This Week: 14 KCAL, KFRQ, KICT, KISS, KLAQ, WAPL, WARQ, WKDF, WKLO, WLLZ, WPLR, WROC, WTUE, WVRK

#### ★ COLLECTIVE SOUL 369/257

*Smashing Young Man (Atlantic)*

Total Stations: 42  
 Heavy (21+): 3 KEGL, KRZR, WLZR  
 Medium (14-20): 8 KEZE, KHOP, KICT, KNCN, KRXQ, KTAL, KZRR, WTPA  
 Light (Under 14): 31  
 New Airplay This Week: 16 KDKB, KHOP, KLOL, KNCN, KTUX, KZRR, WDIZ, WEGR, WKLO, WNEW, WQFM, WRIF, WROC, WTPA, WTUE, WZTA

#### THE JEFF HEALEY BAND 324/92

*Stuck In The Middle With You (Arista)*

Total Stations: 28  
 Heavy (21+): 1 WEGR  
 Medium (14-20): 10 KMOD, KNCN, KSHE, KXUS, KYYS, WFBQ, WHJY, WIOT, WXR, WZZR  
 Light (Under 14): 17  
 New Airplay This Week: 7 KGGO, KTYD, WKLC, WLVO, WRXR, WSTZ, WZZR

#### MAIDS OF GRAVITY 308/47

*Only Dreaming (Vernon Yard/Virgin)*

Total Stations: 32  
 Heavy (21+): 1 WZAT  
 Medium (14-20): 5 KISW, KLOL, KLOS, KRZR, WQFM  
 Light (Under 14): 26  
 New Airplay This Week: 2 KSJO, KZRR

#### DANDELION 300/103

*Weird-Out (Ruffhouse/Columbia)*

Total Stations: 41  
 Heavy (21+): 0  
 Medium (14-20): 2 WARQ, WZAT  
 Light (Under 14): 39  
 New Airplay This Week: 10 KILO, KLAQ, WAPL, WCCC, WFYV, WHCN, WRIF, WROV, WRXL, WZAT

#### CORROSION OF CONFORMITY 298/10

*Seven Days (Columbia)*

Total Stations: 64  
 Heavy (21+): 3 KILO, WROC, WZAT  
 Medium (14-20): 2 KISW, KNCN  
 Light (Under 14): 59

#### PHISH 293/20

*Bouncing Around The Room (Elektra/EEG)*

Total Stations: 26  
 Heavy (21+): 3 WIZN, WXTB, WZAT  
 Medium (14-20): 7 KTYD, KZRR, WAQX, WAVF, WNEW, WPLR, WXR  
 Light (Under 14): 16  
 New Airplay This Week: 1 WHCN

#### GREEN APPLE QUICK STEP 288/23

*Los Vargas (Medicine/Giant)*

Total Stations: 30  
 Heavy (21+): 2 KILO, WZAT  
 Medium (14-20): 5 KEGL, KISS, KISW, KRXQ, WAAF  
 Light (Under 14): 23  
 New Airplay This Week: 2 KISS, KTUX

#### OUR LADY PEACE 283/28

*Naveed (Relativity)*

Total Stations: 34  
 Heavy (21+): 2 WXTB, WZAT  
 Medium (14-20): 5 KLOS, KUPD, WDIZ, WQFM, WROC  
 Light (Under 14): 27  
 New Airplay This Week: 2 KMOD, WAAF

#### SWEET WATER 263/45

*Superstar (EastWest/EEG)*

Total Stations: 29  
 Heavy (21+): 1 KISW  
 Medium (14-20): 5 KBER, KBPI, KRZR, WKDF, WQFM  
 Light (Under 14): 23  
 New Airplay This Week: 4 KEGL, KTYD, WROC, WTPA

### MOST NEW AIRPLAY THIS WEEK

No. Of Stations

#### GIN BLOSSOMS 20

*Til I Hear It From You (A&M)*

#### COLLECTIVE SOUL 16

*Smashing Young Man (Atlantic)*

#### GREEN DAY 15

*J.A.R. (Reprise)*

#### BLIND MELON 14

*Galaxie (Capitol)*

#### R.E.M. 11

*Crush With Eyeliner (Warner Bros.)*

#### QUEENSRYCHE 261/5

*Someone Else? (EMI)*

Total Stations: 32  
 Heavy (21+): 1 KTUX  
 Medium (14-20): 4 KBER, KILO, KUPD, WCCC  
 Light (Under 14): 27  
 New Airplay This Week: 3 KUPD, KXUS, WFYV

#### WEEZER 257/36

*Say It Ain't So (DGC/Geffen)*

Total Stations: 28  
 Heavy (21+): 5 KRAB, WDIZ, WROC, WXR, WXR  
 Medium (14-20): 1 WZAT  
 Light (Under 14): 22  
 New Airplay This Week: 4 KEZO, KMOD, KUPD, WKDF

#### SOUL ASYLUM 230/35

*Just Like Anyone (Columbia)*

Total Stations: 24  
 Heavy (21+): 3 KTXQ, WAAF, WAXQ  
 Medium (14-20): 4 KRXQ, KRZR, WDIZ, WIYY  
 Light (Under 14): 17  
 New Airplay This Week: 2 WAVF, WTPA

#### BON JOVI 225/41

*Hey God (Mercury)*

Total Stations: 27  
 Heavy (21+): 0  
 Medium (14-20): 5 KBER, KDKB, WCCC, WIMZ, WZZR  
 Light (Under 14): 22  
 New Airplay This Week: 3 KSHE, WCCC, WNCN

#### ★ EDWIN MCCAIN 218/126

*Solitude (Lava/Atlantic)*

Total Stations: 23  
 Heavy (21+): 3 WARQ, WAVF, WIXV  
 Medium (14-20): 4 WNEW, WRXR, WXR, WXTB  
 Light (Under 14): 16  
 New Airplay This Week: 8 KDKB, WKQ, WMMR, WNOR, WRXR, WSTZ, WXR, WZZR

#### DEEP BLUE SOMETHING 214/34

*Breakfast At Tiffany's (RainMaker/Interscope)*

Total Stations: 22  
 Heavy (21+): 3 KTXQ, WARQ, WZAT  
 Medium (14-20): 4 KICT, KTYD, WMMR, WXR  
 Light (Under 14): 15  
 New Airplay This Week: 2 KTUX, WXR

#### THE TEA PARTY 176/8

*Fire In The Head (Chrysalis/EMI)*

Total Stations: 18  
 Heavy (21+): 0  
 Medium (14-20): 5 KILO, KISW, KRZR, WRIF, WROC  
 Light (Under 14): 13

#### NATALIE MERCHANT 175/41

*Carnival (Elektra/EEG)*

Total Stations: 18  
 Heavy (21+): 1 KTYD  
 Medium (14-20): 6 KICT, WAVF, WIOT, WMMR, WNEW, WWDC  
 Light (Under 14): 11  
 New Airplay This Week: 2 KDKB, WUFX

#### ★ THE RAMONES 167/49

*I Don't Want To Grow Up (Radioactive/MCA)*

Total Stations: 24  
 Heavy (21+): 1 WLLZ  
 Medium (14-20): 3 KICT, KNCN, WWDC  
 Light (Under 14): 20  
 New Airplay This Week: 4 KEGL, KMOD, KTXQ, WLLZ

#### ELASTICA 161/51

*Stutter (DGC/Geffen)*

Total Stations: 23  
 Heavy (21+): 3 KICT, KLOS, WDIZ  
 Medium (14-20): 1 WROC  
 Light (Under 14): 19  
 New Airplay This Week: 2 KTYD, WWDC

#### BONEPONY 155/8

*Where The Water's Deep (Capitol)*

Total Stations: 16  
 Heavy (21+): 0  
 Medium (14-20): 4 KTAL, WDVE, WIOT, WXR  
 Light (Under 14): 12  
 New Airplay This Week: 1 WGCX

#### ★ WHITE ZOMBIE 145/42

*Electric Head Pt. 2 (The Ecstasy) (Geffen)*

Total Stations: 28  
 Heavy (21+): 0  
 Medium (14-20): 4 KEGL, KILO, WDIZ, WXTB  
 Light (Under 14): 24  
 New Airplay This Week: 3 KICT, KISW, KRXQ

#### DEL AMITRI 138/2

*Roll To Me (A&M)*

Total Stations: 14  
 Heavy (21+): 1 WMMR  
 Medium (14-20): 1 WXR  
 Light (Under 14): 12

#### ★ ELEVEN 138/15

*Why? (Hollywood)*

Total Stations: 20  
 Heavy (21+): 2 WLLZ, WZAT  
 Medium (14-20): 1 WTUE  
 Light (Under 14): 17  
 New Airplay This Week: 2 KEZE, WRCX

#### SMILE 137/8

*Staring At The Sun (Atlantic)*

Total Stations: 20  
 Heavy (21+): 1 WZAT  
 Medium (14-20): 1 WAXQ  
 Light (Under 14): 18  
 New Airplay This Week: 1 KMOD

#### ★ SOUTHERN CULTURE ON THE SKIDS 119/48

*Soul City (DGC/Geffen)*

Total Stations: 28  
 Heavy (21+): 0  
 Medium (14-20): 1 KMOD  
 Light (Under 14): 27  
 New Airplay This Week: 4 KFRQ, KTYD, WIYY, WROC

#### TED NUGENT 108/15

*Fred Bear (Atlantic)*

Total Stations: 17  
 Heavy (21+): 0  
 Medium (14-20): 2 WIMZ, WRXL  
 Light (Under 14): 15  
 New Airplay This Week: 2 KOMP, WZZR

#### VAN MORRISON 104/2

*Days Like This (Polydor/A&M)*

Total Stations: 14  
 Heavy (21+): 0  
 Medium (14-20): 0  
 Light (Under 14): 14  
 New Airplay This Week: 2 WHCN, WPYX



BDS Modern Rock Monitor Debut at **25**  
Over 700 BDS spins on Galaxie at Modern  
Rock and 450 BDS spins at Rock after only 2 weeks!  
On over 65 Modern Rock Stations and 100 Rock Stations.

TAKE A RIDE THROUGH THE GALAXIE.



World Premiere Video

Modern Rock Majors include:

WDRE	WBRU
WHFS	WFNX
Q101	KEGE
KITS	KNDD
KXRK	CIMX
91X	KWOD
KTCL	WLUM
WENZ	KPNT
WMMS	XHRM
WRZX	WXRT
KNRK	WMRQ

Rock Majors Include:

KRXQ	WAAF
WRCX	KISS
KTXQ	WGRX
KLOL	DC101
WXTB	WQFM
KLOS	



**BLIND MELON « GALAXIE »**

FIRST TRACK FROM SOUP.

WATCH FOR THE JAKE SCOTT DIRECTED VIDEO ON  COMING SOON.

PRODUCED BY ANDY WALLACE AND BLIND MELON

MANAGEMENT: CHRIS JONES



©1995 CAPITOL RECORDS, INC.

World Radio History



# Monitor ROCK AIRPLAY™

JULY 24—30, 1995



## DETECTIONS

Compiled from a national sample of airplay supplied by Broadcast Data Systems' Radio Track service to Rock Airplay Monitor. 107 album rock and 59 modern rock stations are electronically monitored 24 hours a day, 7 days a week. Songs ranked by number of detections. ©1995, Billboard/BPI Communications.

THIS WEEK	LAST WEEK	WKS. ON CHART	ALBUM ROCK		DETECTIONS		
			TITLE/LABEL/DISTRIBUTING LABEL	ARTIST	TW	LW	
			★★★★ No. 1 ★★★★★				
①	4	7	AND FOOLS SHINE ON <small>WILCO 1 week at No. 1</small>	BROTHER CANE	1980	1924	
2	3	11	ALL OVER YOU RADIOACTIVE/MCA	LIVE	1940	2003	
3	1	10	HOLD ME, THRILL ME, KISS ME, KILL ME ISLAND/ATLANTIC	U2	1899	2060	
4	2	17	DECEMBER ATLANTIC	COLLECTIVE SOUL	1789	2049	
5	5	10	ONLY WANNA BE WITH YOU ATLANTIC	HOOTIE & THE BLOWFISH	1759	1726	
6	7	7	DOWNTOWN REPRISÉ	NEIL YOUNG	1509	1559	
7	6	12	MISERY COLUMBIA	SOUL ASYLUM	1419	1690	
8	12	6	THIS IS A CALL ROSWELL/CAPITOL	FOO FIGHTERS	1219	1088	
9	14	6	TOMORROW EPIC	SILVERCHAIR	1205	1037	
10	8	15	LITTLE THINGS TRAUMA/INTERSCOPE	BUSH	1129	1267	
11	10	10	POSSUM KINGDOM INTERSCOPE	TOADIES	1129	1136	
12	9	18	GOOD ELEKTRA/VEEG	BETTER THAN EZRA	1079	1176	
13	15	14	RUN-AROUND A&M	BLUES TRAVELER	1067	1036	
14	17	4	A HIGHER PLACE WARNER BROS.	TOM PETTY	1066	941	
15	16	6	IMMORTALITY EPIC	PEARL JAM	1035	978	
16	11	11	MOLLY WORK	SPONGE	1005	1111	
17	13	17	MORE HUMAN THAN HUMAN GEFEN	WHITE ZOMBIE	969	1053	
18	18	6	MUDDY JESUS CAPRICORN	IAN MOORE	868	817	
			★★★★ AIRPOWER ★★★★★				
19	29	2	YOU OUGHTA KNOW <small>MAVERICK/REPRISÉ</small>	ALANIS MORISSETTE	822	567	
20	21	3	I DON'T KNOW ANYTHING COLUMBIA	MAD SEASON	761	714	
21	NEW ▶		TIL I HEAR IT FROM YOU A&M	GIN BLOSSOMS	748	376	
22	25	3	IN THE BLOOD ELEKTRA/VEEG	BETTER THAN EZRA	747	622	
23	19	14	HEY MAN NICE SHOT REPRISÉ	FILTER	743	806	
24	23	5	WYNONA'S BIG BROWN BEAVER INTERSCOPE	PRIMUS	712	657	
25	NEW ▶		J.A.R. REPRISÉ	GREEN DAY	667	467	
26	NEW ▶		COMEDOWN TRAUMA/INTERSCOPE	BUSH	645	459	
27	38	2	NOT ENOUGH WARNER BROS.	VAN HALEN	609	485	
28	30	3	STARS RCA	HUM	597	560	
29	22	13	SHE REPRISÉ	GREEN DAY	590	702	
30	40	2	WHITE, DISCUSSION RADIOACTIVE/MCA	LIVE	573	468	
31	27	15	WISER TIME AMERICAN/REPRISÉ	THE BLACK CROWES	536	606	
32	36	4	ANTS MARCHING RCA	DAVE MATTHEWS BAND	534	519	
33	28	7	I WALKED RCA	WANDERLUST	532	590	
34	33	3	I GOT A GIRL ISLAND	TRIPPING DAISY	523	536	
35	34	20	RIVER OF DECEIT COLUMBIA	MAD SEASON	501	532	
36	24	13	STRANGE CURRENCIES WARNER BROS.	R.E.M.	487	635	
37	31	25	WHAT WOULD YOU SAY RCA	DAVE MATTHEWS BAND	469	545	
38	39	2	FLAT TOP METAL BLADE/WARNER BROS.	GOO GOO DOLLS	452	471	
39	NEW ▶		CRUSH WITH EYELINER WARNER BROS.	R.E.M.	447	275	
40	RE-ENTRY		BETTER THAN NOTHING SQUINT/WARNER BROS.	JENNIFER TRYNN	428	425	

THIS WEEK	LAST WEEK	WKS. ON CHART	MODERN ROCK		DETECTIONS		
			TITLE/LABEL/DISTRIBUTING LABEL	ARTIST	TW	LW	
			★★★★ No. 1 ★★★★★				
1	1	9	YOU OUGHTA KNOW <small>MAVERICK/REPRISÉ 4 weeks at No. 1</small>	ALANIS MORISSETTE	1788	1794	
2	2	6	THIS IS A CALL ROSWELL/CAPITOL	FOO FIGHTERS	1473	1496	
3	7	3	J.A.R. REPRISÉ	GREEN DAY	1437	1188	
4	4	8	TOMORROW EPIC	SILVERCHAIR	1426	1247	
5	3	10	HOLD ME, THRILL ME, KISS ME, KILL ME ISLAND/ATLANTIC	U2	1291	1472	
6	9	8	IN THE BLOOD ELEKTRA/VEEG	BETTER THAN EZRA	1240	1130	
7	8	10	SAY IT AIN'T SO DGC/GEFFEN	WEEZER	1177	1181	
8	5	14	MOLLY WORK	SPONGE	1141	1240	
9	6	8	I GOT A GIRL ISLAND	TRIPPING DAISY	1131	1214	
10	14	6	STUTTER DGC/GEFFEN	ELASTICA	1094	982	
11	16	4	COMEDOWN TRAUMA/INTERSCOPE	BUSH	1030	882	
			★★★★ AIRPOWER ★★★★★				
12	27	2	TIL I HEAR IT FROM YOU A&M	GIN BLOSSOMS	1024	590	
13	12	9	CARNIVAL ELEKTRA/VEEG	NATALIE MERCHANT	1011	1039	
14	13	11	STARS RCA	HUM	961	1018	
15	10	15	ALL OVER YOU RADIOACTIVE/MCA	LIVE	938	1098	
16	11	16	DECEMBER ATLANTIC	COLLECTIVE SOUL	916	1060	
17	15	8	BETTER THAN NOTHING SQUINT/WARNER BROS.	JENNIFER TRYNN	873	906	
18	20	7	ANTS MARCHING RCA	DAVE MATTHEWS BAND	849	805	
19	18	10	WYNONA'S BIG BROWN BEAVER INTERSCOPE	PRIMUS	760	871	
20	19	16	HEY MAN, NICE SHOT REPRISÉ	FILTER	739	826	
21	17	9	SMASH IT UP ATLANTIC	OFFSPRING	724	876	
22	23	7	ONLY WANNA BE WITH YOU ATLANTIC	HOOTIE & THE BLOWFISH	693	724	
23	21	17	MORE HUMAN THAN HUMAN GEFEN	WHITE ZOMBIE	691	791	
24	29	3	WHITE, DISCUSSION RADIOACTIVE/MCA	LIVE	679	572	
25	NEW ▶		GALAXIE CAPITOL	BLIND MELON	643	208	
26	30	2	WEIRD-OUT RUFFHOUSE/COLUMBIA	DANDELION	642	546	
27	26	20	RUN-AROUND A&M	BLUES TRAVELER	634	607	
28	25	24	GOOD ELEKTRA/VEEG	BETTER THAN EZRA	599	636	
29	24	19	LITTLE THINGS TRAUMA/INTERSCOPE	BUSH	581	705	
30	38	2	AWAKE GIANT	LETTERS TO CLEO	569	431	
31	22	13	MISERY COLUMBIA	SOUL ASYLUM	557	771	
32	31	5	I DON'T WANT TO GROW UP RADIOACTIVE/MCA	THE RAMONES	503	523	
33	33	6	IMMORTALITY EPIC	PEARL JAM	494	484	
34	28	9	VOW ALMO SOUNDS/GEFFEN	GARBAGE	492	578	
35	34	24	CONNECTION DGC/GEFFEN	ELASTICA	475	458	
36	36	2	WAKE ME HANDSOME BOY/TAG/ATLANTIC	RUSTY	475	440	
37	NEW ▶		CRUSH WITH EYELINER WARNER BROS.	R.E.M.	463	366	
38	NEW ▶		KISS FROM A ROSE ZTT/SIRE/WARNER BROS.	SEAL	445	400	
39	NEW ▶		WE'RE THE SAME ZOO	MATTHEW SWEET	443	423	
40	NEW ▶		NAME METAL BLADE/WARNER BROS.	GOO GOO DOLLS	432	283	

Records showing an increase in detections over the previous week, regardless of chart movement. A record which has been on either chart for more than 20 weeks will not receive a bullet, even if it registers an increase in detections. Airpower awarded to those records which attain 800 detections (album) or 700 detections (modern) for the first time. If two records are tied in number of plays, the record being played on more stations is placed first. Records below the top 20 are removed from the charts after 26 weeks.



## WILCO

### "CASINO QUEEN" From The Album A.M.

**NEW!**  
WFBQ WWCT WKQQ WAPL KMOD  
AND MORE!

**ALREADY ON:**  
WDVE KYYS WSTZ KLBJ KOMP  
KXUS WZZQ KTYD KRZZ WGIR  
KWBR WXRC WAVF WFSM

AND MORE!

On The H.O.R.D.E. Tour In August!

