

ROCK AIRPLAY Monitor

• We Listen To Radio •

November 24, 1995 \$ 4.95 Volume 2 • No. 48

ROCK HIGHLIGHTS

MAINSTREAM ROCK

#1

GOO GOO DOLLS

Name (METAL BLADE/WARNER BROS.)

★★★ AIRPOWER ★★★

KENNY WAYNE SHEPHERD • *Deja VooDoo* (GIANT)

NEW RELEASES

BODEANS • *Closer To Free* (SLASH/REPRISE)

THE JEFF HEALEY BAND • *Angel* (ARISTA)

WHIRLING DERVISHES • *Grinch* (FOUNDATION)

MODERN ROCK

#1

RED HOT CHILI PEPPERS

My Friends (WARNER BROS.)

★★★ AIRPOWER ★★★

COLLECTIVE SOUL • *The World I Know* (ATLANTIC)

SMASHING PUMPKINS • *1979* (VIRGIN)

OASIS • *Wonderwall* (EPIC)

NEW RELEASES

AZTEC CAMERA • *Sun* (REPRISE)

ENYA • *Anywhere Is* (REPRISE)

THE INBREDS • *Any Sense Of Time* (TAG)

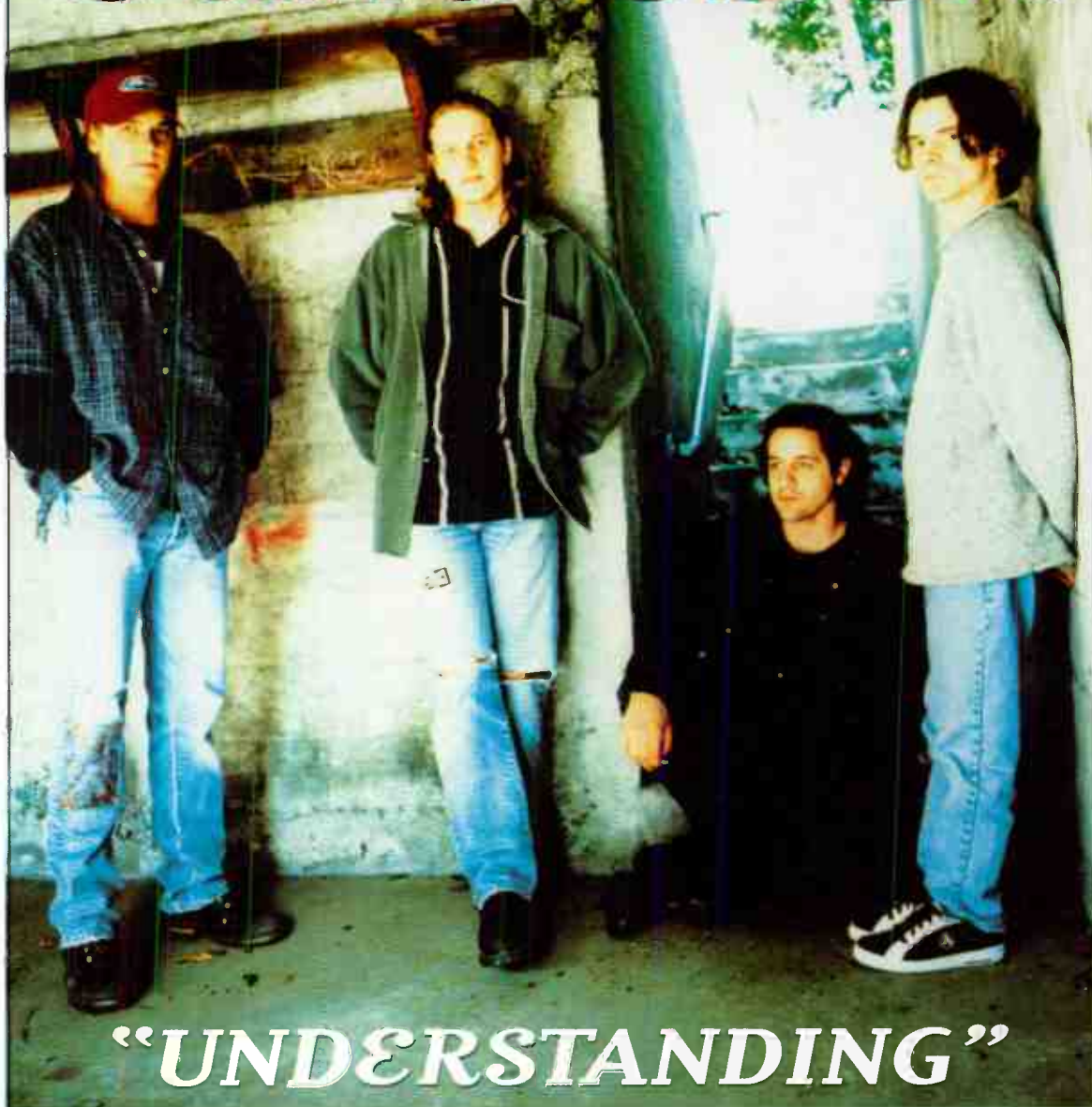
RADIOHEAD • *High And Dry* (CAPITOL)

RUBY • *Paraffin* (CREATION/WORK)

SEVEN DAY DIARY • *He Can* (WARNER BROS.)

WHIRLING DERVISHES • *Grinch* (FOUNDATION)

Candlebox



"UNDERSTANDING"

the second single
from their new album *LUCY*

Watch for  "Breakthrough" video
Directed by Gus Van Sant

(37) - (29) MAINSTREAM ROCK MONITOR

KLOS ADD!	KUFO	KISS	WDIZ	KQRC
KISW	WLZR	KUPD	WXRC	WBZX
KRXQ	WRIF	KTXQ	WCCC	WRCX
KIOZ	WDZR	WXTB	WAAF	WZAT

MODERN ROCK :

WKQX • WMMS • WENZ • WHYT • WLUM • KISF • KEGE • KPNT • KXRK
KBBT • KNRI • KWOD • KDGE • WIBF • WDRE • WMRQ • WEDG • KEDG
KGDE • KFRR



PRODUCED BY KELLY GRAY AND CANDLEBOX • CD-PRODUCED BY JON PLUM
Management: Lindy Goetz for LGM

PUBLISHER: MICHAEL ELLIS
EDITOR: JEAN HOSS
DIRECTOR OF CHRIS: JERRY MOYENNA
MAINSTREAM ROCK CHART MANAGER: ANTHONY COLOMBO
MODERN ROCK CHART MANAGER: MARK MIRONE
CHART PRODUCTION MANAGER: MICHAEL CUSON
ASST. CHART PRODUCTION MANAGER: PAUL PAGE
EDITORIAL PRODUCTION MANAGER: BARRY BISHIN
ASSOC. EDITORIAL PRODUCTION MANAGER: MARCIA TEPESI
EDITORIAL PRODUCTION: MIRC GIAGUINTO, MORRIS KILGEMAN
ADVERTISING PRODUCTION MANAGER: LYDIA MURKIN
ADVERTISING PRODUCTION ASST.: CYNDEL WEISS
ADVERTISING ART DIRECTOR: RAY CARLTON
NATIONAL ADVERTISING MANAGER: JON GUINN
ADVERTISING SALES: ARI PHILLIPS, ANDREA THOMPSON
CLASSIFIED ADVERTISING: LAURA RIVCHUN
ADVERTISING SERVICE MGR.: MICHELE JACANGELO
SALES ASSISTANTS: EVELYN AZORIN, ERICA BEHIGTON,
ALEX VITOUK, ALYSE ZIGMAN
EDITORIAL ADVISER: TIMOTHY WHITE
PRODUCTION DIRECTOR: MARI GOMBERT
DIRECTOR OF MARKETING: ELISSA TOMASETTI
CIRCULATION MANAGER: JEANNE JAMIN

© 1995 by Columbia TriStar Communications, 1515 Broadway, New York, NY 10036
712-535-5049 Fax: 212-512-2346

Music Group
HOWARD LANDER

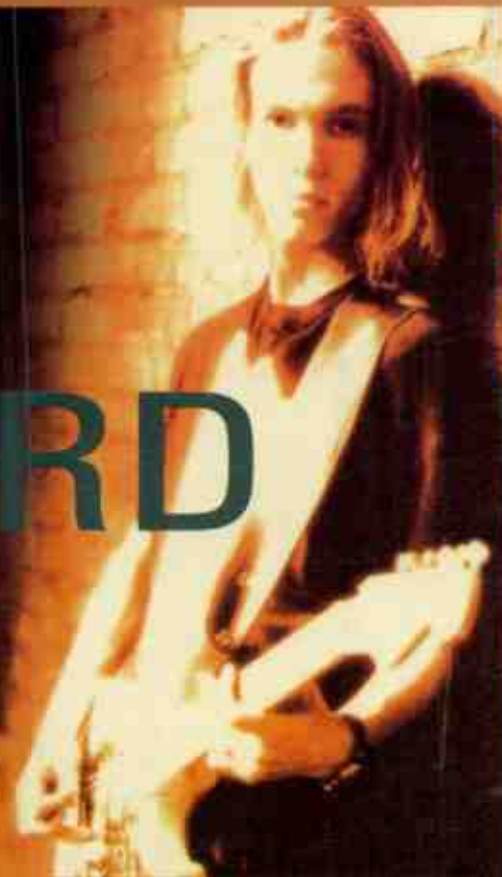
"DEJA VOODOO"

(21) - (18) ★★ ★ AIRPOWER ★★ ★

MAINSTREAM ROCK MONITOR

900 SPINS, UP 141!

KENNY
WAYNE SHEPHERD



TOP 5 PHONES:

WRDU

KILO

WGBF

WRFX

WKLS

WDVE

KBOY

TOP 10 SPINS:

WHJY

WMMR

WDVE

WRXK

WRXL

KQRS

KILO

KDKB

KSJO

KRXQ

WLVQ

WZZR

KLOS

Strongest Increase In Airplay This Week

MAINSTREAM ROCK

INCREASE
IN PLAYS

TOM PETTY • <i>Waiting For Tonight</i> (MCA)	+330
WARQ +19, WIYY +18, WWDC +18, WZZR +16, WRIF +16, KLOS +14, WKQQ +13, WEZX +13, KZRR +13, KMOD +13	
BUSH • <i>Glycerine</i> (TRAUMA/INTERSCOPE)	+194
WDIZ +18, KEGL +16, WJST +15, KISW +14, KSJO +13, KTXQ +11, WWDC +11, KNCN +10, KEZO +9, WKDF +9	
AC/DC • <i>Cover You In Oil</i> (EASTWEST/EEG)	+153
KTUX +21, WKLQ +14, KFRQ +12, KIOZ +11, WTFX +8, WZAT +7, KILO +7, KLPX +7, KMJX +7, WIYY +7	
SMASHING PUMPKINS • <i>1979</i> (VIRGIN)	+144
WAXQ +15, KRAB +13, WMMR +13, WWDC +13, KEZO +12, WRIF +12, KZRQ +8, WLZR +7, KQRC +6, WRCX +6	
COLLECTIVE SOUL • <i>The World I Know</i> (ATLANTIC)	+142
KTXQ +15, WIXV +14, WQFM +14, WTAK +12, KUFO +12, KISS +12, WLLZ +12, KIOZ +10, WTPA +10, WZZR +9	
KENNY WAYNE SHEPHERD • <i>Deja Voodoo</i> (GIANT)	+141
KILO +14, KEGL +12, KTYD +7, WAFX +7, WRXR +7, KIOZ +7, KEZO +7, WIMZ +7, KSJO +6, WEZX +5	
SEVEN MARY THREE • <i>Cumbersome</i> (MAMMOTH/ATLANTIC)	+135
WNCD +15, WCCC +13, KICT +11, WEBN +11, WLLZ +11, KRZR +10, KZRQ +9, KRXQ +8, WAXQ +7, KQRC +7	
CANDLEBOX • <i>Understanding</i> (MAVERICK/WARNER BROS.)	+119
WJST +19, KNCN +13, WDIZ +12, KHOP +11, WKDF +10, WXRC +9, WZAT +8, KRZZ +7, KQRC +7, WTUE +7	
BETTER THAN EZRA • <i>Rosealia</i> (ELEKTRA/EEG)	+118
WZAT +17, KICT +15, WKDF +14, KTYD +12, WAVF +12, WLLZ +12, WWDC +10, WPLR +7, WAFX +5, KRZR +5	
DAVE MATTHEWS BAND • <i>Satellite</i> (RCA)	+99
KZRR +11, WWDC +11, WZAT +10, KICT +10, KTYD +8, KTAL +8, WKLS +7, WARQ +6, WSTZ +5, WIOT +4	

MODERN ROCK

INCREASE
IN PLAYS

OASIS • <i>Wonderwall</i> (EPIC)	+339
WCHZ +25, KTOZ +24, KMYZ +24, KFRR +18, CIMX +18, KBBT +17, WRLG +14, WQXA +14, WBCN +14, KTCL +13	
BUSH • <i>Glycerine</i> (TRAUMA/INTERSCOPE)	+286
KKND +25, WCYY +19, WVGO +17, CIMX +16, KRRK +15, WZRH +15, WROX +14, KLZR +12, KBBT +12, WHYI +11	
SMASHING PUMPKINS • <i>1979</i> (VIRGIN)	+276
KDGE +25, KKND +20, KCXX +19, KNNC +19, KBBT +15, KXRK +14, WKQX +14, WPLY +12, WDRE +12, WMMS +12	
COLLECTIVE SOUL • <i>The World I Know</i> (ATLANTIC)	+244
KEGE +30, KRRK +26, KNRK +17, WQXA +17, WAQZ +15, WXWX +15, KTCL +15, WCHZ +14, KEZE +13, KMYZ +13	
DAVE MATTHEWS BAND • <i>Satellite</i> (RCA)	+191
KISF +26, KEDJ +15, WAQZ +14, WHFS +14, KNRK +13, WEQX +13, WQXA +13, WQNF +10, KWOD +8, WSHE +8	
SEVEN MARY THREE • <i>Cumbersome</i> (MAMMOTH/ATLANTIC)	+180
KKND +25, KBBT +21, WQNF +19, KXRK +15, KROQ +13, KMYZ +9, WHFS +9, KDGE +8, WCYY +7, KGDE +7	
RANCID • <i>Ruby Soho</i> (EPITAPH)	+145
WHYT +21, XTRA +15, KRRK +12, KOMI +11, KXRK +10, KTCL +10, KTOZ +9, KBBT +9, WBRU +9, WMMS +9	
SPACEHOG • <i>In The Meantime</i> (SIRE/EEG)	+133
KEGE +23, KPNT +20, KISF +18, KEZE +13, WXWX +12, KCXX +9, KNNC +9, KITS +9, WWCD +8, KLZR +7	
THE PRESIDENTS OF THE UNITED STATES OF AMERICA • <i>Kitty</i> (COLUMBIA)	+124
KTOZ +24, KPNT +17, WRLG +15, WZRH +11, KNNC +11, KFRR +10, WWCD +10, WEQX +10, WGRD +10, KTBZ +9	
EVERCLEAR • <i>Santa Monica</i> (Watch The World Die) (CAPITOL)	+113
KWOD +18, KRRK +14, WHYI +14, WBER +13, WQNF +12, KTBZ +11, WCYY +10, KTOZ +9, KGDE +6, CIMX +6	



• ROCK ROUNDUP •

by Mark Merone

I'm sure everyone would like to see a solution to the modern rock holiday-concert syndrome. With so many stations bent on doing the obligatory Christmas show, and with artists reduced to being a spoke in the wheel of an assembly line of hits, playing all across the country for free, can it be long until some impresario wants to revert back to the days of Dick Clark's "Caravan Of Stars" to appease the hoard of interested modern rock stations? The routine in the early days of rock was to put artists together with the hit songs of the day on a package bus tour; each artist was on stage only long enough to play a few hits. The demands being put on artists, management, and labels this holiday season recall the archaic traveling hit shows of the '50s in that artists must endure rigorous itineraries for small reward. So, short of returning to those not-so-thrilling days of yesteryear and just making it official, how can stations find creative ways to market themselves year-round and stop putting the onus on the labels twice a year? For many stations, summer festival and Christmas concert shows require far more effort than can be recouped for the time, money, and energy expended. A little ingenuity can promote a station for a lot less at such regular events as local shows, summer tours, and existing festivals, including Lollapalooza. So, let us enjoy what's been set up for this holiday season, because who knows if anybody will be up for this again next year.

UPDATE: The following panel changes are effective with this week's issue: WVGO Richmond, Va., KCXX Riverside, Calif., and KEZE Spokane, Wash. (moved from mainstream), are added to the modern rock panel, making the total 69 stations. Added to triple-A is WRLT Nashville, making that panel's total 17 stations. The mainstream panel now totals 104 stations.

MTV PLAYLIST

Most-Played Rock Tracks

	TW	LW		TW	LW		
1	Presidents Of The United State, Lump	30	28	21	AC/DC, Hard As A Rock	10	11
2	Smashing Pumpkins, Bullet With Butterfly	30	22	22	Green Day, Geek Stink Breath	10	16
3	Red Hot Chili Peppers, My Friends	28	26	23	Heather Nova, Walk Ths World	10	11
4	Goo Goo Dolls, Name	24	26	24	Ozzy Osbourne, Perry Mason	9	7
5	Alanis Morissette, Hand In My Pocket	19	21	25	R.E.M., Tongue	8	12
6	Bush, Come Down	17	26	26	Blues Traveler, Hook	7	6
7	Toadies, Possum Kingdom	16	12	27	Red Hot Chili Peppers, Warped	7	4
8	Joan Osbourne, One Of Us	16	15	28	Seven Mary Three, Cumbersome	6	5
9	Garbage, Queer	16	13	29	Ruth Ruth, Uninvited	6	4
10	Collective Soul, The World I Know	16	15	30	311, Don't Stay Home	5	5
11	Hootie & The Blowfish, Time	15	16	31	Meat Loaf, I'd Lie For You	5	10
12	Lisa Loeb & Nine Stories, Do You Sleep?	15	16	32	Rolling Stones, Like A Rolling Stone	5	5
13	Rancid, Ruby Soho	15	10	33	Stone Temple Pilots, Plush	5	4
14	Passengers, Miss Sarajevo	15	0	34	Silverchair, Pure Massacre	5	3
15	Melissa Etheridge, Your Little Secret	14	17	35	Hootie & The Blowfish, Let Her Cry	4	0
16	Foo Fighters, I'll Stick Around	12	11	36	Chris Isaak, Go Walking Down There	4	3
17	Rentals, Friends Of P.	12	13	37	Toad The Wet Sprocket, Good Intentions	4	3
18	Alice In Chains, Grind	12	7	38	Live, Lightning Crashes	4	3
19	Sophie B. Hawkins, As I Lay Me Down	10	9	39	Nirvana, Smells Like Teen Spirit!	3	3
20	Deep Blue Something, Breakfast At Tiffan	10	7	40	Nirvana, Heart-Shaped Box	3	3

MR. MIRAINGA

"It's already Top 10 most requested and sounds great on the air. I don't know why everyone isn't playing 'Burnin' Rubber!'"
KIM MONROE
WEND, CHARLOTTE



"Burnin' Rubber"

From the forthcoming
debut album in-stores
January 2nd 1996

Already reacting,
early phones at: CFNY, WEND,
WROX, WNFZ, CIMX

Single in-stores
December 12th

40 - **34** Modern Rock Monitor
617 spins



QUESTIONS, COMMENTS, SUGGESTIONS

We want to hear
what you have
to say

CALL THE AIRPLAY MONITOR
SUGGESTION LINE
213 • 525 • 2299

AIRPLAY

Monitor

• We Listen To Radio •

MAINSTREAM ROCK

POWER PLAYLISTS

AIRPLAY
Monitor

For Week Ending
November 19, 1995

KLOS Los Angeles PD: Carey Curelop MD: Rita Wilde
WNEW New York PD: Ted Edwards MD: Amy Winslow
WAXQ New York PD: Ron Valeri APD/MD: Vinny Marino

	TW	LW
1 Smashing Pumpkins, 1979	24	24
2 Smashing Pumpkins, Bullet With Butterfly	22	28
3 Foo Fighters, I'll Stick Around	21	30
4 Red Hot Chili Peppers, My Friends	21	27
5 Kenny Wayne Shepherd, Deja Voodoo	21	21
6 Green Day, Geek Stink Breath	20	27
7 Blues Traveler, Hook	20	11
8 Alice In Chains, Grind	19	21
9 Seven Mary Three, Cumbersome	17	18
10 AC/DC, Hard As A Rock	16	24
11 Melissa Etheridge, Your Little Secret	16	21
12 Ozzy Osbourne, Perry Mason	16	21
13 Seaweed, Start With	16	16
14 Tom Petty, Waiting For Tonight	14	0
15 Bush, Comedown	14	0
16 Smile, Staring At The Sun	14	16
17 Presidents Of The United States, Lump	12	16
18 For Squirrels, Mighty K.C.	12	0
19 Better Than Ezra, In The Blood	11	11
20 Hootie & The Blowfish, Drowning	10	13
21 Spacehog, In The Meantime	10	11
22 Black Grape, In The Name Of The	9	11
23 Foo Fighters, This Is A Call	9	10
24 Van Halen, The Seventh Seal	9	7
25 Bush, Everything Zen	8	16
26 Red Hot Chili Peppers, Warped	8	11
27 Live, Selling The Drama	8	6
28 Neil Young, Throw Your Hatred Down	8	7
29 God Lives Underwater, All Wrong	8	11
30 Blues Traveler, Run Around	7	8

	TW	LW
1 Melissa Etheridge, Your Little Secret	20	21
2 Smashing Pumpkins, 1979	19	16
3 Goo Goo Dolls, Name	19	20
4 Natalie Merchant, Wonder	19	17
5 Alanis Morissette, All I Really Want	17	12
6 Red Hot Chili Peppers, My Friends	17	21
7 Edwyn Collins, A Girl Like You	17	11
8 Collective Soul, The World I Know	17	11
9 Blues Traveler, Hook	16	20
10 Garbage, Queer	15	13
11 The Rentals, Friends Of P	15	17
12 Heather Nova, Walk This World	15	16
13 Smashing Pumpkins, Tonight, Tonight	14	16
14 Julian Cope, Try Try Try	14	5
15 Chris Isaak, Go Walking Down There	14	17
16 Passengers, Miss Sarajevo	14	8
17 Hootie & The Blowfish, Time	14	14
18 Pretenders, Sense Of Purpose	14	12
19 Tears For Fears, God's Mistake	13	14
20 Rusted Root, Ecstasy	13	15
21 Red Hot Chili Peppers, Aeroplane	12	15
22 Black Grape, In The Name Of The	12	6
23 Bruce Springsteen, Youngstown	12	6
24 Tom Petty, Waiting For Tonight	11	0
25 Sarah McLachlan, Dear God	11	13
26 Dave Matthews Band, Typical Situation	11	13
27 Lenny Kravitz, Circus	11	4
28 Toad The Wet Sprocket, Good Intentions	10	21
29 Neil Young, Throw Your Hatred Down	10	2
30 Bush, Glycerine	10	4

	TW	LW
1 Seven Mary Three, Cumbersome	43	36
2 Bush, Glycerine	42	36
3 Down, Stone The Crow	41	40
4 Alice In Chains, Grind	39	44
5 Foo Fighters, I'll Stick Around	39	41
6 Smashing Pumpkins, Bullet With Butterfly	39	41
7 Ozzy Osbourne, Perry Mason	37	40
8 Red Hot Chili Peppers, My Friends	36	36
9 Smile, Staring At The Sun	22	25
10 Fig Dish, Seeds	22	20
11 For Squirrels, Mighty K.C.	21	24
12 CW, Can't Wait One Minute More	20	22
13 Seaweed, Start With	20	20
14 Loud Lucy, Ticking	20	20
15 Live, White Discussion	19	17
16 God Lives Underwater, All Wrong	19	18
17 White Zombie, Electric Head Pt. 2	18	25
18 Toadies, I Came From The Water	18	26
19 White Zombie, Super-Charger Heaven	18	12
20 Spongy, Rainin'	18	15
21 Ozzy Osbourne, See You On The Other Side	18	9
22 Soundgarden, Supernumero	17	16
23 Smashing Pumpkins, 1979	16	1
24 Alice In Chains, Heaven Beside You	15	5
25 Ruth Ruth, Uninvited	15	20
26 Spacehog, In The Meantime	15	18
27 The Nixons, Happy Song	15	14
28 Red Hot Chili Peppers, Warped	14	14
29 Bush, Comedown	14	15
30 Green, She Shines	14	15

WMMR Philadelphia PD: Joe Bonadonna MD: Riki Holberg

	TW	LW
1 Toad The Wet Sprocket, Good Intentions	23	22
2 Kenny Wayne Shepherd, Deja Voodoo	23	23
3 Red Hot Chili Peppers, My Friends	23	26
4 Melissa Etheridge, Your Little Secret	23	24
5 Pretenders, Sense Of Purpose	22	23
6 John Hiatt, Cry Love	22	22
7 Tom Petty, Cabin Down Below	22	17
8 Alanis Morissette, Right Through You	22	21
9 The Bottle Rockets, Radar Gun	21	16
10 Bonnie Raitt W/Bryan Adams, Rock Steady	20	20
11 Don Henley, The Garden Of Allah	20	20
12 Joan Osborne, One Of Us	19	22
13 Rolling Stones, Like A Rolling Stone	19	23
14 The Badlees, Fear Of Falling	19	17
15 Edwin McCain, Jesters, Dreamers & Thieves	19	16
16 Dave Matthews Band, Best Of What's Around	19	17
17 Heather Nova, Walk This World	19	19
18 Collective Soul, The World I Know	16	16
19 Chris Isaak, Go Walking Down There	15	15
20 Sonia Dada, Planes & Satellites	15	15
21 Julian Cope, Try Try Try	14	10
22 Bonaparte, Where The Water's Deep	14	14
23 Seven Mary Three, Cumbersome	13	9
24 Smashing Pumpkins, 1979	13	0
25 Hootie & The Blowfish, Time	13	14
26 Rusted Root, Ecstasy	12	12
27 Melissa Etheridge, I Really Like You	12	0
28 Bruce Springsteen, Youngstown	12	0
29 Collective Soul, Smashing Young Man	10	11
30 Joe Satriani, (You're) My World	10	6

WRCX Chicago PD: Dave Richards MD: Jo Robinson

	TW	LW
1 Smashing Pumpkins, Bullet With Butterfly	42	44
2 Ozzy Osbourne, Perry Mason	39	42
3 Bush, Comedown	39	38
4 Collective Soul, Where The River Flows	35	21
5 Foo Fighters, I'll Stick Around	32	19
6 Tripping Daisy, FireNha	22	22
7 Seven Mary Three, Cumbersome	21	22
8 Silverchair, Pure Massacre	20	17
9 Spacehog, In The Meantime	20	20
10 Red Hot Chili Peppers, My Friends	20	44
11 Cheap Trick, Cold Turkey	19	19
12 AC/DC, Ballbreaker	18	17
13 Toadies, Possum Kingdom	18	13
14 Lenny Kravitz, Circus	18	8
15 Goo Goo Dolls, Name	17	42
16 White Zombie, More Human Than Human	17	15
17 Brother Cane, And Fools Shine On	16	14
18 Toadies, I Came From The Water	16	18
19 Bush, Glycerine	16	18
20 Brother Cane, Breadmaker	16	10
21 Smashing Pumpkins, 1979	15	9
22 Foo Fighters, This Is A Call	14	18
23 Green Day, She	14	10
24 Silverchair, Tomorrow	14	12
25 Live, All Over You	13	14
26 Ruth Ruth, Uninvited	12	7
27 AC/DC, Hard As A Rock	11	17
28 Alice In Chains, Grind	11	13
29 Alanis Morissette, You Dugta Know	10	17
30 Pearl Jam, Corduroy	10	11

KQRS Minneapolis PD: Dave Hamilton APD/MD: Reed Collins

	TW	LW
1 Red Hot Chili Peppers, My Friends	16	13
2 Joe Satriani, (You're) My World	14	14
3 Freddy Jones Band, Hold On To Midnight	14	13
4 Peter Frampton, You	13	13
5 Tom Petty, Waiting For Tonight	11	0
6 Blues Traveler, Hook	11	10
7 Bob Seger, Lock And Load	11	8
8 Don Henley, The Garden Of Allah	10	10
9 Kenny Wayne Shepherd, Deja Voodoo	10	8
10 Tom Cochrane, I Wish You Well	9	10
11 Rolling Stones, Like A Rolling Stone	7	9
12 The Badlees, Fear Of Falling	7	0
13 Edwin McCain, Solitude	6	7
14 AC/DC, Hard As A Rock	6	8
15 Meat Loaf, Amnesty Is Granted	6	8
16 Supertramp, Bloody Well Right	5	3
17 John Hiatt, Cry Love	5	9
18 Heart, Love Alive	5	3
19 Steely Dan, Do It Again	5	4
20 Dire Straits, Sultans Of Swing	5	4
21 Cars, Let's Go	5	4
22 Tom Petty, Cabin Down Below	5	8
23 Collective Soul, Shine	5	6
24 Neil Young, Peace And Love	5	3
25 Talking Heads, Life During Wartime	4	2
26 Talking Heads, Take Me To The River	4	5
27 Eric Clapton, The Core	4	4
28 Neil Young & Crazy Horse, Change Your Mind	4	3
29 Steely Dan, Reelin' In The Years	4	3
30 Allman Brothers Band, Soulshine	4	2

WWDC Washington, DC PD: Dave Brown MD: Buddy Rizer

	TW	LW
1 Live, White Discussion	28	25
2 Smashing Pumpkins, Bullet With Butterfly	28	21
3 Foo Fighters, I'll Stick Around	24	17
4 Goo Goo Dolls, Name	24	24
5 Green Day, Geek Stink Breath	24	20
6 Alanis Morissette, Hand In My Pocket	23	22
7 Hootie & The Blowfish, Drowning	23	23
8 Bush, Comedown	22	23
9 Silverchair, Tomorrow	22	28
10 Toadies, Possum Kingdom	22	23
11 Presidents Of The United States, Lump	21	20
12 Alice In Chains, Heaven Beside You	20	0
13 Edwyn Collins, A Girl Like You	20	23
14 Ruth Ruth, Uninvited	19	19
15 Joan Osborne, One Of Us	19	13
16 Tom Petty, Waiting For Tonight	18	0
17 Red Hot Chili Peppers, My Friends	18	18
18 Seven Mary Three, Cumbersome	18	19
19 Collective Soul, The World I Know	17	17
20 Dave Matthews Band, Satellite	16	5
21 Smashing Pumpkins, 1979	15	2
22 The Rentals, Friends Of P	15	15
23 Oasis, Wonderwall	15	17
24 Jewel, Who Will Save Your Soul	15	12
25 Alanis Morissette, All I Really Want	14	19
26 Natalie Merchant, Wonder	14	7
27 Better Than Ezra, Rosealia	13	3
28 Rolling Stones, Like A Rolling Stone	12	23
29 Toad The Wet Sprocket, Brother	12	20
30 Natalie Merchant, Jealousy	12	3

WDVE Pittsburgh PD: Gene Romano

	TW	LW
1 Bonaparte, Where The Water's Deep	22	19
2 Pearl Jam, Corduroy	20	16
3 Rolling Stones, Like A Rolling Stone	18	17
4 Dave Matthews Band, Ants Marching	18	11
5 Live, I Alone	17	11
6 Goo Goo Dolls, Name	16	15
7 Kenny Wayne Shepherd, Deja Voodoo	15	19
8 Bush, Glycerine	14	16
9 Collective Soul, Gel	14	10
10 Neil Young, Downtown	14	12
11 Better Than Ezra, In The Blood	13	15
12 Blues Traveler, Hook	13	16
13 Red Hot Chili Peppers, My Friends	13	10
14 Collective Soul, The World I Know	12	20
15 Tom Cochrane, I Wish You Well	12	9
16 Wanderlust, I Walked	12	11
17 Pearl Jam, Imortality	12	15
18 Tom Petty, Waiting For Tonight	11	0
19 Ian Moore, Muddy Jesus	11	12
20 Bush, Comedown	10	11
21 Seven Mary Three, Cumbersome	10	10
22 R.E.M., Bang And Blame	8	5
23 Live, All Over You	8	15
24 Stone Temple Pilots, Big Empty	7	6
25 Stone Temple Pilots, Dancing Days	7	6
26 Cracker, Low	7	4
27 Cracker, Get Off This	7	4
28 Matthew Sweet, Sick Of Myself	7	5
29 Stone Temple Pilots, Plush	7	6
30 Ozzy Osbourne, Perry Mason	7	3

WRIF Detroit PD: Doug Podell MD: Mark Thompson

	TW	LW
1 Foo Fighters, I'll Stick Around	30	21
2 Seven Mary Three, Cumbersome	30	31
3 Red Hot Chili Peppers, My Friends	29	29
4 Toadies, Possum Kingdom	28	32
5 Goo Goo Dolls, Name	25	22
6 AC/DC, Hard As A Rock	25	26
7 Ozzy Osbourne, Perry Mason	23	19
8 Collective Soul, Where The River Flows	23	27
9 Meat Loaf, Amnesty Is Granted	22	17
10 Spongy, Rainin'	20	14
11 Smashing Pumpkins, Bullet With Butterfly	20	22
12 Alice In Chains, Grind	20	31
13 Silverchair, Tomorrow	19	29
14 Tom Petty, Waiting For Tonight	18	0
15 Bush, Glycerine	16	16
16 Bush, Comedown	16	16
17 Van Halen, Feelin'	13	14
18 Candlebox, Cover Me	13	9
19 Ted Nugent, Fred Bear	13	10
20 Live, All Over You	12	9
21 Smashing Pumpkins, 1979	12	0
22 White Zombie, Super-Charger Heaven	12	6
23 White Zombie, More Human Than Human	11	11
24 Smashing Pumpkins, Bullet With Butterfly	11	17
25 Jimmy Page & Robert Plant, Four Sticks	10	8
26 All, Long Distance	10	10
27 Green, She Shines	10	9
28 Candlebox, Understanding	10	8
29 Seaweed, Start With	10	5
30 For Squirrels, Mighty K.C.	10	0

WAAF Boston PD: Dave Douglas MD: John Osterlind

	TW	LW
1 Ozzy Osbourne, Perry Mason	35	34
2 Goo Goo Dolls, Name	35	34
3 Green Day, Geek Stink Breath	34	39
4 Candlebox, Simple Lessons	34	39
5 Smashing Pumpkins, Bullet With Butterfly	32	35
6 Silverchair, Pure Massacre	32	32
7 Alice In Chains, Grind	31	32
8 Red Hot Chili Peppers, Warped	31	29
9 Everclear, Santa Monica	31	29
10 Red Hot Chili Peppers, My Friends	29	33
11 Ruth Ruth, Uninvited	29	30
12 Seaweed, Start With	28	31
13 Loud Lucy, Ticking	28	28
14 Sweet Water, Superstar	24	27
15 The Bottle Rockets, Radar Gun	21	29
16 The Tea Party, The Bazaar	21	22
17 Spongy, Rainin'	19	20
18 Blind Melon, Galaxie	18	16
19 Fig Dish, Seeds	18	22
20 The Nixons, Happy Song	18	19
21 Brother Cane, Breadmaker	17	18
22 Foo Fighters, For All The Zeros	17	15
23 Smashing Pumpkins, 1979	17	19
24 Toadies, Possum Kingdom	17	21
25 Presidents Of The United States, Lump	17	23
26 Korn, Blind	16	18
27 Bush, Little Things	15	3
28 Tripping Daisy, FireNha	15	3
29 Down, Stone The Crow	13	10
30 Pearl Jam, Corduroy	13	15

WFBQ Indianapolis PD: Marty Bender MD: Ace Cosby

	TW	LW
1 Bob Seger, Lock And Load	20	20
2 Hootie & The Blowfish, Time	17	12
3 Bon Jovi, Something For The Pain	16	11
4 AC/DC, Hard As A Rock	16	14
5 Don Henley, The Garden Of Allah	13	18
6 Gin Blossoms, I'll Hear It From You	12	11
7 Bonaparte, Where The Water's Deep	11	19
8 Goo Goo Dolls, Name	11	18
9 Rolling Stones, Like A Rolling Stone	11	16
10 Melissa Etheridge, Your Little Secret	11	17
11 Bonnie Raitt W/Bryan Adams, Rock Steady	10	15
12 Kenny Wayne Shepherd, Deja Voodoo	10	9
13 Edwin McCain, Solitude	10	13
14 Better Than Ezra, Rosealia	9	5
15 Tom Petty, Waiting For Tonight	9	0
16 Gov't Mule, Mule	9	7
17 Collective Soul, December	8	20
18 Boston, Don't Look Back	6	1
19 Lynyrd Skynyrd, That Smell	6	2
20 ZZ Top, I'm Bad, I'm Natioinwide	6	4
21 Steely Dan, Bodhisattva	6	4
22 ZZ Top, La Grange	6	3
23 Rolling Stones, Angie	6	0
24 Tom Petty & The Heartbreakers, Breakdown	5	0
25 The Who, Who Are You	5	4
26 Ted Nugent, Hey Baby	5	3
27 Aerosmith, Rag Doll	5	0
28 Rolling Stones, Best Of Burden	5	3
29 Dire Straits, One World	5	3
30 Collective Soul, The World I Know	5	0

KLOL Houston PD: Andy Beaubien APD: Dayna Steele

	TW	LW
--	----	----

POWER PLAYLISTS



For Week Ending November 19, 1995

Playlists supplied by Broadcast Data Systems' Radio Track service...

Table for station KEGL (DaVas) listing top 30 tracks including Alice In Chains, Melissa Etheridge, and Ozzy Osbourne.

Table for station WKLS (Atlanta) listing top 30 tracks including Melissa Etheridge, Red Hot Chili Peppers, and Tom Petty.

Table for station WLLZ (Detroit) listing top 30 tracks including Red Hot Chili Peppers, Green Day, and Smashing Pumpkins.

Table for station KSHE (St. Louis) listing top 30 tracks including Don Henley, Soundgarden, and Silverchair.

Table for station KTXQ (Dallas) listing top 30 tracks including Goo Goo Dolls, Smashing Pumpkins, and Presidents Of The United States.

Table for station WHJY (Providence) listing top 30 tracks including Rolling Stones, Goo Goo Dolls, and AC/DC.

Table for station WEBN (Cincinnati) listing top 30 tracks including Seven Mary Three, Toadies, and Red Hot Chili Peppers.

Table for station KSJO (San Jose) listing top 30 tracks including Hootie & The Blowfish, AC/DC, and Smashing Pumpkins.

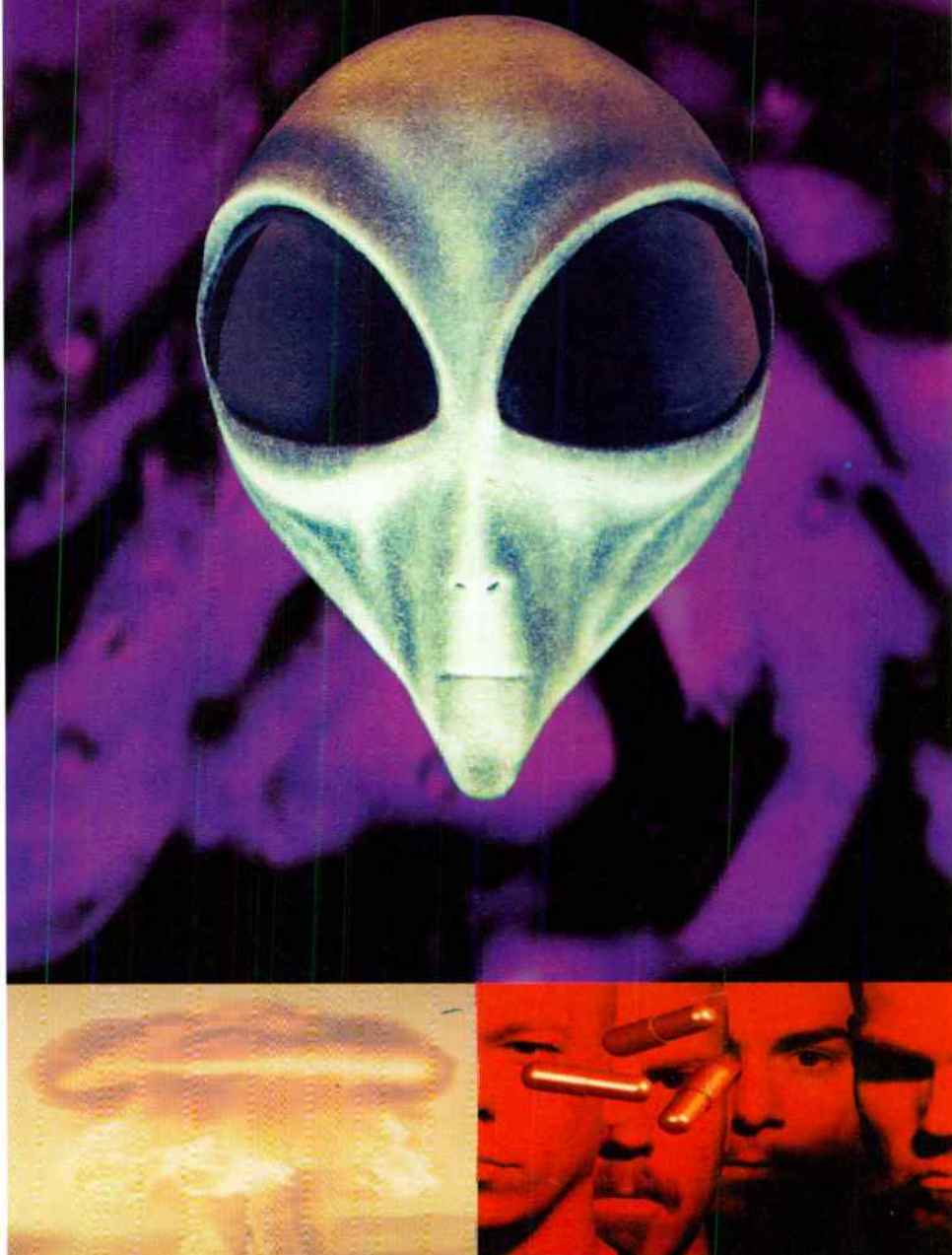
Table for station WIYY (Baltimore) listing top 30 tracks including Smashing Pumpkins, Ozzy Osbourne, and Seven Mary Three.

Table for station WZTA (Miami) listing top 30 tracks including Goo Goo Dolls, Pearl Jam, and Seven Mary Three.

Table for station WXTB (Tampa) listing top 30 tracks including CIV, Can't Wait One Minute More, and Seven Mary Three.

Table for station KUFO (Portland) listing top 30 tracks including AC/DC, Bush, and Van Halen.

NATURE THE SELF TITLED DEBUT ALBUM



FEATURING 'COMETH' THE FIRST TRACK AT ROCK AND ALTERNATIVE RADIO ADD DATE NOVEMBER 27TH

Z8 ENTERTAINMENT... © 1995 BMG Music



POWER PLAYLISTS

For Week Ending November 19, 1995



Playlists supplied by Broadcast Data Systems. Radio Track service. Stations selected from panel of leading broadcasters in 125 radio markets, electronically monitored 24 hours a day, 7 days a week. Songs ranked by number of plays in monitored week.

Grid of 48 radio station playlists (e.g., KBPI, KUPD, WBAB, KQRC, KDKB, KHOP, KATT, WLVQ, WLZR, KISW, WDIZ, WCMF, KISS, WKDF, KYYS, WTUE, WKLQ, WIMZ, WPYX, WRDU, WNOR, KIOZ, WXRA, WHCN) with columns for station name, PD, MD, and song titles with play counts.



*** AIRPOWER ***

(Minimum 800 detections for the first time)

Total Plays/Gain

KENNY WAYNE SHEPHERD 900/141

Deja Voodoo (Giant)

Total Stations: 79/Chart Move: 21-18
Heavy (21+ plays): 15 KDKB, KEGL, KEZO, KFRQ, KLO, KLOS, KLPX, KRXQ, KTAL, KTUX, WIOT, WIXV, WMMR, WRXK, WXRC
Medium (14-20): 14 KGGO, KIOZ, KMXJ, KSJO, KTYD, WDVE, WEZX, WPLR, WRDU, WROV, WRXL, WRXR, WTPA, WZZR
Light (Under 14): 50
New Airplay This Week: 1 WIMZ

AIRPOWER BOUND

Total Plays/Gain

SILVERCHAIR 785/67

Pure Massacre (Epic)

Total Stations: 61/Chart Move: 22-20
Heavy (21+ plays): 10 KIOZ, KRAB, KRZR, KTUX, KUPD, WAAF, WIYY, WJST, WLLZ, WZAT
Medium (14-20): 12 KBER, KICT, KILO, KSJO, KTYD, KZRC, WARQ, WKDF, WKLO, WLZR, WQFM, WRXC
Light (Under 14): 39
New Airplay This Week: 5 KATT, KCAL, KLAQ, WRXL, WWDC

BUSH 769/194

Glycerine (Trauma/Interscope)

Total Stations: 58/Chart Move: 32-21
Heavy (21+): 12 KILO, KTUX, WARQ, WAVF, WAXQ, WIYY, WJST, WKDF, WKLO, WLLZ, WXR, WZAT
Medium (14-20): 15 KEGL, KICT, KIOZ, KISW, KRAB, KRZR, KSJO, KJFO, KZRC, WDI, WDVE, WFVY, WRCX, WRIF, WTUE
Light (Under 14): 31
New Airplay This Week: 10 KEGL, KEZO, KISS, KISW, KNCN, KTXQ, WDI, WNEW, WWDC, WZTA

BOB SEGER & THE SILVER BULLET BAND 726/37

Lock and Load (Capitol)

Total Stations: 50/Chart Move: 24-22
Heavy (21+): 10 KDKB, KMJX, KXUS, KYSS, WAQX, WIOT, WKLC, WNCDC, WRXK, WRXR
Medium (14-20): 17 KLPX, KRZZ, KTAL, KTYD, WAPL, WBAB, WCCC, WEGR, WEZX, WFBQ, WHJY, WIMZ, WPLR, WRDU, WSTZ, WXF, WZZR
Light (Under 14): 23
New Airplay This Week: 2 KOMP, WNOR

DON HENLEY 710/65

The Garden of Allah (Geffen)

Total Stations: 64/Chart Move: 26-24
Heavy (21+): 8 KEZO, KSHE, KTAL, KXUS, WIOT, WKL, WRXK, WRXR
Medium (14-20): 18 KFRQ, KLAQ, KMXJ, KMOD, KRZZ, KTYD, WAQX, WEGR, WEZX, WIMZ, WIXV, WKLC, WMMR, WRDU, WROV, WSTZ, WXR, WZZR
Light (Under 14): 26
New Airplay This Week: 3 KDKB, KLB, WPYX

BROTHER CANE 703/25

Breadmaker (Virgin)

Total Stations: 64/Chart Move: 25-25
Heavy (21+): 4 KISS, KTUX, WQFM, WZAT
Medium (14-20): 19 KBER, KEGL, KEZO, KICT, KLOL, KLPX, KQRC, KRZR, KUPD, KXUS, WAAF, WFVY, WIXV, WIYY, WPLR, WRCX, WTPA, WTUE, WXR
Light (Under 14): 41
New Airplay This Week: 1 KTXQ

THE BOTTLE ROCKETS 628/15

Radar Gun (ESD/TAG/Atlantic)

Total Stations: 53/Chart Move: 28-27
Heavy (21+): 7 KHOP, KLPX, KNCN, KTUX, WAAF, WJST, WMMR
Medium (14-20): 18 KICT, KHOZ, KISW, KRZR, KRZZ, KTYD, WAVF, WIOT, WIXV, WPLR
Light (Under 14): 36
New Airplay This Week: 2 WAXQ, WVRK

CANDLEBOX 569/119

Understanding (Maverick/Warner Bros.)

Total Stations: 55/Chart Move: 37-29
Heavy (21+): 5 KRXQ, KUPD, WDI, WKDF, WZAT
Medium (14-20): 13 KICT, KILO, KLAQ, KQRC, KRZR, KTUX, KTXQ, KZRC, KRZR, WJST, WTFX, WTPA, WXTB
Light (Under 14): 37
New Airplay This Week: 8 KHOP, KNCN, KRZZ, WIZN, WJST, WNCDC, WTUE, WXR

JOE SATRIANI 531/26

(You're My World (Relativity))

Total Stations: 48/Chart Move: 34-31
Heavy (21+): 4 KRZR, WLVO, WPLR, WXR
Medium (14-20): 10 KCAL, KGGO, KISS, KMOD, KQRS, KSHE, KTAL, WAPL, WRXK, WZAT
Light (Under 14): 34
New Airplay This Week: 2 KXUS, WVRK

STEVIE RAY VAUGHAN 489/13

Taxman (Epic)

Total Stations: 42/Chart Move: 36-32
Heavy (21+): 4 KFRQ, KTYD, KXUS, WPLR
Medium (14-20): 9 KLAQ, KLPX, KNCN, WAQX, WEZX, WIYY, WIZN, WROV, WRXL
Light (Under 14): 29
New Airplay This Week: 3 WEGR, WKLC, WTKA

AC/DC 463/153

Cover You In Oil (EastWest/EEG)

Total Stations: 51/Chart Move: Debut 35
Heavy (21+): 5 KEGL, KIOZ, KTUX, WTUE, WXTB
Medium (14-20): 6 KMJX, KRZR, KSJO, KUPD, WCMF, WKLO
Light (Under 14): 40
New Airplay This Week: 10 KCAL, KFRQ, KILO, KLB, KLPX, KTUX, WIYY, WKLO, WTFX, WZAT

RUTH RUTH 423/50

Uninvited (Ventruel/American/Warner Bros.)

Total Stations: 36/Chart Move: Debut 38
Heavy (21+): 5 KILO, WAAF, WKLO, WLLZ, WLZR
Medium (14-20): 10 KBER, KBPI, KEGL, KRXQ, KRZR, KUPD, WAXQ, WKDF, WWDC, WZAT
Light (Under 14): 21
New Airplay This Week: 6 KEGL, KHOP, WDI, WTPA, WVRK, WZAT

JOAN OSBORNE 420/41

One Of Us (Blue Gorilla/Mercury)

Total Stations: 39/Chart Move: Re-Entry 39
Heavy (21+): 3 KDKB, KRZR, WARQ
Medium (14-20): 10 KICT, KRAB, WAPL, WKLS, WLLZ, WMMR, WRXK, WSTZ, WWDC, WZAT
Light (Under 14): 26
New Airplay This Week: 1 WLLZ

CHART BOUND

Total Plays/Gain

THE BADLEES 409/19

Fear Of Falling (Atlas/A&M)

Total Stations: 43
Heavy (21+): 3 KFRQ, WXR, WZAT
Medium (14-20): 7 KISS, KNCN, KTYD, KRZR, WAVF, WIXV, WMMR
Light (Under 14): 33
New Airplay This Week: 3 KQRS, KTAL, WKLC

MOST NEW AIRPLAY THIS WEEK

No. Of Stations

TOM PETTY 22

Waiting For Tonight (MCA)

AC/DC 10

Cover You In Oil (EastWest/EEG)

BUSH 10

Glycerine (Trauma/Interscope)

CANDLEBOX 8

Understanding (Maverick/Warner Bros.)

SMASHING PUMPKINS 3

1979 (Virgin)

FIG DISH 377/8

Seeds (Atlas/A&M)

Total Stations: 42
Heavy (21+): 3 WAXQ, WJST, WZAT
Medium (14-20): 5 KBPI, KTUX, KUPD, KZRC, WAAF
Light (Under 14): 34
New Airplay This Week: 1 WFVY

BETTER THAN EZRA 345/118

Rosealia (Elektra/EEG)

Total Stations: 35
Heavy (21+): 5 KTYD, WARQ, WKDF, WXR, WZAT
Medium (14-20): 5 KBPI, KICT, KTUX, WCKW, WTUE
Light (Under 14): 25
New Airplay This Week: 4 KICT, WFBQ, WLLZ, WXF

SPACEHOG 341/63

In The Meantime (Sire/EEG)

Total Stations: 31
Heavy (21+): 5 KEGL, KILO, KTUX, WLLZ, WZAT
Medium (14-20): 5 KBER, KRZR, WAXQ, WRCX, WTPA
Light (Under 14): 21
New Airplay This Week: 3 KSJO, WLLZ, WVRK

SEAWEED 336/2

Start With (Hollywood)

Total Stations: 34
Heavy (21+): 2 WAAF, WZAT
Medium (14-20): 5 KLOS, KTUX, KUPD, WAXQ, WLLZ
Light (Under 14): 27

TOM PETTY 334/330

Waiting For Tonight (MCA)

Total Stations: 44
Heavy (21+): 0
Medium (14-20): 6 KLOS, WARQ, WIYY, WRIF, WWDC, WZZR
Light (Under 14): 38
New Airplay This Week: 22 KLOS, KLPX, KMOD, KQRS, KRXQ, KXUS, KRZR, WAQX, WARQ, WDVE, WEZX, WFBQ, WFVY, WIYY, WKLC, WKQ, WLVO, WNEW, WRIF, WTUE, WWDC, WZZR

SMASHING PUMPKINS 318/144

1979 (Virgin)

Total Stations: 38
Heavy (21+): 2 KLOS, KRAB
Medium (14-20): 8 KICT, KILO, KZRC, WAXQ, WLZR, WNEW, WRCX, WWDC
Light (Under 14): 28
New Airplay This Week: 8 KEZO, KLB, KQRC, WFVY, WMMR, WRIF, WWDC, WZTA

SELF 310/3

Cannon (Spongebath/Zoo)

Total Stations: 34
Heavy (21+): 1 WJST
Medium (14-20): 5 KBER, KILO, KRXQ, KZRC, WZAT
Light (Under 14): 28

TESLA 292/71

Steppin' Over (Geffen)

Total Stations: 30
Heavy (21+): 3 KBER, KHOP, KILO
Medium (14-20): 7 KEGL, KMJX, KRXQ, KTUX, KUFO, KUPD, WKLO
Light (Under 14): 20
New Airplay This Week: 5 KEGL, KLOL, KQRC, KXUS, WHJY

GOD LIVES UNDERWATER 263/14

All Wrong (American/Reprise)

Total Stations: 28
Heavy (21+): 2 KEGL, KUPD
Medium (14-20): 4 KISW, WAXQ, WLLZ, WZAT
Light (Under 14): 22
New Airplay This Week: 3 KTUX, WKDF, WXR

LENNY KRAVITZ 260/73

Circus (Virgin)

Total Stations: 25
Heavy (21+): 2 WXR, WXTB
Medium (14-20): 5 KLOL, KRZR, KTUX, KZRR, WRCX
Light (Under 14): 18
New Airplay This Week: 4 KNCN, KRZR, WNEW, WZTA

WHITE ZOMBIE 252/62

Super-Charger Heaven (Geffen)

Total Stations: 32
Heavy (21+): 0
Medium (14-20): 3 KBPI, KISW, WAXQ
Light (Under 14): 29
New Airplay This Week: 5 KIOZ, KQRC, KTUX, KRZR, WZAT

ALANIS MORISSETTE 249/72

All I Really Want (Maverick/Warner Bros.)

Total Stations: 22
Heavy (21+): 7 KRAB, KRXQ, KTXQ, KZRC, WARQ, WXTB, WZTA
Medium (14-20): 2 WNEW, WWDC
Light (Under 14): 13
New Airplay This Week: 1 KATT

LOUD LUCY 245/29

Ticking (DGC/Geffen)

Total Stations: 30
Heavy (21+): 3 WAAF, WJST, WZAT
Medium (14-20): 2 WARQ, WAXQ
Light (Under 14): 25
New Airplay This Week: 4 KTUX, KUFO, WRCX, WSTZ

FOR SQUIRRELS 233/66

Mighty K.C. (550 Music)

Total Stations: 18
Heavy (21+): 4 WARQ, WAXQ, WDI, WZAT
Medium (14-20): 2 WXR, WXTB
Light (Under 14): 12
New Airplay This Week: 6 KLOS, KRAB, WLZR, WRIF, WSTZ, WXTB

JAWBREAKER 232/6

Fireman (DGC/Geffen)

Total Stations: 28
Heavy (21+): 0
Medium (14-20): 7 KBER, KQRC, KTUX, KZRC, WARQ, WXR, WZAT
Light (Under 14): 21

OZZY OSBOURNE 232/66

See You On The Other Side (Epic)

Total Stations: 28
Heavy (21+): 0
Medium (14-20): 10 KILO, KQRC, KUFO, WAXQ, WDI, WKLO, WKQ, WLVO, WLZR, WTUE
Light (Under 14): 18
New Airplay This Week: 2 WCKW, WDI

EVERCLEAR 227/65

Santa Monica (Watch The World Die) (Capitol)

Total Stations: 28
Heavy (21+): 1 WAAF
Medium (14-20): 8 KBPI, KIOZ, KISS, KUFO, WAVF, WJST, WKDF, WLLZ
Light (Under 14): 19
New Airplay This Week: 6 KIOZ, KRZR, KTYD, WARQ, WJST, WXR

COLLECTIVE SOUL 222/49

Where The River Flows (Atlantic)

Total Stations: 20
Heavy (21+): 4 WLZR, WRCX, WRIF, WXR
Medium (14-20): 2 KGGO, WRXL
Light (Under 14): 14
New Airplay This Week: 2 KGGO, KISW

JOHN HIATT 217/11

Cry Love (Capitol)

Total Stations: 24
Heavy (21+): 2 KTYD, WMMR
Medium (14-20): 5 WAPL, WIOT, WPLR, WQFM, WXR
Light (Under 14): 17
New Airplay This Week: 2 WCCC, WIZN

ALICE IN CHAINS 214/27

Heaven Beside You (Columbia)

Total Stations: 29
Heavy (21+): 3 KTXQ, WIYY, WLZR
Medium (14-20): 2 WAXQ, WWDC
Light (Under 14): 24
New Airplay This Week: 5 KILO, KRZZ, KSJO, WAAF, WWDC

DAVE MATTHEWS BAND 214/99

Satellite (RCA)

Total Stations: 26
Heavy (21+): 3 KRZR, WARQ, WXR
Medium (14-20): 2 WIOT, WWDC
Light (Under 14): 21
New Airplay This Week: 7 KICT, KTAL, KTUX, KTYD, WKLS, WWDC, WZAT

GREN 199/42

She Shines (I.R.S.)

Total Stations: 34
Heavy (21+): 1 WZAT
Medium (14-20): 4 KRXQ, KZRC, WAXQ, WKDF
Light (Under 14): 29
New Airplay This Week: 1 KLB

FREDDY JONES BAND 163/13

Waitress (Capricorn)

Total Stations: 20
Heavy (21+): 1 WXR
Medium (14-20): 3 KLPX, WARQ, WAVF
Light (Under 14): 16
New Airplay This Week: 2 WRXK, WZZR

DEF LEPPARD 150/10

When Love & Hate Collide (Mercury)

Total Stations: 14
Heavy (21+): 1 KBER
Medium (14-20): 4 KFRQ, KHOP, KTAL, WIOT
Light (Under 14): 9
New Airplay This Week: 1 WIOT

CHEAP TRICK 147/28

Cold Turkey (Hollywood)

Total Stations: 19
Heavy (21+): 0
Medium (14-20): 2 WRCX, WTUE
Light (Under 14): 17
New Airplay This Week: 5 KHOP, KLAQ, KNCN, WIYY, WZAT

HOOTIE & THE BLOWFISH 141/20

Time (Atlantic)

Total Stations: 13
Heavy (21+): 1 WAPL
Medium (14-20): 3 WBAB, WFBQ, WNEW
Light (Under 14): 9
New Airplay This Week: 2 KDKB, WBAB

Airpower awarded to those records which attain 800 detections for the first time. New airplay lists those stations registering six or more detections per week on a record for the first time. ★ Initial impact: records appearing on this page for the first time.

For Week Ending November 19, 1995



Detailed song tracking information for the last 3 weeks for all songs showing increased play this week. Total play and gain do not include sales. Play weeks listed in order of popularity.

Grid of song activity reports for artists: AC/DC, The Badlees, The Bottle Rockets, Brother Kane, BUSH, etc. Each entry includes station, date, and play count.

Grid of song activity reports for artists: Candlebox, Collectie Soul, Melissa Etheridge, Foo Fighters, Don Henley, etc. Each entry includes station, date, and play count.

MAINSTREAM ROCK

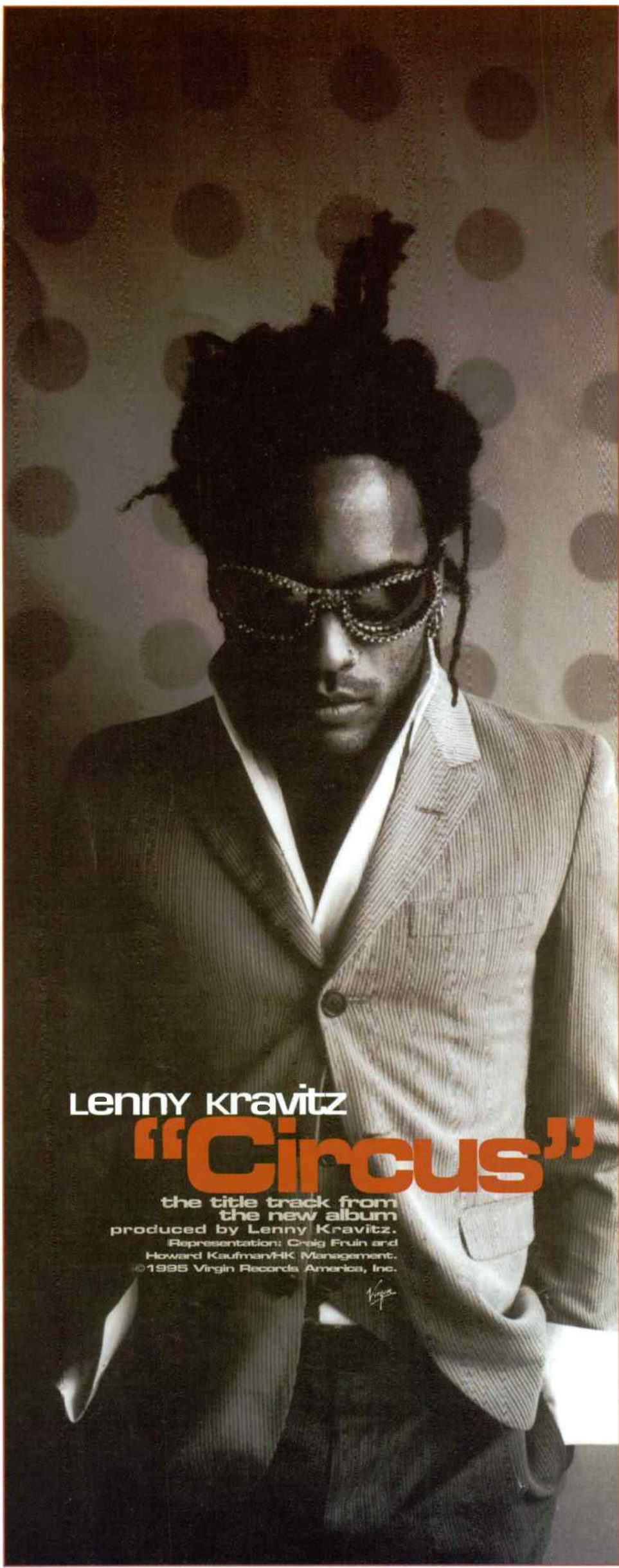
SONG ACTIVITY REPORTS

For Week Ending November 19, 1995

AAA
Broadcast Data Systems
Detailed song tracking information for the last 3 weeks for all songs showing increased play this week. Total plays and gain do not include video play. Markets listed in order of population.

JOAN OSBORNE		RED HOT CHILI PEPPERS		RUTH RUTH		JOE SATRIANI		BOB SEGER & THE SILVER BULLET BAND	
420/41		2029/30		423/50		531/26		726/37	
One Of Us (Blue Gorilla/Mercury)		My Friends (Warner Bros.)		Uninvited (Venture/American/Warner Bros.)		(You're) My World (Relativity)		Lock And Load (Capitol)	
Total Stations: 39		Total Stations: 99		Total Stations: 36		Total Stations: 48		Total Stations: 50	
Chart Move: Re-Entry 39		Chart Move: 2-2		Chart Move: Debut 38		Chart Move: 34-31		Chart Move: 24-22	
City	Station	City	Station	City	Station	City	Station	City	Station
New York	MTV	New York	MTV	New York	MTV	New York	MTV	New York	MTV
Phil.	WAXQ	Phil.	WAXQ	Phil.	WAXQ	Phil.	WAXQ	Phil.	WAXQ
Phila.	WMMR	Phila.	WMMR	Phila.	WMMR	Phila.	WMMR	Phila.	WMMR
Detroit	WLLZ	Detroit	WLLZ	Detroit	WLLZ	Detroit	WLLZ	Detroit	WLLZ
Dallas	KEGL	Dallas	KEGL	Dallas	KEGL	Dallas	KEGL	Dallas	KEGL
Wash. DC	WVOC	Wash. DC	WVOC	Wash. DC	WVOC	Wash. DC	WVOC	Wash. DC	WVOC
Boston	WAAX	Boston	WAAX	Boston	WAAX	Boston	WAAX	Boston	WAAX
Houston	KLDB	Houston	KLDB	Houston	KLDB	Houston	KLDB	Houston	KLDB
Miami	WZTA	Miami	WZTA	Miami	WZTA	Miami	WZTA	Miami	WZTA
Atlanta	WKLS	Atlanta	WKLS	Atlanta	WKLS	Atlanta	WKLS	Atlanta	WKLS
Seattle	KISW	Seattle	KISW	Seattle	KISW	Seattle	KISW	Seattle	KISW
Long Isl.	WBAB	Long Isl.	WBAB	Long Isl.	WBAB	Long Isl.	WBAB	Long Isl.	WBAB
San Diego	KIOZ	San Diego	KIOZ	San Diego	KIOZ	San Diego	KIOZ	San Diego	KIOZ
Minn.	KQRS	Minn.	KQRS	Minn.	KQRS	Minn.	KQRS	Minn.	KQRS
St. Louis	KSHE	St. Louis	KSHE	St. Louis	KSHE	St. Louis	KSHE	St. Louis	KSHE
Balt.	WIYY	Balt.	WIYY	Balt.	WIYY	Balt.	WIYY	Balt.	WIYY
Pitts.	WOVE	Pitts.	WOVE	Pitts.	WOVE	Pitts.	WOVE	Pitts.	WOVE
Phoenix	KOKB	Phoenix	KOKB	Phoenix	KOKB	Phoenix	KOKB	Phoenix	KOKB
Tampa	WXTB	Tampa	WXTB	Tampa	WXTB	Tampa	WXTB	Tampa	WXTB
Denver	KBPI	Denver	KBPI	Denver	KBPI	Denver	KBPI	Denver	KBPI
Cincinn.	WEBN	Cincinn.	WEBN	Cincinn.	WEBN	Cincinn.	WEBN	Cincinn.	WEBN
Port., DR	KUFO	Port., DR	KUFO	Port., DR	KUFO	Port., DR	KUFO	Port., DR	KUFO
Rivers.	KCAL	Rivers.	KCAL	Rivers.	KCAL	Rivers.	KCAL	Rivers.	KCAL
Milwauk.	WLZR	Milwauk.	WLZR	Milwauk.	WLZR	Milwauk.	WLZR	Milwauk.	WLZR
Sacram.	KRXQ	Sacram.	KRXQ	Sacram.	KRXQ	Sacram.	KRXQ	Sacram.	KRXQ
Kan City	KQRC	Kan City	KQRC	Kan City	KQRC	Kan City	KQRC	Kan City	KQRC
San Jose	KYSJ	San Jose	KYSJ	San Jose	KYSJ	San Jose	KYSJ	San Jose	KYSJ
Provid.	WHJY	Provid.	WHJY	Provid.	WHJY	Provid.	WHJY	Provid.	WHJY
Norfolk	WNOR	Norfolk	WNOR	Norfolk	WNOR	Norfolk	WNOR	Norfolk	WNOR
Colum., OH	WLWQ	Colum., OH	WLWQ	Colum., OH	WLWQ	Colum., OH	WLWQ	Colum., OH	WLWQ
San Anton.	KISS	San Anton.	KISS	San Anton.	KISS	San Anton.	KISS	San Anton.	KISS
Salt Lake	KBER	Salt Lake	KBER	Salt Lake	KBER	Salt Lake	KBER	Salt Lake	KBER
Indian.	WBFB	Indian.	WBFB	Indian.	WBFB	Indian.	WBFB	Indian.	WBFB
Charl., NC	WXRC	Charl., NC	WXRC	Charl., NC	WXRC	Charl., NC	WXRC	Charl., NC	WXRC
New Or.	WCKW	New Or.	WCKW	New Or.	WCKW	New Or.	WCKW	New Or.	WCKW
Orlando	WOIZ	Orlando	WOIZ	Orlando	WOIZ	Orlando	WOIZ	Orlando	WOIZ
Hartford	WCCC	Hartford	WCCC	Hartford	WCCC	Hartford	WCCC	Hartford	WCCC
Greensb.	WXRA	Greensb.	WXRA	Greensb.	WXRA	Greensb.	WXRA	Greensb.	WXRA
Memphis	WEGR	Memphis	WEGR	Memphis	WEGR	Memphis	WEGR	Memphis	WEGR
Roche.	WCMF	Roche.	WCMF	Roche.	WCMF	Roche.	WCMF	Roche.	WCMF
Nashv.	WKOF	Nashv.	WKOF	Nashv.	WKOF	Nashv.	WKOF	Nashv.	WKOF
Dayton	WTUE	Dayton	WTUE	Dayton	WTUE	Dayton	WTUE	Dayton	WTUE
W.P. Beach	WZZR	W.P. Beach	WZZR	W.P. Beach	WZZR	W.P. Beach	WZZR	W.P. Beach	WZZR
Jacksonv.	WFYV	Jacksonv.	WFYV	Jacksonv.	WFYV	Jacksonv.	WFYV	Jacksonv.	WFYV

SEVEN MARY THREE		KENNY WAYNE SHEPHERD		SILVERCHAIR		SMASHING PUMPKINS		STEVIE RAY VAUGHAN	
1622/135		900/141		785/67		1559/33		489/13	
Cumbarsome (Mammoth/Atlantic)		Deja Voodoo (Epic)		Pure Massacre (Epic)		Bullet With Butterfly Wings (Virgin)		Taxman (Epic)	
Total Stations: 97		Total Stations: 79		Total Stations: 61		Total Stations: 79		Total Stations: 42	
Chart Move: 6-3		Chart Move: 21-18		Chart Move: 22-20		Chart Move: 5-6		Chart Move: 36-32	
City	Station	City	Station	City	Station	City	Station	City	Station
New York	MTV	New York	MTV	New York	MTV	New York	MTV	New York	MTV
Phil.	WAXQ	Phil.	WAXQ	Phil.	WAXQ	Phil.	WAXQ	Phil.	WAXQ
Phila.	WMMR	Phila.	WMMR	Phila.	WMMR	Phila.	WMMR	Phila.	WMMR
Detroit	WLLZ	Detroit	WLLZ	Detroit	WLLZ	Detroit	WLLZ	Detroit	WLLZ
Dallas	KEGL	Dallas	KEGL	Dallas	KEGL	Dallas	KEGL	Dallas	KEGL
Wash. DC	WVOC	Wash. DC	WVOC	Wash. DC	WVOC	Wash. DC	WVOC	Wash. DC	WVOC
Boston	WAAX	Boston	WAAX	Boston	WAAX	Boston	WAAX	Boston	WAAX
Houston	KLDB	Houston	KLDB	Houston	KLDB	Houston	KLDB	Houston	KLDB
Miami	WZTA	Miami	WZTA	Miami	WZTA	Miami	WZTA	Miami	WZTA
Atlanta	WKLS	Atlanta	WKLS	Atlanta	WKLS	Atlanta	WKLS	Atlanta	WKLS
Seattle	KISW	Seattle	KISW	Seattle	KISW	Seattle	KISW	Seattle	KISW
Long Isl.	WBAB	Long Isl.	WBAB	Long Isl.	WBAB	Long Isl.	WBAB	Long Isl.	WBAB
San Diego	KIOZ	San Diego	KIOZ	San Diego	KIOZ	San Diego	KIOZ	San Diego	KIOZ
Minn.	KQRS	Minn.	KQRS	Minn.	KQRS	Minn.	KQRS	Minn.	KQRS
St. Louis	KSHE	St. Louis	KSHE	St. Louis	KSHE	St. Louis	KSHE	St. Louis	KSHE
Balt.	WIYY	Balt.	WIYY	Balt.	WIYY	Balt.	WIYY	Balt.	WIYY
Pitts.	WOVE	Pitts.	WOVE	Pitts.	WOVE	Pitts.	WOVE	Pitts.	WOVE
Phoenix	KOKB	Phoenix	KOKB	Phoenix	KOKB	Phoenix	KOKB	Phoenix	KOKB
Tampa	WXTB	Tampa	WXTB	Tampa	WXTB	Tampa	WXTB	Tampa	WXTB
Denver	KBPI	Denver	KBPI	Denver	KBPI	Denver	KBPI	Denver	KBPI
Cincinn.	WEBN	Cincinn.	WEBN	Cincinn.	WEBN	Cincinn.	WEBN	Cincinn.	WEBN
Port., DR	KUFO	Port., DR	KUFO	Port., DR	KUFO	Port., DR	KUFO	Port., DR	KUFO
Rivers.	KCAL	Rivers.	KCAL	Rivers.	KCAL	Rivers.	KCAL	Rivers.	KCAL
Milwauk.	WLZR	Milwauk.	WLZR	Milwauk.	WLZR	Milwauk.	WLZR	Milwauk.	WLZR
Sacram.	KRXQ	Sacram.	KRXQ	Sacram.	KRXQ	Sacram.	KRXQ	Sacram.	KRXQ
Kan City	KQRC	Kan City	KQRC	Kan City	KQRC	Kan City	KQRC	Kan City	KQRC
San Jose	KYSJ	San Jose	KYSJ	San Jose	KYSJ	San Jose	KYSJ	San Jose	KYSJ
Provid.	WHJY	Provid.	WHJY	Provid.	WHJY	Provid.	WHJY	Provid.	WHJY
Norfolk	WNOR	Norfolk	WNOR	Norfolk	WNOR	Norfolk	WNOR	Norfolk	WNOR
Colum., OH	WLWQ	Colum., OH	WLWQ	Colum., OH	WLWQ	Colum., OH	WLWQ	Colum., OH	WLWQ
San Anton.	KISS	San Anton.	KISS	San Anton.	KISS	San Anton.	KISS	San Anton.	KISS
Salt Lake	KBER	Salt Lake	KBER	Salt Lake	KBER	Salt Lake	KBER	Salt Lake	KBER
Indian.	WBFB	Indian.	WBFB	Indian.	WBFB	Indian.	WBFB	Indian.	WBFB
Charl., NC	WXRC	Charl., NC	WXRC	Charl., NC	WXRC	Charl., NC	WXRC	Charl., NC	WXRC
New Or.	WCKW	New Or.	WCKW	New Or.	WCKW	New Or.	WCKW	New Or.	WCKW
Orlando	WOIZ	Orlando	WOIZ	Orlando	WOIZ	Orlando	WOIZ	Orlando	WOIZ
Hartford	WCCC	Hartford	WCCC	Hartford	WCCC	Hartford	WCCC	Hartford	WCCC
Greensb.	WXRA	Greensb.	WXRA	Greensb.	WXRA	Greensb.	WXRA	Greensb.	WXRA
Memphis	WEGR	Memphis	WEGR	Memphis	WEGR	Memphis	WEGR	Memphis	WEGR
Roche.	WCMF	Roche.	WCMF	Roche.	WCMF	Roche.	WCMF	Roche.	WCMF
Nashv.	WKOF	Nashv.	WKOF	Nashv.	WKOF	Nashv.	WKOF	Nashv.	WKOF
Dayton	WTUE	Dayton	WTUE	Dayton	WTUE	Dayton	WTUE	Dayton	WTUE
W.P. Beach	WZZR	W.P. Beach	WZZR	W.P. Beach	WZZR	W.P. Beach	WZZR	W.P. Beach	WZZR
Jacksonv.	WFYV	Jacksonv.	WFYV	Jacksonv.	WFYV	Jacksonv.	WFYV	Jacksonv.	WFYV



Lenny Kravitz
"Circus"

the title track from
 the new album
 produced by Lenny Kravitz.
 Representation: Craig Fruin and
 Howard Kaufman/HK Management.
 ©1995 Virgin Records America, Inc.

MODERN ROCK
POWER PLAYLISTS
AIRPLAY Monitor
 For Week Ending
 November 19, 1995

Playlists supplied by Broadcast Data Systems' Radio-Track service. Stations selected from panel of leading broadcasters in 125 radio markets, electronically monitored 24 hours a day, 7 days a week. Songs ranked by number of plays in monitored week.

Station	PD	APD/MD	TW	LW	Station	PD	APD/MD	TW	LW	Station	PD	APD/MD	TW	LW
KROQ	Kevin Weatherly	Gene Sandbloom			WKQX	Bill Gamble	Mary Shuminas			WPLY	Garret Michaels	Chuck Tisa		
Los Angeles					Chicago					Philadelphia				
1 Smashing Pumpkins, 1979	40	40	1 Smashing Pumpkins, Bullet With Butterfly	47	45	1 Bush, Comedown	43	43						
2 Smashing Pumpkins, Bullet With Butterfly	34	34	2 Bush, Glycerine	42	41	2 Wanderlust, I Walked	43	42						
3 Bush, Glycerine	32	21	3 Toadies, Possum Kingdom	41	37	3 Goo Goo Dolls, Name	43	46						
4 Folk Implosion, Natural One	29	37	4 Smashing Pumpkins, 1979	39	25	4 Presidents Of The United States, Lump	42	31						
5 Rancid, Ruby Soho	28	22	5 Red Hot Chili Peppers, My Friends	34	26	5 Deep Blue Something, Breakfast At Tiffany's	43	41						
6 No Doubt, Just A Girl	26	22	6 Goo Goo Dolls, Name	33	41	6 Live, All Over You	39	43						
7 Rancid, Time Bomb	25	39	7 Alanis Morissette, All I Really Want	32	29	7 Edwyn Collins, A Girl Like You	31	38						
8 Nine Inch Nails, Dead Souls	24	29	8 Silverchair, Pure Massacre	33	28	8 Edwyn Collins, A Girl Like You	31	32						
9 Alanis Morissette, Ironic	21	0	9 Foo Fighters, I'll Stick Around	30	28	9 Lisa Loeb & Nine Stories, Do You Sleep?	31	28						
10 Oasis, Wonderwall	21	19	10 Presidents Of The United States, Lump	28	37	10 Melissa Etheridge, Your Little Secret	31	30						
11 Presidents Of The United States, Lump	20	32	11 Folk Implosion, Natural One	26	28	11 Alanis Morissette, Hand In My Pocket	30	46						
12 Silverchair, Pure Massacre	19	15	12 Green Day, Geek Stink Breath	24	41	12 Better Than Ezra, In The Blood	29	30						
13 Alice In Chains, Grind	18	7	13 Poe, Trigger Happy Jack	24	23	13 Toad The Wet Sprocket, Good Intentions	29	29						
14 For Squirmis, Mighty K.C.	18	18	14 Rancid, Ruby Soho	22	24	14 Green Day, J.A.R.	28	29						
15 Pearl Jam, Better Man	17	15	15 Oasis, Wonderwall	22	15	15 Sponge, We'll Be Back	28	28						
16 Joan Osborne, One Of Us	17	28	16 Tripping Daisy, I Got A Girl	16	25	16 Del Amitri, Roll To Me	27	27						
17 Foo Fighters, I'll Stick Around	17	18	17 Candlebox, Understanding	15	17	17 Blues Traveler, Hook	26	29						
18 Radiohead, High And Dry	17	23	18 Live, All Over You	15	17	18 Dave Matthews Band, Ants Marching	26	27						
19 Pearl Jam, Corduroy	15	12	19 Alanis Morissette, Hand In My Pocket	15	17	19 Collective Soul, The World I Know	26	15						
20 Toadies, Possum Kingdom	15	18	20 Tripping Daisy, Piñata	14	4	20 Toadies, Possum Kingdom	25	14						
21 Sonic Youth, The Diamond Sea	15	13	21 Red Hot Chili Peppers, Warped	14	15	21 Silverchair, Tomorrow	24	29						
22 Ruth Ruth, Uninvited	11	11	22 The Cranberries, Zombie	14	11	22 Rancid, Time Bomb	23	46						
23 Goo Goo Dolls, Name	14	7	23 Pearl Jam, Corduroy	14	12	23 Oasis, Wonderwall	18	10						
24 Red Hot Chili Peppers, My Friends	14	16	24 Silverchair, Tomorrow	13	10	24 Red Hot Chili Peppers, My Friends	16	30						
25 Elastica, Shutter	13	9	25 Stone Temple Pilots, Interstate Love Song	13	13	25 Hootie & The Blowfish, Time	18	3						
26 Presidents Of The United States, Kitty	13	11	26 Live, Lightning Crashes	13	12	26 Everything But The Girl, Missing	15	27						
27 Bush, Comedown	13	16	27 Sponge, Ramin'	13	4	27 Joan Osborne, One Of Us	15	14						
28 Seven Mary Three, Cumbersome	13	0	28 Collective Soul, December	13	13	28 Green Day, Geek Stink Breath	15	15						
29 Weezer, Say It Ain't So	12	7	29 Alice In Chains, Grind	13	8	29 Foo Fighters, I'll Stick Around	15	15						
30 Nirvana, The Man Who Sold The World	12	7	30 Nine Inch Nails, Closer	12	13	30 Smashing Pumpkins, Bullet With Butterfly	14	16						
WDRE	Jim McGuinn	Ted Taylor			WBCN	VP/Programming: Oedipus	Carter Alan			WHYT	Rick Gillette	Alex Tear		
Long Island					Boston					Detroit				
1 The Rentals, Friends Of P.	33	33	1 Goo Goo Dolls, Name	39	38	1 Toadies, Possum Kingdom	56	52						
2 Toadies, Possum Kingdom	32	37	2 Bush, Glycerine	36	32	2 Goo Goo Dolls, Name	50	53						
3 Garbage, Queer	30	33	3 Red Hot Chili Peppers, My Friends	32	32	3 Alanis Morissette, All I Really Want	48	27						
4 Folk Implosion, Natural One	30	23	4 Smashing Pumpkins, Bullet With Butterfly	29	33	4 Folk Implosion, Natural One	45	56						
5 Collective Soul, The World I Know	28	21	5 Smashing Pumpkins, 1979	26	32	5 311, Don't Stay Home	41	34						
6 Smashing Pumpkins, 1979	27	15	6 Alice In Chains, Grind	25	25	6 Edwyn Collins, A Girl Like You	40	34						
7 Joan Osborne, One Of Us	27	24	7 Green Day, Geek Stink Breath	24	14	7 Smashing Pumpkins, Bullet With Butterfly	38	46						
8 Goo Goo Dolls, Name	26	33	8 Toadies, Possum Kingdom	22	16	8 Red Hot Chili Peppers, My Friends	38	46						
9 Foo Fighters, I'll Stick Around	26	24	9 Everclear, Santa Monica	22	22	9 Bush, Glycerine	36	25						
10 Presidents Of The United States, Lump	26	20	10 Presidents Of The United States, Kitty	22	23	10 No Doubt, Just A Girl	35	25						
11 Edwyn Collins, A Girl Like You	25	33	11 Better Than Ezra, Rosalita	21	18	11 Collective Soul, The World I Know	35	27						
12 Oasis, Wonderwall	24	19	12 Folk Implosion, Natural One	20	22	12 Green Day, Geek Stink Breath	32	30						
13 Green Day, Geek Stink Breath	24	18	13 Green Day, Geek Stink Breath	19	31	13 Everclear, Santa Monica	32	18						
14 Seven Mary Three, Cumbersome	23	21	14 Rancid, Ruby Soho	19	16	14 Foo Fighters, I'll Stick Around	31	47						
15 Alanis Morissette, All I Really Want	22	28	15 Joan Osborne, One Of Us	16	14	15 Smashing Pumpkins, 1979	31	33						
16 Bush, Glycerine	21	27	16 Garbage, Queer	16	13	16 Presidents Of The United States, Kitty	30	26						
17 Black Grape, In The Name Of The	21	18	17 311, Don't Stay Home	16	17	17 Silverchair, Pure Massacre	29	27						
18 Heather Nova, Walk This World	20	20	18 Foo Fighters, This Is A Call	16	15	18 Lisa Loeb & Nine Stories, Do You Sleep?	28	29						
19 Rancid, Time Bomb	19	13	19 Alanis Morissette, All I Really Want	16	14	19 Elastica, Car Song	25	14						
20 Red Hot Chili Peppers, My Friends	19	34	20 Seven Mary Three, Cumbersome	16	16	20 Presidents Of The United States, Lump	22	27						
21 Toad The Wet Sprocket, Good Intentions	18	12	21 Rancid, Time Bomb	15	14	21 Rancid, Ruby Soho	21	0						
22 Deep Blue Something, Breakfast At Tiffany's	17	15	22 Alice In Chains, Over Now	15	16	22 For Squirmis, Mighty K.C.	19	15						
23 Silverchair, Pure Massacre	17	13	23 Blues Traveler, Hook	14	15	23 Poe, Trigger Happy Jack	18	10						
24 311, Don't Stay Home	17	12	24 Oasis, Wonderwall	14	0	24 Joan Osborne, One Of Us	17	12						
25 G. Love & Special Sauce, Niss And Tell	16	15	25 Silverchair, Pure Massacre	14	13	25 Alanis Morissette, Hand In My Pocket	17	20						
26 Green Day, J.A.R.	16	8	26 Alanis Morissette, Hand In My Pocket	13	13	26 Blues Traveler, Hook	15	15						
27 Passengers, Miss Sarajevo	15	9	27 Mr. Mirraing, Burnin' Rubber	13	9	27 Better Than Ezra, Run Good	15	17						
28 Tripping Daisy, Piñata	14	22	28 Collective Soul, The World I Know	12	10	28 Blues Traveler, Fireman	15	14						
29 Gin Blossoms, I'll Hear It From You	14	16	29 Dave Matthews Band, Satellite	12	4	29 Dave Matthews Band, Ants Marching	15	13						
30 Blues Traveler, Hook	14	10	30 Live, All Over You	12	12	30 Hootie & The Blowfish, Only Wanna Be With	12	10						
KDGE	Joel Folger	Jay Michaels			WHFS	Robert Benjamin	Bob Waugh			KITS	Richard Sands	Roland West		
Dallas					Washington, DC					San Francisco				
1 Goo Goo Dolls, Name	49	53	1 Goo Goo Dolls, Name	40	38	1 Toadies, Possum Kingdom	30	29						
2 Blues Traveler, Hook	48	46	2 Foo Fighters, I'll Stick Around	40	36	2 Goo Goo Dolls, Name	27	30						
3 Natalie Merchant, Carnival	42	45	3 Smashing Pumpkins, 1979	39	36	3 Bush, Glycerine	24	26						
4 Bush, Glycerine	39	29	4 Seven Mary Three, Cumbersome	37	28	4 Oasis, Wonderwall	24	21						
5 Presidents Of The United States, Lump	39	32	5 Alanis Morissette, Hand In My Pocket	37	39	5 Joan Osborne, One Of Us	24	21						
6 Toadies, Possum Kingdom	38	40	6 Toad The Wet Sprocket, Good Intentions	37	38	6 Alanis Morissette, Hand In My Pocket	24	11						
7 Collective Soul, The World I Know	38	32	7 Toadies, Possum Kingdom	28	17	7 Elastica, Car Song	22	13						
8 Tripping Daisy, Piñata	33	40	8 Dave Matthews Band, Satellite	21	12	8 No Doubt, Just A Girl	21	21						
9 Smashing Pumpkins, Bullet With Butterfly	31	19	9 311, Don't Stay Home	20	24	9 Rancid, Time Bomb	21	7						
10 Natalie Merchant, Wonder	29	22	10 Folk Implosion, Natural One	20	34	10 Collective Soul, The World I Know	21	23						
11 Filter, Hey Man Nice Shot	27	22	11 Oasis, Wonderwall	20	24	11 Red Hot Chili Peppers, My Friends	20	28						
12 Alanis Morissette, Hand In My Pocket	27	32	12 Bush, Comedown	24	24	12 Heather Nova, Walk This World	19	9						
13 Smashing Pumpkins, 1979	26	1	13 Joan Osborne, One Of Us	23	23	13 Self, Cannon	19	14						
14 Weezer, Say It Ain't So	25	16	14 Presidents Of The United States, Lump	23	26	14 Natalie Merchant, Wonder	18	16						
15 Bush, Comedown	24	37	15 The Rentals, Friends Of P.	22	27	15 Radiohead, High And Dry	18	11						
16 Oasis, Wonderwall	24	30	16 Presidents Of The United States, Kitty	21	14	16 Mr. Mirraing, Burnin' Rubber	18	18						
17 Tears For Fears, God's Mistake	23	21	17 Collective Soul, The World I Know	20	28	17 Smashing Pumpkins, Bullet With Butterfly	17	22						
18 The Nixons, Sister	23	4	18 Red Hot Chili Peppers, My Friends	19	30	18 Everclear, Santa Monica	17	20						
19 Folk Implosion, Natural One	22	24	19 Jewel, Who Will Save Your Soul	18	19	19 Ruby, Paraffin	17	3						
20 Green Day, J.A.R.	22	22	20 Lisa Loeb & Nine Stories, Do You Sleep?	18	18	20 Smashing Pumpkins, 1979	15	16						
21 Red Hot Chili Peppers, My Friends	21	22	21 Elastica, Car Song	18	24	21 Foo Fighters, I'll Stick Around	15	14						
22 Hootie & The Blowfish, Only Wanna Be With	19	17	22 Mr. Mirraing, Burnin' Rubber	17	20	22 For Squirmis, Mighty K.C.	14	15						
23 Pearl Jam, Yellow Ledbetter	19	13	23 Everclear, Santa Monica	17	11	23 Chris Isaak, Go Walking Down There	14	16						
24 Alanis Morissette, You Oughta Know	18	18	24 Garbage, Queer	16	19	24 The Rentals, Friends Of P.	13	16						
25 Bush, Little Things	17	14	25 Jawbreaker, Fireman	14	14	25 Sonic Youth, The Diamond Sea	13	1						
26 The Rentals, Friends Of P.	16	33	26 Alanis Morissette, All I Really Want	13	20	26 Folk Implosion, Natural One	13	16						
27 Soundgarden, Fell On Black Days	14	12	27 Oasis, Live Forever	13	3	27 Spacabog, In The Meantime	13	4						
28 Nirvana, In Bloom	14	8	28 Better Than Ezra, In The Blood	13	17	28 Bush, Comedown	12	15						
29 Elastica, Car Song	14	13	29 Green Day, Geek Stink Breath	13	18	29 Jawbreaker, Fireman	12	6						
30 No Doubt, Just A Girl	14	10	30 Smashing Pumpkins, Bullet With Butterfly	13	18	30 Primus, Wynona's Big Brown Beaver	12	9						
WNNX	Brian Philips	Leslie Fram			KEGE	John Lassman	Wade Linder			WMMS	John Gorman	Doug Kubinski		
Atlanta					Minneapolis					Cleveland				
1 Seven Mary Three, Cumbersome	25	22	1 Toadies, Possum Kingdom	46	50	1 Collective Soul, The World I Know	42	37						
2 Folk Implosion, Natural One	24	20	2 Red Hot Chili Peppers, My Friends	46	46	2 Alanis Morissette, All I Really Want	39	38						
3 Bush, Glycerine	23	24	3 Folk Implosion, Natural One	46	45	3 Red Hot Chili Peppers, My Friends	39	37						
4 Collective Soul, The World I Know	23	25	4 Smashing Pumpkins, Bullet With Butterfly	44	45	4 Smashing Pumpkins, Bullet With Butterfly	38	43						
5 Bush, Comedown	23	27	5 Smashing Pumpkins, 1979	38	27	5 Bush, Comedown	38	40						
6 Blues Traveler, Hook	22	27	6 Spacabog, In The Meantime	36	13	6 Deep Blue Something, Breakfast At Tiffany's	37	27						
7 Goo Goo Dolls, Name	22	25	7 Oasis, Wonderwall	35	26	7 Goo Goo Dolls, Name	36	39						
8 Red Hot Chili Peppers, My Friends	18	19	8 Bush, Glycerine	34	30	8 Toadies, Possum Kingdom	33	39						
9 Oasis, Wonderwall	18	14	9 Sponge, Ramin'	34	39	9 Rancid, Time Bomb	32	30						
10 Everclear, Santa Monica	18	21	10 Seven Mary Three, Cumbersome	32	35	10 Blues Traveler, Hook	31	30						
11 Smashing Pumpkins, Bullet With Butterfly	17	30	11 Collective Soul, The World I Know	31	1	11 Joan Osborne, One Of Us	30	30						
12 Ruby, Paraffin	17	15	12 Alice In Chains, Grind	30	28	12 Seven Mary Three, Cumbersome	29	25						
13 No Doubt, Just A Girl	17	13	13 Foo Fighters, I'll Stick Around	29	28	13 Presidents Of The United States, Lump	28	21						
14 Bechy Sharp, Beach Ball	16	17	14 Goo Goo Dolls, Name	26	35	14 Poe, Trigger Happy Jack	27	25						
15 Natalie Merchant, Wonder	16	20	15 Bush, Comedown	26	35	15 Smashing Pumpkins, 1979	26	14						
16 Urgt Overkill, Somebody Else's Body	15	14	16 Dandelion, Weird Out	23	30	16 Silverchair, Tomorrow	25	19						
17 Green Day, Geek Stink Breath	14	27	17 311, Don't Stay Home	20	17	17 Natalie Merchant, Wonder	25	19						
18 Elastica, Car Song	14	14	18 Tripping Daisy, Piñata	18	1	18 Silverchair, Pure Massacre	23	24						
19 Grew, She Shines	14	15	19 Natalie Merchant, Wonder	17	18	19 Passengers, Miss Sarajevo	22	6						
20 Better Than Ezra, In The Blood	13	15	20 For Squirmis, Mighty K.C.	17	12	20 Ruth Ruth, Uninvited	22	18						
21 Edwyn Collins, Solitude	13	15	21 Alanis Morissette, You Oughta Know	16	13	21 Everclear, Santa Monica	20	22						

POWER PLAYLISTS

For Week Ending November 19, 1995



Playlists supplied by Broadcast Data Systems' Radio Track service. Stations selected from panel of leading broadcasters in 128 radio markets, electronically monitored 24 hours a day, 7 days a week. Songs ranked by number of plays in monitored week.

WENZ Cleveland PD: Rick Bennett MD: Sean Robertson. Playlist table with columns for rank, song title, and TW/LW.

WLUM Milwaukee PD: Ron Bunce MD: Zerrin Bulut. Playlist table with columns for rank, song title, and TW/LW.

KWOD Sacramento PD/MD: Alex Cosper. Playlist table with columns for rank, song title, and TW/LW.

WBRU Providence PD: Alexa Tobin MD: Stephanie Findley. Playlist table with columns for rank, song title, and TW/LW.

KISF Kansas City MD: Booker Madison. Playlist table with columns for rank, song title, and TW/LW.

WXDX Pittsburgh PD: Cris Winter MD: Steve Frankenberry. Playlist table with columns for rank, song title, and TW/LW.

WEDG Buffalo PD: Vince Richards MD: Rich Wall. Playlist table with columns for rank, song title, and TW/LW.

KNRK Portland, OR PD: Mark Hamilton MD: Matt Souther. Playlist table with columns for rank, song title, and TW/LW.

KEDJ Phoenix PD: John Clay MD: Christopher "The Minister". Playlist table with columns for rank, song title, and TW/LW.

WGRD Grand Rapids PD: Allan Fee MD: Leann Curtis. Playlist table with columns for rank, song title, and TW/LW.

WKOC Norfolk PD: Mark Bradley MD: Dal Hunter. Playlist table with columns for rank, song title, and TW/LW.

WROX Norfolk PD: Chris Corley MD: Al Mitchell. Playlist table with columns for rank, song title, and TW/LW.

WNVE Rochester PD/MD: Erick Anderson. Playlist table with columns for rank, song title, and TW/LW.

KMYZ Tulsa PD: Paul Kreigler MD: Greg Kocsack. Playlist table with columns for rank, song title, and TW/LW.

KGDE Omaha PD: Michael Steele MD: Tim Virgin. Playlist table with columns for rank, song title, and TW/LW.

KTCL Denver PD: John Hayes MD: Mary Moses. Playlist table with columns for rank, song title, and TW/LW.

KEDG Las Vegas PD: John Griffin MD: Freddy Snakeskin. Playlist table with columns for rank, song title, and TW/LW.

WAQZ Cincinnati PD/MD: Matt Harris APD: Sterling Schiessler. Playlist table with columns for rank, song title, and TW/LW.

KXKR Salt Lake City PD: Mike Summers MD: Sean Ziebarth. Playlist table with columns for rank, song title, and TW/LW.

WQXA Harrisburg PD: John Moschitta MD: Scott McCadden. Playlist table with columns for rank, song title, and TW/LW.

WWCD Columbus PD: Jane Purcell MD: Andy Davis. Playlist table with columns for rank, song title, and TW/LW.

KTEG Albuquerque PD: Sandy Horowitz MD: Julie Hoyt. Playlist table with columns for rank, song title, and TW/LW.

WZRH New Orleans PD: Jack Snyder MD: Darren Gauthier. Playlist table with columns for rank, song title, and TW/LW.

WEND Charlotte PD: Jack Daniel MD: Kim Monroe. Playlist table with columns for rank, song title, and TW/LW.



★ ★ ★ **AIRPOWER** ★ ★ ★
(Minimum 900 detections for the first time)

COLLECTIVE SOUL 1157/244
The World I Know (Atlantic)
Total Stations: 57/Chart Move: 21-12
Heavy (30+ plays): 14 KDGE, KEGE, KGDE, KMYZ, KRRK, KTCL, KTOZ, KWOD, WCHZ, WGRD, WHYT, WMMS, WXXW
Medium (15-29): 23 KBBT, KCXX, KEDG, KEDJ, KISF, KITS, KNNC, KNRK, KPNT, WAQZ, WDRE, WEND, WENZ, WEQX, WHFS, WMRQ, WNNX, WPLY, WQNF, WQXA, WROX, WXXD, WZRH
Light (Under 15): 20
New Airplay This Week: 6 CIMX, KEZE, KNRK, WAQZ, WCYY, WQXA

SMASHING PUMPKINS 1138/276
1979 (Virgin)
Total Stations: 61/Chart Move: 24-13
Heavy (30+): 12 CIMX, KBBT, KEGE, KFRR, KGDE, KNNC, KOME, KROQ, KTBZ, WHFS, WHYT, WKQX
Medium (15-29): 22 KCXX, KDGE, KEZE, KISF, KITS, KKND, KLZR, KNRK, KTCL, KXPX, KXRR, WBCN, WDRE, WEND, WFNX, WLUM, WMMS, WNVE, WROX, WRXQ, WSHE, WWCD
Light (Under 15): 27
New Airplay This Week: 12 KCXX, KDGE, KKND, KRRK, KTOZ, KWOD, KXRR, WEDG, WNNX, WPLY, WRLG, WRXQ

OASIS 989/339
Wonderwall (Epic)
Total Stations: 56/Chart Move: 35-21
Heavy (30+): 5 CIMX, KEGE, KISF, KNDD, WFNX
Medium (15-29): 30 KBBT, KDGE, KEZE, KFRR, KITS, KLZR, KMYZ, KNRK, KOME, KPNT, KROQ, KTBZ, KTCL, KTOZ, WCHZ, WDRE, WEQX, WHFS, WKOC, WKQX, WLUM, WMMS, WMRQ, WNNX, WPLY, WQXA, WRLG, WWCD, WXXW, XTRA
Light (Under 15): 21
New Airplay This Week: 16 KBBT, KEDJ, KFRR, KMYZ, KTCL, KTOZ, KWOD, WBCN, WBER, WBRU, WCHZ, WGRD, WOXY, WQXA, WRLG, WRXQ

MOST NEW AIRPLAY THIS WEEK

Artist	No. Of Stations
OASIS <i>Wonderwall (Epic)</i>	16
DAVE MATTHEWS BAND <i>Satellite (RCA)</i>	15
THE PRESIDENTS OF THE USA <i>Kitty (Columbia)</i>	12
RANCID <i>Ruby Soho (Epitaph)</i>	12
SMASHING PUMPKINS <i>1979 (Virgin)</i>	12

★ **HOOTIE & THE BLOWFISH 115/34**
Time (Atlantic)
Total Stations: 11
Heavy (30+): 1 WENZ
Medium (15-29): 3 WAQZ, WMRQ, WPLY
Light (Under 15): 7
New Airplay This Week: 3 WMMS, WMRQ, WPLY

★ **ALANIS MORISSETTE 111/23**
Head Over Feet (Maverick/Reprise)
Total Stations: 7
Heavy (30+): 2 KTOZ, WCHZ
Medium (15-29): 1 WEQX
Light (Under 15): 4

★ **LENNY KRAVITZ 110/17**
Circus (Virgin)
Total Stations: 17
Heavy (30+): 0
Medium (15-29): 1 WEQX
Light (Under 15): 16
New Airplay This Week: 2 KTBZ, WEQX

★ **ECHOBELLY 104/13**
King Of The Kerb (550 Music)
Total Stations: 15
Heavy (30+): 0
Medium (15-29): 3 CKEY, KTBZ, WQNF
Light (Under 15): 12
New Airplay This Week: 1 KMYZ

★ **GREN 104/25**
She Shines (I.R.S.)
Total Stations: 18
Heavy (30+): 0
Medium (15-29): 0
Light (Under 15): 18
New Airplay This Week: 2 KLZR, WQNF

★ **RADIOHEAD 101/28**
High And Dry (Capitol)
Total Stations: 12
Heavy (30+): 0
Medium (15-29): 4 KITS, KOME, KROQ, WBER
Light (Under 15): 8
New Airplay This Week: 2 KNDD, WBER

★ **JULIAN COPE 95/33**
Try Try Try (American/Reprise)
Total Stations: 17
Heavy (30+): 0
Medium (15-29): 0
Light (Under 15): 17
New Airplay This Week: 3 KEZE, KTCL, WEQX

★ **FOO FIGHTERS 78/11**
Big Me (Roswell/Capitol)
Total Stations: 8
Heavy (30+): 0
Medium (15-29): 3 KNDD, WFNX, WOXY
Light (Under 15): 5
New Airplay This Week: 1 WOXY

★ **GREEN DAY 78/24**
86 (Reprise)
Total Stations: 15
Heavy (30+): 0
Medium (15-29): 2 KLZR, WLUM
Light (Under 15): 13

★ **THE INNOCENCE MISSION 77/9**
Keeping Awake (A&M)
Total Stations: 14
Heavy (30+): 0
Medium (15-29): 1 WQNF
Light (Under 15): 13

★ **ALICE IN CHAINS 76/15**
Over Now (Columbia)
Total Stations: 9
Heavy (30+): 0
Medium (15-29): 2 KNDD, WBCN
Light (Under 15): 7
New Airplay This Week: 2 KEGE, WKQX

★ **GREEN DAY 182/73**
Brain Stew (Reprise)
Total Stations: 18
Heavy (30+): 1 KRRK
Medium (15-29): 5 KEDJ, KKND, KNDD, KXRR, WRZX
Light (Under 15): 12
New Airplay This Week: 6 KITS, KKND, KOME, KROQ, KXRR, WEDG

★ **SMASHING PUMPKINS 172/30**
Tonight, Tonight (Virgin)
Total Stations: 26
Heavy (30+): 0
Medium (15-29): 3 KNRK, KRRK, WEQX
Light (Under 15): 23
New Airplay This Week: 5 KEZE, KNRK, WGRD, WKQX, WQXA

★ **RUBY 160/84**
Paraffin (Work)
Total Stations: 48
Heavy (30+): 0
Medium (15-29): 3 KITS, WBRU, WNNX
Light (Under 15): 45
New Airplay This Week: 4 KITS, KLZR, WBRU, WEQX

★ **JEWEL 140/23**
You Were Meant For Me (Atlantic)
Total Stations: 19
Heavy (30+): 1 KTOZ
Medium (15-29): 9 KBBT, KLRZ, KNDD, KNNC, KOME, KROQ, KTBZ, KTOZ, KXRR
Light (Under 15): 17
New Airplay This Week: 5 CIMX, KITS, KOME, WMMS, WROX

★ **THE RUGBURNS 132/9**
War (Priority)
Total Stations: 14
Heavy (30+): 0
Medium (15-29): 3 KEDG, KNNC, XTRA
Light (Under 15): 11

★ **MY LIFE WITH THE THRILL KILL KULT 127/7**
Hit & Run Holiday (Interscope)
Total Stations: 15
Heavy (30+): 1 WFNX
Medium (15-29): 2 WBER, WBRU
Light (Under 15): 12
New Airplay This Week: 1 WLUM

★ **ALICE IN CHAINS 127/69**
Heaven Beside You (Columbia)
Total Stations: 34
Heavy (30+): 0
Medium (15-29): 1 KRRK
Light (Under 15): 33
New Airplay This Week: 4 CIMX, WAQZ, WJRR, WWCD

★ **SON VOLT 126/25**
Drown (Warner Bros.)
Total Stations: 14
Heavy (30+): 1 KISF
Medium (15-29): 4 KLZR, WENZ, WOXY, WQNF
Light (Under 15): 9
New Airplay This Week: 1 WENZ

★ **THE INBREDS 117/16**
Any Sense Of Time (TAG)
Total Stations: 10
Heavy (30+): 0
Medium (15-29): 4 CIMX, CKEY, KEDJ, WBRU
Light (Under 15): 6
New Airplay This Week: 2 WEQX, WOXY

AIRPOWER BOUND

Total Plays/Gain

ALICE IN CHAINS 889/2
Grind (Columbia)
Total Stations: 54/Chart Move: 22-23
Heavy (30+ plays): 8 CIMX, KEGE, KKND, KMYZ, KRRK, WBER, WCYY, WRZX
Medium (15-29): 21 KBBT, KGDE, KLZR, KNDD, KNNC, KOME, KPNT, KROQ, KTBZ, KTOZ, KWOD, KXRR, WBCN, WCHZ, WEND, WMMS, WQXA, WRLG, WRXQ, WXXD, WZRH
Light (Under 15): 25

THE PRESIDENTS OF THE USA 813/124
Kitty (Columbia)
Total Stations: 54/Chart Move: 32-26
Heavy (30+): 8 KEDG, KFRR, KNDD, KNNC, KRRK, WFNX, WHYT, WROX
Medium (15-29): 18 CIMX, KBBT, KKND, KOME, KPNT, KTOZ, KXRR, WBCN, WEDG, WENZ, WHFS, WLUM, WMMS, WRLG, WVGO, WXXD, WZRH, XTRA
Light (Under 15): 28
New Airplay This Week: 12 KEDJ, KPNT, KTOZ, KWOD, WAQZ, WDRE, WEQX, WGRD, WOXY, WQNF, WRLG, WWCD

NO DOUBT 789/69
Just A Girl (Trauma/Interscope)
Total Stations: 54/Chart Move: 29-27
Heavy (30+): 4 KOME, KTOZ, WCHZ, WHYT
Medium (15-29): 21 KBBT, KEDG, KEDJ, KFRR, KISF, KITS, KKND, KNRK, KROQ, KTBZ, KTCL, KWOD, KXRR, WGRD, WLUM, WNNX, WOXY, WQNF, WROX, WVGO, WXXW
Light (Under 15): 29
New Airplay This Week: 3 KCXX, WCYY, WFNX

BETTER THAN EZRA 713/100
Rosealia (Elektra/EEG)
Total Stations: 49/Chart Move: 37-28
Heavy (30+): 0
Medium (15-29): 22 KBBT, KEDJ, KEZE, KKND, KMYZ, KTCL, KTEG, KTOZ, KXPX, WAQZ, WBCN, WBRU, WENZ, WEQX, WGRD, WQNF, WQXA, WRLG, WRXQ, WWCD, WXXW, WZRH
Light (Under 15): 27
New Airplay This Week: 4 CKEY, KGDE, WDRE, XHRM

MR. MIRAINGA 617/46
Burnin' Rubber (Way Cool Music/MCA Soundtracks/MCA)
Total Stations: 51/Chart Move: 40-34
Heavy (30+): 2 CIMX, WEND
Medium (15-29): 15 KBBT, KITS, KMYZ, KNDD, KNNC, KNRK, KOME, KTCL, KTOZ, KXRR, WEQX, WHFS, WRLG, WROX, WRZX
Light (Under 15): 34
New Airplay This Week: 4 KLZR, WFNX, WNVE, WQXA

TRIPPING DAISY 602/4
PirAnha (Island)
Total Stations: 45/Chart Move: 36-36
Heavy (30+): 1 KDGE
Medium (15-29): 16 KBBT, KEDJ, KEGE, KKND, KLZR, KMYZ, KNNC, KOME, KTBZ, WBRU, WGRD, WLUM, WXXD, WXXW, WZRH, XTRA
Light (Under 15): 28
New Airplay This Week: 4 KEGE, KFRR, KKND, WCYY

BLACK GRAPE 539/41
In The Name Of The Father (Radioactive/MCA)
Total Stations: 44/Chart Move: Debut 40
Heavy (30+): 2 CKEY, WFNX
Medium (15-29): 14 KBBT, KEDG, KKND, KLZR, KNNC, WAQZ, WBRU, WDRE, WOXY, WQNF, WRLG, WROX, WZRH, XTRA
Light (Under 15): 28
New Airplay This Week: 5 KOME, KROQ, WLUM, WSHE, WXXW

CHART BOUND

Total Plays/Gain

ELASTICA 522/74
Car Song (DGC/Geffen)
Total Stations: 43
Heavy (30+): 0
Medium (15-29): 15 CKEY, KBBT, KITS, KLZR, KNDD, KNNC, KPNT, WBRU, WENZ, WHFS, WHYT, WQXA, WROX, WVGO, WZRH
Light (Under 15): 28
New Airplay This Week: 4 KCXX, KEDJ, KTOZ, WRXQ

POE 499/63
Trigger Happy Jack (Modern/Antic)
Total Stations: 35
Heavy (30+): 1 KFRR
Medium (15-29): 13 KBBT, KEDJ, KLZR, KNNC, KNRK, KPNT, KXRR, WAQZ, WCYY, WENZ, WHYT, WKQX, WLUM, WMMS, WOXY, WZRH
Light (Under 15): 18
New Airplay This Week: 4 KEGE, KTOZ, WBRU, WCHZ

FOR SQUIRRELS 499/106
Mighty K.C. (550 Music)
Total Stations: 41
Heavy (30+): 2 CIMX, KFRR
Medium (15-29): 13 KBBT, KEGE, KKND, KOME, KROQ, WCHZ, WEND, WHYT, WKQX, WLUM, WQNF, WVGO, XTRA
Light (Under 15): 26
New Airplay This Week: 10 KBBT, KGDE, KLZR, KNNC, KTBZ, WENZ, WGRD, WNNX, WXXW, WZRH

SPACEHOG 460/133
In The Meantime (Sire/EEG)
Total Stations: 35
Heavy (30+): 3 KEGE, KGDE, KISF
Medium (15-29): 11 KBBT, KCXX, KKND, KMYZ, KNDD, KNRK, KPNT, KTBZ, KTCL, KTOZ, KXPX
Light (Under 15): 21
New Airplay This Week: 7 KEZE, KITS, KNNC, KPNT, WEDG, WWCD, WXXW

RANCID 446/145
Ruby Soho (Epitaph)
Total Stations: 40
Heavy (30+): 3 KBBT, WFNX, XTRA
Medium (15-29): 8 KFRR, KLZR, KOME, KROQ, KXRR, WBCN, WENZ, WHYT
Light (Under 15): 29
New Airplay This Week: 12 CIMX, KMYZ, KNNC, KRRK, KTCL, KTOZ, WBRU, WCHZ, WHYT, WMMS, WMRQ, WZRH

CHRIS ISAAK 436/53
Go Walking Down There (Reprise)
Total Stations: 39
Heavy (30+): 0

Medium (15-29): 12 KCXX, KEDJ, KNRK, KTCL, WBRU, WCHZ, WEQX, WMMS, WQXA, WRXQ, WZRH, XHRM
Light (Under 15): 27
New Airplay This Week: 7 KMYZ, KNDD, KXRR, WEND, WHFS, WLUM, WNNX

DAVE MATTHEWS BAND 423/191
Satellite (RCA)
Total Stations: 41
Heavy (30+): 0
Medium (15-29): 7 KEDJ, KISF, WEND, WHFS, WROX, WRXQ, WXXW
Light (Under 15): 34
New Airplay This Week: 15 KEDJ, KISF, KLZR, KNRK, KRRK, KWOD, WAQZ, WBCN, WEQX, WKOC, WLUM, WOXY, WQNF, WQXA, WSHE

CANDLEBOX 312/42
Understanding (Maverick/Warner Bros.)
Total Stations: 34
Heavy (30+): 0
Medium (15-29): 9 KBBT, KEDG, KFRR, KTOZ, KWOD, WCHZ, WCYY, WEDG, WKQX
Light (Under 15): 25
New Airplay This Week: 7 KISF, KWOD, KXRR, WDRE, WEQX, WRLG, WZRH

SONIC YOUTH 310/41
The Diamond Sea (DGC/Geffen)
Total Stations: 27
Heavy (30+): 1 WFNX
Medium (15-29): 13 KBBT, KLZR, KNDD, KNNC, KOME, KROQ, KTBZ, KTOZ, KXRR
Light (Under 15): 17
New Airplay This Week: 5 CIMX, KITS, KOME, WMMS, WROX

PASSENGERS 285/72
Miss Sarajevo (Island)
Total Stations: 38
Heavy (30+): 0
Medium (15-29): 6 KTOZ, WCHZ, WDRE, WKOC, WMMS, WROX
Light (Under 15): 32
New Airplay This Week: 6 KNNC, KTOZ, WBER, WHYT, WNNX, WRLG

★ **LOUD LUCY 210/72**
Ticking (DGC/Geffen)
Total Stations: 29
Heavy (30+): 0
Medium (15-29): 4 KBBT, KEGE, KNDD, KNRK
Light (Under 15): 25
New Airplay This Week: 7 KEGE, KMYZ, WEDG, WHFS, WRLG, WRXQ, WVGO

SELF 198/21
Cannon (Spongebath/Zoo)
Total Stations: 19
Heavy (30+): 0
Medium (15-29): 7 KBBT, KGDE, KITS, KKND, KNRK, KRRK, WCYY
Light (Under 15): 12
New Airplay This Week: 2 KNND, XTRA

★ **KORN 191/51**
Shoots And Ladders (Immortal/Epic)
Total Stations: 26
Heavy (30+): 0
Medium (15-29): 3 KBBT, KFRR, KNDD
Light (Under 15): 23
New Airplay This Week: 5 KEGE, KFRR, WBER, WDRE, WROX

Airpower awarded to those records which attain 900 detections for the first time. New airplay lists those stations registering six or more detections per week on a record for the first time. ★ Initial impact: records appearing on this page for the first time.

For Week Ending November 19, 1995

Detailed song tracking information for the last 3 weeks for all songs showing increased play this week. Total plays and gain do not include video play. Markets listed in order of population.

Table with 12 columns: Artist, Title, Total Stations, Chart Move, and a grid of station codes (MTV, KROQ, etc.) with their respective play counts and trends.

Table with 12 columns: Artist, Title, Total Stations, Chart Move, and a grid of station codes (MTV, KROQ, etc.) with their respective play counts and trends.

Table with 12 columns: Artist, Title, Total Stations, Chart Move, and a grid of station codes (MTV, KROQ, etc.) with their respective play counts and trends.

For Week Ending November 19, 1995

Detailed song tracking information for the last 3 weeks for all songs showing increased play this week. Total plays and gain do not include video play. Markets listed in order of population.

ALANIS MORISSETTE 1124/45

All I Really Want (Maverick/Reprise)

Total Stations: 61 Chart Move: 15-14

Table with columns for station, song, and activity. Includes stations like L.A. KROQ, Chicago WKDQ, San Fran. KITS, etc.

MR. MIRAINGA 617/46

Burnin' Rubber (Way Cool Music/MCA Soundtracks/MCA)

Total Stations: 51 Chart Move: 40-34

Table with columns for station, song, and activity. Includes stations like L.A. KROQ, Chicago WKDQ, San Fran. KITS, etc.

NO DOUBT 789/69

Just A Girl (Trauma/Interscope)

Total Stations: 54 Chart Move: 29-27

Table with columns for station, song, and activity. Includes stations like L.A. KROQ, Chicago WKDQ, San Fran. KITS, etc.

OASIS 989/339

Wonderwall (Epic)

Total Stations: 56 Chart Move: 35-21

Table with columns for station, song, and activity. Includes stations like L.A. KROQ, Chicago WKDQ, San Fran. KITS, etc.

JOAN OSBORNE 1309/48

One Of Us (Blue Gorilla/Mercury)

Total Stations: 65 Chart Move: 11-10

Table with columns for station, song, and activity. Includes stations like L.A. KROQ, Chicago WKDQ, San Fran. KITS, etc.

PASSENGERS 285/72

Miss Sarajevo (Island)

Total Stations: 38

Table with columns for station, song, and activity. Includes stations like L.A. KROQ, Chicago WKDQ, San Fran. KITS, etc.

POE 499/63

Trigger Happy Jack (Modern/Antic)

Total Stations: 35

Table with columns for station, song, and activity. Includes stations like L.A. KROQ, Chicago WKDQ, San Fran. KITS, etc.

THE PRESIDENTS OF THE UNITED STATES 813/124

Kitty (Columbia)

Total Stations: 54 Chart Move: 32-26

Table with columns for station, song, and activity. Includes stations like L.A. KROQ, Chicago WKDQ, San Fran. KITS, etc.

RANCID 446/145

Ruby Soho (Epitaph)

Total Stations: 40

Table with columns for station, song, and activity. Includes stations like L.A. KROQ, Chicago WKDQ, San Fran. KITS, etc.

SELF 198/21

Cannon (Spongebath/Zoo)

Total Stations: 19

Table with columns for station, song, and activity. Includes stations like L.A. KROQ, Chicago WKDQ, San Fran. KITS, etc.

SEVEN MARY THREE 1217/180

Cumbersome (Mammoth/Antic)

Total Stations: 64 Chart Move: 16-11

Table with columns for station, song, and activity. Includes stations like L.A. KROQ, Chicago WKDQ, San Fran. KITS, etc.

SILVERCHAIR 1014/20

Pure Massacre (Epic)

Total Stations: 57 Chart Move: 17-18

Table with columns for station, song, and activity. Includes stations like L.A. KROQ, Chicago WKDQ, San Fran. KITS, etc.

SMASHING PUMPKINS 1138/276

1979 (Virgin)

Total Stations: 61 Chart Move: 24-13

Table with columns for station, song, and activity. Includes stations like L.A. KROQ, Chicago WKDQ, San Fran. KITS, etc.

SONIC YOUTH 310/41

The Diamond Sea (DGC/Geffen)

Total Stations: 27

Table with columns for station, song, and activity. Includes stations like L.A. KROQ, Chicago WKDQ, San Fran. KITS, etc.

SPACEHOG 460/133

In The Meantime (Sire/EEG)

Total Stations: 35

Table with columns for station, song, and activity. Includes stations like L.A. KROQ, Chicago WKDQ, San Fran. KITS, etc.

SERVICES

AIRCHECKS



URBAN AIR-CHECK
 * Full-Service Aircheck company!
 * Personalized airchecks & radio resumes!
 * National Airchecks: Major to small markets
 * Free Aircheck evaluation!
 Volume 1 Now Available! features WPEG, WHTA, WGCI, WJLB, WVEE, WRKS, WQQK & WFXA! Send \$12 to: P.O. Box 7808, N. Augusta, SC 29841
 Call for **FREE DEMO & brochure**
706-481-1821

VOICEOVERS



FASTEST GROWING VOICE-OVER TALENT IN NORTH AMERICA. FEMALE ROSTER ALSO AVAILABLE. CALL 1-800-843-3933 FOR DEMO.
 WELCOME KRIS-HOUSTON, Q102-DALLAS, WGPR-DETROIT

CARTER DAVIS
VOICE AND PRODUCTION FOR RADIO AND TV
 Tel/FAX: (901) 681-0650

When Excellence Matters

Sean Caldwell PRODUCTIONS
 Y100 Young Country • Country CHR Rock Hot AC
 H 96 KISS FM WLLZ • voice-over • production effects
 New Country KISS108 • (610) 640-5899 FAX 892-7890

DON'T MISS OUT! SPECIAL END-OF-YEAR CLASSIFIED OFFER
PICK UP THE PHONE AND CALL ME ... NOW!

LAURA RIVCHUN
(212) 536-5058 (PH)
(212) 536-5055 (FAX)

HELP WANTED

San Jose radio station looking for experienced announcer to take over midday shift. We're consistently in Top 4 (25-54) and we're planning to continue winning. Must have some Country experience. T&R to:

Julie Stevens
 KRTY, P.O. Box 995
 San Jose, CA 95108
 (EOE)

WIBW-FM Topeka, KS 97 COUNTRY is looking for 7-Midnight personality. Heavy use of phones and lots of public appearances. Send Tape & Resume to: Personnel Dept. WIBW-FM, Box 1818 Topeka, KS 66601 Deadline 12/1/95 (EOE)

The music matters most, but it's what happens in-between that makes the difference. Nation's top two Rock/ACs seeking talent for future openings and acquisitions. If you understand preparation, concentration and moderation, rush your T&R to: Tom Benson, Dame Media, WRVV/WRVE, P.O. Box 6477, Harrisburg, PA 17112. (EOE)

POSITION WANTED

WAKE UP with a great chick. Witty, creative female talent will add spice to your mornings, with no regrets!
KAREN (702) 458-6143

Trapped in a musical nightmare? This humorous, topical, community-minded AC/CHR MD/AT gives you pleasant dreams.
CHRIS: (717) 285-4975

Hard working professional, dependable willing to relocate. Prefer Missouri. Complete production skills, good control operation.
SCOTT: (417) 864-7503

POSITION WANTED

"WHAT, AND GIVE UP SHOW BIZ?" IF YOU STILL BELIEVE IN THE MUSIC, MADNESS AND MAGIC OF OUR BUSINESS, SO DO !! AIR TALENT STILL ON STAGE IN SAN FRANCISCO, SEATTLE AC, NAC AIRWAVES NEEDS FULL-TIME. DIANE CARTWRIGHT. (209) 523-0380

DUNCAN PAYTON (818) 556-5250 16 years radio mgmt, consulting, programming, marketing, promotions & on-air experience ... KOST 103/L.A., Power106/L.A., 99.1KGGI/Riverside.

Seeking a hungry young AT? PT for 3 years, and ready for FT Rock/CHR gig. Will relocate east coast, south preferred.
CHRIS: (914) 473-4961

SHANA LIVIGNI, best-known as a veteran L.A. Broadcaster, seeks career opportunity in Radio/T.V./Film projects. Exceptional skills working closely with entertainers, media and public. (818) 249-6701.

BULLETIN BOARD

JAYE-We still love you and our thoughts are with you. Best Wishes.

HUMAN FIREBALL. The most eligible bachelor in the Northeast. Although I work for Virgin, I am not. But I am clean, well-groomed and full of good humor. No rock stars need apply. Call Chuck @ 212-332-0421

HAPPY THANKSGIVING to all our friends in Radio. Bob Kingsley, Robin Rhodes and the entire staff of American Country Countdown.

FREE BULLETIN BOARD LISTINGS!
 Call Laura Rivchun
 212-536-5058
 or Jon Guynn
 213-525-2306

BULLETIN BOARD

DAVE RICHARDS WRGX- I'll see you in Los Angeles December 2nd for food, drink, and fun??? From S.I.D.

Hey Duane Doherty @ The Eagle. How's your nipple? Just wondering, Stacy.

Oh That fateful night in New Orleans: We ran around the city with Road Map Boy You fell; Your zipper broke; We fell in love I believe alcohol was involved

Oh that fateful night in Nashville We three ran around for more wine I fell, I lost my lunch then had the mashed potatoes, We kissed. True love I believe alcohol was involved.

PAULIE P, Let's meet at Shoney's at 2:00 a.m. I hear their mashed potatoes are real. Love ya,Babe

Fax us your FREE Bulletin Board listing! Attention Monitor Classified 212-536-5055 or 213-525-2395

CJM- Bp sends his love, says be sure to bet on Seven and look out for the Monkee . . . happy holidays . . . go cowboys! RA

FRANKIE . . . Boop, Boop, Bee Doop . . . Boop! Luv Ya, Miss Ya, Mean It! Betty

HEY Alan Sneed Heard any good train wrecks lately? Your friend, Pumpkin Naumann.

E-Mail us your FREE Bulletin Board listing! Send to guynn@aol.com or guynn@msn.com

LIPMAN, So what are you going to call the football game next year? The Rising Tidy Bowl?

YO! John Roberts KHFI Has your phone been broken for the past two months? If it is, I'll pay to fix it. Please respond. Mean Ed.

HELP! My name is Greg Evigan, formerly of B.J. & the Bear. I would like to consult Modern Rock Radio and help get it back on course. God knows, traveling the road with a monkey has given me the radio skills needed to win the ratings game. Contact my agent via e-mail cookooNYC@aol.com

CLASSIFIED ADVERTISING RATES

HELP WANTED:
 1 WEEK \$75.00 per inch
 2 WEEKS \$65.00 per inch
POSITION WANTED AND BULLETIN BOARD:
 \$45.00 per inch
BOX NUMBER: Add \$20.00
SERVICES:
 1 WEEK \$75.00 per inch
 6 WEEKS \$65.00 per inch
 13 WEEKS \$60.00 per inch
 26 WEEKS \$55.00 per inch
 51 WEEKS \$50.00 per inch
DEADLINE (ALL CLASSIFIED):
 Each Wednesday 3pm EST, 9 day leadtime.
 • Classified ads are non-commissionable •

SUBMIT ALL AD COPY TO:
Laura Rivchun
Airplay Monitor Classified
1515 Broadway
New York, NY 10036
Phone: 212-536-5058
Fax: 212-536-5055

POWER PLAYLISTS



For Week Ending November 19, 1995

Playlists compiled by Broadcast Data Systems Radio Track service. Stations selected from panel of leading broadcasters in 135 radio markets electronically monitored 24 hours a day, 7 days a week. Songs ranked by number of plays in monitored week.

WXRT Chicago VP/Programming: Norm Winer MD: Patty Martin. Top 30 playlist including Smashing Pumpkins, 1979; U2, Rattle and Hum; The Police, Every Breath You Take.

KFOG San Francisco PD: Paul Marszalek MD: Bill Evans. Top 30 playlist including Joan Osborne, One of Us; Tears For Fears, God's Mistake; Tracy Chapman, Give Me One Reason.

KSCA Los Angeles PD: Mike Morrison MD: Merilee Kelly. Top 30 playlist including Alanis Morissette, All I Really Want; Smashing Pumpkins, 1979; Hootie & The Blowfish, Time.

WHPT Tampa PD: Chuck Beck APD/MD: Chris Taylor. Top 30 playlist including Melissa Etheridge, Your Little Secret; Goo Goo Dolls, Name; Natalie Merchant, Wonder.

KTCZ Minneapolis PD: Lauren MacLeash MD: Jane Fredrickson. Top 30 playlist including Joe Satriani, (You're) My World; Anders Osborne, Pleasin' You; Natalie Merchant, Wonder.

KBCO Denver PD: Mike D'Connor MD: Scott Arbough. Top 30 playlist including Wakefield, Half Of You; Natalie Merchant, Wonder; Toad The Wet Sprocket, Good Intentions.

KMTT Seattle PD: Chris Mays MD: Dean Carlson. Top 30 playlist including Joan Osborne, One of Us; Tears For Fears, Felling Down; Natalie Merchant, Wonder.

KZON Phoenix PD: Chris Ebbott MD: Erika Smith. Top 30 playlist including Goo Goo Dolls, Name; Smashing Pumpkins, 1979; Faith Implosion, Natural One.

KQPT Sacramento PD: Jim Trapp MD: Carrie Dwens. Top 30 playlist including Ewyn Collins, A Girl Like You; Joan Osborne, One of Us; Better Than Ezra, In The Blood.

WVRV St. Louis PD: Scott Strong MD: Mike Richter. Top 30 playlist including Toad The Wet Sprocket, Good Intentions; Edwin McCain, Solitude; Melissa Etheridge, Your Little Secret.

WTTS Indianapolis PD/MD: Rich Anton. Top 30 playlist including Joe Satriani, (You're) My World; Goo Goo Dolls, Name; Toad The Wet Sprocket, Good Intentions.

KFMG Des Moines PD: Mark Vos GM/MD: Ron Sorenson. Top 30 playlist including Lisa Loeb & Nine Stories, Do You Sleep?; Alanis Morissette, Hand In My Pocket; Edwin Collins, A Girl Like You.

MONITOR ROCK PANELS

MAINSTREAM ROCK STATIONS (104)

Mainstream Rock Stations (104) listing stations like Albany, NY; Albuquerque, NM; Atlanta, GA; Augusta, GA; Austin, TX; Bakersfield, CA; Baltimore, MD; Boston, MA; Burlington, VT; Charleston, SC; Charleston, WV; Charlotte, NC; Chicago, IL; Cincinnati, OH; Colorado Springs, CO; Columbia, SC; Columbus, GA; Columbus, OH; Corpus Christi, TX; Dallas, TX; Dayton, OH; Denver, CO; Des Moines, IA; Detroit, MI; El Paso, TX; Ft. Myers, FL; Fresno, CA; Grand Rapids, MI; Green Bay, WI; Greensboro, NC; Harrisburg, PA; Hartford, CT; Houston, TX; Huntsville, AL; Indianapolis, IN; Jackson, MS; Jacksonville, FL; Kansas City, MO; Knoxville, TN; Las Vegas, NV; Lexington, KY; Little Rock, AR; Long Island, NY; Los Angeles, CA; Louisville, KY; McAllen, TX; Memphis, TN; Miami, FL; Milwaukee, WI; Minneapolis, MN; Modesto, CA; Montgomery, AL; Nashville, TN; New Haven, CT; New Orleans, LA; New York, NY; Norfolk, VA; Oklahoma City, OK; Omaha, NE; Orlando, FL; Philadelphia, PA; Phoenix, AZ; Pittsburgh, PA; Portland, ME; Portland, OR; Providence, RI; Raleigh, NC; Richmond, VA; Roanoke, VA; Rochester, NY; Sacramento, CA; St. Louis, MO; Salt Lake City, UT; San Antonio, TX; San Bernardino, CA; San Diego, CA; San Jose, CA; Santa Barbara, CA; Santa Fe, NM; Savannah, GA; Seattle, WA; Shreveport, LA; Springfield, MO; Syracuse, NY; Tampa, FL; Toledo, OH; Tucson, AZ; Tulsa, OK; Washington, DC; West Palm Beach, FL; Wichita, KS; Wilkes-Barre, PA; Youngstown, OH; WZTA; WLZR; WQFM; KQRS; KHOP; WAFX; WKDF; WPLR; WIZN; WAXQ; WNEQ; WNOR; KATT; KEZO; WDLZ; WMMR; KDKB; KUPD; WDVW; WBLM; KUFO; WHYJ; WRDU; WRXL; WROV; WCMF; KRKQ; KSHE; KBER; KISS; KCAL; KIOZ; KSJO; KTYD; KZRQ; WXV; WZAT; KISW; KTAL; KTUX; KXUS; WAQX; WXTB; WIOT; KLPX; KMOD; WWDC; WZZR; KICT; KRZZ; WEXX; WNCB.

MODERN ROCK STATIONS (69)

Modern Rock Stations (69) listing stations like Albany, NY; Albuquerque, NM; Atlanta, GA; Augusta, GA; Austin, TX; Boston, MA; Buffalo, NY; Charlotte, NC; Chicago, IL; Cincinnati, OH; Cleveland, OH; Columbus, OH; Dallas, TX; Denver, CO; Detroit, MI; Fresno, CA; Grand Rapids, MI; Greenville, SC; Harrisburg, PA; Hartford, CT; Houston, TX; Indianapolis, IN; Kansas City, MO; Las Vegas, NV; Long Island, NY; Los Angeles, CA; Louisville, KY; Memphis, TN; Miami, FL; Milwaukee, WI; Minneapolis, MN; Nashville, TN; New Orleans, LA; Norfolk, VA; Omaha, NE; Orlando, FL; Philadelphia, PA; Phoenix, AZ; Pittsburgh, PA; Portland, ME; Portland, OR; Providence, RI; Richmond, VA; Riverside, CA; Rochester, NY; Sacramento, CA; St. Louis, MO; Salt Lake City, UT; San Diego, CA; San Francisco, CA; San Jose, CA; Seattle, WA; Spokane, WA; Springfield, MO; Tucson, AZ; Tulsa, OK; Washington, DC; WESH; WLUM; KEGE; WRLG; WZRH; WKOC; WROX; KGDE; KRRK; WJRR; WPLY; KEDJ; WDXD; WCYD; KBBT; KNRK; WBRU; WGO; KCXX; WBER; WNVN; KWOD; KPNT; KKRK; XHRA; XTRA; KITS; KOME; KNDD; KEZE; KTOZ; KNOZ; KMYZ; WHFS.

TRIPLE A STATIONS (17)

Triple A Stations (17) listing stations like Albany, NY; Baltimore, MD; Burlington, VT; Chicago, IL; Denver, CO; Des Moines, IA; Indianapolis, IN; Las Vegas, NV; Los Angeles, CA; Minneapolis, MN; Nashville, TN; Phoenix, AZ; Sacramento, CA; St. Louis, MO; San Francisco, CA; Seattle, WA; Tampa, FL; WXLE; WRNR; WNCS; WXRT; KBCO; KFMG; WTTS; KXPT; KSCA; KTCZ; WRLT; KZON; KQPT; WVRV; KFOG; KMAT; WHPT.

*Added to panel last week.

For Week Ending November 19, 1995

COMBINED ROCK MONITOR AIRPLAY										AIRPLAY THIS WEEK BY FORMAT								
TW	LW	WKS	TITLE (LABEL)	ARTIST	THIS WEEK			LAST WEEK			MAINSTREAM			MODERN			TRIPLE A	
					Audience (millions)	Detections No.	Rank	Audience (millions)	Detections No.	Rank	Audience (millions)	Detections No.	Rank	Audience (millions)	Detections No.	Rank	Audience (millions)	Detections No.
1	2	10	MY FRIENDS (WARNER BROS.)	RED HOT CHILI PEPPERS	31.8904	4143	1	34.7760	4193	2	16.6169	2029	2	13.5673	1890	1	1.7062	224
2	1	15	NAME (METAL BLADE/WARNER BROS.)	GOO GOO DOLLS	31.8486	4062	2	35.3587	4401	1	15.1252	2149	1	15.0127	1676	3	1.7107	237
3	3	7	BULLET WITH BUTTERFLY WINGS (VIRGIN)	SMASHING PUMPKINS	28.8646	3445	3	28.9358	3455	3	12.9544	1559	6	15.8746	1873	2	0.0356	13
4	4	15	POSSUM KINGDOM (INTERSCOPE)	TOADIES	22.1250	2629	5	22.6861	2642	7	8.1193	968	14	14.0024	1657	4	0.0033	4
5	10	8	CUMBERSOME (MAMMOTH/ATLANTIC)	SEVEN MARY THREE	21.1828	2870	4	18.6053	2547	8	12.9076	1622	3	8.1728	1217	11	0.1024	31
6	13	4	GLYCERINE (TRAUMA/INTERSCOPE)	BUSH	20.2119	2308	9	15.8748	1822	17	6.7824	769	21	13.4203	1533	5	0.0092	6
7	5	15	COMEDOWN (TRAUMA/INTERSCOPE)	BUSH	18.9265	2089	14	21.4794	2394	9	10.3969	1216	9	8.4929	864	25	0.0367	9
8	18	4	1979 (VIRGIN)	SMASHING PUMPKINS	18.4941	1595	20	13.3972	1144	31	4.3752	318	—	12.7870	1138	13	1.3319	139
9	8	11	I'LL STICK AROUND (ROSWELL/CAPITOL)	FOO FIGHTERS	18.1725	2170	13	18.8923	2326	11	9.1856	1037	12	8.9805	1124	15	0.0064	9
10	6	15	LUMP (COLUMBIA)	THE PRESIDENTS OF THE UNITED STATES OF AMERICA	17.8836	2390	7	20.0293	2714	4	7.0217	1050	11	10.7953	1332	8	0.0666	8
11	9	15	HAND IN MY POCKET (MAVERICK/REPRISE)	ALANIS MORISSETTE	16.8117	2420	6	18.8254	2674	6	8.3016	1275	8	7.5427	987	22	0.9674	158
12	16	4	THE WORLD I KNOW (ATLANTIC)	COLLECTIVE SOUL	16.3683	2249	11	14.3850	1850	16	6.6603	1026	13	8.9361	1157	12	0.7719	66
13	11	7	GRIND (COLUMBIA)	ALICE IN CHAINS	15.9795	2270	10	16.0584	2303	12	9.7969	1376	7	6.1777	889	23	0.0049	5
14	12	7	YOUR LITTLE SECRET (ISLAND)	MELISSA ETHERIDGE	15.3130	2335	8	15.9272	2380	10	11.1433	1594	4	2.7272	552	38	1.4425	189
15	7	9	GEEK STINK BREATH (REPRISE)	GREEN DAY	14.3239	2192	12	19.1877	2706	5	5.9657	872	19	8.3543	1315	9	0.0039	5
16	14	15	TOMORROW (EPIC)	SILVERCHAIR	13.4939	1661	19	15.6424	1858	15	8.1293	962	15	5.3622	697	29	0.0024	2
17	15	10	HOOK (A&M)	BLUES TRAVELER	13.1931	2081	15	14.3993	2191	13	5.7805	912	17	6.8571	1087	16	0.5555	82
18	17	6	NATURAL ONE (LONDON/ISLAND)	FOLK IMPLOSION	12.9580	1568	22	13.9603	1534	22	—	—	—	12.5562	1501	6	0.4018	67
19	19	10	ONE OF US (BLUE GORILLA/MERCURY)	JOAN OSBORNE	12.8057	1899	16	13.2141	1811	18	2.7779	420	39	8.8489	1309	10	1.1789	170
20	22	5	PURE MASSACRE (EPIC)	SILVERCHAIR	12.5343	1803	17	12.4407	1714	19	5.0245	785	20	7.5064	1014	18	0.0034	4
21	20	8	PERRY MASON (EPIC)	OZZY OSBOURNE	12.4908	1581	21	12.8751	1660	20	12.4908	1581	5	—	—	—	—	—
22	21	8	GOOD INTENTIONS (COLUMBIA/REPRISE)	TOAD THE WET SPROCKET	11.6997	1767	18	12.9087	1865	14	4.2612	610	28	5.4260	875	24	2.0125	282
23	25	4	ALL I REALLY WANT (MAVERICK/REPRISE)	ALANIS MORISSETTE	11.0565	1426	24	10.5573	1286	25	2.4365	249	—	8.0070	1124	14	0.6130	53
24	32	2	WONDERWALL (EPIC)	OASIS	10.6035	1125	31	8.6146	721	60	0.8058	107	—	9.5919	989	21	0.2058	29
25	24	5	WONDER (ELEKTRA/EEG)	NATALIE MERCHANT	10.2873	1328	25	10.6538	1284	26	1.2236	70	—	7.0880	994	20	1.9757	264
26	23	15	ALL OVER YOU (RADIOACTIVE/MCA)	LIVE	9.9648	1040	34	11.1052	1163	29	4.4152	511	—	5.4760	521	—	0.0736	8
27	26	11	HARD AS A ROCK (EASTWEST/EEG)	AC/DC	8.5559	1197	28	9.9864	1374	24	8.5559	1197	10	—	—	—	—	—
28	29	15	IN THE BLOOD (ELEKTRA/EEG)	BETTER THAN EZRA	8.4876	1110	33	9.3855	1256	27	3.8082	468	34	4.3291	598	37	0.3503	44
29	27	6	FRIENDS OF P. (MAVERICK/REPRISE)	THE RENTALS	8.2631	1486	23	9.6845	1580	21	1.0771	109	—	7.0899	1356	7	0.0961	21
30	NEW		SANTA MONICA (WATCH THE WORLD DIE) (CAPITOL)	EVERCLEAR	7.9690	1276	26	7.2547	1087	35	1.5431	227	—	6.3189	1031	17	0.1070	18
31	34	5	RAININ' (WORK)	SPONGE	7.8284	1271	27	8.1444	1385	23	4.6916	715	23	3.0436	536	—	0.0932	20
32	30	15	DECEMBER (ATLANTIC)	COLLECTIVE SOUL	7.8024	1000	37	9.2102	1155	30	4.6181	571	—	2.7785	374	—	0.4058	55
33	38	10	LIGHTNING CRASHES (RADIOACTIVE/MCA)	LIVE	7.7000	939	39	7.5571	905	44	4.0439	507	—	3.4897	406	—	0.1664	26
34	31	15	GOOD (ELEKTRA/EEG)	BETTER THAN EZRA	7.6554	935	40	8.7184	1058	36	3.7150	491	—	3.7269	414	—	0.2135	30
35	28	13	A GIRL LIKE YOU (BAR NONE/A&M)	EDWYN COLLINS	7.6431	956	38	9.6301	1143	32	1.7390	161	—	5.2200	695	31	0.6841	100
36	35	2	UNINVITED (VENTRUE/AMERICAN/WARNER BROS.)	RUTH RUTH	7.6048	1129	30	7.9017	1109	33	3.4414	423	38	4.1506	696	30	0.0128	10
37	33	2	LIKE A ROLLING STONE (VIRGIN)	ROLLING STONES	7.4801	1039	35	8.3387	1098	34	6.9341	927	16	—	—	—	0.5460	112
38	37	14	INTERSTATE LOVE SONG (ATLANTIC)	STONE TEMPLE PILOTS	7.4768	860	44	7.6764	884	45	4.1540	487	—	3.1706	353	—	0.1522	20
39	NEW		KITTY (COLUMBIA)	THE PRESIDENTS OF THE UNITED STATES OF AMERICA	7.4244	923	41	6.7351	717	61	0.6091	108	—	6.8133	813	26	0.0020	2
40	NEW		PIRANHA (ISLAND)	TRIPPING DAISY	7.0629	1036	36	6.7840	1036	37	2.7741	431	37	4.2868	602	36	0.0020	3

Records showing an increase in audience over the previous week, regardless of chart movement. Rankings broken down by mainstream and modern formats (on right side of this page) correspond to 40-position charts printed in this week's Monitor and therefore rankings do not exist for recurrences and records below No. 40. Rankings are not listed for triple A because there is no chart yet. Audience computed by cross-referencing exact times of airplay with Arbitron listener data. © 1995, Billboard/BP1 Communications.



BUSH
"Glycerine"

from the **DOUBLE** platinum album, **SIXTEEN STONE** 92531

Billboard Modern Rock Monitor 10 - 5

Top 5 charting record in 3 weeks!

Heavy Rotation!!!!

Produced by Clive Langer, Alan Winstanley & BUSH



NO DOUBT
"Just A Girl"

from the album, **TRAGIC KINGDOM** 92580

Billboard Modern Rock Monitor 29 - 27

Top 10 Rotated Record at: KROQ, KOME, KITS, KNRK, KEDG, 99X, WROX and more!

120 Minutes debuted 11/19

ON TOUR NOW!

Produced by Matthew Wilder
Mixed by HDiman & Paul Palmer

THE ATLANTIC GROUP
TRAUMA RECORDS



Billboard Music Group

Complete
coverage of
the music
and
entertainment
industries
worldwide.

Billboard
online

B I N



Amsterdam Chicago London Los Angeles Nashville New York Tokyo Washington DC

THIS WEEK	LAST WEEK	WKS. ON CHART	MAINSTREAM		DETECTIONS		
			TITLE/LABEL/DISTRIBUTING LABEL	ARTIST	TW	LW	
			*** No. 1 ***				
1	1	13	NAME METAL BLADE/WARNER BROS.	5 weeks at No. 1	GOO GOO DOLLS	2149 2289	
(2)	2	9	MY FRIENDS WARNER BROS.		RED HOT CHILI PEPPERS	2029 1999	
(3)	6	12	CUMBERSOME MAMMDTH/ATLANTIC		SEVEN MARY THREE	1622 1487	
(4)	4	6	YOUR LITTLE SECRET ISLAND		MELISSA ETHERIDGE	1594 1541	
5	3	8	PERRY MASON EPIC		OZZY OSBOURNE	1581 1660	
(6)	5	7	BULLET WITH BUTTERFLY WINGS VIRGIN		SMASHING PUMPKINS	1559 1526	
7	7	7	GRIND COLUMBIA		ALICE IN CHAINS	1376 1412	
8	10	9	HAND IN MY POCKET MAVERICK/REPRISE		ALANIS MORISSETTE	1275 1308	
9	8	17	COMEDOWN TRAUMA/INTERSCOPE		BUSH	1216 1382	
10	9	11	HARD AS A ROCK EASTWEST/EEG		AC/DC	1197 1374	
11	11	12	LUMP COLUMBIA		THE PRESIDENTS OF THE UNITED STATES OF AMERICA	1050 1186	
(12)	14	9	I'LL STICK AROUND ROSWELL/CAPITOL		FOO FIGHTERS	1037 1034	
(13)	18	4	THE WORLD I KNOW ATLANTIC		COLLECTIVE SOUL	1026 884	
14	17	26	POSSUM KINGDOM INTERSCOPE		TOADIES	968 960	
15	13	22	TOMORROW EPIC		SILVERCHAIR	962 1048	
16	16	3	LIKE A ROLLING STONE VIRGIN		ROLLING STONES	927 972	
17	15	10	HOOK A&M		BLUES TRAVELER	912 963	
			*** AIRPOWER ***				
(18)	21	6	DEJA VOODOO GYANT		KENNY WAYNE SHEPHERD	900 759	
19	12	9	GEEK STINK BREATH REPRISE		GREEN DAY	872 1055	
(20)	22	5	PURE MASSACRE EPIC		SILVERCHAIR	785 718	
(21)	32	2	GLYCERINE TRAUMA/INTERSCOPE		BUSH	769 575	
(22)	24	5	LOCK AND LOAD CAPITOL		BOB SEGER & THE SILVER BULLET BAND	726 689	
23	19	8	RAININ' WORK		SPONGE	715 770	
(24)	26	2	THE GARDEN OF ALLAH GEFLEN		DON HENLEY	710 645	
(25)	25	6	BREADMAKER VIRGIN		BROTHER CANE	703 678	
26	20	23	AND FOOLS SHINE ON VIRGIN		BROTHER CANE	700 778	
(27)	28	5	RADAR GUN ESD/TAG/ATLANTIC		THE BOTTLE ROCKETS	628 613	
28	23	8	GOOD INTENTIONS COLUMBIA/REPRISE		TOAD THE WET SPROCKET	610 682	
(29)	37	2	UNDERSTANDING MAVERICK/WARNER BROS.		CANDLEBOX	569 450	
30	29	4	CABIN DOWN BELOW WARNER BROS.		TOM PETTY	550 579	
(31)	34	5	(YOU'RE) MY WORLD RELATIVITY		JOE SATRIANI	531 505	
(32)	36	3	TAXMAN EPIC		STEVIE RAY VAUGHAN	489 476	
33	27	8	DROWNING ATLANTIC		HOOTIE & THE BLOWFISH	483 620	
34	33	19	IN THE BLOOD ELEKTRA/EEG		BETTER THAN EZRA	468 550	
(35)	NEW		COVER YOU IN OIL EASTWEST/EEG		AC/DC	463 310	
36	35	18	YOU OUGHTA KNOW MAVERICK/REPRISE		ALANIS MORISSETTE	434 492	
37	38	3	PIRANHA ISLAND		TRIPPING DAISY	431 435	
(38)	NEW		UNINVITED VENTRUE/AMERICAN/WARNER BROS.		RUTH RUTH	423 373	
(39)	RE-ENTRY		ONE OF US BLUE GORILLA/MERCURY		JOAN OSBORNE	420 379	
40	31	12	SIMPLE LESSONS MAVERICK/WARNER BROS.		CANDLEBOX	418 577	

THIS WEEK	LAST WEEK	WKS. ON CHART	MODERN		DETECTIONS		
			TITLE/LABEL/DISTRIBUTING LABEL	ARTIST	TW	LW	
			*** No. 1 ***				
1	1	10	MY FRIENDS WARNER BROS.	3 weeks at No. 1	RED HOT CHILI PEPPERS	1890 1983	
2	2	7	BULLET WITH BUTTERFLY WINGS VIRGIN		SMASHING PUMPKINS	1873 1916	
3	3	17	NAME METAL BLADE/WARNER BROS.		GOO GOO DOLLS	1676 1882	
4	4	14	POSSUM KINGDOM INTERSCOPE		TOADIES	1657 1676	
(5)	10	4	GLYCERINE TRAUMA/INTERSCOPE		BUSH	1533 1247	
(6)	7	7	NATURAL ONE LONDON/ISLAND		FOLK IMPLOSION	1501 1483	
7	8	7	FRIENDS OF P. MAVERICK/REPRISE		THE RENTALS	1356 1450	
8	6	16	LUMP COLUMBIA		THE PRESIDENTS OF THE UNITED STATES OF AMERICA	1332 1516	
9	5	9	GEEK STINK BREATH REPRISE		GREEN DAY	1315 1646	
(10)	11	10	ONE OF US BLUE GORILLA/MERCURY		JOAN OSBORNE	1309 1261	
(11)	16	6	CUMBERSOME MAMMOTH/ATLANTIC		SEVEN MARY THREE	1217 1037	
			*** AIRPOWER ***				
(12)	21	3	THE WORLD I KNOW ATLANTIC		COLLECTIVE SOUL	1157 913	
			*** AIRPOWER ***				
(13)	24	2	1979 VIRGIN		SMASHING PUMPKINS	1138 862	
(14)	15	6	ALL I REALLY WANT MAVERICK/REPRISE		ALANIS MORISSETTE	1124 1079	
15	9	11	I'LL STICK AROUND ROSWELL/CAPITOL		FOO FIGHTERS	1124 1285	
16	13	9	HOOK A&M		BLUES TRAVELER	1087 1135	
(17)	20	4	SANTA MONICA (WATCH THE WORLD DIE) CAPITOL		EVERCLEAR	1031 918	
(18)	17	4	PURE MASSACRE EPIC		SILVERCHAIR	1014 994	
19	14	11	QUEER ALMO SOUNDS/GEFFEN		GARBAGE	1000 1103	
20	19	7	WONDER ELEKTRA/EEG		NATALIE MERCHANT	994 998	
			*** AIRPOWER ***				
(21)	35	2	WONDERWALL EPIC		OASIS	989 650	
22	12	15	HAND IN MY POCKET MAVERICK/REPRISE		ALANIS MORISSETTE	987 1208	
(23)	22	6	GRIND COLUMBIA		ALICE IN CHAINS	889 887	
24	23	8	GOOD INTENTIONS COLUMBIA/REPRISE		TOAD THE WET SPROCKET	875 911	
25	18	20	COMEDOWN TRAUMA/INTERSCOPE		BUSH	864 1006	
(26)	32	2	KITTY COLUMBIA		THE PRESIDENTS OF THE UNITED STATES OF AMERICA	813 689	
(27)	29	3	JUST A GIRL TRAUMA/INTERSCOPE		NO DOUBT	789 720	
(28)	37	4	ROSEALIA ELEKTRA/EEG		BETTER THAN EZRA	713 613	
29	26	24	TOMORROW EPIC		SILVERCHAIR	697 803	
30	28	7	UNINVITED VENTRUE/AMERICAN/WARNER BROS.		RUTH RUTH	696 730	
31	25	15	A GIRL LIKE YOU BAR NONE/A&M		EDWYN COLLINS	695 861	
32	27	15	TIME BOMB EPITAPH		RANCID	671 784	
33	30	6	DON'T STAY HOME CAPRICORN		311	657 691	
(34)	40	2	BURNIN' RUBBER WAY COOL MUSIC/MCA SOUNDTRACKS/MCA		MR. MIRAINGA	617 571	
35	31	14	WALK THIS WORLD BIG CAT/WORK		HEATHER NOVA	604 702	
(36)	36	4	PIRANHA ISLAND		TRIPPING DAISY	602 598	
37	33	24	IN THE BLOOD ELEKTRA/EEG		BETTER THAN EZRA	598 656	
38	38	6	YOUR LITTLE SECRET ISLAND		MELISSA ETHERIDGE	552 607	
39	RE-ENTRY		BREAKFAST AT TIFFANY'S RAINMAKER/INTERSCOPE		DEEP BLUE SOMETHING	551 594	
(40)	NEW		IN THE NAME OF THE FATHER RADIOACTIVE/MCA		BLACK GRAPE	539 498	

Records showing an increase in detections over the previous week, regardless of chart movement. A record which has been on either chart for more than 20 weeks will not receive a bullet, even if it registers an increase in detections. Airpower awarded to those records which attain 800 detections (mainstream) or 900 (modern) for the first time. If two records are tied in number of plays, the record being played on more stations is placed first. Records below the top 20 are removed from the chart after 26 weeks.



SPACEHOG

LANDING ON:
KGOE 20x KEGE 35x WLLZ 35x KIRF 33x WZAT 31x
KNRK 24x KEBL 24x KILD 24x KPMT 23x KNDD 22x
WRGX 20x KTUZ 19x WORE 16x WBEH 12x

823 SPINS
GREETING OVER 6 MILLION LISTENERS THIS WEEK

IN THE MEANTIME

THE PREMIERE SINGLE FROM THE DEBUT ALBUM **RESIDENT ALIEN**
ALBUM IN STORES NOW

PRODUCED BY SPACEHOG AND BRYCE GOGGIN • MANAGEMENT: DAS COMMUNICATIONS LTD.

ON SIRE COMPACT DISCS AND  CASSETTES. WORLD WIDE WEB: [HTTP://WWW.ELEKTRA.COM](http://www.elektra.com)

© 1995 ELEKTRA ENTERTAINMENT GROUP, A DIVISION OF WARNER COMMUNICATIONS INC. A TIME WARNER COMPANY

