

Broadcast Weekly

*America's Pioneer
Radio Program
Guide*

10¢ COPY

April
28th to
May 4



JOAN KAY
*Dramatic
Artist—
NBC network*



Save Twice As Much As You Spend . . . Plus 70c!

When you buy single copies of BROADCAST WEEKLY, it costs you \$5.20 per year.

When the postman brings it to you, you save the tidy sum of \$3.70, and are sure of receiving every issue promptly.

Subscribe to Broadcast Weekly at the present TEMPORARY low price of \$1.50 for 52 issues. See the new All-Wave Section, starting this issue.

Clip
and
Mail
Today

BROADCAST WEEKLY
1114 Mission Street, San Francisco

Gentlemen: Please send me *Broadcast Weekly* for one year, for which I enclose \$1.50 (in currency, money order, or check).

Name.....

Street Address.....

City.....

New

Renewal

Extension

To Our Subscribers

Daylight Saving Time

is now effective in the East. This makes most of the NBC-CBS network programs reach the Pacific Coast one hour earlier. All time corrections received to press time are shown in day by day listing (see page 16), also topical listings (page 9).

About Program Listings

Many comments have been received concerning reader preferences in style of listing. Many prefer the daily timetable. Others, the topical classification.

For the convenience of all subscribers, both methods will be used.

The general day-by-day, hour-by-hour listings will be complete, as formerly.

The topical listings are intended as a **supplementary service** for all who find that form useful. In this way every subscriber's preferences are considered.

As to Future Issues

We are preparing to add more pages, features and pictures. Established service and features will continue; new ones will be added.

Comments by our readers are always welcome, are most helpful, and we thank you for them.

—THE EDITORS.

Stars of the Radio Theatre



BERNICE BERWIN, "One Man's Family," KPO

ONE of that group of players trained to the microphone from the start of their careers, is Bernice Berwin, who plays Hazel in "One Man's Family."

She was a student at University of California when her acting talent first was discovered.

In less than ten years she has played so many rôles that she herself would not know where to begin to count them.

Bernice was born in California and grew up in this State. Slim, dainty, with dark eyes, exquisite skin and curly dark hair, she was the campus beauty at U. C., and leading woman in most of the student productions there. She

joined the NBC staff in 1928 in "Roads to Romance." Later she played opposite Leo Carillo in "Lombardi, Ltd.," at the Alcazar in San Francisco, and in plays with Marjorie Rambeau, Crane Wilbur, Edward Everett Horton, and other stars.

She has been Muriel La Salle in "Memory Lane" since the inception of NBC's epic of small-town life in the nineties.

Away from the microphone, Bernice is just as charming as the heroines she has played so often. She plays piano and violin, and writes, when she finds time.

BROADCAST WEEKLY

Vol. XIV

San Francisco, California, April 27, 1935

No. 17

Special Events

AMONG important special events of the week is the change from standard to daylight saving time in the East. In most cases this brings Eastern network features to Pacific Coast listeners *one hour earlier* than heretofore.

Most stations carrying network programs have corrected their schedules with the reservation that some few adjustments may be necessary through the coming week. All corrections received up to press time have been made in this issue of BROADCAST WEEKLY, in the *complete* day by day listings that begin on page 16, and in the classified section.

* * *

The annual spring festival in Florence, Italy, is scheduled to be broadcast over the Columbia nationwide network from 8:45 to 9 a. m., P. S. T., on Sunday, April 28.

* * *

For the devotee of serious music, the New York Philharmonic Society under Maestro Toscanini offers the Great Mass in "D" by Beethoven. The soloists are Elizabeth Rethberg, soprano; Marion Telba, contralto; Giovanni Martinelli, tenor, and Ezio Pinza, bass, with the Schola Cantorum Chorus. The broadcast is at 11 a. m. Sunday, April 28, over CBS instead of 12 noon as formerly.

* * *

The A. T. and T. celebration over CBS Sunday afternoon, April 28 at 3 p. m., should prove a highly diverting broadcast. Many notables join in this "dramatization" of the development of the telephone and its wonder child, Radio.

* * *

The spring season is reflected in radio events for the week. On Monday, April 29, at 12 noon over CBS, the Hon. Herbert Hoover will speak on the occasion of the First National Convention of "Better Homes in America."

* * *

Tony and Gus, a new feature, makes its bow Monday, April 29, at 7:15 over NBC, featuring George Frame Brown of "Tompkins Corners" fame and Mario Chamlee, famous operatic tenor, in a comedy role.

* * *

Saturday, May 4, is Derby Day. This colorful event will be described over a coast-

to-coast CBS network at 3 p. m. Robert Trout, Westbrook Van Voorhees and Thomas Bryan George will describe the event from the track and starting line.

* * *

U. S. Chamber of Commerce

Proceedings of the annual convention of the United States Chamber of Commerce in Washington, D. C., will be summarized for the Columbia audience by Merle Thorpe, editor of "Nation's Business" in three broadcasts from the nation's capital. His schedule is Monday, April 29, from 7:05 to 7:15 p. m.; Tuesday, April 30, 7:15 to 7:30 p. m.; and Wednesday, May 1, from 7:05 to 7:15 p. m. (all times P. S. T.)

* * *

John Nesbitt Scores Again

As a narrator, John Nesbitt is attracting wide attention for his virile effective delivery and engaging "mike" manner.

His handling of the re-enactment of scenes from the great San Francisco fire of 1906 over KFRC recently, was an outstanding piece of work. The West Coast has produced another star in his field.

* * *

"Kingfish" Huey P. Long, stormy petrel of the Senate, Louisiana and points west, is scheduled for an address on Thursday eve., May 2, at 7:30 p. m. (KGO and KDYL).

* * *

KYA has a new program chief in the person of Dean Maddox, well known to radio listeners of both coasts.

* * *

"Dude Ranch," New KNX Show

A new and colorful KNX feature had its premier recently, when Sheriff Loyal Underwood officially opens the "KNX Dude Ranch" to its guests and friends. Back on the air with the Sheriff are the famous Arizona Wranglers, including Sleepy, Slicker, and all the old gang, augmented with a new girls' trio to balance the program of old-time cowboy songs with the latest hit numbers. Guests of the "KNX Dude Ranch" will include Glen Hardy, Thomas Freebarin-Smith, Drury Lane, Charlotte Woodruff, and other KNX artists. The "doings" at the ranch-house will be broadcast from KNX Monday, Wednesday, Thursday and Sunday at 9:30 p. m., Tuesday at 10 p. m., and Saturday from 8 to 10 p. m.

Conducted by JOHN D. CLARK,
Pres. Pacific States Short Wave Club

MILLIONS of listeners in all parts of the world today are deriving unlimited enjoyment out of foreign short-wave broadcasts. The thrill of hearing fine musical programs from all parts of the globe is a thrill which never fails to hold the interest of even the most skeptical. But listening on the diminutive waves is not only connected with the glamour of distance—it is now being associated with program value and quality. All the great nations at the present time are as nervous as cats with their tails tied together. They have colonies and dominions to preserve, trade routes and trade prestige to protect and maintain, rebel governments to justify to the world, or constitutional governments whose authority must be maintained against the proselyting propaganda of other nations. In short, they all have need of direct or indirect propaganda, as loud, as far reaching, as penetrating as they can get it. And high power, short-wave broadcasting is their best instrument. Some use it direct with talks on the excellence of their government in many languages; some broadcast peasant songs, descriptions of national celebrations, and travel-bureau information; some go in for news services; some concentrate on musical presentations on a par with our first American presentation, with a distinctive flavor added.

Undoubtedly there are many listeners who fail to hear overseas programs on their short-wave dial; but to blame such failure on the set is wholly unreasonable.



Broadcasting from HP5B, Panama City. Señor Enrique Linares Jr., at piano; Señor Eduardo Vallarino, vocalist

"But," replies the skeptical newcomer, "What is the significance of all this if you can't hear it?" You can hear it. *Everybody* can hear it if they will take the necessary steps to insure success. A good aerial and a knowledge of how to operate the receiver are absolutely essential, and the inexperienced listener will have very little luck until these requirements are met.

One point which cannot be overemphasized is that the dial must be tuned *slowly*. For technical reasons, which need not be considered here, it is possible for as many as ten stations to be heard within one-eighth of an inch of dial space. A strong station can usually be tuned completely in and out again with a dial movement of less than one-hundredth of an inch! It is obvious, therefore, that the listener will have little success as long as he continues the quick, sharp tuning to which he has been accustomed on the conventional broadcast band.

Another point to be considered is that stations are not spread all over the dial. Over 90 per cent of the world's short-wave transmitters are concentrated in five different wave-bands, each of which attains its maximum efficiency at varying times of the day and year. Without becoming too technical, it may be well to mention the principal peculiarities of these bands.

For reception on the Pacific Coast, the 49-meter band (5.8 to 6.8 meg.) becomes effective only between sunset and sunrise. The comparatively high wavelength classifies this band in about the same category as the familiar broadcast wavelengths to which everyone is accustomed. On the 31-meter band, however (9.50 to 9.60 meg.), daylight reception is usually feasible after 3 p. m., and until 9 a. m. in the morning. On the other hand, the 25 and 19-meter bands (11.7 to 12.0 and 15.1 to 15.4 meg.) are distinctly daylight wavelengths, and it is very seldom that a station is heard on these frequencies after dark.

It should be remembered that these are not hard and fast rules, and they will vary distinctly with the changing seasons of the year. Listeners should watch and see what stations others are hearing and then confine their efforts accordingly. A point which cannot be stressed too much is that the new-

comer should be suspicious of each and every short-wave list that comes into his possession. Nearly all such lists are made up months in advance of publication, and are hence very inaccurate by the time they appear in print. Furthermore, lists which are published for the East will rarely conform to reception conditions on the Pacific Coast.

Our weekly efforts in this column will be to give the listener a bird's-eye view of the latest and most interesting developments on the lower wavelengths. Emphasis will be placed on those foreign broadcasts which are most consistently heard on the Pacific Coast, but the minor and less reliable stations will not be neglected.



European reception during the past few weeks has dropped off considerably, but should improve within a short time. Down near the equator, however, the numerous Latin-American stations are still sending excellent signals to our Pacific States, and the attentive listener will find the ether literally filled with the music of the rhumba, the tango, and other native dance tunes. The vast majority of these Spanish-speaking stations are heard every night between 6 and 7 p. m., although several remain on the air until eight o'clock, or even later. With the possible exception of HJ4ABA on 11.71 meg., and HP5J on 9.59 meg., all these South and Central American transmitters are heard between 5.8 and 6.8 megacycles.



HJ1ABB of Barranquilla, Colombia, one of the most powerful, is heard daily until 7 p. m., and on Saturdays broadcasts an excellent two and one-half hour program of lively Spanish and American tunes between 7 and 9:30 p. m.



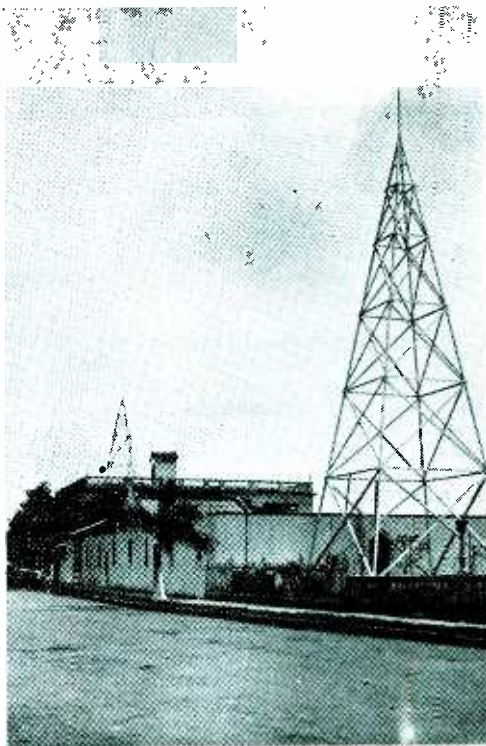
Fine reception will also be noted from HJ4ABE of Medellin, Colombia, on 5.95 meg., and from HJ3ABH, a new station, on 6.02 meg., both of which may usually be heard until 8 p. m.



Venezuela is well represented by YV5RMO on 5.85 meg., YV2RC on 6.11 meg., and YV3RC on 6.16 meg., all of which usually sign off by seven o'clock.



And slightly higher in frequency will be found two excellent stations in Ecuador, one, HC2RL (6.67 meg.), being heard on Tuesdays between 6 and 8:15 p. m., and the other, PRADO, being on the air Thursday evenings at the same time on 6.62 meg. PRADO will broadcast a special transmission for the



MIRAMAR STATION HP5B, Panama City, Republic of Panama. Broadcasting daily until 7:30 P. M. on 6:03 meg.

Pacific States Short Wave Club on May 2, during which a very interesting program will be broadcast with announcements in both Spanish and English.



Before concluding this week's article, we must not overlook the two powerful Peruvian stations—OAX4B, which broadcasts on Wednesdays and Sundays from 6 to 9 p. m. on 6.23 meg., and OAX4D, which transmits on Wednesdays and Saturdays from 6 to 8:30 p. m. on 5.78 meg.



Round the world radio listeners are invited to send in questions regarding foreign programs, stations, short-wave problems. Tell us what service in this department of BROADCAST WEEKLY will best help you better to enjoy foreign and all-wave broadcasts.



Join BROADCAST WEEKLY's "Wide-World, All-Wave Radio Guild." Send in your name and address, information about your set, and tell us your reception problems. Address "All-Wave" Editor, care BROADCAST WEEKLY, 1114 Mission Street, San Francisco.

◆ FANFARE ◆

By J. LESTER MALLOY

By remote control we hear: That the Horace Heidt Brigadiers, of KFRC-CBS and the Golden Gate Theatre, are singing "Some of These Days." That it really is a matter of just a few weeks. And that the destination will be Chicago.

* * *

Proving that sopranos and the mike can get along. Ellen Cameron is a vocal treat, indeed. We came upon her quite by accident the other Saturday afternoon. Miss Cameron sings via KYA, each Saturday at 1 p. m. Doing a little sleuthing of our own, we discovered that she is the gal who voice-doubled for Marian Marsh during the operatic sequences of the John Barrymore picture, "Trilby." Also, Miss Cameron was featured many times with Captain Dobbie on his Shell Ship of Joy. Are you listenin', KYA?

* * *

Yah But No Cheerly. Maybe we should translate that one. Because what we mean is that the droll radio comic, "Yah But," has come home to San Francisco, *but* there's no sign of the other half of the famous act, Cheerly. "Yah But," whose name happens to be Jennison Parker, is to be KFRC's continuity editor. However, that won't prevent him from stepping into his funnyman character at the slightest provocation.

* * *

Short Waves. Don Briggs, ex-Heidt Brigadier, has tired of the four-a-day and is now auditioning for bigger and better things. . . . Reg. Marshall, manager for the Merle Carlson aggregation, late of the networks, but now playing the one-nighters, stopped over en route to Sacramento. . . . Ben Klassen paid us a farewell visit, which was reason enough to request an autographed picture. . . . And, by the way, what's this we hear about a well known orchestra leader giving an equally w. k. artists' representative a very healthy sock in the jaw? . . . That comes on the Southern California shortwave. . . . no local personalities involved. . . . Thanks for listenin'.

* * *

A Letter Without an Envelope

Mrs. George Olsen,
Radio City,
U. S. A.

Dear Ethel:

We've always liked you and we've always liked your rock-a-bye baby crooning. That's why we stayed home the other evening. There was a swell movie we wanted to see, but the papers said you were going to be

Ben Bernie's guest star. Oh, Ethel, how could you? Where did you get *that* song? And, having gotten it, why did you sing it? Where did you get the weak gags? And, having . . . but why go on? For shame, Ethel Shutta! J. L. M.

New Feature on KROW

Scott Weakley, production manager of Station KROW, has started the series "*California Family*," a drama that is expected to run for at least three months.

Pacific Northwest Notes

The radio listening public is invited to attend weekly broadcasts of the new half hour program of the Rocky Mountaineers, heard every Saturday night over KOMO. This augmented program, with genial hill-billy atmosphere, boasts a cast of some of the best known and most talented radio stars in the Northwest, including Cowboy Joe, banjoist and singer of old favorite songs; Dorothy Lee, accordion player and vocalist; Ed Sheldon and Hap Harris, banjo duo; Mace Chamberlain, bass; Abe Brashen, director and violinist; and Frank Coombs, master of ceremonies.

Sergeant Peter Ballard, formerly of the Northwest and Royal Canadian Mounted Police, was so impressed with the authenticity of the True Stories of the Northwest Mounted Police series, broadcast over KOMO every Thursday night, and with John Pearson's characterizations, that he has given his complete mountie uniform to Pearson for use in broadcasting. The material for these programs is obtained through the cooperation of the law and reference libraries of the University of Washington. Pearson, formerly of vaudeville, stage and screen, and now a KOMO-KJR announcer, often portrays as many as seven different parts in these exciting stories.

★ ★ ★ ★

"Short Wave Tips"

10:00 to 10:15 p.m. every
Saturday evening

Sponsored by Philco—on

K G G C

New Topical Featurelog

Copyright 1935 by Howard Way

The purpose of the "New Topical Featurelog" is to enable listeners to select programs by type and character. Available programs under the various group headings are listed in the order broadcast during the current week. Consult the regular day-by-day schedules for all additional programs. The "Featurelog" will be corrected and enlarged each week until all available guaranteed features are covered.—EDITOR.

PROGRAM CLASSIFICATIONS

- | | |
|---------------------------|------------------------|
| 1. Comedy, Revue | 12. Military Bands |
| 2. Concert Orch. Solos | 13. Miscellany Musical |
| 4. Choral Music | 14. Musical Comedy |
| 5. Commentators | 15. News Broadcasts |
| 6. Dance Orchestras | 16. Religious Topics |
| 7. Dramatic Features | 17. Symphony, Opera |
| 8. Educat'n, Econ'mics | 18. Skits and Serials |
| 9. Farm Topics | 19. Sports |
| 10. Foreign Languages | 20. Special Subjects |
| 11. Literary, Poetry, Art | 21. Women's Interests |

1—Comedy, Revue

- | A. M. | Sunday |
|-------|---|
| 10:30 | BREAKFAST CLUB—Ken Niles and cast of artists in lively entertainment. KHJ-KFRC net. |
| P. M. | |
| 12:30 | SUNDAY SPECIAL—"Castle Cragmont," with Colonel Rod. "Song of Life," drama by Carlton E. Morse; Velvet Violin; Hazel Warner and Charles Runyan, organist. KPO-KFI and affiliated stations. |
| 2:00 | RAY PERKINS, M. C., "National Amateur Night." Lively patter and better amateurs. CBS net. |
| 3:30 | JOE PENNER—With Ozzie Nelson, Harriet Hilliard; dizzy sense and nonsense, with excellent music. NBC net. |
| 4:00 | MAJOR BOWES' AMATEUR HOUR—Variety with music. KPO-KFI net. |
| 4:00 | EDDIE CANTOR—Rubinoff, Ted Husing and Parkyakarkas. Diverting comedy, excellent music. CBS net (last broadcast until Fall). |
| 7:30 | JACK BENNY—Don Bestor's Orchestra, Frank Parker and Mary Livingstone. KPO-KFI & net. |
| P. M. | Monday |
| 2:00 | HAPPY-GO-LUCKY HOUR—Popular variety, daily Monday to Friday. CBS net. |
| 7:00 | FRANK WATANABE and Hon. Archie. Mon. to Fri. KNX. |
| 7:30 | KATE SMITH—and all-star revue. CBS net. |
| 8:00 | AL JOLSON—Guest artist; Jack Stanton and Peggy Gardner, vocalists and Victor Young's orchestra. NBC net. |
| 8:00 | BLUE MONDAY JAMBOREE—Harrison Holloway, m.c. Arnold Maguire, Claude Sweeten's Orchestra. Musical specialties and comedy patter. CBS net. |
| P. M. | Tuesday |
| 11:30 | COLUMBIA VARIETY HOUR—Orchestra and soloists. CBS net. |
| 5:30 | ED WYNN—Graham McNamee, Eddie Duchin's Orch., The Fire Chief, gags galore. NBC net. |
| 8:00 | BEN BERNIE and guest artists. NBC net. |
| p. m. | Wednesday |
| 5:30 | ADVENTURES OF GRACIE ALLEN—classic nonsense. Ferde Grofe's Orchestra. CBS net. |
| 6:00 | THE FAMILY HOTEL—Jack Pearl and Cliff Hall. CBS net. |
| 8:00 | TOWN HALL TONIGHT—Fred Allen, Portland Hoffa, Songsmith's Quartet, and Lennie Hayton's Orchestra. NBC net. |
| p. m. | Thursday |
| 4:00 | RUDY VALLEE HOUR—guests artists. Always a consistently good performance. NBC net. |
| 5:00 | SHOW BOAT—Dock this old favorite each week. Good comedy and music. NBC net. |
| 5:30 | WARING'S PENNSYLVANIANS—soloists, Glee Club and entertainers. CBS net. |
| 9:00 | MOBIL MAGAZINE—Music, news dramatizations and humor. with David Broekman's Orchestra. KHJ-KFRC and net. |

- | p. m. | Friday |
|-------|--|
| 5:00 | BEATRICE LILLIE—Cavaliers' quartet, Lee Perrin Orchestra. Fast comedy, excellent music. NBC net. |
| 5:30 | PHIL BAKER—Estella Jayne, Harry McNaughton, Leon Belasco's Orchestra. NBC net. |
| 5:00 | HOLLYWOOD HOTEL—Dick Powell, Louella Parsons, Raymond Paige's Orchestra and guest artists. CBS net. |
| 7:30 | CIRCUS NIGHT IN SILVERTOWN—Joe Cook E. A. Rolfe's Orchestra, Tim and Irene, comedians; Phil Ducey, Peg LaCentra and Lucy Monroe, vocalists. NBC net. |
| p. m. | Saturday |
| 7:00 | NATIONAL BARN DANCE—Novelty Orchestra, guest artists and comedians. The best of this type show. NBC net. |

2—Concert Orchestra, Solos

- | a. m. | Sunday |
|-------|---|
| 8:00 | MAJOR BOWES CAPITAL FAMILY—Orchestra, soloists, vocal trio. NBC net. |
| 8:30 | RADIO CITY MUSIC HALL—Concert from Radio City. Orchestra and soloists. KGO net. |
| p. m. | |
| 11:30 | PENTHOUSE SERENADE—Don Mario, tenor, Chas. Gaylor's Orchestra. NBC net. |
| 1:00 | SENTINEL'S SERENADE—Mme. Schumann-Heink, Joseph Koestner Orchestra, Edward Davies and ensemble. NBC net. |
| 1:30 | TONY WONS—With vocalists, orchestra and dramatic artists. KPO-KFI net. |
| 5:00 | MANHATTAN MERRY-GO-ROUND—Andy Sannella's Orchestra, with "Men About Town" trio and soloists. NBC net. |
| 5:30 | MUSICAL REVUE—Frank Munn, tenor; Vivienne Segal, soprano; Gus Haenschen's Orchestra. KPO-KFI net. |
| 8:00 | KCB's RADIO COLUMN—With Raymond Paige Orchestra. KHJ-KFRC & net. |
| 8:00 | SILKEN STRINGS—Chas. Previn Orchestra, Countess Olga Albani, soprano. NBC net. |
| 9:30 | SALON MODERNE—Claude Sweeten's Orch., Helene Hughes and Ronald Graham. CBS net. |
| P. M. | Monday |
| 3:00 | FEMININE FANCIES—The lighter side of feminine interests. Music and specialties, with Tom Breneman. Monday to Friday. CBS net. |
| 6:00 | CONTENTED PROGRAM—Morgan L. East-Orchestra, Lullaby Lady and vocalists. NBC net. |
| 7:30 | WM. DALY'S ORCHESTRA, with operatic guest star and chorus. NBC net. |
| p. m. | Tuesday |
| 5:00 | BING CROSBY. KFRC-KHJ net. |
| 6:00 | CARAVAN PROGRAM—Orchestra & soloists. CBS net. (Also Thursday 7:30.) |
| 6:30 | HEIDT'S BRIGADIERS—Horace Heidt's Orchestra. Glee Club and Radio Ramblers. CBS net. (Also Thursday.) |
| o. m. | Wednesday |
| 4:30 | BROADWAY VARIETIES—with Everett Marshall, Elizabeth Lennox and vocal ensemble. CBS net. |
| 5:00 | JOHN CHARLES THOMAS, baritone, with vocal ensemble and dramatic cast. NBC net. |
| P. M. | Thursday |
| 6:00 | PAUL WHITEMAN'S MUSIC HALL—Orchestra and entertainers with Helen Jepson, soprano; Lou Holtz, comedian. NBC net. |
| p. m. | Friday |
| 6:30 | PAUSE THAT REFRESHES—Frank Black's Orchestra, Chorus. Outstanding Music. NBC net. |

It's All In Fun

He Told It to the Marines

Roxy, who joined the Marines at the age of eighteen, was thrown in the guard house five hours after he enlisted, as the result of being on the winning end of a "friendly little argument." The veteran showman is famous today as an unusually kindly gentleman, but it was his boast during the seven years he was in the Marines that he never lost a fight.

Ψ

This Guest Always Welcome

Edgar Guest was accorded a reception befitting a movie star on his recent visit to New York. Guest smilingly commented that it took radio to discover him, after he had been a newspaperman for almost forty years.

Ψ

"Were you ever embarrassed?" a friend asked *Barry McKinley*. "I don't know what you'd call it," said Barry, "but I once patted a skunk."

Ψ

Ma Perkins went for her first airplane ride the other day, but says the only thing new she discovered was that her house needed shingling.

Ψ

"Why do doughnuts have holes?" asked Ray Sinatra of *Barry McKinley*. "I dough nut know," replied Barry McKinley to Ray Sinatra.

Ψ

Tonsorial Note

Gus Haenschcen was acting as master of ceremonies at a benefit. While a girl trio was singing Gust stepped into the wings. "You're next," he said to a singer who was leaning against some scenery. The singer took off his coat and vest, looked around absent-mindedly and asked: "Where's the barber?" — Earle Ferris.

If You're Up
Before 7 a. m.

Tune to the
"Morning Express"

Daily except Sunday, 6 to 7 a. m. Popular music with the correct time every three minutes.

KJBS

1070 KILOCYCLES

p.m.	Saturday
4:00	HIT PARADE—With Lennie Hayton's Orchestra. Gogo Delys, Kay Thompson; Johnny Murray, m.c. KPO-KFI and network.
5:00	RADIO CITY PARTY—John B. Kennedy, m.c. Frank Black's Orchestra. NBC net.
6:30	CALIFORNIA MELODIES, with David Broekman's Orchestra. KHJ-KFRC net.

4—Choral Music

A.M.	Sunday
8:00	SALT LAKE TABERNACLE—Famous choir and organ from Salt Lake City. CBS net.

5—Commentators

P.M.	Sunday
7:15	WALTER WINCHELL—Broadway's bad boy in latest gossip and forecasts. NBC net.
10:00	SAM HAYES—News flashes. Daily except Saturday. NBC net.

A.M.	Monday
1:00	FRIENDLY STREET—Philosophy, news of stage and screen personalities, music. Mon. to Fri. KQW.
3:00	RUSH HUGHES—The modern Marco Polo. Mon. to Fri. KPO, KOMO, KFI.
8:00	VOICE OF EXPERIENCE—Monday to Friday a. m.; Wednesday, 7:30 p. m. CBS net.
7:15	EDWIN C. HILL—The human side of the news. Also Wed. & Fri. CBS net.

P.M.	Wednesday
5:00	CAPT. BILL ROYLE—Epics of the Air; a new series. Also Friday. KJBS-KQW.
6:00	JIMMY FIDLER—Hollywood news and gossip. NBC net.

P.M.	Thursday
8:00	FLOYD GIBBONS, the Headline Hunter. NBC net.

P.M.	Saturday
2:00	FREDERICK WILLIAM WILE—Noted political writer from Washington. CBS net.
6:00	EAST BAY LABOR JOURNAL—Labor news, with James H. Quinn. KROW.

6—Dance Orchestras

P. M.	Sunday
6:00	WAYNE KING'S ORCHESTRA—Also Monday. CBS net.
10:00	DON BESTOR'S ORCHESTRA—(Also Tuesday to Saturday.) CBS net.
10:15	TOM COAKLEY'S ORCHESTRA. KPO.
11:00	HAPPY FELTON'S ORCHESTRA. KGO.

P. M.	Monday
10:00	RAY HERBECK'S ORCHESTRA—Also 8:30 p.m., Saturday. CBS net.
10:15	WILLIAMS-WALSH ORCHESTRA. KGO net. (KPO Tuesday 9:30); Thursday and Friday, 10; Saturday, 10:05.
11:00	HENRY BUSSE'S ORCHESTRA—Monday to Friday. NBC net.

P. M.	Tuesday
7:30	LEO REISMAN'S ORCHESTRA. NBC net.
10:15	TOM COAKLEY'S ORCHESTRA—Also Wednesday and Thursday. NBC net.

P. M.	Wednesday
6:30	RAY NOBLE'S ORCHESTRA. NBC net.

P. M.	Saturday
9:30	LET'S DANCE—With Kel Murray, Xavier Cugat, and Benny Goodman (3 hours). NBC net.

7—Dramatic Features

A.M.	Sunday
10:30	RADIO THEATRE—Radio dramas. Well staged dramatic bits. NBC net.

p.m.	Saturday
2:30	GRAND HOTEL—Drama with Anne Seymour and Don Ameche. An excellent dramatic serial. NBC net.
3:00	K-7. Spy story. KGO net.
8:30	ONE MAN'S FAMILY—Serial drama by Carlton E. Morse. NBC net.

P.M.	Monday
3:15	—STORIES OF THE BLACK CHAMBER—Spy drama (Wed. & Fri. also NBC net).
P.M.	Tuesday
8:30	—CALLING ALL CARS—Dramas of street and town. CBS net.
8:30	—DEATH VALLEY DAYS—The Old Ranger, Charles Marshall, singing cowboy, and others. Romantic California well presented. NBC net.
P.M.	Wednesday
4:00	—ONE MAN'S FAMILY (same episode as Sunday broadcast). NBC net.
5:00	—HEROES OF THE AIR. KJBS-KQW. Also Friday.
7:30	—"HOUSE OF GLASS"—drama by Gertrude Berg. NBC net.
A.M.	Thursday
7:45	—DISTINCTIVE DRAMAS—Popular themes. KFBK.
7:30	—WINNING THE WEST—Serial drama, "Days of '49." NBC net.
P.M.	Friday
4:30	—COURT OF HUMAN RELATIONS—True stories dramatized. CBS net.
6:00	—FIRST NIGHTER—Original drama with June Meredith, Don Ameche, Eric Sagerquist's Orchestra. NBC net.
9:00	—ENO CRIME CLUES—Spencer Dean mystery, with Edward Reese and John MacBryde. KGO.
9:15	—FRONT PAGE DRAMAS—World news dramatized. KROW.

8—Education—Economics

A.M.	Sunday
8:15	—WHAT HOME MEANS TO ME—Inspirational Feature. NBC net.
A.M.	Monday
9:30	—THE NEW WORLD—Educational Talks. NBC net.
10:30	—AMERICAN SCHOOL OF THE AIR. Monday to Friday. CBS net.
p.m.	
1:30	—OAKLAND PUBLIC SCHOOLS—Arthur Olsen, talks on adult education; musical features. Monday, Wednesday and Friday. KROW.
4:45	—UNIVERSITY OF THE AIR—Monday to Friday. CBS net.
A.M.	Tuesday
9:45	—P. T. A.—Events of Parent-Teachers. KERN
p.m.	
3:45	—CORRECT ENGLISH—Popular course by authority. CBS net.
3:45	—YOU AND YOUR GOVERNMENT—Popular Political Economy. NBC net.
6:45	—VOICE OF THE CRUSADERS—Talks on Americanism and current problems. Also Thursday. CBS net.
9:30	—UNIVERSITY EXPLORER. CBS net.
P.M.	Wednesday
12:00	—NATIONAL STUDENT FEDERATION. CBS net.
2:00	—EDUCATION IN THE NEWS. KGO, KDYL
A.M.	Thursday
11:00	—STANDARD SCHOOL BROADCAST—Popular subject for students in schools; Mary Garden, commentator. NBC net.
P.M.	Saturday
1:30	—OUR AMERICAN SCHOOLS—Topical discussions on education. NBC net.
2:45	—THE MASTER BUILDER—The Government activities in this field. NBC net.
3:15	—AMERICAN PROSPERITY AND WORLD TRADE. KGO net.

9—Farm Topics

p.m.	Monday
12:00	—FARM & RANCH—Sacramento County Farm advisor; farming, home science and general topics. Monday to Friday. KFBK.
12:15	—WESTERN FARM AND HOME HOUR—Special farm and ranch interests of West Coast. Monday to Friday. NBC net.
12:15	—CALIFORNIA FARM PROGRAM—Daily report of produce market. Daily KROW.
12:30	—MARKET PRICES—Federal and State, covering Fruit, Vegetables, Livestock, etc. Monday to Saturday. KQW.

Tony and Gus Make Debut

From a spontaneous bit of clowning between two old friends at a Connecticut House Party to a nation-wide radio feature—that is the story of the evolution of Tony and Gus, the five-a-week series of dramatic sketches which Mario Chamlee, famous operatic tenor, and George Frame Brown, noted radio actor and author, will open on an NBC nation-wide network Monday, April 29, at 7:15 p. m., P. S. T.

Last summer, while vacationing in Connecticut, Brown amused himself by perfecting a Swedish-American idiom. On meeting his old friend Chamlee at a party, he greeted him in dialect. The tenor, gesticulating dramatically, replied with a rapid fire of Italian dialect. One remark led to another and soon the two friends were surrounded by laughing spectators.

Wickersham "On the Spot"

Harry Wickersham, KJBS production manager, was selected last week by Rush Hughes to substitute for him on his "Langendorf Pictorial," heard on NBC. Rush was called east for an important audition and selected Wickersham because of his dynamic microphone style. Wickersham, who writes, produces, announces and operates at KJBS showed his versatility by stepping right into the difficult spot and carrying on as though it were his regular daily chore.

Latin-American Music

Sparkling rhythms and the warmth and gaiety of Latin American countries are the keynotes of Marcel Ventura's program over KNX. "The Singing Troubadour," accompanied by Ramon Littee's Argentine orchestra, features songs of the Latin American countries. Ventura, star of the former "Continental Cafe" show, sings in the native dialect of the various countries, and is heard every Monday and Friday at 8:30 p. m.

If You Get Up
After 7 a. m.
 You'll like **FRANK COPE**
 and his
Alarm Klok Klub

Daily except Sunday, 7 to 8 a. m. Correct time, Weather Reports, Popular Music in an entertaining manner.

KJBS
 1070 KILOCYCLES

The Radio Tattler

• • • Armand Girard, NBC basso from the West Coast, says friendship may force him to take a larger house in the suburbs. If all his California friends mean what they say in their letters he will have thirty-four of them visiting him this spring!

• • • John B. Kennedy, NBC commentator, has been narrator for a series of Warner Brothers historical shorts for almost a year. He previews them at the motion picture studio, of course, but, up until a few days ago, had never seen one in a regular theater. When he noticed one of his productions advertised at a Broadway theater, Kennedy went in, sat through a dull picture and waited for his short. Finally it flashed on the screen and then—silence. Not a word came forth. The sound track had gone out. The crowd hooted and howled, but Kennedy sneaked from the theater, his day ruined.

• • • Anne Seymour, star of the Grand Hotel program, was dismissed from the first dramatic school she attended with the advice that she try teaching or some occupation other than acting. Anne immediately entered another school, won a scholarship and eighteen months later made her debut on Broadway.

• • • Jan Garber is no set-up physically despite his small stature. The maestro keeps fit by working out daily in his apartment with a professional trainer as his sparring partner. They box and scuffle for at least an hour, and the trainer admits he has his hands full when the band leader begins to throw lefts and rights in fox trot time.

• • • Three elements contribute in making the mid-week presentation of "Raymond Paige and K. C. B." a pleasingly different program with wide appeal. For one, the music of Paige and his All-String Symphony. K. C. B. also is different. His is the happy facility (rarely captured by writers) of telling an intensely interesting story in few words. Unusual, too, is this man who has counted presidents and governors as his friends, in that he finds his "vignettes of life" in the experience of the man in the street and the young couple next door.

"How do I like radio work? Did you say 'work'?" counters K. C. B. "I'd call it play, and a lot of fun."

• • • Ed Wynn likes to hear Cameron Andrews give imitations of him. Says he can learn a few things about himself. Cameron Andrews is the youth who emulated the fire chief during a recent broadcast of Captain

6:00—STATE DEPT. AGRICULTURE—From KQW studio in Sacramento. Monday to Friday.
6:15—MARKET REPORTS—Eastern prices. Live-stock quotations. Monday to Friday. KQW.
7:30—FROST WARNING—for Northern California. Also 7:45, Monday to Saturday. KQW.
8:00—U. S. FROST FORECAST and Farm Service. Daily except Sunday. KMED.

a.m. **Friday**

9:30—NATIONAL FARM AND HOME HOUR—Reviews and discussions from various parts of the U. S. Also Saturday. NBC net.

10—Foreign Language Broadcasts

P.M. **Monday**

12:30—LATIN-AMERICAN PROGRAM — In Portuguese. Music, dramatic skits, with Arthur Avila and Celeste Santos. Daily KROW. Also Tuesday, Thursday, Saturday, 8 p. m.

7:15—L'ITALIA—Echoes of Italy in Italian. Monday and Friday. KROW. Also Tuesday, Thursday, Saturday, 8:30 p.m.

11—Literary—Poetry—Art

P. M. **Monday**

2:00—STORY HOUR—Reading of popular fiction by M. Scott Weakley. Daily KROW.

1:45—BETWEEN THE BOOKENDS—Also Tuesday, Wednesday, Thursday & Saturday. CBS net.

p.m. **Wednesday**

3:45—LIBERAL ARTS SERIES—Topical review on artistic subjects. KGO & net.

P.M. **Friday**

3:30—ART IN AMERICA — Current reviews and topics.

12—Military Bands

a.m. **Tuesday**

7:30—U. S. MARINE BAND—KGO, KDYL

10:05—ARMY BAND CONCERT. Also Wednesday at 7:30 a. m. NBC net.

a.m. **Thursday**

7:30—U. S. NAVY BAND. KPO-KDYL.

p.m.

12:15—SALVATION ARMY BAND. CBS net.

p.m. **Friday**

12:30—U. S. ARMY BAND. CBS net.

13—Miscellany Musical

P. M. **Sunday**

1:30—COLONEL GRANT—and his Texans. KERN.

2:00—MARJORIE LEE—Pianist and vocalist. KJBS-KQW.

2:30—SMILING ED MCCONNELL—Also Thursday, 9:45 a. m. CBS net.

4:30—ART FADDEN, pianist. KJBS-KQW.

a.m. **Monday**

4:00—FRAY & BRAGGIOTTI—pianists. CBS net.

6:30—LILAC TIME—With Night Singer. CBS net.

8:30—COMEDY STARS OF HOLLYWOOD—Biltmore Orchestra. Brown & Lavelle—guest star. Monday, Wednesday, Friday, KGO.

A. M. **Tuesday**

7:45—LEE S. ROBERTS—Also Thursday and Saturday. NBC.

P. M.

8:45—COMEDY STARS OF HOLLYWOOD — KERN.

P. M. **Wednesday**

3:00—STUDIO REVUE—The best auditions of the week. New soloist. KROW.

P. M.

Friday

8:30—EVENING MELODIES—with Gordon Grey. KFBK.

9:30—PICK AND PAT—One night stand minstrel boys with Joseph Bonime's Orchestra. KGO.

14—Musical Comedy

p.m. **Sunday**

6:00—THE GIBSON FAMILY — Original musical comedy. Vocalists, dramatic artists with Don Voorhees' Orchestra. NBC net.

P. M. Monday
 5:30—MUSIC AT THE HAYDNS—Musical drama by Otto Harbach, Al Goodman's Orchestra, vocalists. Story develops week by week. Favorite music. NBC net.

p. m. Tuesday
 6:00—BEAUTY BOX THEATRE — All-star production of best operettas and musical comedies. Noted singers and splendid orch. NBC net.

15—News Broadcasts

A. M. Sunday
 10:55—PRESS RADIO NEWS—News flashes. (Monday to Friday, 10:55 p. m.) KGO-KPO net. Saturday, KGO, 10:00 p. m. Saturday, KPO, 12:30 a. m.

A. M. Monday
 6:45—NEWS BROADCAST—In Portuguese, Monday to Saturday. KQW. News in English from 7:00 a.m.
 7:30—WEATHER FORECASTS—For seven western states, Monday to Saturday. KQW.
 8:00—FINANCIAL SERVICE—Daily from New York. NBC net.
 7:45—NEWS TOPICS—National and World Events. Daily except Sunday. KMED.

P. M.
 12:00—CHAMBER OF COMMERCE—News and community events. Daily except Sunday. KMED.
 6:30—NEWS—In Italian to 6:45; English, 7:00 to 7:15; Portuguese to 7:30. Monday to Saturday. KQW.

16—Religious Topics

A. M. Sunday
 8:15—CHRISTIAN SCIENCE READING—Monday to Saturday, 8:00 a. m. KYA.
 9:00—CHURCH OF THE AIR. CBS net.
 9:30—DR. DANIEL A. POLING—National Radio Youth Conference. Music and Vocalists. NBC
P. M.
 2:45—RAMBLINGS—Rabbi Norman M. Goldberg, travelogue, literary chat and current topics. KFBK.
 2:00—CATHOLIC HOUR—Very Rev. James M. Gillis. Father Finn and choir. NBC net.

a. m. Monday
 8:00—MORNING DEVOTIONS—Inspirational program daily except Sunday. KMED.

P. M. Tuesday
 2:15—MID-WEEK HYMN SING—KGO, KDYL

17—Symphony—Opera

p. m. Sunday
 11:00—NEW YORK PHILHARMONIC ORCHESTRA—Mass in D—Beethoven. Arturo Toscanini, conducting. Elizabeth Rethberg, soprano; Marion Telba, contralto; Giovanni Martinelli, tenor; Ezio Pinza, bass; chorus of Schola Cantorum. CBS net.
 12:00—RHYTHM SYMPHONY—Kansas City Philharmonic Orchestra. De Wolf Hopper, narrator. NBC net.
 5:00—DETROIT SYMPHONY—Victor Kolar. Popular light classics with guest singers and ensemble. CBS net.

p. m. Wednesday
 12:15—CURTIS INSTITUTE ORCH.—From Philadelphia. Popular symphonic works. CBS net.

p. m. Thursday
 8:15—SYMPHONY HOUR—Gaetano Merola, conductor. Mary Garden, commentator. NBC net.

18—Skits and Serials

a. m. Sunday
 10:00—LAZY DAN—Irving Kaufman in popular songs and patter. CBS net.

P. M.
 3:45—NEWSPAPER ADVENTURES—Dramatized true stories. KFBK.

7:00—WENDELL HALL—The veteran of the ukulele in popular songs and comedy. NBC net.

Henry's Show Boat, in which he also mirrored Baron Munchausen. Ed Wynn came as a guest—the first time he ever accorded that distinction to an imitator. He pronounced Andrews uncanny, "even to the simper."

Telephone Calls That Made History

Four outstanding telephone calls of the last year will be re-enacted during the American Telephone and Telegraph Company's 50th anniversary program on Sunday, April 28, over the Columbia nationwide network from 3 to 4 p. m., P. S. T. The calls are as follows:

1. Papa Dionne calling the Collander editor to ask if the price of a birth notice for quintuplets is the same as for one baby.
2. J. Edgar Hoover and Melvin Purvis in a phone talk which led to the death of Baby Face Nelson.
3. Sylvester Harris, Mississippi negro, call-President Roosevelt about his farm mortgage.
4. Brooklyn doctors calling Dr. Raymond Ditmars, Bronx Zoo reptile custodian for advice on a patient bitten by a Gila Monster. Columbia actors will re-enact calls.

* * *

World's Fair Straw Vote

Although San Franciscans will be asked to give their preference for the location of the proposed World's Fair during a referendum on May 2, KJBS is attempting to get an advance forecast of the selection by a straw vote. The balloting is being conducted by Ray Lewis during his twice-daily *City Editor* program. So far the vote is evenly divided between a mainland site and the site on Yerba Buena shoals.

* * *

It's a Boy at the Freebairn-Smiths

A special "news flash" from KNX studios recently announced the arrival at the Thomas Freebairn-Smiths of a husky six-pound boy. The new arrival has ginger-colored hair like his father and three-year-old brother, Ian Peers. The parents had decided on a name for the tiny Freebairn-Smith months ago, but circumstances alter cases. The name selected was "Margaret."

* * *

Air Exploits Dramatized

Lieutenant Frank Luke, called the "Arizona Balloon Buster," was one of America's greatest heroes. The story of Frank Luke's last flight will be dramatized by Captain Bill Royle, over KJBS-KQW, Wednesday, May 1, at 5 p. m.

Eddie Rickenbacher, who flew with Captain Bill Royle in France, and was known as America's "Ace of Aces," will be featured in the May 3 broadcast at the same hour.

Ether Jottings

Edwin C. Hill, through his sponsors, is giving away to American boys fifty all-expense trips to Washington. Hill was wrought up about the crime situation in the country, sold his sponsors on the idea that a trip to the Capital was the best citizenship education. Result: The contest.

Ruth Chatterton, before leaving for a five-week trip to Spain recently, signified her willingness to appear on The Lux Radio Theatre program as soon as possible after her return from Europe.

Lupe Velez promises that the next time she returns to New York for a broadcast she will bring Johnny Weissmuller, her famous husband. Lupe was able to get permission to come to New York this time only on the promise that she would not bring any evening gowns and keep away from parties. Look for Lupe on one of Al Jolson's Shell Chateau programs early in May.

Bob Lawrence, of Paul Whiteman's Kraft Music Hall troupe, has just replaced George Houston as a featured singer in Eddie Dowling's revue, "Thumbs Up," now playing on Broadway. Lawrence will continue to be heard in the Whiteman broadcasts every Thursday night.

Charlie Lung, multiple-voiced thespian of the air, chalks up another triumph . . . or is it? At any rate, he won the assignment to play the rôle of Herman, the dog, on the KHJ cost -to-coaster, "Burns and Allen." Fourteen other "human hounds" were auditioned. Charlie says he is tempted to do an "Arf, arf . . . hello, momma . . . arf, arf!"

Blue Monday Jamboree is now a coast-to-coaster. Same time, Monday evening at 9 o'clock, with Harrison Holliday as emcee, and Claude Sweeten, the Glee Club, Helene Hughes, Jean Ellington, Ronald Graham and Edna O'Keefe. Arnold Maguire is in charge of the chuckle department, aided by Rheba Haufawitz, Adhesive Pontoon, Mrs. Yiff Niff, Otto Glug and others.

Jean Paul King, who announces the "Contented Hour" each Monday evening, always "coppers" horoscope readings. He makes it a point to enter upon contracts and sign important papers on dates the soothsayers hold to be "very unpropitious." "Over a period of years, the horoscope's 'bad days' have proved luckiest for me," declares the popular mikeman.

a. m.	Monday
7:45	MARY MARLIN—Monday to Friday. CBS net.
8:15	THE GUMPS—Andy and Min. Monday to Friday. CBS net.
8:30	FIVE STAR JONES—Monday to Friday. CBS net.
10:00	MARIE, LITTLE FRENCH PRINCESS—Monday to Friday. CBS net.
10:15	ROMANCE OF HELENE TRENT—Edna Wallace Hopper, Monday to Friday, CBS net
11:15	VIC AND SADE—Mon., Tues., Wed. and Fri. NBC net.
11:30	MA PERKINS—Monday to Friday. NBC net.
11:45	DREAMS COME TRUE — Barry McKinley, baritone. Also Wednesday and Thursday. NBC net.
p. m.	
12:00	BETTY AND BOB—Monday to Friday. NBC net.
3:45	"MR & MRS."—Starring Richard Le Grand & Georgia Fifeid (Wed. & Fri. also). CBS net.
2:45	THE DESERT KID—Monday, Wednesday, Friday, KGO, KDYL
4:00	OLD TIMERS—Monday to Thursday, also Friday, 4:30. KERN.
5:45	LITTLE ORPHAN ANNIE—Childhood Playlet. Monday to Friday. KGO.
6:45	AIR ADVENTURES OF JIMMY ALLEN—Monday to Friday. KGO.
7:00	PICK & PAT—Comedy with Josef Bonnine Orchestra. KDYL (Mt. time).
7:15	TONY AND GUS—Monday to Friday. NBC net.
7:30	THE IN-LAWS—With Hal Berger, Charlotte Woodruff, Dale Nash and Bill Boucher. Monday to Friday. KNX.
7:30	GOLD & SILVER—Tuesday, Thursday, Saturday. KROW.
7:00	AMOS 'N' AND—Mon. to Fri. NBC net.
8:15	SOLOMON & SULLIVAN—Friday. KROW.
8:45	LUM AND ABNER—Comedy sketch. Monday to Friday. KGO.

A. M.	Tuesday
9:30	15 MINUTES OF SUNSHINE—With Charley Hamp. Also Thursday. KNX.
P. M.	
1:45	BETTY MARLOWE—Also Thursday. NBC net.
A. M.	Wednesday
7:00	HONEYMOONERS—Grace and Eddie Albert. NBC net.
P. M.	
9:00	TRUE CONFESSIONS—Dramatizations, human interest stories. KFBK.
A. M.	Thursday
8:15	MERRY MACS—Contralto and male trio. NBC net.
P. M.	
1:45	MOVING STORIES OF LIFE—Dramatized stories with Barbara Luddy, Betty Ross Clark and John Gibson. KHJ, KMJ, KDB, KGB.
p. m.	Friday
8:45	NEWSPAPER ADVENTURES — Also Sunday. KERN.

19—Sports

p. m.	Monday
1:00	RACE WEEK AT CHURCHILL DOWNS. Monday, Wednesday, Thursday, Friday (Tuesday 12:45) CBS net.
6:45	TOM McMANUS—Kern Co. Memories. KERN.
P. M.	Friday
3:00	KENTUCKY DERBY. CBS net.

20—Special Subjects

P. M.	Tuesday
4:45	TIM HEALY'S STAMP CLUB—Also Wednesday and Thursday. KFRC.

21—Women's Interests

a. m.	Monday
9:45	NURSE OF THE AIR—Practical hints. KHJ-KFRC net.
11:00	WIFE BEGINS AT 11:00—Monday to Friday. KFRC net.

10:30—HOME ECONOMICS—Auspices U. S. Dept. of Agriculture. Monday to Saturday. KQW.
 11:15—YOUR HOSTESS. CBS net.
 P. M.
 2:00—MAGAZINE OF THE AIR—Various topics of special interest to women. Monday to Friday. NBC net.
 3:30—HOUSEWIFE'S PROTECTIVE LEAGUE—With Fletcher Wiley. Debunking false advertising claims. Monday to Friday. KNX.
 3:30—HOSTESS HI-LITES—Music and timely tips to hostesses and entertainers. Also Wednesday and Friday. KJBS-KQW.

Tuesday
 a.m.
 7:15—YOUR CHILD. NBC net.
 10:30—MARTHA MEADE—Hazel Warner, contralto. "Pot Luck with the Peters." Also Thursday. NBC net.

Wednesday
 a.m.
 8:45—MAGIC RECIPES—Jane Ellison, NBC net.
 9:45—BETTY CROCKER—The Cooking School feature. Also Friday, CBS net. (KOA 7:45, M. S. T.)

Friday
 a.m.
 11:30—FRANCES LEE BARTON—"Kitchen Party" with Warren Hull, m.c. Vocalists and piano duo. From New York. NBC net.

Lou Holtz was amazed, and pleased as a child with an unexpected new toy, to learn that his New York Hindu admirers have formed a "Maharajah club." The Maharajah sketch is the most popular of the hundred-and-one dialect tricks of the magician "My fran" Holtz. * * *

"Mickey of the Circus" changes day and time of broadcast beginning May 3, to Friday at 1:45 over CBS. Richard Himber is also on a new spot—Friday at 8:30 p. m. instead of Saturday. * * *

The Voice of Experience breakfasts on the juice of one-half lemon and a glass of hot water. * * *

The hippety-ho of Paul Whiteman and his orchestra is now being heard at the Paradise, Broadway night spot. A whopping big opening earlier this week brought out all manner of celebrities to cheer the genial maestro. His newest song proteges, Johnny Hauser and Durelle Alexander received a dozen encores.

**SEE THE NEW
 ALL WAVE SECTION**

*Starting in this issue of
 BROADCAST WEEKLY*

Conducted by JOHN D. CLARK
 President, Pacific Coast States Short
 Wave Club. . . See Pages 6 and 7)

When Bobby Benson, the CBS kid star, went to Hartford for a one-day personal appearance, an old practice of the nickelodeon days was, perforce, revived. The kids would not leave after seeing Bobby once; they wanted more. So the theater management had to turn on the lights and empty the house in order to let others in. * * *

Eddie Cantor leaves the airwaves until fall. His last broadcast will be on April 28. Myrt & Marge say aurevoir on April 26.

Gladys Swarthout in Hollywood

Gladys Swarthout's departure for Hollywood, where she will add movie stardom to her laurels in radio and opera, is now definitely set. The famous mezzo soprano is to report on the Paramount lot May 6, where she will play the title role in an elaborate musical production of "The Rose of the Rancho," a celebrated Belasco success, now being modernized and revised.

John Boles, singing star of pictures, is tentatively set to play opposite Miss Swarthout and Willie Howard, stage comedian, is also expected to be in the cast.

The story of "The Rose of the Rancho" is laid in California during the days of Spanish settlement.

During her summer in Hollywood Miss Swarthout will be heard from time to time on NBC networks as guest artist, and upon completion of her picture next fall she will return to The Voice of Firestone programs.

STATION DIRECTORY

• NBC Network Stations

Station	Location	Meters	Kcs.
KECA	Los Angeles	209.7	1430
KEX	Portland, Ore.	254.1	1190
KFT	Los Angeles	468.5	640
KFSD	San Diego	499.7	600
KGO	Oakland-San Francisco	379.5	790
KGW	Portland, Ore.	483.6	620
KHQ	Spokane, Wash.	508.2	590
KJR	Seattle, Wash.	309.1	970
KOA	Denver, Colo.	361.2	830
KOMO	Seattle, Wash.	325.9	920
KPO	San Francisco	440.9	680
KYA	San Francisco	243.8	1230

★ CBS Network Stations

KFRC	San Francisco	491.5	610
KGB	San Diego, Calif.	235.4	1330
KHJ	Los Angeles	333.1	900
KOIN	Portland, Ore.	319.0	940
KOI	Seattle, Wash.	236.1	1270
KSL	Salt Lake City	265.3	1130
KVI	Tacoma, Wash.	526	570

Independent Stations

KFOX	Long Beach, Calif.	239.9	1250
KFVB	Hollywood, Calif.	315.6	950
KGDM	Stockton, Calif.	272.6	1100
KGGC	San Francisco	211.1	1420
KJBS	San Francisco	280.2	1070
KLX	Oakland, Calif.	340.7	880
KNX	Los Angeles	285.5	1050
KQW	San Jose, Calif.	296.6	1010
KROW	Oakland, Calif.	322.4	930
KTAB	Oakland-San Francisco	535.4	580

PROGRAMS for SUNDAY . . . April 28

7:00 to 7:30 A. M.

* KFRC & netwk—Church of the Air
KNX—Breakfast Club
KFOX—El Despertador

7:30 to 8:00 A. M.

* KFRC & netwk—Patterns in Harmony; 7:45, Between the Bookends
KSL—Tabernacle Choir and Organ, to 8:30

8:00 to 8:30 A. M.

• KPO & net—Major Bowes Family; 8:15, What Home Means to Me
KGO—Electrical Transcription
KYA—8:15, Christ, Science Reading
KROW—Commuters Clock
KJBS—Close Harmony
* KFRC & net—Salt Lake Tabernacle Choir and Organ
KEX—Sacred Music; 8:15 Concert
KVI—Temple Baptist Church
KNX—Popular Concert
KFI—Church Quarter Hour to 8:15
KFOX—Percy and His Father; 8:15, Examiner Comics
KOA—8:15, "What a Home Means to Me"

8:30 to 9:00 A. M.

• KPO & net—Radio City Music Hall of the Air
KYA—Science; Sabbath Hymns
KTAB—Sunrise Symphony
KROW—Swedish Meditations
KGDM—Chapel
KVI—Radio Gospel League
* KFRC & net—Romany Trail; 8:45 Spring Festival from Florence, Italy

KHQ—Gus Mack

KFWB—Funny Paper Man
KNX—Associated Entertainers

9:00 to 9:30 A. M.

• KPO & net—Music Hall
KGO—Bobbie Rockwell, comics
KYA—"Fellowship of the Air"
9:15, Funny Paper Man to 10:15
KTAB—Seventh Day Adventists
KJBS—Popular Hits; vocalist
KGGC—Band Concert
KQW—Organ Melodies
KGDM—The Bondons
* KFRC & net—Church of the Air
KJR—Early Echoes; Irish Minstrel
KNX—Hindu Philosophy

9:30 to 10:00 A. M.

• KPO & network—National Youth Radio Conference
KGO—Electrical Transcriptions
KTAB—Seventh Day Adventists
KJBS—Dance Orchestra; Melodies
KGDM—Watch Tower Program
KQW—Funnies; Music
KGGC—Metro Melodies
KFRC—Garden Guide to 9:45
* KFRC & net—He, She and They
KOL—Democratic Talk to 9:45
KFI—Truth About Real Estate; 9:45 Dr. Casselberry
KNX—Judge Rutherford
KECA—9:45, Talk by Skipper Irvine
KSL—Bible Students
KOA—University of Colorado

10:00 to 10:30 A. M.

• KPO & net—Words to the Wise; 10:15, Henri Deering, pianist
KYA—Funny Paper Man; 10:15, Band Concert
KTAB—Tenth Ave. Baptist Church
KROW—Oakland Bible Center
KGGC—Melodies; Popular Concert
KGDM—Echoes of the Nineties
KQW—Salon Orchestra; 10:15, Baptist Church
* KKFC & net—Lazy Dan, Minstrel Man
KNX—Health Talk; Melody Time
KECA—Maurice Zam, pianist

NORTHERN CALIFORNIA BROADCASTING STATIONS

(Position on Dial—Kilocycles)

KTAB 560

580 KMJ

KFRC 610

680 KPO

KTRB 740

790 KGO

KLX 880

930 KROW

KQW 1010

1070 KJBS

KGDM 1100

1200 KWG

KIEM 1210

1230 KYA

KFBK 1310

1370 KRE

KOH 1380

1420 KGGC

KLS 1440

KFOX—Sunday School; Beauty talk
KGB—The Breakfast Club

10:30 to 11:00 A. M.

• KPO & net—Lux Theatre
KGO—Beaux Arts Trio
KYA—Matin Carollers
KROW—Salon Selections; Watchtower, Judge Rutherford
* KFRC & network—Breakfast Club
KVI—Eddie Dunstetter, Organist
KOLN—Eddie Dunstetter, Organist
KNX—Educ. Talk; Baptist Church
KFWB—"The Family Circle"

11:00 to 11:30 A. M.

• KPO & net—Lux Theatre
KGO—Beaux Arts Trio; 11:15, Harry Stanton, basso
KYA—Old St. Mary's Church
KROW—Musical Program
KJBS—Modern Melodies
KGDM—Baptist Church Services
* KFRC & net—N. Y. Philharmonic Orchestra
KNX—Temple Baptist Church
KFWB—Jean Leonard, pianist
KFOX—St. Luke's Church
KFSB—Jamie Erickson, Organist
KECA—First Unitarian Church to 12:30

11:30 to 12:00 Noon

• KPO & net—Penthouse Serenade
KGO—Electrical Transcription
KYA—Lead Kindly Light
KROW—Musical Comedy Revue
KGGC—Metro Melodies
KJBS—Dance Recordings; 11:45, Salon Orchestra
* KFRC & net—Symphony Orch.
KFOX—St. Luke's Church
KFSB—Organ Melodies

12:00 to 12:30 P. M.

• KPO & network—America's First Rhythm Symphony; De Wolf Hopper, narrator with 86 artists
KGO—Electrical Transcription
KYA—Organ; Accordion Trio
KROW—Music Box Requests
KJBS—Dance Orchestra
KGGC—Jewish Program
KQW—Church; 12:15, Opera Stars
KGDM—Portuguese Melodies
* KFRC & network—New York Philharmonic Symphony Orch.
KFWB—"Virginians"
KNX—Church; Concert Orchestra

12:30 to 1:00 P. M.

• KPO & network—Sperry Sunday Special; Drama and Music; Col. Rod, with a dramatic cast; vocalist, violinist and organ
KGO—Everybody Sing
KYA—Marche Parade
KTAB—Church Services; 12:45, Paul Halsinger, Evangelist
KLX—Finbarr Duffy, vocalist; Anita and Orosco, guitar duo
KQW—New and Old Tunes
* KFRC & net—Symphony
KJBS—Emil Baffa's Concert Orch.
KFOX—Keepsaks
KFWB—"Virginians"
KOA—Melody Master; "While the City Sleeps"

1:00 to 1:30 P. M.

• KPO & network—Sentinels Serenade; Mme. Schumann-Heink with Josef Koestner Orch. and vocalists
KGO—Sax Appeal
KYA—Waltz Time; Bargains
KTAB—Latter Day Saints
KLX—Manila Stringed Orchestra
KJBS—Dance Music
* KFRC & net—Hollywood Country Church
KNX—Emil Baffa's Orchestra
KFWB—G. Allison, talk
KFOX—News; Moods Musical
KSL—Sunday Players

1:30 to 2:00 P. M.

• KPO & network—The House by the Side of the Road; Tony Wons, vocalists, comedians, dramatic artists
KGO—Tally-Ho; Instrumentalists
KYA—Salon Melodies
KTAB—Animal Kingdom; 1:45, George Kruger, pianist
KLX—Baseball: Oaks vs. Seattle
KJBS—Popular Concert
KROW—American Legion News
KQW—Dance Music
KGDM—Lonesome Hoboe
* KFRC & net—To be announced; 1:45, Murray & Harris
KNX—L. Johnson, Cosmic Law
KECA—Conservatory of Music
KFWB—Baseball Game
KSL—Melody Parade; Ballad Time

2:00 to 2:30 P. M.

• KGO & net—Catholic Hour
KPO—Pair of Pianos
KYA—Symphony Highlights
KTAB—Ch. of Com. Watch Tower
KLX—Baseball Game
KROW—Symphony Concert
KQW—Marjorie Lee; 2:15, Vocal
KJBS—Marjorie Lee, pianist; Orch.
* KFRC & net—Nat'l Amateur Nite
KFI—Friendly Counselor; Judge Yankwich, talk
KNX—Exposition Park Concert
KFOX—Christian Science; 2:15, Coleman Cox (E. T.)
KFWB—Baseball to 4:30

2:30 to 3:00 P. M.

• KPO & network—Grand Hotel; Drama, with Anne Seymour and Don Ameche

KGO—Vagabonds Quartet
 KYA—Lost & Found; Light Opera
 KTAB—Romancing
 KLX—Baseball Game
 KROW—Zaragoza Spanish Sextette
 KGGC—Sunday School
 KGDM—Honolulu Serenader; Orch.
 KQW—Songs of Romance
 *KFRC & net—Smiling Ed McConnell; 2:45, Three Brown Bears
 KOL—2:45, Studio Musicale
 KVI—2:45, Judge Rutherford
 KOIN—Old Songs of the Church
 KNX—Exposition Park Concert
 KGB—2:45, Newspaper Adventure

3:00 to 3:30 P. M.

•KGO & net—K-7, Secret Service Spy Story
 KPO—Blue Moonlight; 3:15, Sarah Krienderl, violinist
 KYA—Lite Opera; Family Circle
 KTAB—Orchestra; 3:15, Debate
 KLX—Baseball Game
 KROW—Vesper Service to 4
 KJBS—Vocalist; Concert
 KGGC—Church Services
 KQW—Violinist; Musical Program
 KGDM—Orchestra; Piano Moderne
 *KFRC & net—A. T. and T. Celebration
 KGW—Nick's Flowers; Doumitts
 KHQ—Shrine of Beauty; 3:15, Covered Wagon
 KFI—Makers of History
 KFSD—Royal Brown, organist
 KOA—String Ensemble

3:30 to 4:00 P. M.

•KPO & net—Joe Penner, comedian; Harry Hilliard, vocalist; Ozzie New's Orchestra
 KGO—Sunday Concert
 KYA—Lite Opera; Children's Matinee
 KTAB—Debate; Health Lecture
 KLX—Baseball Game
 KQW—Catholic Quarter Hour; 3:45, Semi-Classic Instrumental
 KJBS—Dance Orchestra
 *KFRC & net—A. T. & T. Celebration
 KFRC—3:45, Knox Elec. Trans.
 KNX—Concert
 KFOX—3:45, Freddie Carter's Orch.
 KECA—Choir of Sixty Voices

4:00 to 4:30 P. M.

•KPO & netw—Major Bowes' Amateur Hour
 KGO—Sunday Concert
 KYA—Know Your Hebraics; 4:15, Norman Wilkie, baritone
 KTAB—Musical Program
 KLX—Baseball Game
 KROW—Recreation Singers
 KJBS—Musicale Styles
 KQW—Bible; 4:15, Semi-Classic
 KGDM—4:15, Ansel Roby & Gang
 *KFRC & net—Eddie Cantor
 KNX—Adventures in Literature; 4:45, Swam, Yogananda
 KFOX—Orchestra; News

4:30 to 5:00 P. M.

•KPO & net—Major Bowes
 KGO—Paul Carson, Organist
 KYA—S. F. Church Federation
 KTAB—Episcopal Radio Mission
 KLX—Baseball
 KROW—Dance Encores; Islanders
 KJBS—Musical Program
 KQW—Art Fadden, pianist
 KGDM—Ansel Roby and Gang
 KFRC—Congin to 4:45
 *KFRC & net—To be announced; 4:45, "Games of Melody"
 KOIN—Variety Hour to 4:45
 KVI—Drama to 4:45
 KNX—Dr. Martin Luther Thomas
 KECA—U. S. C. College of Music
 KFOX—Nazarene Church
 KFSD—Symphony Concert to 5:45
 KSL—Jack Armstrong to 4:45

5:00 to 5:30 P. M.

•KPO & netw—Manhattan Merry-Go-Round; Orch. and vocalists

KGO—Community Forum
 KYA—Concert Stars; Shut-In Circle
 KTAB—Chapel of Chimes to 6
 KLX—World Revue
 KROW—Theatre of the Air to 6
 KQW—Organ Melodies
 *KFRC & net—Ford Concert
 KNX—Ethel Hubler; Dr. Matthews
 KFOX—Hi Hilarities

5:30 to 6:00 P. M.

•KPO & netw—American Musical Revue; Frank Munn, tenor; Vivienne Segal, soprano; piano duo; violinist; orchestra
 KGO—Melodiana; Orch. & Vocalist
 KYA—5:45, Do You Remember
 KLX—Covered Wagon Jubilee
 KJBS—Popular Melodies
 KQW—Seventh Day Adventists
 KGDM—Lodi Octet
 *KFRC & net—Ford Concert
 KNX—Dr. John Matthews
 KECA—The Voice of Healing; 5:45, Lutheran Organization
 KFWB—Sunday Players
 KFSD—5:45, Farley's Rangers

6:00 to 6:30 P. M.

•KPO & network—Gibson Family; Original musical comedy
 KGO—Walter Kelsey, violinist; 6:15 Henry M. Hyde
 KYA—Rabbi Burstein; Music
 KTAB—Dinner Concert
 KLX—Mixed Quartet
 KROW—Campus Chronicle
 KQW—Hits of the Past; 6:15, American Family Robinson
 KJBS—Popular Melodies to 6:45
 *KFRC & network—Wayne King's Orchestra
 KFWB—News; Melodies of Eventide
 KNX—Calmon Luboviski & Claire Mellonto, recital
 KECA—News; Organ; Violinist
 KFOX—News; Talk; Drama
 KFSD—Web of Dreams

6:30 to 7:00 P. M.

•KPO & net—Gibson Family
 KGO—Palace Hotel Ensemble
 KYA—Music; Sonia Sapiro, pianist
 KTAB—Dinner Concert
 KLX—Ran Wilde's Orchestra
 KROW—Grace Herold Trio
 KQW—Radio Singing Stars
 *KFRC & net—Fray and Braggiotti; 6:45, Congressional Opinion
 KFWB—Musical Memories
 KNX—Rev. C. E. Fuller
 KFOX—School Kids to 6:45
 KECA—W. Tourtelotte, organist

7:00 to 7:30 P. M.

•KPO & net—Wendell Hall and his Ukulele; 7:15, Walter Winchell
 KGO—Personal Closeups, Artist interviewed by Gypsy; 7:15, Forty-five Minutes from Broadway
 KYA—Pianist; Drama
 KTAB—The Observer; 7:15, Crime and Narcotic Speaker
 KLX—Alice Blue; Variety Hour
 KROW—Music; Judge Rutherford
 KGGC—Italian News; Ch. Service
 KQW—Concert Orchestra
 *KFRC & net—Minute Melodies; Vivan Della Chiesa and Orchestra
 KNX—Rev. C. E. Fuller
 KFWB—Jack Joy's Orchestra
 KECA—Pierce Bros. Program
 KFOX—Jack Joy's Orchestra

7:30 to 8:00 P. M.

•KPO & network—Jack Benny and Artists; Don Bestor's Orchestra
 KGO—45 Minutes from Broadway
 KYA—Drama; 7:45, Louise Taber
 KTAB—Church Serv. Bapt. Church
 KLX—Variety; 7:45, William Don, eccentric comedian
 KROW—Oakland Bible Center
 KGGC—Church Service
 KQW—First Baptist Church Service
 KFWB—Sons of the Pioneers

*KFRC & net—Art Jarrett & Orch. 7:45, Strange as it Seems
 KNX—Religious Talk; 7:45, Judge Rutherford, religious talk
 KFOX—Boy Detective; Ballads
 KECA—Nick Harris Program to 7:45
 KSL—7:45, Mons. Duane G. Hunt

8:00 to 8:30 P. M.

•KPO & network—The Melodious Silken Strings, featuring Countess Olga Albani, soprano, and Chas. Prev'n's Orchestra
 KGO—Rudy Seiger's Orchestra
 KYA—Opera Recordings to 9:45
 KLX—Melodies; Iberian Quintet
 KROW—Sunday Evening Concert
 *KFRC & net—"KCB's Radio Column"; 8:15, Eric Madriguera's Orchestra
 KFRC—8:15, Beauty That Endures
 KOIN—Little Show; Comedy Stars
 KOL—Makers of Alaska; 8:15, Comedy Stars
 KNX—Presbyterian Church
 KFWB—Hi Jinks Amateur Show
 KFOX—Christian Science Church
 KECA—Irish Folk Songs to 8:15

8:30 to 9:00 P. M.

•KPO & netw—One Man's Family
 KGO—45 Minutes from Broadway; 8:45, Southern Harmony Four
 KLX—Hour of Melody
 KROW—Sunday Evening Concert
 KQW—Baptist Church Services
 *KFRC & netw—Beyond the Blue Horizon
 KECA—The Compinsky Trio
 KFWB—Carol Lofner's Orchestra
 KSL—L. D. S. Services

9:00 to 9:30 P. M.

•KPO & network—Program to be announced
 KGO—Political talk to 9:15
 KGO—Beaux Arts Trio
 KTAB—Church Services; Rod Hendrickson, Bits of Humor
 KLX—New Tunes; Pioneer Trail
 KROW—Foreign Watch Tower
 KQW—Organ Recital
 KJBS—Variety Program
 *KFRC & network—Orville Knapp's Orchestra
 KOL—9:15, Mary of the Gardens
 KVI—The Cadets to 9:15
 KHQ—Travel Talk to 9:15
 KFWB—Drama by Sara Langman
 KNX—News; 9:15, Religious talk
 KECA—News; 9:15, Pianist
 KFOX—Beverly Hillbillies
 KSL—The KSL Players

9:30 to 10:00 P. M.

KPO—To be announced
 •KGO & net—Reader's Guide
 KYA—Opera; 9:45, News; America
 KTAB—News; 9:35, Musicale
 KLX—News; Song Souvenirs
 KQW—"Home Again Hour"
 *KFRC & network—Salon Moderne
 KVI—Mary's Friendly Garden; News
 KOL—Orchestra; 9:45, News Flashes
 KOIN—Organ; Nikola Zan
 KFI—The Three Musketeers
 KNX—Dude Ranch
 KSL—Organ, Violin and Vocalist

10:00 to 10:30 P. M.

•KPO & network—Richfield Reporter; Sam Hayes
 KPO—10:15, Cockley's Orchestra
 KGO—John Teel, baritone
 •KGO & network—10:15, Paul Carson, organist
 KYA—Evening Concert
 KLX—Chinese Phantasies; Jess Stafford's Orchestra
 KJBS—Night Cap Revue to 12
 *KFRC & network—Don Bestor & Orchestra
 KVI—Radio Gospel League to 10:15
 KNX—Dude Ranch
 KFWB—News; Kings Men

KFOX—News; Do You Believe in Ghosts

KGB—News; Orchestra
KOA—Orange Lantern

10:30 to 11:00 P. M.

KPO—Tom Coakley's Orchestra
•KGO & network—Paul Carson organist, Bridge to Dreamland; 10:55, Press News Flashes
KYA—Drama
KTAB—Japanese American Society
KLX—Jess Stafford's Orchestra
*KFRC & network—Orville Knapp's Orchestra
KOMO—String Trio

KVI—Val Valenti's Orchestra
KFOX—News; Carol Lofner's Orch.
KFWB—Carol Lofner's Orchestra
KOA—Cosmopolitan Orchestra

11:00 to 11:30 P. M.

•KGO & net—Happy Felton's Orch.
KPO—News; Midnight Melodies
KFRC—Press-Radio News to 11:10
*KFRC & netwk—Les Hite's Orch.
KTAB—Dancesapations
KROW—Dance of the Hour
KVI—The Wanderer; 11:15, Cecil Teague and John Emmel
KOL—Wanderer; Piano Duo
KOIN—The Wanderer; Cecil Teague

and John Emmel, piano duo
KFWB—Bob Millar's Orchestra

11:30 to 12:00 Midnight

•KGO & net—Happy Felton's Orch.
KPO—Midnight Melodies; Organ
KTAB—Midnight Vagabond
*KFRC & netwk—Midnight Mood
KROW—Dance of the Hour
KOL—Rainbows End
KFWB—Carlos Shaw's Orchestra
KFOX—Freddie Carter's Orchestra
12:00 to Sign Off
KROW—Dance Party
KJBS—12:01, Owl Program to 7 a.m.

PROGRAMS for MONDAY . . . April 29

7:00 to 7:30 A. M.

•KPO & net—U. S. Navy Band
KYA—Musical Clock; Texans
KROW—Commuters Clock
KJBS—Alarm Klok Klub Program
KQW—The Breakfast Hour
KFRC—Breakfast with Bob Bence
KOL—Sunrise Express
KHQ—Morning News; Program
KFI—7:15, Louis Rueb, exercises
KNX—Bill Sharples, "Sharplesville"

7:30 to 8:00 A. M.

•KPO & net—U. S. Navy Band
KGO—Electrical Transcription
KTAB—The Texans
KGW—Ronald Buck, pianist
KFRC—Stocks; Bob Bence
*KFRC & net—7:45, Mary Marlin
KVI—Talk; Morning Varieties
KHQ—Economy Comments
KFI—Stocks; Health Exercises
KECA—Bible Fellowship; Records

8:00 to 8:30 A. M.

•KPO & network—Financial Service; 8:15, June, Joan and Jerl
KGO—Fields & Hall, comedy duo;
8:15, Elec. Transcription
KYA—Christian Science Reading;
8:15, Mr. & Mrs. Reader
KJBS—Popular Music; Contest
KQW—Morning Melodies; Varieties
KGDM—Serenade; 8:15, Records
*KFRC & netwk—Voice of Experience; 8:15, The Gumps
KVI—Wandering Cowboy to 8:15
KFI—Church; Airplane Man
KNX—Song Market; "Come and Get It"
KOA—8:15, Sweethearts of Melody

8:30 to 9:00 A. M.

•KPO & net—To be announced
KGO—Morning Eye-Opener
KYA—Morning Concert
KLX—Covered Wagon Jubilee
KQW—Melody Grab Bag
KGDM—News; 8:45, Health Talk
*KFRC & net—Fiv. Star Jones;
8:45, Nat'l Federation of Music Clubs
KVI—Wandering Cowboy to 8:45
KNX—Religious talk
KSL—8:45, Good Morning Judge
KOA—8:45, Marietta Vasconcelles

9:00 to 9:30 A. M.

•KPO & net—To be announced
KGO—Morning Eye-Opener
KTAB—Hour of Prayer
KROW—Concert Miniatures
KQW—Tuneful Topics
KGDM—Records; 9:15, Mabel Rubin
KJBS—Song Hits
*KFRC & net—Hollywood Country Church
KHQ—Early Birds; Gems of Remembrance
KNX—Health Talk; Whopper Club
KFSD—Good Cheer; Dr. McCoy



RITA LANE
Soprano—KPO

9:30 to 10:00 A. M.

•KPO & network—The New World, educational talks and music
KGO—Electrical Transcription
KYA—Lover's Lane; Waltz Time
KTAB—Health Talk, Dr. Thompson
KLX—Clinic of the Air
KROW—Diet and Health
KJBS—Light Classics
KGGC—Song Shop; Star of Today
KQW—Lite Classics
KGDM—News; Records
*KFRC & net—Jan Savitt and Orchestra; 9:45, Nurse of the Air
KVI—Mystic Melodies; Bus talk
KHQ—Walt & Marion; Roundup
KFI—Walkikians; 9:45, News
KNX—Concert; 9:45, News
KGB—News to 9:55
KFSD—Stock Reports to 9:45
KSL—Jennie Lee, stylist; to 9:45
KOA—Farm and Home Hour

10:00 to 10:30 A. M.

KGO—Press Radio News to 10:05
*KGO & network—10:05, Pair of Planos; Gertrude Lyne and Otto Clare
KPO—Menu Flashes; 10:15, News
KYA—Columbia on Parade; 10:15, The Prosperian, Barry Hopkins
KTAB—Old Friend; Cowboys
KLX—Clinic; Stocks; News
KROW—Rhythm Revue
KJBS—News; Orchestra
KGGC—The Fiesta

KQW—News; Old Tunes
*KFRC & network—Little French Princess; 10:15, Romance of Helen Trent

KVI—Musical Chatterbox to 10:15
KOL—10:15, News Flashes
KOIN—The Candy Party; 10:15, Jeannette Cramer
KFI—Ann Warner Chats
KNX—Eddie Albright's Family
KGB—To the Ladies
KFSD—News; Musical Grab Bag

10:30 to 11:00 A. M.

•KPO & net—To be announced
KGO—Musical Clock
KYA—Organ Recital
KTAB—Health Lecture; Music
KLX—International Kitchen
KROW—Hodge Podge; Larry Canelo
KJBS—Orchestra; Songs
KQW—Aunt Sammy Songs
KGDM—Records; Health Talk
*KFRC & netwk—Amer. School of the Air
KFRC—10:45, Ida Bailey Allen
KNX—Home Management; Radio Gossip Club
KOA—10:45, Livestock and Produce

11:00 to 11:30 A. M.

•KPO & net—Ted White, tenor; 11:15, Vic and Sade
KGO—Beaux Arts Trio
KYA—Organ recital
KTAB—Music; 11:15, News
KROW—Health talk; Spotlight
KGDM—Organ Recital
KQW—Popular Orchestra
*KFRC & network—Wife Begins; Your Hostess, Cobina Wright
KVI—The Observer; Health Talk
KOL—Cecil Solly; Morning Melodies
KOIN—Art Kirkham, This and That
KNX—Organ Recital
KECA—French Lessons; Records
KGB—To the Ladies

11:30 to 12:00 Noon

•KPO & net—Ma Perkins; 11:45, Vocational Agric.; Pianist
KGO—Beaux Arts Trio; 11:45, Agricultural Bulletin
KYA—Fashions; Harmonizing
KTAB—Echoes of Portugal
KLX—Anita & Orosco; Music
KROW—Concert Melodies
*KFRC & net—Your Hostess
KGGC—Mountain Music; Records
KGDM—Organ Recital
KQW—Vocalists; Theatre News
KNX—Notes in Rhyme; 11:45, Talk

12:00 to 12:30 P. M.

•KPO & net—Betty & Bob; 12:15, Western Farm and Home Farm and Home
KGO—Electrical Transcription
KYA—Scriptures; 12:03, Concert
KTAB—Echoes of Portugal
KROW—Records; Calif. Farm Prog.
KJBS—Accordionist; Contest

KGDM—Lorelei Strings; Records
 *KFRC & net—Better Home Con-
 vention of the Air
 KOI—The Carnival Hour
 KVI—12:15, Front Page Headlines
 KOIN—Radio Show; Meier & Frank
 KHQ—12:15, Organ Concert
 KNX—News; Drury Lane, tenor
 KECA—Records; 12:15, News

12:30 to 1:00 P. M.

*KPO & net—West. Farm & Home
 KGO—Electrical Transcription
 KYA—Noonday Concert
 KTAB—Musical Program
 KLX—Oklahoma Ramblers; Musical
 KROW—California Farm Hr.; Music
 KJBS—Orchestra; Walkathon
 KQW—Weather & Mkt. Reports
 *KFRC & net—Chicago Variety Hr.
 KGW—News; 12:45, Violinist
 KHQ—Organ to 12:45
 KNX—Concert Orchestra

1:00 to 1:30 P. M.

*KGO & net—Morin Sisters, vocal
 trio
 KGO—1:15, Did You Know; Edna
 Fischer, pianist
 KPO—Radio Reporter
 *KPO & net—1:15, Dudley Bros.,
 quartet
 KYA—Salon Melodies; Mel Peterson
 KTAB—Radio Frolic, Geo. Taylor
 KLX—1:15, Martha Lee, Economics
 KJBS—Stock Reports; Records
 KQW—Friendly Hour Chats & Music
 *KFRC & net—Race Week, Church-
 ill Downs; 1:15, Billy Mills Orch.
 KHQ—Business and Pleasure
 KOI—Julie Day to 1:15
 KOIN—1:15, Book of Life
 KFI—Fed. & State Mkt. Reports
 KNX—Pontrelli's Orchestra

1:30 to 2:00 P. M.

*KPO & net—Alice in Australasia;
 1:45, Rhythm Ramblers
 KGO—Ann Warner's Chat
 KYA—Barker Frivolities
 KTAB—Jean Kent
 KROW—Oak Schools; Ozark Bill
 KGDM—The World Today; Records
 KFRC—Stocks; Christian Science
 *KFRC & net—Billie Bailey and
 Norm Sherr; 1:45, Between the
 Bookends
 KHQ—News Album
 KOIN—Book of Life; Melodies
 KFI—Agnus White's Kitchen
 KNX—Pontrelli's Orchestra

2:00 to 2:30 P. M.

*KPO & net—Woman's Maga-
 zine of the Air
 KGO—William Walsh Orchestra
 KYA—Barker Frivolities
 KTAB—Globe Trotter; Songs
 KROW—Story Time
 KQW—Traffic Court
 KJBS—Popular Tunes
 *KFRC & net—Happy-Go-
 Lucky Hour
 KNX—The Bookworm
 KSL—Men of Notes

2:30 to 3:00 P. M.

*KPO & net—Woman's Magazine
 of the Air
 KGO—Organ Melodies; 2:35, Carol
 Deis, soprano; 2:45, The Desert
 Kid
 KYA—Lost and Found; Novelties
 KTAB—Educ. Prog.; Waltz Time
 KLX—Talks; 2:35, Stocks; 2:45,
 Opportunity Hour
 KROW—Dance Matinee
 KJBS—Events of Interest; Boots
 and his Vagabonds
 KGDM—The Romanciers
 *KFRC & net—Happy-Go-
 Lucky Hour; Between the Bookends
 KNX—Symphonies
 KSL—Three Brown Bears; Concert
 KOA—Alice in Australasia; 2:45,
 Rhythm Ramblers

3:00 to 3:30 P. M.

*KPO & network—Rush Hughes,
 Pictorial; 3:15, Stories of the
 Black Chamber
 KGO—Gould & Shefter, piano duo;
 3:15, Tune Types
 KYA—P. T. A. & Business talk
 KTAB—Two-Four Time; Serenade
 KROW—Dance Matinee
 KJBS—Songs of Hawaii
 KQW—Stock Reports; Music
 *KFRC & net—Famine Fancies
 KHQ—Club Bulletin to 3:15
 KOI—P. T. A. Program
 KNX—Orch.; 3:15, Entertainers
 KECA—Alexander Bevani; Records
 KSL—News; Junior Hour
 KOA—Cub Reporter; Stamp Club

3:30 to 4:00 P. M.

*KPO & net—Jones Boys; Negro
 Quintet
 KPO—3:45, Barbara Lee, Style talk
 KGO—Tune Types to 3:45
 *KGO—3:45, String Ensemble
 KYA—Art Lecture; 3:45, Commu-
 nity Chest Question Box
 KTAB—Royal Sophistication; 3:45,
 Hawaiian Music
 KLX—Carefree Capers
 KROW—Concert Gems; Recordings
 KQW—Hostess Hi-Lites
 KJBS—Hostess Highlights
 KFRC—Just Plain Bill
 *KFRC & net—Musical Nick
 Nacks; 3:45, "Mr. and Mrs." Skit
 KOIN—Newspaper of the Air; 3:45
 KHQ—Music; 3:45, Sylvia Gray
 KFI—Easy Aces; 3:45, Liberal Arts
 KNX—Housewives' Protective League
 KOA—Forty Niners; Big Top

4:00 to 4:30 P. M.

*KPO & net—To be announced
 KGO—Modern Women at Home;
 4:15, Beaux Arts Trio
 KYA—Old Songs; Cocktail Hour
 KLX—Records; 4:15, Brother Bob
 KROW—Waltz Time; Calif. Family
 KJBS—Dance Tunes; Contest
 *KFRC & net—Fray & Brag-
 giotti, piano duo; Songs of Old
 KHQ—Northwest on Parade
 KOIN—Newspaper of the Air
 KVI—Students Radio Playhouse
 KJR—Goodwill Society Talk; Music
 KNX—Haven of Rest
 KFI—Organ Recital

4:30 to 5:00 P. M.

*KGO & net—Meredith Willson's
 Orch. and vocalists
 KGO—Musical Grab Bag
 KPO—To be announced
 KYA—Cocktail Hour
 KTAB—Tanforan Feature Race;
 4:45, Jack Hall and artists
 KLX—Bro. Bob's Club; Health School
 KROW—Ted Williams; Health Talk
 KJBS—4:45, Aubrey Loux, pianist
 KQW—Story Time; 4:45, Songs of
 the Islands
 KGDM—Amer. Family Robinson
 KFRC—Recordings
 *KFRC & net—4:45, University of
 the Air
 KOIN—Bob and Dolly to 4:45
 KVI—4:45, Univ. of the Air
 KJR—Theatre Observer; Snapshots
 KFI—Organ Recital; 4:45, Plain Bill
 KNX—Popular Music; Gov. Inst.
 KSL—Jack Armstrong; 4:45, Or-
 phan Annie
 KOA—Musical Varieties

5:00 to 5:30 P. M.

*KPO & net—Five Cards; Vocal
 Trio; guitar, pianist
 KGO—Art Revue; 5:15, Dot King,
 contralto
 KYA—Uncle Harry; Music
 KTAB—E. L. Ditmer; Trevelyn
 Debonair
 KLX—Helen Parmelee, pianist
 KROW—Studio Varieties

KQW—Sunshine League
 *KFRC & network—Program to be
 announced
 KNX—Veleoro Ensemble
 KFOX—Music; 5:20, Cecil & Sally
 KECA—How Songs Grew; Story Hr.
 KSL—5:15, Tarzan of the Apes

5:30 to 6:00 P. M.

*KPO and network—Music at the
 Haydns
 KGO—Jack Armstrong; 5:45, Orphan
 Annie (Elec. Trans.)
 KYA—Sonny & Buddy; 5:45, Camp-
 bell Corner
 KLX—Covered Wagon Jubilee
 KROW—Eating Your Way to Health
 *KFRC & network—Briek Holton
 & Dick Aurandt; 5:45, Organ
 KGGC—Health Talk; Irish Gems
 KVI—5:45, Anderson & Padgett
 KOI—5:45, Robin Hood
 KOIN—5:45, Merry Men
 KNX—Son of Fire; Orphan Annie
 KFOX—News; 5:45, Garden Tips
 KECA—5:45, Flying Club
 KSL—The Big Show

6:00 to 6:30 P. M.

*KPO & net—Carnation Contented
 Prog.; Orchestra and Vocalists
 KGO—Dinner Concert
 KYA—Og, Son of Fire; Orchestra
 KLX—Arion Trio
 KROW—Headliners; Lorelei Mystery
 KJBS—The City Editor; Variety
 KGGC—Dinner Dance
 KQW—Dept. of Agriculture; Records
 *KFRC & net—Wayne King's Orch.
 KFWB—News; Records; Organ
 KNX—Jack Armstrong; 6:15, News
 KFOX—News; Ballads; Al & Molly
 KECA—Board of Education; News

6:30 to 7:00 P. M.

*KPO & net—Nat'l Radio Forum
 KGO—Safety First; 6:40, Air Ad-
 ventures of Jimmy Allen
 KYA—Cy Trobber's Orchestra
 KLX—Arion Trio
 KROW—Reporter; Herold Trio
 KJBS—Italian News to 6:45
 KGGC—Sports Page; Music
 KQW—Market Reports, Melodies
 *KFRC & net—Lilac Time with the
 Night Singer
 KFI—Music Masters; Chas. W. Hamp
 KNX—Lum & Abner; Jimmie Allen
 KFWB—Organ; 6:45, Jimmie Allen
 KECA—Liberal Arts Series; 6:45,
 Organ and Contralto
 KFOX—School Kids; Jimmie Allen

7:00 to 7:30 P. M.

*KPO & net—Amos 'n' Andy; 7:15,
 Tony and Gus
 KGO—United Citizens Progress
 League; 7:15, Musical Gragbag
 KYA—Sport Page; Studio Program
 KTAB—Italian News; Talk
 KLX—News; Helen Parmelee, pianist
 KROW—C. W. Hammond; L'Italia
 News
 KGGC—Good Gov. League; Music
 KQW—Weather; Voice of Portugal
 *KFRC & net—Four Aces; Claude
 Hopkins Orch; 7:15, Edw. C. Hill
 KNX—Watanabe & Archie; Rudy
 Wiedoeff, saxophone
 KFWB—Music; Pioneer Sons
 KECA—Organ and Vocalist
 KFOX—Eb and Zeb; 7:15, Bobby &
 Betty
 KFSB—Sonny and Buddy; Studio
 KSL—Comedy Stars to 7:15

7:30 to 8:00 P. M.

*KPO & net—Voice of Firestone
 KGO—Beaux Arts Trio
 KYA—Political Talk; Gold Rush
 Days
 KLX—Silver Strains; Anita and
 Orosco, guitarists
 KROW—Echoes of Italy
 KQW—Italian Radio Theatre
 KGGC—7:45, Jeanne Carole, vocalist

- ★KFRC & network—Kate Smith's New Star Revue
 KNX—In-Laws; King Cowboy
 KFVB—Today Down the Centuries, 7:45, Syncoptars
 KFOX—Boy Detective; Cheerio Boys
 KECA—Music; 7:45, Law Talk
- 8:00 to 8:30 P. M.
- KPO & network—Shell Chateau
 KGO—Stanford University; 8:15, John Teel, baritone
 KYA—Amateur Hour
 KLX—Song Market; Drama
 KGGC—Spanish-American Program
 KROW—Italian news and program
 KQW—S. J. State Debate
 ★KFRC & net—Blue Mon. Jamboree
 KNX—Laurence King, tenor
 KFVB—Jack Joy's Orchestra
 KFOX—Antique Shop; Drama
- 8:30 to 9:00 P. M.
- KPO & network—Shell Chateau
 KGO—Comedy Stars of Hollywood 8:45, Lum & Abner
 KTAB—Music; Talks
 KLX—Ann Wakefield, soprano; Musical Auction
 KROW—French Symphony; 8:45, Old-Fashioned Girl
 KQW—Joy Storm; Orchestra
 KGGC—We Salute; Mort Werner
 ★KFRC & net—Blue Mon. Jamboree
 KNX—Marcel Ventura, vocalist; 8:45, Townsend Plan talk
 KFVB—Henry Busse's Orchestra
- 9:00 to 9:30 P. M.
- KPO & net—Studebaker Champions, Richard Humber Orch.
 KGO—Marshall's Mavericks
 KYA—Amateur Hour
- KTAB—Nevada Nighthiders
 KLX—Faucet Theatre of Air Players
 KROW—Veterans of Foreign Wars
 KJBS—Variety Program
 KGGC—News; Organ; Drama
 ★KFRC & net—Program to be announced
 KNX—News; Beauty Talk
 KFVB—Jack Joy's Orchestra
 KFOX—Beverly Hillbillies
 KECA—News; 9:15, Orchestra
- 9:30 to 10:00 P. M.
- KPO & net—To be announced
 KGO—Reflections: Vocal and Instrumentalists
 KYA—Down by Herman's; 9:45, News; America
 KTAB—News; Music
 KLX—News; Freside Phantasies
 KROW—Veterans of Foreign Wars
 KGGC—Wyoming Cowboys
 ★KFRC & net—Program to be announced
 KVI—9:45, News Flashes
 KOL—9:45, Editorial Commentator;
 KNX—The Crocketts
- 10:00 to 10:30 P. M.
- KPO & network—The Richfield Reporter; 10:15, Mann's Orch.
 KGO—Cliff Nazarro, tenor; 10:15, Williams-Walsh Orchestra
 KYA—Concert Orchestra
 KROW—Royal Hawaiians; Records
 KJBS—Nite Cap Reue
 KGGC—Mort Werner's Open House
 ★KFRC & network—Ray Herbeck and Orchestra
 KGW—10:15, Dance Orchestra
 KNX—The Crocketts
 KFI—10:15, Hollywood Boulevardier
 KFVB—News; 10:15, Organ
 KECA—Fishing & Hunting Talk
- KFOX—News; Orchestra
 KGB—News; Political; Orchestra
 10:30 to 11:00 P. M.
- KPO & network—Mann Brothers' Orchestra; 10:55, News
 KGO—Williams-Walsh Orch.; News
 KYA—Orchestra
 KLX—Blue Reflections, Alice Blue
 ★KFRC & network—Dick Jurgens and Orchestra
 KNX—Russian Eagle Quartet; Pontrelli's Orchestra
 KFOX—News; Dance Orchestra
 KFVB—Carol Lofner's Orchestra
- 11:00 to 11:30 P. M.
- KGO & net—Henry Busse's Orch.
 KPO—Organ
 KYA—Sandman Organ
 KTAB—Danapations
 KROW—Dance of the Hour
 KFRC—News to 11:10
 ★KFRC & network—Hite's Orch.
 KOMO—Curtain Calls
 KNX—Pontrelli's Orchestra
 KFOX—Bob Millar's Orchestra
- 11:30 to 12:00 Midnight
- KGO & network—Biltmore Hotel Orchestra
 KPO—Organ Concert
 KYA—Organ Recital
 KTAB—Midnight Vagabond
 ★KFRC & net—Midnight Moods
 KOIN—Musicomedy
 KFVB—Carlos Shaw's Orchestra
 KFOX—Freddie Carter's Orchestra
- 12:00 to Sign Off
- KTAB—Midnight Vagabond
 KROW—Dancing Party
 KNX—Transpacific News to 12:15
 KJBS—12:01, Owl Prog. to 7 a.m.

PROGRAMS for TUESDAY... April 30

- 7:00 to 7:30 A. M.
- KPO & net—Pianist; 7:15, Your Child
 KYA—Musical Clock; Texans
 KTAB—Cuckoo Club
 KROW—Commuters Clock
 KJBS—Alarm Klok Klub
 KGD—News; 7:15, Records
 KFRC—Breakfast with Bob Bence
 KOL—Sunrise Express
 KVI—Radio Gospel League
 KHQ—Morning News to 7:15
 KFI—7:15, Louis Rueb, exercises
 KGB—Seven o'Clock Club
 KFSD—Early Birds; Pep & Ginger
 KOA—Galaxy of Stars to 7:15
- 7:30 to 8:00 A. M.
- KPO & net—Johnny O'Brien, harmonica; 7:45, Lee S. Roberts' Memory Box
 KGO—U. S. Marine Band
 KTAB—Texans
 KFI—The Breakfast Hour
 KFRC—Stocks; 7:35, Bob Bence
 ★KFRC & net—7:45, Mary Martin
 KVI—Morning Varieties to 7:45
 KFI—Stocks; Exercises to 7:45
 KNX—Sharplesville
 KECA—Bible Fellowship; Records
 KGB—Parson Roberts to 7:45
- 8:00 to 8:30 A. M.
- KPO & net—Financial Service; 8:15, To be announced
 KGO—Morning Eye-Opener
 KYA—Christian Science Reading; 8:15, Mr. and Mrs. Reader
 KVI—Records; N. Y. Stocks
 KJBS—Band Concert; Contest
 KQW—Morning Melodies; Varieties
 ★KFRC & net—Voice of Experience; 8:15, The Gumps
- KHQB—8:15, Market Basket
 KNX—John Brown; Tonic Tunes
 KFI—Church Quarter Hour to 8:15
 KOA—8:15, Sweethearts of Melody
- 8:30 to 9:00 A. M.
- KPO & net—To be announced
 KGO—Morning Eye-Opener
 KYA—Paraders; Melodies
 KLX—Covered Wagon Jubilee
 KROW—Melody Grab Bag
 KQW—Tuneful Topics
 ★KFRC & net—Five-Star Jones; 8:45, U. S. Navy Band
 KVI—The Cadets; Cowboy
 KFI—Waikikians; 8:45, Julia Hayes
 KNX—Religious Talk
 KSL—8:45, Mary & Bennie
- 9:00 to 9:30 A. M.
- KPO & net—To be announced
 KGO—Electrical Transcription
 KYA—9:15, Prudence Penny
 KROW—Health talk; Concert
 KGGC—Cal King; 9:15, Parade
 ★KFRC & net—Hollywood Country Church
 KHQ—9:15, Model Melodies
 KFI—Accordionist; Jean Abbey
 KNX—Health Talk; Melody Time
 KFSD—Good Cheer; Dr. McCoy
- 9:30 to 10:00 A. M.
- KPO—Sax Appeal; 9:45, Kitchen Sink Songs
 ●KGO & net—Pair of Planos
 KYA—Lovers Lane; Waltz Time
 KLX—Clinic of the Air
 KROW—Diet & Health
 KJBS—Songs of Romance; Classics
 KGGC—At the Song Shop
 KQW—Songs of Romance; Classics
 KGD—News Flashes to 9:45
- KFRC—Goodwill Industries to 9:35
 ★KFRC & net—Milton Charles, Organ
 KOL—Prudence Penny to 9:45
 KVI—Mystic Melodies; Dr. Burns
 KHQ—9:45, Street of Dreams
 KFI—9:45, News Release
 KNX—Charlie Hamp; 9:45, News
 KFSD—Stock Reports to 9:45
 KGB—9:45, News
 KSL—Jennie Lee; 9:45, Mary and John
 KOA—National Farm and Home
- 10:00 to 10:30 A. M.
- KGO & net—News; 10:05, Army Band
 KPO—Accordiana, Johnnie Toffoli; 10:15, News
 KYA—Waltz Time; 10:15, The Prosperian, Barry Hopkins
 KTAB—Old Friend; Wyo. Cowboys
 KLX—Song Market; Stocks; News
 KJBS—News; Dance Music
 KGGC—The Fiesta
 KQW—News; Old Tunes
 ★KFRC & net—Little French Princess; 10:15, Romance of Helen Trent
 KVI—10:15, The Observer
 KOIN—10:15, Songs for You
 KFI—Ann Warner Chats
 KOL—10:15, News Flashes
 KNX—Eddie Albright's Family
- 10:30 to 11:00 A. M.
- KPO & network—Martha Meade and Hazel Warner, contralto
 KGO—Musical Clock
 KYA—Organ Concert
 KVI—International Kitchen
 KROW—Hodge Podge; 10:45, Larry Canelo

KJBS—Dance Music; Salon Orch.
 KQW—Aunt Sammy; Hillbillies
 *KFRC & net—American School of
 the Air
 KNX—Mary Holmes; 10:45, Music
 KOA—Words & Music to 10:45

11:00 to 11:30 A. M.

*KPO & net—Crosscuts from the
 Log o' the Day; 11:15, Vic and
 Sade
 KGO—Beaux Arts Trio
 KYA—Organ Concert
 KLX—Anita & Orosco; Tonic Tunes
 KROW—Health Talk; Spotlight
 KJBS—Records; Medical Talk
 KGDM—Organ recital
 *KFRC & net—Wife Begins; 11:15,
 Tom Breneman
 KOL—Cecil Solly; Morning Melodies
 KOIN—Art Kirkham, This & That
 KHQ—Business and Pleasure
 KNX—Organ Recital
 KECA—County Medical Assoc. Talk
 KOA—C. A. C. to 11:15

11:30 to 12:00 Noon

*KPO & net—Ma Perkins; 11:45,
 Barry McKinley baritone
 KGO—Edna Fischer, pianist; 11:45,
 Agricultural Bulletin
 KYA—Organ; 11:45, Snapshots
 KTAB—Echoes of Portugal
 KLX—Margaret Reynolds; 11:45,
 Musical Scrapbook
 KROW—Concert Melodies
 KGGC—Mountain Music; Records
 KQW—Vocal Varieties; News
 *KFRC & net—Columbia Variety
 Hour
 KHQ—Organ Concert
 KNX—Spice of Life; Health Talk
 KECA—11:45, Talk on Concert Music

12:00 to 12:30 P. M.

*KPO & net—Betty & Bob; 12:15,
 Western Farm and Home Hour
 KYA—Scriptures; Noonday Concert
 KLX—Dance Music
 KROW—Music; 12:15, Farm Prog.
 KJBS—Popular Tunes; Contest
 *KFRC & net—Talk by President
 Dodge, Univ. of Beirut; 12:15,
 Poetic Strings
 KVI—12:15, Front Page Headlines
 KOL—The Carnival Hour
 KOIN—Radio Show to 12:15
 KHQ—12:15, Organ Concert
 KNX—News; 12:15, Negro Quartet
 KECA—12:15, News Releases
 KOA—Husk O'Hare Orchestra

12:30 to 1:00 P. M.

*KPO & net—Farm Hour
 KGO—Luncheon Concert
 KLX—Ramblers; Paths of Memory
 KROW—Latin American Program
 KQW—Weather; Market Reports
 *KFRC & net—Educ. Feature;
 12:45, Race Week at Churchill
 Downs
 KOL—Carnival Hour
 KGW—News; Pianist
 KHQ—Organ; Practical Hostess
 KNX—Emil Baffa's Orch.; 12:45,
 Venus Melody Masters
 KSL—12:45, State Agric. College

1:00 to 1:30 P. M.

KPO—News
 *KPO & net—1:15, Congress Speaks
 KGO—To be announced; 1:15, Dot
 Kay, contralto
 KYA—Women's Institute; Parade
 KLX—Recorder; 1:15, Martha Lee
 KJBS—Stock Reports; Song Hits
 KQW—Friendly Street
 KFRC—S. F. County Medical Socie-
 ty to 1:15
 *KFRC & net—Wyndham Lewis;
 1:20, Mayfair Melodies
 KOI—Julie Day to 1:15
 KOIN—1:15, Book of Life
 KNX—Orchestra and Quartet



EDDIE HOLDEN
 "Frank Watanabe"—KNX

1:30 to 2:00 P. M.

*KPO & net—Congress Speaks;
 1:45, Betty Marlowe
 KGO—Ann Warner's Chats
 KYA—Barker Frivolities
 KTAB—Jean Kent, economics
 KROW—Wade Forrester; Ross Love
 KFRC—N. Y. Stocks; 1:35, Christian
 Science News
 *KFRC & net—Billie Bailey and
 Norm Sherr; 1:45, Between the
 Bookends
 KHQ—News Album to 1:45
 KOIN—Book of Life; Melodies
 KNX—Pontrell's Orchestra; Quartet
 KFSD—Old-Time Program

2:00 to 2:30 P. M.

*KPO & network—Woman's Maga-
 zine of the Air to 3
 KGO—Talk by John R. Tunis; 2:15,
 Mid-Week Hymn Sing
 KYA—Barker Frivolities
 KTAB—Globe Trotter; popular songs
 KLX—Reds.; Jean Ardath, pianist
 KJBS—Better Business Talk; 2:15,
 Tango Orchestra
 KROW—Story Time
 KGDM—Serenader; News
 *KFRC & netw—Happy Go Lucky
 Hour
 KNX—The Bookworm

2:30 to 3:00 P. M.

KGO—Organ; Mary Small; Norman
 Nielson, vocalist
 KYA—Lost & Found; Rhythm Princes
 KLX—Baseball Game to 4:15
 KJBS—Events of Interest; Vaga-
 bonds
 *KFRC & network—Happy-Go-
 Lucky Hour

3:00 to 3:30 P. M.

*KPO & network—Pictorial, Rush
 Hughes to 3:15
 KPO—As Woman to Woman
 KGO—Three Scamps
 *KGO & net—3:15, Hall & Gruen,
 piano duo
 KYA—Rhythm Princes; 3:15, Man
 of Melody
 KTAB—Two-Four Time; Serenade
 KQW—Stocks; 3:05, Variety
 *KFRC & net—Feminine Fancies
 KHQ—Club Bulletin to 3:15
 KFI—3:15, Easy Aces
 KNX—Orchestra & Entertainers
 KECA—Story Teller to 3:15
 KFSD—Royal Brown, Organist
 KSL—Deseret News; Junior Hour

3:30 to 4:00 P. M.

KPO—Easy Aces; 3:45, Barbara Lee
 *KGO & net—Hits and Bits; 3:45,
 You and Your Government
 KYA—Symphony Sketches
 KTAB—Sophistication; Hawaiians
 KJBS—Musical Comedy selections;
 3:45, SERA Program
 KFRC—Just Plain Bill
 *KFRC & network—3:45, Correct
 English
 KVI—Melodies to 3:45
 KOIN—Newspaper of the Air
 KHQ—3:45, Sylvia Gray
 KFI—Easy Aces; Liberal Arts
 KNX—Housewives' Protective League
 KGB—Orchestra; 3:40, Along the
 Airways to 3:45
 KOA—Hits & Bits; Big Top

4:00 to 4:30 P. M.

*KGO & net—Musicalities
 KPO—Beaux Arts Trio
 KYA—Tea Dance
 KLX—4:15, Bob's Club
 KROW—Harmolin Time; Serenade
 KJBS—Music; Children's Contest
 *KFRC & net—Keith Beecher Orch.
 KVI—Students Radio Playhouse
 KOIN—Newspaper of the Air
 KFI—Organ Recital
 KECA—4:15, Talk on Health
 KNX—Haven of Rest
 KOA—"While the City Sleeps"; 4:15,
 Comedy Stars

4:30 to 5:00 P. M.

*KGO & net—Stringtime
 KPO—Beaux Arts Trio; News
 KYA—Music; 4:45, Greta Gahler
 KTAB—Tanforan Feature; Keep
 Smiling Revue
 KLX—Bro. Bob; Health School
 KROW—Dell Perry; Health Talk
 KJBS—Walkathon; Orchestra
 KQW—Story Time; 4:45, Songs
 of the Islands
 *KFRC & net—D'Artega's Orch.;
 4:45, Univ. of the Air
 KFRS—4:45, Stamp Club
 KOIN—Bob and Dolly; Miniatures
 KHQ—Radio Personalities to 4:45
 KVI—Three Brown Bears
 KFI—Organ Recital; Just Plain Bill
 KNX—Fire Dept. Program; U. S. C
 KFSD—Dr. McCoy; Farley's Rangers
 KSL—4:45, Orphan Annie
 KOA—Rendezvous of Melody

5:00 to 5:30 P. M.

*KPO & net—Red Trails
 KGO—The Well-Dressed Woman;
 5:15, Coquettes, vocal trio
 KYA—Uncle Harry; Music
 KLX—Helen Parmelee, pianist
 KROW—Studio Varieties
 KJBS—Dance Orchestra
 KQW—Airs of South America
 *KFRC & net—Bing Crosby with
 Guest Artists
 KFOX—5:20, Cecil and Sally
 KGW—5:15, Stamp Club
 KNX—USC Chorus; Notes in Rhyme

5:30 to 6:00 P. M.

*KPO & network—Ed Wynn, Gra-
 ham McNamee, Eddie Duchin's
 Orchestra
 KGO—Jack Armstrong; 5:45, Or-
 phan Annie
 KYA—Sonny & Buddy; Music
 KLX—Covered Wagon Jubilee
 KJBS—Dance Orchestra
 KGGC—Talk; 5:45, Irish Gems
 KQW—Popular Orchestra
 *KFRC & net—Hour of Charm
 KHQ—5:45, Capt. Tim Stamp Club
 KNX—Songs; 5:45, Orphan Annie
 KECA—Word Detective; 5:45, Fly-
 ing Club
 KFOX—News; Song Hits

6:00 to 6:30 P. M.

*KPO & network—Beauty Box The-
 atre of the Air; Operetta
 KGO—Dinner Concert

KYA—Cyrus Trobber's Orchestra
 KLX—Arlon Trio
 KROW—News; 6:15, Music
 KJBS—News; Popular Tunes
 KQW—Department of Agriculture
 *KFRC & net—Camel Caravan
 KNX—Jack Armstrong; News
 KECA—Children's Records; News
 KFWE—News; Music
 KFOX—News; Trio; Talk; Al & Molly

6:30 to 7:00 P. M.

*KPO & net—Beauty Box Theatre
 KGO—Review of Activities, S. F. Municipal Government
 Air Adventures of Jimmy Allen
 KYA—Cyrus Trobber's Orchestra
 KTAB—Music; Sports
 KLX—Arlon Trio
 KROW—Reporter; 6:45, Dr. Facci
 *KFRC—net—Horace Heidt's Orchestra; 6:45, Voice of the Crusaders
 KGGC—Sports; Music
 KQW—Mkt. Reports; Tango Time
 KFOX—School Kids; Jimmy Allen
 KFWE—B'nd Brith; Jimmy Allen
 KNX—Lum & Abner; Jimmy Allen
 KECA—Liberal Arts Series; Organ

7:00 to 7:30 P. M.

*KPO & network—Amos 'n' Andy; 7:15, Tony and Gus
 KGO—Melody Review
 KYA—Sport Page; Erin Echoes
 KTAB—Italian News; Orchestra
 KLX—News; Magic Harmony
 KROW—Questions; L'Italia News
 KGGC—Gov't League; Records
 KQW—Weather; Voice of Portugal
 *KFRC & net—Freddie Bergin's Orchestra
 KECA—Organ; Braille Institute
 KNX—Frank & Archie; Emil Baffa's Orchestra
 KFWE—Ray de O'Fan; Syncopators
 KFOX—Eb & Zeb; Bobby & Betty

7:30 to 8:00 P. M.

*KPO & network—Leo Reisman's Orchestra, Phil Duey, baritone
 KGO—Redwood Reveries; Beaux Arts Trio
 KYA—Echoes of Erin; Political Talk; Louise Taber, Gold Rush Days
 KLX—Merlyn Morse, tenor; music
 KROW—Skit; 7:45, Herold Trio
 KQW—Voice of Portugal; Orchestra
 KOIN—7:45, Jimmy Allen Adv.
 *KFRC & net—Art Jarrett's Orch.
 KOL—7:45, Radio Speaker Stevenson
 KVI—7:45, The Fact Finder
 KNX—The In-Laws; King Cowboy
 KFOX—Boy Detective; 7:45, The Audience Decides
 KFWE—Cubanettes; 7:45, Pioneers
 KECA—Musical Program
 KGB—7:45, Comedy Stars

8:00 to 8:30 P. M.

*KPO & network—Ben Bernie's Orchestra
 KGO—Beaux Trio; 8:15, California State Chamber of Comm. Program
 KYA—Old Singing Class
 KLX—World Revue
 KROW—Latin-American Program
 KQW—Know Your Gov't.; Music
 KGGC—Spanish-American Program
 *KFRC & net—Orville Knapp's Orchestra
 KOIN—8:15, Comedy Stars
 KOL—8:15, Comedy Stars
 KNX—Talk; Mona Lowe, songs
 KFWE—Jack Joy's Orchestra
 KSL—8:15, Musical Program

8:30 to 9:00 P. M.

*KPO & netwk—Death Valley Days
 KGO—To be announced; 8:45, Lum and Abner, comedy duo
 KYA—Tom Coakley's Orchestra; 8:45, Fiesta
 KROW—Italian Program
 KLX—Alice Blue, Piano Novelties; 8:45, Orchestra, Mort Werner
 KGGC—Concert; Mort Werner
 KQW—Scott Held's Orchestra
 *KFRC & netwk—Calling All Cars
 KOIN—Little Show Orchestra
 KOL—Bill Hogan's Orchestra
 KVI—Mr. Rex Roubush; Musical
 KNX—Operatic Encores
 KFWE—Henry Busse's Orchestra
 KECA—The Waikikians

9:00 to 9:30 P. M.

KGO—To be announced
 *KPO & net—Panfare; Orchestra
 KFO—Political Talk to 9:15
 KYA—Fiesta
 KTAB—Nevada Nighthanders
 KLX—Gospel Hymns, Quartet
 KROW—Italian Program; Pearl Tener
 KGGC—Orchestra
 KQW—Band Concert
 KJBS—Variety Program
 KFRC—Congoin Prog. to 9:15
 *KFRC & net—To be announced
 KOIN—Northwest Neighbors
 KVI—9:15, Otto Case, talk; News
 KNX—News; 9:15, Homer Canfield, baritone with Orchestra
 KQW—Eno Crime Clues
 KFOX—Evelyn Hillbillies to 10
 KECA—News; Occidental College Orchestra and soloists
 KGB—Melodious Melodies to 9:15

9:30 to 10:00 P. M.

*KPO & net—Williams-Walsh Orchestra; 9:45, Political Talk (KPO only)
 KGO—Herbert Waldman's Orchestra
 KYA—Fiesta; News; America
 KLX—News; California Rangers
 *KFRC & network—University Explorer

KQW—Royal Melodies
 KOL—9:45, Editorial; News
 KOIN—9:45, Sport Flashes
 KVI—Mary's Garden; News
 KNX—Pick and Pat (E. T.)
 KSL—9:45, Univ. of Utah
 KOA—Cosmopolitan Orchestra

10:00 to 10:30 P. M.

*KPO & network—Richfield Reporter; 10:15, Tom Coakley's Orch.
 KGO—Ricardo, violinist; 10:15, Happy Felton's Orchestra
 KYA—Drama
 KLX—Calif. Rangers; Jess Stafford's Orchestra
 KJBS—Nite Cap Revue
 *KFRC & net—Don Bestor's Orch.
 KGGC—Mort Werner's Open House
 KFWE—News; King's Men
 KFI—10:15, The Four Blackbirds
 KNX—The Crocketts to 10:45
 KFOX—News; Music
 KGB—News to 10:10

10:30 to 11:00 P. M.

*KPO & network—Tom Coakley's Orchestra; 10:55, Fressa-Radio News
 KGO—Orchestra; News
 KYA—Lyric Quartet; Arabesques
 KTAB—Musical Contrasts
 KLX—Jess Stafford's Orchestra; Alice Blue, Blue Reflections
 KROW—10:45, Halco Time
 *KFRC—To be announced
 KFWE—Carol Lofner's Orchestra
 KFOX—News; Carol Lofner's Orch.

11:00 to 11:30 P. M.

*KGO & network—Henry Busse's Orchestra
 KYA—Sandman Organ
 KTAB—Dancesapations
 KROW—Dance of the Hour
 KFRC—News to 11:10
 *KFRC & network—Dick Jurgen's Orchestra
 KOIN—Dance Orchestra
 KNX—Pontrelli's Orchestra
 KFOX—Bob Millar's Orchestra

11:30 to 12:00 Midnight

*KGO & network—Bart Woodyard's Orchestra
 KPO—Organ Concert
 KYA—Sandman Organ
 KTAB—Midnight Vagabond
 *KFRC & network—Les Hite's Orchestra
 KNX—Pontrelli's Orchestra
 KFWE—Dance Orchestra
 KFOX—Freddie Carter's Orchestra

12:00 to Sign Off

KTAB—Midnight Vagabond
 KROW—Dancing Party
 KNX—Transpacific News to 12:15
 KJBS—12:01, Owl program to 7 a.m.

PROGRAMS for WEDNESDAY . . . May 1

7:00 to 7:30 A. M.

*KPO & net—The Honeymooners; 7:15, Tony Wons' Scrapbook
 KYA—Musical Clock; Texans
 KTAB—Cuckoo Club; Stocks
 KROW—Commuters Clock
 KJBS—Alarm Kluck Klub
 KQW—The Breakfast Hour
 KGDM—7:15, Watchtower
 KFRC—Breakfast with Bob Bence
 KOL—Sunrise Express
 KHQ—News; Dental Hygiene
 KEX—Rev. Willard Pope
 KVI—Radio Gospel League
 KNX—Sharplesville
 KGB—Seven O'Clock Club
 KFSD—Early Birds; Pep & Ginger
 KSL—News; Broadcasters Review

7:30 to 8:00 A. M.

*KPO & net—U. S. Army Band; 7:45, To be announced
 KGO—Electrical Transcription
 KROW—Commuters Clock
 KFRC—N. Y. Stocks; Bob Bence
 *KFRC & net—7:45, Mary Marlin
 KOL—Sunrise Express
 KVI—Talk; Varieties to 7:45
 KGW—Ronald Buck
 KHQ—7:45, Economy Comments
 KFT—Stocks and Exercises to 7:45
 KGB—Seven o'Clock Club to 7:45
 KOA—7:45, Magic Recipes

8:00 to 8:30 A. M.

*KPO & net—Financial Service; 8:15, Merry Maccs

KGO—Fields & Hall, Elec. Trans.
 KYA—Christian Science Reading; 8:15, Mr. and Mrs. Reader
 KLX—Records; 8:20, Stocks
 KJBS—Concert; Children's Contest
 KQW—Morning Melodies; Varieties
 *KFRC & netwk—Voice of Experience; 8:15, The Gumps
 KFT—Church Quarter Hour to 8:15
 KNX—Playing the Song Market; 8:15, Come and Get It
 KECA—Recital Series to 9:30
 KFOX—Grain Reports; Song
 KOA—8:15, Sweethearts of Melody

8:30 to 9:00 A. M.

*KPO & net—To be announced; Magic Recipes

KGO—Morning Eye-Opener
 KYA—Morning Concert
 KLX—Covered Wagon Jubilee
 KROW—Halco; Melody Grab Bag
 KJBS—Dance Orchestra
 KQW—Morning Concert
 *KFRC & net—Five-Star Jones; 8:45, Story of a Thousand Dollars
 KVI—Cadets; 8:45, Wandering Cowboy
 KNX—Religious Talk

9:00 to 9:30 A. M.

*KPO & net—To be announced
 KTAB—Hour of Prayer
 KROW—Concert Miniatures
 KJBS—Popular Varieties; Records
 KQW—Tuneful Topics
 KGDM—Records; Mabel Rubin
 *KFRC & net—Hollywood Country Church
 KHQ—Early Birds; 15 Minutes of Sweetness
 KNX—Talk; The Whopper Club
 KFSD—Good Cheer; Dr. McCoy

9:30 to 10:00 A. M.

*KPO & net—Beaux Arts Trio
 KGO—Elec. Transcription; 9:45, Jean Abbey, Shop News
 KYA—Lover's Lane; Waltz Time
 KTAB—Health Talk
 KLX—Clinic of the Air
 KROW—Diet and Health
 KJBS—Light Classics
 KGGC—At the Song Shop; 9:45, Star of Today
 *KFRC & net—Eddie Dunstedter entertains; 9:45, Betty Crocker
 KOL—Prudence Penny to 9:45
 KQW—Lite Classics; Book Review
 KHQ—9:45, Roundup Time
 KVI—Mystic Melodies to 9:45
 KFI—Walkikians; 9:45, News
 KNX—Magic Harmony; 9:45, News
 KFSD—Stock Reports to 9:45
 KGB—News to 9:35
 KSL—Jennie Lee to 9:45
 KOA—National Farm & Home

10:00 to 10:30 A. M.

*KGO & net—News; John O'Brien; 10:15, So. Harmony Four
 KPO—Beaux Arts Trio; Radio Reporter
 KYA—Mirror of Fashion; 10:15, The Prosperian, Barry Hopkins
 KTAB—Old Friend; 10:15, Cowboys
 KLX—Songs; 10:15, Stocks; News
 KROW—Rhythm Revue
 KJBS—News; Organ
 KGGC—The Fiesta
 KQW—News; Old Tunes
 *KFRC & network—Little French Princess; 10:15, Helen Trent Romance
 KOL—10:15, News Flashes
 KVI—Musical Chatterbox to 10:15
 KOIN—Candy Party; Songs of You
 KNX—Eddie Albright's Family
 KFI—Ann Warner Chats
 KGB—To the Ladies

10:30 to 11:00 A. M.

*KPO & net—George Hessberger's Orchestra; 10:45, Words & Music
 KGO—Musical Clock
 KYA—Organ Concert
 KLX—International Kitchen
 KTAB—Health Talk; Homemakers
 KGGC—Theatre of the Air; Records
 KROW—Hodge Podge; Larry Canelo
 KJBS—Orch. Songs of Romance
 KQW—Aunt Sammy; Music
 KGDM—Music; Health Talk
 *KFRC & netwk—American School of the Air
 KOIN—Consumer News; This & That
 KFI—10:45, English Lesson
 KNX—Mary Holmes; 10:45, Radio Gossip Club

11:00 to 11:30 A. M.

*KPO & net—Samuel Barber, pianist; 11:15, Vic and Sade
 KGO—Edna Fischer, pianist; 11:15, Tally-Ho; instrumentalists



JENNISON PARKER
 Back on KFRC

KYA—Organ Concert
 KROW—Health Talk; Spotlight
 KJBS—Popular Tunes; Concert
 KGGC—Orchestra
 KGDM—Organ Recital
 KQW—Popular Orchestra
 *KFRC & net—Wife Begins; 11:15, Kate Smith's Matinee
 KFRC—11:15, Ida Bailey Allen
 KOL—Cecil Solly; Melodies
 KVI—11:15, The Observer
 KOIN—Art Kirkham, This and That
 KNX—Organ; Business Trends
 KECA—Pianist; Chinese Lesson

11:30 to 12:00 Noon

*KPO & net—Ma Perkins; 11:15, Barry McKinley, baritone
 KGO—Tally Ho; Did You Know; 11:45, Agric. Bulletin
 KYA—Columbia Parade; Music
 KTAB—Echoes of Portugal
 KLX—Anita and Orosco; Records
 KROW—Concert Melodies
 KGGC—Mountain Music
 KQW—Vocal and Theatre News
 *KFRC & net—Kate Smith's Matinee
 KJR—Rhythm Rulers
 KNX—Music; 11:45, Health Talk

12:00 to 12:30 P. M.

KGO—12:15, Luncheon Concert
 *KPO & net—Betty & Bob; 12:15, Western Farm and Home Hour
 KYA—Scriptures; 12:03, Concert
 KLX—Dance Music
 KROW—Records; Calif. Farm Program
 KJBS—Song Hits: Children's Contest
 KGDM—Gene Almy; Serenader
 KQW—Tunes; Walkashow
 *KFRC & network—National Student Federation; 12:15, Curtis Institute of Music
 KOIN—Radio Show; Meier & Frank
 KHQ—Organ Concert
 KOL—The Carnival Hour
 KVI—12:15, Front Page Headlines
 KNX—News; Venus Melody Masters
 KECA—Nuthouse Program; News

12:30 to 1:00 P. M.

*KPO & network—Western Farm and Home Hour
 KGO—Luncheon Concert
 KLX—Doc Shahan's Ramblers; Musical Auction
 KROW—Latin-American Program
 KQW—Market Reports

KGDM—Recorded Program
 *KFRC & net—Curtis Institute of Music
 KOL—The Carnival Hour
 KVI—News & Comment to 12:45
 KNX—Major League Baseball

1:00 to 1:30 P. M.

*KGO & net—Kay Foster, songs
 KGO—1:15, Dot Kay, contralto
 KPO—News
 *KPO & net—1:15, Grandpa Burton
 KYA—Musical Strings
 KTAB—Geo. Taylor, and artists
 KLX—Garden Tips; 1:15, Martha Lee
 KJBS—Stock Reports and Records
 KQW—Friendly Street
 *KFRC & network—Race Week at Churchill Downs; 1:15, Billy Mills and Orchestra
 KOIN—1:15, Book of Life
 KOL—Julie Day to 1:15
 KHQ—Business and Pleasure
 KFI—Fed. & St. Mkt. Reports, 1:15
 KNX—Baseball Broadcast
 KFSD—Ad Club Luncheon
 KOA—Theatre Reporter

1:30 to 2:00 P. M.

*KPO & net—James Wilkinson, baritone; 1:45, Versatillians' Orchestra
 KGO—Ann Warner's Chats
 KYA—Barker Frivolities
 KTAB—Jean Kent, Economic
 KLX—Music; Amer. Legion talk
 KROW—School Program
 KFRC—N. Y. Stocks; Christian Science News to 1:44
 *KFRC & net—Billie Bailey & Norm Sherr; 1:45, Between the Bookends
 KOIN—Book of Life; 1:45, Melodies
 KHQ—News Album to 1:45
 KFSD—Old Time Program

2:00 to 2:30 P. M.

*KPO & network—Woman's Magazine of the Air to 3:00
 KGO—Education
 KYA—Barker Frivolities
 KTAB—Globe Trotter; Talk
 KLX—Talk; Stocks; Baseball
 KROW—Watchtower Lecture
 KJBS—Mathew Brady; Records
 KQW—Dance Matinee
 KGDM—Records; News
 *KFRC & network—Happy Go Lucky Hour
 KOIN—Homemakers to 2:15
 KNX—The Bookworm
 KFWB—2:10, Baseball Game to 4:30
 KSL—Men of Notes; Talk

2:30 to 3:00 P. M.

KGO—James Wilkinson, baritone; 2:45, Versatillians Orchestra
 KYA—Lost & Found; 2:43, Baseball
 KLX—Baseball Game
 KJBS—Boots and Vagabonds
 KQW—Dance Melodies
 *KFRC & network—Happy Go Lucky Hour
 KNX—Modern Piano Music
 KSL—Parent-Teachers to 2:45

3:00 to 3:30 P. M.

*KPO & network—Pictorial with Rush Hughes; 3:15, Stories of Black Chamber
 KGO—Melodians; Instrumentalists
 KYA—Baseball
 KLX—Baseball Game to 4:15
 KJBS—Popular Melodies
 KQW—Stocks & Bonds; Variety
 KGDM—Records; Piano Melodies
 *KFRC & netwk—Feminine Fancies
 KHQ—Club Bulletin to 3:15
 KNX—Concert Orchestra; Varieties
 KECA—Raine Bennett to 3:15
 KFSD—Royal Brown, organist
 KSL—News; 3:15, Junior Hour

3:30 to 4:00 P. M.

KPO—Easy Aces; 3:45, Barbara Lee, style talk

• KGO & net—Ted White, tenor; 3:45, Liberal Arts Series
 KROW—Concert Gems
 KJBS—Hostess Hi-Lites
 KQW—Hostess Hi-Lites
 KFRC—Just Plain Bill to 3:45
 *KFRC & network—Musical Nick Nacks; 3:45, Mr. and Mrs. Skits
 KOI—The Three Professors to 3:45
 KHQ—3:45, Sylvia Gray
 KOIN—Newspaper of the Air, 3:45
 KFI—Easy Aces; 3:45, Liberal Arts Series
 KNX—Housewives' Protective League
 KGB—Orch.; Along Airways to 3:45
 KSL—Musical Program
 KOA—The Forty-niners; Big Top

4:00 to 4:30 P. M.

• KPO & netw—One Man's Family
 KGO—Beaux Arts Trio
 KROW—Waltzes; Russell Heath
 KLX—Baseball; 4:15, Bro. Bob's Club
 KJBS—Wilding Players; Music
 KQW—Drama; Popular Tunes
 *KFRC & net—D'Artega's Orch.
 KOIN—Newspaper of the Air
 KVI—Students Radio Playhouse
 KNX—Haven of Rest

4:30 to 5:00 P. M.

KPO—Cliff Nazarro, tenor; News
 • KGO & network—Just Around the Corner
 KYA—Baseball Game; 4:45, Melody Lady, Greta Gahler
 KTAB—Tanforan Feature Race; Keep Smiling Revue
 KLX—Bro. Bob's Club; 4:45, Health School
 KROW—Dell Perry; Health Talk
 KJBS—Children's Contest; Orch.
 KQW—Story Time; 4:45, Songs of the Islands
 KGDM—American Family Robinson
 *KFRC & net—Everett Marshall's Varieties
 KFRC—4:45, Healy's Stamp Club
 KOL—4:45, Marines Adventures
 KNX—Dr. Michelson, religious talk
 KFI—Cliff Nazarro, tenor; 4:45, Just Plain Bill
 KFWB—Popular Music
 KECA—Better Business Talk to 4:45
 KFSD—Dr. McCoy to 4:45
 KOA—Hollywood Comedy Stars to 4:45

5:00 to 5:30 P. M.

• KPO & network—John Charles Thomas, baritone, with dramatic cast orchestra & vocal ensemble
 KGO—Children's Hour; 5:15, To be announced
 KYA—Uncle Harry; Metropolitans
 KLX—Herb Kennedy; Jewel Box
 KROW—SERA Choral Ensemble
 KQW—Heroes of the Air
 KJBS—Heroes of the Air
 *KFRC & network—Program to be announced
 KOIN—Bob and Dolly to 5:15
 KNX—Fiction Favorites
 KFCA—Song Recital
 KFOX—Music; 5:20, Cecil & Sally
 KFWE—"Good Egg Club"; 5:15, Virginians
 KSL—5:15, Tarzan of the Apes

5:30 to 6:00 P. M.

• KPO & net—John Chas. Thomas; 5:45, Behind the Footlights
 KGO—Jack Armstrong; 5:45, Little Orphan Annie
 KTAB—Dr. Thompson, talk
 KYA—Sonny & Buddy; 5:45, Campbell Corner
 KLX—Covered Wagon Jubilee
 KROW—Eating Your Way to Health
 KGGC—Health Talk; Irish Gems
 KQW—Walk-a-Show; Orchestra
 *KFRC & net—Adventures of Grace
 KNX—Son of Fire; Orphan Annie
 KECA—5:45, Flying Club
 KFSD—Studio; Farley's Rangers

6:00 to 6:30 P. M.

• KPO & net—Jimmie Fidler, Hollywood Gossip; 6:15, To be ann'cd.
 KGO—Dinner Concert
 KYA—Og, Son of Fire; Concert
 KTAB—Concert; News
 KLX—Arton Trio to 7
 KROW—News; 6:15, Lorelei Mystery
 KJBS—City Editor; Dance Music
 KQW—California Department of Agriculture; 6:15, Mkt. Reports
 *KFRC & net—Family Hotel with Jack Pearl
 KFI—6:15, Chas. W. Hamp
 KNX—Jack Armstrong; News
 KFWB—News; Music; Organ
 KECA—Talk, Nat'l Parks; News
 KFOX—News; Ballads; Al & Molly

6:30 to 7:00 P. M.

• KPO & network—Ray Noble's Orchestra
 KGO—United Citizens Progress League; 6:45, Jimmy Allen, Air Adventures
 KYA—Cy Trobbs's Orchestra
 KTAB—Music; Sport Page
 KROW—Reporter; Congo
 KJBS—Italian News; Concert
 KGGC—Sport Page
 KQW—Globe Trotter; Melodies
 *KFRC & network—Norman Corndon, baritone
 KFWB—Oscar & Elmer; 6:45, Jimmie Allen
 KNX—Lum & Abner; 6:45, Jimmie Allen, Air Adventures
 KECA—Liberal Arts Series; Organ
 KFOX—School Kids; Jimmy Allen

7:00 to 7:30 P. M.

• KPO & net—Amos 'n' Andy; 7:15, Tony & Gus
 KGO—Singable Songs
 KYA—Sport Page; 7:15, Talk
 KTAB—Italian News; Orchestra
 KLX—News; 7:15, Silver Strains
 KROW—C. W. Hammond; L'Italia
 KJBS—Concert to 7:15
 KGGC—Good Gov't League; 7:15, Ruggerio Polosi
 KQW—Weather; Voice of Portugal
 *KFRC & net—"The Four Aces"; 7:05, Claude Hopkins Orch.; 7:15, Edw. C. Hill
 KFWE—Syncopators; Quartette
 KNX—Watanabe & Archie; Rudy Wedoefl, saxophone
 KFOX—Ebb & Zeb; Bobby & Betty
 KFSD—Jimmie Allen Adventures
 KSL—Comedy Stars to 7:15

7:30 to 8:00 P. M.

• KPO & net—"House of Glass"; Drama by Gertrude Berg
 KGO—Agriculture Today; 7:45, Californians on Parade
 KYA—Pipsqueak Pippins; 7:45, Gold Rush Days
 KTAB—7:45, Accordion Ensemble
 KLX—Manila Stringed Orchestra
 KROW—Arthur Nolan; Hawaiians
 KGGC—Between the Lines; Læbeth Baird, vocalist
 KQW—Voice of Portugal; Orchestra
 *KFRC & net—Voice of Experience; 7:45, "Strange As It Seems"
 KOIN—7:45, Jimmy Allen
 KJR—Carefree Capers
 KNX—In-Laws; 7:45, King Cowboy
 KFWE—Today down the Centuries; 7:45, Comedy Stars
 KECA—Opera Hour; Records
 KFOX—Boy Detective; Vocal Duet

8:00 to 8:30 P. M.

• KPO & net—Town Hall Tonight, with Fred Allen and artists
 KGO—Californians on Parade; 8:15, Political Talk
 KYA—Cy Trobbs's Orchestra
 KTAB—Seventh Day Adventists
 KLX—Rhythmic Reporters
 KROW—Educ. Program
 KGGC—Jewish Program
 KQW—Music of the Masters

*KFRC & net—KCB's Radio Column; 8:15, Art Jarrett & Orch.
 KNX—"Calling All Cars"
 KFWE—Musical Comedy
 KFOX—Antique Shop; Drama
 KSL—Organ and Friendly Philosopher

8:30 to 9:00 P. M.

• KPO & net—Town Hall
 KGO—Comedy Stars; 8:45, Lum & Abner
 KYA—Tom Coakley's Orch.; 8:45, San Francisco Quarter Hour
 KLX—Metropolitan Moods
 KROW—French Symphony; 8:45, Old-Fashioned Girl
 KGGC—We Salute; Mort Werner
 KQW—Music of the Masters
 *KFRC & net—Will Rychanek and Orchestra
 KFRC—8:45, Newspaper Ventures
 KOL—8:45, Comedy Capers
 KOIN—8:45, The Wanderer
 KHQ—Memories
 KNX—Beauty Talk; 8:45, Playing Your Own Accompaniment
 KFWE—Henry Busse's Orchestra
 KFOX—Henry Busse's Orchestra

9:00 to 9:30 P. M.

KGO—To be announced
 KPO—Spotlight Review; Political Talk
 KYA—Reminiscing; Comedy Caravan
 KTAB—Nevada Nighthiders
 KLX—Lee Baker; Souvenirs of Song
 KROW—Boxing Matches
 KJBS—Variety Program to 10
 KQW—Walk-a-show; Music
 KGGC—News; Organ; Orchestra
 KFRC—Congoing Program to 9:15
 *KFRC & net—To be announced
 KOIN—Little Show; Chas. Berg
 KVI—9:15, Otto Case, talks
 KHQ—Memories; Orogrande Romances
 KNX—News; Orchestra
 KECA—News; Junior College
 KFOX—Beverly Hillbillies
 KGB—True Confessions to 9:15
 KFWE—Jack Joy's Orchestra

9:30 to 10:00 P. M.

• KPO & net—Wandering Minstrel
 KGO—9:45, Political talk
 KGO—Program to be announced
 KYA—Comedy Caravan; 9:45, News
 KTAB—News; Musicale
 KLX—News; Fireside Phantasies
 KROW—Boxing Matches
 KGGC—Wyoming Cowboys
 KQW—Kirk of Sleepy Hollow
 *KFRC & netw—To be announced
 KVI—Mary's Garden; 9:45, News
 KOL—9:45, Editorial; News
 KOIN—Organ; Amer. Family Robinson
 KNX—Dude Ranch
 KFWE—Al Lyon's Orchestra
 KECA—Los Angeles Jr. College
 KSL—Federal Relief Speaker, 9:45

10:00 to 10:30 P. M.

• KPO & network—Richfield News
 Flashes; 10:15, Tom Coakley's Orchestra
 KPO—10:15, Spotlight Review
 KGO—Ricardo and his violin; 10:15, Happy Felton's Orchestra
 KYA—Supper Concert
 KTAB—Musical Program
 KLX—Talk, Nat'l Historical Areas; 10:15, Jess Stafford's Orchestra
 KROW—Boxing Matches
 KGGC—Mort Werner's Open House
 KJBS—Night-Cap Revue
 *KFRC & network—Don Bestor's Orchestra
 KVI—Lutheran Welfare Society
 KOIN—The Journal
 KNX—Dude Ranch
 KFWE—News; King's Men
 KFOX—News; 10:15, Music
 KGB—News to 10:10

10:30 to 11:00 P. M.

- KPO & network—Tom Coakley's Orch.; 10:55, Press-Radio News
- KGO—Orchestra; 10:55, News
- KYA—Voice of Erin; Organ
- KTAB—SERA Program
- KLX—Jess Stafford's Orch.; 10:45, Alice Blue, Blue Reflections
- KROW—Boxing Matches; Halco
- KGCC—Mort Werner's Open House
- * KFRC & net—To be announced
- KNX—String Quartet
- KFWB—Carol Lofner's Orchestra
- KFOX—News; Carol Lofner's Orch.
- KGB—News; Dance Orchestra

11:00 to 11:30 P. M.

- KGO & network—Henry Busse's Orchestra
- KPO—Home Sweet Home, Organ
- KYA—Sandman Organ
- KTAB—Dansapations
- KFRC—News to 11:10
- * KFRC & network—Dick Jurgen's Orchestra
- KNX—Pontrelli's Orchestra
- KFWB—Bob Millar's Orchestra
- KFOX—Bob Millar's Orchestra
- 11:30 to 12:00 Midnight
- KPO—Organ Concert

• KGO & network—Bart Woodyard's Orchestra

- KYA—Organ Recital
- KTAB—Midnight Vagabond
- KGDM—Fritz Wolcott's Orchestra
- * KFRC & network—Les Hite and Orchestra
- KHQ—Cotton Club Orchestra
- KNX—Pontrelli's Orchestra; News
- KFWB—Carlos Shaw's Orchestra

12:00 to Sign Off

- KTAB—Midnight Vagabond
- KROW—Dancing Party
- KJBS—12:01, Owl Program to 7 a. m.

PROGRAMS for THURSDAY.... May 2

7:00 to 7:30 A. M.

- KPO & net—To be announced; 7:15, House Detective
- KYA—Musical Clock; Texans
- KTAB—Cuckoo Club; Stocks
- KROW—Commuters Clock to 8:30
- KJBS—Alarm Klok Klub
- KQW—The Breakfast Hour
- KFRC—Breakfast with Bob Bence
- KOL—Sunrise Express
- KHQ—Morning News
- KGB—Seven O'Clock Club
- KFSD—Early Birds; Exercises

7:30 to 8:00 A. M.

- KPO & net—Johnny O'Brien, harmonica; 7:45, Lt. S. Roberts
- KGO—U. S. Navy Band
- KTAB—The Texans
- KFRC—Stocks; Bob Bence
- KGW—Ronald Buck to 7:45
- KVI—Varieties
- KOIN—Rhythms to 8:15
- KECA—Bible Fellowship; Records
- KGB—Seven o'Clock Club to 7:45

8:00 to 8:30 A. M.

- KPO & net—Financial Service; 8:15, Merry Macs
- KGO—Fields & Hall, songs; 8:15, Electrical Transcriptions
- KYA—Christian Science Reading; 8:15, Mr. and Mrs. Reader
- KLX—Recordings; 8:20, Stocks
- KJBS—Band Concert; Contest
- KQW—Morning Melodies; Varieties
- * KFRC & net—Voice of Experience; 8:15, The Gumps
- KFI—Church Quarter Hour to 8:15
- KNX—Entertainers; Tonic Tunes
- KOA—Fields & Hall; 8:15, Sweethearts of Melody

8:30 to 9:00 A. M.

- KPO & net—To be announced
- KGO—Morning Eye-Opener
- KYA—Morning Concert; Texans
- KLX—Covered Wagon Jubilee
- KROW—8:45, Melody Grab Bag
- KGDM—Records; 8:45, Health Talk
- * KFRC & netw—Five Star Jones; 8:45, Instrumentalists
- KVI—The Cadets; Wandering Cowboy
- KFI—Al Gayle, singing accordionist; 8:45, Julia Hayes
- KNX—Religious Talk
- KSL—8:45, Mary and Bennie
- KOA—Huffman Harmonies; Marietta Vasconcelles

9:00 to 9:30 A. M.

- KPO & net—To be announced
- KGO—Morning Eye-Opener
- KTAB—Hour of Prayer
- KROW—Talk; Concert Miniatures
- KGCC—Cal King; Parade; Bargains
- KQW—Tuneful Topics
- KGDM—Records; Mabel Rubin
- * KFRC & net—Hollywood Country Church



DIXIE MARSH
KYA Minstrels—Thursday, 8 p.m.

- KHQ—Early Birds
- KNX—Health Talk; Melody Time
- KFSD—Good Cheer; Dr. McCoy
- KOA—9:15, "The Candy Party"

9:30 to 10:00 A. M.

- KPO & net—Alvino Rey, guitarist
- KPO—9:45, Kitchen Sink Songs
- KGO—Electrical Transcriptions
- KYA—Lover's Lane; Waitz Time
- KTAB—Health Talk
- KLX—Clinic of the Air; Records
- KROW—Diet and Health
- KGCC—Popular Songs
- KJBS—Songs of Romance; Classics
- KGDM—Ncws; Clinic
- KQW—Songs of Romance; Classics
- * KFRC & netw—Cleo Brown, pianist; 9:45, Smilin' Ed McConnell
- KFRC—Better Business Bureau to 9:45
- KVI—Mystic Melodies to 9:45
- KOL—Prudence Penny to 9:45
- KFI—9:45, News Release
- KNX—Charlie Hamp; 9:45, News
- KECA—9:45, Edna Fischer, piano
- KFSD—Stock Reports; Pianist
- KGB—News and Music to 9:45
- KSL—Jennie Lee to 9:45
- KOA—Farm and Home

10:00 to 10:30 A. M.

- KGO & net—News; 10:05, Marshall's Mavericks
- KPO—Plano Vignettes; 10:15, News

KYA—Columbia on Parade; 10:15, The Prosperian, Barry Hopkins

- KTAB—Old Friend; Cowboys
- KLX—Song Market; Stocks; News
- KJBS—News; Organ
- KGCC—The Fiesta
- KQW—News; Old Tunes
- * KFRC & net—Little French Princess; 10:15, Romance of Helen Trent
- KOL—10:15, News Flashes
- KVI—10:15, The Observer
- KOIN—Songs for You
- KFI—Ann Warner Chats
- KNX—Eddie Albrigh's Family

10:30 to 11:00 A. M.

- KPO & network—Martha Meade and Hazel Warner
- KGO—Musical Clock
- KYA—Organ Concert to 11:30
- KTAB—Talk; The Browns (serial)
- KLX—International Kitchen
- KROW—Hodge Podge Larry Canelo
- KJBS—Vocalists; Orchestra
- KQW—Aunt Sammy; Tunes
- * KFRC & net—Amer. School of the Air
- KOL—News Flashes to 10:45
- KNX—Mary Holmes; Melody Race
- KOA—Words and Music; Rexall

11:00 to 11:30 A. M.

- KPO & network—Standard School
- KGO—Castles of Romance; 11:15, Pair of Pianos
- KYA—Organ Concert
- KLX—Anita & Orosco; Tonic Tunes
- KROW—Health Talk; Spotlight
- KGCC—11:15, Harlem Sketches
- * KFRC & net—Wife Begins; 11:15, Tom Breneman
- KOL—Cecil Solly; 11:15, Melodies
- KOIN—Consumers News to 11:15
- KNX—Marshall Grant, organ

11:30 to 12:00 Noon

- KPO & netw—School Broadcast; 11:45, Barry McKinley, baritone
- KGO—Pair of Pianos; 11:45, Agricultural Bulletin
- KYA—Dance Time; SERA Talk
- KTAB—Echoes of Portugal
- KLX—Musical Scrapbook
- KROW—Concert Melodies
- KGCC—Mountain Music
- * KFRC & net—Harrisburg Variety
- KOIN—Art Kirkham
- KECA—Records; 11:45, Music Talk
- KNX—Better Business; Health Talk

12:00 to 12:30 P. M.

- KPO & net—Betty & Bob; 12:15, Western Farm and Home Hour
- KGO—Luncheon Concert
- KYA—Scriptures; 12:03, Concert
- KROW—Music; Calif. Farm
- KJBS—Records; Children Contest
- * KFRC & net—Current questions before Congress; 12:15, Salvation Army Band

KOL—The Carnival Hour

KVI—12:15, Front Page Headlines
KOIN—Radio Show; Meier & Frank
KHQ—12:15, American Weekly
KHQ—12:15, Organ Concert
KNX—News; 12:15, Drury Lane, tenor, Marshall Grant, organ
KECA—12:15, News Release
KOA—12:15, Eastman School of Music

12:30 to 1:00 P. M.

● **KPO & net—Farm Hour**
AGO—Luncheon Concert
KYA—Noonday Concert
KLX—Ramblers; Memory Paths
KROW—Latin-American Prog.
KJBS—Music
KQW—Market Reports
 * **KFRC & net—Men of Manhattan; 12:45, Rambles in Rhythm**
KOL—Carnival Hour
KGW—News; 12:45, Pianist
KHQ—Practical Hostess
KNX—Baseball League
KSL—Utah State Agric. College
KGB—Parent-Teachers' Association

1:00 to 1:30 P. M.

● **KGO & net—To be announced**
KGO—1:15, Melody Train
KPO—News to 1:15
 ● **KPO & net—1:15, To be ann'cd.**
KYA—Shrine Club Luncheon
KTAB—Geo. Taylor and Artists
KLX—Records; 1:15, Martha Lee
KJBS—Stocks; Recordings
KQW—Friendly Hour
 * **KFRC & net—Race Week, Church-ill Downs; 1:15, Vera Van, vocalist**
KOL—Julie Day to 1:15
KOIN—1:15, Book of Life
KHQ—Business and Pleasure
KNX—Baseball League
KOA—Reporter; PTA Conference

1:30 to 2:00 P. M.

● **KPO & net—Larry Larson, organist; 1:45, Betty Marlowe**
KGO—Ann Warner's Chats
KYA—Barker Frivolities
KTAB—Jean Kent, Economics
KLX—Popular Concert
KROW—Dance Masters; Ross Love
KGDM—Educ. Period; Recordings
KQW—Concert
KFRC—N. Y. Stocks to 1:35
 * **KFRC & network—Billie Bailey & Norm Sherr; 1:45, Between the Bookends**
KOL—1:45, Bureau of Fisheries
KOIN—Book of Life; Melodies
KHQ—News Album
KNX—Pontrelli's Orchestra; (E. T.)
KGB—1:45, Moving Stories of Life

2:00 to 2:30 P. M.

● **KPO & network—Woman's Magazine of the Air to 3 P. M.**
KGO—Angelo Ferdinando's Orch.; 2:15, Edna Fischer, pianist
KYA—Barker Frivolities
KTAB—Globe Trotter; Record*
KLX—Bridge Talk; Stocks; 2:25, Baseball Game
KROW—Story Time
KJBS—Blindcraft Program
KQW—Blindcraft Program
 * **KFRC & netw—Happy Go Lucky**
KNX—Bookworm
KSL—Beatrice Osgood, pianist

2:30 to 3:00 P. M.

KGO—Organ; Mary Small, singer; 2:45, Norman Neilson, baritone
KYA—Lost & Found; Rhythm; 2:43, Baseball Game to 4:45
KLX—Baseball Game
KJBS—Events of Interest; Boots & His Vagabonds
KQW—Orchestra; Vagabonds
 * **KFRC & netw—Happy Go Lucky**
KGDM—The Romancers
KNX—Symphonies and Light Operas

3:00 to 3:30 P. M.

● **KPO & net—Rush Hughes**
KPO—3:15, Fashion Flashes
 ● **KGO & net—Gene Marvey's Orch.**
KLX—Baseball to 4:15
KGDM—Musical Program
KQW—Stocks & Bonus, Variety
 * **KFRC & netw—Feminine Fancies**
KHQ—Club Bulletin
KFI—3:15, Organ Recital
KNX—Louise Johnson, Cosmic Law
KFSD—Royal Brown, Organist
KSL—Deseret News; 3:15, Juniors

3:30 to 4:00 P. M.

KPO—Easy Aces; 3:45, Barbara Lee
KGO—Jimmy Garrigan's Orchestra; 3:45, Tune Twisters
KROW—Concert Gems; Records
KJBS—Concert; SERA program
KGDM—Organ Recital
KFRC—Just Plain Bill to 3:45
 * **KFRC & net—Melodies of Manhattan; Recordings**
KVI—Blind Assn. Prog.; 3:45, Pre-School Story Lady
KOIN—Newspaper of the Air
KHQ—3:45, Sylvia Gray
KFI—Organ; 3:45, Liberal Arts Series

KNX—Housewives' Protective League
KGB—3:55, Along the Airways
KOA—Orchestra; The Big Top

4:00 to 4:30 P. M.

● **KPO & network—Rudy Vallee and Orchestra with guest artists**
KGO—Modern Woman at Home; 4:15, Coquettes
KLX—Baseball; Bro. Bob's Club
KROW—Amer. Family Robinson
KJBS—U.S. Flag Association; 4:15, Children's Contest
 * **KFRC & net—Romance**
KOMO—4:15, Fire Prevention Talk
KVI—Students Radio Playhouse
KNX—Haven of Rest
KOA—4:15, Don Pedro's Orchestra

4:30 to 5:00 P. M.

● **KPO & net—Rudy Vallee**
KGO—Melody Lingers On
KYA—Baseball; 4:45, Melody Lady, Gretta Gähler
KTAB—Tanforan Feature Race; Keep Smiling Revue
KLX—Bro. Bob's Club; 4:45, Health School
KROW—Dell Perry, pianist; Talk
KQW—Story Time; 4:45, Songs of the Islands
KJBS—Music; Aubrey Loux, pianist
 * **KFRC & net—Leith Stevens Harmonies; 4:45, Univ. of the Air**
KOIN—4:45, Bob and Dolly
KNX—Dr. Mathews' Radio Church
KGB—4:45, University of the Air
KSL—Jack Armstrong; 4:45, Orphan Annie
KFSD—Mr. McCoy; Farley's Rangers artists

5:00 to 5:30 P. M.

● **KPO & net—Capt. Henry's Showboat**
KGO—Music of the Masters
KYA—Uncle Harry; Metropolitans
KTAB—5:15, Old-Timer and Dog
KLX—Vocalist & Pianist
KROW—Studio Varieties
KQW—Airs of South America
 * **KFRC & net—Bob Allen, pianist; 5:15, Let's Go to Europe**
KFOX—Records; Cecil & Sally
KJR—Waltzes; Hi Reporter
KNX—Orchestra and Organ
KECA—Educ. Speech; Records

5:30 to 6:00 P. M.

● **KPO & net—Showboat**
KGO—Jack Armstrong, dramatic skit; 5:45, Little Orphan Annie
KYA—Sonny & Buddy; Music
KTAB—Health Lecture

KLX—Covered Wagon Jubilee
KROW—Eating Your Way to Health
KGCC—Health Talk; Irish Gems
 * **KFRC & net—Waring's Pennsylvanians**

KNX—Drama of Youth; 5:45, Orphan Annie
KECA—Tuning in With Our Children; 5:45, Flying Club

6:00 to 6:30 P. M.

● **KPO & net—Paul Whiteman's Music Hall**
KGO—Dinner Concert
KYA—Junior Birdmen; Orchestra
KTAB—Concert; Monitor News
KLX—Arion Trio
KROW—News; Congoin Program
KJBS—City Editor; Music
KQW—California State Dept. of Agriculture; Market Reports
 * **KFRC & net—Waring's Pennsylvanians**
KNX—Jack Armstrong; News
KECA—6:15, News
KFWB—News; Records; Whispers
KFOX—News; Talk; Al Molly

6:30 to 7:00 P. M.

● **KPO & net—Paul Whiteman**
KGO—Federal Business Talk; 6:45, Air Adventures of Jimmy Allen
KYA—Orchestra
KTAB—Music; 6:45, Sports
KLX—Arion Trio
KROW—Racing Reporter; Dr. Facel
KGCC—Sports; Music
KJBS—Italian News; Concert
KQW—Italian Globe Trotter; Music
 * **KFRC & net—Horace Heidt's Orchestra with vocalists; 6:45, Radio in Education**
KOIN—6:45, Little Show
KNX—Lum & Abner; Jimmy Allen
KFWB—Organ; Jimmie Allen
KECA—Liberal Arts Series; Organ
KFOX—School Kids; Jimmie Allen
KSL—6:45, The Hawk

7:00 to 7:30 P. M.

● **KPO & net—Amos 'n' Andy; 7:15, Tony and Gus**
KGO—Chiff Nazarro, tenor; 7:15, Quartet Time
KYA—Ernie Smith's Sport Page; 7:15, Sportsman's Corner
KTAB—Italian News; Orchestra
KLX—News; 7:15, Pianist
KROW—C. W. Hammond; L'Italia
KJBS—Dinner Concert to 7:15
KGCC—Italian News; Orchestra
KQW—Weather; News; Voice of Portugal
 * **KFRC & net—Freddie Bergin's Orchestra**
KOIN—Organ Recital
KNX—Watanabe & Archie; Quartet
KFWB—Syncopators; Now and Then
KECA—Organ; Compinsky Trio
KFOX—Eb & Zeb; 7:15, Bobby and Betty

7:30 to 8:00 P. M.

● **KPO & net—Winning the West**
KGO—Talk by Senator Huey P. Long of Louisiana
KYA—Political Talk; Gold Rush Days
KLX—Magic Harmony; Edna Parker, contralto
KROW—Gold & Silver Skit; Trio
KGCC—Between the Lines; Jeanne Carole, vocalist
KQW—Voice of Portugal; Orchestra
 * **KFRC & network—Camel Caravan**
KNX—In-Laws; King Cowboy
KFWB—Now and Then; Garr and Fiske; piano and song
KFOX—Boy Detective; 7:45, The Audience Decides
KECA—Compinsky Trio; Vocalist
KOA—The Barrett Family

8:00 to 8:30 P. M.

● **KPO & net—Floyd Gibbons; 8:15, Standard Symphony Hour**

KGO—Sports; 8:15, Tommy Tuckers' Orchestra
 KYA—Minstrel Show
 KROW—Latin-American Program
 KLX—Music; Amer. Legion Prog.
 KGGC—Spanish-American Program
 KQW—Know Your Gov't; 8:15, Am. Family Robinson
 *KFRC & net—Bill Hogan's Orch.
 KFRC—8:15, Congoln Program
 KOIN—8:15, Comedy Stars
 KVI—8:15, Fact Finder
 KOL—8:15, Comedy Stars
 KNX—Beauty Talk; 8:15, Emil Baffa's Symphony Orchestra
 KFWB—Jack Joy's Orchestra
 KECA—Property Studies by John Kennedy; Old Songs
 KFOX—Antique Shop; 8:15, Homer Reid, Organist
 KSL—8:15, Comedy Capers

8:30 to 9:00 P. M.

*KGO & net—Standard Symp. Hr. KGO—Dancing in Twin Cities; 8:45, Lum and Abner
 KYA—Minstrel Show
 KLX—Amer. Legion Program
 Alice Blue, piano and organist
 KROW—Italian program
 KGGC—Concert; Mort Werner KGW—Orchestra; Crime Crusade
 *KFRC & net—Denny Thompson & Orchestra
 KNX—Emil Baffa's Orch.; Drama
 KFWB—Dance Orchestra
 KFOX—Henry Busse's Orchestra

9:00 to 9:30 P. M.

*KPO & network—Standard Symphony Hour; 9:15, To be ann'd.
 *KGO & net—Emil Polak's Orch.
 KGO—Musical Program
 KYA—Sports Parade
 KTAB—Nevada Nightherders
 KVI—Melodies; 9:15, Violinist
 KROW—9:15, Marie George, soprano
 KJBS—Variety Program to 10

KGGC—News; Organ; Orchestra
 KQW—Walkshow; music
 *KFRC & network—Mobil Magazine
 KHQ—9:15, Romance of Achievement
 KNX—News; Homer Canfield, songs
 KFOV—Beverly Hillbillies
 KFWB—Jack Joy's Orchestra
 KECA—News Release; Records
 KOA—Fan's Scrapbook to 9:15

9:30 to 10:00 P. M.

KPO—To be announced
 *KGO & net—Emil Polak's Orch.; 9:45, Ted White, tenor
 KYA—Pianist; News; America
 KTAB—News; Wrestling Matches
 KLX—Dance Music
 KROW—Retrospection
 KGGC—Wyoming Cowboys
 KQW—Royal Melodies; Dance Frollic
 *KFRC & net—Program to be announced
 KOL—Mary's Garden; 9:45, News
 KOIN—9:45, Amer. Family Robinson
 KVI—Mary's Garden; News
 KFWB—Slumbertime
 KNX—Dude Ranch
 KSL—9:45, U. of U. Program

10:00 to 10:30 P. M.

*KPO & netw—Richfield Reporter; 10:15, Tom Coakley's Orchestra
 KGO—Williams Walsh Orchestra
 KYA—Artoso Ensemble
 KLX—Records; 10:15, Jess Stafford Orchestra
 KROW—Royal Hawaiians
 KJBS—Nite Cap Revue
 KGGC—Mort Werner's Open House
 *KFRC & netw—Don Bestor and Orchestra
 KFWB—News; King's Men, vocalists
 KFI—10:15, Four Blackbirds
 KNX—Dude Ranch
 KFOX—News; Orchestra
 KGB—News to 10:10
 KSL—Kalawala Beach Boys

10:30 to 11:00 P. M.
 *KPO & netw—Tom Coakley's Orchestra; News
 KGO—Happy Felton's Orch.; News
 KYA—Arioso Ensemble; Don Logan's Song Album
 KTAB—Musical Contrasts
 KLX—Orch.; Alice Blue, organist
 KGGC—Mort Werner's Open House
 *KFRC & network—Orville Knapp's Orchestra
 KOL—10:45, American Weekly
 KGW—10:45, Bart Woodyard's Orch
 KNX—Russian Eagle Quartet; Orch.
 KFWB—Carol Lofner's Orchestra

11:00 to 11:30 P. M.

*KGO & network—Henry Busse's Orchestra
 KPO—Bal Tabarin Orchestra
 KYA—Organ Recital
 KTAB—Dansapations
 KROW—Dance of the Hour
 KFRC—News Release to 11:10
 *KFRC & network—Dick Jurgen's Orchestra
 KNX—Pontrelli's Orchestra
 KFWB—Bob Millar's Orchestra
 KFOX—Dance Orchestra

11:30 to 12:00 Midnight

*KGO & network—Jimmy Grier's Orchestra
 KPO—Organ Recital
 KYA—Sandman Organ
 KTAB—Midnight Vagabond
 KROW—Dance of the Hour
 *KFRC & network—Les Hite's Orchestra
 KOIN—Orchestra
 KFWB—Carlos Shaw's Orchestra
 KNX—Pontrelli's Orchestra; News
 KFOX—Freddie Carter's Orchestra

12:00 to Sign Off

KTAB—Midnight Vagabond
 KROW—Dance Party
 KJBS—12:01, Owl program to 7 a.m.

PROGRAMS for FRIDAY May 3

7:00 to 7:30 A. M.

*KPO & net—U. S. Marine Band
 KYA—Musical Clock; Texans
 KTAB—Cuckoo Club; Stocks
 KROW—Commuters Clock
 KJBS—Alarm Clock Club
 KQW—Breakfast Hour
 KGDM—News; Records
 KFRC—Breakfast with Bob Bence
 KVI—Radio Gospel League
 KHQ—Morning News; Program
 KNX—Sharplesville; Bill Sharples
 KFSD—Early Birds; Exercises
 KGB—Seven o'Clock Club
 KSL—News; 7:05, Melodies
 KOA—Music Appreciation Hr.

7:30 to 8:00 A. M.

*KPO & net—U. S. Marine Band
 KGO—Electrical Transcriptions
 KTAB—The Texans
 KFRC—Stocks; Bob Bence
 *KFRC & net—7:45, Mary Marlin
 KGW—Ronald Buck to 7:45
 KVI—Varities to 7:45
 KFI—7:45, Church Quarter Hour
 KECA—Bible Fellowship to 7:45
 KGB—Seven o'Clock Club to 7:45

8:00 to 8:30 A. M.

*KPO & net—Financial Service; 8:15, Morin Sisters
 KGO—Fields and Hall; Elec. Trans.
 KYA—Christian Science Reading
 8:15, Mr. and Mrs. Reader
 KJBS—Records; Children's Contest
 KQW—Morning Melodies; Varieties
 *KFRC & net—Voice of Experience; 8:15, The Gumps

KNX—John Brown; Hillbillies
 KOA—Fields & Hall; Morin Sisters

8:30 to 9:00 A. M.

*KPO & net—To be announced
 KGO—Morning Eye-Opener
 KYA—The Paraders; Melodies
 KLX—Covered Wagon Jubilee
 KROW—8:45, Melody Grab Bag
 KJBS—Dance Music
 *KFRC & net—Five Star Jones; 8:45, Jan Savitt & Orchestra
 KVI—The Cadets; Wandering Cowboy
 KNX—Religious Talk

9:00 to 9:30 A. M.

*KPO & net—To be announced
 KGO—Morning Eye-Opener
 KYA—Melodies; Prudence Penny
 KTAB—Hour of Prayer
 KROW—Concert Miniature
 KGGC—Morning Parade
 KQW—Tuneful Topics
 KGDM—Records; Mabel Rubin
 *KFRC & net—Hollywood Country Church
 KHQ—Early Birds; Music
 KNX—Health Talk; Whopper Club
 KFSD—Good Cheer; Dr. McCoy

9:30 to 10:00 A. M.

*KPO & network—National Farm and Home Hour
 KGO—Electrical Transcriptions
 KYA—Lover's Lane; Waltz Time
 KLX—Clinic of the Air
 KROW—Diet and Health
 KJBS—Oddities Program

KGGC—At the Song Shop
 KGDM—News; 9:45, Records
 KQW—Oddities
 *KFRC & netw—Men of Manhattan; 9:45, Betty Crocker
 KOL—Prud. Penny to 9:45
 KVI—Mystic Melodies to 9:45
 KHQ—Walt & Marian; Roundup
 KGW—Keyboard Kapers
 KJR—News; Early Echoes
 KFI—Helen Guest, ballads; News
 KNX—Magic Harmony; 9:45, News
 KGB—News to 9:35
 KFSD—Stock Reports to 9:45

10:00 to 10:30 A. M.

*KGO & network—News; 10:05, Pair of Pianos
 KPO—Menu Flashes; 10:15, News
 KYA—Waltz Time; 10:15, The Perian, Barry Hopkins
 KTAB—Old Friend; Cowboys
 KLX—Music; Stocks; News
 KROW—Rhythm Review
 KJBS—News; Organ
 KGGC—The Flesta
 KQW—News; Old Tunes
 *KFRC & net—Little French Princess; Romance of Helen Trent
 KOL—10:15, News Flashes
 KVI—Musical Chatterbox to 10:15
 KHQ—10:15, Home Comfort
 KJR—Home Makers; Music Box
 KFI—Ann Warner Chats
 KNX—Eddie Albright's Family
 KGB—To the Ladies

10:30 to 11:00 A. M.

*KPO & net—Frances Lee Barton's Kitchen Party

KGO—Musical Clock
 KYA—Organ Concert
 KTAB—Health Talk; Music
 KTX—International Kitchen
 KROW—Hodge Podge; Larry Canelo
 KGGC—Theatre of the Air
 KQW—Aunt Sammy; Songs
 *KFRC & net—American School of The Air
 KOL—News; Orchestra
 KJR—Club Minutes; Bowlers
 KNX—Mary Holmes; Radio Gossip
 KECA—Chaparral Club; Records
 KOA—10:45, Livestock and Produce
 Weather; Time

11:00 to 11:30 A. M.

• KPO & net—Sax Appeal; 11:15, Vic and Sade
 KGO—Beaux Arts Trio
 KYA—Organ Concert
 KROW—Health Talk; Spotlight
 KTX—Records; Tonic Tunes
 KJBS—Dance Melodies
 KGGC—Orchestra
 KGDM—Organ Recital
 KQW—Popular Orchestra
 *KFRC & net—Wife Begins; 11:15, Carla Romano, pianist
 KFRC—11:15, Ida Bailey Allen
 KOL—Cecil Solly; Melodies
 KVI—11:15, The Observer
 KJR—Rhythm Rulers
 KNX—Marshall Grant, organist
 KECA—Spanish Lessons; Pianist
 KOA—Magic of Speech

11:30 to 12:00 Noon

• KPO & net—Ma Perkins; 11:15, To be announced
 KGO—Edna Fischer, pianist; 11:45, Agricultural Bulletin
 KYA—Fashions; Music
 KTAB—Echoes of Portugal
 KTX—Anita & Orosco, guitar duo
 KROW—Concert Melodies
 KGGC—Mountain Music
 KQW—Varieties; Theatre News
 *KFRC & net—The Grab Bag
 KECA—Musical Program
 KNX—Notes in Rhyme; Health Talk

12:00 to 12:30 P. M.

• KPO & net—Betty & Bob; 12:15, Western Farm & Home Hour
 KGO—Agriculture; Concert
 KYA—Scriptures; Concert
 KROW—Music; 12:15, Calif. Farm
 KQW—Noontime Tunes
 KJBS—Children's Contest
 KGDM—Friendship Club; Records
 *KFRC & net—Among Our Souvenir
 KOL—The Carnival
 KVI—12:15, Front Page Headlines
 KOIN—Radio Show to 12:15
 KOMO—12:15, Jack & Adele
 KJR—12:12, Grain Reports to 12:15
 KECA—Nuthouse Program; News
 KNX—News; 12:15, Good Health

12:30 to 1:00 P. M.

• KPO & network—Western Farm and Home Hour
 KGO—Concert; 12:45, Commonwealth Club Luncheon
 KTX—Ramblers; Musical Auction
 KROW—Latin-American Portuguese Program
 KJBS—Dance Hits
 KQW—Weather; Market Reports
 *KFRC & net—U. S. Army Band
 KOMO—Extra Pair; Cowboy Joe
 KHQ—Organ; 12:45, Fur Facts
 KNX—Major League Baseball

1:00 to 1:30 P. M.

KPO—News to 1:15
 • KPO & net—Platt & Nierman; 1:15, Jack Heller, tenor
 KGO—Commonwealth Luncheon
 KYA—Women's Institute; Music
 KTAB—Geo. Taylor and Artists
 KTX—Records; 1:15, Martha Lee
 KROW—Latin-American Program
 KJBS—Stocks; Recordings



RAYMOND PAIGE
 Hollywood Hotel
 KHJ—Friday 5 p.m.

KQW—Friendly Hour
 *KFRC & net—Race Week, Church-ill Downs; 1:15, Billy Mills Orch.
 KGDM—Records; Watchtower
 KNX—Baseball Game

1:30 to 2:00 P. M.

• KPO & net—Nellie Revell, interviews; 1:45, Chas. Gaylor's Orch.
 KGO—Ann Warner's Chats
 KYA—Barker Frivolities
 KTAB—Jean Kent, Economics
 KTX—Popular Concert
 KROW—Oakland Public Schools; 1:45, "Ozark Bill" Rushing
 KFRC—N. Y. Stocks; Christian Science News to 1:45
 *KFRC net—Billie Bailey & Norm Sherr; 1:45, Mickey of the Circus
 KJBS—Dance Orchestra

2:00 to 2:30 P. M.

• KPO & network—Woman's Magazine of the Air
 KGO—Tom Coakley's Orchestra
 KTAB—Globe Trotter; Talk
 KTX—Talk; Stocks; Baseball
 KROW—Story Time
 KJBS—Better Business Talk; 2:15, Events of Interest
 KQW—Dance Matinee
 KGDM—Serenader; News
 *KFRC & network—Happy Go Lucky Hour
 KOIN—Homemakers to 2:15
 KNX—The Bookworm

2:30 to 3:00 P. M.

• KPO & net—Woman's Magazine
 KGO—Organ; Arlene Jackson; 2:45, Desert Kid
 KYA—Lost and Found; Talk
 KTAB—Songs; 2:45, Waltz Time
 KTX—Baseball Game
 KROW—Dance Matinee
 KJBS—Seiffert Players; Boots and His Vagabonds
 KGDM—The Romancers
 KQW—Seiffert Players; Vagabonds
 *KFRC & network—Happy Go Lucky Hour

3:00 to 3:30 P. M.

• KPO & netw—Pictorial by Rush Hughes; 3:15, Stories of Black Chambers
 KGO—Gene Beecher's Orchestra
 KYA—Serenader; 3:15, Happytime Matinee

KLX—Baseball Game
 KROW—Dance Matinee
 KQW—Stocks & Bonds; Music
 KGDM—Records; Scotty Allen
 *KFRC & netw—Feminine Fancies
 KHQ—Club Bulletin
 KNX—Women's Club Program
 KSL—News; Junior Hour
 KOA—Club Reporter; Stamp Club

3:30 to 4:00 P. M.

• KPO & net—Art in America
 KPO—3:45, Barbara Lee
 KGO—To be announced
 *KGO & net—3:45, Chas. Gaylor's Orchestra
 KYA—S. S. President Taft sailing
 KLX—Baseball Game
 KJBS—Hostess Hi-Lites
 KQW—Hostess Hi-Lites
 KFRC—Just Plain Bill to 3:45
 *KFRC & net—Louis Panico and Orch.; "Mr. and Mrs." Skits
 KOIN—Newspaper of the Air to 3:45
 KOL—Three Professors to 3:45
 KHQ—Music; Sylvia Gray
 KFI—3:45, Liberal Arts Series
 KNX—Housewives' Protective League
 KGB—3:45, Along the Airways
 KOA—Forty-niners; Big Top

4:00 to 4:30 P. M.

• KPO & net—Beaux Arts Trio
 KGO—Cocquettes; Vocal Trio
 KYA—Calling All Stars
 KLX—Baseball; Bro. Bob's Club
 KROW—Waltz Time; Call, Family
 KJBS—Records; 4:15, Child Contest
 KQW—Navy Recruiting Program
 *KFRC & net—Mary Eastman, soprano; 4:15, D'Artega's Orch.
 KFRC—4:15, The Open Road
 KVI—4:15, The Archer Family
 KFI—Organ Recital
 KNX—Haven of Rest
 KGB—Teachers Association to 4:15
 KOA—Jessica Dragonette with quartet and orchestra

4:30 to 5:00 P. M.

• KPO & net—Beaux Arts Trio; 4:45, Edna Fischer, pianist
 KPO—4:35, News
 KGO—For Girls and Boys Only
 KYA—Vocalist; Orchestra
 KTAB—Tanforan Feature Race; Keep Smiling Feature
 KLX—Baseball; 4:45, Health School
 KROW—Vocalist; Health Talk
 KJBS—Music; Boy Scouts Program
 KQW—Story Time
 *KFRC & net—Court of Human Relations
 KHQ—N. W. on Parade
 KFI—Music; Just Plain Bill
 KNX—Fireside Phantasies; Talk
 KFOX—Health & Psychology; 4:45, Marathon News
 KFSD—4:45, Farley's Rangers

5:00 to 5:30 P. M.

• KPO & network—Beatrice Lillie
 KGO—Stage and Screen; 5:15, The Audience Decides
 KYA—Uncle Harry; Metropolitans
 KTX—Helen Parlane, pianist
 KJBS—Heroes of the Air; Records
 KGGC—Dancing Echoes
 KQW—Heroes of the Air; Dog stories
 *KFRC & net—Hollywood Hotel
 KNX—Synagogue of the Air
 KFVB—Jeanne Dunne; 5:15, Gold Star Rangers
 KECA—5:15, Care of the Eyes

5:30 to 6:00 P. M.

• KPO & net—Phil Baker & artists
 Leon Belasco's Orchestra
 KGO—Jack Armstrong; 5:45, Orphan Annie
 KYA—Metropolitans; 5:45, Records
 KTAB—Dr. Thompson, talk
 KTX—Covered Wagon Jubilee
 KROW—Eating Your Way to Health
 KJBS—Front Page Dramas
 KGGC—Health Talk; Irish Gems

KQW—Popular Orchestra
 *KFRC & net—Hollywood Hotel
 KNX—Og, Son of Fire; 5:45, Orphan Annie
 KECA—Song Recital Period; 5:45,
 KFVB—Gold Star Rangers
 KFOX—Theatre News; Records

6:00 to 6:30 P. M.

•KPO & net—First Nighter; June Meredith and Don Ameche
 KGO—Dinner Concert
 KYA—Og, Son of Fire; Concert
 KTAB—Dinner Concert
 KLX—Arlon Trio
 KROW—News; 6:15, Lorelei Mystery
 KJBS—City Editor; Music
 KQW—Department of Agriculture; 6:15, Popular Program
 *KFRC & net—Million Dollar Smiles 6:15, To be announced
 KNX—Jack Armstrong; News
 KFVB—News; Records; Organ
 KFOX—News; Ballads; Al & Molly
 KECA—Records; 6:15, News

6:30 to 7:00 P. M.

•KPO & net—Frank Black's Orch. and Chorus
 KGO—Mindways; 6:45, Air Adventures of Jimmy Allen
 KTAB—Music; Sports
 KLX—Arlon Trio
 KROW—Reporter; Congo
 KGGC—Sports; Melodies
 KJBS—Italian News; Concert
 KQW—Mkt. Rpts.; Royal Melodies
 *KFRC & net—Col. Stoopnagle and Budd
 KJR—News; Jimmie Allen
 KNX—Lum & Abner; 6:45, Jimmie Allen, Air Adventures
 KFVB—Oscar & Elmer; Jimmie Allen Adventures
 KECA—Liberal Arts Series; Organ
 KFOX—School Kids; Jimmie Allen

7:00 to 7:30 P. M.

•KPO & net—Amos 'n' Andy; 7:15, Tony and Gus
 KGO—Beaux Arts Trio
 KYA—Ernie Smith's Sport Page; 7:15, Song Album
 KTAB—Italian News; Orchestra
 KLX—News; 7:15, Piano & Vocal
 KROW—Hammond; L'Italia News
 KJBS—Concert to 7:15
 KQW—Weather; News; Voice of Portugal
 KGGC—Italian News; Orchestra
 *KFRC & net—Four Aces; Freddie Bergins and Orch.; Edw. C. Hill
 KFVB—Syncopators; 7:15, Sons of the Pioneers
 KNX—Watanabe & Archie; 7:15, Emil Baffa's Orchestra
 KFOX—Eb & Zeb; Bobby & Betty
 KECA—Organ; Sports Talk

7:30 to 8:00 P. M.

•KPO & net—Circus Night in Silvertown
 KGO—Chester Rowell; 7:45, The Plantation
 KYA—Old Vienna; Gold Rush Days
 KTAB—Studio program; 7:45, St. Mary's College
 KLX—Magic Harmony
 KROW—Echoes of Italy
 KGGC—Between the Lines; Orch.
 KQW—Voice of Portugal; Orchestra
 *KFRC & net—Freddie Beren's Orchestra; 7:45, Strange as it Seems
 KNX—The 10-Laws; King Cowboy
 KECA—Robert Hurd, tenor
 KFVB—Hawaiian Sunlight; 7:45, Comedy Stars
 KFOX—Boy Detective; Vocal Duet

8:00 to 8:30 P. M.

•KPO & net—Circus Night; 8:15, Caswell Concert
 KGO—Plantation; 8:15, Eric Madruguera's Orchestra
 KLX—World Revue

SOUTHERN CALIFORNIA BROADCASTING STATIONS

(Position on Dial—Kilocycles)

KMTR 570

600 KFSD

KFI 640

710 KMPC

KTM
KELW 780

850 KIEV

KHJ 900

950 KFVB

KFVD 1000

1050 KNX

KRKD
KFSG 1120

1200 KGFJ

KFKM
KPPC 1210

1250 KFOX

KFAC 1300

1330 KGB

KGER 1360

1370 KERN

KECA 1430

1500 KKO-KDB
KREG

KTAB—Music; 8:15, Fishin' Fool
 KROW—Echoes of Italy; Skit
 KGGC—Spanish-American Program
 KQW—Recreation Revels
 *KFRC & net—Luigi Romanelli and Orchestra
 KJR—Evergreen Empire; Three Bunkaneers
 KNX—Beauty talk; Mary Kirk
 KFVB—Jack Joy's Waltz Program
 KFOX—Antique Shop; Drama
 KGB—8:15, Scrapbook of Life
 KFSD—Jimmie Allen to 8:15

8:30 to 9:00 P. M.

•KPO & net—Night Editor; 8:45, To be announced
 KPO—8:45, The Philistine
 KGO—Comedy Stars or Hollywood; 8:45, Lum & Abner
 KYA—Tom Coakley's Orch.; 8:45, Lyric Quartet
 KLX—Tales of Hawaii; 8:45, Music
 KROW—French Symphony; 8:45, Old-Fashioned Girl
 KGGC—We Salute; 8:45, Mort Werner, pianist
 *KFRC & net—Richard Himber's Orchestra
 KOL—The Merry Men; 8:45, Ken Stuart's Sports Review
 KFI—8:45, The Philistine
 KNX—Marcel Ventura, vocal; 8:45, Townsend Plan talk
 KFVB—Henry Busse's Orchestra
 KFOX—Henry Busse's Orchestra
 KFSD—8:45, The Philistine

9:00 to 9:30 P. M.

•KPO & net—To be announced
 KGO—Eno Crime Clues
 KYA—Am. Weekly Drama; Headliners
 KYA—Erev Shaboth
 KTAB—Nevada Nighthiders

KLX—Talk; Fireside Phantasies
 KROW—Orchestra; Drama
 KGGC—Musical Program
 KJBS—Variety Program to 10
 *KFRC & net—To be announced
 KFRC—Congolet Frog; to 9:15
 KOL—Hollywood Newshawk; to 9:15
 KVI—Extra Pair; Otto Case
 KOIN—Little Show; Organ
 KNX—News; 9:15, Rudy Wiedoeft, saxophonist
 KFVB—Jack Joy's Orchestra
 KECA—News; Concert Pianist
 KFOX—Beverly Hillbillies
 KSL—9:15, Wrestling Matches

9:30 to 10:00 P. M.

•KPO & net—To be announced
 KGO—Pick and Pat
 KYA—Variety Spotlight; News
 KLX—News; Road information, 9:45, Ran Wilde's Orchestra
 KTAB—News; Moment Musical
 KROW—Watch Tower Program
 KGGC—Wyoming Cowboys
 KQW—War Camp; Drama
 *KFRC & net—Bob Kinney & Orch.
 KVI—Mary's Garden; News
 KOL—9:45, Editorial Commentator; News
 KFVB—Al Lyon's Orchestra
 KNX—Musical Headlines; Fights

10:00 to 10:30 P. M.

•KPO & netw—Richfield Reporter
 KPO—10:15, Tom Coakley's Orch.
 KGO—Williams-Walsh Orchestra
 KYA—Boxing Contest
 KTAB—Hit Tunes
 KLX—Ran Wilde's Orchestra; 10:15, Jess Stafford's Orchestra
 KROW—Royal Hawaiians; Orchestra
 KJBS—Nite, Can Revue
 KGGC—Mort Werner's Open House
 KQW—Roosevelt High Dance
 *KFRC & net—Don Bestor's Orch.
 KOIN—The Fights
 KNX—Fights, Hollywood Stadium
 KFVB—News; King's Men
 KGB—News to 10:10
 KFOX—News; Orchestra
 KOA—Husk O'Hare's Orchestra

10:30 to 11:00 P. M.

•KPO & netw—Tom Coakley's Orch.; 10:55, Press-Radio News
 KGO—Orchestra; 10:55, News
 KYA—Boxing; Fireside Soliloquy
 KTAB—Musical Contrasts
 KLX—Orch.; Alice Blue, pianist
 KROW—Masters' Music Room
 *KFRC & netw—Orville Knapp's Orchestra
 KOIN—10:45, Loveland's Orchestra
 KFVB—Carol Lofner's Orchestra
 KNX—Fights

11:00 to 11:30 P. M.

•KGO & netw—Henry Busse's Orchestra
 KPO—Organ Concert
 KYA—Organ Concert
 KTAB—Dansapations
 KFRC—News Release to 11:10
 *KFRC & netw—Dick Jurgen's Orchestra
 KNX—Pontrelli's Orchestra
 KFVB—Bob Millar's Orchestra

11:30 to 12:00 Midnight

•KGO & net—Laurie Higgin's Orch.
 KGO—Organ Concert
 KTAB—Midnight Vagabond
 KROW—Dance of the Hour
 *KFRC & netw—Les Hite's Orch.
 KGO—Cotton Club Orchestra
 KFI—D-X Program
 KNX—Pontrelli's Orchestra; News
 KFVB—Carlos Shaw's Orchestra
 KFOX—Freddie Carter's Orchestra

12:00 to Sign Off

KTAB—Midnight Vagabond
 KROW—Dance Party
 KNX—Transpacific News
 KJBS—12:01, Owl Program to 7 a.m.

PROGRAMS for SATURDAY.... May 4

7:00 to 7:30 A. M.

- KPO & net—Edna Fischer, pianist; 7:15, The Vass Family
- KYA—Musical Clock
- KTAB—Cuckoo Club; Stocks
- KROW—Commuters Clock
- KJBS—Alarm Klok Klub
- KQW—The Breakfast Hour
- KFRC—Seal Rocks Broadcast
- KOL—Sunrise Express
- KVI—Radio Gospel League
- KHQ—Morning News
- KFT—7:15, Louis Rueb, exercises
- KNX—Sharplesville
- KGB—Seven O'Clock Club
- KFSD—Early Birds; Exercises
- KOA—Galaxy of Stars

7:30 to 8:00 A. M.

- KPO & net—Viennese Sextette; 7:45, Lee S. Roberts, "Memory Box"
- KGO—Studio Program; 7:45, International Week-end Revue
- KTAB—The Texans
- KFRC—N. Y. Stocks; 7:45, Records
- KVI—Varieties
- KFI—Stocks; Exercises to 7:45
- KECA—Bible Fellowship; Records
- KGB—Seven O'Clock Club; Parson Roberts Family

8:00 to 8:30 A. M.

- KPO & net—Financial Service; 8:15, Genia Fonariova, soprano
- KGO—8:15, Studio Program
- KYA—Christian Science Reading; 8:15, Mr. and Mrs. Reader
- KJBS—Band Concert; Children's Contest
- KQW—Morning Melodies
- * KFRC & net—Syracuse University Glee Club
- KVI—Syracuse Glee Club; 8:15, Orientale
- KHQ—8:15, Economy Comments
- KFI—Church Quarter Hour to 8:15
- KNX—Musical Jigsaws; Tonic Tunes

8:30 to 9:00 A. M.

- KPO & net—To be announced
- KGO—Morning Eye-Opener
- KLX—Covered Waigon Jubilee
- KROW—Halco Time; Grab Bag
- * KFRC & net—Saturday Syncopators
- KVI—The Cadets; 8:45, Wandering Cowboy
- KFI—8:45, Charlie Wellman and Helen Hill
- KNX—Religious Talk

9:00 to 9:30 A. M.

- KPO—9:15, News Reporter
- KROW—Health Talk; Music
- KGDM—Records; Harmony Kids
- KGGC—Morning Melodies
- * KFRC & net—Poetic Strings
- KFI—Medical Talk; 9:15, News
- KNX—Talk; Metropolitan Moods
- KFSD—Good Cheer; Dr. McCoy

9:30 to 10:00 A. M.

- KPO & net—Farmers' Union
- KGO—Studio Program
- KYA—Lover's Lane; Waltz Time
- KROW—Diet and Health
- KJBS—Songs of Romance; Concert
- KGGC—At the Song Shop
- KGDM—News; Records
- KQW—Songs of Romance; Classics
- * KFRC & net—Mark Warnow's Orchestra
- KOL—Julie Day to 9:45
- KVI—Mystic Melodies; Dr. Burns
- KNX—Music; 9:45, News
- KECA—L. A. School Program

10:00 to 10:30 A. M.

- KGO—News; Music
- KYA—Waltzes; Prosperians
- KLX—Clinic; 10:15, S. F. Stocks;
- KROW—Rhythm Revue

PACIFIC NORTHWEST BROADCASTING STATIONS

(Position on Dial—Kilocycles)

- KOAC 550
- 570 KVI
- KHQ 590
- 620 KGW
- KPCB 650
- 760 KXA
- KOMO 920
- 940 KOIN
- KJR 970
- 1060 KWJ
- KFIO KRSC 1120
- 1180 KEX
- KOOS KVOS 1200
- 1210 KEJI KGY
- KTW KWSC 1220
- 1270 KOL
- KFJR KALE 1300
- 1310 KMFD-KXRO KIT
- KMO 1330
- 1340 KFPY
- KVL-KUJ KSLM-KRKO 1370
- 1420 KORE-KXL KBPS
- KGA 1470
- 1500 KPQ

- KJBS—Radio News; City Editor
- KQW—News; Old Tunes
- KGDM—Aunt Mary and Kiddies
- * KFRC & net—Louis Panico and Orchestra
- KOL—10:15, News Flashes
- KVI—Louis Panico's Orch.
- KNX—Eddie Albright's Family
- KECA—City School Program

10:30 to 11:00 A. M.

- KPO & net—Week-End Revue
- KGO—Musical Clock
- KYA—Organ Concert
- KLX—International Kitchen
- KROW—Hodge Podge; Larry Canelo
- KJBS—Popular Selections
- KGGC—Children's Happytime Revue
- KQW—Aunt Sammy; Music
- KGDM—Music; Health Talk
- * KFRC & net—Mickey of the Circus
- KVI—Students Radio Playhouse
- KOIN—10:45, "This and That," Art Kirkham
- KNX—Magic Harmony; Jose Manzanera's Orchestra

11:00 to 11:30 A. M.

- KGO—Josef Hornik's Orchestra
- KLX—Recordings, Tonic Tunes
- KROW—Health Talk; Spotlight
- KJBS—Hits of the Past; 11:15, Traffic Safety
- KGDM—Organ Recital

- * KFRC & net—San Jose State College a Capella Choir
- KOIN—Fred Meyer; 11:15, This and That
- KOL—Cecil Solly; Melodies
- KVI—The Observer; Health Talk
- KNX—Modern Piano Music

11:30 to 12:00 Noon

- KPO & net—NBC Music Guild
- KGO—Alvino Rey, guitar; 11:45, Vagabond's quartet
- KYA—Dance Time; Musical
- KLX—Anita & Orsco; Music
- KROW—Concert Melodies
- KGGC—Mountain Music
- KQW—Market Reports; Varieties
- * KFRC & net—Buffalo Presents
- KHQ—Organ Recital
- KNX—Spice of Life; Health Talk

12:00 to 12:30 P. M.

- KGO—12:15, To be announced
- KPO & network—12:15, Western Agriculture
- KYA—Scriptures; 12:03, Concert
- KLX—Closing S. F. Stocks; Music
- KROW—Music; Calif. Farm Prog
- KJBS—Instrumental; Contest
- * KFRC & net—Among Our Souvenirs
- KVI—12:15, Front Page Headlines
- KOIN—Radio Show
- KECA—Records; News
- KNX—News; 12:15, Drury Lane

12:30 to 1:00 P. M.

- KPO & network—West. Agricul.
- KGO—Music Guild
- KLX—Oklahoma Ramblers; Music
- KROW—Portuguese Program
- KJBS—Dance Music; Walkathon
- * KFRC & net—Men of Manhattan
- KNX—Baseball, Major League

1:00 to 1:30 P. M.

- KPO—Radio News Reporter; 1:15, Beaux Arts Trio
- KGO & net—Chick Webb's Orch.; 1:15, Jackie Heller
- KYA—Rhumba Time
- KLX—Records; SERA Concert
- KROW—Portuguese Program
- KJBS—Musical Novelities
- KGDM—Trends in Education; Bondons

- * KFRC & net—Emery Deutsch's Dance Rhythms
- KOIN—1:15, Book of Life
- KNX—Pontrelli's Orchestra

1:30 to 2:00 P. M.

- KGO & net—Our Amer. Schools
- KPO—Beaux Arts Trio
- KYA—Popular melodies
- KLX—Popular Concert
- KROW—Hillbillies; Ross Love
- KQW—Afternoon Concert
- KGDM—The Bondons; "Church in the Wildwood"
- * KFRC & net—The Romany Trail; 1:45, Between the Bookends
- KNX—Orch.; String Quartet

2:00 to 2:30 P. M.

- KPO & net—Tom Coakley Orch.
- KGO & net—Kearney Walton's Orchestra
- KYA—Listener's Voice; Music
- * KFRC & net—Frederic Wm. Wile; 2:15, Concert Miniatures
- KLX—2:25, Track Meet, U.S.C. Stanford

- KROW—Story Time
- KNX—Amateur Hall of Fame to 4
- KECA—Classic Hour
- KFWB—2:10, Baseball to 4:30
- KOA—Musical Panelo

2:30 to 3:00 P. M.

- KGO & net—Biltmore Orchestra
- KPO—Morin Sisters Trio; 2:45, The Master Builder

KYA—Lost & Found; Baseball Game
KTAB—Emergency Relief Talk
KLX—P. A. A. Track Meet to 4
KROW—Dance Matinee
KJBS—Events of Interest; Boots & His Vagabonds
KQW—Vagabonds of the Prairie
KGDM—Romancers
***KFRC—Freddie Bergin's Orch.**
KFRC—2:55, N. Y. Stocks
KHQ—Business & Pleasure

3:00 to 3:30 P. M.

*KGO & net—At the Piano; 3:05, Religion in the News; 3:15, American Prosperity and World Trade
KPO—Organ Concert
KQW—Popular Vocal and Variety
KGDM—Records; Al and Jack
***KFRC & net—Kentucky Derby**
KHQ—Club Bulletin
KFI—Organ Recital
KSL—News; Boy Scouts Program

3:30 to 4:00 P. M.

KPO—To be announced
KYA—Baseball Game
KROW—Ev. Southern; Records
***KFRC & net—Sunset Serenade**
KOIN—Newspaper of the Air
KHQ—3:45, Sylvia Gray

4:00 to 4:30 P. M.

*KPO & net—Hit Parade; Gogo de Lys, Kay Thompson, Lennie Hayton's Orch.; Johnny Murray
KGO—Beaux Arts Trio
KGCC—Studio Program
KROW—Harmolin; Chas. Reynolds
KJBS—Children's Contest
***KFRC & net—To be announced**
KOIN—Newspaper of the Air

4:30 to 5:00 P. M.

KGO—Sax Appeal, Mickey Gillette; 4:45, The Coquettes
KPO—Hit Parade
KYA—Baseball; American Youth
KLX—Bob's Club; Records
KROW—Dell Perry; Health Talk
KQW—Children's Story Time; Songs of the Islands
***KFRC & net—To be announced; 4:45, Don Bestor's Orchestra**
KNX—Carefree Capers
KSL—Broadcasters Review

5:00 to 5:30 P. M.

*KPO & net—Radio City Party
KGO—Pair of Pianos
KYA—Uncle Harry; Metropolitan
KLX—Helen Parmelee, pianist
KROW—Studio Varieties
KQW—Airs of South America
***KFRC & net—To be announced**
KNX—First Radio Church
KFWB—Playtime Lady; M'ntainers

5:30 to 6:00 P. M.

*KPO & net—Organ Symphony
KGO—String Time
KYA—The Metropolitan; Campbell Corner
KLX—Covered Wagon Jubilee
KROW—Eating Your Way to Health
KJBS—Popular Selections
KGCC—Pianist; Irish Gems
KQW—Popular Orchestra
***KFRC & net—To be announced**
KFWB—Musical Mountaineers
KFI—Just Plain Bill to 5:45
KFOX—News; Song Hits; Bobby &

6:00 to 6:30 P. M.

*KPO & net—Josef Hornik's Orch.
KGO—Dinner Concert
KYA—Cyrus Trobbe's Orchestra
KLX—Arión Trio
KROW—East Bay Labor Journal
KJBS—City Editor; Music
KQW—Voice of Portugal
KGDM—6:15, Merle Carlson's Or.
***KFRC & network—Song Time in Tennessee**
KNX—Concert Orchestra; News

KFWB—News; Organ Concert
KFOX—News; Vocal, Al & Molly

6:30 to 7:00 P. M.

*KPO & net—To be announced
KGO—Pat O'Shea, tenor; 6:45, Education Today
KYA—Cyrus Trobbe's Orchestra
KROW—Reporter; Dr. Facci
KJBS—Italian News Currier
KQW—Italian Glob Trotter
KGCC—Sports; Music
***KFRC & net—California Melodies**
KNX—Dance; 6:45, Beauty Talk
KFWB—Organ; 6:45, Amer. Weekly
KECA—Wesley Tourtellotte, organ
KSL—Ethel Hogan, organist; 6:45, Melodies We Love

7:00 to 7:30 P. M.

*KPO & network—National Barn Dance, variety program to 9
KGO—To be announced
KYA—Ernie Smith's Sport Page
KLX—7:15, Emily Howard, soprano
KROW—C. W. Hammond; L'italia News
KQW—News; Law Enforcement
***KFRC & net—Bill Hogan & Orch.**
KNX—Calmon Lubovski, violinist
KHQ—7:15, Covered Wagon
KFWB—Jimmy Tolson & Burt Fiske
KECA—Raine Burnett, poet
KFOX—Vagabonds; Bobby & Betty

7:30 to 8:00 P. M.

KGO—Spiritual Fantasy
KYA—Drama
KLX—Carefree Capers
KROW—Skit; Herold Trio
KGCC—Between the Lines; 7:45, Helen Schneider
KQW—'Calling All Cars'
***KFRC & net—Claude Hopkins' Orchestra**
KOIN—The Journal; Jimmy Allen
KVI—7:45, Rhythmic Keyboards
KFWB—Juvenile Revue
KECA—Musical Program
KGB—7:45, Comedy Stars
KFOX—Juvenile Revue

8:00 to 8:30 P. M.

*KPO & net—To be announced
KGO—Marshall's Mavericks
KYA—Amateur Hour
KROW—Latin-American Program
KGCC—Spanish-American Program
KQW—Italian Radio Theatre
***KFRC & net—Orville Knapp and Orchestra**
KOIN—Leon F. Drews, organ
KFWB—Sons of the Pioneers
KNX—Hollywood Barn Dance
KECA—Dept. of Playground
KFOX—Antique Shop

8:30 to 9:00 P. M.

*KPO & net—Pan-Americana
KGO—Bai Tabarin Orchestra
KROW—Latin-American Program
KOIN—8:45, Leon Drew's, Organist
***KFRC & net—Ray Herbeck & Orchestra**
KVI—Sportlite Revue to 8:45
KJR—It's a Case of Books
KNX—Hollywood Barn Dance
KFWB—Henry Busse's Orchestra
KECA—Recordings; Wild Flower Program by Frank A. Schilling
KFOX—Henry Busse's Orchestra
KSL—Organ and String Group

9:00 to 9:30 P. M.

*KPO & network—Waltz Time
KGO—Bai Tabarin Orchestra; 9:15, Cliff Nazario, tenor
KYA—Four Shades of Tan
KTAB—Nevada Nightholders
KQW—Music; Royal Melodies
***KFRC—Congoin Program to 9:15**
***KFRC & net—To be announced**
KFOX—Al Lyon's Orchestra
KFWB—Al Lyon's Orchestra
KSL—Orch.; Pete Spraynozzle

9:30 to 10:00 P. M.

*KPO & net—Let's Dance: Orchestras under direction of Kel Murray, Xavier Cugat & Benny Goodman
KGO—Neapolitan Echoes
KYA—Bathday Party
KLX—News; Ran Wilde's Orchestra
KROW—Nerino Turchette; Stories
KJBS—Variety Program
KGCC—Wyoming Cowboys
KQW—Concert Echoes
***KFRC & net—Bob Kinney & Orchestra**
KOIN—9:45, Veterans Foreign Wars
KOI—9:45, News Flashes
KVI—Ledger News Flashes to 9:45
KNX—Hollywood Bath Dance
KSL—Garden Varieties to 9:45

10:00 to 10:30 P. M.

KGO—News; 10:05, Williams-Walsh Orchestra
KYA—Bathday Party
KLX—Ran Wilde's Orch.; Jess Stafford's Orchestra
KROW—Dancing Party
KJBS—Nite Cap Revue to 12
KGCC—Short Wave Tips
KQW—Scott Held's Orchestra
***KFRC & net—Don Bestor's Orch.**
KOL—10:15, Harrison Mason
KNX—The Perfume Historian
KFWB—News; Orchestra
KFOX—News; Al Lyons' Orchestra
KGB—News Flashes to 10:10

10:30 to 11:00 P. M.

KGO—Williams-Walsh Orchestra; 10:45, Dot Kay, contralto
KYA—Laces and Graces
KLX—Orchestra; Fireside Phantasies
KROW—Halco; Judge Rutherford
KJBS—Walkathon; 10:45, Nite Cap Revue
KQW—Craig's Cardinals
***KFRC & network—Del White and Orchestra**
KJR—Popular Concert
KVI—Val Valente's Orchestra
KNX—Valesco's Quartet
KFWB—Carol Lofner's Orchestra
KFOX—News; Dance Orchestra

11:00 to 11:30 P. M.

KGO—Charles Runyan, organ
KYA—Sandman Organ
KROW—Dance of the Hour
KFRC—News to 11:10
***KFRC & network—Del Milne and Orchestra**
KNX—Pontrelli's Dance Orchestra
KFOX—Bob Millar's Orchestra

11:30 to 12:00 Midnight

KGO—Slumber Hour
KYA—Organ Recital
KROW—Dance Music
***KFRC & network—Archie Loveland's Orchestra**
KFWB—Carlos Shaw's Orchestra

12:00 to Sign Off

*KPO & network—Let's Dance: 12:30, News
KROW—Dance Party
KJBS—12:01, Owl Program to 8 a.m.

Program listings are correct when published by *Broadcast Weekly*, but sale of time by stations and network and national emergencies often cause deviations which the stations cannot foresee.

THE PLAZA SAN FRANCISCO

A nationally known hotel, facing beautiful Union Square...in the heart of San Francisco's smartest retail shopping district. Near the theatres, cafes, and places of amusement. Restaurant and Tap Room.



ATTRACTIVE RATES ✓ FROM \$2



Post and Stockton Streets