

IN THIS  
ISSUE

A Lesson for the Great

# BROADCAST WEEKLY

December 16th to 22nd



Cheri McKay, contralto, sings with the Merry Macs, male trio, heard over the NBC network from Chicago.

10¢

65 70 75

LEADING RADIO PROGRAM OF THE PACIFIC COAST

# CHAIN PROGRAMS CLASSIFIED

PACIFIC STANDARD TIME

## COMEDIANS

Allen, Fred, Wednesday, 9 p.m. .... NBC  
 Baker, Phil, Friday, 6:30 p.m. .... NBC  
 Benny, Jack, Sunday, 8:30 p.m. .... NBC  
 Cook, Joe, Monday, 6:30 p.m. .... NBC  
 Penner, Joe, Sunday, 4:30 p.m. .... NBC  
 Wynn, Ed, Tuesday, 6:30 p.m. .... NBC

## DRAMAS

Bible Stories, Sunday, 12 noon ..... KGO  
 Death Valley Days, Tuesday, 9:30 p.m. .... NBC  
 Drama Hour, Monday, 8:30 p.m. .... KGO  
 First Nighter, Friday, 7 p.m. .... NBC  
 Grand Hotel, Sunday, 3:30 p.m. .... NBC  
 Ladies Laugh Last, Saturday, 7:30 p.m. .... NBC  
 Lux Radio Theatre, Sunday, 11:30 a.m. .... NBC  
 Mary Pickford Stock Co., Wed. 5 p.m. .... NBC  
 Memory Lane, Monday, 7:30 p.m. .... NBC  
 One Man's Family, Wed., 7:30 p.m. .... NBC  
 Radio Guild, Monday, 12 noon ..... KGO  
 Sunday Morning Special, Sunday, 9 a.m. .... NBC  
 True Story Court, Friday, 8:30 p.m. .... CBS  
 Twenty Thousand Years in Sing Sing, Wednesday,  
 6 p.m. .... NBC  
 Winning the West, Thursday, 9:15 p.m. .... NBC

## EDUCATIONAL PROGRAMS

Commonwealth Club Luncheon, Fri., 12:45 p.m. .... KGO  
 Education Today, Saturday, 6:45 p.m. .... KGO  
 Curtis Institute, Wed., 1:15 p.m. .... CBS  
 Hill, Edwin C., Mon., Wed., Fri., 8:15 p.m. .... CBS  
 Hyde, Henry M., Sunday, 6 p.m. .... KGO  
 Religion in the News, Saturday, 4 p.m. .... KGO  
 Stanford University, Monday, 8 p.m. .... KGO  
 The New World, Monday, 9:30 a.m. .... NBC  
 University Explorer, Tuesday, 9:30 p.m. .... \*KFRC  
 Visiting America's "Little House," Monday,  
 Tuesday, Thursday, 1:00 p.m. .... CBS  
 You and Your Government, Tues., 4:30 p.m. .... NBC

## POPULAR PROGRAMS

Adventures of Grace, Wednesday, 6:30 p.m. .... CBS  
 American Album of Familiar Music, Sunday,  
 6:30 p.m. .... NBC  
 Atwater-Kent, Monday, 5:30 p.m. .... CBS  
 Bernie, Ben, Tuesday, 9 p.m. .... NBC  
 Boswell Sisters, Tuesday, 6 p.m. .... CBS  
 Chesterfield Program, Mon., Wed., Sat., 6 p.m. .... CBS  
 Crosby, Bing, Tuesday, 6 p.m. .... CBS  
 Feminine Fancies, Mon. to Fri., 3 p.m. .... \*KFRC  
 Hollywood Hotel, Friday, 8:30 p.m. .... CBS  
 Marshall's Varieties, Everett, Wed., 5:30 p.m. .... CBS  
 Manhattan Merry-Go-Round, Sunday, 6 p.m. .... NBC  
 March of Time, Friday, 6 p.m. .... CBS  
 Personal Closeups, Interview by Gypsy, Sunday,  
 6:15 p.m. .... KGO  
 Sinclair Greater Minstrels, Monday, 6 p.m. .... NBC  
 Treasures of Time, Wednesday, 8:45 p.m. .... CBS  
 Voice of Experience; Mon. to Fri., 9 a.m.; Wed.  
 8:30 p.m. .... CBS  
 Voice of Firestone, Monday, 8:30 p.m. .... NBC  
 Winchell, Walter, Sunday, 8:15 p.m. .... NBC

## SKITS

Adventures of Jimmy Allen, Monday to Friday,  
 inclusive, 6:45 p.m. .... KGO  
 Amos 'n' Andy, Mon. to Fri., inclusive, 8 p.m. .... NBC  
 Betty and Bob, Monday to Friday, 1 p.m. .... NBC  
 Bachelor, Billy, Monday to Friday, inclusive,  
 5:15 p.m. .... \*KFRC  
 Myrt and Marge, Monday to Friday, inclusive,  
 8 p.m. .... CBS  
 Orphan Annie, Elec. Transcription, Mon. to Fri.  
 inclusive 5:45 p.m. .... KGO  
 Oxydol's Own Ma Perkins, Monday to Friday,  
 1:30 p.m. .... NBC  
 Vic and Sade, Mon. to Fri., inclusive, 11:45 a.m. .... NBC

## SYMPHONY ORCHESTRAS

Ford Symphony Orch., Sunday, 5 p.m. .... CBS  
 N. Y. Philharmonic Orchestra, Sunday, 12 noon .... CBS  
 Radio City Music Hall, Sunday, 9:30 a.m. .... NBC  
 Standard Symphony, Thursday, 8:15 p.m. .... NBC

## VARIETY PROGRAMS

Armour Program, Friday, 6:30 p.m. .... NBC  
 Blue Monday Jamboree, Monday, 8:30 p.m. .... \*KFRC  
 Carefree Carnival, Monday, 5:30 p.m. .... NBC  
 Captain Henry's Showboat, Thursday, 6 p.m. .... NBC  
 Chase & Sanborn Opera Guild, Sunday 5 p.m. .... NBC  
 Colgate House Party, Monday, 6:30 p.m. .... NBC  
 Crosscuts Log o' the Day, Mon., Wed., Thurs.,  
 Fri. and Sat., 8:15 a.m. (Tues. 11 a.m.) .... KGO  
 Fleischmann Hour, Thursday, 5 p.m. .... NBC  
 Gibson Family, Saturday, 6:30 p.m. .... NBC  
 Happy-Go-Lucky Hour, Monday to Friday, in-  
 clusive, 2 p.m. .... \*KFRC  
 Hall of Fame, Sunday, 7 p.m. .... NBC  
 Hi-Jinks, Sunday, 9 p.m. .... CBS  
 National Barn Dance, Saturday, 8 p.m. .... NBC  
 Palmolive Beauty Box, Tuesday, 7 p.m. .... NBC  
 Pearce, Al, and Gang, Mon. to Fri., 2 p.m. .... NBC  
 Roxy Revue, Saturday, 5 p.m. .... CBS  
 Shell Show, Monday, 9 p.m. .... NBC  
 S. & W. Merrymakers, Sunday, 7:30 p.m. .... \*KFRC  
 Town Hall Tonight, Wednesday, 9 p.m. .... NBC  
 Waring's Pennsylvanians, Thurs., 6:30 p.m. .... CBS  
 Whiteman, Paul, Thursday, 7 p.m. .... NBC

## STATION DIRECTORY

### • NBC Network Stations

Station	Location	Meters	Kcs.
KECA	—Los Angeles	209.7	1430
KEX	—Portland, Ore.	254.1	1180
KFI	—Los Angeles	468.5	640
KFSD	—San Diego	499.7	600
KGO	—Oakland - San Francisco	379.5	790
KGW	—Portland, Ore.	483.6	620
KHQ	—Spokane, Wash.	508.2	590
KJR	—Seattle, Wash.	309.1	970
KOA	—Denver, Colo.	361.2	830
KOMO	—Seattle, Wash.	325.9	920
KPO	—San Francisco	449.9	680
KYA	—San Francisco	243.8	1230

### \* CBS Network Stations

KFRC	—San Francisco	491.5	610
KGB	—San Diego, Calif.	225.4	1330
KHJ	—Los Angeles	333.1	900
KOIN	—Portland, Ore.	319.0	940
KOL	—Seattle, Wash.	236.1	1270
KSL	—Salt Lake City	265.3	1130
KVI	—Tacoma, Wash.	526	570

### Independent Stations

KFOX	—Long Beach, Calif.	239.9	1250
KFWB	—Hollywood, Calif.	315.6	950
KGDM	—Stockton, Calif.	272.6	1100
KGGC	—San Francisco	211.1	1420
KJBS	—San Francisco	280.2	1070
KLX	—Oakland, Calif.	340.7	880
KNX	—Los Angeles	285.5	1050
KQW	—San Jose, Calif.	296.6	1010
KROW	—Oakland, Calif.	322.4	930
KTAB	—Oakland-San Francisco	535.4	560

# BROADCAST WEEKLY

(FORMERLY RADIOCAST WEEKLY - - ESTABLISHED 1922 AS BROADCAST PROGRAM)

Published weekly by PACIFIC PERIODICAL CORPORATION

Publication Office  
1114 Mission Street  
SAN FRANCISCO

Telephone  
UNderhill 7676

10 Cents the Copy from All  
Newsdealers

\$1.50 Per Year by Subscription



O. J. NUSSER  
Editor and Manager

Entered as second-class matter,  
March 25, 1923, by the Postoffice,  
San Francisco, California, under  
Act of March 3, 1879.

Vol. XIII

San Francisco, California, December 15, 1934

No. 49

## A Lesson for the Great

A CELEBRITY of the stage, screen and radio has just discovered what a teacher means when she tells a pupil to "come prepared." This particular star has been forced to postpone his return to radio because he went on the air recently without proper preparation—and out the window flew one of the juiciest commercials in recent years. It is more than just tough luck for him—it is a warning and a lesson to all stage and film stars who dare to face the microphone with anything hanging in the balance.

There are a number of lessons to the great in this episode. In the first place, stars of any great magnitude are rather foolish to do so-called "impromptu" guest appearances. Radio is such a tense taskmaster that only one's very best is acceptable—and anything short of the best is generally tragic. The microphone is not to be faced these days without hours of preparation. No longer can a star stroll up to it, say "hello folks" and drop a few alleged pearls of wisdom before resuming his seat. No less a luminary than Jane Cowl, recently appearing on the Lux Theater of the Air, demanded two full weeks of rehearsal—and got it because the sponsor of the program saw the wisdom of such a request.

Competition is terrific in radio. Let a star do a bad performance—and it is just too bad. You cannot be mediocre on radio these days. Certain of the "big name" comics have found just how much harm one weak script does

on an entire series—and some of them are off the air because they didn't heed the warning. The public picks its own hits, and those who want to stay on top had better realize they must do it with "top" material.

ONE of the holiday broadcasts worthy of editorial mention will be the Christmas Day program sponsored by the Nash Motors Company over Columbia Broadcasting System from 11:30 a. m. to 2:15 p. m., and on New Year's Day. It will be one of the longest commercial broadcasts in the history of radio.

Both of the Nash shows will be of the all-star variety and will present entertainment from at least three widely separated points—New York, Chicago and Hollywood. While all the identity of luminaries to appear on the program are not announced, it is known that Lionel Barrymore, who is far from in love with radio, has been lured into the picture with the juicy part of "Scrooge," the unamiable old gentleman in Dickens' "A Christmas Carol."

The Dickens classic is regarded as particularly appropriate for a Christmas broadcast, and it is said that Barrymore, who attained his greatest fame in playing rôles of elderly men, is keen for this impersonation. However, the Barrymore portrayal will require only a fraction of the entire broadcast.

The broadcast will go over nearly a hundred stations.

# MICROPHONE GOSSIP



• • • Even an opera and radio star lives in fear of her hairdresser. Ask Gladys Swarthout, star of the Palmolive Beauty Box Theater. Miss Swarthout has her hair done every Wednesday—and is almost always late for her appointment. Dashing to the beauty salon, at the last moment, she is always worried about what Monsieur Somebody is going to say. Incidentally, here's something interesting about Miss Swarthout's coiffure—one nobody has ever seen duplicated. She worked it out herself. Her hair is bobbed and curled in such a way as to encircle her head like a halo.

• • • John Eugene Hasty, one of radio's most prolific writers, is back at his desk at the MacGregor and Sollie Broadcasting System in San Francisco following a siege of illness. Hasty, who is production manager for the system, was recently confined to a hospital for a short time. He's back at his desk now, though, authoring *Eb* and *Zeb*, *Hi-Hilarities*, the *Hawk*, the *Man About Town* and nearly a dozen other features which are released over the stations affiliated with the MacGregor and Sollie System.

• • • Al and Cal Pearce entertained Leo Tyson, the Gang's manager, and his wife; Phil Hanna and wife; Monroe Upton and wife, and Jack Dorrence and his mother at Palm Springs over a recent week-end.

In a foot-race between Al, Jack Dorrence, Phil Hanna and Monroe Upton, the big MC carried off the honors. Al admits now that in High School he used to run the mile in 4.44.

• • • Maria Peralta, songstress on the Packard Fiesta, and possessor of one of radio's finest radio voices, believes in having more than one string to her bow. Although a professional singer of wide recognition, she holds down an exacting job with the county tax assessor's office.

• • • Alyss Luthi, KYA actress, who has portrayed many different characters over that station, her current appearance being as Yolando in "Joan of Arc" was a little late to rehearsal the other day. Her alibi was that she had been given a surprise "shower" which was the first time many knew that this popular girl was to be married this December.

• • • KYA's dramatic group "The Radio Players" heard frequently over that station have a peculiarity of their own. Every member of the group is young, ranging from thirteen to twenty-nine years, yet they portray

characters of all ages and types to listening audiences. It is infrequent that a radio talent list is made entirely of younger people.

• • • Jack Carter, KNX's "Boy from London," is a happy man now. He appeared at the studios this week, walking with the aid of only an ordinary cane, having dispensed with the crutches he has been using for many weeks. He reports that he soon expects to be walking as good as ever, his knee injury being well on the road to complete recovery.

• • • College, junior college, and high school sport celebrities are presented to the radio fans at the weekly Golden Gate Junior College "Sport Broadcast," with Milton Burnham, publicity director, acting as the master of ceremonies for these programs every Friday night from 8 to 8:15 o'clock over station KTAB.

• • • Roxy (S. L. Rothafel) is returning to the theater. The veteran showman has been signed by Warners to direct the huge and renamed Roxy-Mastbaum in Philadelphia, believed to be the third largest house in the country, with its seating capacity of 5,000. His new venture will require him to commute between the Quaker City and New York, the scene of his Saturday night broadcasts over CBS. Roxy has not yet revealed his new production ideas, but observers believe that his Philadelphia activities will constitute another important chapter in a career that has made theatrical history.

• • • California Melodies, that dandy show piped from KHJ, Los Angeles, under direction of Raymond Paige, was first produced in the KFRC studios in San Francisco.

• • • The foundation for the new KNX self-supporting, single-tower radiator, is taking definite shape out at the transmitter site in Sherman Oaks. The mighty mast, when completed will stand nearly 540 feet high, more than twice the height of the present lofty twin towers.

It will be the tallest self-supporting tower for broadcasting in the country. KOL, Seattle, recently installed a 490-foot tower.

• • • Nowran McGill, KGGC manager, is the latest convert to the realm of short wave, and when not on the job, can usually be found in front of the loudspeaker listening to Buenos Aires. So ardent a fan has he become that he has started Spanish lessons with Humverto Rivas, maestro of the Spanish program, so that he can identify the great number of Spanish-speaking announcers on the short wave spectrum.

• • • The Arline Francis-Hazel Warner feud on the Al Pearce program is all in fun: The girls are really the best of friends and always ride together when the Gang is journeying to theaters.

• • • Travel programs written by Grace Sanderson Michie (formerly with KGO), and electrically transcribed by MacGregor and Sollie, are to be used on the Matson boats plying their colorful way between San Francisco and New Zealand, describing the beauty of the South Seas, Australia, and New Zealand.

Mrs. Michie is starting a new series of twenty-six world travel programs for MacGregor and Sollie. John Eugene Hasty will produce them.

• • • Jack Smart and Minerva Pious are the heavyweight and lightweight, respectively, of Fred Allen's entertaining troupe of players. Smart stands 5 feet 10 inches and weighs 230 pounds while Miss Pious is under five feet tall and weighs all of ninety-eight pounds.

• • • Eddie Holden and Reginald Sharland, who are "Frank Watanabe and the Hon. Archie" over KNX, turned grim stalkers of prey last week-end and as a result returned to the studios with their quota of ducks. Here and there the pair were seen with a handful of birds to prove their success, and a check of the situation reveals they actually bagged the fowl themselves.

• • • Pat Padgett and Pic Malone (Molasses 'n' January) are celebrating their sixth anniversary as a team in bang-up fashion. With their pockets literally bulging with telegrams of congratulations, the burnt-cork comics of Captain Henry's Maxwell House Showboat dashed from the NBC studios after their broadcast and pushed off for wildest Maine for a week of hunting. After all, the boys said, six years together is a record to shoot at!

• • • Kate Smith has cornered the Moffett market—two little Miss Moffetts now heard regularly on her Matinee Hour are Marjorie, monologist, and Adelaide, deb singer—no relation.

• • • If there were a smallpox sign hanging on the door of C Studio in NBC's San Francisco quarters every Monday afternoon, it wouldn't be more meticulously avoided by singers, announcers and musicians. They'll walk blocks, any direction, to avoid it, for the Old Eavesdropper of Studio Chatter lurks within, and his habit of darting out upon some hapless artist and dragging him before the microphone for an impromptu interview has become famous.

Clinton Twiss, the voice of the Old Eavesdropper, and Ken Carney, NBC producer, who writes Studio Chatter, conceived the

idea of the unrehearsed interview as a means of adding spontaneity to the program. Now they have as much fun as listeners do over the manner in which their victims react to the *ad libitum* queries fired at them.

• • • Paramount Pictures has captured one of the most beautiful and talented women of opera and radio—Gladys Swarthout. The leading lady of the Palmolive Beauty Box Theatre signed a picture contract this week. She will go to Hollywood next spring, at the close of the opera season.

For purposes of the screen tests, Miss Swarthout was persuaded to tweeze her eyebrows—something she had never done before. One company that negotiated with her requested that she change her coiffure, on the theory that it was too severe. Miss Swarthout refused. Paramount agrees with her that the coiffure is highly individual and should be left just as it is.

• • • Perhaps in the future a copy of James Melton's cook book will stand side by side with other great kitchen authorities! Jimmy, NBC tenor star, has over 150 recipes for making "short'nin' bread," sent to him by radio fans praising his inimitable interpretation of the song of the same name. Each recipe claims to be the only authentic one. A publisher, hearing of Melton's prize collection, wants to publish it in book form, illustrated with a series of cartoons.



## EMIL J. POLAK

NBC MUSICAL COUNSELOR

Friday—9 p. m. — KPO and  
Network

Polak's Mixed Quartet and Orchestra  
in CASWELL CONCERT

128th Program

ARRANGED AND DIRECTED BY

POLAK

# NEWS *and* COMMENT

Two outstanding radio presentations, Eddie Cantor and "The Hall of Fame," will become highlights of the nation-wide Columbia network's Sunday evening program schedule early in 1935, filling the 5:00 to 6:00 p.m., P.S.T., period under the same sponsorship.

"The Hall of Fame," a popular network feature for the past year, will become a weekly CBS attraction starting Sunday, January 6, from 5:00 to 5:30 p.m., P.S.T. Eddie Cantor will start his series on Sunday, February 3, at that same time, when "The Hall of Fame" will move to the 5:30 to 6:00 p.m., P.S.T., period. The Lehn and Fink Products Company will sponsor both programs, presenting "The Hall of Fame" in the interests of Lysol and Hind's Honey and Almond Cream, and Cantor in behalf of Pebecco Toothpaste.

Rubinoff, violinist and conductor, will be featured with Cantor when he returns to the air. Rubinoff and his violin have been associated with the popular comedian in all of his radio programs for the past three years. Full details of both programs will be announced later.

Cantor, with his wife and his three oldest daughters, sailed for Europe Sunday, December 2, for the comedian's first vacation in ten years. They will spend six or seven weeks abroad, visiting England, France and Italy.

Ψ

John Wolfe and Ned Tollinger, patter and harmony team known on the air as John and Ned, terminated their nine years' partnership on December 1, and Wolfe and Ted Maxwell (Pa Smithers of Memory Lane) are leaving for the NBC studios in Chicago. They will join Bobbe Deane, who is Mrs. Maxwell in private life, and the three will present a new radio skit which will combine dialogue and music.

Ned Tollinger, who is the master of ceremonies of the Carefree Carnival, will remain with the Western Division to pilot the big variety show on its new schedule.

John and Ned were a pioneer radio team. They joined forces and voices in their native town of Council Bluffs, Iowa, almost a decade ago, and received national publicity when they traveled from coast to coast as representatives of an oil company before the days of networks. They were noted for the perfect blend of their voices and the happy informality of their programs.

Maxwell has been a member of the San Francisco NBC staff since the Western Division was organized. His early microphone work included the rôle of Jack in the Jack and Ethyl dramas, and he and Carlton Morse launched the fad for mystery serials on the air with "The Cross-Eyed Parrot." He

played leading rôles in many NBC dramas and serials, including Memory Lane, which he has been writing, as well as playing its Pa Smithers character. He and Bobbe Deane appeared in "The Life of the Bellys." Before they joined the NBC staff the Maxwells headed their own stock company.

Ψ

A new departure in the technique of producing radio drama has been introduced in the broadcasts by Mary Pickford and Company over National Broadcasting Company networks. The new set-up, adapted from the sound-stage used on the movie lots in Hollywood, is designed to give greater intimacy to the broadcast.

A room-size space is set apart from the rest of the stage in NBC's auditorium studio in Radio City, and the microphone at which Miss Pickford and her company perform is set in the center of this space.

Surrounding on three sides are wings and a back drop, but the stage is open to an audience in front. The orchestra that furnishes the background music for the drama is placed at the side of the stage but outside the three-sided "room."

A second microphone is used to pick up the orchestral effects, thus giving separate control of the musical and dramatic portions. The high wing rises between the two microphones, and the stage director is placed in sight of both the music director and the actors to give the proper cues.

Ψ

"Modern dance music, contrary to general belief, undergoes style changes in much the same manner as the automobile," avers Maestro Tommy Thomas, KOMO-KJR's newest orchestra director. "A few years ago the trend was to brassy and showy effects," says Tommy, "and many a dance orchestra sounded like John Phillip Sousa's band passing a reviewing stand." Nowadays, and especially on the air, everything is "soft and sweet." Flute trills, violin obligati and "sub-tone" clarinets being the favorite form of interpretation at the hands of the Whitesmans, Vallees and Lombardos that greet you through the loudspeaker.

When asked what he thought would be the future trend, Thomas quickly replied, "The tango." "For the simple reason that it gives a wider play for unusual musical effects," he continued, "plus an insinuating rhythm that is really just beginning to catch on with the general dancing public."

Tommy Thomas, who conducts his own Romance Time orchestra on KJR, backs up his statements with fourteen years of orchestra and radio experience, having started on his own at the age of fifteen.

Michael Raffetto, who plays Paul in *One Man's Family*, is one of the most absent-minded members of the acting profession. He even forgot he had an automobile the other night.

Mulling over a radio play as he left the ferry train at his Berkeley station, he walked right past the car he had parked at the station that morning, went home, spent a pleasant evening reading and awakened with a start at 1:30 in the morning to remember the car. Realizing he would get a ticket for all-night parking, he struggled up, dressed, walked the mile and a half in the darkness to where the automobile stood, drove it home, put it to bed and then, at about three o'clock, followed suit himself.

Ψ

"Radio City," a new American composition with the rhythm of the Morse code as its motif, will be one of the results of Meredith Willson's recent vacation in New York.

The general musical director of the NBC Western Division has begun work on the suite, which in its first movement will spell "R-A-D-I-O C-I-T-Y" in a succession of musical dots and dashes so scored that telegraph operators will be able to read it. The romance of wireless, translated into sharps and flats, will continue in staccato rhythm to the opening of the second movement, "The Fountain Plaza." This will resolve it-

self into a smooth, melodic sound poem inspired by the fountain in the Rockefeller Plaza.

"Coming on that beautiful fountain in which the water and the shrubbery make such a contract to Fifth Avenue, it is impossible not to pause in thrilled admiration," says Willson.

The third movement may alternate the wireless theme of the first with the melody of the second, and then flow into an interpretation of Radio City as a whole.

Ψ

Graham McNamee's reel voice talks on. The famous NBC ace announcer, after rounding out five years as the Universal Newsreel Talking Reporter, has signed another two-year contract as celluloid commentator.

McNamee has established a solid reputation as "a voice in the dark." Newsreel fans say his remarks on the screen reflect the same exhilarating punch as his reports on the air.

Graham steals away from the studios twice a week to devote twelve to fourteen hours to the preparation of newsreels at Astoria, Long Island. The time is consumed in getting all the facts and in seeing the film three times. After this he works up appropriate descriptive remarks, which are recorded to synchronize with the film.



## Professor E. G. Linsley

*gives you impressions of a world-cruise in four fascinating talks*

This noted author-lecturer, one of the most noted scientific authorities in the West, will speak four consecutive Friday evenings—8:45 to 9—December 7, 14, 21 and 28, on the following subjects:

*"The Great Boulder Dam."*

*"The Panama Canal from the Largest Ship Ever to Navigate It"*

*"A Great Plan to Redeem the Holy Land, and the Engineering Feat to Reclaim this Country."*

*"The World's Most Beautiful Building—The Taj Mahal."*

# KTAB

# The OPENING CIRCUIT



This department is open to all. Send in your letters. Anonymous letters will not be published. Give full name and address.

## We Deleted Some of the Adjectives

I just finished reading my "Broadcast Weekly" and am I amused at those letters about "One Man's Family"! It is hard to believe that such . . . people are really living in this day and age! As if being sponsored by a cigarette company could affect the merits of any radio program or the morals of any one! Absurd and ridiculous!

Do not these pious, holler-than-thou people realize that "One Man's Family is only mythical—that the entire cast are, after all, only acting and doing so for a living—for money and only for money?

Do not these "overgood" individuals realize that being sponsored by such a firm means a big boost in all their salaries, and their admirers should rejoice—not pick flaws and try to preach. It's nauseating, really.

In our family, my husband, my son (who is twenty), and I sit by the fireplace enjoying our cigarettes and would think anyone who criticized us was absolutely out of their mind! And we are just one of the millions of modern families of today. Absolutely moral, living our own lives and allowing others to do likewise. We do not set ourselves up to judge and condemn.

Beth Holly, to me, is as sweet as ever and more power to her and to Carleton Morse for obtaining such an important sponsor! Congratulations, Mr. Morse, and don't lose any sleep over the little "small town condemners," who are really ludicrous to shriek with such horror over the smoking of a cigarette. I suppose these same narrow fault-finders never listen to Ben Bernie, the beer booster, either? I don't drink beer, but I surely like Bernie. I don't use Chase and Sanborn coffee, but I like Eddie Cantor—and, after all, there is about as much said against the habit of coffee drinking as there is against cigarette smoking, isn't there?

Such people as these long-nosed critics make me laugh. The gay, bad (?) nineties were long, long ago. After all, this is an age of broad-minded progress.

Success to Kentucky Winners and "One Man's Family." They can all smoke and I'll still like 'em.

Mrs. H. B., San Francisco.

## Father Barbour's Explanation Not Ample

It is with a deep feeling of disappointment that we see "One Man's Family" change time and sponsors. It means that there are many, many of us who will not get to hear it at all.

But not being able to hear it is not the greatest disappointment. To change from a good, clean sponsor whom all can accept to one which is questionable to some, is not progress to us. Carlton E. Morse has had the opportunity of doing a real service to the American people. Now he has turned that service into a temptation, and as a result has weakened his characters. The Barbour family has lost its morale. To have Paul and Father Barbour advocate smoking, with their background, is to hold them up to ridicule.

Imagine any mother saying, "Now children don't play with matches, but if you do play with matches, be sure you play with the right kind." Any match is still a match and will start a fire. Any cigarette is still a cigarette and is injurious to growing children.

We do not believe that any man such as Carlton E. Morse with the ability to portray beautiful characters will long continue in a mistake. It is too bad that the finest thing on

the air should fall to the level of the commonplace.

Is there not some wholesome product which has money enough to sponsor this program? Let us hope that "One Man's Family" will emerge from this experience into a clearer and more wholesome atmosphere than that which is afforded by the blue rings of tobacco smoke.

M. E. S., Mrs. M. M. M., Mrs. H. K. B.,  
Miss R. E. A., Mrs. M. B., K. P.,  
Vallejo, Calif.

## "Smoke and Let Smoke"

Doggone! I could cheerfully cuss. Just when I get Guy Lombardo 'n' his orchestra all lined up, come your new "Broadcast Weekly" and nary a word as to when or where I could lend ears to his ritzy orchestra. Am I irked? Why isn't he listed every week?

Heh! heh! I'm getting quite a snort out of the squabble over "One Man's Family." I would not miss that program for anything, whether Kentucky Winners or "Ginsberg Salted Pork" is sponsoring it. This idea of not listening to it because Beth shared a cigarette with Paul is silly. After all, it's only a radio play and why take it so seriously? I don't smoke or ever intend to, but if anyone else smokes that's their affair. Congrat to L. O. P., Montana, M. M. M. of San Francisco, and Mrs. H. C. of Diamond Springs, California. That's my idea exactly.

I certainly enjoy the "Broadcast Weekly" and couldn't get along without it. The Open Circuit is the first thing I read, and do I get a bang out of it. I've been tempted to write several times, but this is the first time I've actually grabbed my pen and "went 'n' done it." I have so many favorite programs that I haven't time to stop and listen to programs that "gripe" me. A few of my favorites are: Al Pearce and the Gang, Betty and Bob, Jack Benny, Phil Baker, Ma Perkins, The Shell Show, Camel Caravan, Ed Wynn, Gene and Glenn, Hollywood Country Church, Rev. C. E. Fuller, and the Merry Makers.

E. H. D., Acampo, Calif.

## Impression of a Fourteen-Year-Old Girl

I, also, was very sorry when I learned that Beth, with her high ideals of womanhood, smoked with Paul. I do not blame Carlton Morse, though, for I am sure he would not have done it if he had not felt it necessary to add a touch of modern reality to his play. I am just fourteen, and possibly entering the period of years in which we form our life habits, but I do not feel that Beth smoking would influence me as much as the advertisements in magazines. Especially those for Camels, which picture the daughters, wives, or mothers of famous or popular men, smoking.

I do not think less of Paul for not giving Teddy a selection from the Bible to go to sleep on, though I had supposed he would, and know many, many true, wholesome, good people who do not attend church or go to sleep with a Bible verse in their head.

I think the page devoted to reading the handwriting of radio stars in the "Broadcast Weekly" is a swell idea. Just as the magazine itself is a swell one.

I remain a grateful fan to "One Man's Family."

M. E. K., Calistoga, Calif.



# SILHOUETTES

FOR twelve years Mr. and Mrs. Clyde Boswell paid Professor Otto Finck to teach their daughters, Connie, Vet and Martha, all he knew about the violin, 'cello and piano. Those fond parents fully expected that their offspring would be one of the foremost string trios in the country, but, as of old, the best laid plans of mothers and fathers "gang aft agley." Instead, the girls have received top radio billing for the past four years as the hottest of harmonizers and now are heard in contrast to Bing Crosby's crooning on the Woodbury program each Tuesday over the Columbia network.



MARTHA, CONNIE and VET BOSWELL

It is only natural that the Boswell Sisters should be thus talented, for they are only carrying on the musical endeavors of their mother, father, aunt and uncle (two sisters who married two brothers), who were known as the Boswell Quartet, and whose combined voices became one of the featured attractions at amateur musicales in New Orleans.

It was when Mr. Boswell left their New Orleans home for an extended business trip that these three youngsters, eager to shine in other fields, laid aside their classical trappings. Connie learned to play the sax, Vet strummed a banjo, Martha kept her place at the piano, and before long Brahms had given way to the hottest rhythms. Close upon the heels of this new penchant for jazz came a desire to sing as well, and their latent talent as specialists in vocal harmonies soon came to light. Their distinctive style has brought them far more fame and fortune in radio, screen and stage fields than they could have hoped for as the Boswell String Trio.

Their first professional appearance was at the Orpheum Theatre in New Orleans and a short while later the trio made their radio debut over the local station. Accepting a six-weeks' engagement in Chicago, they left New Orleans for a triumphal procession that

has lasted six years. From the Windy City the Boswells continued making appearances throughout the Middle West and finally landed in Los Angeles. Their first network program was as guest artists on "California Melodies," the same feature that launched Bing Crosby. This was the turning point in their career. A radio executive heard this performance and they were immediately rewarded with a "big time" offer.

The sisters came East and in between programs fulfilled an important assignment in the film, "The Big Broadcast." Shortly after its release the trio left for England and the Continent, where their hot harmonies were the rage. Upon the trio's return to New York, several commercial sponsors vied for their signatures on contracts.

The Boswells now are in Hollywood at the scene of their first triumphs, where they have assumed a prominent position in the studio and social life of the film capital. Cinema-going audiences have recently heard and seen them perform in Constance Bennett's film, "Moulin Rouge," and their latest screen scoop, "Transatlantic Merry-Go-Round," is soon to be released.

Innerviews: A year separates each from the other—Martha is oldest, Connie next, and then Vet. . . . They are very superstitious and always braid a lock of hair before performing on the stage, and cross their fingers during broadcasts. . . . The trio almost met death when their car skidded and turned over three times. . . . Connie writes poems, plays and short stories for her own amusement, but cannot be induced to allow them to be published. . . . Spare time finds Vet painting, while Martha confines her talent to working out their snappy arrangements. . . . Connie is exactly 5 feet tall, weighs 105 pounds; Vet is 5 feet 3½ inches tall and weighs 112 pounds; while Martha is 5 feet 3 inches tall and weighs 115 pounds. . . . All have dark brown hair and eyes.

A VIOLIN prodigy at seven, a prize-winning pianist at 14 and an opera singer and featured radio artist at 21 is the record of Gina Vanna, young soprano of the NBC House by the Side of the Road program . . . dark-eyed and black-haired, Gina won a \$1,000 prize as pianist when 14 years old, and shortly thereafter, took up the study of voice. . . . Paul Longone of the Chicago Grand Opera Company heard her sing on radio and persuaded her to try opera . . . made her debut with Chicago Grand Opera Company last season (1933-34).



# HANDWRITING

AND

## Radio Personalities

By ZITA LOMAS

### CLAUDE SWEETEN

**E**NTER Exhibit C in this series of handwriting analyses of radio personalities . . . CLAUDE SWEETEN, KFRC musical director. . .

Mr. Sweeten is one whom I didn't see when I was collecting samples of writing. However, they tell me that he is heavy-set and blondish.

He also has a dash of the "prima donna temperament." But it wasn't "they" who told me that. It's the signature. . .

*Dear Miss Lomas  
why haven't I had the  
Pleasure of meeting you?  
Claude Sweeten*

**NOTE:** This handwriting is considerably reduced from original.

Take a look at it. What is the first thing to strike the eye? Right—the first time. That curlycue stuck in between the two names is a dead give-away. Such a feature in a signature always indicates a liking for attention, praise, admiration and recognition.

Since the writing in general is plain and unpretentious, we can be sure that Claude Sweeten is not a vain or conceited person. It is simply that he is good, and he knows it, and wants others to recognize the fact. That curlycue, and the large, inflated capital "C" in the signature reflect the consciousness of self, in a professional way.

Activity and energy are leading indications of this quick, angular and sloping writing. Its author is innately averse to ease, indolence and idleness, and so it is essential to his temperament that he be kept busy and actively occupied. His temperament is the nervous, excitable and highly-strung kind which cannot relax, or take things calmly.

\* \* \*

The more a handwriting slopes to the right, the more emotional is the nature of its author. And angularity enhances the signifi-

cance of the sloping hand. Therefore we can be sure that this writer is an ardent person, capable of a strong, deep devotion, either to people or to "causes." All of his feelings are acute. There is nothing lukewarm about him.

\* \* \*

An interesting feature of his writing is the t-bars. Two of them are long and strong, showing will-power, courage and fortitude, while the other two are short and to the left of the stem of the letter, denoting a measure of procrastination. Since there are other signs of strength and resolute purpose (two chopped-off lower projections, a single-stroke "t" and a general firmness and evenness of pressure to the writing as a whole) we know that the writer is a strong-willed and positive person. But at the same time he must watch out for that tendency to procrastination, and not allow it to grow on him. There are times when he will putter about, doing everything under the sun, for no other reason than to stall off the main issue!

\* \* \*

The lines of Claude Sweeten's writing are ascendant. This expresses positive qualities of optimism, hopefulness and buoyancy of spirits. It is also, in this case, a sign of energy and activity. Read in conjunction with the fairly high capitals, it means ambition and aspiration.

Notice, however, that while the general trend is upward, every line commences on a downward slope, and then ascends to the end. This is the calligraphic expression of one who is struggling against some sort of adverse circumstances or discouragement, but who, because of inherent optimism and pluck, keeps himself in a state of hopefulness and enthusiasm.

\* \* \*

Because he is nervous, high-strung, impatient, changeable and somewhat erratic, Claude Sweeten wouldn't be the easiest person to hit it off with. He can be very abrupt and sarcastic, too, which is often disconcerting to others. And on top of that, he is a person who, while exacting in his work, and in his demands upon others, is careless and absent-minded about many everyday matters, such as appointments, promises and so on.

\* \* \*

You have just read an analysis of the handwriting of a well known radio personality . . . Why not have YOURS analyzed? . . . See special offer on page 13 of this issue. . .

# SUNDAY Programs

Dec. 16, 1934

## 7:00 to 7:30 A. M.

KNX—Breakfast Club  
 KGDM—Weather, Records  
 KSL—Church of the Air  
 KFOK—El Despertador  
 KOA—Radio Pulpit

## 7:30 to 8:00 A. M.

• KPO & network—Good Morning; Mickey Gillette; 7:45, Lee S. Roberts and guest artists  
 KGDM—Recordings  
 KVI—7:45, Temple Baptist Church  
 KNX—Bill Sharples and his Breakfast Club Gang  
 KFOK—Recordings  
 KSL—Comic Strips  
 KOA—Morning Musicale

## 8:00 to 8:30 A. M.

• KPO & network—Tid-Bit; 8:05, Ray Heatherton, baritone; 8:15, The Alling House  
 KGO—Pair of Pianos  
 KYA—8:15, Christ. Science Reading  
 KROW—Commuters Clock  
 KJBS—Close Harmony  
 KGDM—News; Organ  
 \* KFRK & netwk—Cleveland String Quartet  
 KJR—Coast to Coast, recorded  
 KEX—Sacred Music; 8:15 Concert  
 KVI—Temple Baptist Church  
 KHQ—Tidbits  
 KHJ—Sunday Times Comic  
 KNX—Bill Sharples and his Breakfast Club Gang  
 KFWB—Records; Funnies  
 KFI—Church Quarter Hour to 8:15  
 KFOK—Percy and His Father; 8:15, Examiner Comics  
 KSL—Comic Strips  
 KOA—News; 8:05, Music; Talk

## 8:30 to 9:00 A. M.

• KPO & network—Major Bowes' Capitol Family  
 KGO—Mickey Gillette and Music  
 KYA—Science Reading; 8:45, Sabbath Hymns  
 KTA—Sunrise Symphony  
 KFWB—Swedish Meditations  
 KJBS—Morning Concert  
 KGDM—Chapel  
 \* KFRK & network—Salt Lake Tabernacle Choir and Organ  
 KOA—P. I. Comic Section  
 KVI—Radio Gospel League  
 KOIN—Sunday Concert  
 KHQ—Gus Mack  
 KJR—Coast to Coast, Recorded  
 KFWB—Funny Paper Man  
 KNX—Bill Sharples, Breakfast Club  
 KECA—Recordings  
 KFOK—Examiner Comics

## 9:00 to 9:30 A. M.

• KPO & network—Sunday Morning Special: Col. Rod, narrator, drama  
 KGO—Chronicle Comics  
 KYA—"Fellowship of the Air"; 9:15, Funny Paper Man  
 KTAB—Seventh Day Adventists  
 KROW—Morning Concert  
 KJBS—Popular Hits  
 KGGC—Melodies; Bargain Basement  
 KGDM—Bondons  
 KQW—Organ; Congo Program  
 \* KFRK & network—Salt Lake Tabernacle  
 KOIN—Journal Comics  
 KJR—Irish Minstrels; Early Echoes  
 KNX—Help for the Day; 9:15, Chnd. Mehra  
 KFWB—Electrical Transcription  
 KECA—Recordings  
 KFOK—Recordings  
 KFSD—Studio Program  
 KOA—Capitol Family



CLAUDE SWEETEN  
 KFRC—Musical Director

## 9:30 to 10:00 A. M.

• KGO & network—Radio City Music Hall on the Air  
 KPO—Singable Songs: Emil Polak's Orchestra  
 KYA—Funny Paper Man  
 KTAB—Seventh Day Adventists  
 KROW—Morning Concert  
 KJBS—Dance Orchestra; Records  
 KGGC—Songs of Today; Concert  
 KGDM—Watch Tower; 9:45, Comics  
 KQW—Light Opera; Funnies  
 \* KFRK & network—Meditations in Melody; 9:45, Romany Trail  
 KOIN—9:45, Dean Matthews  
 KOA—Democratic Talk to 9:45  
 KHQ—Magic Travels to 9:45  
 KOMO—For All the Family  
 KNX—Elec. Trans.; 9:45, Organ  
 KPOK—Recordings  
 KECA—Recordings  
 KFWB—Records  
 KGB—Signs of the Times to 9:45  
 KSL—Schubach Prog.; Watch Tower

## 10:00 to 10:30 A. M.

• KGO & network—Radio City Music Hall on the Air  
 KPO—Beaux Arts Trio: Instrumentalists  
 KYA—Unc. Harry; 10:15, Choral  
 KTAB—10th Ave. Baptist Church  
 KROW—Watch Tower Program  
 KJBS—Recordings  
 KGGC—Timely Tunes; Records  
 KQW—Salon Orchestra; 10:15, Baptist Church  
 KGDM—Echoes of Nineties  
 \* KFRK & netwk—Church of the Air  
 KOMO—For All the Family  
 KECA—Music and Musical Forms  
 KHJ—10:15, Randall String Quartet  
 KNX—Playing the Song Market  
 KFWB—Recordings  
 KFOK—Dance Records  
 KSL—Church of the Air  
 KOA—10:15, Better Housing Talk

## 10:30 to 11:00 A. M.

• KPO & network—National Youth Radio Conference  
 KGO—Sparklets: Coquettes, vocalists  
 KYA—Old Rocking Chair; 10:45, Concert Stars

KTAB—Church Services  
 KROW—Salon Organ  
 KJBS—Dance Recordings  
 KGGC—Request Hour  
 KQW—Baptist Church Services  
 KGDM—Recordings  
 \* KFRK & network—10 Fingers and 88 Keys; Art Kassel's Orchestra  
 KVI—Col. Dames' Cosmetics  
 KGW—Tommy Luke  
 KJR—Judge Rutherford; Music  
 KNX—Congo; Baptist Church  
 KFI—Hawaiians; Dr. Casselberry  
 KFWB—"The Family Circle"  
 KFOK—Recordings  
 KSL—Optical Program to 10:45  
 KOA—Huffman Theatre Harmonies

## 11:00 to 11:30 A. M.

• KPO & network—Road to Romany  
 KGO—Melody Lingers On; Josef Hornik's Orchestra  
 KYA—Old St. Mary's Church Serv.  
 KTAB—Church Services  
 KROW—Oakland Community Church  
 KJBS—College Airs  
 KGGC—Request Hour  
 KQW—First Baptist Church  
 KGDM—First Baptist Church  
 \* KFRK & network—Lazy Dan the Minstrel Man  
 KJR—Evergreen Empire  
 KNX—Temple Baptist Church  
 KFWB—Recordings  
 KFOK—St. Lukes Church  
 KECA—Recordings

## 11:30 to 12:00 Noon

• KPO & network—Lux Radio Theatre, featuring Guest Star  
 KGO—Concert Gems: Emil Polak's Orchestra  
 KYA—Old St. Mary's Church Serv.  
 KTAB—Church Services  
 KROW—Oakland Community Church  
 KJBS—Dance Recordings; 11:45, Songs of the Hills  
 KGGC—Style Parade; Records  
 KQW—First Baptist Church  
 KGDM—Church Services  
 \* KFRK & network—Royal Hawaiian Band  
 KJR—Songs; Jewel Box  
 KNX—Temple Baptist Church  
 KFWB—Maude Hughes, pianist  
 KFOK—St. Lukes Church  
 KECA—Recordings  
 KFSD—Organ, Jamie Erickson

## 12:00 to 12:30 P. M.

• KPO & network—Lux Theatre  
 KGO—Bible Stories and Organ  
 KYA—Organ Sonata  
 KTAB—Church services  
 KIX—Records  
 KROW—All Request Program  
 KJBS—Orch.; 12:15, Melodies  
 KGGC—Marjorie Lee  
 KGDM—Records; Portuguese Melodies  
 KQW—Church; 12:15, Opera Stars  
 \* KFRK & network—New York Philharmonic Symphony  
 KJR—International Musicale  
 KFWB—Gold Star Rangers  
 KNX—Concert Group  
 KFOK—St. Lukes Church  
 KECA—Recordings

## 12:30 to 1:00 P. M.

• KPO & network—The Maybelline Musical Revue  
 KGO—Bible Stories  
 KYA—Band Concert; Bargains  
 KTAB—Church Services; 12:45, Paul Halsinger, Evangelist  
 KIX—Familiar Melodies  
 KROW—All Request Program  
 KJBS—Auburn Airs; Records  
 KGGC—Recordings  
 KGDM—Portuguese Melodies  
 KQW—Question Box; Tango Time

\*KFRC & netwk—Symphony Orch.  
 KJR—Chimes of the East  
 KNX—Concert Group  
 KECA—Records  
 KFOX—Electrical Transcription  
 KFVB—Gold Star Rangers  
 KFSD—Choralla

### 1:00 to 1:30 P. M.

•KPO & network—The Rhythm Symphony, De Wolf Hopper, narrator  
 KGO—Melody Train  
 KYA—Calif. Composers Series  
 KTAB—L. D. S. Men's Chorus  
 KLX—Music; Spice of Life  
 KROW—Recordings  
 KJBS—Melodies; Dixie Marsh  
 KGDM—Melodies; 1:15, Records  
 KQW—Melodies; Dixie Marsh  
 \*KFRC & network—Symphony Orch.  
 KJR—Seattle Pacific College  
 KNX—Louise Johnson, Astro-Analyst  
 KECA—Recordings  
 KFVB—Recordings  
 KFOX—Recorded Orchestra; 1:15, Man About Town

### 1:30 to 2:00 P. M.

•KPO & network—The House by the Side of the Road; Tony Wons and artists  
 KGO—Melody Train  
 KYA—Calif. Composers; Hebraics  
 KTAB—George Kruger, pianist  
 KLX—Recorded Program  
 KROW—Dance Hits  
 KJBS—Concert Record  
 KQW—Dance Music  
 KGDM—Lonesome Hobo  
 \*KFRC & network—Symphony Orch.  
 KJR—Metropolitan Moods  
 KNX—Louise Johnson, Astro-Analyst  
 KFVB—Recordings  
 KECA—Vocational Adjustment; Hollywood Conservatory of Music  
 KFOX—Elec. Trans.; Organ

### 2:00 to 2:30 P. M.

•KPO & network—Sentinel's Serenade; Orch. and vocalists  
 KGO—Pan-Americana; Instrumentalists  
 KYA—Discovery Hour  
 KTAB—Chamber of Commerce; 2:15, Red Cross Playlet  
 KLX—Recorded Program  
 KROW—Dance Hits  
 KJBS—Marjorie Lee, pianist; Orch.  
 KGDM—Ansel Roby and Gang  
 KQW—Marjorie Lee; 2:15, Vocalist  
 \*KFRC & network—Open House  
 KJR—Hollywood Temple  
 KNX—Exposition Park Concert  
 KECA—Classic Hour; Records  
 KFOX—Christian Science; 2:15, To be announced  
 KFVB—Records; Professional Football  
 KFSD—Old-Time Program

### 2:30 to 3:00 P. M.

•KPO & network—American Bosch Radio Explorers Club; 2:45, Terhune Dog Drama  
 KGO—Doorways to Yesterday  
 KYA—Light Opera  
 KTAB—Military Music  
 KROW—Theatre of the Air  
 KLX—Pianist; Song Souvenirs  
 KJBS—Allied Merchants; Concert  
 KGGM—Sunday School  
 KGDM—Ansel Roby and Gang  
 KQW—Independent Merchants; Opera  
 \*KFRC—Congoin (Elec. Trans.)  
 \*KFRC & network—2:45, Rabbi Magnin  
 KVI—2:45, Judge Rutherford  
 KJR—Calvary Presbyterian Church  
 KOL—2:45, Musicales  
 KNX—Concert  
 KECA—Recordings  
 KFVB—Professional Football

KQW—Popular Orchestra  
 KFOX—To be announced  
 KHJ—The Story of Perfume to 2:45  
 KFSD—Old Time Program  
 KSL—Victor Herbert's Melodies; Electrical Transcription

### 3:00 to 3:30 P. M.

•KPO & network—Catholic Hour  
 KGO—Charles Jacobs, trumpeter; Tom Mitchell, baritone  
 KYA—Lite Opera  
 KTAB—Military Music  
 KLX—Records  
 KROW—Vesper Service  
 KJBS—Recordings; Philo Concert  
 KGGM—Church Service  
 KGDM—Serenader; Records  
 KQW—Violinist; Musical Program  
 \*KFRC & network—Music by Gerstshwin  
 KGO—Nick Flowers; Music  
 KOMO—Old Songs of the Church  
 KFI—Dramatic Program  
 KNX—Concert  
 KFOX—To be announced  
 KFVB—Professional Football  
 KFSD—Royal Brown, organist  
 KOA—Home Sweet Home

### 3:30 to 4:00 P. M.

•KPO & network—Grand Hotel; Drama, with Anne Seymour and Don Ameche  
 KGO—Vagabonds Quartet  
 KYA—First Ame Zion Church Choir  
 KTAB—Quartet; Congoin  
 KLX—Manila String Orchestra  
 KROW—Vesper Service  
 KJBS—Musical Styles  
 KGGM—Church Service  
 KQW—Concert Favorites  
 KGDM—Organ  
 \*KFRC & network—Smilin' Ed McConnell; Edith Karen, soprano  
 KOL—3:45, Footpaths of Music  
 KVI—3:45, Amusement Tips  
 KJR—Cornish School Program  
 KNX—Concert  
 KECA—Records; Spirituals  
 KFVB—Professional Football  
 KFOX—To be announced  
 KFSD—Feature Program  
 KSL—3:45, Melodies

### 4:00 to 4:30 P. M.

•KPO & network—Martha Mears, contralto; 4:15, John B. Kennedy  
 KGO—To be announced; Paul Carson, organist  
 KYA—Piano Concert  
 KTAB—Santa Claus; World Affairs  
 KLX—Recordings  
 KROW—Symphony Concert  
 KJBS—Dance Orchestra  
 KQW—Bible; 4:15, Semi-Classic  
 KGDM—Records; Danch Orchestra  
 \*KFRC & network—California Melodies  
 KOL—Drama to 4:05  
 KOIN—Toyland Express; Old Songs  
 KHQ—Shrines of Beauty; Doc Savage  
 KJR—4:15, Woodlawn Playlet  
 KVI—4:15, High School News  
 KOMO—John Spargur; Royal Seven  
 KNX—Amagon; Silver Strains  
 KFI—Organ Recital  
 KFOX—To be announced  
 KFVB—Professional Football  
 KSL—4:15, Melodic Portraits  
 KOA—4:15, Melodic Portraits

### 4:30 to 5:00 P. M.

•KPO & netwk—Joe Penner, comedian; Harriet Hillard, vocalist; Ozzie Nelson's Orchestra  
 KGO—Paul Carson, organist; 4:45, Mickey Gillette's Music  
 KYA—Vesper Services  
 KTAB—Little Serenade  
 KLX—Carefree Capers  
 KROW—Recreation Singers  
 KJBS—Recordings to 4:45

KGDM—Recordings to 4:45  
 \*KFRC & netwk—Chicago Knights; 4:45, Americans of Tomorrow  
 KOL—Radio Pen Friend to 4:45  
 KJR—Jewish Program; Notes in Rhyme  
 KNX—Adventures in Literature  
 KECA—U. S. C. College of Music  
 KFOX—Nazarene Church  
 KFVB—Recordings  
 KFSD—Symphony Concert

### 5:00 to 5:30 P. M.

•KPO & network—Chase and Sanborn Opera Guild  
 KGO—Mickey Gillette's Music; 5:15, Harry Stanton, basso  
 KYA—Aviation Talk  
 KTAB—Religious Services  
 KLX—Old Man Soliloquy; 5:15, Melody Palette  
 KROW—Rhythm Revue  
 KQW—Semi-Classic; Catholic Prog.  
 \*KFRC & netwk—Ford Sunday Evening Hour  
 KJR—Emanuel Tabernacle  
 KNX—Ethel Hubler; Dr. Matthews  
 KECA—Musical Celebrities; records  
 KFVB—Recordings  
 KFOX—Nazarene Church  
 KFSD—Symphony

### 5:30 to 6:00 P. M.

•KPO & network—Chase and Sanborn Opera Guild  
 KGO—Gunnar Johansen, pianist  
 KYA—Symphony Concert  
 KTAB—Religious Services  
 KLX—Covered Wagon Jubilee  
 KROW—Rhythm Revue  
 KQW—Concert  
 \*KFRC & netwk—Ford Program  
 KJR—Vindabonians  
 KNX—Dr. John Matthews  
 KECA—Recordings  
 KFVB—Recordings  
 KFOX—Theatre News; Orchestra  
 KFSD—5:45, Farley's Rangers

### 6:00 to 6:30 P. M.

•KPO & netwk—Manhattan Merry-Go-Round; Orch. and vocalists  
 KGO—Henry M. Hyde; 6:15, Personal Closeups; Radio Artist interviewed by Gypsy  
 KYA—Rabbi Burstein; Melodettes  
 KTAB—Nevada Nighthiders  
 KLX—Mixed Quartet  
 KROW—Symphony; Watch Tower  
 KQW—Hits of the Past; Records  
 KJR—Angelus Hour  
 \*KFRC & network—Alexander Woolcott with Armbruster's Orch.  
 KFVB—News; Mysteries; Fun Fest  
 KECA—Wesley Tourtellotte, organ  
 KNX—Musical Program  
 KFOX—News; Rolly Wray; Drama  
 KFSD—Organ Melodies

### 6:30 to 7:00 P. M.

•KPO & network—The American Album of Familiar Music; Frank Munn; Virginia Rea, vocalists  
 KGO—Palace Hotel Ensemble  
 KYA—Sonia Sapiro, pianist  
 KTAB—Scores, Charlie Tye  
 KLX—Ran Wilde's Orchestra  
 KROW—Recordings  
 KQW—Popular Vocal; Songs  
 \*KFRC & network—Salon Moderne  
 KOL—The Pioneers  
 KOIN—Moods in Music to 6:35  
 KJR—Angelus Hour  
 KFVB—Fun Fest; Organ; Orchestra  
 KNX—Rev. C. E. Fuller  
 KFOX—School Kids; Pioneers Sons  
 KECA—W. Tourtellotte, organist  
 KFSD—Savoy Troubadors  
 KSL—Father Dwyer, address

### 7:00 to 7:30 P. M.

•KPO & network—Hall of Fame  
 KGO—Tales from Shakespeare

KYA—March of the Nations  
 KTAB—Echoes of Portugal; Morgan  
 Production  
 KLX—Variety Hour  
 KROW—Harmonies; Rhythms  
 KGGC—Church Service  
 KQW—Concert Orchestra  
 \*KFRC & network—Wayne King's  
 Orchestra  
 KJR—The Builders  
 KNX—Rev. C. E. Fuller  
 KFWB—Jack Joy's Orchestra  
 KECA—Pierce Bros. Quartet  
 KFOX—Melody-Harmony-Rhythm  
 KFSD—Furnblitt's; 7:15, Vocalist

7:30 to 8:00 P. M.

•KPO & network—Pontiac Program:  
 Orchestra and vocalists  
 KGO—Rudy Selger's Orchestra  
 KYA—Concert; 7:45, Louise Taber  
 KTAB—Church Serv. Bapt. Church  
 KLX—Variety; 7:45, William Don,  
 eccentric comedian  
 KROW—Associated Students  
 KGGC—Church Service  
 KQW—First Baptist Church Service  
 \*KFRC & network—Merrymakers  
 KJR—World Revue  
 KFWB—Electrical Transcription  
 KECA—Nick Harris; Recordings  
 KFOX—Boy Detective; Ballads  
 KNX—Fireside Phantasia; Talk

8:00 to 8:30 P. M.

•KPO & network—Wendell Hall &  
 His Ukulele; 8:15, Walter Winchell  
 KGO—Homik's Viennese Program  
 KYA—Cabbing About; Opera  
 KTAB—Church Services, Baptist  
 KLX—Hour of Melody  
 KROW—Oakland Community Church  
 KQW—Baptist Church Services  
 \*KFRC & network—Merrymakers  
 KJR—First Church of Christ  
 KNX—Presbyterian Church  
 KFWB—Hi-Jinks, Don Smith, M.C.  
 KECA—Recorded Program  
 KFOX—Christian Science Church  
 KFSD—Thoughtful Service to 8:15

8:30 to 9:00 P. M.

•KPO & network—Jack Benny and  
 Artists; Don Bestor's Orchestra  
 KGO—Paul Martin's Music  
 KYA—Opera Recordings  
 KTAB—Church Services  
 KLX—Hour of Melody  
 KROW—Oakland Community Church  
 KQW—Baptist Church Services  
 \*KFRC & network—Evening Dreams  
 KOL—Comedy Stars to 8:45  
 KOIN—Comedy Stars; 8:45, Elchen-  
 laub Ensemble  
 KJR—Church Services  
 KFWB—Hi-Jinks  
 KNX—Church Services  
 KECA—Recordings  
 KFOX—Christian Science  
 KSL—L. D. S. Services

9:00 to 9:30 P. M.

•KPO & network—The Melodious  
 Silken Strings  
 KGO—Flirtations; Vocal Trio  
 KYA—Opera  
 KTAB—Church Services; 9:15, Rod  
 Hendrickson, Humor Stories  
 KLX—World Revue  
 KROW—Foreign Watch Tower  
 \*KFRC & network—Hi-Jinks  
 KOIN—Krausmeyer & Cohen; Little  
 Show  
 KOL—Krausmeyer & Cohen to 9:15  
 KVI—Krausmeyer & Cohen; 9:15,  
 Memories with Edmund Breese  
 KJR—News; National Conference  
 KFWB—Amer. Caravan, Drama  
 KNX—News; 9:15, The Crocketts  
 KECA—Countess Li Guoro, pianist;  
 9:15, Records  
 KFOX—Beverly Hillbillies  
 KFSD—Moments of Melody  
 KSL—Musical Album

9:30 to 10:00 P. M.

•KPO & network—Broadcast to Byrd  
 Expedition  
 KGO—Reader's Guide  
 KYA—Opera; 9:45, News; Answer  
 Man  
 KTAB—Religious Services; Jimmy  
 Cook's Sidelines  
 KLX—News; Metropolitan Moods  
 KROW—Tango Time  
 \*KFRC & network—Hi-Jinks  
 KOL—9:45, News Flashes  
 KVI—News; Gospel League  
 KGW—G. A. Paine; Cystex  
 KOMO—Doc Savage; Romance Time  
 KHQ—Memories; Crazy Wells  
 KFI—Music; 9:45, Dream Drama  
 KNX—The Crocketts  
 KFWB—Slumbertime  
 KFOX—Beverly Hillbillies  
 KECA—Records to 9:45  
 KSL—Temple Square; Organ  
 KOA—Donnelly James; Orchestra

10:00 to 10:30 P. M.

•KPO & network—Richfield Repor-  
 ter: Sam Hayes  
 KPO—10:15, Coakley's Orchestra  
 KGO—John Teel, baritone  
 \*KGO & network—10:15, Paul  
 Carson, organist  
 KYA—Bobbie Gram's Orchestra  
 KTAB—Japanese-American broad-  
 casting Society Program  
 KLX—Dance Music  
 KROW—Concert Gems  
 KFRC—News to 10:10  
 \*KFRC & network—10:10, Organ;  
 10:15, Joe Sullivan, pianist  
 KOIN—Concert Gems  
 KOL—To be announced to 10:15  
 KOMO—10:15, Jack & Melody Maids  
 KJR—Musical Jigsaws  
 KHJ—News; 10:10, Dance Orchestra  
 KNX—The Crocketts  
 KFWB—News; Ed Eben, Organist  
 KFOX—News; Organ  
 KECA—Musical Celebrities; Organ

KGB—News; Organ; Pianist  
 KSL—Temple Square  
 KOA—John Teel; Organ

10:30 to 11:00 P. M.

KPO—Orchestra  
 \*KGO & network—Paul Carson,  
 organist, Bridge of Dreamland  
 KYA—Concert Memories  
 KTAB—Dance Orchestra  
 KLX—Dance Music  
 KROW—Quiet Harmonies  
 \*KFRC & network—Orville Knapp's  
 Orchestra  
 KVI—Dance Orchestra  
 KOMO—Viennese Vagabonds  
 KECA—Recordings  
 KFOX—Tex Howard's Orchestra  
 KFWB—Dance Orchestra  
 KOA—Cosmopolitan Orchestra

11:00 to 11:30 P. M.

•KGO & network—Press-Radio News;  
 11:05, Freddie Bergin's Orchestra  
 KPO—News; Midnight Melodies  
 \*KFRC & network—Dick Jurgens'  
 Orchestra  
 KTAB—Dance Orchestra  
 KROW—Dance of the Hour  
 KGW—To be announced  
 KHJ—Dance Orchestra  
 KFWB—Clyde Leach's Orchestra  
 KFOX—Dance Orchestra

11:30 to Sign Off

•KGO & network—Freddie Bergin's  
 Orchestra  
 KPO—Midnight Melodies  
 \*KFRC & network—Organ Melodies  
 KTAB—Club Tivoli Orchestra; 11:45,  
 DX Program, J. Malloy  
 KROW—Music; Midnight Vagabond  
 KOL—Organ Recital  
 KVI—Orchestra  
 KHJ—Midnight Moods  
 KFOX—Freddie Carter's Orchestra  
 KGD—12, Music and News  
 KJBS—12:01, Owl Program to 7 a.m.

# Character Analysis

By ZITA LOMAS

For a very limited time only, *Broadcast Weekly* offers a highlight analysis of your handwriting by Zita Lomas (250 to 300 words) for only 25 cents when accompanied by a new subscription, renewal or extension to *Broadcast Weekly*.

— — — MAIL THIS COUPON TODAY — — —

BROADCAST WEEKLY

1114 Mission St., San Francisco

Gentlemen: Send me BROADCAST WEEKLY for one year (or six months) and a highlight character analysis from the specimen handwriting on separate sheet enclosed. I enclose herewith \$1.75 (or \$1.00).

Name.....

Address.....

City..... State.....

New  Renewal  Extension

(Subscription **MUST** accompany this offer as the 25 cents does not begin to cover the cost of this personal analysis.)

# MONDAY Programs

Dec. 17, 1934

## 7:00 to 7:30 A. M.

- KPO & network—Harvest of Song; 7:15, Holman Sisters, piano duo
- KYA—Musical Clock
- KTAB—Cuckoo Club; Stocks
- KROW—Commuters Clock
- KJBS—Alarm Klok Klub Program
- KQW—The Breakfast Hour, rec'ds
- KFRG—Recordings; 7:25, Stocks
- KGDM—News; Records
- KOL—Organ Revellie, Don & Frank
- KVI—Daybreak Devotional
- KHQ—Morning News; Program
- KFI—7:15, Louis Rueb, exercises
- KHJ—Recordings and Stocks
- KNX—Bill Sharples Breakfast Club
- KECA—Recordings
- KFSD—Early Birds; Pep & Ginger
- KGB—7 o'Clock Club
- KSL—News; Adv. Review

## 7:30 to 8:00 A. M.

- KPO & netwk—Financial Service; 7:45, Tom Mitchell, baritone
- KGO—Betty Brunn, vocalist; 7:45, Joe White, tenor
- KYA—Musical Clock
- KTAB—The Texans
- KROW—Commuters Clock
- KJBS—Alarm Clock Club
- KQW—Breakfast Hour
- KFRG—Seal Rocks Broadcast
- KGDM—Gilmore Oil Program
- KGW—Crazy Mountaineers
- KOL—Organ Revellie
- KVI—Talk; Morning Varieties
- KJR—Sunrisers; 7:45, Shadows on the Clock
- KHQ—Financial; 7:45, Crazy Wells
- KFI—Market Quotations to 7:45
- KHJ—Records and Stocks
- KNX—Bill Sharples Breakfast Club
- KECA—Bible Fellowship; Records
- KGB—Stocks; Seven o'Clock Club
- KSL—Advertisers Review

## 8:00 to 8:30 A. M.

- KPO & network—Hour of Memories; U. S. Navy Band
- KGO—Crosscuts Log o' the Day
- KYA—Christian News Reading; 8:15, Mr. & Mrs. Reader
- KTAB—Shipping News; Santa Claus
- KLX—Recorded Program; Stocks
- KROW—Commuters Clock
- KJBS—Morning Varieties
- KQW—Morning Melodies
- KGDM—Serenaders; 8:15, Records
- KFRG & netwk—Exercise & Appreciation; 8:15, Fats Waller Rhythm Club
- KOL—8:15, Cecil and Sally
- KVI—Mountaineers; Market Specials
- KOIN—Memories Garden
- KOMO—Morning Reveries
- KHQ—Studio Programs to 8:15
- KFI—Church; Airplane Man
- KNX—Gene Autrey; Help for the Day
- KGB—Recordings to 8:15
- KSL—8:15, Good Morning Judge

## 8:30 to 9:00 A. M.

- KPO & network—U. S. Navy Band
- KGO—Crosscuts of the Day
- KYA—Flower Talk; Notebook
- KTAB—Radio Shoppers' Digest
- KLX—Covered Wagon Jubilee
- KROW—Novelty Review
- KQW—Morning Concert
- KGDM—Records; 8:45, Health Talk
- KJBS—Aubrey Loux, pianist; Records
- KFRG & netwk—Hollywood Country Church
- KOMO—Varieties; Mary's Garden
- KHQ—Review; 8:45, Home Comfort
- KNX—Song Bag; Talk
- KFCA—Recording
- KSL—Cal-O-Dine; Voice of Health



BARBARA BLANCHARD  
NBC—Vocalist

## 9:00 to 9:30 A. M.

- KGO & network—Fields & Hall; songs and patter
- KGO—9:15, Johnny Toffoli, accordion
- KPO—Barbara Lee, Breakfast Club
- KPO & network—9:15, To be announced
- KYA—Concert; Prudence Penny
- KTAB—Hour of Prayer
- KLX—Shopping List
- KROW—Romance; Vocal Varieties
- KJBS—Song Hits; Barcarole
- KGCC—Records; 9:15, Songs
- KQW—Tuneful Topics; Congoin
- KGDM—Records; 9:15, Talk
- KOL—9:15, Prudence Penny
- KVI—9:15, "The Gumps"
- KFRG & network—Voice of Experience to 9:15
- KFRG—9:15, Congoin Dance Music
- KJR—9:15, Early Echoes
- KNX—Organ; Elec. Trans.
- KECA—Recordings
- KFSD—9:15, Good Cheer
- KGB—9:15, The Gumps
- KSL—9:15, The Gumps

## 9:30 to 10:00 A. M.

- KPO & network—The New World, educational talks
- KGO—Improve Your Home; Alvino Rey, guitarist
- KYA—Lovers Lane; Waltz Time
- KTAB—Health Talk
- KLX—Clinic of the Air
- KROW—Diet and Health
- KJBS—Visiting Faye Ward
- KGCC—Morning Melodies
- KQW—Faye Ward
- KGDM—News; Records
- KFRG & netwk—Dick Messner's Orchestra
- KVI—English Lesson; Mystic Melodies
- KOL—9:45, Beautiful Melodies
- KHQ—Wait & Marian; Tull & Gibbs
- KQW—Pianist; Modern Homemaker
- KJR—News; Black and White Moods
- KFI—Hawaiians; 9:45, News
- KHJ—Press-Radio News to 9:35
- KNX—Amagon Program; 9:45, News
- KGB—News to 9:35
- KFSD—Stock Reports to 9:45

## 10:00 to 10:30 A. M.

- KGO & netwk—Press-Radio News; 10:05, Mickey Gillette's Music
- KPO—Golden State Menu Fashions; 10:15, News Reporter
- KYA—Columbia on Parade; 10:15, Organ Recital
- KTAB—News; Old Bachelor; Bargains
- KLX—Clinic; Stocks; News
- KROW—Rhythm Revue
- KJBS—News; 10:05, Organ
- KGCC—Cal King
- KQW—News; Popular Orchestra
- KGDM—Recordings
- KJR—Home Makers; Music
- KOMO—Jack and Jill to 10:15
- KFRG & network—Just Plain Bill
- KFRG—10:15, Women's Home Forum
- KOL—10:15, Morning Melodies
- KOIN—10:15, Air Shopping
- KVI—10:15, Pioneer Sons
- KNX—Eddie Albright's Family
- KECA—Recordings
- KGB—10:15, Organ Recital
- KOA—10:15, Marietta Vasconcelles
- KSL—10:15, Recorded Program

## 10:30 to 11:00 A. M.

- KPO & network—Woman's Magazine of the Air
- KGO—Hum & Strum, harmony team; 10:45, Music Guild
- KYA—Organ Concert
- KTAB—Health Talk; Shorty Burke
- KLX—International Klugee
- KROW—Concert
- KJBS—Orchestra; For the Ladies
- KGCC—Hits of Today
- KQW—Aunt Sammy; 10:45, Music
- KGDM—Records; Health Talk
- KFRG & network—University of California Program; 10:45, Pat Kennedy and Kassel's Orchestra
- KOL—Sue Allen, shopping
- KJR—Club Minutes; serenader
- KNX—M. Holmes; Rhythm Encores
- KECA—Recordings
- KFSD—10:50, Studio Program
- KOA—Ida Allen; Produce Reports
- KSL—Organ; Orchestra

## 11:00 to 11:30 A. M.

- KPO & network—Woman's Magazine of the Air
- KGO—Music Guild
- KYA—Organ; Unique Program
- KTAB—Examiner; Fashions; Beauty Facts; Rhythm
- KLX—Records; Notes in Rhyme
- KROW—Health Talk; Spotlight
- KJBS—Popular Hits; Records
- KGCC—Milady's Date Book; 11:15, Organalties
- KGDM—Organ Recital
- KQW—Light Classics
- KFRG & network—Little French Princess; 11:15, Helen Trent
- KVI—The Observer; Melodies
- KOL—Garden Talk; News
- KOIN—Art Kirkham
- KJR—Rhythm Rulers
- KNX—Organ Recital
- KECA—French Lesson; Records
- KGB—Recordings

## 11:30 to 12:00 Noon

- KPO & network—Calif. Fed. of Women's Clubs; 11:45, Vic & Sade
- KGO—Smackout; Marion and Jim Jordan; 11:45, Agricultural Bulletin
- KYA—Fashions; Snapshots
- KTAB—Blue Moments; News
- KLX—Anita & Orsco; 11:45, Castles in Music
- KROW—Latin-American Program
- KJBS—Dance Orchestra
- KGCC—Requests
- KQW—Variety and Theatre News
- KGDM—Organ Recital

\*KFRC & network—Amer. School of the Air  
KHQ—Organ Recital  
KJR—Measured Steps  
KGW—Eddie King to 11:45  
KFI—Fashion Tour to 11:45  
KNX—Musical; 11:45. Talk  
KECA—11:45, Records  
KFSD—Smiling Young Man; Studio

## 12:00 to 12:30 P. M.

●KPO & network—Vocational Agriculture; 12:15, Farm & Home  
KGO—Radio Guild, dramatic sketch  
KYA—Scriptures; 12:03. Concert  
KTAB—Talk; Agricultural Period  
KLX—Dance Music  
KROW—Latin American Program  
KJBS—Postmaster McCarthy; Accordionist  
KGGC—Recruit Hour  
KQW—Popular Program  
KGDGM—Lorelie Strings; Records  
\*KFRC & network—Your Hostess—Cobina Wright  
KOL—The Carnival Hour  
KVI—Mkt. Specials; Headlines  
KOIN—Amie Brunn to 12:15  
KOMO—12:15, Harp Melodies  
KGW—Music; 12:15, Meier & Frank  
KHQ—Planist; 12:15, Bus. & Pleas.  
KJR—Tonic Tunes; Grain Reports  
KNX—News; 12:15, Congo  
KECA—12:15, News Release  
KHJ—Better Business Bur. to 12:15  
KSL—Broadcasters Review

## 12:30 to 1:00 P. M.

●KPO & network—Western Farm and Home Hour  
KGO—Radio Guild  
KYA—Noonday Concert  
KTAB—Echoes of Portugal  
KLX—Don Brose; Music  
KROW—California Farm Hr.; Music  
KJBS—Dance Orchestra  
KGGC—Mountain Music  
KQW—Weather and Market Reports  
KGDGM—Recordings  
\*KFRC & network—Your Hostess  
KOL—The Carnival Hour  
KGW—News; 12:45, Violinist  
KHQ—Stepping Along; Studio  
KVI—News & Comment to 12:45  
KGW—Dr. Semler; 12:45, Studio  
KOMO—Farm Talk; Cowboy Joe  
KNX—Concert Group  
KECA—Recordings

## 1:00 to 1:30 P. M.

●KPO & network—Betty & Bob; 1:15, East & Dumke, comedy duo  
KGO—Financial Flashes; News; 1:15, Ann Warner's Chats  
KYA—Hawaiians  
KTAB—Radio Frolic, Geo. Taylor  
KLX—Records; 1:15, Martha Lee  
KROW—Concert Melodies  
KJBS—Stocks; Records; World Affairs  
KQW—Friendly Hour  
KGDGM—Records; The World Today  
\*KFRC & network—America's Little House; 1:15, Carille & London  
KOL—Johnnie Walker's Scrapbook  
KOL—1:15, Julie Day  
KGW—1:15, Dental Clinic  
KOMO—1:15, Tea Time Tales  
KHQ—1:15, Sylvia Gray  
KJR—Headliners to 1:15  
KFI—1:15, Glen Rice and Beverly Hillbillies  
KNX—Pontrelli's Orchestra  
KECA—Records to 1:15  
KFSD—Studio Program to 1:15  
KGB—1:15, Stocks; Farm Flashes  
KSL—1:15, Payroll Builder

## 1:30 to 2:00 P. M.

●KPO & network—Oxydol's Own Ma Perkins; 1:45, Dreams Come True, Barry McKinley, baritone  
KGO—Ann Warner's Chats; 1:45, Robert Pitner, tenor

KYA—Symphony Concert  
KTAB—Jean Kent  
KROW—Oakland Public Schools; Oklahoma Ramblers  
KLX—Popular Concert  
KJBS—Concert Recordings  
KQW—Afternoon Concert  
KGDGM—The World Today  
KFRC—Stocks; Christian Sci. News  
\*KFRC & network—1:45, U. S. Marine Band  
KOL—1:45, Consumers Facts  
KOIN—Book of Life  
KJR—Renovize; The Sun Dial  
KNX—Pontrelli's Orchestra  
KHJ—Dow Jones' Reports; 1:45, Nolan and Sherr  
KFSD—Old Time Program

## 2:00 to 2:30 P. M.

●KPO & network—Al Pearce and His Gang  
KGO—Sam Moore, guitarist; 2:15, Jackie Heller, tenor  
KYA—Symphony Concert  
KTAB—Globe Trotter; Romancin'  
KLX—Lost & Found; 2:05, Records  
KROW—Dance Matinee  
KJBS—Barrister's Club; Tunes  
KGDGM—Records; News  
KQW—Dance Matinee  
\*KFRC & network—Happy-Go-Lucky Hour  
KJR—Salon Hour, recorded  
KNX—The Bookworm  
KECA—Classic Hour, records  
KSL—Men of Note; Dental Clinic  
KOA—Huffman Reporter; Talk; 2:15, Rowdy Wright

## 2:30 to 3:00 P. M.

●KPO & network—Al Pearce Gang  
KGO—Pair of Pianos  
KYA—Lost & Found; Modern Notes  
KTAB—Talk; 3-4 Time  
KLX—Records; 2:35, Stocks; 2:40, Opportunity  
KROW—Dance Matinee  
KJBS—Events of Interest; Records  
KGDGM—The Romancers  
KQW—Dance Matinee  
\*KFRC & network—Happy-Go-Lucky Hour  
KJR—Salon Hour  
KECA—Classic Hour, records  
KNX—Foreign Recordings  
KFSD—2:45, Studio Program  
KSL—Organ Interlude to 2:45  
KOA—Sizzlers; Happy Jack

## 3:00 to 3:30 P. M.

●KPO & network—Langendorf Pictorial; 3:15, Mickey Gillette's Music  
KGO—United States Army Band  
KYA—P. T. A. Talk; Better Business Talk  
KTAB—Bulletin; Chinese News  
KLX—Opportunity Hour  
KROW—Fay Lanphier; Merry-Go-Round  
KJBS—Orchestra; 3:15, Songs of Hawaii  
KQW—Stock Reports; Music  
KGDGM—Recordings  
\*KFRC & network—Feminine Fancies  
KJR—Easy Chair; Enchanted Islands  
KGW—Concert Trio  
KHQ—Hostess Hints; Club Bulletin  
KOL—P. T. A. Program  
KNX—Concert Orchestra  
KECA—Alexander Bevan; Records  
KSL—Songs of Long Ago; Junior Hour  
KOA—3:15, University of Denver

## 3:30 to 4:00 P. M.

●KPO & network—Mickey Gillette's Music  
KGO—Family Cook Book; 3:45, Singing Strings  
KTAB—Royal Sophistication; Preview  
KYA—Art Lecture; 3:45, Community Chest Question Box  
KLX—Records; 3:45, Musical Jigsaw

KROW—Merry-Go-Round; Records  
KJBS—Songs of Hawaii; Melodies  
KGDGM—Organ  
KQW—Variety Program  
\*KFRC & network—Frank Castle's Matinee  
KHQ—3:45, Beauty Talk  
KOL—Harriet Linkins; Studio  
KOIN—Newspaper of the Air  
KOMA—String Trio  
KFI—Ann Warner's Chats  
KHJ—Stimulating Soothers to 3:45  
KNX—Fletcher Wiley  
KGB—3:55, Along the Airways  
KSL—Junior Hour; Records; News  
KOA—3:45, Microphone News

## 4:00 to 4:30 P. M.

●KGO & network—Ray Perkins; Oriental Gardens Orchestra  
KPO—Master Library  
KYA—Old Songs; Tea Dance  
KTAB—'Jewish Date Book'; Bay Meadows Feature Race  
KLX—Records; Bro. Bob's Club  
KROW—Waltz Time; Records  
KJBS—Melodies of the Moment  
KGDGM—Gilmore Oil Program  
KQW—Star Reporter; Recordings  
\*KFRC & network—Dan Russo's Orchestra; 4:15, Univ. of the Air  
KOIN—Newspaper of the Air  
KGW—Friendly Chat  
KHQ—4:15, News Album  
KJR—Goodwill Program; Records  
KNX—Haven of Rest  
KECA—Library Talk; Records  
KSL—Broadcasters' Review  
KOA—Comedy Capers; Stamp Club

## 4:30 to 5:00 P. M.

●KGO & network—Armand Girard, basso; 4:45, The Big Top  
KPO—Master Library; News Flashes  
KYA—Tea Dance Parade  
KTAB—Jack Hall and Artists  
KLX—Bro. Bob's Club; Health School  
KROW—Lee Davis' Gang  
KJBS—Recordings to 4:45  
KQW—Story Time; 4:45, Songs  
KGDGM—Ernie Cruz; Records  
\*KFRC & network—Bob Allen, pianist; 4:45, Between the Bookends  
KVI—Santa Claus to 4:45  
KOIN—Hollywood Reporter; Toyland Express  
KHQ—N. W. on Parade  
KJR—Snapshots  
KOMO—4:45, Moments of Melody  
KQW—Sam Gordon; Studio Prog.  
KFI—Organ Recital  
KNX—Advisor; U. S. C.  
KSL—Adventures of Robin Hood; 4:45, Orphan Annie

## 5:00 to 5:30 P. M.

●KPO & network—Jan Garber's Supper Club  
KGO—Art Revue; 5:15, Edna Fischer pianist  
KYA—Children's Hour  
KTAB—Lauretta La Marr; Santa Claus  
KLX—Planist; Bill, Mack & Jimmie  
KROW—Memory Lane; Recordings  
KGGC—Dancing Echoes; Frolic  
KQW—Sunshine League  
\*KFRC & network—Carson Robinson's Buckaroos; 5:15, Billy Bachelor  
KJR—Orange and Blackie; Music  
KNX—Fire Dept.; Sunset Serenade  
KFOX—Playtime Lady; Records  
KECA—How Songs Grew; Story Teller  
KFSD—Studio Program  
KSL—5:15, Tarzan

## 5:30 to 6:00 P. M.

●KPO & network—Carefree Carnival  
KGO—Ivory Stamp Club; 5:45, Orphan Annie, Elec. Trans.  
KYA—Metropolitans; 5:45, Campbell Corner  
KTAB—Dr. Thompson, talk

KLX—Covered Wagon Jubilee  
 KROW—Eating Your Way to Health  
 KGW—Popular Orchestra  
 KGGC—Dr. King; Irish Gems  
 \*KFRC & network—Atwater Kent Program  
 KGW—Ivory Soap to 5:45  
 KJR—Tarzan; 5:45, Orphan Annie  
 KOMO—Ivory Stamp Club  
 KHQ—Ivory Stamp Club  
 KFI—Ivory Stamp Club; Charlie Wellman, songs, Helen Hill pianist  
 KNX—Son of Fire; Orphan Annie  
 KFOX—Theatre News; Songs  
 KFSD—Studio; Farley's Rangers  
 KOA—Pick and Pat

## 6:00 to 6:30 P. M.

\*KPO & network—Sinclair Greater Minstrels with Gene Arnold  
 KGO—Music Box  
 KYA—Man About Town; 6:15, Orchestra  
 KTAB—News; Concert  
 KLX—Arlon Trio  
 KROW—News; Rhythm Kings  
 KGGC—Dinner Dance  
 KGW—Dept. of Agriculture; Records  
 \*KFRC & network—Chesterfield Prog.; Rosa Ponselle and Orch.  
 KGW—Traffic Talk to 6:15  
 KJR—News; Romance Time  
 KHQ—Singing Secretary; Melodies  
 KOMO—30 Minutes of Music  
 KFVB—News; Mysteries; Organ  
 KNX—News; 6:15, Concert Group  
 KFOX—News; Trio, Al & Molly  
 KECA—Board of Education; News

## 6:30 to 7:00 P. M.

\*KPO & network—Colgate House Party  
 KGO—Safety First; 6:45, Air Adventures of Jimmy Allen  
 KYA—Cy Trobber's Orchestra  
 KTAB—Sports; Affairs of Leo  
 KLX—Arlon Trio  
 KROW—Ne'er Do Well  
 KGGC—Theatre of the Air; Dance  
 KGW—Market Reports; Thorobred Quarter Hour  
 \*KFRC & network—Marshall Sohl, tenor  
 KOIN—Merry Gentleman; Sports  
 KVI—News; Vocalist  
 KOL—Chas. A. Reynolds to 6:45  
 KJR—Romance Time; Jimmie Allen  
 KNX—Concert; 6:45, Jimmie Allen  
 KFVB—Organ; 6:45, Jimmie Allen  
 KECA—Organ and Vocalist  
 KFOX—School Kids; Jimmie Allen  
 KSL—The Big Show

## 7:00 to 7:30 P. M.

\*KPO & network—Carnation Contented Program  
 KGO—Beaux Arts Trio  
 KYA—Sports; Tales of the Turr  
 KTAB—Italian News; Sport of Kings  
 KROW—C. W. Hammond; L'Italia News  
 KLX—News; 7:15, Lovable Liars  
 KGGC—Song at Twilight; Records  
 KGW—Weather; Voice of Portugal  
 \*KFRC & network—Wayne King's Orchestra  
 KJR—Concert; Dollars and Sense  
 KNX—Watanabe & Archie; Rajput  
 KFVB—Talk; Pioneer Sons  
 KECA—Organ and Vocalist  
 KFOX—Eb and Zeb; 7:15, Bobby & Betty  
 KFSD—Studio; Sonny and Buddy

## 7:30 to 8:00 P. M.

\*KPO & network—Memory Lane  
 KGO—Comedy Stars of Hollywood; 7:45, Cliff Nazarro, songs  
 KYA—Cowboys; Louise Taber  
 KTAB—Socialist Labor Party; Revolving Stage  
 KLX—Silver Strains; Clinic of the Air

KROW—L'Italia Echoes of Italy  
 KQW—Italian Radio Theatre  
 KGGC—Bob May; Recordings  
 KFRC—Raymond Marlowe, tenor  
 \*KFRC & network—7:45, Unsolved Mysteries  
 KOL—Speaker Stevenson to 7:45  
 KVI—Dr. Mellor to 7:45  
 KOIN—Jimmy Allen to 7:45  
 KJR—Knights of Note  
 KNX—In-News; King Cowboy  
 KFVB—Syncopators  
 KFOX—Boy Detective; Vagabonds  
 KECA—Records; 7:45, Law Talk  
 KGB—James O'Connor to 7:45  
 KSL—Crazy Crystals; Alka Seltzer

## 8:00 to 8:30 P. M.

\*KPO & network—Amos 'n' Andy; 8:15, Red Davis, dramatic series  
 KGO—Stanford University Program; 8:15, Ricardo and his violin  
 KYA—Drama; Amateur Party  
 KTAB—Itchy & Scratchy; Ballads  
 KLX—Clinic of the Air  
 KGGC—Spanish-American Program  
 KROW—Italy; Watch Tower  
 KQW—Historic Santa Clara Valley  
 \*KFRC & network—Myrt & Marge; 8:15, Edwin C. Hill  
 KJR—Music; Carefree Capers  
 KNX—June Irwin; Music  
 KFVB—Jack Joy's Orchestra  
 KECA—Vocalist; 8:15, Philosopher and Country Jane  
 KFOX—Organ and Piano; Trio  
 KFSD—Adventures of Jimmie Allen

## 8:30 to 9:00 P. M.

\*KPO & network—Voice of Firestone Garden Concert; Orchestra with guest artists and chorus  
 KGO—Drama Hour  
 KYA—Amateur Party  
 KTAB—Butchers Union; Vocalist  
 KLX—All Star Sports; Tonic Tunes  
 KROW—Happy Harmonies; News  
 KGGC—Concert; Timely Tunes  
 KQW—Opera  
 \*KFRC & network—Blue Monday Jamboree  
 KJR—Highlight Hour  
 KFVB—Drama  
 KNX—Songs; Talk  
 KECA—SERA Orchestra  
 KFOX—Goodyear Melodeer; Cecil & Sally

## 9:00 to 9:30 P. M.

\*KPO & network—Shell Show; Rush Hughes, master of ceremonies; guest artists; Yahbut & Cheerly  
 KGO—Guy Lombardo's Orchestra  
 KYA—Party; Nat'l Defense  
 KTAB—Nightherders  
 KLX—Krausmeyer & Cohen; Music  
 KROW—Powder River Wranglers  
 KQW—Opera  
 KGGC—News; Wyoming Cowboys  
 \*KFRC & network—Blue Monday Jamboree  
 KJR—News; Musical Scrapbook  
 KNX—News; Ed. McConnell  
 KFVB—Nick Stewart's Orchestra  
 KECA—9:15, Fishing & Hunting Talk  
 KFOX—Beverly Hillbillies  
 KFSD—Furmbilt Program; Marie Viratelle Kriete

## 9:30 to 10:00 P. M.

\*KPO & network—Shell Show  
 KGO—Art Kassel's Orchestra  
 KYA—Concert Orchestra; 9:45, News 9:55, Woman Investor  
 KTAB—News; Morgan Players  
 KLX—News; Musical Headlines  
 KROW—St. Mary's College Prod.  
 KGGC—Dance Tunes; Records  
 KQW—Opera  
 \*KFRC & network—Claude Hopkins' Orchestra  
 KOL—Talk; News; Editorial  
 KVI—News Flashes to 9:45

KJR—The Purple Ray; C. of C.  
 KNX—The Crocketts  
 KFVB—Slumbertime  
 KECA—Song Recital  
 KHJ—"Witches Tales"  
 KFOX—Beverly Hill Billies  
 KFSD—Marie Viratelle Kriete  
 KSL—Auerbach Program; 9:45, Milt Taggart's Orchestra

## 10:00 to 10:30 P. M.

\*KPO & network—The Richfield Reporter; 10:15, Clef Dwellers  
 KGO—Nanette La Salle, contralto; News; 10:20, Williams-Walsh Orch.  
 KYA—Concert Orchestra  
 KTAB—Drama  
 KLX—Dance Music  
 KROW—Royal Hawaiians  
 KGGC—Ten o'Clock Review  
 KFRC—News; Lifebuoy Soap; To be announced  
 KOL—Editorial; Sunshine Hour  
 KVI—Dance Orchestra  
 KOIN—Journal Show  
 KJR—Jack Mills' Orchestra  
 KHJ—News Items; 10:10, Music  
 KNX—The Crocketts  
 KFVB—News; Organ Recital  
 KECA—Musical Celebrities  
 KFOX—News; Organ  
 KGB—News; Orchestra  
 KOA—10:15, Studio Program  
 KSL—Congoing; The KSL Players

## 10:30 to 11:00 P. M.

\*KPO & network—Blue Moonlight; 10:55, News  
 KGO—Williams-Walsh Orchestra  
 KYA—Concert Orchestra  
 KTAB—Morgan Players Drama  
 KLX—Dance Records  
 KROW—Quiet Harmonies  
 KGGC—Merry Melodies  
 \*KFRC & network—To be announced  
 KLX—Dance Music  
 KOMO—Moonlight Melodies  
 KGW—10:55, Olympians  
 KOIN—Kaballeros; Columbians  
 KJR—10:55, Memory's Garden  
 KNX—Pontrelli's Orchestra  
 KHJ—The Islanders  
 KFOX—Tex Howard's Orchestra  
 KFVB—Dance Orchestra  
 KECA—Recordings

## 11:00 to 11:30 P. M.

\*KPO & network—Ted Fio-Rito's Orchestra  
 KGO—Organ Concert  
 KYA—Dance Orchestra  
 KTAB—Organ Concert  
 KROW—Dance of the Hour  
 \*KFRC & network—Lionel Hampton's Orchestra  
 KOMO—Dance Orchestra  
 KNX—Pontrelli's Orchestra  
 KFVB—Nick Stuart's Orchestra  
 KFOX—Nick Stuart's Orchestra

## 11:30 to 12:00 Midnight

\*KGO & network—Jimmy Grier's Orchestra  
 KPO—Organ Concert  
 KYA—Organ Recital  
 KTAB—Dansapations  
 KROW—Dance Music  
 KGD—12, Records to 6  
 \*KFRC & network—Midnight Moods  
 KLX—Dance Music  
 KOMO—Biltmore Orchestra  
 KJR—Reflections of Romance  
 KFVB—Dance Orchestra  
 KFOX—Freddie Carter's Orchestra

## 12:00 to 1 A. M.

KTAB—DX Program  
 KROW—Midnight Vagabond  
 KGB—Records  
 KJBS—Owl Program

## 1:00 A. M. to 7:00 A. M.

KJBS—12:01, Owl Program to 7 a.m.



# TUESDAY Programs

Dec. 18, 1934

## 7:30 to 8:00 A. M.

- KPO & network—Financial Service; 7:45, To be announced
- KGO—Morning Parade
- KYA—Musical Clock
- KTAB—Texans
- KROW—Commuters Clock
- KJBS—Alarm Klok Club
- KQW—The Breakfast Hour
- KGDM—Gilmore Oil
- KFRC—Seal Rocks Broadcast
- KOL—Organ Music
- KVI—Talk; 7:35, Varieties
- KGW—Piano to 7:45
- KOMO—7:45, Emil Hansen
- KJR—Market Quotations; Records
- KHJ—Recordings and Stocks
- KNX—Bill Sharples Breakfast Club
- KFI—N. Y. Stocks to 7:45
- KECA—Morning Bible Fellowship; 7:45, Records
- KFSD—7:45, Studio Program
- KGB—Stocks; Records
- KSL—Advertisers Review; Music

## 8:00 to 8:30 A. M.

- KGO & network—Johnny O'Brien
- KGO—8:15, Organ Concert
- KPO—Songs by the Kitchen Sink
- KPO & network—8:15, Your Child
- KYA—Christian Science Reading; 8:15, Mr. and Mrs. Reader
- KTAB—Shipping News; Santa Claus
- KLX—Records; N. Y. Stocks
- KROW—Commuters Clock
- KJBS—Auburn Airs; Varieties
- KQW—Morning Melodies; Varieties
- KGDM—Serenaders; Records
- KFRC—Recordings
- KFRC & network—8:15, Alexander Semmler, pianist
- KOL—8:15, Ceil and Sally
- KOIN—Rhythms to 8:15
- KHQ—Studio Programs
- KOMO—Morning Reveries
- KVI—Recordings; Market Specials
- KNX—Gene Autrey; Help for the Day
- KFI—Church Quarter Hour to 8:15
- KECA—Records to 8:15
- KSL—Studio Ensemble; 8:15, Mary and John
- KOA—Galaxy of Stars to 8:15

## 8:30 to 9:00 A. M.

- KPO & network—U. S. Marine Band
- KGO—Eaux Arts Trio
- KYA—Concert
- KTAB—Radio Shoppers' Digest
- KLX—Covered Wagon Jubilee
- KROW—Novelty Review
- KJBS—Dance Melodies
- KQW—Morning Concert
- KGDM—Records; Health Talk
- KHQ—Crazy Wells to 8:45
- KOMO—Melodies; Mary's Garden
- KFRC & network—Hollywood Country Church
- KNX—Song Bag
- KFI—Ballads; Helpful Hints
- KECA—8:45, Records
- KSL—Cal-O-Dine; Mary & Bennie

## 9:00 to 9:30 A. M.

- KGO & network—U. S. Marine Band
- KPO—Barbara Lee; 9:15, Edna Fischer, pianist
- KYA—Concert; 9:15, Pru. Penny
- KTAB—Hour of Prayer
- KLX—Shopping List
- KROW—Beauty & Romance; Varieties
- KJBS—Kings Men; Bargains
- KGCC—Records; 9:15, Songs
- KQW—Tuneful Topics; Congoin
- KGDM—Cowboy; 9:15, Personalities
- KFRC & network—Voice of Experience to 9:15
- KFRC—9:15, Congoin Co.



LUTHER PUTNAM

KGCC—Staff Artist

- KVI—9:15, The Gumps
- KOL—9:15, Prudence Penny
- KHO—Dessert Hotel; Home Comfort
- KGW—Edna Jacks, pianist, to 9:15
- KFI—Hawaiian Group; Jean Abbey
- KNX—Organ; Lotus Land
- KFSD—9:15, Good Cheer
- KGB—9:15, The Gumps
- KSL—9:15, The Gumps

## 9:30 to 10:00 A. M.

- KPO & network—Martha Meade Society
- KPO—9:45, Organ Concert
- KGO—Improve Your Home
- KGO & network—9:45, Three of a Kind
- KYA—Lover's Lane Waltz Time
- KTAB—Health Talk
- KLX—Clinic of the Air
- KROW—Diet and Health
- KGCC—Records
- KQW—Musical Program
- KGDM—News; Records
- KFRC & network—Arthur Warren & Orchestra
- KVI—Dr. Burns; Mystic Melodies
- KOL—9:45, Beautiful Melodies
- KHQ—9:45, Tull & Gibbs
- KJR—9:45, Gardner Nursery Prog.
- KGW—9:45, Cooking School
- KFI—9:45, News Release
- KNX—Musical Jigsaws; 9:45, News
- KECA—Records to 9:45
- KFSD—Stock Reports to 9:45
- KGB—News to 9:35
- KSL—Jennie Lee to 9:45

## 10:00 to 10:30 A. M.

- KGO & network—Press-Radio News; 10:05, Army Band Concert
- KPO—As Woman to Woman; 10:15, Cliff Nazarro, vocalist
- KYA—Columbia on Parade; 10:15, The Novelty Shop
- KTAB—News; Bachelor; Bargains
- KLX—Clinic; Stocks; News
- KROW—Rhythm Revue
- KJBS—News; Orch.; Melody Parade
- KGCC—Cal King
- KQW—News; Headline Memories
- KGDM—So This Is Hollywood; Bondons

- KFRC & network—Just Plain Bill
- KFRC—10:15, Home Forum
- KVI—10:15, Sons of the Pioneers
- KOL—10:15, Morning Melodies
- KOIN—10:15, Air Shopping
- KJR—Home Makers; Music Shop
- KFI—Al Gayle, accordionist; 10:15, Hollywood Looking Glass
- KNX—Eddie Albright's Family
- KSL—10:15, Elec. Trans.

## 10:30 to 11:00 A. M.

- KPO & network—Woman's Magazine of the Air
- KGO—Jerry Brannon, songs; 10:45, Ranch Boys, cowboy songs
- KYA—Organ Concert
- KTAB—Health Talk; Shorty Burke
- KLX—International Kitchen
- KROW—Morning Concert
- KJBS—Organ; 10:45, Melodies
- KQW—Aunt Sammy; 10:45, Music
- KGCC—Hits of Today
- KGDM—The Bondons; Talk
- KFRC & network—Esther Velas Ensemble; Art Kassel's Orch.
- KOIN—Shopping to 10:45
- KVI—Amusement Tips to 10:45
- KJR—Club Minutes; Uncle Hank
- KNX—Mary Holmes; 10:45, Records
- KECA—Song Recital
- KOA—10:45, Livestock & Produce

## 11:00 to 11:30 A. M.

- KPO & network—Woman's Magazine of the Air
- KGO—Crosscuts Log o' the Day
- KYA—Organ Concert
- KTAB—Bargains; Fashions; Rhythms
- KLX—Anita & Orsco; Tonic Tunes
- KROW—Health Talk; Spotlight
- KJBS—Orch.; 11:15, Medical Talk
- KGCC—Milady's Date Book; 11:15, Waltz Time
- KQW—Light Classics
- KGDM—Organ
- KOL—Garden Talk; 11:15, News
- KFRC & network—Little French Princess; 11:15, Helen Trent
- KFRC—Women's Home Forum
- KJR—Rhythm Rulers
- KVI—Observer; Music
- KOIN—Art Kirkham
- KNX—Marshall Grant, organist
- KECA—Records; Medical Talk
- KGB—To the Ladies

## 11:30 to 12:00 Noon

- KPO & network—Smackout; 11:45, Vic and Sade
- KGO—William Cowles, pianist
- 11:45, Agricultural Bulletin
- KYA—Dance Time; 11:45, Snapshots
- KTAB—Four-Four Time; News
- KLX—Beauty Salon; 11:45, Musical Scrapbook
- KROW—Latin-American Program
- KJBS—Dance Orchestra
- KGCC—Request Hour
- KQW—Accordion Capers; News
- KGDM—Organ
- KHQ—Organ Concert
- KFRC & network—American School of the Air
- KOIN—Art Kirkham
- KJR—Irish Minstrel; Records
- KFI—Fashion Tour to 11:45
- KNX—Spice of Life; Ionizer Talk
- KECA—11:45, Music Talk
- KFSD—11:45, Studio Program

## 12:00 to 12:30 P. M.

- KGO & network—New Jersey College for Women Choir
- KGO—12:15, Financial Flashes; 12:20, Mickey Gillette's Music
- KPO—News Reporter
- KPO & network—12:15, Western Warm and Home Hour
- KYA—Scriptures; Noonday Concert

KTAB—Talk; Agricultural Period  
 KLX—Dance Music  
 KROW—Latin-American Program  
 KJBS—Song Hits; 12:15, Records  
 KGGC—Request Hour  
 KGW—Popular Orchestra  
 KGDM—Road Report; Dance Band  
 \*KFRC & network—Stockholm Sym-  
 phony Orch. from Sweden  
 KOL—Carnival Hour  
 KVI—12:15, Front Page Headlines  
 KOIN—Johnnie Walker; Amie Brun  
 KOMO—12:15, Viennese Vagabonds  
 KJR—Music; Grain Report to 12:15  
 KHQ—12:15, Chamber of Com-  
 merce Luncheon  
 KGW—12:15, Meier & Frank  
 KFI—Market Reports to 12:15  
 KNX—News; 12:15, Congo  
 KECA—12:15, News Release  
 KSL—Swedish Radio Service Orch.  
 KOA—Charlie Davis Orchestra

## 12:30 to 1:00 P. M.

•KPO & network—Western Farm  
 and Home Hour  
 KGO—Mickey Gillette's Music  
 KYA—Noonday Concert  
 KTAB—Echoes of Portugal  
 KLX—Don Brose; Musical Auction  
 KROW—Callif. Home Hour; Records  
 KJBS—Dance Matinee  
 KGGC—Mountain Music; Oddities  
 KGDM—Recordings  
 KQW—Weather; Market Reports  
 \*KFRC & netwk—Symphony Orch.  
 KOL—Carnival Hour  
 KOMO—12:45, Cowboy Joe  
 KGW—News; Abe Bercovitz, violin  
 KHQ—Chamber of Commerce  
 KNX—Concert Group  
 KECA—Concert Group  
 KSL—Soloists and Chorus

## 1:00 to 1:30 P. M.

•KPO & network—Betty and Bob,  
 1:15, East and Dunke  
 KGO—Vocalist; 1:15, Ann Warner  
 KYA—Women's Institute of the Air  
 KTAB—Radio Frolic  
 KLX—Records; Martha Lee  
 KROW—Concert Melodies  
 KJBS—Stock Reports; Song Hits  
 KQW—Friendly Hour  
 KGDM—Recordings; Organ  
 \*KFRC & network—Visiting Amer-  
 ica's "Little House"  
 KFRC—1:15, Health Society Talk  
 KOL—1:15, Julie Day  
 KOIN—1:15, Poetic Strings  
 KHQ—1:15, Sylvia Gray  
 KOMO—1:15, Tea Time Tales  
 KGW—Headliners to 1:15  
 KVI—1:15, Dental Clinic  
 KFI—1:15, Beverly Hillbillies  
 KNX—Pontrelli's Orchestra  
 KECA—Recordings to 1:15  
 KFSD—Studio Program to 1:15  
 KGB—1:15, Stocks; Farm Flashes  
 KSL—Payroll Builder  
 KOA—1:15, Crazy Hotel Orchestra

## 1:30 to 2:00 P. M.

•KPO & netwk—Oxydol's Own Ma  
 Perkins; 1:45, Betty Marlowe, talk  
 KGO—Ann Warner's Chats; Nanette  
 La Salle, contralto  
 KYA—Piano Concert  
 KTAB—Jean Kent, economics  
 KLX—Popular Concert  
 KROW—Spanish Serenade; 1:45,  
 Oklahoma Ramblers  
 KJBS—Dance Orchestra  
 KQW—Afternoon Concert  
 \*KFRC & network—Educational  
 Feature to 1:45  
 KFRC—1:45, Stocks; Christian Sel-  
 ection News  
 KGDM—Organ; Recordings  
 KOL—Educational Feature  
 KOIN—Book of Life  
 KJR—Renovize; Musical Headlines  
 KEX—Grain Reports; Records  
 KNX—Pontrelli's Orchestra  
 KFSD—Old Time Program

## 2:00 to 2:30 P. M.

•KPO & network—Al Pearce and  
 His Gang  
 KGO—Meredit Willson's Orchestra  
 KYA—Don Valdemar's Orchestra  
 KTAB—Globe Trotter; Romancin'  
 KLX—Recordings  
 KROW—Dance Matinee  
 KJBS—Better Business Talk; 2:15,  
 Tang, Orchestra  
 \*KFRC & netwk—To be announced  
 KGO—Dance Matinee  
 KGDM—Serenader; News  
 KJR—Salon Hour  
 KEX—World Bookman; Music  
 KNX—The Bookworm  
 KECA—Classic Hour  
 KSL—Orch.; 2:15, Dental Clinic  
 KOA—Theatre Reporter; Orchestra

## 2:30 to 3:00 P. M.

•KPO & network—Al Pearce Gang  
 KGO—Pair of Planos  
 KYA—Modern Notes  
 KTAB—Child Life; Records  
 KLX—Records; 2:35, Stocks; 2:40,  
 Records  
 KROW—Dance Matinee  
 KQW—Dance Matinee  
 KJBS—Events of Interest; Records  
 KGDM—The Romancers  
 \*KFRC & netwk—To be announced  
 KJR—Salon Hour  
 KEX—Music  
 KNX—Recordings  
 KECA—Classic Hour  
 KFSD—2:45, Studio Program  
 KSL—Milton Charles; 2:45, Minia-  
 tures

## 3:00 to 3:30 P. M.

•KPO & netwk—Langendorf Pictor-  
 ial; 3:15, Mickey Gillette's Music  
 KGO—Xavier Cugat's Orchestra;  
 3:15, Mid-Week Hymn Sing  
 KYA—Band Concert  
 KTAB—Notices; Chinese News  
 KLX—Song Market; 3:15, Records  
 KROW—Presenting Fay Lanphier;  
 3:15, Merry-Go-Round  
 KJBS—News; Records  
 KQW—Stocks; 3:15, Variety  
 KGDM—Ernie Cruz Program  
 \*KFRC & netwk—Feminine Fancies  
 KJR—Operatic Gems  
 KEX—Orchestra  
 KGW—Crazy Crystals; Cellist  
 KHQ—Business & Pleasure; Bulletin  
 KNX—Concert Orchestra  
 KECA—Recordings  
 KSL—Pianist; 3:15, Junior Hour  
 KOA—Orchestra

## 3:30 to 4:00 P. M.

•KPO & network—Mickey Gillette's  
 Music  
 KGO—Interlude; Dorothy Page, con-  
 tralto; High & Low, vocal duo  
 KYA—Drama  
 KTAB—Sophistication; 3:45, Picture  
 Talk  
 KLX—Recordings  
 KROW—Merry-Go-Round; Records  
 KQW—Variety Program  
 KJBS—Musical Comedy  
 KGDM—Pacific Instrumentalists  
 \*KFRC & network—Frank Castle's  
 Matinee; Correct English  
 KOL—Harriet Lincks; Studio  
 KOIN—Newspaper of the Air  
 KHQ—King's Men; Beauty Talk  
 KOMO—Birbaum's Bavarians  
 KFI—Ann Warner's Chats  
 KNX—Fletcher Wiley  
 KGB—Along the Airways to 3:45  
 KOA—3:45, Microphone News  
 KSL—The Junior Hour; Records

## 4:00 to 4:30 P. M.

•KPO & network—King's Guard,  
 quartet; 4:15, Hal Kemp's Orch.  
 KGO—Novalettes  
 KLX—Records; Bob's Club

KYA—Symphony Sketches; Tea  
 Dance  
 KTAB—Jewish Date Book; Bay  
 Meadows Feature Race  
 KROW—Waltz Time; Organ  
 KJBS—Star Reporter; Orchestra  
 KGDM—Gilmore Oil Program  
 KQW—Star Reporter; Tunes  
 \*KFRC & network—Dan Russo's  
 Orchestra; University of the Air  
 KOIN—Newspaper of the Air  
 KQW—Friendly Chat  
 KHQ—4:15, News Album  
 KJR—Tea Dansant  
 KFI—Latvian Singers to 4:15  
 KNX—Haven of Rest  
 KECA—4:45, Recordings  
 KSL—Town Crier  
 KOA—4:15, Orchestra

## 4:30 to 5:00 P. M.

•KPO & network—You and Your  
 Government  
 KPO—4:45, News Reporter  
 KGO—Dot Kay, contralto  
 \*KGO & netwk—4:45, The Big Top  
 KYA—Tea Dance Parade  
 KTAB—Keep Smiling Revue  
 KLX—Bro. Bob's Club; Health School  
 KROW—Lee Davis' Cowboys  
 KJBS—Dance Orchestra  
 KQW—Story Time; 4:45, Songs  
 KGDM—Iron House  
 \*KFRC & network—Charlie Kent's  
 Adlerikans; Between the Bookends  
 KVI—Santa Claus to 4:45  
 KOIN—Hollywood Reporter to 4:45  
 KOL—4:45, Radio Pen Friend Club  
 KOMO—Talk; Saxophone Melodies  
 KFI—Organ Recital  
 KNX—Personal Advisor, U.S.C.  
 KSL—Town Crier; Orphan Annie

## 5:00 to 5:30 P. M.

•KPO & network—Beaux Arts Trio  
 KGO—Back Stage Chatter; 5:15,  
 Eileen Piggott, soprano  
 KYA—Children's Hour  
 KTAB—Laurette La Marr; Santa  
 Claus  
 KLX—Pianist; Bill, Mack & Jimmie  
 KROW—Memory Lane; Ramona,  
 Romero  
 KGGC—Echoes; Studio Frolic  
 KQW—Popular Concert  
 KFRC—Son of Fire  
 \*KFRC & network—5:15, Billy  
 Bachelor  
 KOIN—Bob & Dolly  
 KVI—"The Deerslayer" to 5:15  
 KHQ—5:15, Donald Ayers Adventures  
 KJR—Steamboat Bill; Records  
 KNX—Serenade; Musical Headlines  
 KFI—A. C. Gilbert to 5:15  
 KFOX—Playtime Lady; Records  
 KECA—5:15, Records  
 KSL—Pulman Prog.; 5:15, Tarzan  
 KOA—5:15, Story Behind the Claim

## 5:30 to 6:00 P. M.

•KGO & network—Chestor Rowell  
 KGO—5:45, Orphan Annie (E. T.)  
 KPO—Behind the Footlights  
 \*KPO & network—5:45, Ricardo &  
 his violin  
 KYA—Metropolitan; 5:45, Campbell  
 KTAB—Health Talk  
 KLX—Covered Wagon Jubilee  
 KROW—Eating Your Way to Health  
 KGGC—Talk; 5:45, Irish Gems  
 KQW—Popular Orchestra  
 KFRC—Sports to 5:45  
 \*KFRC & network—Chic Scoggin's  
 Orchestra  
 KOL—5:45, Ralph Horr, talk  
 KOIN—5:45, Merry Men  
 KJR—Once Upon a Time; Orphan  
 Annie  
 KVI—5:45, Hollywood News  
 KOMO—Moments of Melody to 5:45  
 KHQ—5:45, To be announced  
 KNX—Songs; 5:45, Orphan Annie  
 KFI—Your Pal Jimmy; Charlie Well-  
 man & Helen Hill  
 KECA—Word Detective to 5:45

KFOX—Theatre News; Records; Talk  
KGB—Studio; 5:45, Robin Hood  
KFSD—5:45, Farley's Rangers  
KSL—5:45, Krausmeyer & Cohen  
KOA—McMurtry Harmonists

6:00 to 6:30 P. M.

• KPO & network—Chiffon Jazz  
KGO—Community Forum  
KYA—Man About Town; Orchestra  
KTAB—News; Organ Concert  
KLX—Arion Trio  
KROW—News; 6:15, Harmonies  
KGGC—Dinner Dance Review  
KQW—Department of Agriculture; 6:15, Popular Program  
\* KFRC & network—Bing Crosby & Boswell Sisters  
KJR—News to 6:15  
KOMO—Musical Mannequins  
KGW—Musical Mannequins  
KHG—Pick and Pat  
KFWB—News; Mysteries; Organ  
KNX—News; 6:15, Concert  
KFI—6:15, Four Blackbirds  
KECA—Children of All Lands; News  
KFOX—News; Cheerio Boys; Al & Molly

6:30 to 7:00 P. M.

• KPO & network—Ed Wynn, the Texaco Fire Chief; Graham McNamee, Eddie Duchin's Orchestra  
KGO—Harry Stanton, basso; 6:45, Air Adventures of Jimmy Allen  
KYA—Orchestra  
KTAB—Sport Page; Affairs of Leo  
KLX—Arion Trio  
KROW—Rhythm Kings; 6:45, Dr. G. Facci  
KGGC—Theatre of the Air; Music  
KQW—Market Reports; Thorobred Quarter Hour  
\* KFRC & network—Isham Jones' Orchestra for Chevrolet  
KJR—Vindabolians; Jimmy Allen  
KFOX—School Kids; Jimmy Allen  
KFWB—Studio Whispers; Jim Allen  
KNX—Dance; 6:45, Jimmy Allen  
KECA—Wesley Tourtellotte, organ

7:00 to 7:30 P. M.

• KPO & netwk—Palmolive Beauty Box Theatre of the Air; Operetta, with Gladys Swarthout, mezzo-soprano; John Barclay; Nat Shilkret's Orchestra  
KGO—Every Man's Palace  
KYA—Ernie Smith's Sport Page; 7:15, Memory Strains  
KTAB—Talk; 7:15, Sport of Kings  
KLX—News; Song Souvenirs  
KROW—C. W. Hammond; 7:15, L'Italia News  
KGGC—Symphonette; Tango Time  
KQW—Weather; Voice of Portugal  
\* KFRC & network—Camel Caravan  
KJR—Theatre Observer; Concert  
KECA—Recordings  
KNX—Frank Watanabe; Music  
KFWB—Ray de O'Fan; Hollywood Hilarities  
KFOX—Eb & Zeb; Bobby & Betty

7:30 to 8:00 P. M.

• KPO & netwk—Palmolive Beauty Box Theatre  
KGO—Redwood Reveries; Argentine Trio  
KYA—Story Teller; Louise Taber  
KTAB—Spanish Talent; Itchy and Scratchy  
KLX—Merlyn Morse, tenor; 7:45, Spice of Life  
KROW—French Symphony; American Magazine  
KGGC—Jeanne Carole; 7:45, Records  
KQW—Italian Radio Theatre  
\* KFRC & network—To be announced  
KJL—Speaker Stevenson to 7:45  
KOL—Jimmy Allen; Little Show  
KVI—Dr. R. M. Mellor to 7:45  
KJR—Old Songs; Silver Strains  
KNX—The In-Laws; King Cowboy

KFWB—Mrs. Pasquale and Califs.  
KFOX—Boy Detective; Vagabonds  
KGB—Comedy Stars to 7:45  
KSL—Ridge Roamers; Origin of Superstition

8:00 to 8:30 P. M.

• KPO & network—Amos 'n' Andy; 8:15, Voice of Romance  
KGO—California State Chamber of Commerce Program; 8:15, College Days; Helen Troy and Frank Provo  
KYA—Gypsies  
KTAB—Itchy and Scratchy; London Fantasy  
KLX—Manila Stringed Orchestra  
KROW—Latin-American Program  
KGGC—Spanish-American Program  
KQW—Melody Round-Up  
\* KFRC & netwk—Myrt and Marge  
KJRC—8:15, Beauty That Endures  
KOL—8:15, Comedy Stars  
KOIN—8:15, Comedy Stars  
KVI—8:15, Souvenirs  
KJR—Castles in Music; Phantasies  
KNX—June Irwin; Adlerikans  
KFI—8:15, Instrumental Program  
KFWB—Welcome Lewis; 8:15, Orch.  
KFOX—Garden Talks; Melodies  
KECA—Recordings  
KFSD—Jimmie Allen to 8:15  
KGB—8:15, Oddities from Life  
KSL—8:15, Mirth Parade

8:30 to 9:00 P. M.

• KPO & network—Leo Reisman's Orchestra  
KGO—Neapolitan Echoes  
KYA—Tom Coakley's Orchestra; 8:45, Leon Mojica's Orchestra  
KTAB—London Fantasy; Vocalist  
KLX—Sports; 8:45, Melody Palette  
KROW—Italian Program  
KGGC—Concert; 8:45, Timely Tunes  
KQW—Melody Round-Up  
\* KFRC & netwk—Calling All Cars  
KOL—Merry Gentlemen to 8:45  
KOL—The Merry Men to 8:45  
KVI—Mr. Rex Roubush to 8:45  
KJR—Waltz Dreams  
KFWB—Pioneers' Sons; Orchestra  
KNX—Forge of Freedom  
KECA—Dr. Geo. Liebling, pianist  
KFOX—Orchestra; Cecil & Sally  
KSL—Auerbach; Bill Post, baritone

9:00 to 9:30 P. M.

• KPO & network—Ben Bernie's Orchestra  
KGO—Ralph Kirbery; 9:05, Hotel Biltmore Orchestra  
KYA—Radio Players  
KTAB—Nevada Nighthanders  
KLX—Old Gospel Hymns  
KROW—Italian Program; Music of the Masters  
KQW—Band Concert  
KGGC—News; Wyoming Cowboys  
\* KFRC & netwk—Clyde Lucas' Orch  
KOIN—Krausmeyer & Cohen to 9:15  
KVI—Krausmeyer & Cohen; Arm-chair Traveler  
KOL—Krausmeyer & Cohen; News; Editorial  
KJR—News; Singers  
KNX—News; 9:15, Music  
KFWB—Orchestra; News  
KFOX—Beverly Hillbillies  
KECA—'Rhapsodies in Song'  
KFSD—Lewis Popular Program  
KSL—Orchestra; 9:15, Smoke Rings  
KOA—Comedy Stars; Studio

9:30 to 10:00 P. M.

• KPO & netwk—Death Valley Days  
KGO—Harry Sosnik's Orchestra  
KYA—Players; News; Answer Man  
KTAB—News; To be announced  
KLX—News; California Rangers  
KROW—Master's Music; Ramona  
KGGC—Recordings  
KQW—Hits of the Past

\* KFRC & network—The University Explorer  
KOL—Boxing Bouts  
KOIN—Fights  
KVI—News; Piano Program  
KJR—Pick and Pat  
KNX—Pick and Pat (E. T.)  
KFWB—Boxing Bouts  
KFOX—Boxing Bouts  
KECA—Recordings  
KSL—Smoke Rings; Orchestra  
KOA—Cosmopolitan Orchestra

10:00 to 10:30 P. M.

• KPO & network—Richfield Reporter; 10:15, Tom Coakley's Orch.  
KGO—Reflections  
KYA—Gary-Evers' Orchestra  
KTAB—To be announced  
KLX—Dance Music  
KROW—Hawaiians; Sports  
KGGC—Ten o'Clock Review  
KJRC—News; Studio Program  
\* KFRC & network—10:15, Fred Skinner, Negro Song Stylist  
KOIN—Fights  
KVI—Studio Program to 10:15  
KJR—Till Tomorrow  
KFWB—Boxing Bouts  
KECA—Musical Celebrities, records  
KNX—The Crockets  
KFOX—Boxing Bouts  
KFSD—10:15, Studio Program  
KGB—News; To be announced  
KSL—Dance Orchestra  
KOA—Country Club Orchestra

10:30 to 11:00 P. M.

• KPO & network—Tom Coakley's Orchestra; 10:55, Press-Radio News  
KGO—News; Williams-Walsh Orch.  
KYA—Dance Orchestra  
KTAB—Recordings  
KLX—Dance Music  
KROW—Quiet Harmonies  
KGGC—Ten o'Clock Review  
\* KFRC & network—Orchestra  
KOIN—Elmer Anthony's Columbians  
KJR—Dance Orchestra  
KGW—Dance Orchestra  
KNX—Pontrelli's Orchestra  
KFWB—Dance Orchestra  
KFOX—Tex Howard's Orchestra  
KOA—Huffman Harmonies

11:00 to 11:30 P. M.

• KGO & network—Ted Fio-Rito's Orchestra  
KPO—Freddie Bergin's Orchestra  
KYA—Dance Orchestra  
KTAB—Recordings  
KROW—Dance of the Hour  
\* KFRC & network—Dick Jurgens' Orchestra  
KOIN—Kelly's Kaballeros  
KOMO—Moonlight Melodies  
KGW—Dance Orchestra  
KNX—Pontrelli's Orchestra  
KFWB—Nick Stuart's Orchestra  
KFOX—Nick Stuart's Orchestra

11:30 to 12:00 Midnight

• KGO & netwk—Jack Mills' Orch.  
KPO—Organ Concert  
KYA—Organ  
KTAB—Fern Walton's Orchestra  
KROW—Dance Music; Vagabond  
KFRC—Lionel Hampton's Orchestra  
KVI—Dance Orchestra  
KOMO—Dance Orchestra  
KJR—Reflections of Romance  
KFWB—Dance Orchestra  
KHJ—Music  
KGB—Dance Orchestra  
KFOX—Freddie Carter's Orchestra

12:00 to Sign Off

KTAB—D-X Program  
KROW—Midnight Vagabond  
KGGM—Music and News  
KJR—Records  
KJBS—12:01, Owl Program to 7 a.m.

# WEDNESDAY Programs

Dec. 19, 1934

## 7:00 to 7:30 A. M.

• KPO & netwk—Harvest of Song; 7:15, Florenda Trio  
 KYA—Musical Clock  
 KTAB—Cuckoo Club; Stocks  
 KFRC—Records; 7:25, Stocks  
 KOL—Organ Reveille  
 KHQ—News; Studio Program  
 KFI—7:15, Louis Rueb, exercises

## 7:30 to 8:00 A. M.

• KPO & network—Financial Service; 7:45, Tom Mitchell, baritone  
 KGO—Betsy Brunn; 7:45, Sam Moore, guitarist  
 KYA—Musical Clock  
 KTAB—The Texans  
 KROW—Commuters Clock  
 KJBS—Alarm Klok Club  
 KQW—Breakfast Hour  
 KGDM—Gilmore Oil Program  
 KFRC—Seal Rocks Broadcast  
 KOL—Organ Program  
 KVI—Talk; Varieties  
 KGW—Ronald Buck  
 KEX—Varieties  
 KJR—Market Quotations; Shadows  
 KFI—N. Y. Stocks to 7:45  
 KNX—Bill Sharples' Club  
 KHJ—Recordings and Stocks  
 KECA—Bible Study; Records  
 KGB—Stocks; Seven O'Clock Club  
 KSL—Broadcasters Review

## 8:00 to 8:30 A. M.

• KPO & network—The Honey-mooners, Grace and Eddie Albert; 8:15, Tony Wons' Scrapbook  
 KGO—Crosscuts Log o' Day  
 KYA—Christian Science Reading; 8:15, Mr. and Mrs. Reader  
 KTAB—Shipping News; Santa Claus  
 KLX—Records; 8:20, Stocks  
 KROW—Commuters Clock  
 KJBS—Auburn Airs; Varieties  
 KQW—Morning Melodies  
 KGDM—Recorded Program  
 KFRC—Records to 8:15  
 \* KFRC & netwk—Hollywood Country Church  
 KOL—Music; 8:15, Cecil & Sally  
 KVI—Mountaineers; Mkt Specials  
 KOIN—Rhythms to 8:15  
 KOMO—Morning Reveries  
 KHQ—Crazy Wells; Station Review  
 KFI—Church Quarter Hour to 8:15  
 KNX—Jewel Box; Help for the Day  
 KECA—8:15, Recordings  
 KFOX—Grain Reports; Songs  
 KGB—Records to 8:15  
 KSL—Informal Music; Good Morning Judge

## 8:30 to 9:00 A. M.

• KPO & netwk—U. S. Army Band  
 KGO—Crosscuts Log o' the Day  
 KYA—Feminine Notebook; Concert  
 KTAB—Radio Shoppers' Digest  
 KLX—Covered Wagon Jubilee  
 KROW—Novelty Review  
 KJBS—Dance Orchestra  
 KQW—Morning Concert  
 KGDM—Records; 8:45, Health Talk  
 \* KFRC & netwk—Country Church; 8:45, Jane Ellison; Magic Recipes  
 KOI—Studio Program  
 KGW—Abe Berovitz, violin  
 KHQ—Kronenberg; Home Comfort  
 KOMO—Harp Melodies; Mary's Friendly Garden  
 KNX—Song Bag  
 KSL—Cal-O-Dine to 8:45

## 9:00 to 9:30 A. M.

• KPO & netwk—Fields & Hall, songs and patter; 9:15, To be announced  
 KGO—Organ Concert  
 KYA—Concert; 9:15, Prudence Penny  
 KTAB—Hour of Prayer  
 KLX—Shopping List  
 KROW—Romance; MacMarr News



GERTRUDE CHAVIS  
 KTAB—Vocalist

KJBS—Popular Varieties; Records  
 KGGC—Star of Today; Songs  
 KQW—Tuneful Topics; Congo  
 \* KFRC & network—Voice of Experience to 9:15  
 KFRC—9:15, Dance Music  
 KGDM—Cowboy; Mabel Rubin  
 KOL—9:15, Prudence Penny  
 KVI—9:15, "The Gumps"  
 KHQ—Musical Gems to 9:15  
 KOMO—Mary's Garden to 9:15  
 KJR—Morning miracles  
 KNX—Dr. Sherman; Lotus Land  
 KECA—Recordings  
 KFSD—9:15, Good Cheer  
 KGB—9:15, The Gumps  
 KSL—9:15, The Gumps  
 KOA—Fish Tales to 9:15

## 9:30 to 10:00 A. M.

• KPO & network—Marshall's Mavericks  
 KGO—Improve Your Home; 9:45, Jean Abbey, Shop News  
 KYA—Waltz Time  
 KTAB—Health Talk  
 KLX—Clinic of the Air  
 KROW—Diet and Health  
 KJBS—Faye Ward Program  
 KGGC—Morning Melodies  
 KQW—Faye Ward  
 KGDM—News; Minstrels  
 \* KFRC & network—Betsy Crocker; 9:45, Your Home and Mine  
 KGW—Edna Mae Jacks, pianist; Modern Homemaker  
 KJR—News Reporter; Songs  
 KHQ—9:45, Tull & Gibbs  
 KOL—9:45, Beautiful Melodies  
 KOIN—9:45, Experiences from Life  
 KFI—Hawaiians; 9:45, News  
 KNX—Drury Lane; 9:45, News  
 KECA—Jr. Orchestra L. A. Schools  
 KFSD—Stock Reports to 9:45  
 KSL—Jennie Lee; 9:45, Fish Tales  
 KOA—National Farm & Home

## 10:00 to 10:30 A. M.

• KGO & netwk—Press-Radio News; 10:05, Mickey Gillette's Music  
 KPO—Contralto; 10:15, News  
 KYA—Columbia on Parade; 10:15, Hawaiians  
 KTAB—News; Old Bachelor  
 KLX—Clinic; 10:15, Stocks; News

KROW—Rhythm Revue  
 KJBS—News; Memories; Organ  
 KGGC—Cal King  
 KQW—Headline Memories; Orch.  
 KGDM—Recordings  
 \* KFRC & network—Just Plain Bill  
 KFRC—10:15, Home Forum  
 KGW—10:15, Crazy Crystals  
 KOL—10:15, Morning Melodies  
 KOIN—10:15, Air Shopping  
 KVI—10:15, Sons of the Pioneers  
 KJR—Homemakers; Music  
 KNX—Eddie Albright's Family  
 KECA—Recordings  
 KGB—News; Music  
 KSL—10:15, Recordings  
 KOA—National Farm & Home

## 10:30 to 11:00 A. M.

• KPO & network—Woman's Magazine of the Air  
 KGO—Jules Lande's Ensemble; 10:45, Words and Music  
 KYA—Organ Concert  
 KLX—International Kitchen  
 KTAB—Health Talk; Shorty Burke  
 KROW—Morning Concert  
 KJBS—Dance Orchestra; For the Ladies  
 KQW—Aunt Sammy; 10:45, Music  
 KGGC—Hits of Today  
 KGDM—Records; Health Talk  
 \* KFRC & network—University of Calif.; 10:45, Better Housing; Herbert Foote, organist  
 KOL—Sue Allen, shopping  
 KVI—Amusement Tips to 10:45  
 KJR—Club Minutes; Sere-nader  
 KECA—Recordings  
 KNX—Mary Holmes; Rhythm  
 KOA—Best Foods; Betty Moore  
 KSL—Triangle Club; Mrs. Chapman at Home

## 11:00 to 11:30 A. M.

• KPO & network—Woman's Magazine of the Air  
 KGO—The Wandering Minstrel  
 KYA—Organ; Unique Tunes  
 KTAB—Bargains; Fashions; Rhythms  
 KLX—Records; 11:15, Notes in Rhyme  
 KROW—Health Talk; Spotlight  
 KJBS—Popular Tunes  
 KGGC—Milady's Date Book; 11:15, Band Concert  
 KGDM—Organ Recital  
 KQW—Light Classics  
 \* KFRC & network—Little French Princess; Romance of Helen Trent  
 KOL—Garden Talk; News  
 KVI—Observer; Melodies  
 KOIN—Art Kirkham  
 KJR—Rhythm Rulers Recorded  
 KNX—Organ; Business Trends  
 KECA—Records; German Lesson  
 KGB—Recordings  
 KOA—Livestock and Produce

## 11:30 to 12:00 Noon

• KPO network—Smackout, Marion and Jim Jordan, comedy duo; 11:45, Vic and Sade  
 KGO—Alvino Rey, guitarist; 11:45, KYA—Mirror of Fashion; Snapshots  
 KTAB—Congoing; News  
 KLX—Anita and Orsco; Records  
 KROW—Latin-American Program  
 KGGC—Request Hour  
 KJBS—Dance Orchestra  
 KQW—Variety and Theatre News  
 KGDM—Organ Recital  
 \* KFRC & netwk—American School of the Air  
 KHQ—Organ Recital  
 KJR—Children's Stories; Measured Steps  
 KFI—Home Nursing Hints to 11:45  
 KECA—11:45, Frankie Patten, pianist  
 KNX—Music; 11:45, Ironizer Talk

12:00 to 12:30 P. M.

•KGO & network—Ramblers Trio  
 KGO—12:15, Financial Flashes;  
 12:20, Johnny O'Brien, harmonica  
 KPO—News  
 •KPO & network—12:15, Western  
 Farm and Home Hour  
 KYA—Scriptures; 12:03, Concert  
 KTAB—Seventh Day Adventist  
 KLX—Dance Music  
 KROW—Latin-American Program  
 KGW—Popular Orchestra  
 KGGC—Request Hour  
 KJBS—Song Hits  
 KGDM—Gene Almy; Serenader  
 •KFRC & network—Kate Smith's  
 Matinee  
 KOIN—Scrapbook; Amie Brunn  
 KOL—The Carnival Hour  
 KOMO—12:15, Viennese Vagabonds  
 KGW—Glenn Shelly and Clarence  
 Tolman; 12:15, Meier & Frank  
 KHQ—Business and Pleasure  
 KJR—Records; 12:12, Grain Reports  
 KVI—Mkt. Specials; Headlines  
 KFI—State Market Reports to 12:15  
 KNX—News; 12:15, Conqoin  
 KECA—12:15, News Release  
 KOA—Orchestra

12:30 to 1:00 P. M.

•KPO & network—Western Farm  
 and Home Hour  
 KGO—Just Around the Corner  
 KYA—Noonday Concert  
 KTAB—Echoes of Portugal  
 KLX—Don Brose; Garden Tips  
 KROW—California Farm Hour;  
 12:45, Records  
 KJBS—Dance Matinee  
 KGGC—Mountain Music  
 KGW—Market Reports  
 KGDM—Recordings  
 •KFRC & network—Kate Smith's  
 Matinee  
 KOL—The Carnival Hour  
 KVI—News & Comment to 12:45  
 KOMO—Farm Talk; Cowboy Joe  
 KGW—News; Studio Program  
 KHQ—Stepping Along; Studio  
 KNX—Concert Group  
 KECA—Concert Favorites, records  
 KOA—Brown Palace Hotel Orch.

1:00 to 1:30 P. M.

•KPO & network—Betty and Bob;  
 1:15, Talks by Dr. Joseph Jastrow  
 KGO—Elmore Vincent, tenor; 1:15,  
 Ann Warner's Chats  
 KYA—Folk Tunes; Serenaders  
 KTAB—Radio Frolic  
 KLX—Records; 1:15, Martha Lee  
 KROW—Concert Melodies  
 KJBS—Stock Reports and Records  
 KQW—Friendly Hour  
 KGDM—Records; Theatre Talk  
 •KFRC & network—National Student  
 Federation; Curtis Institute of  
 Music  
 KOL—1:15, Julie Day  
 KJR—Headliners  
 KOMO—1:15, Tea Time Tales  
 KGW—1:15, Dental Clinic  
 KHQ—1:15, Sylvia Gray  
 KNX—Pontrelli's Orchestra  
 KFI—1:15, Beverly Hillbillies  
 KJBS—Pontrelli's Orchestra  
 KECA—Recordings to 1:15  
 KFSD—Ad Club Luncheon  
 KGB—1:15, Stocks; Farm Flashes  
 KSL—Payroll Builder  
 KOA—1:15, Crazy Hotel Orchestra

1:30 to 2:00 P. M.

•KPO & network—Oxydol's Own Ma  
 Perkins; 1:45, Dreams Come True,  
 Barry McKinley, baritone  
 KGO—Ann Warner's Chats; 1:45,  
 John Lee, baritone  
 KYA—Modern Maestros  
 KTAB—Jean Kent, Economics  
 KLX—Popular Concert  
 KROW—Oakland Public Schools;  
 1:45, Oklahoma Ramblers

KJBS—Afternoon Popular Concert  
 KQW—Afternoon Concert  
 KGDM—Accordion Boys; Records  
 •KFRC & network—Curtis Insti-  
 tute of Music  
 KOIN—Book of Life  
 KJR—Renovize; The Sun Dial  
 KNX—Pontrelli's Orchestra  
 KFSD—Old Time Program

2:00 to 2:30 P. M.

•KPO & network—Al Pearce and  
 His Gang  
 KGO—Edna Fischer, pianist; 2:15,  
 Merry Macs; Vocalists  
 KYA—Don Valdemar's Orchestra  
 KTAB—Globe Trotter; Romancin'  
 KLX—Records; Romance Under  
 Water  
 KJBS—Gerald Kenney; Records  
 KROW—Dance Matinee  
 KQW—Dance Matinee  
 KGDM—Recordings  
 •KFRC & network—Happy Go  
 Lucky Hour  
 KJR—Salon Hour, recorded  
 KNX—The Bookworm  
 KECA—Recordings  
 KFSD—2:15, Studio Program  
 KSL—Music; 2:15, Dental Clinic  
 KOA—Huffman Reporter; 2:15,  
 Rowdy Wright

2:30 to 3:00 P. M.

•KPO & network—Al Pearce Gang  
 KGO—Vagabonds Quartet  
 KYA—Lost & Found; Modern Notes  
 KTAB—Relief Talk  
 KLX—Talk; Stocks; 2:40, Records  
 KROW—Dance Matinee  
 KJBS—Dance Selections  
 KQW—Dance Matinee  
 KGDM—Romancers  
 •KFRC & network—Happy Go  
 Lucky Hour  
 KJR—Salon Hour, recorded  
 KECA—Classic Hour  
 KNX—Recordings  
 KFSD—2:45, Studio Program  
 KSL—Parent-Teachers; Pat Chasin  
 KOA—String Serenade; Happy Jack

3:00 to 3:30 P. M.

•KPO & network—Langendorf Pic-  
 torial; 3:15, Mickey Gillette's  
 Music  
 KGO—Education in the News; 3:15,  
 Alma Kitchell, contralto  
 KYA—Band Concert  
 KTAB—J. Malloy; Chinese News  
 KLX—World Revue  
 KROW—Fay Lanphier; Merry-Go-  
 Round  
 KJBS—News; Recordings  
 KQW—Stocks; 3:05, Music  
 KGDM—Records  
 •KFRC & network—Feminine Fancies  
 KJR—Easy Chair; Enchanted Islands  
 KGW—Concert Trio  
 KHQ—Hints; Club Bulletin  
 KNX—Concert Orchestra  
 KECA—Raine Bennett; Records  
 KFSD—Royal Brown, Organist  
 KOA—Education in the News  
 3:15, University of Denver  
 KSL—Songs of Long Ago; 3:15,  
 Junior Hour

3:30 to 4:00 P. M.

•KPO & network—Mickey Gillette's  
 music  
 KGO—Interlude; Jack & Loretta  
 Clemens; Singing Strings  
 KYA—Symphony Highlights  
 KLX—Recordings  
 KTAB—Sophistication; Talk  
 KROW—Recordings  
 KQW—Popular Concert; Music  
 KJBS—Recordings  
 KGDM—Wyoming Rustlers; Ernie  
 Cruz  
 •KFRC & network—Frank Castle's  
 Matinee  
 KOL—Harriet Links; Studio Prog.

KOIN—Newspaper of the Air  
 KHQ—Magic Travels; Happy Feet  
 KOMO—Concert in Miniature  
 KFI—Ann Warner's Chats  
 KNX—Fletcher Wiley  
 KGB—3:55, Along the Airways  
 KSL—Junior Hour; News  
 KOA—News; Irving Kennedy, vocal

4:00 to 4:30 P. M.

•KPO & network—Pickens Sisters;  
 Will Osborne's Orchestra  
 KGO—Tally-Ho, instrumentalists  
 KYA—Tea Dance Parade  
 KTAB—"Jewish Date Book"; Bay  
 Meadows Race  
 KLX—Musical Jigsaw; Bob's Club  
 KROW—Waltzes; Hawaiians  
 KJBS—Dance Orchestra  
 KGDM—Gilmore Oil Program  
 KQW—Star Reporter; Popular Tunes  
 KFRC—N. Y. Stocks to 4:05  
 •KFRC & network—Edgewater Beach  
 Concert; University of the Air  
 KOIN—Newspaper of the Air  
 KHQ—Studio; 4:15, News Album  
 KGW—Friendly Chat  
 KYA—Business Talk; Tea Dansant  
 KFI—Better Business Talk  
 KNX—Haven of Rest  
 KECA—4:15, Better Business Bureau  
 KSL—Town Crier  
 KOA—Comedy Capers; Stamp Club

4:30 to 5:00 P. M.

•KPO & network—Talk by Dean  
 Carl W. Ackerman, School of  
 Journalism, Columbia University  
 KPO—4:45, News Reporter  
 KGO—Robert Pitner, tenor  
 •KGO & network—4:45, The Big Top  
 KYA—Tea Dance  
 KTAB—Keep Smiling Revue  
 KLX—Bro. Bob's Club; 4:45, Health  
 School  
 KROW—SERA Choral Ensemble  
 KQW—Story Time; 4:45, Songs of  
 the Islands  
 KJBS—Dance Orchestra  
 KGDM—Dance Orchestra to 4:45  
 •KFRC & network—Fred Skinner,  
 songs; 4:45, Between the Bookends  
 KVI—Santa Claus to 4:45  
 KOIN—Hollywood Reporter; Toy-  
 land Express  
 KGO—To be announced  
 KGW—Eddie King; 4:45, Milton  
 Gumbert  
 KJR—Snapshots  
 KOMO—4:45, Moments of Melody  
 KNX—Advisor; U. S. C.  
 KFI—Organ Recital  
 KGB—Police Talk to 4:35  
 KSL—Town Crier; 4:45, Orphan  
 Annie

5:00 to 5:30 P. M.

•KPO & network—Mary Pickford  
 and Stock Company  
 KGO—Children's Hour; 5:15, Chro-  
 mos, Chas. Runyan, pianist  
 KYA—Children's Hour  
 KTAB—Lauretta La Marr; Santa  
 Claus  
 KLX—Music; Bill, Mack & Jimmie  
 KROW—Memory Lane; Vocalist  
 KGGC—Echoes; Studio Frolic  
 KQW—Popular Concert  
 KFRC—Og, Son of Fire (E. T.)  
 •KFRC & network—5:15, Billy  
 Bachelor  
 KOIN—Bob & Dolly to 5:15  
 KJR—Drama; Waltzes & Tangos  
 KNX—Music  
 KECA—Recordings  
 KFSD—Better Business; Studio  
 KSL—Pulman Prog. 5:15, Tarzan

5:30 to 6:00 P. M.

•KPO & network—Nomads  
 KGO—Tim Healy's Ivory Stamp Club;  
 5:45, Little Orphan Annie  
 KTAB—Dr. Thompson, talk  
 KYA—Metropolitans; 5:45, Campbell  
 Corner

KLX—Covered Wagon Jubilee  
 KROW—Eating Your Way to Health  
 KGGC—Health Talk; Irish Gems  
 KQW—Popular Orchestra  
 \*KFRC & network—Everett Marshall's Broadway Varieties  
 KGW—Ivory Soap to 5:45  
 KJR—Tarzan; Orphan Annie  
 KOMO—Stamp Club to 5:45  
 KHQ—Ivory Stamp Club to 5:45  
 KNX—Elec. Trans.; Orphan Annie  
 KFI—Ivory Stamp Club; Music  
 KFOX—News; Records; Talk  
 KFSD—Studio; Farley's Rangers  
 KOA—Vocalist; Studio Program

**6:00 to 6:30 P. M.**

•KPO & network—Warden Lewis E. Lawes in 20,000 Years in Sing Sing  
 KGO—Melodiana; Vocal & Orch.  
 KYA—Man About Town; Orchestra  
 KTAB—Organ; News Service  
 KLX—Arlon Trio  
 KROW—News; Rhythm Kings  
 KGGC—Dinner Dance  
 KQW—California Department of Agriculture; 6:15, Recordings  
 \*KFRC & network—Chesterfield Program; Nino Martini & Orch.  
 KJR—Reporter; Romance Time  
 KFWB—News; Mysteries; Fun Fest  
 KNX—News; 6:15, Concert Group  
 KECA—Board of Education; News  
 KFOX—News; Trio; Al and Molly  
 KFSD—Dinner Music

**6:30 to 7:00 P. M.**

•KPO & network—John Charles Thomas, baritone  
 KGO—Barbara Merkle, harpist; 6:45, Air Adventures of Jimmy Allen  
 KYA—Cy Trobbe's Orchestra  
 KTAB—Sport Page; Affairs of Leo  
 KLX—Arlon Trio  
 KROW—Ne-er Do Well  
 KGGC—Theatre of the Air; Music  
 KQW—Market Reports; Thorobred  
 \*KFRC & network—Adventures of Gracie  
 KJR—Romance; 6:45, Jimmie Allen  
 KFWB—Organist; Jimmie Allen  
 KNX—Dance; 6:45, Elec. Trans.  
 KECA—Wesley Tourtellotte, organ  
 KFOX—School Kids; Jimmy Allen  
 KFSD—Dinner Music

**7:00 to 7:30 P. M.**

•KPO & network—Gabrielle De Lys, contralto; 7:15, Madame Sylvia, beauty and health expert  
 KGO—Business Review; 7:15, Agriculture Today  
 KLX—News; 7:15, Lovable Liars  
 KYA—Ernie Smith's Sport Page; 7:15, Tales of the Turf  
 KTAB—Italian News; Sport of Kings  
 KROW—C. W. Hammond; L'Italia News  
 KQW—Weather; Voice of Portugal  
 KGGC—Jewish Radio Hour  
 \*KFRC & network—Byrd Expedition Broadcast  
 KHQ—Jewel Box to 7:15  
 KJR—Tonic Tunes; Dollars & Sense  
 KFWB—Syncoptars  
 KNX—Watanabe & Archie; Rajput  
 KFI—Four Blackbirds to 7:15  
 KECA—7:15, Records  
 KFOX—Eb & Zeb; Bobby & Betty  
 KFSD—7:15, Sonny & Buddy

**7:30 to 8:00 P. M.**

•KPO & network—One Man's Family, serial Drama  
 KGO—Comedy Stars of Hollywood; 7:45, Californians on Parade  
 KYA—Cowboys; Louise Taber  
 KTAB—Socialist Labor Party; Organ  
 KLX—Studio Program  
 KROW—Sports Review; Hawaiians  
 KGGC—Jewish Radio Hour  
 KQW—Italian Radio Theatre

\*KFRC & network—Melody Masterpieces  
 KOIN—Jimmie Allen to 7:45  
 KOL—Speaker Stevenson to 7:45  
 KJR—Popular Concert  
 KNX—In-Laws; 7:45, King Cowboy  
 KFWB—Pioneers; Comedy Stars  
 KECA—Echoes of the Opera  
 KFOX—Boy Detective; Vagabonds  
 KGB—James O'Connor to 7:45  
 KFSD—Marie Viratelle Kriete  
 KSL—Crazy Crystals; Comedy Stars  
 KOA—Conoco Program

**8:00 to 8:30 P. M.**

•KPO & network—Amos 'n' Andy; 8:15, Red Davis, dramatic series  
 KGO—Californians on Parade; 8:15, College Daze  
 KYA—Trobbe's Scrap Book  
 KTAB—SERA Choral Society; Accordion Ensemble  
 KLX—Rhythmic Reporters  
 KROW—Crime Stories; 8:15, Watchtower  
 KGGC—Harlem Nights; Records  
 KQW—Singing Stars  
 \*KFRC & network—Myrt & Marge; 8:15, Edwin C. Hill  
 KJR—Neapolitans  
 KNX—June Irwin; To be announced  
 KFWB—Latin-American Program  
 KECA—Echoes of the Opera  
 KFOX—Ballads; Instrumental Trio  
 KFSD—Jimmie Allen to 8:15

**8:30 to 9:00 P. M.**

•KPO & network—Lanny Ross and His Log Cabin Orchestra  
 KGO—Clef Dwellers; Sports Headliners  
 KYA—Dance Orchestra; 8:45, Drama  
 KTAB—School-days  
 KLX—All-Star Sports; Tunes  
 KROW—Harmonies; Sextette  
 KGGC—Concert; Tamey Tunes  
 KQW—Waltz Favorites  
 \*KFRC & network—Voice of Experience; 8:45, Treasures of Time  
 KOL—8:45, Mirth Parade  
 KOIN—8:45, Moods in Music  
 KVI—8:45, Orchestra  
 KJR—Scrapbook; Castles in Music  
 KNX—Songs; To be announced  
 KFWB—Jack Joy's Orchestra  
 KECA—Recordings  
 KFOX—Melodies; Cecil & Sally  
 KSL—8:45, Orchestra

**9:00 to 9:30 P. M.**

•KPO & network—Town Hall Tonight; Fred Allen, comedian; Lenzie Hayton's Orchestra; James Melton, tenor  
 KGO—Bal Tabarin Orchestra  
 KYA—Music; Comedy Caravan  
 KTAB—Nevada Nightherders  
 KLX—Krausmeyer & Cohen; Melody Race  
 KROW—Boxing Matches  
 KQW—Musings; Salon Orchestra  
 KGGC—News; Wyoming Cowboys  
 \*KFRC & network—Treasures of Time; 9:15, Jacques Renard and Orchestra  
 KOL—Public Bench; Orchestra  
 KOIN—Serenades  
 KVI—9:15, Master's Music Room  
 KJR—News; Song Market  
 KNX—News; 9:15, Musical Prog.  
 KFWB—Dance Orchestra  
 KECA—A. J. C. Musicale  
 KFOX—Beverly Hillbillies  
 KFSD—Furmbilt; 9:15, Studio  
 KSL—Pinto Pete Ranch Boys to 9:15

**9:30 to 10:00 P. M.**

•KPO & network—Town Hall Tonight  
 KGO—National Players  
 KYA—Caravan; News; Fights  
 KLX—News; Adolph's Rangers  
 KTAB—Wrestling Matches  
 KROW—Boxing Matches  
 KQW—Kirk of Sleepy Hollow

KGGC—Dance Tunes; Recordings  
 \*KFRC & network—Dance Orchestra  
 KVI—News; Orchestra  
 KOL—9:45, News; Editorial  
 KOIN—Joseph Sampietro, violinist; Orchestra  
 KJR—"Purple Ray" Drama; Chamber of Commerce  
 KNX—The Crocketts  
 KFWB—Slumber Time  
 KECA—Melodie; 9:45, Records  
 KFOX—Beverly Hillbillies  
 KFSD—Eddie Wheeler's Orchestra  
 KSL—Orchestra; Melody Lane

**10:00 to 10:30 P. M.**

•KPO & network—Richfield Reporter; 10:15, Tom Coakley's Orchestra  
 KGO—Paul Martin and his music  
 KYA—Famous Fights; Rhyme Land  
 KTAB—Wrestling Matches  
 KLX—Recordings  
 KROW—Boxing Matches  
 KGGC—Ten o'Clock Revue  
 KFRC—News  
 \*KFRC & network—To be announced; 10:15, Organ Recital  
 KVI—Wednesday Night Mixer  
 KOL—Ivan Dittmars, Organist  
 KOIN—Orchestra  
 KJR—Orchestra  
 KNX—Orchestra  
 KFWB—News; Organ  
 KECA—Musical Celebrities  
 KFOX—News; 10:15, Organ  
 KGB—News; Studio; Orchestra  
 KSL—Music; 10:15, Pianist  
 KOA—Orchestra

**10:30 to 11:00 P. M.**

•KPO & network—Tom Coakley's Orch.; 10:55, Press-Radio News  
 KGO—News; 10:35, Williams-Walsh Orchestra  
 KYA—Dance Orchestra  
 KTAB—Charley Dring's Orchestra  
 KROW—Quiet Harmonies  
 KGGC—Ten o'Clock Revue  
 \*KFRC & network—Orville Knapp's Orchestra  
 KOIN—Dance Orchestra  
 KOL—Dance Music  
 KGB—Elec. Trans.; Orchestra  
 KJR—Till Tomorrow  
 KNX—Pontrelli's Orchestra  
 KFWB—Tex Howard's Orchestra  
 KFOX—Tex Howard's Orchestra

**11:00 to 11:30 P. M.**

•KGO & network—Ted Flo-Rito's Orchestra  
 KPO—Freddie Bergin's Orchestra  
 KYA—Sandman Organ  
 KTAB—Vern Walton's Orchestra; Dansapations  
 KROW—Dance of the Hour  
 \*KFRC & network—Dick Jurgen's Orchestra  
 KOIN—Club Victor  
 KOMO—Dance Orchestra  
 KNX—Pontrelli's Orchestra  
 KFWB—Dance Orchestra  
 KFOX—Nick Stuart's Orchestra

**11:30 to 12:00 Midnight**

•KGO & network—Bart Woodyard's Orchestra  
 KPO—Organ Concert  
 KYA—Organ Music  
 KTAB—Dansapations  
 KROW—Dance Music  
 KGGC—Fritz Wolcott's Orchestra  
 \*KFRC & network—To be announced  
 KOIN—Phantom Violin  
 KGW—Bart Woodyard Orchestra  
 KOMO—Moonlight Melodies  
 KFWB—Dance Orchestra  
 KFOX—Freddie Carter's Orchestra

**12:00 to Sign Off**

KTAB—DX Program  
 KROW—Midnight Vagabond  
 KFI—Recordings  
 KGB—Records  
 KJBS—12:01, Owl Program to 7 a.m.

# THURSDAY Programs

Dec 20, 1934

## 7:30 to 8:00 A. M.

- KPO & network—Financial Service; 7:45, To be announced
- KGO—Morning Parade
- KYA—Musical Clock
- KTAB—The Texans
- KROW—Commuters Clock
- KJBS—Alarm Klok Klub
- KQW—Breakfast Hour
- KFRG—Seal Rocks Broadcast
- KGDM—Gilmore Oil Program
- KOL—Organ Program
- KJR—Market Quotations; Records
- KVI—Varieties; Musical Bracer
- KOMO—7:45, Stradivarieties
- KGW—Ronald Buck to 7:45
- KFI—Stock Market to 7:45
- KHJ—Recordings and stocks
- KNX—Bill Sharples Club
- KECA—Bible Fellowship; Records
- KFSD—7:45, Studio Program
- KGB—Stocks; Seven O'Clock Club
- KSL—Morning Watch; McThrift

## 8:00 to 8:30 A. M.

- KPO—Songs by the Kitchen Sink
- KPO & network—8:15, Tony Wonn Scrapbook
- KGO—Crosscuts from Log o' Day
- KYA—Christian Science Reading; 8:15, Mr. and Mrs. Reader
- KTAB—Shipping News; Santa Claus
- KLX—Recordings; 8:20, Stocks
- KROW—Commuters Clock
- KJBS—Auburn Airs; Varieties
- KQW—Morning Melodies
- KGDM—Ernie Cruz Prog.; Records
- KFRG—Recordings
- ★ KFRG & network—8:15 Academy of Medicine
- KOIN—Rhythms to 8:15
- KOL—Organ; 8:15, Cecil & Sally
- KOMO—Morning Reveries
- KHQ—Edna Fischer, pianist to 8:15
- KVI—Records; Market Specials
- KFI—Church Quarter Hour to 8:15
- KNX—Jewel Box; Help for the Day
- KECA—Edna Fischer, pianist to 8:15
- KFSD—Johnny O'Brien to 8:15
- KSL—Melodies; Mary & John
- KOA—Galaxy of Stars; Band

## 8:30 to 9:00 A. M.

- KPO & network—U.S. Navy Band
- KPO—8:45, Breakfast Club
- KGO—Crosscuts Log o' the Day
- KYA—Morning Concert
- KTAB—Radio Shoppers' Digest
- KLX—Covered Wagon Jubilee
- KROW—Novelty Review
- KQW—Morning Concert
- KJBS—Dance Music; Pianist
- KGDM—Records; 8:45, Talk
- ★ KFRG & network—Hollywood Country Church
- KOMO—Harp Melodies; Mary's Garden
- KGW—8:45, Heinz Musicale
- KHQ—Review; Heinz Co.
- KFI—Music; 8:45, Julia Hayes
- KNX—Song Bag
- KECA—Recordings
- KSL—Cal O-Dine; Mary & Bennie
- KOA—U. S. Navy Band

## 9:00 to 9:30 A. M.

- KPO & network—Fields & Hall; 9:15, Merry Maes
- KGO—Organ Concert
- KYA—Concert; Prudence Penny
- KTAB—Hour of Prayer
- KLX—Shopping List
- KROW—Romance; Varieties
- KJBS—Popular Concert; Bargain
- KGCC—Stars; Songs; Bargains
- KQW—Tuneful Topics
- KGDM—Cowboy; Personalities
- ★ KFRG & network—Voice of Experience to 9:15
- KFRG—9:15, Dance Music
- KOL—9:15, The Gumps



JAY BROYER  
KFRG—2:00 P. M.

- KVI—9:15, The Gumps
- KHQ—9:15, Home Comfort
- KJR—9:15, Early Echoes
- KNX—Organ; Lotus Land
- KECA—Recordings
- KGB—9:15, The Gumps
- KFSD—Studio Program; Good Cheer
- KSL—9:15, The Gumps

## 9:30 to 10:00 A. M.

- KPO & network—Martha Meade Society
- KPO—9:45, Elmore Vincent, tenor
- KGO—Improve Your Home
- KGO & network—9:45, Press-Radio News; 9:50, Piano Vignettes
- KYA—Lovers Lane; Waltz Time
- KTAB—Health Talk
- KLX—Clinic of the Air
- KROW—Diet and Health
- KJBS—For the Ladies
- KGCC—Morning Melodies
- KQW—Gems of Melody
- KGDM—News; Records
- ★ KFRG & network—George Hall's Orchestra
- KVI—Dr. Burns; Mystic Melodies
- KJR—News; Songs for Sale
- KHQ—9:45, Tull & Gibbs
- KGW—9:45, Modern Homemaker
- KFI—9:45, News Release
- KECA—Records to 9:45
- KNX—Music; 9:45, News
- KFSD—Stock Reports to 9:45
- KGB—News to 9:45
- KOA—Farm and Home

## 10:00 to 10:30 A. M.

- KPO & network—Woman's Magazine of the Air
- KGO—Mickey Gillette's Music
- KYA—Columbia on Parade, 10:15 The Novelty Shop
- KTAB—News; Bachelor; Bargains
- KLX—Clinic; Stocks; News
- KROW—Rhythm Revue
- KJBS—News; 10:05, Memories
- KGCC—Cal King
- KGDM—Recordings
- KQW—News; 10:05, Orchestra
- KOL—10:15, Morning Melodies
- ★ KFRG & network—Just Plain Bill
- KFRG—10:15, Home Forum
- KOIN—10:15, Air Shopping
- KVI—10:15, Sons of Pioneers

- KJR—Home Makers; Music Shop
- KNX—Eddie Albright's Family
- KECA—Recorded Program
- KGB—10:15, Marie Golden

## 10:30 to 11:00 A. M.

- KPO & network—Woman's Magazine of the Air
- KGO—Airbreaks; Variety Program; Music Guild
- KYA—Organ Concert
- KTAB—Health Talk
- KLX—International Kitchen
- KJBS—Vocalists; Melodies
- KROW—Morning Concert
- KGCC—Hits of Today
- KGDM—Records; Health Talk
- KQW—Aunt Sammy; Music
- KFRG—Better Business Bureau
- ★ KFRG & network—10:45, Pat Kennedy and Kassel's Orchestra
- KOL—Morning Melodies to 10:45
- KVI—Amusement Tips to 10:45
- KJR—Club Minutes; Uncle Hank
- KECA—Recordings
- KNX—Mary Holmes; 10:45, Rhythm
- KSL—Colonial Dames to 10:45
- KOA—10:45, Livestock & Produce

## 11:00 to 11:30 A. M.

- KPO & network—To be announced
- KGO—NBC Music Guild
- KYA—Organ Concert
- KTAB—Fashions; Modern Rhythms
- KLX—Anita & Orosco; Tonic Tunes
- KROW—Health Talk; Spotlight
- KGCC—Milady's Date Book; Waltz Time
- KJBS—Dance Orchestra
- KQW—Light Classics; Records
- KGDM—Organ Recital
- ★ KFRG & network—Little French Princess; Helen Trent Romance
- KOL—Garden Talk; 11:15, News
- KOIN—This and That
- KVI—Observer; Morning Melodies
- KJR—Rhythm Rulers
- KNX—Marshall Grant, Organ
- KECA—Recordings
- KGB—Recordings
- KOA—Huffman Harmonies

## 11:30 to 12:00 Noon

- KPO & network—To be announced; 11:45, Vic and Sade
- KGO—Smackout; 11:45, Agricultural Bulletin
- KYA—Dance Time; Snapshots
- KTAB—Rhythms; News
- KLX—Beauty Salon; Scrapbook
- KROW—Latin America Program
- KJBS—Popular Hits; Talk
- KGCC—Request Hour
- KQW—Accordion Capers; News
- KGDM—Organ Recital
- ★ KFRG & network—Amer. School of the Air
- KJR—Irish Minstrel; Music
- KECA—Records; 11:45, Music Talk
- KNX—Talk; 11:45, Ironizer Talk
- KOA—Question Box to 11:45

## 12:00 to 12:30 P. M.

- KGO & network—Castles of Romance
- KGO—12:15, Financial Flashes; 12:20, Melody Revue
- KPO—News Reporter
- KPO & network—12:15, Western Farm and Home Hour
- KYA—Scriptures; 12:03, Concert
- KTAB—Congoin; Agric Period
- KLX—Dance Music
- KROW—Latin American Program
- KJBS—Vocal and Instrumental
- KGCC—Request Hour
- KQW—Popular Orchestra
- KGDM—Recordings
- ★ KFRG & network—Roadways of Romance
- KVI—Mkt. Specials; Headlines
- KOL—The Carnival Hour

KOIN—Mary Cullen; Amie Brunn  
KOMO—12:15, Viennese Vagabonds  
KGW—12:15, Meier & Frank  
KHQ—Organ Recital  
KJR—12:12, Grain Reports  
KFT—Fed. & State Mkt. Reports  
KNX—News; 12:15, Congoin  
KECA—12:15, News Release  
KSL—Payroll Builder  
KOA—Orchestra

## 12:30 to 1:00 P. M.

•KPO & network—Western Farm and Home  
KGO—Melody Revue  
KYA—Noonday Concert  
KTAB—Echoes of Portugal  
KLX—Don Brose; Memory Paths  
KJBS—Dance Matinee  
KROW—California Farm Hour; 12:45, Hits of Today  
KGGC—Mountain Music; Salonesque  
KQW—Market Reports  
KGDM—Recordings  
\*KFRC & network—Roadways of Romance  
KOIN—Johnnie Walker's Scrapbook to 12:45  
KOL—Carnival Hour  
KOMO—Vagabonds; Cowboy Joe  
KGW—News; 12:45, Glenn Shelley  
KHQ—Luncheon Club  
KNX—Concert Group  
KECA—Recordings  
KSL—Utah State Agric. College; 12:45, Recorded Program  
KOA—Eastman School of Music

## 1:00 to 1:30 P. M.

•KPO & network—Betty and Bob; 1:15, East & Dumke  
KGO—Edna Fischer, pianist; 1:15, Ann Warner  
KYA—Shrine Club Luncheon  
KTAB—Radio Frolic  
KLX—Records; 1:15, Martha Lee  
KROW—Concert Melodies  
KJBS—Stocks; Recordings  
KQW—Friendly Hour  
KGDM—Recordings; 1:15, Quartet  
\*KFRC & network—Visiting Armenia's Little House; 1:15, Salvation Army Band  
KOL—1:15, Julie Day  
KOMO—1:15, Tea Time Tales  
KHQ—1:15, Sylvia Gray  
KJR—Musical Auction to 1:15  
KGW—1:15, Dental Clinic  
KFT—1:15, Beverly Hillbillies  
KNX—Paris Inn  
KECA—Recordings to 1:15  
KGB—1:15, Stocks; Farm Flashes  
KFSD—Rotary Club  
KSL—Payroll Builder

## 1:30 to 2:00 P. M.

•KPO & network—Oxydol's Own Ma Perkins; 1:45, Dreams Come True, Barry McKinley  
KGO—Ann Warner's Chats; 1:45, Harry Stanton, basso  
KYA—Modern Maestros  
KTAB—Jean Kent, Economics  
KLX—Popular Concert  
KJBS—Dance Orchestras  
KROW—Spanish Serenade; Ramblers  
KQW—Afternoon Concert  
KJBS—Education; Recordings  
KFRC—Stocks; Christian Sci. News  
\*KFRC & network—1:45, Dick Messner's Orchestra  
KOL—1:45, Bureau of Fisheries  
KOIN—Book of Life  
KJR—Renovize; Song Souvenirs  
KNX—Paris Inn  
KFSD—Old Time Program  
KGB—Parent Teachers' Association

## 2:00 to 2:30 P. M.

•KPO & network—Al Pearce and His Gang  
KGO—National Congress of Parents and Teachers  
KYA—Don Valdemar's Orchestra

KTAB—Globe Trotter; Romancin'  
KLX—Bridge Talk; 2:15, Records  
KROW—Dance Matinee  
KJBS—Blindcraft Ensemble  
KGDM—Records; News  
KQW—Blindcraft Ensemble  
\*KFRC & network—Happy Go Lucky Hour  
KJR—Salon Hour  
KNX—Bookworm  
KECA—Classic Hour  
KSL—Loretta Lee; Dental Clinic  
KOA—Theatre Reporter; P. T. A.

## 2:30 to 3:00 P. M.

•KPO & network—Al Pearce Gang  
KGO—Pair of Pianos; Gertrude Lyne and Grace Frankel, piano duo  
KYA—Modern Notes  
KTAB—Child Life; 3:4 Time  
KLX—S. P. Stocks; 2:40, Records  
KROW—Dance Matinee  
KJBS—Events of Interest; Orch.  
KGDM—The Romancers  
KQW—Dance Matinee  
\*KFRC & network—Happy Go Lucky Hour  
KJR—Salon Hour, records  
KNX—To be announced  
KECA—Records  
KFSD—2:45, Studio Program  
KSL—Organ and A. M. A. Speaker; 2:45, Miniatures

## 3:00 to 3:30 P. M.

•KPO & network—Langendorf Pictorial; 3:15, Mickey Gillette  
KGO—Ithaca College Choir; 3:15, Captain Bruce Barnsfather  
KYA—Band Concert; Melody Man  
KTAB—Notices; Chinese News  
KLX—Song Market; Records  
KROW—Fay Lanphier; Music  
KJBS—News; Ballroom Favorites  
KGDM—Recordings  
KQW—Stocks & Bonds; Variety  
\*KFRC & network—Feminine Fancies  
KHQ—Organ; Club Bulletin  
KGW—Crazy Crystals to 3:15  
KJR—Enchanted Islands; Music  
KOMO—3:15, Fire Prevention Talk  
KECA—Dr. Meyers; Records  
KNX—Louise Johnson, Astro-Analyst  
KFSD—Organ Recital  
KSL—Pianist; Junior Hour

## 3:30 to 4:00 P. M.

•KPO & network—Mickey Gillette's music  
KGO—The Family Cook Book; Singing Strings  
KYA—Drama; Hillbillies  
KTAB—Sophistication; Talk  
KLX—Recordings  
KROW—Singing Strings  
KJBS—Dobbie's Radio Jubilee  
KQW—Captain Dobbie  
KGDM—Organ Recital  
\*KFRC & network—Frank Castle's Matinee from Trouville Club  
KOL—Harriet Lincks; Studio  
KOIN—Newspaper of the Air  
KOMO—Birnbaum's Bavarians  
KFT—Ann Warner's Chat  
KNX—Fletcher Wiley  
KGB—3:55, Along the Airways  
KSL—The Junior Hour; Records  
KOA—3:45, Microphone News

## 4:00 to 4:30 P. M.

•KPO & network—Richard Himber's Orchestra; 4:15, John B. Kennedy  
KGO—The Restful Hour, concert orchestra direction Emil Polak  
KYA—Tea Dance Parade  
KTAB—"The Jewish Date-Book"; Bay Meadows Race  
KLX—Oak Recreation Dept.  
KROW—Waltz Time; Organ  
KJBS—Dance Orchestra  
KQW—Star Reporter; Records  
KGDM—Gillmore Oil Program  
KVI—Pre-school Story Lady to 4:15

\*KFRC & network—Edgewater Beach Concert Orchestra; University of the Air  
KJR—Tea Dansant  
KGW—Friendly Chat  
KHQ—4:15, News Album  
KNX—Haven of Rest  
KFT—Paul Roberts, tenor to 4:15  
KECA—4:15, Records  
KGB—Girl Scouts Program to 4:15  
KSL—Broadcaster's Review

## 4:30 to 5:00 P. M.

•KPO & network—Will Aubrey, Bard of the Byways  
KGO—4:45, News  
KPO—The Restful Hour  
\*KGO & network—4:45, The Big Top  
KYA—Tea Dance  
KTAB—Keep Smiling Revue  
KLX—Bro. Bob's Club, Health School  
KROW—Lee Davis Cowboys  
KQW—Story Time; 4:45, Songs of the Islands  
KJBS—Dance Orchestra to 4:45  
KGDM—Iron House  
\*KFRC & network—Charlie Kent's Adlerikans; 4:45, Between the Bookends  
KOL—To be announced  
KOIN—Reporter; Toyland Express  
KJR—Snapshots  
KGW—Eddie King; 4:45, Milton L. Gumbert  
KOMO—4:45, Moments of Melody  
KNX—Personal Advisor; U. S. C.  
KFT—Organ Concert  
KGB—S. D. Calif. Club to 4:35  
KSL—Broadcasters Review; Orphan Annie  
KOA—Thrills of Tomorrow; Smilin' Ed McConnell

## 5:00 to 5:30 P. M.

•KPO & network—Fleischmann Variety Hour; Rudy Vallee and his Connecticut Yankees  
KGO—Art Revue; 5:15, Beaux Arts Trio  
KYA—Children's Hour  
KTAB—Lauretta La Marr; Santa Claus  
KLX—Pianist; Bill, Mack & Jimmie  
KROW—Memory Lane; Ramona & Romera  
KGGC—Dance Echoes; Studio Frolic  
KQW—Popular Concert  
KFRC—Og, Son of Fire to 5:15  
\*KFRC & network—5:15, Billy Bachelor  
KOIN—Bob and Dolly to 5:15  
KOL—Treasure Adventures to 5:15  
KJR—Steamboat Bill; Concert  
KNX—Organ; Quartet  
KFSD—C. of C. Studio Program  
KSL—Musical Prog; 5:15, Tarzan

## 5:30 to 6:00 P. M.

•KPO & network—Fleischmann Variety Hour  
KGO—Beaux Arts Trio; 5:45, Little Orphan Annie  
KYA—Metropolitans; 5:45, Campbell  
KTAB—Health Talk  
KLX—Covered Wagon Jubilee  
KROW—Eating Your Way to Health  
KGGC—Health Talk; Irish Gems  
KQW—Popular Orchestra  
\*KFRC & network—To be announced  
KJR—Melodies; Orphan Annie  
KNX—Drama of Youth; 5:45, Orphan Annie  
KECA—Recordings  
KFSD—5:45, Farley's Rangers  
KSL—Standard Optical; Krausmeyer & Cohen

## 6:00 to 6:30 P. M.

•KPO & network—Captain Henry's Maxwell House Show Boat  
KGO—Everybody Sing  
KYA—Man About Town; Orchestra  
KTAB—News; Organ Concert



KLX—Arion Trio  
 KROW—News; 6:15, Harmonies  
 KGGC—Dinner Dance Review  
 KQW—Popular Program  
 \*KFRC & network—Let's Go to Europe; Piano Fantasies  
 KOIN—Merry Gentlemen; Piano Phantasies  
 KVI—6:15, Hollywood News  
 KJR—News; Romance Time  
 KNX—News; 6:15, Concert Group  
 KECA—Noreen Gammill; News  
 KFWB—News; Mysteries; "Fun Fest!"  
 KFOX—News; Vocalists; Al, Molly  
 KSL—The Utah Hour

6:30 to 7:00 P. M.

\*KPO & network—Captain Henry's Show Boat  
 KGO—Federal Business Talk; 6:45, Air Adventures of Jimmy Allen  
 KYA—Orchestra  
 KTAB—Sports; Affairs of Leo  
 KLX—Arion Trio  
 KROW—Rhythm Kings; 6:45, Dr. Facel  
 KQW—State Market Reports; 6:45, Thorobred Quarter Hour  
 KGGC—Theatre of the Air; Dance Music  
 \*KFRC & network—Fred Waring's Pennsylvanians  
 KJR—Romance; Jimmy Allen  
 KNX—Dance; 6:45, Jimmy Allen  
 KFWB—Fun Fest; Jimmie Allen  
 KECA—Wesley Tourtelotte, organ  
 KFOX—School Kids; Jimmie Allen

7:00 to 7:30 P. M.

\*KPO & network—Paul Whiteman's Music Hall; Orch. & Entertainers  
 KGO—Ricardo and His Violin; 7:15, Review of Activities of the San Francisco Municipal Government  
 KYA—Ernie Smith's Sport Page; 7:15, Sportsman's Corner  
 KTAB—Italian News; Sport of Kings  
 KLX—News; 7:15, Magic Harmony  
 KROW—C. W. Hammond; News  
 KGGC—Symphonette; Tango Time  
 KQW—Weather; News; Voice of Portugal  
 \*KFRC & network—Barnyard Serenade  
 KOIN—Little Show; The Journal  
 KOL—Beautiful Melodies  
 KVI—To be announced  
 KJR—Silver Strains; Greater Washington Hour  
 KNX—Watanabe & Archie; Songs  
 KFWB—Nip and Tuck; Hilarities  
 KECA—Records; Dr. Hopkins  
 KFOX—Eb and Zeb; 7:15, Bobby & Betty  
 KFSD—Romance of Melody; Sonny & Buddy  
 KSL—Memory Garden; Studio Prog.

7:30 to 8:00 P. M.

\*KPO & network—Paul Whiteman's Music Hall  
 KGO—Clef Dwellers; 7:45, Pan Americana  
 KYA—Story Teller; Louise Taber Gold Rush Days  
 KTAB—Ice Hockey  
 KLX—Helen Parmelee, pianist; Studio Program  
 KROW—Accordionist; Old-Fashioned Girl  
 KGGC—Jeanne Carole; Records  
 KQW—Italian Radio Theatre  
 \*KFRC & network—Vincent Lopez Orch.; 7:45, Fat Waller's Rhythm Club  
 KOL—Speaker Stevenson to 7:45  
 KVI—Dr. R. M. Mellor to 7:45  
 KOIN—Jimmy Allen; Wanderer  
 KJR—Program; Sweethearts Parade  
 KNX—In-Laws; King Cowboy  
 KFWB—Syncopters  
 KFOX—Boy Detective; Vagabonds  
 KECA—Hawaiian Group

KFSD—Moments of Melody  
 KGB—Comedy Stars to 7:45  
 KSL—Studio; 7:45, Sports

8:00 to 8:30 P. M.

\*KPO & network—Amos 'n' Andy; 8:15, Standard Symphony Hour  
 KGO—Pan Americana; 8:15, College Daze  
 KYA—Orchestra; Musical Milkman  
 KTAB—Ice Hockey  
 KLX—Jewel Box; Amer. Legion Talk  
 KROW—Latin-American Program  
 KGGC—Spanish-American Program  
 KQW—Lena Leland; Sportolog  
 \*KFRC & network—Myrt & Marge; 8:15, Little Jack Little's Orchestra  
 KOIN—8:15, Comedy Stars  
 KJR—8:15, Jack & Melody Maids  
 KOL—8:15, Comedy Stars  
 KVI—8:15, Souvenirs  
 KNX—June Irwin; Adierkans  
 KFWB—Welcome Lewis; Orchestra  
 KECA—Old New England Whaling; Records  
 KFOA—Talent Discovery Program  
 KFSD—Jimmie Allen; Studio  
 KSL—8:15, Mirth Parade

8:30 to 9:00 P. M.

\*KPO & network—Standard Symphony Hour  
 KGO—Eddie Duchin's Orchestra  
 8:45, Big Ben Dream Dramas  
 KYA—Tom Coakley's Orch.; Leon Mojicas Orchestra  
 KTAB—Interlude; Vocalist  
 KLX—All-Star Sports; 8:45, Studio  
 KROW—Italian Program  
 KGGC—Concert; Timely Tunes  
 KQW—Musical Comedy Hi-Lites  
 \*KFRC & network—Camel Caravan  
 KJR—Popular Concert  
 KNX—Opera Hour  
 KFWB—Jack Joy's Orchestra  
 KFOX—Organ & Piano; Cecil & Sally  
 KECA—Records  
 KFSD—Ratliff's Orchestra  
 KOA—Sports on Tap; Studio

9:00 to 9:30 P. M.

\*KPO & network—Standard Symphony Hour; 9:15, Winning the West  
 KGO—Geo. Olsen's Orchestra  
 KYA—Sports Parade  
 KTAB—Nevada Nighthiders  
 KLX—Melodies; 9:15, Violinist  
 KROW—Italian Program; Records  
 KGGC—News; Wyoming Cowboys  
 KQW—Band Concert  
 \*KFRC & network—Al Kavelin Orchestra  
 KFRC—9:15, S. F. Junior C. of C.  
 KOL—Krausmeyer & Cohen  
 KOIN—Krausmeyer & Cohen to 9:15  
 KVI—Krausmeyer & Cohen; Mem'r's  
 KJR—News; Charlie Kent Singers  
 KNX—News; Mona Lowe  
 KFOX—Beverly Hillbillies  
 KFWB—Nick Stuart's Orchestra  
 KECA—Story Teller; Records  
 KFSD—Lewis Prog.; Aztec Half-Hour  
 KGB—Nino Marcelli & Symphony  
 KSL—9:15, Ridge Roamers  
 KOA—Comedy Stars; Orchestra

9:30 to 10:00 P. M.

\*KPO & network—Winning the West  
 KPO—9:45, Book Parade  
 KGO—Dance Music  
 \*KGO & network—9:45, Dancing in Twin Cities  
 KYA—Troubadour; 9:45, News; 9:55, The Answer Man  
 KTAB—News; Velder Players  
 KLX—News; California Rangers  
 KROW—KROW Varieties  
 KGGC—Dance Tunes; Singers of Songs  
 KQW—Dance Frolic  
 \*KFRC & network—Orchestra  
 KOL—Hollywood News; 9:45, News

KVI—News; Evening Meditations  
 KOIN—Serenader  
 KJR—Uncle Sam's Exchange; Orch.  
 KHQ—9:45, Crazy Wells  
 KOMO—9:45, Romance Time  
 KGW—9:45, Edwards Furn. Prog.  
 KFWB—Slumbertime  
 KNX—Music; The Crocketts  
 KFOA—Beverly Hillbillies  
 KECA—Records  
 KFSD—Aztec Half-Hour to 9:45  
 KGB—Orchestra  
 KSL—Leon Navarro's Orchestra  
 KOA—Country Club Orchestra

10:00 to 10:30 P. M.

\*KPO & network—Richfield Reporter; 10:15, Waltz Time  
 KGO—Music Box  
 KYA—Drama  
 KTAB—Vern Walton's Orchestra  
 KLX—Dance Music  
 KROW—Varieties; Sport Hilites  
 KGGC—Ten o'Clock Review  
 KFCR—News to 10:10  
 \*KFRC & network—To be announced; 10:15, Fred Skinner, vocalist  
 KOL—Dance Music  
 KGW—10:15, Tolman, Shelly, Johnson  
 KOMO—10:15, Royal Seven  
 KFI—10:15, Four Black Birds  
 KFWB—News; Organist  
 KNX—Crocketts  
 KECA—Records to 10:15  
 KFOX—News; Organ  
 KGB—News to 10:10  
 KSL—Orchestra; Kalawala Boys  
 KOA—Dance Orchestra

10:30 to 11:00 P. M.

\*KPO & network—Waltz Time; 10:45, Tom Coakley's Orch.; 10:55, News  
 KGO—Press-Radio News; 10:35, Williams-Walsh Orchestra  
 KYA—Dance Orchestra  
 KTAB—Ray Teller's Orchestra  
 KLX—Dance Music  
 KROW—Quiet Harmonies  
 KGGC—Ten o'Clock Review  
 \*KFRC & network—Orville Knapp's Orchestra  
 KOL—10:45, American Weekly  
 KOIN—Orchestra  
 KOMO—Moonlight Melodies  
 KGW—10:45, Bart Woodyard's Orch.  
 KJR—10:55, Memory's Garden  
 KNX—Pontrelli's Orchestra  
 KFWB—Tex Howard's Orchestra  
 KFOX—Tex Howard's Orchestra

11:00 to 11:30 P. M.

KPO—Freddie Bergin's Orchestra  
 \*KGO & network—Ted Fio-Ritto's Orchestra  
 KYA—Sandman Organ  
 KTAB—Organ Concert  
 KLX—Stuart Hamblen's Roundup  
 KROW—Dance of the Hour  
 \*KFRC & network—Dick Jurgen's Orchestra  
 KOIN—11:15, Anthony's Columbians  
 KOMO—Orchestra  
 KHJ—Organ  
 KNX—Pontrelli's Orchestra  
 KFWB—Nick Stuart's Orchestra  
 KFOX—Dance Orchestra

11:30 to Sign Off

\*KGO & network—Jimmy Grier's Orchestra  
 KPO—Chas. Runyan, Organist  
 KYA—Organ  
 KTAB—Dansapations  
 KLX—Stuart Hamblen's Roundup  
 KFRC—Organ Recital  
 KOIN—Organ Recital  
 KVI—Organ; News and Tips  
 KJR—Till Tomorrow  
 KHJ—Organ and Records  
 KFWB—Dance Orchestra  
 KFOX—Freddie Carter's Orchestra  
 KGB—Organ  
 KJBS—12:01, Owl Program to 7 a.m.

# FRIDAY Programs

Dec. 21, 1934

## 7:30 to 8:00 A. M.

•KPO & network—Financial Service; Tom Mitchell, baritone  
KGO—Betty Brunn; Johnny O'Brien  
KYA—Music; Unique Prog.  
KTAB—The Texans  
KROW—Commuters Clock  
KJBS—Alarm Klok Klub  
KQW—Breakfast Hour  
KGDGM—Gilmore Oil Program  
KFRC—Seal Rocks Broadcast  
KVI—Talk; Varieties  
KHQ—7:45, Crazy Wells  
KGW—Ronald Buck  
KJR—Market Quotation; 7:45, Shadows on the Clock  
KEX—Varieties  
KOL—Organ Program  
KFI—Stocks; 7:45, Church  
KHJ—Records and Stock Reports  
KNX—Bill Sharples Breakfast Club  
KECA—Bible Fellowship to 7:45  
KGB—Seven O'Clock Club  
KSL—Morning Melodies

## 8:00 to 8:30 A. M.

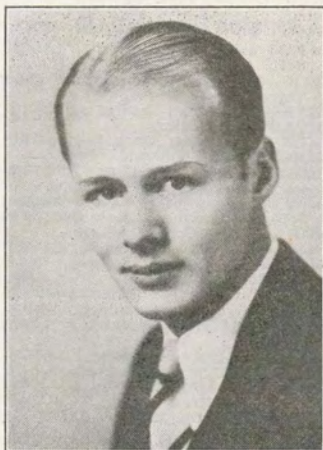
•KPO & netwk—NBC Music Appreciation Hour  
KGO—Crosscuts Log o' the Day  
KYA—Christian Science Reading; 8:15, Mr. and Mrs. Reader  
KTAB—Shipping News  
KLX—Records; 8:20, Stocks  
KROW—Recordings  
KJBS—Morning Varieties  
KQW—Morning Melodies  
KGDGM—Serenaders; Records  
KFRC—Recordings  
\*KFRC & network—8:15, Illinois Wesleyan Choir  
KOL—8:15, Cecil and Sally  
KVI—Crazy Mountaineers; Specials  
KOIN—Rhythms to 8:15  
KOMO—Morning Reveries  
KNX—Electrical Transcriptions  
KECA—Recordings  
KGB—Recordings to 8:15  
KSL—Studio Ensemble; Good Morning Judge

## 8:30 to 9:00 A. M.

•KPO & netwk—Music Appreciation Hour  
KGO—Crosscuts Log o' the Day  
KYA—Feminine Notebook; Concert  
KTAB—Radio Shopper's Digest  
KLX—Covered Wagon Jubilee  
KROW—Novelty Review  
KQW—Morning Concert  
KGDGM—Recordings; Health Talk  
KJBS—Dance Music  
\*KFRC & netwk—Country Church  
KOMO—Harp Melodies; 8:45, Mary's Friendly Garden  
KNX—To be announced  
KECA—Recordings  
KSL—Cal-O-Dine Program

## 9:00 to 9:30 A. M.

KGO—Kahnversation with Kay; Wm. Cowles, pianist  
•KPO & network—Fields & Hall; 9:15, To be announced  
KYA—Concert; Prudence Penny  
KTAB—Hour of Prayer  
KLX—Shopping List  
KROW—Romance; Vocal Varieties  
KJBS—Kings Men; Records  
KGGC—Recordings  
KQW—Tuneful Topics; Congoin  
KGDGM—Records; 9:15, Personalities  
\*KFRC & network—Voice of Experience to 9:15  
KFRC—Congoin Dance Music  
KOL—9:15, Prudence Penny  
KHQ—Home Comfort to 9:15  
KJR—9:17, Early Echoes  
KVI—9:15, The Gumps  
KNX—Health Talk; Lal Chan Mehra  
KECA—Recordings



IVAN DITMARS

KOL—10:05 P.M.

KGB—9:15, Organ Melodies  
KFSD—9:15, Good Cheer  
KSL—9:15, The Gumps

## 9:30 to 10:00 A. M.

•KPO & network—National Farm and Home Hour  
KGO—Improve Your Home; Sam Moore, guitarist  
KYA—Lovers Lane; Waltz Time  
KTAB—Health Talk  
KLX—Clinic of the Air  
KROW—Diet and Health  
KJBS—Faye Ward's Program  
KQW—Faye Ward  
KGGC—Morning Melodies  
KGDGM—News; 9:45, Records  
\*KFRC & network—Betty Crocker  
KFRC—9:45, Crazy Wells  
KOL—9:45, Beautiful Melodies  
KVI—9:45—Mystic Melodies  
KHQ—Walt & Marion; Tull & Gibbs  
KGW—Vocalist; Homemaker  
KJR—News; Jewel Box  
KFI—Helen Guest, ballads; News  
KHJ—9:45, News Items to 9:50  
KNX—Music; 9:45, News  
KGB—9:45, News to 9:50  
KSL—Jennie Lee

## 10:00 to 10:30 A. M.

KPO—Golden State Menu Flashes; 10:15, News Reporter  
•KGO & netwk—Press-Radio News; 10:05, Organ  
KYA—Columbia on Parade; Music  
KTAB—News; Bachelor; Bargains  
KLX—Clinic; Stocks; News  
KROW—Rhythm Review  
KJBS—News; 10:05, Memories  
KGGC—Cal King  
KQW—News; Memories; Orchestra  
KGDGM—Easy Chair; Records  
\*KFRC & network—Just Plain Bill  
KFRC—10:15, Home Forum  
KOIN—10:15, Air Shopping  
KOL—10:15, Morning Melodies  
KVI—10:15, Sons of the Pioneers  
KGW—10:15, Crazy Crystals  
KOMO—Jack & Jill  
KJR—Home Makers Time; Woman in the Shoe  
KFI—10:15, English Lesson  
KNX—Eddie Albright's Family  
KECA—Recordings to 10:15

KGB—10:15, Marie Golden, pianist  
KSL—10:15, Recorded Program  
KOA—10:15, Marietta Vasconcelles

## 10:30 to 11:00 A. M.

•KPO & network—Woman's Magazine of the Air  
KGO—Horacio Zito's Orchestra  
KYA—Organ Concert  
KTAB—Health Talk; Shorty Burke  
KLX—International Kiteae.  
KROW—Morning Concert  
KJBS—Dance Tunes; For the Ladies  
KGGC—Hits of Today  
KGW—Aunt Sammy; Music  
KGDGM—So This Is Hollywood; Talk  
\*KFRC & network—Univ. of Calif.; 10:45, Art Kassel's Orchestra  
KOL—Sue Allen Shopping to 10:45  
KOIN—Air Shopping; Talk  
KJR—Club Minutes; Serenader  
KNX—Mary Holmes; 10:45, Rhythmic Encores  
KECA—Chaparral Club; Records  
KFSD—Mirth Parade; Studio  
KOA—Best Foods; 10:45 Livestock and Produce  
KSL—Recorded Program

## 11:00 to 11:30 A. M.

•KPO & network—Woman's Magazine of the Air  
KGO—Magic of Speech  
KYA—Organ Concert  
KTAB—Fashion; Modern Rhythms  
KROW—Health Talk; Spotlight  
KLX—Records; Notes in Rhyme  
KJBS—Dance Melodies  
KQW—Light Classics  
KGGC—Milady's Date Book; 11:15, Hawaiian Sketches  
KGDGM—Organ Recital  
\*KFRC & network—Little French Princess; Helen Trent Romance  
KOIN—This & That  
KOL—Garden of the Air; News  
KVI—The Observer; Melodies  
KJR—Rhythm Rulers, recorded  
KNX—Marshall Grant, Organist  
KHJ—Beauty Program to 11:15  
KECA—Spanish Lessons; 11:15, Frankie Patten pianist  
KGB—To the Ladies

## 11:30 to 12:00 Noon

KGO—Edna Fischer, pianist; 11:45, Agricultural Bulletin  
•KPO & network—Smackout; 11:45, Vic and Sade  
KYA—Fashion Mirror; Snapshots  
KTAB—Blue Moments  
KLX—Anita & Orsco; Music  
KROW—Latin-American Program  
KGGC—Request Hour  
KJBS—Dance Melodies  
KQW—Popular Variety; News  
KGDGM—Organ Recital  
\*KFRC & netwk—American School of the Air  
KHQ—Organ  
KJR—Measured Steps  
KFI—Home Nursing Hints to 11:45  
KNX—Spice of Life; Talk  
KECA—11:45, Recordings  
KFSD—Smiling Young Man; Studio

## 12:00 to 12:30 P. M.

KPO—News  
•KPO & network—12:15, Western Farm and Home Hour  
KGO—Agriculture; Financial; 12:20, Pair of Pianos  
KYA—Scriptures; 12:03, Concert  
KTAB—Talk; Agriculture Period  
KLX—Dance Music  
KROW—Latin-American Program  
KQW—Popular Orchestra  
KJBS—Song Hits  
KGGC—Request Hour  
KGDGM—Friendship Club; Records  
KVI—Mkt. Specials; Headlines

\* KFRC & network—Philadelphia Orchestra  
 KOL—The Carnival Hour  
 KOMO—Music; 12:15, Vagabonds  
 KHQ—Spokane Shopper Program  
 KJR—Tunes; Grain Reports to 12:15  
 KGW—Music; Meier & Frank  
 KFI—Market Reports to 12:15  
 KECA—12:15, News  
 KNX—News; 12:15, Congoin  
 KFSD—Wm. Cowles, pianist, 12:15

## 12:30 to 1:00 P. M.

• KPO & network—Western Farm and Home Hour  
 KGO—Pair of Pianos; 12:45, Commonwealth Club Luncheon  
 KYA—Noonday Concert  
 KTAB—Echoes of Portugal  
 KLX—Don Brose; Recordings  
 KROW—Calif. Farm Hour; Records  
 KJBS—Dance Hits  
 KGGC—Mountain Music; Melodies  
 KQW—Orchestra  
 KGDM—Pacific Islanders  
 \* KFRC & network—Philadelphia Orchestra  
 KOL—The Carnival Hour  
 KVI—News & Comment to 12:45  
 KOMO—Viennese Vagabonds; Cowboy Joe  
 KGW—News Flashes; Pianist  
 KHQ—Stepping Along; Studio  
 KJR—Dr. Matthews  
 KECA—Concert Favorites, records  
 KOA—Brown Palace Orchestra

## 1:00 to 1:30 P. M.

• KPO & network—Betty & Bob; 1:15, East and Dumke  
 KGO—Commonwealth Club Luncheon  
 KYA—Women's Institute of the Air; 1:15, Musical Strings  
 KTAB—Radio Frolic  
 KLX—Records; 1:15, Martha Lee  
 KROW—Concert Melodies  
 KJBS—Stocks; Recordings  
 KQW—Friendly Hour  
 KGDM—Records; Watchtower  
 \* KFRC & network—Philadelphia Orchestra  
 KOL—1:15, Julie Day  
 KHQ—1:15, Sylvia Gray  
 KJR—Ch. of Commerce Lunch  
 KOMO—1:15, Tea Times Tales  
 KGW—1:15, Dental Clinic  
 KNX—Pontrelli's Orchestra  
 KFI—1:15, Beverly Hillbillies  
 KFSD—Stocks; 1:15, Studio Prog.  
 KOA—1:15, Crazy Hotel Orchestra

## 1:30 to 2:00 P. M.

• KPO & network—Oxydol's Own Ma Perkins; 1:45, Betty Marlowe, talk  
 KGO—Ann Warner's Chats  
 KYA—Modern Maestros  
 KTAB—Jean Kent, Economics  
 KLX—Popular Concert  
 KROW—Oakland Public Schools; Oklahoma Ramblers  
 KJBS—Dance Orchestra  
 KQW—Concert  
 KGDM—Conservatory Concert  
 \* KFRC & network—Philadelphia Orchestra  
 KJR—Renovize; The Sun Dial  
 KOIN—Amie Brunn; Scrapbook  
 KNX—Pontrelli's Orchestra  
 KFSD—Old Time Program

## 2:00 to 2:30 P. M.

• KPO & network—Al Pearce and His Gang  
 KGO—To be announced; 2:15, Mid-Afternoon Musicale  
 KYA—International Troubadours  
 KTAB—Globe Trotter; Romancin'  
 KLX—Recordings; Romance  
 KROW—Dance Matinee  
 KQW—Dance Matinee  
 KJBS—Better Business Talk; 2:15, Events of Interest  
 \* KFRC & network—Happy Go Lucky Hour

KGDM—Records; News  
 KJR—Salon Hour  
 KNX—The Bookworm  
 KECA—Classic Hour  
 KFSD—2:15, Studio Program  
 KSL—Men of Note; Dental Clinic  
 KSL—Theater Reporter; 2:05, Al Pearce Gang; 2:15, Jackie Heller

## 2:30 to 3:00 P. M.

• KPO & network—Al Pearce Gang  
 KGO—Mid-Afternoon Musicale  
 KYA—Lost & Found; Modern Notes  
 KTAB—Talk; 3-4 Time  
 KLX—Better Business Talk; 2:35, Stocks; 2:40, Records  
 KROW—Dance Matinee  
 KJBS—Seiffert Players; Orchestra  
 KQW—John Seiffert Players; Dance  
 KGDM—The Romancer  
 \* KFRC & network—Happy Go Lucky Hour  
 KJR—Salon Hour  
 KNX—Music  
 KECA—Recordings  
 KFSD—2:45, Studio Program  
 KSL—Milton Charles; Miniatures  
 KOA—Nellie Revell; Happy Jack

## 3:00 to 3:30 P. M.

• KPO & network—Langendorf Pictorial; 3:15, Mickey Gillette  
 KGO—Jack Berger's Orchestra  
 KYA—Band Concert  
 KTAB—Notices; Chinese News  
 KLX—Musical Jigsaw; Records  
 KROW—Fay Lanphier; Music  
 KJBS—Radio News; Records  
 KQW—Stocks & Bonds; Music  
 KGDM—Recordings  
 \* KFRC & network—Femline Fancies  
 KJR—Easy Chair; Enchanted Isles  
 KHQ—Business & Pleasure; Club Bulletin  
 KQW—Concert Trio to 3:15  
 KNX—Federation of Women's Clubs  
 KECA—Recordings  
 KSL—Songs of Long Ago; 3:15, Santa Claus  
 KOA—Hotel Astor Orch.

## 3:30 to 4:00 P. M.

• KPO & network—Mickey Gillette's Music  
 KGO—The Well Dressed Woman; 3:45, Singing Strings  
 KYA—Symphony Highlights; Orch.  
 KTAB—Sophistication; 3:45, Picture Preview  
 KLX—SERA Orchestra  
 KROW—Spanish Tunes; Records  
 KJBS—Front Page Drama; Records  
 KQW—Variety Program; Music  
 KGDM—Ernie Cruz; Records  
 \* KFRC & network—Frank Castle's Matinee  
 KOIN—Newspaper of the Air  
 KOL—Harriet Linkns; Studio Prog.  
 KHQ—King's Men; Happy Feet  
 KOMO—String Trio  
 KFI—Ann Warner's Chats  
 KNX—Fletcher Wiley  
 KGB—Stocks; 3:55, Along the Airways  
 KSL—Junior Hour; Records; News  
 KOA—News; Soloist

## 4:00 to 4:30 P. M.

• KPO & network—Jack & Loretta Clemens; 4:15, Jack Denny's Orch.  
 KGO—Beaux Arts Trio  
 KYA—Matinee Idol; Orchestra  
 KTAB—"Jewish Date Book"; Bay Meadows Race  
 KLX—Records; Bro. Bob's Club  
 KROW—Waltz Time; Ross Love  
 KJBS—Dance Orchestra  
 KGDM—Gilmore Old Program  
 KQW—Star Reporter; Music  
 KFRC—Stock Reports to 4:05  
 \* KFRC & network—Russo's Orch.; 4:15, Univ. of the Air  
 KHQ—4:15; News Album

KOL—Studio Program to 4:15  
 KOIN—Newspaper of the Air  
 KVI—Happy Birthday Club to 4:15  
 KHQ—4:15, News Album  
 KJR—Friendly Chat  
 KQW—Tea Dances  
 KFI—Calif. Teachers Assn. to 4:15  
 KNX—Haven of Rest  
 KECA—4:15, Recordings  
 KSL—Payroll Builder  
 KOA—Comedy Capers; 4:15, Ivory Stamp Club

## 4:30 to 5:00 P. M.

• KPO & network—King's Guard  
 KPO—4:45, News  
 KGO—For Girls and Boys Only  
 KYA—Orchestra  
 KTAB—Keep Smiling Revue  
 KLX—Club; 4:45, Health School  
 KROW—Lee Davis & Gang  
 KJBS—Orchestra to 4:45  
 KQW—Story Time; 4:45, Dog Stories  
 KGDM—Bob Allen; Records  
 \* KFRC & network—Danny Russo's Orchestra; Between the Bookends  
 KVI—Santa Claus to 4:45  
 KOIN—Hollywood Reporter to 4:45  
 KOMO—4:45, Cherniavsky's Orch.  
 KGW—4:45, Cherniavsky's Orch.  
 KJR—Snapshots  
 KHQ—N. W. on Parade; Orchestra  
 KFI—Organ recital  
 KNX—Your Personal Advisor; U.S.C.  
 KECA—4:45, King's Guard  
 KFOX—4:45, Recordings  
 KSL—Adventures of Robin Hood; 4:45, Orphan Annie  
 KOA—Skit; 4:45, Orchestra

## 5:00 to 5:30 P. M.

• KPO & network—Studio Chatter: Clinton Twiss, Old Eavesdropper  
 KGO—High School Hour; 5:15, To be announced  
 KYA—Children's Hour  
 KTAB—Lauretta La Marr; Santa Claus  
 KLX—Pianist; Bill, Mack, Jimmie  
 KROW—Memory Lane; Records  
 KQW—Popular Concert  
 KGGC—Echoes; Studio Frolic  
 KFRC—Dr. J. C. Campbell  
 \* KFRC & network—5:15, Billy Bachelor  
 KVI—Deerslayer to 5:15  
 KJR—Drama; 5:15, Melodies  
 KHQ—Flirtations; Model Boots  
 KOIN—Donald Ayer, Adventures to 5:15  
 KOMO—Moments of Melody; 5:15, Thrills of Tomorrow  
 KNX—Synagogue of the Air  
 KFI—Rev. Chas. E. Fuller  
 KSL—Pulman Tailors; 5:15, Tarzan  
 KOA—Cities Service Concert

## 5:30 to 6:00 P. M.

KPO—Fashion Flashes  
 • KPO & network—5:45, Ricardo and his violin  
 KGO—Ivory Stamp Club; 5:45, Little Orphan Annie  
 KYA—Metropolitans; 5:45, Campbell  
 KTAB—Dr. Thompson, talk  
 KLX—Covered Wagon Jubilee  
 KROW—Eating Your Way to Health  
 KGGC—Dance Echoes; Irish Gems  
 KQW—Popular Orchestra  
 \* KFRC & network—Vincent Lopez' Orchestra  
 KOIN—Merry Men to 5:45  
 KHQ—Wm. Cowles, pianist; to 5:45  
 KJR—Tarzan; Orphan Annie  
 KOMO—Stamp Club to 5:45  
 KGW—Ivory Soap to 5:45  
 KFI—Ivory Stamp Club to 5:45  
 KNX—Og, Son of Fire; 5:45, Orphan Annie  
 KECA—Tuning in with the Children  
 KFSD—Studio; Farley's Rangers  
 KSL—Harry Clarke, soloist and Organ; Krausemyer and Cohen  
 KOA—Cities Service Concert

## 6:00 to 6:30 P. M.

• KPO & network—To be announced  
 KGO—Five Cards; Coquettes, vocal trio, guitar and piano  
 KYA—Man About Town; Orch.  
 KTAB—Organ; News  
 KLX—Arion Trio  
 KROW—News; 6:15, Club Castro  
 KGGC—Dinner Dance Review  
 KQW—Department of Agriculture; 6:15, Popular Program  
 \* KFRC & network—March of Time  
 KJR—News; Notes in Rhyme  
 KNX—News; Concert Group  
 KFWB—News; Mysteries; Fun Fest  
 KECA—Educ. Prog.; 6:15, News  
 KFOX—News; Trio; Al & Molly  
 KFSD—Junior Chamber of Commerce; Dinner Music

## 6:30 to 7:00 P. M.

• KPO & network—Armour Program, featuring Phil Baker  
 KGO—Mindways; 6:45, Air Adventures of Jimmy Allen  
 KYA—Cyrus Trobbs's Orchestra  
 KTAB—Sports; Affairs of Leo  
 KLX—Arion Trio  
 KROW—Ne'er Do Well  
 KGGC—Air Theater; Records  
 KQW—State Market Reports; 6:45, Thorobred Quarter Hour  
 \* KFRC & network—Hollywood Hotel, featuring Dick Powell, Ted Fio-Rito's Orchestra and Guest Star KJR—Evergreen Theatres  
 KNX—Dinner Dance; 6:45, Adventures of Jimmie Allen  
 KFWB—Fun-Fest; Jimmie Allen  
 KECA—Wesley Tourtellotte, organist  
 KFOX—School Kids; Jimmie Allen  
 KFSD—Dinner Music

## 7:00 to 7:30 P. M.

• KPO & network—The First Nighter, drama, featuring Don Ameche, June Meredith  
 KGO—Barbara Merkle; 7:15, Chester Rowell  
 KYA—Ernie Smith's Sport Page; 7:15, Tales of the Turf  
 KTAB—Italian News; Sport of Kings  
 KLX—News; 7:15, Lovable Liars  
 KROW—Hammond; L'Italia News  
 KQW—Weather; Voice of Portugal  
 KGGC—German-American Program  
 \* KFRC & network—Hollywood Hotel  
 KJR—Concert; Dollars & Sense  
 KFWB—Talk; Synopsators  
 KFOX—Eb & Zeb; Bobby & Betty  
 KNX—Watanabe & Archie; Raiput  
 KECA—Scotland in Song and Story; Records

## 7:30 to 8:00 P. M.

KGO—Comedy Stars of Hollywood  
 • KGO & network—7:45, Veterans of Foreign Wars  
 KPO—Packard Fiesta  
 KYA—Cowboys; Louise Taber  
 KTAB—Socialist Labor Party  
 KLX—Silver Strains; 7:45, Soprano  
 KROW—L'Italia Echoes of Italy  
 KGGC—Records; Organalities  
 KQW—Italian Theatre  
 \* KFRC & network—Borden's Friday Frolic  
 KOMO—Romance Time  
 KHQ—U. S. & World Affairs  
 KFI—Packard Fiesta  
 KFWB—Chas. Kaley & Burt Fiske; Comedy Stars  
 KNX—The In-Laws; King Cowboy  
 KFOX—Boy Detective; Vagabonds  
 KECA—Recordings  
 KSL—Crazy Crystals; Alka Seltzer

## 8:00 to 8:30 P. M.

• KPO & network—Amos 'n' Andy; 8:15, Red Davis, dramatic skit  
 KGO—Ricardo and his violin; 8:15, College Daze

KYA—Erev Shaboth; Interlude  
 KTAB—Sports; 8:15, Fishin' Fool  
 KLX—World Revue  
 KROW—Echoes of Italy; Skit  
 KGGC—Spanish-American Program  
 KQW—Church Choir  
 \* KFRC & network—Myrt & Marge; 8:15, Edwin C. Hill  
 KJR—Spice of Life; 8:15, Carefree  
 Capers  
 KNX—Songs; Elec. Trans.  
 KECA—Recordings  
 KFWB—Welcome Lewis; Pioneers  
 KFOX—Poster Rucker & Trio  
 KFSD—Jimmie Allen to 8:15

## 8:30 to 9:00 P. M.

• KPO & network—The Intimate Revue  
 KGO—Echoes from Orchestra Pit  
 KYA—Orchestra; Serenader  
 KTAB—To be announced  
 KLX—Sports; 8:45, Tonic Tunes  
 KROW—Happy Harmonies; Orch.  
 KGGC—Concert; Timely Tunes  
 KQW—Waltz Favorites  
 \* KFRC & network—Court of Human Relations  
 KJR—Yesterday, Today and Tomorrow  
 KNX—Homer Canfield, songs; Talk  
 KECA—Recordings  
 KFWB—Jack Joy's Orchestra  
 KFOX—Melodier; 8:45, Cecil and Sally  
 KFSD—Studio Program

## 9:00 to 9:30 P. M.

• KPO & network—Caswell Concert  
 KPO—9:15, Night Editor, Hal Burdick, the story teller  
 KGO—Ralph Kirby; 9:05, Montclair Hotel Orchestra  
 KYA—Drama; 9:15 Neighbors  
 KTAB—Nevada Nightherders  
 KLX—Krausmeyer & Cohen; Black and White Melodies  
 KROW—Orchestra; Stories  
 KGGC—News; 9:05, Cowboys  
 KQW—San Jose State Debate  
 \* KFRC & network—Scott Fisher's Orchestra  
 KJR—9:15, Hobbies, Wilbur Hall  
 KOL—Speaker Stevenson to 9:15  
 KOIN—Goal Post Highlights to 9:15  
 KVI—Elk Stocking Fillers  
 KOMO—9:15, Montag Fireside Hour  
 KHO—9:15, Serenade  
 KGW—9:15, Fireside Hour  
 KJR—News to 9:15  
 KNX—News: 9:15, Amagon  
 KFI—9:15, Organ Recital  
 KFWB—Nick Stuart's Orchestra  
 KFOX—Beverly Hillbillies  
 KFSD—Furmbilt; 9:15, Orchestra  
 KGB—9:15, Hobbies  
 KSL—Organ to 9:15  
 KOA—Studio Program

## 9:30 to 10:00 P. M.

• KPO & network—To be announced  
 KPO—9:45, The Phillistine  
 KGO—Pick and Pat  
 KYA—Lyric Quartet; News  
 KTAB—News; To be announced  
 KLX—News; Road Information; Ran Wilde & Orchestra  
 KROW—Buck Royce Cowboys  
 KGGC—Recordings; Cowboys  
 KQW—American Legion; Drama  
 \* KFRC & network—Hal Grayson and Orchestra  
 KOL—9:45, News; Editorial  
 KVI—News Flashes; Stocking Fillers  
 KOIN—Merry Gentlemen to 9:45  
 KJR—"Purple Ray," Drama to 9:45  
 KHQ—Melodies; Romance  
 KOMO—9:45, Moments of Melody  
 KFI—Organ; 9:45, The Phillistine  
 KFWB—Slumbertime  
 KNX—Musical Headlines; Fights  
 KFOX—Beverly Hillbillies  
 KECA—9:45, Records  
 KSL—Wrestling Matches

## 10:00 to 10:30 P. M.

• KPO & network—Richfield Reporter  
 KPO—10:15, Sportlight Review  
 KGO—Will Aubrey; 10:15, Williams-Walsh Orchestra  
 \* KYA—Cabbing About; Rhyme Land  
 KLX—Recorded Music  
 KROW—Royal Hawaiians  
 KGGC—Ten o'Clock Review  
 KFRC—News; 10:10, Elec. Trans.  
 \* KFRC & network—10:15, Joe Sullivan, pianist  
 KOIN—Journal Friday Show  
 KOL—Ivan Ditmars Organ  
 KVI—Elk's Stocking Fillers  
 KOMO—10:15, To be announced  
 KHQ—10:15, Dance Orchestra  
 KJR—Dance Orchestra  
 KNX—Fights, Hollywood Stadium  
 KFWB—News; Organ Recital  
 KECA—Musical Celebrities  
 KGB—News; To be announced  
 KFOX—News; Organ  
 KSL—Wrestling Matches; 10:15, Melody Lane  
 KOA—Broadmoor Country Club Or.

## 10:30 to 11:00 P. M.

KPO—Orchestra; Organ; News  
 • KGO & network—Dance Orchestra; 10:55, Press-Radio News  
 KYA—Dance Orchestra  
 KTAB—Dance Orchestra  
 KROW—Golden Memories  
 KGGC—Ten o'Clock Review  
 \* KFRC & network—Orville Knapp's Orchestra  
 KOIN—Club Victor  
 KGW—Orchestra  
 KOMO—Lifebuoy Program; Orch.  
 KJR—Till Tomorrow  
 KFWB—Tex Howard's Orchestra  
 KNX—Fights; 10:45, Orchestra  
 KFOX—Tex Howard's Orchestra

## 11:00 to 11:30 P. M.

• KGO & network—Ted Fio-Rito's Orchestra  
 KPO—Freddie Bergin's Orchestra  
 KYA—Bobbie Gram's Orchestra  
 KTAB—Dance Orchestra  
 KROW—Dance Music  
 \* KFRC & network—To be announced  
 KOIN—Kelly's Kabbelleros  
 KGW—De Honey's Orchestra  
 KOMO—Dance Orchestra  
 KFWB—Nick Stuart's Orchestra  
 KFOX—Nick Stuart's Orchestra

## 11:30 to 12:00 Midnight

• KPO & network—Bart Woodyard's Orchestra  
 KGO—Organ Concert  
 KGB—Dance Orchestra  
 KYA—Organ  
 KTAB—Dancesapations  
 KFRC—Dick Jurgen's Orch.  
 KVI—Dance Orchestra  
 KJR—Reflections of Romance  
 KFWB—Dance Orchestra  
 KFOX—Freddie Carter's Orchestra

## 12:00 to Sign Off

KTAB—D-X Program  
 KROW—Midnight Vagabond  
 KGDM—Music and News  
 KHJ—Recordings  
 KGB—Records  
 KJBS—Owl Program

A BRAND NEW SHOW  
 —FOR A GRAND OLD BRAND  
 THE *Borden*  
 FRIDAY FROLIC  
 KFRC 

## 7:00 to 7:30 A. M.

- KPO—Morin Sisters, vocal trio; 7:15, Gospel Singer
- KYA—Musical Clock
- KTAB—Cuckoo Club; Stocks
- KROW—Commuters Clock
- KJBS—Alarm Klok Klub
- KQW—The Breakfast Hour
- KGDM—Breakfast News; Records
- KFRC—Records; 7:25, Stocks
- KOL—Organ Program
- KVI—Radio Gospel League
- KHQ—Morning News
- KFI—Louis Rueb, exercises
- KHJ—Recordings
- KNX—Bill Sharples Breakfast Club
- KECA—Recordings to 7:15
- KGB—Seven o'Clock Club
- KFSD—Early Birds; 7:15, Pep and Ginger
- KSL—News; Music

## 7:30 to 8:00 A. M.

- KPO & network—Financial Service; 7:45, To be announced
- KGO—Morning Parade
- KYA—Musical Clock
- KTAB—The Texans
- KROW—Commuters Clock
- KJBS—Alarm Klok Klub
- KQW—The Breakfast Hour
- KGDM—Gillmore Oil Program
- KFRC—Seal Rocks Broadcast
- KOL—Organ Program
- KVI—Varieties; Musical Bracer
- KGW—Ronald Buck to 7:45
- KJR—Market Quotations; Shadows on the Clock
- KOMO—7:45, Stradivarieties
- KFI—Stock Quotations to 7:45
- KHJ—Recordings
- KNX—Bill Sharples Breakfast Club
- KECA—Bible Fellowship; Records
- KFSD—7:45, Studio Program
- KGB—Club; 7:55, Program Resume
- KSL—Morning Music

## 8:00 to 8:30 A. M.

- KPO & network—Johnny O'Brien, harmonica; 8:15, The Vass Family
- KGO—Crosscuts, Log o' the Day
- KYA—Christian Science Reading; Mr. and Mrs. Reader
- KTAB—Shipping News; Santa Claus
- KLX—Records; Crazy Crystals; Stocks
- KROW—Commuters Clock
- KJBS—Recordings; Varieties
- KQW—Melodies and Varieties
- KGDM—Serenader; Records
- \* KFRC & network—Geo. Johnson's Orchestra
- KOL—Organ; 8:15, Cecil and Sally
- KVI—8:15, Market Specials
- KOMO—Morning Reveries
- KFI—Program; Tull & Gibbs
- KFJ—Church Quarter Hour to 8:15
- KNX—World Revue
- KECA—8:15, Memories of the Waltz
- KOA—Galaxy of Stars to 8:15

## 8:30 to 9:00 A. M.

- KPO & network—Down Lovers' Lane
- KGO—Crosscuts Log o' the Day
- KYA—Morning Concert
- KTAB—Radio Shopper's Digest
- KLX—Covered Wagon Jubilee
- KROW—Novelty Revue
- KJBS—Records; Melodies
- KGDM—Recordings; Talk
- KQW—Morning Concert
- \* KFRC & network—Hollywood Country Church
- KHQ—Comments; Home Comfort
- KOMO—Vagabonds; Musical Madcaps
- KFI—Musical Program
- KNX—Song Bag; Talk
- KECA—Recordings
- KSL—Glee Club; Concert Miniatures



NADINE CONNOR

KHJ—Vocalist

## 9:00 to 9:30 A. M.

- KGO & netwk—Armchair Quartet
- KGO—9:15, Organ Concert
- KPO—News
- KPO & network—9:15, Genia Fonariova, soprano
- KYA—Concert; Prudence Penny
- KTAB—Hour of Prayer
- KLX—Shopping List
- KROW—Romance; Vocal Varieties
- KJBS—Vocalists; Bargain Basement
- KGCC—Recordings
- KQW—Tuneful Topics; Goin' In
- KGDM—Cowboy; Recordings
- \* KFRC & netwk—Instrumentalists; 9:15, Orientale
- KOL—9:15, Prudence Penny
- KVI—Mountaineers; Mystic Melodies
- KOMO—Musical Madcaps to 9:15
- KGW—Cooking School to 9:15
- KHJ—Musical Gems; Tull & Gibbs
- KJR—9:15, Early Echoes
- KFI—Medical Talk; 9:15, News
- KNX—Organ; 9:15, Melody Race
- KFSD—9:15, Good Cheer Program
- KSL—9:15, Jennie Lee

## 9:30 to 10:00 A. M.

- KPO & network—Farmers' Union Program
- KGO—Organ Concert; 9:55, Press-Radio News
- KYA—Lover's Lane; Waltz Time
- KTAB—Dr. Thompson, health talk
- KLX—Clinic of the Air
- KROW—Diet and Health
- KJBS—For the Ladies; Concert
- KGCC—Morning Melodies
- KQW—Gems of Melody
- KGDM—News; 9:45, Minstrels
- \* KFRC & network—Abram Chasins, Pianist
- KOL—Julie Day; Studio
- KOIN—This and That
- KJR—News; Spice of Life
- KNX—Amagon; 9:45, News
- KECA—L. A. School Program

## 10:00 to 10:30 A. M.

- KPO & network—Farmers' Union
- KGO—Pair of Pianos
- KYA—Columbia Parade; Harmonies
- KTAB—Bachelor; Bargain
- KROW—Rhythm Revue

- KLX—Clinic; 10:15, S. F. Stocks; 10:20, News Items
- KJBS—Radio News; Organ
- \* GGC—Cal King
- KQW—News; Popular Orchestra
- KGDM—Kiddies Program
- \* KFRC & network—George Hall's Orchestra
- KVI—10:15, Sons of Pioneers
- KOL—10:15, Morning Melodies
- KOIN—10:15, Air Shopping
- KJR—Music Shop
- KNX—Eddie Albright's Family
- KECA—City School Program

## 10:30 to 11:00 A. M.

- KPO—Interlude to 10:35
- KPO & network—10:35, Woman's Magazine of the Air
- KGO—NBC Farm Forum; 10:45, Words and Music
- KYA—Organ Concert
- KTAB—Health Talk; Shorty Burke
- KLX—International Kitchen
- KROW—Morning Concert
- KJBS—Records; Redwood Melodies
- KGCC—Hits of Today
- KQW—Aunt Sammy; Music
- KGDM—Records; Talk
- \* KFRC & network—Esther Velas' Ensemble
- KVI—Amusement Tips to 10:45
- KOIN—Air Shopping to 10:45
- KGW—Mark Daniels, baritone
- KJR—Club Minutes; Uncle Hank
- KNX—Marshall Grant, Organist
- KECA—Classic Hour
- KOA—10:45, Livestock & Produce

## 11:00 to 11:30 A. M.

- KPO & network—Woman's Magazine of the Air
- KGO—Words & Music; Songfellows
- KYA—Organ
- KTAB—Blue Moments; Rhythms
- KLX—Recordings; Tonic Tunes
- KROW—Health Talk; Spotlight
- KJBS—Hits of the Past
- KGCC—Milady's Date Book; Music
- KQW—Light Classics
- KGDM—Organ Recital
- \* KFRC & network—Dan Russo's Orchestra
- KOIN—This and That
- KOL—Garden of the Air; News
- KVI—The Observer to 11:15
- KQW—Studio Program
- KJR—Rhythm Rulers
- KNX—Musical Program
- \* KECA—Classic Hour Records
- KOA—Words and Music; 11:15, Songfellows

## 11:30 to 12:00 Noon

- KPO & network—Don Pedro's Orchestra
- KGO—Financial Flashes; 11:35, Sam Moore, guitarist; 11:45, Agricultural Bulletin
- KYA—Dance Time; Snapshots
- KTAB—Four-Four Time; News
- KLX—Anita & Orsoco; Music
- KROW—Latin-American Program
- KJBS—Dance Orchestra
- KGCC—Request Hour
- KQW—Stocks and Bonds; Accordion; Theatre News
- KGDM—Organ Recital
- \* KFRC & network—Round Towners
- KJR—Measured Steps
- KHQ—Organ Concert
- \* KNX—Musical Auction; Talk
- KECA—Records
- KSL—Round Towners

## 12:00 to 12:30 P. M.

- KGO & network—High & Low; 12:15, Western Agriculture
- KPO—News; 12:15, Platt & Nierman, piano duo
- KYA—Scriptures, 12:03, Concert

KTAB—Talk; Agriculture Period  
 KLX—Stocks; 12:05, Dance Music  
 KROW—Latin-American Program  
 KJBS—Instrumental and Vocal  
 KQW—Popular Orchestra  
 KGGC—Request Hour  
 KGDM—Road Reports; Serenader  
 \*KFRC & network—Poetic Strings  
 KOIN—Johnnie Walker's Scrapbook;  
 Amle Brunn  
 KVI—12:15, Front Page Headlines  
 KHQ—12:15, Business and Pleasure  
 KGW—12:15, Meler & Frank  
 KJR—News; Grain Reports; Notes  
 KNX—News; 12:15, Congoin  
 KFI—Fed. & State Market Reports  
 to 12:15  
 KECA—12:15, News Release  
 KSL—Payroll Builder

## 12:30 to 1:00 P. M.

\*KGO & network—Western Agriculture  
 KPO—To be announced  
 KYA—Noonday Concert  
 KTAB—Echoes of Portugal  
 KLX—Don Brose; Magic Harmony  
 KROW—Band Concert; Records  
 KJBS—Dance Matinee  
 KGGC—Mountain Music; Band  
 KQW—Market Reports  
 KGDM—Records; News  
 \*KFRC & network—Buffalo Variety Workshop  
 KHQ—Business & Pleasure; Drama  
 KGW—News; Friendly Chat  
 KJR—Uncle Frank's Children Mat.  
 KNX—Concert Group  
 KECA—Concert Favorites

## 1:00 to 1:30 P. M.

KGO—Vagabonds Quartet  
 \*KPO & network—To be announced  
 KYA—Hawaiian Troubadours  
 KTAB—Seventh Day Adventists  
 KLX—Records  
 KROW—Concert Melodies  
 KJBS—Musical Novelties  
 KQW—Friendly Hour  
 KGDM—Recordings; The Bondons  
 \*KFRC & network—Emery Deutsch's  
 Dance Rhythms  
 KGW—Chat; Dental Clinic  
 KJR—Uncle Frank's Children Mat.  
 KNX—Pontrelli's Orchestra  
 KFI—Organ Recital  
 KOA—Weekend Revue  
 KSL—Payroll Builder

## 1:30 to 2:00 P. M.

\*KGO & network—Handel's "Messiah"; Chorus of 100 voices  
 KPO—To be announced  
 KYA—Rhythm Princess  
 KTAB—Jean Kent, Economics  
 KLX—Records  
 KROW—Spanish Serenade; Oklahoma Ramblers  
 KJBS—Afternoon Popular Concert  
 KQW—Afternoon Concert  
 KGDM—The Bondons; Records  
 \*KFRC & network—Samuel De Jong's Orchestra  
 KVI—Santa Claus to 1:45  
 KOIN—Book of Life  
 KJR—The Sun Dial  
 KEA—Grain Reports; Records;  
 Bookman  
 KNX—Pontrelli's Orchestra

## 2:00 to 2:30 P. M.

\*KGO & network—Handel's "Messiah"  
 KPO—To be announced  
 KYA—Don Valdemar's Orchestra  
 KTAB—Dance Tunes; Romancin'  
 KLX—Records  
 KROW—Dance Matinee  
 KJBS—Popular Dance Recordings  
 KQW—Dance Matinee  
 KGDM—Charley & Harry; News  
 \*KFRC & network—Little Jack  
 Little's Orchestra  
 KNX—Song Market

KCA—Classic Hour  
 KJR—International Musical  
 KSL—2:15, Dental Clinic  
 KOA—Huffman Theatre Reporter

## 2:30 to 3:00 P. M.

\*KPO & network—Something Simple  
 KGO—Our American Schools  
 KYA—Modern Notes  
 KTAB—Child Life; Records  
 KLX—Melody Race; Records  
 KROW—Dance Matinee  
 KJBS—Events of Interest; music  
 KQW—Dance Matinee  
 KGDM—The Romancier  
 \*KFRC & network—Tito Guizar;  
 2:45, Miniatures, by Franklin McCormick  
 KNX—To be announced  
 KJR—Memory Box  
 KECA—Travelogue  
 KOA—Our American Schools

## 3:00 to 3:30 P. M.

KPO—Beaux Arts Trio  
 \*KGO & network—Tom Coakley's  
 Orchestra  
 KYA—Symphony Highlights  
 KTAB—Notices; Chinese Music  
 KLX—Recordings  
 KROW—Fay Lanphar; Music; Talk  
 KOW—Popular Vocal and Variety  
 KJBS—News; Light Opera  
 KGDM—Jubilee, Capt. Dobbs  
 \*KFRC & network—Al Roth and  
 Orchestra  
 KJR—Enchanted Islands  
 KNX—To be announced  
 KECA—Records  
 KSL—3:15, Junior Hour  
 KOA—Rowdy Wright; News

## 3:30 to 4:00 P. M.

KPO—Dot Kay, contralto; 3:45,  
 Pastels  
 \*KGO & network—Tid-Bit; 3:35,  
 Shortest Day Program; 3:40,  
 Twenty Fingers of Harmony;  
 3:45, The Master Builder  
 KYA—Drama; Dance Parade  
 KTAB—Sophistication; 3:45, Talk  
 KLX—Records  
 KROW—Singing Strings; Records  
 KJBS—Dance Orchestra  
 KQW—Variety Program  
 KGDM—Jubilee  
 \*KFRC & network—Leon Navarra  
 and Orch.; 3:45, Woody Willie  
 KFRC—3:55, New York Stocks  
 KJR—Vindabonians  
 KNX—To be announced  
 KECA—Recordings  
 KSL—The Junior Hour to 3:45  
 KOA—News; Orchestra

## 4:00 to 4:30 P. M.

\*KPO & network—Pastels; Clef  
 Dwellers  
 KGO—Religion in the News; 4:15,  
 Jamboree, variety program  
 KYA—Tea Dance  
 KTAB—Date Book; Bay Meadows  
 KLX—Records; Bro. Bob's Club  
 KROW—Waltzes; Campus Echoes  
 KJBS—Dance Orchestra  
 KGDM—Gilmore Oil Program  
 KQW—Star Reporter; Variety  
 \*KFRC & network—Edgewater  
 Beach Concert Orchestra  
 KJR—Tea Dansant  
 KNX—To be announced  
 KECA—Recordings  
 KSL—Broadcasters Review  
 KOA—Religion in the News; Satur-  
 day Jamboree

## 4:30 to 5:00 P. M.

\*KPO & network—String Time  
 KGO—Jamboree; 4:45, Pickens Sis-  
 ters, vocal trio  
 KYA—Tea Dance Parade  
 KTAB—Peaceways; Ramblings  
 KLX—Bob's Club; Records

KROW—Lee Davis Cowboys  
 KJBS—Dance Orchestra to 4:45  
 KQW—Story Time; Songs  
 KGDM—Dance Orchestra  
 \*KFRC & network—Vera Van; 4:45,  
 Lawyer and the Public  
 KOIN—Hollywood Reporter  
 KJR—Snapshots  
 KFI—4:45, Charlie Wellman and  
 Helen Hill  
 KECA—Recordings  
 KNX—Fireside Phantasies  
 KSL—Broadcasters Review  
 KOA—Jamboree; Ford Rangers

## 5:00 to 5:30 P. M.

\*KPO & network—Swift Hour; mu-  
 sic direction Sigmund Romberg  
 KGO—Spiritual Fantasy  
 KYA—Children's Program; 5:15,  
 Metropolitans  
 KTAB—Relief Talk; 5:15, Santa  
 Claus  
 KLX—Vocalist and Pianist  
 KROW—Memory Lane, vocalist  
 KGGC—Serenade; 5:15, Go to Church  
 KQW—Concert  
 \*KFRC & network—Roxy Revue  
 KEX—Concert; Sam Gordon  
 KJR—Over the Skyways; Waltzes &  
 Tangos  
 KNX—Carefree Capers; 5:15, Church  
 KECA—Recordings  
 KFOX—Recordings

## 5:30 to 6:00 P. M.

\*KPO & network—Swift Hour  
 KGO—Beaux Arts Trio  
 KYA—Metropolitans; Campbell  
 KTAB—The Funnies; Voice of  
 Stamps  
 KLX—Covered Wagon Jubilee  
 KROW—Eating Your Way to Health  
 KGGC—Recordings; Irish Gems  
 KQW—Musical Impressions  
 \*KFRC & network—Roxy Revue;  
 5:45, Mary Courtland and Robt.  
 Armbruster's Revue  
 KJR—Candlelight Time  
 KNX—Dr. Matthews; Music  
 KFVB—Gold Star Rangers  
 KECA—Recordings  
 KFOX—News; Song Hits; Talk  
 KFSD—5:45, Morales Islanders

## 6:00 to 6:30 P. M.

\*KPO & network—Radio City Party;  
 John B. Kennedy, master of cere-  
 monies; guest artists; Frank  
 Black's Orchestra  
 KGO—Beaux Arts Trio; Edna Fischer,  
 pianist  
 KYA—Man About Town; Orchestra  
 KTAB—Echoes of Portugal  
 KLX—Arion Trio  
 KROW—East Bay Labor Journal;  
 6:15, Club Castro Villa  
 KGGC—Dinner Dance Review  
 KQW—Concert  
 \*KFRC & network—Chesterfield  
 Program  
 KJR—News Reporter; Concert  
 KNX—News; 6:15, Concert Group  
 KFVB—News; Records; Organ  
 KECA—Records; News  
 KFOX—News; Vocalists, Al & Molly  
 KFSD—6:15, Fairway Facts

## 6:30 to 7:00 P. M.

\*KPO & network—Gibson Family,  
 original musical comedy  
 KGO—Coquettes; Education Today  
 KYA—Orchestra  
 KTAB—Sports; News  
 KLX—Arion Trio  
 KROW—Rhythm Kings; Dr. Fauci  
 KGGC—Theatre Program; Music  
 KQW—Gerald Kenney; Thorobred  
 Quarter Hour  
 \*KFRC & network—Benj. Franklin  
 KOIN—Marine Corps Program  
 KJR—Concert; Melody Palette  
 KNX—Dance; 6:45, Jimmy Allen  
 KFVB—Organ; Amer. Weekly

KECA—Wesley Tourtellotte, organ.  
KFOX—School Kids; Elec. Transc.  
KFSD—Los Flores Mountaineers

**7:00 to 7:30 P. M.**

•KPO & network—Gibson Family  
KGO—Organ Symphony  
KYA—Ernie Smith's Sport Page;  
7:15, Wandering Troubadour  
KTAB—Italian News; Sport of  
Kings  
KLX—News Items; 7:15, Vocalist  
KROW—C. W. Hammond; News  
KGGC—Orchestra; Organalities  
KQW—News; Accordion Capers  
\*KFRC & netwk—Carborundum  
Band  
KJR—Los Argentinos  
KFWB—Interview; Kaley & Fiske  
KECA—Raine Bennett, poet  
KNX—Watanabe and Archie; 7:15,  
Calmon Luboviski, violinist  
KFOX—Vagabonds; Bobby & Betty  
KFSD—Feature Program

**7:30 to 8:00 P. M.**

•KPO & netwk—Ladies Laugh Last  
KGO—Hal Kemp's Orchestra  
KTAB—Spanish Home Hour  
KYA—Drama  
KLX—Carefree Capers  
KROW—Hawaiians; Old Fashioned  
Girl  
KGGC—Recordings  
KQW—Italian Radio Theatre  
\*KFRC & netwk—Saturday Revue  
KOIN—Jimmy Allen; 7:45, Merry  
Gentlemen  
KOL—Radio Speaker Stevenson  
KVI—Dr. R. M. Mellor to 7:45  
KGW—Studio; Crazy Crystals  
KOMO—30 Minutes of Music  
KHQ—Crazy Wells; Ed. McConnell  
KNX—Calmon Luboviski, violinist  
KFWB—Juvenile Revue  
KFOX—Juvenile Revue  
KGB—Comedy Stars to 7:45  
KSL—7:45, Saturday Revue  
KOA—Harry Sosnick's Orchestra

**8:00 to 8:30 P. M.**

•KPO & network—National Barn  
Dance  
KGO—Emil Polak's Orchestra  
KYA—Winsome Sereinander; Orchestra  
KTAB—Ralph Baker, tenor; Golden  
Gate Junior College  
KLX—Musical Soiree  
KROW—Latin-American Program  
KQW—Voice of Portugal; Enter-  
tainers  
KGGC—Spanish-American Program  
\*KFRC & network—Richard Him-  
ber's Champions  
KJR—Uncle Sam's Exchange; Magic  
Harmony  
KFWB—Round Towner  
KNX—Hollywood Barn Dance  
KECA—Dept. of Playground  
KFOX—Organ and Piano; Vocal  
KFSD—Studio; 8:15, Drama Hour

**8:30 to 9:00 P. M.**

•KPO & network—National Barn  
Dance  
KGO—Freddie Bergin's Orchestra  
KYA—Orchestra  
KTAB—Golden Gate Junior College;  
8:45, Vocalist  
KLX—Musical Soiree  
KROW—Latin-American Program  
KGGC—Concert; Records  
KQW—Music of the Masters  
\*KFRC & network—Hodge Podge  
Lodge  
KOIN—Footlight Fancies  
KJR—"It's a case of Books"  
KNX—Hollywood Barn Dance  
KFWB—Sons of Pioneers  
KECA—Recordings  
KFSD—Drama Hour  
KFOX—Orchestra; Cecil and Sally  
KSL—Geppert Saturday Party;  
8:45, Morton Salt Program

**9:00 to 9:30 P. M.**

•KPO & network—Big Ten  
KGO—Freddie Bergin's Orchestra;  
Musical Treasure Chest  
KYA—Lyric Quartet; Novelty Piano  
KTAB—Nevada Nightherders  
KLX—Fausit Theater of the Air  
KROW—Italian Program  
KGGC—News; Wyoming Cowboys  
KQW—Music of the Masters  
\*KFRC & netwk—Joe Haymes Orch.  
KHQ—To be announced  
KOL—Dance Music  
KVI—Orchestra  
KJR—News Reporter to 9:15  
KOMO—Fisher's Blend Half Hour  
KNX—News; Hollywood Barn Dance  
KFWB—Dance Orchestra  
KFOX—Nick Stuart's Orchestra  
KECA—Recordings to 9:15

**9:30 to 10:00 P. M.**

•KPO & netwk—Let's Dance: Or-  
chestras under direction of Kel  
Murray, Xavier Cugat & Benny  
Goodman  
KGO—Musical Treasure Chest  
KYA—Dance Orchestra  
KTAB—News; Drama  
KLX—News; Orchestra  
KROW—Dancing Party  
KJBS—Morning Concert  
KGGC—Records  
KQW—St. Claire Hotel Orchestra  
\*KFRC & network—Dance Orch.  
KOL—9:45, News; Editorial  
KVI—Ledger News Flashes to 9:45  
KNX—Hollywood Barn Dance  
KJR—World Revue  
KFWB—Slumbertime  
KFOX—Slumbertime  
KSL—Harry Clarke & Peter Spray-  
nozzle to 9:45

**10:00 to 10:30 P. M.**

•KPO & network—Let's Dance  
KGO—Williams-Walsh Orchestra  
KYA—Bath-Day Party  
KTAB—Club Tivoli Orchestra  
KLX—Records  
KGGC—Ten o'Clock Review  
KROW—Dancing Party; Talk  
KFRC—News; 10:10, Studio; Fred  
Skinner, songs  
KOL—Harrison Mason; Dance Music  
KJR—Music Shop  
KHJ—News Items; 10:10, Orchestra  
KNX—Haven of Rest  
KFWB—News; Organ  
KFOX—News; Organ  
KGB—News Flashes; Music  
KECA—Recording  
KSL—Dance Orchestras

**10:30 to 11:00 P. M.**

•KPO & network—Let's Dance  
KGO—Press-Radio News; 10:35,  
Marshall's Mavericks  
KYA—Bath-Day Party  
KTAB—Ray Teller Orchestra  
KLX—Records  
KROW—Quite Harmonies  
KGGC—Ten o'Clock Review  
\*KFRC & network—Orville Knapp's  
Orchestra  
KOL—Dance Orchestra  
KOIN—Elmer Jean Anthony's Col-  
umbians; Kaballeros  
KJR—Rocky Mountaineers  
KNX—Pontrelli's Orchestra  
KFWB—Orchestra  
KFOX—Dance Orchestra

**11:00 to 11:30 P. M.**

•KPO & network—Let's Dance  
KGO—Slumber Hour  
KYA—Sandman Organ  
KTAB—Dance Orchestra  
KROW—Dance of the Hour  
\*KFRC & network—To be announced  
KOIN—Anthony's Columbians  
KJR—Dance Orchestra  
KGW—Dance Orchestra  
KFWB—Dance Orchestra

KFOX—Dance Orchestra  
KGB—Orchestra

**11:30 to 12:00 Midnight**

•KPO & network—Let's Dance  
KGO—Slumber Hour  
KYA—Organ  
KTAB—Dansapations  
KROW—Ran Wilde's Orch.  
\*KFRC & network—Dick Jurgen's  
Orchestra  
KJR—Till Tomorrow  
KFWB—Dance Orchestra  
KHJ—Recordings  
KFOX—Freddie Carter's Orchestra

**12:00 to Sign Off**

•KPO & network—Let's Dance;  
News  
KTAB—D-X Program  
KROW—Dance Music  
KJBS—Records  
KHJ—Records  
KFWB—Clyde Leach's Orchestra  
KGB—Recordings  
KJBS—12:01, Owl Program to 7 a.m.

Program listings are correct when published by Broadcast Weekly, but sale of time by stations and networks and national emergencies often cause deviations which the stations cannot foresee.

# Christmas Suggestion

... and it's not too early to start thinking about your Christmas gifts. A one-year subscription to *Broadcast Weekly* will make an ideal Christmas gift to any friend or family. A constantly recurring joy, for each issue is different during the fifty-two weeks of the year. Here is something that makes an ideal little remembrance, that carries the spirit of the season, and is useful as well. You may also include your own subscription on this offer.

## Subscribe at These Prices

One one-year subscription ..... \$1.50  
Three or more one-year subscriptions ..... 1.00 each

---

BROADCAST WEEKLY,  
1114 Mission Street, San Francisco, Calif.

Gentlemen:

I enclose herewith \$..... for.....one-year subscriptions to *Broadcast Weekly*. Kindly start all subscriptions with the Christmas issue, unless otherwise marked, and mail Christmas card to each party advising them of this gift from me.

My name is..... Address.....

City..... State.....

---

Name..... Address.....

City..... State.....

---

Name..... Address.....

City..... State.....

---

Name..... Address.....

City..... State.....

---

**SPECIAL OFFER**—25 cents additional with each subscription to *Broadcast Weekly* will bring you a Character Analysis of your handwriting or that of a relative or friend by Zita Lomas, handwriting expert. Read her analysis on page 10 of *Claude Sweeten*.