

DECEMBER ISSUE

# BREAKER ON THE SIDE.....

YOUR NORTHERN CITIZENS BAND  
MAGAZINE

60p



# CB RADIO ACCESSORIES

the biggest and best selection of  
CB radio accessories including:-

40 different types of antennas; 19 types of swr power meters from £12.95; amps from 50 watt variable to 350 watt; base antennas from £24.95; HMP DV27s £12.95 inc. cable; Hi-Gain electric antennas £27.95; with splitter £37.90; also PA horns, pre-amps, antennas, Matchers cable, plugs, power supplies, power mikes and K40. Send sae to **Mura Electronics (UK) Ltd., 79 Church Road, Hendon, London NW4** for catalogue or call. Open 9 till 6, 6 days on 203 5277/8 or contact your nearest dealer

**BLACKPOOL:** A.D.S. Electronics, 16 Warbrick Drive, (Off Shore Blackpool, Tel: 0253 57222/6253 21173

**BURY ST. EDMUNDS:** Denver Autos (Skid Parish),

Troton, Bury St. Edmunds, Suffolk, Tel 03598 508

**COVENTRY:** Spares & Repairs, 79 Far Gosford St., Tel 0567-29567

**EDINBURGH:** Custom Equip., 131 Fountain Bridge,

Edinburgh EH3 Tel 031 229 8930

**STONE ON TRENT:** MSBC, 27 Hope Str., Hanley  
Stoke-On-Trent Tel 0782 273916

**WIGAN:** Car Radio Wigan, 60 Darlington

Street East, Wigan, Lancs. Tel 0942 43101

**NEW BRANCH NOW OPEN  
IN THE WEST END OF LONDON at  
SONIC SOUND AUDIO  
248-256 TOTTENHAM COURT  
ROAD LONDON W1**



**Mura**  
Mura Electronics (UK) Ltd.

The Biggest & Best  
now in the Westend

# editorial

We are very pleased to meet with you again in this our second edition of **BREAKER ON THE SIDE** and trust you will enjoy its content as much as last months issue. "Thank you all for the feed back".

You will have noticed this months cover with a slant towards greater 'appeal'. Over the coming months along with keeping you informed of what is going-on in the world of **CITIZENS BAND RADIO** we intend to give you **MORE** to look at than most C.B. magazines. We will strive to bring you the best in C.B. information, vehicles and models!! Our policy remains the same to bring you a quality magazine to meet your needs. Breaker on the Side is based around your region : **THE NORTH OF ENGLAND.**

Well, we invited you or your organisation to write to us and Oh boy, you did! The mail has flooded in and our telephone wants to retire early. This is fantastic and keep it coming full strength. We want to keep contact with you all with the hope of meeting your wants along with putting forward the right image and presentation to bring about support to legalise C.B. in Britain. Many organisations invited us to meetings, alas we can only be in one place at a time, so please accept our apology and we look forward to being at your next meeting to learn your views on a personal basis. We do thank you sincerely for your response and support to our magazine and from our many meetings what a great crowd you are!

Well good buddies and good ladies we hope you will enjoy this months northern edition of Breaker on the Side and look forward to our meeting each month.

"ALL THE HIGH NUMBERS"

10-10 : 10-18 : 10-21 : 10-22 P.R.G.

345678901

1567890123456

5678901234567890

1678901234567890123

67890123456789012345

8901234567890123456789012

# TERMS

# CB LINGO

CB'ers long ago adopted their own system of coded language, used to communicate most common messages.

*Breaker On The Side . . .* will feature a regular index containing all the terms you are ever likely to need.

CB is rapidly becoming an important on-the-road way of life to many thousands of Drivers within Europe.

In Particular to Truck Drivers, it is an expressive, often funny and logical language of words and phrases.

We realize however, that we are going to miss certain regional codes out, unless you the readers, keep us informed of any new or missing codes . . .

A little help – extra power  
Adios – leaving the air  
Advertising – marked police car with lights on  
Affirmative – yes  
"All the good numbers" – best wishes  
Alligator Station – all mouth and no ears  
Amplifier – device for increasing signal strength  
Back door – last vehicle in a group  
Back out/off – stop transmitting  
Background – noise or static over channel  
Backside – return trip  
Backstroke – as above, also use rebound, flip flop  
Back to you – answer back  
Bagging – Police catching speeders  
Barefoot – running without a kicker  
Base station – static CB station, fixed location  
Basement – channel ONE  
Barley Pop – Beer  
Bear – a minion of the law, also use smokey, kojac  
Bear cave – Police station, also use Bears den  
Bear in the air – Police patrolling in helicopter, or aeroplane  
Bear in the bushes – Police hiding  
Bear's lair – Police station  
Bear report – report on Police locations  
Bear trap – radar  
"Beat-the-bushes" – lead vehicle looking for smokey to relay his "twenty"  
Beaver – small, furry, large toothed animal that lives in the water also female  
Better half – wife or husband  
Between the sheets – sleeping  
Big brother – Police  
Big switch – CB rig's on/off switch

Big ten four – yes, for sure also use Roger D, Roger Roger, Roger Dodger, Roger Squadge  
Blinkin-Winkin – school bus  
Blood box – ambulance also use Meat wagon, blood bank, bone box  
Blow'n smoke – coming in loud and clear  
Blow the doors off – passing  
Boots – linear amplifier also use shoes, kickers, socks  
Bottle popper – beverage truck  
Bounce around – next trip around  
Bra buster – bosomy woman  
Break – call a station  
Breaker, break – what you say to get on a channel also use breaking break  
Breaker – CB'er wanting to come in on a channel  
Breaking up – signal cutting on and off, breaking up all over the place  
Breaking the needle – powerful transmission  
Bring it on – go ahead, it's clear to speak



Brown bottles – beer  
Brush your teeth and comb your hair – radar trap ahead, slow down  
Bubble gum machine – vehicle with flashing lights  
Bubble trouble – tyre problems  
Bucket mouth – CB'er who won't shut up  
Bull jockey – someone giving a load of bull on channel  
Bulldog – Mack truck  
Burner – RF power amplifier  
Bust – getting caught  
Buzby – GPO official or investigator  
Camera – hand held radar unit, also use kodak  
CB – Citizens band radio

## Terms .. . . .

- CB land – the land of CB communication, and folks using CB meet  
“Catch you on the flip flop” – talk to you on the return trip  
Channel hog – someone who won’t let anyone else transmit  
“Check the Seat Covers” – look at the females  
Chicken box – CB transceiver  
Choo-Choo train – semi hauling two trailers  
Clean – no Police sighted in the immediate area  
Come back – say it, or say it again, return call  
Come on – invitation to reply, your turn to talk also use “C’mon” “Come on back”  
Comic book – truckers logbook  
Coming out the windows – perfect reception  
Convoy – line of vehicles moving together in CB contact  
Copy – do you understand?  
Copy the mail – listening to other conversations on channel  
Cotton-Picker – fellow CB’er, or substitute in place of swearing (no swearing is allowed on CB).  
Crank the handle action – repeat your handle  
Crumb snatchers – children  
Definitely – emphatically also use definatory  
Diesel digit – channel 19  
Dog biscuits – db, decibels  
“Don’t feed the bears” – don’t get any speeding tickets  
Double “L” – land line, telephone  
“Down and gone” – stopped transmitting  
Dusting your britches – walked on, transmitted at the same time  
DX – long range transmitting  
Ears – CB radio or antenna “ya got yer ears on?”  
Earwig – listening in on transmissions  
Eights and other good numbers – best wishes  
Eights, Eighty-eights – love and kisses  
Eye in the sky – helicopter  
Eyeball – visual contact  
Eyeball to Eyeball – get together  
Evel kneivel – motorcycle Policeman  
Fairy lights – traffic signals  
Fender bender – slight vehicle damage  
“Find a clean one” – move to channel with less conversation or static  
Five by five – very strong signal  
Flat side – sleeping  
Flip – return trip also use flip-flop, flipper  
Fluff stuff – snow  
Fly in the sky – aircraft  
Folding camera – Police vehicle equipped with vascar  
Foot warmer – linear amplifier  
For sure – that’s right  
Four – yes, o.k.  
Front door – first vehicle in line of two or more  
Funning – joking  
Fuzz buster – electronic radar detector  
Get horizontal – go to sleep, lying down  
Gone, we gone – end of transmission, signing off  
Go, go juice – fuel  
Good buddy – fellow CB’er  
Goodies – CB accessories  
Good numbers to you – (73’s & 88’s) best regards  
Got a copy? – do you hear me?  
Got your ears on? – do you hear me?  
Green light – all clear  
Green stamps – money  
Ground clouds – fog  
Ham – amateur radio operator  
Hammer – accelerator  
Hammer back in the tool box – slow down  
Handle – CB nickname  
Happy numbers – S-meter reading, especially above five  
“Have a good day today and a better day tomorrow” – salutations  
Heater – linear amplifier used to gain extra range  
“Holding onto your mud flaps” – driving right behind you  
Hole in the wall – tunnel  
Home twenty – location of your home “where are you from?”  
Honey bear – female Policewoman  
Hot pants – smoke or fire  
How about it? – asking for a response, your turn to talk; say it  
In a short, short – real soon  
In the bushes – smokey hiding on the side of the road  
It’s clear – no smokies in sight  
Jam jar – red and white Police patrol car also use Jam Butty  
Jaw jacking – long-winded conversation  
Keep the shiny side up and the dirty side down – have a safe journey  
Keep your nose between the ditches and smokey out of your britches – drive safely and look out for speed traps  
Keep the lipstick off the dipstick – pay attention to driving  
Keyboard – CB rig controls  
Knocking on your back door – vehicle overtaking  
Kicker – linear amplifier  
Land line – telephone  
Lay an eye on – see  
Let off – reduce speed  
Local yokel – local police  
Look over your shoulder – traffic in opposite direction  
Mail – overheard conversations  
Making the trip – getting the signal out  
Mayday – international emergency distress call (10-34)  
Meanies – anti-CB Authorities  
Motion lotion – fuel  
Mobile parking lot – automobile carrier  
Modulating – talking  
Monitor – listening to transmissions  
Negatory – no also use negative  
On the peg – legal speed limit  
On the side – standing by on the channel  
On channel – on the air  
Over the shoulder – behind you  
Over – through transmitting, your turn to talk  
Pavement princess – roadside prostitute  
Pedal to the metal – accelerate also use Hammer

## Terms . . . .

Plain wrapper — unmarked police car  
Porcupine — vehicle with lots of antennas  
Pounds — S-units, 9s-units on the meter is 9 pounds  
Pregnant Roller skate — Volkswagen  
Pressure cooker — sports car  
Pull the big switch — turn off the CB  
Put my teeth up for the night, go 10-7 — sign off  
Put your shoes on — turn power up/on  
QSL card — postcard with call letters or handle confirming communication contact  
Quick trip around the horn — scanning all CB channels  
Radio check — checking the quality of transmission  
Ratchet-jaw — non-stop talker  
Rig — CB radio  
Ringing your bell — someone's calling you  
Roller skate — small car  
"S" unit — "s" meter reading of wattage  
Salt-shaker — salt spreading truck  
Seat cover — female passenger  
Seventy threes and eighty eights — love and kisses, best regards  
Sideband — CB operating above channel forty and below channel one  
Shaking the windows — loud and clear signal  
Shotgun — seat next to driver  
Skip — stations heard from a great distance  
Skip talker — CB'er who talks long distances  
S-meter — signal strength indicator  
Smokey — Police also use smokey bear  
Smokey report — location of Police in the immediate area  
Smokey on rubber — police moving  
Spies in the sky and hounds on the ground — Police aircraft and pursuit cars  
Squawk box — CB transceiver  
Stepped on — someone overpowered you with a stronger transmission also use stepped all over you, stomped on  
Steakin' — exceeding legal speed limit  
SWR — standing wave ratio  
Superskate — sports car  
Sweetthing — lady breaker on channel  
Take it down — move to lower channel  
Take it up — move to higher channel  
Ten pounder — excellent signal  
Threes — best regards  
Threes and eights — lots of best wishes  
Three 3's, Seventy three's — good luck, best wishes  
Throwing nines — strong signal on S-meter  
Tighten up on the Rubberband — accelerate  
Toilet mouth — CB'er using foul language  
Tree top tall — good signal  
TVI — television interference  
Twins — dual antennas  
Two wheeler — motorcycle  
Up on the roof — channel forty, also use Penthouse suite  
Walked on — same as stepped on also use walked all over, walking all over you  
Walking tall — good signal  
Walking the dog — long distance conversation  
We gone — stop sending transmission, just listening

Wall to wall and tree tops tall — clear, strong signal, very good reception  
Works twenty — work location  
Wrapper — colour of car  
X-ray machine — radar  
XYL — Ex young lady, usually a wife  
Yardstick — mileage marker  
You got it — go ahead  
Yeah four — big ten four, affirmative  
YL — young lady  
ZOO — police headquarters  
Z's — sleep



## 10 CODE

This code is strongly recommended for all CB communications, were a coded transmission is desired.

10-1 Poor signal  
10-2 Receiving well  
10-3 Stop transmitting  
10-4 OK Message received  
10-5 Relay message  
10-6 Busy, stand by  
10-7 Out of service  
10-8 In service subject to call  
10-9 Repeat message  
10-10 Transmission completed  
10-11 Talking too fast  
10-12 Visitors present  
10-13 Weather road conditions  
10-14 Prowler  
10-15 Convoy  
10-16 Make pick up at . . . .  
10-17 Urgent business  
10-18 Anything for us  
10-19 Nothing for you, Return to base  
10-20 Location or position  
10-21 Call by telephone  
10-22 Report to  
10-23 Stand by  
10-24 Completed last Assignment  
10-25 Can you contact  
10-26 Disregard last information  
10-27 I am moving to channel

## Terms... ..

- 10-28 Identify your station  
 10-29 Time is up for contact  
 10-30  
 10-31 Crime in progress  
 10-32 Radio check  
 10-33 Emergency  
 10-34 Trouble at this station  
 10-35 Confidential information  
 10-36 Correct time  
 10-37 Wrecker needed at  
 10-38 Ambulance needed at  
 10-39 Your message delivered  
 10-40 Stop at nearest pull in  
 10-41 Please tune to channel  
 10-42 Traffic accident at  
 10-43 Traffic tie up at  
 10-44 I have message for
- 10-45 All units within range please report  
 10-46 Assist motorist  
 10-47 Stop for gas  
 10-48  
 10-49  
 10-50 Break channel  
 10-51 Accident wrecker needed at  
 10-52 Accident ambulance needed at  
 10-53 Accident road blocked  
 10-54  
 10-55  
 10-56  
 10-57  
 10-58
- 10-59  
 10-60 What is next message number  
 10-61  
 10-62 Unable to copy use Land line  
 10-63 Write this down  
 10-64 Not clear  
 10-65 Awaiting your next message/  
 assignment
- 10-66 Cancel message  
 10-67 All units comply  
 10-68 Repeat message  
 10-69 Do it the french way/Lets do it  
 10-70 Fire at  
 10-71 Proceed with transmission in sequence  
 10-73 Speed trap at  
 10-74 Negative  
 10-75 You are causing interference  
 10-77 Negative contact  
 10-81 Reserve hotel for  
 10-82 Reserve room for  
 10-84 My telephone number is  
 10-85 My address is  
 10-88 Advise phone number of  
 10-89 Radio repairman needed at  
 10-90 Talk closer to mike
- 10-91  
 10-92 Your transmitter is out of adjustment  
 10-93 Check my frequency  
 10-94 Please give a voice test  
 10-95 Transmit Dead carrier for 5 seconds  
 10-97 Check Test signal  
 10-99 Mission completed all units secure  
 10-100 In the John  
 10-200 Police needed at
- 13-CODES  
 Put-downs, or just plain insults.
- 13-1 All units can copy you and think  
 you're an idiot  
 13-2 Yes, I copy you, but I'm ignoring  
 you  
 13-3 You're beautiful when you're angry  
 13-5 Same to you  
 13-7 If you can't copy me it must be your  
 fault because I'm running 3000 watts  
 13-20 Is your mike clinking or are your  
 uppers loose again?  
 13-22 Lady, is that your voice or did you  
 install a steam whistle?  
 13-24 You make more sense when you're  
 smashed  
 13-25 Some of the local operators and I  
 have chipped in to purchase your rig  
 from you. Have you considered  
 stamp collecting?  
 13-26 Next time you eat garlic speak  
 farther from the mike  
 13-41 Either my receiver is out of alignment,  
 or you're on channel 28  
 13-42 Either my speaker cone is ripped or  
 you better try it again when you're  
 sober  
 13-43 That was a beautiful 10, try it with  
 your mike connected  
 13-44 I love the way your new rig sounds,  
 now I know why the manufacturers  
 discontinued that model  
 13-45 Your transmitter must have a short-  
 circuit because there's smoke coming  
 from my loud-speaker  
 13-47 What a fantastic signal — give me a  
 few minutes to bring the mobile unit  
 to your driveway so I can copy your  
 message





# EYEBALL.....

# Breakers!

Volume 1 Number 2

Editor/Publisher: Peter R. George  
Harvey S. Hudson  
Art, Creative Director:  
Harvey S. Hudson  
Marketing, Advertising Director:  
Peter R. George  
Technical Editor: Cas Michaelson  
Production Editor:  
Brendan McCaffery  
Contributing Editors: Paul G. Rogers  
V. Frederick, Pat Noone.  
Advertisement Division:  
Concept and Associates,  
Arena Offices, 26 Brown Street,  
Manchester M2 1DN.

Breaker on the Side is published  
monthly by Concept & Associates,  
Concept Publishing, Arena Offices,  
Manchester M2 1DN.  
Telephone: 061-832 2572.

Copyright Concept and Associates,  
Concept Publishers 1980. All rights  
reserved. Reproduction in whole or  
part is forbidden save with the  
express permission of the publishers  
in writing.

## CONTENTS

	Page
Editorial .. .. .	<i>Inside Front Cover</i>
Eyeball Breakers .. .. .	1
DX... DX... DX... ..	3
Special Delivery .. .. .	4
INFO .. .. .	7
British Airwaves .. .. .	8
Feedback .. .. .	10
CB Dealers – North West .. .. .	11
To the Editor! .. .. .	12
About the law .. .. .	14
Report file – Antennas .. .. .	15
Events North-West .. .. .	21
Press clippings .. .. .	23
Miss Breaker contest .. .. .	25
The Rig .. .. .	29
To Russia with love .. .. .	30
Teaser competition .. .. .	32

It is the policy of the publishers of  
*Breaker On The Side* NOT to support the illegal  
use or possession of CB equipment nor do we  
intend to encourage such illegal activities.

# BIG EARS

**SUPPLYING THE NORTH WITH ALL YOUR C.B. NEEDS;  
CHOOSE ALL OF YOUR REQUIREMENTS FROM OUR LARGE AND**

**DIVERSE RANGE OF STOCK**

**A.C.H.Car Accessories, Station Rd, Cheadle Hulme.**

**MANCHESTER 061 485 3356**

**Bolt on Goodies, Abinger St, BURNLEY 0282 2825**

**Car Sound, 1 Union St, MIDDLESBOROUGH 0642 243818**

**Furness Electronics, Furness House,**

**BARROW-IN-FURNESS 0229 26169**

**Howley Racing, Winwick Rd, WARRINGTON 0925 51793**

**R&S Supplies 28-29 Lamb St CARLISLE 0228 38172**

**Supertune, 20 High St, STUDLEY, 052785 3778**

**Weekend D.I.Y. Unit 2 Thorne Rd, Stainforth,**

**DONCASTER. 0709 863792.**

**Wheels & Things, 7 Rufford Ave, New Ollerton,**

**NEWARK, 0623 860366**

**Wheel & Custom, 143 Rochdale Road,**

**BURY 061 764 0554.**

---

# BIG EARS

**68 Narborough Rd.**

**Leicester**



**TELEPHONE 0533-546031 TRADE ENQUIRIES WELCOME.**



**DX . . . DX . . . DX . . .**  
**CQ . . . CQ . . . CQ . . .**

One of the most common questions we get asked is, "what's the maximum distance, my rig can push?" . . . In all honesty there is no easy answer to this question. It's a bit like the Chicken and the Egg . . .

CB rigs are not extremely powerful transmitters capable of constant communications across country.

So much depends on weather conditions, terrain, and the position of the Twig (on mobile units), the number of people using any given channel at one time, and above all the type of equipment used.

In particular the Antenna used with your rig is going to determine your rig's performance, remember this above all is the most important part of your system!

Forget how expensive your transceiver is, it will not reach optimum levels without a good antenna radiating or receiving strong signals. A poor Twig can make the best unit available 10-1., in the same way that a good quality twig will do wonders with the cheapest transceiver going.

However, there are limitations that even Joderell Bank must accept as there are laws of Gravitation, for example, range is much greater over water where it is flat with no obstructions, than in a major city with tall buildings in all directions using 27 MHz equipment, communication is reliable well in excess of 15 miles, between one base station and another. With a minimum of around 5 miles between mobile units.

Then there is a mystique called the "skip" this involves a transmitted signal which quite simply bounces off the I onosphere some 50-400 miles above the earth's surface. Finally being picked up on a transmitter several hundred or even thousands of miles away. Although this does not always happen, it is quite common to most CB'ers. However, constant changes, within the earth's atmosphere may vary the effects of "skip" considerably, either at predictable intervals, or completely at random.

## **INTERNATIONAL Q-SIGNALS**

<b>QRA</b> — Name for handle	<b>QSM</b> — Repeat the last message
<b>QRH</b> — Frequency varies	<b>QSP</b> — I will relay
<b>QRL</b> — Busy	<b>QSO</b> — Communications with, contact
<b>QRM</b> — Interference from other stations	<b>QSY</b> — Change frequency
<b>QRN</b> — Natural interference — static	<b>QSZ</b> — Send each word or sentence more than once
<b>QRO</b> — Increase Transmitter Power	<b>QTH</b> — Location
<b>QRP</b> — Decrease Transmitter Power	<b>QTR</b> — Correct time is —
<b>QRQ</b> — Transmit faster	
<b>QRS</b> — Transmit more slowly	
<b>QRT</b> — Stop transmitting	
<b>QRU</b> — I have nothing for you	
<b>QRY</b> — I am ready	
<b>QRX</b> — Call back later, stand by	
<b>QRZ</b> — Who is calling me?	
<b>QSA</b> — Readability	
<b>QSB</b> — Fading signal	
<b>QSL</b> — Acknowledge receipt	



## LETTERS

### Even more of the same: Porno Trash, and Diplomatic Splendor

Sir,

As everyone knows 928 MHz would be little more than useless for a CB Service. However, what I cannot understand is why anyone thinks that a legalised 27 MHz band would be so great.

Although the U.S.A. and other countries are stuck with 27 MHz, it is in fact an unsuitable frequency for a CB type service.

The major disadvantage of 27 MHz is Skip, which makes local communication during most days very local indeed, not everyone is prepared to wait until 11 p.m. at night just to contact a friend living only 2 miles away. (Even 928 MHz would give more range during bad Skip conditions). It says on the front cover of your mag. that CB is a Private, two way, *Short Distance* voice communication service for the general public, I would agree with this, but would add another word – Reliable.

Whatever 27 MHz is, it is not Reliable the maximum range of a CB system should be usable 24 hours of the day.

An ideal CB service would be one somewhere on a band between 50 MHz and 250 MHz with at least 80 channels.

The mode is not too important, but frequency modulation would give best results on a band where users share the same channels. The maximum range of such a band would be as great if not greater than 27 MHz, but over a full 24 hours!!

I realise that some people who stand to make their fortunes from their large stocks of 27 MHz equipment, and some DX enthusiasts may be disappointed if anything else but 27 MHz is legalised, but they do not have the interests of others at heart, who want a 1st Rate Service. I support (and join in) the increasing pressure upon the Government to quickly implement a usable CB (o.c. if you must) service, but PLEASE NOT 928 or 27 MHz !!!

*Matt Black, Manchester.*

any comments? – Ed.



BEST LETTER PUBLISHED £5.00  
ANY LETTER PUBLISHED £2.00

Sir,

I just read with interest your magazine and found it very enjoyable, the standard of printing and layout place it way ahead of its rivals, after all just because CB is illegal doesn't mean to say that we have to have cheap and ta ty reading material about it.

So keep up the good work and more seat covers please, how about mentioning my rough-twenty it's Heywood better known as Monkey Town. So it's 10-10 till we do it again. breaker break!

*Rock Jockey,  
Monkey Town*

Thanks for the praises! – how about the cover then?, glad to see other breakers agree with our policy of quality! – ED. (£2 waiting for you, if you let us have your address).

Sir,

A big-4 good buddies, you've got Charley-Delta here this end. We've just come in from the Old North of Ireland Twenty, and I thought I'd give you breakers a look at the chicken-box scene over there! My home 20 is the Cow-Town area, otherwise known as Ballymoney, which is 40 miles north of "The Big Smoke" (Belfast).

CB is a big thing over there, as the recent rally in "Big Smoke" showed. There are several thousand registered breakers plus as many again who run loose. Our equipment (rigs) are really tree tops tall, almost every street has at least one Polecat, Silver Rod, etc. etc.

President, Sharp & Cobra are the more popular rigs, I myself pushed an AR7 and then a Pacer Mustang 40.

At the moment, I'm staying in the Rainy City, so if yer about, gimme a break! By the way in the Northern Ireland twenty, we break on channel 30.

Well, I've gotta go 10-10 now good buddies, so I'll wish you "all the high numbers" C.D. is gone!

*Charley-Delta  
Cow-Town (N.I.)*

Sir,

I was delighted to find a copy of your new venture "Breaker on the Side" on sale at Smiths.

However, this was the only copy left, and I have not seen it for sale anywhere else. Could I obtain the magazine by direct subscription rather than trying to obtain the same from my local newsagent.

If so, I would be grateful if you could supply me with your rates. Secondly, I would be grateful if you could help me contact any organised CB group in the area. I believe there is a group operating in the Runcorn area, but I have so far been unable to contact them.

*K. Crouch  
Cheshire.*

Due to the way we market our magazine, it was decided not to offer subscription facilities to our readers, thereby preventing any antaganism with the News Agents who sell our magazine! – three cheers for the News Agents. Unfortunately certain parts of Cheshire and the Wirral had very limited distribution on the last issue, though we are now rectifying that problem. Please try your local Newsagent, who should be able to obtain your copy through W.H. Smiths. If you still have problems, drop us a line and we'll see what we can do to keep you supplied. We have passed your details on to a Runcorn Breakers Club, and they should be contacting you in the near future – ED.

Dear Good Buddies,

We should have Citizens Band Radio for Great Britain (CB4GB) because:– "CB is the best thing since the Beaver!"  
Good numbers to all.

*M. Oldham  
Cheshire*

Whatever happened to Sliced Bread? – ED.

\*Well kiddies, thanks for the terrific response to our Special Delivery Spot! – remember it's your magazine so if you want to express your own feelings towards CB – Do it!

Drop us a line . . . . .

**CB & AUDIO SPECIALISTS**

11, Abbey Street, Rhyl, Clwyd.  
Telephone: Rhyl 36413.



**FOR THE BEST IN CB ACCESSORIES**

*OUR WIDE RANGE INCLUDES:*

TURNER - HAM MASTER - AMERICAN ELECTRONICS - MONICOR  
- ADUANTI - K40 - FIRESTICK - HI GAIN - TELEX - WIDE RANGE  
OF S.W.R. Meters, Burners, Pre-amps, Power Units, TVI filters always  
in stock.

*\*\*\*Also at 28 CHRISLTON ROAD, CHESTER\*\*\**

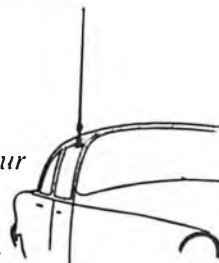
**COMMUNICATION EQUIPMENT SUPPLIES**

31, ST. DAVIDS ROAD SOUTH,  
ST. ANNES, LANCS.

Telephone: 0253 726430 or 0772 684094.

*\*All C.B. Accessories Available along with our  
friendly and Helpful Service to CB'ers.*

*\*Next time your around the West Coast give  
us an eyeball.*



For all your printing requirements

Membership Cards, Leaflets, Newsletters, Circulars etc.

Contact us at anytime

**ARENA**

26 Brown Street, Manchester M1 2DN.

Telephone: 061-832 2572

## TRADE ONLY

*Everything you need in  
CB Accessories from direct  
importers.*

Mobile antennas  
(all the best makes)

Sirtel DV27:  
Hardada: Firestik, etc. etc.

Home Base Antennas

SWR Meters

Patch Leads, RG58 and  
RG8 Coax

PA Horns

TVI Filters

Suppressor Kits

CB Extension Speakers

Splitter Boxes

Antenna Matchers

Power Supply Units

Linnear Amplifiers

Plugs and Sockets, PL 259 etc.

CB Monitors

Power Mikes

Slide Mounts

*and much, much more!*

**SHARMANS WHOLESALE,  
3 Bury New Road,  
Manchester M88FW  
Tel: 061-834 9571  
Tlx. 665446 G**

9.30 a.m. -- 7 p.m. Mon.-Fri.  
9.30 a.m. -- 2.30 p.m. Sunday.

# INFO

## CB Technical Terms

ANL	Automatic Noise limiter
Base	Static in one place
Beam	Form of highly directional antenna
Channel	Name given to CB frequency
Coax	Coaxial cable used between antenna and transceiver
Crystal	Piece of Quartz used to control frequency
Decibel(db)	Unit of measure for the loudness of sound
Delta	Tuning control on some transceivers which makes it possible to tune in stations who are a little off the centre of a channel
Dx.	Long distance transmitting
Frequency	Pitch of a radio signal distinguishing it from another.
Hz.	Hertz (cycles per second)
KHz.	Kilohertz (kilocycles) thousands of cycles per second



# British airwaves



## BRITISH AIRWAVES – SPECIAL FEATURE

No doubt you've noticed that this months cover is a little more "appealing" than our last.

The shot was taken along with many more, some weeks down ago at Barton Airport, Manchester.

In fact we were very fortunate in being offered the use of a hanger for the afternoon. – complete with the aircraft. Unfortunately it was a very rainy day, and we were unable to take many outside photographs!

Now allow me to introduce the young lady, her name is Adell Addey-Jones and she is without doubt the nicest, professional model model I've ever had the pleasure to work with.

The Cherokee Chief belongs to BREAKER 1 – 9, a very successful CB Accessory shop, firmly based here in the North of England.

The shop is enthusiastically manned by the owners Jack Unal and Peter Wilkins, better known to all as *Wurzel* and *Cockney Sparrow*.

Established only a few months ago, BREAKER 1 – 9 traces it's history back some 18 months, when Jack sold CB Accessories through his highly successful Wheel and Custom Centre.

It was during this period that Cockney Sparrow flew in from the South, choosing to feather his nest here in Bury – and so it came to pass that over a meal at a Manchester coffee house BREAKER 1 – 9 was conceived. As there were shops at that time solely selling CB accessories, and being two wise men, they decided to provide a totally reliable and enthusiastic CB Accessory shop in the NORTH.



Not only do they devote as much time as possible to the customers who visit their shop with an endless stream of questions and problems, they even find time to visit CB Clubs around the NORTH WEST, assisting them in raising funds towards charitable causes.

If your club members would like a Presentation on the ever increasing range of CB equipment now entering the UK, – give them a call, they would be more than willing to nip over for an eyeball!! In fact if you're in Leeds between the 28th and 30th of November you can eyeball their Stand at the Leeds Exhibition Centre.

The shop is open Monday to Saturday between the hours of 10 a.m. and 8 p.m. – due to heavy skip conditions it don't open Tuesdays and Sundays.

An example of the wide range of goodies always available may be found in their Advertisement a little further on inside the Mag.

They run a perfectly legitimate business, which has allowed them to live in harmony with the various authorities in the area, however if . . . . .

The future for Breaker 1 – 9 is very exciting, in the short period of time it has been operating, it has steadily become one of the biggest CB sources in England. They keep in stock over seventy different types of CB antennas, making this section alone one of the most comprehensive in the NORTH-WEST .

Having spent some time with Pete and Jack these past few weeks we honestly feel that it would be very difficult to find two more helpful or enthusiastic CB'ers anywhere in the North of England.

So if you want to know what CB is all about, and you have a few hours to spend browsing – Breaker 1 – 9 has just got to be worth a visit!!!

However they do recommend you come Clean and Green!

P.S. If on your visit you find two young ladies at the opposite side of the counter, no Jack and Pete havn't had a sex change – it's their XYL's Margaret and Yvonne (Ladybird & Rag Doll) respectively.



---

---

# FEEDBACK

## FEEDBACK

There has been a tremendous response towards the publishing of our regions twenty codes – need I say more? Not only by mail but also on the Land Line, I personally answered eight calls one after the other on the subject.

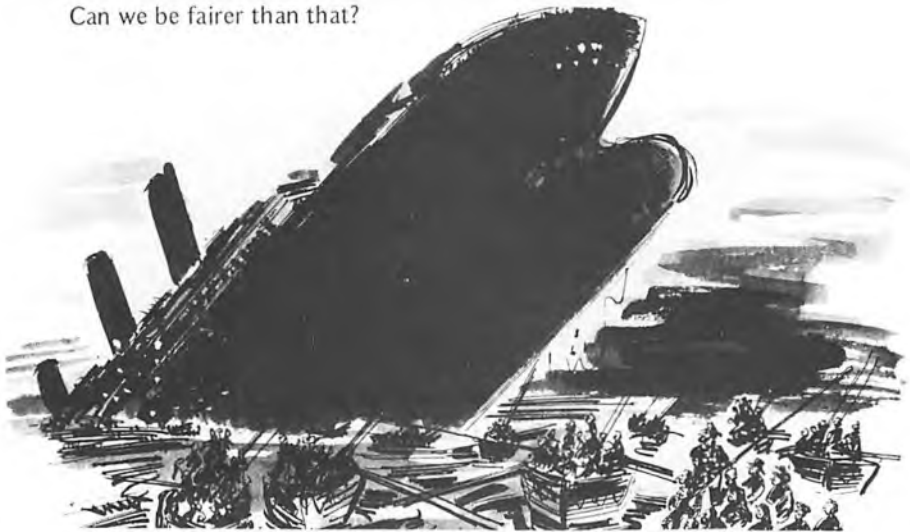
Personally, I see no harm in such an article, if anything the plus points outweigh any negatives there might be. How many times have you requested a nine when someone throws you a twenty? or asked for more specific clues after two minutes building a mental jigsaw?

We do see the need to restrict the code to medium size towns and major cities, and have done so in this issue, though it was never our intention to itemize every street or Brown Bottle Shop in the region.

Lets be realistic, it doesn't need a degree in Psychology to work out the alternative name for places such as Cake Town or Tower Town does it?, not forgetting Pier Town or Clog Town and then there's our own Rainy City!

The response has been very favourable, but this is your magazine and we feel it only democratic and fair to let you have the final decision! write in expressing your feelings, if we receive more against the Code, then we will remove it from all future issues, if we receive more in favour, then it stays . . .

Can we be fairer than that?



*"IF ONLY THEY HAD OUR ROUGH 20"*





**C.B. DEALERS  
NORTH WEST**

**BLACKPOOL:** A.D.S. Electronics.

16 Warbreak Drive (Nth. Shore),  
Blackpool. Tel: 0253 57222/21173.

**BURY:** Shellpost Limited, 183 The Rock  
Bury, Lancs. Tel: 061-761 6144.

**BURY:** Breaker 1-9, 143 Rochdale Road,  
Bury, Lancs. Tel: 061-764 0554.

**LLANDUDNO:** North Wales Telecoms,  
41 Penberth Buildings, Breton Street,  
Llandudno, N. Wales. Tel: 0492-701 72.

**LYTHAM St. ANNES:** Communication  
Equipment Supplies, 31 St. David's Road  
South, St. Annes, Lancs. Tel: 0253  
726430 or 0772 684094.

**OLDHAM:** ABC Electronics (O/M) Ltd.,  
83 Lees Road, Oldham O64 1JW.  
Tel: 061-624 8812.

**RHYL:** Base 20 Ltd., 11 Abbey Street,  
Rhyl, Clwyd. Tel: Rhyl 36413.

**SHEFFIELD:** Electro Trading,  
282 Eccleshall Road, Sheffield.  
Tel: 0742 668844.

**STOKE ON TRENT:** HSBC, 27 Hope  
Street, Hanley, Stoke-on-Trent.  
Tel: 0782 273815.

**URMSTON:** Channel 19, 49 Flixton  
Road, Urmston, Manchester.  
Tel: 061-747 6614.

**WIGAN:** Car Radio Wigan, 80 Darlington  
Street East, Wigan, Lancs.  
Tel: 0942 43101.

**\*If you would like a mention in this column, contact our Manchester Office.**

# To the Editor!

Our Editorial office recently received an interesting communication, from a newly formed Breakers Club in the Manchester 20.

Although a lot of the content relates to the development of the club, we felt that it should be printed in its entirety. If you have any comments to make, please address them to our Manchester office where they will be published in our next issue, alternatively you may write direct to their P.R. man:

Mr. J. McCormick  
8, Longhill Walk,  
Moston,  
Manchester. M10 9NT

Dear Sirs,

We are pleased to announce the formation of The 10-4 Club based in the North Manchester 20. Any 'breakers' who wish to join us are invited to help support our cause.

Our aims are to campaign for legislation of 27MHz and 'Citizens Band Radio'. This we wish to do so in a constructive and responsible manner.

Only hours after our first meeting we put into operation a 24hr (channel 9) emergency listening service., and we put our first cash into the charity fund.

Local businesses have kindly offered discounts to our members, and we are able to offer holidays abroad at a greatly reduced rate.

There is total democracy within the club, and anyone who has something constructive to say will be allowed to air their views. The committee is receptive to all reasonable ideas, and all major decisions are made by a vote of all members present at meetings.

Already the Club has got through a tremendous amount of work. Local Radio stations have been contacted, along with The Guardian Newspaper, as well as various C.B. and other magazines. We feel that the C.B. fraternity can justly be proud of itself. Any publicity CB gets should on balance be good, remembering that if the general public is unaware of us and our cause it cannot support us. The MP for our constituency has been notified of our existence, our cause, and our aims, with a request for him to support us in our fight for legalisation in any forthcoming parliamentary debates.

Obviously, we are an active group of CBers and we need your support in any way you can help us.

Unfortunately such is the nature of most CBers, that many are almost paranoid in their need to remain anonymous. It is as though they don't believe in the cause of freedom of communication. There are however many groups such as ourselves, and we would be happy to get together with them in the cause of mutual aid, so please send your representatives to our meetings.

In the past few months many issues have been raised on the subject of CB and our Club would like to add it's views. Only a few months ago the Home Office put out Open Channel as a document for discussion, but has done precious little discussing since. To discuss, is to exchange ideas, but even though the rest of us have discussed, written, phoned and demonstrated The Home Office has been very silent about updating it's views since Open Channel. We must try to find out what the current ideas are in that office, because at the moment we are campaigning blindly. There must be some form of official statement to supplement some of the rumours that are flying about.

The U.K. on our behalf signed an agreement along with other E.E.C. countries to appropriate the 27MHz wavelength to a Citizens Band Radio system. Since that time they have kept this wavelength from the citizens, and have very actively policed this illegal(?) wavelength. Surely this country must abide by both it's international obligation under E.E.C. law, and it's obligation to it's own people.

The whole evolution of the human race is tied in with it's stability to communicate more efficiently, it is therefore a basic human right to communicate. With the recent advance in technology it would appear just to allow the people their own means of communication.

The Government are our elected representatives, put there to do our bidding not to make decisions against the will of it's people. There is obviously a demand for CB and surely it is the duty of the Government to attend to this demand.

As a final point may it be noted that in accordance with our expectations of recent Government Committees, we were offered a totally unacceptable alternative to what we would like. Instead of 27MHz we were offered a wavelength which was used in the early microwave ovens. It is undoubtedly more akin to cooking meals than to cooking brains, it is a health hazard reported to cause tumours in some instances. Could it be possible that The Authority knew this prior to it's suggestion, if so weren't they being somewhat irresponsible.

If anyone can add anything to these points they are welcome to do so at any of our club meetings.

John McCormick

\* *This page is available to anyone who wishes to express any points of view they may have toward CB in the UK*



## Quick Flash

Youth photographed in Wales  
being punished —  
by local Magistrates for using  
illegal CB.

*P.S. — they also confiscated his rig!!*

# About the law

## ABOUT THE LAW –

Wigan Breakers recently held there monthly venue, at a Brown Bottle Shop in there Home Twenty. They featured Mr. Johnathan Lawton, a Barrister from Chorley as their guest speaker, who attempted to outline the law relating to CB in this country.

The three deadly sins being: Installation, Transmission and Importation (see our last issue for more detailed information on these offences! – ED).

Before the Post Office can prosecute you on Transmission, they must first prove you have actually Transmitted with the production of either a tape recording or a verbal admission – should you be apprehended, you are advised to say as little as possible, in particular, deny having a handle or call sign, without these you could not possibly have used the rig – could you?

On Installation Mr. Lawton pointed out that many breakers assumed this means who fitted the CB Radio! negatory, Installation means that if the unit is in your vehicle or Home Twenty and all the wires are connected, then the CB Radio is Installed. If, however, each item is separate from the other, and therefore in-operative you cannot be charged with either Transmission or Installation.

This still leaves Importation, and it is this offence that has you bang to rights – as they say. It is very difficult for the meanies to prove Installation or Transmission, unless you confess or make a written statement to the fact. However, Importation is the big no-no that will get you if all else fails. There is no way you can legally justify having 27MHz CB Radios in this country. Nor can you legally bring or have posted to you such equipment from abroad.

It was mentioned that CB Radios were being manufactured in the Midlands, and then advertised through the media. – Does the law on Importation apply to them?

The answer is No!, if such equipment is being produced in the U.K. you cannot be charged with Importation, but try getting an admission from the company that sold it to you! – To manufacture Radio Transceivers you require a licence from the Home Office, and such Licences do not exist for the production of 27MHz equipment in this country. Mr. Lawton was finally asked “if you own a rig over six months are you exempt from Importation Duty?..”, he replied that he could find no law to support this, and in his opinion felt it would still be illegal under the Importation Laws.

# REPORT FILE

## REPORT FILE : ANTENNA SYSTEMS

The antenna you choose will determine the CB rigs performance, right from the outset. It is the most important part of your system, no matter how expensive or how good your Transceiver may be, unless the antenna is capable of radiating and receiving a good strong signal – it will never give you peak results.

However a good quality antenna can produce acceptable results from a poor standard Transceiver – that is the difference.

There are many different types of antennas, however if it is intended for mobile units, there are obvious limitations, but some places have greater advantages over others. The metal shell of your vehicle, actually becomes part of your antenna – where you mount your antenna in relation to the car body will therefore affect the radiation pattern of the signal, being strongest across the longest section of the vehicle.



The solution to obtaining the best communicating range, must lie in matching the antenna to the transceiver, for if the transceiver output remains constant, it must be possible to increase the communicating range by simply improving the antenna's efficiency. Omnidirectional antennas used by most mobiles can only radiate the amount of energy supplied from the transmitter – in other words buy the best antenna your pocket can afford, at the expense if need be of less important CB goodies.

### THE CHOICE:

CB antennas are available in all shapes and sizes with prices to match. The ultimate physical length for a mobile CB antenna is 108 inches, commonly called the  $\frac{1}{4}$  wave antenna, however, 9 foot long antennas do not blend into the background very easily, they are also known to attract low-flying birds.

So, for mobile application, the solution is an antenna that incorporates a loading coil. – This reduces the physical length, whilst still maintaining the correct "electrical length", though rarely as efficient, they do have the distinct advantage of being shorter. Coils are either Base, Centre, Top or Continuous load, though it is recommended to select either a top or centre loaded position, since most of the RF energy is concentrated in the coil, it is wise to locate it as high up as possible. Bottom loaded antennas were designed for mounting on the roof of a vehicle, a position not advisable in the U.K. at present.

Antennas are usually rated in watts; 100, 300, etc., etc., meaning that the antenna can accept an input from the CB Radio equal to this rating. Where possible choose an antenna with the highest rating available, the higher the wattage, the greater it's efficiency.

# REPORT FILE — ANTENNAS

ANTENNA MAKE/MODEL	LENGTH (Approx.)	LOAD IF ANY	WAVE LENGTH	GAIN IF ANY WERE KNOWN IN dB
K 27	40 inch			
MOCAT T2102	54 inch	Base		
SYLVAIA AUTO MATCH	47 inch	Base		
D.V. 27	53 inch	Top	1/4	
D.V. 27 W.R.	39 inch	Cont		
T27E	24 inch	Top	1/4	
HIGH GAIN IUL 130CL	42 inch	Base	1/4	
D.X. 27	64 inch	Cont	5/8	3 - 4.5 dB
D.V. 27 XN	42 inch	Cent	1/4	
SPARKOMATIC SA104	44 inch	Base	1/4	
TRI BAWDER TBT1	34 inch (retractable)	Cent	1/4	
STERLING C107	42 inch Semi-Ret.	Cent	1/4	
TOP MOUNT UNIVERSAL	42 inch Detachable Whip	Top		
FULLY RETRACTABLE	40 inch Retractable	Top		
A/S FULLY RET.	47 inch Retractable	Nil		
LITTLE FOOLER	53 inch Semi-Ret.	Matcher		
A/S STEEL WHIP MS264	47 inch Whip	Matcher		
SHAKESPEARE				
BIG MOUTH	37 inch Whip			
SPARKOMATIC WHIP	25 inch	Cent		
A/S C.B. MAG. MOUNT	36 inch			
POWER MAG. 10	21 inch	Cent		
MR C.B. LIGHTNING				
ROD MAG.	48 inch Mag.	3 Loads	5/8	3 - 4.5 dB
D.X. 40 WHIP	44 inch	Base		
K40 TRUNK/ROOF	44 inch	Base		
HI-GAIN TRUNK 68505	52 inch			
HI-GAIN HELL CAT	52 inch			
PHANTON/GLASS MOUNT	18 inch			
FIRESTICK	2 foot	Top	5/8	3 dB
"	3 foot	"	"	3 dB
"	4 foot	"	"	3+ dB
"	5 foot	"	"	3+ dB
"	7 foot	"	3/4	3+ dB
LIGHTNING ROD MRCB	Various Sizes	3 Loads	5/8	3 - 4.5 dB
ELECTRIC RETRACT.	40 inch	Top		
G.P.Z.	6 foot	Cont	5/8	3 - 4.5 dB
HOMING PIGEON	Ceiling to Floor			
HMP DIPOLE 27½	18 foot	½ wave	1/2	0 dB
CLEAR DIPOLE	18 foot	½ wave	1/2	
STAR DUSTER M400	18 foot (A/S)	½ wave	1/2	5 dB
STAR DUSTER 2M800	18 foot (A/S)	½ wave	1/2	5 dB
K.40 (American antenna)	56 inch	Base		
PACER PTT 48	33 inch	Top	1/4	

THE TABLE ABOVE HAS BEEN COMPILED USING INFORMATION AVAIL

MOBILE OR BASE	MOUNTING TYPE	MATERIAL	CB OR TRI-WAY	COMMENTS
Mobile	Car Body/V	F/Glass	C.B.	
Mobile	Car Body/V	S/Whip	C.B.	
Mobile	Boot/Roof	S/Whip	C.B.	Automatic Tuner (S.W.R.)
Mobile	Car Body/U	F/Glass	C.B.	Cheap, Good Twig
Mobile	Car Body/O	F/Glass	C.B.	
Mobile	Car Body/U	F/Glass	C.B.	
Mobile	Car Body/V	S/Whip	Tri-Way	Good Disguise
Mobile	Car Body/U	F/Glass	C.B.	Good for D.X.ing
Mobile	Car Body/U	S/Whip	C.B.	Good for Car Roof
Mobile	Mag/Univer	S/Whip	C.B.	Like Radio Phone
Mobile	Car Body	S/Retract	Tri-Way	
Mobile	Car Body	Semi/Ret.	Tri-Way	
Mobile	Car Body	Det/Whip	Tri-Way	Easy Removable Whip
Mobile	Car Body	Steel/Ret.	Tri-Way	Fully Ret. Good Disguise
Mobile	Car Body	Steel/Ret.	Tri-Way	100% Non Sus
Mobile	Car Body/Univ.	Steel/S/Ret.	Tri-Way	98% Non Sus
Mobile	Car Body	Steel/Whip	Tri-Way	98% Non Sus
Mobile	Trunk	F/Glass	C.B.	Really Sus
Mobile	Mag. Mount	Steel	C.B.	
Mobile	Mag. Mount	Steel	C.B.	
Mobile	Mag. Mount	Steel	C.B.	
Mobile	Mag. Mount	F/Glass	C.B.	Good for D.X.ing
Mobile	Trunk Mount	S/Whip	C.B.	
Mobile	Trunk/Roof	S/Whip	C.B.	Not THE K.40
Mobile	Trunk	S/Whip	C.B.	Removeable Whip
Mobile	Trunk	S/Whip	C.B.	Collapsible Whip
Mobile	Wind Screen	F/Glass	C.B.	For F/Glass cars etc.
Mobile/Base	Universal	F/Glass	C.B.	The Cream
" "	"	"	"	" "
" "	"	"	"	" "
" "	"	"	"	" "
" "	"	"	"	" "
Mobile/Base	Universal	F/Glass	C.B.	
Mobile	Car Body	Steel	Tri-Way	Auto or Semi-auto, Retract.
Base		F/Glass	C.B.	Loft or bedroom, good for D.X.ing
Base		Plastic Rod	C.B.	Fits any room
Base	Outside	Alloy	C.B.	Any fitting outside
Base	Outside	Alloy	C.B.	" " "
Base	Outside	Alloy	C.B. F.M.	" " "
Base	Outside	Alloy	C.B. F.M.	" " "
Mobile	Trunk/Roof	S/Whip	C.B.	The original K.40
Mobile	Trunk/Roof	F/Glass	C.B.	

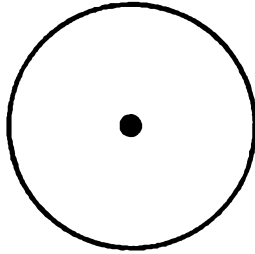
ABLE ON 27MHz ANTENNAS IN THIS COUNTRY AT THE PRESENT TIME

For reasons we are sure you will understand, we will not discuss the many different types of antennas available — a visit to a local CB dealer will illustrate this point more clearly. Some antennas stick out like sore thumbs, whips being the most blatant! There are however, many non-sus antennas that are now freely available — the centre pages are devoted to listing these and other more common twigs now on the market.

**Antenna Gain:** Antenna gain is the alteration of the radiation pattern, by concentrating this energy in one direction it would appear as though it had been produced from a much stronger source. An omnidirectional antenna radiates energy of equal proportions in all directions; thereby lowering the angle at which energy is radiated, and producing a dB gain in all directions.

Unidirectional antennas are designed primarily for use in home base stations, a subject we intend to cover in our next issue.

When you choose an antenna, look for one that has less than 6 dB gain, — anything above will squeeze the signal together affecting the radiation pattern.



*Omnidirectional Antenna Radiation Pattern*

**SWR — tuning the antenna:** Once installed your antenna must be tuned so that it obtains the lowest possible VSWR (variable standing wave ratio), which simply means you must match your antenna's length to that of the radio wave, or how much radiated signal power is reflected back into the antenna. The Manufacturer tunes the antenna for 1.5:1, but the breaker prefers 1.1:1 which he continually strives to achieve, yet seldom attains — anywhere between is acceptable to most CB'ers. However, a VSWR of 3:1 or above will almost certainly cause serious damage to your Transmitter.

#### **ADJUSTING YOUR ANTENNA:**

Antennas are tuned in a number a different ways:

1. **Base-load:** This type usually come equipped with an allen head set screw, which you loosen to adjust the antenna shaft up or down.
2. **Centre-load:** These usually have a resonator tip made from wire that is held in place by a set screw, moving the resonator tip up or down adjusts the tuning.
3. **Continuous-load:** These may be tuned either by loosening a thumbscrew and then sliding a resonator tip up or down, or removing a little cap on the antenna and filing a slight amount off the top.

Next you need to beg, steal or borrow an SWR meter, alternatively you could buy one, they are usually inexpensive and an item you will always find useful. Add to this a 24 inch length of coaxial cable with a connector on each end, and away you go. First point, you should tune your antenna well away from tall buildings, if possible in a wide open area. This done, plug one end of the coaxial into your Transceiver and the other end into the socket on the SWR meter, marked Transmitter. Plu the coax that come from your antenna into the other socket left remaining on the SWR meter, marked "antenna". On the front of the SWR meter you will find a switch, marked Forward and Reflected (FWR/REF). Switch your CB Radio on, and select a channel where you are well away from everyone else, key your mike button, and without speaking adjust the SWR meter in the "FWR" position until the meter reads SET, on the scale.

Now flip the switch to the "REF" position and read the SWR scale on the meter. If the meter reads below 1.5:1 your antenna is working properly, if on the other hand it is in excess of 2:1 your antenna needs attention.

First, check for bad connections, this can cause his SWR. If you still have problems, check the SWR reading on Channel One if it is higher than Channel Forty your antenna is too strong, properly tuned antennas have very low SWR on the middle band and equal readings on Channels One and Forty.

If you cannot get the SWR below 1.5:1 recheck the installation.

If the antenna needs to be higher, place a few washers at the base allowing it to move up slightly. Above all, remember Transceivers, Antennas and Microphones are extremely complicated pieces of equipment, and can easily be damaged or otherwise abused. If you don't feel at ease installing it, forget it. Get assistance from someone who knows what he's doing.



# SHELLPOST Limited

*WHOLESALE & RETAIL CB ACCESSORIES SUPPLIED*

**THE NORTH'S LEADING STOCKIST OF CB ACCESSORIES**

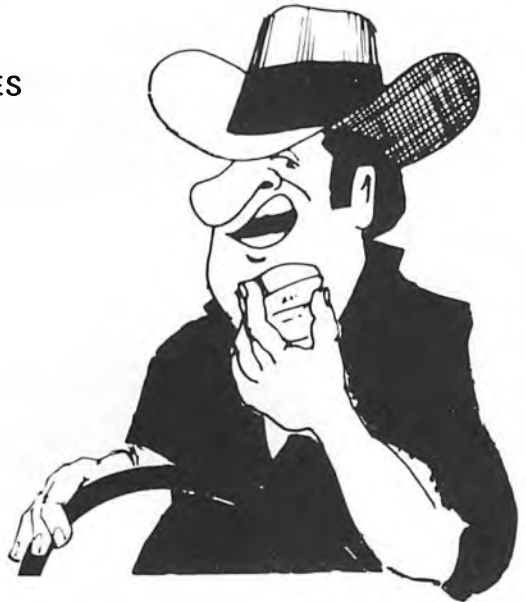
**\*NORTHERN MURA WHOLESALE AGENTS.**

**\*SUPPLIES TO WHOLESALE AND  
RETAIL TRADE**

**\*WIDE RANGE OF ACCESSORIES  
ALWAYS IN STOCK.**

**SHELLPOST FOR ALL  
YOUR CB REQUIREMENTS**  
183, The Rock, Bury, Lancs.  
(Next to Fire Station)

Telephone:  
061-761 6144  
061-797 7146 (2 lines)



DEAR Mr. NEWSAGENT

Please deliver 'BREAKER ON THE SIDE' to my home every month.

Name .....

Address .....

.....



### BREAKER ON THE SIDE

Major distribution : W. H. Smith & Son Ltd.  
Surridge Dawson Ltd.

Publishers: Concept & Associates, Concept Publishers,  
Arena Offices, 26 Brown Street, Manchester. M2 1DN  
Telephone: 061-832 2572

## EVENTS NORTH WEST

### BELLE VUE RALLY

Sunday 2.11.80 – arrived at Belle Vue car park on a cold but sunny morning, it was 10 a.m. and not a soul in sight, thought the rally had been called off!

10.30 a.m. Two cars pulled into the car park, one covered in antennas, I was proved wrong. Within minutes the area was full of breakers, over 1,000 of them coming from places as far a field as Warrington, Buxton, Wigan, Liverpool and even GRANTHAM!

To say the police on duty were surprised would be an understatement, they were amazed – all four of them!!! Though friendly, they did inform us yet again – that no special treatment would be given, they were there to keep traffic moving, for the benefit of other road users. Having anticipated around 150 people, they were inadequate in number to attempt controlling this armada on wheels.

A few breakers had wired their wrappers with P.A. horns, having planned to play the Convoy Song, the police in the interest of Law and Order informed them that this would constitute a disturbance of the peace – not wishing to break the law, no P.A. system was heard.

One officer even commented to us that he was in favour of CB, though declined the offer of having his photograph taken – wonder why?

When everyone had arrived, we had a briefing session, at which the route to be taken was outlined by the very charming Bubbles, assisted very ably by her husband Sunray, two very nice people, to whom even the most officious officer warmed to.

The convoy was such an impressive sight, that it even amazed the organisers. I must admit that even I stood back to take in this spectacular sight!

The noise was overwhelming, engines revving, horns sounding . . . a vision of wheel and steel. The police with efficiency, proceeded to their pre-arranged stations. Unfortunately, the convoy took the opposite direction, creating a wave of panic, as the police attempted to restore law and order, regrettably, by this time 200 renegade breakers were loose, and converging on the City Centre.

The route chosen took the convoy from Belle Vue Stadium to Manchester City Centre, during which time the Convoy was Bumper to Bumper, many vehicles being decorated with balloons and posters. The destination was the National Car Park in the centre of Manchester, donated free of charge to the organisers – 3s and 8s to you N.C.P.

After a short speech on CB and the Government's policies towards Open Channel, we all returned to Belle Vue, where we had a good old ratchet between ourselves.

The Party was over, one after another the vehicles split away from the main body returning home no doubt pleased with the day's event. It was a terrific show of strength, and on behalf of Bubbles and Sunray, we would like to thank everyone who gave their time and motion lotion in making this rally the success it obviously was.



## CB FANS PLAN RALLY IN AIRWAVES BATTLE

ILLEGAL Citizens' Band radio operators claimed that they have more than 18,000 active members in the Greater Manchester Area and 1,000 in North Wales.

And in a bid to pressure the Government to legalise their 27MHz frequency, a group of North Wales CB fans are planning to "break cover" and organise a rally next month.

One fan called "Red Dragon" the identification tag of a Cheshire businessman says North Wales CB members are increasing at the rate of 30 a week.

There is no trouble obtaining their two-way radios, despite the fact that it is illegal to import and use them here, he added.

"Large numbers of the sets are coming in through Holyhead from Ireland," said another CB fan.

A Government document proposes a frequency of 928 megahertz for a CB-type band in Britain, and rules out the 27 megahertz band used in other countries.

"The ultra high frequency proposed by the Government is ridiculous. It's no use to us because of its limited range and because of the high price of the necessary equipment," said Red Dragon.

He has close ties with the Manchester clubs - 12 of them altogether - and is chairman of the North Wales CB club. And he was adamant: "We will not move from 27 megahertz no matter what the Government decides to do."

CB fans in North Wales openly defy the authorities to catch them as they nightly go on the air for discussions.

The Post Office radio-interference section say they are doing all they can, with the co-operation of police and the Customs and Excise to track down offenders. The waveband is supposed to be used only for the flying of radio-controlled models and for certain medical purposes.

It is claimed Customs officers have seized 1,000 of the illegal sets at ports this year. But it is known there are at least seven undercover retailers of the sets in North Wales alone.

"There are about 15 retailers in the Greater Manchester area," said a member of the North Wales club.

Post Office officials face a dilemma. For if the Government insists on its ultra high frequency idea the problem will be how to get CB fans to use it.

And if the Government makes a U-turn and legalises 27 megahertz the Post Office sees vast TV interference problems ahead.

"It's one huge headache," admitted a Post Office radio-interference official.

M.E.N.

## 'CITIZENS' BAND RADIO BAN'

THE Government plans to ban the sale or hire of "CITIZENS' BAND" radio-telephone transmitters for use on frequencies in the 27MHz band it was announced yesterday in a Commons written reply by the Home Office Minister of State, Mr. Timothy Raison, who said power would be sought when Parliamentary time permitted.

In answer to a second question from Mr. Michael Brotherton, Conservative MP for Louth, he said 276 people had been prosecuted in the first eight months of 1980 for the unlicensed installation of 27MHz transmitters.

Daily Telegraph 28/10/80



# miss Breaker North West 81

## competition

The response to our Competition has been very exciting, although there is still time to enter if you haven't yet done so. The Venue will be held at one of Manchester's top night clubs during January of next year, and promises to be a sensation.

Any young lady is invited to enter, and the prizes for the three winning finalists include: Clothing Vouchers, a Mini-Weekend in London, plus Cosmetic & Perfume Sets — not forgetting a special photographic feature in our magazine for the Winner! and much, oh so much more.

So why not write to our office for your Entry Form:—

Miss Breaker '81  
Concept Publishing  
Arena Offices,  
26 Brown Street,  
Manchester M2 1DN

You won't regret it — if you win you'll never forget it!



# THE RIG



## THE RIG

A CB Rig is technically called a transceiver, being part transmitter and part receiver — o.k.? There are literally hundreds upon hundreds of CB Transceivers available on the world's market today — ranging from simple 100 milliwatt walkie-talkies, with one channel facility through to Multi-channel Base Sets, equipped with Clocks, Meters, Digital Displays and other technological gadgetry. The basic difference between your car radio and a CB rig is that being a Transmitter as well as a Receiver you are able to communicate with the people you hear! — making it much more fun, and less frustrating! — I've always wanted to tell Terry Wogan to go Modulate someplace else!!!

Getting back to Rigs, the next question is what kind of rig should I get?, well quite simply it all depends on how much you want to spend. Buying the most expensive set doesn't guarantee top performance. The objective therefore is to acquaint you with some of the features available, then let you make up your own mind.

### The Choice:

CB equipment is loosely divided into three basic types: Base, Mobile and Portable. Base stations are usually desk top transceivers. As size is no great problem, they offer better performance as a rule, against mobile units, and are generally equipped with more features. On the negative side, they are more expensive (as are the antennas required to go with them). Nearly all Base sets operate from AC current, with the exception of Base/Mobile rigs that operate with a dual facility 12 Volt DC/240 Volt AC. Mobile units are usually 40 channel (however, there are some 23 channel rigs on the market, which were manufactured before 40 channel legislation in 1977) Transceivers. These sets are designed to operate from 12 Volt Negative ground Electrical Systems, being small in size and of totally solid state circuitry, they can offer many attractive features.

Portable sets (walkie-talkies) are capable of two-way communication whilst being carried, though, viable only where range is of no great importance. A telescopic whip antenna is usually standard, and the power source is battery. The life span is very limited when transmitting, and we recommend the use of rechargeable battery packs, with sets that may see a lot of service.

### The Controls:

The basic transceiver has only 3 controls — a channel selector switch, a squelch control, and an on/off volume control. As sets become more expensive, you will find all kinds of fancy knobs and dials. Here is a breakdown of the most common ones, along with their features.

*"It is the policy of the publishers not to support the illegal use or possession of CB equipment."*



**Volume, on/off** – Turns your set on. This switch is usually combined into one control at the front of the set. It also controls the volume of what you are listening to.

**Squelch** – this control is used in adjusting the sensitivity of the Receiver – filtering out background noise, static, and weak signals.

Almost all sets made have a squelch control. With the squelch control on full, only strong signals will be received, in it's off position it will receive very weak signals.

**Channel Selector** – Allows you to select any of the 40 channels you may transceive on. Full 40 channel sets have the channel numbers on either a marked knob or a push button control, usually with a LED (light emitting diodes) readout, indicating selected channel.

Many units now feature automatic scanners that will keep moving from channel to channel. It is also common to find channel selector switches in the microphone housing itself, making it much more convenient when mobile.

**Automatic Noise Limiter (ANL)** – This switch filters out static or ignition noises. Though sometimes built into the rig itself, it is usually an on/off switch located on the front of the transceiver.

**Noise Blanker (NB)** – this facility is much more powerful than ANL, and is normally used when the ANL filter is inadequate in surpressing noise.

**Delta Tune** – A control provided on some transceivers making it possible to home in on stations bleeding off the centre of a channel.

Normally it is left in its centre position, but when a signal is received with a high or low frequency error, it should be adjusted to either the plus (+) or minus (-) position.

**RF Gain Control** – reduces the RF (radio frequency) volume in your amplifier, thereby preventing overloading the receiver with an extremely strong signal.

**Meter** – better known as the S-motor. Which indicates by the use of two scales the relative strength of incoming signals in S-units, measured from 1-9 and in db above the SA level when receiving.

On some transceivers you may also find an LED facility whereby lights glow in the meter itself indicating the various S-levels.

**External Speaker Jack** – If you are not satisfied with the speaker provided inside your set, you may by-pass it by plugging an external speaker into this socket, usually at the back of the set.

**DX/Local Switch** – an attenuator that enables you to receive short range signals in one position, and longer range (DX) signals in the other switch position.

**Mike Gain** – a control that increases the strength of your modulation by altering the percentage of modulation, you are able to vary your talking power.

Allowing you to pin-point the position your signal begins to distort or break up.

**Tone Control** – Occasionally found on certain CB transceivers, it allows you to alter the tone of sound (treble-bass).

**P.A. Switch** – Simply allows you the capability of tuning a standard CB set into a public address system. This socket is usually found at the back of the unit.

**Single Sideband (SSB)** – whilst most CB sets offer a maximum of 40 channels, there are certain sets available that offer more. This is achieved by what is commonly called a single sideband (SSB) transceiver.

Basically it involves dividing each channel into a carrier and two sidebands – upper and lower, which are duplicates of one another.

Such sets are equipped with a mode selector for AM, USB (upper) or LSB (lower), in the lower position only the lower sideband portion of the carrier is generated, the upper sideband carrier being suppressed.

In the upper sideband position, the above is reversed – whilst in normal AM mode, both USB & LSB and the carrier are generated. Single sideband offers the advantage of greater range, along with more channels of more importance it reduces interference and increases performance.

The disadvantage is the need to readjust the clarifier each time a different signal is received.



### **Typical Sideband Rig**

Well, that covers most of the features you are ever likely to find on a citizens band radio, though new equipment is being introduced into the market place almost every month.

We could of course go on and on about this subject, filling endless pages with technical specifications that only an electronics wizard would understand.

Fortunately, most CB'ers are everyday people, who though interested in what a transceiver is, show more concern about what it does! There are hundreds of CB radios to choose from, with almost as many features.

To help you in choosing a Transceiver, we have drawn up a checklist that we hope you will find useful.

1. If at all possible, test the unit before buying it – checking each control separately.

2. Try to find a unit that features an ANL facility, or NB mode. Noise from your ignition system will effect your receiver dramatically.
3. Buy a unit with detachable mike, in the event that at a later date you decide to go for a power mike.
4. Look for one with easily operated controls, simple operation is important when your mobile.
5. Don't assume that the more you spend, will get you more power. All transmitters are basically equal. If maximum distance is paramount, spend the extra money on a better antenna.
6. If you only require a mobile unit. Don't be convinced that a combined mobile/base transceiver is acceptable. They are nearly always larger than there mobile counterparts – taking up much more space.



# TO RUSSIA WITH LOVE....

They say charity begins at home, I.C.B., however gave it a new slant, this time it began at Haydock Roundabout halfway along the Orient Express (A57 to the un-initiated!). This was the starting point for the mammoth Charity/Sponsored Walk organised by the I.C.B. Committee to raise money for the Weaver family who reside in Oldham.

Those of you who read a recent article in the Manchester Evening News, will no doubt recall that the Weaver Children are gradually going blind, and need £2,000 to visit a clinic in Moscow, in the hope of preventing their terrible fate.

To this end, Chicken George and Purple Turkey attempted the never before known attack on the North Face of the East Lancashire Road, a sheer 20 miles of Glacier like tarmac. From the photograph below, you will notice that their equipment is of the latest design.

Chicken George choose a 36 lb. ball and chain, which he labouriously dragged for quite some distance. Purple Turkey opted for the more up-market image of bicycle and sidecar (a model recently launched at the N.E.C. Motor Show in Birmingham). Unfortunately, after a devastating six miles, they were forced to abandon their attempt, due to prevailing weather conditions, and old age.

Fortunately Lone Wolf a well respected Swinton Breaker stepped in at the last moment, and completed the final 15 miles giving them a well earned total of some 21 miles.

Three cheers for a well organised charity event, it's nice to know that CB'ers can and do provide positive benefits to the community in which they live.

Chicken George has asked me to mention, that although the good buddies who sponsored this walk, agreed to pay for each mile he and Purple Turkey covered, they will no doubt agree to pay the distance Lone Wolf covered on their behalf . . . is that a big four?.

Many thanks to all those who helped in the organisation of this charity walk including Freebird, Gun Runner, Night Flyer and Crazy Dog.

P.S. By way of a postscript I.C.B. will be holding a Scavenger Hunt on Tuesday the 18th November they will be meeting on the N.C.P. Car Park facing City Hall on Liverpool Road, Manchester at 7.30 p.m. This event is open to any Breakers who want to join in the fun with a chance of winning £30.00. If your in that twenty why not come along for an eyeball!

VICTORY V



# TEASER competition

**Inside this magazine you will find  
The solution to all these questions**

## **20 QUESTIONS:**

1. What does ANL refer to?
2. Who would you find at 143 Rochdale Road, Bury?
3. How many Breakers attended the Belle Vue Rally on the 2.11.80?
4. Who is the Chairman of Bury Breakers?
5. What is the alternative name for Monkey Town!
6. Where was the location for the cover photograph?
7. Where is Charley-Deltas Home Twenty?
8. How many miles did Chicken George and Purple Turkey cover in their recent Charity Event?
9. Who is the editor of 'BREAKER ON THE SIDE'?
10. Who gave a discussion on the law relating to CB at the Wigan Breakers Eyeball?
11. What are the three main offences that the anti-CB authorities work from?
12. Who is Cooperman?
13. What vehicle is featured on the cover of this issue?
14. What does USB mean?
15. What is 10-36?
16. What is the abbreviation for kilocycles?
17. What is 10-100?
18. Where would you find Sharmans wholesale?
19. How many cartoons are featured in this issue?
20. What is the abbreviation for GPO officials?

Now that you've completed them send your answers to:

The Publishers,  
Concept & Associates,  
Arena,  
2nd Floor,  
26 Brown Street,  
Manchester M2 1DN.

\*The first one opened, with all the Correct Answers will receive £5.00 – so hurry

WHATS YOUR 20?

As you will notice it has been revised for this months edition – see Feedback. However, many thanks to all those good buddies who responded to our request for more twenty codes.

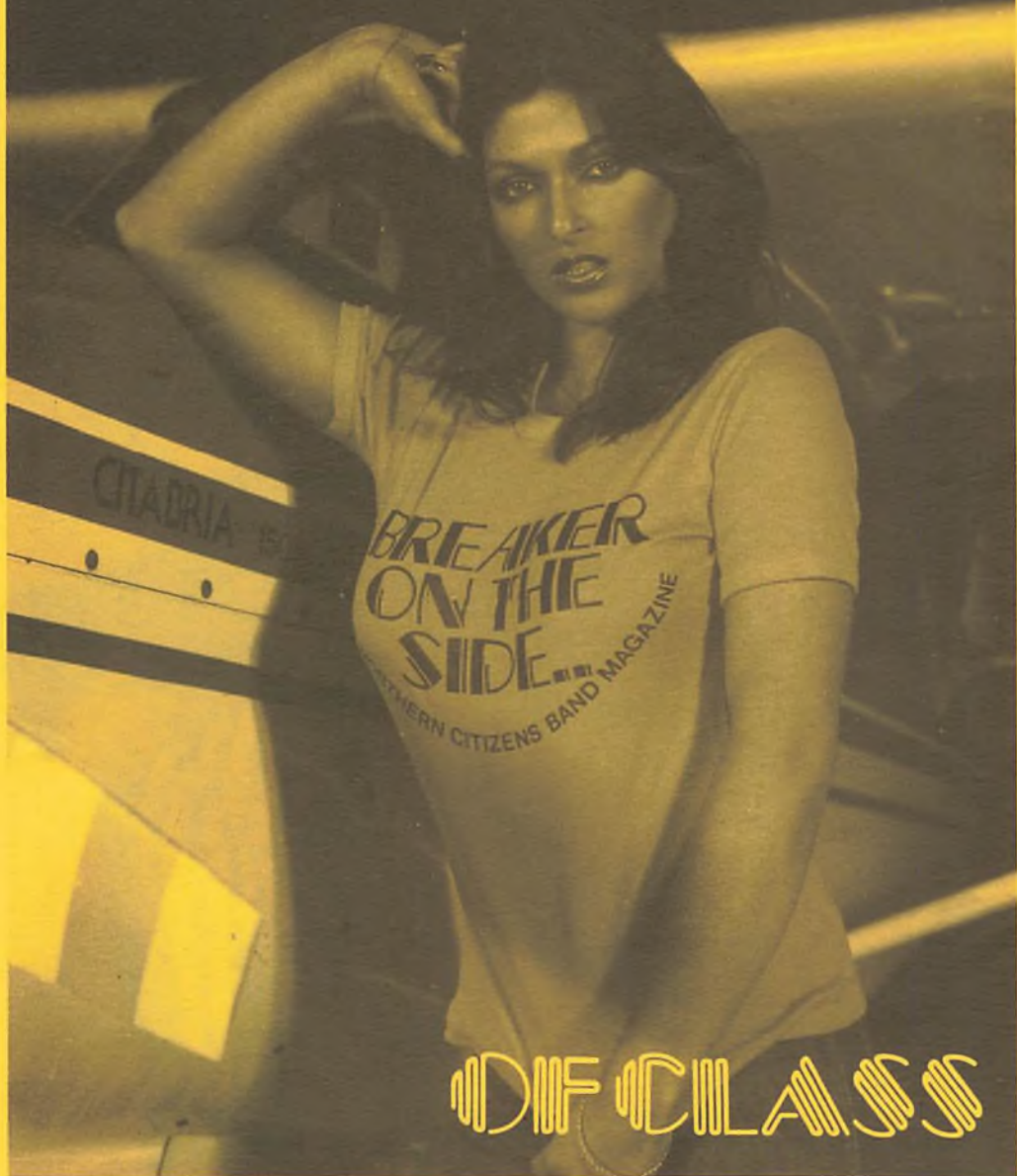
*Thelwall  
Trafford Park  
Walkden  
Warrington  
Widnes  
Wigan*

*Dipper Town  
The Park  
Las Vegas  
Red City  
Monster City  
Pier Town*

<i>Ashton-under-Lyne</i>	<i>Cinder Town</i>
<i>Blackpool</i>	<i>Tower Town</i>
<i>Bolton</i>	<i>Clog Town</i>
<i>Burtonwood</i>	<i>Base Town</i>
<i>Bury</i>	<i>Pudding Town</i>
<i>Congleton</i>	<i>Bear Town</i>
<i>Droylsden</i>	<i>Towel City</i>
<i>Eccles</i>	<i>Cake Town</i>
<i>Ellesmere Port</i>	<i>Lotion Motion City</i>
<i>Hyde</i>	<i>The Maze</i>
<i>Higher Broughton</i>	<i>David's Town</i>
<i>Haydock</i>	<i>Race Town</i>
<i>Heywood</i>	<i>Monkey Town</i>
<i>Lymm</i>	<i>The Little Village</i>
<i>London</i>	<i>Smokey Town</i>
<i>Lowton</i>	<i>Coal Town</i>
<i>Latchford</i>	<i>Lock Town</i>
<i>Liverpool</i>	<i>Blood City/ Bird City/ Holy City</i>
” ”	
” ”	
<i>Lower Broughton</i>	<i>The Valley</i>
<i>Mossley</i>	<i>Belle Air</i>
<i>Manchester</i>	<i>Rainy City</i>
<i>Moss Side &amp; Hulme</i>	<i>Red Light District</i>
<i>Macclesfield</i>	<i>Silk Town</i>
<i>Newton-le-Willows</i>	<i>Motor Town</i>
<i>Oldham</i>	<i>Gods Acre</i>
<i>Partington</i>	<i>Ponderosa</i>
<i>Prestatyn</i>	<i>Sun City</i>
<i>Rochdale</i>	<i>Cowboy Town</i>
<i>Runcorn</i>	<i>Boom City</i>
<i>Salford</i>	<i>Smokey Town/ Matchstick Town</i>
” ”	
<i>Sheffield</i>	<i>Steel Town</i>
<i>Stockport</i>	<i>Box Town</i>
<i>Stalybridge</i>	<i>The Paddock</i>
<i>Stockton Heath</i>	<i>Forge City</i>
<i>Sankey</i>	<i>Sugar Town</i>
<i>St. Helens</i>	<i>Glass City</i>
<i>Swinton</i>	<i>Pigtown</i>



AT TOUCH.....



DIFFICLASS





# READERS T-SHIRT OFFER

Highest Quality T-Shirts in a choice of two colours featuring our exclusive "BREAKER ON THE SIDE" logo. These garments are manufactured in cotton and are fully guaranteed.



BREAKER ON THE SIDE  
'T' SHIRT £3.00

SMALL 32"–34" QTY .....

MEDIUM 36"–38" Colour: YELLOW No. ....  
WHITE No. ....

LARGE 40"–42"

I enclose Cheque/P.O. Number ..... Value .....

Payable to Concept & Associates.

NAME .....

ADDRESS .....

.....

Please allow 21 days for delivery.

To: T-SHIRT OFFER, Concept & Associates,  
Arena, 26 Brown Street, Manchester M2 1DN. All Prices include Postage & Packaging.

## BURY BREAKERS CLUB

The number of breakers in the Bury area was increasing so rapidly some six months ago, that it was decided to form a club of our own.

The news spread over the air so quickly, that within a few weeks we had our first 'meet' in the secluded room of a local Brown Bottle Shop – affectionately known as the 'Pickled Egg'.

The original committee consisted of Blue Peter, Cooperman and Supertramp, with much reluctance, not knowing what exactly was involved they agreed on a temporary basis. 'Ginger Nut' being present at the 'meet' offered a room at his premises, complete with mikes, speakers, music and much, much more, totally free of charge – fantastic! – A club was born!

Cockney Sparrow and his good lady Ladybird were nominated

A: Ladybird: Chairlady

B: Cockney Sparrow: Social Secretary

– A committee was formed!

Well, I needn't tell you how the B.B.C. has grown, with well over 400 members, and still growing. The club is very involved in the Social aspects of CB'ing as well as the serious undertones – getting quite humorous at times.

There have been two big charity events, both held back in the summer months with a sponsored cycle ride from Bury to Blackpool and back again, followed shortly afterwards with a Parachute jump from Bridlington Aerodrome.

We meet regularly at the Nailors Green Hotel, which lies between Bury and Holcombe Brook on alternate Sunday lunch times, and every Tuesday evening. We are at present organising a slap-up Christmas Do for the members, which will take place on the 2nd of December – full top of the bill entertainment and food will be laid on.

The Bury Breakers Club must be one of the more successful CB Clubs in the area, and speaking on behalf of the committee, wish all it's members every success for the future.

Supertramp.

Committee:

Chairman – Cockney Sparrow

Chairlady – Ladybird

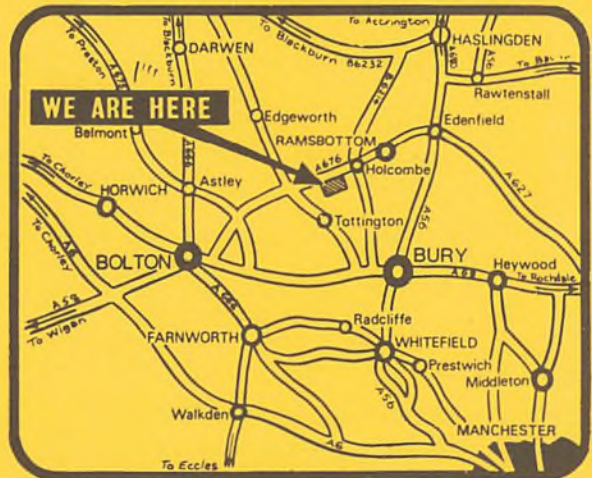
Soc. Secretary – Skydiver

Secretary – Supertramp

Public Relations – Cooperman

Technical Adviser – Novice I

Legal Adviser – Bouncer



# TRUCKERS' PARADISE

10, Marshalsea Rd; London, S.E.1

Tel. 01-403 1717

All the best in Trucking and C.B.



We carry a wide range of C.B. equipment in our shop covering everything that you could ever possibly need. If you live in the London area our shop is open from 9.00 — 5.30, Mon-Sat, and we're just 1 minutes walk from Borough tube station. If you can't get in to see us send 25p for our catalogue of C.B. and Trucking goodies. We can send most things by post and below you will find a few special mail order offers.

## T. SHIRT SPECIAL OFFER

Our famous Busby T. shirt really puts the message over. It usually sells for £3.50 + P&P but we're offering it for only £3.25 inc. P&P. We use only top quality American shirts and they are available in black, navy blue and red. When ordering don't forget to give your chest measurement.



## QUICK RELEASE C.B. MOUNT

This is the ESSENTIAL accessory when you want to be able to remove your rig quickly and easily. The mount is in 2 sections, connect one part to the radio and install the other part under the dashboard or wherever is most convenient. Attach the power leads and the aerial and that's it, when you want to remove your rig, just slide it out. These mounts usually sell for around £10 but we are offering them for only



£7.95 inc. P&P.

## SUPER C.B. OPERATOR TRUCKERS' CAP



Get ahead of everyone else with our great cap offer. Caps are available in black, navy blue, red and yellow and come complete with a high quality embroidered badge on the front. Our caps are guaranteed to fit almost any head and have an adjustable strap at the back. Special BREAKER price £2.95 inc. P&P.

## BOOKS ON C.B.

There are so many C.B. books available now that we have decided to offer only the three best

**THE BIG DUMMY'S GUIDE TO C.B. RADIO** is an excellent book covering every aspect of C.B. It has all the information you need to know when buying a rig, when installing one and when actually using one. The best book at the best price £2.95 inc. P&P.

## SLANGUAGE LANGUAGE

is America's best selling C.B. dictionary and contains thousands of words and phrases in use by our C.B. buddies in the States. Essential reading for everyone interested in C.B. £2.50 inc. P&P.

## C.B. BIBLE

is probably the best selling C.B. book in this country. It's only small, but it tells you everything you need to know on how to talk C.B. 75p inc. P&P.



## WHAT'S YOUR HANDLE

Use our D.I.Y. sun-strip kit to display your handle. It comes in green and measures 68" x 4", big enough for car, van or truck. When ordering print the name that you require on a separate piece of paper and we will send you the letters which you then stick onto the strip. Sun-strip £1.59, letters 12p each.

## C.B. EQUIPMENT

Whatever kind of antenna you're looking for, we've probably got it in stock, and at really competitive prices. D.V. 27's from £9.50; twin truckers from £25.00; electric retractables from £27.00. Unfortunately, a lot of antennas are too long to send in the post, but most other items — no problem. Just send us a cheque or postal order and you'll have the goods in a matter of days. If you require any information do not hesitate to phone and we'll be happy to help. If you have Access or Barclaycard we can take your order over the phone, just ring 01-403 1717.



P.A. Speaker ..... £12.95  
S.W.R. meter & power meter ..... £14.95  
Extension Speaker ..... £12.95

## ATTENTION ALL CLUBS

As well as supplying the best in C.B. equipment and accessories, we are able to supply clubs with all kinds of personalised clothing such as T. Shirts, sweat-shirts, caps and jackets, all at very reasonable prices and with quick delivery. Please write or phone for further information. We also give a discount on most C.B. items when you produce your membership card.

To: Truckers' Paradise, 10 Marshalsea Rd; London S.E.1

Please send me the following items, for which I enclose a cheque or postal order for the sum of £

Special offer T. Shirt size . . . . .	Quantity
Quick Release C.B. mount	@ £3.25 . . . . .
Super C.B. Cap	@ £7.95 . . . . .
Red . . . Yellow . . . Blue . . . Gr. . . . . Blk. . . . . D.I.Y. Sun Strip	@ £2.95 . . . . .
(Please enclose additional slip with your slogan PRINTED in block letters)	@ £1.59 . . . . .
Letters for Sun Strip	@ £0.12 Each . . . . .
Big Dummy's Guide	@ £2.95 . . . . .
Slanguage Language	@ £2.50 . . . . .
C.B. Bible	@ £0.75 . . . . .

## Extension speaker

P.A. speaker  
S.W.R. meter & power meter

@ £12.95  
@ £12.95  
@ £14.95

NB — we are sorry to say that we are unable to accept Irish cheques or postal orders. Whilst we are happy to send goods out of the British Isles, please phone and check what the extra postage costs will be.

We can accept post or telephone orders on Access or Barclaycard

All prices include V.A.T. & P+P.

If you don't want to cut your copy of BREAKER ON THE SIDE send your order on a separate piece of paper.

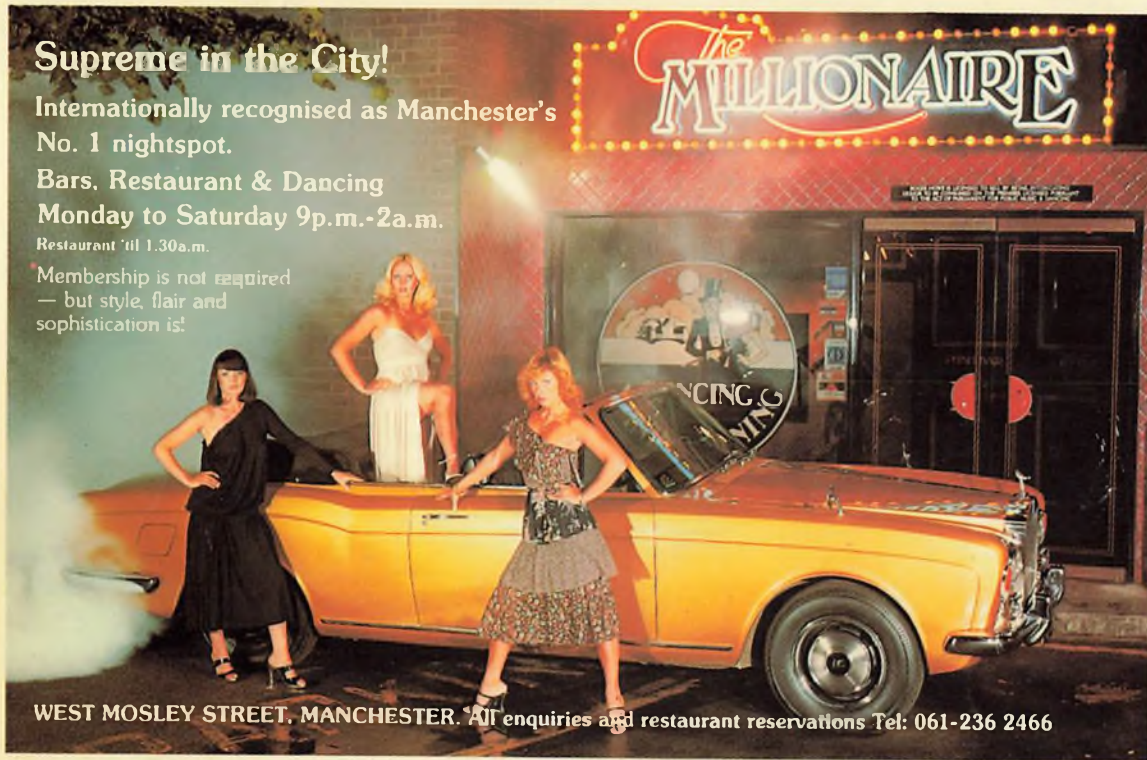
## Supreme in the City!

Internationally recognised as Manchester's  
No. 1 nightspot.

Bars, Restaurant & Dancing  
Monday to Saturday 9p.m.-2a.m.

Restaurant 'til 1.30a.m.

Membership is not required  
— but style, flair and  
sophistication is!



WEST MOSLEY STREET, MANCHESTER. All enquiries and restaurant reservations Tel: 061-236 2466

### NOVEMBER 1980

S	M	Tu	W	Th	F	S
30						1
2	3	4	5	6	7	8
9	10	11	12	13	14	15
16	17	18	19	20	21	22
23	24	25	26	27	28	29

### DECEMBER 1980

S	M	Tu	W	Th	F	S
	1	2	3	4	5	6
7	8	9	10	11	12	13
14	15	16	17	18	19	20
21	22	23	24	25	26	27
28	29	30	31			

### JANUARY 1981

S	M	Tu	W	Th	F	S
					1	2 3
4	5	6	7	8	9	10
11	12	13	14	15	16	17
18	19	20	21	22	23	24
25	26	27	28	29	30	31