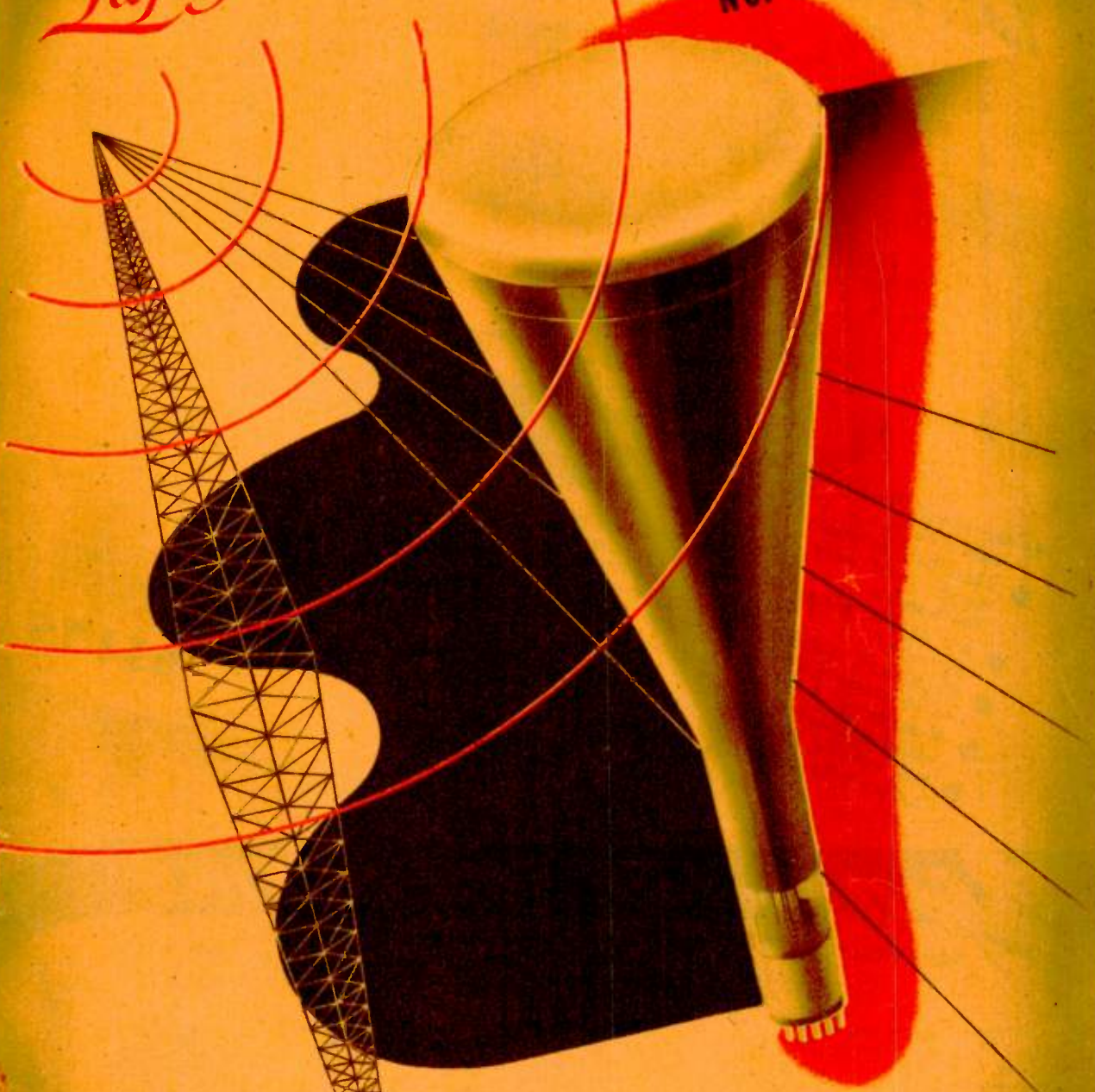


Lafayette Radio

SUPPLEMENT & GIFT GUIDE
No. 88 S-1947-48



Radio Wire Television Inc.

NEW YORK 13, N. Y.
100 SIXTH AVENUE

BOSTON 10, MASS.
110 FEDERAL STREET

BRONX 58, N. Y.
542 E. FORDHAM RD.

NEWARK 2, N. J.
24 CENTRAL AVE.

Lafayette's **GREAT
DUAL VALUE**

**AM-FM
TABLE
MODEL**



- Greatest FM-AM value ever.
- Standard broadcast and new FM band.
- AC or DC, plays anywhere.
- Excellent tone, wide-range FM.
- Mahogany finish wood cabinet.
- Marvelous tone Alnico 5 Speaker.

No one dreamed of ever getting both FM and AM at such low cost. For just \$34.75, you get complete FM-AM down to the last requirement—with filtered power supply for AC or DC operation and marvelous tone Alnico 5 PM speaker. No FM antenna is needed, you'll get perfect results just by tuning in on the "eye-angle" illuminated slide-rule dial. As for AM, there's an extra-sensitive built-in loop antenna that easily handles big broadcast reception. For best FM reception at a distance, use of a dipole antenna is recommended. Handsome, mahogany finish two-tone wood cabinet adds a smart touch to any room. Latest type tubes: 1-12BE6, 1-12BA6, 1-12AT6, 1-12A7.1-35B5. Employs a 35W4 rectifier. FM range, 88-108 Mc. AM range, 530-1650 Kc. 105-125V 60 cyc. AC or DC. 8 1/4 x 13 1/4 x 6".
MODEL M-19—Shpg. Wt. 15 lbs.
Your Cost, Only

\$34.75

Free FOR THE ASKING

**LAFAYETTE offers — AS MANY REMARKABLE;
MONEY SAVING VALUES, AS IT COULD
JAM-PACK INTO THIS SUPPLEMENT.**

Here's your great new LAFAYETTE bargain book. Everything new in Radio and Electronics—developments you've long been waiting for, and many a surprise, too. Plenty of eye-opening gear for the "Hams," kits for the hobbyist and experimenter, micro-precise laboratory and test equipment for the engineer and servicer. And for real home items—a dazzling line of FM sets and AM superhets, from portable and midget marvels to luxurious consoles—all to make living pleasant. **BUT THAT'S NOT ALL**—For more unbelievable values in Every

LAFAYETTE RADIO, Dept. 885
100 Sixth Avenue, New York 13, N. Y.
Please RUSH big free radio catalog.

Name

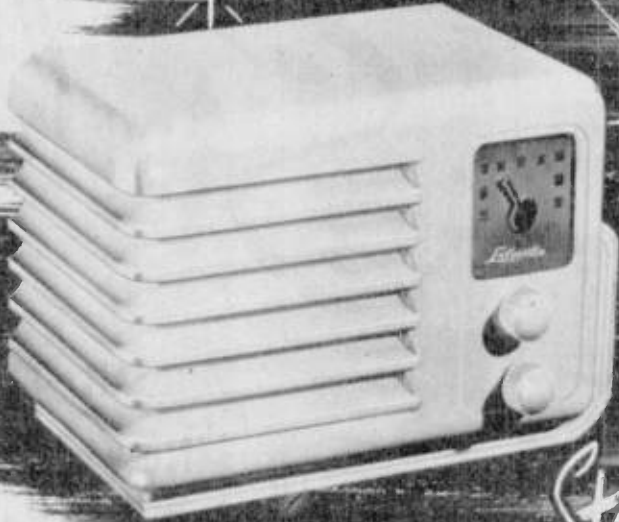
Address

City Zone State

Field of Radio, just send in the coupon at left for our **BIG, ABSOLUTELY FREE** catalog, completely illustrated and indexed. **LAFAYETTE GIVES YOU TOPS IN VALUE AT LOWEST COST!**



Sparkling Beauty in Style & Performance



**Value-Packed Plastic Superhets—Everything Advanced But The Price!
Here's That Extra Receiver For The Kitchen, Den, Bedroom, Nursery.**

A jewel of compactness and design! Just a handful, but with all the performance and engineering features of larger and more expensive sets. Gleaming plastic case designed by one of our leading industrial designers. Famous Lafayette engineering from shock-proof knobs to built-in loop. A real buy for design, for performance, for price. Here's what you get: SLIP STREAM STYLED CASE in black or ivory plastic only seven inches wide, five and a half inches high, four and a half inches deep. Takes up less room than your telephone. Simple and dignified lines are a perfect complement to any room, modern or period. LATEST ENGINEERING FEATURES including a circuit using a dual purpose 12AT6 oscillator-converter, a 12BA6 I.F. amplifier, a triple purpose 12BE6 detector, first audio amplifier and A.V.C. tube, a 50B4 Beam Power audio amplifier and a 35W4 rectifier. BUILT-IN LOOP ANTENNA Polystyrene insulated for greater sensitivity. No outside aerial or ground required. ALNICO 5 permanent magnet speaker for extra power, extra tone. ILLUMINATED AIRPLANE DIAL easy to tune, easy to read. WEIGHS ONLY 4 LBS. Circuit licensed under R.C.A. and Hazletine patents. Try this set in your own home under our 30 day home trial plan.

MODEL MC-16B Complete with tubes. **\$12.95**
Beautiful Black Plastic. Your Cost
MODEL MC-16Y Complete with tubes. **\$13.80**
Beautiful Ivory Finish Plastic. Your Cost

A scintillating, sparkling star from LAFAYETTE's galaxy of stunning superhets. Smart looking to harmonize with the latest styles in home furnishing. Small and compact to fit in any room or for easy carrying from place to place (excellent when travelling or when you go on vacation). Modern circuit designed to give you the splendid tone and performance you'd expect from bigger sets. As for price, it's way, way down—so hurry to get this one, it's moving fast! Outstanding features include SUPERHETERODYNE ENGINEERING using the modern multipurpose 12SA7GT pentode converter, the 12SK7GT triple grid super control amplifier, the 12SQ7GT dual diode detector and high gain triode amplifier, and a 50L5GT beam power output amplifier. Employs a 35Z5GT rectifier. AUTOMATIC VOLUME CONTROL gives even response over entire range. TWO GANG VARIABLE CONDENSER with ball bearing movement for precision setting. AIRPLANE TYPE ILLUMINATED DIAL gives accurate "fix" of stations where they should be. Covers the STANDARD BROADCAST RANGE from 540 to 1660 kilocycles. ALNICO 5 permanent magnet speaker for added power, smoother tones. BUILT-IN LOOP ANTENNA gives greatest input sensitivity. 10 1/4 x 5 1/4 x 6". Shpg. wt. 6 lbs. 30 day home trial—see for yourself.

MODEL J-5B Complete with tubes. **\$14.95**
Walnut Plastic. Your Cost
MODEL J-5Y Complete with tubes. **\$15.85**
Ivory Finish Plastic. Your Cost



Style

**FOR THE
Now - More
Better Value
Better Tone**



**Budget-Wise
Price \$74.50**

**2-BAND AUTOMATIC
TABLE PHONO-RADIO**

The warm, rich tones and clear sparkling music of this attractive 2-band phono-radio table model will make your home a center of attraction for the gay, youthful set. Symphony or swing, lovers of fine music on radio or records will applaud your choice of this splendid instrument. Lafayette's design and production are reflected not only in superior performance but in the definitely greater dollar value you receive. Examine some of these outstanding features:

TWO VERSATILE BANDS: 540-1600 Kc. band for local and long range programs on the standard broadcast band. 5.5 to 18 Mc. for international shortwave, police, marine, aircraft and amateur bands.

SLIDE-RULE DIAL: At correct "easy view" angle for comfortable adjustment to desired station.

PUSH-PULL AUDIO SYSTEM: Beam Power Push-Pull circuit, inverse feedback, 6" ALNICO 5 speaker, full range bass-treble control combine to give you fidelity and tone quality normally available only on much larger and more expensive sets.

TUBE COMPLEMENT: 12SK7 R.F. amplifier, 12SA7 oscillator and converter, 12SK7 I.F. amplifier, 12SQ7 detector, A.V.C. and first audio amplifier, two 50L6 Beam Power tubes in a Push-Pull audio output circuit. A 35Z5 rectifier is used.

AUTOMATIC RECORD CHANGER: Continuous playing of ten 12" or twelve 10" records. Feather-weight pickup extends life of valuable records.

CABINET: Made of fine American Walnut by our master cabinet craftsmen. A piece of furniture to add distinction to the finest room. 15 3/4 x 20 x 11". Operates on 110V 60 cyc. AC. Shipping weight 29 lbs.

MODEL JL-8 With tubes. **Your Cost \$74.50**

**2-BAND MODERN
WALNUT TABLE MODEL**

Delightfully new and fresh design, dependable true-life performance and exquisite styling make this superlative broadcast and short-wave table model in two-tone Walnut a joy to own and use. Open new vistas of listening pleasure for all the family and enjoy the solid, deep-down satisfaction of knowing that you've bought yourself a great radio at a cost unbelievably low for an instrument of this truly high caliber. This Lafayette 2-band superhet is a sound investment, advanced in everything but the price.

TWO BANDS: Enjoy local and long range programs on the broadcast band, 540-1600 Kc. as well as U. S. and foreign short-wave, marine, police, aircraft and "ham" bands, on 5.5 to 18 Mc.

SLIDE-RULE DIAL: Illuminated dial tilted to "easy view" angle for easy tuning on either precisely calibrated band.

MODERN SUPERHET CIRCUIT: 12SK7

**Budget-Wise
Price \$33.95**

R.F. amplifier, 12SA7 oscillator and converter, 12SK7 I.F. amplifier, 12SQ7 detector, A.V.C. and first audio amplifier, 2 50L6 Beam tubes, 35Z5 rectifier.

AUDIO CIRCUIT: The push-pull Beam Power stage, inverse feedback, full range tone control and 6" ALNICO 5 speaker are combined in an audio system truly amazing for a set of this price range.

PHONO JACK: Phono jack input enables you to plug in a phonograph or automatic record changer for further listening pleasure.

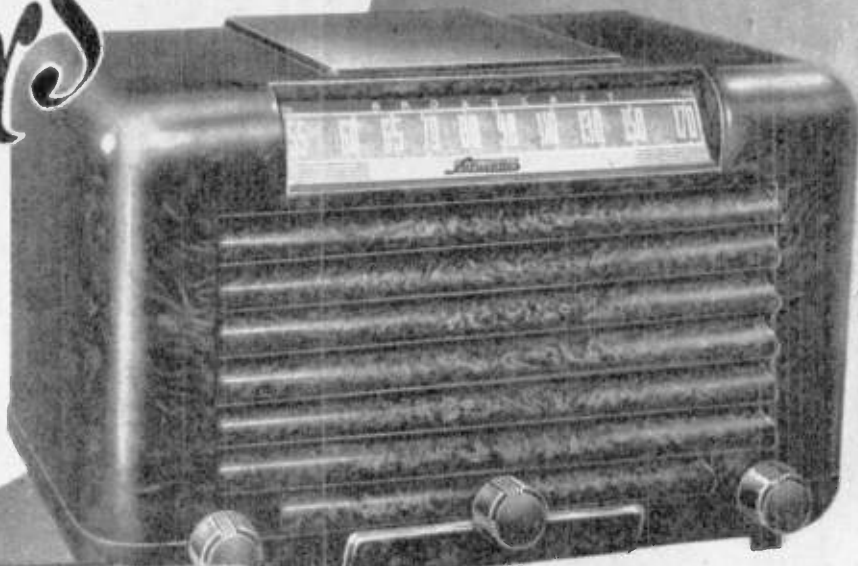
CABINET: Two-tone Walnut cabinet is a masterpiece of the cabinet-maker's art. Knobs are plastic. Dimensions 17 1/4" x 7 1/2" x 8". 110-120V 50-60 cyc. AC or DC. Take advantage of our 30-day Home Trial offer. Try this handsome instrument in your own home, enjoy its beauty of tone and styling. Shipping weight 15 lbs.

MODEL JL-7 With tubes. **Your Cost \$33.95**



Leaders

**BUDGET-WISE
Than Ever!
Better Performance
Better Design**



**TWO-BAND AC-DC
PLASTIC SUPERHET**

In this splendid 2-band AC DC superhet you'll find better tone, better performance, better value yet Lafayette's modern production methods and forward-looking engineering enable us to offer it at this amazingly low price. Enjoy domestic broadcasts and world-wide short-wave reception. Your friends and family will praise your choice of this value-packed set. Brimming with advanced engineering features, it will assure your radio listening pleasure for years to come. Here's what makes it an outstanding buy:

FREQUENCY RANGE: 550-1600 Kc. covering the AM Broadcast band and 5.5-18.0 Mc. for world-wide short wave, marine, aviation and "ham" calls. R.C.A. AND HAZELTINE licensed circuit uses a 12SK7 R.F. amplifier, 12SA7 oscillator and converter, 12SK7 I.F. amplifier, 12SQ7 detector, A.V.C. and first audio stage, 50L6 Beam Power amplifier plus a 35Z5 rectifier. Five tubes and one rectifier in a circuit

**Budget-Wise
Price \$25.95
(IN WALNUT)**

embodying the latest engineering principles. **FULL RANGE TONE CONTROL** for complete bass or treble emphasis. **WIDE-RANGE PM** speaker with **ALNICO 5** magnet. **AUTOMATIC VOLUME CONTROL** minimizes fading. **"EASY-VUE"** illuminated slide rule dial makes accurate tuning easy on both bands. **POWER SUPPLY:** works from 110-120 volts 50-60 cycle A.C. or from 110-120 volts D.C. **BEAUTIFULLY STYLED PLASTIC CABINET** available in Walnut or with Ivory finish. Dimensions 12 $\frac{3}{4}$ " x 6 $\frac{3}{4}$ " x 8". Take advantage of our Home Trial offer. Try this splendid radio in your own home for 30 days. Satisfaction guaranteed or your money refunded. Shipping wt. 12 lbs. **MODEL JL-6** Walnut finish. **Your Cost \$25.95**
MODEL JL-6Y Same as Model JL-6 but in Ivory finish cabinet. **Your Cost \$26.85**

**Budget-Wise
Price \$22.95
(IN WALNUT)
MODERN DESIGN AC-DC
PLASTIC SUPERHET**

Get the PLUS that only Lafayette engineering and production skill can give you in this modern, handsomely attractive plastic cabinet superhet. This jewel of a radio more than lives up to the standards that have made the Lafayette name renowned for quality, dependability and performance wherever fine radios are known. Its advanced engineering, its oversize speaker, its full range tone control all add up to give you the BIG tone performance you want. Here are just a few of the features of this great dollar saving radio value:

MODERN SUPERHET CIRCUIT embodying five tubes plus a rectifier. Tubes consist of 12SK7 R.F. amplifier, 12SA7 dual-purpose, oscillator and converter, 12SK7 I.F. amplifier, 12SQ7 triple purpose, detector, A.V.C. and first audio amplifier, 50L6 Beam Power output plus 35Z5 rectifier.

FREQUENCY RANGE from 550 to 1600 Kc. covers the entire domestic broadcast band.

AUTOMATIC VOLUME CONTROL minimizes annoying signal fading. **FULLY VARIABLE TONE CONTROL** to suit your individual taste in listening.

ALNICO 5 5" PM speaker has heavy duty magnet to develop the full power and quality of the Beam Power output tube in a small speaker area. 110-120V 50-60 cyc. AC or DC. Smartly finished plastic cabinet, 12 $\frac{3}{4}$ " x 6 $\frac{3}{4}$ " x 8" available in Walnut or with Ivory finish.

Try this fine instrument in your own home for 30 days. Our Home Trial plan guarantees full satisfaction or your money back.

Licensed under R.C.A. and Hazeltine patents. Shipping wt. 12 lbs.

MODEL JL-5 Broadcast band receiver complete with tubes. Walnut plastic. **Your Cost \$22.95**

MODEL JL-5Y Same as above but with Ivory plastic finish. **Your Cost \$23.85**

ALL LAFAYETTE Radios are R. C. A. and Hazeltine Licensed

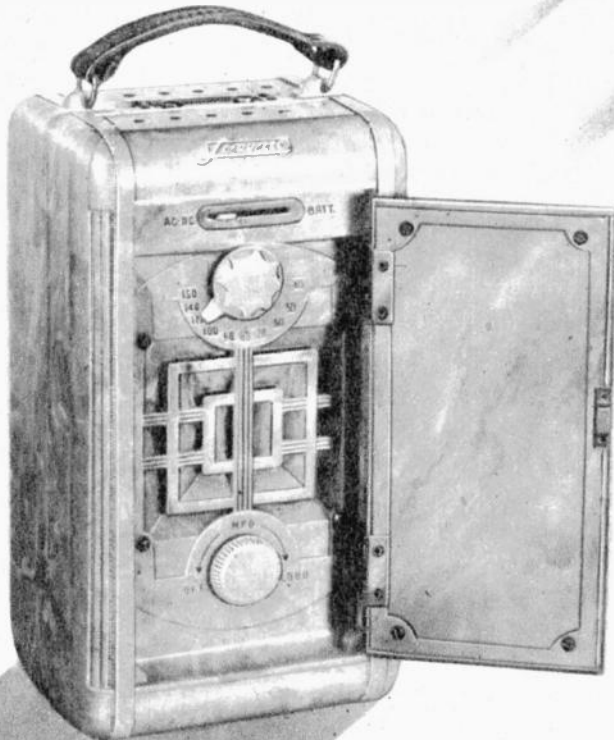
Lafayette

3 WAY PORTABLES ARE 3 WAYS BETTER

**Better
Performance**

**Better
Portability**

**Better
Value**



Lafayette 3-WAY PERSONAL PORTABLE

Another outstanding Lafayette buy! This Personal Portable is a marvel of efficiency and styling. Compact, rugged, dependable, you can take it anywhere, play it anywhere, on A.C., D.C. or self-contained batteries. And it starts instantly. The space saving selenium rectifier gives trigger-quick start. You don't have a long waiting period for tubes to warm up. Handsome, sturdy Tenite case features a High-Q loop built into the door for maximum signal pick-up. Virtually unbreakable case, rugged leather carrying handle. Only 8 1/2 inches high, 4 1/2 inches wide and 3 3/4 inches deep. Weighs only 4 1/2 lbs. Circuit licensed under R.C.A. and Hazeltine patents contains the latest design features including a planetary drive variable condenser for smooth, easy tuning, four low drain tubes, a selenium rectifier, and automatic volume control. Tubes are a 1R5 oscillator and converter, a 1T4 I.F. amplifier, a 1S5 detector, A.V.C. and first audio amplifier and a 3Q4 final audio amplifier. Speaker has an Alnico 5 magnet for extra power, clear tone on music and voice. Covers entire AM broadcast band. Hinged case makes battery changing easy. For 110 volts A.C. or D.C. and batteries. Requires one 67 1/2 volt battery and two 1 1/2 volt flashlight cells. Makes an ideal gift, distinctive and personal, to be used and enjoyed the year round.

MODEL J4 Shpg. wt. 6 lbs.
Complete with tubes, less batteries. **\$24.95**
Your Cost
Complete Set of Batteries **\$1.84**

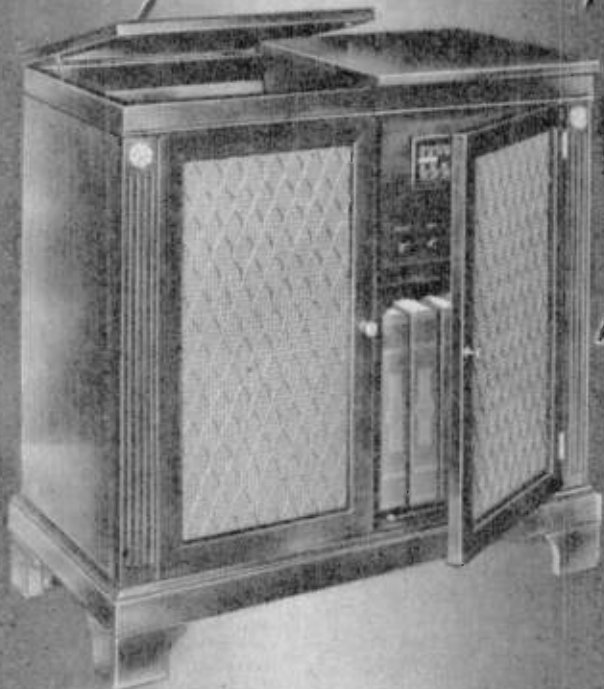
Lafayette 3-WAY DE-LUXE PORTABLE

A powerful portable . . . you can use it as a permanent set in the home, or take it on outings, vacations, on boats and trains, football games, in fact anywhere . . . for delightful, spontaneous entertainment. Has the clear, vibrant tones you would expect of higher-priced non-portable sets. Beautiful simulated alligator case looks like a piece of expensive luggage. Genuine leather carrying handle and heavily plated hardware built to last. Modern supersensitive circuit contains five tubes plus rectifier, three-gang condenser, tuned R.F. stage. Tube complement consists of one 1T4 R.F. amplifier, one 1R5 oscillator-converter, one 1T4 I.F. amplifier, one 1S5 detector, A.V.C. and first audio amplifier, one 3Q5 beam power amplifier and one 11Z3 rectifier. Operates on its own self-contained batteries, on 105-125 volts 40-60 cycles A.C. or on 105-125 volts D.C. Requires two 45 volt B batteries and two 4 1/2 volt A batteries. Full view easy-to-read slide rule dial is 5 3/4 inches wide, tunes from 538 to 1650 Kc. covering the entire broadcast band and some police calls. 5" dynamic speaker with 1.47 oz. Alnico 5 magnet gives clean, clear tone. High efficiency built-in loop antenna. Cabinet size only 12 3/4 inches wide, 10 1/2 inches high, 7 inches deep. Weighs 15 lbs. 10 oz. with batteries, only 9 3/4 lbs. less batteries. Circuit licensed under R.C.A. and Hazeltine patents. Try this set under our 30 day home trial plan (batteries excluded). See for yourself. Convince yourself that it is everything we claim.

MODEL JS-1 With tubes, less batteries.
Shipping weight 11 lbs. **\$35.95**
Your Cost
Complete set of batteries **\$3.82**

**ALL LAFAYETTE Radios are
R. C. A. and Hazeltine Licensed**

truly... an incomparable value!



AM
+ FM
+ PHONO
+ BEAUTY

ALL ADD UP TO 'Best Buy'
A Lafayette

FM-AM Receiver—
Automatic Changer Console

- In a rich, luxury-styled cabinet you get
- Magnificent, lifelike, noiseless FM
 - Remarkable superb AM
 - Extra-power push-pull audio
 - Silent, smooth automatic changer

Imagine! You can tune in your best liked AM broadcasts (540 to 1700 Kc.), or enjoy superb listening on the new FM channel (88 to 108 Mc.), or just lean back and listen to forty minutes of uninterrupted playing of your favorite records. This console has all the exclusive features of higher priced combinations—full range tone control, AVC, dual antenna system with built-in AM loop, FM folded dipole, plus outside antenna terminals. 12-inch Alnico 5 PM speaker gives fullest tones with extra power. De luxe automatic record changer plays ten 12-inch or twelve 10-inch records at one loading. Tubes: 6BA6, 7A6, 7AG7, 7AH7, 7C6, 7F7, 7F8, 7Q7, plus a 5Y3 rectifier. Operates on 110 volts 60 cycles AC only. This desirable combination is available in several models: MODEL M-72: Graceful lines and sturdy support mark this well built mahogany veneer console. Has lift top feature for greatest changer compartment accessibility. Ample album space. 34 $\frac{1}{2}$ "x34 $\frac{1}{2}$ "x16 $\frac{1}{4}$ ". Shpg. wt. 100 lbs. FM-AM radio and automatic changer. 30-day home trial.

Model M-72 **\$197.50**

Your Cost

MODEL M-73: A superb extra-thick mahogany veneer console, hand-crafted and polished to a rich, warm finish. Pullout record compartment. Matching door with antique bronze handle opens to expose clear, easy to read and operate radio section. The improved changer has additional features of automatic stop after last record and universal holder action, as well as a larger motor for dependable constant speed operation. 34x35x17 $\frac{1}{4}$ ". Shpg. wt. 110 lbs. FM-AM radio and automatic changer. 30-day home trial.

Model M-73 **\$224.50**

Your Cost

MODEL M-74: Handsome, convenient chairside model. Same outstanding features as M-73 above. 17 $\frac{1}{4}$ " W x 26 $\frac{1}{4}$ " H x 29 $\frac{1}{4}$ " D. Leather basketweave grille. Mahogany or walnut, specify. Shpg. wt. 100 lbs. 30-day home trial.

Model M-74 **\$224.50**

Your Cost

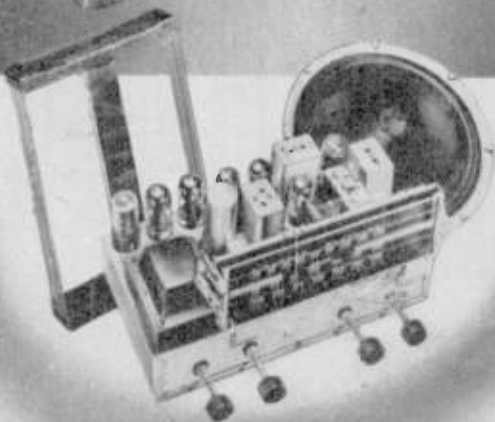
FM-AM Receiver Chassis

Lafayette offers you the same elements that go into the making of our magnificent consoles (described above)—in the form you can afford. This is the FM-AM chassis you can put right into your own cabinet, or rig up to suit your individual needs. You get a 7 stage section for finest listening on the standard broadcast band from 540 to 1700 kilocycles and a 10 stage FM channel covering 88 to 108 megacycles. The conservative fidelity ratings achieved are 60 to 7700 cps on AM and 40 to 12,000 cps on FM. Built-in tone control permits you to vary tone to suit your individual listening requirements. In broadcast areas where signals are strong, no external antenna whatsoever is needed for either FM or AM reception. However, it is recommended that an FM dipole be used for improving pickup when you are at some distance from the station. Two antennas are built-in for FM and AM, with provision for outside extension. To round out this high-fidelity group, a 12-inch Alnico 5 permanent magnet speaker gives clear, faithful reproduction. Operates on 110-120 volts 60 cyc AC. Tubes: 1-6BA6, 1-7A6, 1-7AG7, 1-7AH7, 2-7C5, 1-7C6, 1-7F7, 1-7F8, 1-7Q7. Also uses 5Y3 rectifier. Chassis size: 12x9x9 $\frac{1}{2}$ ". Loop, 11x13x1 $\frac{1}{4}$ ". Shpg. wt. 25 lbs.

Model M-70—FM-AM Chassis, 12" **\$89.50**

Speaker, and Two Antennas.

Your Cost, Only



THE *Ultimate* IN DISTINCTIVE
THE GREAT



Hear fine music as the composer dreamed it would be heard by you, for you—alive, colorful, pulsating—on an instrument worthy of the finest, capable of the best musical reproduction the electronic art has ever offered.

Choose the Lafayette Concerto as your assurance of quality, reputation and performance. Let the Lafayette Concerto be your standard—you'll find nothing finer, no set a greater value.



LISTENING *Lafayette* CONCERTO

The FM-AM Radio Phonograph Combination Supreme . . .

NOW the Lafayette Concerto, the great new musical reproducing instrument is ready to bring you that radiantly alive, thrillingly real re-creation of radio and recorded music you've always hoped for. Musicians, engineers and critics are acclaiming the Concerto superior to any other FM-AM radio-phonograph combination ever offered at any price. Lafayette's engineers and designers worked long and arduously to create this entirely new and better instrument for those who consider quality alone of primary importance. New electronic engineering, advanced acoustic design are joined with superb cabinetry to give you the very finest in sound and appearance. We believe that when you hear Lafayette Concerto your reaction will be one of sheer amazement at its startling realism of sound. You will virtually "feel" the performing presence in your home. Your concept of reproduced sound will be completely changed.

The FM-AM Tuner incorporates the genuine Armstrong FM circuit to assure highest fidelity and static-free reception. The highly sensitive AM band covers 630 to 1630 KC; FM band includes the new 88 to 109 MC band. Separate RF and IF systems are utilized for the FM and AM bands. Two-stage cascade limiter on FM insures maximum noise rejection. Tuning "eye" for precision tuning on both bands. Excellent reception on both bands with FM antenna alone. An inter-station noise suppressor, desirable in urban areas, is optional at slight extra cost.

The High-Fidelity Amplifier, the "heart" of the Concerto, is the now famous Lafayette

HF 720 (technical brochure on request), featuring flat frequency response from 30 to 20,000 cps (± 1 db) which more than covers the audio spectrum found in the finest FM transmission and the fullest frequency range recordings, foreign and domestic. Individual bass and treble controls provide complete equalization to suit personal preferences in brilliance and sonority. Rated at 20 watts, virtually distortionless (5%) normal output, peak 35 watts, the amplifier utilizes push-pull beam power output. A pre-amplifier for the G.E. reluctance pickup used in the record player is included. Tuner and amplifier together make use of 16 tubes, plus 1 tuning "eye" and 1 rectifier. Operates on 115 volts, 50-60 cycles A.C.

The Mixer Record-Changer is the world-famed Garrard RC 60 modified by our engineers to include the sensational new General Electric variable reluctance pickup, to bring you record reproduction you've never dreamed possible. Even your old records will have a fresher finer sound and last years longer.

The Tru-Sonic Co-Spiral Speaker, produced by Stephens, makers of fine theatre speakers, has a powerful Alnico 5 magnet and a range to 14,000 cps. The revolutionary new co-spiral has a high frequency dispersion of 90 degrees. Two acoustic sections, a 15-inch seamless curvilinear cone and the co-spiral provide deep, sonorous basses and clear, brilliant highs.

Inter-Station Noise Suppressor (Squelch circuit) is an electronic device which eliminates between-station tuning noises by isolating the speaker from the circuit.

Highly desirable in areas covered by many stations. Optional at slight extra cost.

Exquisite Master-Craft Cabinets. The console and credenza cabinets are truly worthy housings for the great Concerto. Authentic reproductions of magnificent period furniture they are made of 1-inch thick stock with natural grain mahogany veneers, constructed with great care and hand rubbed to a lustrous, enduring finish. Attractive wire grilles and brass knobs. Two record compartments in each cabinet. Genuine Kimsul insulation pads the rear enclosure to neutralize cabinet resonance and eliminate boominess.

LAFAYETTE CONCERTO Console Model (illustrated at left, above), including AM-FM tuner, amplifier, record player and speaker described above in Mahogany Console, 45 1/2 x 38 1/2 x 15 1/2" overall, complete with all tubes, FM antenna.

Your Cost **\$640.00**
For "Squelch" Circuit, add \$15.00

Console Cabinet P-2003, available separately **\$197.00**

LAFAYETTE CONCERTO Credenza Model (illustrated at left, below) as above, but in Mahogany Credenza, 64 1/2 x 39 x 18 1/2" overall, complete with tubes, FM antenna.

Your Cost **\$720.00**
For "Squelch" circuit, add \$15.00

Credenza Cabinet P-2001 available separately **\$275.00**

Your Cost



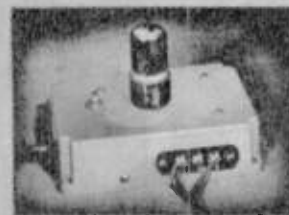
AM-FM TUNER for unsurpassed reception on standard broadcast band and the new FM band (88 to 109 mc.). Powerful, sensitive, selective, it is unequalled for performance and dependability.



THEATRE TYPE CO-SPIRAL SPEAKER with 15-inch cone, co-spiral tweeter and extra heavy Alnico 5 magnet create an indisputable illusion of "live" performance in your home. Represents greatest advance in reproduced sound.



HIGH FIDELITY AMPLIFIER, an engineering marvel, covers complete audible range from 20 to 20,000 cycles per second (± 1 db). 20 watts conservative output. Individual bass and treble controls for complete equalization.



"SQUELCH" CIRCUIT for use in urban areas. Completely kills "between station" noises when tuning AM or FM bands by ingeniously isolating speaker from circuit. Optional at slight extra cost.



GARRARD RC-60 MIXER CHANGER with famed G.E. variable reluctance pick-up provides the ultimate in response from your fine recordings. Plays a full stack of 10" and 12" records in any order. "Rolls-Royce" of record changers!



ACOUSTICALLY INSULATED CABINET. To achieve the ultimate in tonal response the cabinet of the Concerto is scientifically insulated with Kimsul to neutralize cabinet resonance and reverberation.



Lafayette

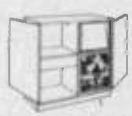
RAFT-BUILT

Lafayette Craft-Built Cabinetry spells magic in wood—the kind of magic that you can take immediate advantage of. Shop the magnificent consoles on these two pages, and you will find the one that fits you in every respect, your personal taste, your home, and your budget. You will see that “Craft-Built” by Lafayette means something.



Model P-2009

Model P-2011

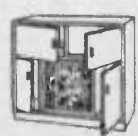


Our newest edition to the “Craft-Built” modern group. Fashioned from subtle Primavera veneers — with sturdy thick stock to assure perfect acoustic resonance. A most intriguing console for its simple lines and natural (blonde) finish. Radio and record changer compartments each measure 12”x16³/₄”x16”. Overall cabinet size is 36”x36¹/₄”x17³/₄”. Ample built-in compartment for your favorite record albums.

Model P-2011—Primavera.....\$150.00

Crating, delivery extra. Prices for other woods and finishes sent on request.

Model P-2007



A carefully styled cabinet for those who prefer the modern touch in their home surroundings. Built by master craftsmen and surfaced with the finest Primavera veneers. A natural (blonde) finish, hand rubbed to a glossy sheen, fully exploits the inherent beauty of the wood. Radio and record changer compartments each measure 21”x16¹/₂”x12”. Overall size is 44”x37”x18”. Two built-in sections provide record album space.

Model P-2007—Primavera.....\$197.00

Crating, delivery extra. Prices for other woods sent on request.

Model P-2009

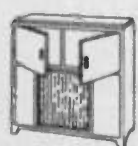


A skillfully patterned replica of period design furniture with split top-lift feature for access to either radio or record changer section. Solid ³/₄” thick stock — surfaced with mahogany veneers. Radio and record changer compartment measures 36”x6¹/₂”x15¹/₂”. Overall dimensions 39”x47¹/₂”x15¹/₂”. Two built-in album compartments

Model P-2009—Mahogany, Your Cost.....\$145.00

Crating, delivery extra. Other wood prices on request.

Model P-2006



Modern and graceful—a typical example of our superior cabinet art. Fabricated of choicest extra-thick oak wood and veneers —hand rubbed to a brilliant satin gloss. Radio and record changer compartments each measure 16¹/₂”x12”x16”. Overall size is 36¹/₄”x17³/₄”x37¹/₄”.

Model P-2006—Natural Oak, Your Cost.....\$135.00

Crating, delivery extra. Other wood prices on request.



Model P-2006

OFFERS YOU CABINETS

For these skillfully fashioned cabinets do more than make an additional piece for the home—most often a "Craft-Built" console becomes the showpiece, the dazzling masterpiece you will be so proud to own. Whether you prefer traditional or modern styling, in simple or ornamental shape, of particular finish or decor, Lafayette has a "Craft-Built" for you.

Model P-2005



Here is an outstanding example of superior wood craftsmanship, which combines space-saving features in a highly attractive period type cabinet. Fabricated with the finest 3/4" thick stock and surfaced with carefully matched sections of natural grain mahogany veneers. Two swing-a-way doors provide access to the radio section. A well built top lift exposes the record changer. The radio compartment measures 23 3/4" x 26" x 16"; record changer space is 23 3/4" x 6 1/2" x 16". Overall size is 25 1/2" x 18" x 39 1/4".

Model P-2005—Mahogany

\$122.00

Your Cost.....
Crating, delivery extra. Prices for other woods and finishes sent on request.

Model IRO-6



A craftsman's handiwork, combining delicate grace of superb period furniture with smart lines of modern styling. Fashioned from 3/4" mahogany veneers to highest artistic and acoustic standards to house the radio and record changer you may choose to install. The lift top feature eliminates hazards of breakage characteristic of cramped enclosures. Simply adorned front has attractive grille and antique finish handles. The radio and record changer space measures 30 1/4" x 5 1/2" x 15". Overall cabinet size is 33 1/2" x 34 1/2" x 17 1/4".

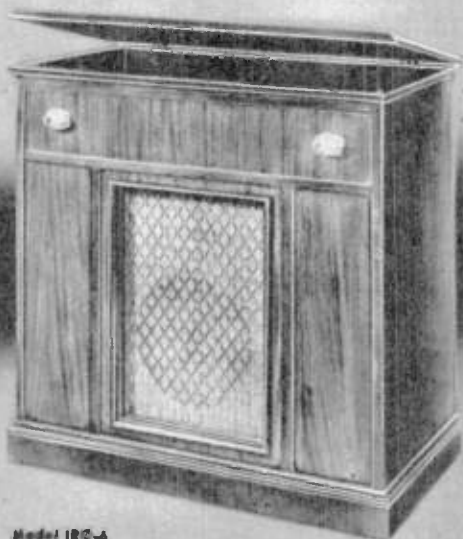
Model IRO-6—Mahogany

\$79.50

Your Cost.....
Crating and delivery extra. Prices for other woods and finishes sent on request.



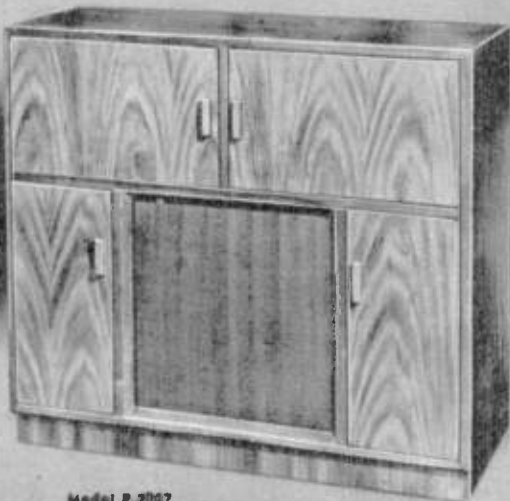
Model P-2005



Model IRO-6



Model P-2011



Model P-2007

Lafayette

RADIO TUBES

RCA

Six Months Guarantee

In Original Factory Cartons

| Tube Type | Laf. Price | RCA Price | Tube Type | Laf. Price | RCA Price | Tube Type | Laf. Price | RCA Price | Tube Type | Laf. Price | RCA Price |
|--------------|------------|-----------|-----------|------------|-----------|-----------|------------|-----------|------------|------------|-----------|
| 0A4G | \$1.15 | \$1.15 | 6AC5GT | \$1.10 | \$1.29 | 65N7GT | \$1.10 | \$1.29 | 12SR7GT | \$.90 | \$1.06 |
| 0Z4 | 1.10 | 1.29 | 6AC7/1852 | 1.33 | 1.56 | 65Q7 | .68 | .79 | 12Z3 | 1.10 | 1.29 |
| 0Z4G | 1.10 | 1.29 | 6AD7G | 1.33 | 1.56 | 65Q7GT | .75 | .88 | 14A4 | 1.33 | 1.56 |
| 1A3 | .90 | 1.06 | 6AF6G | 1.10 | 1.29 | 65R7 | .75 | .88 | 14A5 | 1.95 | 2.29 |
| 1A4P | 1.60 | 1.88 | 6AG5 | 1.33 | 1.56 | 65S7 | .90 | 1.06 | 14A7/12B7 | 1.10 | 1.29 |
| 1A5GT | .75 | .88 | 6AG7 | 1.33 | 1.56 | 65T7 | 1.10 | 1.29 | 14B6 | 1.10 | 1.29 |
| 1A6 | 1.33 | 1.56 | 6AK6 | 1.10 | 1.29 | 65Z7 | .90 | 1.06 | 14B8 | 1.10 | 1.29 |
| 1A7GT | .90 | 1.06 | 6AL5 | .90 | 1.06 | 6T7G | 1.33 | 1.56 | 14C7 | 1.10 | 1.29 |
| 1B3GT | 1.95 | 2.29 | 6AQ5 | .90 | 1.06 | (6Q6G) | | | 14E6 | .90 | 1.06 |
| 1B4P | 1.60 | 1.88 | 6AQ6 | .90 | 1.06 | 6U5/6G5 | .90 | 1.06 | 14F7 | 1.10 | 1.29 |
| 1B5(1B5/255) | 1.33 | 1.56 | 6AT6 | .75 | .88 | 6U7G | .75 | .88 | 14H7 | 1.33 | 1.56 |
| 1C5GT | .90 | 1.06 | 6AU6 | .90 | 1.06 | 6V6 | 1.33 | 1.56 | 14J7 | 1.33 | 1.56 |
| 1C6 | 1.33 | 1.56 | 6B4G | 1.33 | 1.56 | 6V6GT | .90 | 1.06 | 14N7 | 1.33 | 1.56 |
| 1C7G | 1.33 | 1.56 | 6B5 | 1.33 | 1.56 | 6W7G | 1.10 | 1.32 | 14Q7 | 1.10 | 1.29 |
| 1D5GP | 1.60 | 1.88 | 6B6G | .75 | 1.06 | 6X4 | .75 | .88 | 14R7 | 1.10 | 1.29 |
| 1D7G | 1.33 | 1.56 | 6B7 | 1.33 | 1.56 | 6X5 | 1.10 | 1.29 | 15 | 1.33 | 1.56 |
| 1D8GT | 1.60 | 1.88 | 6BA6 | .90 | 1.06 | 6X5GT | .68 | .79 | 19 | 1.33 | 1.56 |
| 1E5GP | 1.95 | 2.29 | 6BE6 | .90 | 1.06 | 6Y6G | 1.10 | 1.29 | 24A | 1.06 | 1.29 |
| 1E7G | 1.60 | 1.88 | 6BF6 | .75 | .88 | 6Y7G | 1.60 | 1.88 | 25A6 | 1.33 | 1.56 |
| 1F4 | 1.10 | 1.29 | 6BG6G | 2.40 | 2.82 | 6Z7G | 1.60 | 1.88 | 25L6 | 1.33 | 1.56 |
| 1F5G | 1.10 | 1.29 | 6BJ6 | .90 | 1.06 | 6ZY5G | .90 | 1.06 | 25L6GT | .75 | .88 |
| 1F6 | 1.60 | 1.88 | 6B8 | 1.33 | 1.56 | 7A4 | .90 | 1.06 | 25Z5 | .68 | .79 |
| 1F7G | 1.60 | 1.88 | 6B8G | 1.33 | 1.56 | 7A5 | .90 | 1.06 | 25Z6 | .90 | 1.06 |
| 1G4GT | 1.10 | 1.29 | 6C4 | .75 | .88 | 7A6 | .90 | 1.06 | 25Z6GT | .68 | .79 |
| 1G5G | 1.10 | 1.29 | 6C5 | .75 | .88 | 7A7 | .90 | 1.06 | 26 | .75 | .88 |
| 1G6GT | 1.10 | 1.29 | 6C5GT | .75 | .88 | 7A8 | .90 | 1.06 | 27 | .68 | .79 |
| 1H4G | .90 | 1.06 | 6C6 | .90 | 1.06 | 7B4 | .90 | 1.06 | 30 | .90 | 1.06 |
| 1H5GT | .75 | .88 | 6C8G | 1.33 | 1.56 | 7B5 | .90 | 1.06 | 31 | 1.10 | 1.29 |
| 1H6G | 1.33 | 1.56 | 6D6 | .75 | .88 | 7B6 | .90 | 1.06 | 32 | 1.33 | 1.56 |
| 1J5G | 1.33 | 1.56 | 6D8G | 1.33 | 1.56 | 7B7 | .90 | 1.06 | 32L7GT | 1.60 | 1.88 |
| 1J6GT | 1.33 | 1.56 | 6E5 | .90 | 1.06 | 7B8 | .90 | 1.06 | 33 | 1.33 | 1.56 |
| 1L4 | .90 | 1.06 | 6F5 | .75 | .88 | 7C5 | .90 | 1.06 | 34 | 1.33 | 1.56 |
| 1LA4 | 1.33 | 1.56 | 6F5GT | .75 | .88 | 7C6 | .90 | 1.06 | 35/51 | .90 | 1.06 |
| 1LA6 | 1.33 | 1.56 | 6F6 | .90 | 1.06 | 7C7 | .90 | 1.06 | 35A5 | .90 | 1.06 |
| 1LB4 | 1.33 | 1.56 | 6F6G | .75 | .88 | 7E6 | .90 | 1.06 | 35B5 | .90 | 1.06 |
| 1LC5 | 1.33 | 1.56 | 6F6GT | .75 | .88 | 7E7 | 1.10 | 1.29 | 35L6GT | .75 | .88 |
| 1LC6 | 1.33 | 1.56 | 6F7 | 1.33 | 1.56 | 7F7 | 1.10 | 1.29 | 35W4 | .58 | .68 |
| 1LD5 | 1.33 | 1.56 | 6F8G | 1.33 | 1.56 | 7F8 | 1.33 | 1.56 | 35Y4 | 1.10 | 1.29 |
| 1LE3 | 1.33 | 1.56 | 6G6G | 1.10 | 1.29 | 7G7/1232 | 1.33 | 1.56 | 35Z3 | .90 | 1.06 |
| 1LH4 | 1.33 | 1.56 | 6H6 | .75 | .88 | 7H7 | 1.10 | 1.29 | 35Z4GT | .63 | .73 |
| 1LN5 | 1.33 | 1.56 | 6H6GT | .75 | .88 | 7J7 | 1.33 | 1.56 | 35Z5GT | .58 | .68 |
| 1N5GT | .90 | 1.06 | 6J5 | .68 | .79 | 7L7 | 1.10 | 1.29 | 36 | 1.10 | 1.29 |
| 1P5GT | 1.10 | 1.29 | 6J5GT | .68 | .79 | 7N7 | 1.10 | 1.29 | 37 | .75 | .88 |
| 1Q5GT | 1.10 | 1.29 | 6J6 | 1.33 | 1.56 | 7Q7 | .90 | 1.06 | 38 | .90 | 1.06 |
| 1R5 | .90 | 1.06 | 6J7 | .90 | 1.06 | 7R7 | 1.10 | 1.29 | 39/44 | 1.10 | 1.29 |
| 1S4 | 1.10 | 1.29 | 6J7G | .90 | 1.06 | 7S7 | 1.33 | 1.56 | 41 | .75 | .88 |
| 1S5 | 1.10 | 1.29 | 6J8G | 1.33 | 1.56 | 7V7 | 1.33 | 1.56 | 42 | .75 | .88 |
| 1T4 | .90 | 1.06 | 6K5GT | .75 | .88 | 7W7 | 1.33 | 1.56 | 43 | .75 | .88 |
| 1T5GT | 1.10 | 1.29 | 6J7GT | .75 | .88 | 7Y4 | .90 | 1.06 | 45 | .75 | .88 |
| 1U4 | .90 | 1.06 | 6K6GT | .68 | .79 | 7Z4 | .90 | 1.06 | 45Z3 | .75 | .88 |
| 1U5 | 1.10 | 1.29 | 6K7 | .75 | .88 | 10 | 1.95 | 2.29 | 45Z5GT | .75 | .88 |
| 1V | .90 | 1.06 | 6K7G | .75 | .88 | 12A7 | 1.33 | 1.56 | 46 | 1.10 | 1.29 |
| 2A3 | 1.33 | 1.56 | 6K7GT | .75 | .88 | 12A8GT | .90 | 1.06 | 47 | 1.10 | 1.29 |
| 2A4G | 1.60 | 1.88 | 6K8 | 1.10 | 1.29 | 12AH7GT | 1.10 | 1.29 | 49 | 1.10 | 1.29 |
| 2A5 | .90 | 1.06 | 6K8G | 1.33 | 1.56 | 12AL5 | .90 | 1.06 | 50 | 1.95 | 2.29 |
| 2A6 | 1.10 | 1.29 | 6L5G | 1.10 | 1.29 | 12AT6 | .75 | .88 | 50A5 | 1.10 | 1.29 |
| 2A7 | 1.10 | 1.29 | 6L6 | 1.60 | 1.88 | 12AU6 | .90 | 1.06 | 50B5 | .90 | 1.06 |
| 2B7 | 1.10 | 1.29 | 6L6G | 1.33 | 1.56 | 12AU7 | 1.10 | 1.29 | 50L6GT | .75 | .88 |
| 2E5 | 1.10 | 1.29 | 6L7 | 1.10 | 1.29 | 12AW6 | 1.33 | 1.56 | 50Y6GT | .75 | .88 |
| 2V3G | 2.75 | 2.75 | 6L7G | 1.33 | 1.56 | 12BA6 | .90 | 1.06 | 53 | 1.10 | 1.29 |
| 2X2/879 | 1.60 | 1.88 | 6N7 | 1.10 | 1.29 | 12BE6 | .90 | 1.06 | 55 | .90 | 1.06 |
| 3A8GT | 1.95 | 2.29 | 6N7GT | 1.10 | 1.29 | 12C8 | 1.33 | 1.56 | 56 | .75 | .88 |
| 3LF4 | 1.33 | 1.56 | 6P5GT | .90 | 1.06 | 12F5GT | .75 | .88 | 57 | .90 | 1.06 |
| 3Q4 | .90 | 1.06 | 6Q7 | .90 | 1.06 | 12H6 | .75 | .88 | 58 | .90 | 1.06 |
| 3Q5GT | 1.10 | 1.29 | 6Q7G | .75 | .88 | 12J5GT | .68 | .79 | 59 | 1.33 | 1.56 |
| 3S4 | .90 | 1.06 | 6Q7GT | .75 | .88 | 12J7GT | .90 | 1.06 | 70L7GT | 1.95 | 2.29 |
| 3V4 | .90 | 1.06 | 6R7 | 1.10 | 1.29 | 12K7GT | .75 | .88 | 71A | .90 | 1.06 |
| 5T4 | 1.60 | 1.88 | 6R7GT | .90 | 1.06 | 12K8 | 1.10 | 1.29 | 75 | .75 | .88 |
| 5U4G | .68 | .79 | 6S7 | 1.10 | 1.29 | 12Q7GT | .75 | .88 | 76 | .75 | .88 |
| 5V4G | 1.10 | 1.29 | 6S7G | 1.33 | 1.56 | 12SA7 | .75 | .88 | 77 | .75 | .88 |
| 5W4 | 1.10 | 1.29 | 6S8GT | 1.10 | 1.32 | 12SA7GT | .90 | 1.06 | 78 | .75 | .88 |
| 5X4G | .75 | .88 | 6SA7 | .75 | .88 | 12SC7 | .90 | 1.06 | 79 | 1.10 | 1.29 |
| 5Y3GT | .48 | .56 | 6SA7GT | .75 | .88 | 12SF5 | .75 | .88 | 80 | .53 | .62 |
| 5Y4G | .63 | .73 | 6SB7Y | 1.10 | 1.29 | 12SF7 | .90 | 1.06 | 81 | 1.60 | 1.88 |
| 5Z3 | .75 | .88 | 6SC7 | .90 | 1.06 | 12SG7 | .90 | 1.06 | 82 | 1.10 | 1.29 |
| 5Z4 | 1.10 | 1.29 | 6SF5 | .75 | .88 | 12SH7 | .90 | 1.06 | 83 | 1.10 | 1.29 |
| 6A3 | 1.33 | 1.56 | 6SF5GT | .90 | 1.29 | 12SJ7 | .75 | .88 | 83V | 1.33 | 1.56 |
| 6A4/LA | 1.33 | 1.56 | 6SF7 | .90 | 1.06 | 12SJ7GT | .75 | .88 | 84/6Z4 | .75 | .88 |
| 6A6 | 1.10 | 1.29 | 6SG7 | .90 | 1.06 | 12SK7 | .75 | .88 | 85 | .90 | 1.06 |
| 6A7 | .90 | 1.06 | 6SH7 | .90 | 1.06 | 12SK7GT | .75 | .88 | 89 | .90 | 1.06 |
| 6A8 | .90 | 1.06 | 6SJ7 | .75 | .88 | 12SL7GT | 1.10 | 1.29 | 117L7/M7GT | 1.95 | 2.29 |
| 6A8G | .90 | 1.06 | 6SJ7GT | .75 | .88 | 12SN7GT | 1.10 | 1.29 | 117N7GT | 1.95 | 2.29 |
| 6A8GT | .90 | 1.06 | 6SK7 | .75 | .88 | 12SQ7 | .68 | .79 | 117P7GT | 1.95 | 2.29 |
| 6AB5/6N5 | 1.10 | 1.29 | 6SK7GT | .75 | .88 | 12SQ7GT | .75 | .88 | 117Z3 | .90 | 1.06 |
| 6AB7/1853 | 1.33 | 1.56 | 6SL7GT | 1.10 | 1.29 | 12SR7 | .90 | 1.06 | 117Z6GT | 1.10 | 1.29 |

fluorescent units

Gooseneck Desk Lamp



14 watts, 110 volts 25-60 cycles AC or DC. Flexible as your wrist. Instantly set to any position. Lights immediately. Resistor ballast keeps cord cool. Sturdy base, brown finish. 7 lbs. **K25500**—Model MIX, less lamp. **Your Cost \$7.95**
K25520—Lamp for above 81c

STARLITE Bed Lamp



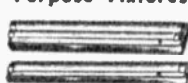
Easier on the eyes... cooler than any bed lamp you've ever tried. For real reading comfort this fluorescent bedlamp has no direct. The rays are directed at exactly the right angle, and concentrated to give abundant light where needed—without shining throughout entire room. It is far cooler than ordinary light, and its brilliant glow is glareless and practically shadowless, restful. Streamline shape blends with contours of any bed. 110V AC only. Quantity limited. Complete with bulb. **K25504**—**Your Cost \$4.95**

Industrial All-Purpose Fixture



Dual 40-watt units. Works on 110-125 V 60 cycles AC. For factory—shop—drafting room. 24 hours of concentrated light without glare or annoying flicker. Approved by Underwriters' Laboratories. Heavy gauge steel bodies. Knockouts for surface, chain, or rod suspension mtg. 35 lbs. **Your Cost \$14.50**
Lamps For Above
K25539—White **\$1.03..**
K25540—Daylight

Channel-Type All-Purpose Fixtures



Thousands of uses for assembly tables, work benches, machines, walls, ceilings, showcases, windows, booths, etc. Excellent for more and better light in the right places. Gives new high standards in lighting performance, where and when needed at a remarkably low cost. Works on 110-125V 60 cycles AC only. Single lamp channels in two sizes. Less lamps. **K25563**—20 watts—5 lbs. **Your Cost \$3.95**
Each.....
K25564—40 watts—9 lbs. **Your Cost \$6.95**
Each.....

Infra-Red Heat Lamp



250w, 110V DC or 60 cyc. AC. For heat therapy or general use where concentrated heat is desired. Ideal for drying clothes, paint, hair, etc. An excellent therapeutic aid for aches, pains, or soreness. For standard home socket. **K25503** **Each \$1.25**

Desk Lamp

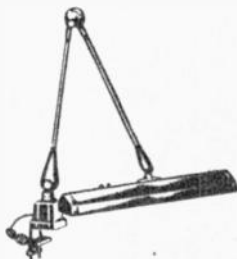


Attractive brown morocco finish desk lamp. 14 1/2 x 5 1/2 x 18" wide. Uses one T-8 15-watt lamp. Scientific reflector, washable white enamel. Shipping wt. 5 lbs. **K25551**—**Each, Less Lamp \$5.65**

Lamps For Above

K25496—White T-8 **67c**
K25497—Daylight T-8..... 67c

FLEXO Adjustable Lamp



At home or at work, FLEXO brings you a cool, diffused light exactly where and when you want it. Successfully employed right now in many factories, laboratories, offices, mills, and homes. By a mere touch of the hand the FLEXO lamp glides into virtually any position without loosening or tightening screws. It remains in a given position without locking. Tubing is 1/2" dia. quality steel with oven fired statuary bronze finish, baked enamel. Inner surface of reflector is washable Litex white enamel. Horizontal swing to 330 degrees, extension to 36 inches. Six flexible joints permit dozens of lighting positions. Two sturdy bolts clamp the base to any table or desk top up to 3" thick. Uses 2 lamps. **K25505**—FLEXO 4303, complete with lamps **Your Cost \$17.95**

Kitchen Fixture



With this adapter, fluorescent lighting can be installed in any incandescent type of fixture employing a globe with a 4" diameter holder. Just insert plug into lamp socket, fasten adapter in shade holder and enjoy modern, better, cooler lighting instantly. Holds two 20-watt 24" lamps. With 4" adapter, Less Lamps. Shpg. wt. 8 lbs. **K25581**—**Your Cost \$6.49**
K25535—White Lamp..... 81c
K25536—Daylight Lamp..... 81c

Household Fixture



Fluorescent kitchen fixture with adapter which permits installation in any incandescent type fixture employing a globe with a 4" diameter holder. Just insert the adapter plug into the lamp socket, fasten the adapter in the globe holder and enjoy modern, better, cooler lighting instantly. Holds two 20-watt 24" bulbs. Finished in white baked enamel with chrome strips and translucent glass ends. 25" long. **K25683**—Less Lamps, **Each \$6.59**
K25536—Daylight Lamp..... 81c
K25535—White Lamp..... 81c

Fluorescent Starters



Extremely sturdy and dependable starters for all of the different sizes and styles of fluorescent lamps. Keep a few on hand at all times for that unexpected moment when the light fails. **K13802** FS-5 6"

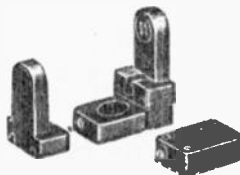
4-W; 9" 6-W and 12" 8-W lamps. **Your Cost**..... 27c
K13810 FS-2, 18" 15-W; 24" 20-W
K13811 FS-4, 36" 30-W; 48" 40-W
Either Above, **Each**..... 24c
K13820 FS-7, For 36" 65-W lamps 60c
K13813 FS-6, For 60" 100-W lamps 48c

Fluorescent Noise Filter



Under certain conditions it is often found that radio receivers connected to the same power lines will pick up electrical noise from a fluorescent fixture. Leads from filter are connected to power line and the case is grounded. The filter itself can be installed inside of the offending fixture. Will fit all fluorescent fixtures. DeLuxe Filter—Cures the most obstinate cases. Wt. 1 lb. **K12520** **Your Cost 88c**

Fluorescent Sockets



Combination sockets include socket for the starter. All are molded of durable heat-proof plastic. **K13803** Comb. Black..... 24c
K13804 Comb. White..... 26c
K13805 Plain Black..... 14c
K13806 Plain White..... 15c
K13801 T-17 Sockets (100 W) Per Pair, **Your Cost 79c**

Fluorescent Sidewall Brackets



These attractive fixtures have many applications for decorative and utilitarian purposes. Alongside mirrors and medicine cabinets they provide a flood of soft glareless light for putting on or taking off makeup or shaving. With one of the many beautiful and tastefully colored fluorescent lamps (available in red, pink, gold, blue, etc.) they can be used for many decorative purposes. Often used horizontally on the wall alongside the tables in a restaurant to provide excellent glareless illumination of the table top. Types are available as illustrated. Type A is plain. Type B has an outlet at one side for connecting an electric shaver, etc. 14-watt sizes are 15" long and 3 1/4" wide. They have a switch at one end and are finished in highly polished



chrome. All are for use on 110 volts, 60 cycles AC only. They are easily installed and meet Underwriters' specifications. All components—ballasts, starters, sockets and switch are of the highest quality. All are sold less lamp.

| Stock No. | Type | Shpg. Wt. | Each |
|---------------|------|-----------|--------|
| K25676 | A | 3 lbs. | \$4.45 |
| K25677 | B | 3 lbs. | 4.75 |

GE Mazda Fluorescent Lamps

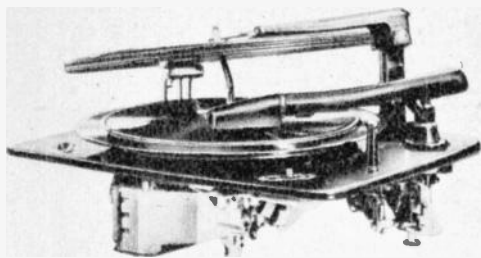
All supply several times the usable light output of ordinary incandescent lamps. Rated life better than 2500 hours.

| Stock No. | Stock No. | Stock No. | GE No. | Dimen. L x D | Watts | Each | Lots of | Each | Lots of | Each |
|---------------|---------------|---------------|--------|--------------|-------|--------|---------|--------|---------|--------|
| K25533 | K25513 | K25534 | T6 | 9x3/4" | 6 | \$0.81 | 7 | \$0.66 | 24 | \$0.62 |
| K25527 | K25514 | K25528 | T5 | 12x3/4" | 8 | .91 | 6 | .74 | 24 | .70 |
| K25529 | K25518 | K25530 | T12 | 15x1 1/2" | 14 | .81 | 7 | .66 | 24 | .62 |
| K25496 | K25516 | K25497 | T8 | 18x1" | 15 | .67 | 9 | .55 | 24 | .52 |
| K25535 | K25519 | K25536 | T12 | 24x1 1/2" | 20 | .81 | 7 | .66 | 24 | .62 |
| K25537 | K25520 | K25538 | T8 | 36x1" | 30 | .81 | 7 | .66 | 24 | .62 |
| K25539 | K25522 | K25540 | T12 | 48x3/4" | 40 | 1.03 | 5 | .88 | 24 | .83 |

All have standard 2 pin base. Approx. shipping weights: 6 & 8 watt—1 1/4 lbs.; 14, 15, 20 watt—2 lbs.; 30 & 40 watt—3 1/2 lbs. All above prices include Federal Excise Taxes. **NOTE:** When purchasing lamps with any fluorescent fixture listed use 1st "Lots of" price instead of single price. We can furnish all above lamps in red, gold and pink on special order. Prices on application.

All Prices Subject To Change Without Notice

automatic record changers



MIXER CHANGER DE-LUXE

GARRARD RC-60

This de-luxe "mizer" automatic record changer is of radically different design. You can adjust to perfect operating speed (78 rpm), or accelerate or retard the tempo. 10" and 12" records may be mixed in any sequence. Swift, gentle changing regardless of record warpage. The non-slip spindle is available only on Garrard. The true-tangent pick-up has a ball bearing jeweled mount and pivot. Requires 15 x 13 x 9 1/4" overall clearance. Shpg. wt. 20 lbs.

Model 60/LC AC Model, 110/130 volts, 50/60 cycles; with low pressure crystal pickup and permanent stylus. **\$69.50**

K20985 Your Cost
Model 60/LR AC Model as above, with crystal pickup for use with replaceable needles. **\$69.50**

K20991 Your Cost
Model 60/LM AC Model as above, with Garrard magnetic pickup for use with replaceable needles. **\$69.50**

K20986 Your Cost
Model 60/UR Model 60/LR modified. Has AC-DC dual voltage, 110/130 and 200/250 V., 25-60 cyc. **\$89.50**

K20992—Your Cost

WEBSTER CHICAGO



Model 70 Mixer-Changer

Plays full 1 1/2" stack of 10-12 inch records intermixed or a stack of either size. And for the first time automatic release of drive mechanism when the machine is not running a long-awaited solution for thumps caused by long periods of non-use. Model 70 automatically turns off after the last record has been played. Manual control switch permits playing home recordings or "inside-out" records. The cushioned spindle protects records. It is easily removable for easy handling of played records. Concealed mounting hardware. 14" square mounting base. 10 1/2" deep. 25 lbs.

K20908 Less needle and base. **\$42.34**

Your Cost

Metal mtg. base, 14 x 14 x 4". **\$3.45**

K19469



Model 56 Record Changer

An excellent record changer in the famous Webster tradition. Plays ten 12" or twelve 10" records at one loading. Automatic stop after last record. Feather-light crystal pickup. Velvet-soft turntable—gentle on your records. Quiet in action. Only one button for all operations. Offset spindle increases record life—no cracked or chipped edges. Cushion-mounted motor eliminates rumble or "wow." Heavy-duty parts for lasting performance. 14" square mounting base. Overall depth above and below mounting board, 9 inches. Shpg. wt. 21 lbs.

K20909—Model 56, less needle **\$26.66**

and base. **Your Cost**

Metal Mounting Base for Model 56.

K19464—14 x 14 x 4", wt. 6 lbs. **\$3.45**

Your Cost



Model 50 Record Changer

Enjoy the easy operation of a Model 50. Compact and efficient. Fast change cycle—about 4 seconds. Feather-light horizontal and vertical needle pressure. Automatically plays all standard records; twelve 10" or ten 12". Quiet record drop on velvet soft heavy-pile turntable covering. Durable stainless steel spindle, cushioned for record protection. Heavy duty plated metal parts. Ideal in small radio-phonograph combinations. 12 1/2" square mtg. base. Depth above and below mounting board, 9 inches. Shpg. wt. 20 lbs.

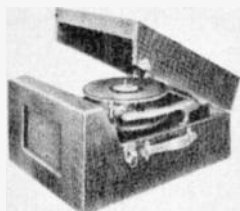
K20903—Model 50, less needle **\$21.17**

and base. **Your Cost**

Metal Mounting Base for Model 50.

K19465 12 1/2 x 12 1/2 x 4", wt. 4 lbs. **\$3.45**

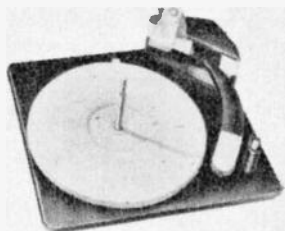
Your Cost



De-Luxe Portable Record Changer-Amplifier

A fine portable record changer-phonograph amplifier. Latest model record changer. Plays a stack of ten 12" or twelve 10-inch records at one loading. Just one control for Start, Stop, Reject and Manual operation. Noiseless constant speed motor. High impedance crystal pickup feeds into built-in amplifier. Has latest type 3 tube amplifier. Has tone and volume controls. 5 1/2-inch PM speaker. Highest quality hardware. Simulated alligator case, 16 x 19 1/2 x 9". Shpg. wt. 23 lbs.

KPS643 **Your Cost** **\$39.95**

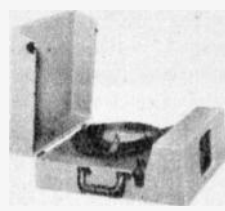


DeLuxe Record Changer With Automatic Stop

A smash value! Now you can have a deluxe record changer with the versatile features of higher priced models. Plays ten 12-inch or twelve 10-inch records at one loading, and stops automatically after last record is played. Makes a handsome addition to your console. Grey flocced turntable matches silver and deep lavender finish of lightweight metal parts. Astatic crystal pickup and curved tone arm for best reproduction and least record wear. Mounting base measures 12x10 3/4". Below panel depth 2 1/2", above 5 1/2" with full record stack. 78 rpm. 110V 60 cyc AC. Shpg. wt. 15 lbs.

KPS273 DeLuxe Record Changer **\$18.95**

Your Cost, Only

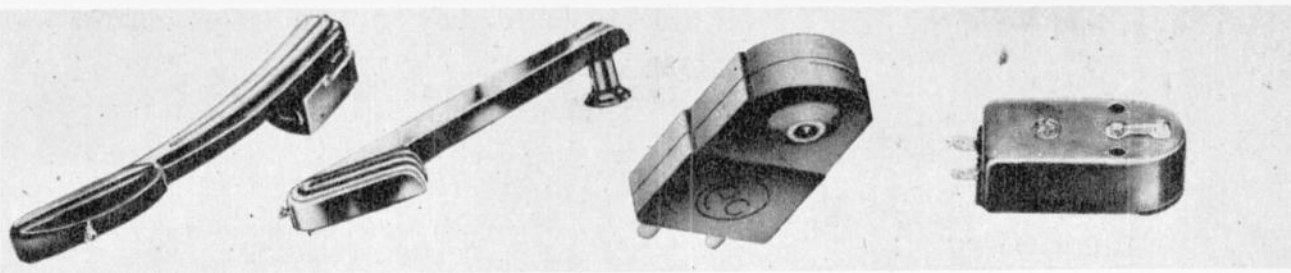


Portable Phono Player-Amplifier

Special portable record player and amplifier. Housed in a handsome airplane luggage carrying case. Includes a three-tube amplifier using 1-12SQ7, 1-50L6, 1-35Z5. Five-inch Alnico 5 permanent magnet speaker. Tone and volume controls. High quality crystal pick-up. Rugged motor. Turntable is covered with brown flock, easy on your favorite records. Plays ten-inch or twelve-inch records. Case size is 15 x 15 x 7 3/4" high. Well-placed carrying handle. All this adds up to a swell buy, so send your order in now. 15 lbs.

K22245 **Your Cost** **\$24.50**

pick-ups and accessories



ASTATIC FP-8 Low Pressure Xtal Pickup

Time TESTED AND PROVED
This low pressure (1 oz.) crystal pickup, with permanent, built in, jewel tipped stylus, contributes immeasurably to the convenience, economy and enjoyment of electrical phonographs. Since only the light weight stylus itself vibrates at audio frequencies, the weight of the vibrating system is far less than in pickups having a needle chuck and needle screw. 50 4500 cps. Hand-some curved arm finished in rich maroon. 2 lbs.
K235 Your Cost \$10.79

WEBSTER AJ-1 Lightweight Crystal Pickup

FOR LONGER RECORD LIFE
A new, precisely balanced, simplified pick up that practically does away with record wear and needle changing. The light weight, streamlined bakelite tone arm is accurately balanced to place controlled pressure on the needle. 50-4000 cps. Crystal and chuck are built directly into the tone arm for perfect balance. Simple servicing, no soldering. Easily mounted. Needle pressure 1.5 oz. Shpg. wt. 2 lbs.
K427 Your Cost \$4.26

The PICKERING Cartridge Reproducer

FOR HIGHEST QUALITY REPRODUCTION
Perfect response 20-20,000 cps. An amazing studio type reproducer. Fits practically any arm. When mounted in a well-designed arm, the PICKERING tracks with only 15 grams pressure (1/2 oz.). An ingenious "Keystone Clip" permits easy mounting in a large variety of arm shapes and sizes. Sapphire stylus. Requires equalizer amplifier. Satin finish gold case.
K245 Your Cost \$15.00

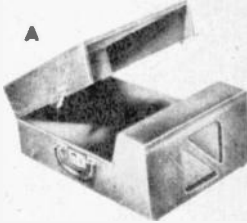
G-E Variable Reluctance Magnetic Pickup

DESIGNED FOR THE UTMOST IN FIDELITY Over the Entire Audible Spectrum, G E offers a unique pickup for completely faithful reproduction of lateral records in commercial, studio, and home recordings. Features: reduced hum pickup, unusually low mechanical impedance, and smooth high frequency. Tracks at about 22 grams pressure. Natural sapphire tip. To reduce needle talk, jewel tip is mounted on soft spring this permits tip to follow record groove intimately and without chattering. Simple 2 screw mtg. For best results, use with preamplifier equalizer
K218 Your Cost \$4.67

GENERAL ELECTRIC Preamplifier For use with high fidelity, low mechanical impedance pickups as PICKERING or GE. **\$5.82**
K244 20 20000 cps. Your Cost

A) Phono and Amplifier Case

Handsome airplane luggage type case built to "take it," yet light in weight. Will hold phonos built to play 10 or 12 inch records, with space for 6" spkr. and amp. circuit. 13x14" mtg. panel. 19x13 3/4 x 7 1/2" overall. 8 lbs.
K19444 Phono and Amplifier Case Your Cost, Case Only \$6.95



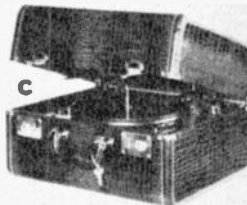
B) Portable Record Changer And Amplifier Case

An excellent buy for those who want both record changer and amplifier in one unit. Takes any record changer. All wood. Alligator leatherette cover with matching hardware. For 5", 6" or 8" speaker. Overall size 21" x 16 1/2" x 9 3/4". Motor board 15" x 16 3/4". Below panel depth 3", above panel 5 3/4". Shpg. wt. 9 lbs.
K22360 Your Cost, Case Only \$12.95



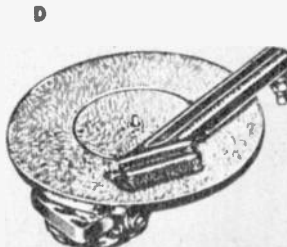
C) De-Luxe Changer Case

Attractive, compact, lightweight. De luxe case of solid wood construction with covering of extra fine simulated-alligator fabrikoid. Sewn leather-covered edges. Nickerled locking snaps with key. Blank covered motor board. Inside dimen. 17" x 14 1/2" x 11". Shpg. wt. 10 lbs.
K22343 Your Cost, Case Only \$13.95



D) Build-Your-Own Record Player Kit

It's fun to build your own all electric record player with this essential parts kit and you'll save money doing it! Can be mounted in a console cabinet with your present radio. Anyone can do it in 1/2 hr time! You get (1) constant speed (78 rpm) rim-drive motor with 9 inch flocked turntable, for 110 V. 60 cyc. AC only, self-starting type; (2) Offset head latest type crystal pickup with excellent response. Arm is 9" long; unit plays all 10 or 12 inch records. Shpg. wt. 5 lbs.
K690 Complete Kit Your Cost, Only \$6.75



E) Kiddies MEL-O-TONE Phono

A Supreme Gift Value For Children Performs Like ANY Well-Built Player

For the child's delightful world of fancy and imagination, there is no finer gift that this understandingly created record player. In pastel pink and blue enamels with colorful decals. Has 78 rpm air cooled motor. Operates on 110 V. AC only. Light-weight table model easy to move from place to place. ON-OFF switch. Complete with pickup and 6 ft. line cord. 11 1/2 x 11 1/2 x 4". 8 lbs.
K25023 Your Cost \$9.95



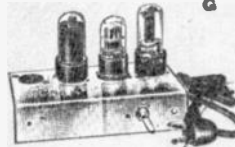
F) ADAPTOL Phono Oscillator

Features: ✓ Small, compact, convenient mounting. ✓ Excellent tone. ✓ Strong signal. ✓ High percentage of modulation. ✓ Good frequency stability. ✓ Measures just 4x2x4". Complete with 50B5 35W4 tubes. Shpg. wt. 4 lbs.
KPS697 Your Cost \$4.95



G) 3-Tube Phono Amplifier

The compact, useful phono-amplifier you've been wanting! Ready for installation. Uses 35Z5 or 35W4, 1 12SQ7 or 12AT6, 1-50L6 or 50B5. Audio stages are capacitively coupled. Heavy chromed chassis, 6 1/2 x 1 3/4 x 3 1/2". 1 1/2" vol. cont. shaft. Octal socket for spkr. plug-in. Tone control with 5 ft. cord and tubes. **K108 Wt. 3 lbs. Your Cost \$5.95**



H) ADAPTOL Hi-Fi Amplifier

Features: ✓ Increased undistorted power. Plenty of Treble and Bass. ✓ Inverse feedback. ✓ Permits boosting of high notes to three times normal flat response. ✓ Uses 12SQ7, 50L6 and 35Z5 rect. ✓ Convenient size, 5" x 3 1/2" x 7". With tubes. 5 lbs.
KPS696 Your Cost, Only \$7.45



J) Sensational Pickup Value

You get a curved arm pickup, plus high quality crystal cartridge and mtg. hardware at the cost of any one of the major components. Curved arm assures low record wear and best tracking. For use with any standard stylus. 1 1/2 lbs.
KPS270 Only \$1.95



To Speed Handling of YOUR Order—Use Our Order Blank

phono accessories, recording equipment

Recording Needles

Sapphire Cutting Needles

(A) Lapped edge. For acetate discs. Precision cut jewel assures low surface noise and high fidelity. Over 5 hrs. cutting life. **K191** Your Cost Each... **\$3.23**

(A) Like above with Long Shank for Presto Professional and Brush cutting heads. **K198** Your Cost Each... **\$3.23**

(B) Sapphire cutter ground to W.E. specs. For acetate discs. 10 hours life. Can be reground. **K196** Your Cost Each... **\$4.25**

Steel Cutting Needles

(C) Stellite cuts hundreds of acetate discs. Can be reground. **K337** Your Cost Each... **\$1.18**

(D) Polished steel cutters for 15 to 20 ten inch acetate discs. **K348** Package of 4. Your Cost... **59c**

(D) Alloy cutter for acetate; harder than steel. Polish while they cut. Hand lapped. **K434A** Package of 5. Your Cost... **88c**



Latest Jewel-Tip Needles

DUOTONE Durpoint—No needle talk, no surface noise. New offset principle improves operation. Plays up to 4000 records. **K443** DUOTONE Durpoint, Each... **59c**

WALCO Tru-Trac—Sapphire needle. Plays up to 5000 records. **K195** WALCO Tru-Trac, Each... **79c**

Playback Needles

For playing either home recording discs or standard commercial records.

Transcription steel needle. Shadow tested. Fine response, little wear. Play 5 to 10 records. **6c**

K346 Package of 10. Your Cost... **6c**

K347 Package of 25. Your Cost... **15c**

K319 Package of 75. Your Cost... **30c**

Filter point highly polished surgical steel needle. Shadow tested. Low surface noise. **6c**

K209 Package of 10. Your Cost... **6c**

K222 Package of 25. Your Cost... **15c**

K226 Package of 200. Your Cost... **88c**

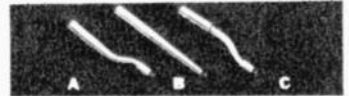
Cactus Needles: Cause no wear. Eliminate scratch. 10 Packages for \$1.89

K359 Package of 12. Your Cost... **21c**

Greythorn Needles: Special thorn. Ideal for crystal pickups. Tested. **36c**

K262 Package of 15. Your Cost... **36c**

NORRIS Jewel-Tip Needles



(A) **NORRIS One-Fifty**—Diamond lapped sapphire point. Reg. price \$1.50. **K178** Your Cost, Each... **88c**

Lots of 12, Each... **75c**

(B) **NORRIS Flame Tip Full-Jewel** Sapphire—Patented flame process fuses surface to mirror smoothness for easy gliding over record contours. Microscopically inspected and shadow-graphed. Reg. \$3.00. **K179** Your Cost, Each... **\$1.76**

Lots of 10, Each... **\$1.50**

(C) **NORRIS Flame Tip Ruby**—Has parabolic action—processed under intense heat to form a perfect parabolic point for finest possible record surface action. Reg. price \$4.00. **K182** Your Cost, Each... **\$2.35**

Lots of 12, Each... **\$2.00**

"Protect-O-Flap" Album

Saves you the harrowing experience of having your favorite records slip out of the album accidentally. A protective flap on each pocket prevents just such accidents. Embossed mahogany color envelope.

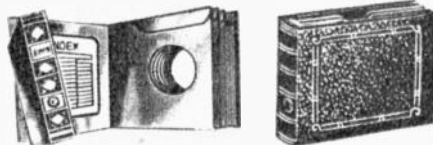
| No. | Size | Pockets | Lbs. | Each |
|---------------|------|---------|------|---------------|
| K20207 | 10" | 12 | 2 | \$1.10 |
| K20208 | 12" | 12 | 2 | \$1.29 |

Amazing "Ultra-Mike"

It Works Without Wires!

Turn on your radio, tune it and the Ultra-Mike to any clear channel between 1250 and 1700 kilocycles and you can broadcast distinctly from mike to radio—all without making a single connection between the two. The Ultra-Mike acts as a broadcast transmitter, and puts out enough power to work perfectly with any radio up to seventy-five feet away. Uses either 1L4 or 1T4 tube, a 45 volt miniature "B" battery and a flashlight cell. Excellent for use in restaurants, home entertainment, in the sick room or nursery, and a host of other practical applications. Complete with tube, batteries and long ground. List \$9.95. Shpg. wt. 3 lbs.

K13614—Your Cost... **\$6.63**



De-Luxe Album

Here is a truly well-built album to hold your favorite records. Gold embossed. Beautiful rich brown fabrikoid cover. Sturdy construction. 12 pockets. 2 lbs.

K21892—10" size... **89c**

K21893—12" size... **\$1.05**

Economy Model: Brown cover, sturdy construction. Index. 12 pockets. Shpg. Wt. 2 lbs.

K21886—10" size... **69c** 6 for **\$3.59**

K21887—12" size... **85c** Ea. for **4.59**

LAFAYETTE Record Carrying Cases

Ideal for carrying your records from place to place with the safe feeling that they won't break or chip. The best protection for your records. Strong all wood cases covered with attractive, durable fabrikoid. Sturdy handle and hardware. 4 lbs.

K22345—Holds 50 ten-inch records. **\$4.29**

Your Cost... **\$4.29**

K22346—Holds 25 twelve-inch records. **\$4.29**

Your Cost... **\$4.29**

General Industries Recorders

Single Speed Home Recorder And Phono Assembly

Cuts records to 10" diam. Plays records to 12" diam. Cut-depth adjustment on retractable driving pin permits playing of standard records without adjustment. Heavy-duty rim drive induction motor. (78 RPM). 110V. 60 cycles AC. Assembly includes motor; 10" turntable; cutting mechanism; low press. crystal pickup; cutter and pickup arm rests; 15" x 10" base plate. 16 lbs.

K22535 Model GI-R70L. **\$24.51**

Your Cost... **\$24.51**

Dual Speed Home Recorder And Phono Assembly

Has same features as model above plus speed change dial which permits operation at 78 or 33 1/3 RPM. "Reproducer" and "Recorder" engraved on pickup and cutter arms. Dynamically balanced motor. Compensating switch operated by speed change dial. Works on 110V, 60 cycles AC. Plate measures 15" x 11 1/2". 17 lbs.

K22537—Model GI-R90L. **\$28.95**

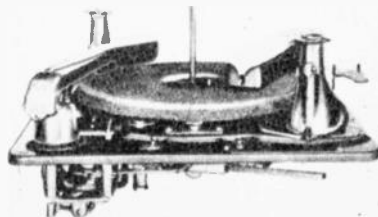
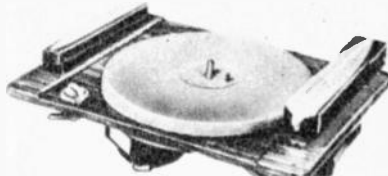
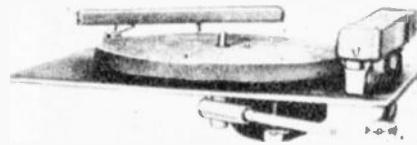
Your Cost... **\$28.95**

Combination Record Changer-Recorder

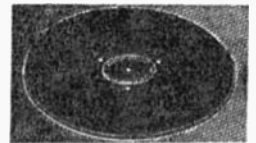
Cuts records to 10", plays 10" or 12" records automatically. With lever in extreme position, all sizes of records easily removed. Non-jamming record handling fingers. Handles records with either run-in or oscillating trip grooves. Provision for guiding pickup needle on records without lead-in grooves. Shock mounting permits isolation of entire assembly. Furnished with low pressure crystal pickup; weighted 78 RPM turntable; 14" x 14" base plate. Brown iridescent finish. Streamlined plastic trim on pickup and cutter arms with identification engraved. 25 lbs.

K22536 Model GI-RC130L. **\$40.14**

Your Cost... **\$40.14**



Recording Discs



Paper Base

Yellow Label. Coated both sides. **K11969**—SIX 6 1/2" Discs... **60c**

K11970—SIX 8" Discs... **\$1.00**

K11971—SIX 10" Discs... **\$1.40**

RECORDISC

Purple Label. Alum. base. 2 sides. **K11966**—6 1/2" Discs... **14c**

25 or more, Each... **12c**

K11967—8" Discs... **20c**

25 or more, Each... **18c**

K11968—10" Discs... **30c**

25 or more, Each... **27c**

Red Label Alum. Discs

Coated both sides. Labeled.

| No. | Size | 1 to 24 | 25 Up |
|---------------|--------|----------------|----------------|
| K11982 | 6 1/2" | 20c | 18c |
| K11983 | 8" | 27c Ea. | 24c Ea. |
| K11984 | 10" | 40c | 35c |
| K11978 | 12" | 53c | 47c |

PRESTO Recording Discs

Orange Seal: Compares favorably with commercial discs. Two sides.

K11955 6 1/2" **\$0.35**

K11956 8" **.50** Ea.

K11957 10" **.75**

K11958 12" **1.00**

16 All Prices Subject To Change Without Notice

recording equipment

PRESTO gives you, at lowest cost, such desirable features as—

- **Magnetic cutting head** and pick-up, the design used in highest grade equipment.
- **6 tube amplifier**, using push-pull triodes in the power stage.
- **High frequency equalizer** for 33 1/3 RPM recording, and a tone control for suppressing needle scratch when commercial records are played.
- **Safety cam lever** for lowering cutting head to prevent accidental damage to sapphire needles.
- **Detachable, dynamic loud-speaker**, which may be operated at any desired distance from the recorder.
- **Cutter feed mechanism**, located beneath turntable where it is protected from dust or accidental damage.
- **Provision for quick change** from cutting outside-in to inside-out.
- **Exclusive PRESTO rubber-fired turntable** driven directly by a pulley on the motor shaft—this eliminates the rubber pulleys and belts which are subject to rapid wear. Turntable speed may be changed in 5 seconds from 78 to 33 1/3 RPM by removing a brass pulley on the motor shaft.



PRESTO Model "K" Recorder

A COMPLETE, PORTABLE SOUND RECORDER, RECORD PLAYER AND PUBLIC ADDRESS SYSTEM IN A SINGLE CARRYING CASE. Exceptionally light and compact, the PRESTO Model "K" is ideally suited to the needs of sales training, teachers of speech, music and dramatics, as well as actors and musicians who require an instrument easy to carry and operate.

Records fifteen minutes continuously at 33 1/3 RPM on one side of a 13 1/2" disc. Can be connected to any home radio to record radio programs. It also makes 6, 8, 10 and 12 inch records, and plays all makes of phono records. As a voice amplifying system it will serve audiences of about 500 persons.

The features of the Model K, not found in any other low-priced recorder, enable the user to make high quality recordings, consistently. As a result of its performance, more Model K recorders are used by schools, industrial concerns and in the home than any other recorder in a similar price range.

Operates on 110 volts 60 cycles AC. Shipping weight 59 lbs.
K22500—PRESTO Model "K" Your Cost, \$348.00 Complete

MASCO RK-5 Combination

Dual-Speed Disc Recorder and P.A. System

FEATURES: Instant play-back ● Recording and play-back at both 78 and 33 1/3 rpm ● Electronic volume-level indicator ● Heavy-duty 6" PM Alnico V speaker ● Separate volume and tone controls ● Adjustable cutting head ● Heavy-duty recording motor and table ● Three input channels ● U. L. approved.

APPLICATIONS: Direct recording from any microphone. Direct recording electronically from a phonograph, known as "dubbing." Direct recording from radio to record. Records 12 minutes at 33 1/3 rpm on a 10" disc. This is equivalent to four sides of 12" commercial records. For dubbing, a 12" commercial record can be recorded on a 10" blank at 78 rpm.

The MASCO Model RK-5 Portable Recorder finds important use in educational programs at schools, colleges and universities. Invaluable for recording lectures and addresses. Used by vocalists, actors, and orchestras for self-criticism and is the choice of elocutionists, and students of languages and phonetics. Any standard radio may be adjusted for use with the Model RK-5 for recording favorite programs. Ideal for use in the "rumpus room."

SPECIFICATIONS: Tubes—2 6SL7, 1 6V6GT, 1 6U5G, 1 6X5GT rectifier. Operates on 110 volts 60 cy. AC. Handsomely finished in brown alligator fabricoid. Dimensions 16x19 1/2 x 8 1/2" high. **K22593 MASCO RK-5, Shpg. wt. 40 lbs. \$86.40**
 List Price \$135.00. Complete with Tubes



BRUSH "Soundmirror" Portable Model BK-403

Here Are Just A Few Jobs It Will Do

- Remote pickup
- Delayed broadcast
- Spot announcement
- Speech correction
- Language studies
- Class plays
- Assembly entertainment
- Sermon reference

The BK-403 SOUNDMIRROR is a portable "Magnetic Ribbon" recorder contained in an attractive black leatherette carrying case. Ideal for use in broadcast companies, school class rooms, industrial conference recording, and commercial sound studios. With the SOUNDMIRROR, on-the-spot recording is easy and accurate. This is a magnetic recorder that anyone can operate.

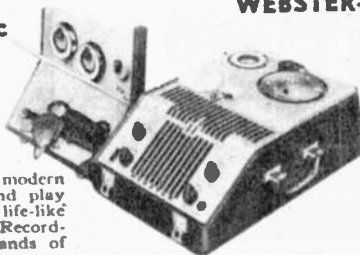
Ribbon speed is 4.5 in./sec./or 7.5 in./sec. (dual capstan arrangement allows change of speed). Response is 100-5000 cps. 45 second rewind. Type BA-106 crystal, desk stand microphone with removable base provided. Self-contained 6"x9" oval speaker. BK-921 take-up reel, 5 BK-914-3 ribbon and reel, 8 foot cable, 7.5 in./sec. and 4.5 in./sec. capstans. Full instructions included. 110V 60 cyc AC. **K22502—BK-403 SOUNDMIRROR portable, complete with accessories. Shipping weight 55 lbs. \$367.50**
 Your Cost

Ultra-Compact Portable Magnetic Wire Recorder

- Records and Plays Back A Full Hour
- Erase Feature. Use Same Spool Over and Over
- For Entertainment, Business and Schools

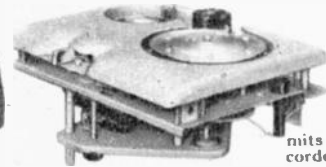
A perfected wire recorder of modern design. Make recordings and play them back immediately with life-like fidelity at full room volume. Recordings can be replayed thousands of times or erased in favor of new programs. Use it in business to dictate letters. Excellent for professionals, whether for patients' case histories or lawyers' briefs. An asset to any political campaign. Recorder includes recording mechanism, microphone, amplifier, speaker, two 15-minute and one 30-minute spools. Has volume and tone controls. Attractive case. Easy to carry only 27 lbs. 110-120 V. 50/60 cyc AC.

K22516 Model 80 Magnetic Wire Recorder, complete. Your Cost, Only \$149.50
 K22517 Extra 15 Min. Spool \$2.00
 K22518 Extra 30 Min. Spool \$3.00
 K22519 Extra 60 Min. Spool \$5.00



WEBSTER—CHICAGO

Wire Recorder Foundation Unit Build Your Own Professional Wire Recorder . . . Save Money!



For experimenters, hams or engineers. Permits building a complete, wire recorder or adding recorder to a sound system. A complete foundation—wire transporting mechanism, triple-purpose recording head (records, plays back and erases), oscillator coil, a 15 minute spool of wire, and instruction sheet with suggested circuit. Takes any standard Armour type recording spool. Make recordings up to an hour. If and when desired, old programs may be erased and new recordings made. Now is your chance to get the essential part of an efficient recording system at lowest cost. Dimensions, 10 1/2 x 8 1/2 x 5 1/2". 110-120 V. 50/60 cyc AC. 13 lbs. **KPS698 WEBSTER-CHICAGO Model 79. \$52.92**
Your Cost, Only
 K22517 15 min. spool \$2.00
 K22518 30 min. spool \$3.00
 K22519 60 min. spool \$5.00

To Speed Handling of YOUR Order—Use Our Order Blank

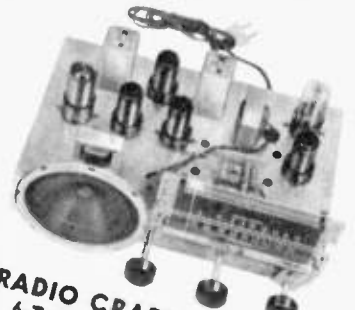
FM and AM, kits and components



this most EFFICIENT FM Tuner connects to any Radio Receiver or Sound Amplifier

The EDWARDS FIDELOTUNER brings you delightful, noise free FM with its revolutionary High Q Tuning Lines (pat. pending). This device simplifies tuning in the very high frequency range of FM reception. For untold hours of FM listening joy many newest features are incorporated: ✓ discriminator circuit ✓ three IF stages including limiter ✓ permeability tuned IF and Disc "K-Trans" ✓ slide rule dial easy finger tip tuning ✓ full range 88 to 108 Mc ✓ five tubes plus selenium rectifier ✓ VHF insulation throughout ✓ local reception antenna included. Tubes: 3-6SH7, 1-6J6, 1-6H6. 105-130 V. 60 cyc. AC operation. 11 x 6 x 6 1/4". Shpg. wt. 7 1/2 lbs.

K20360 Edwards FM FIDELOTUNER, complete with tubes \$31.50



RADIO CRAFTSMEN Kit RK6S 6-Tube 2-Band AC-DC Superhet

A NEW design superhet kit. High sensitivity and selectivity. Features: (1) Range-Band one 550-1600 Kc., Band two 5.5-18.0 Mc. (2) R.F. Amplifier Stage on both bands. (3) Big illuminated, easy-to-read Dial. (4) Big, dual purpose tubes. (5) Low noise level. (6) Amplifier included. Easy to assemble. Instructions include both pictorial and schematic diagrams. Heavy steel chassis, punched and formed, cadmium plated against rust. No holes to drill, no dial to mark, no odd screws or nuts to buy. Complete with tubes, hookup wire, solder and instructions. Shpg. wt. 7 lbs.

K20352 Kit RK6S \$24.50



STANWYCK Quality FM Transformers

FM Discriminator Compression tuned. Coils wound of Litz wire. Electrical centered secondary results in perfect symmetry between positive and negative peaks. High output and excellent discrimination. A superior quality transformer for production or replacement. 1 1/4 x 1 1/4 x 2 1/2" aluminum can.

KPS727 SFM-601 \$2.15

FM I.F. Coil Exceptional quality at moderate cost. Low loss ceramic used throughout. High quality iron core. Maximum "Q" and gain at 10.7 Mc. Symmetrical response curve with no irregularities in wave shape. In 3 x 1 3/4" aluminum cans. Spade bolt mtg. ctrs. 1 1/2".

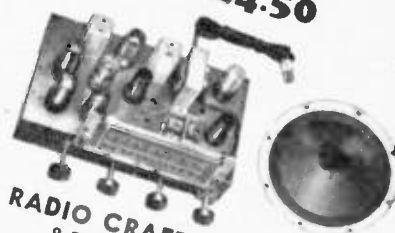
KPS728 SFM602 \$1.91



MAGI-KLIPS

An amazing kit for students and hobbyists. A remarkably simple clip arrangement builds up 18 electronic units. Make a fine radio receiver, a code practice oscillator, signal tracer, home broadcaster, photoelectric relay, remote control relay or any one of 12 other useful devices. Complete with chassis assembly, condensers, resistors, tubes, plug-in coils and "magic" clips. 50L6, 12SL7. 35Z5 supplied. 4" PM spkr.

K20358 10 lbs. \$29.75
Your Cost, Only



RADIO CRAFTSMEN Kit RK8S 8-Tube 2-Band AC-DC Superhet

Like other "Craftsmenbuilt" kits, this big superhet was engineered for ease of construction, efficient operation and attractive appearance. Designed around a highly sensitive superhet employing dual purpose tubes for exceptional performance. Features:

- (1) Range-Band one 550-1600 Kc., Band two 5.5-18.0 Mc.
- (2) Tone Control.
- (3) RF Amplification on all bands.
- (4) Push pull output for greater volume.
- (5) 125 V. AC-DC 50-60 cyc. operation.
- (6) Alnico V. PM type speaker.
- (7) High impedance and schematic diagrams.
- (8) 105-130 V. AC-DC 50-60 cyc. operation.
- (9) Push pull output for greater volume.
- (10) Alnico V. PM type speaker.
- (11) High impedance and schematic diagrams.

You just need a screwdriver, pliers

K20350 Kit RK8S \$41.50
Your Cost

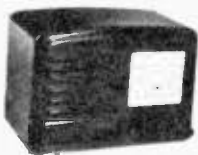


Change old FM (40-50 Mc) to new FM (88-108 Mc) at lowest cost ever. Takes little time to make this change. Efficient operation. This unique crystal device now gives you lowest cost conversion of your old band FM set. This is a superior device.

Crystal FM Converter

It is as fine a converter as you can possibly get. There is no loss in quality of signal received. Complete with necessary instructions. Can be installed easily by anyone.

KPS700 Your Cost, Only \$6.00



AC-DC HOME RADIO KITS

6-Tubes 2-Band AC-DC Kit

Model SWK receiver kit has a freq. range from 550-1600 kc and s.w. band from 7-16 mc. Two band dial. Three controls: band switch, tuning and volume controls. Circuit includes untuned stage of RF amplification. 12SK7 as RF amplifier, a 12SA7 oscillator-rectifier, a 12SQ7 as a det., AVC, 1st Audio Amplifier, 50L6GT power output, and a 35Z5 rectifier. Kit includes all parts including cabinet except tubes, wire and solder.

K10462 Model SWK 6-Tube Receiver Kit \$17.95
Your Cost



5-Tube AC-DC Kit

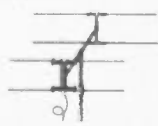
SK is a top kit in post war engineering of a modern receiver. A 5 tube superhet. True tone reproduction. Airplane dial 550 kc to 1600 kc. Brown plastic cabinet. Loop antenna, new Alnico 5 speaker. Antenna tuned by one section of condenser and feeds directly into mixer-oscillator tube 12SA7 while the other section tunes the oscillator coil. IF channel is 456 kc and uses 2 double tuned transformers. 12SK7 as IF Amplifier. 12SQ7 as diode detector and first audio, 50L6 "Beam Power" output and 35Z5 rectifier. Contains all parts less wire, solder, tubes.

K10461 Model SK Receiver Kit \$12.95
Your Cost

KPS615 As above but less Cabinet \$9.95

TACO Double Doublet

Made up of 1 (Type) 436 H-antenna and (Type) 437 reflector. All steel structure. Reflector makes antenna unidirectional, desirable in areas with low signal strength. Antenna has 4 aluminum dipole rods, 2 rod supports with terminals and neoprene grommets; spacer post & mtg. clamps for mast; 60 ft. coil of 300-ohm high-freq. transmission line; 2 jumpers & screws; 5 ft. sectional wood mast; 3 special standoffs; 4 wallboard insulators. Reflector has 4 dipole rods with connectors; 1 crossarm (steel heavily enameled); 1 spacer post; mounting hardware. 1.5 db loss per 100 ft. of line. Wt. 15 lbs.

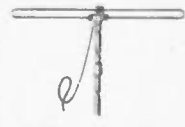


K16488 Each \$14.70

TACO FM Folded Dipole

An efficient antenna, directional both front and rear. Flat characteristics. 1 folded dipole with terminal block; 1 60 ft. coil of high-frequency 300-ohm transmission line; 1 5 ft. wood mast; 2 mtg. straps & screws; 3 special screw eyes for high-freq. transmission line; 4 wallboard insulators. Ideal for areas of low signal strength. Wt. 6 1/2 lbs.

K16494 Each \$5.59

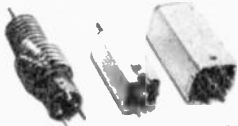


Television kits and components

RCA

Television Tubes

| | |
|-------|---------|
| 5BP4 | \$27.50 |
| 5TP4 | 67.50 |
| 7DP4 | 27.00 |
| 7GP4 | 24.25 |
| 9AP4 | 62.50 |
| 10BP4 | 49.50 |
| 12AP4 | 75.00 |



IF And Video Coil Kit Components

| Stock No. | RCA No. in Type Kit | Description | Your Cost |
|-----------|---------------------|--------------------------------|-----------|
| K10212 | 201K1 2 | Sound IF Transformer, ea. | \$2.20 |
| K10211 | 202K1 1 | Converter Transformer, ea. | 2.20 |
| K10210 | 202K2 1 | 1st PIX IF, ea. | 2.20 |
| K10209 | 202K3 1 | 2nd PIX IF, ea. | 2.20 |
| K10206 | 202K4 1 | Cathode Trap, ea. | 2.20 |
| K10207 | 203K1 1 | Discriminator Transformer, ea. | 2.45 |
| K10206 | 202L1 2 | 3rd & 4th PIX IF, ea. | .44 |
| K10205 | 203L1 1 | Video Series Peaking Coil, ea. | .44 |
| K10204 | 203L2 1 | Video Shunt Peaking Coil, ea. | .44 |
| K10203 | 203L3 2 | Video Series Peaking Coil, ea. | .44 |
| K10202 | 203L4 2 | Video Shunt Peaking Coil, ea. | .44 |
| K10201 | 204X1 | Complete IF & Video Coil Kit | \$19.11 |

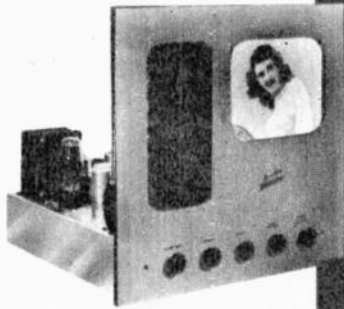


Television Components

| Stock No. | RCA Type | Description | Your Cost |
|-----------|----------|------------------------------|-----------|
| K10261 | 201B1 | Mirror | \$88.20 |
| K10252 | 201D1 | Deflection Yoke | 8.00 |
| K10251 | 201D2 | Deflection Yoke | 8.76 |
| K10250 | 201P2 | Lens | .76 |
| K10249 | 201R1 | Width Control | 1.29 |
| K10248 | 201R2 | Width Control | .82 |
| K10247 | 201R3 | Horizontal Linearity Control | 1.62 |
| K10239 | 201X1 | Mounting Hood | 1.62 |
| K10238 | 202D1 | Focus Coil | 5.34 |
| K10217 | 203D1 | Ion Trap Magnet | 3.82 |
| K10236 | 204L1 | Filament Choke | .18 |

Transformers

| | | | |
|--------|-------|----------------------------|---------|
| K10230 | 204T1 | Horiz. Output | \$13.52 |
| K10228 | 204T2 | Vert. Output | 5.29 |
| K10227 | 204T3 | Horiz. Output | 5.56 |
| K10224 | 208T1 | Horiz. Blocking | 3.35 |
| K10223 | 208T2 | Vert. Blocking | 2.64 |
| K10222 | 208T3 | Horiz. Blocking | 2.79 |
| K10221 | 208T8 | Horiz. Sync. Discriminator | 9.90 |
| K10220 | 211T1 | Horiz. Output and H.V. | 13.38 |
| K10213 | 211T2 | Horiz. Output and H.V. | |



10-In. Complete Kit

Features special unbreakable viewing window made of highly polished optical plastic. Offers maximum picture area and eliminates annoying corner shadows. Chassis finished in heavy black crackle. Tube supports and all hardware plated with bright cadmium, and front panel is a satin finished hardwood. All chassis holes drilled. Complete, nothing more to buy. 16 x 18 x 19 1/2" Shpg. wt. 57 lbs.
K22400—10-Inch Kit, TL-10.
Your Cost \$199.50

10-In. Conversion Kit

Convert your 5" or 7" television receiver to a large 10" screen with **REPUBLIC Conversion Kit TC-10**. Simple to follow instructions. No additional controls needed. Sufficient length of high voltage cable permits operation of 10-inch unit up to 6 feet from your television set. Complete with new type 10" Electrostatic picture tube, 15 x 13 x 19 1/2" Shpg. wt. 28 lbs.
K22398—10-Inch Conversion Kit, TC-10.
Your Cost \$93.50

7-In. Complete Kit

REPUBLIC still offers this outstanding 20 tube kit, including 7-inch picture tube, at lowest cost. Has same quality components of larger screen kits.
KP5725—7-Inch Complete Kit, TL-4.
Your Cost \$165.00
K22368—Cabinet for 7" Kit.
Your Cost \$29.95



Sturdy "Eye-Height" Teleset Table

Here is just the table television set. Comes in knocked down form, but assembly is easy and secure. Wing nuts are provided which keep the parts perfectly rigid. No tools required. Handsome walnut finish. Convenient rack at bottom 19 1/2 x 23 1/2 x 26".
K22401—
Your Cost \$20.95



Television Interference Trap

Designed to remove image interference in telecasts due to FM signals and Amateur transmissions. Provides no loss in signal strength. Tunable to 40-60 Mc. or 85-111 Mc. Covers 6 meter "ham" band as well. Complete instructions.
K10206 Crystal Devices Model 1105A.
Your Cost \$6.00



300 Ohm Twin Lead and Stand-Off Insulator

Ideal for FM & Television lead-ins. Tough, weather resistant. Insulator keeps conductors at parallel and fixed distance from nearby surface.
K20826—Per Ft. 3¢
Per 100 Feet \$2.85
K17076—Insulator—5¢ Each

build TELEVISION yourself

After the keen creative pleasure of assembling your own television set, you can lean back and let the entertainment world take over. Ball games, prize fights, on the spot news events, and a rich variety of dramatic, educational and entertaining shows are right at your fingertips.

You don't have to be a mechanical genius to build this carefully planned and expertly engineered television receiver. Just ordinary ability to read and follow the simplest, clearest instructions will result in a professional looking and performing set.

No knowledge of television or radio is needed. You get five full size picture diagrams of the wiring in progressive stages. Difficult sections are already pre-wired and pre-tuned. Performance is guaranteed if you follow the simple directions carefully.

A complete kit. You have nothing else to buy. You get a di-pole antenna, 60 feet of lead-in cable, all 20 tubes including the picture tube, sound section, front panel, in fact everything down to the smallest nut.

Just look at these technical advantages the television receiver has: 5 channel RF unit pre-wired, and 3 channels tuned to your specific locality. A DC restorer circuit for clearer pictures. Pre-tuned slug IP's for high gain and greater stability. FM sound. 3.5 MC band width. Operates on any 110 volt 60 cycle AC line. Only high quality components of standard brands are used—you can be sure of long years of trouble-free operation. Kit includes all tubes, speaker, and hardware.

MODERATE POWER SOUND SYSTEMS

8 Watts

A high quality, sturdy amplifier. Gives unexcelled operation for paging systems, store demonstrators, cafeterias, restaurants and similar applications. At astonishing low cost.

AMPLIFIER: 8 watts, 1 mike, 1 phono channel. Mixing & fading. Bass treble tone control. 117 db mike gain, 72 db phono gain, 40-9000 cps response. Three output impedances. 110V 60 cyc AC. 7C7, 7B4, 6L6G tubes. 5Y3G rect. 9 1/2 x 6 x 7" Shpg. wt. 10 lbs.

MODEL 708 Amplifier, with tubes. **\$27.60**

INDOOR SYSTEM: An outstanding value leader in low price field. You get:
1 Model 708 Amplifier incl. tubes.
1 10-inch permanent magnet speaker.
1 Fabrikoid speaker wall baffle.
1 Combination crystal mike & stand plus 7 1/2 ft. cable and connector.

1 25 ft. speaker cable.
MODEL 7015 Complete Indoor System, 27 lbs. **\$44.60**

READY TO OPERATE:
OUTDOOR SYSTEM: Overcomes background noises. Perfect for demonstrations, sideshows, etc. Includes:

1 Model 708 Amplifier with tubes.
1 University "Booster" speaker.
1 Combination crystal mike & stand plus 7 1/2 ft. cable and connector.
1 25 ft. cable.

MODEL 703H Complete Outdoor System, 17 lbs.

READY TO OPERATE: \$52.00
ECONOMY PORTABLE: Ideal for travelling shows, lecturers, etc. You get:

1 Model 708 Amplifier, with tubes.
1 10-inch permanent magnet speaker.
1 Combination crystal mike & stand plus 7 1/2 ft. cable and connector.
1 25 ft. cable.

MODEL 702P Complete in sturdy carrying case, 23 lbs. **\$51.00**

1 Adjustable mike stand, 35-68".
1 Turner 22X crystal microphone. Built-in wind gag. 57 db output.

1 50 ft. long 2-wire ridged cable.
READY TO OPERATE. Includes instructions and plugs.

MODEL 705S Complete Indoor System, less phono, 75 lbs. **\$75.00**

MODEL 706SP Same as above with built-in phono, 80 lbs. **\$88.00**

OUTDOOR SYSTEM: Compact, weatherproof. Very high projection efficiency.

1 Model 718 Amplifier, complete with tubes, less phono.
2 University 1B-8 horns.

1 Turner 22X crystal microphone.
1 Adjustable mike stand, 35-68".
1 50 ft. cable.

MODEL 710H Complete Outdoor System, less phono, 48 lbs. **\$87.00**

MODEL 711HP Same as above with built-in phono, 53 lbs. **\$100.75**

18 Watts

An ideal sound system for small industrial plants, classrooms, cafes, etc. Thousands now in successful use.

AMPLIFIER: 18 watts, 1 mike, 1 phono channel. Mixing & fading. Bass treble tone control. 120 db mike gain, 75 db phono gain, 50-10000 cps response. 5 output impedances. 110V 60 cyc AC. 1-7C7, 1-7F7, 2-6L6G tubes. 5Y3G rect. 12 x 7 x 7 1/2". Shpg. wt. 23 lbs.

MODEL 718 Amplifier, with tubes, **\$38.25** less phono

MODEL 719 Same as above, plus built-in record player **\$51.75**

INDOOR SYSTEM: A select combination of high quality parts. You get:

1 Model 718 Amplifier, complete with tubes, less phono.

2 12" broad range PM speakers.

2 Fabrikoid tilted wall baffles.

MEDIUM-HIGH POWER SOUND SYSTEMS

25 Watts

Unsurpassed for a variety of applications in churches, small halls, restaurants, etc. Especially suitable for dance bands. For those who want performance and efficiency at low cost.

AMPLIFIER: 25 watts, 2 mike, 1 phono channels. Mixing & fading. Bass-treble control. 125 db mike gain, 80 db phono. 50-10000 cps response. 5 output impedances. 110V 60 cyc AC. 2-7B4, 1-7N7, 2-6L6G tubes. 5U4G rect. 15 x 8 1/2 x 8 1/2". 30 lbs.

MODEL 726 Amplifier, with tubes, less phono. **\$53.85**

MODEL 727 Same as above, plus built-in phono, 33 lbs. **\$65.15**

INDOOR SYSTEM: A well-matched group at surprisingly low price!

1 Model 726 Amplifier, complete with tubes, less phono.

2 G.E. 12" PM dynamic speakers.

1 35-68" adjustable mike stand.

1 Turner 22X crystal microphone.

1 100 ft. long 2-wire ridged cable.

MODEL 712S Complete Indoor System, less phono, 85 lbs. **\$95.70**

MODEL 713SP Same as above with built-in phono, 90 lbs. **\$106.40**

OUTDOOR SYSTEM: All components chosen to match the amplifier for rated power and efficiency. System includes:

1 Model 726 Amplifier, complete with tubes, less phono.

2 University SMH horns.

2 University MAH drivers.

1 35-68" adjustable mike stand.

1 Turner 22X crystal microphone.

1 100 ft. long 2-wire ridged cable.

MODEL 717H Complete Outdoor System, less phono, 68 lbs. **\$129.85**

MODEL 720HP Same as above with built-in phono **\$130.50**

imum operating power and efficiency. You get:

1 Model 735 Amplifier, complete with tubes.

2 12-inch PM dynamic speakers.

2 Fabrikoid angled wall baffles.

1 35-68" adjustable mike stand.

1 Turner 22X crystal microphone.

1 100 ft. long 2-wire ridged cable.

MODEL 721S Complete Indoor System. Shpg. wt. 85 lbs. **\$108.50**

OUTDOOR SYSTEM: Intended particularly for outdoor use or high noise level indoor area.

1 Model 735 Amplifier, complete with tubes.

2 University Reflex Projectors.

2 University Driver Units.

1 Turner 22X crystal mike.

1 35-68" adjustable mike stand.

1 100 ft. long 2-wire ridged cable.

MODEL 723H Complete Outdoor System. Shpg. wt. 81 lbs. **\$151.65**

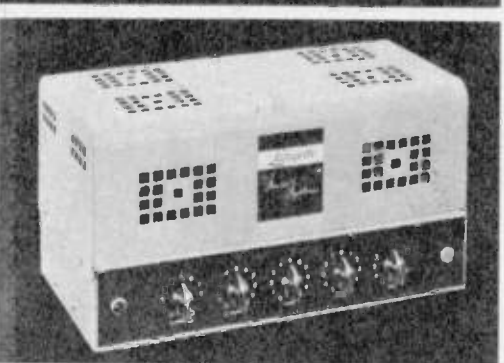
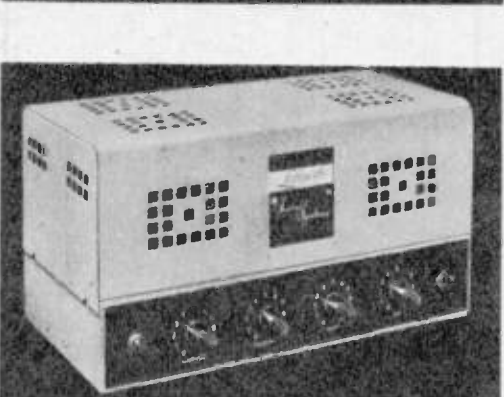
35 Watts

Designed for indoor audiences up to 4,000 or outdoor areas to 30,000 square feet. The best for larger school auditoriums, dance halls, churches, etc. Definitely fills gap between medium and high power systems.

AMPLIFIER: 35 watts, 2 mike, 1 phono channels. Mixing & fading. Separate bass & treble. 125 db mike gain, 80 db phono gain. 50 to 10,000 cps response. 5 output impedances. 110V 60 cyc AC. Uses 4-7C7, 1-7N7, 2-6L6G, 1-5U4G rectifier. 15 1/2 x 8 1/2 x 8". Shpg. wt. 85 lbs.

MODEL 735 Amplifier, with tubes **\$63.90**

INDOOR SYSTEM: This complete indoor system gives you rugged components perfectly matched for maxi-



for Sound Values

ENTERTAINMENT



HIGH POWER SOUND SYSTEM

50 Watts

Great volume and large coverage are easily and capably handled by this LAFAYETTE unit. Built especially for permanent installations in theatres, schools, auditoriums, camps, etc. Magnificent power at remarkably small cost.

AMPLIFIER: 50 watts. 2 mike. 1 phono channel. Mixing & fading. Separate bass & treble controls. 125 db mike gain, 80 db phono. 50-10,000 cps response \pm db. Five output impedances. 110V 60 cyc AC. 2-7C7 1-7F7, 1-7N7, 4-6L6G tubes. 2-5U4G rectifiers. Shpg. wt. 47 lbs.

MODEL 750—Amplifier, with tubes \$84.50

INDOOR SYSTEM: A powerful indoor system using four speakers for maximum distribution. System comprises

- 1—Model 750 Amplifier, complete with tubes.
- 4—12-inch PM dynamic speakers.
- 4—Fabrikoid angled wall baffles.
- 1—35-68" adjustable mike stand.
- 1—Turner 22X crystal microphone.
- 1—200 ft. long 2-wire ridged cable.

MODEL 724S—Complete Indoor System. Shpg. wt. 150 lbs. \$160.00

OUTDOOR SYSTEM: Built to highest standards of performance and coverage at rated power of 50 watts. Easily overcomes incidental outdoor noises.

- 1—Model 750 Amplifier, complete with tubes.
- 2—University reflex projectors.
- 2—University driver units.
- 1—35-68" adjustable mike stand.
- 1—Turner 22X crystal microphone.
- 1—100 ft. long 2-wire ridged cable.

MODEL 728H—Complete Outdoor System. Shpg. wt. 98 lbs. \$170.50

ponents you need to do full justice to the 75-watt amplifier. You get—

- 1—Model 775 Amplifier, complete with tubes.
- 4—12-inch PM dynamic speakers.
- 4—Fabrikoid angled wall baffles.
- 1—35-68" adjustable mike stand.
- 1—Turner 22X crystal microphone.
- 1—200 ft. long 2-wire ridged cable.

MODEL 729S—Complete Indoor System. Shpg. wt. 160 lbs. \$179.45

OUTDOOR SYSTEM: An amazingly powerful system, using four reflex projectors to achieve highest sound efficiency obtainable.

- 1—Model 775 Amplifier, complete with tubes.
- 4—University reflex projectors.
- 4—University driver units.
- 1—35-68" adjustable mike stand.
- 1—Turner 22X crystal microphone.
- 1—200 ft. long 2-wire ridged cable.

MODEL 730H—Complete Outdoor System. Shpg. wt. 152 lbs. \$263.65

75 Watts

Tremendous power plus versatility mark this LAFAYETTE 75-watter as the best in Public Address. The amplifier in unparalleled for use in ball parks, large halls, for chime amplification, or wherever great power and absolute clarity of reproduction are essential.

AMPLIFIER: 75 watts. 2 mike. 1 phono channel. Mixing & fading. Separate bass and treble controls. 124 db mike gain, 94 db phono. 50-10,000 cps response \pm 2 db. Five output impedances. "Standby" switch keeps tube filaments warm with negligible current drain. 110V 60 cyc AC. 2-7C7, 2-7F7, 2-6V6G, 4-6L6. 2-83V, 1-5Y3G rectifier.

MODEL 775—Amplifier, with tubes \$104.95

INDOOR SYSTEM: All the com-

SPECIAL SOUND EQUIPMENT

12 Watt Phono Expander Amplifier

- Get the best possible reproduction from your fine recordings.

- Exceptionally fine tone quality and volume.

You get a "clean" power output of 12 watts, plus volume expansion, from this versatile amplifier-expander. Record reproduction can now assume the life-like clarity it deserves. Cutting of the original record involves compression of certain loud passages, where the dynamic range of a selection exceeds the normal width of the record groove. If you now play back a record through this Lafayette expander, a special circuit automatically replaces the compressed passages and the re-

production duplicates the original sound in all its dynamic and tonal brilliance.

SPECIFICATIONS: 12 watts normal power output; 1 phono input channel; 78 db phono channel gain; 8 db expansion; 50-10,000 cps \pm 1 db response; hum level -30 db below zero level; distortion at normal output, less than 5%; output impedances, 2, 4, 8, 15, and 500 ohms; 110-120V AC 60 cyc required. 75 watts consumption; Tubes, 1-7Q7, 2-7F7, 2-6V6; 1-5Y3G rectifier; 12"Hx7"Wx7½"D. Shpg. wt. 20 lbs.

MODEL 700X—Complete 12-watt phono expander and amplifier, including tubes. \$44.00

Your Cost \$44.00

15 Watt Musical Instrument Portable Amplifier

- High fidelity reproduction of all musical instruments.

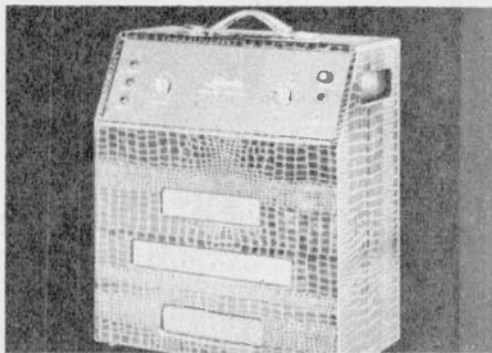
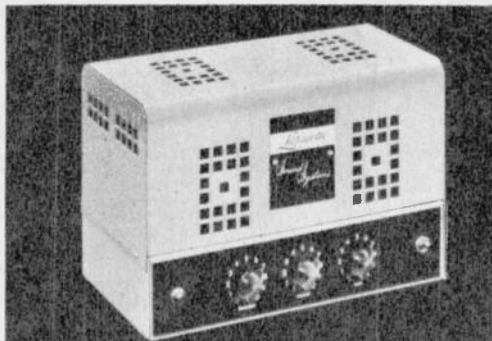
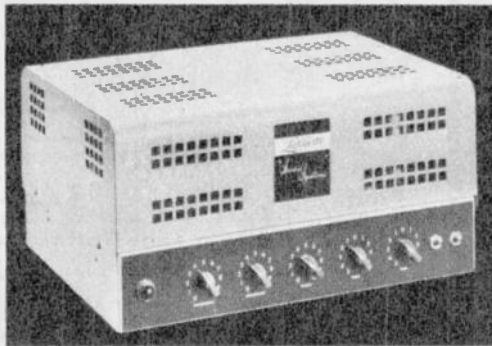
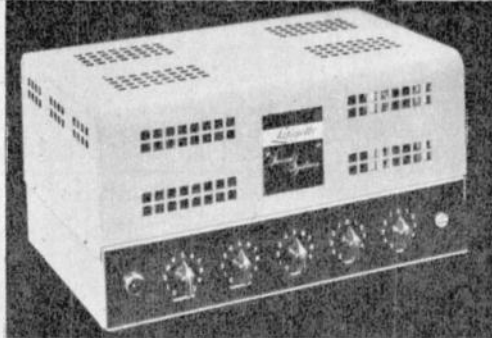
- Three inputs—For solo work or orchestra.

Unsurpassed high-quality reproduction over the entire audible register for professional or amateur musician. This amplifier faithfully reproduces the full range and tone of all musical instruments. Designed for solo work or any combination of instruments and voice. The three separate inputs permit use of up to three instruments, singly or in combination. And for complete flexibility, one of the inputs may be used with a microphone for vocals while instruments come in at the same time. You can use the com-

plete rated power of 15 watts with a minimum of distortion. Scientifically designed case acts as a perfect acoustic baffle.

SPECIFICATIONS: 15 watts normal power output; 30-12,000 cps response; 3 input jacks; 115 db gain per channel; volume control and bass treble tone control; -24db hum level below normal output; less than 5% distortion at normal output; 110-120V 60 cyc AC. 95 watts power consumption; uses 2-7F7, 2-6L6GA tubes, 1-5Y3G rectifier; 18"Hx15½"Wx8½"D. Shpg. wt. 28 lbs. A heavy duty 12-inch electro-dynamic speaker is carefully housed in the smart, one-piece leatherette case.

MODEL 715—Complete 15-watt portable amplifier, including tubes and case \$61.00



test equipment

McMurdo Silver "SPARX" 905 Signal Tracer

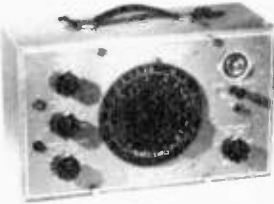


The Dynamic Signal Tracer provides an audible means of following a signal from the antenna to the speaker. The electron-ray indicator furnishes a visual means of measuring circuit gain or loss. With this instrument the technician can check a receiver at every circuit point, locating hum, noise, open and short circuits. Even the presence of grid and plate supply voltages is indicated visually. Useful frequency range is from 20 cycles to over 200 megacycles. 65 db gain in AF amplifier. Complete with test leads. Practically no detuning effect of circuit under observation. Size 12 $\frac{1}{2}$ " x 7 $\frac{3}{4}$ " x 5 $\frac{7}{8}$ ". Wt. 13 lbs.

K21456 Your Cost

\$39.90

Model 904 C-R Bridge

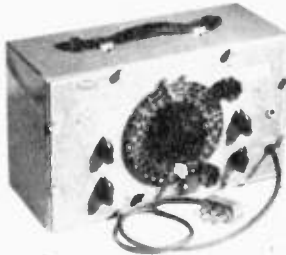


The Model 904 Capacitance-Resistance Bridge gives direct readings from 10 ohms to 1000 megohms and from 10 mmfd to 1000 mfd on a five inch logarithmic scale. Accuracy is better than 3 percent up to 100 megohms/mfd., slightly less on the highest scale. Measurements down to $\frac{1}{2}$ ohm/mfd can be made as to any small value of C or R. 0-500 volts DC potential is applied to all capacitors during test. Unit is furnished complete with tubes: 1-6SN7, 1-6E5 "Eye" tube, 1-5Y3 and test leads. Will operate on 105-125 volts. 50-60 cycle, AC only. Dimensions: 12 $\frac{3}{4}$ " x 7 $\frac{3}{4}$ " x 5 $\frac{7}{8}$ ". Shpg. Wt. 13 lbs.

K21454 Your Cost

\$49.90

Model 906 FM-AM Signal Generator



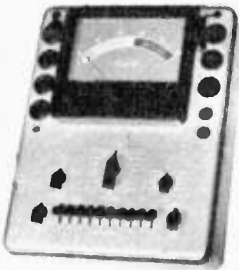
This signal generator provides fundamental frequency coverage of all usual AM bands, plus built-in frequency modulation and total range including new FM bands up to 210 MC. The frequency range, 90 KC-170 MC, is covered in eight bands. In an MOPA circuit, 1 triode section of a 6J6 miniature uhf tube serves as oscillator and the other as buffer amplifier. Output voltage is indicated by a uhf radar type crystal diode and panel meter, calibrated directly in microvolts. Built-in attenuator provides continuously variable, metered output from 0-1 volt. Signal can be AM or FM modulated at any frequency. Offers negligible load on circuit under test. 12 $\frac{3}{4}$ " x 7 $\frac{3}{4}$ " x 5 $\frac{7}{8}$ ". Wt. 20 lbs.

K21452 Model 906
Your Cost

\$99.50

Triplett

Model 3212 Counter Tube Tester

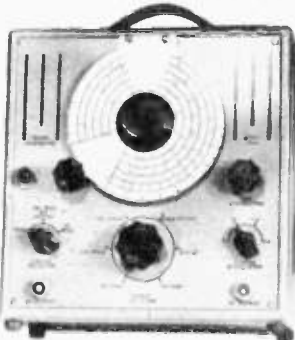


Professional counter Tester for servicier and dealer. Handles receiving tubes, gaseous rectifiers, ballast tubes & pilot lamps. Full range of filament voltages 0-75/1.2/1.4/1.5/2/2.5/3.3/5/6.3/7.5/12.6/25/32/50/70/85/95/100/110. 5 $\frac{1}{2}$ " color coded scale reads BAD, 1, GOOD. Sockets take 4, 5, 6 prong, 7 prong large and small, 8 prong octal and loctal, 5 prong bantam, 7 prong miniature and sub-miniature, and one spare tube base. Neon indicator short test. Fast, flexible 3-position lever switch. 110V 60 cyc AC operation. New metal case with two tone hammered baked-on enamel finish. 15x11 $\frac{1}{4}$ " x 6". Illuminated speed roll chart for quick easy setting. Shpg. wt. 15 lbs.

K21518 Your Cost

\$62.23

Model 2432 Signal Generator



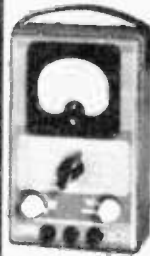
75 KC to 50 MC in six overlapping bands. Approx. 30% internal modulation at 400 cycles. 400 cycle audio signal available at panel jacks. Air trimmer capacitors, permeability adjusted coils, and electron coupled oscillator circuit provide increased stability. Directly geared, aluminum dial permits accurate settings. Fine and coarse variable attenuation. Coaxial cable output lead minimizes losses. Separate coaxial fittings for RF and AF output connections. Uses one each 6SJ7, 6J5, 6SGT and VR-150-30. 115 volt 50-60 cycle power supply voltage regulated for increased oscillator stability. Metal case with tan, hammered enamel finish, 10x10x6 $\frac{3}{4}$ ". Entire RF and AF assembly enclosed in separate shields. Strong second and third harmonic signals provide for extending coverage to new FM bands. Internally shielded power transformer. Filtered power line. 16 lbs.

K21507

Your Cost

\$86.73

Jackson Model 615 Volt-Ohm-Milliammeter



An excellent general purpose instrument, compact in size but unusually complete in ranges. 2 ohms ranges: 0-1000/500,000; 5 DC volt ranges: 0-5/50/100/250/1000; four DC ma ranges: 0-1/5/50/250; five AC volt ranges: 0-10/100/200/500/2000; additional high voltage DC range: 0-2500. Rotary switch range selection saves time and reduces errors. 3" square type meter has two jeweled bearings. Each instrument supplied complete with self-contained batteries. Panel is finished in attractive two-tone grey with white lettering. 7x4 $\frac{1}{2}$ " x 3". Shpg. wt. 4 lbs.

K21473 Model 615, **\$24.45**
Your Cost.

Model 640 Test Oscillator



Has full range direct reading dial from 100 KC to 30 MC. All ranges are fundamental frequencies. Push button selection of all ranges for speedy, accurate operation. The dial is glass enclosed. Two-circuit attenuator for variable and vernier control. Powerful signal output which may be used as pure RF or modulated RF carrier, modulated at approximately 30% AF voltage obtainable for external use. Accuracy to $\frac{1}{2}$ of 1% on all ranges. Complete with three tubes. Unit welded steel case, gray morocco baked enamel finish, 8 $\frac{1}{2}$ " x 8 $\frac{1}{2}$ " x 6". 110 volts 60 cycle AC. Wt. 15 lbs.

K21652
Your Cost **\$54.88**

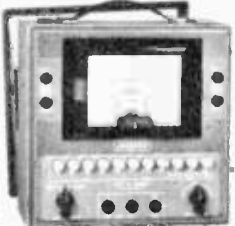
Model 645 Vacuum Tube Voltmeter



Both AC and DC volt ranges are electronic, providing maximum sensitivity and overload protection. Measures resistance up to 1 billion ohms and as low as 2/10 ohm. Meter ranges: AC Volts 0-1/4/10/40/100/400/1000; DC Volts 0-4/10/40/100/400/1000; Ohms 0-1000/10,000/100,000/1 meg/10 meg/100 meg/1000 meg; Ma 0-1/4/10/40/100/400/1000; db minus 30 to minus 5/minus 10 to plus 15/10 to 35/30 to 55. Reversal switch gives instant positive or negative DC voltmeter indications. Constant input resistance of 12 megs on all DC volt ranges. Input resistance of 4.4 megohms on all AC ranges. 3 million ohms per volt sensitivity on 0-4 volt DC range. Over 4 million ohms/volt sensitivity on 0-1 volt AC range. 3 tubes: 6X5GT, 6K6GT, 7N7, 4 $\frac{1}{2}$ volt battery and ballast self contained and furnished. 8 $\frac{1}{2}$ " x 8 $\frac{1}{2}$ " x 6", 10 lbs.

K21472 Your Cost, **\$58.31**
Complete

Model 642 Volt-Ohm-Milliammeter



A valuable instrument for all measurements of sensitive circuits such as AVC, grid circuits, etc. Many measurements can be made with current drain as low as 10 microamperes. Instant selection of any range by means of 11 key push button selector. Volts AC and DC; range: 0/10/100/250/500/1000/5000; -10 to +14/10 to 34/30 to 54 db; DC ma 0/10/100/250; 0/100 microamps; 0/10 amps; 0/3000/300,000/30,000,000 ohms. No external batteries or line power required. All DC volt ranges arc 20,000 ohms/volt. Current readings may be made as low as 2/1000 of 1 ma. Case is welded steel finished in grey morocco. Fitted with removable steel hinged cover. Protects meter and controls. 8 $\frac{1}{2}$ " x 8 $\frac{1}{2}$ " x 6". With battery, test leads, Shpg. wt. 8 lbs.

K21653 Model 642 Your Cost **\$58.31**
Model 643 same as Model 642 except 0-1000 microamps, ohms 0-3000/300,000/3,000,000. **\$44.10**
K21759 Your Cost

Supreme Model 565 Vacuum Tube Voltmeter

An electronic voltmeter incorporated into a beautiful case and panel. New type of hand-fitting probe allows ease of measurements, and handles just as any ordinary test lead. Probe includes a new hi-frequency diode. DC ranges: 0/1/2.5/10/50/250/500; AC 0/1/2.5/10/50/250; DC input resistance 40 to 80 megs; AC 20 to 40 megs. Input capacity 9 mmfd. 9 1/2" x 4 3/4" x 9 1/2". Shpg. Wt. 11 lbs.



\$62.23

General Electric Unimeter YMW-1

20,000 ohms per volt multi-range portable instrument. Provides for rapid, accurate measurement of volts, ohms, current and decibels. Extreme simplicity of operation. ALL functions except the 50 microamp and capacitor for output are available without changing to various jacks. AC and DC. Volts: 0-2.5/10/50/250/1000. Sensitivity: DC volts, 20K ohms per volt; AC volts, 1K ohms per volt. Output Meter: Same as AC volts through .5 mf. 600 V capacitor. Decibels: -10 to +3, -2 to +15, +16 to +29, +30 to +43, +42 to +55. 0 level is 6 milliwatts in 500 ohms. Resistance: 3 ranges covering 1 to 20 megohms; R x 1, 20 ohm center 2 K ohm max.; R x 100, 2K ohm center 200K ohm max.; R x 10K, 200K ohm center 20 megohm max. 0-.5/5/50/500 DC ma.; 0-50 microamps available at separate jack. 1 set 40" test leads and 2 slip-on alligator clips for test prods. 1-No. 2 flashlight cell, 2-7.5V "C" batteries supplied. Portable carrying case of fabricated steel, removable cover. Gray wrinkle finish. 12 3/4" x 9 3/4" x 5 1/2". 12 lbs. K21633 Model YMW-1



\$44.50

RCA High Frequency VoltOhmyst

- 6 Instruments in One!
1. VHF Voltmeter
 2. Audio Voltmeter
 3. A-C Voltmeter
 4. D-C Voltmeter
 5. Ohmmeter
 6. F-M Indicator

Applications: FM and television measurements... all a-c measurements in radio receivers from power transformer to output transformer... d-c measurements directly at the grid, plate, screen or cathode terminal... bias cell voltages... AFC and FM discriminator voltages... AVC voltages... d-c resistances... insulation leakage... oscillator strength, etc. The WV-75A can be used for quick and accurate checking of voltages in h-f lines. A diode probe is supplied and has a standard AN integral female fitting for direct connection to coaxial lines.



SPECIFICATIONS
D-C, 6 RANGES: 0-3, 10, 30, 100, 300, 1000 V.
A-C, With probe 0 to 3, 10, 30, 100 V
6 Ranges Probe & mult. 0 to 300, 1000 V
Using probe directly, 30 cyc. to 250 mc
Frequency Probe and leads, 30 cyc. to 30 mc.
Response Probe and mult., 30 cyc. to 15 kc
Resistance 0 to 1,000, 10,000, 100,000 ohms
6 Ranges 0 to 1, 10, 1,000 megohms

| Input Imped. | Using probe directly | At 1 mc 10 mc 250 mc 1 kc & mult. 10 kc | Equivalent Shunt | |
|--------------|----------------------|---|------------------|-------------|
| | | | Res. (ohms) | Cap. (mmfd) |
| | | | 625,000 | 15.6 |
| | | | 32,000 | 14.5 |
| | | | 100 | 13 |
| | | | 1,650,000 | 2 |
| | | | 1,650,000 | 2 |

Power Supply: 105/125 V, 50/60 cyc., 15 watts
Uses 2 RCA-6K6GT/G, 2 RCA-6AL5, and 1 RCA-6X5GT/G tubes. 9 3/4" x 6 3/4" x 6 3/4". Shpg. wt. 17 lbs. K21677 WV-75A

\$125.00

Eico Model 210 De-Luxe Vacuum Voltmeter

for FM and Television specially designed
A precision laboratory instrument, designed for the rugged requirements of the service engineer. Does the work of 5 instruments
DC VOLTMETER: Constant input impedance of 26 megohms; voltages 0.5/10/100/500/1000/5000.
AC VOLTMETER: 25 megohms input impedance; ranges 0.5/10/100/500/1000; uses 6AL5 as linear rectifier.
OHMMETER: electronic on all scales from .2 ohms to 1000 megohms (ranges in multiples of 10).
OUTPUT METER: 5 ranges of AC voltage calibrated from minus 20 to 60 db, flat response, ideal for receiver alignment.
VISUAL SIGNAL TRACER: Uses radar type UHF 6AL5 in probe; linear RF or audio readings from 60 to over 100 megacycles; comparative readings obtainable to 700 megacycles.



Easy to read 8 1/2" meter with wide angle scales overall accuracy 2% on all ranges. Absolutely stable, one zero adjustment for all ranges. Requires 115V 50/60 cyc AC. Has 6SN7, 6X5 tubes, 6AL5 rectifier. 15x10x7" overall. Shpg. wt. 13 1/4 lbs. K21532 Model 210 VTVM, complete with tubes.

\$69.50

Model 113A Multi-Analyst

Take the guesswork out of radio servicing a complete, economical laboratory.

Here's what the 113A Multi-Analyst does for you—
1. **AUDIBLE SIGNAL TRACER** ultra-sensitive, includes a high gain 3 tube amplifier. Traces RF, IF, FM, Television and audio circuits without making frequency adjustments, unsoldering wires or removing tubes. Flat response from 60 cycles to 100 megacycles.
2. **DC VOLTMETER** 26 megohms constant input impedance. Ranges 0.5/10/100/500/1000/5000V with external multiplier.
3. **AC VOLTMETER** VTVM on all scales with 1.5 megohms constant impedance. Voltages 0.5/10/100/500/1000. Diode linear rectifier.
4. **OHMMETER** Electronic on all scales from .2 ohms to 1000 megohms (5 ranges in multiples of 10).
5. **OUTPUT METER** 5 AC ranges, calibrated from minus 20 to 60 db, ideal for receiver alignment. Employs a **BUILT-IN SPEAKER** which permits the servicer to keep his eyes on his work while hearing the operation of the different stages of the electronic device under test. Operates on 115V 50/60 cyc. AC. 8 1/2"x11 7/8" overall Uses 6SU7, 6U6, 6H6, 6X5, 6SN7 and 6AT6. Shpg. wt. 19 lbs. K21533 Model 113A Multi-Analyst, complete with tubes.



\$89.50

Premier Electronic Labs Model 570 Signal Generator

For Testing and Aligning AM, SHORT-WAVE, FM, TELEVISION

The only low priced signal generator with MICROMASTER band spread dial. Geared to tuning condenser and main dial to give a total scale length of approximately 60 inches. This is a most important feature for tuning and aligning FM and Television receivers where tuning is sharp and critical. Any frequency setting can be tuned and repeated very accurately. Incorporates air trimmers on all bands, buffer stage between oscillator and output. Bands 75-220, 200-600, 550-1700 kilocycles; 1.6-5, 5-16, 14-50 Megacycles on fundamentals; 50-150 Megacycles on third harmonic. 400 cyc internal sine wave: 0-100', external modulation from below 50 cyc to over 15000 cyc. Four step attenuator. Shielded line filter. 6J5, 6SN7 tubes. 6J5 rectifier. 105/120V 50/60 cyc AC. 12 1/2"x12x5 1/2". Shpg. wt. 20 lbs.

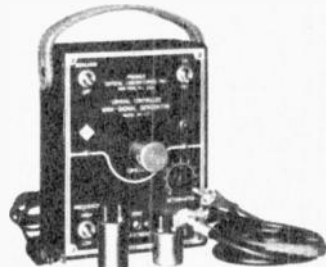


K21535 Model 570 Signal Generator

\$54.75

Premier Crystal Laboratories Model 117 Mini-Signal Generator

Crystal Controlled... Compact... Versatile
Crystal precision and extreme portability. 110 125V AC or DC. 400 cyc modulation of r.f. Useful for FM or AM aligning. Frequencies from 100KC to 10 MC. Harmonic operation above 10 megacycles. Continuously variable a.f. attenuator. Ample ventilation. 3x5x7", 6 foot connection cord and 5.3" lead. Complete with 100Kc. crystal, +0.05% precision. Shpg. wt. 5 lbs.



K21534 PREMIER MODEL NO. 117

\$69.50

Your Cost

PREMIER CRYSTALS +.05% Precision

K13425 175 Kc K13434 1500 Kc.
K13430 200 Kc K13435 8.3 Mc.
K13431 455 Kc K13436 10.7 Mc.
K13432 465 Kc

\$5.85

Your Cost, Any Crystal Above

ham gear



VFO-21

STOPS DRIFT

Set your frequency and **STAY THERE**. The new BUD variable frequency oscillator. Has stability comparable to crystal control. Uses plug-in coils for highest efficiency. No fear of coils and operate. Is a dual purpose unit with Variable Frequency Oscillator operation and provision for switching to crystal control. Is, in itself, a low powered CW transmitter. Has more than enough output to drive any low or medium power beam tubes. Is compact and self-contained. Power supply included. 12 1/2 x 8 1/2 x 3 1/2". **K10654 BUD VFO 21.** Complete with set of 49 meter coils. **Your Cost \$52.50**

COIL SETS FOR OTHER BANDS
K10655 CK 22, 3-10M \$4.00
K10656 CK 23, 3-20M Per Set
K10657 CK 25, 3-80M

Frequency Calibrator SELF-POWERED

No more pink tickets for off-frequency operation. Know your exact frequency. BUD'S FCC 90 features:
 ✓ 100 kilocycle crystal rich in harmonics usable to 10 megacycles. ✓ Extra condenser to zero beat WWV. ✓ ON OFF switch, and STANDBY switch. ✓ Complete with tube and crystal. ✓ Self powered; just plug in to 110 volt line and connect output lead to antenna post of your receiver. ✓ Small, handy, efficient. 2 1/2 x 4 1/2". **K10800 BUD FCC 90. \$14.25**
Your Cost, Complete

You Need A GIMIX

What's a GIMIX? It's a **WAVE-METER**, covering 80, 40, 20, 15 and 10 meter bands. **MONITOR** earphones, and jack for monitoring. **FIELD STRENGTH METER** for accurate tuning. **NEUTRALIZING INDICATOR** and **CARRIER SHIFT INDICATOR**, just plus meter in. 6 x 2 x 2 1/2". **K10801 GX 79. \$8.30**
Your Cost

MILLEN Parts for G-E "Guillotine" Converter

MILLEN offers a complete line of parts for the new General Electric "Guillotine" Converter. This sensational development has aroused great interest in the ham world - so here's the list of fine, precision made MILLEN parts that go into this amazing device.

| No. | MILLEN Used | Description | Each |
|-------|-------------|-------------------------------|--------|
| K8096 | 10035 | 1 Illuminated panel dial | \$6.00 |
| K8095 | 74001 | 1 Perm. toned coil form | 1.85 |
| K8094 | 46811 | 1 Guillotine osc. coil | 2.10 |
| K8093 | 46812 | 1 Guillotine HF coil | 2.10 |
| K8092 | 26100 | 2 100 mmf var. air cond. | 1.30 |
| K8091 | 69641 | 2 Slug tuned coil forms | .60 |
| K8090 | 33407 | 2 Midgetsockets, less shields | .45 |
| K8089 | 33307 | 3 Midgetsockets, with shields | .85 |

h a l l i c r a f t e r s

hallicrafters

SX-4:3

**COVERS THE "HAM" RANGE—
540 Kc. to 108 Mc.**

Here's what you get Continuous coverage from 540 Kc. to 55 Mc. and a band from 88 to 108 Mc. AM reception on all six bands. CW on lower 4 bands, FM above 44 Mc. On 44 to 55 Mc. band, you have wide band FM, AM or narrow band FM. For hottest ham performance a crystal filter and expanding IF channel provide four variations of selectivity on the lower frequency bands. Temperature compensation gives freedom from drift. Series type noise limiter. Permeability-adjusted "microset" inductances in the RF circuits. Separate RF and AF gain controls. 500 or 5000 ohm speaker term. Simple operation for entire family. TUBES: 1-6BA6 RF amp., 1-7F8 converter-oscillator, 1-6SQ7 1st IF amp., 1-6SH7 2nd IF amp. and 2nd converter, 1-6SH7 3rd IF amp. (10.7 Mc.), 1-6H6 AM detector and noise limiter, 1-6AL5 FM detector, 1-6SQ7 1st IF amp., 1-6J5 beat freq. oscillator or 2nd converter oscillator on band 5, 1-6V6 audio output tube, and 1-5Y3 rectifier tube. 105 125 volts, 50 60 cyc. AC. 18 1/2 x 8 1/2 x 13" overall. Shpg. wt. 45 lbs. **K21014 HALLICRAFTERS SX 43. \$169.50**
Your Cost
K21015 HALLICRAFTERS R44 Table Model Speaker in Cabinet for above. \$19.50
Your Cost



hallicrafters

S-47

**EXCEPTIONAL
FM-AM RECEIVER
A Brand New Kind
Of Receiving Instrument**

14 tubes for FM and AM over a range from 535 Kc. to 108 Mc. in 3 bands. And something new - push buttons for FM as well as AM tuning.



BANDS: 535 to 1720 Kc.; 5.9 to 18.2 Mc.; 9 to 12 and 15 to 18 Mc. (including band-spread tuning for foreign reception); and 88 to 108 Mc. (new FM band). PLUS: slide rule dial; automatic frequency control on FM; treble tone and AM selectivity switch; bass tone control; push-pull 6V6GT for 12 watts audio output; flat AM response from 30 to 7500 cps, FM from 30 to 15000 cps; temperature compensated oscillator; phono and antenna connections at rear; 500 600 ohms speaker terminals. TUBES: 1-6BA6, 1-6J6, 1-6BE6, 3-6SQ7, 1-6SH7, 1-6AL5, 2-6J5, 2-6SQ7, 2-6V6GT, SU4G rect. 105-125 V 60 cyc. AC required. 20 w. x 9 3/4" h. x 16" d. **K21010 HALLICRAFTERS S-47. \$200.00**
Your Cost
 Write for information and prices on suitable High Fidelity Speakers for use with S-47.

hallicrafters

HT-17

**HIGH QUALITY
LOW POWER
TRANSMITTER
AT LOW COST**

**Amateur Band Operation
From 3.5 to 30 Mc.**



Put out 10 watts minimum on all bands. Use any antenna, pi-section matching network plus coupling link built in. Easily coupled to a high power final amplifier. Socket for auxiliary power supply. Oscillator automatically switched to Triton on 3 higher bands. Terminals for connection of external modulator. Plug-in provision for M-2 plate milliamperemeter. Employs a 6V6GT crystal oscillator, an 807 PA and a SU4G rect. 105-125 V 50/60 cyc. AC. 12 3/4 x 7 3/8 x 8 3/4" overall. Complete with (SM-2) meter and 7 megacycle coils. Shpg. wt. 25 lbs. **K21006 HALLICRAFTERS HT-17. Your Cost \$79.50**
K21007 Set of 3 1/2 MC Coils for HT 17 \$3.50
K21008 Set of 14 MC Coils for HT-17 7.00
K21009 Set of 28 MC Coils for HT-17 7.00

We also have these popular members of the HALLICRAFTERS family—

S-38 LOWEST priced communications receiver. 540 Kc. to 32 Mc. in four bands, with adequate overlap. CW pitch control, automatic noise limiter, self-contained PM dynamic speaker, "Airodized" steel grille. 12SA7, 21SK7, 35L6GT & 2-12SQ7 tubes. 35Z5GT rect. 12 3/4 x 7 3/8 x 8 3/4". Shpg. wt. 13 1/2 lbs. **\$47.50**
K21100 HALLICRAFTERS Model S-38

S-40A Covers from 540 Kc. to 43 Mc. and is called by hams "ONE OF THE GREATEST RECEIVER VALUES OBTAINABLE." "Micro-set" adjustable inductances, automatic noise limiter, temperature compensated RF oscillator, BFO, inertia flywheel tuning, etc. 8 tubes, plus rect. 18 1/2 x 9 x 11". Shpg. wt. 33 lbs. **K21093 HALLICRAFTERS Model S-40A. \$89.50**

SX-42 Approaches classic perfection. Greatest continuous frequency coverage from 540 Kc. to 110 Mc. AM, FM, CW. Six bands, adequate overlap. Unsurpassed CW performance. Six degrees of selectivity. Noise limiter. Precision tuned controls. "Airodized" steel top. 13 tubes, plus rect. 20 x 10 1/2 x 18". Shpg. wt. 65 lbs. **K21170 HALLICRAFTERS Model SX 42. \$275.00**

NATIONAL HRO-7T ham gear

HAMMARLUND



- You'll hear the whole world with
- ✓ Automatic, adjustable-threshold noise limiter for CW or Phone
 - ✓ Improved high-frequency oscillator.
 - ✓ Voltage Regulator.
 - ✓ Front panel tone switch.
 - ✓ Lever type handles for coil sets.
 - ✓ Slide rule calibration on coil sets.
 - ✓ Bandsread on 11-meter band.
 - ✓ Radio-phon switch.

The HRO-7T gives you stability and dependability by use of time-proved components. All bands have two tuned RF amplifier stages, a tuned first detector, a high-frequency oscillator tube separate from the first detector, two stages of IF amplification, combined 2nd detector and AVC, automatic adjustable noise limiter, first audio stage, audio output stage, and a BFO. A crystal filter is connected between the 1st detector and 1st IF and a voltage regulator tube serves to regulate the plate supply to the high-frequency oscillator tube. An S-meter is associated with the AVC circuit to provide means of measuring signal strength of incoming signals.

Tuning is accomplished by a micrometer dial and use of plug-in coil sets. The MAIN TUNING dial has an effective scale length of approximately twelve feet, with a linear calibration from zero to 500.

Sensitivity—1 microvolt or better throughout normal frequency range. **AVC Characteristic**—within ± 10 dB between 1 and 100,000 microvolts input. **Image Rejection**—increases from better than 30 dB at 30 Mc to better than 120 dB at 175 Kc. **Signal-To-Noise Ratio**—exceeds 16 dB (ratio of output with 30% modulation ON/OFF) with 5 microvolts input. **Input Impedance**—at antenna terminals, 350 ohms. **Power Input**—115V 50/60 cye AC, 75 Watts. **Output**—3 watts maximum. **Tubes**—4-6K7, 2-6J7, 1-6CA, 2-6H6, 1-6SJ7, 1-6V6GT/G, OA2 voltage regulator.

HRO-7T supplied with four coil sets covering frequencies from 1.7 to 34.0 Mc. Five additional coil sets available to cover from 50 to 430 Kc. and 480 to 7050 Kc. 191, 10^3 , 121^2 . Weight 31 lbs. Complete with tubes.

K21252—HRO-7T, Complete, but less speaker and Power Supply. **\$279.00**

Your Cost
K21253—NATIONAL Type MCR 8" Speaker and matching transformer for above. **\$12.00**

Your Cost
K21252—NATIONAL No. **\$20.36**
697 Power Supply for above.

FOUR 20 Transmitter

All Bands — 80 to 10 Meters

The same engineering skill that produced the HQ-129-X and the Super-Pro now bring you an entirely new transmitter. Over a year and a half of intensive research was devoted to the design of this transmitter to fulfill the very special needs of the amateur. **Mono-Sequence Tuning** ✓ One control tunes 4 circuits to 4 different harmonic frequencies.

Stability & Keying ✓ Crystal lightly loaded (less than 5 ma. RF), to assure stability, protect crystal. Resistor network keeps constant load—key up or down.

Transmission Line Matching ✓ Solved in the Four-20 by use of an output coil having a special tap arrangement. This assures easy matching to any of the conventionally used transmission lines.

What Else? 20 watt output at ant. terminals. 0-100 ma. meter reads plate current of each stage. Uses 4-7CSLT's, 1-807 and a 5U4G rect. 105/120 V 50-60 cye. AC. $8\frac{1}{2} \times 15\frac{1}{2} \times 9\frac{1}{2}$ " 31 lbs.

K21001—Four-20 complete with 10 M coil.

Your Cost
K21002—20 M Output Coil; **K21003**—40 M Output Coil; **K21004**—80 M Output Coil
Any Coil Above

\$120.00

\$2.70



FOUR 11 Modulator

A Complete Audio System With Built-in Power Supply

Phone Operation ✓ Designed for use with four-20 transmitter. Will produce more than enough power to modulate 807 final stage. **Pieces QRM.**

For Beginners ✓ Four-11 plus four-20 combined make ideal phone and CW transmitter. "ON THE AIR" with crystal, mike.

For Advanced Operators ✓ Build your own hi-power final. The four-20 can drive a 1 kw tetrode final. The four-11 can push a high-power modulator.

Audio Response ✓ Substantially flat between 200 and 3000 cycles, falling off sharply below 200 cycles and above 3000 cycles.

Data ✓ 11 watts audio, less than 5% distortion, .110 db gain. 6SL7GT 1st and 2nd audio amp., 6CS5 phase inverter, two 7CSLT's push-pull audio. Quality components are used throughout, ratings are ultra-conservative and great care has been taken to produce a unit which will give long service under all kinds of conditions. H-imped. mike. 105/120V 50-60 cye AC. $8\frac{1}{2} \times 15\frac{1}{2} \times 9\frac{1}{2}$ " 41 lbs.

K21005—Your Cost

\$72.50



Frequency Standard FS-135-C

Make your receiver an accurate frequency meter.

With the FS-135-C you can calibrate your receiver, check your transmitter frequency or make any other checks required. The crystal freq. can be adjusted for zero beating with WWV—once this is done its accuracy equals that of a costly frequency standard. Unit is small enough to mount in any receiver and is furnished complete with 100 kc. crystal, miniature tube, and installation instructions. Crystal is low drift, silver plated, rugged and completely sealed. Tube takes negligible power from receiver. Color-coded leads and convenient mounting angles. $2\frac{1}{2} \times 2\frac{1}{2} \times 3\frac{1}{2}$ " high overall. Shipping wt. 2 lbs.

K10802—FS-135-C. Complete with tube. **\$14.25**

Your Cost



NATIONAL NC-173

- ✓ Double Action Noise Limiter.
- ✓ Wide Range Crystal Filter.
- ✓ "S" Meter.



Engineered to fulfill a wide variety of applications; for the Amateur, Short Wave Listener, and in Commercial Installations. 540 kc to 31 mc., plus 48 to 56 mc. (includes 6 meter band). Separate scales for general coverage and bandsread. Auxiliary scales for logging. Calibrated bandsread for 6, 10-11, 20, 40 and 80 m. 13 tubes in superhet array provides for circuit stabilization and a double-diode noise limiter. Pick up jack on front to connect auxiliary apparatus. Audio is flat from 75 to 6000 cps. Loudspeaker is of PM field type, 8 ohms. **Tubes**: 3-6SG7, 1-6SA7, 1-6J5, 2-6H6, 1-6AC7, 1-6SJ7, 1-6V6GT/G, 1-OD3/VR 150, 5Y3GT/G Rect. **Controls**: Main Tuning; Bandsread Tuning; Band Switch; RF Gain AC ON/OFF; AF Gain; Send Receive; AVC MVC; Tone, CWO; CWO Switch; Limiter; Phasing; Selectivity; RF Trimmer. **Size**: Receiver— $19\frac{1}{2} \times 10\frac{1}{2} \times 13\frac{1}{2}$ "; Speaker $10\frac{1}{2} \times 10\frac{1}{2} \times 6\frac{1}{2}$ ". Shipping weight 70 lbs.

\$179.50

K21286—NC-173 Receiver **\$130.00**
K21287—Speaker for above in cabinet

NATIONAL NC-57

Now you can get everything in the radio to suit amateur, professional, and the whole family. Has that "tailored" look that puts sparkle into any room and delights the listener with its



amazing range. You get ✓ Five bands standard broadcast and four others ranging from 1.6 to 56 megacycles. ✓ Extended range includes the 6 meter Ham band. ✓ Main and electrical bandsread dials are precision calibrated with RF trimmer control to give you maximum signal adjustment. ✓ Circuit of advanced design includes a noise limiter, voltage regulator, beat oscillator, antenna trimmer, universal antenna input, 3 step tone control, and many other refinements that make for superior reception. ✓ Self-contained power supply. ✓ Built-in PM speaker. ✓ Socket for battery operation. ✓ Socket for external "S" meter. ✓ Terminals for external relay or B plus switch. ✓ Phone jack. **Tubes**: 1-7H7, 1-7S7, 2-6SG7, 1-6H6, 1-6SN7, 1-6V6, VR-150 regulator and 5Y3GT/G rectifier. $16\frac{1}{2} \times 8\frac{1}{2} \times 11\frac{1}{2}$ ". 105-125 volts 50-60 cye AC. Complete with tubes. Shpg. wt. 33 lbs.

K21062—NATIONAL NC-57 **\$89.50**

Your Cost

ham transmitters

HARVEY-WELLS TBS-50 HAM TRANSMITTER

The Most Versatile Small Transmitter Available

50 WATTS ■ ■ 8 BANDS ■ ■ PHONE OR CW

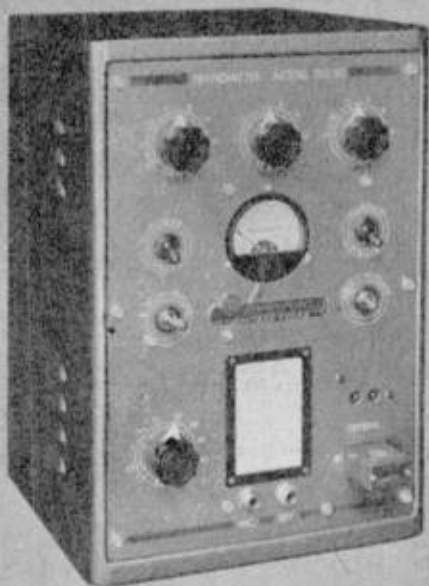
80, 40, 20, 15, 11, 10, 6 and 2 Meters—No Plug-In Coils

This model steals the show wherever it appears. Everything about it was designed to please any operator of this 50 Watter. Crystal controlled on all bands, yet requires no oscillator or multiplier tuning. Six bands from 80 to 2 meters, and no bother with plug-in coils—just switch to the band you want. Compact, the TBS-50 serves equally well for fixed station or mobile operation. Will operate from AC power packs up to 500 volts at 27.5 ma. or dynamotor supply for portable mobile operation. As an exciter unit, R.F. output is capable of driving 1000 watt Class C amplifier. Separate winding on modulation transformer permits audio system to be used to drive 500 watt modulator. Employs Pi antenna matching network. Separate coaxial output terminal for 144-148 Mc. antenna. Power input to final is 50 watts with 450 volt power supply on Bands 1 through 7, 30 watts on Band 8. All circuits are sufficiently broad to tune completely over any band with adequate excitation for any frequency on the first six bands. No tuning adjustments are necessary except those necessary to resonate the final output to the antenna.

Controls: Band Switch, Excitation Control, Antenna Loading, Amplifier Tuning, Power On Switch, Carrier On Switch, Meter Switch, CW-Phone Switch. Antenna network will match non-reactive feeder of approximately 50-500 ohms. Provision for inexpensive single button carbon type microphone. Frequency calibration chart on front panel as well as 0-10 ma. DC milliammeter.

Tubes: 6AQ5 Crystal Oscillator, 6AQ5 Buffer Multiplier, 807 Final Amplifier, 2-6L6 Class B Modulators. In sturdy steel cabinet, 8" wide x 12" high x 8" deep. Shpg. wt. 15 lbs.

K20352—TBS-50. Your Cost, Complete with Tubes..... \$99.50



MILLEN 90810 HIGH FREQUENCY TRANSMITTER

75-Watt Output ■ ■ 10-11, 6 and 2 Meter Bands

Crystal and circuit development on "third overtone frequency output crystals" makes possible this highly efficient transmitter with a minimum of tubes. Provisions for quick band shift with latest high frequency plug-in coils.

The 90810 consists of a Bliley CCO-2A crystal oscillator unit, using a 6AG7 crystal oscillator, a 2E26 tripler and an 829B power amplifier. For 10-11 meter operation, a conventional crystal is used to drive the 829 direct. For 6 meter operation, an overtone crystal drives the 829 directly as a power amplifier. The overtone crystal is also used on 2 meters but the output is fed through the 2E26 tripler. Operational checks are possible by means of the multipurpose meter connected into the grid and plate circuits of the tripler and power amplifier. The 90810 is supplied with grid and tank coils for 10-11 meter operation. Panel size is 8 1/2" x 19". Shpg. wt. 25 lbs.

K20364—MILLEN 90810 including 10-11 meter coils, less tubes \$69.75

Your Cost

COILS FOR MILLEN 90810 TRANSMITTER

Grid Coil and Link
K8116—48011, 10-11 meters..... **\$1.80**
K8115—48006, 5 meters..... **1.80**
K8114—48002, 2 meters..... **1.80**

(Above grid coils mount in MILLEN 41407 socket.)

PA Tank Coil and Link
K8112—48111, 10-11 meters.... **\$1.80**
K8111—48106, 6 meters..... **1.80**
K8110—48102, 2 meters..... **1.80**

(Above PA tank coils mount in MILLEN 41403 socket.)

STANCOR RADIO TRANSMITTER KIT

ST-202-A

A Watt Per Dollar Transmitter . . . Completely Powered

The ST-202-A Kit when assembled provides you with a CW rig that covers 6 bands between 3.5 and 30 Mcs., and has substantial power output. Depending on the R.F. amplifier tube used, plate input power varies from 100 to 125 watts and output varies accordingly. Internal frequency control is achieved with six crystals. Output circuit has link coil with adjustable coupling. Bands covered are 10, 11, 15, 20, 40 and 80 meters. Tubes required are metal 6V6 oscillator, metal 6L6 intermediate tube, 5R4-GY H.V. rectifier, 5Y3-GT L.V. rectifier, and a triode P.A. tube of your desire such as the 35T, 35TG, HK54, 811, or 5514. Filament voltages of 5.0, 6.3 and 7.5 provide range for different tubes used. P.A. circuit is balanced and neutralized. Amplifier tank uses 150 watt standard type plug-in inductors, one for each band. Quick channel shifting by use of panel switch. Grid and plate current readings from single meter. Complete kit includes cabinet, chassis and all constructional components. Also supplied is a prefabricated cabled harness, taking care of most of the wiring. Complete detailed instruction booklet. 14 1/2" x 9" x 13 1/2". Shpg. wt. 55 lbs.

K20361—STANCOR KIT ST-202-A, less tubes, amplifier tank coils, milliammeter and crystals. Your Cost..... \$92.80

MICAMOLD XTR-1 45 WATT CW TRANSMITTER KIT

● No Special Antenna ● No Coils To Change ● Shock Proof

Easy to assemble, wire and operate this inexpensive, efficient transmitter. A punched, baked grey finish chassis has appropriate lettering, dial scales, etc. Complete from power supply to antenna matching network—needs only one each type 83, 6AQ7 and 1614/6L6 tubes, a crystal and key. Furnished with simple, clear instructions for assembly, wiring and operation. See these outstanding features yourself: 1- **Absolute Safety**—no exposed live parts. When used with insulated lead-in wire it is impossible to get a shock during adjustment or operation. 2- **Band Switching**—no plug-in coils, just flip the switch to 3.5, 7 or 14 Mc., using suitable crystal. 3- **Surefire Circuit**—crystal oscillator driving final amplifier insures stability without neutralization. A pi-network to match any antenna. Simple to operate and emits a fine crystal signal. 4- **Well Engineered**—designed to last and fully guaranteed under the Radio Manufacturers Assoc. standard warranty.

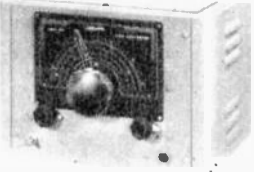
K20363—MICAMOLD XTR-1, less tubes. Your Cost..... \$34.00



W1's W2's W3's
W4's W5's W6's W
W8's W9's W10's
ALL SAY...
'AMAZING'



the popular **LESTER V.H.F. CONVERTER** for 6-10-11 meter operation • • tops in performance, low cost.



Frank "W2AMJ" Lester, well-known designer of "ham" equipment, engineered this efficient 6-10-11 meter VHF Converter not just for those who are willing to pay for the best, but to give the rest of us who must put "cents" in every dollar a completely assembled, wired and calibrated job, you get a compact unit with quality components and superior performance... and, truly inexpensive. **DESIGN:** For most efficient operation at the high frequencies employed, the chassis was designed for component placement at different levels. This permits use of shortest possible leads essential to high frequency electronic design, while at the same time retaining a neat and symmetrical panel layout. Plug-in coils are used to cope with possible FCC band changes. The converter makes use of a selenium rectifier and three miniature type tubes. One 6BA6 is employed as a tuned RF stage, one 6BE6 as a mixer, and one 6C4 as the high frequency oscillator. Single dial tuning is featured; however, this only controls the high-frequency oscillator, the RF stage being under separate control. This feature eliminates tracking error and permits band spread tuning besides being able to cope with strong local signals by detuning the RF stage. A separate bias control makes it possible to vary the gain of the mixer thus providing a means of obtaining optimum signal to noise ratio regardless of the type of receiver the converter may be connected with. Besides

the ON-OFF switch, a STANDBY switch controls both the converter and an associated receiver. The plug-in coils employed for the various bands cover the 50 to 54 megacycle range and the range from 27.18 to 29.7 megacycles. The suggested output frequency is 5.7 Mc., however the output transformer is adjustable from 4.7 to 6.5 Mc. The kit comes supplied complete with a punched chassis, panel and cabinet as well as parts for 6 meter band and complete instructions, less tubes. In an attractive gray crackle cabinet 8x12x8". Shipping weight 15 lbs., kit or assembled.

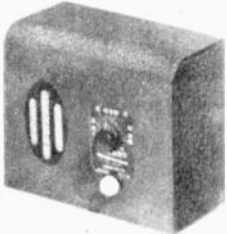
K10454 Converter kit, including 6 Meter coil, all parts, less tubes. **\$34.50**
Your Cost, Only
K1011CK 10-11 meter coil **\$3.50**
component kit
K21000 Tubes for converter **\$3.00**
K10481 Converter completely assembled, wired and calibrated for 6 meter operation, including tubes. Your Cost, Only **\$49.50**
K10456 Same as above plus coils for 10 and 11 meter operation, calibrated **\$54.50**

Flash—20 Meter Coils Now Ready!

20 meter coil assembly for converter makes it more versatile than ever.
K10467 20 M coils, calibrated. **\$3.95**
Your Cost, per set

CRYSTAL SETS

Table Model Crystal Set



A real set. No tubes, batteries, or current just aerial and ground. Simple, complete instructions supplied. Positive contact tuning dial and spring-action easy-hand locator permit simple tuning. Mahogany finish case. Clear reception is possible with specially constructed earphones. All that is required for effective reception is a good aerial and ground. Shpg. Wt. 1 1/2 lbs.

K13822 Model 250. **\$4.59**
Your Cost
K13823 Same as above but less phone **\$3.09**

Philmore Supertone Radio Receiving Set



A remarkable radio receiving set built to give everlasting service. Loud and clear reception. Glass-enclosed sensitive crystal with adjustable cats whisker. Aerial, ground and

earphone posts. 1 lb.
K13888 Your Cost **\$1.12**

Miniature Plastic Crystal Set



An efficient crystal set housed in a beautiful marble color plastic case. Just like the big sets. Earphone is set into the case. When in use, the phone is removed from the case and held to the ear for top reception. Looks like a miniature of present-day modern design sets. 4x2 1/2 x 1 3/4". Wt. 8 ozs. Instructions supplied with each unit.

K13885 Your Cost Each **\$2.49**

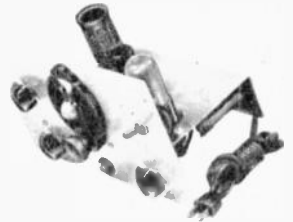
Air Champ Crystal Kit



The Air Champ Crystal Kit is an educational and scientific as well as a genuine radio. All components are clearly labelled, so that the beginner can see and learn the rudiments of radio. No batteries or electric source are required. Completely self-contained. Assembly is simple. Instruction manual explains radio theory. Earphone and headband. 2 lbs.

KP5542 Complete. **\$1.98**
Your Cost Only

All Wave Receiver Kits



AC-DC Kit

You can easily assemble this versatile receiver in very little time. A 12SJ7 and a 117N6GT are employed in a high gain circuit for maximum sensitivity and response. Kit supplied with 4 coils, covering 10 to 200 meters. This takes in police, aircraft, amateur, foreign and standard bands. Coils overlap in the tuning range. Electrical bandspread tuning is built in. An output transformer is provided to match the receiver output to any PM speaker voice coil. A jack permits headphone operation. Complete with punched chassis, panel, set of plug-in coils, tubes and full instructions. Shpg. wt. 7 lbs.

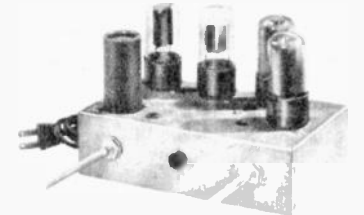
K10448 Kit includes punched chassis, plug-in coils and tubes. **\$17.95**
Your Cost
K10043 Extra set of Broadcast Coils covering 100-570 meters. **\$1.82**
Your Cost
K19269 5" PM spkr. for above. **\$2.59**
Your Cost

Battery Kit

An easy-to-build high gain, instant operating broadcast and short wave receiver. Finest components give you long-lasting dependable performance. This unit, when built, will cover the broad range from 10 to 200 meters, and can cover the standard band from 550 to 1650 Kc. as well as popular short wave bands. Coils overlap in tuning range. The highly sensitive circuit uses a 1C5 detector and a 3Q5 p.a. The battery requirements for this set when completed are a 1 1/2 volt "A" battery, two 45 volt "B" batteries and one 4 1/2 volt "C" battery. Complete kit consists of all parts including punched chassis, panel, set of plug-in coils, tubes and instructions. Shpg. wt. 7 lbs.

K10451 Kit complete. **\$16.95**
Your Cost
K19820 Kit of batteries for above **\$3.85**
K19269 5" PM speaker for above **\$2.59**

4-Tube Phono Amplifier Kit



Designed for either AC or DC operation. Excellent response characteristics. A 35Z5 rectifier is employed. A 12SL7 dial triode acts as an amplifier phase inverter. Two 35L6 Beam Power output tubes operate in push pull. Inverse feedback is employed to improve frequency response. Universal output transformer permits matching of any PM speaker voice coil impedance. Power output approximately 3 watts. Also has variable tone control. A complete kit with punched chassis, tubes and instructions. Shpg. wt. 10 lbs.

K10457 Your Cost **\$10.45**
K19271 8" PM speaker for above. **\$3.57**
Your Cost

NOTE: HOME RADIO BUILDERS

For more hits, exceptional superhets and television, see the terrific buys on page 18. Above all be sure to take advantage of our free catalog offer, as described on page 2.

All Prices Subject To Change Without Notice

tools

WELLER Soldering Gun



A must in the kit of every man who makes soldered electrical connections. Heats in five seconds; see where you work; has built in spotlight; gets into tight corners. Operating on the same principle as the resistance welder. 100 watts, 115 volts, 60 cycles AC.

K14907 **\$12.69**
Model S107
K14841 Tip Fastening Stud .10
K14844 Copper Tip .05

EAGLE 16-Piece Drill Kit



An Ideal Gift Item for Servicers, Home Craftsmen, Farmers, Hobbyists

With 14 EAGLE Twist Drills
 A dependable, easy-to-use, streamlined tool. $\frac{1}{4}$ " capacity, light-duty, and designed with a line-of-balance that means almost effortless drilling. In a handy, on the job utility box you get those drill components that are most needed with seven 118 degree point drills for drilling iron and steel and seven 90 degree point drills for drilling wood and plastic. Points vary from $\frac{1}{4}$ to $\frac{1}{16}$ inch diameter. The new twist drill design will be appreciated by servicers and mechanics - slightly shorter than the old style length, these clearance ground mirror finish drills are sturdier and better able to withstand the twisting strain of power drilling. Motor works on 110-120 volts AC or DC. Guaranteed chuck speed of 1100 revolutions per minute. Armature shaft turns smoothly in Oilite bearings of impregnated bronze. Drill housing is lacquer sprayed, slow baked, smooth finish, precision cast aluminum alloy. Finish does not peel. Plug-in cord scientifically located in shielded area. Factory guaranteed for one year. Shpg. wt. 4 lbs.

K14839 **Your Cost \$15.95**

RH60 Tackmaster

Here's a heavy-duty trigger action staple tacking machine with a multitude of uses for all purposes in the home, for servicers, in tacking wire or wire netting, in fact anywhere where a quick way of securing paper to paper or paper to wood is needed. An easy grip action permits you to use it flat against any vertical or horizontal object where tacking is necessary. Ruggedly built to stand the strain of working into harder surfaces such as wood. Loads 140 flat wire "RH" ($\frac{1}{8}$ " leg) staples.
K14799 - Markwell **\$7.50**
RH60 Tackmaster
K14798 Package of 5000 "RH" staples **\$2.10**



BURGESS Vibro-Tool

MARKS, ENGRAVES, FILES, CHISELS, HAMMERS (even on the hardest metals, glass and thin plastics), **CUTS RUBBER, CLOTH, THIN WOOD AND CARDBOARD.** Using vibration principle, the Burgess Vibro-Tool puts temporary or permanent markings on tools, jigs, dies, production parts; instantly engraves names, departments or trademarks on tools or parts. Cuts cloth patterns, stencils, gaskets, washers from rubber, fibre, cardboard, leather, etc. Special improved ball grip makes all-day use possible without hand cramp. Does not overheat. Vibro-Tool can be used by anyone. No special experience necessary. Uses vibration principle, 60 cycle, 110 V. A.C., 120 vertical strokes per second. Supplied with V5 needle. Approximate weight 1 lb.

K14724 **Your Cost, Complete \$7.50**



HANDEE Grinder Tool of 1000 Uses

Will drill, grind, polish, cut, carve, saw and engrave on all materials. Fits the hand, yet incorporates a powerful high-speed motor which is practically troubleproof. Ball bearing construction with packed-in lubrication, enclosed motor, built-in switch. Operates on 110-120 volts 25-60 cycles AC or DC. Each unit supplied with $\frac{1}{4}$ " spring collet chuck.

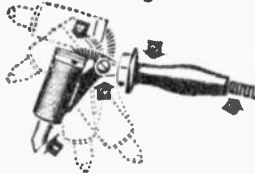
K15354 De Luxe HANDEE, complete with 7 accessories as follows: $\frac{1}{4}$ " Collet; 5 Wheels; 1 Rubber Polishing Wheel; 1 Wheel Dressing Stone. Speed 25,000 r.p.m.

Your Cost \$17.63

No. 3010 De Luxe HANDEE outfit, complete with 27 fine accessories and contained in a steel carrying case. Accessories include: rubber polishing wheel with mandrel; saw with mandrel; slitting saw; two steel cutters; three drills; push-pin mandrel; steel wire cavity brush; bristle brush; wire scratch brush; rubber disc with mandrel; felt polishing point with mandrel; rubber polishing point with mandrel; felt polishing wheel; drum sander and three bands; disc cleaning brush; mounted wheels (six); wheel dressing stone; vial of Handee speed oil; dozen assorted sandpaper discs. You can accomplish every conceivable job with this complete outfit. Shpg. wt. 8 lbs.

K15263 **Your Cost \$23.38**
K15264 No. 3011. Same as the above, but with 26 assorted Mounted Wheels for industrial application only. **\$23.38**
Your Cost

McKINLEY Adjustable Soldering Iron



Quickly Adjusted to Easiest, Most Efficient Work Position

Operators do better, faster production line soldering because they can reach the solder point instantly and approach the work from the most efficient angle. Head is easily adjusted to most efficient, comfortable soldering position. Entire shank enclosed in hermetically sealed heating element for more heat delivery. Easy access for changing heating unit. Well balanced comfortable handle. Long life flexible heater cord. In 100 and 200 watt sizes.

K15057 100 Watts, **\$5.95** with $\frac{3}{16}$ " copper tip
K15056 200 Watts, **\$7.45** with $\frac{3}{8}$ " copper tip

Harmic's Mighty-Mite



NATIONALLY ADVERTISED

An efficient electric soldering iron with the new "DEMON HEAT" element. 35 Watts: 110-120 volts. You can't miss this buy. Does a job comparable to that of many higher priced irons. At amazing low cost!

K14796 HARMIC No. 35 **Your Cost \$4.95**

JACKSON Electric Soldering Pencils Standard Kit



FOR PRECISION WORK AND ALL PURPOSES

Element wound on brass core. High grade mica and nichrome wire. $\frac{1}{2}$ " steel tubing, gun metal finish. 25 Watts, 115 Volts, 7" long. $\frac{1}{4}$ " diam. tip. Wood handle, rich black finish with cork sleeve. Complete with stand, 2 extra tips, solder and 6 ft. rubber cord and plug. Shpg. wt. 5 oz.

K14740 Standard Kit 230K **Your Cost \$1.89**

De Luxe Kit

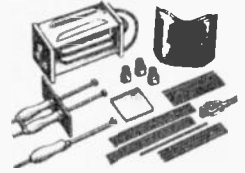


FOR SKILLED CRAFTSMANSHIP

A soldering pencil kit for all light work such as Radio, Television, Jewelry, Instruments and Electronics. Extra tips for woodcraft, metalcraft, gold lettering, wood-burning, soldering and marking. Handle is cork-filled composition, 100% air cooled; $\frac{1}{2}$ " steel tubing, chromium plate, perforated for air cooling. Element wound on brass core for quick heating. High grade mica and nichrome wire. Complete with four extra tips, solder, stand and 6-ft. rubber cord and plug. 25 Watts, 115 Volts, 7" long. Shpg. wt. $\frac{1}{2}$ lbs.

K14743 De Luxe Kit 230C **Your Cost \$2.49**

TRUTEST Electric Welding Outfit



The complete outfit for welding, soldering, brazing and cutting. Use it at home, in the shop, or carry it with you to the job. It operates from any 110-120 volt line, either a.c. or d.c. It's easy to use, too anyone can do a good job with a few hours practice. Use it to repair broken garden tools, water tanks and pipes, bicycles, pots and pans and innumerable other pieces of equipment. The welder is SAFE, no fumes, and it's ECONOMICAL current automatically shuts off when torch is lifted from the work. The outfit comprises: power unit; both metallic and electric flame welding torches; generous supply of metallic rods and carbons; a guard mask; fluxes for various metals; ground wiring and an asbestos block. Shipping weight 15 lbs.

K14869 Complete **\$14.95** Welding Outfit.

BRUNO Hole Cutters



These versatile hole cutters can be used in hand bits, power drills, or drill presses to cut holes in metals, wood or plastics. Model 100 cuts holes from $\frac{3}{16}$ " to $1\frac{1}{2}$ ".

$1\frac{1}{2}$ " deep. Model 101 cuts holes from $1\frac{1}{2}$ " to $2\frac{1}{2}$ ". $\frac{3}{4}$ " deep. Both models have round shanks. Models 100-B and 101-B have square shanks to fit tapered chucks. Blades easily adjusted, and once set, can be locked in position. A standard drill bit is part of hole cutter. Easy, simple, and safe to use. Shipping weight of each 2 lbs.

No. Bruno Shank Each
K14965 +100 round **\$2.45**
K14966 +100-B square

No. Bruno Shank Each
K14967 +101 round **\$3.45**
K14968 +101-B square

Power Cutter Kit Cutters +100 and +101 in plastic case.
K14962 **Your Cost \$5.85** Complete.

LENK Workshop Soldering Kit



- Famous Lenk long life soldering iron with utility tip
- Lenk automatic self priming nickel plated "BLO-TORCH"
- Handy, ready to use acid core and resin core solder
- Lenk special formula super aluminum solder
- Complete instructions

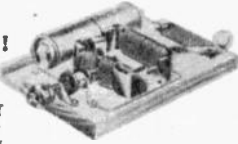
You get all this in a soldering kit expressly designed for the skilled mechanic as well as the home hobbyist. A truly remarkable buy!
K14744 LENK kit, complete **Your Cost \$3.75**

FUN FAIR Electric Motor Kit & Book

Motorize your gadgets!

- Imaginative
- Fascinating
- Educational

A complete set of precision-made parts for building an electric motor that runs beautifully. Plus simple, vividly illustrated instruction book with 25 pages crammed full of "Whys and Hows" of electricity, television, radar and atomic energy. Hours of lasting fun motorize windmills, merry-go-rounds, etc. Complete everything provided, including two batteries. 2 lbs.



K25003 Your Cost \$3.29

RCA Radio Battery Kit

Buy a package of EXTRA listening hours.

Each personal radio battery kit contains 1 - 67 1/2 volt "B" radio battery and 6 - 1 1/2 volt "sealed in steel" "A" radio batteries. A wonderful gift for happy holiday listening from midget portable radios.



K20119 Your Cost \$2.19

Output Transformers

Limited Quantities, Buy Now!

25 Watts PP 6L6 to 4-8-15-250-500 ohms.

KP5739 Your Cost \$3.95

50 Watts PP Parallel 6L6 to 4-8-250-500 ohms.

KPS 738 Your Cost \$4.35



Power Transformer

Made by a well-known manufacturer.

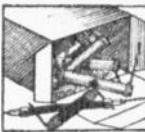
We have a very limited quantity of this highly efficient power transformer. Rated at 700 volts, C.T. at 115 ma., 5 volts at 3 amperes and 6.3 volts at 3.2 amperes. Sturdy and well built, with provision for mounting.



KPS740 Your Cost \$3.49

Kit of 100 Resistors

What value! 100 count "em-100 standard IRC 1/2, 1 and 2 watt resistors for \$1.95! All standard usable sizes; insulated, metallized, RMA coded; 5, 10 and 20% tolerances. Hurry! Quantity limited.



KPS496 Kit of 100 \$1.95

Sensational Value

Emerson 12" PM Speaker

Alnico 5 Magnet

A terrific speaker buy! Manufactured for Emerson by RCA. One piece cone, heavy metal frame. Ideal for replacement use or new installations. Furnished less output transformer. Shpg. wt. 9 lbs.



KPS271 Sale Price \$4.95

Kit of 5 Miniature Tubes

Outstanding tube buy for miniature set builders. Five modern compact tubes, selling at a sacrifice. This is what you get:

- 12BA6 remote cut-off pentode, class A amplifier.
- 12BE6 pentagrid converter.
- 12AT6 duplex diode triode class A amplifier.
- 50B5 beam power class A amplifier.
- 35W4 half-wave rectifier. Going fast. Limited quantity. 1 1/2 lbs.



KPS188 Kit of 5 tubes \$2.75

WESTON Master II Model 735 Universal Exposure Meter

Rugged and well made, like a fine watch. Has every versatile feature necessary for best picture taking, whether color, black and white, or movie photography. Shows film limit positions. With neck ribbon.



KPS702 - Your Cost \$29.67
Postpaid anywhere in U. S.

SUPREME 543S Multitester

A fine value. Uses 3" sq. meter. 200 microamp. movement. Sensitivity 5000 ohms/V. DC ranges 0/150/300V. Ma. ranges 0/60/120/300/600. AC ranges 0/150/300V. Ohm ranges 0/1000/100,000. Uses 2 Penlite cells. Bakelite case 5 3/4 x 3 1/2 x 2 1/4". Less batteries and test leads. Shpg. wt. 2 lbs.



KPS529 543S Your Cost \$17.95

TRUTEST 67 1/2 Volt Battery

A powerful miniature "B" battery for portable radios, hearing aids, etc. Light and compact. Can be used in place of similar Burgess, Minimax, RCA, etc., batteries. Will give long hours of useful life. Fully Guaranteed. 2 1/2 x 1 1/2 x 3 1/2". 1 1/2 lbs.



KPS737 Sale Price \$1.29

BARGAINS, BARGAINS AND MORE BARGAINS

IN OUR FAMOUS CAT. No. 88
See Page 2 for Free Offer

GENERAL INSTRUMENT Model 205 Record Changer

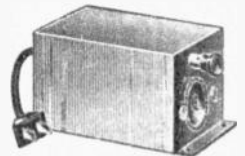


ONE SIMPLE CONTROL for On, Off, Reject. Own this latest, complete automatic record changer—good looking, engineered for perfection and economical. Plays a full stack of 10 twelve inch or 12 ten inch records at one loading. Electrostatically flocked turntable. Curved tangent tone arm of remarkably lightweight material. Astatic pickup. Handsome maroon and tan finish. Super-silent motor. 11x11 1/2 x 7" overall. 110 V. 60 cyc. AC. 12 lbs.

K22501 - Model 205 Changer \$16.95

LAFAYETTE Line Filter

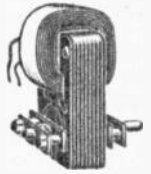
These excellent quality, highly efficient radio-noise suppressors are rated at 110 volts, AC-DC, maximum current 5 amps. Effective with radios or appliances.



KPS619 - Sale Price \$3.95

Fractional HP Motor

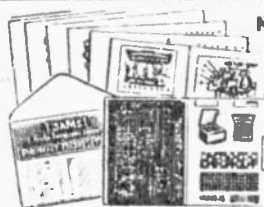
Here's an unusual buy in small motors. Excellent for hobbyists and experimenters. Measures only 3 1/2 x 2 1/2 x 2" overall. Works on 110 volt AC line. 3/8" shaft. Extends 3/4" for easy coupling. 3 lbs.



KPS294 Sale Price \$1.49
10 for \$12.95

SAMS Photofact Folders

If this is you... Here's "How-to-Do"



No Service Problem

Can Stump You

When You Use

SAMS Photofact Folders!

A set of PHOTOFAC FOLDERS Gives You: Disassembly Instructions—Photofacts take the sets apart before your eyes. This single feature actually saves the serviceman more time than the cost of a single set of folders. Dial Card Information "Easy-to-see" diagrams and instructions. Replacement Parts Information—Accurate electrical and mechanical specifications of every part in a set. Record Changer Folders—Illustrated record changer information. You will be amazed at the simple, logical servicing procedures. Highly technical information made crystal clear. Changes, Corrections, Additions—No new data on existing equipment escapes us. We keep you up to date at no extra cost. Personal Service—SAMS Institute gives technical information and sends countless schematics to servicemen without charge. SAMS also gives servicemen business aids at no cost. Continuity, Consistency—The only continuing, consistent method of locating information. No more waiting or hunting. Predigested Information—No more confusion. It's all simplified! Speed up work, make profits bigger, lick every service problem. Full-page schematics, clear-cut photos, original technical dope tell you everything in a jiffy about every radio manufactured since Jan. 1, 1946. 30 to 50 folders in each set, plus membership in the Howard W. Sams Institute with its many free privileges.

K20100 - Individual sets. Your Cost, \$1.50
K19982 - Volume I, Sets 1 to 10. Each Photofact Set. \$1.50
K19988 - Volume II, Sets 11 to 20. \$1.50
K19979 - Volume III, Sets 21 to 30. \$1.50
Your Cost, \$18.39
Each Volume.....

1947 Automatic Record Changer Manual—Everything new in record changers since the war. Over 40 models. You see everything inside and out with SAMS super-simplified way of showing things with pictures. Recorders such as wire, tape and disc types included. Full adjustment data. 400 pages. Hard cover. **\$4.95**

Dial Cord Stringing Guide—This book makes the most intricate dial stringing job as simple as a slip knot. Models covered way back to 1938 and through 1946. **75c**

Aid and Comfort



Money-Saving New Appliances For Kitchen And Home Comfort

A) GRILL-N-TOASTER

Grill frankfurters, bacon and cube steak right at the table—with controllable heat... make toasted cheese sandwiches or cheeseburgers... toast fresh toast, English muffins. All with this versatile, gleaming aluminum GRILL-N-TOASTER. Combines built-in grill and reversible tines for toasting. Instantly taken apart for washing. Will not rust, tarnish, chip or peel. Hammertone finish on highly polished aluminum. 110 and 220 volts. Underwriters' Laboratories approved. Shpg. Wt. 3 lbs.

K25012—GRILL-N-TOASTER \$4.95

B) THE NEW GRILL MASTER

It toasts... it fries... and it broils! Ample room to make toast and heat coffee at the same time. Toasts bread, muffins or biscuits to beautiful golden brown. Heavy aluminum frying pan to quick fry bacon, sausages, fish, eggs, potatoes, pancakes, etc. Can also be used as a "sizzling platter" for the table. Broils directly over heat, as in broiling over charcoal. Drippings will NOT harm heating element. Shpg. wt. 5 lbs.

K25013—THE NEW GRILL MASTER \$11.95

C) PERFECTO BREAKPROOF 8-CUP COFFEE MAKER

All aluminum... no more breakage. A truly perfected vacuum coffee maker that saves you money on costly replacements. Perfecto quality is unsurpassed, made of first run aluminum, even and long drawn in one piece, to prevent weak spots caused by seams and joints. Heat-resistant handle. NEW unbreakable cast aluminum filter with stainless steel prongs provided with each coffee maker. Filter engineered for greatest efficiency in brewing coffee—no sediment drip into lower bowl, ideal for drip or grind. Shpg. wt. 3 lbs.

K25014—Model P8, complete \$3.69

LEMARC HOTPLATES

LEMARC stoves give greatest satisfaction in many ways. UNCONDITIONALLY GUARANTEED for one year. Trim and smart looking—specifically designed to meet today's crowded living conditions. Nickel plated steel top plates to protect elements. Solid construction throughout, heavy gauge steel. Safe and clean enclosed bottoms. Genuine nichrome elements. Ventilating louvres give ample heat dissipation. All stoves complete with 6-foot cord and rubber plug. 110 V. AC or DC. Underwriters' Labs. approved.

E) SINGLE BURNER

660 Watts. Black crackle finish. 9x9 1/2 x 5 1/4". Shpg. wt. 4 lbs.

\$2.25

K25015—Model 1B

F) DOUBLE BURNER

2 heat. 600 and 1000 Watts. Black crackle finish. 18x9x5 1/4". Shpg. wt. 7 lbs.

\$5.65

K25016—Model 2B

G) SINGLE BURNER

660 Watts. Baked white enamel and black wrinkle finish. 9x9x5 1/4". Shpg. wt. 4 lbs.

\$2.49

K25017—Model 1T

H) SINGLE BURNER WITH SWITCH

660 Watts. Same as model 1T, except with switch on hotplate. 9x9x5 1/4". Shpg. wt. 4 lbs.

\$3.25

K25018—Model 1TS

J) DOUBLE BURNER

2 heat, 660 and 1000 Watts. Baked white enamel and black wrinkle finish. 18x9x5 1/4". Shpg. wt. 7 lbs.

\$6.25

K25019—Model 2T2

K) DOUBLE BURNER, 4 HEAT

4 heat, 350-550-700-1050 Watts. Baked white enamel and black wrinkle finish. 18x9x5 1/4". Shpg. wt. 7 lbs.

\$7.85

K25020—Model 3U

L) AMPARO "MAGIC VALVE" 4 1/2 QUART PRESSURE COOKER

Your AMPARO cooker is queen of the kitchen—beautiful, fast and easy. Cook vegetables and fruit in a minute or two, meats and fish in a small fraction of the usual time. Preserves the vitamins and minerals in food as put there by nature, instead of letting them boil away or evaporate into air. Keep food at their delicious best... even cheaper cuts of meat are more tender and tasty when cooked the AMPARO way. The only pressure cooker with the "magic valve," operated with a flick of the wrist. This valve eliminates complicated breakable gauges, keeps pressure at proper level and permits rapid cooling without setting in sink or pan of water. With full, simple instructions and interesting recipes. Rack provided. Heavy cast aluminum construction. Shpg. wt. 7 lbs.

K25021—AMPARO cooker \$9.95

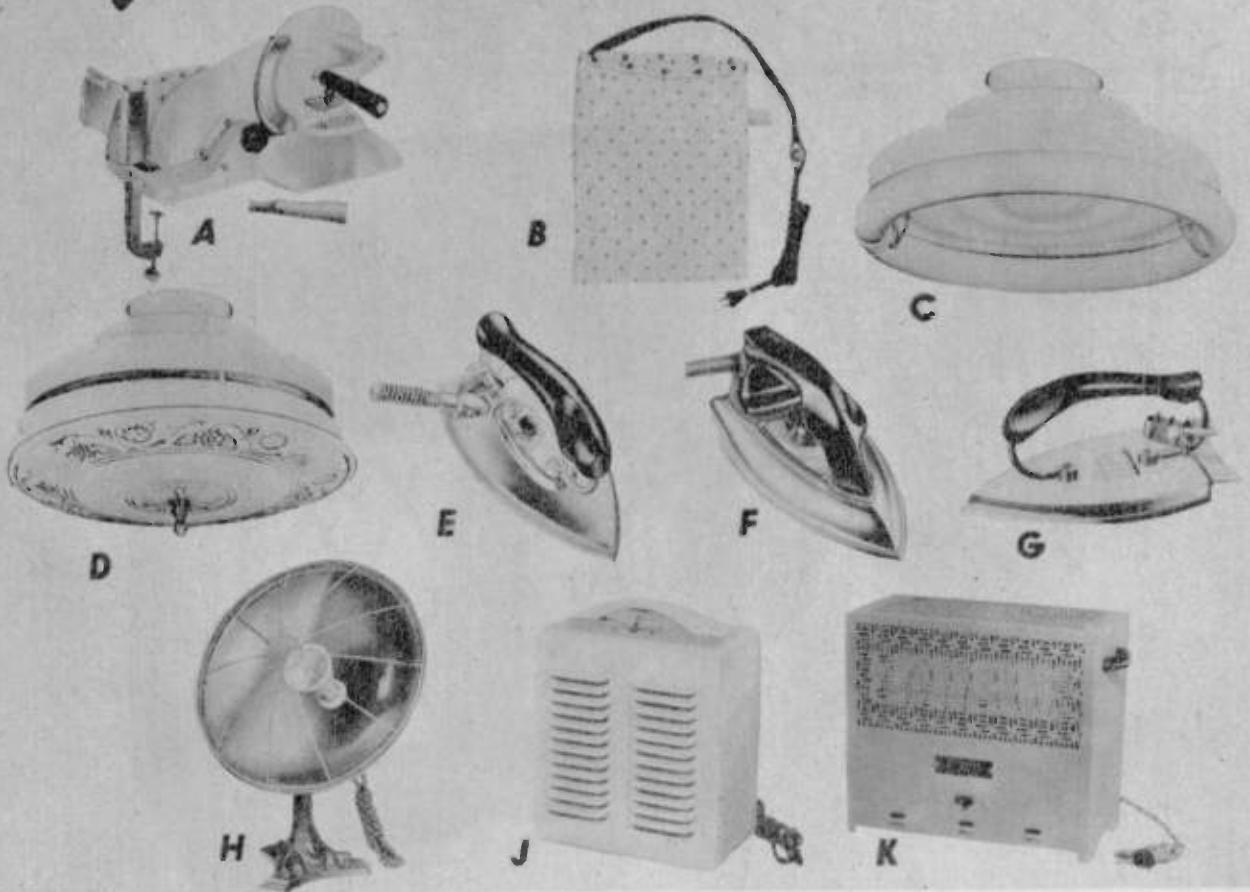
M) PRINCESS "GEM" AUTOMATIC WAFFLE IRON

A fast, clean, even, dependable baker—No fuss or bother. Special expansion hinges assure waffles of uniform thickness. One piece, seamless, perforated waffle molds—easily cleaned and sanitary. One piece chrome on steel tray-type base—will not tip or mar furniture. Cool attractive wood handles finished in brown mahogany. Built-in heat indicator. Solid, safe internal construction—heating elements are set in ceramic brick. All wiring of shock-proof asbestos insulation. Always ready for instant use—this clean, compact baking unit was built by superior craftsmen from finest materials, yet costs no more than other waffle irons. To insist on the finest, insist on GEM. Operates on 110 V. AC or DC.

K25022 Shpg. wt. 6 lbs. \$10.95
Princess GEM Waffle Iron

30 All Prices Subject To Change Without Notice

for the Home



Useful Appliances — Long Lasting — Always Appreciated

A) GENERAL FOOD SLICER

Here's a useful, time-saving appliance every housewife will welcome as a practical addition to her kitchen equipment.

A safe, efficient slicer built to "take it" with greatest economy of operation. A perfect home size model of the GENERAL SLICER used by butchers, grocers and markets for over 15 years. Slices ham, bacon, beefologna, fruits, bread, cheese, vegetables, etc. for making cole slaw, noodles, french fries and potato chips. New improved sharpener included. Finished in white porcelain with black trim. Shpg. wt. 13 lbs.

GENERAL FOOD SLICER \$12.95

B) G-E AUTOMATIC 3-HEAT HEATING PAD

Provides uniform distribution of heat. Gives pleasant warmth quickly where it is needed. Costs less than 1/4 cent an hour to operate at electrical rates up to 5 cents per kw-hr. Inner cover is of rubberized material, resistant to moisture and perspiration. Removable outer cover is of soft, printed, washable material. Cushioning with soft padding of flame-retardant material adds to comfort of user. Hidden snap fasteners, no metal can touch the skin. Durable heating element high quality insulated asbestos-wrapped heating-element wire has long flexing life. Four small thermostats maintain pad surface at selected approximate temperature: high, 170 degrees F; medium, 145 degrees F; low, 125 degrees F. Dimensions are full standard size, 12 by 15 inches. Cord is permanently attached 8-foot G-E cord with molded rubber plug. Multiple switch provides the three fixed heats, and is close to pad; fourth position is OFF. 60 watts, 115 volts AC and DC. Approved by Underwriters' Laboratories.

K25010 GENERAL ELEC AUTOMATIC 3-HEAT PAD \$4.95

"CIRCLINE" FLUORESCENTS

Use the new, better, circular fluorescent. Throws light upward eliminates normally dark ceiling areas, without loss of general downward illumination. Ideal for kitchens, dinettes, foyers, bedrooms, bathrooms, playrooms, etc. All wiring materials are on top plate, for easy installation and servicing. Made with all U.L. approved parts in 110-120 volts, 60 cycle AC current only. Bulb included. Wt. 7 lbs.

C) RMC-32 Height to bottom of bulb, 4", 11 1/2" circumference. **\$10.25**

D) RMC-32GL With ornamental glass bottom, 7" high, 11 1/2" circum. **\$11.95**

K25510 RMC-32

K25509 RMC-32GL

DURABIL STYLED IRONS

E) DURABIL ALL-PURPOSE AUTOMATIC FOLDING IRON

Styled for speed, lightweight, all purpose small enough to carry around, yet large enough to do all the work. Positive heat control heat controlled by soleplate alone. Heats in less than 30 seconds. 115 V. AC. 2 1/2 lbs. U.L. approved. With cord set. **\$8.10**

K25009 MODEL 193

F) DURABIL AUTOMATIC IRON

Graceful lines, sturdy construction assures effortless, gliding ironing. Accurate temperature control to 10 degree tolerance. Cool comfortable handle. Fast heating. High powered, 1000 watts. 115 V. AC. 3 lbs. U.L. approved. With cord. **\$10.95**

K25008 MODEL 10

G) DURABIL AC-DC TRAVEL IRON

A non automatic folding iron that is the perfect solution to the traveler's problem and just right for home use, too. Folds flat and compact. Smartly styled with sure-grip black plastic handle and heavy chromed finish. 115 V. AC or DC. 2 1/2 lbs. U.L. approved. With cord set. **\$6.95**

K25007 MODEL 102

H) "DAWN" BOWL HEATER

Handy and convenient for any room that needs quick heating. Fifteen inch copper reflector gives maximum heat. 1000 watt porcelain cone element for 110 or 220 volts AC or DC operation. Copper plated guard fits in perforations on bowl. 2 1/2 lb. cast aluminum base. Wired with approved heater cord. Guaranteed by manufacturer for 1 yr.

K25006 DAWN COPPER BOWL HEATER \$4.95

J) PORTABLE ELECTRIC HEATER-FAN

Controls climate, circulates comfort, cuts cost. It's unique . . . from heat to cold, or from cold to heat. A motor driven heater and fan meets household needs in any weather by the turn of a switch. It's healthful . . . circulates room air at even temperature. Keeps those chills away in winter. Cools rooms in summer without drafts. Safeguards children against injury by use of protective shutters. For countless useful jobs, it's a time saving, work saving joy to have around. You'll find many more uses for it, such as drying clothes, hair, or photographic films to clear away smoke and cooking odors, etc. In addition a beautiful piece of furniture. 11 1/2 x 9 x 6 1/2". 8 1/2 lbs. 990 watts at 110 volts AC or DC.

K25005 PORTABLE ELEC HEATER-FAN \$13.95

K) JIFFI ROOM HEATER

Solid construction, modern compact design, heavy gauge steel. Finished in a striking rose-tan wrinkle. Easily moved from place to place has two bakelite heat resistant handles. Controlled by "T" rated on/off switch. Safe, completely enclosed and protected. Open grill on front and top allows for efficient and healthful flow of heat. 1320 watts, AC DC, 110 to 120 volts. 12x6x12". Shpg. wt. 7 lbs.

K25004 JIFFI HEATER \$6.95

Perfect Merchandise—Prompt Shipment—Personal Service

LAFAYETTE BRINGS YOU...

Luxury Listening at Low Cost



America's Finest Buy in an Automatic Phono- Radio Console

Look far and wide, you'll not find another value like this in the entire field of radio. In all our 27 years of offering great radio value we've rarely had anything to equal this jewel of a radio-phonograph console at today's phenomenally low price. Think of it! For only \$97.50 you can own and enjoy this lovely period style console—thrill to its superb tone on the extended broadcast band, or settle back luxuriously and listen to 40 minutes of excellent reproduction of your favorite recordings on its fine record changer.

Push-Pull Audio Output

Two "Beam-Power" output tubes in push-pull, usually found only in much more expensive sets, bring you glorious tone and more than ample volume. A fully variable tone control provides bass and treble emphasis where YOU want it. Full 8-inch Alnico 5 PM speaker pours forth concert hall tone quality for your keenest listening pleasure on radio or records.

Ultra-Modern Superhet Circuit

High caliber engineering skill and design in modern superhet circuitry assure sensitivity and selectivity on the extended broadcast range covering 540 to 1730 kc. Built-in antenna enables you to place the console anywhere with excellent reception assured. Automatic volume control keeps weak and distant stations at the volume you desire. Edge-lighted slide rule dial, easy to read, easy to tune. Tube complement: 12SA7, 12SQ7, 12SK7 and two 35L6 tubes, plus selenium rectifier for operation on 110 volts 60 cycles AC.

Gentle-Action Record Changer

The modern record changer, with featherweight crystal pick-up plays ten 12-inch or twelve 10-inch records while you sit back and enjoy your favored recordings. Walnut finish period style console cabinet 34x34x16" deep with 3/4" solid walnut lid will add dignity and graciousness to any home.

MODEL J-65 Radio-Phono Console
Complete With Tubes. Wt. 69 lbs. **\$97.50**
YOUR COST