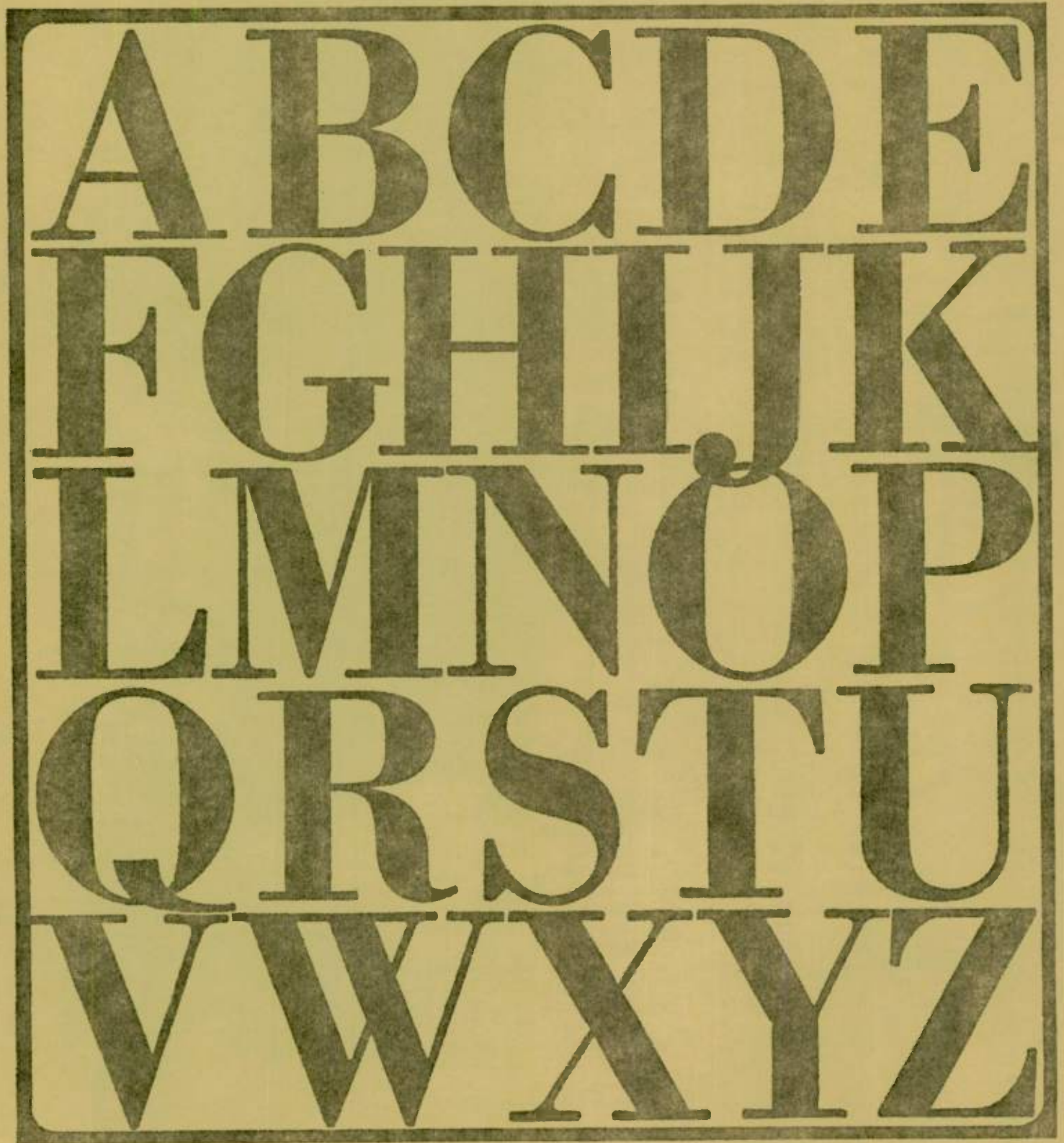


Westinghouse ENGINEER  
Subject, Author Index

Volume 25, 1965  
Volume 26, 1966



## A

- Accelerator**, Stanford linear particle. TP. Sept 1966. p144.
- Aerospace**. See Aircraft; Radar; Space.
- Air conditioning**, system innovations improve operation and extend application range. J. R. Harnish. May 1966. p73-7.
- Aircraft**  
F-111 power system passes 5000-hour test. TP. Nov 1966. p188.  
See also Testing.
- Alignment**. See Measurement.
- Antenna**, radio telescopes will have 130-foot movable. TP. May 1965. p95.
- Appliance**, electric range self-cleaning oven and automatic stirrer. TP. July 1966. p127.
- Arc furnace**. See Computer.
- Arc heater**, electric for high-temperature chemical processing. D. A. Maniero, P. F. Kienast and C. Hirayama. May 1966. p66-72.
- Arrester**. See Lightning protective device.
- Author**. See Author Index, p6 of index.

## B

- Battery charger**, static. PI. Mar 1965. p64.
- Blast furnace**. See Control.
- Bus duct**, enclosed low-impedance. PI. July 1966. p128.

## C

- Cable**. See Radar.
- Camera**. See Integrated circuit; Space.
- Capacitor**  
glass-dielectric electronic. PI. Nov 1965. p192.  
indoor. PI. Mar 1965. p64.  
potential device. PI. Mar 1966. p64.
- Circuit breaker**  
high-speed trip mechanism for EHV. W. V. Bratkowski, W. H. Fischer and R. J. Radus. Mar 1966. p55-7.  
modular SF<sub>6</sub> design for EHV. R. C. Van Sickle, R. N. Yeckley, C. F. Sonnenberg, and J. J. Brado, Mar 1965. p44-9.  
molded case for switchboards. PI. July 1965. p128.  
SF<sub>6</sub>, 161 kv. PI. Sept 1965. p160.  
See also Distribution system.
- Computer**  
aluminum cold mill control. TP. July 1965. p126.  
arc furnace supervision. TP. Nov 1965. p190.  
central-station supervision, digital. TP. Sept 1965. p158.  
data processor for antisubmarine hydrofoil. TP. Mar 1966. p63.

## Computer (continued)

- digital simulation for testing control programs. R. Herbst and R. E. Hohmeyer. Jan 1966. p21-4.
- Enrico Fermi station system. TP. Nov 1965. p191.
- hot-strip mill. Mar 1966. Outside back cover.
- on-line controls giant rolling mill. A. F. Kenyon. Nov 1965. p183-7.
- process control has simplified programming. TP. Nov 1966. p189.
- programming for process control. P. E. Lego. Jan 1965. p13-9.
- simulation of steel-mill ingot-processing. E. Y. Kung, K. Chen, and P. B. Skov. Sept 1965. p148-52.
- teaching system. Sept 1965. Inside front cover.  
See also Control; Drive.
- Connector**. See Space.
- Control**  
advanced system for high-speed strip mill. TP. Jan 1966. p27.  
crane drive. PI. Sept 1966. p147.  
electrohydraulic improves operation of large steam turbines. E. G. Noyes and M. Birnbaum. Mar 1966. p49-54.  
fractional-horsepower dc motor. PI. Sept 1966. p147.  
high-grade plywood from southern pine. TP. May 1966. p94.  
new concept in control centers. W. L. McKeithan. Mar 1965. p41-3.  
parallel system regulates motor speed and torque. H. Eisele and A. M. Vance. July 1966. p119-24.  
PowrMag station. PI. Nov 1966. p192.  
programmed blast-furnace charging increases production and improves product. M. J. Greaves, W. A. Munson, and J. C. Ponsingl. Sept 1966. p130-6.  
programmed system for transfer machines. TP. Mar 1966. p61.  
T-100: A new system drive concept. S. J. Campbell. May 1965. p84-8.  
tandem aluminum mill rolls to precise gauge. TP. Sept 1965. p159.  
thyristor ac crane. PI. Nov 1966. p192.
- numerical**  
machines produce uniform turbine blades. TP. Mar 1965. p61.  
model 30 for three-axis machines. PI. Sept 1966. p146.  
molecular electronics enhances machine-tool reliability. TP. Mar 1965. p60.  
positioning system based on integrated circuits. A. T. Bacheler. Sept 1965. p137-41.  
See also Computer; Drive; Marine; Nuclear energy; Space; Testing.

**Crane**. See Control.

## D

- Data processor**. See Computer.
- Deepstar**. See Marine.
- Desalting**. See Flash evaporator.
- Distribution system**, coordinating protective-device settings. V. C. Cook. Nov 1966. p183-7.
- Drill**. See Moon.
- Drive**  
computer simulation reduces system start-up costs. W. C. Carter, R. A. Montoro, and T. O. Curlee III. Nov 1966. p178-82.  
direct-tension regulation for large winders and rewinders. C. L. Ivey and W. C. Carter. May 1965. p89-93.  
static systems serve textile processing. Mar 1965. p39-40.  
See also Control; Inverter; Power supply.
- Dynamotor**, static. PI. Jan 1966. p32.

## E

- Economics, engineering**. See Power system.
- Electric utility**. See Power system.
- Engine**. See Generator.

## F

- Fan**, Axiflex adjustable-vane. PI. Nov 1966. p192.
- Feedwater heater**, carbon-steel tube-to-tube-sheet joints for high-pressure. A. Lohmeier and S. D. Reynolds, Jr. Sept 1966. p137-43.
- Flash evaporator**  
installations—present and future. R. E. Gaunt. Nov 1965. p167-72.  
Key West plant. TP. July 1966. p127.  
model. Jan 1966. Outside back cover.  
principles and capabilities. R. E. Gaunt. Nov 1965. p162-6.  
See also Power-water plant.
- Flooring**, raised. PI. July 1966. p128.
- Fuel cell**  
produces power from coal. TP. May 1965. p96.  
See also Space.
- Fuse**  
current-limiting. PI. Mar 1966. p64.  
See also Distribution system.

## G

- Garbage disposal**. See Refuse reclamation.
- Gemini**. See Radar.
- Generator**  
Connecticut-Yankee completed. TP. July 1966. p126.  
large frames machined at one station. Mar 1966. p58-9.



**Generator (continued)**

portable engine-generator set with Wankel engine. TP. Jan 1966. p27.

**hydroelectric**

rewinding improves Grand Coulee. TP. Jan 1966. p29.

TVA modernized. TP. May 1966. p93.

See also Measurement; Power plant; Space.

**I**

**Induction heating, application of power systems.** W. A. Emerson. July 1965. p121-4.

**Inductor, for rectifier circuits.** PI. July 1965. p128.

**Instrument**

seven years experience with taut-band suspension. L. J. Lunas. Mar 1965. p50-4.

TBS switchboard edgewise. PI. Nov 1965. p192.

**Insulation.** See Motor.

**Integrated circuit**

"breadboard" can serve various purposes. TP. Nov 1966. p191.

compact camera. TP. Sept 1965. p158.

digital systems, more complex for. E. A. Sack. May 1966. p88-92.

diode transistor logic. PI. July 1965. p128.

Kovar alloy forms tiny electric connections. TP. May 1966. p94.

molecular-electronic telemetry oscillators developed. TP. Jan 1966. p29.

operational amplifier. PI. Sept 1966. p146.

package. May 1966. Outside back cover.

packaging techniques. H. G. Carter. Sept 1965. p153-7.

resonant-gate transistor performs tuning functions. TP. Nov 1966. p190.

tiny size. July 1966. Inside front cover.

See also Control, numerical.

**Inverter**

Apollo ac power supply. TP. Sept 1966. p145.

static adjustable-frequency, and ac motors for industrial drive systems. C. G. Helmick. July 1966. p104-9.

static fixed-frequency . . . sources for normal and emergency ac power. K. M. Watkins. July 1966. p98-103.

three-phase. PI. Mar 1966. p64.

**K**

**Klydonograph.** See Lightning.

**L****Laboratory**

high-voltage dc. Sept 1966. Outside back cover.

See also Testing.

**Lamp**

fluorescent performance improved. TP. May 1966. p93.

mercury life increased. TP. Mar 1966. p62.

mercury vapor. PI. Jan 1966. p31.

new era for mercury. M. C. Unglert and D. A. Larson, July 1965. p116-20.

red output improves fluorescent color balance. TP. Sept 1966. p146.

See also Laser; Lighting.

**Laser**

beam pattern viewer. Mar 1965. Inside front cover; TP. p60.

chemical reactions in gases initiated. TP. Nov 1966. p188.

coaxial flash lamp provides more energy. TP. Mar 1966. p62.

efficiency increased. TP. Jan 1966. p27.

high-power narrow-beam system. TP. Mar 1965. p62.

**Lighting**

Pan-Am building. Mar 1965. Outside back cover.

Verrazano-Narrows Bridge. May 1965. Outside back cover.

See also Lamp; Space; Transmission line.

**Lightning**

five-year study with klydonograph recorders. E. Beck, D. F. Shankle and S. B. Griscoun. Sept 1966. p148-53.

klydonograph recorder. Sept 1966. Inside front cover.

See also Lightning protective device.

**Lightning protective device, new arrester for distribution systems.** C. H. Carothers. July 1966. p114-8.

**M**

**Machine tool.** See Control, numerical.

**Magnet**

superior materials. TP. July 1966. p126.

See also Superconductivity; Transportation.

**Maintenance, automatic.** TP. July 1965. p125.

**Marine**

automated research ship outfitted. TP. July 1966. p125.

*Deepstar-4000.* TP. Mar 1966. p60.

diving system permits longer, deeper dives. Jan 1966. p25-6.

oceanographic ships with computer-assisted central engine-room control. D. W. Drews. Jan 1965. p7-12.

oceanography—a field of expanding horizons. J. H. Clotworthy. Jan 1965. p2-6.

submarine oxygen generator control. TP. May 1966. p94.

workboat central engine-room control. TP. Jan 1966. p27.

See also Computer; Research; Sonar.

**Mass spectrography, improved sampling technique.** TP. Nov 1965. p190.

**Measurement**

shaft alignment analysis prevents shaft and bearing failures. C. T. Yarbrough. May 1966. p73-81.

See also Power system.

**Metallurgy, alloy annealing line.** Nov 1965. Inside front cover.

**Meter**

demand register. PI. May 1965. p96.

See also Power system.

**Microscope, scanning electron.** PI. Sept 1965. p160.

**Molecular electronics.** See Control, numerical; Integrated circuit.

**Moon drill.** TP. Nov 1966. p188.

**Motor**

ac industrial analyzer. PI. Jan 1965. p32.

ac rerate—a new industry standard. R. F. Woll. Nov 1965. p175-81.

ac rerated motors smaller and better. R. F. Woll. Jan 1966. p16-9.

brushless excitation. Sept 1965. Outside back cover.

centrifuge. July 1966. Outside back cover.

field-checking circuit. PI. July 1966. p123.

jet pump. PI. Jan 1966. p32.

Lockheed-Georgia wind tunnel. Nov 1966. Outside back cover.

submersible. PI. Mar 1966. p64.

textile spinning. PI. Sept 1965. p160.

Thermalastic epoxy insulation for large ac. Mar 1965. p34-8.

See also Control; Measurement.

**N**

**NERVA.** See Nuclear energy.

**Nuclear energy**

design features of the San Onofre station. H. J. von Hollen and C. F. Currey. Sept 1965. p142-7.

developments in pressurized-water reactors. J. C. Rengel. Jan 1965. p20-5.

guides to nuclear power planning. J. C. Rengel. Jan 1966. p14-5.

NERVA rocket reactor program. W. H. Esselman. May 1965. p66-75.

plutonium being evaluated as power reactor fuel. TP. May 1966. p93.

San Onofre reactor vessel. July 1965. Inside front cover.

See also Power-water plant; Turbine, steam.

**Numerical control.** See Control, numerical.

**O**

**Oceanography.** See Marine; Sonar.

**Oxygen generator.** See Marine; Space.

## P

- Peaking plant.** See Power system.
- Phonovid, system.** July 1965. Outside back cover.
- Plutonium.** See Nuclear energy.
- Plywood.** See Control.
- Power plant**  
 peaking to reduce capital investment per kilowatt. L. E. Hedrick. Jan 1966. p6-7.  
 pumped storage—a new opportunity for hydro-generators. J. M. Wallace. Jan 1966. p8-9.  
 station efficiency improvement with gas turbines. V. P. Buscemi. May 1965. p76-81.  
 waste heat from gas turbine. TP. Mar 1965. p63.  
 See also Power-water plant; Nuclear energy; Turbine, steam.
- Power supply**  
 large reversing mill has thyristor. TP. Mar 1966. p63.  
 reversing cold reduction mill with all-static. TP. July 1965. p125.  
 static for continuous casting facility. TP. Mar 1966. p61.  
 static for hot strip mill. TP. Nov 1965. p190.  
 thyristor dc drive systems. L. F. Stringer and L. R. Tresino. Sept 1966. p154-60.  
 See also Inverter.
- Power system**  
 cost-size relationships of utility equipment. J. W. Simpson. Jan 1966. p3-5.  
 economics of peaking generation. J. H. Cronin and H. W. Lokay. Jan 1965. p26-9.  
 magnetic tape recording on electric utility systems. C. J. Snyder and D. D. Weers. Sept 1965. p130-6.  
 require modern relay protection. A. J. Petzinger. Jan 1966. p12-3.  
 See also Space.
- Power-water plant**  
 dual-purpose for St. Thomas. W. G. Rogal. Nov 1965. p173-4.  
 dual-purpose nuclear plants. J. D. O'Toole and W. H. Stinson. Nov 1966. p169-74.  
 makes Guantanamo self-sufficient. TP. May 1965. p94.  
 Virgin Islands. TP. Jan 1965. p31.  
 See also Flash evaporator.
- Printed circuit**  
 flexible copper-clad materials. PI. May 1966. p96.  
 See also Radar.
- Pumped storage.** See Power plant.

## R

- Radar**  
 Gemini rendezvous test. TP. July 1965. p125.

- Radar (continued)**  
 printed-circuit cable connector. TP. Jan 1965. p30.
- Radio telescope**  
 parts float on oil film. TP. Jan 1966. p30.  
 See also Antenna.
- Railroad.** See Transportation.
- Reactor, nuclear.** See Nuclear energy.
- Recloser, calibrator.** PI. July 1965. p128.
- Rectifier**  
 high-power silicon. PI. Jan 1965. p32.  
 silicon, 175-ampere. PI. May 1965. p96.
- Refuse reclamation**  
 Florida plant. TP. July 1965. p125.  
 St. Petersburg's solution to a growing urban problem. L. G. Reimer. Nov 1966. p175-7.
- Regulator.** See Control; Drive.
- Relay**  
 auxiliary. PI. Mar 1965. p64.  
 combustible limit. PI. July 1966. p128.  
 high-speed pilot-wire. PI. Nov 1966. p192.  
 solid-state timing. PI. May 1966. p96.  
 See also Distribution system; Power system.
- Research**  
 underwater facility. May 1966. Inside front cover.  
 See also Accelerator.
- Reversing mills.** See Power supply.
- Rocket.** See Nuclear energy; Space.
- Rolling mill.** See Computer.

## S

- San Onofre plant.** See Nuclear energy.
- Satellite.** See Space.
- Ship.** See Marine.
- Silicon.** See Solar cell.
- Simulation.** See Computer; Drive; Transportation.
- Shielding, thin-gauge alloy.** PI. Mar 1966. p64.
- Solar cell**  
 heating system to restore radiation damage. TP. Jan 1966. p30.  
 new silicon strip material applied. K. S. Tarneja. Mar 1966. p44-8.  
 restoration. Jan 1966. Inside front cover.
- Sonar, seeing under the sea.** J. T. Laing and A. Nelkin. Nov 1966. p162-8.
- Space**  
 Apollo lunar TV camera model. Mar 1966. Inside front cover.  
 electrical connectors for outer space application. F. C. Rushing. Mar 1966. p41-3.  
 launch illumination system will track rockets. TP. Jan 1965. p30.  
 LMCD-II generator: experimental tool to evaluate power system problems. P. H. Scheffler. May 1966. p82-7.  
 long metal booms. TP. Sept 1966. p144.

## Space (continued)

- motor cases for Titan III-C rocket. TP. Jan 1965. p31.
- oxygen generator. Nov 1965. Outside back cover.
- oxygen regenerating system based on fuel-cell principles. TP. Nov 1965. p190.
- recent advances in spacecraft control. A. T. Monheit and A. G. Buckingham. Mar 1966. p34-40.
- simulator helps design power systems. TP. Jan 1966. p30.  
 See also Inverter; Nuclear energy.
- Spacecraft.** See Space.
- Spectrometer.** See Superconductivity.
- Speed reducer, parallel-shaft.** PI. May 1966. p96.
- Steel mill**  
 steel strip continuously coated with aluminum. TP. Sept 1965. p159.  
 See also Computer; Control; Power supply.
- Sulfur hexafluoride (SF<sub>6</sub>).** See Circuit breaker.
- Superconductivity**  
 NMR spectrometer has superconducting magnet. TP. Mar 1965. p60.  
 supermagnet maintained with refrigeration system. TP. May 1965. p95.
- Supervisory control, Unicode.** PI. July 1965. p128.
- Switch**  
 disconnect, 500-kv test. Jan 1965. Outside back cover.  
 emergency. PI. Sept 1965. p160.  
 gang-operated loadbreak. PI. Jan 1965. p32.  
 oil load-break. PI. Sept 1966. p146.  
 safety handle mechanism. PI. Mar 1966. p64.
- ## T
- Tachometer, zero-speed pulse.** PI. May 1965. p96.
- Television.** See Space.
- Testing**  
 aircraft tire tester improved with modern control system. TP. Sept 1965. p159.  
 EHV test center. TP. Mar 1965. p62.  
 modern electrical laboratory. H. J. Reichwein. Nov 1965. p188-9.  
 See also Switch.
- Textile.** See Drive.
- Thermoelectricity, generator has replaceable modules.** TP. Mar 1966. p61.
- Thyristor.** See Control; Power supply.
- Tracpak propulsion drive.** See Transportation.
- Transducer.** See Ultrasonic energy.
- Transformer**  
 EHV current shipped assembled. TP. July 1966. p125.



**Transformer (continued)**

oil-filled potential. PI. Jan 1966. p32.

UTT load tap changer. PI. Nov 1966. p192.

**distribution**

capacitor dry-type. PI. Jan 1966. p31.

**power**

Keystone EHV project. TP. Sept 1966. p146.

new design approaches to EHV. J. W. Stirling. Jan 1966. p10-1.

VEPCO 500-kv. Jan 1965. Inside front cover.

windings dried. TP. July 1965. p126.

**Transmission line**, estimating shielding performance. F. S. Young, J. M. Clayton and A. R. Hileman. Mar 1965. p55-9.

**Transportation**

airport system to eliminate long walk. TP. Sept 1965. p159.

commuter railroad simulation. J. Kostalos, Jr. and D. N. Dewees. July 1965. p109-15.

high-speed ground. TP. Sept 1966. p145.

magnetic vehicle suspension. TP. May 1965. p95.

transit car propulsion system for PATH. R. C. Flanagan and K. H. Fraelich, Jr. July 1965. p104-8.

**Transportation (continued)**

transit expressway. Nov 1966. Inside front cover.

transit expressway . . . a new mass-transit system. W. J. Walker and J. K. Howell. July 1965. p98-103.

transit expressway superstructure. May 1965. Inside front cover.

**Trash disposal**. See Refuse reclamation.

**Tube, electronic**

cathode-ray with fiber-optic faceplates. PI. Mar 1965. p64.

ion chamber. PI. May 1966. p96.

**Turbine, gas**

supercharged serves industrial power system. TP. Sept 1965. p160.

See also Power plant.

**Turbine, steam**

for nuclear power plants. W. Sinton. July 1966. p110-3.

See also Control, numerical.

**U****Ultrasonic energy**

acoustic flowmeter. PI. Nov 1965. p192.

cavitation meter. PI. Nov 1966. p192.

**Ultrasonic energy (continued)**

degreaser. PI. Jan 1966. p32.

generator. PI. Jan 1965. p32.

transducer for continuous processing of liquids. TP. Nov 1966. p191.

transducer system for cleaning. PI. July 1966. p128.

vapor degreaser. PI. Sept 1966. p147.

**W**

**Warehousing**, semiautomatic system. TP. July 1965. p127.

**Water purification**. See Flash evaporator; Power-water plant.

**Welding**

electron-beam operates out of vacuum. TP. July 1966. p125.

resistance-controlled dc arc welder. May 1965. p82-3.

See also Feedwater heater.

**Winder**. See Drive.

**X**

**X-ray**, portable industrial machine. PI. Mar 1965. p64.

*author index* (Author biographies appear on the inside back cover of each issue.)

- Bachelor, A. T.**  
A Numerical Positioning Control System Based on Integrated Circuits. Sept 1965. p137-41.
- Beck, E.**  
Results from Five Years of Lightning Study with Klydonograph Recorders. Sept 1966. p148-53.
- Birnbaum, M.**  
Electro-Hydraulic Control Improves Operation and Availability of Large Steam Turbines. Mar 1966. p49-54.
- Brado, J. J.**  
A Modular SF<sub>6</sub> Circuit Breaker Design for EHV. Mar 1965. p44-9.
- Bratkowski, W. V.**  
High-Speed Trip Mechanism for Extra-High-Voltage Power Circuit Breakers. Mar 1966. p55-7.
- Buckingham, A. G.**  
Recent Advances in Spacecraft Control. Mar 1966. p34-40.
- Buscemi, V. P.**  
Station Efficiency Improvement With Gas Turbines. May 1965. p76-81.
- Campbell, S. J.**  
T-100: A New Systems Drive Concept. May 1965. p84-8.
- Carothers, C. H.**  
A New Lightning Arrester for Distribution Systems. July 1966. p114-8.
- Carter, H. G.**  
Integrated-Circuit Packaging Techniques. Sept 1965. p153-7.
- Carter, W. C.**  
Direct Tension Regulation for Large Winders and Rewinders. May 1965. p89-93.  
Factory Testing by Computer Simulation Reduces Drive-System Start-Up Costs. Nov 1966. p178-82.
- Chen, K.**  
Computer Simulation of a Steel-Mill Ingot-Processing Area. Sept 1965. p148-52.
- Clayton, J. M.**  
Estimating Transmission Line Shielding Performance. Mar 1965. p55-9.
- Clotworthy, J. H.**  
Oceanography—A Field of Expanding Horizons for the Engineer. Jan 1965. p2-6.
- Cook, V. C.**  
Coordinating Protective-Device Settings Gives Maximum Freedom from Electrical Outages. Nov 1966. p183-7.
- Cronin, J. H.**  
Economics of Peaking Generation. Jan 1965. p26-9.
- Curllee III, T. O.**  
Factory Testing by Computer Simulation Reduces Drive-System Start-Up Costs. Nov 1966. p178-82.
- Currey, C. F.**  
Design Features of the San Onofre Nuclear Station. Sept 1965. p142-7.
- Deweese, D. N.**  
Commuter Railroad Simulation. July 1965. p109-15.
- Drews, D. W.**  
Oceanographic Ships With Central Engine-Room Control. Jan 1965. p7-12.
- Eisele, H.**  
Parallel Control System Regulates Motor Speed and Torque. July 1966. p119-24.
- Emerson, W. A.**  
Application of Induction Heating Power Systems. July 1965. p121-4.
- Esselman, W. H.**  
The NERVA Nuclear Rocket Reactor Program. May 1965. p66-75.
- Fischer, W. H.**  
High-Speed Trip Mechanism for EHV Power Circuit Breakers. Mar 1966. p55-7.
- Flanagan, R. C.**  
A New Transit-Car Propulsion System for PATH. July 1965. p104-8.
- Fraelich Jr., K. H.**  
A New Transit-Car Propulsion System for PATH. July 1965. p104-8.
- Gaunt, R. E.**  
Flash Evaporation—Its Principles and Capabilities. Nov 1965. p162-6.  
Flash-Evaporator Installations—Present and Future. Nov 1965. p167-72.
- Greaves, M. J.**  
Programmed Blast-Furnace Charging Increases Production and Improves Product. Sept 1966. p130-6.
- Griscom, S. B.**  
Results from Five Years of Lightning Study with Klydonograph Recorders. Sept 1966. p148-53.
- Harnish, J. R.**  
Air-Conditioning System Innovations Improve Operation and Extend Application Range. May 1966. p73-7.
- Hedrick, L. E.**  
A New Peaking Plant to Reduce Capital Investment per Kilowatt. Jan 1966. p6-7.
- Helmick, C. G.**  
Static Adjustable-Frequency Inverters and AC Motors . . . A Versatile Team for Industrial Drive Systems. July 1966. p104-9.
- Herbst, R.**  
Digital Simulation for Testing Control Computer Programs. Jan. 1966. p21-4.
- Hileman, A. R.**  
Estimating Transmission Line Shielding Performance. Mar 1965. p55-9.
- Hirayama, C.**  
Electric Arc Heaters for High-Temperature Chemical Processing. May 1966. p66-72.
- Hohmeyer, R. E.**  
Digital Simulation for Testing Control Computer Programs. Jan 1966. p21-4.
- Howell, J. K.**  
Transit Expressway . . . A New Mass-Transit System. July 1965. p98-103.
- Ivey, C. L.**  
Direct Tension Regulation for Large Winders and Rewinders. May 1965. p89-93.
- Kenyon, A. F.**  
On-line Computer Controls Giant Rolling Mill. Nov 1965. p183-7.
- Kienast, P. F.**  
Electric Arc Heaters for High-Temperature Chemical Processing. May 1966. p66-72.
- Kostallos Jr., J.**  
Commuter Railroad Simulation. July 1965. p109-15.
- Kung, E. Y.**  
Computer Simulation of a Steel-Mill Ingot-Processing Area. Sept 1965. p148-52.
- Laing, J. T.**  
Seeing Under the Sea With Sonar. Nov 1966. p162-8.
- Larson, D. A.**  
A New Era for Mercury Lamps. July 1965. p116-20.
- Lego, P. E.**  
Programming for Process Control. Jan 1965. p13-9.
- Lohmeier, A.**  
Carbon-Steel Tube-to-Tube-Sheet Joints for High-Pressure Feedwater Heaters. Sept 1966. p137-43.
- Lokay, H. E.**  
Economics of Peaking Generation. Jan 1965. p26-9.
- Lunas, L. J.**  
Seven Years Experience With Taut-Band Suspension Instruments. Mar 1965. p50-4.
- Maniero, D. A.**  
Electric Arc Heaters for High-Temperature Chemical Processing. May 1966. p66-72.
- McKeithan, W. L.**  
New Concept in Control Centers. Mar 1965. p41-3.
- Monheit, A. T.**  
Recent Advances in Spacecraft Control. Mar 1966. p34-40.
- Montoro, R. A.**  
Factory Testing by Computer Simulation Reduces Drive-System Start-Up Costs. Nov 1966. p178-82.
- Munson, W. A.**  
Programmed Blast-Furnace Charging Increases Production and Improves Product. Sept 1966. p130-6.
- Nelkin, A.**  
Seeing Under the Sea With Sonar. Nov 1966. p162-8.

- Noyes, E. G.**  
Electro-Hydraulic Control Improves Operation and Availability of Large Steam Turbines. Mar 1966. p49-54.
- O'Toole, J. D.**  
Electric Power and Pure Water from Dual-Purpose Nuclear Plants. Nov 1966. p169-74.
- Petzinger, A. J.**  
Today's Power Systems Require Modern Relay Protection. Jan 1966. p12-3.
- Ponstingl, J. C.**  
Programmed Blast-Furnace Charging Increases Production and Improves Product. Sept 1966. p130-6.
- Radus, R. J.**  
High-Speed Trip Mechanism for Extra-High-Voltage Power Circuit Breakers. Mar 1966. p55-7.
- Reichwein, H. J.**  
Modern Electrical Testing Laboratory. Nov 1965. p183-9.
- Reimer, L. G.**  
Refuse Reclamation . . . A Solution to a Growing Urban Problem. Nov 1966. p175-7.
- Rengel, J. C.**  
Developments in Pressurized-Water Reactors. Jan 1965. p20-5.  
Some Guides to Nuclear Power Planning. Jan 1966. p14-5.
- Reynolds Jr., S. D.**  
Carbon-Steel Tube-to-Tube-Sheet Joints for High-Pressure Feedwater Heaters. Sept 1966. p137-43.
- Rogal, W. G.**  
Dual-Purpose Plant for St. Thomas. Nov 1965. p173-4.
- Rushing, F. C.**  
Electrical Connectors for Outer Space Application. Mar 1966. p41-3.
- Sack, E. A.**  
More Complex Integrated Circuits for Digital Systems. May 1966. p88-92.
- Scheffler, P. H.**  
The LMCD-II Generator: An Experimental Tool to Evaluate Space Electric Power System Problems. May 1966. p82-7.
- Shankle, D. F.**  
Five Years of Lightning Study with Klydonograph Recorders. Sept 1966. p148-53.
- Simpson, J. W.**  
Cost-Size Relationships of Utility Equipment. Jan 1966. p3-5.
- Sinton, W.**  
Steam Turbines for Nuclear Power Plants. July 1966. p110-3.
- Skov, P. B.**  
Computer Simulation of a Steel-Mill Ingot-Processing Area. Sept 1965. p148-52.
- Snyder, C. J.**  
Magnetic Tape Recording on Electric Utility Systems. Sept 1965. p130-6.
- Sonnenberg, C. F.**  
A Modular SF<sub>6</sub> Circuit Breaker Design for EHV. Mar 1965. p44-9.
- Stinson, W. H.**  
Electric Power and Water from Dual-Purpose Nuclear Plants. Nov 1966. p169-74.
- Stirling, J. W.**  
EHV Transformers Lead to New Design Approaches. Jan 1966. p10-1.
- Stringer, L. F.**  
Thyristor-Power DC Drive Systems. Sept 1966. p154-60.
- Tarneja, K. S.**  
New Silicon Strip Material Applied in Large-Area Solar Cells. Mar 1966. p44-8.
- Tresino, L. R.**  
Thyristor-Power DC Drive Systems. Sept 1966. p154-60.
- Unglert, M. C.**  
A New Era for Mercury Lamps. July 1965. p116-20.
- Vance, A. M.**  
Parallel Control System Regulates Motor Speed and Torque. July 1966. p119-24.
- Van Sickle, R. C.**  
A Modular SF<sub>6</sub> Circuit Breaker Design for EHV. Mar 1965. p44-9.
- von Hollen, H. J.**  
Design Features of the San Onofre Nuclear Station. Sept 1965. p142-7.
- Walker, W. J.**  
Transit Expressway . . . A New Mass-Transit System. July 1965. p98-103.
- Wallace, J. M.**  
Pumped Storage—A New Opportunity for Hydro-Generators. Jan 1966. p8-9.
- Watkins, K. M.**  
Static Fixed-Frequency Inverters . . . Reliable Sources for Normal and Emergency AC Power. July 1966. p98-103.
- Weers, D. D.**  
Magnetic Tape Recording on Electric Utility Systems. Sept 1965. p130-6.
- Woll, R. F.**  
AC Motor Rerate—A New Industry Standard. Nov 1965. p175-81.  
Alternating-Current Motor Rerate—New Motors Are Both Smaller and Better. Jan 1966. p16-9.
- Yarbrough, C. T.**  
Shaft Alignment Analysis Prevents Shaft and Bearing Failures. May 1966. p78-81.
- Yeckley, R. N.**  
A Modular SF<sub>6</sub> Circuit Breaker Design for EHV. Mar 1965. p44-9.
- Young, F. S.**  
Estimating Transmission Line Shielding Performance. Mar 1965. p55-9.



Westinghouse Electric  
Corporation  
Box 2278  
Pittsburgh, Pa. 15230

Published by the  
Westinghouse ENGINEER

