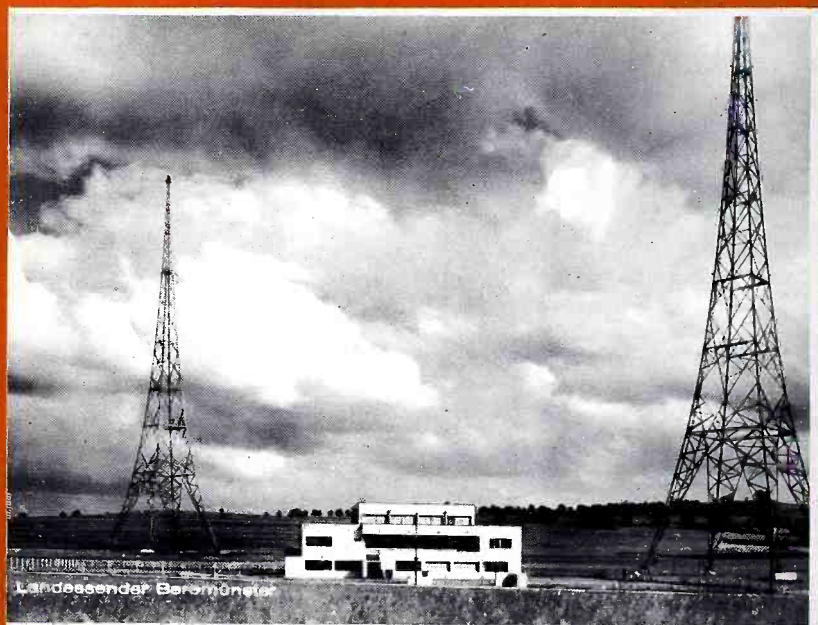


# THE GLOBE CIRCLER

FEBRUARY — 1937



100 Kilowatt Broadcaster—Radio Beromunster,  
Beromunster, Switzerland.

ONE  
DIME

## INTERNATIONAL DX'ERS ALLIANCE

### AUSTRALASIAN EDITION

Our Midnight Marauders

With Our Australian Members

History of the GRDXA-IDA

Accurate Short-Wave List

Australia-N. Z. Station List

World Short-Wave Notes

NOTE: The small BCP stations in the D. R. and Venezuela constitute excellent dx goals for BCB dx'ers.

DOMINICAN DIRECTORY

CALL	KC/S	PWR	LOCATION
HIX	800	1000	Trujillo City.
HI4V	850	25	San Francisco de- Macoris.
HIG	900	40	Trujillo City.
HI1J	930	40	San Francisco de- Macoris.
HI4D	1010	20	Trujillo City.
HIT	1050	100	Trujillo City.
HIL	1111	20	Trujillo City.
HI4M	1150	20	Trujillo City.
HI7P	1300	25	Trujillo City.
HIZ	1370	100	Trujillo City. (is
HIH	1391	75	San Pedro de Macor-
HI6Y	1400	100	Santiago.
HI1A	1410	75	Santiago.
HI5N	1440	100	Santiago.

NEW VENEZUELAN PANEL

YV5RA	960	2500	"Radio Caracas" Owner: Almacen Americano, Caracas.
YV5RG	1100	100	"Ondas Populares" Gonzalo Veloz Mencera, Caracas.
YV5RE	1110	200	"Ecos del Avila" Santiago Martin Vegas, Caracas.
YV1RF	1153	250	"Ondas del Lago" Valle Quintero, Maracaibo.
YV1RE	1153	75	"Radio Maracaibo" Luis Mantellini Hijo, Maracaibo.
YV5RG	1153	100	"Radio Maracay" Luis Croquer, Maracay.
YV5RD	1200	1000	"Radio-difusora (as Venezuela, "Herman Degwitz, Carac-
YV4RA	1350	500	"La Voz de Carabo- bo," Herman Degwitz, Valencia.
YV6RA	1400	250	"La Voz de Cuidad- Bolivar" Enrique Valencia, Bolivar
YV1RA	1500	100	"Ecos de Zulia" Nebot & Castro, Maracaibo.

(Lyle Nelson)

WBZ\*, WHN, WTIC\*, WBAL, LR1\*, WTAM, WBT\*, KMOX\*, WPG\*, LR8, WHAM, WCAU\*, WOAI, LS2 LS8, WNAC\*, WKAQ, WNEW, WNEL, WIOD, WDRG WAAB, WJSV. Best catches logged by R. T. Coales were: CKAC, WJR, WGY, XERA WJAX, CRGM, XENT, WRVA, PRG3 and WCKY. Best catches logged by R. Stansfield were: WINS, CJCB, CRCT, KFI, KSL WOWO, WKBW, WDAE, WHAS, WBBM, WGN, WHO, CHNS, WDSU, WMBG, WRC, WJDX, KPRC, KYW, WJAS, KMJ, LR10, LS5-9, CX14-10, CMCY, LS1, LT3, LV2, YV1RC, LR9, CMJB.

RECEPTION IN NORTH AMERICA

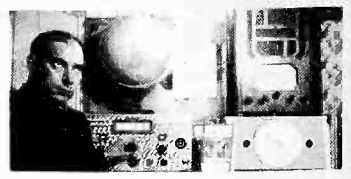
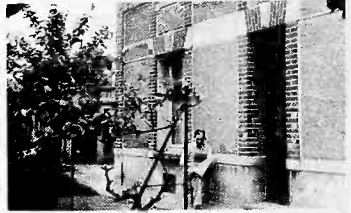
This year has not been too bad here, but lots of fading and very spotty. In Dec. heard a new German on 1428, relaying Frankfurt and Saarbrücken programs, but couldn't identify. I now have 86 TA's verified with 15 reports still out. I have 36 Aussies, 4 Zedders and 3 Hawaiians verified (W. Reichardt-Reading, Mass). TA reception during most of Dec. was very fine. TA's are ALWAYS best during the period between the new and the full moon. . . Parade, Portugal (1031), is coming in so well, I think the new 30KW xmt. must be in use. The new German on 1429 is Kaiserslautern. Stavanger and Bodo, Norway, are now on 722KC with 1kW. BBC xmtrs. which relayed the cricket games were: NR, SR WR, LR, NIR, MR, Newcastle, Aberdeen & Bournemouth. Who was station on 1303KC relaying BBC news-bulletin? 125 TA's have been heard and definitely identified this season. Best TA morning ever here, was Dec. 19, when 95 TA's were heard. On afternoon of Dec. 24, between 3 and 7pm EST, 74 Europeans were heard. TA Dx has been pretty good this year, although noise level is a little high. A few SA's have been heard at good strength. PRER, Rio, on 980, is still the best SA. A new Brazilian for me, heard on 800KC, announced "Radio Eucadora" - must have been PRB7 (E. Roberts, Denver, Mass) . . . TA reception during Dec. was excellent, except for last two or three days. A new one on 986KC, believed to have been Torun, Poland, heard. Several TA's were R9 in the afternoons. P.P. was very loud until 5pm AST, when CHNC comes on. TA's on BCB poor at present (Jan. 10) but LW xmtrs. good. Have sent one hour report to Lahti, Finland, and I have new Soviet between Oslo and Kalundborg, probably Tashkent on 256KC. Hulzen is good, but heterodyned by the other station on his frequency - the latter signs off at 6:05pm AST

\*DECEMBER TUNING IN ENGLAND

Reception pretty good recently. The Brazilians seem to have had a re-allocation since those heard lately have been slightly off-frequency or on new channels. The 980 KC xmt. is definitely PRER, "Radio Nacional de Rio de Janeiro." There is a new Rio xmt. on 880 with slogan that sounds like "Radio Consolidation and call PR 73." Appears to use plenty of power. Am of Dec. 23 was VFB. CRGM was wonderful, quite blotting out XENT, which was logged after CRGM signed off. CRCK also reported. NA's good except around 12 and last of month. SA's fair, and excellent at last of month. Stations heard follow, with best heard marked by Asterisk: WEEI, WSM, WEA, WLW, WOR\*, WSB, WJZ\*, LR5\*, WABC\*, WWL, LR6, CMQ, LR2, PRFL, LR3\*, XEAW, PRER\*, LR4,



LISTENING POST OF CARL EDER, WILLMAR, MINN.  
(CB Log of 418; SW Log of 84-26 Countries)



EMILE NOEL, COMPIEGNE, FRANCE  
(1) Apartment. (2) Dx Post

(E. L. Peters, Westport, Nova Scotia)

On Xmas morning, heard station WJAB-?, in Barranquilla, Colombia, on 1070kC, until 2:15am EST. Can anyone identify? (Don Reynolds, Newburgh, N.Y.) TA's went wild on Dec. 24. What reception! I got Lwow, Cottens and Beromunster as new ones from the mess.. Am hearing a strange station on 565kC after lam EST. Kaipeda, Lithuania?.. SA's fair at times-LR5, LR6 and LS2 are best from 7:30pm EST on; CX26, LR1, LR3, LR4, LR9 and LS4 are all best from 8:30 to 9pm; also hearing HJN, HJ-ABN and YVIRC, of course. PRE8 is very loud at times.. Who, and where is VGX, Roberts speaks of, on 701kC? Who are the Spanish xmtrs. on 653, 285 and 1315kC?.. How come Newfoundland stations don't answer reports?.. XELO has gone to 580kC, leaving former freq. free for dx.

R. H. Tomlinson, Port Chester, N.Y.)

Middle West: Belfast (977) was great Jan. 7, 2-3am EST. I managed to log whole hour program.. PRF3 was also fine on 960kC, morning of 1/4. J. DeMyer, Lansing, Mich). DX still poor, SA's good some evenings. PRF3 special came in quite well. PRE8 heard occasionally. TA's poor thus far (R. Swenson, Rockford, Ill). Best CB catches this year are: PRF3, PRE8, Rennes, Belfast, OKK, Paris PTT, Pecamp and Lille. Belfast was QSA4-3 to 6 on its Jan. 7 test. Rennes heard same morning. PRF3 was R7 on its special. Who is the Spanish xmtr. on 985kC. Apparently puts on a American Hour from 8:30-9pm EST? (H. Gustafson, Rockford, Ill). XEAF, Nogales, listed on 990kC, is actually on 985kC. Heard R5 between WBZ and KDKA.. CMCD, Havans, brought in R9 on 943kC, between KMBC and WAVE. PRF3 heard QSA2/R3. CKCR, Waterloo, Ontario, heard in early evening

.. Since Oct. 15, have logged 470BCB 101 police, 159 aircraft and 89 commercial xmtrs. on the RME-69 (M.J. Olthoff, Independence, Kans.)

In general: European reception has been fair recently, ranging from no stations audible to extraordinary conditions; SA reception has been fair; practically no TP reception has been heard but during February, Aussies and Zedders should be coming in again, reaching a peak early in March.

On Nov. 24, at 11am EST, heard a French station giving news on 650 kC. Could this have been Lyons PTT? (A. E. A. Thomas, St. Michael, Barbados)

Reception poor here. November USA freq. checks were very poor. Latest loggings are KROC, WSMB, KGMB and KIEM (Ernest M. Niven, Dunedin, N. Z.)

LATEST VERI'S REPORTED

E. Niven, Dunedin, NZ: 2LM, 6WB, WKBB WAAB, KECA.. H. Gustafson, Rockford, Ill: KHBC.. R. Swenson, Rockford, Ill -LS3 (11th SA veri).. J. DeMyer, Lansing, Mich: 2NR.. Evan Roberts, Danvers, Mass: KHBC. Edward Goss, Brooklyn, N.Y.: Toulouse-Muret, KGMB LR6. R. H. Tomlinson, Port Chester, N.Y.: 4BK, 2NR, 4YA, 3YA, 1YA.. H. Eck, Lansing, Mich: 2GZ.. A. J. Bartholomew, Bradford, N.Y.: Strausborg, LRL, Munich, Bar1. 3YA, 4YA, 4BC, 2GB, 2KY, 2UW, 2SM, 3GI, 2GZ.. C. H. Wyborski, Philadelphia, Penna: 11TO.. H. Respaport, Brooklyn, NY: LR5, PP, HHK, TGW  
Ralph Gozen, Brooklyn, NY: LR3.

\*\*

APPOINTMENTS

STATE MGRS: C. Burnham, 117 E. Main St, Gloucester, for MASS; R. Donnelly 69 Downing St, Moncton, for NB; L. D. Brewer, 2246 N. 9th St, Phoenix, ARIZ.

Subscription price \$1.25 per year anywhere.

International

Published Monthly Excepting July



Rx'ers Alliance

CHARLES A. MORRISON  
EDITOR

VOLUME V

BLOOMINGTON, ILLINOIS, U. S. A.

NO. 2

## E D I T O R I A L

We are grateful to these members for contributing to the mimeograph fund: Messrs. Eck, Ivensen, Thomas, Rodriguez, Johnson, Goodeve, Brewer, Deibe, Ansell, Koch, Thomson and Beta Chapter. (Have you contributed yet)

The IDA is the only DX Club that issues a monthly printed magazine, with Stop Press Sheet; monthly ham dx bulletin (Ama-Touring), and a correspondence bulletin (Forum), and ALL for only \$1.25 per year. Dx'ers can not afford NOT to belong to the IDA. It is a non-profit club operated solely for YOUR benefit. Our officers and myself, have worked night and day ceaselessly for more than four years to give YOU the finest, most complete, most interesting and most cordial DX Fraternity in existence at an amazingly low fee. We are in the midst of the greatest membership drive in our history, but to date only a FEW members have done anything towards enrolling their own friends in the IDA. We only ask you to drop your friends, correspondents or acquaintances a line, outlining the many advantages of IDA membership and its low cost. Just forward their names and addresses to me, and I will send each information about the IDA and a sample Globe Circler. The IDA is a COOPERATIVE club, where each member should be willing to share in the work, as well as the rewards. LETS! TALK IDA, WRITE IDA AND SELL IDA. IT'S OUR CLUB.

Please pay your own renewal promptly and line up at least two members for the IDA as soon as possible.

To get Ama-Touring (our amateur dx bulletin, issued the first week in each month), you must send in at least one item for its columns. The Forum (our correspondence bulletin), is issued to members who correspond with headquarters regularly.

Directors, Representatives, Members, lets all combine to make 1937 a red-letter year for the I.D.A.

Charles A. Morrison.

## I.D.A. CHAPTERS

BETA (New York): Under the leadership of N.Y. Mgr., Edward Goss, 812 Prospect Place, Brooklyn, the chapter has enrolled more than 15 new members in its ranks since the IDA Membership drive started. Meetings are held regularly every other Saturday night, at the above address and all members or dx'ers in N.Y.C or vicinity, are cordially invited to attend. BETA DX POW-WOWS are red letter events for N.Y. dx'ers. Many interesting chapter activities are under way. See you at Ed's!

DELTA (Lansing): Meeting held on Jan. 5, at home of A. Debicki. DX was discussed as well as plans for giving chapter local publicity. Next meeting set for February 2nd.

EPSILON (London): Has enrolled two new members. local S.W. Contest won by R. E. Simms, with veris from CELAR, K4DDH and VK2BC. The Lissen set demonstration was a huge success. Chapter will visit its plant on January 21. Messrs. Graham-Parish has loaned chapt. a set for it to test. Due to lack of support, the BGC has been dropped, and owing to disproportionate expense, the 4d subs. are not being returned unless so requested.

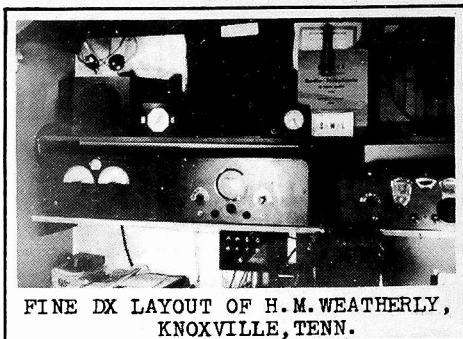
REGINA JUBILEE (Regina): Held its first annual banquet on Jan. 5. A good attendance made it a great success. Music was furnished by R. Bell and T.H. Wills, and Vice-President Wm. Ansell, made an address about the IDA. Officers elected for 1937 were: Chairman, W. Ansell; Sec-Treasurer, P. Sampson and Hon. Chairman, W.R. Pottke (radio inspector). Regina sent HQ a donation towards the mimeograph fund.

NEW-PHOENIX, ARIZONA, chapt. has been organized by IDA State Mgr. L.D. Brewer, with following charter members: Messrs. Criswell, Binder, Duddy, Babcock, Sprague and Stephenson. Brewer says, "We intend to put Phoenix, Arizona, on the IDA map in a big way." (Best Wishes- Ed.)

Inaugural meeting of SAN FRANCISCO Chapter set for Jan. 22. Look out Phoenix, here we come!

**BRITISH IDA SHORT-WAVE CONTEST**

Winners in the "Best Three" S.W. Contest were: 1ST, Colin Wright, with VS2AK (30w), KALAH (30w), K7VH (25w); 2ND, R. T. Coales, with XE3AG, W7FP and HRD. Other unusual veris submitted by C. Wright were in part -W5EUC, W6KSO, W7AYG, VE4CW, YN1OP, PK-1MX, VS2AK, K6KDX, VK2AP, VK3HM, VK4JX, KALAK, CX1AA, OA4F, VP9G and CPLAB. Of these, 70% are 50w or under, and two (W6KSO and VE5HU) are for the first European reports (Mr. Wright is to be heartily congratulated on this remarkable list of veri's-Ed)



FINE DX LAYOUT OF H. M. WEATHERLY, KNOXVILLE, TENN.

**WORLD-WIDE BROADCAST CALENDAR**

TIME	E. S. T.	KC/S	KW	LOCATION	CALL
Feb. 7	Sunday 4-5pm	15300	SW	La Paz, Bolivia.	RS CP7
	Send reports to G. Lopez Videla, Mgr. Compania Radio Boliviana, Casilla 637, La Paz, Bolivia, South America.				
Feb. 24	Wed. 3-4am	1400	.25	Hilo, Hawaii.	NNRC KHBC
Feb. 27	Sat. 7-7:30pm	6108	60w	Tunis, Tunisia	RP
	A remarkable opportunity to log TUNISIA on the first DX BROADCAST ever to originate in that country. International Reply Coupons must accompany your reports, which may be sent to M. de Mattels, 20 Es Sadikia St, Tunis, Tunisia, or to Tunis Experimental Station, 43 av. Jules Ferry, Tunisia. AN IDA RED-LETTER BROADCAST arranged by Rene Pleiber, IDA Representative in Alger. Algeria.				
Feb. 28	Sunday 2-5am	930	.1	Prescot, Ont, Canada.	CFLC
Mar. 11	Thurs. 5:30-7am	1440	.1	Ipswich, Qsld, Australia	M 4IP
	Royston Marcus, 4IP, Brisbane St, Ipswich, Qsld, Australia.				
Mar. 19	Friday 1-2am	690	.1	Calgary, Alta, Canada.	AM CJCJ
	This is an IDA broadcast sponsored by, and which will be entirely conducted by IDA CALGARY FOOTHILLS CHAPTER.				
Weekly	Tues. 6:35-7pm	9530	SW	Schenectady, New York	ED W2XAF
Weekly	Sat. 12:01am	6140	SW	Pittsburgh, Pa.	EL WRXK
Weekly	Sun. 1:15-1:30am	640	50	Los Angeles, Calif.	FA KFI
MEMBERS WHO AR- (RS) R. Swenson, (RP) R. Pleiber, (M) R. Myers, (AM) Art McLean. RANGED PROGRAM (ED) Eugene Darlington, (EL) Ed Lips, (FA) Frank Andrews. NOTE: FAD Director, Art McLean, 1640-10th Ave., West, Calgary, Alta, Canada, wishes every IDA FAD member to send him a complete report on activities this season, number of letters written, to whom, and what success.					

**AROUND THE WORLD WITH THE BROADCASTERS**

**AFGHANISTAN** The wireless xmtr. at Kabul, has been completed and broadcasting will start shortly. Five smaller xmtrs. are under construction.

**ARGENTINA** A new station, LRA (750kc), "Radio del Estado," Buenos Aires, with a power of 10kw, for Govt. use only, is broadcasting irreg.... LV9, is now operated by the Govt. of the Prov. of Salta on 970kc.... LR3 (950kc), "Radio Belgrano, Buenos Aires, operates daily from 6am to 11pm EST and until 1am Sundays. Proprietor is Jaime Yankelevich.

**ENGLAND** New BBC xmtr. (50/100kw), is planned for Start Point, Devon

**FRANCE** Radio-Lyon, 1390kc, now radiating English sponsored BC's.

**ITALY** New xmtrs. are to be built at Ancona and Catania and Genoa, is to be given greater power. Sicily will then have two stations; Palermo and Catania (R. Stansfield)

**JAPAN** New xmtrs. on air for regular programs: JOOG (950kc), Obihiro; JOJG (1000kc), Yamagata, and JOLG (890kc), Tottori, each has a power of 500 watts.... JONK, Nagano, is now operating on 1040kc.... Two new Korean xmtrs. on the air are: JBEK1 and JBEK2 in Heijo.... The 50kw xmtrs. of JOAK1 and JOAK2, will be completed this summer, and the JONG xmtr. at Miyazaki, will be completed this winter (Akifusa Saito)

**S. AFRICA** New xmtr. to be built at Port Elizabeth.

**U.S.A.** New xmtrs: Bridgetown, N. J., 1210kc, 100w; Superior, Wis., 1200 kc, 100w; Visalia, Calif., 1190kc, 250w; College park, Md., 1060kc, 100w, 0-6am EST

DISTRICT -6- Mich, Ind, Ohio, Ky, Va, W. Va, Penna, N. Y., Del, Md, N. J.  
 David Thomas 19X Ohio VQ7LO, NRH, EAJ5, LOV, SANTO PAULO, FN, PRAK, KZRC, G6BM  
 2BD, LYX, VUO, Huizen, Warsaw, Moscow, Drottwich. ZBW,  
 ZTJ, CX20.  
 R. Tomlinson 16X N.Y. CE62, CX34, HAE2, Lille, Nice, Dresden, Konigsberg  
 (1348), LS8, LT3, HAE, HAE-3, LS9, Gleiwitz, EAJ15,  
 Poste de L'Ile, Antibes.  
 Ray Lewis 9X Ohio LV1, TIC, 5DN, EAJ41, JOBK2, JFAK, RWMC, Palermo, Naples  
 Howard Eck 8X Mich 3KZ, PRA6, JOCG, Innsbruck, Stettin, Freiberg, Augs-  
 berg, JOVK.  
 C. Wyborski 7X Pa. HJ3ABD, CX14, TIRC, TIRCA, YN1GG, LS6, Cracow.  
 Don Reynolds 3X N.Y. Eiffel Tower, Riga, Monte Ceneri.  
 Carl Lord 3X Ohio NN, SN, Suisse Romande.  
 John DeMyer 2X Mich JOPK, JQAK. I. Beitman 2X Ohio PRA<sup>R</sup>. LU2.  
 R. Hough 1X N.Y. OAX. I. Goodeve 1X Mich LZM.  
 Art B. Johnson 1X N.Y. HJ1ABE.

NOTE: To give our SW DX'ers a break, I propose an Honor Roll for them, based on their VAC rating, this Honor Roll to alternate every other month with the BCB Honor Roll. No one will be considered for SW Honor Roll with a rating of less than 3 VAC. The first VAC Honor Roll will appear in the March Globe Circle. To help me get started on this, I request EACH member in the 6th district to send me at once his or her VAC rating, to be checked with my present records. In case some do not understand the VAC rating, for example, a member with at least five verifications from each of the major continents (Europe, Asia, Africa, N.A., S.A., Oceania), would have a VAC rating of Five; one with at least six verifications from each one of the six major continents, a VAC rating of Six etc. Please have your VAC rating in to me (J. DeMyer, 545 Baker St, Lansing, Michigan), ON OR BEFORE FEBRUARY 12TH. (I think this unique VAC-SW Honor Roll idea could be worked in all IDA Districts- Chas. A. Morrison)

### NEW I.D.A. MEMBERS

Louis Bruno, Brooklyn, New York.  
 Emil Guerrier, Staten Island, N.Y.  
 Chas. J. Zanardi, Brooklyn, New York.  
 J. C. Shores, Atlanta, Illinois.  
 R. Vergrughe, Jr., Detroit, Michigan  
 Morris Vanderhaeghe, Detroit, Mich.  
 Kenyon A. Olds, Plymouth, Michigan.  
 E. J. Hale, Regina, Sask, CANADA.  
 Cameron H. Brown, Omaha, Nebraska.  
 Edward L. Rockstroh, Valley Stream,  
 L. I., New York.  
 Max Mosler, Palm Besch, Florida.  
 James M. Westerly, New Rochelle, NY.  
 C. S. Kinter, Regina, Sask, CANADA.  
 A. E. Surtees, Regina, Sask, CANADA.  
 M. Leach, Regina, Sask, CANADA.  
 A. J. Dupuis, Regina, Sask, CANADA.  
 C. Montague Veysey, Datchet, Bucks,  
 ENGLAND.  
 Ellsworth H. Clark, Hollister, Calif.  
 Howard S. Bradley, Hamilton, New York  
 John Barre, Bronx, New York City, NY.  
 Roy Waite, Ballston Spa, New York.  
 Ted Horton, Newburgh, New York.  
 Burton W. Bostad, Minneapolis, Minn.  
 Carl and Anne Eder, Willmar, Minn.  
 William Myers, Jr., Kent, Ohio.  
 John Binder, Phoenix, Arizona.  
 John J. Duddy, Phoenix, Arizona.  
 Henry Babcock, Phoenix, Arizona.  
 Ralph Sprague, Phoenix, Arizona.  
 Robert D. Stephenson, Phoenix, Ariz.  
 Stephen McVicker, Brooklyn, N.Y.  
 John Velazquez, New York City, N.Y.

Robert Bartunek, Rego Park, L. I., NY.  
 William M. Kline, Gloversville, N.Y.  
 Joseph D. Cook, Haddonfield, N.J.  
 Jose Tomas Carbonell, San Salvador.  
 EL SALVADOR, Central America.  
 T. W. Goford, South End, Mount Isa,  
 Qsld., AUSTRALIA.  
 Forrest Connor, Kalamazoo, Michigan.  
 Eugene Reinhard, Locust, New Jersey.  
 Arthur Clark, Kansas City, Missouri.  
 Carroll Seth, Wellsville, New York.  
 Carlo Spartari, Astoria, L. I., N.Y.  
 H. W. Frey, New York City, New York.  
 Mrs. Thos. A. MacNeill, Orangeville,  
 Nova Scotia, CANADA.  
 John K. Bryan, Jr., New Augusta, Ind.  
 Sgt. A. W. Brummond, Fort Douglas, Utah  
 Harry J. Blanchet, Brooklyn, New York  
 Albert Kasten, Hicksville, L. I. N.Y.  
 Louis Elkamp, Cochrane, Wisconsin.  
 Ted Serafin, New York City, New York  
 Dr. W. C. Ostrom, Schenectady, New York  
 Paul C. Bird, Vineland, New Jersey.  
 Frank T. Jennings, Jr., Norman, Okla.

### GOLDEN GATE WORLD DX CONVENTION

George C. Sholin, Director-  
 Handsome colored Exposition poster  
 stamps are now available at 35  
 ¢ per 100 or 300 for \$1.00 post-  
 paid Canadian or U.S. unused post-  
 age stamps in 1¢, 2 or 3¢ denomina-  
 tions accepted for orders of less  
 than \$1.00. Send a dime or stamps  
 for a sample sheet of 20 stickers  
 p.p. (55 Lapidge St, San Francisco)

LAST MINUTE INFORMATION

7

IDA STAMP EXCHANGE

Joseph D. Cook, of Box 102, Haddonfield, N.J. wishes to exchange used or mint stamps with members in any country. He can correspond in either French or English.... Last month we called for votes from ISG members for officials for this organization. To date, only one vote has been received. Nothing further can be done on organizing the ISG until each member has been heard from, as to his or her choice for officers. All stamp members enrolled in the ISG have been listed under this heading in recent GC's.

E. L. Frost, of 2426 Logan Avenue, Superior, Wisconsin, would like to correspond with other SWL's in India, China or Australia.

LAST MINUTE BCB NOTES

The new mystery station on 820KC verified for Carl and Anne Eder, of Willmar, Minnesota, in 5 days time. It is XEBG in Tijuana, Mexico, on the air daily from 8am to 2am EST. Listen between 1 and 2am EST to English programs, 1 to 1:30am for Todds Clothing, and from 1:30 to 2am, for the Los Angeles Central Labor Council. Reports are appreciated... The new 150kW transmitters for JOAK1 and JOAK2, of Tokio, Japan have been completed by the Tokyo Electric Co. They will soon be tested at the factory. Antennas are now under construction and will soon be completed (G. Sholin, Calif) .. Practically no TA reception since the holidays. Heard a Brazilian testing on 1213KC, morning of Jan. 14, from 1 to 1:30am and 3 to 4 am EST. Call was given quite often and it sounded like PR-9. Plenty of static lately (E. L. Peters, Nova Scotia)... The Times Dispatch Pub. Co. Inc., of Richmond, Virginia, has been granted a permit to construct a new 100-watt station to operate on 1500KC, unlimited time... A new broadcast station on 1360KC, located in Panama City, Panama, relaying short-wave station HP5J, is on the air (Nelson-Oregon).

CALGARY FOOTHILLS CHAPTER NEWS

Through the courtesy of the Hudson Bay Co. and the co-operation of the members, CF Chapt. has one of the finest window displays ever shown in this city... The Chapt. has been fortunate in securing the Herald Board Rooms as a Club Room for the entire year. Meetings will be held the second Tuesday and the

third Monday of every month.... All IDA members are requested to kindly listen for and report to, if at all possible, the Calgary Foothills DX Broadcast, which takes place over CJGJ (690KC), Calgary, on March 18, from 1-2am EST. Two prizes are being offered: a one-year membership in IDA for the best report on the broadcast, within a radius of 100 miles, and a one-year membership in IDA for the best report outside the 100-mile radius.

We are grateful to the following members for additional contributions to the mimeograph fund: - - - Messrs. Rosenbrock, Roberts, Oppenheimer, Grabek, Bink, Portman and Sorensen.

BROADCASTING IN MOROCCO

By M. Andre Touchard, IDA-Rep. in Casablanca, Morocco

Radio Maroc or Rabat PTT, located in Rabat, a city of 60,000 population, was erected in 1928, fulfilling the dream of Marechal Lyntey-pacificator of Morocco. It works on 601KC or 499.16 meters. Prior to 1932, the power was 5000 watts. It now has 20,000 watts power, with a maximum power of 25,000 watts possible. A special quartz crystal, which is not influenced by temperature, was obtained from Japan for maintaining a constant frequency.

The aerial is a T-shape between two iron masts.

Studios are located in Rabat, Casablanca, Marrakech and Fez, the principal center being in Rabat, in the building of "Direction des PTT," where four studios are in use

On Saturdays, a 1½-hour program is relayed from Casablanca. The evening mussulman programs come from Fez, the capitol of the north, or Marrakech, the capitol of the south.

It is rumored a station will be built in Meknes to operate on 868-KC, with a power of 120kW, for broadcasting Mussulman programs. Nothing definite has been done as yet.

For Maroc France, the frequencies are: 12.83 and 8.035mc. It is used solely for telephonic communication with France. Frequencies of about 6.39 and 4.54mc, are used for communication with ships. Beam aeriels, with reflectors, are directed on Lyons and Paris. The station has not transmitted broadcasts for two years, but occasionally the xmtr. is used for some special program or relay. Power is 12000 watts

## AUSTRALASIAN SECTION

### Australia-New Zealand Broadcast Stations

CALL LOCATION	KC/S	WATTS	CALL LOCATION	KC/S	WATTS
6WA-Minding, W. A.	560	10000	6ML-Perth, W. A.	1130	500
2YA-Wellington, N. Z.	570	60000	3SH-Swen Hill, Vict.	1130	100
3AR-Melbourne, Vict.	580	4500	4VL-Charleville, Qsld.	1130	50
4QN-North Regional, Qsld.	600	7000	2HD-Newcastle, NSW.	1140	500
2FC-Sydney, NSW.	610	2000	4YO-Dunedin, N. Z.	1140	150
7ZL-Hobart, Tasmania.	620	1000	2WG-Wagga, NSW.	1150	1000
4ZP-Invercargill, N. Z.	620	500	2ZM-Gisborne, N. Z.	1150	25
5CK-Crystal Brook, S. A.	640	7500	2KA-Katoomba, NSW.	1160	100
1YA-Auckland, N. Z.	650	10000	2LV-Inverell, NSW.	1170	1000
7BU-Burnie, Tasmania.	660	50	2ZD-Masterton, N. Z.	1170	5
2DU-Dubbo, NSW.	660	100	3KZ-Melbourne, Vict.	1180	600
2CO-Corowa, NSW.	670	7500	2CH-Sydney, NSW.	1190	1000
6WF-Perth, W. A.	690	3500	3YL-Christchurch, N. Z.	1200	500
2NR-Lawrence, NSW.	700	7000	5KA-Adelaide, S. A.	1200	300
7NT-Kelso, Tasmania.	710	7000	6WB-Katanning, W. A.	1200	2000
6GF-Kalgoorlie, W. A.	* 720		2GF-Grafton, NSW.	1210	100
3YA-Christchurch, N. Z.	720	10000	6KG-Kalgoorlie, W. A.	1210	500
5CL-Adelaide, S. A.	730	2000	3YB-Melbourne, Vict.	1210	50
2BL-Sydney, NSW.	740	3000	4ZL-Dunedin, N. Z.	1220	100
2YB-New Plymouth, N. Z.	760	100	4AK-Oakey, Qsld.	1220	2000
3LO-Melbourne, Vict.	770	3500	2NC-Newcastle, NSW.	1230	2000
4YA-Dunedin, N. Z.	790	10000	2ZL-Hastings, N. Z.	1240	20
4QG-Brisbane, Qsld.	800	2500	6IX-Perth, W. A.	1240	500
2ZH-Napier, N. Z.	820	65	3TR-Sale, Vict.	1240	500
3GI-Longford, Vict.	830	7000	1ZM-Manurewa, N. Z.	1260	150
2YC-Wellington, N. Z.	840	200	3WR-Shepparton, Vict.	1260	50
5RM-Renmark, S. A.	850	1000	2SM-Sydney, NSW.	1270	1000
4AY-Ayr, Qsld.	860	300	3AW-Melbourne, Vict.	1280	600
7HO-Hobart, Tasmania.	860	120	4ZC-Cromwell, N. Z.	1280	20
2GB-Sydney, NSW.	870	1000	4BK-Brisbane, Qsld.	1290	500
1YX-Auckland, N. Z.	880	150	2TM-Tamworth, NSW.	1300	1000
6PR-Perth, W. A.	880	500	5AD-Adelaide, S. A.	1310	300
2LM-Lismore, NSW.	900	500	1ZJ-Auckland, N. Z.	1310	6R
2ZP-Wairoa, N. Z.	900	250	3BA-Ballerat, Vict.	1320	500
4RK-Rockhampton, Qsld.	910	2000	2BH-Broken Hill, NSW.	1330	100
2ZR-Greymouth, N. Z.	920	50	4RO-Rockhampton, Qsld.	1330	50
ZJV-Suva, Fiji's.	920	400	4ZR-Balclutha, N. Z.	1340	10
3UZ-Melbourne, Vict.	930	600	5MU-Murray Bridge, S. A.	1340	200
3ZR-Greymouth, N. Z.	940	400	3GL-Geelong, Vict.	1350	100
2UE-Sydney, NSW.	950	1000	4PM-Port Moresby, Papua.	1360	100
2ZF-Palmerston, N, N. Z.	960	250	4WK-Warwick, Wsld.	1360	100
5DN-Adelaide, S. A.	960	300	3MA-Mildura, Vict.	1360	100
3BO-Bendigo, Vict.	970	2500	2MO-Gunnedah, NSW.	1370	100
2ZJ-Gisborne, N. Z.	980	75	3HS-Horsham, Vict.	1370	1000?
6AM-Northam, W. A.	980	2000	4BH-Brisbane, Qsld.	1380	1000
2GZ-Orange, NSW.	990	2000	4CA-Cairns, Qsld.	1390	100
4GR-Toowoomba, Qsld.	1000	500	2GN-Goulburn, NSW.	1390	150
3HA-Hamilton, Vict.	1010	300	3MB-Birchip, Vict.	1390	100
4ZB-Dunedin, N. Z.	1010	30	2ZO-Palmerston, N, N. Z.	1400	100
4ZM-Dunedin, N. Z.	1010	60	2KO-Newcastle, NSW.	1410	500
4ZO-Dunedin, N. Z.	1010	25	3XY-Melbourne, Vict.	1420	600
2KY-Sydney, NSW.	1020	1000	2WL-Woollongong, NSW	1430	600
3DB-Melbourne, Vict.	1030	600	2QN-Deniliquin, NSW.	1440	50
5PI-Crystal Brook, S. A.	1040	2000	4IP-Ipswich, Qsld.	1440	100
2CA-Canberra, NSW.	1050	2000	7UV-Ulverstone, Tasmania	1460	300
4MB-Maryborough, Qsld.	1060	100	3ZM-Christchurch, N. Z.	1470	60
2AD-Armidale, NSW.	1080	100	2RG-Griffith, NSW.	1470	50
4MK-Mackay, Qsld.	1080	100	2AY-Albury, NSW.	1480	100
4TO-Townsville, Qsld.	1080	200	4BU-Bundaberg, Qsld.	1480	100
1ZB-Auckland, N. Z.	1090	1000?	3AK-Melbourne, Vict.	1500	200
4LG-Longreach, Qsld.	1100	300	NOTE: Corrected by GRDXA and E.		
7LA-Launceston, Tasmania.	1100	300	Niven.. SYMBOLS: Asterisk-not com-		
2UW-Sydney, NSW.	1110	750	pleted. Aussie calls prefixed by 2,		
4BC-Brisbane, Qsld.	1120	1000	3, 4 or 7 EST; by 5 CST; by 6 WStime.		



# GLOBE RADIO DX'ERS ASSOCIATION

(Australian Branch of the IDA)

This article is by Arthur Preece, General Australian Representative for the IDA, and Organizer-Secretary of the Globe Radio DX'ers Association, whose headquarters are 61 Lipson St., Adelaide, Australia.

Australia had no dx clubs that catered for both the S.W. and B.C. dx'er prior to the GRDXA. There were, and still are, Australian Dx Clubs— that were exclusively for S.W. or B.C. members, but none that catered for both classes, until the GRDXA began operations on January 1, 1936.

On this date, with the permission of IDA Pres. Chas. A. Morrison, the GRDXA began operations as the Australian Branch of the IDA and as the first All-Wave Association in Australia.

Australian contests were arranged for both the SW and BC sections as well as special competitions for lady members. These were as follows: Women's DX Australian Championship (BC), closed Jan. 2, 1937; Women's DX Australian Championship (SW), closed Jan. 2, 1937; Centenary DX Championship (BC) to close on March 31, 1937; Globe Association Champion (SW), to close on March 1, 1937. The winners of each of the above contests will receive a Silver Trophy, which means that FOUR silver cups are being awarded to members in the first year of the GRDXA's existence. Many new and interesting features are now being arranged for 1937.

With the competition furnished by free clubs, it is hard to get dx'ers to pay a fee, but the REAL dx'er finds that the GRDXA is catering for members by the many contests that are carried on, and I can say, although members are slow in joining the GRDXA-IDA, each month finds new members to be enrolled as official IDA members.

The GRDXA is encouraging members and has a large membership that are not at present IDA members, but these, in time, will become affiliated members of the IDA.

On October 1, 1936, I arranged the following international contests to induce dx'ers from all parts of the world to join the GRDXA: Australian QSL Association Champion (SW), to close on September 1, 1937, and Australian QSL Association Champion (BC), to close on September 1, 1937. The prizes are unique silver maps of Australia, mounted on genuine Australian timber. A special cup will be awarded for the most outstanding single verif'.

During 1937, the GRDXA will aid and follow the IDA in building up the Stamp, Amateur and Journalists Guilds, will support Ama-Touring and the Forum, and will arrange special broadcasts from Australian stations for Overseas members. The new Stop Press Sheet is very much appreciated by Australian members.

All amateurs are invited to get in touch with the GRDXA, as special contests are being arranged for this department during 1937.

I wish to extend our thanks to the management of the weekly radio journal, "Teleradio," for the way that it has given the GRDXA publicity and acted in the capacity of our 'official organ' during the past six months, and will continue to do so in the future. An offer also comes from "Wireless News," in West Australia to publish our notes and it will, in the future, act as our official outlet in conjunction with "Teleradio."

1937 promises to be a great year for the GRDXA-IDA as the state representatives intend to form state branches in each state, and I am appointing District Delegates for each district, so as to form District chapters. To encourage members in gaining the results that I anticipate, I am awarding special trophies to the member that enrolls the most new members, each month, during the whole year of 1937.

GRDXA badges will be available for members early in 1937, and I would like to see the IDA have official badges also. Members would I feel sure, pay a small fee for these, and I suggest that all IDA members, who think the badge idea is a good one, to write to the Pres ident.

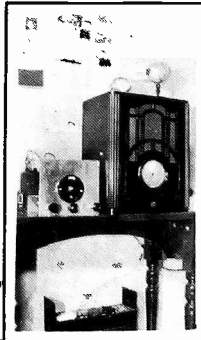
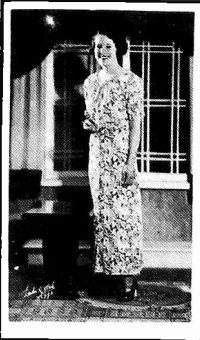
Arrangements have been made so that Australian members will be able to procure radio accessories receivers, etc., at reduced prices from leading dealers in each state—these names will be furnished on request.

In conclusion, Australian members send greetings to IDA members in all parts of the world, and wish the IDA every success and members the best of dx during the year 1937.

(Sincere best wishes from all of us to the GRDXA— Charles Morrison)

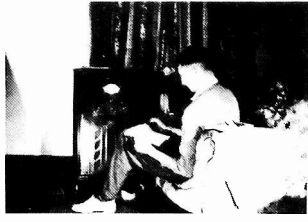
## WITH OUR AUSTRALIAN MEMBERS

To the right, Miss Pearl Geppert, Narrandera, NSW, State Representative for IDA/GRDXA (Women's Section)-is a keen 20-meter band dx'er and is sending out reports weekly, in hopes of scooping the cup. She has helped the GRDXA much, by means of publicity in the local newspaper, where she is employed.



To the left, the Dx Listening Post of Miss Betty Geisel, Murray Bridge, S. Australia, Asst. Rep. (Women's Section). She is the only YL to pass exams to operate a ham xmtr. in South Australia. She will be on the air by last of January, with call VK5YL. Miss Geisel, only

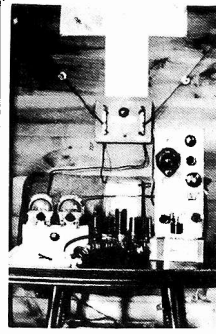
To the right, Don Cameron, Millicent, S. Australia, State Representative for IDA-GRDXA, at the dials of his BCB receiver. Below Don's SW set. He is one of the foundation members of the GRDXA and is very keen on BCB dx, being a runner-up in a recent dx competition. Don is doing his best to win the GRDXA cup this season and has also gone in for SW dx.



16 years of age, belonged to no ham club, and relied entirely on books for the exam, and she passed it with high honors. 5YL will be the official GRDXA-IDA xmtr. in S. Aust.

## THURSDAY ISLAND

The GRDXA/IDA boasts two members on interesting Thursday Island, namely, M. Nishi and D. Clifford, known as "Ossie." Rep. for the Island. Remote Thursday Island is north of Queensland and as far north as Australia goes. The main industry is Mother of Pearl and Beach la Mer, which is a sea slug. Left bottom photo shows natives having a war dance and right bottom, shows a few tons of Mother of Pearl. There are



## WIGNALL ON ROTTNEST ISLE

G. Wignall, of North Perth, W. Australia, State Rep. for GRDXA/IDA, a keen dx'er is now working on the fortifications on Rottnest Island, which is about 12 miles west of the Port of Fremantle. It is terribly isolated -there being a launch touching there on Wednesdays and Saturdays only, weather permitting. It is 6 1/4 miles long and 3 miles wide, having a total area of 4726 acres, of which 510 are salt lakes. It is a great holiday resort in the summer months. The camp is 3 miles from the settlement and after one has walked this at the end of a days work, he is ready for sleep.

200 whites and 2000 Japanese, who do the diving for the pearls, on the isle. One can easily walk completely around the isle in a day. It is quite hilly, one hill being 260 feet high. Nearest mainland port is Cairns 600 miles away, and Brisbane is 1500 miles distant. Thursday Island is the largest of 32 smaller isles in this group.

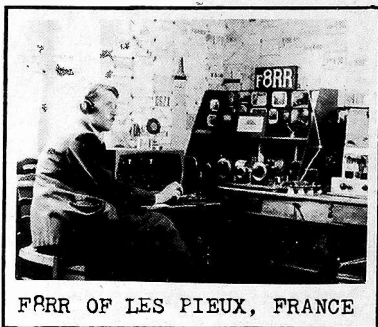


# Short-Wave News

Editor-C. A. Morrison

Assoc. Editors: Paul Dilg (PD); R. B. Oxrieder-Freq. Checking Bureau (RBO); Amateur-H. S. Bradley and Edward Schmeichel (ES).

**E. S. T. IDA BROADCAST**  
Feb. 27, Sat. 7-7:30pm 6.108mc-60w, TUNIS  
See page Five for full details.



FRRR OF LES PIEUX, FRANCE

**AMA-TOURING** (the new IDA ham dx bulletin) will be issued the first week in each month to, and only to, those members who are interested in this field of reception to the extent of contributing at least one item of interest for its columns. That the first issue was greeted with tremendous enthusiasm is a well-earned tribute to its capable editors, Edward Schmeichel and H. S. Bradley. Give as complete data as possible about each ham heard, including frequency, power, identifying signals, QRA, day-date and hour heard, etc.

**SHORT-WAVE REPORTS** should be in this office not later than 17 of the month (15th in Feb.), but single important items can be accepted up to noon of next to last day of month for STOP PRESS SHEET. Be sure and mark card or letter-Stop Press. To permit handling, it is imperative that all reports be written or typed plainly on one side of page only, that lines be double-spaced, items be grouped into continents and time used be stated. Items in order of relative interest are: new stations; frequency or schedule changes; exact operating schedules; identifying signals and opening or signature selections; correct addresses; commercial schedule tips and unusual receptions. RUSH important S.W. items by fastest mail as soon as noted—a postal card giving facts will do.

Four stars (\*\*\*\*) after an item denotes SCOOOP or exceptional merit.

**E. S. T. NORTH AMERICA-CENTRAL AMERICA Megacycles used**

**ALASKA** Commercial **KLA**-Waterfall, on 2.566mc, heard foning San Francisco with loud signals near 9pm (DeMent-Texas)

**BARBADOS** Amateur **VP6TR** (14.06/14.09), Bridgetown, heard (Bostad-Minn)

**CANADA** Dominion Skyways Que.net includes; **CZ5K**-4.5, Shaboygama, on 4.8mc; **CZ9U**, St. Felicia; **CZ5L**, Mud Lake; **CZ5M**, Rouyn; **CY3M**, Shaboygama Rd (ER)

**COSTA RICA** **TIEP**-6.687, San Jose, using slogan, "The Voice of the Isthmus" (in Spanish La Voz de Isthmo or La Voz de Tropico) (RBO-Penna)... **TIOU**, Limon, heard on 6.85mc, at 11pm, in QSO with other xmtrs. (Legge-Pa)... **TIPG**-6.41, San Jose, often using slogan, "Whiskey White Horse," on Wed and Sat. 9-10pm, with English program by Tourist Bureau (Stark, Bostad)... A. Cespedes M. of **TIRCC**-6.55, communicates daily with the director of the station in Managua, Nicaragua, from 6 to 7pm (CSWRC-Chicago)

**CUBA** Commercial **CMA5**, Havana, testing in evenings on approx. 8.63, 9.95 and 10.89mc, acknowledges reports but will not verify. This is the mystery station puzzling many on 9.95 (Gozen-NYC, Legge)

**D. R.** **HIT**-6.63, Ciudad Trujillo, 200w, broadcast a DX program on Sundays 11pm-1am (E. R. Roberts)... **HIRQ**, Ciudad Trujillo, is back on air on 6.198mc. Occasionally in chain with **HI4D** or **HI4D** and **HIT** (RBO)

**LABRADOR** **VOWQ**-approx. 8.65, Northwest River, owned by Newfoundland Skyways, Ltd., heard in duplex QSO, with **CZ9U**, Dec. 31, 7:30pm (Hyde-Conn)... **NEW-Amateur** **VELKK**-14.3, Belle Isle, heard at 7:50am, 7:15pm and 1pm, from R5 to R9 (\*\*Satterthwaite-Ohio, Hock-N. J., Hixie-Maine)

**MARTINIQUE** (French Colony in West Indies): **NEW** station on approx. 9.44mc, announcing in French (occasionally Spanish), as **Radio Port de France**, Martinique, or "Ici Martinique2," first heard on Dec. 29, by Thomas, in Barbados, transmits daily from 11:15am to 12:30pm, and 6:30 to 9pm or later; usually announces in English and French at sign-off (\*\*Thomas-Barbados, Lippincott-Mass, PD-Chicago, CAM-Bloomington)

**MEXICO** Commercial **XAP**-8.7, Villa Hermosilla, contacts **XBC**, Vera Cruz, at 7pm.. **XBA**-6.977, Tacubaya, D. F., heard testing with American recordings at Q4/R7 (Ansell-Sask, RBO)... **XEBM**-15.44, "El Progonero del Pacifico," (The Crier of the Pacific), located at Mazatlan, Sinaloa, re-lays **XEBL**, on Sun/Mon/Wed/Fri mornings to 10am, afternoons to 3:30 or 5

pm, and evenings from 8 to 10:45pm; interval signal is four chimes (\*\*Criswell, QRC)... NEW-XEBR-approx. 11.83mc, Hermosillo, Sonora, relays programs of XEBH, 2 to 4 or 5pm, and irregularly in early evenings (\*\* Balbi-Calif, E. Roberts, Murphy-111)... Mystery xmt. with call sounding like XEXW, heard on approx. 11.07mc, Jan. 17, 1:17 to 2:12pm (Ansell-Sask)... NEW station on approx. 9.35mc, broadcasting in Spanish from 8 to 12:30am, gives calls as XJJ and XJI (\*Goldner-Ind)... NEW-XEBT-9.49, Mexico D.F., using three blasts on a squeeze bulb horn, sounding like CTIAA's triple cuckoo call, for identification, heard on Dec. 16, Jan. 7, and Jan. 12 (Bostad-Minn, Graham-Que)... XEFT, Veracruz (formerly on 6.12), heard recently on 9.493 (RBO)... XEDQ relaying XED of Guadalajara, is now on 9.48mc, having apparently moved away from QRM, caused by HJLABH (RBO)... NEW-XEUZ (6.117), "Radio Nacionales," Mexico City, relays XEFO, to about 1:30am. Announcements are in English and Spanish, and English news is read at 1:15am (\*\*RBO, Goldner, Ansell, E. R. Roberts)... NEW-XEPW-6.12, "La Voz de Aguila Azteca desde Mejico," Apartado 240w, Mexico, D.F., using five piano notes-followed by four strokes on gong as interval signal, operating daily from 8pm to midnight, signs off with, "Ah Sweet Mystery of Life" (\*\*RBO, Nelson, E. R. Roberts)... XETU-6.115, Guadalajara, Jalisco, giving several toots on a two-tone whistle for interval signal operates from 8 to 11pm (\*\*RBO, E. R. Roberts)

NICARAGUA NEW-YNAM-7.2, "LA Voz del Pacifico," Managua operating nightly from 8 to 11pm, uses call YNAM when xmt. is used for ham purposes (\*\*Graham, RBO)... YNLC, variable freq. is near 8.505. Owned by Benjamin J. Guerra L; relays BCE station on 1280kc, from 7:30 to 10pm daily (RBO, Rodriguez-NYC)... YNOP-5.758, Managua, operates from 7:30 to 11pm, except Sundays and holidays (Graham)... YNLGG, Managua, variable in freq., is now on 6.54mc (RBO)

PANAMA A new xmt. HP5A, "The Voice of the Ismo", Panama City, will be on the air shortly. Under same management as HP5J, the new station located in a theater, will have a power of about 3KW and will operate on the 49 meter band (\*\*Nelson-Ore)... NEW-HP5L (11.74), 350 watts, owned by Cia Chiricana de Radiodifusion Y Television, David, Chiriqui, was inaugurated Jan. 15, and operates daily from 4 to 7pm; Mgr. is Leo Marchosky (\*\* RBO, Nelson)... HP5K-6.005, Colon, comes on air at 7am (Eder-Minn)

U.S.A. 441-line television images have been successfully inaugurated by NBC (NBC)... NEW SHORT WAVE BAND (25.6 to 26.6mc), just allotted by FCC, will soon be used by several apex xmt. (\*\*Criswell)... New NBC aerial beamed on South America inaugurated Jan. 15, by W3XAL, Boundbrook, N.J.; on 17.78mc, will produce equivalent power increase from 10 to 60kW and on 6.1mc, from 25 to 150kW. European beam serial will be completed about Feb. 20, and will produce power equivalents of 200 and 275 kW's respt... N.Y. Metropolitan Opera being sent to Latin America, Sat at 2pm, over W3XAL-17.78, W2XAD-15.33, W2XAF-9.53 and W8XK-15.21; also being sent to European listeners... New freqs. granted Lawrenceville, N.J. xmt.s.: 7.555mc for contacting London; 7.665mc for communication with London and Paris; 5.052 and 5.067... W0Q, Ocean Gate, N.J., has added freq. of 2.522 for communication with ships... WNK-9.37, Hialeah, Fla, heard contacting WCU-9.94, San Juan, P.R., at 7 to 8:30pm (E. R. Roberts)... WVD-8.65, Seattle, Wash, heard foning WXE, Anchorage, Alaska, Jan. 13, at 7pm (Ambrosius)... WLXAL, Boston, Mass, will increase power to 20kW... W2XAF-9.53, Schenectady, N.Y., broadcasts Chapel organ, Sats. at 1pm (Graham) Sked of W9XAA, Chicago, is: 11.83mc, Weekdays 9am-5:15, Sundays 9-11am; on 6.08mc, 7:30-9am and 6pm-1am; Sun 11am-1am (Graham, Murphy)... Listen for Earl DeHaven's DX Tips, Mon/Wed/Fri 2-2:30pm over W6XKG (25.95) in L.A.

#### SOUTH AMERICA

B. GUIANA VP3MR, Georgetown, still drifting in freq. is usually near 5.98. To insure a veri', reports must be accompanied by an IRC (RBO)

CHILE NEW-CEB-approx. 12.38mc, Casilla 761, Santiago, operates from 11am to 1pm and from 7 to 8 or 9pm. All announcements Spanish (\*\*Nelson-Ore, Balbi-Calif, Walmsley-Calif)

COLOMBIA Commercial HJA9-14.94, El Centro, now on the air-works WNC, Hialeah, Fla (Gozen)... HJLABB, Baranquilla, operates during day and some times as late as 7pm on 9.559mc, and evenings to 10pm on 6.115mc (Bostad, RBO)... HJLABE-9.5, Cartagena, is conducting radio contests on dx program, Mondays 10 to 10:30pm (CSWRG)... HJLABP-9.618, Cartagena, now having 2 1/2 kW power, has early sked from 6-8am (Schmeichel)... HJ3ABD, Bogota, moved to 6.055mc to escape QRM from GSA (RBO)... HJLABB-6.108,

Manizales, now comes on the air at 5:30pm (Graham)... HJL/ABC, "Ecos de Combeima," Ibaguè, is back on 6.09mc again-badly QRMing CRCX (E.R. Roberts)... A station announcing "La Voz de Antioquia," apparently HJL/ABE, Medellin, was heard signing off at 8pm, Jan. 7, on 9.55mc (Ansell-Sask)... Latest sked of HJL/ABH-9.52, Armenia, is: 8 to 11am and 6 to 10pm (E.R.R)

ECUADOR Mystery station HCNA-9.44, "La Voz de Almos," believed to be in Ecuador, heard 9 to 9:33 and 10:08 to 11:05pm (Stark)... Station believed to be HC1PM, Quito, heard on 5.73mc, until 1am EST, signing off with "La Golondrina." (Sholin-Calif)... HC2RL-6.635, Guayaquil; has man announcer, and woman makes English announcements (Campbell)

PERU NEW-OAX1B-6.164, "La Voz de Chiclayo," owned by J. Carlos Montjoy D., Compania de Radios, "Delcar, P.O. Box 9, Chiclayo, has Collins 300-watt xmtr. and relays OAX1A (1250kc), from 8 to 11pm, signing off with "Good Night Song." Was formerly on 6.125mc (\*\*Deibe, Rodriguez-NYC RBO)... NEW-OAX1J-approx. 9.33, "Radio Nacional, The Voice of Lima, Peru," Lima, relays OAX1I, from near 6:30 to 11:15pm or midnight. Frequently uses bugle call and train record; uses chimes similar to NBC just before announcement of call in Spanish (\*\*Stark-Wisc, Kure-Ohio, CAM-111, Roberts-Ind)... NEW-OAX5E (call not positive), "Radio Universal," Ica, on 11.796mc, has schedule from 2 to 11pm, but usually heard from 3 to 5, and 8 to 9:30pm (\*\*PD-111, Nelson-Ore, RBO)

VENEZUELA Here is official (double-checked by members) list of new Venezuelan call letters NOW in effect: YV1RG-6.37, Valera, no change; YV1RH-6.39, Maracaibo, no change; NEW-YV1RI-6.21, "La Voz de Coro," Coro, owned by Roger Leyba, power of 150w, proposed; NEW-YV1RM-6.5, Cristo de Aranza, is, or will be, testing shortly (Nelson); YV1RB (formerly YV5RMO)-5.85, Maracaibo, relays YV1RA; YV1RD (formerly YV7RMO)-6.075, Maracaibo, relays YV1RE; YV3RA (formerly YV8RB)-5.899, Barquisimeto; YV2RB (formerly YV1ORS)-5.72, San Cristobal, relays YV2RA; YV4RB (formerly YV6RV)-6.52, Valencia, relays YV4RA; YV4RD (formerly YV12RM)-6.3, Maracay, relays YV4RG; YV5RE (formerly YV3RC)-6.156, Caracas, relays YV5RD; YV5RC (formerly YV2RC)-5.8, Caracas, relays YV5RA; YV5RE (formerly YV4RC)-6.38, now "Ecos de Caribe," Caracas, relays YV5RE; YV5RH (formerly YV9RC)-6.4, Caracas, relays YV5RG; YV5RP-6.27, Caracas, no change as yet; YV6RB (formerly YV11RB)-6.545, Bolivar, relays YV6RA; YV15RV-5.917, Valencia, no change as yet (\*\*Nelson, RBO, Graham, Eders)

#### EUROPE

AUSTRIA OER2, Vienna, now near 11.78mc, using a fast-ticking metro-nome as an interval signal, has a power of 1½kW (Peters, Nelson, X, DX-Pa)

CZECHO-SLOVAKIA Praha, power 2½ to 3½kW, is broadcasting at present as follows: 11.81mc, 8:45-11am; 6.01mc, 2:25-4:30pm; 6.01 or 9.55mc, Mon/Thur, 7-9pm to N.A... Frequencies used thus far by Praha include: 6.01, 6.115, 6.03, 9.55, 11.74, 11.76, 11.84, 11.87, 15.23, and 15.32mc (X, DX, Peters, Dilg, Stansfield)

ENGLAND GSA (6.05) now on 6-8pm; GSL (6.11) now on 9-11pm (Goldner, RBO, Graham, Ambrosius)... Historic G5SW of Chemsford supplementing regular Deventry xmtrs. irregularly... GSK (26.1) will soon be inaugurated with beam to Africa... Greenwich Time signals, sixth pip being correct time radiated at: 4:45am, 8:15am, 11:45am, 1pm, 4:15pm, 7:45pm and 10:45pm. These are the world's most accurate time signals (BBC)

FRANCE New telephone xmtrs. to work Rocky Point reported to be: TYE 14.1, TYE 3 10.42... TYAZ 9.05, is broadcasting to Algeria, 2-3am.

GERMANY DGG-13.18, Neuen, heard foning at 8am.. DZH-14.46, heard at 12:21pm, relaying Zeesen programs (Gozen, Hock)

GREECE Salonica Radio Club, plans to shortly inaugurate a 10kW SW xmtr. to work on 15.6 meters (19.23mc) according to Short-Wave-Ser.

HOLLAND PGJ, Eindhoven, will be off air for several weeks time, during installation of new super-power transmitter (Whitehouse-111)

HUNGARY Opening and closing signal of HAT4/HAS3 is phrase of nine notes in two-part harmony, four notes repeated, followed by initial note. Announcements are Hungarian, French, German & English (Schmeichel)

ICELAND TFJ heard using freq. of 12.21kc irregularly (Ansell)

ITALY IAC, Coltano, usually uses 17.699mc freq. when foning (RBO... IBS-14.48, Sao Paulo, calls Addis Abeba and Asmara frequently at 8am (Schmeichel-111)... 2RQ will have two new xmtrs, one to be beamed on Italian East Africa, the other on Far East, by next October (Stansfield)

LUXEMBOURG It is reported Luxembourg (LW) will soon have a SW relay but no definite steps have been taken as yet (Short-Wave-Service)

NORWAY LKJ1-9.53, Jeloy, broadcasts foreign language school, Sunday 3-4am; first half German-Norwegian; second half English-Norwegian (Kure)  
POLAND SPW-13.635, still on Mon/Wed/Fri 12:30-1:30pm; deep pitched bells sound for 5 min. prior to program's start, national anthem at exactly 12:30pm, then talk or news in Polish, followed by music. Maximum volume near close. Station requires sharp tuning (PD, Graham, RBO, X. DX)

PORTUGAL CSW, Lisbon, now on 11.04mc, until 5 or 6pm, -then to 9.94mc, with English period 7:05 to 7:30pm (English news at 7:15pm), program for S.A. at 7:35 to 8pm, followed by striking of clock, national anthem and sign-off (\*PD, RBO, Ambrosius, Sholin, X. DX)... CTIAA, Lisbon, Portugal, broadcasting Tuesday programs irreg. on 25 meter band (X. DX-Penna)... NEW-CUT, approx. 8.05, Lisbon, heard working Geneva at 3am; Portuguese phone on 9.2, and 10.25 (maybe other freqs. of CUT), heard working HBQ at 4am. English was used in the tests (\*Gozen-New York City)

SPAIN Communist xmtr. ECN1-7.22, Barcelona, transmits war news in various languages weekdays from noon to 1pm, and 4-5pm, Sun 5-7pm (\*\* Short-Wave Service); Communist xmtr-7.165, Valencia, operates Tues/Fri noon-1pm; Socialist xmtr-7.31, Valencia, operates Mon/Sat 7-8am... Radio San Sebastian-7.2mc, announcing "Radio Espanola, Espana por Espana, Radio Repete, Radiodifusora San Sebastian," often heard 9-9:30pm (PD-111)

SWEDEN A powerful new govt. SW xmtr. will soon be constructed near Motala... SM5SX-11.705, Stockholm heard irreg. near 6pm (PD-111)

SWITZERLAND On Saturdays, Geneva xmtrs. HBP-7.797 and HBL-9.595, have been testing from 6:35 to 7pm, then broadcasting program to Swiss nationals in N.A. and S.A. from 7 to 8:15pm (ending with anthem). At 8:25 to 8:55pm, HBL tests on new freq. of 9.345mc, alternating with omnidirectional and S.A. aeriels; preparatory to adopting this frequency. (\*X. DX, Kure, Dilg, E.R. Roberts, Patton, Stark, Balbi, Goldner, Ambrosius)

TURKEY Construction on new 20kW S.W. xmtr. has started at Etimesout, near Constantinople. Will be most powerful in Near East (E. Radio)

U.S.S.R. RAN-9.6, Moscow, now transmitting to N.A. daily 7 to 9:10pm (Hutchinson, Messer, CAM)... RNE-12, RIR-10.08 and RIO-10.16, heard working fone nightly at midnight. Very loud Soviet fone on 9.35mc, heard from midnight on; others heard on 6.725, 10.75, 14.485, 14.97 and 15mc (Goldner, Sholin, Schmeichel, Gozen)

#### AFRICA

ALGERIA FVA-12.12, Alger, works Paris, using side-band secrecy at 3am, 6:15am and 2-3pm (\*C. Miller-Ky, Schmeichel-111, Gozen-NYC)... New phone TYI2-4.185 reported heard on Thursday at 2am (E.R. Roberts)

BECHUANA-NEW-ZNB (or ZMB)-5.9, 45w, -owned by govt. at Mafeking, is LAND PROT testing daily 2-3am and 1-2pm; works telephone on same

ECTORATE freq., with portable ZNC in Kalahari Desert at midnight, 2am, 9am and 2pm. Send reports to Chief Engineer (\*\*Lindsay, Roche-SA)

CANARIAS EAJ43-10.37, Tenerife, transmits: to Europe 2:15 to 7:05pm; to N.A., with woman announcer, from 7:25 to 7:55pm and irregularly after 8pm in Spanish for Latin America (X. DX-Pa, Messer-Maine)

EGYPT SUV-10.055, Cairo, works GCP-10.77, in scrambled speech or CW; occasionally straight voice, near 4pm (Ambrosius-Mich, E.R. Roberts)

ERITREA New Asmara xmtr-14.5, heard calling Rome at 8am (EGS-111)

F. MORROCO CNR-12.83, Rabat, heard calling FTM, Paris, Sat. at 8:15am.

F. SOMALILAND FZER-8.87, Djibuti, heard calling Paris at 2am (EGS-111)

LIBERIA John Cooper, ex-WRBIS, of Akron, now operates government radio station ELA at Monrovia; as amateur-EL1A '7.145/7.240/7.39, he works XELK (7.2) 12:30-2:30am irreg; as EL2A (14.405), he works XELK (14.04) in early evenings; power 500w. (\*\*Roberts, Satterthwaite, DeMyer)

MADAGASCAR Amateur on 14.105mc heard in South Africa (A.R.A.)

MOZAMBIQUE CR7AA, Laurenco Marques, will soon commence test transmissions on the 19 and 25 meter bands (African Radio Announcer)

TRIPOLITANIA ICK-9.46, Tripoli, works IAC, Rome, at 2am and 6-8am.

S. AFRICA ZSR-9.18, Klipheuevel, works Rugby near 4pm (Schmeichel-111)

... ZTJ-6.097, best heard 11:45pm-12:30am; Gymnastics at midnight (Cohen)

SP. MOROCCO "Radio Tetuan or Radio Guardia Civil," on approx. 6.545mc, broadcasts daily 4-5pm; heard in evenings near 7.003mc; as amateur EA9AH-14.045, gives program and news in English 4 to 9pm on Saturdays; works hams irregularly in evenings using Spanish (\*Nicolassy, Guilbert, Lippincott, Bird, Waite, Oxrieder)

TUNISIA NEW-FTHAJ, "Tunis Experimental, 60 watts, owned by M. de Matteis, 20 Es Sadikia, Tunis, transmits on 6.108mc in evenings (\*\*Pleiber)

ASIA-AUSTRALIA

AUSTRALIA Sked of VK3LR-9.58, Melbourne, is daily 3 to 8:30am and Fri.10pm to Saturday 8:30am.. VK5DI-7.2888, S.W.Club, of Adelaide, transmits Saturdays from 9:30 to 10 and 10:30 to 11pm and irreg. (CSWRC)

CHINA Commercial XTV-9.49, Canton, calls XPC-9.285, Shanghai, with VERY loud signals in English at 8:20, 8:50, 9:20, 9:45 and 10am; occasionally XTV broadcasts music at 11pm; XPC calls XTV in scrambled speech 3:10 to 3:55am and XPC calls XPK-9.08, Hankow, in English at 6am. These xmtrs. believed to be owned by China National Aviation Corp. (\*Gozen, Schmeichel, DeMyer, C.Miller, Goldner). XGW-10.42, Shanghai, calls KWY in San Francisco, nightly, at 10:30pm (\*Schmeichel-111)

FILIPIS VPD2, Suva, now operating on 8.719mc, 5:30-7am (\*Sholin, PD)\*

F.INDO-CHINA It is rumored that F31CD-11.73, is an out-law xmtr. (LN)

HONG KONG Sked. of ZBW3-9.525 is; Weekdays 11:30pm-1:30am and 4-10am -Sat. 9:15pm-Sun 1:30am and 3am to 9:30am; power 2 1/2kW (FS-Ohio, Eders)

INDIA VWY-8.975, Poona, calls GBC-R.68, at 2:30am; VWY-17.48, fones Rugby at 9:30am (Schmeichel)... New 5kW xmtrs. are to be installed at Calcutta, Bombay, Madras and Delhi (CSWRC)... Amateur VU2CQ-14.358 and 14.02, 10w, works W21XY and All-Continents Round Table near 7:30am. NEW QRA is-M.Mozoomder, Hindu Colony, Plot Number 9, Second Floor, 164 Vincent Road, Dadar, Bombay (D.Hall-W21XY-NYC)

JAPAN Sked. of Overseas transmissions over new 50kW Nazaki xmtrs --for Eastern N.A. and S.A., daily 4-5pm over JZJ-11.8, JVN 10.66; for Western N.A. daily midnight-1am, over JZJ, and occasionally JVH (\*DX, Gozen, Goldner, Ambrosius, PD, Bell, Lippincott, Schmeichel, RBO, Patton, Hutchinon, Stark)... JVD-15.86, works KWU daily at 4pm; JVD usually works XOJ-15.785 in English at 8pm (\*Goldner-Ind, Nelson-Ore).. MYSTERY XMTRS IDENTIFIED: New telephone circuit between Shuri, Akinawa Islands, using 4.38mc xmtr. and Kagoshima, Japan, using 4.3mc xmtr., opened December 21; J2AA, the Haneda Airdrome at Tokio, is the mystery xmtr. on 6.5mc (also heard on 9.84mc). It can be heard reporting weather conditions late evenings and early mornings on the coast (\*\*Sholin-Calif)

JAVA Sked of NIROM xmtrs. is: Weekdays 6-7:30pm, 11:30pm to 2 am, and 5:30 to 10:30 or 11am (Sat. to 11:30am), Sun 7:30pm-2am, 5:30-10:30am. On Mon/Wed/Fri last hour is native program (\*Hardeman-Java)

MACAO CQN-heard on 9.61mc after HJLABP left air-Mon.am (ES-111)

MALAYSIA ZHJ-6.08, Penang, operates from 6:40 to 9:10am ex.Sundays. A news bulletin is given about 7:35am (Cohen-NTC)

SHIPS 9MI-6.01, S.S.Kanimbla, 50w, relays programs to 3BQ, Bendigo, irregularly from 5:45 to 7:00am, or later; a woman announces (\*CSWRC).. ZMBJ-R.84, S.S.Awatea, 300w, being heard louder than regular Aussie stations 1 to 3am and 6 to 7:15am. Is generally best Tues/Wed or Sat/Sun, when ship is near Wellington, N.Z. No IRC's are necessary. Xmtr sometimes goes off air for few minutes while orch. takes rest (\*Balbi, Schmeichel, Dilg)

SIAM HSP-17.740, Bangkok, calls Tokio on Mondays at 5am and Berlin, Mondays at 5am, and Thursday at 7am (Schmeichel).. HSRPJ, announces that no further S.W. reports will be verified (Young-S.Africa)

U.S.S.R. RV15-4.273, Khabarovsk, will promptly verify reports on its English programs, now put on at 9am daily since Jan.1 (\*Wonn)

(Short-Wave List cont. from Page 19)

<u>V50.64</u>	5.925	HH2S	Port-au-Prince, Haiti, 7-10, or 11pm.
<u>50.71</u>	5.917	YV15RV	Valencia, Venezuela 5pm-midnight ex.Sundays.
<u>N50.85</u>	5.90	ZNB	Mafeking, Bechuanaland, 2-3am and 1-2pm & irreg.
<u>V50.86</u>	5.899	YV3RA	Barquisimeto, Venez 5:30-9:30pm ex.Sundays.
<u>S51.07</u>	5.875	HRN	Tegucigalpa, Honduras, 6-9:30pm.
<u>51.24</u>	5.855	H11J	San Pedro, D.R. 11:40-1:40p, 6:10-8:40pm.
<u>C51.28</u>	5.85	YV1RE	Maracaibo, Venez. 10:45-12:40pm, 4:30-9:30pm.
<u>B51.55</u>	5.82	TIGPH	San Jose, C.R. N'n-2pm, 7-11pm ex.Sundays
<u>C51.72</u>	5.80	YV5RC	Caracas, Venezuela 5:15-9:30pm, Sun 3:30-9pm.
<u>51.90</u>	5.78	OAX4D	Lima, Peru. Wed/Sat 9-11:30pm.
<u>S52.10</u>	5.758	YNOP	Managua, Nicaragua 7:30-10pm, or later, ex.Sun.
<u>52.30</u>	5.735	HC1PM	Quito, Ecuador. Tues 9-11pm & irreg.
<u>C52.45</u>	5.72	YV2RB	San Cristobal, Ven. 5:30-9:30pm ex.Sundays.
<u>52.45</u>	5.72		Khabarovsk, U.S.S.R 10pm-10am.
<u>65.22</u>	4.60	HC2ET	Guayaquil, Ecuador Wed/Sat 8-10pm.(9am.
<u>70.20</u>	4.273	RV15	Khabarovsk, U.S.S.R. 11pm-11am. English hour at

# SHORT-WAVE BROADCASTING STATIONS

SYMBOLS: N- New stations; F- change in frequency; S- change in sked, C- change in call letters; U- exact frequency in doubt; B- frequency calibrations according to Oxrieder-IDA Frequency Bureau; J- Jumpers; stations persisting in hopping about; V- Varying in frequency.

DIAL	METERS	MEGS	CALL	STATION	TIME	E.S.T.
15.77	19.02	HS8PJ	Bangkok, Siam	Monday 7, or 8 to 10am.		
S16.86	17.79	GSG	Daventry, England	3-5 and 6-8:45am.		
16.87	17.78	W3XAL	Boundbrook, N.J.	9am-5pm.	(East Asia)	
16.89	17.76	DJE	Zeesen, Germany	12:05-5:15, 5:15-11am to 16		
16.89	17.76	W2XE	Wayne, New Jersey	noon-1pm		
18.72	16.03	KKP	Kahuku, Hawaii	Sundays 8:30-9pm.		
S19.43	15.44	XEBM	Mazatlan, Sinaloa, Mexico	8 to 10:45pm & irreg		
19.52	15.37	HAS3	Budapest, Hungary	Sundays 9-10am.		
19.56	15.34	DJR	Zeesen, Germany	8-9am to Central America.		
19.57	15.33	W2XAD	Schenectady, N.Y.	10am-3:45pm, Mon to 4:30pm.		
19.52	15.29	LRU	Buenos Aires, Arg.	6am-5:55pm. (12:25pm Sun.		
19.63	15.28	DJQ	Zeesen, Germany	6-8, 8:15-11am, 11:10am to		
19.64	15.27	W2XE	Wayne, New Jersey	1-6pm.		
19.66	15.26	GSI	Daventry, England	12:15-4pm to Africa.	19M	
19.67	15.25	WLXAL	Boston, Mass.	Sundays 11am-noon irreg.		
19.68	15.243	TPA2	Pontoise, France	2-2:40am, 5:55-11am.		
19.71	15.22	PGJ	Eindhoven, Holland	Sun 7:30-8:30am, Tues 4:30-6am, Wed 8-11am. See notes.		
19.72	15.21	W8XK	Pittsburgh, Penna.	9am-7pm. (Sun 11:10a-12:25		
19.74	15.20	DJB	Zeesen, Germany	12:05-5:15, 5:55-11am.-		
19.76	15.18	GSO	Daventry, England	3-5am to Australia & Asia.		
19.80	15.15	YDC	Bandoeng, Java.	5:30-11am. See sked-notes.		
19.82	15.14	GSF	Daventry, England	9am to noon to India.		
19.84	15.12	HVJ	Vatican City, Italy	10:30-10:45am. (Sun 6-8am.		
19.85	15.11	DJL	Zeesen, Germany	Mid-2am, 8-9, 11:35am-4:30pm		
B20.11	14.92	LZA	Sofia, Bulgaria	Su 12:30-8, 10am-4:30pm, M/W F/S 5-7am, Tu/Th 1-3pm.		
20.55	14.60	JVH	Nazaki, Japan	Evenings irregular.		
N21.36	14.045	EA9AH	Tetuan, S. Morocco.	Saturdays 4-9pm.		
22.00	13.635	SPW	Warsaw, Poland	Mon/Wed/Fri 12:30-1:30pm.		
N24.23	12.380	CEB	Santiago, Chile	11am-1pm, 7 to 8, or 9pm.		
V24.52	12.235	TFJ	Reykjavik, Iceland	Sundays 1:40-2:10pm.		
25.00	12.00	RNE	Moscow, U.S.S.R.	Sun/Wed 6-7am, Sun 10-11am.		
25.21	11.90	XEWI	Mexico D.F.	M/W/F 3-4pm, Tu/Th 7:30-8:45pm, T/Th/F 10pm-mid etc		
S25.24	11.885	TPA3	Pontoise, France	2-2:40, 2:55-5am, 11:15-6pm.		
25.27	11.87	W8XK	Pittsburgh, Penna.	7-10pm.		
N25.27	11.87	OLR	Prague, Czechoslov.	8:45-11am (or 11.84 freq.)		
25.32	11.85	DJP	Zeesen, Germany	11am-4:20pm to Africa.		
25.34	11.84	OLR	Prague, Czechoslov.	8:45-11am (or 11.87 freq.)		
25.36	11.83	W2XE	Wayne, New Jersey	7-10pm.		
N25.36	11.83	W9XAA	Chicago, Illinois	9am-5pm, Sundays 9-11am.		
N25.36	11.83	XEBR	Hermosillo, Mexico	2 to 4, or 5pm.		
25.40	11.81	2R04	Rome, Italy	6:45am-12:30pm	25M	
S25.42	11.80	JZJ	Nazaki, Japan	4-5pm, midnight-1am.		
N25.43	11.796	OAX5B	Ica, Peru	2-9:30pm, or later. (Su-irreg		
25.43	11.79	WLXAL	Boston, Mass.	Th/F 6-6:30pm, Sat 4-6:30pm		
25.47	11.78	OER2	Vienna, Austria	Mon to Fri 10am-5pm, Saturday 10am-5:30pm. (to N.A.		
S25.49	11.77	DJD	Zeesen, Germany	11:35-4:30, 4:50-10:45pm-12:15-5:45pm.		
S25.53	11.75	GSD	Daventry, England			
N25.55	11.74	HP5L	David, Panama	4-7pm.		
25.58	11.73	PHI	Huizen, Holland	S/M/Th/Sa 8:30-10:30am.		
S25.60	11.72	CJRX	Winnipeg, Canada	6-midnight, Sun 3-9:30pm.		
25.61	11.714	TPA4	Pontoise, France	6:15pm-1am. (5pm, Wed 5-6pm.		
25.63	11.705	SM5SX	Stockholm, Sweden	1:45-2:45am, 6:25-7, 11am-11:45pm		
S25.68	11.68	KIO	Kahuku, Hawaii	Thursdays 9:30-10pm.		
V26.24	11.435	COGX	Havana, Cuba	8am-1am, Sun 8am-Nn, 6-9pm.		
N27.17	11.04	CSW	Lisbon, Portugal	2-6pm.	notes.	
S27.27	11.00	PLP	Bandoeng, Java	5:30-11am, 6-7:30pm (see-		
S28.14	10.66	JVN	Nazaki, Japan	4-7:40am and 4-5pm.		



S28.93	10.37	EAJ43	Tenerife, Canarias	2:15-7:05, 7:25-8, 8-9pm.
28.98	10.35	LSX	Buenos Aires, Argen	Mon/Fri 5-6pm & irregular.
29.04	10.33	ORK	Ruyssede, Belgium	1:30-3pm to Belgian Congo.
S29.24	10.26	PMN	Bandoeng, Java	5:30-11am, 6-7:30pm etc.
V30.18	9.94	CSW	Lisbon, Portugal	6:05-8pm. (2-4pm.)
V30.43	9.86	EAQ	Madrid, Spain	3-5pm irreg, 5:15-10pm, Sat-
V30.78	9.746	COCC	Havana, Cuba	Relays CMQ 7am-1am.
V30.94	9.698	TLNRH	Heredia, C.R.	9-10, 11:30pm-midnight.
J30.95	9.693	CT1AA	Lisbon, Portugal	Tues/Thurs/Sat 4-7pm.
V31.04	9.662	YNLF	Managua, Nicaragua	2-3 and 8-11pm.
U31.06	9.66	CR6AA	Lobito, Angola, Afr.	Wed/Sat 3:45-5:30pm.
31.06	9.66	LRX	Buenos Aires, Argen	6-10:30pm.
F31.06	9.66	YDB	Sourabaja, Java.	5:30-11am (see notes)
B31.11	9.645	HH3W	Port-au-Prince, Haiti	1-2, 7-8:30pm.
31.12	9.635	2R03	Rome, Italy	M/W/F 12:40-7:30pm, T/Th/s 12:40-7:45pm, Sun 1:20-5:30
V31.20	9.618	HJ1ABP	Cartagena, Colom.	6-8am, 5-11pm, Sun 5-8pm.
U31.22	9.61	CQN	Macao, Macao.	Mon/Fri 7-8:30am.
31.23	9.605	HP5J	Panama City, Panama	11:45-1:15pm, 7-10pm. 31M
S31.25	9.60	RAN	Moscow, U.S.S.R.	7-9:10pm.
31.25	9.60	CB960	Santiago, Chile	10:30am-noon, 6-8:30pm.
S31.27	9.595	HLB	Geneva, Switzerland	Sat 5:30-6:15, 6:35-8:15pm.
S31.28	9.59	PCJ	Eindhoven, Holland	Sun 2-3pm, 7-8pm, Tu 1:30-3p Thur 7-10pm. See notes.
31.28	9.59	VK2ME	Sydney, Australia	Sun 1-3, 5-11am.
31.28	9.59	W3XAU	Philadelphia, Penna	Noon-8pm, Sun noon-7pm.
31.32	9.58	GSC	Daventry, England	4-5:45, 6-8, 9-11pm to NA.
S31.32	9.58	VK3LR	Melbourne, Austral.	3-8:30am, Fri 10pm-Sat 8:30
B31.34	9.575	HJ2ABC	Cucuta, Colombia	6-10pm ex. Sundays.
31.35	9.57	WLXK	Springfield, Mass.	6:30am-1am, Sun 8am-1am.
31.36	9.565	VUB	Bombay, India	Sun 1:30-3:30am, Tu/Th/Fr 11:30am-12:30pm. (10:45pm 12:05-5:15, 5:55-11am, 4:50-
31.38	9.56	DJA	Zeesen, Germany	During day and to about 7p
N31.38	9.559	HJ1ABB	Barranquilla, Col.	2:25-4:30pm irr, M/T 7-9pm.
N31.41	9.55	PR	Prague, Czechoslov.	12:05-5:15, 5:55-11am, 4:50-
31.45	9.54	DJN	Zeesen, Germany	10:45pm to South America. Tu/Fr 2-3pm, dly 4-5pm irr.
S31.46	9.535	JZI	Nazaki, Japan	4pm-mid, Sat 1pm-mid.
S31.48	9.53	W2XAF	Schenectady, N.Y.	6-11pm; Sun 3-4am etc.
S31.48	9.53	LKJ1	Jeloy, Norway	11:30pm-1:30am, 4-10am; Sat 9:15pm-Sun 1:30am, 3-9:30am
S31.50	9.525	ZBW3	Hong Kong, Hong Kong	6-10pm. (pm, 6-8, 9-11pm.) 3-5, 6-8:45, 9-Nn, 12:15-5:45
S31.51	9.52	HJ4ABH	Armenia, Colombia	Mon/Wed/Fri N'n-2, 8-11pm.
31.55	9.51	GSB	Daventry, England	5-10:30pm ex. Sundays.
31.55	9.51	HJU	Buenaventura, Colom	4:45-5:45pm ex. Sundays.
S31.58	9.50	HJ1ABE	Cartagena, Colombia	4-7am except Sundays.
31.58	9.50	PRF5	Rio de Janeiro, Brz	7:30pm-midnight.
B31.58	9.50	VK3ME	Melbourne, Austr.	Evenings irreg.
N31.61	9.493	XEFT	Veracruz, Mexico.	Evenings irreg.
N31.61	9.49	XEBT	Mexico D.F.	8-10, 11pm-mid, to 5am Sun.
F31.65	9.48	XEDQ	Guadalajara, Mexico	6:30 to 9pm or late
31.73	9.45	TGWA	Guatemala, Guat.	7am-mid, Sun 8-9am, 11:30am- 1:30pm, 6-9pm.
N31.78	9.44		Port de France, Mart	Thursdays 7 to 8, or 10am.
31.80	9.428	COCH	Havana, Cuba.	Tests Saturdays 8:25-8:55p
32.09	9.35	HS8PJ	Bangkok, Siam	6:30 to 11:15pm, or midnite
N32.11	9.345	HLB	Geneva, Switzerland	1-2:55, and 6-8pm.
N32.15	9.33	OAX4J	Lima, Peru	Sundays 6-7pm.
32.26	9.30	YNGU	Managua, Nicaragua	7-11:30pm except Mondays.
32.88	9.125	HAT4	Budapest, Hungary	1-3:30am and 6-7:15am irr.
33.53	8.948	HCBJ	Quito, Ecuador	Mon/Thur 7-7:30pm.
S33.94	8.84	ZMBJ	S.S. "Awatea"	4-10am. See notes.
34.11	8.795	HKV	Bogota, Colombia	5:30-7am except Sundays.
34.26	8.75	ZBW	Hong Kong, Hong Kong	5:30-6:30pm or to 9pm irr.
F34.40	8.719	VPD2	Suva, Fiji's	1:30-2:30, 6-10pm
S34.66	8.665	CO9JQ	Camaguey, Cuba	8-11pm except Sundays.
F35.27	8.505	YNLG	Managua, Nicaragua	
J36.36	8.25	HC2CW	Guayaquil, Ecuador	

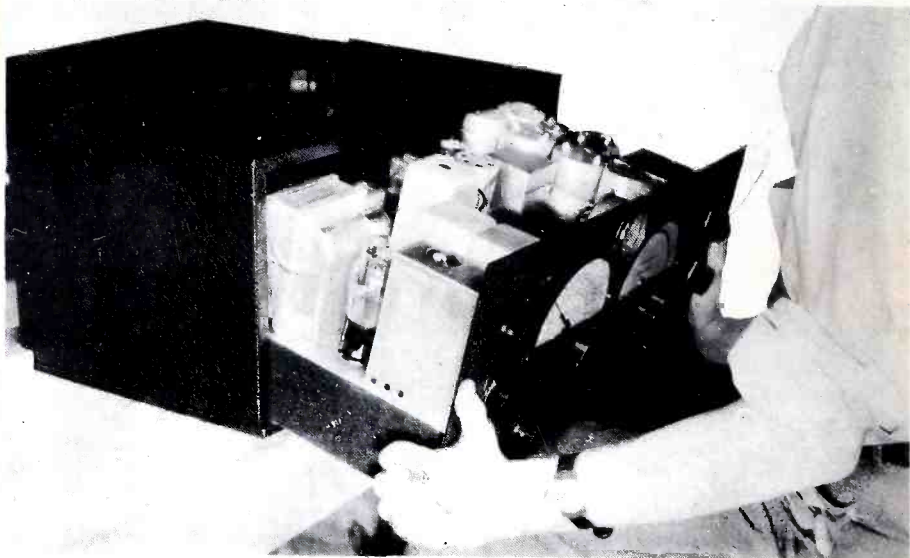
B38.20	7.854	HC2JSB	Guayaquil, Ecuador	6-10:30pm except Sundays.
S38.47	7.797	HBP	Geneva, Switzerland	Sat 5:30-6:15, 6:25-8:55pm.
B39.68	7.56	YNLF	Managua, Nicaragua	Evenings irregularly.
39.74	7.55	TI8WS	Puntarenas, C.R.	5-7, 8:30-10pm, Sun 5-6pm.
S39.87	7.52	KKH	Kahuku, Hawaii	Tuesday 12:30-1am.
40.65	7.38	XECR	Mexico D.F.	Sundays 7-8pm.
V41.00	7.315	YNLAT	Granada, Nicaragua	8-10pm irreg.
N41.55	7.22	ECN1	Barcelona, Spain	Noon-1, 4-5pm, Sunday 5-7pm.
S41.67	7.20		Radio San Sebastian, Spain,	Evenings to 9:30pm
N41.67	7.20	YNAM	Managua, Nicaragua	8-11pm. (later
42.25	7.10	FO8AA	Papeete, Tahiti	Tues/Fri 11pm to mid. or-
J42.80	7.00	EA9AH	Tetuan, S.Morocco	4:30-7pm irreg.
B42.80	7.00	PZH	Paramaribo, D.Guiana	Mon/Wed/Fri 5:40-9:40pm.
43.48	6.90	HI2D	Trujillo City, D.R.	Heard Saturdays at 7pm.
43.51	6.895	HCETC	Quito, Ecuador	Thursdays 8-10:30pm.
N43.80	6.85	VP4TC	Port-of-Spain, Trinidad,	heard Sat 4:30-4:50pm.
43.99	6.82	XGOX	Nanking, China	5:30-9:40am.
V44.09	6.805	HI7P	Trujillo City, D.R.	Evenings irreg.
V44.28	6.775	HIH	San Pedro, D.R.	7:40-9:10pm except Sunday.
44.44	6.75	JVT	Nazaki, Japan	4-7:40am irreg.
44.51	6.74	HCL1TQ	Quito, Ecuador	Sundays 5-7pm. (11pm.
44.58	6.73	HI3C	La Romana, D.R.	6:10-7:40pm; irreg late as
44.60	6.727	PMH	Bandoeng, Java	5:30-11am. See notes.
V44.86	6.687	TLEP	San Jose, Costa Rica	7-10:30 or 11:30pm ex. Sun
B45.22	6.635	HC2RL	Guayaquil, Ecuador.	Sun 5:30-7:30pm, Tu 9-11pm.
45.25	6.630	HIT	Trujillo City, D.R.	12:10-1:140pm, 5:40-8:40pm.
B45.29	6.625	PRADO	Riobamba, Ecuador	Thursdays 9-11pm.
45.60	6.578	HCVT	Ambato, Ecuador	Broadcasts irregularly.
45.76	6.555	HI4D	Trujillo City, D.R.	5:10-8:10pm ex. Sundays.
S45.80	6.55	TIRCC	San Jose, C.R.	6-9:30pm.
C45.84	6.545	YV6RB	Bolivar, Venezuela	8-10pm. 49M
N45.84	6.545		Tetuan, S.Morocco.	4-5pm.
B45.87	6.540	YN1GG	Managua, Nicaragua	1-2:30, 8-10pm.
C46.01	6.52	YV4RB	Valencia, Venezuela	10:30am-1:30pm, 5:30-9:30pm
46.15	6.50	TIOW	Port Limon, C.R.	10-11:30am, Sundays 2-3pm.
N46.15	6.50	YV1RM	Cristo de Aranza, Venezuela,	will be testing.
B46.15	6.50	HIL	Trujillo City, D.R.	5:40-7:40pm ex. Sundays.
B46.31	6.479	HI8A	Trujillo City, D.R.	5:40-7:40pm ex. Sundays.
B46.33	6.477	HI4V	S.F.de Macoris, DR.	5:10-6:40pm ex. Sundays.
46.73	6.42	HI1S	Santiago, D.R.	6:10-8:10pm ex. Sundays.
46.80	6.41	TIPG	San Jose, C.R.	6-11:30pm.
C46.88	6.40	YV5RH	El Valle, Venezuela	5-9:30pm, ex. Sundays.
J46.95	6.39	YV1RH	Maracaibo, Venez.	6:30-10:45pm. (Sun
C47.02	6.38	YV5RF	Caracas, Venezuela	11am-1pm, 5:30-9:30pm ex.
B47.10	6.37	YV1RG	Valera, Venezuela.	5:30-8:30pm.
47.20	6.357	HRP1	San Pedro Sula, Honduras	7:45-10pm ex. Sundays.
B47.27	6.346	HH3NW	Port-au-Prince, Haiti.	not heard recently.
47.32	6.34	HIX	Trujillo City, D.R.	Tues/Fri 8:10-10:10pm.
V47.54	6.31	HIZ	Trujillo City, D.R.	5:10-7:40pm ex. Sundays.
C47.62	6.30	YV4RD	Maracay, Venezuela	6-10pm except Sundays.
47.76	6.282	COHB-	Sancti Spiritus, Cuba	4-6, 9-11pm ex. Sundays.
47.77	6.28	HIG	Trujillo City, D.R.	8:10-9:40pm, T/F 6:40-8:10p
47.85	6.27	YV5RP	Caracas, Venezuela	6:30-9:30pm or later.
B47.92	6.26	OAX4G	Lima, Peru.	7-11pm.
V48.05	6.243	HIN	Trujillo City, D.R.	7:10-9:10pm.
S48.11	6.235	HRD	La Ceiba, Honduras	7:30-10:30pm.
B48.39	6.20	COKG	Santiago, Cuba	8-9am, 11am-2pm, 5-9pm.
N48.39	6.198	HI8Q	Trujillo City, D.R.	4:40-8:40pm.
V48.47	6.19	HI1A	Santiago, D.R.	10:40am-1:40pm, 6:40-9:40pm
V48.59	6.174	XEXA	Mexico D.F.	8-10am, 3-5, 7-11pm.
N48.67	6.164	OAX1B	Chiclayo, Peru	8-11pm.
B48.73	6.156	YV5RB	Caracas, Venezuela	3:30-10pm.
48.78	6.150	CB615	Santiago, Chile	4-7pm.
V48.78	6.15	HI5N	Santiago, D.R.	6-7am, noon-2pm, 6-9:30pm.
S48.78	6.15	CJRO	Winnipeg, Canada	6-mid, Sun 3-9:30pm.
48.81	6.147	ZEB	Bulawayo, S.Rhodesia	Mon 11am-Nn, Tu/T 1:15-3:15 pm, Sun 3-4:30a, F 10-10:45
S48.82	6.145	HJ4ABU	Pereira, Colombia	6:30-10pm.

48.86	6.140	W8XK	Pittsburgh, Penna.	10pm-1am.
J48.87	6.138	HJ4ABD	Medellin, Colombia	8-11pm.
S48.88	6.137	CR7AA	Laurenco Marques,	11:45pm-12:30pm, 4:30-6:30a 9:30-11am, 12:30-4pm.
B48.93	6.132	VB9HX	Halifax, N.S., Canada	relays CHNS irregularly.
S48.93	6.132	VP3BG	Georgetown, B. Guiana	4:45-8:45pm ex. Sundays.
48.94	6.13	ZGE	Kuala Lumpur, FMS,	Sun/Tues/Fri 6:40-8:40am.
48.94	6.13	COCD	Havana, Cuba	N'n-lam, Sun 10am-4, 8-10pm.
48.98	6.125	CX4L	Montevideo, Uruguay	8am-noon, 2-10pm.
49.01	6.122	HJ3ABX	Bogota, Colombia	10:30a-2:30pm, 5:30-11:30pm
49.01	6.122	OAX4P	Lima, Peru	Noon-1pm, 9-11pm.
49.02	6.12	W2XE	Wayne, New Jersey	10-11pm.
49.02	6.12	XEFT	Veracruz, Mexico.	7:30pm-midnight.
N49.02	6.12	XEPW	Mexico D.F.	8pm-midnight.
N49.04	6.117	XEUZ	Mexico D.F.	relays XEFO to 1:30am.
J49.06	6.115	HJ1ABB	Barranquilla, Col.	6-10pm except Sundays.
C49.06	6.115	XETU	Guadalajara, Mexico	8-11pm.
S49.11	6.11	GSL	Daventry, England	9-11pm.
49.11	6.109	VUC	Calcutta, India	Sa 9:35-Su 2:05am, Su 7:05- 10:35am; daily 1:35am on- Mornings irreg.
N49.11	6.108	FT4AJ	Tunis, Tunisia	5:30-10pm ex Sun, Sat to 11
S49.11	6.108	HJ1ABB	Manizales, Colombia	6-11pm, Sat 6pm-1am.
49.18	6.10	W3XAL	Boundbrook, N.J.	11pm-2am. (5:15pm.
49.18	6.10	W9XF	Chicago, Illinois	1-3am, 6:15-8:15am, noon-
49.18	6.10	YTC	Belgrade, Yugoslavia	7:30-10:30pm.
B49.20	6.097	HJ4ABE	Medellin, Colombia	11:45pm-1am, 3:15-7:30, 9am- 4pm, Sun 3:30-4:30, 8-10:15a
S49.20	6.097	ZTJ	Johannesburg, S. Afr	5:30-11:30pm, Sun 3-11:30pm
49.26	6.09	CRCX	Bowmanville, Canada	8-10pm.
N49.26	6.09	HJ4ABC	Ibague, Colombia.	7-11pm. (2:30p, Tu/Th 8:20a- M to F 5:10-6:10, 11:25am-
S49.30	6.085	HJ5ABD	Calli, Colombia	7:30-9am and 6pm-1am.
S49.32	6.083	VQ7LO	Nairobi, Kenya.	6:40-9:10am ex. Sundays.
S49.34	6.08	W9XAA	Chicago, Illinois	7-10:30pm.
S49.34	6.08	ZHJ	Penang, S.S.	5-10pm.
49.38	6.075	HP5F	Colon, Panama	6-7:30pm, Sun 1:45pm-1am.
B49.38	6.075	YV1RD	Maracaibo, Venez.	7pm-midnight ex. Sundays.
N49.42	6.07	VE9CS	Vancouver, B.C. (2w)	1-6:30pm, Sun 11am-7pm.
B49.41	6.069	HJ3ABF	Bogota, Colombia	8-11pm. (Thurs 5:10-8:10am.
49.50	6.06	OXY	Skamlebaek, Denmark	Sat 10:40pm-1:10am, Mon/Wd- 6:30am-8pm, 11pm-2am, 8-8p
49.50	6.06	W3XAU	Philadelphia, Penna	7pm-midnight.
J49.50	6.06	ZHI	Singapore, S.S.	6-8pm.
49.50	6.06	W8XAL	Cincinnati, Ohio	6:30-7:45am.
F49.55	6.055	HJ3ABD	Bogota, Colombia	6:30-10pm ex. Sundays.
N49.59	6.05	GSA	Daventry, England	Sun 5-7pm, Mon/Fri 7-9pm.
49.59	6.05		Colombo, Ceylon	2:30-8:30pm.
V49.65	6.042	HJ1ABG	Barranquilla, Colom	7-11pm except Sundays.
49.67	6.04	W1XAL	Boston, Mass.	8-10:45pm.
U49.67	6.04	PRAS	Pernambuco, Brazil	10am-2am.
B49.72	6.033	HJ4ABP	Medellin, Colombia	5:30-10:30pm ex. Sundays.
49.75	6.03	HP5B	Panama City, Panama	10pm-1am (not heard lately
S49.75	6.03	VE9CA	Calgary, Canada	11:35-4:30pm, 4:50-10:45pm.
49.79	6.025	HJ1ABJ	Santa Marta, Colom.	4:40-9:40pm except Sundays
B49.83	6.02	XEUW	Veracruz, Mexico	4-11pm, Sunday 4-9pm.
49.83	6.02	DJC	Zeesen, Germany	7:55am-10pm or later. (irr.
V49.86	6.017	H13U	Santiago, D.R.	2:25-4:30pm, Mon/Th 7-9pm-
49.91	6.012	HJ3ABH	Bogota, Colombia	5:45 to 7am, or later.
49.92	6.01	COCO	Havana, Cuba	Tananarive, Madagascar 10-11am.
F49.92	6.01	OLR	Prague, Czechoslov.	7:45am-1am, Sun 9am-11:15pm
S49.92	6.01	VK9MI	S.S. "Kanimbla"	7-10am, 1-2, 7-10pm.
49.92	6.01	FIU	Tananarive, Madagascar	10am-1:45am.
49.95	6.005	CPCX	Montreal, Canada	Sun/Mon/Wed/Fri 4-5pm.
49.95	6.005	HP5K	Panama City, Panama	(7-11pm) see 9.33mc.
49.97	6.003	XEBT	Mexico D.F.	6-10pm.
50.00	6.00	RNE (RV59)	Moscow, USSR.	4:45-8:45pm, Sun 8:45am-(S
50.00	6.00	OAX4J	Lima, Peru.	11am-2pm, 8:30-10:30pm ex-
V50.08	5.99	HJ2ABD	Eucaramanga, Colom.	
B50.17	5.98	VP3MR	Georgetown, B. Guiana	
V50.38	5.955	HJN	Bogota, Colombia	

# YOUR — 1937 — RECEIVER

## RME-69 SINGLE SIGNAL SUPER

FREQUENCY RANGE 550 KC TO 32000 KC



### STANDARD FEATURES FOUND IN EVERY RME-69

- \* R.F. stage ahead of first detector gives high ratio of signal to noise level.
- \* Optional crystal filter for knife-edge selectivity.
- \* Maximum sensitivity less than one micro-volt absolute.
- \* Built-in coils with wiping silver contacts, continuous band spread from 550 to 32000kc.
- \* Tuning dial accurately calibrated in megacycles.
- \* Separate trimmer for maximum resonance of R.F. circuits.
- \* Carrier level indicator shows R's and DB's.
- \* Optional AVC control.
- \* All elements carefully treated for tropical use.
- \* UNCONDITIONALLY GUARANTEED.



Bulletin 69 for information  
on receivers

**INTERNATIONAL DX 'ERS ALLIANCE**

**BLOOMINGTON, ILLINOIS. U. S. A.**