



★ ★ ★ DX MONITOR ★ ★ ★

PUBLISHED BY
THE INTERNATIONAL RADIO CLUB OF AMERICA
P.O. Box 605, Beaverton, Oregon 97005

March 22, 1969

RIVERSIDE, CALIFORNIA

VOLUME SIX, NUMBER 26

DX CALENDAR

Mon. Mar. 17	KSON	1240	San Diego, Calif.	250w	0300-0600	EST	IRCA/RS
Mon. 24	KSON	1240	San Diego, Calif.	250w	0300-0600	EST	IRCA/RS
	KMAM	1530	Butler, Missouri	250w	0330-0430	EST	IRCA/NRC/TEST
Mon. 31	KSON	1240	San Diego, Calif.	250w	0300-0600	EST	IRCA/RS
Wed. Apr. 2	KTCR	690	Minneapolis, Minn.	500w	0100-0115	EST	NRC/TEST
Mon. 7	WADE	1210	Wadesboro, N. C.	1kw	0100-????	EST	NRC/PoP
	KBOL	1490	Boulder, Colo.	1kw/250w	0415-0445	EST	NRC
Sun. 13	WANL	1540	Lineville, Ala.	1kw	0200-0300	EST	NRC/TEST
Mon. 14	WCAL	770	Northfield, Minn.	5kw	0100-0300	EST	IRCA/NRC/TEST
	KCKY	1150	Coolidge, Arizona	1kw	0200-0800	EST	IRCA
	CKWW	580	Windsor, Ontario	500w	0215-0345	EST	RLA
Mon. 21	KOOL	960	Phoenix, Ariz.	5kw	0300-0400	EST	NFRC
	KLME	1490	Laramie, Wyoming	500w	0330-0345	EST	IRCA

KSON Mar. 17 DX program was aired before word could be distributed in DXM. Word of the Mar. 24 DX should reach most Westerners in time. See Mar. 31 for write-up on this DX program for IRCA. Arranged by: -Bill Lipis

KMAM test will probably consist of pre-recorded program done by Fish with plenty of IDs, time checks, authenticifiers, etc. Reports should be sent to: Chief Engineer B. D. Thornton, P. O. Box 191, Butler, Missouri 64730. -David Fischer

KSON will test from midnight to 3 A.M. PST for IRCA as part of their new all-night, no silent period operation which began 3/13. The first three Monday mornings of this service are dedicated to IRCA. The station would very much like to receive tape recordings; however, none can be returned so keep this in mind when sending them. Signal reports should compare KSON's signal with that of KMBY, KROY or whatever the listener usually heard before KSON went NSP.

Also, KSEA-FM will simulcast. Reports should be sent to: Radio Station KSON, Attn Chief Engineer, College Grove Center, San Diego, Calif. 92115. -Bill Lipis

KTCR will use test tone and country & western music with mention of the National Radio Club toward the end of the program. KTCR is directional E-W so could be heard coast to coast, if conditions are favorable. Interference expected from XETRA, WTIX, WAPE, CMEC. Reports should be sent to: Mr. Daniel Hertsgaard, Chief Engineer, Radio Station KTCR, Minneapolis, Minnesota 55427. This test arranged by: -NRC/George Sherman, Rosemount, Minn.

WADE will be Proof of Performance. No other details. Info from: -NRC/DX NEWS

KBOL has received very few reports in the past and is hoping for better results after hours. First quarter hour will be with 250w, last with 1kw. Comparisons are invited. This time was picked for minimum interference though there will still be plenty. Among those expected on are KAIR, KOWL, KWAC, KEON, KNOW, etc.

There is a possibility Glenn Hauser, who arranged the program, will be at the mike. Reports should be sent to: Lauren Bettencourt, Chief Engineer, KBOL, P. O. Box 146, Boulder, Colorado 80301. Arranged by: -Glenn Hauser, NRC

WANL will test using cycle-tone and March music. The announcing will be done by NRC member Alex Bowab, who is now serving in the U.S. Navy. WANL has been (con.)

March 22, 1969

(cont'd) on the air since November 1967 so few DXers have logged this one. All-night stations may give some QRM but 50kw KXEL in Waterloo will be off. KFOL will still be on the air though if WANL runs past 0300 EST, KFOL will probably be signing off at that time. All reports to: Jim Lumpkin, Chief Engineer, Radio Station WANL, P. O. Box 396, Lineville, Alabama 36266. -NRC/Len Kruse, Dubuque, IA

WCAL will test for two hours. With KOB and WABC both off, this one should be easy nationwide. The CE writes that WCAL is an old DXers station having celebrated their 50th anniversary last November. During the 30's, they received QSL requests from Germany, Japan, Norway and Australia. The oldest reports he has received are from the 1920's when the station was still a Physics Dept. project under the call 9AMH and 9YAJ. Reports to: George Anderson, WCAL Radio, St. Olaf College, Northfield, Minnesota 55057. Phone calls would be appreciated and no doubt the number will be given on the air. This program arranged by: -David Kulka

KCKY will be a repeat of the previous successful KCKY DX for IRCA. Country and Western music, time checks, plenty of IDs and phone calls live over the air will be featured. In addition, see Paul Lotsof's report in 3/1/69 WC DXF and in this issue MW DXF for information on sending recorded greetings for broadcast over KCKY. Tapes should be one-track, 7½ ips, and sent directly to Paul S. Lotsof, P. O. Box 1233, Tempe, Ariz. 85281. If you want tape returned, be sure and include a prepaid mailing envelope. All reception reports should be sent to: Mr. Roger Beck, Chief Engineer, Radio Station KCKY, P. O. Box 246, Coolidge, Arizona 85228. Arranged by: -Paul S. Lotsof

CKWW DX will consist of test tones, possibly some rhythm and blues music mixed in to help fight WIBW until 0300 s/off. Interference expected from CFRA in East, CKY in Midwest and KMJ-KIKX in West. ID at least every 5 minutes along with Radio Listeners of America HQ address (Florida). Reports should be sent to: Chief Engineer Wally Dowhan, Radio Station CKWW, 176 University West, Windsor, Ontario, CANADA. Program arranged by: -RLA/Mark Robinet

KOOL will dedicate an hour of their regular schedule to the Newark News Radio Club. The correct address for reports is: Mr. Al Hillstrom, Chief Engineer, Radio Station KOOL, 511 W. Adams Street, Phoenix, Arizona 85003 and NOT the address given on page 4 of 3/15/69 DXM. This program, we find, was arranged by new IRCA member Kevin Slater who also arranged the KSLM DX. The information was first sent in by NNRC's CFC Chairman, John T. Tweedie. -NNRC/Kevin Slater

KLME is a re-sked of an earlier program which was not aired because Chief Eng. Bob Rule was unavoidably out of town at the time. The format will be similar to the last program on KOWB and will consist of a pre-recorded 15 minute tape with IDs, test tones, etc. Please send your reports to: Bob Rule, Box 1054, Laramie, Wyoming 82070 and NCT to the station. -Bill Nittler/DEE

Courtesy Programs Committee Looks like things really opened up at an unusual time of the season. Various CPC-men from IRCA, NRC, RLA and NNRC have mentioned other stations which are in the midst of plans for DX programs but have not set a firm date so it looks like DX Calendar is going to continue strong for at least a few more weeks. And it isn't too late to get in on the excitement if you would like to arrange some programs yourself. Write to IRCA CPC Chairman, Jim Korn, Box 156, 666th Radar Squadron, Mill Valley Air Force Station, Calif. 94942. He'll be very happy to send all the details and answer any questions you may have. When arranging programs for any club, please remember to contact the other clubs when it is possible for them to print word of the program in their bulletin. John Tweedie, CPC Chairman of NNRC writes that Page Taylor, Argonne Road, Box 208, Butler, New Jersey 07405 does CPC write-ups which appear in the NNRC bulletin. His deadline is approx. the 5th of each month. For NRC, send all details to: Ernest R. Cooper, 438 E. 21st, Brooklyn, New York 11226, deadline is usually Monday before date of issue.

DX NEWS will soon be published on a monthly basis similar to IRCA's. For RLA bulletin, send information to RLA HQ, Ken Hopkins, P. O. Box 2162, Tallahassee, Florida 32304. Deadlines are 12th and 28th of each month. -IRCA Publisher

CONSTRUCTION OF A 'BOX' LOOP ANTENNA

These plans are adapted from an article printed many years ago in the DXing Horizons magazine (no longer printed), written for the National Radio Club by Dan Phillips K4FMR and Vic Patton WN4OXL, and amended by useful suggestions from David Fisher and Chuck Sadoian. Any number of additional copies for distribution to interested persons may be obtained from: Don Erickson, 6059 Essex St., Riverside, Calif. 92504. There is no charge; SASE appreciated.

The advantages of the use of a directional loop antenna are many. Best known is the directional property. Stations which are not collinear (that do not form a straight line intersecting the point of reception) can be selectively nulled. This property is best demonstrated on stations at right angles to each other, or 90 degrees from reception point. By pointing the loop at one of the stns, it will be received with maximum signal while the other will have its minimum signal. Points of null and maximum signal are 90° apart on a properly constructed loop. Next, for stations which are collinear, the nulling (minimizing) effect is greatest on stns closer. Therefore, the weaker of 2 stns in the same direction can be better received by nulling the stronger stn if the stronger one is appreciably closer. This little known property is especially useful on locals. Next, the loop antenna adds to the selectivity of a receiver because the capacitor tuning the loop is quite selective. For this reason, the capacitor must be re-tuned every time the frequency is changed. This property greatly cuts down slopover. Depending upon the size of the loop built, it will generally have less gain than a good long-wire antenna. However, the additional gain on most communications receivers will more than compensate for this. Also, because of its directionality, noise is reduced about one-third more than the signal being received. For this particular box loop (4-foot), the gain is approximately equal to a well constructed 50 foot long-wire.

The plans presented here are for a box loop antenna which will cover the entire standard A.M. broadcast band (540 - 1600 kc/s) or, with minor alteration, can be made to do so. Loops of other sizes can be made using the same principle. The amount of wire affects the frequencies the loop will tune so loops of other sizes may require capacitors (variable) of difference capacitance. One rule to bear in mind; the larger the loop (the more wire used), the higher its gain.

The first thing to do is to study carefully the drawing on the fourth page of these plans. After all the parts are constructed and put together (except the wiring), the most important thing remains--the wiring of the loop. If not wound according to instructions, the loop will not work properly. The hardest thing to keep in mind is the fact that the major portion of the wire is NOT connected directly to the receiver but inductively (indirectly) coupled by the one-turn link. It is the one-turn link that should be connected to the antenna and ground terminals of the receiver. The major winding is connected to and tuned by the capacitor.

In winding the loop, take about 180 feet of #18 stranded insulated wire (#'s 18, 19, 20, 21 are best; be sure it is stranded and insulated wire) and start winding from the bottom of the loop leaving plenty of wire with which to connect to the capacitor. Thus the wire is started at the connecting board (where the capacitor is mounted) and wound on either side notch of one of the bottom notch-plates. Then the wire is wound up to the same notch on the notchplate above it. Likewise, the wire should be wrapped around and around all nine notches and back to the capacitor mounting board by way of the notchplate on the bottom of the loop and opposite of the one on which you started. This main winding (one continuous wire with nine turns) is connected to the capacitor which is mounted on this connecting board.

Then, the very important one-turn link is added. Allowing plenty of wire for connecting to the 300 ohm line, connect the one turn link to one of the two remaining holes on the capacitor mounting board, wrap it around the center notch of each of the notchplates and back around to the last hole on the mounting board.

In connecting the main nine-turn winding to the capacitor, be sure you connect it properly. The most common mistake made in building both box and spiral loop antennas is incorrectly connecting the capacitor. Many a good loop is discarded because the capacitor is not made part of the circuit by connecting (incorrectly) both wires to two of the terminals on the capacitor. These terminals are common to each other and this method of connection isolates entirely the capacitor from the circuit. One wire should be connected to one of the terminals but the other must be connected to the chassis of the capacitor. If no terminal is provided, it will be necessary to solder to the side of the capacitor. The location of this connection is not critical as long as it does not interfere with the turning of the rotor blades of the capacitor.

To make the final connection to the receiver, take enough 300 ohm TV lead-in (RG59U coax is probably the best but not readily available and is rather expensive) to connect the one-turn link (truncated at the capacitor mounting board) to the receiver. On receivers with two terminals, an A- or antenna terminal and a G- or ground terminal, one side of the 300 ohm line is connected to each of the terminals. It makes no difference which one is connected to which terminal. For receivers having three terminals, one side is connected to the A- or antenna terminal and the other to the remaining two terminals (sometimes designated G- and Z- terminals). The connection to G- and Z- terminals can be made by connecting one side to either of the two terminals and connecting the two terminals with a tiny piece of wire. A little experimentation might be useful on receivers with the 3 terminals in case some alternate method is determined more beneficial. For receivers with one terminal (antenna only), don't panic and decide a loop antenna can't be used. Connect one side to the antenna terminal and (bearing in mind that the chassis of a receiver is ground) the other side to the chassis by soldering or by a screw.

For receivers with built in loopstick antennas or other such built-in antennas, the box loop can often be used to inductively tune this built-in antenna without any connection at all. In this manner, it can be used with interesting results on transistor radios (the small portable hand-held type).

Another interesting thing is to combine the box loop with the IRCA spiral loop. With the IRCA spiral loop built and connected in the usual manner, the box loop can be placed nearby and, with no connection, used to inductively tune the IRCA spiral loop. With this method, stns can be heard under very strong locals where the use of either antenna alone would not be sufficient. Such coupling is difficult for maximum results and every minute twist and turn of the box loop will result in radical changes in the received signal.

Permanent mounting of the box loop can be a problem. Because of its size (the one described herein), it is not too convenient no matter how much space you have. If quarters are very cramped, the problem is severe. Two common methods of mounting are (1) in a pipe which is mounted in a wood block and, (2) hanging from the ceiling (where this can be achieved without damaging the ceiling). By hanging it from the ceiling, if done properly, the antenna is not as much in the way and turning it can be less difficult. The obvious alternate to a large, cumbersome box loop (with its higher gain because of its size) is either a small box loop (anyone have wire sizes, capacitor value, etc. for a good 2' variety???) or the IRCA spiral loop which can be used quite conveniently almost anywhere. As an aside, a spiral loop of the size of the box loop described here can also be built. Its gain is similar to the box loop of the same size but is built in an entirely different manner. The IRCA spiral loop plans call for a 2' loop. By using longer dowels, it can be made much larger. The spacing between the wires is not changed (it remains $\frac{1}{2}$ ") but the winding just continues until you reach the desired size. The theory of size versus % of nulling effect isn't known by this writer; maybe someone will comment. Is there a point at which there is no use in making either a box or spiral loop any larger?

Once again, remember when using the loop (any loop) that every change in frequency requires re-tuning the capacitor for maximum gain. And the capacitor should have a very sharp null. If not, the connection of the capacitor may be wrong or the coupling of the one-turn link and the main winding may not be proper.

Box Loop Antenna Plans -- Page 3 of 4

If the antenna fails to cover part of the standard A.M. broadcast band spectrum, this can be compensated for by changing the value of the capacitor. Changing the amount of wire (the usual method when constructing spiral loop antennas) is, of course, more difficult. However, these plans have been tested and with the sizes given, performance should be proper over at least most of the band. By using a two-gang variable and using a slide switch to connect or disconnect at will the two gangs, one capacitor can be used to tune all parts of the band as well as parts below and above the 540 - 1600 kc/s portion of the band. In doing this, one gang of the capacitor would be in the circuit with the slide switch in one position and both gangs in the circuit with the switch in the other position.

PARTS LIST

- 1 365 MMF Variable Capacitor (one or more gangs; connect just one gang if a two- or three-gang variable is used and only one gang is needed; don't connect to the terminal of one gang and the ground of another gang)
- 200 feet of number 18, 19, 20, or 21 stranded insulated wire
- 5 feet of 300 ohm TV lead-in (easily obtained at any radio-TV shop) (more or less may be used depending upon how far apart the receiver and loop are)
- 2 58" long pieces of 1" x 1" strips of wood for crossplates
- 1 36" length of same for center of loop to the base
- 16 one-quarter inch bolts each about 2 - 2 $\frac{1}{2}$ " long
- 16 washers and nuts to connect to the bolts
- 1 capacitor mounting board, 3" x 3" of $\frac{1}{2}$ " plywood, this is mounted at the bottom of the loop
- 4 plywood end plates (notchplates) (see insert A)
- 1 center plate of 6" x 6" piece of plywood, about $\frac{1}{2}$ " thick

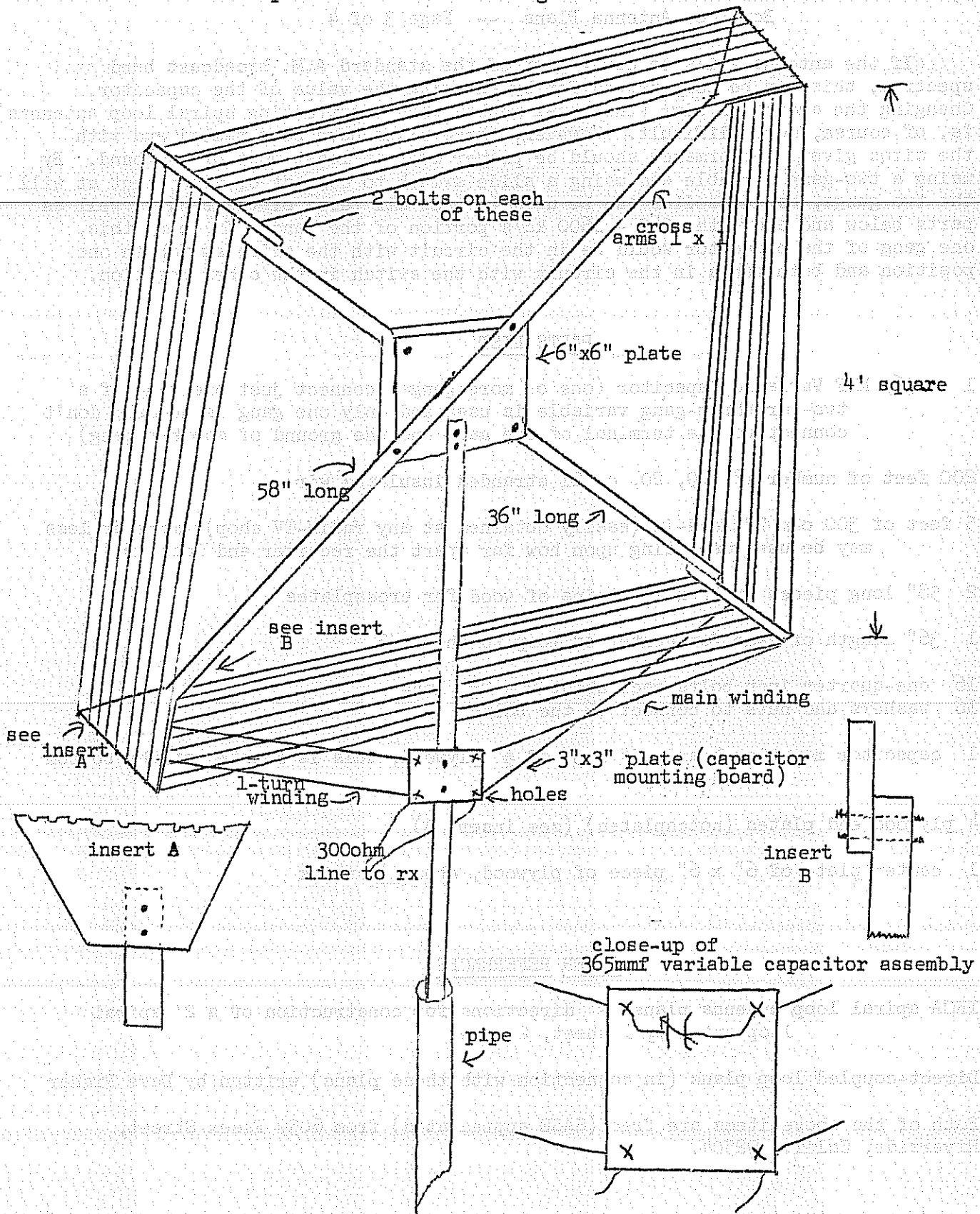
OTHER REFERENCES

IRCA spiral loop antenna plans - directions for construction of a 2' spiral loop antenna, 1 sheet, 2 pages

Direct-coupled loop plans (in connection with these plans) written by Dave Fisher

Both of the above items are free (SASE appreciated) from 6059 Essex Street, Riverside, Calif. 92504.

Box Loop Antenna Plans -- Page 4 of 4



These plans are free to all DXers by writing to Don Erickson, 6059 Essex Street, Riverside, California 92504. SASE appreciated.

Editor: Marc DeLorenzo - 35 Sylvan Drive - Hyannis, Mass. 02601

Deadline: Friday, 8 days before publication

570 WNAX SD, Yorkton in fair @ 0700 2/27, rptd & veried. (LMA)
 WKBN OHIO, Youngstown hrd 0245-0255 w/C&W u/WMCA, 3/8. (KC)

590 WOW NEB, Omaha poor @ 2200 w/CBS nx, 2/18. (JR) Hrd well w/CKEY
 0255-0331 w/Holiday INN, 3/8. (KC)

600 WMT IOWA, Cedar Rapids hrd 0333-0345 w/telephone talk, 3/8. (KC)
 WTAC? MICH, Flint believed to be the one w/rr 0208-0222. Sound-
 ed like them on their SIDs 3/9. (KC)

630 WMAL DC, Washington hrd w/mx 0155-0205 w/much QRM, 3/9. (KC)
 CJET ONT, Smiths Falls a regular in the daytime, hrd also
 briefly 3/2 0241-0248 w/mx & much WMAL/CKRC QRM. (KC)

640 WHLO OHIO, Akron poor thru a strong KFI 0645-0705 3/5 w/MoR,
 s/on 0645. (MR)

690 KTCR MINN, Minneapolis good @ 1845 w/s/off, no NA hrd, 2/21. (JR)
 CBF QUE, Montreal good @ 1845-1850 w/WLW slop, 2/21. (JR)
 WAPE FLA, Jacksonville hrd o/WVOK w/nx @ 1820-1823, 3/5. (JR)
 WVOK ALA, Birmingham on top @ 1823-1828 w/rr & wx, 3/5. (JR)/(MR)

680 WCAW W.VA, Charleston poor thru CHLO/WPTF 3/6 1830-1845 w/C&W/
 710 WUFF GA, Eastman 2/20 0630 fair sig, blocked @ 0645 by WROM. (LA)
 WROM GA, Rome s/on @ 0645 2/20 fair signal, a nice pair of 1kw
 catches. (LMA)

730 CKDM MAN, Dauphin hrd @ 0555 w/nx u/CKAC, 2/19. (JR)

820 WAIT ILL, Chicago w/WOSU nulled @ 1805 w/ID, 2/17. (JR)
 WOSU OHIO, Columbus strong w/classical mx 1815-1845 2/17.
 Suddenly gone @ 1845, no s/off ancd, what happened? (JR)

WBAP TEX, Ft. Worth hrd @ 0200-0215 w/C&W mx 3/4. (JR)

840 WRYM CONN, New Britain hrd u/WHAS w/EBS ad (not test), then
 religous pgm @ 0645 3/9. (KC)

850 WJAC PA, Johnstown hrd well w/s/on 0530, then Lord's Prayer
 & MoR mx. (3/8 - KC)

860 KOAM KAN, Pittsburg in w/non-stop mx 3/4 @ 1915. (LMA)
 WOAY W.VA, Oak Hill weak @ 1740 3/3. (LMA)

900 WBRV NY, Boonville hrd w/CHML 1703-1709 w/nx & rr, 3/6. (KC)
 WPRO OHIO, Fremont weak w/CHML nulled 1529-1555 w/C&W, 3/19. (JR)

910 KGLC OKLA, Miami o/WFDF w/C&W mx @ 0656 2/17. (JR)
 WHSM WISC, Haywood o/WFDF/KGLC @ 0659 s/on 2/17. (JR)

920 KDHL MINN, Faribault good @ 0140-0200 w/C&W to s/off, 2/12. (JR)
 WMNI OHIO, Columbus hrd @ 0030 w/C&W 2/18. (JR)
 WBAA IND, West Lafayette good @ 0100 w/s/on & MoR on DX TEST,
 rpt sent, s/off 0130, 2/24. (JR)

930 KWOC MO, Poplar Bluff weak @ 0700 s/on 3/3, rpt sent. (LMA)

940 WGRP PA, Greenville good @ 1740-1750 w/rr mx, 2/17. (JR)
 WIDG MICH, St. Ignace good @ 0812 w/sports 2/22. Hrd again
 w/C&W mx til 1800 s/off w/NA, 2/26. (JR) /(JR)

WJOR MICH, So. Haven good w/nx, wx @ 1815 s/off; s/on 0700 2/26/
 WMAZ GA, Macon hrd 1835-1845 w/WCPC, rpt sent, 3/7. (JR) /(JR)
 WCPC MISS, Houston L&C after 1845 w/gospel mx, rpt sent, 3/7. /

960 CKWS ONT, Kingston good @ 0020 w/MoR mx, 2/19. (JR)

970 WWSW PA, Pittsburgh hrd w/nx 0230 & soft mx after 0235, 2/16. (JR)
 WAVE KY, Louisville strong @ 0230 w/sx 3/5. (JR)

980 CKRM SASK, Regina a welcome surprise @ 0715 2/24 w/xlnt sig,
 report sent. (LMA)

990 WCAZ ILL, Carthage w/f/c 0115-0130 thru CBW, o/WNOX, 3/10. (MR)

1000 CKBW NS, Bridgewater strong and alone 1730 3/11 w/rr apparently
 on NDA; sometimes bothering WCFL in the evening; good bet
 for NS on EC for those who can loop WCFL. (FW)

1010 KLRA ARK, Little Rock 2200 2/11 fair. (LMA) /(MR)

1060 KGFX SD, Pierre good w/r/c u/KYW 0230-0245, ID ev 7 min, 3/5. /

1070 WIBC IND, Indianapolis w/CBA nulled @ 0530 w/nx, 2/17. (JR)

- 1070 CBA NB, Moncton good @ 0524-0530 w/sx & pop mx, 2/27. (JR)
 WKDR NY, Plattsburgh hrd 1714 w/s/off-SSB, CHOK QRM, 2/24. (KC)
- 1080 WEWO NC, Laurinburg ID @ 0536 w/test 2/17. (JR)
- 1090 WBAL MD, Baltimore hrd for 1st time in a while 2/11 @ 0710, (LA)
- 1120 WUST DC, Washington hrd 3/5 @ 1815 s/off. WWOL had gone off just prior to that. (KL)
- 1130 WASP PA, Brownsville hrd 3/5 @ 1821 w/C&W to 1829 s/off, no SSB. First hrd here. (KL)
 WCAR MICH, Detroit noted again (along w/WDGY) 3/9 w/WNEW on low power OC @ 0245. (FW)
- 1170 WLKE WISC, Waupan @ 1800 on 2/9, vfd, good o/WWVA. (LMA)
- 1180 WHAM NY, Rochester poor @ 0100 s/off 2/16. (JR)
- 1230 WBOW IND, Terre Haute on top w/ID & rr 0245, 3/5. (JR)
 WCUM MD, Cumberland w/rr 3/5 0140-0153 thru QRM mucho. (MR)
 WJOY VT, Burlington fair 0224-0256 w/MoR 3/9. (KC)
- 1240 unid QUE, FFC here 0150 SM 3/9 w/rr, R&B - call sounded like they might have been CKLS, not sure. CFNW likely. (FW)/MR
 WBAX PA, Wilkes-Barre w/nx & HI 0200-0210 3/5; (not on HI list)
- 1250 WEMP WISC, Milwaukee hrd after WTAE s/off 0300-0330 w/nx & MoR mx, 3/9. (KC)
- 1260 WIBV ILL, Belleville on 2/11 @ 2005, fair sig. (LMA)
- 1270 WXYZ MICH, Detroit hrd w/"Speaking of Everything" 0507-0530 w/CJCB QRM 3/2. (KC)
- 1290 KOWB WYO, Laramie on DX @ 0300 2/10, only code hrd, but vfd as correct. (LMA)
- 1300 WSYD NC, Mt. Airy strong w/C&W after 0500 s/on 3/8, WFBR not on til 0530. (FW) / (JR)
- KGLO IOWA, Mason City w/ID & strong test tone 0105 off 2/16. /
- 1310 KOKX IOWA, Keokuk hrd w/nx @ 2250 o/CPGM/WKNR 2/18. (JR)
 WGSA PA, Ephrata good ID 1715 o/WKNR 2/25. (JR)
 WCCW MICH, Traverse City w/ID @ 1730 o/WKNR 2/25. (JR)
- 1350 KRNT IOWA, Des Moines poor thru WSLR 0059-0105 s/off 3/8. (MR)
- 1360 WIXZ PA, McKeesport w/new calls 0255-0359 w/Bob Harper Show 3/2. (KC)
 unid Very interesting unid here 0310+ SM 3/9 w/WSAI/WBAY off; rr w/only IDs hrd as "Wixy" or "Weexy" & no ads giving EST TC's. At 0320 hrd DJ say "We play this for all the groovy kids in Monroeville" (where WMFC is located, but they're D & in CST-land). Didn't sound like E/T, also hrd SM 3/2. (FW)
- 1370 WDEA ME, Ellsworth way u/WSPD 3/10 w/semi classical mx & nx 0055, then o/u @ 0102 s/off w/hymn. (FW)
- 1390 WFBL NY, Syracuse 0215-0235 w/pop mx & nx, rpt sent, 3/2. (JR)
 CHOO ONT, Ajax hrd u/WFBL w/C&W @ 0210-0235 3/2. (JR)
- 1400 WOND NJ, Pleasantville hrd w/single ID @ 0448 3/8. (KC)
- 1410 WING OHIO, Dayton fighting WPOP/KQV 0500-0529 3/9. (KC)
- 1430 WIL MO, St. Louis hrd again 0115-0205 w/C&W o/u WIRE/CKFH. Nx @ 0200, rpt sent, 2/16. (JR)
- 1450 WFPG NJ, Atlantic City real surprise 0200-0209 w/fair signal, Nx, PSA, MoR mx on 3/10. My best grave-yarder yet. (MR)
- 1460 KIRL MO, St. Charles w/strong ID 0155 w/test, then off, 3/2 (JR)
- 1490 CHYM ONT, Kitchener poor @ 0230 w/ID & MoR mx - was trying for WOSH on 2/14. (JR)
 unid SSB-s/off 0202 MM 3/10, undoubtedly KBKR per NRC Log. (FW)
- 1500 WDEN GA, Macon hrd 3/3 @ 0216-0225+ w/E/T-C&W L&C. (KL)
- 1510 WAUK WISC, Waukesha good @ 1752 o/WLAC w/C&W 2/10. (JR)
 WAHT PA, Annville hrd @ 0050-0100 w/TT 2/18. (JR)
- 1540 KXEL IOWA, Waterloo very very weak 2/13 @ 1930-2000 leaving ZNS Nassau in w/a beautiful sig. Rptd. Last time hrd was 1962. (LMA)

- 1550 KKHI CALIF, San Francisco actually made it here 0215 w/opera no IDed til 0258 s/off-SSB. (FW)
- WCTW IND, New Castle s/on 0525 3/9, religious word, then C&W pgm - CBE not on yet. (FW)
- WSAO MISS, Senatobia E/T-OC 0215 3/10. (FW)
- WKBA VA, Vinton w/test @ 0113 w/C&W mx til s/off @ 0148, 3/2. Hrd again on 3/7 @ 0220-0230 w/test. Why do they keep testing? (JR)
- WIRV KY, Irvine hrd during f/c w/WPTR slop 0303-0308 3/1. (KC)
- 1560 WTOP OHIO, Toledo hrd w/ID @ 0632 u/WQXR's TT/OC 3/9. (KC)/(FW)
- WBKC OHIO, Chardon new stn IDed u/WQXR 0730, then into MBS nx./
- 1590 WCBG PA, Chambersburg f/c 0100-0115 2/7 thru heavy WAKR QRM (MR)
- WTBY CONN, Waterbury o/WAKR w/ID @ 0546 2/24. (JR)
- 1600 WCPK VA, Chesapeake w/f/c 0220-0230 thru strong WWRL, not on f/c list. (MR)
- CJRN ONT, Niagara Falls @ 0552 w/ID & pop mx 2/17. (JR)
- WCWC WISC, Ripon on top w/s/on @ 0600 2/17. (JR)
- KCRG IOWA, Cedar Rapids on top w/s/on @ 0601 2/17. (JR)
- WCGO ILL, Chicago Heights on top w/s/on @ 0601 $\frac{1}{2}$ 2/17. (JR)

Contributors:

- (MR) Mark Robinet - 357 McKay Ave. - Windsor 11, Ontario
- (KL) Ken Lyon - 5155 South Newstead - Akron, New York 14001
- (LMA) Larry M. Abraham - 6080 Hess Road - Saginaw, Michigan 48601
- (KC) Kenneth Cousineau, Jr. - 55 Buonomo St. - Rochester, N.Y. 14621
- (JR) Jerry Robertson - 6065 Gardner Line - Crosswell, Michigan 48422

+++++

EAST COAST DX FORUM

Paul R. Daplyn - 94 Mortimer Avenue - Toronto 6, Ont.

Since I am a new member and this is my first forum rpt., I thought it would be appropriate to reveal a little bit about myself. I started fooling around with a small five tube GE Rx. tuning in distant stations when I was twelve years old. I can't honestly say I started DXing until I was made aware of reception reports, QSL's etc. in the spring of 1964. It was then I kept a log of everything hrd. My first QSL was dated June 5, 1964, fm CFCF Montreal. I was a radar technician in the RCAF but I'm afraid the isolation of the radar sites in the Pine-Tree Line didn't appeal to me very much. I was wondering if anyone would be interested in trading American 6¢ stamps for Canadian ones as I prefer to send the American stations SASE'S instead of monies. Recent veries: KOIL WNOX WKMI WQAN WGRP WBAY WIRL KXOK WHN CJIC WRKO WPAR WTAR WINA XERF CJRS. No luck with any of the DX Tests except for WBAA. I have no comment about the tapes except that they make excellent reception reports. I would also like to thank all the thoughtful IRCA ers who sent welcome cards. 73s

Larry M. Abraham - 6080 Hess Road - Saginaw, Mich. 48601

Hi gang! Well our club has been together for 6 great years, 2 of which I have been a member and enjoyed every minute. A re-introduction for newer members: I teach high school Math, am 23 as of today, and have been married for 3 weeks. MY rx is a HQ-145-A, a 10 tube receiver. My current totals are: 788/125, states 41/34, prov. 8/5, countries 25/6. Among the most commonly logged states are Mich. w/97 stns, and Ohio & Ontario w/51 each. The latest edition of White's Radio Log states that there are 4224 stations operating on BCB & 810 on J. Latest veries include: WEW WLKE CBA KFDF CJGX(6 mo.) BHBS KOWB-DX KLTR WNAX KSKY KPRC. My non-verifiers this season include: KDON KECK KOMA KFH WVMT KATZ WLOL KJR. JH: waiting to meet w/you sometime. Wendell Sturgess: give me a call if you like in Lansing: 482-3481. 73.

Philip L. Sullivan - 152 Third St. - Leominster, Mass.

(Cont'd from last week - MD) Basically what I am suggesting is that a committee of experienced DXers certify or verify a DXer's claim of having hrd a station, rather than having the stn do it; after all, an experienced DXer knows the reception cx etc. and generally has a feel for whether such a claimed reception is easy, difficult, or all but impossible. Most stns don't know this and couldn't care less. Just how this would work in practice would have to be worked out, but I would think that in about 90% of the cases the committee would merely accept the claim, especially on easy stns, but on rarer catches or otherwise "funny" loggings would be able to ask for proof, proof being tapes, program notes, some veries (from stns known to be careful about verifying), etc. The committee would have to be large enuf to be spread out geographically and also to prevent any one member of the committee from using his position to unfairly attack another DXer's loggings because of any personal reasons. This system of DX Records would take some setting up but I think it has enuf advantages to be worth looking into.

Thomas Joseph Yingling - 221 Pinewood Rd. - Baltimore, Md.

Hi DXers. This is my first report. I've been DXing for one year now, especially for QSL's & now I stand at 15 states, 2 provinces, and 3 countries. I'm getting a new rx, the Lafayette 600T whenever the order comes. I'll have a lot of DXing with that set. Recent veries: KXEL WJAS WVOK WWL. 73. (WELCOME to IRCA, Thomas!! - MD)

Quentin K. Brown - 59 Kenilworth Street - Ottawa 3, Ont.

Greetings. With exams next week, DX has been nil this week. Flu didn't help either. To show how this club is so great, when I wrote about some stns that didn't verie for me, I got a card from KL & Forum info from TGH. Only 3 veries this week: 3 nice v/q's: WBAY CJGX (78 days) WHDH (rare here). PSL: you have some good points but EC DXers seem to be spread out and don't live in bunches as in L.A., Vancouver, etc. PRD: Is CHFI off every MM now & what is CFRB's MM SP? 73's.

Jerry Robertson - 6065 Gardner Line - Crosswell, Mich. 48422

I have listened for all the CPC Tests. My 1st & only one hrd was WBAA. 1st veries: KGLC-910 WUNI-1410 WONE-980 WKZO-590 WPHM-1380 KBIB-1560 WPRO-900 WKYC-1100 WCCO-830 WGRD-1410 WKBN-570 & "Cheer Radio" (CHYR-710 & CHIR-730). I got a nice letter from Frank Labelle in Montreal stating the format of the Montreal area stns. I also rcvd the SRDS last Monday, but it only has some formats. I does, however, have the addresses of all U.S. stns. If anyone has a list of formats of their area stns or know where I can get them, let me know. Thank You & 73. (Boston formats: WEEI - discussion, WRKO - RR, WHDH - MoR & sports, WRYT - MoR, WBZ - light RR, WCOP - C&W, WILD - NN, WEZE - semi-classical, WCRB - semi-classical, WHIL - C&W, WMEX - RR, & WBOS - MoR. - MD)

Mark Robinet - 357 McKay Avenue - Windsor 11, Ontario

Recent veries: CBK-540 CFCF-600 WHBG-1360 CJGX-940 WORD-910 (those last two after long waits) KFI-640 (send for one every year) WMAY-970 WBAM-740 WVOK-690 KICX-1360 WINZ-940 CJOC-1220 KMON-560 WJLS-560 all v/q except WORD KFI KICX & CJOC, and all worth points in the Domestic Singles Contest. My total as of 3/12 is 430, with a good number of rpts out (2 new states). Hope you EC members try for CKWW-580 ND-U 500 watts Windsor test for RLA 4/14 0215-0345. Hope also that CBC workers do go on strike - might get some open channels up here. TOTALS HERE: 489/262; 43/40 states, 9/8 prov, 9/3 countries. 3/8 DXM told sad story: CHLO moving to 1570 w/10kwU DA-1 and they're NSP - there goes another freq. or two down the drain! Only one Special hrd here this year - WSSA (still no verie) but I've missed a few I know I could have hrd, like WBAA WPHM. That's about all til next tx.

EDITOR: Lynn D. Brooks - Box 253 - Ponca City, Okla. 74601

DEADLINE: Friday, eight days before publication date. Use EST & double space all rpt.

- 540 CBK SASK, Regina at 1930 2/24; poor with news. (AJ)
 570 WKYC KY, Paducah hrd at 2300 2/24; poor with rr mx. (AJ)
 610 WDAF MO, Kansas City hrd at 2330 2/23; fair with NK & religious program. (AJ)
 630 WLAP KY, Lexington hrd 2/23 2100; fair w/pop mx; QRM from KXOK. (AJ)
 640 KFI CAL, Los Angeles hrd at 0100 2/22; good w/NK; state #31. (AJ)
 710 WOR NY, New York hrd 2/24 2307; fair with NK. (AJ)
 KBTR COLO, Denver fair signal MM 3/3 0450 w/KIRO off. (PRK)
 730 WACE MASS, Chicopee hrd at 0600 3/2; fair at s/on. (AJ)
 WPIK VA, Alexandria hrd 3/2 0615; fair at s/on. (AJ)
 740 CBL ONT, Toronto hrd 2/24 2250; good with classical mx. (AJ)
 KCBS CAL, San Francisco hrd 0310 2/23; poor with NK; state #31. (AJ)
 750 WSB GA, Atlanta hrd 2/23 0300; good with NK. (AJ)
 790 WMC TENN, Memphis in poor u/KWIL 3/3 0352 w/Hi programming. (PRK)
 820 WBAP TEX, Ft. Worth at 0500 3/2; excellent with cw mx. (AJ)
 850 KTAC WASH, Tacoma in like a local 3/3 0504, apparently AN-7. (PRK)
 880 WCBS NY, New York at 2355 2/23; fair with NK. (AJ)
 920 CKCY ONT, Sault Ste Marie at 0045 2/24; fair with pop mx. (AJ)
 KARK ARK, Little Rock at 0100 2/24; fair at s/off. (AJ)
 WBAA IND, W. Lafayette in good w/TEST for RIA 0105 2/24. (AJ)
 950 KFSA ARK, Fort Smith on TT (2nd Mon) w/Commercial Mon, K. C. 0515 on. (BN)
 1160 KSL UTAH, Salt Lake City at 0010 2/24; poor w/NK. (AJ)
 1300 KHAC ARIZ, Window Rock has r/c conducted every other month on 4th Wed. from
 0230-0245. Next one will be in April. Their signal is monitored in
 St. Louis. (HWW)
 1330 KGAK N.M., Gallup on f/c TT 3/7 (1st Fri) 0200-0215. (BN)
 1360 KRUX ARIZ, Glendale a poor to fair signal w/UnID QRM on DX. (PRK)
 WBAY WISC, Green Bay fair at s/on 0558 3/3, killed KRUX. (PRK)
 1450 KDXU UTAH, St. George running "Program Tests" 3/5 w/mx 0310. (BN)
 1540 WPTR N.Y., Albany in poorly u/KBUY 3/9 0428. Not enuf for rpt. (IdB)

REGULAR-CHECK per IRCA F/C List:

KARR- 1400 MONT. (2nd Mon) (BN)

REPORTERS:

- (PRK) PERCY KESTEVEN - 13112 134th St. - Edmonton, Alberta, Canada (KT-340; L-W)
 (AJ) ARVIDAS JARASIOUS - 3435 Ann - Lansing, Ill. 60438 (Zenith AM/FM 7-tube; loop)
 (BN) BILL NITTLER - Box 112 - Englewood, Colo. 80110 (HQ-180)
 (HWW) HANK WARD - 9617 Panola Way - Houston, Texas 77055
 (IdB) YOUR EDITOR - 2109 Mary - Ponca City, Okla. 74601 (HQ-150 & NRC type loop)

PAUL S. LOTSOF - Box 1233 - Tempe, Arizona 85281

Latest IRCAer to be visited (invaded?) was Don Kenney of Santa Monica who was nice enough to fulfill my DX-dream by giving me a desperately needed loop. Although the loop provides much less sensitivity than my long wire, it has opened up many channels, & I expect the quality of my DX to improve a lot. Thanks, Don! If you feel that the present IRCA leadership isn't doing everything possible to make our club the greatest, there is something you can do. Become a candidate for the BoD or even a higher office. Simply write a letter declaring your candidacy to Election Chairman George Tanner of Scottsdale. Do it NOW! This week, I'm working for KRDS-1190; who knows where next week. Watch for future PSL DX Specials, & send me your tapes to be broadcast. I wish to retract my statement that stns in Mexico aren't listed in NRC's Log. Both KXEO-1340 & WJUN-1220 are included.

ERNEST J. WESOLOWSKI - 1416 Pasadena Ave. - Omaha, Nebr. 68107

HAPPY ANNIVERSARY IRCA on your 5th tower! New logging on MM-3/10 was KNEX-1540 McPherson, Kan. s/on 0745 w/NA. Stn KVSH-940 Valentine, Nebr. had a complete loss of their studios on 2/23 when fire destroyed the hotel in which it is located. They were on the air again within a couple of hours. Thanks to D. Rogers of KGYN for the v/c. Local WOW-590 has been sued for \$3 millinn for damages to a man running for Mayor of Omaha for a News item aired on radio and WOW-TV-6. '73's.

DAVE FISCHER - 810 Oldfather, NU - Lincoln, Nebr. 68508

Feb. '69 new catches: KWRF-860 Ark, KQEO-920 N.M., KOLO-920 Nev, WBAA-920 Ind, 990-XET Mex, WVOV-1000 Ala, WTIC-1080 Conn, WKLO-1080 Ky, WQBA-1140 Fla, KSEN-1150 Mont, 1220-WAQY Ala, WJOB-1230 Ind, KDLS-1310 Ia, WRJW-1320 Miss, ???-1470 Winnipeg, Man, KRBC-1470 Tex, KPLC-1470 Ia, KTXO-1500 Tex, WAMY-1580 Miss, KETO-1590 Wash. Using NC109 with 11" x 11" box loop & sometimes LW fed to it. Terrible!! line noise past 3 wks! Veries: 1240-WBIR, 1220-KOFO, sent 920-WBAA. Now, I have a great distaste for words put into my mouth! Speak for yourself! -- To say that "...Fish ... couldn't believe it!", referring to the fact that KECK was logged in New Zealand during the 1/20 test, is to imply that I am a "green" DXer -- never having experienced DX phenomena! To the contrary!! -- the KECK ID tape was made at MY suggestion that we maximize the audio output for ID's in hope that we would make the deep Pacific -- and we did! That's why the test was as "monotous" as it was claimed to be by some -- 100% ID's & TC's. Blast!

STEVEN R. RUSSELL - c/o Paul Lotsof - Box 1233 - Tempe, Arizona 85281

Here I am in Arizona -- for a while at least. With any kind of luck I'll land a job. Spending most of my time visiting stations -- KALF, KMEQ, KRDS, KBUZ, KRIZ, KRUX, etc. If you had a station playing underground music during the time the KRUX test was scheduled, it probably was KRUX. Didn't play many ID's but they sure had good music, hi. I also finally received my First Class License. 73 & Best Of DX.

LARRY B. GODWIN - 5421 South Clinton Court - Englewood, Colorado 80110

Hi gang. DX seems to have slacked off here. Deep S. America isn't as strong as in February, that's for sure. But April is sometimes a good month for DU reception. I second Bob Jacoby's comments on return postage. It's a club policy that RP should be included with every report. (This usually takes the form of a 15 cent International Reply Coupon for stns outside the US & Canada). I hope the Constitution and Bylaws that were distributed in the 3/8 issue will be read & kept handy for reference. They, & the Editorial Policy, are truly the backbone of our club. Good DX and VOTE!

TOM MANN - 1805 E. Elmdale Court - Milwaukee, Wisconsin 53211

I had better introduce myself for the benefit of the newer members. I am twenty-nine years of age, and stand 5' 6" tall. Started SWLing in Jan. 1957, when I joined the NNRC, & now I belong to quite a few radio clubs including the IRCA. My receivers include: Zenith Royal 3000 T-0 and Zenith table model C730 AM/FM with AFC to prevent drifting on FM band. The Royal 3000 T-0 has AM/FM plus short-wave. They both have built-in antennas. WONE-980 in Dayton, Ohio is now cw mx twenty-four hours a day. The QTH of that new station on 990 khz in Wisconsin Dells, Wisc. is Mr. Obed S. Borgen, 1710 11th Ave, N.E., Rochester, Minn. in case any of you want details. 73's.

BILL NITTLER - Box 112 - Englewood, Colo. 80110 (HQ-180)

Here we are in year #6! It's interesting that some of our members who yell the loudest about censorship never have much to contribute in the way of DX tips which is the name of the IRCA game! I find it very easy to send a report out each Tuesday...it's easy if you put yourself on a schedule. This eliminates the need for a 30 or 40 line report once every six months! Bruce Portzer: I think if we're going to list DX RECORDS regularly, all DXers have the right to be on this list & not just those over 10, 20, or 30 countries...let's leave it the way it is. The new DXers like to see their totals grow, too. V/1 from WBAA-920 DX lists reports from 36 DXers with mine the furthest west. A very friendly station over the years! No needed veries in for some time now, but then, nor reports out either. 73. (Your weekly reports to column are very much appreciated, Bill. I wish all DXers would do the same. -ldB)

JOHN C. JOHNSON - 625 Park Street - Sheridan, Wyoming 82801

Gratitude is the most exquisite form of courtesy. Hi gang, well, back in good ole Wyo. again. No DX for reporting yet, as am still busy taking care of things that have piled up for me to do. Hi. Just wanted to say Happy Anniversary to the IRCA. IRCA remains another year. Of course, we all knew it would, why not? No DX like I say, but have been hearing a few news items on the dial around here, so there is DX potential, & will sock it to 'em soon. But, for now, IRCA, Congrats on making it through another wonderful year -- of course DX POWER makes IRCA stay! 73.

Seems that some DXers got mixed up and thought the Anniversary Issue was the 3/22 one rather than the 3/15 one. All reports here in time for 3/15 issue were printed. -ldB

PERCY R. KESTEVEN - 13112 - 134th Street - Edmonton 44, Alberta, Canada

Veries: v/1 CKCR-1340, CKXR-580, WXCL-1350; v/q WPTR-1540, CJGX-940 (two veries within a few days for reports outstanding for many months, v/s H. Kerr, he may be catching up on his mail so it might be a good idea to wait awhile before sending a f/up if CJGX is outstanding in your books), CKDM-730 (v/s Allen Watson, same info here as in CJGX); v/pp KLIF-1190, CFRB-1010 (on two reports in past they veried SW reception so I got fed up, hi), KUTI-980. In your Forum reports the use of the frequency along with call letters mentioned in any context is helpful to other DXers. I support the 15 line limit per club rules. Sure, there are times when a member goes over and the editor lets him but these times should be rare & the report of a nature & value to warrant it. Otherwise, why not stick to 15 lines--you can always send in a report to be split up and get in every issue for 60 lines a month in winter, which is generous by any standard. 73's.

LYNN D. BROOKS - 2109 Mary Street - Ponca City, Okla. 74601

After seeing the 3/1 DXM with 3 pages of DX Records & a page on Idaho radio, I can't in good conscience cut someone's report down to 15 lines. So I urge you to do your best to maintain a 15 line limit on yourself, as I will not cut a report unless the guy went completely overboard & made it 30 or 40 lines. With 3 pages of DX Records each month, that is 36 pages per year (or almost equal to 2 normal size bulletins). I have serious doubts that the column is worth that kind of money. I'm sorry to see that the tape situation was not resolved. Leaving it up to the Chairmen involved can only lead to confusion. What happens if our present Achievement Awards Chairman decides to count tapes as veries, & then he resigns & the next one does not count tapes at all. Then what good is the award if the regulations for obtaining it are not consistent. No DXing done in last 6 weeks, except for TESTS, due to illness, etc. But from now until summer, I will hit the dials hard. Need some more points for the contest, hi. I urge everyone to think seriously about the upcoming elections. Our elected govt. is what makes this club great. It's a shame that our two fellow BCB-only clubs don't have enough sense to realize this. Since merger fell through, NRC leaders have done nothing to indicate that they want an elected govt. But during merger talks they seemed to be all for it. Doesn't make sense, does it? 73's.

Publisher's Note: As an explanation to Lynn Brooks and others complaining about the space occupied by Foreign DX/Domestic Records, please realize that these pages are run when there is nothing else on hand to run. The cost of 500 sheets of paper for Idaho Radio History (1 page) and Foreign DX/Domestic Records (3 pages) was approx. \$1.50. If these were not run and the bulletin was mailed with just 8 sheets of paper, the wasted postage would have been valued at over \$4! Those of you who think you can come up with something more valuable/interesting, you'll receive the genuine appreciation of the publisher who simply doesn't have time to sit down and type four stencils at the last minute and still publish the bulletin, prepare and mail it and then go to work the next day. Such articles (if not already stencilled) should be sent to: Jim Nall, Special Features Editor, 606 North Hite Avenue, Louisville, Kentucky 40206. If you can/want to, by all means type the stencils and send them to pub. hdq. They can then be kept on hand to fill out the page levels (20, 34, 44) so that the best use can be made of postage. If you have something for which offset printing is the best medium of reproduction, this can be done both economically and very quickly if the type-written or drawn matter is sent in. Do it now and help make IRCA an even finer club in the years to come. -Pub.

Orders for IRCA red, white and blue stationery should be sent to Bill Nittler, P. O. Box 112, Englewood, Colorado 80110 with \$1.30 per 100 sheets postpaid. Please use only check or money order. You may not care if you lose a dollar in the mail once in a blue moon but by sending cash, you put an added responsibility on the recipient of this money. Orders for DEXs, IRCA Report Forms, Prepared QSLs are NOT being accepted at this time as supply is exhausted. Those orders on hand will be processed as supply becomes available. IRCA emblem rubber stamps are 50¢. All items mentioned except stationery are mailed from 6059 Essex Street, Riverside, Calif. 92504. -DEE

CEC STRIKE? Mark Robinet says the following: "Hope for a CEC strike is high. ARTEC is taking strike vote, on lack of contract since 3/31/68 and supervisory personnel who would keep the stations going in the event of a strike say their union, NABET, may honor the picket lines...." -Mark Robinet

KRUX DX A letter sent to Ray Thomson at address given on KRUX program but to Phoenix 85033 has netted no reply to date. Suggest you try 100 W. Clarendon, Phoenix, Ariz. 85013 per DKK, ERC and NRC log, if you haven't mailed or re-mailed report. Hopefully PSL will have additional info next week.

KFML DX was right on sked with a 50% readable signal in Riverside (Bill Powers/DEE) despite Mother Mary, Brother Al (AFL?) and the likes on KGER Long Beach. Regular IDs and cycle tone (test tone) made this one likely over much of the West.

KFSC TEST was very likely not on, at least at the time and date scheduled as the frequency was quite clear and not a peep was heard of normally easy KFSC. If this test is re-sked, it stands a good possibility of setting distance/power records for 1968-1969 CFC programs.

Mail Service In a word: ROTTEN. The computer labels for this issue took 4 days via air mail from Portland. Several other routine items have required a surprisingly long delivery time. Worst, of course, the Anniversary Issue via third class mail was Phoney Express at its best. If you did not receive that issue, first make sure you renewed your membership on time! Then, if you receive bulletin first class or air mail, drop pub. hdq. a pc at 6059 Essex St. If you receive it by third class, about all that can be done is to wait. They almost always show up though FO takes a few extra days/weeks.

Renewals A lot of members who are not receiving this issue are probably wondering why. They forgot to renew! Repeatedly, early renewals have been sought, requested, and begged but often to little avail. If you want to make sure you don't miss an issue or receive it late, renew several weeks in advance. Three months before exp. is not too early to think about renewing. It doesn't cost a cent extra! If you miss issues by renewing late, back issues are available as supply lasts for 25¢ each postpaid. Send requests to 6059 Essex St. If you should fail to receive an issue or get a blank page, replacement will be made as soon as possible after you write pub. hdq. -Don Erickson, Publisher

Achievement Awards Committee Some changes have been made and others are being considered for AAC. As soon as everything is ready, the RULES FOR APPLYING will be included in an issue of DXM where space permits. The reaction to the certificates already received has been excellent; don't wait another minute. Dig out your rules and apply now! If you need another set of rules, drop a pc to DEE. Several more certificates have been awarded since the last list appeared in DXM and these will be enumerated here:

Series I, States Award

Richard J. Nall, Jr. (30)	Larry M. Abraham (30)
William Wall (30)	Alan Merriman (40)
Charles Sadoian (30)	Dennis Williams (20)

Series II, Provinces Award -- Alan Merriman (10)

Series III, Countries Award -- Alan Merriman (70)

Series IV, Total Stations Verified Award

Richard J. Nall, Jr. (100 and 200)	Brian Williams (200)
Larry M. Abraham (100)	

Special Award, Verified All Continents -- Alan Merriman

March 22, 1969

WEST COAST DX ROUNDUP

Page 15

Editor: Don Kaskey Hotel El Rancho, Box 235, West Sacramento, Calif. 95691

Deadline: Saturday morning. Stencils typed Saturday's at noon.....

- *****
- 540 KVIP CALIF. Redding, Still off the air at last check on a.m. of 3/15 (DKK)
 - KNOE LA. Monroe, Vy wk w/NX & rr 0632 3/3, u/CBXQ/XEWA OC's (BW)
 - 550 KOY ARIZ. Phoenix, Good o/KAFY w/rr & many SID's 0430-0454 3/3 w/KARI off, maybe they've seen the light? (BW) ERBA strikes again-(ed)
 - KRAI COLO. Craig, testing with a stated 5 kw(?) (have they changed day power to this?) -yes-ed; coming in over KAFY/KOY at 2015 3/3 (BL) Bill your times have me a bit confused, is 8:15 PM EST correct??-ed.
 - 570 KVI WASH. Seattle, good sig 0658 3/10 with KLAC off. (Lis)
 - 590 KFXM CALIF. San Bernardino, off MM 2/24, back around 0620 w/OC (DEE)
 - ???? UnID. TT here 0425 (tune-in) to 0430 3/3. KSUB r/c?? CJOR killed chance for ID. (BW) Very likely it was KSUB Brian (ed)
 - 660 WESC S.CAR. Greenville, finally got definite ID @ s/on 0630 3/4. Used long choral SSB (3 min). State #40. (BW)
 - 690 KKUA HAWAII. Honolulu, Strong w/rr 0545 3/4. XETRA off for short period, but OC on. Also a weak EE there (BW)
 - 690 XETRA B.C.N. Tijuana, off 0630 MM 2/24 (DEE) Also noted off 2/25 & as BW notes for a short period on 3/4. Wish they would make this SP regular (ed)
 - 730 KLOE KANS. Goodland, Very good 0806 3/10 w/NX & WX until KVOD s/on 0818 (Lis)
 - 780 WBBM ILL. Chicago, ET/OC/TT 0602-0630 s/on SSB on 3/3 (BW)
 - 860 KTRB CALIF. Modesto, Noted 2/18 at 1230 when XEMO was off (BL)
 - WDMG GA. Douglas, s/on 0545 Tues. 2/18 w/KONO off as usual. (DEE)
 - 870 KIEV CALIF. Glendale, Noted 2/18 at 1230 when XEMO was off. Vy strong (for 250 watts) with much splatter. (BL) Bill they have increased to 500w-ed.
 - 930 KSEI ID. Pocatello, Above both KHJ & CJCA w/rr 3/7 at 0208 (DC)
 - 960 KNEZ CALIF. Lompoc, Solid S-9+ 3/8 @ 2124, no sign of KABL even with DF (DKK)
 - 980 KFWB CALIF. Los Angeles, 2/26 @ 0015. Poor sig due to KOMO slop. (DC)
 - 1030 WBZ MASS. Boston, Fair 0308 3/8 o/u XEQR til 0358. 1st time heard (Lis)
 - 1090 XERB B.C.N. Rosarito, 3/1 0230 w/fair sig & KING off (because of nearby fire) Hrd Wolfman Jack again. KING was off for about 45 min to an hour (DC)
 - 1150 KGKY ARIZ. Coolidge, DX Test 0245-0545 2/24. KRKD not in at all until after 0315. In a solid 50db. Have noted that they are in here every night o/ KRKD, probably due to directional pattern being off. (BL)
 - ???? UnID. Who is this? I heard call twice (C-K-C-Y---1150, ID) with C&W mx, o/KAYO from 0210-0214, then u/KAYO, this on 2/24. Ideas????(PM) You most likely had the K C K Y DX Pat, sked was 0200-0800 (ed)
 - 1170 KOHO HAW. Honolulu, thru KVOO 3/10 0400-0434 s/off. JJ pro but EE s/off ancmt KVOO kept having difficulties & going on/off the air. When off KOHO had a very nice readable signal. Rpt sent (DKK)
 - CFNS SASK. Saskatoon, vy gud w/mx, ID "R. Onze, Soixante-Dix" & FF Comedy Pgm 0810-0825(KPUG s/on) 2/24. Hrd on tip from JEP (BW)
 - ???? UnID. Hrd at 0150 (no date given-ed) behind KLOK with BKB game, KPUG?(DC)
 - 1180 VOA FLA. Marathon, Fair with SS pgm 2250 3/8 until s/off at 2300 (Lis)(Lis)//
 - KOFI MONT. Kalispell, Good w/some fading 2332 3/8 w/a HS BKB game. Mx at 0018/
 - 1220 ???? UnID. ET/TT loud w/CKDA 0229-0250 MM 3/3; looped NEE; no IDs (mbn)
 - 1230 KRDR ORE. Gresham, s/off no anthem 0305 MM 3/3. Almost certainly AN-6 (mbn)
 - KWG CALIF. Stockton, s/off male chorus SSB 0306 3/3. 1st time hrd since moving to Portland. (mbn)
 - KQIK ORE. Lakeview, r/c w/TT, mx, voice & code IDs 0310-0340 tune-out (so prob ET as well as r/c) MM 3/3. Now only 3 Orygun stns unhrd here. (mbn)
 - 1240 KROY CALIF. Sacramento, ET 0639 MM 2/17 (DEE) LBG, KROY had been going off on MM for about 2 months until last MM 3/10 when I noted them AN again (ed)
 - 1260 KTEE IDAHO. Idaho Falls, s/on 0758 MM 1/20 w/SSB, fair sig after KYA s/on a minute earlier. Much QRM. (DEE)
 - WNDR N.Y. Syracuse, Gud w/NX, WX & rr Mx 0530-0540 2/26. KYA off that a.m.(BW)
 - 1270 CHWK B.C. Chilliwack, 3/8 @ 0308 w/s/off for both CHWK & CFVR-1240. Ann as being owned by The Fraser Valley B. Co. (DC)
 - 1290 KGVO MONT. Missoula, w/NX then a C&W rcd on 3/4 at 0810. (PM)
 - KOWB WYO. Laramie, Strong ET/MX/TT/OC tune-in 0446-0450 when apparently off. This on 3/4. Frequent IDs-voice, same as on DX. (BW)

- 1310 KBUZ ARIZ. Mesa, In slightly with XEC off 3/9 2005 SSS. Probably hadn't lowered power (BL)
- 1320 KBLU ARIZ. Yuma, In o/KUDE & traces of KCPX at 1955 SSS 3/9 (BL)
- 1330 KCLM CALIF. Redding, New calls for KAHR. Hrd w/C&W mx till 2115 s/off 3/8 (DKK)
- 1350 CKLB ONT. Oshawa, w/PSA for "Education Week" 0658 MM 3/3, right before KKAM s/on. New logging (DEE) A dandy-(ed)
- 1360 KRUX ARIZ. Glendale, Strong on DX. U/gnd rr & freq ID/Promos, 0518-0540 3/3 (BW DX Test coming in 55db 0537-0550 3/3. Seemed to up 15db after 0536.(BL) Good on DX 0502-0600 3/3. Seemed to increase power to 5 kw at 0512.30, but such a good signal it was hard to tell. (mbn) //(BL)
- 1370 WSPD OHIO. Toledo, In well u/UnID TT & OC (KEEN or KREL in 45db) @ 0430 3/10//
- 1390 KSLM ORE. Salem, Beautiful here with mx o/everything else, from 0402-on 2/17 (PM) In well on DX 0335-0425 MM 2/17 w/mx & NNRC history. This hrd in Sacto at ERBA. (mbn)
- 1400 KRPL ID. Moscow, MoR 0352-0359 s/off choral SSB MM 3/3. Ai Net. (mbn)
- KBMI NEV. Henderson, AN w/psych mx 0400-0431 MM 3/3. Heavy echo on IDs makes it tough here, despite good signal. (mbn)
- KEDO WASH. Longview, s/on quite loud 3/11 @ 0757, topping KART et al (DKK)
- 1410 CFUN B.C. Vancouver, was off MM 3/3, but only WING heard (BW)
- 1420 KSTN CALIF. Stockton, Fair 0550 3/8 w/rr. Much KALI slop. (Lis)
- 1440 KODL ORE. The Dalles, w/Test, local type sig, used TT & IDs, 0405-on 2/24 (PM) Noted OC on/off 0331 2/24 w/Test in 38db. Over unk Mex. & stn w/TT.(BL) Hrd on DX w/TT & IDs 0325-0340 MM 2/24. Post ERBA Celebration made rpt impossible. KEWI hrd after.(mbn) v/ltr rcvd 3/15 for this TEST (DKK)
- 1450 KVML CALIF. Sonora, 1st time hrd, 3/9 u/KZIN 1200-1230 w/relig pro. ID at 1230 then into soft mx. Can here 3 stns daytime on 1450 w/loop (DKK)
- KYET ID. Payette, hrd at s/on 0800 3/4 o/others til 0803. s/on with SSB (PM)
- ???? UnID. ET or f/c 0438-0450 3/3 when appeared to go off. No anncts, u/KTIP
- ???? UnID. rr stn 0453-0500 3/3 u/KTIP--only audible after tester went off. 1 unreadable ID @ 0454.30, but I blew it. (both above from mbn)
- 1460 WCMB PA. Harrisburg, s/on Vocal SSB o/UnID NX 0500 3/3. WX @ 0501.30 then interview pgm. My 1st decent Pa. (BW)
- GJOY ONT. Guelph, s/on GSQ 0503 3/3 o/WCMB. Played SID & Marty Robbins C&W. Not in well enough for a report (BW)
- 1480 KYOS CALIF. Merced, 3/8 0244. Hrd every night after KRED s/off 0213. Signal alternates w/KWIZ (DC)
- 1490 KBZY ORE. Salem, 3/8 0243 w/Ore. State BKB. In good o/KLOG etal w/KBRO off(DC)
- 1500 KXRK CALIF. San Jose, 3/5 0214. Gd sig w/both CKAY & KSTP off. No sign of KBBQ
- 1510 KGA WASH. Spokane, On 3/3, off 3/4. CHQM spur there anyway (BW) (DC)
- 1540 KBUY TEX. Ft. Worth, Way u/KPOL SM 3/2 0715-0725 w/relig. pgm. (BW)
- 1550 ???? UnID. Somebody came on suddenly 0630 SM 3/2 w/organ Mx-then said "--WR--- Radio is pleased to present---services from Sunrise Baptist Church". Faded u/XEBG shortly after. WOKJ not on til 0700. Miami info op said no such Church listed there. Who wazzit?(BW) KOKA s/on w/Organ Mx daily-ed
- KRGO UTAH. S.L.C. atop KKH1 3/8 @ 2030 s/off. No sign of KOPY on RS as yet(DKK)
- WOKJ MISS. Jackson, s/on w/SSB 0600 MM 2/10 o/KOKA (DEE)
- 1570 KOLS?? OKLA. Pryor, MoR u/XERF 0734-0745 SM 3/2. Annct at 0737 said "This 1/2 hr of brought to you by" Temp was 49 deg, Sounded like Pryor(BW)
- KCVR CALIF. Lodi, ended ET 0420 3/3. Good o/u CHUB (BW) (BW)
- 1590 KVGB KANS. Great Bend, Vy good o/KLIV/?? 0702-0732 3/3 w/C&W/MoR/detailed WX/
- 970 KVEG NEV. Las Vegas, In well w/MoR @ 1950 SSS 3/9 (BL) Sorry its out of place(ed)

CONTRIBUTORS*****

- DC---Dave Christensen, 3434 39th W., Seattle, WA. 98199 SX-130 w/50' LW
- DEE--Don Erickson, 6059 Essex St., Riverside CA 92504 ARB Navy Surplus, 6 tubes
- DKK--Don Kaskey, Editor HQ-140-X 4x2' leaning Kenney-Loop + hearing aid
- Lis--Andy Lisowski, 2034 Fair Park Ave., L.A. CA 90041
- BL---Bill Lipis, PO Box 325, El Cajon, CA 92022 Navy Surplus RBB w/TV Mast 30' ant.
- PM---Pat Martin, 1130 5th Ave., Seaside, OR 97138
- mbn--Mike Northam, PO Box 605, Beaverton, OR 97005 HQ-140X, 43" Loop & lotsa guts
- BW--Brian Williams, 2554 Yale St., Vancouver 6,B.C. Nord Mende 6/612 C 40"NRC Loop

Gentlemen, it's getting rather weak of late. More reports requested. Please have reports here by Sat a.m. Welcome to our new Arizona member Jerry Mander...Touche.....

Editor: Robert J. Jacoby, 556 E. Alvarado St., Pomona, CA 91767
Donald K. Kaskey - Hotel El Rancho - Box 235 - West Sacramento, CA

Recent veries have raised total now to 1898. v/1 CJVI-900, KEST-790, KTNT-1400 KXIV-1400, KBLF-1490 and a QSL from KINY-800. Since 2/1 DX has been very sporadic but am ready to go at it in good measure again now. The recent ERBA meeting was another good time with 28 attending. Highlights were the pool tournament. mbn won the singles & joined with Saralie to cop the doubles. Frank Kennedy won the DX Quiz with 20 of 24 correct. The bobsy twins (Seaver-Krejny) combined to get the best score on the Crossword Puzzle. The ERBA sessions end in about a ten way tie. Attending were Bruce Bacon, Saralie Bush, Rich Coday, Don Erickson, Clarence Freeman, Bill Fox, Gary Jackson, Bob Jacoby, Don & Bob Kaskey, Frank Kennedy, Don Kenney, Jim Korn, Ed Krejny, Dave Kulka, Andy Lagomarsino, Bob LaMotte, Gene Mattocks, Randy Miltier, Lance Muller, Mike Northam, Father Jack Pejza, Bob Pietsch, Dave Prather, John Richards, Ron Schatz, Randy Seaver, & Ben Veio & the Mrs. Elections coming up soon. Nominate your favorite DXer for something. ERBA promises a slate of hard-to-beat candidates.

Bill Lipis - P.O. Box 325 - El Cajon, CA 92022

Thought I would mention some alternatives to SRDS. First, is a magazine published by Harbrace Publications Inc., 71 Vanderbilt Ave., NY, NY 10017. The name of the magazine is Top 50 Markets 1968. It costs \$2.50 a copy or \$5 a year. It contains AM/FM/TV rates, news dept. info, and formats on the the top-50 markets arranged by mkt. Another fine publication is Radio Programming Profile which is published by BF/Communication Services Inc., 7 Cathy Court, Glen Head, NY 11545. This quarterly publication covers only the top-100 mkts (only AM stn data) and gives rates, news dept. info, format, and most importantly, a history and PR bit on each jock! Each page of the book contains two stns and it is some 900 pages thick and sells for \$50 a year. Excellent for finding out where different DJs have gone, etc. KGYN veriß back, but no time listed. Anyone who uses 6SK7's or their equiv. should check into buying a couple 717A tubes which are a direct replacement. These are extremely high gain tubes and sell for 25¢ at any cheap surplus store. They are pretty hard to find though, but well worth the effort.

Michael B. Northam - P.O. Box 605 - Beaverton, OR 97005

Greetings, group. DX activities have taken a downswing here lately (ever since ERBA, for some reason!) with little time being spent at the dials. Have been listening for the Specials though, with fairly good results. Welcome mat goes out to two new Oregon members: I.H. Pepper and Kevin Slater (Kevin is the one who arranged the fine KSLM-DX for the NNRC). There are now nine Oregon IRCA'ers. Veries in include: v/1 KPRO KSLM-DX KOHU. v/q CJGX a long time non-verifier which now has a fine-looking QSL card--gettum while they're hot! In the meantime I've cut my Oregon unheard totals down to three: KVAS 1230 kHz Astoria (also closest unheard at about 80 miles), KBRR-1340 North Bend (which Kaskey continues to hear, darn him), and KLBM-1450 LaGrande (which Kaskey has VFied). All others have been heard (and this includes all call/fre location changes since I started DXing in 1966). There are currently 83 Orego stns on the air, by the way. Hope that someone can take over the planning for the Hollywood get-together Memorial Day--it should be well-attended. MIDDLEBURG HEIGHTS IN '70. 73 and DX.

Reid Wheeler - 702½ Pleasant - Walla Walla, WA 99362

Just finished Heath GE-125 "Q" Multiplier for super selec on my Halli S-38E. Doesn't kill the gain but it's tricky to use, espec on reject notch mode. Still have green-eyed envy for HQ-180 & up bunch. Also finished a TRF sig booster from Pop Elec Feb '61 issue. Bulkier than an FET job and requiring an outside power supply, still works good w/careful tuning. Typically req. careful RF wiring practice for best results. The shack looks lile a snake pit with all the cables running around. Recent veries are KBOI, KSND, WLS, KPNW, WSM & KPOJ. Only one holdout for 100% veries. That is KTIL. Believe DX Rec should be separated into "heard" and "verified" with emphasis on the veries. Have heard a heck of a lot more than I have attempted to verify, due to poor reception, strictly locals, or being 50,000 watts beamed into your ear from across the state line. The strong ones are no challenge but I always hope for the weak ones as there is some real DX under the QRM. Those are the ones to try toverie. 73 from a confirmed rag-chewer. Tnx.

Hi Ya All. I have been enjoying the DXM as always, and it is nice to see all you new members in the club. Welcome aboard! I feel that DEE has the right to go on the warpath if he wants to, about these long reports. If you want one page put aside for each member, you should expect an increase in the dues. Think about this: what if DEE got feed-up and quit. We then would be without a publisher, wouldn't we? Where are we going to find someone to put in all the time that he does? We should be very thankful that we have someone to do all the work for the club that he does. I feel that DEE is one of the most valuable members we have in the IRCA, so I would suggest that we start appreciating him, instead of tearing him down! Congrats to the Godwin family on their new baby. The IRCA has a new DXer! New veries: KWSO-1050, 3LO-770, KFAR-660 (their 1,000 watt tx), & CJGX-940. The KODL & KSLM tests were beautiful here. I think I'll add a Q-Multiplier to my receiver this coming summer, as the KSWB slop is awful. Well good DX to all. 73's till next time.

Raleigh Biss - 2541 Sunny Dunes Rd. - Palm Springs, CA 92262

If I expect to get any report out to the DXF it better be now. Very little DX this season--too busy a work schedule, so something has to suffer. I have been doing some listening during MST and PST sign-on times with fair success. Am working on KKOK and KRML both needed on 1410 kHz who come in about even with KERN. KERN signs on at 9:00, KKOK at 9:03 and KRML about 9:05. Haven't gotten enough for a verie on any one morning, but hope for better luck tomorrow morning. Recent veries include KDHN-1470 Diminitt, Texas for 7:00 AM sign-on 2/9, KGHO-1560 for s/on 9:00 AM 2/9, KNEW-910 regular after midnight and KYXI-1520 the same. Reports out to KTOM-1380 and KASA-1540 both on 9:00 AM s/on (all times EST). Best wishes to all.

Douglas Pearson - 2896 Yale St. - Vancouver 6, B.C. Canada

Greetings IRCAers and a special hello to Ken Lyon. Well I really don't know exactly what to say but here I am in the IRCA. It's great. Keep up the excellent work all. I am 21 and have been DXing for over a year now on SW, and just under a year on BCB. I have a Lafayette HR40 and use an NRC loop. First BCB verie was good old KNBR. Latest veries, slow as they were in coming: KWRC (Test), KDKA, WHAM (2nd N.Y. verie), KMJ, KOB, XEMO, WCCO (six monthes wait), WSB (state #19) and KCPX. Things have been rough all over in mail service, hence few veries. The major gripe being my confound rec'vr, which has been going on and off the frits for the past two monthes or so. Any comments on this type of rx. Until next time, Best of 73 and Good DX from XM 11 1319. (Welcome to the DXF, Douglas. Report often!-BJ)

Dave Christensen - 3434 39th W. - Seattle, WA 98199

Airwaves have come alive with three new loggings. KHVH-1040 with a little WHO QRM, but not enough for a report. CJCA-930 Edmonton which makes three stations on 930. Rpt sent to CJCA. KOH-630 Las Vegas, my first from Nevada. (KOH is in Reno, Dave-BJ.) Latest veries: KORL-650, WHO-1040, WCCO-830, XEMO-860, XEG-1050, and last but not least KOB-770. I want to thank all members for nice welcome they gave me into the club. Ken Lyon (EDR) sent me nice p/c. Terrific DX to all. 73's.

Bob Jacoby - 556 E. Alvarado St. - Pomona, CA 91767

Greetings men! Well it's the same old story here with no veries in for another week. I have been sending out reports, honest. Hopefully this situation will change soon. Recent DX here has included the s/off of KSLM-1330 (ex-KAHR) Redding, Calif. and KVLV-980 Fallon, Nevada. These are two veries that are much needed here. Congratulations to DEE for putting out that great anniversary issue unassisted as usual. Don does a fantastic job week in and week out. I quite agree with Pat Martin above. Before you criticize DEE, take a look at the job he does every week and see if your efforts on behalf of the IRCA can even approach DEE's. In my opinion Don is the main reason why the IRCA is the number one BCB club in the world. The past few weeks I've noticed a lot of reaction to Phil Sullivan's comments. Come on guys let's don't all jump on Phil at once. After all we must assume that Phil is a loyal club member, and when he criticizes he has the best interests of his club at heart. Well I'm about to the fifeteen line limit, hi. See everybody in a week.

Editor: Father Jack Pejza, 12096 Ventura Ave., Ojai, Calif. 93023
 Telephones: w/tape recorder: 805-646-1464; Dorm phone, 7-9 PM PST Su-Th: 805-646-9183.
 Deadline: Saturday before publication; use EST in reports, one side of page.

+++++

Listeners' Logs-- East Coast

- 540 HJKA Colombia Bogota heard 0530-0540 3/11 w/Horizonte IDs. Rather late for SA reception, isn't it? (AMG) (I'm not certain what time sunrise would be at that latitude at this time of year, but it would seem to be close. FJP)
- XEWA Mexico, San Luis Potosi, continues to be heard nightly 2100 here. (AMG)
- 590 CMW Cuba, Havana dominates channel every evening AN n/w. Power increase? (AMG)
- 725 TGN Guatemala, noted on this frequency on 2/1 2310-2331 s/off with EE religious programs. Not heard here since so apparently they had transmitter problems this evening. Excellent signal. (AM)
- 773 RNE Spain, San Sebastian, heard 2/24 at 0158. Time pips on the hour. Country #48 heard. (BER)
- 780 ZBVI British Virgin Islands finally logged on 3/1 0500-0535. Mostly very poor; program called Morning Devotions, w/gospel mx and dedications to 0530; then I lost them for two minutes when they defied all DX laws by fading up for a very clear ID, taped. Most welcome as country #82. (AM)
- 810 HJGY Colombia, Bogota, R. Suttatenza with a powerful signal over-all, 2/28 from 2115-2205, long drama, complete ID at 2115, news. Taped report sent. This must be the 250 kw transmitter that this one is supposed to get. Fully as strong as PJB, noted several evenings since. And the high power race in the New World escalates! (AM)
- 818 ???? UnID, definite carrier, but no audio, 3/8 approximately at 0015. (BER) (Could be either Andorra or Egypt possibly. FJP)
- 833 British Honduras, Belize finally heard u/loud hum (due to WCCO?). 3/8 2200 w/BBC news, weather, 2215 Latin American review. Report sent. Country #10.
- 836 RTF France, Nancy probably the carrier 3/8 0030; why is it that the carriers of many TAs make it, but the audio doesn't? It's hard to believe that all the TAs would have poor modulation. (BER)
- 840 HJBI Colombia, Santa Marta, Onads del Caribe finally reported 3/4 on late, 0030-0045, excellent signal and gave address as Apartado Aereo 757 on the air, apparently asking for reports. (AM)
- 910 CM-- Cuba, Radio Musical heard loud 1/26 with many pips and IDs, 0450-0503. (QKB) (RFS List gives CMJB, Camaguey, 1 kw.)
- 1165 ???? UnID weak carrier at 2355, off at 0000, on 3/7. I've never seen anything listed, and it hasn't been heard since. (BER) (OAX61, nominally 1250, was reported here last year. WRTH lists 500 watt HCUE6 also. FJP)
- 1200 HIDV Dominican Republic, Santo Cerro, a surprise 3/12 2013-2031 w/Radio Santa Maria IDs after every selection. A much wanted for a new country. (AMG)
- 1403 RTF France, synchros. Strong carrier but too much 1400 splatter, and again, no audio at all. I'd love to add this one to the log! 3/8 0025. (BER)
- 1439 ???? Luxembourg might be the strong het here 3/7 2342 and on. Thought I had some audio once but maybe not. WCHB splatter made things impossible. (BER)

Mid West

- 540 ???? UnID SS noted here AN MMs 3/10 and 3/3. Very weak and unable to understand speech. Who? (PRK) (Regulars here are XEWA, HCFA2, HJKA. FJP)
- HCFA2 Ecuador, Guayaquil is up to 10 kw, per Dave Gleason. (LBG)
- 750 HJDK Colombia, Bogota noted here with fair to good signal AN MM 3/10. Not needed. (PRK)
- 830 4VEC Haiti, Cap Haitien was surely the one with organ music MM 3/10 at 0448 followed by s/on in FF with much QRM from WCCO. Mad marches at 0513 followed by FF announcements. Some QRM from CMCA which s/on 0459. Tentative sent.
- 840 HJBI Colombia, Santa Marta again AN MM 3/10 so probably a regular. (LBG) (LBG) In with a fair signal 0300-0430 3/10. Either my non-existent SS is

- 840 contid getting better or the announcer is speaking at a half decent pace, cause I was able to make out the ID clearly! (PRK)
- 870 HCN2 Ecuador, Guayaquil, "Radio Cristal" weak with ID at 0358 SM 3/9 while trying for something better. Announced power as 20 kw; hard to believe. Isn't this one supposed to hange frequencies? (LBG)
- 890 ???? UnID ET with Latin-type music 0200 MM 3/10; don't think it was WLS. (LBG)
- 905 HCD02 Ecuador, Guayaquil "Radio Espectaculo" is a new 5 kw station here, per Dave Gleason, having begun operations 10/28/68. Plays all kinds of international music, from instrumental to rock. One to watch. (LBG)
- 912 HJ-- UnID Colombian (I think) AN MM 3/10 with a couple of announcements mentioning Colombia. Man and woman announcers. Anyone ID? (LBG)
- 995 HCEW2 Ecuador, Guayaquil was surely the one I heard 12/5, not HGGH1 in Quito as I had thought. Per Dave Gleason, there is no Quito station on 995. The date of my reception was the anniversary of Quito's founding, and it must have been HCEW2 with a special program dedicated to Quito. (LBG)

West Coast

- 670 China here with talk 1030 2/24, QRM from KBOI, which was poor. (FM)
- 690 KKUA Hawaii, Honolulu with rr on 2/11 from 1015 stop XETRA. Good signals. (FM)
- 700 JOFB Japan, Hiroshima with talks in JJ, 0435 2/24. Wasway over SS. (FM)
- 770 3LO Australia, Melbourne, with drama 0440 2/24 very strong signals. (FM)
- 775 ???? UFO here with talk in language 0511 2/24. Ideas? (PM) (Art Peterson's Oriental log lists nothing here. FJP)
- 820 China here with music 0422 2/24. Very strong. A good bet for those who don't have China yet. (FM)
- 830 CMCA Cuba, Havana heard with s/off 2304 2/16, S-9. (DV)
- 840 HJBI Colombia, Santa Marta heard 0225 3/4 with fair signal. (DV) //(FM)
- China with music; WSWG says Hardin Province. 0543 2/24. Weaker than 820.
- 880 HLKI South Korea, Taejon rqrther weak with minister and religious programming 0505 2/24. (FM)
- 890 5AN Australia, Adelaide with classical music 0500 2/24. Very strong. A good bet for those needing Australia. Stronger than 4QD. (FM)
- 1020 ZOO Tonga, Nuka Alofa mixed with KSWs at 0210 after news. Good signal 2/4. First time heard in three years! (FM)
- 1375 Asiatic RSFSR, Vladivostok heard 0705 3/10 with fair signal and what I believe was Russian. (DV)
- 1420 XEYX Mexico, Tijuana, with mixture of big bands and ranhero mx 3/10 0240. (FJP)
- 1460 JOWF Japan, Sapporo with talk. Very strong with KDON and others off 0445 2/24. Reported. (FM)
- ???? UnID here in Portuguese along with Japanese 0445 2/24. Quickly faded under Japanese. (FM) (Several Brazilians here. FJP)
- 1475 Asiatic RSFSR, Vladivostok heard with Radio Moscow EE program 0630-0700 then into unid language 3/10. (DV)
- 1500 KUMU Hawaii, Honolulu heard at 0400 2/3 with weak signal. (DV)

Verifications

- 640 CMQ Cuba, La Voz de Cuba verified my 5/1/68 report with a very friendly personal letter from the Dept. of International Relations. Signer is J. Miranda (or similar). I sent the report to LV de Cuba hoping that they would answer, and it worked. Address: Apartado 60-17, La Habana. (BER)
- 773 RNE Spain, San Sebastian verified in 2 weeks w/card, travel folder, pennant, and 3 different RNE program skeds. Sent report to San Sebastian, not Madrid. (BER)
- 850 KICY Alaska, Nome v/q received for reception of 8/10/68. Sorry they had misplaced my report. Asked to keep my tape; first Alaskan. (DV)

Reporters

- | | | | |
|-----|-----------------------------------|-----|---------------------------------|
| QKB | Quentin Brown, Ottawa, Ontario | FM | Patrick Martin, Seaside, Ore. |
| AMG | Angel Garcia, Bronx, N.Y. | AM | Alan Merriman, Fairfax, Ore. |
| LBG | Larry Godwin, Englewood, Colo. | FJP | Your editor |
| PRK | Percy Kesteven, Edmonton, Alberta | BER | Bill Raczko, Toledo, Ohio |
| | | DV | Dennis Vroom, San Pable, Calif. |