



# DX MONITOR

PUBLISHED BY

THE INTERNATIONAL RADIO CLUB OF AMERICA

Saturday, September 9, 1972

NEXT ISSUE 2 WEEKS

VOLUME TEN NUMBER 1

TIMES in DX Monitor Domestic sections: EST during the winter and EDT during the summer. Foreign section (DXWW): GMT all year. AZ HI and MI do not observe Daylight Savings Time. Please keep your reports in the correct time zone.

President: Percy R. Kesteven - 13112 134<sup>th</sup> St. - Edmonton, Alta. CANADA T5L 1V8.

Publisher (Dues, Address Changes, DX Calendar): Tele: 403-454-8278.

Donald Erickson - 6059 Essex St. - Riverside, CA 92504. 714-687-5910 24 hours.

Membership Dues: \$9.50 first class mail, \$13 air mail, \$6.50 3rd class mail. 3rd class not recommended because of delays. All membership dues and renewals now go to IRCA HQ, Don Erickson, Riverside. Please include your full name and address on the outside of the envelope in the upper left-hand corner for sake of convenience.

Club Supplies: IRCA Report Forms, offset-printed in red, blue, and black. \$1.50 per pkg.

Bulletin Schedule: Next issue in 2 weeks, 9/23. Then 10/7, 10/21, and weekly thereafter.

Courtesy Programs Committee addresses: IRCA CPC Chairman, Randy V. Minnehan, 975 Chester-shire Rd., Columbus, OH 43204. NRC Musings Editor, Ernest R. Cooper, 438 East 21st, Carrier Rte 56, Brooklyn, NY 11226. NNRC Asst BCB Editor, Thomas R. Sundstrom, P. O. Box 205, Willingboro, NJ 08046. IRCA DX Calendar, c/o IRCA HQ, Riverside.

CPC Deadlines: NRC & IRCA: mail immediately upon receipt of info. NNRC: Tom's deadlines are: 10/17, 11/14, and 12/12. Please keep this list handy if you're on CPC

Bulletin Editors: (eff. this issue) EDXR: DEE; EDXF: Brh; CDXR: RCE; CDXF: DEE; WDXR: AH; WDXF: BJ; DXWW: FJP. Deadlines appear each issue. Note last-minute change for EDXR, reports to DEE, deadline Monday before date of issue.

## NASWA EXECUTIVE EDITOR TAKEN

NASWA Executive Editor William P. Eddings died Wednesday, August 23, 1972, after a long illness. Bill was widely known in the DX hobby for many years. He was instrumental in founding the North American Shortwave Association in 1962, and served as Executive Editor from the founding of the club till his death. His hobby efforts for many years were devoted to increasing friendship around the world. His passing is a great loss to the short wave radio hobby for which he devoted so much of his time, and especially to the members of the North American Shortwave Association.

-NASWA, Box 8452, So. Charleston, WV 25303

## TABLE OF CONTENTS

|   |  |
|---|--|
| DX Calendar - page 8 - lots of new tests    | IRCA Foreign Log now available - page 44 |
| SANDICON Photos - 11-14, with key on 9-10   | Election Committee Report - page 6 and 7 |
| President's Report - pages 3 and 4          | Ballot - bottom of page 7                |
| Sheldon Swartz resigns as EDXR ed. - page 2 | Contest Standings as of 8/31 - page 5    |
| Broadcasting Information - page 2           | DXR, DXF, DXWW - lots of DX reading      |

FOR FUTURE ISSUES These are just a few of the items that are being held: Graveyard Records for 1450, ANARC Report, Special Features (5 pages), State of the Month - Indiana, Report from Europe - Quentin K. Brown, Foreign Verified Records, Desert Beverage Party by Don Kenney, IRCA Volume 9 Index, and still more. -DEE

September 9, 1972

Broadcasting Information (as compiled by Mike Worst) July 31 - Aug. 28

|      |      |               |                             |                     |
|------|------|---------------|-----------------------------|---------------------|
| KGW  | 620  | 5kw           | Portland, Oregon            | from DAL to DA-N    |
| KPHO | 910  | 5kw           | Phoenix, Arizona            | requests KJJJ       |
| new  | 940  | 500w-D        | Smithfield, Virginia        | granted WAYM        |
| WBMB | 1060 | 1kw-D         | West Branch, Michigan       | start operation     |
| KBUG | 1060 | 500w-D        | Springfield, Missouri       | " "                 |
| KAMA | 1060 | 10kw-D        | El Paso, Texas              | " "                 |
| WMVI | 1170 | 250w-D        | Mechanicville, New York     | " "                 |
| WGLX | 1170 | 250w-D-DA     | Galion, Ohio                | " "                 |
| WHMT | 1190 | 500w-D        | Humboldt, Tennessee         | " "                 |
| WAQY | 1220 | 1kw-D         | Birmingham, Alabama         | granted WBUL        |
| WLTO | 1220 | 250w-D        | Miami, Florida              | requests WCMQ       |
| new  | 1220 | 250w-D        | Midwest City, Oklahoma      | CP                  |
| WLYB | 1250 | 1kw-D         | Albany, Georgia             | granted WQDE        |
| WWOK | 1260 | 5kw           | Miami, Florida              | change DA system    |
| KBUB | 1270 | 1kw-D         | Sparks-Reno, Nevada         | requests KWRL       |
| KKGF | 1310 | 5kw-D 1kw-N   | Great Falls, Montana        | " KEIN              |
| WUNO | 1320 | 5kw-D 1kw-N   | Rio Piedras, Puerto Rico    | to San Juan         |
| WEBY | 1330 | 5kw-D         | Milton, Florida             | renewal denied,     |
|      |      |               |                             | to close 12-31-72   |
|      |      |               |                             | to 1kw-D, 250w-N    |
| KVOY | 1400 | 250w          | Yuma, Arizona               | to unlimited        |
| KRLN | 1400 | 1kw-D 250w-N  | SH Canon City, Colorado     | requests KFLS       |
| KFLW | 1450 | 1kw-D 250w-N  | Klamath Falls, Oregon       | inc. ht. to 140 ft. |
| WLOX | 1490 | 1kw-D 250w-N  | Biloxi, Mississippi         | granted WBLB        |
| new  | 1510 | 1kw-D 250w-CH | Pulaski, Virginia           | requests WRBX       |
| WTNW | 1530 | 5kw-D DA-CH   | Chapel Hill, North Carolina | op. 90 days by      |
| KWLG | 1530 | 250w-D        | Wagoner, Oklahoma           | Neo Broad. Co.      |
|      |      |               |                             | CP                  |
| new  | 1540 | 1kw-D         | Circleville, Ohio           | requests KBES       |
| KFKF | 1540 | 1kw           | Bellevue, Washington        | granted WOKI        |
| new  | 1550 | 1kw-D         | Oak Ridge, Tennessee        | requests WSDL       |
| WBGs | 1560 | 1kw-D         | Slidell, Louisiana          | granted WYHI        |
| WFBF | 1570 | 1kw-D         | Fernandina Beach, Florida   | " WNIR              |
| WGEE | 1590 | 5kw-D         | Indianapolis, Indiana       | " WNST              |
| new  | 1600 | 5kw-D         | Milton, West Virginia       |                     |

The following are PSA's with power as shown

|      |      |        |                         |                |
|------|------|--------|-------------------------|----------------|
| WSST | 800  | 250w-D | Largo, Florida          | 250w           |
| WMOP | 900  | 5kw-D  | Ocala, Florida          | 82w            |
| KWIV | 1050 | 250w-D | Douglas, Wyoming        | 84w            |
| KBUG | 1060 | 500w-D | Springfield, Missouri   | 63.3w          |
| KYMO | 1080 | 1kw-D  | East Prairie, Missouri  | 4.9w           |
| KBMR | 1130 | 10kw-D | Bismarck, North Dakota  | 32w            |
| WGLX | 1170 | 250w-D | Galion, Ohio            | 250w           |
| WSLM | 1220 | 5kw-D  | Salem, Indiana          | 438w           |
| WBTX | 1470 | 5kw-D  | Broadway, Virginia      | 500w           |
| WPUT | 1510 | 1kw-D  | Brewster, New York      | 4.2w from 5.7w |
| KAJN | 1560 | 1kw-D  | Crowley, Louisiana      | 194w           |
| KRSA | 1570 | 250w-D | Salinas, California     | 19             |
| KOHU | 1570 | 1kw-D  | Hermiston, Oregon       | 500w from 195w |
| WQTW | 1570 | 1kw-D  | Latrobe, Pennsylvania   | 300w from 346w |
| WHPA | 1590 | 500w-D | Honesdale, Pennsylvania | ?              |

SPECIAL PRESIDENT'S REPORT Sheldon Swartz will be resigning as Eastern DX Roundup Editor effective immediately. Sheldon cites a new job with longer hours as the reason for his resignation. His time simply won't permit the stencil cutting. Applications for the post of EDXR Editor are requested. Apply on the IRCA Application Form, available from the President. Deadline for applications is October 15, 1972. Your prompt reply to this notice is appreciated as the temporary shortage of editors adversely affects Club operations at a critical time.

(signed) Percy R. Kesteven, President, August 29, 1972

Recent Board of Director Activity

| <u>Proposals</u> | <u>Erickson</u> | <u>Evans</u> | <u>Hauser</u> | <u>Northam</u> | <u>Wood</u> | <u>Worst</u> | <u>Result</u> |
|------------------|-----------------|--------------|---------------|----------------|-------------|--------------|---------------|
| 5.1-96           | F               | F            | F             | F              | F           | F            | PASSED        |
| 5.1-97           | F               | F            | F             | F              | O           | F            | PASSED        |
| 5.1-98           | F               | F            | F             | O              | F           | F            | PASSED        |
| 5.1-99           | F               | F            | F             | F              | F           | F            | PASSED        |
| 5.1-100          | F               | F            | F             | F              | O           | F            | PASSED        |
| 5.1-101          | F               | F            | F             | F              | A           | F            | PASSED        |
| 5.1-102          | F               | F            | F             | F              | F           | F            | PASSED        |
| 5.1-103          | F               | F            | F             | A              | O           | F            | PASSED        |
| 5.1-104          | F               | O            | F             | F              | F           | F            | PASSED        |
| 5.1-105          | F               | O            | F             | F              | F           | F            | PASSED        |
| 5.1-106          | F               | F            | F             | F              | F           | F            | PASSED        |
| 5.1-107          | F               | F            | F             | F              | F           | F            | PASSED        |

Key to Symbols: O=Opposed; F= Favor; A=Abstain

Board of Directors: Donald E. Erickson, Richard C. Evans, Glenn Hauser,  
Michael B. Northam, Dr. Richard E. Wood, Michael G. Worst

- 5.1-96 Amend By-Laws Article III, Section 5, part 4 to read: "... A nominee who has indicated his intention to run for an office may not be considered as a write-in candidate for another office in the same election."
- 5.1-97 Amend By-Laws Article III Section 6 to read: "... In the event the Chairman of the Board becomes Club President, he shall be required to resign his Board position. The ECC shall then ballot the Board of Directors again to determine the new Chairman of the Board."
- 5.1-98 Amend the By-Laws Article V Section 2 Part 1, k to read: "k. Shall, in September of each year, request the Board to reconfirm the appointment of each Editor and Committee Chairman currently serving the club. Such request will be accompanied by the President's recommendation concerning each individual, based on a review of the past year. The Contest Manager and the Courtesy Programs Committee Chairman, however, are to be reconfirmed in May of each year."
- 5.1-99 Amend By-Laws Article VI to read: Change the word "Tuesday" to read "Saturday." Proposals 5.1-96 to 5.1-99 inclusive submitted 26 June 1972 by Richard C. Evans.
- 5.1-100 I propose that the IRCA form a Bylaws Study Committee for the purpose of studying Article X (Irregularities, Reprimands, Dismissals) of the IRCA Bylaws with a view to making recommendations for possible changes in procedures outlined in that Article. The Committee would, by solicitations from both its own members and the membership as a whole, gather ideas for possible revisions to the Article. Following this, the Committee would present and feasible proposals to the President for action as outlined in Article XIII of the IRCA Bylaws. Submitted 27 July 1972 by Percy R. Kesteven
- 5.1-101 Confirm the appointment of Jay Murley as Chairman to the Bylaws Study Committee.
- 5.1-102 Amend By-Laws Article XII to read:  
Article XII - Recall  
If a petition is presented to the Election Committee bearing the signatures of 20% of the members asking for the removal from office of the President, Secretary-Treasurer, or a member of the Board of Directors, the Committee shall call a special election at which the membership will be able to vote for or against such removal. If the removal of the officer is approved by 75% of the members voting, the office shall be declared vacant. Submitted 26 June 1972 by Richard C. Evans.
- 5.1-103 It is proposed that the Ted Vasilopoulos Award winner have his free one year membership sent to him via air mail, instead of the present third class mail. Submitted 26 June 1972 by Richard C. Evans.
- 5.1-104 Resolved, that the Board authorize the IRCA to open savings accounts at Mountain Savings and Loan and Capital Federal Savings and Loan, both in Boulder. Submitted 14 July 1972 by Larry B. Godwin.

- 5.1-105 I propose that the IRCA form an Offset Publishing Committee to study the feasibility of the IRCA resorting to offset printing for DX Monitor. The Committee would study various format possibilities and obtain bids from printing outlets with regard to the cost of each format. A final recommendation to the membership would be made at a convenient future date. Submitted 27 July 1972 by Percy R. Kesteven.
- 5.1-106 Confirm the appointment of Father Jack Pejza as Chairman of the Offset Publishing Committee.
- 5.1-107 Confirm the appointment of Andrew Hecker to the post of Western DX Forum Editor.

### Commentary

Proposals 5.1-96, 5.1-97, 5.1-98, 5.1-99, and 5.1-102 are Bylaws amendments and require approval by the general membership before becoming part of the IRCA Bylaws proper. Most are straightforward. Proposal 5.1-97 allows for a chain of command in the event that the second President (the former Board Chairman) resigned. Proposal 5.1-98 is designed to protect both Committees involved. Since time is an important factor in both the CPC and the Contest, the Board should reconfirm each early in the year to avoid any problems which might arise later should a Chairman be found unsuitable. Proposal 5.1-102 rewords the present Article slightly to bring it in line with the rest of the Bylaws. It is also simpler and a bit shorter.

Jay Murley and Father Jack Pejza, as indicated in the Secretary-Treasurer's Report on the 1972 Business meeting in the August 12, 1972 DX Monitor, were each involved in the Committees to which they have been appointed. A Task Force, headed by Saralie Northam, worked on the concept of Offset Publishing some time ago, but that Task Force made its report. It was thus considered to be at an end and a new Committee was formed at this time. The reference for both committees is approximately the same.

### Positions Available

Central DX Forum Editorship--this editorship has not been applied for by anyone to date. The deadline for applications is hereby extended to September 29, 1972. Applications must be on the IRCA Application Form, available from the President. We need your help!

Standby Editor--this post is now vacant by virtue of the fact that D. Alan Cunningham has let his membership lapse. The Standby Editor fills in for short periods should any regular DXF, DXR, or DXWW editor be unable (or unavailable) for his position. An elite typewriter, the ability to type (though not with great speed), and the desire (or ability) to learn to type stencils are pre-requisites for both this position and CDXF above.

Bylaws Study Committee--requires help as mentioned in Proposal 5.1-100. If you are interested in this aspect of Club affairs, write: Jay Murley, 1733 Candlestick, Newport Beach, CA 92660.

Countries List Committee--draws up the list of official IRCA countries. The committee needs two more members. Write Michael G. Worst, Chairman, 5903 Greenwood North, Seattle, WA 98103

Poor Reports Committee--members obtain reports from local radio stations, then contact those DXers with poor reporting habits. VOLUNTEERS ARE URGENTLY NEEDED IN THIS AREA. Write Stephen S. Howe, Chairman, 16 Windsor Road, Great Neck, NY 11021.

Respectfully submitted,  
August 27, 1972

*Percy R. Kesteven*  
Percy R. Kesteven, President

\*\*\*\*\*  
EDITORSHIPS See elsewhere for the text of President Percy Kesteven's announcement that Sheldon Swartz has resigned. Effective immediately, all EDXR reports go to Don Erickson, 6059 Essex St., Riverside, CA 92504. Because there will be some delay in forwarding reports received by Shel for next issue, the deadline is Monday, September 18, 1972, and possibly later. So please mail those EDXR reports now. A temporary CDXF appointment will be announced next issue.

MANAGER: Richard C. Evans - Box 2146 - East Chicago, Indiana 46312

+++++

The standings as of 31 August 1972:

VERIFIED:

|                          |          |         |        |                  |
|--------------------------|----------|---------|--------|------------------|
| 1) Karl Forth, Ill.      | 217 pts. | 24 stns | 10 S&P | (16- 3- 5- 4- 1) |
| 2) Fred Hendricks, Ill.  | 138      | 16      | 10     | ( 9- 4- 3- 7- 1) |
| 3) Rick Williams, Okla.  | 133      | 12      | 5      | ( 4- 5- 3- 3- 1) |
| 4) Bud Bailey, NY        | 99       | 9       | 5      | ( 7- 1- 1- 0- 0) |
| 5) Robert Kramer, Ill.   | 73       | 12      | 7      | ( 5- 6- 1- 2- 0) |
| 6) John Zondlo, Ind.     | 60       | 3       | 3      | ( 2- 0- 1- 1- 1) |
| 7) Paul R. Daplyn, Ont.  | 59       | 9       | 3      | ( 7- 1- 1- 0- 0) |
| 8) Bill Liken, Ohio      | 49       | 10      | 6      | ( 7- 1- 2- 3- 0) |
| 9) David Bury, Mich.     | 13       | 2       | 1      | ( 1- 1- 0- 1- 0) |
| 10) Bruce Portzer, Wash. | 12       | 2       | 2      | ( 0- 2- 0- 0- 0) |

NO ENTRIES: John Boncek, Melville Coffin, Michael Hogan, Richard Mayhew.

HEARD:

|                           |           |          |        |                  |
|---------------------------|-----------|----------|--------|------------------|
| 1) Bill Nittler, Neb.     | 1158 pts. | 137 stns | 41 S&P | (57-33-47-13- 3) |
| 2) Fred Hendricks, Ill.   | 979       | 113      | 32     | (77-17-19-16- 2) |
| 3) Bruce Portzer, Wash.   | 775       | 84       | 27     | (27-33-24- 6- 3) |
| 4) Robert Kramer, Ill.    | 677       | 83       | 34     | (39-33-11- 9- 1) |
| 5) Allen Napier, Fla.     | 621       | 76       | 22     | (44- 6-26-15- 1) |
| 6) Ken Horne, B.C.        | 475       | 38       | 15     | (15-14- 9- 0- 4) |
| 7) Michael Hogan, Ind.    | 440       | 57       | 22     | (21- 8-28- 3- 2) |
| 8) Rick Williams, Okla.   | 376       | 55       | 22     | (25-16-14- 5- 0) |
| 9) Dave Christensen, Wash | 307       | 32       | 8      | ( 6-21- 5- 2- 0) |
| 10) Jim Boyd, Okla.       | 301       | 46       | 18     | (21-13-12- 4- 0) |
| 11) Bill Likens, Ohio     | 218       | 35       | 18     | (17-11- 8- 7- 0) |
| 12) Paul R. Daplyn, Ont.  | 216       | 20       | 7      | (14- 5- 1- 2- 1) |
| 13) Donald E. Erickson CA | 158       | 16       | 5      | ( 0-16- 0- 0- 0) |
| 14) Frank Wheeler, Penn.  | 155       | 20       | 7      | (15- 3- 2- 7- 2) |
| 15) Blake Lawrence, Col.  | 133       | 17       | 9      | ( 1-16- 0- 0- 0) |
| 16) Richard Mayhew, P.Q.  | 127       | 21       | 10     | ( 5- 9- 7- 8- 0) |
| 17) John Zondlo, Ind.     | 62        | 13       | 9      | ( 7- 3- 3- 3- 0) |

NO ENTRIES: John Boncek, Paul Welka.

FOREIGN:

NO ENTRIES: Melville Coffin, R. Steven Dildine, Michael Hogan, Paul Petersky.

Due to "popular demand" by persons both in the foreign contest and those not in it, there will be a change in the way bonus points will be figured in the foreign contest. It will no longer be based on splits. Instead, there will be one point earned for each issue of DXWW of volume 9 (1971-1972) in which the station was not listed as a logging. Example: If the station is listed in 11 issues, the bonus points will be 23 points. (34 issues minus 11 issues listed equals 23) This from a suggestion by Bruce Portzer. For those who had doubts about joining under the old bonus plan, the deadline for entering the foreign contest only is extended thru 10/31/72.

The one point bonus for daytimers applies to regionals and locals as well as to clears.

## ELECTION COMMITTEE REPORT

In accordance with Article III, Section 7, of the Bylaws, a special election will be held to select a new Director to fill the unexpired term of Lynn Brooks. The Election Committee will accept nominations for this position until October 16, 1972. Each member will be allowed to make one nomination for this position and all nominations must be submitted in written form to the Election Committee Chairman.

The following proposals are hereby submitted to the membership for vote. Enclosed you will find your official ballot, which should be sent to Dave Prather, 1711 6th St., Apt. 14, Woodland, Calif. 95695. Deadline for receipt of ballots is Oct. 23, 1972.

Proposal 5.1-59. Amendment to the Bylaws, Article II. Submitted by Michael Northam. Article II to be amended by striking the word "kilocycles" and inserting in its place the word "kiloHertz." The revised Article II as amended, would read:

"ARTICLE II - PURPOSE

The purpose of the IRCA shall be to promote the hobby of radio listening on the AM Broadcast Band, 510 to 1630 kiloHertz."

Proposal 5.1-60. Amendment to the Bylaws, Article III, Section 5, Parts 6 & 7. Submitted by Richard C. Evans.

Amend Parts 6 & 7 to read as follows:

"Part 6 - Ballots and the printed campaign statements are to be mailed to all members via first class mail separate from the June issue of DX Monitor, and are to be postmarked on June 15th of the election year.

Part 7 - The ballots are to be returned to the Election Committee Chairman prior to August 1."

Proposal 5.1-66. Amendment to Proposal 5.1-60 (see above). Submitted by Mike Worst. Amend Proposal 5.1-60 by deleting "on June 15th" and substituting "during the second calendar week of June." Art. III, Section 5, Part 6, would read as follows:

"Part 6 - Ballots and the printed campaign statements are to be mailed to all members via first class mail separate from the June issue of DX Monitor, and are to be postmarked during the second calendar week of June of the election year."

Proposal 5.1-81. Amendment to the Bylaws, Article XII. Submitted by Bill Hardy. Amend Article XII to read as follows:

"ARTICLE XII - RECALL

If a petition is presented to the Election Committee bearing the signatures of 20% of the club membership asking for the removal from office of the President, Secretary-Treasurer, or any Director on the Board, the Committee shall call a special election at which the membership will be able to vote for or against such removal. If the removal of the officer is approved by 75% of the members voting, the office shall be declared vacant."

Proposal 5.1-82. Amendment to the Bylaws, Article XI. Submitted by Bill Hardy. Amend Article XI to read as follows:

"ARTICLE XI - REFERENDUM/INITIATIVE

If a member cannot get action on a proposal in the prescribed manner, he can submit a petition bearing the signatures of 20% of the club membership to the Election Committee to effect a special election on the matter. This pertains to matters other than those concerning the contents of these documents."

Proposal 5.1-83. Amendment to the Bylaws, Article V, Section 2, Part 1 (h).

Submitted by Bill Hardy. Part 1 (h) (Duties of the President) now reads "Shall not have the power of pocket veto." Part 1 (h) is amended to read as follows:

"h. Shall not have veto power over actions of the Board."

Proposal 5.1-96. Amendment to the Bylaws, Article III, Section 5, Part 4. Submitted by Richard C. Evans. Amend the last sentence of Part 4 to read as follows:

"... A nominee who has indicated his intention to run for an office may not be considered as a write-in candidate for another office in the same election."

September 9, 1972

ELECTION COMMITTEE REPORT

Page 7

Proposal 5.1-97. Amendment to the Bylaws, Article III, Section 6. Submitted by Richard C. Evans. Amend Section 6 to read as follows:

"Section 6 - Election of the Chairman of the Board

The ECC shall ballot the Board of Directors soon after each regular election to determine the Chairman of the Board, who will be the spokesman for the Board and will be responsible for assuming the President's office in case it is vacated during the current term. In the event the Chairman of the Board becomes Club President, he shall be required to resign his Board position. The ECC shall then ballot the Board of Directors again to determine the new Chairman of the Board."

Proposal 5.1-98. Amendment to the Bylaws, Article V, Section 2, Part 1 (k). Submitted by Richard C. Evans. Amend Part 1 (k) to read as follows:

"k. (The President) Shall, in September of each year, request the Board to reconfirm the appointment of each Editor and Committee Chairman currently serving the club. Such request will be accompanied by the President's recommendation concerning each individual, based on a review of the past year. The Contest Manager and the Courtesy Programs Committee Chairman, however, are to be reconfirmed in May of each year."

Proposal 5.1-99. Amendment to the Bylaws, Article VI. Submitted by Richard C. Evans. Change the word "Tuesday" to read "Saturday." The revised article to read as follows:

"ARTICLE VI - PUBLICATION

The official publication of the IRCA shall be known as DX Monitor. It shall be issued 34 times each year, except in cases of emergency. With the permission of the Board the number of issues may be changed. DX Monitor will normally be published beginning with the first Saturday in October, up to and including the last Saturday in March, twice in April and September, once in May, June, July, and August."

Proposal 5.1-102. Amendment to the Bylaws, Article XII. Submitted by Richard C. Evans. Amend Article XII to read as follows:

"ARTICLE XII - RECALL

If a petition is presented to the Election Committee bearing the signatures of 20% of the members asking for the removal from office of the President, Secretary-Treasurer, or a member of the Board of Directors, the Committee shall call a special election at which the membership will be able to vote for or against such removal. If the removal of the officer is approved by 75% of the members voting, the office shall be declared vacant.

Proposal 5.1-69. Divide NWT into three separate provinces. Submitted by Percy R. Kesteven. "The Northwest Territories shall count as three separate provinces, with the three districts Mackenzie, Keewatin, and Franklin comprising the new provinces. References in future to these provinces will be made thus: NWT-Mackenzie; NWT-Keewatin; and NWT-Franklin. This proposal, if passed, will apply to past, present, and future references to the NWT. A vote of the general membership will be necessary for any amendments or revisions to this proposal."

-----  
Dave Prather, Election Committee Chairman  
1711 6th Street, Apt. 14, Woodland, California 95695

September 9, 1972

DX Calendar

| Date          | Time       | Station | Freq | Location         | Power | Mode | Remarks              |
|---------------|------------|---------|------|------------------|-------|------|----------------------|
| Wed. Aug. 30  | 0015-0030  | WCHE    | 1520 | West Chester, PA | 250w  | D1   | NRC/via Flash Alert  |
| Mon. mornings | 0000-0100a | WRIZ    | 1550 | Coral Gables, FL | 10kw  | D3   | PoP/Bill Lemak       |
| Mon. Sep. 18  | 0000-0030a | WEEO    | 1130 | Waynesboro, PA   | 1kw   | D2   | NRC/Wes Boyd         |
|               | 0300-0400  | KJAN    | 1220 | Atlantic, IA     | 250w  | D1   | IRCA/Keith Mehl      |
| Sun. 24       | 0000-????  | WJVA    | 1580 | South Bend, IN   | 1kw   | D1   | direct/Mr. C. Cross  |
|               | 0330-0400  | WFTN    | 1240 | Franklin, NH     | 250w  | U1   | IRCA/T. Saltmarsh    |
| Mon. 25       | 0200-0300  | WHLI    | 1100 | Hempstead, NY    | 10kw  | D3   | IRCA/John Tracey     |
|               | 0300-0500  | KGHO    | 1560 | Hoquiam, WA      | 1kw   | D1   | IRCA/Lemak & Hardy   |
| Fri. Oct. 6   | 0430-0500  | WAMY    | 1580 | Amory, MS        | 5kw   | D1   | IRCA/Bill Likens     |
| Mon. 9        | 0300-0330  | WVOV    | 1000 | Huntsville, AL   | 10kw  | D3   | IRCA/Bill Likens     |
| Sun. 29       | 0000-????  | WJVA    | 1580 | South Bend, IN   | 1kw   | D1   | direct/Chris Cross   |
| Mon. 30       | 0000-0100  | WTWB    | 1570 | Auburndale, FL   | 5kw   | D1   | IRCA/Larry V. Flegle |
|               | 0530-0545  | WSPA    | 950  | Spartanburg, SC  | 5kw   | U2   | NRC/Wes Boyd         |
| Sat. Nov. 4   | AN         | KRSN    | 1490 | Los Alamos, NM   | 250w  | U1   | AN for Hunters/Peek  |
| Sun. 26       | 0000-????  | WJVA    | 1580 | South Bend, IN   | 1kw   | D1   | direct/Chris Cross   |

WCHE was distributed by NRC's Flash Alert Service, headed by Carl Junker and Fred Tankersley. No word so far on whether or not it was aired per sked. -FAS/Carl Junker

WRIZ will use tone and stn IDs on a series of PoP tests for the next 2 or 3 weeks after you receive this. Tests will last about an hour and one of them may run past 0300 for better WC reception. Rpts to CE, WRIZ, Coral Gables, FL 32069. -IRCA/Bill Lemak

WEEO will conduct PoP w/TT and many IDs. Rpts to: Mr. James Hartzler, WEEO, R. D. 4, Box 309, Waynesboro, PA 17628. -NRC/Wes Boyd

KJAN will use IDs and test announcements after each musical selection. Return postage, as always, is a must. Ph. is 712-243-3920. Rpts to: Dennis Ballard, KJAN, Box 389, Atlantic, IA 50022. -IRCA/Keith Mehl and FAS/Junker

WJVA will conduct an f/c with lab in Lake Bluff, Ill, the last SM of each month. Time of start is midnight or sometime thereafter South Bend local time (EST all year?).

Both AM & FM will be on with a series of 1000 Hertz tones, dead carrier, and stn IDs.

Following the f/c, Mr. Chris Cross indicates march music and cycle tone may be used.

All previous reception reports from the past five years are going to be re-verified with a QSL card; however, it may be a while before the printing is completed. Some pre-sign-on tests are also being considered. Details later. Reports should be sent to: Mr. Chris Cross, DoE, P. O. Box 179, South Bend, IN 46624. -Chris Cross

WFTN will use cycle tone and frequent IDs. Rpts to: Mr. W. P. Burgess, WFTN, 901 Central St., Franklin, NH 03235. -IRCA/Tim Saltmarsh

WHLI will use 10kw until 0245 when they will switch to 1kw standby xmtr. 400 cycle tone and IDs are expected. Rpts to: CE, WHLI, 384 Clinton St., Hempstead, NY 11550.

KGHO will use frequent IDs, music (probably loud rock), and -IRCA/John Tracey perhaps some cycle tone. Normally simulcast FM affil., KGHO-FM, will be off the air during the test. Prepaid calls will be accepted but not aired; no. is 206-532-1200.

Written veries only, no verie for phone calls. Taped reports are presumably OK.

Address reports to: KGHO, 31st & Bay, Hoquiam, WA 98520. Attn: Bill Hardy, Traffic Manager. -IRCA/Bill Hardy, arranged by CPCer Bill Lemak

WAMY programming not known, possibly dial tone modulation. Rpts to: Mr. Bill Monaghan, WAMY, P. O. Box 268, Amory, MS 38821. -IRCA/Bill Likens



Photo Page A (Page A has a beach party photo in lower left-hand side and is based on three vertical rows). All photos are from SANDICON, July 1 - July 4, 1972, the IRCA 1972 Convention, San Diego, unless otherwise noted. Vertical row 1, two photos at top: Randy Cook, Long Beach; Murray Lycan, No. Vancouver, taken at Van. 70 IRCA Convention. Vert. row 1, Hor row 2: Auction, clockwise from top: Albert Lobel, Nina (Mrs. Grant) Manning, Dave Stroup (taking photo), Glenn Hobbs, Aris Papafingos, Jerry Thatcher, and Randy Cook (under picture frame). V1, H3: Beach Party, left to right, Art Peterson, Len Lockwood, Raleigh Biss, Albert Lobel, Vera (Mrs. Raleigh) Biss and daughter; Percy Kesteven. V1, H4: Beach Party, l-r, Steve Kamp, San Jose; Jay Murley, Newport Beach; and Bob Jacoby, Pomona. V1, H4: Auction, including John Kolb, bottom left, Mike McCullough, Bill Harang, H. John Clements, and Glenn Hobbs. V1, H5, Business Meeting?. V1, H6: Beach Party, Russ Francis in front and, l-r, Gordon Hanson, Credo Bisquera, Dave Stroup, Ralph Sanserino and ?. V2, H1: Grant Manning, Steve Kamp, and Gordon Hanson. V2, H2: V2, H2: WFMA control room. V2, H3: Production room WCEC/WFMA. V2, H4: WCEC control room. V2, H5: Dennis Park Smith, Wasco, Calif; Jim Critchett, San Diego. V2, H6: Don Kenney, Santa Monica; Randy and Linda Seaver, Imperial Beach (San Diego). Vertical row 3, top to bottom, Theo Donnelly, now in New Zealand?; Dan Adams, San Jose; Don Kaskey, West Sacramento; and Mike Northam, Portland; Jon E. Pearkins, Jr., Burnaby, B.C.; Tom McCormack, West Lafayette, Ind., preceeding from Vancouver 70. V3, H6: Fred L. Parsons, Welland, Ontario, former NRC member, photo from 1966 or so.

Photo Page B (Page B has the same photos, now reduced in size, that appeared in the July 72 DXM Convention write-up; they are the bottom three, the first one in the now row up, and the first one in the 3rd row from bottom). All photos from SANDICON except those of Brian Elder and Wallace Glavich. This page based on roughly six rows, horizontally. H1 across top: Charles A. Taylor, San Diego; Russ Francis, South Gate; Larry Marshall, NASWA guest; San Diego vic.; Mrs. Ben Veio, Mrs. Raleigh Biss, and Mort Meehan; Dave Christensen, Seattle, with UofW shirt. H1, bottom: Credo Bisquera, sitting; John Kolb, Percy Kesteven, and Randy Seaver at baseball game; Brian Elder, Vancouver. H2, V1: Banquet (from back to front), Tom Critchett and wife, Jim Critchett and girl friend, Marty Fosberg, Mike McCullough. H2, V2: Mort Meehan, No. Palm Springs. H2, V3 (right margin): Wallace Glavich, former IRCA member, Eureka, Calif., shack photo. H3 from left to right: Andy Hecker, Steve Oster, Aris Papafingos, Tim and Bruce Bacon, George McKay, Jr. H4: George McKay, Jr. (this is part of the photo in the July write-up), Randy Cook, Steve Simonsen, Ontario; Jerry Thatcher; Len Lockwood, Olympia; Glenn Hobbs; Chuck Albertson, now in Arizona; Bill Flynn, Mountain View, Calif., SPEEDX. H5: Grant Manning, Percy Kesteven, Dave Stroup, Pat Martin, Warrenton, Oregon; Len Lockwood, Dennis Park Smith, Bill Block, Portland; and Bob Jacoby. H6: Credo Bisquera, Waianae, Hawaii; Ralph Sanserino, Huntington Beach; John Kolb, Jay Murley, Larry Godwin, Mrs. Albert Lobel, Randy Seaver.

Photo Page C (Page C has a Maryland get-together and two shack photos at top).

This page is based on a top H row and 4 V rows under that. H1, V1: NRCer Robert Rooney of Ridley Park, Pa., taken several years ago. H1, V2: Photo courtesy of Stephen E. Martin, get-together at Tom Yingling's. Top row: Steve Martin, Upper Marlboro; Fred Heutte, NNRC; Tom Yingling, Baltimore; Bill Blazek, Hillcrest Heights, Md.; Don Blevins, Baltimore. Bottom row: Lynn Gary, Baltimore; Matt Zahner, NNRC BCB editor, Baltimore; Charles Spellman, Wash. DC; Joe Kureth, NRC, WTTR Radio. H1, V3: Jack Keene, Houston, taken mid-60's, former IRCA member. V1 and V2, H1 and H2 (4 photos): Voice of American relay, Marathon. Photos courtesy of Ronald F. Schatz who sends these notes: Freq.: 1180 kHz; Power 50kw. Pattern, cardioid, protecting WHAM. Mailing add.: Voice of America (Relay), P. O. Box 726, Marathon, FL 33050. Phone: AC 305-743-6444. Mgr: Charles W. Brannen. Location: Sister-Creek Island, 1 mile SW of Marathon. QSL policy: All reports to Washington, D.C., not Marathon. V1, H3: John Kolb, Glenn Hobbs, H. John Clements. V1, H4: Blake Lawrence and John Tull, at John Tull's shack, Kansas City, Mo. V1, H5: Art Peterson at his shack, San Pablo, Calif.

(continued on other side)

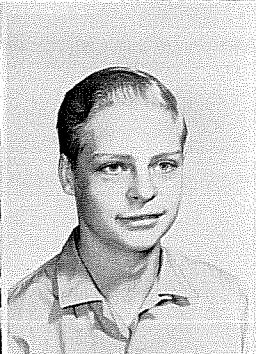
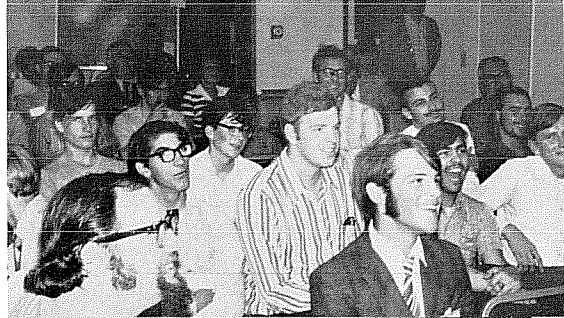
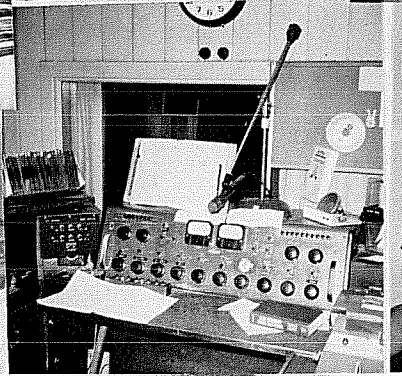
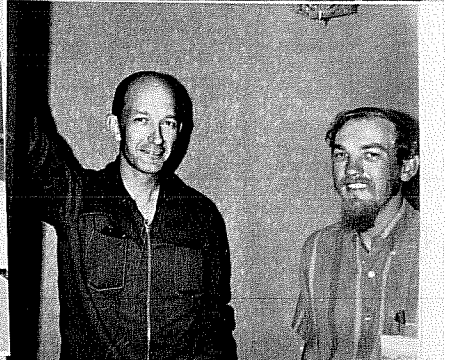
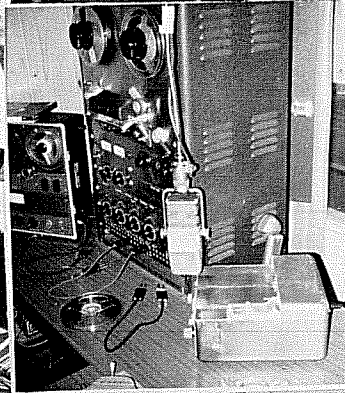
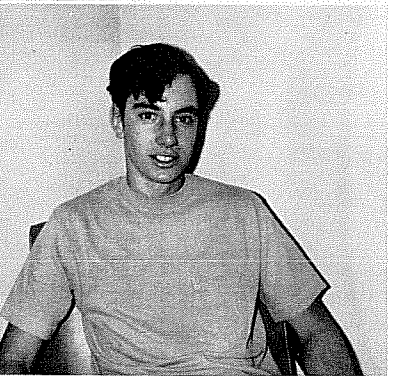
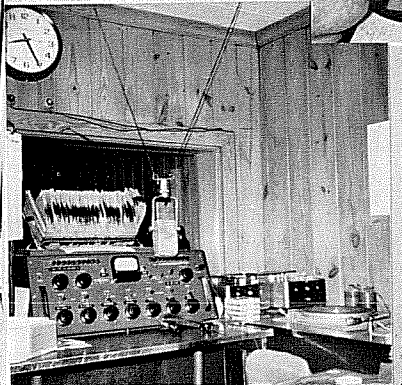
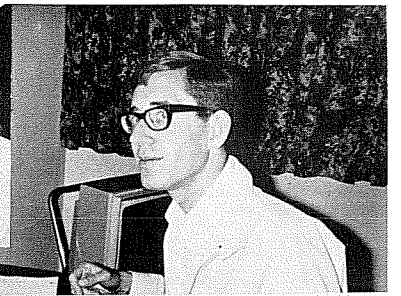
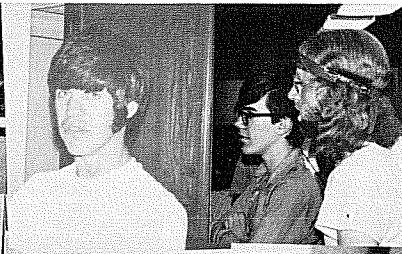
Photo Page C (continued from other side) V2, H3: Hotel El Rancho, Don Kaskey's former employer and the location of several DX get-togethers and the 1971 NRC Convention. V2, H4: Len Mack shack photo, former IRCA member, B.C., Canada. V2, H5: Shack photo of Bill Coleman, Raleigh, N.C., who supplied all the inside shots at radio stations. V3, H1: Dennis Rodgers, Saginaw, Mich., shack photo, about 1965. V3, H2: Don Kaskey, Art Peterson. Don's photo taken at 1968 Hollywood Convention Auction, as auctioneer. V3, H3: Credo Bisquera, Eldon Luoma (taken Vancouver 70), an HQ180 and Space Magnet SM-1. V3, H4 (bottom of page): Chuck Sadoian's shack in Dinuba, Calif., with NRC Box Loop. V4, H1: Father Jack Pejza with camera, Don Kaskey, shooting pool, and John T. Arthur & Bob Pietsch looking on. V5, H2: Larry Godwin figuring auction totals. (V4, H1 was taken in West Sacto in 1969). V4, H3: Ev Johnson, Mendota, Ill., former IRCA member. V4, H4: Harvey Young, former charter IRCA member, McAllister, N.M. V4, H5: Jeff Kadet, personal photo, 1972.

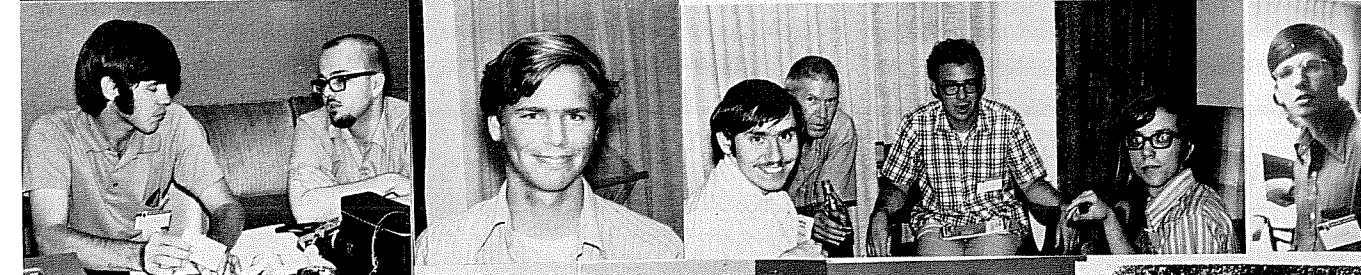
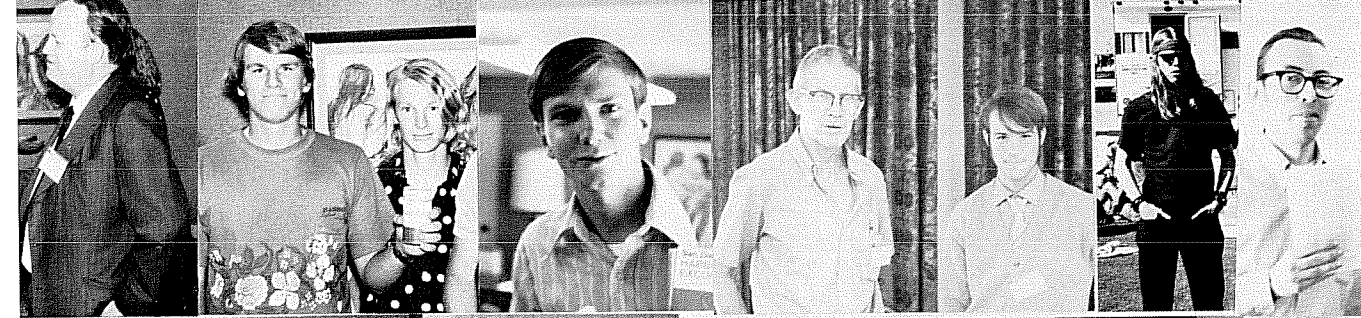
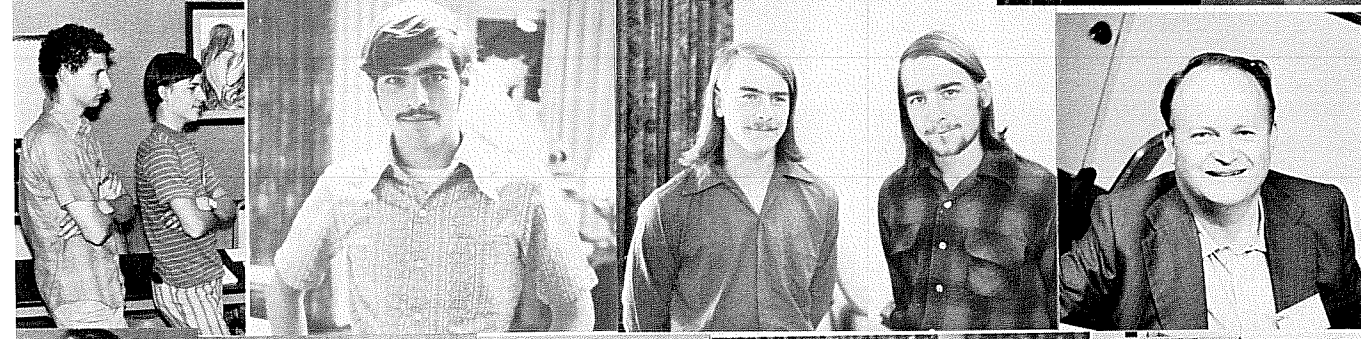
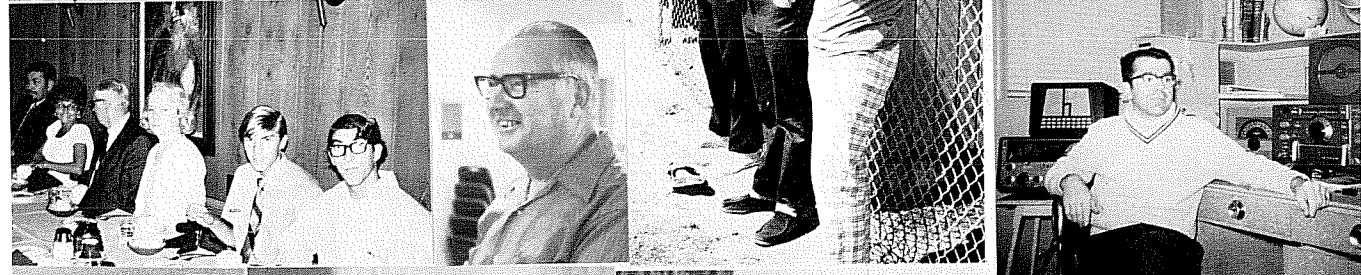
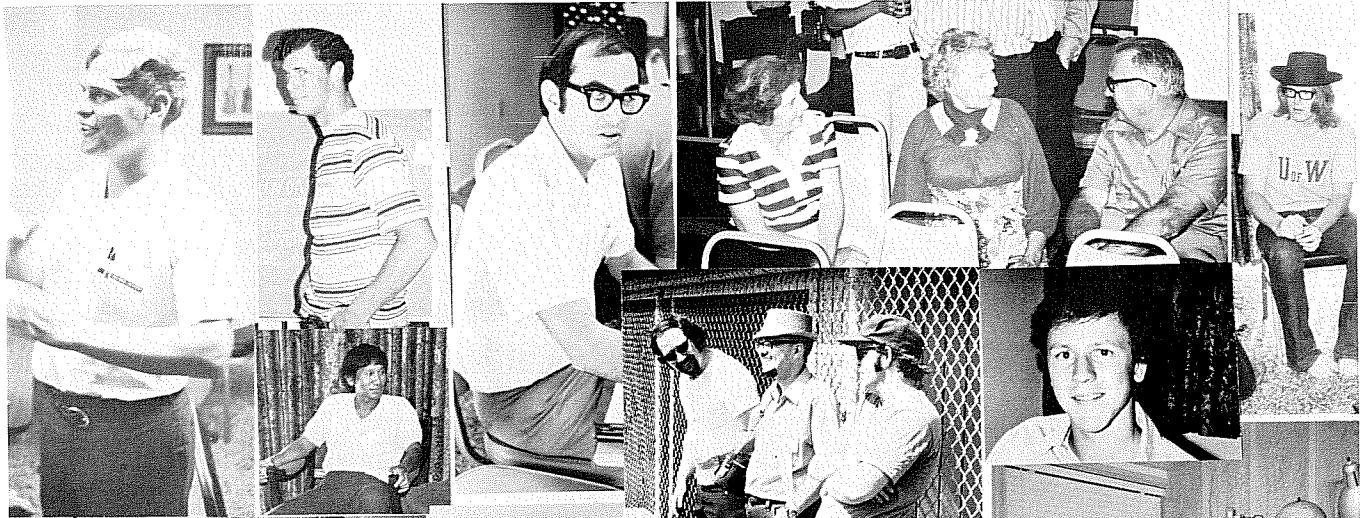
Photo Page D (Page D has Father Jack opening sack of groceries). This page based on 7 horizontal rows. H1, V1: Father Jack Pejza, SANDICON Host. H1, V2-4: WYNA, Raleigh, N.C., control room; WYNA production room; WCEC/WFMA, Rocky Mount, N.C., equipment rack. All N.C. stn photos courtesy of Bill Coleman, Raleigh. H2, V1: Aris Papafingos at the HQ180 at SANDICON. H2, V2-4: John Kolb, Larry Godwin, Bruce and Karen Portzer. Bruce and Karen's picture was taken at Vancouver 70. H3, left to right: H. John Clements, Newhall, Calif.; Nina Manning and Brian; Steve Simonsen; photo of Fabulous Inns of San Diego, SANDICON site. H4, left to right: Dave Stroup, Andy Hecker, Steve Oster, Dave Christensen, Roger Horie (personal photo), Mike McCullough, and Marty Fosberg. H5, V1: Auction. H5, V2-6: Richard Brazier, Pomona, Calif., former IRCA co-publisher; Bill Block and Pat Martin; Murray Spiegel, Pittsburgh, taken at Hollywood 68; Dave Thorne, SPEEDX, Santa Ana, Calif. H6, V1: Bob Ziel, La Mesa; Ben Veio, San Jose; Len Lockwood. H6, V2: Auction? clockwise from right: Jerry L. Thatcher, Aris Papafingos, H. John Clements, Art Peterson, Mort Meehan. H6, V3-5: Norm Christensen, Seattle; Ralph Sanserino, Jay Murley. H7, V1 and 2: SPEEDXers Dave Thorne, Bill Flynn, Oliver Ellsworth, and Wendell Benedetti. H7, V3: Father Jack Pejza. H7, V4: Ben Veio.

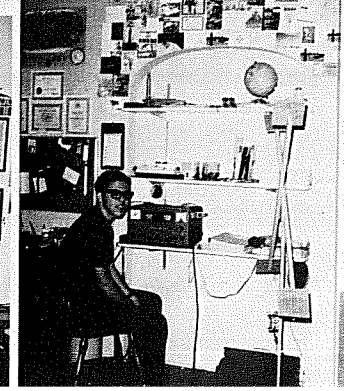
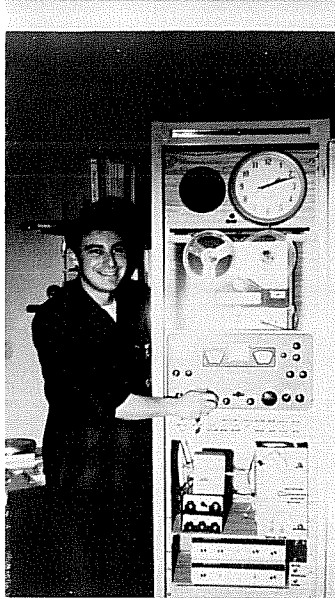
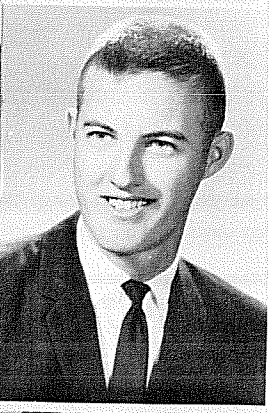
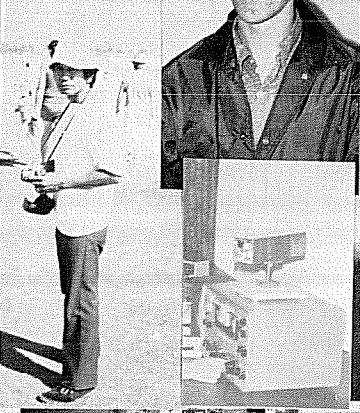
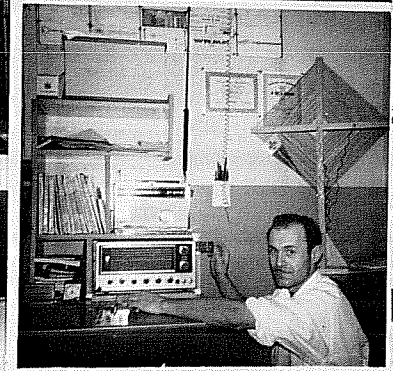
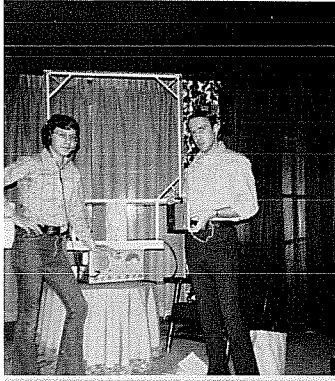
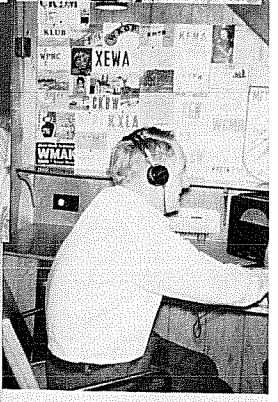
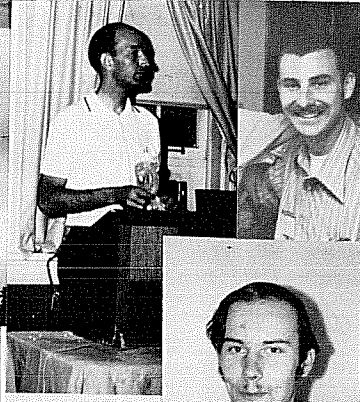
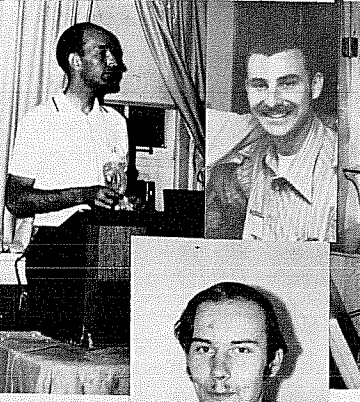
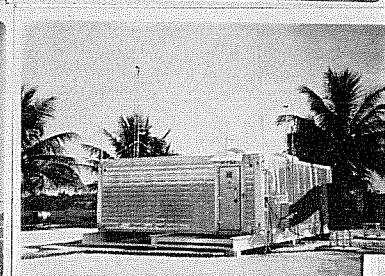
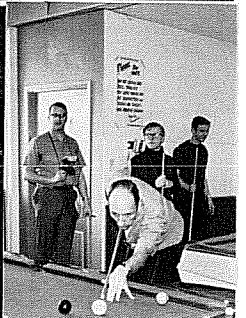
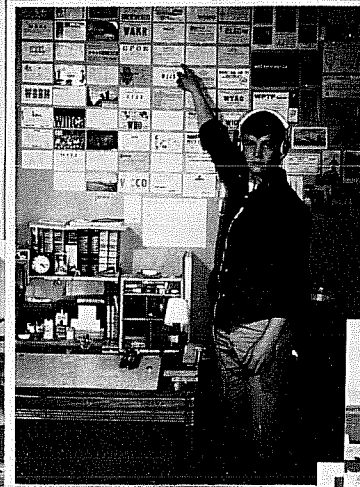
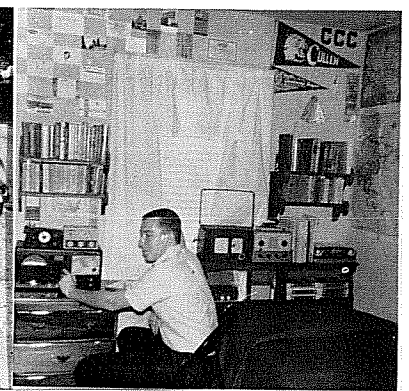
Credits Vancouver 70 photos courtesy Percy Kesteven; SANDICON photos courtesy of Father Jack Pejza and Percy. Hollywood 68 photos courtesy of Walt Breville. West Sacramento photos courtesy of Saralie B. Northam. Thanks also to Bill Coleman, Ron Schatz and Steve Martin for photos, as well as all who sent personal and shack photos.

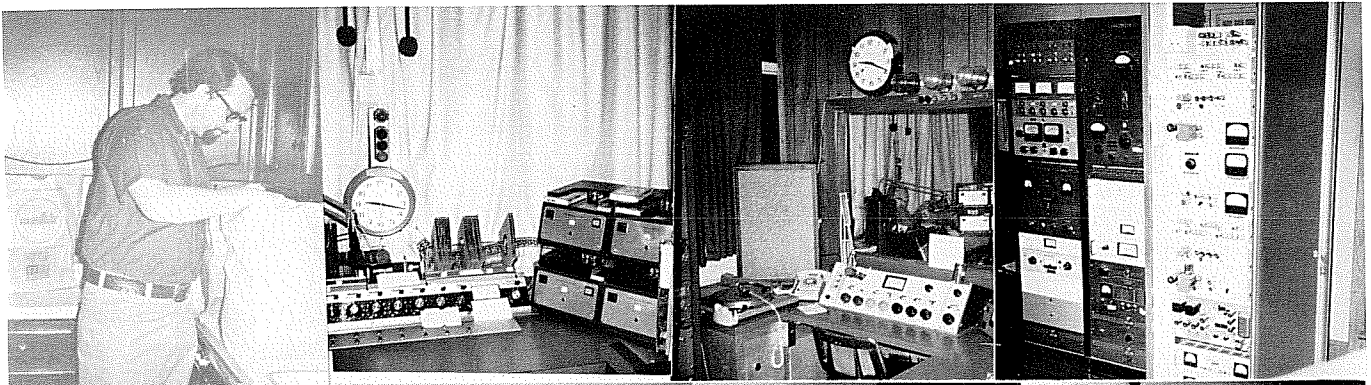
Want more photos in DXM? The response to previous requests for photos has been on the poor side. Eight pages had been planned for this issue and it was all we could do to come up with 4 pages. However, future photo pages will not have quite the reduction so that we can maintain the best quality possible. If you really want to see more photos, PLEASE send in your personal or shack photo or photos taken of other DXers. Photos of other conventions are also desired. If you can supply a large number of photos, write in advance and we'll arrange to pay all costs of extra prints (negatives can not be used). Non-member DXers reading this in a sample copy: Want your photo printed? Send it along with a self-addressed, stamped envelope. When it is printed in DXM, you'll receive 5 copies of the photo pages! Please address all correspondence regarding photos to: Don Erickson, 6059 Essex St., Riverside, Calif. 92504. Please mark outside of envelope, "PHOTOGRAPHS" or "Regarding Photographs" and be sure to provide identification of all individuals pictured, their locations, month or year photo taken, etc. This can be on separate sheet of paper (preferably) or on the back of the photo.

Previous photo pages IRCA has published 4 prior pages of photos that are still available on request. Please specify whether you desire 1971 Toledo or 1972 SANDICON convention photos and the number of each. There are plenty available for all. Please write DEE.









September 9, 1972

EASTERN DX ROUNDUP

Page 15

Shel Swartz - 290 Court Street - Plymouth, MA 02560 (Editor)

Deadlines: Sept. 18, 28; Oct. 12, 19, 26; Nov. 2, 16, 23

Effective immediately: reports to Don Erickson, 6059 Essex St., Riverside, CA 92504.

- BB - Budd Bailey - 8800 Wenner Road - Williamsville, NY 14221  
RX: Allied A-2515//SM-1
- DF - Dave Faulkner - 1430 Pine Grove Avenue - Port Huron, MI 48060  
RX: (Let us all know, Dave, will you?)
- MH - Mark Hittinger - 1932 Buttonwood Road - Louisville, KY 40222  
RX: Knightkit Star Roamer II//2' spiral loop, 60' LW
- DM - Dan Myers - 2650 104th Street - Toledo, OH 43611
- FT - Fred Tschudy - P.O. Box 356 - Shrub Oak, NY 10588 (WRKO SP WINNER)  
RX: Zenith Transoceanic Portable//102" steel whip
- JM - Jerry Monroe - 1050 Bonnie Lake Drive - Alden, NY 14004
- RM - Rich Mayhew - 266 Dufferin Road - Valleyfield, QUE
- ALN - Allen Napier - 319 W. Comanche Avenue - Tampa, FL 33604  
RX: Sears Wayfarer//4' Box Loop
- BCL - Bill Likens - 2578 Spaatz Avenue - Columbus, OH 43204  
RX: Heathkit GR-64, GD-125//Q Mult., 4' DCL
- BLC - Brian Cartwright - 106 Leila Street - Johnstown, PA 15905  
RX: Channelmaster 6456-A//Loopstick
- GWJ - George Jensen - 4604 Anntana Avenue - Baltimore, MD 21206  
RX: Zenith Inter-oceanic Multiband Portable
- JMP - Jim Poterba - 949 Queens Drive - Yardley, PA 19067  
RX: HQ-200//SM-1
- SSH - Stephen Howe - 16 Windsor Road - Great Neck, NY 11021 (PRC Chmn)  
RX: DX-150, Laf. AM/FM Port., 1944 Detrola 568-1
- TJS - Tim Saltmarsh - 35 Towler Street - Penacook, NH 03301  
RX: NC-183//IRCA Loop w/75' LW
- TRS - Tom Sundstrom - Box 205 - Willingboro, NJ 08046  
RX: Hammarlund HQ-150//4' Loop

Welcome to EDXR, DXers - Report often, double-space, and don't forget to tell me what you receive with, and your three initials if you got 'em!

### Section A - DX American-Style

- 550 WGNG RI Pawtucket, vj wk but clear on ET w/IDs, old rr 0240-0310 8/14. unID c&w stn u/WGNG. (CFNB, Steve?). Called and spoke w/CE Duane Burnham, who said they were on lkw day (non DA), and their regular 500w nite pattern favors the south. (SSH) (Duane tells me QSLs are available - ss)
- 560 WIND IL Chicago, in midday 1446 8/9. (BCL)
- WIS SC Columbia, 8/8 mx, flash flood watch notices, fair. (BCL)
- 610 WIP PA Philadelphia: 2115-2200 Tom Lamane show, strong 8/9 (FT)
- 620 WHEW NY Syracuse, NSP - YECH. (QK)
- Oops: Quentin K. Brown - 59 Kenilworth Street - Ottawa K1Y 3Y5 ONT
- 690 WTIK LA New Orleans, fair daytime w/local WWBA-680 off, CIMC nulled. RR and sid's 1649 8/19. (ALN)
- 740 WCAS MA DX TIP: Excellent SRS/SSS bet for a 250 w. daytimer - ss
- 790 WTAR VA Norfolk, 8/20 250 ID into CBS "Face the Nation" w/WAEB looped. (TRS)
- 910 WFCW TN Johnson City, Gd w/fading, c&w mx. WGAT still off. 0540 8/14. (ALN)
- WRNL VA Richmond, 8/14 0255 rr. Strong. (TJS)
- 920 KARI AR Little Rock, Gd 8/7 2117 w/nx hdlnes, Charlie Stiver show. (MH)
- WKVA PA Lewiston, 8/21 w/"KV Countdown" top 40 rr pgm following a horoscope pgm 2132-2139 fair-poor, much fading and QRM. At times it comes in better. (GWJ)
- WHEW WV Fairmount: 8/20 mx hrd ending 2505, ID w/WTTM off 2505 TRS
- WKRT NY Cortland, 8/20 s/off 2515. Yankees BB game ending 2510 TRS

September 9, 1972

EASTERN DX ROUNDUP

Page 16

EDXR 24-Hour Phone Service: (617) 746-0394 (Non-Collect Only)

920 WOKY WI Milwaukee, 8/21 fair w/teletalk show. (BL)  
930 WSEV TN Sevierville, 8/13 wx followed by long rel. pgm. No-thing much in program details to take down. 0605-0638 all alone, fair signal strength. (BCL)  
940 WCPC MS Houston, Like a local SSS 8/14 w/2115 s/off. No SSB, said stn had 93.3 FM and anncr was Rick Huffman. (MH)  
WFNC NC Fayetteville, on for ET 8/25. Listened 0117-0233. Mostly w/S-10 sig. Maybe using 50kw. (BCL)  
WNRG V Grundy, w/C&W on 8/16, fair-poor 0716-0724. (BCL)  
960 WBRC L Birmingham, Exc. 8/13 2155 w/SID & spot. (MH)  
Coming thru 8/22 0000. Covered by WFIR-VA every few mins. Anyone know sked of WFIR? Sounds like they've gone AN. (NSP?) (BCL)  
970 WWSW PA Pittsburgh, fair w/ID then nx, fading o/u XE (?? ss), 0200 8/7. (ALN)  
980 KFVB CA Los Angeles, vy wk 0137, all nx. U/strong XETU w/WONE nulled, WSIX off 8/7. (ALN)  
KMBZ MO Kansas City, vy wk w/SID at 0212 while copying KFVB, WONE nulled 8/7. (ALN)  
WTRY NY Troy, 8/20 w/ID 0005, into rr o/usual din on freq. Surprisingly, no WRC, but some SS. (TRS)  
990 WANT VA Richmond, 8/15 w/ET using a live entertainment pgm w/folk type mx. Sig. poor-fair 0125-0133. (GWJ)  
WCAZ IL Carthage, way u/WIBG ET and WNOX on f/c, 0126 8/14, used tone. (JMP)  
1000 WVOV AL Huntsville, gd w/deep fades, rr + SIDs, o/u WQTY & WXTN 2017 8/13 (LN)  
1040 WHO I A Des Moines, 0404-0536 w/C+W & Comedy, strong 8/15 from somewhere in Upstate NY. (FT)  
1060 WNOE LA New Orleans, has gd daytime sigs, no QRM, Gold RR 1124 8/19. (ALN)  
1080 WBIE GA Marietta, fair w/fading. Ai nx 2000 8/13. (ALN)  
WVCG FL Coral Gables, fair days w/WFIV nulled. EL mx w/spots every 1/4 hour. 1904 8/13. (ALN)  
1010 WKEG PA Washington, noted 8/21 w/nx tip promo, and C&W mx. Sig gd but many deep, long fades. 2146-2158. WBT nulleable. Rare station here. (GWJ)  
WTBQ NY Warwick, xlnt on s/off 2030 8/18. WNAR anncr paused, 5numbers hrd - was zip code for Warwick. (JMP)  
1150 WGEA AL Geneva, fair w/CKOC on f/c - TT 0135 8/23. (JMP)  
WGOW TN Chattanooga: Fair w/uMoR, wx & Les Stevens(?) show. 0248 8/7. CKOC had OC, first time I've hrd them off.BB  
1190 KLIF TX Dallas, vg w/concert promo, no QRM, gone at 2115 pwr/pattern change 8/18. (ALN)  
1220 WGAR OH Cleveland, off MM 8/14 & 8/22 leaving a completely-dead frequency. (QKB)  
WJUN PA Mexico, fair s/off 2011 8/23, 1st time here. (JMP)  
1230 WEEX PA Easton, fair w/ID, s/off 0130 8/21. (BB)  
WNOR VA Norfolk, in auroral cx w/rr 0007, 8/7. Strong w/slight WERE-RI QRM (aurora starting to wear off). (QKB)  
WSOK GA Savannah, L&C on super aurora 0119-0220 8/5. Closer graveyarders wiped out. (QKB)  
WJOY VT Burlington, w/ET 0225 8/14. (QKB)  
1240 WBHB GA Fitzgerald, way u/WGBB on f/c w/ET 0305 8/10. (JMP)  
WFOY FL St. Augustine, well o/rest on f/c w/tone 0015 8/18, even beat WGBB! (JMP) ((WGBB also pest here - ss))  
WGVA NY Geneva, L&C 0230 8/14. NSP? (QKB)  
WVOS NY Liberty on f/c w/OC, had brief ID at end, 0010 8/18JMP  
WWCO CT Waterbury, all alone w/xlnt sigs 0246 8/3. (JMP)

PLEASE BE CAREFUL TO MAIL DX INFO ENOUGH IN ADVANCE OF DEADLINE! Tnx



September 9, 1972

EASTERN, DA ROUNDUP

Page 17

Deadline for Next Issue September 14 - Be On Time, Y'all!

1250 WARE MA Ware, 8/1 w/Red Sox BB, ID at 2000. Strng o/WKBR. (TJS)  
8/11 w/2130 ID during Red Sox BB, w/no sign of usual  
WT/E even without loop. (TRS)  
WKBR NH Manchester, all alone 0105 8/7 s/off. Often tried in  
winter at this time but no luck. Aurora got 'em in.  
Most wanted. (QKB) ((Is rr format - ss))  
WMTR NJ Morristown, 8/1 1955 s/off w/mentions of Morris Coun-  
ty and WDHA-FM. Instead of SSB, they used a rel. song.  
Strong w/WARE. (TJS)

1260 WWDC DC 8/19 2330 ID w/WBUD looped & o/WNDR. 1st time. (TRS)

1270 WLIK TN Newport, 2153 good o/Cuban het w/MoR, light rr & ID.  
Gone at 2157 8/19. (ALN)

WLSM MS Louisville, poor u/WXYZ on f/c w/tt 0222 8/23. (JMP)

1290 WCOW WI Sparta, fair on f/c w/others on channel. TT 0126  
8/23. (JMP)

WHIO OH Dayton, 8/19 w/ID & TC 0110, o/WICE w/rr. Good. (TRS)

WSCM FL Panama Cy Bch, way u/WHIO w/f/c 0235 8/18 (JMP)

1300 WQBK NY Rensselaer 8/14 0200 f/c, ID as: "Have a Happy Day  
with WQBK, Rensselaer." Strong. (TJS)

1310 WISE NC Asheville, vy poor 8/13 2130 w/ID. (MH)

1320 WILS MI Lansing, 8/20 0311 nx, rr mx. Good. (TJS)

WGET PA Gettysburg, 8/18, ID @ 2305 at end of MBS Nx. (TRS)

WKAP PA Allentown, gd o/WATR w/spots, ABC nx 1625 8/8 (SSH)

1330 WFBC SC Greenville, fair w/mx 8/15 0034-0045. (BCL)

1340 WBGN KY Bowling Green, strong on f/c 0421 8/5. (JMP)

WBBQ GA Augusta, w/others on f/c, fair 0022n8/21. (JMP)

WGAU GA Athens, fair-poor on f/c TT 0118 8/21. (JMP)

WMBO NY Auburn, "Serving the Finger Lakes" 0030 8/14. (QKB)

WUSJ NY Lockport, now AN w/rr. Hrd 0100-0110 8/14 L&C. (QKB)

1350 WKLA VA Portsmouth, 8/18 nx ending 2245, into rr. O/WHWH and  
WORK. (TRS)

WNLK CT Norwalk, exlnt w/old rr, AM/FM (WDRN) ID 1627 8/8 (SSH)

WYLS IL York, poor w/end of nx & ID, much QRM. 2032 8/19 (ALN)

1360 WAZA GA Bainbridge, u/WDRRC w/f/c TT 0017 8/24 (JMP)

WHBG V Harrisonburg, 8/21 ID, s/off. No SSB. Good sig. (GWJ)

WMNS NY Olean, strong, good on f/c o/WDRRC 0045 2/18 (JMP)

1370 WDEF TN Chattanooga, gd w/mx, nx 0530, slight WLCY slop. WCO A  
not yet on 8/14. (ALN)

WELV NY Ellenville, 8/18 w/mx to abrupt s/off 1959 w/advisory  
to go to 99.3 FM. Good, no SSB (TRS)

WMHI MD Braddock Hgts, 8/18 s/off 2000, no SSB, w/enmt to go  
to 103.9 FM. Clear after WELV pulled carrier. (TRS)

1380 WGUS GA Augusta, xlnt on f/c, TT 0108 8/15 (JMP)

1390 WCSC SC Charleston, in auroral cx, good w/WEED. Had CBS pgm  
and ID 2050-2102 8/6. (GWJ)

WPLM MA Plymouth, FORGET IT - This one beams out to sea, but  
first is beamed to 290 Court Street, hi.

Budd Bailey says watch for 1380's CKLC - all alone w/s/on at 0445.

1400 WABY NY Albany, OC & IDs on et 0102 8/14. Is N-6 w/rr, SP  
MM. (QKB) ((Good tip, Quentin! QKB is SoM Ed. - ss))

WALE MA Fall River, tent. ID 0200 8/23, much interference  
from WABY. (JMP) ((It was W/LE, Jim, on ET. They  
ran a cart.: "You're listening to WALE, Fall River,  
Massachusetts, conducting equipment checks", con-  
tinuously, w/no tt. - ss))

WGAP TN Maryville, Gd on f/c 0013 8/15, fair o/slop. (JMP)

WJZM TN Clarksville, u/mess w/wk tone, just audible, very  
poor, 0104 8/17. (JMP)

WJZM GA Savannah, w/rr 0130 8/8 - auroral cx. (QKB)

September 9, 1972

EASTERN DX ROUNDUP

Page 18

"DX Season's Getting Stronger - You Can't Afford to Wait Much Longer."

- 1410 WIKI VA Chester, gd u/WPOP on f/c, 0012 8/24. (JMP)  
WINE OH Dayton, 8/14 0210 w/rr. Strong. (TJS)  
WONS FL Tallahassee, o/rest of channel w/dialtone f/c 8/10  
0216. (JMP)
- 1420 WACT AL Tuscaloosa, fair/poor w/s/off, WRBL nulled, 2045 8/13  
(ALN)  
WDDY VA Gloucester, 8/20 1925-1935, w/WCOJ looped. (TRS)  
WLET GA Toccoa, u/CKPC w/f/c, 0134 8/18. (JMP)
- 1430 WDIC VA Clinchco, Editor notes: This one tests every third  
MM, and was heard here 8/21 from 0115-0130, entire  
(Also hrd by BCL - gets out well!) test. Was also hrd by SSH and JMP. Here, it is al-  
ways o/pest CKFH, and does veri - I have a QSL here.  
IDs as "This is WDIC - William, David, Ida, Charlie,  
Clinchco, Virginia, testin'". Always same time.  
WENE NY Endicott, 8/20, ID and TC for 1951 w/WNJR looped.  
Fairly good, new here. (TRS) ((Is rr - ss))  
WMNC NC Morgantown on 8/10, 0030-0112 on PoP. (BCL)  
1440 W/JR WV Morgantown, 8/18 w/clear ID 2330 thru beautiful mx  
of WHHH's Penthouse Serenade which IDed right behind  
WAJR. No sign of usually dominant WAAB-MA. (TRS)  
WELJ KY Williamsburg, way u/all rest w/snatches of tone,  
tent. 0352 8/5. (JMP)
- WRBE MS Lucedale, poor w/s/off in QRM 2044 8/13. (ALN)
- 1450 WWXL KY Manchester, hrd on r/c per updater list fair 8/13,  
0415-0430. (BCL)  
WMAJ PA State College, 8/15 w/0007 s/off. Poor, no SSB noted,  
but could have been in fade. (GWJ)  
WTHU MD Thurmont, fair w/tt on f/c 0003 8/15, fair-good. (JMP)  
((WTHU is 100 watts night - good catch if was 100. ss))
- 1460 WRVK KY Mt. Vernon, o/WMBR w/tt on f/c 0317 8/5 - gd. (JMP)  
WBRN MI Big Rapids, 8/20 0115 ET w/tone, strong o/WCMB. (TJS)
- 1470 WBIG NC Greensboro, 8/14 w/ID & TC 0151 u/o WTKO in jumble.  
Surprise - no WSAN!!!! (TRS)
- 1480 WSAR MA Fall River, very gd on et w/old rr, IDs, promos 0157  
8/21. No QRM as WHOM had s/off. (SSH)
- 1490 WDXL TN Lexington, 8/20 w/SID - "WDXL - More Mx!" 0205  
momentarily above normal din w/WBCB looped. (TRS)  
((DXers be careful - W. Springfield, MA on 1490 has  
NSP rr WTXL, and has similar IDs. Gets out v. well.))
- 1500 WGMF NY Watkins Glen, 8/14 longest f/c I've ever hrd 0000-0040  
used tt. Strong o/XERH and others. (TJS) ((Ed: WGMF  
has plenty of time to test, but never seems to have  
time to veri. I've sent out 4 accurate reports, and  
even phoned. Empty promises, and I'm minus 8 stamps.))
- 1530 WOBR NC Wanchese, gd in auroral cx, no QRM 2002-2015 w/some  
deep fades. Weekender Beach Boy show, top 40 rr,  
8/6. (GWJ)
- 1550 WPJD TN Daisy, on f/c w/mx 0246 7/17, 3rd MM. (DF)  
WLUX LA Baton Rouge, Gd at s/off, 0 0 by Capitol Cities  
Broadcasting (Like WPRO, WKBW) 2045 8/5 (ALN)
- 1600 WINX MD Rockville, 8/10 2145, pop mx thru WWRL. (TRS)  
Went to CT for weekend of 9/2, and enjoyed beautiful wx. Came back to  
find that Hurricane Cary had hit Plymouth, wrecking temporarily my  
typewriter (maybe improving it), and drenching so many EDXR reports,  
to the extent of unreadability. This typewriter courtest of Lynne and  
Cary Pall (KCLW) of NRC HQ - deep gratitude.
- Section B - DX Canadian-Style:
- 740 CBL ONT Toronto, on the air 0245 8/21. Never heard a Canadian  
run an et or somesuch. CJBC also on. (BB)
- 900 CHMI ONT Hamilton, 8/20 0030 w/rr, gd w/unk. FFstn. (TJS)

- 910 CBO ONT Ottawa, 8/20 w/CBC pgm (a play), ID, w/CHML completely looped. (TRS)
- 960 CHNS NS Halifax, w/Halifax wx 0202 8/21. Sponsor for on the hour nx at 0200, 0300 is Argyle's Garage, Halifax. JMP
- 1150 CJRC ONT Ottawa, off MM 8/14, 8/22 leaving a strong CKOC. Usually NSP. (QKB)
- 1240 CKBS QUE St. Hyacinthe L&C 0122 8/10. Auroral cx had switched from south to east by this time. (QKB)
- 1280 CHAM ONT Hamilton, poor w/s/off 0100 8/21 to return 0300. (QKB)
- 1350 CJLM QUE Joliette, in mess 0215 8/14 w/nx, sx. (QKB)
- 1360 CKBC NB Bathurst noted 8/21 w/s/on, GSQ, into nx. Exlnt sig., 0500-0505. Time check gave 0600. Very rare in this area. (GWJ)
- 8/13 2334 FF MoR gd u/WDRRC. (TJS)
- 1510 CJRS QUE Sherbrooke, good o/u WMEX w/FF promos, light rr/MoR. 0054 8/14. (SSH)

Section C - unIDs

- 1360?WELP? SC Easley 8/15 0102-0130 w/IDs that sounded like WELC. Not sure if WBLC in Lenoir City, TN or WELP in Easley. I sent a tent. asking a reply right or wrong to WELP. (BCL)
- 1370 ???? ?? ??? TTer u/WFEA 0005 8/10 probably WOTR on r/c. S/off 0007 w/3 short tones, no ID. This is typical of several PA r/c's I've heard. (SSH)
- 1380 ???? ?? ??? Apparent ET 0348-0407 8/7, some rr over and over. IDs given 0349, 0353, 0400, 0407, then off. Clearest was 0348, but recorder wasn't on. Others came out too jumbled to hear. (BB)
- 1440 WMVB??NJ?? Millville, fairly certain about this one but not positive. Hrd 8/24 vy wk from 0016-0040. Only ID I could hear & only thing identifiable was call, which sounded like someone mumbled it. Anyone on EC hear this? (BCL)=
- 1550 ???? ?? ETer w/1 kHz TT, ID mx 0135 8/21. Definitely WR -- and from the sound of the last 2 letters was prob. WRIZ, Coral Gables, FL. (SSH) (Superlog: WRIZ is it, Steve, as I don't list any "W" calls with WR but WRIZ.

Reminder Tom Sundstrom would appreciate receiving info on CPC programs. His deadlines are 9/12, 10/17, 11/14, and 12/12 for bulletins arriving approx. 1st of the following month. Send all info to Tom at Box 205, Willingboro, NJ 08046. The NNRC is the largest radio club in N.A.; let's not miss an opportunity to get the best coverage possible for DX programs.

DX Meeting Albert Lobel, Apt. 6, 4545 55th St., San Diego, CA 92115, is planning a DX get-together for 10/21. All interested DXers invited; slides of the San Diego Convention will be shown. Please write or phone if you plan to attend. (714) 286-3668. Directions available from Albert.

Canadian Notes (via John Oldfield) CJNL-1, 1400, is on (Princeton, B.C.) relaying CJNL-1230//CHNL-610. \*\*\* CKSP-1450 is on, relaying CKOK-800 Penticton. Stands for CKSummerland-Peachland, B.C. CKOO-1240, CKGF-1340, & CKSP-1450 all relay CKOK-800 except a couple of live hours per day.

IRCA Foreign Log Ready The IRCA Foreign Log is ready to mail. Sooner you order, sooner you'll have yours. It's got a lot more than just the stations heard this past year. It has a call-letter index, articles on foreign DXing by Jay Murley and Father Jack Pejza, a sample WW sunrise-sunset map, Geomagnetic Indices for the past season, a Time Chart, and so. Order now by sending check or money order for \$2.75 to Father Jack Pejza, 3266 Nutmeg St., San Diego, Calif. 92104. Make funds payable to IRCA. Non-members, send \$3.25.

HAVE YOU ENTERED THE IRCA CONTESTS? FOR COMPLETE RULES, SEND SASE TO IRCA HQ, c/o DEE.

SEPTEMBER 9, 1972

EASTERN DX ROUNDUP

Page 20

Editor; Bruce Heimburger - 1710 Cambridge - Ann Arbor, MI 48104

Please note this change of address. This section typed by DF. Deadlines will remain Friday, 8 days before date of issue.

XX

Larry M. Abraham - 3839 Sherman - Bridgeport, MI 48722

Big news here is the purchase of an HQ 180AC Hammarlund. After a little bargaining I got it for \$300. I have several good reasons for believing that the previous owner seldom used it, and it was in almost new condition. I am very much satisfied! On the first night of use (which coincided with the great solar storm on 8/3) I logged YNOW, 540, Managua, YNM, 620, Managua (have never seen this one reported) (Hrd here last year & reported. FJP said was often hrd several years ago-DF) and PRG2, 1040, Sao Paulo, Brazil (my 34th country). I have been DXing more this summer than any other. Spending most of my time on SW, but some on BCB. Latest veries include WSBS-860, KVET-1300, WRBC-1300, WSTL-1600 (am furthest listener according to them), CKNB-1350, WCHS-580, WWST-960, WCND-940, WINZ-940, WUNN-1110. I am a member of NASWA and receive their fine FRENDDX Bulletin monthly. They have been offset since March and produce many quality photographs. Those who say offset pictures are poor (as in recent DXM) should realize this. I hope we too can go offset someday. Altho this might mean slight dues increase. Having a book form is nice, I am not saying that mimeo is bad, understand. We shall see. 73s.

Bill Coleman - APT. B-2, 105 Salem Circle - Raleigh, NC 27609

Greetings to you all. On 8/17 I heard a f/c from WNMT/Garden City, Ga., on 8/20 one from WDSL/Mocksville, NC. Not too much DXing going on around here. If anyone is interested you can call the cost of Living council radio news service free. 1-800-424-8830. Thinking about getting rid of my DX-150a and SX99, and get a new Drake SPR4. I'd appreciate any comments, info, etc. from anyone that uses the SPR4. Hope to go to the NRC convention in Miami. I only wish IRCA would have a convention on the East Coast. California is too far to go. Been hearing a pirate playing oldies around 1620 kHz about 0030 EDT. I think its WRFL, not sure as much interference with it. I've made up a log of all the pirates hrd in the last year/info taken from IRCA & NRC bulletins. If anyone wants a copy send 25¢ stamps or coin to help cover xerox costs. I got a copy of Paul Harris' book When Pirates Ruled the Waves. It is well worth \$7.95 and can be ordered from Tab books. It's got a lot of good pictures in it. Ask for book #299. If anyone has any air checks (reel only) of pirates please let me know. I have a lot of interesting tapes myself and would like to swap. Reel only/cassette is out of order. New phone # here is 1-919-782-1527 (no collects). 73 and peace.

Flash Tips and Notes

Joseph L. Helm, via John Kolb, reports that the Drake SPR4 is going from \$499 to \$579 eff. 9/15. Ralph Sanserino notes good reception from JOBB-830 at 1400 GMT in late Aug. Also 835-770-1040 TPs. Jay Murley advises that KFMB-760 San Diego will go AN-6 effective 9/1 with SP of 0100-0500 or thereabouts on MMs. Rick Evans and John Zondlo have new addresses eff. imm.: Rick Evans, P. O. Box 2048, Gary, IN 46409. Deadline changed to Wed., 10 days before date of issue. John Zondlo is at Palmer Hall Box 113, Muncie, IN 47306. Ralph Kemper reports that KCHY, Cheyenne, WY, is now on 1530, ex-KCGO-1590. Noted 0400 9/4 MM w/nx u/KFBK. KCHY in the clear, fair, after KFBK s/off 0405. Steve Taaffe has the following mistakenly not used last issue: WGEE-1590 Indy has changed to WNIR (Winner Radio) with C&W. WEMJ DX was verified by Steve w/full-page v/f indicating rpts from Midwest and NYC area. WAZY-1410 Lafayette, IN, has been ETing on MMs w/TT & OC. IDs every 5 min's. lkw, DA N-S, 0630 EDT s/on. Aris Papafingos and Bill Powers note that KBBQ-1500 Burbank, CA, changed from C&W to KROQ and RR at noon PDT, Sat., 9/2.

September 9, 1972

EASTERN DX FORUM

Page 21

(+)

Mark Hittinger - 1932 Buttonwood Road - Louisville, KY 40222

A lot was accomplished this summer contrary to many who have not logged very many stations this summer. My DX success was totally due to joining the IRCA. Thru tips in the bulletin I logged 38 new stations (as well as a new loop antenna), 4 new states and 2 new countries which bring my totals to; 100/74, 27/24, 2/2 (no more provinces still) 7/5. Walt Breville; I would like to see your article that was in the March 4 DXM (I wasn't a member then). UFOs are a subject that interests me. I almost choked when I saw Stephen Francis's verie totals in the 5/6 DXM. DEE; I liked those margins on the 7/15 DXM. FJP; I've seen the offset printing that SPEEDX has for their bulletin and it's alright. I think those photos sort of blew the idea of offset printing in the convention highlight notes. Joe Markewicz; I would appreciate it if you would write me and tell me how to verie Cuban stations. On the whole much was accomplished this summer. What's MoR? 73s. (Middle of the Road music - DF)

Jordon Roderick - 48 Orchard Farm Road - Port Washington, NY 11050

Hello again everybody. The static is bad where I am. However I have had the good fortune to visit Philadelphia and Nantucket, Mass. where I got 31 stations. My totals are 206/128, 26/25, 4/3, 2/2. The new state is Delaware, WDEL sent a v/1, and again, my only hold-out is New Hampshire. The engineer who wrote me the letter from WDEL asked me if I belonged to a radio club. If not he suggested NRC. An obvious case of poor taste! I wrote him back and soon I hope to see his name among the new members. From the very beginning I thought that BCB DXing was an exasperating hobby. After all, how many hobbies require you to sit up until 4:00 Clock in the morning to practice them? But now I think BCB DXing is a piece of cake. What changed my mind? Six letters. SWLing. For two months of work I have 25 stations and 7 QSLs. Also I talk louder than I used to. You know, like people who are partially deaf? 73.

Charles Berman - 2901 Deran Parkway - Brooklyn, NY 11235

Hi there everyone. Hope that DXing has been gud for everyone. Cx are steadily improving and more stations are coming in. In the past two weeks I received the following veries while working here at Grossinger's Hotel, WWL, WGN,+ CM, WCCO, WHO, WJR,+CM & v/ppc, KMOX. About 3 weeks ago I purchased a Panasonic portable rx (Model R-1449) from one of the staff members up here. I reccomend it very highly if you're DXing on your vacation. You outhg 2 C the size of the loopstick antenna built in it. Well, just two more weeks left before I leave here to go back to school on Sept. 7th. Sorry I couldn't make SANDICON. Turned out that when I started work up here the convention began the same day. Also I use 3rd class so that made matters also bad. I'm definitely going to use 1st class when I renew next year. Incidentally, did any of you catch that "Greaser Weekend" that WBZ in Boston put on a few weeks ago? I thought it was great because I really dig the 50's oldies. There was one guy who called up from Seattle to make a request. The DJ freqked out when he heard that BZ was being heard all the way out there hi. Well, that's all 4 now. 73.

George W. Jenson - 4604 Anntana Avenue - Baltimore, MD, 21206

Hi gang. The quroral conditions in the last week or two created some real surprising cx. It's nice to have stations like WCFL, WBBM, WHN, WNEW, WBZ etc. not qudible. Unfortunately many Cubans and other LAS were there to take their place. Can you beat WOBR w/15 Minutes of SSS w/no WKBW? Recent veries follow; PPC, SASE, WWIN, WSID; PPC; WCTR, v/q; HJCY, WEOK, WNOW, WRVA, WSAN, WOBR; v/c; WWVA, v/1, WHEN, WRNL, WNMT, WSLT + QSL, WTMR, WWDC, v/f; WJAR, WTAR, WAVA, WPIK, WUST, WWPA, WNCT, V/memo; WUOK. Report of WPMH, 1010, Portsmouth VA in August EDXR is not correct according to letter from station. Though format monitored matched (e.g. oldtime radio) SS, maybe it was B3C hi.

September 9, 1972

EASTERN DX FORUM

Page 22

Jim Poterba - 949 Queens Drive - Yardley, PA 19067

Greetings Gang! DX has picked up of late with 40+ in August putting me over 740 heard. I agree w/Dave Faulkner; everyone complains about the terrible cx but how many of you try using the f/c list, or Baseball Network to their fullest? July wasn't too bad a month, static-wise, but August was a disaster. Several large thunderstorms have ruined much good DX. Veries; v/c WAHT, CHOK, WSAN, WELI, CBE, WSWV, WBOC, WICC, WHLI, WADO; v/ppc; WHLO, v/l; WVCH, WBNS, WPAT, WGVA, WVOS, WBUX, WFTR, WEEZ, WEHH, v/f; WTOW, WHOT, WSM, v/CM, WYDE. Verie info; WBUX-address reports to; Leslie W. Crist, CE, WBUX, and specify you would appreciate a speedy reply. This per station visit. WEEZ; John C. Dyckman advises that all reports should be addressed to him, and that there may be a wait involved. WEEZ veries all correct 15 minute reports. WHOT verie courtesy Wes Boyd, NRC. Wes mentions that he has scheduled a test this season from WBTX, Broadway, VA. 73 to all and let's hope for a very fine season this year....

Randy Minneham - 975 Chestershire Road - Columbus, OH 43204

Hi everyone. I've been in IRCA for a year now so I guess a re-intro is in order. I'm 17 and a senior in High School. I've been DXing BCE & SW since August '70. BCB totals, States; 44/38, provs. 6/3, countries 14/8. I use a realistic TRF w/no external antenna. In the IRCA I'm CPC chairman and + invite anyone wishing info to contact me. This season is going to be one of the best for DX TESTS. Summer cx really hasn't been too bad. My best catch this summer was KKGf-1410, Great Falls, MT. (1492 miles away!), on a f/c. Whoever sent me the "great Circle Maps," many thanks. Does anyone else have any ideas on my splitting the Netherland Antillies idea? Take care everyone. 73.

Budd Bailey - 8800 Wenner Road - Williamsville, NY 14221

A large Thank You is in order to Lynn Brooks for his large contribution to our club. Hope his replacements can live up to his high standards. Got to meet Greg Condon & Shel. Swartz on my recent trip to Mass. Both were extremely gracious to me and Shel even got me a small tour of WBET in Brockton. New Totals are; 385/205, 42/37, 9/9, 13/4. Recent veries; v/q; WNYC, WRAK, WLBR, WHBC, CKWS (#200), v'l, WCCR. Tim Saltmarsh; a list of foreign addresses might be helpful here but domestic might be sent to NRC for their new log. Really enjoyed Gene Martin's article on the Silent Night of '26. Wish it would happen again in '72. Bankbook about to shrink; plan to renew, order IRCA foreign log, enter contest. Hope Brh doesn't mind my stuffing his mailbox with reports. 73 & good DX to all.

The following report did not have a name on it although Bruce has repeatedly urged members to put name & address on all reports.

Hi DX mob. Havn't done any DX lately tnx to a vacation to the NJ shore. I brought along a portable rx and was amazed to find that every L.I. station came in like a local; WGBB was the #1 signal on BCB. Local daytimer WERA, 1590, Plainfield NJ tests frequency every 3rd FM of every Sept., Dec., March & June. If anyone else known when other daytimers test frequency ple write. Jordon Roderick, you can get your xmtr from Gates Radio Co., Quincy, Ill. Uncle Shel; WQQW's format is beautiful mx, you know, old lady music. DEE is against IRCA going offset. It's great the way it is. CPCers; don't write to daytimers because they can't go on the air unless there an emergency or they're having a frequency test. (Hogwash. ANY station has the right to test equipment during the Experimental Testing Period. Besides, one of the things the CPC does is to learn the f/c schedules of many stations - DF) Nutin also to say so 73s.  
Don't forget Brh's new address, effective for the next issue and from thence throughout the coming season. It is 1710 Cambridge, Ann Arbor, MI 48104. New address shortly for me as well - DF

Fred Tschudy - P. O. Box 356 - Shrub Oak, NY 10588

Dave Faulkner; Thank You for your tip of Sunrise DX in the 7/15 DXM EDXF. (You're welcome-DF) I tried it this morning and I picked up state #18--Iowa. I arose at 0400 and found WHO loud as a local! My reception report is amde out and ready to mail. (If you stay in the hobby long enough you'll come to hate WHO whether it's loud as a local or soft as a whisper-DF). In my last report I claimed that Mass. was state #18 veried. Well I was wrong since CKLW is in a province, not a state. Sunrise DX-try it, you'll like it.

Bill Raczko - Route 2, Box 70 - Swanton, OH 43558

Hi gand! Contrary to popular belief I'm still alive. I haven't DXed since march, but a few veries came in; v/q WHEX, KPNW, v/l, KLUC, v/f, WBAT, v/cm, WJOR. I hope to be more active this season, but I said that last year, hi. A few questions for anyone. Is CJRC now on 1140? If so, what is power. (I don't think CJRC was to move, only to increase day power. CJTR, Trois Riveres, PQ is there now though w/EE & FF rr & very few IDs AN - DF) KAYQ-1190 Power? (1kw-DF) No offset printing. I am against it for two reasons, the high cost and I think our preasant mimeo bulletin looks better than an offset bulletin, and is easier to read. I guess that's about all for now. 73 & peace.

Larry Flegle - KEQ 4754 - 1510 East Lambright - Tampa, FL 33610

Well finals are over and I came up w/a "B" in intro to Broadcasting. Really felt bad since I missed an "A" by one point. Not much DX lately with cx as bad as they have been. Did get a few new, but not exciting catches. Sent out 18 CPC letters this leek, all Florida. Hope I get some good results. Few veries in, v/l 4VEF, v/l, WKXY. New totals, 217/157. SCers; i can supply a few locals so write. CB swap cards also. 73s to all and we're clear and going 10/7.

Stephen E. Martin - 12115 Northwood Drive - Upper Marlboro, MD 20870

(cont. from last issue) Him (Herkimer) questioned my idea of putting up a preamp and tuning capacitor up at the loop, instead of down at the radio, while in VHF/UHF work it is often necessary ot have antenna mounted preamps.due to line losses, etc., losses at BCB are quite low. But putting a pre-amp up at the antenna isn't that much more work, and it just might make a difference in weak signals. I still think that the variable capacitor should be mounded up with the loop, however, because if it is mounted near the radio you'll be tuning both the loop and the coax, instead of the loop alone.

Tim Saltmarsh - 33 Fowler Street - Penacook, NH 03301

Greetings. The truth is out! The public has found out why DXers stay up at odd hours of the night and the wee hours of the morning, they found out that we all suffer from insomnia (maybe it's insanity) and only use the radio as an excuse to why we never sleep. Am debating to whether I will continue with the address and phone # list, one thing is for sure, that the New England portion will be completed and printed as it is almost done now, the rest will probably be deleted as most of the membership seems to think that such a list is unnecessary, tnx to all who have sent me lists and shown their interest. Only new veries are; WKBR-v/q-v/s W. Bumach, CE, WTSN-v/q, W. E. Zuinby, CE WTKO-v/l-Jeff Gill, DJ. Have gotten three TV veries lately, WJXT, WCAX and WTIC-TV, pretty good considering i don't even DX TV. 73s.

KCRL Test KCRL-780 Reno was on for IRCA dedicated test per sked, 0300-0400 EDT 9/11.

Hrd in Riverside by DEE while mimeographing the last pages of this issue of DXM. Good sig on 10kw and no difference was even noted when they dropped or said they dropped to 1kw. Programming 100% classical music with IRCA dedications and nx at 0400, then drop to 1kw. Don't forget to support "Flash Tips and CPC Results!"

EDITOR: Richard C. Evans - Box 2146 - East Chicago, Indiana - 46312

DEADLINES: 9/14 9/28 10/12, then every thursday through March!

+++++

## OF SPECIAL INTEREST:

660 KOWH NE Omaha, September sign/off is 1930 (EJW)  
 740 KRMG OK Tulsa, 24 hours, off SM,MM. MoR format (JB)  
 970 KAKC OK Tulsa, NSP Drake rr, nx at about :17. They change the DJs around about once a month! (JB)  
 1170 KVOO OK Tulsa, now off 2nd MM 0100-0600 according to the station. Noted off 8/14 (JB) AN, off MM 0100-0200, leaves carrier on, though. C&W Mx w/Billy Parker Show AN. Voice of Oklahoma. NBC (JB) (this was two different reports. -- rce)  
 1270\*\*KIML\*\*WY Gillette, Check is 4th Sat. Quarterly, next 9/23 0115 (EJW)  
 1300 KCNW OK Tulsa, 24 hours, off MM, U4 5kw, 1 kw nites, Now CBS (JB)  
 \*\*KOLY\*\*SD Mobridge, on 8/16 for ET 0142-0148. RC changed to 3rd Tuesday from 0100-0115 EDT (EJW)  
 1430 KELI OK Tulsa, NSP, w/RR, SID's. Nx at about :18. AM. Top 40 runs at 1900-2200 Saturday Nights (JB)  
 1450\*\*KVSL\*\*AZ Show Low, fair to good w/clear ID at 0344 "This KVSL Show Low, Arizona and this ends equipment test." NOTE TIME: 0330-0345 f/c list shows test 0345-0400. First MM 8/7 (BN)  
 out of order (EJW)  
 1400\*\*KEYJ\*\*ND Jamestown, new check time: 3rd Mon. 0130-0135 tone  
 +++++  
 560 KWTO MO Springfield, 0613 8/14 w/ann. saying he was starting off the new format: "Big Country". Also he said slogan is the "Big 56" (JB)  
 620 WJDX MS Jackson, fair to good w/farm Nx 0613 8/14 (RW)  
 690 WAPE FL Jacksonville, v/good w/ID as "The Ape" 0310 promo "Great Rambling Raft Race" and Steve Foster Show 8/3 (RW) 0310-0315 8/3 w/SID, "Ape"ID's, rr/mx. At 0315 sig. went off the air abruptly (JB)  
 KGGF KS Coffeyville, 10 kw. 5 kw N. c/w days, rr/nites, "The Big 69" (JB)  
 WTIK LA New Orleans, weak w/nx 0345. Messed up by XETRA (JB) Poor with news 0345 8/3 (RW)  
 710 CKVM PQ Villa Marie, FF program 2150-2200 7/31 (MH)  
 730 CKDM MAN Dauphin, good o/WFMC ET w/Rock music, WGN off 0346 8/22 (DP)  
 \*\*WFMC\*\*NC Goldsboro, fair u/CKDM w/ET 0345-0410 8/22 (DP)  
 800 KDDD TX Dumas, 8/1, s/on 0700, also r/c (EJW)  
 850 KFUD MO Clayton, 7/25 2215 w/BBC late concert. nice v/q (JB)  
 860 WDMG GA Douglas, 0539, 8/14, w/c&w mx. In almost every MM at about this time. Good signal (JB)  
 WGOM IN Marion, 8/22 fair 0733 in fair way u/WNOV (RSK)  
 KOAM KS Pittsburg, strong from 2115-2146 7/30 with NBC Monitor (FH)  
 900 CHML ONT Hamilton, 8/25 2208, Commercial about Hamilton Fire Dept. pole climbing contest. Mod. fading, heavy static (KM)  
 WFIA KY Louisville, 8/26 0624 way under WFRO with ID (RSK)  
 WFRO OH Fremont, 8/26 0618 bombing in w/farm show o/WFIA (RSK)  
 910 WLAS NC Jacksonville, 8/28 0610 on top of everything with spot (RSK)  
 WDOR WI Sturgeon Bay, poor u/o WLS slop w/mention of county fair 0713 8/13 (DP)



EDITOR: Richard C. Evans.

DEADLINES: 9/14 9/28 10/12 10/19.

\*\*\*\*\*

930\*\*WFMB\*\*MD Frederick, 8/23 0110 w/ET OC tuned this one in by accident and just caught their ID Xlnt signal (RSK)

940 WCND KY Shelbyville, 8/22 in fair w/Wx not enough details for a report as quite fady 0624 (RSK)

950 WSPA SC Spartanburg, fair w/sx (?-rce) 2110 7/26 (RW)

KPRC TX Houston, fair w/ID only 2126 7/26 (RW)

KSEL TX Lubbock, 8/4 0212 a big surprise w/KSEL \$1000 grand giveaway promo in all alone during auroral (RSK)

WKAZ WV Charleston, 8/15 0036 fair o/u WWJ w/progressive rock type format (RSK)

960 KOOL AZ Phoenix, weak and fading, heavy QRM w/"Cool News" 0200 8/14. Much wanted, state #39 (DP)

980 KMBZ MO Kansas City, 8/28 0530 poor w/ID u/WONE (RSK)

990 WCUB WI Manitowoc, fair mixing w/WITY and WCFL slop, rock music 0706 8/13 (DP)

1010 KIND KS Independence, v/good w/wx 1015 8/4 (RW)

1050 KFMJ OK Tulsa, religious programs and gospel music. D1 1 kw. sign off with no SSB (JB)

1080 KYMN MN Northfield, good but fady no QRM w/Nx 2100 8/13 (DP)

1090 WMUS MI Muskegon, 8/7 2026 in very poorly way under WGLC with weather (RSK)

1170 KSTT IA Davenport, 8/5 0145 w/PSA's. Heavy QRM and fading, thought it was KCBQ (KM)

1190 KLIF TX Dallas, fair w/Wx 0445 and promo f/Three Dog Night concert 8/14 (RW) w/rr easy L&C KVOO off 8/14 0435. KAYQ (?) was also there but KLIF was winning easily.

1230 WBOW IN Terre Haute, 8/15 fair w/Wx 0145 (RSK) (JB)

WJEF MI Grand Rapids, 8/14 0158 w/s/off SSB fair, being massacred by WQUA (RSK)

KMRS MN Morris, on 8/16 late for baseball. s/off 0137 (EJW)

WCOL OH Columbus, 8/28 0353 w/PSA on top of everything (RSK)

WBBZ OK Ponca City, v/good w/Jeff Johnson Nx 1700 7/26 (RW)

KSST TX Sulphur Springs, poor with news 0555 8/14 (RW)

???? ?? UNID, 7/27, 2235 w/end of AE Nx and jingle: "More solid rock. More solid rock. More solid rock: \_\_\_\_\_" Sounded like WLS jingle. Who?? (JB)

1240 WOWL AL Florence, on top of everything 8/5 0206-0229 with music and many ID's (FH) Heard with ID after news 8/14 0401 (BN)

WSDR IL Sterling, s/off 0201 w/SSB (EJW) 8/24 0201 in good at s/off. WEDC completely looped (RSK) (RW)

KAKE KS Wichita, poor to fair w/Dolly Holiday show 0200 8/3

KFMO MO Flat River, 8/9 0001 w/ID "KFMO Flat River, Missouri" atop everything for about five minutes. (KM)

KWOS MO Jefferson City, 8/24 0119 bombing in w/s/off. WEDC looped. (RSK)

KOKL OK Okmulgee, v/good w/Nx headlines 1228 and Mtn. Dew spot at 1229. rr/mx 7/26 (RW)

???? ?? UNID, SS program often on MM 0300-0400 looped NE. WEDC?? (JB) (quite likely, Jim, but considering your location, I would not discount something off the backside of your loop!--rce)

1260 KGBX MO Springfield, fair w/rr/mx and mention of Springfield newspapers 0057 8/3 (RW)

1270 KWPR OK Claremore, D1, C&W/mx, Okla. Nx Network, 500 w. (JB)

SOME REQUESTS: Please only one side of the paper. Do not list stns in freq. order--it's no value to me. Show your initials on each and every item, including those r/c's which are pulled out. Double-space.

EDITOR: Richard C. Evans

DEADLINES: 9/14 9/28 10/12 10/19+

+++++

1280 KNBV AR Newport, 8/3 2044-2100 Good signal, requested  
listeners to switch to KNBV-FM for St. Louis BB (FH)  
KTLK CO Denver, fair w/Nx at 2200 7/26 (RW)  
WYVE VA Wytheville, probably the one with spot for real  
estate in Stuart, then C&W mx 0620 8/22 (DP)

1290 WNIL MI Niles, fair at s/on o/u WZUU/WCOW 0700 8/13 (DP)  
WCOW WI Sparta, fair at s/on w/SSB o/u WNIL/WZUU 0700 8/13(DP)

1300 WIBR LA Baton Rouge, hrd 8/7 0603 w/"1300-WIBR Golden"  
jingle and oldie rr (JB)  
KCNW OK Tulsa, 8/10 2230-2243 in w/C&W mx, couldn't keep  
long enough to verify, o/WBLG (FH)  
KVET TX Austin, 8/4 0215 in well but fady w/wx o/u WRBC  
C&W format, announcer said hi to me during his pgm,  
very friendly station (RSK)

1310 WDOD TN Chattanooga, 7/30 2230-2300 in strong w/C&W mx  
over WIFE (FH)

1320 WILS MI Lansing, good w/spot for the Metrobowl at 0248, SID  
and rr/mx at 0250 8/7 (RW)

1340 WJPF IL Herrin, 8/22 good 0130 w/ID. Veric said I was the  
most distant listener on 250 watts (RSK)  
WTRC IN Elkhart, 8/13 2356 w/nx into s/off at 2400 in real  
strong. I'm surprised I never noticed this one  
before (RSK) (I've only heard it once, Bob, in over  
six years in this area--rce)

KROS IA Clinton, s/on (?-rce) every MM ? (sic) 0105 after  
local news (EJW)

KTOW OK Sand Springs, NSP C&W mx, AE nx "Proud Country  
Radio" (JB)

1360 KRYS TX Corpus Christi, good w/R+R mx. No WBAY/WSAI QRM  
tnx to aurora 2237-2246 8/4 (KDF)

1380 KBWD TX Brownwood, poor 2042 w/ID only 8/7 (RW)

1390 WNUS IL Chicago, fair w/Nx at 0430 wx at 0434, gave temp.  
as 65, playing MoR mx 8/7 (RW)

1400 WJLD AL Homewood, ID jumped up out of mess and then faded  
away 7/30 0230 (FH) (Such is the stuff DX memories  
and disappointments are made of, hi--rce)

KTTS MO Springfield, 8/4 RS during aurora storm, 24 hours  
(EJW) 8/11 0200 w/nx and mx, best signal on crowded  
frequency. v/1 (FH)

KWON OK Bartlesville, v/good w/promo for Rare Earth concert  
at 1257 7/27 (RW)

KTMC OK McAlester, hrd 7/27 2215, w/wx, 95 degrees (JB)  
KTFS TX Texarkana, w/promo for KTFS Nx 0207 7/27 (JB)  
WDUZ WI Green Bay, poor w/ID, "You're listening to much  
more music on WDUZ" 0320 8/7 (RW) Best WI hrd. 0452  
w/rr & Pat ?? Show. Mucho QRM from WJHO (?) and  
others. 8/7 (JB)

WRJN WI Racine, Network Nx 1328-1338 8/23 (MH)  
WRIG WI Wausau, with music 0124-0129 7/31 (MH)

1410 WLAQ GA Rome, in w/fair to good signals 0517 8/14. After  
?? Time came George Fletcher !til 9 (JB)

KWBB KS Wichita, good w/spot for Am. Savings and Loan Assoc.  
of Kansas 0051, s/off at 0056 8/2 (RW)

WGRD MI Grand Rapids, poor u/WING/WIZM w/s/on 0645 8/22 (DP)  
KRIG TX Odessa, fair w/s/off 0100 8/2 (RW)  
KNAL TX Victoria, w/wx rpt and end of "The 9 o'clock edition  
of the news". 7/23 2205 (JB)

AS WE HEAD BACK INTO THE WEEKLY ISSUES, DON'T FORGET TO REPORT OFTEN!

9 SEPTEMBER 1972

CENTRAL DX ROUNDUP

Page 27

EDITOR: Richard C. Evans.

DEADLINES: 9/14 9/28 10/12 10/19+

+++++

- 1420 KTOE MN Mankato, poor w/SID 0516 and rr/mx 8/14 (RW) 8/18  
2354 w/"Time to play Instant Ripoff--caller no.  
three. Gud signals. long time no hear (KM)
- 1440 KOKY AR Little Rock, s/off 2001 no SSB, strong, no QRM  
noticed, 8/5 (rce)
- WGEM IL Quincy, 8/18 2356 w/spot for 7th Birthday Contest(KM)
- KEWI KS Topeka, 8/18 2358 o/u WGEM, mod. fading, w/Nx (KM)
- 1450 WVON IL Cicero, ID 0346 Soul Mx 8/14 (BN) Strong 0200 7/27  
w/Soul Mx and NN ann. (JB)
- KLWW IA Waterloo, w/rr fair sig. 0419 MM 7/31 (JB)
- \*\*WASK\*\*IN Lafayette, ending TT 0215 8/14 (BN)
- WMBH MO Joplin, fair w/CW mx and s/off at 0100 8/8 (RW)
- KTYC TX Beaumont, w/rr & "KTYC" SID. 74 deg. in Beaumont  
8/7 0332 (JB)
- ???? ?? UNID, w/wx for Tenn. 8/7 MM 0320 ruined by TT on at  
0231. WMOC?? (JB) (Or, WGNS, which gets out well--rce)
- 1460 KKOY KS Chanute, fair w/Pepsi spot and Hi-Lo Contest 1738  
7/27, v/1 in 12 days (RW)
- WACO TX Waco, good w/rr mx and ID 0108 8/1 (RW)
- out of order
- 1400 KTTS MO Springfield, poor w/time check 0517 and C&W mx  
8/14 (RW)
- 1470 WMBD IL Peoria, s/on 8/7 0559 w/steamboat whistle. Fair (JB)
- KLCL LA Lake Charles, w/ID only at 0045 8/5 (RW)
- WNAU MS New Albany, s/on w/"Good morning from New Albany,  
Miss." 8/7 0558. Lousy signal (JB)
- WVOL TN Nashville, 8/4 0200 L&C once WMBD went off (FH)  
8/28 0243, fair w/ID not reportable (RSK)
- KRBC TX Abilene, w/ID only at 0050 8/5 (RW)
- 1480\*\*KWIZ\*\*CA Santa Ana, OC test ID 0322 8/21 (BN)
- KBOX TX Dallas, playing Santana, Carpenters, etc. Format  
change? (JB) (Must be, Jim, as Santana doesn't  
jibe with good country music, hi--rce)
- 1490 KDMO MO Cartage, KDMO Final News 0128 8/3, next nx at 0500(JB)
- KBIX OK Muskogee, v/good w/rr/mx and Jim Bushmore Show  
at 1725 7/26 (RW)
- 1510 WJRC IL Joliet, Now C&W on Saturday all day, SS to SS,(RJN)  
(Has anyone figured out why WJRC stays on late as a  
daytimer after the other local Chicago daytimers  
have gone off on schedule? I heard them at 2025  
9/2--rce) (RW)
- 1530 KECK NE Lincoln, good to v/good w/cw/mx and s/off 2128 8/7
- KCLR TX Ralls, poor to fair w/s/off 2130 8/7 (RW)
- 1550\*\*WRIZ\*\*FL Coral Gables, 8/21 fair, a big surprise on ET  
TT & OC 0125 (RSK)
- KXOJ OK Sapulpa, D3 500 w. rr/mx Okla. Nx. Network,  
PSA 61.5 watts (?) (JB) (The 61 and a half watts  
is right, Jim, but it does sound crazy, hi-rce)
- 1560 WDXR KY Paducah, 8/18 0000 w/ID "1560 W-D-X-R Paducah" then  
into Nx. Gud sigs, little fading. Do they verify?  
(KM) (Let's just say they have been known to verify,  
but very erractically--rce)
- WTPS MI Portage, good at s/on w/non-vocal SSB, announcement,  
and into news 0701 8/13 (DP)
- WCNW OH Fairfield, strong and all alone w/C&W music 0645  
8/13 (DP)

SUPPORT YOUR LOCAL ACHIEVEMENT AWARD COMMITTEE, SO WRITE TO PRK FOR ANY INFORMATION YOU NEED. SUPPORT YOUR LOCAL DXR AT THE SAME TIME!

EDITOR: Richard C. Evans

DEADLINES: 9/14 9/28 10/12 10/19+

+++++

1570 KUXL MN Golden Valley, poor w/jazz 2108 8/13 (DP)  
 \*\*WHII\*\*MS Bay Springs, TT 8/17 0219-0240, ID 2 min int. over  
 CHLO, XERF off (BN)  
 WPTW OH Piqua, 8/28 0600 w/s/on SSB fair but on top (RSK)

1580 \*\*WJVA\*\*IN South Bend, ET on 8/28 from 0115-0140 TT & OC (EJW)  
 WPGC MD Morningside, 8/28 0623 w/spot poor (RSK)  
 WESY MS Leland, s/off 2015 9/2 poor o/KTGR and a couple  
 of others, probably including much-wanted WBBΛ,  
 no SSB (rce)

1590 WVNA AL Tuscumbia, Lowell Thomas Nx 2230-2245 8/4 (MH)  
 Heard 8/7 and 8/8 2115 to approx. 2230 w/Atlanta  
 BB games. No sound of any other stations except  
 once in awhile some mx, mostly easy listening instr.  
 was hrd for a few seconds, then cut off. Signal  
 sounded strong enuf to be WLTD, and was if someone  
 was putting the tx on for 10 seconds then shut it  
 off. Never hrd anything like it before in 20 years  
 of DXing (RJN) (That's about the time to invest 20¢  
 in a call to WLTD, if only to satisfy your curiosity.  
 Could be tr problems they didn't know about--rce)

WBLV OH Springfield, weak and fading w/MoR 0653 8/13 (DP)  
 KEND TX Lubbock, fairly good w/minimal QRM during aurora  
 0641-0649 8/4 (KDF)  
 KYOK TX Houston, w/soul mx/rr 0442 8/7. Signal was fair to  
 good but there was WAKR QRM (JB)

\*\*WGOE\*\*VA Richmond, 8/28 0015 w/ET RR/mx,were on AN (RSK)

1600 KCRG IA Cedar Rapids, Nx and ABC perspective until sign/off  
 0100 7/31. Fair signal. v/q (FH)  
 WSTL KY Eminence, 8/22 fair u/KCRG with s/on then into  
 news 0500 (RSK)

PER THE LIST:

|          |                       |          |                     |
|----------|-----------------------|----------|---------------------|
| 1st TUE: | KDDD- 800 TX (EJW)    | 2nd SAT: | KBRB-1400 NE (BN)   |
| 1st THU: | WLSI- 900 KY (JB)(RW) | 3rd MON: | KXXL-1450 MT (BN)   |
| 1st FRI: | KTCS-1410 AR (FH)     |          | WDIC-1430 VA (BN)   |
| 1st SAT: | KNIR-1360 LA (KDF)    | 3rd TUE: | XEK - 960 MEX (EJW) |
|          | KSIM-1400 MO (BN)     | 3rd THU: | WHII-1570 MS (EJW)  |
| 2nd WED: | WAMI- 860 AL (EJW)    | 4th MON: | KIKN-1590 TX (EJW)  |
|          | KBRX-1350 NE (BN)     | 4th THU: | WHIY-1530 AL (EJW)  |
| 2nd THU: | WYDE- 850 AL (BN)     |          | WJFC-1480 TN (EJW)  |
|          | WPCF-1430 FL (BN)     | 4th FRI: | KPOS-1370 TX (EJW)  |
| 2nd FRI: | KXIT-1410 TX (BN)     |          |                     |

A TIP OF THE HAT THIS WEEK TO:

JB - JIM BOYD, 9017 E. 29th Ct.; Tulsa, Okla. 74129 (3)&(3)  
 rce - RICHARD C. EVANS, Box 2146, East Chicago, Indiana 46312  
 KDF - KARL FORTH, 142 E. Division St.; Villa Park, Ill. 60181 (1)  
 FH - FRED HENDRICKS, 11 Ravina Park, Decatur, Ill, 62526 (1)  
 MH - MIKE HOGAN, 4811 Euclid Ave.; East Chicago, Indiana 46312 (1)  
 RSK - ROBERT KRAMER, 3406 W. Pierce, Chicago, Illinois 60641 (2)&(1)  
 KM - KEITH MEHL, 1320 S.W. Broad St., Des Moines, Iowa 50315 (3)  
 BN - BILL NITTLER, Box 295, McCook, Nebraska 69001 (4)  
 RJN - RAY NEMAC, 1631 Carol St., Downers Grove, Ill. 60515 (1)  
 (Welcome to the column, Ray! Keep the reports coming)

DP - DAVE PETERSON, 800 Humboldt Ave., Winnetka, Ill. 60093 (1)  
 EJW - ERNEST J. WESOLOWSKI, 1416 Pasadena Ave., Omaha, Neb. 68107 (2)  
 RW - RICK WILLIAMS, 9015 E. 28th St., Tulsa, Okla. 74129 (4)

Well, so much for any forum report, hi. Good DX in the cooler wx.73.

Temp. Editor: Don Erickson - 6059 Essex St. - Riverside, Calif. 92504

Next Deadline: Monday, Sept. 18. Please keep reports to 15 lines and double-space.

Jerry Peek - 1160 Myrtle Street - Los Alamos, New Mexico 87544

Hi fans. I'm a new member and 17 years old, DXing since 1971. I've gotten serious since 5/72 and logged 127 stns since then, almost all of my total 141/85. State total is 22/20. To add my opinion to the kilohertz battle, I think it's gotta be kHz for kilo-Hertz (Heinrich R. Hertz). KKIM-1000 is a new 10kw stn in Albuquerque. Hours are 0630-1830 MDT. KKIM's PD informs me that they will probably run 12.2 watts mornings from 0600-0630 starting sometime soon. William L. McManus, CE at KIUP-930, Durango, Colo., mentioned that he was working on a new 100kw FM outlet. Local AM-FM KRSN (1489.985) will be on AN sometime in Oct. with a program for hunters. (See DX Calendar for more info. -DEE). They will verify reports with RP. 73's.

Carl "Skip" Dabelstein - 3300 North 56th Street - Lincoln, Nebraska 68507

Although I've been in the IRCA for about a year now, this is my first report so an introduction is appropriate. I am a CPA and am presently employed as the Asst Controller of Central Tele & Util Corp here at the operating HQ in Lincoln. I am 26, married, and have been DXing since 1959. I've been a member of NRC since 1961. During that time, I have logged 1425 stns of which 1265 are verified. My present equipment is an old Halli SX-71 and a SM-1. I also hold an advanced class amateur license as KØSBV and operate both 75 and 40m. My AM DXing this summer was practically non-existent as I DXed both TV and FM. However, I have had a few AM veries come my way lately: v/q: WMAX, CFCF, WAMY, WSOY; v/l: WEDC, KCRV, KFGQ, KVOL, KORN, KTAC. In late July, Ernie Wesolowski and I spent a weekend visiting several AM stations in KS. We stopped at KXXX-790, KANS-1510, KAYS-1400, KVGB-1590, KNEX-1540, KVOE-1400, KOFO-1220, and KARE-1470. We picked up a few of our holdout veries, too. Most stns were friendly and we were able to get all of our veires. We did learn, however, that it is a policy of KXXX not to verify and the CE at KVGB will no longer verify due to poor quality rpts. One such rpt by an IRCAer has been forwarded to HQ. Just remember guys, the perpetuation of this hobby is up to us! Welcome to NE's newest member, Bill Nittler. 73's.

Larry B. Godwin - 2985 E. College #6 - Boulder, CO 80303

Hi gang. DXing has been OK in late Aug. with a couple of Chileans (see DXWW). No trace of any DU's around sunrise, though. Some of Bruce Portzer's catches are very desirable. I just bought a copy of the new Jones Log (Howard Sams pub. #20915, No. Amer. R-TV Stn Guide) for \$3.95, 8th ed. Also I put up about 850' insulated hookup wire on the roof of our apt. building, running it E-W back and forth, and it produces good gain but has little if any directional properties. Tim Saltmarsh, foreign stns' addresses are available in the WRPH. Andy Hecker, congratulations on your new appointment. Steve Tordoff, I include pirates (all 2 of them) in my totals. Gene Martin's article about the Silent Night was interesting and makes me realize how apathetic broadcasters are these days to DXing. Percy's article on offset was also interesting, but switching to that method wouldn't eliminate much of the publisher's work. I believe the club would still be dependent upon our publisher to a very considerable degree. DEE told us in San Diego that he didn't feel going to offset would reduce significantly his publishing time. Good DX.

Gene Martin - 3303 East Evans - Denver, Colorado 80210

As I understand it, if beverage is a person's name, then the lengthy LW is properly called a Beverage antenna with a capital B. But if usage reaches the point where such aeriels are known only by that person's name, the one word, it will have to be rendered as beverage with a small b. Personally, I dislike kilohertz and can find no good reason why Hertz should be honored by having his name come to mean cycles-per-second. Kilocycles served very well in identifying frequencies, and the cycles part of it conveyed a good idea of what was happening in radio transmission. But Hertz has no natural validity in the language and suggests nothing, although in American English, it is a reminder of the rental car business. I do not accept the notion that all change is improvement. In fact, I am thinking of going back to meters.

PLEASE NOTE THAT NOMINATIONS ARE OPEN FOR THE POST ON THE BOARD OF DIRECTORS VACATED BY LYNN BROOKS. SEE THE ELECTION COMMITTEE REPORT FOR DETAILS AND DEADLINE.

John Tull - 5539 Oak - Kansas City, Missouri 64113

Just rcvd 8/12 DXM with info on the TP contest. TPs heck! I've only received 2 TAs and they weren't in well enough to send a rpt! I suppose there is such a TP but I can't prove it. Not long ago I sent my 300<sup>th</sup> verie request but it sure is difficult to log any new stns. My only verie for July is KWOA-730 Worthington, Minn. A good daytime catch. If you don't have a copy of the NRC Pattern Book, let me tell you its well worth \$5. I'm looking forward to the IRCA Foreign Log. The IRCA foreign DX column has got to be the best! 73.

Steve Millay - 550 Swain Ave. - Elmhurst, Illinois 60126

Greetings everyone. Hope you all are ready for the new DX season; may it be one of the best yet. Not much DXing done this past summer; not as much as the last two, mainly because I was too lazy. A few goodies hrd the past few months. Recent veries include v/1-WRGS+CM, CFTR-680, KABR-1420+CM, WCBL-1290+CM, and WSBT-960; v/q-WIBC-1070, WIFE-1310, WNOX-990 and WIBW-580; v/ppc-KWLA-1530. KWLA-1530 La. conducts their f/c 0145-0200 EDT 3rd MM, not 0135-0150. Best catch of the summer has to be KCGO-1530 Wyo asking for collect phone calls. They switch to 1530 for RS on 9/1. I called twice after 0330, but no answer. Guess I was too late. SCers and bumper sticker collectors, write. 73.

Tom Jasinski - 11510 W. 192 St. - Mokena, Illinois 60448

Greetings. To introduce myself to just about all of you, I have been an IRCA member since Dec. 64. For the past two years have been concentrating on school work. Graduated in June from Joliet Jr. Coll with an AS in Elect. Tech. Am planning on attending Bradley Univ. in Peoria, Ill., in the spring of 73. DX has been nil for the past 10 mo's. Rx was lifted in apt. break-in last 11/10 (Allied A2515 w/FET pre-amp). Am giving new life to an old rx. Added pre-amp and 3rd IF amp to a Zenith K622. Will use this rig and a 2½ loop for the upcoming DX season. 73's and good DX.

Dr. Richard E. Wood - Dept. of Foreign Languages - LSU - Baton Rouge, LA 70803

Now back from a trip to Europe to teach a course in linguistics at the Univ. of Liege, Belgium. MW band is increasingly crowded there and BBC has inaugurated a full-fledged MW service on 4 different frequencies beamed to Europe. 1088 testing, European service, ex-BBC Regional. Glad to note Gene Martin's support for my stand against the non-word kiloHertz. My particular complaint (subtly misinterpreted by a writer in another Forum) was against the capital letter in the middle of a single word. Regardless of the abbreviation kHz, that does not affect the inflexible rule against internal capitals in English words. As for Beverage, when we speak of a Beverage antenna we are still referring to a person, i.e. the antenna designed by Mr. Beverage. We may still speak, for example, of a Watt steam engine; the reference is, here, to James Watt, to Harold Beverage, Heinrich Hertz, etc. But when the words stand for a thing, and no longer a person, they are not capitalized. Thus, when standing alone and referring, not to the man but to his invention, beverage will increasingly lose its capital. The Communications Handbook manuscript is now in; IRCA will be listed as usual. Should be on sale in November.

Keith Mehl - 1320 S.W. Broad St. - Des Moines, Iowa 50315

Greetings DXers; I have a few questions to ask. 1) Is the VOA mw stn in Florida audible up here? 2) Does KRVN verify? 3) What are my chances for TAs and TPs? 4) Geomagnetic indices measure atomic particles in what units? That's all the question for now. I joined CPC; my region is Iowa, Kansas, and Nebr. I'm presently trying to log and verify all of Iowa; totals for Iowa are 43/14. I see there's a DXer in Tulsa (America's most beautiful city). I lived there for 10 years, 6/60 to 6/70. Fantastic city; have a convention there. Latest veries are: v/q-WHO WSM WAKR KSTP; v/1-KIOWA WIZM KWKY; v/ppc-WNAX KFJB KBOE KCOB. I've used up my space so 73's. (Answer to #1--VOA-1180 can be heard almost anywhere in N.A. at one time or another; try early SM for their s/on. See also photos pages in upcoming DXM for pictures and short item on the station. #2--Dave Fischer will be handling veries for KRVN and, because of the quantity of rpts being received, there will be a delay. In addition, 'Fish' points out that the quality of verie will be comparable to the quality of the rpt. Sloopy but verifiable will get CE's signature; excellent rpts will get personal ltr. It has been pointed out that those who complain about the quality of their upcoming KRVN verie will be telling the club a lot about the quality of their report. -DEE)

+++++  
Morris Sorensen - God's Narrows School - God's Narrows, Manitoba ROB OMO

(Vacationing in Bala, Ont.) No DX to report as I've been travelling and visiting my parents in Bala. I attending the ANARC Convention in Boston and had a great time despite the disappointing absence of IRCAers. Highlights of the convention included an address by veteran announcer Eddy Startz of R. Nederland fame and a talk on DXing auroral disturbances by Gordon Nelson of the NRC. The latter should inspire me to try some more auroral DXing up in God's Narrows this season. I returned to Bala via St. John, N.B. I recently acquired an HQ-150 but may encounter some difficulties in transporting it up north. On a recent trip to New Lisheard up in northern Ont., I was able to tune in several LPRTs. In Temagami, Ont. (61 miles north of North Bay), I saw the "transmitting site" of CBEV-1340 which consisted of a longwire antenna stretched between two brightly painted poles, beside the Ont. Northland Railway Sta. I believe this is a typical LPRT installation. Well, that's all for now. 73.

CDXF Editorship and format requests Members are doing a fine job in CDXF-land; having typed all DXF's, I find the CDXFers are most careful in following the rules--one report per issue, 15 lines of DXM elite type, no messages to other members (they belong on the back of a pc), no lists of stations hrd (they belong in CDXR), the type of verie (v/l, v/q, etc.), name and address on top the double-spaced rpt. To clarify policy on personal messages: if you want to congratulate someone for an unusual feat, answer a question, or ask a question of general interest of one or more DXers, fine. What we don't need are the following: "Bob, where are you?" and "Chuck, I received your letter." These help no one. ANNOUNCEMENT: Next issue will contain the name of the new temp. editor of CDXF; he will start with the second issue in Oct., dated 10/21. Your present editor, DEE, assumes EDXR typing immediately, replacing resigning Sheldon Swartz (see Percy Kesteven's announcement elsewhere).

WESTERN DX ROUNDUP

Editor: Andy Hecker - P. O. Box 835 - Saratoga, California 95070  
 This issue edited by Steve Oster while Andy is in Japan. However, the stencils are re-typed at HQ because the stencils were cut outside both the vertical and horizontal margins making mimeographing absolutely impossible.

This month's reporters:

- (GA) Gene Allen - 134 Bret Harte Way - Vallejo, Calif. 94590  
 Rx: HQ-129 Ant: SM-1 and 75 foot LW
- (DGC) Dave Christensen - 3434 39th Ave. West - Seattle, Washington 98199  
 Rx: Halli SX-130
- (MF) Marty Fosberg - 5153 Englewood Drive - San Jose, California 95129  
 Rx: Halli S-40B Ant: LW
- (W) Bill Harang - 811 Nevada Avenue - San Jose, California 95125  
 Rx: Lafayette HA-63 Ant: LW grounded in places
- (BH) Bill Hardy - 303 W. 10th St. - Aberdeen, Washington 98520  
 Rx: GE C-2510 Ant: built-in loopstick
- (RWJ) Royal W. Jaynes - 1057 W. Hilliard Lane - Eugene, Oregon 97402  
 Rx: Drake SPR-4 Ant: Worcester Space Magnet
- (PM) Pat Martin - P. O. Box 149 - Warrenton, Oregon 97146  
 Rx: Surplus RBO-2 Ant: 400' LW
- (MM) Mike McCullough - 5240 Rhonda Drive - San Jose, Calif. 95129  
 Rx: ARB Ant: IRCA Spiral Loop
- (SO) Steve Oster - 16080 Greenridge Terrace - Los Gatos, California 95030  
 Rx: Hammarlund HQ-140 Ant: Spiral Loop
- (RS) Ralph Sanserino - 8422 Crane Circle - Huntington Beach, Calif. 92646  
 Rx: Bendix MN26K Ant: Sanserino FET Loop
- (PRW) Paul Welka - 15340 Union Ave. - San Jose, Calif. 95124 (now in Burnaby, B.C.)  
 Rx: Hammarlund HQ-145 & Q5er Ant: Spiral Loop

Andy's next deadline: Thursday, Sept. 14, 1972. Please use one side of paper, double-space between stns and give freq. for every item. Please use ELT only.

- (SPT) Steve Tordoff - 410 Topaz Street - Redwood City, Calif. 94062  
 Rx: BCB DX SL-72 Ant: 3' Loop
- 550 CKPG BC Prince George 7/15 0225 strong & dominant in KFYZ null w/RR. (DGC)  
 620 KWSD CA Mt. Shasta fair u/KNGS w/sports 0915, local spot 0925 8/28. (SO)  
 650 KORL HI Honolulu local-like signal 0112 8/14. (PM)  
 660 WESC SC Greenville 0600 8/28 w/what sounded like sports. (SO)  
 690 KRCO OR Prineville 7/27 0830 s/on w/SSB & call hrd thru XETRA. C&W. (BH)  
 710 KMPC CA Los Angeles 7/31 0758 w/KIRO off, fair. Wx, prayer, SID & into nx, female DJ, 1st time here. (BH)  
 720 KUAI HI Eleele about same as KORL 0117 8/14. (PM)  
 730 KLOE KS Goodland 7/27 0730 w/ s/on, nx, wx, spot for Boot Hill, Dodge City. Very good signal. (RS)  
 760 KGU HI Honolulu 0537 8/14 on RS. (GA) Near 10db o/S9 w/mx & sports 0220 8/14. (PM)  
 790 KKON HI Kealakekua finally hrd mixed w/KABC, w/brief ID, mx like MoR 0200 8/14.  
 800 CKOK BC Penticton s/off 0405 7/30 w/info CKGF/CKOO/CKSP. (SPT) (PM)  
 830 KIKI HI Honolulu about equal w/KGU 0225 8/14. (PM)  
 870 KAIM HI Honolulu w/rel. pgm 0234 8/14 15db o/S9 signal. (PM)  
 910 KORD WA Pasco 7/30 0901 good atop KISN/KIXI w/AM Pasco, FM Richland & into ABC "Update." (BH)  
 920 KLMR CO Lamar in like a local w/son 0755 8/28. (SO)  
 KGAL OR Lebanon ETing w/carrier & mx 0645 8/28 vy strong. (SO)  
 930 KKIN MN Aitkin in u/CJCA 8/21, KHJ off, w/call mentioned. (SO)  
 KYSS MT 8/7 in w/ f/c 0335-0355 w/code ID. (MF) Quarterly f/c 0330 8/7 w/ 800 Hz tone, Morse code at 1000 Hz. (RWJ) Missoula-DEE  
 KQOT WA Yakima 7/30 0903 w/taped Yakima Valley mx, then into RR; jingle o/KBFW, KSWB off until 1000. (BH)  
 940 KIXZ TX Amarillo; tuned in 0754 8/21 to RR, in fair. (SO) W/nx before hour, 0800 8/21. (PRW)  
 KBRE UT Cedar City s/off 2230 8/16 w/God Bless America u/KFRE. (SPT)  
 960 KLAD OR Klamath Falls 7/18 0905 Oregon nx o/KALE, then C&W. (BH)  
 980 KMBZ MO Kansas City 0530 8/14 w/talk show; "You're listening to the Dave Andrews Show on KMBZ, Kansas City;" KFVB testing. (SPT)  
 KSVC UT Richfield 8/14 0344 w/TT & IDs every few minutes o/CKNW. (DGC)  
SASK Regina good w/farm talk 0745 w/KFVB off, some CKNW QRM. (PRW) Fair to poor u/CKNW 8/21. (SO)  
 1000 WCFL IL Chicago in poor 0540 8/21 w/talk. (SO)  
 KKIM NM Albuquerque in good w/classical mx 0840 8/28. (SO)  
 KXRB SD Sioux Falls bombing in 8/21 0730 w/C&W and spots. (PRW)  
 1020 KSWS NM Roswell s/on 0800 8/5. (GA)  
 KDKA PA Pittsburgh talk show in 0430 7/26 w/S7 sig. (GA)  
 1060 KLMO CO Longmont s/on 0800 8/14 o/KRSP/KUPD/CFCN. KPAY s/on covered everything. (SPT)  
 1090 KNCR CA Fortuna 7/19 0905 poor u/KING nx w/call on promo, then MoR. (BH)  
 1130 KLEI HI Kailua hrd w/beautiful mx, IDs like "You're in tune w/KLEI, the voice of million dollar mx," S9 sig 0205 8/14. (PM)  
 1140 KGEM ID Boise 8/21 w/C&W, good sigs 0812 (SO)  
 KSOO SD Sioux Falls must have been the one u/KGEM w/CDT TCs 0750 8/28. (SO)  
 1150 KAGO OR Klamath Falls s/on 0900 no SSB 8/9. (GA)  
 1170 KCBQ CA San Diego 8/10 0503 u/KLOK w/RR & ID, vy weak. (DGC)  
 1180 WHAM NY Rochester spot for CNA wk. end S8 0524 7/31. (GA) (??-DEE)  
 1190 KRDS AZ Tolleson w/C&W atop KEZY; KEX off, Oriental QRM 0715 8/20. (GA)  
 1210 KGYN OK Guymon s/on 0630 8/4. (GA)  
 1220 KCCS OR Salem 7/31 0900 "inspired" s/on u/CKDA, then rel. mx. Is KASY even on the air? (BH)  
 1230 KRIZ AZ Phoenix noted w/ID 0312 8/7. (MF)  
 KRDR OR Gresham in/out of mess 0317 8/25. (SO)  
 KQIK OR Lakeview in good w/ f/c 0304-0310 8/7 w/code IDs. (MF)



- 1230 KYJC OR Medford jingle hrd u/KCBN & others 0329 8/25. (SO) 8/10 0650 dominating w/RR & MoR, Ai nx on the hour, o/KRDR. (DGC)
- 1240 KOAD CA Lemoore 7/24 0558 s/off o/u KROY & others. (BH)  
 KROY CA Sacramento w/ABC show, "Issues and Answers," and others; Ac nx :25 and :55, MMs 0500-0800, normally RR. KMBY & CFVR off. (BH)
- KPRB OR Redmond 8/5 0525 w/C&W & great sigs; don't know if RS or not since hrd and has been s/off at usual 0200. (DGC)
- CKOO BC Osoyoos atop 7/17 0900 w/CKOK, CKOO, CKGF FM s/on w/lots of freq's and powers, then CBC nx. CFVR ID underneath. (BH)
- ???? unID hrd u/KROY 7/24 0600-0800 w/ABC Info nx, C&W, and possibly MLT TCs. Thought KSON, but not if MDT. Any ideas? (BH)
- 1250 KTMS CA Santa Barbara w/mx, ID 0146 8/20. (RWJ)  
 KDHI CA Twentynine Palms fair w/ f/c per list, ended 0319 8/21. (PRW)
- 1260 KYA CA San Francisco noted OFF 0360 (?-DEE) 8/21; 1260 open. (SO)  
 KWIQ WA Moses Lake 0941 7/17 w/C&W, good atop others. (BH)  
 CFRN ALTA Edmonton w/nx & wx 0701 8/21. (GA)
- 1270 CHAT AB Medicine Hat s/on 0750 8/20. (GA)
- 1280 KIT WA Yakima appears light RR, no MoR; still NSP. (DGC)
- 1310 KIOT CA Barstow poor w/local KDIA off. (W)  
 KKGf MT Great Falls good w/local spot in KBUZ null 0553 8/28. (SO)  
 KARY WA Prosser 7/17 0909 w/good sigs atop KNPT; KXRO off. (BH)
- 1320 KHIT WA Walla Walla w/Eastern WA wx 0921 u/CHQM/KCRA. Prob., then, the C&W mx hrd tho that might have been KATR. KXRO off until 0927. DJ prob. late. Atop again 7/30 0957 briefly w/KHIT Country Corral. (BH)
- 1330 KCLM CA Redding 7/17 0915 o/rel. (KCFA?) w/C&W, where was KPOK? (They were down here hassling us, hi-SO). KXRO not missed, hi. (BH)  
 KGAK NM Gallup in w/ID & spots 0830 8/21 w/KPOK QRM & KFAC. (PRW) U/KPOK 0833 8/21, poor. (SO)  
 ???? unID 7/17 0917 w/"Morning Chapel Hour," o/u KCLM, hopefully KCFA; KPOK not hrd so it could be them, too. (KCFA all rel.) (BH)
- 1340 KIKO AZ Miami poor w/KRAM 0740 8/21. (W)  
 KAOR CA Oroville 8/7 0040 vy strong w/RR, Taco Bell spot & Curtis Bear, DJ, vy little fading. (DGC)  
 KAIN ID Nampa 8/7 0430 dominant all MM w/cl mx & political spots for local candidates, o/KMAK. (DGC)  
 ???? OR unID on top mess for a while. 0840, "keep your OR forests green" PSA then C&W. 0845, "news from central Oregon." 8/21. Ideas? (PRW)
- 1350 KIVM HI Lihue hrd nightly, best HI stn; nx & wx; s/off 0600 7/31. (GA)  
 WSMB LA New Orleans in poor w/call-in show 0600 8/21. (SO)
- 1370 WTKY KY Tompkinsville in poor u/QRM w/SSB s/on 0659 8/21. (PRW)(SO)  
 WSPD OH Toledo in poor w/wx. 0540 8/21. (SO) MoR & talk poor/fair w/fading 0541 8/21. (PRW)
- KAST OR Astoria seems to be s/on 0800 weekdays, 0900 SM, oriented to those fishermen dudes who get up early. Try MMs before KEEN s/on. (BH)
- 1380 KRKO WA Everett fair 0530 8/7 all alone, KTOM off. (SPT)
- 1390 KENN NM Farmington hrd 8/21 0845 w/pgm promo & call, fair/poor. (SO)
- 1400 KRE CA Berkeley 8/14 0233 "Radio East Bay," and "KRE is back again;" had nx and light mx, good o/KRPL & unID TTer. (DGC)  
 KSLY CA San Luis Obispo w/Top 40 0307 8/4. Good after KONG s/off. (PM)  
 KUKI CA Ukiah 8/6 0307 w/nx final & s/off, mixing w/KQMS, no sign of KRPL or KSLY. (DGC)  
 KONG CA Visalia hrd w/ s/off 0304 8/4, vy good. Rptd. (PM)  
 KART ID Jerome s/on 0804 8/6. (GA)  
 KTNT WA Tacoma s/off w/SSB 0400 8/7 o/KSLY. (MM) (MF)
- 1410 KERN CA Bakersfield w/KERN IDs, Top 40 RR 0225 8/4. CKVN gone. (PM)
- 1430 KELI OK Tulsa 8/7 0517 w/RR & nx 0520, jingle ID and screaming DJ on 1/2-hr, poor w/lotsa noise. (DGC)
- KARM CA Fresno in like a local o/KLO 8/4 0234. No sign of KBRC. (PM)

(continued at the end of WDXF)

Editor: Bob Jacoby, 556 E. Alvarado St., Pomona, CA 91767 (Thurs deadline)  
Mike Vandever - 6315 Swainland Road - Oakland, CA 94611

Hi! Sorry I couldn't attend SANDICON. My financial range could only get me to Fresno and back. As some of you sharp readers may have found, I listed in WDXR a bootleg stn. I called the DJ, who shall remain nameless, and spoke to him. He told me that he was moving to the Santa Cruz area and will be operating near KDON-1460. The following day I took some tapes of his bdcsting endeavors. I soon will be able to sell all IRCA and NRC members taped copies of some of his format. If anybody wants a "Collectors Item" tape, pse drop me a line. The call was KH WX and they changed from 880 to 1570 KHz. I'm now in the process of making copies of the original tapes. Each tape runs approximately 30 minutes and can be available in reel to reel or cassette tape form. Believe me, this is going to be a collector's item! The reel to reel tape will be 3/4 ips. Latest catches are CJOC, KERN XEJ. KERN sends a ditto as a verie and the CE is a radio amateur since on the bottom of his name he has WA6ZJC. One more thing before I close, Radio Moscow has freqs on 1320 and 1490 beamed to Britain and Ireland so some ECers might try for that. I received a verie from them for the SW bands. Well, gud DX to all people. 73's

Paul Welka - 15340 Union Ave. - San Jose, CA 95124

Hi. DX has been good lately. Best recent catches are WTJH-1260 East Point, Georgia and WTKY-1370 Tomkinsvilles, KY. Newest addition to the shack is a BC-453 command set being used as a Q-5er with my HQ-145. It works good but BC-453's are getting very hard to find nowadays. This is probably my last rpt to WDXF from San Jose. By the time you read this I will have moved to B.C. My new QTH there is 7749 Patterson Ave., Burnaby, B.C. about three blocks from Vancouver. It's been a fun 18 years here in S.J. I've never seen a finer group of DXers, probably the most closely-knit group in IRCA. I'm looking forward to meeting the Vancouver group and hopefully having a DX get together soon. As I've said before, I think taped veries are more meaningful than written veries. I'd like to hear Jay Murley's opinion, since he's been affiliated with broadcasting for quite some time. Anyways, too bad taped veries don't count in the contest. I think RCE designed the contests for luck more than skill. I just read the GOATBPSLC rules. Don't forget to participate. It should be a very competitive contest. 73s for now.

Bill Harang - 811 Nevada Ave. - San Jose, CA 95125

Greetings! Latest catches include KIOT-1310, KIKO-1340, and KOBV-1550. I've been trying for KOBV a long time. I finally got them on SRS. KDIA has been having xtr problems lately it seems. I managed to hear KDIA off one morning at 0730 PDT and surprisingly picked up KIOT. I don't know why KTKR's signal wasn't in there. When I went thru the San Joaquin Valley near Bakersfield on Interstate 5 I couldn't hear them. Maybe, they are off the air or something. KGEV should read on 1230 instead of 1280 in my 8/12/72 DXF rpt. The following stns broadcast the San Francisco 49ers games: KSFO-560, KHSL-1290, KINS-980, KDAC-1230, KMJ-580, KBEE-970, KWSD-620, KVCV-600, KFBK-1530, KTOM on 1380, KUKI-1400, and KSYC-1490. I have Radio Logs of "The Hour of Decision" and "The World Tomorrow" pgms. If you want both of them send a SASE. One addition of the American Top 40 List is KMBY-1240. KMBY broadcasts it on Sundays from 6 p.m. to 9 p.m. PDT. SCers and Cassette Tapesponders pse write. 73's and KEEP ON TRUCKIN!

Marty Fosberg - 5153 Englewood Dr. - San Jose, CA 95129

Hi fellow DXers. It's been a while since I've written. I was at the IRCA convention and I met some pretty cool guys. It was fairly well organized. It was somewhat fun too (even though the North let the South off easy in the softball game). DX has been fairly good lately. It's always better, though, at Mike McCullough's house. My totals as of now are (479/38/5) (stns hrd/stater hrd/provs hrd. Tapesponders pse send tape. (Especially those in midwest and EC areas. See you later. 73's and good DX (most people need it in the summer or even at the end of it.

I guess it's time for a report since my last one was well before SANDICON. July was a total flop DXwise (maybe cause I never DXed) but so far August has been good. See DXR. Only two stns logged in July, KIT-1280 and KKGf-1310. KIT seems like a friendly stn as they verified with a v/1 plus their promotion kit. My 8¢ RP didn't do much good as it cost 'em 48¢ to mail the stuff. V/s is Ben Murphy, CE. Other veries since last report: v/q KCID-1490, KPOW-1260, KLZ-560, XETRA-690. V/1 KOSI-1430, KKGf-1310, KOLT-1320 (very friendly letter), KPUR-1440, V/r KVOG-1490. Anybody got any verie info on the following: KAIR, KRLD, KRVN, KBKR. Domestic BCB DX will soon come to an end as I leave for Izmir, Turkey in January. I'll be there for 18 months, courtesy of Uncle Sam. It should be quite interesting DXing with a 300 KW stn in Izmir and many other 100+ stns all around. I'll probably go insane. GH-Have you ever been to Wright-Patterson? If so, what's it like? Does anyone know if an ex-IRCA member still works at KAAA in Kingman, AZ? That's 15 so 73 and good DX.  
Steve Oster - 16080 Greenridge Terrace - Los Gatos, CA 95030

Hi. Time for a reintro. I'm 16, a junior in high school. Equipment here is a Hammarlund HQ-140X, an IRCA spiral, and a 50' LW, for recorders I use reel to reel, a Wollensak T-1500, and a Magnavox 720. Also have a Lloyd's cassette. I'd like to trade tapes (mono) w/anyone who is interested. I tape quite a bit of mx from KIOI-FM, San Francisco, because they don't gab during the records like slobs. The San Diego convention was great. Tnx to Dave Stroup and Grant Manning for putting up w/me while I was there. Tnx also to DEE for my stay at Toyland. All there was to eat out there was tuna! I haven't been able to touch the stuff since I came back, the second night I was there I ate two cans of it for dinner. Re the "unconventional report", I might add that the "cricket style" delivery pitching has nothing to do with San Jose, it's actually from Texas, right??? 73's and San Jose in '74.

Wm. Larry Cowles - 362 W. Marcus Dr. - Tucson, AZ 85706

Hi to all. No new DX for the summer as I've been very busy moving into a new house, new job, etc. New address is above. I was working at KTKT as an engineer but have now moved to TV (boo) at KVOA Ch. 4. Veries in this summer are KTSM & KELP as a result of a personal visit plus KIKO KAWT KVOP KSET KXLR KATI WCKY KGB KENO XETRA KIST KIIS KCKY KEXO KYVA KBUZ. My new location is farther south of town and not so close to the locals. It looks like this may open up a couple of new freqs. I used to be about a 1/2 mile from RR KIKX. Static levels have been very high all summer with desert lighting storms about every night. I expect things to pick up around the first of Sept. For SC collections I have KTKT, KIKX, and KHEY for a SASE. Till next time, 73.  
Steve Tordoff - 410 Topaz St. - Redwood City, CA 94062

Greetings all. Just got a great verie today...KLMO-1060. They are a daytimer and they sign on at 0500 PDT, the same time as KPAY-1060. KPAY really dominates the freq and SPs on MM only. So, on MM 8/14 KLMO's s/o beat KPAY's by 10 seconds! Thinking I might never hear them again, I sent a courteous letter and a tape recording of the two s/o's. Four days later their v/m arrived here. They thanked me for the letter and tape and informed me that they had a news story about hearing from me and used it on their 11:00 am nx! It was sent by William Stewart, manager. Truly a cordial stn. Other veries in: WGN, KCOK, KOAC, KRED, KRKO. Totals still moving up slowly: 234/77. Does anybody know if WOKJ verifies? Chalk up another one for kHz as opposed khz. Missed ready verifiers list 8/12 issue. Any letters welcome here. 73 & peace.  
George C. Kesteven - 3524 Benton Dr. N.W. - Calgary, Alberta CANADA

Greetings everyone. Just got back from a holiday to northern California. Was able to contact four members and was able to visit the studios of KRED. Even got to go on the air on the Buck Buchanan show. I tried some DXing on the Oregon coast but did not hear anything fantastic probably because of the lousy radio I had with me. Veries received here lately are CBU & CHNL. Would like to thank all of you members I contacted for making my holiday more enjoyable. 73 and good DX.

DX is alive and well (and picking up). Broke the 200 hrd mark 8/17/72 with KGVO. August, as Bill Hardy mentioned, was a good month. Gains of 21 hrd/12 vrfd. As you can see, I've moved, only across town, but DX seems to be a little better. However, change is only temporary, since I plan a move to NC in Oct. Seems that Steve Taffee was just 80 miles from here on his Reno DXpedition, but I still don't know how he knw KOBV would test since I still haven't heard a word. Enjoyed Gene Martin's "Silent Night" article. Still being a young whippersnapper, it's interesting to read about the old days of radio. As for offset, being a former nxpaper/magazine editor, I have worked with it and it is easier, neater, etc. However I disagree with FJP that NRC bulletin looks better. The reason I joined IRCA and not NRC was that our bulletin had more info and was easier to read and better looking. I agree that offset is definitely more costly. Matter should be considered seriously before any switch is made. Peace & Good DX.

Paul Petersky - 512 167th N.E. - Bellevue, WA 98008

Hello. TP's were in 8/28 and cx were very good. Looks like we are moving into the upcoming season. I enjoyed Europe very much, although little time for DXing. Hi-pwr stns create very bad spurs over there, as well as slop. Tripoli-1250 can be hrd during the day over most of Southern Europe. I did most my radio in Cascais, Portugal where I was two blocks from the ocean. Best catch on my Sony portable was Sierra Leone-1205. After a week at home, I put \$50 into repairing my reel recorder. Now my radio blew out a transformer and burned out the S meter also. Looks like my DXing will be curtailed for the moment. I can only hope that such a transformer is still available, or you will see a rather angry DXer. Only verie-YNX. Larry Godwin: tnx for all the nice comments. Brad Clark: Sorry to have missed you in Portland. How did the get-together go? Steve Taffee: Good luck at Vincennes Univ. and study hard. Many 73's to all... (Steve Taaffe!!! -DEE)

WESTERN DX ROUNDUP

(continued from before the start of WDXF) Next deadline: Thurs., Sept. 14, 1972.

- |      |           |      |   |       |
|------|-----------|------|---|-------|
| 1450 | <u>AZ</u> | KVSL | Show Low 0334 8/7 w/ID. (MF)  |       |
|      | <u>CA</u> | KOBO | Yuba City 7/19 0809 on RS, always atop here when on. (BH)   |       |
|      | <u>ID</u> | KYET | Payette 8/1 0803 distinguishable w/temp., call, C&W. (BH)   |       |
|      | <u>MT</u> | KXXL | Bozeman w/ f/c per list, in like a local 0330 8/21. (PRW)   | (SPT) |
| 1460 | <u>NV</u> | KENO | Las Vegas in good 0430 8/7 all alone w/"K-E-N-O Las Vegas trucks on!"   |       |
| 1470 | <u>MD</u> | WJDY | Salisbury hrd w/ f/c 0500-0515 8/28, pr u/QRM. Caught ID abt 0512. (SO)   |       |
| 1490 | <u>AZ</u> | KCUZ | Clifton w/ f/c, IDs, fair to good 0323 8/7. (MF) (MM)   |       |
|      | <u>UT</u> | KVOG | Ogden hrd 0730 8/28 w/fair sigs u/KBZY. (SO)  | (DGC) |
|      | <u>WA</u> | KTEL | Walla Walla 7/14 0101 rare w/"The Late Hours Show," Ai nx on hour.  |       |
|      | <u>BC</u> | CKGO | Hope 8/18 0447 w/RR, C&W, MoR, fair-poor sigs o/u KBZY. (DGC)   |       |
| 1510 | <u>AZ</u> | KDKB | Mesa 0859 8/28 w/IDs, good sig. (SO)  |       |
| 1520 | <u>CA</u> | KACY | Port Hueneme 8/20 2239 exc. sigs w/RR & many spots (as usual-SO) per tip from BP. IDed as "The Pacific <u>Rock</u> " & "Casey" w/KYXI nulled, apparent pattern change 2246 as they disappeared. (DGC) |       |
| 1540 | <u>TX</u> | KBUY | Fort Worth bombing in w/C&W 0752 8/28. (SO)   |       |
| 1550 | <u>NV</u> | KOBY | Reno u/KKHI w/Ai nx 1005 8/22. (W)  |       |
|      | <u>UT</u> | KRGO | Salt Lake City bombing in w/RR 0557 8/28 until KOBY s/on. (SO)  |       |
| 1560 | <u>NY</u> | WQXR | New York in good w/soft mx 0613 8/28. (SO)  |       |
|      | ??        | ???? | unIDed TT hrd fair-poor must have been ET, in for a while but disappeared after about 10 min's; 0613 8/21. (Reporter? -DEE)   |       |
| 1580 | <u>LA</u> | KLOU | Lake Charles w/rr fair-good sigs 0622 8/28. (SO)  |       |
| 1600 | <u>CA</u> | KUBA | Yuba City w/ s/off 0257 8/4 w/rr format sound. (PM)   |       |
|      | <u>CA</u> | KGST | Fresno looped from KUBA 2018 7/19. (GA)   |       |

Please excuse transposition of call and state columns. -DEE. Be sure and support WDXR during the coming season. Mail your reports to: Andy Hecker - P. O. Box 835 - Saratoga, California 95070. Please double-space between items and give times in ELT (EDT during summer and EST during winter).

Editor: Father Jack Pejza, 3266 Nutmeg St., San Diego, Calif. 92104. Telephones: 714-282-0076 or 714-282-2184. Deadlines: Sept. 15, 29, Oct. 13, 20 and weekly thereafter. Use GMT (EST + 5 hours) in reports, one side of page, preferably in order of frequency and by area of reception.

+++++

Report from South Africa-- Denzil V. Baker, 85 Percy Osborn Road, Durban, Natal, S.A. As a new member of IRCA, I am writing to introduce myself to all other members of IRCA. A few personal details on myself first: I am 34 years of age and employed in the Post Office as clerk. The section of the Post Office I am employed in is the Foreign Parcels Section where we receive mail from many parts of the world including the USA. It is very interesting work but my only complaint is that I don't get much time to devote to my hobby, namely DXing. To get to my DX equipment: I have a Trio 9R-59DS receiver and a National battery operated portable. My antenna is rather a disgrace, but it is the best I can do. It is 30 feet, 15 feet high, longwire--one end attached to a mango tree in the backyard and the other end to a pole. As I am kept busy at work, I haven't much time to erect a decent one. The DX scene isn't too bad out here. I am able to get quite a good catch. Of course the best time for DXing in this part of the world is about May-Sept. During the summer months (Nov.- March), DXing is hardly worthwhile, there is so much static. Anyway it is just as well because that is my busy time at work. I shall try to send in a few loggings each month. I am interested in hearing from Medium Wave DXers in the United States and comparing notes.

- 710 ... Rhodesia, Gwelo, Rhodesian Broadcasting Corp., African Service, heard 8/19 1600 GMT, with news in Ndebele, "Castle Show" in EE with music. Good signal.
- 728 ... South Africa, Cape Town, Springbok Radio (SABC), 8/19 1720 with "Kooobe the Bear" Show. Fair signal with slight QRM.
- 953 ... Kenya, Kisumu, Voice of Kenya heard 8/18 1702 with music, talk and adverts Swahili. Good signal.
- 1130... India, Calcutta, All India Radio, heard 8/19 at 1532 with news in English. Fair signal.
- 1210... China, Peking, Radio Peking, heard 8/19 at 1855 with music and s/off in EE. Directed to South Asia. Good signal.
- 1241 ... Rhodesia, Bulawayo, Radio Matopos, (RBC) heard 8/19 at 1859 with pop music, poor signal.
- 1255 ... Rhodesia, Salisbury, Radio Jacaranda (RBC) , heard 8/19 at 1641 GMT with pop music and adverts. Poor signal.
- 1340 ... Rhodesia, Bulawayo, Rhodesian Broadcasting Corp., African Service heard 8/18 at 1747, with news in English. Good signal.
- 1410 BBC Muscat, Masirah Island, BBC World Service relay heard 8/19 at 1903 with play in EE. QRM from UnID station., fair signal.
- (Welcome to IRCA, Denzil; we'll be looking forward to your reports. Ed)

New BEFC Station, Cheju-Do, Korea

The new 250,000 watt station is targetted to start transmitting in April 1973, on 1570 kilohertz. It will beam west to China, North to Russia and Korea, and east to Japan. At present the times of transmissions are not established. The projected staff will consist of six missionaries, including American, Chinese, Russian, and Japanese, and about ten Korean nationals for engineering and programming. (Billy Kim, FEBC Director for Korea, via Mike Hardester)

Vietnam -- Word from the official USIA frequency schedule says that the Voice of America has greatly extended its operations on 760 kHz. The channel is now listed as operative from 0900-1700 and 2200-0200. This story is further expanded upon by a report originating with the Washington Post Service which says VOA has sharply increased its propaganda efforts in Vietnam since the Communist offensive began on Easter weekend. The VOA has increased its Vietnamese language broadcast time from 5 to 18 hours a day and the broadcast's emphasis is now largely on North Vietnam.

According to the Post account, programs are continuous from 3 PM to 9 AM Hanoi time, i.e., 0800-0200 GMT. The article notes that Poro, Philippines, 1140 kHz, still officially scheduled from 1100-1700, covers South Vietnam and Hue covers the North with a directional antenna. Note that if the Post is correct, then the Flying Radio City on 760 kHz has either been modified to make it directional (as was previously done with a FRC in Thailand) or has been replaced with a more permanent unit. The Post quotes VOA officials as saying that they feel that MW broadcasts help spread the message but the exact effect is hard to judge. (C.M. Stanbury II)

#### South Africa/Swaziland

Ralph A. Bate, a director of the CIDXC, has been told by Trans World Radio that they have cancelled their plan to build a relay in South Africa. The station will be built in Swaziland. (C.M. Stanbury II)

#### Montserrat

According to the German magazine, Funkschau, Deutsche Welle is now using, or will use Radio Antilles' 200 kilowatt transmitter on 930 kilohertz as a relay. This appears to be an interim arrangement, as the same article says that Deutsche Welle and the BBC will begin construction in 1973 of a shared shortwave relay on Antigua. (C.M.S)

#### Your Old Editor's "Favorite" Topic--Sharjah

Just to set the record straight, my description of Don Jensen's source as a government one was based on his own earlier description to that effect; I do not necessarily consider a FRS (British equivalent of AFRTS) employee as a government source and presumably the staff members of FRS Sharjah were monitoring during different periods of VoC's evolution. Also the current operation at Dubai is not calling itself the Voice of the Arab Emirates as stated in the 5/20 DXWW. That ID is being used by the Abu Dhabi site, which, with a 750 kilowatt MW transmitter in the works, should be "loggable" in North America if the next sunspot low ever arrives, hi. (C.M. Stanbury)

#### Australia

Info pieced together from schedules sent by 2NA and 4QD indicates ABC stations are on 2000-1402 Mon-Sat, 2029-1402 Sun. There seems to be 3 networks--Radio 1, Radio 2, and Radio 3. Radio 1 seems to be lighter music, jazz, MoR, talk, etc. Radio 2 features lots of classical music. Radio 3 is varied--info from 4QD indicates it's a regional network. Radio 1 includes 2BC-740, 2NC-1230, and 2CN-1540; Radio 2 has 2FC-610, 2NA-1510, and 2CY-850, though they're not always parallel. There's probably more but that's all the schedule lists. Also, 4AT in Atherton, Qsld., has moved from 600 to 720. Power is still 4/2 kw. At least now we won't have to worry about QRM from Rarotongua, hi. (Bruce Portzer)

#### Report from Europe-- Paul Petersky

Although I haven't really experienced any good DX openings, I can certainly praise the Europeans on the clearness of the bands. Algeria-529 was bombing in a half-hour before sunset. Those high-powered stations are real dependable, and fade slowly, like Belize-834. WDR-1586 splashes from about 1560 to 1620. This was in Brussels. I'd hate to be in the Rhineland! BBC-647 is the most dependable English station. 881 is poor, as are the other commonwave stations. 1295 has a good solid signal, even during daylight across the English channel. When I get to Portugal, I shall give you a more detailed report. Maybe I might hear Brazil, hi. Luxembourg is a bad slopper too. 73

#### BBC Changes-

September 3 marked the beginning of a new External service, the first since 1962, exclusively used for European broadcasts. The new frequency of 1088 kHz will be used for programs directed to the French and German speaking countries of Europe. 1295 kHz will continue to be used for lengthened broadcasts to Central and southern Europe in Czech, Slovak, Polish, Hungarian, Serbo-Croat, and Italian. In addition, both frequencies will carry BBC World Service news and other programs in English in their morning and evening transmission periods. The frequency of 1088 has been freed for use by the BBC External Services by the reorganization of the Domestic Service

frequencies, which was necessary to meet the new United Kingdom commercial network and the BBC local radio stations. Previously 1088 was used to broadcast the Midland Regional program of Radio 4 from a transmitter at Droitwich in Central England. A new transmitter, with a directional antenna system, was built at Crowborough in South-east England. Reports for External Service receptions should be sent to Chief Engineer, BBC External Broadcasting, Bush House, Aldwych, London, WC2B 4PH, England. External Services on BBC are scheduled as follows:

647 kHz----- World Service, 0400 until start of Radio 3  
 809 kHz----- French 1130-1230; English 1230-1330  
 1088 kHz----- English, French, German 0000-0730; 1600-0000  
 1295 kHz----- European languages 0400-0730; 1700-2330

Also scheduled for starting operation at the beginning of September are the new BBC local stations. Previously only on FM, these will supposedly run competition for the new commercial stations authorized. They are as follows:

|      |                     |      |                |
|------|---------------------|------|----------------|
| 854  | Blackburn           |      |                |
| 998  | Solent              | 1484 | Brighton       |
| 1034 | Medway              |      | Humberside     |
|      | Leicester           | 1502 | Stoke-on-Trent |
|      | Sheffield           | 1546 | Bristol        |
| 1106 | Leeds               |      | Teesside       |
| 1457 | London              |      |                |
|      | Birmingham          |      |                |
| n    | Newcastle upon Tyne |      |                |

Radio London will be 20 kilowatts, although the original plans for this station called only for a 10 kilowatt transmitter. There is the possibility of this station eventually going to 50 kW. The powers of the other stations, as that of the 1088 External Service station, are still unknown to your editor. Radio London, and perhaps the rest of the local stations, will continue to broadcast in FM as well as on the medium waves. The address of Radio London is Harewood House, 13, Hanover Square, London W2R-0JD. Terry Greenhill notes that Radio London signs on at 0400 GMT (0500 in winter), and relays Radio 2 until 0545, when their own program "Rush Hour" starts. He feels this is the best bet for US reception. (clippings from Hertfordshire Mercury Evening Standard, and The Listener, via Terry Greenhill; list of stations from C.M. Stanbury II; information on 1088 from London Calling, the magazine of the BBC World Service, via Joel Brill.)

#### Geomagnetic Indices

A major geomagnetic storm began at 0120 GMT on 8/4 and continued about 80 hours. The Storm A-index was 195. A second disturbance began about 0030 8/9 and lasted about 15 hours. The A-index on this one was 45. Five major solar flares occurred between 8/4 and 8/7. One astronomer, quoted in Newsweek and Time, compared a major geomagnetic disturbance at this particular part of the sunspot cycle to getting snow in August in Savannah.

|               |    |    |     |     |    |    |    |
|---------------|----|----|-----|-----|----|----|----|
| August 2-8    | 6  | 4  | 106 | 151 | 51 | 27 | 8  |
| August 9-15   | 44 | 15 | 17  | 7   | 5  | 9  | 10 |
| August 16-22  | 6  | 6  | 12  | 13  | 14 | 11 | 9  |
| August 23-29  | 2  | 2  | 6   | 19  | 18 | 8  | 7  |
| August 30-9/5 | 06 | 08 | 04  | 05  | 05 | 06 | 05 |

#### Listeners' Loggings-- Trans Atlantic

1268 ??? South Africa, Pretoria? believed to have been the one detectable here at 0305-0310 8/9. Audio heard so sporadically that it was impossible to check with //2376 kHz but the latter was audible that data as was ORTF Reunion on 2446 at 0245, so MW conditions were definitely right for lower Africa. (CMS,E)

1554 ... Gabon, Libreville was almost certainly the one 8/10 turning its carrier on at 0403 but faded out before scheduled 0430 s/on. Frustrating, hi. (CMS,E)

Latin America

- 590 CMW Cuba, Havana, SS speeches by man (Castro?) with plenty of cheers, hollers, and hoots, //570. (MHi, Bah)
- 640 CMQ Cuba, Havana, SS drama or soap opera featuring American imperialists. //600. (MHi, Bah)
- 690 CMBC Cuba, Havana, American rock music?? //680. (MHi, Bah)
- 700 TIHB Costa Rica, San Jose, "Radio Reloj" in with ID atop the frequency at 1210 8/15. (LBG, C)
- 720 HJAN Colombia, Barranquilla gave call ID plus slogan "Emisoras Unidas" at s/off with NA 0400 8/10. (LBG, C)
- 725 TILX Costa Rica, San Jose had a good signal with announcement "Esta es la musica de Columbia" at 1053 8/16. (LBG, C) (Radio Columbia. Ed)
- 730 HJCU Colombia, Bogota strong with "Radio Melodia" ID ANing at 0830 MM 8/28. (LBG)
- 738 CM. Cuba, La Voz de Cuba with vocal LA music. (MHi, Bah)
- 750 JBC Jamaica, Point Galina, heard at night with "Record Special"--rock music. In EE. (MHi, Bah)
- 760 CM. Cuba, La Voz de Cuba ID and then 4 fast pips. After them there were news items with 3 fast pips between each news item. News in SS. (MHi, Bah)  
(That's the Reloj Nacional format. This is CMCI, Havana, 10 kw. Ed)
- 760 CB76 Chile, Santiago s/on 1054-1058 8/16. Initiated with 6-note IS to the tune of "Pomp and Circumstance," followed by recording of the entire song, then full and lengthy s/on announcement. Gone by 1105. (LBG, C)
- 760 TGHS Guatemala, Guatemala "Super Radio" ID at 1105 atop the frequency 8/10. Perhaps s/on. (LBG, C)
- 770 YV.. Venezuela, SS ID as "Radio Nacional de Venezuela", mentioned other frequencies as 630 and 1050 kilo-ceklos? (MHi, Bah) (kilociclos. YVKK, Valencia, 10 kw. Ed)
- 780 CMJN Cuba, Camaguey believed the Cuban atop WBBM with frequent mentions of Camaguey (no ID) around 0435 8/14. (LBG, C)  
+Radio Rebelde SS ID and talk program. (MHi, Bah)
- 800 PJB Netherlands Antilles, Bonaire, EE from 0300, with "Island of the Flamingos" and "500 kW voice of the Caribbean"; religious station. (MHi, Bah)
- 860 HILR Dominican Republic, Santo Domingo in weakly at s/on 8/14. After learning that Radio Clarin had increased daytime power to 50 kW, I thought I'd give their 1000 s/on a try, hoping that they would come on ahead of KOAM and CJBC. What sounded like an anthem appeared at 0957½ through KONO/WDMG QRM, and at 0959, a partially readable ID: "Transmite...Radio Clarin". At 1000 the channel was a jumble of QRM with KOAM emerging as the dominant station at 1004. My first Dominican. (AEL, W)
- 880 CMDZ Cuba, Santiago, tentative 8/7 with ID at 0630. Signal looped due south (as opposed to Havana SSW). WCBS off. ID 0555, "The Sorcerer's Apprentice" (Disney made this piece famous, in "Fantasia") 0600-0615, instrumental "Let it Be" 0615-0618, then more pop music to Radio Musical Nacional ID 0630, then more music. (TRS, E)  
+Matanzas (per RFS in DX News), fair signal about even with WWL and with little noise. News with many mentions of Cuba and tentative slogan as Radio Enciclopedia, 0938 8/10. (DGC, W)  
+Strong with "Radio Progreso" ID, TC = EST + 1 hour, 1028 MM 8/21. (LBG, C)  
(There seems to be quite a bit of differences expressed about this station; slogans and locations. Matanzas is quite near Havana, Santiago is at the far end of the island. Ed)
- 890 HJCE Colombia, Bogota "La Voz de Bogota" with strong signals and ID 0425 8/14 WLS very weak. (LBG, C)
- 940 XEQ Mexico, D.F., Radiodifusora Mexico, 8/7 with ID 0525 in midst of SS music. Very clear. First time in 17 years. (TRS, E)
- 1020 HOF2 Panama, Colon believed the one s/on SM 8/27 1057-1100. Panamanian NA was played at 1057, and weak ID at 1100 seemed to be "Reloj Onda". TCs were EST. HOF2 is the only Panamanian listed in WRTH, with slogan, "Onda Popular", so possibly they. (LBG, C)



- 1060 ??? UnID, SS with "Bolero" (a classical selection) at tune-in 0535 to 0545, announcements, into show-tune music. Lost 0547 with KYW put carrier back on air. Fairly good signal. Who? (TRS,E)
- 1155 YSCF El Salvador, San Miguel very strong with call ID and "Ondas Orientales" at 0428 MM 8/28. Gave frequency as 1150 kcs. No s/off announcement as such, but NA followed immediately. (LBG,C)
- 1160 ??? UnID LA heard here SM 8/27 0955-1036 with, luckily, KSL silent. TCs were EST and music played strongly suggests Panama, Colombia, or Ecuador (I'd bet on Colombia). At 1000, ID was "Radio ... el 26, la emisora de su preferencia"; nothing like it in WRTH or FBIS. At 1020 another ID sounded like "Radiolanda"; ditto at 1035. FJP, can you help? (LBG,C) (Fraid not, Larry. Al Lehr says KSL has been silent 3 consecutive Sundays. Ed)
- 1180 ZYD65 Brazil, Rio de Janeiro believed the one mentioning this country frequently, broadcasting in Portuguese around 0806 MM 8/28 with WHAM looped. I believe "Radio Globo" was given a few minutes earlier, but my recorder wasn't on. (LBG,C)
- 1180 CBL18 Chile, Santiago first heard this summer at 1100 8/10 with gongs on the hour just as WLDS s/on, drat. Better at 1100 8/16 with gongs, march and news; there was a "Portales" ID at 1049 that AM. Then on 8/21 in with commercials at 1029, good ID at 1041, gone by 1119. (LBG,C)
- 1180 TGT Guatemala, Guatemala, "Radio Sonora de Guatemala" s/off 0501 8/27, then marimba music after announcement. (LBG,C)
- 1180 XEFR Mexico, D.F. "Radio Felicidad" IDed atop WHAM (looped) at 0754 MM 8/28, still AN, I see. (LBG,C)
- 1190 ??? UnID SS or PP station, hard to tell with all the splatter from WHAM, but with 3 or 4 octave chimes rising in pitch before an ID at 0800 8/4; something like "Radio Estonda, La Voz de Muchela" and after, had the same chimes in reverse order, dropping in pitch; with MoR music 0715-0800. Any ideas? (TJS,E) (HJCT, La Voz de la Costa, is the only "La Voz" I find listed for this frequency. Ed)
- 1269½ CMJG Cuba, Camaguey, Radio Reloj Nacional noted topping the 1270 channel at 0250 8/10. (CMS,E)
- 1340 XEAA Mexico, Mexicali, B.C. 1003 8/11, SS ID mentioning XEAO, XEAA, and tentative XEOR(?). Many SIDs, as "Radio Doble Ah". Over KMEL and KMAK with orchestral mariachi music (complete with violins). Good signals with little fading during atmospheric storm. (DGC,W) (Violins are essential to real mariachi music. Ed)  
+"Radio Doble-ah" atop KRAM/KATA 1020 8/12. (BP,W)
- 1540 ZNS1 Bahamas, Nassau probably the one with religious music and accented EE announcer 1040 8/21. Looped that way. (BP,W)  
+Noted IDing as "Bahaman Radio Network" at 0211 8/22. I wonder if this means that those new out-of-Nassau outlets are operating or will be shortly? (CMS,E) (Ron Schatz has tentatively reported tests from Freeport. Ed)  
+Accented EE rock and blues music, also soul music. Announcer likes to give exact time, for instance, 2 minutes, 25 seconds after 9 PM. Few ads for US companies and Bahama land developers. Rarely IDs as ZNS1, just as "Radio Bahamas". (MHi,Bah)
- 1550TICCR Costa Rica, Ciudad Quesada noted 8/7 from 0047-0055 fading over/under Portena with man with SS talk; ID at 0047 was "...a traves de Radio Cima de Costa Rica" followed by incidental mention of Ciudad Quesada; Portena was dominant with their North American rock format, but this one faded up every so often; conditions were, of course, quite auroral this PM. (WBF,E) (RBIS also lists this as TIMET, so I guess you can take your pick. NRC LA Log lists it as 1 kw; but both FBIS and WRTH have it as 2 kw; judging from their surprisingly good signal, I wouldn't be at all surprised to find out they were running 5 kw. . . .)
- 1555 ??? UnID, SS 8/6 tune-in at 0425 through 0530, never peaked at ID time. Mostly music. Russ Edmunds says this is HJLP, Radio Espacial, Tulua, off 1560. Couldn't prove it by me. (TRS,E)

1555 ??? UnID LA noted at 0400 s/off 8/10. Frequency could have been as high as 1556, definitely above 1554. (CMS,E)

1560 XEVIP Mexico, D.F. 8/6, a rare appearance over usual din on frequency once WQXR goes off. In EE, tune-in 0510 with pop music, through ID 0530. (TRS,E)

#### Trans-Pacific

590 KGMB Hawaii, Honolulu 8/14 with MoR and oldies, ID and TC fair signals, but noisy. Weakest of all Hawaiians heard 8/14. (DGC,W)

720 KUAI Hawaii, Eleele, Kauai, 8/14 0830 full ID as "News of 72 on the station of 72, KUAI, Eleele, Kauai, Hawaii" followed by the Hour of Decision. MoR preceded. Very strong, with no WGN QRM. (DGC,W)

940 KAHU Hawaii, Waipahu, tentative. What threw me was that they had ukelele music and possibly Hawaiian language talk instead of C&W music which I thought they programmed. Mentions of Oahu and maybe Waipahu; 8/14 0833-0857 (when KJR-950 resumed playing rock and blocking 940). Anyone know of change or special Sunday night programming? (DGC,W) (Can you help, Credo Bisquera?Ed)

1040 KHVH Hawaii, Honolulu 8/14 0940 good over WHO with interview program. (DGC,W)

1080 KHAI Hawaii, Honolulu 0814 8/14 with pop standards. "Kay-Hi music at 10-80" and "Kay-Hi, KHAI, Honolulu". Fair to good signals with little fading but lots of noise. (DGC,W)

+Battling WFIC way under KRLD/KWJJ 0948 8/21. Seemed to be MoR. (BP,W)

1130 KLEI Hawaii, Kailua 8/14 0930-1000 s/off, over/under CKWX with dull MoR and no announcements till a minute before s/off. S/off followed by SSB. (DGC,W)

1270 KNDI Hawaii, Honolulu probably the very weak signal with talk in what sounded like JJ or KK 1140 8/14. (BP,W)

#### Verifications

1510 2NA Australia, Newcastle sent ABC v/q and program schedule in 3 weeks. Address is P.O. Box 669J, Newcastle 2300, Australia. They have zip codes down there too! (BP,W)

1550 4QD Australia, Emerald sent long friendly letter from John H. Bartlett. Letter mentions that 4QD is mainly a relay with virtually all programs coming from Brisbane and seldom originates any program. Staff is mainly technicians, including Mr. Bartlett, who says he handles all the DX reports. Uses a 310 foot antenna and has been heard in Finland. Offered to send station photos with future correspondence. Also enclosed tourist brochure and program schedule. (BP,W)

#### Reporters

DGC Dave Christensen, Seattle, Wash.

WBF Bill Feidt, Laurel, Md.

LBG Larry Godwin, Boulder, Colo.

MHi Mark Hittinger, Louisville, Ky., vacationing in the Bahamas

AEL Al Lehr, Livermore, Calif. 5' loop with FET pre-amp, Allied A-2515

BP Bruce Portzer, Seattle, Wash. National NC-120 with 4'DCL loop

TJS Tim Saltmarsh, Penacook, NH

CMS C.M.Stanbury II, Crystal Beach, Ont.

TRS Tom Sundstrom, Willingboro, NJ., HQ-150, 4' loop

\*\*\*\*\*  
Father Jack Pejza, 3266 Nutmeg St., San Diego, Calif. 92104

Good to see such a big column so early in the season. I just hope the geomagnetic storms won't have aftereffects to mess up the coming season. Hope you plan to enter GOATBPSLC (pronounced Goat-Blisk?). It's funny how the good dentist, Dr. Molar, who thunk this whole thing up, has apportioned out times to the judges to be listening, but apparently plans to sleep this one out, as he didn't assign himself any times. Look elsewhere in this bulletin for the big announcement of the long-awaited IRCA Foreign Log. By the time you read this, they will be in hand, ready to be distributed. 124 pages of goodies for the bargain price of \$2.75 to members. Get your copy now while the supply is fresh. It promises to be a big help in the new season. FJP



# ANNOUNCING THE

# IRCA FOREIGN LOG

124 pages

6 months in preparation.

Jampacked with information on foreign DXing on the broadcast band.

Lists all stations actually heard, with times, dates, and valuable tips on what to listen for.

Lists all stations verifying within the past year.

Interesting articles on DXing trans-Atlantic, Latin-America, and trans-Pacific stations.

**\$2.75 to IRCA members**

including postage

**\$3.25 to others**

1500 XERH +Fair with ranchero music and "Radio Tricolor" ID through looped KXRY 1200 2/27. (BP,W)  
+Good over KSTP with a Radio Tricolor ID and ranchero music 2/21 0300. XERH is the only station on 1500 that has made it over KSTP. XERH SW stations on 25 and 19 meter bands heard good some nights. (JAM,M)  
1500 PJCT Netherlands Antilles, Curacao, Radio Hoyer heard in June (don't remember exact day) till 0700 with transmission of fiestas, in local idioms, mentions of Aruba, etc. (CRM,SA)

1513x XERH Mexico, D.F. distorted spur 0704 10/25, LA music; at 0740 was closer to 1514 kHz. Giveaway jingles, "R-H" at 0744; //1500. (WGH,M)  
1515 YNCZ Nicaragua, Leon, "Transmite desde Leon, Radio Progreso, en 1515 kilociclos, frecuencia musical..." 1115 12/20. (WGH,M)  
1520 LZT5 Argentina, Curuzu Cuatia, Radio Guarani with special transmission till 0500 SM 6/20 and MM 6/21. (CRM,SA)  
1520 HJLQ Colombia, Barranquilla, Radio Minuto, IDs as "la emisora diferente", TCs, pop music, 0817 9/20. (WGH,M)  
+Radio Minuto here with recorded ID 0800 after SS vocal. Easily loopable from moderately strong EE which turned out to be KXAY running AN MM as usual; weak because of antenna pattern. (SK,W)  
+Noted on 12/17 at 2305 with spot for firm in Barranquilla and Radio Minuto ID; then into Latin vocals. (WBF,E)  
+AN as usual, ID, 3:55-TC at 0854 12/20, "24 horas con las mejores noticias y canciones" (Meaning they only broadcast good news?) (WGH,M)  
+Loud with tropical music and a beautiful ID at 0900 as Radio Minuto; NRC LA Log lists as 2 kw. Is this correct? Signal semi-local at times 12/20. (JB,M)  
1520.36 HJLQ Colombia, Barranquilla, Radio Minuto measured here badly letting HJLQ with WKBW off 0515 2/14. (HJE,E)  
1520 HJLQ Colombia, Bogota weak with MoR music under WKBW rock in aurora with ID, news 2330-2335 1/27, ID as Radio Latina, with HJLQ on 1520.7 or so. Didn't measure. (HJE,E)  
1520 XEYP Mexico, El Limon, Tamps., ID, TC, cerveza Corona y Victoria ad, at times dominating with KOMA et al nulled, as on 1/3 at 0023. (WGH,M)  
1520 WRAI Puerto Rico, San Juan, 0430 SM 4/18, "Este fue Movimiento Aereo....al redor del mundo transmite Radio Aeropuerto Internacional, San Juan, Puerto Rico, 1520 kcs." (CRM,SA)  
1520 111 UnID heard SM 4/30 0945 with WKBW off for a few minutes, in SS, format of fast music with many excited commercials but nary an ID. Heard on a sunrise skip to LA which also had SS stations on 1550, 1560, and 1590. (QCB,E)  
1530 XEUR Mexico, Texcoco, Mex., (Mexico, D.F.), 0531 11/29 with typical Mexican music and ID 0537; QRM from another Latin with same null. (RSD,E)  
+Radio Onda heard weakly with WKCY in aurora 11/29 0550. (RJE,E)  
+Heard 12/20 at 1045 with Radio Onda ID. Usual Mexican pop stuff. (PP,W)  
+With Radio Onda jingle, poor with QRN 0710 12/20, WKCY off. (BGS,M)  
+Probably the one in quite often over/under WKCY, KFBK, but have been unable to ID this one yet. 0230 3/30. (JAM,M)

- 1250 WARE MA Ware, 8/1 w/Red Sox BB, ID at 2000. Strng o/WKBR. (TJS)  
 8/11 w/2130 ID during Red Sox BB, w/no sign of usual  
 WT/E even without loop. (TRS)
- WKBR NH Manchester, all alone 0105 8/7 s/off. Often tried in  
 winter at this time but no luck. Aurora got 'em in.  
 Most wanted. (QKB) ((Is rr format - ss))
- WMTR NJ Morristown, 8/1 1955 s/off w/mentions of Morris Coun-  
 ty and WDHA-FM. Instead of SSB, they used a rel. song.  
 Strong w/WARE. (TJS)
- 1260 WWDC DC 8/19 2330 ID w/WBUD looped & o/WNDR. 1st time. (TRS)
- 1270 WLIK TN Newport, 2153 good o/Cuban het w/MoR, light rr & ID.  
 Gone at 2157 8/19. (ALN)
- WLSM MS Louisville, poor u/WXYZ on f/c w/tt 0222 8/23. (JMP)
- 1290 WCOW WI Sparta, fair on f/c w/others on channel. TT 0126  
 8/23. (JMP)
- WHIO OH Dayton, 8/19 w/ID & TC 0110, o/WICE w/rr. Good. (TRS)
- WSCM FL Panama Cy Bch, way u/WHIO w/f/c 0235 8/18 (JMP)
- 1300 WQBK NY Rensselaer 8/14 0200 f/c, ID as: "Have a Happy Day  
 with WQBK, Rensselaer." Strong. (TJS)
- 1310 WISE NC Asheville, vy poor 8/13 2130 w/ID. (MH)
- 1320 WILS MI Lansing, 8/20 0311 nx, rr mx. Good. (TJS)
- WGET PA Gettysburg, 8/18, ID @ 2305 at end of MBS Nx. (TRS)
- WKAP PA Allentown, gd o/WATR w/spots, ABC nx 1625 8/8 (SSH)
- 1330 WFBC SC Greenville, fair w/mx 8/15 0034-0045. (BCL)
- 1340 WBGN KY Bowling Green, strong on f/c 0421 8/5. (JMP)
- WBBQ GA Augusta, w/others on f/c, fair 0022n8/21. (JMP)
- WGAU GA Athens, fair-poor on f/c TT 0118 8/21. (JMP)
- WMBO NY Auburn, "Serving the Finger Lakes" 0030 8/14. (QKB)
- WUSJ NY Lockport, now /N w/rr. Hrd 0100-0110 8/14 L&C. (QKB)
- 1350 WKLA VA Portsmouth, 8/18 nx ending 2245, into rr. O/WHWH and  
 WORK. (TRS)
- WNLK CT Norwalk, exlnt w/old rr, AM/FM (WDRN) ID 1627 8/8 (SSH)
- WYLS AL York, poor w/end of nx & ID, much QRM. 2032 8/19 (ALN)
- 1360 WAZA GA Bainbridge, u/WDRG w/f/c TT 0017 8/24 (JMP)
- WHBG V Harrisonburg, 8/21 ID, s/off. No SSB. Good sig. (GWJ)
- WMNS NY Clean, strong, good on f/c o/WDRG 0045 2/18 (JMP)
- 1370 WDEF TN Chattanooga, gd w/mx, nx 0530, slight WLCY slop. WCO A  
 not yet on 8/14. (ALN)
- WELV NY Ellenville, 8/18 w/mx to abrupt s/off 1959 w/advisory  
 to go to 99.3 FM. Good, no SSB (TRS)
- WMHI MD Braddock Hgts, 8/18 s/off 2000, no SSB, w/anmt to go  
 to 103.9 FM. Clear after WELV pulled carrier. (TRS)
- 1380 WGUS GA Augusta, xlnt on f/c, TT 0108 8/15 (JMP)
- 1390 WCSC SC Charleston, in auroral cx, good w/WEED. Had CBS pgm  
 and ID 2050-2102 8/6. (GWJ)
- WPLM MA Plymouth, FORGET IT - This one beams out to sea, but  
 first is beamed to 290 Court Street, hi.
- Budd Bailey says watch for 1380's CKLC - all alone w/s/on at 0445.
- 1400 WABY NY Albany, OC & IDs on et 0102 8/14. Is /N-6 w/rr, SP  
 MM. (QKB) ((Good tip, Quentin! QKB is SoM Ed. - ss))
- WALE MA Fall River, tent. ID 0200 8/23, much interference  
 from WABY. (JMP) ((It was W/LE, Jim, on ET. They  
 ran a cart.: "You're listening to WALE, Fall River,  
 Massachusetts, conducting equipment checks", con-  
 tinuously, w/no tt. - ss))
- WGAP TN Maryville, Gd on f/c 0013 8/15, fair o/slop. (JMP)
- WJZM TN Clarksville, u/mess w/wk tone, just audible, very  
 poor, 0104 8/17. (JMP)
- "3G" GA Savannah, w/rr 0130 8/8 - auroral cx. (QKB)

September 9, 1972

EASTERN DX ROUNDUP

Page 18

"DX Season's Getting Stronger - You Can't Afford to Wait Much Longer."

- 1410 WIKI VA Chester, gd u/WPOP on f/c, 0012 8/24. (JMP)  
WINE OH Dayton, 8/14 0210 w/rr. Strong. (TJS)  
WONS FL Tallahassee, o/rest of channel w/dialtone f/c 8/10  
0216. (JMP)
- 1420 WACT AL Tuscaloosa, fair/poor w/s/off, WRBL nulled, 2045 8/13  
(ALN)  
WDDY VA Gloucester, 8/20 1925-1935, w/WCOJ looped. (TRS)  
WLET GA Toccoa, u/CKPC w/f/c, 0134 8/18. (JMP)
- 1430 WDIC VA Clinchco, Editor notes: This one tests every third  
MM, and was heard here 8/21 from 0115-0130, entire  
(Also hrd by BCL - gets out well!) test. Was also hrd by SSH and JMP. Here, it is al-  
ways o/pest CKFH, and does veri - I have a QSL here.  
IDs as "This is WDIC - William, David, Ida, Charlie,  
Clinchco, Virginia, testin'". Always same time.  
WENE NY Endicott, 8/20, ID and TC for 1951 w/WNJR looped.  
Fairly good, new here. (TRS) ((Is rr - ss))  
WMNC NC Morgantown on 8/10, 0030-0112 on PoP. (BCL)
- 1440 W/JR WV Morgantown, 8/18 w/clear ID 2330 thru beautiful mx  
of WHHH's Penthouse Serenade which IDed right behind  
WAJR. No sign of usually dominant WAAB-MA. (TRS)  
WELJ KY Williamsburg, way u/all rest w/snatches of tone,  
tent. 0352 8/5. (JMP)
- WRBE MS Lucedale, poor w/s/off in QRM 2044 8/13. (ALN)
- 1450 WWXL KY Manchester, hrd on r/c per updater list fair 8/13,  
0415-0430. (BCL)  
WMAJ PA State College, 8/15 w/0007 s/off. Poor, no SSB noted,  
but could have been in fade. (GWJ)  
WTHU MD Thurmont, fair w/tt on f/c 0003 8/15, fair-good. (JMP)  
((WTHU is 100 watts night - good catch if was 100. ss))
- 1460 WRVK KY Mt. Vernon, o/WMBR w/tt on f/c 0317 8/5 - gd. (JMP)
- WBRN MI Big Rapids, 8/20 0115 ET w/tone, strong o/WCMB. (TJS)
- 1470 WBIG NC Greensboro, 8/14 w/ID & TC 0151 u/o WTKO in jumble.  
Surprise - no WSAN!!!! (TRS)
- 1480 WSAR MA Fall River, very gd on et w/old rr, IDs, promos 0157  
8/21. No QRM as WHOM had s/off. (SSH)
- 1490 WDXL TN Lexington, 8/20 w/SID - "WDXL - More Mx!" 0205  
momentarily above normal din w/WBCB looped. (TRS)  
((DXers be careful - W. Springfield, MA on 1490 has  
NSP rr WTXL, and has similar IDs. Gets out v. well.))
- 1500 WGMF NY Watkins Glen, 8/14 longest f/c I've ever hrd 0000-0040  
used tt. Strong o/XERH and others. (TJS) ((Ed: WGMF  
has plenty of time to test, but never seems to have  
time to veri. I've sent out 4 accurate reports, and  
even phoned. Empty promises, and I'm minus 8 stamps.))
- 1530 WOBR NC Wanchese, gd in auroral cx, no QRM 2002-2015 w/some  
deep fades. Weekender Beach Boy show, top 40 rr,  
8/6. (GWJ)
- 1550 WPJD TN Daisy, on f/c w/mx 0246 7/17, 3rd MM. (DF)  
WLUX LA Baton Rouge, Gd at s/off, 0 0 by Capitol Cities  
Broadcasting (Like WPRO, WKBW) 2045 8/5 (ALN)
- 1600 WINX MD Rockville, 8/10 2145, pop mx thru WWRL. (TRS)
- Went to CT for weekend of 9/2, and enjoyed beautiful wx. Came back to  
find that Hurricane Cary had hit Plymouth, wrecking temporarily my  
typewriter (maybe improving it), and drenching so many EDXR reports,  
to the extent of unreadability. This typewriter courtest of Lynne and  
Cary Pall (KCLW) of NRC HQ - deep gratitude.
- Section B - DX Canadian-Style:
- 740 CBL ONT Toronto, on the air 0245 8/21. Never heard a Canadian  
run an et or somesuch. CJBC also on. (BB)
- 900 CHML ONT Hamilton, 8/20 0030 w/rr, gd w/unk. FFstn. (TJS)