

DX MONITOR

PUBLISHED BY
THE INTERNATIONAL RADIO CLUB OF AMERICA

MARCH 16, 1974 VOLUME 11 NUMBER 24 25

Ten Years for IRCA and DX Monitor

Ten years ago a group of broadcast band DXers formed a new radio club and published the first issue of a magazine now known as DX Monitor. Many members perhaps do not know the story behind the foundation of IRCA; this tenth anniversary issue is a good place to review the history of the founding of IRCA, as gleaned from the pages of DX Monitor.

For thirty years, there was only one club which specialized in BCB DX -- the National Radio Club. NRC was formed by members of the disbanded Buffalo Evening News DX Club in September 1933. In 1934, two other clubs--the Atlantic Radio Club and the Central DX Club merged with NRC. For most of its history, NRC was a democratically run club, with elected officers. Decisions made at the annual convention were considered as equally binding as any other vote of the membership. Over the years, however, an old-guard leadership gradually assumed control of the club, and by the late '50's and early '60's, the nature of the club organization changed. At the 1959 convention, the club's constitution was scrapped; in 1961, the club's executive secretary refused to abide by decisions made at the annual convention.

As a result of these actions on the part of the club officials, there arose a group of younger progressive members who wanted a return to a more representative club government. Since their views were censored in NRC's bulletin, DX News, they were forced to send out their own private newsletters in order to communicate their ideas on club government.

Things came to a head at the annual convention in 1963, held in Denver. It was hoped that representatives from both camps would be present, to sit down and iron out their differences. As it turned out, no members of the group actually controlling the club were at the convention. The entire group of those who did attend resolved to adopt a new club constitution with a democratic form of government. After the convention, a poll was taken of the entire NRC membership; of those who voted, 64% favored adopting the provisional constitution drawn up in Denver. It was hoped that the large percentage favoring such a change would convince the executive secretary that an official vote should be taken. The poll, however, was ignored, and the stage was set for the founding of IRCA.

On February 1, 1964, a group of Denver area NRC members incorporated an organization called the National Radio Club, Incorporated (NRCI). The founders of NRCI--Larry Godwin, Dallas John, Dave Johnson, Bill Nittler, Marv Robbins, and John Tracey--felt that NRCI was the lawful successor of NRC, since the officers of NRC had refused to follow the wishes of a majority of members. NRCI quickly attracted members from NRC; over 100 had joined NRCI by the end of spring.

Since NRCI considered itself the successor to NRC, the name given to the club bulletin, first published on March 17, 1964, was DX News, the same as that used by NRC. (NRC, however, did not roll over and die; it also continued to publish its bulletin called DX News.) The format and names of columns in NRCI's DX News were identical with those used in NRC's DX News.

After about a month's existence, the officers of NRCI decided that the club should change its name, both because of a technical flaw in the bylaws and also to avoid any future conflict with NRC. At the same time, the name of the bulletin was changed. After a vote of the membership, the club was renamed

the International Radio Club of America; the bulletin was re-named DX Monitor. The columns were renamed, but remained essentially the same as those in DX News for several years. There were two DX Forum sections, one for California edited by Don Erickson, and the other for the rest of the country. The Domestic Tip Index (similar to NRC's DXDD) was edited by Dave Johnson, and Ed Krejny was the first editor of DXWW. The Roundup and Forum sections came into their present form in 1966; the current names were tacked on in 1967.

At its beginning, NRCI used the constitution and bylaws drawn up by the Denver NRC convention of 1963. The first provisional president of the club was Marv Robbins. Bill Nittler was the first Secretary-Treasurer, and the Board of Directors was composed of Ed Krejny, Dallas John, Dave Johnson, Dave Gleason, and Bill Nittler. The first election of officers took place in late 1964; elections have been held every two years since.

The first publisher of DX Monitor was Bill Nittler. Later Bill Lipis took over the job of putting out the bulletin. From 1968 to 1973 Don Erickson was the publisher and editor-in-chief. The San Diego Publishing Committee took over in May 1973, with Grant Manning becoming publisher and Father Jack Pejza, ditto-in-chief.

For the first nine years of its existence, DX Monitor was published by mimeograph. In the summer of 1973, this was changed when the publication was done by offset lithography done commercially. Another change instituted within the past year was to drop third-class subscriptions. At one time, a large percentage of subscribers received DX Monitor by third-class; with a change to offset, third class subscriptions became a financial drain on the club; because of slow mail service, they also had proved unsatisfactory to most in recent years. A third change within the past year was a division between IRCA members and DX Monitor subscribers, done primarily with a view to applying for a second-class mailing permit.

What's inside:

CBC English Network List -- Pg. 12	
ANARC Almanac-- Pg. 12	
CBS Mystery Theater List -- Pg. 13	
FCC "Honor Roll -- Pg. 14	
LSCA, Part III-- Ron Schatz -- Pg. 15	
Old Time Radio-- Page 16	
Photographs of your favorite DXers -- Pg. 17-18	
Ten Year Index of SoM and PoM-- Pg. 19	
Ptarmigan Telegraph-- Pg. 20	
Revival Radio-- Pg. 20	
Back to the Bible List-- Pg. 21	ELECTION
CKLW and WGL Stories-- Pg. 23	RESULTS-
Contest Standings-- Pg. 24	PAGE 22

No DXWW this issue; Ron Schatz phoned to say that the press of work and school prevented him from editing the column this week.

①

DX Monitor-- the official magazine of the International Radio Club of America -- is published weekly from October to March, bi-monthly in April, May and September, and monthly in June, July, and August. Official business address: 3266 Nutmeg St., San Diego, CA 92104. SUBSCRIPTIONS: For IRCA members, \$7.50 (+ \$2.00 membership fee); airmail to North America, \$11.00 (+ \$2.00); airmail to Central and South America, \$18.00 (+ \$2.00); to Europe and Africa, \$23.00 (+ \$2.00); to Oceania and Asia \$28.00 (+ \$2.00). Non-IRCA members, add \$3.00 to IRCA rates. Sample bulletin 50c or 3 International Reply Coupons. Make all checks and money orders payable to IRCA. Canadian subscribers, please use Canadian Postal Money Orders payable in U.S. funds. Other foreign subscribers, use International Money Orders payable in U.S. funds. Send all funds for memberships and subscriptions, as well as changes of address, to IRCA, 12536 Arabian Way, Poway, CA 92064. Please enclose self-addressed stamped envelope in correspondence with publishing headquarters if reply is expected. PUBLISHING STAFF: Executive Editor: Father Jack Pejza, 3266 Nutmeg St., San Diego, CA 92104 (714-282-0076 or 282-2184); Publisher: Grant Manning, Poway (714-566-1264). Dave Stroup, Randy Seaver, Jim Campbell, Albert Lobel, John Kolb.

Each postage increase in the past has forced adjustments in membership dues. Each increase brought with it the loss of some members, priced out of the club; on the other hand, the financial situation of the club generally improved with each dues raise. Even with the recent postal increase, the officers of IRCA do not feel that an increase in subscriptions is needed at this time. IRCA is applying some of its unexpended income from previous years toward the current losses caused by the postal increase. Such a situation, of course, cannot continue indefinitely. Sooner or later a decision will have to be reached-- to cut back on the number of issues, or increase the subscription rates so that income will again match expenses.

Hopefully such a decision will not have to be reached. SDPC has applied for a second-class mailing permit. This will entitle DX Monitor to be sent for about 2c an issue instead of the current 10c by first class. The obvious advantage is an annual savings of close to \$1000; this saving could be then used to increase the size of the average issue, or run more issues per year, or run more pictures. Perhaps even a lower subscription price could be reached.

The major disadvantage of second-class mailing, as now foreseen, would be a possible increase in the time the bulletin would spend in transit. Theoretically second-class mail has almost the same priority as first-class, so there should be no delay in getting DX Monitor. Experience, however, has shown that second-class mail does travel more slowly over long distances than first class; not as slowly, perhaps as third-class but still more slowly. A magazine published in Washington, D.C., for instance, takes a week to reach San Diego. Large publishers, such as Time or Newsweek, get around such delays by having a number of printing plants scattered throughout the country; they also truck a great deal of magazines to regional postoffices instead of depending on postal service to carry the magazines all the way.

The future of DX Monitor, then, really comes down to a question of priorities. Are we more interested in having a high-priced magazine which arrives promptly each week; would we be satisfied to receive fewer issues of DX Monitor each year; would we be willing to wait a few days extra to receive the bulletin if we knew it would cost less? The future of DX Monitor is certainly tied in with whatever decision we make. If we raise our dues too high, to compensate for increases in postage and inflation, we scare off the new blood to the organization, the beginner who can't afford a high-priced bulletin. If the bulletin is delayed too much in the mail, we lose those who are actively DXing and who want to receive the bulletin as soon as possible. If we cut back on the number of issues, we again alienate the active DXer.

At the moment, the exact delays which might be encountered with second-class mail in our case are unknown. SDPC feels that it only by actually going ahead and getting the permit that we will find out. From our point of view, the economy of second-class mail more than outweighs any possible delays. We feel that we will be able to cover the broadcast band DX scene more thoroughly than we could otherwise. If a member finds that the delays of second-class hinder his DX too much, then arrangements can be made for him to receive the bulletin by airmail, or perhaps even by first class, to speed up delivery to him.

IRCA has withstood the test of time. Unlike the vast number of DX clubs which have come into existence and then quickly faded, IRCA has endured. There have been conflicts as far as club government and publication of DX Monitor are concerned; but IRCA has been able to overcome such obstacles. Many clubs have floundered when key personnel have lost interest or have no longer been able to do the job; IRCA has been blessed with many dedicated people who have been willing to devote long hours to running the club and to publishing DX Monitor. Let's hope that the next ten years will be as interesting and as fulfilling as the first ten.

FJP

DX CALENDAR

All times Eastern Daylight Time

Mon. Mar. 18	0100-0200	WHLI	1100	Hempstead, NY	10kw D3
	0200-	WSAI	1360	Cincinnati, OH	5kw U2
	0200-	WNDB	1150	Daytona Beach, FL	1kw U2
	0300-0320	KHDN	1230	Hardin, MT	1/.25kw U1
Mon. Apr. 15	0030-0200	WHCU	870	Ithaca, NY	5kw L1

WHLI--test will consist mainly of of tone test. Telephone lines will be open during the test at 516-481-8008 and 516-481-8007. Callers should ask for the Chief Engineer. Reports go to the Chief Engineer, WHLI, 384 Clinton, St., Hempstead, NY 11550. Arranged by John Tracey for IRCA. Word of this test unfortunately received too late for most to learn about it. WSAI--no program information available. Write to M.W. Ebehardt, CE, WSAI, West 8th Street and Matson Place, Cincinnati, OH 45204. Arranged by Alan L. Mihalek for NNRC. WNDB-- no program data available. Reports go to Ronald L. Kocher, DX Manager, WNDB, P.O. Box 720, Daytona Beach, FL 32017. Arranged by Eugene Vonderembse for NNRC. KHDN-- will test with 1000 hertz tone with station ID every 3 minutes. Reports go to Charlie Heit, KHDN, Hardin, MT 59034. Arranged by Darryl Belanger for IRCA.

BROADCASTING INFORMATION (as compiled by Mike Worst)

From the Feb. 18 and 25 issues, and the GRTC.

new 710	1-U DA	Port Cartier, Que.	CF, French
new 720	5-U	Agana, Guam	CF
WWSO 1090	1-D	Montecello, Fla.	requests WTRM
new 1090	1-D	Bellville, Tex.	granted KACO
new 1110	1-D	Pineville, La.	" KPAL
WLIB 1190	10-U	New York, N.Y.	PSA 100 from 50w
CFGT 1270	1-U	Alma, Que.	to 10-D, 5-W DA-N
KERG 1280	5-D 1-N	Eugene, Ore.	granted KBDF
WEET 1320	1-D	Richmond, Va.	to 5-D, DA
WKRZ 1340	1-D 1/4-N	Oil City, Pa.	requests WNZE
WYNZ 1520	1/4-D	Ypsilanti, Mich.	" WYFC
KBES 1540	1-U DA	Belleveue, Wash.	to 5-D, 1-N DA-N

all powers in kw.

FLASH TIPS AND CPC RESULTS

KDLT-540, Delta, Utah is now on the air, per Ralph Kemper of Colorado. He noted them at their 2100 s/off 2/27 with a poor signal, with XEWA QRM. KDLT has been noted here in San Diego by FJP and GM on 3/3 at 2130 s/off, with a fair signal. Also on 540, KSDT, a current-carrier station from U. of Calif., San Diego, has been noted during the daytime and in early evenings.

Paul Mount, NJ, reports not hearing WHCU because of WWL and WCBS. Paul did not hear WHIS. WCHL was heard mostly over WDRG with rock 0302-0327 with a fair to good signal. Paul also reports a tentative reception of WTIW; he heard a station mentioning 12:30, 100 watts, the address, and a tone at 0034; then varying tones at 0118. WGAR was off MM 2/25 "for DXers"; WKBK, Keene, NH, was heard with rock, code IDs 0056-0016 (sic) with French QRM, WGAR ETing.

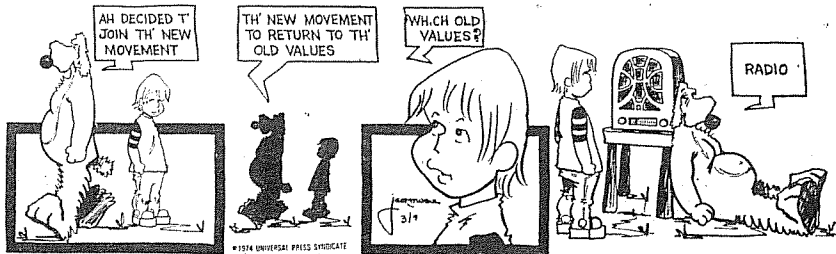
Ralph Kemper reports that neither the WYLD-540 or WGLB-1560 DX specials were heard.

GEOMAGNETIC INDICES

Feb. 27-Mar. 5 17 23 17 15 17 10 14

Radio conditions should be unsettled 10-12 March in association with a recurrent increase in geomagnetic activity. Another period of disturbed conditions is expected to begin about 21 March.

KELLY



BY JACK MOORE

THOUGHTS FROM THE EDITOR'S DESK

Like many others, I will use this anniversary issue to re-introduce myself to the readers of DX Monitor. I am 39, a Catholic priest who teaches Earth Science and Chemistry at St. Augustine High School here in San Diego. I also am a frosh moderator and counsellor. On Sundays I assist at a neighboring parish. I got started in DXing in 1967 when I bought a Lafayette receiver; worked my way up to a Hammarlund HQ-180AC

which I just sold to get a Drake SPR-4. I also use a Sanserino loop, 300' longwire, and an Ampex tape recorder in my DXing. For five years I edited DXWW and then became Executive Editor a year ago. Since becoming Editor, I probably have DXed less than before, but maybe the new receiver will get me back at the dials. The cartoon at the left maybe is the forerunner of a revival of interest in radio. With gas becoming more expensive (not to mention everything else), people will have to find more ways of entertaining themselves at home. After a while, one does lose interest in the boob tube, and so maybe people will return to hobbies such as DXing to keep themselves busy. Who knows; maybe we're just ahead of our time. In any case, IRCA has completed ten years. In my six or so years with the club, I've seen a great many DXers come and go; sometimes I wonder if there is anything we could do to keep people interested in the hobby, so that our turn-over rate wouldn't be so high. Is it because people become discouraged at not hearing more stations, or because they find other more attractive hobbies, or some other thing which takes them away? Ideas? FJP

Eastern DX roundup



Editor: Mike Mitock
 975 Osborn Ave.,
 Lorain, OH 44052
 DEADLINES:
 3/23; 4/6; 4/20; 5/11

540	WDAK	GA	<u>COLUMBUS</u> ; 2/25 w/AN rr show atop freq noted 0420-0435, while looking for WYLO (IA) IRCA DX, which if on, not hrd. WDAK not too often hrd; veried back on 12/20/58. (TRS)	1080	*WEWO*	NC	<u>LAURINBURG</u> ; Good o/WTIC on ET/RR/C&W 0243-50 on 2/18. (SF)
	WRIC	VA	<u>RICHLANDS</u> ; 2/22 1850-1856 good o/ everything w/ads all mentioning Richlands. rr mx. (DJL)	1130	WCBX	NC	<u>EDEN</u> ; This one caught in null of WNEW w/c&w 1837 2/19. Quite a surprise. (JMP)
	WYLO	WI	<u>JACKSON</u> ; Fair/good w/deep fades 0334-0400 2/25 on DX TEST w/c&w & TT. (SF) +In solid on their DX 2/25 0332-50 except from 0339-48 when they faded badly. (ELK)	1180	WLDS	IL	<u>JACKSONVILLE</u> ; 2/20 at 1859, ID, WHAM nulled, local px & wx, then into nat. nx w/Chet Huntley. Fair sig. New. (JAD)
550	KSD	MO	<u>ST. LOUIS</u> ; Dominant 0031-35 on 2/22 w/Beach Boys & Streisand. Fine signal. (ELK)	1210	WILY	IL	<u>CENTRALIA</u> ; 2/21 at 1906 w/wx, TC, fair-good signal, no WCAU. (JAD)
560	WIS	SC	<u>COLUMBIA</u> ; Noted w/s/off at 0106 on 2/22. Good sig but severe QRM. New sked?? (ELK)		WADE	NC	<u>WADESBORO</u> ; 2/28 at 1858, quick ID and s/off, no SSB. Good signal. New. (JAD)
	KWTO	MO	<u>SPRINGFIELD</u> ; Must have been the one here w/United Van Lines spot at 0107 giving MO phone number. Quickly covered by WJLS & WHBQ. This on 2/22. (ELK)	1220	WENC	NC	<u>WHITEVILLE</u> ; 2/28 at 1845, ID, rr mx, u/WSLM. New. (JAD)
570	WKYX	KY	<u>PADUCAH</u> ; Noted 2/22 w/rr then s/off anncd 0057-59. No SSB hrd. Severe QSB. Hvy WKBN QRM also. (ELK)	**WERT**	OH		<u>VAN WERT</u> ; 2/25 NRC DX hrd w/code ID's only 0003, 0004, 0006, 0015, thru WGAR OC, CHSC, unID FF, and CMGY (listed). Code IDs penetrated well, report out. WCAU at 3 air miles, if that, nulled out of self-defense. New. (TRS)
	WGMS	MD	<u>BETHESDA</u> ; ET-cl mx noted 0348 on 2/25. (JMP)		**KDDR**	ND	÷ Good on TEST w/circus mx & ID 0008 2/25. (SF)
590	**WKZO**	MI	<u>KALAMAZOO</u> ; 2/25 NNRG DX, if on, not discernible w/Cuban & others. Someone had news items all relating to the state of NE. If WOW, not hrd since 3/5/62. (TRS)				<u>OKES</u> ; Noted on DX 2/25 0242-55. Only IDs made it, however. Severe XEB/CHSC QRM. WGAR a problem here when they came on. (ELK)
600	WCAO	MD	<u>BALTIMORE</u> ; Surfaced at 0152 on 2/22 for an ID. This freq was all garbage at this time, sounded like a GY: HJHJ dominant later. (ELK)		WGDC	CT	<u>HAMDEN</u> ; Fair on s/off 1929 2/24 using SSB. Just o/din of WGAR/WFAX. (JMP)
730	WMNA	VA	<u>GREENA</u> ; On with news at 0700, believe just signed on, lost through fading at 0715. They sent a large QSL card with "A Tip of the WMNA Hat". (FAW)		CKSM	PQ	<u>SHAWINIGAN FALLS</u> ; This presumed to be the one w/FF 0010-0015 2/25. (PRM)
	WLOR	GA	<u>THOMASVILLE</u> ; In fairly well 2/27 w/c&w 1907-14. Lost to QRM then. (ELK)	**WKBK**	NH		<u>KEENE</u> ; 2/25 0001-0200 on TEST w/WGAR off. ID noted 0153. Stayed on 1220 0000-0200 and this only ID noted as CHSC caused quite a bit of trouble. (FAW)
740	WBAM	AL	<u>MONTGOMERY</u> ; In well w/UPI nx and then wx 2/27 1903-05. Music followed. (ELK)				÷2/25 NRC DX noted w/code ID's 0040, 0045, 0101, w/best audio noted 0100-0101 o/WGAR OC, CHSC, CMGY (listed) unID FF. Called station, said furthest call by 0105 was IN. Report out. New. (TRS)
810	WSJC	MS	<u>MAGEE</u> ; Great sig o/u/ WGY/KCMB till p/p change. 1944 2/23; WGY particularly weak this evening, as was dominated by WMTS/WQIZ/KCMB/WSJC/WEDO. (JMP)	**KOFO**	KS		++Fair-good on DX TEST 2/25, first appeared 0100 w/nx, then gave phone #, temp. While on phone 0110 strong "WKBK KEENE" code ID came thru. WGAR off, and CJSS s/off 0104 noted. (PRM)
820	WAIT	IL	<u>CHICAGO</u> ; 2/15 1957-1959 Sig good for one minute, then covered w/WOSU/WBAP. Ads and ID. (DJL)				++Noted w/poor sig 2/25 on DX. ID at 0041 noted. (ELK)
890	KBYE	OK	<u>OKLAHOMA CITY</u> ; Good in WLS null w/wx for several OK cities. 1930 2/26. (SF)				<u>OTTAWA</u> ; In very well on DX 2/25 when checked at 0153. Much CHSC QRM. (ELK)
910	CKLY	ON	<u>LINDSAY</u> ; Atop everything 0213 2/14 w/s/off, anncd s/on as 0655 EDT. (SF)				÷Great o/WGAR ET for a few secs, w/IDs 0156 & 0159 2/25. Only audible twice in 15 mins. of monitoring. (JMP)
950	WPET	NC	<u>GREENSBORO</u> ; Fair u/WSPA at s/on 0600 2/25. (SF)				++Strong on TEST w/Carpenters records, and ID 0145 2/25. (SF)
	WSPA	SC	<u>SPARTANBURG</u> ; 2/15 1919-1929 Good w/TC's, MoR, plug for BB @ 1930. (DJL)	????	??		<u>unID</u> ; Played "Nights in White Satin" 0056, Sunshine on My Shoulder, 0059. GE at WKBK said others had asked if this was them. 2/25. (PRM)
	WMRD	IL	<u>PEORIA</u> ; 2/25 0100-0107 fair w/CBS nx, ID, MoR mx. New. (DJL)	????	??		<u>unID</u> ; Was there a sked test 2/25 at 0020-0040?? Tone Bursts 2500 hz noted 0025-6 and again 0030. Could not tell if WERT was continuing or WKBK was on early. WGAR, CHSC, unID FF, CMGY (listed) on freq; WCAU nulled. (TRS)
1040	????	??	<u>unID</u> ; Interesting unID noted 2/24 0250-0430. Continuous MoR American mx. Geoff hrd 'em also. He thinks he heard an anncd, but I hrd no voice at all. Methinks 'twas Puerto Rico w/50 watts, and a tentative sent (w/crossed fingers that they save music lists), but Geoff doesn't agree. Wasn't Radio Tupi or Radio Super, as both noted as QRM. I just wonder if the three AFCN PR outlets run automated on the AN shift. (ELK)	1230	**WTIV**	PA	<u>TITUSVILLE</u> ; Tent. on DX w/ID 0034 ment. 1000 watts, 1230 kHz, gave address. Tone thru 0037. 2/18. (PRM)
	WRMP	FL	<u>TITUSVILLE</u> ; Testing w/progressive rock and SID 0315 2/25. Signal fair-good atop CMBQ/ZNS-3. (SF)				<u>DALTON</u> ; Fair w/rr and spots 0345-50 2/22. (SF)
				1290	WSHF	AL	<u>SHEFFIELD</u> ; Good u/WATO w/s/off 1930 2/19. (SF)
				1300	WYSO	NC	<u>MT. AIRY</u> ; 2/24 at 1955, ID, dominating freq today. Good sig. (JAD) [program details????....mrm]
				1340	WIZE	OH	<u>SPRINGFIELD</u> ; In briefly at 0311 on 2/26 w/an ID and a spot for a firm in Fairborn. (ELK)
				1410	CKSL	ON	<u>LONDON</u> ; Was noted struggling to get thru WING/KQV on 2/26 at 0135-0200. Never quite made it completely. Others noted also. (ELK)
				1420	CKPT	ON	<u>PETERBOROUGH</u> ; In well 2/26 twixt 0104-0107 w/nx and sports. (ELK)
					WOC	IA	<u>DAVENPORT</u> ; Noted w/KTOE on 2/25. Had an ID at 0202. (ELK)
					KTOE	MN	<u>MANKATO</u> ; In solidly w/nx-wx 0158-0200 on 2/25. Then into rr. (ELK)

WBSM MS NEW BEDFORD; In well on 2/25 0304-06 w/snow warnings and up-tempo music. (ELK)
WCOJ PA COATESVILLE; Fair w/WBSM w/s/on w/SSB 0443 2/18 in WHK silence. (SF)
1440 WKHJ SC HOLLY HILL; Good at s/on 0600 on 2/18. (SF) [SSB??.....mrm]
1450 WSPB FL SARASOTA; Good w/instrumental MoR, ID, and into CBS nx 0455-0500 2/25. (SF)
WCVS IL SPRINGFIELD; Strong w/TT 0145-47 on 2/25. ID, Jingles. (ELK)
WFRA? PA FRANKLIN; Is this one w/continuous OC arnd 0320-0335 2/25??? No ID noted from this one. (JMP)
WHLS MI PORT HURON; Good w/rrr o/chnl 0140, into "WHLS SPORTS". Not hrd in several years. (JMP)
1470 KLCL LA LAKE CHARLES; Strong w/c&w, and local spots 1935 2/26. (SF)
WTTR MD WESTMINSTER; 2/25 NNRC DX, if on, not discernible in really bad jumble on freq 0430-0440+. (TRS)
1480 WHOM NY NEW YORK CITY; On top of the freq 2/26 0207-20 w/SS program. (ELK)
1490 WDXB TN CHATTAHOOGA; On top 2/25 w/A1 nx 0432-0437. ID jingles, then into "Sweet City Woman". (ELK)
1500 *KOKN OK PAWUSKA; Good w/TT and ID 0132 2/18. (SF)
1560 WSMO MD LA PLATA; Fair-good w/s/on annc 0645 2/24, local & regional nx 'till 0700. WTAI only QRM. (SF)
1600 WJNJ FL ATLANTIC BEACH; 2/28 at 1913, ID, s/off under a jumble, mentioned FM outlet as 104.9, which checks. New. (JAD)

4 KDF - KARL FORTH, 630 South Ardmore, Villa Park, IL 60181 (HQ-160, SM-1)
GLH - GLENN HAUSER, 620 N. Husband, Stillwater, OK 74074 (HQ-160, SM-2)
MH - MIKE HOGAN, 4811 Euclid Ave., East Chicago, IN 46312 (Hitachi KH-966)
RFK - RALPH KEMPER, 297 - 27 3/8 Road, Grand Junction, CO 81501 (Norelco 22RC-067/44x)
RSK - ROBERT KRAMER, 3406 W. Pierce, Chicago, IL 60651 (HQ-129X, 4' x 3' spiral loop)
BBL - BOB LAZAR, 1109 Niesen Road, Port Washington, WI 53074 (Heathkit GR-78, 45' LW)
AWO - AL OGRIZOVICH, 3836 Sleepy Hollow Ln, Fort Wayne, IN 46804 (Allied A-2515, SM-1)
DP - DAVID PETERSON, 800 Humboldt Ave., Winnetka, IL 60093 (25 yr. old Zenith Table Radio)
MLP - MIKE PLUMB, 602 East Patton, Papillion, NE 68046 (Realistic Patrolman 10, SM-1)
JTP - JIM POGUE, 11 University St., Apt. 3, West Lafayette, IN 47906 (Zenith Royal 7000-1, SM-2)
DW - DON WEINZIERL, 6100 W. 97th St., Oak Lawn, IL 60453 (Halli SX-42, SM-1)

PER THE LIST THIS WEEK:

1230 KLIC LA MONROE; Fair on r/c 2/20 w/non-stop TT 0123 t/in--0132 brief ID, "bye", then off. (SF)
1450 WFTR VA FRONT ROYAL; Strong on FC-T 2/26 0101-0104 per list. (ELK)
*Good on 4th Tuesday r/c w/IDs every minute or two 0100-0115 2/26. Not on list, apparently replaces 2nd Tue. listing. (SF)
WHSC SC HARTSVILLE; 2/18 0125 t/in thru 0130, on 3rd Monday f/c. ID often, phoenetically, thru a mess of QRM. (FAW)
1580 WCCR IL URBANA; in 2/25 on FC-T as per list, 0309-14 1/2 s/off. (ELK)

BROUGHT TO YOU THIS WEEK BY:

(FAW)-Frank Wheeler/6589 Wattsburg Rd./Erie PA 16509
(ELK)-Ed Krejny/6538 Belmeadow DR./Middleburg Hts. OH 44130
(DJL)-Dave Leach/527 Walnut St./Lemoyne PA 17043
(JAD)-James DeYoung/1514 Greenbrier Dr./Huntington WV 25704
(SF)-Stephen Francis/1620 Lodge St./Alcoa, TN 37701
(JMP)-Jim Poterba/949 Queens Dr./Yardley PA 19067
(PRM)-Paul Mount/471 Emerson Ave./Teaneck NJ 07666
(TRS)-Tom Sundstrom/Box 205/Willingboro NJ 08046

And so it goes for another week. Let me first say "Happy 10th Anniversary IRCA". And, as we begin our 11th year, let's all do our part to keep IRCA number one! NOTE: With only a couple more weekly issues, I've put my next 4 deadlines at the head of this column. I'll try to list all deadlines at least 4 issues in advance. Until next week, 73, and good DX to all. I'd like to also thank Dave Leach, who made up the logo at the top of the column.



Reports to:
John C. Keleher
Box 7543, Fairfield Stn.
Fort Wayne, IN 46807

THE HAT TIPPED THIS WEEK TO:

JA - JIM ALBRECHT, 3313 N. Weil St., Milwaukee, WI 53212 (Sony CRF-5090)
PB - PHILIP BOERSMA, 15570 Cleveland St., Spring Lake, MI 49456 (Panasonic RF-1600, 60' LW)
RTE - RICH EDDIE, 152 West Rose Ave., Saint Louis, MO 63119 (Navy surplus RBM, 3' altaz. loop)
JDF - JAY D. FLORIAN, 300 East Main St., Round Lake, IL 60073 (Panasonic RF-5000a, 70' LW)

+++++

540 KDLT UT Delta, new station now on the air, C&W format, s/off 2100 2/28 w/inspirational reading, fair to good sig w/XEWA QRM. 1st hrd 2/27(RFK)
WYLOWI**Jackson, noted w/"bottom of the dial" SID 0339 2/25(KDF) In well on ET w/8 temp, C&W jingles and Mx, sounding almost like RS, w/Gary Timm. First call put on was from me, then someone in Springfield, IL where they have a major lobe pointing, then from a caller in Florida who reported a fine signal but said QRM was from XEWA, in Mexico City, which wasn't on and isn't in Mexico City anyway. Stayed with it to 0400. Several tones and code IDs. Better here on my RF619 pocket portable w/SW-2 induction than on HQ-160 which gets very weak on the low end (GLH) Good on DX w/C&W 0330 2/25 (AWO) Exlnt w/IRCA special 0305 2/25 (JTP)

560 KLZ CO Denver, good w/oldies 0355 2/25 (AWO)
WEBC MN Duluth, 2/19 o/WIND 1905 w/Charley Rich Mx, ads(PB)
KWTO MO Springfield, SRS regular after 0700 w/WIND nulled. C&W Mx, local spots (DP)
GFOS ONT Owen Sound, good signal w/nulled WIND/KWTO w/PSA for Ontario Human Rights Code and MoR Mx, 0728 2/26 (DP)
570 WKBN OH Youngstown, good 2/19 1855 w/CBS Sports and Business Reports. ID and pattern change 1900 (PB)
WNAX SD Yankton, hrd talk, music and 1 ID, then lost in mess 2345 2/24. WFAA not too strong (JDF) Fair w/QRM 2/24 0409, w/C&W, ads for March of Dimes, and Wx for various midwest states (BBL)
580 WELO MS Tupelo, fair 0748 2/28 w/many ads and promos, ID, Mx, WILL not on yet (JDF)

1130 KWKH LA Shreveport, CBS Nx and pgm. 2040 2/27 u/very dominant WISN (JDF)

1140 KNEI IA Waukon, fair 0825 2/19 w/R&R and jingle "You have a friend to tune to, K-N-E-I" (DW)

1150 WIMA OH Lima, weak and fadey 2/24 2013-16 w/light R&R and ID (PB)

1170 CFNS SAS Saskatoon, 0152 2/25 w/operat u/KVGO OG. ID and s/off in FF 0200, then EE 0 Canada. Is CFNS 10 kw now? (RFK) (Anyone can help? Ed.)

1210**KGYN**OK**Guymon, Exlnt 2/22 0310 o/WCAU w/ET and ID (JTF)

1220**KOFO**KS**Ottawa, 2/25 0153, ID and address, fair-good on DX
CJRB MAN Boissevan, noted (KDF) // to CHSC-1220 and CFAM-950 w/clx, apparently NSP, this on 2/4 and other MMs now (RWW)

WKBKNH**Keene, 2/25 cw picked up here 0040, 0046, 0049, best copy after steady tone 0052 on DX (KDF) Fair signals u/o CJRB/XEB/CHSC/CHSM on DX per tip from Karl Forth. Code ID's spelling "WKBK Keene" at 0052, 0100. Didn't realize I had 'em until I replayed the tape 2 days later. State #45 (DP)

WGAR OH Cleveland, was off MM 1/25 from 0000-0330, leaving some "golden opportunities"

WERTOH**Van Wert, 2/25 0010, (DP) weak ID, on/off tones, WGAR occ. test ID (KDF)

CHSC ONT Saint Catharines, finally 2/25 0057 w/C&W Mx (KDF) good signal fading in and out w/CHSM/CJRB, C&W Mx 0134 2/25 (DP)

CHSM PQ Shawinigan Falls, exlnt. o/CHSC/CJRB w/woman talking in FF 0102 2/25 (DP)

1230**WBLJ**GA**Dalton, 2/18 0308, ET w/Mx and ID (KDF)

1270 WHBF IL Rock Island, 2/25 0630 w/ID before WWCA s/on (MH)

1290 WCBL KY Benton, 2/14 1925-30 fair-good w/loc., Nx, Wx, s/off, no SSB (JA)

1310 CKOY ONT Ottawa, 2/14 2152-2200 exlnt, well atop freq. w/MoR oldies, many IDs, slogan "Ottawa's sound of Solid Gold." (JA)

CFGM ONT Richmond Hill, fair w/C&W 0231 3/1 (AWO)

1320 WKTQ PA Pittsburgh, 2/23 o/u WILS w/IDs, R&R 2115-20 (PB)

1330 WJPS IN Evansville, 2/23 1928-30, weak w/Nx, Wx, ID, R&R (PB)

KVOL LA Lafayette, R&R Mx, KVOL Nx 2131 2/25, Wx followed, WFBC QRM (JDF)

WTRX MI Flint, good u/o KFH w/C&W 0050 2/21 (DP)

1360 WDRC CT Hartford, 2/17 0325-33 poor-fair w/Solid Gold R&R, ID's after most songs, jingle sounded like "The Rock that made Hartford famous"

WCHLNC**Chapel Hill, 2/11 (JA) 0311 w/ID, rock Mx on DX, fair (KDF)

WMOV WV Ravenswood, much wanted, in good w/SSB, s/on and into Regional Newswatch 0601 2/19 (DP)

1370 WRGS TN Rogersville, 2/25 0653 w/spot for Home Federal Bank (MH)

WLOPGA**Jessup, about even w/WSPD w/ID ending apparent ET 0020 2/25 (DP)

WELE WV Moundsville, fair signal tho way u/WSPD w/SSB, jingle and Nx, 0601 2/24 (DP)

1390 KJPW MO Waynesville, 2/14 1943-45 poor, u/WNUS w/s/off and SSB. R&R Mx (JA)

WEED NC Rocky Mount, 2/17 0015 weak, o/big mess w/"This is WEED, Rocky Mount, NC," may have been ET (JA)

1400**WGON**MI**Munising, 2/11 0400 fair w/DX test, SSB, s/on (RSK) W---***?***On/off dT "busy signal" looping S/SE 0330 2/11. Anybody catch ID? (KDF)

1430 CKFH ONT Toronto, good-fair 2/16 2320 w/oldies show and local ads (JTF)

WVAMPA**Altoona, Exlnt 2/22 0437 o/CKFH/WIRE w/ET (JTF)

1440 WHHY AL Montgomery, poor 2/18 0345 w/R&R Mx, "Beatles in Concert" 0400 (DW)

1450**KOKO**MO**Warrensburg, 0311-30 1/21 on DX test, only code IDs hrd (RTE)

WMOC TN Chattanooga, 2/16 0022 fair w/ID thru mess (JA)

1460 WZEP FL De Funiak Springs, sounded like the call in poorly with SSB and s/on 0701 2/24. Could have been WBET, Brockton, MA, does anybody know if they s/on at this time? (DF)

KSO IA Des Moines, 2/12 1935 noted w/format change to "KSO Great Country" (JA)

1470 WKMF MI Flint, good tho fady w/C&W 0234 2/26 (AWO)

WVOL TN Nashville, good w/soul 0255 2/25 (AWO)

1480 KBEA KS Mission, 2/16 2009 fair w/ID following Beatle Song by Boston Pops (JA)

1490 WESL IL East Saint Louis, 2/13 2302-05 fair-good w/2 IDs, MoR style soul Mx (JA)

WSIP KY Paintsville, 2/11 2015 fair, very briefly atop GY w/ID before local Bk&B game (JA)

1500 CKAY BC Duncan, s/off 2/4 0310 after Nx, ment. 5 kw days, 1 kw nites, u/OC likely WDEE, a MM pest. KSTP off (RWW)

WTOP DC Washington, 1835 2/17, very good for about 10 mins. then sudden fade. Nx and comment. by Walter Cronkite (BBL)

WAKE IN Valparaiso, 2/22 1910, Nx presented by 1st National Bank of Valparaiso. S/off 1915, fair (BBL)

1510 KGA WA Spokane, 2/11 0229 w/ID for insp. pgms. f/CA. Fair w/CJRS. S/off 0325 (KDF)

1530 KDSN IA Denison, 2/12 2000, fair u/WCKY w/s/off ment. 500w power, no SSB (JA)

WYGR MI Wyoming, w/local Nx, some local ads and IDs, 1700 2/17 (JDF)

KECKNE**Lincoln, 1/28 0215-42, ET w/tones and Mx (RTE)

WBCWPA**Jeannette, 1/14 0225-0302 ET w/R&R Mx (RTE)

1550**KGMO**MO**Cape Girardeau, 2/25 testing w/R&R, SIDs 0244-0251, battling KKH (RFK)

1560**WGLB**WI**Port Washington, 1/21 0125-31, testing (RTE)

1570 WTLK NC Taylorsville, 2/13 0600 w/s/on, poor (KDF)

1580**KPCA**AR**Marked Tree, 1/7 0307-33 on DX test (RTE)

WSRFFL**Port Lauderdale, 1/24 0344-0406, testing w/R&R (RTE)

WCLS GA Columbus, 0325 2/24, fair w/R&R, CBJ off (BBL)

WKIGGA**Glennville, 1/24, on with
 test broadcast 0336, end
 test 0344 (RTE)
 1590 WVNA AL Tuscumbia, Exlnt 2/16 2305
 w/local spots, then CBS
 Mystery Theater (JTP)

①

MARCH 16, 1974

PER THE LIST:

1st Fri.: WPHG-980-VA (AWO)
 3rd Mon.: WPJD-1550-TN (RWW)
 4th Mon.: WSWN-900-FL (AWO)
 KCRV-1370-MO (MH)
 WGOE-1590-VA (AWO)
 4th Wed.: WFLI-1070-TN (AWO)
 WLSM-1270-MS (AWO)

Well, sure had a few contributors this time, thanks to all who supported, and a hearty welcome extended to all the new contributors. Keep turning the dial, and who knows what will come your way. A few veries in, the best being KTAR-620-AZ (after 3 months!) and KGHL-790-MT. 38 states now. Also a little foreign action, TIJC-675 for Country #8. Hope everybody else is getting something for their postage. Happy Anniversary IRCA, may many more come our way. 73 and best DX from Charley.

Western DX Roundup

editor - Jeff Brasier

Tests and schedules:

540**KDLT**UT***Delta- new stn here noted ETing w/
 c&w mx 2/23 0305-0307 s/off. Said
 was a new stn, but not known if on
 RS yet. (JAB-CA)
 CBK SAS Regina s/off 0310 12/16, annced
 0745 s/on. Different from NRC log.
 550**KBOW**MT***Butte hrd ET w/TT 0223-0230 (BP)
 2/22. Xlnt w/ID at 0225. Aren't
 they AN-6 thou? (JAB-CA)
 750**WSB**GA***Atlanta testing from about 0135
 onward 2/18 while looking for WPD
 test. Dirty \$#%&'s. (BP-WA)
 1250 KTW WA Seattle is still nx & talk. The news
 paper articles I got info out of
 didn't specify whether AM, FM or
 both were changing to progressive
 rock. As it turns out, only the FM
 changed. Has returned to AN sked.
 Now off only LSS-0215 (when KSWU is
 on-JAB) daily and 0600-0900 SM, but
 that'll probably be obsolete by the
 time everyone reads this. KTW
 changes their sked almost as often
 as the gas stns do, hi. (BP-WA)
 1260**KPSO**TX***Falfurrias 2/20 0105-0110, weak u/
 KYA w/r/c TT, many ID's. (WLC-AZ)
 1290**KOWB**WY***Laramie 2/25 0539-0620 ETing w/
 instrumental mx. (JEC-CA)
 1480**KTHS**AR***Berryville 2/25 on r/c 0530-0538,
 TT (KWIZ testing at 0533). (JEC-CA)
 1560**KAJN**LA***Crowley 2/18 0647-0657 r/c, TT.(WLC)

AND NOW WDXR PRESENTS THE TENTH ANNIVERSARY DX:

540 CBK SAS Regina in real gud 2/18 0100-0105 w/
 ID. XEWA in under w/ID and a weak
 signal. I prefer CBK! I can at
 least understand them. (GP-CA)
 550 KFVR ND Bismark 2/18 0753 w/program on ND
 water resourses, very gud until
 covered by KBOW SSB 0757. (NG-WA)
 560 KSFO CA San Francisco, xlnt signal w/nx on
 the hour. lkw nighttime. I couldn't
 believe it. they were coming in
 almost as strong as local KLAC-570
 with slight amount of slop. 0300-
 0310. 2/19. (GP-CA) 1045-1055 2/28
 First time I've hrd KSFO at this time
 of the morning. The DX was great
 that morning. Slight slop from KLAC.
 KSFO had already switched to 5kw.(GP)

600 KGEZ MT Kalispell 3/4 0059 CBS Mystery
 Theater ending, some kind of jingle,
 Kalispell wx & clear live ID, then
 CBS News. (BH-WA)
 620 KNGS CA Hanford 2/20 1700-1715. Coming in
 real clear for daytime. The DJ
 announced (KNGS Radio 620 serving
 KINGS County & The San Joaquin
 Valley). Gud signal for daytime.(GP)
 Mt. Shasta 2/18 2145 s/off announce-
 ments, then instrumental SSB thru
 KGW. (BH-WA)
 KWSO CA Wilwaukee 2/17 0300-0306, right after
 WTMJ WI KTAR s/off. NBC news, "Thought for
 Today", then s/off w/SSB. Weak
 under CKCK. (WLC-AZ)
 730 LPRT BC several listed, noted w/usual CBC
 programming //740 et al 0456 1/18.
 CKLG silent for first time in ages,
 but left OC on and resumed RS 0158.
 (Do you mean 0458?-JAB). (BP-WA)
 860 KWHO UT Salt Lake City 3/4 0955 w/classical
 CFPR BC mx ending & promo, then nx. (BH-WA)
 Prince Rupert, Drama from CBC 0400.
 ID, mx, sports scores; 0423 wx.
 XEMO 2nd. (JEC-CA)
 900 CHML ONT Hamilton o/LPRT s/off 0502 1/18 w/
 news & KIXI slop. CJVI off. (BP-WA)
 910 KNEW CA Oakland 2/20 0100-0115. Their ID
 goes like this- "KNEW Channel 91,
 Oakland-San Francisco". With
 KJJJ under. (GP-CA)
 920 KDES CA Palm Springs in gud for a change!
 1045-1055 3/1 rr mx format. No
 problem from 93 KHJ. (GP-CA)
 940 KFRE CA Fresno they were booming in like a
 local, just as strong as local KHJ.
 First time I've ever heard KFRE at
 this time of the morning. 3/1
 1040. (GP-CA)
 970 KCHV CA Coachella in w/super strong signal
 with KBIS under. The announcer was
 giving the weather for the high and
 low desert areas. 3/1 1040-1045.
 980 CKRM SAS Regina 2/19 0222 singing (GP)
 jingle ID, fair with CKNW nulled.
 1000 KSTA TX Coleman 2/18 0730-0738, (NG)
 fair under KTOK w/"Farm & Ranch
 Report" then Texas State Network
 news at 0730. (WLC-AZ)
 1040 KHVH HI Honolulu 2/24 0641 talk show. No
 WHO: Chinese 2nd. (JEC-CA)
 1060 KUPD AZ Tempe 2/19 2330-2345. In gud w/KPAY
 under. KNX was nulled. (GP-CA)
 1080 KIOE HI Honolulu 2/18 0407-0441, very weak.
 Finally logged with K-108 ID's.
 RR music sounds like automated
 programming. (WLC-AZ)
 1090 KAAV AR Little Rock 2/18 0740 wx and faint
 ID, ID 0745 good, thru/o/XEPRS.(NG)
 1140 KLUC NV Las Vegas 2/19 1040-1045. They had
 just signed on. First time I've ever
 heard them. No sign of KRAK. KLUC
 is 10kw Daytimer. (GP-CA)
 KS00 SD Sioux Falls 2/25 0633-0659 KGEM s/on.
 Farm talk show. (JEC-CA)
 WRVA VA Richmond o/u KS00 w/spot 0655 2/4
 just ahead of KGEM s/on. (BP-WA)
 1170 KLOK CA San Jose in fair with KCBQ way under.
 The DJ announced the following:
 "Request your own superstar on KLOK
 San Jose." 3/1 1040-1055. (GP-CA)
 1200 unID ?? UNID 2/19 1555-1600 Religious pro-
 gramming. I heard no ID. What stn
 could it have been??? Maybe WOAI??
 During the Daytime?? (GP-CA)(Well,
 its not WOAI, so it could be a
 pirate, an image in your receiver
 or some stn spur-JAB)
 1220 KFSC CO Denver 2/13 2015-2030, good, SS
 programming. SS & EE s/off at
 2030. (WLC-AZ)
 1240 KWIK ID Pocatello 3/5 0600 clear ID & Ai nx,
 good atop KMBY, KBYM, others.
 Disappeared after nx (Which was
 ?? on KBYM) so don't know format.
 Needed here. (BH-WA)
 1250 CBOF ONT Ottawa apparently the orch "O Canada"
 0659 2/17 w/FF afterwards. Also on
 2/12 at 0800 w/c1 mx & "ici R.
 Canada" ID. CBGA also possible.(BP)

DX FORUM

EASTERN



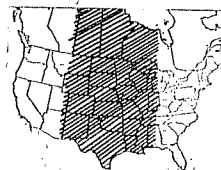
EDITOR: BRUCE R. Heimburger, 1710 Cambridge Rd., Ann Arbor, MI 48104

No copy received by press time. FJP.

Desmond Lanktree, Apt. 18, 68 Weber St. South, Waterloo, Ont. Canada N2J 1Z7

Gene Martin's heathily lusty attacks on the QSL-card with the "thesis" that, while "nice to have" they don't necessarily prove a thing receptionwise--(I frankly feel precisely the same about tapes, which are so easy to copy, quite literally)--left a mid-air question no one seemed willing to print (unless I missed it!): this is: then, surely (by extension of GM's remarks), the "DX AWARDS" are also "nice to have" but also do not necessarily prove a thing receptionwise? Application for such "AWARDS" usually requires at least a statement of possession of so-called proof (is "evidence" a better word?) of reception of stations claimed--given to examination if requested--along with logging data (not difficult to "bluff up" as I believe someone already pointed out). However, if nothing is acceptable as "proof" any more, what are the "AWARDS" worth? I'm sorry if it seems like opening a can of worms (whatever that sounds like), but if it's the truth, it had better be faced. There seems two obvious alternatives: the less attractive one to come of "ditching" the system, or perhaps the more appealing one of "finding a way to live with it!" Can someone come up with some words in justification of the first approach? and write them into "club policy" so that members may know how their club officially views or evaluates them--or can someone come up with other alternatives? (A call for "come-up-manship maybe, but the product would have to be good enough to stand up for a "respectable" period of acceptability--until someone else finds a reason to knock that down too.) (Sent to SDPC HQ.)

CENTRAL



John Zondlo-Shales Hall Box 120-Muncie, IN 47306

Gene Martin-3303 E. Evans Ave.-Denver, CO 80210

Surely, IRCA is peddling needless confusion in its new member packets in what it has to say about classification of frequencies. See the Philip Boersma complaint in the CDXF 2/16. Well, as I understand it, there is no such thing as a IA channel or a IB channel. These terms belong to stations, never to frequencies. The frequencies are classified in three ways, Clear, Regional or Local. Stations are classified as IA or IB when they are 50 kw operating on a clear channel. Classifications of lesser stations are II, III and IV. The IV's (I think) are always found on local channels (yep-jz). The FCC through extravagant licensing of stations has blurred the onetime clear definition of a IA station. The only genuine IA's still operating are WOAI, KFI, KSL, WNBC, WLW, WGN, WBAP, WCCO, WHAS, WWL, WLS, WHO. They are genuine IAs because they are the only stations in the mainland U.S. at night on their frequencies. The IA classification, however, always indicates a 50 kw non-directional station, yet certain IBs also are 50 kw non-directional; KOA, KNEB, WGY and even some 50 kwers are Class II, KBOI, KCMO, KRLA, WHDH. The FCC is staffed with lunatics.

Tom McCormack-275 Littleton St.-W.Lafayette, IN 47906

(According to the EP, DXF editors can include non-members reports if they are of interest. Thought you might like to hear this voice out of the past, hi-jz) Hello there! Remember me? Yep... I'm back at the dials and plan to report frequently. About 50 follow-ups have gone out plus many current reports on new loggings. Recent DX here includes: (Sorry Tom, that's outa here-jz) Latest veries here include: V/1- WOSH-1490, CKY-580, CKLB-1350, KJSE-900, KTCH-1590 (finally!), WEST-1280, KOCY-1340, KIRV-1510-DX (from Dec. '69... sez I'm they're most distant too....finally came from the P.D.), KOKO-1450-DX (and v/q), WIYN-1360, CKLY-910, WVMC-1360, WCHO-1250, WPOW-1330 (took

- 1260 WWOK FL Miami 2/25 0509 ID, TC; C&W mx, sports, news; JOIR 2nd. (JEC-CA)
- KTEE ID Idaho Falls 2/18 0831 ID and into Idaho news, good o/others. (NG-WA)
- KWYR SD Winner 2/25 0724, ID, TC; music. KYA testing. (JEC-CA)
- 1270 WHBF IL Rock Island u/CHWK OC w/death notices 0712 2/4. (BP-WA) (Sounds like a pretty dead stn, hi-JAB)
- KNWC SD Sioux Falls s/on male vocal SSB 0700 1/28. (BP-WA)
- 1280 KBDF OR Eugene 2/21 noted with call change from KERG 1728. News 1730 2/22.(JEC)
- 1290 KHSL CA Chico in gud with CBS news and ID on the hour. 2/19 0200-0210. Very rare for KHSL to come in real clear. KMEN was under. (GP-CA)
- 1310 KBUZ AZ Mesa in very strong. Here's how their ID went: "KBUZ 1310 w/studios in The Thomas Mall, Mesa, AZ." 3/1 1000-1005. (GP-CA)
- 1320 KCRA CA Sacramento; they were coming in real clear for a change. 2/28 1220-1230. The first time I've ever heard them during daytime. News format daily. (GP-CA)
- 1350 KSRO CA Santa Rosa in gud w/ID on the hour. 1055-1105 2/28. Xlnt on daytime reception. (GP-CA)
- 1360 KRUX AZ Glendale in gud with KFIV way under. KRUX has a great rr format. 2/28 1155-1210. (GP-CA)
- 1380 KTOM CA Salinas in xlnt for a few minutes. C&W format. 2/28 1130-1135. (GP-CA)
- 1400 KTNT WA Tacoma 2/19 0459 "End of Broadcast Day" 0500 off. (JEC-CA)
- 1430 KAMP CA El Centro 2/21 1120-1142, fair w/ KOSI, KARM, rr mx, spots for stores in Calexico. (WLC-AZ)
- KOSI CO Aurora 2/21 1125-2235, fair w/KAMP, KARM. EL mx, nx at :30. (WLC-AZ)
- 1440 KDOT AZ Scottsdale, this was a gud catch for me. First time I've ever heard them. Heres how their ID goes: "This is KDOT AM 1440 and FM Stereo 100 in Scottsdale, AZ." El mx. One of my favorite stns now. ND with 5kw Daytime. KPRO was way under. I like KDOT better than KPRO for sure. 1000-1015 3/1. (GP-CA)
- 1450 KCYL TX Lampasas 2/18 0600 s/on SSB straight into spot for Drive-in restaurant.
- 1480 KRED CA Eureka; first time I've hrd (WLC) this stn. RR format. 2/27 2140-2150. KRED was dominant over KWIZ. First stn from Eureka that I have ever heard! (GP-CA)
- 1510 KDKB AZ Mesa 2/28 1055-1110. Slight bleed-over from local KROQ. I consider this a very fine catch, especially since it's the first time I've hrd them. 10kw ND Daytime, with KTIM way under. KDKB has a stereo rock format on their FM outlet. (GP-CA)
- WLAC TN Nashville 2/18 0640-0645 fair w/ rr, ID 0642. (NG-WA)
- 1550 KRGO UT Salt Lake City 2/18 0809 with address for write-in promo, xlnt w/KKHI off. (NG-WA)

The Tenth Anniversary Edition reporters are:

- (WLC) William "Larry" Cowles- 362 West Marcus Drive-Tucson, AZ 85706 HQ-200 w/3 1/2' box loop 80' LW, SM-1
- (JEC) James E. Critchett- 1103 North Street-Yreka, CA 96097 SPR-4 w/2' FET BCB Sanserini loop
- (NG) Nancy Gantzer- 2301 Pacific Ave- Aberdeen, WA 98520 HE-30 w/SM-1
- (BH) Bill Hardy- 303 West 10th St- Aberdeen, WA 98520 HE-30 w/SM-1
- (GP) Gary Parton - 15115 Parthenia St. #173- Sepulveda, CA 91343 Kenwood 2120 w/spiral loop
- (BP) Bruce Portzer- 14056 5th Ave South- Seattle, WA 98168 HQ-180A w/SM-2, 4' box loop
- (JAB) Jeff Brasier- 10341 Shirley Avenue- Northridge, CA 91324 HQ-129-X, w/2' box lup

Veries in: v/q KPOK on KPOJ card, v/1 KQIK, KTAN, KAMX, KEST, KCMO, v/f KNIE, v/r, KVOY and opps..v/q KSWS. Not much DX in as I have successfully slept thru the past 3 MMs. Happy birthday to IRCA. 73's.

MARCH 16, 1974

9

3 1/2 years), WRET-1450, WPTW-1570, WAIR-1590, WVAH-1500, WJLW-1340 and KESB-1580. V/cm WHII-1570. V/f- WJLW-970 and CHAI-1280. V/q- WJLW-1280, CQCY-1310, WPAR-1470, KORO-1450-DX, CFMB-550, GPEC-930 (took 5 years...longest ever...one f/up and one of my best early SRS catches thru WJLW no less!!) TOTALS NOW: 1,000 veries...2300 domestic loggings...50/50 states...8/8 provinces. Hope to be back ASAP...IRCA renewal is coming. Glad to see RWV back at the dials!! SCers + CHers write soon for my lists. (I have many traders). 73's + GOOD DX.

Michael Hogan-4811 Euclid-East Chicago, IN 46312
I hope everybody has supported the move to make taped and written veries equal. As I have stated before 'veries' are only as good as the DX'ers word. If a person wants to fake a verie had enough I don't think it enters his mind whether he will fake a written or taped one. In most public meetings written and taped records are kept and BOTH carry the same weight when it comes to legal matters. Isn't it harder to fake someone's voice than it is to forge his handwriting? I'd be glad to defend these points with anyone who wants to challenge them. Who are we to judge a DXers skill on whether the majority of his veries are taped or written. 73's. Not much DX done in the last two weeks.

Bill Estes-5938 Whitehill Dr.-Jackson, MS 39206
Not much DX done due to six weeks' exams. Latest veries- v/l WABG and WJLW. WJLW was a follow up report. Totals are 486/93, 32/25, 2/0, 13/3. Sorry about putting down 29 states verified, I lost count for a while. Also recent veries are WHNY and WAFB, both v/l. I think the reason for the band turning sour like this is because of the number of sunspots going down. Back in '69 when I started DXing on shortwave, I logged 78 countries that year. A few years later, I couldn't pick up more than 3/4 of the stations that I logged in my beginning year. We are now near the bottom of the 11 year cycle, so from my viewpoint, DXing is going to be sour for a while. 73's. (Should be sour just the opposite way, Bill. The low point is normally the best for EHF reception. Just hitting the "mid-winter anomaly" right now-jz)

Al Ogrizovich-3836 Sleepy Hollow Lane-Fort Wayne, IN 46804
Hi gang. Well, nothing new 'cept veries. V/l WEGS, WAUS & PS, WERT & stuff, GFTB, WJOE, WBEX, WDXB, WGAZ. V/f WJLW, KPCR & stuff, WTRU. V/q WLS, KIRO, BSB, WQXR, WTAC, WSM, WTOP, WCFB. V/cm WHII. V/l & v/cm WGLL. That's about it verie wise. Been noticing that the verifiers don't and the non's do. You figure that one out. Speaking of veries. In the summit city, here are the policies: G&W WFWR-1090 v/l, Oldies & Top Hits WOWO-1190 v/folder, Standards WGL-1250 v/q & v/l, Top 40 WJLW-1380, v/l, WLYV-1450 Top 40 v/l. Look out for WKZZ which is taking WLYV's place on the dial. Also a format change of G&W. RCE should be happy, hi. Since this mess will probably be in the anniversary issue... Right as well reintro- I'm 20, in the big bad radio Bizz, 1st phone, been DXing since '69. Use 2 rx's. Mostly Allied-A-2515 with SM-1, also a TRF by Realistic. Since moving here I've changed logs so am trying to rehear everything, also reverify. Still wondering what they do with the 8¢ stamps. Well, enough is enough. Come on gang, quit reporting subaudible hets and lets get some action going. I want ID's out of every one of them little wheasels. 73's.

Dave Rogers-Box 348-Buffalo, OK 73834
Greetings on the IRCA's 10th Anniversary! It doesn't quite seem 10 years since I joined IRCA in April of '64. Not much in the way of DX to report w/only recent activity being reception of KTRN-990 on SRS 2/5. New veries: V/l KTRC-1220, V/q G&W-590 & PZX26-725. PZX26 makes country #24 verified on BCB (Surinam). Since it's customary to reintroduce ourselves at this time of year, I'll say I'm 25, have been DXing since 1962 and am a Charter Member of the IRCA. I was attending the University of Oklahoma, but presently am working at the state hospital in Ft. Supply, Okla., to make a little money. Some of my better veries accumulated over the years include 2NR-700, LYA-

760, BBC-1214, WDR-1586, Peking-1040, CX16-850 and HGJB-700. Equipment consists of HQ-145A w/IRCA loop and Drake SWA with Space Magnet. The offset printing of DXK looks great. Best wishes & 73.

Bob Lazar-1109 Riesen Rd.-Port Washington, WI 53074
I'm a new member of the IRCA so here's my intro. I am 17 and a junior at Port Washington High School. I've been DXing for about 5 years but not very seriously until recently. My receiver is a Heathkit GR-73 with a 45 foot longwire antenna. Thinking about a loop, but have no definite plans as of now. I also do a lot of SW DXing and I am a member of the ASWLC. My totals are 280/56, 30/21, 5/3 and 11/3. Some recent veries: v/q WJLW, WALT-Ronald L. Stephens, CHRL, CRCK+CR-H. C. Dean. V/l WJLW-Robert Haslow. DX this year so far has been great for me as I have logged 60 new stations. That's all for now. 73.

Alan Rayer-3119 Western Ave.-Park Forest, IL 60466
This being my first report, an intro is in order- I am 27 years old, married, work as a chem engineer/computer programmer. Equipment used here for BCB- HG173/DX150B, w/SM-2 and 2 longwires, also BC221. I have been DXing for 15 years primarily SWBC, but renewed interest recently in BCB, mainly foreign. Totals 338/3, 34/0, 5/0 and 15 countries. Not much interested in written BCB veries. Phone 312-748-1951. Good DX and 73.

Jim Pogue-11 University, Apt. 3-W. Lafayette, IN 47906
Hello DXers! I finally verified WCLS-1580 after about four different reports over about eight years. The v/s was Stu Richards, who I mentioned in the report. Verie was a hand written v/l, so if you have had trouble like me, you might try sending ur report to him. Address was Box 229, Columbus, GA 31902. Also new are v/q WOI-640, Keith Ketcham, GB; WFUV-1580 ET, John A. Columbus, Pres.-GE-GE. Tom McCormack is back here in West Lafayette at his same home, and I'm sure would like to hear from many of you guys. Also, welcome to Robert Beck of Indianapolis who just joined IRCA. There are rumblings of a central Indiana get-together, so any silent members in the area make yourselves known. Many tests heard, and many reports are out. Keeping my fingers crossed. 73's and good DX.

Howard Meyerson-7429 Teasdale Ave.-University City, MO 63130
Finally hit 500. Am now 507/371. Got the 1180 VOA from Marathon, FL. It veried already. About the CBS Mystery Theatre: this is my current list--- OFFICIAL- KNOX 1120 St. Louis MO 11-12 (all times GDT), WCAU 1210 Philadelphia PA 9-10, WBBM 780 Chicago IL 10:30-11:30, WSIX 980 Nashville TN 9-10, WKY 1530 Cincinnati OH 9-10, WWL 870 New Orleans LA 7-8, WHAK 1180 Rochester NY 9-10, KSL 1160 Salt Lake City UT 9-10, WDAF 610 Kansas City MO 11-12, KRLL 1080 Dallas TX 10-11, KOTA 1380 Rapid City SD 10-11. TENTATIVE- WHAS 840 Louisville KY after basketball?, WCCO 830 Minneapolis MN 9-10? 11-12?, KFH 1330 Wichita KS 10:30-11:30?, WJR 760 Detroit MI 9-10? 12-1?, WHBF 1270 Rock Island IL 11-12, WSFA 950 Spartanburg SC 9-10?. I'll keep workin' on it. By the way, thanks for the list from "TIEB", Gregg Allinson. It's helped me already. If anyone has any tips, I'll take them. That's about it for now. 73s. (Next time, Howard, please send this kind of material to Bill Hardy. I'm sure it would make a good special feature-jz)

Karl Forth-630 S. Ardmore-Villa Park, IL 60181
Have really been "out of" the DXing scene the first week of January, but hope to get back "into it" soon. I thought ex were poor but various receptions through January and February have proved me wrong. KFAY was on per sked, but the two r/c's I "arranged" didn't show. In the future I'll send word of new r/c's and dates to the DDXD editor and r/c editor. Last year I was 0 for 1 on r/c tests, while 2 for 3 on GPC tests. The NNRC tests that have been arranged are next to worthless. Although their efforts are for the good of DXing, someone should teach them how to arrange a DX test. I've called an NNRC test station and they told me that

no tone was planned, and told another area DXer that they were on their night pattern, and did not intend to switch to the non-directional antenna. hardly a "DX Test". Quite a few veries-- v/q XBOY-1000 WYX-570 WCLE-1570 KVI-570 WHEX-1580 CJTR-1140 CJRK-1150 WHEB-750 FJAG-925 WDR-1586 WDGX-1130 WJDK-620 v/l 1400-1450-DX (tnx Bruce Reynolds!) WFLR-1220 WGOR-910 CJRL-1220 WPGG-1580 WWT-950 WJRG-1060 WENR-1090 GJX-1150 WJHT-730 GHSB-1050 WJHT-1240 CJBR-900 WAWL-1140 WFIW-1390 v/f WQHN-1530 WPCR-1530-DX WHCU-870 CJRN-710 CFUN-1410 WSIV-1140 WSUF-1580 KOTA-1330 v/r WTKR-1530 KASH-1140 WJFW-810 WDXB-1490 v/pp WOAY-860. Best wishes to all in the spring.

David Phillips-336 24th Ave. N.E.-Birmingham, AL 35215

Hi. It's been a few months since my last report, so I guess it's about time. Since I received my Beginners Guide to ECB DXing, DXing has been a lot more fun. I didn't know how much I didn't know until I read that thing. I just didn't know how to write a good reception report. This is proven by the fact that only 47% of my reports were verified. Now I know how. To all those that helped put the Guide together- Thanks! Latest veries: WJIS, WVA, WRBC, KWEH, KRJO, KGGF, Trans World Radio and Radio Belize. Totals: 389/53, 30/25. I will end my report with 1 good and 1 dumb question. (1) How do you go about arranging an ET by one of your local stations? (2) What is an SC? 73's. (On #1, CFC head Randy Minnehan can help you out. His address is 975 Chestershire Rd., Columbus, OH 43204. SC stands for Survey Collector. However, it is often misused to mean record survey-jz)

Don Weinzierl-6100 W. 97th St.-Oak Lawn, IL 60453

Greetings: Happy Anniversary to the IRCA, job well done. May there be many more. Has been a fairly good DX season, am nearing the 400 mark with some good veries this year...WKY 820 after 3 months, RTAR 620 after 5 months, KUPD 1060 with a promise of boogie shirt from P.D., friendly station, WIS 560, WAWA 1590, CJRF 1060, WHCU 870, KARC 970, WELI 960, KFKA 1310, KQXI 1550 and WTKF 1150 Tampa, friendly station. Happy DXing.

David Shapiro-423 4th St., Apt. 4-Des Moines, IA 50309

Greetings to all of you again on the 10th year of our club. Although many of you know me from the Convention last summer, let me again introduce myself for the benefit of the new members that joined our club. I am 23 years old and single and do DX in the ECB bands and TV DX during the summer. My equipment consists of a Patrolman 600 rx with ECB, FM and Public Service bands. I also use a Motorola portable rx with AM & FM bands for DXing. I have around 300 QSLs to date from the US, Canada and Mexico. I also have a cassette tape recorder and I can tape my locals and regionals and semi-locals for exchange of your regulars. KSO 1460 changed to CEW music format and they really sound sick with rock announcers playing that music. They changed last Monday, Feb. 11. May our club prosper for ten more glorious DXing years. 73.

Jim Boyd-9017 E. 29th Ct.-Tulsa, OK 74129

Happy Anniversary IRCA! Hope to see many more. I gave a re-intro in an earlier report so won't repeat it here. For you FMers, KMOD 97.5 is now back on the air w/heavy rock and no spots. Thanks to Glenn Hauser for the fantastic Mexiglenm List. It has come in handy often already. XEROK is 24 hours EE rock (not SS days as in list). Recent veries: v/q WBT, CBF (CK incl.); v/l KOKO (for test, v/q & CK also), WGLB; v/f WHCU. Latest catches include ZDR-1100 for a new country. I've ordered the FM Atlas from Gilfer and hope to get into being this spring. Anyone with info on good (cheap) antenna please write. That's all for now, so 73 from the Oil Capitol. (Thanks much for the kind comments included with your report. Much appreciated!-jz)

Rich Eddie-152 W. Rose-St. Louis, MO 63119

Happy Birthday IRCA! Welcome to all new members. Haven't done that much actual DX as I've been sending follow-ups out. I do have the following questions (1) Did anybody ID the tone tester on

(10) 1120 around 0020 to 0108 (EDT?-jz) on Friday 2/8/74 either WUST or WWOL, but which one? (2) Did anybody ID the female announcer with various tones on 1080 AM 2/18/74 from 0323 to 0350 when seemingly off the air, looped HE? and (3) How that British Honduras is called Belize, does hearing Belize count as a new country? So much for questions, hi. Totals 1148/721 43/47 6/5 22/15 as of Monday 2/19/74. Brief re-intro- I'm single, 26 and live at home with my parents. Receiver- Navy surplus RBM tunes 200 to 2,000 kHz in 4 bands and has 11 tubes. Antenna- 3 foot altizimuth unamplified loop. My limit must be up so I'll sign off. Good DX, Peace and 73's de RTE.

Dr. Richard E. Wood-Dept. of Foreign Languages-Louisiana St. Univ.-Baton Rouge, LA 70803

This is my Mardi Gras and IRCA Anniversary report. I have just bought Father Jack's "Ralph" loop to try alongside my SR-2; receivers an HQ-180AC and an R-390A; the 180 has the edge in several ways. Thanks to several of you for interesting explanations of significant calls. My collection of these continues; I don't need any obvious ones, but if you have some unusual slogan-based calls, or calls based upon initials of owners long dead, etc., I'd welcome them. It may turn into a book. Also would be glad to have Xeroxes of slogan lists from old RADEXes and prewar White's Logs. I will be teaching a course emphasizing international radio in the world's #1 international EC city, Munich, W. Germany, this summer, in the University of New Orleans (former LSU-N.O.) Summer in Germany. Visiting R. Free Europe, R. Liberty, Bayerischer Rundfunk, VOA Munich station, etc. Congratulations to IRCA on 10 years. I have been with the club for most of them. May it have many more.

Philip Boersma-15570 Cleveland St.-Spring Lake, MI 49456

Greetings. The IRCA is 10 years old! I'd like to wish it a happy 10th, and hope that it continues to grow and prosper. I've only been in the club for less than one year, but it has been worth it. My knowledge of radio and DX techniques has grown immensely. I shall be glad to renew my membership when it expires at the end of May. Since this is the traditional time for re-intros, here's mine: I'm almost 17, a junior at Spring Lake High, and besides DXing, I like to read science fiction. Well, that's all I can think of for now. 73's.

Michael Hogan-4811 Euclid-East Chicago, IN 46312

I've been a member of IRCA since May, 1972, and I think that every time I've run into problems DX wise IRCA has solved them. But there is more to this club than that. I know that this club has a personal aspect to it too, and that's what has made it the #1 DX club with me. A brief re-intro: I'm 20 years old, a sophomore at Calumet College in East Chicago, and majoring in Clinical and Community Psychology. I'm also on the Board of Directors for a local mental health group. I'm using a Hitachi AR-F receiver, at least since 1/1/74. Totals heard are 358/35/7/7 (?-jz). I briefly served as Graveyard Records editor, but my school load would simply not permit me to continue the job. Now I've just joined the CFC so I hope to serve the club through that capacity. REMEMBER DX MEANS FRIENDSHIP and FRIENDSHIP MEANS IRCA, AND ALL ITS MEMBERS.

Charles A. Taylor-939 Eastern-Indianapolis, IN 46201

Annual reintro: 26 years old, charter member of IRCA. Married, with four curtain climbers. Recent repatriate from the Philippines. Expect to return in next 1 to 4 years. Totals from Indianapolis: 1382 received, 126 varied, 41 states and 19 countries varied. Generally verie only rare and unusual loggings. Best veries: KFQD 730 Alaska 3-31-63, CBLG 730 Ontario 20w LPRT 3-30-64. Most unusual veries: KBJ835 1500 58w field intensity transmitter here in Indy 4-5-62, plus WYBO 756 5w, WDM 813 50w, WOGO 1150 20w, WAES 1110 10w, WERT 1540 10w, WISE 1550 15w and WQRK 1550 10w, all long gone Indy bootleggers (a land-based pirate to the uninitiated). Receiver: Lafayette HA-600 with

outboard SBEA-1 Single Sideband Adaptor with 2MF array, PEG, for serious DX. Antenna: 50' E/W lw. I have been DXing since 1957 and am Indy's only permanent IRCA member (Guess again Charles--Linn Jones is also from Indy-jz). Specialty: verifying all active Indiana counties (quite difficult), foreign DX.

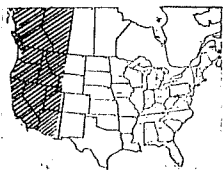
Mark L. Fisher-3032 Boynton Ave.--South Bend, IN 46615

Greetings from the land of Hoosier DX!, which is auroral and is lousy for even Southern DX right now. As this is anniversary time or roundabouts, I might as well reintroduce myself. I'm one of the more erratic regulars (or more regular erratic, anyway), 17 years old and a junior at John Adams HS. My totals are 102/80, 28/26, 4/4, 5/3. I use a Motorola KC12BR AM clock radio, a 56 foot inverted-L longwire and a Graymark 501 crystal tuner as an antenna tuner; obviously no pro set-up. Am in the process of building a loop, the very simple one in Jan-Feb 74, and hope to have it completed by spring vacation end. I'm rather lazy, unfortunately, especially with regard to DX, but even my January vacation from it probably didn't hurt my potential totals too much. I'm also interested in weight-lifting (competitive), reading almost anything, writing science fiction, satirical humor and songs, playing guitar, listening to music, all kinds, but especially progressive rock like Deep Purple, Yes, ELP and Genesis, playing chess, our church group and synchronized swimming/aquatic arts. Guess that's all for now so 73's and good DX.

John Zondlo-Shales Hall Box 120-Muncie, IN 47306

Greetings. Well, since this is the Anniversary Issue, guess I'll go thru the re-intro process also---I'm 20, a junior here at Ball State University, majoring in journalism. I've been DXing since the summer of '70, and along with BCB, I dabble into FM and TV DX. Thought that Mike Hogan brought up an interesting point about the IRCA--it's not just a big club disseminating info about the DXing hobby; it has a very personal aspect to it also. In my time in IRCA, I've met many interesting and unusual people, and I wouldn't trade the experiences I've had for anything. Unfortunately, many members fail to get to meet their area DXers. This is especially true in the Chicago area. Last year we had the convention in Hammond, and with the great concentration of members in Chicagoland, you'd think we'd have a great turnout. Just wasn't so! I think that in this next year of IRCA's existence, we should all try to meet our fellow hobbyists in our immediate area. Come on, get out from under your shells people! See y'all in 7.....

WESTERN



Michael G. Worst, 3608 Phinney N., Seattle, WA 98103
Deadline: Tuesdays through March.

Michael B. Northam, 1608 N.E. Knott, Portland, OR 97212
Greetings group. Contrary to an opinion held by an unrepentant few, I did not drown while trying to extract a lime from my vodka tonic with both hands tied behind my back. In fact, I have been holding up quite well except for a recurrent urge to fondle the knobs of my stereo. That situation is at least better than that of some of my dearest friends in the club who have apparently not only been DXing (if you'll pardon the expression), but actually letting other people know about it -- poor souls, I fear that there is no hope for them...(I can state with some certainty that at least in Krejny's case it is most likely that demon vodka has finally made its mark.) As for myself: I am an untrustworthy 30 years of age, married with 0 children, gainfully employed as a computer programmer doing statistical analysis-type stuff, and a part-time cynic. My main activity for the last couple of years has been automobile rallying (which pretty well confirms a masochistic bent in my choice of hobbies -- first staying up all night, and now driving cars without gasoline), in which I have achieved about as much notoriety from the public at large as one would get as a topflight DXer. Not

(11) to take anything away from fellow Northwesterners Bill Hardy and Nancy Gantzer, but on August 2, 1969 Saralie J. Bush, an IRCA member of long standing, and I (an IRCA member of even longer standing) got married, so there have been "DX Weddings" before. Totals are the same as last year except for any locals that changed calls. 73...

Art Peterson, 2726 Rollingwood Drive, San Pablo, CA 94806
Well DXers, with another IRCA birthday I complete my 9th year in this fabulous club. Little did I realize how much the club would mean to my DXing! An introduction would be in order. I'm 29 years old and working as a forester for a private consulting forestry company. Veries stand at 46 countries, 43 states, 9 provinces, and 10 Mexican states. My primary focus for the last 5 years has been on foreign DX which I find particularly intriguing. Equipment here includes HQ-180 primary rx and mil. surplus Bendix MN-26 (150-1600khz) as standby and // checker, SM-1, Webcor reel to reel recorder, Olson tr for dubbing reports, Sony cassette tr, Electronic Measurements Corp. RF sig. gen., and a Heathkit IB-1100 frequency counter (last 2 items for freq. measurements). My favorite DX target is Asia and the Pacific, although I sure wouldn't pass up any TAs, hi. My other interests include photography, bicycling, (including long touring trips), snow skiing, geography, and politics -- obviously too many to do justice to any of them. My space used up, so 73 and good DX to all. (You could have gone a few more lines, Art. mw)

Brian M. Scully, 1301 Wardman Drive, Brea, CA 92621

Since it is anniversary issue time, it is time for my re-intro. I'm 16, a junior at Brea-Olinda High and my equipment consists of one DX-150A and a wire strung across my roof. My best catch is WROA-1390 in Gulfport, MS. Only thing here in the way of news is that KQIQ-1400 Santa Paula is currently using its new call KAAP and identifying itself as "Kap Radio." So much for the old "KQIQ Triple Play Radio" ID's. It used to be that Triple Play meant three commercials in a row but they have shaped up recently. The L.A. Dodgers recently announced their switch from KFI-640 to KABC-790. They had a disagreement over Sunday pre-game scheduling (Dodgers wanted a two-hour pre-game show). Of course the Dodger Broadcast Staff can't be all bad (especially with an announcer named Scully, hi). I certainly hope the anniversary issue has AT LEAST three stencils per editor! 73's and a Dodger Victory in the '74 Series!!!

Jon E. Pearkins, 6137 Service St., Burnaby, B.C. V5H 1V7

Hi! Glad to be here for yet another anniversary celebration. As a re-introduction, I am 21 and a student at UBC, BSc comes in May in Computer Science. RX is an HA-230 (improved by Paul Daplyn) and an SM-2 is my antenna. Main interest is foreign DX and exotic domestics (LPRTs are rather challenging) -- in that order. I am oft accused of being a "cynic"; I don't deny it, but I feel a synonym of cynic is realist. For instance, I agree with the conclusion of Thames Television (in a show on US commercial radio; dub of soundtrack available from me) that commercial radio has one purpose -- to make money; possibly at the expense of all else. However, government-run radio tends to lead to empire building at the expense of efficiency and the final product. On a different note, I am glad to see that things are a little quieter than a few years ago and feel they can stay that way only if IRCA members ignore rumours. Going back a few years, I thought you might be interested to know that Brian Elder, Theo Donnelly, Doug Pearson and Brian Williams who were all former IRCA members are still here in Vancouver with other interests than DX. So, the past never dies -- it just slowly fades away. 73.

George Kesteven, 3524 Renton Dr. N.W., Calgary, AB T2L 1W8

Hi everybody. Seeing it's the anniversary of the IRCA I suppose an intro is in order. I'm 16, in the 11th grade at Sir Winston Churchill High. I seriously started to DX in 1970 and joined the IRCA in 1971. The equipment I use includes a Philco 6 band portable and a Philips AM-FM stereo with a box loop and spiral loop. Not much DXing done lately due to a cold. Only verie received as of late was a v/q from KIDO for my report of 3/16/73. The v/s, CE D.K. Chesterton said that they had lost my report. Oh well, better late than never. Well that's about it this time around. 73 and Happy Anniversary to the IRCA.

Nancy Gantzer, 2301 Pacific Ave., Aberdeen, WA 98520

Since this is the anniversary issue of DXM and because I've never given one, here's a re-intro. I'll not give my age -- but just say that I'm younger than Bill. Bill referring to Bill Hardy whom I'll be marrying in May. I'm a secretary/log typist at KGHO AM & FM. Since last fall I've been a member of the IRCA Board of Directors, something that I enjoy doing very much. IRCA is a great club and I'm honored to be able to serve on the Board. 73 to all. 88 to Bill. Hope to see many of you at our wedding in May.

Bill Hardy, 303 W. 10th St., Aberdeen, WA 98520
 Everybody would like to do something unique in this Tenth Anniversary Issue, but I'm the only guy in the club right now who can say I'm engaged to a member of the IRCA Board of Directors! Here goes my annual re-intro, which has some new stuff this year: I'm 27, engaged to Nancy Gantzer of the IRCA Board, and have edited IRCA Special Features for the past two years. I am afternoon drive-time DJ at KGHO-1560 plus FM, where I also write and record ads and supervise Nancy's work. I recently gave everyone my heard totals, which have since gone just over 500, so I won't repeat them here. Comparison of today's DXM with some of the early, rough issues shows that our club is making real, steady progress. While we may not always have a Don Ericson, we'll always have the continued fine membership support that is the foundation of a club like ours. With that, I sink back into the DX ocean, not to reappear till I come up with a definite Alaskan logging! hi. 73 to everybody, 88 to Nancy, and if anyone plans on being at Nancy's and my wedding, please be sure to let us know by April 20. By the way, the picture of Nancy and me which should be in this issue is courtesy of Jones Photo - we're supposed to give them credit upon publication! hi.

Bill Block, 2424 E.W. Kearney St., Apt. 11, Portland, OR
 Happy Birthday IRCA! For those of you who are 97210 new to the club and those who have managed to forget me, I offer this reintroduction: I am 27 and single and I have been DXing for some 12 years. In this time I have heard 975 stations from 45 states and 34 countries. My receiver is a Hammarlund HQ-140-XA with an SM-1 for the antenna. In the last two years I have done very little DX due to my job and other things. I am very much interested in IRCA and hope to be a member for many more years. I hope to see many of you at the convention this coming summer. 73 and good DX.

Bill Harang, 811 Nevada Ave., San Jose, CA 95125
 Greetings! Pappy Anniversary IRCA!!! IRCA was started ten years ago. The club is supposed to practice democracy. The club Constitution and Bylaws are supposed to be the foundation of it. During the last ten years, much has happened in IRCA. But has change gone for the worse? Has the club followed the Constitution and Bylaws as it professes? Almost all of us would probably say that the club has followed its Bylaws the last ten years. It would be a safeguard to re-examine our thinking. We take so many things for granted without taking time to investigate why we believe so. Therefore, I challenge all IRCA members to re-examine what has gone on in this club the last ten years. Let's do it objectively too in order to seek the truth. Time for a re-introduction: I'm 18, a senior at Willow Glen High School. My equipment here includes a Lafayette HA-63 A Communications Receiver with 50 ft. of longwire. Total sins heard are approx. 520. SCers, CHers & Cassette Tapesponders are welcome. SAN JOSE IN 1974!!! 73a.

Bruce Portzer, 14056 5th Ave. S., Seattle, WA 98168
 I've never really considered myself an oldtimer at anything but having been a member since 1966 and having started DXing the month IRCA was formed (no connection) I guess I probably am. As a quickie re-intro, I'm 22, single, and work for Boeing as a communications engineer. Shack includes HQ-180A as main rx w/S-40a, Heath AR-1302 & GE portable in standby. Also have NC-183 & NC-120 in dire need of repair. Antennae include SM-2, 4' box loop, & 35' LW. SA-670 spectrum analyzer & Sony TC-355 recorder with a TRAC AN-60 noise reduction unit complete the picture. Totals are 1220/521, 44/39, 7/7, 43/25. Best veries are 3YW-1460, CFAY-1357 (pirate), BBC-647, & CERW-610. First catch was CERW-1260 on 3/28/64, first verie was KFBK-1530 for 12/31/64. DXing has by far been the most fascinating hobby I've ever embarked on. It's exotic and unique, but more important it's made up of a lot of interesting people. Through DXing and IRCA I've come to find that there are people in this world who are just as wierd and screwy as I am, hi. I definitely plan to attend at least one, hopefully two, DX conventions this summer to make new acquaintances and renew old ones. Maybe that'll be right here in town; as they say in Loris, South Carolina, We Love Seattle Conventions. 73 and good DX.

ALBERT S. LOBEL, Post Office Box 1818 El Cajon, CA 92022

PHONE: 714-440-2544. Happy anniversary to the IRCA on 17 MAR 74. May IRCA continue for at least another ten score years. I have been a member of IRCA for the past 4 1/2 years and have certainly been proud to be an IRCA member. I have met many very good friends from IRCA, many of whom have taught me quite alot about DX'ing. A few years ago, I suggested to Percy R. Kesteven (then IRCA President) that an "Items for Sale Column" be created. After seeing FJP's items for sale in the last DXM, I have decided to again propose such a

column. Your comments will be appreciated. Write me or call me at 714-440-2544 any evening except Monday from 1900-2200 Pacific Time. 73's and good DX to all! (This WDXF report was received by JAB and I didn't have time to send up to Mike Worst by his deadline, so it was typed here-JAB)

IRCA SPECIAL FEATURES
 Editor: Bill Hardy - 303 W. 10th St. - Aberdeen, WA, 98520

CBC ENGLISH NETWORK LIST
 Compiled by Bruce Portzer
 Source: "List of Radio Stations in Canada," published by the CBC Sept. 1, 1973

* indicates a station owned and operated by the CBC.
 (CFB) indicates the station is located at a Canadian Forces base and operates at low power (10-20 watts) for the benefit of base personnel.

No LPRT's are included.

All other stations are privately-owned stations that carry CBC programs.

540	CBT*	Grand Falls, Nfld.	1000	CKBW	Bridgewater, N.S.
	CBK*	Regina, Sask.	1010	CBR*	Calgary, Alta.
550	CKPG	Prince George, B.C.	1050	CFGP	Grande Prairie, Alta.
560	CJKL	Kirkland Lake, Ont.	1070	CJIO	Sault Ste. Marie, Ont.
	CFOS	Owen Sound, Ont.		CBA*	Moncton, N.B.
570	CFWH*	Whitehorse, Y.T.	1140	CHCK	Sarnia, Ont.
580	CJFX	Antigonish, N.S.	1150	CB*	Sydney, N.S.
590	CFTK	Terrace, B.C.	1120	CKX	Brandon, Man.
	CFAR	Flin Flon, Man.	1200	CFFB*	Frobisher Bay, N.W.T.
600	CKCL	Truro, N.S.	1230	CJOC	Lethbridge, Alta.
	CBNA*	St. Anthony, Nfld.		CJRL	Kenora, Ont.
	CFCT	Tuktoyaktuk, N.W.T.		CKTK	Kitimat, B.C.
	CFCH	North Bay, Ont.		CFBC*	Churchill, Man.
610	CJAT	Trail, B.C.	1240	CJTT	New Linkseard, Ont.
	CHTM	Thomson, Man.		CFPA	Thunder Bay, Ont.
630	CKOV	Kelowna, B.C.		CKOO	Oliver-Osoyoos, B.C.
	CKAR	Huntsville, Ont.		CJVR	Abbotsford, B.C.
	CJET	Smith Falls, Ont.		CJAV	Port Alberni, B.C.
	CFGY	Charlottetown, P.E.I.	1270	CJCS	Stratford, Ont.
640	CBN*	St. John's, Nfld.	1270	CJWA	Wawa, Ont.
680	CKBG	Timmons, Ont.		CHAT	Medicine Hat, Alta.
690	CBU*	Vancouver, B.C.	1280	CHWK	Chilliwak, B.C.
730	CJNR	Blind River, Ont.	1320	CHQB	Powell River, B.C.
740	CBX*	Edmonton, Alta.	1340	CKEC	New Glascow, N.S.
	CBNM*	Marystown, Nfld.		CFKC	Creston, B.C.
	CBT*	Toronto, Ont.		CKGF	Grand Forks, B.C.
790	CKSO	Sudbury, Ont.		CKGB*	Goose Bay, Nfld.
	CFAN	Newcastle, N.B.		CFYK*	Yellowknife, N.W.T.
800	CKOK	Penticton, B.C.		CJLS	Yarmouth, N.S.
	CFOB	Ft. Francis, Ont.		CKNR	Elliot Lake, Ont.
	CJBB	Belleville, Ont.		CKAR-1	Parry Sound, Ont.
860	CFPR*	Prince Rupert, B.C.		CFRM	Moisie, Que. (CFB)
	CHAK*	Inuvik, N.W.T.	1350	CKMA	Mont Apica, Que. (CFB)
	CBH*	Halifax, N.S.		CFOM*	Quebec, Que.
900	CJVI	Victoria, B.C.	1360	CKAD	Middleton, N.S.
	CKTS	Sherbrooke, Que.	1390	CHOV	Pembroke, Ont.
910	CFJC	Kamloops, B.C.	1420	CKBC	Bathurst, N.B.
	CKLY	Lindsay, Ont.	1440	CKKC	Nelson, B.C.
	CBO*	Ottawa, Ont.	1450	CKDY	Digby, N.S.
920	CJGJ	Woodstock, N.B.		CFCP	Courtenay, B.C.
940	CJIB	Vernon, B.C.		CKSP	Summerland, B.C.
	CBM*	Montreal, Que.		CBG*	Gander, Nfld.
950	CKNB	Campbelltown, N.B.	1490	CFAB	Windsor, N.S.
960	CKWS	Kingston, Ont.		CFAO	Aerstrong, Ont. (CFB)
970	CBZ*	Fredericktown, N.B.		CFJR	Brookville, Ont.
980	CHEX	Peterborough, Ont.		CJPR	Blairmore, Alta.
990	CBW*	Winnipeg, Man.		CFWB	Campbell River, B.C.
	GBY*	Corner Brook, Nfld.	1550	CFHG	Holberg, B.C. (CFB)
				CKGO	Hope, B.C.
				CBE*	Windsor, Ont.

ANARC ALMANAC

Executive Secretary: Al Reynolds, Box 433, Peabody College Station, Nashville, TN 37203

ANARC is also celebrating its tenth anniversary this spring. The February ANARC newsletter spent a considerable time discussing some of the past history of ANARC, with a listing of all the clubs which have belonged to ANARC in the past. Most of them have ceased to exist.

Transworld DX Club has been accepted as an associate club. President is John Chapman, 606 St. Andrews Rd., West Vancouver, B.C., Canada V7S 1V4. The club has 11 members at present and is SWBC only.

European DX Council will hold its European DX Camp 27 July-19 August at Dobriach am Millstatter See, Austria. About 1000 youths will be there from 20 countries. A shack will be set up with 12 receiving posts and 10 antenna outlets, with communication receivers of all kinds. DXpeditions are expected. If interested, write: EDXCamp, 6 Frankfurt 90, Alexanderstrasse 122, Fed. Rep. of Germany.

Witnesses:

If you're not yet a *CBS Radio Mystery Theater* listener, you're missing out on one of the most exciting innovations in modern radio. Over 100,000 listener cards and letters received thus far bear enthusiastic witness to the success of the seven-times-a-week *CBS Radio Mystery Theater* broadcasts. And literally hundreds of newspapers and magazines across the country have welcomed these all-new suspense dramas to radio. Top-name stars join host E. G. Marshall in presenting the eerie tales. Produced by Hi Brown, each 52-minute broadcast is a complete story in itself.

Accomplices:

CBS Radio Mystery Theater sends out thrill waves to the stations listed below. Tune in tonight and discover what the excitement's all about.

ALABAMA Mobile WKRG 710 Tuscaloosa WJRD 1150 Tuscumbia WVNA 1590	ARIZONA Phoenix KOOL 960 Tucson KOPO 1450	ARKANSAS Fort Smith KFPW 1230 Hot Springs KZNG 1340 Little Rock KLRA 1010	CALIFORNIA Bakersfield KPAC 1560 Chico KHSL 1290 Eureka KINS 980 Fresno KARM 1430 Los Angeles KNX 1070 Palm Springs KCMJ 1010 Redding KVCV 600 Riverside KPRO 1440 Sacramento KFBK 1530 San Diego KSDO 1130 San Francisco KNEW 910	COLORADO Colorado Springs KVOR 1300 Denver KOA 850 Durango KDGO 1240 Grand Junction KREX 920	CONNECTICUT Hartford-Manchester WINF 1230	DISTRICT OF COLUMBIA Washington WTOP 1500	FLORIDA Daytona Beach WNDB 1150 Fort Myers WMBR 1660 Jacksonville WKWB 1600 Key West WWSR 1340 Lake City WKAT 1360 Miami Beach WBJW 1440 Orlando WCOA 1370 Pensacola WFOY 1240 St. Augustine WSPB 1450 Tallahassee WTVT 1270 Tampa West WDAE 1250 Palm Beach WJNO 1230	GEORGIA Albany WGPC 1340 Athens WGAU 1450 Augusta WGAC 580 Brunswick WMOG 1490 Columbus WRBL 1420 Macon WMAZ 940 Rome WLAQ 1410 Savannah WTOG 1290 Thomasville WPAJ 1240 Waycross WAYX 1230	HAWAII Honolulu KHVH 1040	IDAHO Boise KBOI 670 Idaho Falls KID 590 Lewiston KRLC 1350	ILLINOIS Champaign WDWB 1400 Chicago WBBM 780 Danville WGAN 1490 Decatur WSOY 1340 Peoria WMBD 1470 Quincy WTDJ 930 Rock Island WHBF 1270 Springfield WTXA 1240	INDIANA Anderson WHBU 1240 Fort Wayne WGL 1250 Indianapolis WIBC 1070 Marion WBAT 1400 Muncie WLBC 1340 South Bend WSBT 960 Vincennes WAOV 1450	IOWA Cedar Rapids WMT 600 Des Moines KRNT 1350 Mason City KGLD 1300 Ottumwa KBIZ 1240	KANSAS Pittsburg KSEK 1340 Topeka WIBW 580 Wichita KFH 1330	KENTUCKY Ashland WCMI 1340 Hopkinsville WHOP 1230 Lexington WLAP 630 Louisville WHAS 840 Owensboro WOMI 1490 Paducah WPAD 1450 Paintsville WSIP 1490	LOUISIANA Alexandria KALB 580 New Orleans WWL 870 Shreveport KWKH 1130	MAINE Augusta WFAU 1340 Calais WODY 1230 Ellsworth WDEA 1370 Houlton WHOU 1340 Lewiston WCOU 1240 Machias WMCB 1400 Portland WGAN 560	MARYLAND Baltimore WFBR 1300 Cumberland WUOK 1270 Hagerstown WARK 1490 Salisbury WBOC 960	MASSACHUSETTS Boston WEEI 590 Greenfield WHAI 1240 Pittsfield WBRK 1340 Springfield WMAS 1450 Worcester WNEB 1230	MICHIGAN Cadillac WJWR 1370 Detroit WJIM 760 Escanaba WDBC 680 Kalamazoo WKZO 590 Saginaw-Bay City WSGW 790	MINNESOTA Duluth KDAL 610 Minneapolis WCCO 830	MISSISSIPPI Jackson WJQS 1400	MISSOURI Columbia KFRU 1400 Jefferson City KWOS 1240 Kansas City WDAF 610 St. Louis KMOX 1120	MONTANA Butte KBOW 550 Helena KCAP 1340 Kalispell KGEZ 600 Missoula KGVO 1290	NEBRASKA Hastings KHAS 1230 Omaha KLVG 1490	NEVADA Las Vegas KLAV 1230 Reno KBET 1340	NEW HAMPSHIRE Berlin WMOU 1230 Concord WKXL 1450 Hanover WTSN 1400 Keene WKNE 1290 Rochester WWNH 930	NEW JERSEY Atlantic City WFPG 1450	NEW MEXICO Clovis KWKA 680 Roswell KKAT 1430	NEW YORK Binghamton WKOP 1360 Buffalo WBN 930 Elmira WELM 1410 Glensville WENT 1340 Kingston WKNY 1490 New York WGEZ 710 Plattsburgh WEAJ 960 Rochester WHAM 1180	Schenectady WGY 810 Syracuse WFBL 1390 Utica WIBX 950 Watertown WWNY 790	NORTH CAROLINA Asheville WKBE 1380 Charlotte WSOB 930 Durham WDNB 620 Fayetteville WFNC 940 Greensboro WBIW 1470 Wilmington WNCN 1070 Wilmington WMFD 630	NORTH DAKOTA Dickinson KDIX 1230	OHIO Canton WHBC 1480 Cincinnati WCKY 1530 Cleveland WERE 1300 Columbus WJNI 920 Marietta WMOA 1490 Portsmouth WPAJ 1400 Youngstown WKBN 570	OKLAHOMA Bartlesville KWON 1400 Oklahoma City KOCY 1340	OREGON Eugene KERG 1280 Klamath Falls KFSL 1450 Portland KOIN 970 Roseburg KRNR 1490	PENNSYLVANIA Du Bois WCED 1420 Easton WEST 1400 Harrisburg WHP 580 Indiana WDDA 1450 Johnstown WJNL 1410 Philadelphia WGAU 1290 Pittsburgh WWSW 970 Scranton WGBI 910 Sunbury WKOK 1070 Williamsport WWPA 1340	RHODE ISLAND Providence WICE 1290	SOUTH CAROLINA Anderson WAIM 1230 Columbia WIS 560 Florence WJMX 970 Greenville WMRB 1490 Spartanburg WSPA 950	SOUTH DAKOTA Rapid City KOTA 1380 Yankton WMAX 570	TENNESSEE Chattanooga WDEF 1370 Cookeville WHUB 1400 Knoxville WBR 1240 Memphis WREC 600 Nashville WSIX 980	TEXAS Amarillo KGNC 710 Austin KLEB 590 Corpus Christi KSIX 1230 Dallas KRLD 1080 El Paso KTSM 1380 Houston KTRH 740 Lubbock KFYO 790 San Antonio KITE 930 Wichita Falls KWFT 620	UTAH Cedar City KSUB 590 Salt Lake City KSL 1160	VERMONT Barre WSNO 1450 Brattleboro WKVT 1490 Burlington WJOY 1230 Newport WIKR 1490 St. Johnsbury WTVN 1340	VIRGINIA Charlottesville WINA 1070 Richmond WTVR 1380	WASHINGTON Seattle KIXI 910 Spokane KXLY 920 Sunnyside KREW 1230 Walla Walla KUJ 1420
--	--	---	--	---	---	---	---	--	-------------------------------------	---	--	---	--	---	--	--	---	--	---	---	---	---	--	--	--	--	---	--	---	--	---	---	--	--	--	---	---	---	--	---	---	---	---	--	--	--

CBS RADIO mystery theater

(For time of broadcast, check local newspaper radio listings or call the CBS Radio Mystery Theater station serving your area.)

WEST VIRGINIA Beckley WJLS 560 Charleston WCBS 580	WISCONSIN Green Bay WBAY 1360 Milwaukee WEMP 1250 Wisconsin Rapids WFHR 1320	WYOMING Casper KATI 1400 Lander KOVE 1330
---	--	--

By JOHN J. O'CONNOR

The "revival" of radio drama attempts to get considerably more serious this Sunday evening with the debut of "C.B.S. Radio Mystery Theater," which will offer a complete and different 52-minute story to listeners seven nights a week. Because WCBS-AM in New York will continue as an "all news" station, the series will be carried on WOR in the metropolitan area — at 7:07 P.M. Monday through Friday, 8:07 P.M. Saturday and 5:07 Sunday.

The executive producer is Himan Brown, a radio-drama veteran whose credits go back to the nineteen-thirties and include "Inner Sanctum Mysteries," "Grand Central Station" and "Nero Wolfe." The nightly host, swaddled in ominous music and the sound of the old "Inner Sanctum" squeaking door, is E. G. Marshall.

The idea of radio drama could hardly be more promising. Mr. Brown is characteristically "bulletproof" about that promise: "We're going to tell you a story, not show you a story. We can take you anywhere, unhampered by sets, production costs, locations, make-up, costumes, memorizing lines, and make you believe everything we put on the air."

With the possibilities so obvious, the "C.B.S. Radio Mystery Theater" results, at least for the first week of programs, are unfortunately

disappointing. The project seems to be stuck between hackneyed scripts, which are too silly to be taken seriously, and camp nostalgia, which is too flimsy to sustain a respectable quota of knowing giggles.

Mr. Marshall oozes friendly menace while offering his "welcome to the sound of suspense, welcome to the fear you can hear." He provides bits of narration, serving as a guide through plots that couldn't be more transparent and nudging the listener with superfluous information.

One story, "The Old Ones Are Hard to Kill," features Agnes Moorehead as a 77-year-old woman who takes in boarders and finds herself solving a 10-year-old murder case. Her first boarder has a bad cold and a collection of twittering birds from South America. Keep your ear on those birds.

He dies, but not before confessing to the murder, for which another man was convicted. Another boarder turns up. "By the way," asks Miss Moorehead, "how did you know I had a room?" He also develops a bad, bad cold, but Miss Moorehead plies him with roast chicken, noodle soup with dumplings and a television set. He is personable enough with the old woman, but turns downright threatening when she is out of microphone range.

The narrator, just to make things imperfectly clear, observes, "Well, something tells

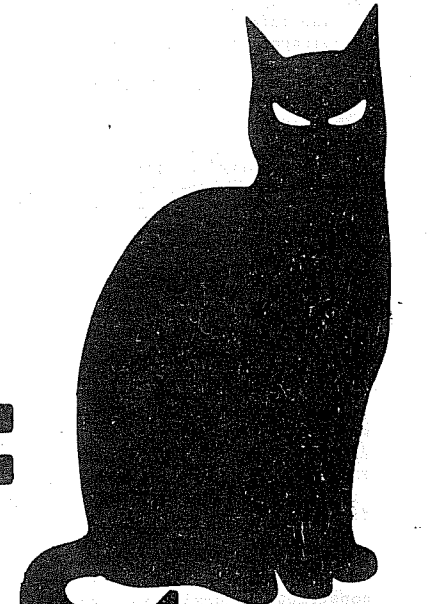
me Mr. Wingfield isn't such a nice man after all." In the end, of course, the old woman solves her case and demolishes her enemies. The narrator even tacks on a moral: "Let that be a warning to all those who think our senior citizens are an easy prey for crime."

It's cute, good for maybe 15 nonsensical minutes, but hardly geared toward "making you believe everything we put on the air." And that's one of the better installments. Another one, for instance, starring Lois Nettleton as a woman being forcefully convinced she is going mad, goes painfully un-mysterious after about two and a half minutes.

Admittedly, radio drama is not easy. As a "theater of sounds," the form is petrified of silences. The TV soap opera can leave its characters looking soulfully at each other for several minutes, dragging out plot lines for weeks or months. The radio equivalent is verbal padding and, when the plots are slight, that padding becomes disconcertingly luxurious.

The concept of "C.B.S. Radio Mystery Theater" remains promising. Carried on 218 radio stations across the country, the series is being given an enviable forum to prove the contemporary potential of radio drama. The immediate problem is the large matter of substance. Even mystery stories can be substantial.

'C.B.S. Mystery Theater'
Starts Nightly Run



FCC "HONOR ROLL": REVOKED OR DENIED RENEWAL (Editor's note: This article originally appeared in the 12/9/72 DXM. At that time, much of the information on frequencies and present assignments was incomplete, and I promised to rerun the article when I filled up the holes. Thanks to Jim Critchett, all the holes have been filled, so we're running it again. - Bill Hardy.)

14

- KFLY-1240 Corvallis, Ore. denied 5/20/70 deleted 3/3/71
new license 1971
- KPTN-140C Central Point, Ore. denied 5/20/70 deleted 3/3/71
- WXUR-690 Media, Pa. denied 7/1/70 deleted 7/5/73
- WHMC-1150 Gaithersburg, Md. denied 3/24/71 still in
litigation
- WQVF-1230 Clifton Forge, Va. denied 5/27/71 deleted 7/20/71

The following stations' licenses or construction permits were revoked:

- KUMA-1420 Yuma, Ariz. revoked 2/20/39 deleted 2/1/40
- WSAL-1200 Salisbury, Md. revoked 10/24/39 deleted 3/31/40
- WFPN-1490 Middlesboro, Ky. revoked 10/16/47 deleted 2/27/48
- KGAR-1050 Garden City, Kan. revoked 2/27/48 deleted 5/19/49
new license 1949; now KNOO
- WPBP-1450 Mayaguez, P.R. revoked 12/22/48 deleted 5/2/49
- KCRO-1380 Englewood, Colo. revoked 10/14/49 deleted 8/9/50
- KWIK-1490 Burbank, Calif. revoked 12/14/49 deleted 5/15/51
new license 1951; now KROQ-1500
- KPAB-1490 Laredo, Tex. revoked 1/26/50 deleted 2/14/51
new license 1952; now KVOZ
- WXLT-1450 Ely, Minn. revoked 5/23/50 deleted 3/28/51
new license 1954; now WELY
- KFMA-1580 Davenport, Iowa revoked 6/21/50 deleted 4/2/51
new license 1952; now KWNT
- KALA-1400 Sitka, Alaska revoked 5/21/52 deleted 8/6/52
new license 1954; now KSEW
- KOAT-860 Albuquerque, N.M. revoked 6/22/55 deleted 11/9/55
- WGAV-1570 Amsterdam, N.Y. revoked 9/25/57 deleted 4/28/59
new license 1962; now WAFS
- KHCD-1450 Clifton, Ariz. revoked 7/23/58 deleted 1/21/59
- KBOM-1270 Bismarck-Mandan, N.D. revoked 11/30/60 deleted 3/3/63
new license 1963
- KLFT-1600 Golden Meadow, La. revoked 1/19/61 deleted 6/25/62
new license 1963; now KLEB
- WIOS-1480 Tawas City-E. Tawas, Mich. revoked 3/20/61 deleted 1/13/62
new license 1965
- WGRC-1580 Green Cove Springs, Fla. revoked 2/20/62 deleted 6/26/62
- KWK-1380 St. Louis, Mo. revoked 5/27/63 deleted 3/1/66
special authorization
- WBMT-1350 Black Mountain, N.C. revoked 6/26/63 deleted 9/1/63
new license 1966; now WBMS
- WSRA-1490 Milton, Fla. revoked 8/1/67 deleted 8/17/67
new license 1967
- WEKY-1340 Richmond, Ky. revoked 5/3/68 later allowed to
sell
- WHHL-1440 Holly Hill, S.C. revoked 6/22/66 deleted 7/12/67
- WFFA-790 Pensacola, Fla. revoked 5/11/66 later allowed to
sell

The FCC's 37th annual report, released in June, 1972, listed for the first time those radio stations given the "death penalty" by the FCC: denial of license application or renewal of license, or revocation of license or CP. This "informal list" is the first such listing of all AM's, FM's and TV's that have lost their authority to operate. The complete list - 55 denials and 34 revocations - is printed in the 6/19/72 issue of Broadcasting. In many cases, new stations were later authorized with the deleted facilities, sometimes with the original call letters.

This list starts in 1934 when the FCC began. The most obvious omission from before that year (under the old FRC) would be Dr. Brinkley's KFKB, Millford, Kansas. Frequencies listed before 1941 are based on the pre-NARBA assignments.

This list is for AM (BCB) denials and revocations only and does not include FM or TV - see Broadcasting for that. And this list does not include stations who have voluntarily surrendered their licenses (such as for economic reasons).

Information on call letters, cities, and dates comes from 6/19/72 Broadcasting and is used by permission.

The following stations were denied renewal of license (or, in some cases, denied grant of original license after the construction permit was granted):

- KGIX-1420 Las Vegas, Nev. denied 7/31/34 deleted 5/14/35
- KPJM-1500 Prescott, Ariz. denied 10/15/35 deleted 12/16/35
new license 1940; now KYCA-1490
- KGBZ-930 York, Neb. denied 5/21/36 deleted 7/28/36
- KWEA-1210 Shreveport, La. denied 7/2/36 deleted 8/1/36
- KWTN-1210 Watertown, S.D. denied 5/25/38 deleted 11/6/39
- KGDY-1340 Huron, S.D. denied 5/25/38 deleted 6/24/38
- WHBF-1500 Kosciusko, Miss. denied 10/25/38 deleted 11/14/38
- KGCA-1270 Decorah, Iowa denied 11/4/40 deleted 11/24/40
- KIDW-1450 Lamar, Colo. shared time w/educ. KWLQ, now on 1240
denied 9/22/48 deleted same day
- WOKO-1460 Albany, N.Y. denied 3/27/45 deleted 11/9/45
new license (when?)
- WORL-950 Boston, Mass. denied 4/23/47 deleted 5/31/47
new license 1950; now WRYT
- WJBW-1230 New Orleans, La. denied 4/22/48 deleted 8/14/49
new license 1951; now WBOK
- WIBK-800 Knoxville, Tenn. denied 8/10/49 deleted 11/17/52
- KWRZ-1340 Flagstaff, Ariz. denied 8/18/49 deleted 6/22/50
- KXXL-1230 Reno, Nev. denied 12/27/49 deleted 2/28/50
new license 1963; now KCBN
- KSFE-1340 Needles, Calif. denied 8/4/50 deleted same day
new license 1952
- KENE-1230 Belen, N.M. denied 1/10/51 deleted 1/31/51
- KL1Q-1290 Portland, Ore. denied 4/24/57 deleted 5/27/57
new license 1959
- WREA-1480 East Palatka, Fla. denied 7/19/61 deleted 1/12/62
- KCKY-1150 Coolidge, Ariz. denied 2/23/62 deleted 12/10/62
new license 1964
- KCLF-140C Clifton, Ariz. denied 2/23/62 deleted 12/10/62
- KGLU-1480 Safford, Ariz. " " " " " " " "
- KVNC-1010 Winslow, Ariz. " " " " " " " "
- KZOW-124C Globe, Ariz. " " " " " " " "
- KRLA-1110 Pasadena, Calif. denied 3/15/62 deleted 8/1/64
special authorization
- WDKD-1310 Kingstree, S.C. denied 7/25/62 deleted 2/1/65
new license 1965
- WSPN-900 Saratoga Springs, N.Y. denied 8/9/63 deleted 3/3/64
new license 1964; now WKAJ
- WIXI-1480 Irondale, Ala. denied 9/11/63 deleted 10/30/64
new license 1964; now WLPH
- WMCZ-960 Mobile, Ala. denied 1/29/64 deleted 8/3/66
- WWIZ-1380 Lorain, Ohio denied 3/31/64 deleted 7/14/67
new license 1969; now WLRO
- WGMA-1320 Hollywood, Fla. denied 4/17/64 later allowed to
sell
- WHZN-1300 Hazleton, Pa. denied 3/18/65 deleted 4/6/65
- WKSJ-930 Milford, Del. denied 4/29/66 deleted 6/20/66
new license 1967; now WTHD
- KMRE-1580 Anderson, Calif. denied 6/2/65 deleted 9/15/65
- KABE-1540 Westwego, La. denied 10/6/65 deleted 6/6/66
- WNJR-143C Newark, N.J. denied 11/26/68 deleted 7/20/71
still on air
- WKOY-1330 Wellston, Ohio denied 1/24/68 deleted 9/11/70
new license 1970
- KICM-1250 Golden, Colo. denied 10/2/68 license surren-
dered 4/8/69 - new license 1969
- WCGA-900 Calhoun, Ga. denied 10/29/69 still in
litigation
- KTRG-990 Honolulu, Hawaii denied 3/18/70 license surren-
dered 2/18/71

Besides the list of stations and dates from the 6/19/72 issue of Broadcasting, used by permission, info for this feature came from Jim Critchett's 1934 list of stns in 3/4/67 DXM; RFS's article reprinted in 6/17/72 DXM; Jim Critchett's 2/37 and 2/39 Radexes and 1948, 1950, 1955, 1958, 1960, and 1963 BYB's; and my 1965, 1967, 1971, and 1973 BYB's. Special thanks is due to Jim Critchett for taking the time to look in all these reference works to finish this article! - BH.)



KXRB RADIO
100 N. Phillips, Sioux Falls, South Dakota
1000 K
C
10,000 WATTS

WDXR
Radio Station
P. O. BOX 298
Paducah, Ky. 42001

S₁ High-band/low-band select switch.

S₂ On-off power switch.

Dotted-line boxes indicate grounded metal chassis to shield components from body capacitance.

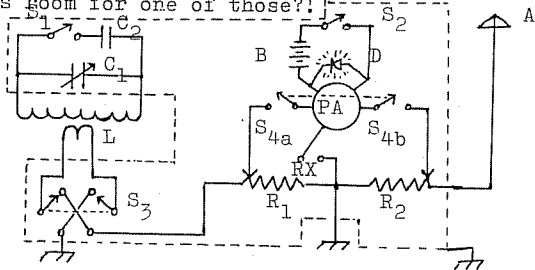
Component values are typical; other values may serve well.

To summarise good LSCA construction practices:

- 1) Avoid using a high-Q loop.
- 2) Mount the whip outboard of the loop frame so as to rotate with it (absolutely necessary to preserve the pattern) yet not be approached by the operator.
- 3) Shield everything - except the loop coils and the whip. Ground the shielding.
- 4) Use "fine-tuning" devices to advantage.

THE ULTIMATE ANTENNA

... is the Multi-Pattern Array, or MPA. This is a cardioid array, regular loop, and vertical antenna rolled into one; and one can choose any three patterns at the flick of a switch! Only the Beverage-wave antenna does more amazing things, and who has room for one of those?!



Note the following additional components in the MPA schematic diagram above:

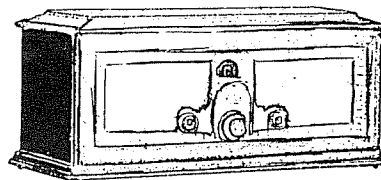
- D LED, a battery-saving warning "ON" lamp.
- S₃ "Pattern-reversing" (PR) switch, has no effect in the omnidirectional or figure-8 mode, but flips the cardioid peak and null 180°, DPDT.
- S₄ "Mode-select" switch, a rotary switch on the MPA-1, a level switch on the MPA-2, selects either an omnidirectional, cardioid, or figure-8 reception pattern.

The MPA-1 was built by the author in 1972 especially for the NRC annual convention in Coral Gables. Although it performed very well - better than anything in existence in its time - the whip was too short in length, shielding was poor and ungrounded, and the battery - prone to be left on after use - was hard to replace. Such a worn-out battery led to a disastrous demonstration during the author's lecture on cardioid arrays at the Coral Gables convention.

The MPA-2 is the product of the lessons learned from the MPA-1. Complete plans for building and operating the MPA-2, the "ultimate antenna", will be the subject of Part IV in this series.

The author regrets that he is unable to answer individual queries by mail.

Performance that Challenges the World!



FEDERAL'S engineering accomplishment, in producing the F11, has won the recognition and commendation of radio experts everywhere. Without question it outperforms any radio receiver ever before placed on the market.

Remarkable Federal Feats

A Federal Radio operated by an amateur in the crowded New Jersey broadcasting area established a world's record for DX reception in all parts of the world were received.

Antenna and ground operation with four stages of tuned radio frequency, detector, and two stages of amplification brings in the weakest of radio impulses picked up by the antenna and provides phenomenal distance range. Every part of the set bespeaks itself of precise standards of engineering and skilled workmanship. Every unit, including the individual tubes, is fully shielded. The chassis is all metal—the cabinet genuine mahogany.

Prices, without tubes, for battery operation \$145; for light socket operation with Federal's power-tube coupler, 60 cycle, \$210; 25 cycle \$245. (Slightly higher West of Rockies.)

Ask the nearest Federal Retailer for demonstration or write for complete specifications.

FEDERAL RADIO CORPORATION, BUFFALO, N. Y.
OPERATING BROADCAST STATION WGR AT BUFFALO
Federal Ortho-sonic Radio, Ltd., Bridgeburg, Ont.

Federal Radio

ORTHO-SONIC* Radio

Manufactured under patents owned and controlled by Radio Corporation of America, and in Canada by Canadian Radio Patents, Ltd. *Federal's fundamental exclusive development making possible Ortho-sonic reproduction is patented under U.S. Letters Patent No. 1,241,418

Say You Saw It in QST — It Identifies You and Helps QST

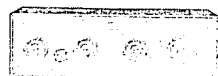
At Date

Care of Station

Your program of at o'clock

was greatly enjoyed by

The following numbers are especially commended



Name

Address

Atwater Kent Model 20, \$100

Amateur Broadcasting Station 10-BQ

BRANTFORD, ONTARIO

CHIEF OPERATOR
HAROLD BROWN



TELEPHONE
CITY
CANADA

ASSISTANT OPERATORS
ALBERT ELLIS
WILBERT BROWN
EDGAR BROWN

250 METRES — 1200 KILOCYCLES

Regular D-X Programs
First Saturday Morning
in the Month
2-3.30 a.m. E. S. T.

Nov. 5-1932
Dec. 3-1932
Dec. 11-1932
Jan. 7-1933
Jan. 7-1933-Special ?
Feb. 4-1933
Feb. 7-1933-Special ?
March 4-1933
March 7-1933-Special ?

Special 3-3.30
a.m. E.S.T.
Atlantic
Radio Club

Our Power at time of (Regular
D-X Programme (Special

Power Output (Tube Rating 7½ Watts)
Using 2 Tubes as Oscillators - 15 Watts
and Home-Made Double Button Microphone.
Antenna Current 45 Amperes.
Input Volts 500. Milliamperes 75 on Oscillators.
Input Volts 500. Milliamperes 30 on Modulators.

WE APPRECIATE YOUR REPORT.
This will verify your reception.

Thos Brown
Manager.



名古屋中央放送局

CALL SIGN: J O C K

FREQUENCY: No. 1. 810 kc (370m) V
No. 2. 1175 kc (252m) V

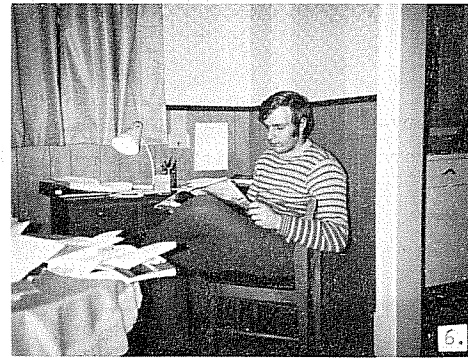
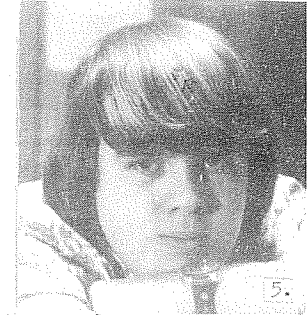
POWER: No. 1. 10 kw
No. 2. 10 kw

Dear Sir,
In reply to your letter of recent date, stating up our station, we are pleased to verify that your reception is correct.

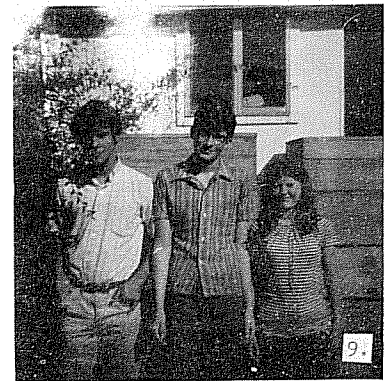
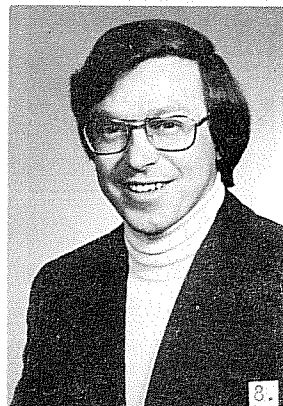
These recording reports serve as good reference to study the science of radio.

Trusting to be favoured with your further information, we are,
Yours truly,

Nagoya Central Broadcasting Station

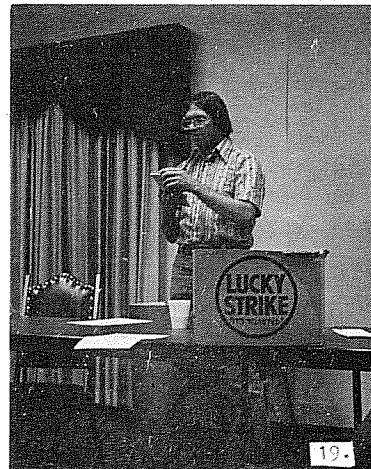
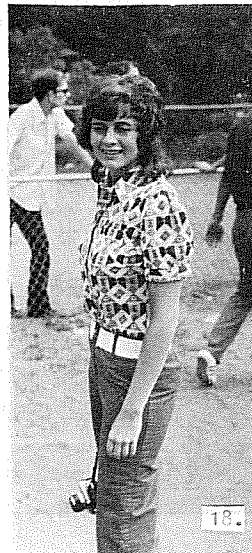
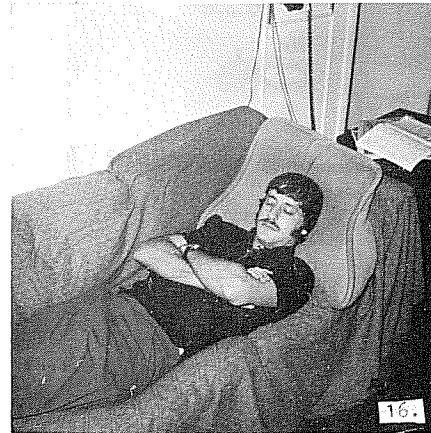
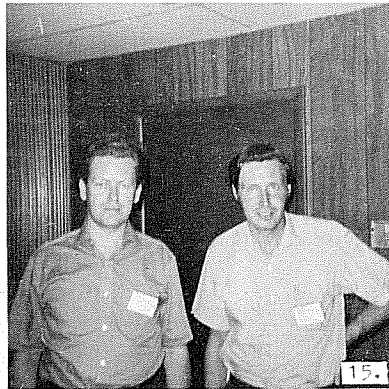
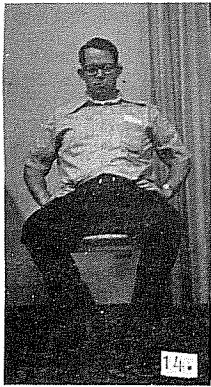
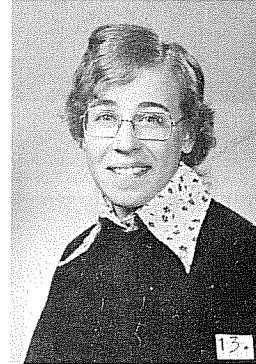
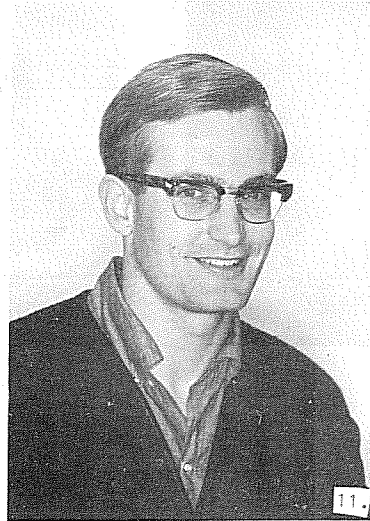
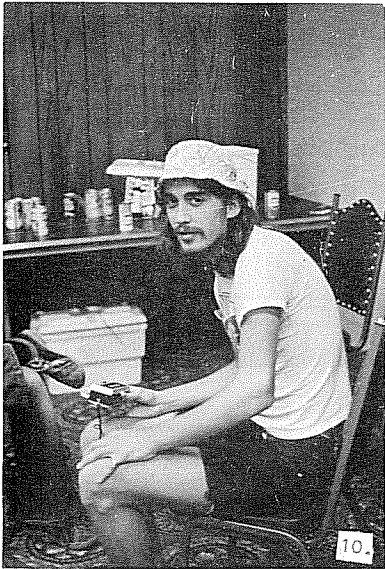


IRCA'S FAMILY



GUIDE TO PHOTOGRAPHS

1. L- GEORGE BOULLES, HIGHLAND, IN; R- JOHN ZONDLO, MUNCIE, IN
2. L- LARRY M. ABRAHAM, BRIDGEPORT, MI; R- CREDO A. BISQUERA WAIANAE, HI
3. LARRY V. FLEGLE, TAMPA, FL
4. MARTIN VANKUILENBURG, LAVAL, QUEBEC
5. RANDY V. MINNEHAN, COLUMBUS, OH
6. SHELDON SWARTZ, PLYMOUTH, MA
7. L- NANCY GANTZER, ABERDEEN, WA; R- BILL HARDY, ABERDEEN, WA
8. CURTIS C. HAYES, STEGER, IL
9. L- GLENN HOBBS, SAN JOSE; C- BILL HARANG, SAN JOSE; R- BILL'S SISTER



10. ROBERT KRAMER, CHICAGO, IL 11. MICHEL BREGER, AUSTIN, TX 12. LARRY B. GODWIN, BOULDER, CO
13. CAROL SCHWEIGER, STONEHAM, MA 14. DON E. ERICKSON, RIVERSIDE, CA 15. L- RICHARD E. WOOD, BATON ROUGE,
LA; R- DAVE WHATMOUGH, HAMILTON, ONTARIO 16. RON F. SCHATZ, NORTH MIAMI BEACH, FL 17. L- KARL FORTH, VILLA
PARK, IL; R- ROBERT KRAMER, CHICAGO 18. CATHY L. WOODRUFF, COLUMBUS, OH 19. ROGER W. WINSOR, VALPARAISO, IN

Compiled by IRCA Special Features Editor, Bill Hardy.

This index contains an alphabetical listing of all known state and province of the month articles since the first one appeared in *DX Monitor* June 15, 1965, up to and including the recent Dakotas feature in the 2/9/74 issue. With this list, you can refer back as far as your DXMs go to find details on stations in those states and provinces you still need.

The most recent article is listed first, since that will contain the most up-to-date info. Articles bracketed on the right are continued in more than one issue. Some 1965-1967 issues contained no page numbers on the stencils, so educated guesses are made in a few cases.

As you can see, some states have been featured two or three times, while others have never been covered. However, every province has been written up at least once. If anyone discovers any errors or omissions, be sure to write, and I'll run an addendum at a later date. Have fun!

Alabama	none			Kentucky	none			North Dakota	2/9/74	p. 11	QKB
Alaska	11/16/68	p. 11	LCM	Louisiana	7/20/68	p. 23	LCM		3/15/69	p. 35	LCM
	3/18/67	p. 24	MB	Maine	7/19/69	p. 33	LCM		11/13/65	p. 8	KGS
Arizona	9/4/71	pp. 34-36			11/5/66	p. 8	MB	Ohio	9/28/65	p. ???	KGS
	9/18/71	pp. 25-26	DN	Maryland	6/17/67	p. 18	MB	Oklahoma	none		
	1/6/68	pp. 13-14		Massachusetts	1/8/66	p. 5	KGS	Oregon	6/14/69	pp. 21-22	LCM
	1/13/68	p. 16	LCM	Michigan	none			Pennsylvania	5/6/67	p. 11?	MB
Arkansas	6/15/68	pp. 26-27	LCM	Minnesota	none			Rhode Island	1/7/67	p. 12?	MB
California	12/28/68	pp. 11-14	LCM	Mississippi	none			South Carolina	2/3/68	p. 14	LCM
Colorado	none			Missouri	6/15/68	pp. 27-28	LCM	South Dakota	2/9/74	p. 11	QKB
Connecticut	2/14/70	pp. 19-22	CR	Montana	3/31/73	pp. 17-18	QKB		3/15/69	pp. 35-36	LCM
	1/7/67	p. 12?	MB	Nebraska	3/9/68	p. 14	LCM	Tennessee	none		
Delaware	5/20/67	p. ???	MB	Nevada	4/8/72	pp. 25-27	QKB	Texas	none		
Dist. of Col.	6/17/67	p. 18	MB	New Hampshire	11/18/72	pp. 13-14	QKB	Utah	5/4/68	p. 6	LCM
Florida	7/20/68	pp. 22-23	LCM		7/19/69	p. 33	LCM	Vermont	11/18/72	pp. 12-13	QKB
	12/4/65	pp. 5-6	KGS	New Jersey	12/3/66	p. 9	MB		7/19/69	pp. 33-34	LCM
Georgia	none			New Mexico	5/20/67	p. ???	MB	Virginia	12/3/66	p. 9	MB
Hawaii	11/16/68	p. 12	LCM	New York	9/18/71	pp. 27-28		Washington	2/8/69	p. 15	LCM
Idaho	6/15/65	p. ???	KGS		10/30/71	pp. 11-16	QKB	West Virginia	2/12/72	pp. 11-18	QKB
Illinois	none				11/20/71	pp. 15-20			6/14/69	pp. 22-24	LCM
Indiana	9/23/72	pp. 27-32	QKB		2/18/67	p. 11	MB	Wisconsin	2/8/69	p. 15	LCM
Iowa	7/17/71	pp. 27-31	QKB	North Carolina	2/3/68	pp. 13-14	LCM	Wyoming	3/19/66	pp. 15-16	KGS
Iowa	3/9/68	pp. 13-14	LCM						5/4/68	pp. 6-7	LCM
Kansas	2/26/66	p. 7	KGS								

Key: CR - Cliff Reno; DN - Doug Nyholm (spotlight article); KGS - Gray Scrimgeour; LCM - Lance Muller; MB - Mike Bratcher; QKB - Quentin K. Brown.

LPRT Specials	9/5/70	pp. 34-38	JEP	Ontario	7/15/72	pp. 23-29	DO	Manitoba	(early 1971???)	Got	
	1/25/69	pp. 19-20	JEP		10/5/68	pp. 16-20	JEP		separated from rest of issue!	JEP	
Alberta	1/10/70	pp. 3-4	JEP	P.E. Island	4/19/69	p. 3	JEP		12/2/67	pp. 13-14	BL
	1/13/68	pp. 19-20	JEP		1/18/69	p. 26	JEP		map-6/12/71	p. DXWW-6	JEP
	10/8/66	p. 10	KGS	Quebec	1/18/69	pp. 25-26	JEP	New Brunswick	4/19/69	p. 3	JEP
	map-6/12/71	p. DXWW-6	JEP	Saskatchewan	1/2/71	pp. 11-13	JEP	Newfoundland	7/14/73	p. 21	DO
British Col.	2/3/73	pp. 11-15	DO		7/22/67	p. 18	JEP		4/19/69	p. 3	JEP
	9/6/69	pp. 11-12	JEP		map-6/12/71	p. DXWW-6	JEP	N.W. Territories	4/4/70	p. 22	JEP
	10/4/69	pp. 14-16	JEP	Yukon Territory	4/4/70	p. 22	JEP		6/17/67	p. 17	JEP
	5/20/67	pp. 13-14	JEP		6/17/67	p. 17	JEP	Nova Scotia	4/8/72	p. 28	DO
	1/29/66	p. 9	KGS						4/19/69	p. 3	JEP
B.C. LPRT's	5/6/67	p. 12?	JEP								

Key: BL - Bill Lafferty; DO - David Oliphant; JEP - Jon E. Pearkings, Jr.; KGS - Gray Scrimgeour.

Kitchener-Waterloo Record, Fri., Feb. 8, 1974

220 briefs filed on CBC licence bid

OTTAWA (CP) — More than 220 briefs have been filed with the Canadian Radio-Television Commission (CRTC) supporting or criticizing the CBC's application for a five-year renewal of all its radio and television licence.

The application goes before the commission in a public hearing opening here Feb. 18.

Six volumes of pleadings and data filed by the CBC in support of its application promise more Canadian pro-

grams and more attention to regional productions.

The corporation also asks for a fundamental revision of its financing. Instead of loans from the public treasury, on which it is charged interest, the corporation should be given outright grants by Parliament and forgiven its past indebtedness, the CBC says.

Most of the criticism comes from radio-television watchdog organizations, asking for wider dissemination of pro-

grams, fewer commercials, better service in the hinterland, less dependence on Toronto and Montreal production centres and an end to commercials.

Laurent Picard, CBC president, is expected to open the hearings with a three-hour oral statement, following which he will be questioned by CRTC chairman Pierre Juneau and members of the commission. The hearings are expected to last three or four days.

The chief criticism has been filed in a 187-page brief by The Committee on Television, a Toronto-based group of artists, authors, academics and community leaders, many of them past or present employees of the CBC.

While not advocating that the CBC's application for renewal be rejected, the committee says conditions should be put on its new licences requiring it to reduce its dependence on commercials, to produce fewer but better programs, repeating them more frequently on the air, and to encourage regional productions and independent filmmakers.

The CBC itself says that its first objective in the last five years was to decentralize management and streamline the administration for greater efficiency. During the next five years, the CBC says, it will move away from administrative concerns to the development of a creative programming system.

Rambling about radio

The Washington State Association of Broadcasters has distributed two "energy crisis" announcements to state radio stations, assuring us all that we can resolve the crisis by conserving. The tapes were prepared at Kaye-Smith Productions, in Seattle. The object is to demonstrate that broadcasting is more important to provide "leadership and information" to the public than to be "turned off" by curtailed broadcast hours.

Kaye-Smith Productions is affiliated with KJR-950, according to Bruce Portzter.

Once a week, the C. B. S. Mystery Theater has been aired on KIXI-AM-FM; the other days it is restricted to KIXI-AM only. There are places, KIXI management readily admits, that KIXI-AM doesn't come in too well. KIXI has been asking drama listeners to write if reception isn't good enough, hoping to document the case before the Federal Communications Commission someday.

Gil Jacobsen, general manager, said response was overwhelming. He is pondering listener requests that the nightly dramas be aired on both frequencies.

They want to move to 800 khz with 50 kw; that's why they want people to write, according to Bruce Portzter.

222 Hazard Street
Orlando, Florida 32804

Roussville Radio



LIKE TO SEE MORE PHOTOGRAPHS?

That's up to you. In order to produce another photo page, photographs will be needed. Why not have your picture taken and send it to me. Even simple cameras take good photographs. We'll try to have additional pages if enough photographs can be gathered. If you wish your photo returned, please state so. 73.

Randy V. Minnehan, 975 Chestershire Road,
Columbus, OH 43204



Ptarmigan Telegraph²⁰ airs private messages

Stanton H. Patty



In chilly Western Alaska, where Siberia is closer than any of Alaska's major cities, you know that just about everyone is going to be by his radio at 5.43 p. m. Monday through Saturday.

The reason: Station KICY in Nome and its long-playing "Ptarmigan Telegraph" program.

It is a radio message service — village to village — with news about everything from family illnesses to flying conditions. And one of the most entertaining "party lines" around.

Some Russian listeners may think so, too. But more about that later.

Ptarmigan Telegraph covers about 1,000 miles of the Alaska coastline, reaching perhaps 100 native villages when conditions are right. Mostly, however, it is the 18 or so scattered villages on the Seward Peninsula that depend on KICY for dispatches.

Messages reach the KICY studio by telephone or letter and are compiled into strictly unedited form shortly before broadcast time. Every word is read on the air, even when a sender signs off with something tender like "All my love . . ."

FROM HUMOR to pathos, from the routine to the urgent — these are the ingredients of Ptarmigan Telegraph.

Some examples:

From the dentist in Nome: "Please come in and pick up your teeth."

To a Golovin family from their mother in Nome: "I went and saw the doctor as soon as I arrived and have to see him again Monday morning. If everything is O. K., I will be home. Love you all. Mom."

To a man in Shishmaref from a grateful friend in Nome: "Received the box of meat and oogruck (bearded seal) skin. Thank you very much and Happy New Year."

To a patient in remote Little Diomedes from the nursing office at Nome: "You are authorized to come to Nome for chest clinic on next available plane."

To a family in White Mountain: "Our thoughts and prayers are with you at this time of sorrow."

To the basketball team in Noorvik: "Wien's (airline) will be there tomorrow, weather permitting, to pick up your team."

To the people of Gambell: "The program service aide will be in Gambell to sell food stamps."

To the people of Unalakleet: "The council meeting is canceled tonight since Richard Atuk could not make it in because of weather."

To the rescue team of Koyuk, Elm and Nome from Pastor Tungwuk: "Thank you for your efforts in finding me. Thanks very much everyone."

From a school pupil at Nome who must have sent home to "Mom and Dad at Teller" for some spending money: "It was good to hear from you. Just to let you know I received the money today."

From Munz Northern Airlines to four villages: "Request that you call in with your weather and runway conditions, so we can schedule the National Guard haul."

To Hannah in "Beautiful downtown Shishmaref" from Julius in Nome: "Received your beautiful letter today. You made me so happy. You make my day more beautiful when I think of you. Love always."

And then there was the stoic fellow who left his family dangling with this cryptic classic not long ago: "I had my toe amputated today. Don't worry."

PTARMIGAN TELEGRAPH has been a KICY fixture since the station went on the air in April, 1960.

In addition, the staffers will broadcast "special messages" any time of the day. Maybe a birth announcement or word of safe arrival for someone traveling by boat or snow machine.

Many a night the station has stayed on the air after hours to broadcast emergency procedures for an ill villager from a physician in Nome unable to reach the village because of socked-in weather.

"We know it is a very important and appreciated public service," says Dave DeVries, KICY's assistant manager. "We hear about it all the time from our listeners."

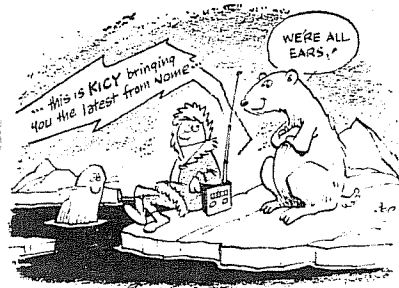
DeVries also knows first hand.

Once he was grounded by weather at Scammon Bay on the Bering Sea. For five nights he listened to Ptarmigan Telegraph to find out when his plane would return.

KICY is a non profit Christian station staffed by the Evangelical Covenant Church of America. It operates under a subsidiary corporation, the Arctic Broadcasting Association, in cooperation with the American Lutheran Church and the Alaska Yearly Meeting of Friends.

The "Voice of the Arctic" broadcasts with a power of 5,000 watts and is at 650 kilohertz on the radio dial.

That is plenty of output to reach Siberia, only 125 miles across the Bering Sea from Nome—and KICY is sure it does. One letter has been received from Vladivostok, and there are other clues.



SIBERIAN ESKIMOS speak the same dialect as the Eskimos on nearby St. Lawrence Island, Alaska. In fact, many of the St. Lawrence Island families have relatives in Soviet Siberia.

KICY's "hit parade" in Siberia may include half-hour programs the Nome station airs five nights a week to teach the Russian language. This show is intended for Russian-speaking Alaska natives but could come under the heading of educational programming for Alaska's Russian neighbors.

"It would be great if we could try to reopen travel and communications between the Eskimo people on both sides," DeVries said.

Other KICY staff members, including several volunteers, are:

Ralph Fondell, manager; Stan Summers, program director; Jim Engwall, news director and business manager; Chip Swanson, chief engineer; Dennis Gustafson, disc jockey; Jim Hendershot, assistant engineer; Chris Chamberlain and Janet Peterson, secretaries. Fondell's wife, Gert, also helps out as the midmorning disk jockey.

NOME'S OTHER radio station, KNOM, operated by the Catholic Church, also has a message service, called "Hotline." KNOM went on the air in July, 1971.

Tune in Ptarmigan Telegraph or Hotline next time you are up this way. You won't be disappointed.

Fact is, you might need it if you wander out in the bush.

I remember a winter afternoon when I was stranded in Koyuk after our plane broke a wheel in a rough landing on an ice strip. If another plane with space for a hitchhiker had not come along a few hours later, I would have been waiting for word from the Ptarmigan Telegraph.

That's the way it works.

The Seattle Times Sunday, January 6, 1974

The Power Just Booms Over Revival Radio

By RAY HOLTON
Inquirer Staff Writer

ACUNA, Mexico — Brother Larry and Brother George had obviously been getting some flak.

Listeners of their radio sermons had been sending in money for recordings by the two preachers, but the records weren't being sent out.

And now, at 9 P. M., Brother George Cooper was on radio station XERF explaining some worldly realities:

"Well, friends," he started in that rat-a-tat-tat rhythm that Burt Lancaster imitated as Elmer Gantry. "There's a shortage in everything, and it's my theory that whoever is — ah, ah — behind the whole shortage thing is trying to drive the prices up.

"There's — ah, ah — as you well know, a shortage in everything — gasoline, paper and RECORDS! But Brother Larry is working to get those records to you."

One thing there is no shortage of, at least at XERF, is radio preachers. And when a man preaches the Word on XERF, the Word is bound to be heard.

XERF, located in a one-story stucco building near this bawdy, desert town across the Rio Grande from Del Rio, Tex., is the world's most powerful commercial radio station — 250,000 watts, five times the legal limit in the United States.

The station, broadcasting at 1570 kilocycles and reaching all 50 states, has electrified the hearts of widows, farmers and just-plain folk in America's heartland since 1947.

The station has also brought riches to its Mexican owners and an obscure Del Rio lawyer, Arturo Gonzales, who directs the operation.

The station is on the air every night, from 6 P. M. to 8 A. M., but almost no one is ever there except Pedro Rodriguez and the other Mexican engineers who play the taped sermons.

The station's stable of about 25 preachers mail their tapes to XERF's postal box in Del Rio. The tapes are then taken across the border and boomed out on the airwaves.

Time Factor

A preacher who gets 15 to 20-30 minutes of air time daily, will pay the station anywhere from \$800 to \$2,500 a month, depending on what time his tapes are played.

To get the money back (and who knows how much more), a preacher like Brother Glen Thompson, of Paragould, Ark., makes this shrill pitch:

"There is deliverance in God. There is deliverance in this Broadcast. There is deliverance in ME!

"Write for your sack cloth and the prayer handkerchief. Send your tithes so I won't go

off the air. I will mail you my long-playing record of my life and schools days and ministry.

"Send \$3 and ask for this record.

"It's yours FREE, with my picture and a picture of my first and last church I have built."

The Reverend J. C. Bishop of Dallas takes another approach, promising sensational healing powers from a "miracle cloth."

"Now," he starts, the wailing cry playing havoc with the audio meter needle on the studio's control panel, "you can send for our piece of prayer cloth we have anointed with oil in the name of Jesus Christ. THIS is the same cloth we anointed and prayed over in Lourdes, Southern France.

"Now," he continued, "one listener writes, 'I had a misery in the right side of my neck and I placed the cloth on my neck and I was healed.'"

'Miracle' Worked

"Friends, that's the work of the miracle cloth. She placed it on her body according to the printed instructions we send."

Gonzales, the man who orchestrates the programming at XERF, is a native Mexican lawyer and U. S. citizen.

"I can't explain the appeal these preachers have, but if

people want to listen, well, they have that right, don't they sensor?" Gonzales said.

He runs XERF from a restored, sandstone house in Del Rio, a border town of 25,000 residents, surrounded by mesquite desert and thousands of head of cattle and goats in Val Verde County.

Gonzales is a major participant in the Mexican company — an "anonymous society" — which owns XERF. He holds all of the broadcast time of an exclusive contract to buy XERF and resell it.

More Power

Gonzales sells the time at anywhere from \$2 to \$4 a minute, giving the station an estimated \$600,000 to \$1-million gross income a year.

In fact, things have been so successful that the owners are completing the installation of a 500,000-watt transmitter, doubling the power of XERF.

Gonzales is a soft-spoken businessman with grey hair and horn-rimmed glasses.

His greying hair, fine-woven shirt, gold cufflinks, gold digital watch and a gold diamond ring are his rewards for overtaking competing "pirate" stations along the border surviving a mini-coup at the studio in 1964 which was aborted by accidental gunfire and the death of an old man, and resisting big city promoters who have tried to change the station's format.

Policy Change

Several years ago, Gonzales decided to change XERF from country-western music and mail-order commercials that included offers like "100 baby chicks for \$1.95 cash, check or money order," "genuine simulated diamonds for \$2.95," and cure-alls for nearly all body distresses.

"We used to be a mail-order station, but now we are religious and careful of what we put on the air," Gonzales said.

But, except the products, there's some similarity between the old XERF and the new.

For example, Joe Crews, of Baltimore, Md., offers "Amazing Facts" on the dead for those who send him a "tax free contributions."

'Present Facts'

"We present the facts that affect your life. The living know they shall die, but the dead know not anything. When you die, you are absolutely dead and asleep, until the resurrection.

"Why don't you get the facts: Are the Dead Really Dead? Complete with beautiful color photos. Just ask for folder A. Send your tax-free contribution."

For those with a law-and-order bent, the Rev. J. Harold Smith of Dallas, makes a special offer on his Radio Bible Hour.

"Send us \$5 or more and we'll send you a cassette and a sermon pamphlet on capital punishment around the world with photographs. This includes examples of the different methods of capital punishment."

Cite Expense

Most preachers insist the money, or "love offerings," from listeners doesn't cover the expense of buying time on XERF.

"I've only been on since November," said Evangelist Jack Martin of Lincoln, Ark. "At first, we had to pay \$1,000 a month (for 15 minutes, five nights a week in advance, but they made us a better deal.

"When my mail increases, I imagine the rates will go up, but right now offerings through the mail only cover about one-third of the costs.

"The mail will increase, though. I know the potential here."

Sunday, Feb. 24, 1974

Philadelphia Inquirer



Back to the Bible

RADIO LISTENING SCHEDULE • EARLY WINTER 1973

BACK TO THE BIBLE BROADCAST

Box B2808, Lincoln, Nebraska 68501 or
Box 10, Winnipeg, Manitoba R3C 2G2

AM STATIONS WITH 50,000 WATTS OR MORE OF POWER ARE UNDERLINED. THESE POWERFUL STATIONS COVER LARGE AREAS IN MANY STATES. CHECK THEIR COVERAGE IN YOUR AREA.

Monday - Missions
Tuesday thru Thursday - Bible study
Friday - Evangelism
Saturday (in most areas) - Youth

If there is no local coverage in your area, try these super-power stations:

TWR - Bonaire, N.A. 800 Kc.
4:00 am EST
Radio Paradise - St. Kitts, West Indies, 1265 Kc.
7:30 pm EST M-F
9:00 am EST Sat

For overseas and shortwave stations, request our International Listening Schedule.

UNITED STATES

Location	Station	Kc. or Mc.	Mon thru Sat (except as noted)
ALABAMA			
Birmingham	WDJC-FM	93.7	8:30 am
Dothan	WTVV-FM	95.5	9:30 am M-F 10:00 am Sat
Hartselle	WHRT	860	12:30 pm Sun-Fri
Huntsville	WNDA-FM	95.1	6:00 pm
Mobile	WMOD	1500	11:00 am
Tusculum	WRCK-FM	106.3	6:30 pm
York	WYLS	1350	11:20 am
ALASKA			
Glennallen	KCAM	790	7:30 pm
Juneau	KINY	800	7:30 am
Nome	KICY	850	6:30 pm M-F 3:30 pm Sat
North Pole	KJNP	1170	9:00 am M-F 9:00 am Sat
Soldotna	KSRM	920	9:00 pm
ARIZONA			
Flagstaff	KCLS	600	11:30 am
Phoenix	KHCS	1010	8:00 am Sat
Phoenix	KHEP	1280	11:00 am
Phoenix	KHEP-FM	101.5	7:00 pm M-F
Prescott	KNOT	1450	11:30 am Sat
Show Low	KVSL	1450	10:00 am
Tucson	KPMM-FM	99.5	12:30 pm M-F 8:30 am Sat
Window Rock	KHAC	1300	8:30 am
ARKANSAS			
Hopkirk	KXAR	1490	1:30 pm Sun
Hot Springs	KXOW	1420	9:00 am
Jacksonville	KGMW	1500	7:30 am
Little Rock	KAAV	1090	6:30 am
Menard	KENA*	1450, 101.7	9:00 am
William Springs	KUOA	1290	9:00 am
CALIFORNIA			
Alturas	KCNO	570	8:30 am
Arroyo Grande	KFYV	1280	9:00 am
Crescent City	KPLY	1240	8:30 am M-F 11:00 am Sat
Dinuba	KRDU	1130	6:30 pm M-F 7:00 pm Sat
Fresno	KBIF	900	7:30 am M-F 6:00 pm 9:00 am Sat
Glendale	KHOF-FM	99.5	6:30 pm
Lodi	KCVR	1570	9:30 am
Long Beach	KGER	1390	6:30 am Sun
Los Angeles	KFSG-FM	95.3	7:30 am M-F 8:30 am Sat
Los Angeles	KTYM	1460	11:00 pm M-F
Merced	KAMB-FM	101.5	9:00 am
Paradise	KEWQ	930	9:00 am
Redding	KVIP	540	9:00 am Sat
Sacramento	KEBR-FM	100.5	9:00 am
San Diego	KCFR-FM	93.3	9:00 am
San Diego	XEMO	860	9:00 am
San Francisco	KEAR-FM	97.3	9:00 am
San Francisco	KEAX	1100	10:00 am

Santa Barbara	KACL	1290	9:30 am
Seaside	KZEN-FM	107.1	11:30 am
Wasco	KWSO	1050	9:00 am
COLORADO			
Danver	KRKS	990	11:00 am
Grand Junction	KSTR	620	8:30 am
Langmont	KLMO	1060	1:00 pm M-F 11:00 am Sat
Longmont	KLMO-FM	104.3	6:30 am
Morrison	KWBI-FM	91.1	8:00 am
Pueblo	KFEL	970	12:30 pm
Salida	KVRH*	1340, 92.1	11:30 am
CONNECTICUT			
Middletown	WIHS-FM	104.9	5:00 pm M-F 11:30 am Sat
Milford	WFIF	1500	10:30 am
FLORIDA			
Auburndale	WTWB	1570	11:00 am M-F 9:00 am Sat
Boca Raton	WWOG-FM	99.9	8:30 am 10:00 pm
Ft. Myers	WSOR-FM	95.3	9:00 am Sun
Ft. Pierce	WIRA	1400	7:15 pm
Ft. Pierce	WQV-FM	95.5	1:30 am Sun-Sat
Immokalee	WOPF*	1490, 95.9	9:00 am
Jacksonville	WAYR	550	6:30 am 9:00 am
Marianna	WTYS	1340	9:30 pm
Miami	WMJ-FM	99.7	8:30 am
Miami	WRIZ	1550	8:30 am M-F
Orlando	WTLN*	1520, 95.3	9:45 am
Pensacola	WPCS-FM	89.3	8:30 am
St. Petersburg	WGNB-FM	101.5	1:00 am M-F 7:30 pm M-F 9:00 am M-F
St. Petersburg	WGNP	1520	10:00 am Sat
Tampa	WJNO	1010	8:30 am
Windermere	WVCF	1480	11:30 am
GEORGIA			
Buford	WGCO-FM	102.3	6:30 pm
Decatur	WAVO	1420	12:30 pm
Manchester	WFDL-FM	93.3	11:30 am
Sylvestre	WOGA	1540	9:00 am
Toccoa	WLET	1420	9:30 am
Valdosta	WAFV-FM	101.1	8:00 am 6:30 pm
Warner Robins	WAVC	1350	8:30 am 6:30 pm
HAWAII			
Hilo	KIPA	1110	6:30 am
Honolulu	KAIM	870	9:30 am
Honolulu	KAIM-FM	95.5	11:00 pm M-F
Honolulu	KNDI	1270	11:00 pm M-F 3:30 pm
IDAHO			
Caldwell	KBGN	910	11:30 am 7:30 pm Sat
Hailey	KSKI	1340	4:30 pm Sun
Idaho Falls	KUPI	980	11:30 am
ILLINOIS			
Chicago	WMBI	1110	12:30 pm M-F 2:00 pm Sun
Chicago	WMBI-FM	90.1	9:00 pm M-F 2:00 pm Sun
Clinton	WHOW	1520	11:30 am
E. Moline	WDLW	960	9:00 am M-F 2:00 pm Sun
Peoria	WPFO	1020	7:30 am
INDIANA			
Auburn	WIFF-FM	105.5	7:30 am 11:30 pm
Elkhart	WCMB	1270	9:00 am
Evansville	WGBF	1280	1:05 pm M-F 11:05 am Sat
Evansville	WVH-FM	105.3	6:30 pm
Ft. Wayne	WFVR	1090	9:00 am
Indianapolis	WBFI	1500	9:00 am
Lafayette	WXUS-FM	92.7	7:30 am
North Vernon	WOCH*	1460, 106.1	9:30 am 10:00 am
South Bend	WHME-FM	103.1	10:00 am
W. Terre Haute	WWVR-FM	105.5	9:30 pm 6:00 pm 3:00 pm Sun
IOWA			
Boone	KFGQ	1260	10:30 am 6:00 pm M-F 6:00 pm M-F
Boone	KFGQ-FM	99.3	4:30 pm Fri 8:00 am M-F
Cedar Rapids	KTOF-FM	104.5	8:00 am M-F 11:30 am Sat
Des Moines	KDMI-FM	97.3	11:30 am 11:30 pm
Des Moines	KWKY	1150	8:30 am
Knoxville	KTAV-FM	92.1	3:00 pm
Mason City	KSMN	1010	1:00 pm
Pella	KCUJ-FM	89.1	5:30 pm Sun
Shenandoah	KMA	960	9:30 am
Sioux City	KTFC-FM	103.3	6:30 am M-F 6:30 pm M-F 8:30 am Sat 3:30 pm Sat 1:30 am M-F 8:30 am
Waterloo	KNWS	1090	8:30 am 5:30 pm Sat
Waterloo	KNWS-FM	101.9	5:30 pm Sat
Waterloo	KXEL	1540	8:00 pm M-F
Waterloo	KXEL-FM	105.7	9:00 am Sun
KANSAS			
Atchison	KARE	1470	1:30 pm M-F 8:30 am Sun
Colby	KXXX	790	11:00 am M-F 4:30 pm Sun
Dodge City	KGNO	1370	1:00 pm
Leavenworth	KCLO	1410	1:00 pm
Newton	KJRG	950	7:00 am
Pittsburg	KOAM	860	10:30 am
Pratt	KWNS	1290	11:30 am
Topeka	WIBW	580	10:30 pm M-F 7:30 am Sun
Wichita	KICT-FM	95.1	6:30 pm
KENTUCKY			
Beattyville	WLJC-FM	102.3	8:30 am M-F 8:30 am Sat
Bowling Green	WKCT	930	6:30 pm
Erlanger	WHKK-FM	100.9	1:30 am 11:30 am 10:00 am M-F
Jamestown	WKY	1050	8:30 am
Lexington	WJMM-FM	100.9	8:30 am
Louisville	WFIA	900	8:00 am M-F 9:00 am Sat
Louisville	WFIA	900	10:00 am M-F 9:00 am Sat
Manchester	WWXL*	1450, 103.1	12:30 pm Sat
Monticello	WFLW	1360	12:30 pm M-F 9:30 am Sat
Somerset	WTLO	1480	11:30 am
LOUISIANA			
Alexandria	KSYL	970	9:30 am
Baton Rouge	WLUX	1550	8:05 am
New Orleans	WVOG	600	7:30 am M-F 11:30 am Sat
Shreveport	KCIJ	980	9:00 am
MAINE			
Lincoln	WLKN	1450	10:05 am Thur-Sat

Portland	WDOS-FM	97.9	9:30 am M-F 9:15 am Sat
South Paris	WKTP	1450	11:00 am
MARYLAND			
Annapolis	WFSI-FM	107.9	9:00 am
Baltimore	WA VR	Ch. 4	11:00 am
Baltimore	WRBS-FM	95.1	7:00 pm M-F 4:00 pm Tue
Frostburg	WFRB	560	10:00 am M-F
Frostburg	WFRB-FM	105.3	10:00 am M-F 6:00 am
Towson	WTOW	1570	8:30 am
MASSACHUSETTS			
Boston	WRYT	950	8:00 am
Springfield	WMAS	1450	9:30 am
MICHIGAN			
Albion	WUFN-FM	96.7	8:30 am M-F 2:30 pm Sat
Clare	WCRM*	990, 95.3	7:00 pm
Detroit	WBFG-FM	98.7	6:30 pm M-F 8:30 am Sat
Detroit	WUZZ-FM	105.3	10:00 am
Dowagiac	WDOW	1440	11:30 am
Grand Rapids	WFLR	1570	10:00 am
Grand Rapids	WFUR-FM	102.9	6:30 pm 11:05 pm Sun
Holland	WJBL-FM	94.5	11:00 am
Iron Mountain	WJNR-FM	103.9	9:00 pm Sun
Iron Mountain	W28BA	105.5	10:30 am 6:30 pm
Iron River	WKIB	1230	1:30 pm M-F 11:30 am Sat
Kalamazoo	WKPR	1420	10:00 am
Lapeer	WMPC	1230	8:30 am
Marquette	WDMJ	1320	6:15 pm
Mason	WUNN	1110	8:30 am M-F 2:30 am Sat
Muskegon	WKJR	1520	10:00 am
Royal Oak	WE XL	1340	9:00 pm
Saginaw	WSAM-FM	98.1	11:30 am M-F 8:30 am Sat
St. Johns	WRBJ	1580	8:30 am
MINNESOTA			
Benson	KBMO	1290	1:00 pm
Duluth	WJUC	850	9:00 am
Hibbing	WMFG	1240	5:30 pm M-F 11:30 am Sat
Int'l Falls	CFOB	800	1:30 pm
Minneapolis	KTIS	900	8:30 am 7:00 am M-F 5:30 pm Sat
Minneapolis	KTIS-FM	98.5	7:00 pm M-F 5:30 pm Sat
Roseau	KRWB	1410	5:30 pm Sat
Wadena	KWAD	920	9:00 am
Worthington	KWOA	730	9:30 am
MISSISSIPPI			
Houston	WQPC	940	12:45 pm M-F 1:15 pm Sat
Kosciusko	WKOZ	1340	9:00 am
Madison	WSJC	810	10:30 am M-F
Magee	WSJC-FM	107.5	8:30 am Sat
Pascagoula	WCIS-FM	104.9	9:00 am
Vicksburg	WKVY-FM	106.7	6:30 pm Sun
MISSOURI			
Fulton	KFAL	900	11:00 am
Hannibal	KHMO	1070	1:00 pm M-F 9:30 pm Sat
Kansas City	KCCV	1510	10:00 am
Kansas City	KLJC-FM	88.5	7:30 pm
Macon	KLTI	1560	8:30 am
Poplar Bluff	KWCC	930	10:30 am
St. Louis	KSTL	690	9:00 am
Springfield	KGBX	1260	1:30 pm M-F 11:00 am Sat
MONTANA			
Belgrade	KGWV	630	9:00 am 5:30 pm
Billings	KURL	730	7:30 am 11:30 am
Butte	KXLF	1370	6:30 pm M-F 9:30 pm Sun
Glendive	KGLE	590	9:00 am
Great Falls	KMON	560	6:30 pm
Missoula	KGMV	1450	9:00 am Sun
NEBRASKA			
Chadron	KCSR	610	8:30 am MST
Columbus	KJSK	900	1:00 pm
Falls City	KTNK	1280	6:30 pm
Lexington	KRVN	830	9:00 am
Norfolk	WJAG	780	10:00 pm M-F
North Platte	KJLT	970	9:05 am 6:00 pm 11:30 am Sat
Omaha	KGBI-FM	100.7	8:00 am 6:30 pm
Scottsbluff	KNEB	960	9:00 am MST
Valentine	KVSH	940	9:05 am
NEVADA			
Carson City	KNIS-FM	94.7	9:00 am
Henderson	KILA-FM	95.5	9:00 am
NEW JERSEY			
Camden	WKDN-FM	106.9	9:00 am
Cape May	WRIO-FM	102.3	9:30 am
Newark	WHME-FM	94.7	9:00 am
Trenton	WCHR-FM	94.5	9:00 am 7:00 pm M-F 3:00 pm Sat
Zarephath	WAWZ-FM	99.1	3:00 pm Sat
NEW MEXICO			
Albuquerque	KBNM-FM	99.5	8:30 am Sat
Albuquerque	KKIM	1000	9:00 am
Roswell	KWSV	1020	8:30 pm
NEW YORK			
Buffalo	WDCX-FM	99.5	8:00 am
Fulton	WOSC	1300	9:30 am
Houghton	WJSL	640	2:30 pm M-F
New York	WEVD*	1350, 97.9	10:00 pm M-F
New York	WPOW	1330	6:30 am M-F
Niagara Falls	WHLD*	1270, 98.5	9:00 am
Plattsburgh	WEAV	960	6:30 pm M-F</

Shallotte	WVCB	1410	10:00 am M-F 8:00 am Sat
Spring Lake	WFBS	1450	1:30 pm M-F 10:30 pm Sun
Tabor City	WKSM-FM	104.9	6:30 am
Winston-Salem	WGPL-FM	93.1	9:00 am 9:00 pm
NORTH DAKOTA			
Fargo	KFNW	900	8:30 am
Fargo	KFNW-FM	97.9	8:30 am
Jamestown	KEYJ	1400	8:30 am
Minot	KCJB	910	6:25 pm
Tioga	KTGO	1090	7:30 am
OHIO			
Bowling Green	WMGS	730	10:00 am M-F 9:30 am Sat
Bucyrus	WBOD-FM	92.7	6:30 pm
Canton	WTOF-FM	98.1	1:00 am Tue-Sun
Cincinnati	WAKW-FM	93.3	11:30 am
Cincinnati	WLW	700	7:30 pm
Cincinnati	WZIP	1050	10:30 am Sun
Cleveland	WCRF-FM	103.3	8:30 pm M-F 1:30 pm Sat
Columbus	WCOL-FM	92.3	7:30 am
Columbus	WCVO-FM	104.9	9:30 am M-F 3:00 pm Sat
Hamilton	WQMS-FM	96.5	12:00 midnight 6:30 pm
Holland	WPOS-FM	102.3	10:30 am
Lima	WTGN-FM	97.7	6:30 pm
Marietta	WBRJ	910	9:30 am Sat
Miamisburg	WFCA-FM	93.7	12:30 pm 9:00 am
Springfield	WECC-FM	100.7	7:30 pm 8:30 pm M-F 2:30 am Sat
Waverly	WIBO-FM	100.9	10:30 am Sat
Waverly	WPKO	1380	9:00 am Sun
Willoughby	WELW	1330	9:00 am
Youngstown	WQOD-FM	93.3	6:00 pm M-F
OKLAHOMA			
El Reno	KELR	1460	9:00 am
Guyton	KGYN	1210	9:30 am
Oklahoma City	KBYE	890	7:30 am M-F 10:30 am Sat
Oklahoma City	KGOY-FM	104.9	6:00 pm
Poteau	KLCO-FM	98.3	6:30 pm
Tulsa	KFMJ	1050	12:30 pm
Tulsa	KBJH-FM	98.5	7:30 am
OREGON			
Albany	KWIL	790	1:00 am 11:00 am
Ashland	KDOV	1350	8:00 am
Baker	KBKR	1490	1:00 pm
Cottage Grove	KNND	1400	9:00 am Sun
Eugene	KBMC-FM	94.5	7:30 am
Portland	KPDQ	800	10:30 am
Portland	PDDQ-FM	93.7	10:30 am 5:00 pm Sat 7:30 pm M-F 8:30 am Sun
Springfield	KORE*	1050,93.1	8:30 am Sun
PENNSYLVANIA			
Apple	WAVL	910	11:00 am M-F 10:00 am Sat
Boyetown	WBYO-FM	107.5	6:30 pm
Chambersburg	WCBG	1590	9:30 am M-F 8:00 am Sat
Chester	WVCH	740	8:30 am
Coudersport	WFRM	600	7:30 am
Danville	WPGM	1570	9:30 am
Danville	WPGM-FM	96.7	8:30 pm M-F 7:30 am
Greencastle	WKSL-FM	94.3	7:30 am
Lancaster	WDAC-FM	94.5	11:00 am M-F 8:30 pm M-F 4:30 pm Fri
Martinsburg	WJSM	1110	10:30 am
Martinsburg	WJSM-FM	92.7	10:30 am 6:30 pm
Mexico	WJUN	1220	9:00 am
Montrose	WPFL*	1250,96.6	9:30 am
Phillipsburg	WPHB	1260	12:30 pm M-F 11:30 am Sat
Pittsburgh	WPIT	730	8:30 am
Pittsburgh	WPIT-FM	101.5	8:30 am 11:30 pm M-F
Tyrone	WTRN	1340	11:30 am
Union City	WCTL-FM	106.3	10:30 am
RHODE ISLAND			
Providence	WRIB	1220	9:00 am M-F 8:15 am Sat
SOUTH CAROLINA			
Burnetown	WVAP	1510	11:30 am M-F 7:30 am Sun
Charleston	WEZL-FM	103.5	6:30 pm
Charleston	WQKE	1340	9:30 am
Columbia	WQXL	1470	12:00 noon
Greer	WCKI	1300	10:30 am M-F 4:00 pm Sat
Marion	WATP*	1430,94.3	8:30 am
Moncks Corner	WVMC-FM	105.5	6:00 pm
SOUTH DAKOTA			
Pierre	KGFX	1060	11:30 am
Rapid City	KVSR-FM	97.9	8:30 am M-F 9:30 am Sat 6:30 pm M-F 7:00 pm Sat
Sioux Falls	KNWC	1270	9:00 am CST 9:00 pm CST
Sturgis	KBHB	810	9:30 am
Yankton	WNAX	570	9:30 am CST

TENNESSEE			
Chattanooga	WDYN-FM	89.7	10:00 pm M-F 10:30 am Sat 12:30 pm M-F 2:00 pm Sun
Chattanooga	WMBW-FM	88.9	9:00 am
Chattanooga	WRIP	980	9:00 am
Jackson	WTJS*	1390,104.1	9:00 am CST
Johnson City	WJCW	910	11:30 am
Knoxville	WSKT	1580	12:30 pm EST
Memphis	KWAM	990	11:30 am M-F 1:30 pm Sat
Memphis	KWAM-FM	101.1	6:30 pm
Nashville	WWGM	1560	12:30 pm
TEXAS			
Amarillo	KRAY	1360	9:00 am
Corpus Christi	KCTA	1030	11:00 am
Crane	KBSN	970	11:30 am
Dallas	KDTX-FM	102.9	6:30 pm
Dallas	KSKY	650	11:30 am M-F
Houston	KHCB-FM	105.7	9:00 am 9:00 pm Tue 9:30 pm Wed-Thur
Longview	KLTC	1520	9:00 pm M-F
McAllen	KVMV-FM	96.9	7:00 pm M-F 5:30 pm Sat
Ralls	KCLR	1530	11:00 am
San Antonio	KDRY	1110	11:00 am M-F 4:00 pm Sat
Tulia	KTUE	1260	9:00 am M-F 1:30 pm Sat
Wichita Falls	KWFT	620	10:30 am M-F 8:30 am Sat
UTAH			
Blanding	KUTA	790	9:30 am
Ogden	KSVN	730	1:30 pm M-F
Price	KOAL	1230	10:00 am Sat 6:30 pm M-F 9:30 am Sat
VERMONT			
Brattleboro	KVKT	1490	7:30 am Sun
Rutland	WHWB-FM	98.1	10:00 am
VIRGINIA			
Ashland	WIVE*	1430,100.1	10:30 am
Bluefield	WKJC-FM	106.3	9:30 am 6:00 pm
Broadway	WBTV	1470	8:00 am
Chaster	WKI	1410	1:30 pm
Chester	WYLF-FM	92.1	4:30 pm
Falls Church	WFAX	1220	11:45 am Mon 11:30 am Tue-Sat
Harrisonburg	WEMC-FM	91.7	6:15 pm
Lynchburg	WVOD-FM	100.1	9:00 am M-F 9:30 am Sat
Norfolk	WYFI-FM	99.7	9:30 am 7:00 pm M-F 8:00 pm Sat
Richmond	WRVA	1140	10:30 pm M-F
Richmond	WRVA-FM	94.5	4:30 am Tue-Sat
Roanoke	WLM-FM	93.5	10:30 pm M-F 6:00 pm Sat
Roanoke	WRIS	1410	11:30 am
Staunton	WAFB	900	1:10 pm
Staunton	WSGM-FM	93.5	6:00 pm
WASHINGTON			
Blaine	KARI	550	12:30 pm 7:30 pm M-F
Pasco	KOLU-FM	90.1	12:00 noon 8:30 pm
Seattle	KGDN	630	9:00 am
Spokane	KCFA*	1330,107.9	7:30 am
Spokane	KGA	1510	12:30 pm 6:30 pm M-F 7:30 pm Sun
Yakima	KBBO	1390	8:00 am
WEST VIRGINIA			
Beckley	WBKW-FM	99.5	1:00 pm M-F 9:00 am Sat
Charleston	WCHS	580	6:30 pm
Charleston	WVAF-FM	99.9	8:30 am
Matawan	WHJC	1360	9:30 am
WISCONSIN			
Eau Claire	WBIZ*	1400,100.7	12:25 pm
Ladysmith	WWIB-FM	103.7	9:00 am
Madison	WNWC-FM	102.5	6:30 pm
Monomonic	WDMW-FM	92.1	9:30 am 7:00 pm
Milwaukee	WVCY-FM	107.7	9:00 am
Richland Center	WRCO	1450	6:30 pm
Shelbyville	WHBL	1330	6:00 pm Sat 8:00 am M-F 8:30 am Sun
Suring	WRVM-FM	102.7	10:30 am 6:30 pm
Viroqua	W292AA	106.2	6:30 pm
Wausau	WSAU	550	6:30 pm M-F 7:00 pm Sat
WYOMING			
Sheridan	KROE	930	10:30 am 8:30 am Sun

CANADA

ALBERTA			
Brooks	CKBR	1340	7:00 am
Carrsore	CFCW	780	7:30 pm M-F 8:00 pm Sat
Drumheller	CJDV	910	7:00 pm
Medicine Hat	CHAT	1270	7:00 pm M-F 8:00 am Sun
Peace River	CKYL	610	7:00 pm M-F 1:30 pm Sat
Wetaskiwin	CJOI	1440	10:00 am Sun Fri

BRITISH COLUMBIA			
Abbotsford	CFVR	1240	9:30 pm M-F 1:30 pm Sun
Burns Lake	CFLD	1400	7:30 pm M-F 8:30 am Sun
Castlegar	CKQR	1230	8:30 pm M-F 8:30 am Sun
Chilliwack	CHWK	1270	8:30 pm Sun 8:30 pm M-F
Creston	CFKC	1340	1:30 pm Sun
Dawson Creek	CJDC	1350	7:30 pm 9:30 am Sat
Hope	CKGO	1490	7:00 pm M-F 9:30 pm M-F
Kitimat	CKTK	1430	1:30 pm Sun 7:30 pm M-F
Nanaimo	CHUB	1570	7:00 pm Sun 7:00 pm M-F
Nelson	CFKC	1390	9:30 pm 9:30 pm M-F
100-Mile House	CKBX	1240	7:30 pm
Prince George	CJCI	820	8:00 pm M-F 8:00 am Sun
Prince Rupert	CHTK	560	8:30 pm Sun-Fri
Quesnel	CKCQ	560	7:30 pm
Smithers	CFBV	1230	7:30 pm M-F 8:30 am Sun
Terrace	CFTK	590	7:30 pm M-F 6:30 pm Sun
Vancouver	KARI	550	12:30 pm M-F 7:30 pm M-F
Williams Lake	CKWL	920	7:30 pm
MANITOBA			
Altona	CFAM	950	9:30 am
Boissevan	CJRB	1220	8:30 pm M-F 8:30 pm
Brandon	CKX	1150	7:30 pm M-F
Dauphin	CKDM	730	2:00 pm
Filet Ron	CFAR	860	9:10 am CST
Steinbach	CHSM	1250	8:30 pm M-F 7:00 pm M-F
Thompson	CHTM	610	8:30 am Sun
NEW BRUNSWICK			
Frederickton	CFNB	550	4:10 pm M-F 1:30 pm Sat
Moncton	CKCW	1220	9:30 pm
Newcastle	CFUN	790	6:30 pm
St. John	CHSJ	1150	8:30 pm Sun Fri
Woodstock	CJJC	920	7:30 pm M-F 7:00 pm Sat
NOVA SCOTIA			
Halifax	CHFX-FM	98.1	9:00 am M-F 8:30 am Sun
ONTARIO			
Ajax	CHOO	1390	11:15 pm
Blind River	CJNR	730	7:00 pm EST M-F 10:30 am EST Sat
Brantford	CKPC	1280	7:00 pm
Cambridge	CFTJ	1110	2:00 pm
Cobourg	CHUC	1450	7:00 pm
Dryden	CKDR	900	1:30 pm CST
Elliot Lake	CKNR	1340	7:00 pm M-F
Ft. Frances	CFOB	800	1:30 pm CST
Kapuskasing	CKAP	560	6:30 pm
Kenora	CJRL	1220	1:30 pm CST
Kirkland Lake	CJKI	560	9:10 pm
Lindsay	CKLY	810	8:25 pm M-F 7:25 am Sun
Midland	CKMP	1230	1:10 pm EST M-F 6:05 pm EST Sun
Muskoka	CKAR-I	630	8:30 pm EST M-F 8:15 am EST Sun
New Liskeard	CJTT	1230	9:30 pm
North Bay	CFCH	600	9:30 pm
Oakville	CHWO	1250	9:30 pm M-F 7:00 am Sun
Orillia	CFOR	1570	7:00 pm M-F 9:00 am Sun
Perry Sound	CKAR-II	1340	8:30 pm M-F 8:15 am Sun
Sarnia	CKJD	1250	7:00 pm M-F 1:00 pm Sun
S.S. Marie	CJIC	1050	9:00 pm EST M-F 7:15 am EST Sun
St. Thomas	CHLO	1570	9:15 am EST
Smiths Falls	CJET	630	2:30 pm EST M-F 10:00 am EST Sun
Thunder Bay	CFPA	1230	6:30 pm
Tilsonburg	CKOT	1510	9:00 am EST
Toronto	CHM-FM	100.7	11:00 pm
Toronto	CKFH	1430	6:30 pm
Wawa	CJWA	1240	9:00 pm EST M-F 7:15 am EST Sun
PRINCE EDWARD ISLAND			
Charlottetown	CFCY	630	9:30 pm M-F 6:30 pm Sat
QUEBEC			
Montreal	CFMB	1410	4:30 pm M-F
Quebec City	CFOM	1340	6:30 pm
Sherbrooke	CKTS	900	9:00 pm M-F 9:30 am Sat
SASKATCHEWAN			
Lloydminster	CKSA	1080	1:00 pm M-F 9:00 am Sat
Melfort	CJVR	1420	6:00 am
Moose Jaw	CHAB	800	6:30 pm M-F 8:30 pm Sun
Rosetown	CKKR	1330	1:30 pm M-F 9:30 am Sat
Saskatoon	CFQC	600	7:30 pm M-F
Shaunavon	CJSN	1490	2:00 pm MST M-F 1:30 pm MST Sat
Swift Current	CKSW	1400	2:00 pm MST M-F
YUKON	CKRW	610	1:30 pm MST Sat 6:30 pm

*Both AM and FM

ELECTION RESULTS

Convention Site:	Yes	No	Abstain
Seattle	39	20	11
San Jose	23	34	13
Bylaw Amendments:			
6.1-32 (change kilohertz to kilohertz)	50	16	4
6.1-51 (strike Contest Manager from list of officers BoD cannot appoint)	54	8	8
6.1.52 (rephrase By-law dealing with Pres. reporting actions of BoD)	61	4	5

Referendum:	Yes	No	Abstain
Do you feel taped verifications should carry the same status as written verifications?	38	31	1
Do you feel that the requirements for taped verifications should be the same as those set out in the Achievement Awards regulations?	38	25	7
Do you feel that taped verifications should be allowed in DX records?	43	25	2
Do you feel that taped verifications should be allowed in contests based upon verifications?	30	38	2
Do you use a tape recorder while DXing?	57	12	1

Total ballots: 70

George W. Jensen, Elections Committee Chairman
March 10, 1974

Dr. Ralph Freed, missionary statesman, passed away in Monte Carlo, on Saturday, December 29, 1973, following a heart attack. He was 81. Dr. Freed was General Director of Trans World Radio

Aiding CRTC may benefit Bassett Ocean radio stations set

BY CHARLES TAYLOR

BOTH JOHN Bassett and the Canadian Radio-Television Commission strongly deny that there was anything improper about the strange 1970 deal which saw the Toronto businessman acquire a temporary three-quarter interest in Windsor's television station CKLW in partnership with the CBC.

Under the terms of the deal, the CRTC must buy out Mr. Bassett by May next year, paying him his share of the \$5-million purchase price, plus interest charges and the full operating loss. By last March 31, this loss had already totalled \$3-million.

Since it seems that Mr. Bassett will neither make nor lose money on the deal, why did he ever become involved in such an unusual operation?

Willing to help

"I'm a pragmatist," he explains. "It was an interesting situation and if the CRTC wanted me to do it, I was willing to try.

"It's pretty hard to refuse a Government agency. I was a licensee and I

had hopes in other areas. It never occurred to me not to proceed."

At the time, Mr. Bassett had no cause to feel much gratitude to the CRTC. It had already forced him to relinquish his share of a partnership with Ted Rogers in cable television in Toronto which was potentially highly profitable. "They kicked the hell out of me on that one," he maintains.

Around Windsor it appeared to some that Mr. Bassett went along with the CRTC proposal because he knew he'd soon be seeking CRTC permission to buy Windsor's radio station with the same call sign and the same American owners as CKLW-TV. With its steady diet of rock music, CKLW-AM has the third-largest radio audience in North America (about as large as the combined audience for Toronto's CFRB and CHUM).

Mr. Bassett did get the radio station and he cheerfully agrees that it's a gold mine, making about \$1-million a year after taxes. At that rate he's already recouped most of his investment—\$1-million down, with another \$3-million over five years.

But Mr. Bassett flatly denies that there was any connection between the two deals. He says that RKO-General, the U.S. owners, came to him at first for a package deal, asking \$20-million for both stations. He told them it was too much and advised them to sell the stations separately. He also said he had no interest in radio and suggested other buyers.

Mr. Bassett adds that RKO came back to him after the television deal had been completed and approved by the CRTC. They begged him to buy the radio station. According to Mr. Bassett, a lot of his directors now think that he's a genius.

In fact, he says, he would have preferred to buy the television station outright and not to have got involved with radio. "So I would have been much worse off. You know, it's a hell of a lot better to be lucky than smart."

The CRTC supports Mr. Bassett's version of the transactions. According to chairman Pierre Juneau, the CRTC had no idea at the time of the television deal that Mr. Bassett and RKO would make a further deal for CKLW-AM, especially since Mr. Bassett was loudly proclaiming his total lack of interest in radio.

The CRTC approved its own proposal for a Bassett-CBC takeover of CKLW-TV in June, 1970. In November, Mr. Bassett came back to the commission with his bid to acquire the radio station. There was no opposition and the bid was approved.

There is no doubt that Mr. Bassett nailed the CRTC out of a highly embarrassing situation in Windsor. In the words of CRTC vice-chairman Harry Boyle, television in Windsor had long been "the nettle in the whole Canadian broadcasting flesh."

WESTMINSTER, Md. (AP)—Dr. Carl McIntyre, a fundamentalist minister who lost his broadcasting license for a landbased station WXUR, has announced plans to broadcast from five ships off the coasts of the United States.

McIntyre said all five of the ships carrying radio equipment will be stationed in international waters outside the three-mile limit of U.S. jurisdiction.

The ships will not be registered in the United States. McIntyre refused to say with what country the ships will be registered.

He said they will be sponsored by the International Council of Christian Churches, of which McIntyre is president.

THE WGL STORY

WGL RADIO —
Fort Wayne's FIRST
Broadcasting Station
... serving since 1924

KFAC

like a
1909
Mercer

**A CLASSIC
EXPERIENCE**



KFAC
LOS ANGELES
1330 AM/92.3 FM

What were you doing on January 24, 1924?

In New York a young pianist was rehearsing for a concert which would see the premiere of his composition, "Rhapsody in Blue."

If you were a young woman of Fort Wayne you were trying hard to live up to the label "flapper," braving the January cold with four-buckle arctics that flapped provocatively below knees bared by the day's daringly short skirts.

If you were among Fort Wayne's masculine population you were more interested in that new-fangled gadget, radio than you were in fashion. The man who could report, "I got KDKA last night" was the envy of his fellows. And if one was really lucky he was among those chosen few who heard the premiere broadcast of Fort Wayne's first station, WGL!

For it was in this setting (a scant three years and three months after Pittsburgh's pioneer station took to the air, and less than a year and a half after WEAZ, New York first sold air time to an advertiser) that Fort Wayne's own WGL... then known as WHBJ... brought commercial broadcasting to the Summit City. On January 24, 1924, WHBJ went on the air, thanks to the efforts of Chester W. Keen, and became one of the country's earliest stations.

Keen, operator of the American Products Corporation and the Reflex Manufacturing Company and inventor of the transmission bands then used in Ford Motor cars, became interested in radio in 1921 and, while on a business trip to New York that same year, purchased the equipment that later made it possible for WGL to go on the air. Anyone interested in viewing it, most of this equipment including the original transmitter, can now see it at the Allen County-Fort Wayne Historical Society Museum at 1424 Swinney Court. Its current value is estimated to be \$40,000.00.

In 1924, Keen and the now-extinct Lauer Auto Company joined forces to inaugurate Fort Wayne's first station. During that year Keen and Lauer divided their air time equally, with Keen broadcasting from the mezzanine of the Keenan Hotel and Lauer from its showrooms. Harold Blausler, a Lauer salesman, handled that company's air activities. In 1925, Keen bought out Lauer and enlarged operations, moving to new studios at 1729 South Lafayette Street. At the same time, he changed the station's call letters from WHBJ to WCWK. The new call letters, of course, stood for Chester W. Keen.

On September 1, 1928, Keen transferred his interests in WCWK to Frederick C. Zieg. In addition to a new owner, the station received new call letters... WGL... as well as new studios on the second floor of the Main Auto Supply Company on West Main Street. And a new era in Fort Wayne radio had begun! It is interesting to note that official documents say the new call letters... WGL... stand for "With God's Love." However, Zieg recalls that they evolved through expediency. "W," of course, was required of all stations east of the Mississippi by licensing authorities. "G" was chosen because in this highly agricultural region it was an easily recognizable sound—the command to a horse to go to the right. "L" was the best sounding of the five remaining letters available for use by the station. Zieg operated WGL until August 1, 1936 at which time he sold his budding radio property to Westinghouse Radio Stations, Inc. Two months later, on November 1, 1936, WGL became an affiliate of the National Broadcasting Company.

Moving day rolled around again on May 1, 1937 when WGL moved to 925 South Harrison Street, where Westinghouse had opened brand new studios. Broadcasting continued from this location until WGL became the property of the Farnsworth Television & Radio Corp. The sale to Farnsworth was effected on May 25, 1945 and in March, 1946 WGL began broadcasting from its new, modern studios at 201 1/2 West Jefferson Street in downtown Fort Wayne, its present location. And at 8:00 p.m. on September 24, 1947, WGL dropped down the broadcast band to 1250 kilocycles, increasing its power from 250 to 1000 watts, its present power. Three tall towers in Waynedale mark the site of WGL's transmitter.

WGL became the "Voice of the News-Sentinel" on June 17, 1949 when it was purchased by The News-Sentinel Broadcasting Co., Inc. In October, 1950 it transferred from the National Broadcasting Company to the American Broadcasting Company. August 17, 1970 WGL became an affiliate of the Columbia Broadcasting System; NAB (National Association of Broadcasters); and the Indiana Broadcasters Association.

WGL RADIO is known throughout the Fort Wayne area as the "101 Club" station which during the month of December solicits in various ways contributions for the local Christmas Bureau to be used in purchasing gifts, toys, food, clothing and other necessities for needy Allen County families.

DX CONTESTS

CONTEST STANDING FOR MARCH

Dr. Michel Braker, 7217 Creekside, Austin, Tx 78752

DOMESTIC CONTEST		TOTAL	S	B	3	2	1	PRO	AMA
1	(1) Portzer, Wash.	141	47	34	22	16	9	1.	
2	(2) Keleher, Ind.	134	48	12	34	6	8	2.	
3	(3) Abraham, Mich.	115	44	9	25	12	7	3.	
4	(6) Bytheway, Wash.	115	43	23	16	17	10	4.	
5	(5) Mayhew, Que.	114	44	5	29	7	8		1.
6	(4) Cowles, Az.	103	43	18	14	14	15	5.	
7	(7) Sherman, Minn.	88	36	3	17	15	4		2.
8	(8) Daplyn, Ont.	85	39	2	16	12	11	6.	
9	(10) Hogan, Ind.	83	35	4	16	12	7		3.
10	(9) Boyd, Okl.	80	33	7	16	8	9		4.
11	(19) Gantzer, Wash.	76	37	12	9	9	19	7.	
12	(17) Wheeler, Pa.	73	33	10	10	10	13	8.	
13	(11) Seaver, Cal.	72	35	11	7	12	16	9.	
14	(13) Wallon, N.Y.	71	34	3	13	8	13	10.	
15	(12) Myer, N.S.	70	35	6	11	7	17		5.
16	(14) Flegle, Fla.	63	31	3	8	13	10	11.	
17	(15) Horne, S.C.	59	35	0	9	6	20	12.	
18	(16) Mount, N.J.	59	32	3	10	4	18		6.
19	(18) Buehler, Mo.	58	33	1	8	8	17	13.	
20	(20) Hendricks, Ill.	57	34	1	3	16	15		7.
21	(21) Phillips, Alab.	56	29	1	8	10	11	14.	
22	(22) Parsons, Ont.	52	29	3	6	8	15	15.	
23	(23) Gill, N.Y.	52	28	4	6	8	14		8.
24	(24) Gabelman, Fla.	32	24	1	1	5	18	16.	
25	(25) Fisher, Ind.	17	11	0	1	4	6		9.
26	(26) Plumb, Neb.	4	4	0	0	0	4	17.	

Leaders so far: November - Sherman, Minn.
 December - Abraham, Mich.
 January - Keleher, Ind.
 February - Portzer, Wash.
 March - Portzer, Wash.

FOREIGN CONTEST - Transpacific

- 1 Seaver, Cal. 8 stations, 6 countries
- 2 Portzer, Wash. 7 stations, 5 countries

Transatlantic

- 1 (1) Minnehan, Ohio 11 stations, 9 countries
- (-) Breger, Texas 3
- 2 (2) Brown, Ont. 1
- Flegle, Fla. 1

Americas

- 1 (3) Minnehan, Ohio 31 stations, 22 countries
- (-) Breger, Texas 29 18
- 2 (1) Flegle, Fla. 28 19
- 3 (2) Abraham, Mich. 24 17
- 4 (5) Mayhew, Que. 20 14
- 5 (4) Seaver, Cal. 19 14
- 6 (6) Parsons, Que. 8 7
- 7 (7) Hogan, Ind. 7 4

IRCA



THE INTERNATIONAL RADIO CLUB OF AMERICA - a non-profit club devoted to listening to distant radio stations on the broadcast band (540-1600 khz). IRCA is a member of ANARC, The Association of North American Rad' Clubs, dedicated to promoting cooperation between the radio clubs of North America.

IRCA Officers: President: Richard C. Evans, Box 2048, Gary IN 46409 (219-981-3232); Secretary-Treasurer: Carl Dabelstein, 3300 North 56th St., Lincoln, NE 68507. Board of Directors: Chairman: Father Jack Pejza, Bob Foxworth, Nancy Gantzer, Percy Kesteven, Ed Krejny, Bill Nittler, John Zondlo.

Membership dues in IRCA: \$2.00 per year.

IRCA publishes the IRCA Foreign Log, listing over 1500 foreign stations heard on the broadcast band. Vol. 1, \$2.25; Vol. 2, \$3; combination offer, \$5.

IRCA has an extensive listing of reprints of articles and features which appeared in DX Monitor in past years. Send a SASE for a copy of the list.

IRCA stationery: 70 sheets for \$2; 100 sheets for \$2.75.

Permission is granted to publish, broadcast, or reproduce any of the material in DX Monitor (except items which acknowledge that they appear by permission from other sources), providing credit is given to DX Monitor and the author or contributor, if listed.

DX Monitor is printed by San Diego Printers, San Diego, CA.

MARCH 16, 1974

24

8	(8) Boyd, Okl.	6	5
9	(9) Mount, N.J.	5	4
11	(11) Portzer, Wash.	5	4
11	(11) Fisher, Ind.	2	2
12	(12) Bytheway, Wash.	1	1

This list will hopefully make the Anniversary Issue. Nice to see the club members being so active. Some letters asked why the February Standings were so late. Well, it took 22 days between mailing them out and reading them in DXR. Guess these things happen. Happy Anniversary!

Michel



Windsor's CKLW-AM, with its steady diet of rock music, has the third-largest radio audience in North America.

INTERNATIONAL RADIO CLUB OF AMERICA
 12364 AVALON BLVD. CA 92064
 FIGHT CHIPPING
 ADDRESS CORRECTION REQUESTED



EXP 4/6/74 V12N28 1
 MICHAEL G. WORST
 3608 PHINNEY NORTH
 SEATTLE, WA 98103

FIRST CLASS