



# DX MONITOR

PUBLISHED BY  
THE INTERNATIONAL RADIO CLUB OF AMERICA

AUGUST 3, 1974 VOLUME 11, NUMBER 34

BRUCE PORTZER

The IRCA Board of Directors have awarded the 1974 Ted Vasilopoulos Award to Bruce Portzer of Seattle at the annual convention. Bruce received the award as a result of a vote of the membership conducted earlier this spring.

The reason Bruce's name was submitted for consideration for the TVA, according to the TVA Nomination Committee was "for years of service as DX Records Editor for recent contributions as Questions and Answers Editor, and for leadership of the regular members through continual active DXing."

Bruce was recently one of the hosts of the very successful 1974 IRCA Seattle Convention. He will submit a report on the convention for the next issue. About forty DXers showed up at the Sheraton Renton Inn, including President Rick Evans of New Buffalo, MI, Charley Keleher of Fort Wayne, IN., and Ed Krejny of Middleburg Heights, OH. Others arriving from outside the Northwest included Don Erickson, Brian Scully, Father Jack Pejza, and John Clements from Southern California; Jim Critchett from northern California, Larry Godwin and Rob Harrington from Colorado, and Percy and George Kesteven from Canada. More next issue.

## DX CONVENTIONS AND GET-TOGETHERS

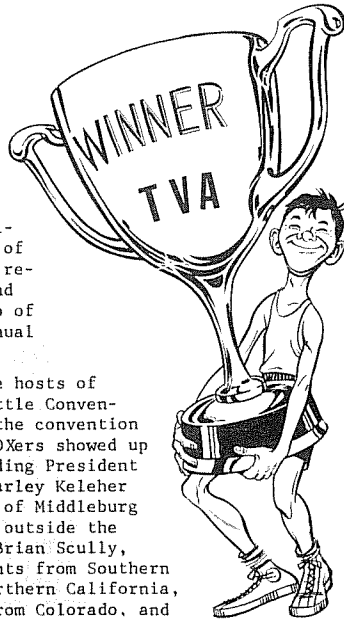
**NRC-- National Radio Club** will hold its convention August 16-18 (Fri-Sun) at the Ramada Inn, Perrysburg, OH (U.S. 20 at I-75). Room rates: \$14 single; \$17 double; \$20 triple, \$23 quad; \$26 quintuple. Banquet for \$7.15 includes all you can eat of chicken, beef or seafood. Registration fee for the convention depends on the number who show up. Contact Frank Merrill, 1560 Brooke Park Dr., Apt. 8 Toledo, OH 43612 for information.

**SCADS - Southern California Area DXers** meet Aug. 17-18 at the home of Verlin Shinn, 23942 Long Valley Road, Hidden Hills, CA 91302 from 0900 each day. Registration fee is \$3.00. All radio listeners are welcome. Bring swim trunks and towel. HAP will hold an auction. Send registration fee to Stewart MacKenzie, 16182 Ballard Lane, Huntington Beach, CA 92649 Phone 714-846-1685.

**CHAP-- Canadian Handicapped Aid Program** will meet Aug. 31 in Kingston, Ontario. Registration fee is \$2.50. Write CHAP Get-Together 4375 De Lorimier Ave., Montreal, Quebec, Canada H2H 2B3 for information.

## What's inside

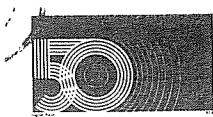
RFS Cujamatiem List-- (Cuba, Jamaica, Haiti)  
Newspaper articles from Seattle area papers on Convention  
Comment on FJP Equation for Arrival-Takeoff angles--Ghotti



BROADCASTING INFORMATION (as compiled by Mike Worst)			
new 590	1/2-D 1/4-N	Sussex, N.B.	CP
CJET 630	10-U	Smiths Falls, Ont.	change pattern to 25-U
CFTR 680	10-D 25-N	Toronto, Ont.	granted CIPC to 50-U
new 710	1-U	Port Cartier, Que.	granted CHYR-7
CKLG 730	10-U	Vancouver, B.C.	CP
CHIR 730	1/2-N	Leamington, Ont.	requests KBUL
new 810	10-U	Winnipeg, Man.	DA-N from DA-2
KEYN 900	1/2-D	Wichita, Kan.	granted CJEN to 670
CKBI 900	10-U	Prince Albert, Sask.	CP & requests WSCP
CKJL 900	1-U	St. Jerome, Que.	granted WTBJ
KPUA 970	5-U	Hilo, Hawaii	requests WFKI
new 1070	1-D	Sandy Creek-Pulaski, N.Y.	requests WHHL
WWSO 1090	1-D	Monticello, Fla.	CP Eng.
WMWM 1090	1-D	Wilmington, Ohio	granted CFLN
new 1190	1/2-D	Pine Castle-Sky Lake, Fla.	delete station SH 0600-2000
new 1190	10-U	Charlottetown, P.E.I.	granted CKMK
new 1230	1-D 1/4-N	Goose Bay, Nfld.	" CJAR
CKFL 1230	1/2-U	Schefferville, Que.	separate prog. to 1110, 10-D 1/2-N
KCYN 1240	1-D 1/4-N	Williams, Ariz.	granted CJMS
new 1240	1-D 1/4-N	MacKenzie, B.C.	CP
new 1240	1-D 1/2-N	The Pas, Man.	to Marinette, Wis. -Menominee, Mich. to 1230
CHSM 1250	10-U	Steinbach, Man.	CP Fre //CKML-610
CKJD 1250	1-U	Sarnia, Ont.	granted CJCR
new 1280	50-U	Montreal, Ont.	requests WJEB to 1-U DA-2
new 1290	10-U	Matane, Que.	granted CHPQ
WLOT 1300	1-D	Marinette, Wis.	requests KZUL
CBON 1340	40w	Maniwaki, Que.	CP
new 1340	1-D 1/4-N	" "	CP Fre
new 1350	1-U	Gander, Nfld.	granted WZZA
new 1350	1-D	Gladwin, Mich.	" CFJR
WKYO 1360	1/2-D	Caro, Mich.	CKPB
new 1370	10-U	Westloc, Alta.	CP
new 1370	1-U	Parksville, B.C.	granted WCKC
new 1380	1-D	Parker, Ariz.	CP Fre //CKML-610
new 1380	1-U	Cap Chat, Que.	granted CJMC
new 1400	1/2-D 1-N	Drummondville, Que.	granted 10-D delete CH
new 1400	1/2-U	St-Jovite, Que.	all powers in kw.
WRCK 1410	1/2-D	Tuscumbia, Ala.	Thanks to Broadcasting Magazine June 24 - July 15 issues, the CRTC, and CRTC notifications to the FCC via Glenn H.
new 1450	1-D 1/4-N	Brockville, Ont.	And now for you real DXers:
new 1470	1-U	Bagotville, Que.	CBPA 1490 .1w-U Jasper Nat'l Park, Alta. CP Eng
new 1480	10-U	Newmarket, Ont.	CBPB 1230 .1w-U " " " " CP Fre
new 1490	1-D 1/4-N	Milton, Fla.	CBPC 1490 .1w-U Glacier Nat'l Park, B.C. CP Eng
new 1490	1-D 1/4-N	L'Annonciation, Que.	CBPD 1230 .1w-U " " " " CP Fre
new 1490	1-D 1/4-N	Ste-Anne-des-Monts, Que.	CBPE 1490 .1w-U Cape Breton Nat'l Park, N.S. CP Eng
CKOT 1510	1-D	Tillsonburg, Ont.	CBPF 1450 .1w-U " " " " " " CP Fre
WITI 1530	10-U	Dalton, Ga.	Note that the power is 100 milli watts.

DX MONITOR, the official magazine of the International Radio Club of America, is published weekly from October to March, bi-monthly in April, May, and September, and monthly in June, July and August. SECOND-CLASS POSTAGE PENDING IN SAN DIEGO, CA. Official business address: 3266 Nutmeg St., San Diego, CA 92104. POSTMASTER: SEND FORM 3579 TO IRCA, 12536 ARABIAN WAY, POWAY, CA 92064.

SUBSCRIPTIONS: for IRCA members: \$7.50 (+ \$2.00 membership fee); airmail \$11.00 (+ \$2.00); airmail to Central and South America, \$18.00 (+ \$2.00); airmail to Europe and Africa, \$23.00 (+ \$2.00); airmail to Oceania and Asia, \$28.00 (+ \$2.00). Non-IRCA members, add \$3.00 to IRCA rates. Sample copy 50c or 2 International Reply Coupons. Make all checks or money orders payable to IRCA. Canadian subscribers, please use Canadian Postal Money Orders payable in U.S. funds. Other foreign subscribers, use International Money Orders payable in U.S. funds. Send all funds for memberships, subscriptions, and changes of address, to Poway address above. Please enclose self-addressed stamped envelope in correspondence with publishing headquarters if reply is expected. PUBLISHING STAFF: Executive Editor Father Jack Pejza, (714-282-0076 or 282-2184); Publisher: Grant Manning, (714-566-1264); Dave Stroup, Randy Seaver, Jim Campbell, John Kolb, Albert Lobel.



- 970 WWSW PA PITTSBURGH; Got first time, 6/27 0033 w/wx, ID, & MoR mx, on top, o/CKCH, etc. (EDF)
- 1100 \*WGPA\* PA BETHLEHEM; 5/20 had ET ID 0216, ending, u/WHLI ET/CC. (RLF)
- 1130 WPUL FL BARTON; Strong and alone in aurora w/s/on-SSB 0600 7/8. (SF)
- 1220 \*WGAR\* OH CLEVELAND; 5/20, had ET/OC 0146, then off. CHSC in clear 0200. (RLF)
- 1230 CHVD PQ DOLBEAU; Good again all SM 4/14 w/ continuous mx, sounds automated. I think this one runs day pattern on weekends. (RLF)
- WNEB MA WORCESTER; Regular s/off 0006 after Novins CBS net cast, w/SSE. (RLF) [what date, may I ask???...mrm]
- CKLD PQ THETFORD MINES; Is part of AN net, along w/CFDA-1380, CKFL-1400, etc. "en ondes 24 heure par jour" hrd often w/distinctive jingle. Don't confuse w/CHVD, also AN here. (RLF)
- WERI RI WESTERLY; Still has HI AN show, so IDed 0139 6/13. Heavy sports coverage, AN newscaster named Robusterelli, mentions calls alot. (RLF)
- 1240 WCOU ME LEWISTON; Hrd 6/3 in well from WGBB s/ off 0106 (for PoP) thru 0135, generally loud and atop, WBAX second sig. Gal anncr "Dixie", and is c&w. Wx from Portland N.W.S. Ofc on 1/2-hour, lots of WCOU and WCOU-PM 94. Even in thru WGBB 1kw OC here, on LW. (RLF)
- \*WGBB\* NY FREEPORT; Had PoP 6/3, normally is still NSP. IDed 0130 (RLF)
- WJEJ MD HAGERSTOWN; 5/10 at 0037 s/off after BB, WGBB looped, WROV QRM. Is AM/PM too. (RLF)
- WVON RI WOONSOCKET; Logged w/Red Sox BB 5/11 2100, WGBB looped. Fair. (RLF)
- 1250 WDVA VA DANVILLE; o/WTAE w/c&w mx, ID at 0155 6/27. (EDF)
- WCHO OH WASHINGTON COURT HOUSE; Noted 6/25 at 1430, w/nx, wx, stocks, and country-rock mx, poor-good. New. (JAD)
- 1270 KFJZ TX FT. WORTH; Hrd 7/6 at 0445, mixing w/WXYZ and UnID SS, rock mx, poor-fair. New. (JAD)
- 1280 \*WITX\* VA APPOMATOX; On 5/22 at 0045 w/audio tests using talks, country mx, mx, wx, rock mx, and SID's. This new station is part of ABC net. CHAM QRM. DJ asked for calls from DXers, phone 803-352-8353. Fair, new. (JAD)
- 1290 CJBK ON LONDON; Noted on 7/1 at 2340 w/rock mx, u/WHIO. Poor, New. (JAD)
- WFIG SC SUMTER; 4/21 atop 2032-2039, opening to the south (WDVA-1250 was excellent at the same time) very unusual. (RLF)
- 1310 WRR TX DALLAS; Hrd on 7/6 at 0600 w/s/on ancts, poor. Sked is 0600-0100. New. (JAD)
- 1320 WCLU KY COVINGTON; Noted at 0614 on 7/18 w/ country mx. Poor-fair. New. (JAD)
- 1330 WASA MD HAVRE DE GRACE; w/test of some kind on 7/8. 0110 t/in, "You Make me Feel Brand new" played, but not all the way thru got me suspicious. Record & OC in various combos till 0120, then ID and carrier off. Exc. sig. (EDF)
- WRIE PA ERIE Nx, wx, then 0103 ID 6/27. New. (EDF)
- WFBC SC GREENVILLE; Fighting it out w/WRIE 6/27 w/country mx. ID came thru at 0130. New. (EDF)
- 1340 WGNI NC WILMINGTON; Dominating freq. 6/27 0110 w/country mx, frequent ID's and jingles. New. (EDF)
- WOKS GA COLUMBUS; Good u/local WGNK w/SID, 0359 7/3. (SF)
- WGAW MA GARDNER; 6/19 0156-0202 w/sox night coast game, on late, off w/SSB. Also hrd after Mutual nx at normal s/off 2359 6/10 w/poor signal. (RLF)
- WBRK MA PITTSFIELD; 6/19 on late for sox, off 0200. Normally hrd off at 2359 w/SSB. Think this has been about 50 hz off freq, rptd w/query re that. (RLF)
- WALL NY MIDDLETOWN; 6/11 hrd w/nx 0001 after WGAW s/off, fair signal. (RLF)
- WTVN VT ST. JOHNSBURY; 6/5, hrd to 0025 end of Red sox coast night game, then d.b. of CBS midnight nx, then many local items to late s/off 0037 w/SSB. Was atop freq much of time. Was hrd 5/26 at 0002 w/

SOUTH AFRICA has issued a stamp commemorating fifty years of broadcasting in South Africa. Only one stamp was issued because the Post Office is trying to save money, according to Denzil Baker.

SWAP 'N' SELL

A sample of the WARS TRADIO (Wichita Amateur Radio Society swap and sell bulletin has been received at HQ. The bulletin is free to interested people. Ads are also free. Write WARS TRADIO P.O. Box 4391, Wichita Falls, TX 76308 for your copy.

BROADCASTING STATIONS OF THE WORLD

Mike Hardester informs us that the 25th edition of Broadcasting Stations of the World, with information corrected to July 1, 1972, is now available from the U.S. Government Printing Office. Washington, DC 20402. The two parts of interest to BCB DXers are Part I, with stations indexed by country; and Part II, indexed by frequency. Each part is \$2.00. Specify the GPO publications number, "PrEX-7.9:972" and the part you want. Payment must accompany each order. Overseas mailing requires an additional 25% of the total amount of the order. The 26th edition will be available in September, according to Mike.

These books are issued by the Foreign Broadcast Information Service (FBIS), an adjunct of the CIA. They are perhaps one of the cheapest ways a DXer has of getting a listing of foreign BCB (and SW) stations.

PROJECT HELP

A member of HAP (Handicapped Aid Program) would like to do some BCB DXing. Does anyone have a Worcester "Space Magnet" that they would like to donate for this HAPie so that he can enjoy the hobby? He doesn't have room for a big loop. Write Bill Paschke, Assistant Director, HAP, 514B Portland Ave. (Rear), Beloit, WI 53511.

LASH TIP

Charley Keleher reports KKIM-1000 has dropped their 3rd PM r/c. Per phone call to the station, they were not on 7/15 and do not intend to be on regularly since they made arrangements for r/c during regular schedule. Charley heard a weak tester 7/15 and called later in the week to inquire if it was KKIM.

Editor: Mike Miteck,  
 Box 533  
 Lorain, OH 44052

////// Please note new address for EDXR reports. All Reports to this Box Number please! mrm

- \*\*\*\*\*
- 620 \*????\* ?? unID; Hrd 7/8 at 0031-0038, station on w/many tones over WSUN and another unID rocker, possibly a POP test w/ tones from 15,000-50 hz, each change announced. The tones were to be set against an RIAA curve (?), ID at 0035, about 15 seconds after last tone, was WETE. Not sure that was the TTer, tho. Mx hrd till 0038 tune out. Who was this???? (JAD)
- 680 WRKO MA BOSTON; On top w/rock mx, ID's 0015, 6/27. Beams North, so unusual. (EDF)
- 790 WAKY KY LOUISVILLE; ID o/WAEB 0027 6/27. (EDF)
- WQXI GA ATLANTA; Hrd 7/9 at 2302 w/rock mx, mixing w/unID SS, poor-good. New. (JAD)
- 810 \*WKBC\* NC N. WILKESBORO; on 7/10 at 0114 w/TT TC, and country mx, s/off 0122, completeing Equip. test, poor-good, New. (JAD)
- 900 \*WIAM\* NC WILLIAMSTON; Fair o/CHML w/TT and AM & FM ID 0512 6/24. (SF)
- 950 WRMA AL MONTGOMERY; w/"Right on, Rockin City" ID at 0200 7/1. Dominant WKAZ was off and testing. (SF)
- 960 WBCC MD SALISBURY; 6/27, 0045 ID in mess u/ WELI. New, 1kw. nights. (EDF)

single ID in game break...has a-capella styled jingles. (RLF)

WENT NY GLOVERSVILLE; 6/7, logged 0031-0052 w/late Yankee BB, clear ID taped. (RLF)

CJLS NS YARMOUTH; Hrd s/off 0011 in April, when Canada still on EST....likely 2311 now. (RLF)

1390 WAOB VA LYNCHBURG; On 7/17 at 2001 w/Sound Off program, wx, TC, and country mx. Poor to fair. New..(JAD)

1400 WCYN KY CYNTHIANA; Hrd on 7/9 at 2359, Hrd ID then Possibly their s/off at 0000, tho not sure, new. Hrd again 7/14 at 2130 w/poor-fair sigs. (JAD)

CJFP PQ RIVIER du LOUP; Same remarks as CHVD. Way atop, S-9 and a little fading on a blah morning (4/14) to 0220 s/off. Just jingles between mx, EE and FF records. Noted once again w/exc sigs to 0126 s/off 5/11, taped. What is FCC going to do about 10 kw nighttime operation on these freqs by Canadians??? (RLF)[what can they do???? mrm]

WDOT VT BURLINGTON; 5/27 atop briefly w/Great Amer Mx Machine promo 0355, then into s/off. (RLF)

WALE MA FALL RIVER; Occasionally hrd at 0011 s/off MM's, says call as a word, "mail" (RLF)

WHMP MA NORTHAMPTON; Occasionally at 0014 s/off weekdays, w/AM-FM, has local nx then.(RLF)

WLLH MA LOWELL; Still dominant here on AN show many nights, not MMs, uptempo jingles. (RLF)

WILI CT WILLIAMANTIC; 6/13 s/off 0200 after ABC nx, poor signal. Not known if always on this late. (RLF)

1420 WOC IA DAVENPORT; Noted 7/1 at 0110 w/religious programing, an unID TTer w/variable tones also here. New. (JAD)

1450 WCVS IL SPRINGFIELD; Hrd on 7/6 at 0540 w/rock mx and contest, ID as "The Music Capitol of Springfield." New. (JAD)

\*W??R\* ?? unID; Hrd Tting 6/24 0112-0116, ID's given every minute (feel like tearing my hair out....hi) as follows: "This is W--R on the air for freq measurement tests. This is W--R." Help someone.(EDF)

WSNO VT BARRE; 6/20 finally clear at 0015 regular s/off. Occasionally hrd, always at 0015. Has SSB. Heavy WWSG QRM.(RLF)

WTSA VT BRATTLEBORO; Often noted at 2358 with "Deborah" reading local nx, UPI nx at 0000 and off at 0004. Gets out quite well for me. Cal ancr is hrd many times evenings. (RLF)

WWSG NY GLENS FALLS; Is AN with tele-talk, phone # 793-7300 and 793-4445 mentioned very often. Dominant pest here ANs. Plays mx when nobody is calling in. (RLF)

CFJR ON BROCKVILLE; If indeed was phone-in, not now, is AN w/nx at top of hour to :03, so hrd 5/16, and uses CBS news type sounders, gives plugs for temps along the seaway, and "CFJR Newsradio". Occasionally hrd. (RLF)

WKRI RI WEST WARWICK; Noted atop WTSA 5/7 at 2200 and 2300 for ID, logged occasionally at 2359 s/off, no anthem. Was good 5/14 then. (RLF)

WMAS MA SPRINGFIELD; More consistantly hrd at 2359 s/off thru WTSA, "You're in 14-50 country" and often in quite well evenings. (RLF)

CHEP PQ GRANBY; 5/15 long intricate jingle in FF, atop freq at 0130. Seems sometimes to be on to 0104 but not regular s/off time??? (RLF)

WKXL NH CONCORD; 6/8 hrd w/AM-FM calls 0135, Don't know if always on this late. (RLF)

1460 WPRV VA MANASSAS; Noted on 7/2 at 2105 w/nx, wx, and rock mx, fair to good. New. (JAD)

WRAD VA RADFORD; Also hrd on 7/2 at 2114, w/wx and rock mx, poor. New. (JAD)

1480 WSAR MA FALL RIVER; In mess 7/8 w/WHOM off, 0021 w/"American Top 40". 0100 ID. (EDF)

WDAS PA PHILADELPHIA; ID 0030 7/8 in mess, strong at times w/rock mx. (EDF)

WLEE VA RICHMOND; ID 0036 7/8, on top w/rock mx w/country accent. Powerful even in frequent fades. When is WBBL scheduled on???? (EDF)

3

1490 \*????\* ?? unID; TFinw 0210 7/6. prob from S-9 of here, not much help. Anyone?? (EDF)

WMRC MA MILFORD; 6/23 atop WGCH momentarily at 2054 w/jingles, mention of Milford. Played requests for listeners in Haverhill (no, not really...hi) (RLF)

WIKE VT NEWPORT; 6/8 at 0128 after Red Sox late BB w/wrapup, into s/off 0129 and SSB. Thru WPCR RS and WTVL s/off w/LP, who also had same game. Fair. (RLF)

CKEN NS KENTVILLE; Hrd again, 0012 4/23, poor but definite, taped. Believe off at 2312 now, in summer months, but ought to be 0012 or 0014 again, after October. (RLF)

???? ?? unID; Who on 1490 has AN show Sat. nights/Sun AM "Jim Road Night Flight" from midnight to 8AM. Plays Rock mx. Help! (RLF)

WTVL ME WATERVILLE; Normal s/off 0011 w/LP after local nx. Has stayed on late w/Red Sox BB when night coast games run long. Had ET 0015 3/28, was on 6/18 until 0159. (RLF)

WVEC VA HAMPTON; Is AN w/schmalz mx, "WVEC and WVHR-FM" (RLF)

WEMJ NH LACONIA; Hrd often at 0007 s/off to return at 0528 LT, off w/brassy fanfare. Had Salute to Radio AN 5/31. Often on late w/Red Sox BB mixing w/WTVL. On til 0126 6/8. Sometimes AN. (RLF)

WTXL MA W. SPRINGFIELD; Indeed, 6/7 logged at 0100 s/off, "This is Radio Station 15-X, also known as station WTXL" and uses 15-X as call, except legal IDs. Mentions 1kw DA-D N-S antenna. Underground mx, off after Ac nx, w/Jimi Hendrix version of SSB. Farout! (RLF)

1530 WASC SC SPARTANBURG; 0627-30 7/9 fair o/u/ WCKY w/c&w and into nx. (SF)

1550 \*WKBA\* VA VINTON; 6/2 ET 0158 acknowledging call from Gordon Nelson in MA. Paped. Who is that guy?? (RLF)

1560 \*KQYX\* MO JOPLIN; Fair/good between static crashes w/ET-mx and ID 0218 7/20. (SF)

1570 \*WBUX\* PA DOYLESTOWN; Fair and fady w/XERF w/TT and long ID 0020 6/24. (SF)

CFOR ON ORILLIA; Hrd 7/10 at 0144 w/rock mx, mixing w/WTOW. New. (JAD)

GKLM PQ MONTREAL; Noted 6/30 at 0045 in FF, mixing w/XERF and CHLO. New. (JAD)

\*WTOW\* MD TOWSON; On ETing 7/10 at 0144, ID'd often, mixing w/CFOR. Used variable TT and pop mx. New. (JAD)

1580 WCLS GA COLUMBUS; In well 6/27 0143 w/"Rock the Boat" ID. New, I was surprised to get it. Aurora, obviously. Only 1kw and no QRM. (EDF)

1590 WETT MD OCEAN CITY; ID 2059 6/24 and into Mutual nx. Unintentional tip from PRM helped. Got w/severe WQQW QRM. New. (EDF)

\*\*\*\*\*

PER THE LIST THIS MONTH:

1310 WDOC KY PRESTONSBURG; Hrd on 7/6 at 0556, w/fair sigs and tone. S/on to RS right after check. This is now 1 hour later than per the list, 1st Sat. (JAD)

1400 WHUB TN COOKVILLE; Noted 7/10 at 0158, w/ID near the end of this R/C, poor, 2nd Wed. (JAD)

1440 WHIS WV BLUEFIELD; 7/6 at 0532 w/alternating tones of 400 & 800 hz, ID's often, s/on to RS after this check...1st Sat. (JAD)

1480 WCFR VT SPRINGFIELD; 6/26 r/c TT 0003 t/in-0007 AM & FM ID & off.. TT fair at best, w/WTHI/WRDW, but well modulated ID made it thru despite poor signal level. State #44. (SF)

\*\*\*\*\*  
 BROUGHT TO YOU BY:  
 (SF)-Stephen Francis/1620 Lodge St./Alcoa, TN 37701  
 (JAD)-Jim DeYoung/1514 Greenbrier Dr./Huntington, WV 25704  
 (EDF)-Eric Fader/23-35 Bell Blvd./Bayside, NY 11360  
 (RLF)-Bob Foxworth/GPO Box 2111/New York, NY 10001  
 \*\*\*\*\*

And another nice column this month, despite what has to be the worst spring/summer noise-wise in a long time. PLEASE NOTE again the PO box number. Please send all

reports to the box. I will be checking it Wed., and Sat., since I plan to go back to a Saturday deadline when we go weekly again, as my work sked doesn't permit a weekday deadline. Also, regarding R/C's, please list them separately from the other material in your reports. This makes it alot easier all around. Let's support ALL the columns...DXR/DXF/ and the great DXW. Until next month 73 to all. DEADLINES: 9/10; 9/24; 10/5

④

WTTI ETs (JDF) (another r/c running late, must not like DXers, hi--JCK)

- 1540 KBUY TX Fort Worth, 5/27 0704-12, fair, C&W Mx w/lots of ads (JEB)
- 1550 WAAY AL Huntsville, not hrd 0313 7/1, channel clear, 4QD seekers note Lake Charles, s/off (JCK) w/SSB 0101 6/17, all alone, IDs sound like KLEU (JDF)
- 1580 KLOU LA

**central dx roundup**

Editor: John C. Keleher,  
Box 7543, Fairfield Stn.  
Fort Wayne, IN 46807

**THE HAT TIPPED THIS WEEK TO:**

- JEB - JOHN BRADLEY, 2617 Holiday Lane, Colorado Springs, CO 80909 (Realistic Astronaut-8)
- JDF - JAY FLORIAN, 300 East Main Street, Round Lake, IL 60073 (Panasonic RF-5000a, 70' LW)
- JCK - Ye Editor (XCR-30, loopstick, preamp)

- 590 WOW NE Omaha, 5/27 0301-14, poor w/fade, R&R Mx and IDs (JEB)
- 600 WBDN MI Escanaba, fair way/u WMT w/C&W Mx, 2052 6/17 (JDF)
- 680 KNBR CA San Francisco, 6/17 0315-45, good, easy R&R Mx w/ads and PSAs (JEB)
- 920 KELP TX El Paso, 6/17 0520-35, poor, R&R Mx, ID and Wx (JEB)
- 1070\*\*WIBC\*\*IN\*\*Indianapolis, noted off, testing w/varying low pitch tones, 0145 7/8 (JCK)
- WINA VA Charlottesville, w/teletalk 7/8, ID 0156, WIBC nulled (JCK)
- 1270 KFJZ TX Fort Worth, 5/27 0350-0430, fair, R&R Mx, local Nx on hour (JEB)
- 1310 WIFE IN Indianapolis, 5/27 0442, poor, Nx w/ID "WIFE Nx - in touch," promo for cash for top news tip of year (JEB)
- 1320 KXYZ TX Houston, 5/27 0500-15, poor o/KCPX, easy Mx w/ID (JEB)
- KCPX UT Salt Lake City, 5/27 0510-20, poor u/KXYZ then over, R&R (JEB)
- 1360 KRUX AZ Glendale, 6/17 0437-43, poor w/R&R Mx and heavy QRM (JEB)
- 1370 KGNO KS Dodge City, 5/27 0748-0800, good, C&W Mx w/ads (JEB)
- KVWO WY Cheyenne, 5/27 0800-10, fair, s/on, C&W Mx, ID w/"Fun Country," local ads, o/KGNO (JEB)
- 1420 KTOE MN Mankato, 6/17 0410-25, good, R&R Mx w/PSA and TCs (JEB)
- 1440 WAJR WV Morgantown, s/off 0158 6/29, no SSB hrd (JCK)
- 1450\*\*KXXL\*\*MT\*\*Bozeman, 6/17 0352-0401, fair on f/c w/heavy QRM (JEB) (list says check ends 0345, they're running late-JCK)
- 1470 WMBD IL Peoria, 5/27 0559, poor, AM/FM s/on, heavy QRM, CBS Nx on hour (JEB)
- 1480 WTHI IN Terre Haute, good 6/17 0110-14, o/QRM w/C&W Mx and jingle (JDF)
- KLMS NE Lincoln, 5/27 0601-20, fair, s/on w/ID "Lincoln's Mx Station," "Be Still and Know" on hour, R&R Mx (JEB)
- 1500\*\*UnID\*\*??\*\*6/17 0445-56, good, cycle tone sounded like f/c but no ID (JEB)
- 1510 WLAC TN Nashville, 6/17 0505, very poor u/KGA, surfaced for ID and Wx, C&W Mx (JEB)
- KGA WA Spokane, 6/17 0500-05, fair, C&W Mx and Nx, ID "Big K Radio"
- 1530\*\*WTTI\*\*GA\*\*Dalton, good w/IDs as (JEB) "WTTI-Dalton-Testing" at 0148 6/17 w/WCKY, KWLA tests (JDF)
- KNBI KS Norton, good 0710-35 w/C&W Mx w/Requests, promos for "Country Corner" show every morning and "American Country Countdown" Sat. morning (JEB)
- \*\*KWLA\*\*LA\*\*Many, poor to fair on f/c w/IDs every 3 minutes, u/WCKY and

PER THE LIST (same time too!):

- 1st Mon.: KNOX-1310-ND (JCK)
- 4th Mon.: KTHS-1480-AR (JEB)

A big welcome to new reporter John Bradley, who really made this week's column possible. Yours truly decided he was going to the convention, but didn't realize till the last minute that his plans made it impossible to do the column when he came back and still meet the deadline. To those who may have reported so as to get in as much as possible and still meet the normal deadline, mucho apologies, and a double hat tip in the September issue. O. K. Keleher, but don't let it happen again or I won't report anymore. I won't, that's for sure. Well, the first leg of my journey to the Great Northwest is tomorrow so must get packing. 73-Charley

**western dx roundup**

Editor: Jeff Braster,  
10341 Shirley Ave.,  
Northridge, CA 91324

Tests and changes:

- 630\*\*KOH\*\*NV\*\*Reno on announced ET 7/15 0310 w/TT. (JAB-CA)
- 690 XETRA BCa Tijuana now off nitely!!! Sked is now 0900-0300, but s/off and s/on can varie an hour or so. (JAB-CA)
- \*\*KHEY\*\*TX\*\*El Paso in good on r/c w/TT 7/22 0208-0212 w/slight CBU and Cuban QRM. (JAB-CA)
- 750\*\*KXL\*\*OR\*\*Portland on ET 7/11 0340 w/c1 mx.(JAB)
- 910 KNEW CA Oakland now c/w from the talk/oldies type of programs they had. They very sic sounding ID's. (JAB-CA)
- 940\*\*KGRL\*\*OR\*\*Bend in fair on r/c w/TT and ID's about every minute. (JAB-CA)
- 980\*\*KFWJ\*\*AZ\*\*Lake Havasu City in fair w/ET u/local KFWB 7/4 0320-0330. They used TT. (JAB-CA)
- 1210\*\*KGYN\*\*OK\*\*Guymon on apparent ET 0220 7/19.(JAB)
- 1230\*\*KFPW\*\*AR\*\*Fort Smith 6/16 0115-0129. R/c-missed opening announcement if there was one- steady TT to ID at 0123. Another at 0129. Faint but clear, w/the usual unID's. Not bad for June. (RJS-AZ)
- \*\*KATO\*\*AZ\*\*Safford in poor on r/c 7/9 0330 u/local KGfJ and the other mess. (JAB)
- 1260 KGIL CA San Fernando now off AN-6!!! Sked is now 0815-0345 daily. 2nd ANer here to quit. (JAB-CA)
- \*\*KWEI\*\*ID\*\*Weiser on ET w/TT and EL mx 7/11 0352-0430+. Quite good o/KYA w/KGIL off. (JAB-CA)
- 1330\*\*KGAK\*\*NM\*\*Gallup, good on r/c w/TT o/local KFAC 7/19 0200-0215. ID's every 5 minutes. (JAB-CA)
- \*\*KOVE\*\*WY\*\*Lander 6/13 0204-0207. 1000 cycle tone on r/c followed by "this is KOVE in Lander, WY conducting a f/c w/(name of monitor, unreadable) in Denver, CO", fair to good with KFH. Another ID at 0207. (RJS-AZ)
- 1350\*\*KKAM\*\*CO\*\*Pueblo on "DX Test" 7/15 0330 and 7/22 0330. Played Deodato over and over so it would sound to DXers like a test. Asking for reception reports and phone calls. IRCAer Blake Lawrence, who works there, was running it. (JAB-CA)
- 1380\*\*KKZZ\*\*CA\*\*Lancaster on ET 0300-0340 with TT 7/8. (JAB-CA)

AUGUST 3, 1974

1400 KREO CA Indio logged 0300-0330 7/9 o/KVOY r/c, KBMI and KSLY w/MoP mx. News from 0300-0305. A change in sked in NRC log. (JAB-CA)

\*\*KVOY\*\*AZ\*\*Yuma in fair on r/c o/mess with TT 0300-0315 7/9. (JAB-CA)

1450\*\*KAWT\*\*AZ\*\*Douglas, r/c hrd 0315 7/8 o/mess w/TT. (JAB-CA)

\*\*KVSL\*\*AZ\*\*Show Low, r/c o/ mess 7/8 0325 w/ EL music. (JAB-CA)

\*\*KDXU\*\*UT\*\*Saint George, r/c hrd 7/8 0215 o/ mess w/TT. (JAB-CA)

1490\*\*KCUZ\*\*AZ\*\*Clifton, r/c 7/8 0320 good w/TT o/mess. (JAB-CA)

\*\*KDBM\*\*MT\*\*Dillon, hrd r/c o/mess w/TT 7/8 0312. Fair. (JAB-CA)

1500\*\*KROQ\*\*CA\*\*Burbank on ET w/TT 0400 7/15. Then off totally later on. (JAB-CA)

1600\*\*KUBA\*\*CA\*\*Yuba City on announced ET 0400 o/ KWOW on 5kw. Used TT and EL music on a probable Pop. (JAB-CA)

\*\*\*\*\*  
and now the other stuff.....

610 KFRC CA San Francisco hrd 7/1 dominating o/ everything. 0414 w/PS programs. ID at :15 then another PS pgm at 0416. (KDS-CA)

690 KHEY TX El Paso hrd fair w/c/w music 0440-0510 7/20."KHEY El Paso Country" ID's. (JAB-CA)

KEOS AZ Flagstaff, Wolfman Jack show w/rr mx and U.S. Airforce plus 0255. S/off 0300 7/22. Xlnt o/CBU, and Cuban w/ XETRA off. (JAB-CA)

CBU BC Vancouver s/off 0400 7/20 gud. (JAR)

730 CKDM MAN Dauphin probably the 2nd stn here w/rr mx 7/17 0200. (JAB-CA)

770 KOB NM Albuquerque off 0250 7/17. Weak WABC there until KOB aux. on 0258. Sounded like a 10kw rig. (JAR-CA)

920 KGAL OR Lebanon tent. the one w/s/off 0307 7/8. Men't 1,000 watts fultime. This is most likely. (JAB-CA)

KELP TX El Paso, hrd 6/17 at 0602 w/ announcement or jingle and top 40 mx. And at 0605 and more music. Fair signal. (KDS-CA)

980 KVLV NV Fallon logged 7/4 w/country music u/ local KFWB 2254-2315 s/off. Gud.(JAR)

1030 KCTA TX Corpus Christi hrd 7/8 good w/ad at 0632 and into mx. Ad gave P.O. Box Number. Format was c/w. (KDS-CA)

1050 KOFY CA San Mateo hrd w/SS mx 2215 up to 2230 EE s/off. Fair o/XED. (JAB)

1230 KGEE CA Bakersfield 7/1 0324-0400. RR mx w/spots for Sage Department Stores. Good o/KRIZ. (JAB-CA)

KINO AZ Winslow 6/8 0858-0900. Good clear s/on with no SSB hrd. Two more anthems hrd u/them as they signed on. No ID's on the later. (RJS-AZ)

KOTS NM Deming 5/31 0759-0800. SSB with vocal by woman & s/on. Slogan 'your community minded station, KOTS in Deming, NM'. (RJS-AZ)

KYVA NM Gallup 5/31 0746-0847. Navajo talk for an hour, with KRIZ, KALG + KOTS. Chant in Navajo at 0819. Finally a good "KYVA" in EE in midst of Navajo at 0847. (RJS-AZ)

1240 KCYN AZ Williams 6/7 0902-0904. Abbreviated America the Beautiful, followed by "KCYN Williams, AZ now beginning another day of broadcasting to the people of Coconino County". Fairly good & clearly readable w/KDGO and unID XE. (RJS-AZ)

1260 KYA CA San Francisco 7/8 0535, xlnt w/Radio South Africa's "South African Magazine" pgm till 0539. ID as KYA 1260 and men't FM. (KDS-CA)

KTEE ID Idaho Falls s/on 0900 o/u KVSF. Had SSB 7/11. KGIL OC at 0803.(JAB)

1260 KWHK KS Hutchinson 6/28 0657-0700. SSB + s/on at 0659. Good and clear despite KYA and KGBX on best morning in several weeks. (RJS-AZ)

KVSF NM Santa Fe 7/11. RR mx 0755-0800, then UPI news o/uKTEE, KGIL OC at 0803. 1st time heard. (JAB-CA)

KWYR SD Winner 6/28 0700-0702. Long wanted heard at s/on following SSB. Mention of "KWYR-FM." Good. Had tuned for

5

1270 KFJZ TX them at 0645 on listed r/c, but sure they were "no show" then. (RJS-A7) Fort Worth hrd v. gud 7/8 when band went wide open, at 0422 with ID and more music at 0426. ID "KFJZ Forth Worth" and into mx at 0430.(KDS)

1310 KLIX ID Twin Falls s/off fair u/KR17, YDIA 0210 7/8. (JAB-CA)

1320 KCPX UT Salt Lake City hrd fair on 7/P at 0437 w/mx. 0439 jingle "KCPX" then wx and into mx. (KDS-CA)

1340 KDOL CA Mojave hrd w/Dodger baseball 7/10 2145-2205. Had spots for Olympia Beer, Farmer John, Union Oil and Union Bank. (JAB-CA)

1350 KABQ NM Albuquerque 6/17 0825-0826. Two good calls in SS between records + "R. Mexicana" slogan (this is all-SS stn). Good with another unID SS there also. (RJS-AZ)

1370 WSPD OH Toledo weak 0410-0417 7/15 w/country music on the Ron Smith show. (JAB-CA)

1390 KHOB NM Hobbs 6/17 0800-0801. S/or w/c SSB. Fair to good thru KENN. S/on by KGER moments later buried them. (RJS-CA)

1430 KAMP CA El Centro 6/29 0858-0901. S/on announcement preceded SSB. Only fair but readable with unID ORM. (RJS-AZ)

\*\*KLO\*\*UT\*\*Ogden on announced ET 7/21 0320 w/rr mx and 7/22 w/TT. Sorry, out of order. (JAB-CA)

1450 KTIP CA Porterville probably the one with Angels baseball 7/10 2150. (JAB-CA)

KEST CA San Francisco 6/24 0330. Good ID following Rev. Ike. In and out during previous 15 mins w/KEYY. (RJS)

KOBE NM Las Cruces 6/18 0700-0701. S/on included two full ID's. No SSB hrd. Good w/KRZY + others. (RJS-AZ)

1450 KONE NV Reno, 250 watter hrd o/others by a long run on 7/8 at 0454 w/c&w, 0456 AN, Dj's name was Chet I think, then into PSA for Distrphy then jingle "K-one Golden" w/wx after. C&W until nx at 0500. (KDS-CA)

1470 KDHN TX Dimmitt, hrd 6/17 at 0723 very good with jingle then c/w. ID "Big Country KDHN Radio" at 0728 w/more c/w. Ranch pgm at 0730. I think they only run 500 watts. (KDS-CA)

1550 CBE ONT Windsor s/on 7/15 fair w/KOKA 0500.

1590 KCIN CA Victorville 6/7 2248-2249 (JAB) good call at 2249 followed by SID "KCIN Victorville 1590" between records. Fair w/XEHC + unID's.(RJS)

This month's receiver tuners are:

(KDS) Kirk Schneider- 781 Cedarwood Drive- La Habra, CA 90631 (DX 150-B w/75' "V" LW)

(RJS) R.J. Small- P.O. Box 4548- Tucson, AZ 85717 (SPR-4 w/Sanserino loop)

(JAB) your ead-i-tor

Cx has really been good lately. Hope more people are DXing than this column shows. Veries: v/o KFJZ, CHWK, KIOE, KIVM, v/l KREO, WFDR, v/r KFWJ. KIOE, KIVM and KFJZ are the results of a follow-up. WFDR sent the "perfect" verie letter telling everything possible about my reception. Oh well, will be in Riverside this weekend with trips to KPRO, KBON, KKAR, KREL planned to get them to verie my reports. Till next month- good DX and 73's.

**eastern dx forum**  
Editor: Bruce R. Heimburger

817 Rawlins St. - Fort Huron, MI 48060

Eric Fader - 23-35 Bell Blvd - Bayside, NY 11360  
Intro time, folks, my first. I'm 15 at last count, will be a junior in HS in Sept. Been DXing since 71, but not seriously til 72. I've tried SWL (too many lang's & sked changes), TV-DX (not enuf results), & FM-DX (bleah w/my rx's antenna), but ECB is best and I'd rather fight than switch. Aside from GYs, by best freq. is

1570 w/10 stns, most hrd by SSS, my favorite technique. Revised totals 483/33/5/13, incl. some from FL area. Have to set up a verie file. For all you uninformed people, Bayside sits in NE Queens, NYC, and has more hi-risers & apts. than any other "residential suburb" anywhere. Nice place. Just counted my "images logged" & came up w/45, about 1015 real pains. Anyone wanting a sample of a genuine NYC image just send a cassette. For you more normal people, I answer letters, too, and will take any unwanted SCs off your hands, not to mention stamps, coins, post cards, records, pre-recorded cassettes, etc.

Richard K. Shaftan - "Sea Robin" - Jennings Bay Southampton, Bermuda

Hi group! Loads DX of late. First veries. WGNG v/l+3 CMS, WGSM v/l, HJKC v/q w/25 anniv. of Caracol sticker on verie, WHOA v/l, WGBI v/l +wish for a bumper DX season, WBBF v/l+CM, WWJ v/l, KYW v/q, v/s famous Phyllis, WDEL v/l on paper similar to WZIX (of Ed Zug fame), KSL v/q, WFBG v/l, WWBZ v/l, WAWZ v/l, Bronx DXer Marc Fisher said that I am now on the mailing list for all sorts of stuff - sent AM & FM CMS, WEST v/l+CM, WMPT v/l, WVOX v/memo+CM, WGAL v/l+CM+sked, WBTA v/memo+CM, CKOT v/l+CM+sked, WTHE v/l, WPTS v/l, RDDR I 1570 v/q said xmtr was in Bernburg, WSUF v/l+CM, WEEZ v/l+CM+sked, WVNA v/l for first AL. Had a meeting here 6/30 & met Charlie Berman fir first time. At ANARC next weekend about 30-40 DXers showed up, including Bob Foxworth, Tom Sundstrom, All Brooks, & Paul Mount. I was in no cx to DX after celebrating ANARC too mucho, though I managed to hear 3 LAs in 1 hour SM before room mate Paul Mount walked out. Other high points of ANARC were Sundstrom's speech on RFA, Dr. David Weisel on propagation, and others. Note August address above. Totals 366/135, 22/14, 37d/25d, 6/6.

Pete Kemp - 13-8 Fleetwood Ave. Bethel, CN 06801

After one year of membership I believe that an introduction is certainly in order. I am 26, single, and chairman of the Bethel Middle School industrial arts dept. I've been into the communications field for some 15+ years, having grown up w/a radio in my ear, later working my way thru college in various capacities w/a number of radio & instructional TV stns. My pet project, during the past 2 yrs, at school has been implementing a course in BC Communications. This class has been very busy exploring such areas as Ham, CB, TV, AM, FM, SW & Public Service operations. Some projects carried out during last year included the recording of SS & FF language stns for translation by the foreign language dept. & taping weather info from the Nat'l Weather Service for use in a science mini-course. Equipment at the school includes a DX-150, tape recorders, TV sets an SM-2, and a beam. The class meets 5 days a week for 10 weeks, is an elective, non-graded & open to both boys and girls as an extension of the IA program. We have held voluntary listening sessions early in the morning, during vacations & weekends, encouraging many parents to participate. At home I have a Halli S-85 rx w/an SM-2 antenna. I would be very interested in hearing from anyone w/ideas for using radio in the classroom.

Dave Fischer - Hickory, NC

It's been quite some time-about 5 yrs-since I've contributed regularly to these columns. This is not a pledge to do so in the future, but rather the statement of a desire to support the bulletin more in the up-coming DX seasons. I'm sure I must be similar to others who also spend DX time but don't input to the bulletins on a regular basis. My interests in BCB are technical and considerable time is spent in such work with the rx in the background. One observation I've made is the decreasing frequency of stn IDs and the almost drastic reduction in proper identifications at the proper times. This factor doesn't help BCB DXing - new chaps wait too long for IDs & get bored and we "old timers" are sound asleep by the time it gets broadcast. The new FCC ID regulation is convenient to the broadcaster, but not so the DXer. Such situations make the set-up of a DX Fishing operation very attractive - if not necessary. DX Fishing consists of recording DX on tape and then playing it back at a later time - not nothing's gained unless speed of playback is

increased - say doubled. So the DXer must get proficient at DD DXing as well - Donald Duck audio - but your ability to pick out such DX and IDs in such a fast playback will surprise you - many are very successful!! More to come. (Thanks for the rpt Ghoti - you have an intriguing idea-Brh)

Jim DeYoung - 1514 Greenbrier Dr. Huntington, WV 25704

Howdy all! DX here has been fair. Has CMJN, the Cuban on 780 changed networks? I hrd a R. Liberation ID on 7/9 at2320, but it should be R. Rebelde, per RFS Cuban list. I just sent for a NRC Domestic log book, its about time, hi. I finally figured out my skyline blockage angles, as described in FJP's special feature of 12/30/72, "How I Learned to Live with My Mountains." You can really see why certain areas or stns are blocked out! All I used was a ruler, protractor, topographic map, a tangent table, plus the RFS-BRE readouts helped save some time w/xmtr skip angles. My totals hrd are 494, 35d, 3, 10; only 6 more and I'll have 500 hrd! Let's have a lot of new rpters plus the regular ones contributing to the columns next time. 73s from WV.

Dave Faulkner - 1430 Pine Grove Ave. Fort Huron, MI 48060

Hi gang! Well, it's been a while since I've had anything in DXM & I've renewed my membership, so I guess it's time for a re-intro. I'm 22 & a graduate of Michigan State Univ., w/a B.A. in history. In the fall I'll begin graduate study at Gordon-Conwell Seminary in S. Hamilton, MA. I've been DXing off and on since 1965, but really seriously since 69. I joined ICA in 1970. For just over a year, 1/71 thru 3/72 I edited the EDXR, but it got to be too large for me (I typed 10 stencils for an issue in Jan. 72) so I gave it up. Totals look something like this:1298/48/8. Very few veries. Only recent DX was 7/22 when I hrd 1 new stn, WYFR-970 w/an ET. Hopefully things will be better in Aug. That's usually a good month for me. Rx is Lafayette HE-80, purchased from a ham friend of mine for \$40. Antenna is Brh's box loop w/Sanserino pre-amp. When it works right (that is w/a fresh battery-Brh) reception is xlnt. 73s.

~~~~~Editor: John Zondlo  
**central dx forum** 6617 Maryland  
~~~~~Hammond, IN 46323

John Bradley-2617 Holiday Lane-Colorado Springs, CO 80909

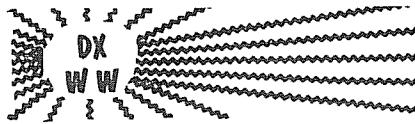
This is my first time in CDXF, so here goes with an introduction. I'm 18 years old, starting community college in the fall studying broadcasting, and presently working for a beer distributor! My hobbies are radio, sports and button collecting (not shirt or coat buttons!). I've been seriously DXing since February of this year. My rx is a Realistic Astronaut 8 portable and I sometimes use our 12 year old Zenith console stereo. During the summer, half my time is spent up at our cabin near Leadville, CO, which is a great place for DX. If anyone needs any information about anything in Colorado, feel free to write. If anyone out there has TV Guides's prior to 1970 from any city or any Radio Mirror magazines prior to 1955, please write me. I would be willing to pay \$\$ for them (not much tho!). Could someone please tell me what a DX test at a station is and how to get about arranging one? That's my contribution to DXM, how 'bout everyone else pitchin' in??? 73 in 74. (Welcome to CDXF, John. Contribute often. As for info about DX tests, write to Courtesy Programs Committee chairman Randy Minnehan.)

David Peterson-800 Humboldt Ave.-Winnetka, IL 60093

Well, I've finally been convinced that summer actually is a good time to DX. Conditions on 7/7 & 8 were truly amazing. The aurora was so strong it could be seen from even this far south. And it really affected DX, too, producing occurrences like XEQ bombing in during early evening, SS heard under WLS, KXXO-1300 overriding WTAQ, and the complete obliteration of WCCO. I stayed up all night



AUGUST 3, 1974



Ron Schatz § Box 592814 AMF § Miami, FL 33159  
AC305-945-4915 § Deadlines: 8/28, 9/11, (9/25?)..  
All times are UTC/GMT/Z § Advance date past 2400.

The summer doldrums have hit hard, and I have little material this month. The local static is the worst I have experienced in years, and it seems I aligned my R-388 for naught. § I hope everyone has/had a great time at the IRCA Seattle convention. While that one is out for me, I expect to be in Toledo for the NRC convention 2 weeks thereafter. Many IRCA'ns will be there - perhaps enough for a quorum, hi. § Adelante:

Latin-Log Project Revived!

That long-overdue attempt to create a new published log of Latin-American CBE stations, similar to NRC's fine effort of 3 years past, has become a reality at last. Both IRCA & NRC will be participating, and computerisation of the data will save a lot of work and simplify yearly revised editions. Volunteers are needed in two major areas: 1) For providing extremely accurate and up-to-date data on LA stations, 2) for doing a share of transferring said data to "IBM cards" using an IBM-029 card punch (some 3000 cards in all). Volunteers will receive free logs, credit, fame and fortune! If interested, please contact RFS at DXWW or at the Toledo convention. An equal-opportunity recruiter, hi.

Beware - Two Melodías

- 730 "Radio Melodía", Bogotá, COLOMBIA.
- 735 "Radio Melodía", Quito, ECUADOR.

Please be aware of the difference so as not to confuse them.

Model DX-Roundup Reports

The following created samples represent the bare minimum info that will qualify a DX-Roundup report for inclusion in DXWW. Those couple of reporters who still ignore the rules should take heed:

- 600 COLOMBIA, Barranquilla heard 4/1<sup>a</sup> 0015-0200<sup>b</sup> w/good signals o/Cuban<sup>c</sup>. ID heard as "Radio Libertad"<sup>d</sup> at 0030<sup>e</sup> (Reporter)
- 1586 GERMANY-W, Langenberg assumed pgr GG lgg<sup>f</sup> 4/1<sup>a</sup> 0400-30<sup>b</sup>. Strong w/some fading<sup>c</sup> (Reporter)
- 760<sup>t</sup> COLOMBIA, Barranquilla tent. the one heard 4/1<sup>a</sup> 0230-0300<sup>b</sup> w/cumbias: Weak u/WJP<sup>c</sup> (Reporter)

Note the following minimum data in the models:

- a) Date heard - advanced a day when converting to UTC/GMT past 2400.
- b) Inclusive times of reception - in UTC.
- c) Relative signal strength & QRM - to give others an idea of what to expect.
- d) ID actually heard on the air (not just calls out of a printed log.
- e) Time (in UTC) that the ID was heard.
- f) Evidence to support a highly acceptable assumption or a tentative.

I wish to thank the great majority of the DXWW "family" of reporters for its willing and insistent cooperation with the above, which has given DXWW a good reputation among DX'ers throughout the world. The above is not for those loyal reporters, but for the few who spell "team" with an "I".

Also, please don't over-abbreviate. I don't go for it, and FJP even less so. We'd rather be able to read a report than try to save space, so use only those abbreviations which commonly appear in DXWW.

One more: This editor reserves the right to exclude from this column any report which, for ANY reason, tends to be detrimental to the reliability of DXWW or IRCA as a DX club or to the reputation of the DX'er who contributes the report. Tnx.

DXWW Roundup reporters this month:

- Jim ALBRECHT; Milwaukee, WI (Realistic AM-FM port.)
- Richard CLARK; Lighthouse Point, FL (Aiwa 4-band)
- John CLEMENTS; No. Hollywood, CA (SPR-4, Sans. loop)

7

- Don ERICKSON; DX'ing w/CLEMENTS; (SPR-4, 3k' bev.)
- Charley KELEHER; Fort Wayne, IN (XCR-30, loopstick)
- Albert LOBEL; El Cajón, CA (DX-150A, Sans. loop)
- Richard SHAFMAN; New York, NY (Ameco R-5, SM-2)
- C.M. STANBURY II; Crystal Beach, Ont (HQ-200)
- Charles A. TAYLOR; Indianapolis, IN

Report from Paradise

Jim Albrecht was in Fr. Polynesia (Tahiti) during most of June. Here is what he heard from the île de Huahine:

- 560 FIJI, Suva, VRH 6/12 fair-good w/local mx & talk in Fijian. Mentions of Radio Fiji 1 & 2 Suva 0525-35.
- 600 CUBA, San Germán, CMKV 6/12 fair briefly w/LV de Cuba ID 0700. KOGC here most of time.
- 710 FIJI, Suva 6/12 YL in EE mentioning talk pgm. Local spot followed by Radio Fiji I ID 0543.
- Break: I was down in the So. Pacific in '69. "Fiji" is pronounced "fee-DGEE" by the natives (last syllable stressed). "Samoa" is "SAH-moa" - on the first syllable. Their "talofa" is equivalent to the Hawaiian "aloha". (RFS)
- 760 NEW ZEALAND, Auckland, 1YA 6/13 fair-good o/u KGU w/non-stop instr. MoR mx. Anmts at 0630, ID wiped out by KGU ballgame 0625-35.
- 780 NEW ZEALAND, Dunedin, 4YA 6/13 fair // 1YA 0638.
- 800 NED. ANTILLEN, Bonaire, PJB 6/13 good w/TWR ID followed by rel pgm 0300.
- 980 NEW ZEALAND, Wellington, 2ZB 6/12 fair w/Radio 2ZB ID 0630, oldies & R&R.
- 1000 NEW ZEALAND, Tauranga, 1ZD 6/11 good w/AN request show, US pops, frequent Radio Tauranga ID's 0640+. In good several nights.

Break: "Tauranga" is pronounced something like "TOWEL-rung-ga". I was there - nice place. (RFS)

- 1130 ÉTATS-UNIS, Shreveport, LA, KWKH 6/13 fair, ID following CBS News, C&W mx 0300-05.
- .... CANADA, Vancouver, BC, CKWX 6/12 fair-good w/ weather. spot for B.C. T'phone Co., then C&W mx 0600-05
- 1170 U.S.A., Tulsa, OK, KVOO 6/12 fair w/KVOO News & ment. of Tulsa Civic Center 0325. Sports at 0330.
- 1280 NEW ZEALAND, Napier, 2ZC 6/13 very good w/ sports, elect. conservation ad & MoR mx, 2ZC ID 0535.
- 1470 FIJI, Raki-Raki 6/12 poor-fair w/spot for Fiji sport n'paper. OM w/heavy EE accent, faded rapidly. 0615.
- 1480 NEW ZEALAND, Auckland, 1XA 6/11 good w/Elton John mx & "Radio Hauraki" ID 0642+. Strongest stn heard most nights.

Also:

- 740 Fr. POLYNESIA, Tahiti, Papaété, TT heard nightly around 0130-0200 just prior to regular pgmg. Give it a try this winter! (Albrecht)

Thanks, Jim, for a very interesting report!

Trans-Pacific DX Roundup

- 620+ PILIPINAS, Quezon City, DWWX. Ref. Jerry Thatcher's report of 27 May. This is almost certainly ex-DZXL. ABS-CBN B'casting Corp was acquired Nov 73 by Barangay B'casting Corp, & stns will be reactivated u/this new ownership. DW- & DZ- are assigned in Luzon. Old DZXL & ABS-CBN were silenced by PP1081 (Declaration of Martial Law, 21 Sept 73) (Taylor)
- 830 JAPAN, Osaka, JOBB in fair w/flute & harp song followed by pips at 1200 7/9 (Clements)
- 870+ JAPAN, presumed w/JJ male talking. Didn't hang around since this was right after ID time 1203 7/9 (Clements)
- 920+ PILIPINAS, Mainila, DZRP, Ref. Jerry Thatcher's report of 5/26: This callign was assigned to this outlet (DZRP means "Rep. of the Philippines") but deleted. May have been reassigned. DZRC is assigned to Legaspi City stn on 890 kHz (Taylor)
- 1178 JAPAN, Okinawa, VOA assumed w/CC talk in very good until wiped out by 1170 slop 1223 7/9. TP's w/A index of 26??? (Clements)
- 1525+ RFSFR. Re Portzer's unusual May logging, Soviet home services do play such selections as

"Jesus Christ Superstar"; e.g., they were hrd today on SW w/"My Sweet Lord". So I would conclude, based on the rest of his description, that he did hear one of the Soviet XR's around this freq (Stanbury) & Charley Keleher submitted a lengthy treatise offering the likelihood that the Soviets regularly pirate Western tunes, leaving the original lyrics - and the resultant conotation - out (RFS for Keleher)

No TADXR material this month - & no surprise!

Pan-American DX Roundup

- 570 CUBA, Santa Clara, CMHI, sounded like news 09-43 6/17 w/ment. of Ecuador & Panamá. "Territorio Libre" ID 0946, then talk by YL. Tremendous signal, stronger than WKBN who should have been on day pattern by then (Keleher)
- 700 COSTA RICA, San José, R. Reloj in good-exc. but largely QRM'ed by thunderstorm. ID was "20 para las 10 en Radio Reloj" 0340 7/6 (Clements/Erickson) / (Clements/Erickson)
- 710 MEXICO, Guaymas, Son., XEPS fair-good thru KMPC baseball game. Good call ID 0402 7/6.
- 730 COLOMBIA, Bogota, HJCU all alone w/SS pops, R. Melodia ID 0914 6/17. Always seems to have a nice steady signal when in (Keleher)
- 750? COLOMBIA, unID giving hora colombia TC's every couple of songs but no slogan. No YNX. Poor to fair 0940-1005 7/7 (Clements/Erickson) La Voz de Antioquia, Medellín (RFS)
- 840 COLOMBIA, Santa Marta, HJBI, Ondas del Caribe in good 0918 7/9 w/TC's, call ID's, slogan, power & location (Clements)
- 880 MEXICO, Tequila, Jal., XETZ, Radio Felicidad (naturally) in fair-good w/R. Felicidad slogan & call ID's w/location 1211 7/9 (Clements)
- 890 COLOMBIA, Bogotá in fair-good w/LV de Bogota ID's 0614 7/6 (Clements/Erickson)
- ... PANAMA, David in fair w/YL. TC's, radio Libertad slogan, & many mentions of Panamá 0900 7/9 (Clements)
- 905<sup>t</sup> EL SALVADOR, San Salvador 7/12 0445 w/slow SS songs, deep-voiced OM, weak w/long fades & XEW splat. WRTH '73 gives this as YSOX, Radiopolis 1 kw (Keleher) Agreed, except that call is YSQJ, & is so announced (RFS)
- 910 MEXICO, Cd. Obregón, Son, XEHO in good w/call ID 0635 7/6 (Clements/Erickson)
- 960 MEXICO, Cd. Obregón, Son, XEIQ in good w/distinct "Radio I-Q" ID's. Also locutor said to call him in Cd. Obregón 0306 7/6 (Clements/Erickson)
- 1000 COLOMBIA, Cartagena, HJAQ fair in XEOY null 0630 7/1, mentioned Cartagena & "La Radio de Colombia" (Keleher)
- .... MEXICO, D.F., XEOY always good MM's despite QRM from XCR-30 1 MHz oscillator. Noted 0632 7/1 w/4-note whistle, then ... (should be "EH-keeece - EH - OH - ee-GRYEH-gah", but XEOI is SW // call RFS) ... followed by SS version of pop Lord's Prayer (Keleher)
- 1010 MEXICO, Cd. Obregón, Son, XEEB in good w/doble La Rancherita ID's ("Doble-E B"?? -RFS) 0515 7/6 (Clements/Erickson) / (Clements/Erickson)
- 1040 COLOMBIA, Bogotá, Radio Súper in exc. w/plenty of "en Radio Súper de Bogotá" ID's 0555 7/6
- 1080? CUBA, R. Reloj Nacional noted eves. Who? (Clark) CMBM, Isla de Pinos, w/new pgmg (RFS)
- 1180<sup>t</sup> COLOMBIA, Bucaramanga, HJGK presumed to be the one w/TC's mentioning hora colombia & "Esta es la señal de RCN" on the hour 0850-0901 7/1 (Clements/Erickson) Very likely this R. Santander (RFS)
- .... CHILE, Santiago, Radio Portales in good w/plenty of TC's. ID's as R. Diego Portales a lot. 3 church bells on hour w/"76 Trombones" march as lead in to news 1040-1105 7/9 (Clements)
- 1210 COLOMBIA, Pereira, HJFF in fair w/low-freq het & several La Voz Amiga ID's 08-12 7/6 (Clements/Erickson) Het likely from Cuban (RFS)
- 1320 MEXICO, D.F., XEAI in good w/call ID's 1109 7/6 (Clements/Erickson)
- 1380 MEXICO, Villahermosa, Tab., XEKV in good & dominant the whole time w/some fading. Full ID at 0830 w/calls, city & power. No spots. 0812-35 7/6 (Clements/Erickson)
- 1440 MEXICO, D.F., XELZ in good w/full ID at 0806 7/6 (Clements/Erickson) / (Clements/Erickson)
- 1520 MEXICO, San Luis-Río Colorado, Son., XEEH absolutely bombing in. YL, TC's 2 minutes fast.

⑧ 1590

Mentions of San Luis in ads & promos 0200 7/6. MEXICO, Mexicali, BC, XEKC peaked in for a moment w/call ID & mentions of Mexicali 0226 7/6 (Clements/Erickson)

International QSL Roundup

- 810 COLOMBIA, Bogotá, HJCY, Sutatenza v/folder in SS & EE w/photo of XR's, specific as to date & freq. V/signer Sra. Georgina Zanudio c., Gerencia General, for Gilfer form report + pgm details, 3 IRC's, to Aéreo 7171 address. Only took a month to verify, but 2 more months elapsed in surface mail, as airmail was not specifically requested (Keleher)
- 1210 COLOMBIA, Pereira, LV Amiga for report of 6/6 received 7/9. Report mailed 6/8, verie mailed 6/30. Letter signed by Fabio Palau Rojas, Gerente (Lobel)

I was going to include a 3<sup>rd</sup> QSL in here, but it said little more than that it was received & its form. QSL's reported here MUST include all info, especially re how specific they are. As some alert DXWW readers have informed me, some QSL reports here-in represent veries themselves representing reception popularly regarded as "too good" for the actual skill of the DX'ers reporting them. The growing trend among DX'ers today is that QSL's solely acknowledge a report & do NOT verify reception or are unreliable proof of reception, in spite of the illogical, emotional reactions of those who have sacrificed hundreds of dollars over decades to build personal collections, tho I understand how they feel. This is why reports to IQSLR must be informative. & such standards will be enforced from now on. Ask any CPC'er - some stations will verify anything!


Words from Brasil

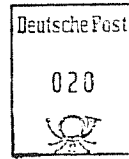
Cláudio Moraes (Florianoópolis) confirms Gene Martin's past reception of a mystery Brazilian on 1170 khz as Rádio Atalaia in Curitiba, per the GM tape that this editor was unable to ID (cf. DXWW 26 Jan 74). § Cláudio also mentions the infamous Radio Caaguazu on 645 khz, which is now NSP, wants reception reports, & responds w/a pennant. This editor sent a taped report to them over a year ago, & still no reply (Info from personal letter from CM to Gene Martin)

Well, thanks to Don Erickson for informing me that the IRCA convention was already held 7/19-21, which means I had no chance to call in as planned. I'll either see many of you in Toledo 8/16-18 or back here next month.

73 de RFS

**Drucksache**  
Eisenach - Wartburg  
**DEUTSCHER**  
**DEMOKRATISCHER**  
18-50 Nalepastraße  
DDR 116 Berlin, **3 RUNDFUNF**  
19





---

Herrn .....

Richard K. Shaftan

0-60 Gramercy PK.

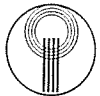
---

N.Y.C., N.Y. 10010

---

U S A

---



Radio DDR I. Programm  
MW Bernburg

Broadcasting  
Service  
of the  
German  
Democratic  
Republic

Ag 142 99 72



# RFS CUJAMAITIEN LIST

AUGUST 3, 1974

RONALD F. SCHATZ

Corrected to July 1974. Experimental computerized edition

|                        |       |                    |          |  |
|------------------------|-------|--------------------|----------|--|
| ✓550 CUBA              | CMAN  | RADIO REBELDE      | 30000    | PINAR DEL RÍO                                |
| <del>550 JAMAICA</del> |       | R J R              | 5000     | MONTEGO BAY                                  |
| <del>560 JAMAICA</del> |       | J B C              | 5000     | KINGSTON                                     |
| ✓570 CUBA              | CMHI  | RADIO REBELDE      | 60000    | SANTA CLARA                                  |
| ✓580 CUBA              | CMJM  | RADIO REBELDE      | 500      | CIEGO DE ÁVILA                               |
| ✓580 CUBA              | CMKF  | RADIO REBELDE      | 1000     | BARACOA                                      |
| <del>580 JAMAICA</del> |       | R J R              | 5000     | POINT GALINA                                 |
| ✓590 CUBA              | CMW   | RADIO REBELDE      | 150000   | LA HABANA                                    |
| ✓600 CUBA              | CMKV  | RADIO REBELDE      | 150000   | SAN GERMÁN                                   |
| ✓610 CUBA              | CMHV  | RADIO REBELDE      | 250      | TRINIDAD                                     |
| ✓620 CUBA              | CMOQ  | RADIO REBELDE      | 1000     | VICTORIA=TUNAS                               |
| <del>620 JAMAICA</del> |       | J B C              | 500      | SPUR THE                                     |
| ✓630 CUBA              | CMH9  | R. LIBERACIÓN      | 50000    | SANTA CLARA                                  |
| ✓640 CUBA              | CM9   | R. LIBERACIÓN      | 50000    | LA HABANA                                    |
| ✓650 CUBA              | CMKU  | R. LIBERACIÓN      | 2000     | SANTIAGO=CUBA                                |
| ✓660 CUBA              | CMHG  | RADIO PROGRESO     | 10000    | SANTA CLARA                                  |
| <del>660 HAITI</del>   | 4VUE  | RADIO LUMIÈRE      | 1000     | PORT=AU=PRINCE                               |
| ✓670 CUBA              | CMKP  | RADIO PROGRESO     | 50000    | <del>S P DE CAGOUM</del> ← <i>San German</i> |
| ✓680 CUBA              | CMHN  | RADIO PROGRESO     | 1000     | CIENFUEGOS                                   |
| ✓680 CUBA              | CMDB  | RADIO PROGRESO     | 1000     | SANTIAGO=CUBA                                |
| ✓690 CUBA              | CMBC  | RADIO PROGRESO     | 50000    | LA HABANA                                    |
| ✓700 CUBA              | CMJT  | RADIO PROGRESO     | 5000     | CIEGO DE ÁVILA                               |
| <del>700 JAMAICA</del> | CMDU  | RADIO PROGRESO     | 250      | GUANTÁNAMO                                   |
| ✓720 CUBA              | CMGN  | RADIO REBELDE      | 30000    | MONTEGO BAY                                  |
| <del>720 JAMAICA</del> |       | R J R              | 5000     | COLÓN  |
| ✓730 CUBA              | CMKJ  | R. LIBERACIÓN      | 10000    | KINGSTON                                     |
| ✓740 CUBA              | CMAQ  | R. LIBERACIÓN      | 1000     | HOLGUÍN                                      |
| ✓740 CUBA              | CMJL  | R. LIBERACIÓN      | 10000    | PINAR DEL RÍO                                |
| <del>750 JAMAICA</del> |       | J B C              | 5000     | CAMAGÜEY                                     |
| ✓760 CUBA              | CMCI  | RELOJ NACIONAL     | 10000    | POINT GALINA                                 |
| <del>760 HAITI</del>   | 4VI   | RADIO LUMIÈRE      | 10000    | LA HABANA                                    |
| ✓770 CUBA              | CMKB  | R. REVOLUCIÓN      | 1000     | LES CAYES                                    |
| <del>770 JAMAICA</del> |       | R J R              | 5000     | LAS MERCEDES                                 |
| ✓780 CUBA              | CMJN  | RADIO REBELDE      | 60000    | MANDEVILLE                                   |
| <del>780 HAITI</del>   | 4VIE  | RADIO LUMIÈRE      | 1000-250 | CAMAGÜEY                                     |
| ✓790 CUBA              | CMCH  | CADENA HABANA      | 10000    | JÉRLMIE                                      |
| <del>805 HAITI</del>   | 4VVB  | R. Trans-Atlántico | 1000     | LA HABANA                                    |
| <del>810 BAHAMAS</del> | ZNS3  | 8-10 RADIO         | 1000     | Sancti Spiritus                              |
| ✓810 CUBA              | CMJE  | RADIO PROGRESO     | 1000     | FREEMPORT                                    |
| ✓820 CUBA              | CMCA  | C M C A            | 10000    | CAMAGÜEY                                     |
| ✓820 CUBA              | CMDT  | RADIO PROGRESO     | 1000     | LA HABANA                                    |
| ✓840 CUBA              | CMHW  | DOBLEVÉ            | 50000    | BAYAMO                                       |
| ✓840 CUBA              | CMKC  | R. REVOLUCIÓN      | 2000     | SANTA CLARA                                  |
| <del>840 HAITI</del>   | 4VEF  | RADIO 4VEH         | 10000    | SANTIAGO=CUBA                                |
| ✓850 CUBA              | CMDC  | R. REVOLUCIÓN      | 1000     | CAP=HAÏTIEN                                  |
| ✓860 CUBA              | CMBL  | R. INT'CIONAL      | 1000     | HOLGUÍN                                      |
| ✓860 CUBA              | CMJY  | CAD. AGRAMONTE     | 1000     | LA HABANA                                    |
| <del>860 HAITI</del>   | 4VLS  | RADIO PROGRESO     | 250      | CIEGO DE ÁVILA                               |
| ✓870 CUBA              | CMDN  | RADIO REBELDE      | 10000    | PORT=AU=PRINCE                               |
| ✓880 CUBA              | CMAF  | RADIO PROGRESO     | 10000    | GUANTÁNAMO                                   |
| ✓890 CUBA              | CMHD  | R. MUSICAL NAC     | 250      | PINAR DEL RÍO                                |
| ✓890 CUBA              | CMDZ  | R. MUSICAL NAC     | 250      | SANTA CLARA                                  |
|                        |       |                    |          | SANTIAGO=CUBA                                |
| ✓900 CUBA              | CMJV  | R. LIBERACIÓN      | 1000     | CIEGO DE ÁVILA                               |
| ✓910 CUBA              | CMJB  | R. MUSICAL NAC     | 1000     | CAMAGÜEY                                     |
| <del>910 HAITI</del>   | 4VRMN | R. N'VEAU MONDE    | 10000    | PORT=AU=PRINCE                               |
| ✓920 CUBA              | CMKH  | R. MUSICAL NAC     | 250      | GUANTÁNAMO                                   |
| ✓930 CUBA              | CMAG  | R. MUSICAL NAC     | 250      | CONS=UR                                      |
| ✓930 CUBA              | CMGL  | RELOJ NACIONAL     | 1000     | MATANZAS                                     |
| ✓940 CUBA              | CMHI  | DOBLEVÉ            | 250      | CIENFUEGOS                                   |
| ✓950 CUBA              | CMBF  | R. MUSICAL NAC     | 10000    | LA HABANA                                    |
| ✓950 CUBA              | CMDJ  | R. REVOLUCIÓN      | 250      | GUANTÁNAMO                                   |
| <del>960 HAITI</del>   | 4VCD  | R. CARILLON        | 300      | PORT=AU=PRINCE                               |
| ✓960 CUBA              | CMHB  | RADIO PROGRESO     | 1000     | S=SPIRITUS                                   |
| ✓980 CUBA              | CMCK  | C O C O            | 5000     | LA HABANA                                    |
| ✓990 CUBA              | CMHT  | R. S=SPIRITUS      | 1000     | S=SPIRITUS                                   |
| ✓1000 CUBA             | CMAP  | RADIO GUAMÁ        | 250      | GUANE  |
| <del>1000 HAITI</del>  | 4VCPS | RADIO CACIQUE      | 300      | PORT=AU=PRINCE                               |
| ✓1010 CUBA             | CMAS  | RADIO GUAMÁ        | 250      | PINAR DEL RÍO                                |
| ✓1010 CUBA             | CMKM  | R. MUSICAL NAC     | 1000     | HOLGUÍN                                      |
| ✓1020 CUBA             | CMAC  | RADIO GUAMÁ        | 1000     | SAH CRISTÓBAL                                |
| ✓1030 CUBA             | CMFA  | CAD. AGRAMONTE     | 5000     | CAMAGÜEY                                     |
| <del>1035 HAITI</del>  | 4VEC  | RADIO 4VEH         | 10000    | CAP=HAÏTIEN                                  |
| ✓1040 CUBA             | CMBN  | RADIO CARIBE       | 250      | ISLA DE PINOS                                |
| ✓1059 CUBA             | CMKG  | R. REVOLUCIÓN      | 1000     | BARACOA                                      |
| ✓1060 CUBA             | CMB9  | R ENCICLOPEDIA     | 5000     | LA HABANA                                    |
| ✓1080 CUBA             | CMBM  | RELOJ NACIONAL     | 250      | ISLA DE PINOS                                |
| <del>1080 HAITI</del>  | 4VA   | LV RÉV. DUV.       | 1000     | PORT=AU=PRINCE                               |
| ✓1100 CUBA             | CMHU  | R. CD. DEL MAR     | 250      | CIENFUEGOS                                   |
| ✓1120 CUBA             | CMDL  | RADIO ANGULO       | 1000     | HOLGUÍN                                      |
| ✓1130 CUBA             | CMHA  | ONDA MUSICAL       | 1000     | SANTA CLARA                                  |
| ✓1130 CUBA             | CMDW  | R. LIBERACIÓN      | 250      | GUANTÁNAMO                                   |
| <del>1130 HAITI</del>  | 4V    | Radio Haiti        |          | Pi-aur-R (CA)                                |

|                                |                    |                           |                 |                           |                                 |
|--------------------------------|--------------------|---------------------------|-----------------|---------------------------|---------------------------------|
| ✓1440 CUBA                     | CMJK               | RADIO CAMAGÜEY            | 500             | CAMAGÜEY                  |                                 |
| <del>1445 HAITI</del>          | <del>4VADVWA</del> | <del>RADIO CAMAGÜEY</del> | <del>1000</del> | <del>PORT-AU-PRINCE</del> | <i>Cap Haïtien</i>              |
| ✓1450 CUBA                     | CMDD               | RADIO HANES               | 250             | BAYAMO                    | <i>Bayamo</i>                   |
| ✓1454 CUBA                     | CMAD               | RADIO ARTEMISA            | 250             | ARTEMISA                  | <i>Artemisa</i>                 |
| ✓1490 CUBA                     | CMJP               | RADIO SURCO               | 500             | CIEGO DE AVILA            |                                 |
| <del>1450 HAITI</del>          | <del>4VAB</del>    | <del>R. Carabos</del>     | <del>1000</del> | <del>PORT-AU-PRINCE</del> |                                 |
| ✓120 CUBA                      | CMKL               | RELOJ NACIONAL            | 2000            | SAINTIAGO=CUBA            |                                 |
| ✓1210 CUBA                     | CMJX               | RADIO MORON               | 250             | MORON                     | <i>1910 HOURS Radio Program</i> |
| ✓1210 CUBA                     | CMKD               | RELOJ NACIONAL            | 1000            | HOLGUIN                   | <i>1000 P.m.-P</i>              |
| ✓1220 CUBA                     | CMGY               | R. VEINTISEIS             | 5000            | PERICO                    |                                 |
| ✓1230 CUBA                     | CMGM               | R. VEINTISEIS             | 250             | JAGÜEY GRANDE             |                                 |
| <del>1240 BAHAMAS</del>        | ZNS2               | R. N PROVIDENCE           | 750             | NASAU                     |                                 |
| ✓1249 CUBA                     | CMGW               | R. VEINTISEIS             | 500             | MATANZAS                  |                                 |
| ✓1240 CUBA                     | CMKE               | R. REVOLUCIÓN             | 250             | VICTORIA=TUNAS            |                                 |
| <del>1240 HAITI</del>          | 4VM                | RDIF HAÏTIENNE            | 200             | PORT-AU-PRINCE            |                                 |
| ✓1250 CUBA                     | CMHP               | DOBLEVE                   | 250             | PLACETAS                  |                                 |
| ✓1250 CUBA                     | CMKA               | RELOJ NACIONAL            | 250             | GUANTANAMO                |                                 |
| ✓1260 CUBA                     | CMAX               | RELOJ NACIONAL            | 1000            | CUBA=HYTE                 |                                 |
| ✓1260 CUBA                     | CMDE               | RELOJ NACIONAL            | 250             | BAYAMO                    |                                 |
| ✓1269 CUBA                     | CMJG               | RELOJ NACIONAL            | 1000            | CAMAGÜEY                  |                                 |
| ✓1280 CUBA                     | CMHM               | RELOJ NACIONAL            | 1000            | SANTA CLAR                |                                 |
| ✓1280 CUBA                     | CMDP               | RELOJ NACIONAL            | 250             | VICTORIA=TUNAS            |                                 |
| <del>1290 HAITI</del>          | 4VPH               | R. MÉTROPOLE              | 5000            | PORT-AU-PRINCE            |                                 |
| ✓1290 CUBA                     | CMKS               | R. GUANTANAMO             | 250             | GUANTANAMO                |                                 |
| ✓1300 CUBA                     | CMJQ               | RADIO NUEVITAS            | 1000            | NUEVITAS                  |                                 |
| ✓1301 CUBA                     | CMJD               | R. MUSICAL NAC            | 250             | CIEGO DE AVILA            |                                 |
| ✓1307 CUBA                     | CMHK               | RELOJ NACIONAL            | 250             | CRUCES                    |                                 |
| ✓1310 CUBA                     | CMDD               | R. REVOLUCIÓN             | 250             | BAYAMO                    |                                 |
| ✓1320 CUBA                     | CMAL               | RELOJ NACIONAL            | 250             | PIÑAR DEL RÍO             |                                 |
| ✓1330 CUBA                     | CMJS               | RELOJ NACIONAL            | 500             | CIEGO DE AVILA            |                                 |
| <del>1330 HAITI</del>          | 4VM                | RADIO HAÏTI               | 10000           | PORT-AU-PRINCE            |                                 |
| ✓1340 CUBA                     | CMGU               | RELOJ NACIONAL            | 250             | COL. N.                   |                                 |
| <del>1340 GUANTANAMO-BAY</del> |                    | AM. FORCES R.             | 1000            | GUANTANAMO BAY            |                                 |
| ✓1350 CUBA                     | CMKY               | R. PUERTO PADRE           | 250             | PUERTO PADRE              |                                 |
| ✓1360 CUBA                     | CMJG               | RADIO POPULAR             | 250             | LA HABANA                 |                                 |
| ✓1364 CUBA                     | CMKW               | RADIO SIBONEY             | 250             | SANTIAGO=CUBA             |                                 |
| <del>1380 HAITI</del>          | 4VS                | R. P=AU=PR                | 5000            | PORT-AU-PRINCE            |                                 |
| ✓1390 CUBA                     | CMKX               | RADIO BAYAMO              | 250             | BAYAMO                    |                                 |
| ✓1400 CUBA                     | CMJI               | CAD. AGRAMONTE            | 250             | FLORIDA                   |                                 |
| ✓1420 CUBA                     | CMDX               | LV DE BARACOA             | 250             | BARACOA                   |                                 |
| ✓1430 CUBA                     | CMKZ               | RADIO BARAGUA             | 250             | PALMA SORIANO             |                                 |
| <del>1430 HAITI</del>          | 4VGM               | M B C                     | 10000           | PORT-AU-PRINCE            |                                 |
| ✓1450 CUBA                     | CMJW               | RADIO MABOA               | 250             | STA CRUZ=SHR              |                                 |
| ✓1460 CUBA                     | CMCG               | RADIO MARIANAO            | 250             | MARIANAO                  |                                 |
| <del>1460 HAITI</del>          | 4VEA               | LV DU NORD                | 1000            | CAP=HAÏTIEN               |                                 |
| ✓1470 CUBA                     | CMGE               | R. CD. BANDERA            | 250             | CARDENAS                  |                                 |
| <del>1470 HAITI</del>          | 4VA1               | LV DU PEUPLE              | 250 700         | PORT-AU-PRINCE            |                                 |
| ✓1490 CUBA                     | CMHL               | DOBLEVE                   | 250             | S=PIRITUS                 |                                 |
| <del>150 HAITI</del>           | 4VOC               | RADIO SELECT              | 350             | PORT-AU-PRINCE            |                                 |
| ✓1520 CUBA                     | CMKT               | RADIO VICTORIA            | 1000            | VICTORIA=TUNAS            |                                 |
| <del>1540 BAHAMAS</del>        | ZNS1               | RADIO BAHAMAS             | 20000           | NASAU                     |                                 |
| ✓1510 CUBA                     | CMDV               | RADIO SANTIAGO            | 250             | SANTIAGO=CUBA             |                                 |
| ✓1560 CUBA                     | CMGB               | RELOJ NACIONAL            | 250             | CARDENAS                  |                                 |
| ✓1590 CUBA                     | CMDF               | R. MANZANILLO             | 250             | MANZANILLO                |                                 |

DX FORUM -- CONTINUED FROM PAGE 6

MM 7/8 & it turned out to be one of my best MM's of the year. Most of my DX this summer, though, has been daytime DX. I found it a lot easier than I expected to null my locals, and usually there were other stations underneath that I hadn't heard before. Latest veries: v/q CFQC-600 CKWS-960 v/l WSDR-1240 WBUX-1570 v/cm KFLP-900 WMID-1340 v/f KCTA-1030 WIBG-990. 73.

John Zondlo-6617 Maryland-Hammond, IN 46323 Greetings. The summer reporting slump continues with only two reports this issue. Indeed, as Dave Peterson found out, summertime is a good time to DX. Work has kept me busy during DX time lately, but I'm still very active on MM's. Recent veries from summer DX- v/l WKAC-1080, KGFY-1060. See you next month.....

western dx forum  
Editor: Michael G. Worst,  
4618 Fremont N., #104  
Seattle, WA 98103

Mike Hardester, 401 Birchwood Court, Modesto, CA 95350  
Howdy! It's been some time since I last sent a report to the Forum, but the plain truth is I'm mostly a shortwave

Dxer (due to the MW band congestion), but do occasionally listen, though nothing new has been heard there in over a year. Main reason for this report was to let others know about one of my locals: KTRB-860. On 1 July '74, they switched their format considerably, added Mutual News, dropped many programs, and added others. Wolfman Jack is due to begin on Saturday 20 July '74 @ 2300 EDT. Also, their previous operation schedule was changed from s/off each night @ 0200 (or so) EDT to AN-6 with s/off MM 0300-0830 EDT. Power remains @ 10/1 kw day/night, but they plan an increase in the future, but have declined to say how much or when...now if Tarawa will just show early this season. Their FM is now 50kw, and new call letters will be added plus separate programming. All for now. 73.

Donald E. Erickson, 6059 Essex Street, Riverside, CA 92504  
After many months of doing little but working overtime (now as a computer operator, Univac 9300) and cleaning up IRCA's former publ. HQ, "Toyland," it looks as if I'll be active in BCB DXing this fall. Seattle '74 was very well hosted and a lot of fun; I only wish I could have stayed another day. For those who might get this in time, don't forget NRC's Convention in Toledo, Ohio, Aug. 16-18. I'll be there by Tues. or Wed. and will look forward to seeing lots of IRCA members there. Brian Scully, Brea, CA, and Steve Simonsen, Ontario, CA, have agreed to bid for co-hosting the 1976 IRCA Convention in nearby Ontario, home of the Ontario Motor Speedway and one of the most accessible airports in the country. Other SoCal members willing to help co-host are invited to get in touch with Brian, Steve, or myself. Let's start planning early. Everybody have a good, safe summer. 73.

NEWS FORUM

How About DXing Tonight?

The International Radio Club of America will hold its eleventh annual convention from Friday July 19, to Sunday, July 21, at the Sheraton Renton Inn.

Members of the IRCA pursue a hobby called DXing. They search the radio spectrum for rare and distant stations. The best known aspect of this hobby is shortwave listening. An older and more difficult part is broadcast band DXing, listening only to stations on the AM broadcast band, 550 to 1600 khz. IRCA concentrates on this phase of DXing. Its members do not transmit or broadcast, as do hams and CB'ers, but only listen. Their equipment ranges from simple table radios to highly elaborate communications receivers costing several hundred dollars.

Many broadcast band DXers listen for foreign stations. Seattle area DXers regularly hear Mexico, Hawaii, and Japan. On occasion they have also heard such exotic places as Senegal, Argentina, and the Fiji Islands. Others concentrate on the more than 5000 stations in the U.S. and Canada. Some old-timers in the hobby have been listening since the early 1920's, when radio first began, and have heard over 3000 stations in the course of 40 or 50 years.

This is the first time that the IRCA has held its convention in Seattle. Previous conventions have been in other parts of the U.S. and Canada, including one in Vancouver, B.C., in 1970. The convention gives club members a chance to meet other members and to learn more about this unusual hobby.

The IRCA publishes a bulletin, DX Monitor, 34 times a year. The bulletin is issued weekly in the winter and monthly during the summer "slack" season. In it, members report on stations they are hearing and exchange information on their receiving equipment. The club also arranges special DX programs where a station stays on the air after normal broadcasting hours, enabling members to hear a station they couldn't ordinarily hear.

Anyone interested in radio or DXing is invited to attend the convention. Further information can be obtained from Bruce Portzer at 244-9361, Phil Bytheway at 525-8736, or Mike Worst at 632-3608.

# On strength of the wind they hear the world on their radios . . .

By ERIC PRYNE

What's it like to listen to the radio in the Fiji Islands? Or Argentina? Or Australia?

About 50 people who can answer those kinds of questions descended on Renton this weekend. The International Radio Club of America is holding its 11th annual convention at the Sheraton Renton Inn. Some come from as far away as Ohio.

Members of the club pursue a hobby called DXing. They specialize in trying to pick up distant radio stations on the AM band — the same band in the radio in your car, 550 to 1600 khz. But members of the club don't just absent-mindedly twist the dials. For them, it's a serious pursuit.

Bruce Portzer and Phil Bytheway, two Seattle-area members, say the hobby is dying.

"It was a big thing when radio first got started," Bytheway says. "Then the novelty wore off."

The stereotyped picture of the bearded old man, with his earphones on, tinkering with his crystal set, doesn't fit radio club members.

"Most of our people are kind of young," Bytheway says. "We have a lot of members who are high school age. . . When you get into college, or get a full-time job, you don't have as much time to spend listening."

Bytheway himself is a student at the University of Washington. Portzer is an engineer at Boeing.

Both men have special radios and antennas to help them pick up distant stations. They say they've heard England, Australia, Fiji and Argentina.

What do they talk about on the radio in Argentina?

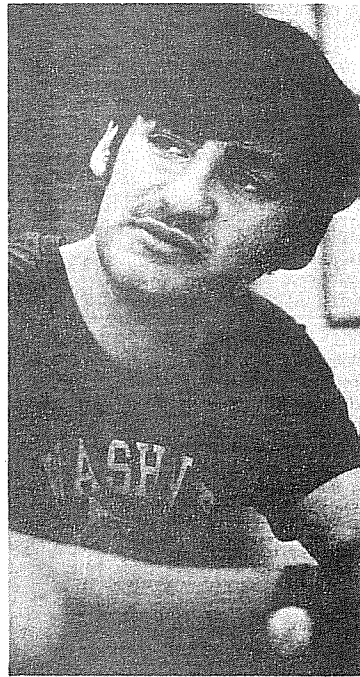
"We don't know," says Portzer, "it was in Spanish."

Then how do they know they were listening to Argentina?

"There are certain phrases you pick up after awhile, like their station ID — Radio del Plata."

Whatever possesses a man to search the radio spectrum for a station he can't understand?

"Sometimes I wonder about that myself,"



PHIL BYTHEWAY

Portzer says. ". . . I guess it's the sense of discovery, like a scientist who's looking for something, and then he says "Eureka, I've found it!'"

"It's kind of a specialized hobby," Bytheway adds.

The two men say they could understand the stations they've listened to in Australia.

"It seems like the most powerful stations there are the government stations — for whatever reasons," Bytheway says.

"Australian radio is 30 years behind American radio," Portze says. "There's a lot of recorded drama and discussion shows."

When Bytheway and Portzer listened to the Fiji Islands, they ran into the same problem that occurred when they picked up Argentina — the station was broadcasting in a foreign language — Hindi.

"We knew it was Fiji, though," Bytheway says. "Their station ID is somebody beating on a log drum."

Portzer and Bytheway have listened to a lot of exotic places. But Bytheway says the funniest thing he's ever heard on the radio is the signoff of a station in Walla Walla.

"They say 'KUJ comes to you on the strength of the wind' and stuff like that," he says. "It's only a 5,000-watt station."

People interested in radio are invited to attend the convention this weekend. Further information may be obtained by calling Bytheway at 525-8736, or Portzer at 244-9361.



BRUCE PORTZER

Display to continue

## Big solar flare stirs earth 'storm'

BOULDER, Colo., July 6 [AP] —The continuing series of major flares on the sun has produced a global storm in the earth's magnetic field, scientists for the National Oceanic and Atmospheric Administration [NOAA] reported today.

The storms are produced when incoming electrified particles from the sun cause strong electrical currents above the earth's atmosphere, resulting in a sudden and dramatic variance in the magnetic field.

Displays of the aurora borealis, or northern lights, were reported last night in Chicago, Omaha, Cleveland, and Pontiac, Mich., the NOAA said.

THE AURORA light is caused when energized particles from the sun enter the atmosphere and ionize or electrify atoms and molecules of atmospheric gases, causing them to glow.

NOAA forecasters said the magnetic storm which produced last night's display will continue for the next several days and should be visible to observers in the northern states, altho a full moon might make viewing difficult in some areas.

Among the effects of the strong current flowing in the stormy magnetic field have been low-frequency short wave radio fadeouts and some failures of longline telephone links in the Midwest, forecaster Carl Posey said.

Also, altho low-frequency radio may fade, the ionization of the upper levels of the earth's atmosphere enhances very high frequency [VHF] and ultra high frequency [UHF] radio propagation, thus permitting TV and other such signals to be carried hundreds or thousands of miles beyond their normal range.

Chicago Tribune, Sunday, July 7, 1974

GEOMAGNETIC INDICES

|                |    |    |    |     |    |    |    |
|----------------|----|----|----|-----|----|----|----|
| June 26-July 2 | 32 | 37 | 24 | 18  | 16 | 11 | 12 |
| July 3-9       | 10 | 24 | 52 | 116 | 16 | 27 | 14 |
| July 10-16     | 18 | 14 | 20 | 14  | 24 | 9  | 11 |
| July 17-23     | 8  | 6  | 6  | 9   | 9  | 11 | 42 |

FJP published an article on the topic of skyline-horizon blockage in both DXN and DXM and gave there the derivation of the following formula for the angle of arrival or angle of takeoff for a signal travelling via an N-mode (an ionosphere-Earth hop):

$$A = \text{ASIN} \frac{(R+H)\text{COS}(X) - R}{\text{SQRT}(2R(R+H)(1-\text{COS}(X)))} \text{ degrees}$$

where R is the Earth's radius and H is the height of the point of "reflection" in the ionosphere and are both of the same linear measure; e.g., miles or kilometers. Typical values (miles) are R = 3957, H(F-layer) = 186 and H(E-layer) = 65. X is half the angle subtended at the Earth's center by the great circle path of the signal of distance D. X is measured in degrees and for D in miles;  $X = D/(138.12k)$  where k is the number of hops the signal takes to travel from the transmitter to the receiver. The maximum distance (miles) a signal can travel by one hop in an N-mode is given by:  $D_{\text{max}} = 138.12 \text{ ACOS}(R/(R+H))$  where R and H are defined as above and of the same linear measure.

FJP's original derivation contains an error: viz., in Equation 4 of his work in simplifying the Law of Cosines applied to his illustration. Specifically:

$$\text{Eq. 4: } L^2 = R^2 + (R+H)^2 - 2R(R+H)\text{COS}(X) \neq 2R(R+H)(1-\text{COS}(X))$$

where X denotes the angle above (FJP's symbol here is theta). The error is denoted by the absence of the unequal sign in the above equation. Thus, properly stated, FJP's equation becomes:

$$A = \text{ASIN} \frac{(R+H)\text{COS}(X) - R}{\text{SQRT}(R^2 + (R+H)^2 - 2R(R+H)\text{COS}(X))} \text{ degrees.}$$

This equation can be replaced by a perhaps simpler one which has been derived in PATTERNS IV (an NRC Monograph) which also considers such genetic modes of propagation. There are a multitude of equations which follow from applying the trigonometric equations to such a problem and from PATTERNS IV, the following is offered:

$$A = \text{ATAN} \left( \frac{H + R(1-\text{COS}(X))}{(R)\text{SIN}(X)} \right) - X \text{ degrees.}$$

The error introduced by the published equation given by FJP increases as the angle X decreases for a fixed height H. Thus values given by that formula tend to be larger than the true value of arrival/takeoff, A.

Finally, it should be noted that all trigonometric arguments (dependent variables) and all trigonometric inverse values (independent variables) are measured in degree measure for the equations given above.

The article on TRANS-POLAR DX published in DXN uses the original FJP equation and thus some errors are introduced. For those interested, the following table from that article is reproduced with correct values entered below:

| STATION         | D (miles) | 2F2  | 3F2  | 4F2  | 5F2  | 6F2  | 7F2  | 5E   | 6E   | 7E   |
|-----------------|-----------|------|------|------|------|------|------|------|------|------|
| Urumahni        | 6472      | n    | 1.7  | 6.8  | 11.0 | 14.7 | 18.1 | 0.7  | 2.6  | 4.2  |
| Khabarovsk etc. | 6000      | n    | 3.0  | 8.2  | 12.5 | 16.4 | 19.9 | 1.5  | 3.4  | 5.1  |
| Petrovop'lovsk  | 5169      | n    | 5.7  | 11.0 | 15.6 | 19.8 | 23.6 | 3.0  | 5.0  | 6.8  |
| Bulun           | 4850      | n    | 6.8  | 12.3 | 17.0 | 21.3 | 25.2 | 3.7  | 5.7  | 7.6  |
| Sredne-Kolumsk  | 4550      | 0.8  | 8.0  | 13.6 | 18.5 | 22.9 | 26.9 | 4.4  | 6.5  | 8.4  |
| Helstriki       | 4155      | 2.4  | 9.7  | 15.5 | 20.6 | 25.2 | 29.4 | 5.4  | 7.6  | 9.6  |
| Murmansk        | 4000      | 3.0  | 10.4 | 16.4 | 21.6 | 26.2 | 30.4 | 5.8  | 8.0  | 10.1 |
| Reykjavik       | 2683      | 10.3 | 18.9 | 26.1 | 32.2 | 37.5 | 42.1 | 11.0 | 13.8 | 16.4 |
| Thule           | 2534      | 11.4 | 20.2 | 27.6 | 33.9 | 39.2 | 43.9 | 11.8 | 14.7 | 17.5 |
| Calcutta        | 7921      | n    | n    | 3.2  | 7.2  | 10.6 | 13.7 | n    | 0.5  | 2.1  |
| Bangkok         | 8452      | n    | n    | 2.1  | 6.0  | 9.4  | 12.4 | n    | n    | 1.4  |

with R = 3957 miles; H(F<sub>2</sub>) = 186 miles and H(E) = 62 miles. It is also proper to round off to the nearest whole degree due to the uncertainty of the path geometry in real ionospheres—in fact variants of several degrees are possible.

SECOND CLASS POSTAGE  
PENDING AT SAN DIEGO,  
CALIFORNIA

International Radio Club of America  
12536 Arabian Way, Poway, CA 92064



THE INTERNATIONAL RADIO CLUB OF AMERICA - a non-profit club devoted to listening to distant radio stations on the broadcast band (540-1600 khz). IRCA is a member of ANARC, the Association of North American Radio Clubs, dedicated to promoting cooperation between the radio clubs of North America.

IRCA Officers: President: Richard C. Evans, RR#2, Box 375-A, New Buffalo, MI 49117. (616-469-3866); Secretary-Treasurer Carl Dabelstein, 3300 North 56th St., Lincoln, NE 68507; Board of Directors: Chairman: Father Jack Pejza, Bob Foxworth, Nancy Gantzer Hardy, Percy Kesteven, Ed Krejny, Bill Nittler, John Zondlo.

Membership dues in IRCA: \$2.00 per year.

IRCA publishes the IRCA Foreign Logs, listing over 1500 foreign stations heard on the broadcast band from North America. Volume I: \$2.25; Vol. II, \$3.00; combination offer, \$5.00.

IRCA has an extensive listing of reprints of articles and features which have appeared in DX Monitor in past years. Send a self-addressed stamped envelope for a copy of the list.

IRCA stationery: 70 sheets for \$2.00; 100 sheets for \$2.75. Permission is granted to publish, broadcast, or reproduce any of the material in DX Monitor (except items which acknowledge that they appear by permission from other sources. or material which is copyrighted), providing credit is given to DX Monitor and the author or contributor, if listed. DX Monitor is printed by San Diego Printers, San Diego, CA.

Michael G. Worst 28  
4618 Fremont N., #104  
Seattle, WA 98103