

Kick 20/11/82  
823-8612

Rich Heald  
VA1-0447



# DX Monitor

Devoted Exclusively to  
Broadcast Band DXing

June 14, 1980 \* Volume 17, Number 32 \* Issue Number 551

## In This Issue

Broadcasting Information .....	2	IRCA Swap 'N Shop .....	24
New Members .....	3	BARF Announcement .....	24
IRCA Technical Column .....	4	IRCA Sports Network Updater #5 ..	25
Eastern DX Roundup .....	6	Almanac help needed .....	27
Central DX Roundup .....	8	Zonal Analysis Approach to Pan	
FCC Votes to End Clear Channel ..	13	American DXing .....	29
Contest Standings .....	14	An S-meter for the Realistic TRF.	33
Western DX Roundup .....	15	Eastern DX Forum .....	35
Midday DX Records .....	19	Western DX Forum .....	38
DX Records .....	21	Back Page .....	44
DX Worldwide .....	22	Special Mt. St. Helens Photo	
Ted Vasilopoulos Award anncement.	23	somewhere in this Issue .....	

## DX Calendar

Sun June 22 WMLB-1550, West Hartford, CT, will test 0100-0330 ELT w/Jazz, heavy rock, punk rock, frequent voice ID's, possible JFK Presidential speech portions, talk on DXing and DX clubs, a phone-in special, special 2.5 watt pre-sunrise sections with unspecified contest, and maybe some tones. Phone: (203)-521-1550. Address: John Ramsey, CE, WMLB, 630 Oakwood Ave., W. Hartford, CT 06110. Arranged by Saul Chernos for IRCA.

## Odds & Ends

In this edition of DX Monitor, the ballots for the 1980 Ted Vasilopoulos Award (TVA) can be found. These cards are of proper duty so that you may simply address the opposite side, apply 10¢ postage and return them by 01 August 1980 to Larry Van Horn, 7870-A Corsair, Millington, TN 38053.

Mike Hardester states that the KTRC cpc test slated for 5/26 was heard by neil Zank. However, no word yet from arranger Rob Harrington.

Eastern DX Roundup Editor Bob Curtis says that he will retire his duties following the August Issue of DXM. Many thanks to you Bob for a job well done!! Anybody interested in taking over as EDXR Editor, please contact either Bob or Father Jack.

## DX Gettogethers

The Bay Area Radio Freaks have scheduled yet another gettogether. This time at the home of Rich Segalas. It is slated to start around 1300 PLT Sat. 12 July. Refer to page 24 for further details.

Pete Nolan says the Eugene Radio Phreaks (EURP) have planned a weekend gettogether for July 25-27. Various activities have been brewed up, and if there is enough interest, maybe they will head for the coast with a Beverage antenna. For further information, contact Pete at (503)485-8049 prepaid. or box 1524 Eugene, OR 97440.

Well, it looks as if Bruce and everybody are back on the road again. So I get the dubious distinction of assembling DXM again. I believe Phil Bytheway mentioned before he left to SoCal that the Goodie Factory was up to date.

Just as a note of curiosity, has anybody out there had an opportunity to DX 'Ash Fallout Skip'? If so, report your findings to your respective Roundup Editors. Should make for interesting DX...73... Dave Korinek.....

# BROADCASTING INFORMATION

Greg Monti  
1110 Fidler Lane, #1424  
Silver Springs, MD 20910

call	kHz	day/night	
new	680	250/	Pineville LA granted construction permit
appl	850	2500/500	Cazenovia NY
WEEO	940	10000/	Smithfield VA granted WKGM
new	1080	2500/	Price UT wants KRPX
KPOP	1110	500/500	Roseville CA wants KPIP
KIIS	1150	5000/1000	Los Angeles CA wants KPRZ
new	1200	250/	Lares PR granted WGDL
WNIA	1230	500/250	Cheektowaga NY granted WECK
new	1270	1000/	Portland TN wants WMRL
WFUL	1270	1000/	Fulton KY granted Fulton KY-South Fulton TN
appl	1310	500/	Birch Tree MO
KHAP	1340	1000/250	Aztec NM wants KKBK
KBLW	1390	5000/500	Logan UT wants KBLQ
new	1390	2500/1000	Waite Park MN granted KKCM
WKYZ	1420	1000/	Herkimer NY wants WRMV
KKAT	1430	5000/1000	Roswell NM granted KCRX
WTCO	1450	1000/250	Campbellsville KY wants WCKQ
KLMS	1480	1000/1000	Lincoln NE granted 5000/1000 instead of 2500/1000
KAAR	1510	250/	Mount Lake Terrace WA wants KKNW
KMZK	1540	50000/1000	Fort Worth TX granted KTIA
new	1540	500/	Harvey ND granted KHND
KHEN	1590	500/	Henryetta OK wants KGCC
WJRO	1590	500/500	Glen Burnie MD granted 1000/1000

The Federal Communications Commission reports that as of 3/31/80, there are 4546 licensed AM stations, plus 9 holding construction permits who are on the air, plus 3 stations on under Special Temporary Authorization giving a total-on-air figure of 4558. In addition, 104 outfits hold construction permits but haven't yet signed on for the first time, giving a total-authorized figure of 4662. From the 5/5 thru 5/26 Broadcastings.

RADIO PROGRAMMING NOTES Golden Gaters Productions plans to offer satellite-distributed radio coverage of the 1980 Wimbledon Tennis Championships between 6/22 and 7/5. Wimbledon was on 151 stations last year...Golden West Radio Productions is offering "Country Music's Magazine of the Air", including music, interviews, and features, but no countdown. Host is Harry Newman of KLAC-570....Some stations make light of their traffic reports by claiming they come from a balloon, instead of a plane or helicopter. KKZZ-1380 Lancaster CA, on the other hand, actually has a traffic balloon, up between 7 and 9 AM...Two overseas restaurants have given their customers a Chicago atmosphere by running airchecks of WLS-890 Chicago IL as background music. They are in Johannesburg and London...The International Center for Economic Policy Studies is offering free, daily, 3-minute commentaries by economics experts. They're titled "As a Matter of Fact", and are on 100 stations, including WTIX-690 New Orleans LA...There's now a syndicated series for do-it-yourself auto mechanics, "Bill's Car Care". It's offered exclusively to one station per market and is customized to the climate experienced in the station's coverage area. The program is adapted from most-asked-questions on a telephone-talk show on the subject (station unknown).

# RADIO 1540

# WRCP

AM

\*\*\* **NEW MEMBERS** \*\*\*

from Rich Segalas  
P.O. Box 26254  
San Francisco, CA 94126

John Hart, P.O. Box 644, Carlin, Nevada 89822  
Lyle Lunsford, 9604 Annetta Avenue, South Gate, California 90280  
John Zondlo, 1802 N. Rockwell, Apt. 107, Bethany, Oklahoma 73008 (rejoin)  
John M. Sullivan, 8007 Tall Pines Court, Raleigh, North Carolina 27609  
Allen E. Clingman, 3235 Quesnel Drive, Vancouver, British Columbia, CANADA V6S 1Z7  
Terry A. Ward, 4755 South Braden, #501, Tulsa, Oklahoma 74135  
Joe Grunkemeier, 2343 NE 15th, Portland, Oregon 97212  
Lauren L. Neville, 328 Springdale Street, Sebastopol, California 95472  
Gary Scott, 2309 East 32nd Street, National City, California 92050  
Ron Scrapneck, 6 Claus Bay, Winnipeg, Manitoba, CANADA R2G 2A1  
Harry E. Howell, 3233 Avenue F, Yucaipa, California 92399  
Christian Dehaes, 935 Papineau, Chicoutimi, Quebec, CANADA G7H 2N3  
George K. Dunn, 630 Sunrise Boulevard, Prescott, Arizona 86301

RENEWALS AS OF 06 June 1980

Br. Dennis Bednarz, Robert E. McKinney, Raymond D. Martinez, Matthew Shugart, Tony D. Bratton, David Hart, Takahito Miki, Robert A. Curtis, David B. Gibson, Jr., Dave Korinek, David Oliphant, Raymond S. Moore, Richard T. Pistek

ADDRESS CHANGES

Robert McKinney, RR #2, Box 120, Clinton, Illinois 61727  
Charles A. Taylor, Box 1226, Naval Air Station, FPO New York 09560  
Father Jack Pejza, 108 Cole Street, San Francisco, California 94117  
Ken Horne, 2150 W. 20th Avenue, Vancouver, British Columbia, CANADA V6L 1G1

DON'T FORGET THAT ALL RENEWALS AND ADDRESS CHANGES SHOULD COME TO ME AT THE ABOVE ADDRESS.

Also, except for those new members listed above, "Principles of Broadcast Band DXing" have been mailed to all new members. If you haven't received yours yet, remember that they are sent third class and may take up to six weeks. Phil will be getting copies out to those of you above after he returns from California.

You may have noticed that your bulletin had a very small label on it last issue. This was because the normal labels did not arrive in Seattle until 28 May, even though they were mailed from San Francisco on 12 May. The envelope was marked "FIRST CLASS" in big letters and had \$1.45 in postage on it (There were other things in the envelope also), but the Postal Service apparently treated it as third class material. The small labels were reduced copies hand delivered by me one week late.

If Heald's column arrived on time, there should be a notice of a get-together at my house on Saturday, 12 July 1980. If there is no notice, write me at the above address for details.

REMEMBER: THE IRCA CONVENTION WILL BE IN LOUISVILLE, KENTUCKY, .15-17 AUGUST 1980. Ted Fleischaker has a lot of things planned so come and join us for a good time. I understand that the Hyatt Regency will let us use the pool 24 hours a day, so we can have our 2:00 am swim party after the auction and business meeting.

**WCCZ**  
**1550 ON ALL A.M. RADIO DIALS**  
**"THE VOICE OF NEW SMYRNA BEACH"**



# the irca technical column

Editor: *Wick Hadd-Patch*  
1558 Ambition St.  
Victoria, B.C. V3R 4Z6  
Canada

## The Japan Radio Corporation NRD-515

Perry Ferrell sends word that Gilfer Associates will be carrying the NRD-515 which was described in DXM a while back in an article originally printed in SPEEDX. This radio uses a tunable preselector from 600-1600 kHz only and a low-pass filter below 600 kHz; otherwise bandpass filters are used at the front end. The receiver tunes in 100 Hz "steps" (i.e. it is not continuous) with a fine tuning control to tune from one 100 Hz step to the next if necessary. Automatic "up-down" tuning is also available as is an optional memory.

Antenna input impedance below 1600 kHz is in the 300-700 ohm range. Perry found that using an impedance matcher with a longwire antenna improved the receiver's resistance to cross-modulation on BCB. Overall, he feels that a loop antenna or the McKay-Dymek DP-40 longwire preselector would be advisable when using the NRD-515 for BCB DX in an area with strong BCB transmitters nearby. Further information on the NRD-515, write Gilfer, P.O. Box 239, Park Ridge, NJ 07656. If you've used this receiver for MW DX, let us know about it.

\* \* \* \* \*

## The Kenwood R-1000

The first impression upon seeing a Kenwood R-1000 receiver is that it is small--at 12 3/4"W x 4 1/2"H x 8 9/16"D, it is quite a bit less bulky than a FRG-7. Its few controls are well laid out. They include band selector (each band is 1 MHz wide), RF attenuator, AF gain and tone controls, push button mode selector (AM wide, AM narrow, USB, LSB/CW), tuning knob with analog dial accurate to 10 kHz and a digital display accurate to 1 kHz, a "dimmer" switch, a noise blanker switch, plus various switches which control the digital clock and timer. An S-meter is also on the front panel. The receiver covers 200 kHz to 30 MHz--why do these receivers ignore the fact that European LW BCB goes down to 150 kHz?

A quick look at the receiver's block diagram reveals that it is quite different from the FRG-7/7000. There is no tuneable preselector; instead there are six bandpass filters which are switched in according to the MHz band chosen. An RF amplifier is followed by a balanced MOSFET mixer which upconverts the incoming signal to 48.055 MHz. Another balanced MOSFET mixer is used to bring the signal to 455 kHz where it is run through one of three ceramic filters. Before the filters is a noise blanker circuit which consists of an IF amplifier which is momentarily "switched off" when noise pulses occur, but doesn't affect received audio. The circuit is fairly conventional after the filters--IF amplifiers, detector, AGC and audio amplifiers.

Well, how does it work? Sensitivity below 2 MHz is quoted as 50 uV on AM; some have felt that this is a drawback. I didn't get to use this radio in a quiet location, but feel that 50 uV is not too insensitive for a MW receiver in most urban settings. Iden B. Rogers in an R-1000 review in The Lowdown says: "...when (the R-1000 was) compared side by side with a considerably more expensive receiver whose published sensitivity is '1 uV (S+N)/N of 10 dB', there was no perceptible difference in each receivers ability to pick up the same weak medium wave broadcast stations as judged by ear." Colin Newell's electronics class had done sensitivity tests on the R-1000 I tried and came up with 7.5 uV and 6.5 uV sensitivity using the AM narrow filter in the BCB range. So the specs might be better than you expect. The lesser sensitivity on BCB is due to an attenuator in the MW antenna input. One could improve sensitivity by bypassing this attenuator, but it would probably not be necessary (or wise) unless you were using a small unamplified loop or a very short wire antenna.

Also, you would have to be in an area with no locals to be able to remove attenuation from the MW circuit. Like other consumer grade shortwave sets, this one will not tolerate the use of an untuned antenna on BCB. Spurs from locals will crop up at numerous points below 2 MHz. The RF attenuator control is supposed to take care of this problem but doesn't really. -20 dB attenuation does reduce spurs somewhat, but the -40 dB and -60 dB reduce any DX you want to hear to inaudibility, which is no use. In fact, -60 dB leaves you hearing your locals only. Use of a good loop antenna or longwire preselector appears to clear up the problem. No local spurs were noticed here on the R-1000 when using a homebrew loop antenna, though there might have been weak ones underneath the local noise level.

Selectivity specs makes one wonder whether Kenwood designers were thinking of a hi-fi receiver when they built this. "AM Wide" selectivity is 12 kHz wide at -6 dB, and "AM Narrow" is 6 kHz wide at -6 dB. The "AM Wide" is good for listening to full-fidelity locals only, while the "AM Narrow" will get you within 10 kHz of your locals and maybe the occasional strong split. The SSB filter (2.7 kHz wide at -6 dB and with a better shape factor than the other filters) can be used for AM reception and is recommended for DX'ing. A kit can be obtained from Kenwood for this modification of the older R-1000's; the later R-1000's can be modified without a kit--see the receiver manual. After this modification, the "AM Wide" position uses the 6 kHz filter, "AM Narrow" and the SSB positions use the 2.7 kHz filter and the 12 kHz filter is bypassed. Radio West also offers mechanical filter

mechanical filter modifications on this receiver. Incidentally, word from Rob Harrington is that stock R-1000's built after January 30, 1980 will have the 6 kHz filter in "AM Wide" and a 3 kHz filter in "AM Narrow".

A big problem with the R-1000 has been its absurdly long AGC decay rate. A burst of splatter can blank out a weak adjacent signal for a number of seconds. The R-1000 I tried had been modified for a faster AGC decay time but, even so, splatter peaks from locals could eliminate adjacent channel signals for a good second at a time. I suspect that a way of switching the AGC off (such as Radio West offers) might be necessary for serious BCB DX.

The S-meter on the R-1000 is a pleasant surprise in its relative accuracy and resistance to "pinning". 20 dB attenuation at the antenna knocks down an S9+40 dB signal indication to S9+24 dB. Colin Newell's class found that a 225 uV signal on MW gave an S9 reading on the R-1000, while S9 on the stock FRG-7 is yielded by only 4 uV--which doesn't give you much room for finding a null on your loop.

The tone control simply tailors the audio from a bassy sound to a trebly sound and is not fantastic, but the receiver's overall audio quality is very good. The noise blanker works fine on sharply defined noise peaks, but is no good for splatter peaks or most other noise found on BCB.

The blue frequency display is accurate and easy to read, and the set is easy to tune--the band selector sets MHz and the large tuning knob sets kHz. The lack of preselector tuning makes this receiver a lot easier to use with a loop or antenna tuner than similar table radios which have preselectors. The display doubles as a digital clock when the "function" switch is set to "clock". Unfortunately, this is a 12 rather than a 24 hour; most DXers and SWLs use the 24 hour system. A timer circuit is incorporated with the clock so that the receiver can be switched on and off automatically, perhaps to allow remote DX recording.

This brings up the subject of stability. This set does drift in frequency--the specs say  $\pm 2$  kHz in the first 60 minutes from the set being turned on, and 1300 Hz every 30 minutes thereafter. With the wide IF filters, this should pose no problem for AM DX'ing, but if one uses a narrow IF filter, the set may drift enough so that a DX signal will fall outside the IF passband eventually. If you're recording DX using the timer, the set might drift right off the desired signal if you're not around to reset the frequency.

Finally, the stock R-1000 can be powered by AC house current only, though at least one distributor (Radio West) offers an external DC modification for portable use (13.5 v DC at 600 ma--you'll need more than dry cells!).

Overall, the radio shows promise for MW use--I preferred it to the FRG-7000, though my experience with both radios is limited. Thanks to Jack Cain for use of the R-1000 and to Colin Newell for getting it all together. \* \* \* \*

Oops dept: The FRG-7 modifications by Brian Aase in the last tech column were originally submitted to the ANARC receiver questionnaire and were used by kind permission of the author. \* \* \* \*

#### Improving tilting on the Dymek DA-5 loop by Armand di Filippo

From time to time I have read in IRCA's DX Forum and NRC's Musings of a DXer having difficulty with the tilting antenna head on the Dymek DA-5. After a short time of active use, the head will not hold its placed position. The head will rest in a 45° position only.

First, it is important to note that the unit was not designed for DX use. It was created for use with a companion high fidelity AM tuner, the Dymek AM-5. Second, while it does possess good sensitivity, it cannot achieve the kind of nulls as comparable units such as the Palomar, Radio West and SM-2 loops. Despite these facts, many DXers, including myself, use the DA-5 with good results.

But let's get back to the problem at hand: a tilting head that will not hold its position. If it is under warranty, by all means send it back for servicing. If it's not under warranty, do not send it to McKay-Dymek for repairs. The unit as designed will eventually fall victim to the same problem after a short period of active use even if a new shaft is installed. Save your money.

Instead, remove the plate on the underside of the head. This plate surrounds the shaft and is held to the head by four screws. Be sure this is done with the head removed from the base amp and with the four screws facing up at you, the head resting on a table or workbench. When removing the plate, do so carefully. Make sure the shaft remains in place and that the two small ball bearings under the plate do not fall inside the head.

Once the plate and its rubber base molding are removed, place the visible ball bearings in a cup so they won't get lost. If the ball bearings are not loose and are held tight in place on each side of the shaft, leave them be. You are lucky. They have not worn loose from the shaft.

Now place a strip of plastic electrical tape on both sides of the shaft's ball-like terminus. Be sure that each strip of tape runs in the same vertical plane as the shaft and covers as much surface as possible without covering the ball bearing positions. The tape should be smooth with no bulges or gathered lumps. It should also be fresh with effective adhesive. It is important that a smooth, evenly covered secure surface be achieved.

continued on pg. 7



# EASTERN DX ROUNDUP

Bob Curtis - 17 Cobbleview Drive - Colchester, VT 05446

Deadlines - Mondays

All times are Eastern Local

Upcoming Monday dates: June 30th and July 28th.

Splatter:

- "First time logged." (see 550-CFNB) Robert E. Schweitzer - NJ
- "# 711 heard." (see 610-WDAF) Niel Wolfish - ON
- "UNID drive-in" (see 831.5, also 825) Neil Kazaross - RI
- "#16 on 1000 (see CFLP); #15 on 1470 (see WTZE) and #10 on 1080 (see WQRO)." Bill Townshend - DC
- "...for state # 42." (see 1450-WTSA) Niel Wolfish - ON
- "...in all day during daylight." (see 1070-WNCT) Neil Kazaross - RI
- 540 CBT NF, Grand Falls 5/16 2300 Unusually good w/ID & CBC pgm. (KAZ-RI)
- 550 CFNB NB, Fredericton 5/5 0015-0020 Country mx, ID, wx degrees in Celsius, o/WGR, I think, First time logged. (RES-NJ)
- 610 WDAF KO, Kansas City 5/19 0145-0236 In w/C&W mx by Glen Campbell, George Hamilton, Bellamy Bros., Eddie Rabbitt etc., ID's as "Country 61", wx & TC's by OM DJ, AP nx at 0200. Poor-good signal o/WIP & WTVN w/CKTB off. Signal lost to WIP & WTVN around 0236. # 711 heard. (NW-ON)
- 620 WLBZ ME, Bangor 5/5 0040-0045 u/WHEN & WVNJ w/wx & ID. (RES-NJ)
- 740 CBL ON, Toronto 5/5 0010-0012 programming ancmts & s/off(RES-NJ)
- \*KRMG\* OK, Tulsa 5/19 0217-0221 ET w/song "Hillbillie Heaven", then ID. Fair signal. These guys rank up there w/CBJ, WMOO and WYFA for testing consistency. (NW-ON)
- 825a ???? UNID DRIVE-IN Good, noted rebroadcasting WPJB-FM at 1545 on 5/17, back again w/ads & mx at 1945, movie at 2030. Nearest Drive-in is about 20 miles away. (KAZ-Rib)
- (ed: WPJB-FM is Providence, RI.)
- 831.5 ???? UNID DRIVE-IN here with signal drifting slightly in freq 5/16 at 2115-2232. Quite strong, looped N-S. This is sandwiched between Belize-834 & WNYC-830. Do you know what kind of power drive-ins use to transmit audio to their customers? (KAZ-RI)
- (ed: No, I have no specific information on Drive-in setups. I always supposed they were a carrier operation using the AC lines, but am not sure. Neil, did you consider that the above two reports are from the same or different drive-ins?)
- 850 \*WHDH\* MA, Boston 5/5 0020 announcer, "We'll only say this once, conducting equip tests and maintenance. This is brought to you by WHDH." (RES-NJ)
- WJW OH, Cleveland 5/5 0025 Sign-off. (RES-NJ)
- 860 \*????\* UNID, 4/28 0031-0112 ET w/TT's on and off, plus "Pilot of the Airwaves" by Charlie Dore at 0053. Fair signal, but no ID's, so I gave up. (NW-ON)
- 1000 CFLP PO, Rimouski 5/6 2046 talk in FF by OM, alone on freq. Good signal. #16 on 1000. (WPT-DC)
- + 5/17 2033 Good in FF w/2 ID's. (KAZ-Rib)
- WRAR VA, Tappahannock 5/17 2010 Fair w/Request Line. ID. (KAZ-Rib)
- 1010 WPMH VA, Portsmouth 5/17 1200 way u/WINS nx w/"The Gospel Hour" at 1200. I called them to be sure. They are rlg's now. At 1817 they were a bit better because of skip & I was able to catch an ID. (KAZ-Rib)
- 1050 CHUM ON, Toronto 5/5 0105 "CHUM" ID. Poor w/hum, WHN off. (RES-NJ)
- 1070 WNCT NC, Greenville 5/17 1150-1225 in all day during daylight. Poor Fair o/CBA & others. Many promo's for "The Boathouse" in Greenville, many ID's. (KAZ-Rib)
- 1080 WQRO PA, Huntingdon 5/2 2014 s/off foll'ing ID by OM. Fair. #10 on 1080. (WPT-DC)
- 1230 WCMC NJ, Wildwood 5/17 1710 u/WERI w/South Jersey Nx. (KAZ-Rib)
- 1290 WKNE NH, Keene 5/17 0033 s/off at odd time of 0033 w/SSB. Financially troubled local WICE was already off. (KAZ-RI)
- 1340 (WYCB) DC, Washington 5/11 2016 noted off air w/intermittent OC. On again at 2019. (WPT-DC)
- 1420 WACK NY, Newark 5/9 2029-2030 s/off w/SSB. Fair signal o/WCED. (NW-ON)

- 1420 WCED PA, DuBois 5/9 2023-2030 spots for DuBois Mall, roller skating place & clothing store, T-40 mx by Paul McCartney & Aerosmith. Fair signal, but lost at 2030 pattern change. (NW-ON)
- 1450 WTBO MD, Cumberland 5/12 0006-0010 pop mx: "Any Way You Want It" by Journey, then ID by man followed by "You May Be Right" by Billy Joel. Poor and gone by 0010. (NW-ON)
- WTSA VT, Brattleboro 5/16 2358-0003 faded in w/end of Billy Joel song, ID by YL into NBC Nx. Poor in mess for state # 42 heard. (ed: Congratulations, Niel, on Vermont.) (NW-ON)
- 1470 WTZE VA, Tazewell 5/20 2029 s/off by OM w/out SSB. Fair sig. #15 on 1470. (WPT-DC)
- 1550 KKJO MO, St. Joseph 5/10 0107-0111 fade-in just after CBE s/off w/T40 by Bob Seger & Ambrosia, TC & ID by female DJ at 0108 as 12:08 AM. Poor-very poor w/slop from 1540. (NW-ON)
- 1560 \*WGLB\* WI, Port Washington 5/14 0057-0103 ET w/TT's, ID by OM w/TC at 0101. Fair signal w/WQXR off. (NW-ON)
- 1580 WTWP MS, Pascagoula 5/20 2045 s/off by OM folling TC. Worthy of mention, although unneeded. Good signal. (WPT-DC)

////////////////////////////////////  
 REPORTERS THIS ISSUE

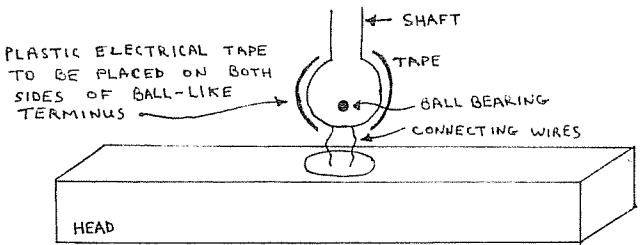
- RES-NJ Robert E. Schweitzer, 7 Madeline Ave., E. Brunswick, NJ 08816  
 DX-160 + longwire
- WPT-DC Bill Townshend, 4500 Conn. Ave., NW, Washington, DC 20008  
 Realistic TRF
- NW-ON Niel Wolfish, 15 Donwoods Grove, Toronto, ON M4N 2X4  
 Realistic TRF & Yaesu FRG-7
- KAZ-RI Neil Kazaross, Pawtucket, RI  
 R390A & Sanserino loop + 80' longwire
- KAZ-RIb Neil Kazaross, Narragansett, RI  
 using Hutton-mod. TRF & 1300' beverage at about 197°. Unterminated.  
 \*\*\*\*\*

Again, thanks to Niel Wolfish for CKOC and WTSO survey lists.

Nice to get the reports from Neil Kazaross' rather extraordinary daytime DX with his Beverage. Neil writes: "The Beverage is a fantastic antenna during the day. In late November and December I could hear WAFB on 690 w/CBF way u/WADS all day using the R390A. They still may be there (in May); but I couldn't tell for sure, and I've also moved my antenna so that it's a few more degrees directional to the south. Cuba on 720 was also just about barely audible all day in the winter."

It's been three months since I sent in my letter of resignation as editor of EDXR. Since that time I've received neither an acknowledgment nor any indication that a replacement editor is being very actively pursued. In view of this and also due to some upcoming commitments in September, I am announcing that the August EDXR column (deadline July 28th) will be my last. September is an excellent time for a new editor to take over, so we earnestly hope that someone will pick it up by that time.

73 and good DX Bob Curtis



While working on the shaft, do not tug or pull, since the connecting wires can snag. Re-mount the shaft, ball bearings and plate with its rubber molding. Be sure to tighten the four plate screws firmly. Test the tilting ability of the head. If the tape was applied with no lumping and is secure, the feel of the head will be firm, yet easy enough to tilt and hold any position.

If any tape gathering or bunching occurs, it means a second try is in order. Go through the outlined procedure again. Be patient. It may well take two tries. The tape must be smooth, even and secure.

Once the task is correctly completed, the tilting performance will be better than my DA-5 has been handling just great and has been holding all tilt positions for over seven months now.

Editor this issue:

# Central DX Roundup

Bob Lazar  
3837 Milan Dr., Apt. 1  
Alexandria, VA 22305

=====

NEW CDXR EDITOR:

This is my last CDXR column. The new editor is:

Robert Kramer  
3406 W. Pierce  
Chicago, IL 60651

All reports should now go to Robert. His deadline for the next issue should be around July 1. I will forward any reports received here.

=====

- 521 "ORC" IA Orange City Airport, 5/30 0143 extremely weak w/ "ORC" code. Listed as 50 watts. (CK-CO)  
"INE" MT Missoula, 4/30 0141 fair w/ "INE" code repeated. (CK-CO)
- 540 KNOE LA Monroe, 4/29 0400 good signal w/ top 40 mx & ID. (BEM-OK)
- 590 CKRS PQ Jonquiere, 5/19 0203 male anc'r reading nx in FF @ 0204 gave SID and into French rock. Good. (DW-WI)  
unid ?? 4/29 0300 stn good u/ WOW w/ Ae nx, then ID "59, W---, location". Sounded like they said Roanoke for the location, any ideas? (WRTH Wood River, IL is the only Ae listed on 590 in both the NRC Log and the IRCA Almanac--ed)
- 610 KARV AR Russellville, in very good on 4/20 at 0050 w/ full ID then into state nx. First time heard since their move from 1490. (SEM-TN)
- 620 WRJZ TN Knoxville, 4/22 0145 good signal while looking for WSUN. Top 40 mx & ID "62, WRJZ", into "My Girl" by O'Jays. (BEM-OK)  
(Bruce, note the correct calls--ed)
- 690 KAPI CO Pueblo, 5/3 1612 noted off. 5/4 0212 local daytimer "R. Mexicana" noted w/ OC's. Probably trying to correct 1380 harmonic. (CK-CO)
- KHEY TX El Paso, 4/27 0400 fair to bad signal w/ YL anc'r & top 40 mx, ID on the hour. (BEM-OK)
- WZAP VA Bristol, 4/2 0612 good, light QRM, C&W mx, local spots & menus for school lunch in several counties. (DF-IL)
- 730 WJMW AL Athens, in very strong on 4/25 at 0633 for several minutes w/ local & state nx, wx, mx, spot for B&B Photo in Athens, mx, spot for paint & hardware store serving Limestone Co., TC, spot for Athens Motors. (SEM-TN)
- WLOR GA Thomasville, 4/2 0600 ID in what was apparently s/on. Rather buried in the mess. (DF-IL)
- WMTC KY Vanclave, 4/2 0600-03 s/on w/ OM anc'r talking over instr. hymn. Good signal but much QRM. (DF-IL)
- WLIL TN Lenoir City, 4/2 0601 s/on, several IDs noted, moderate QRM from several other s/ons. (DF-IL)
- 790 KFGO ND Fargo, 5/4 0208 mx by Donna Fargo ending, male anc'r w/ "R. 79, KFGO" ID, into Tommy Overstreet mx. Signal was good. (DW-WI)
- WMC TN Memphis, 5/18 0106 male anc'r w/ wx radar 72°, ID, into Larry Gatlin mx, then faded out. I thought I had this but it's not listed in my log. (DW-WI)
- WEAQ WI Eau Claire, heard @ nite carrying The Rock Report from The Source w/ an AOR format and no nx from NBC. Checked at noon Memorial Day and they were carrying NBC nx on the hour. Although Eau Claire is only about 80 miles from here, they usually get wiped out by WTAR and CKSO at nite. Bob, what time is the nx feed from The Source? (DW-WI) (At :15--ed)
- 810 KGO CA San Francisco, 5/3 0300 poor w/ nx u/ KCMO. (RH-CO)
- KCMO MO Kansas City, 5/3 0300 good w/ KCMO ID, nx o/ KGO. (RH-CO)
- WKBC NC N. Wilkesboro, 4/2 0616 ID poor w/ much QRM. (DF-IL)  
4/4 0545 to 0547 w/ s/on anmt, C&W mx. (RG-IL) (Hey, both of you guys, note the correct location of this stn. Both of you had different locations listed, and neither one is right per my NRC Log--ed)
- WQIZ SC St. George, 4/2 0615 fair w/ moderate QRM, had nx, ID, much mention of SC. (DF-IL)
- 850 unid ?? 4/7 0409 to 0417½ o/ KOA w/ strong signal, someone on ET, TTs but no ID's. (RG-IL)



860 KOAM KS Pittsburg, 4/5 good 0707 to 0715 w/ ID, stock market rpts, local ads. (RG-IL)

\*WUCR\*TN\* Sparta, 5/13 0232 stn played pop song "It's Like the Rocking of the Ocean" twice, then MoR song by a wailing female twice, then gave quick ID @ 0245 and off. Good. (DW-WI)

880 KRVN NE Lexington, 4/5 0715 to 0730 good, no sign of "pest" WCBS usually here, w/ cattle rpts, C&W mx, local ads & wx. (RG-IL)

WRRZ NC Clinton, 4/2 0623 fair, mixing w/ WRFD. No sign of WCBS or KRVN. (DF-IL)

900 KIKR TX Conroe, in strong on 4/20 from 1942 to 1945 w/ mx and full s/off heard. (SEM-TN)

910 WOKK MS Meridian, 3/31 0006 to 0018 good w/ C&W mx, YL DJ, many ID's as "91 WOKK", local wx. (RG-IL)

920 KLMR CO Lamar, 1/1 1745 good w/ ID & wx forecast, ad for tires. (RH-CO)

930 WGNT WV Huntington, 4/28 0332 on top w/ local events & ID "93, WGNT". Fair signal. (BEM-OK)

940 KFRE CA Fresno, 4/30 0127 good to xlnt w/ R&R mx and "K-Free" ID's. Looped SW to null out KIXZ. (CK-CO)

KIXZ TX Amarillo, 4/26 2000 SID w/ mess into local nx while waiting for KIOA. Seems like I've always waited for them, hi, and gotten someone else. (BEM-OK)

950 KDSX TX Denison-Sherman, 4/7 0153 to 0159 popped in o/ KIMN & WKAZ w/ 1940's mx, OM anc'r who gave ID at 0159 and asked for listeners to send in requests. (RG-IL)

WKAZ WV Charleston, 4/7 0143 to 0153 fair o/u KIMN which dominated freq w/ rock mx, many ID's. (RG-IL)

960 KARZ AZ Phoenix, 4/30 0106 great signal w/ "CBS Mystery Theater" and "Serta" ads. Good bet for you midwest DXers. (CK-CO)

970 KPFL CO Pueblo, 4/26 1759 fair w/ CFI ad, classical mx. (RH-CO)

WDAY ND Fargo, 4/26 2340 good w/ mx & ID. (RH-CO)

990 WWWW AL Fayette, in clear on 4/13 at 0700 w/ s/on heard before semi-local KWAM came on the air. (SEM-TN)

1000 KXRB SD Sioux Falls, 5/3 2127 good w/ C&W mx, ID. New. (CK-CO)

KOMO WA Seattle, 3/31 0300-05 fair o/u KTKO/SS w/ ID, nx, then s/off, no SSB. (JA-WI)

1010 WIOI OH New Boston, 4/9 0620 w/ MoR mx, spots, ID, much mention of New Boston. (DF-IL)

1050 WKAU WI Kaukauna, 5/1 2115 fair thru CFYN QRM w/ s/off mentioning 24 hr FM operation. WLIP off 2045. (JA-WI)

1060 WKNG GA Tallapoosa, xlnt signal on 4/25 from 0656 to 0701 w/ PSA by GA Dept. of Agriculture, mx, top of hour ID & into nx. (SEM-TN)

KGFX SD Pierre, 4/26 2243 anc'r Jim Somebody gave BB scores, C&W mx by Janie Frickie, wx 52<sup>o</sup>, mention of SD Nurses meeting, ID, more C&W mx by LaCosta & others, "KGFX Gold Rush Contest" promo, NBC nx @ 2300. Good. (DW-WI)

KHYM TX Gilmer, boomed in on 4/25 at 0701 w/ s/on heard before it dropped out. Sounded like it was right in my backyard when it came on! (SEM-TN)

1080 WOAP MI Owosso, a real surprise 4/10 0638 w/ MoR & talk, ID just as I tuned in. Fair signals & moderate QRM, mostly from KRLD. (DF)

KYMO MO East Prairie, in good on 4/23 at 0806 for several minutes w/ IL & MO state nx, TC, ID, and mx. (SEM-TN)

1090 WENR TN Englewood, 4/2 0631 w/ KAAV nulled, good & alone. (DF-IL)

WGOC TN Kingsport, 4/10 0625-30 one of a number of stns here w/ KAAV nulled, possibly the one w/ religious mx. Clear ID & into more mx. (DF-IL)

1110 WBT NC Charlotte, 5/14 0316 male anc'r gave time check and played C&W mx for everyone @ Federal Bakery, ID'ed as "BT" after each record. Truckers' wx @ 0329, 69<sup>o</sup> in Queen City, Ronnie Milsip mx @ 0330. Signal very good, KFAB off. (DW-WI)

1120 KCLE TX Cleburne, 4/25 2000 w/ C&W mx, "Thought for the Day" just before s/off. KMOX completely nulled. (CK-CO)

1130 WSJP KY Murray, in very strong on 4/18 at 1235 for about 5 mins. w/ spot for Littleton's Store, annt about local Tappin Range factory closing, other western KY nx, ID, spots for Parker's Market & KY Lake Music Barn. (SEM-TN)

1140 WKWM MI Kentwood, 4/3 0603 quick s/on w/ WRVA partially nulled. Good signals. (DF-IL)

CKXL AB Calgary, 4/28 0235 good/xlnt signal w/ R&R mx from the movie "Grease", ads, ID's. (CK-CO)

1150 WKKN IL Rockford, 5/9 1323-30 poor o/ WCEN/WISN slop w/ wx, SID & C&W mx. (JA-WI)

1210 WKNX MI Saginaw, 4/9 0614 doing nicely w/ R&R mx, spots, IDs & WCAU null'd. (DF-MI)

WAVI OH Dayton, 4/10 0619 fair, heavy WCAU/WKNX QRM but ID noted during what seemed to be a promo. (DF-IL)

1220 CJOC AB Lethbridge, 5/5 0123 good w/ ID, R&R. (RH-CO)

1240 KRDO CO Colorado Springs, 4/26 1930 good w/ ID, mx. (RH-CO)

1260 WMUU SC Greenville, 4/6 0600 for many years now it has been a tradition for me to log one new stn before going to Eastern Sunrise services. This year's had s/on w/ hymn (stn is owned by Bob Jones Univ.) and standard s/on anmt by OM. Fair signals, light QRM. (DF-IL)

CFRN AB Edmonton, 4/28 0228 good w/ R&R mx & ID. Regular here after KVSF's MM s/off. (CK-CO)

1270 CHAT AB Medicine Hat, 4/28 0221 good to xln't w/ R&R mx, "Chuckie's in Love" was one song. S/off at 0300. (CK-CO)

1280 CJSL SA Estevan, 5/3 0230 ID pierced KTLK w/ "Saskatchewan's Music Giant...CJSL". New. (CK-CO)

1290 KBMO MN Benson, in fair to good on 4/23 at 1947 w/ stn promo to listen to KBMO for all severe wx reports and comments about their wx reporting system. (SEM-TN)

WATO TN Oak Ridge, in very strong on 4/23 at 2007 for several mins. w/ mx, ID, wx and temp. in Oak Ridge, TN ("8:10 at ATO") and more mx. From the strength of their signal I wondered if they were still running their day power! (SEM-TN)

1300 KVOR CO Colorado Springs, 4/26 1925 fair w/ "Radio 13 KVOR" ID, R&R mx. QRM from KTLK. (RH-CO)

KXXO OK Tulsa, 5/13 0129 break in Larry King Show, female ancr w/ ID, wx 68°, into Mutual nx, then faded to WKXI. No. 11 on 1300. (DW-WI)

1310 WIFE IN Indianapolis, 4/21 0207 rock mx ending, male ancr w/ ID, wx 54°, promo for Cin. Reds BB games, into Dan Fogelberg mx. Good o/ several unid's. (DW-WI)

1320 KCPX UT Salt Lake City, 4/27 0020 good w/ "Pilot of the Airways" song, ID. (RH-CO)

1330 WTRX MI Flint, 5/23 2338 talk show discussing taxes in Flint and Richfield Township. Signal was poor w/ a null on usually strong KWWL. (DW-WI)

WFBC SC Greenville, 4/28 0300 a surprise, w/ KFH off. Strong signal w/ ID into NBC nx. TT underneath. (BEM-OK)

CKKR SA Rosetown, 4/28 0201 Broadcast News ends @ 0205, wx, 10° @ CKKR, Salvation Army spot, ment of C&W format, to return to air @ 5:45 local time and s/off w/ no GSQ. Signal was good. Canadian #81. (DW-WI)

1340 WNBS KY Murray, in good on 4/18 at 1330 w/ ID, then into Church of Christ pgm. Was surprised to get this one and WSJP at mid-day!! Also both from the same city and new catches for me! (SEM-TN)

WEVE MN Eveleth, 4/26 2015 Anne Murray mx ending, ID as "Stereo WEVE", wx, spot for local furniture store, into mx by The Eagles. Fair atop the mess. (DW-WI)

1360 KSCJ IA Sioux City, 4/27 2330 good w/ ID, into Christian pgm. (RH-CO)

1380 KOTA SD Rapid City, 1/1 0249 xln't w/ ID: "11 before 1 on KOTA Radio". (RH-CO)

1390 KCBC IA Des Moines, 4/8 2305 fair w/ R&R. Heard on car rx in Denver. 4/28 0035 fair w/ nx, ID & R&R. (RH-CO) 4/3 0014 in KCRC null w/ ID and "It's clear in Des Moines w/ \_\_\_ degrees". New. (CK-CO) 4/10 0000 ID & SID into old Peter Gordon record, horse racing results @ 0003, then more rock. First time hrd o/ the usually strong WVON which was carrying a combination of local and SBN nx @ this time. (DW-WI)

KENN NM Farmington, 4/30 0100 very good w/ ID "This is KENN Farmington NM, it's 11 o'clock", ABC nx. (RH-CO)

KKOA ND Minot, 4/30 0300 good w/ ID as "Double K-OA". (RH-CO) 0020 5/3 good to xln't peak w/ R&R mx & ID: "Double K-OA". Thanks to tip from Rob Harrington. (CK-CO)

\*unid\*??\*3/31 0114 to 0120 someone here u/ WCSC on ET, TT's only, no ID's. (RG-IL)

1400 WATW WI Ashland, 5/1 2244 poor-fair w/ wx, 56° in Ashland & ID. (JA-WI)

1410 KRIG TX Odessa, 4/4 0631 w/ good signal, ID & moderate WIZM QRM. I can't believe how easy it is to log Texas stns here. Quick count from memory indicates 63 now logged here. (DF-IL)

1420 unid ?? 4/28 0130 good w/ R&R, ID, R&R, R&R, R&R, ID, R&R, R&R. (RH-CO)  
1430 KOL UT Ogden, 4/1 0105 right thru WIL/WIRE/CKFH QRM w/ end of Ai nx, ID, then back under. (DF-IL)  
1440 WBUY NC Lexington, 4/9 0558 fair signals w/ moderate QRM, readable w/ several spots & ID. (DF-IL)  
KEYS TX Corpus Christi, 4/5 0340 good w/ moderately heavy WRM, some QRN. Had R&R mx & KEYS promo. 3rd 1440 Texan. (DF-IL)  
1450 KEST CA San Francisco, 4/20 0516 ID "For over 50 years in broadcasting this is KEST radio", then faded. Taped. (CK-CO)  
KYOU CO Greeley, 4/26 1815 good w/ ID, mx, ad for car sale. (RH-CO)  
KRZY NM Albuquerque, 5/4 0151 ID "KRZY, Alb'q's own great American mx" (CK-CO)  
1460 KYSN CO Colorado Springs, 4/26 1816 very good w/ ID, mx "It Hirts Real Bad". (RH-CO)  
WXOK LA Baton Rouge, in good, for a couple of mins., on 4/23 at 0506 w/ end of nx, ID, then into GOS mx before covered by KSO.(SEM)  
KRNY NE Kearney, in fair to good on 4/21 at 1950 w/ spot about fishing contest w/ mention to register at KRNY studio or local sporting goods store, wx, then mx. (SEM-TN)  
1470 KSIR CO Estes Park, 4/26 1910 fair w/ ID, nx, ad for Roadway Inn & more nx. (RH-CO)  
KWSL IA Sioux City 5/27 0145 female ancr playing hard rock w/ spots & ID after each record. Signal was fair to poor w/ WKMF's C&W and usually dominant WMBD. (DW-WI)  
\*WEAG\*TN\*Alcoa, 4/1 0118 ET w/ ID & OC fair w/ WMBD nulled. (DF-IL)  
1480 WLTW NC Franklin, 4/10 0600 s/on by YL w/ ID but quickly buried by other s/ons, etc. (DF-IL)  
1500 WGIC OH Xenia, 4/4 0600 s/on w/ readable ID, ment of its county & into nx. Fair signals, some WTOP QRM. (DF-IL)  
1520 WARR NC Warrenton, thru WHIC r/c 4/4 0545 w/ s/on, much mention of call letters. Fair signals but very loud WHIC TT. (DF-IL)  
1540 WPTR NY Albany, 4/7 0221 to 0243½ good w/ no sign of pest KXEL w/ YL DJ, rock mx, station promo. (RG-IL)  
CHIN ON Toronto, 4/9 0604 w/ nx, actualities w/ "reporting for CHIN" tag. Fair & fadey w/ KXEL QRM. (DF-IL)  
1560 KCJJ IA Iowa City, in very strong on 4/23 at 0418 w/ mx, full ID, and more mx. (SEM-TN)  
WTRQ NC Warsaw, s/on all alone w/ fair signals 4/10 0546. (DF-IL)  
1580 WAMY MS Amory, in very good on 4/13 at 1930 w/ s/off & SSB. (SEM-TN)  
1590 KZOK WA Seattle, 4/5 0425 a real surprise. Had R&R mx & ID, fair signals in heavy QRM. (DF-IL)  
1600 WCWC WI Ripon, is now affiliated w/ CBS and has been for about 6 mos. Their signal is good here during the day but gets wiped out by KCRG at night. They carry CBS Mystery Theater M-F @ 2007 and their hours of operation are 0600-0100, 7 days a week. May 1st, their FM will become WYUR and they will have no simulcasts. They answer all veries and someone from Finland even sent them a tape some time last year. (DW-WI)

PER THE LIST

790 KGHL MT Billings, 0245 to 0300 4/7 fair w/ ET per list, TT's, OM gave voice ID's as follows "This is KGHL Billings, MT operating on the authorized freq of 790 KC w/ the authorized power of 5000 watts, for f/c purposes". First MT logged in IL, logged MT in Alta. before so not a new state. (RG-IL)  
950 KFSA AR Ft. Smith, 4/7 0130 to 0143 no sign of ET per list. (RG-IL)  
1260 KFGQ IA Boone, 4/7 poor u/ semi-local WNDE 0207 to 0215 w/ organ mx, ID's at 0214 for KRGQ-AM & KFGQ-FM. Must have been on ET w/ mx as per list. (RG-IL)  
1310 WDOC KY Prestonburg, 4/5 0445 very good w/ 1000 Hz TT, moderate QRM. (DF-IL)  
1340 WHPI IL Herrin, 3/31 0125 to 0140 local not DX, checked to see if this was the MM they'd use for their regular ET on 4th MM as per list. No ET, regular pgm'ing, C&W mx, local ads. (RG-IL)  
1360 WMOV WV Ravenswood, 4/5 0450 good w/ 1000 Hz TT & ID, heavy QRM. (DF)  
1450 KSIW OK Woodward, 4/25 0150 w/ r/c fair to good signal w/ TT, ID, which left no doubt who they were. They went on & on w/ ID for 5 min. straight, an example for others! (BEM-OK)  
1460 WRVK KY Mt. Vernon, 4/5 0330 fair w/ 1000 Hz TT & ID, much QRM from KRNY ET. (DF-IL)  
1470 WBFC KY Stanton, 4/5 0402 good w/ heavy QRM & WMBD nulled. (DF-IL)

1520 WHIC KY Hardinsburg, 4/4 0545-55 strong w/ 1000 Hz TT, light QRM. Way o/ WARR s/on. (DF-IL)  
 1550 WIRV KY Irvine, 4/5 0310 almost slept thru this one but radio finally managed to rouse me. Had soul mx & ID closing r/c five mins. early. (DF-IL)

REPORT FROM OKLAHOMA CITY

The following loggings were made by Californian Mike Bittner while on a trip to Oklahoma City, Oklahoma. DX was done with a Sony TFM-8600W from the Holiday Inn on the Tinker Diagonal.

540 XEWA (tentative) two OM's dialog in SS 4/17 0045.  
 550 KSD MO St. Louis, 4/17 0053 Larry King o/u KTSA.  
 KTSA TX San Antonio, 4/17 0053 DJ talking on phone to caller Tina Reynolds o/u KSD.  
 560 KWTO MO Springfield, 4/17 0058 Willie Nelson record followed by ID on the hour, strong o/ another C&W stn.  
 KLVI TX Beaumont (tentative) 4/17 0100 weak C&W mx u/ KWTO.  
 570 unid ?? 2 stns fluttering in and out, weak, unreadable. 4/17 0102.  
 580 WIEW KS Topeka, 4/17 0106 CBS nx, stn ID at 0107, then into Larry King reporting from National Assoc. of Broadcasters convention at the Las Vegas Hilton.  
 590 WOW NE Omaha, 4/17 0103 Mutual nx "John Haurahan reporting", PSA for Project Hope, stn ID at 0105 w/ wx for Sioux City o/ pop mx stn.  
 600 unid ?? 4/17 0110 YL C&W singer o/ strong het.  
 1420 unid ?? 4/17 0120 Beatles record Live and Let Die, TC given as 12:22, then fadeout.  
 1460 WACO TX Waco, 4/17 0117 stn ID u/ KSO.  
 KSO IA Des Moines, 4/17 0119 sports nx, then stn ID.  
 1520 KOMA OK Oklahoma City, 4/17 0050 stn ID, then anmt for wet T-shirt contest. Hrd several places on the dial. Especially loud on 530. Top of xmtr tower can be seen from motel. The KFI of Okie City. You have to live where I live (in the shadow of KFI) to appreciate thate.  
 1550 unid WOKJ?? 4/17 0114 preacher.

A FINAL TIP OF MY HAT TO THESE CDXR REPORTERS

JA - Jim Albrecht, 3313 N. Weil St., Milwaukee, WI 53212  
 (Realistic TRF, Panasonic RF-2200)  
 DF - David Paulkner, P.O. Box 602, Will, IL 62094  
 (Realistic TRF)  
 RG - Rob Gerardi, 1418 N. Lincoln, Apt. D, Benton, IL 62812  
 (Realistic TRF)  
 RH - Rob Harrington, 3181 S. York St., Englewood, CO 80110  
 (Realistic TRF)  
 BEM - Bruce E. McFadden, 6335 S. Owasso Ave., Tulsa, OK 74136  
 (HQ-129-X, 50' longwire)  
 SEM - Sidney E. Marshall, 7224 Pam Dr., Millington, TN 38053  
 (Panasonic RF-2200, SM-2)  
 DW - Dave Wurl, 908 W. 14th St., Marshfield, WI 54449

And now, to wind up almost two years serving as CDXR editor, I'm pleased to present the first and last BOB LAZAR COMPILATION OF CDXR STATISTICS:

First let's thank those reporters that contributed the most to the column.

The top 15 reporters in terms of number of loggings submitted	The top 14 reporters in terms of number of issues appearing in
1. Dave Wurl (284)	1. Neil Zank (26)
2. Sidney E. Marshall (213)	2. Sidney E. Marshall (20)
3. Michael Jeziorski (169)	Dave Wurl (20)
4. Neil Zank (160)	4. Jim Albrecht (16)
5. John Clemmer (136)	5. John Clemmer (11)
6. Jim Albrecht (126)	John J. Rieger (11)
Todd Skaine (126)	7. Karl Forth (10)
8. Karl Forth (125)	Joseph Landry (10)
9. Joseph Landry (123)	9. Andy Kwiatkowski (9)
10. Robert Kramer (115)	Robert Steadman (9)
Andy Kwiatkowski (115)	Gerry Thomas (9)
12. Paul A. LaFreniere (108)	12. Paul A. LaFreniere (8)
13. Robert Steadman (97)	Mark Strickert (8)
14. Rob Harrington (77)	14. Rob Gerardi (7)
15. Rob Gerardi (76)	

And thanks go out to all of our CDXR contributors: Jamil Z.A. Albi, Kenn Carr, George Carter, T.J. Cieslewicz, Phil Conley, Craig A. Cook, David Faulkner, Michael L. Hogan, Tom Jasinski, Rob Keeney, Chris Knight, Bruce McPadden, Robert McKinney, Daniel Massey, Scott A. Mentzer, Bill Nittler, Tim Noonan, Brian P. Sherwood, Steve Sprague and Larry Van Horn.

And now, a statistical breakdown on the loggings reported to CDXR....

Number of stations from each state reported to CDXR

1. Tex. 182	11. Ga. 79	21. Pa. 52	31. N.H. 24	Ore. 6
2. Ill. 114	12. Minn. 74	22. Neb. 49	32. Md. 14	42. R.I. 5
3. Ala. 109	13. Ark. 67	23. N.Y. 48	33. Wyo. 12	43. Utah 4
4. Wis. 99	14. Okla. 63	24. Cal. 47	34. Mont. 11	44. N.J. 3
5. Mo. 98	15. Ohio 61	25. N.C. 38	35. Ariz. 11	Ida. 3
6. Tenn. 96	La. 61	S.D. 38	36. Del. 10	Conn. 3
7. Miss. 93	Kan. 61	27. N.D. 36	37. Mass. 8	47. N.H. 2
8. Ind. 91	18. Ind. 59	28. Va. 34	Wash. 8	48. Me. 1
9. Mich. 84	19. Fla. 55	29. S.C. 29	D.C. 8	49. Vt. 0
10. Ky. 81	20. Col. 54	30. W.Va. 25	40. Nev. 6	

Canadian provinces

1. Ont. 115
2. Que. 29
3. Sask. 27
Alta. 27
5. Man. 26
6. B.C. 5
7. N.B. 4
8. Nfld. 1
9. P.E.I. 0

CDXR's top 20 frequencies

1. 1580 (91)	11. 950 (44)
2. 1590 (56)	12. 1490 (42)
3. 1550 (54)	13. 960 (41)
4. 1570 (52)	1360 (41)
5. 900 (47)	1530 (41)
6. 1250 (46)	16. 1030 (39)
7. 930 (45)	17. 1150 (37)
8. 1320 (45)	18. 1460 (36)
9. 1560 (45)	19. 1250 (35)
1600 (450)	20. 790 (34)
	1450 (34)

CDXR's bottom 20

1. 720 (0)	11. 650 (3)
2. 700 (1)	760 (3)
1200 (1)	780 (3)
4. 670 (2)	1120 (3)
820 (2)	1180 (3)
830 (2)	16. 870 (4)
840 (2)	17. 1160 (5)
890 (2)	18. 770 (7)
1040 (2)	19. 660 (8)
1160 (2)	1210 (8)

Welcome to Dave Faulkner to CDXR-land and a welcome back to Bruce McPadden to the pages of CDXR. And a special thanks to Jim Albrecht who delivered his report in person at the recent WADXA get together. Sorry about missing a column. Actually, the one I missed was the one that was supposed to be in last issue. The one that was in that issue was actually the one that was intended to be in the issue before that but it was apparently slow in making it to Seattle. Anyway, it turned out that I broke my arm and was unable to type the last column (at least not very easily!) so that is why there was a column. Gee, maybe I shouldn't have gone roller skating! I'm more or less back to normal now, just in time to type up this grand finale CDXR column and wish the best of luck to new editor Robert Kramer. 73 and good DX.

# FCC votes to end clear channel

By Martha M. Hamilton  
Washington Post Staff Writer

The federal Communications Commission voted yesterday for a major, nationwide expansion of AM radio stations by limiting the interference protection granted powerful nighttime broadcasters.

The commission's decision to limit "clear-channel" broadcasters is expected to create as many as 125 new AM stations.

Initially, the action is expected to benefit small communities with local radio service. In addition, the new rule is aimed at cities with substantial minority populations that either have no minority-owned stations or are considered by the commission to be underserved by minority-owned stations.

Commission members also said that additional stations are expected to be used to provide public radio in areas now only served by commercial stations.

The FCC listed 37 communities likely to qualify for new stations under its guidelines, none in the Washington metropolitan area. Whether the guidelines eventually might allow for additional stations in this area is unclear.

FCC officials said they expect as many as 2,000 applications for the newly available frequencies, the first major expansion of AM stations in major years.

What the commission did to make additional frequencies available for new AM stations was to modify regulations protecting powerful "clear-channel" stations, which were previously assured transmission protection from interference at night.

Instead, the FCC voted to limit protection to 750 miles in any direction from the stations. Reception beyond 700 miles has been unreliable even under the old standards, FCC chairman Charles D. Ferris said.

"By protecting the 25 clear-channel stations from interference across a diameter of 1,400 to 1,500 miles, most people who now listen to 'skywave' broadcasts will continue to hear them," Ferris said.

For instance, many listeners to the Grand Ole Opry broadcast on a Nashville clear-channel station, will continue to receive the Opry without interference. Signals from the 50,500-watt, clear-channel stations have been received infrequently beyond a radius of 750 miles when atmospheric conditions were correct.

Ferris called the FCC decision a "compromise that will satisfy dual needs" by maintaining the benefit of broad nighttime coverage on the clear channel stations while opening an opportunity for more service elsewhere.

Ferris also said that if the United States had failed to place additional stations on clear-channel frequencies along U.S. borders, it might have lost rights to interference protections along those frontiers.

Only one Maryland or Virginia community—Collinsville, Va., outside of Martinsville in the southwestern part of the state—made the FCC's initial list of communities that may pick up a new AM station. Collinsville was listed among communities without local radio service.

In other action yesterday, the FCC approved a tariff setting price for Comsat, the public-private communications satellite company, to provide service directly to television networks. Previously Comsat could provide satellite service only through international record carriers such as AT&T.

What the FCC did was to allow Comsat to provide the service directly at the same costs charged by the international record carriers.

CONTEST MANAGER: Richard C. Evans  
P. O. Box 1294  
North Wales, Pennsylvania 19454

1979-80 Contest standings, as of June 1, 1980

Domestic Heard

	Points	Stations	S&P
1. R. Kramer, Ill.	1383	227	56
2. N. Wolfish, Ont.	744	160	44
3. W. McMillan, Idaho	648	126	36
4. L. Van Horn, Tenn.	549	111	36
5. M. Saltmarsh, N.H.	383	84	32
6. M. Hogan, Ill.	381	76	29
7. B. Nittler, Colo.	318	61	24
8. J. Clemmer, Ill.	265	58	27
9. B. Hardy, Wash.	235	53	27
10. S. Grubb, Tenn.	216	47	17
11. K. Horne, B.C.	182	40	15
12. N. Hardy, Wash.	142	40	21
13. F. Mount, Ohio	33	8	7

No entry: M. Jeziorski, B. Portzer, G. Thomas.

Alphabet Soup

	Points	Stations
1. L. Van Horne, Tenn.	351	195
2. M. Saltmarsh, N.H.	236	144
3. B. Portzer, Wash.	236	156
4. B. Hardy, Wash.	201	139
5. J. Byrns, N.Y.	200	100
6. N. Hardy, Wash.	185	129

No entry: J. Clemmer, M. Jeziorski, G. Thomas.

Foreign Heard

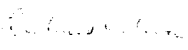
	Points	Cont.	Countries	Stns
1. B. Cartwright, Pa.	521	4	27	66
2. B. Portzer, Wash.	446	5	23	58
3. N. Wolfish, Ont.	358	3	12	42
4. L. Van Horne, Tenn.	269	2	9	29
5. N. Hall-Patch, B.C.	84	2	5	10
6. B. Hardy, Wash.	57	2	3	6
7. M. Saltmarsh, N.H.	35	1	2	4

No entry: N. Hardy, M. Hogan, P. Martin, G. Thomas.

Father Jack was notified quite a while ago that I will not be continuing as contest manager next season, due to lack of time. I'm currently working two jobs, and have all the overtime I want at my regular job.

The deadline for sending in reports is being pushed back to July 31st. There is no time limit (such as 30 days from reception) for reporting this season, so you can wrap up your loose ends.

Respectfully submitted,

  
Richard C. Evans,  
Contest Manager

BOX 1350, PRINCETON, N.J. 08540

**whwh**

**1350**

on your Radio

# WESTERN DX ROUNDUP

Nancy Hardy  
2301 Pacific Avenue  
Aberdeen, WA 98520

All times are  
Eastern Local

Phone for hot WDXR tips: (206)532-6827 till 10:30pm(PT)--no collect calls

Next deadline: Wednesday July 2

REPORTERS FOR THIS ISSUE:

- (JEC) James Critchett-1635 Walbridge Street-Red Bluff, CA 96080  
Drake SPR-4, Sanserino loop
- (JH) John Hart-P.O. Box 644-Carlin, NV 89822  
Panasonic RF-594, "Select-A-Tenna," 200' rusty bailing wire N/S
- (JFJ) Joe Jergel-1507 California #337-San Francisco, CA 94109  
Grundig Satellit 3400, DA-5
- (RPK) Ralph Kemper-297-27 3/8 Road-Grand Junction, CO 81503  
Norelco portable
- (MEM) Mark McMillan-Rt. 3 Box 381-Rathdrum, ID 83858  
HQ-180, PRG-7, Bendix car rx, 2000' E, 2000' SE & 1000' E  
Beverages
- (SMM) Steve Mittman-2248 west 37th Street-San Pedro, CA 90732  
Realistic TRP, PRG-7, 3' wedge
- (bp) Bruce Portzer-6546-19 NE-Seattle, WA 98115  
HQ-180A, 4' loop
- (RET) Randy Tomer-1969-27th Street-Arcata, CA 95521  
HQ-180A, Radio West loop
- (RW) Robert Wien-1309 Dentwood Drive-San Jose, CA 95118  
GE long-range portable, SM-2

- \*\*\*\*\*
- 521 ORC IA, Orange City 5/22 0500-0505 w/"INE" but easily readable.  
Also noted 5/23. Station #939. (MEM-ID)
- 540 \*KVIP\* CA, Redding 5/16 0326 noted TT's & OC. (RW-CA)  
CBK SK, Regina Fr 5/23 0310-0410+ on the air AN for emergency  
coverage of 3 raging fires covering 60,000 acres in 3 provinces.  
As I was listening, the anncr. suddenly came on to say that the  
community of Snow Lake had to be evacuated (Many other  
communities were already ghost towns!). Gave EDT, CDT & MDT  
TC's. (SMM-CA)
- 550 KBOW MT, Butte MM 5/19 0336 fair in mess w/Montana rx. Not sure if  
now AN MM or just on due to volcanic activity, but probably the  
former. (bp-WA) (Was off MM's last year.--NH)
- 560 KBLU AZ, Yuma Th 4/17 0711, while KSP0 was testing. (JEC-CA)
- 570 KCNO CA, Alturas 5/23 1804 poor w/Ai rx in KSFO null. Unusually  
strong this day. (RW-CA)
- 600 KSJB ND, Jamestown 5/26 0330-0352 C&W mx; w/strong signal, faded out  
w/heavy QRM. (JH-NV)  
CPQC SK, Saskatoon 6/2 0615 xint on top w/KOGC/CJOR nulled. Contest,  
jingle ID. Rapid fade-out. Almost Sask. SR. (RW-CA)
- 610 (KPRC) CA, San Francisco 6/2 0354-0605+ totally off. Seems to have a  
SP on 1st MM of certain months, but don't see a pattern yet.  
+MM 6/2 0340 noted totally off, yielding a strong (RW-CA)  
KRKE. (SMM-CA)
- 630 CKRC MB, Winnipeg 5/19 0326 in nicely w/ID & C&W mx during rare  
KHOW SP. (RPK-CO)
- 690 XETRA BCN, Tijuana 5/30 1100 strong w/EZL mx, o/KBLI. (JH-NV)
- 720 (KDWN) NV, Las Vegas Tu 5/6 0312 totally off. (SMM-CA)
- 750 KPQD AK, Anchorage my second Alaskan, heard MM 3/3 0342. (JEC-CA)
- 760 (KPMB) CA, San Diego MM 5/5 0350 totally off. Testing 0450-0520, then  
off again. MM 5/12 0345 off the air for the 2nd MM in a row!  
Came on at 0359:30, ID'd & played a song, then ment. that they  
were leaving the air until 5am (0800). (SMM-CA)
- WJR MI, Detroit finally caught this 5/12 0305-0320 w/inst. mx.  
Weak to fair, out w/KOB-770 splatter. KPMB dominates here  
nights. (JH-NV)
- 800 XEROK CH, Ciudad Juarez 5/17 0108 (EE) "This is XEROK broadcasting w/  
150,000 watts of power from Juarez, Mexico." Also ID's as  
"Country-80, Radio Cañon" (JH-NV)
- KBUH UT, Brigham City fair to strong days w/rr mx. (JH-NV)
- 820 (WBAP) TX, Fort Worth-Dallas Su 4/20 0430-0600 noted off. (SMM-CA)
- 850 \*KGOE\* CA, Thousand Oaks Wed 5/7 0310 fair to good o/KOA w/TT's. ID at  
0326, then more testing w/pop mx. A bit late for their DX test,  
hi! (SMM-CA)

- 860 WDMG GA, Douglas MM 5/12 0504 fair s/on o/QRM w/ment. that WDMG-AM operates on 860 kHz w/5000 watts, & WDMG-FM operates on 99.5 MHz w/50,000 radiated watts. SSB followed s/on, then into relig sermon. Tipped off to me by Mark Bixby, who logged them recently. (SMM-CA)
- 920 KLOC CA, Ceres-Modesto 5/23 1801 very weak & fadey thru KNEW-910 slop w/SS. Quite rare here. (RW-CA)
- (KORK) NV, Las Vegas Fr 5/23 0259 hrd s/off, mentioning 5000 watts day 500 watts night. (SMM-CA)
- KKLS SD, Rapid City 4/21 mx, ads, lotsa ID's. Atop using both HQ and car rx. (MEM-ID) (You left off the time, Mark!--NH)
- KELP TX, El Paso Fr 5/23 0300 good w/KHJ-930 slop nulled. "It's 1:00 in the southwest, & this is K-E-L-P, El Paso, celebrating our silver anniversary of rock music!" (SMM-CA)
- \*KXLY\* WA, Spokane MM 5/26 0501-0510 TT, ID "This is K-X-L-Y Spokane, on the air for test purposes only." Very strong signal! (JH-NV)
- 930 \*KSEI\* ID, Pocatello 5/19 0320 good w/TT well o/KHJ. (RW-CA)
- 940 (KPRE) CA, Fresno 6/2 0356+ noted totally off. (RW-CA)
- 950 KLER ID, Orofino 5/17 0015 ID hrd o/"Radio Noventa Cinco, La Grande" (XEBM?). SS "24 hrs. of mx." Also hrd 0048 o/KJR. (JH-NV)
- 970 KOOK MT, Billings 5/23 0120 w/wx, temps at "Music 97 K-O-O-K." (JH)
- 990 (KKIS) CA, Pittsburg 6/1 0520 noted totally off. (RW-CA)
- 1000 \*KKIM\* NM, Albuquerque 5/19 0315 noted w/ET of gospel mx good o/HJAR.
- 1010 \*KXEG\* AZ, Tolleson 5/10 noted off, then testing w/TT. (RW-CA) (RW-CA)
- 1030 \*KTWO\* WY, Casper 5/19 0336 xlint w/TT & hum tones. 6/2 xlint w/TT. (RW)
- 1080 WTIC CT, Hartford 4/21 0420 YL w/ID into talk show. Also noted 4/28 at 0430. (MEM-ID)
- CKSA AE, Lloydminster 5/8 0700 hrd ID w/good level. (JH-NV)
- 1090 KBOZ MT, Bozeman 5/23 0058; rarely hrd thru XEPRS QRM! (JH-NV)
- (XEPRS) BCN, Rosarito 5/7 0332 noted off the air for the FIRST TIME EVER by me!! Hrd TGZ for 1090 #2. Tried for KING & KBOZ, but local KNX-1070 was just too much. XEPRS was still off at 0415, but was back on when I got up again 0600 to try for WBAL. (SMM)
- 1110 CHQT AB, Edmonton 5/30 1200 w/nx, o/KRLA. (JH-NV)
- 1150 KCKY AZ, Coolidge 5/25 0200-0230 w/"Jamboree America" C&W mx. Memorial Day program changed due to broadcast for "Indy 500" race. Not hrd for several months. (JH-NV)
- KWBE CO, Englewood 5/28 0030 w/ID "KWBEZ Denver, 1150 talkradio," w/teletalk till 0100. (JH-NV)
- 1160 \*KSL\* UT, Salt Lake City Su 4/27 0425 EDT (0125 MST) noted testing. Hrd anncts. a couple of times "This is KSL, Salt Lake City, UT, conducting equip. performance tests. Normal programming will resume at the conclusion of these tests." Had OC's & TT's from 0425 EDT through at least 0615 EDT, but apparently never went completely off. Got up again at 0715 EDT to try for WJJD s/on, but KSL was back on RS. (SMM-CA)
- 1190 KRDS AZ, Tolleson 5/27 1640 w/ID, MOR, relig. mx, UFI World nx. (JH)
- KNBA CA, Vallejo 5/27 1920 w/ID, TC, sports nx, pop mx; faded out 1935. (JH-NV)
- 1220 \*KLIT\* CA, Pomona 6/1 0514 w/TT, ID o/u XEB in CJOC null. Seemed to be switching powers, as signal got weaker & stronger during various switches. (RW-CA)
- 1240 \*KESE\* CA, Monterey 5/16 0351 strong w/TT way o/KROY, wiping out 1240 almost. (RW-CA)
- 1250 KNCO CA, Grass Valley 5/21 0913 well o/everything w/many local spots one ID; gone by 0921. (RW-CA)
- 1250 \*KTMS\* CA, Santa Barbara 6/1 0613 strong TT o/KYAC. (RW-CA)
- 1260 \*KYA\* CA, San Francisco 6/2 0358 xlint w/TT. (RW-CA)
- \*KSNO\* CO, Aspen noted 0210 5/19 w/ID & jazz mx; another ID at 0230 then into TT, o/KYA. (RPK-CO)
- KVSF NM, Santa Fe 5/17 2355-0000 ID, mx, SID into nx. (MEM-ID)
- 1270 KBAM WA, Longview MM 5/19 noted on due to Mt. St. Helens eruption w/C&W mx, emergency messages, road closures, flood warnings, etc. Said they'd be on AN. Good o/KCOOK after CHWK s/off. (bp-WA)
- (KBAM) 5/29 0345-0358 tried per tip from BH, who said they were 24 hr due to possible flood cx from volcano, but nothing noted during this period, only usual stations. Not noted as well on 6/2 during same period, so flood danger probably over. (RW-CA)
- CHAT AE, Medicine Hat 5/3 w/ID "12-70 C-H-A-T," 11 o'clock report, mx; faded to KTLG at 0726. (JH-NV) (0726 is 5:26am MDT. What's this about an "11 o'clock report"??--NH)



1280 KVOX MN, Moorhead 4/21 0615 w/wx & ID. Also noted 4/28 0600. (MEM)  
KIT WA, Yakima MM 5/19 AN (not unusual for them) w/personal messages, business closures, emergency shelter info, etc. Little, if any, of the usual MOR mx. (bp-WA)

1290 KGVO MT, Missoula MM 5/19 0405 on RS (like usual) w/CBS nx & pop mx but unusually strong. Not sure if volcano related or just weird cx. (bp-WA)

KUMA OR, Pendleton 5/7 0800 s/on w/America the Beautiful; fair u/ KGVO. "Chicken Man" spot for Best Ice Cream. (JH-NV)

1300 \*KWKW\* CA, Pasadena Tu 5/12 0405 off RS for the first time ever for me! Was sending out a lot of OO's & some TT's, and was even off for a couple minutes at a time! returned to RS at 0445. Imagine... in less than a week, I caught both XEPRS & KWKW off for the first time! (SMM-CA)

?KMPS? WA, Seattle Tu 5/12 0405-0445 C&W in & out w/good signal. Caught one PDT TC. XEP (a newbie) & unID Mexican QRM'ing w/KWKW off. (SMM-CA)

1310 KZZP AZ, Mesa ex-KQXE MM 5/5 0330 good w/album-rock mx. ID's as "KZZP-FM 104 and AM 1310," and "The Valley's new FM--KZZP." KZZP is owned by the same company that owns KZAP 98.5 Sacramento Note the similarity in calls. (SMM-CA)

1320 KQIQ CA, Lemoore 5/23 1757 ex-KLAN fair in KGNR null w/local spot. Surprisingly strong, first time ever hrd this in mid-day. (RW)

\*KGNR\* CA, Sacramento 5/19 0333 good w/TT; o/KCPX. (RW-CA)

1330 KGAK NM, Gallup 5/8 2146 w/promo for KGAK bumper stickers. Indian language program to 2230. Faded u/KPAC. (JH-NV)

KOVE WY, Lander 5/8 2143 "You're listening to Radio 13-30 K-O-V-E." Spot for mobile homes--faded out 2146. (JH-NV)

1340 KIST CA, Santa Barbara Fr 4/18 0637 ID only. (JEC-CA)

KMAK CA, Fresno 5/23 1752-1755 strong in KOMY null w/local spots, race track results. Much stronger than normal this time of day, usually very weak during day. (RW-CA)

1350 KIDN CO, Pueblo 5/25 weak 0600 w/end of nx, talk, wx, ID and mx. (JFJ)

1360 KGB CA, San Diego 5/4 2330 w/ID, Dr. Hook mx, astronomy talk. (JH-NV)

KWO WA, Tacoma 5/4 2313-2330 w/P&A, YL DJ, mx. (JH-NV)

KRKK NY, Rock Springs 5/4 2357-0005 w/ID, rr mx. (JH-NV)

1370 \*KGNO\* KS, Dodge City testing MM 5/12 w/inst. arrangement of the theme from "Baretta" played over & over. ID's hrd 0302 & 0410, o/KSGP.

KSOP UT, South Salt Lake City noted 0202 MM 5/5 w/ID and C&W (RPK-CC) They're fulltime now and evidently NSF as well. How disgusting. Good signal unfortunately. (RPK-CC)

1380 KKZZ CA, Lancaster 5/15 w/ID, pop mx, s/off at 2245. (JH-NV)

KRKO WA, Everett 5/3 2255 hrd u/KSRV. Also 5/5 2323-2330. (JH-NV)

1390 (KCEY) CA, Turlock 5/21 0327 noted totally off. (RW-CA)

1400 (KRE) CA, Berkeley 6/2 0420 totally off for at least a few hours. (RW)

KSLY CA, San Luis Obispo 6/2 0441 o/u mess w/talk show, unID TT causing trouble. (RW-CA)

?KNND? OR, Cottage Grove 6/2 0422 tent. w/wx, blip ID in mess "... at KNND," but freq. quite messy at time, so unsure of ID. (RW-CA)

KEDO WA, Longview 6/2 0552 weak w/talk show about volcano. (RW-CA)

KTNT WA, Tacoma 6/2 0558 barely o/mess w/YL DJ. Weak ID 0600, into nx. o/u KSLY, KEDG, KVEG. New. (RW-CA)

1440 CPGO ON, Ottawa 5/18 0457-0500 ID w/top 40 mx. At that time we were getting volcanic fallout. (MEM-ID) (? Mountain didn't blow till 5/18 1132 ELT!--NH)

1450 KGRZ MT, Missoula MM 5/19 0413 blasting in w/YL w/wx & travellers advisory (haze on highway from volcanic dust), "The Griz" ID, then C&W mx. (bp-WA)

1480 (KWIZ) CA, Santa Ana Th 5/1 0310 totally off. Sure is going off a lot lately. If they don't watch out, they're going to lose their reputation as an NSP'er, hi! (SMM-CA)

\*KYOS\* CA, Merced 6/2 0523 xlnt w/TT, wiping out KWIZ. (RW-CA)

KLAY WA, Lakewood 5/7 2235 ex-KQLA, good w/rock oldie & live annr. (had been all automated). (bp-WA) (We noticed the KLAY call 4/26 when up there, but forgot to report it then. KLAY-FM is now KRPM-FM, sold to KRPM-1450.--NH)

1490 KLYC MT, Laurel 4/21 0810 ID w/TC and wx. (MEM-ID)

KJQN UT, Ogdén ex-KVOG 3/24 0559 w/Ski Report. (JEC-CA)

KLOG WA, Kelso MM 5/19 apparently AN due to Mt. St. Helens eruption. Dominant w/rock mx, info on road & school closures, possible flooding, etc 0316. (bp-WA)

KNCW WA, Grand Coulee 5/6 0042 atop w/rr & ID. (bp-WA)

1500 (KROQ) CA, Burbank 5/15 1230 noted off mid-day, through at least 1730. Noted on again at 1830. Nothing there but KNX-KFI (KFI-640 + 430 = KNX-1070. KNX + 430 = 1500). Now why couldn't they go off at night? (SMM-CA)

KROQ 5/28 fair w/fading 0655, SS ID as "R. America" & ads and mx. EE ID at 0701. (JFP-CA)

1510 KIRV CA, Fresno Fr 5/23 1946 quite by chance happened to hear an anct. that they've increased their pwr 20 times (500 watts to 10,000)! Also, they are now gospel mx (ex-bfl mx). S/off 1955. Happened to hear KIRV at SSS 5/17 & at that time they still seemed to be 500 watts and bfl mx. (SMM-CA)

KMSD SD, Milbank 4/21 wx into C&W mx. Atop. (MEM-ID (Time?--NH))

1520 KOWA OK, Oklahoma City 5/31 0002 ID, TC, o/unID XE--. (JH-NV)

1530 KECK NE, Lincoln 4/21 s/on w/no SSB. Atop freq. (MEM-ID) (Time?--NH)

1540 KASA AZ, Phoenix 5/23 2140 till 2215 s/off w/SSB. Christian pgm, pop/relig. mx. Hrd loud & clear w/KZLA-1540 blotto! (JH-NV)

KMFO CA, Aptos-Capitola ex-KKAP 5/22 2251 w/spot for Capitola business. 5/24 2253 w/ID, pop/MOR mx till 2315 s/off. Very strong signal! (JH-NV)

KISA HI, Honolulu MM 5/12 0434-0500:30 is now fulltime w/5 kw. Sig. kept deeply fading from good to poor. Caught a couple of ID's from lady DJ, as well as EDT minus 6 hours TC's (HST). Format was light pop mx. Taped s/off anct at 0458, into "America the Beautiful." (SMM-CA)

KZAM WA, Bellevue 5/22 2318 after KMFO s/off. Faded out to KZLA "Dynamic Duo" 2330. (JH-NV)

1550 \*KXEX\* CA, Fresno 5/24 weak 0710 w/ranchero mx & ID's in EE & SS-- twice in each. Faded out. A test? (JFP-CA)

\*KKHI\* CA, San Francisco 5/29 0403 xint w/TT. (RW-CA)

KGAR WA, Vancouver 5/24 0731 weak w/talk & ID, faded out to KRG0.

1570 KCVR CA, Lodi 5/30 2257-2315 in like local SS promo (JFJ)  
"Vote for Tony Guitierrez...Stockton," disco mx, SS s/off foll. w/EE editorial by G.M., EE s/off w/SSB 2315. Pgm mostly SS, some EE. (JH-NV)

1580 KNIX AZ, Tempe-Phoenix "Arizona Country" 4/29 1826 w/ID, TC, C&W mx. Good signal, but rain-thunder-lightening storms here. (JH-NV)

(KNIX) MM 6/2 0330 went off the air. A little later KDAY went off (for their usual MM SP), which totally opened up the freq. Sure was good to have things back to "normal" again for a change, hi!

KZIA NM, Albuquerque 5/1 s/off 2200. 5/2 hrd w/KNIX, w/ID. (JH)/(SMM)

1600 KASH OR, Eugene 5/7 2355 w/ID, rr mx. (JH-NV)

KBBX UT, Centerville "Golden Gospel Giant". Hrd daily, often SS. (JH)

1610 TIS WA, Wenatchee Nat'l Forest MM 5/19 0145 fair to poor running routine continuous tape w/ments of firewood cutting, forest fire prevention, etc. No ment. of the fact that nearly all the roads in the area were closed due to fallout from volcanic ash! Said "...campgrounds will be opened as soon as spring cleaning is completed," which could be the understatement of the year, hi.

May f/c's: Both 1st MM June f/c's: Also both 1st MM (bp)

KMCL-1240 ID (RET-CA) KMCL-1240 ID (RW-CA)

KVAC-1490 WA (RET-CA) KQIK-1230 OR (RW-CA)

DX TEST:

1400 \*KTRC\* NM, Santa Fe 5/26 0203-0210+ weak, but occ. peaking mess. Tone, w/breaks in tone at certain times, one readable ID, back to TT. Much weaker 0224 (250 watts?). New. (RW-CA)

UNID ID'd:

950 Last 1/6 0910 (see 1/19 DXM) during the XEGM SP I thought I hrd an anct in the crud which sounded like "This is the Longhorn Radio Network," & asked if there was such a network. Well, indeed there is! On MM 4/28 0430 I hrd KPMB-760 carrying public affairs programming re mental health, w/anctts about every 10 min. as "This is the Longhorn Radio Network." There were also ments that it originated from the Univ. of Texas at Austin. (SMM-CA)

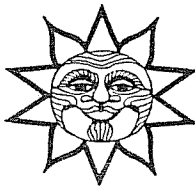
UNID's:

1140 KVL1? Tu 5/12 0340 possibly the one w/TT's & OC's mixing w/KMJJ & KRAK. (SMM-CA)

1400 6/2 0434 unID w/SS u/mess, fading up then gone for good. No Mexicans listed as NSP. Who would make sense? (RW-CA)

Welcome to WDXR, John! We don't get many reports from Nevada! In case anyone is wondering, yes, Aberdeen did get some volcanic ash. We only got 1/8 to 1/4 inch of it, but that was enough! Bill & I have spent hours washing it off everything (trees, our garden, the house, street, etc). ♡

# MIDDAY DX RECORDS



## the 20's

Gerry Thomas  
P.O. Box 2036  
Pensacola, FL 32503

The "40's" are due July 15

The 20's look like a good group of frequencies for a lot of people...some really nice catches from past contributors and newcomers alike.

Before we begin the loggings, a couple of people have questioned the "time window" used in this column to define "midday." Some have said that because this column accepts loggings made from two hours after local sunrise to two hours before local sunset, the "typical" daylight propagation mode (i.e., groundwave) is not being exclusively represented. That is, ionospheric skip propagation can easily occur within the time window presently delimited as midday. In reply, I must state that skip can and does occur at local noon, so defining midday in the traditional manner (i.e., the couple of hours bordering noon) would not eliminate skip receptions, it would only put at an advantage those DX'ers living in the northern latitudes (where midday skip is a near daily occurrence, especially in winter). So, in an attempt to prevent this column from becoming too regional in character, midday was defined as it was to increase the probability that mid-latitude and southern DX'ers would encounter skip conditions (through irregular late sunrise or early sunset skip). As an alternative to the present situation, we could break the column into Northern DX'er/Southern DX'er sections and define midday in the traditional way, or we could limit loggings to those received via groundwave (easier said than done) which, however, would eliminate a lot of great midday skip DX. Let me know your opinion on this matter, I'm open to all suggestions.

Here are the stations that "get out" on the 20's channels.....

STN (QTH)	PATH	DX'ER (QTH)	DATE	DISTANCE	POWER
620					
HISD (DR)	Sea	Taylor (Bermuda)	Yr Rnd	1014 mi	15,000w(?)
WVNJ (NJ)	Sea	Taylor (Bermuda)	Yr Rnd	784 mi	5,000w
CJCI (BC)	Land	Portzer (WA)	?	438 mi	10,000w
KNGS (CA)	Land	Meehan (CA)	2/22/80	254 mi	1,000w
CJCI (BC)	Hall-Patch (BC)	[382 mi] (10kw)	WSUN (FL)	Thomas (FL)	[335 mi] (5kw)
KTAR (AZ)	Meehan (CA)	[234 mi] (5kw)	WLBZ (ME)	Connelly <sup>a</sup> (MA)	[229 mi] (5kw)
WVNJ (NJ)	Connelly <sup>a</sup> (MA)	[216 mi] (5kw)	KGW (OR)	Hall-Patch (BC)	[203 mi] (5kw)
KNGS (CA)	Mittman (CA)	[194 mi] (1kw)	CKCK (SK)	Alvi (SK)	[150 mi] (10kw)
KGW (OR)	Portzer (WA)	[144 mi] (5kw)			
720					
CMGN (Cuba)	Sea	Connelly/Kazaross (RI)	11/79	1402 mi	30,000w
WGN (IL)	Land	Alvi (SK)	1/80	1139 mi	50,000w
KUAI (HI)	Land	Portzer (HI)	?	109 mi	5,000w
CMGN (Cu)	Taylor (Brmd)	[1198 mi] (30kw)	KDWN (NV)	Hall-Patch (BC)	[944 mi] (50kw)
WGN (IL)	Whaley (CO)	[914 mi] (50kw)	WGN (IL)	Con/Kaz (RI)	[833 mi] (50kw)
CMGN (Cu)	Thomas (FL)	[660 mi] (30kw)	WGN (IL)	Byrnes (NY)	[519 mi] (50kw)
KDWN (NV)	Allen (CA)	[412 mi] (50kw)	KDWN (NV)	Mittman (CA)	[248 mi] (50kw)
KDWN (NV)	Meehan (CA)	[150 mi] (50kw)			
820					
WBAP (TX)	Land	Meehan (CA)	2/22/80	1083 mi	50,000w
WAIT (IL)	Land	Kazaross (RI)	11/79	840 mi	5,000w
CMCA (Cuba)	Sea	Thomas (FL)	Yr Rnd	585 mi	10,000w
WBAP (TX)	Merrill (FL)	[1006 mi] (50kw)	WBAP (TX)	Whaley (CO)	[645 mi] (50kw)
WBAP (TX)	Thomas (FL)	[617 mi] (50kw)	WOSU (OH)	Con/Kaz (RI)	[611 mi] (5kw)
920					
WJAR (RI)	Sea	Taylor (Bermuda)	Yr Rnd	753 mi	5,000w
WBOX (LA)	Sea	Whaley (FL)	10/16/77	507 mi	1,000w
CJCH (NS)	Land+Sea	Connelly <sup>a</sup> (MA)	Reg	392 mi	25,000w
KARN (AR)	Thomas (FL)	[418 mi] (5kw)	WJAR (RI)	Connelly <sup>c</sup> (NS)	[309 mi] (5kw)
KXLY (WA)	Portzer (WA)	[229 mi] (5kw)	WIRD (NY)	Connelly <sup>b</sup> (MA)	[184 mi] (5kw)
KORK (NV)	Meehan (CA)	[150 mi] (5kw)	WGHO (NY)	Connelly <sup>b</sup> (MA)	[136 mi] (5kw)

STN (QTH)	PATH	DX'ER (QTH)	DATE	DISTANCE	POWER
-----1020-----					
KDKA (PA).....Sea.....Taylor (Bermuda).....			Yr Rnd.....	1019 mi.....	50,000w
CMAB (Cuba).....Sea.....Thomas (FL).....			Yr Rnd.....	602 mi.....	1,000w(?)
KDKA (PA).....Merrill (FL).....	[792 mi]	(50kw)	KDKA (PA).....Connelly <sup>a</sup> (MA).....	[517 mi]	(50kw)
CMAB (Cu).....Kazaross (FL).....	[352 mi]	(1kw)	CMAB (Cu).....Whaley (FL).....	[323 mi]	(1kw)
KTNQ (CA).....Meehan (CA).....	[126 mi]	(50kw)			
-----1120-----					
KMOX (MO).....Land.....Merrill (FL).....			8/75.....	854 mi.....	50,000w
WUST (DC).....Land+Sea.....Connelly <sup>a</sup> (MA).....			Reg.....	406 mi.....	1,000w
KPNW (OR).....Meehan (CA).....	[781 mi]	(50kw)	KMOX (MO).....Barfield (FL).....	[596 mi]	(50kw)
KMOX (MO).....Thomas (FL).....	[596 mi]	(50kw)	KPNW (OR).....Allen (CA).....	[411 mi]	(50kw)
WWOL (NY).....Kazaross (RI).....	[394 mi]	(1kw)	KPNW (OR).....Portzer <sup>b</sup> (WA).....	[234 mi]	(50kw)
-----1220-----					
KIBE (CA).....Land.....Meehan (CA).....			Winter.....	412 mi.....	5,000w
CJRB (MB).....Land.....Alvi (SK).....			2/80.....	356 mi.....	10,000w
WQSA (FL).....Sea.....Thomas (FL).....			Yr Rnd.....	354 mi.....	1,000w
KASY (WA).....Land.....Portzer (WA).....			Yr Rnd.....	20 mi.....	250w
WKTZ (FL).....Whaley (FL).....	[215 mi]	(1kw)	WSME (ME).....Connelly <sup>a</sup> (MA).....	[124 mi]	(1kw)
-----1320-----					
WAMR (FL).....Sea.....Thomas (FL).....			Yr Rnd.....	371 mi.....	500w
WARA (MA).....Sea.....Connelly <sup>c</sup> (NS).....			8/75.....	299 mi.....	1,000w
KOLT (NE).....Land.....Whaley (CO).....			Yr Rnd.....	164 mi.....	5,000w
CHQM (BC).....Land.....Portzer (WA).....			Yr Rnd.....	116 mi.....	50,000w
KAWC (AZ).....Meehan (CA).....	[129 mi]	(.5kw)	KXRO (WA).....Hall-Patch (BC).....	[103 mi]	(5kw)
-----1420-----					
WBSM (MA).....Sea.....Taylor (Bermuda).....			Yr Rnd.....	728 mi.....	5,000w
WBDR (FL).....Sea.....Thomas (FL).....			Yr Rnd.....	352 mi.....	1,000w
WASR (NH).....Land.....Connelly <sup>a</sup> (MA).....			Reg.....	141 mi.....	2,500w
XEXX (BCN).....Land.....Meehan (CA).....			2/22/80.....	131 mi.....	2,000w
CJVR (SK).....Land.....Alvi (SK).....			Yr Rnd.....	101 mi.....	10,000w
WBSM (MA).....Connelly <sup>c</sup> (NS).....	[291 mi]	(5kw)	KYNG (OR).....Portzer <sup>a</sup> (WA).....	[277 mi]	(1kw)
XEXX (BCN).....Mittman (CA).....	[110 mi]	(2kw)			
-----1520-----					
KOMA (OK).....Land.....Alvi (SK).....			3/80.....	1240 mi.....	50,000w
WTGR (SC).....Sea.....Taylor (Bermuda).....			Yr Rnd.....	831 mi.....	5,000w
WIBG (NJ).....Sea.....Taylor (Bermuda).....			Yr Rnd.....	733 mi.....	1,000w
KXKW (LA).....Sea.....Whaley (FL).....			10/19/77.....	622 mi.....	10,000w
KOMA (OK).....Merrill (MI).....	[1066 mi]	(50kw)	WKBW (NY).....Taylor (Brmd).....	[1065 mi]	(50kw)
WKBW (NY).....Connelly <sup>b</sup> (MA).....	[381 mi]	(50kw)	WGNB (FL).....Thomas (FL).....	[333 mi]	(1kw)
WIBG (NJ).....Connelly <sup>a</sup> (MA).....	[284 mi]	(1kw)	KYXI (OR).....Hall-Patch (BC).....	[216 mi]	(50kw)
WTHE (NY).....Connelly <sup>a</sup> (MA).....	[189 mi]	(1kw)	KACY (CA).....Meehan (CA).....	[182 mi]	(50kw)
KYXI (OR).....Portzer (WA).....	[156 mi]	(50kw)			

Brought to you by:  
Gene Allen, Vallejo, CA\*\*\*HQ 129X/SM-1, 4' loop  
Jamil Alvi, Saskatoon, SK\*\*\*DX-160, TRF/50' 1w, loop  
Charlie Barfield, Pensacola, FL\*\*\*Modified TRF/4' loop  
Jim Byrnes, Rochester, NY\*\*\*GE Superadio  
Mark Connelly<sup>a</sup>, from W. Yarmouth, HA\*\*\*R-390A, TRF/phased 1w's  
Mark Connelly<sup>b</sup>, from Sudbury, MA\*\*\*R-390A/phased Beverages  
Mark Connelly<sup>c</sup>, from Clark's Harbor, NS\*\*\*Car radio/whip  
Mark Connelly/Neil Kazaross, from Narragansett, RI\*\*\*R-390A, HQ-180A/Beverages, Sanserino 1p  
Nick Hall-Patch, Victoria, BC\*\*\*HRO (transmog)/FET box loop; TRF/Radio West Shotgun  
Neil Kazaross, Narragansett, RI\*\*\*HQ-180A (?)/1300' S Bvg.; 1000' W Bvg.  
Neil Kazaross, from Clearwater Beach, FL\*\*\*????????????  
Mort Meehan, 29 Palms, CA\*\*\*FRG-7/Sanserino loop  
Frank Merrill, from New Smyrna Beach, FL\*\*\*Car radio/whip  
Frank Merrill, from Milan, MI\*\*\*HQ-129X/1w  
Steve Mittman, San Pedro, CA\*\*\*FRG-7, TRF/3' Wedge  
Bruce Portzer, Seattle, WA\*\*\*HQ-180A, FRG-7, NC-120, SX-96/Asst. loops and 1w's  
Bruce Portzer<sup>a</sup> from Kalaioch, WA\*\*\*GE P-780  
Bruce Portzer<sup>b</sup> from Lake Cushman, WA\*\*\*GE P-780, HQ-180A, SX-96/SM-2, box loop  
Bruce Portzer<sup>c</sup> from Waikiki, HI\*\*\*Sanyo portable  
Charles Taylor, St. Davids, Bermuda\*\*\*R-390A/100' 1w; SPR-4/SM-2  
Gerry Thomas, Pensacola, FL\*\*\*FRG-7, Superadio, TRF/600' 1w, 4' loop, ferrite loop  
Brock Whaley, Denver, CO\*\*\*HQ-140X, TRF, DX-300/30' 1w, Wedge, phaser  
Brock Whaley, from Sarasota, FL\*\*\*HQ-140X, TRF, pre-amp/ 300' 1w, Wedge

73's  
BT

# DX RECORDS

Editor: Michael Jeziorski  
3908 Circle Dr.  
Brookfield, IL 60513

Recently I was chosen as the new DX Records editor. I have been trying my best to stir up support for the column, since I am, for all practical purposes, starting from scratch. However, the response has been less than spectacular. After the first notice was printed in DX Monitor, five people wrote in, enclosing their totals. Later, after I included a reminder in a Forum, four more people responded. That makes a grand total of ten (including me), or approximately 1 out of every 40 IRCA members. A column cannot survive with that kind of help, so I'm trying to find ways to get through to the other 39. An excellent suggestion was brought up by Paul Mount for a sample column to be printed, and another helpful bit of advice came from Thomas H. White, concerning a form that could be printed in DXM for the members to fill in and mail. I think both of these suggestions may help in getting some of the more apathetic members moving, so here is the first (as far as I know) combination report form/sample column for DX Records. The deadline for this form is July 1.

### REPORT FORM

Name \_\_\_\_\_ What year did you start DXing \_\_\_\_\_  
 seriously? \_\_\_\_\_  
 City \_\_\_\_\_ Do you count call changes? \_\_\_\_\_  
 State \_\_\_\_\_ Date of report \_\_\_\_\_ / / \_\_\_\_\_

# of stations heard (foreign & domestic) \_\_\_\_\_  
 # of stations verified (foreign & domestic) \_\_\_\_\_  
 Domestic stations heard \_\_\_\_\_  
 Domestic stations verified \_\_\_\_\_  
 Foreign stations heard \_\_\_\_\_  
 Foreign stations verified \_\_\_\_\_  
 Best domestic station heard \_\_\_\_\_  
 Best domestic station verified \_\_\_\_\_  
 Best foreign station heard \_\_\_\_\_  
 Best foreign station verified \_\_\_\_\_

# of states heard \_\_\_\_\_ Have you heard DC? \_\_\_\_\_  
 # of states verified \_\_\_\_\_ Have you verified DC? \_\_\_\_\_  
 # of provinces heard \_\_\_\_\_ # of countries heard \_\_\_\_\_  
 # of provinces verified \_\_\_\_\_ # of countries verified \_\_\_\_\_

HEARD, DOMESTIC NAME, CITY, STATE	YEAR	SAMPLE COLUMN		STATES	PROVINCES	BEST	CC
		TOTAL STNS	DOMESTIC STNS				
1. Jones, Paris, IL	1968	2986	2753	49+	10	KZOK-1590-WA	+
2. Smith, Ogden, UT	1975	2438	2309	43	7	WDEL-1150-DE	+
3. Brown, Dover, DE	1973	1935	1560	45+	8	PA 138 STNS	-

and so on. + denotes DC. I still have plenty of bugs to work out. Note that CC is call changes; there, + denotes yes, - denotes no. I have to find room for longer names and cities (the cities may be dropped out altogether) and date of report. If you feel that your totals are not high enough to be printed (as I once did), don't worry. DX Records is not meant to be a judge of how good a DXer is. This is simply a listing of totals. I hope to see a blizzard of these in my mailbox soon. I put everything on here except the stamp, so if you're too cheap to pay for a stamp, just check here \_\_\_\_\_ and I'll mail you back a Canadian or American stamp. You can't beat that. 73s from Mike.

**DX****Worldwide**Elliot Straus  
EditorAll times UTC  
Deadline Tuesdays

Box 168 - RedBank, NJ 07701 - 201-736-1681, M-F 18-2200, Wed 10-2200 ELT

Well we've got a massive column this month so here it is (don't blink-hi)

TRANS-ATLANTIC DX ROUNDUP

I told ya not to blink.

PAN-AMERICAN DX ROUNDUP

- 760 COLOMBIA Barranquilla HJAJ LV de Barranquilla 1029 Apr 20, good signal w/typical HJ mx., ID & Colombia ments. KFMB nulled. (Knight-Co.)  
 820 CUBA Habana CMCA 0958 Apr 19, TT's then s/on @ 1000 w/NA & ID., WEAP off again. Maybe reg. SP? (Knight-Co.)

TRANS-PACIFIC DX ROUNDUP (All Pat Martin unless noted)

- 531 AUSTRALIA Kempsey 2KM 0940 Apr 13, pretty good w/Pop mx & anct.  
 567 NEW ZEALAND Wellington 2YA 0946 Apr 14, heard well w/EZL.  
 576 AUSTRALIA Sydney 2FC 0950 Apr 13, fair w/cl. mx ABC # 2 pgm.  
 594 AUSTRALIA Horsham 3VW 1006 Apr 13, fair w/talk show, best lately.  
 612 AUSTRALIA Brisbane 4QR 0958 Apr 15, w/end of pgm. w/pgm highlights.  
 650 HAWAII Honolulu KORL 1140 Apr 14, good w/hard rr mx. YL DJ gave phone # (524-6565) & ID. no WSM. (Knight-Co.)  
 657 NEW ZEALAND Auckland 2YC 1009 Apr 12, w/concert pgm. good.  
 666 NEW CALEDONIA Noumea 0842 Apr 14, fair w/OM in FF, into jazz.  
 693 AUSTRALIA? Brisbane 4KQ 1116 Apr 15, poss. w/OM in accented voice, but too much XTRA slop, soon faded. Did hear 4KQ last year, but not enough for a report.  
 702 AUSTRALIA Brisbane 2BL 1100 Apr 16, fair w/accented ann. talking into nx & pips.  
 702 UNID 1205 Apr 19, only DU carrier of the morning, weak. (Knight-Co.)  
 738 SOCIETY ISLDS Tahiti 0715 Apr 16, fair w/OM in FF & pop mx, some FF & EE. reported in FF.  
 747 AUSTRALIA Toowoomba 4QS // 2BL w/ABC nx @ 1104 Apr 16.  
 747 UNID 1158 Apr 14, strong DU carrier, ruined by KMMJ s/on. (Knight)  
 756 NEW ZEALAND Auckland 1YA 0955 Apr 14, somewhat better than 567-2YA, // w/EZL.  
 765 NEW ZEALAND Hastings 2ZK 1008 Apr 17, heard well for 5 kw. w/concert hall.  
 774 AUSTRALIA Melbourne 3LO 0750 Apr 21, & 28. fairly good w/some KCRL splatter. Apr 28 w/KCRL off.  
 790 t HAWAII Kealakekua KKON 0745 Apr 20, poss. the one looping SW. Noted accented YL (polynesian) then lost w/jumble. Hawaiians were unusually good that a.m. Tent. report to Alan Roycroft. One of my Most wanted!  
 792 AUSTRALIA Brisbane 4GQ // 2FC  
 828 AUSTRALIA Sale 3GI 0938 Apr 15, fair w/drama pgm.  
 830 HAWAII Honolulu KIKI 1209 Apr 19, fair w/rr mx. ID, a regular here. (Knight-Co.)  
 837 AUSTRALIA Rockhampton 4RK 0939 Apr 15, u/o N.Z. // 828 et al.  
 855 AUSTRALIA Maryborough/Eidsvold 4QB/4QO 0842 Apr 15, // 837, 828.  
 864 N.Z./AUSTR. 4ZA 1019 Apr 16, hrd w/Tonight Show fighting it out w/7HO.  
 873 AUSTRALIA Sydney 2GB 0743 Apr 21, in w/pop mx & TC's.  
 882 N.Z./AUSTR. 1YC/4BH mixing most of the morning of Apr 16. Normally 4BH is on top!  
 891 UNID 1135 Apr 20, fair het looping DU. best carrier of the a.m. (Knight-Co.)  
 1008 AUSTRALIA Brisbane 4IP 0816 Apr 08, quite good o/u 1ZD w/hyped ancr. & rr mx. Sure wish I could verie them though.  
 1017 AUSTRALIA Sydney 2KY 1000 Apr 28, w/racing after Tonga s/off.  
 1026 AUSTRALIA Mackay 4MK 1236 Apr 28, quite good o/ Sol. Isl./N.Z. w/pop mx.  
 1035 NEW ZEALAND Wellington 2ZB 0730 Apr 27, // 1044. 1008.  
 1044 NEW ZEALAND Dunedin 4ZB 0735 Apr 27, // 1035, 1026, 1008.

- 1053 t INDONESIA Jayapura RRI 1147 Apr 28, poss. the one w/YL in UNID lang. mixing w/N.Z. poor w/1050 slop.
- 1107 AUSTRALIA Sydney 2UW 1034 Apr 15, w/pop mx. soon lost to KFAX slop.
- 1116 AUSTRALIA Brisbane 4BC 1043 Apr 15, w/jingle-'You, me, 4BC' into rr. about equal w/2UW at times!
- 1170 HAWAII Honolulu KOHO 0730 Apr 20, heard fair w/YL in JJ, o/KLOK/KPUG at times but faded.
- 1179 t AUSTRALIA Melbourne 3KZ? 1107 Apr 28, Aussie ancr into oldies rr. soon gone to slop.
- 1188 AUSTRALIA Inverell 2NZ 1036 Apr 27, w/Back to Bible Bdcst, into pops after 1105.
- 1206 AUSTRALIA Grafton 2GF 1200 Apr 27, w/pop mx, mx.
- 1215 NEW ZEALAND Kaikohe 1ZE 1019 Apr 27, // 1026.
- 1404 W.SOMOA Apia 2AP 0830 Apr 07, in poorly w/Poly mx, w/YL.
- 1476 NEW ZEALAND Auckland 1XA 1234 Apr 28, R.Hauraki good w/hvy rr.
- 1500 HAWAII Honolulu KUMU 0930 Apr 19, fair u/o KXXK w/automated SCA type mx.
- 1540 HAWAII Honolulu KISA 0800 Apr 07-10 at s/off w/Poly-Oriental theme.

VERIES:

- 756 W.GERMANY DLF full info card for tent. report. (Hall-Patch-B.C.) (both
- 882 ENGLAND Wales BBC, letter, bookmark & photo of studio for tape rpt.
- 999 JAPAN Hachinohe JOTQ sent nice cards & stickers w/all details on card. 3 weeks (P.Martin-Ore.)
- 1206 CHINA Yambian sent card w/all details, signed Yambian People's Bcsting Stn. 1 month. (P.Martin-Ore.)
- 1500 HAWAII Honolulu KUMU card fm. Alan Roycroft all details, 2 weeks. (P.Martin-Ore.)
- 1540 HAWAII Honolulu KISA card same as above.

Thanks to:

Chris KNIGHT 598 S.Clarion Dr. Pueblo West, Colo. 81007

Pat MARTIN POB 843 Seaside, Ore. 97138

## THE TED VASILOPOULOS AWARD

Every year the ICA presents the Ted Vasilopoulos Award to the person who has contributed the most to the club during the previous year. The award is presented at the annual ICA convention in memory of one of the club's early members and consists of an engraved plaque and a year's free membership. The recipient is selected by a vote of the members. This year, the following persons have been nominated for this award:

- BOB CURTIS - for consistently fine work as LPMR editor
- MICHAEL LEMAR - for regular reporting to DX Worldwide and for other contributions to DX Monitor
- NICK HALL-PATCH - for editing the Technical Column and helping with the preparation of the Foreign Log
- NANCY HARRY - for several years' work as WDXE editor
- RICH HIALD - for several years' work as WDXE editor
- JEF JAISIE - for work done as membership committee chairman
- PATRICK HARTLE - for regular reporting to DX Worldwide
- GERRY THOMAS - for developing the Bayline DX records column and authoring many articles and receiver reviews
- BILL TOWNSHEND - for regular reporting to various columns
- ROBERT WILK - for regular reporting to various columns

Please vote for one of the above nominees or for a write-in of your choice using the enclosed ballot. The following members have received the TVA award within the last five years and are therefore ineligible to receive it this year: Rich Segalas, Don Kaskey, Mark Connelly, Bill Hardy, John Zondlo, Phil Bytheway, and Grant Hanning. Your ballot must be received by our Election Committee Chairman, Larry Van Horn, by August 1, 1980. His address is:

Larry Van Horn  
7870A Corsair  
Millington, TN 38053

# IRCA SWAP 'N SHOP

EDITOR : TIM O'HARE  
20023 84th W.  
EDMONDS, WASH. 98020

FOR SALE PANASONIC RF - 2800 PORTABLE RECEIVER. THIS SET COVERS SHORT WAVE ( WITH DIGITAL READOUT ), MEDIUM WAVE & F.M. IN GOOD CONDITION - USED ONLY 18 MONTHS. THIS IS A GOOD BACKUP SET FOR CHECKING SW PARALLELS. \$ 150.00  
JACK LATTEMAN - 314 N.E. 56th St. - SEATTLE , WA. 98105  
PREPAID CALLS ONLY - 206 - 522 - 1017

FOR SALE HAMBARLUND HQ - 145 - X RECEIVER WITH MANUAL AND MATCHING SPEAKER. LOOKS LIKE NEW. THE ONLY MODIFICATION IS A REAR APRON JACK INSTALLED BY RADIO WEST FOR A DIGITAL DISPLAY. ( DISPLAY IS NOT INCLUDED ) \$ 150.00 PLUS SHIPPING.  
WAYNE MOSELEY - P.O. BOX 1349 - CRESTLINE , CALIF. 92325  
PREPAID CALLS ONLY ON MON, WED, FRI & WEEKENDS AT 714 - 338 - 4396

FOR SALE PANASONIC RF-4800 RECEIVER. HAS DIGITAL FREQUENCY READOUT. ABOUT ONE YEAR OLD IN EXCELLENT CONDITION. \$ 300.00 PLUS SHIPPING.  
RANDY MILTIER - 1068 FAIRVIEW AVE. SAN JOSE , CALIF. 408 - 265 - 5532

## BAY AREA RADIO FREAKS



Announcing - BARF IX

Saturday, 12 July 1980  
1300 PLT to ??

At the home of Rich Segalas  
221 Bocana  
San Francisco, CA

Directions: From the "Bloody Bayshore" (Hwy 101), north or south, Army Street exit. West on Army to Mission. Left on Mission to Courtland. Left on Courtland up the hill to Bocana (at the flashing light). Left on Bocana.

From Hwy 280 - southbound, exit at Army and follow above directions.  
Northbound, exit at San Jose Ave/Bosworth St. Continue on San Jose to stoplight. Turn right, to next stoplight, Mission St. Left on Mission to Courtland, right on Courtland and up the hill.

Public Transportation: No. 12 Ocean or No. 14 Mission trolley buses on Mission to Courtland and either walk up the hill (only if you are in shape, hi) or transfer to No. 10 Monterey and get off at Bocana. Or No. 25 Bryant to Courtland and transfer.

BART would take you to 24th St or Glen Park stations and then transfer to a Mission St. bus.

Hope to see you all there. Segalas has a big Victorian house, so lots of room - bring your receivers, antennas and anything else you can carry. Maybe we can have enough receivers going at one time that we'll cancel each other out, hi!



# Sports Network Updater

## IRCA SPORTS NETWORK UPDATER #5

Editor (for now): Bill Hardy - 2301 Pacific Ave. - Aberdeen, WA, 98520  
This updates the listings in the IRCA ALMANAC, 1979 edition. Watch for a brand new 1980 edition of the ALMANAC this fall!

-----  
• MAJOR LEAGUE BASEBALL (see pp. 130-135, IRCA ALMANAC)

This is a continuation of the 1980 baseball updates which appeared in updater #3 (4/12/80 DXM) and updater #4 (4/26/80 DXM).

Information is now on hand for all teams except the New York Mets.

I apologize for the delay in printing some of this info. I held off until the baseball strike situation was resolved.

### AMERICAN LEAGUE

BOSTON RED SOX DROP: WROW-590 (not in Almanac but added in updater #3); it seems WROW is carrying the Yankees instead.

ADD: 900 WKXA-ME\*\*.

REINSTATE: 610 WGIR-NH, 1380 WBEX-NH, and 1390 WPLM-MA+. (All were listed as "dropped" in updater #3.)

CALIFORNIA ANGELS Add this note if you wish to: In some cases, Angels games are carried on another Los Angeles station when L.A. Rams (NFL) or UCLA Bruins (college) football is being carried on KMPC-710.

CHICAGO WHITE SOX Add Rich King to announcers. Also note that in case of conflicts between the White Sox and the NFL Chicago Bears this fall, baseball will move to WBBM-FM.

CLEVELAND INDIANS REINSTATE: 1260 WLKK-PA. (Listed as "dropped" in #3.)

OTHER: Drop + sign from WKNT-1520.

MINNESOTA TWINS DROP: KANA-580, KWAD-920, KICD-1240, KTHE-1240, KOZY-1320, KXPO-1340, KKOA-1390, KBJM-1400, WELY-1450, KRBN-1450, and KDAK-1600.

ADD: 970 WDAY-ND, 1270 KBOM-ND, 1340 KDLM-MN, 1480 KSDR-SD\*, and KXRA-MN.

OTHER: Now "no FM's."

NEW YORK YANKEES Enough changes to merit typing a fresh new 1980 list:

570 WFLP-FL <sup>1</sup>	950 WWVI-NY* <sup>3</sup>	1250 KBBI-AK <sup>4</sup>	1350 WRNY-NY*	1450 WWIV-LA
WSYR-NY	WIBX-NY	1270 WDLA-NY*	1360 WKOP-NY	WCLII-NY
580 WDBO-FL	960 WATS-PA*	1300 KXXO-OK	1370 WELV-NY*	1470 WMMW-CT*
590 WROW-NY	1010 WINS-NY	1320 WATR-CT	1400 WDOT-VT	WFDM-NY*
610 WSWG-CT	1110 WSFV-NY*	WSCR-PA	1410 WBZA-NY*	1490 WUSS-NJ
WIOD-FL	1200 WOAI-TX	1340 KSKI-ID	WDOE-NY	1530 WHYP-PA*
680 KBRW-AK <sup>2</sup>	1230 WINF-CT	WMBO-NY	1420 KPBC-LA	1590 WQIQ-PA
WPTF-NC	WHUC-NY	WENT-NY	WBEC-MA	1600 WIXY-MA&
690 WADS-CT*	WERI-RI	WIRY-NY		
790 WNNY-NY	1240 WWVD-NY	WWPA-PA		(plus 11 FM's)
920 WPTM-NJ	WBAX-PA	WHAP-VA		
WKRT-NY	WSKI-VT			

1. Formerly WFSO, Pinellas Park FL; now a fulltime station.
2. KBRW is "educational," so probably does not air commercials.
3. Formerly WHPN, Hyde Park NY.
4. KBBI is a new 5000-watt fulltime station in Homer AK.

Note: Many of the "far flung" Yankees stations, especially those in Alaska and KSKI-1340 in Idaho, plus some of the Florida outlets, may be airing only selected Yankees games because of the high cost of phone lines. Some of the distant stations, including WIOD-610, WOAI-1200, and KXXO-1300, are "sports stations" that carry baseball nightly, selecting from several different teams throughout the season.

OAKLAND A's They finally got radio coverage as of 4/28/80:

In English: Red Rush

1230 KWG--CA 1310 KDIA-CA 1440 KVON-CA (maybe some others too?)

In Spanish: Weekend home games only, on 1050 KOFY-CA\* only.

TORONTO BLUE JAYS ADD: 710 CHYR-ON<sup>1</sup>, 730 CHYR7-ON<sup>1</sup>, 1230 WNIA-NY, and 1490 WBTA-NY. (Add these to the new 1980 list in updater #3.)

OTHER: Add footnote 1 as follows:

1. This Leamington, Ont., station operates as CHYR on 710 daytime, and as CHYR7 on 730 nighttime; switchover is made at sunset. CHYR and CHYR7 will not carry Sunday games because of commitments to ethnic language programming on Sundays.

IRCA Sports Network Updater #5, continued

NATIONAL LEAGUE

CHICAGO CUBS DROP; WVJS-1420.

ADD: 1110 WFBM-IN\*.

OTHER: On 1250, KCFI-IA is now fulltime, delete the "&" symbol.

MONTPREAL EXPOS REINSTATE: 1350 CKAR-ON. (Listed as "dropped" in #3.)

PITTSBURGH PIRATES CORRECTION: In updater #3, the station "added" listed as "1400 WWSF-PA" should read as follows: 1400 WAMQ-PA; the footnote should read: 1. Formerly WWSF, Loretto PA. (This call change happened in August 1979, but evidently slipped past me.)

ST. LOUIS CARDINALS ADD: 550 WCBI-MS, 580 WILL-IL, 1050 KMIS-MO\*, 1220 KJAN-IN\*, 1230 WQUA-IL, 1250 WREN-KSO, 1270 WEIC-IL, 1300 KXXO-OK, 1340 KSMO-MO, 1390 KCBC-IA, 1430 KAOL-MO\*, and 1570 WHLP-TN\*.

CORRECTION: KBTA-AR should be on 1340, and not on 1400 as listed in the Almanac. Sorry about the confusion.

OTHER: Call change on 960, KFVS is now KGIR (Cape Girardeau, MO).

ADD + sign to KCRV-1370. Now "plus 30 FM's."

Acknowledgements: Dave Arbogast, Ray Barno, Doug Beard, Joe Brauner, Mike Brooker, John Clemmer, Ernie Cooper, Tim Cronin, Neil Kazaross, Terry Klasek, Bill Moriyama, Lonnie Nine, Ken Onyschuk, Chuck Reh, Sheldon Remington, and Robert Wien all came through with info. Thanks to every one of you -- a good long list of contributors this time!!

Unless someone comes through with the 1980 New York Mets network, we'll let this be the final updater to the baseball networks for this year.

• COLLEGE FOOTBALL AND BASKETBALL (see pp. 141-145, IRCA ALMANAC)  
▶ COLLEGE FOOTBALL, NATIONWIDE COVERAGE -- YEAR-END BOWL GAMES:  
The Sugar Bowl will be on ABC Radio this winter! That's ABC Radio's first bowl game since 1967!

• NASL SOCCER (see p. 149, IRCA ALMANAC)

Thanks to Tim Cronin for supplying the following 1980 updates:

ATLANTA CHIEFS Add John Cocking to announcers. Still on WGST-920.

CHICAGO STING Howard Balson, Chuck Swirsky, Ken Stern. WCFL-1000 only (a change from last year).

DALLAS TORNADO Bill Hazen. Still on WFAA-570.

FT. LAUDERDALE STRIKERS Rick Weaver. Still on WIOD-610. When games conflict with the NFL Miami Dolphins, soccer will be tape-delayed.

HOUSTON HURRICANE Jerry Trupiano, Chuck Courtney. Still on KTRH-740.

MEMPHIS ROGUES Bob Brame. Still on WREG-600.

MINNESOTA KICKS Al Shaver. KSTP-1500 only (a change from last year).

During overlap with NHL hockey season, KSTP aired Minnesota North Stars live (what an upset when the North Stars eliminated Montreal from the Stanley Cup playoffs!) and carried soccer on a tape-delay.

NEW YORK COSMOS Announcers are now Jim Karvellas and Seamus Malin (for home games), or Sam Rosen and Werner Roth (for away games). Still on WNEW-1130.

PHILADELPHIA FURY Ron Weber. Five-station network as follows (the team's first radio coverage ever, in four years of existence!):

1300 WING-NJ<sup>1</sup> 1490 WUSS-NJ 1590 WQIQ-PA 1600 WHOL-PA\* (no FM's)  
1360 WWBZ-NJ

1. Formerly WTNJ, Trenton, NJ (changing license to Ewing, NJ, when they go fulltime).

PORTLAND TIMBERS Greg Flakus. KYXI-1520 only (a change from last year).

SAN DIEGO SOCKERS (a change for English coverage, and add Spanish!)

In English: John DeMott, Rolf Benirschke. KSDO-1130 only; KSDO will cover all home games and all but four of the road games.

In Spanish: Federico Sada. XEXX-1420 only; there will probably be some schedule conflicts with XEXX coverage of San Diego Padres baseball.

SAN JOSE EARTHQUAKES In English: Hal Ramey. Still KXRX-1500 & 2 FM's.

TORONTO BLIZZARD Bill Stephenson. Still CFRB-1010.

TULSA ROUGHNECKS Bob Carpenter, Nick Hampton. Still KRMC-740, which will cover all home games but only six road games.

WASHINGTON DIPLOMATS Add Mike Zimet to announcers. Moves to WWDC-1260.

Unknown: If you know for sure of 1980 coverage for these teams, please drop us a line: California Surf, Detroit Express, Edmonton Drillers, Los Angeles Aztecs (EE & SS), New England Tea Men, Rochester Lancers, San Jose Earthquakes (SS only), or Vancouver Whitecaps.

Seattle and Tampa Bay coverage for 1980 is the same as listed for 1979.

Well, assuming someone has offered to take over this column from me, this should be the final sports updater I type. It's been fun! If you've been one of the dozens of people who've sent in info, thanks much!--Bill Hardy.

HELP WANTED!! ... by IRCA Almanac Project Coordinator Bill Hardy

IRCA has nearly sold out of the 1979 edition of the IRCA Almanac! So the Board of Directors has approved a new edition this fall.

One of the major reasons for the success of the Almanac was the input of dozens of IRCA members nationwide. Another reason was the help of some 20 volunteers who compiled, edited, typed, wrote articles, and gathered information for the project. Now, it's time to do it again.

Everyone can help by tuning around the dial this summer, while you vacation and while you DX, looking for information in a few key categories. Make notes in any convenient format, and try to get it to me by July 15th if possible. Last-minute info may be sent in until August 31st. Who knows? While you're checking for APR, slogans, and Mystery Theater outlets, you might get some new DX catches! Here's what we need:

- ▶ Almanac errors. Anything you notice which is not listed in the 1979 Almanac. Also, any errors, omissions, deletions, changes.
- ▶ Network news. We especially need to know AP Radio stations (live or delayed) as APR does not distribute a station list. Also much needed: UPI Audio, Mutual, Sheridan (formerly "Mutual Black"), the RKO Radio Network, and any regional, state, or farm networks.
- ▶ CBS Radio Mystery Theater. Station airing, and time of day.
- ▶ Mutual Radio Theater. Station airing, and time of day.
- ▶ Station slogans. Nick Hall-Patch will again compile the slogan list. Send info directly to Nick (3272 Alder St., Victoria, B.C., V8X 1P2, Canada) or to me. Send in the slogans of all the stations in your area; be sure they actually use the slogans all the time and don't just say them one time only. If you have a 1979 Almanac, check for slogans no longer used which should be deleted, and also please confirm any slogans which are still in use. Be especially sure to check those stations which have recently changed callsigns.

Note: To make it easier to send in this information, you may enclose it on a separate sheet in the same envelope with your report to the Eastern or Western DX Roundup. Or send the information directly to me:

Bill Hardy -- 2301 Pacific Ave. -- Aberdeen, WA, 98520

We hope that just about everyone will gather raw data for the Almanac. For those who wish to do more, there is plenty to be done. Since some of last year's volunteers won't be able to help in 1980, we need more. If any of the following interest you, please write to me soon:

- ▶ Research. Involves checking through the past year's IRCA, NRC, and GWDXA bulletins, looking for info to be used in the Almanac.
- ▶ Letter writing. If you can type neat-looking business letters, we might wish to have you write to a few radio stations.
- ▶ Compiling and editing. Involves taking the raw data, arranging it by frequency, and getting it ready to be typed.
- ▶ Typing. If you have access to a good typewriter, can type neatly, and can follow simple directions, we need your help!
- ▶ Compiling/editing/typing. Those who can type the sections they compile and edit are especially in demand!
- ▶ Computer work. If you have access to a computer which has the capability of sorting data by frequency, and have the time to enter the data into it, it would save much compiling and editing time. (The final typing job can be handled by anyone from the printout.)
- ▶ Original articles. Would you like to write an article for the Almanac? If so, drop me a line explaining the subject.

Incidentally, if you wish to volunteer for a specific section of the Almanac to research, compile, edit, or type, just say so! If more than one volunteer steps forward, we'll divide the workload fairly and evenly, so you might wish to mention alternate sections that you could handle.

We wish that everything included in the 1979 Almanac could be carried over to the 1980 edition. But, for various reasons, these sections which appeared in 1979 might not appear in 1980, unless someone steps forward to take over responsibility for them. Let us know if you're interested:

- ▶ Conditions of frequencies. Ralph Kemper has resigned as editor of the listing of stations operating all night. Since this is an official club column, you should apply to the President of IRCA right away if you're interested. Here's the address:  
Father Jack Pejza -- 108 Cole St. -- San Francisco, CA, 94107
- ▶ Sports networks. I've asked to resign as IRCA Sports Network

Editor. I could probably compile most of the 1980-81 NFL, NBA, and NHL listings by Almanac presstime. However, unless someone steps forward to take over IRCA Sports Networks soon, there won't be a listing for college football and basketball this time. Write to Father Jack Pejza (address in the previous item) if you're interested. Also: would anyone like to compile college sports info for their particular region of the country, such as Big Ten, Atlantic Coast Conference, Pac Ten, etc.? This would minimize letter writing and spread out the workload. Drop me a line.

▶ AM-FM simulcasts. We need an editor if this section is to continue. We could limit it to simulcasts only, expand it to all co-owned AM-FM combinations, or drop the section entirely.

▶ Canadian section. Unless one of our Canadian members wants to take charge of this, we might just drop it altogether for 1980.

▶ Cover artwork. Are there any resident artists or graphics designers willing to design a cover for the 1980 Almanac?

In addition, the following new sections were suggested for this year. They're good ideas, but we need to find someone willing to handle them:

▶ Telephone talk shows. Could include both fulltime newstalk stations like KGO-810 or WCAU-1210, plus stations where a regular call-in show is part of the normal programming. Names of talk show hosts and phone numbers could be listed. (We do plan to include an updated Larry King network list.)

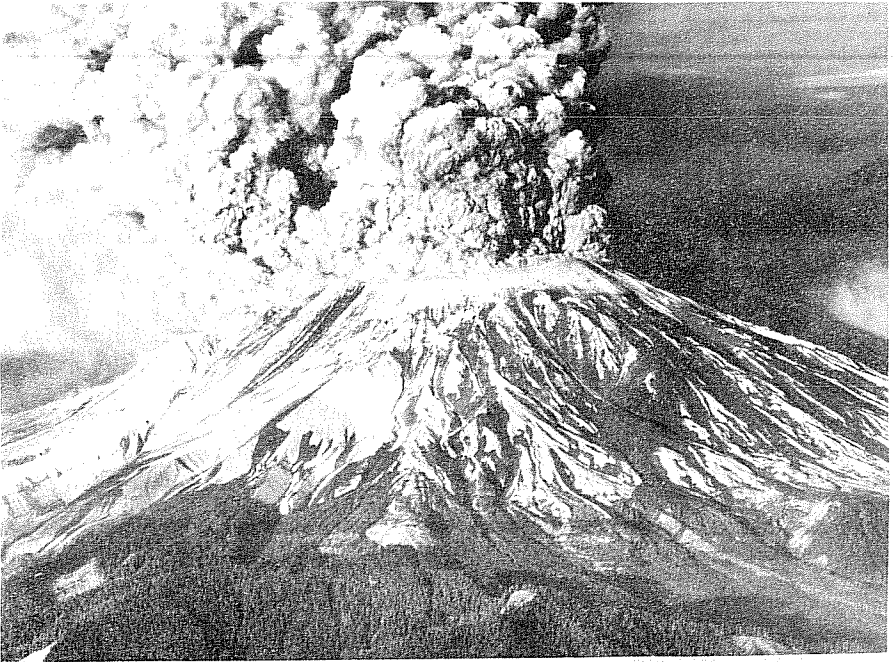
▶ Radio dramas. In addition to stations and airtimes for Mutual Radio Theater and CBS Radio Mystery Theater, is anyone interested in listing stations carrying old-time radio dramas from the 1930's and 1940's? (The Shadow, Green Hornet, Jack Benny, etc.)

As a parting thought, if you have a favorite syndicated radio program (like American Top 40) or religious program that you'd like to see in the 1980 Almanac, with stations and airtimes, let us know.

Once again, the address for sending information or offering to help:

Bill Hardy -- 2301 Pacific Ave. -- Aberdeen, WA, 98520

I'd certainly like to see your name in the contributors list on the inside front cover of the 1980 Almanac! Thanks for helping! 73 and good DX.



U.S. Geological Survey Photo

# A Zonal-analysis Approach to Pan-American DXing

Mark Connelly

The purpose of this article is to enable DXers in the northeastern states to DX Latin America in a systematic manner, based upon checking "pilot signals" from different areas. The methods employed are similar to those used in the recent "Zonal Analysis for TA DX" article. Of course, DXing the LA's is quite a different ballgame from TA-chasing.

Paths to Latin America are open under most night-time ionospheric conditions except the most utterly severe auroras. Auroral effects are chiefly of interest because of their influence upon domestic stations which interfere with the LA's. (Note: for the sake of convenience, the term "Latin American" (LA) will be used for all Caribbean, South American, Central American, and Mexican stations, even those which are in countries which speak English & other non-Romance languages.)

LA splits can be heard on most nights; on the other hand, domestic stations must be aurorally-weakened somewhat to permit large-scale DXing of LA's on 10-kHz. channels. The DXer should recognise the difference between short-skip and long-skip openings for LA's, just as these differences are observed in domestic DX. A DXer, who notes Dominican Republic stations over-riding normally-heard high-power co-channel Venezuelans & Colombians, should refer to the zonal chart at the end of this article and exploit the short-skip LA opening for other stations within 2000 miles. During such an opening, South American-chasing is best bypassed, to be re-attempted at another time. This situation is analogous to that of a domestic DXer in Boston who realises that, when WCBS-880 is loud on skip & WLS-890 is weak, it makes more sense to try for regionals & graveyards in the NY-NJ-PA area than trying to get similar stations from the Midwest.

Frequency-dependence of openings must be considered: many nights have exhibited auroral conditions with weak domestic skip & good LA's below 1200 kHz., whilst yielding strong short-skip domestics & poor LA's above 1200. Instead of formulating one band-wide "plan of attack" for LA DXing, the DXer should generate 3 plans of attack: one for low-band (500-900 kHz.), a second for mid-band (900-1200 kHz.), and a third for high-band (1200-1700 kHz.).

As we are dealing with north-south paths, the DXer must be aware of sunset and sunrise times at both the transmitter and receiver sites. These times themselves are reasonably accurate for fade-time predictions: the difference in sunset (or sunrise) times between those of the first ionospheric control point and that of the nearest ground point of interest (transmitter or receiver), when a north-south path is considered, is nowhere near as great as the difference in sunset (or sunrise) between ground-site & control-point on the east-west routes encountered in TA & TP DX.

The sunset/sunrise tables I previously published should be your guide to LA path viability. The DXer should first determine what LA's are capable of being heard at his hometown sunset & sunrise times.

In December, a DXer in Boston at local sunset can hear LA's having sunset earlier than 2112 GMT. Only the eastern tip of Brazil has an earlier sunset, however. Under normal conditions, domestic QRM will have already overtaken 10-kHz.-multiple LA's by the time they enter darkness. An aurora at this time of year could prove to be very beneficial: with domestics knocked out, a DXer could selectively tune for LA's far to the east (e. g. Brazilians) shortly after sunset with no QRM from the Venezuelan & Colombian pests. Mid-December sunset for Venezuela doesn't occur until 2210 GMT. To me, far-east LA openings are far more rewarding than routine YV/HJ-chasing. North-coast Brazilian reception generally goes hand-in-hand with equally-fascinating African reception: both are auroral-conditions occurrences largely confined to coastal receiving sites at sunset with topnotch gear. Like Deep-South-American chasing, African & northern-Brazilian DXing put one's operating skills to a very thorough test.

Summertime LA DX at sunset is considerably different. The aforementioned Boston DXer has a mid-June local sunset of 0017 GMT. At that time, all of South America and the Caribbean islands are well into darkness. Even in Costa Rica, sunset has occurred 23 minutes earlier. Therefore, before domestics from the west start to skip in, a considerable chunk of Latin America is "open" for intensive DXing, without the need for AU CX. Of course, aurora will still enhance one's possibilities by extending domestic-free LA DX well into the evening, by which time Mexico and western 29

Central America will be in the dark. The drawback to summer LA DXing (other than QRN) is that stations such as Fortaleza, Brazil on 760, 1200, & 1300 will be covered by stronger Venezuelans/Colombians as soon as they begin to propagate in. During an auroral winter opening, the DXer could "sit on" 640 kHz. and get Brazil, then Surinam, followed by Guadeloupe & Venezuela as the sunset line moves westward, not reaching Cuba until 1½ hours after Boston sunset. In summer, the Cuban pest surfaces immediately after Boston sunset.

Because domestic skip is usually very strong up until east coast sunrise, the sunrise LA termination times are principally of interest to eastern DXers during disturbed conditions. At sunrise in December, the Boston DXer may hear Mexico, western Cuba, and western Central America: these have sunrise times later than 1216 GMT. Other LA's have faded earlier that morning (Rio de Janeiro, Brazil sunrise = 0810; Venezuela/Colombia/Caribbean area sunrise about 1045-1105). June sunrise in Boston permits DXing of countries with sunrise after 0912 GMT: these include all Latin American areas except the far east of Brazil.

The sunset & sunrise cases of the winter & summer solstices represent the extreme cases: other times of the year range between these extremes in terms of the amount of area "open" for DXing at LSS/LSR. The DXer should proceed to the following zonal-analysis, keeping in mind the necessity to "follow" the sunset & sunrise terminators from east (group 1) to west (group 5). Individual station schedules must also be considered: the World Radio-TV Handbook and the international DX column updates are your references.

#### Group 1 / 145° - 160° (E of N)

These can be isolated from the interference of more westerly LA stations by exploiting autumn/winter sunset auroral openings. Salt water in the direction of desired-station pickup is advisable: this should be within the first 10 miles from the receiving site as the signals of interest will be arriving at low angles, skimming the surface of the earth. Africans should be DXed simultaneously. Surinam on 725 is the heavy hitter of group 1. Other Surinam stations on 600, 640, 820, & 914 are likely to be heard. Hindi-culture programming forms an important part of the broadcasting scene in Surinam: the exotic East Indian music will definitely help you to locate the non-split Surinam stations. 760 is worth checking as there is a station in Fortaleza, Brazil here; also the more-common Guyana station should show. These are sandwiched between Africans (rare São Tomé on 759 & powerhouse Senegal on 765). A tough one is the French Guiana outlet on 1070. 960 is your best bet for Bermuda; this is favoured by short-skip openings, rather than by heavily auroral conditions. Barbados is frequently heard on 900 during the conditions that give decent group 1 reception. Rio de Janeiro on 860 & 1220 are generally best just before Rio sunrise, rather than at east coast US sunset.

#### Groups 2 & 3 / 160° - 195°

Within these groups are many of the Caribbean islands: a veritable motherlode of potential countries to beef up the DXer's totals. The splits may be heard most nights, even when domestics are strong. The best "pilot signals" are from St. Kitts on 1265 & 555. Antigua - 1165 is also super-easy; non-split ZDK-1100 is somewhat more of a challenge because of HJAT/WWW E QRM. Haiti offers 1035 as an easy split; 895, 1325, & others are more difficult. Tougher Caribbean splits include Grenada - 535, Dominica - 595, St. Vincent - 705, Montserrat - 885, and Anguilla - 1505. 10-kHz.-channel stations heard nightly include Netherlands Antilles - 800, Venezuela - 1200, Colombia - 1100, & Dominican Republic - 650. Of course, auroral conditions will greatly increase the quantity and the quality of DX heard; the reader is encouraged to read the recent "DXing Latin America & the Caribbean - Country by Country" article, the IRCA foreign logs, and the international DX columns for a more in-depth examination of the enormous number of potential targets. A highly-rewarding aspect of DXing Colombia & Venezuela is the reception of stations on the US regional & graveyard channels from 1230 to 1490 kHz.

#### Deep-South-American Hunting

This is a special breed of DX which is both satisfying and frustrating. The DXer should check Ecuadorian splits (605, 735, 945, 995, & 1465 for starters) as a prelude to DSA DX attempts. My experience is that the 0300 - 0900 GMT time slot is most productive. Spring & autumn are the seasons preferred by some DXers, although, theoretically, DSA

should be DX-able all year. Peru - 854 (and also 880 during WCBS SP) and Paraguay - 645 come next on my DSA target list. If these are found, by all means, dig for more: Argentina, Chile, Bolivia, Uruguay, and (the ultimate) Falklands Islands on 536. Buenos Aires on 870 and Rio de Janeiro on 860 may serve as propagation-viability-indicators.

Group 4 / 195° - 220°

Bahamas on 810 & 1540 are regularly heard with the Albany, NY area stations on their channels disposed of with a good loop or auroral cx. Cuba is loaded to the gunwales with pests with which we're all too familiar. Cayman - 1555 is a "regular"; 1205 is somewhat less commonly heard. Jamaica - 700 may be found with WLW looped or phased. A short-skip LA night is best to minimise YVMH/HJXC QRM. Belize - 834 and the Costa Rican splits (on 575, 675, 725, 775, 825, et al) provide effective propagation beacons to the Central American isthmus. Central America is generally best from 0400 - 0800 GMT; additional targets are noted in the recent LADX article by Kazaross, Connelly, & DeLorenzo.

Group 5 / 220° - 250°

Mexico is the country of interest here: 540, 730, 900, 940, 1000, 1050, 1220, 1500, 1560, & 1570 have all been heard in New England. Early morning (from 0600 Z to sunrise termination time) is the most efficient time period for DXing Mexico. During that period, the high-powered Colombians & Venezuelans start fading, leaving Cuba & domestics to QRM Mexico. Moderate, rather than severe, auroral conditions are best. The lowest-latitude "Down-Under" DX paths pass through Mexico & the US southwest: unusually-loud Mexicans & SW domestics could signal the tantalising possibility of South Pacific DX making it to the northeastern USA. Tahiti - 738 & Tonga - 1017 would probably be the first heard.

Russ Brown has gotten TP/DU DX from Michigan; Gordon Nelson heard Tonga on 1020 in the '60s from MA. Despite the new splits, New England DXers have not recently heard TP/DU stations. Increased all-night domestic operation is the "villain" blamed for this by many DXers.

OTHER RELEVANT ARTICLES

(NOTE: DXN = NRC DX NEWS, DXM = JRCA DX MONITOR)

TITLE	AUTHOR(S)	WHERE FOUND	COMMENTS
CUBAN STATIONS	SCHATZ	DXN, 25 FEB 1980	DEADLY ACCURATE
ZONAL-ANALYSIS APPROACH/TADX	CONNELLY	DXN, 10 MAR 1980 DXM, 16 FEB 1980	INTRODUCTION TO ZONAL-ANALYSIS; APPLIED TO TA DX
TA DXER'S GUIDE TO SUNSET/SUNRISE TIMES	CONNELLY	DXN, 4 FEB 1980 DXM, 23 FEB 1980	USEFUL TO PREDICT RECEPTION PATH TERMINATION TIMES FOR BOTH LA'S & TA'S
DXING LATIN AMERICA & THE CARIBBEAN (COUNTRY BY COUNTRY)	KAZAROSS/ CONNELLY/ DE LORENZO	DXN, 28 DEC 1979 DXM, 22 DEC 1979	A DETAILED LOOK AT LA DX TARGETS FOR ALL 46 COUNTRIES, ARRANGED IN ORDER OF DIFFICULTY
DXING LATIN AMERICA & CARIBBEAN (COMMENTS/CORRECTIONS)	FOXWORTH	DXN, 21 JAN 1980 DXN, 28 JAN 1980 DXM, 26 JAN 1980	ADDITIONAL INFO. TO THE ARTICLE BY KAZAROSS ET AL.
LA DX FROM THE PACIFIC NORTHWEST	PORTZER	DXM, 29 DEC 1979	THE WESTERNER'S VERSION OF THE KAZAROSS/CONNELLY/DELORENZO LA ARTICLE
LA SPLITS	HUTTON	DXN, 19 FEB 1979	SLIGHTLY DATED, BUT STILL GENERALLY CORRECT & USEFUL

Pan-American Zonal-Analysis Chart (for Massachusetts QTH)

	<u>5</u>	<u>4</u>	<u>3</u>	<u>2</u>	<u>1</u>
	220°-250°	195°-220°	175°-195°	160°-175°	145°-160°
A 500-1000mi. 805-1610km.	USA - TN	-	-	-	Bermuda
B 1000-1500mi. 1610-2415km.	USA - MS	USA - FL Bahamas Cuba	-	-	-
C 1500-2000mi. 2415-3220km.	USA - TX	Belize Jamaica	Dominican Republic  Haiti	Anguilla Antigua Dominica Guadeloupe Martinique Montserrat Puerto Rico St. Kitts St. Lucia Virgin Isl.	-
D 2000-2500mi. 3220-4025km.	Mexico	Costa Rica Panama Honduras Nicaragua Guatemala El Salvador	Neth. Antilles	Grenada Venezuela	Barbados
E 2500-3250mi. 4025-5232km.	-	Galapagos Isl.	Colombia Ecuador	Brazil Manaus	French Guiana Guyana Surinam
F 3250-4000mi. 5232-6440km.	-	-	Peru	-	Brazil Natal
G 4000-4750mi. 6440-7647km.	-	-	Bolivia	Paraguay	-
H 4750-5500mi. 7647-8855km.	-	Easter Isl.	Chile	Argentina Uruguay	Brazil Rio de J.
I 5500-8000mi. 8855-12880km.	Tahiti	Pitcairn Isl.	-	Falklands Isl.	-
J >8000mi. >12880km.	New Zealand	Antarctica McMurdo	-	-	-

YOUR FIRST 20 EDWARDS/  
NA/SA COUNTRIES (PAGE)  
TAYLOR

OLD NRC REPRINT  
(AVAILABLE FROM  
NE DX INFO. S'CE,  
30 WILLIAM RD.,  
BILLERICA, MA.  
01821)

INFO. IS DATED,  
BUT DX TECHNIQUES  
THEREIN ARE STILL  
VALID. OF HISTORICAL  
INTEREST.

THE READER IS ALSO ADVISED TO REFER TO THE IRCA FOREIGN LOGS FOR  
OTHER ARTICLES PERTINENT TO LA DX, TA DX, AND MEDIUM-WAVE  
PROPAGATION IN GENERAL.



# AN S-METER FOR THE REALISTIC TRF

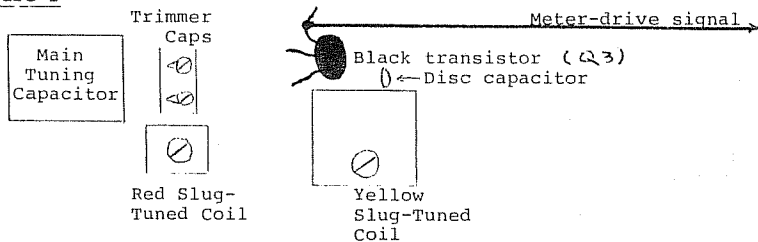
an initial attempt Mark Connelly

A signal-strength meter (S-meter) has many useful properties to the DXer. It may be used to compare levels of groundwave stations, to observe fade characteristics of skip signals, to analyse sub-audible heterodynes (SAH's), and to accurately peak or null a station.

I had a zero-centre "AM-FM Tuning Meter" scavenged from an old Sharp multiband portable lying around in my "junk box". Its small size made it a "natural" for use on the Realistic TRF. The meter movement is  $-100 \mu\text{A}$  for a full-scale-left deflection and  $+100 \mu\text{A}$  for a full-scale-right deflection.

To obtain a voltage which varies with signal strength, I tapped the transistor lead shown in Figure 1. (Open TRF, observe circuit card.)

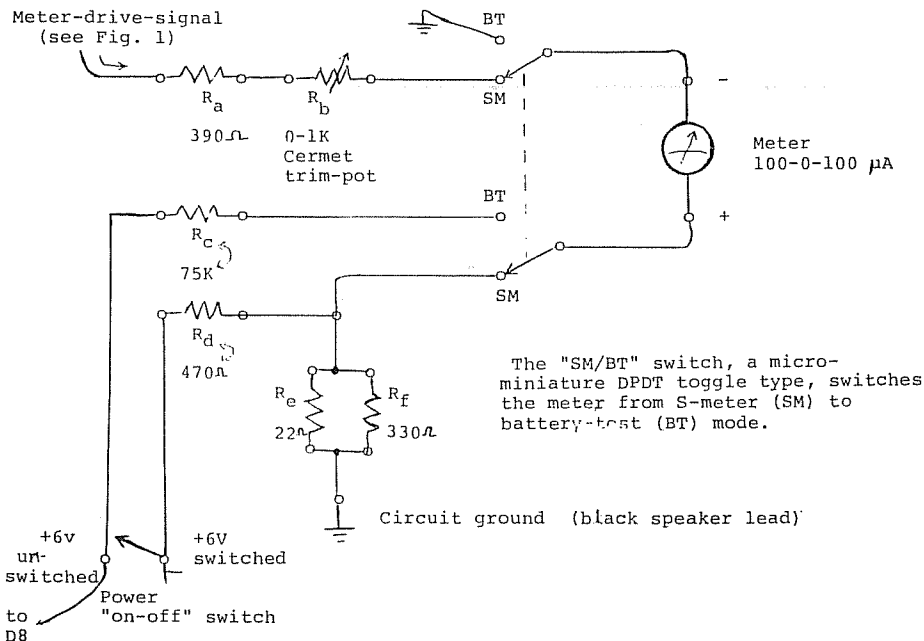
Figure 1



The meter-drive-signal measures approximately  $+0.5$  volts for zero-signal and about  $+0.2$  volts for full-scale signal (a strong local).

After some experimentation, I came up with the scheme of Figure 2:

Figure 2



The trim-pot is used to adjust for a full-scale-left deflection on the meter with zero-signal received. Tuning the receiver above 1600 kHz. will provide a nearly-zero signal level under most conditions.

$R_d$  sets the full-scale-right deflection. I found that  $470\Omega$  will yield a  $3/4$  scale deflection on a strong local.  $430\Omega$  may be used if you want a more "generous" meter reading. Alternately, you can keep  $R_d$   $470\Omega$  and increase the value of  $R_f$  (nominally  $330\Omega$ ) which shunts  $R_a$  ( $22\Omega$ ).

The receiver's operation will be adversely effected if you use an  $R_a$  value much less than  $390\Omega$ .

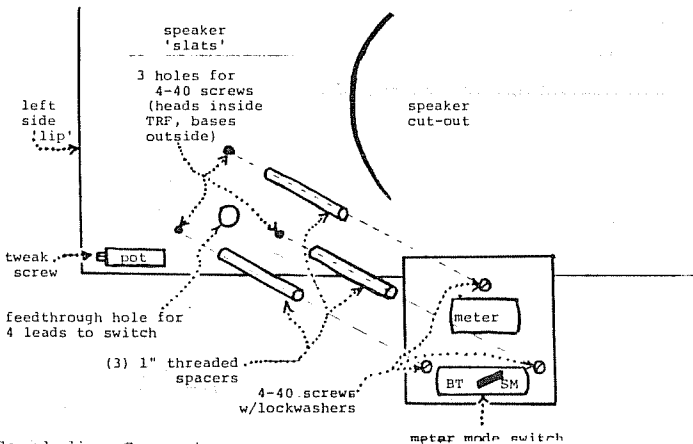
In the "BT" mode, the battery voltage is read whether or not the receiver is turned on. A good set of batteries will provide about a  $3/4$  scale (right) meter deflection; full-scale-right is 7.5 volts in this mode. A useful battery check is to monitor the battery voltage under unloaded (TRF off), lightly-loaded (TRF on, but volume down), and fully-loaded (TRF on, volume high) conditions. A centre-reading in the battery-test mode indicates zero volts: batteries are either dead or not installed. A left deflection indicates that the batteries have been installed backwards. With the TRF plugged into mains, the AC-to-DC power supply takes over; a nearly-full-scale-right meter reading should be observed as the power-supply DC output is about +7.3 v (loaded).

#### Mechanical Assembly

Fixed resistors were mounted inside the TRF. The 0-1k Cermet/Bournes-type trim-pot was mounted on the lower left corner of the front of the receiver: (see Figure 3). Trim-pot leads were fed directly through small holes drilled in the cabinet. A few drops of rubber-cement ("RTV") were applied with a cotton-swab to secure the pot.

The meter and the switch were mounted on a  $1-5/8"$  by  $1-5/8"$  square piece of epoxy-glass (G-10) printed-circuit-board stock. This assembly was then attached to the left-front side (above, and somewhat to the right of, the trim-pot) by using three  $1"$ -long threaded metal standoff-spacers and 4-40 hardware (screws, lockwashers). The 4 leads to the switch from inside the TRF were fed through a hole drilled in the front grille. This hole should be fitted with a rubber grommet to reduce wear on the insulation on the 4 lead wires. Figure 3 gives an overview of the exterior mechanical assembly.

Figure 3/ expanded view



#### Concluding Comments

I have found that the S-meter is particularly useful in nulling & peaking applications: the meter shows changes in signal strength much more readily than audio output does.

My S-meter/battery-meter project was an unsophisticated first "stab" at this idea. Others will undoubtedly come forward with considerable refinements and improvements. As years have passed with no significant articles about S-meters for the TRF, I felt that the least I could do was to "get the ball rolling".

An active meter-drive circuit with an operational-amplifier chip was contemplated, but I opted for a simpler approach which all DXers could implement. Others are hereby encouraged to write of their designs using meters of different movements (such as 0-1 ma., 0-100  $\mu$ a., 1-0-1 ma.). A design utilising a linear LED level meter (similar to those on some modern cassette decks & stereo receivers) would be of considerable interest to many. Also desirable: S-meter circuits for the GE Superadio.

# EASTERN DX FORUM

THE COLUMN  
OF THE 80's  
Send to Nelsonville TFM

Paul Mount  
35-1/2 W.Columbus St.  
Nelsonville, Ohio 45764

MIKE SALTMARSH 33 Fowler St. Penacook NH 03303 (603)753-4164 28 March(postmarked 5/3-PRM  
OK, who's the wise guy? I just received a verification Saturday from KAAA-AZ (a  
graveyarder) and I wondered at first how in the world I received a QSL from a station I  
never heard much less never sent a reception report to. So I checked my log to see if  
I heard anything on the day whic the QSL was saying I heard them (Feb.30!) but I heard  
nothing  $\pm$  3 days from that date (if you want to call it a date). So then I thought some-  
one is trying to get me into trouble(sweet lil' ol' me?) by getting me stuck with a QSL for  
which I had no details (goody, hi). Then my mother brought to my attention that the AZ  
postmark was faked and the 2nd postmark on the envelope was from N. Truro MA (I just  
glanced at them before I opened my "verie"). Well, there's no one I know from around there  
so I thought "Oh boy, I've got a phoney QSL letter. Hmmm, maybe I'll write a mystery  
book. It'd be the greatest mystery book ever written. The only one, too." Whoever did it  
I'm going to send them to Antartica to say hello to a few penguins, hi. I found it pretty  
amusing, I must admit, but the originator (CE David R. Yakinelli--initials DRY)KAAA is on  
1230 not 1240. On to other stuff. Whatever happened to DX Contests? I finally got 100 QSLs  
but I;m too lazy to finish up typing my application but expect to have it done by the next  
few days. I have just joined the Naval Sea Cadets and the summer after this one I hope to  
be sailing off to Europe for a month (not the Middle East, hi). I was up in Conway on the  
27th and DXing up there stinks. Mountains everywhere. It's hard getting much of anything  
up North and to the South and East, stations were coming in fairly good. Of course,  
there are worse locations: Take your pick: Antartica, the North Pole, or right under WBZ's  
towers. That's an idea. As soon as WBZ signs off, hook a piece of feedline from their  
towers to my receiver antenna outlet and I've got a 300 ft antenna! I just better watch  
out when they sign on (a radio that's turning into a bomb?) Crazy, aren't I? Enough for  
now from the messiest shack in the club?  $x^2$  to ya if the legs of a right triangle are 8 and  
3 and the hypotenuse is x.

MIKE BROOKER 245 Old Forest Hill Road Toronto ON M6C 2H5 May 6  
Thanks to CFTR's cheapie transmitter which re-radiates spurs off local high-rises, WNYR  
has sought asylum on 990. Reception of "The New 99 WNYR" is fair to poor on SSS, getting  
hammered by WNOX and CFRB slop, and poor but consistent at night after CBW sign off. Us  
Superadio owners should keep the Duracell people in business for a long time. The Superadio  
drains batteries (6 D Cells) fast. I had 6 Duracells in it since last December and last  
night they all went kaput. The RF-2200 uses only four D-cells. Since I got my RF  
almost 2 years ago, I have had the same batteries in it. (Panasonic Hi-Top, non-alkaline).  
Has anyone else noticed that the Superadio drags batteries? The Expos games are back on  
CKAR-1350 again this season--big deal as the Expos are still in last place while the Jays  
are tied for first, two weeks before strike day. Jays have also added CHYR-710-730 this  
year. CHYR uses 710 in the daytime and 730 at night. It's better than having to sign off  
in the bottom of the ninth with the score tied, bases loaded and a 3-2 count. "Disco 790"  
is for all intents and purposes dead. CHIC has changed to CKMW. The third letter is "M",  
but the first time I heard them (today) I thought their new calls were KKNW--which would  
steal the Vancouver calls. Format is MOR/Adult contemporary/pop standards--zzz. Their  
FM, CFNY-102.1, is still playing the same new wave junk. WNIA-1230 in Cheektowaga NY was  
off the air for a while until they got a new owner. They are back on now as WECK, with  
the slogan "Radio One two three" and no disco which they played a lot of as WNIA. They are  
also on the Blue Jays network, as is WBTA-1490 in Batavia. DX Fever--Catch it! 73's

BILL WURTZEL 32 West 31st St. New York, NY 10001 (212)594-8498 May 8  
Thanks for the Information C.M. Stanbury. I have seen some of your articles in elec-  
tronics magazines. We might be seeing the beginning of superpower in this hemisphere. A  
Brazilian station is testing with 600KW on 980 k with soccer games. Bonaire is still using  
500 KW on 800 k with less operating hours. The Cuban on 600 is planning to increase power  
four-fold from 150 to 600KW. My DXing has been limited due to getting a roommate for 3  
months. He turns in early so I have to. For 10 days in May he will be in Canada so I plan  
to do alot of listening. On Sat May 10 I will attend the Washington Area DXers gathering  
in Arlington VA at Tom White's. I plan to stay overnight to DX and will bring along the  
Panasonic RF-2900 and another set. Anyone visiting New York this summer is welcome to stop  
by here. I enjoy company. My phone number is listed in the phone book and in this Forum.  
My first song will be performed in public by a girl who wrote music for it, called "Alone  
With You". Bryan Lee mentioned DXers block, which lead me to write this poem"DXers Block":  
Sometimes I suffers from DXers block - But soon find myself at the radio dial  
Hearing a new station gives me a shock - Soon I'm happy and full of smiles  
So I send in a Forum to Paul Mount - Reporting new stations that I heard  
My QSLs grow too large to count - DXing sure can be a lovely word!

GREG MONTI 1110 Fidler Lane # 1424 Silver Spring, MD 20910

May 11

Attended the WADXA GTG at Tom White's in Arlington on 5/10, and had a good time. The place was packed with more DXers/SWlers than I've seen in a long time. A couple of them were even planning to attend the Three Mile Island DXA GTG in State College PA in June! Tom works for Dafaworld, a company which compiles lists of radio and television stations. Their service is expensive and is usually bought by consulting engineers, but it sure is complete and up-to-date. Gave me a copy of their latest printout, which lists transmitter site coordinates and millivolts per meter per kilowatt, among other data. Hopefully, I can use it to keep "Broadcasting Information" up to date for IRCAnS. Recently, I was paid a visit by ex-IRCAn George Greene. (another victim, hi-PRM) We spent a whole Sunday afternoon checking out the FM DX, airchecks, promo stuff, and station addresses and photos. He has quite a collection of just about everything! Looks like I won't be able to get vacation time for the IRCA convention in LOUISVILLE, but I am planning for the ANARC thing in LA in July. 73's.

NIEL WOLFISH 15 Donwoods Grove Toronto ON M4N 2X4

May 18

I've been kind of busy lately, but I've still managed to get in some DX. A few new stations, including WTSN-1450 which gives me VT finally for state #42. Haven't had any luck w/recent DX tests, basically because I tend to fall asleep around 0045 every MM..I haven't had much in the way of veries either. Letter from WNST and cards from WTDQ, WOHO, and WKBN. As of 5/18 1980 updated totals read 711/252/328 (stations heard verified, & Taped) with 42/40 states, 10/9 provinces and 19/11 countries. Anybody out there interested in trading stickers drop me a line. I have many available from CFOS CFPS CHUM CJBK CKFH CKAR and CKOC. Others floating around here also, plus tons of surveys from CKOC. For you log changers or DXers out there, not that CHIC-790 is now CKMW w/mellow pop type of format. Could it be a coincidence that CKLW is on 800? Incidentally, I'll be out of town between June 26 and August 21 - summer camp time again, and that means a paid vacation, hi. I'll be at Camp New Moon - Baysville ON POB 1A0. (I can see it now, Meatballs part 2, starring Njw-PRM). Well 73s for now, and be sure to send in your graveyard records.

STEVE APEL Chadwick Apartments Apt H-123 Lindenwold, NJ 08021

May 18

Hi, gang. Great news. I've just been named Program/Operations Manager at WCAM-1310 in Camden, NJ. The station has been purchased by Wade Broadcasting. That ends 55 years of municipal ownership. Schedule is AN-6, the SP on MM 0300-0557. This may be subject to change. Please send your verie requests to my attention at WCAM City Hall Camden NJ 08101. That address will change soon. No new DX to report as I still haven't had much time since moving down here. In other market news, here's a scoop on Broadcasting:WZZD-990, which has just changed formats from dancemusik to gospel/inspirational/religious programs, has requested a call letter change to WWBJ. The other station owned by the same company is WWDJ-970 in Hackensack, NJ. I wonder if they're trying to create a CBC-type pattern (CBL, CBM, CBJ, etc). (Reminds me of when WWDJ and KKDJ were owned by the same company-PRM). That's about it for now. Feel free to write or call if you're in the Philadelphia/South Jersey area. 73's and good DX.

SAUL CHERNOS 75 Ridge Dr. Toronto ON Canada M4T 1B6

Hello. In response to CPC plea for more tests, I've arranged WMLB. I had begun arrangements a few weeks before the plea was printed. WBIS has also been agreed to, and are choosing when to do so. I made WMLB's a bit unusual. I hope for a JFK speech!(Ask not..) Punk Rock! Acid Rock! Phone in DX show! A taped speech about DXing & publicity for clubs, featuring...guess who!!!! My 7 year old sister may give an ID, and maybe a few friends. WBIS should be a tone, as they're on a crowded frequency (1440) unlike WMLB's open 1550. CPC Committee: if you want more tests, send me your "information" you mentioned. Other tests I'm excavating range from Arizona to Ohio to Massachusetts, etc. I have CFRB, CHUM, CKFH, CKAR, CHUM, etc stickers. If you want, send some from your area. I'll also QSL Toronto area stations if you'll do the same for your area, so send the reports. Best tests heard here: KRDS 5 KW AZ, KNCK 1 KW AR, KOLY, WVNK, WQCK, KGIR & more. I average 2-3 per DX night. Anyone into tests is welcome to write. I'm keeping detailed tabs on tests, so any info is appreciated. What about a column for tests??? 73's, S.

RON THOMPSON Route # 1 Lawrenceburg, KY 40342

May 29

Since I've been a member of IRCA for 1 year, I thought it was about time for me to send in a Forum to introduce myself. I am 28 years old, single (but looking) and living with my parents. I am currently working as an alarm monitor on the midnight shift and I would like to eventually get a job in radio. (WLGN needs part time help-PRM). I was a casual DXer for 10 years until I joined the IRCA and NRC in the summer of '79. My receivers are a DX-160 and an unmodified TRF. Since I joined the IRCA I have heard 225 stations, with only 1 station verified. When I am not DXing, I am usually playing basketball, tennis, volleyball or running. Since Louisville is only 50 miles from my home, I am planning to attend this years convention. I'm looking forward to meeting everyone. See you in August. Ron.

KEEP SENDING FORUMS TO THE ADDRESS AT THE TOP OF THE COLUMN. I'M MOVING BUT I DONT KNOW WHERE, SO MAIL RECEIVED IN NELSONVILLE WILL BE FORWARDED TO WHEREVER. DEADLINE JULY 1.

GERRY THOMAS P.O. Box 2036 Pensacola FL 32503 New phone (904) 432-8208

Hi Folks. Well, we've finally moved into the house we'd been building for the past six months and things are beginning to fall into place somewhat...even time for a little DX lately. I'm also slowly getting around to answering the backlog of radio related correspondence/commitments that have accumulated over the last several months... I appreciate your indulgence. The new location is a tremendous improvement over the apartment. With a 600' "mini-Beverage" running to the edge of a 100' cliff overlooking Pensacola Bay and the Gulf of Mexico beyond, the strength of signals from the south is astounding. Charlie Barfield's modified Lyonodyne Xtal set has brought in several 1kw'ers from the Tampa Bay area at midday(!) not to mention several LA splits at night. My best catch at the new location though occurred last night with the Frog and mini-Beverage. Checking for any out-of-band action, I tuned past 1610 kHz and detected a carrier. In a few minutes good lever audio appeared and the station turned out to be WYZ 235, the information station at Tampa International Airport---10 watts (listed) at a distance of 335 miles I can't wait for fall to roll around! Other matters---those blue IRCA info flyers are great, every member should get a handful and display them at their local Radio Shacks and electronics stores. Speaking of RS, I bought one of the new TRFs when they first came out several weeks ago but haven't had time for a careful evaluation...in the near future for sure. I'm at the limit, so 73's.

ERNEST R. COOPER 5 Anthony St. Provincetown MA 02657 May 30

I had a really sumptuous time at this year's great YAD get-together! Everything was super except the plane connections by YouAssAir - both ways! I had to practically run for my connecting flights both coming and going, and that ain't good for an old bat with angina! My bags trailed me both ways, too. But, I'm used to this - it seems to happen every convention! I stayed at the Days Inn (down the road a piece from the scene of the Ramada where the meeting room was). I wonder why they call it "Days Inn" when you only use the room at night? When I got home I had a swell v1-EE waiting for me from 4VRS-1170, Port-au-Prince, Haiti, received Easter morn carrying Midnight (Episcopal) Mass from the Cathedral in that city, in French. Look for this one on Christmas AM & maybe also New Years morn as well, and next Easter - they really did a job on WWVA. This is being written on May 30 which used to be a big holiday, but today it really IS a holiday here, with the season's first big FM opening, as I added Arkansas, Illinois, and Missouri to my states heard, bringing that total to 16. Question for you Midwestern FMers - who is "FM-95" with c/w mx, I believe actually on 95.3, but it could be a channel either way they were in for 3/4 of an hour this AM, but that and "K-95" were the only IDs the Guy gave! (WHOK-FM 95.5 in Lancaster OH iscountry and goes by K-95, if that helps-FRM) Then faded to WRXX, Centraillia IL @ 11 am. AMVn verie total AM verie total is now 4153. Locally, WVLC-1170 became WKZE on 6/2 and changed format to "Music of Your Life". If that's my life, I must be slipping fast, hi. CYN 28.

PAUL MOUNT 35 $\frac{1}{2}$  WestColumbus St. Nelsonville, OH 45764 June 4

It's been a week and a half since we got back from YAD, and we're still laughing about some of it. Got up around 0700 5/21 Sa, taking Darlene, two OU students(riders) and WTPDA member Randy Clark from Parkersburg to Youngstown. Hit the motel strip around 230p, leaving Randy there and going over to the Motel 6 room. Put window stickers on the left rear window of the car, most of them West Coast, Canadian, or Atlanta stations. Only 4 people there when we got back as they had gone to dinner, and ran into ex-IRCA and good friend John Sally as we left to do same. That night the Hearts games began, two or three going at once sometimes. THE DX quiz was given, half silly, half serious, and was won by Gary Siegel, who would soon also show his athletic ability. Gary, Joe Fela from NJ, Darlene and I played hearts for about 3 hours. Also the slide presentation of small studios and missing call letters on buildings in NM was interesting. Buzzing sounds began about the time Frank Merrill came in, wonder why? Sunday we rode w/ ERC and Joe Fela over to the WHO<sup>1</sup>/WSRD station tour and stood in at Bob Popa's 1330 AM show for about 20 minutes. The bear can throw was held, and again Gary Siegel emerged victorious, adding a belt buckle to his WSRD T Shirt prize collection. We also saw the inside of a building by the tower, and more noise was made when George Greene of Akron arrived via Alma, MI. Jim Wallace, George, & Randy took a ride in my cabin cruiser to eat at a McDonalds of questionable management then back to the Ramada for more card games and tape playing. The room closed at 11, but a Hearts game and music continued till about 0330 in Room 62, the participants being named Merrill, Siegel, Milton, Greene, Glick, and Mount. Banging on the wall by occupants of rooms on either side of 62 were barely heard due to the music and attempts at KTRC. Monday the survivors caravanned to Jerry Starr's for a picnic and playing of the MAD game. We had to leave around 4 as I had to work in Athens at 9. Should also mention that at one time, JS plus other NRC editors and LPC members were all reading IRCA bulletins, wish I had a picture, it would make a nice endorsement, hi. Furthest attendee was Wayne Heinen & wife from Colorado Springs, with Honorable Mention to Paul Swearingen & wife from KS. As for ERC, the typer ran out of ribbon & wouldn't reverse. 73"NN"

# Western DX Forum

Ric Heald  
1058 Sanchez Street  
San Francisco, CA 94114 USA  
(415) 821-0447

## 1980 Deadlines—03 & 17 April, 08 May, 05 June, 03 & 31 July

Remainder of 1980 Deadline Dates TBA by Seattle

□ □ □ □ □ □ □ □

GET WELL SOON - Jim Critchett, 1635 Walbridge St., Red Bluff, CA 96080 writes that he suffered a heart attack on 18 April 1980 at his home in Red Bluff. He is recovering at home now after spending 12 days in the hospital. He mentions that this has greatly reduced his DX time, especially during the graveyard hours of 0000-0500. Jim, I believe I speak on behalf of the rest of IRCA in wishing you a speedy recovery. Jim, why not sleep during the day and DX during the night? Please get well soon-RtH

RICH TOEBE, 2350 STONEHAVEN CIRCLE, RENO, NV 89511 - 14 May 1980  
\*\*\*\*\*  
Hi everybody! What with RtH's arm-twisting (gentle persuasion, hi-RtH), I figured it's about time I get another forum in. First, I'd like to thank the Nyholms for holding BARF GTG. Although I got there slightly late (four hours, hi), I got the chance to meet many of the previously faceless names prominently featured in IRCA's hallowed columns. I'm already looking forward to the next GTG in July! I think that I may have converted someone to the cause. I brought a friend of mine along to the GTG and he was so impressed that he plans to join IRCA soon, albeit on a trial basis. Also had a chance to drop by Rich Segalis' place after the GTG, and spent an enjoyable, although short, time there. On to local crud: Today was a strange day, weather-wise, and as a result, we had a massive power outage beginning at 3.58 pm PLT. All of the Reno, Carson City and surrounding areas as far as Tonopah and east as Fallon was affected, and every single MW and FM station was off! Driving home from work, I listened to KSUE 1240, a newie; it was that or KNBR/KCBS/KGO. Unfortunately, stations were coming back on as power was being restored and everything was back to normal by 6.00 pm. What a shame! I had visions of 1340 and 1450 being open for DX dancing in my head! It's really something to hear KXQR 790 at 5 pm PLT clearly, with reasonable signal strength, and no KCRL sloop! Speaking of KCRL, I have noted them with SS after midnight PLT and do not know if this is a regular program. Good DX to all de RT.

BILL HARMS, P.O. BOX 7428, UNIVERSITY STATION, PROVO, UT 84602 - 19 May  
\*\*\*\*\*  
This is a short note to report some reception of a few NW stations in midday which may or may not be related to the volcanic plume from Mt. St. Helens. I heard the following: KIRO 710, CBU 690 and KGA 1510 today about 1400 ELT. I have heard all of these during the day but they were before enhanced signals strength. I don't know whether these receptions were due to the volcano but it is interesting to make a conjecture. 73 de WJH.

RANDY MILTIER, 1068 FAIRVIEW AVE., SAN JOSE, CA 95125 - 27 May 1980  
\*\*\*\*\*  
Finally received the IRCA Almanac and NRC Domestic Log and I am impressed by both publications. BCB DX'ing has come a long way since the '60s when I last DX'ed. To everyone who contributed to those two publications you did a real nice job. I know the work involved in such publications and I used to be editor of a newsletter for the fire department for which I work. I hope everyone appreciates the time and effort that went into the IRCA Almanac and NRC Domestic Log. DX has been slow since returning to the dials after a ten year absence. I'm still getting familiar with the dial. I hope to add a loop antenna soon but not sure which one to go with yet. I have a Panasonic RF-4800 receiver for sale for \$300. The set is a little over a year old and has the digital frequency readout. The RF-4800 also tunes the FM band. Veries have been slow, like CKAL. (I have a CKAL decal if anyone wants it). Also, KWSU, KKKQ, KDWN and KMJJ in since January (I got off to a slow start). (Sounds like KMJJ is verifying again, that is, if there's anything left of the station after the devastating tornado swept through Grand Island-RtH). Does anyone have a v/s for KXEG 1010? Best of DX.

MARK McMILLAN, RT. 3, BOX 381, RATHDRUM, ID 83858 (KA7BTQ) Phone: (208) 687-0350 - 27 May 1980

\*\*\*\*\*  
Hi gang! This last DX season DX'ed me out. Boy it's tough on a 16-year-old, hi. (Wait until you're at least twice that age, hi-RtH). For a re-intro: I'm 16, a junior at Lakeland High School in Rathdrum, Idaho. I just passed my general ham ticket on 15 May. I have been BCB DX'ing since July 1976 with traces back to 1970. My totals on 1 August 1979 were 550 stations logged from 34 states, 4 provinces and 10 countries. As of today, it's 939 logged from 39 states, 6 provinces and 39 countries. As you can see I've DX'ed myself to death, hi. (Sounds pretty grave to me, hi-RtH). I would like to set up a BCB DX info line on 10, 15 or 20 meters. Please let me know on any net or if you are interested. I've heard some great DX this year - namely TAs, LAs, DUs and TPs. I logged seven TA countries and the best was BBC 882 with a super armchair copy. Best U.S. catches were WTIC 1080, WCSC 1390, KCAB 980 and WDAF 610, plus many others. I recently traded a ham transceiver for a 2 meter rig and an FRG-7, unmodified. The "Frog" works great - audio better than HQ180, but birdies and harmonics are bad. New catches on FRG-7 include KVSF 1260 and CFGO 1440. Well, best say 73 from the ashtroy of the U.S. We have about one-eighth of an inch of the stuff. 73 de KA7BTQ Mark. (What clever phonetics have you developed for your ham calls?-RtH).

STEVE MITTMAN, 2248 W. 37th ST., SAN PEDRO, CA 90732 - 27 May 1980

\*\*\*\*\*  
Enjoyed the 17 May DXM - after brushing volcanic ash off first, hi. (Noticed it was mailed a week late). (Also mailed from Tackyoama, hi - my mom's hometown and she coined the word, so don't jump on me, hi-RtH). Lots of bib DX news around here lately. First, KFMB 760 was off the MM's of 5 and 12 May, which at long last yielded my first positive DU - 1YA 756 in New Zealand! I know many of you - particularly around the Pacific Northwest - can hear DU quite easily, but I'll have you know that I have been trying for years! Today (in three weeks) I received some literature from R. New Zealand and a nice v/q, which is still soaking wet, my having drooled over it all afternoon, hi. The second MM of KFMB's SP I logged CMCI with their little tone at the top of each minute. I had read about Cuba's MW "time stations," but had never heard one before. Now, are you ready for this? Two days after logging New Zealand I did a midnight bandscan and (you better sit down) lo and behold (grab a glass of water) (May I have something stronger?-RtH), XEPRS 1090 was off the air! Now that you've picked yourself up off the floor, let me add that that was the very first time I had ever caught them off (for more than a minute), and I logged TGZ Guatemala for 1090 #2! Was hoping for KING or KBOZ, but KNX 1070 was just too much (their XR is just 9mi/15km north of here). 20 April WBAP was off, which gave me 820 #2, CMCA at apparent s/on. Before that heard an unID. Suspect HJED. (I think so-RtH). The following Sunday, KSL was off (with OC), but absolutely no sign of anything was heard. Has anyone out west ever heard anything on 1160 other than KSL? (Sure! WJJD, HJCK, 4MB and China - during KSL's MM SP back in the early '60s-RtH). MM 12 May I heard 5kw KISA 1540 Honolulu 0430 ELT until their s/off at 0500, so they are fulltime now and should be a good bet on MM. And if that wasn't enough already, 12 May, KWKW 1300 was testing (off RS for the first time for me) and I heard .5kw XEP. Some of you may remember that I heard a spur from them last Christmas on 1620. That brings me to an interesting question. Should I count XEP as two stations (1300 and the spur on 1620), or just one? (I would say, one-RtH). I've always believed in keeping my totals low, not high, and have therefore always counted a stations transmitter, not their call or frequency. But this somehow seems different, considering the rarity and difficulty of logging a spur. And yet, it's really the same station. Would appreciate feedback. Other interesting news: KQXE 1310 Mesa, AZ is now KZP (O&O by the same company that owns KZAP-FM Sacramento), and KIRV 1510 Fresno has boosted its power 20 times - from 500 watts to 10,000. They have switched from Btfl music to btfl-gospel music (or as they say, "The New Life Sound."). See you at the ANARC '80 convention at UC-Irvine 18-20 July. 73 de SWM.

JOE F. JERGEL, 1507 CALIFORNIA, #337, SAN FRANCISCO, CA 94109 - 28 May

\*\*\*\*\*  
A few things from the last seven weeks since I last "Forumed." I went to Long Beach in early May and finally got a Grundig RR 1140 stereo radio-recorder. Not strictly a DX machine but I like this one. When I got back I called RtH just in the nick of time to get a ride down to Doug Nyholm's for the "BARFing." Thanks, RtH. (No problem, the bill is in the mail, hi-

Rth). Nice to meet so many DX'ers there. I hope there's more of these in the future. (There will - see this issue for the BARF July GTG-Rth). A good way to exchange information. Not much DX'ing from mid-April to mid-May here as my heater broke down and I was not about to start a fire with station logs. Only five new stations heard in the last 2½ weeks. One, KUAT 1550 Tucson on 15 May. I'll mention here as I lost my notes before entering them into my log so I cannot report the exact time to WDXR. Bad local news: "The North Bay Noise" KTIM in the process of being sold and rumor (B.A.M. Magazine) has it that the new owners do not like its free-form rock format. And if that's not bad enough, KSFO 560 started broadcasting the Larry King show last Monday. Schedule is 0000-0500 PLT. Is there no end to this? (KSFO has been NSP for at least ten years. Be thankful they're AN with voice instead of music modulation - even if the modulation is like Jepko, a pile of compost, hi-Rth). 73 de JFJ.

NICK HALL-PATCH, 1538 AMPHION ST., VICTORIA, BC V8R 4Z6 - 29 May 1980  
\*\*\*\*\*  
DX? Well, I've heard WNBC on the TRF from my new location, but have only recently found time to set up a reasonable listening post. Local noise levels don't seem too bad so far though there have been a couple of evenings of ghastly continuous hash which gave even KGO trouble. Haven't traced that yet. This place is considerably closer to all three locals, and I fear that the HRO is going to need further transmogrification as there are some cross-modulation problems which weren't apparent at Alder Street. For now, I'll have to live with it, as time is a scarce commodity. One project will be a new slogans list for the next edition of the Almanac. The Almanac will be most worthwhile if it contains up-to-date information. So . . . could please everyone please check their locals and semi-locals for slogans which are used at present, and send them to me at the above address. Also very important is finding out how many of the slogans in the Almanac have been dropped. I'm sure the list is no longer entirely accurate, if it ever was. I may indicate in the list which slogans have been heard recently and I'd like to have considerably better than a 1-in-10 accuracy in the listing. So please check the Almanac slogan list for accuracy and let me know which slogans are still in use as well as any new slogans you hear. I'd like to get this typed up in late July. Best DX and 73 de NHP.

JACK LATTEMANN, 314 NE 56th ST., SEATTLE, WA 98105 - 31 May 1980  
\*\*\*\*\*  
Hello fellow IRCAnauts from ash-spared Seattle. Due to the demands of my work schedule I haven't done much DX'ing during May. I'll devote this Forum to discussing two "new wave" radios which may be of interest. Two weeks ago I visited Pearl Electronics in Seattle to check out the new Panasonic RF-090, an AM-FM portable which features digital frequency readout and microprocessor-controlled tuning in a package the size of a large paperback book! No tuning knob or dial scale - these controls have been replaced by a set of calculator-type buttons which allow programming of up to eight FM and eight AM stations for instant recall. List price is a hefty \$199.95. Audio was good for a portable this size, and it seemed reasonably selective on FM. Now the bad news: The RF-090 tunes only every 10 kHz, the standard North American frequency spacing. If you are into foreign MW DX, this probably won't be the radio for you. A more interesting receiver for MW DX may be Sony's new ICF-2001, available in the U.S. in July. The ICF-2001 also features digital readout and microprocessor-controlled tuning. Frequency coverage is 150 kHz, to 29.999 MHz in one band, plus FM 76-108 MHz. Tuning can be accomplished by direct punching in of an exact frequency, manual tuning in 1 or 10 kHz steps, preset memory recall of up to six stations, or autoscanning in 3 kHz steps. For your information, and not as an endorsement, Spectronics, Inc., 1009 Garfield St., Oak Park, IL 60304 will be carrying this receiver. List price is \$329.95. The unanswered question: Selectivity, degree of freedom from overload, presence of images or birdies, and as a bottom line whether the performance characteristics and features of this radio justify the price for DX'ing value. I certainly would welcome a performance review of the ICF-2001 by anyone who can get their DX'ing mitts on one and write a coherent article. Enough for now. 73 de JKL.

ROB HARRINGTON, 3181 S. YORK ST., ENGLEWOOD, CO 80110 - 31 May 1980  
\*\*\*\*\*  
Greetings! David Hailey from Nashville was in Colorado during the month of May. I showed him the state in the ten days he was here. We had a DX meeting in Pueblo on the 10th and three Pueblo DX'ers came to the meet. Traveled all around the state to all the high points - it was a great



visit. I am now working with the IRCA CPC along with Chris Knight. The Colorado Association of DX'ers (COADX) will be putting out a monthly report on CPC work in Colorado. All members of COADX who belong to IRCA are invited to help. If anyone is interested, please contact me. I will need all reports from all COADX/IRCA CPC members by the 24th of each month. I will be sending my report on COADX CPC work to IRCA on the 30th of each month. The NRC Log: The NRC is in need of people to help with updating the NRC Log. I have NRC log update forms and should you need one please contact me. By the time you read this I will have a new receiver, the Hallicrafters S-120, a used, 1961 model. I purchased it from a Texas DX'er. I heard that KFML 1390 wants to go 24 hours. They have applied for 5000/1000. I'm really unhappy about that because another DX frequency will bite the dust. I really like 1370, 1380, 1390, 1400, 1410, 1220, 1230 and 1240 kHz for DX'ing. That's it for this time. 73.

BILL HARDY, 2301 PACIFIC AVE., ABERDEEN, WA 98520 - 02 June 1980  
\*\*\*\*\*  
For those wondering, Aberdeen escaped the ashfall of the 18 May "killer eruption" of Mt. St. Helens, about 95mi/152km southeast of here. However, the wind shifted for the 25 May eruption and the ash mixed with local rains to give us about one-eighth inch of volcanic mud. We were lucky in comparison with Yakima and other places in eastern Washington, but let me assure you that even a small amount of the ashfall is difficult to get rid of. The key emergency radio outlet during the disaster was KBAM 1270 Longview. They went 24 hours with emergency info and C&W music. The two Longview-Kelso fulltimers are GY's, so KBAM's 5 kw provided the best local signal to the hardest hit areas, including the devastated Toutle River basin, and also to towns standing by for evacuation in case of flooding or mudflows, such as Toutle, Castle Rock, Longview and Kelso. KBAM also reached outlying areas on the south side of the mountain, such as Cougar, which were on alert in case the south face of the mountain collapsed. When the ashfall blew west during the second biggest eruption on 25 May Longview and Kelso got the worst of it. At night, Nancy and I could hear the latest info from the Cowlitz County Courthouse on KBAM, then tune up to KIT 1280 Yakima with news, traveler's warnings, cancellations and the like for their area, which got some of the worst ashfall with many highway closures. For other volcano-DX tips, see Nancy's WDXR section. Before I go, I'll mention that the BoD has approved a new edition of the popular "IRCA Almanac," to come out this fall. If you have any corrections, additions, etc. from the first edition, be sure to send them in now. And if you'd like to help compile or type any portion of the Almanac, or have any suggestions on how to make it better, I'd love to hear from you. 73 and good DX.

GENE ALLEN, 134 BRET HARTE WAY, VALLEJO, CA. 94590  
\*\*\*\*\*  
Had a difficult log on KHOT 1250 Madera at 1600 ELT due to KYA 1260 splatter but was really hunting for either Grass Valley or Willits, but no luck. (Grass Valley reportedly is on, Willits is not-Rth). Was using my best antenna for this KHOT reception which was the home-made 4' unamplified loop. The Sanserino 2' (loop kit) loop ranks a very poor third when compared with the SM-1 and the 4' unamplified loop. The only other DX of late was R. Caribe 840, heard at 0040 ELT on 12 May with WHAS not on the scene. They mentioned 20 kw power in about every other announcement. Hope that the other big BCB club will, for a change, arrange some specials at times we west coasters can hear them. I.e. after 0300 ELT. (Hear, hear-Rth). I have my 1926-27 season heard log of stations here in California. That would be a bit of nostalgia for DXM. Let me know if desired - power in watts and frequency in meters will be given as well as owners names at time of reception. (Thanks for sending me a copy, Gene. Very interesting indeed-Rth). Best of summer to all. 73.

FATHER JACK PEJZA, 108 COLE ST., SAN FRANCISCO, CA 94117 (415) 387-3960  
\*\*\*\*\*  
By the time this gets printed I will be living at the above address. My term as principal of Central Catholic H.S. in Modesto has ended and I am attending summer school at USF working on a M.A. in Private School Administration. I have been lucky enough to have been given a year off as a sabbatical, to study and to travel. From September to December I will be at the Vatican II Clergy Institute in Menlo Park, CA being updated in Scripture, theology, etc. During the second semester I will finish the degree at USF. I hope to be able to do some travel during the year, at least to the East Coast, The range of travel depends on funds available. Next summer I will be moving back to southern California, either to San Diego

or Ojai, to get back into school work. Maybe I'll have some time this year to get back into DX'ing more than I have in the last couple of years. I plan on attending the NRC Convention in Los Angeles over the Labor Day weekend. Unfortunately, I will not be able to get to either the IRCA Convention in Louisville or ANARC Convention in Los Angeles, in July. 73 de FJP.

BRUCE PORTZER, 6546 19th AVE. NE, SEATTLE, WA 98115

\*\*\*\*\*  
I've been meaning to throw in a forum for several weeks now. Unfortunately, come DXM preparation time I'm either out of room, out of time or out of town. (Excuses, excuses, hi-RtH). Because I'm scheduled to be in New Mexico when this issue hits print, I've decided to fo what normal people do (and what some abnormal people do, too) - report via RtH. (I'm not touching that one, hi-RtH). This past DX season has been unusual. Latin American, Asian, Down Under and domestic DX has been a bit below normal, while European DX has been the best I've ever experienced! I was on a two-week trip to Ogden, Utah in April and managed a weekend visit with Bill Harms. We successfully erected three "portable" Beverage antennas by finding a straight stretch of road, suspending 2000 feet of wire from tree branches, fence posts, etc. along the road, and DX'ing on the FRG-7 in the car. The results were quite good - on the NNW-SSE antenna 1610 sounded like a GY frequency with the 10 watters at Bryce Canyon, Zion and Grand Canyon National Parks fighting it out. And Ric, you were right about the Mexicans. Tijuana and Mexicali stations were all over the dial. (But not on the NNW-SSE antenna, right?-RtH). Mort Meehan made a comment a few issues back regarding an 882 Oriental station being Mongolia. To set the record straight, there are several possibilities on that frequency including China, Japan and S. Korea. To anyone who may have wondered, the delay in sending out the 17 May DXM was not due to recent geological events in this state. What actually happened was Rich Segalas mailed the labels to us (like usual) on the preceding Monday and they haven't been seen since! (Probably in a holding pattern in Puyallup-RtH). We had to make up a new set of labels, resulting in about a week's delay. Don't forget to contribute something to the IRCA Convention auction, even if you're not going to attend. It's a good way to get rid of old receivers, tape recorders, bulletins and other junk as well as to make money for the club. 73 de bp.

ART PETERSON, 851 31st ST., RICHMOND, CA 94804

\*\*\*\*\*  
To paraphrase a famous person, recent reports of my marriage are somewhat exaggerated. I thought it was going to happen too, but we changed our minds. However, even with all the resulting free time (don't I wish), I still haven't done much DX. Conditions are just plain lousy. . . except the exact time I'm out of town away from the receiver! I guess I'll just have to grit my teeth for another sunspot maximum. Last MM I couldn't even hear HLDA 1566. I am glad to hear that you other foreign DX'ers are hearing something. I wonder if anybody up in the NW part of the U.S. is investigating the effect of Mt. St. Helens' eruptions on radio propagation; could be interesting (hopefully at a safe distance!). The mass of volcanic dust in the air could produce some atypical wave reflections and net someone a new catch. Not much else for now, so 73 and good DX to all.

GENE MARTIN, 3303 E. EVANS AVE., DENVER, CO 80210

\*\*\*\*\*  
Between 15 and 28 August I will be in Frankfurt, West Germany equipped with the GE Super radio and the Sony AM/FM cassette receiver. Visiting my son David, who works there for Sperry-Univac, and lives in suburban Taurus. Am taking a nine year-old grand-daughter with me, and a wife, but I may be able to get in some DX anyway. If anyone has any questions about stations I may be able to hear from there, I'll do my best to get something on tape that might supply the answer. Will be much better equipped for checking out things from Frankfurt than I was on my visit to London in December 1976, when I only had the TRF and no method of taping what I heard on it. Close frequency reading on the GE isn't easy on the higher frequencies especially. My method of marking that dial was to put a narrow strip of white Avery labels underneath the pointer, then marking 600, 700 and so on through the hundreds with a thin red fine-tip ballpoint pen marker. I marked the 50s with a thin black line, and I read the right side of the pointer. I made no effort to mark frequencies between the hundreds and the fifties. Am flying via Braniff, will spend 12 and 13 August in Dallas, then to Frankfurt 14 August via Boston. Returning the

same route. The GE and Sony, in their own box, will be my "carry-on" luggage, as they were to Hawaii last December. Would rather not check them through as baggage. (Gene, as a former travel agent who has gone to Europe several time with radios, have your wife carry one, and you carry the other. . .I believe it's still true that only one radio is allowed per person. . .just trying to make customs easy - and have a great DX time-Rth).

GARY LARSON, 2806 LINCOLN, BURBANK, CA 91504

\*\*\*\*\*  
Went to the SCADS GTG in Huntington Beach recently and saw a few IRCA members. Was hoping to win a door prize but wasn't that lucky. Regarding my last forum. . .sorry if I meant XEGM and XETRA were Los Angeles stations. I see Bullhead City, AZ 1490 is applied for. Wonder what they will program. A comment on KABL (AM/FM). I like their format (via airchecks) but glad I don't have to put up with their spurs. (860 and 1060 at this QTH-Rth). The last four nights I've been working in Valencia where scenes for "All Night Long" will be filmed. Quiet and perfect for listening to cassettes. I've noticed a lot of stores/businesses in the area listen to clears like KFI and KNX and whatever else is receivable (KIQQ-FM, hi). Hope the two applications in Willits, CA for 1250 kHz are rejected. I'd rather see KTMS be a dominant (or are they?) (Huh? KTMS has been dormant for years - is that what you meant?-Rth). Rth, how did you like the bluegrass brochure I sent? (Never got it. It too must be in Puyallup-Rth) If 1020 here were to be C&W instead of SS, think it would be a good station to listen to on freeways? (I didn't realize L.A. freeways evoke a need for special music, hi-Rth). There was a story on Boyd R. Britton (KHTZ) in the 25 May Valley News. Am going to xerox it and if it comes out OK, I'll be happy to send it to HQ or anyone interested. (Remember Gary, we are a BCB only club-Rth). Once again, I'm listed in the book as G. Larson. Also, I sometimes pull the modular plug on the phone when asleep, so it may ring a lot. (One ringy-dingy-Rth). 73 and good DX.

RIC HEALD, 1058 SANCHEZ ST., SAN FRANCISCO, CA 94114 Tele-Forum: (415) 821-0447 to 2200 PLT and prepaid - 05 June 1980

\*\*\*\*\*  
Thanks gang for a great contribution. This is the largest WDXF since the Anniversary issue - but, Midwest, where are you? Memorial Day weekend, a jaunt with five others to the north country. Camped 5km south of Dunsmuir (Castle Crags), traveled east and southwest to Mt. Lassen (in view of St. Helens and that Lassen is still active we were all a little nervous, hi), and so forth. One other DX'er in the group, Dave Tonelli, a non-member, but many BARFers know him. As luck had it, was able to put up 115 feet of wire across a meadow and set about with the TRF to DX. Surprise! Not only did the antenna connection not work, neither did placing the TRF close to the antenna. But, Tonelli's Sony did work well with the longwire. So what I gave up for selectivity, I gained in sensitivity. My "local" was 15km away, K-Weed, Shasta, Dunsmuir 620, which actually slopped over 10 kHz. The advantage of low frequency operation was very evident. KAFY 550 and KOAC 550 fought it out during the day! Yet, neither KIQS 1560 or KPFC 1560 were heard daytime. Noted that KRDG 1230 Redding is attempting to go 125% modulation but with problems. Either equipment is too old or inferior. . .heard them arcing over on several occasions and rest of the time modulation was so bad it was impossible to listen to them. Made K-PEST sound clean, hi. For an NRC Log update, under programming: KQMS 1400 POP/ROK; KXSX 600 POP/ROK; KWSD 620 add MRK; KSYC 1490 add MRK; KCNO 570 add C&W; and KBLF 1490 add MRK. Nighttime - well it was so cold that my fingers became numb and did just a little bit of dial twisting. Not any different than I expected, no surprises. I did figure out part of KVRE 1460 Santa Rosa's pattern, however. Northeast. They were quite good at LSS and LSR, like dominant, and quite good during the day in the upper Sacramento Valley. Never did hear KSUE 1240, not even from Lassen. FM was quite surprising, however, like all the Sacramento stations from the 6,000 foot level of Lassen. Adding to the St. Helens comments; my folks live in Lacey, near Olympia (in fact in spitting distance of KITN's XR), but dad's hometown is Woodland, just a few miles south of Kelso. They were caught in the ashfall Memorial Day weekend driving from Portland home. They commented it was like driving in a desert dust storm. I don't know what results in BCB DX would be from the ash traveling around the world, but I do know that little things like a temperature inversion, fog, clouds, etc all affect FM and TV, so there might be some surprises there. That's it this month. Hope to see many of you at BARF IX 12 July. See you in 30. 73 de Rth..

THE INTERNATIONAL RADIO CLUB OF AMERICA

A non-profit organization devoted to the hobby of listening to distant radio stations on the AM broadcast band (510 to 1630 kHz). IRCA is a member of ANARC, the Association of North American Radio Clubs.

OFFICERS: President: Father Jack Pejza, 212 South Carpenter Road, Modesto, CA 95351, (209)524-6674. Secretary-Treasurer: Rich Segalas. Board of Directors: Phil Bytheway, Nick Hall-Fatch, Don Kaskey, Paul Mount, Bruce Portzer, Susan Strulnick, Gerry Thomas.

MEMBERSHIP DUES: \$16.50 First Class to the U.S.A., Canada, and Mexico. \$20.00 Air Mail to the rest of the world via Canada. Air mail direct from the U.S.: \$25.00 to Central America, Caribbean, Colombia, and Venezuela; \$30.00 to the rest of the world. Sample copies cost 50¢ each or three International Reply Coupons. Make checks and money orders payable to I.R.C.A. Persons living outside the U.S. should send checks or money orders payable in U.S. funds.  
DUES AND ADDRESS CHANGES should be sent to Rich Segalas, P.O. Box 26234, San Francisco, CA 94126.

DX MONITOR, the official bulletin of the IRCA, is published 34 times a year; weekly from October to March, twice in September and April, and monthly from May to August.  
PUBLISHING STAFF: Bruce Portzer (editor-in-chief), Phil Bytheway (Publisher), Evelyn Portzer, Nick Hall-Fatch, Jeff Jaisun, and Dave Koriner. Phone: 206-522-2521 (Portzer)

THE IRCA GOODIE FACTORY, The IRCA Almanac, Foreign Logs, reprints, and other materials are available for nominal charges. For a complete list, write to P.O. Box 17089, Seattle, WA 98107.

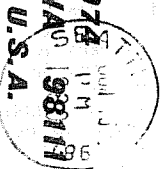
Unless otherwise noted, permission is granted to publish, broadcast, or otherwise reproduce non-copyrighted material appearing in DX Monitor, provided credit is given to IRCA and the original contributor.

Opinions expressed in DX Monitor are those of the contributors and do not necessarily reflect those of the IRCA, its publishing staff, editors, or officers.

DX Monitor is printed by Save-on Printing, Seattle, WA.

**IRCA**

**P.O. BOX 21074  
SEATTLE, WA 98117**



**First Class**

D.A. Nyholm  
2071 Cedar Street  
San Carlos, CA 94070

19

