



# DX Monitor

Devoted Exclusively to  
Broadcast Band DXing

July 11, 1981

Volume 18, Number 33

Issue Number 586

## In This Issue

Broadcasting Information .....	2	NRC Publications Ad .....	18
FCC Compiles list of AM Sites ....	3	DX Worldwide - West .....	??
The IRCA Technical Column .....	4	Eastern DX Forum .....	19
The Sony ICF-S5W - Another Look ..	7	Western DX Forum .....	21
Eastern DX Roundup .....	10	Verification Signers .....	26
Radio War May Erupt .....	11	FCC May Kill AM Plan .....	28
Central DX Roundup .....	12	Sports Networks .....	29
New Members .....	13	Catholic Views Broadcasts List ..	31
Western DX Roundup .....	14	R-390A Alignment and Optimization	32
DX Worldwide - East .....	17	IRCA Reprint List .....	36

## What's Happening?

We'll start with a few flash tips: CKAG-1350 in Nanaimo, BC, is now on RS, was noted as such 7/4. KGAR-1550 in Vancouver, WA is now KVAN. And local KZAM-1540 will switch to jazz (now AoR) around 7/15. Rob Gerardi reports that his employer, KSCB-1270, conducts a regular ET on the fourth day of every month at 0106-0115 ELT w/OC.

Bill Hardy is preparing a huge updater for the Almanac, which will appear in the August DXM. Any member with additions, deletions, corrections, etc to material in the second edition of the Almanac, send them to Bill at 2301 Pacific Avenue, Aberdeen, WA 98520 by Tuesday, July 21.

The Golden West DXers Association has a new address: P.O. Box 2675, Boise, ID 83701.

Those of you who have been wondering how to file your DX Monitors are now in luck. The IRCA Goodie Factory now has little boxes for filing DXMs and similar sized publications. They are made of sturdy cardboard and measure 10"x7 $\frac{1}{2}$ "x4". They're open at the top, like the pamphlet/magazine files you find in libraries. Each one is large enough for over one year's worth of DXMs. They cost \$2.00 each, postpaid, from the Goodie Factory, P.O. Box 17088, Seattle, WA 98107.

In case you haven't heard, the Canadian Post Office is on strike and in the words of the Wall Street Journal "it looks like it will be a long one". If you were planning to send auction items to Calgary, you obviously can't use the postal system at the moment, hi. The best alternative would probably be to give them to someone who will be there. The more obvious P.O. alternatives, such as Greyhound, UPS, etc, don't ship to Calgary, and companies that do charge a bundle (like over \$20 for 5 lbs from Seattle!). If you mailed in your convention registration during the last few days of June or the first part of July, it's probably sitting in a mailbag at the moment. You'd be wise to follow up by phone. Our convention chairman, George Kesteven, has conveniently moved to Regina, but his brother Leonard is taking care of things in his absence at (403)282-8859.

Phil Bytheway will be out of town for a week or two beginning July 13, so there may be a longer than usual turnaround on reprint and publication orders. Especially since the reprint list in this issue will probably bring about a few more orders than usual.....

The next issue of DX Monitor will come out August 8. We'll then begin our next volume, with DXMs coming out September 5, September 19, October 3, and weekly thereafter.

That about does it for now. See y'all next month. 73.

# BROADCASTING INFORMATION

Greg Monti  
1110 Fidler Lane, #1424  
Silver Spring MD 20910

call	kHz	day/night	
appl	660	2500/2500	Phoenix AZ application returned
K EVT	690	250/	Tucson AZ wants KVOI
WVIC	730	500/	East Lansing MI wants WVG0
WBO0	740	250/	Baraboo WI wants WRPQ
appl	880	5000/1000	Madisonville TX
appl	890	2500/2500	San Jose CA
WFNC	940	50000/1000	Fayetteville NC appl for 640 kHz & 10000/1000 rtnd
WAGM	950	5000/5000	Presque Isle ME granted WKZX
WTCB	990	500/	Flomaton AL granted WPKK
WVOV	1000	10000/	Huntsville AL granted WTAK
appl	1020	10000/500	Selah WA
KKKQ	1060	5000/500	Tempe AZ granted KUKQ
new	1070	10000/2500	Monticello MN wants KMOM
new	1110	5000/	Kellogg ID granted construction permit
KSKS	1140	250/	Conroe TX granted 1000/
KJBC	1150	1000/	Midland TX appl for 1180 kHz & 1000/1000 returned
WABH	1150	1000/	Churchville VA granted WNLR
appl	1200	5000/1000	Frankfort IL
appl	1200	500/500	Radcliffe KY
appl	1200	1000/250	Seattle WA
WMPC	1230	1000/250	Lapeer MI currently specified hours, wants unlimited
KGAM	1230	1000/250	Bakersfield CA granted KGE0
KYAC	1250	5000/5000	Seattle WA granted KKFx
KTMS	1250	1000/	Santa Barbara CA wants 2500/
KUSN	1270	1000/	Saint Joseph MO wants KGNM
KTLK	1280	5000/5000	Denver CO granted KBRQ
new	1290	5000/5000	Omaha NE granted construction permit (will become permanent replacement for KOIL, which lost license current operation is interim)
WBLE	1290	1000/	Batesville MS wants WWUN
WOLD	1330	1000/	Marion VA granted 5000/
KABQ	1350	5000/500	Albuquerque NM appl for 660 kHz & 50000/50000 rtnd
new	1370	500/	Deer Trail CO granted construction permit
KAKD	1380	500/	Redfield SD appl for 870 kHz & 50000/2500 returned
WLCB	1430	500/	Buffalo KY wants Hodgenville KY & 1200 kHz & 1000/250
Wohn	1440	1000/	Herndon VA wants WVBK
WKSD	1470	5000/	Huntington WV wants WWHY
WGNE	1480	500/	Panama City Beach FL granted WKGC
WSIB	1490	500/250	Beaufort SC granted WVBG
new	1520	500/	Lawrenceburg TN granted construction permit
KUUY	1530	10000/1000	Cheyenne WY granted 660 kHz & power not given
new	1560	2500/	West Lake Hills TX wants KTXZ
WJVA	1580	1000/	South Bend IN wants WAMJ
WGTW	1580	5000/	Mount Dora FL wants WHTZ
KDOM	1580	250/	Windom MN granted 100G/
new	1590	500/	Algood TN wants WRZK
KLIV	1590	5000/5000	San Jose CA wants KSAX

- - from the June 1, 8, 15 issues of Broadcasting - - - - -

RADIO Format & station news: WRBN-1600 Warner Robins GA is now PROGRAMMING running a "Music of Your Life" Format...WRGG-1420 Columbus GA has switched from country to pop...WNEX-1400 Macon GA from top 40 to pop...WDAT-1380 Ormond Beach FL from top 40 to big band/MOR...WPXN-1280 Rochester NY from news-talk to MOYL...WKTIQ-1320 Pittsburgh PA from pop to MOYL with "13-20-AM" ID's...CJCL-1430 Toronto ON is now rock with "Metro 14-30" ID's (ex-CKFH)...WZUU-1290 Milwaukee WI from top 40 to oldies with "Z-channel" and "13-Z" ID's...WGLB-1560 Port Washington WI is big band 1500-1800 CT, country FM simulcast other times...KARN-920 Little Rock AR from beautiful music to news-talk...WJFL-1490 Vicksburg MS from top 40 to country...WQBC-1420 (same city) from country to soul...KEWI-1550 Cape Girardeau MO from top 40 to country...KILT-610 Houston TX from top 40 to country...KGMR-1500 Jacksonville AR from country & gospel to easy listening...KLPL-1050 Lake Providence LA from top 40 to country & gospel...KYST-920 Texas City TX from country to big band (ex-KTLW)...KALO-990 Beaumont TX from country to soul (ex-KTRM)...KODA-1010 Houston TX from beautiful music to Spanish...KACO-1090 Bellville TX from variety to country...

KPAC-1250 Port Arthur TX from MOR to country... WJTO-730 Bath ME from top 40 to country... WWER-1440 Westbrook ME (ex-WJBQ) is now all news-and-talk with plenty of networks including UPI, AP, and Enterprise... WKBZ-850 Muskegon MI from pop to big band... WSE-750 Atlanta is now airing an overnight country program called "Interstate 75" in place of LARRY KING... WDGS-1290 New Albany IN should be returning to the air soon with a black-gospel format... The new schedule at WCAU-1210 Philly is 0530 Gene Burns, 0900 Susan Bray, 1200 Wally Kennedy, 1500 Jim Rogers 1800 John Stupak, 2100 Harry Cup, 0000 Larry King. Times ELT, all shows are talk, some with more news emphasis than others.

Ratings: Statistical Research, Inc.'s RADAR 1981 report shows that the share of FM listening in the USA is now 58%. It was 25% in 1972, 42% in 1976 and 57% in 1980. Employed women account for 55% of all radio listening... The May Mediatrend for Washington shows that commercial college station WHUR-96.3 is #1 with an 8.4 overall listener share. The rest of the top ten: WQAY-1050+99.5 8, WKYS-93.9 7.7, WMAL-630 7.4, WRQX-107.3 7.3, WPGC-1580+95.5 6.4, WASH-97.1 5.3, WOOK-100.3 5.2, WRC-980 4.9, WWDC-1260+101.1 4.8.

Off-the-air department: WPOK-1080 Pontiac IL has been silent since 3/1. The applied-for calls WDAI were never used.

Networks: New CBS affiliates: WNDE-1260 IN, WYNZ-970 ME, WNDR-1260 NY, WLCY-1380 FL, KFWO-1030 WY, WGHM-1370 MI, WASA-1330 MD, KOAK-1080 IA, WDRV-550 SC. Paul Anka, Hall & Oates and Barry Manilow will be featured on three, separate, 20-part weekend specials in July and August on CBS. Peter Bekker, music critic on CBS' GN RECORD series, will host the specials, called BETWEEN THE LINES. CBS, and presumably everybody else, will provide live coverage of the royal wedding on 7/29 beginning at 0545 EDT. CBS has inaugurated another daily series, JAMES BEARD'S KITCHEN... New Mutual affiliates: KSFO-560 CA, WRCP-1540 PA, KHVH-990 HI, WGST-920 GA, KAIN-1340 ID, WCII-1080 KY, KBHM-1220 MO. Dick Clark's been signed on by Mutual to do both specials (on holiday weekends) and a weekly NATIONAL MUSIC SURVEY, the third pop countdown show of its kind and the only one produced and fed by a network... New to NBC: WYPR-970 VA, KXL-750 OR, WQAM-560 FL, WDEH-800 TN, WMPS-680 TN, and KXRB-1000 SD. NBC's COUNTRY SESSIONS weekly recorded-in-concert series continues through the summer with big-name country stars... The NIGHTCALL network which replaced the old NIGHTCAP SHOW for a while has gone bankrupt and been disbanded... Kansas City Kings basketball will no longer be flagged by KCKN-1340 KS. A new flagship has not been announced.

E.D. Rivers, a group radio station owner, has demanded that Broadcast Music Incorporated (BMI), one of the three national music-licensing organizations, supply him with 12 copies (one for each station) of BMI's entire repertoire of song titles. BMI has refused, saying that there is only one copy in existence, in BMI's New York computer and that Rivers can come and see it if he wants. BMI says that the catalog contains over 1,000,000 song titles and changes too often to be printed or mailed since it would be inaccurate immediately. Rivers says he won't pay his annual blanket music-license fee to BMI (every station pays several thousand dollars a year) for a license that is "worthless" unless he gets the copies of the catalog that he wants.

Sources: George Greene, Akron OH; Mark Strickert, Chicago IL; John Clemmer, East Moline, IL; Robert Kramer, Chicago IL; Jerry Bond, Rochester NY; Dave Schmidt, New Castle DE; Kevin Brady, Sioux Falls SD; Rod O'Connor, South Portland ME; Raymond J. Neme, Naperville IL; Conrad Durocher, Pasadena TX; Ken MacHarg, Jeffersonville IN; Mike Cooper, Atlanta GA; Phil Boersma, Spring Lake MI. Thanks!

## Compile List of Possible Sites For AM Radio

The FCC has established a preliminary list of 3,900 possible locations of new full time AM radio stations in 2,900 US communities for consideration in international planning of AM radio station assignments in the Western Hemisphere. The list, designed to cover foreseeable needs for the five year period of 1983 to 1987 is the broadest compilation of US full time AM radio service proposals ever prepared. It was compiled by the FCC staff as part of the US submission for a plan for hemisphere-wide AM station assignments.

The plan being developed is to be put into effect by the Western Hemisphere (Region 2) Administrative Radio Conference, under the auspices of the International Telecommunications Union, of which the United States is a member.

The list will be a supplement to a previously submitted inventory of stations existing or expected to be authorized by December 31, 1982, on which the US part of the plan will largely be based.

Details of the plan will be negotiated at the second and final session of the Region 2 conference on medium frequencies in Rio de Janeiro in November and December. The plan will provide the basis for mutual interference protection in the hemisphere.

The US list embraces needs put forward by the Daytime Broadcasters Association, National Public Radio, the National Black Media Coalition, and representatives of Hispanic Americans. It also includes communities identified by the FCC staff as lacking and needing a locally assigned station.

The list contains many more station locations than the present or potential radio spectrum resources could accommodate. The Commission is conducting a computer search to identify frequencies on which additional full time radio stations could be accommodated. The search is expected to reduce the list substantially, since frequencies will not be available for many of the needs identified.

Communications News, July 1980



## the irca technical column

Editor: Nick Hall-Patch  
1538 Amphion St.  
Victoria, B.C. V8R 4Z6  
Canada

### The MFJ-1020 Indoor Active Antenna

by Randy Tomer

Several months back, local IRCAn Edmund O'Leary gave me his MFJ-1020 "Indoor" Active Antenna to try out. I immediately liked the device, and used it quite a bit for awhile. This has its shortcomings (as does any active antenna or preselector used at medium-wave frequencies) but in certain applications it could be an extremely useful piece of equipment for a MW DXer.

The MFJ-1020 is housed in an attractive and compact cabinet. Front panel controls are included for RF gain, RF tune, bandswitching, and on/off. On the rear are RCA sockets for input and output, and a binding post for a ground wire. As Larry Magne stated in the 1981 WRTH, the MFJ's control knobs are too small, and also are stiff in operation, but this didn't bother me much. It is powered by either an internally contained 9 volt transistor battery or by an optional 9 volt power supply, an AC adapter which provides power to the MFJ through a sub-mini jack on the rear panel. I prefer using the battery just to have on less power cord cluttering up the DX shack.

The MFJ-1020 as an active antenna---a short telescoping whip antenna is flimsily mounted on top of the MFJ's cabinet, but it should hold up with reasonable care, or could be improved by the owner. The main difference between the MFJ and other active antennas is that the MFJ is tuneable, instead of being broadbanded as other active antennas are. This is a big plus for MW use, where overloading from strong signals is a constant problem. I was very pleasantly surprised with the MFJ's fine performance on medium wave--with just its two-foot high whip it gives signal strengths approximately equal to my Radio West loop, and practically every night I can use it to listen to 1YC-882, even when conditions aren't very good. Its main disadvantage is that unlike a loop, it cannot be used to null out interference, due to its omnidirectional pickup. Also, the MFJ's noise pickup is quite a bit worse than a loop's. At my location, power line hash is at a fairly high level, and the MFJ was useless unless hooked up to a ground wire. Grounded, it worked well. In a fairly quiet location, it works fine ungrounded. At this location, the MFJ-1020 gave me no overload problems when used as an active antenna, and I ran it at full gain. (Ed. note: Randy has no 50 kw locals; has anybody tried it in a high signal area?)

The MFJ-1020 as a longwire preselector---By retracting the MFJ's whip and attaching an outdoor antenna, this unit can be used as a preselector. However, in the presence of strong local signals, the MFJ is completely useless as a preselector, even when used with only a 30-foot outdoor wire. Even with the gain control set at minimum, my locals caused sideband splatter sounds to be heard all over the dial, as well as cross modulation and other spurious responses. Since my locals run only 5 kw max, you can imagine how bad its performance would be in a metropolitan area. At night, when my locals reduce power or sign off, the MFJ was useable as a preselector. It produced a useable boost with all my receivers, but was most useful when used with my FRG-7, which doesn't like a short random wire on MW. Adjacent channel splatter and atmospheric noise are also boosted, so the gain provided isn't 100% useful, but under very quiet conditions and without strong adjacent QRM, the MFJ-1020 might conceivably pull an ID out of the mud for you.

Portable and mobile use---I feel that this is where the MFJ-1020 really shines. I've tried several ways of matching an automobile's whip antenna to my FRG-7 and SPR-4 and always got very poor results. However, when using the MFJ between the whip and receiver, amazingly good results were had. The MFJ is also handy on camping trips, either used with a car whip or just attached to a short length of wire tied to a nearby bush or tree. For the travelling all-band DXer, the MFJ could also be very useful. Its MW pickup equals a loop, yet it's much more portable and less fragile. It does well on longwave down to 250 kHz and works well enough on shortwave. It would probably do extremely well if hooked up to a 9-foot whip in a car.

Additional comments---The tuning dial is inaccurately marked. Improved sensitivity can sometimes be obtained by trying different combinations of tuning and bandswitch positions. When the power is shut off, any external antenna connected to the MFJ will feed the receiver directly, handy for making quick comparisons and checking for possible overload. Its LED power indicator didn't seem to drain the 9 volt battery excessively. Price is \$80, far lower than some of its competition.

\* \* \* \* \*

### Radio West Ferrite Loop Antenna

by Don Moman

This loop uses a 22½ inch collection of ferrite rods for its core, and uses a 2 FET preamp. The stand is 12" high and the base is 8" square. The base rotates smoothly and the core tilts to further null out signals. The arrangement is simple and sturdy. No "top heavy" tendency is noted. (The SM-2 would fall over easily in certain positions when on a wooden desk; it has a magnetic base to clamp on top of a receiver to make it stable---my Drakes have aluminum cabinets however...)

Controls include the usual on/off, tuning and a lo/hi switch to expand the tuning range to cover a wider frequency range before you have to change coils. It uses 3 coils to cover LW, MW and SW. There is considerable overlap on the coils; the SW coil will tune from 6.2 MHz down to 1020 kHz for example. To change coils you loosen 3 screws holding the spade terminals from the coil, unsnap the ferrite core, slide one coil off and another on, put the core back in place, reconnect the terminals and you are now ready to DX. This is inconvenient but is the only economical way to do it. A little practise should get you into the under 30 second category!

Performance---My main antenna here is an 85' random wire about 45' high. We live in a high density RF environment; several 50 kw'ers nearby, so overload is a problem. My oscilloscope shows over 2 volts of RF being gathered by the random wire. The loop's ability to reduce the locals is very helpful. The depth of the null changes with different stations due to reflections, and distortion caused by the fact that my shack is in the basement. Average null depths are from 30 to 50 dB. The best I have gotten is 70 dB.

On longwave, the loop delivers about 20 dB more signal than the random wire, and is also quieter. Good nulls are obtained, usually down to just above the noise level.

On MW the loop still outdoes the random wire, by about 5 to 15 dB depending on the frequency. I recently had the chance to take it out of the city and do some listening in a quieter location. Results were very good; for example I was able to null out the 35 dB over S9 signal from WSM Nashville on 650 to the point where KORL Honolulu was quite readable!

The results on shortwave really impressed me. I had expected it to be marginal, but was pleased to hear almost equal signals on both antennas. Several stations which are just above the noise level were compared and found to be of equal quality on the loop and random wire. Nulls, of course, are nearly non-existent at these frequencies.

Complaints---The tuning dial is quite small, only roughly calibrated and is directly connected to the tuning capacitor. I would have preferred the method used in the Space Magnet: A small vernier dial which likely has about a 6:1 turns ratio would make peaking a station much easier. Also, the well marked 0-100 scale found on these verniers makes for a log scale that could be plotted vs. frequency. I find it very easy to peak the preamp on noise or images when, in fact, you are not peaked on the frequency that your receiver is tuned to.

A slightly more secure hold-down for the ferrite core could be used. The present system is like a large chassis mounted fuse holder. No handle is provided for tilting the loop so one grasps the end of the core to tilt it. At times the bar will work loose making it hard to get the best null. At times, ¼" can make a large difference in the null depth.

Performance vs. SM-2---CIDXer Brian Pimblett has a SM-2, so a comparison test was arranged. Tests were performed in the middle of a field, well away from buildings and wires that might cause noise and/or poor null characteristics. Results were very consistent so I will leave out the raw data and just give the results. On peaks, the Radio West loop was about 5 dB stronger. Nulls were also somewhat sharper and deeper, from 0 to 10 dB deeper than the SM-2. Most locals showed about 50 to 60 dB nulls. Tests were done on the Drake R-7, so all dB reading are from its S-meter; I feel that it is quite an "honest" meter.

Conclusion---The Radio West loop was priced at \$145 when I got it, and at that time, was the cheapest multi-band loop when comparably equipped. The Palomar Engineers loop is cheaper if you get just the MW version, but when you add SW and LW the price rises quickly. (ed. note--When considering MW only the SM-2 is still the least expensive). You might build a better loop from plans given by MW clubs. However it would likely be a 4 foot job, and not everyone has room for one of those monsters! A decent preamp for the loop might also prove difficult to build unless you had some electronics background. Therefore, the Radio West loop is an answer for those who would rather buy than build a MW loop. I am pleased with its overall performance.

If you have questions or comments, they are welcome. My address is 6815-12 Ave., Edmonton, Alberta T6K 3J6, Canada.

(Yet another ed. note: Don also mentions that he has a Heath SB-620 panoramic display with all coils for sale at \$225 Canadian, shipping extra. As I write this, the Canadian P.O. is once again on strike, so you might have to get in touch with Don at the Calgary convention. If and when the strike is settled, Don's address is above)

\* \* \* \* \*

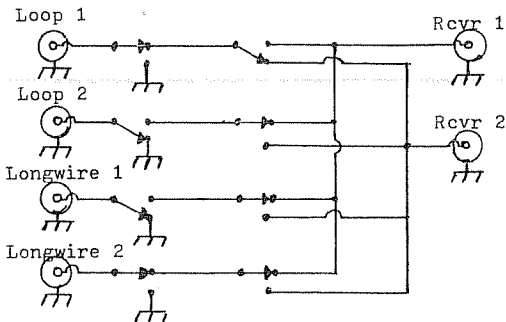
Louis Goldstein sends word of a timer which will set your receiver and tape recorder to go on and off right to the minute--The Copal on/off timer M6-730, a fluorescent display 12 hour AM/PM digital job, which has an alarm as well as timer and other features. Spec sheet from Copal Corporation of America, 58-52 Queens Blvd., Woodside, NY 11377. He says that Gilfer Associates sells it for \$65 plus shipping of \$2.50. He feels that this timer is "a real gem".

\* \* \* \* \*

An antenna switching unit

After building a second loop antenna and another receiver, I began to find it very tedious comparing loops and receivers by reaching behind the radios to change the antenna lead-ins. Constructing this switching unit and placing it off to one side from my receivers has lowered my blood pressure considerably. I can now choose which of two loops and two random wires to feed to either of two radios.

The circuit is enclosed in an aluminum mini-box. When an antenna is not being used, it is switched to the ground position on the SPDT switch. (Note that this ground isn't intended to be protection from lightning discharges through your random wire antenna. A grounding switch for this purpose should be outside a building.) An SP3T switch (with the third position grounded) could be used instead of the two SPDT ones connected to each antenna input, if such a switch is available. If you are using a loop in which the circuitry has been painstakingly balanced to allow for accurate direction finding, you may have to run that loop directly to a receiver when direction finding; the mess of wires in the switching box may have an effect on the loop's balance even if all other antenna inputs are grounded. Not having a well balanced loop at present, I haven't been able to find out if this is the case. Oh yes, the wires connecting the loops and receivers to the unit are shielded.



Since building this, I've added switching positions for another receiver or two, as well as for connecting phasing units between antennas and receivers, but the additional circuitry is simply more of the same.

# THE SONY ICF-S5W----ANOTHER LOOK

Gerry Thomas

(with help from Charlie Barfield)

As many of you know, Sony recently released a new AM/FM portable and, in an unprecedented move among manufacturers, has sought the help of DX'ers in the evaluation of the radio. Having been selected as one of the ten "monitors," I've had the opportunity to test the ICF-S5W for the past few weeks and offer the following results and impressions.

First of all, according to the letter accompanying the "loaner" ICF-S5W, the availability of the Sony is not limited to the New York City area; in fact, it was released nationwide last fall and should be obtainable through any Sony dealer. As an interesting aside, the ICF-S5W is, at the present time, the most popular Sony portable in Japan, according to the letter.

Because Mark Connelly's superb review of the ICF-S5W covered the radio in significant detail, I submit this article as a supplement to Mark's and will limit my discussion to points of difference between our impressions and to observations not made by Mark.

I would also like to remind the reader that the conditions under which Mark's and my comparison tests were conducted differed in several important ways, not the least of which was the fact that two different samples of the ICF-S5W provided the results. Equally important is the realization that the radios with which I compared the Sony were all optimally aligned for MW DX'ing, whereas the ICF-S5W was untouched, straight out of the box.

The radios with which the Sony was compared were a modified (3 kHz muRata IF filter) FRG-7 with a four-foot passive box loop; an SPR-4 (stock selectivity) with a 30-foot longwire; a General Electric Superadio; an unmodified Realistic TRF 12-655; and an unmodified Realistic TRF 12-656.

## PERFORMANCE

For the sensitivity and selectivity tests I used a modified "SIO" grading system of the following description:

S (signal strength)	I (adjacent channel interference)	O (overall reception quality)
5 = excellent (local-like)	5 = totally free of splash	5 = entertainment grade
4 = good	4 = weak, minor splash audible well under signal	4 = good, armchair listening quality
3 = fair	3 = moderate splash but not interfering with intelligibility	3 = easily readable but not of a "5" or "4" quality
2 = poor	2 = heavy interference (up to 50% masking of signal)	2 = readable with effort
1 = very weak/barely detectable	1 = splash is intelligible or signal is masked over 50% of the time	1 = marginally readable
0 = not detectable	0 = 100% masking of signal	0 = unreadable

Two types of reception tests were conducted over several sessions---a daytime domestic DX test and a night test of foreign split-frequency reception.

### Daytime reception---

	<u>FRG-7</u>	<u>SPR-4</u>	<u>ICF-S5W</u>	<u>Superadio</u>	<u>TRF 12-655</u>	<u>TRF 12-656</u>
WSUN-620 (messy local WHYM on 610)	444	433	444	444	433	412
WSB-750	242	343	343	343	232	121
WFLA-970 (local WBOP-980)	444	433	444	434	434	333
WABF-1220 (local WNVY-1230)	101	101	322	000	000	000
WLCY-1380 (WCOA-1370)	455	444	455	333	312	000
WZEP-1460 (WBSR-1450)	322	100	222	100	000	000

As can be seen, the Sony provided reception that was largely equal to or better than any other receiver/antenna combination. Reception on 1220 kHz is usually possible on both the Superadio and TRF 12-655 but for several days running the reported ratings were the norm. An especially impressive sensitivity showing by the Sony occurred at my place of employment. I work in an underground ferroconcrete laboratory where reception on the BCB is abysmal. In fact, the best showing of any portable I own has been the Superadio, which manages to pull in all of my local stations (and nothing more). I was more than a little astonished when I put the Sony to this acid test and it not only provided the best ever reception of my locals but also pulled in a number of stations over 200 miles distant---unheard of!

Of the portables then, the Sony I had was the best performer, with the Superadio second, the TRF 12-655 third, and the TRF 12-656 last.

#### Split-frequency reception---

	<u>FRG-7</u>	<u>SPR-4</u>	<u>ICF-S5W</u>	<u>Superadio</u>	<u>TRF 12-655</u>	<u>TRF 12-656</u>
TICAL-525 (Costa Rica)	353	353	353*	353	253	252
TIRN-575 (Costa Rica)	433	433	343	433	233	222
YSS-655 (El Salvador)	444	433	423	433	343	311
Radio Belize-834	454	454	444	433	354	323
HRIC-1255 (Honduras)	322	211	211	211	222	000
Cayman Islands-1555	354	333	322	322	232	211

\*"Birdie" interfering with reception

Overall, I'd have to rate the TRF 12-655 the best (by a hair) of the portables for foreign DX despite its generally lower signal levels. The ICF-S5W and Superadio were not far behind and, in my opinion, essentially equal. I hasten to remind, however, that my Superadio has been aligned for optimal foreign DX'ing; the Sony would have "beat the pants off" of a stock Superadio.

#### OTHER CHARACTERISTICS AND OBSERVATIONS

##### Spurious responses---

The area where the ICF-S5W really fell down was in its handling of spurious responses and this, in my mind, seriously reduces its desirability. Significant images were evident on 540, 570, 590, and 640 kHz in the RF "normal" attenuator position and the band really came alive with images, mixing spurs, and harmonics when the attenuator was placed in the circuit. In addition, CW and RTTY was audible at night at a few spots on the dial (even without an external antenna attached). Cross-modulation was noted in only one instance (WHYM-610) and only on occasion. Also, pegging the dial pointer at minimum frequency (about 520 kHz) provided WWVQ-1430 at a fair level. As Mark noted in his review, the Superadio and TRF 12-655 are essentially free of these problems (at least at our locations) although IF harmonics do show up on the TRF 12-655 (on the TRF 12-656 too).

Incidentally, my Sony ICF-5900W (which is now in its third year of 40+ hours/week duty at work---totally trouble-free) performs similarly to the ICF-S5W with respect to spurious responses so this is apparently a design problem. Additional front-end selectivity (neither Sony is a "TRF" (as we know it)) would go a long way toward correcting this shortcoming.

##### Attenuator---

This RF gain control feature is operative only on the AM section and can, I found, be useful in some situations. One of its peculiarities, however, is that, for some reason, inserting the attenuator into the circuit adds capacitance to the tuning section. That is, if you are tuned to a weak station adjacent to, and higher in frequency than, a strong local, switching in the attenuator can actually increase the presence of the local (if the tuning isn't re-adjusted). Optimal reception in this kind of situation, then, requires decreasing the capacitance by moving the dial pointer up about 2-3 kHz. As Mark noted, a schematic would have helped explain this problem and shed some light on the increase in spurs that occurs with the attenuator in-line.

##### Zone Dial---

I really like the Zone Dial idea, primarily because it is an excellent vehicle for exposing casual listeners to BCB DX. Stations from all ten zones were audible here in Pensacola but one of the stations listed for my zone is audible at night only on rare occasions. This is WAPE-690 whose night antenna pattern directs most of its power into the Atlantic---NRC's night pattern book would have been of use to Sony in creating the zone lists. Another station listed for my zone is WKVM-810 which has never been logged here (in western Zone IV) with any receiver. Also, WBT-1110 was positioned at about 1170 kHz on the zone dial. Finally, Sony might consider mentioning in their



owner's manual that it is possible to hear stations outside of a listener's designated zone (there's no station overlap between zone listings so the 50 kW clear channel stations appear only in their "home" zone).

Although the monitors were not to remove the back of the ICF-S5W, I obtained permission from Mr. Jon Strom of Sony to examine the inside of the cabinet and noted the following.

#### Ferrite rod antenna---

The Sony's ferrite rod antenna is 6½" x 3/8" in size (slightly longer than the TRF 12-655's, but smaller than the Superadio's) and is not mounted horizontally but rather at a slight (est. 20 degrees) angle. Conceivably, this could result in improved sky-wave nulling though I did not carefully investigate this possibility. Also, instead of using a few turns of wire around the ferrite rod with which to couple an external antenna (as in the TRF's and Superadio), the Sony uses about 70 turns of litz. This tighter coupling provided, in my opinion, the largest external antenna signal "kick" of any of the portables but, unfortunately, also exacerbated the spur and feedthrough problems.

#### Circuitry---

Despite the lack of mention of an integrated circuit in the ICF-S5W's brochure, IF amplification is handled by an IC (there goes the emitter by-pass transfilter modification). Somewhat surprisingly, audio section amplification is provided by discrete components. It would seem that since most of the current draw in a radio circuit is by the audio section, Sony would have used an IC for this function (and kept the discrete components in the IF section, for our benefit), especially since the ICF-S5W draws about twice as much current (40 mA) as, for example, the Superadio. With this current consumption and its three C-cells, the ICF-S5W is not much of a match in the battery life area for the Superadio (and its six D-cells). Speaking of battery life, the ICF-S5W's manual reports an expected life of 50 hours (mine dropped to under 1.4 VDC per cell after about 25 hours).

One thing about the circuitry that really disturbs me is the mounting of the printed circuit boards. They are mounted etching side out with no access to the transformers. So, unless you can find a right-angle alignment tool, removal of one of the circuit boards is necessary if you intend to align the Sony.

#### FM PERFORMANCE

And finally, a few words about the FM section. Whereas Mark reported FM performance largely on par with the Superadio, my Sony performed very poorly in this mode. Sensitivity was well below that of the Superadio but more significant was the presence of my locals all over the dial. Local WOWW-107.3 MHz appeared on no less than 13 spots on the dial and WMEZ-94.1 MHz showed up on seven. Apparently my Sony's FM section needed some work, so I'm reserving judgment pending additional reviews.

#### CONCLUSIONS

Excellent sensitivity and selectivity in a classy, compact package make the ICF-S5W an attractive choice in the DX portable field. It consistently gave the best reception of distant domestic stations of any of the portables tested and provided creditable signals on the foreign splits. Its principal drawbacks included susceptibility to spurious responses, relatively short battery life, and inconvenient circuit board placement. The performance of the Sony ICF-S5W should appeal to a large number of DX'ers and the unique Zone Dial will make it a collector's item in the future.

73's---GT

## The Radio Dial

AM	
*WABS 780	Religious
*WCTH 950	Sacred/Contemporary
*WDOM 1540	Contemporary/Religious
WEAM 1390	Big Band
WEEL 1310	Adult/Contemporary
*WFAX 1220	Religious
*WGAY 1050	Beautiful Music
WGMS 970	Classical
*WGHM 1440	Contemporary
*WINX 1600	Solid Gold
WNAV 1430	Contemporary
*WLMJ 900	Adult Album
WMAL 630	Music/Info/News
*WOL 1450	Talk/Contemporary
*WPGC 1580	Top 40/Rock

*WPXK 730	Country
WPRW 1480	Contemporary
WRC 980	News/Talk
*WSMD 1550	Music/Info/News
WTOP 1500	All-News
*WUST 1120	Gospel
WWDC 1260	Contemporary
WYCB 1340	Inspirational
* denotes daytime broadcasts only	

FM	
WAMU 88.5	Public Radio
WASH 97.1	Adult/Contemporary
WAVA 105.1	Album Rock
WBJC 91.5	Public Radio
WETA 90.9	Public Radio
WEZR 106.7	Beautiful Music

WFSI 107.9	Religious/Classical
WGAY 95.5	Beautiful Music
WGMS 103.5	Classical
WGTS 91.9	Educational
WHFS 102.3	Progressive Rock
WHUR 96.3	Jazz/Progressive
WJMD 94.7	Adult/Contemporary
WKYS 93.9	Contemporary
WMCZ 86.7	Country
WOCB 100.3	Album Soul
WPFW 89.3	Jazz/Talk/News
WPGC 95.5	Top 40/Rock
WRQX 107.3	Top 40/Rock
WVKX 105.9	Country
WWDC 101.1	Album Rock
WXTR 104.1	Music/Info/News

ALL STEREO

# EASTERN DX ROUNDUP

Bob Lazar

1711 Wainwright Dr.

Reston, VA 22090

- 540 WDMV MD Pocomoke City, 6/22 1307 sun 15<sup>0</sup> from zenith. C&W song by male, wx. Xlnt. (WPT-MD)
- 550 WSWA VA Harrisonburg, 6/19 1315 T40 mx. Xlnt. (WPT-MD)
- 610 WHPL VA Winchester, 6/19 1316 talk by OM. Fair u/ WIP. (WPT-MD)
- WIP PA Philadelphia, 6/22 1306 T40 song. Fair u/ WHPL. (WPT-MD)
- 660 WNBC NY New York City, 6/19 1307 spot for Hatz Pet Collar. Xlnt.
- 700 WLW OH Cincinnati, 6/23 1336 spot for Freeway Savings & chewing tobacco. Good. Also hrd 6/19 1326 fair. (WPT-MD, last two)
- 710 WOR NY New York, 6/19 1304 burglar alarm spot during nx. Xlnt.
- 800 WSVS VA Crewe, 6/22 1324 religious pgm by male preacher. Good u/ WYRE slop. (WPT-MD, last two)
- 830 WNYC NY New York, 6/19 1305 classical mx. Good. (WPT-MD)
- 840 WHAS KY Louisville, 6/23 1341 two spots, then "Fernando" by Abba. Fair to poor w/ QRN. Also 6/19 1329. (WPT-MD)
- 850 WEEU PA Reading, 6/22 1336 spot for home improvement center. Good o/ WRAP. (WPT-MD)
- WRAP VA Norfolk, 6/22 1336 T40 song by female. Fair u/ WEEU. (WPT-MD)
- 870 WFLO VA Farmville, 6/22 1337 T40 by male. Fair u/ WAYE slop. Also 6/23 1312 w/ talk by OM. (WPT-MD)
- 880 WCBS NY New York, 6/19 1304 nx about Justice Stewart's retirement. Xlnt. (WPT-MD)
- 900 WJWL DE Georgetown, 6/19 1313 T40 mx. Poor u/ WLMD. (WPT-MD)
- 910 WRNL VA Richmond, 6/23 1325 T40 mx, then ID by male DJ. Fair signal.
- 920 WPTX MD Lexington Park, 6/22 1313 T40 song. Xlnt. (WPT-MD, last 17)
- CJCH NS Halifax, 6/17 2130 "Nova Scotia's family entertainer." Rock mx. (GS-VA)
- 940 WVLV PA Lebanon, 6/19 1311 C&W mx. Good u/ WKGM. (WPT-MD)
- WKGM VA Smithfield, 6/19 1311 religious pgm by YL w/ ment of 666. Xlnt o/ WVLV. (WPT-MD)
- 950 WXGI VA Richmond, 6/23 1328 talk by YL. Fair u/ WCTN. (WPT-MD)
- 960 WSBY MD Salisbury, 6/19 1310 T40 mx. Xlnt. (WPT-MD)
- 1000 WIOO PA Carlisle, 6/23 1326 talk by OM (not commentary). Fair u/ WRAR. (WPT-MD)
- WRAR VA Tappahannock, 6/23 1326 T40 song by male. Good o/ WIOO.
- 1020 KDKA PA Pittsburgh, 6/19 1316 energy savings tips by YL. Good.
- 1030 WBZ MA Boston, 6/19 1301 MA state nx by OM. Fair. (WPT-MD, last 3)
- 1060 KYW PA Philadelphia, 6/19 1309 ment of buses & trolleys by OM.
- 1070 WINA VA Charlottesville, 6/19 1317 A&P store spot by OM. Good.
- 1080 WEEP PA Pittsburgh, 6/19 1317 spot for Italia meats by OM. Fair.
- 1130 WNEW NY New York, 6/19 1306 sports (U.S. Open), wx by OM. Fair. (WPT-MD, last four)
- 1140 CBI NS Sydney, 5/24 0205 local ID after CBC nx. WRVA off. (GS-VA)
- 1150 WDEL DE Wilmington, 6/22 1310 C&W song by f. Xlnt. (WPT-MD)
- 1170 WWVA WV Wheeling, 6/19 1319 C&W song by m. Fair. (WPT-MD)
- 1190 WBDY VA Bluefield, 5/22 2021 weak, barely o/ SS hets at sunset. (GS-VA) 6/9 2045 s/off by OM w/ ment of 10 kw & FM 106.3 MHz. Good. (WPT-DC)
- 1210 WCAU PA Philadelphia, 6/19 1308 local nx by OM/YL. Sports (U.S. Open) by OM. Xlnt. (WPT-DC)
- 1230 WITH MD Baltimore, 6/8 good 0105-0125 o/ two talkers w/ MYL, just PSAs and "WITH-AM" ID's between music clusters. Believed new here. (PRM-NJ)
- 1240 WCEM MD Cambridge, 6/22 1333 T40 song by male. Xlnt. (WPT-MD)
- 1280 WHVR PA Hanover, 6/22 1319 C&W song by f. Xlnt. (WPT-MD)
- 1310 WBEF PA Bedford, 6/7 20250 (??-ed) s/off by Dean Duvall. (GS-VA)
- 1320 WICO MD Salisbury, 6/22 1330 ID by OM. Fair u/ WEET-WGET. (WPT-MD)
- WHHO NY Hornell, 6/8 0600 stn ID, NBC nx. (GS-VA)
- 1330 WESR VA Onley-Onancock, 6/22 1350 ID, then stock market rpt by YL. Good. (WPT-MD)
- 1340 WHAT PA Philadelphia, 6/1 fair 0204 w/ feature "WHAT - What's happening". New. (PRM-NJ)
- WKRZ PA Wilkes-Barre, fair 6/8 w/ talk show to 0300, AM & FM ID, spot for Milton's. (PRM-NJ)
- 1370 WKIK MD Leonardtown 6/22 1316 T40 song, sportscope by OM. Xlnt. (WPT-MD)
- WSAY NY Rochester, 6/1 loud o/ WPEN/TT 0145-0200 w/ T40, DJ Bert Heinein, mention call from Teaneck, NJ. (PRM-NY)

1410 WPOP CT Hartford, 6/20 2320 local nx. 100 kHz het underneath. (GS-VA)  
 WDOV DE Dover, 6/22 1307 ID & star\* of home furnishings spot. Good.  
 (WPT-MD)

1420 WBSM MA New Bedford, 6/13 2340 C&W song ID by m DJ. Good. (WPT-NJ)  
 1440 WNPW PA Lansdale 6/9 2100 ID by OM w/ ment of 1440 kHz & Montgomery  
 County. Fair u/ WOL slop. (WPT-DC)

1480 WDAS PA Philadelphia, 6/20 2325 playing LA bebop sounding like a HJ  
 but on frequency - a dead giveaway. (GS-VA)

WLEE VA Richmond, 6/22 1328 gospel-soul pgm. Good. (WPT-NJ)  
 1490 WUSS NJ Atlantic City, 6/20 2335 local promo. New NJ (#6). (GS-VA)  
 WLPA PA Lancaster, 6/8 fair-very good (fadey) 0155-0236 o/ WBCB w/  
 T40, NBC nx ID as "14-WLPA". New. (PRM-NJ)

1510 WITS MA Boston, 6/5 2045 teletalk. Strong o/ WLAC. (GS-VA)  
 1540 WRCP PA Philadelphia, 6/12 1815 in absence of WDON here all day. ZNS  
 here too, near sunset. (GS-VA)

1550 WNTN MA Newton, 6/1 strong alone on ET w/ rock, TT, whistling 0117-  
 0136+. CE Bob Wolf said RFI in studio, no other calls. Often  
 heard on SSS. (PRM-NJ)

### EASTERN DXERS

PRM - Paul Mount, 471 Emerson Ave. Teaneck NJ 07666 (GE Superadio)  
 GS - Gardner Smith, 6907 Fern Lane, Annandale, VA 22030  
 (HQ-145X, 80 m dipole)

WPT - Bill Townshend, 4500 Connecticut Ave. NW, #901, Washington, DC 20008  
 (Realistic TRF)

WPT-MD DXing at work in Marlow Heights, Maryland  
 WPT-NJ DXing at the Golden Eagle Motel in Cape May, New Jersey  
 WPT-DC DXing at home in Washington, D.C.!!!!

Please note that EDXR reporters are not required to DX from the Washington, D.C. metropolitan area or New Jersey....or both. All it takes is a location east of 85 degrees west longitude. By the time you read this, I will probably have completed a two week vacation in Wisconsin and Ontario. I plan to visit the area of Ontario north of Lake Superior. It should be interesting DXing there since it is a rather remote location. I found Mark Connelly's comments on the lack of T40 mx on AM in Boston at night interesting. The Washington area is similar. The popular mx stations are all FM. The only fulltime AM w/ an all music format is WWDC-1260. They have an album rock format and partially simulcast with their FM. They were previously a soft top 40 format but only averaged about 1% of the audience with it. Other sources of mx at night on AM are WOL-1450 with a soft soul format (talk days), WEAM-1390 with big band, WMAL-630 at times with MoR and jazz, and WEEL-1310 with a soft top 40 format but only audible in parts of the Virginia suburbs. Also WINX-1600 is audible in parts of the Maryland suburbs. The problem with most Washington AM stations is that their signals do not adequately cover the entire metropolitan area while the FMs do it easily. Even 50 kw WTOP-1500 is tough at night out in this area, about 20 miles west of its eastward beaming antennas in Wheaton, Md. The best AM signal belongs to WMAL-630 which also happens to be the most popular stn in most rating surveys. 73 & good DX.

# Radio war may erupt

By Ernest Holsendolph  
 New York Times

WASHINGTON — A House panel has been told that American radio stations may be on the verge of a war of broadcasting signals with Cuban transmitters in the AM band.

In recent months, American broadcasters throughout the Southeast, and in scattered instances as far north as Indiana, have been complaining that powerful radio stations in Cuba have interfered with local broadcasts, according to testimony before the House subcommittee on international operations.

Officials from the State Department and the Federal

Seattle Post Intelligencer  
 5-9-81, via Rick Svajdlenka

Communications Commission said the problem could get worse, because Cuban communications officials have indicated plans to increase the number of AM stations in Cuba, estimated to be about 75, to as many as 188. At least two will beam programs with 500,000 watts of power, fully 10 times the maximum power allowed by American stations.

"It's very obvious that they don't need that power to cover Cuba, but what will they use the stations for?" asked Rep. Dante B. Fascell, D-Fla., chairman of the subcommittee. No one knew the answer, but specialists said the signals could interfere with United States broadcasters as far from Cuba as Alaska and Hawaii.

James L. Buckley, undersecretary of state for security assistance, science and technology, and the FCC chairman, Mark Fowler, told the panel that the primary hope for avoiding deeper interference problems appears to lie in a forthcoming regional radio conference in Rio de Janeiro, where the United States hopes to obtain agreement among 28 hemisphere nations on distributing radio frequencies between now and 1987.

Even though Cuba has allegedly ignored an old agreement between the United States and Cuba governing present broadcasting practices, the officials thought that the Cuban government would abide by a new regional agreement that provided advantages to it.

Cuban officials have said they were abrogating the old agreement because it was signed by the pre-Castro regime. A new regional agreement with more station allocations would be preferable, they say.

# CENTRAL DX ROUNDUP

Robert Kramer  
4639 N. Albany  
Chicago, IL 60625

## UnDed, Special, Changes, et. al.

- 610 WIOD FL MIAMI, Broadcasting Magazine reports that the FCC has granted them 10 kw & a new DA system as a result of QRM from Cuban stations in their coverage area. EH-W-IL
- 1560 WSQR IL SYCAMORE, a new stn now on the air, first noted 6/13 1908 fair W/ID. In much better the following day. Sent nice V/L & balloons. RK-IL 1200 6/22 fair W/WRIN W/pop tunes, legal ID, new station per tip from RK and RK via MJ. Address info ? EH-IL
- 570 WKYX KY PADUCAH, 6/26 0234 YL ancr W/"57 KYX" ID, into Bette Davis Eyes", other pop mx, 1st wx, fair-poor W/WLED sloop. MB-IL
- WFAA TX DALLAS, 6/16 1615-32 W/nx & ID. RG-KS
- 580 WOFE TN ROCKWOOD, 6/14 2050 W/T-40 mx, PSA for an area Vacation Bible School, poor U/WCHS W/Indianapolis Triple A BB. WC-KY
- CHIC IQ HAUTERIVE, 6/26 0240 in FF W/YL DJ, EE pop mx such as "Woman Needs Love", good steady signal. MB-IL (With all due respect Mike, what makes you think this was CHIC ? I've never seen them reported in this area, especially with the strength you described, ed.)
- 610 WDAF MO KANSAS CITY, 6/26 0149 in very good W/"61 Country" IDs, into Waylon Jennings song. MB-IL
- 620 CKCK SK REGINA, 6/26 0200 W/SK Wx, several IDs, into "Stars on 45", fair-good in WTHJ null, spot for car dealer. MB-IL
- 790 CKSO ON SUDBURY, 6/27 0219 W/"Tim Man" by America, spot for 7-Up, followed by ID & Sudbury wx, fair-good W/WBEM sloop null. MB-IL
- 850 WIVK TN KNOXVILLE, 2125 5/4 good atop all W/WIVK FM 107.7 audio (what, no WBEW, ed.) & IDs, forgot to pull plug, called stn after I alerted other area DXers. C&W & Ae Nx. EH-IL
- 930 WGNT WV HUNTINGTON, 6/26 0300 ID as "We are 93 WGNT Huntington"; NBC nx, spot for Topol tooth polish, fair W/fades. MB-IL
- 940 WMAZ GA MACON, 4/12 1900 W/ID by woman. EH-IL
- 950 KLIK MO JEFFERSON CITY, 5/25 0329-0336 good W/no sign of KIMN, W/several "95 KLIK" IDs, request line # 734-2124 & adult contemp. mx. RG-KS
- 960 KARZ AZ PHOENIX, 5/25 weak 0343-0400 W/nx, several "Radio 9-60" IDs, promo, & C&W mx. RG-KS
- 980 WONE OH DAYTON, 6/26 0254 "98 WONE" IDs, PSA to quit smoking, promo for "WONE food pantry day", spot for a Toyota dealer, C&W mx, good O/WITY. MB-IL
- 1010 KLRA AR LITTLE ROCK, fair W/WCFL off U/others W/S/On. Was hoping for something better 4/6 0530. EH-IL
- WROB IL KRAMMER GREEN, poor fighting it out in sloop abrupt S/off 0200 6/20, ment. of new studios to open soon in Berwyn (Berwyn? ed.), off after "Save the Llamas" PSA (& "God Save the Llamas" right ?, ed.). Sammy Davis Jr.
- 1230 KLWT MO LEBANON, fair O/WJOB 1935 4/10 W/wx for Lebanon (what about Jordan, Israel & Syria ? ed.), loud but soon faded. EH-IL
- 1290 KTRN TX WICHITA FALLS, 6/4 0326 poor W/C&W mx, nx & ID at 0330. "This is KTRN Wichita Falls, TX it's 2:30 and time for KTRN 30-30 News". RG-KS WC-KY
- CJRK ON LONDON, 6/13 2209 ID male DJ W/tlk on Frampton LP & track from it, fair//
- 1330 KWLO IA WATERLOO, 2150 5/2 fair W/"KW" ID & pop tune, ex-KWWL. EH-IL
- WHBL WI SHEBOYGAN, fair-poor in WRRR null 1806 4/12. Brought up to reasonable level W/manual gain control on HQ-140X. Mush wanted. EH-IL EH-IL
- 1360 KBKB IA FORT MADISON, steady atop 1947 4/3 W/rock tune, wx, S/off W/ment of FM// (Earl, please note correct calls. Hogie, note potential sucker, ed.) RK-IL
- 1450 WOL DC WASHINGTON, 6/6 0000 fair in WXOL null W/full ID. At minimum a big suprise//
- WLYV IN FORT WAYNE, 6/5 0105 fair in WXOL null W/ID. RK-IL
- WLBC OH SANDUSKY, 6/6 0122 good in WXOL null W/promo & Cleveland Indians baseball. Has been in alot recently. RK-IL
- WJPA PA WASHINGTON, 7/1 0105½, a good start to the CADX GY Channel contest, out of nowhere in WXOL null & mixing W/WXVW, W/full ID then gone. Possibly an ET ? RK-IL
- 1460 WACO TX WACO, 6/8 0316, poor U/KSO W/DJ asking for requests at phone # 273-3722, Dolly Parton record. RG-KS
- 1470 WMBD IL PEORIA, 6/13 2115 good W/T-40 mx, wx W/female DJ. WC-KY
- 1480 KIMS NE LINCOLN, 6/8 0200 poor U/KWKN W/nx, ID as "14-80 KIMS". RG-KS
- 1520 KOIM MN ROCHESTER, 2121 5/8 fair in KOMA null W/promo ID by female ancr. EH-IL
- 1540 WBNL IN BOONVILLE, atop 1929 4/2 W/S/off W/ment. of FM. EH-IL
- 1550 WJIL IL JACKSONVILLE, 4/3 1939 fair-good W/ID & address, then gone to KJJO. EH-IL

1590 KRRK MN EAST GRAND FORKS, 6/9 2228½ dominating channel W/C&W mx & Double R-K Country ID. RK-IL, 6/10 fair-good way atop W/"K-double R K" & "Double R Country" IDs, C&W format, ex-KRAD. EH-IL

With the conservative turn the country has taken, the freaks have gone into hiding.

**At Least Jeziorski Didn't Put Us To Sleep:**

MB... Mike Brooker 245 Forest Hill Rd Toronto, ON M6C 2H5, DX at the "Rathole" at the GWDXA convention in Chicago (Superadio)

VC... Wheels Conover RR #8, Box 344B Manchester, KY 440962 (Isn't that too many # ? ed.) (RF-2800, SM-2, 99 in gym, 1 Wolfish)

RG... Rob Gerardi 102 S. Grant Ave Apt. # 2 Liberal, KS 67901 (TRF 12-655)

EH... Early Higgins 286 Lawton Rd Riverside, IL 60546 (HQ-140X, SM-1, gills from the Wolfish)

RK... Mole (R-1000, HQ-129X, Radio West loop, spiral loop, MFJ-732 audio filter, scales from the Wolfish)

BHW... Brock Whaley, 1313 W. Pratt Chicago, IL 60636 (He caught the Wolfish)

WJ... Went to bed early

**RK's Progress Report**

	Last Week	This Week	# New	To Go
heard	2909	2913	4	87
SLed	1977	1982	5	18

Well, believe it or not, it's been a year since I took over as CDXR editor. So for those who are new, or those who fall asleep reading Jeziorski's reports, I guess an intro is in order. If you already know me, you may skip this part. I am 28, work as a Public Aid Jaseworker for the State of Illinois. I work in the area of redetermination of eligibility for General Assistance and food stamps. In addition to DX, I also collect promo items, particularly station license plates (if anybody knows of a station that has license plates please let me know), & CMS. I also love jazz, soccer & am the world's greatest whiffle-ball pitcher (SLDX please note) with a 0.50 ERA over the past 6 years. In addition, I write comedy on an amateur basis, maybe soon to go pro. I also fall asleep whenever Jeziorski calls. For those who collect surveys, I have a gigantic box full of SCs I want to get rid of (all leftover from the GWDXA). I have no idea of what's in it, but I do know that some go back to the mid 60's. I am willing to trade a whole bunch for MS (originals only) or promo items (stickers, tee shirts, license plates, etc), but no contest sheets or street sheets. It will depend on what you send as to how many SCs you get, but I'll send you a ton for something I need. Please be fore-warned that you will get some doubles, but I will guarantee you at least 15 different in each envelope. There is a good chance that I'll have moved before next issue. So if I did, then you'll know about it & I'll know where. If not, I'll see you again next month here in the project.

★ ★ **New Members** ★ ★  
IRCA—Our 17th Year

Editor: Rich Segalas • P.O. Box 26254 • San Francisco, CA 94126

New Members, Membership Renewal, Address Changes—Send to the Above Address

- G. B. Swartz, 28 Sand Spring Dr., Eatontown, NJ 07724
- William J. Lamb, 1800 El Paseo #1804, Houston, TX 77054
- B. Peters, Lymbaansgr. 3181, 1017WZ Amsterdam, HOLLAND
- R. J. O'Connor, USCG Group, 259 High Street, South Portland, ME 04106
- Frank Aden, Jr., 4514 SE 83rd, Apt. 5, Portland, OR 97266 (rejoin)
- Curtis C. Hayes, 3634 Morgan St., Steger, IL 60475 (rejoin)
- Edwin A. Gibson, 6030 Riverview Dr., Indianapolis, IN 46208
- Richard Kawa, 3296 Abbott Rd., Orchard Park, NY 14127
- F. W. Atkinson, 1506 Grant, Carlsbad, N.M. 88220

ADDRESS CHANGES

- Per Kristian Bjoennes, Postboks 118, N-2260 Kirkenær, NORWAY
  - Richard Eckman, 2900 E. Aurora Ave., #320, Boulder, CO 80303
  - J. C. Doherty, 18 Elgin Road, St. John, N.B., CANADA E2J 2Y7
  - Rick Heald, 2618 Spring Creek Dr., Santa Rosa, CA 95405
  - Robert E. Fischer, Box 82210, Fairbanks, AK 99708
  - Jack L. Swearngen, 2929 W. 190th St., #209, Redondo Beach, CA 90278
- Continued on page 20

# WESTERN DX ROUNDUP

Nancy Hardy  
2301 Pacific Avenue  
Aberdeen, WA 98520

All times are  
Eastern Local

Phone for hot WDXR tips: (206) 532-6827 till 10:30pm(PT)--no collect calls  
Next deadline: Thursday July 23

## REPORTERS FOR THIS ISSUE:

- (NHP) Nick Hall-Patch-1538 Amphion Street-Victoria, BC V8R 4Z6  
Transmogrified HRO, 3' box loop
- (WJH) Bill Harms-temporarily residing at Rt. 2 Box 264J-Spokane, WA 99207  
Realistic TRF, 1000' E-W Beverage
- (CK) Chris Knight-598 S. Clarion Drive-Pueblo West, CO 81007  
(CK-UP) DX'ing on top of Uncompahgre Peak 10 mi. west of Lake City, CO  
(CK-LC) DX'ing in Lake City, CO, 50 mi. south of Gunnison, CO
- (DN) Doug Nyholm 2071 Cedar Street-San Carlos, CA 94070  
FRG-7000, R. West loop
- (AWP) Art Peterson-851-31st Street-Richmond, CA 94804  
FRG-7, R. West ferrite loop
- (bp) Bruce Portzer-6546-19th Ave. NE-Seattle, WA 98115  
HQ-180A, 4' loop
- (AJR) Andrew J. Rimmington-559 Clarke Road-Coquitlam, BC V3J 3X4  
DX-160, 4' box loop
- (PT) Pete Taylor-2614 Jackson Street-San Francisco, CA 94115
- (RW) Robert Wien-1309 Dentwood Drive-San Jose, CA 95118  
GE long-range portable, SM-2

\*\*\*\*\*  
OF SPECIAL INTEREST:

- 1090 KLWJ OR, Umatilla 6/8 2340-2345 SS relig. program & s/off in EE.  
Tough w/KING, CHEC, and KBOZ QRM. (WJH-WA) (New stnl--NH)
- \*\*\*\*\*
- 550 K TSA TX, San Antonio 6/3 0051 ID into a local ad. Rough thru KBOW,  
KPYR, etc. KOAC & KARI not heard. (WJH-WA)
- 570 WNAX SD, Yankton 6/3 0057-0100 two ads, C&W song, & ID into CBS nx  
on the hour. Blowing KVI away, no KLUB. (WJH-WA)
- 580 KUBC CO, Montrose 6/11 1445 xlnt w/rr mx & ID. (CK-UP)
- 590 KCSJ CO, Pueblo 6/11 1446 very weak w/MOR mx. (CK-UP)
- 620 KSTR CO, Grand Junction 6/11 1451 mellow rr mx, "The Star" slogans.
- 650 KORL HI, Honolulu 6/19 0523 hrd for 1st time in o/3 1/2 / (CK-UP)  
months, poor w/KFI-640 slop. "K-65" ID. (RW-CA)
- 660 WNBC NY, New York 6/3 0106 great signal w/"25 minutes of non-stop  
music." First time in June. (WJH-WA)
- 690 CBU BC, Vancouver 6/19 0500 noted w/BC nx. AN now? Thought their  
s/off was 0400. (RW-CA)
- 720 (KDWN) NV, Las Vegas 6/8 0500 noted totally off, KUA1 nor WGN in.  
Terrible EC cx & worst HI cx in last 6 months. (RW-CA)
- 740 KVFC CO, Cortez 6/11 1454 good w/nx, spot for a firm in Cortez, ID.
- 780 KCRF NV, Reno is now NSP during week, but off during / (CK-UP)  
unk. hrs. of SM's & MM's.
- (KABC) CA, Los Angeles 6/8 0320 & 6/15 0323 noted totally off. (RW-CA)
- KWIL OR, Albany 6/23 in weak w/KABC nulled. Had relig. program at  
2359. No sign of KEKA for some time now. (DN-CA)
- 880 KRVN NE, Lexington 6/11 1514 poor w/C&W mx, ID. Good midday catch.
- 910 KKSJ WA, Vancouver 5/25 0710 xlnt signal w/ID & what (CK-UP)  
sounded like an AOR format. (WJH-WA)
- 920 KVEL UT, Vernal 6/11 1518 barely hrd ID in KQEO midday GY-like mess.
- 930 KIUP CO, Durango 6/11 1448 xlnt, ad for a place in Durango. (CK-UP)  
(CK-UP)
- 960 KNDN NM, Farmington 6/11 1522 xlnt w/Indian chanting. (CK-UP)
- KDOT UT, Provo 6/8 2235 fair w/rr mx & ID. (CK-LC)
- 970 KPEL CO, Pueblo 6/11 1523 good w/"inspirational programming". (CK-UP)
- 1030 KCTA TX, Corpus Christi 6/8 0615 fair at s/on o/umID SS. This is 75  
min. later than what it should be according to IRCA Almanac.  
How come? (RW-CA) (Perhaps the earlier time slot was unsold.--NH)
- \*KTWO\* WY, Casper 6/22 0326 ET'ing w/periods of TT and C&W mx. (RW-CA)
- 1050 \*KOFY\* CA, San Mateo 6/3 0301 noted w/ID twice as "This is KOFY, San  
Mateo, CA, conducting equip. tests." (RW-CA)
- KBLE WA, Seattle 6/22 2330 very poor w/a "KBLE 10-50" ID being about  
all that was heard. Not enuf for a report. (DN-CA)
- 1060 KRSP UT, Salt Lake City 6/8 2239 fair w/rr mx, temp, ID. (CK-LC)

1070 (KNX) CA, Los Angeles 6/22 0324 totally off. Possibly a regular MM SP now instead of just 2nd and/or 3rd MM? (RW-CA)

\*KERR\* MT, Polson 6/12 0400 ET'ing w/OC and C&W mx. (RW-CA)

1080 \*KSCO\* CA, Santa Cruz 6/13 0315 blasting in w/TT on day patt.(RW-CA)

1090 KANN UT, Ogden 6/8 2243 xlnr, relig. program, listener's letters, ID. (CK-IC)

1100 KREX CO, Grand Junction 6/11 1449 xlnr w/radio play. (CK-UP)

1150 KKEY OR, Portland in w/brief s/off anncr. 2359. They were heard just briefly o/KAGO, KPRZ and one other unID. (DN-CA) (Date?-NH)

KAFO OR, Klamath Falls 6/20 2350-2359 w/Falcon baseball. Good signal for awhile. Who are the Falcons? (DN-CA)

(KAYO) WA, Seattle noted on RS SM 6/28 0802, but was off 0617. Apparently a change in their 0600-0900 SM SP. (bp-WA)

1190 \*KEX\* OR, Portland 6/8 0526 very rarely note them ET'ing, w/time-intervaled sweep tones. (RW-CA)

1220 KASY WA, Auburn 6/21 2357-0000 & s/off. MOR mx & PSA's also hrd. Weak, first time heard. (DN-CA)

1230 KEXO CO, Grand Junction 6/11 1600 fair to good w/rr mx & "KEXO" ID. (CK-UP)

KDZA CO, Pueblo 6/8 2300 atop briefly w/"Top 5 Countdown," a nightly feature at this time, rr mx, ID. (CK-IC)

1240 CFNI BC, Port Hardy Su 6/21 0250 sports, nx 0300, wx "8° here at CFNI." Several CFNI ID's by same anncr who read nx, so evidently not on Coast R. network at this time. But when tried again 0407, ID hrd was CFWB. (AJR-BC)

CKBX BC, 100 Mile House Fr 6/19 0243 "Cariboo News Roundup," zzz CDN playlist, "R. Cariboo" ID's. Fair in usual mess. (AJR-BC)

1250 KWSU WA, Pullman 6/21 2322-2331 w/classical mx & tail end of NPR nx, good signal but horrendous noise. (DN-CA) ( 100 lashes with the stiff penguin flipper! Doug, you had KWSU listed as KWSC. They've been KWSU since 1969!--NH)

KKFX WA, Seattle 6/19 0400 ex-KYAC. Day I got bulletin, didn't know about it, not listed in any tech. app. in bulletin! Usual fair signal in KTMS null, ID on hour w/YL, then OM w/fox howling (coyote?) in background, ID "This is the fox, KKFX, Seattle," back into mx. #906. (RW-CA)

1280 KBRQ CO, Denver 6/3 0207 C&W mx, "K-Bar-Q" slogan also called themselves "The Radio Ranch of Denver." Good signal, but KIT & KWMS QRM. (WJH-WA)

1300 \*KPTL\* NV, Carson City 6/19 0511 w/TT way o/KYNO, KMPS. (RW-CA)

1310 (KDIA) CA, Oakland 6/8 0300-0700 noted totally off this whole time, ET'ing later on past 0700. KZZP, KLIX, KEIN as usual. (RW-CA)

CIOK AB, St. Paul Su 6/21 0541 // C/OK-1370 w/C&W mx, wx, "OK Country" slogans. "B-N Report" nx (wozzat? BNV?) (Yes.--NH). Much stronger than usual--actually slopping KMPS-1300! Day pattern? (AJR-BC)

1320 KXRO WA, Aberdeen 6/8 0751 strong & all alone in KCPX null w/TC, ID, just before a KGNR OC. New hrs of operation, NH? Aberdeen SR this time of year about 0815. (RW-CA) (As per 9/20/80 WDXR, they are NSP.--NH)

1340 KIST CA, Santa Barbara 6/9 0430 rather rare, wiping out KATA in KMAK, KBET, KRAM null w/"kissed" ID. Auroral cx tonite. (RW-CA)

CKBR AB, Brooks Su 6/21 0640 C&W mx, "Big Country" & "3-in-a-row Country" slogans, spot for car dealer in Stettler. This network evidently still alive despite sale of CJDV. (AJR-BC)

CIVH BC, Vanderhoof Fr 6/19 0347 intermittent w/slow QSB. "C-I Radio" ID's, unID network nx 0400, CFL football rpt 0411. Noted again 0439 w/"C-I" ID, spots for Williams Lake (!). Does Cariboo network join C-I for AN show ala CFBV, etc? (AJR-BC)

1350 KIDN CO, Pueblo 6/11 1527 xlnr w/C&W mx, "Kiddin Country" slogan. CKEG(?) BC, Nanaimo man announcing test 6/20 1645 w/fill ID. / (CK-UP) "Will commence full service in the very near future." 15 min. blocks of pop mx, but OC at 1835. Quite weak for announced 10000 watts; perhaps pattern nulls this way. (NHP-BC)

1380 KTOM CA, Salinas 5/25 0658 C&W mx & ID on the hour. Dominating channel. (WJH-WA)

1400 KDTA CO, Delta 6/11 1458 good o/KPAG w/"The Paul Harvey Show" right after nx, ID at 1500. (CK-UP)

KPAG CO, Pagosa Springs 6/11 1500 hrd w/YL ID then nx at the top of the hour, u/KDTA. (CK-UP)

- 1430 (KNFA) CA, Santa Clara 6/21 0310 noted totally off before 0310-?, may have a monthly 3rd SM SP. Will watch this one. (RW-CA)
- 1450 \*KTX\* MT, Whitefish MM 5/4 already on w/TT when tuned in 0322. ID 0325 "This is radio stn KTX, Whitefish, MT..." something unreadable. More TT to 0329, off w/o further ID. (AJR-BC)
- 1460 KQTE CA, Santa Rosa while driving around in the Napa/St. Helena area 5/31 about 1800, noted KQTE now also MYL. I have never heard this stn in San Francisco, nary a peep, it is so directional, presumably for KEST. However, the same doesn't apply to KVON, which blasts in. (PT-CA)
- KWIP OR, Dallas 6/8 2350 w/"The Sunset Edition" a pre-s/off newscast. Mucho QRM, but strongest signal of the group. (WJH-WA)
- 1470 CJVB BC, Vancouver 6/22 0149 unusually strong way o/KXOA/KSEM, w/talk show about BC affairs. XEBBC totally off early, are they off early MM's? (RW-CA)
- 1480 KAAR WA, Vancouver 5/25 0728 this "pest" (here anyways) calls itself "Car Radio." The channel dominant most of the time. (WJH) +6/6 0400 finally bothered to log this call change, ex-KARO, legal ID on hour. Xlnt as usual in KYOS null, bombing KWIZ. (RW)
- 1490 CK00-1 BC, Oliver Fr 6/19 0635 Jim French pgn, "Okanagan R." ID's. New here, but very strong--anyone know what power? Also noted: list of Jim French stns ment. only CKOK, CKSP, CK00, & CKOR-FM. CKGF no longer on network? (AJR-BC) +CKOK relay here is on; noted generally dominant a number of evenings here. 6/19 2323, got an "Okanagan R." ID out of them. What are calls? (NHP-BC) (CK00-1, Nick.--NH) +New CKOK-800 network stn dominant here 6/28 0805 w/promo for CKOK beach party. (bp-WA)
- 1530 (KFBK) CA, Sacramento 6/21 0345-0413 noted totally off in middle of "Best of Larry King" due to tech. problem. WCKY in very weakly. ?KCLR? TX, Ralls 6/22 0730 tent. when suddenly came on w/ (RW-CA) possible ment. of Texas. Fits their SR day pattern change for June. (RW-CA)
- 1560 \*KGHO\* WA, Hoquiam 6/18 0445 noted w/ET of FM simulcast. So what else is new, hi. (RW-CA)
- 1580 KLOQ CA, Merced 6/13 2315 logged call change, ex-KMCE/ex-KWIP. All alone in KLIV-1590 null w/no sign of KDAY. ID "...from your friends at 1580, KLOQ," into C&W mx. This may not be their format, tho, lost strangely to XEDM! (RW-CA)
- 1590 KBBQ CA, Ventura-Oxnard 6/22 0206 very weak in phased KLIV null, w/C&W mx, "K-bobby-Q" slogan. (RW-CA)
- 1600 KGST CA, Fresno 6/22 0200-0300+ noted w/show called "Muy Buenos Noches," OM anncr. Way o/KWOW/KASH in KLIV-1590 null. When the heck did they go nighttime? Never saw this tech. application in the bulletin, either! (RW-CA)
- 1610 TIS CA, Mountain Rest (6 mi. SW of Shaver Lake), Sierra Nat'l Forest Visitor Info Radio. Stn runs only six watts & heard 175 miles away. Mr. Pearson (v/s) was rather disturbed about the coverage since intended to cover 4-6 mi. of hwy & said they "may turn the power down!" I wrote back to assure him that I was using a highly sensitive receiver, & I suggest that this be mentioned by any other DXers reporting this stn. (AWP-CA) +6/22 0510-0615+ my 1st TIS after years of trying. Tried AWP's tip & hrd this very poor, poor on peaks & quite distorted in KLIV-1590 null w/KWOW-1600 slop. OM & YL intermittent w/ments of "Kaiser Pass Road," & gave phone no. 843-3311. Called for more info. This exchange not listed for Fresno. As AWP suspected, is headquarters for Sierra Nat'l Forest. Doesn't fit any other exchanges in that part of central valley. Banjo mx or similar at end of loop tape. (RW-CA)

June f/c's

- 2nd MM: 0300-0315 KXIV-1400 AZ (RW-CA)  
 0530-0545 KRG1-1430 NE (RW-CA)  
 0615-0630 WOK2-1570 IL NOT heard (RW-CA)

Next WDXR deadline is Thursday July 23. Normal deadline would be the 30th, but Bill & I will be at Lake Louise on vacation that day! We're leaving 7/25 for the Canadian Rockies & Glacier Nat'l Park in Montana. If you vacation in another part of the country this summer, remember that you can send a report to the Roundup section for that area! With the convention in Calgary this year--WDXR-land--feel free to send DX from that area to WDXR, even if you're from another part of the country! ♡



**DX****Worldwide**

DX WORLDWIDE EAST  
 NEIL KAZAROSS  
 30 KING PHILIP RD.  
 PAWTUCKET RI 02861  
 401-722-3652



The big news here is that I've graduated from Union College and have accepted an Electrical Engineering position in the Radar Antenna Dept. at Hughes Aircraft Co. in El Segundo, California. I start work Aug. 20, 1981 and will be leaving RI about Aug. 10. I hope to keep editing this column although I will no longer be living in the East. I feel that I have sufficient experience to enable me to continue to do this job which is: (1) To type DXW-E, (2) to help DXers here more foreign DX, (3) to help DXers ID their unID foreign catches, (4) to spot erroneous reports...I have spoken with qualified eastern DXers and they don't wish to take over DXW-E at this time. If, for any reason, you, the readers of DXW-E, feel that I should not continue to edit this column from the west coast, please inform HQ and I will step down as soon as a qualified eastern member volunteers to take over. Once again, I do feel that I can continue to edit DXW-East from California.

I don't know what my California address will be so please continue to send reports to the above address and I'll have them forwarded to California.

TRANS ATLANTIC DX ROUNDUP (all Connelly on Cape Cod)

- 738 SPAIN Barcelona fair in T-storm QRN: male SS vocal ballad, 0254, June 7. Adjacent CBNM-740 was blasting in at the time, totally o/CBL. (Connelly)
- 882 GREAT BRITAIN Washford fair w/ woman in EE, 0247, June 7.
- 891 ALGERIA Algiers poor w/ male AA chanting 0428-0430 June 7.
- 1206 FRANCE Bordeaux running potent OC, 20 db stronger than Cayman 1205, 0343, June 7.
- 1521 SAUDI ARABIA Duba presumed here w/powerful het drilling WKBW on car rx. at coastal marsh locations, 0300, June 6. By 0330 the het had faded away. Numerous other highband TA hets were also heard during this period.

PAN AMERICAN DX ROUNDUP (all Mark Connelly)

- 725 SURINAM Paramaribo loud w/reggae mx, DD talk 0252 June 7.
- 860 t COLOMBIA - HJEP probably the stn. here w/ very rustic Colombian Folk mx w/shrill accordion & SS vocals, mostly buried by super-loud CBH running a CBC hardrock pgm., 0421 June 7.
- 1610 ANGUILLA R.Beacon good w/C&W-style hymns, 0332 June 7.

Verifications

- 1580 ANTIGUA VOA QSL card rec.confirming this location. Card is signed by Warren G. Richards, Acting Chief, Frequency Division. (Stan-ON)

Contributors

- Mark Connelly 7 Trowbridge Path West Yarmouth, MA 02673- R390A & two Phased 37-meter LW's
- C.M.Stanbury II RR#1 Ridgeway, Ontario LOS 1N0, Canada - HQ200 & 90 foot LW

Now some Cuban info:

- 600 actual location is Jaruco, where the SW tx's are.
- 950 Reloj is ex-1330
- 960 Reloj is in Cienfuegos
- 980 Reloj is somewhere in eastern Cuba

Here's a listing of Dominican and Haitien changes and off frequency stn's from Richard Clark.

- 541 HICM R.ABC Sto Domingo
- 610 HIJR R.Accion Santiago ex-1470
- 629 HIAF R.Monte Cristi Monte Cristi
- 699 HIDC R.Mao Mao
- 760 4VU is indeed 20 kw per letter and strong in D.R.
- 820 HIAZ ex-810
- 791 HIL LV del Tropico Sto Domingo
- 1101 HIPS R.Nagua Nagua
- 1145 4VVB R.Citadella Cap Haitien
- 1231 4VBL R.Creole Cap Haitien
- 1282 HIVM R.Bonac Bonac
- 1300 HIMH ex-1310
- 1315 HIAV R.Bani Bani

1322	HINZ	R.Boya	Sabana Grande
1330	4VJCD	ex-1325	is INACTIVE
1372	HIFA	LV de Fuerzas Armadas	Elias Pinas
1385	4VS	R.Port-au-Prince	
1411	HIPK	R.Neiba	Neiba
1416	HIOS	R.Marien	Dajabon
1439	HIFS	R.Bahía	Nagua
1451	HIAC	R.Util	Salcedo
1455	4VEA	LV du Nord	Cap Haitien
1462	HIAI	R. San Cristobal	
1472	HIEH	R. Sur	Barahona
1475	4VAA	R. Val aux Peuple	Port-au-Prince
1488	HIFK	R.Azua	Azua
1502	HIAF	R. Generacion	Moca
1511	HIBL	R. Pueblo	Sto Domingo
1532	HIJN	HIJN	Santiago
1539	HIFB	La Reina	Sto Domingo
1561	HIPZ	R. Pedernales	
1572	HIAJ	R. Union	Sto Domingo
1595	4VKB	R. Cap Haitien	
1600	HIBA	R.Trifuno	ex-920

This clears up a couple of mystery hets from last season. Many of the above can be heard from good locations during AU cx. Best time is usually early evening before QRM becomes too great.

Remember to continue reporting to Rhode Island:

73's and amazing DX to all!! - KAZ -

---

## NRC PUBLICATIONS CENTER

NRC PUBLICATIONS CENTER  
P.O. BOX 164  
MANNSVILLE, NY 13661

No, the above address nor the following advertisement for National Radio Club publications is an oversight by your editor.

We are pleased to announce that the Board of Directors of IRCA and the Publishing Committee of NRC have reached a mutual agreement that will benefit the memberships of both organizations.

Effective immediately, ALL National Radio Club publications and reprints are available to all IRCA members for the discounted member price previously open to NRC members only. This results in substantial savings on the recently published NRC Canadian/American Night Pattern Book. Also available are the NRC Receiver Reference Manual and NRC Antenna Reference Manual (ideal companion pieces to the new IRCA DXer's Technical Guide), as well as the NRC Domestic Log (fifth edition printed in 1979). This last publication is now available while supplies last for only \$4.00.

In addition to the above publications, all NRC Reprints will be available for the member discounted rate of 10¢ per page. Many top-notch DX related articles from past issues of DX News are now available to update your library on virtually all aspects of the MW DXing hobby.

For a copy of the current NRC Reprints List, just forward your request to the above address along with a self-addressed stamped envelope. The latest NRC Reprint List will be sent by return mail.

The NRC library is available to you at member prices!! Send your SASE.....NOW!!!

# EASTERN DX FORUM

Paul Mount  
471 Emerson Avenue  
Teaneck, NJ 07666  
201 836 1137

MARK CONNELLY 30 William Road Billerica MA 01821 16 May 1981

More notes on Boston radio: WITS - 1510 now operating 50 kW day & nite from Waltham (route 60, just south of junction w/Trapelo Rd) has an inferior daytime "get out ability" to most areas of Eastern MA as compared to its former 50 kW day signal out of North Quincy. At night in both Billerica & W. Yarmouth, it dominates the channel with much less CJRS QRM than before' side-chatter from WKBW & WTOP is still sometimes above acceptable levels Skywave/groundwave interaction causes excessive fading & phase distortion on WITS relatively close to Boston; this is a common problem on high-end-of-the dial stations w/quarter-wavelength or shorter towers. On Cape Cod, WITS has a poorer signal than other Boston 50 kWers WRKO, WHDH and WBZ. I wonder if DXers living near CJRS or WNLC has noted increased WITS QRM recently. WGTR-1060 is supposedly 50 kW day, either 1 or 5 kW night. The day signal, as noted from several Eastern MA QTHs is much better than the old 1kw, but it doesn't sound like "50 gallons" either. Observed strengths compared to other stations at similar over-land distances point to 5-10 kW as WGTR's effective output. Then again, WLKW-990, supposedly 50 kW, sounds like 500 watts to a wet piece of spaghetti. The WGTR ("G-1060") night signal is downright wimpy, as Ernie Cooper has noted. More than 10 miles from Natick adjacents WHN-1050 & CBA-1070 are much stronger on average skip nights, not too good for WGTR which has put up advertising billboards in Boston, 20 miles from its transmitter. WGTR is a waste of time anyway, their all-news format stinks: items are repeated word for word every 15 minutes or so. If I want news, I'll tune in WEEI-590. I hope that as members travel this summer, travel DX reports will appear soon thereafter. I'd be especially interested in reading reports from Atlantic Canada (NF-NS-PEI-NB), the Caribbean, Europe, Africa. Those bound for Cape Cod, southern RI (E.G. Newport), or eastern Long Island should consult recent international columns for DX by Cooper, DeLorenzo, Kazaross, and me in order to take advantage of the first class DX potentials of these southward-facing coastal areas, especially in the domain of Caribbean & Latin American DXing. '73 & a good summer to all.

MATT STUTTERHEIM RD 1 Box 702 Glenford NY 12433

Now that I've been an IRCAN for a while, perhaps an intro is in order. I'm 40, divorced and been a ECBDXer since I was 10; and have worked in various radio stations over the years since I was 14 (starting at WWIN, Baltimore doing remotes from various dance halls and Sunday church services). In fact, I recently qualified for the Broadcast Pioneers organization - sure made me feel old. Last on-air gig was five years as morning man at WNCN, New York City. Also some part time relief work at WQXR, but all that stopped early this year. I now have my own small business, not in radio. Altho I'm on Roosevelt Island four days a week, and keep an FRG-7 there, most of my DXing is done from upstate NY, near Woodstock (of festival fame), where the setup includes two R-390 As, and pair of Collins 51-J-3s, which serve double duty picking up SW teletype newscasts. There are several beverages hanging in the branches of trees, each about 1200' long running N-S, and 500' E-W longwire, plus a ten year old Sanserino loop. The one R-390A was bought from Ralph Sanserino, and I had a chance to use in in Riverside CA at my brothers place. Since I was suffering from jet lag and getting up every am at 0430, I managed to log a Jap and an Aussie on 747 and 828, plus get some snatch of the mystery station (an LA unID) on 530 all using a 50 foot wire running E-W, and lying on the ground. (Harder to log 'em when you're lying on the ground, hi!-PRM). You CA people don't have the QRM problems we have on the East (or the earthworm problem, boy I got them all over me lying on the ground DXing the other day -PRM). It turns out I've spoken to Mike Collins (who works at the AP bureau in NYC) several times regarding news stories; it was a surprise to realize he's also a DXer; ditto regarding Bob Foxworth who at WCBS - we have several mutual friends. The CE at WQXR used to kid me for being a ECL (as he calls us) but he apparently always confirmed reports. '73

WHAT DO YOU THINK OF HAVING A MONDAY MORNING TIP LINE NEXT SEASON? THIS WOULD BE A NUMBER TO CALL TO GET THE VERY LATEST IN CPC TESTS NOTIFICATION, PLUS A CENTRAL EXCHANGE TO GET "DX AS IT HAPPENS" TIPS ON STATIONS OFF, DATTIMERS NOTED TESTING, OR CONDITIONS TO A CERTAIN AREA OF THE COUNTRY? MENTION IT IN YOUR FORUM OR WRITE ME, IT MAY BE COMING NEXT FALL// be sure to vote -prm

WHEELER CONOVER RR # 8 Box 344B Manchester KY 40962

8105.31

Time to again stuff Paul's mailbox w/a Forum. I just about can't do what Paul said we could do last ish- read DXM and send in a Forum for the next issue. I got my 5/16 yesterday - was this a wholesale delay or did I just hit it lucky? (hi). In since the last time is a SM-2 but right now it and the RF 2800 doesn't want to get along, and I doubt they will. Maybe a few improvements should be attempted, but I'm not the one to do them!! I will say the RF 2800 is about the next thing to junk, so avoid it if you can' (BCB is CK if you could get the loop to work right on it, but SW is the pits). Not much DX here due to lack of time and whatnot, but I did hear the Caribbean Beacon-1610 on 5/22 w/a weak signal doing REL, other than 3 dance mx stns down South (which I can do w/o disco and dance mx- give me some good T40 and oldies mx (OK, send me a tape-PRM)). Sorry to hear about Landecker leaving WLS, which shouldn't have happened - I listened to him more than a few nights when he was their nighttime DJ back in '77. I hope to have a part time job at local WWXL-FM this summer as a DJ, but it looks a little cloudy right now, so what I do w/my free time this summer is still unknown to me. I had better find out in a hurry, because school's out in 4 days!! Say, that reminds me about studying for my 2 day German semester test, so I'd better get to it. I'm gone until next time, so tschu von Herr Rod (or, so long from Wheels. (I have a Landecker interview if you're interested-PRM)).

PAUL MOUNT 471 Emerson Avenue Teaneck NJ 07666

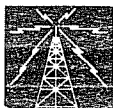
All Forums received before the end of June are here. For a long time I've been thinking that IRCA should do a member survey, similar to what NRC has done. This would be a set of questions about the club that each member would be asked to answer and return for compilation. I guess my idea hasn't gotten past letters to President Pejza or Chairman Portzer. Sample questions: What do you like most/least about IRCA? How does the frequency of bulletins suit you? What is the maximum you would pay when a necessary dues increase arises? What sections do you find most and least useful in DX Monitor? Do you have any feelings on Forum line lengths? What columns would you like to see more often? Less often? Added? Eliminated? In addition, I suggested that the publishers or president have a behind the scenes list of interested people for various typing jobs. They get some idea by seeing who volunteers for open positions but are not appointed. But how about something to the effect of "Anyone interested in typing or future column editing please contact the IRCA President; we would like to have an idea of who is interested"? (I think I just did it, hi). As an example, I'm not going to be typing Forum forever; it would be nice to know that someone is waiting in the wings for the time that I decide to serve DXers in some other way. Next time I hope to have some Forums about the first convention of the year, GWDXA Chicago. Vote! 73PRM

BILL TOWNSHEND 4500 Conn Ave NW#901 Washington DC 20008 202-966-8046 6/18  
Greetings once again from the land of pleasant living. On Sat 5/30 Kick Astarb hosted a WADXA GTG in Silver Spring w/20 DXers (mostly SWLers) and including IRCANs Greg Monti, Tom White, Rich Kimmel WA3OWN, Doug Williams and yours truly. A cold front zilched BDB DX after 2100 that night. The next WADXA GTG is slated for WA3OWN's College Park MD QTH in mid-September. WEAM-1390 & WINX-1600 are AN weekends only. On Sunday 6/7 I made it ON FOOT from my NW DX pad to Crabtown (Annapolis), the gates of the Naval Academy. I ended my 37 mile (60 km) walk w/a surf meal at a restaurant overlooking the Chesapeake Bay w/the land bridge crossing it (previously walked on 4/26), several freighters on the downstream side of the bridge, the naval radio stn' (NSS on VLF, carrier frequencies audible to dogs, cats, and birds.)s Tower Farm w/the flashing red lights (not the district, hi), and tee giant carinas on Spa creek w/4500 sailboats tied there. I came home by bus and taxi. A week later last M and T those lazy hazy crazy days of Summer, a time of Sodas, pretzels and beer, dumped down on us w/air temps of 97/36 - very oppressive. I plan to be at the ANARC Convention next month come hell and high water, even if I cab it all the way, hi. I had two out of town trips last month to Pittsburgh and Cape May NJ. A midday bandscan on the 12-655 Trf yielded .2 stations at Pittsburgh and a similar bandscan at Cape May gave 96 stns. I heard WJR-760 in midday<sub>2</sub> in western PA and WPRO-630 and WRKC-680 in midday in S NJ. 8.544003745) that's 73 de Bill T. (2022-PRM).

#### RENEWALS

Edmund O'Leary, Walter P. Ortner, Mark Tribe, Goran Eriksson, David Williams, Bill Coleman, Jr., Edwin W. Conover, J. C. Doherty, David B. Gibson, Jr., Thomas F. Butas, Phil Conley, Larry Glass, Percy Kesteven

REMEMBER ALL RENEWALS AND ADDRESS CHANGES SHOULD COME TO ME FOR MORE EFFICIENT SERVICE.



# Western DX Forum

☆☆☆☆

IRCA—Serving the Broadcast Band DX'er Since 1964

Editor: Ric Heald · 2618 Spring Creek Dr · Santa Rosa, California 95405 USA

DEADLINES: 30 JULY, 26 AUGUST, 09 and 27 SEPTEMBER 1981

STEVE MITTMAN, 2248 W. 37th ST., SAN PEDRO, CA 90732 (213) 833-1010

Following a two-year, then another two-day delay, on Sunday morning, 12 April, the Space Shuttle Columbia lifted off for its historic flight. It was due to land Tuesday morning at 1020 PLT at Edwards AFB (about two-and-a-half hours away), so I went out there, along with Mark Bixby, another friend, my trusty TRF and wedge. Upon our 0200 arrival, there were thousands of campers, trailers, RVs and cars. Somehow we managed to squeeze right up to the front.

As soon as we stopped, I popped outside with headphones and began DX'ing, hi. (But of course, hi-Rth.) There was only one local (KDOL 1340 Mojave), but nevertheless we were still too close to home for anything new to be heard. Once, on around 1640, I thought I heard a transmission with the astronauts or Houston, but it was extremely weak. Probably an overload spur from a transmitter on the base. Fell asleep at 0300, but by 0500 the sun was up and people everywhere. Apparently I was too excited to be tired, so I went outside and set up my TRF and wedge again. Every two minutes someone came by and asked me what that "thing" was and I enjoyed telling them that it was an AM antenna which I built and at night I could listen to stations hundreds and even thousands of miles away. They were quite impressed. (Too bad I did not have any IRCA literature.) (But the bottom line is, Steve, did you get any addresses for sample DXMS?-Rth.)

Locals KAVL, KDOL and KUTY were providing updates between songs, but KKZZ 1380/KOTE 106.3, "Your official Shuttle stations for the Antelope Valley," were providing continuous live coverage, so I stuck with them.

At 0850 an interesting thing happened. The announcer said, "OK, we have with us now. . .this is KOTE/KKZZ in Lancaster and we've got KAVR in Apple Valley and KENO in Las Vegas. We're all together on the same line, gentlemen. Good morning." They then began talking about what the weather was like in their respective desert cities, the huge crowds (someone mentioned a line was backed up six miles as people were trying to get on the base), the vendors and concession stands and other "important" stuff. At 0855 KOTE/KKZZ broke in and said "they'd have to leave here "for our NBC newsfeed coming in right now." Now that's what you call the news media feeding on itself, hi.

As the Shuttle approached, an announcer said that he just heard two sonic booms. A few seconds later everyone where I was heard them as well. . .they were extremely, thunderously loud. It was truly an exciting event.

Before leaving I did a bandscan and heard midday, KNBR, KBOI, KOB, KFBK and KDWN, all audible at armchair level. Then, as 200,000 people tried to leave, the massive traffic jam hit. It took us two hours to move 50 yards and three hours to leave the lot. Thank goodness someone remembered the poker chips and cards, hi. 73 de SMM

GLEN KIPPEL, 3394A G ST., MERCED, CA 95340

Shalom. After 16 years absence from these pages, here I am again. (Well, there goes the neighborhood. . .) I still have my rusty, I mean trusty, old SP-600-JX17 but living 100 yards from a 70-KV powerline means that longwires don't work. Besides, my back yard isn't that big.

Around the end of February I threw together a shielded, unbalanced, non-resonant, non-rotatable loop which was sufficient to log HJCE 890, JOIB 747, JOUB 774, JOBB 828. More recent loggings include XEPS 710, HOL80 840 and CKAL 1050.

I'm presently working on a smaller, rotatable loop, which so far is good enough to pull in KBOI 670 daytime (nulling KNBR) and Sierra National Forest TIS 1610, which emanates from the Shaver Lake ranger station, with the ten-watt transmitter at Mountain West.

Now a couple of comments. Phil Byetheway, your SP-600 must need alignment. Need information? I get a stronger S-meter reading with the crystal filter. Try a 500-8 ohm transformer to drive a speaker. I use headphones cobbled up from a pair of telephone company surplus U-1 units, which give decent readability when using the XTAL filter. The noise limiter can be tamed by adding a 100K resistor in series with the switch, or put in a pot.

Oh, anyone looking for an R-392, Cut-Rate Electronics in Fresno currently has six of them. Well, 73 and I'll let you know if I hear anything interesting. (Welcome back to IRCA's "Blue Pages" Glen. Good to have your forums as often as you can send them-RtH.)

DAN FLAK, PSC BOX 1159, APO SAN FRANCISCO, CA 96328

A word about DX'ing in Japan. Every location has its problems, so here's mine. The first one in Japanese Standard Time (JST) which is GMT + 9. This gives us: JST 0000 (0500 SR, 1700 SS), GMT 1500 (2000 SR, 0800 SS), EST 1100 (1600 SR, 0400 SS), PST 0800 (1300 SR, 0100 SS). At first glance, it looks like the period 17-21 JST would be convenient for North America DX. However, most of the band is booked solid with JJs until 0000 JST. There is a small window to Europe just prior to dawn, but I haven't had a chance to try it yet.

The second problem is geographical. If I attempt to aim my antenna to North America, I have two problems. The Great Circle Path lies close to the poles (76 degrees North for NEUS). Also the reciprocal headings (that's back azimuth to you Army types) is 210-to-240 degrees, which points the rear end of my antenna towards China and Southeast Asia. With a billion people living there, the bands tend to get crowded. Might as well be wired to the Tower of Bable.

Looks like DU is my only realistic hope (no luck yet). Add to this that nobody in his right mind beams EE to this area and you've got a tough situation. (Wrong, DX-less breath, hi. USSR, China and others all have EE programs at various times. Propaganda, of course, but it's EE, hi-RtH.) Nobody said it was going to be easy.

However, I'm convinced that good DX is possible, so I'll keep on trying. And now for a word of thanks. Since I joined IRCA several months ago, I've received quite a bit of correspondence from some of the members. The IRCA might not have done much to help my DX'ing, but it's helped me meet some really nice people. Got to go now and mow the lawn. . .one more uniquely Asian problem. . .I don't have crab grass, what I have grows taller and quicker. . .Bamboo. Sayonara and 73.

ROBERT WIEN, 1309 DENTWOOD DR., SAN JOSE, CA 95118

Some interesting DX of late. Received first TIS ever, Shave/Huntington Lakes, Sequoia National Park, thanks to tip in 13 June DXM (WDXR).

RtH, your unIDs in same DXM are probably as follows: 1320 probably KGNR who TTs about that time most MMs just prior to their 0800 s/on. Your unID on 1080 is probably XEDY Mexicali, R. Morelos, common that time of morning. I sent two reports to them in the past with no luck.

Have had a tough time verifying and Mexicali station, as follows: XEAA 1340 0/6, XEMBC 1190 0/1, XEHG 1370 0/1, XED 1050 0/7, XECL 990 0/5, XEWV 940 0/2, XERM 1150 0/4, XEFZ 850 0/2, XEAO 910 0/4, XESU 790 0/1.

Have heard 69 Mexicans to date, about one-half-to-two-thirds heard have received reception reports. Total of nine verified for about a 20-25 percent verie rate, compared to 63 percent for overall rate.

Best Mexicans heard to date: XEVQ 830, XEUR 1530, XERP 860, XECVC 700 (lo-cale unknown, XECG 1240.

Have a 0 percent verie rate for Mexicali and Mexico City stations, and a 44 percent (4/9) rate for Tijuana/Ensenada stations.

Stations still needed from Tijuana/Ensenada/Tecate area include: XEHA 560, XEMMM 800, XEDX 1010 (appropriate as we DX XE's, hi), & XEEBC 1500 (no chance, hi.) (Wanna borrow my heavy-duty wire cutters? hi-RtH.) One more, also with no chance, XEHC 1590. Others include: XEXCT 1230, XEKT 1380, XEPF 1400, XESS 1450.

In case anyone has heard loud SS nighttime on 1600 lately, KGST Fresno has apparently gone fulltime with SS programming. Have had an unID lately under KFVB 980, never strong enough for ID, seems AN. Eyeing XEKE, but could be XENR or XEFQ, though.

Some bad brush fires lately, one today in Napa destroying thousands of acres. (Don't believe everything you hear on the radio, hi. It was not in Napa, was not in Napa Valley, it was in Soda Canyon, Atlas Peak and foothills outside and east of Napa Valley-RtH.) This heat's killing us; bet it's nice and cool up there in Santa Rosa, hi. (It's heaven at one-oh-seven, hi-RtH.)

I never hear KPLS 1150 at night, or anytime. KBAI is dominant until s/off, then XERM, KPRZ, KAGO and KAYO fight it out. (Thought KBAI went fulltime, and KAYO s/off at 0000, but then again, I wouldn't know anymore, hi-RtH.) KPLS is almost as non-existent as KVRE/KQTE, which has been heard once here, three years ago during winter on SRS. Have KPLS veried though. Can barely get them during the day through bad KLOK slop. 'Bout all from here. Don't forget to vote. 73. (Robert, would you clarify first line of last paragraph with the fifth one re KPLS. Did you misplace punctuation, or did I goof?-RtH.)

TERRY A. KLASEK, 9720 VICKIE PL., ST. LOUIS, MO 63136

Greetings again. The crazy DX'ers of St. Louis will be holding a big blow-out this summer. It will be held in my 60-foot by 60-foot backyard in North St. Louis County. Dates: 14-15 August. On Saturday the 14th, I have arranged a visit to a number of radio stations and the Bush Brewery for free beer in-between visits. We will play at DX with two HQ-180As plus other rigs.

On Sunday, the 15th, will be the big picnic. I'll attempt to barbeque a record number of hot dogs, plus DX, a big SLIDX Wiffle Ball game and plenty of beer and soda.

On display at this event, all 500 assorted veries of Richard Pistek for all of you to drool over. We will have plenty of promo goodies from locals free for those attending, and trading at anytime. Three big sticker/promo item collectors will bring their duplicates out for the first time. All DX'ers from anywhere are hereby invited. Write to me at the above address for further details, maps, etc.

There are good hotels in the area and room for sleeping bags. (Terry, I've got the second subject, but missing a verb. Did you mean bedroll space at your QTH?-Rth.)

I have over 300 coverage maps on hand and I don't really collect them, so they are up for trade. I want 150 (AM only) stickers in trade and all different. First person to contact me gets them.

I hope to meet some of you in August. Good DX to all--you too Rich Eddie, hi. 73.

RICH TOEBE, 556 SANTANDER DR., SAN RAMON, CA 94583

Hello all. Now that summer's here and DX tends to fall by the wayside for many of you, I've got a little project in mind. By now, you know that I've taken over the Slogans List in the Almanac as well as the Updaters for the DXM, and presently I'm updating the Master List from the Almanac's second edition. I'm asking everybody in the club to go through their locals and either confirm that the slogan is still being used, or what the new slogan is, or whether they still even use one at all. (Obviously, new slogans are greatly appreciated, too, hi.) Any slogans in parentheses and not confirmed by the time I re-type the list for the next Almanac will be dropped. Considering how rapidly slogans change, I'm not going to waste time typing them when the odds are that they are erroneous anyway. There's been discussion lately about the level of contributions to the bulletins lately; here's your chance to contribute something important even if you hardly DX.

On another note, Doug Nyholm and I have been discussing our next Beverage DX'pedition. We'd really like to see a big turnout of BARFans and any others who'd care to attend. We've achieved some hot DX out there, and I can personally assure you that there is nothing like hearing Piji 774, KIPA 620 or trying to pick out an ID from four signals on 1206 at the same time. So plan to take part. (Plan it for Bodega Bay, hot weather and no Officer Zealous, and I'll consider, hi-Rth.)

Ric, I enjoyed watching you do your thing at KNBA that Saturday when we invaded the station. Good luck in your new job. (Thanks, Rich-Rth.)  
73 and see you in Calgary and send me your slogans.

DOUG NYHOLM, 2071 CEDAR ST., SAN CARLOS, CA 94070 (415) 593-3330

Hellow all. I tried some sunset DX last week for the first time in about a year. It kind of surprised me. Conditions seemed pretty good to the northwest as new loggings include KASY 1220 and KKEY 1150. Several others heard also. (This time of year is perfect for northwest s/offers, Doug-Rth.)

In other news, what I would like to do is organize a major Beverage DX'pedition this fall. I have 3,200 feet of wire plus all the stakes and termination resistors, so if you don't have any equipment to contribute all you have to do is bring yourself.

Last season, for the most part, only Rich Toebe and myself could make it for one reason or another (what's a little rainstorm or a \$50 parking ticket? (That's it, ya hit the nail on the head, hi-Rth.)

Anyhow, I figured if I put out the word early enough you DX'ers and BARF'ers (that doesn't quite sound right) (You said it, you get out of it all by yourself, hi-Rth.) could make plans, help me set up a date that could accommodate most people and we could have a great DX'pedition. Initially I was thinking of the last week of August or the first week in September. This may seem early but after a long summer of minimal DX it couldn't be dismal (could it?). Last years' Point Reyes DX'pedition (03 August I think) was a success. A lot of people turned out, unfortunately the stations didn't until about 0230 when most people were gone or asleep.

I know a good location 22 miles south of Half Moon Bay and you can even DX from the comfort of your car. More details later but for now give me a call at (415) 593-3330 or write. I sure hope that some of you would like to help plan and make this a great Beverage party. C U soon and 73.

NICK HALL-PATCH, 1538 AMPHION ST., VICTORIA, BC V8R 4Z6

After editing the TP and LA sections of the Foreign Log, might I make a small request of DXWW reporters. When you send in a logging, rather than just saying "poor with ID," why not elaborate a bit? Like, what was the ID (call letters, slogan) and what was the programming? Was there interference which had to be nulled, etc.? Not only would this make the logging more useful at the time to other DX'ers, but it would make the foreign log more accurate. It really was hard at times to make a decent station entry in the Foreign Log when all that was on hand were very diffuse loggings of a station which I wasn't familiar with. I hopw this suggestion sits well with the DXWW editors. Perhaps for future foreign logs, a more appropriate editor could be found for the LA section, as a great many LAs are unfamiliar to me in this corner of the continent. If somebody in the southern U.S. is interested, get in touch with me and I'll let you know what's involved.

Rick Svjdlenka, CFAX 1070 hasn't upped power that I know of. But their signal has been getting dirtier, so could be that the pattern's out of whack as well. Now they generate a splatter-type noise around 1010 kHz (beyond their usual splatter at that frequency), and occasionally at other points of the dial. The most vivid spur however, is at 535 kHz, and mucks up 540 and occasionally 550. It sounds like splatter as well, but there is a carrier of sorts also. Can anybody hear this outside of Victoria? Was listening to the news on CJVI 900 awhile back, when suddenly their audio was drowned out by mushy CKNW 980 audio; you could hear the CJVI DJ peeping away underneath "we are having technical problems." You bet. Was cleaned up in about 20 minutes, but the engineer isn't saying what happened.

And really Ric, if you can't hear summer DUs in Santa Rosa, then maybe you should talk to Hank Wilinon there. He seems to be NRC's answer to Pat Martin. DUs on 657 and 756 are often heard up there, so maybe try them. (Two fantastic frequencies for horrendous TVI at my QTH, but will try-Rth.) 73 for now.

ROB GERARDI, 102 S. GRANT AVE., #2, LIBERAL, KS 67901

Greetings to one and all from the Central High Plains. I moved here around May 1st to start my new job as the 8 PM to 1 AM (ELT) DJ for KSCB 1270.

Format is Adult Contemporary, and I believe that we must have the world's largest collection of 45s by the Carpenters and the Captain and Tennille ever assembled in one spot. Though I have been fortunate enough to be allowed to expand the night playlist to include some hard rock artists, as well as featured albums by such artists. So our listeners have been treated to the likes of George Thorogood, Jethro Tull, and Pink Floyd, and have loved it. The albums come from my collection as well as that of one of the other DJ's.

There's been talk of automation, and because we've lost both the PD and CE (management's decision) I don't know how much longer I'll be here. Yet while I'm here, I'll see to it that all correct reception reports get QSLs. Also, I have access to the logs from 1978 to present so if you have an outstanding report to KSCB send me a follow-up, to the above address, and I'll check it out for you.

DX here has been lousy. Though I did manage to get a report off to CDXR from this locale.

If I owe anyone airchecks from Illinois, please let me know. I taped just about every station back that way to have on hand. 73 de Rob. (Welcome to WDXF, Rob. Good to hear from another Midwesterner and someone else in the radio industry-Rth.) ~~795 3297~~

RIC HEALD, 2618 SPRING CREEK DR., SANTA ROSA, CA 95405 (707) 523-0210 to 2100 PLT and prepaid

Greetings from Sonoma County, and after Vallejo, "God's Country," hi. Send KPLS reception reports (good luck, hi) to Roger Shannon, PD. KPLS is directional WNW, with an ERP of 20kw D, 2 kw N, severely nulled to the east, protecting KRAK 1140. I'm SW of transmitter site by 1.2 miles, so not getting the full impact of the ERP figure. Night, KRAK no problem, KSL is fair with KPLS "nulled."

Have done some minor DX, very little time available. The usual Monday to Friday sales stuff, plus weekend fill on the air. Last two weeks I've had the pleasure of 0000-0600 Sunday.



Santa Rosa vs. Vallejo reception. Although I'm nearly twice the distance from San Francisco as from Vallejo, latter location was northeast of San Francisco and off to the side or in back of Bay Area station's lobes. Santa Rosa is northwest of San Francisco and smack dab in the middle of everyone's lobes. Soooooo, San Jose is once again strong and virtually unkillable. But, YA 1260 is lost to Calgary at night, and my once horrendous pest, KEST 1450, fell. . . I sure enjoy the country music of KONE, hi.

Daytime DX changes little with the move. Lakeport, Grass Valley and Mendocino now audible, traces of Ukiah under KRE, likewise Fr. Bragg under KWG. Minuba, KRAK, 1340 and 1360 inaudible for some strange reason, but little if any slop from KQTE 1460. Nighttime, 1340 and 1360 are fair, and all Santa Rosa stations are remarkably clean. Am using the FRG-7, and there's not a spur or harmonic to be found. Seems the Hammarlund became hot, mild shock to the touch, so went over to the FRG.

Briefly, I'm appalled at network journalism for their inaccurate reporting of the Napa area brush fire. Monitored KVON 1440 throughout the period, they had their own men on the scene, and net news had a different version. The biggest error though, was the constant mention that damage would have been far greater had the fire turned and hit the vineyards. First rule of journalism is to know your facts. Had they checked, they would have known that density of a vineyard is about 90 percent less than the burning hillsides and that all the vineyards have elaborate sprinkler irrigations systems which would have been activated and checked the flames. DUMB!

As RW mentioned, yes we had a heatwave. Five days over 100°, but, and you guys back east listen up, with 15 to 20 percent humidity. I felt more uncomfortable in Washington, DC two years ago at 88° than I did in Santa Rosa at 107°. It do make a difference.

Because I am sharing my present living quarters with a family, please respect their privacy when calling me, it is their phone, and no calls after 9 PM PLT for whatever reason, please. I'm still looking for my own living space, hopefully by early fall. This temporary measure came about simply because a 90-mile daily commute plus 50-100 miles during the day was killing me, not to mention the gas.

Well, enough for this time around. See you in 30 and 73 de Rth. .

Bruce Portzer - 6546 19th Avenue Northeast - Seattle, WA 98115

Pssst, Rth. Reread the last sentence of your second to last paragraph. The 90 mile commute couldn't have killed the gas, since gas is a non-living substance derived from the remains of long-deceased dinosaurs, hi.

Re Paul Mount's suggestion for a membership questionnaire. I'm all for the idea and have actually put together a rough draft or two for one along the lines he described. Unfortunately, putting it into final form hasn't yet reached the top of my priorities list.

The biggest news here, DXwise, is a visit to Jordan River, BC, with Nick Ball-Patch on 7/4-5 SM. We put up a couple of 1300' Beverage antennas about a mile from the beach with good results. Lots of Aussie/New Zealand stations came barreling in, along with a handful of Pacific Island signals. We noticed a "sunrise enhancement" around 5 am, where good DU signals came rolling in on previously quiet channels. Things remained good until about 0550 PDT when the DX all faded into oblivion. Nick noticed the same effect during previous visits out there --- mildly interesting cx all night until just before sunrise, then POW!, more DX than he thought possible. Which leads up to a suggestion for any West Coast DXer with a battery-powered rig, a loop, and a car --- if conditions seem promising, hop into your vehicle and drive out to a beach (preferably far from power lines, etc). You'll probably be amazed at the results, and you'll be able to catch a few hours of sleep by skipping the normally unproductive hours of a DX session.

I was rather surprised to find out KLIV had switched from the music of my life to the music of my ancestors' lives, but that's life, hi.

Neil Kazaross, congratulations on Spain-1584 and good luck with your new job in El Segundo.

I guess it's time to call it a forum. 73 and remember to vote if you haven't already do so.

**HORA EXACTA. S. A.**  
CONCESIONARIA DE LAS  
RADIODIFUSORAS

**KEQK**

UNICAS QUE DIFUNDEN MINUTO A MINUTO DURANTE LAS 24 HORAS DEL DIA  
LA HORA EXACTA DEL OBSERVATORIO ASTRONOMICO NACIONAL DE MEXICO

EN ONDA LARGA 1350 KHz.  
EN ONDA CORTA 9665 KHz.  
EN F.M. 91.3 Mhz.

# VERIFICATION SIGNERS

DON MOORE

Box 157, RD #5

Bellefonte, PA 16823

```

*****
540 WGTO q Dr. Frank L. Berry, CE JHD
550 WHLM l Anthony F. Hogg, CE JHD
560 KLVI l Steve Sandlin, CE TPN
    WFRB l D.C. Loughry, CE JHD
570 WKBN q unsigned JHD
590 WMBS q George J. Halvonik, CE JHD
600 Moscow q unsigned via Cuba JHD
610 WIP l Phillip Harris, CE JHD
630 WMAL q unsigned CE JHD
650 WSM q unsigned JHD
660 WNBC q none JHD
670 WMAQ l William R. Ryan JHD
700 WLW q unsigned JHD
710 WOR q Paul K. Stewart, CE JHD
720 WGN q James J. Carroll, CE JHD
740 CBL q M. Bettam JHD
750 WSB q unsigned JHD
760 WJR q unsigned JHD
770 WABC q Winston H. Loyd, CE JHD
800 WCHA l C. David Bennett, Op Mgr KVJ
    WMGY v verie on CM unsigned KVJ
    CKLW q Ed Buterbaugh, VP Eng JHD
    TWR q C. Vanden Akke JHD
810 WDMP l Richard A. Carroll, GM TPN
820 WOSU q unsigned JHD
825 RPar l (Radio Paradise) unsigned CE NW
830 WCCO q unsigned JHD
850 WEEU l Dave Schilpp, VP & GM JHD
860 WLBG l Bill Hogan, GM NW-KVJ
    WUCR l cm, stcks Don Howard, PD KVJ-DHM
870 WWL q C. DeCota JHD
880 WCBS q unsigned JHD
900 CHML q unsigned JHD
    WNNO q & l, Kevin Ruppert, CE TPN
910 KCJB l Rocky Hefty, asst CE (luv that name!-DHM) TPN
    CKLY l Bob Eakins PD JHD
930 KSDN l Jo Larson, Chief Operator NW
    WBEN q unreadable, CE JHD
    WLBL l & q Don Moran, Tech Coordinator. TPN
        address: 732 North Midvale Blvd., Madisnon Wi 53705
    WLLL l R.D. Woods, CE JHD
940 CBM q Andrew Simon, dir JHD
960 KMA q Norm Kling, CE TPN
980 WTOT l Jerry Brewer, GM KVJ
990 WEEB l Mitt Younts, P & GM KVJ
1000 WKLO l Ralph Randolph, GM KVJ
1010 WINS q unsigned JHD
1020 KDKA q unsigned JHD
1030 WBZ q Norman Graham, EM JHD
1040 KPBC up (??-DHM) John Socolof, CE KVJ
    WHO q unsigned JHD
1070 WKOK l John W. Keller, JR, VP Eng JHD
1080 WTIC q unsigned JHD
1090 KEXS l Willie A. Williams, Pres TPN
    WBAL q Rowland Kraft, CE JHD
1100 WWWE q Jim Schiaitte, EM JHD
1110 WBCA l Milinda M. Homan KVJ
1110 WBT q Richard Mertz, CE JHD
1120 WWOL l Ken Johnson, PD KVJ
1130 WNEW q Frederick Moore JHD
1140 WRVA q Tom Ogburn, Asst. CE JHD
1160 WJJD q Henry R. Rush, CE JHD

```

1170	WWVA	q	unsigned	JHD
1190	WOWO	q	Dave Snyder, EM	JHD
1200	WOAI	q	unreadable	JHD
1210	WCAU	l	unsigned	JHD
1220	WGAR	q	unsigned	JHD-DHM
	WKBK	l	cm Lindsay Collins, CE	TPN
	KVSA	l	James S. Junt, CE	TPN
	CJRB	q	Ed Fast	JHD
1230	WBPZ	l	Lynn A. Deppen, CE	JHD
1240	WRTA	l	Michael Morning CE	KVJ
	WBCF	l	Benny Carle	KVJ
	WPAX	l	Jim Jacobs, PD	JHD
	WEMB	l	Jim Crawford	TPN
1250	WTAE	l	Kurt J. Haase CE	JHD
1260	WIBV	l	Marvin Mollring, CE	KVJ
	WPHB	l	C. Dean Sharpless, CE	TPN
1270	WXYZ	up	Charles Bush, producer	JHD
1280	WNPT	l	Tom Voorhies, OM	KVJ
	WNAK	l	Bob Beck, operations manager	TPN
1290	WFBG	q	unsigned	JHD
1300	WFBR	q	unreadable	JHD
	WKXI	up	Tommy Marshall,	KVJ
	CKOY	l	Linda Lines	JHD
1310	WKTQ	q	Jeff Gulicle, CE	JHD
1320	WFTC	q	J.R. Fulmer	JHD
1330	WFBC	q	J.R. Fulmer	TPN
1340	WMKE	l	LeRoy Wolniakowski, Exec VP & Tech Director	JHD
1350	WCSM	l	Brad Lovett	KVJ
1360	WWWB	l	Leon Wilcutt, Sales Mgr	JHD
	WSAI	q	John M. Ierham CE	TPN
	WHBG	q	H.E. Richardson, CE	JHD
1370	WKMC	l	G.Robert Reigh CE	KVJ
1380	WBNX	l	Alvin V. Jayne, CE	KVJ
	WFEA	l	Steve Vanni, CO (opps-out of order-DHM)	KVJ
	WYHK	q	Don R. Brown, PD	KVJ
	WQHK	l	Randy Henderson, asst. CE	JHD
1390	WFBL	q	D.Z. Bordman, CE	JHD
	WRSC	l	Bob Zimmerman, mgr	TPN
1400	KTFB	l	Warren R. Cullom, CE	JHD
1410	KQV	l	Gerald M. Land, CE	JHD
1430	CKFH	q	unreadable	JHD
1440	WHHH	l	John L. Armour, Eng	DHM
1450	WCTC	l	stck, promos, Buddy Seibert, DJ	JHD
	WMAJ	q	Carl Wogh, CE	KVJ
	WMOH	l	Steven D. Crum, CE	KVJ
	WXVW	up	unreadable OM	JHD
1480	WHBC	q	John Sehen, CE	KVJ
	KBEA	l	Robert P. Ingram	KVJ
1490	WDUR	up	Alvin Stowe, PD	JHD
1500	WTOP	q	unsigned	NW
	WEAC	l	Craig St. Turner, CE	TPN
	WGEN	l	Joeseh E. Lobaito, pres & GM	TPN
1510	KMSD	l	Denny Comfort, PD	JHD
	WLAC	l	Watt Hairston, CE	TPN
1520	WLUV	l	John R. Lee	JHD
	WKBW	l	Peter Burk, CE	JHD
1530	WCKY	q	Jim Ranney	NW
1540	WMLW	l	Gregory W. Siekfer, GM	KVJ
1550	WWWN	l	Bill Goodson, CE & MGR	TPN
	KIWA	l	Frank Luepke	KVJ
1560	WTAI	l	Carla A. Prine, OM	JHD
	WQXR	q	Walter Neilman, Pres & GM	KVJ
1570	WMES	l	Ray Lott	TPN
	KSRB	l	Bill C. Trimble, GM	TPN
	KTER	l	Richard E. Zimmer, Pres.	JHD
	CFOR	l	Gray Hooper	JHD
	CKLM	l	Geoffrey O. Brown, PD	NW
1580	KFDF	l	cm, Don Doss	NW
	KPCA	v/r	unreadable	NW
	WAMY	q	unsigned, CE	KVJ
	WAXU	up	R.E. Johnson, GM	TPN
	WBBA	l	Russ Knepler	JHD
1590	WAKR	q	unreadable	JHD

Faster than a speeding postman, able to leap a Sanserino Loop with the aid of a very tall ladder . . . this column is brought to you by . . . JHD John H. Demmitt, Bellefonte, PA

KVJ Karl V. Jeter Decatur, GA

NW Neil Wolfish Toronto, ONT

TPN Timothy P. Noonan, Milwaukee, WI

DHM Don Moore Bellefonte, PA (4 miles East of)

I received a comment from Tim Noonan concerning the presence of "unreadable" & "unsigned" verifications in what is called a "verification signers" column. Obviously a bit of a contradiction. I am unaware of any IRCA policy concerning such an issue, however should there be one, I will follow it. In the meantime I will continue to print them. My view is that first of all such an item does show that the station will verify - therefore less chance that you're throwing valuable postage stamps away! Secondly, myself, & I'm sure some other DXers, am more likely to report to a station if I know it issues a QSL card (as opposed to a letter) or if it sends out stickers, cm, etc. Any further comments on this issue or any other concerning this column will be appreciated. As will details of your latest QSLs received! 73s, Don

.....

## FCC, Under Fowler, Delays and May Kill AM Plan, Giving Broadcasters Big Victory

Wall Street Journal  
6-8-81, via Todd Skaine  
and Mark Connelly

By MARGARET GARRARD WARNER

Staff Reporter of THE WALL STREET JOURNAL

WASHINGTON—The broadcasting industry seems on the way to winning its first major reversal of Federal Communications Commission policy in nearly four years.

Just three weeks after President Reagan's choice to head the FCC, broadcast attorney Mark Fowler took over at the regulatory agency, he and other members of the newly realigned commission agreed privately and informally to postpone consideration of a controversial proposal that could substantially increase the number of AM radio stations throughout the Western Hemisphere.

Insiders on both sides of the issue see this Fowler-instigated delay as the first step in scuttling altogether a proposal unanimously endorsed by the FCC just 18 months ago. The National Association of Broadcasters, the industry's Washington-based lobbying organization, is thrilled.

### Nine-Kilohertz Spacing

"It's been a giant effort for us, and now it looks like it's starting to pay off," said a NAB official, Rory Wilcox, upon hearing that the vote had been postponed. The NAB has spent, by its own account, hundreds of thousands of dollars in the past two years to undermine a proposal to shrink channel spacing on the AM radio dial in North and South America to nine kilohertz from the current 10.

The rest of the world has already switched to nine kilohertz, and the U.S. advanced the proposal for the Western Hemisphere last year to reduce growing interference problems between radio stations broadcasting on the same frequency from different nations, a particularly acute problem between Cuban and U.S. stations.

Arguing that the move would reduce AM sound quality, impose conversion costs on station owners and make existing digital radios obsolete, the NAB funded economic and technical studies, joint government-industry research committees and an extensive lobbying campaign aimed at FCC members, House and Senate members and the State Department. The State Department must negotiate an agreement with 28 other North and South American nations, and the Senate must ratify any treaty that results.

The U.S. vigorously lobbied South American nations to endorse the nine-kilohertz proposal at a March 1980 conference in Bue-

nos Aires, and the State Department told a congressional committee late last week that foreign-policy considerations favored sticking with that position when the issue comes to a final vote in Rio de Janeiro in November. But Assistant Secretary of State James Buckley said his negotiators would be guided by the FCC's final decision on the issue.

NAB pressure was aimed in recent months at simply winning a delay in next Tuesday's scheduled FCC decision because one of the proposal's most ardent backers, former interim Chairman Robert E. Lee, retires June 30. The NAB's hopes for delay rose when Mr. Fowler was confirmed last month, and Miss Wilcox then remarked: "We have a little political game going on here—will Fowler change the agenda?"

Mr. Fowler's staff insists the postponement isn't politically motivated or designed to manipulate the ultimate vote count on the seven-member commission. His advisers note that an eight-nation panel of technical experts has been meeting in Geneva since April 22 to determine if the move to nine kilohertz will alleviate international radio signal interference. The Geneva report won't be ready until June 19 at the earliest, and Mr. Fowler wants to wait for it.

His advisers insist this multination engineering report will be the most objective of all studies done on the issue, despite the fact that the official U.S. delegation consists of four FCC staffers and four persons selected by the NAB. "You can't call that unusual," Kaimann Schaefer, Mr. Fowler's international economics adviser, said of the NAB's role. "Government often has to rely on industry for technical advice."

Commissioner Lee's June 30 retirement will be the FCC's third since it voted in December 1979 to join the rest of the world in moving to nine-kilohertz spacing. The two other recent commission retirees, former Chairman Charles Ferris and Tyrone Brown, also were strong backers of the proposal.

They believed it could add as many as 1,460 new AM stations to the 4,600 currently broadcasting in the U.S. and give minority entrepreneurs, public radio and daytime-only stations a chance to compete in the full-time AM radio market.

The same new frequency can be used simultaneously by several stations in the U.S. and elsewhere in the hemisphere if the

strength and direction of their signals are engineered to avoid interference. But the NAB disputes the estimate of 1,460 new U.S. stations, saying the U.S. will be lucky to get 40 new stations when neighboring nations begin competing for the new frequencies.

### Commissioners' Positions

Unless the Senate acts quickly on Mr. Reagan's most recent FCC nominee, Mr. Fowler believes there will be only six commissioners voting when the nine-kilohertz issue comes up for final consideration, probably in July.

Only two firm supporters remain from the December 1979 vote, Commissioners Joseph Fogarty and Anne Jones. Two FCC members who endorsed the measure with reservations have since come out strongly against it, Abbott Washburn and James Quello, who was reappointed to his post by the President Friday. And Mr. Fowler, while insisting he hasn't made up his mind on the issue and won't be swayed by his broadcasting background, indicated considerable empathy for the broadcasters' view in an interview with The Wall Street Journal shortly before taking office.

"If introducing 30 more radio stations into a particular market erodes the broadcasters' economic base so they can't afford to produce news and public affairs shows anymore, is that in the public interest?" he demanded. "In some places, it's hard for broadcasters to do well. It's been very tough to survive, you know, because there are already too many of them."

That leaves Mimi Weyforth Dawson, Mr. Lee's already-confirmed replacement, as the "wild card" in a six-commissioner vote, noted an FCC official. Mrs. Dawson refused to commit herself when asked about the issue at her confirmation hearing.

"She could make a difference," the FCC official said with some skepticism, "but I think the switch on this commission in the last four months is clear. Power is being passed from free-market, open-competition types to people who are more sensitive to the concerns of established industry when it feels economically threatened. Politics is changing the numbers, and numbers will change the policies."

# Sports Networks

SUMMER ADDRESS (to 9/15)  
 Dave Yocis  
 85 Vesper Street  
 Fairfield CT 06430

1981 Baseball Networks : Update No. 1

For a number of reasons, our baseball listings remain incomplete and I apologize for that. Plus, as this is being typed, the possibility exists that you may not hear baseball at all this year! I will update assuming I get the rest of the information.

Thanks to Mike Endza, John Clemmer, Bill Hardy, Tim Cronin, Terry Klashek, Gzeg Monti, Charles Sanders, Mike Cooper, Andrew Rimmington, and Tom Arey. Thanks to these and everyone else I forgot!

## AMERICAN LEAGUE

Boston Red Sox

Add the following:

850 WEAT-FL

Detroit Tigers	Ernie Harwell,	Paul Caray	
580 WTCM-MI\$	970 WUPY-MI*	1280 WFYC-MI*+	1450 WATZ-MI+
590 WKZO-MI	1150 WCEN-MI	1290 WHGR-MI	WHTC-MI+
760 WJR--MI	1220 WBCH-MI*+	1340 WMTB-MI	WKLA-MI
790 WSGW-MI	1230 WCUZ-MI	1370 WWAM-MI	WNBV-MI
850 WKBZ-MI	WSOO-MI	1400 WCCY-MI	1480 WIOS-MI*+
900 WATC-MI*	WSTR-MI+	WSJM-MI	1490 WMPX-MI
920 WMPL-MI*+	1240 WCBY-MI+	WTCM-MI\$+	
930 WBCK-MI		plus 3 more FM.	

\$ - WTCM has a CP for 580. Presently operating on 1400.

Minnesota Twins  
 DROP WHO-1040-IA.

Oakland A's  
 SPANISH COVERAGE: KIQI-1010\* w/CP to go fulltime. Carries home day games only.  
 Announcers are Julio Gonzalez, Amuary Pi-Gonzalez.

Texas Rangers			
710 KGNC-TX	820 WBAF-TX	1200 WOAI-TX	1250 KPAG-TX
790 KPYO-TX	970 KSYL-IA ?	1230 KSPA-AR	1340 KTOW-OK
KULF-TX	1150 KXLR-AR	1240 KOCA-TX	plus 1 FM.
	KRBD-OK		

## NATIONAL LEAGUE

Atlanta Braves

Ernie Johnson, Paul Van Wieren, Skip Carey, Darrel Chaney

560 WIS--SC	1170 WCOV-AL	1300 WMAK-TN	1410 WDAX-GA*
580 WGAC-GA	1230 WAUD-AL	1310 WTIK-NC	WLAQ-GA
600 WSJS-NC	WSBB-FL	1320 WAGF-AL	1420 WRCG-GA
710 WKRG-AL	WBLJ-GA	1330 WMLT-GA	1450 WDLK-AL
750 WSB--GA	WFAT-NC	1340 WTRF-GA	WGPC-GA+
800 WJAG-GA*+	1240 WLCO-FL	WOKB-SC	WBHF-GA
860 WDMG-GA+	WBHB-FL	WBAC-TN	WKEU-GA
930 WJAX-FL	WDUN-GA	WKGN-TN	WMVG-GA
WMGR-GA	WLAG-GA	1350 WGAD-AL	WLAR-TN
WSOC-NC	WWNS-GA	1360 WKAT-FL	1470 WCLA-GA*+
940 WMAZ-GA	1270 WTNT-FL	1370 WDEF-TN	WBIG-NC
970 WFLA-FL	1280 WIPC-FL*	1390 WHMA-AL	1480 WARI-AL
1070 WNCN-NC	WSAT-NC	1400 WCOH-GA+	1490 WMOG-GA
1130 WMGA-GA	1290 WWSA-GA	WSGA-GA	WTRB-SC
1150 WDIX-SC	WATO-TN	WKDY-SC	1590 WVNA-AL

Chicago Cubs

Vince Lloyd, Lou Boudreau

720 WGN--IL	1170 WLBH-IL	1340 WSOY-IL	1460 WKAM-IN
980 WITY-IL	1220 WLPO-IL*	1400 WBAT-IN	1520 WBNO-OH
1110 WFBM-IN*	1300 WAAC-IN*	1440 WGEM-IL	1540 WBNI-IN*
1150 WKYK-IA	1330 WRAM-IL*	WRBA-IL	1580 KWMT-IA*
		plus 4 more FM's.	

Houston Astros Gene Elston, DeWayne Staats  
 1070 KENR-TX plus network. Help?

Montreal Expos

ENGLISH network: Dave Van Horn, Duke Snider

600 CFCF-PQ	1240 CJNH-ON	1340 CJLS-NS	6005 CFCX-PQ <sup>2</sup>
800 CJBQ-ON	1270 CJTN-ON	1350 CKAR-ON	6130 CHNX-NS <sup>3</sup>
960 CHNS-NS		plus 2 FM's.	

1-CJNH and CJTN are twins of CKAR but were not listed on the network information, as twins were for the FF list. 2- SW relay of CFCF. 3-SW relay of CHNS.

Expos FF coverage: Jacques Doucet, Claude Raymond

550 CHLN-PQ	1220 CFVN-PQ	1340 CHAD-PQ	1400 CKFL-PQ
560 CKGN-PQ	1230 CJLP-PQ	CJAN-PQ	CJFP-PQ
610 CKML-PQ	CKLD-PQ	CFED-PQ	CKRN-PQ
630 CHLT-PQ	1240 CJAF-PQ	CKMG-PQ	CKSJ-PQ
710 CIPC-PQ	CJMD-PQ	CKVT-PQ	1420 CJMT-PQ
CKVM-PQ	CKLS-PQ	1350 CHAL-PQ	CKTL-PQ
730 CKAC-PQ	CFLM-PQ	1360 CJBL-PQ	1450 CHEF-PQ
790 CKBH-PQ	1280 CKGV-PQ	1370 CFVD-PQ	CHRT-PQ
900 CKVD-PQ	1310 CHGB-PQ	1380 CFDA-PQ	1490 CKLR-PQ
970 CKCH-PQ	1320 CJSO-PQ		no FM

St. Louis Cardinals Jack Buck, Mike Shannon, Dan Kelly

550 WCBI-MS	1220 KJAN-IA*	1310 KOKX-IA	1430 WWEE-TN*
580 WELO-MS	WLPO-IL	WDKI-TN	1450 KIRX-MO
WILL-IL	1230 KBTM-AR	1320 KWHN-AR+	WAOV-IN
630 KVMA-AR**	KLWT-MO	1340 KBTA-AR	WKFI-IL
740 KBOE-IA*	KODE-MO	KSEK-KS	1470 WMBD-IL
WVLN-IL**	WBBZ-OK	KSMO-MO	1490 KDRS-AR
800 KXIC-IA*	WHCO-IL	KZNG-AR	WKRO-IL
930 KWOC-MO	WJBC-IL	WHPI-IN	1500 KDFN-MO**
WTAD-IL	WQUA-IL	1360 KFFA-AR	WGEN-IL*
950 KXJK-AR**	1240 KBIZ-IA	1370 KCRV-MO**	1520 KMPL-MO
960 KGIR-MO	KTLO-AR	1390 KCBC-IA	1550 WMSK-KY*
970 KQQA-MN	KWOS-MO	KCRC-OK	1560 WPAD-KY
990 KAYI-IA**	WEBQ-IL	1400 KCLA-AR	WUME-IN**
1010 KLRA-AR	WTAX-IL	KPRV-MO	1570 KBRI-AR*
1050 KMIS-MO*	1250 WRAY-IN*	KVFD-IA	WTAY-IL*
1060 WRHL-IL*	WREN-KS*	WDWS-IL	WHLP-TN**
1070 KILR-IA*	1270 KUSN-MO	WGIL-IL	1580 WAMW-IN**
1090 WCRA-IL*	1 WEIC-IL	1420 WINI-IL	1590 KCLU-MO*
1120 KMOX-MO	1300 KXXO-OK	1430 KAOL-MO*	Plus 42 FM.

San Francisco Giants Lindsey Nelson, Hank Greenwald, Dave Glass  
 680 KNBR-CA 1250 KHOT-CA\*\* 1360 KFIV-CA\* 1410 KMYC-CA  
 1230 KDAC-CA 1320 KQIQ-CA\*\*

Still at large: Houston Astros, both New York teams, and San Diego's Spanish network.

Asorted Minor League Baseball: Rochester(NY) Red Wings are on WFXN-1280. Toledo Mud Hens are on WSPD-1370, Wed/Thu/Fri/some wknd. Vancouver Canadians are on CFVR-850 in Abbotsford, BC. No known regional coverage.

NORTH AMERICAN SOCCER LEAGUE: Partial listing.

Atlanta Chiefs	920 WGST-GA	Bob Neal, Brad Nessler, Steve Holman
Chicago Sting	1590 WONX-IL(SS)*	Jorge Ramos, Luis Rossi (homw only)
Pt Lauderdale	610 WIOD-FL	Rick Weaver
Jacksonville	930 WJAX-FL	Scott Morrison
Minnesota Kicks	1500 KSTP-MN	Al Shaver
New York Cosmos	620 WVNJ-NJ	(H) Jim Karvellas, Seamos Mallin, (A) ??
Portland Timmers	750 KXL--OR	Bob Robertson
San Diego Sockers	1130-KSDO-CA	John DeMott, Jerry Epstein
San Jose E'quakes	1500-KKRX-CA	Hal Ramey
Seattle Sounders	1000-KDMO-WA	Have Green

-----  
 Anyone interested in helping compile COLLEGE SPORTS: Please contact me before September 1. Around that day I plan to contact by letter as many schools as possible - and it will save work and avoid duplication of effort if those of you who can get ahold of college nets let me know before then. Thanks! *Jana*



**Catholic Views  
Broadcasts**  
86 Riverside Drive  
New York, NY 10024

via Father Jack Pejza

IEWS OF THE NEWS is on these stations. Please phone for times, and write thanking the stations for carrying VIEWS. It is most important that you write expressing approval of VIEWS OF THE NEWS. Thank you.

**ALABAMA**

Anniston: WANA 1490 AM; 237-1627  
Birmingham: WDJC 93.7 FM; 897-3324  
Cullman: WFMH 1300 AM; 734-3271  
Fl. Payne: WFPA 1400 AM; 845-2620  
Huntsville: WNDA 95.1 FM; 534-2433

**ARIZONA**

Chandler: KMLE 107.9 FM; 899-5000  
Phoenix: KASA 1540 AM; 276-4241  
Phoenix: KOOL 94.5 FM; 257-1234  
Phoenix: KRDS 1190 AM; 955-9555  
Phoenix: KRUX 1360 AM; 477-5789  
Phoenix: KXTC 92.3 FM; 258-1218

**CALIFORNIA**

Los Angeles: KGIL 1260 AM; 877-3466  
Los Angeles: KTYM 1460 AM; 678-3731  
Paradise: KEWO 930 AM; 877-3872  
San Francisco: KEST 1450 AM; 626-5585  
San Francisco: KFAX 1100 AM; 673-4148  
Yreka: KSYC 1490 AM; 842-4158

**COLORADO**

Colorado Springs: KKCS 1530 AM/ 101.9 FM

**CONNECTICUT**

Hartford: WJMJ 88.9 FM; 633-8890  
Milford: WFIF 1500 AM; 878-5915

**FLORIDA**

Belle Glade: WSWN 900 AM; 995-2063  
Port St. Joe: WJOE 93.5 FM; 227-1101  
Tampa/St. Pete: WSTT 800 AM; 581-9424  
West Palm Beach: WLIZ 1380 AM; 585-5533

**GEORGIA**

Savannah: WKBX/WSGF 630 AM 95 FM, 897-1529

**GUAM**

Agana: KATB, 570 AM; 472-6945

**HAWAII**

Honolulu: KAIM 870 AM; 732-6602

**IDAHO**

Idaho Falls: KTEE 1260 AM, 523-3710

**ILLINOIS**

Chicago: WONX 1590 AM; 475-1590  
Chicago: WXRT 93.1 FM; 777-1700  
Hoopston: WHPO 100.9 FM; 203-7744  
Marion: WGGH 1150 AM; 993-8102  
Marion: WDDD 107.3 FM; 997-8123

**INDIANA**

Crawfordsville: WLFO 104 FM; 362-8200  
Evansville: WVHI 105.3 FM; 425-4226  
Gary: WLTH 1370 AM, 884-9409  
Rensselaer: W:RIN 1560 AM; 866-5105  
Terre Haute: WVVH 105.5 FM; 533-1663  
Vincennes: WVUB 91.1 FM; 882-2237

**IOWA**

Cedar Rapids: KWMR 88.9 FM; 363-8213  
Des Moines: KDPS 86.1 FM, 284-7723

**KANSAS**

Concordia: KNCK 1390 AM, 243-1414

**KENTUCKY**

Bardstown: KBRT 1320 AM, 348-3943  
Lebanon: WLBH 1590 AM; 692-3125

**LOUISIANA**

Alexandria: KSYL 970 AM; 442-6611  
Baton Rouge: WYNK 1380 AM; 343-8340  
Crowley: KSIG 1450 AM, 783-2520  
Lafayette: KPFL 1420 AM, 233-7003  
Morgan City: KFXY 96.7 FM 384-1430

**MAINE**

Portland: WCSH 970 AM; 883-3455

**MARYLAND**

Baltimore: WCAO 600 AM; 685-0600  
Baltimore: WXYU 102.7 FM, 653-2200  
Potomac: WCTN 950 AM, 299-7026

**MASSACHUSETTS**

Boston: WHRB 95.3 FM; 495-4818  
Boston: WNTN 1550 AM; 969-1550  
Concord: WIOH 88.3 FM; 369-2440  
Holyoke: WREB 930 AM; 536-3930  
N. Easton: WSHL 93.1 FM; 238-1081

**MICHIGAN**

Detroit: WGRP 107.5 FM; 259-8862  
Grand Rapids: WMAX 1480 AM; 458-3793  
Hillsdale: WCRS 1340 AM; 437-4444  
Spring Arbor: WSAE 89.3 FM; 750-1200

**MINNESOTA**

Mpls/St. Paul: KRSI 950 AM; 941-5774  
Jackson: WJXN 1570 AM; 544-3196  
Mpls/St. Paul: KULX 1570 AM; 544-3196  
Thief River Falls: 90.1 FM, 681-5427

**MISSISSIPPI**

Clarksdale: WROX 1450 AM; 627-7343  
Jackson: WJXN 1450 AM; 352-6673  
Meridian: WDAL 101.3 FM, 693-2381  
Newtown: WMYQ 1410 AM, 889-3331  
Yazoo City: WYAZ/WJNS 1230 AM/ 92.1 FM

**MISSOURI**

Bowling Green: KPCC 1530 AM; 324-2283  
Ferguson: KCFV 89.5 FM, 524-8311  
Frissonia: KSCF 97.1 FM, 321-3505  
St. Louis: WGNU 920 AM, 931-9468  
St. Louis: KXEN 1010 AM; 436-6550  
J'mon: KLPW 1220 AM/ 101.7 FM;

**MONTANA**

Helena: KOJM 610 AM; 265-7841

**NEBRASKA**

Columbus: KTLX 91.9 FM; 564-0547

**NEW HAMPSHIRE**

Nashua: WSMN 1590 AM, 882-5107

**NEW JERSEY**

South Orange: WSOU 89.5 FM, 762-8950

**NEW MEXICO**

Albuquerque: KLYT 88.3 FM; 293-8300  
Albuquerque: KZIA 1580 AM; 262-1733

**NEW YORK**

Auburn: WAUB 1590 AM, 253-7111  
Boonville: WBRV 900 AM, 942-4311  
Buffalo: WBLK 93.7 FM, 882-1500  
Hyrnet: WLEA 1480 AM; 324-1480  
Malone: WICY 1490 AM; 483-1100  
Niagara: WTHE 1520 AM; 741-1520  
New Rochelle: WRTN 93.5 FM; 636-1460  
New York: WPOW 1330 AM; 984-4600  
Syosset: WKWZ 88.5 FM, 921-5500  
Syracuse: WYRD 1540 AM; 446-7442

**NORTH CAROLINA**

Burgaw: WVBS/WPJC 1470 AM/100 FM;  
Mars Hill: WVHM 90.5 FM; 689-1138  
Raleigh: WKIX 850 AM, 851-2711  
Raleigh: WPJL 1240 AM; 834-6401  
Raleigh: WYYD 96 FM; 851-2086  
Scotland Neck: WYAL 1280 AM, 826-3114

**OHIO**

Akron: WAPS 89.1 FM; 434-1661  
Bellaire: WOMP 1290 AM; 676-5661  
Bowling Green: WJWY 730 AM; 352-4649  
Cincinnati: WKRC 550 AM; 381-5500  
Cleveland: WELW 1330 AM; 946-1530  
Cleveland: WGAR 1220 AM; 526-6700  
Dayton: WGXM 88.1 FM; 275-8434  
Lima: WTGN 97.7 FM; 227-2525  
Owensville: WCNE 88.7 FM; 241-5511  
Portsmouth: WPAY 1400 AM; 353-5176  
Toledo: WGOR :520 AM, 248-7088

**OREGON**

Medford: KSHA 860 AM; 772-8600

**PENNSYLVANIA**

Alltoona: WFBC 1290 AM; 943-1136  
Gettysburg: WALN 92.1 FM; 791-1818  
Butler: WISR 680 AM; 283-1500  
Canonsburg: WARO 540 AM; 531-8800  
Connellsville: WLSW 104 FM, 628-2800  
DuBois: WCED 1420 AM; 371-6100  
Emporium: WLEM 1250 AM; 483-3712

Jeanette: WBCW 1530 AM; 527-5656  
Jenkintown: WBF 104 FM; 886-2000  
McKeesport: WEDO 810 AM; 462-9922  
Milville: WNUP 100.7 FM; 821-4100  
New Castle: WKST 1280 AM; 554-5501  
New Kensington: WKPA 1100 AM; 362-2204  
Philadelphia: WRCP 1540 AM; 564-2300  
Pittsburgh: WEEP 1080 AM; 471-9950  
Pittsburgh: WJCI 93.7 FM; 381-8100  
Pittsburgh: WPIT 101.5 FM; 281-1900  
Reading: WHUM 1240 AM; 376-3987  
Wilkes-Barre: WRKC 88.5 FM; 824-9931

**RHODE ISLAND**

Warwick: WARV 1590 AM; 737-0700

**SOUTH CAROLINA**

Charleston: WCSC 1390 AM; 722-7611  
Cherter: WGCO 1490 AM; 377-1111  
Florence: WOLS 1230 AM; 662-3271  
Ridgeland: WJMR 1430 AM; 726-8118  
Rock Hill: WRHI 1340 AM; 327-2085  
St. George: WOIZ/WDWO 810 AM/107.5 FM;

**SOUTH DAKOTA**

Rapid City: KIMM 1150 AM, 348-1100

**TEXAS**

Ableton: KRBC 1470 AM; 692-4242  
Amarillo: KDJW/KBUY 1010 AM 94 FM;  
Arlington: KWJS 94.9 FM; 265-3101  
Victoria: KTXN 99 FM; 573-4366

**UTAH**

Salt Lake City: KBBX 1600 AM; 290-1142  
Salt Lake City: KSXX 630 AM; 355-6233

**VERMONT**

Winooski: WWPV 88.7 FM; 655-0178

**VIRGINIA**

Falls Church: WFAK 1220 AM; 532-1220  
Hampton: WQKT 1270 AM; 723-3391  
Norfolk: WQRC 104.5 FM; 497-1067  
Richmond: WRXL 102 FM; 282-9731  
Virginia Beach: WVAB 1550 AM; 425-1550

**WASHINGTON**

Blaire: KARI 550 AM; 332-5500  
Longview: KEDO 1400 AM; 425-1500  
Seattle: KBLE 1050 AM; 324-2000  
Wenatchee: KIAM 104.9 FM; 663-8513

**WEST VIRGINIA**

Fairmont: WFGM 97.9 FM; 366-9880  
Fort Gay: WFGH 90.7 FM; 648-5752  
Sutton: WSGB 1490 AM; 765-7373  
Oak Hill: WOAY 860 AM; 94.1 AM; 465-0534

**WISCONSIN**

Berlin: WISS 1090 AM/ 102.3 FM; 361-3551  
Dodgeville: WDMP 810 AM; 935-2302  
Durand: WRDN 1430 AM; 672-8989  
Hayward: WRSM 910 AM; 634-4836  
Medford: WIGM 1490 AM; 748-2566  
Milwaukee: WYLO 540 AM; 353-5300  
Monroe: WEKZ 1260 AM; 325-2161  
River Falls: WRFW 88.7 FM; 425-3887

**CANADA**

Altona, MAN: CFAM 950 AM; 324-6464  
Charlottetown, PEI: CHTN 1190 AM;  
Steinbach, MAN: CHSM 1250 AM; 326-3737

**CENTRAL AMERICA**

Belize: Radio Belize

**ITALY**

Vatican City: Radio Vatican

**PHILIPPINES**

Bangad, Abra: Radio DZPA 873 AM

**SOUTH AFRICA**

Johannesburg: SABC

# R-390A/URR ALIGNMENT & OPTIMIZATION

(excluding 455-kHz, fixed-frequency IF)

1. Initial setup Set all front-panel controls as follows:

A. FUNCTION switch: CAL	I. BANDWIDTH KC: 8
B. BREAK IN switch: X	J. BFO ON/OFF switch: OFF
C. LIMITER control: OFF	K. LOCAL GAIN: CCW
D. AGC switch: FAST	L. DIAL LOCK: CCW
E. ANT TRIM: "0"	M. ZERO ADJ: CCW
F. LINE GAIN: CCW	N. RF GAIN: CW
G. AUDIO RESPONSE: WIDE	O. MEGACYCLE CHANGE: X
H. BFO PITCH: "0"	P. KILOCYCLE CHANGE: X

X= irrelevant

2. Allow about 30 minutes warmup before proceeding.
3. Set receiver in turn to each frequency specified below, in column A. of TABLE 1. Adjust the corresponding inductors (L-) specified in column B. of TABLE 1, and then the corresponding trimmer capacitors (C-) specified in column C. of TABLE 1. Rock the KILOCYCLE CHANGE back and forth for a maximum indication on each frequency on the CARRIER LEVEL meter. Refer to CHART 1 for the location of adjustments.

TABLE 1

A.	B.	C.	A.	B.	C.
600 kHz	L224-1 L224-2		4400 kHz	L227-1 L227-2	
900 kHz		C230-1 C230-2	7600 kHz		C239-1 C239-2
1100 kHz	L225-1 L225-2		8800 kHz	L228-1 L228-2	
1900 kHz		C233-1 C233-2	15200 kHz		C242-1 C242-2
2200 kHz	L226-1 L226-2		17600 kHz	L229-1 L229-2	
3800 kHz		C236-1 C236-2	30400 kHz		C245-1 C245-2

4. Set the receiver FUNCTION switch to AGC. Assure that the regularly used antenna is connected to the receiver input.
5. Received signals are used to make the following alignment. Reception of a relatively stable-intensity signal is indicated for alignment, so it may be necessary to seek such a signal at a frequency slightly at variance with those specified in the following TABLE 2; however, the alternate chosen frequency should not differ from the specified frequency by more than 10%. When aligning on alternate frequencies, chose a HIGHER alternate frequency when aligning inductors (L-); and chose a LOWER frequency when aligning capacitors (C-).

## NOTE

A signal generator may be used to good effect in the following alignment. Do not make a direct connection from the signal generator to the antenna or receiver. Instead, using a short antenna wire of a few feet connected to the generator's output, radiate a signal at the frequencies specified in the following TABLE 2 to the receiving antenna. Use the least output from the generator that just produces a usable indication on the CARRIER LEVEL meter. Note that TABLE 1 adjustments may be "touched up" (as may all following adjustments in all tables) using the radiated signal from the generator.



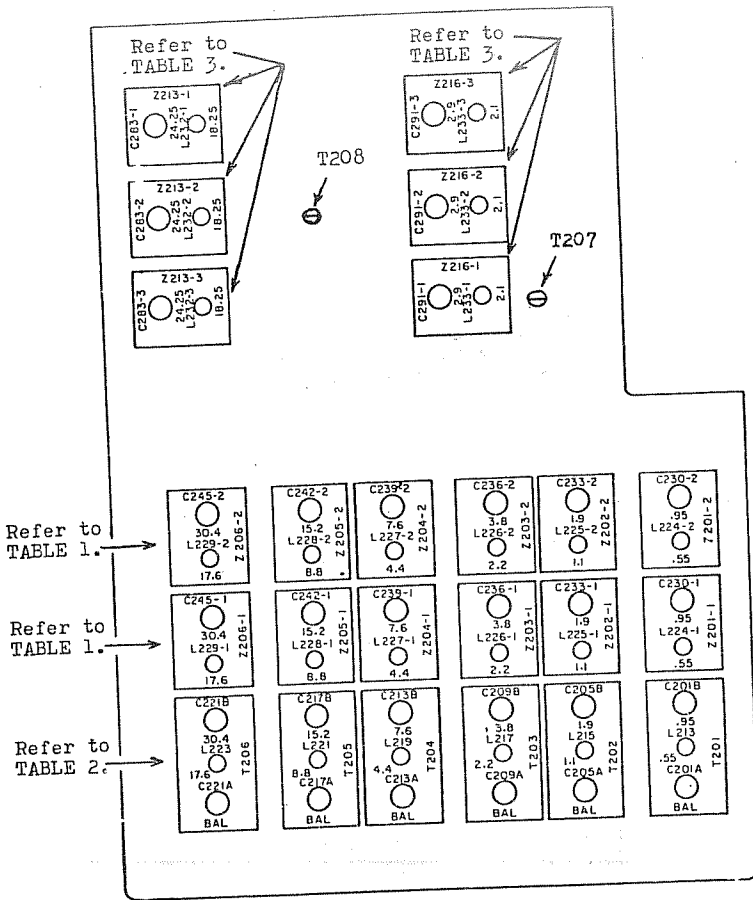


Chart 1. Adjustment points on R-F subchassis.

TABLE 2

A.	B.	C.	A.	B.	C.
600 kHz	L213		4400 kHz	L219	
900 kHz		C201B	7600 kHz		C213B
1100 kHz	L215		8800 kHz	L221	
1900 kHz		C205B	15200 kHz		C217B
2200 kHz	L217		17600 kHz	L223	
3800 kHz		C209B	30400 kHz		C221B

6. Set the receiver FUNCTION switch to CAL, then align the inductors and capacitors specified in TABLE 3.

TABLE 3

A.	B.	C.	A.	B.	C.
1300 kHz	L232-1 L232-2 L232-3		1900 kHz	L233-1 L233-2 L233-3	
7300 kHz		C283-1 C283-2 C283-3	1100 kHz		C291-1 C291-2 C291-3

- Set the receiver KILOCYCLE CHANGE to any 100 kHz calibration point between 500 kHz and 7900 kHz, and align the following adjustments:

T207  
T208

- Referring to CHART 2, set the receiver KILOCYCLE CHANGE and MEGACYCLE CHANGE controls for a dial reading of 8100 kHz, and adjust the trimmer labelled "8" on the Crystal Oscillator subchassis for a peak indication on the CARRIER LEVEL meter. Next, tune the receiver to 9100 kHz, and likewise adjust the trimmer labelled "9". Then, tune the receiver to 10,100 kHz, and adjust the trimmer labelled "10". Continue this to 31,100 kHz for the trimmer labelled "30". Note that the trimmer labelled "17" also aligns the 00 MHz band, the trimmer labelled "16" also aligns the 01 MHz band, and so on. Therefore, those bands are aligned in the above procedure.

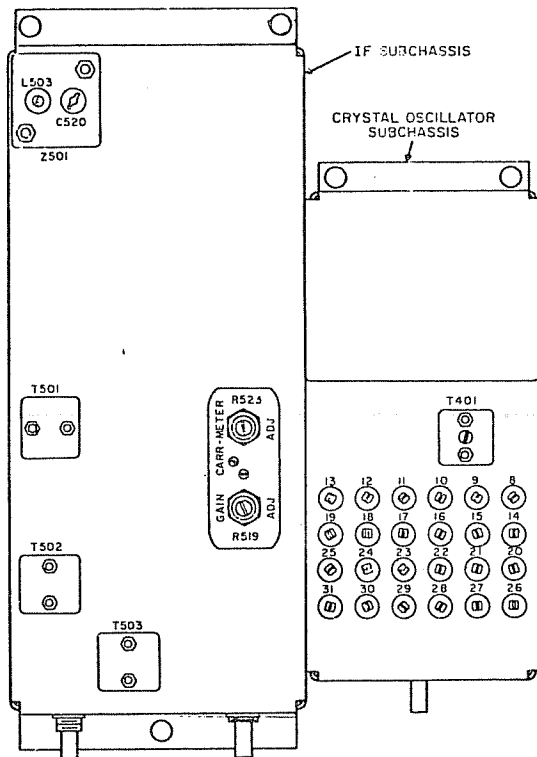


Chart 2. Adjustment points on I-F subchassis and Crystal Oscillator.

- Rotate the RF GAIN control fully CCW. Loosen the locking nut on the CARR-METER adjustment potentiometer, R523, on the I-F subchassis. Using a flat-blade screwdriver, rock R523 back and forth across its present setting about ten times. This is to clear the pot of noise and dirt. Then, carefully reset this pot such that the CARRIER METER comes to rest on zero. This will probably require several tries.

Notes R519 (GAIN ADJ) on I-F subchassis is not critical to adjust, and generally only needs to be readjusted when the set is retubed. An approximately correct setting can be made thusly: (set up)

- |                            |                           |
|----------------------------|---------------------------|
| A. FUNCTION switch: AGC    | I. BANDWIDTH KC: 8        |
| B. BREAK IN switch: X      | J. BFO ON/OFF switch: OFF |
| C. LIMITER control: OFF    | K. LOCAL GAIN: CCW        |
| D. AGC switch: X           | L. DIAL LOCK: CCW         |
| E. ANT TRIM: X             | M. ZERO ADJ: CCW          |
| F. LINE GAIN: fully CW     | N. RF GAIN: CW            |
| G. AUDIO RESPONSE: WIDE    | O. MEGACYCLE CHANGE: 05   |
| H. BFO PITCH: X            | P. KILOCYCLE CHANGE: 500  |
| Q. LINE METER switch: -10  |                           |
| R. DISCONNECT ALL ANTENNAS |                           |
- X= irrelevant

With all controls thusly set, adjust the ANT TRIM control for a peak reading on the LINE LEVEL meter. What is being registered at this stage is "front end" noise of the set. The reading should be no less than "VU" on the -10 to VU scale of the LINE LEVEL meter (note that "VU" is to the right—upscale—of the physical center of the meter scale). It should also be no more than "VU" on the LINE LEVEL meter, with the LINE METER set to "0". R519 (GAIN ADJ) may be varied to bring the indication within this range. BEFORE varying the setting of R519, however, carefully SCRIBE A MARK ON THE POT TO INDICATE PRESENT POT SETTING. The pot can then be returned to its former position.

If you are unable to attain a "VU" reading on the LINE LEVEL meter with the LINE METER set to -10, and after adjusting R519, this probably indicates a need to retube the receiver. Note, however, that if the set has been functioning normally otherwise, don't be quick to test tubes. Refer the set to a qualified serviceman, if in serious doubt.

Depending on the characteristics of your longwire antenna, once your R-390A is optimized for that antenna, you may find that the set "front end" does not resonate exactly for such as an amplified loop. This is evidenced by the lack of a sharp, well-defined peak in signal and noise level when the ANT TRIM control is rotated. Since most amplified loops are tuned, and possess considerable "Q", this shouldn't be a problem (as far as cross-modulation is concerned). It is therefore advantageous to optimize your R-390A for the antenna that will be most likely to induce cross-modulation in your set.

-30-

Charles A. Taylor, 939 Eastern Ave., Indianapolis, IN 46201

.....

COMING SOON!

The All-New IRCA Foreign Log, featuring:

- An all new format
  - Complete concise summaries for hundreds of foreign ECB stations, with details on where and when heard, schedules, IDs & interval/time signals, formats, and other items.
  - Recently updated (7/81) versions of the Mexican, Chinese, and Korean station lists.
  - Articles on foreign DXing
  - Verification information
  - And more
- Two years worth of DX tips gleaned from DX Worldwide, DX Worldwide II, and other columns, in an easy-to-use compact reference.

STAY TUNED FOR DETAILS ON HOW TO ORDER YOURS!

# IRCA REPRINT LIST

Quite a few articles have appeared in DX Monitor since the club started in 1964. They have offered a wide variety of information on broadcast band DXing. This is the list of reprints and other items which are currently available. Numbers in parenthesis are the total number of pages contained in the reprint. Designations in parenthesis following reprint descriptions are other IRCA publications in which the reprint appears (or was taken from). Descriptions of these appear at the end of the list.

## ANTENNAS

- A1 Construction of a Directional Spiral Loop Antenna (1) Dallas John/Keith Birlingmair. Describes how to construct a simple inexpensive Loop antenna. Updated 9/73. (NMP)
- A2 Construction of a "Box" Loop Antenna (2). Plans for a large four foot box loop, unamplified. March 1969.
- A3 DCL Construction Plans (1) Dave Fischer. Plans for a Direct Coupled Loop antenna. Requires some receiver modification. January 1970.
- A4 Roll Your Own (1) Dave Fischer. Hints on the construction of a simple two-foot box Loop antenna. December 1969.
- ✓ A5 The Loop-Sensor Cardioid Array (1) Ron Schatz. Introductory thoughts about combining antenna signals, a Loop and a longwire or vertical, which can produce a heart-shaped pattern (LSCA). See also A6, A7, A18 and A33. May 1971.
- ✓ A6 Some Comments on the Loop-Sensor Cardioid Array (2) Gordon Nelson. Discusses some shortcomings of the theory described in A5. August 1971.
- ✓ A7 The Loop-Sensor Cardioid Array (7) Ron Schatz. In depth description of the LSCA, with examples of its usefulness and construction hints. See A5. September 1973.
- A8 Two-Foot DCL Plans (4) Ralph Sanserino/Nick Hall-Patch. Updated construction plans for a box loop and pre-amplifier. Extremely well done. This is the "Sanserino Loop". October 1980. (TG)
- A9 The Shielded Ferrite Loop: Principles and Practice (4) Joe Worcester. Theoretical description of a Ferrite rod directional antenna, used by many DXers because of its compactness. See A10 for construction details. February 1970.
- A10 How to Build the SPACE MAGNET Shielded Ferrite Loop (6) Joe Worcester. Very thorough plans for the antenna described in A9, including photo. January 1971.
- A11 The Super Signal Snatcher (4) Dave Fischer. Presents some of the theory of operation of a Beverage antenna; a very long wire, with tables and graphs. See also A15, A16, A19 and A23. December 1972.
- ✓ A12 Using Two Loop Antennas to Generate Asymmetrical Receiving Patterns (1) Mike Levintow. Describes how the simultaneous use of two loop antennas can distort the pattern of one alone, thus nulling out some stations otherwise unnullable. December 1973.
- A13 The Wedge (3) Charles Wolff. Detailed plans on a space saving wedge-shaped loop. Includes tuning instructions and base construction. November 1975.
- A15 NEBE (3) Dave Fischer. A sequel to A11. Describes the construction and results of a Beverage antenna DXpedition in the middle of Nebraska. March 1975.
- A16 Report on the Beverage Antenna DXpedition (1) Don Kenney. Describes a DXpedition to the Mojave Desert using two Beverage antennas, one 2800' (850m), the other 6000' (1830m) long. Results are discussed. September 1972.
- A17 Loops for the Barlow Wadley, (or Anything Else) (1) Grant Manning/Ralph Sanserino. How to modify the XCR-30 so it can be used with a ferrite rod antenna. Also includes two schematics for single ended FET preamplifiers. August 1975.
- ✓ A18 LSCA-2 (4) Ron Schatz. Construction plans for an updated, and easier to build, version of the LSCA described in A7. March 1976.
- A19 Some Thoughts on Beverages (1) H. John Clements. An experienced Beverage user gives some hints to potential Beverage builders. April 1978.
- A20 4 Commercially Available Ferrite Loops (1) Michael Sapp. Author compares the performance of the SM-2, MW1, DA5/7 and Palomar Loop Ferrite core antennas. Several areas of concern to the DXer are discussed, and each is rated. June 1978.
- A21 Amplifiers/Tuners for Longwires (1) Brian Sherwood. Two circuits for amplifying the signal from a coupled longwire tuner to your radio. January 1979.
- A22 MW1 vs SM-2 (1) Mark Connelly. Two popular Ferrite core antennas are compared by an experienced DXer. March 1979.

- A23 The Jordan River Beverage Expedition (1) Nick Hall-Patch. DXers brave the wilds of Vancouver Island in order to hear DUs on a Beverage. August 1979.
- A24 DXing with the "DX Fliers" (1) Gerry Thomas/Charlie Barfield. What is it like DXing with an antenna strung out with a kite? Talks about results of 650' wire towed from a flying kite. October 1979.
- A25 The KRS All-Band "Active" Antenna (1) Mike Hardester. Review of Radio West's amplified "whip" antenna. July 1980.
- A26 Random Length Antennas (1) Bruce Portzer. Discussion of random length antenna's advantages and disadvantages. October 1980. (TG)
- A27 Random Wire Accessories (2) Nick Hall-Patch/Ralph Sanserino. Attenuators, couplers, traps and amplifiers for use with long wire antennas. October 1980. (TG)
- A28 Phased Longwire Antennas (1) Mark Connelly. A phasing unit is used to connect two longwires to obtain directionality. Schematic given. October 1980. (TG)
- A29 Why a Loop? (2) Phil Bytheway. Loop antenna theory, construction and tuning techniques are discussed. October 1980. (TG)
- A30 Using the Loop (1) Grant Manning. Discusses techniques for getting the most out of a loop antenna. October 1980. (TG)
- A31 A Ferrite-core Loop Antenna (1) Nick Hall-Patch. Construction details for a simple ferrite loop antenna using a FET pre-amplifier. See also A9. October 1980. (TG)
- A32 A Loop-Longwire Combo (1) Nick Hall-Patch. Talks about a simple way to connect a loop and longwire to obtain unidirectional receiving patterns. Very much like the LSCA described in A5. October 1980. (TG)
- A33 Improve Your Latin American DX by Phasing Non-Identical Antennae (1) Mark Connelly. Discusses how using two parallel antennas (one on the ground) and a phasing unit can effect DX reception. Includes some examples of possible DX. May 1981.

#### DOMESTIC

- D2 A History of Bootlegging in Indianapolis: The Rise and Fall of the Ten-Watt Voices (6) Charles Taylor. Illegal radio stations in the 1960's. March 1975.
- D12 New "Two-Tone" System for E.B.S. (1) Bill Hardy. A Special Feature article on a new receiving system for the Emergency Broadcasting System. March 1976.
- D17 A Few Rural Alaskan Radio Stations (3) Mike Dorner. Commentary on several radio stations in Alaska, their histories and operations. February 1978.
- D18 Highway Advisory Radio (1) Bruce Portzer. Describes some low-powered radio stations that provide motorists with road condition information. Includes list. April 1978.
- D20 A Look at AM Stereo (2) Greg Monti. Talks about the various plans for introducing stereo to AM. The possible effects of each plan are discussed. April 1980.

#### FOREIGN

- F1 DXing the Latins (2) Bruce Portzer. A by country list of Central and South American stations which are easiest to pick up, plus tips on Spanish pronunciation. 8/76.
- F4 DXing the TA's (2) Richard Eckman. How to hear trans-Atlantic stations and what to listen for by country. August 1979. (FL8)
- F5 The IRCA Mexican List (6) Bruce Portzer. Compilation of all available data on Mexican stations, including frequencies, slogans, schedules and powers. April 1981.
- F16 Spanish, French and Portuguese Report Forms (6) Larry Godwin/Ron Schatz/Phil Bytheway. Instructions and suggestions on how to write a report in SS, FF or PP, including definite and tentative receptions and follow-ups. Includes an extensive vocabulary of common words and phrases. Revised June 1978. (NMP, FL3)
- F21 Taped Reports to Foreign Countries (1) Larry Godwin. Answers questions about sending reports to other countries, with suggestions on how to mail them. January 1966.
- F24 Why is a Country (1) Page Taylor/Russ Edmunds. Discussion of the reasons for countries lists and the basis of divisions. December 1972.
- F26 Time Pips as an Aid to IDing TP's (1) Nick Hall-Patch. Covers the different time pips used by Pacific and Asian stations. September 1977.
- F28 A New Era of TP DXing (2) Bruce Portzer. A by country list of Asian and Pacific best bet stations with tips on how to hear them. August 1979. (FL8)
- F29 Tuning in on Japan (1) Eric Rittenhouse. Briefly summarizes NHK and some of the more often heard Japanese stations. September 1977 w/frequency updates.

- F30 Spotlight on Soviet Far East (3) Randy Seaver. Very informative discussion of Soviet Far East BCB stations including schedules and identifying practices. October 1977.
- F31 VOA Thailand/American Forces Radio-Diego Garcia (1) Mike Hardester. Two short articles about Pacific area stations. August 1978.
- F32 Trust Territory Stations/Radio Tonga/KMTH Midway (1) Mike Hardester. Three short articles about Pacific area stations. August 1978.
- F33 Southern Command Network/Norfolk Island Broadcasting: VL2NI (1) Mike Hardester. Two short articles about Pacific and Central American US stations. August 1978.
- F34 DXing in Sweden (2) Sigvard Andersson. A Swedish DXer tells what it is like to DX from Sweden, and listen for US stations. April 1979.
- F35 How to Pronounce Korean, Chinese and Spanish (1) Bruce Portzer/Bill Harms. Three short articles to aid in understanding how letters are pronounced in 3 languages. October 1979. (FL8)
- F36 Trans-Pacific SW Parallels (2) Bruce Portzer. List of SW parallels for BCB stations in the TP and DU areas. October 1979. (FL8)
- F37 Latin American SW Parallels (1) Bruce Portzer. List of SW parallels for BCB stations in the LA and PA areas. October 1979. (FL8)
- F38 Broadcasting in Bermuda (1) Charles Taylor. Talks about the country and its stations. Their locations and formats. November 1979.
- F39 DXing Latin America and the Caribbean: Country by Country (3) Mark Connelly/Neil Kazaross/Marc DeLorenzo. Tips on hearing Latin American countries on the BCB from the East Coast of the US. Gives programming details and level of difficulty. 12/79.
- F40 Hearing Latin American and Caribbean Countries in the Pacific NW (2) Bruce Portzer. Country by country look at hearing LA and Caribbean countries. The where and when to listen is included along with a difficulty rating. December 1979. See above.
- F41 DXing in Africa (3) Pete Taylor. A traveling DXer talks about what he heard while in Africa. Includes a list of stations. January 1980.
- F42 DXing in Asia (4) Pete Taylor. The traveling DXer talks about DXing while he was in Asia. A list of stations is included. February 1980.
- F43 A Zonal Analysis Approach to Transatlantic DX (2) Mark Connelly. Divides TAs into zones according to great circle bearing. Discusses conditions responsible for reception/non-reception of each category. Chart showing division for eastern MA also given. February 1980.
- F44 A Transatlantic DXers Guide to Sunrise and Sunset Times (2) Mark Connelly. Technique for knowing the best times to listen for TAs based on the sunrise at the station and sunset at the listener. Tables included with various TA country's sunrise and Domestic sunset. Also Latin American sunrise chart is included. February 1980.
- F45 A Zonal Analysis Approach to Pan-American DXing (2) Mark Connelly. Groups Pan-American signals by loop bearing and discusses conditions allowing/blocking reception of each "zone". Chart for MA zonal breakdown is also included. June 1980.
- F46 A Zonal Analysis Approach to Transpacific DX (1) Bruce Portzer. TP signals are broken down according to loop bearing and distance. Reception qualities of each zone is discussed, and a chart is included for Seattle. September 1980.
- F47 The DXers Guide to China (5) Bruce Portzer. Everything you wanted to know about broadcasting in China including pronunciation guide, map, list of stations, schedules and formats. October 1980.
- F48 A Guide to DXing Korea (3) Bill Harms. A very complete guide to broadcasting in Korea. Networks, IDs and QSL policies are discussed. Also includes a list of stations. February 1981.
- F49 A Baja Expedition (2) Pete Taylor. DXing from the southern tip of Baja California Sur. List of Mexican stations with some program details. March 1981.
- F50 Random Remarks on Chinese Broadcasting (3) Pete Taylor. Comments and information on Chinese broadcasting with station lists, maps and program information. March 1981.

## GENERAL

- G1 DX While You Sleep (1) Paul Petersky/Tom Sundstrom. Outlines techniques for recording special tests or DXing while one sleeps. September 1972.
- G2 Noise (1) Lawrence Foster/John Kalpus. Notes on eliminating various types of noise, and quieting fluorescent lamp noise. Not technical. December 1967.
- G3 Sunrise/Sunset Maps (25) Father Jack Pejza/Ernie Wesolowski. The full set consists of 24 maps showing sunset and sunrise times for North America and the world. Includes explanation of their use and examples of DX made possible by a knowledge of SR/SS times. \$2.00. (AL2)
- G4 How do You Rate Your Best Catch (1) Larry Godwin. Gives some of the criteria DXers use in rating their catches. April 1966. (NMP)
- G5 Computation of Sunrise and Sunset Times (14) Father Jack Pejza. Tables by which the exact time of sunrise and sunset can be computed for latitudes up to 60° N and S, throughout the year. December 1973.
- G6 Information Please (1) Father Jack Pejza. Describes a system used to keep records on stations, with the ability to retrieve information easily. May 1972.
- G8 FCC Rules: Station Identification (1) Bill Hardy. The rules and a short explanation. September 1974.
- G9 FCC Rules: Pre-Sunrise Service Authorization (2) Bill Hardy. The rules and a short explanation. January 1975.
- G10 Territory-Geometrical BCB DXing (2) Dave Fischer. Several methods of systematically DXing are described. January 1975. (NMP)
- G11 Veries (4) Karl Forth. Samples of verification requests by a number of DXers to a fictitious station. See also G15. January 1975.
- G12 All You Ever Wanted to Know about Running a Radio Club Convention but didn't Know Who to Ask (12) Father Jack Pejza. An experienced convention host gives suggestions, ideas and warnings. Includes samples of news release and souvenirs.
- G13 Average Coverage in Miles (1) Dave Fischer. Coverage area of BCB stations by frequency and power. December 1968.
- G14 Morse Code Identification (1) Larry Godwin. Techniques for using Morse Code to ID testing stations. Also includes the code alphabet. February 1970. (AL2, FL8)
- G15 Veries - by Areas of the US (1) Karl Forth. Discusses percentages of verie returns by state and province. September 1974.
- G16 GMT Conversion Chart (1). Includes all time zones of North America. (AL1,2, FLs)
- G17 After 50 Years at the Game, One DXer Learns a New Trick (1) Gene Martin. Some DX tips, and how to use a receiver with a BFO to hear stations next to strong domestics more effectively. January 1976.
- G18 Sunrise, Sunset, and the Shortest Day of the Year (1) Bill Hardy. Explains why the length of the day and the time of sunset don't necessarily jibe directly. Also talks about how the DXer can take advantage of it. December 1975.
- G20 World Time Chart (1). World map showing all time zones, and the letter designation of each. January 1977. (NMP)
- G21 Perceptual Confusions Among Letters of the Alphabet (2) Gerry Thomas. Analyzes the possible confusions resulting in identifying call letters in a background of static and other noises. August 1977.
- G23 Sunrise DX in Depth (2) Robert Kramer/Nick Hall-Patch. Three part analysis of sunrise DX with specific examples and techniques outlined. February 1978.
- G24 Writing Reception Reports (3) Bob Coomler. Hints and techniques for writing good reception reports. Defines what things are verifiable and which information to include. A sample report is also included. (NMP)
- G25 Mistake DXing (1) Bill Hardy. Talks about the kinds of mistakes radio station personnel can make and how a DXer can hear a station because of them. October 1978.
- G26 Allocations (3) Bill Hardy. Discusses how the BCB frequencies are broken down and the types of stations that can operate on each frequency. October 1978.
- G27 The Traveling DXer (1) Mark Connelly. Talks about the equipment and techniques for the DXer when DXing away from home. See also M21 for more detail. February 1979.
- G28 Home Computers and DXing (1) Mark Connelly. Several suggestions on how a home computer may be used to keep DX records, do DX calculations, etc. February 1980.

OLD TIME RADIO

- H1. Frequencies Before 1941 (1) Ron Schatz. Describes the distribution of stations prior to the 1941 NARBA Treaty. See also H30.
- H2. A Silent Night (1) Gene Martin. January 24, 1926 was the night almost all U.S. stations went off the air to allow DXers to try for European stations. See also H13.
- H3. So You Heard 3XN, or was it Whippany, New Jersey? (2) Gene Martin. Describes the early days of radio. See also H26.
- H4. Calls and Slogans (1) Glenn Hauser. The call letters of many stations remind us of the station's origins. See also H5 and H18.
- H5. Radio History Often Preserved in Call Letters (1) Gene Martin. Similar to H4.
- H6. Converting kHz to Meters (1) Thomas White. In the early days, stations were located by their wavelength, not frequency. A chart is provided to make the conversion.
- H7. The Top Becomes the Bottom (1) Gene Martin. What happened when the US changed from wavelength to frequency.
- H8. KPPC-AM: Not Just Your Average Radio Station (1) Jay Murley. Description and history of one of the few 100 watt stations left in the US. December 1973.
- H9. The WRR and KDKA Stories (1) Larry Flegle/Pete Kemp. Describes two early stations, plus some odds and ends on old time radio. February 1975.
- H10. The WGL Story (1). The Indiana station tells its story. March 1974.
- H11. The FCC "Honor Roll" (1) Bill Hardy. Stations taken off the air by order of the FCC.
- H12. A Little Bit of Anarchy (2) Thomas White. Describes the broadcasting industry during 1926 to 1927 when there was no regulatory agency.
- H13. Half a Century Ago: The International Radio Week Tests (3) Thomas White. Covers the international tests between North America and Europe from 1923 to 1926. See also H2.
- H15. Dial-Number Order for Stations (2) Jim Critchett. List of North American radio stations in 1934.
- H17. BCB Radio Stations in Canada in 1929 (1) Dan Sys. Listed by province and city.
- H18. Can You Top This? (1) Father Jack Pejza. List of radio station calls that use the initials of the owner, or a regional feature, from 1938. See also H4.
- H19. WLV, and Superpower (1) Mike Worst. Report on WLV's operation of their 500kw transmitter in the 1930's.
- H20. Radio History - 1912 to 1937 (5). Reprinted from the 1938 Radio Annual. Short notes on advances in the state of the art.
- H21. Three Letter Call History: Some Were Names of Ships (1) Mike Worst. Most three letter calls were used elsewhere before becoming BCB stations. See also H32.
- H22. Mexican and Canadian Radio Stations of 1938 (1). Reprinted from 1938 Radio Annual.
- H23. U.S. Radio in World War Two (2) Gene Martin. Personal reminiscences on what broadcasting was like during WW2.
- H24. "Super-Power" - 1925 Style (2). Some ideas about super power from 1925.
- H25. KDKA (1). Article about the station, reprinted from the August 1922 issue of Wireless Age.
- H26. Remembering the Old Days of DXing (3) Gene Martin. More reminiscences of DXing in the 1930's. See also H3.
- H27. WHA - "The Oldest Station in the Nation" (1) Bob Lazar. A station's history. 10/77.
- H28. The Legacy of the Attic Antenna (1) Bruce Portzer. Describes an attic antenna that was built into houses back in the early days of radio. March 1978.
- H29. Story of the "KOB" Problem (7) Bill Hardy. First part is reprinted from the Federal Register. The other parts are articles that have appeared since. KOB fights WABC for clear channel rights and loses. June 1978.
- H30. November 1978 Frequency Shifts Similar to 1941 (1) Cary Simpson. Tells about the change to the present day radio spectrum that occurred in 1941. See also H1. 12/78.
- H31. Uncrowded Bands (1) Bob Curtis. A DXer recalls the days when the BCB was uncrowded.
- H32. The Mystique of the Three Letter Call Signs (2) Thomas White. Nostalgic discussion of three letter calls with chronological information on what happened to the various stations. See also H21. September 1979.



- H33 Sharing Time (2) Thomas White. Discussion of the origins of Sharing Time stations, the problems associated with them and some historical notes. December 1979.
- H34 Looking Back at Radio in 1930 (5) Gene Martin. Talks about radio back in 1930 in the form of programs, personalities and schedules. A complete radio listing from the December 1930 Radex is also included. February 1980.
- H35 Extraterrestrial DX Circa 1924 (1) Thomas White. Author recalls one night in August of 1924 when all stations went off the air to allow transmissions from Mars to be heard. August 1980.
- H36 The Early History of Radio Hauraki (1). The story behind the birth of New Zealand's "pirate" Radio Hauraki. January 1981.

#### LISTS

A few words are in order here. This section contains various lists of networks, frequency checks, etc. All are dated. Therefore they may not be 100% accurate. Any list may be updated whenever material appears in DX Monitor, so the given date is the oldest any information will be.

- L2 Frequency Check List (3) Joe Fela. List of stations that conduct frequency checks after local midnight. Updated every January. (AL2, NMP)
- L4 IRCA Countries List (2). A list of countries that broadcast on the BCB compiled by the IRCA Countries Committee, for the purpose of record keeping. March 1980. (NMP)
- L5 CBS Mystery Theater (1). List of stations by frequency with schedules. 1/81. (AL2)
- L8 Conditions of Frequencies (2) Ralph Kemper. List of stations operating past local midnight and their silent periods, if any. August 1979. (AL1)
- L9 Spotlight on Upstate Illinois (2). List of possible IL stations one may receive and some hints, schedules and other useful information. January 1977.
- L10 Spotlight on British Columbia and the Yukon (3). Tips on how to hear the two most western provinces. March 1977.
- L11 Spotlight on Florida (2). Tips on how to hear Florida. May 1977.
- L12 Spotlight on Quebec (2). Tips on how to hear Quebec. June 1977.
- L13 Spotlight on Connecticut, Delaware and Rhode Island (1). How to hear 3 states. 7/77
- L14 Spotlight on Hawaii and Alaska (2). Information and tips for reception. Sept. 1977.
- L15 Spotlight on Alabama (2). Tips on how to hear Alabama. October 1977.
- L16 Spotlight on Maine (2). How to hear a tough state. February 1978.
- L17 Best Bet 50 States from the Pacific Northwest (4) Bill Hardy. Concise list of most likelies from all 50 states as possible from the Pacific Northwest. See also L25 and L27. December 1977.
- L18 DXing Indiana Counties (2) Charles Taylor. Tells how to hear the various Indiana counties on the BCB. Includes a map. December 1977.
- L19 Utility Stations (3) Bruce Portzer. A list and some information about beacons, traveler information and other stations around and within the BCB. 1/81. (AL2)
- L20 Canadian Family Life; It's Twins (2) John Oldfield. Describes small networks in Canada. January 1981 plus updaters. (AL2)
- L21 CBC English and French Network List (1). List of the two major networks in Canada, including schedule information. January 1981. (AL2)
- L25 Best Bets for 50 States - from NY-NJ-New England (2) Roger Morby. Concise list of most likelies for all 50 states as possible from the NY, NJ and New England area. See also L17 and L27. August 1978.
- L26 Logging Wisconsin (1) Robert Steadman. List of probable stations to try for. 12/78.
- L27 Best Bets from Southern California (2) Matthew Shugart. Concise list of most likelies for all 50 states that may be heard from Southern CA. See L17 and L25. June 1979.
- L28 Spotlight on Mississippi (1). List of possible MS stations one may receive and some hints, schedules and other useful information to help in hearing them. November 1979.
- L29 Spotlight on New Mexico (1). As above, best bets for hearing NM. December 1979.
- L30 Spotlight on Colorado (3). As Above, best bets for hearing CO. January 1980.
- L31 Spotlight on West Virginia (1). As above, best bets for hearing WV. February 1980.
- L32 Spotlight on Texas (7). Very complete list of tips for hearing TX. March 1980.
- L33 Spotlight on New Jersey (1). As above, tips on hearing a difficult state. 2/81.

## RECEIVER MODIFICATIONS AND CONSTRUCTION

- M1 The Curse of the Superhetrodyne, and how to hex it (4) Joe Worcester. Describes the advantages and disadvantages of the superhetrodyne receiver. Gives suggestions on how to design around the shortcomings of the TRF circuit. March 1971.
- M2 Putting a Recording Outlet on Your Receiver (1) Grant Manning. Describes how and where to attach a recording jack which bypasses the volume control of a receiver.
- M3 The Worcester Long Distance M.W. Receiver (6) Joe Worcester. Technical description of a BCB receiver designed by Joe Worcester. Also covers problems encountered when designing a receiver. November 1975.
- M4 SPR-4 SSB Filter (1) Grant Manning. How to modify the circuitry of a Drake SPR-4 to use the 2.4 khz filter without turning on the BFO. May 1974. (TG)
- M5 Super Selectivity at a Super Price: The Q-5er (1) Grant Manning. Describes briefly a method to increase selectivity on BCB by use of another receiver that tunes to the IF frequency (455 khz). March 1972.
- M6 Intermediate Frequency Transformer Alignment (2) Jon Perkins. How to align the IF stages of any receiver, step by step. March 1970.
- M7 Selectivity (1) Philip Sullivan. An introduction to the various methods of getting selectivity out of a receiver.
- M8 A Handy Little Gadget (1) Tim O'Hare. Describes a switching arrangement for receivers and antennas. February 1976.
- M9 R-390A/URR Optimization and Alignment Check (2) Charles Taylor. Explains how to align the RF and IF stages of an R-390A. Updated May 1981.
- M10 Modifying the Realistic TRF (6) Gerry Thomas/Mark Connelly. Very detailed and specific instructions for aligning, improving the readout (to 10 khz), improving selectivity, adding antenna connections and an S-meter to the TRF. 10/80. (TG)
- M11 An Audio Switching Unit (1) Nick Hall-Patch. Explains how to connect up two receivers to a tape recorder so you can listen to one or the other or playback with a minimum of switches. October 1980. (TG)
- M12 Tape Interconnection, the Right Way (1) Don Davis. Explains how to modify your receiver and install a tape recorder jack to take advantage of the receiver's audio stage during playback. February 1978. (TG)
- M13 Direct Digital Readout (1) Grant Manning. Discusses digital readouts and some of the problems that one runs into when designing or using one. February 1978.
- M14 Mobilizing the SPR-4 Receiver (1) Charles Taylor. Addresses problems associated with mobil operation of the SPR-4. Formulates solutions to antenna and power supply problems, and describes the construction of an antenna tuner. August 1978.
- M15 WWV Converter/100 khz Crystal Calibrator (1) Brian Sherwood. Circuit allows WWV at 10 Mhz to be received on a TRF tuned to 1630. Crystal calibrator circuit good for BCB up to 6 Mhz at 100 khz markers. December 1978.
- M16 Upgrading the Realistic DX-150/160 Receivers (1) Nick Hall-Patch/Ralph Sanserino. Coupling to the internal loop for BCB, overload problem cures and selectivity improvements are discussed. October 1980. (TG)
- M17 Synchronous AM Detector (1) Nick Hall-Patch. Discussion of AM detection and the use of a phase-locked loop to improve detection by providing a strong internal carrier for weak BCB signals. Includes schematic. October 1980. (TG)
- M18 FRG-7 Mods (2) Brian Aase/Ralph Sanserino. Describes modifications to the FRG-7 which improve the S-meter, selectivity, AVC and parallax. October 1980. (TG)
- M19 An Outboard Ferrite Loop for the Superadio (1) Gerry Thomas. Describes a mounting technique for putting a "Shotgun" ferrite antenna on a Superadio. October 1980. (TG)
- M20 R-390A Operating Procedure (2) Charles Taylor. Complete description with notes and explanations. October 1980.
- M21 More Thoughts on Tape Recording from the TRF and other Portable Radios (2) Mark Connelly. Updates and expands on thoughts in the Traveling DXer article (see G27). Several methods are discussed, with diagrams. December 1980.
- M22 Aligning the Superadio (1) Gerry Thomas. Diagrams and text on how to take apart, align the RF, IF and oscillator of the GE Superadio. January 1981.
- M23 R-390A/URR Vacuum-Tube to Solid State Power Supply Conversion (3) Charles Taylor. Complete concise description of how to convert your R-390A power supply to solid-state equivalent. Many good diagrams. February 1981.

- M24 Crudley-Bathbrush 26... a Homebrew MW DX Receiver (3) Nick Hall-Patch. Yes... a homebrew solid state receiver that really works. Discussion of design, check out and problems encountered as the author builds his own. Complete schematic included. 3/81
- M25 A Homebrew Tube BCB Receiver (1) Mike Bittner. Author designed and built a receiver using 1-3 volt tubes and parts from junk radios. Includes a block diagram. 3/81.

#### RECEIVERS

- R1 Sony TR-1300/Heath GR-78/Panasonic RF-759 AM-FM Portable (1) Ron Schatz/George Sherman. Three receiver reviews. December 1971 and July 1972.
- R3 Hammarlund HQ-200 (1) Tom Garcia. Review. September 1973.
- R4 National HRO-500 (1) Paul Daplyn. Review. December 1973.
- R5 Drake SPR-4 (2) Robert Fischer. Review with selectivity curves. November 1972.
- R6 Barlow-Wadley XCR-30 (3). Reviews by several persons and notes on modification. 7/75.
- R8 National NC-120/Sony CRF-230/Multiband Portables (1) Grant Manning/Bruce Portzer. Two reviews and some general comments on various multiband portables. March 1972.
- R9 Not Too Technical Report on Some Sony Products/The "ARB" for BCB (1) Tom Garcia/Grant Manning. Short reviews on CRF-230, TR-1000, IC-200 and TC-110 from Sony, and notes on using and modifying an "ARB" for use on BCB. January 1971.
- R13 Car Radios for DXing (2) Tom Garcia/Bill Lipis/Grant Manning. Three articles about how to use and modify car radios for DXing. 1971.
- R15 Collins R-392 (1) Ralph Sanserino/Phil Bytheway. Review. October 1980. (TG)
- R16 Drake SSR-1/Autek QF-1 (1) Grant Manning. Reviews. November 1975.
- R17 Yaesu FRG-7 (2) Bruce Portzer. Review. September 1977. (TG)
- R18 Collins R-390A/URR (5) Charles Taylor. Complete and detailed review. July 1979.
- R19 Sony TR-6500 vs Realistic TRF (2) Gerry Thomas/Charlie Barfield. Hands on comparison of two fairly inexpensive radios and their DX capabilities. April 1978.
- R20 Panasonic RF-4800 (1) Grant Manning. Review. April 1978.
- R21 GE Superadio (1) Gerry Thomas/Charlie Barfield/Ed Satterthwaite. Review. 10/80. (TG)
- R22 Panasonic RF-2200/RF-2600/RF-2800/RF-2900 (1) Bruce Portzer. Reviews. 10/80. (TG)
- R23 Realistic DX-150/160/Kenwood R-300/Layfayette BCR-101/Sony ICF-6700W (1) Pete Taylor. Four short reviews. October 1980. (TG)
- R24 Yaesu FRG-7000/Kenwood R-1000 (1). FRG-7000 is short, R-1000 is longer. 10/80. (TG)
- R25 Modified FRG-7 and FRG-7000/McKay-Dymek DR-33C (1). Reviews. October 1980. (TG)
- R26 Hammarlund HQ-180/SP-600 (1) Bruce Portzer/Phil Bytheway. Reviews. 10/80. (TG)
- R27 Radio West Modified SPR-4 (1) Randy Tomer. Radio West puts a selectivity and AGC Time Constant modification in SPR-4s. Randy talks about the improvement. December 1980.
- R28 Sony ICF-S5W (7) Gerry Thomas/Armand DiFilippo/Mark Connelly/Bruce Portzer. Several detailed reviews and comparisons with TRFs and Superadios. March 1981.
- R29 TRF Model 12-656 (1) Gerry Thomas. Side by side comparison of the 12-655 and 12-656 model TRFs (last year's and this year's models). January 1981.
- R30 Sony ICF-2001 (1) Pete Taylor. Short review. March 1981.
- R31 Drake R-7 (1) Don Moman. Review. March 1981.

#### TECHNICAL

- T2 A Beginners Guide to the Ionosphere (4) Father Jack Pejza. In simple terms, explains how the ionosphere behaves and how it reradiates radio waves. January 1973.
- T3 Skyline Blockage (4) Father Jack Pejza. Discusses various propagation modes, their arrival angles and how to compute the effects of local geography on hearing/not-hearing stations. Helps to have a trig background. See also T14. December 1972.
- T4 Power Distribution in an Amplitude Modulated Signal (1) Angel Garcia. How to figure the distribution of power in a modulated signal. May 1969.
- T5 Precision Frequency Measurement (1) Ron Schatz. Describes methods of determining the exact frequency of a station with a Heathkit IB-1101 frequency counter. April 1972.
- T7 Yes, SAH (1) Glenn Hauser. Describes sub-audible heterodynes, how to detect them, and how to use them for determining frequencies. December 1971.

- T8 DX Mathematics (6) Dave Fischer. Describes how to use trig tables to compute Great Circle distances and Bearing. Also discusses radio direction finding. See also T12
- T10 Spurious Responses and How to Recognize Them (1) Michael Northam. Talks about how the mixing of frequencies inside a superhetrodyne receiver can cause signals to be heard on frequencies other than those upon which they are being transmitted. (TG)
- T11 The Use of a Tape Recorder in DXing (1) Arthur Peterson. The DX-related use of a recorder; what to look for in purchasing; how to use and maintain a recorder. (TG)
- T12 Easy DX Calculations (1) Dave Fischer. Simplified version of some of the calculations found in T8. May 1974.
- T14 Comment on FJP Equation for Arrival/Takeoff Angles (1) Dave Fischer. Corrects an oversight in some of the calculations in T3. August 1974.
- T16 Variations in the Ionospheric Gyromagnetic Frequency and Effects on MW Propagation (1) Gordon Nelson. Explains why there is little variation in the gyromagnetic frequency for a given area. June 1974.
- T17 TV Oscillator Harmonic Frequencies (1) Bruce Portzer. Discussion of TVI, causes and possible cures. A list of frequencies at which TVI will be found. October 1980. (TG)
- T19 Directional Antenna Patterns (1) Jim Korn. A brief explanation on how BCB stations radiate a directional pattern. See also T20. December 1968.
- T20 How to Read Directional Patterns (2) Jim Korn. How to convert from mv/mile to ERP in watts. Includes a table and sample antenna pattern. See also T19. December 1968.
- T21 A Simple Method of Finding the Great Circle Path and Distance (2) Father Jack Pejza. A quick method using map overlays is described. Includes map and overlays. 3/75.
- T22 Summer Static, a Skywave Proposition (1) Gene Martin. Discusses phenomena of thunder-storm generated static and why the noise level goes down as dawn approaches. 7/70.
- T25 Radio Direction Finding (1) Dave Fischer. Technique for determining the location of a station using bearing information from other DXers. October 1971.
- T26 Relation Between Geomagnetic Measurements and MW DX Conditions (2) Grey Scringeur. Talks about the correlation between Afr readings and BCB DX conditions. Two tables are included. January 1968.
- T27 Precision Frequency Analysis for the Medium Wave DXer (2) Ron Schatz. Describes a technique for identifying stations by measuring their exact frequency. November 1975.
- T28 WWV and You (2) Bruce Portzer. Complete information on the services of WWV, with three charts. April 1976. (NMP)
- T29 Inferential Frequency Measurement by Hetrodyne Analysis (1) Glenn Hauser. An easy method to know the frequency of radio stations by analyzing hetrodynes. 11/75.
- T31 Precision Frequency Measurement in the Mediumwave and the Shortwave Broadcast Bands (8) Charles Taylor. Complete rundown on what PFM is and how to do it. February 1976.
- T32 Auroral/Geomagnetic Activity and its Effect on MW DX Reception (1) Gordon Nelson. Concise set of guidelines for the DXer on how geomagnetic activity can relate to BCB reception conditions. August 1976. (FL5)
- T33 Silencing QRN from a Fish-Tank Heater (1) Nick Hall-Patch. Describes a method for reducing line noise buzzes with a capacitor. August 1977.
- T36 Some Thoughts on TP Reception on the East Coast due to the New 9 khz Waveplan (2) Bob Foxworth. Comments about the possibilities of East Coast reception of some of the more easily heard TPs. January 1978.
- T40 Some Non-Technical Thoughts About Long Distance Radio Reception in the Medium Waves (4) Gene Martin. A hypothesis that may explain some of the effects noted by DXers trying for long distance stations. February 1978.
- T41 Unusual Antenna Systems (2) Cary Simpson. Interesting discussion on some of the non-ordinary broadcast band radio station antenna. February 1978.
- T42 Long Distance Receiving Measurements of Broadcast Waves Across the Pacific (2). Describes field intensity measurements of KNX-1050, Los Angeles, CA, made in Japan over the course of a year. First printed in December 1931.
- T43 Radio Propagation at Frequencies in the Standard Broadcast Band (2) Philip Sullivan. Good short discussion about how radio waves propagate. (NMP)
- T44 Palomar Engineers VLF Converter (1) Grant Manning. Review on a converter that converts 0-500 khz to 3.5-4.0 Mhz. November 1977.
- T45 Nighttime Medium Wave Propagation by Ionospheric Refraction (4) Randy Seaver. Talks about radio wave propagation theory, ionospheric conditions, and specific conclusions by an expert in the field. September 1978.

- T46 On Reflection and Refraction (2) Randy Seaver. Do radio waves reflect or refract from the ionosphere? Both philosophies are discussed and conclusions drawn. 1/79.
- T47 A Method of Finding the Distance Between Two Places on Earth (2) Father Jack Pejza. Using two charts, the distance can be determined to within 50 miles. February 1979.
- T48 Terrain Charts for Propagation Predictions (1) Mark Connelly. Discusses how variations in the conductivity of local terrain can effect reception in certain directions. Includes example chart for Billerica, MA. August 1980.
- T49 What to Look for when Buying a Receiver (2) Nick Hall-Patch. Talks about sensitivity selectivity, strong signal handling, readout, etc., as requirements to be considered before selecting a receiver for DX. October 1980. (TG)
- T50 Strong Signal Handling (2) Chuck Hutton. Discussion about what determines the strong signal handling capability of a receiver, and what can be done to improve it. (TG)
- T51 Audio Filters (3) Bruce Portzer. Includes introduction, reviews of Autek QF-1, MFJ SBF-2BX, SL-55, MFJ-752, Laboelectron SF-0330 and Datong FL-2 audio filters, and some simple build your own audio filter circuits for the experimenter. October 1980. (TG)
- T52 Gilfer GAR-7, KRS DD-1-4D (1) Gerry Thomas. Reviews of some commercially available digital readouts for radios with 455 khz IF. October 1980. (TG)
- T53 More Great Circle Calculations (1) Richard Corry. Simple equations and a program for a HP-25 for calculating great circle distances. November 1980.
- T54 Seasonal Variation in Medium Wave Reception (2) Bruce Portzer. Author has compiled information from IRCA Foreign Logs to plot out the number of loggings vs. month of the year for TP, TA, LA and DU signals. January 1981.

FREE REPRINTS TO IRCA MEMBERS

- X1 Achievement Awards Certificates Requirements. Describes the awards available to IRCA members, along with requirements. (NMP)
- X2 DX Records Report Explanation and Guidelines. Form to use to list your "catches" for submission to the "DX Records" column in DX Monitor. (NMP)
- X4 IRCA Abbreviations List. Complete list of abbreviations used in DX Monitor and in most of these reprints. This is free to anyone. (NMP)

The following discounts of merchandise have been negotiated:

National Radio Club (NRC): All merchandise on this list (reprints and books) are available to NRC members at the IRCA member price. All NRC merchandise is available to IRCA members at their member price. For a current list write:

NRC Publication Center  
P.O. Box 164  
Mansville, NY 13661

Long Wave Club of America (LWCA): Discount on IRCA's Technical Guide for discount on their Beacon Guide. Write to:

LWCA  
P.O. Box 33188  
Granada Hills, CA 91344

San Diego DXers Club (SDDXC): Discount on IRCA's Technical Guide for discount on their Shortwave Hobby Equipment Review. Write to:

SDDXC  
1826 Cypress Street  
San Diego, CA 92154

Please be sure to include a SASE when writing to the above organizations.

This reprint list was completely revised by Phil Bytheway and printed in June of 1981.

## OTHER IRCA PUBLICATIONS AND SUPPLIES

Principles of Broadcast Band DXing (NMP). This is the New Member Packet, sent as part of the first year's membership (or trial membership) to each one joining IRCA. It is a comprehensive introduction to the hobby of Broadcast Band DXing. Topics covered range from antennas, receivers, reception reports, logging stations, to the IRCA Constitution and Bylaws. Many reprints from this list are included. Price is \$2.00 postpaid.

IRCA Stationery. Beautiful red and black masthead with the club emblem and name. Just the thing to use when writing for verifications. 100 sheets, \$3.00 postpaid.

The IRCA Foreign Logs (FLs). Edited by Father Jack Pejza/Phil Bytheway/Bruce Portzer/Nick Hall-Patch/Mark Connelly. Complete listing of foreign stations reported to IRCA's World Wide columns over the period of a year, plus articles on foreign DXing (Vols. 6, 7, 8), foreign language reports (Vol. 3), Utility and Beacon lists (Vols. 7, 8), BCB propagation (Vols. 5-8), and other useful information. Each volume is completely different and is a record of a complete DX season.

Volume 3 (1973-74 season): \$2.00 each (close out special)  
Volume 4 (1974-75 season): \$2.00 each (close out special)  
Volume 5 (1975-76 season): \$4.00 each (\$4.50 to non-IRCA members)  
Volume 6 (1976-77 season): \$2.00 each (close out special)  
Volume 7 (1977-78 season): \$4.50 each (\$5.00 to non-IRCA members)  
Volume 8 (1978-79 season): \$4.50 each (\$5.00 to non-IRCA members)

Volume 9 (1979-81 seasons) will be out sometime in the late summer of 1981. Write the IRCA Goodie Factory for details on price.

IRCA Almanac (ALs). This highly successful IRCA publication is in its second edition. It includes the current frequency check list, sunrise/sunset maps for the US and the world (G3), sunset times for major US cities, lists of radio network, syndicated and religious program affiliates, station slogans, AM-FM simulcasters, sport programs, utility station list, a glossary of DX terms and articles on AM broadcasting. This handy cross reference to the NRC Domestic Log is a must for the serious BCB DXer. 164 pages and comb bound.

Volume I (1979 edition): \$4.50 (\$5.00 to non-IRCA members)  
Volume II (1980 edition): \$5.50 (\$6.50 to non-IRCA members)

A DXers Technical Guide (TG). Our latest new publication, this 100 page book includes articles on receiver and antenna theory, receiver reviews and modifications, antenna design and construction, hints on how to build and use receiving accessories, a list of places to buy parts and components, and much more. Many of the new reprints in this list were taken from the Technical Guide.

IRCA's Technical Guide is priced at: \$4.50 (\$5.00 to non-IRCA members)

The Beacon Guide. The IRCA Goodie Factory has on hand a few copies of the latest publication from the Longwave Club of America, the Beacon Guide. It is a complete list of aeronautical, marine, offshore and private beacons from 191 khz to 1921 khz.

The Beacon Guide is: \$6.00 each (no discounts to other club members)  
\$7.00 each (non-IRCA members)

Overseas members, please add \$1.00 per book for airmail via-Canada delivery. Otherwise, they will be shipped by sea mail.

The above prices are effective June 1, 1981. Payment in U.S. funds only. Please allow six weeks for delivery. All of the above items are available from:

IRCA Goodie Factory  
P.O. Box 17088  
Seattle, WA 98107



IRCA Goodie Factory  
P.O. Box 17088  
Seattle, WA 98107

ORDER FORM

IRCA Reprints List No. PB-1

Please cross out reprints you want. Number in parenthesis is the number of pages in each.

A1 (1)	A31 (1)	F39 (3)	G17 (1)	H20 (5)	L15 (2)	M12 (1)	R20 (1)	T22 (1)
A2 (2)	A32 (1)	F40 (2)	G18 (1)	H21 (1)	L16 (2)	M13 (1)	R21 (1)	T25 (1)
A3 (1)	A33 (1)	F41 (3)	G20 (1)	H22 (1)	L17 (4)	M14 (1)	R22 (1)	T26 (2)
A4 (1)		F42 (4)	G21 (2)	H23 (2)	L18 (2)	M15 (1)	R23 (1)	T27 (2)
A5 (1)	D2 (6)	F43 (2)	G23 (2)	H24 (2)	L19 (3)	M16 (1)	R24 (1)	T28 (2)
A6 (2)	D12 (1)	F44 (2)	G24 (3)	H25 (1)	L20 (2)	M17 (1)	R25 (1)	T29 (1)
A7 (7)	D17 (3)	F45 (2)	G25 (1)	H26 (3)	L21 (1)	M18 (2)	R26 (1)	T31 (8)
A8 (4)	D18 (1)	F46 (1)	G26 (3)	H27 (1)	L25 (2)	M19 (1)	R27 (1)	T32 (1)
A9 (4)	D20 (2)	F47 (5)	G27 (1)	H28 (1)	L26 (1)	M20 (2)	R28 (7)	T33 (1)
A10 (6)		F48 (3)	G28 (1)	H29 (7)	L27 (2)	M21 (2)	R29 (1)	T36 (2)
A11 (4)	F1 (2)	F49 (2)		H30 (1)	L28 (1)	M22 (1)	R30 (1)	T40 (4)
A12 (1)	F4 (2)	F50 (3)	H1 (1)	H31 (1)	L29 (1)	M23 (3)	R31 (1)	T41 (2)
A13 (3)	F5 (6)		H2 (1)	H32 (2)	L30 (3)	M24 (3)		T42 (2)
A15 (3)	F16 (6)	G1 (1)	H3 (2)	H33 (2)	L31 (1)	M25 (1)	T2 (4)	T43 (2)
A16 (1)	F21 (1)	G2 (1)	H4 (1)	H34 (5)	L32 (7)		T3 (4)	T44 (1)
A17 (1)	F24 (1)	G3 (\$2.00)	H5 (1)	H35 (1)	L33 (1)	R1 (1)	T4 (1)	T45 (4)
A18 (4)	F26 (1)	G4 (1)	H6 (1)	H36 (1)		R3 (1)	T5 (1)	T46 (2)
A19 (1)	F28 (2)	G5 (14)	H7 (1)		M1 (4)	R4 (1)	T7 (1)	T47 (2)
A20 (1)	F29 (1)	G6 (1)	H8 (1)	L2 (3)	M2 (1)	R5 (2)	T8 (6)	T48 (1)
A21 (1)	F30 (3)	G8 (1)	H9 (1)	L4 (2)	M3 (6)	R6 (3)	T10 (1)	T49 (2)
A22 (1)	F31 (1)	G9 (2)	H10 (1)	L5 (1)	M4 (1)	R8 (1)	T11 (1)	T50 (2)
A23 (1)	F32 (1)	G10 (2)	H11 (1)	L8 (2)	M5 (1)	R9 (1)	T12 (1)	T51 (3)
A24 (1)	F33 (1)	G11 (4)	H12 (2)	L9 (2)	M6 (2)	R13 (2)	T14 (1)	T52 (1)
A25 (1)	F34 (2)	G12 (12)	H13 (3)	L10 (3)	M7 (1)	R15 (1)	T16 (1)	T53 (1)
A26 (1)	F35 (1)	G13 (1)	H15 (2)	L11 (2)	M8 (1)	R16 (1)	T17 (1)	T54 (2)
A27 (2)	F36 (2)	G14 (1)	H17 (1)	L12 (2)	M9 (2)	R17 (2)	T19 (1)	
A28 (1)	F37 (1)	G15 (1)	H18 (1)	L13 (1)	M10 (6)	R18 (5)	T20 (2)	X1
A29 (2)	F38 (1)	G16 (1)	H19 (1)	L14 (2)	M11 (1)	R19 (2)	T21 (2)	X2
A30 (1)								X4

PRICE: IRCA members: 8¢ per page, third class mail (10¢ per page for non-IRCA members)  
9¢ per page, sea mail overseas (11¢ per page for non-IRCA members)  
9¢ per page, first class mail (11¢ per page for non-IRCA members)  
10¢ per page, overseas airmail (12¢ per page for non-IRCA members)  
via Canada

Third class rate can only be used if ordering more than 40 pages. Please mark above the rate you are paying. The IRCA Goodie Factory is handled entirely by voluntary labor, so delays will occasionally occur. Allow at least six weeks for delivery.

Total number of pages	_____	IRCA Stationery	_____
X cost per page	_____	100 sheets for \$3.00	_____
Total cost of reprints	_____	IRCA Almanac -- Vol. I	_____
Sunrise/Sunset maps	_____	Vol. II	_____
24 maps for \$2.00	_____	Technical Guide	_____
Foreign Logs -- Vol. 3	_____	Beacon Guide	_____
Vol. 4	_____	Total from column 1	_____
Vol. 5	_____	GRAND TOTAL	_____
Vol. 6	_____	Payment in U.S. funds only.	_____
Vol. 7	_____		
Vol. 8	_____		

Please include a self-addressed stamped legal sized envelope with orders for less than \$1.00. Allow six weeks for delivery of all orders. Thank you.

Name \_\_\_\_\_

Address \_\_\_\_\_ State \_\_\_\_\_ Zip \_\_\_\_\_

City \_\_\_\_\_ Province \_\_\_\_\_ P.C. \_\_\_\_\_

THE INTERNATIONAL RADIO CLUB OF AMERICA

A non-profit organization devoted to the hobby of listening to distant radio stations on the AM broadcast band (510 to 1630 kHz). IRCA is a member of ANARC, the Association of North American Radio Clubs.

OFFICERS, President: Father Jack Pejza, 3433 Somerset Avenue, Castro Valley, California 94546. Secretary-Treasurer: Rich Segalas, Board of Directors: Phil Bythway, Nick Hall-Patch, Don Kaskey, Paul Mount, Bruce Portzner, Susan Sivilnick, Gerry Thomas.

MEMBERSHIP DUES: \$16.50 First Class to the U.S.A., Canada, and Mexico. \$20.00 Air Mail to the rest of the world via Canada. Air mail direct from the U.S.: \$25.00 to Central America, Caribbean, Colombia, and Venezuela; \$30.00 to the rest of the world. Sample copies cost 50¢ each or three International Reply Coupons. Make checks and money orders payable to I.R.C.A. Persons living outside the U.S. should send checks or money orders payable in U.S. funds.  
DUES AND ADDRESS CHANGES should be sent to Rich Segalas, P.O. Box 26254, San Francisco, CA 94126.

DX MONITOR, the official bulletin of the IRCA, is published 3/4 times a year; weekly from October to March, twice in September and April, and monthly from May to August.  
PUBLISHING STAFF: Bruce Portzner (editor-in-chief), Dave Korinek (Publisher), Evelyn Portzner, Nick Hall-Patch, Jeff Jaisum, and Phil Bythway. Phone: 206-522-2521 (Portzner)

THE IRCA GOODIE FACTORY. The IRCA Almanac, Foreign Logs, reprints, and other materials are available for nominal charges. For a complete list, write to P.O. Box 17088, Seattle, WA 98107.

Unless otherwise noted, permission is granted to publish, broadcast, or otherwise reproduce non-copyrighted material appearing in DX Monitor, provided credit is given to IRCA and the original contributor.

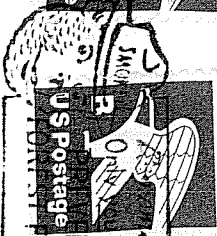
Opinions expressed in DX Monitor are those of the contributors and do not necessarily reflect those of the IRCA, its publishing staff, editors, or officers.

DX Monitor is printed by Save-on Printing, Seattle, WA.

**IRCA**

**P.O. BOX 21074  
SEATTLE, WA**

**U.S.A. PM  
1981**



**First Class**

**D.A. Nyholm  
2071 Cedar Street  
San Carlos, CA 94070**

**1982**