



DX Monitor

Devoted Exclusively to
Broadcast Band DXing

November 6, 1982

Volume 20, Number 7

Issue Number 628

In This Issue

Your First 30 Countries in English	2	Western DX Forum	12
Atlanta & Hickory Radio Dials	6	Eastern DX Roundup	16
The IRCA Technical Column	7	Central DX Roundup	17
Eastern DX Forum	10	Western DX Roundup	18
"America Overnight" to Leave Air	11	Unreported Stations Update	21

DX Calendar

- Sun Nov 21 KMPS-1300, Seattle, WA, will test 0400-0500 EST w/various tones, mx, and voice IDs. Will use their non-DA daytime facilities for part of the test. Phone (xr site):(206)623-3458. Send reports to Jim Eberhart, CE. Arranged by Bruce Portzer for IRCA.
- Mon Nov 22 KWSO-1180, Wasco, CA, will test 0300-0500 EST w/mx, voice IDs, and short TTs. Phone:(805)758-2145 or 324-5970. Send reports to Don Bevilacqua, KWSO, Rte 1 Box 38, Wasco, CA 93280. Arranged by Bruce Portzer for IRCA.
- Mon Nov 28 WCHE-1250, West Chester, PA, will test 0000-0200 EST, possibly longer, with "periods of totally unique tones", rock oldies, big band mx, and IDs. Phone:(215)692-3131. Send reports to Dave Schmidt, WCHE, 139 W Gay St., West Chester, PA 19380.
- Sun Dec 12 WJEE-1240, Hagerstown, MD, will test 0115-0145 EST w/tones, using 1 kw. Send reports to Louis Scally, CE, WJEE, Box 399, Hagerstown, MD, 21740. Arranged by Bob Binou for NRC.
- Mon Dec 13 KCEE-790, Tuscon, AZ, will test 0300-0500 EST w/5kHz TT w/code IDs, voice IDs, various TTs. KABC will be off for maintenance that morning! Return postage is required for a verie. Send reports to (IRCA member) Bill Croghan, KCEE, 2100 N. Silver Bell Road, Tuscon, AZ 85745. Arranged by Phil Bytheway for IRCA.
- Sun Jan 16 WBZT-1130, Waynesboro, PA will test 0100-0130 EST mostly w/tones. This will be their annual PoP test. Send reports to Louis Scally CE, WBZT, Box 309, Waynesboro, PA 17268. Arranged for NRC by Bob Binou.

We're starting to get a nice list of tests on behalf of both clubs. If you'd like to see it grow large, write to our CPC chairman, Phil Bytheway, for details on how to arrange CPC tests.

What's Happening?

Remember to order your advance copy of the IRCA Almanac. This time you have a choice of two styles: comb-bound or looseleaf (no holes). The Almanac will feature all sorts of information on stations and networks, such as: stations carrying particular features (American Top 40, Music of Your Life, American Country Countdown, etc), Sports Networks, Formats and affiliates of National and Regional networks, non-English broadcasts, religious broadcasts, slogans, utility stations, and a bunch of other stuff. Next to a list of all the stations in the U.S. & Canada, it's about the most useful DX aid a domestic DXer can own. It's available for \$5.00 (IRCA members only) until November 22. After that the price increases. To order your copy, send a check or money order and specify combbound or looseleaf. You can order your copy from the IRCA Goodie Factory, P.O. Box 17088, Seattle, WA 98107. The Almanac will be printed later this month and will be mailed out sometime in December.

If you haven't yet ordered your 1983 World Radio TV Handbook, the deadline is drawing near for a prepublication deal on that reference. See page 16 for details.

Nancy Heuer, 1312 24th Ave S., Moorhead, MN 56560 would like some information on an old radio she acquired. It was apparently made by a company called "Willcox-Gay" and has a serial number 62901. It is a six tube receiver, tunes up to 1500 kHz, and is built into a 36x22x10 inch cabinet. I believe there is a club of antique radio enthusiasts but I can't find their address at the moment. If you know it, or have any info on the receiver, please write her.

YOUR FIRST 30 COUNTRIES IN ENGLISH

with comments on 20 in the Western Hemisphere
(also included: a brief look at Pan-American DX possibilities in other languages)

Written by Mark Connelly, W4ION

17 October, 1982

This article is an updated version of a previous article entitled "The First 20 MW Countries in English." This article is primarily intended for the eastern US DXer. For the sake of brevity, the common DX bulletin abbreviation EE, for English-language, will be used.

As one's first 30 countries in EE may contain Transatlantic DX as well as Pan-American stations and because the earlier article concentrated on the western hemisphere only, this article will be divided into 3 sections: (1) a "hit parade" style list, in order of approximate reception ease, of all 30 countries, (2) an alphabetical list of 20 Pan-American countries audible in EE (excluding USA & Canada) with information which may help in logging them. Note that section (2) is in the format of the previous article. Transatlantic DX is discussed in a companion article "Your First 40 Transatlantic Countries (And Then Some)". Section (3) of this article is a brief synopsis of Pan-American countries other than those listed in section (2). Most of the countries in the Section (3) listing are not commonly heard in EE.

Section (1) - Your First 30 MW Countries in English - in approximate order of ease of hearing each country's EE stations, based upon receptions from the Boston & Cape Cod areas. The first frequency listed is considered the easiest one.

- | | |
|--|--|
| 1. USA (many) | 16. Albania (1395 - see note 1) |
| 2. Canada (many) | 17. Dominica (595) |
| 3. Netherlands Antilles (800) | 18. St. Vincent (705) |
| 4. St. Kitts (825,555) | 19. Montserrat (885) |
| 5. Cayman Islands (1555,1205) | 20. Jamaica (720,700,770) |
| 6. Belize (834) | 21. Barbados (900,790) |
| 7. Antigua (1165,1100,1580) | 22. Ireland (567,612,1188) |
| 8. British Virgin Islands (780) | 23. Mexico (1570) |
| 9. Anguilla (1610) | 24. W. Germany (873) (1197-see note 1) |
| 10. Cuba (see Section (2) listing) | 25. Bermuda (950) |
| 11. Haiti (1035) | 26. Trinidad & Tobago (730,610) |
| 12. Monaco (1467 - see note 1 to follow) | 27. Luxembourg (1440 - see note 1) |
| 13. UK (882,909,693,1053,1089,1215) | 28. Guyana (760) |
| 14. Bahamas (1540,810) | 29. N. Ireland (1341) |
| 15. Grenada (535,990) | 30. US Virgin Islands (1000,970) |

Notes

1. Station listed uses several languages in addition to EE; consult World Radio TV Handbook (WRTVH) for schedule.
2. Other possible Trans-atlantic EE targets: Vatican-1530, Sweden-1179, Italy-846, USSR-1143/1386, & several African countries may be received in EE, along with other languages.

Section (2): 20 Pan-American Countries (excluding USA/Canada) audible in English:
an alphabetical list with reception details. ALL TIMES GMT/UT

ANGUILLA The Caribbean Beacon, with religious programming on 1610, is heard most nights. The signal isn't always strong, but that's not important as it is on a clear channel. Only those with strong 1600 locals will have trouble with this one. Note that it has a listed silent period of 0500-0900. Parallel 690 is seldom heard. Anguilla-1505 is occasionally heard, but the signal tends to be poor.

ANTIGUA Three stations make Antigua easy: ZK on 1100 with Caribbean & US soul music and locally-accented talk, Caribbean Radio Lighthouse - 1165 with religion (both of the local & US-produced varieties), and the Voice of America station on 1580 (with EE programming similar to that of VOA's shortwave outlets). ZDK is best just after the sunset sign-off (s/off) of WHLI and before WAVE and/or HJAT fade-ins; if it's "short-skip aural" ZK may dominate throughout the evening to 0504 s/off (0204 Sunday). Caribbean Radio Lighthouse - 1165 is heard from sunset (at transmitter or receiver, whichever is later) until s/off, usually around 0215. Reception is better earlier in the evening before WVA slop gets too heavy; of course if it's aural, you don't have to worry about WVA (unless you live near Wheeling). The VOA station on 1580 may be heard under CBJ on normal nights; if it's aural, CBJ is attenuated severely, leaving VOA more or less in the clear with perhaps HJQZ/WSRF/WCLS/XEDM in the background. VOA operates from 0000 to 0400. There's also an Antigua station on 620; it is seldom heard.

BAHAMAS ZNS-1 on 1540 is heard regularly mixed with WPTR from southward-facing coastal areas, especially in WPTR's null (from LI southward). It can be heard best (alone' on channel) with WPTR & KXEL attenuated by aurora. Programming is usually light pop music & a lot of local advertising. Religious programs have occasionally been noted. ZNS-3 on 810, featuring Black-oriented pop music, is heard best with CJVA/WJY "aurora'ed out". Short-skip auroral conditions are best in terms of preventing powerhouse HJCY (R. Sutatenza) from totally bulldozing ZNS-3 out of the picture. ZNS-2 is occasionally logged in the northeastern states during aurora with 1240 skip domestics knocked out & 1240 groundwave stations (WOGB et al) off or nulled. All three Bahamas stations operate a 24-hour schedule.

BARBADOS CBC (Caribbean Broadcasting Corporation) on 900 is heard well during aurora from coastal areas just after sunset has occurred at both ends of the path. YVMD (R. Mara) & other South Americans may also be present; hopefully, the aurora has cleaned away normal pests CKTS/CHML/CJBR. Accented announcements & a variety of generally mellow Caribbean & US/UK pop melodies may be heard. S/off occurs at 0600, s/on at 0930. The new Barbados outlet on 790 presently operates a brief schedule, reported to be 2100 s/on to 0300 s/off. Your best shot at this one would be right after sunset from a coastal location on an auroral night. The ideal site would be at least 50 miles over land from the closest groundwave 790 domestic. The bearing to that 790 groundwaver (be it WEAN, WTAR, CFNW, or someone else) should be at a right angle to the bearing to Barbados, so that looping techniques can be successful. By mid-evening, after 0100, the Cuban on 790 can definitely be a pest. Most reports of Barbados - 790 mention talk as the principal programming.

BELIZE Belize City on 834 is one of the easier late-evening Pan-American splits: programs include local news & advertising and a wide variety of pop music including reggae, soul, mainstream US/UK top 40, and country-western. Some programming is in Spanish. Nominal s/off is at 0500 but all-night programming occurs with a considerable degree of regularity. Best reception time is after 0200.

BERMUDA ZFB on 960 occasionally makes it through tremendous levels of domestic & foreign QRM. A "short-skip auroral" night is best, reducing CHNS/WGLI/WELI/WSBY et al to groundwaves whilst not producing a situation which would allow HJHN to roll over the channel as it often does. Under such conditions, Bermuda would be noted with pop/soul music & local announcements -- possibly mixed with HIFF & domestic groundwaves. ZFB's main problem is that it is using a dreadfully-inefficient 50-foot tower as its antenna. Other Bermuda outlets on 1230 & 1340 are generally logged only by those near southward-facing beaches in areas such as Nantucket or Nova Scotia, far to the east of the heaviest concentrations of US local ('graveyard') stations.

BRITISH VIRGIN ISLANDS ZBVI on 780 is good from just after sunset has occurred at both ends of the signal path. It is in the clear from when WABS (VA) goes off to when WBBY and/or Latin Americans (YVCO, HJZG et al) start to become bothersome. There have been some recent managerial problems at ZBVI causing interruptions in programming: one involved a dispute over whether to hire new DJ's to present a US-style adult-contemporary format instead of the well-known reggae & soul programming more appropriate for a Caribbean station. ZBVI packs a potent signal to coastal New Jersey, Long Island, & Cape Cod; inland reception occurs, but with much less regularity than at the shore. S/on time is 1000; s/off time is listed as 0200 (Mon.-Thurs.), 0400 (Fri./Sat.), 0100 (Sun.).

CAYMAN ISLANDS Radio Cayman is most easily heard on 1555 (unless WQXR is in your backyard). Laid-back adult-contemporary snooze-music and low-key announcing styles are featured. For reasons I don't quite fathom, they run a weaker parallel transmitter on 1205 (as if 1555, which booms into the USA, is incapable of covering the Cayman Islands). 1205 is heard fairly often by US DXers, though not as well as 1555. Best 1205 reception is during auroral conditions when WCAU skip slop & the France-1206 QRM are removed from the "playing field" around 1205. The 2 R. Cayman outlets s/off at 0430 (except 0330 Sunday).

CUBA This country poses a distinct problem to the writer of any DX article: whatever is written will probably be obsolete by the time it goes to print. Cuba is possibly the easiest country to hear aside from Canada & the US; that's based on their numerous Spanish-language outlets (considered pests, rather than DX, by many of us). I'm tentatively ranking Cuba # 10 in terms of English programming (see Section 1): this is based on a 1-year average of different manifestations of EE programming. Some months no EE broadcasts were logged; in other months, several powerhouse channels were noted with EE broadcasts to the USA. Some channels used in recent times include 550, 600, 1040 (very briefly), & 1160. No one expects relations between Cuba & the US to improve to the point that Cuba wouldn't want to broadcast EE propaganda to Americans and generally foul up the band with totally unnecessary superpowered Spanish-language domestic service stations.

DOMINICA Roseau on 595 with Caribbean & US/UK pop music and locally-accented announcers is heard most nights before 0230 s/off. As with many Caribbean stations, open carrier is usually left on after programming s/off. Such open carriers may be used by DXers as propagation beacons, even if they are of little other use. A 1210 outlet occasionally heard is more often in French than in EE; 1210 relays St. Lucia - 840. Dominica has a religious station on 1060 which is seldom heard in the USA.

GRENADA Two stations, 535 & 990, represent Grenada. The 990 station is good during auroral conditions at coastal sites about an hour after receiving site sunset; under such conditions, a mix with YVTA/HJDB/WH00 can be expected. If conditions aren't auroral, CBY/WZZD/WNOX/WNYR may interfere. Look for Caribbean music (steel drums, calypso, reggae, ska, dub) and lively accented talk. The station on 535 is generally fair to good, although seldom super-strong. Like 990, best reception of 535 is shortly after both ends of the signal path have entered darkness. 535's programming is rather mellow with softer music & talk. In the past, occasional religious programs were broadcast, although that might not continue as the present Grenada government is pro-Castro. 535 has s/off at 0400.

GUYANA The Guyana Broadcasting Corporation outlet on 760, formerly known as Radio Demerara, is occasionally loggable just after sunset during auroral conditions - at least from southward-facing coastal areas. If Surinam on 725 is "blowing the house down", then Guyana should have a good chance of being heard. EE programming includes reggae & US/UK pop music as well as long, drawn-out announcements of local matters: one somewhat morbid program noted is what amounts to an obituary column of the airwaves. If listening to death notices isn't your 'thing', tune out for a few minutes & then come back. You may be surprised to hear Hindu or Islamic music - yes, this is still Guyana. Guyana, like Surinam & Trinidad, has a sizeable population of immigrants from India, Indonesia, and other far-flung former colonies of Britain & Holland. Guyana is also supposed to have a 10 kW station on 705. Nobody in the US has definitely logged Guyana - 705; St. Vincent ties down that channel. Action Radio - 560 gets logged about once a year, usually from Long Island. In ME, NH, MA, NB, & the western NE coastal regions, WGAN overwhelms 560, unfortunately. In CT & western MA, WHYN chops things up and in the NJ/Delmarva peninsula/eastern PA areas, WFIL pretty much demolishes Guyana. The 560 outlet is supposed to be parallel to elusive 705. The WRVH lists 0817 s/on & 0200 s/off for 760 and its shortwave parallels on 3265 & 5980 kHz. 560 & 705 have 0755 s/on & 0315 s/off; 5950 kHz. is on the air from 1100 to 0315 with programs parallel to 560 & 705.

HAITI 4VCC on 1035 provides religious programming in EE. It is heard well from just after sunset to 2400 (0000) s/off. Several Haitian stations other than 1035 can be heard; these are mostly in French.

JAMAICA J. B. C. on 700 & 720 are heard most often. Reggae, calypso, & American soul/disco records are played; DJ's often have thick Caribbean accents. Less-frequently heard Jamaicans are on 550, 560, 580, 620, & 770. 750 is reportedly off. Most stations operate throughout the night. Jamaicans are most reliably heard after 0400, when many co-channel Venezuelan stations s/off for the evening.

MEXICO XERF-1570 is the only EE Mexican station heard regularly in the northeastern states. Religious programs and/or country-western are offered, although at present the station is not operating during the early morning (east coast time) hours most conducive to good propagation from Mexico. An all-night C&W show for truckers is in the planning stages; once that comes on, XERF will once again become a common catch in MA, especially on auroral mornings with superpet CKLM knocked out. XERF has an interesting history including all sorts of fast-buck-type "doctors" & "preachers" selling everything from snake oil to prayer cloths to plastic religious articles that glowed in the dark. Several other Mexican stations make it to the northeastern US, but these are in Spanish (e. g. 540, 730, 900, & 940). Best reception is from 0500 to east coast dawn. XEG on 1050 has run EE in the past; I'm not sure about the current format as WHN/CHUM usually tie up that channel.

MONTSERRAT ZJB Plymouth on 885 runs EE programming, often featuring relays of BBC news on the hour. Music played encompasses Caribbean reggae/calypso & US pop hits, both new & old. A lot of mellow soul is played (e.g. Dionne Warwick, Stylistics). In New England, the signal is best as soon as darkness has commenced on both ends of the signal path. At that time, WCBS's slop is primarily from its groundwave component, which can be easily looped or phased. WLS slop is not a problem until later in the evening; on auroral nights WLS is never a problem. 885, therefore, may be completely in the clear right up to 0200 s/off on an auroral night. ZJB's signal is seldom in the "juggernaut" strength category, but it's widely heard. Montserrat's Radio Antilles outlets are on 740 (audible in French mixed with YVIC, with CBNM/CBL lost to aurora) & on 930 (mostly in EE & hardly ever heard in the USA).

NETHERLANDS ANTILLES PJB Bonaire on 800 (Trans-World Radio) is one of the easiest Caribbean stations to hear - even listeners quite close to Windsor/Detroit's CKLW-800 have gotten it. The format is religious & programming is in several different languages. EE broadcasts are from 0230 to 0600 (except 0500 Monday). "Caribbean Night Call" is a popular mail-bag type program on PJB late in the evening.

ST. KITTS Basseterre on 825 (Radio Paradise) is very strong throughout the evening to 0400 s/off. There's no serious QRM to 825 in the east, except within a couple of miles of WNYC-830. Programming is religious, with many syndicated shows of US origin. DXers far to the west may get 825 better between s/on (0900 except 0745 Sunday) and transmitter site dawn. ZIZ-555 isn't quite as strong as 825, but it's heard fairly often at locations without serious 550 & 560 local pests. Caribbean-accented EE with international pop hits & Caribbean music is the format. As with many other stations on former British territory in the Caribbean, ZIZ often relays BBC news. ZIZ-555 s/off is at 0300 but it usually leaves its transmitter on (running open carrier) to combat the effects of the warm, humid air on equipment. S/on of regular programming is at 1000.

ST. VINCENT Kingstown on 705 is a good split channel to check just after the signal path enters darkness. On non-auroral evenings, especially at inland sites where 705 is apt to be weak, WOR & WLW skip sloop will QRM St. Vincent later into the evening as darkness spreads westward. 705's programming features Caribbean-accented EE, mellow Caribbean calypso music & some US/UK pop music. Audio level tends to be low; the DXer should try to loop out as much WOR sloop as possible. 705 has a listed s/off of 0300 followed (usually) by unmodulated (open) carrier until s/on at 1000. St. Vincent also has a seldom-heard station on 1450 which runs French-language programming.

TRINIDAD & TOBAGO Two stations represent these islands: 610 & 730. Both require auroral conditions to clear domestic pests away from their channels. Unless properly-directed Beverages are available, a receiving location within 20 miles/32 km. of the ocean on the bearing towards Trinidad & Tobago is virtually essential. Local announcements (including interesting local advertising, on-the-air lottery drawings, etc.), often in thickly-accented EE, characterize these stations. Programming which serves the East Indian Hindu & Islamic immigrant communities has sometimes been heard on 730. Both stations should be audible from just after sunset to 0400 s/off and then from 0930 to the first appearance of sunrise along the signal path. Chances of hearing Trinidad & Tobago are good if (1) domestics are weakened by aurora (2) Barbados & Grenada are good & (3) Surinam-725 is like a local.

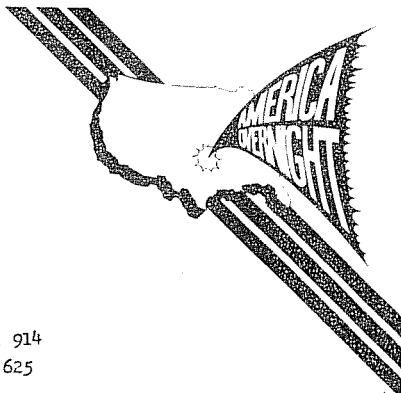
Section (3) A brief synopsis of Pan-American DX countries, aside from the US, Canada, & those listed in Section (2)

The 1979 Kazaross-Connelly-DeLorenzo "DXing Latin America & the Caribbean" article (available as NRC & IRCA reprints) is slightly outdated, but still of general use. Important differences are that Cuba's stations have done numerous shuffles of frequencies, locations, & powers; they are continuing to do so. St. Kitts, formerly on 1265 is now on 825. Anguilla has gotten much easier to hear thanks to the new outlet on 1610. The Costa Rican splits are gone, making that country considerably harder to hear in the northeastern states. There are no easily-heard Puerto Rican EE stations since WHOA-870 went all-Spanish. Brazil is actively expanding its number of stations; continuing power increases & additional facilities may make Brazil an easier catch. Argentina - 870 is being logged more regularly. Turks & Caicos is now being logged, during auroral conditions, on 1460. The Cuban shuffle has made some channels easier for stations from other Latin American countries (Jamaica on 720, Venezuela/Colombia - 780, etc.); other channels (e. g. 790) are now more difficult to DX due to new Cuban QRM. The continuing expansion of no-silent-period broadcasting within the US & Canada and the breakdown of clear channels will, of course, have a negative impact on all types of international DX.

For the sake of brevity, the list to follow only gives countries & frequencies of 'best bet' Pan-American DX stations. The list is in alphabetical order of countries. The US, Canada, & the 20 countries of Section 2 are not listed. For information about slogans, schedules, & best reception times, consult IRCA Foreign Log #9, the World Radio-TV Handbook, recent DX bulletins, the aforementioned "DXing Latin America & the Caribbean" article, lists of Pan-American split channels compiled by Hutton, and lists of Cubans compiled by Schatz. Remember that the slogan, rather than the call, is considered the ID on most Latin American stations. In the following list, the language used by stations listed is Spanish, except those marked PP (Portuguese), FF (French), EE (English), or DD (Dutch).

Likely to be heard:

- Argentina 870, 950, 1030
- Brazil (PP) 860, 1000, 1100, 1120, 1220
- Colombia many 700, 730, 760, 810, 820, 890, 960, 1040, 1070, 1100, 1160 among the best
- Costa Rica 700 has been logged. The former splits have relocated to 10 kHz. channels, but nobody's logged a significant number of them yet.
- Ecuador 540, 735, 945, 995, other 5-kHz. splits
- El Salvador 655, 905
- Dominican Republic 650, 830, 860(?), 1160, 1180
- French Guiana 1070 (FF)
- Guadeloupe (FF) 640
- Guatemala 640
- Honduras 890, 944, 1365
- Nicaragua 540, 620, 750
- Panama 770, 825, 840, 860, 965, 1045
- Paraguay 645
- Peru 854, 880
- Ruerto Rico 580, 680, 810, 870, 1560
- Surinam (DD, other languages) 600, 640, 725, 820, 914
- St. Lucia (FF) 840; (EE) 660, possibly moving to 625
- Turks & Caicos (EE) 1460
- U. S. Virgin Islands (EE) 970, 1000
- Venezuela many 540, 640, 670, 710, 720, 740, 750, 830, 910, 950, 1000, 1020, 1070, 1110, 1200 are some of the best.



The following are considered very unlikely to be heard:

- Bolivia 1020, others
- Chile 1140, 1180, others
- Falklands Islands (EE) 536
- Martinique (FF) 1310 (if back on the air)
- Uruguay 850, others

Note: Easily-heard St. Pierre & Miquelon - 1375 is not considered as a Pan-American country for this article: DX columns treat it as a TA, much as Alaska is considered a TP.

Any article written about Pan-American DX is doomed to quick obsolescence. New high-powered stations, many of them religious outlets with EE programming, are being planned for the Caribbean. When one of these stations takes to the air, a formerly rare country can become commonplace in very short order. The instability of Cuban broadcasting requires daily monitoring from south Florida to keep up to date. Active participation in DX club international columns is the best way to keep abreast of developments.

WHKY (1280 KHz.) 5 a.m. to midnight. Popular and rock music, weather and sports. Local news at 7 a.m., 7:45 a.m., 10 a.m., 12:15 p.m. and 6:55 p.m. ABC affiliation with Entertainment News on the half hour.

WHKY-FM (102.5 MHz.) 5 a.m. to midnight. Religious music. News at 15 minutes after the hour and five minutes before the hour.

WSPF (1000 KHz.) 7 a.m. to 7:30 p.m. Modern country music, weather. UPI World News at top of the hour. Sports at 7:30 a.m. and 8:30 a.m.

WIRC (630 KHz.) 6 a.m. to 7:30 p.m. Country music, weather and sports. Local, state, national news at 6:30 a.m., 7 a.m., 7:30 a.m., 7:55 a.m., noon, 3:30 p.m. and 4:30 p.m.

WXRC-FM (95.7 MHz.) 24 hours. Contemporary music in stereo, weather and sports. Local, state, national news at 6:55 a.m., 7:55 a.m., 12:12 p.m. and 4:55 p.m.

WUIV (1580 KHz.) 7:15 a.m. to 7:30 p.m. Adult contemporary, CBS news on the hour, Accu-Weather twice hourly. Unifour news at 6:30 a.m., 7:30 a.m., 8:30 a.m., 12:30 p.m., 4:30 p.m. and 5:30 p.m. Stocks at 5:30 p.m.

WNNC (1230 KHz.) 5 a.m. to midnight. Adult contemporary music. Mutual Network news at top of the hour followed by local news. Local sports at 6:30 a.m., 7:30 a.m., 8:30 a.m., 5:30 p.m. Mutual Sports, 2:35 p.m., 5:35 p.m., 7:35 p.m. Weather forecast at 45 minutes past the hour.

LEFT: from Atlanta Journal
 RIGHT: from Hickory (NC) Daily Record
 both via Karl Jeter

Radio Dial

- AM STATIONS**
- WABC (850) - Black
 - WFLD (590) - Country
 - WCN4 (480) - All News
 - WSB (750) - Pop-Rock
 - *WQXI (770) - Pop-Oldies
 - WAE (560) - Christian
 - WCST (920) - News
 - WRIS (770) - Album-Rock
 - WGUR4 (1010) - Religious
 - WJVI (1080) - Standards
 - WGKA (1190) - Classical
 - WFGA (1230) - Top 40
 - WJHI (1240) - Gospel
 - WCHR (1250) - Country
 - WXII (1310) - Gospel
 - WIGO (1340) - Black
 - WLAW (1360) - Variety
 - WACK (1380) - Black
 - WMOE (1400) - Pop-Rock
 - WAVO (1420) - Religious
 - WDYX (1440) - Country

- WYZE (1480) - Jazz-Gospel
 - WXPB (1500) - Country
 - WDGL (1520) - Christian
 - WZAI (1540) - Pop-Rock
 - WPKR (1550) - Christian
 - WESA (1570) - Christian
 - WACK (1600) - Country
- FM STATIONS**
- *WRAS (88.5) - Rock
 - WRFG (89.3) - Diversified
 - *WABE (90.1) - Ed-Classical
 - *WREK (91.1) - Progressive
 - *WGLK (91.9) - Jazz-Black
 - *WZCZ (92.9) - Top 40
 - *WQXI (94.1) - Rock
 - *WPCN (94.7) - Easy-listening
 - *WJLS (96.1) - Album-Rock
 - *WREB (98.5) - Pop-Rock
 - *WJTA (99.7) - Pop-Rock
 - *WRIX (101.5) - Country
 - WGCO (102.3) - Country-Gospel
 - *WVEE (103.3) - Black
 - WCHK (103.5) - Country
 - * - Stereo



the irca technical column

Editor: Nick Hall-Patch
1538 Amphion St.
Victoria, B.C. V8R 4Z6
Canada

Ask and Ye Shall Receive Dept.-----

An enquiry concerning replacement of the 3TF7 ballast tube in the R-390A resulted in not one but three replies.

Ralph Sanserino says he used a 50 ohm, 10 watt resistor plugged into the tube socket.

Charles Taylor suggested contacting Don Roller, 3983 Pine View Lane, Greenwood, IN 46142 to see if he has any 3HTF4 ballast tubes which are a direct replacement for the 3TF7.

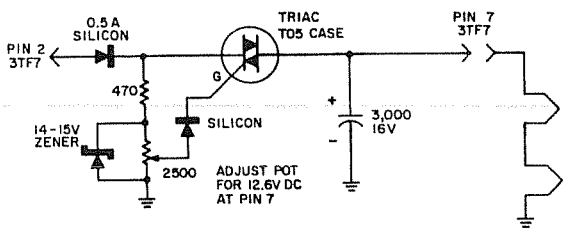
And Dick Truax found the following info from a MARS bulletin inside an R-390A manual. He printed it in DX News, Vol. 47, #29---so here it is for those who didn't see it there:

Three Methods of Replacing the 3TF7 in the R390 and R390A Receivers

R390

R390A

- | | |
|--|---|
| <ol style="list-style-type: none"> 1. Replace V508 and V701 (PTO and BFO tubes) with 12BA6's. Short pins 2 and 7 on 3TF7 tube socket with a short piece of wire. 2. Leave 6BA6's in PTO and BFO sockets and put a 42 ohm resistor (5 watt) across pins 2 and 7 on the 3TF7. 3. Below is a Triac regulator circuit which can be plugged into pins 2 and 7 on the 3TF7 socket. Ground to one of tube mounting screws. | <ol style="list-style-type: none"> 1. Replace V505 and V701 PTO and BFO tubes with 12BA6's and short pins 2 and 7 on 3TF7 socket 2. Same as 2 for R390 3. Same as 3 for R390 |
|--|---|



* * * * *

The Kenwood R-600

by Randy Tomer

I ordered this new receiver by telephone from Ham Radio Outlet in Burlingame, California and received it the very next day! Their price was \$299; \$100 below list price. After unpacking it and hooking it up to a medium length random wire antenna (60 feet long), my first reaction was to return the set for a refund! The broadcast band was swamped with spurious signals of my local stations, and lots of loud birdies were found everywhere. In the few spaces of the dial that were free of spurious signals, weak QRN from the receiver's LED digital display was heard, and I didn't like that either. (The display cannot be switched off). I was just about to send the set back. However, I have other radio interests besides the CB and this little radio was so slick looking, so smooth in operation, that I just had to give it a more thorough checking out.

Tuning down into the low frequencies (100-500 kHz), I was again disappointed, as the low band was full of BCB interference. But tuning up in the shortwave bands made me realize the potential of the little R-600. Tuning in SSB ham signals was a real snap, and it pulled them in just as easily as the SPR-4 did; and much more easily than the FRG-7 and HQ-180A. Tuning in the International SW broadcasters was also a snap, with good selectivity in the "AM-Narrow" position, and with great hi-fi sound from

strong stations in the "AM-Wide" setting; the best sounding communications receiver I ever listened to, by far. It pulled in weak stations between strong ones just about as well as did my modified SPR-4. A few birdies did appear on the 31 meter band, but disappeared after the "powerhouses" signed off. At this point I knew I would end up keeping the R-600 after all, as I was rapidly getting very attached to it.

I dusted off the Radio West loop and tried the R-600 on the BCB again. Using the loop, the R-600 was much more useable on the BCB, though it still had several prominent birdies and the QRN from the LED's had to either be nulled out or the loop placed about four feet away from the receiver. In spite of using the loop, however, the R-600 still has serious problems on the BCB, both with birdies and with mixes of local stations popping up at various places on the dial.

The spurs aside, the R-600 does have very good sensitivity on the BCB. At nighttime when my local stations are running reduced power or are off the air, the R-600 fares much better, with only a few strong birdies remaining. A particularly strong one occurs near 1030 kHz. One positive note on these birdies is that they seem to tune out very rapidly. Usually by tuning only $\frac{1}{2}$ kHz from the desired station's frequency, the birdie can be made to disappear. Most of these birdies do not actually cause a zero-beat effect with the desired station's signal. I suspect that some of these noises are caused by the LED frequency display, but there's no way to tell, because the display can't be switched off. Looking inside the R-600's case, it seemed to me that the display module was not sufficiently shielded, so possibly it is a source of undesired noise.

With my locals on nighttime power I found that the R-600 can handle a random wire after all, but only the little 30 foot one; when hooked up to the 250-foot "monster-wire" the R-600 is totally swamped. Seems to be an extreme case of a bugaboo of many modern solid state receivers--they can't handle a long random wire, yet are too insensitive with a short one. Quite a contrast to the SPR-4, which handles the 250-footer with no serious spurs, and is also very sensitive using just the 30-footer. With my locals operating on daytime power (three 5 kWers, one 1 kWer) the R-600 is useable only with a loop, and I might add, only with very, very careful operation of that loop. I would predict from this experience that the R-600 will be impossible to DX with on the BCB in an area loaded with 50 kW locals, unless Kenwood makes some major improvements in the R-600's design (or is my set somehow defective?)

The bad side of the R-600 is its severe overloading on the BCB. Some of its many good features include: The S-meter is excellent. AVC action is fixed but seems to be set at a good compromise setting. Audio quality is the best I've heard in a communications receiver. Selectivity is good in the narrow setting. The receiver is very compact and weighs only 10 pounds, yet is solidly constructed. Inside the case, it's a work of art, totally modern in design and beautifully built. Switches and controls are first rate in quality, and operation is quite simple. On a scale of 1 to 10, this receiver gets a solid "10" when it comes to ease of operation and good looks. The bottom line is: if you're looking for a good second rig for checking shortwave parallels, SWling, or just for tuning in strong BCB stations, the R-600 is hard to beat, but if you can afford only one good DX receiver, definitely avoid this one.

(ed note)...There's been some question as to why the Kenwood R-600 is so much less expensive than the R-1000 in spite of its having nearly all the R-1000's features. A DX Post (Southern Cross DX Club's magazine) article forwarded by Pete Taylor mentions comparisons between the two receivers found in the German DX magazine Weltweit Horen. The magazine mentions that when tested together, the R-600 and R-1000 had nearly identical specifications, but that sensitivity was somewhat greater in the R-1000. At MW frequencies, the R-1000 was found to be considerably more sensitive (on the order of 12-14 dB), but judging by our R-600 reviews, this lesser sensitivity is not a problem.

The R-600's front end is quite different from the R-1000's, being triple conversion rather than dual conversion, and its first IF filter is an LC rather than a crystal job, which probably helps explain some of the overload problems. In this case, triple conversion doesn't mean it's better, just that there is more opportunity for spurious signals to be generated.

I decided to try an antenna tuner as an aid to the R-600's dismal performance with a random wire, and picked the Yaesu FRT-7700 because of its apparent high quality, numerous features, and its being priced well below the competition. I get the impression that Yaesu is selling the FRT-7700 and the matching FRA-7700 tuneable active antenna at or near cost (possibly to encourage FRG-7700 sales) as they are both loaded with features, yet are quite reasonably priced.

The FRT-7700 did not eliminate all of the R-600's BCB problems, but I found it to be a useful addition to the shack anyway. It immediately eliminated practically all of the BCB garbage that had been swamping the Longwave band, even when using the big 250-foot wire. It made the R-600 much more useable with a random wire on the BCB, allowing use of the 250 footer even with my locals running daytime power, and its Z-matching switch allowed more gain when using the short wire. In spite of the tuner the 250' wire still did not give as much gain with the R-600 as does the Radio West loop, and I consider the use of a good loop to be critical for serious BCB reception with the R-600. At my location, however, a random wire gives quieter reception than does a loop, so I'm looking into hi-Q BCB tuning setups for the Kenwood.

The FRT-7700 did a good job of eliminating BCB interference from the lower shortwave bands. In the higher frequencies, it had little effect, though it probably eliminates strong out-of-band QRM there also. One advantage of this tuner is that it allows quick changeover between two antennas and two receivers, and is useful in making quick comparisons between a loop and random wire.

I tried the FRT-7700 with a FRG-7, and found it to be essentially useless with that receiver. It provided only a slight gain in signal strength (not enough to justify the cost) and little if any reduction in blocking and cross-modulation problems caused by locals. Also the FRT-7700 did not "peak" when tuned with the FRG-7. I've noticed this with other tuners I've tried (home-brew jobs). They may peak well using other receivers, but have effect on the FRG-7...

*

More on the FRT-7700

by Sheldon Remington

Since my purchase of the FRT-7700 (mentioned in July 10/82 DX Monitor) my supplier, Webster Radio in Fresno, has stopped handling ham gear, so the FRT-7700 is no longer available from them.

Because my ICOM IC-551 receiver with converters has quite a high noise figure on MW, I have added a homebrew preamp inside the FRT-7700 based on articles in The Lowdown in July/Aug '79 and December '80. This preamp can be switched out and does not add any extra tuning to the preselector.

Since putting this set-up together, I have used the FRT-7700 on MW with 7 Beverages, 10 shorter wires, 2 dipoles, a 10-meter delta loop and even a 2-meter Yagi; this using the ICOM chain mentioned above and a Pioneer AM-FM tuner. In general, I've not tried to set up "worst-case" experiments with the system, but overall I've been satisfied with the FRT-7700's ability to clean up the band using the above antennas. On the matching switch, position #2 (occasionally 1 or 3) gave best signal strength, but the 1000' wires were strongest at position #4. Position #4 gives the highest Q (and hence best preselection) but sometimes gave a poor match (-15 dB or so) on the shorter wires. Generally, I can't agree with Don Moman that the FRT-7700 has "little real selectivity for MW", except when using high gain antennas, or receivers which have poor RF selectivity when compared with their strong signal characteristics.

However, in one worst case example, 1010 kHz with a large KABL-960 spur when using a 500' dipole, the FRT-7700 couldn't entirely handle the mess. Straight attenuation of -10 dB in the DX-BC line eliminated this spur, but the "true" 1010 signals were then too weak for monitoring. When using the tuner portion of the FRT-7700 with no attenuation, I couldn't entirely eliminate the KABL spur, even by moving the FRT-7700 tuning far above 1010 kHz. By adding two further stages of homebrew tuning plus my preamp, I ended up with good fat signals on 1010 with no trace of KABL.

Definitely, two or more tuned circuits in a MW preselector is the way to go for optimum results (which means homebrewing), but I still feel that for a single tank circuit, the FRT-7700 is best in terms of construction, price and features.

EASTERN DX FORUM

(215) 368-8067
RICHARD EVANS
P.O. Box 1294
NORTH WALES, PA 19454

Reports from listeners living east of the Mississippi River
Deadlines: Saturdays thru 3/19/82

Philip Boersma, 15570 Cleveland, Spring Lake, Michigan 49456

I'd like to comment on a couple of things in the Oct. 16th EDXF. First, for JCK, while the "two radios" approach has been used for the Kahn AM Stereo system, it is not the ultimate way that Kahn envisions the system being used. They have designed an IC chip which, when inserted in newly-designed radios, will make possible reception of Kahn-stereo AMs with one radio, just like FM stereo is now. This is the way that Kahn, and stations that use the system, ultimately want to go. Actually, Kahn has several advantages over the so-called "multiplexed" AM systems like Magnavox or Harris, when used properly (ie, with a receiver designed to receive the system). In mono, the Kahn system does not introduce added distortion (unlike the other systems). In stereo, Kahn has been described (by those who heard WNBC at a recent NAB meet) as "superior to FM" in separation, signal-to-noise ratio, and lack of distortion. Also, Kahn keeps its stereo image for the longest distance, whereas the multiplex systems all lose the stereo after a specified signal strength. The Motorola and Magnavox systems are also notorious for losing their stereo image in the presence of an interfering signal (such as at night). One must also remember that precisely because Kahn does NOT multiplex its signal (ie, encoding L+R on the "main" channel and L-R on a subcarrier) it does not add large amounts of noise to the stereo signal (again, unlike the multiplexed systems. Our FM stereo system, also a multiplexed system, adds 20 db of noise to the stereo signal). Kahn's main drawback is that it is much more expensive, thus stations adding the system have to invest more, and receivers will cost a bit more. As for the "two radios" approach, it is a gimmick, and a temporary one at that, until bona-fide Kahn stereo receivers can hit the market. On another subject, no, rce, the FCC won't be abolished--but it might as well be. The FCC staff has seriously considered the elimination of ALL nighttime interference standards to allow more full-time AMs; other equally looney proposals include abolition of standards for station ownership (thus, even convicted felons could own a radio station), relaxation of DAYTIME interference standards; and who knows what else will pop up in the near future? The lunatics have taken over the asylum, for sure. 73.

Karl J. Zuk, 224-04 Stronghurst Avenue, Queens Village, New York 11427

I seem to be suffering from a BCB DXers disease. It is known as 3000 mile syndrome. No matter how hard I try, I can't work anything farther than 3000 miles away! (I'd like to work something 3000 miles away, hi-rce) I have heard numerous stations all along the coasts of the Caribbean Sea and into the Rocky Mountains, but I just seem to reach the West Coast, inside South America or anything transAtlantic. Last night I thought I had finally broken the streak. Under WIOD and WIP on 610 kHz was a muffled YL announcer playing whining middle eastern chants. I thought I had finally gotten Morocco on 612, but Noooooo..... I had NBS in Trinidad and Tobago doing their Friday night middle eastern request program. "For Sim-Sala-bim in Haiti, here's Abdul and the Sheiks doing 'Camel-lot'". Very strange! New York has a new TIS station being operated by the Port Authority of NY and NJ at their building at Kennedy Airport. It must be fairly low power, since I've heard movie theatres operating with better signals. The Westbury Drive-In, on Long Island, has recently gone to three individual transmitters for their triplex theatre, but I have yet to hear them. Belated thanks to Albert Lobel, for all the witty post cards. If I told you XETRA "The Mighty 690" was probably my favorite BCB station in the world, would you believe me? You see, Albert doesn't like rock and disco. Welcome to George Hakiel. It is nice to know someone else on Long Island has DX in his blood. I will be in Houston again in November, for a week, covering the fifth space shuttle (just turn right at the Saturn Five in the NASA parking lot) and I hope the DX is better than last time! Best Wishes and GD DX to all.

George Hakiel, 739 Van Buren Avenue, West Islip, New York 11795

I think I owe these columns a report. I have had a lot of luck with my DX, this past summer! I only counting foreigners (no Canadians), July 11 newies caught, Aug. logged 10. Sept. was a banner month-- 32! Oct. so far has brought 14 more new ones to the fold. My total is now 260. Auroral conditions during Sept. really swelled my totals. My best are LRA-1,

(Hakiel, cont...) Argentina, Turks and Caicos Islands, several low powered Colombians, and lastly-OAX40, Lima, Peru on 1010 kHz. This was tough because local station WINS was on at the time! I have discovered that deep S. American stations are received better when Cx are not Au. Such was the case last night--LRA-1 came in and so did Brazil (ZYZ 459). Brazil really came in very strong! Again, the time to catch Brazil is 0800. For some strange reason, signals from there seem to peak at this hour. I have recently had a new 4 ft. FET aaz loop made for me by Steve Bohac. What wonderful work this man does! The first night I used the loop, I logged Lima, Peru with it. Much credit has to go to Steve for hishandiwork! I have spoken on the phone with several members, all delightful people! Neil Kazaross, Chuck Hutton, Bob Foxworth, Matt Stutterheim, Jeff Kadet, Steve Bohac, Bob Langdon. Also, Karl Zuk, who was instrumental in the logging of Trinidad and Tobago. I have had many inquiries about the R7A Rx. I won't say anything about this yet, as I intend to write an article concerning this Rx. Everyone is of the opinion that my location must be an ideal one. Far from it! Lots of power lines, telephone wires, dimmer switches. People in my house who insist on using the TVs (only 4 TVs in my household!). You see that I have my problems too! To top it all off, my radio shack is in the worst room in the house for a loop. A large metal furnace chimney pipe is very close to my loop. Nulls are affected by it. Despite all this, I still manage to DX! Part of my success is due to the R7A which can overcome these problems, to a degree. Till next time, 73.

Richard C. Evans, P. O. Box 1294, North Wales, Pennsylvania 19454

It would be appreciated here if those who write reports on lined paper would single-space the reports. It makes it easier for me to copy them. While typing the end of George Hakiel's report(above), I tuned in WCFL-1000 Ill. for background music. It's in better than (semi) local WPEN-950, and the music's not bad--it's an oldies show--but Wolfman Jack as the announcer? He doesn't impress me anymore now than he did almost 20 years ago when I first heard him. George Hakiel, how far north of the coastline do you live? It sounds like you get a "water effect" such as those who live close to the Great Lakes. Last week, I was complaining about the lousy SSS reception I get here. I managed to be home today (10/23) during SSS and gave it a good try. Result was 7 new stations, plus a new state from here--Alabama for #29. Gotta run. PTL.

RKO TALK SHOW "AMERICA OVERNIGHT" TO LEAVE THE AIR IN 1983

"America Overnight," a six hour nightly talk show introduced by the RKO Radio Network in Sept. 1981, will leave the air at the beginning of 1983. RKO's only talk program is currently on 50 stations (35 on AM). An RKO official says RKO is dropping the show to concentrate on "what it does best" -- music programming for young adult listeners, such as the all-night music show "Night Time America." (From 10/18/82 Broadcasting magazine, used by permission.)

"America Overnight" originates at KRLD-1080 Dallas, with host Ed Busch 0005-0300 Eastern Time and Mitch Carr 0305-0600, Tuesday thru Saturday mornings. On Sunday morning there is a "best of" repeat program.

Here is a list of the AM stations currently carrying the program:

550 KOY--AZ	740 KRMG-OK	1260 KVSP-NM	1450 KVEN-CA
WGR--NY	790 KGMI-WA	1280 WGSO-LA	KEEP-ID
570 WKBN-OH	920 WHJJ-RI	1300 KYNO-CA	KQDI-MT
590 WROW-NY	970 KSYL-LA	1310 WNIC-MI	1480 WABB-AL
600 WCAO-MD	KREM-WA	1340 WKRP-PA	KBEA-KS
610 WSGN-AL	1080 WTIC-CT	1380 KSRV-OR	1490 WDAN-IL
620 WJDX-MS	WVOG-FX	1420 WLNA-NY	WJNL-PA
KGW--OR	KRLD-TL	1440 WHHY-AL	WLPA-PA
680 WRKO-MA	1250 WTAE-PA	WAJR-WV	

The above list was originally prepared for the upcoming "IRCA Almanac." However, I decided to rush it into print in DXM because its life expectancy has been greatly shortened, hi.

You will find station listings in the Almanac for this program's all-night talk competitors, including the Larry King Show, NBC's Talknet, ABC Talkradio, and the new (old) Herb Jepko Show. Also, RKO-1's all-night music show, "Night Time America," will be there with both station list and a "hot clock" chart showing the times for local breakaways.

There will be many other useful items in the Almanac, so order yours today. Remember the special prepublication price of \$5.00 for IRCA members only, if you order by November 22. Check or money order to the IRCA Goodie Factory, P.O. Box 17088, Seattle, Wash., 98107. Please specify your choice of unbound (looseleaf) or comb-bound. This will be the best IRCA Almanac yet, so order today! (Also see page 15. bp)

--Bill Hardy



Western DX Forum

★ ★ ★ ★

IRCA—Serving the Broadcast Band DX'er Since 1964

Editor: Ric Heald, 1632 J St., #4, Eureka, CA 95501

1982/3 DEADLINES - WEEKLY ON TUESDAY, 12 DAYS PRIOR TO PUBLICATION DATE

JIM HILLIKER, 1502 E. HEDGEWOOD DR., ANAHEIM, CA 92805

Here's my first forum since joining IRCA in September. I've already sent in some loggings to WDXR and I hope to be as active in reporting as possible. I'm 27, single and have worked in broadcasting for three years. Presently I work for KYMS (FM) Santa Ana as an announcer. I've been in the DX hobby for nine years, mostly SW. The MW DX bug really bit me in late '78 and early '79 when Don Erickson told me about a trip some DX'ers were making to 29 Palms to DX using Beverage antennas. I had no idea what this was about, but I went and I've been excited about MW DX since. Some of us just went out to the Beverage site this past weekend (16-17 October). Most of my loggings have probably been in a recent WDXR, but basically, we had two Beverages set up, one to the northeast and the other to the southeast. John Clements and I shared my R-1000 and because I go mostly for domestics, I let John look for the Latins on Saturday night. I do remember watching John tune around and that conditions Saturday night were unusual. Mexicans were loud, such as Mexico City 1000 and on 890 Bogota, Colombia. This was all quite new to me, but was a lot of fun. The Beverages were working the way they're supposed to do, also. On the northeast, I was getting a lot of stuff from Colorado, Utah and Idaho. In the past Wyoming has also been good. Some of my best catches there were: KOLT 1320 Scottsbluff, NE; KRKK 1360 Rock Springs, WY; KIML 1270 Gillette, WY; KWIV 1470 Douglas, WY; KEXO 1230 Grand Junction, CO; and KFBC 1240 Cheyenne.

So far we've been out there three times this year including last March and April. Being 150mi/240km from Anaheim, it's great to be away from all the local interference. John is planning to stay out in the area for a couple of weeks in late November, and drive out to the site every night. I plan to go out there one of those weekends. Another thing about the site and using the Beverage is that groundwave reception is usually good as I logged KNAK 540 Delta, Utah at 1200. I would guess the distance is 350-400mi/560-640km and they're listed as 1 kw. Also Sunday morning @ 0930, JJ on 828, 837, 893. (To Be Continued. . .Welcome to IRCA and WDXF, Jim. Hope to hear from you with double-spaced - hi - forums often-RtH.)

MARK STRICKERT, 706 25th AVE., SAN FRANCISCO, CA 94121 (415) 752-4245 1800-2330 PLT

My DX activities have really picked up these last two weeks, as at least some things are finally managing to sneak through my building's QRM. . . there's a nasty noise that constantly covers 820-840 (no-Besides KGO, hi), so it took a strong KHL0 to pop through KOA for my first off-coast Hawaiian. (Ya sure you're on 25th Ave and not in Kaskey's building?-hi-RtH.)

Finally got out to Año Nuevo with Steve McGreevy on 09 October. It took a last-second compromise with visiting relatives to go and even then it was long dark by the time Steve and I got over there. After hours searching for the other "hordes" of DX'ers who were to be there but weren't, we instead looked for a flat piece of ground for a 1,000-foot longwire, finding it at a lettuce patch next to Pigeon Point Lighthouse. After all that, we heard little of interest, except maybe JOBB 828 and North Korea 657 well after sunrise on my aRF-2200, not attached to the wire. For more details WDXR/DXWW-W.

Next week, TA DX and what network censors have to say about it. 73 de MaS.

JEF JAISUN, 12860 136th AVE NE, KIRKLAND, WA 98033

"America's special agent for cleaning toilets." Yes friends, read and weep. This is how the TV ads are plugging new Ty-D-Bol with "DX-3." No more Mr. Nice Guy floating around in a porcelain sea. (Probably got sunk after local growers thought he was an agent, hi-RtH.) Well, I know some of you like to collect DX product trivia, so feel free to add this to your collection. It's probably what the FCC is using to break down the clear channels, hi. (I can't wait to hear a lemon-scented daytimer on 1200.) (Squeaky clean, no doubt-RtH.)

Ric, with respect to making WDXF 40 lines instead of 30, I think it would be superfluous. (It was bp's idea, point at him, hi-Rth.) Presently, you can submit a forum of any length. If it's too long, the editor may do just that. . .edit it. Some of you may have noticed a series of forums I submitted and I initially gave Ric enough for three forums to be divided as he saw fit (or unfit, hi). Natch, it would be silly to break up a 40-line forum just to run ten lines the following week. Still, that's where editorial discretion comes in. If you can break up a forum without the second half losing its continuity, what's the diff? On the other hand, some of us (myself included) tend to blab about non-DX-related things from time-to-time. I think the 30-line limit keeps our imaginations in check. Also, the idea of a 30-line limit is to encourage and allow room for more member participation. Granted that some of us are more wordy than others, but when members choose not to write I would rather see the excess space used for more articles than padded forums.

DX-wise, things have begun to pick up here. Finally logged Haiti 1035 on 04 October w/SS (!) program. (To be expected, Jef. I've heard 'em in SS-Rth.) Also, Tahiti 738 and TGWC 1000 Guatemala. The first two have been "most wanted" for several years. MM 11 October was excellent for midwest conditions, with WMBD 1470 blasting down the doors for the first time in quite a while. Also heard were KKOA 1390 Minot; KBLQ 1390 signing on at 0440 PLT (weird time), and the new KWSO 1180. (As a former morning man, no doubt the guy overslept, hi-Rth.) Maybe the best domestic catch of late though, has been KCNO 570 Alturas, CA. Local KVI was zapped by a lightning storm at local sunset 28 September, and KCNO floated in and out for about 20 minutes until 1919 PLT s/off. They were carrying the Oakland A's at the time and left in the middle. Poor Billy. Poor Angels. Go Pilots. . .er, I mean, Brewers. How refreshing. A World Series without the Yankees or Dodgers. (AMEN-Rth.)

A couple of recent forums have mentioned XERB 1090 and that Wolfman Jack worked his famous years at XERF 1570. Scuse me gang, but the Wolfman worked at XERB, which has been XEPRS (Express) for a long, long time. But I guess we can all be forgiven for being nostalgic. . .those were the real days of radio and DX. (Scuse me obscure rock-star breath, he worked at BOTH. He started at XERF and went to XERB when Mexican union problems became somewhat violent and he left for TJ. So there, hi-Rth.)

GENE MARTIN, 3303 E. AVANS AVE., DENVER, CO 80210

As an oldtime DX'er, I can remember the days when all radio stations signed off, some of them two or three times a day after a few hours on the air. WHO Des Moines, in about 1928-30, always signed off by playing the song "Who?", a ballad from a Broadway musical, "Sonny." The opening lyrics of this song inquire, "Who stole my heart away? Who makes me dream all day?" I would gamble that you couldn't locate three people on WHO's staff today who would know about this s/off theme from 50 years ago. Maybe Ronald Reagan who was doing sports there about that time would remember.

Another unusual s/off was developed at KFI in the early days and I believe I heard it still in use as late as 1962. KFI signed off in several languages, perhaps five or six. Don't believe I ever knew all the languages but am sure they included JJ, CC, SS and other foreign tongues from the Pacific area. If memory serves me correctly, this recorded s/off was played with "Aloha Oe" as musical background. Why doesn't some L.A. member call KFI's publicity people and see if they can identify the languages used? Or could it be KFI still signs off in that manner if they ever fall silent? (Last time I heard them s/off, it was short and conventional, Gene-Rth.)

While engaged in reminiscing, let me lay out the historic link between KGO and WGY. KGO, then in Oakland, not San Francisco, went on the air in 1924 as a General Electric station as WGY still is. They have always shared the same frequency, 790 in 1930, 810 nowadays. Originally it was a case of putting two GE stations on the same frequency, a reasonable thing to do from the licensing viewpoint of the middle '20s. But by 1930 GE had sold KGO to NBC, then in 1944, KGO was acquired by ABC, the former link with Schenectady all but forgotten.

For many years, WGY and KGO were alone at night on their frequency almost 3,000 miles between them. I'm a little uncertain but believe it was the late '40s before KCMO was assigned to 810 at the approximate mid-point between KGO and WGY. 73.

ROB HARRINGTON, P.O. BOX 3434, LITTLETON, CO 80161

DX conditions continue to be poor due to interference from my neighbor's house. However, I got a raise at work and will be able to afford my own apartment by late '82 or early '83.

Seems the interest in the IRCA Contest is not too great as the turn-out has been poor. I'll give it a few more weeks before I cancel it. Would like to see 10-to-15 more participants. See past DXM's for details. See you in 30.

RANDY TOMER, 1969 27th ST., ARCATA, CA 95521

The only interesting DX here of note lately is the reception of a new Alaskan on 830, heard last Saturday evening (23 October) and also hearing what must have been Cuba 820 coming in over/under WBAP the following evening. The suspected Cuban had programming similar to what the 880 outlet had (880 is no longer receivable here thanks to the KIXI move). During the week of 11 October, KIPA 620 Hilo, was giving KGW a pretty good working over.

Back to the Alaskan on 830, I'm pretty sure it was KENI Anchorage, so I'm assuming they've made the switch and I'll send a tentative report. Looked through back issues of DXM but couldn't find any mention of KENI making a frequency change, though.

The Philips NEA5550 car radio chip can be obtained from Signetics Corp., Box 409, Sunnyvale, CA 94086. I got the specs but can't really tell much, so I'm sending them to NHP. It does look like external circuitry will be minimal, but unfortunately, I think it has an oddball IF frequency so a good Murata IF Filter won't work.

Recently I made a lot of extra overtime income at work so I splurged on two new Sonys, an ICF-7600A and an ICF-S5W. The 7600A does indeed have a very good MW band for such a small radio, being just about as good as the larger S5W's. FM on the little Sony seems to be better than on the larger ICF-S5W. Both have a terrible birdie on 910, a Sony trademark, I guess. The S5W's tested by MC, bp and GT must have been well tweaked at the factory, because mine doesn't quite match up to my superadio with regards to pure sensitivity or in alternate channel splatter rejection. My S5W works well, however, and I like its compact size. I haven't noticed any SW images on mine, but I haven't tried it at night yet. The ICF-7600A is a nice little rig, but too expensive if you're not into SW. 73 de RET.

SHELDON REMINGTON, NIGE, 102 WREDEN AVE., FAIRFAX, CA 94930 (Part I)

It was disappointing to discover that the planned 09 October Beverage party had been cancelled (after I carried 1,500 feet of wire on the bus to Rich Segalas', hi). Hope Don Erickson and the gang reschedule it another time. Incidentally, I chatted with ex-IRCA Mark McMillan on 50 MHz SSB this summer, and although he's sold his HQ-180 and is now concentrating on VHF, he fondly remembers IRCA and sends his greetings to all.

I'd sure like to see a listing of past editors, board members, etc. and IRCA convention sites, just for nostalgia if nothing else. (E.Y.O.L. = Editors of your Life, hi.) Another thing of value would be a "DX night in the life of" Pat Martin, Bruce Portzer, etc., detailing how you go about scanning the band for DX - you all seem so productive with your DX time.

Local news: KTIM (now Big Band, slogan "1510") has gotten a new transmitter and moved their tower a short distance. Perhaps now they will turn the carrier completely off at night (they're a daytimer, hi). (Thought a day-timer HAD to turn the final off. Do they leave just the elements on?-Rth.) I'm a part-time engineer there, and can assure you the CE would be shocked to get reception reports. Also did some work recently at KDFC-FM and learned that their AM, KIBE 1220, is an off-air relay of KDFC, if someone walked by with an FM wireless mike. . .no, I'd better not make any suggestions, hi.

Pirate WRFB, aka Radio Free Bolinas, has been on the air frequently this summer. They seem to have zeroed in nicely on 840, eliminating the het they used to have on 838. Usual pre-teen music and they run their announcements 20 db or more below the music level, perhaps to avoid being identified. Steve McGreevy and I hope to d.f. them when we get a chance (by driving around Bolinas with a loop and S-Meter). (In Bolinas, that should take about 15 minutes, hi-Rth.) Also we may be able to locate that beeper around 1615 kHz which is local-like at Pt. Reyes.

I've noticed some old, faded signs painted on buildings in San Francisco advertising defunct radio stations. The best example is the KSAY 1010 ad off to the left as you drive south along Van Ness Ave. How old is that call-sign, Ric? (Became KIQI September 1974. Sign dates to mid-'60s-Rth.)

The new Popular Communications looks pretty good. Popular Electronics is down the tubes for DX'ers, I guess, so the timing is right. I saw IRCA mentioned in the October edition, although no mention of our specialty. (The Remington Report continues next week, and many more to come, hi-Rth.)

RIC HEALD, 1632 J ST., #4, EUREKA, CA 95501

Trivia quiz time (got the idea from Martin). KDIA's 1310 Oakland previous calls were KWBR. KFAX 1100 was KJBS. What did KWBR stand for? Why the change to K-FAX. And who did KEWB buy their calls from to become KNEW?

Thunderstorms average about two annually in this part of the country; they're very rare out here. About ever three years we get a major storm, and this past week we got it. Lasted off and on for nearly two days as a major front

moved through. I took advantage of it to DX behind the storm when it finally moved through. As experienced from the East Coast, sure enough, conditions to the north were dynamite. Bay Area and points south was wiped out. Calgary owned 740 for several hours before KCBS came back strong again. KDIA 1310, normally in like blockbusters was replaced predominantly by KLIX. And WLS, well, not heard this strong in literally years. Steady at 30db o/S/9. The northern Midwest very strong and weakened as you moved south. No trace of WWL or WBAP, for example. This was all on the evening of 26 October between 1900 and 2200 PLT.

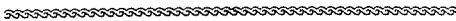
Sheldon, WRPB is nothing new. They were heard back in '77 when I lived in the Sunset district of San Francisco. At that QTH, they were nearly all waterpath and semi-local strength. Were heard as far as Oakland by non-member DX'er Dave Tonelli. They then claimed to be broadcasting from the Bolinas Community Hall. Sounds like they finally got a crystal for 840, hi.

Jaisun, regarding the Wolfman Jack thing. He started out at then 150 kw XERF, which blanketed the majority of the U.S. at night. He stopped going to their studios when two of the three unions working at XERF had been dumped and they in turn (the dumped unions) hired gunmen to fire at those going to/from XERF. So Wolfman turned to tapes. He then went to greener pastures at XERB, went live and really made his mark in show biz there. Remember his famous line, "Get naked in front of your radio.? I have that plus a couple of his five-minute spots on a tape somewhere. The drop for his advertisers at XERF was Del Rio, Texas.

Gene Martin, you've brought up some really interesting radio nostalgia. I'd like to see some of our old-timers in IRCA possibly gather more information for a possible future column. I think the entire club would really enjoy the reading.

Well, before I s/off, answers to my tivia quiz. K-Warner Brothers Radio. K-Facts (KFAX); the FIRST all-news station in the country, yes, before WINS. But they were ahead of their time and the idea flopped, so they took the easy way out by selling block time. Lastly, KEWB bought their calls from KNEW 790 Spokane, now, of course, KJRB.

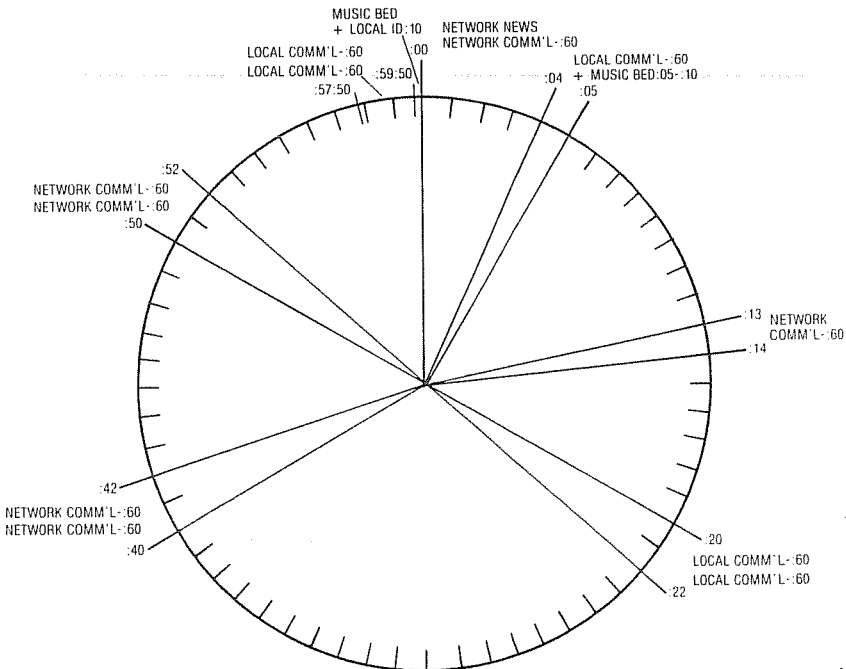
One more thing. KIXI is only 1 kw? Ya gotta be kidding? They're a semi-local now, I hate to think how they'll sound with 50 kw. 73 de Rth. .



TYPICAL HOUR

RKO "AMERICA OVERNIGHT"

Continued from
Page 11



EASTERN DX ROUNDUP

Bob Lazar

1711 Wainwright Dr.

Reston, VA 22090

Deadlines: Saturdays

OF SPECIAL INTEREST

- 530 KNAA585 NY New York, 10/12 1500 new TIS testing at JFK International Airport. Continuous tape loop giving ID, freq, "owned and operated by Port Authority of NY and NJ." I guess 25 to 100 watts. Located at Port Authority Bldg on northwest edge of airport. About 10 mile range w/ stinky car rx. (KZ-NY)
- 730 WRMR VA Alexandria, ex-wPKX now uses these calls w/ "Remember Radio" slogan. Format remains WYL. (RAI-VA)

- 570 WAAX AL Gadsden, 10/12 2345 wx, ID - "Wax" Radio, C&W mx. (DLR-KY)
- 580 WELO MS Tupelo, 10/14 2055 Coach Emery Ballard Show (MS State coach), lcl spots, ID. Poor o/u SS str. (DLR-KY)
- 590 WMBS PA Uniontown, 10/13 0010-0020 talk of consolidation of shoal systems, lcl nx, wx, ID. Poor o/u WVLK. (DLR-KY)
- 610 WIOD FL Miami, 10/15 2100 noted o/u NBS-Trinidad & Tobago w/ NBC Talk-net and Ai nx on hour. Weak. (KZ-NY)
- 950 WBKH MS Hattiesburg, 10/14 1930 s/off anmts w/ ment of Deep South Broadcasting Corp., SSB. (DLR-KY)
- 1220 WCSR CT Hamden, 10/15 1600 o/u WGNV Newburgh, NY. Noted now w/ C&W format. Fair. (KZ-NY)
- 1270 WTNT FL Tallahassee, 10/14 1857-1905 ID "WTNT Tallahassee", CBS nx. Fair. (DLR-KY)
- WJJC GA Commerce, 10/14 1828-1840 ID "WJJC", GA Network nx, lcl wx. Poor o/u WORX. (DLR-KY)
- 1280 WANS SC Anderson, 10/14 1910 atop w/ lcl spots, ments Anderson. Poor o/u WGBF. (DLR-KY)
- 1300 WFBR MD Baltimore, 10/15 1800 dominant over WAVZ New Haven, CT. Now talk and top 40 combined format. Begining of end for mx here? (KZ-NY)
- 1460 WBET MA Brockton, 10/15 1800 in WVOX null. Ai nx followed by Ai stinger & local nx, ABC feature, then long show "Sportsbeat". Good. (KZ-NY)
- WVOX NY New Rochelle, 10/15 1815 strong, s/off at 1812 w/o SSB. "Listen to WRTN at 93.5 FM", etc. (KZ-NY)
- WCMB PA Harrisburg, 10/15 1830 o/u slop. ID "The greatest country in the world, WCMB", C&W format. (KZ-NY)
- WPRW VA Manassas, 10/15 1834 in mess. ID "We're Prince William's (county) own radio station - WPRW." Top 40 rocker. (KZ-NY)
- CKRB PA Ville St. Georges, 10/15 1830 CBC nx in FF, "Ici R. Canada" etc. In slop. (KZ-NY)
- 1600 WDHB TN Harriman, 10/12 1900-1915 TN nx, SID - "WDHB Harriman". Fair. (DLR-KY)

EASTERN DXERS

DLR - David I. Reitz, 9332 Fairground Rd., Fern Creek, KY 40291
(DX-160, GE Superadio)

KZ - Karl Zuk, 224-04 Stronghurst Ave., Queens Village, NY 11427
(GE Superadio)

1983 World Radio TV Handbook

The 1983 WRTH will be published in Jan. or Feb. 1983 and retail in the USA for \$17.50. Club members are eligible to purchase prior to 20 November 1982 at the special price of \$12+S/H; thereafter, \$14+S/H until publication date. Shipping/handling by UPS or Book Rate (please specify) is \$3 worldwide except Canada. Canadians should write to SWL Horizons, c/o Don Moman, w/SASE, for details. S/H by First Class Mail, U.S. only, is \$5 per copy. Payments, by personal check or money order in \$U.S. on a U.S. bank, payable to CENTURY PRINT SHOP, must be accompanied by a SASE for confirmation of shipment and 1984 pre-pub. details. Please mail prior to 20 Nov. 1982 for the special \$12+S/H price, to: Century Print Shop, Donald Erickson, 6059 Essex St., Riverside, CA 92504-1599. 714-687-5910 7 days.

CENTRAL DX ROUNDUP

Robert Kramer
6416 N. Richmond
Chicago, IL 60645

UNIDED, SPECIAL, CHANGES, et. al.

- 1340 KRKR KS KANSAS CITY, fair W/C&W mx & ID as "Kansas City Country KRKR", ex-KCKN. RK-IL
- 1540 UnIDed 10/14 2015 O/U/KXEL W/SS pgning & spot for Charles Liquor Store. KITA or does KGBC have SS ? CR-IL (Christos, sounds like KITA to me, ed.)
- All da Rest
- 540 KNOE LA MONROE, 10/16 0400, weak but alone W/C&W mx & many IDs, SIDs. CR-IL
- 640 WWLS OK NORMAN, 10/22 1959½ poor U/2 foreign W/ID. RK-IL
- 910 KPOF CO DENVER, 10/14 0750 good W/Rel tlk & mx, ID as "You are tuned to 910 KPOF Denver" @0759, short time tone 0800, APR nx. CR-IL
- 920 KYST TX TEXAS CITY, 10/18 0240 W/rck mx & IDs, fair & steady signal. NZ-NE
- 930 WKY OK OKLAHOMA CITY, 10/16 0325, rck mx & IDs as "Radio 93, WKY". Good sig. CR-IL
- 940 KTOA IA DES MOINES, 10/8 2045 many ads, sports trivia, Ad con mx, mixing W/WMIx, gone at 2053. New Pattern ? EWC-KY (How should I know ? ed.)
- 960 WERC AL BIRMINGHAM, 10/16 0230 fair W/CNN Headlines nx throughout W/only WERC IDs on the hour & half hour. CR-IL
- 1030 WBDX TN WHITE BLUFF, 10/8 2055 lcl ads, C&W mx (actually used as filler between halves of a H.S. Football game), back to H.S. Football. Good. EWC-KY, 10/15 2225, tent. W/football game & many ment. of Tennessee U/WBZ & SS stn QRM. C&W mx after the game. CR-IL
- 1180 WKKE MS PEARL, 10/15 2320 poor W/MOYL, ID & Wall Street Journal spot. CR-IL
- 1210 WILY IL CENTRALIA, 0730 10/18, good W/nx, sports, wx & political ads. CR-IL
- 1230 WBOK LA NEW ORLEANS, 10/18 0210 W/soul mx & IDs, decent signal from this one. Noted from time to time over the years. NZ-NE (We get them from time to time as well, ed.)
- 1240 WSDR IL STERLING, 10/18 0145 loud W/TTS & OC & 1 ID. NZ-NE
- 1400 WBTP MS BOONEVILLE, 10/18 2326 good W/full ID & mx. RK-IL
- 1410 WUNI AL MOBILE, 10/19 1905, fair-W/nx, wx & "Fun Radio WUNI" ID. CR-IL
- 1550 WLUX LA BATON ROUGE, 10/19 1915 poor W/rel. mx, SID S/off @ 1930. WSAO. CR-IL
- KOKA LA SHREVEPORT, 10/18 1930, good W/R&B mx, ads, nx & "KOKA Radio 1, still number 1" ID. Slight WAAY & KQWB QRM. CR-IL
- WSAO MS SENATOBIA, 10/15 1920 fair W/nx, prayer & S/off @ 1930. CR-IL
- KKJO MO SAINT JOSEPH, 10/15 1940, fair W/wx, ID & pop mx. Disappeared abruptly @ 1945. Pattern change ? CR-IL (Yep, ed.)
- 1570 KSRE AR HARDY, 10/18 1928 S/Off, fair signal but fading. CR-IL CR-IL
- 1600 WBTO IN LINTON, 10/13 0730, ads, nx, ment. of WBTO & Linton. Poor mixing W/WARU//

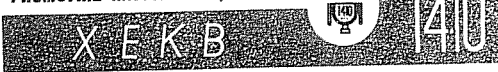
WHO ARE DEY ?

EWC... Wheeler (Wheels) Conover RR #8, Box 344B Manchester, KY 40962
(Admiral All-World multiband, assorted barnyard beasts)
RK.... It's really only me
(R-1000, HQ-129X, HQ-140X, Radio West loop, spiral loop, Kowalski Loop, bird)
CR... Christos Rigas 4832 N. Drake Chicago, IL 60625
(Superadio)
NZ,... Neil Zank 623 Lyncrest Dr. Lincoln, NE 68510
(HQ-180A, RF-2600)

CADX XXIII

Did Karl Forth recently get arrested in Cleveland on a morals charge ? Did Mike Hogan trade his green sox in on a newer model ? And just who is this Earl Higgins, and why ? Find out at the 13th annual CADX Holiday Get Together. This year's edition is taking place Dec. 26-28 & Dec. 30-Jan. 3. There will be plenty of DX & 2 MM SESSIONS. IF YOU PLAN TO bring a receiver, please provide yourself with headphones. For more info, call 1(312)-262-6299. The event is taking place at the address listed above, with little old me hosting. The full schedule of the WMET silent movie night (Jan. 1 midnite- 5 AM) will be announced shortly. Some of the tentative titles are: The Adventurer, 1 AM (Charlie Chaplin), the General (Buster Keaton), Fatty's Tintype Tangle (Fatty Arbuckle), The Cannon Ball (Chester Conklin) & The Eyes Have It (Ben Turpin). You'd better come, or else,

PROMOTRIZ RADIOFONICA, S. A.



AV 16 DE SEPTIEMBRE No. 426 2º PISO TEL. 13 10-78 GUADALAJARA, JAL.

CKCH



72, LAVAL, HULL, QUE.

WESTERN DX ROUNDUP

Nancy Hardy
2301 Pacific Avenue
Aberdeen, WA 98520

All times are
Eastern Local

Phone for hot WDXR tips: (206)532-6827 till 10pm(PLT)--no collect calls
DEADLINES: Tuesdays 11/9, 11/16, 11/23, 11/30, 12/7, Mondays 12/13 & 12/20

REPORTERS FOR THIS ISSUE:

- (BH) Bill Hardy-2301 Pacific Ave.-Aberdeen, WA 98520
FRG-7, SM-1
- (NH) Nancy Hardy-2301 Pacific Ave.-Aberdeen, WA 98520
FRG-7, SM-1
- (JH) Jim Hilliker-DX'ing 22 mi. east of Twentynine Palms, CA
Kenwood R-1000, 2 Beverage antennas (NE & SE)
- (ASL) Albert Lobel-Post Office Box 26762-San Diego, CA 92126
GE Superadio
- (AWP) Art Peterson-851-31st Street-Richmond, CA 94804
FRG-7, R. West loop
- (bp) Bruce Portzer-6546 19th NE-Seattle, WA 98115
HQ-180A, 4' loop
- (MaS) Mark Strickert-706-25th Ave.-San Francisco, CA 94121
(MaS-CA2) In a used lettuce patch at Pigeon Point, San Mateo, CA
(MaS-CA3) Ocean beach off Irving St., San Francisco, CA (a
short walk from home)
- (PT) Pete Taylor-2614 Jackson Street-San Francisco, CA 94115
RF-2200, no external antenna at any site
ICF6700W, SM-2 (unamplified)
- (RW) Robert Wien-1309 Dentwood Dr.-San Jose, CA 95118
GE long-range portable, SM-2

OF SPECIAL INTEREST:

- 880 KWIP OR, Dallas Mon 10/25 1508 now here, ex-1460. Levi's Jeans ad,
"part of our first full day of broadcasting at our new dial
position, A-M 880." Local ad, back to Spotlight Special show
on Loggins & Messina. Actually atop KIXI (still 1kw) w/loop
nulling strong electric noise to the east. Average-to-good
signal, not bad for the distance. (BH&NH-WA)
- 1180 KWSO CA, Wasco 10/18 0320 running DX test of sorts w/pop standards
& Christian mx. Frequent IDs (including in SS) & DJ patter.
Called them & talked to the annr (the GM, I think), who is
willing to run a CPC test in a few weeks (more details when/
if they materialize). Said they also got calls from Ft. Bragg,
CA and Vancouver, BC. On until around 0500. Strong, sounded
like 10kw. (bp-WA)
- 1390 KAST OR, Astoria 10/16 0058 w/local ad & football game good o/u
KBBO after phone tip from Pat Martin. Licensed to 1370. I
wonder if the FCC knows about this (or if the station knows
they're off freq, hi). (bp-WA)
- 1460 KDON CA, Salinas 10/16 noted running Big Band nights (still C&W
days, however). (MaS-CA)
+10/16 0115 ID, promo for C&W daytime, MOR at night. Jazz &
old standards hrd, so I guess it isn't C&W 24 hrs anymore.
Fair to good. (JH-CA)
+10/13 0246 noted w/MYL, per annct later in week, they are now
C&W days & MYL nights. What a combination! (RW-CA)
- *****
- 540 KNMX NM, Las Vegas 10/18 0914 good w/SS spot, ID. All alone. (RW)
- KNAK UT, Delta 10/17 1200 C&W mx, then guitar mx, male annr came
on w/"We've got what you want to hear! America's favorite mx!
We're AM-54, K-N-A-K, Delta!" Musical logo, into Mutual mx.
This surprised me, there was a SS stn here earlier, but this
one (KNAK) was all alone w/some splatter from 550. Fair, some
QRN. Ground wave reception usually has been good at this
Beverage QTH in the past. (JH-CA) (SS either XEWA or KNMX.-NH)
+10/18 1009 very good w/wx long after KNMX fadeout. (RW-CA)
- 550 KMVI HI, Wailuku 10/10 0540 fair w/female annr "live from mobile
sound studios at Maui Co. Fair...55 KMVI", T40 mx. (MaS-CA2)
- KOAC OR, Corvallis 10/19 1005 fair o/KAFY & KSFO-560 slop w/end of
NPR nx, OR nx, start of "NPR Morning Edition". (MaS-CA)
- 560 KLZ CO, Denver 10/17 0413 C&W mx, ID, good. (JH-CA)

570 KLUB UT, Salt Lake City 10/17 0323 ID, "Club wx," into beautiful mx, sounds automated. Good. (JH-CA)

590 KCSJ CO, Pueblo 10/17 0305 end of nx, ID, wx for downtown Pueblo, back to Larry King Show. Glad I got this at the right time. Fair. (JH-CA)

600 CJOR BC, Vancouver 10/10 0553 good w/man grumbling about mail service, CJOR nx promo, N. Sedaka mx. (MaS-CA2)

620 KGW OR, Portland 10/19 0905 fair--"KGW Sports". (MaS-CA)

630 KHOW CO, Denver 10/17 0303 ID, pop mx, "1:03 at K-How", jingle. Good. (JH-CA)

?KIDO? ID, Boise 10/17 0403 tentative, someone got definite ID earlier, all I hrd was CBS nx u/KHOW, then pop mx. Poor. (JH)

640 (KFI) CA, Los Angeles 10/18 0302 totally off, then w/OC, later w/TT & sweep TT. Only CMQ in. (RW-CA)

KFI 10/18 0440 ET w/OC & various tones. Still testing 0600. Cuba and unID noted in their null. (bp-WA)

680 (KNBR) CA, San Francisco 10/6 noted off 1055, still off past 1145... hrd only XETRA-690. (MaS-CA)

710 KFIA CA, Carmichael 10/20 2115 hrd call letters at end of wx. Very weak thru KIRO. New. (NH-WA)

KNUS CO, Denver 10/17 0330 talk show, ID as "Talkradio 71," phone number 937-0710. 0358 local nx & wx for Denver, legal ID, nx 0400. Fair to good, sometimes much stronger than KMPC. (JH-CA)

730 KBOY OR, Medford 10/19 0914 good o/KCBS-740 slop. Ad for "Bob James for Congress," "KBOY" jingle, K. Rogers mx. (MaS-CA)

800 KHIS CA, Bakersfield 10/17 1100 legal ID, C&W/Gospel mx, twangy-voiced anncr. Fair to good. (JH-CA)

880 KIXI WA, Seattle w/lots of oldies (I know them all--I'm dating myself!) 10/20 0001-0030. In & out of KRVN. Deep fades occurred only during commercial breaks... (PT-CA)

930 KAPR AZ, Douglas 10/17 1010 specific ID by man "This is KAPR, Douglas, playing more Country Gold" Burger King ad "Hiway 80 West, Douglas." Into C&W mx. I was looking for KFLG Flagstaff which I hrd here last April as KAFP. This was a surprise. Fair to good w/much junk underneath. (JH-CA)

KSEI ID, Pocatello 10/10 0526 fair in KHJ null. "Bud Mini-Car Race" ad, "Super 93 wx", Crosby Stills & Nash mx. (MaS-CA)

950 KJR WA, Seattle 10/10 0518 fair o/XEGM w/top 40 mx, 421-9595 request number. (MaS-CA2) 10/19 0937 fair "KJR Sports", Delta Air ad, "Mr. Lockwood" giving request #, "KJR Seattle" jingle, Wings mx...finally got at home. No KABL-960 trouble for once. (MaS-CA)

990 ?KHVH? HI, Honolulu 10/10 0510 very poor u/KOMO-1000 slop w/nx. McGreevy had hrd ID at 0500, but by time I got to 990, it was barely a murmur. (MaS-CA2)

1000 KKIM NM, Albuquerque 10/17 0930 end of church service, ad for movie "In Search of Noah's Ark," Gave theatre locations in Albuquerque, ID as "KKIM, the Joy of 100," then singing KKIM jingle. Good. (JH-CA)

1050 KORE OR, Springfield-Eugene 9/28 2217 good/fair ment "Junction City", ad for "Joe's Pizza", relig. talk/mx to 2230 s/off (to return next morning "Lord willing"...haven't hrd them since, so did they? Hi.) (MaS-CA)

?KBLE? WA, Seattle 9/28 2219 poor u/KORE...would assume, w/similar format & 2230 s/off as well? (MaS-CA)

1060 KRSP UT, South Salt Lake City 10/17 1002 ID as "KRSP, serving Salt Lake City", pop mx. Fair, fading. (JH-CA)

1110 KPIP CA, Roseville 10/17 1048 ads, all in SS, ID in SS, mentioned Roseville. Good. (JH-CA)

1130 KSDO CA, San Diego 10/20 2116 heard very audible change in power at 2116 when pattern change took effect. Was listening to World Series on KSDO & all of a sudden it was very weak at my QTH in Northern San Diego County. Had to tune to KNX-1070 in L.A. at a much greater distance to hear the rest of the game. (ASL-CA)

1140 KMJJ NV, North Las Vegas 10/19 0948 good in precarious KRAK null w/Von's Store ad, "KMJJ" jingle, ment of World Series "tonight on Ch. 3", top 40 mx. (MaS-CA)

1150 KAGO OR, Klamath Falls 10/18 0257 poor o/KBAI/KPRZ w/ID, gone immediately, while looking for KSPL (not hrd to date). (RW)

1210 KCLG UT, Washington 10/11 1115-1135 in fair w/KNEW-910 image looped out. Somewhat surprising since it was about an hour after local sunrise & 2 hours after Utah sunrise! C&W format. (AWP-CA)

+10/19 0953 good w/Zion Bank ad, Utah nx. Also hrd 10/20 0228 w/Herb Jepko Show. (MaS-CA)(See next tip! Pete heard KCLG s/off 31 minutes before you heard Jepko! WOAI-1200 maybe??--NH)

- 1210 KCLG +10/20 0100-0157 w/C&W, a Mormon spot, & s/off using cont'd narration version of "America the Beautiful", topping our beloved KDIA-1310 image. Didn't note KGYN. (PT-CA)
- 1220 KCCS QR, Salem 9/28 2228 fair w/s/off. (MaS-CA) 10/16 2126 xlnt w/"Life Changing" relig. mx. (MaS-CA3)
- 1260 *KYA* CA, San Francisco 10/18 0316 noted w/TT. (RW-CA)
- 1270 KROI NV, Sparks w/pops & commercials 10/20 0153; strong, easily cutting thru KYA-1260 slop. No sign of Tulare or the Canadian. (PT-CA)
- +10/22 2351½ ID into oldies. Excellent--no sign of CHWK.(NH&BH)
- 1330 KCLM CA, Redding 10/16 2120 wx, C&W mx, ID, "1330 Country, KCLM". Good, o/KCLM. (You mean o/KFAC??--NH) Even better Su morning by themselves. (JH-CA)
- 1360 KOHU QR, Hermiston 10/18 0212 dominant o/KCNN w/C&W. Local KMO off early. (bp-WA) (JH-CA)
- 1380 KGMS CA, Sacramento 10/16 0121 MOR mx, ID "KGMS, music & memories".
- 1390 CKKC EC, Nelson 10/18 0307 wx, then quick one line s/off, no anthem. (bp-WA)
- 1450 KPSI CA, Palm Springs 10/10 0502 fair o/KEST w/RKO nx, "Palm Springs Blotter". (MaS-CA2)
- 1460 KENO NV, Las Vegas 10/16 2030 poor way u/KDON w/ad for "Carol (Whozit)" running for a NV office. Went of some race to Reno, then lost. (MaS-CA3)
- 1480 KRED CA, Eureka 10/16 0100 C&W mx, ID nx, hrd "KRED, Eureka", & later "K-Red". Loud & clear. (JH-CA)
- KYOS CA, Merced 10/16 0218 pop mx, short ID "KYOS, Joe Cocker & Jennifer Warnes, Up Where We Belong." Fair, fighting w/KRED.
- KWIZ CA, Santa Ana 10/17 0424 pop mx, ID, ads. Poor. (JH-CA)
- A local for me, but was checking to see if they made it out here at night. (JH-CA)
- 1490 KBLF CA, Red Bluff 10/16 0223 ID, C&W mx, PSA for Tehoma County. Fair to poor. (JH-CA)
- KDB CA, Santa Barbara 10/10 0505 poor u/KTOB w/end of some net nx, male annrc "I'm Dave Scott on KDB", then lost in the middle.
- 1550 KUAT AZ, Tucson 10/17 0958 got ID but kept tuning, (MaS-CA2) didn't stop to listen. Good. (JH-CA)
- 1590 KMTI UT, Manti 10/19 1136 ID for AM & FM, long stretches of BTFL mx. Good. This surprised me! (JH-CA)
- 1666.8 CA, Richmond 10/11 1140-1200 local cordless telephone. Positive device ID (not caller ID, hi) because that was mentioned in the conversation. Strong & clear reception. (AWP-CA)
- 1730.5 CA, Richmond 10/11 1208 another cordless phone. Weaker signal than the above but still clear. (AWP-CA)

UNIDs:

- 1000 CBS nx 10/18 0600. Only 2 daytimers listed in NRC Log. (bp-WA)
- 1010 C&W mx, "KW-I, 94 FM" ID & CDT TC atop freq 10/18 0558. Details fit KDJW, except their FM is KBUY. (bp-WA)
- 1510 10/10 0445 sounded like the "Larry King Show" way u/KGA. (MaS-CA2)
- 1640/1650 Continuous tones, weak on 1640, very strong on 1650...Bay area beacons or what? (MaS-CA)

Keep up the good work, everyone! ♥

~~~~~

New stations reported as having taken to the air DURING the period between V19 #30 through #34:

|                    |               |                      |               |
|--------------------|---------------|----------------------|---------------|
| 540-GJSB--ON       | 1090-WXBK--AL | 1300-WWKG-PA         | 1500-WDEE--MI |
| 880-KIXI--WA(x-74) | 1210-KCLG--UT | 1340-WBLE-VA(x-1510) | 1500-KNCI--TX |
| 1010-WPYK--AL      | 1240-KSML--AZ | 1390-GJCY-AB         | 1520-WAAH--GA |
| 1030-WBDX--TN      |               |                      |               |

DELETIONS: Previously unreported stations noted by IRCA Reporters in DXM since the last update (V19 #30)..Covers V19 #30 through #34...

- ID--O-KJBK-1590 (Harms-UT)
- LA-16-KJCB--770 (Bigley-TX)
- MS-18-WRKN--970 (Clemmer-gallavanting in MS)
- TX-61-KQPI-1130 (Bigley-TX), KIKN-1590(Moore-Honduras), KTEO-1340, KMUL-1380 & KBYG-1400 all (Knight-CO).
- UT--O-KCLG-1210 (Harms-UT)
- WV-11-WVMR-1370 (Townshend-DC)
- BC--4-CHNL2-1340 (Portzer-WA)
- ON--4-CJSB--540 (Stutterheim-NY)

SUMMARY OF UNREPORTED STATIONS  
END OF VOLUME 19.....

The following chart lists the total number of stations in the USA and Canada and the volume they were last reported as being heard.

| COUNTRY | V19  | V18  | V17 | V16 | V15 | V14 | V13 | V12 | Prior | Total   |
|---------|------|------|-----|-----|-----|-----|-----|-----|-------|---------|
| CANADA  | 223  | 71   | 26  | 17  | 7   | 7   | 1   | 2   | 57    | 411     |
| U.S.A.  | 2247 | 906  | 388 | 333 | 152 | 85  | 48  | 78  | 383   | 4620    |
| TOTAL   | 2470 | 977  | 414 | 350 | 159 | 92  | 49  | 80  | 440   | 5031    |
| PCT. %  | 49.1 | 19.4 | 8.2 | 7.0 | 3.2 | 1.8 | 0.9 | 1.6 | 8.8   | 100.0 % |

The following chart lists the total number of stations in the USA and Canada, the total number reported by members in V19 and the number unreported since Volume 11 by state and province.

T=Total # of Stations  
R=Reported in V19  
U=Unreported since V11

| STATE | T   | R   | U  | STATE | T   | R   | U  | PROVINCE | T    | R    | U   |
|-------|-----|-----|----|-------|-----|-----|----|----------|------|------|-----|
| AL    | 148 | 48  | 27 | MT    | 49  | 29  | 0  | AB       | 40   | 30   | 2   |
| AK    | 29  | 15  | 8  | NE    | 49  | 33  | 0  | BC       | 66   | 52   | 4   |
| AZ    | 68  | 40  | 4  | NV    | 21  | 19  | 0  | MB       | 19   | 11   | 3   |
| AR    | 100 | 39  | 16 | NH    | 28  | 22  | 0  | NB       | 17   | 6    | 1   |
| CA    | 236 | 193 | 0  | NJ    | 39  | 24  | 2  | NF       | 33   | 5    | 18  |
| CO    | 74  | 56  | 0  | NM    | 58  | 35  | 4  | NWT      | 5    | 0    | 5   |
| CT    | 39  | 27  | 0  | NY    | 165 | 77  | 11 | NS       | 18   | 4    | 1   |
| DE    | 10  | 4   | 0  | NC    | 218 | 45  | 34 | ON       | 101  | 62   | 4   |
| DC    | 7   | 5   | 0  | ND    | 32  | 21  | 2  | PEI      | 3    | 2    | 0   |
| FL    | 200 | 54  | 37 | OH    | 127 | 59  | 4  | QU       | 87   | 32   | 19  |
| GA    | 188 | 33  | 25 | OK    | 68  | 35  | 8  | SK       | 20   | 19   | 0   |
| HI    | 26  | 24  | 0  | OR    | 85  | 72  | 1  | YT       | 2    | 0    | 0   |
| ID    | 46  | 39  | 0  | PA    | 185 | 80  | 6  |          |      |      |     |
| IL    | 131 | 86  | 0  | RI    | 15  | 7   | 0  |          |      |      |     |
| IN    | 87  | 40  | 1  | SC    | 108 | 24  | 18 | TOTAL    | 5031 | 2470 | 440 |
| IA    | 84  | 68  | 1  | SD    | 36  | 29  | 3  |          |      |      |     |
| KS    | 62  | 41  | 4  | TN    | 170 | 52  | 19 |          |      |      |     |
| KY    | 128 | 44  | 7  | TX    | 294 | 134 | 61 |          |      |      |     |
| LA    | 97  | 30  | 16 | UT    | 40  | 36  | 0  |          |      |      |     |
| ME    | 39  | 19  | 7  | VT    | 20  | 10  | 0  |          |      |      |     |
| MD    | 50  | 19  | 1  | VA    | 142 | 50  | 11 |          |      |      |     |
| MA    | 68  | 35  | 0  | WA    | 98  | 83  | 1  |          |      |      |     |
| MI    | 132 | 54  | 4  | WV    | 66  | 22  | 11 |          |      |      |     |
| MN    | 100 | 64  | 5  | WI    | 107 | 58  | 0  |          |      |      |     |
| MS    | 109 | 31  | 18 | WY    | 31  | 18  | 0  |          |      |      |     |
| MO    | 111 | 65  | 6  |       |     |     |    |          |      |      |     |

The following chart lists the same information as the chart above except by regions instead of states.

| REGION                                      | T    | R    | U   |
|---------------------------------------------|------|------|-----|
| North East (CT-ME-MA-NH-RI-VT)              | 209  | 120  | 7   |
| Mid Atlantic (DE-DC-MD-NJ-NY-PA)            | 456  | 209  | 20  |
| South Atlantic (FL-GA-NC-SC-VA)             | 856  | 206  | 125 |
| South East (AL-AR-KY-LA-MS-TN-WV)           | 818  | 266  | 114 |
| Mid East (IL-IN-MI-OH-WI)                   | 584  | 297  | 9   |
| Mid West (IA-KS-MN-MO-NE-ND-SD)             | 474  | 321  | 21  |
| South West (AZ-NM-OK-TX)                    | 488  | 244  | 77  |
| Rockies (CO-ID-MT-UT-WY)                    | 240  | 178  | 0   |
| West Coast (CA-HI-NV-OR-WA)                 | 466  | 391  | 2   |
| Maritimes (NB-NF-NS-PEI-NWT-e)              | 72   | 17   | 21  |
| Eastern Canada (ON-QU)                      | 188  | 94   | 23  |
| Central Canada (MB-SK)                      | 39   | 30   | 3   |
| Western Canada & Alaska (AK-AB-BC-NEW-w-YT) | 141  | 97   | 18  |
| TOTAL                                       | 5031 | 2470 | 440 |

IRCA--UNREPORTED STATIONS TO DXM SINCE VOLUME 11 (Aug 74)

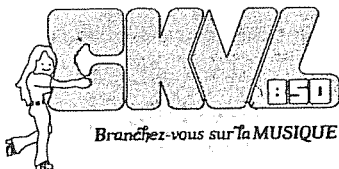
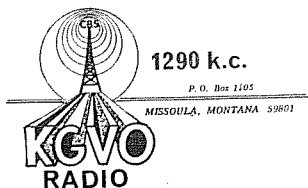
by state

AL--27--WWLX--620, WTZN--910, WWR--920, WPK--1010, WLVN-1080, WXBK-1090, WACQ-1130, WJBB-1230, WHOD-1230, WNUZ-1230, WOPP-1290, WBSA-1300, WHEP-1310, WKUL-1340, WMRK-1340, WXR-1340, WFEB-1340, WELR-1360, WRAB-1380, WGYV-1380, WPPA-1400, WZZA-1410, WPHK-1430, WRHG-1430, WSMQ-1450, WDK-1450, WEGN-1470,  
 AK---8--KYUK--580, KHAR--590, KBRW--680, KOTZ--720, KRXA--950, KABN-1150, KIPW-1230, KLAN-1450,  
 AZ---4--KAFR--930, KBZE-1230, KSNL-1240, KFBR-1340,  
 AR--16--KVFA--630, KBBA--690, KOSY--790, KAYR-1060, KAAB-1130, KJEM-1190, KWAK-1240, KCAT-1340, KBOT-1350, KWYN-1400, KJWH-1450, KCCL-1460, KKAR-1490, KDRS-1490, KACJ-1510, KCTP-1530,  
 CA---0--  
 CO---0--  
 CT---0--  
 DE---0--  
 DC---0--  
 FL--37--WSBR--740, WSWN--900, WRS--920, WLQH--940, WWSI-1000, WHBO-1050, WGGG-1230, WCNH-1230, WINK-1240, WNER-1250, WIYD-1260, WNOG-1270, WIFC-1280, WDLF-1310, WYKR-1310, WAMR-1320, WFTP-1330, WTAN-1340, WFFL-1340, WPSH-1340, WDFW-1350, WCAI-1350, WZNG-1360, WTRA-1400, WPRY-1400, WYJB-1450, WSPB-1450, WBAR-1460, WAPG-1480, WYCF-1480, WTRL-1490, WKVQ-1490, WCKC-1490, WFXE-1490, WTTB-1490, WSTR-1490, WRXB-1590,  
 GA--25--WCEH--610, WTRP--620, WPIQ--790, WBLW--810, WVOH--920, WGLM--990, WCGA-1050, WBIA-1230, WILI-1230, WPAK-1240, WGAA-1340, WBBT-1340, WULF-1400, WSGC-1400, WCOH-1400, WGF5-1430, WWCC-1440, WGFC-1450, WBHF-1450, WCLA-1470, WYYZ-1490, WSPB-1490, WDGR-1520, WLEJ-1560, WTGA-1590,  
 HI---0--  
 ID---0--  
 IL---0--  
 IN---1--WNDI-1550,  
 IA---1--KLBA-1370,  
 KS---4--KINA--910, KRSL--990, KOYY-1360, KNCK-1390,  
 KY---7--WSRG-1070, WGBR-1110, WEOQ-1220, WANO-1230, WEPA-1460, WGRK-1540, WFJT-1590,  
 LA--16--KREH--900, KTCG--920, KXLA--990, KOKI-1170, KHEK-1190, KSLO-1230, KASO-1240, KVCL-1270, KEZW-1310, KUZN-1310, KVOB-1340, KTLB-1360, WFPB-1400, KMRC-1430, KCKW-1480, WIKC-1490,  
 ME---7--WOWW--710, WQDY-1230, WSJR-1230, WMR-1240, WLVC-1340, WHOU-1340, WLN-1450,  
 MD---1--WTHU-1450,  
 MA---0--  
 MI---4--WNRS-1290, WWPZ-1340, WHMI-1350, WDEE-1500,  
 MN---5--WMIN-1010, KMRS-1230, KDLM-1340, WNLT-1390, KLLR-1600,  
 MS--18--WCEP-1080, WMA-1230, WHSY-1230, WAFZ-1230, WKFA-1240, WGRM-1240, WTAM-1240, WUSA-1260, WYOM-1270, WCCO-1310, WJFE-1340, WCOB-1340, WAKL-1340, WKYO-1410, WOIC-1450, WZBR-1520, WCEP-1520, WSLB-1580,  
 MO---6--KJEL-1080, YPFO-1240, KNEM-1240, KPBC-1250, KSEO-1340, KBCB-1410,  
 MT---0--  
 NE---0--  
 NV---0--  
 NH---0--  
 NJ---2--WDVL-1270, WJJZ-1460,  
 NM---4--KLEA--630, KMIN--980, KSRG-1290, KCHS-1400,  
 NY--11--WQZO--850, WCHN--970, WKEV-1170, WKSJ-1340, WMSA-1340, WRYN-1350, WVIN-1380, WDNY-1400, WSLB-1400, WGLI-1450, WKAL-1450,  
 NC--34--WDLV--550, WCAB--590, WMSJ--680, WTNC--790, WPTL--920, WKYK--940, WAAK--960, WAAA--980, WAFZ-1010, WCOK-1060, WRNA-1140, WHPB-1230, WNNC-1230, WPNF-1240, WPSB-1240, WCBQ-1340, WONO-1350, WHIP-1350, WJRM-1390, WSHB-1400, WSIC-1400, WNYN-1420, WJFS-1430, WNCN-1450, WJZS-1450, WHKP-1450, WJQI-1450, WRKB-1460, WTOE-1470, WLOE-1490, WSTP-1490, WLWL-1500, WYNC-1540, WJZQ-1550,

IRCA UNREPORTED STATICNS (page 2)

by state

ND---2-KFOK-1340, KFPJM-1370,  
 OH---4-WCTM-1130, WILE-1270, WFAH-1310, WCLT-1430,  
 OK---8-KBEL-1240, KKCC-1320, KIHN-1340, KRHD-1350, KTMC-1400, KALV-1430, KVIN-1470,  
 KXOJ-1550,  
 OR---1-KRNS-1230,  
 PA---6-WTIV-1230, WWCH-1300, WWKC-1300, WACB-1380, WAMQ-1400, WFDG-1600,  
 RI---0-  
 SC---18-WQKI--710, WALD-1060, WAIM-1230, WKDK-1240, WCKM-1250, WCKI-1300, WKSC-1300,  
 WAGS-1380, WGTN-1400, WKDY-1400, WYMB-1410, WJMR-1430, WKHJ-1440, WORS-1450,  
 WVAP-1510, WCPD-1510, WFIS-1600, WKZK-1600,  
 SD---3-KIJV-1340, WQKD-1380, KBJM-1400,  
 TN---19-WSVQ--740, WIRJ--740, WMUP-1000, WORM-1010, WDBX-1030, WSVG-1190, WMIR-1230,  
 WMRL-1270, WLSB-1400, WGAP-1400, WYBG-1400, WTNR-1410, WLAF-1450, WTNB-1500,  
 WBHT-1520, WREA-1520, WKVL-1550, WTBP-1550, WQDQ-1600,  
 TX---61-KURV--710, KFST--860, KNAF--910, KVRN--980, KAML--990, KSTA-1000, KJJT-1000,  
 KPXE-1050, KCLT-1060, KISO-1150, KJBC-1150, KPMM-1150, KVLV-1220, KSIX-1230,  
 KDJK-1230, KERV-1230, KLVN-1230, KEEB-1230, KWTK-1230, KVLP-1240, KSOX-1240,  
 KIPR-1260, KHEK-1270, KEPS-1270, KPTX-1280, KLUE-1280, KRAN-1280, KVWG-1280,  
 KIVY-1290, KKUB-1300, KKAS-1300, KOYL-1310, KBUC-1310, KCWM-1340, KACT-1360,  
 KBOP-1380, KULP-1390, KUNO-1400, KGVV-1400, KEBE-1400, KEYE-1400, KDWT-1400,  
 KBAL-1410, KGNB-1420, KSTB-1430, KREN-1450, KCTI-1450, KMBL-1450, KCYL-1450,  
 KMHT-1450, KRME-1460, KWKC-1490, KSAM-1490, KVOZ-1490, KDOK-1490, KNCI-1500,  
 KM00-1510, KRJH-1520, KEDA-1540, KBYP-1580, KBUS-1590,  
 UT---0-  
 VT---0-  
 VA---11-WAMM--940, WSPC-1140, WODI-1230, WKWY-1340, WJMA-1340, WBLB-1340, WHHV-1400,  
 WHLF-1400, WBBL-1480, WPAK-1490, WSBV-1560,  
 WA---1-KIXI--880,  
 WV---11-WHAW--980, WGST-1010, WLOG-1230, WDNE-1240, WYKM-1250, WMTD-1380, WRON-1400,  
 WSCW-1410, WWBB-1450, WTCS-1490, WSGB-1490,  
 WI---0-  
 WY---0-  
 AB---2-CIYR-1230, CILW-1340,  
 BC---4-CFTK--590, CTKK-1230, CFBV-1230, CHET-1450,  
 MB---3-CFAR--590, CHTM--610, CHFC-1230,  
 NB---1-GKNV-1490,  
 NF---18-CFCB--570, CBNA--600, CKYQ--610, CKCM--620, CKGA--730, VOWR--800, CHVO--850,  
 CFTQ--970, CFYQ-1010, CPLN-1230, CKIN-1240, CBSI4-1240, CFGB-1340, CPLW-1340,  
 CBG--1450, VOU3-1480, CBDQ-1490, VOHF-1490,  
 NWT--5-CFCT--600, CHAK--860, CFPB-1210, CJGD-1240, CFYK-1340,  
 NS---1-CFAB-1450,  
 ON---4-CPLK-1230, CPLH-1340, CKRE-1340, CPRC-1490,  
 PEI--0-  
 QU---19-CBGA1-540, CFRP--620, CIPC--710, CKBH--790, CFVM-1220, CBON-1230, CJAF-1240,  
 CJYD-1240, CHAD-1340, CFED-1340, CKMG-1340, CBGA7-1340, CKVT-1340, CFVD-1370,  
 CKRV-1400, CKTN-1400, CJEM-1450, CHRT-1450, CKLR-1490,  
 SK---0-  
 YT---0-



THE INTERNATIONAL RADIO CLUB OF AMERICA

A non-profit organization devoted to the hobby of listening to distant radio stations on the AM broadcast band (510 to 1630 KHz). IRCA is a member of ANARC, the Association of North American Radio Clubs.

OFFICERS: President--Don Kaskey, 465 Burnett, Apt. 1, San Francisco, CA 94131. Secretary--Rich Segalas. Board of Directors--Phil Bythway, Nick Hall-Patch, Ric Heald, Ernie Cooper, Jef Jaisun, Bruce Fortzer, Niel Wolfish.

MEMBERSHIP DUES: \$16.50 First Class to the U.S.A., Canada, and Mexico. \$20.00 Air Mail to the rest of the world via Canada. Air mail direct from the U.S.: \$25.00 to Central America, Caribbean, Colombia, and Venezuela; \$30.00 to the rest of the world. Sample copies cost 50¢ each or three International Reply Coupons. Make checks and money orders payable to I.R.C.A. Persons living outside the U.S. should send checks or money orders payable in U.S. funds. DUES AND ADDRESS CHANGES should be sent to Rich Segalas, P.O. Box 20254, San Francisco, CA 94126.

DX MONITOR, the official bulletin of the IRCA, is published 34 times a year: weekly from October to March, twice in September and April, and monthly from May to August.

PUBLISHING STAFF: Bruce Fortzer (editor-in-Chief, phone: (206)-522-2521), Evelyn Fortzer, Nick Hall-Patch, Jef Jaisun, and Phil Bythway.

THE IRCA GOODIE FACTORY. The IRCA Almanac, Foreign Logs, reprints, and other materials are available for nominal charges. For a complete list, write to P.O. Box 17088, Seattle, WA 98107.

Unless otherwise noted, permission is granted to publish, broadcast, or otherwise reproduce non-copyrighted material appearing in DX Monitor, provided credit is given to IRCA and the original contributor.

Opinions expressed in DX Monitor are those of the contributors and do not necessarily reflect those of the IRCA, its publishing staff, editors, or officers.

DX Monitor is printed by Save-on Printing, Seattle, WA.

**IRCA**  
**P.O. BOX 21074**  
**SEATTLE, WA 98111**  
**U.S.A.**

**First Class**

FIRST CLASS MAIL  
U.S. POSTAGE  
PAID  
Seattle, WA  
Permit No. 601