



DX Monitor

Devoted Exclusively to
Broadcast Band DXing

January 22, 1983

Volume 20, Number 18

Issue Number 639

In This Issue

Membership Survey Results	2	Eastern DX Roundup	15
Eastern DX Forum	8	Central DX Roundup	17
Western DX Forum	11	Western DX Roundup	19
The DX Test from the Station's Viewpoint	14	DX Worldwide East	??
		DX Worldwide West	??

Looks like Kaz is still on vacation somewhere, but otherwise DX has picked up. Look inside for details.

We have a new Swap and Shop editor: Randy Tomer, 1969 27th Avenue, Arcata, CA 95521. Send him your "wanted" and "for sale" ads from now on. Also, the club's achievement awards program is in the process of being revived. We'll have more on that after it develops.

Gettogethers--

This will probably be too late in getting out, but there will be a get-together in Portland, Oregon, on January 23 at the home of Bob Bodell, 9118 SE Mason Hill Drive, Milwaukie, OR. For more info, his number is (503)654-0658.

The SCADs gettogether mentioned a couple issues ago will take place on February 12 from 10 am to 4 pm at the Mercury Savings Bldg, 4140 Long Beach Blvd, corner of Carson Street. I think that's in Long Beach, but better check to be sure.

And don't forget the Seattle area gettogether, to be held February 19 from noon onward, at IRCA publishing HQ, 6546 19th Avenue N.E., Seattle 98115. For more details contact Bruce or Evelyn at (206)522-2521. BYOTF.

According to CQ and QST magazines, Ardco Electronics, P.O. Box 95, Berwyn, IL 60402 has service manuals for old Hallicrafters receivers. Write them for prices, specifying the model number(s) desired.

According to the ANARC news letter, you can get a catalog of shortwave listening equipment from the Electronic Equipment Bank, 516 Mill Street N.W., Vienna, VA 22180.

Nick Hall-Patch is currently working on a new edition of the IRCA Technical Guide. This edition will feature a lot of information (equipment reviews, modifications, construction projects, articles, etc) not in the current edition and will probably be larger. Watch these pages for more information, such as prepublication prices.

As long as I have the space, I'll remind you about the IRCA Goodie Factory. It has all sorts of nifty club supplies, such as:

- Reprints of a couple hundred articles which have appeared in DX Monitor.
- IRCA Foreign Logs, going back as far as the mid-1970s.
- IRCA Stationery.
- The Beacon Guide.
- The Technical Guide.
- Soon---the next edition of the IRCA Almanac.
- Boxes for storing your DX monitors & similar-sized bulletins.

For a complete price list, send an SASE to the Goodie Factory at P.O. Box 17088, Seattle, WA 98107.

Good DX and report often in 1983. CU Next week! bp.

The results of the 1982 Membership Survey

by Bruce Portzer

Our membership survey of late last year is now complete. A total of 115 responses were received. This represents a reply rate of about 29% of the total membership, which is quite good compared to similar surveys held by other DX clubs and better than a similar survey we held in 1976 (where the reply rate was about 22%). American members responded at a much higher rate (31%) than Canadian (15%) or foreign (18%) members. Although the question wasn't specifically asked, at least three of the replies were from women.

Here are the results of the survey. Where appropriate, I've compared the results with those of the 1976 survey and/or interjected a few comments.

LOCATION

The states with the largest numbers of replies were California (23); Washington (12); New York (7); Illinois (6); Missouri (5); and Oregon, Texas, and Wisconsin (4 each). The responses were organized into five groups which corresponded roughly to the four major Anglo-American time zones, plus "other". The results: Pacific: 34%, Mountain 10%, Central 22%, Eastern 29%, Other (Hawaii(2), West Germany, Australia, Finland, & Okinawa) 5%.

OCCUPATION

A wide range of occupations was represented in the replies. Here's a complete list. If an occupation was mentioned more than once, the number is given in parentheses.

Accountant(2), farmer, astronomy professor (2), obscure rock star, advertising distributor, sales manager, housewife, retail sales clerk(3), grocery store manager, glass salesman, electrical engineer (7), student (10, some of whom mentioned part-time jobs such as piano teacher, aquatics supervisor, hospital orderly, radio announcer, etc), radio announcer(3), heating & airconditioning service/installation, linguist, marketing manager (2), fast food restaurant manager, postal carrier (3), police work, retired(10), carpenter, banker, communications technician(2), publisher, custodian(2), temporarily unemployed, locksmith, public housing manager, public aid case-worker, engineering/drafting, payroll clerk/supervisor, credit analysis, title insurance advisory officer, electronics test supervisor, marketing rep(cable tv), teacher & part-time radio announcer, broadcast engineer (3), forester, factory worker, rate auditor/transportation consultant, cheese plant worker, electronics technician (2), record salesman(mail order), truck driver, gardener, hospital corpsman (Navy), Armed Forces (Coast Guard), ticket/freight agent, dentist, senior manufacturing planner, supply clerk, land surveyor, engineer, chemist, sales/free lance announcer, salesman, house painter, physicist, building maintenance, railroad inspector, US Airforce (weather), "scope dope" (Air Force), architect, technical director (TV station), appliance repair, TV broadcast technician, engineering technician, handyman, photofinisher, manager, property manager, free spirit.

It's hard to draw any general patterns from the above. About 20% of the responses came from people who either work in radio-TV or in electronics (engineer, technician, etc). The rest work in fields that don't seem to be "DX related".

AGE

The average was 37 years, but 50% of the respondents were 33 or under. 3% were in their teens, 32% in their 20's, 36% in their 30's, 11% in their 40's, 8% in their 50's, 6% in their 60's, and 4% in their 70's. The youngest respondent was 18, the oldest was 78.

The biggest surprise was the drastic drop in the number of teenagers in recent years. In the 1976 survey, 26% of the respondents were in their teens! It would appear that the shift of rock music to FM and the introduction of home computers and video games have steered the teens away from medium wave DXing. At the same time, we're attracting more older members. Our total membership count has stayed the same despite the drop in the number of younger members, with the difference being made up fairly evenly among the various age groups.

YEARS A DXER

The average was about 17.75 years. It's interesting to note that, between us, we have a total of about 7000 years of DXing behind us!

YEARS IN IRCA

The average was 5.8 years, but about 55% said they'd been members for 3 years or less. Several said they'd been members since the club was founded 18 years ago.

RECEIVERS USED

Many different models of receivers were mentioned. The average member listed about 2.5 receivers (one for each of his children??). The following is a list of those mentioned most often and the number of times mentioned:

1. Realistic TRF	34	7. Yaesu FRG-7700	8	Sony ICF-S5W	6
2. GE Superradio	25	Drake SPR-4	8	14. Realistic DX-150	5
3. Yaesu FRG-7	23	9. Realistic DX-160	8	15. Yaesu-FRG-7000	4
4. Kenwood R-1000	15	10. R-390 (military)	6	Hammarlund SP600	4
5. Hammarlund HQ180	13	Hammarlund HQ-129	6	17. Drake R-7	3
6. Panasonic RF2200	12	Panasonic RF-2200	6	Hammarlund HQ140	3

(In compiling the above list, receivers of the same series were treated as one type of receiver, i.e. the "HQ-180" total includes the HQ-180, HQ-180A, HQ-180X, HQ-180AC, etc.)

Approximately 25% of the receivers mentioned were tube types, the rest were solid state. Eighty percent of the receivers were made by one of nine manufacturers, as follows:

1. Realistic	54	4. General Electric	26	7. Sony	16
2. Yaesu	35	5. Panasonic	20	8. Drake	13
3. Hammarlund	33	6. Kenwood	19	9. Hallicrafters	8

Military Surplus receivers totalled 14 (about 5%), 2 DXers mentioned home-brew receivers, and the remaining 41 receivers were made by any one of about 20 other manufacturers.

Respondants were asked to indicate which receiver was the one they used most often for medium wave DXing. The rankings were a lot different from the above listing:

1. Yaesu FRG-7	13	4. GE Superradio	7	7. R-390	5
2. Kenwood R-1000	11	5. Drake SPR4	5	8. Hammarlund SP600	4
3. Hammarlund HQ-180	7	6. Yaesu FRG-7700	5	9. Realistic TRF	4

10 (tie). Yaesu FRG-7000, Drake R7, Panasonic RF-2600 & RF-2200 3 each

If you compare the two lists you'll quickly discover that, while lots of people own TRFs, Superradios, and Panasonic portables, only a small percentage think of them as their main DX rig. On the other hand, there's more than a 50% chance (in most cases) that, if a person owns a communications receiver, then he considers it his main receiver. If he doesn't think of it as his main rig, it's probably because he has another communications receiver he likes better. In fact, there seems to be an unsurprisingly good correlation between price and the probability of it being mentioned as someone's number one receiver. 100% of the \$1500 Drake R-7 owners said it was their main receiver, whereas only 12% of the \$35 Realistic TRF said it was their number one rig. Manufacturers who fared best in the "used most often" category were 1. Yaesu, 2. Hammarlund, 3. Kenwood, 4. Drake. The venerable Hammarlunds made a very good showing considering the last one was made about 12 years ago, and some were made 40 years ago.

ANTENNAS

50 of the respondents mentioned an air core loop, 58 mentioned a ferrite loop of some kind, 72 mentioned a random length aerial/longwire/inverted "L", etc, 6 mentioned inverted V or dipole, 7 mentioned Beverage antenna, and 22 mentioned a vertical, whip, or active antenna.

The most frequently mentioned air core loops were box loop (15), spiral loop (9), and Sanserino loop & wedge (8 each). The most frequently mentioned ferrite loops were Radio West (18), SM-2(Space Magnet) (15), SM-1 (Space Magnet) (10), Dymek DA-5 (4).

When asked which antenna they used most often, 26 said air core loop (most frequently mentioned: box 12, wedge 4, Sanserino 4, Spiral 3), 33 said ferrite loop (most frequent: Radio West 13, SM-2 7, SM-1 5), 25 said long-wire/inverted L/random wire, 3 said dipole, 4 said Beverage, 6 other. The rest either didn't mention one or used the internal loopstick in their receiver.

SOURCES OF MEMBERS

How did you first hear about IRCA? Here's how we answered that question.

- 17% From a friend
- 27% From a magazine (of which 71% said Communications World, 16% Popular Electronics, 13% other or on answer)
- 16% A sample DX Monitor showed up in the mail one day (probably because we got it from a station's report file, from another club's membership list, or because a club member wrote us & said "send this guy a sample")
- 4% From a radio station (one each for KDOWN KGO KDKA WPTF & KIRO, none from shortwave broadcasters even though we've been mentioned on several)
- 18% From ANARC or another club (40% said NRC, 25% ANARC, the remaining 35% was split among a half dozen other organizations)
- 15% From a book (60% said World Radio-TV Handbook, the rest was split among 5 other books on short wave listening)
- 13% Other (including several charter members, plus people who heard about the club at a get-together or from an IRCA member who was a total stranger at the time)

It's unfortunate, but our best source of new members seems to be drying up. Communications World is now defunct and Popular Electronics has changed its name and emphasis to Computers and Electronics. Comm. World was a natural source of members for us because it had a log of US/Canadian AM/FM/TV stations in it, as opposed to the newer magazines like Popular Communications and Monitoring Times where the emphasis is on things like "how to eavesdrop on dope smugglers", etc. Our efforts at plugging IRCA via loop plan blurbs on various clear channel stations a couple years ago paid off poorly; out of about 1500 sets of plans & club info sent out, only a handful of the recipients joined and even fewer are still with us. Personal contact is a surprisingly good source of members, judging from the "friend" and "other" responses.

RECEPTION REPORTS & VERIFICATIONS

The question, "do you send reception reports?" was included because of what seems to be a drop in interest in such activities in recent years. Up until about 10 years ago, club contests, DX Records, etc emphasized (almost exclusively) verifications, whereas now the emphasis is mainly on just hearing the station. And nowadays, some station engineers are wondering if there are any DXers left in the U.S., judging from the number of reports they get. Anyway, here's how the response ended up:

25% Yes, frequently	13% Used to but don't anymore
41% Only in special cases	21% Never have

There was quite a bit of difference in attitudes among the four categories. 68% of those who said "frequently" said they did so to prove they heard the station, 41% said they like to see what the station sends back, 32% said for the fun of it, and 14% gave some other answer. Of those who send reports only in special cases, 26% said it was to prove they heard the station, 43% said they like to see what the station sends back, 30% said for the fun of it, 2% said they weren't sure, 15% gave some other reason; they said they limit their reporting because of lack of time (52%), high postage costs (24%) poor returns (22%), or lack of interest (20%), the other answers were mentioned by less than 10%. It would appear we have two distinct types of report-senders. One sends out lots of reports for the traditional reason of proving he heard the station, the other has time and/or money constraints which cause him to send fewer reports and to treat the responses more as mementos than as proof of reception.

Those who said they used to send reports but don't anymore said postage was too high (40%), lack of interest (40%), poor returns (20%), verifications don't prove anything (13%), lack of time or have verified everything I can hear (7% each). Lack of time seems to cause people to send fewer reports, but not to drop the pastime completely....

Of those who have never sent reception reports, 75% said lack of interest. "Verifications don't prove anything" was a very distant second, mentioned by only 17%, lack of time was mentioned by 13%, the other answers were mentioned by less than 10% of the respondents.

MEETING OUR EXPENSES

When asked to choose between raising dues or cutting size or quantity of DXMs, the response was lopsided: 65% said their first choice would be to raise dues, 20% said reduce the number of issues per year, 12% said reduce the size of a typical DX Monitor, 3% didn't answer.

CHANGES, ANYONE?

What changes would you like to see made in IRCA? About a third of the respondents left this one blank or said "none". Many others went one step farther and said IRCA was already a great club and didn't need improving. Others went on to say what they liked about the club (friendly members, usefulness of DX Monitor, etc). Some even offered words of praise and/or encouragement for club leaders, especially the publishing committee (thanks!). There were also a large number of suggestions for improvement or changes, as well as a few complaints. Here they are:

- "A convention in July." (We'll have one this year. bp)
- "DX Tests I can hear." "A more active CPC campaign." "More emphasis on DX tests." "More CPC activity aimed at daytimers testing between 0300 & 0500 ELT on MMs." (We also need more people to work at arranging DX tests, any volunteers? bp)
- "More member participation." "Increased participation by eastern USA members." "Reduce apathy of the membership, especially in reporting DX catches." (Two or three others said they thought membership participation was very good. I suspect both sides are correct -- we print more DX per capita than most clubs, but many of us haven't developed the habit of reporting our DX to the appropriate columns. bp)
- "A promotional chairman." "Our existence could be better known." "Place a promotional ad in national magazines."
- "A terrorist squad to deal with NSPers."
- "A computer for the publishing committee."
- "Fewer typos in WDXF." "Improve WDXF--it now seems as though I'm reading the editor's personal mail over his shoulder." "Cut out cutesy expressions like 'all da rest'." "Eliminate forums which seldom contain any DX type material and more often than not are full of ego trip type garbage." "More forums." "EDXF is hard to read--it's the typewriter..."
- "A column for promo collectors."
- "NO on including FM." "Add FM." "Expanded frequency coverage, but only for BC & TIS stations." From four people: "Expand BCB to 1800 kHz." "PLEASE NO FM COVERAGE! Who needs it!" "More coverage of FM in station/network/programming lists." "How about longwave coverage?" "No change in present policy on FM." "Include TV/FM." "NO FM or TV!!" "Encourage FM-related items everywhere except Roundups & DXWWII." "Add FM to forum sections (not roundup columns)." "Keep it an AM (ECB) club only." "How about becoming an all-band club?" (Here's an example of not being able to please everyone. In retrospect, we should have asked about expanded coverage on the questionnaire. Maybe next time. bp)
- "Advertising inserts as a way of defraying expenses."
- "More technical articles." "Simpler, more basic items in the technical column." "More technical reports, receiver mods, propagation, etc." "Institute an ongoing propagation study with a special regular propagation column." "Use of one-on-one comparisons in receiver reviews."
- "Hold off on the history."
- "Larger type size in DX Monitor." "Larger page size." Two other people mentioned better quality of printing (printing too light, bleed through, etc)
- From 2 people: "Drop all reports of pirate stations."
- "PST in WDXR, CST in CDXR, EST in EDXR." "Local time zones in Roundups" (this from 3 people). "Convert to GMT or individual time zones." "GMT in all columns." (Here's another example of not being able to please everyone, and of something we probably should've asked about specifically. bp)
- "Network and format changes listed in frequency order in Broadcasting Information." (This from 2 people)
- "More on propagation, listening tests, daytime DX etc." "More feature articles, possibly from DXers in other countries."
- "Equal time for wombats." (What's wrong with penguins? bp)
- "Better coverage of Canadian station changes and a new ribbon for the Canadian Corner editor."
- "An awards program." (One is in the works, I believe. bp)
- "More emphasis on North American and less on foreign DX."

- "More material for beginners."
- "Less personal vendettas." "Discouragement of forums that slander other people and clubs." "Get rid of (name of member)." "Less bickering." (Several other people said they liked the friendliness and camaraderie of IRCA members. We all have our standards, what may pass as bickering to one person may be a perfectly reasonable exchange of ideas to someone else. Editors and/or the publishing committee sometimes find it necessary to edit or tone down part of someone's report if it seems overly offensive, but like I said before, you can't always please everyone....bp)
- "More attention to formatology." "Less discussion of formats, ratings, etc."
- "Issues every two weeks during the summer."
- "Editors of various columns removed when they don't do enough (one a month in my opinion). Some of them haven't done a column in ages!!"
- From 2 people:"Joint IRCA/NRC projects, like a joint foreign log or domestic log." (Certain hurdles would have to be crossed here, like how to split the profits, etc. bp)

THINGS WE'D LIKE TO SEE

The number of suggestions for articles was really impressive, as was the quality of suggestions. One person said "if I want to see an article in DXM I'll write it myself." That's a good bit of advice in some cases, but some members want to see an article on something they know nothing about. Here's the list of suggested articles. Are there any volunteers to write them?

General Interest

- Possible good Beverage DXpedition areas and possible results. How to plan a good DXpedition--do's and don'ts.
- Encourage experts to give tips (spread their expertise). A Question and Answer Column. New, different and better ways to DX. Hints and kinks from the experts.
- How to aggressively promote IRCA.
- How to approach a station for the purpose of arranging a DX test.
- An article on the specifics of verifications, the station's viewpoint, and tips on getting a better response ratio.
- An article on what DXing was like in the 40's and 50's. More articles on the early days of radio. History of top 40 radio. History of album rock radio. Radio during World War II.
- Some humor. (Besides the April Fool issue? bp)
- A better way to classify formats. (i.e. the words pop, adult contemporary, middle of the road, chicken rock, etc can all be used to describe the same thing)
- Biographies of members. Spotlight on a DXer in the club or hobby. Photos of DXers, their shacks, antennas, etc.
- An up to date Doctor Demento list.
- An article on DXing during an aurora.
- An article dealing with the advantages of having a penguin or llama present during DXing. (Who was it who asked for some humor? bp)
- A verification collector's column (besides v/s) similar to the column edited in the early 1970's.
- Short duration contests (24 hours or less). Lively contests.
- Conditions of frequencies tables, perhaps by area (Northwest, Southeast, etc)
- Sunrise/sunset tables for all 12 months, by cities in a fairly small area.
- Effects of geomagnetic disturbances & eclipses on DXing.
- Results of this survey. (I think that can be arranged, hi. bp)
- Spotlight on a broadcaster/personality.
- Articles on small town BCB radio.
- More articles on broadcasting trends.
- Occasional lists of IRCA members by state or region.
- Something on the process involved in a new station applying, getting calls, getting a CP, when an old CP expires, etc.
- More articles on stations.
- Invited articles from members on individual listening habits/times, receivers used, antennas used, and unique conditions that may prevail at DXers location.
- More articles on breakdown of clear channels (i.e. lists of new or almost new stations on 880, etc) /bp)
- Regular docket reviews of FCC rulings and proposed rulemaking.
- What happened to St George UT on 890? (There was an article in the 8/7/82 DXM.
- An article or series on beginning to DX.
- How to milk a DX opening--i.e. how does an advanced DXer proceed step-by-step, checking favorite indicators, how often to check for rare much wanted targets, when to sit on a channel and wait, etc
- Compilation of all TIS stations reported to IRCA columns.

Domestic DXing

- From 2 people: How to log Wisconsin in Kirkland, Washington.
- How to log all 50 states from various parts of the country (i.e. "Best Bets" articles listing likely targets, when heard, etc). About a dozen people made this suggestion!
- How to log all 50 state capitals.
- How to log the Yukon. (Move there, hi. bp)
- Baseball networks, etc.
- A list of rarely reported stations in the western U.S.
- A regular list of which stations are now using AM stereo and which system.
- From 2 people: More Spotlight articles.
- More articles/info on TIS stations.
- Daytime DX articles.

Foreign DXing

- Articles on DXing foreign English-language stations
- from 5 members: The best bets for TAs and TPs in the midwestern U.S.
- How to hear TPs on the west coast.(this from several members)
- Good Latin American bets.
- A detailed report by someone in Southern California regarding actual hearing of down under stations.
- Your first 30 countries on WCNA, like recent articles for ECNA.
- Tips on hearing Australia & NZ from inland portions of the SF bay area.
- How to hear and ID Asiatic TPs in WCNA.
- An article on DXing Puerto Rico.
- An article on DXing England, Scotland, and Ireland.
- How to Hear Hawaii on ECNA.
- Spotlight articles dealing with foreign countries.
- Articles on hearing other places outside NA.
- How to log non-coastal Asians in WCNA (India, Mongolia, etc.)
- How to log Deep South Americans (Chile, Argentina, etc)
- Best TP bets depending on time of year
- A list of positively IDed TPs heard in the last 2 seasons.
- An article explaining why TP propagation in the past year appears to have been reasonably good in one direction only--signals reaching WCNA from Australia, NZ, & the Pacific. Signals from NA in Australia/NZ have generally been very poor, based on reports to DU DX clubs.

Technical Articles

- By far the hottest article request of all was for a review of the Icom R-70, which was asked for by no less than 15 people. Other suggestions included:
 - Articles on active antennas and preselectors.
 - A review of the new Kenwood R-2000.
 - Tabular comparison of major receivers (HQ-180, FRG-7 etc) showing their performance on BCB and user observations.
 - a good wring-out on audio filters for BCB DXing
 - How to beg/borrow/build/buy an antenna for BCB DXing.
 - Reviews of the digital receivers and how to use them to their fullest.
 - Comparison of the Sanseino loop and any ferrite bar antenna.
 - Article on Martens Loop
 - How to use unmodified equipment for TAs, TPs, LAs, GY DX.
 - A listing of good but inexpensive receivers and ratings of same.
 - Good DXpedition receivers
 - antenna tuner reviews
 - Review of DX-302.
 - How to eliminate interference from neighbor's all-night TV set (short of violence). Reduction of RFI tips, my location is ghastly! Articles on practical methods of dealing with RFI on the BCB due to TV, light dimmers, etc, including any method that works; listening techniques, technical gadgets, consumer action, legislation, etc. Tracking down and curing "line noise" and other QRN.
 - Review of GE TRF circa 1962. (There was an article about 12 years ago in DXM but for some reason it's not available as a reprint. bp)
 - Article on modification of RF-2600 to improve performance.
 - Review of Hermes aperiodic loop array.
 - More on propagation.
 - Review of new Superradio Digital receiver.
 - Review of new Superradio cassette recorder/receiver.
 - Review of Drake R-7A (there was one 2-3 weeks ago. bp)
 - Info on what books will help me understand the technical & theoretical articles in IRCA.
 - A complete comparison of the many types of loop antennas and their compatibility with common rigs.
 - Kenwood R-1000 modifications/improvements.
 - How to connect a longwire to a receiver. Shielded lead-in or coax?
 - Getting better selectivity.
 - When a preamp can be helpful. Building a simple battery powered preamp.
- Continued on page 18....

EASTERN DX FORUM

(215) 368-8067
RICHARD EVANS
P.O. Box 1294
NORTH WALES, PA 19454

Reports from members living east of the Mississippi River
Deadlines: Saturdays thru 3/19/83

Niel Wolfish, 15 Woodlands Grove, Toronto, Ontario M4N 2X4

Hope 1983 has treated everybody fairly thus far. 1982 ended on a high note for me as I finally heard the elusive #900. Totals presently at 910 heard, 294 verified and 505 taped. Spent the Christmas holiday visiting friends in Ohio, and DXing in Williamsford, Ontario. Williamsford is about 12 miles from Owen Sound, home of CFOS-560. CKNX-920 and CPFS-1490 can also be considered locals. DXing all the bands (with fellow Ontarians Paul Routenberg and Mike Bolitho) on 4 receivers and 3 beverages was quite interesting. Had the opportunity of logging New Year's pirates, PRN, KPRC, and WGUT. Unfortunately, Steve Webster's Radio Bouvet didn't broadcast this year, as it did on 12/31/81. Take care and best of DX.

Karl J. Jeter, 3590-C Clubhouse Circle East, Decatur, Georgia 30032

Time to check into EDXF-land once again. Christmas morning surprised me with a GE Superadio under the tree...guess I've finally gotten Linda "trained" properly, hi. In trying it out, I find that it's pretty good for AM DXing, although I can't DX up close to strong signals like I can on the souped-up TRF. But the fidelity on the Superadio is great, and I am anxious to try it out on FM when that time rolls around. Still, a few new ones were bagged with it already. It may be good that I have a 3rd rx, because my HQ-150 has a very bad hum that continues to worsen. I used to be able to rid the hum w/my MFJ-SBF-2 filter, but even it now only partially helps. Plus, listening to a radio like the new GE w/its good audio quality makes the old HQ-150 even harder to listen to! Does anyone have any ideas and/or suggestions concerning this problem with my HQ-150? I rec'd a verie a few weeks ago from WFBM-1110 which brought to mind the earlier 1970 verie I had for a station in Indianapolis, WFBM-1260. This has happened once before, with WKLO, veried a few years ago when it was on 1080 in Louisville, and more recently as the 1000 kHz Danville, Ky. outlet. I also got a verie from WKYK-940, which is the 2nd from this station, as it also replied back when it was on 1540. There's not much new in the local radio scene, but I thought I'd give some background on the application for a station on 1380 kHz for Young Harris, Ga. One of the applicants is the state's lieutenant-general, Zell Miller, who is from that town, and hopes to obtain the call, "WZEL". He is a c/w fan, and I'll bet that's the format for the new station...also, he was a professor at Young Harris College, where one of his students was c/w star Ronnie Milsap. Enough rambling for now...73's in '83 to all!!

Rob Gerardi, 420½ North Main Street, Benton, Illinois 62812

I agree w/Ric Head about the state of today's communications gear. I've often thought that the new rigs are so pilled down w/neat little gadgets which must have some effect upon their reception. I'm sure that's why it is hard to find a new rig for less than \$400, what w/digital read-out, time clocks, memory banks, and one that even says it "scans" (whatever that means!). No wonder HQ-180's and R390's bring high resale values! Four years ago, I bought a 1940's Motorola from a farmer for \$5. I'd stack that rig up against a couple of FRG-7's, DX-200's, DX-302's, and a FRG-7000 I've tried. I like the KFAT article, even if it was FM! After reading so much about it o/the year, I sure would like to hear an aircheck! (that's a hint Bay area Aircheck traders!) KPAT's problems reminded me of a good AOR we had here two years ago. When the #5% & ' new owners got their hands on it, they didn't change calls but it would have been better if they had! Stills refers to itself as AOR, though T-40 (no new wave) of AOR, 200% more talk & ads, "The Source", and a "Wx watch". I've always thought it a heinous crime to change some calls, especially when it is one of the three letter ones! (Where's that boiling oil? hi!) Cape Girardeau daytimer KZYM (1220) has an interesting s/off announcement. No mention of studio QTH, etc., but they do urge people to write their Congressmen and Senators (even mentioning names!) to "...change the antiquated rules of the FCC, adopted way back in the 1930's when broadcasting equipment and receivers were not as technically advanced as today's, which cause us to leave the air at sunset and leave Cape Girardeau without nighttime service." The town has 2 FM's, and about 9 other AM/FM locals. Sounds like Fairy Tale Theater, hi. Best of DX to all in '83.

Ted Fleischaker, 3023 Tremont Drive, Louisville, Kentucky 40207
(aka Wolf J. Flywheel) Hello there and time for a re-intro as it's great to be back in the world's best and most democratic DX club! I decided to re-join after a couple years absence and it's great to be back as three bulletins were waiting when I got back from Christmas in Florida! I am 32, single (for another 11 months as I'm at last engaged and the wedding's in December) and I work as Operations Manager of WUOL-FM, the 35,000 watt classical NPR station at the University of Louisville. My DXing is done on an ancient Hammarlund HQ-129-X as well as a Superadio and Sony ICF-2001, which was recently added. I have a Space Magnet, long wire and also DX FM and TV when time allows! I am also known to host the occasional radio club convention (gives me the chance to say LOUISVILLE for IRCA in '84...) and for those who are unwarned, I trade cassette tapes of beautiful music stations. This gives me the chance to say I send whatever format you want as long as I get back beautiful music and I especially need a trader in Denver of the Rocky Mountain West...Anyway, now that the intro is done, did some good DX in Florida and did not note the Cuban problem many gripe about from West Palm Beach, where we were for 8 days. Even WGN-720 was in well most nights and WBBM-780 boomed in. Also the "new" ZNS-3 Freeport was interesting daytime listening and their "Bahamian Christmas" on Dec. 25th was interesting w/steel drum renditions of "Joy to the World" and so on. Also noted Nassau w/same programs on 1540 and Trans World Radio-800 was in loudly, but no sign of 4VEH or R. Cayman this time as was the case from Myrtle Beach, where I was in October. More later but meanwhile, it's great to be back and tell a friend about IRCA!

Ernest R. Cooper, 5 Anthony Street, Provincetown, Massachusetts 02657
(617-487-9337) One AM verie arrived, from WRTK-1370 - or is it? I received a Christmas card, business card, and coverage map - and that's it! It continues very Auroral around here; this morning, why even South Florida was Aurora-ed out! On 1320, no sign of WLQY or WVOJ, but a strong signal from lkw "R. Apollo", YVWF, Turmero, in the clear till WLQY began to fade back in around 0200. In case you didn't find it, the mystery TEST was on 1110 kHz, from semi-local WHIM-RI - too bad it wasn't set up for Sunday AM as WBT was off then. With the AU Cx & WBT, I doubt they got out too far. There was no sign of CKMV-1490 on Christmas morn here; 1490 was a muffled jumble here, with an occasional surfacing of an SS. No KCEE-790 or WSWW-1590 TESTS either. On the subject of publicizing activities of domestic pirates, I can't see any valid reason to do so, any more than should a coin club publicize counterfeiters. I'll agree that, speaking for myself, I have broken some "obscure" laws, but I wouldn't particularly like others who might know about it to publicize that fact in a hobby magazine! And I see nothing wrong with a DXer reporting pirate activities to the FCC; in fact, I have done so in the (not recent) past. Oh yes - WOMR-91.9 T-shirts are available through me for \$7 - they are dark blue with white lettering - please state size desired! Does anybody what time Pres. Reagan's weekly Saturday radio address is broadcast? I'm on from 1015 till noon & I am wondering if we are in competition with one another. (I'm still wondering what stations carry it--rce) I suspect the young man in Saskatchewan (CDXR, Vol. 20, #13, 12/18/82) was reporting in "English" time which would make his claims more likely. Can somebody tell me what electronics magazine Harry Helms writes for, and what its address is? Forward March!

Karl J. Zuk, 154 Old Albany Post Road North, Croton-on-Hudson, New York 10520
Happy New Year to all! May the great penguin of propagation lay an egg near your Beveridge! I am having a lot of fun at my new QTH about 40 miles north of NYC. I have put up a 300 foot piece of wire and a ground system (the town's water pipes) and I am getting great results. It's a whole new world being somewhat farther away from all the 50kws near my old QTH. I can now hear WLS every night next to WCBS, a rarity in NYC. My reception of the Caribbean and South America is intact, with the Caribbean Beacon and all the others bombing in like never before. The good ole Superadio has very similar results. I listened to WIZ-St. Kitts a couple of nights ago with word-perfect, almost hi-fi copy. I have now gotten away from my old pest WQXR-1560; I can finally hear S. Cayman's beautiful music and IDs clearly. I can also pick up as many as 7 wireless telephone conversations at once right above the ECB. The conversations are really interesting to listen to..."if my husband ever finds out about us..." rce: When I was living in Queens County, a part of NYC, I was right in the midst of several FM pirates who broadcasted in stereo, no less. These were the characters getting the LaGuardia and Kennedy airport beacons fouled up. (I can't remember anytime that a pirate on 1620, or so, was causing significant

(Zuk, cont...) problems, but I'm sure it has happened.) These guys were so organized, they had a network set up so they could rebroadcast each other talking to one another over the air using different frequencies and/or phone lines. You could always tell when the feds came to call. They would all disappear in a big hurry! Although I don't support their shenanigans, I think of them much like C.M. Stanbury: They are an interesting oddity. I also don't think that the FCC has the time, money or patience to track these guys down unless they really create problems like jamming IFR - VOR beacons. One pirate on Long Island was actually listed in the radio pages of the major newspaper, Newsday, for awhile, and the FCC captured him quickly thereafter. As long as there is radio, there will always be pirates. Finally, anyone who could aircheck XETRA for me, I will aircheck anything I can for you, or replace your tape or whatever. Steve Mittman: I am very close to Poughkeepsie, NY, now, and can pick up the entire market with much better quality and stereo. If interested, just tell me what you want! Thanks and does anyone know where I can get a lawn flamingo? (Ask your local florist; they may be able to help you--rce) It would make a really interesting ground stake! 73s and good DX.

Mike Hardester, 17 Rowan Drive, Havelock, North Carolina 28532

Greetings! QSLs continue to trickle in: Caribbean Beacon-1610 sent fd card via surface. Also sent station promo sheet and bumper sticker. In the 18 December WDXF, Sheldon Remington commented about East Coast/West Coast DX. Having DXed the West Coast from the Oregon border to Mexico border, I find (based on my location) North Carolina (I'm about 85 air miles SE of Raleigh) to be less occupied by pests than from locations in California. Granted, I've only been on the East Coast a short time, however, the graveyard frequencies are virtually clear of locals at night; as are the other frequencies. In fact, I find some frequencies wide-open at night (the regionals) compared to the heavily packed West Coast bands - just a matter on where one is situated. For me, I'm quite happy with my location: the surrounding economy is too poor to support many stations, and those "locals" cause no problem at night. Question time for the broadcasters out there: is an AM station allowed to test, with tones, etc., during the period of 0600-2400 local - possibly in conjunction with testing a new antenna array, new transmitter, or move from another frequency or beginning operation as a new station? A week ago, (didn't log the time) near ECNA local SS, noted a stn on 1510 with series of tones. Tones lasted 5-10 minutes, then off w/ann by man: "This...testing". Have checked since then, but nothing further. Comments? Very 73 & Best of DX. (second report) Greetings! First mail of the New Year (and a birthday present) brought in four QSLs (one being shortwave): all fd (full-data) v/q WSUN-620, WTIC-1080 (state 43 QSLd), and WTOP-1500. Didn't try for the mystery DX Test - I've mixed feelings about a test of this type, though hope others took the time to try and log it. DXing will take a back seat for the next couple of weeks as I prepare for a Navy advancement exam (Chief Hospital Corpsman) on 20 January. After tha, should be back at DXing. Tried again (unsuccessfully) for the CJEM-570 DX Test. Were they on? All for now. Very 73 and Best of DX.

Mark Tribe, PSC, Box 6117, Myrtle Beach AFB, South Carolina 29579

Hey everyone - what's happening? I just finished watching the Liberty Bowl. How did you like that clown throwing 3 interceptions for Illinois? I think Illinois should have won it. WCSC-1390 in Charleston is now stereo. I don't know how long it's been that way. I just seen a billboard. I'll be in Cocoa Beach, Fla. Jan. 3rd thru the 14th. That should give me a chance to get all the east coast Florida and Northeast Florida stations that I couldn't get living on the west coast of Florida. I noticed that North Myrtle Beach might get a new station on 900 kHz. Personally, I don't want it. I've been trying to get WHNC-890 for awhile, and I'm afraid it would ruin it for me. (Mark, I've heard WHNC-890 up here on SSS--rce) Is anybody into Heavy Metal out there in DX land? Like Diamondhead, Accept, Y&T, Venom, Motley Crue, just to name a select few. I'm sure if anybody's been over in Europe, they've heard of them. Uh, oh, check this out. I just turned on my radio and the AM band is blank, great time to DX, gotta go. 73s. (Mark, would you please put your name and address on the reports for me--rce)

Richard C. Evans, P. O. Box 1294, North Wales, Pennsylvania 19454

Karl Zuk, I verified a pirate once in Illinois who had printed up letterheads, and showed his title on the verie as "General Manager". While I was in Chicago, Roger Winsor and I picked up a pirate using their phone # over the air; we tracked him down to Cincinnati, and Roger forgot to ask about getting a verie from them! No room left, so must go. PTL.



Western DX Forum

★ ★ ★ ★

HRCA—Serving the Broadcast Band DX'er Since 1964

Editor: Ric Heald, 1632 J St., #4, Eureka, CA 95501

1982/3 DEADLINES - WEEKLY ON TUESDAY, 12 DAYS PRIOR TO PUBLICATION DATE

(The following two forums were mauled by the USPS and arrived late-RtH)

PAT MARTIN, P.O. BOX 843, SEASIDE, OR 97138

Well, 1983 is here. Hopefully it will be as good as '82 - maybe better. DX highlights of '82 include: Cook Islands (500w); both Guam commercial stations (KUAM and KGUM); DXRS 1kw Philippines; VL2VU 300w Kensington, NSW; 7RPH 500w Hobart, Tasmania; 4GM 200w Gympie, Qsld.. I don't know how a year could be better DX-wise, but who knows?

Ric, yes I remember when most stations were off MM, SuM, TuM, etc. About 1970-1, 1400 was so clear on MM, WMAN Mansfield, Ohio was dominant. A couple WC DX'ers logged New Jersey on 1400. I heard and verified WNUF Ft. Walton Beach, Florida on their DX TEST. WIRL 1290, WFLA 970, WRFD 880, KIRL 1460, KBOX 1480, etc. all regular on MM. Domestic DX was fantastic. WBZ is DX from the WC now. (Hear, hear-RtH.)

I lived in Seward, Alaska in the early to mid '60s (1960-67), and heard and verified all 50 states in less than two years. I doubt a person could heard all 50 states that easily from Alaska, now. I believe there were 18 stations in the state then. (Psst, 16-RtH.) There are about 35 now. All I used in those days was a Norelco 17 transistor large portable, and 100 feet of wire out the back window. Best of DX to all in 1983 and 73 de PM.

FRANK ADEN JR., P.O. BOX 66352, PORTLAND, OR 97266

Another DX year down the drain. I thought last year was bad for DX. Well, there's always next year.

I'm interested in hearing from any DX'ers who have a VIC-20 computer. I'd be willing to trade programs and etc. related to DX'ing such as logging files and great circle path calculations.

Haven't decided on a second edition of the Oregon Broadcast Band Guide, as I'm not sure if I'll have the extra time. If I do go ahead it'll be expanded to include FM and TV.

Has anyone heard anything about the R-2000 yet? I'm interested in seeing if it'll be a good DX receiver.

I still have plenty of KBOI stickers to trade one-for-one. Duplicates OK. 73

ROBERT WIEN, 1309 DENTWOOD DR., SAN JOSE, CA 95118

As I sit here writing this (MM 03 January, 0030 PLT), listening to KFAT in its last (??) minutes of broadcastdom (still on Monday night), I ponder. They were supposed to be off the air a half hour ago. It's sad to hear them go, but at least some is on tape. It's a great EC conditions night, looking for 1003. Get you K-FAT t-shirts while still available (copies of the above tape available for \$50, hi. (So are their t-shirts, hi-RtH.) A tribute:

K-FAT, We're sorry to see you go,
You put Gilroy on the map, you know,
Your format made the other stations laugh,
Your spot on the dial, Fat-FM 94-and-a-half,
You made the public in-"fat"-ible,
In Gilroy, the world's garlic capital,
But you've been replaced by station K-WISS,
K-FAT will surely be sorely missed,
So goodbye, Fat one, it was to know you,
FAT-heads will miss you, just so true.

MARK STRICKERT, 706 25th AVE., SAN FRANCISCO, CA 94121

Headlines of the past three months' activities:

* Año Nuevo DX'pedition of 07 November was quite successful, with oodles of Hawaiians, Asians and even Soviet longwave stations present. Concurrent Pt. Reyes DX'pedition also went well.

* Visited most Los Angeles stations on 17 December, with little luck, stick-er-wise, although many a station was taped, of course.

* Storm of 21 December knocked off a few AM's (briefly), with KOLK and KCBS on emergency for awhile, and many FM's off for some time. Thankfully, the heavy rains and high winds were not often simultaneous, at least when I was outside.

* Got a nice tour of the KNBR transmitter site (and adjacent SW KGEI as well) on 31 December. "Goodtimes 68" is running off the auxiliary tower at present, so are not running at full steam. Also, they're replacing the old 5kw gear with one capable of full 50kw, so with two back-up transmitters and when main tower is back on, don't expect many off-periods for awhile, hi.

"To Happen by the Time This Shows" Department:

* KFAT is going (blah) some sort of adcon. Bad part is, an informal survey of FM signals in downtown Gilroy showed me that the strongest signals were KDON-FM (TM automated adcon), KWAV ("live" adcon) and KEZR (roughly between those two). The Ostriches are taking over programming. . .

* Third issue of "DECALcoMANIA" will be out. Information and a sample of this monthly sticker-collector's bulletin is available for 55 cents to P.O. Box 931, San Francisco, CA 94101.

Next time, a look at a new station carrying nothing by fluorescent hum, sort of a "Music of Your Light." (Groan, hi-RtH.) 73 de MaS.

GLEN KIPPEL, 612 WEST AVE., MERCED, CA 95340

It's occurred to me that the tools to solve the msytery of MW propagation are now available at reasonable cost. Most any microcomputer could be interfaced with a receiver such as the Kenwood R-2000, Panasonic RF-6300 or Sony ICF-2001, so that the computer could tune the receiver to specified stations and record the signal strength and date/time information, then tabulate the results. But now that the hardware is here, the clear channels are disappearing and it's very difficult for the computer to ID which station is coming in. The "good old days" when WCBS 880, WBZ 1030 and WHAM 1180 were regulars out here are long gone. Now look for new stations in El Paso on 750 and West Fargo on 660.

I've found a source for Mallory 3kHz ceramic filters at \$3.40 plus ferrite rods and toroid cores, 365 pF variable capacitors, IF XFRMRS, etc. It's Mouser Electronics, 11433 Woodside Ave., Santee, CA 92071. They have a free catalog, so you technical types take note. Doug Nyholm - - I think your receiver's input impedance is lower than most, so that's why it's a "signal hog." Don Moman's tuning unit may help, or try an 8:1 transformer. I could cobble one up for you if you wish. John H. Rose -- you didn't specify whether your 60-volt chassis potential was AC or DC. Would help to know that to locate the trouble. In any case, you have a potentially lethal machine.

If any western DX'ers have yet to log South America, note that Bonaire 800 is pretty much in the clear Sunday evenings when XEROK is off. Oh, a big "thanks" to the very together publishing crew that manages to get DXM to my mailbox every Monday morning. Super job! 73.

RANDY TOMER, 1969 27th AVE., ARCATA, CA 95521

The latest around here is the formation of the HEAVES' DX-Net on CB channel 21. Absurd, yes, but it seems that certain local HEAVE members don't have telephones and we have to be able to keep bragging about our latest catches somehow. Besides, getting on the air will give me a chance to do some experimenting with transmitting antennas. (That's a 10-4, Woodhog, hi-RtH.)

Boy, have conditions dropped off to absolute zilcho lately, I've only heard one or two hets the last week or so (writing this on 10 January). By "hets," I'm not counting Tahite's, which is there nearly nightly against KCBS. Interesting, but not a surprise, is total lack of hearing 1YC/4BH 882 ever since the KIXI/KWIP mess came on 880, and they used to be heard at this QTH almost all year 'round. The way it's been lately, the only way to hear anything exotic when I get up in the morning is to tune in Singapore on 5052 kc.

After wanting one for the last five years or so I've finally gotten a digital readout unit for my HQ-180A. I got the one from Torrestronics because it's available in kit form, at a savings of \$60 from the price of the comparable R. West unit. Actually, the R. West job has more features, i.e. megahertz digits, but I liked the idea of saving \$60 and if you don't know what mHz a Hammarlund is tuned to you have no business DX'ing anyway. The HQ-180A doesn't really need a digital display for BCB DX, but will be nice for SW. 73

DOUG NYHOLM, 2071 CEDAR ST., SAN CARLOS, CA 94070

Concerning verifications, I've made a couple of observations. I know that the QSL collector seems to be fading out but for me that's the whole purpose of DX'ing. It's not impossible to have a 90% rate on domestics, and foreign, primarily TP's, should be 95%. I've found that verifying BCN? (R. New Zealand), is much more positive when the report is sent to the individual station rather than the Radio N.Z. HQ. A full page letter usually accompanies the QSL card and bumper stickers are common. The addresses aren't in the WRTH,

of course, but are easily obtainable in several DU club logs.

The same QSL policy generally follows for ABC stations in Australia. I haven't tried this with the NHK stations, however. Does anyone have any observations about their policies?

Also, has anyone received a QSL or anything, for that matter, from North Korea in the past few years? I wonder if our postal service even has relations with them.

Just received a QSL from JOQR 1134. It seems that virtually all commercial JJ stations verify with a card with some pop art type of picture and the phrase, "THX FUR UR QSL" and few details.

I used to have a poor percentage of verifying commercial JJ's, but recently seem to have hit on the right item, (anyway, my percentage is up), I send them kind of a form letter along with the report explaining the reception, my equipment and some personal aspects of my interest in the hobby. I guess if we all took the time (and had the time) to write personal letters with all our reception reports, replies would dramatically increase.

Anyhow, these are some observations I've made and good luck. 73.

STEVE MC GREEVY, 45 ELDA DR., SAN RAFAEL, CA 94903 TMM III-Conclusion

Lots to say this time around. First, just what is the power of the LAX TIS on 530? I'm tired of reading conflicting information on their power. 10 watts? 100 watts? Etc. They are barely audible some nights here.

Sheldon's right about our DX'pedition to Pt. Reyes, sometimes it's very hard to bandscan, looking for new stuff, when there's several enticing stations to just sit on and listen to, like Tarawa 846, Tonga 1017, Fiji, etc. In fact, at the latest DX'pedition to Pt. Reyes on 07 November, I sat on JOIB 747 and taped over 30 minutes of traditional JJ music, virtually slop and fade free.

I'm very disturbed about the future plight of BCB DX. The beautiful Clear Channels are rapidly filling up, turning into "regionals" such as 880. New Zealand is moving AM outlets to FM, thus reducing the number of TP/DU targets to try for from that country (although other countries are gaining more BCB outlets, such as the Pacific Islands and Australia). What may become of TP/DU DX'ing or, for that matter, TA DX too, if we go to 9 kHz spacing and use the same frequencies as the other hemisphere (hopefully not, hi)?

Domestic splatter is on the rise as the once lean KCRL 760 with classical music is now the splatter box. KROW often slops from 795 to 765. Bleah! However, it's quite an incentive to develop highly directional antennas in order to knock down domestics to favor TP/DU DX. I realize the FCC wants to destroy DX'ing, but I look forward to new and exciting changes also on the BCB in the future. I don't see how the audio fidelity of the BCB will improve if Uncle Charlie squeezes stations closer together and increases a station's ability to splatter on others that will only hasten the demise of BCB.

This past month (December) has not been too good for DX, as the powerline QRM has greatly increased with several malfunctioning street lights, making it unbearable at times to DX which prompts me to go to Pt. Reyes more often. (This concludes The McGreevy Mirror-Rth.)

RIC HEALD, 1632 J ST., #4, EUREKA, CA 95501-or-POB 4855, ARCATA, CA 95521

Greetings. Now I realize that 10% of America lives in California, but this is ridiculous, hi. I hope the Seattle crew (all of them) will add a forum.

OK gang, we had fun with HEAVE, but it's been given the old heave-ho, hi. Tomer came up with a great name and we're going with it. Extreme Northern California Organization of Radio Enthusiasts-ENCORE. Watch DXM for ENCORE GTGs in the future. Southern Oregon DX'ers are more than welcome.

DX has really gone to the dogs. 'Bout the only thing worthwhile around here was late SRS (1000 PST) from much wanted (since the '60s, hi) KOMW 680 Omak, Washington. Nary a sign of "Goodtimes 68" (eat your hearts out, Bay Area, hi), KOMW was in the clear. Relogged Aptos 1540 and Carmel 1410 (now with religion), so with exception of KBLC 1270 Lakeport, KWUN 1480 Concord, KEGL 1430 Santa Clara, I've logged everything from Carmel to the Oregon border (on the coastal side, still working on The Valley).

Steve, the FCC is not trying to ruin BCB DX, they no longer realize that it exists, and furthermore, big business runs it anyway, and remember, the almighty dollar rules the roost. The FCC has already lied about the duplication of the Clears, it was supposed to be assigned in "white" areas only and as expected (really), they're assigning the Clears to daytimers and other fulltimers in metro markets and moving the city of license to a suburban location, so the whole thing's a farce anyway.

As for splatter. That's been talked about ever since I've been involved with clubs ('64). Rockers are the most notorious for their splatter and on down the line we go. The first song that really sent splatter out more than any others was, "Theme from Shaft."

For those of you planning to purchase a computer terminal, remember one

thing, turn it off when you plan to DX. Of all the noise makers ever invented, computers have to take top honors. We have three terminals at the travel agency, and listening to KRED 1480 in the late afternoon after the power decrease, is a real challenge, and they're only ten miles away. They really rip up the FM band with neat heavy-duty harmonics.

Randy has mentioned that some of us are establishing a CB net because certain parties don't have phones. He calls it, and rightfully so, Children's Band, but with no phone and area emergency companies tuned to ch 9, at least I do have a phone of sorts in case of emergency. I did not, however, that when John Arhtur and I started talking BCB DX, propagation and antennas, the audience changed and we have several breakers who showed some interest. A new twist, recruiting for IRCA on the two-way, hi.

That'll do it for yet another week. Remember gang, handwritten or typed, please, PLEASE, DOUBLE SPACE! It takes two-to-three times as long to retype a single-spaced forum as a double-spaced one, and dropping lines becomes much more a reality. 'Nough said. See y'all in 7 and 73 de Rth. .

THE DX TEST FROM THE STATION'S VIEWPOINT

As a member of IRCA and NRC, I was glad to arrange a DX test here at KCEE in Tuscon, AZ (790 kHz). The returns from the test have resulted in our manager referring to us as "Radio Free Tuscon"!

The returns received have brought up a few points I would like to make which may result in better QSL returns, more cooperation from stations, and more tests being available.

First.....in requesting stations to perform tests; ask the engineer to perform a test as part of his routine maintenance. The tones used can be used to adjust audio processing, check modulation assymetry, test auxiliary transmitters, or whatever. Most good stations will not give up air time merely for a DX test. If they can do it as part of their routine maintenance, then they are willing.

Second.....do not ask a station to perform a DX test during the "book". We live and die by the results of that book. Anything which could cause us to have a lower "number" will be treated exactly like what it is, a threat to our livelihood. (The "book" is usually conducted in April/May and October/November in major cities. bp)

If the person you contact has no experience with DX tests, have them contact someone who has, preferably another radio engineer. I'll be glad to help as will most DXers/Engineers.

When you send your report, an SASE is a must. This means self addressed stamped envelope, not just a stamp. If you like to collect station envelopes and letterheads as I do, then at least send a gummed mailing label with your address, plus a stamp. Most engineers don't have a secretary, and writing out all those addresses might tend to discourage returns or repeat tests.

Be detailed in your report and use the station's local time as most non DXers (and some DXers) don't know, don't care, and aren't interested in something called ELT. If I'm in Tuscon, I care about Tuscon time, or maybe GMT (UTC) but not Eastern Time, or some other arbitrary standard that ignores me. If you put your local time or some time other than the station's local time, you just might not get a verification if the engineer decides it is too much trouble to convert times! Worse, he might not notice the time zone difference and decide you did not hear him because he wasn't testing at that time.

Tapes.....very much appreciated.....but please, don't just copy your whole night's listening and expect the engineer to dig his out.....put the station at the beginning. Short C10 or C5 tapes are cheap, light (to mail) and easy to use.

Address.....get the exact address of the station when arranging the test and spell the name correctly.

Times.....again no "ELT", and make sure you don't ask a station to begin tests before his local midnight. That is the FCC approved testing period.

The test I ran on December 13th was fun and productive. I'll be glad to run others when I can and will encourage the engineers working for me at our other stations to do the same. Anyone who needs help to explain the tests to a non-DXing engineer is welcome to contact me at work 602-623-7556 or home 602-742-2270.

--- Bill Croghan

EASTERN DX ROUNDUP

Bob Lazar

1711 Wainwright Dr.

Reston, VA 22090

Deadlines: Saturdays

All times Eastern

- 1130 WASP PA Brownsville, 0730 12/19 s/on, "WASP now begins another broadcast day." Very strong o/ WCXI. (PP-OH)
- 1190 KMCW AR Augusta, 12/21 1755 Arkansas Radio Net nx, 1759 s/off w/ no SSB. Poor w/ WOWO & possible WXGR. (NW-ON)
- 1310 WDOD TN Chattanooga, 2330 11/25 hrd "WDOD, there's a little country in all of us." Carrying the Music Country Network. Very strong signal. (PP-OH) (This is a correction for the WTLB item in the 12/18 DXM, caused by DXing in the dark!--ed)
- 1320 WAMR FL Venice, 12/25 Christmas mx 1745, then ad and sports rpt on Sun Bowl FB game. First session w/ new Superadio! (KVJ-GA)
- 1400 WHCC NC Waynesville, 12/27 s/on 0500 w/ SSB & ment of "equal oppor. employer." (KVJ-GA)
- 1490 WSNT GA Sandersville, 12/23 0642 Ga. Net sports & Christmas message from local business. (KVJ-GA)
- WJMO OH Cleveland Heights, 12/27-28 according to channel 3 TV news of 6 p.m. 12/28, the stn was vandalized and the top 150 ft of antenna was knocked down. They stayed on the air w/ reduced power and damaged antenna. (LMP-OH)
- WDXL?TN?Lexington, 12/28 w/ political anmt 1812 & ments of "Gov. Alexander"; call does not sound like WDXB, so a tentative on WDXL. (KVJ-GA)
- 1500 WVSM AL Rainsville, 12/21 1727-1730 w/ C&W mx, followed by s/off that said studios and xmtrs are on Highway 35; fair o/ WTOP w/ WKAX. (NW-ON)
- KXVQ OK Pawhuska, 12/18 1813-1815 C&W mx, followed by humourous s/off anmt. ID's as Q-Country: Quality country for all of OK, KXVQ. Fair signal in WTOP null for my first OK daytimer. (NW-ON)
- 1510 WYNI AL Monroeville, 12/19 & 12/26 1745 s/off both times; is definitely on w/ these calls, gives power as 1000 watts. Ment's of "SW AL" and address given during s/off is 201 Office Park. (KVJ)
- WMIB FL Marco Island, 12/29 1720 w/ MOYL, "AM-1510" and ads for Naples, FL businesses. (KVJ-GA)
- KAGY LA Port Sulphur, 12/19 1719 c&w mx & Dollar General Store ad.(KVJ)
- 1520 WGMA NC Spindale, 12/26 1717 brief reception w/ this call hrd; am 99% sure I hrd "WGMA" but can find no listing--anyone know of a change here? (KVJ-GA) (This is a new stn, 500 w ND daytimer--ed)
- 1530 KGBT TX Harlingen, 12/20 1800 very good in WCKY null w/ EE ID and "America's only full-time 50,000 watt Spanish stn." (KVJ-GA)
- 1540 KGBC TX Galveston, 12/28 1732 on top w/ nx, "Galveston area wx" and big band format. (KVJ-GA)
- 1560 KXXX AR Monette, 12/8 & 12/18 1758-1800 long-winded s/off asking listeners to write to the FCC about KXXX's daytime status, poor w/ KQYX and KDDA. (NW-ON)
- KQYX MO Joplin, 12/8 1750-1757 in w/ "Cool Change" by the Little River Band, and also mx by Crosby Stills & Nash, ID & local anmt between songs. Poor w/ KXXX. (NW-ON)
- KDDA AR Dumas, 12/18 1745-1800 w/ C&W mx, spot for Monticello Suzuki, 1755 Ark. Radio Net nx w/ local spots for Dicker's Chevrolet, 1759 s/off inviting listeners to tune to 107.1 KDDA-FM. Fair signal o/ KXXX & KQYX in WQXR null. (NW-ON)
- WYZD NC Dobson, 12/13 1711-1712 caught s/off in under WAGL, very poor in WQXR null. (NW-ON)
- 1580 WMTL KY Leitchfield, 12/8 1726-1729 Christmas song, followed by s/off, after the s/off the stn played "My Old Kentucky Home (?)". Fair-good, all alone on 1580, for my 40th on 1580. (NW-ON)
- WANB PA Waynesburg, 1507 12/15 rock format, male DJ mentioning WANB Waynesburg wx. Strong signal. (PP-OH)
- 1600 unid ?? 12/28 hrd ad in the mess here @0629 w/ location given as "at the intersection on Hwy. 75 and KY 80." A consultation to my atlas puts this near Pittsburg, KY, so a tent. on WLPQ. (KVJ)

1616 KPRC NY New York, 0109 12/31 taking requests, then ID as "Pirate 1616 KPRC from Pirate City, the Big Apple, New York." Very strong signal. Local-like. Classical mx. Very odd stn. (PP-OH)

DX tests

570 CJEM NB Edmundston, not hrd on special test (12/25). Listened to 0105, but hrd no ID, FF, etc. Three stns noted on freq w/ 1) Christmas mx, 2) talk and 3) country/western mx. In fact, from 2350 to 0105, never heard one ID or slogan or city. Will try 1/1 test. (MH-NC)

1240 WJEJ MD Hagerstown, 12/22 test hrd fair/good 0115-0144. Tones generally made it, voice ID's at 0119 and 0144. (KVJ-GA)

Eastern DXers

- MH - Mike Hardester, 17 Rowan Drive, Havelock, NC 28532 (R. West modified FRG-7, R. West loop)
- KVJ - Karl Jeter, 3590-C Clubhouse Circle East, Decatur, GA 30032 (HQ-150, TRF, Superadio, 4' loop, SM-2)
- PP - Paul Pelletiere, 7726 Fern Dr., Mentor, OH 44060 (DX-160, 50' lw)
- LMP - Louis M. Poda, 395 Kling St., Akron, OH 44311
- NW - Niel Wolfish, 15 Donwoods Grove, Toronto, ON M4N 2X4 (FRG-7, SM-2, pipeline to Arkansas (his secret!))



MARWOOD



The 1928 Sensations!

8 Tube-1 Control

ALL ELECTRIC OR BATTERY OPERATION

Only **\$69** RETAIL PRICE
Big Discount to Agents From This Price

AGAIN Marwood is a year ahead—with the Radio sensation of 1928—at a low price that smashes Radio profiteering—the marvelous 8 Tube Single Control Marwood for BATTERY or ALL ELECTRIC operation. Direct from the factory for only \$69.00 retail price—a price far below that of smaller, less powerful Radios. Big discount to Agents from this price. To prove Marwood can't be beat we let you use it on 30 Days Free Trial. Compare it with any Radio at any price. If you don't say it is a Radio at any price. If you don't want your money unless the Marwood does all we claim. We take the risk.

New Features

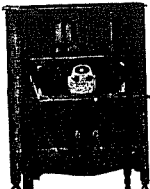
Coast to coast with enough volume to fill a theatre. Amazing direct tone that only super-power Radios like the Marwood can get. Ultra-selectivity to cut out interference. Every Marwood is perfectly BALANCED—a real laboratory job. One dial control gets the stations with ease. A beautiful, guaranteed, super-efficient Radio in handsome walnut cabinets and consoles.

Buy from Factory—Save Over Half

Why pay profits to several middlemen? A Marwood in any retail store would cost practically three times its low direct-from-the-factory price. Our policy is to get the benefit. Marwood is a pioneer, responsible Radio. If you want next year's improvements NOW—get a Marwood.

Get Our Discounts before you buy a Radio. Save half. Try any Marwood on 30 Days' Free Trial. Compare it with any Radio regardless of price. If you don't get the surprise of your life, return it. We take the risk. Don't let Marwood low prices lead you to believe Marwood is not the highest quality. Guaranteed 5 years.

6 Tube-1 Control for BATTERY or ALL ELECTRIC operation. Get coast to coast on loud speaker with great volume. Only \$47.00 retail price. Big discount to Agents from this price. Comes in handsome walnut cabinets and consoles. Has the volume of 7 tube sets.



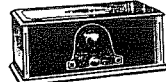
ALL ELECTRIC
8 Tube-1 Control
\$98 RETAIL PRICE

Big Discount to Agents From this Price

Has Complete A-B Power Unit

A REAL ALL ELECTRIC Radio with one Unit on the market at the world's lowest price. Big batteries included. If you have electricity in your home, just plug into the light socket and forget batteries. Costs less than a day to operate. Always has ALL ELECTRIC tone. All ELECTRIC units. All ELECTRIC Radios are high priced but we cut profits to the bone and offer \$36.00 retail price. Big discount to Agents from this price.

\$47 RETAIL PRICE Big Discount to Agents From this Price



Push for Free Trial

Marwood Radio Corporation, 5315 Ravenswood Ave., Dept. A-13, Chicago.

Send Agents' Confidential Prices, 30 Days' Free Trial, New Catalog and Agents' New Money Making Plan. No obligations on my part.

Name.....
Address.....
St. or R. F. D.....
City..... State.....

GET YOUR RADIO AGENTS at Wholesale Price Make Big Money in Spare Time

It's easy to get orders for the Marwood. We want agents and dealers in each territory to handle the enormous business created by our national advertising. Big money made in spare time demonstrating We show you how. This is the biggest season in Radio history. Rush coupon for 30 Days' Free Trial, 1928 Catalog, Agents' Confidential Prices and Agents' New Plan.

MARWOOD RADIO CORP.

Dept. A-13
5315 Ravenswood Ave., Chicago, Ill.

CENTRAL DX ROUNDUP

Robert Kramer
6416 N. Richmond
Chicago, IL 60645

UNIDED, SPECIAL, CHANGES, et. al.

- 640 WMSO TN COLLIERVERILLE, 12/30 1330 ID, w/PFL Club pgm. Called stn, said be 1-2 months before on AN. Still collecting funds for towers (OK, let's sabotage their efforts, nobody send them any money, hi, ed.). Also still using old "Victory 63" ID. TB-TN
- 850 WLRC MS WALNUT, 12/30 1452 ID, rel. mx, ad. Real fine signal. 1ST time noted here//
- 950 UnIDED Houtson/San Diego BKB, ment. of TX bank. KPRC? EWC-KY (Sounds like them, ed.)
- 1110 WHIM RI EAST PROVIDENCE, 12/27 0214 fair on so called DX test w/Time beeps, CW IDs & Voice ID. RK-IL, 12/27 0218 fair time pips, CW IDs, voice IDs, KFAB QRM// TN-WI
- 1370 WOQL WI PEWAUKEE, is still silent. TN-WI
- 1500 UnIDed 12/30 1745 poor W/S/Off ment. to tune to sister stn WTNN-106.3 FM. JA-WI (Jim, this was WSEM-1500 Donaldsonville, GA, whose FM call letters are WEMK, if you look at the sunset map there is a small portion of GA that goes off at this time in DEC., & Donaldsonville is in that area, ed.)
- WRIS MS SARDIS, 12/30 1336 ID, nx, country format. Good signal, said just begun operations. New stn. TB-TN
- 1580 WBBE KY GEORGETOWN, went under these calls mid-Nov, format BBD/STDS. EWC-KY
- All da Rest
- 540 WRIC VA RICHLANDS, 12/30 1714 S/Off w/SSB, fair on top of freq. EWC-KY
- 550 KOY AZ PHOENIX, 1/3 0142 good O/KTSA W/pop mx & "55 KOY" SID. RK-IL
- 560 WHEQ TN MEMPHIS, 0323 12/20 strong in WIND null w/pop, ID by male anc. ETH-IL
- 590 WBEI MA BOSTON, 12/29 2320 fair w/ID & spot for Camera stores in Boston, then sports O/CKEY/WOW. JA-WI
- 620 WSUN FL ST. PETERSBURG, 12/28 0201 W/nx, xlnt, on top of freq. EWC-KY
- 630 KXOK MO ST. LOUIS, 12/30 2100, ID, spot, Legal ID into rck mx, fair O/u/WIAP. EWC-KY
- 680 WMFS TN MEMPHIS, 12/23 1745 fair in WMAQ null w/C&W, ID, wx. ETH-IL
- KKYX TX SAN ANTONIO, 1822 12/20 poor in slop w/wx, 2 IDs. ETH-IL
- 690 WAPE FL JACKSONVILLE, 12/30 1706 end of AI nx, Accu-wx, "AM 69 WAPE" ID into ABC sports. EWC-KY
- 730 CHYR7 ON LEAMINGTON, 12/25 2102 mx, lcl ad, ID ment. "The Leader. Fair-poor. EWC-KY
- 740 KSSS CO COLORADO SPRINGS, 1/3 0346 good w/wx, C&W mx, "K-Triple S" IDs. RK-IL
- 790 WTSK AL TUSCALOOSA, 12/24 1743 rel. S/Off w/power data, no SSB, O/WQXI. EWC-KY
- 800 WHOS AL DECATUR, 12/23 1745 poor right after WSHO S/Off w/S/Off no SSB. JA-WI
- KVCM AR MORRISTON, 12/21 1800 poor U/PJB W/S/Off by YL, no SSB. JA-WI
- 810 WSJC MS MAGEE, 12/24 1732 mx, into lcl ads & PSA, more mx. EWC-KY
- 850 WPTB CA STATESBORO, 12/30 1802 fair w/GA Radio News Service nx, wx. RK-IL
- 910 WALF MS MERIDIAN, 12/26 0101 fair w/ID. RK-IL
- KGLC OK MIAMI, 12/30 2109 male DJ w/ID "910 Country KGLC" into C&W mx. Good, no sign of WJCV. EWC-KY
- 970 WTBF AL TROY, 12/30 1745 fair w/ID just before power change. RK-IL
- 980 KMBZ MO KANSAS CITY, 12/30 2123 ID w/ment. of Kansas City. Quick fade up & out, weak U/WGUB. EWC-KY
- WCUB WI TWO RIVERS, 12/30 2124 ID between C&W mx. EWC-KY (Wheels, note correct city of license, ed.)
- 1050 CFYN ON SAULT STE. MARIE, 12/28 2108 mx, ID, wx, ads, fair-poor w/CHUM. EWC-KY
- 1060 WWAM GA TALLAPOOSA, 12/23 1725 fair w/many lcl spots & C&W Gospel mx. JA-WI
- 1070 WAPI AL BIRMINGHAM, 12/29 1742 mx, ID by female, sports, fair U/WIBC. EWC-KY
- 1080 WVCG FL CORAL GABLES, 12/28 1937 50's type screaming DJ w/oldies, promo for Orange Bowl Parade, ID, more oldies. Fair O/SS rocker. EWC-KY
- WJYI CA MARIETTA, 12/23 1730 poor O/KRLD W/EZL mx & quick S/Off. JA-WI
- 1180 WKKE MS PEARL, 12/29 1745 ID & MYL U/WHAM. EWC-KY
- 1190 KJEM AR BENTONVILLE, 1/7 1828 XLNT w/C&W mx & S/Off. RK-IL
- 1220 WBUL AL BIRMINGHAM, 12/30 1745 w/s/Off, ment S/On @ 0600, into "What the World Needs Now", then gone. EWC-KY
- KVSA AR MCGHEE, 12/29 1746 National & lcl nx, wx, ad, fair w/WGAR. EWC-KY
- 1230 WTBG AL TUSCALOOSA, 12/30 1807 ad for a night club w/ment. of Tuscaloosa, wx, ID, faded in O/GY mess, fair. EWC-KY
- 1250 WETU AL WESTUMPKA, 12/30 1737 w/ment. of contest call in, into C&W. EWC-KY EWC-KY
- WREN KS TOPEKA, 12/30 2118 ment. of WREN Secretary of the day into ad. Fair-good.//
- CHWO ON OAKVILLE, 12/29 1801 ID in mess then old radio show. EWC-KY
- 1270 KADL AR PINE BLUFF, 1/7 1813 good in WWCA null w/wx & S/Off. RK-IL
- 1280 WPID AL PEEMONT, 12/30 1730 probably the one here w/ID that sounded like WEID. EWC-KY
- WYTC MN MINNEAPOLIS, 12/20 0255 fair in mess w/many IDs. ETH-IL
- 1290 KOIL NE OMAHA, 12/27 0134 fair "1290 koil" ID W1ZZ off. TN-WI

1330 WXTA IL ROCKFORD, 12/20 1502 poor in noise W/XMAS carol, 2 IDs. ETH-IL
 1340 KHUB NE FREMONT, 1/8 0012 fair W/ID & MoR mx. RK-IL
 1350 WIOU KY LOUISVILLE, 12/20 1725 fair W/WIOU, WXCL W/soul, ID by male. ETH-IL
 1360 WFIW KY MONTICELLO, 12/19 1730 good, atop W/S/Off ment. WKYM 101.7. WTH-IL
 1380 WNSI FL ST. PETERSBURG, 12/25 1817 mx, 4-105 IDs, into mx. EWC-KY (Wheels, they haven't changed calls, they're just delay simulcasting the FM, ed.)
 1390 WFIW IL FAIRFIELD, 12/19 1745 poor W/S/Off ment. FM 104.9 in WVON null. TN-WI
 WJIS TN JACKSON, 12/30 1725 male DJ W/"TJS" slogan, TC & oldies. Good. EWC-KY
 1400 KMYN AR WYNNE, 12/30 1410 ID, wx market rpt., clear weak signal. TB-TN
 WRDB WI REEDSBURG, 12/27 1706 poor W/Baraboo wx, ID in WRJN null. TN-WI
 1420 WACT AL TUSCALOOSA, 12/21 1743 fair in Jumble W/ID at S/Off. ETH-IL
 1440 KMLB IA MONROE, 12/28 1945 3 in a row promo, many ments. "Something Special KMLB", lcl ad, poor-good W/WWXL slop. EWC-KY
 1450 WROX MS CLARKSDALE, 12/30 1420 W/ID, R&R mx, very weak U/static. TB-TN
 1460 WRKR WI RACINE, now playing rock mx W/old calls, ex-WWEG. TN-WI
 1470 WSAN PA ALLENSTOWN, 12/29 1836 poor O/WOHO W/NOYL mx & ID "1470 WSAN" by YL. JA-WI
 1480 WMOG TN MEMPHIS, 12/30 1724 Church mx, lcl ad, xlnt. EWC-KY ETH-IL
 1540 WGRK KY GREENSBURG, 12/19 1722 good atop W/Countdown, "The Best music WGRK", SID.//
 1560 WIZY GA GORDON, 12/30 1729 fair W/C&W mx, wx & ID. JA-WI
 1570 WCSR GA MILLEN, 12/30 1731 fair W/S/Off right after WSSA S/Off also using Dixie//
 WSSA GA MORROW, 12/30 1730 fair W/C&W & S/Off using Dixie. JA-WI
 1580 WAMW IN WASHINGTON, 12/22 1731 poor W/MoR mx & S/Off ment. 250w, no SSB. JA-WI
 WMTL KY LEITCHFIELD, 12/22 1723 fair W/lcl spots & ID by YL, S/Off using "Old Kentucky Home. JA-WI
 1590 WCCL MS JACKSON, 12/24 1746 mx, DJ ment. album hour & Wolfman Jack at midnite, into oldie. Very good, dominant. EWC-KY
 1600 KCRJ AR WEST HELENA, 12/30 1405 ID, end of nx atop freq, fair. TB-TN
 WHTO IN LINTON, 12/22 1730 tail end of S/Off W/ID O/all. ETH-IL
 1616 KPRC NY NEW YORK, "Pirate Radio Central" 12/31 0202 poor-good W/phone calls & occ. rock mx. QSL address is: Box 747 Exeter, NH 03833. RK-IL

Beware of these guys!

JA.... Jim Albrecht 3313 N. Weil St. Milwaukee, WI 53212
 (RF-2200, Sony ICF-S5W)
 TB.... Tom Butas 5083 Skippy Memphis, TN 38116
 (FRG-7, Superadio, LW)
 EWC... Wheeler Conover RR #8, Box 344B Manchester, KY 40962
 (RF-2800, LW)
 ETH... Earl Higgins 286 Lawton Riverside, IL
 (R-1000, Radio West Loop, gerbil) (Does the gerbil bite ? ed.)
 RK.... I wish I could remember this guy's name
 (R-1000, HQ-140X, HQ-129X, Radio West Loop, Kowalski Loop spiral loop, gerbil bite)
 TN.... Tim Noonan 7454 West Thurston Circle Milwaukee, WI 53218
 (Drake SW-4A, Radio West Loop)

I hope you can read the proceeding. I am in need of a new typewriter ribbon, which should be secured by next issue. About the WHDM mystery DX test. There is no room in the hobby for such silliness. I know of at least 2 Chicago Area DXers that didn't hear the test because they didn't know where to look. The band these days is fairly congested, making some frequencies very tough in some areas. As a result, a person, in order to hear a DX test may need to know the frequency it is on & spend a lengthy time there just to hear tones. Perhaps the arranger of the WHDM test would like us to print our DX loggings in DXM & DXN as mysteries. I am considering submitting a proposal to the BoD to eliminate the publication of mystery DX tests in DXM. The publishing people of the NRC also should be condemned for their role in this, since they apparently printed the DX test info as a mystery, inspite of knowing all the details about the test. I had considered not printing any logging results of the test as a protest, but decided against it since it was DX. However, in the future, no logging of a mystery DX test will appear in this column. I will not condone this type of stupidity & will not add the further spread of such nonsense. (Rob. Craig had a somewhat legit reason for not identifying the station before the test, but I don't recall offhand what it was. It definitely wasn't solely to make everyone search the whole dial....bp)

Continued from page 6....

- Comparative reviews of receivers, antennas, etc in the same price class. These reviews should be made by technically qualified members. The equipment reviews I've seen so far are superficial for the most part and can be quite misleading.
- Article on the new GE World Monitor II.
- Upgrading the AVC on the DR-33.
- Stereo AM detectors.
- An article or series about building/designing your own receiver.
- An article on specific loops for portables.
- Review of the Sherwood SE-3 detector.
- Plus various general requests for more receiver reviews, articles on ante and so on.

- continued next week

WESTERN DX ROUNDUP

Nancy Hardy
2301 Pacific Avenue
Aberdeen, WA 98520

All times are
Eastern Local

Phone for hot WDXR tips: (206)532-6827 till 10pm(PLT)--no collect calls

DEADLINES: Each Tuesday thru March 22

REPORTERS FOR THIS ISSUE:

(BH&NH) Bill & Nancy Hardy-2301 Pacific Ave.-Aberdeen, WA 98520

FRG-7, SM-2

(JH) Jim Hilliker-1502 E. Hedgewood Ave.-Anaheim, CA 92805

Kenwood R-1000, Radio West loop

(EH) Ed Hoffman-P.O. Box 125-Burlington, WA 98233

Icom R-70, SM-2

(CK) Chris Knight-598 S. Clarion Drive-Pueblo West, CO 81007

FRG-7, 500' east non-terminated "Mini-Bev.", 300' SE
non-terminated "Mini-Bev." w/homebrew inductor

(DN) Doug Nyholm-2071 Cedar Street-San Carlos, CA 94070

FRG-7000, Radio West loop

(DP) Doug Pifer-4804 W. McFadden #85-Santa Ana, CA 92704

FRG-7000, MW-1

(bp) Bruce Portzer-6546 19th NE-Seattle, WA 98115

HQ-180A, 4' loop

(MDR) Mark Robertson-1617 Cedar-Newberg, OR 97132

Kenwood R-1000, Sanserino loop

(JW) John Wallace Jr.-24902 Altamira Dr.-Laguna Hills, CA 92653

FRG-7700, 20' shortwire

(RW) Robert Wien-1309 Dentwood Dr.-San Jose, CA 95118

GE long-range portable, SM-2

OF SPECIAL INTEREST:

1300 KHUG OR, Phoenix Mon. 1/10 0000-0030 C&W format, YL DJ, mentioned
lost dog in east Medford, "K-Hug" slogan. Good signal, no
QRM. This is now fulltime so could be the UNID Oregon State
bkb in 1/8/83 WDXR, ex-Medford. (MDR-OR)

540 KVIP CA, Redding 12/29 1930-1945 ID, TC "This is Family Radio",
into relig. mx, 1945 DJ said "We'll be right back." Into
s/off, so maybe simulcast. Ment. KVIP-FM 98.1, also gave
phone number to call during the day, and address. Poor,
barely above noise level. (JH-CA)

KNAK UT, Delta 12/28 1900-1915 nx, ID, C&W mx, s/off at 1615,
poor. But, 12/29 1615 s/off completely understood, good.
New. (JH-CA)

550 KMVI HI, Wailuku 1/9 0712 fair in KARI null w/ID, jingle ID into
rr mx. (EH-WA)

600 WREC TN, Memphis 1/3 0220 MYL, wx for Memphis, IDs, loud! New.(CK)

610 KAVL CA, Lancaster 12/24 2140 Christmas mx all night, anncts.
every 10 min., ID, TC "20 before ? at KAVL." Splatter from
KOGO-600. (JH-CA)

KVNU UT, Logan 1/5 1900 good at SSS w/local nx, ID, spot for
computer dealer in Logan. (EH-WA)

620 KWAL ID, Wallace 1/5 1915 good at SSS w/Paul Harvey, ski bus
sked, ID. (EH-WA)

630 KZJO UT, Sandy 1/3 1935 good u/KHOW w/nx, "Talkradio 63" slogan,
ID, into talk program. New. (CK-CO)

CKOV BC, Kelowna 1/8 1720 weak in KGDN null w/"O-V 63" slogan,
C&W songs. (EH-WA)

670 *KBOI* ID, Boise 1/3 0332 noted w/OC. (RW-CA)

730 KBOY OR, Medford 12/23 1945 out of ? Up ad, into s/off "This is
KBOY & KBOY-FM. KBOY-AM 73 now leaves the air. You're invited
to listen to KBOY-FM 95.3" Into nx on FM, then carrier off.
Fair. New. (JH-CA)

850 *KOA* CO, Denver 1/3 0310 hrd w/TT's & OC's, not hrd off. (CK-CO)
+Hrd briefly w/OC, back on at 0400. (RW-CA)

CKRD AB, Red Deer 1/6 1855 good w/rr mx, "8-50 C-K-R-D" IDs then
short talk show. KTAC nulled. (EH-WA)

870 KAIM HI, Honolulu 12/23 0839 Christmas mx, ID, TC "This is Night
Watch on KAIM". Gave phone number to call in & talk about
being a Christian. Fair. (JH-CA)

- 870 KORD WA, Pasco hrd here 1/4 0903-0914 thanks to tip in DXM. Signals were quite weak w/short fades. Hrd w/"Cord" IDs and C&W mx. Had nx on the hour. At this time they could have been using their PSA or have they gone fulltime yet? Also mentioned daily program "KORD's Country Coast to Coast".(DN) ("Country Coast to Coast" is their satellite format.--NH)
+1/6 1015 poor w/C&W mx w/splat from nulled KIXI-880. Rather weak considering distance (KOTY-1340 comes in better!).(bp)
+Sa 1/8 0215-0230 C&W via Satellite Music Network. KORD jingle 0224 the only local material. KORD & WWL took turns atop w/C&W, both looping the same direction. Less local noise than usual tonight. Good at times. Supposedly only 250 watts at night! (BH&NH-WA)
- 940 (KFRE) CA, Fresno 1/3 0329 noted totally off. (RW-CA)
KGRL OR, Bend 1/3 0415 noted w/ET w/KFRE off, on top of CJIB. Pre-recorded "Sportsline" program, talking about how Georgia might do in Sugar Bowl! (RW-CA)
- 950 KOZE ID, Lewiston 1/7 2012 good w/IDs, ads, wx. KJR nulled. (EH)
970 KYTE OR, Portland 1/6 1756 fair to good w/IDs, C&W songs. KREM nulled. (EH-WA)
- 1050 CKAL BC, Vernon 12/31 0500 noted w/s/off, ment. of returning to air at 0800, so apparently no longer NSP. In XED null. (RW)
- 1200 KFNW ND, W. Fargo 1/3 0915 popped up w/ID & TC, then organ mx (possibly start of relig. program). Good signal but bad KEX-1190 slop. (bp-WA)
- 1220 KIBE CA, Palo Alto 12/26 1933-1945 good at SSS w/classical mx. Into ID at 1943 & s/off at 1945 good. (JW-CA)
KCCS OR, Salem 1/6 1950-2000 fair o/KIBE, w/contemp. Christian mx, ID 1958, wx, ad for Corner Cobbler in Salem's Lancaster Mall, and into s/off from there, at 2000 completely off. (JW-CA)
- CJOC AB, Lethbridge 12/26 1958-2003 Crystal Gayle song into ID "This is CJOC Radio serving western & southern Alberta", then into nx. Faded out by 2004. Poor reception. (JW-CA)
- 1230 KLAV NV, Las Vegas 12/23 2050 ad for a casino, ID, poor w/KGFJ QRM. (JH-CA)
- 1240 KNRY CA, Monterey 12/24 2313 pop mx, oldies, ID, TC, ads (one for records, gave phone no. for Salinas & Monterey). Into wx, phone call from listener, talk about Christmas. Strong & on top for 2½ min.! Good. (JH-CA)
- KENZ CA, Sacramento 1/1 0450 good, well on top of KNRY w/ID, ment. of KENZ Sacramento Bridal Fair, logged call change a few weeks ago, ex-KROY. (RW-CA)
- KSUE CA, Susanville 12/24 2206 faded up out of nowhere above the mess. Male DJ "It's 14⁰ at KSUE". Promo spot "Merry Christmas from KSUE & KSUE-FM". Faded quickly. Fair to poor. Also, logged again 12/29 1930 ment. of "KSUE and KSUE-FM, Susanville's good news pair". Into sports. Fair. New. (JH-CA)
- 1250 KNEU UT, Roosevelt 12/29 1902 just caught tail end of their s/off annct., ment. 5000 watts, ID, "KNEU Roosevelt, UT." Fair.(JH)
- 1270 KROI NV, Sparks-Reno 12/22 1920 ID, pop mx, ads, license plate contest "It's now 4:21, you have one hour, til 5:21 to call KROI." Prize was a weeks vacation in Hawaii. Ad for Nevada First Thrift and a hair styling shop. Wx, temp. of "39⁰ at KROI." Fair, mixing w/SS station. (JH-CA)
+12/24 0320-0332 Jim Croce song into ID, ad for the station's window stickers--get spotted & win a weeks trip for two on Waikiki Beach. "Get your stickers to win on your oldies station, K-R-O-I." (JW-CA)
+1/9 0110 xlnt w/ID, rr mx, promo for window sticker contest. (EH-WA)
- 1280 KDYL UT, Salt Lake City 1/9 1905 briefly o/KMAS w/IDs, nx. (EH)
+1/10 0459 dominant w/CNN nx, ID as "KDYL...Newsradio 1280", ment. of Wasatch Front, then PSA. (bp-WA)
- 1290 KOIL NE, Omaha 1/3 0240 xlnt w/good rr mx, "Omaha's Coil" and "Coil" slogans. Not hrd in awhile. (CK-CO) (EH)
- 1300 CJWE SA, Regina 1/6 0603 fair mixing w/KMPS, ID, TC into rr songs.
1310 KLIX ID, Twin Falls 12/26 1949-1955 "Gone Too Far" song by Eddie Rabbitt into ad for Buster Brown stores' sale on snow boots, ID, into Frank Sinatra Christmas song--I know Xmas mx is strange on the 26th of Dec., but... At 1955 XEC faded in to destroy KLIX signal. Good reception but w/eventual fading. (JW-CA)

- 1340 ?KWXY? CA, Cathedral City 12/29 0900 tent. w/BTFL mx & ads for Palm Springs. (DP-CA)
 KSFE CA, Needles 12/23 2013 mx, faded up "We're KSFE", phone conversation w/listener, into Christmas song. Poor-fair. (JH)
- 1350 KSRO CA, Santa Rosa 12/27 good reception, continuous classical mx 0007-0044, slight trace of KCKC at times, no anmcts. until 0045 "This is a Sunday evening concert brought to you by The Press", ID "KSRO, Santa Rosa, continuing with music by Stravinsky." (JW-CA)
- 1380 KSRV OR, Ontario 11/30 2007-2040 wx by DJ "Wx for Ontario, low in the 20's, hight mid 40's, 38° at KSRV." C&W mx, ads for "Radio Shack in downtown Ontario", others, nx at 2030, talk about the Winter Wonderland Parade in Ontario that Saturday. Mostly good-fair. New. (JH-CA)
- (KRKO) WA, Everett 1/10 0405 noted totally off. KGMS in w/good signal. (EH-WA)
- 1390 KSLM OR, Salem 1/10 0359 fair w/rr mx, ID, CBS nx. (EH-WA)
- 1400 KVOY AZ, Yuma 12/24 2026 ID "Radio 14, K-V-O-Y" into Christmas mx, faded out quickly in mess. Poor. (JH-CA)
 KWON OK, Bartlesville 1/3 0335 ad for "United States Savings Bonds", wx forecast, "K-One" slogans. New. (CK-CO)
- 1410 KERN CA, Bakersfield 1/10 0347 fair in CFUN null w/ID, many ments. of MYL. Good Aur. cx this am. (EH-WA)
- KQAM KS, Wichita 1/3 0325 fair peak w/oldies, ad. New. (CK-CO)
- 1430 (KLO) UT, Ordan 1/10 0640 noted totally off on regular SP. On at 0700. (EH-WA)
- 1450 KPSI CA, Palm Springs 12/29 2000 ID by man "It's 4:59, next is ABC news, this is K-P-S-I, Palm Springs". Into Ai nx. Fair. New. (JH-CA)
 KTIP CA, Porterville 1/10 0224 dominant w/rr mx, IDs, ment. of San Joaquin Valley. (bp-WA)
 KAYO WA, Aberdeen 1/3 2200 atop w/C&W mx, "Fun Country KAYO" ID, Ai nx. (bp-WA)
- 1480 KYOS CA, Merced 12/30 0309 pop mx, ID, very strong most of time, some slow, deep fades. Dominant most of time. Ski report later. Fair to good. New. (JH-CA)
- (KWIZ) CA, Santa Ana 12/30 0300 went off for rare SP, said they would be off for a couple of hours for maintenance. (JH-CA)
 KAAR WA, Vancouver 12/30 0310-0406 talk show faded up above KYOS a couple of times, man asking woman what they look like, other personal questions, sounded like "Dateline" or "Hotline", then after 0400, faded up enough to understand above KYOS "If you're calling from Vancouver, call ----(faded), if you're calling from Oregon, call ----(faded)." Faded out, then said they'd be back tomorrow at 11pm. Then, barely hrd s/off, ID "...join us tomorrow at 5:30, this is 14-80, K-A-A-R, Vancouver, U.S.A. Thanks for listening. Goodnight." Mostly poor. New. (JH)
- 1490 KOWL CA, South Lake Tahoe 12/30 0419 faded up very strong above the others, pop/rock mx, YL DJ "That's John Stewart on K-Owl at 1:19." Into promo for New Years roundup of mx & events of 1982 "...plus all the contemporary music you love on K-O-W-L". Good to fair. New. (JH-CA)
- KTOP KS, Topeka 1/3 0205 "From the Capital City, KTOP", new. (CK)
- 1515 KJZZ WA, Bellevue 1/10 0444 weak-fair spurs noted here & 1565. (bp)
- 1550 *KKHI* CA, San Francisco 1/3 0429 w/TT, ET of rr mx later on. (RW-CA)
- 1590 KLIV CA, San Jose 12/29 1858 poor, ID, ment. of MYL, faded out, bad splatter QRM. (JH-CA)
 KMTI UT, Manti 12/24 1845-1900 Christmas mx, TC by male DJ "It's 12 min. til 5." PSA, more mx, TC at "2½ min. before 5, time for ABC news." "Radio 15, K-M-T-I, Manti". Ae nx, local spot at end of nx 1900, severe splatter QRM from KDAY-1580 and KWOW-1600, then changed power & pattern. Fair-poor. New. (JH)
- 1600 KXEW AZ, So. Tucson 1/1 0200 fair w/10 sec. countdown till 1983 w/ cheers and ID. Gone. (DP-CA)

Jan. f/c's:

1st MM 0300-0315 KQIK-1230 OR (RW-CA)
 0315-0330 KTXK-1450 MT (Tentative) (RW-CA)

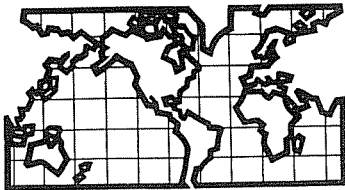
DX Test:

???? ???? 12/27 0200 mystery DX test tried w/no luck on clear channels.

UNIDs: (DP-CA)

1290 1/3 0427 unID ET'er w/Morse code ID, then TT, u/KMEN. KCUB? (RW-CA)

Welcome to WDXR, Mark and John! ♡



DX WORLDWIDE - WEST

Pat Martin - Editor

P.O. Box 843, Seaside, Oregon 97138

(503) 861-3185 - deadline Mondays

DU DX has sure picked up around here. Last Sunday morning DU's were all over the dial, with logs of 4CD-927, 4AY-936, 4BU-1332, etc. I should call it an Australian morning really, because very few New Zealanders were heard, including the biggies like 2ZB-1035, 4ZB-1044, 12D-1008. Mentioning DU's, I just received a sample bulletin (Issue #5) and the MW sections of issue one thru four of DKER's CALLING, the monthly DX magazine of the new club "DX AUSTRALIA". The club looks like an excellent DX club, dealing with both Short Wave and MW. This is Australia's newest DX club. Their bulletin includes "Crystal Ball" a section on Ionospheric Prediction; "Radio Activity", news on Short Wave stations, schedules, new stations, etc.; Musings; "Out of the Box"-A section listing Short Wave QSL's; "Listening" a section on stations, history of, etc. "Beverage" a Musings type section on Medium Wave, with a "Trail" listing by frequency all stations heard; "Onda Corta", a long list of Short Wave stations heard by freq. If you are looking for a good DU club to join, this is really worth checking in to. A Sample bulletin can be received by sending either 3 IRC's or \$1.00 Australian Mint Stamp to DX Australia; Post Office Box 80; Forest Hills Centre, Victoria, Australia 3131. There also are some good technical articles. The one included here on "Phased Beverages"! Now on to reports:

PAN-AMERICAN DX ROUNDUP

- 660 HONDURAS, Tegucigalpa-HRN 1/4 at 0405, SS OM talk, ID "HRN, La voz de Honduras" o/KERPM, fair (CK-Co)
MEXICO, Mexico City-XERPM at 0547, vy good w/lively SS mx w/"en 66, La Tropical, bienvidos, musica colombiana en un poquito". (JWJ-CAL) (Welcome John to the column, hope you report often. PM)
- 710 UNID, 1/3 from 1206-1231, KE?? all alone w/KMPC-KIRO both off, clear ment. of "cinco mil watts" (5000 watts), tent. ID as "Radio Frontera" at 1221, many mentions of "en Chihuahua" Help! I misplaced my Mexican list, no 710 Chihuahua station listed in my 76 WRTH. (RW-Ca) (Robert, XEDP is listed with 5,000 watts in Ciudad Cuahutemoc, Chih, with slogans as "La Grande" and "Radio Cuahutemoc". PM)
- 725 SURINAM, SRS 0255 1/4 vy poor w/EZL mx, OM in DD?? //4850 SW (CK-Co)
- 760 CUBA, Radio Reloj at 0148 1/4 SS, OM loud "RR" code ID's in jumble (CK-Co)
- 800 NETHERLAND ANTILLES, TWR (PJB) 0243 1/4, EE loud w/talks on various Bible Study Prgrams, XEROK way underneath. (CK-Co)
- 834 BELIZE, Radio Belize-0155 1/4 SS, old EE C&W mx, vy good (CK-Co)
- 890 COLOMBIA, Bogota, "La Voz de Bogota" w/SS ballads, ID "Cinco minutos para el cinco en la voz de Bogota" at 0950, WLS was off, good, but eventually faded out. (JWJ-Ca)
- 900 CUBA, Radio Progreso at 0730 1/3 SS, loud peak o/KEWO w/LA mx, "Radio Progreso" ID's "deade Cuba", new. (CK-Co)
- 1180 U.S.A., Florida, Marathon Key-VOA 1/4 0225 good peaks w/SS talk on "Equity Tax" (or something like that), Reloj? and jammer underneath. (CK-Co) (Chris, this really should be sent to the DX Roundup, as is not foreign)
- 1610 ANGUILLA, Caribbean Beacon, 1/4 0215 EE preacher, strong beeper QRM(CK)
- 1613a GUATEMALA, Rabinal "RAB" 0333 1/4 weak w/code ID's (CK-Co)

TRANS-PACIFIC DX ROUNDUP

- 531 AUSTRALIA, Kempsey-2MC, fair w/Pop mx and 2MC ID's at 0915, 1/11 (PM-Or)
- 558 FIJI, Suva-Radio Fiji, good w/OM in Fijian at 0730 on 1/11 (PM-Or)
- 603 AUSTRALIA, Hobart-7ZL, fair at 1015 w/Clas. mx, and DU ancr, 1/9 (PM-Or)
- 650 ALASKA, Anchorage-KYAK, hrd fairly good all day 1/9, w/C&W mx, from S5 to about 10 DB over S9. (PM-Or)
- 660 ALASKA, Fairbanks-KFAR hrd weakly at 1530 w/Fairbanks spots 1/8 (PM-Or)
- 670 ALASKA, Dillingham-KDLG, under KBOI w/Alaskan nx info at 1605-1/8 (PM-Or)
- 700 ALASKA, Anchorage-KBYR, fair w/Rita Coolidge song, ID, 1545-1/8 (PM-Or)
- 750 ALASKA, Anchorage-KFQD, quite good mixing and o/KKL at 1530 on 1/8, rr mx, KFQD ID's. (PM-Or)
- 792 AUSTRALIA, Brisbane-4QG, vy good w/Clas. mx 0934-1/10 (PM-Or)
- 801 t PHILIPPINES, Surigao City-DKBL, poss. heard w/Pop mx earlier reported as Tent. 5RM, as ancr had Aussie accent. Listening closer to tape, sounded like "-XBL" ID, spot for contest, TC, but couldn't hear well enough. Tent. report sent to station. (PM-Or)

- 820 ALASKA, Fairbanks-KCBF, hrd weakly on 10/7, w/ment. of Alaska in spot, followed by "KCBF" ID, poor at 1530. New on 820, have vq on 900. Presume they are 1 KW currently, at night. (PM-Or)
- 830 HAWAII, Honolulu-KIKI, 1300 choral ID "KIKI Honolulu" into more rr mx Good (JWJ-Cal) (Date? PM)
- 837 t AUSTRALIA, Rockhampton-4RK vry weak hrd a DJ w/Aussie accent 1228 (JWJ-Cal) (Date?PM)
- 846 AUSTRALIA, Canberra-2CY vry good w/cas. mx 1025 1/10 (PM-Or)
UNID, Pop mx station here at 1515 on 1/12, lost under mud, Aussie ancr, presume 4CA as a possibility, as listed as 24 hours.(PM)
KIRIBATI, Tarawa-0838 w/island mx, good reception (JWJ-Cal)
- 855 AUSTRALIA, Maryborough/Eidsvoid-4QB/4QO vry good AN 1/9, w/Drama pgms noted several times (PM-Or)
- 864 PAUPA/NEW GUINEA, Madang-, good for a while w/OM in Pijian, at 1209 o/NZ,Aust. Unneeded but nice to hear. (PM-Or)
- 873 AUSTRALIA, Sydney-2GB, vry good w/ancr talk, mentioned phone lines at 1019 on 1/9 (PM-Or)
- 882 AUSTRALIA, Brisbane-4BH vry good w/soft MOR at 0850 on 9/11 (PM-Or)
- 927 AUSTRALIA, Gladstone-4CD, fair o/Fiji was C&W song,4CD ID, Unid station underneath, prob. 3UZ or NZ at 1050 on 1/9 (PM-Or)
- 936 AUSTRALIA, Townsville-4AY, very good at 1040 1/9, w/pop mx, many spot, 4AY ID's, haven't hrd this in a while. (PM-Or)
- 945 SOLOMON ISLANDS, Gizo-H4B, hrd well at 0740 // 1035 w/OM in Pijian, 1/9. (PM-Or)
- 999 AUSTRALIA, Broken Hill-2NB, vry good w/ABC Drama at 1031-1/10, w/KOMO off, rr underneath presume 2ST. (PM-Or)
- 1008 AUSTRALIA, Brisbane-4IO, vry good all night on 1/9, w/Radio 10 ID's, hyped DJ, rr mx, no sign of LZD (PM-Or)
- 1040 HAWAII, Honolulu-KPOI-at 1500 w/rr mx (JWJ-Cal)
- 1053 t AUSTRALIA, Canberra-2CA poss. the BU here w/spots, at 1037 on 1/9, no NZers that AM (or few), so 2CA is about the only other thing.(PM-Or)
- 1098 MARSHALL ISLANDS, Majuro-WSZO, hrd w/Native talk at 0900-1/9, into mx, o/u unid 7LA? (PM-Or)
- 1188 AUSTRALIA, Inverell-2NZ vry good w/pop mx 1009-1/10(PM-Or)
- 1197 WALLS, Uvea-hrd s/off w/anthem at 1002, leaving 2NZ alone-1/10(PM-Or)
- 1206 AUSTRALIA, Surfers Paradise-4GG, hrd well o/5KA w/4GG ID's at 1115 on 1/10, KEX off. (PM-Or)
- 1332 AUSTRALIA, Grafton-2GF, local-like for a while w/C&W mx at 1050 on 1/9, noted also 1/10, way o/Fiji (PM-Or)
- 1332 AUSTRALIA, Bundaberg-4BU, hrd again w/Pop mx, TC, stronger than ever for a while w/KUPL off, KFAC vry weak, w/1332 het-1110 1/10 (PM-Or)
- 1521 t AUSTRALIA or NEW ZEALAND, one or other at 1520 1/12, w/pop mx, EE accented ancr (sounding DU), 2QN listed s/off at 1300, but NZ listed as 24 hours. (PM-Or)
- 1575 THAILAND, VOA very strong in EE at 1530 on 1/11, o/200 (PM-Or)

VERIES:

- 558 AUSTRALIA, Atherton-4AM, sent vl in 3 weeks for taped report, sent also cm, signed Manager: B.J. Healy. Mentioned first report from USA, receive quite a few from Japan and SE Asia. Queensland verie #42,
- 830 HAWAII, Honolulu-KIKI, rec. vq from Alan Roycroft, for first (PM-Or) day of Stereo broadcast, first Hawaiian Stereo station. (PM-Or)
- 1350 HAWAII, Lihue-KIPO, rec vq from Alan Roycroft, for taped report (as usual), now have all three call changes, KTOH,KTVM, and KIPO.(PM-Or)

THANKS TO THESE REPORTERS:

- CK-Co Chris Knight-598 South Clarion Drive-Pueblo West, Colorado 81007
FRG-7, Antennas: 500 ft. East non-Term, Mini Bev., 300 ft. SE non-term. Mini-bev. w/homebrew inductor.
- JWJ-Ca John Wallace Jr.-24902 Altamira Drive-Laguna Hills, Ca. 92653
FRG-7700, 20 foot wire
- JWJ-Cal John Wallace Jr. DXing at Point Reyes, Cal. 1/2-700 foot LW on beach
- RW-Ca Robert Wein-1309 Dentwood Drive-San Jose, Ca. 95118
GE TRF Long-range Portable cir 1962 SM-2 loop
- PM-Or Yer Editor
SP-600 JX, E.H. Scott RBO-2, 1500 foot E Beverage, 200 foot Term. Wire Ground System (3 rods spaced 9 feet apart, buried system)

THE INTERNATIONAL RADIO CLUB OF AMERICA

CLUB ADDRESSES

Membership Dues, Address Changes, and Renewals:
P.O. Box 26254, San Francisco, CA 94126
Bulletin Material Sample Requests:
P.O. Box 21074, Seattle, WA 98111
The IRCA Goodie Factory (Publications and Reprints)
P.O. Box 17088, Seattle, WA 98107

MEMBERSHIP DUES

\$16.50 First Class to the U.S.A., Canada, and Mexico. \$6.00 for trial membership(10 issues of DX Monitor and a New Member Packet) to the U.S.A., Canada, and Mexico. \$18.00 Surface Mail to the rest of the world. \$27.00 airmail to Central America, Colombia, Venezuela, and the Caribbean. \$30.00 to the rest of Latin America, Western Europe, North Africa, and the Middle East. \$34.00 to the rest of the world. Sample copies of DX Monitor cost 50 cents each or three International Reply Coupons. Make checks and money orders payable to IRCA. Persons living outside the U.S. should make dues payments by check or money order payable in U.S. funds.

The International Radio Club of America is a non-profit organization devoted to the hobby of hearing distant stations on the AM Broadcast Band (Medium Wave). IRCA is a member of ANARCO, the Association of North American Radio Clubs.

Club Officers: President--Don Kaskey, 465 Burnett, Apt. 1, San Francisco, CA 94131. Secretary--Treasurer--Rich Segalas. Board of Directors--Phil Bythway, Nick Hall-Patch, Ric Head, Ernest Cooper, Jef Jaisun, Bruce Portzer, Niel Wolfish.

DX MONITOR, the official bulletin of the IRCA, is published 34 times per year: weekly from October to March, twice in September and April, and monthly from May to August. Unless otherwise noted, permission is granted to publish, broadcast, or otherwise reproduce non-copyrighted material appearing in DX Monitor. Provided credit is given to IRCA and the original contributor. Opinions expressed in DX Monitor are those of the original contributors and do not necessarily reflect those of the IRCA, its publishing staff, editors, or officers.

PUBLISHING COMMITTEE: Bruce Portzer (206)522-2521, Evelyn Portzer, Phil Bythway, Jef Jaisun

FIRST CLASS MAIL
U.S. POSTAGE
PAID
Seattle, WA
Permit No. 601

first class

D. A. NYHOLM
2071 CEDAR STREET
SAN CARLOS CA
94070

19

Postmaster: if undeliverable, return to
P.O. Box 21074, Seattle, WA 98111, U.S.A.