



DX Monitor

Devoted Exclusively to
Broadcast Band DXing

February 5, 1983

Volume 20, Number 20

Issue Number 641

In This Issue

Eastern DX Forum	2	Station Wins Battle for Sexy Call 16
Western DX Forum	5	Portland Arbitron Ratings
Fall Arbitrons for Phoenix	7	Central DX Roundup
The IRCA Technical Column	8	Western DX Roundup
NBC Talknet Affiliates	12	Grand Junction Radio Log
1983 Frequency Check List	13	DX Worldwide West
Eastern DX Roundup.....	16	DX Worldwide East

Flash Tips

We'll open this issue with some flash tips:

- KARZ-960 changed its calls back to KOOL on Monday, January 24, according to a newspaper article sent in by Dennis Kibbe.
- CKDQ-910 in Drumheller is putting out a spurious emission (or possibly has a new relay) on 860 kHz, per John Oldfield, who heard it 1/27.
- The Bermuda station on 1450 relays the Voice of America Breakfast Show after midnight their time, according to Roy Millar, who got the info from a friend who recently went there on vacation. This would surely make them the VOA station heard by Ernest Cooper, Glenn Hauser, et al in recent months (unless there's another 1450 station doing the same thing.....).

A couple weeks ago we ran a plug for the Goodie Factory on the front page. Unfortunately, I listed the Beacon Guide as one of the items available. As it turns out, we've exhausted our supply. However Don Erickson's Century Print Shop (6059 Essex Street, Riverside, CA 92504) still has some.

As you read this bulletin, the rain, wind, snow, and hail are probably doing their thing. Which means it's time to start planning your summer vacation. This year, why not take it in the Pacific Northwest? You could take in such wonderful sights as majestic mountains, ocean beaches, beautiful forests, and such famous sights as Mt. Saint Helens and the Grand Coulee Dam. And.....the 1983 IRCA Convention!



Seattle, The Emerald City.

This year, the convention will take place in Seattle from July 1 to 4 and we hope to make it the biggest and best IRCA Convention ever held. Many of our plans are still tentative, but they'll probably include:

- Tours of a couple of local Radio-TV stations and/or government (Navy, Coast Guard) radio installations.
- A DXpedition to somewhere, and possibly a couple of talks by IRCA members or guest speakers.
- The annual banquet, business meeting, and auction.

Not only that, but you'll get to meet many other club members, make new friends, and have a good time. The cost? Room rates will be \$38 single, \$44 double (tax not included); registration fee and banquet will be about \$10 each. Transportation? Seattle is served by about 25 airlines, including almost all major U.S. carriers, plus a few that fly from Asia and Europe. Regardless of whether you can or can't make it, start saving up your unwanted radios, tape recorders, parts, logs, stickers, books, etc. for the auction.

The Almanac is inching closer to completion. We hope to have it delivered to the printer in another week or two. Thanks for your patience, gang. Don't forget the anniversary issue...March 26. Editors' deadlines will be about two weeks before that date. Let's see a record number of forum reports in this year's issue! That does it for the front page this week. Look inside for more tidbits. 73, bp.

EASTERN DX FORUM

(215) 368-8067

RICHARD EVANS
P.O. Box 1294

NORTH WALES, PA 19454

Deadlines: Saturdays thru 3/19/83, 4/2, 4/23, 5/14, 6/11, 7/9, 8/6.

Brent Taylor, c/o CFNB Radio, P. O. Box 217, Fredericton, N.B. E3B 4Z4

Hello everybody. This is my first appearance in these pages so an intro of sorts is in order. I began DXing in the early 1970's on our family table radio. Since then I have graduated through a Realistic TRF and a Sony ICF-5900W to an FRG-7700 and a wedge loop. I am married with no children at present (and hopefully for quite a while to come, hi). This is my 3rd year here at CFNB. I am an announcer and my shifts are usually 0600-1200 local time Saturday and Sunday mornings and the first few evenings of each week. I have done just about every other shift here at one time or another; from afternoon drive to the all-nighter to weekday mornings during ratings. Besides all that jocking I don't plan to be in this end of the business all my life. My goal is to have a talk show in the evenings or all-nights. Look out Larry King, hi. For DXing I don't have organized totals of any sort but my estimates are about 400 or 500 heard so far. My DXing has not been up to scratch since I moved inland here to Fredericton. I used to live in the extreme eastern part of the province in TA country. The only TA heard here recently has been a nasty hat on WLS from Algeria-891. The LA DX from this location is somewhat better with the same regulars everyone else is reporting. I first joined the NRC back in the mid 1970's and hooked up with the IRCA just a few months ago. Because I am a new member of this club, I am in the dark about a few things: K. Swan/Americas and the Tom Kneitel-S9 thing. Whenever I read C.M. Stanbury's submissions to EDXF, I see mention of one or the other or both. Maybe somebody could fill me in. Everytime I come across them, I feel as if I am the only member of the IRCA who doesn't know about K. Swan/Americas and each time I read more comments about it, I don't learn anything new! Is somebody beating a dead horse (yes--rce) or is this something I really should know about. (no--rce) I love controversy. In other news, I am just back from a mini DXpedition to my parents' cottage on the Kiramichi River. DXer Chris Stark and myself arrived there early on the afternoon of Sunday, Jan. 2nd and had a couple of longwires strung by sunset. We didn't find the cx fantastic but they weren't bad either. The best part was the total absence of QRM! No TV sweep harmonics, no line noise, no razors, vibrating beds, thermostats, etc., etc. Chris was amazed at the silence. Several LA's were noted but we didn't have much time to sit around and wait for IDs. Both Chris and I are also active on SW as well, so our time was divided. The main purpose of our little trip was to test that location for future possibilities. It looks good. We left our antennas up and made them semi-permanent so they would still be there when we decided to return. Next time it will be an entire weekend so we will have time to adequately cover all aspects of our fantastic hobby. May the Good Guy upstairs bless us all with health and good DX in 1983. Till next time, 73. (welcome to EDXF, Brent. I haven't been able to sneak CFNB past local WPFL-560 yet, but I'm still hoping.--rce)

Mike Brooker, U.C. Residence #405, Laurentian University, Sudbury, Ontario P3E 2C6

Long time no EDXF as I had been out of IRCA for almost a year, but I just rejoined. I let my membership expire after bulletins were not received at all, returned to sender, or taped shut, and with the Canadian dollar hitting an all-time low of 79¢ US, I could not afford to renew. Anyway, it's good to be back in IRCA again, as I had been an IRCA member from 1977 until early '82. I suggest that all Canadian members write the U.S. Postmaster-General and/or the Congressman from Seattle, to protest an absurd postal regulation that is arbitrarily enforced, ignored at some (most) post offices and pulled out of the rule book whenever the h... the Seattle P. O. wants to shaft Canadians. Why does foreign mail have to be put in envelopes anyway? Sudbury DX is fair at best. My DXtime is quite limited, and it's not easy to DX or type a report/ODXA MW column with a hangover. For Laurentian students, "beverage" means only one thing. Just about everything that I've logged in Sudbury would have been heard in Toronto, with the exception of KWBK which was heard with CPTK null. Other "Northland" DX highlights: CKLQ-1570 in regularly over pest CFOR, KOA-850, KKOW-860, 1620 bootleg calling itself "WJZ", using

(Brooker, cont.) the call of a long-defunct NYC station, KPRC-1616, which is probably the same station as "WJZ", XEW-900 with a special program for the inauguration of Mexico's new president, and that's about it. Sudbury is too far south for logging CFFB if they were still on 1210. It is a dumping ground for southern Ontario regionals such as CHYM-570, CKWV-580, CFCO-630, etc. which beam most of their signal north. Sudbury radio is so bad that the only station worth listening to is WLS, which can only be heard after midnight when CFBR-900 signs off. CKSO-790 and CHKO-550 are useless. Sudbury doesn't even have a station on the Leafs or Blue Jays network. For that you have to listen to CKAT-FM in North Bay. 73 from the Great White North, the city with open pits, where DX is the ...

Richard E. Wood, College of Education, Abha, Saudi Arabia

Following the suggestion of Shel Remington in DXM 20-11, I ordered The DX Edge and it was delivered promptly (\$4.00 extra for foreign airmail). It is very useful and explains some of my receptions from Thailand, Angola, etc., though not my lack of reception from the Americas (blockage by local mountains may play a part). Well, it looks as if I may soon have a 2nd local; TT at local strength was heard on 567 today. In the provincial capital of Jizan on the Red Sea near the Yemeni border there are two stns, 576 with the Qur'an service and 549 with the General service (which also includes much Qur'an). I think it is the plan of BSKSA to give Abha, a similiar provincial capital, Qur'an service on 567 besides the existing General service now well established on 675 after periods elsewhere. 675 is ORN-free and usually s/off 2100, revealing Doha, UAE. Saudis which currently stay on the air to 2300, when they go quickly off with a short military band anthem, are 585, 648, 900, 1440 and 1521. Two often heard on ECNA, 594 and 1512, s/off 2100 like Abha. Also hrd testing with TT and Arab music is a pwerful newie on 1539, around 2100-2300, which should make it to ECNA, still unid, and thought not to be a Saudi since the musical styles suggest a more Westernized country, e.g., Lebanon. It overrides Voice of Peace, which will probably have to change fq. now. In my Forum of 12/4 I said Malta-1557 was inactive; well, it has reactivated as follows: 1800-1900 R. Mediterranean EE, 1900-2120 DW relays, 2130-2230 RM Arabic and 2230-2330 RM French; currently testing with lengthy explanations in EE, AA, and FF, but will be on RS when you read this. To quote: "R. Mediterranean is back on the air thanks to a bilateral agreement between Malta and Algeria. RM is a joint venture open to applications by all peace-loving Med. countries. It aims to make the Med. zone of contact between Eur., Af. and Asia a Med. lake of peace. Address R. Med., P.O. Box 2, Valetta, Malta", and is // SW 5960. Director, the English-sounding Donald Hamilton, was interviewed on R. Nederland's Media Network 12/13 and explained RM uses DX's transmitters. Perhaps diplomatically, the interviewer did not ask Hamilton about the erstwhile Libyan connection. Luanda-1367 continues hrd nitely 2300 with "noticias zero horas"; and Libya is powerful on new 648, clear after BSKSA s/off 2300, perhaps ex-540. Finally, Djibouti heard in French on 1169 (not 1170!) with chansons 1540 1/14 and French history 1630, not // Arar-language 1538 (not 1539). 73.

Bill Townshend, 4500 Connecticut NW #901, Washington, D.C. 20008

202-966-8046. I'm long past due for another Forum. One of our NSP pests, WOL-1450, has SP each morning 0000-0600, giving DXers in this area a welcome break for working 1450. I bagged two newbies WJOY (ex-WHIT), which itself has become a pest, and WDAD, in N.C. and Penn. respectively. WGCA (ex-WQSI!) was also heard; this is a re-log of a SC station heard back in 1956 on a Zenith Royal-500 rig. I phoned several other BCB DXers alerting them to WOL's Sfs. Now the EDXR column should be half again as long as it otherwise might be. The first hint of SP came when the oldies show normally on at the start of of Tuesday was moved up to the end of Monday to allow s/off. It was worth missing my favorite oldies show to bag WJOY, New Bern, N.C. which has now become a GY pest, and to hear WOSN Charleston, S.C. under the new call WGCA. Several nights later, WDAD Indiana, Penn. landed in my log. The reincarnation of WHMC-1150, WJOK, is supposed to take place at the end of the month. I think the comedy format is going to fall flat on its face and by summer, rock Bx (maybe oldies) may be heard on that station like it was in the good old days in the mid-1960's. We've had our hottest December ever, with T-shirt and shorts Wx and alfrgsco (sic) dining (I had dinner outside on 12/4, an hour after the earliest sunset of the year) on two weekends. I was listening to Christmas music on my pocket rig while outside soaking up the sun on

(Townshend, cont...) Christmas on a 12 mile walk thru Bethesda, Md. (Eat your hearts out in Wobcrat country, hi). Now this morning, it was 16 F after 70 F on Christmas. Redskins all the way! By the time you all read this, the super bowl will be history. I've blabbed off enough. CUN 14 or 21. 73's.

Gerry Thomas, P. O. Box 2036, Pensacola, Florida 32503
904-432-8208. My much desired DX/vacation trip to Jamaica this fall was cancelled due to a cranky wisdom tooth which demanded to be removed the day before scheduled departure; I'll try again this year, I guess. I've been playing around with the Sony ICF-6500W and continue to be impressed with it in its modified form (i.e., narrow ceramic filter) but wish to heck that Sony's engineers had put a tuned front end on the thing. There is just no excuse for the overloading that occurs when it's hooked up to an untuned LW (over 50'). Sony, please, either tune the front end or go to a better mixer. Overloading isn't too much of a problem at my location but it very well could be in a large urban setting. To correct this susceptibility, I'm building a double-tuned RF preselector for the 6500 and will forward details to Nick, if it works. Finally, the KCEB-790 Tucson, Ariz. test was heard here, but the mystery test wasn't. 73's.

John Clemmer, 4524 - 7th Street, Apt. 2303, East Moline, Illinois 61244
A lot has happened here since my last Forum, so I suppose some sort of summary is in order. Hosting the IRCA convention here in August was a blast. It was great to see many old faces and new friends here. Sept. activities included going to the NRC convention in Louisville and then on to Knoxville and the Carolinas for vacation w/fellow IRCAer Gary Siegel. I was really impressed w/the radio in the SE overall, especially in S. Carolina which was a surprise in some ways. Trip tidbits that come to mind would include the good sound and unbelievable SIDs on WHIN-1010, Gallatin, Tenn. Great stuff from a 250w. daytimer. Nashville & Chattanooga radio was OK. 3 AMs are country in Chattanooga - WFLI-1070, WDOO-1310 and WDXB-1490. WDEF-1370 still s/off 0100. On to the Carolinas where we had a friendly visit at WESC AM/FM, Greenville. Studios were decorated in green - including the carpet - green Astro turf! WESC-AM is "660 in Dixie" - not many southern stns mention Dixie anymore. WESC's vans were white and green too. Columbia, S.C. found a lot of simulcasting w/FM slogans being run on the AMs when simulcasting. Listening to WCOS-1400 you'd hear "the great 98" promo/ID for their FM and WNOK-1230 was saying "Rock 105 FM" on the AM. Had another nice visit at WCOS at a remote at the lovely Metro Columbia airport. Then on to Charleston and Myrtle Beach. The 1270 WYAK in Surfside Beach, S.C. was off for the entire time. Stn said AM was messing up the FM signal because of some problems so the AM was off. Stn said everyone listened to FM anyway - a sign of the times it seems. Then on to N.C. Highlight of the trip radio-wise had to be at WPAQ-740 Mt. Airy, N.C. Had the friendliest visit I've ever had (on a Saturday afternoon too) during a bluegrass/country gold show hosted on the air by the stn's owner, Mr. Ralph Epperson. Siegel and myself had to stop at these guys - they were a little ways off I-77 which we were on. We even got interviewed live on the air by Mr. Epperson!! They were sorta in shock, a couple of guys from Ohio and Illinois would get off I-77 and stop by. Had a nice tour too including their studio where they put on a live country show w/local artists every Sat. morning. Unbelievable stuff from a small market stn. Stuff like this restores your faith in broadcasting! Otherness - some nice DX at SSS here in Nov. and here in mid-Jan. Have nabbed KUAT & KRMX - 2 of my farthest SSS catches ever! Had a super time at Kramer's in Chicago the end of Dec. Hope everyone has a good '83. 73's. P.S. Imagine my surprise finding a new '80 Brdctg Yearbook in the Chicago Loop at a bookstore in the clearance section for \$10.00!

Richard C. Evans, P. O. Box 1294, North Wales, Pennsylvania 19454
A thought came to me a couple of weeks ago: What do people who count call changes as a new station do when those calls pop up again? It would seem to me that you could count either calls or facilities but not both. Regardless, we don't compete against each other in a numbers game, but against ourselves to better our performance. Too many variables are involved to compare two person's against each other. Notable: Of the reports above, Dr. Wood mailed his on 1/15, Mike Brooker on 1/14 and Brent Taylor on 1/7, but all were received here on 1/22. Gotta run. PTL.



Western DX Forum

★ ★ ★ ★

IRCA—Serving the Broadcast Band DX'er Since 1964

Editor: Ric Heald, 1632 J St., #4, Eureka, CA 95501

1982/3 DEADLINES - WEEKLY (ON TUESDAY, 12 DAYS PRIOR TO PUBLICATION DATE)

ATTENTION NEW MEMBERS. IF YOU LIVE WEST OF THE MISSISSIPPI (In Canada, Manitoba west), YOU'RE IN WDXF COUNTRY (Includes All the Pacific)

DON MOMAN 6815 12 AVE EDMONTON, ALBERTA T6K 3J6

DX has sure been scarce up here this winter! Even though the weather recently turned warm enough to allow a few beverage sessions, nothing much was heard. On 07 Jan I had a 2000' beverage to Europe but no trace of any hets of TA origin - even though solar conditions had been relatively quiet from 29 December. Only trace of any DU stuff is 1017 and 891 with extremely weak hets. However, the 2000 footer did do a good job on longwave, with half a dozen Quebec beacons logged, as well as many in the NWT, especially the higher powered ones. New domestics logged included: WEBC-560 Duluth MN, KCRO 660 Omaha, and KGIM-1420 Aberdeen, SD.

I've been using the new ICOM IC-R70 receiver for the last few weeks and I'm very pleased with it. I see no reason for any MW DX'er to have to spend more than the price of the R-70 (949\$ CAN) to get a good set. I know it's a poor time to mention this, but I just happen to have a Drake R-7 for sale! (I'll trade you my R-600 for it, Don, hi-RET)

A special hello to Ralph Fidyk who phoned me via an amateur radio phone patch. I've been working hard on the code lately, so I may just wind up with a ham call myself soon. See you all later down the log!

DENNIS.....(no last name or address..) (Dennis Kibbe, Tempe, AZ. bp)

Hello out there to everyone in DX land! I have been a member for a couple of months and always enjoy reading the Forum. So, I thought I'd better jump in myself. By day, I run a 1-hour photo lab, and the rest of the time you will find me spinning the dials of my Kenwood R-1000 or my Sony ICF-7600A (nice radio, the Sony!). (I agree-RET) My style of listening is pretty casual but I did catch the DX test from KWSO, which wetted my appetite for a more serious approach to DX'ing.

The real news here, however, is the opening of George Fathauer's ANTIQUE RADIO and TUBE COMPANY! Lots of restored radios from the 20's and 30's and a large stock of tubes and hard-to-find parts. The address is: Antique Radio and Tube Company, 1725 W. University, Tempe, AZ 85281. If your interests are in this direction, you should drop him a line. Well, that's all for now. I look forward to seeing this in print. (A big welcome to WDXF Dennis. Report again soon but don't forget your name & address-RET)


CHARLES GEORGE 6407 HOWARD, DALLAS, TX 75227

I hope everyone had a fine holiday season. I did not get any new DX equipment, but I sure had a lot of fun using the equipment that I already had.

I want to thank Don Moore for obtaining a verification from R. Honduras for me. I now have 11 countries verified on MW. Two of the countries I have verified from don't broadcast on SW.

I received a verie on stationary from WNIX 1330 in 11 days. This is the second station to send me a verie from the state of Mississippi. The other is WMAG 850. I have heard the station WMAG recently and it sounded like the station has a new call as well as having switched to a black format. I could not be sure, but it sounded like the new call was WJYZ.

Right before Christmas KIXK-FM, 106.1, dropped their c&w format for contemporary hit rock. This is the second in the market to drop c&w and go to another format. KBOX 1480 is now KMEZ with easy listening music. I guess stations are finding that playing c&w will not guarantee success. However, the owners and managers seem so worried about the success of their stations that if they do not do well immediately with a particular format they go and change it. I hate to say that I enjoy a station, since almost every station that I say I have liked has changed its sound due to the views of the management of the station. It seems that in some markets the stations do not seem to change as often as they do in Dallas. 73's (Around here they don't seem to change so often, but we have only 9 AM & FM's-RET)

**WMAF****ON 1230****"Big Bend
Country Radio"****TUNE
1480
KGCX...**
Monday - Friday
for the
Fairview Area News
Mary Barr, reporter

TONY L. HEMPHILL 2415 MAPLE NE SALEM, OR 97303 PHONE (503) 370-7535

Hi- Well, I guess it's that time again. Sorry, Ric, but my typewriter is buried somewhere in my radio shack- hope you can read my writing. (No problem, very neat printing-RET) A lot has happened since the last time I wrote. The biggest event was the birth of our son John on 25 July 1982. The 2nd place event had to be my two daughters (by previous marriage) spending a week with us at Christmas. Xan, my oldest at 10, spent some time helping me at DX'ing. For her benefit, I tuned to the giants- KDOWN, KTWNO, WWL, KRVN, KGO, etc. She caught on to the hobby quickly and for the rest of the night she flipped the dial, asking "where is that one from?". Then we attempted to bring in KUMA-1290 Pendleton, (the girls' grandmother works for them) only to be disappointed by KHSL's predictable and mammoth signal. Anyway, it was fun and from what I understand both Xan and her sister Andrea (age 9) have been DX'ing at home since their visit. Third on the list of events is that I have just finished school and I'm selling life insurance.

I am still trading with some of the IRCA members who trade radio station promo material, but have been slow because of all the events mentioned above. Therefore, I feel that a public apology is necessary. Sorry Terry! Sorry Dan! Sorry Tim!

I officially started my DX season on 29 December 1982, and have not been disappointed. I've logged 10 new Canadians and 23 new Americans. Some of the new stations: CBW, Winnipeg; CKST, St Albert; KHUG, Medford (now on at night); KITI, Chehalis; KJZZ, Bellevue; KOH, Reno; KSP, Seattle; KYES, Roseburg; KVOO, Tulsa; WHO, Des Moines; KXLF, Butte; CKTA, Taber; KFMB, San Diego; and KABC, Los Angeles. My find of the year so far is KCPX, Salt Lake City. I hope I get a better return on verifications than I did last year, when I received a 65% return on reception reports sent. I verified 58 stations in 1982.

Well, until next time, best in the new DX season. Now--where did I put that typewriter? Anna, where is my typewriter? John, did you hide Daddy's typewriter? Oh well, bye.

ROBERT WEIN 1309 DENTWOOD DRIVE, SAN JOSE, CA 95118

Rth, you're absolutely right! A cold front passage does indeed cause great cx to the north. CKRD-850 at the moment is o/u KOA (1/20, 0605 ELT). As a meteorology major, there is a clear explanation. Cold air causes people to turn up their thermostats and the added heat bill causes them to blow their top. The heat released from their heads rises to the ionosphere, causing the ions to coagulate together, resulting in better skip. See? (uh, yeah, sure, hi-RET) Who's that unID 690 outlet w/ CBS nx heard nightly? Does anyone have info on the following stations, such as whether on the air yet or not, skeds if already on the air, addresses, etc.: KJBK-1590 Twin Falls ID; Colorado City, CO-1560; KVKJ-1550 Solvang, CA; KZZZ-1510, West Jordan, UT; KWLL-1460, Casa Grande, AZ; KSES-1420, Yucca Valley, CA; KRVV-1360, Vail, CO; KRML-1410, Carmel, CA nighttime appl; KLLK-1250, Willits, CA; KRDG-1230 call change to KPAC; Virginia City, NV-1160; Pinetop, AZ 1140; KLE-1110, Marana AZ; KCMJ-1010/1140 Palm Springs, CA (still on 1010); KHEE-1000, Hayden, CO; KTMG-1370 Deer Trail, CO; KRHS-1000 Bullhead City AZ; KUPI-980 and KSV-980 nighttime app; KGLR-830 Tucson AZ; KSJL-San Antonio, TX; KBEE-970 call change to KHYV (still KBEE); KARZ-960 call change to KOOL; KHOT-1250/KLOC-920 night time appl; Hesperia, CA 910; KKMC-830 Gonzales, CA (aaargh-RET); KVVA-860 Phoenix AZ nighttime appl; KGRV-700 Winston, OR (aargh, that one will be the deepest cut of all, I'll quit DX'ing when they come on-RET) (I want to hear Jamaica-RET)

Finally heard KQTE-1460 after 4 years, that was tough! Closest non-heards now are KLOA-1240 Ridgecrest, CA, and KZON-1600 Santa Maria, CA, plus all Lompoc stations except KLOM-1330. Ever heard KNEZ-960, KVOR-1300, or KCSJ 590, Rth? Other newies of late: KBEX-1600, KHSJ-1320, tent. WCFL-1000 and KGCX-1480 3rd MM f/c. Anyone have the current addresses of KORD-870, KFAM 680, KENZ-1240, or KIXI-880? Neither KORD or KIXI have replied to reports sent in Oct and Dec. KBEX was the first new catch on my new Superadio, a fine rx. Does anyone know if KNCO-1250 is on nights? I've never heard them here at night! They couldn't be that directional! (I don't hear 'em at night here either-RET) Finally, KFAT 94.5 Gilroy CA is now KWSS, cl change officially at 12:01 AM PST 1/17 MM, caught call change on tape. (the end of an era, RET) 73's

RANDY TOMER 1969 27th STREET, ARCATA, CA 95521

Conditions seem to be picking up around here, at least if last night's bandscan (evening of 1/23) is any indication. Most of the Eastern clears that are still available were in with good signals, and during their fades, Latins were heard (or, at least a good loud rumble-het). Tahiti was in with a super loud het against KCBS just a couple of hours after local sunset, and several other South Pacific carriers began to fade in not long after Tahiti. An hour later there was good solid audio from 1YZ-819. Tuning to 820 kHz, WBAP was getting strong interference from a station looping N-NW and playing EZL music. The signal was dominant at 0750 GMT but faded across the hour, natch. I wonder if it was from the new Alaskan on 820, KCBF? At about this time, the 'ol eyeballs just wouldn't stay open any longer, so the DX session ended before there were any WC MM signoffs, unfortunately (if there were indeed any s/offs at all, hi).

HEAVES/ENCORE continues to be an active regional DX group, with the latest activity being a get-together at Wally Glavitch's QTH. Ric and I spent a lot of time tuning the Racal, what a great rig to operate. I actually dug out some DX with it, while Rth tuned directly to KNEW, hi. Three of us HEAVES are having regular QSO's on CB channel 21 to discuss DX and other important (hi) matters; we're armwisting Wally to join in, too. By the way, in the January 8 DXM, my forum should have read "transister rig" and not "transmitter rig", guess I'll have to start typing my forums again instead of scribbling them out in 1/2-spaced pencil, hi.

The results of the IRCA survey written up by bp were quite interesting, especially some of the suggestions. 73's, RET

From the Arizona Republic, via Dennis Kibbe

Fall Arbitron ratings have Valley executives shaking their heads

Broadcasters in the Valley are still shaking and scratching their heads over fall ratings results delivered last week by the Arbitron Co. The preliminary statistics are, indeed, perplexing.

Generally, when the report is issued three times a year, there are some winners and some losers. Stations examine the data and then set their advertising rates accordingly.

This go-round, the losers exceeded the winners by a nearly three-to-one margin among the top 20 stations.

One explanation is that listener loyalty, whereby a listener settles on one or two favorite stations, is dissolving and that dial-switching is becoming common. Another theory says that also-rans are chipping at the foundations of the big gunners.

A complete analysis won't be available until the complete set of figures arrives on the desks of the market's general managers. Overall, though, there were more frowns than smiles.

A smile could be found at news/talk/sports KTAR, which retained its No. 1 ranking from spring and became the first station to hit double-digits in several years. It pulled a 10.1 share of the daily audience.

Radio / Bud Wilkinson

On the flip side, news/talk competitor KSUN bombed in its initial outing. After spending tens of thousands of dollars on TV and print advertising, the station attracted a 0.6 share.

KDKB held on to its perch as the Valley's top rock station, vaulting from fifth place overall in the spring to the second spot.

Other stations that improved were urban-format KUKQ, up from 10th to seventh place; soft country KEZC, up from 13th to 10th place; and Spanish-language KPHX, which jumped from 19th to 14th place.

Spanish radio did well during the 12-week survey period, with the market's three stations pulling a combined 6.1 percent audience share. Newcomer KNNN, the only Spanish outlet on the FM band, premiered with a 1.1 share, while KVVA earned a 2.3 share.

Listenership continued to be dominated by the contemporary/rock outlets with the 11 stations that fit into the category combining to attract a 35.9 percent share of the audience.

Country, which rebounded, was the second most popular approach with a 16.9 percent combined share. Beautiful music dipped to 14.7 percent; news/talk pulled 10.7 percent; religious 2.7 percent; and classical music KHEP-FM, a 1.9 percent share.

The biggest losers were the beautiful music stations, KMEO-FM and KQYT. Other noteworthy sliders included contemporary outlets KZZP-FM and KOY, and country KNIX-FM, which is finally facing some competition from KEZC (formerly KJJJ-FM).

The following chart illustrates station ranking and average share of the total audience between 6 a.m. and midnight, Monday through Sunday. Parentheses indicate ranking and share in the spring.

The top 10 finishers were:

1. (1)	KTAR	10.1	(8.8)
2. (5)	KDKB	7.6	(6.8)
3. (2)	KQYT	6.7	(8.4)
4. (3)	KMEO-FM	6.5	(8.1)
5. (4)	KNIX-FM	6.5	(7.8)
6. (6)	KUPD	5.5	(5.9)
7. (7)	KOY	4.9	(5.7)
8. (10)	KUKQ	4.9	(4.0)
9. (8)	KKLT	4.6	(4.8)
10. (9)	KZZP-FM	3.8	(4.8)

The second 10 stations:

11. (13)	KEZC	3.6	(3.1)
12. (12)	KOOL	3.3	(3.3)
13. (11)	KOPA-FM	3.3	(3.5)
14. (19)	KPHX	2.7	(1.5)
15. (14)	KLFF	2.6	(2.7)
16. (15)	KJJJ	2.4	(2.5)
17. (—)	KNIX	2.4	(—)
18. (18)	KVVA	2.3	(1.6)
19. (17)	KHEP-FM	1.9	(2.1)
20. (16)	KSTM	1.6	(2.4)

While stations are currently digesting the fall ratings, the winter rating period is already in progress.

One change that will occur before the next report card is issued is that contemporary KARZ, which fell from the top 20, will become KOOL. Tom Chauncey is expected to assume ownership within 10 days.



the irca technical column

Editor: Nick Hall-Patch
1538 Amphion St.
Victoria, B.C. V8R 4z6
Canada

The ICOM IC-R70 Receiver

by Don Moman

First, the basics: It's fully synthesized down to a very precise 10 Hz resolution and covers 100 kHz to 30 MHz with digital readout to .1 kHz. It has the latest in up-conversion front end technology with a high level double balanced mixer circuit to provide excellent strong signal handling capability. Has top quality crystal IF filters (9 MHz) in the AM/SSB/CW modes to provide bandwidths of 6 kHz in AM, 2.3 in SSB or CW and 500 Hz in CW. Shape factor is excellent on all of the filters (in spite of what the specs say for the AM filter), and by my measurements (crude but basically accurate) both the AM and SSB filters had better than 1.5:1 shape factors. With the aid of the Pass Band Tuning (hereafter PBT) control these widths can be further reduced. A notch filter is available to reject interfering carriers etc. Other useful controls include: a two width noise blanker switch, two speed AGC with an off position, RF gain and a squelch control. Although the FM reception mode capability is an option, the squelch circuit functions on AM/SSB as well, a nice feature for utility DX'ing.

Power requirements are the usual 117 VAC with the capability to run on 200/220/235 VAC if some internal reworking of the transformer is done. An optional DC connector is available as an option to allow 12 vdc operation. Current draw is normally 780 mA at 12 vdc. The lights and display may be dimmed but not turned off.

A coaxial (SO-239) style connector is used as the antenna input (covers the entire tuning range) and a spring type connector is provided for a low frequency (below 1600 kHz) antenna. This may be set to switch in automatically, ideal for a BCB loop. Some may prefer to mount a coaxial connector in place of the spring type.

Tuning the R-70 to a desired frequency is done by pushing the UP/DOWN buttons until the proper MHz number is displayed; then using the VFO knob, one selects kHz. Tuning rate may be in 10 or 100 Hz steps or 1 kHz; these are also push button selected. Two working memories are available in the form of A/B VFO's. Basically you always have instant access to one other frequency in the other VFO at any time. As soon as you engage the other frequency then the first one becomes stored. Although one would always like more, the A/B system works well. Because each memory is fully tuneable, the system is preferred over the store only system of the FRG-7700 and NRD-515 (the NCM-515 controller overcomes this drawback on the NRD).

Changing bands on the R-70 is less convenient than other sets--the UP/DOWN buttons pause at each ham band frequency (to think perhaps?) and generally are less convenient than the rotary selector found on the FRG-7700 and other sets. Since a conventional VFO is not used, one may tune past the edge of each band without fear of physical binding (such as is encountered on the R-7). Unlike the NRD-515 which automatically changes the MHz digit as you tune by, the R-70 merely wraps around and you wind up at the other end of the band. This wrap around effect does not occur exactly at 000.0 which leads to some confusion when tuning signals on exact multiples of 1 MHz. However you quickly learn to recognize what is going on.

The memory system is erased when the set is unplugged, but you may decide (via a rear panel switch) whether the data is to be erased when you turn off the power switch. Similarly, data may be saved when on battery operation, but at the expense of added current draw. Since there are only two memories to lose, this is normally a small factor, however for absentee recording, such a feature is needed.

Since the R-70 was announced, much discussion has revolved around the AM selectivity or lack of it. It's rated at 6 kHz (18 kHz at -60 dB, but my measurements say quite a bit less; more like 8.7 kHz), but is variable down to 2.7 kHz via the PBT control. That's what the manual says! PBT will only, in my tests, narrow the bandwidth down to about 4 kHz and skirts are not that sharp because an inexpensive 6 kHz ceramic is used in the AM PBT filter. In actual tests on the SWBC bands, the PBT control did very well, especially if the QRM was only on one sideband. The PBT only narrows the BW if the control is set near one extreme or the other and no reduction in QRM is possible if the interference is occurring on both sides of the desired signal. Perhaps figure 1, taken from the manual will explain how the PBT works. The SSB filter is not available in the AM mode, so one must use exalted carrier selectable sideband (ECSS) tuning to get narrow AM performance. Fortunately, ECSS tuning on the R-70 is very easy and works well. Equally fortunately, it appears quite possible to use the SSB PBT filter (ceramic, good quality--about 2.7 kHz in place of the wide 6 kHz AM PBT filter. The filter is quite similar to the narrow filter used in the FRG-7700 and R-1000. The modification is quite simple and requires a minimum of parts--two diodes! The modification significantly improves AM reception in heavy QRM and allows the PBT control to position the filter virtually anywhere in the pass band, thus allowing maximum audio recovery. Full details on the mod are available from myself for an SASE at Shortwave Horizons, 6815 12 Ave., Edmonton, AB T6K 3J6.

Utility and Ham DXers will enjoy the 2.3 kHz SSB filter (adjustable to less than 500 Hz in PBT) and the standard equipment 500 Hz CW filter. An optional FL-63 250 Hz CW filter is available, as well as a FL-44 SSB filter. When the above mod is performed, the FL-44 should provide even better AM PBT performance, although I have not tested this yet. At \$105 I doubt that the improvement would justify the expense.

The notch filter is a useful circuit that is rated at 30 dB; I have found the notch to give over 60 dB of attenuation, which is good--and considerably more than the notch on my Drake R-7. In AM, the notch will only cover one half of the passband which reduces its otherwise fine capabilities.

Sensitivity on all bands is very good. With the preamp engaged, minimum discernible signal measured -140 dBm (14 MHz SSB). The preamp is made inoperative on frequencies below 1600 kHz so MW sensitivity is somewhat reduced. However it is a simple matter to modify the preamp control circuitry to allow operation on all bands.

Strong signal handling characteristics are notably better than other sets in this price range, thanks to the high level double balanced mixer stage. In my own tests, on MW, the R-70 consistently bettered the Drake R-7, although the difference was very small. Tests consisted of connecting each receiver to a random wire through a stepped, variable attenuator, and then seeing how much attenuation was needed to reduce IMD products to the level of inaudibility. On a variety of local "problem" frequencies the R-70 was able to withstand from 10-20 dB more signal (depending on exact frequency) than the R-7, before IMD products became noticeable. At the same time, the R-7 was about 0-6 dB more sensitive than the R-70--so one must reduce the R-70's initial advantage by this amount. The preamp on the R-70 has slightly reduced gain at the lower MW frequencies (drops off in the LW band) which accounts for its slightly lower gain than the R-7.

The S meter is very good--large, well lighted, easy to read black on a yellow background. And it is accurate too--S9 is 50 uV and linearity is likewise very good.

The noise blanker has two response "widths", selectable from the front panel. This allows for optimum blanking of both narrow pulse type noise and of wider pulses--such as those of the infamous Russian "woodpecker". In actual use, the blanker performed well, better than the stock blankers I've encountered in Yaesu, Kenwood, and JRC sets, mainly due to extra width control design.

FM reception was not tested, as I didn't have the FM option installed. As FM signals are scarce on the SW bands--pretty well limited to the high end of the 10m ham band--it's not a feature many will find useful. Its main use is that one could use VHF/UHF converters (like the Yaesu FRV-7700) to extend the set's basic HF coverage.

If by now, you've gotten the impression I like the IC-R70, you're right! Side by side tests with the R-7 in a variety of DX situations have shown both sets to be very close in performance. Since the R-7 is over twice the cost of the IC-R70, you can see what would be the most cost effective choice; you'd have a hard time convincing me that the R-7 is worth even a dollar more than the R70. Compared to the JRC NRD-515 with its 96 channel capability and key pad controller options, the R70 is no match with its dual VFO system and rather slow UP/DOWN system. However the extra price of the well-equipped NRD-515 is considerable.

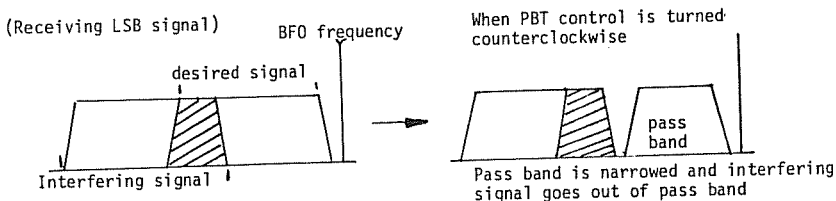
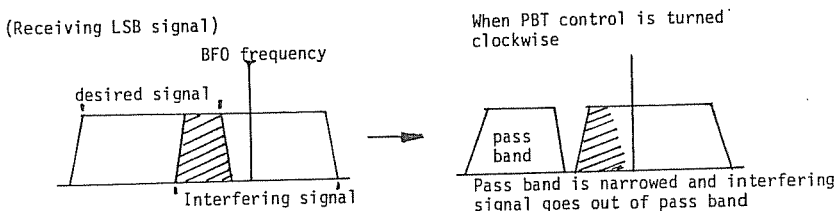


FIGURE ONE



Sony ICF-6500W Selectivity Modification

by Gerry Thomas

As I noted in an earlier review of the Sony ICF-6500W, this portable has many positive features and only one major shortcoming---insufficient IF selectivity. What follows are the details for installing a narrower IF ceramic filter to correct this drawback.

What you'll need....

- (1) Communications receiver quality ceramic IF filter. The muRata CFS455J is recommended (3 kHz @ -6dB, 9 kHz @ -60 dB) but a Vernitron VTD-4-I (4 kHz @ -6 dB, 10 kHz @ -60 dB) can be substituted. The former is available at muRata dealers around the country as well as Shortwave Horizons, 6815 12 Ave., Edmonton, AB T6K 3J6 (ed note: also at Ambit International, 200 N. Service Rd., Brentwood, Essex CM14 4SG, England; they also carry the cheaper CFG455I), while the latter is available (or was) from Radio West as well as Shortwave Horizons. (The CFG455I is comparable to the Vernitron). I don't have prices from the preceding dealers but would guess either filter would be around \$30-35.
- (1) DPDT toggle switch (Radio Shack #275-1546 is ideal because it comes with different colors of toggle covers and the green one perfectly matches the trim of the 6500; \$2.65)
- ** About 2 feet of stranded 20-22 gauge wire (the shielded RG-174U is recommended but unshielded works OK)
- ** About 2" of #18 solid wire
- ** Razor blade or X-acto knife
- ** Drill and 1/8" bit
- ** Soldering iron, solder, wire cutters/stripper, Phillips head screwdriver

Procedure....

1. Remove batteries and/or unplug 6500
2. Pull knobs straight off front of radio. The tuning knob is easy; the others may require wrapping a length of wire (e.g. AC line cord) to provide a better grip. Pry off with a screw driver only as a last resort.
3. Remove the five screws from the back of the cabinet.
4. Carefully lift back away (there may be some glue offering resistance) and note attached whip antenna wire (blue)
5. Desolder whip antenna wire from circuit board (note location for resoldering)
6. Carefully turn radio over and gently lift off front panel (glue again could be present)
7. Release the three claws holding in the speaker and remove speaker from mounting hole. (You can desolder the speaker wires if you want, but it isn't necessary if you are careful with the speaker throughout the modification. You are now looking down into the chassis of the radio and should see the conductor side of the main circuit board.
8. Look to the upper left of the speaker mounting hole (about the "10 o'clock position) and find on the the circuit board a printed, vertically bisected rectangle with a "T3" in the right-hand half (see Figure 1)
9. Note that there is conductor material running diagonally across the mid-section of the rectangle (labelled "A" and "B" in Figures 1 and 2).
10. With your razor blade or X-acto knife, cut this conductor at two points (see Figure 2) and carefully scrape away the conductor between the two cut points, thereby creating two "floating" points.
11. Now carefully solder on end of a 6-8" length of stranded wire to "floating" point "A" and another 6-8" length to "floating" point "B". If you are using shielded wire you can ground the shields by scraping away the coating on a point on the grounded portion of the PC board (shaded area) and soldering.
12. Now take the ceramic filter you've chosen and solder a short length of bare, solid wire to the filter's ground poles (i.e. a single length of wire connects the poles). On the MuRata, the two ground terminals are on the same (lengthwise) side of the filter ("3" and "4" in Figure 3) as the tab ("5") on the shielded case. On the Vernitron, the two grounds are on the lengthwise side opposite the corner of the filter with a notch. (See Figure 3) Allow about a 1/2-1" "tail" of the bare wire to extend from one of the ground terminals of the filter so that it can be soldered to a ground point on the circuit board or shield.
13. Now solder a 6-8" length of wire to pole #1 (input) on the filter and another similar length of wire to pole #2 of the filter. The filter is now ready for mounting.
14. I mounted the muRata by laying it on its side on the shield covering the PC board (visible in Figure 1) and spot soldering the tab to the shield, and the "tail" wire (connecting the ground poles) to a ground point (shaded area) on the circuit board. This was sufficiently sturdy that adhesive wasn't necessary. It might however, be necessary to glue the Vernitron to the shield because of its plastic casing.
15. After you've mounted the filter, there should be four loose wires in the speaker hole (two from the filter, and one each from points "A" and "B"). Gather these wires and thread them through the slot in the speaker housing cylinder so that

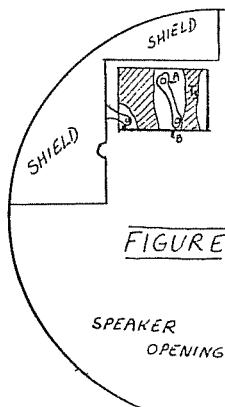


FIGURE 1

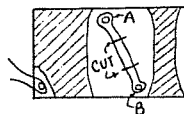


FIGURE 2

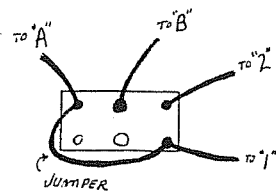
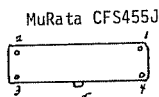


FIGURE 4

Figure 3 (underside)



Vernitron VTD-4-1



- 1 = input
- 2 = output
- 3 = ground
- 4 = ground
- 5 = ground tab

- they protrude into the general area of the volume, tone, and band selection controls.
16. Now take the front half of the cabinet and drill a $\frac{1}{8}$ " hole about $\frac{7}{8}$ " from the center of the "TONE" control hole and toward the "one o'clock" position. This will locate the DPDT selectivity switch in the vacant area bordered by the speaker grill, band selector switch, and tone control (see illustration in earlier article.)
 17. Lay the front of the cabinet on top of the chassis to get an idea of how long the four wire leads need to be to attach to the DPDT switch. Remove cabinet and trim wires to correct length.
 18. Solder the wires to the terminals as shown in Figure 4 (which is an underside view of the DPDT switch). Attach the jumper as illustrated and, if you are using shielded wire, solder shields together.
 19. Replace speaker
 20. Replace cabinet front and mount DPDT switch (you might attach a length of scrap wire to the switch, thread it through the hole, and pull the switch through).
 21. Re-solder whip antenna wire.
 22. Secure back (be careful of power tab on top of cabinet) and replace knobs.

Now apply power and switch back and forth between wide and narrow positions and you should hear a "darkening" of audio in the narrow mode. To appreciate the improvement provided by the narrow filter, tune to a local station with the selectivity switch in the narrow mode and continue to slowly tune away from the station until the audio just loses intelligibility. Now switch in the wide filter...clear as a bell audio. Note the respective frequencies; the narrow filter should be 2-3 kHz narrower per sideband (depending on filter type, strength of signal etc.)

About the only potential trouble spot with this modification is the mounting of the switch. If the radio is dead in one or both selectivity positions, the switch might be touching the tone control pot and grounding out; if so, loosen switch and rotate until clear.

Although I don't find the insertion loss of the narrow filter unduly high (listed at 8 dB), some DXers might want to add a single stage of amplification to boost the signal.

After completing the modification, I'm sure you'll find DXing the 5 kHz spacing MW and SW stations a much more enjoyable (and profitable!) pasttime.

---Some additional observations on the ICF-6500W:

1. Since writing the review of the 6500, I've had the opportunity to test it with a 600' mini-Beverage and also within the shadow of a local 5 kw'er. Overloading does occur in these situations with spurs, cross-modulation, and SW feedthrough in places (similar in behavior to the ICF-S5W). However, daytime use with a medium-length random wire or night-time DX'ing barefooted is fine at this location. If you've got a 50 kw'er in your backyard or are intent on using a gargantuan antenna at night, expect these problems... (When will Sony realize that tuned front ends are desirable design features?)

2. Regarding LCD read-out accuracy...it isn't a catastrophe, in my mind at least, if read-out is off a kHz or two because the BFO can be adjusted to zero-beat the carrier for precise frequency readings. Optimal audio will still be off frequency a bit but this is the case with narrow filters anyway. So, if your 6500 is slightly off, I wouldn't advise tearing into the counter circuit; just adjust the BFO (write for details). Address is 3635 Chastain Way, Pensacola, FL 32503.

* * * * *

...from Chuck Hutton comes the word that the NE561 AM synchronous detector IC's which are turning up on the market are simply old stock; the IC isn't being manufactured

...and from John Reh is mention of another article on Beverages in the Jan/83 QST; this one concentrates on radio amateur frequencies, but gives a good theoretical overview and some experimental observations, plus some information on a Beverage array which can be used as a transmitting antenna at higher frequencies...would have to be pretty big at MW though.

* * * * *

...You'll have noticed "Kowalski loop" among Rob Kramer's list of antennas in CDXR lately; Paul Kowalski builds these as a service to DXers, and custom builds each one as he gets the order (this takes about 2 weeks); he isn't setting up as a business.

Four basic ferrite loops are offered--one uses 15" of ferrite rods and an unbalanced MOSFET amplifier, \$80; another loop uses 22" of ferrite and the same amplifier for \$120 (not recommended for those near strong locals). Both loops tune 500-2000 kHz approximately. Two other loops use a 2 FET balanced amplifier and cover LW-30 MHz using interchangeable coils. The 15" model costs \$95, the 22" one \$130. Shipping and handling extra. As Rob Kramer mentioned, the loops are similar in appearance to the Radio West model, though look as if they use less ferrite.

Those who have been using the unbalanced MOSFET loop have been finding that deeper nulls can sometimes be obtained than with balanced loops, as well as more gain apparently. The balanced loop is necessary for direction finding however. Information from Paul Kowalski, 7811 W. Oklahoma Ave., Apt #5, Milwaukee, WI 53219.

NBC Talknet

(via Greg Monti)

560 KMLU Yuma, AZ	930 WKY Oklahoma City, OK	1330 WFPG Greenville, SC
560 WJAN Portland, ME	950 WEEF Rochester, NY	1340 KACH Preston, IL
560 WEEC Duluth, MI	950 KPRC Houston, TX	1340 WMID Atlantic City, NJ
560 WFS Columbia, SC	950 WFIR Roanoke, VA	1350 WHWH Princeton, NJ
570 WSEF Syracuse, NY	970 KCHV Coachella, CA	1350 WMSB Norfolk, VA
570 WFAA Dallas, TX	970 WFLA Tampa, FL	1380 KTEM El Paso, TX
580 KMLI Eugene, OR	970 WVC Louisville, KY	1390 KHQB Hobbs, NM
580 WDBO Orlando, FL	970 WTKN Pittsburgh, PA	1390 KKOA Minot, ND
580 WTGQ Worcester, MA	930 WPC Washington, DC	1390 WPMJ Youngstown, OH
590 WTCM Traverse City, MI	980 WSLX Nashville, TN	1400 KQMS Redding, CA
590 WBAQ Spokane, WA	1030 WTEG Hartford, CT	1400 WMLA Fort Pierce, FL
600 WESB Winston-Salem, NC	1110 KFAB Omaha, NE	1400 WBMA Beaufort, NC
610 WIOD Miami, FL	1120 KTNW Eugene, OR	1400 WRAC Williamsport, PA
620 WVKC Newark, NJ	1130 KSDO San Diego, CA	1420 WOC Davenport, IA
620 WDNB Durham, NC	1130 WDEL Wilmington, DE	1420 WBSM New Bedford, MA
620 WBTJ Milwaukee, WI	1230 KEXD Grand Junction, CO	1430 WBLI Tulsa, OK
* 700 WLW Cincinnati, OH	1230 WJHO West Palm Beach, FL	1430 WVAM Altoona, PA
750 KXL Portland, OR	1230 WKBO Harrisburg, PA	1450 KTLF Porterville, CA
770 WOB Albuquerque, NM	1240 WSPC Somerset, NJ	1450 WVLB Valdosta, GA
790 WSTW Springfield, MI	1240 WJIM Lansing, MI	1450 KWBW Hutchinson, KS
790 WIMY Fargo, ND	1240 KODY North Platte, NE	1450 KGRZ Missoula, MT
790 WBAQ Eau Claire, WI	1240 WJTB Jamestown, NY	1470 WCRD Toledo, OH
820 KARK Kansas City, MO	1240 WHEZ Zanesville, OH	1480 WTHI Terre Haute, IN
850 KGEK Thousand Oaks, CA	1250 KTEB Santa Barbara, CA	1480 WKHC Wichita, KS
850 WJW Cleveland, OH	1250 WREN Topeka, KS	1490 WTTB Vero Beach, FL
910 WSPA York, PA	1280 WQSO New Orleans, LA	1490 WOME Owensboro, KY
910 KALL Salt Lake City, UT	1300 WFBR Baltimore, MD	1490 WAZL Hazelton, PA
920 KARK Little Rock, AR	1300 WOOD Grand Rapids, MI	1490 WLCX La Crosse, WI
920 WHJJ Providence, RI	1300 WQEK Besselsaer, NY	1500 KSTP St. Paul, MN
930 WBSK Battle Creek, MI	1310 WIFE Trilaspellis, IN	1530 KFEK Sacramento, CA
930 WELI Jackson, MS	1320 WAMR Venice, FL	1590 WCBG Chambersburg, PA
930 WEOC Charlotte, NC	1320 WAGY Forest City, NC	100.1 WPRR Altoona, PA
* KIRO 710 Seattle WA		101.7 WMMH Sauk Rapids, MN

THE 1983 FREQUENCY CHECK LIST

All times are in EASTERN LOCAL TIME, except checks with underlined times. In those cases, the check is run on standard time throughout the year.

FIRST MONDAY

0000-0015	WELI	960	CT	T
0100-0115	*WORV	1580	MS	M
0110-0125	KQNK	1530	KS	T
0115-0125	*KILE	1400	TX	T
0145-01500	KCCR	1240	SD	T
0200-0215	*KFGQ	1260	IA	M
0205-0220	*KXIV	1400	AZ	T
0215-0230	*KGUZ	1490	AZ	T
0225-0235	*KAAA	1560	SD	T
0245-0300	*KGHL	790	MT	T
0300-0315	*KQIK	1230	OR	TCa
	*KMCL	1240	ID	TCa
0315-0330	*KVAC	1490	WA	TCa
	*KTXX	1450	MT	Ta

a - 1st MM per monitor but is occasionally reported on 2nd MM

SECOND MONDAY

0020-0030	WONC	1240	NC	T
0030-0045	*WHHO	1320	NY	Tb
0100-0110	KSEK	1340	KS	T
0110-0125	KQNK	1530	KS	T
0115-0130	KVSH	940	NE	T
0215-0225	KEXO	1230	CO	T
0215-0230	*KVSP	1260	NM	T
0230-0245	*KGLV	1240	NM	T
0240-0250	*KBYM	1240	MT	T
0245-0300	*WPHG	980	VA	T
0300-0315	*KQIK	1230	OR	TCa
	*KMCL	1240	ID	TCa
0315-0330	*KVAC	1490	WA	TCa
	*KTXX	1450	MT	Ta
0310-0325	WCDT	1340	TN	t
0435-0450	*WSWV	1570	VA	T%
0515-0530	*WNBS	1340	KY	T%
0530-0545	KRGI	1430	NE	T
0545-0600	KZNG	1340	AR	T
0615-0630	*WKCK	1560	IN	T%w
0645-0700	*WKCK	1560	IN	Ts%
	*KERZ	1460	TX	T

a - 1st MM per monitor but occasionally shows up on 2nd MM

b - MM in same week as 15th

% - MM after 2nd Sunday

w - winter s - summer

THIRD MONDAY

0000-0005	*WRWH	1350	GA	T
0030-0045	*WHHO	1320	NY	Tb
0100-0110	KQNK	1530	KS	T
0100-0115	*KEDD	1550	KS	T
	*KGTQ	1050	OK	T
0130-0145	WAXX	1230	GA	t
0200-0215	KYCN	1340	WY	T
0245-0300	KXPO	1340	ND	T
0435-0450	*WSWV	1570	VA	T%
0515-0530	*WNBS	1340	KY	T%
0530-0545	KMUS	1380	OK	T
0615-0630	*WKCK	1560	IN	T%w
0630-0645	WOKZ	1570	IL	T
0645-0700	*WKCK	1560	IN	T% _s

b - MM in same week as 15th

% - Monday after 2nd Sunday

w - winter s - summer

FOURTH MONDAY

0000-0005	*WCON	1450	GA	T
0001-0015	*WGBG	1590	PA	T
0015-0030	*WOND	1400	NJ	T
0030-0040	*WCHE	1520	PA	TM
0030-0045	*WTCN	1240	VA	T
0045-0100	*WPTH	1590	VA	M
0100-0115	*KQJB	910	ND	T
0105-0120	*KROX	1260	MN	T
0120-0135	WHPI	1340	IL	T
0130-0145	WCVS	1450	IL	T
0145-0200	*WBOB	1490	PA	T
0215-0230	*WRNL	910	PA	T
0230-0245	*WVFC	1530	PA	T
0300-0305	*WFBG	1290	PA	T
0330-0335	*WFL	560	PA	M
0415-0430	*WILK	980	PA	T
0515-0520	*WVPA	1340	PA	T
0525-0540	*WANV	970	VA	T
0530-0540	*WNNT	690	VA	T
0545-0600	*WYNS	1150	PA	T
	*KFLA	1310	KS	T

FIRST TUESDAY

0000-0015	*WLET	1420	GA	T
0115-0120	KOKK	1190	SD	T
0200-0215	*KINO	1230	AZ	T
0445-0500	*WSFC	1240	KY	T
0500-0515	*WHLN	1410	KY	T
0530-0545	*WKLB	1290	KY	T
	*WBEZ	1440	KY	T
0545-0600	*WKGB	1540	KY	T
	*WBGH	1340	KY	T
0615-0625	*KWMC	1490	TX	T
0640-0650	*KDBS	1410	LA	T
0645-0655	*KRME	1460	TX	T
0650-0700	*KKBK	1340	NM	T

SECOND TUESDAY

0000-0015	*WRAA	1330	VA	T%
0005-0020	*WNSJ	1240	NJ	T%
0020-0035	*WMTD	1380	WV	M%
0115-0120	*WETT	1590	MD	MT%
0125-0135	*WPEX	1490	VA	T%
0130-0135	*KSIB	1520	IA	T
0135-0145	*WENZ	1450	VA	T%
0200-0215	KTYN	1430	ND	T
0645-0700	*KVLF	1240	TX	T
	% - Tuesday after 2nd MM			

THIRD TUESDAY

0000-0015	*WSIG	790	VA	T#
	*WRAA	1330	VA	T%
0005-0020	*WNSJ	1240	NJ	T%
0015-0030	*WAHT	1510	PA	T#
	*WJUN	1220	PA	T#
	*WMTD	1380	WV	T%
0020-0025	*WEHH	1590	NY	T
0030-0045	*WVBK	1440	VA	T#
0045-0100	*WHOL	1600	PA	T#

0100-0115 *KOLY 1300 SD T
 *KVSH 940 NE T
 0110-0120 *KAMI 1580 NE T
 0115-0120 @WETT 1590 MD MT%
 0125-0135 @WPEX 1490 VA T%
 0120-0140 *KERZ 1350 NE T
 0135-0140 @WENZ 1450 VA T%
 0300-0315 @WBNX 1380 NY T#
 0615-0630 KYDE 1590 AR T
 % - Tuesday after 2nd Monday
 # - Tuesday after 3rd Monday

FOURTH TUESDAY

0000-0010 @WKEN 1600 DE T%
 0000-0015 @WPED 810 VA T%
 @PSIG 790 VA T#
 0015-0030 @WAYB 1490 VA T%
 @WAHT 1510 PA T#
 @WJUN 1220 PA T#
 0045-0055 @RCVA 1490 VA T%
 0045-0100 @WVBK 1440 VA T#
 @WHOL 1600 PA T#
 0300-0315 @WBNX 1380 NY T#
 # - Tuesday after 3rd Monday
 % - Tuesday after 4th Monday

FIRST WEDNESDAY

0000-0030 WJAZ 960 GA T
 0100-0110 @KGBG 1540 TX T
 0100-0115 WSKY 1240 NC T
 0115-0125 @KSNY 1450 TX T
 0115-0130 @KOPF 1070 TX T
 @KVLG 1570 TX T
 0215-0230 @KRRR 1360 NM T
 0330-0345 WMFC 1360 AL t
 0545-0600 @WSLK 1600 KY T
 @WMTL 1580 KY T
 0547-0600 @WEKY 1340 KY T

SECOND WEDNESDAY

0105-0120 @KPDN 1340 TX T
 0110-0120 @KEAN 1280 TX T
 0145-0200 @WHUB 1400 TN t
 0345-0400 WMOC 1450 TN t
 0600-0615 KTUI 1560 MO T

THIRD WEDNESDAY

0030-0035 WJDM 1530 NJ T
 0200-0215 KOSC 1510 MO T
 0230-0245 KKIT 1340 NM T

FOURTH WEDNESDAY

0100-0110 @WSMT 1540 IL T
 0200-0215 WLSM 1270 MS t

FIRST THURSDAY

0025-0040 @WMCT 1390 TN T
 0100-0110 @WCPM 1280 KY T
 KTGO 1090 ND T
 0200-0215 *KBIX 1490 OK T
 0215-0230 KGCA 1450 ND T
 0545-0600 @KIBL 1490 TX T
 @WKCT 930 KY T
 @WRVK 1460 KY T
 @WRLV 1440 KY T
 0600-0610 @KIKN 1590 TX T
 0610-0620 @KJCH 1410 TX T
 0635-0645 @KANI 1500 TX T
 0645-0655 @KROB 1510 TX T
 0645-0700 @WLBQ 1570 KY T

SECOND THURSDAY

0100-0115 KNLV 1060 NE T
 KTGO 1090 ND T
 KBOM 1270 ND T
 0115-0200 *KMAV 1520 ND T
 0300-0315 @WBHB 1240 GA t
 0630-0640 @KMBL 1450 TX T
 0645-0655 @KPSO 1260 TX T
 0655-0700 @KBER 1560 TX T

THIRD THURSDAY

0100-0120 @WCPM 940 MS t
 0200-0215 WHII 1570 MS T

FOURTH THURSDAY

0030-0040 @WVAI 610 VA T%
 % - Thursday after 4th Wed.

FIRST FRIDAY

0015-0025 WFOY 1240 FL T
 0100-0115 *KGLR 960 MO T
 WCOM 1290 WI T
 WRBN 1600 GA T
 0130-0145 @WBOW 1230 IN Tw
 0430-0445 @WMOR 1330 KY T
 0445-0500 @WSVL 1520 IN Tw
 @WBOW 1230 IN Ts
 0500-0515 @WSVL 1520 IN Ts
 0530-0545 @WYKA 1490 KY T
 0545-0555 @WHIC 1520 KY T
 0630-0640 @KTRD 1470 TX T
 0650-0700 @CFHM 1150 TX T
 s-summer w-winter

SECOND FRIDAY

0000-0015 @WHBG 1360 VA T%
 0015-0030 @WRTA 1240 PA T%
 0015-0030 @WSHP 1480 PA T%
 0045-0050 @WRAW 1340 PA T%
 % - Friday after 2nd Thursday

THIRD FRIDAY

0000-0015	@WHBG	1360	VA	T%
0015-0030	@WRDA	1240	PA	T%
	@WSHP	1480	PA	T%
	@WIVE	1430	VA	T#
0045-0050	@WRAW	1340	PA	T%
0100-0105	@WXAM	1400	VA	T#
0110-0115	@WFTR	1450	VA	T#
	WBBK	1260	GA	t
0115-0130	WYHI	1570	FL	t
0130-0145	*WKSJ	1270	AL	t
0145-0150	@WFEC	1400	PA	T#
0200-0215	KGAK	1330	NM	T
0215-0230	KRTN	1490	NM	T
#	- Friday after	3rd Thursday		
%	- Friday after	2nd Thursday		

SECOND SATURDAY

0205-0220	KLMX	1450	NM	T
0215-0230	KAHL	1410	NE	T
0645-0700	KORN	1490	SD	T

THIRD SATURDAY

0135-0150	KCNI	1280	NE	T
-----------	------	------	----	---

FOURTH SATURDAY

0300-0315	KOAL	1230	UT	T
-----------	------	------	----	---

FOURTH FRIDAY

0000-0005	WICY	1490	NY	T
0015-0030	@WIVE	1430	VA	T#
0100-0105	@WXAM	1400	VA	T#
0100-0115	@WFTR	1450	VA	T#
	*KTLQ	1350	OK	T
	WCOW	1290	WI	T
0145-0150	@WFEC	1400	PA	T#
0145-0200	*KSIW	1450	OK	T
#	- Friday after	3rd Thursday		

FIRST SUNDAY

0001-0015	WEVA	860	VA	T
-----------	------	-----	----	---

SECOND SUNDAY

0530-0545	@WLCX	1250	KY	T
0545-0600	@WMOV	1360	WV	T

THIRD SUNDAY and FOURTH SUNDAY
(none)

FIRST SATURDAY

0200-0215	@KZUL	1380	AZ	T
0210-0225	@KYCA	1490	AZ	T
0215-0230	KBTA	1340	AR	T
0300-0315	WIRV	1550	KY	T
0530-0545	@WFTJ	1590	KY	T
	@WFSR	1470	KY	T
	WDDY	1420	VA	T
0545-0600	@TVKY	1270	KY	T
	@WDOC	1310	KY	T
0550-0600	*KMIS	1050	MO	T
	WKSK	580	NC	T

key to symbols:

@ - Regular check per monitoring service.
 * - Regular check per consistant reception and/or station.
 T - Station checks with Tone
 t - Station checks with dial tone.

M - Station checks with Music
 O - Station checks with open carrier
 L - check made during last week of month.
 C - Station IDs in Morse Code

Other symbols defined in list.

ACKNOWLEDGEMENTS:

Once again a number of monitoring companies were kind enough to supply their list of regular checks, including Hutton and Southwest. In addition, special thanks go to C.A.D.X. and Wayne Heinen who also supplied information. Other information was gathered from both DXN and DXM.

To make next years list better and more accurate, send all new information to -

Joseph Fela
 150 Robert Pl.
 So. Plainfield, N.J. 07080

EASTERN DX ROUNDUP

Bob Lazar

1711 Wainwright Dr.

Reston, VA 22090

Deadlines: Saturdays

OF SPECIAL INTEREST

- 1000 WCPI IL Chicago, using new slogan "WCPI means Chicago's Favorite Listening". EZ music & comedy format. Great signal, as usual. Always. (KZ-NY)
- 1510 WMRE MA Boston, 1/4 1800 ex-WITS. New format MOYL-like. "AM-1510" and "We've got your memories...WMRE." Excellent. (KZ-NY)
-
- 550 WHLM PA Bloomsburg, 1/11 1600 NBC nx. Good. (KZ-NY)
- 660 (WNBC) NY New York, 1/2 0200-0300 noted off w/ WCBS. They share towers.
- 850 WKIX NC Raliegh, 1/3 1545 country format. SSS. Good. (KZ-NY, last 2)
- 880 (WCBS) NY New York, 1/2 0200-0300 noted off. (KZ-NY)
- 920 WHJJ RI Providence, 1/6 2230 talk, phone-in no. (401)438-6110. Fair. (KZ-NY)
- 1290 WFBG PA Altoona, 1/10 2000 using old WABC-type jingles. "The best music ... WFBG" o/u CJBK. (KZ-NY)
- CJBK ON London, new wave top 40 rock o/u WFBG. 1/10 2010. (KZ-NY)
- 1320 WAGY NC Forest City, 1/20 1759 ID by m. Fair. (WPT-DC)
- 1350 WANC NC Aberdeen, 1/21 1730 s/off w/ Dixie & SSB, ment of Aberdeen by m. Fair. (WPT-DC)
- 1370 WSAY NY Rochester, 1/4 2030 talk. Good. (KZ-NY)
- 1390 WFBL NY Syracuse, 1/4 2030 EZ listening. Good, fadey. (KZ-NY)
- 1440 WRRO NY Warren, 1/9 2330 top 40. Good. (KZ-NY)
- 1450 WDAD PA Indiana, 1/14 0040 ment of C&W song by Eddie Rabbit, ID by m DJ. Good, then sunk into GY pile. (WPT-DC)
- 1460 WOKO NY Albany, 1/4 2020, all news CNN2. "The Capital District's all-news leader...WOKO". (KZ-NY)
- 1470 WSAN PA Allentown, 1/4 2010 EZ listening "Unforgettable WSAN". Good. (KZ-NY)
- 1530 WCKY OH Cincinnati, new slogan "Your news and inf. leader...WCKY." "Practical psychology" show -talk. Ended 2000 1/4. (KZ-NY)
- 1550 CBE ON Windsor, 1/4 1930 "As It Happens" CBC EE net. Good. (KZ-NY)
- 1620 K2DX ?? pirate, 1/16 2307 (s/off) played Arlo Guthrie, Lightfoot, Knickerbockers "Kicks" and the Clash. Usual ad-libbed comments from m w/ f. Deep fades like skywave. Signed off w/ "Good-night Irene" at 2307. Anyone else hear this one? (KZ-NY)

Eastern DXers

WPT - Bill Townshend, 4500 Connecticut Ave., NW, #901, Washington, DC 20008
(Realistic TRF, Sony ICF-S5W)

KZ - Karl Zuk, 154 Old Post Rd. N., Croton, NY 10520
(DX-160, 300 ft. wire & grd. system)

Left: San Jose Mercury 1-23-83

via Robert Wien

Below: Portland Oregonian

1-20-83

via Pat Martin

KYTE-AM (down from 3.3); 15. Tie at 2.3: KKEY-AM (down from 2.8) and KPQD-FM (up from 1.4); 16. KSKD-FM, 1.8 (up from 1.0); and 17. KPQD-AM, .5 (down from .8).

KLIQ, KAAR and KCNR-AM did not have large enough ratings to make the Arbitron book. Non-commercial stations KBOO, KBPS, KOAP and KOAC are not listed in Arbitron market reports.

KTWO Radio and Television

4200 east second street casper wyoming



wyoming's pioneer broadcaster
nbc cbs abc a horriscope station est 1930

Station wins battle for sexy call letters

Chicago Sun-Times

CHICAGO — In a surprise decision, the new owners of WTOCO-FM (92.7) in northwest suburban Arlington Heights have won their four-month battle to change the station's call letters to WSEX.

The Federal Communications Commission officially approved the name change requested by station boss Darrel Peters, after earlier rejecting the letters on the basis of "bad taste." Washington attorney James Weitzman, representing Peters and WTOCO before the FCC, told the Chicago Sun-Times that the station probably will start calling itself WSEX sometime next week.

Peters bought the station last September for \$550,000. He said the WSEX designation "would have nothing whatsoever to do with 'dirty radio'; we just want the station to have an identity." As WTOCO, the station failed to generate profits with a variety of musical formats under its former owners.

Here's how the stations stacked up in the ratings averages, total week, 6 a.m.-midnight, persons 12 and older (with spring ratings in parentheses):

1. KGON-FM, 9.1 (down from 13.3); 2. KINK-FM, 7.6 (up from 5.8); 3. KUPL-FM, 6.9 (down from 7.4); 4. KGW-AM, 6.8 (up from 6.1); 5. KXL-FM, 6.3 (up from 4.9); 6. Tie at 5.6: KCNR-FM (down from 6.8) and KEX (down from 5.9); 7. KXL-AM, 4.8 (up from 2.7); 8. KYXI-AM, 4.7 (up from 4.3).

9. KMJK-FM, 4.2 (up from 1.5); 10. KJIB-FM, 4.1 (up from 2.7); 11. KWJL-AM, 3.9 (down from 5.4); 12. KB101 (now KRCK), 3.6 (down from 4.7); 13. KUPL-AM, 3.2 (down from 4.1); 14. Tie at 3.1: KQFM-FM (up from 2.2) and

CENTRAL DX ROUNDUP

Robert Kramer
6416 N. Richmond
Chicago, IL 60645

UnIDED, SPECIAL, CHANGES, et. al.

- 522 TO UnIDed 1/8 0202 poor W/continuous CW IDs, looped E/W, OJ & all ON beacons in at same time, help on this ? ETH-IL
- 790 KKRQ TX HOUSTON, 1/15 good at 1844 W/rock, 794 slogan, JC-IL (ex-KULF, ed.)
- 800 KLTZ CO BRIGHTON, 1/6 1900 poor-fair O/CKLW W/MoR mx & S/Off ment. 6AM S/On, no SSB, ex-KBRN. JA-WI (You hear this & complain about lousy cx, hi, ed.)
- 980 KFRD? TX ROSENBERG, 1/15 tent., someone signing off here at 1845 in both EE & SS. Too weak to make out much. KFRD is SS. Possibly them ? JC-IL
- 1130 WBZT PA WAYNESBORO, not hrd on DX Test. TMJ-IL & RK-IL
- 1290 KALM MO THAYER, 1/16 0101 fair on DX test W/ID thru WIRL. RK-IL, 1/16 0104 poor on DX test, weak tones, Morse Code IDs & some weak audio U/WIRL. TMJ-IL
- 1510 WMRE MA BOSTON, 1/8 1754 fair in WIAC null W/TC-ID & into nx then MoR mx, ex-WITS. JA-WI
- All da Rest
- 526 OJ KS OLATHE, 0140 1/8 continuous CW IDs. ETH-IL
- 540 KLMX NM SANTA FE, 1/14 fair 1908 W/SS, EE S/Off. JC-IL
- 560 KLVI TX BEAUMONT, 12/23 poor in WIND null 2307 W/XMAS mx, spots, wx, ID, mx. DIM-IN
- 570 WNAK SD YANKTON, 12/28 poor 2030 World Tomorrow, 2100 ID, CBS nx. DIM-IN
- 570 WFAA TX DALLAS, 1/7 0105 briefly at top WAAX W/net. nx, ID. ETH-IL
- 580 WKTY WI LACROSSE, 1/15 fair W/ID & mx at 1848. JC-IL
- 590 WEEI MA BOSTON, 12/28 very poor U/WOW W/nx by male & female ancrs, ID, wx, spots, CBS sports nx. DIM-IN
- KLBJ TX AUSTIN, 12/24 very poor 1825 spot, stock market rpt, spots, ID as News-talk radio, 1830 MBS nx. DIM-IN
- 680 KKYY TX SAN ANTONIO, 1/14 good 1756 W/ads, C&W mx, IDs. JC-IL
- 690 WCKK WI OSH KOSH, 1/16 1538 good W/PSA, spots & MOYL. RK-IL
- 710 KGNC TX AMARILLO, 1/14 good 1840 W/extended TX nx. JC-IL
- 720 KDWN NV LAS VEGAS, "K-Damn" wx, good W/WGN nulls 1910 1/19. GS-MN
- 770 KJCB LA LAFAYETTE, 1/15 good 1820 W/soul, IDs, ad. JC-IL DIM-IN
- 790 WNSW FL MIAMI, 12/28 poor 2202 lcl nx, Neal Rodgers tlk show & ment. phone # ././
- 800 WSHO LA NEW ORLEANS, 1/14 1802 fair W/TC, wx & ID. JC-IL
- 810 WSJC MS WAGEE, 1/14 fair at 1806 W/ads, MS nx, thru KCMO, rare here. JC-IL
- 850 KEYH TX HOUSTON, 1/2 1825 replay of tape of KFUO reveals weak SS, frequent ment of Houston. TMJ-IL
- 920 KYST TX TEXAS CITY, 1/15 good O/KARN W/rock, IDs, JC-IL
- 930 KSEI ID FOCATELLO, ID & spot U/WKY 1920 1/5. GS-MN
- WGNT WV HUNTINGTON, 12/31 poor 2352 New Year mx, ID, MBS nx, Larry King. DIM-IN
- 960 KPOF LA ABBEVILLE, 1/15 fair at 1828 W/mx, ID. JC-IL
- WFTB VA ROANOKE, 12/31 poor 2319 ad, sports tlk, wx. DIM-IN
- 970 KOOK MT BILLINGS, 1955 ABC nx, MT nx, "Cook Radio" ID., 1/5. GS-MN
- 980 WAFP MS MCGOMB, 1/15 fair at 1815 S/Off W/ment of address. JC-IL
- 1050 WTSJ OH CINCINNATI, 1/4 1746 fair W/end of S/Off by YL, no SSB. JA-WI
- 1090 KRKB CO AURORA, 1800 in KAAY null 1/19, new calls & new city, NSP, BBD format. GS-MN
- 1090 WSLG LA GONZALES, 1/15 1830 fair W/S/Off no SSB. JA-WI
- 1150 KRMS MO OSAGE BEACH, 1/6 1810 fair lcl nx & ID "KRMS News time is 5:10" JA-WI
- 1180 WKKE MS PEARL, 1/13 fair thru KSTT slop W/ads, sports at 1805. JC-IL
- 1190 WHIY AL MOULTON, 1/13 1800 fair-poor S/Off. TN-WI, 1/13 fair at 1800 W/S/Off ment. 2500 watts. JC-IL
- KJEM AR BENTONVILLE, 1830 faded up for S/Off good O/KLIF 1/19. GS-MN
- WXGR MS BAY ST. LOUIS, 1/6 1815 fair O/WOW W/S/Off & SSB. JA-WI
- 1230 WBOV IN TERRE HAUTE, 1/8 1812 blasting in W/pop mx, many IDs. ETH-IL
- 1250 WRBN KS TOPEKA, 1/17 1825 weak O/WEMP W/MoR mx, nx on half hour. TMJ-IL
- KIKC MT FORSYTH, 1820 spots, IDs, C&W, good in WWTC null 1/6. GS-MN
- CHWO ON OAKVILLE, 1/16 2255 good W/rel. O/weak WEMP. TMJ-IL
- 1260 KIMB NE KIMBALL, 1830 nx, fair-good O/WRM, 1/5. GS-MN
- KPOW WY POWELL, 1840 spots & ID fair in WWTC null 1/6. GS-MN
- 1270 KRJZ TX FORT WORTH, 0240 1/10 good W/mellow mx, several IDs. ETH-IL
- WWES VA HOT SPRINGS, 1/18 1730 fair S/Off, new stn. TN-WI
- 1290 CJBK ON LONDON, 1/9 0120 fair W/WIRL, "CJBK wx watch", & promo IDs. ETH-IL
- 1320 KRLR AR WALNUT RIDGE, 1/11 1811 good W/many lcl spots, C&W, S/Off W/WKAN, ETH-IL
- WJAS PA PITTSBURGH, 0130 1/8 poor W/WILS, MYL, ex-WKIQ. ETH-IL
- WMSR TN MANCHESTER, 1/18 1759 good S/Off, SSB. TN-WI
- 1330 WKRA AL SCOTTSBORO, 1/11 1800 good W/S/Off & ID "key 13" slogan. ETH-IL
- WNIX MS GREENVILLE, 1/12 1806 fair-good W/many IDs in lcl nx, wx. ETH-IL

1330 WFBC SC GREENVILLE, 12/23 poor 2037 Jim Phillip sports talk show, ads, ID, promo, NBC nx. DIM-IN

1340 WBBQ GA AUGUSTA, 1/16 2221 fair W/contest promo. RK-IL

1360 KNIR LA NEW IBERIA, 1/8 1826 good W/many IDs, S/Off. ETH-IL

WNAH TN NASHVILLE, 1/11 1801 fair W/S/Off ment. Cable FM 92.5 24h. ETH-IL

KRYS TX CORPUS CHRISTI, 1/15 2305 all alone W/RR mx, "Your Adult Radio", xlint. TMJ

1370 WABD KY FORT CAMPBELL, 1/18 1800 fair S/Off no SSB. TN-WI

WTAB NC TABOR CITY, 1/22 0559½ fair W/S/On. RK-IL

1410 WFTE IN LAFAYETTE, 1/22 0621 fair W/ID. RK-IL

1420 KLNK TX LUFKIN, 1/11 0106 fair W/wx, ID, ment. Lufkin. Ex-KLUF. ETH-IL, 1/13 1839 fair W/promo, ID, C&W mx. JA-WI

1430 WWWQ FL PANAMA CITY, 12/23 2215 C&W mx, ads, ID as "Greatest Country". DIM-IN

1440 WHHY AL MONTGOMERY, 1/12 2305 good W/ID & R&R mx W/WROK. TMJ-IL

KMLB LA MONROE, 1/12 2315 weak W/WHHY & WROK. TMJ-IL

1470 WRGA GA ROME, 12/24 very poor 2047 XMAS mx, ID as Rome's Leadership Station, PSA, promo for Larry King Show. DIM-IN

1480 WABB AL MOBILE, 12/24 1949 XMAS mx, ads, ID, ABC nx. DIM-IN

WVQM TN MEMPHIS, 1805 W/rel. pgm, fair O/qRM 1/7. GS-MN

1500 WKAX AL RUSSSELLVILLE, 1/18 1801 good W/S/Off "Franklin County's best Country". TN

WDEB TN JAMESTOWN, 1/18 fair W/lcl nx & S/Off no SSB. JA-WI

1510 KACJ AR GREENWOOD, 1/5 1815 poor U/WLAC W/C&W mx & S/Off no SSB. JA-WI

1530 KMAM MO BUTLER, 1815 S/Off O/qRM, plug for FM 92, fair 1/19. GS-MN

1540 KLIK KS PARSONS, 1705 even W/KXEL, clear ID 1/19. GS-MN

KCTO LA COLUMBIA, 1/7 1830 fair U/KXEL W/C&W mx & S/Off ment. 1kw, no SSB. JA-WI

1560 WQQM TN NASHVILLE, 1/11 1802 fair W/S/Off inv. to tune Cable FM, S/Off W/choral prayer. JA-WI

1560 KTYZ TX WEST LAKE HILLS, 0230 1/10 weak W/MYL, ID after wx. ETH-IL

1580 KPCA AR MARKED TREE, 1830 s/off fair O/mess 1/19. GS-MN

1590 WATM AL ATMORE, 1/13 poor thru WCCL W/S/Off at 1815. JC-IL

WCCL MS JACKSON, 12/24 poor 1922 ads, rck mx. DIM-IN

1600 WKWF FL KEY WEST, 12/26 poor 1855 big band mx, ID AM 16, UPI nx. DIM-IN

A BREAK

1220 WJUN PA MEXICO, 1/18 0018½ fair on R/C per list W/TT & very weak ID. WGAR almost nonexistent this night. RK-IL

SOME MORE BREAKS:

JA... Jim Albrecht 3313 N. Weil St. Milwaukee, WI 53212
(RF-2200, Sony S5W)

JC... John Clemmer 4524 7th St. #2303 East Moline, IL 61244

ETH... Earl Higgins 286 Lawton Rd. Riverside, IL 60546
(R-1000, Radio West Loop)

TMJ... Tom Jasinski 503 Jensen Shorewood, IL

RK... Why not ?
(R-1000, HQ-140X, HQ-129X, Radio West Loop, Kowalski Loop, spiral loop)

DIM... Donald L. Marsh 4041 N. LeClaire Chicago, IL 60641
(R-7, MW-1, DXing from Union City, IN)

TN... Tim Noonan 7454 West Thurston Circle Milwaukee, WI 53218
(SW-4A, Radio West Loop)

GS... George Sherman Box 2284 Minneapolis, MN 55402
(R-1000, Radio West loop)

From Earl Higgins comes word that he got his 1000th station logged. According to him, he heard Columbia on 1550 to put him over the top. Congrats are in order.



WESTERN DX ROUNDUP

Nancy Hardy
2301 Pacific Avenue
Aberdeen, WA 98520

All times are
Eastern Local

Phone for hot WDXR tips: (206)532-6827 till 10pm(PLT)--no collect calls

DEADLINES: Each Tuesday thru 3/22

REPORTERS FOR THIS ISSUE:

- (TLH) Tony L. Hemphill-2415 Maple NE-Salem, OR 97303
7E Superadio Plus, Palomar Engineers loop w/amp
(EH) Ed Hoffman-P.O. Box 125-Burlington, WA 98233
IC-R70, RF-2900, SM-2
(PM) Patrick Martin-P.O. Box 843-Seaside, OR 97138
Hammarlund SP-600JX, E.H. Scott (RBO-2), 1500' Beverage
running east, 200' terminated NE--ground system
(DP) Doug Pifer-4804 W. McFadden #85-Santa Ana, CA 92704
FRG-7C00, MW-1
(RW) Robert Wien-1309 Dentwood Dr.-San Jose, CA 95118
GE Superadio, GE long-range portable, SM-2

- *****
550 KOY AZ, Phoenix 1/17 0325+ good w/top 40 mx & "K-O-Y" ID. A strong OC dominated the freq. but KOY seemed to be riding in on carrier w/little or no fading. Promo collectors: KOY announced new sticker--send SASE to KOY. (TLH-OR)
KFYR ND, Bismarck 1/17 0530 very strong, w/"K-Pire" ID & rr mx. (PM)
570 Kklub UT, Salt Lake City 1/12 0332 noted simulcasting FM. ID'ing as "Kissin 97 and Kklub-AM", thought they may have changed formats, but noted w/usual EZL MM 1/17, so may have been an ET. (RW-CA)
580 KFXD ID, Nampa-Boise 1/11 0720 noted on RS. Thought they had SP till 0730 Tu? (EH-WA)
600 CFQC SA, Saskatoon 1/16 0229+ fair w/KOGO & KUGN-590 nulled. Top 40/rock mx and "C-F-Q-C" ID. (TLH-OR)
610 KFRC CA, San Francisco 1/11 0541 fair in GY-like mess w/ID, ads, rr mx. (EH-WA)
630 *KIDO* ID, Boise 1/18 0450 noted ET'ing w/OC, mx. (EH-WA)
KOH NV, Reno 1/3 1837+ good for daytime signal w/KGW-620 nulled. Nx, ID "K-O-H 630 Nevada's #1 news voice.". (TLH-OR)
690 *CBU* BC, Vancouver 1/11 0716 noted w/TT. (EH-WA)
CBF PQ, Montreal 1/13 0728 very good w/FF talk, one CBF ID in EE into MOR type song. XETRA nulled. (EH-WA)
730 CKDM MB, Dauphin 1/11 0700 xint at s/on w/IDs, nx, wx, sports, C&W songs. CKLG nulled. (EH-WA)
760?*WJR*? MI, Detroit 1/14 0102 suspected w/TT strong in KFMB null. (RW)
770 (KOB) NM, Albuquerque 1/17 0315 noted off on rare SP w/OC, TT later on. Only KXA in, no sign of needed WABC or KJBC. (RW-CA)
790 KABC CA, Los Angeles 1/11 0732+ fair w/KGHL nulled. Talk show "Open Forum" & IDing as "K-A-B-C 79 Los Angeles". (TLH-OR)
KQHL MT, Billings 1/2 0008+ good w/C&W mx & ID. (TLH-OR)
800 CHAB SA, Moose Jaw 1/13 0718 very good w/"Radio 800" ID, rr mx. (EH)
820 WBAP TX, Ft. Worth-Dallas 1/17 0515+ good w/C&W mx and ID as "W-B-A-P Ft. Worth-Dallas 820 AM". This is the best this stn has done since Feb. 1982. (TLH-OR)
870 KAIM HI, Honolulu 1/16 0351+ fair, dominating at times o/WWL w/instrumental mx & ID'ing as "87 KAIM Honolulu". (TLH-OR)
880 KIXI WA, Seattle 1/6 0648+ xint w/KWIP off. BBD mx & ID. (TLH-OR)
900 CKBI SA, Prince Albert 1/13 0700 good mixing w/CJVI, rr mx, jingle ID, nx on the hour. (EH-WA)
+1/15 0526+ fair w/CJVI nulled. ID'ing "Music all night long on 90AM--99FM from Prince Albert". (TLH-OR)
910 KNEW CA, Oakland-San Francisco 1/17 0200 noted badly overmodulating on low end of 910 w/Kiwanis Club "roast" program. Slopping clear to 870, but 920 clear! (RW-CA)
940 CJIB BC, Vernon 1/6 0728+ good w/C&W mx and BN News. (TLH-OR)
950 KYES OR, Roseburg 1/4 1813+ poor w/"K-Y-95" ID. (TLH-OR)
1000 ?WCFL? IL, Chicago 1/17 0632 probably the one extremely weak thru KOMO OC o/HJAR w/sports, top story was Chicago Blackhawks hockey win on Sun. night. Gone by 0634. (RW-CA)
1030 WBZ MA, Boston 1/17 0606 very good w/ID & spot. (PM-OR)
1060 KRSP UT, South Salt Lake City 1/17 0059 fair ID, mx "Jessie's Girl", new. (DP-CA)
CFCN AB, Calgary 1/2 0057+ good w/pop mx & ID "C-F-C-N Radio 1060 Calgary". (TLH-OR)

1080 KRLD TX, Dallas 1/17 0615 fair u/o KWJJ, w/ID. Really tearing up 1080. (PM-OR)

1110 *KRLA* CA, Pasadena 1/17 0440 noted w/TT o/KFAB. (RW-CA)
 ?KHEI? HI, Kihei 1/17 0524 tent. w/Hawaiian-style mx o/u KFAB, deep fades thru KRLA OC. Don't think it was CHQT. (RW-CA)
 KFAB NE, Omaha very strong 1/17 0120 w/ID in passing, o/KBND. (PM)
 CHQT AB, Edmonton 1/1 0425+ fair o/others w/EZL mx & jingle "You have friends...C-H-Q-T extra music." (TLH-OR)

1120 KMOX MO, St. Louis 1/17 very strong u/o KPNW at 0230, KPNW s/off after 0300 leaving KMOX alone, DJ talk. (PM-OR)

1150 KSPL WA, Seattle 1/3 2140+ good w/EZL mx & Cougar BKB. (TLH-OR)
 CKIQ BC, Kelowna 1/17 0801+ fair o/others w/pop mx and ID'ing as "Okanagan Country...C-K-I-Q". (TLH-OR)

1170 KVOO OK, Tulsa 1/6 0256+ fair w/KLOK/KPUG nulled. C&W mx & AP nx. Wx ID as "KVOO Safeway weather" & "K-V-O-O AM 1170" ID. Pulled in this one--tnx to Bruce Portzer's "Best Bets in the Pacific Northwest" in 1/1/83 DXM. (TLH-OR)
 KPUG WA, Bellingham 1/6 0845+ fair w/ID "You're listening to K-P-U-Q Bellingham". (TLH-OR)

1180 WHAM NY, Rochester 1/17 very strong w/KOFI off, MOR mx, TC at 0440. (PM-OR)

1240 KNRY CA, Monterey 1/12 0752 fair w/"K-R-Y 12-40" (sic--NH) slogan, oldies songs. (EH-WA)
 KPRB OR, Redmond 1/13 0800 very good at s/on, ment. of AM-FM stations, IDs, Ai nx. (EH-WA)

1270 KGUY CA, Palm Desert 1/19 1000 good w/ID "KGUY nx radio, your nx and info station for the valley", Mutual nx. New. (DP-CA)
 (KROI) NV, Sparks-Reno 1/17 0349 noted totally off. (RW-CA)

1300 KROP CA, Brawley 1/11 0030+ fair o/KHUG w/pop mx & IDing "K-R-O-P Imperial Valley's farm station", CBS nx. (TLH-OR)
 KHUG OR, Phoenix 1/1 0525+ good, dominate o/others w/C&W mx and ID "KHUG Phoenix, Oregon". First reception of this stn since it became a nighttimer. (TLH-OR)
 KLAR TX, Laredo 1/24 2335 in well for 1 1/2 min. on the East Beverage during KWPS fade-out. C&W mx, CST TC, wx, "This is KLAR," DJ called himself "The Birdman." Phone call to KLAR confirmed it was they. C&W in & out several times in the ensuing hour. W/the Beverage, 1300 sounded like a GY freq. during KWPS fades! Some confusion around 0020 w/Jimi Hendrix rock mx, thought it said KLAR too but it could have been KLER Orofino, Idaho (ex-950). C&W & another KLAR ID 0040. At 500 watts DA-N, this is one of my best domestic catches ever. (PM-OR)
 (Fantastic catch, Pat! Wish we had room here for a Beverage aimed at New Hampshire, hi!--NH)

1320 KGNR CA, Sacramento 1/16 0228 in briefly o/CHQM; nx, blip ID. (EH)
 KCPX UT, Salt Lake City 1/2 0203+ fair w/CHQM nulled w/top 40 mx and Ac nx. (TLH-OR)
 CHQM BC, Vancouver 1/13 0325+ very good IDing "Your dial is set to C-H-Q-M 1320, C-H-Q-M FM 103.5 Cable 106". (TLH-OR)

1340 KBET NV, Reno 1/12 0809 weak u/KAGT OC, Ai nx, EZL mx. (EH-WA)
 +1/14 0352 noted playing MYL/EZL type mx, perhaps a format change? (RW-CA)

CIBQ AB, Brooks 1/12 0859 weak w/"Q-13" slogan, TC, nx. (EH-WA)
 1360 KOHU OR, Hermiston 1/16 0256 good w/relig. program, s/off w/SSB. No KOMO. (EH-WA)(Bring on the penguin flipper. Should be KMO.bp)

1370 KXLF MT, Butte 1/11 2017 good w/spot for windshield doctor, "13 X-L" slogan, rr mx. (EH-WA)

1380 *KSRV* OR, Ontario 1/17 0229 xlnt on ET w/OC, mx. Big surprise, was expecting KRKO. (EH-WA)

1390 KCEY CA, Turlock now simulcasts FM at night at least, not sure of day. ID'ing all the time at night as "KMIX, 98 FM"(98.3), only IDs on top of hour. (RW-CA)

1410 KBLQ UT, Logan 1/13 0641 good w/C&W songs, KBLQ-AM ID. (EH-WA)
 KERN CA, Bakersfield 1/13 0313+ fair, ID'ing as "K-E-R-N and K-E-W-I" (didn't understand this one) and "K-E-R-N, music of your life". EZL mx program. (TLH-OR)

1420 KITI WA, Centralia-Chehalis 1/1 0645+ fair w/top 40/rock mx and ABC net nx. (TLH-OR)

1430 KEZW CO, Aurora 1/17 0659 fair u/OC, ID, nx, then covered by KLO s/on. (EH-WA)

1460 KDON CA, Salinas 1/16 0040+ good (easy one) w/BBD mx & ID "1460 KDON...daytime country--nighttime big band era". (TLH-OR)

1470 KXOA CA, Sacramento 1/18 0541 good w/IDs, ment. of MYL into song. (EH-WA)

1480 *KYOS* CA, Merced 1/17 0328 noted w/TT o/KWIZ/KPHX. (RW-CA)
 KWIZ CA, Santa Ana 1/1 0754+ fair o/KBZY-1490 QRM w/top 40/rock mx & ID'ing "1480 K-W-I-Z". (TLH-OR)

KGXC MT, Sidney 1/17 0330-0345 f/c per list. (EH-WA)
 ?*KGXC*? 1/17 0330-0345 tent. w/f/c appearing for 1st time after at least 10 tries. U/KYOS TT, tone started at 0330 exactly, and ended at 0345 exactly, w/breaks in between. Thought this f/c was defunct, but perhaps not! Tent. rpt. sent. (RW-CA)

1500 (KHTT) CA, San Jose 1/17 0314 noted totally off. (RW-CA)

1530 KFBK CA, Sacramento 1/15 2348+ very good w/"Talknet" & ID'ing as "AM 1530 K-F-B-K Sacramento--the news authority". (TLH-OR)

KFBK 1/17 0410 noted w/TT. (RW-CA)
 WCKY OH, Cincinnati 1/17 1032 poor w/wx, PSA, back into mx. QRM--KYXI-1520 slop. (PM-OR)

1540 KJZZ WA, Bellevue 1/1 2208+ good o/KZLA w/jazz mx & ID'ing "24 hour jazz radio K-J-Z-Z Bellevue". (TLH-OR)

1570 CKTA AB, Taber 1/17 0521 good w/ment. of Sunday talk show, "CHEC 10-90" ID, rr mx. (EH-WA) (TLH-OR)

1580 KNIX AZ, Tempe-Phoenix 1/13 0056+ fair o/KDAY w/C&W mx and ID.

1590 KBBQ CA, Ventura-Oxnard 1/13 0021+ poor w/heavy QRM. C&W mx and "Country 16 K-B-B-Q" ID. (TLH-OR)

KBBX UT, Centerville 1/17 1041-1100+ finally hrd in tight KLIV-1590 null w/relig. mx, local spots, ID on hour mentioning "Golden Gospel Giant" ala KXEG-1010. Well stop KGST/KWOW, still in as late as 1115! #1006. 1st new catch on Superadio. (Another 100 lashes! KBBX is on 1600! bp)(RW-CA)

January f/c heard:
 3rd MM: 1480 KGXC-MT 0330-0345 (EH-WA)

ID'ing an unID:

520 ASL's unID in 1/8/83 WDXR, Radio Todos, could possibly be some sort of image from XEGM-950, which IDs as "Radio Todos". But I can't think of a combination that could cause it! (RW-CA)

UNID's:

690 1/12 0605 unID w/GBS nx in XETRA null, no one listed. This is probably same unID CBS outlet on 690 reported in 9/82 WDXR. Possibly KZKZ? (RW-CA) (KZKZ is on the latest CBS list.--NH)

770 1/17 0545 WABC possibly the one w/DJ talk, way behind KOB/KXA. WABC I believe is all nx now, aren't they? (PM-OR) (Yes. KJCB perhaps?--NH)

1100 1/17 0610 WWWE possibly the one w/C&W mx u/KFAX, no KREX. Is this WWWE? (PM-OR) (Format fits.--NH)

1490 1/11 2035 stn here ID'ing as "WBWJI? AM and FM Shreveport". Nothing in the NRC Log or BI one this one? (EH-WA)

1490 1/17 0514 unID C&W w/KHTT off, using a satellite broadcast from Nashville (SMN?), possibly KKLB? KRNR? (RW-CA) (SMN does not mention satellite and does not broadcast from Nashville. This sounds like Music Country Network. KKLB-ID the only 1490 out here w/MCN.--NH)

1580 1/17 unID here w/C&W mx, u/o KDAY, KNIX, etc. Hrd TC for EST at 1015, but too much QRM to copy. Ideas? (PM-OR)

Welcome to WDXR, Tony! Congratulations to Pat Martin on his KLAR-1300 logging. Pat phoned in his tip; watch for more catches next week. He told Bill on the phone that he had a pipeline into the Texas-Oklahoma area on his newly terminated Beverage. KRLD-1080 was wiping out KWJJ at times, KOMA-1520 topping KYXI, KLIF-1190 battling w/KEX -- in short, stations from down there beating the Portland powerhouses. He terminated the Beverage because he was getting tired of hearing the "same old stations" from Down Under all the time! Keep up the reports, everyone! ♡

AM STATIONS

380 KUBC Montrose.....adult contemporary (AP)
 320 KSTR* Grand Junction.....adult contemporary (NBC)
 310 KWSR* Rifle.....country (ABC)
 380 KGLN* Glenwood Springs.....adult contemporary (Mutual)
 1100 KREX Grand Junction.....news/talk (CBS)
 1230 KEXO Grand Junction.....adult contemporary (ABC)
 1340 KQIL Grand Junction.....country (AP)
 1400 KDTA Delta.....adult contemporary (MNN)
 1450 KURA Moab.....adult contemporary (ABC)
 1450 KMKR Meeker.....country/adult contemporary (AP)

FM STATIONS

8.5 KCIC Grand Junction.....Christian/traditional
 8.3 KJOL Grand Junction.....Christian/contemporary
 8.9 KYNF Paonia.....non-commercial/community (NPR)
 11.3 KMSA Grand Junction.....non-commercial/ABC
 11.7 KOTO Telluride.....non-commercial/free form

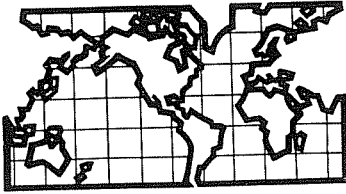
82.3 KREX Grand Junction.....beautiful music (CBS)
 92.7 KMTS Glenwood Springs.....country (ABC)
 93.1 KQJX Grand Junction.....adult contemporary
 94.0 KKKK Montrose.....country
 96.1 KWDE Montrose.....music mix (Mutual)

FM CABLE STATIONS

90.4 KMSA Grand Junction.....non-commercial/free form
 91.6 HOME BOX OFFICE.....television audio
 95.0 KOSI Denver.....easy listening
 95.5 KVOD Denver.....classical
 98.1 KQIX Grand Junction.....adult contemporary
 99.1 KZOO Grand Junction.....album rock
 101.1 KAZY Denver.....album rock
 104.0 MOVIE CHANNEL.....television audio
 105.0 MTV.....television audio
 106.1 KQIL Grand Junction.....country (AP)

*denotes daytime only programming

Left; from a Grand Junction Colorado newspaper, via Mike Hardester



DX WORLDWIDE - WEST

Pat Martin - Editor

P.O. Box 843, Seaside, Oregon 97138

(503) 861-3185 - deadline MONDAYS

Not too much to report this week. Conditions haven't been very good except a few peeps out of DU's the last couple of mornings. A few LA's also have been in, but nothing to get excited about. This week we have another new reporter to the column, John Wilkins from Wheat Ridge, Colorado. Welcome to the column and report often. Also Chris Knight, also from Colorado logged his first DU, 1 YA. Congratulations! On with reports:

PAN-AMERICAN DX ROUNDUP

- 655 EL SALVADOR, San Salvador-YSS hrd w/NY eve pgm 1/1 at 0454, fair (GK-Ca)
- 660 CUBA, Santa Clara-CMED (presumed) dominant here, altho weak, after XERPM s/off at 0800 "Radio Progreso" Programming w/a variety of mx 0800-0930 on 1/15 and other AM's. (ØW-Co)
- VENEZUELA, Coro-YVNA "Gloria el Pueblo" (NA) by kids chorus, then s/on amñt IU03, stn. personalities named, then into YV mx "Ondas de los medanos" mixing w/CMFB on 1/16 (ØW-Co)
- 700 t JAMAICA, Montego Bay-JBC listened from 0709-0800, but no ID, 0709 a review of Black albums, 0730 pgm of reggae mx, OM ancr had heavy W. Indies accent, WLN looped, but problems w/local KNUS testing off and on, on 710, 1/17 (ØW-Co)
- 730.1 COLOMBIA, Bogota-HJCU, fighting it out w/XFX 1/16-1028 "Radio Meloda" ID (GK-Ca)
- 750 NICARAGUA, Managua-YNX hrd 0727 w/LA pops, including Roberto Carlos and Rafael, usually dominant here o/WSE "Radio Sandino", on 1/14 (ØW-Co)
- 760 CUBA, Havana-CMED fair signal w/Radio Reloj nx pgm, WJR looped, occ. KOB splatter o/HJ in background, TC's and R. Reloj ID's every minute on 1/14 (ØW-Co)
- 830 UNID, Westminster chimes and SS u/KIKI 1/8 1203 (GK-Ca)
- 880 CUBA, Pinar del Rio, CMAB (presumed) fair signal KRVN off, pgm of EE/SS pops at 1015 "Radio Progreso" // 660, ID 1029 as "Radio Progreso Cadena Nacional" on 1/16 (ØW-Co)
- 1039.9 t COLOMBIA, Barranguilla-HJAT poss. 1/12 0700 w/ment. CaRaCol (GK-Ca)
- 1175.3a COLOMBIA, (re: UNID in Vol 20 #17) I logged this on 12/13 w/Colombian mx, Christmas Greetings, ID 0833 "Les habla la emisora HJKB, 1180 (!) KHZ desde Radio Centro Todelor en Neiva" poss. here only when KV00 is off. (ØW-Co) (Thanks for the info on this. Now if I could just get an address I would send them a report. hl.PM)
- 1210 VENEZUELA, Barcelona-YVQZ-generally the dominant signal here (tho weak), on 1210, early AM's WCAU no problem out here s/on 0932 w/NA then OM ancr, into YV mx "Radio Anzoategui", slogan also ID's as "Radio Anzoa", 1/17 (ØW-Co)
- VENEZUELA, Coro-YVMN vy weak first time hrd w/YVQZ off, YV ancr (OM) mixing w/another weak signal, think PP prob. Brazil, both wiped out by YVQZ s/on 0932. Both YVMN and YVQZ listed as lo KW, but YVQZ considerably stronger. (ØW-Co)

TRANS-PACIFIC DX ROUNDUP

- 550 HAWAII, Wailuku-KMVI 1/18 at 0955 vy good w/ID by YL, mx jingle, rr Mutual nx on the hour. (EH-Wa)
- 567 NEW ZEALAND, Wellington-2YA fair w/EZL mx pips at 0900-NZBC nx-1/25 (PM)
- 576 AUSTRALIA, Sydney-2FC vy good w/Clas. mx at 0915-1/25 (PM-Or)
- 585 UNID, EZL mx station here at 1015, fades, no DJ, just non-stop mx, American Samoa? But 1404 and 648 were much stronger at the time. This sure didn't sound like 50 KW! on 1/25 (PM-Or)
- 612 AUSTRALIA, Brisbane-4JR, vy good w/ABC nx at 1000-1/25 (PM-Or)
- 650 HAWAII, Honolulu-KORI 1/14 0951 fair w/"Coral 65" ID's, MYL (EH-Wa)
- 690 HAWAII, Honolulu-KKUA-1/18 1112 rough in XETRA null w/ID, rr mx (EH-Wa)
- 702 t AUSTRALIA, Sydney-2BL 1/16 1122 w/light jazz, Some XETRA splatter, but otherwise quite clear. (GK-Ca)
- 738 AUSTRALIA, Grafton-2NR hrd w/Clas. mx 1/16 1037 EE nx ment. Canberra III, ment. ABC net 1115 (GK-Ca)
- 750 ALASKA, Anchorage-KFQD- 1/11- 1058 fair mixing w/KXL, rr mx, ID into AP nx on the hour. (EH-Wa)
- 760 HAWAII, Honolulu-KGU 1/13 1221 fair w/ Radio K G U ID's, ads, talk show (EH-Wa)

- 774 t FIJI, Suva-Radio Fiji 2, 1051 1/17 vy poor w/chanting audio detec-
table only w/SSB because of KOB slop (CK-Co)
792 AUSTRALIA, Brisbane-4QG vy good w/clas. mx // 576 at 0916 1/25 (PM-Or)
830 HAWAII, Honolulu-KIKI-1045 1/17 usual rr mx, noted every morning
about this time. (CK-Co)
*Also noted 1/13 1211 fair w/soul mx, M.L. King Tribute. ID (EH-WA)
864 AUSTRALIA, Hobart-7HO, topped 4GR w/mx, wxcast for Hobart, 7-H-O
ID, followed in 5 seconds w/4GR ID. All this o/Paupa/N.G. w/Pijin
talk at 1045 1/25. Interesting! (PM-Or)
873 AUSTRALIA, Sydney-2GB, good w/tele. talk at 0940 1/25 (PM-Or)
882 AUSTRALIA, Brisbane-4BH, vy good w/MOR mx, 4BH ID, McQuarrie mx 0900,
on 1/24 (PM-Or)
UNID, hrd 1/9 1132 and 1/16, 1117 w/Australian bearing. Suspect 4BH,
Orch mx both times. (GK-Ca) (Poss. 4BH, but 1YC seems more likely,
as 4BH is MOR-1YC Orch. mx (clas.) (PM)
891 FIJI, Lautoka-Radio Fiji 2 12/25 1000 hrd w/pips ID and GSQ (GK-Ca)
1116 AUSTRALIA, Brisbane-4BC, good w/rr mx, jingle after Rita Coolidge,
sung "We're All Alone" 1042 on 1/25 (PM-Or)
1179 AUSTRALIA, Melbourne-3KZ, good, stronger than KOFI, noted w/rr mx
and 3KZ ID at 1120-1/25 (PM-Or)
1197 AUSTRALIA, Surfers Paradise-4GG, hrd w/Pop mx and "4-Double G" ID,
at 1111 on 1/24 (PM-Or)
1206 AUSTRALIA, Grafton-2GF, good o/4XO w/C&H tune, 2GF promo, at 0935
1/25 (PM-Or)

VERIFS:

- 1205 CAYMAN ISLANDS, rec vl in 2 weeks for taped report. Signed: Loxley
Banks-Dir. of Broadcasting. 1 KW. (PM-Or)
1512 CHINA, CPBS- rec vq in 3 weeks for taped rep, beautiful pennant
Included for Radio Peking; 3rd diff. R. Peking pennant. China vq
#14. (PM-Or)

THANKS TO THESE REPORTERS:

- EH-Wa Ed Hoffman-P.O. Box 125-Burlington, Washington 98233
JC-R70, SM-2 loop
GK-Ca Glen Kippel-612 West Avenue-Merced, California 95340
SP-600, Box loops
CK-Co Chris Knight-P.O. Box 7611-Pueblo West, Colorado 81007
FRG-7, Sanserino Loop
W-Co John Wilkins (NØAXM/WDXØM)-4385 Hoyt St. #205-Wheat Ridge, Co. 80033
Kenwood R-1000, 2 foot sq loop
PM-Or Yer Editor
SP-600 JX, RBO-2, 200 foot LW, term., 1500 foot East, term. bev.
Groud System.

NOTICIERO

TODELAR

Un mundo de noticias... para un mundo de oyentes

EMISIONES:

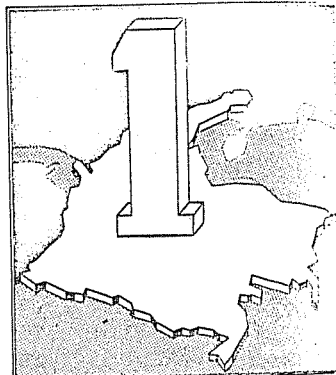
- 6:30 a.m. a 7:30 a.m.
12:30 p.m. a 1:30 p.m.
7:00 p.m. a 8:00 p.m.
10:00 p.m. a 10:30 p.m.

Directores: **Alberto Acosta**
Hipólito Hincapié

Gerencia: 4150 36
Teléfonos: Dirección: 34 88 50
Redacción: 4234 28
4235 72

RADIO SANTA FE

13,200 WATS.
24 HORAS DIARIAS DE TRANSMISION CONTINUA
ONDA LARGA 1.070 Kcs. F.M. 97.7 Mgt.
ONDA CORTA 4.965 Kcs.



CONMUTADORES: 41 75 13 y 41 74 04
ADMINISTRACION: 34 64 30
Carrera 13 N° 15-90 P. B - Apartado Aéreo: 9331
BOGOTA

TODELAR

LO MODERNO EN RADIO

THE INTERNATIONAL RADIO CLUB OF AMERICA

CLUB ADDRESSES

Membership Dues, Address Changes, and Renewals:
P.O. Box 26254, San Francisco, CA 94126
Bulletin Material, Sample Requests:
P.O. Box 21074, Seattle, WA 98111
The IRCA Goodie Factory (Publications and Reprints)
P.O. Box 17088, Seattle, WA 98107

MEMBERSHIP DUES

\$16.50 First Class to the U.S.A., Canada, and Mexico. \$6.00 for trial membership (10 issues of DX Monitor and a New Member Packet) to the U.S.A., Canada, and Mexico. \$18.00 Surface Mail to the rest of the world. \$27.00 airmail to Central America, Colombia, Venezuela, and the Caribbean. \$30.00 to the rest of Latin America, Western Europe, North Africa, and the Middle East. \$34.00 to the rest of the world. Sample copies of DX Monitor cost 50 cents each or three International Reply Coupons. Make checks and money orders payable to IRCA. Persons living outside the U.S. should make dues payments by check or money order payable in U.S. funds.

The International Radio Club of America is a non-profit organization devoted to the hobby of hearing distant stations on the AM Broadcast Band (Medium Wave). IRCA is a member of ANAHC, the Association of North American Radio Clubs.

Club Officers: President--Don Kaskey, 465 Burnett, Apt. 1, San Francisco, CA 94131. Secretary--Treasurer--Rich Segalas. Board of Directors--Phil Bytheway, Nick Hall--Patch, Ric Head, Ernest Cooper, Jef Jaisun, Bruce Portzer, Niel Wolfish.

DX MONITOR, the official bulletin of the IRCA, is published 34 times per year; weekly from October to March, twice in September and April, and monthly from May to August. Unless otherwise noted, permission is granted to publish, broadcast, or otherwise reproduce non-copyrighted material appearing in DX Monitor, provided credit is given to IRCA and the original contributor. Opinions expressed in DX Monitor are those of the original contributors and do not necessarily reflect those of the IRCA, its publishing staff, editors, or officers.

PUBLISHING COMMITTEE: Bruce Portzer (206)522-2521, Evelyn Portzer, Phil Bytheway, Jef Jaisun

FIRST CLASS MAIL
U.S. POSTAGE
PAID
Seattle, WA
Permit No. 601

first class

19

D. A. NYHOLM
2071 CEDAR STREET
SAN CARLOS CA
94070

Postmaster: if undeliverable, return to
P.O. Box 21074, Seattle, WA 98111, U.S.A.