



DX Monitor

Devoted Exclusively to
Broadcast Band DXing

December 10, 1983

Volume 21, Number 12

Issue Number 667

In This Issue

The IRCA Technical Column	2	Central DX Roundup	12
Spice Island Radio	5	Western DX Roundup	13
Eastern DX Forum	6	DX Worldwide East	16
Summary of Unreported Stations ...	7	DX Worldwide West	19
Western DX Forum	8	Iowa Station Beams Friendly Word	
Eastern DX Roundup	9	Into Space World	20
Cabbage Patch Fans	11	DX Worldwide II	21

FLASH TIPS AND SUCH

As another reminder, don't forget the WLS silent period, and the KBYE test, both scheduled for Monday morning, December 19, 1983 beginning at midnight CST. Check back issues of DX Monitor for more details....only other news comes from my own receiver---as I type this front page, there is a suspicious test tone on 660 looping towards Calgary, so possibly the new station up there will hit the air soon...there goes another frequency.

EXTENDED HOURS FOR DAYTIMERS

Daytimers may be staying on past sunset by the time you read this bulletin. The move had been held up by the Canadian government, which was a little slow in agreeing to a treaty to allow daytimers to stay on late. According to a couple of articles sent in by Jim Hilliker, that hurdle has been cleared, although it's not clear how much paperwork still has to be shuffled. Oddly enough, one of the articles mentioned that the same treaty would also allow "the FCC to authorize a number of new fulltime stations", since under a previous treaty "no new full-time stations could be assigned within 650 miles of Canada". That probably applies to Canadian clears since lots of new stations have been assigned fulltime status within 650 miles of the 49th parallel. Anyway, prepare for still more fulltimers....(gulp!).

In any case, the powers allowed for post-sunset operation for daytimers will be relatively low, which could make for some interesting DX challenges. A Broadcasting magazine article (November 14, 1983) broke down the authorizations as follows: 98 stations-no authorization; 508 stations - one to 25 watts; 500 - 25 to 50 watts; 393 - 50-75 watts; 218 - 75-100 watts; 350 - 100-200 watts; 152 - 200-300 watts; 51 - 300-400 watts; 87 - 400-500 watts

THE 1984 WORLD RADIO TV HANDBOOK

In case you missed or forgot about the first announcement, here's a reminder. The 1984 World Radio TV Handbook will be published in January or February 1984 and will retail at \$17.50 in the U.S... Orders are now being taken at \$15.00 USPS Book Rate, worldwide, or United Parcel Service, U.S. only, (please specify), or \$16.00 First Class Mail, U.S. only. California residents add 6% sales tax. Orders, with an SASE for confirmation of shipment, and a check or money order made in U.S. funds on a U.S. bank, payable to Century Print Shop, should be mailed as soon as possible (no deadline) to Century Print Shop, c/o Don Erickson, 6059 Essex Street, Riverside, CA 92504-1599. Inquiries welcome at 714-687-5910. In Canada, please include \$21.00 fourth class, or \$23.50 special delivery, and mail orders for receipt no later than January 7, 1984, to Canadian International DX Club, c/o Don Woman, 6815 12th Avenue, Edmonton, AB T6K 3J6.

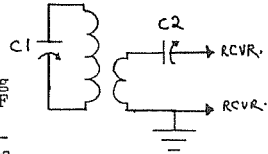
Once again, the DX Worldwide East editorship is still up for grabs. If interested, contact Phil Bytheway right away at 9705 Mary Avenue NW, Seattle 98117 or 206-7845145. That's all the news we have room for. More goodies next week. 73, bp.



the irca technical column

Editor: Nick Hall-Patch
1538 Amphion St.
Victoria, B.C. V8R 4Z6
Canada

A whole lot of bits and pieces this time, so let's get straight to it. Remember the article on matching unamplified loop antennas to receivers in the June 25, 1983 DX Monitor? Don Moman uses another system for matching air-core loops to a receiver. Simply place a 365 pF variable capacitor (C2) between the "hot" side of the link winding of the loop and the receiver antenna terminal (see left). Lowering the capacitance of C2 will isolate the loop from the receiver, minimizing loading effects on the loop's tank winding, and causing an increase in tank Q. Greater signal strength of one's DX can be the result. There may be interaction between C1 and C2, so after you have reduced C2's capacity to the point before signal strength drops off, repeak C1, then see if C2 needs repeaking.



* * * *

An Indoor Random Wire---or is it Loop?

by Ben Peters

I'm presently using a two turn loop of wire in a horizontal plane running on the walls of my room (4 x 5 meters) near the ceiling. The total wire length is about 40 meters. Exactly in the middle of this length of wire is a tap which gives a very clean signal to the receiver antenna input, when both the beginning and end of the wire are grounded and/or are fed to the receiver ground terminal. By itself it is OK, but it gives very good results with my phasing set-up (described in Jan 2, 1982 DX Monitor). Above this two turn loop I made a 7 turn loop using 140 meters of wire which gives a lot of flexibility, depending on which turn of the loop is tapped for ground or for signal. For example, the beginning of the 7 turn loop gives BBC-4 at midday on 720 kHz, yet the end gives the German as the dominant. This is untuned, and with no connections through a phasing unit.

(ed. note: a similar system to the above was tried here--10 turns in a spiral in a horizontal plane mounted on a 3 x 3 meter ceiling. With the center-tap feeding the receiver's antenna terminal, the ground connection was moved from turn to turn (the ends of the loop were left unconnected unless one or other was connected to the ground terminal). Using this system, one station or another could be chosen on a few channels. Certainly, signal strengths of dominant stations on various channels could be varied considerably. It would seem a good random antenna to use with a phasing system, as the dominant signal could be varied a fair bit even before the phasing unit was used, perhaps allowing better nulls. It must be noted however that this antenna doesn't produce high level signals, and amplification will probably be necessary when listening to weak signals or when phasing this against an outdoor antenna. I also noted that varying a 10 k potentiometer connected across the open ends of the loop could occasionally deepen a null on a signal.)

* * * *

Using computer ribbon cable to create a quick and easy air-core loop antenna is an idea which has surfaced a few times in the LWCA bulletin, the Lowdown. Such an antenna can be made quite large, yet the wiring can be folded up into a small package for portability. Unfortunately most available ribbon cable uses quite small gauge wire and apparently MW loops made with this cable have quite low Q. However, Fair Radio Sales, P.O. Box 1105, Lima, OH 45802 is offering 20 conductor #22 gauge wire ribbon cable at \$10 for 10 feet (lower prices for 100' or more). 20 conductor would make a good start for a longwave loop, but the cable could probably be split into two 10 conductor lengths more suitable for a MW loop. I can give construction hints to anybody interested in making such a loop; they make a great signal booster for portable radios.

For the Beverage enthusiast, Fair Radio has 1000' lengths of stranded vinyl covered wire in gauges #12 to 22. They give prices for up to 5000' but can't guarantee continuous lengths above 2000'. An example:

1000' of #20 is \$12. Shipping extra. For further info on wire or ribbon cable, write Fair Radio, enclose a 20¢ stamp and ask for WS-83 catalog supplement.

* * * *

From the Marketplace Report in the ANARC Newsletter is word on the Palomar Engineers "Loop Coupler", which is intended for use with the Palomar Loop Amplifier and the ECB plug-in loop, when the receiver in use has only an internal loop antenna and no provision for connecting an external antenna. The Loop Coupler connects the Palomar antenna to the receiver antenna by magnetic coupling, thus allowing the operator to take advantage of the loop's amplification and directivity. Price \$15 plus \$3 shipping and handling. Palomar Engineers, 1924-F West Mission Road, Escondido, CA 92025.

Also from the Marketplace Report is mention of the Sony SRF-A100 portable stereo radio which can decode four AM stereo systems--Kahn/Hazeltine, Harris, Magnavox and Motorola. The Sansui TU-577-AMX tuner does a similar job on AM Stereo. (see p. 18 of Sept. 24/83 DX Monitor for a few more details on the Sony.)

* * * *

An article sent by Bruce Portzer details a couple of AM Stereo decoder ICs. One is National Semiconductor's LM1981 which was constructed for the Magnavox system, but can accommodate Harris, Belar and Kahn/Hazeltine. No pilot tone detection is provided on the chip. Motorola's MC13020P is meant for use with the Motorola system (naturally) which will be used in Delco car radios. Unfortunately, prices for both ICs were quoted for lots of 1,000,000 (ahem) and I don't know of suppliers of individual devices....

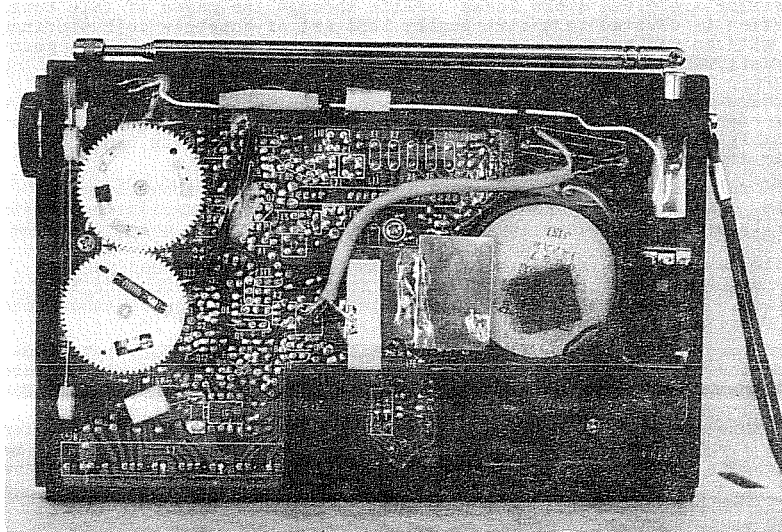
* * * *

Two Sony Modifications

by Dennis Kibbe

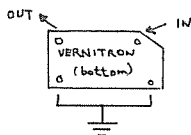
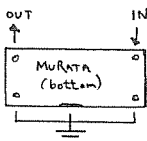
1/ While you have the Sony 6500 apart to put in a sharper filter (DX Monitor Feb 5/83), here is a cure for the muffled tone of the radio. Remove C99 from the tone and volume control board. The leads can be snipped or the board carefully removed and the leads desoldered. You've just gotten rid of the Sony's head cold!

2/ The Sony ICF-7600A is one of the best pocket radios. With a little effort on your part it can really shine by improving the selectivity. First, off with the back! Remove the four screws holding the back on (one is in the battery compartment) and with the antenna pushed out of the way, lift the back off. Be careful of the tab in the lower right hand corner. With the back off, find the outline of the ceramic filter on the back of the circuit board. It is just to the left of the metal shield and is marked CFI'. The three points inside the square need to be desoldered.



Now, you are probably wondering as I did. How am I going to get the old filter out? Glad you asked! There are two brass screws, one above the shield and one in the battery compartment that, when removed, will let you pull the front cover off. The volume control and off switch will come loose too. Now carefully pry the circuit board from under the plastic clips that hold it down. Lift it up just enough to shake the old filter out.

Congratulations! The hardest part is over. Clip the circuit board back in place, replace the front cover (got all the switches back in the right places?) and screw it down. There is enough room to the right and just above the speaker for a Vernitron or even a large MuRata CFS 4 kHz filter. Connect this new filter with a short length of 2 conductor shielded audio cable (two lengths of RG174 coax, one for filter in, the other for filter out, might be a better choice). Don't use ordinary hook up wire or you will hear your locals all over the place! See the sketches below for the right connections. Now your little pocket Sony has selectivity like the big boys!



* * * * *

Dennis also asked about a question and answer section of the Tech column. I haven't really mentioned this since the column started, but I'll always try to answer technical questions any reader might have, in print if you like. If I don't know the answer (entirely possible) then I'll print the question in the hope that a more knowledgeable reader can handle it.

* * * * *

Review: Low and Medium Frequency Radio Scrapbook

NHP

This is the fourth edition of a book which has been around for awhile now. If you own one of the previous editions and have found it useful, then it might be an idea to pick up this present edition as it is composed almost entirely of new material. This one is solid-state oriented whereas previous editions favored vacuum tube technology.

Ken Cornell, the author, often works on the principle that the forgotten LW/MW technologies of the past can be updated to give the DXer good results using components available today---I feel that this is a worthwhile approach. Devices such as the variometer and the regenerative preamplifier are given a new lease on life through the pages of this book. One section is devoted to the virtually lost art of homebrew coil winding, though with an emphasis on modern ferrite cores. A pair of homebrew mechanical coil winders are featured, as these are no longer commercially available. The detail in the mechanical drawings is impressive.

There is a small section on reception (modifications, one IC receiver, LW converter etc) and the section on transmitting is interesting. It is principally devoted to the 160-190 kHz longwave experimenters band, with just one 100 mW mediumwave transmitter.

In spite of the title, the book is almost entirely about longwave circuits. Even the fine appendix of related articles in various publications is heavily oriented towards longwave. Mr. Cornell edits a column for the LWCA bulletin, the Lowdown, so this emphasis is hardly surprising. However, some antenna related circuits such as preamplifiers, a VMOS active whip and a broadband ferrite loop will provide food for thought for the MW enthusiast. Unfortunately, there is nothing in this edition on tuned loops, either ferrite or air core.

In conclusion, it should be noted that this is definitely a "scrapbook" as the title states; it is not an overview of all facets of longwave and mediumwave reception or transmission. It is rather a description of the many interesting projects the author and others have developed. A copy of this manual will be a useful addition to the die-hard experimenter's library, even if he has one of the previous editions, but it should not be considered as an introduction to the technical side of long and mediumwave DXing.

The book is available from Ken Cornell, 225 Baltimore Ave., Point Pleasant Beach, NJ 08742 for \$10 postpaid. It is 119 pages long.

On the subject of looking to the past for "new" ideas when experimenting, Derek Claridge sends word of a small outfit which specializes in crystal sets (like those using "cat's whiskers"--reputed to be more sensitive than germanium diodes) and other hard-to-find and unusual equipment such as tubes, coil forms and sliders, hardware, sockets as well as simple radio kits (tube and crystal set). This outfit is not into up-to-date synthesized tuning with memory and multiple flashing lights and looks all the more interesting as a result. Reasonable prices too. \$1 to Modern Radio Labs, P.O. Box 1477, Garden Grove, CA 92642 will get you their experimenter's catalog. It's a one-man outfit I believe, so there may be delays. Thanks to Derek for this info.

* * * * *

Radio West has just sent out catalog #6 which looks quite interesting. They have increased their product lines quite a bit from their last catalog, and still retain the Shotgun (it's changed its looks), the Sanserino loop, and Radio West ferrite loop, for those with MW interests. Send 'em a 37¢ stamp for a copy--they're at 3417 Purer Rd., Escondido, CA 92025. Radio West continues to send out their monthly garage sale list to those who send in a batch of SASEs. These lists feature sale prices on their regular stock as well as occasional used items.

Spice Island Radio: only show in town

By ROBERT BLOCK
Reuter News Service

St. Louis Globe Democrat 11/25/83 via Rob Gerardi

ST. GEORGE'S, Grenada — Mounted on the back of a dark green U.S. Navy truck is a one-room radio studio. It is the home of "Spice Island Radio," the only show in Grenada.

For five hours a day, Spice Island Radio fills the local airwaves with a variety of music, announcements and news.

"This is Spice Island Radio," says the radio's sign-on statement. "We broadcast daily to keep you informed and to provide assistance. We will be a consistent source of factual information. We will tell you the truth and bring you the facts as we learn them. They may be favorable or unfavorable, but we will tell you the truth."

The Grenadian announcer's voice gives the radio a Caribbean flavor, but the station is, for all practical purposes, owned and operated by the U.S. Navy.

The mobile studio, two generators and a towering relay antenna are parked at the rear of the unfinished Point Salines airport, where several thousand U.S. troops landed during the U.S. invasion of Grenada Oct. 25.

Spice Island Radio is the only radio station on Grenada. The last station, "Radio Free Grenada," owned and operated by the country's former left-wing government, was bombed by U.S. fighter planes in the first hours of the invasion.

The station was the idea of the U.S. Army's "Psychological Operations" (PSYOPS) section, which has based almost 100 people in Grenada since

the invasion.

PSYOPS is in charge of U.S. propaganda on the 133-square-mile island.

The officer in charge of the 12-man Navy team running Spice Island Radio, Lt. Richard Ezzel, said the station's early broadcasts were an important factor in calming people's fears and preparing Grenadians to welcome the invasion as a rescue mission.

The radio's first broadcasts called on Grenadian soldiers to lay down their arms and surrender to U.S. troops. It gave amnesty announcements to the Grenadian soldiers despite the fact that many were later rounded up and imprisoned.

"We wanted to save lives," Ezzel said.

Since the invasion, the radio has been the main news link between Grenada's caretaker government and the people.

The radio runs an average of 15 minutes of news and public service announcements every hour on the half hour.

Although the 12 members of the Navy staff working with the radio are trained broadcast journalists, they do not go out and gather news, they said.

Most news comes from the government, wire-service reports and sometimes from old newspapers flown in from nearby Barbados.

Ezzel said that one of the radio's biggest scoops was who won the final game of baseball's World Series, although the game was "old news"

elsewhere by the time of the invasion.

None of Spice Island Radio's news is written by PSYOPS, Ezzel said, and neither was it running propaganda. Some of the news was critical of the United States, including reaction to the invasion by Cuban leader Fidel Castro.

The radio equipment and personnel were brought in from Norfolk, Va., when the Army was looking for someone to replace Radio Free Grenada.

They found the only group prepared to run a radio station was the Navy, Ezzel said.

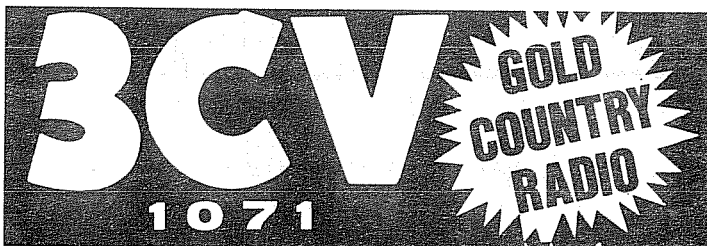
After landing on Grenada, the Navy team recruited two local announcers, now paid by the Grenadian government, to be the on-air voices of the station, broadcasting at 990 kilohertz.

"The people were used to listening to that frequency, so we decided it would be the most natural place to start," Ezzel said.

"When we first came down, we were told to play nothing but reggae and calypso music. Later, we found out the people did not want to hear reggae music, but wanted more rock-'n'-roll and country music."

Although the White House announced that some 2,300 U.S. combat troops would be out of Grenada before Christmas, the Navy said it would stay with Spice Island Radio until the Grenadian government was able to start its own radio station.

"Until then, we will be here running our radio station," Ezzel said.



EASTERN DX FORUM

(215) 368-8067

RICHARD EVANS
P.O. Box 1294
NORTH WALES, PA 19454

reports from members living east of the Mississippi River
Deadlines: Fridays

Richard E. Wood, College of Education, P. O. Box 959, Abha, Saudi Arabia

Thanks to an on-the-ball Japanese DKer/businessman who saw my forum report inquiring about it, I have imported a National RD-9170 loop. Assembly took 45 mins., with just two screwdrivers, and even batteries were supplied. A pleasure to build, look at and use. In this steel-frame building it is not outstandingly directional, but, as the Aussie whose review I noted said, it greatly reduces electrical noise. It's a big help eliminating R. Moscow AA 1170 and Abu Dhabi 1539 to get me my favorite station, R. Djibouti. I have no major new catches yet, but I'm sure it will help as I seek new TAs, deep Southern Africans, etc. Sudan 1295 is back on, but still breaks down many evenings, leaving the frequency clear for BBC 1295 which along with Kvitsy 1314 is the most distant stn heard and listenable nightly. Bahrain 612 is noted dominant and as loud as 801; may have increased from listed 20 kw. Also on 801, I am counting my daytime unit there as Eritrea, coastal Ethiopia, but unknown location. Swamped by Bahrain and Jordan at night. Jamming in the Middle East is one-sided. Iran does not seem to fear R. Baghdad's Farsi broadcasts on 846, 1197, and 1224, which are unjammed, whereas Iran in Arabic is severely jammed on 990, 1555 and 1566. Propagation this fall is surprising us all with its quality performance. Congrats to Pat Martin on his Europe/North African catches, also to all who are hearing Saudi stns while I have yet to hear a U.S. one. The Finnish DXpeditions to Lapland began in October and results are totally fascinating. Dozens of U.S. daytimers from the K zone have been heard, and 15 Hawaiians. Northern Finland, using beverages, is one of the places from which all 50 states can potentially be heard. Yes, power on Pristina 1413 has been increased to a megawatt and the music of that partly Muslim area is oriental-sounding, so Neil Kazarov is right to await positive ID before claiming Oman there; the several SW //s are a good way to ID Oman. Kaz's 1269 report in DXWE 10/15 of "Neubrandenberg" should read Neumünster. Neubrandenburg (note spelling) is in E. Germany. George Bakiel, it was good talk to you from JFK on my way to Jeddah, until my U.S. change ran out. 73.

Karl V. Jeter, 2115 Scarbrough Road, Stone Mountain, Georgia 30088

Time to check-in again, and with this time, some rather mediocre veriereturns to report, unfortunately. It seems like extracting varies is getting harder to be sure, but not impossible, with patience, perseverance, and a little imagination! Since resuming report-sending in early Oct., I have managed 5 replies in 14 tries. From Jan-April this year, I managed an 89% rate (17 for 19), but that was only w/a considerable effort and numerous f/ups! What may have been a sign of the times occurred a few months ago when I phoned one of my earlier hold-outs, WXQR-970 Spring City, Tenn. An exasperated-sounding GM told me his was a small station with a small overworked staff, and he wasn't about to pull one of them off their duties to answer reports. I certainly sympathized with his plight, and asked if I could send a pp/c, to which he agreed, and later returned. My two beverages continue to pull in some nice stuff (see EDKR, natch) with the west one being the most productive. The one running NWV tends to give me great signals on all the northern clears, unfortunately, and I wish we had run it due NW now! With the west beverage, I have gotten regularly into Texas, Okla., Ark., Kans, and even Ariz. (Drool!--rce) Maybe HI will be next, hi (pun intended)? The next project, with the help of local beverage ace Chuck Hutton will be a phasing unit which he promises to help me with. Yes, Rich, Barbados is the eastern most of the windward chain, which explains why it is so hard to hear (and expensive to fly to as well). My wife is from Barbados, and her brother is currently working at CBC-900 doing their all-night show since they are now apparently full-time. It was quite interesting for us to see Barbados, during the Grenada invasion so prominently in the world "spotlight" as the base for operations. That's about it for now...73.

Rob Gerardi, 1421 North Franklin, Apartment 7, Benton, Illinois 62812

Does anyone know why it is so difficult to find porcelain insulators for antenna use these days? My recent experiences in trying to find some

(Gerardi, cont...) made me wonder, could it be because they are no longer manufactured? The only type I could find were for either electrical fence useage, utilizing a circular center hole design, or were plastic. I admit that I haven't purchased any for several years, had no need to do so as was still using the same ones. Yet, when I did do so, all that was required was a trip to the local hardware store where they were in various sizes and even painted colors. Of course, then, REAL hardware stores were easier to find too, hi! About Jef Jaisun's proposal regarding holding the elections during the DX season, I don't know if it would help in voter turn out, but sounds good to me. Any move against apathy is a move in the right direction. Having nothing relevant left to say, I turn it over to someone who does. C U later. 73.

Ernest A. Cooper, 5 Anthony Street, Provincetown, Massachusetts 02657 (617) 487-9337. Hi. It's OK to call again between 0100 and 0300 if you have a hot DX tip to pass along. The Cardiac Catheterization test showed partial blockage in two arteries, but the supervising doctor at Mass. General felt no operation is necessary at this time; possibly in the spring. He is leaving it up to my Yannis cardiologist to talk it over with me, and I still await word from him. Now, a few observations from recent Monitors. Dale Park, what is "white noise"? Do you have a color radio? Nothing like getting a 24-page Monitor and then finding to my great disappointment it contains 13 pages of hi-tech data which means zilch to me (Issue 662). In Issue 663, in Broadcasting Info, Radio Programming Notes I see "KWXI-670, Hot Springs, Ark, is now country". I don't have any such station listed in my NRC Log or from any subsequent updates in Broadcasting Info in IRCA or from AM Switch in DX News. (In my latest NRC Log, KWXI is 1470, a daytimer in Glenwood, Ark., 30 miles SW of Hot Springs--rce) WQIK-1320 programs independently in the wee hours, as I've heard them mention often "WQIK-1320 and WQIK-FM-99.1". And, Issue, 664, in Central DX Roundup, I believe Gordon, Ga. on 1120 is WIZY, not WIXY?? And Harriman, Tenn, on 1600 is WKJS instead of WKSJ according to AM Switch in NRC. When you have about 4250 BCB veries and get four new ones in one day, it is indeed a rarity, but it happened to me on Tuesday, 11/15. During the 0100-0300 time I logged WSTU-1450, Stuart, Fla and WMBM-1490 Miami Beach, and in the twilight, I found Radio Antilles, St. Vincent, roaring in atop everything for almost an hour, 1724-1821 when they signed-off for the night, mentioning frequencies of 930, 730, & 1450. Next to them was my fourth newie, also blasting in on top, Turks & Caicos-1460, heard easily after many an unsuccessful try heretofore. Three cheers for the Aurora! WDER-1320, Derry, N.H., is now on RS, at least in the daytime, and is heard here weakly behind WARA-Mass w/EZL/MOR fare, but not noted at night; could be their night pattern disfavors me, though. May I wish everyone a very Merry Christmas and a New Year of Peace and Happiness, and great DX. Forward - March! (Good to hear you're feeling better, Ernie. Will pass your message on to the others--rce)

SUMMARY OF UNREPORTED STATIONS
through Volume 21 # 9 dated November 19, 1983

by Don Kaskey

The following chart lists the total number of stations in the USA and Canada and the volume they were last reported as being heard in DX MONITOR.

COUNTRY	V21	V20	V19	V18	V17	V16	V15	V14	V13	V12	Prior	Total
CANADA	105	112	56	43	18	14	5	7	0	2	52	=== 414
U.S.A.	940	1466	723	491	243	229	98	65	41	64	334	===4694
TOTAL	1045	1578	779	534	261	243	103	72	41	66	386	===5108

New stations reported as having taken to the air during the period between V21 #1 through V21 #9:

700-WCAT-MA (x-1390)	1040-WSKE-PA (x-1050)	1300-KGHX-AK
700-KPAM-UT (x--680)	1060-KIUN-TX (x-1570)	1310-WJOZ-PA
750-KERR-MT (x-1070)	1110-CHUR-ON	1320-WDER-NH
760-KMTL-AR	1120-WIZY-GA (x-1560)	1360-WXKY-TN
810-WCTA-TN	1120-WYNO-OH (x-1130)	1380-WFCL-WI
880-WMDB-TN	1230-KVAK-AK	1500-KTOL-WA
960-WWGR-TN	1240-KLTN-NM	1520-WMLM-MI (x-1540)
1020-KYXB-WA	1210-KREW-WA (x-1230)	1520-WRID-PA

These stations were incorrectly reported as 'on the air' in previous un-



Western DX Forum

★ ★ ★ ★

WCA—Serving the Broadcast Band DX'er Since 1964

Editor: Ric Heald, 1632 J St., #3, Eureka, CA 95501

1983/4 DEADLINES - WEEKLY ON TUESDAY, 12 DAYS PRIOR TO PUBLICATION DATE

GEORGE SHERMAN, P.O. BOX 2284, MINNEAPOLIS, MN 55402

The last time I reported to DXF, I think we had a Central column! For those who don't know me, I'm 32 and a DX'er since '65. Joined NRC and got my first TRF in '68. Also into SW DX and member of NASWA, TV/FM DX and former member of WTFDA, plus I'm in the Minnesota DX Club which has monthly meetings of about 20 DX'ers in the Minneapolis area.

My BCB totals are 2,042 heard from 49 states (need Alaska), nine Canadian provinces (need P.E.I.) and 67 countries. A few were verified years ago, now I just tape a few and mostly don't bother to "prove" my receptions. Veries or tapes can be faked and most people don't want to see or hear them that badly. Besides that, I have enough things to try to keep in order now, hi.

I've logged 33 new stations this season due to chronic insomnia and NRC contest. My equipment is a Kenwood R-1000 modified by Radio West and a Radio West loop. Also, Icom ICR-70 still waiting to be modified, plus Panasonic RF-6300 for FM.

Have one FM at one-half mile and five FM at two-and-a-half miles. Have three BCB at one-half mile and two at two-and-a-half miles. About 20 FM and 25 BCB locals. Who can claim worse?

My Tropical Bands Guide gives much info on all broadcasting stations heard from 2000 to 5900 kHz in North America. Twenty two pages for \$3 postpaid. Some of these stations have BCB parallels and propagation could be somewhat the same?

The newest local here, WRPX 740 Hudson, Wisconsin, is running OC during the day, but no ID's have been heard.

The Minnesota DX Club had our annual DX'pedition 12 and 13 November, and heard Fiji 891 S/5 or so right next to WLS at nearly S/9 +20 on an old NC-183 belonging to a friend. It doesn't seem receivers are getting much better, hi.

Best state here is not nearby but Texas with 123 heard--best that anyone?

I have KKMC Gonzales, California listed for 880 5/1 U4, not the 830 I see mentioned in WDXF--now I'm confused--which is correct? (You're right, I'm wrong, hi. So many of them coming on, hard to keep track, hi-Rth.)

73 and good DX. (Welcome to WDXF George, always good to hear from your part of the country-Rth.)

RIC HEALD, 1632 J ST., #3, EUREKA, CA 95501 (707) 443-1685 M-F 9-6 or (707) 443-2704 SAT 9-2 ppp

Greetings and all that. Come on gang, we can do better than this. Is anybody out there DX'ing? Then again, if everyone is hearing as much DX as I have lately, the small column is understandable, hi.

Was in Reno 25 to 27 November. Stayed on The Strip and tried some DX from the hotel room using the TRF. Plugged it in and immediately went to the batteries. What with a casino eight floors below, elevators, neon lights, etc., you should have heard the HNL.

Thanks to the steel and concrete structure, direction was limited to putting the radio on the window sill. Actually was kind of surprised at what I did hear.

KFAM 700 is a real powerhouse in Reno. Southern California (which is due south of Reno) was all over the dial. KFI had no trouble being heard with local KOH 630 just a few miles away. Actually, KOH was rather weak. KROW 780 covered 30 kHz each direction, KOLO was strong, but 900 and 940 easily heard, and could get next door to all the GY's (1230, 1340, 1450). KROI 1270 was quite strong and sloppy. Also noted that the two Tahoe stations barely make it to Reno at night.

Rich Toebe, whose tower is on the north side of I-80 just east of 395? And who is on the west side of 395 about a mile or two north of I-80? It had FM "bumps" at the top, so FM only or AM/FM? And from my hotel (Sands), looking due east saw two towers at night, KOLO? And for those interested, KSUE 1240 Susanville is on the west side of Hwy. 44 about two miles east of town.

That'll wrap it up for another week. Hope all had a great Thanksgiving. I know several turkeys who did, hi. 73 de Rth. .

EASTERN DX ROUNDUP

Bob Lazar

11011 Becontree Lake Drive, #410
Reston VA 22090

Deadlines: Mon. 12/12, Sat. 12/17, Wed. 12/21, Sat. 12/31
All times Eastern

- 550\$WDUN\$GA\$Gainesville, 11/13 semi-local noted w/ new call (ex-WGGA). Haven't been able to see if the 1240 (ex-WDUN) is now WGGA! This w/ C&W format. (KVJ-GA)
- 560 WIS SC Columbia, 10/20 2103 good but very staticy, faded out as evening went on. Talk show. (JH-PA)
- 580 WCHS WV Charleston, 11/23 2200 w/ nx at 2200 and QRM from CBC nx. Slogan "WCHS, Charleston's ear to the world", good. (JH-PA)
- 590 WOW NE Omaha, 11/24 0412 "59 Country", QRM from others, audible here only during SRS. (JH-PA)
- 600 CFCH ON North Bay, 11/8 1823-1826 rare here, not hrd since. Strong w/ QRM. (JH-PA)
- WCAO MD Baltimore, 11/8 2055 weak sig, ID into song, then gradual fadeout. (JH-PA)
- WSJS NC Winston-Salem, 11/24 0416 w/ info on the HAM in space, "60 WSJS", good sig. (JH-PA)
- WMT IA Cedar Rapids, 11/24 0530 semi-clear w/ QRM. 0530 end of Larry King show and then Thanksgiving talk. (JH-PA)
- 630 WLAP KY Lexington, 11/23 2115 at 2116 ancr gave wrong ID as WLAT and then correct one after R&R. Faded in/out. (JH-PA)
- 640 KFI CA Los Angeles, 11/24 0610-0650 good sig when EXTREME pest WHLO wasn't QRMing. At 0650 a man from Ontario called to say he was listening, surprising the female ancr (even I was surprised!) (JH-PA)
- 740 KRMG OK Tulsa, 11/24 0431 good sig, hardly any fading and a little QRM. (JH-PA)
- 850 KOA CO Denver, 11/24 0500 nx at 0500, good sig when hrd through pest WJW. (JH-PA)
- 900 WLSI KY Pikeville, 11/14 1630 very early evening catch! 1630 nx & weak sig w/ fading and QRM from others. (JH-PA)
- 910 KLCN AR Blytheville, 11/13 1756-1800 good sig w/ s/off at 1800.(JH-PA)
WJCW TN Johnson City, 11/13 1826 good sig but constant fadeouts. 1830 CBS nx. (JH-PA)
- 930 WSLI MS Jackson, 11/21 1814 "930 WSLI" IDs, faded in/out but sig was good. (JH-PA)
WGNT WV Huntington, 11/24 0440 faded in/out w/ poor sig. C&W mx called "new country." (JH-PA)
- 940 WCPC MS Houston, 11/14 1755-1800 1800 switch to low pwr, before switch good sig. "MS Network" slogan and TONS of sports nx. (JH-PA)
KIOA IA Des Moines, 11/14 1755-1800 very clear after WCPC switch to low pwr, then at 1805 suddenly disappeared. (JH-PA)
- 1060\$KUKQ\$AZ\$Tempe-Phoenix, 11/9 1912 & 1930 urban-contemp. mx, promo for "Rick James Contest" and ID's as "1060-KQ". (KVJ-GA)
KAYR AR Van Buren, 11/6 end of rlg's pgm "Point of View" 1805, then bfl mx until 1815 s/off. (KVJ-GA)
CJRP PQ Quebec, 11/7 alternating man/woman ancrs in FF, apparent nx-cast 1928. (KVJ-GA)
- 1050 WTSJ OH Cincinnati, 11/12 poor 0632 w/ EZL mx & wx, w/ "temp in downtown Cincinnati." (KVJ-GA) (Out of order, sorry --ed)
- 1070 WDIA TN Memphis, 11/10 1751-1800 "WDIA Mx Money" promo, nx w/ f ancr, ad for Haglar/Duran fight. (KVJ-GA)
CBA NB Moncton, 11/19 2006 wx forecast by f. Fair to good sig.(WPT)
CHOK ON Sarnia, 10/18 1930 w/ Canadian nx, ment of Parliment Hill, etc. Good. (KZ-NY)
- 1110 CBD NB Saint John, 11/16 1800 weak but good behind WBT. Hrd nx & wx at this time. (WW-MA)
- 1120 KMOX MO St. Louis, very strong signal 11/20 1830. Frank Sinatra song "Young at Heart". (WW-MA) 11/18 2000 CBS nx on hr. Very strong on stinky car rx. Strong as local WNEW-1130. (KZ-NY)
- 1140 WSAO MS Senatobia, 11/13 1758 end "King Biscuit Hour" R&R show, then rlg's message and into s/off 1800. (KVJ-GA)
- 1150\$KBOX\$AR\$North Little Rock, 11/20 1749-1752 w/ CHR, f DJ, contest promo & ments of Jacksonville & Little Rock. (KVJ-GA) (Yes, this is the correct new calls. --ed)

1160 WJJD IL Chicago, 11/21 1251 big band mx, ID by m DJ. Good. (WPT-DC)

1190 WHIY AL Moulton, 11/13 1728-1745 C&W mx, ID's and Alabama wx, dominating until 1745 s/off. (NjW-ON)

WAXE NC Monroe, 11/17 1715 s/off by m. Fair u/ WOWO. (WPT-DC)

WSVC TN Dunlap, 11/13 1722-1725 C&W song by Jennifer Warnes & ID, poor w/ WHIY. (NjW-ON)

1210 WDGR GA Dahlonaga, 11/20 noted s/off Sun eve's at 1730 w/ slow vocal version of "Dixie". (KVJ-GA) (tentative) 11/17 1716 C&W mx, fair u/ WCAU. (WPT-DC)

1270 WVIK TN Newport, 11/14 1722-1730 C&W mx, spot for chainsaw and ID - promo on upcoming programs. Fair w/ WXYZ. (NjW-ON)

1280 CJMS PQ Montreal, FF talk show 11/19 1916. Battling w/ WADO-NY. Good sig. (WW-MA)

1290 CJBK ON London, 11/23 0237 continuously fading in/out but 0237 ID was very clear. (JH-PA)

1300 WFBR MD Baltimore, 10/27 2125 very poor sig but audible ID, fadeouts often. (JH-PA)

1320 CKEC NS New Glasgow, 11/18 1628 weak but good signal behing local WARA. Noted ID "CKEC" and not much else. Not hrd in this area much. (WW-MA)

1330 KVOL LA Lafayette, 11/19 1806 severe wx anmt, slogan "the stn you grew up with". (KVJ-GA)

1140 KATT OK Oklahoma City, 11/20 poor 1831 w/ rock mx, s/off w/ minimal info. (KVJ-GA) (Ooooooops ... out of order here! --ed)

KSKS TX Conroe, 11/20 vy poor in mess w/ ID after what sounded like a rlgs pgm 1824. (KVJ-GA)

1350 WNIS VA Portsmouth, weak signal popping thru freq. WOYK battling w/ it. Hrd "Scoreboard" & other sports pgming 1330 11/19. (WW-MA) (Is this time correct? --ed)

1360 CJVL PQ Ste-Marie Beauce, FF 11/19 popping thru freq w/ "Billie Jean - Micheal Jackson", then WDRC-CT back in o/ it. (WW-MA)

1390 WEAM VA Arlington, 11/19 1633 weak in mess on 1390. "Oldies Show", battling w/ WFBL-NY. (WW-MA)

WCSC SC Charleston, 10/17 2330 a new regular w/ top 40 format. Usually dominant o/ WFBL, etc. (KZ-NY)

1420 WLIS CT Old Saybrook, 10/12 1740 clear ID in fade up. Super local WLNA in null. (KZ-NY)

1430 WENE NY Endicott, 11/2 0630 ID, fade up in SRS slop. Nx w/ local items. (KZ-NY)

WTTT MA Amherst, 10/12 1751 w/ local sports rpt sponsored by Baskin Robbins. In for several minutes during SSS. (KZ-NY)

WXKS MA Medford, 10/12 1750 MOYL in w/ WTTT during SSS. (KZ-NY)

1460 WBET MA Brockton, 10/12 1800 ID as "Brockton's nx authority, WBET", into Ai nx. (KZ-NY)

1470 CHOW ON Welland, 10/30 1818 xlnt sig for a few mins, then steady decrease, some QRM after clear time. (JH-PA)

1480 WAME NC Charlotte, 11/13 1708 w/ wx from nx, weak sig then fadeout. (JH-PA)

1490 WMRN OH Marian, 11/17 1803-1806 w/ local nx by f, wx by m and ID, fair w/WESB. (NjW-ON)

1510 WMRE MA Boston, 10/23 2223 continuous fading and WTOP QRM for some reason, rare here. (JH-PA)

1540 KXEL IA Waterloo, 11/6 0530-0630 C&W format, ID as "We're America's country, KXEL". An old favorite in w/ enormous sigs this a.m. Could be heard on dental fillings, hi! (KZ-NY)

1550 WYNX GA Smyrna, 11/23 1728-1730 faded in/out but strong sig, some rlgs mx, then anrc said WYNX was the class A radio stn of the year, "24 hr Family Radio" slogan, faded around 1732. (JH-PA)

WCCZ FL New Smyrna Beach, 11/15 1727-1730 C&W mx and 1730 s/off. Poor, weaker than WTAI on 1560. (NjW-ON)

WVAB VA Virginia Beach, 11/17 1649-1700. 1700 ID then s/off, good sig. (JH-PA)

CBE ON Windsor, very strong signal 0100. Noted s/off at 0109. (WW) (William, I assume these times are Eastern and not GMT as you stated in your report.--ed)

1560 WTAI FL Melbourne, 11/15 1709-1730 local nx and wx, jingle & Gulf Oil College Football rpt. C&W mx until s/off at 1730. Fair and alone. (NjW-ON)

1570 WTOW MD Towson, 10/12 1829 s/off, rlgs format. (KZ-NY)

WLDW MA Westfield, (tentative) 10/12 1730 ID as "Newsradio 1570" w/ CNN radio format. Is WLDW now CNN? (KZ-NY)

1570 WYTI VA Rocky Mount, 1714-1715 11/23 s/off at 1715, s/off hrd thru maze of other s/offers, 1715 or so must be the LSS here. (JH-PA)
 CFOR ON Orillia, 11/21 2027 w/ C&W mx, xlnt sig, no fade. (JH-PA)
 1580 WAMJ IN South Bend, 11/17 1730 ID & local anmts after song by Teddy Pendergrass, fair o/ CBE. (NjW-ON)
 KXRK IA Davenport, 11/14 1745 s/off immediately. WEYY was hrd signing off. Poor. (NjW-ON)
 WPGC MD Morningside, 11/14 1657-1700 s/off at 1700 telling listeners to turn to WPGC-FM 95.5. Xlnt reception. (JH-PA)
 WPMP MS Pascagoula, 11/21 1743-1748 mx by Hall & Oates, ID, spot for the "Wx Channel", poor-fair. (NjW-ON)
 WJIK NC Camp LeJeune, 11/17 1700 at s/off. Rlgs format, southern accents. Nice SSS. What is current power of this one? (KZ-NY) (As far as I know, is still 10000 watts, 5000 during critical hours.--ed)
 1600 WHVL NC Hendersonville, 11/14 0750 in null of local WWRL. AC w/ England Dan & Manilow, etc. Carolina Toyota ad. Had to really dig for this one. (KZ-NY)

Eastern DXers

KVJ - Karl V. Jeter, 2115 Scarbrough Rd., Stone Mountain, GA 30088
 JH - Jim Hall, 240 Byron Rd., Pittsburgh, PA 15237
 WPT - Bill Townshend, 4500 Connecticut Ave. NW, #901, Washington, DC 20008
 WW - William Wyllie, 95 Peck St., Franklin, MA 02038
 NjW - Niel Wolfish, 15 Donwoods Grove, Toronto, ON M4N 2X4
 KZ - Karl J. Zuk, 154 Old Post Rd. North, Croton, NY 10520

The \$ symbol indicates "special" items including station changes and catches of special interest. Welcome this week to new members Jim Hall and William Wyllie. I hope to hear from both of you often. William needs some help w/ the addresses for CKO-1470 and WLIM-1580. His reports to both were returned. The latest NRC log lists a "Woodside Ave." address for WLIM, the address for CKO is the one you had. Anyone else have a recent address for either of these? Please not the special deadlines for December.

Cabbage Patch fans search sky for dolls

Mercury News Wire Services

MILWAUKEE — Visions of Cabbage Patch dolls raining from the skies sent two dozen people scurrying to a stadium in near-freezing temperatures after two radio announcers jokingly said the scarce Christmas items would be dropped by a B-29 bomber.

Bob Reitman and Gene Mueller said on their WKTI-FM show Tuesday morning that buyers should head for Milwaukee County Stadium at 3 p.m., bringing catcher's mitts and holding their American Express cards up high so that someone in the World War II bomber could take aerial photographs of their account numbers.

The radio report said that because of high demand for the dolls, an unidentified person had decided to fly over Milwaukee and drop 1,500 to 2,000 dolls into the stadium lot. Believers came out in winds gusting to 37 miles an hour and a wind chill of 7 degrees below zero Tuesday afternoon, only to learn that the report had been a hoax.

Miller and Reitman continued the gag Wednesday morning with reports of a rented barge containing Cabbage Patch Kids stationed eight miles out in Lake Michigan with Popeye aboard. Those interested in getting the dolls were told to go to the lake with a can of spinach, swim out to the barge and exchange the spinach for a doll. To keep the doll from getting wet on the return trip, people were advised to bring along a Baggie.

"We made it more ridiculous this time," said Miller. There were no reports of shoppers swimming in Lake Michigan.

Many of those who showed up at the stadium Tuesday were reluctant to have their names revealed — perhaps to fear that someone might try to cut them the Brooklyn Bridge. Others said



United Press International

they had taken off work to participate in the air drop and they didn't want their bosses to find out.

Lee, 32, said he was trying to fulfill the Christmas wish of his 2-year-old daughter. He arrived at the stadium well after the announced 3 p.m. "drop-time," but seeing no dolls in the lot, he cast his eyes up to the gray, November sky to see whether, perhaps, the plane was late.

He didn't find a reporter was looking on.

"I'm here to investigate the reported parachuting of Cabbage Patch dolls," said Lee, who works near the stadium. "When I heard it on the radio, I thought, 'Far out.' I thought some rich guy wanted to give them away."

Asked whether he really thought the reports were true, Lee said: "Yeah. It's not that far-fetched. It could be possible that somebody could do it for a publicity stunt."

San Jose Mercury-News
via Robert Wien



P. O. BOX 6200
REGINA, SASKATCHEWAN

CENTRAL DX ROUNDUP

Robert Kramer
6416 N. Richmond
Chicago, IL 60645

UNIDED, SPECIAL, CHANGES, et. al.

- 570 KRQX TX DALLAS, 11/20 0109 fair thru WIND slop w/rck mx, "K-rocks" ID & KRQX ID. RK-IL
- 1140 WINT TN LOUDON, 11/21 0000-0030 tune out, ET good sig. w/Voice ID, R&R mx & C&W mx u/WRVA & Janner. TMJ-IL, 11/21 0004 poor u/WRVA & WJJD splatter w/ID & mx on DX Test. KDF-IL
- 1410 WJED TN SOMERVILLE, 11/21 1816 poor w/lcl spots & Fayette County wx. KDF-IL
- 1420 WHEZ WV KENOVA, 11/2 0600 fair u/WOC w/ID, Olympics programming promo, ABC nx, ex-WTCR. KDF-IL
- 1540 WZZX AL LINEVILLE, 11/11 1745 fair w/Quick s/off no SSB, C&W mx, ex-WANL. JA-WI (Jim, note that new calls are WZZX, not WCXC, ed.)
- All da Rest:
- 730 KURL MT BILLINGS, 11/14 1815 w/lcl spot, MST TC, ID. NZ-NE NZ-NE
- KKDA TX GRAND PRAIRIE, 11/15 1758 w/soul mx, AP Black Net. nx, ID, more soul mx.//
- 760 KMTL AR SHERWOOD, 11/45-1800 w/Gospel mx, Sounds of the Times pgm, s/off, nice signal 11/14. NZ-NE
- 860 KVVA AZ PHOENIX, 11/7 0226 clear w/Mexican mx, R. Viva IDs, SS tlk & PSAs, hrd several times since. KDF-IL
- 950 WISQ AL MONTGOMERY, 11/7 1900 w/rck mx, ID "WISQ Rock 95". NZ-NE
- 980 KSGM IL CHESTER, 11/20 1758 good w/end of Mutual net. pgm, wx & ID, Mutual nx 1800, rare here. KDF-IL
- 990 KFSL KS RUSSELL, 11/14 1815 poor in mess KNIN/WNOX/KRKS w/s/off ment. AM-PM. JA-WI
- WABO MS WAYNESBORO, 11/14 1802 poor w/s/off ment. lkw, no SSB right after KWAM s/off. JA-WI
- 1010 WPYK AL DORA, 11/8 1745 fair w/s/off, pop adult mx. JA-WI
- 1040 KPBC TX DALLAS, 11/24 1830 good o/nulled WHO w/s/off, no SSB. RK-IL
- 1050 WJSB FL CRESTVIEW, xlnst @ s/off 1745 11/15 ment. 104.9 FM, all alone. TMJ-IL
- KGTO OK TUISA, 11/24 1814 good w/s/off no SSB. Ignore my logging of this stn 15 min. earlier in last week's CDXR. Don't know what I hrd, but it wasn't KGTO. RK-IL
- 1060 KRSP UT SALT LAKE CITY, 11/14 1917 poor w/ID & TC "KRSP it's 5:17", T40 mx. JA-WI
- 1090 CHEC AB LETHBRIDGE, 11/7 0220 fair-good w/pop mx, sports, "Chec" IDs. KDF-IL
- 1100 WBBB CA CARROLLTON, 1745 11/17 s/off all alone & weak, no SSB. TMJ-IL
- 1110 WBCA AL BAY MINETTE, very weak w/unided SS @ s/off 1800 11/15. TMJ-IL
- TX ALVIN, 1818 11/15 C&W mx until s/off 1830 w/"Heart of Texas. TMJ-IL
- 1140 KATT OK OKLAHOMA CITY, 11/14 1830 fair o/WRVA w/s/off no SSB. T40 mx. JA-WI
- 1190 WXGR MS BAY ST. LOUIS, 1800 11/17 Christian Radio s/off w/address & SSB. TMJ-IL
- CJMR ON MISSISSAGUA, 11/7 1635 fair u/WOVO w/lcl nx, ment. Mississauga beauty contest. JA-WI
- 1250 WRAY IN PRINCETON, 11/14 1720 fair-good in WEMP null w/ID & sports. JA-WI
- 1260 WWIS WI BLACK RIVER FALLS, 11/25 1744 $\frac{1}{2}$ good w/s/off no SSB. RK-IL
- 1310 WAZZ GA WEST POINT, 11/15 0559 poor u/WBRO, s/on during aurora. KDF-IL
- 1360 MBBT AL MADISON, 11/13 1731 fair o/WGEE w/ID & stn promo. JA-WI
- 1380 WRAB AL ARAB, 11/13 1745 fair w/s/off ment. lkw, no SSB. JA-WI
- KOTA SD RAPID CITY, 11/8 1815 poor briefly w/KOTA Sports promo. JA-WI
- 1400 KADR IA ELKADER, 11/7 0245-55 good signal w/C&W mx, ID in partial s/off. I believe they were Etling on day power. NZ-NE
- KAOK LA LAKE CHARLES, surfaced briefly o/mess w/ID @ 1825 11/15. TMJ-IL
- 1410 KBUD TX ATHENS, 11/13 1830 poor w/s/Off & SSB, C&W mx, slop from WRJN. JA-WI
- 1420 KBTN MO NEOSHO, 11/10 1750 fair o/KPOC w/ID & many lcl spots, pop adult mx. JA-WI
- 1440 WRRO OH WARREN, 11/8 1858 noted w/lcl ad, ID, ABC nx. KDF-IL
- 1450 KWFM MO WEST PLAINS, 11/7 0220 w/C&W mx, promo: "ABC Directions News on full service radio for the Ozarks, KWFM West Plains". NZ-NE
- 1480 WCNS PA LATROBE, 11/10 0559 poor s/on, ment of 500w power, so CP isn't on yet. KDF
- 1500 KCLF LA NEW ROADS, 1816 11/18 s/off weak w/complete address u/strong KANI. TMJ-IL
- KANI TX WHARTON, 1755 11/18 xlnst Texas State Net. Sports, lcl spots. TMJ-IL
- 1540 WRSM AL SUMITON, 11/11 1746 poor w/s/off, no SSB right after WZZX s/off. JA-WI
- 1580 WENO FL CHATTahooCHE, 11/17 fair w/s/off using song "May God Be With You". JA-WI
- 1600 WKWF FL KEY WEST, weak w/WBUP or WXVI 1845 11/15 w/brief ment. of wx. TMJ-IL

The Freaks Are Out:

- 1340 KPOK ND BOWMAN, 11/21 0200-0207 poor-fair on R/C per updatr w/TT & ID. Only my 5th MST GYer. RK-IL

The Boys:

JA.... Jim Albrecht 3313 N. Weil St. Milwaukee, WI 53212
(RF-2200, ICF-SSW, Kowalski Loop, shotgun, wedding licenses) Continued on Page 15
KDF... Karl Forth 2714 N. LeClaire Chicago, IL 60639
(HR-160, RF-2900, spiral loop)

WESTERN DX ROUNDUP

Nancy Hardy
2301 Pacific Avenue
Aberdeen, WA 98520

All times are
Eastern Local

Phone for hot WDXR tips: (206)532-6827 till 10pm(PT)

DEADLINES: Mon. 12/12, Mon. 12/19, Tues. 12/27, Tues. 1/3, Tues. 1/10

REPORTERS FOR THIS ISSUE:

- (JH) Jim Hilliker-1502 E. Hedgewood Ave.-Anaheim, CA 92805
Kenwood R-1000, Radio West loop
(DKK) Don Kaskey-465 Burnett #1-San Francisco, CA 94131
Hammarlund 140X, SM-2
(DK) Dennis Kibbe-1422 W. 5th St.-Tempe, AZ 85281
(DK-AZ1) DX'ing at Christopher Creek, AZ
(DK-AZ2) DX'ing at Fool's Hollow Lake, AZ
Sony S5W w/30' antenna
(DP) Doug Pifer-480 W. McPadden #85-Santa Ana, CA 92704
FRG-7000, MW-1
(RW) Robert Wien-1309 Dentwood Dr.-San Jose, CA 95118
GE Superadio, GE long-range portable, SM-2

OF SPECIAL INTEREST:

- 1560 KLLV CO, Breen (Hesperus) per call to Colorado directory assis.,
KLLV has a listing at (303)295-5558. Called, but there was no
answer, so may be getting ready to hit air any day now. Hasn't
hit air yet, I believe. (RW-CA)

540 CBK SK, Watrous 11/6 0800 announced new tower at Watrous for
better signal. Good clear signal away from usual KOY-550
slop. (DK-AZ1)
560 KBLU AZ, Yuma 11/19 2242 poor w/KSFO QRM & KLAC-570 splatter. Pop
mx, ID, TC "20 before 9 in Arizona." Gone later, w/only KLZ &
KSFO. New. (JH-CA)
KSFO CA, San Francisco 11/16 0446 w/TT. (RW-CA)
590 KID ID, Idaho Falls 11/24 2312-2315 nicely atop w/wx, ID & into
light rock. (DKK-CA)
700 KFAM UT, Bountiful 11/23 w/powerful sig 1901 w/UPI World News. 1st
day on 50kw days. On w/lkw nites now, battles about even w/WLW,
slight advantage to KFAM. EZL format. (DKK-CA)
710 WHB MO, Kansas City 11/21 0500 nicely o/KNUS w/KMPC/KIRO off. ID
into NBC nx. Interesting to hear this newie night after showing
of "The Day After"! (RW-CA)
740 KRMG OK, Tulsa 11/20 0800 must've gone to day power, fair through
KCBS OC. ID "AM 740, K-R-M-G, Tulsa." Short wx & TC of 7am,
into ABC nx. New. (JH-CA)
750 KERR MT, Polson 11/19 2230 fair, 1st fighting w/KXL, then I
managed to get a null on KXL where KERR faded up by itself
for awhile. Sounds good for 1kw, out of C&W w/good ID "Jerry
Reed on 7-50 'Mountain Country' 8:30 in the mountain west."
Into local spot, promo "moved to Mountain Country...listen
for your chance to win on 7-50, K-E-R-R." Into wx for the
area, into C&W mx again. Much better than when first logged.
(JH-CA)
+11/23 atop 1855 w/time & ads, still on day power. (DKK-CA)
790 KBRV ID, Soda Springs 11/22 atop w/ads, ID 1856, time, local
events, time & ID again 1857. Preparing to s/off 1900. (DKK)
810 (KGO) CA, San Francisco 11/19 0438 totally off on rare SP, even
rarer weekday SP! (RW-CA)
CHQR AB, Calgary 11/19 0440 very strong w/ID, into song "Venus,"
HJCY strong in null. (RW-CA)
840 WHAS KY, Louisville 11/7 2200 call-in straw vote for governor's
race. (DK-AZ2)
880 KJJR MT, Whitefish 11/23 rock o/u KRVN 0430-0530. Solid atop at
0500 w/ID & nx. Best ever hrd on 500w nite power. On day power
of 10kw 11/23 1844-1900 atop w/C&W mx this time. (DKK-CA)
910 KOXR CA, Oxnard 11/22 1259 w/KMJC nulled, end of Sav-On Drug Store
spot in SS, into legal ID in EE & SS. Fair. New. (JH-CA)
KALL UT, Salt Lake City 11/20 0245 good w/ID K-A-L-L followed by
"Stormy" by the Classics 4. (DP-CA)
930 KFLG AZ, Flagstaff atop 11/23 1900-1915 s/off, C&W mx & K-Flag
IDs. Remained on top entire 15 minutes. (DKK-CA)
KAPR AZ, Douglas again hrd concluding day just after KFLG s/off
11/23 at 1915. (DKK-CA)

980 KFWJ AZ, Lake Havasu City 11/22 0840 hrd a little better w/null on KFWB. Pop mx, ment Turkey Contest, sound of turkey gobbler to caller #5 "call 855-K-F-W-J." Into mx. Fair, lost as KFWB got stronger & harder to null. (JH-CA)
 (KFWB) CA, Los Angeles 11/21 0300-0800 off all morning w/occ. periods of TT & OC. Many, many IDs mentioning "annual test." Looking for KMBZ, but not hrd. (RW-CA)

KVLV NV, Fallon 11/24 w/Voice of Prophecy 1915-1930. ID as "Voice of the Lahontan Valley, KVLV" at 1930, into C&W mx. (DKK-CA)

990 KTKT AZ, Tucson KKIS having trouble this week & off a lot. KTKT in 11/23 0400-0640 atop several weaker stns. Had rock mx. Also noted in KKIS absence w/good ID 11/25 0300. (DKK-CA)

KNIN TX, Wichita Falls 11/23 w/ID 0410 in KKIS absence. Local spot for W. Falls 0412. Didn't note mx, just talk here & there. Heavy KTKT QRM. (DKK-CA)

CEW MB, Winnipeg 11/23 atop KKIS who returned w/lower power at 0540. CEW w/morning edition nx, easily 0602-0606. (DKK-CA)

1010 KCHJ CA, Delano 11/19 2129-2130 fair w/MOR mx, ad for business in Porterville, then old-fashioned sounding ID "This is K-C-H-J, 10-10 kilocycles, with transmitter near Delano." Ment number of counties & population served, back into mx. (JH-CA)

1080 KRPX UT, Price 11/24 1855-1915 s/off. Mostly atop KSCO et al. Female anncr w/regional nx 1900-1906. Local ads at 1904. S/off 1915 way atop. (DKK-CA)

1190 KNWZ CA, Anaheim 11/23 0130-0600 in KEX null. Also a SS & a rocker in the null. KNWZ w/nx, including CNN nx. Few IDs. (DKK-CA)

1200 WOAI TX, San Antonio 11/6 0818 Monday Morning Report & ad for Wizard ATM. (DK-A21)

WOAI 11/21 0235 w/OC. (RW-CA)

WSLM IN, Salem 11/21 0715 fading up nicely w/ID, then lost u/XEB in CJOJ null, this is turning into a SRS pest! (RW-CA)

1230 KPRD CA, Barstow 11/24 0224-0228 popping up w/ad for merchants "in Barstow" several times, soon back in pack. (DKK-CA)

KPAK CA, Redding atop 11/24 w/UPI nx 0200-0205, then local wx & temps. Ads noted 0208 then lost in QRM. Back at 0227 w/ID and C&W mx. Wx again at 0230. (DKK-CA)

KLAV NV, Las Vegas 11/19 1158 ID & mx by Frankie Valli. (DP-CA)

1240 KJOP CA, Lemoore up for local ads & K-Jop ID in EE 0330 11/24 then back to Mexican mx. (DKK-CA)

1250 KKFX WA, Seattle 11/20 0230 good w/K-Fox ID. I presume this used to be KYAC? (DP-CA) (Right, ex-KYAC.--NH)

1270 KBLC CA, Lakeport 11/20 2000 poor to fair, man ment they have to go off air, good ID "K-B-L-C on 1270kHz, will return tomorrow at 6am," gave owner, etc, ment tune to FM's in Santa Rosa & Ft. Bragg, and KQTE in Santa Rosa. "Good evening from KBLC, Lakeport." Off, no SSB. New. (JH-CA)

KGUY CA, Palm Desert 11/20 1945-1950 noted w/nx of wind problems in Palm Springs, Indio area. Update on wx situation, gave ID, complete s/off (power, etc) at 1950 w/SSB. Fair, w/QRM from co-channel SS stn. (JH-CA)

1280 KVOV NV, Henderson-Las Vegas 11/24 w/ID "KVOV your direct connection for southern Nevada" at 1932 then on w/BFL mx. (DKK-CA)

KDYL UT, Salt Lake City 11/23 w/local nx & anncs 1922 & good K-D-Y-L ID. Also 11/24 1917-1925 w/tele-talk show nicely atop. (DKK-CA)

1320 *KGNR* CA, Sacramento 11/21 0322 w/TT. (RW-CA)

1360 KRKK WY, Rock Springs 11/20 0900 good by itself w/legal ID, into C&W mx, later local ad, no ID then, fading w/KLFF/KPQP QRM. Gone by 0908. New. (JH-CA)

1410 KCAL CA, Redlands 11/24 thru KRE-1400 slop w/Mexican format at 1941. (DKK-CA)

1420 KSES CA, Yucca Valley 11/23 s/off 1945 very difficult thru loud KSTN. 11/24 in/out w/KSTN/XEXX 1930-1945. Several ads noted for Yucca Valley & ID at s/off in clear. (DKK-CA)

1470 KOLI CA, Coalinga 11/23 w/C&W mx 1950-2000 in/out w/XERCN et al. S/off buried but phoned stn & they confirmed I had 'em. (DKK)

1480 KRED CA, Eureka 11/20 0000 fair w/hick voice spelling out KRED. (DP-CA)

KYOS CA, Merced 11/20 0300 fair, quick & clean ID, between talking from KWIZ. (DP-CA)

DX test:

1140 KLNT KY, Loudon 11/21 0000-0100 tried but not hrd. (RW-CA)

November f/c's tent. heard:
3rd MM 0230-0240 KSIL-1340 NM (RW-CA)

November f/c's heard:
3rd We 0230-0245 KKIT-1340 NM (RW-CA)
3rd Sa 0200-0205 KGAK-1330 NM (RW-CA)

UNIDS:

- 820 11/19 0452 rr faded up in WEAP null w/KGO off, wiped out by KGO-810 TT. KCBF? No other AK's in at time, JOBB-828 potent, tho. (RW-CA)
- 910 10/20 0228 two unIDS. One w/ment of Super Saturday featured artist, but ID sure sounded like KFWL, but I realize it could be K-A-double L. (DP-CA)
- 910 10/20 0235 fair w/Country Gold K-J-A-F?? w/XEAO behind. Talk also w/solid gold country. (DP-CA)
- 1210 11/19 2122 w/"Top 30--USA." KREW? Probably not KCLG or KGYN. Didn't wait for ID, I've logged KREW before. (JH-CA)
- 1220 11/21 0658 unID in the rumble w/OM giving agricultural farm rpt, kept talking about "Georgia." Neither of the GA 1220's are on the GA Farm Network, per IRCA Almanac. Lost to WSLM later on. (RW-CA)
- 1610 11/7 2045 KSTG?? North Minnesota hockey network. (DK-AZ2) (How about KSTP-1500, on the Minnesota North Stars network?--NH)

Since there have been quite a few new reporters to WDXR perhaps I should give some guidelines for reporting. WDXR-land includes the Mountain & Pacific time zones, plus Alaska & Hawaii. List your tips like they appear in the column using one side of the paper, and Eastern time! A couple of weeks back two reports were in Pacific time, and another written on both sides of the page. It took about an extra hour of editing time, so please watch it. If you have to use Pacific time tell me! Finally, if you have any questions about reporting to WDXR, just send me a note and I'll help you. Because of the length of the past few WDXRs I've decided to drop the "f/c's not heard." If a f/c is heard it's of much more value to other members, than one not heard (you may just live too far away to hear it!). What are your feelings? If you want to see them appear again let me know. ♡

~ ~ ~ ~ ~

CDXR Contributors....continued

- TMJ... Tom Jasinski 503 Jensen Shorewood, IL 60436 (FRG-7, 2 1/2' loop)
- RK.... Me, myself & Mike Hogan (R-1000, Hq-140X, Hq-129X, Radio West Loop, Kowalski Loop, spiral loop)
- NZ.... Neil Zank 623 Lyncrest Dr. Lincoln, NE 68510 (Hq-180A, RF-2600)

Hopefully this week's column will be readable. I tried to buy a new typewriter ribbon cartridge, but the store was out. Hopefully, I can get one by next week.

CADX XIV

The time of this year's annual holiday get together is getting near. This is the 14th one, dating back to 1970. It always is a major event, attracting DXers from all over the midwest. Already, there are 2 out of town confirmations & 2 more tentative. Why not plan on joining the. The dates are Dec. 29- Jan. 2 at 6416 N. Richmond in Chicago, IL. For more info, call 312-262-6299. There are plenty of good times planned, including a MM AN session on Jan. 2, plus the silent film festival beginning at 12:05 AM CST on 1/1/84. So plan to be there.

I support Dalby's Rotary Rodeo & Campdraft



DX WORLDWIDE EAST

Editor: Neil Kazaross
 somewhere in Ogunquit, Maine

PAN AMERICAN DX ROUNDUP

Mostly last week's LA's with a few from this week.

- 760 BRAZIL Fortaleza ZYH588 gd atop growl w/PP soccer coverage //810
 2149 11/27. Mixed w/YVQQ by 2202 & generally buried underneath
 them later. WJR which had been weak & alone around 2100 was not
 much trouble here again 'til about 2300. Interesting cx. (Kaz-ME)
- 810 BRAZIL Fortaleza ZYH588 I caught the usual "electronic" sounds
 from soccer net well u/WGY/domestics at 2131 11/27. In better by
 2147 = w/WGY/domestics & v.gd o/WGY on peaks w/soccer // 760
 2205 11/27. Seems to be common here & has no serious LA QRM until
 later when Sutatenza fades in, but sometimes can override them, too,
 as HJCY is not a killer sig. here usually (Kaz-ME)
- 685 MONTSERRAT Plymouth ZJB comes in nicely on new 450' LW at approx.
 1430. v.gd 11/13 at 2305 w/accented EE M w/nx. & actually xlt at
 2308 on LW while only fr-gd on loop. (Kaz-ME)
- 900 BARBADOS Bridgetown CBC 0310 10/8 BBC world nx, CBC World Headlines
 read by W ancr, Islands wx, gd. (Herkimer-NY*) + Comes in like a ton
 of bricks on LW-xlt 2247 11/13 w/cricket scores+ truly local-like
 w/accented EE W giving #'s for Zingo game 2304 11/18. (Kaz-ME)
- 910 UNID 0427-0433 10/21 OM & YL talking together in SS, no ID's hrd
 pr in CKLY null, HJDO in Medellin?? (Wolfish-ON) I dunno, YVRQ is
 very strong & miles above any other LA on this chan. here-- but
 your considerably more westerly QTH could be quite different.
 M&W together are often hrd on Cuban stn's (that off course shouldn't
 be taken as significant, here) but the Cuban is another poss-ed.
- 910 VENEZUELA Maiquetia YVRQ 0132 10/25 LA mx, ID, gd. (Hakiel-NY)
- 914 SURINAM Paramaribo RANI bombs in (!) occ. on LW. v.gd to xlt
 w/lively mx in strange lang. 2312 11/13+ xlt later at 2335 w/mx
 in Hindi or similar lang. + v.gd w/EE T40 hit 0026 11/15 (Kaz-ME)
- 915 ECUADOR Machala HRCO-3 (Calls changed to HRCO-3-ed) 0257 10/8
 swingly LA mx, ID gd. (Hakiel-NY) + v.gd & best ever w/ads ment
 "en Machala" into LA ballad 0404 11/11. (Kaz-ME)
- 940 MEXICO Mexico City XEQ 0102-0110 10/21 w/LA mx, spots, & ID fr
 w/Cuban (Wolfish-ON) Actually my first Mexican logging here w/Mexican
 mx & two "XEQ Radio" SIFS 0047-0054 xlt peaks & almost completely
 atop w/CBM phased. (Kaz-ME) 11/21.
- 900 MEXICO Mexico City XEW in w/ID ment" la grande... transmite de la
 capital de Mexico 0055 11/21 fr-gd w/others. (Kaz-ME)
- 940 CUBA 0103 10/21 R.Reloj, M in SS w/ID's & time pips, fr w/XEQ
 (Wolfish-ON)
- 944 t HONDURAS Tegucigalpa HRYW -instr mx, lady ancr in SS 10/29 0233
 (Stutterheim-NY)
- 950 DOMINICAN REPUBLIC Santo Domingo HIG -local-like sig(!) w/two
 R.Popular ID's 0010 11/19 far atop the YV which is usually dominant
 Latin here (Kaz-ME)
- 960 t BERMUDA Hamilton ZEM presumed w/EE W w/slight accent on 1430 LW w/
 GMT-4 TC fr-gd o/SS LA in AU cx 2325 11/13 + 2301 11/18 in semi-AU
 cx w/Sutatenza briefly w/EE (accented) w/supermarket ad (Kaz-ME)
- 960 CUBA Relej synchron in thru mess w/"RR" in morse code beeps
 0004 11/14. Common in RI, but not here. (Kaz-ME)
- 980 BRAZIL Brasilia ZYH707 far atop w/PP M&W and peaking xlt in mx.
 2315-2316 11/18. (Kaz-ME)
- 983 t HAITI 4VCPS pres. w/Creole sounding ancr & lively mx p-fr peak 2333
 11/15. Thnx to Hakiel for telling me they seem to be here now. (Kaz)
- 990 GRENADA Mourn Rouge "R.Free Grenada" M w/political talk, ID, xlt
 (Hakiel-NY) Has been noted on only some nights since US liberation
 mission-ed.
- 1000 BRAZIL Sao Paulo ZYX522 0119 11/14 nice R.Record SID by W into mx
 briefly o/Mundial Mil. v.gd clearly atop later @ 0132 + 2317 11/18
 v.gd -xlt peak w/PP M&W but soon buried by Mundial Mil (Kaz-ME)
- 1030 HAITI Cap Haitein 4VEC 2231 10/24 rlg play, EE preaching, ID given
 way o/WBZ, xlt. (Hakiel-NY) + (tent) presumed way u/phase null
 of WBZ's superlocal signal w/EE Rlg pgm 2321 11/18 (Kaz-ME)
- 1090 UNID 11/4 0159-0204 very weak u/KAAY w/M ancr, tropical sounding
 ballads, no ID hrd before sunk u/weight of KAAY (Gerardi-IL)
- 1095 UNID Ecuador (?) weak het loop south 0305 10/28 (Stutterheim)
- 1100 COLOMBIA one of the Relej stns here w/BB game in SS 2325 w/repeated
 ments of Colombia (Stutterheim-NY)

- 1100 UNID 11/4 0226-230 very weak occ. rising from het w/Ranchera type tunes, though no more than a few sec at a time. (Gerardi-IL)
- 1100 BRAZIL Sao Paulo ZYK694 pr well u/Antigua w/FF soccer // 1220 2211 11/20. (Kaz-ME)
- 1127 UNID het hrd several AM's, loops LA. 10/15 1003 (Stutterheim-NY)
- 1135 GUATEMALA Retalhuleu LV de Costa Sur was on 1130 but now back on off-freq s/on 1000. Strong mornings. (0400 s/off ?) (Moore-Hond)
- 1180 ANTIGUA assumed (this VOA is in Marathon Key, FL-ed) w/Yankee Doodle @ 0300 11/6; obliterated by other domestics. (Stutterheim-NY)
- 1200 VENEZUELA Caracas YVOZ 2349 10/17 lively LA mx "R.Tiempo" ID, gd (Hak)
- 1200 t BRAZIL Fortaleza ZYH585 pres. the one w/what sure sd/lk PF in severe QRN pr w/M ancr 2110 and faded into slop/QRN. 11/19. YVOZ totally in control by 2200 after fade in. + 11/20 in clear pr-fr peaks before YVOZ fade in 2125 w/light dimmer phased. Somebody(YVOZ?) took over 2130 as this faded. PF came back mixed w/YVOZ (IDed later) @ 2140 briefly before YVOZ took over for good as usual (Kaz-ME)
- 1211 t EL SALVADOR Zacatecolura pres. to be the YS stn here. Reception quite poor. hrd early eve (0100 approx.) (Moore-Hond)
- 1220 BRAZIL Rio de Janeiro ZYJ458 2245 10/8 PF talk // 6035, R.Globo ID gd. (Hakiel-NY) + blasting in w/Globo ID, PF mx, promo xlnt. and far above anything else. 220' 11/20. Light dimmer (shut off later) phased out. (Kaz-ME)
- 1270 COLOMBIA(?) 0638 tropical mx GMT-5 TC's ID's as R.El Sol. 10/28 (Moore-Hond)
- 1370 HONDURAS R.Constelacion now noted here, ex 1385, (assigned to 1340 tho.) R.Danli 1372 is only 50 miles away- teh het must be horrible there. (Moore-Hond)
- 1411 UNID strong het against 1410-10/16 0105. (MS-NY) D.R still here?-ed
- 1418 GUATEMALA Flores R.Feten noted strong mornings & eves, beleive 1200-0400 (Moore-Hond)
- 1500 UNID LA w/lively mx noted beating up WTOP early eves in AU cx. R.???? ID. "Cnda Musical" 2400 11/18. Noted a few other dates/times. Connelly tells me he hrd a Cuban here from Oriente province last weekend on Cape Cod w/ lively mx here. (Kaz-ME) Is this them??
- 1502 HONDURAS R.Victoria HRTX Choluteca new stn noted mornings & eves, also uses LV de la Verdad, occ. (Moore-Hond)
- 1520 COLOMBIA 0317 10/21 Barranquilla HJLQ ss tx & LA mx, ID's as "R.Minuto" fr in WKBW null. (Wolfish-ON)
- 1520 VENEZUELA La Guapa YVIC w/other LA's u/WKEW w/YV NA at 0407 s/off 11/19. (Kaz-ME)
- 1540 BAHAMAS Nassau ZNS-1 noted u/WPTR w/"Of the Bahamas" ment 0014 11/19. (Kaz-ME) + 0332 10/21 female version of "Hey Jude" ID & promo for upcoming parade fr-pr w/KXEL/WPTR, ZNS-3 also hrd. (Wolfish-ON) + 0134 10/20 rlg pgm w/preacher, xlnt (Hakiel-NY)
- 1550 COLOMBIA 0306 10/21 Barranquilla HJCB RCN nx, 0312 ID as "R.Exito, HJCB" gd o/CBE. (Wolfish-ON) (Wolfish)
- 1555 CAYMAN IS. 0305-0312 Grand Cayman, W w/nx about the Carib., fr-gd //
- 1564 CUBA(?) UNID SS stn ment "Cubano" 0503 10/28, pr (Moore-Hond)
- 1574 UNID 0929-1000 occ. snippets of audio. man in deep voice, loops LA (Stutterheim-NY) 10/16.
- 1610 ANGIULLA Caribbean Beacon 0913 10/16 on at this hour w/rlg. pgm in EE (Stutterheim-NY) + 021 10/26 gd w/M decrying anything but the King James version of the Bible. (First time noted this well since last March) (Garardi-IL)

TRANS ATLANTIC DX ROUNDUP

- 702 T MORROCCO Sebaa-Aioun presumed w/powerful but somewhat undermod. sig. beating uo 700 w/mid-east type(not really AA) instr mx & singing (like hrd here before at this time) 2218 11/27(Kaz-ME)
- 720 nr In reference to my 9/14 unID w/tropical mx, bird chirps, etc. Both Don Moore & Dr. Richard Wood have informed me that the Canary Is. have no natives-they are extinct. Canary Is. is as SS as Spain. The Canary stn was recently reported on 716 but hasn't been hrd here even when cx have been xlnt to that area. (Kaz-ME)
- 765 nr SENEGAL per info from Dr. Richard Wood they use very little AA (only for brief Koran reading) instead they're in Vernaculars which we mistake for AA... Also uses FF off course.. to me some of the 'VV's sd/lk AA & some def. sound like Afro tribal langs.-ed
- 836 UNID SD/LK PF but not at all sure do to garbled audio hrd only due to notch on strong Canaries -837. Briefly for about 8 sec. 2234 11/27. Ths loops along the same bearing(+or - 10') as Canaries & I'll bet it's Azores. Help requested-European Dxers ! (Kaz-ME)
- 837 CANARY ISLANDS Las Palmas gd w/836 het notched 2232 11/27. Rock mx then R.Popular, Las Palmas ID by W then SS ballad (Kaz-ME)
- 846 ITALY Rome pr thru some WHDH slop w/W singing in II 0058 11/30(K)
- 873 UNID 0104 11/30 w/AA-mideastern type chanting into chants w/mx & suddenly buried by Spain.fair sig.(Kaz-ME)

- 882 CANARY ISLANDS (no where else but-hi) Tenerife v.gd -xlnt w/2 R.Popular ID's after pop mx,ment"su emisora favorita" best on 143° LW. No sign of BEC in ages here w/continuing poor high-lat TA cx (Kaz-ME) 2229 11/27
- 909 t ENGLAND synchros presumed in during brief attempt at better high-latitude TA cx 0055 11/30 with usual FZL muzak format(Kaz-ME)
- 918 t SPAIN Madrid likely w/SS talk looping 70/250° not 208° for Managua which is also here. Lots of lower band Spainiards in.(Kaz-ME) Time was 2253-2256 11/29.
- 945 FRANCE Toulouse gd & best on loop w/R.France International ID in SS after SS pgm then NA at 2300 s/off 11/27. Was QRMed by a stn w/mx briefly at 2252 maybe Nigeria again as Afro's were gd,too(Kaz)
- 1566 AZORES Santa Maria starting to afde in w/readable audio at 2045 11/27 & v-gd -xlnt peak w/FP M, then PP mx at 2054(Kaz-ME)
- 1554 GABON Libreville has been showing up often at or before sunset-pr. & just audible 2056 11/27.(Kaz-ME) and a few more out of order that I forgot -ed
- 1205.2 UNID loops Africa-carrier here 2120 11/20 & audio bits later at 2152. Nasty light dimmer QRM at times.This the same stn hrd 11/19 w/a brief bit of acc.EE nx. NOT CAYMAN they came in at 2215 on 1205.0. Help requested European of African DXers (Kaz-ME)
- 1224 SENEGAL Ziguinchor pr w/Afro mx noted in passing w/dimmer phased 2159 11/20. (Kaz-ME)
- 1215 CANARY ISLANDS Las Palmas-another one noted--fast SS talk,pr 0019 11/21 loop 90°. (Kaz-ME)

CONTRIBUTORS FOR THIS & LAST ISSUE

- Matt Stutterheim PO Box 2576 Montauk, NY -many great rx's & LW's, loops. George Hakiel 739 Van Buren Ave. W. Islip, NY 11795-R7A, IC-R70, verticals, loops phasing unit, etc.
- Jim Herkimer 3255 S. Drive, Caledonia, NY 14423-R390A, NRC 4' Altaz' loop. Herkimer* Wellsley Is, NY in St. Lawrence River-FRG-7 & 120' terminated LA @ 160°.
- Rob Gerardi 1421 N. Franklin Apt 7, Benton, IL 62812-1941 Motorola R-43 w/ 650' barbed wire fence antenna.
- Niel Wolfish 15 Donwoods Grove, Toronto, ON M4N 2X4-FRG-7 SM-2
- Paul Choroszy 66 Clark St., Saco ME 04072-FRG-7000 & 30' LW
- Choroszy* Camp Ellis Beach, Saco, ME w/GS Superadio
- Neil Kazaross Cgunquit, ME-IC-R70, NRC Altaz, Sanserino Loop, 450' LW @ 143°, 2 LW's at 75° approx 175', phasing units, amp, Connelly APT-2

VERIFICATIONS (from Don Moore)

- COSTA RICA R.Victoria 1150 full data ppc 12d for m/s, v/s illegible
- COLOMBIA LV de las Americas 1230, long friendly v/l (full data) in 35d am for no r/p. v/s Carlos Mario Nicholls P., Garente
- HONDURAS R.Cultural 1450- friendly handwritten letter on stn head 44d for SASE. Kept ppc. v/s Jorge Alberto Deras, garente
- Guatemala R, Atlantida 1230 full data ppc in 72d for m/s, v/s illegible.
- Don Moore Santa Barbara, SB, Honduras-FRG7 w/2.9 kHz mech filter, MW-1

With semi-AU cx again, some more Brazilians were in tonite 11/30 around 2300 after my return home from work. Nothing like 10/21 however. Surinam 725 is still off & no trace of 914 this week either. Also there has been no 640 Surinam as used to be noted w/Guadeloupe/YVQO. Flash tip!! Ernie Cooper tells me he's hrd R.Antilles 1450 twice recently from St. Vincent in AU cx. There were in EE not FF as listed in WRTH. He also noted a GG newcast. I've been trying for them this season in AU cx but have been listening for FF and have not hrd them. Hopefully, the 450' LW will be extended to a Beverage this weekend (if I can get across the river)

73's from the place where Brazilians & Canary Is. blast in.

- KAZ -



BOX 1170 - JAMESTOWN, N.D. DAK.
58401

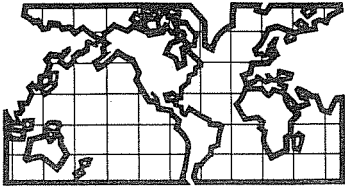


SEATTLE, WASH. 98133

A DIVISION OF KINGS GARDEN, INC.

WOIC RADIO

P. O. BOX 565
COLUMBIA, S. C. 29202



DX WORLDWIDE - WEST

Pat Martin - Editor

P.O. Box 843, Seaside, Oregon 97138

(503) 861-3185 - deadline Tuesday

Several people came through this week with the ID of that UNID Colombian on 895 KHZ. It is indeed Radio Galeon, ex 1450 KHZ. I managed to get an ID last week, and thought it was that, and several others have also reported the same.

PAN-AMERICAN DX ROUNDUP

- 715 UNID, heard 11/13 at 0913 w/SS mx, under heavy KDWN splatter (GK-Ca)
834 BELIZE, Radio Belize-heard 11/17 at 1101, beautiful signal at s/on with NA, full details, ment. 910 and 930 outlets, into rel pgm, quite rare here, for some unknown reason, Bad het on WHAS-840 (RW-Ca)
895 COLOMBIA, Radio Galeon, Santa Marta, ex 1450, 24 hours, Station has been reported by Chuck Hutton as Radio Galeon, ID was definitely hrd by myself and Steve Reinstein-DX South Florida. (Jim Herkimer-NY) (Thx for the info on this Jim.PM)
*Also mucho thx to Robert Wein for solving my Radio Colion mystery, he dug up 6 mo of back issues of DXM and came up with the solution. In 5/28/83 DXWW-E a new station listed, ex. 1450 as listed above, stn uses 890 ments. (SMM-Ca)
*Also heard tent. with "Radio Galeon ID, bad het on WLS-890, lost by 0256 on 11/18, pretty sure ID hrd. (RW-Ca)
*UNID, strikes again 11/13 at 0918 w/SS mx w/SS anc. Mex. sounding mx, good mod, low level on anmts. Again on 11/14, 0322, Caribbean type mx, much carrier as WLS, but weaker mod. (GK-Ca) (Glen: You might be hearing the Colombian also.PM)

TRANS-PACIFIC DX ROUNDUP

- 531 t JAPAN, Morioka-JOQG possibly the one hrd 11/4, 1210 in Asian tlk, weak. (GK-Ca)
550 HAWAII, Wailuku-KMVI, 11/4-0837 exc. w/rr mx, ID by YL DJ (EH-Wa)
567 t JAPAN, Sapporo-JOIK good sigs in JJ 11/4 1207. (GK-Ca)
590 HAWAII, Honolulu-KSSK, 11/4 at 0813 fair o/KHQ w/K 59 IDs, rr mx. (EH-Wa)
594 t JAPAN, Tokyo-JOAK 11/4-1216 //567 (GK-Ca)
620 HAWAII, Hilo-KIPA-11/4 0832 vy good w/ments. of Hilo, Jazz mx (EH-Wa)
648 U.S.S.R., Vladivostok-hrd. 11/4, 1226 w/Jazz, 1238 in CC, 1225-1229 Kremlin Bells, KFI Splatter, hard to copy. (GK-Ca)
650 HAWAII, Honolulu-KORL-11/4 at 0803, vy good in Passing, MOYL, ID (EH-Wa)
657 NORTH KOREA, Kangnam-strong 11/4 1205 in KK, 11/15 1145 in KK. (GK-Ca)
693 JAPAN, Tokyo-JOAB, good sig 11/4 1157 JJ talk, pips at 1200 (GK-Ca)
702 UNID, 11/17 at 1017, fading up, het on 700, Oriental lang. Ideas? (RW-Ca) (Good possibility of JJ, as they are heard here most nights. PM)
720 HAWAII, Elelele-KUAI, 11/4 at 0800 fair w/ID, TC, local nx-KDWN nullled (EH) UNID, fading up in WGN null, what sounded like CC, then RR by OM, into RR song by YL-Vladivostok? on 11/21 at 1044. (RW-Ca) (USSR likely.PM)
729 t CHINA, Jiانشi? 11/4 at 1146 w/CC opera, slow pips 1300, CC anc. (GK-Ca)
760 HAWAII, Honolulu-KGU, 11/4 at 0758, good w/Larry King, IDs (EH-Wa)
819 UNID, 11/19 at 1005, KK fading up nicely, het on WBAP-820, KGO off, rare, weekday SP. Pyonyang more common here (657), sp putting in less chance that it was HLCN. Whats your opinion, PM? (RW-Ca) (Have heard both here, but if 657 is more common at your QTH, more likely to be 819 I presume.PM)
820 UNID, 11/19 at 0952, UNID rr fading up in WBAP null, w/KGO off, wiped out by KGO TT at 0952. KCBF? No other AKs in at the time, but JOBB was very strong! (RW-Ca) (Lately I have heard KCBF in the mornings soft MOR, so I don't really know about this one. Keep checking.PM)
850 HAWAII, Hilo-KHLO, 11/4 at 0730, vy good o/KTAC, KOA, etc. ID-rr mx (EH-Wa)
870 HAWAII, Honolulu-KAIM- 11/4 at 0716, good w/nx "AM-870" ID, talk show (EH)
873 JAPAN, Kumamoto-JOGB, good 11/15 at 1200, ID in JJ, pips (GK-Ca)
891 SOUTH KOREA, Busan-HLKB, had call letter ID 11/20-1200, mix JOHK (GK-Ca)
940 HAWAII, Waipahu-KDEO 11/4 at 0723, good w/"K-DEE-OH" slogan, C&W (EH-Wa)
981 UNID, TP carrier 11/4 1246 and 11/15-1201, under splatter (GK-Ca)
1017 UNID, TP hrd weakly 11/4 1153, Oriental mx (GK-Ca)
1197 UNID, TP Carrier 11/15 1202, good sigs on peaks, rapid fading (GK-Ca)
1206 CHINA, Yanji-strong 11/4, 1155, w/KK talk (GK-Ca)
1242 UNID, TP carrier 11/4, 1252, too much splat for any readable audio (GK)

VERIFICATIONS:

585 INDONESIA, Suribuya-RRI, rec. nice friendly letter in three weeks w/mint stamps enc. Sent taped report-Agus Widjaja-Director vs (PM-Or)
594 JAPAN, Tokyo-JOAK, rec. reg NHK card from Tokyo in three wks. (PM-Or)

THANKS TO THESE REPORTERS:

James G. Herkimer-3255 South Drive-Caledonia, N.Y. 14423
Ed Hoffman-P.O. Box 125-Burlington, Wa. 98233- 1C-R70, 2'loop
Glen Kippel-612 West Ave.-Merced, Ca. 95340- SP-600JX17, 8 ft. loop
Steve Mittman-2248 West 37th St.-San Pedro, Ca. 90732, Real. TRF-3' Wedge loop
Robert Wein-1309 Dentwood Drive-San Jose, Ca. 95118- GE TRF, ca 1962, loop
Yer Editor- SP-600JX, (2) 1500 ft. East Bev, (1) Term. 200' NE LW, Ground system

IF NOT CLAIMED IN 7 DAYS RETURN TO



BOX 3, P.O., INVERELL, N.S.W. 2360



Auckland's



Hauraki



reported lists. They are still Construction Permits, waiting to take the air: WBTZ-1080-TN, WCMQ-1210-FL (PO-1220), KABR-1500-NM.....

Previously unreported stations noted by IRCA Reporters in DX MONITOR since the last update (V21 #3)...Covers V21 #1 through #9:

- AK---6---KGHX-1300 (Fischer-AK)
- AR---11---KMFL-760 (Breville-MO)
- CO---0---KRVV-1360 & KTMG-1370 (Nittler-CO)
- GA---19---WIZY-1120 & WSLE-1440 (Jeter-GA); WDGR-1210 (Reitz-KY)
- IA---0---KADR-1400 (Kramer-IL)
- KY---8---WEAK-900 (Faulkner-IL); WLPQ--980 (Conover-KY)
- MI---4---WMLM-1520 (Boersma-MI)
- MS---17---WTWZ-1150 (Faulkner-IL)
- MT---0---KEER-750 (Portzer-WA)
- NM---3---KLTN-1240 (Wilkins-CO)
- NC---30---WNCR-1080 (Faulkner-IL)
- PA---7---WSKE-1040 (Albrecht-WI)
- SC---17---WGSN-900 (Tribe-SC)
- TN---21---WEDB-880 & WSVQ--740 (Reitz-KY); WKKY-1360 (Albrecht & Noonan-WI), WKCE-1230 (Conatser-TN)
- TX---49---KVRN-980 (Faulkner-IL)
- UT---0---KFAM-700 (Hoffman-WA)
- WA---0---KYXE-1020 (Martin-OR); KREW-1210 (Wien-GA); KTOL-1500 (B.Hardy-WA)
- WI---0---WFGL-1380 (Albrecht-WI)
- NF---16---CPCB-570 & VOUS-1480 (Hauser & Schatz-vac NF)

St. Louis Globe-Democrat

Nov. 19-20, 1983

Iowa radio station beams friendly word into space world

MUSCATINE, Iowa (AP) — Extraterrestrial beings who want to break the ice with earthlings have a standing invitation to come and chat at radio station KFMM.

Every Wednesday at midnight, the progressive rock station broadcasts a 10- to 15-minute message to any aliens

via Rob Gerardi

who might be listening.

"It's a message of friendship, telling that there are those of us who believe in them," said Steve Bridges, 34, KFMM program director. "We play a message of friendship and then play tapes of people who believe in them. Then we give our location in latitude and longitude in English, Samoan, French, Italian, Japanese, Malaysian and other languages. Then we ask them to respond."

The radio station began airing the message in response to interest in the community, Bridges said. Muscatine, in southeastern Iowa, is considered a hotbed of UFO activity, with more

than 250 sightings recorded by Ablatna Inc., a UFO support group based in Davenport.

"I thought the audience would be interested in this, but I didn't realize how many people were really interested. We've had over 300 calls from people — we've had to put in a whole separate phone line just to handle it," Bridges said.

"If this were a promotional stunt, we wouldn't be doing it at midnight, we'd be doing it during prime drive time. This is serious; this isn't like giving out turkeys for Thanksgiving," he said.

DX WW II

EDITED BY
PETER V. TAYLOR
2614 JACKSON STREET
SAN FRANCISCO, CA. 94115

T R A N S - P A C I F I C

ALASKA - Alaska time zones are rearranged as of Oct. 30. Most of the state is now on GMT-9 (Yukon time) except for the westernmost part of the Aleutian Islands, which are GMT-10 (S. Mittman, A. Peterson). KJUK-1230 is the call for the 250 U1 outlet. Application: Soldatna 10kw U1 (Broadcasting).

AUSTRALIA - 4AY-936 will be moving to 891 soon. 4EB-1485 Brisbane moves to 1053 w/500w early 1984. 2CN-1440 is testing on 666 but won't move there permanently for a few months. New 10kw 4...-1062 ABC outlet in Charleville is planned. 4GC Charters Towers will move to 828 w/500w. 2LM-900 Lismore goes to 5kw-DA early 1984. 8HA Yulara translator is expected mid 84 w/500w on 693. Tennant Creek-765 xltr. may be on. 3CS relays 3AW news and carries it 7 seconds before it is broadcast on 3AW due to the talk station's "delay" system; 3BA also relays/delays it. 3AB-990 Albury's antenna is up but no programs yet. 2XL-918 Cooma plans 5kw. 4VL-918 Charleville 2.2kw is on; plans 5kw DA. 6IX-1080 Perth plans 5kw, AM stereo (DXC via FERC; ADXN).

BRUNEI achieves full independence in December (DIS, UKVK).

CHINA - PROVINCIAL SCHEDULES: Guangxi PBS 792/1071/1440 is on 2110-0500, 0850-1605. Guizhou PBS 765/927/1026 is on 2130-0030, 0150-0600, 0850-1605. Hebei PBS 783/1278 is on 2120-0020, 0155-0600 (Sun. 0155-0730), 0830-1545. Henan PBS1 657kHz is on 2120-0040, 0340-1515. Hubei PBS1 774kHz is on 2100-0605, 0850-1535. PBS2-1179 is on 0640-1300. Hunan PBS 1152/1233 is on 2100-0100, 0320-0515, 0920-1440. Ningxia PBS 891/1287 is on 2150-0145 (Sun. 2150-0215), 0330-0600, 0855-1510. Qinghai PBS1 (Std. Chinese) 666kHz 2225-0115, 0340-0630, 0955-1530. Shaanxi PBS 693/1008 is on 2120-0625, 0930-1520. Shandong PBS 594/918/1548 is on 2050-0050, (Sun. 2050-0130), 0245-0630, 0630-0700 Tu. & Sun., and 0845-1600. Shanxi PBS 819/846/1269 is on 2110-0040, 0315-0650, 0905-1550. Sichuan PBS-1 612/909/1116 is on 2120-0030, (2120-0200 Tu., Sun.), 0320-1505 (Tue. 0320-0600, 0910-1505), and P2 1084kHz 2150-0530, 0950-1320 (1089kHz listed - PT) (BBC; T. Gima, ABI via FERC). (What does Hubei-1179 carry the rest of the time, P1? - PT). Xinjiang P1 (CC) noted on 1493.8 //738 999 (O. Alm, ARC).

CITY/REGIONAL SCHEDULES: Nanchang PBS-1280 (nom. 1278) is on 2120-??, ??-0530, 0840-1430 (Su. 1500). Bengbu PBS-1485 (AH) is new; 2120-2400 (Su 0100), 0235-0500, 0925-1310 (Su 1400); noted on 1492 mid-Sept. Shanghai frequencies: P3-1170, P4-648, P5-1251. P2 (all night svc.) noted on 1353 Sept. 11 //792. Beijing-1251 has EE 1200-1255, 1300-1355 (I presume this is ex-1476 - PT). Datong PBS (SX) formerly a relay station in Zhuanbo tai is now on 1584 (ex-1368); s/on 2050 and s/off 1255. Zhelimu PBS (CC) is now on 1350, ex-1152. Schedule: 2145-2400 (M-Sa), 2225-0500 (Su), 0320-0520 (M-Sa), 0945-1330. (Where is the Molgolian service now? - PT). New CI outlet noted on 1494. Taiyuan PBS-1422 is on 2155-0015 (M-Sa), 0020-0630 (Su), 0355-0545 (M-Sa), 0935-1440 (Su-Fr), 0935-1510 (Sa); relays C1 & P1 frequently. Changsha PBS-1323 is on 2130-2340, 0325-0500, 0925-1410 (Su-Fr), 0925-1440 (Sa) (FERCans K. Shirakawa, T. Gima, T. Oka, Y. Kato, + ABI via FERC).

INDIA - AIR-900 Cuddapah, 100kw, has been commissioned (BBC). AIR Delhi, listed on 819 in WRTH, continues on 810; noted w/Hindi nx 1330-1340 (REW).

IRAN - VVIRI long term plans include two national networks by 1988, at least one of which will be 24h, reaching 98% of the country. External AA service: 558/1390: 1730-2030; 765: 1630-2030; 990/1125: 0330-2030; 1080: 0330-1730; 1287: 0630-1430, 1630-2030. Tabriz radio has an Azeri pgm. on 1026/1197/1323 from 1800-1825 (BBC). AA external service noted 1500-2030 on 1566 (jammed), 1125, 990 (jammed), and 765. 765 is distorted and at booming strength, possible ECNA. Listed Gorgan-1426, ex-1427, is now on 1422; in Farsi at 0355 (REW).

IRAQ - R. Baghdad's Persian service is on 846/1197/1224 from 1600-2300 (BBC).

JAPAN - KBS-Kyoto's new relays in Hikone (ex-1107) & Maizuru (ex-1062) are now on 1215 as of about Oct. 1 (T. Oka, FERC). Kyokuto Hoso, JOTF-1251, will leave MW and be FM only (K. H. Naha FM, JOUI-FM, 1kw) (FM Fun via H. Fujita via FERC).

KAMPUCHEA/CAMBODIA - Khmer Peoples' Natl. Lib. Front (Khmer Serika) is on 800kHz as of Apr. 7 (DXFL via DXC via FERC). VPK-1360 has EE 0000-0015, 1200-1215, and FF 0015-0030 (SCDX).

NEW ZEALAND - 4ZG-558 Gore (XR: Dacre) is now 5kw NSP. 4ZF-612 Te Anau has local news Mondays 2100-2115, Fridays 0400-0415 fed from 4ZA (A. Cushen, NZDXT).

PHILIPPINES - DWW-630 IDs as "the big 50 K"; 1700 s/off (GR, ADXN). (Thought they were dropping their power? - PT).

THAILAND - VOFA-1575 relays the VOA in EE 1100-1200 & 1530-1600, 1200-1230 Sun. only; Laotian 1200-1230 & 1500-1530; Cambodian 1330-1400 & 2200-2230; Burmese 1400-1500; and Bengali 1600-1700. VOFA's own programs include EE 1230-1300 ex-Sun.; Laotian 1030-1040, Cambodian 1040-1050, and Vietnamese 1050-1100, all Sat. only. It also carries R. Thailand's domestic news 1300-1330 (BBC).

USSR - Vladivostok-1251 is now off (K. Takasaki, FERC).

T R A N S - A T L A N T I C

ALGERIA - On Oct. 17, the AA service was noted on 981kHz // to the other MW channels, rather than 891kHz. However, on Nov. 5, the AA service was back on 981, with FF back on 891 (BBC).

ANGOLA - ER de Benguela-1200 noted //944 1000 1008 1367 (B. Kramer, SADX).

AZORES - R. Lajes-648, Port. Air Force, Terceira, now 10kw 0800-2300 (WRTHNL).

BAHRAIN - Manama-612 may have increased power from listed 20kw, as noted throughout its 0300-2005 broadcast day with strength often better than higher powered 801kHz (REW)

CENTRAL AFRICAN REPUBLIC - LV de Rep. Centrafricaine-1575 observed here (listed 1570) (E. Rimmer, SADX).

CZECHOSLOVAKIA - Cizalice now 400kw, ex 600kw (WRTHNL).

CYPRUS - Bayrak's new XR at Yeni Iskele (Greek: Trikomo) was commissioned Oct. 28. P1 is 1098/50kw, P2 is 1494/10kw (BBC). Bayrak-1098 heard at good strength with new XR; 2000 s/off (REW)

FINLAND - R. Finland-963 has EE at 2200//254 (SCDX).

GERMANY, WEST (FRG) - R. Canada Intl. is relayed on Berlin-810 in German from 1830-1900 (BBC).

GREECE - RS Amaliadas-1584 & RS Mesolongiou-1602 have 1kw (WRTHNL). Pyrgos Bc. Station-1430 (announces 1445kHz) closes down 0400; has EE news 0200 (UKVK). (Time given is "SNT" - Swedish time? - PT). Plans: Thessaloniki-1044 to 200kw; Crete-1116, 300kw; Athens-729 to 1000kw (WDXC/WH/DRF via MWSC).

GUINEA-BISSAU - RDF Nacional is back on 1034; 1071 isn't active (WRTHNL).

ICELAND - Hofn-1485 Navy relay is closed down (BT, ARC).

IRELAND - RTE Dublin-2 (10kw) and Cork-2 (5kw) are on 1278 (WRTHNL).

IVORY COAST - 1241kHz carries EE & local dialects 1745-1945 (WRTHNL via MWSC).

JORDAN - Ajlun-801 uses 2MW from 1530 to s/off (WRTHNL).

LEBANON - V. of Lebanon-873 is on 0415-2125 in AA, except for news in FF 1315-1320 & 1800-1810, and in EE 1400-1405 & 1815-1825. Addr.: Box 165271, Al-Ashrafiyah, Beirut (BBC). R. Lebanon-836 is still here, not 837 (HGV, UKVK).

LESOTHO - Strong carrier noted on 639 Sept. 15-19, same bearing & signal strength as 891kHz; 639 is planned here w/100kw (R. Gimbey, WRTHNL).

LIBERIA - ELBC-711 is on 0530-2302 (Sun. 0700-2247) in EE. It relays BBC news 0700-0709, 1700-1709, and VOA news 2200-2215 (BBC). LBC-834 is new, 5kw, Harper; ID is "Rural Radio Network." Is on 0528-2400 (WRTHNL).

MALI - RNM-1430 has 0600 (0700 Sun.) - 2400 schedule in various languages. FF newscasts: 0700-0709 (ex. Sun.), 0755-0758, 0900-0910 (Sun.), 1300-1315, 1500-1530, 2015-2030, 2230-2240 (ex. Sun.) (BBC).

MALTA - Cyclops-1557 has EE 2300 (HGV, UKVK). (Cf. 10/29 DXWII, EE 2230-2330 - PT).

MONACO - 702 is in Italian 0425-1735; 1467 is FF 0430-1800 and carries TWR 1800-2315 (WVH via MWSC).

MOROCCO - Network "A" is 24 hours on 540/594/657/819/864/936/972/999/1026/1044/1053 1080/1116, with some carrying regional pgms. at times. Network "B" is on 0600-0100 in FF on 774 (Agadir)/828/1017/1026/1152/1188/1197 (to 1400)/1325. Network "C" is on 702/918 1197/1296/1485/1493/1593 in SS 0600-0900, EE 0900-1200, Berber 1200-0100 (BBC). (Marrakech is listed on both 1493 & 1593 - ? - PT).

PORTUGAL - RdP1-630 Chaves is ex-1251. RdP1-666 Braganca, ex-576 has local pgms. M-F 1100-1200, 1700-1900. RdP1-666 Vila Real is ex-621. Porto-720/1377 has local pgms. M-F 0800-1200, 1600-1800. Elvas-1331 is local M-F 1700-1800, Sat. 1600-1800, Sun. 0900-1200, 1330-1600 (CRA in DSWCI via ARC).

QATAR - QBS is on in AA on 675/954 from 0245-2130, and in EE on 999/1233 from 0300-2130 (Thur. 0300-0200). The Urdu program is on 1485/1602 from 1600-1800. The Folk program is on 999, 1233 (to 1430), and 1602 from 1200-1600 (BBC).

ROMANIA - P1 s/on routine w/NA is at 0357 on 603/630/1053/1152/1179/1314/1404 (REW).

SAUDI ARABIA - New BSKSA outlet with Holy Qur'an service noted on 783 (unlisted anywhere) //567 576 747 792 882 900 918 981 1089 1512 (REW).

SIERRA LEONE - SLBC-1206 is on 0558-1030, 1155-0005 (Sun. 0558-0005) in EE and local languages (BBC).

SOUTH AFRICA/VENDA - New 100kw XR on 1035 is on; R. Venda (ARC).

SYRIA - Homs-567 is now on 612 as of May 1 (EBU via ARC).

SUDAN - Soba has drifted from 963 to 958.5, noted with weak signals 0400-2200//5039 and 1295. The latter booms in with off-air relay modulation quality; also, it breaks down often and is frequently off the air all day (REW).

SWAZILAND - TWR-1170 has EE 1730-2000 (WRTHNL).

SWEDEN - SBC-1179 half hour pgms. unless otherwise stated: GG 1630, 2000; Port. 1730; FF 1800, 2030; EE 1830, 2100, 2300; RR 1930, 2200; SS 2230. R. Sweden P1 (domestic) is on 1700; RSI pgms. in Swedish are on 1900, 2130, 2330 (SCDX).

TANZANIA - Dar-es-Salaam Commercial Svc., listed 657, still on 656 in Swahili //5W5050 (REW).

UNITED KINGDOM - R. Jackie-1323 is 24h with 100w (O. Alm, ARC). BBC local stations: It is R. Shrewsbury-756, not Shropshire; R. Kent-774 is ex-R. Medway-1035; R. Brighton-1161/1485 is ex-R. Sussex as of Oct. 22. R. Bristol-1323 is ex-1584; R. Lancashire has 1557 relay. R. Nottingham-1584 is a relay in Clipstone near Mansfield (SM, BBC, TW via ARC). Northdown Radio-954 is testing (ARC). R. Caroline-963 is interfering with 13 of Britain's 20 75w (max.) college stations on this frequency (S. Fenwick et al, SCDX). The new 954kHz outlet for Maidstone & Medway area of Kent is testing (B. Allen, SCDX). (Is this Northdown Radio? - PT).

USSR - R. Alma Ata now on 783 (O. Alm, ARC).

VATICAN - VR-1611 has EE 2050-2110; this is new and previously unlisted (REW).
YEMEN ARAB REPUBLIC - Mocha-716 300kw is on 0300-0700, 1100-2100 (WRTHNL).
YEMEN, PDR - New outlet on 1593 noted //1188 on Oct. 16 (Y. Kato, FERC).
YUGOSLAVIA - Sarajevo-747 is off. Biograd-1134 (1200kw) and Pristina-1413 (1000kw) are on (EBU, WRTHNL, BE in ARC). (Is that Beograd? Or do we have a Biodegradable column on our hands? - PT).
ZAIRE - Kinshasa-1448 2kw is the only MW stn. on (BE, WRTHNL, via ARC).
INTERNATIONAL WATERS - VOP-1539 address: Box 4399, Tel Aviv; v/s Stuart Vint (ARC).

P A N A M E R I C A N A

ARGENTINA - LV5-1120, R. Sarmiento, is ex-1090 (LAB, UKVK). LR1-1070 is using only 25kw (BBCMS).
BOLIVIA - CP173-1030 is ex-1320. CP29-1110 R. Fides is ex-1300. CP208-1180 3kw is ex-1040. CP31-1200 5kw is 5kw. DELETE: CP133-1370, CP190-1450, R. Urkupina-1570 (WRTHNL).
BRAZIL - DELETE: R. Tropical-620, RDF Princesa do Sul-1070, ZYK517-1160, ZYL204-1540, ZYK647-1580. CHANGES: ZYL276-920 R. Mineira do Sol. Brusque SC-920 R. Cidade. R. Alianca-920 is ZYJ815. R. Agudos-930 R. Unversal. ZYL251-1080 R. Capital. ZYI778-1120 Mundial. R. Iracema-1240 is ZYJ810 (A. da Motta, WRTHNL). ZYK695-780 is 100kw. ZYK689-980 R. Jornal de Sao Paulo is ex-1300. R. Capital-1040 is 300kw (PDX via ARC).
COLOMBIA - According to El Tiempo, as of Oct. 9, all station applications will be subjected to a bidding process. R. Nacional and official or private institutions offering strictly cultural programming will be given precedence. New ones may be established only in border areas; national territories and islands; municipalities with no stations; and conditionally, municipalities with no more than 3 AM and 2 FM outlets. 100 stations which have failed to keep their licenses up to date will be closed (BBC). HJJN-1130 nw on 920. HJGP-1560 is R. El Sol. HJCC-1310, Ondas del Cesar, Aguachica, new, 30kw (T. Jones, WRTHNL). HJSA-1220 commercials indicate it is in Barranquilla, possibly indicating a move of HJAI-1040. What happened to HJVF? (BEB in ARC).
CUBA - R. Progreso has its own AN service; noted on 640kHz Oct. 6 at 0700. LV de Cuba is also AN; noted on 690 Oct. 18 concluding R. Habana Cuba pgm. 0830 (SWNS). R. Sagua-1540, Sagua la Grande, is new (DXC via MWSC).
DOMINICAN REPUBLIC - The CIDC programs were never on Clarin-860 MW (GH). However, ARC quotes BBCMS as citing the MW frequency (PT). "Monitor DX" produced by R. Club DX Internacional is on Sun. at 1400 on R. Accion-870, Sat. 0000 on S. Santiago-820, and at an unknown time on R. Isabel de Torres-840 (D. Bloisse, WRTHNL).
ECUADOR - All HC... DELETE: SP1-590, AAI-785, MT1-940, KC2-955, T05-1025, RR2-1027, RP3-1065, MGI-1090, GL1-1210, AP1-1225, PA1-1245, AC1-1280BS1-1440, VZ2- and VT7-1490, NC4-1530. HCGM1-550 50kw is 100% cumbias. HCEG1-1105 R. Exito is ex-1110. HCMV5-1235 R. Pop. de Cuenca is nom. 1220. HCGF1-1340 is ex-1335. HCER5-1390 is ex-HCEA5. HCVE3-1500 R. Uno is ex-HCUE5; now 3kw (WRTHNL, UKVK).
GRENADE - R. Free Grenada is now "Spice Isle Radio" (BBC).
GUATEMALA - TGHR-700 Mundial is 15kw. TGKL-910 R. Emperador 10kw is on 1000-0600. TGMX-1210 Rumbos 10kw is 24h (WRTHNL).
GUYANA - R. Guyana-920 noted 9/9 0203 w/nx in EE & PP (E. Rimmer, SADXC).
MONTERRAT - Radio Canada Intl. is relayed in EE on the three Radio Antilles XRs (740/930/1450) from 2330-2400 (BBC). R. Antilles is on (bilingual EE/FF) 0940-2230 Mon.-Sat. (Tue. 0940-2245) and Sun. 1000-1400 (religious) (H. Jager, WRTHNL). (Seems to be a conflict here - PT).
PERU - RN del Peru-670 Puno is new (E. Povrzenic, SCDX). O..4.-660 Lima is new, R. Omega; if so, what happened to OBX4A-670 Lima? (M. Rojas, ARC). OAX9T-1220 R. Bagua is on 14 hours a day (soon 17) (R. Nuevo Mundo in ARC). OAX3N-1351.9 ex-1350 (JLCC in ARC).
PUERTO RICO - WENA-1330 granted 500w U1. WMNT-1500 R. Ateluya, Manati', ex-R. Atenas. WPPC-1570 R. Felicidad, Penuelas, seks 1kw U1 (DIS, WRTHNL via UKVK).
SURINAM - SRS-725 ID: "De Stem van de Revolutie Suriname de Stem van het Volk (WRTHNL). The transmitter of SRS-725 was blown up Oct. 26 (BBC).
URUGUAY - New, R. San Salvador, Dolores, CW15B-1580 (WRTHNL).
VENEZUELA - YVMF-1120 calls itself "Superondas." YVZJ-1400 is Mundial, ex-R. Juvenil. YV...1420 R. Bahia, ex-1400. YV...-1560, R. Dif. Andina, Merida, is new (DXC/DWSCI via MWSC). YVMJ-580 is 100kw (WRTHNL).

Credits: ADXN - Australian DX News. ARC - Arctic Radio Club (Sweden). BBC - BBC Monitoring Service (copyrighted). Broadcasting Magazine. DXA/DXC - DXers Calling, DX Australia. FERC - Far East Radio Club (Japan). GH - Glenn Hauser, Knoxville TN. MWSC - Mittelwellen-Spezial-Club (W. Germany). NZDXT - N. Z. DX Times. REW - Dr. Richard E. Wood, Abba, KSA. SADXC - South African DX Club. SCDX - Sweden Calling DXers (RSI, Sweden). SWS - Short Wave News Service. UKVK - Umea Short Wave Club (Sweden). WRTHNL - World Radio/TV Handbook Newsletter. NOTE: Material included herein may be reproduced freely in other DX publications providing credit is given to both IRCA and the originating contributor.

Dr. Richard E. Wood is back in Abba, but this time with a National RD-9170 loop, which he says is not highly directional, but which does cut down on QRN and TVI significantly, and which will help on the forthcoming revised bandscan. Hope you all had a Happy Thanksgiving. Holidays are great for DX, so load up the various columns!

THE INTERNATIONAL RADIO CLUB OF AMERICA

CLUB ADDRESSES

Membership Dues, Address Changes, and Renewals:
P.O. Box 26254, San Francisco, CA 94126
Bulletin Material, Sample Requests:
P.O. Box 21074, Seattle, WA 98111
The IRCA Goodie Factory (Publications and Reprints)
1422 W. 5th St., Tempe, AZ 85281

MEMBERSHIP DUES

\$18.50 First Class to the U.S.A., Canada, and Mexico. \$6.00 for trial membership (0 issues of DX Monitor and a New Member Packet) to the U.S.A., Canada, and Mexico. \$18.00 Surface Mail to the rest of the world. \$27.00 airmail to Central America, Colombia, Venezuela, and the Caribbean. \$30.00 to the rest of Latin America, Western Europe, North Africa, and the Middle East. \$34.00 to the rest of the world. Sample copies of DX Monitor cost 50 cents each or three International Reply Coupons. Make checks and money orders payable to IRCA. Persons living outside the U.S. should make dues payments by check or money order payable in U.S. funds.

The International Radio Club of America is a non-profit organization devoted to the hobby of hearing distant stations on the AM Broadcast Band (Medium Wave). IRCA is a member of ANARC, the Association of North American Radio Clubs.

Club Officers: President--Phil Bytheway, 9705 Mary Avenue NW, Seattle, WA 98117. Secretary--Rich Segalas. Board of Directors--Ernest Cooper, Nancy Hardy, Ric Heald, Neil Kazaross, Bruce Portzer, Peter Taylor, Neil Wolfish.

DX MONITOR, the official bulletin of the IRCA, is published 34 times per year: weekly from October to March, twice in September and April, and monthly from May to August. Unless otherwise noted, permission is granted to publish, broadcast, or otherwise reproduce non-copyrighted material appearing in DX Monitor, provided credit is given to IRCA and the original contributor. Opinions expressed in DX Monitor are those of the original contributors and do not necessarily reflect those of the IRCA, its publishing staff, editors, or officers.

PUBLISHING COMMITTEE: Bruce Portzer (206)522-2521.

Evelyn Portzer, Phil Bytheway, Jef Jaisun

FIRST CLASS MAIL
U.S. POSTAGE
PAID
Seattle, WA
Permit No. 601

first class

D. A. NYHOLM 19

2071 CEDAR STREET
SAN CARLOS CA
94070

Postmaster: if undeliverable, return to
P.O. Box 21074, Seattle, WA 98111, U.S.A.