



DX Monitor

Devoted Exclusively to
Broadcast Band DXing

December 31, 1983

Volume 21, Number 15

Issue Number 670

In This Issue

Western DX Forum	2	Fire Destroys WNAX	11
St. Petersburg/Tampa Radio	4	Central DX Roundup	12
Eastern DX Forum	5	Another Sound at KSFO	12
All Out of Air	5	Western DX Roundup	13
The Sony ICF-2002 (Review)	6	Cartoon	16
Western Spotlight: Utah, Part 1	7	DX Worldwide West	17
Air Waving	9	KSD Going AM Stereo	18
Eastern DX Roundup	10	Some Honduran Radio Stations	19
Female Format Flying in Flint ..	23	Slogan List Updater	20

DX WORLDWIDE EAST

No word on where DXWWE is this week, but as you all know by now, Neil Kazarsoss is stepping down as editor, effective the end of December. Sooo... until sometime around February, send your DX Worldwide East contributions to temporary/interim editor: Don Erickson, 6059 Essex Street, Riverside, CA 92504.

THE 1984 WORLD RADIO TV HANDBOOK

Speaking of Don Erickson, we thought we'd run the WFTVH offer again. The next edition of the World Radio TV Handbook will be published in January or February and will retail at \$17.50 in the U.S. Orders are now being taken at \$15.00 each, USPS book rate (worldwide) or United Parcel Service (U.S. only), please specify which when you order; or \$16.90 first class mail, U.S. only. California residents please add 6% sales tax. Orders, with an SASE for confirmation of shipment, and a check or money order made payable in U.S. funds on a U.S. bank, payable to.... Century Print Shop, should be mailed as soon as possible (no deadline) to: Don Erickson, 6059 Essex St., Riverside, CA 92504-1599. Inquiries are welcome at 714-687-5910. In Canada, please send \$21.00 Canadian for first class delivery or \$23.50 special delivery, and mail orders for receipt no later than January 7, 1984 (which may have come and gone by the time some of our Canadian members read this) to: Canadian International DX Club, c/o Don Moman, 6815 12th Avenue, Edmonton, AB T6K 3J6.

A SEATTLE GETTOGETHER

It's time once again for the annual February gettogether at the Portzer house. This year, it will take place on Saturday, February 18, from 2 p.m. onward. As usual, the food and refreshments will be putluck junk food (liquid or solid), then sometime around 6 p.m. we'll pass the hat around for pizza or whatever else happens to sound good at the time. The address for the festivities will be 6546 19th Avenue N.E., Seattle 98115, and the phone number is 206-522-2521. DXers of all kinds are invited (BCB, SW, TV/FM, PSB, etc) so be sure to bring yourself, friends, radios, veries, and anything else the rest of the gang might enjoy.

Do you have some money left over after Christmas? Maybe it's time to treat yourself to a Christmas present....at the IRCA Goodie Factory. More than 200 reprints of past DXM articles are available from the Goodie Factory, as are the IRCA Almanac, IRCA Foreign Logs, and DXers Technical Guide. And while the supply lasts, each book order will include a stack of bumper stickers from various stations. For more details write to the IRCA Goodie Factory, c/o Dennis Kibbe, 1422 West 5th St., Tempe, AZ 85281.



Western DX Forum

★ ★ ★ ★

IRCA—Serving the Broadcast Band DX'er Since 1964

Editor: Ric Heald, 1632 J St., #3, Eureka, CA 95501

1984 DEADLINES - WEEKLY ON TUESDAY, 12 DAYS PRIOR TO PUBLICATION DATE

GARY LARSON, 2806 LINCOLN, BURBANK, CA 91504 (213) 841-8249

Welcome to 1984. Happy New Year to all IRCAnS and better DX in '84. I see Gonzales is south of Salinas. Not too familiar with KKMC. What's their format? Power? (We'll all know when they go on the air-Rth.) Have picked up KWSO 1180 Wasco. Fady at times in the early evening. Is their tower still on Jackson?

Got a call from Gary Parton this evening (12 December), informing me of the changes in Bay Area radio. He mentioned he'd be taping a few things. Good to see Al Collins back.

If anyone wants airchecks of locals (cassettes), please let me know.

XETRA 690 has been playing a song called "The Curley Shuffle" referring to the Three Stooges.

Well, anyway, Happy Holidays from Southern California.

ROB HARRINGTON, P.O. BOX 3434, LITTLETON, CO 80161

Greetings to all IRCAnS. Chris Knight and I went on a DX trip to Taos, New Mexico at the end of October. We heard Japan, South Korea and also North Korea. A great fun-filled trip.

I'd like to wish everyone Happy Holidays. This is a great way of sending out a Christmas card to everyone without going broke from the postage! I'll be back in 30-to-60 days with another report. 73.

RICH TOEBE, 2388 AMERICAN AVE., HAYWARD, CA 94545

Ah well, time for a forum. I actually haven't DX'ed much except for logging the new clear-channel busters, but I did catch a historic occasion: The long awaited and discussed KSFO/KYA switch. December 12 was the last day for the old KSFO and for KYA. I tuned in Jerry Gordon's Comedy Hour around 2230 local time and heard utter pandemonium as Jerry, Mel Sharpe (famous for his man-in-the-street interviews, even did some for the Bell System) from KMEL-FM and other drifting in and out were waxing poetic about the imminent demise of a San Francisco radio institution.

There was even the sound of a crew in the background demolishing other parts of the studios located at the Fairmont Hotel. Jerry was taking calls from listeners asking them what they thought the studios should be renovated into (one suggested a video arcade, another said, a bar).

TV crews from Channels 2, 4 and 7 came by. There was a live simulcast of KSFO and channel 2 at one point, and Gene Autry (apparently I was left with the idea it was an imposter) was there to sing a song.

The head of Channel 7's TV crew, George Lang, told Jerry he was welcome to call Dr. Joy Browne at KGO 810 if he wanted advice about "unemployment blues." He asked George if he was any relation to Jim Lange, a KSFO personality (and ex-host of TV's Dating Game show), but George said no, "he has an 'e' and I have a job!" With that, Jerry called KGO and moments later there was a KSFO/KGO simulcast of Jerry talking to Joy Browne. She was more broken up over the whole thing than he was.

Then at 2230 when they played a tape of the late Don Sherwood, who, while at KSFO literally dominated morning radio, reciting a Winnie the Pooh story.

At midnight there was a long, long KSFO jingle; then came a Pattonesque voice 'instructing' listeners of the fact that "as of zero zero hours" oldies could continue to be found at KYA-93.3 FM and AM 560 KSFO. I quickly tuned to KYA, who simulcast this spot, and after it was over I heard a KSFO ID on 1260, then a quick shut off to an open carrier. Switched back to KSFO, and the same voice who gave the ID was introducing the "new" KSFO and welcoming back Al "Jazzbeaux" Collins, who said he was coming back the second time from New York to KSFO. I switched back to 1260 and now there was contemporary easy listening music being broadcast; shortly thereafter there was an ID "the new AM 12-60, KOIT." For those not familiar with San Francisco radio, there was already a KOIT-FM at 96.5 with the same format. Ironically, years ago KYA's FM'er at 93.3 had the KOIT calls; now the situation is reversed. (Yes, years, like 20+, it's been KYA since at least '62-Rth.)

Forgive my rambling, but I thought it might be of interest to all if the last moments of the old KSFO/KYA were documented. I always liked the old KSFO because of their comedy hour and old radio shows, but it's nice to have Jazzbeaux back too.

Ric, about the tower sites in Reno: The twin towers to the east are KOL0; the one north of I-80 by the hills are KONE/KOZ -FM; the one by the 395/I-80 interchange is KNEV-FM, I believe. (Nope, no FM elements on the tower-RtH.) KROI used to be in that area too, but the old tower disappeared (probably because they needed a new setup for their fulltime status). Did you notice if the new Public channel (ch. 5) is on yet? (Yes-RtH.) Took years of concerted effort by the community to get that going. Did you also notice that the three towers west of Reno on I-80 are gone? (We went 395, not I-80-RtH.) They disappeared last year. I still wonder if they were for the short-lived KOBV 1550.

That's all for now. Happy New Year to everyone and 73 de RT.

BILL HARDY, 2301 PACIFIC AVE., ABERDEEN, WA 98520

Here on the Washington coast we get the full brunt of fall and winter weather off the Pacific. Lots of rain, yes, but several times each year we get nasty windstorms, too. A pair of these storms hit us 19 and 24 November.

Eureka-Arcata-Portuna, California, with 5 AM's, 5 FM's and 3 TV's (counting Public), is the largest broadcast market north of San Francisco that's actually on the ocean. Major markets like Seattle and Portland are on the I-5 corridor east of the Coast Range and Olympic Mountains and a bit more sheltered from our storms. The big stations in those markets, of course, have emergency generators, standby transmitters, etc., to keep them on the air during big storms.

Ric has mentioned that the Eureka market is well equipped with standby generators, transmitters and other backup systems to stay on the air with emergency information during big storms.

Aberdeen-Hoquiam, with 3 AM's and 3 FM's is the third largest coastal market north of San Francisco, behind Coos Bay-North Bend-Coquille, Oregon which has 4 AM's, 4 FM's and 1 TV. Even though our population is just a few thousand short of the Eureka market, our stations are lucky to stay on the air during our windstorms.

On Thanksgiving Day for at least an hour at noontime, KGHO 1560 was the only local radio station on the air. All three FM's and the other two AM's had lost power at their studios, transmitter, or both. KXRO 1320 was off for more than eight hours. Two of our three FM's (the two that get out the best) are up on a hill getting electricity via 20 miles of power lines that can blow down and stay down for hours (even days) before they're restored. None of the stations has an emergency generator. Only KAYO 1450 has a backup transmitter and tower, the original facility on US 12 at its studios in case it loses power at its newer facility two miles away. KBKW (now KAYO) had an emergency generator in the '60s, but no more; evidently too complicated or too expensive to maintain.

It's not the best situation for public service when storms disrupt power in this area. But as long as I keep batteries handy for the FRG-7 when my locals go off the air, I suppose I shouldn't complain too loudly, should I? 73 and good DX in 1984.

RIC HEALD, 1632 J ST., #3, EUREKA, CA 95501 (707) 443-1685 M-F 9-6 or (707) 443-2704 SAT 9-2 PLT and ppd

Well, Eureka is really managing to set the records this year. The highest temperature ever (86°), the warmest, sunniest summer since 1942 and now we're two inches away from the wettest year on record, and local weather service says we may have a white Christmas. I mean, if you're going to set records, you might as well go all the way, hi.

Bill, KRED 1480 is the official EBS station on the North Coast. They have a generator, but when I got the "cook's tour" a few months ago I was told it hadn't been fired up in quite some time and wasn't sure if it would still work! Also, the feds built a separate building next to the studios in the '50s, actually a bomb shelter (back when everyone was building them)! The walls and ceiling are concrete and 16 inches thick. It's used for their production studio. I'm telling you, when you enter that windowless room and that eight-inch door slams shut, it's deadly quiet. One of their DJ's calls it "the dungeon," hi. The other stations have never left the air during severe wind, mainly because of underground wiring, double-guyed towers, etc. By the way, I changed your FM total for the area because KEKA 101.5 is on. They are also rumored to have an application in for TV too. And our market area is approximately 125,000 (we count Del Norte and Curry County).

Ric, good thing I didn't hear the KSFO/KYA change. . . would have been too sad for one who grew up listening to both. Although KYA was my main station, it seemed like everyone would switch to KSFO in the morning just to listen to Sherwood's crazy antics. He was referred to as San Francisco's "bad boy."

He had morning drive and would do things like party all night and show up for work late, or drunk, or not at all. He was fined for every minute he was late. He would make a regular feature of putting down his sponsors and they loved it. . .there was a waiting list to get on his show and at the time, the most expensive minute in San Francisco radio was his show. Something like \$200 (in '63 that was quite a bit) as opposed to \$5 midnight to six with Dave Niles. He also hosted late-night TV movies. I still remember the sponsor was Big E Carpets, and one night he shook the carpet and commented that it was shoddy quality. Big E loved it, believe it or not. Customer came in just to shake the carpet, hi.

Guess that's enough of my rambling. Here's to everyone for a better DX year in 1984. 73 de Rth. .

VIA: Mike Hardester

RADIO

Highlights

Classical

St. Paul Sunday Morning — Sun., 10:30 a.m., WUSF
 Milwaukee Symphony — Sun., 3 p.m., WUSF
 Adventures In Good Music — Mon.-Fri., 12:30 p.m., WUSF
 Vocal Scene — Fri., 11 a.m., WUSF
 Boston Pops — Sat., 10 a.m., WUSF
 Choral Masterworks — Sat., 2 p.m., WUSF
 New York Philharmonic — Sat., 7 p.m., WUSF

Popular

Dick Clark Top 30 — Sun., 9 a.m., WRBQ
 American Top 40 — Sun., 9 a.m., WMGG
 American Country Countdown — Sun., 10 a.m., WSUN;
 Sun., 5 p.m., Sat., 9 a.m., WWJB
 Beach Party — Sun., 10 a.m., WQXM
 Your Hit Parade — Sun., 11 a.m., WLFW
 Lawrence Walk Radio Show — Sun., noon, WLFW
 Six Pack — Sun., 6 p.m., WQXM
 Wolf Man Jack — Sun., 8 p.m., WRBQ
 King Biscuit Flower Hour — Sun., 11 p.m., WYNY
 Live From Gilley's — Sun., 9:30 p.m., WSUN
 Radio Classics — Sun., 10 p.m., WDAE
 Request Hour — Sun., 10 p.m., WQYK
 Big Band & Nostalgia — Mon.-Fri., 10 a.m., WMNF
 Oldies — Mon.-Fri., 11 a.m., WHBQ
 Lunchtime At The Oldies — Mon.-Fri., Noon, WMGG
 Bluegrass — Mon.-Fri., 4 p.m., WMNF
 Big Bands with Frank Stone — Mon.-Fri., 10 p.m., WTAN
 Jazz Flavours — Wed., 10 p.m., WSRZ
 Sentimental Journey — Mon.-Fri., 10 p.m., WDAE
 Rockline — Mon., 11:30 p.m., WYNY
 Nightcap — Mon.-Fri., midnight, WSRZ
 Jazz Revisited — Tues., 7:30 p.m., WUSF
 BBC Concert Series — Wed., 7 p.m., WMNF
 Music Of The British Isles — Thurs., 7 p.m., WMNF
 Jazz Alive! — Thurs., midnight, WUSF
 Jazz Place — Fri.-Sat. 1 a.m., Sun.-Wed. midnight, WUSF
 Reggae Sound — Sat., 4 p.m., WMNF
 Soundtrack Of The '60s — Sat., 6 p.m., WPSO
 Prairie Home Companion — Sat., 9 p.m., WUSF
 Let's Dance — Sat., 9 p.m., WDAE
 Old Gold Retold — Sat., 9 p.m., WPSO
 Sounds Of The Big Bands — Sat., 9 p.m., WWBA
 Saturday Night Special — Sat., 10 p.m., WSRZ

Talk

National Town Meeting — Sun., 5 a.m., WRBQ
 Sun Economy — Sun., 8:30 a.m. WQXI, WFLA, WLFW; 7
 a.m., WDAE; 7:30 a.m. WRDQ, WDUV; 8 a.m. WRBQ; 9
 a.m., WVTY; 9:30 a.m. WFNN; 10:30 a.m. WTAN;
 10:30 a.m., WTAN; 12:30 p.m. WQSA; 11:30 p.m.
 WFLA; Mon., 6 p.m. WWJB; Sat., 7 a.m., WSST
 Deutsche Funksendung — Sun., 9:30 a.m., WTYM
 All Things Considered — Sun.-Fri., 6 p.m., Sat. 8 p.m.,
 WUSF — NPR's newsmagazine.
 Black Affairs — Sun., 8 p.m., WPLP
 Merv Griffin — Sun. 7:05 p.m. Mon.-Fri. 11:10 p.m. WPAS
 Health Talk — Sun., 11 p.m., WSUN

Paul Harvey — Mon.-Fri., 5:35 a.m., Mon.-Sat., 8:30 a.m.
 and 12:06 p.m., WSUN
 Richard Shanks — Mon.-Fri., 9 a.m., WPLP
 WTAN Garage — Mon.-Fri., 9:45 a.m. WTAN — Swap
 shop.
 Open Line — Mon.-Fri., 10 a.m., WGUL
 Dennis Crandall — Mon.-Fri., 10 a.m., WTAN
 Christopher At The Bijou — Mon.-Fri., 10:35 a.m., 5:35
 p.m., WSRZ — Film reviews
 Jack Lipsey — Mon.-Fri., 1 p.m., WSST
 Conference Line — Mon.-Fri., 2 p.m., WQSA
 Business Report — Mon.-Fri., 5:35 p.m., WTAN
 Speaking Of Sports — Mon.-Fri., 5:35 p.m., WSUN
 Talk Back — Mon.-Fri., 7 p.m., WFLA
 Tim Coles — Mon.-Fri., 9 p.m., WPLP
 Larry King — Tues.-Sun., midnight, WPLP
 Talknet — Mon.-Fri., 10 p.m., WFLA
 BBC Science Magazine — Mon., 7:30 p.m., WUSF
 Live Music — Tues., 8 p.m., WMNF
 Mind's Eye — Wed., 7:30 p.m., WUSF
 Art In Your Ear — Fri., 1 p.m., WMNF
 World Trade-Off — Fri., 9 p.m., WFLA
 Mr. Greenthumb — Sat., 7 a.m., WPLP
 Gil Whitton Gardening — Sat., 9:15 a.m., WTAN
 Lord Peter Wimsey — Sat., 12:30 p.m., WUSF

Suncoast stations

AM

WPLP (570): Talk programs.
 WSUN (620): Country music.
 WLFW (680): 1940s-1960s hits; 6 a.m.-sunset.
 WSST (800): Religious; 6 a.m.-sunset.
 WAZE (850): Spanish; sunrise-sunset.
 WFLA (910): Country.
 WFLA (970): Adult contemporary music.
 WCBF (1010): Religious; 6 a.m.-sunset.
 WHBO (1050): Oldies music; 6 a.m.-sunset.
 WTIS (1110): Religious; 6:45 a.m.-sunset.
 WTMP (1150): Rhythm-blues.
 WQSA (1220): Adult music.
 WDAE (1250): Music of the 40s-present.
 WTYM (1300): Spanish programming; 6 a.m.-sunset.
 WTAN (1340): Popular adult music.
 WRBQ (1380): Contemporary music.
 WPAS (1400): Adult contemporary music; 5 a.m.-midnight.
 WRDQ (1420): Country music.
 WFNN (1470): News, talk, information; a.m.-sunset.
 WGUL (1500): (Pasco) '40s-'50s music; 6 a.m.-sunset.
 WGNB (1520): Religious; sunrise-sunset.
 WYOU (1550): Latin programming; 6 a.m.-sunset.
 WRXB (1590): Rhythm-blues; 6 a.m.-sunset.

FM

WMNF (88.5): Big band, jazz, folk, new wave; 24 hours.
 WUSF (89.7): Classical music and public affairs; Sun.-Thurs., 6 a.m.-2
 a.m.; Fri.-Sat. 24 hours.
 WUSF (89.7, subcarrier requiring special receiver): Radio Reading
 Service for visually handicapped; Sun.-Thurs., 5 a.m.-2 a.m.,
 Fri.-Sat. 24 hours.
 WQJC (93.3): Country music.
 WYNY (94.9): Adult album-oriented rock music.
 WMGG (95.7): Adult contemporary music.
 WQXM (97.9): Album-oriented rock.
 WQYK (99.5): Country music.
 WQXI (100.7): Popular music for adults.
 WKES (101.5): Religious.
 WSRZ (102.5): (Sarasota) Contemporary rock, jazz.
 WDUV (103.3): (Manatee) Mood music.
 WRBQ (104.7): Rock music.
 WGUL (105.5): (Pasco) '40s-'50s music.
 WVTY (106.5): Beautiful music with personality.
 WWBA (107.3): Mood music.

Listening ranges of the stations above vary considerably. The city of origin is listed for stations outside Panama and Hillsborough. Unless noted otherwise, stations operate 24 hours a day.

EASTERN DX FORUM

RICHARD EVANS
P.O. Box 1294
NORTH WALES, PA 19454

Tom Jasinski, 503 Jensen Street, Shorewood, Illinois 60436

Seasons Greetings to all. From the Joliet Post Office I discovered that IRC's are good for only one year from purchase date--no exceptions. Found out the hard way. Have 3 from Jan., 1982. Postal clerk says they are now worthless! Sunset Skip has been good here this year with 85 new stations on SSS. As I write this on 12/12, KGBG-1540 is booming in during another good opening to the Gulf Coast. No sign of usual KXEL. KAJN-1560 made it over usual WPAD and WQXR. (see CDXR rpt.) Recent veries in from WKWF-1600 and WMDO-1540 DX Test. Both required followups. Also, beacon "VOC"-525 and WLNT-1140 DX Test. Fred Zehr, mgr of Iowa City Airport says actual frequency of VOC is 524.51. The FAA authorized frequency is 524. Noted that some daytimers are now staying on past sunset s/off. First one noted is WKKD-1580 (ex-WFVR) Aurora, Ill. now s/off at 1800 LT. Their late programming is 100% CNN net news. Probably don't have scheduled programming for the extra 1½ hours of additional broadcast time, or too cheap to keep a DJ or announcer over the extra 1½ hour. For those of you who remember WFVR is ex-WKKD, so they are actually reusing an old call sign! The form letter QSL from WLNT-1140 mentions possible future DX Test during WRVA SP on Sunday morning during early 1984, so those of you who did not catch them will have another try! 73.

San Francisco Chronicle
12/12/83
via Roger Stevens

46 San Francisco Chronicle 12/12/83

GERALD NACHMAN

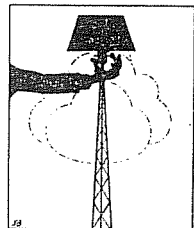
All Out of Air

When Gerry Gordon turns off the light after signing off at KSFO one last time tonight, several listeners plan to bury their radios.

Gordon, who won't be returning when the station resumes under new ownership, was one of a dozen lifelong KSFOers who gathered Friday at Perry's for the fifth last supper that week. Gordon, who looks less like a DJ than a Hell's Angel, a big, bearded guy wearing an ivory tooth necklace, joked about working for a motorcycle magazine.

To his right was Buddy Hatton, who has been asked back. Hatton, like others at KSFO (Jim Lange, Larry Ickes, Bob Holmes), has one of those chunky KSFO voices that tells you where you are on the dial.

Across from Hatton sat program director Alan Hotlen, who won't be back and was not chuckling. "It finally hit me today," said Hotlen, slouching into his seat. "I'm feeling terrible, but the day Sherwood died was worse."



At the other end of the table, next to host Perry Butler, sat beefy news director Jeff Scov, he of the booming voice, a definite Sound of the City who has never worked anywhere else. Further down sat Bob Texiera, legendary longtime engineer. They're all out, after 20 or 30 years, along with newsman Aaron Edwards, who has seen 'em come and go but never thought he'd watch himself go.

It was a genial wake — not drunken, maudlin or jolly, just a bunch of colleagues having one last lunch. Perry Butler stood up and said how, when he moved here in 1968, he tuned in 580, and "I've never had any reason to change the dial."

No one knows what will happen when King takes over. "Beats me," said Hatton. "Someone came up to me and said 'I'm your new producer' and I said 'Glad to know ya! It's a big mystery.'"

One rumor is that KSFO-II will be much more talk and less music, a shotgun wedding of Neil-Diamond and Mel Torme.

Apparently, the new policy will forbid playing anyone who's dead or isn't still recording, so Streisand and Sinatra will survive but Mercer and Garland have had it, at least in this city. This also will finish Fats Waller and Hoagy Carmichael; tough luck, guys. Billie Holiday will have to shift for herself or make the Top 40.

All is not lost, for Dan Sorkin is coming back, along with Gene Nelson, Carter B. Smith and Russ Syracuse, who passed their demographic tests.

The new owners have relied on the sage council of Magid Associates, the revered media medicine men responsible for making a joke of local TV news; they also fiddle with radio formats. Stations pay them great sums of money to do this.

Hotlen, a veteran of several "broadcast markets" (often called cities) said, "I've never been at a station that was so much a part of a city. Has anyone heard a word about KYA?" Nobody had.

The listeners are not sad, or nostalgic, just mad as hell. A cab driver told Hatton that on Tuesday he switches stations forever. A woman wrote: "I cried when Gene Nelson left and I'm crying worse that he's coming back."

Yet because KSFO isn't technically going anywhere, just being dismantled, the on-air personalities who are leaving — Jim Lange, primarily — have been denied departure with dignity.

Their farewell has been muted — mostly on-air innuendoes and gentle joshing, but not the sort of bitter Goodbye to All that a great tradition deserves. They've had to be good sports.

The DJs can't say what they feel, it seems, because King has bought the call letters and the good will that goes with it. Tomorrow, all that good will, to devoted KSFO listeners, will be worth about 72 cents.

It's like someone has come in and, overnight, stolen one of our hills.

The Sony ICF-2002 (76000)

--- First Impressions

by Dennis Kibbe

This Sony receiver is going to be a very popular radio! Combining as it does overall good performance with a degree of operating convenience that can only be described as -- well, sinful!

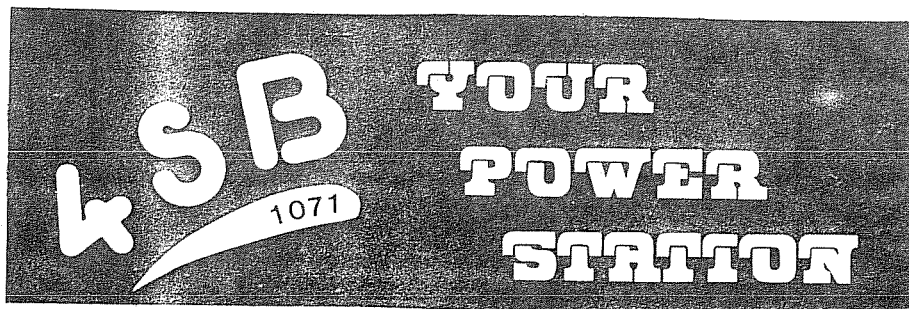
If you haven't seen a picture of one, this short physical description will get you acquainted. The radio is the same size as the ICF-7600A (analog) model it replaces. That's 7 x 4½ inches, or no bigger than a copy of the DXM minus the masthead. Thickness is 1½ inches thin. Most of the controls are on the front face of the radio: speaker on the left half, digital readout and tuning buttons on the right.

If you are worried about getting used to push buttons in place of a tuning dial, let me say simply that you'll love it! Sony has provided a tuning method to please everyone. First, directly by keying in a known frequency. Second, by manually scanning up and down the bands, stopping as long as you want at each frequency. And third, autoscanning up the band, but you'll only catch the strong stations as the scanner skips over the weaker ones. Frequency coverage is 153-519 kHz in 3 kHz steps, 520-1610 kHz in 10 kHz steps, 1615-29995 kHz in 5 kHz steps, and 76-108 MHz in 0.1 MHz steps (US model will be 88-108 MHz). A fine tuning thumbwheel on the side of the case allows tuning between these steps. The radio does a credible job of tuning SSB. Although drift is minimal, sharper selectivity would be needed for listening in the crowded Amateur bands. Overall selectivity is better than any other stock portable I've heard. A two-position tone switch is also effective. Once you've tuned in your station, its frequency can be stored in one of the ten memories and can be recalled at the push of a button. The Sony will remember whether the station is AM or FM and switch automatically. As a bonus, these ten memories are completely tunable! Tune up or down as far as you like and then come right back to the preset frequency.

Other features are a built-in clock/timer, off lock, antenna, and recording jacks.

Before you think this reviewer is being paid by Sony, let me point out that this receiver falls short of being a true medium wave DX receiver on several counts. Sensitivity is less than on the Sony S-5W, and while images are few, strong shortwave signals sometimes show up in the AM band. Connecting an external longwire increases overloading, but a tuned loop such as the Wedge works well. Also, sensitivity is greater on AC than with batteries. For DXing, batteries are good for 1-2 weeks. For general listening they will last much longer. I should mention my ICF-76000 is one of the first ones out (a friend spent three enjoyable hours searching Tokyo's famous Akihabara electronics shopping district before he found one), but should be identical in performance to the ICF-2002 being sold in this country.

Overall, what this receiver lacks in MW performance it makes up for in convenience and shortwave performance. As I said, this Sony is going to be very popular!



 Steve Mittman
 2248 West 37th Street
 San Pedro, CA 90732

The Spotlight shines again! Yes, it's the "all new WSPT"! (Sorry, I've been listening to too many radio stations, hi!) For our new members, or continuing members who may have forgotten, approximately every quarter WSPT will cover a different state or Canadian province west of the Mississippi River with details (tips) from our members on hearing stations in that given state or province. You can contribute to the Western Spotlight column no matter where you may live. Try to provide information that would help other DX'ers in your general vicinity log the station you've heard. Try to include such information as:

1. Reception conditions: a) QRM/QRN; b) stations off, nulled, or faded; c) when logged (time of day or year); d) if a regular, unusual reception or a test;
2. Station stats: a) format(s); b) hours of operation (ELT); c) slogans; d) network affiliation(s); f) verification policy; g) SP, if known (so people will know when not to try for it!).

Also, reporting 50,000 watt clears is fine by me since one person's pest is another person's DX. Also, theoretically a person may log a station and not know its power or if it's on a clear channel or not. (Besides, those 50 kw'ers are getting harder and harder to hear, hi.)

To get us started (restarted), Bill Harms has provided us with some excellent tips for the state of Utah which he logged when he lived in Provo, Utah and Spokane, Washington. Next time we'll include tips from everyone else (see end of column).

. . .

Utah

(Part 1)

[Stations logged by Bill Harms]

- 540 KNAK Delta, D1 1000
 Good in Provo. Rock/pop mx. Friendly v/l. (UT)
 + To Spokane with a Beverage at SSS/SRS. (WA)
- 570 KLUW Salt Lake City, U1 5000/5000.
 Strong. EZL/MYL. MSP. V/q. (UT)
 + Usually u/KVI, etc., at night (WA)
- 590 KSUP Cedar City, U2 5000/1000.
 Good. Pop mx. S/off at 0200. V/q. (UT)
- 610 KVVU Logan, U2 5000/1000.
 Good. Pop mx. V/q. (UT)
 + Frequently w/QRM. (WA)
- 630 KZJO Sandy, U4 1000/500. (Ex-KSXX.)
 Strong. MSP. Talkradio and local talk. V/p as KSXX.
 (UT)
 + Once as KSXX on Beverage. (WA)
- 680 KFAM Bountiful, D1 1000. (Currently on 700 kHz. as South Salt
Lake City. Power is 50,000/1000. Directional to the SW at
 night; daytime DA unknown.)
 EZL. Good in Provo. Prompt friendly v/l. CE likes
 DX'ers. (UT)
 + Once on Beverage u/KOMW. (WA)
- 730 KSVN Ogden, D1 1000; PSA 55.
 Country mx. Good. Prompt v/l. (UT)
 + Once on Beverage. (WA)
- 790 KUTA Blanding, D1 1000; PSA 500.
 Various music; mostly pop. Poor days w/QRM. Sometimes
 good at SSS. V/l. (UT)

800 KBUH Brigham City, D1 500; PSA 91.
 Poor days bombed by XEROK at SSS. Various mx, but seems to have settled on C&W. No verie, despite several tries. (UT)
 + Again on Beverage one time. (WA)

860 KWHO Salt Lake City, D1 1000.
 Classical mx. Good. V/l. (UT)
 + Occasionally at SSS. (WA)

910 KALL Salt Lake City, U2 5000/1000.
 Talk, news, pop music. Strong. V/q. (UT)
 + Once in a while at night w/QRM. (WA)

920 KVEL Vernal, D1 5000; PSA 500.
 Poor to Provo. Format not well known; seems pop now fulltime. No verie yet. (UT)
 + Once before KXLY s/on. (WA)

940 KBPE Cedar City, D1 10,000; PSA 500.
 Poor to Provo. Heard well w/pop mx. V/ppc. (UT)
 + One day on Beverage in 1981. (WA)

960 KDOT Provo U2 5000/1000. (Ex-KYAK.)
 "K-Dot" slogans. Tries for the softer 60's and 70's pop songs. Local. The CE isn't friendly towards DX'ers, so veries are nearly impossible to come by. (UT)
 + Several times as KYAK at night. (WA)

980 KSVC Pichfield, D1 5000; PSA 500.
 Fair. Seems to be C&W mx (?). V/q. (UT)

990 KTLT Tooele, D1 1000. (Ex-KDYL.)
 Good. Pop mx, farm mx, grab bag. V/l. (UT)
 + Occasionally at SRS. Heard as KDYL. (WA)

1060 KRSP Salt Lake City, D1 10,000; PSA 500. (CP for fulltime status as South Salt Lake City. Nighttime power unknown.)
 Top 40 w/some oldies. Strong signal. Reluctant verifier; v/l. (UT) [Bill, could he have been reluctant simply because he felt you lived so close to him? Perhaps he's a more willing verifier for more distant DX'ers. -SMM]
 + Once all day. Good at SSS. (WA)

1080 KRPX Price, D1 2500.
 Fair. Pop mx. V/l. (UT)

1090 KANN Ogden, D1 5000; PSA 22.
 Good. Religious. V/l. (UT)
 + Good now, since power boost, at SSS. (WA)

1160 KSL Salt Lake City, U1 50,000/50,000.
 MOR/Pop/talk/magazine format. V/q. (UT)
 + Great at night. Sometimes all day on average radios. (WA)

1210 KCLG Washington, U1 10,000/250.
 Poor days; good nights. S/off at 0200 (ELT). C&W mx. No verie yet. (UT)

1230 KPRQ Murray, U1 1000/250.
 Rock music. Good days; poor nights. V/l. (UT)
 + Occasionally at night w/QRM. (WA)

1230 KOAL Price, U1 1000/250.
 Format? Only occasionally at SSS. V/policy unknown. (UT)

1250 KNEU Roosevelt, D1 5000; PSA 500.
 C&W mx. Fair all day. V/l. (UT)

1280 KDYL Salt Lake City, U2 5000/500. (Ex-KWMS.)
 All news; Larry King nights. Good. V/l. (UT)
 + Heard often at night (as KWMS).

1320 KCPX Salt Lake City, U3 5000/5000. (Currently KEUG.)
 Strong. Rock mx. V/q. (UT)
 + Usual dominant station at night. (WA)

- 1340 KLVK Heber City, U1 1000/250.
Grab bag; pop mx; even Old Radio Theatre programs! Fair in Provo. (UT)
- 1370 KSOP South Salt Lake City, U2 1000/500.
C&W mx. Strong. AN. V/l. (UT)
+ Occasionally at SSS and SRS. (WA)
- 1390 KBLQ Logan, U2 5000/500; PSA 500.
Pop mx. (Larry King?) Difficult in Provo w/KFTN-1400 slop. V/l. (UT)
+ Often evenings. (WA)
- 1400 KFTN Provo, U1 1000/250.
C&W mx. 0800 - 0200 daily. Local. V/l. (UT)
+ Sometimes during auroral conditions. (WA)
- 1430 KLO Ogden, U2 5000/5000.
MYL. AN; maybe NSP. Good days; fair nights. V/q. (UT)
+ Dominate at nights. (WA)
- 1450 KEYK Provo-Orem, U1 1000/250.
[Bill, note correct City of License. This per NPC Log and confirmed per call to station.]
MYL. NSP. Local. V/l. (UT)
+ During auroras. (WA)
- 1470 KBXN Tremonton, D1 5000.
Format? Fair w/KONI-1480 slop. (UT)
- 1480 KONI Spanish Fork, D1 1000; PSA 500.
Pop music. Look for frequency change. (UT)
- 1490 KJQN Ogden, U1 1000/250.
Fair w/KONI slop. "15-KJQ" slogan ID's. Pop mx. (UT)
+ Sometimes at night w/QRM. (WA)
- 1550 KRGO West Valley City, U2 10,000/500.
C&W mx. Good days; fair nights. V/ppc. (UT)
+ Good at SSS. Once all day long. (WA)
- 1590 KMTI Manti, U2 5000/1000. (Ex-1340 kHz.)
Pop mx. 0800 - 0200. Good days; fair nights. V/l. (UT)
+ Oddly, the only time heard was all day long one day in December, 1981 on Beverage over KZOK (now KJET). (WA)
- 1600 KBBX Centerville, D1 5000; PSA 500.
Religious. Good. V/l. (UT)
+ Good at SSS often. Once all day. (WA)

. . .

Thanks, Bill, for providing us with these excellent tips for the state of Utah!

As mentioned earlier, we'll continue on with Utah next time with tips from everyone else -- so start preparing your tips, everyone. The deadline for contributing to the new WSPT is February 20, 1984 -- or three weeks after this column appears (which is later).

The only guidelines for reporting to Western Spotlight are to please write legibly (typewritten is preferred) and to please write your last name (or initials) and state after each tip. - SMM

AIR WAVING: Did I say Monday that KFOG-FM was on the block? It's been sold, no price announced, to Susquehanna Broadcasting, which operates 13 other stations in such places as Dallas, Cincinnati, Atlanta and Miami. There'll be no change in the station's eclectic rock format for the present... KNBR, which airs old-time radio dramas on Sunday nights, has turned up an old-time listener -- E. Phillip Perry of Scottsbluff, Neb., who wrote to say he picks up the shows on his antique radio, a 1925 Grebe Synchronphase. Perry also says he powers his "good things" in life -- washer, iron, toaster, lighting and shop tools -- with an equally antique wind generator. No TV, though, because "I believe it rots the mind." You're not just blowing wind, E. Phil.

Left: San Jose Mercury News, circa 12/15/83, via Rbt Wien

KTAC 85

2000 Tacoma Mall Office Building
Tacoma, Washington 98411

EASTERN DX ROUNDUP

Bob Lazar

11011 Becontree Lake Drive, #410
Reston VA 22090

Deadline: Mondays

All times Eastern

- 560 WIND IL Chicago, 11/30 2305 w/ sports nx at 2305, relatively clear for approximately 1 hr, very clear at times. (JH-PA)
- 610 WRUS KY Russellville, 12/3 1725 w/ local nx, s/off. (RCW-OH)
WDAF MO Kansas City, 12/1 0702 slogan is "61 country". VERY RARE IDs (call letters). Hrd almost always here, usually w/ C&W.(JH-PA)
- 620 WRJZ TN Knoxville, 11/27 0041 faded in/out w/ commercials at 0042, then R&R mx. (JH-PA)
- 680 WCNN GA Atlanta, 11/27 1925-1935 hrd for approx. 10 min. Very strong & clear w/ all nx, "All-nx 68", many IDs as just "CNN".(JH-PA)
- 800 KREI MO Farmington, 12/2 1853 w/ EZL mx, s/off at 1900 by m. Noted again on 12/4. (RCW-OH)
- 810\$KBHB\$SD Sturgis, 12/4 1815 s/off following local nx, 25 kw power, invited to tune to KRCF, Stereo 93. (RCW-OH)
- 850 WJW OH Cleveland, 12/1 nx format, ID as "AM - 850" at 0749. (RCW-OH)
- 920 WMMN WV Fairmont, 11/27 2005 w/ Top 30 USA show, jingle: "Holiday radio, WMMN for ?? in Fairmont". W/ QRM but otherwise strong. (JH-PA)
- 930 KWOC MO Poplar Bluff, 12/2 1643 w/ Conway Twitty mx then ID, hrd for about 5 min. (JH-PA)
WPAT NJ Paterson, 12/4 1756-1800 hrd until 1800 w/ sports nx then wx and ads. (JH-PA)
WNNH NH Rochester, 12/3 1731 hrd for a few min, jingle "2 93, WNNH, Rochester". Clear at times w/ QRM from many. (JH-PA)
- 940 WMAZ GA Macon, 12/1 1730 rec'd very quickly in jumble, but ID was very strong. Not hrd since. (JH-PA)
WVLV PA Lebanon, 12/11 0716 s/on u/ CBM w/ ments of Mutual net, into local wx. (RCW-OH)
- 950 KXJK AR Forrest City, 12/4 s/off at 1759 by ancr Glen McFarland, ments of FM stn KBFC. (RCW-OH)
WBKH MS Hattiesburg, 12/4 1800 s/off by Franklin Davis. (RCW-OH)
KLIK MO Jefferson City, 12/4 1736 very clear at times w/ C&W mx and a wx forecast, "95 country", lost by 1745. (JH-PA)
WBBF NY Rochester, 12/1 1754 very clear at times w/ talk show. Lots of QRM. (JH-PA)
- 960 WFIR VA Roanoke, 12/1 1759 frequent IDs, lost after 1800, reception varied w/ different antennae. (JH-PA)
- 1070 WAPI AL Birmingham, 11/27 1754 w/ "AM-1070 wx", tornado and flash flood watches in area, blasting o/ regular WIBC. (RCW-OH)
- 1130 KBMR ND Bismarck, 12/10 1759 jingle ID, Ac mx, local nx, many local ads, dropped out of sight at 1810 (pattern change?) (RCW-OH)
- 1140*WASC*AL Atmore, 12/18 0137 fair w/ ID by f, TT, ID by m, mx on DX test. (RAL-VA)
- 1170 WAMB TN Donelson, 11/27 s/off at 1745 o/ big band tune, format continues all night on cable TV on either 99.1 or channel 24. (RCW-OH)
- 1210 WDGR GA Dahlonga, 11/27 noted at 1726 w/ s/off, no ment of night power or night operation, owned by Blue Ridge Radio, Inc. A regular here on night operation. (RCW-OH) (Apparently, according to DX News, their grant for night power was a mistake and they are no longer on at night.--ed)
WILY IL Centralia, 11/27 u/ KDKA (do you mean WCAU?--ed) w/ anmts "WILY, 1210, we're all mx for 20 minutes." (RCW-OH)
- 1290 WCOW WI Sparta, 11/27 u/ usual dominant WHIO w/ Packer NFL net, ID as "your stn for mx, nx and information." (RCW-OH)
- 1300 WAVZ CT New Haven, 11/26 1735 constant fading and QRM, "mx of our lives" ment frequently; when ID'ed, woman ancr calls it "WAVZ 'waves'". (JH-PA)
- 1370 WTTS IN Bloomington, 11/30 T40 mx, ID at 2101 as "The Rhythm of the Sunshine". (RCW-OH)
- 1430 KCOH TX Houston, 12/5 1820-1830 spot for "KCOH shopping spree", soul mx, s/off, 1000 w days, 396 w PSA. (RCW-OH)
- 1450 CHUC ON Fort Hope, 12/3 1709 hrd them w/ several ads, then R&R mx. Very clear reception. (JH-PA)

- 1550 WKBA VA Vinton, 11/27 1715 w/ very brief ID, then quick s/off. Reception was poor. (JH-PA)
- 1560 KAJN LA Crowley, 12/8 s/off at 1800 w/ invite to tune KAJN-FM at 101. (RCW-OH)
- WSDL LA Slidell, 12/8 1900 s/off, dominant on channel. (RCW-OH)
- 1570 WRCL AL Oneonta, 11/30 s/off at 1744, no SSB, mixing w/ WHLP. (RCW-OH)
- WHII MS Bay Springs, 12/5 s/off at 1758, dual ID (two sets of call given) but unaudible. (RCW-OH)
- WHLP TN Centerville, 11/30 late s/off at 1748, ends w/ ID. (RCW-OH)
- 1580 KPIK CO Colorado Springs, 11/27 1831 ID after KLTR cuts their carrier. (RCW-OH)
- WUIV NC Icard, 12/9 1754 gospel mx, "Beautiful gospel" slogans and s/off at 1800. (RCW-OH)
- KLTR OK Blackwell, 11/27 s/off at 1830, no SSB, ments of owners - Indian Nations Broadcasting. (RCW-OH)
- 1590 WJSO TN Jonesboro-Johnson City, 12/7 1700 hrd briefly (5 min) but xlnr reception w/ NBC nx at that time, "WJSO Jonesboro-Johnson City" IDs. (JH-PA)
- 1600 KATZ MO St. Louis, 12/2 soul mx, ID at 1900 as "The black experience", NBN nx. (RCW-OH)
- WRNC NC Reidsville, 12/6 2055-2105 "WRNC Radio 16" and "The closer you listen, the more you'll love, WRNC Radio 16", 2056 ads then R&R mx. Ex-WKXQ. (JH-PA)
- WHVL NC Hendersonville, 11/29 1729 hrd at 1730 s/off w/ funny FCC cutdown: "... and now WHVL Hendersonville leaves the air because we have to ... ", tells us to tune in at 0600. (JH-PA)
- WNST WV Milton, 12/2 1730 s/off, xlnr. (JH-PA)
- CHNR ON Simcoe, 12/10 1705-1715 "CHNR 1600", lots of QRM at times. Lost to others by 1715. (JH-PA)

Eastern DXers

- JH - Jim Hall, 240 Byron Rd., Pittsburgh, PA 15237
(Juliette AM stereo w/ 375' and 100' lw's)
- RCW - Bob Walker, 16 Wythe Court #10, Fairfield, OH 45014
(Superadio)
- RAL - Bob Lazar, 11011 Becontree Lake Dr., #410, Reston, VA 22090
(Superadio)

Several new members have asked me for the rules for reporting to this column. All you have to do is send in your reports exactly as they appear in the column with frequency, call letters, state, location and your initials on each item. Please use just one side of a paper as when there are a lot of reports I'll cut them up to arrange them in frequency order (this is one reason why your initials should be on each report.) Placing items in frequency order is optional, though preferred. Remember to include time, date, reception conditions and program details for each logging. As to what to report, any new station or any station not a "regular" at your location would be an appropriate logging. Also, you should send in reports on changes at your local stns such as formats, call letters, operating hours, etc. All of the reports received from new reporters in the past month or so have been good, so I hope to hear from you again soon. 73. P.S.: all of the times in all of the domestic DX sections are Eastern local; standard or daylight, which ever is in effect at the time of the logging. Please use the 24 hour clock.

Fire Destroys WNAX Yankton

NEW YORK—Paul Shay and his family got a "bird's eye view" of the blaze that gutted the office and studio of WNAX Yankton, S.D.

Shay, the music director of the AM country outlet, known as "Your Big Friend In The Midwest" for its five-state reach, lives across the street from the three-story brick building which housed the station. A fire of undetermined origin swept through the structure just after midnight on Dec. 9, causing over \$1 million in damage, according to Shay. "Everything was destroyed—records, equipment, production gear, everything," he says.

Two employees, in the building at the time of the fire, escaped unharmed and ran three blocks to a fire station, he says. Firefighters, hampered by zero-degree weather, battled

the blaze for 24 hours and remained on the scene for another 12 hours. A Yankton fire marshal was quoted as saying that over one million gallons of water was pumped by his men, notes Shay, adding that an investigation into the cause of the fire began Dec. 12.

The country station, whose 5,000-watt signal at 570 on the dial covers the Dakotas, Minnesota, Iowa and Nebraska, was back on the air five hours after the blaze, broadcasting from a makeshift studio at the side of the WNAX transmitter in Mission Hill, S.D., three miles northeast of Yankton. Two local stations, adult contemporary-oriented KYNT and AOR-formatted KQHU, have assisted the station with news and weather copy and equipment during its hour of need. LEO SACKS

WNAX-570

YANKTON, SOUTH DAKOTA

*"Your Big Friend
In The Midwest"*



Billboard, via Peggy Thompson

CENTRAL DX ROUNDUP

Robert Kramer
6416 N. Richmond
Chicago, IL 60645

UNITED, SPECIAL, CHANGES, et. al.

1160 WKCM KY HAWESVILLE, 1730 12/8, fair-good o/nullled WJJD w/C&W mx & ancmt about change from 2.5 kw ND to 1 kw DA w/null west to protect KSL. Poor-fair after w/severe QSB. ex-1140. REM-IL

1240 WIMZ TN KNOXVILLE, 12/13 0020 good in WSEB w/C&W mx & wx, ex-WHEL. RK-IL

1420 WIGG MS WIGGINS, 12/14 1800 fair w/s/off ment. 5 kw, so CP is on. RK-IL

All da Rest

1040 WSKE PA EVERETT, 12/14 1641 good briefly o/WHO w/spot. RK-IL

1190 WIDS KY RUSSELL SPRINGS, 12/16 1729 fair w/PSA & s/off. RK-IL

1460 WBRN MI BIG RAPIDS, 1953 2/7 briefly o/WRM w/lcl spot, SID & into RR mx. REM-IL

1510 WYNI AL MONROEVILLE, 1745 12/5 fair briefly o/WLAC w/wx then s/off ment. 5kw. REM-IL

12/18 0038 good o/WLAC on E! w/C&W mx & ID, then off. RK-IL

KACJ AR GREENWOOD, 1855 12/4 fair at times w/C&W mx o/WLAC until 1900 s/off. Many "Country 106" IDs. REM-IL

An Easy Week:

RK... Hey, I'm on first
(R-1000, HQ-140X, HQ-129X, Radio West Loop, Kowalski Loop, spiral loop)
REM... Robert McKinney RR# 2, Box 120 Clinton, IL 61727
(R-300, SM-1)

Last week's reception of Oregon & other Northwest areas at sunset here in Chicago appears to be an indicator of geomagnetic activity the following day. This is the 4th or 5th time in the past couple of years that this type of opening has preceded an aurora (although not all of the openings occur at sunset). The opening about 5 weeks previous at sunset that produced KERR-750 Polson, MT & KOPI-1180 Kalispell, MT also was followed by aurora the following day. In both cases the aurora was minor. However, the day after I logged KTO4-1340 Rapid City, SD a major geomagnetic storm broke out. I am planning to get some blank maps of the U.S. & plot the reception paths that take place during these "Johnstown Effect" openings (see the article I wrote on Aurora last season for more on this). Hopefully these plottings will be the basis of an article in the future about these spectacular openings.

via Steve Mittman

Los Angeles Times Tuesday, December 13, 1983

ANOTHER SOUND AT RADIO STATION KSFO

SAN FRANCISCO (AP)—Jim Lange and other familiar voices said goodbye on KSFO Monday as new owners prepared to take over the dial spot and call letters of the self-proclaimed "world's greatest radio station."

The 11:59 p.m. last sign-off for the old KSFO staff is one element of a multistation switch sparked by the purchase of KSFO by Seattle-based King Broadcasting Co., which already owned KYA-AM and KLHT-FM here.

King was forced by federal law to sell one property, and KYA was sold to the owners of KOTT, an FM station that will use KYA's 1260 AM dial spot as an added voice for its "beautiful music" programming.

The new KSFO will have voices familiar to listeners to the old station. Lange and others will be gone, but the new owners will bring back Gene Nelson, Carter B. Smith, Russ Syracuse and Buddy Hatton.

Just what the new KSFO will sound like was kept a mystery by the new owners, although they were expected to jettison the menu of big-band and other older pop music.

KSFO, with personalities like the late Don Sherwood, once held the top spot in San Francisco radio ratings but had slipped in recent years. The station tried talk shows and the big-band music among efforts to regain the top, but finally was sold by Golden West Broadcasters, owned by one-time cowboy star Gene Autry, whose holdings also include the California Angels baseball club.

KING RADIO
10,000 WATTS 5/N WATTS
1170
KC ON YOUR DIAL
VISITORS WELCOME

Why not drive out to North Pole and visit us? . .



Don & Gen Nelson, Manager & Gen. Manager
BOX "O" NORTH POLE

WESTERN DX ROUNDUP

Nancy Hardy
2301 Pacific Avenue
Aberdeen, WA 98520

All times are
Eastern Local

Phone for hot WDXR tips: (206)532-6827 till 10pm(PLT)

DEADLINES: Tuesdays 1/3, 1/10, 1/17, 1/24, 1/31, 2/7, 2/14, 2/21, 2/28

REPORTERS FOR THIS ISSUE:

- (CBC) Chris Campbell-4037 SE 11th St.-Renton, WA 98055
Sanyo M9926 AM/FM cassette radio, GE Superadio
- (AD) Alan Davidson-8121 E. Balfour-Tucson, AZ 85710
GE 7-2950
- (PH) Bill Hardy-DX'ing at Ocean City State Park-Ocean Shores, WA
FRG-7, SM-1
- (NH) Nancy Hardy-DX'ing at Ocean City State Park-Ocean Shores, WA
FRG-7, SM-1
- (JH) Jim Hilliker-1502 E. Hedgewood Ave.-Anaheim, CA 92805
Kenwood R-1000, Radio West loop
- (SPM) Steve McGreevy-45 Elda Drive-San Rafael, CA 94903
DX-200, ICF-7600D, FRT-7700 tuner w/home brew preamp, 50',
200', 400' & 500' longwires
- (RM) Roy H. Willar-7420 57th Dr. N.E.-Marysville, WA 98270
Grundig 5077, SM-1; DAK3 unamp. loop
- (DN) Doug Nyholm-2071 Cedar St.-San Carlos, CA 94070
- (RW) Robert Wien-1309 Dentwood Dr.-San Jose, CA 95118
GE Superadio, GE long-range portable, SM-2

OF SPECIAL INTEREST:

- 1220 KTSJ CA, Pomona 12/4 2100 noted on post-sunset authority, into s/off & ID. Sounds like they use all of their 250w. (JH-CA)
- 1250 KLLK CA, Willits per call to KUKI-1400 Ukiah, CA (25 mi. SE of Willits), secretary who answered phone says she is "absolutely positive" that KLLK is not on the air, contrary to prior published reports. However, she mentioned that they are "working on it" (getting on air). So apparently they are not on the air. (RW-CA)
- 1260 (KYA) CA, San Francisco 12/12 1520 totally off the air in preparation for change to KOIT-AM tonight. Back on later playing all-request night. (RW-CA)
-KOIT CA, San Francisco ex-KYA made the switch 12/13 0300. Very enjoyable last hour of KYA in which they played back to back every ID slogan they used since the mid 50's. During the switch at midnight a KSFO ID slipped through (as KYA moved operations to KSFO-560) & there were several pauses & a KOIT ID at 0301. KOIT played continuous mx (most likely a FM simulcast as I didn't check) and then their first legal 1260 ID at 0316. Say goodbye to another 3 letter AM call. (DN-CA)
- 1270 KGUY CA, Palm Desert 12/6 1945-1950 still in strong o/the Mexican w/Pet Patrol for lost & found animals in desert area. Obviously now on til 6, called stn, they forgot to lower power, then disappeared at 1950. (JH-CA)
- *****
- 515 PKV TX, Fort Lavaca very poor at 0125 12/7 w/ID. Sat on this for 15 min. until decent fade up to do it! On 200' E wire. New. (SPM-CA)
- 524 VOC IA, Iowa City poor-fair 12/7 0323 on 50' vertical longwire. Double hop. Only 25w. Weaker than usual midwest beacons hrd on longwire. New. (SPM-CA)
- HRD TX, Kountze (near Beaumont) poor 12/7 0130 w/ID, hrd on east longwire. (SPM-CA)
- 530 TIS CA, Los Angeles Airport poor 12/7 0325 audible poorly most nights, some nights can be quite good on the Beverages at 400 miles distance! Het often from 531 JOQG-Japan in morns. (SPM-CA)
- 540 KNOE LA, Monroe-W. Monroe 12/12 0331 poor, deep fades in CBXQ null w/C&W, OM DJ, clear ID. Been wondering what this has been for a year already. New. (RW-CA)
- 550 KFYR ND, Bismarck 12/12 0759-0827 hrd fair to good, many ments of the snow falling in "the Capital City," many different "K-Fire" jingles, a spot for a car show in the Kirkwood Mall in Bismarck, and for the Computerland on Airport Road South. About equal in strength to CBK, very steady signal, but wiped out by KBOW s/on at 0827. New. (CBC-WA)

- 600 KGEZ MT, Kalispell 12/12 0857-0902 spot for a Ford dealer in Kalispell, 0859 wx for area by man and "...KGEZ, Kalispell, the time: 7am" and into network nx. Fairly strong in CJOR null. Very faint stn in back. (CBC-WA)
- 630 KOH NV, Reno 12/4 0723-0806 w/Larry King show u/o KIDO, in CKOV null. Hrd "K-O----" by man after fade out & Mutual spot, then rx, by man: "K-O-H, Reno," jingle sung by woman, then more Larry King. New. (CBC-WA)
- 650 KYAK AK, Anchorage 12/2 0637-0710 C&W stn on NW-SE bearing, clear clean audio, good in strength. Splash from KFI-640, sometimes very intense. IDs at 0649 by man "K-Y-A-K..." & at 0710 "We're giving away...thousand dollars on KYAK," by man. Weaker than KFQD, but when noted again on 12/5 it was only Alaskan hrd. New. (CBC-WA)
- 660 WNBC NY, New York 12/2 0205 very poor to poor w/ID "WNBC, New York" and SID "NBC," into pop mx. New, state #23. (AD-AZ)
CFFR AB, Calgary noted TT'ing for hours nightly after 0200 the entire week on 12/6-12/12. (RW-CA)
- 670 KBOI ID, Boise 11/17 1748-1810 hrd spot for Idaho Power by man, "AM 67" jingle at 1749. Carrier w/faint audio hrd w/out loop, weak & readable w/4' loop. (CBC-WA)
- 680 KNBR CA, San Francisco 11/17 1748-1807 noted fuzzy audio w/loop, Michael Jackson's new one at 1748 and some Santana at 1753. ID by man at 1754, more pop, and two IDs & a jingle after nx, at 1807. Weak, partially readable. Most distant daytime DX for me yet, but I guess it's fairly common in this area.(CBC)
- 690 ?CEKF-1? SK, Gravelbourg 12/4 0657-0717 FF talk, sounded like nx interviews, some pop mx afterwards. In XETRA null, fair sig., QRM from unID BTFL mx or orch. stn. Presume it's not CBF, CEK was in super strong at time. (CBC-WA)
- 700 KPAM UT, No. Salt Lake City 12/5 0724 EZL/ETFL mx o/u WLW. Promo, ID, and slogan "AM 700" given. (SPM-CA)
KPAM+12/9 0426 w/TT. They've been off after 0300 lately. (RW-CA)
?KPAM?+12/5 0605-0714 weak, muddy signal w/end of UPI nx at 0605, into muzak version of Kenny Rogers' "The Gambler." Woman annr. Stn never faded up enough long enough for clear ID. Hrd "call 525-5485...or call now at AM-700" by woman, then faded out. Sounds like it could fit KPAM's format. Bearing was SE. (CBC-WA)
?KPAM?+12/7 0520 probably the one here w/TT's for quite awhile.(JH)
- 740 KTOX ID, Boise 12/18 1732 poor but alone w/telephone talk show, sudden "Newstalk 74, KTOX, Boise" by different male voice, then right back to same show. Not on 730 yet. (BH-WA)
- 750 KFQD AK, Anchorage 12/2 0625-0900 appeared on NW bearing w/pop mx, very clean audio (not much bass). IDs by man as "KFQD," "Stereo KFQD," and before NBC nx at 0800 as "Stereo 75, KFQD." No location given. After NBC nx (no local nx), man gave marine forecast for waters south of the Alaska Peninsula. Very steady, clear sig., sometimes covering KXL. Began to fade after 0800. New here. State #24. (CBC-WA)
- 760 WJR MI, Detroit 12/2 0240 fair, occ. o/KFME, w/jazz mx, ID 0245, into stn promo and wx. New, state #24. (AD-AZ)
- 830 ?KIKI? HI, Honolulu 12/4 0620-0850 pop mx stn, E-W bearing, weak, w/woman annr. ID "K_K" by man at 0632, behind WCCO and another tent. ID by woman at 0850, then it started to fade out. (CBC)
- 840 WHAS KY, Louisville 12/2 0211-0522 steady & strong signal most of night, w/All Night oldies show. IDs as "The Big 84, WHAS." Spot for "Joe Donovan's Weekend" at 0328. Not too common on my radio. QRM from SS unIDs. Faded out by 0700. (CBC-WA)
- 850 KGOE CA, Thousand Oaks 12/18 2129 quick ID during break in sporting event, fair, but definite "K-(G?)-O-E, Radio 85." Sporting event was L.A. Kings hockey; we expected KOA which was partly nulled w/Denver NEA basketball. KTAC nulled. New. (BH&NH-WA)
- 870 WWL LA, New Orleans 11/30 0417-0418 breaking through KORD, ID "...at WWL, Radio 87, New Orleans..." Spot and "...a special weather service of WWL, Radio 87, New Orleans..." by man at 0418. Stronger than usual, almost even w/KORD. (CBC-WA)
- 900 KNUI HI, Kahului 12/19 0126 ad for Safeway "on Kamehameha," mx, 0130 SID. Briefly very good w/CJVI nulled, no sign of XEW.(NH)
+12/19 0204 good, just o/XEW, CJVI nulled, ending "K-N-U-I news." New. Had logged on 1310. (BH-WA)

- 900 CKBI SK, Prince Albert 12/12 0721-0722 hrd w/good sig. in CJVI null, w/spot for farm equip. dealer, some tickets for sale at "The Bay" (Canadian dept. store), and "...6:22 here at CKBI..." by man. First time hrd. (CBC-WA)("The Bay" comes from The Hudson's Bay Company! It's a dept. store sort of like JC Penney in the U.S.--NH)
- 940 (KPRE) CA, Fresno 12/12 0105 noted totally off, back on at 0135 recheck. (RW-CA)
- 950 KJR WA, Seattle 12/10 0230 XEGM running OC, hrd pop mx & "Channel 95" IDs. Later, XEGM running TTs. (JH-CA)
- 960 KAVR CA, Apple Valley 12/6 1944 good w/ID, then gone. New. (AD-AZ)
- 980 KFWJ AZ, Lake Havasu City 0810 in semi-KFWE null, fairly strong "Mojava County's most listened to station, KFWJ." Fair. (JH-CA) (Date??--NH)
- 1030 KCTA TX, Corpus Christi 12/2 0700 good w/s/on then lost to KTWO. WEZ wanted here. (AD-AZ)
- 1070 CKST AB, St. Albert 11/17 0400-0405 hrd EN nx report w/Canadian nx and then ID "Today's best music...this is 10-70 radio, CKST," by deep voiced man. On top of channel, almost unnullable, fair in strength. KNX buried, while just 24 hours earlier it was the only one you could hear. (CBC-WA)
- 1170 (KLOK) CA, San Jose 12/10 0435 noted totally off. (RW-CA)
- 1230 KPAK CA, Redding 12/18 2200 ID o/C&W song, "KPAK Redding" weak but definite amid mess. First logging since change from KRDC. (BH&NH-WA)
- KVAS OR, Astoria 11/18 1656-1705 hrd man say "...Sadie Hawkins night...in downtown Astoria" at 1656. ID "K-V-A-S, Astoria!" by man at 1700, then nx, sports nx about Univ. OR and OR State U. coaches, coast wx, and country mx at 1705. QRM from KRDR. (CBC-WA)
- *KQIK* OR, Lakeview MM 12/5 0310 1st MM f/c noted w/tone and CW ID. Poor to fair in KGFJ null. (JH-CA)
- ?KOZI? WA, Chelan 11/17 2034-2038 hrd man ment. MTV & "TV forest" (?), and "Ed Carey, in Chance." (Could have been Chelan) Then Mutual pips at 2035 and "Ey satellite, it's Mutual sports." Sounded like same stn though I could've been mistaken. (CBC-WA)
- 1240 KSWA CA, Santa Maria 12/18 2300 clear ID during break in L.A. Lakers Network phone-in talk show. Also mentioned MYL on KSWA. Briefly atop KNRY. New. (BH&NH-WA)
- KQEN OR, Roseburg 12/2 2328 good, on top of jumble w/spots, ID, into BTFL mx. (SPM-CA)
- 1270 KAJO OR, Grants Pass 12/4 1943 two local ads ment. Grants Pass, TC, but no ID. Disappeared u/the Mexican. Then, on 12/7 0915-0918, fair out of talk on Oregon, definite "K-Joe" ID. Fair to poor. New. (JH-CA)
- KSSA TX, Ft. Worth 12/12 0458 fair w/several "Radio Variedades" IDs in KROI null. Good cx to south tonight, hrd a ment. of "esta en Casa (Kahssa)..." Call change, ex-KFJZ. (RW-CA)
- 1310 KZZP AZ, Mesa 12/5 on top at times 0755-0830 w/top 40 mx, legal ID at 0800. Songs by Yes & others. 1314 het QRM'ed at times. New. (SPM-CA)
- KIOT CA, Barstow 12/5 0945-1003 several "K-131" IDs in mix of stns (like a GY freq.!). Surfaced nicely on hour w/ID, wx at 1000. New. (SPM-CA)
- KCRE CA, Crescent City 12/5 suddenly on at 0900 in mid song, ID on hour, into nx. On top of KZZP. (SPM-CA)
- KDIA CA, Oakland 12/6-12/12 seems to have been running on low power all this week, perhaps still recovering from last week-end's big wind storm. (RW-CA)
- (KDIA)+ off for several days beginning Sa 12/3 due to storm. Back on sometime Wed. 12/7 w/low power. (SPM-CA)
- KLIX ID, Twin Falls 12/5 0855 TC, ID, ment. of Magic Valley. Ai nx on hour. 1st time hrd in 2 years. (SPM-CA)
- KEIN MT, Great Falls 12/5 0300 nice ID on hour into nx. Dominant on 400' wire running N/S in KDIA absence. New. Also noted 2021 w/C&W mx, wx, ID, sports, in KDIA null (KDIA on very low power). (SPM-CA)
- KARY WA, Prosser 12/5 SS, ranchera mx, "LV del Valle" ID, into s/off in EE w/details at 1900 o/others w/excellent sig. New. (SPM-CA)
- 1350 KDOV OR, Ashland 12/15 1040 time & ID nicely in clear for a brief log of call change (ex KRVC). (RW-WA)
- 1390 (KGER) CA, Long Beach MM 12/5 0420 noted off, only KELQ noted. (JH)

- 1400 KRE CA, Berkeley 12/12 1006 w/clear KBLX (FM) call and Bay area traffic. Unneeded, but nice to hear that distance on a GY freq. (RM-WA)
- CFLD BC, Burns Lake 12/12 0500 w/"CI Radio/BCFM" ID; BC #77, 1400 #80 (73/61 varied). CINL nulled. (RM-WA)
- 1450 KFLS OR, Klamath Falls 12/18 1924 end of mx, 1925 ID & into CBS sports. Poor w/KAYO nulled. New. (NH-WA)
- 1470 KUTY CA, Palmdale 12/19 0359;50 ID into APR nx. Very strong and clear. New. (NH-WA)
- 1480 (KWIZ) CA, Santa Ana 12/6 0325-0349 noted off the air. OC, TT at 0349, ID, testing, back w/RS by 0415. (JH-CA)
- 1490 KCUZ AZ, Clifton MM 12/5 0215-0230 reg. 1st MM f/c fair to good w/TT o/others, some fading. Missed 2 IDs, then in good 0225 w/voice ID "This is radio station K-C-U-Z, Clifton, AZ, conducting a frequency check." More TT, then last ID at end 0229, "This is radio station KCUZ, Clifton, AZ, now concluding our frequency check, Tucson, Arizona..." faded out. New. Now I've got all 4 Arizona 1490 stations. (JH-CA)
- 1560 WPAD KY, Paducah 12/7 0645 C&W mx, much fading. Quick fade-up w/ID and TC "WPAD, 5:45," through someone's OC. New. (JH-CA)

December f/c's heard:

- 1st MM 0215-0230 KCUZ-1490 AZ (JH-CA)
 0300-0315 KQIK-1230 OR (JH-CA)
- 2nd We 0118-0124 KOPY-1070 TX (RW-CA)
- December f/c's tent. heard:
- 1st Tu 0115-0119 KOKK-1190 SD (RW-CA)
 0210-0220 KOJW--610 MT (RW-CA)
 0655-0700 KFMN-1560 TX (RW-CA)
- 2nd MM 0130-0137 KSDN--930 SD (RW-CA)
 0200-0205 KSN0-1260 CO (RW-CA)

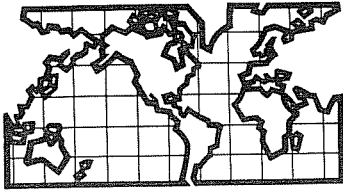
UNIDS:

- 690 12/4 0659-0710 BTFL mx stn behind (tentative)CEKF-1 in XETRA null. Continuous, interminable muzak or classical orch. piece, no talk heard. (CEC-WA)
- 740 12/4 0747-0758 jazz stn, lots of sax, E-W bearing. Weak, fluttery, KCES off. Wiped out by CEX s/on, KIRO-710 splash. Ideas? (CEC-WA)
- 1360 12/8 0659 UNID w/KEEN slop loop N, phone 848-4570 hrd, thought it might be KUIK, but prefix doesn't fit KUIK's phone no. in BYB. Is this a Tacoma exchange? (RW-CA) (848 is prefix of my sister who lives in Puyallup, WA, near Tacoma.--NH)
- 1360 12/19 0715-0720 "WMOB"? fair above rumble w/ad for music store, location possibly "Saraland" (a Mobile, Alabama suburb). More ads, then fairly loud 2-minute ad 0717 selling "Gospel record albums" & 8-track tapes, 5 for \$5, "right here at the studios & offices of WMOB." 3 very clear "WMOB" ments. Specific directions on how to get to WMOB studios at 328 South Sage Avenue, via Airport (?) Blvd. Even told where to park, "come up the elevator, first door on the left"! Mobile, Alabama, 5kw daytimer on 1360 is listed as WIXO. WMOB-840 Mobile recently changed calls to WWAX. Did WIXO recently change calls to WMOB? Would be only our 2nd Alabama if it's them! (BH&NH)
- 1480 12/6 0330 looped east, C&W mx w/Music Country Network IDs, nothing else. If KWIZ would've only waited till after 0400 to go back on!(JH)
- 1560 12/7 0700 KPNC s/on late at 0701 today. Many signals in & out. Hrd voice fade up "...broadcast day...K-M-T..." Then another voice "530, good morning everybody, here's news on the Florida network." Sure wish KPNC would s/on later! (JH-CA)

Welcome to WDXR, Steve. Hope to hear from you often. In case you are wondering, "DX'ing at Ocean City State Park" does mean Bill & I went camping again. There was a light covering of snow on the ground when we left home, so expected good DX cx. We weren't let down. Happy New Year everyone--even if you don't live in WDXR-land! ♡

McGonigle of the Comical ☐ Jeff Danziger





DX WORLDWIDE - WEST

Pat Martin - Editor

P.O. Box 843, Seaside, Oregon 97138

(503) 861-3185 - deadline Tuesday

PAN AMERICAN DX ROUNDUP

- 540 MEXICO, S.L.P. XEWA 12/3 at 1215 noted booming in, in CBK null, some splash at times. First time hrd in a while (CBC-Wa)
- 660 MEXICO, Mexico D.F.-XERPM, 12/3 from 1206-1252, hrd station w/SS mx and SS Speech by man and woman, N/S bearing, "Radio Uno" at 1208. My guess as XERPM as "Radio Uno" listed as slogans. (CBC-Wa)
- 730 UNID, 12/3 at 1239-1252, SS Speech, Latin mx, in partial CKLG null clear audio, horrible KIRO splash at times, too covered to ID. 100 KW-XEX Best bet? (CBC-Wa) (Yep, PM)
- 750 UNID, 12/2 at 1045 SS man in Latin style mx, behind KXL, bearing SE/HW. Faded up once on KXL fadeout, Thought I hrd Sandino, but not sure. Try again I guess. (CBC-Wa)
- 830 MEXICO, Navolato-XEVQ 12/4 from 1312-1335, tuned in to strong SS ancr, in WCCO null, lots of spots, ranchera mx, ID "Rancho Alegre" and ment. (many) Pacifico and Navolato. Interesting spot at 1326 w/man playing, talking over organ, which played "Rudolph the Red Nosed Reindeer" Guess they have the Christmas Rush there too, hi. (CBC-Wa)
- 840 UNID, 12/2 at 0722 to 1022, light Jazz muzak faded up behind WHAS, during fadeout, w/YL ancr, say once sentence between selections. Couldn't catch ID. Ideas? HOL80? Does format fit? (CBC-Wa) (Could be HJBI, as they play soft mx.PM)
- UNID, 12/2 from 0722-1022, Station lot of speeches made by man, behind WHAS and another unid SS station, poss. Cuban accent? Indian style flut mx at 1003 No idea. Vy weak. (CBC-Wa) (The flute mx may be Ecuador or Southern Colombia. Any ideas anyone? PM)
- 850 MEXICO, Chihuahua-XEN 12/12 at 1302, poor u/KOA w/vy clear ment. of "esta en Chihuahua, Me-hee-ko" poss. tail end of s/on, tho s/on listed at 1200 in Mexiglen list. (RW-Ca)
- 1000 UNID, 12/12 1019-1244, sev. unids here, first one speesh by man, which sounded like Colombia, but very muddy audio. Reappeared at 1118 another OM reading-nx. HJAO? 2nd unid-station had Indian flute mx (presume poss. HJAO, at 1227 station w/singing ballad (SS), lots of Latin percussion 1231. Ideas? (CBC-Wa)
- 1010 MEXICO, Guadalajara-XEHL 12/12 1010-1017, hrd IDs as "HL" and "en la hache el" by OM. New (CBC-Wa)
- 1030 MEXICO, Mexico City-XEQR 12/12 1051-1104, hrd ballads in SS, "La Hora Radio Centro", fair-poor KTWO off New. (CBC-Wa)

TRANS-PACIFIC DX ROUNDUP

- 648 UNID, 12/5 1112-1257, het on lower side of 650, no audio NW/SE, strong KFI QRM (CBC-Wa)
- 657 t NORTH KOREA, 12/5 1112-1310, vy weak speech by man and woman, sounded like KK (more throaty than JJ) Faded by 1330. (CBC-Wa)
- 702 UNID, 12/5-1112, Het on upper side of 700 KHZ, KIRO off, NW/SE bearing No audio hrd. (CBC-Wa)
- 720 U.S.S.R., Yuzhno-Sakhalinsk-12/5 at 1100 quite clear under WGN with R.Moscow FS IS and time pip, quite alone at 1200, but not strong. KDWN test ID, just off the hour each time. (RM-Wa)
- 738 UNID, 12/4 at 1247 het NW/SE bearing, Jazz station KCBS off (CBC-Wa)
- 747 JAPAN, Sapporo-JO1B 12-2 from 1038-1200, het on 750, audio at 1045 JJ talk QRM KXL (CBC-Wa)
- 828 JAPAN, Osaka-JOBB, 1155-1210 hrd during WCCO fadeout, Ment. NHK in EE by man. 1st time heard, 12/2 (CBC-Wa)
- 837 UNID, 12/2 het on lower side of 840 (CBC-Wa)
- 1053 UNID, het 1224-1232-12/5, growl or hum, no audio NW/SE (CBC-Wa) (see help with Unids below.PM)
- 1566 SOUTH KOREA, Cheju-HLAZ 12/15-1500-1540, note 1540 is beyong WRTH listed s/off, not hrd at 1600, not reported as too much slop from CHUB-1570, but have them verified as HLDA (R -Wa)

HELP WITH UNID'S

- 666 UNID, station here in 11/29 DXWW-West is most likely DZRH, especially considering early Christmas mx. (CAT-Okinawa)
- 1053 SOUTH KOREA, The echoinf audio here is from the South Korean jammer here for North Korea's Voice of the Reunification. The jammer has at least 250 KW, judging from the signal it puts in Okinawa during the daytime. JOAR-Nagoya is thrashed by this combination and loses about 50% of its coverage. (CAT-Okinawa) (Thx Charlie for the help on these.PM)

THANKS TO THESE REPORTERS:

- CBC-Wa Chris Campbell-1037 SE 11th Street-Renton, Wa. 98055
Sanyo M9926 AM/FM cassette and 4 and 2 ft. loops
- RM-Wa Roy Millar-7420 57th Drive N.E.-Marysville, Wa. 98270
Grundig 5077/SM-2, FRG-7/SM-1
- CAT-Ok Charlie A. Taylor-MCAS-Box 812-FPO Seattle 98772
- RW-Ca Robert Wien-1309 Dentwood Drive-San Jose, Ca. 95118
GE Super Radio, Dent.



Capital City Radio Ltd
PO Box 558 Wellington
New Zealand



St. Louis Globe-Democrat, 11/7/83 via Rob Gerardi

KSD-AM going stereo, hoping for 'dawn of new era'

KSD-AM radio, a country-music station at 550 on the dial, is going stereo. It will be first in St. Louis with AM stereo capability.

KSD has quietly been installing and testing the Motorola system of AM stereo broadcasting and will make an official announcement on Nov. 15 that it is ready to offer the "enhanced music sound" of AM stereo to the listening public, according to Merrell Hansen, general manager of that station owned by the Gannett Inc. media conglomerate.

So what will stereo AM mean — immediately, so to speak — to the majority of listeners in KSD's broadcast range?

"Not a blessed thing. At present, AM stereo receiver equipment is virtually unavailable to the consumer-listener and — this is important — the radios you now have in your cars and homes cannot receive an AM stereo signal. However, the Buick division of General Motors has announced that radios in some of its 1984 models will have AM stereo capability and some set manufacturers, Motorola and Sony among them, are beginning to turn out small quantities of small demonstration receivers.

It will be years — many years, perhaps — before AM stereo becomes a significant factor in the radio biz, if it ever does, say some trade observers.

But others claim AM stereo is the dawn of new era for radio stations and insist it will be a fast-track era when big bucks will be made by manufacturers of new broadcasting equipment for stations, by radio-receiver makers and by the stations that jump on the bandwagon early.

THE KEY PHRASES to understanding all that are enhanced music sound," "the dawn of a new era" and "big bucks." I think the latter is self explanatory. For instance, if you buy a new car within the next few years with a radio that can pick up AM stereo, hey, you're likely to get bifed for at least an extra \$100 or \$150 for that piece of "optional" equipment. And the first "hand-held" AM stereo portables will be pegged in the \$80 to \$90 range, he told.

New era for AM radio operators in general and enhanced sound go hand-in-hand.

According to a 1982 survey, many AM broadcasters of music hope stereo broadcasting will lure back to AM radio the millions of listeners lost in the 1970s to FM radio stations that air music, particularly rock music in stereo.

A decade ago, three out of four listeners who wanted music turned most frequently to an AM station. By the late 1970s that had changed, more music listeners were opting for FM stations and the double-channel stereo sound.

GOT THE SCENARIO? As listeners and ratings dropped, many AM music stations lost huge chunks of revenue — sponsor loot — to the FM stereo competition and have been struggling to stay alive largely by switching to a "talk" format or to other specialized sounds like country, soft rock or old-time easy listening.

KMOX-AM radio's Robert Hyland was a savvy, hardy pioneer in talk radio and prospered. But many AM owners coast-to-coast that stuck with music came acropper.

So now some of those music AM'ers are expected to opt in turn for the so-called "stereo image" and the superior music sound of stereo.

MISS HANSEN SAID "some 150 AM stations across the country" have already converted to stereo.

"And people who have heard a test of AM stereo in a comparison situation with FM stereo say they can't tell the difference in the quality of sound of the two," she said.

She added that KSD's stereo sound on the AM band will be "compatible," meaning that there will be no deterioration of the station's sound on receivers now in use.

But not all radio folk are convinced that stereo will bring an about face for AM music makers. Some doubt that even the stereo sound will restore the mass appeal AM radio once enjoyed simply because it was FM radio that caught the ear of the listening public first with stereo music.

But all are closely watching this latest development in the radio field.

For example, Craig Magee, the general manager of WIL-AM/FM said: "Stereo AM is a good promotion tool for an AM station, but you have to have audience, too, you have to have people who can hear it. And that won't happen until they have receivers."

Magee said that Lin Broadcasting, which owns the WIL duo, has tested AM stereo on a station in Philadelphia and "is ready to go" if and when AM stereo catches fire.

SOME HONDURAN RADIO STATIONS

Photos by Don Moore

Top to Bottom:

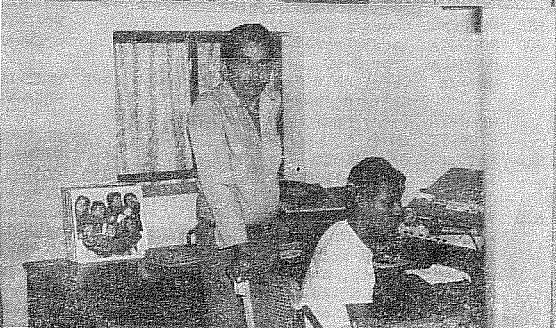
Studio of Radio Paraiso, 1163 kHz - note the egg carton sound insulation

Studio of Radio Danlí, 1365 kHz, Manager Wilberto Ruiz Molina is standing in doorway

Radio Guaymuras, 1070 kHz Manager Miguel Medina Elvir is standing in doorway

Sign atop a rather non-descript building for Radio Latina, 1255 kHz, and Radio Cadena Oriental, 1120.

Sign for Radio Danlí, easily visible two blocks up the street



Slogan List Updater 3

Rich Toebe • 2388 American Ave. • Hayward CA 94545

- | | | | | | | |
|-----|----------|--|-----|----------|--|--------------|
| 540 | WDAK-GA | (add) The Legendary 5-40 | 740 | KTOX-ID* | (rsw) K-Talks, Talkradio 74 | |
| | KWMT-IA* | (add) Country 54 | | KRMG-OK | (add) AM 7-40 | |
| | WDMV-MD* | (add) AM 54 | | WSVQ-TN* | The Tri-States' New Tradition | |
| | CJSB-ON | (add) AM Stereo 5-40 | 750 | KERR-MT | Kerr, Kerr Radio, 7-50 Kerr, Montana Country, 7-50 Mountain Country (ex- 1070 kHz) | |
| 550 | CBK-SK | (add) Radio 5-40 | | WBMD-MD* | Voice of Religion | |
| | WGGA-GA | delete, now WDUN | | WHEB-NH* | (add) Seacoast Sound | |
| | WDUN-GA | AM 55 | 760 | KMTL-AR | Spirit of 76 | |
| | KMVI-HI | The station closest to you | | KGU-HI | (add) The Talk of Hawaii | |
| | WGNG-RI | We're alive and kicking | | WJR-MI | (add) Radio 76 | |
| | WDEV-VT | Radio 55 | 790 | KABC-CA | (add) Your ABC Olympic Station for all of Southern California | |
| 560 | KBLU-AZ | Your Pushbutton One, (rp) K-Blue | | WNWS-FL | (add) Your Conversation Stn. | |
| | KLAC-CA | (add) AM 57 | | WPIC-PA* | Your Sports Voice | |
| | WFAA-TX | delete, now KRQX | | KUTA-UT* | The Voice of the Canyonlands | |
| | KRQX-TX | Stereo 5-70, K-Rocks, Crank-in' out the Classics | | WSIG-VA* | 79 Country | |
| 580 | WELO-MS | Country Connection | | CFCW-AB | (add) Super Station, Super Country | |
| 600 | KOGO-CA | (add) Stereo 6 | 800 | KLTT-CO* | K-Light (ex-KBRN) | |
| | KSXO-CA | (rp) K-60 | | KQIN-WA* | Seattle's newest Adult Contemporary station | |
| | WMT-IA | (add) AM 6 Hundred, CBS in Eastern Iowa | | WHTN-WV* | delete, now WKEE | |
| | WREC-TN | (add) Music of Your Life | | WKEE-WV* | Key Radio | |
| | KTBB-TX | AM 6 | 810 | KGO-CA | (add) Newstalk AM 81 | |
| 610 | KARV-AR | Carve 6-10 | | WEDO-PA* | Unforgettable, Radio 81 | |
| | KYJC-OR | 61 (ex-1230 kHz) | | KXOL-TX* | (add) 24 Hours of Son-shine | |
| | CHNL-BC | NL 6-10 | | KTBI-WA* | Read Broadcasting | |
| 620 | WWLX-AL* | WLX | 820 | WAIT-IL | (add) Great Music | |
| | KNGS-CA | Kings Country 62 | | WOSU-OH | News 8-20 | |
| | KNAL-ID | Radio 6-20 | 850 | WEAT-FL | (add) Newstalk 85 | |
| | WACZ-ME | delete, now WZON | | WOZO-NY* | The Finger Lakes Music Station | |
| | WZON-ME | Rock n' Roll Zone, Z-62 | | WKIX-NC | (add) 85 KIX Country | |
| | WJNV-NJ | delete, now WSRQ | 860 | KVVA-AZ | Radio Viva (:SS) | |
| | WSKQ-NJ | Super Kah Coo (:SS) | | WGOM-IN* | Country 86 | |
| | WDNC-NC | AM 62, Music of Your Life | | KKOW-KS | (add) K-Cow | |
| | WRJZ-TN | Solid Gold Rock n' Roll | 870 | KAIM-HI | (add) AM 8-70 | |
| | WTMJ-WI | Information & Sports Authority | | WKAR-MI* | Michigan State University R. | |
| | KCKM-NF | CK Country | | KJIM-TX* | (add) Music of Your Life | |
| 630 | WKBX-GA | (add) KB-63 | 880 | KJJR-MT | The Great 88, Great 88 Country (ex- 1400 kHz) | |
| | KOH-NV | (add) Talkradio 63 | | WMDB-TN* | Your Clear Channel Station in Nashville, the station with power, Biggest Mouth in Town | |
| 640 | WWLS-OK* | Oklahoma Country | | 900 | WJWL-DE | (add) AM 900 |
| | WMSO-TN | Victory Radio | | KFAL-MO* | Clear Channel 900 | |
| 660 | KFAR-AK | 66 | | WCPA-PA* | CPA | |
| | WESC-SC* | (add) 6-60 in Dixie | | KFBA-TX* | Radio 900, The News Voice of West Texas, Your Clear Channel Service in Floydada | |
| | KSKY-TX* | (add) Your Sky Station | 910 | KLCN-AR* | Arkansas' oldest broadcast stn. | |
| 670 | KBOI-ID | (rsw) Radio 67 | | WFDF-MI | 91 FDF | |
| 680 | KBRW-AK | Top of the World Radio | | KGLC-OK | (add) Supercountry | |
| | WCBM-MD | Metromedia Radio, Newstalk 68 | | KURY-OR* | Curry Country | |
| | KFEQ-MO | Your station for sports | | WJCW-TN | (add) 91 Country | |
| | WJNR-NY | (add) AM 6-80 | | KALL-UT | (add) Call 91 | |
| | KOMW-WA* | AM 6-80 | | CKLY-ON | Central Ontario Radio | |
| 690 | KZKZ-AZ | (add) AM 69 | 920 | WGST-GA | Newstalk 92 | |
| | WAPE-FL | (rsw) Joy 6-90 | | KOLO-NV | (add) New 92 | |
| | KHEY-TX | (add) 6-90 K-Hey | | KYST-TX | "KBLT" Beatle Radio Number 9 | |
| 700 | KFAM-UT | AM 7 Hundred | 930 | WJAX-FL | 93 JAX | |
| 710 | WGBS-FL | (add) Radio 7-10 | | WMGR-GA | (add) Action Sports Radio | |
| | KEEL-LA | (add) Big hits you forgot | | KSEI-ID | (add) The Valley's Best | |
| 730 | KDAZ-NM* | The Christian Sound and Pulse of the Great Southwest | | WREB-MA* | REB | |
| | KKDA-TX* | Community Radio | | WCNR-PA* | Radio 93 | |
| | KSVN-UT* | (add) AM 73, Best of Utah Gold | | KCCW-TX | delete, now KLLS-TX Class | |
| | KTRQ-WA* | delete, now KULE | | | | |
| | KULE-WA* | 73 | | | | |
| | CKDM-MB | DM-73 | | | | |
| 740 | KCBS-CA | (add) Radio home of the 49ers | | | | |
| | KVFC-CO | (add) Sound 74 | | | | |
| | WSBR-FL* | Real Radio | | | | |

940 KFRE-CA Stereo AM Country 9-40, It's nice living in a K-Free Country
WINZ-FL (add) All News Radio
WCPC-MS* (add) Mississippi Network
WECO-TN* (rsw) Country 94
KBRE-UT* Radio 94
WKGm-VA* Christian Radio for Southeast Virginia

950 WLSQ-AL Rock 95
KFSA-AR AM 95, Music for the entire family
WBBF-NY Person to Person Radio delete, now WQBE
WQBE-WV 24 Karat Country

960 KAVR-CA* Music 96, Radio 9-60
KNNDN-NM* K-Indian
WVGR-TN* Warm Wonderful Gospel Radio, Gospel 9-60
KDOT-UT 9-60 K-Dot
970 KIAK-AK Kayak
KVIM-CA R. Nueve Setenta (:SS), The New 9-70 where the best is yet to come (ex-KCHV)
WMVN-MI* Hot Stereo Rock Q-107 (//FM)
KNUU-NV K-New
WFUN-OH (add) 97 Fun, AM 97
KARC-OK (add) Tulsa's Gospel Radio
KYTE-OR New 9-70

980 KUPI-ID* QP Country
KVLV-NV* (add) Voice of the Lohntan Valley
WFHG-VA (add) AM 98 FHG
990 WHOQ-FL (add) WHO 99
WNOX-TN Only country stn. in Knoxville
KNIN-TX (rp) K-9
1000 KRHS-AZ* Channel 100
KRdz-CO Serving the Yampa Valley, KZ 100
WHWB-VT HWB
1010 WPYK-AL* (add) the music you grew up with
KLRA-AR Arkansas Country
WITL-MI* Whittle 10-10
WIOI-OH* (add) AM 1-oh-1
1020 RYXE-WA AM 10-20 Supercountry
1040 WSKE-PA* Radio 10-40, SK Country
1050 KBUF-KS* AM 10-50, Country 10-50, The Buff
WTSJ-OH* The Joy of Cincinnati
CFGP-AB Radio 1-oh-5
CHUM-ON (add) The Rock of Toronto
1060 KUKQ-AZ (add) New KQ
KHVM-TX* Your information station
1070 KNX-CA (add) Your CBS News Station
KERR-MT delete, now on 750 kHz
WKDR-NY* Talkradio for the Champlain Valley
WFLI-TN The Gospel Voice of the South
KWEL-TX La Doble Oo, La Sonida Grande de Doble Oo (:SS)
WINA-VA* (add) Your sports leader
1080 WVCC-FL Modern Christian Music, Radio Espanol Cristiano (:SS nite)
WCII-KY (add) WC double I
KWJJ-OR 10-80 AM is Country Music in Portland
1090 WBAL-MD Where Baltimore Always Listens
WILD-MA* (add) Studio 1-oh-9
KANN-UT* (add) Can

1100 WWWE-OH (add) 3WE
WGPA-PA* Your Star Station
KDROY-TX* Christian Radio
1110 KAKA-AR* South Arkansas Best Country
KHET-HI (add) K-Hey
WKRA-MS* K Country
WVNH-NH* (add) Your music is our pleasure, Best music in the Merrimac Valley
WHIM-RI* 11-10 Country
KTEK-TX* K-Tech
1120 WIZY-GA* The Pride of Dixie
WNYS-NY* Buffalo's Constant Music Station, AM 11-20
1130 CKWX-BC Stereo Country WX 11-30, AM Stereo WX 11-30
1140 KRAK-CA (add) Northern California's #1 Country and Western Stn. Western New York's Entertainer
WLXC-TN* Wixie in Dixie
CKXL-AB XL 11-40
1150 KXLR-AR delete, now KBOX
KBOX-AR AM 12
CKOC-ON (add) Where the hits keep on coming, Ontario's first AM station and now first with AM stereo
1170 KLOK-CA (add) Your computer request station
WKZE-MA* KZE-FM (//FM)
CKGY-AB (add) KG Country
1180 WKKE-MS (rsw) Pearl Country
1190 WXGR-MS* Christian Radio
KLIF-TX (add) Cliff 11-90
1210 WDGR-GA North Georgia's big country sound, the new sound of 12-10
KREW-WA Voice of Central Washington, Crew
1220 KLIT-CA* delete, now KTSJ
KTSJ-CA* Inspirational Radio for the Inland Empire
WVLE-MN* Valley Radio
WENC-NC* The Soul Sound
CJOC-AB (add) C-Jock Country
1230 KVAK-AK The Voice of Prince William Sound, Voice of Valdez
KAAA-AZ (rsw) 12-30 K triple A
KPRD-CA K-Pride, Radio 12 (ex-KWTC)
KCBN-NV Your modern music station
KADA-OK (add) Great Country
KYJC-OR delete, move to 610 kHz
WKCE-TN KC Country
CJNL-BC NL 6-10 (//CHNL-610)
1240 KDIG-CA Voice of the Inland Empire
KFLI-ID delete, now KJCY
KLTN-NM Radio Latina (:SS)
CKOO-BC (rp) Okanagan Radio, (add) Radio 80
CKIM-NF (add) CK Country (//CKCM-620)
1250 KNEU-UT* The station with personality
KKFX-WA (add) The Northwest's proudest music
1260 KYA-CA delete, now KOIT
KOIT-CA The new AM 12-60, Coit, San Francisco's Best Music
KGBX-MO (rp) Springfield's favorite music
WNDR-NY Memory Music
KWSH-OK We do it for you

1270 WHLD-NY* (add) Casual Country
 KFJZ-TX delete all slogans, now SS format

1280 WGBF-IN Evansville Radio
 WGSO-LA delete, now WQUE
 WQUE-LA New Orleans' Music Stn., 13-Q
 KVOV-NV* (add) Your direct connection for Southern Nevada
 WPKY-NY 98-PXY (//FM) (ex-WPXN)
 WHVR-PA HVR
 CHAM-ON (add) 12-80 Country
 1290 WHKY-NC Y 102.9 (//FM)
 1300 KGHX-AK 13-X
 WBLG-KY KY-13 Country (ex-WTKC)
 WXRL-NY Radio Buffalo
 CJME-SK (add) JME-13
 1310 KDIA-CA (add) AM 13-10, The Boss of the Bay
 WIFE-IN delete, now WMLF
 WMLF-IN Music of Your Life
 WDOC-KY* #1 stn. in Eastern Kentucky, 13 All-Hit Country
 WSSJ-NJ The Superstation serving the Delaware Valley
 Wbfd-NY BFD, 13 BFD
 WTLB-NY (add) Sounds Like Utica
 WVIP-NY* VIP
 KAAM-TX (rsw) 13-10 K double AM Stereo Stereo 13-10
 (add) "Newswheel"
 WEEL-VA WGH-VA delete, now WNSY
 WNSY-VA Sunny 97 (//FM)
 WIBA-WI Something Special
 1320 KGNR-CA Newstalk 13-20
 KUDE-CA delete, now KEZL
 KEZL-CA K 13-20, AM 13-20, Your oldies and goodies stn.
 WOBL-OH 13-20 Country
 WJAS-PA The station everyone is talking about
 KXYZ-TX (add) La estacion joven de Houston (:SS)
 KBUG-UT K-Bug, The Music Bug (ex-KCPX)
 1330 WKKR-IN delete, now WVHI
 KVOL-LA the station you grew up with
 1340 KRRK-KS delete, now KPKF
 KIJV-SD Radio as it is meant to be heard
 KWOR-WY Country K-Wor
 1350 KSRO-CA Radio 13-50, AM 13-50
 KRNT-IA (add) The News Leader
 KABQ-NM Kah-ah-beh-coo (:SS)
 WANC-NC* The Sand Hills Radio Leader, Lucky 13
 WOYK-PA (add) AM York Country
 WNVVA-VA* Wise Country's Music Source
 1360 WABT-AL* (add) Great Country Music
 KGNN-CA delete, now KPQP
 KPQP-CA K-Pop AM 13-60
 KRVV-CO* Radio Vail Valley, Radio Vail Village
 RRRR-NM* Cree Country
 WKXY-TN* The station that gives it to you
 KXOL-TX Constant Country
 1370 KEEN-CA (add) Continuous Country
 KTMG-CO* Voice of Agriculture for Colorado's Eastern Plains, Music from the Country, Colorado's High Country
 WRTK-NY (rsw) Country Magic 13-70,
 1370 cont. Rochester's Country Magic
 WKMC-PA* Big & powerful 13-70
 WVVR-WV* West Virginia Mountain Radio
 1380 WVSA-AL* King Country
 RTOM-CA (add) California Country
 WBBX-NH The all-new 13-80
 WRAQ-NC Making a difference in your life
 WIZO-TN* (add) Wizzo Country
 1390 KMRY-IA Memory Makers
 1400 KWYN-AR K-Win
 KKBZ-CA The Unforgettable 14 Hundred
 KRE-CA (rsw) The Quiet Storm (when //KBLX 102.9), Stormin' 14 Hundred, 14 Hundred
 WSJM-MI 14 Country
 KJJR-MT delete, now on 880 kHz
 WAMQ-PA (add) The Q, AM 14 Hundred, Q-94 (when //FM)
 WJET-PA JET cares about Erie
 KFTN-UT Utah Valley's Best Music
 KEDO-WA AM 14
 KTNT-WA delete, now KPMA
 KPMA-WA Radio 14 Hundred
 CKSQ-AB (add) Q-91
 1410 KERN-CA delete all slogans
 KLVV-CA* delete, now KLBB
 KLBB-CA* Country Club 14
 RMYC-CA California Gold
 WLAQ-GA* (add) Country AM 14-10
 KCLO-KS (add) Country 14-10
 KAHL-NE delete, now KOOQ
 KOOQ-NE K double OQ
 WELM-NY Radio 14
 WYLQ-TN* 14-Q (ex-WTNR)
 1420 KTAN-AZ (add) Your kind of country
 KSES-CA* Kisses
 WCOJ-PA Chester County Radio
 WHEZ-WV Voice of the Cincinnati Bengals, Easy 14-20
 1430 WQDI-FL Country Connection
 KELI-OK (rsw) The Rock of Tulsa, 14K
 KLO-UT (add) Unforgettable
 WIVE-VA* (add) The county's best gospel music
 1440 KOPA-AZ* The best music
 KRQZ-CO 14-40 Radio
 KMED-OR (add) Hit Radio, Med Radio
 WCDL-PA* (add) Every song has a memory for someone
 1450 KEST-CA (add) Your life, health and happiness station; With a world of information
 (add) AM 14-50
 KPFI-CA Mellow Rock FM 104 (//FM)
 KDRW-CO Where your friends are
 WCLI-NY The Fox, Foxy 99 (//FM)
 WFXX-PA Magic 14-50
 WMAJ-PA Kissin'
 1460 KYSN-CO Brockton's News Authority
 WBET-MA Stereo 100, FM 100 (//FM)
 WBRN-MI* Good music in St. Louis
 KIRL-MO* (add) Where every song is a winner
 KENO-NV Newsradio 14-60
 1470 WWCN-NY (rsw) Cutie 1-47
 KUTY-CA (add) The Spirit of Rome
 WRGA-GA All Gospel Radio
 WMPP-IL* (add) The Information Station for Central New York
 WTKO-NY Dune Country
 KDUN-OR*

1470	CHOW-ON	(add) C-How	1540	WYNC-NC*	The all-new 15-40
1480	WABB-AL	(add) Mobile's only soft hits station		WNIO-OH*	Country 15
	WSDS-MI*	WS 14-80	1550	WCCZ-FL*	Constant music
	WAME-NC	(add) Sun Life Radio		WYNX-GA	(add) Family Radio 15-50
	WLEE-VA	W-Lee 14-80		WNTN-MA*	(add) Boston's official dance music, Radio 15½
	WSAY-VA	(rsw) Your Station of the Stars		WKVL-TN*	Quiet Storm, Music strictly for lovers
	KRAE-WY*	(add) We play it for you		WKBA-VA*	(add) KBA
1490	KJIN-LA	(add) KJ Country, K-jin Country	1560	KLTI-MO*	15-60 Radio
	WQXQ-MA	delete, now WACM		KQYX-MO*	(add) The Boss
	WABJ-MI	Playing your kind of country music	1580	KNIX-AZ	(add) Arizona's best country and western
	WAZL-PA	Radio 15		KDAY-CA	15-80 Stereo
	WLKR-WI	15 Hundred Country		KLOQ-CA*	Cow Country
	CJPR-AB	(add) C-Jock Country		WSRF-FL	(add) Where the gold is
	CJSN-SK	Radio 14-90		WFVR-IL*	delete, now WKKD
1500	KSTP-MN	(add) Your direct connection	1590	WPMF-MS*	(add) Hot new sound
	WKER-NJ*	The Mighty 15 Hundred		KLIV-CA	(add) The sound of 15-90
1510	WMRE-MA	(add) The Memory Station		WONX-IL	15-90 Evanston
	KCCV-MO*	Your Christian Companion		KRRK-MN	(add) Double R Country
	WAUK-WI*	(rsw) Talkradio 15-10, The Talk of Milwaukee		KHEN-OK*	KG-99 (//FM)
1520	KYXI-OR	(add) News Voice of the Northwest	1600	WAWA-WI*	(add) Amazing AM
	WTGR-SC*	delete, now WKQC		WXVI-AL	(add) Sunshine 16, Love 16
	WKQC-SC*	The Q, Energy 102 (//FM)		KGST-CA	Radio Mexicana (:SS)
1540	KXEL-IA	We're America's Country		KUBA-CA	Valley Country
				WCKZ-GA*	KZ 16 (ex-WACX)
				WRNC-NC	Radio 16
				WANR-WV*	(add) AM 16, Valley's Hot One

Information for this edition of the Slogan List Updater was taken from the pages of DX Monitor and DX News, as well as my own observations. Do your part to keep the list as complete and timely as possible; jot down the slogans used by your local and semi-local stations and send them to me at the address listed at the beginning of the column. If everyone in the club sent me just 10 slogans, the list would be even more useful than it is already (and I'd be busy for weeks, hi). I'm especially interested in areas of the USA that the list is rather weak on (the South, certain areas of the midwest, etc.); won't you help out?

Abbreviations used in this list: (rp)- remove parentheses; (rsw) replace slogan with; (*) daytime; (:SS)- uses Spanish language; (//)-relays (or parallels) another station, usually on FM, but some Canadians relay other AMers.

AT ALL-WOMAN WWMN

'Female' Format Flying In Flint

By LEO SACKS

NEW YORK—Linda Lanci was not eligible to win WWMN's "woman of the year" listener award when the station, located in Flint, Mich., made it selection last week following a month-long promotion. But Lanci, the station manager and program director of the nation's lone "female contemporary" outlet, certainly laid claim to the title in spirit.

The concept of all-female radio certainly isn't new: Sun Records pioneer Sam Phillips used female jocks to lure male listeners at his properties in Memphis (WHER) and West Palm Beach (WLIZ) about 20 years ago. It was also tested by program director Bob Herpe of WOMN New Haven, and at WSDM Chicago (billed as "Smack Dab In The Middle" before its call letter change to WLUP) and WNEW-FM here (where Allison Steete got her start).

WWMN, however, gears its programming to a female audience, and when the station in the state's third largest city celebrates its second anniversary on Jan. 1, Lanci says that the AM daytime will have "beaten the odds."

"No one, quite frankly, ever thought we'd last this long," says the programmer, who handles the midday shift and doubles as music director and weekend air personality at AOR "brother" station WWCK. "But we've given it our all, and it's starting to pay off." Response from listeners on the phones and through the mail leads her to believe that "Flint's New Woman" will cop a 2 share in the winter Arbitron, up from the .9 registered in the spring book.

The sound, targeted to the 18-40 age group, is described by Lanci as "beautiful, hit-oriented soft rock." The narrowcasting concept does not exclude male performers, however.

Her adds last week included the latest singles by Lionel Richie and Culture Club, augmenting a rotation highlighted by Jeffrey Osborne, Billy Joel, Elton John, Dionne Warwick, the Motels, Crystal Gayle and the Carpenters.

"People ask me why here's doing this in Flint," Lanci says, "and my response is, 'Why not?' This is a town that needs something. Don't forget, we had the highest unemployment in the nation at 25% not too long ago."

The station, which reaches some of Lansing and Detroit, used to program three hours of talk each day. The plan was shelved when Lanci replaced Marsha Kloor as station manager, and since then listenership has improved, according to Lanci.

Her team, which consists of Diane Brewer (mornings), music director Sally Ryann (afternoons) and news director Susie Essex, works out of a studio decorated with newspaper and magazine clippings, hanging plants and a stained glass window emblazoned with the "Flint's New Woman" monicker. "It's a homey kind of atmosphere," says Lanci. "When you're on the air, you want to be as up as possible."

Billboard, via Peggy Thompson

THE INTERNATIONAL RADIO CLUB OF AMERICA

CLUB ADDRESSES

Membership Dues, Address Changes, and Renewals:
P.O. Box 26254, San Francisco, CA 94126
Bulletin Material, Sample Requests:
P.O. Box 21074, Seattle, WA 98111
The IRCA Goodie Factory (Publications and Reprints)
1422 W. 5th St., Tempe, AZ 85281

MEMBERSHIP DUES

\$16.50 First Class to the U.S.A., Canada, and Mexico. \$6.00 for trial membership (10 issues of DX Monitor and a New Member Packet) to the U.S.A., Canada, and Mexico. \$18.00 Surface Mail to the rest of the world. \$27.00 airmail to Central America, Colombia, Venezuela, and the Caribbean. \$30.00 to the rest of Latin America, Western Europe, North Africa, and the Middle East. \$34.00 to the rest of the world. Sample copies of DX Monitor cost 50 cents each or three International Reply Coupons. Make checks and money orders payable to IRCA. Persons living outside the U.S. should make dues payments by check or money order payable in U.S. funds.

The International Radio Club of America is a non-profit organization devoted to the hobby of hearing distant stations on the AM Broadcast Band (Medium Wave). IRCA is a member of ANARC, the Association of North American Radio Clubs.

Club Officers: President--Phil Bytheway, 9705 Mary Avenue NW, Seattle, WA 98117. Secretary--Rich Segalas. Board of Directors--Ernest Cooper, Nancy Hardy, Ric Heald, Neil Kazaross, Bruce Portzer, Peter Taylor, Neil Wolfish.

DX MONITOR, the official bulletin of the IRCA, is published 34 times per year: weekly from October to March, twice in September and April, and monthly from May to August. Unless otherwise noted, permission is granted to publish, broadcast, or otherwise reproduce non-copyrighted material appearing in DX Monitor, provided credit is given to IRCA and the original contributor. Opinions expressed in DX Monitor are those of the original contributors and do not necessarily reflect those of the IRCA, its publishing staff, editors, or officers.

PUBLISHING COMMITTEE: Bruce Portzer (206)522-2521, Evelyn Portzer, Phil Bytheway, Jef Jaisun

FIRST CLASS MAIL
U.S. POSTAGE
PAID
Seattle, WA
Permit No. 601

first class

D. A. NYHOLM
2071 CEDAR STREET
SAN CARLOS CA
94070 RENEW 19

Postmaster: if undeliverable, return to
P.O. Box 21074, Seattle, WA 98111, U.S.A.