



DX Monitor

Devoted Exclusively to
Broadcast Band DXing

January 14, 1984

Volume 21, Number 17

Issue Number 673

In This Issue

Eastern DX Forum	2	Top End	12
Western DX Forum	4	Western DX Roundup	13
Diego Garcia	5	Central American List Updater ...	16
The IRCA Technical Column	7	Who Plays What, Where	17
DX Worldwide West	11	Free Speech and Kansas Radio	19

Several columns are missing this issue. No CDXR this issue per announcement in last week's issue, no word on EDXR. DXWWE will be back next week under the editorship of interim editor Don Erickson.

Lots of things are happening this week. CFFR-660 in Calgary began regular broadcasting at 7:15 am MST on Tuesday, January 10, 1984, as most of us in the northwestern corner of the continent have already discovered....KREM-970 in Spokane, WA, has changed calls to KLHT per Ed Hoffman...and we must also report the passing of DXer/SWL Larry Brookwell, who passed away December 26 at the age of 80. Although not an IRCA member, he was nonetheless well known to many club members. Larry was leader and publisher of the International DX Club of San Diego for the last several years.

Phil Bytheway advises that the board of directors has approved the convention bids for Toledo, Ohio, and Louisville, Kentucky. We will have a run-off election in a few weeks to choose between the two cities for our 1984 convention. Phil also says that he is caught up on sending out new member packets, so if you joined before late December and don't receive your soon then let us know.

Don't forget the gala DX gettogether at the home of Bruce and Evelyn Portzer, Saturday, February 18, beginning at 2 p.m. Several club members have already said they will be there or hope to be there, including Rich Segalas, Rich Toebe, Bill Block, Pat Martin, Frank Aden, Nick Hall-Patch (with daughter Lucy), Ed Hoffman, Jef Jaisun, Phil Bytheway, Tim and Sue O'Hare, and others (hope I didn't surprise anyone by mentioning their name, hi). All radio enthusiasts (BCB, SWL, etc) are encouraged to attend this fun event. Refreshments will consist of potluck junk food, liquid or solid, and at dinnertime we'll pass the hat around for pizza or equivalent thereof. For more information, the address is 6546 19th Avenue N.E., Seattle, WA 98115, and the phone is 206-522-2521.

Going back to coming events, don't forget the 20th annual IRCA anniversary issue. That issue will be the March 24 issue. Deadline for articles, etc to reach headquarters will be March 16; editors' deadlines will be March 12 or so. This year we'd like to the anniversary issue be the biggest DXM of all times, with at least 50 forum reports and plenty of other material. Maybe even a hundred or more forums. Especially from those who have been in the club a long time. So...be sure to send in a forum report for the anniversary issue (a reintroduction or some other good words about yourself or the hobby). (If you send it in early, you might mention it to the editor, or he might print it before then, hi).

Hopefully, things will pick up next week. See you then...bp.

EASTERN DX FORUM

RICHARD EVANS
P.O. Box 1294
NORTH WALES, PA 19454

Reports from members living east of the Mississippi River
Deadlines: Fridays.

Don Moore, Apartado #3, Santa Barbara, S.B., Honduras

Greetings from an illigal immigrant! Usually they start out in this area and go north. I'm an exception. I recently discovered my Honduran residency visa had expired and I had been here illegally for several months. Required a lot of running around in Tegus to straighten it out. On 10/28 many low powered Cuban stations that usually s/off at 0500 GMT were on past 0600 with net broadcast on Grenada. Heard here on 1310, 1340, 1360, 1370, 1380, 1390, 1400, 1440, 1450, and 1460. Other frequencies between 1300 and 1500 either blocked or Reloj outlets. I guess families get worried on both sides. Armed Forces Radio in Comaagua is now on with both an FM and TV station. The FM is 106.5 mHz with 30 watts. Recently was in Comayagua for an evening and listened to it about an hour. Had a live drama pgm then a DJ spinned some pop discs, mainly oldies and made various anmts of interest to the soldiers. Would appreciate any info anyone could provide on these UNIDs: KDQL-1380, KAAQ-1580, WIRK-590, and WGAM-1240. All noted in wee hours, so AN. IDs all fairly clear so should be close if not exactly as I heard, especially the first two. An assumed Mexican, perhaps someone in the SW can help with. A "Radio Alegria" on 920 kHz with ranchera Mx, GMT-6 hour TCs, mentions of the north of Mexico and also occasional IDs as "E stereo 92." Still on 920, back in Sept. and Oct. was noting KYST/KBFL mixing with KARN's talkshow. Found the all Beatles format enjoyable, not at all stiff as I expected. 73.

Steve Kennedy, P. O. Box 231, Immokalee, Florida 33934

Howdy to all from the Ear of the Everglades. DX has been a bit slow...however I am primarily now a daytime DXer...and also like to go after foreign DX. When I am not running the MW band...I am doing a lot of SWBC work. Help anyone! I have run completely out of any room for any more equipment...and I am forced to sell my prized two Hammarlunds. I still do believe in tube receivers...and always will but I don't have room for them anymore. So here goes...For Sale: Hammarlund HQ-180...one of the original models of the 180 series. Mine is clean, recently realigned...in excellent shape...will sell for \$200 or consider an even swap for a FRG-7, R-600, or R-1000. Included is schematics, extra tubes, and a 8" speaker. Also I have for sale...Hammarlund HQ-145A...in good condition...makes a decent standby receiver for RCB DXing...will sell for \$75 or will accept a Mizuho SX-59 or SX-101 preselector for even swap. HQ-145A will be shipped with manual, extra tubes, and 8" speaker. I need to move this equipment as soon as possible...so I am willing to discuss the deal. Home phone is (813) 657-4974 any evening from 1800-2400 Eastern time. Anyone interested in Hammarlund receivers...give me a call...73.

Jody Hughes, 13720 Gulf Blvd., Apt. 401, Madeira Beach, Florida 33708

Just another EDXF to fill some space. Here goes...Greetings from Gator Country. Actually, it's been so cold this past weekend (a record-breaking 29 deg.F) I haven't seen any gators. DX doesn't seem to have suffered any, though. I just logged WOKJ-1550 Jackson Miss. for my 651st station. I dropped Steve Bohac a line to ask about constructing the FET amp for the Altaz but haven't heard anything yet. But I did at least get the frame put together and the loop wound. Last week I concentrated my DXing between 540-800 kHz looking for some new low-end catches but didn't log a single station. I also thought I would hear more Caribbean stations when I moved here but can't even get the Caribbean Beacon. I get more than enough Cubans though. 73.

Gary Siegel, 2728 - 106th Street, Toledo, Ohio 43611

Greetings and best wishes for the holidays and New Year. It has been far too long since I've sent in a Forum (agreed, hi!--rce) so I'll review what I've been up to in '83. DXwise 1983 has topped both '81 and '82 in the years' total. So far 40 new ones in '83 mostly on the strength of 19 new stations in November which was by far my best month in about 3 years! Overall total now shows 2630 heard. A fair share of the November new ones came from stations that are likely to become regulars such as WMDB-880 and WDGR-1210 (well almost in the latter's case, hi.). Strange business w/WDGR, they thought they were asking the FCC for a "Chevy" by requesting critical hours operation only to be handed a "Cadillac" in being supposedly granted fulltime. I see where the FCC caught their "goof"

(Siegel, cont...) and took back the "Cadillac". This kind of thing almost makes you wonder if the FCC is paying any attention to anything these days. This past summer I accompanied Ill. DXers John Clemmer and Marv Shults on a 3-week plus trip out West with almost 2 weeks out of it in California. We had nice stays with Rich Segalas and Don Erickson plus visits with Don Kaskey and Doug Nyholm among others. It was really super seeing these DXers on their own turf. The hospitality shown was great, many thanks folks. During the past year I had visits at my QTH from Bob Walker and Paul Mount, the former getting to see WHND's south suburban Monroe, Mich transmitter site, the latter getting to see the Tidewater Tides drub my Mud Hens 12-1, ouch; and I had an opportunity to visit John Clemmer in the Quads in March and in Chicago in June, along with seeing all three again at a GTG over Halloween weekend in Indianapolis where I had the pleasure to witness Illinois' romp over Michigan, hi. Others at the GTG included Frank Merrill, George Greene, Ted Fleischaker, Ralph Stroebel, Bob Marksch and radio encyclopedist Roger Hoppe and his father. Plans are in the works for a similar GTG in Columbus, Ohio, in the spring. Also let me take this opportunity to put a plug in for Toledo's bid for the '84 IRCA confab. Tentatively if the club selects us I'm looking at the weekend of Aug. 17-19th for this event. A tour of WHND studios-transmitter site is virtually assured via Fred Vobbe and yes the Mud Hens are in town vs. Tidewater. More on all this later. For now 73 and Good DX in '84.

Richard C. Evans, P. O. Box 1294, North Wales, Pennsylvania 19454

Seems like just about every year in which I've typed a column, I find myself doing it on New Year's Eve, and this year is no exception, hi. Barb and I made it to Michigan for Christmas, but because of the road conditions, we headed back Christmas morning. I listened for WHND-560 on the way over, but no luck, even though it was only 1700 EST when we went thru Toledo on the turnpike. Coming back, down US 23, I did hear the station, and it sounded decent. A comment was made a couple of months back about WKLZ-1470 Kalamazoo, Mich. being off the air. I checked with my Dad while home--WKLZ was indeed off the air for a two or three week period this fall, but is now on the air again, with an all-news format. For those interested in how our present time zones evolved, there is an interesting article in the 1/2/84 Traffic World magazine describing how they came to be. I wasn't aware it had been a 100 years, but the chance to our present system of determining times was made on Sunday Nov. 18, 1883. The federal government didn't even legalize the use of standardized time until the Standard Time Act of 1918 authorized the ICC to establish the U.S. time zones. The ICC merely cloned the railroad's time zones. In 1967, the Dept. of Transportation took over the jurisdiction of the time zones. Before the railroads acted a century ago, they had to deal with 56 different time zones in the U.S.--we think it's rough trying to deal with five in the club bulletins. Gary Siegel, I'm convinced the FCC--and the ICC, among others--are deliberately trying to make such a mess of things, that Congress will get rid of them. Reagan made his appointments to the regulatory agencies with men who did not believe in any type of regulation. Don Moore, your package of newspapers was in here on 12/24; I picked it up on 12/27. Thanks a lot. I'll hold off the check until after the Mexican papers show up. For everyone, have a good '84, and I hope you made a resolution to report to the bulletin more often, hi! PTL.





Western DX Forum

★ ★ ★ ★

WCA—Serving the Broadcast Band DX'er Since 1964

Editor: Ric Heald, 1632 J St., #3, Eureka, CA 95501

1984 DEADLINES - WEEKLY ON TUESDAY, 12 DAYS PRIOR TO PUBLICATION DATE

PAT MARTIN, P.O. BOX 843, SEASIDE, OR 97138

DX has slowed to a "snail's pace" recently, with only a little domestic DX to report. Caught KEMR 1130 10kw Bismark, North Dakota the other afternoon, at 1405 PLT over CKWX. That was really a surprise. Also, KFNV 1200 was in quite weak. The dial sounded more like SR or SS skip all day. Most regional frequencies were jammed.

Ric, so KWJJ is like a local in the Eureka area at night. They're a pest here too. Are they strong during the day as well? (Negatory-Rth.) You might be able to pull in Idaho at SS or in the afternoon or SRS. They tear KWJJ apart frequently. With the Beverage, KRLD mixes with KWJJ frequently at night.

Have also logged KCJJ 1560 1 kw Iowa City, Iowa lately. Haven't heard that one before either.

I've been spending most of my DX time in recent years concentrating on foreign DX, so I've missed out on a lot of the domestics.

Boy, that tone from CFPR 660 is sure a strong one all day here. Ric, are you hearing it your way during the day? I think they're going to really be a pest. The Mexican mixes with the tone at night. (Once I get beyond nine pounds of TVI-nearly NSP-I'm lucky to hear the Mexican, hi-Rth.)

KFAM 700 isn't that strong here day or night, not like KSL. I wonder if KFAM is only 10 kw, not 50 kw day? With 500 watts at night directed south, they're normally under WLM.

Veries have slowed down too. JOPG 585 Kushiro, Japan sent v/q in one month for taped report. Also sent v/l. Number 71 from Japan.

Even though foreign DX has been poor this season for of lot of DX'ers, it's nice to see all the great domestic DX reported. Keep up the good work.

It's great to see another DX'er from Alaska reporting. There's tons of great DX to be had from our 49th state (in the winter), so we need more DX'ers in the area.

Good DX to all and may you hear the best in 1984.

RIC HEALD, 1632 J ST., #3, EUREKA, CA 95501 (707) 443-1685 M-F 9-6 or (707) 443-2704 SAT 9-2 PLT and ppd

Had a nice surprise visit from Steve McGreevy and non member DX'er Jeff (didn't catch last name) on their way to Patrick's Point S.P. (20 miles north of me) hoping for some DU/TP Beverage DX. Of course the DU/TP DX was lousy (I could have told them that) and they stayed in the car because it was too cold to pitch a tent (I could have told them that also, hi). Great meeting you Steve, and come on up this way again. I'll let him forum the details.

This time of year SS DX is nearly impossible. I'm working five days of the week and weekends I get too busy with other things. Not to mention TV's going in four other apartments and tremendous leakage from CATV makes SS DX tough, as witnessed by McGreevy. That same TVI really tears up some of the prime DU/TP frequencies and often I have to sit there deciding whether I'm hearing a het or my neighbor's TV. Cox is putting in a new system and have been stringing new cable all over town so maybe the leakage will be cured.

Pat, you're as far north of me as I'm north of San Francisco. You're just that much further north to have better wintertime midday DX conditions. But, CFPR 860 Prince Rupert is getting to be a downright pest in the mornings, up to 7 AM and maybe beyond, and their signal is steady, I mean little fading and LOUD. Heard them s/on at 0530 PST the other morning and then track albums for the next half hour (testing?). Clear enough to hear someone drop the needle on the next album, rather than already cued.

Looks like it's the Pat and Ric show again. Sure would like to keep busy, so send those forums in. Best of DX and 73 de Rth. .

WLNA
THE MUSIC OF YOUR LIFE™
AM 1420

DIEGO GARCIA

The following article is reprinted from the Asian DX Review, the bulletin of the Indian DX Club International, and was written by Dr. S. Chowdhury.

Diego Garcia is a small U-shaped coral island in the Indian Ocean. It is one of the islands of the British Indian Ocean Territory. The highest landmass on this island is less than 10 feet above sea level. For more reasons than one, Diego Garcia has been the focus of world attention. This is primarily because of the U.S. air and naval deployments there. As is usual, the marines there have their own AFRTS radio station operation 24 hours, excepting Sunday when there is maintenance from 1900 to 0000 GMT. The station has an output of 250 watts only! DXers all over the world have been very keen on logging this station which operates on 1485 kHz.

Indian DXers have a very good chance of bagging this station. It is more difficult for upcountry members because of the AIR stations on 1485 kHz, i.e. Allahabad, Bhopal, and Baroda, all 1000 watts each. Also, for members in other cities, UAE Radio Dubai, on 1481 kHz blasting out with a power of 1,500,000 watts, is a constant menace in the evenings and nights. The members in South India have a better chance especially in the evenings and before sunrise. Recently I had the opportunity to study the reception of this station in various parts of South India.

From Madras the reception was very difficult and moreover I did not have the space to erect any outdoor antenna. Then from Pondicherry I tried again. But here, after local AIR stations close down, there is very good reception of low-powered Thai stations on this channel, with lots of Thai songs, advertisements, et cetera. The Thai stations can be heard till fade out in early morning. But unfortunately, Diego Garcia was not heard. But then just some kilometers inland, at Villapuram another attempt was made. This time there were no Thai stations and so after AIR s/off, I'm sure that with a longwire it can be logged. My next stop was at Kanyakumari. A pilgrimage to Kanyakumari is always rewarding and like all devout religious persons, all devout DXers also come to pray (DX) at this southernmost tip of India. And pray (DX) I did. The last rays of the golden setting sun faded into the horizon of the Arabian sea. The I looked towards the Indian Ocean and LO AND BEHOLD with rising (signal) strength I did hear the voices from heaven! Well, I really mean the broadcast from Diego Garcia. Without an external antenna the signal strength was about S2 to S3 just before sunset. But as with many seaside places the atmospheric static played havoc. Furthermore, from about 8:30 pm local time, onwards, Dubai on 1481 caused very terrible interference.

I always knew that Trivandrum is an exceptional location for DXing so how could I miss it out. The emerald green scenery was indeed very beautiful with coconut palms everywhere. They say in Kerala the ripe coconuts and cabinets fall at about the same time every year. So I knew I could utilize those palms. Anyway, in the city proper, with a 50 meter G.I. wire I got good reception of Diego Garcia from evenings till about 8:00 or 8:30 local time, when again Dubai caused interference. After some reconnaissance I selected a very suitable spot in Kovalam Beach for erecting a longwire antenna. The location was at Lighthouse Beach in an area where coconut palms were planted in straight rows in a north-south direction. So all I had to do was to erect a Beverage antenna, using the support of the coconut palms, which were planted at regular intervals. The length of the G.I. wire used as 400 meters, plus some extra for grounding and as a feedline connection. It was about 4 meters above ground and from the north end there was a feeder connection to the receiver. The receiver used was an RF-2200 digital portable one. The direction of the antenna was north-south because, on an azimuthal map, from Trivandrum, Diego Garcia is 180°. It was grounded at the south end to give unidirectional pattern. The length of the wire used was 400 meters, as the station I wanted to log was on 1485 kHz, which is 202.0 meters, so there was a 2:1 ratio giving better gain.

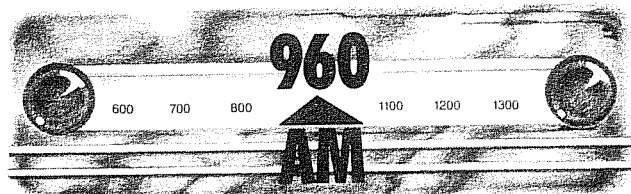
For the next five days, I studied the reception of the station in detail. Every evening the fade in time was approximately 5:15 to 5:30 pm local time. The signal strength rose till it was S4 to S5, often sounding as good as a local station. Excellent reception was possible till about 8:50 or 9:00 p.m. local time, when Dubai on 1481 kHz caused very slight QRM. Good reception was possible throughout the night and even till the morning hours of around 7:00 am local time. The programming style is very different from the AFRTS on shortwave and is also different from the American Forces Network in Europe. To me, it sounded a lot more like the American AM local stations that I used to hear a lot during my stay in the U.S. in 1979. Hence there were many different forms of IDs and jingles, sometimes depending on the DJ or the program compere. But nevertheless,

the IDs were indeed very frequent, depending on the programme. There were also frequent time checks (Diego Garcia is a half hour behind IST). The official ID before the news was a slogan jingle sung by OMs and YLs and went "American Forces Radio Service - Diego Garcia" with the words Diego Garcia stretched out, along with the frequency announcement by the OM news-caster. Apart from this, there were other IDs like "Radio Diego Garcia" or just "AM 1485", or sometimes the DJ would give an ID "It's right here on 1485" and there was also one jingle ID which went "Coconut Radio"!! So there was no lack of easy identification.

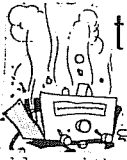
On the hour, every hour there is news. Before the news, there is the jingle ID, followed by the news ID as "AM 1485 Radio News". News items would be given for three minutes. Then the usual break would be "we'll have more news and weather right after this...", followed by some public service announcements. Then there would be some sports news preceded by "...1485 Radio Sports News now at (time)..." This was followed by the weather reports. Some of the programmes continued through the hour without the usual on-the-hour news break. In that case, the usual ID was always given on the hour. From six minutes past the hour till the half there would be either talk shows, music programmes or just some DJ playing out records. In that case he would identify after every two or three songs. There would also be public service announcements, comments, et cetera, generally regarding the military or about the islands. The public service announcements regarding the military were similar to the ones heard on AFRTS on SW or elsewhere. But I found the other comments more interesting. They included announcements about the protection on the nature and wildlife, the flora and fauna of the island, and facts of the island life. One was about new stamps of the BIOT, to be released; another interesting one was about a new facility for developing color photo prints on the island. Likewise there were many other interesting announcements about the island life. From the half hour to the hour there were radio programmes which are aired over many of the U.S. AM stations including personality programmes, record shows, talk shows, or sports or laugh shows, et cetera. So unlike the AFRTS on SW which does not have much music content in its broadcasts, "AM 1485" has lots of music. As I had optimum reception conditions, I recorded more than two hours of their broadcasts. One of the tapes I recorded a full hour of their various programmes and of course their various IDs. On two other tapes I recorded the reception at different times, starting from fade-in, recording different times of the night and then also the fade outs. The first people to hear the recordings were Nirmal Chako and Sanjay Vidyadharan of Trivandrum. Later at a gettogether in Bangalore, our members were also surprised at the good recordings. But none were more excited at hearing "1485" than Glen and Falvio in Goa. Back at the headquarters, it was immediately decided to conduct another longwire meet.

Now I hope that more and more members will try out longwire antennas or Beverage antenna. Good luck!

FRIENDS YOU CAN TURN TO



the Valley's
COOL
 AM 960 • CBS RAD III O

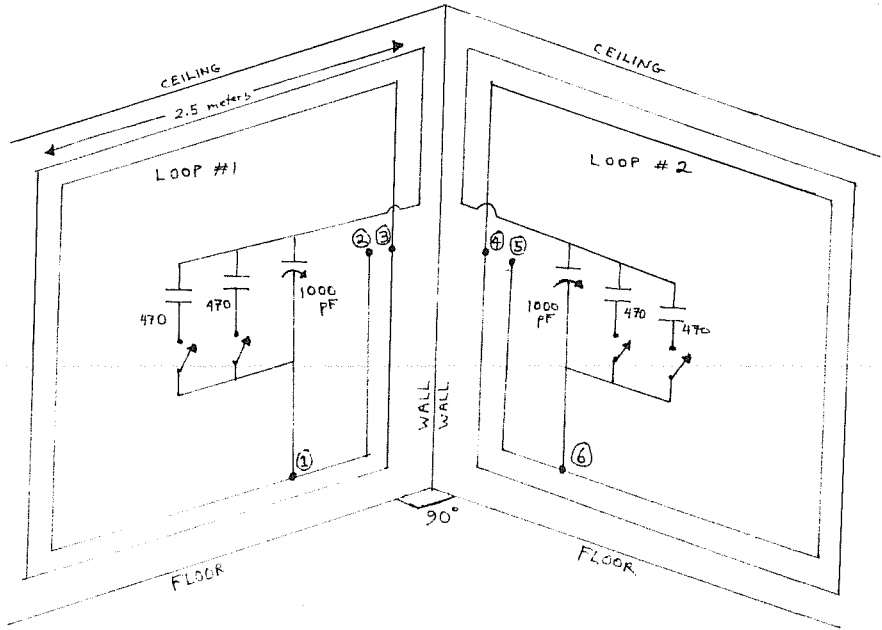


We've had some discussion of large area air-core loops in this column (June 25/83 and Mar 20/82 DXM). A major problem with large area loops is that they often show poor nulls and are difficult to move about in order to make use of these nulls. The following article shows one way to get good nulls with stationary large area loops.

Nulling with Two Wall-Mounted Loops

by Ben Peters

I have been experimenting with two large vertical loops mounted at 90° to each other on the walls of my room. Results were so interesting that I would like to relate my experiences and give instructions for building this system with a full recommendation to try it out. It is cheap and easy to construct, easy on the eyes, and easy to work with; only two capacitor knobs to be adjusted, with no physical tilting or rotation needed to give nulls which are consistently superior to the Radio West 22" loop or my dual Martens loop system described in Jan. 2, 1982 DX Monitor. Signal strengths from the pair of loops are quite good, but could perhaps be improved with more turns or larger dimensions.



Parts needed:

- 2--walls meeting at 90° convenient to your listening area. My walls were able to accommodate a loop of 2.5 meters on each side
- 2--variable capacitors, each with total capacity of 1000 pF. I used dual gang 500 pF variables connected in parallel. (ed. note: these aren't common in North America, though Fair Radio sells them as well as a 3 gang 365 pF variable which will parallel to approximately 1000 pF)
- 4--fixed capacitors of 470 pF to extend loop tuning range to the low end of the MW band.
- 4--SPST switches to be used with above capacitors
- 20 meters of twinlead (300 ohm TV lead-in). Each loop uses 10 meters as they are 2.5 meters on a side. The twinlead is used as a two turn loop.
- some pins or nails to get the loops on the walls.
- about an hour for experimental set-up, more if satisfied and a more permanent model is built.

More signal strength might be obtained by large dimensions or more turns on the loop. These options would involve experimentation with values of the resonating capacitors of course, and with the position of the taps (#1 and #6 in the diagram). The position of the tap is not critical (mine is about 2.5 meters from the "floating" end of the loop), but the tap itself is very important as it allows the loops to be coupled to a receiver without loading down the loops too much (ed note: The length of wire from the tap to the loop's floating end seems to correspond with the link coil of smaller loops, i.e. it picks up signal from the tuned circuit formed by the rest of the loop and the capacitors. A good way to make a large area tuned loop work better).

Procedure: Start with connections #1 and #6 to receiver ground, and #2 and #5 connected together and running to the receiver antenna terminal. Peak the signal on loop #1, using its capacitor and switching in additional capacitance if necessary. Peaking may be easier with loop #2 initially disconnected. Then peak loop #2, disconnecting loop #1 if necessary. Reconnect loop #1 if it has been disconnected; near the peak on loop #2 one will usually find a dip in strength; touch up loop #1 for a deeper null. If a null is not found, then start the tuning procedure with loop #2. Other possibilities would be to connect #1 and #6 to receiver antenna and 2 and 5 to its ground terminal, or connect 1 and 5 to antenna and 2 and 6 to ground etc. There are a number of variations in connecting the loops' terminals to the receiver, particularly if you also use connections #3 and #4 (the points where the twinlead connects back on itself.) For starters, these can be connected to receiver ground, while #1 and 5 and #2 and 6 are connected to the receiver antenna terminal. It is now possible to select among 3 stations on a channel, just by playing with the two variable capacitors. Do not forget to experiment with different connections of the loop to the receiver, although the first set-up mentioned above gives good results most of the time.

Examples of nulls:

- a) 675 kHz -- wall loops: France Inter under Hilversum III
-- R. West loop: France unreadable
-- dual Martens loops: France unreadable
- b) 873 kHz -- wall loops: England (weak), Spain and USSR
noted with AFN pulled
-- R. West loop: USSR good, Spain poor
-- dual Martens loops: USSR only

A conventional box loop in the field of these larger loops will be affected by them of course; if the smaller loop is connected to the receiver and adjustments made to the wall loops, some interesting nulls can result. (ed. note: when using the wall loop system with my receiver, I found that adjusting my 3' box loop's tuning or position also influenced nulls on the wall loops, even though the 3' loop wasn't hooked up to anything.) My present system uses a Martens loop connected to my receiver in the usual manner. Points #1 and #6 of the wall loops are connected to receiver ground, but no other connections are made. Nulls are produced by adjustment of the variable capacitors on all three loops, plus some adjustments of the position of the Martens loop.

(Incidentally, congratulations to Ben on the arrival of his son Thomas in late November. At this rate we'll be able to start an IRCA junior auxiliary, with a special emphasis on the technical crowd, hi. --MHP)

* * * *

---A recent brochure from Gilfer Shortwave, P.O. Box 239, Park Ridge, NJ 07656 mentions "Do-it-yourself kits for receiver improvement". The MOD-1 improves selectivity and sensitivity of the PRG-7, the MOD-3 upgrades the PRG-7700's selectivity, and the MOD-4 adds a 3.5 kHz filter to the BRD-515. The MOD-1 is \$45, the others are \$50, and require some electronics and PC board skills.

* *

---Shortwave Horizons, 6815 12 Ave., Edmonton, Alberta T6K 3J6 has recently put out a catalog of interest to Canadians (due to Canada Customs, it's virtually impossible for a Canadian distributor to be able to sell to U.S. customers at competitive prices). This outfit is run by IRCA's Don Moman and offers ICOM, Yaesu, Kenwood and Panasonic, some modifications, accessories and books. Canadians send a 32¢ stamp to the above address for your copy of the catalog.

The PVC Loop Frame

by Dennis Kibbe

Even the newcomer to MW DXing knows that a loop antenna offers advantages over a long wire and is a valuable addition to any receiver. But maybe like I have, you've been turned off building one by the thought of some complicated woodwork or the high cost of a commercial unit. Well, take heart! Your local hardware store has everything you need to construct a really first rate box loop right in their plumbing department!

PVC plastic pipe and fittings are easy to work with (just cut and glue) and the threaded parts available allow easy construction of a moveable joint for tilting. Here is my shopping list for a wedge loop (IRCA reprint #A13): 3/4 inch thick wall pipe, P-joints to support wire, threaded elbows between antenna frame and base upright to allow tilting, flat threaded metal flange to screw to plywood base, threaded adapter between flange and upright. 1/2 inch pipe might work in lengths under two feet, but will not stay straight in long lengths.

If I may be permitted to boast, the Wedge loop I constructed turned out great! With its white frame wound with red wire and a yellow pinstripe for the coupling turn, even my wife has accepted it. See, do you think there is a market for designer antennas?

* * * * *

The Kenwood TS 430 Transceiver/General Coverage Receiver

by Don Moran

It should be noted that the TS430 is an amateur radio transceiver, but because it also contains a general coverage receiver it is of interest to the CWL who is also a ham radio operator. I realize this type of unit is not of interest to everyone, but it is interesting to see how Kenwood tries to serve two very different groups of radio enthusiasts.

Basic Features (receiver section):

- 150 kHz to 29999 kHz, continuous tuning, auto MHz roll over
- 8 memory channels plus A/B VFO's (mode is memorized too!)
- scanning of memory channels or programmable limits
- synthesized (11 to 10 Hz with modifiable 10 Hz readout
- 111 shift, squelch, audio notch filter and noise blanker

In addition to all the above features, the TS 430 is a full 200 watt transmitter, capable of AM, FM, SSB, CW and RTTY (with optional RTTY board). And it's all squeezed into a package that is smaller than most receivers --its front panel is less than 4 inches high and 10.6 inches wide!

Basically, it is designed for the ham bands, but for this reason it's not surprising that the RF performance is excellent. The only standard filter is 4.4 kHz (4.4 kHz at -40 dB) and one must purchase any other filter desired--such as the 2 kHz AM filter (12 kHz at -40 dB) or the 1.2 kHz narrow CW filter as well as 270 or 600 Hz IF filters. Filter selection is not completely independent of mode--you have only one of bandwidth available--or 2.4 (installing the optional 2 kHz filter doubles the CW in AM, although it could likely be modified for both). Limited carrier (100%) reception is an easy and all around to listen to that I don't even miss not having a narrow AM filter. You can change sidebands with just a touch of a button and so changing AM-SSB owners take note!

The IF scheme places the filters at the standard Kenwood frequency near 2.429 MHz, which means the filters are the high performance crystal type, with sharp skirt selectivity. Ultimate rejection of the filters is reduced by leakage around the filters, something typical of most 1" layouts. Firms like PC-PARC Corp. (Box 10244, S. Palm Beach, FL 33410) already have lower cost and superior performance options.

A notch filter control is provided, but unfortunately it is only the audio variety. IF notch circuits are to be preferred but the audio notch can be quite useful in eliminating audio beats. Unlike the IF notch, the 430's circuit cannot reduce strong carriers that desensitize the set through the AGC. Other receivers (R1, R70, GR-4) use circuits which operate at the IF stage.

General performance in all areas is very good, if not excellent. My only "complaints" center around the small amount of IF leakage around the filters, and somewhat compromised FM and LW performance. Compared to other popular sets like the R-600, 1000, 2000 and PRS-7, 7000 and 7200, the 430 is an improvement, but it falls slightly short of the excellent performance of the ICOM R-70.

Other "shortcomings" can be easily remedied if one has some technical ability. Power is 12 VDC (at 1.2 amps), BUT there is no built in AC supply. The Kenwood supply is rather expensive as it has to be capable of much higher current to supply the transmitter section. I use a storage battery with a trickle charger to provide cheap and clean DC power. Another missing item is a tape recording jack. I've added one to the ACC connectors on the rear, but it's something that should be provided by Kenwood. ACC time constants on AM are reasonable (you don't have any choice!) but I found the SSB times to be far too slow. In case you have the same complaint, change C67 to .047 uF.

The 430 is a very nice set to operate with the flexible memory and VFC system. Readout is easily modifiable internally to indicate frequencies to 10 Hz (xxxxx.xx) and the set is very stable, which makes ECSSP reception a snap. The resultant audio in the ECSSP mode is the BEST, in my opinion, of any set I've used which includes most of them.

The 430 competes against sets from ICOM, Drake and Yaesu who also have general coverage transceivers in a similar price range. The Drake TR-7 and Yaesu FT-1 cost over twice as much, while the ICOM 720 is only 25% more. Canadian price of the 430 is \$1199, however options may easily bring this to more than \$1500, closer to that of the ICOM. New sets are just out---Yaesu FT980 and the ICOM 751, but both are expected to cost in \$1500-2000 range. The Kenwood TB930, big brother to the 430, offers more advanced selectivity schemes and filter versatility but costs well over \$2000.

In conclusion, I'm quite pleased with the 430. While at \$1200 it's not exactly cheap, it is by comparison with other sets in its class. For those SWL's with a ham ticket who want one set to do it all, the 430 is certainly a good buy.

(This review first appeared in the Canadian International DX Club Bulletin, the MESSENGER. Other hobby clubs and organizations are welcome to use this review. Questions and/or comments should be addressed to: Don Moman, 6815 12 Ave., Edmonton, Alberta T6K 3J6. SASE would be much appreciated---USA please include a loose mint stamp; we can't use US stamps here in Canada on outgoing mail!)

* * * *

---Radio West's December garage sale list included some Collins R-390A mechanical filters (2, 4 and 16 kHz) at \$20 each. There were only a few, but there may still be one or two left by the time you read this. Send a SASE to Radio West, 3417 Purer Road, Escondido, CA 92025 if you're interested.

* * *

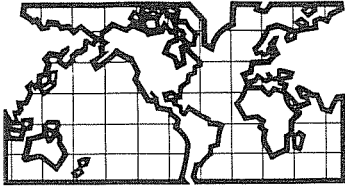
---Grove Enterprises, 140 Dog Branch Rd., Brasstown, NC 28902 also has a new catalog out. They carry the new Bearcat DF-1000 (reviews anybody?), as well as receivers from Sony, Kenwood and Icom, some with optional modifications; books, antennas, and Grove's well known accessories are also included. Catalog is free from Grove at the above address.

---KCS Electronics Corp., P.O. Box 33205, Phoenix, AZ 85067 offers the "Channel Guard" an IF filter module to improve the selectivity of many inexpensive receivers. Actually designed for CB transceivers, the Channel Guard is available for three IF frequencies, 455 kHz, 7.8 MHz, and 10.695 MHz. There are four wires to the module, input, output, ground and DC supply (8 to 14 volts). The manufacturer says other frequencies are available upon special request. The stock filters are available for \$24.95 plus \$2.50 shipping. Credit card phone orders to (602) 274-2895. (Info from Armand DiFilippo) Source did not specify filter specs.

---Those who are into memories (not the nostalgic type) and own a JRC RR0-515 or ICOM IC-R70 will be interested in the Pocom PFC-100 Programmable CPU Frequency Controller. It allows storage of 100 frequencies each with mode, ACC setting, attenuator setting, bandwidth and name of the station (which is displayed on an LCD readout). As well as direct recall of memories there are a couple of scanning modes as well. More info from Universal Amateur Radio Inc., 1280 Aida Drive, Reynoldsburg, OH 43068.

(The above three items from ANARC's Marketplace Report)

---and best wishes for 1984, especially to Derek Claridge, Jim Herkimer, Chuck Hutton, Dennis Kibbe, Steve McGreevy, Don Moman, Ben Peters, Bruce Portzer, John Reh, Ralph Sanserino, Mike Sapp, Gerry Thomas and Randy Tomer who helped keep the Tech Column up to snuff in 1983. Thanks. --NHP



DX WORLDWIDE - WEST

Pat Martin - Editor

P.O. Box 843, Seaside, Oregon 97138

(503) 861-3185 - deadline Tuesday

DX here continues to be slow here with very little to report. Even the strong DUs and JJs haven't been in too well. A few RR stations have been showing up in the mornings at times on 585 and 576 KHZ. DYFM-837 made a showing this past week. In Radio Station news, received a letter telling me that 2CN-666-Canberra City, ACT, is now on (ex 1440), but only with 2KW. They are supposed to boost to 5 KW OD. DXers in Australia get Houmeas carrier tearing 2CN apart. Also SIBS (Solomon Islands) are supposed to be testing their new tx (5KW) at Lata, Santa Cruz on 1386 KHZ. Only have heard a carrier here very weakly. By the time you read this KIP0-ex 1350-Hawaii should have moved to 570 w/1kW, using a new 400 foot tower. KPOI-1040 supposed to be only operating with 5 KW, soon to be back up to 10KW. KHDI-1270 only operating with 1800 watts, since three silicon rectifier stacks blew. KGU is running 9 KW and 80% Mod. KHVI-550 has had the "Roycroft Treatment" KHL0 has had an increase in tower height. Pearl City-130-5KW has its tx in position and will be getting a DA soon. This all from Broadcast Services-Alan Roycroft and DX Australia. Now to reports:

PAN-AMERICAN DX ROUNDUP

- 660 VENEZUELA, Coro-YVNA s/on at 0902 12/19 w/NA sung (I think) by group of Children fair to weak. Blown away when KBOI went from nx to mx at 0905. (BP-Wa)
- 830 ECUADOR, Guayaquil-At 0633 11/13, Radio Huancavilca-fair o/u WCCO w/LA Pops and IDs (BP-Wa)
- 970 MEXICO, Cd. Juarez-XEJ all alone w/Mexican Pops, IDs,spots at 0655 on 11/13 (BP-Wa)

TRANS-PACIFIC DX ROUNDUP

- 576 U.S.S.R., Khabarovsk-OM in RR w/Clas. mx at 1434 on 1/2, fair w/ some slop. (PM-Or)
- 585 U.S.S.R., Svobodnyy-fair w/YL in CC at 1445 on 1/2. (PM-Or)
- 650 ALASKA, Anchorage-KYAK blasting in w/C&W mx 0734-11/24 (BP-Wa)
- 747 JAPAN, Sapporo-JOIB 11/24, at 0716 already in well, also noted hets on 828, 837, and 873 at same time (BP-Wa)
- 820 ALASKA, Fairbanks-KCBF- 1512 to 1517 11/25, fair to nil w/CBS nx, and local ads,wx. (BP-Wa)
- 830 ALASKA, Long Island, KABN blasting in w/folk mx 1518 11/25 (BP-Wa)
- 837 PHILIPPINES, Iloilo-DYFM, fair w/US Pops o/u JJ at 1445 on 1/3, also weak Pop mx at 140 on 1/4. Nothing on 828 KHZ (PM-Or)

VERTIES:

- 720 HAWAII, Eleele-KUAI, sent vq in 2 months direct to station, No v/s (BP)
- 855 CHINA, CPBS-sent beautiful vq in 4 weeks sent to Peking, also with postcards, stickers, and a pin. no v/s (PM-Or)

THANKS TO THESE REPORTERS:

- BP-Wa Bruce Portzer-6546 19th NE-Seattle, Wa. 98115
HQ-180A and 4' loop
- PM-Or Yer Editor
SP-6003X, 200 foot NE LW, Ground system

1984 World Radio TV Handbook The 1984 WRTH will be published in Jan. or Feb. 1984 and retail at \$17.50 in the US; orders are being taken at \$15 USPS Book Rate, worldwide, or United Parcel Service, US only, (please specify) or \$16 First Class Mail, US only. Calif. residents must add 6% sales tax. Orders, with an SASE for confirmation of shipment, and a check or money order in \$US on a US bank, payable to CENTURY PRINT SHOP, should be mailed as soon as possible (no deadline) to: Century Print Shop, Don Erickson, 6059 Essex St., Riverside, CA 92504-1599. Inquiries welcome, (714) 687-5910. In Canada, please include \$21 fourth class or \$23.50 special delivery and mail orders for receipt no later than Jan. 7, to: Canadian International DX Club, Don Moman, 6815 12th Avenue, Edmonton, Alberta, Canada T6K 3J6.

TOP END

January
1984

A monthly column of loggings, discussions & information for the 1600 - 1800 kHz range.
Deadline: The last Saturday of the month
All times are GMT

Craig Healy 66 Cove St Pawtucket, RI 02861.....

First, Eric Bueneman has some BCB harmonics:

Of WEW 770: 1540, fair.
Of KFUO 850: 1700 ex., 2550 ex., 3400 gd., 4250 fr., 5100 pr.
Of KXEN 1010: 2020 good/ex.
Of KMOX 1120: 2240 ex., 3360 ex., 4480 gd., 5600 gd w/ dist. audio, 6720 fr.
w/ dist. audio, 7840 fr., 8960 fr., 10080 pr. w/ fr. audio,
11200 pr. w/ fr. audio and a few higher non-harmonic freqs.
Of KSIV 1320: 2640 ex., 3960 gd.
Of KWK 1380: 2760 good/fair

I can't help wondering if these are being generated locally to Eric. It seems like a lot of misplaced RF, particularly for a CBS O&O like KMOX.

KPE-643 (WATD rebroadcast) has apparently had some tower construction hangups. I don't have a new target date, but knowing Ed Perry's track record, it shouldn't be too much longer. More as it happens.

LOGGINGS:

1611 ??? 0631-0646 12/31 BC station-bits of mx, voice. Too weak to ID lang. 1610 and 1613 hets, 1600 splatter. WDR-1593 gd at this time.
1613 GUATEMALA Rabinal 0446 11/21 RAB fair. (Neal)
1621 ??? 0459 11/21 IND fair. (Neal)
1629 ??? 0450 11/21 KAB1226 fair. (Neal)
1635 ??? 2210 12/16 K235 fair.
1635 ??? 2211,2216 12/16 Y375 good.
1635 ??? 2212,2220 12/16 H313 fair, unstable frequency.
1635 ??? 2218 12/16 G59 and dash, poor. Unusual, only 2 digits.
1635 ??? 2214,2220 12/16 W445 fair.
1635 ??? 0441,0446 12/5 G442 and dash. good. Also 2211,2216 12/16
1635 ??? 0444,0448 12/5 U282 and dash, strong.
1635 ??? 0447,0504 12/5 E59 and dash, good. Another unusual one.
1635 ??? 0455,0507 12/5 W382 and dash, strong.
1635 ??? 0526,0530 12/5 R235 fair.
1637 ??? 2222,2226 S340 and dash. Fair. Oh yes, 12/5.
1637 ??? 2223,2227 12/5 J445 and dash. Fair.
1637 ??? 2226,2230 12/5 D348 fair.
1637 ??? 2227 12/5 KA81184 fair. Also 0500,0504 12/19.
1637 ??? 0503 12/19 KA81192 fair w/ faster than normal code speed.
1644 ??? 0704-0710 12/23 RTTY noted fair. Seemed like two, one over the other. Also a faster data rate than 1768.
1644 ??? 0540-0615 12/30 Station sending "LGB TLX" in morse code. A "brap braaap brap" electronic sound effect followed each code sequence. This ended and RTTY started at 0555. Went back to "LGB" bit at 0603. Fair to very good w/ static from t-storm. also 0625 12/31.
1650.7 0426 11/21 OSVM followed by 6 dots. Fair. (Neal)
1665 ??? 0440 11/21 KA83468 poor. (Neal)
1678 ??? 0549-0551 12/29 USB signal in SS noted again poor to fair. Was never really understandable. Several different stations here like a network. Gone by 0551. Lots of T-storm noise as well.
1680 ??? 0536-0546 12/20 SAL very good at times.
1680 ??? 0541-0546 12/20 XM fair under SAL.
1685 COLOMBIA Mercaderes 0506-0507 12/12 MER very good.
1685 same 0444 11/21 MER fair. (Neal)
1698 ??? 2305 onwards 11/24 Woman and man alternating in SS, latin mx. Several ments of Cuba. Fading started 2330 but still there 2357. On hour hrd three chimes, rising in pitch. Fairly heavy CW interference. (Stutterheim)
1700 ??? 0609-0616 12/31 USB SS station(s) fair-good. Exactly 1700.
1755 ??? 0614,0623 12/17 FU13 and dash. Poor-fair.
1768 ??? 0543-0546 12/22 RTTY station, strong. Anybody with a RTTY demod want to try this one?? Quite regular here.

Out of order:

1623 ??? 0502,0505,0508 12/14 AE07 and dash, poor-fair.
1649.5 ??? 0435 11/21 JETU dash IEUT dash fair. (Neal) Sounds like negative keying, but I don't know of what....ed.

Credits: Sam Neal Cleveland TX Kenwood TS830S
Matt Stutterheim Montauk NY Radio Antenna Salt Water
Those with no name are mine.....same old equipment.

WESTERN

Nancy Hardy
2301 Pacific Avenue
Aberdeen, WA 98520

DX ROUNDUP

All times are
Eastern Local

Phone for hot WDXR tips: (206)532-6827 till 10pm (PLT)

DEADLINES: Tuesdays 1/17, 1/24, 1/31, 2/7, 2/14, 2/21, 2/28, 3/6, 3/13

REPORTERS FOR THIS ISSUE:

- (NH) Nancy Hardy-2301 Pacific Ave.-Aberdeen, WA 98520
FRG-7, SM-1
- (CK) Chris Knight-598 South Clarion Dr.-Pueblo West, CO 81007
R-1000, 700' SW/NE Beverage, Sanserino loop
- (PM) Patrick Martin-P.O. Box 843-Seaside, OR 97138
SP-600JX, two 1500' east Beverages
- (SMM) Steve Mittman-2248 West 37th Street-San Pedro, CA 90732
Realistic TRF, 3' wedge
- (bp) Bruce Portzer-6546 19th NE-Seattle, WA 98115
HQ-180A, 4' loop
- (RW) Robert Wien-1309 Dentwood Dr.-San Jose, CA 95118
GE Superadio, GE long-range portable, SM-2
- (ØW) John Wilkins-4385 Hoyt St. #205-Wheat Ridge, CO 80033
R-1000, spiral loop

***** OF SPECIAL INTEREST:

- 700 KGRV OR, Winston 12/30 1938 ID into Christian mx, o/KFAM. Slowly faded out 1945 leaving KFAM alone. Not hrd since, just KFAM. Strange! (NH-WA)
- 730 WFMW KY, Madisonville 12/23 1830 a real surprise, presume on post-sunset power. C&W mx, wx, ads. Fair but fadey, KDAZ nulled. New, KY #3. (ØW-CO)
- 1250 KVAR TX, San Antonio ex-KUKA, 12/12 0305 musica romantica, SS lang. stn. Good signal o/CKOM, WREN off. (ØW-CO)
- *****
- 550 KOY AZ, Phoenix 12/27 0406 very good, end of nx, ID, Talknet.(CK)
- 560 *KBLU* AZ, Yuma 12/26 0458-0520+ strong, EP'ing w/rr mx & OC, ID ment. "transmitter adjustment," another ID as "Yuma's hottest AM station." (RW-CA)
- KSFO CA, San Francisco now has definite MM SP 0300-0700 or 0730. KOIT-1260 is definitely NSP. (RW-CA)
- (KLZ) CO, Denver 12/17 0218 totally off due to tech. difficulties; back on 0237. (ØW-CO)
- WIND IL, Chicago 12/17 0230 ABC nx, ad for The Brickyard; dominant until KLZ came back on at 0237. New. (ØW-CO)
- KMON MT, Great Falls 12/26 0305 poor u/KLZ/KPQ w/wx, current temp. of -34°. (RW-CA)
- KLVI TX, Beaumont 12/17 0218 C&W tunes, Christmas tree ad; WIND QRM, local KLZ totally off. New. (ØW-CO)
+12/26 0515 poor on fadeup u/KBLU OC w/promo for Paul Harvey "...on fifty-six, KLVI." New. (RW-CA)
- CHTK EC, Prince Rupert 12/16 1015-1037 fair to nil u/KPQ w/hockey report, pop mx, nx, in KVI-570 null. (bp-WA)
- 580 CKXR BC, Salmon Arm 12/22 0930-0947 strong at times in KMJ null way o/KFXD/KCMX w/ID on half hour. Ment full network (CKGR-1400, CIPR-FM, CKTR-FM, CKXR, etc), hrd IDs as "Big Radio Sports Network," "XR," and at 0945 "It's a quarter to 7 on the R Country Network." Many spots, local nx 0930-0935, sports later. New, one of my most-wanted EC stns. On night pattern at this time, of 1kw. What's strange is that they mentioned R Country Network, but they were playing rrl (RW-CA)
- 600 KOGO CA, San Diego 12/26 1939 nx, "KOGO news time 4:39." Fair.(CK)
?WREC? TN, Memphis 12/13 1934 tent. carrying Tenn-GA State BKE on Vols BKB Network. Fair in KIIIX, KR0D QRM. No ID hrd. (ØW-CO)
- 620 KTAR AZ, Phoenix 12/27 0345 xlnt w/Larry King, XEU underneath. Beverage antenna. (CK-CO)
- 680 KFEQ MO, St. Joseph 12/14 1655 "68 News" regional nx, wx; 1659,55 ID "AM 68 K-F-E-Q St. Joseph, it's 4:00," CBS nx. Weak, but no QRM until KKYX faded up 1705. New. (ØW-CO)
- 740 KBRT CA, Avalon 12/26 1944 very good w/s/off, ID, said xmtr located on Santa Catalina Island, KSSS QRM. New! (CK-CO)
- KCBS CA, San Francisco 12/25 AN w/Christmas mx, off w/OC MM 12/26 0300-0800, totally off at times this period as well, subs. their usual SM SP for a MM SP this week for Christmas holiday. (RW-CA)

- 740 CBL ON, Toronto 12/26 0612 very nice signal o/KTRH/KRMG et al w/ID
 "This is CBC Radio," wx for So. Ontario. (RW-CA)
 +MM 12/26 0630-0720 dominant o/KTRH/Mexican w/Christmas mx,
 features, etc. KCBS off this MM instead of Sunday morning
 12/25. (bp-WA)
- 780 KAZM AZ, Sedona 12/23 1906 state & local nx, ads, wx (51°); 1916
 into Christmas mx, then suddenly lost, prob. cut power; before
 1916 fair in WBBM null. New, AZ #30. (ØW-CO)
- 860 KVVA AZ, Phoenix 12/27 0446 SS, good w/ranchera mx, "Radio Viva"
 IDs, slight KKOW QRM. Beverage. (CK-CO)
- 910 KJJJ AZ, Phoenix 12/26 2002 good, end of nx, ment. 7th Ave. Bridge
 closed due to Salt River Project release of water, "K-J"
 slogans. (CK-CO)
- 920 KYST TX, Texas City 12/13 1903 traffice rpt., dedications, DJ
 chatter, all in SS, then ranchera mx. Fair, dominant KORK
 nulled, KPOF-910 slop. They've dropped all-Beatles format.
 (ØW-CO)
- 930 WTAD IL, Quincy 12/21 0156 fair w/s/off for WTAD & WQCY-FM, "Now
 our National Anthem," then SSB. New. Loop. (CK-CO)
 KSDN SD, Aberdeen 12/27 0552 very good w/rr mx, TC, ID, no KOGA.
 New. (CK-CO)
- 940 KNST AZ, Tucson 12/26 1958 very good o/u XEWV w/ID "The best
 informed people in southern Arizona listen to KNST news plus,"
 ABC nx at 2000. (CK-CO)
- 990 KTKT AZ, Tucson 12/26 1850 xlnr w/rr mx, "KT-KT" ID, current temp.
 56 degrees (warm!). (CK-CO)
- 1000 KRHS AZ, Bullhead City 12/21 2000 finally logged this at s/off;
 fair o/u WCFL. New, AZ #29. (ØW-CO)
 KKIM NM, Albuquerque 12/22 1839 ID "Your constant Christian
 companion in New Mexico, this is the Joy of 100" (spoken),
 then SID "K-K-1-M," then Christmas/relig. mx. Very good sig,
 dominant o/KRDZ/XEFV. (ØW-CO)
 +12/26 1844 xlnr w/ads for "Farrell's Ice Cream Shop" & a
 Christian Center on San Pedro. 296 & 292 exchanges. (CK-CO)
- KOMO WA, Seattle 12/26 AN this MM for holiday weekend, they are AN
 on 3-day holiday weekends. Will probably be AN MM 1/2 as
 well. (RW-CA)
- 1060 KYW PA, Philadelphia 12/21 0112 good peak w/nx, "KYW news time
 one-twelve." Taped, new! Loop. (CK-CO)
- 1080 ?WTIC? CT, Hartford 12/21 0107 hrd very poor during good Eastern ex
 u/KRDL w/"Talknet" program. No ID hrd so tent. Loop. (CK-CO)
- 1110 KHAC AZ, Window Rock 12/27 1200 good w/ID, "Haven of Rest" program,
 ment. "Unshackled" coming up at 11:00. (CK-CO)
- 1130 KEMR ND, Bismarck 12/26 1707 mixed & o/CKWX w/C&W and spots. Quite
 good at times, IDs. Very surprised. (PM-OR)
- 1140 WRVA VA, Richmond 12/21 0119 good w/C&W mx, trucker's program, "It's
 17 after the hour on WRVA," taped. New! Loop antenna. (CK-CO)
- 1150 KDEF NM, Albuquerque 12/26 1854 MYL, ID, thanking listeners for
 responding to their format. (EX-KDRM, KDQQ, etc, etc). (CK-CO)
- 1170 (KVOO) OK, Tulsa 12/12 & 12/13 noted totally off both nights 0300-
 0400 and later; back on 0600 on 12/12. (ØW-CO)
- 1190 KRDS AZ, Tolleson 12/26 1856 xlnr! w/local nx, ment. 7th Ave.
 bridge closed due to Salt River Project release of water. (CK)
 KHAD MO, SeSoto 12/19 0653 C&W and Christmas mx; wx & school
 closings after each song; fair o/KJLA past 0715. New. (ØW-CO)
- 1240 KLTN NM, Albuquerque 12/27 0325 SS, xlnr w/"KLTN, Radio Latina" ID,
 Latin mx (of course). Would be considered impossible here w/
 only a loop due to KDZA-1230 slop. Beverage. (CK-CO)
- 1250 KHIL AZ, Willcox 12/26 1840 ads for Gordon's Market, Cactus
 Kitchen, and a new TV stn (channel 2) serving Cochise Co.
 effective Jan. 4, 1984. (CK-CO)
- 1260 KWYR SD, Winner 12/12 0700 SSB, then "no-data" s/on; arnct'd 17°,
 then nx. Fair, but quickly faded into oblivion. (ØW-CO)
- 1270 *KIML* WY, Gillette 12/26 0604-0615 strong w/f/c, elaborate IDs
 every 5 minutes mentioned f/c was w/monitoring service in
 Lee's Summit, MO. Full blown s/off 0615 w/owner, power,
 etc. (bp-WA)
- 1280 KHEP AZ, Phoenix 12/26 1915 good, ID, "This is KHEP, Phoenix,
 Arizona wishing you a pleasant good evening," then off, no
 SSB. New. Beverage antenna. (CK-CO)
 KFRN CA, Long Beach 12/26 1930 YL w/ nx, "This is (name) reporting
 for KFRN, Long Beach." New. (CK-CO)

- 1290 KSRC NM, Socorro 12/26 1822 SS, xlnt w/ranchera mx, ad for "La Plaza de Socorro, telefono 835-1120," ads for other businesses. New. (CK-CO)
- 1340 KXTC ID, Nampa 12/31 1950 end of Mutual's "Country Music Countdown." 1955 "Happy New Year Boise Valley" into rockish mx. 1959-2002 DJ talk w/many KXTC ments. A couple hours later hrd w/SS. New. (NH-WA)
- 1360 KPQP CA, San Diego Wed 11/2 logged call change, ex-KCNN. Stn IDs now exclusively w/"K-Pop" slogans (e.g., "K-Pop AM 1360," "K-Pop Radio," etc). Quick legal ID at 1000; "KPQP, San Diego. It's 7:00 (or as the case may be) at K-Pop." Into ABC nx, then local nx at :02. Has big bands format. (SMM-CA)
- 1370 (KEEN) CA, San Jose 12/23 0300-0356+ totally off, looked for KUIK-1360, but only KAMT/KFIV/KPQP/KLFF/KRKK mix. Does KUIK-1360 s/off at 0300? I thought they were NSP. (RW-CA)
- 1400 KWNA NY, Winemucca 12/17 1059 fair in KPMA null w/Community Calendar, ID, ABC nx. Much wanted, now need only KELY-1230 for 100% Nevada. (bp-WA)
- 1440 KOPA AZ, Scottsdale 12/26 1910 xlnt w/"AM 14-40 Kopa" ID. (CK-CO)
- 1470 KSVB AZ, Sierra Vista 12/26 1905 xlnt! End of ABC nx, ad for a business on East Fry Blvd., 458 exchange, equal in strength to local KAYK-1480! New. (CK-CO)
- KUTY CA, Palmdale Sa 12/17 1550 easy here midday in XEBBC null w/KWIZ-1480 on reduced power (see below). Noted w/new light C&W format & "Cutty Country 1-47" slogans. Has Mutual nx at :55 and local nx at :00. (SMM-CA)
- 1480 KWUN CA, Concord Su 12/18 0508 good signal o/KWIZ (only running 230w) w/lady DJ, "KWUN. 8 minutes after 2:00 on a Sunday morning, and the Pioneer Sisters..." Afterwards, very strong signal w/male DJ, "That was the Pointer Sisters on the 1." (Or did he say "K-1"?) Listed in the NRC Log w/a 10pm s/off; apparently AN now. New, and much wanted! (SMM-CA)
- KYOS CA, Merced Su 12/18 0509 xlnt, local-like signal--strongest on the frequency--even o/local KWIZ (running low-power)! (KYOS & KRED can usually be hrd in KWIZ null, even when KWIZ is at full power.) Ment. that the wx plays an important part in the San Joaquin Valley. (Promo for wx reports on KYOS.) Into pop mx. (SMM-CA)
- KWIZ CA, Santa Ana Sa 12/17 & Su 12/18 thanks to Jim Hilliker that KWIZ--normally 5000/5000--was temporarily running only 1000/250 for a couple of days! At night/SSS, 1480 was a real GY mess (KWIZ/KSBQ/KWUN/KYOS/KRED)! On conventional radios, KWIZ went from being a day & night local here, to totally degrading to unlistenable status! Was still low power Sunday night/NN, but back to full power for Monday morning drive time. (SMM-CA)
- KSBQ CA, Santa Maria Sa 12/17 1605 logged midday for midday #127 w/KWIZ on reduced power of 1kw. Could just barely hear pop mx in extremely light KWIZ null. (SMM-CA)
- 1490 KQUE CA, Banning Sa 12/17 1617 2nd time hrd midday. In KRE null w/KWIZ-1480 on reduced power. Pop format. Uses "K-Good" slogan. Legal IDs as "You're in 'good' company--KQUE, Banning." Into ABC nx. (SMM-CA)
- 1510 KUDQ AZ, Mesa 12/26 1830 xlnt w/rr mx, "15 KDJ4" IDs, KNSB w/SS hrd faintly underneath, no KDKO. Rare. (CK-CC)
- 1520 KACY CA, Fort Hueneema 12/26 1833 poor b/KOMA w/end of nx, "Now more of So. California's best music on K-C one fifty-two." (CK)
- 1550 KHAT AZ, Tucson 12/26 1900 xlnt w/lite mx, YL said "KHAT is located in the Modern Languages Building." (CK-CO)
- WOLJ MS, Jackson 12/14 1855 R&E tunes, 1900 ID "W-G-K-J Jackson, the one with the roots, the one with the hits," then NBN nx. Good o/u KKJC. (ØN-CO)
- 1560 *KPMC* CA, Bakersfield 12/26 0327 w/OC. (RW-CA)
- KCJJ IA, Iowa City 12/26 0350 w/Christmas mx, ID into ABC nx at 0400. Fair, no sign of KKA. New. (PM-OR)
- KGHO WA, Hoquiam-Aberdeen on 1/1/84 changed format from rock to BFL mx. (NH-WA)
- 1570 CKTA AB, Taber 12/19 0300 nx, hockey scores, wx (-300), anncr Doug Peacock said "It's 1:03 and you're up-to-date on Check," then rock mx, relaying CHEC-1090. Good signal, dominant way o/CKLQ, XERF was off. (ØN-CO)

DX TEST:

890 *KBYE* OK, Oklahoma City 12/19 0140 DX test w/rock oldies; good sig w/WLS off. 0157 mentioned my name & IRCA after I had called stn. On all night, unfortunately--I was hoping to log some Latins, but no go. (ØW-CO)

UNIDs:

- 530 11/24 0045-0115 adult contemp. mx w/YL DJ, "FM 105" & KZUK IDs, possible mention of Oregon at top of hour, but wasn't alert enough to catch location. Good w/no fading. Cut off abruptly 0115. Call suggests Karl Zuk has set up a pirate out here, but no references to penguins noted. More likely someone ET'ing a local TIS.(bp-WA)
- 760 12/26 0313 unID C&W u/KFME/WJR/Colombian. KGU isn't C&W. UnID ET? Or is KSJL already on the air? (RW-CA)

"Whoops" Dept.:

Bill Harms called from Maryland to say that his report of KJBK-1590 back in the 9/18/82 WDXR column (Vol. 20 #1) should be a tentative. Bill says he was driving through the Twin Falls area, heard what he thought was a "KJBK" ID, and had his wife take notes, but that he never heard the station in Provo, Utah, his DX location at the time. As for Doug Nyholm's logging in 11/19/83 "Of Special Interest," Bill suggests the Idaho references could perhaps come from KMTI Manti, Utah, because southern Idaho news often makes the Utah regional newscasts. We're still unsure whether KJBK-1590 is a legitimate station or not.

100 lashes with the Stiff Penguin Flipper go to me. In the 12/17 WDXR I turned Jim Hilliker's KTOE-1420 logging into a KTAN logging! Sorry! Thanks to everyone who is putting the frequency down for "slop stations." I've had some favorable comments about it from various parts of the country. ♡

The following is a list of additions and changes to the IRCA Central American List, which appeared in the October 22, 1983 DXM. The list is arranged first by changes to stations in the list, followed by a list of stations to be added (either new stations or stations in the WRTM that weren't on the list). All are from Don Moore in Honduras unless otherwise credited. (IRCA) means it was from DXNW or DXWW II.

ADDITIONS/CHANGES FOR STATIONS ALREADY LISTED

- 560 HRRZ R. Juticalpa, ex 1250, SW:4780
- 640 TGW LV de Guatemala, occasionally AN
- TIQQ Radio CuCu, AN
- 670 TIBAS now TITM, new slogan:Niticial Monumental, all news (IRCA)
- 700 TGHR Power 15kw (IRCA)
- 720 TGRO R Corona, net:OA
- 770 TGBX R Fraternidad, sked:AN
- 780 TIRA Power:3kw (IRCA)
- 800 TG R. Rosa, net OA
- 810 HRLT ex-HRET, 3.5 kw (IRCA)
- 834 et al, R Belize, Sun s/on 1200 (IRCA)
- 860 HOL55, s/on 1000
- 910 TGKL 10 kw, 1000-0600 (IRCA)
- 980 San José, call now TIRI (Stanbury)
- 1010 HRMH LV del Junco, now 1200-0400
- 1020 YSCA R Internacional 1100 s/on
- 1079 TGLU R Novedad, announces 5kw, net:OA
- 1080 YSME R 10-80 AN
- 1135 TGVR LV de la Costa Sur, ex-1130, 1000-0400
- 1140 YST R El Mundo FM:93.7
- 1150 HR R Esperanza inactive
- 1150 HRQN LV del Atlántico now 5kw
- 1210 TGMX AN(IRCA)
- 1211 YSCG R La Pa., nom 1210
- 1250 HRQ Super Q. AN
- 1260 YSA R Teatro ex-1250
- 1270 YSQZ R 12-70 1100 s/on
- 1303 HRXX R Rumbos 0600 s/off
- 1310 HR R Majestad not on 1307 for some time
- 1320 TGME R Quesada ex-1340
- 1340 TIHR R Sideral, 0500 s/off
- 1340 TGCU LV del Trópico occ 0400 s/off
- 1350 HRKW R El Patio ex-1354
- 1370 HR R Constelación ex-1385, nom-1340
- 1372 HRTR R Danlí, ex-1365

1400 TGIZ R Caribe net:0A also R Porteña
 1410 YSQR R Venceremos occ AN
 1418 TGRN Flores, nom:1420 1200-0400 (IRCA)
 1450 TGLG R Variedades also "La Emisora Multicolor"
 1460 HROX R Landia also "La Centro Americana" SW:4965
 1540 TIACA 1200 s/on (IRCA)

Additional net: Organizacion Aliv's Radiodifusoras (0A), includes TGAL-990 el al. Address: 7a Avenida 1-31, Zona 2, Guatemala.

NEW STATIONS (Not on previous list)

570	HR	Tegucigalpa	FM	R Tegucigalpa
700	YSQR	San Salvador	SS	.5 Auto Radio
718	HR	Comayagua	CM	1 R Comayagua Net:CRH, nom:710
730	HRQQ	La Esperanza	IB	1 R Intibuca
820	HO	Chiriqui		R Ritmo (IRCA)
830	HR	Juticalpa	OL	
860	HR	Danlí	EP	1 R Centro (authorized but not on)
	HR	Olanchito	YO	1 R Centro (" " " ")
890	TILDA	San Jose	SJ	R Linda (IRCA)
920	HRRN	Comayagua	CM	1 R Sistema 1300-0300
940	YS	Unid		
960	HT	San Juan province?		R 13 de Octubre 1000-?
980	HR	Comayagua	CM	R Novedades
990	TGAL	Chiquimula		1 LV Perla de Oriente net:0A
1020	HO	Panama?		R Ritmo 1000-0400 (IRCA)
1040	YS	Unid		
1150	TI			R Monumental net:670
1170	YSVE	San Salvador	SS	5 LV Evangelica de America 1130-? Relig
1240	HO			La Doble B Grande de Panama, AN
1280	HRYT	San Pedro Sula	CT	1 R Estrella de Oro Religious
1360	HT	Carazo		Ondas del Sur
1425	TI	Guapiles	LI	R Guapiles, sked: ?-0400
1440	HRIC	Puerto Cortes	CT	.8 La Radio del 70
1502	HRTX	Choluteca	CH	R Victoria, LV de Verdad, nom:1500
1540	HT	Puerto Cabezas		LV del Poder Popular

Who plays what, where

Providence Sunday Journal Magazine
 10-30-83, via Charles Harrison

These are the area's top 22 radio stations in order of overall popularity, according to the latest Arbitron listener survey, and including a few of the songs or special features you're likely to hear. (A share is the percentage of the listening audience, 12 years old and older, tuned to a station during an average quarter-hour between 6 a.m. and midnight.)

1 **WLKW-FM (101.5)** Providence
 audience share: 12.3
 owner: Jag Communications of Rhode Island
 manager: Eugene Mitchell
 program director: Norman Jagolnizer
 format: easy listening

I'm Happy Just to Dance With You by Anne Murray.
Slow Dancing by Olivia Newton-John, *When I Dream* by Crystal Gayle

2 **WPRO-FM (92)** Providence
 audience share: 9.4
 owner: Capitol Cities Broadcasting, NYC
 manager: Aaron Daniels
 program director: Tom Cutty
 format: top 40

Delirious by Prince, *Islands in the Stream* by Kenny Rogers and Dolly Parton, *Uptown Girl* by Billy Joel

3 **WHJY-FM (94.1)** Providence
 audience share: 8.5
 owner: Federal Communications Corp., Providence
 manager: Janet Carger
 program director: Ted Utz
 format: album-oriented rock
The Big Country by Talking Heads, *Rock of Ages* by Def Leppard, *The Last Time* by the Rolling Stones

4 **WPRO-AM (630)** Providence
 audience share: 6.3
 owner: Capitol Cities Broadcasting, NYC
 manager: Aaron Daniels
 program director: Tom Cutty
 format: adult contemporary music
Making Love Out of Nothing at All by Air Supply, *All Night Long* by Lionel Richie, *Total Eclipse of the Heart* by Bonnie Tyler

5 **WLKW-AM (990)** Providence
 audience share: 4.9
 owner: Jag Communications
 manager: Eugene Mitchell
 program director: Norman Jagolnizer
 format: nostalgia
Five Minutes More by Frank Sinatra, *Ballerina* by Nat "King" Cole, *Walking Backwards Down the Road* by Dionne Warwick

6 **WSNE-FM (93)** Taunton
 audience share: 4.8
 owner: Outlet Broadcasting
 manager: Tom Mosher
 program director: Holland Cooke
 format: adult contemporary music
Islands in the Stream by Kenny Rogers and Dolly Parton, *Fleshdance* by Irene Carr, *Making Love Out of Nothing at All* by Air Supply

7 audience share: 4.3
WHJJ-AM (920) Providence
 owner: Federal Communications Corp., Providence
 manager: Janet Carger
 director: Ron St. Pierre
 format: news/talk
 program
 Red Sox baseball, Bruins hockey

audience share: 3.9
8 **WEAN-AM (790)** Providence
 owner: Providence Journal
 manager: Dave Garrison
 director: Dave Nickerson
 format: news/talk
 program
 Patriots football, Brown football, PC basketball

audience share: 3.5
9 **WPJB-FM (105)** Providence
 owner: Providence Journal
 manager: Dave Garrison
 director: Tom Hunter
 format: adult contemporary music
 program
Hard to Say I'm Sorry by Chicago, *Flashdance* by Irene Carr, *Hey Jude* by the Beatles

audience share: 3.4
10 **WBRU-FM (95.5)** Providence
 owner: Brown Broadcasting Corp. (Brown University students at the station)
 manager: Charles Henry
 director: Patti Galluzzi
 format: album-oriented rock
 program
Everyday I Write the Book by Elvis Costello, *Girlfriend is Better* by Talking Heads, *Mama* by Genesis

WMYS-FM (98.1) New Bedford
 owner: Hall Communications, Norwich, Conn.
 manager: Paul Battaini
 director: Joania Pfeiffer
 format: soft rock
 program
Sara by Fleetwood Mac, *Leader of the Band* by Dan Fogelberg, *Steppin' Out* by Joe Jackson

audience share: 2.8
12 **WBSM-AM (1420)** New Bedford
 owner: Southern Mass. Broadcasters Inc.
 manager: George Gray
 director: David Derosier
 format: news/talk
 program
 Financial analyses, movie reviews

audience share: 1.9
13 **WHIM-AM (1110)** Providence
 owner: East Providence Broadcasting
 manager: Tom Allen
 director: Jim D'Brien
 format: country music
 program
Always On My Mind by Willie Nelson, *It Feels So Right* by Alabama, *I'm Movin' On* by Hank Snow

WSAR-AM (1480) Fall River
 owner: Knight Quality Group Stations, Boston
 manager: Bob Fay
 director: David Andrews
 format: adult contemporary music
 program
Lawyers in Love by Jackson Browne, *September Morn* by Neil Diamond, *All You Need is Love* by the Beatles

audience share: 1.4
15 **WNBH-AM (1340)** New Bedford
 owner: Hall Communications, Norwich, Conn.
 manager: Paul Battaini
 director: Pete Brley
 format: nostalgia
 program
I Left My Heart in San Francisco by Tony Bennett, *New York New York* by Frank Sinatra, *Old Cape Cod* by Patti Page

audience share: 1.3
16 **WALE-AM (1400)** Fall River
 owner: Milton E. Milder, Virginia
 manager: Ray Cheney
 director: Mike Moran
 format: news/talk
 program
 Local football games, French, Portuguese and Polish programs

WGNG-AM (550) Pawtucket
 owners: Donald and Dennis Hysko
 manager: Donald Hysko
 director: Mark Wayne
 format: country music
 program
You Don't Know How Much I Love You by Ronnie Milsep, *Country Roads* by John Denver, *You've Got a Lover* by Ricky Skaggs

audience share: .9
18 **WADK-AM (1540)** Newport
 owner: Newport Communications
 manager: Gary Lash
 director: Bob Angel
 format: news/talk and adult contemporary music
 program
Islands in the Stream by Kenny Rogers and Dolly Parton, *True by Spandau Ballet* and *All Time High* by Rita Coolidge

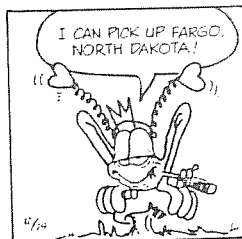
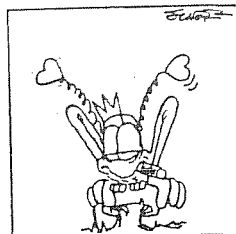
audience share: .6
19 **WARA-AM (1320)** Attleboro
 owner: Ottmar family, Attleboro
 manager: Ruth Kohler
 director: John Abaray
 format: adult contemporary music
 program
True by Spandau Ballet, *Tell Her About It* by Billy Joel, *Total Eclipse of the Heart* by Bonnie Tyler

WWON-AM (1240) Woonsocket
 owner: Woonsocket Call
 manager: Dave Russell
 director: Dave Richards
 format: middle-of-the-road music
 program
And I Love You So by Perry Como, *Scarlet Fever* by Kenny Rogers, *How Am I Supposed to Live Without You* by Laura Branigan

audience share: .4
21 **WERI-FM (103.7)** Westerly
 owner: Natele Urso, Westerly
 manager: Phil Urso
 director: Steve Feldman
 format: album-oriented rock
 program
Safety Dance by Men Without Hats, *Candy's Room* by Bruce Springsteen, *Question* by the Moody Blues

WWON-FM (106.3) Woonsocket
 owner: Woonsocket Call
 manager: Dave Russell
 director: Dave Richards
 format: beautiful music
 program
Woman in Love by Ronnie Aldrich, *Feelin' Groovy* by 101 Strings, *Goodbye* by Frank Purcell

Conrad



Free Speech and Kansas Radio

ALTHOUGH DODGE CITY, Kansas, residents aim to retain the Old West in their city of 18,000, where beef and tourism are the big businesses, something worse than six-shooting has been troubling the town. Racist hatred and venom have been emanating from a steel building which houses KTTL-FM. This 100,000-watt country music and religious radio station has turned into a bitter battleground over a license renewal request.

Much more than a renewed license is at issue, however. A renewal for seven years is meeting opposition from a local citizens' group that claims widespread approval. Programs broadcast by KTTL in early 1983 have put to the test constitutional guarantees of freedom of speech. The matter also has quickened debate about whether to ease federal broadcasting regulations. Already the Federal Communications Commission, having partly deregulated radio, is contemplating similar action regarding television.

Matters came to a head in the summer of 1982, when the station started twice-nightly programs by William P. Gale of the California-based National Identity Broadcast and James P. Wickstrom, self-appointed spokesman for an extremist, paramilitary group called the Posse Comitatus. Manufacturing its own definitions, the Posse is extremely discriminatory in naming who is American. The taped programs attacked Catholics, Jews, blacks, Asians and public agencies, including the Internal Revenue Service.

"Cleanse our land with a sword," Gale told his listeners. "You may say, 'Reverend Gale, you're teaching violence.' You're damned right I'm teaching violence! God said you're going to do it that way. It's time someone tells you to get violent, whitey." Gale sees nothing wrong in telling his listeners, "Start making dossiers and collecting names, addresses, telephone numbers and car license numbers of every damned Jew rabbi in this land. You'd better start doing it now, and know where he is. You get these roadblock locations where you can set up ambushes and get it all to working now." On a different broadcast Gale said of minority groups, "Just get a .32-caliber gun and begin pumping it at their feet."

While KTTL owners Nellie and Charles Babbs, who are Posse members, have stopped broadcasting the Gale and Wickstrom tapes, they still believe in and defend them. "This man Gale is only explaining constitutional law," says Nellie Babbs. "I'm being hounded by state and public officials to give up our license, but I refuse to do so. It's my obligation."

ORGANIZED OPPONENTS are led by Naomi Kauffman, head of Community Service Broadcasting, Incorporated. This 14-member Dodge City group has petitioned the FCC to assign KTTL's license to it. Kauffman recalls with horror the first time she tuned in on the Wickstrom and Gale broadcasts. "My initial feeling was total disbelief," she recalls in her Dodge City law office. "I had the feeling of hearing the sort of thing that might have been said in the deep South before the days of civil rights." Shocked too was Robert Kirby, general manager of the competing local radio station KGNO, who at first defended the Babbses' "freedom of speech."

Nevertheless, he says, "When I heard the broadcasts for myself, I was horrified. I turned on the program, and the first thing I heard was 'Niggers from bongo-bongo land.'" Then Kirby went to work on the matter. His eloquent radio editorials urged listeners to rid local airwaves of such prejudice. His action got the opposition movement off the ground. It was not easy for Kirby to speak out because he had known Nellie and Charlie Babbs for years. He was also a firm supporter of the protection of broadcasters under the First Amendment to the Constitution. "But responsibility goes hand in hand with freedom of speech," Kirby says. "Nellie took up where the Ku Klux Klan left off. Their line of patter is the same old, tired hatred syndrome, which contains nothing new."

The Babbses' talk is not just offensive; it is dangerous. KTTL's programs reach deeply into the rural areas. "Sometimes it's the only station one can get in the entire southwestern corner of the state," Kauffman says. "People out there can be taken in by anti-Semitic talk, and they are sometimes unclear as to what went on in Vietnam. This makes the whole situation frightening."

Bob Kirby expresses wonder that the KTTL broadcasts have not led to violent acts. "Dodge City is so lily-white," he says. "We may have a few blacks and three Jews. [One] can be sure, however, that these racist programs aren't supported in the rural areas," despite the Babbses' claim that they are."

Nearly all advertisers abandoned patronage of the station at the beginning of the dispute. "I don't want to be included in what they believe in," says Floyd Kirby, manager of a store. Nevertheless, Nellie Babbs claims that the Fidelity State Bank and Trust has renewed its loan to their station. The bank also continues to advertise with KTTL, something that plagues opponents. Fidelity President Ben Zimmerman refused to discuss the radio matter, referring questions to Ray Shrader, Fidelity's mortgage director, who was unavailable for interview.

WHILE THE FCC may rule on the matter this fall, observers hold that odds are against the station's opponents because of the commission's historic reluctance to revoke broadcast licenses even in extreme circumstances. By now the debate has reached the Congress, where early in August the House's subcommittee on telecommunications received testimony from Kauffman and Nellie Babbs. The subcommittee is pondering legislation that would revamp the FCC's licensing policies for radio, including elimination of competitive renewal application. Kauffman looks upon such an action as "virtually assuring the license renewal of KTTL for seven more years." The Posse Comitatus's reputation for violence has led some of the anti-Babbs petitioners to become leery of making a public condemnation of the station.

"I disapprove of what you say, but I will defend to the death your right to say it," a correspondent of Voltaire wrote. But how far public statement of personal opinion should be pushed without interference raises a question: Is everyone entitled to his or her own opinion—regardless of whether the person is informed on the topic?

Whether Nellie and Charles Babbs, quick on the draw in their emotional reactions, can understand public reaction to their own views is doubtful. But at present they—not their opponents—control the airwaves of KTTL in Dodge City.

Aubrey B. Haines.

THE INTERNATIONAL RADIO CLUB OF AMERICA

CLUB ADDRESSES

Membership Dues, Address Changes, and Renewals:
 P.O. Box 26254, San Francisco, CA 94126
 Bulletin Material, Sample Requests:
 P.O. Box 21074, Seattle, WA 98111
 The IRCA Goodie Factory (Publications and Reprints)
 1422 W. 5th St., Tempe, AZ 85281

MEMBERSHIP DUES

\$16.50 First Class to the U.S.A., Canada, and Mexico. \$6.00 for trial membership(10 issues of DX Monitor and a New Member Packet) to the U.S.A., Canada, and Mexico. \$18.00 Surface Mail to the rest of the world. \$27.00 airmail to Central America, Colombia, Venezuela, and the Caribbean. \$30.00 to the rest of Latin America, Western Europe, North Africa, and the Middle East. \$34.00 to the rest of the world. Sample copies of DX Monitor cost 50 cents each or three International Reply Coupons. Make checks and money orders payable to IRCA. Persons living outside the U.S. should make dues payments by check or money order payable in U.S. funds.

The International Radio Club of America is a non-profit organization devoted to the hobby of hearing distant stations on the AM Broadcast Band (Medium Wave). IRCA is a member of ANARC, the Association of North American Radio Clubs.

Club Officers: President--Phil Bytheway, 9705 Mary Avenue NW, Seattle, WA 98117. Secretary--Treasurer--Rich Segalas. Board of Directors--Ernest Cooper, Nancy Hardy, Ric Heald, Neil Kazeros, Bruce Portzer, Peter Taylor, Niel Wolfish.

DX MONITOR, the official bulletin of the IRCA, is published 34 times per year, weekly from October to March, twice in September and April, and monthly from May to August. Unless otherwise noted, permission is granted to publish, broadcast, or otherwise reproduce non-copyrighted material appearing in DX Monitor. Provided credit is given to IRCA and the original contributor. Opinions expressed in DX Monitor are those of the original contributors and do not necessarily reflect those of the IRCA, its publishing staff, editors, or officers.

PUBLISHING COMMITTEE: Bruce Portzer (206)522-2521, Evelyn Portzer, Phil Bytheway, Jeff Jaisun

FIRST CLASS MAIL
 U.S. POSTAGE
 PAID
 Seattle, WA
 Permit No. 601

first class

D. A. NYHOLM
 2071 CEDAR STREET
 SAN CARLOS CA
 94070

19

RENTAL

bx 461

Postmaster: if undeliverable, return to
 P.O. Box 21074, Seattle, WA 98111, U.S.A.