



DX Monitor

The Unofficial DX Club of
the 1984 Summer Olympics

March 32, 1984

Volume 21, Number 28

Issue Number 477

In This Issue

Eastern DX Forum	2	Central DX Roundup	13
Western DX Forum	4	Vane Jones Log Announcement ...	13
How to Ru(i)n a Radio Station	7	Western DX Roundup	14
The IRCA Personality Quiz	8	DX Worldwide East	17
DX County	9	DX Worldwide West	18
Verification Signers	10	DX WW II	19
Eastern DX Roundup	12	Dayton Hamvention/MVDXA Forum ..	21
List of Medium Wave Stations		FCC News	22
in Bhutan	12	DXatron	23

NEW AM STATION IN CUBA

On March 1, 1984, a new medium wave station in Havana, Cuba, signed on the air. The station, known as Radio Ludicrouso, operates on 1620 kHz. Although the Cuban IRT has listed the station as 250 watts, it is believed to be running more, as a recent daytime test of the station was heard on a simple crystal set in Vancouver, B.C. The station is operating nightly from 0000 to 0215 GMT. All broadcasts are in Spanish with the exception of the 0200 to 0215 transmission. Here is a typical listing of programming heard on Radio Ludicrouso:

0000-0015 News (comedy); 0015-0030 Over Modulation; 0030-0031 Stereo AM in Cuba (discussion); 0031-0100 Truth or Consequences (Drama); 0100-0101 Call Letter Change; 0101-0130 Are We On Frequency? (Quiz); 0130-0131 Tips on Buying a New Car (discussion); 0131-0145 Time Signals (inaccurate); 0145-0200 Recorded Music (pressed off center); 0200-0215 Dead Air; 0215 Signoff.

Radio Ludicrouso has informed DXers it will verify all correct reception reports, provided the request is accompanied by two IRCs and one 50,000 watt transmitting tube in good working order.

NEW RADIO SHACK RECEIVER

Radio Shack has announced the latest in their long line of DX receivers. The latest is called the DX-390. Basically, it is a solid state version of the popular military surplus receiver, the R-390, redesigned to Radio Shack's exacting standards. Unconfirmed reports say that the receiver is actually a redesigned and repackaged DX-300. In order to maintain the military surplus look, Radio Shack decided to use a mechanical type digital readout, just like the one on the R-390, except that it doubles as a digital clock. A rather intricate mechanism of gears, levers, and cams is used to drive the clock/tuning dial, switch back and forth between the two, and to adjust the main tuning capacitor. In fact, it reportedly occupies 85% of the receiver's volume and probably accounts for most of the weight of 120 pounds (remember, this is a solid state rig). The receiver also has a rear panel connector for hooking up to a TRS-80 computer. This connection allows you to use the use the computer to turn the receiver on and off, to change frequencies, and to set the clock.

ANOTHER FCC RULES CHANGE

The FCC has just announced another loophole in the rules which will enable stations to raise power and change frequencies. Previously, stations could do this only by relicensing to an obscure suburb of the city they actually plan to serve. However, under the new rules, stations can change their facilities by relicensing to another country. They don't have to physically move, just change their call prefix, announce their new location at the top of the hour, and abide by the rules of the country they picked. Several changes have already been granted. KFI-640 is changing calls to XEKFI, IDing as in Tijuana, and boosting power to 250 kw. WLS will shortly relicense to Havana, change calls to CMLS, boost power to 150kw, and drift back and forth from 800 to 1000 kHz. WGBB-1240 is moving to 1242, relicensing to

(continued on page 7)

EASTERN DX FORUM

RICHARD EVANS
P.O. Box 1204
NORTH WALES, PA 19454

Reports from members living east of the Mississippi River .
Deadlines: 3/30 4/13 5/2 6/1 6/29 7/27 (last)

Don Moore, Apartado #3, Santa Bárbara, SB Honduras

Recently read Voice of America got permission from Honduran government to put a BCB relay in the Bay Islands off the north coast. My guess would be they'd use 1530 or 1550, only places I think that could avoid substantial interference through most of the isthmus. On DXWW-II, 12/3: George Hakiel, good log on HRKL-700!! They are lkw per CE and printed info I have from station. Not that easy to hear in Santa Bárbara. Radio Noticias is still on 840 kHz, in fact I logged them there 11/22. No idea on the 830 unID. In 12/17 DXWW-W, on 660 kHz, the HRN ID should go "La N Más grande..." On DXWW-E 2/4: Mark Sutterhain on your 1425 station, Radio Guapiles, CR (see CAM list updater) was well hrd here through mid-December when I left for Mexico. Since my return it is no longer hrd, probably on even channel now. A few nights ago I did hear the HC weakly and tentatively with local ads. DX has been pretty good here. Passed 600 stations hrd here. A good TA opening netted 3 newies, including a new country, Belgium-1512. A few more daytimers added also, WTHB and WYOU-1550, WCRJ-1530, WGNB-1520. One unID, anyone know who has AT40 program starting 1200 GMT on 790 on Saturday? While in Guatemala City, on way to Mexico in December, GDXC members told me that local radio Fabulosa-670 has taken to airing WWV time checks. The WWV TC is aired, e.g. at 2315 GMT, then the DJ announces in Spanish "it's 1715 UTC" - giving the local hour, but adding "UTC" - not knowing what it means. Still, I bet it sounds impressive!

Bill Townshend, 4500 Connecticut Avenue, #901, Washington, D.C. 20008
202-966-8046. Time for another Forum, this for the anniversary issue. I'm 52, single and live with my 80-year-old stepmother in upper NW DC near the Van Ness subway station, and work for the National Weather Service (don't blame me for lousy weather, hi, especially the snow-thunderstorm this evening with three inches depth and mammoth traffic snarls), as a computer programmer. Mark Fink hosted a GTG for WADXA at his Rockville, Md. pad on Sat. 2/25 with 16 attending including yours truly. As usual, I enjoyed the oldies fracas while plans for the next gtg in May, possibly a picnic were being hashed out. I'm be back to pounding the highways and byways around the DC-Baltimore area at the time before the swimming pools' "white elephant" season ends. I now have heard 20 on 1540 with WYNC, Whitesville, N.C.; my best channel is 1580 with 28 including local yokel WPGC. Total is now 1138 heard. The Redskins are still the NFC champs and Super Bowl runners-up but have the winningest record, 16-3. That's two Super Bowl trips in a row. WWWE-1100 has joined the Saturday night oldies melee, with the old standbys, WGY-810, WRVA, WHAM-1180, WOWO-1190, and WKBW-1520, with the oldies shows on all six stations produced locally. WTAR-790, WBT-1110, and WGAR-1220 carry the "Solid Gold Saturday Night" program (1900-0200) which is broadcast by satellite from New York; many other stations carry this oldies show; this is something for the IRCA Almanac. On Sunday night, WBT-1110 (1800-2200), WFMD-930 (1900-2400), WNAV-1430 (1800-2400), and WPRW-1460 (1900-2400) fight it out (although I'm in a null of WNAV but hear WPRW readily o/u WCMB). I even called up the WPRW DJ and told him his station made a serious mistake in moving the oldies show from 1400-1900 (ex-1300-2200), where it was virtually free from competition to 1900-2400 where it fights WBT and WFMD. WINX-1600 is now T40 (ex-BBD). 73.

Bill Harms, 3571 Fort Meade Road, #417, Laurel, Maryland 20707

Time again for a reintro. I am 28 years old, work as a Korean language specialist for a Washington, D.C. area federal agency. I am married to the former Becky Patch of Minneapolis, and we have three children. I have been a DXer for over 15 years and a member of IRCA for 6½ of them. DX totals here are 490 total heard from 30 states, 6 provinces and around 30 countries. I have also DXed in Utah, Washington state, and Korea. I also DX FM, TV, and SW with MW on the top of my list. Chil-ship-sahm (73's in Korean).

Sherrell D. Warren, Rt 2, Box 285, Nettleton, Mississippi 38858

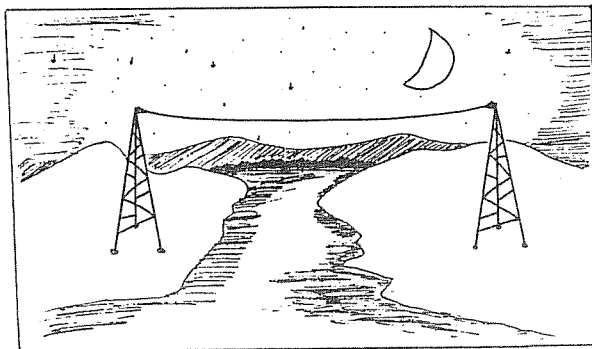
Hello from Nettleton, Miss. Am I the only IRCA member here? Looks that way from the membership map in DXM (12/24/83.) (There was a member down in Tylertown, Miss., but he may have dropped out--rce) So it's time to forum. I'm 36 years old and have been TV and BCB DXing since the

(Warren, cont...) late 50's, and FM and SW DXing since the 60's. During the early 60's with a cheap radio and a NA radio guide but aided by open channels and spare time I heard 41 states, 8 provinces and several W.I. islands on BCB. MM DX was good then. Using an RCA long range AM from 1965-69, I heard stations from all over NA, CA, northern SA and even DU and New Zealand, without a good BCB antenna. I was living in Fulton, Miss. at that time. DXing on a Zenith Trans-Oceanic from Tupelo, Miss, I added 3 new states and my first TA from Germany betwee 1972-78. In the late 70's, NSP's multiplied like rabbits (hi) and long hours at Mid-South Packers didn't help. When the Zenith became unable to pull in BCB or SW signals at all, I replaced it with a FRG-7 but the Yaesu, a Panasonic, a Sony ICF-6700W, and a GE Super Radio failed to come close to the Zenith on BCB. Unable to find a good rx for BCB and being disappointed with the Yaesu and Sony's selectivity on SW I bought a TRC NRD-515 hoping to move to a new QTH in the country. From Nettleton, Miss. I mainly did TV and FM DXing with a new 100' tower and SW DXing on the NRD-515 between 1981 and late '82. A lightening stike that knocked out my SW tower and a new Satellite rx caused me to return to BCB DXing. An IRCA Almanac also helped too. In the summer of 1983, I bought a new Panasonic portable and began to tune SSS and occasionally on MM. I did so well that I bought another portable in the fall, a Realistic 12-650 and joined the IRCA in late Nov. to see if DXing was still alive. Now everything is back in operation except for a good antenna for the NRD-515 but I am finding time to BCB DX as well as watch Satellite TV and listen to SW. Maybe if I can decide on a good BCB antenna I can become one of Miss. best BCB DXers again (hi). Any suggestions on antenna will be appreciated. Does anyone use an NRD-515 for BCB DXing? 73 and good DX from Mississippi. (Welcome to EDXF, Sherrill, and keep reporting to EDXF, please. My parents had a friend who was a salesman for a pork packing plant in West Point, Miss.-rce)

Richard C. Evans, P. O. Box 1294, North Wales, Pennsylvania 19454

A quick note to mention that this is the last of the weekly issues of DXM for the season. We won't be weekly again until October. I found this year to be very interesting for typing the column, if only the fact that I missed two weeks worth of columns because of the lack of reports. (I couldn't help recalling the west coast boycott of WDXF several years and wondered if I had the same problem, but the nice large turnout for the anniversary issue helped get rid of that notion.) Two reports for the anniversary issue came in late and are included this week. I have the clock radio by my bed set for WPEN-950 in nearby Philadelphia, and have noticed lately that at night--say, around midnight--there appears to be a Spanish station on top of the frequency. No idea yet who it might be. I've checked to see if it's French bleeding over from CBM, but not them. So far, I've not found the ambition to get out of bed, and turn on the HQ, hi. Gotta run, since there's a lot to do here. Please note the deadlines at the beginning of the columns--they will be strictly followed (although the 5/2 could drop back to 5/4, depending on how school treats the snow day we had on 3/8, which could affect the final exam date of 5/3, which could affect the vacation to the south we were to start on 5/5 about 0300, hi). Seriously, there is a lot of DX in the spring and summertime, so please don't hide the radio. Use it and let us know what you hear! PTL.

Pirate Radio Central



KPRC

1616



Western DX Forum

★ ★ ★ ★

IBCA—Serving the Broadcast Band DX'er Since 1964

Editor: Ric Heald, 1632 J St., #3, Eureka, CA 95501

DEADLINES - 03 & 17 APR, 08 MAY, 05 JUN, 03 JUL, 07 AUG

PAT MARTIN, P.O. BOX 843, SEASIDE, OR 97138

DX of late has been somewhat on the slow side. I did hear the Washington Department of Highways broadcast from Olympia on 1610 kHz. In fact, the signal is quite regular here; presume ten watts. Got a verie back from Olympia, but didn't list the power.

Some of those ten-watters sure get out. I've also been hearing the California Department of Highways radio on 530 kHz, somewhere along I-80. I presume near the Nevada border as they mention to carry chains, etc, I also sent out a report to them. They make interesting QSLs. (I doubt near Nevada as chains are required on west side of Sierras - probably near Colfax or above-Rth.)

St. Helens also had a broadcast information station for awhile on 1610, but I haven't heard it in some time. I sent a report to Tootle, Washington, but never heard anything back.

Received a few veries the past couple weeks: CKDQ 910, KOIT 1260, CKXR 580, KKA 1560 (after three followups), Washington Department of Highways for Olympia 1610, HJPM 895, JOKK 603 (sent photos of station, stickers, etc), 2YP 1530 (1 kw), and finally two of my semi-locals, KAST 1370 and KVAS 1230. I need only three more Oregon stations verified for completion. KBKR 1490 (report out), KPRB (report out) and KRNS 1230. Good DX to all.

BROCK H. WHALEY, 442B KALAIMOKU ST., HONOLULU, HI 96815 (808) 941-4547 (cont)

MW equipment here is an HQ 140X, 20-foot longwire, Palomar loop and homebrew antenna tuner. And for longwave, add a Palomar converter and a homebrew (one 6BA6 tube, thank you, please) preamp.

Here's a small list of stations that are so strong and consistent here that a simple consumer six-transistor job would have no problem picking them up on a nightly basis. (The locals on 650, 1040 and 1540 are off at midnight, local time) - Samoa 648 WVUV, AJZ 1017 Tonga, KTNQ 1020 Los Angeles, 27B New Zealand, 1044 China and HQD 1548 Australia. On longwave, the Russians on 155, 182, 191, 245 and 272 kHz are in every night with 191 at armchair level. It sure is a switch here from the years I used to spend in Florida and Chicago going deaf from powerline noise, straining to hear France on 164!

And now a trivia question. In the 1930's, comedian Ed Wynn tried to start a new radio network. What was the name of the network? What year did it start? And what was its key station? Art Fleming and I will be back with the answers and another question next time. (What's behind door number three, hi?-Rth.)

Until next time, 73 and goos DX.

DENNIS KIBBE, 1422 5th St., TEMPE, AZ 85281 (602) 966-3131

Just a short forum this time. Saw a Twilight Zone episode recently titled Static that I wanted to share. . . An old man living in a boarding house becomes fed up watching TV with the other boarders every night. He goes down to the cellar and brings his old console radio up to his room. Surprisingly enough it still works and still plays all the old programs he remembers from his youth. Glenn Miller, The Shadow, etc. But all that the others can hear is static. Besides they would rather watch TV and think radio old fashion. Well, in the end we find the radio has actually turned into a young man again. 73. (Sounds like an ERBA DX'pedition, hi-Rth.)

RICH TOBBE, 2399 AMERICAN AVE., HAYWARD, CA 94545

Hello everyone. First of all, to my mini review of an AM stereo receiver, the Sony AM stereo-FM stereo Walkman. I went over to Emporium/Capwells the other day to try one out. As far as I'm concerned, either the unit isn't properly designed or AM stereo is a washout. To be sure, the interior of a department store isn't the best possible location, but then I wasn't DX'ing either. I tuned to three local stations that are broadcasting in stereo here: KPFC and KNBR (both Kahn) and KEEN (not sure which but worked when switched to the multi-system mode). There's a stereo effect, to be sure, and the fidelity improves because of the wider bandwidth position, but it certainly does not compare to FM sound. In addition, although this unit was "on sale" for only \$79.95 (price will be \$99.95 when you read this), it's still way too ex-

pensive for what it delivers. It's a nice novelty, but my advice, don't buy it. Anyone else have any experience with this unit? Rebuttals, anyone?

Went up to Seattle with Rich Segalas on Washington's (no, President's) weekend to attend Bruce and Evelyn Portzer's GTG. It was well-attended; almost as many showed for it as did for the convention last July. Really enjoyed the visit. Pat Martin brought his collection of veries, which I looked through and was thoroughly impressed.

Saw in the latest issue of Billboard that the KUSA calls aren't going to Los Angeles after all; they'll end up in St. Louis at another Gannett outlet.

Thanks again to John T. Arthur for the slogans and sticker. Much appreciated, John. As usual, the call goes out: Send in any slogans you all hear out there. Let's make the Slogans List as accurate as possible.

Finally, thanks Jim Hilliker for the note and the sticker; thanks Greg Hardison for the call. That about wraps it up for now (did you think I was going to close with 73 like everyone else does?), until next time.

RANDY SEAVER, 1154 VIA TRIESTE, CHULA VISTA, CA 92011

I thought it might be useful to write down some of my thoughts concerning "How to choose the best DX location," or if stuck in one area, "How to Make the most of your DX location."

- 1) Live in a rural area - don't live in the city! Not only is the noise level higher, the local stations are stronger. If you have to live near a big city, pick a place as far from the local stations, and on the backside of antenna patterns, if possible.
- 2) Live on or near the ocean - the nearer the better to hear trans-oceanic stations. Be selective - check the great circle bearings to your pests (defined as stations 1,200 miles away or less), and make them land paths if possible. Check the great circle bearings to your prime DX area and minimize the land path distance.
- 3) Check the terrain in the direction of your target DX - have an open view of the horizon in your prime DX direction. Live at as high an altitude as possible.
- 4) Select an area with high ground conductivity soil - an ocean or salt marsh is best. Use a ground system - saturate the ground area with salt and water.
- 5) Have a number of antennas - loops, longwires (ideally, half wavelengths or longer). Get the antennas as high off the ground as possible. (I thought an ERBA loop precluded all of the above, hi-RtH.)
- 6) Search out and eliminate the RF polluters - fish tanks, light dimmers, computers, TVs, powerlines, etc. Check the neighborhood before you rent or buy.

I wish I had taken my own advice years ago - I'm midway between the San Diego and Tijuana stations, six miles from the ocean, open to the west only, land to the southwest (DUs) and northwest (Far East), mountains to the northeast (TAs) and southeast (Latins), on rocky soil with no room for long antennas, no ground system, on the first floor, and a mile from a powerline (or near a neighbor's fish tank - I'm not sure). Of course, your job, family and income play an important role in where you DX from: If you are going to move, you might consider optimizing your DX location.

(If you've been looking for that perfect article or story to read late at night when you can't sleep, here's a tip from RtH - JAISUN'S JOURNAL III)
JEF JAISUN, 12860 136th AVE. NE, KIRKLAND, WA 98033

Can anyone tell me what happened to the talk station blitz of a couple years ago? There was a time not too long ago when Seattle area residents could bounce opinions off talkjocks on at least four stations: XVI, KXA, KIRO and KAYO (now KSPN). Granted, the IQ of most of the callers around here would rival your average primate, but it seems to me the very essence of public service is to give people a place to gripe and discuss things. We now have none. KVI was the last to go, dropping their midday talk host Mark Savan about six months ago. They still carry Larry King at night. KIRO dropped their local overnight host in favor of Talknet last year; KXA lost talk when they went rock two-and-a-half years ago (now religious); and KAYO dropped their entire format (and call letters) over a year ago after Arbitron gave them a 1.4 or something like that. Pretty difficult to imagine a city with a metropolitan population base of two million and no talk. (PuLEEEze. . . sports talk show don't count, even though they're on nightly with KIRO and KVI.) It's no wonder KGO shows up in the ARB around here, Ray Taliaferro notwithstanding. Have any of you folks noticed a similar collapse of the format in your area?

I did make an interesting discovery lately regarding talk shows. Art Finley is now doing afternoons on CJOR 600 Vancouver, BC. Art used to be at KGO, but moved up north about three years ago (which I mentioned in a recent forum). It was my understanding that CJOR had him anchoring a morning news block, which I considered a real waste of his true talents. Now that he's doing

talk, he's much more in his element. And now at least I've got something to listen to during the day. I must say, some of his callers are pretty funny, eh? Like the guy who called in one afternoon when Art had a Hare Krishna fellow on to say, "Yah, you bet I'm mad at you, Finley, 'cause you got that damn bloody" Editorial click. Tsk, tsk. Imagine - a Canadian casting aspersions on a person of minority faith. And I thought Cannucks were so tolerant, hi. (What, not asleep yet? That's OK, you'll have another chance in two weeks for the final episode of JAISUN'S JOURNAL-Rth.) (OK, you can just close your eyes and snooze thru the next forum, hi. - JJ)

RIC HEALD, 1632 J ST., #3, EUREKA, CA 95501 (707) 443-1685 M-F 9-6 or (707) 443-2704 SAT 9-2 PLT & ppd

I'd like to thank all of you who slipped in a forum or two with your anniversary forums or this week's column wouldn't have happened, hi.

Finally, after 20+ years of trying, nabbed KOMW 680 Ephrata, Washington, peaking on SRS 15 March @ 0700 PLT. Good for about five minutes with KNBR in an excellent null, then retaken by KNBR by 0705. You have to move quick on some of these loggings. (where'd you move? KOMW is in omak! See next forum re flapper hi.)

Jef, I have some good ideas why the newstalk void in your market. KVI probably found better money with music. Regarding KIRO: Talknet is far less expensive than a high-priced talkjock. Much easier to have a \$5 an hour board operator. But you'd think somebody could make a go of it in a market the size of yours. I mean, we have two stations in the morning in Eureka doing talk for a couple of hours - I mean, little ole Eureka, hi. (yeah, hi)

Locally, KRED 1480 has Voice of the People (which I've dubbed, the Voice of Ignorance, hi) from 0815-0930, and KEKA 790 does one at similar hours but with swap and sell items mixed in. I got so tired of hearing the same ignorant people day after day moaning and groaning about things they didn't have the first idea about, I finally called and suggested he limit callers to twice a week. Big improvement. Although, after listening to the program I'm more than ever convinced Americans should be given a voting test before being able to vote, like total comprehension of the voter's handbook, hi.

Rich, I have this funny feeling that AM stereo, like quad stereo, isn't going to catch on. It's virtually, no totally impossible for AM to even approach the quality of FM stereo. Give another couple years and watch AM stereo go by the wayside.

Randy, I'd like to thank you for your tongue-in-cheek forum. I wasn't aware that you were restarting ERBA, hi.


Enough of this nonsense. We're now winding down the season, so please take notice of the spring and summer deadlines. See y'all in 14. 73 de Rth. .

BILL & NANCY PENGUIN, 2301 ANTARCTIC AVE., LITTLE AMERICA, ANTARCTICA 00000

Some of you may be wondering how we penguins got interested in DXing. Actually, some of you may be wondering about penguins altogether, hi.

Actually, the current "penguin infestation" in IRCA started as an inside joke between the Portzers and the Hardys, a gag that went public in 1979.

It all started back in 1973 when DXer Nancy Gantzer thought the little embroidered penguin on Bill Hardy's "Munsingwear" shirt was cute, so she gave him a similar shirt for Christmas. After Bill and Nancy were married, they began collecting all sorts of penguin paraphernalia.



Unknown to the Hardys, IRCA members Bruce and Evelyn Portzer also developed an interest in penguins. This startling fact came out into the open at the Westport (Wash.) Beverage antenna DXpedition, hosted by the Hardys, in Jan. 1978. Evelyn wore a T-shirt with several penguins on it. Nancy asked about it, and Evelyn replied, "Oh, I'm a penguin freak."

During 1978, it was a sort of "inside" gag among the Portzers and Hardys. Subtle references to Fleetwood Mac records, Pittsburgh Penguins hockey, etc. But Nancy went public with "penguin-ism" in the March 3, 1979 WDXR by awarding the first "100 lashes with a stiff penguin flipper" to Bruce, who had left the date and time off his KDHN-1470 logging. Bruce replied in the March 17 WDXR. In July, Steve Mittman gave Nancy 100 lashes for one of her mistakes, and the "Stiff Penguin Flipper Award" has been around ever since!

So as you gaze upon the picture of Nancy and I holding flippers, reflect upon the amazing history of IRCA's "unofficial" mascot -- the penguin!!

(The above originally appeared in the 1981 April Fool's issue of DXM. It actually is a true story!)

DAN d. RECEIVER, 180 HAMMARLUND WAY, BOONDOCKS, CA 93799

As you can see, I've moved away from the big city so that I can devote all of my free time to DX'ing. One of my newest aids to DX'ing is my new JCN personal computer (always one step ahead of IBM!) which has two disc drives, color graphics, 160 cps printer, voice recognition unit, clock/calendar, 1200-baud modem and 512K of RAM. Software includes DX-LOG (which contains a minute-by-minute log record), DX-FILE (which stores all my loggings), DX-WRITE (which writes reports automatically from the voice recognition

tapes), DX-SEARCH (which turns the radio on, searches target frequencies, tunes the antenna, starts the tape recorder, etc., all controlled by the computer), and DX-MAIL (which sends the reception report via electronic mail to the station within four hours of reception). The whole setup is controlled by the program DX-MASTER, which I whipped up a few weeks ago in a spare moment.

Since then, my DX life has changed for the better - no more waiting long periods listening to static waiting for Nibi-Nibi to fade up - the computer does the waiting. The hassle of listening to tape repeatedly to get five minutes of program has been eliminated - all of the program data is transferred directly into a reception report, and then filed in my DX logbook.

DX-MASTER has logic to select the station that is at the highest signal strength of the top three stations on the target list.

Since I started using this system, I've logged 2,365 stations, sent 1,463 reports, received 989 veries, and have received 89 countries, all in the last three weeks. Now, all of my time is spent putting veries in books, backing up discs and shopping for computer supplies. Even the wife is enjoying my hobby now - I come to bed around 10 PM rather than after sunrise.

Fortunately, I haven't received the bill yet for the E-MAIL service. On the other hand, I can show some income resulting from my hobby - I'm marketing my software package for \$295. It'll soon be an indispensable part of a DX'er's shack - at a price less than most receivers. 73 de Ddr.

How to Ru(i)n a Radio Station

by Henry Ruh

Stamford CT ... Here are a few simple techniques used at many places to ensure that Murphy's Law (whatever can go wrong, will) applies:

- Never strip the insulation from wires; let the screws bite through.
- Never use a Bud box if a bread pan will hold the project.
- Always solder the wires to screw terminals.
- Always remove the ground plane from PC boards.
- Always solder wire wrap sockets.
- Always strip coax so that the shield can short out adjacent connections.
- Never insulate filter caps which have high voltage on their cans.
- Always clip off ground lugs on AC cords.
- Always mount subassemblies so that the connections cannot be reached after mounted.
- Always mount connectors so that the cables must make sharp turns to clear adjacent items.
- Always mount subassemblies by their uneven surface so the mounting plate is bent.
- Always mount the bent rack panel by nailing it to 2x4's.
- Never use insulated sleeves to separate adjacent wires, especially if one of the wires is AC and adjacent wires are regulated DC.
- Always use as many AC outlets as possible so that a vital piece of equipment must be unplugged in order to service other non-vital items.
- Always use the largest switches available for low current applications.
- Always use the smallest switches available for AC mains.
- Always use multiple grounds on audio equipment.
- Never terminate inputs or outputs.
- Never put the same label on both ends of a cable.
- Never label the ends of a cable bundle if the ends are in different rooms.

- Always adjust operating scopes so the trace is barely visible.
- Always stock lamps and indicators not used in your equipment.
- Never stock ICs, transistors and indicators used in your equipment.
- Always use the highest paid staff employee to do the jobs requiring the lowest level skills.
- Always put your amateur call letters on your professional projects.
- Never use solder lugs if wires can be squished under a large screw.
- Never use mounting clamps on parts when the wraps or string will do.
- All projects must look like a kludge.
- Never label switches or other controls.
- Always use solid conductor wire in high vibration areas; the smaller the wire size, the better.
- Always have a digital engineer design analog circuits, and vice versa.
- Never run wires neatly; the bigger the rat's nest, the better.
- Always use the most expensive and sophisticated control systems for the simplest applications.
- Always place the most frequently used control farthest from the operating position.
- Supervisors need never clean up their own messes, that's what staff technicians are for.
- Always locate work areas as far as possible from the technical areas. I recommend location in another building or at least two floors and two elevators away.
- Never give employees keys to enter the areas in which they work.
- Always use the most obscure meter scales and conversions. A circuit using 20 microamps should use a 100 amp meter.
- Never keep spare transmitter tubes.
- Make schedule changes after the person has left for the weekend or vacation.
- Never clean tape heads or replace phono needles.

- Use the highest fidelity recorders for recording phone calls.
- Mount the stereo speakers to one side of the audio control operator.
- Mount the color monitors in front of the audio operator and the small black and white monitors in front of the TD position.
- Use the most obscure and unavailable connectors for cables which get the most use.
- Use the same connector type and sex for AC mains and signal wires.

Faithfully follow these techniques and you will never have any problems with your facility ... because it will never work. Of course, no list is ever complete, and you can add your own favorite items. I thank all those who contributed

to our fun list *****
(continued from page 1)
Tokyo, Japan, and boosting power to 500kw. And WABC is planning to move to 774 kHz, relicense to Riyadh, Saudi Arabia, and boost power to 2 million watts. Other changes will be announced later. As we said before, the stations will not make any programming changes and will not actually move to their new cities of license. They'll merely be changing power, frequency, and/or the way they ID at the top of the hour.
Oddly enough, few stations have shown an interest in relicensing to Canada, even though they could then use 50 kw on regional channels. This is apparently because they would have to abide by the 30% Canadian content rule.

THE INTELLECTUAL RADIO CLUB OF ARAGON'S
PERSONALITY PROFILE QUIZ

Here's a hypothetical question in three dimensional beverage construction logic.

A group of adventurous penguins, accompanied by their faithful pack llamas, enter a cavern in the wilds of Seattle to begin a beverage DX-pedition on a Friday night. Monday morning they exit the cavernous area to find themselves somewhere in the South China Sea near Formosa.

Would they have been said to have traveled.....

- a.) North? b.) South? c.) To the East? d.) Down?
e.) None of the above? f.) Who asked this dumb question anyway?
g.) Who Cares?

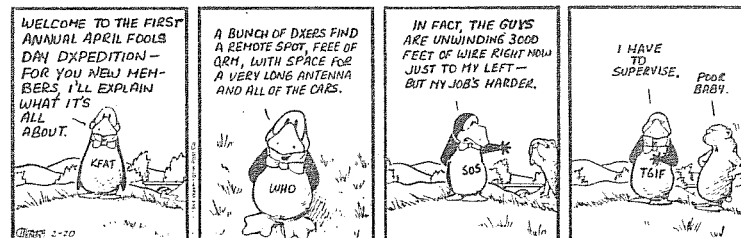
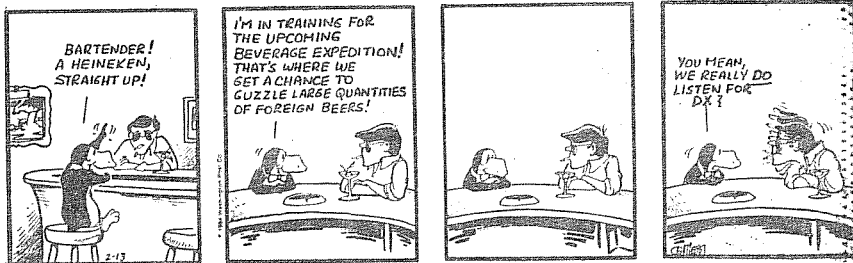
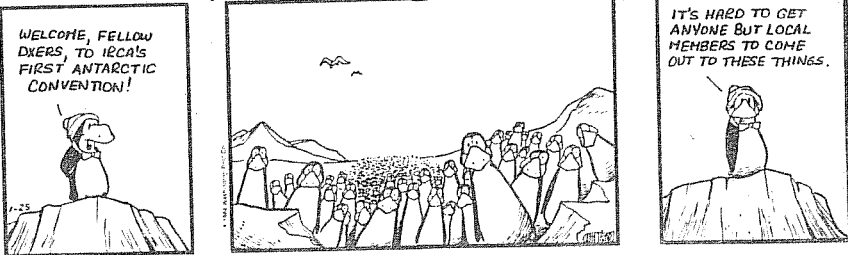
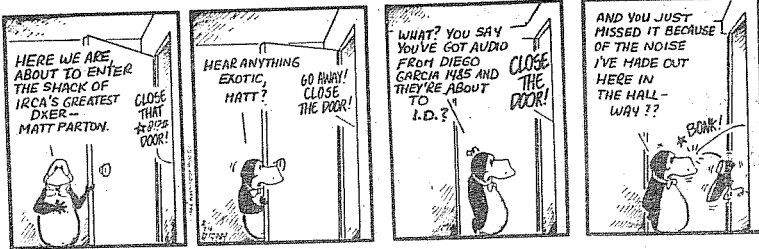
You have 30 seconds to record your answer, but you may take all day to sit and study the problem! Turn page upside down for answers.

!MOM HLDI XNW WE HARDI XNOM

about a group of penguins, llamas, and their friends who
foundly for the purpose of the DX-pedition on 1400 MHz from
the mid USA! So be prepared for:
The hope that you liked this quiz, next time the quiz will be
I) This shows an alert mind, one that recognizes stupid junk
llamas who accompany penguins, or penguins who use pack llamas.
2) This shows a mind that might be considered to be self center-
ed, and sarcastic to some. This is because you were busy DX-ing
the rare ones during that Great opening, while everyone else was
busy trying to answer this question! This can be the only one, true,
correct answer to this question.
3) There is no such choice! This person must be jump started,
and thus should not be taken on DX-peditions, as they will wear down
valuable batteries in doing so!
4) This shows an alert mind, one that recognizes stupid junk
llamas who accompany penguins, or penguins who use pack llamas.
5) This shows a mind that might be considered to be self center-
ed, and sarcastic to some. This is because you were busy DX-ing
the rare ones during that Great opening, while everyone else was
busy trying to answer this question! This can be the only one, true,
correct answer to this question.
6) There is no such choice! This person must be jump started,
and thus should not be taken on DX-peditions, as they will wear down
valuable batteries in doing so!
7) This shows an alert mind, one that recognizes stupid junk
llamas who accompany penguins, or penguins who use pack llamas.
8) This shows a mind that might be considered to be self center-
ed, and sarcastic to some. This is because you were busy DX-ing
the rare ones during that Great opening, while everyone else was
busy trying to answer this question! This can be the only one, true,
correct answer to this question.
9) There is no such choice! This person must be jump started,
and thus should not be taken on DX-peditions, as they will wear down
valuable batteries in doing so!
10) This shows an alert mind, one that recognizes stupid junk
llamas who accompany penguins, or penguins who use pack llamas.
11) This shows a mind that might be considered to be self center-
ed, and sarcastic to some. This is because you were busy DX-ing
the rare ones during that Great opening, while everyone else was
busy trying to answer this question! This can be the only one, true,
correct answer to this question.
12) There is no such choice! This person must be jump started,
and thus should not be taken on DX-peditions, as they will wear down
valuable batteries in doing so!
13) This shows an alert mind, one that recognizes stupid junk
llamas who accompany penguins, or penguins who use pack llamas.
14) This shows a mind that might be considered to be self center-
ed, and sarcastic to some. This is because you were busy DX-ing
the rare ones during that Great opening, while everyone else was
busy trying to answer this question! This can be the only one, true,
correct answer to this question.
15) There is no such choice! This person must be jump started,
and thus should not be taken on DX-peditions, as they will wear down
valuable batteries in doing so!
16) This shows an alert mind, one that recognizes stupid junk
llamas who accompany penguins, or penguins who use pack llamas.
17) This shows a mind that might be considered to be self center-
ed, and sarcastic to some. This is because you were busy DX-ing
the rare ones during that Great opening, while everyone else was
busy trying to answer this question! This can be the only one, true,
correct answer to this question.
18) There is no such choice! This person must be jump started,
and thus should not be taken on DX-peditions, as they will wear down
valuable batteries in doing so!
19) This shows an alert mind, one that recognizes stupid junk
llamas who accompany penguins, or penguins who use pack llamas.
20) This shows a mind that might be considered to be self center-
ed, and sarcastic to some. This is because you were busy DX-ing
the rare ones during that Great opening, while everyone else was
busy trying to answer this question! This can be the only one, true,
correct answer to this question.
21) There is no such choice! This person must be jump started,
and thus should not be taken on DX-peditions, as they will wear down
valuable batteries in doing so!
22) This shows an alert mind, one that recognizes stupid junk
llamas who accompany penguins, or penguins who use pack llamas.
23) This shows a mind that might be considered to be self center-
ed, and sarcastic to some. This is because you were busy DX-ing
the rare ones during that Great opening, while everyone else was
busy trying to answer this question! This can be the only one, true,
correct answer to this question.
24) There is no such choice! This person must be jump started,
and thus should not be taken on DX-peditions, as they will wear down
valuable batteries in doing so!
25) This shows an alert mind, one that recognizes stupid junk
llamas who accompany penguins, or penguins who use pack llamas.
26) This shows a mind that might be considered to be self center-
ed, and sarcastic to some. This is because you were busy DX-ing
the rare ones during that Great opening, while everyone else was
busy trying to answer this question! This can be the only one, true,
correct answer to this question.
27) There is no such choice! This person must be jump started,
and thus should not be taken on DX-peditions, as they will wear down
valuable batteries in doing so!
28) This shows an alert mind, one that recognizes stupid junk
llamas who accompany penguins, or penguins who use pack llamas.
29) This shows a mind that might be considered to be self center-
ed, and sarcastic to some. This is because you were busy DX-ing
the rare ones during that Great opening, while everyone else was
busy trying to answer this question! This can be the only one, true,
correct answer to this question.
30) There is no such choice! This person must be jump started,
and thus should not be taken on DX-peditions, as they will wear down
valuable batteries in doing so!

IF YOU CHOOSE:

DX County
 DX County
 DX County
 DX County
 DX County



Verification Signers

ROB GERARDI
1421 NORTH FRANKLIN #7
BENTON, IL 62812

540	KWMT	v/l	Barry Walsh, CE	(DLR)
560	WMIK	v/l	Jim Branham, CE	(KVJ)
	WIND	v/l	Jack Layton, Eng. Mgr.	(DLR)
	WJLS	v/q	Unsigned	(DLR)
580	WLEW	v/q	Unsigned	(DLR)
	XEMU	v/l	Claudio M. Bres, Gerente General	(JMW)
640	WHLO	v/l	Kenneth R. Zuerches, CE	(DLR)
	WMSJ	v/l	Kathy Kinnon, Opr. Dir.	(KVJ)
690	KRCO	v/l, CM & Stkr.	John Kendall, Owner & Mgr.	(JTA)
710	WGBS	v/l	John E. Morris, CE	(DLR)
730	WJYM	v/l	Robin Cloud, Off. Mgr.	(DLR)
	CHYR-7	v/l	Tony Grossman, Asst. Tech.	(DLR)
750	KERR	v/l	Paul Doolittle, CE	(JMW)
770	WEW	v/l	Streikes	(DLR)
800	XEROK	v/l	Rosa Munoz Frausto, Depto de Correspondencia Forinea	(JMW)
810	KLMO	v/q	Fred Frost, Supervisor	(DLR)
	WMTS	v/l	Linda L. Tipton, Traff.	(DLR)
850	WCUG	v/r	George Blaiskow	(KVJ)
860	KOSE	v/l	Jo Gibson	(DLR)
	WGOM	v/q	Gene E. Miller, CE	(DLR)
920	WTCW	v/l	L.C. Phillips, CE	(KVJ)
	WGFT	v/l	Jill Stanislawsky, Pub. Affir. Dir.	(DLR)
930	KSWB	v/l, CM, & stkr	Forrest Smith, Nx Dir.	(JTA)
940	KGRJ	v/l & CM	Alan Boyd, Tech. Dir.	(JTA)
950	WWJ	"up"	Gregory Urbiel, CE	(KVJ)
960	WSBT	v/l	Robert Bell, CE	(DLR)
970	WXQK	"up"	Walter Hooper, GM	(KVJ)
	KVAM	v/l	S.J. Woodworth, Owner	(JMW)
1035	ZAB	v/q	unreadable, Mgr.	(JTA)
1050	WANA	v/l (per visit)	Danny Blizzard, PM/MD	(KVJ)
1060	KAYR	v/l	Paul Demaree, CE	(KVJ)
1070	WDIA	v/f	Alonzo Pendleton, CE	(KVJ)
	KWEL	v/l	Bob Hicks, GM	(JMW)
1120	WIZY	v/l	Al Parker, Opr. Mgr.	(KVJ)
1140	KSOO	v/l	Roland Marty, CE	(DLR)
1150	KSAL	v/l & v/q	D.A. Snglehart, CE	(DLR)
1210	WDGR	v/f	Michael E. Hollifield, Pres. & GM	(KVJ)
1220	KOUR	v/l	Jaryl D. Duwe, Ops. Dir.	(JMW)
1240	KSUE	v/l	Maurice Heskett, CE	(JTA)
	KPOD	v/l (f/u)	Bill Stamps, "owner, Mgr., DJ, & janitor"	(JTA)
	KFOR	v/l	Wm. Hohstein, KØHA, CE	(JMW)
1250	KDHI	v/l	Jay Corbin, VP & GM	(JTA)
	KHOT	v/xe ox of CM	Sheila Willis, Bus. Mgr.	(JTA)
	WEPU	v/l	Christopher Neal, Pub Serv. Dir.	(DLR)
1300	KPMO	v/l	Susie Zipp, Trf. Mgr.	(JTA)
1360	KOHU	v/l	Gordon Maurer, CE	(JTA)
1370	KFIR	v/l	Steve Woodruff, CE	(JTA)
1380	KKZZ	v/l, CM, & Stkr.	Chris Compton, PD & CE	(JTA)
1390	WTJS	v/f	John Mount, PD	(KVJ)
1400	KIVR	v/l	Randy LaBlue, Chief Opr.	(JTA)
	KWNA	v/l, CM	Terry Sheen, Pres. & GM	(JTA)
	KUKI	v/r	T.S. Storth	(JTA)
	KRLN	v/r	Ed Nordien, Ops. Mgr.	(JMW)
	KFTN	v/l	John (unreadable)	(JMW)
	KBRB	v/l	Randy L. Brudigan, Eng.	(JMW)
1410	KRML	xerox of v/r	Jim (unreadable), CE	(JTA)
1420	KYNG	v/l	Roger Spaugh, CE	(JTA)
	KKOW	"up"	Ruidy McLelland, CE	(KVJ)

1430	KGAY	v/l	D. Baud, CE	(JTA)
1440	KODL	v/l, CM, stix	Roger Nichols, Gen. Handyman	(JTA)
1460	WOCH	v/l	Jimmie D. Ochs, CE	(KVJ)
1490	KKLB	v/l	Jeff Heuer, CE	(JMW)
1500	KCLF	"up"	unreadable, GM	(KVJ)
1510	WHII	"up"	unreadable, PD	(KVJ)
1540	WETR	v/q	James T. Criscoe	(JLR)
1560	KBEW	v/l	Ray Haven, Opr. Mgr.	(JMW)
	KQYX	v/l	Wm. B. Neal, GM	(JMW)
	KTUI	v/l	Wilma E. Scott, Off. Mgr.	(JMW)
1566	HLAZ	v/q	unreadable initials	(JTA)
1600	WKKG	v/l(f/u)	Dan S. Tilson, Eng.	(KVJ)
	WNGA	v/l(f/u)	J.F. May	(KVJ)

BIG thanks this time to:

(JTA)=John T. Arthur, 15-2700 Kala St., Pahoa, HI 96778
 (KVJ)=Karl V. Jeter, 2115 Scarbrough Rd., Stone Mt., GA 30088
 (JLR)=David L. Reitz, 9332 Fairgrounds Rd., Fern Creek, KY 40291
 (JMW)=John M. Wilkins, 4385 Hoyt St. # 205, Wheat Ridge, CO 80033

As Capt. Zumo always says, "when it rains, you get wet!", and I'm rather encouraged about the number of stations reported this time, especially the non-domestic info! Big thanks to all four of you guys. An' all reports are appreciated here, but it is nice to see foreign material!

While I'm at it, I guess now is as good a time as any to go over the abbreviations used for this column. I don't mean to embarrass or criticize any reporters, God knows this column can use all that it can get, but I've received several items in which abbreviations were used that even I didn't know what you meant. So, I'm going to list a set of abbreviations below, if you use anything else please let me know what you are abbreviating or are using the symbols for, thank you. Also, I'm open to suggestions and improvements if you have any regarding abbreviations. Hope this clears any confusion, and doesn't create any, hi!

GL's

v/l= verification letter	v/r=verification on your report
v/q= verification card	(f/u)=follow up report sent and verified
v/f= form letter, or verification form	ppc=prepared card sent, and verified

Station Staff

CE = Chief Engineer	Trf. = Traffic
Eng. = Engineer	Trf. Dir. = Traffic Director
Tech. = Technician	Trf. Dept. = Traffic Department
Eng. Dept.= Engineering Department	Trf. Mgr. = Traffic Manager
Opr. = Operator	Dir. Gen. = Director General
Chief Opr.= Chief Operator	Promo Dir. = Promotions
Ops. = Operations	Director
GM = General Manager	Promo Dept. = Promotions
Mgr. = Manager	Department
PD = Program Director	PR Dir. = Public Relations
MD = Music Director	Director
Dir. = Director	PR Dept. = Public Relations
Nx Dir. = News Director	Department
Off. Mgr.= Office Manager	DJ = Disc Jockey
Sec. = Secretary	Pres. = President
Bus. Mgr.= Business Manager	VP = Vice President
Pub. Serv. Dir. = Public Service Director	Chief Eng. Serv.= Chief Engineering
Asst. = Assistant (like Asst. Eng.)	Services

Other Items/Promo Items that might be sent w/ a verification

CM = Coverage Map	MS = Music Survey
rc = rate card	but. = button
phlt. = phomplet	photg. = photograph(of station,
pen = ink pen	staff, etc.)
pcl = pencil	T-sh = Tee-shirt
stkr. = sticker (plural=stix)	biz/car = business card
bal. = balloon	plas/car = plastic card
hat = ny type cap/hat	ptch = patch
pack. = information package	Ky rng = Key Ring
pent. = pennant	cal. = calender

EASTERN DX ROUNDUP

Bob Lazar
11011 Becontree Lake Drive, #410
Reston VA 22090

Deadlines: 4/2, 4/16, 5/7, 6/4

All times Eastern

Of Special Interest

- 1180 WWJN IN Newburg, 3/11 1330 ID, ABC nx, wx, SID into mx. New stn. (DLR-KY)
- 1350 WLOU KY Louisville, now noted as of 3/8 at night, so CP is on. (DLR)
- 630(WMAL)DC Washington, 3/10 0130 noted off air. (WPT-DC)
- 660 WESC SC Greenville, 3/4 0730 ID noted into gospel pgm. Good o/ Cuban. (JBH-FL)
- 730 WLOR GA Thomasville, 3/9 1834-1845 ID, C&W mx, lcl spots, s/off anmts. (DLR-KY)
- 740 WBAM AL Montgomery, 3/12 1850 IDs, promo for Wrangler Country Showdown, C&W mx. Good. (DLR-KY)
- 790 WNWS FL South Miami, 3/7 2001 nx by f. Good atop WTAR. (WPT-DC)
- 800 WSHO LA New Orleans, 3/9 1905 AP nx, lcl spots, ID. Poor w/ WAKY-790 splash. (DLR-KY)
- 840 WHAS KY Louisville, now carries ABC information nx, ex-CBS. Also carries Paul Harvey. (DLR-KY)
- 900 WSWN FL Belle Glade, 3/4 1030 ID just out of REL pgm. Poor-fair w/ WMP0 nullled. (JBH-FL)
- 940 WMAZ GA Macon, 3/15 1818 wx forecast, oldies, f DJ. Fair. (WPT-DC)
- 960 WJCM FL Sebring, 3/4 1210 ID by f w/ "And now more mx of your life." Caught during lull of WFLA slop from 970. (JBH-FL)
- 980 WBSS FL Pompano Beach, 3/4 1859 faded up from u/ LA w/ ID "WBSS-98" & EZL mx. Poor-fair. (JBH-FL)
- 1080 WFIV FL Kissimmee, 3/5 1751 out of C&W mx w/ ID, wx rpt, SID. Fair. (JBH-FL)
- WCII KY Louisville, now carries CBS nx. (DLR-KY)
- 1110 WTIS FL Tampa, 3/11 1820 REL mx, ID "1110 WTIS, Inspiration radio for Tampa Bay", more mx. (DLR-KY)
- 1130 WMGA GA Moultrie, 3/9 1759 CNN nx, lcl spots, ID. (DLR-KY)
- 1150 CKOC ON Hamilton, 3/11 2010 American Top 40, ID "1150 CKOC." (DLR-KY)
- 1310 WAUC FL Wauchula, 3/11 0953 ID noted into oldies mx. Poor u/ WTYM-1300 slop. (JBH-FL)
- 1380 WAOK GA Atlanta, 3/5 1901 end of Carl Rowan rpt, SID. Fair. (WPT-DC)
- 1390 WCSC SC Charleston, 3/9 1747 hrd w/ local wx, ad for credit union & RKO nx earlier. Poor sig. (JBH-FL)
- 1410 WZST FL Leesburg, 3/8 1803 ID noted during nx. Poor u/ WBRD-1420 slop. (JBH-FL)
- 1450 WSTU FL Stuart, 3/7 1833 ID noted w/ Boz Scaggs mx in WSPB null. Sig varied from good to nil. (JBH-FL)
- 1460 WBRN MI Big Rapids, 3/10 2345-0000 rock mx, IDs, nx (lcl & national), wx, IDs, full data s/off anmts. Very strong. (DLR-KY)
- 1470 WBIT GA Adel, 3/6 1859 ID noted on fade-up, mixing w/ WRGA. (JBH-FL)
- 1480 WAPG FL Arcadia, 3/7 1643 believed to be the one w/ C&W mx & ads for "Termite Control, call 494-3505 in Arcadia." Poor-nil w/ severe WOFN-1490 slop. (JBH-FL)
- WYZE GA Atlanta, 3/6 1845 faded up w/ ID & s/off, no SSB. (JBH-FL)
- 1550 WYOU FL Tampa, 3/8 1845 SS talk by m, ment of Tampa. Good. (WPT-DC)
- *WVAB*VA*Virginia Beach, 3/12 0107 TT, ment of ET by m CE. Xlnt. (WPT)
- 1590 WAIK IL Galesburg, 3/10 1859 "WAIK" IDs, s/off anmts, ment of Q-93 FM.
- 1600 WKJS TN Harriman, 3/10 1832-1845 lcl spots, wx, IDs, big band mx, IDs and off. (DLR-KY, last 2)

Eastern DXers

- JBH - J. B. Hughes, 13720 Gulf Blvd., Apt. 401, Madeira Beach, FL 33708 (R-1000, Radio West loop)
- DLR - David Reitz, 9332 Fairground Rd., Fern Creek, KY 40291 (DX-160, GE Superadio)
- WPT - Bill Townshend, 4500 Connecticut Ave. NW, #901, Washington, DC 20008 (Realistic TRF, Sony ICF-S5W)

CENTRAL DX ROUNDUP

Robert Kramer
6416 N. Richmond
Chicago, IL 60645

UNIDED, SPECIA, CHANGES, et. al.

- 780 WPTN TN COOKVILLE, has been here since 12/83. Noted most recently 3/5 1845 w/rr mx & vy quick s/off. DF-IL
- 1030 KRSM MO BLUE SPRINGS, poor w/KHOG/KCTA QRM, ID (I think), a little tlk & ment. of KC, 3/5 1841. DF-IL
- 1100 KKLL MO WEBB CITY, 1930 3/12 caught end of s/off, address given, sounds like Gospel programming, fair u/WWWE. TMJ-IL, 3/17 1850 poor in WWWE null w/ID & ment. of Webb City. RK-IL
- 1240 KXIT TX DALHART, 2100 2/14 taped clear ID, into TX net nx, well atop, new here, ex-1410. GS-MN
- All da Rest
- 630 CJET ON SMITHS FALLS, 3/12 0204 fair w/BN nx & SID. RK-IL
- 850 CKVL FQ VERDUN, 0530-0633 3/2, fair w/"Radio Journal" nx show, ID jingles. RG-IL
- 1030 KHOG AR FARMINGTON, 1850 2/13 & SSS regular since, w/IDs "AM 1030 KHOG", "K-hog" & "Hog Country", new, ex-1440. GS-MN., 3/5 1836 killing KCTA w/C&W mx, lcl spots & ID. DF-IL
- 1140 WQBA FL MIAMI, presumed 3/4 1932 during good southern cx, WRVA weak. SS pgm, mx, nx, ment. Miami & Miami Beach area. TMJ-IL
- 1150 KSAL KS SALINA, 0159 2/27 fair u/o WQOW on ET w/full ID, ABC nx, wx. RG-IL
- WQOW TN CHATTANOOGA, 0159-0207 2/27, fair o/u KSAL w/TT, ID, also rr mx. RG-IL
- 1170 WXAX SC LEXINGTON, 3/5 0640 blasting in w/C&W mx, farm nx, lcl spots, ID. DF-IL
- 1220 CHSC ON ST. CATHERINES, rr mx 3/12 0230, good signal, no WGAR. TMJ-IL (Tom, as far as I know the calls are CHSC. It probably just sounded like CHLG, ed.)
- 1230 WFAI NC PAYETTEVILLE, 3/5 0635 ID sounded like them. Anyone know when they might be moving? DF-IL
- 1250 KHIL AZ WILCOX, 3/3 fair & nearly alone w/s/off o/buzz, only AZ in, 1/2 hour before lcl SS, used "K-hill Country" slogan. GS-MN
- 1350 KCAR TX CLARKSVILLE, 1900 2/16 s/off fair o/QRM. GS-MN
- 1360 WISV WI VIROQUA, poor u/WGEE w/s/off, SSB then full ID 3/7 1914. JJR-WI
- 1500 WBRI IN INDIANAPOLIS, 1745 2/12 w/rel. & lcl ad, fair in KSTP null. GS-MN
- 1520 KOLM MN ROCHESTER, in fair on 3/7 1910, // FM & using "Everybody's Country" slogan. JJR-WI
- 1560 WRIN IN RENSELAER, in fair w/s/off at 1902 3/7. JJR-WI

SEE YOU IN 2:

- DF... David Faulkner Box 602 Witt, IL 62094
- (TRP) RG... Rob Gerardi 1421 N. Franklin #7 Benton, IL 62812 (RF-2200)
- TMJ... Tom Jasinski 503 Jensen Shorewood, IL 60436 (PRG-7, 2 1/2' loop)
- JJR... John Rieger 1586 S. 82nd West Allis, WI 53215 (ICOM ICR-70, Kowalski Loop, coat hanger on left eyebrow)
- GS... George Sherman Box 2284 Minneapolis, MN 55402 (R-1000, Radio West Loop)
- RK... The Invisible Man (R-1000, HQ-140X, HQ-129X, Radio West Loop, Kowalski Loop, spital loop)

Sorry about missing last week's issue. I was a bit ill the whole previous week & didn't feel up to typing it. This is the last of the weeklies. See you'll in 2 weeks.

CADX SPRING Get Together:

The 14th edition of the CADX spring get together will take place Memorial Day weekend (May 25-28) at the home of the CDXR editor. There will be plenty of thrills, spills & adventure, so why not plan to be here. There are several people from outside the Chicago area that are planning to be here, so it could be almost like a convention. For more info, call me at 1-312-262-6299.

Vane Jones Log - 15th edition

Howard W. Sams & Co. has announced the publication of the 15th edition of "North American Radio TV Station Guide," compiled and edited by Vane A. Jones and popularly known as the 'Vane Jones Log'. Sams #22296 will retail at \$9.95. Century Print Shop will supply copies at \$8 postpaid to those ordering by May 15, 1984. Thereafter, \$10 ppd. CPS also has a supply of the 1979, 1981, 1982, 1983, and current 1984 editions of "World Radio TV Handbook" by Billboard Publications, at \$15 each, 3 for \$35 mix or match. Orders with personal check or money order payable to: CENTURY PRINT SHOP, Donald E. Erickson, 6059 Essex St., Riverside, CA 92504. Inquiries (714) 687-5910.

WESTERN DX ROUNDUP

Nancy Hardy
2301 Pacific Avenue
Aberdeen, WA 98520

All times are
Eastern Local

Phone for hot WDXR tips: (206)532-6827 till 10pm(PLT)

DEADLINES: Tuesdays April 3, April 17, May 8, June 5; Monday July 2

REPORTERS FOR THIS ISSUE:

- (NH) Nancy Hardy-2301 Pacific Ave.-Aberdeen, WA 98520
FRG-7, SM-1
- (JH) Jim Hilliker-1502 E. Hedgewood Ave.-Anaheim, CA 92805
Kenwood R-1000, Radio West loop
- (DKK) Don Kaskey-465 Burnett St. #1-San Francisco, CA 94131
Hammarlund HQ-140X, SM-2
- (GK) Glen Kippel-612 West Ave.-Merced, CA 95340
SP-600-JX17, surplus RAX-1, two 8' loops
- (SMM) Steve Mittman-DX'ing in Bend, OR
Realistic TRF, 3' wedge
- (RT) Rich Toebe-2388 American Ave.-Hayward, CA 94545
- (RW) Robert Wien-1309 Dentwood Dr.-San Jose, CA 95118
GE Superadio, GE long-range portable, SM-2

OF SPECIAL INTEREST:

- 1220 KDFC CA, Palo Alto now carries this call sign, // KDFC 102.1
San Francisco, call sign was effective March 1, 1984. Still
uses same slogan. Ex-KIBE. (RT-CA)
- 1380 KLPZ AZ, Parker 3/12 0853 bombing out KTOM completely in KEEN null
w/S.W. Agri-business Network farm rpt (listed on network in
Almanac). Confirmed via phone. They are now KLPZ, C&W format,
which matches what I hrd before farm rpt. Only stn on 1380 on
this network. Call change, ex-KZUL. (RW-CA)
- *****
- 530 WYZ-301 CA, Los Angeles good 2/19 0417 w/LAX terminal & parking info.
(GK-CA)
- 540 KVIP CA, Redding 3/10 2100 very strong signal w/very little noise.
Relig. mx, ID "This is KVIP Redding, it's 6 o'clock." Into
taped program. Must've s/off at 2115. Also good 3/11 same time.
Not hrd in awhile. (JH-CA)
- 550 KOAC OR, Corvallis Su 2/5 2230 xlint w/classical mx. (SMM-OR)
- 560 KSFO CA, San Francisco Su 2/5 2231 good w/tele-talk program dealing
w/building & buying homes. "Actionline number" was 398-KSFO.
(SMM-OR)
- 570 KLUB UT, Salt Lake City Su 2/5 2250 fair in KVI null. "We've got the
all time classics, right here on Club 57--KLUB." (SMM-OR)
- +2/23 2151 w/Bing Crosby song o/KVI.(GK-CA)
- 580 KFXD ID, Nampa-Boise Su 2/5 2255 "58 KFXD. Five before nine with
Neil Diamond and 'Cracklin' Rosie." Good. (SMM-OR)
- KCMX OR, Ashland-Medford Su 2/5 2259:55 fair w/KFXD nulled out.
"This is the --- Valley's only 24-hour country station, KCMX,
Ashland-Medford. It's 8:00 and NBC News is next." (Tone; NBC
jingle began. KCMX annrc continued...) "It's 47° in the
Valley." (SMM-OR)
- CKUA AB, Edmonton 3/14 0357 w/classical mx o/KMJ. ID 0400 & into
full s/off including CKUA-FM & many relays. 1st time from
Calif. (DKK-CA)
- 640 KFI CA, Los Angeles Mon 2/6 2308 xlint armchair signal. "The
Amazing AM Stereo--64 KFI" jingle. (Same sound effects jingle
as used by KCBQ-1170 San Diego back in the late 70's when they
were top 40). (SMM-OR)
- 680 KNBR CA, San Francisco Mon 2/6 2307 w/a dated ad...Jim Lange was
advertising a Chrysler-Plymouth dealer in the Bay Area. Lange,
of course, is an ex-Bay Area personality (ex-KSFO-560), and
currently is on KRLA-1110 in L.A. (SMM-OR)
- 690 KRCO OR, Prineville Wed 2/8 1047 w/Mutual's "The World This
Morning." Then slogan "Jefferson and Cook counties number
one radio station." Into C&W mx. (SMM-OR)
- XETRA BCN, Tijuana The Mighty 690 put in an xlint, local-like signal
here at night. Where was closer 50kw CBU?! (SMM-OR)
- 700 KGRV OR, Winston 2/27 2042 w/country-gospel song, then annct. that
they would be switching to night power after next song.
Switched at 2048. (GK-CA)

730 KRVC OR, Medford 3/10 2050 quite good w/contemp. Christian mx, ID, CX noisy at 2115 when they did s/off, freq., power, ment. advertisers who support Christian radio. "Tell them you heard their message on KRVC...Join us tomorrow at 6am, for another day of quality Christian music & entertainment." (JH-CA)

790 KABC CA, Los Angeles Mon 2/6 2315-2320 fair signal overall (some fading) w/usual talk format. KROW-780 was slopping over.(SMM-OR)

870 KORD WA, Pasco hrd w/BKB 2/23 2221; spot ment. Kennewick. (GK-CA) +2/26 0725-0730 way o/WWL w/L. King Show. (DKK-CA)

880 KJJR MT, Whitefish 3/12 0725 good w/ID o/KRVN. Not very common here. (RW-CA)
+3/20 0100 ID by YL into mx. O/KWIP, KIXI nulled. Local static off for a few hours, luckily. New--one of my most-wanted.(NH)

KIXI WA, Mercer Island-Seattle-(Bremerton) 3/10 0500 noted using "Mercer Island/Bremerton" ID, still KIXI, not KMRK yet. (RW-CA)
+3/17 1200 ID "Mercer Island-Seattle and Langley." At 1400 "Mercer Island-Seattle, and Utsaladdy." Hrd 12 top of the hour ID's on 3/17 all w/a different 3rd city! (NH-WA)

910 KNEW CA, Oakland-San Francisco Th 2/9 2322 fair in unID null (unID had Talknet--who?) w/Bay Area merchant ads; KNEW contest. (SMM-OR) (KALL the Talknet?--NH)

KURY OR, Brookings 3/10 2108-2110 CX to the north seemed good, so I checked here & found what I wanted. Very faint at first, fading in & out above KMJC. Then, hrd man doing nx, ment 2 towns in Oregon, gave wx for So. Oregon coast, "here at Curry studios, it's 53°. That's weather & news for this hour, brought to you by... in Brookings." Faded out w/only KMJC, then back up for ID "This is KURY-AM in Brookings, Oregon, the time in 10 seconds will be 6:10." Into Big Band type show "Remember When." Then gone to KMJC. A nice surprise & much wanted. New, Oregon #20. Called stn, anncr. was very happy, especially w/three 910's in CA, usually KNEW is in, and instead I luck out & hear KURY.(JH)

920 KDES CA, Palm Springs 3/11 2038 w/some KHJ-930 slop, hrd ID as "AM Stereo 92, K-Des" into pop mx. (JH-CA)

KOLO NV, Reno Mon 2/6 2230 promo "Hi, this is---from---(3 callers--2 from Reno & 1 from Sparks). I love my country on KOLO." NEC nx at 2255. Strong. (SMM-OR)

930 KSEI ID, Pocatello Tu 2/7 2312 very strong w/two ads for businesses in Pocatello, back into Idaho State vs Nevada-Reno BKB game. No sign of KAGI, hrd the day before! (SMM-OR)

KAGI OR, Grants Pass Mon 2/6 2359:58 "It's 9:00 at KAGI." Into ABC nx. City not given, unless it was drowned out by ABC nx beginning. (SMM-OR)

980 KFVB CA, Los Angeles Su 2/5 2338 fair o/GY-like rumble w/lady anncr. "KFVB Accu-weather forecast for Orange Country..." (SMM-OR)

1060 KRSP UT, South Salt Lake City rock mx o/KPAY 3/1 2307. (GK-CA)

1080 KVNI ID, Coeur d'Alene 2/26 1001-1007 w/local relig. program o/KSC0. (DKK-CA)

1180 KERI CA, Wasco-Bakersfield 3/1 2256 noted for 1st time w/new call (ex-KWSO) w/CCM. In the clear, no KOPI. (GK-CA)
+3/13 w/ID 2130. (ex-KWSO) Same relig. format. (DKK-CA)

1190 KEX OR, Portland 2/28 2315-2330 buried by XEMBC-Mexicali who had "Radio Variedades" ID 2323 & many ments of Mexicali. (DKK-CA)

1230 KIBS CA, Bishop 3/17 0256-0257 into s/off, power, studios on S. Hwy. 395 "in Bishop, Calif., the gateway to the eastern high Sierra...Join us tomorrow at 5am, in the greatest country in the world on KIBS." (JH-CA)

KPRL CA, Paso Robles 2/20 0259 w/s/off w/inst. SSB. AN-6. (DKK-CA)

1240 KJCY ID, Mountain Home 2/26 0852 atop w/"Country 1240-KJCY" ID. (DKK-CA)

KPRB OR, Redmond Wed 2/8 2040 semi-local here w/C&W mx. Hrd ment of 103 FM, but I don't believe KPRB has an FM. Prob. the ment came from another stn--but who? (SMM-OR)

1260 (KOIT) CA, San Francisco MM 3/12 0440-0610+ off, leaving XEMM & unID stn w/MOR type mx. Is KGIL NSP? (DKK-CA)
+3/12 0904 noted off this late, back on at 0905. Was hoping to bag KWIQ but no such luck! (RW-CA)

?KPOW? WY, Powell Wed 2/8 2007 assumed the one w/Wyoming nx. Poor at SSS. Lost at 2017 without any IDs given (or at least hrd.) (SMM-OR)

1270 KORY NV, Sparks-Reno 3/1 2257 w/ID o/KCOK. Same rock format. Ex-KROI. (DKK-CA)

- 1280 KBDF/ OR, Eugene 3/12 0942 tent. w/OM/YL nx team doing what sounded
KYKN? like CNN nx. Have they changed calls yet? Tried calling them
but OR directory assis. doesn't list a phone number for
them! (RW-CA)
- 1310 KTKR CA, Taft 3/11 2100 been looking for this about a year, and here
they were! Pair to good, alone w/s/off by Dave Mann, power
1000 watts, "KTKR's studio and transmitter are located 1 mile
northwest of Taft on highway 33." Ment serving listeners w/
good mx, nx & special events, member of Kern County Broadcasters
Assn. Off at 2101, no SSB. New. (JH-CA)
- 1320 KBUG UT, Salt Lake City Wed 2/8 2103 w/Jim Croce song. Then "1320
K-Bug" slogan, into Neil Sedaka song. Numerous stns QRM'ing
but dominant on the frequency. (SMM-OR)
- 1330 KPAC CA, Los Angeles Wed 2/8 2006 surprisingly strong w/wx & temp at
The Civic Center, into local nx. According to the NRC Pattern
Book, KPAC should put a strong signal out towards my house back
home, but in actuality, they are very weak at my house at night.
(My dad listens to KPAC, & sometimes complains about how weak
they are at night.) Considering how strong they are up here in
Oregon, it looks as though all their signal is going north for
some reason. (SMM-OR)
- KUPL OR, Portland Wed 2/8 believe it or not, was in KPAC null!
Mutual nx at 2000, then into MYL format afterwards. Hrd a
couple of "Couple" slogan IDs. (SMM-OR)
- 1340 KDOL CA, Mojave 3/12 0213 completely dominant w/C&W, ID while look-
ing for KSYX f/c which didn't show. (RW-CA)
- 1360 KFIV CA, Modesto 3/9 2100 good on hour w/"K-5" ID. Hasn't changed
calls to KZUN yet, despite rpt in recent Broadcasting Info that
they did effective 3/11 (RW-CA)
- KZIQ CA, Ridgecrest 3/9 2058 good o/mess w/SSB, s/off. (RW-CA)
- KPQP CA, San Diego 3/6 0340 w/ID way u/KAMT. BBD nx. (DKK-CA)
- KOHU OR, Hermiston Wed 2/8 2046 wx for Northern Oregon & Southern
Washington. "Currently we have 380 at KOHU." Into C&W mx. (SMM-OR)
- KROR OR, Myrtle Creek 3/5 w/C&W mx to 2113 then into s/off. Calls
repeated often. O/u QRM. (DKK-CA)
- KAMT WA, Tacoma 3/6 0300-0600+ very dominant w/KEEN-1370 off. Pop
Format. KPQP only other stn noted under them. (DKK-CA)
- 1370 KSOP UT, So. Salt Lake City 3/6 0315-0600+ dominant o/KWRM w/KEEN
off. (DKK-CA)
- 1380 KSRV OR, Ontario 3/9 2040 good way o/KTOM w/Portland Trailblazers
BKB game. (RW-CA)
- 1420 KTAN AZ, Sierra Vista 3/17 0320 end of "To Your Health," "service of
AZ hospitals & KPAN." C&W mx, wx, ment score of Phoenix Suns
game. Pair to good through KALI-1430 slop. Haven't hrd this
since last year. (JH-CA)
- KSTN CA, Stockton Sa 2/11 1701 hrd while driving home through
Stockton, "KSTN, Stockton--celebrating twenty years of the
Beatles in America!" Into "Lady Madonna." (SMM)
- KITI WA, Centralia-Chehalis 3/14 0314 briefly o/KSTN w/wx & clear
ID. (DKK-CA)
- 1450 KVSL AZ, Show Low 3/17 0317 on top, good for quick ID "1450, KVSL,
Rick...with you for a Saturday." Into C&W. Faded out. (JH-CA)
- KPSI CA, Palm Springs 3/10 2000 possibly faded up at wrong moment,
hrd ID but no "Palm Springs" ment. Just "KPSI, AM 1-45" into
ABC nx. (JH-CA)
- 1470 KBXN UT, Tremonton 2/19 0957 atop nicely w/ads & ID. (DKK-CA)
- ?GJVB? BC, Vancouver Th 2/9 2240 w/radio drama show. XEBEC & uNIDs
mixing. (SMM-OR)
- 1480 KPHX AZ, Phoenix 3/12 0315-0500+ mixing w/KWIZ w/KWUN/KYOS off.
Program was in SS altho good clear ID at 0402 was by female in
English. (DKK-CA)
- ?KRED? CA, Eureka Th 2/9 assumed the one fading in & out w/C&W mx. ADC
nx at 2300. (SMM-OR)
- KYOS CA, Merced Th 2/9 2248 very poor in KAAR null w/ID, into
Beatles tune. (SMM-OR)
- KWIZ CA, Santa Ana Th 2/9 2249 hrd just momentarily w/ment of "Irvine"
and I recognized the DJ's voice. No sign of WRSW. (SMM-OR)
- +3/12 w/ID 0340 o/KPHX. MOR/pop mx. Was testing later. Both
KWUN & KYOS off at time altho KWUN back by 0545. (DKK-CA)
- KAAR WA, Vancouver Th 2/9 2245 ID as "K-double A-R." Then into live
ABC Olympic report. Couple of Beatles tunes at 2306 (part of
syndicated program?). (SMM-OR)

- 1490 ?KGUD? CA, Banning 3/17 1043 tent. fair in KWIZ null w/"National Music Survey" w/Dick Clark. Didn't wait for ID, probably KGUD since it was strong. If so, this is diff. time than current Almanac lists, but day is the same (Saturday). (JH-CA)
- KDB CA, Santa Barbara 3/14 above mess w/nx to 0309, then ID & into "Classics Till Sunrise" w/classical mx. Soon gone. (DKK-CA)
- 1500 (KHTT) CA, San Jose 3/12 0740 totally off on rare SP. (RW-CA)
 KSTP MN, St. Paul-Minneapolis 3/17 0215-0230 really bombing in tonight, unusually strong w/very little fading. Many KSTP and "Talkradio 15" IDs, wx for Twin Cities, etc. (JH-CA)
- 1510 KDKO CO, Littleton 3/12 0755 good o/KSOM w/CO nx by YL. Was looking for KCCV or KMSD, but neither showed. (RW-CA)
- 1530 KFBK CA, Sacramento now apparently has both a SM & MM SP. Exact hours unknown. (RW-CA)
- 1550 KXXR WA, Opportunity 3/12 0306 o/u KRGO w/MYL mx. (DKK-CA)
- 1570 KMAX CA, Riverside 2/26 0933-0944 w/program on Latin American relations. Legal ID 0945, then began to fade w/daylight. (DKK-CA)

F/c's tentatively heard:

- 2nd Tu 0115-0119 KOKK-1190 SD (RW-CA)
 2nd MM 0110-0120 KQNK-1530 KS (RW-CA)
 0220-0230 KTOQ-1340 SD (RW-CA)
 2nd Sa 0210-0217 KLMX-1450 NM (RW-CA)

UNIDS:

- 1020 MM 3/12 0445-0610+ cutting thru KTNQ easily w/BBD type mx & OC. No anncts hrd. Suspect KWIQ w/Skw. (DKK-CA)
- 1360 3/12 0300 either KUIK or KOHU s/off u/KAMT w/KEEN-1370 slop. Ment. located in Oregon w/studios on River Road. Suspect KOHU as KUIK rptd s/off 0308 a couple weeks ago in WDXR. (DKK-CA)
- 1470 Th 2/9 2241 hrd what sounded like "1470 K-Zap" u/another unID w/MYL. There is a KZAP in Sacramento on 98.5, but driving home, passing through Sacramento, I tuned in 1470, but they are still KXOA. (KXOA incidentally, is MYL---and probably the MYL unID I hrd). Perhaps KAZM which uses "Chasm" (pronounced "kaz'em") slogans. Any other ideas? (SMM-OR)

Welcome back to WDXR, Glen. This is the end of the weekly issues, so see you in two weeks! ♡

DX WORLDWIDE EAST

DXW East Temporary Editor:

Donald Erickson, 6059 Essex St., Riverside, CA 92504-1599 Attn: IRCA DXW-E
 New Deadline: Mondays, 19 days before issue date. Phone: (714) 687-5910.

Pan American DX Roundup

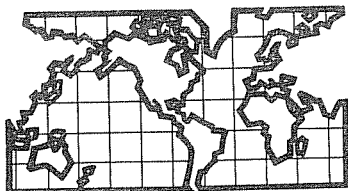
- 600 Surinam Paramaribo 3/10 2350 noted back on for the first time; exc. on all ant's; multi-lingual ancr said, "Have a nice weekend" in EE. Went into Dutch at 2350 for presumed ID & definite mention of AM & FM freq's. (Kaz-ME)
- 620 Brazil Fortaleza ZYH590 3/4 2351-2353 exc & pinning S-meter; ID & carnival mention by excited PP men; far o/stn w/rel mx & SAH. (Kaz-ME)
- 770 Venezuela Caracas YVKK 3/10 0100 fr but virtually alone in AU cx w/ID. (Kaz-ME)
- 790 Barbados St. George 3/4 0006 gd & almost alone in AU cx w/calypso mx. (Kaz-ME)
- 800 Venezuela Maracaibo YVTB 3/5 0347 noted u/Bonaire w/"Exitos" ID. (Kaz-ME)
- 810 Brazil Fortaleza ZYH589 3/4 2358 local-like in amazing AU cx w/Fortaleza mention & "Verdes Mares" ID; as strong as WGY ever is; still way o/QRM 2344. (Kaz-ME)
- 880 Brazil Belo Horizonte ZYL275 3/10 2246 noted blasting WCBS w/PP vocal. (Kaz-ME)
- 920 Colombia Cartagena HJAE 3/5 0404-0407 in well w/MHJJ phased in AU cx. (Kaz-ME)
- 990 Grenada 3/4 2305 fr w/BBC nx w/new pest WNYR zapped by AU cx. (Kaz-ME)
- 1000 Brazil Sao Paulo ZYK522 3/10 2247 noted in passing vy gd w/usual format. (Kaz-ME)
- 1010 Brazil Fortaleza ZYH625 3/4 2300-2302 gd w/fanfare & about a dozen "O Povo" IDs. Brazil ment's gd & clear way atop w/no WINS in very AU cx. (Kaz)
- 1040 Brazil Sao Paulo ZYK537 3/10 2301 to vy gd peak w/PP talk, some WBZ slop. (Kaz-ME)
- 1130 Brazil Rio de Janeiro ZYJ461 3/4 2320-2321 fr-gd almost in the clear in AU cx w/ID.
- 1200 Brazil Fortaleza ZYH585 3/10 2303-4 vy gd w/PP ancr foll'd by BBD mx. (Kaz-ME)(Kaz)

Trans Atlantic DX Roundup

- 621 unIDed 3/11 0346 w/W in romance lang, sd/lk FF but too far u/Canary Island QRM to tell; 0.33 Hz SAH. Belgium isn't supposed to be on this early but little else likely. (Kaz-ME)
- 1134 Spain unIDed stn 3/10 2223 noted fair-good w/SS talk, maybe nx. As usual, TT didn't stay up long enough to hear an ID. (Neil Kazaross, Ogunquit, Maine)
- 1215 Albania Lushnje 3/11 0358 // to 9500 SW w/AA pgm then trumpet IS. (Kaz-ME)
- 1314 Spain unIDed stn 3/10 2220 just putting SS audio past a low growl of low hets. (Kaz)
- 1233-t-Cyprus Cape Greco 3/12 0328 probably the one putting bits of audio thru slop when 1323 was in. I've also noted the Czech here. (Kaz-ME)
- 1323***Cyprus Zyyi 3/12 0320 first noted w/talk by deep voiced EE M // 9410. (Kaz-ME)
- 1341 unIDed het here 0256 (date?) & soon faded. (Kaz-ME)
- 1530 Vatican City 3/11 0407 noted u/WCKY w/nx in unIDed lang by M&W. (Kaz-ME)

Week's Contributors

(Kaz-ME) Neil Kazaross - P. O. Box 1908 - Ogunquit, ME 03907
IC-R70 w/phased 1350' Bev's at 150 degrees,
175' LW at 72 deg., 310' LW, Bohac loop, MW1,
phasing unit, APT-2 tuner.



DX WORLDWIDE - WEST

Pat Martin - Editor

P.O. Box 843, Seaside, Oregon 97138
(503) 861-3185 - deadline Tuesday

PAN-AMERICAN DX ROUNDUP

- 530 UNID, SS briefly o/LAX-TIS 3/11 at 1044 looping CA (GK-Ca)
This is possibly Costa Rica.PM
- 825 ST. KITTS, Basseterre, Radio Paradise noted w/EE Talk 3/4 at IO17 (GK-Ca)
- 880 MEXICO, Los Hochtis-XEPNK s/on anmt 2/24 at 1301 (GK-Ca)
PERU, Lima-Radio Union poss. the one hrd 2/24, at 1240 w/SS and strange mx, sounded like bagpipes and percussion with occasional whoops. Also 3/4 at 0923 w/Radio Union ID and flute mx. (GK-Ca)

TRANS-PACIFIC DX ROUNDUP

- 702 AUSTRALIA, Sydney-2BL-noted w/Dreamy mx 3/11 1005, vy strong (GK)
- 738 t AUSTRALIA, Grafton-2NR w/elas. mx 3/11 1007 (GK-Ca)
- 792 UNID, Orch. mx 3/11, 1011 UTC looping DU. 40G? (GK) (Probably.PM)
- 837 t AUSTRALIA, Rockhampton-4RK, torch singer 3/11 at 1012 (GK-Ca)
CHINA, CPBS station here w/YL in Opera at 1520-3/19.Good (PM-Or)
- 855 UNID, orch mx 3/11 at 1013 and 1058, poss. 40B (GK-Ca)
- 873 CHINA, Harbin-hrd again w/YL in CC at 0930 on 3/19. Good (PM-Or)
- 882 AUSTRALIA, Brisbane-4BH-3/11 at 1014 w/beautiful mx (GK-Ca)
- 891 FIJI, Lautoka-Radio Fiji 2, clear at 1003 on 3/11, Hindi mx (GK-Ca)
JAPAN, Sendai-JOHK strong 2/26 0900 w/HHK Pips and JJ talk (GK)
- 972 SOUTH KOREA, Gimje-strong in KK at 0901 2/26 (GK-Ca)
- 1044 CHINA, Changzhou-FS in JJ hrd at 1237 2/24 (GK-Ca)
- 1206 UNID, 3/11 w/Pop mx, loop bearing more towards Aust than NZ, much KASY slop (GK-Ca) (2GF is C&W and 4XA in Pop. PM)

THANKS TO THESE REPORTERS:

- GK-Ca Glen Kippel-6L2 West Avenue-Merced, Ca. 95340
SP-600, Box loops
- PM-Or Yer Editor
SP-600-(2) 1500 foot Bev. East, 200' term. NE LW, Ground system

DX WW II

EDITED BY
PETER V. TAYLOR
2614 JACKSON STREET
SAN FRANCISCO, CA. 94115

TRANS - PACIFIC

ALASKA - KYUK-580 wants 640 with 10kw (Broadcasting)
AUSTRALIA - 4EB-1053 (ex-1485) was commissioned Jan. 27 (Chris Martin, DXA). 2AY-1494 is 24h. 2UW-1107 just calls itself "11" (L. Rendek, B. Anderson, ADXN). 3CR-837 is now 1kw. 5KA-1197 plans on increasing its power to 5kw and moving to 1062 (I. Stanley, ADXN).

BANGLADESH - R. Bangladash testing on 1413; presumed in Comilla (ADXN via DXA, ARC).

CHINA - The PLA Fujian Front station, which broadcasts to Taiwan and the offshore islands, now IDs as "The Voice of the Strait" (Haixia zhi sheng guangbo diaantai) (S. Aoki, FERC). Huangshi PBS is on 1476kHz 2130-2400 (M-Sa), 2155-0530 (Su), 0255-0530 (M-Sa), 0900-1500. Wuhan PBS-P1-873 is on 2130-0515, 0730-1500 (Wed. 0850-1500); P2-1053 is on 2130-0515, 0730-1500. Qinhuangdao PBS-936 has 2120 s/on; Zhejiang PBS is also on 936 (T. Gima, ABI via FERC (ABI via FERC)).

HAWAII - KPUA Hilo will move to 670 this summer with 10kw (not 5kw, which has been circulated occasionally) (PT; info from station).

INDONESIA - RRI will build a new station at Ende in Flores, East Nusatenggara (BBC). During a recent visit to Indonesia, Gary Daly of Australia saw newspaper ads for these non-WRTH stations: R. RHK-1521 Semarang; R. Walisanga-738, Pekalongan; R. Anita-1584 in Penunjan, plus R. Jatayu-1005, Semarang, which was previously unconfirmed (SCDX).

IRAN - "V. of the Islamic Revolution of Afghanistan"-720 is still on from 1700-1730, in Pashto/Dari. Commentaries refer to both the USA and USSR as "Satanic powers" -- thus, the assumed location. VIRI-1332 has inaugurated the "V. of the Qur'an" on 1332kHz. It is on from 1330-1630 as "Inja Tehran ast, Radyo Qur'an." (BBC). Kermanshah-1275 is heavily jammed, so must now be in AA. When it was in Farsi, it was readable, but not now (REW).

IRAQ - VIRI (Iran) reported that its "fighters of Islam" had damaged the Basra-693 facility, knocking it off the air between Feb. 23-25. It was back on the air Feb. 26. "The V. of the Masses" has a new MW frequency, 1377kHz (BBC).

KAMPUCHEA - V. of Khmer People's Natl. Liberation Front-801 is on 0400-0600, 1100-1200, 2300-2400 (DXFL via FERC, ARC). Phnom Penh-917 is on 2300-0030 (to 0130 Sun), 0430-0530 (to 0630 Sun), 1100-1400 (to 1500 Sun) in Cambodian (BBC). Vientiane-580, 150kw, the Russian built operation, will be on in mid 1984 (BBC).

LAOS - National Radio-1030, Vientiane, is in EE 0100-0130, 0600-0630, 1300-1330; FF 0030-0100, 0530-0600, 1230-1300; Thai 0400-0430, 1100-1130, 2300-2330; Vietnamese 0430-0500, 1130-1200, 2330-2400; and Cambodian 0000-0030, 0500-0530, 1200-1230. It does not appear to be on the air between 0130-0400, 0630-1100, 1330-2300 (BBC).

PAKISTAN - Islamabad 4 on 85kHz is in Lawrencepur, 350km W of Rawalpindi towards Peshawar. Power is 1000kw (WDXC via MWSC, ARC).

PHILIPPINES - DYBO-981 Iloilo is 24h (Y. Kato, FERC).

SINGAPORE - P1 has EE 2200-1605 on 630kHz, of which 1415-1605 is also relayed on 792kHz (D. Heathcote, ADXN).

TAIWAN - BCCI is 24h in Standard Chinese on 657 (key) 720 819 855 864 882 1017 1071 1116 1143 1224 1242 1296 1350 1377 1404 1413 1449 1467 1503. The NA, a program preview, and all call signs are heard 1600-1610. BCC2 is on 2050-1730 in Amoy and Std. Chinese on 783 954 (key) 1008 1017 1035 1062 1152 1161 1188 1251 1386 1449 (its pgm. preview and call signs are heard at 2050). BCC3 is on 2055-1500 in Amoy & Std. Chinese on 630 882 891 1224 1359 1413 1460 1467 1539. The Voice of Education-1494 is on 2200-0100, 0400-0600, 1000-1600 in Std. Chinese. The Voice of the Military is on 2040-1800 on 684 693 792 846 936 1089 1116 1251 1269 1287 1332 1359 (IDs at 2040; EE LL 1130-1200, 1230-1300. Also, it relays VOPC Mainland China Network 1 from 1630-1800) (BBC). Chiaoyu BS-1494 has been reactivated (2200-0100, 0400-0600, 1000-1600. Chienkuo BS now has 1700 s/off. Chung Hua BS is increasing to 10kw from 3.5kw. Taiwan area Fishery BS-1143 on Pengfu Is. is 10kw (T. Gima, H. Doi, Y. Kato, ABI, FERC).

VIETNAM - A new Xuan Loc district, Dong Nai province stn. is on (BBC). (No freq.--PT)

TRANS - ATLANTIC

ALBANIA - New station on 909kHz since November (EBU via BE, ARC).

ALGERIA - RTA-981 carries "V. of the Chilean Resistance" 0003-0032 in SS; news in SS is on 693 & 981kHz 1030-1100 and 2030-2100. VOP/VPR is on 1702-1800 (1602-1700 during Ramadan) on 531 549 576 891 1098. News in EE is on 981kHz 2000-2030. "V. of the Free Sahara" in AA and/or FF is on 576kHz from 2200-2300 (BBC).

ANDORRA - R. Andorra is back on the air on 702kHz but with low power (C. Zettl, SCDX).

ANGOLA - RNA "A" program is now 24h (BBC). E.R. do Bie' is back on 1403 after a long spell on 1390 (VK).

CANARY IS. - EAK35-936 R. Popular is now on 837kHz (MWSC).

CYPRUS - Radio Bayrak P1-1098 is on 0330-2100 in Turkish. P2-1494 (0900-2000) has EE 0900-1030, 1115-1530, 1600-1700, 1730-2000; Gk. 1030-1115, 1700-1730; AA 1530-1600 (BBC).

CZECHOSLOVAKIA - A new 1200kw XR is being built between 1987-1992 at Horsovsky Tyn, south of Plzen; 1287kHz? (KH via BT, ARC)

EGYPT - Radio Cairo-1107 programs in Hebrew for Israel from 1000-1200, but includes RR 1100-1115, FF 1115-1130, and EE 1130-1145; and Hebrew 1500-1800 (BBC).

ETHIOPIA - According to a Cuban TV story, R. Tatek is the name of its Ethiopian operation on 1242kHz. Additional similar stations are planned (BBC).

GREAT BRITAIN - New ILR outlets opening this year: 954 Northdown Radio, Maidstone & Medway; 990 Northside Sound, Londonderry; 1152 Radio Broadland, Norwich & Gt. Yarmouth; 1161 Viking Radio, Humberstone; 1521 R. Mercury, Reigate & Crawley (BDXC via ARC). Radio Jackie-1323 will move to 1584 (ARC).

GREECE - ERT1 First Program on 729kHz is on 0350-2305 M-Sat, and 0430-2305 Sun in Greek except for Greek/EE weather 0430-0440 (0435-0445 Sun.), and 5 minute newscasts in EE 0540, FF 0545, GG 0550, and AA 0555. The schedule is relayed on VOA-1260 from 1000-1030 (Sa/Su), 1030-1300, 2200-2230, and on VOA-792 from 0815-1030 (Su), plus 1030-1315, 1500-1700, 2000-2030, 2130-2230. ERT1 Second Program on 1386kHz is 24h. ERT1 Third Program is on 666kHz and is classical. ERT2 is on 765 945 954 981 1080 1179 1278 1314 1485 1584 1602 from 0355-2400. News in foreign languages is listed 1200-1230 (Sun. to 1215) and 1900-1930 but they are not specified. Radio Station Macedonia-1044 is on 0355 (Sun 0425)-2305. Other regional stations are on roughly between 0350 (0430)-2305 and relay some ERT programs. These include Chania-1512, Rhodes-1494, Crete-1008, Patras-1485, Zakynthos-927, Samos-1602, Komotini-1404, Volos-1485 (BBC).

HUNGARY - P2 is now 24h on 873 1116 1188 1251 1341 1350 (BDXC via ARC)

IRELAND - Cavan Community Radio-747 with 1.2kw is on 0800-2400. The Radio Carouseil Network (2/84): Dundalk-1125, Navan-1386, N. Ireland-1413, Drogheda-1413 (HGV, ARC).

ISRAEL is putting all clocks back one hour between May and the end of August (BBC).

KENYA - A new high powered General Service (Swahili) outlet on 702kHz is now on the air and is well heard (REW). (Meru 100kw is listed - PT)

LEBANON (presumed) - A new "VOP/VPR/V. of National Unity" operation is now on the air on 1505kHz between 1700-1900. Another new station, believed to be in Lebanon, is "V. of the Arab Revolution" on 1377-79kHz-v (Huna Sawt Ath-Thawrah al-'arabiyah, sawt al Jamahir ash-sha'biyyah) (BBC). "Voice of the Mountain"-1080 (Sawt al-Jabal) is in AA 0430-2130 except for news in FF 1430-1435 & 1630-1635, and EE 1445-1450 & 1645-1650 (BBC).

MOROCCO - Tetouan-1053 is now on the air with 600kw (BBC).

NIGERIA - Abeokuta-1170, R. Nigeria, is 50kw w/102m antenna (OA, ARC).

ROMANIA P1 is 24h on 12 MW frequencies. P2 is on 0400-2300 on 12 MW frequencies. P3 is FM (BBC).

SOMALIA - Mogadishu is on 693kHz with 300kw, //963. It is dominant, but is heterodyned by Juba, Sudan on 692.5 (REW). (This resolves my concern that the frequency was a typo from 963 - PT).

SOUTH AFRICA - R. Thohoyandou-1035 in Venda is testing more often. Station QSL says they don't know when regular programming begins. R. Tsonga-990 and R. Venda-864 are both 24h, formerly FM only, and are probably located in Northern Transvaal where the two nations are; estimated power is 50kw (VK).

SPAIN - RNE-585 Berrostequieta (nr. Vitoria) is new; it is RNE-1 for Alava Province, Basque country. EAJ39-693 R. Miramar is ex-702 (since Andorra returned). EAJ20-882 R. Sabadell sometimes relays the new network Cadena 80/Radio 80; address is Cadena 80, Enrique Larreta 15, Madrid 16. EFE19-1476 RCE Castellon is ex-1413. EFJ45-1476 RCE Palma de Mallorca is ex-1107 (BBC, PDX, HGV, UKVK, vis ARC)

SUDAN - Some Japanese transmitter engineers are setting up 10kw XRs in 'Atbarah (170 miles NNE of Omdurman) and Danaqilah (Northern Province) (BBC).

SWEDEN - Goteborg-981 ceased transmitting February 29 (ARC).

SWITZERLAND - RSR Saviese-1485 is now on 0500-2400 (EBU via MWSC)

TURKEY - Trabzon-954 is now linked up with TRT1, and carries only 6 hours of regional programs a day (BBC).

UNITED ARAB EMIRATES - The new 50kw Ra's al-Khaymah outlet on 1152kHz opened in the Zabbut area Feb. 25 in AA, but also with some programming in EE (time unknown) and Urdu (0900-0930). It is //1175 only with Friday prayers (BBC).

USSR - New XR here on 1578 since Nov.; location unknown (EBU via ARC).

YEMEN PDR - DYBS has been noted on 1593kHz (ARC/FERC)

YUGOSLAVIA - R. Sarajevo is now 1000kw on 945kHz, ex-747 (ORF via BE, ARC).

INTERNATIONAL WATERS - Laser 730 (on 729kHz) began Jan. 19 with 5kw emanating from an antenna supported by a helium balloon. Is is anchored near the Caroline ship in the North Sea. Pgmg.: top 40. Address: 341 E. Madison Ave., NY NY 10017. Caroline-963 is now signing off at 2400 due to either antenna work or fuel shortage. New address: New York, NY 11518 (BDXC, OA via ARC). (However, the Feb. DXA says they have commenced 24 hour operation - PT).

P A N A M E R I C A N A

ARGENTINA - LRA7-750 R. Nacional, 100kw, is 24h (WRTHNL)

BARBADOS - CBC-990 is 20kw, 24h (DXA).

BRAZIL - ZYL...-1010 R. Jacutinga, ex-R. Estancia, is now on (CRM via ARC). ZYJ337-570 R. Panorama is ex-790. ZYH...-790 R. Barreiras is on. ZYK546-790 is ex-1370 (ARC).

CHILE - CA156-1560 R. Parinacota (ex-R. Putre) is on 1564.9 (CRM via ARC). R. Agricultura-579 is 24h (C. Zettl, SCDX).

COLOMBIA - HJZD-1020 is on 1011 (NRC). HJAD-1330 R. Bolivar ex-R. Vigia. HJTZ-1480 R. El Sol ex-R. Palonegro. HJPX-1480 LV de las Estrellas ex-R. Olimpica. HJQZ-1580 LV de las Estrellas ex-R. Principe, is relayed at nights on HJAG-1070, HJFA-1340, HJPX-1480 (AB, SDXL via ARC). HJLZ-1055 is ex-1050 (NRC). HJGV-1230 R. Ciudad de Bucaramanga is ex-R. Rumbos (LAB, ARC).

COSTA RICA - Radio Victoria-1180 placed an ad in the San Jose' newspaper La Republica complaining about VOA-1180 wiping it out in the NE part of the country after 1700 local time; they have also complained to the US Embassy (BBC). T1STHB-1120 San Jose' is on 1127 (NRC)

CUBA - Radio Rebelde and Radio Liberacion merged into one station on March 26, but some changes took place a week earlier. It features news, sports, and music, with a little drama, and is called R. Rebelde. Some equipment will be reallocated in order to strengthen the transmissions of R. Reloj. Some of the former programs of the merged stations will be transferred to R. Progreso (BBC). (I hope this is abundantly clear - PT).

ECUADOR - HCLD4-1500 R. Junin ex-1270 (UKVK)

PANAMA - HO.-1180, R. Belen, Santiago (Veraguaz Prov.) is new (BBC)

PERU - OAX2E-1180 R. Maranon is here (officially on 580). O.9.-1545 R. Vision is here; nominally 1520 (MBR, PDX via ARC). O.5.-1160 R. Huanat 2000 is here + SW. OAX5F-1530 LV de Nazca is nominally 1510 (LES, SWB via ARC).

SURINAM - SROS is now noted as "Stichting Radio Stanvaste" or "de Stem van de Revolutie"; slogan is "the Big Sound." Schedule: 0830-0730 weekdays (0830-0530 Sundays) on 600 (ex-R. Paramaribo) and 1030 (ex-ABC Radio) (DSWCI via ARC).

URUGUAY - CWI-550 R. Colonia is 24h, on 551 days, 549 or 550 nights (DSWCI via ARC). (Guess the XR heats up during the days..-PT).

VENEZUELA - YVRE-1190 R. Barinas is 25kw. YV.-1490 R. El Sol is here and not 1480 (HAH, ARC)

Credits: ABI - Asian Broadcasting Institute. ADXN - Australian DX News. ARC - Arctic Radio Club (Sweden). BBC - BBC Monitoring Service (copyrighted). Broadcasting Magazine (USA). DXA - DX Australia. FERC - Far East Radio Club. MWS - Mittelwellen-Spezial-Club (W. Germany). NRC - National Radio Club. REWE - Dr. Richard E. Wood, Abha, Saudi Arabia. SCDX - Sweden Calling DXers. VK - Vashak Korinek, Edenville, So. Africa. NOTE: Material included herein may be reproduced freely in other DX publications providing credit is given to both IRCA and the originating contributor.

Thanks to Bill Harms for locating Kang-hwa Island at 126E23, 37N44. Bill is planning an Asian trip, and specializes in Korean DX. If you need clarification on anything, write him at 3571 Ft. Meade Rd. #417, Laurel MD 20707. HAPPY ANNIVERSARY, IRCA!

The MIAMI VALLEY DX CLUB is proud to be hosting its second annual SWL-DX-LISTENER Forum at the Dayton Hamvention.

Guest speakers at the 1984 Forum include:

***Fred Osterman of Universal Shortwave Radio, who will discuss the UBIX Computer Bulletin Board System he operates.

***Bob Grove, publisher of The Monitoring Times- Mr. Grove's topics will include hot frequencies for monitoring, new equipment and accessories, trends in technology and answers to the most common questions about listening throughout the spectrum.

***Other speakers to be announced.

The Dayton Hamvention has become the largest hamfest in the western hemisphere, covering several floors of equipment display space indoors at the Hara Arena, and covering several acres of outside flea market as well.

This year's Hamvention will be held from Friday through Sunday, April 27 through April 29.

The Listening Forum will begin Sunday morning at 9:30 EST and last for two hours. It will be held in Room #2.

Additional information can be obtained for a GASE from the MIAMI VALLEY DX CLUB, 4666 Larkhall Lane, Columbus, OH 43229.

This is an all band event that should be of interest to all SWLs, DXers and other communications enthusiasts.



NEWS

FEDERAL COMMUNICATIONS COMMISSION
1919 M STREET, N.W.
WASHINGTON, D.C. 20554

This is an unofficial announcement of Commission action. Release of the full text of a Commission order constitutes official action. See MCI v. FCC, 515 F.2d 385 (D.C. Cir. 1975) 648

Report No. 2993 BROADCAST BUREAU March 31, 1984

NEW EMPLOYMENT GUIDELINES FOR BROADCASTERS

The Commission has amended its regulations covering broadcasters (AM, FM, TV, and International Broadcast)(Parts 73, et al) to expand the areas in which licensees are prohibited from exhibiting any prejudices in hiring practices.

Prior to the action by the Commission, broadcasters were enjoined from exercising any prejudicial hiring processes which might affect applicants' qualifications in the following areas:

- Sex
- Age
- National Origin
- Sexual Preference
- Criminal records

To the above list, the Commission has now added the following:

- Ability
- Language(s).

Therefore, after 11:59 PM on March 31, 1984, all broadcasters shall adhere to the following revised regulations regarding hiring practices:

Pt 73.301 (a) No broadcaster shall be granted a license renewal who has been found, following due process hearings, to have discriminated in its employment practices for any reason whatsoever, including but not limited to sex, age, national origin, religious belief or lack thereof, sexual preference or lack thereof, criminal background or lack thereof, ability or lack thereof, and ability to speak English or Any other language. All hiring shall be by lottery only.

I'M A STICKER FOR
BEA
BATEMAN'S BAY
765
NAROOMA
1584

DXATRON

at the cutting edge

of DX technology

The April upturn in government and commercial orders for our High Tech medium-wave DX engineering services has given rise to many challenging new career opportunities. Our west coast location offers a wide range of academic and research facilities and varied after-work outdoor and indoor sports possibilities.

OPENINGS AVAILABLE NOW

BSET, BSEE, BSCS, or BS Physics required; MS or PhD in DX Engineering advisable.

Beverage Applications Engineer -- 28K

Applicant should be capable of plotting expected directional patterns of horizontal Beverages of various heights, lengths, and terminations over a variety of grounds at a variety of frequencies between 500 and 1700 kHz. Previous involvement with balloon-supported vertical Beverages is also necessary.

Loop Designer -- 30K

Must have hands-on experience with SM2, MW-1, Sanserino, McKay-Dymek, wedge, NRC FET Altaz, Palomar Engineers, and other loop antennae, both of ferrite-core and air-core design. Should be capable of designing MW loops with -90dB side-nulling capability and 60 dB minimum forward gain over a 100-foot longwire.

Software Engineer -- 38K

Must be familiar with programs such as TA-SCAN, BEVUPHASE, LOOPTWEAK, SKITRAX, AMPLITAR, GEOPLLOT, MODULYSER, BEAMIAC, ACCUTUNE, and AUTODX. Must be able to create software analysing Fourier spectral distribution of light-dimmer RF noise. Knowledge of microprocessors, assembly language, and aurora-simulation programming is a plus.

Phasing Unit Service Technician -- 22K

Must be capable of repairing Nelson, Hutton, Herkimer, Connelly, Kazaross, & Hall-Patch type phasing units. Should be able to modify units for improved performance. Multi-layer PC board layout, drill-press operation, and drafting experience desirable. Must interface with sometimes-irate customers.

Technical Writer - Receivers -- 24K

The applicant must present a portfolio of significant technical reviews of receivers including, but not limited to, TRF, R390A, IC-R70, HQ-130A, HF-2200, Joe Worcester superset, Barlow-Wadley, R-1000, R7, and GE Superadio. Articles written should contain modification possibilities including interfacing the receiver to the IRETE-488 Bus and to CADX (Computer-Aided DXing) systems.

* Latin American Liaison -- 50K

Applicant with fluent command of Spanish required to infiltrate Cuban broadcasting. EW/ECM/C-1/007 background wanted. US secret clearance and prior work experience with FCC/MIG/CIA/FBI/Radio Swan/Radio Americas desirable. Travel 90%; private plane provided.

* Supervisor, DX Engineering -- 100K & coffee-machine commission

The applicant must be able to whip subordinates into line. The guys you'll be supervising like to drink and/or smoke their lunch. Some of them have the audacity to say "heck" & "darn" when they go to Klasek GTG's. They listen to "boombox" portable stereos playing 'outlaw' C&W and hard rock. Previous experience as a prison guard, circus animal trainer, or Marine bootcamp drill-sergeant will be helpful. Must be able to handle attack dogs. Gun provided. Applicant must be able to supply the "troops" with a steady supply of Navy-surplus industrial strength coffee.

(* = company life insurance not available for these positions.)

Please send resumes, with salary history & references, in confidence to:

DXATRON
2 Nu-Weson Lane
Silicon Valley of the Jolly Green Giant, CA 92718.2818

THE INTERNATIONAL RADIO CLUB OF AMERICA

CLUB ADDRESSES

Membership Dues, Address Changes, and Renewals:
P.O. Box 26254, San Francisco, CA 94126

Bulletin Material, Sample Requests:

P.O. Box 21074, Seattle, WA 98111

The IRCA Goshie Factory (Publications and Reprints)
P.O. Box 17088, Seattle, WA 98107

MEMBERSHIP DUES

\$16.50 First Class to the U.S.A., Canada, and Mexico. \$6.00 for trial membership! 0 Issues of DX Monitor and a New Member Packet to the U.S.A., Canada, and Mexico. \$18.00 Surface Mail to the rest of the world. \$27.00 airmail to Central America, to Colombia, Venezuela, and the Caribbean. \$30.00 to the rest of Latin America, Western Europe, North Africa, and the Middle East. \$34.00 to the rest of the world. Sample copies of DX Monitor cost 50 cents each or three International Reply Coupons. Make checks and money orders payable to IRCA. Persons living outside the U.S. should make dues payments by check or money order payable in U.S. funds.

The International Radio Club of America is a non-profit organization devoted to the hobby of hearing distant stations on the AM Broadcast Band (Medium Wave). IRCA is a member of ANARC, the Association of North American Radio Clubs.

Club Officers: President--Phil Bythway, 9705 Mary Avenue NW, Seattle, WA 98107. Secretary--Ernest Cooper, Rich Sogalis, Board of Directors--Ernest Cooper, Nancy Healy, Ric Heald, Neil Kezeross, Bruce Portzer, Peter Taylor, Neil Wolfish.

DX MONITOR, the official bulletin of the IRCA, is published 34 times per year, weekly from October to March, twice in September and April, and monthly from May to August. Unless otherwise noted, permission is granted to publish, broadcast, or otherwise reproduce non-copyrighted material appearing in DX Monitor. Provided credit is given to IRCA and the original contributor. Opinions expressed in DX Monitor are those of the original contributors and do not necessarily reflect those of the IRCA, its publishing staff, editors, or officers.

PUBLISHING COMMITTEE: Bruce Portzer (206)522-2521.

Evelyn Portzer, Phil Bythway, Jeff Jelsun

FIRST CLASS MAIL
U.S. POSTAGE
PAID
Seattle, WA
Permit No. 601

first class

19

D. A. NYHOLM
2071 CEDAR STREET
SAN CARLOS CA
94070

Postmaster: if undeliverable, return to
P.O. Box 21074, Seattle, WA 98111, U.S.A.