



DX Monitor

Devoted Exclusively to
Broadcast Band DXing

October 20, 1984

Volume 22, Number 5

Issue Number 694

In This Issue

Sansui CX-990 Review	2	Western DX Roundup	17
The WMDX-2A Phasing Unit	4	Eastern DX Roundup	20
Sports Networks	10	DX Worldwide West	21
Eastern DX Forum	11	Galva, Iowa Bandscan	23
Western DX Forum	13	No News is Good News	23
Flutter Jamming	16	Back Cover	--

No CDXR this week due to no reports. And DXWWE will be back again shortly.

To start out this week's issue, I thought I'd tell you a little about what I did last Monday. Phil, Jef, and I put up a 2000' beverage antenna east of Seattle and DXed all night Sunday night/Monday morning. At sunrise, we pulled in the wire, and I went straight to the office and put in a full day's work. After work I went to a meeting that lasted for an hour or two, then came home, threw together the bulletin as quickly as possible, and then packed my suitcase so I could spend the rest of the week on an out-of-town business trip. Given those circumstances (especially at the advanced age of 33), it's no surprise that some odd statements showed up on the front page of last week's DXM. First of all, it was the October 13 issue, not October 6, and it was volume 22, number 4, not number 3. Finally, 99 Nights on Medium Wave costs \$7.00 airmail to the U.S. and it's available from Wilhelm Herbst Verlag. I guess I'll have to give up some of this wild, carefree living I've been doing....

Flash Tips

Some more hot flashes: from Pat Martin, both directly and through several intermediaries, comes the news that KSWB in Seaside moved to 840 kHz on October 13 at 6 am....WNRK-1260 in Newark, Delaware will test 0000-0230 ELT with tones, music, and IDs; power output is 1 kw. Send your reports to Dave Schmidt, CE, WNRK, Box 8152, Newark, DE 19714....WLS-890 will be off the air for maintenance on December 17 from 0000 to 0500 CST....KXL-750 had some problems when they boosted nighttime power to 10 kw. They were 10 kw for about 3 hours and then their transmitter fried itself. They've been using the old 1 kw rig since then, but by the time you read this they'll be back to 10 kw.

BOOK REVIEW - THE INTERNATIONAL LISTENER'S GUIDE

A lot of us tune the shortwave bands as well as the broadcast band. And without some guide to stations and frequencies, listening to shortwave can be a wild goose chase. Bernd Friedewald in West Germany has been publishing, for a couple of years, the International Listener's Guide, a 40 page directory of external services in English. About the same size as DX Monitor, the ILG lists stations in time order. Don't let this simple format fool you! Bernd has squeezed a lot of information in to help you find the best time and frequency to listen to. A few bonuses have been thrown in, like the world frequency survey (which stations use which frequency regularly).... DX-programs and World News programs are listed conveniently on each page. Overall, the ILG is up to date, well-organized, and a bargain at \$6.00 for four quarterly issues. To subscribe, write the U.S. representative: Rob Harrington, Box 3434, Littleton, CO 80161. (Reviewed by Dennis Kibbe).

We've still got a substantial backlog of articles and lists waiting for publication in DX Monitor, so if you sent something in, be patient and you'll probably see it published eventually. In the meantime, sit back and enjoy the material in this week's DXM. 72, er 73, bp.

Review of the Sansui CX-990
Stereo AM/FM Car Receiver

by Steve Mittman

The Sansui CX-990 is Sansui's top of the line (best) car receiver. It also was the first stereophonic AM automobile receiver on the market and is still (as of 6/84) the only car receiver on the market capable of decoding all four AM stereo systems being used in the United States (Harris, Kahn, Magnavox and Motorola), and does so automatically.

I had been needing a new stereo system for my car and had been waiting impatiently for this unit to be made available. Originally promised for last September, following numerous delays, it wasn't finally introduced into the marketplace until this past April.

The CX-990 is a fantastic piece of machinery. The receiver is loaded with features, and delivers true high fidelity stereo, with full frequency response. And since it decodes all four AM stereo systems automatically, the listener need not be concerned about which particular system is being used by which station; thus the practice of "keeping track" of station and system becomes about as obsolete as caring about the particular brand name of any other piece of equipment a station may be using. On a scale of 1 - 10, 10 being highest, I would rate the CX-990 a "9." The main reason it doesn't get a full "10" is due to the fact that it has two major disadvantages. The first "disadvantage" is its high price. The unit's Manufacturer's Suggested Retail Price is \$519. Additionally, it is unamplified, which means that it requires a separate amplifier, or if you have front and rear speakers -- as I do -- you will need two amplifiers or a dual-amp. And since this really is a great stereo receiver, one might as well go "all the way" and get a (passive) graphic equalizer (EQ) for the finest sound quality. It so happens that Sansui tends to be slightly high priced and are also shrewd in that no other manufacturer's components are truly compatible with their line of products. Per a lot of inquiring around, I learned that basically it would be all right to have the Sansui CX-990 preamp outputs modified for another (less expensive) brand amplifier, but since the Sansui EQ (SG-7) can plug directly into the back of the CX-990, to avoid or reduce distortion, I should really get the Sansui SG-7 EQ. Of course, no one in their right mind would walk into a stereo store and purchase something at the "asking" price, but with only three stores in the entire greater Los Angeles area carrying the unit (only authorized Sansui dealers), I really didn't have too much bargaining power, hi. Nevertheless, I managed to get \$55 knocked off the CX-990, picked up a factory reconditioned \$250 Kenwood dual-amp for \$95, and the Sansui EQ for \$100. With the preamp modification (\$20) and tax, that was 725 bucks right there. (And basically all I was really buying was "the radio"! (Thank goodness I'm happy with my speakers, hi!)) Relatively speaking, the CX-990 (and required additions) may be worth the price -- but it's still expensive, hi, and unfortunately is probably out of the price range of most consumers. If stereo truly is the "savior" of AM radio, I think the price of such receivers will have to first drop significantly -- especially since most people don't even listen to AM radio anyway.

The second major problem, especially for we DX'ers, is that the unit comes with built-in mutes for both AM and FM. The mute is basically an "all or nothing" function such that unless the incoming signal strength of a station is sufficiently strong, the mute will cut in and blanket the channel with absolute silence. (The reasoning behind this feature is that supposedly the average listener doesn't listen to "weak" stations. To them, such stations are just "noise," so by the mute prohibiting reception of everything except strong locals, the average listener is fooled into thinking that it is a great radio as there is never any "noise" and everything sounds so "crisp and clean.") The mute on this unit was so bad that as I was driving down the freeway listening to FM locals and would pass under bridges, the mute would kick in! (Yes, this was happening with FM, so you can imagine how bad the AM was!) Luckily (for me, anyway), it so happens that Sansui headquarters is located in nearby Carpton. I brought the unit in and when I asked them to remove the mute, they tried to explain to me that a lot of "thought" went into the feature and that it "improves" reception. When I pointed out that I couldn't even receive Anaheim, let alone Boise, Seattle and New Orleans, I think I blew them away! They agreed to take it out, and then "matter of factly" told me that it would be ready in four weeks! After "explaining" to them that I couldn't wait, they relented and told me that it would be ready in a couple of days. When I came back, I suspected that the mute had been turned down all the way (but not "off"), and when I asked the technician if I could test it, he admitted that there might still be some "extremely weak" stations I might still not be able to hear. I reiterated that I wanted absolutely no mute whatsoever. He sighed and said that that would require going into the circuit boards and removing some diodes. I said fine; that's what I wanted. It was ready the next day and now works beautifully! (And yes, I can now hear WWL, et al.) All in all, I must admit that Sansui was friendly and cooperative, but the reason for this great elaboration is to warn you that if you plan to purchase this unit, no doubt you will be unhappy with the mute feature, so when you send it to them, be prepared to wait four to six weeks, and also make certain that you clearly explain that you want the diodes in the circuitry for the AM and FM muting completely removed. (That mute feature is a worse threat to DX'ing than the breakdown of the clears, hi.)

Those two problems aside, the Sansui CX-990 is a great receiver, and I have nothing but praise for it. As mentioned earlier, this unit delivers high fidelity AM stereo, and lest you think that AM stereo is limited to the three-kilohertz bandwidth, but with two channels (stereo; but hardly "high fidelity"), don't be fooled. With a good receiver, and

if the stations are using good equipment (which is probably the case in large, competitive markets), the stereo separation is excellent and the frequency response rivals FM. (In "blind" tests conducted with my friends, they were unable to tell if I was tuned to FM or AM.) I've also extensively compared the various AM stereo systems in an attempt to evaluate which is the best, and I would have to conclude that if there is any real difference, it is insignificant. If there is any true dämoneering factor, it would have to be simply the relative signal strengths of the stations. For example, locals KFI (Motorola) and KHJ (Kahn) seem to have great stereo signals, full of high fidelity sound, but they also happen to be the strongest stereo AM stations on the dial at my location. (Though that is not to say that distant stations don't also sound good in stereo. I've monitored KBOI - Boise and KSL - Salt Lake City in stereo, and even over those great of distances, the stereo is still quite good.)

The CX-990 has a stereo indicator light which works for both FM and AM. Unlike the portable AM stereo Sony SFF-A100 unit (whose light is really only a carrier indicator), with the Sansui unit, if the station (either FM or AM) is being received in stereo, the stereo indicator light will illuminate; otherwise, if the station is being received in mono, it will remain off. Actually, to be precise, the light indicates the presence of a pilot signal transmitted by the station. Theoretically, if a local station is broadcasting in stereo, but isn't transmitting the pilot signal (though that would be unlikely), the station would be received in stereo though the stereo indicator light would stay off.

Since this receiver decodes four different AM stereo systems, one interesting facet about the unit is that whenever an AM stereo station is tuned in, for a brief moment the station is received in mono before the stereo occurs, as it takes a moment for the circuitry to decode which stereo system is being utilized and for the appropriate components to be activated. Interestingly, whenever a frequency is tuned in in which two or more non-locals are mixing together (even if they are mono), the stereo light always comes on and an artificial stereo effect is produced! (This won't occur if only one mono station is being received, or if one of the stations is a local (i.e., strong carrier) and another station can be heard under it.) Apparently the two or more stations mixing together confuses the circuitry into believing that a stereo signal is being received, and the signals are fed through a stereo mode, creating a synthesized "stereo" effect! Since my front speakers reproduce treble better and my rear speakers reproduce bass better, a "quad" effect is created, and the two or three stations seem to "echo" and swirl around the car, producing quite a sensation! (Somehow, DX'ing on my TRF was never quite the same, hi!) (And now I see why the radio normally comes with a mute!) Occasionally during this "stereo" effect, due to fading or other factors, the radio will momentarily "cut off," then quickly come back on, followed (as usual) with the "stereo" signal. Apparently the receiver suddenly decided that now a different stereo system was being received, and rerouted the signals through the "new" mode! Since two non-locals mixing will always cause the "stereo" effect and light to come on, it is only possible to be certain of receiving true stereo reception from locals or from clear stations. (To illustrate, one evening I believed I was receiving stereo reception of WBAP - Ft. Worth. However, upon closer inspection, I also noted faint Spanish in there, which would have activated the "stereo." The following evening WBAP was alone, and the light remained off and there was no "stereo" effect.)

As mentioned earlier, this is Sansui's top of the line car receiver, and as such, besides automatically decoding all four AM stereo systems, is loaded with additional features which contribute to making this receiver "top notch." As these other features will also figure in one's decision about purchasing this particular unit, they are herein briefly listed: * Digital readout; * Quartz-locked PLL Synthesizer; * Computer Logic Tape Transport (computer circuitry prevents tapes from becoming snagged or jammed); * Dual-amp balancer/fader; * LED level meters (stereo); * 24 presets (6 x 3 FM; 6 x 1 AM); * Auto Reverse; * Tuner Monitor (can switch from tape to radio without ejecting tape); * Amorphous tape head; * Dolby B and C noise reduction; * Normal/Metal tape capability (actually, normal bias or CrO₂ or better); * Loudness Control; * Separate bass and treble controls; * Direct EQ capability; * Mono Switch (improves weak signals); * Manual Tuning (used in conjunction with Mono Switch); * Auto Seek (seeks next or previous station); * Preset Scan (scans 6 preset stations); * FM Local/DX Switch (50 db FM signal reduction; becomes obsolete with mute removed); * Auto Music Program Search (automatically locates beginning of current or next song); * Intro Scan (scans tape, playing first 10 sec. of each song); * Clock (5 sec. display, then freq. is displayed again; cont. display during tape operation); * Complete green and red illumination of all controls; * Illumination reduced by half when lights are on; * On/off control automatically raises/lowers power antenna; * High or low output voltage (to amps); * 9 or 10 kHz. spacing; * Tuning range: AM (530 - 1620 kHz., 10 kHz. spacing); FM (87.9 - 107.9 MHz., .1 MHz. spacing).

Conclusion: There are, of course, advantages and disadvantages with AM stereo reception. AM doesn't suffer from multipath interference, can be received behind hills, and has a much greater range than does FM. However, all the problems of regular AM reception still exist. The stations still suffer from noise, fading, and nighttime skip QFM. But if one wishes to listen to a local AM station in stereo, this receiver has demonstrated that AM can provide the same high fidelity, full frequency sound that is normally associated with FM. So if you are excited about AM stereo, want an excellent receiver, and are prepared to wait a few weeks for Sansui to remove the AM/FM muting (a must!), then the Sansui CX-990, loaded with great features, will be a car receiver with which you will no doubt be quite pleased.

THE MWDX-2A PHASING UNIT
Mark Connelly - WALION DX Labs - 25 JUN 1984

The following article includes the schematic for the MWDX-2A phasing unit, an enhanced version of an earlier unit, the MWDX-2, which was described in February 1984 issues of DX News (National Radio Club) & DX Monitor (International Radio Club of America).

The earlier (MWDX-2) article contains worthwhile construction details pertinent to the MWDX-2A: notably with respect to chassis drilling and the T1, T2, C1, & C2 vectorboard-mounted subassemblies. Interested individuals may obtain a copy of the MWDX-2 article by sending a self-addressed stamped envelope to: MWDX-2 Plans c/o Mark Connelly - 30 William Road - Billerica, MA 01866.

The MWDX-2A eliminates a couple of MWDX-2 features not deemed, after evaluation, to be overly useful. Improvements have been made in the dual input tuners so that virtually any length wire pair may be tuned & then used to produce phasing nulls of dominant signal(s) (be they of a meaningful-communications nature or a noise-source origin), thereby permitting weaker 'sub-dominant' stations to be audible. The main stipulation in this scheme is that, since the S6 length switch controls both lines (in the interest of tuning simplicity), the two wires used should be of comparable (+/- 25%) lengths.

The length switch (S6) allows wire aerials whose reactance is either capacitive or inductive to be tuned successfully; it also permits the use of frequency range switches of only 4 positions to cover the band of interest. Note that, with proper inductor selection (see Table 1), one can build a longwave (LW) version of this unit, a medium-wave (MW) version, or a tropical-bands (TB) version.

MWDX-2 documentation can generally be used in conjunction with the notes & drawings of this article to guide the construction of the MWDX-2A. The hole list will be the same, with the following exceptions:

- Right Side - delete J6 (holes 5, 6, 7)
- Left Side - add S6 (DPDT on/off/on toggle)
 - hole 6 = S6 shaft (X=0, Y=1.5, DIA=0.25)
 - hole 7 = S6 tab (X=0.25, Y=1.5, DIA=0.113)

The revamped level-equalising/Q-spoiling pots (R1, R2) scheme permits smoother level/Q adjustment than the arrangement in several previous phasing unit designs.

Tuning and Nulling Procedure Abstract

NOTE: The receiver to be used should have a shielded input. Operation with portable radios using a coupling-coil input on a ferrite rod antenna may not always be successful because of stray pickup by the rod.

1.0 Two Wire Phasing

1.1 Setup

1.1.1 (Inputs)

- Connect wire #1 to J1.
- Connect earth-ground wire to J2.
- (no connection to J3)
- Connect wire #2 to J4.

1.1.2 (Output)

- Connect the output cable from J5 to receiver or amp. input.
- Output cable must be of a coaxial type; amplification of MWDX-2A output by means of a tunable (e.g. APT-type) or broadband (e.g. BBA-type) RF amplifier is suggested if wires shorter than 1/10 wavelength (approx. 30 m./ 100 ft. at 1 MHz) are being used.

If an amplifier is put between the MWDX-2A output and the receiver input, switch the amplifier to its 'Off/Bypass' mode, thereby (initially) routing the MWDX-2A output directly to the receiver.

1.1.3 (Controls)

Set C1, C2, & C3 to midrange / half-meshed.
Set R1, R2, & R3 fully counterclockwise (CCW) = maximum Q.
S1 & S2 will be set in step 1.2.
Set S3 to '1' (= Line 1 tuner)
Set S4 to 'Wire'.
The position of S5 is irrelevant during this step.
Set S6 to 'short' if the wire is shorter than 1/10 of a wavelength; otherwise, set S6 to 'normal'.

1.2 Line 1 Tune

- 1.2.1 Run S1 through its 4 positions; leave it on the position yielding the strongest desired-frequency signal. (After the unit has been used for a while, a frequency-range-switches versus frequency 'look-up table' can be prepared for a particular pair of comparable-length wires.)
- 1.2.2 Tweak C1 for a peak. If maximum signal occurs with C1 fully meshed, then set S1 one position CCW (= higher tank L) and re-adjust C1 for a peak. If maximum signal occurs with C1 fully open, then set S1 one position CW (= lower tank L) and re-adjust C1 for a peak.
- 1.2.3 If, in step 1.2.2, a well-defined peak couldn't be obtained, try each of the other two possible positions of S6 (length switch); each time this is done, re-do steps 1.2.1 & 1.2.2. The S6 position which enables you to get the strongest, sharpest peak is the one which should be maintained throughout subsequent steps.
- 1.2.4 Once Line 1 has been peaked, set R3 to midrange.

1.3 Line 2 Tune

- 1.3.1 Set S3 to '2' (Line 2).
- 1.3.2 Set S2 to the position corresponding to that of S1, as set during section 1.2.
- 1.3.3 Tweak C2 for a peak. Apply the concepts of step 1.2.2 (with respect to S2 positions instead of those of S1) if proper C2 peaking doesn't occur.

1.4 Level Equalisation

- 1.4.1 Switch S3 back & forth from 1 to 2 (to 1, etc.): if the '1' position has the stronger signal from the station to be nulled, adjust R1 until the Line 1 & Line 2 levels are equal. If position '2' has the stronger 'pest station' signal, adjust R2 to equalise the Line 1 & Line 2 levels.

1.5 Null Initiation

- 1.5.1 Set S3 to 'N' (Null).
- 1.5.2 Flip S5 back & forth from 'a' to 'b' (to 'a', etc.). Leave S5 on the position with the lower 'pest-station' signal / greater evidence of subdominant stations.

1.6 Nulling -----

- 1.6.1 Tweak C1 to get a 'dip' (= point at which adjusting the control either CW or CCW strengthens the station to be nulled). Re-adjust whichever pot had been tweaked in step 1.4.1 (try to get deeper 'dip'); if neither pot had previously been tweaked, try using R3 to enhance the dip. Tweak C2 for further dip (null) enhancement.
- 1.6.2 Repeat step 1.6.1 as long as continued improvements in the null are noted.
- 1.6.3 Finalise the null (when use of the main controls becomes too touchy; this may be accomplished by adjusting the vernier (fine-tune) controls C3 & R3).

1.7 Amplification -----

- 1.7.1 Set S5 to the opposite position from that yielding a null.
- 1.7.2 Treat the MWDX-2A phasing-unit output as a signal source and follow the normal steps for the external amplifier used (whether tunable or broadband) to get maximum level at the desired frequency, without creating objectionable spurious signals. (Such spurs usually result from the amp. being overdriven by strong local stations on frequencies not necessarily close to the operating frequency.)
- 1.7.3 Set S5 back to the null-producing position. If necessary, touch up the null by using C3 & R3 (this isn't usually needed). Increase amp. gain, if possible & if necessary, to bring weak desired station(s) (left after nulling the 'pest') up to readable level.

2.0 Loop versus Wire Phasing -----

NOTE: The loop to be used (whether active or passive) should be equipped with a 'Q-pot'. Such a pot (recommended value 50K or 100K, linear taper) should parallel the main loop L-C tank. A provision to switch the pot out of the circuit is advisable so that, when phasing is not being done, the loop can be used in its normal high-Q state. The Q pot shaft & case should be grounded to minimise hand capacitance effects.

2.1 Setup -----

Follow step 1.1 with the following changes: Loop output cable to J3. No connection to J4. The positions of R2 & C2 are irrelevant. Set S4 to 'Loop'.

2.2 Line 1 Tune -----

Perform step 1.2.

2.3 Line 2 Tune -----

2.3.1 Set S3 to '2'.

- 2.3.2 Turn loop power on, if an active loop is being used. Set loop's Q-pot to maximum Q position. If the loop has a frequency-range switch, set it to the proper position for the desired frequency. If the loop has regeneration capability, set the regeneration switch to 'Off'.

2.3.3 Tweak the loop's tuning capacitor for peak desired frequency signal. Aim the loop for (what you think) is the direction of the wanted subdominant station(s), regardless of the dominant's bearing.

2.3.4 Set the loop Q-pot to midrange if a 100K pot, or about '1 hour' (1/12 turn) from the maximum Q position if a 50K Q-pot is used.

2.4 Level Equalisation

2.4.1 Follow step 1.4.1 except substitute 'Loop Q-pot' for 'R2'.

2.5 Null Initiation

2.5.1 Perform step 1.5.1.

2.6 Nulling

2.6.1 Follow step 1.6.1 except substitute 'Loop Tuning Capacitor' for 'C2'.

2.6.2 Repeat step 2.6.1 as long as continued improvements in the null are noted.

2.6.3 Perform step 1.6.3.

2.6.4 'Absolute' null finalisation may be aided by slight re-positioning of the loop.

2.7 Amplification

2.7.1 If amplification of MWDX-2A output is required, perform all steps in section 1.7.

Construction

This unit is very similar to the MWDX-2. If you follow the MWDX-2A schematic (Figures 1 & 2) and the MWDX-2 hole list (taking note of the previously-mentioned modifications), construction should proceed in a relatively straightforward manner.

The MWDX-2 article details of the C1 & C2 'floating' variable capacitor card subassemblies and of the T1 & T2 RF transformer card subassemblies are still valid for the MWDX-2A.

The chassis box used is also the same, a 10 X 6 X 3.5-in. bare aluminium box (Mouser # 537-TF-784).

Conclusion

The MWDX-2A should prove to be a worthwhile DXing tool, for nulling both unwanted dominant stations and unwanted manmade noise (e.g. light dimmers, TV's). Use of an external output amplifier (broadband OK in country, tunable recommended in city) will enhance the MWDX-2A's operational capabilities, allowing use of much shorter wires than anyone ever thought about phasing back in the early '70s, when phasing units became popular with medium-wave Trans-Atlantic DXers in the Boston area.

It should be noted that the MWDX-2A is but one of many considerably different phasing unit designs generated here and in the 'labs' of other DXers. Medium-wave DXers have done the most research & development in this area; however, some designs have appeared in the longwave-DX and amateur radio press. Interestingly, most ham interest centres about the 160-m. band (1800-2000 kHz).

Phasing, like looping, provides the deepest nulls when signal vertical & horizontal arrival angles are not fluctuating greatly in short-term real time. It is on the frequencies below 5 MHz that these techniques have traditionally exhibited their greatest worth.

FIGURE 1 (OF 2)

SCHEMATIC : MWDX-2A

PHASING UNIT

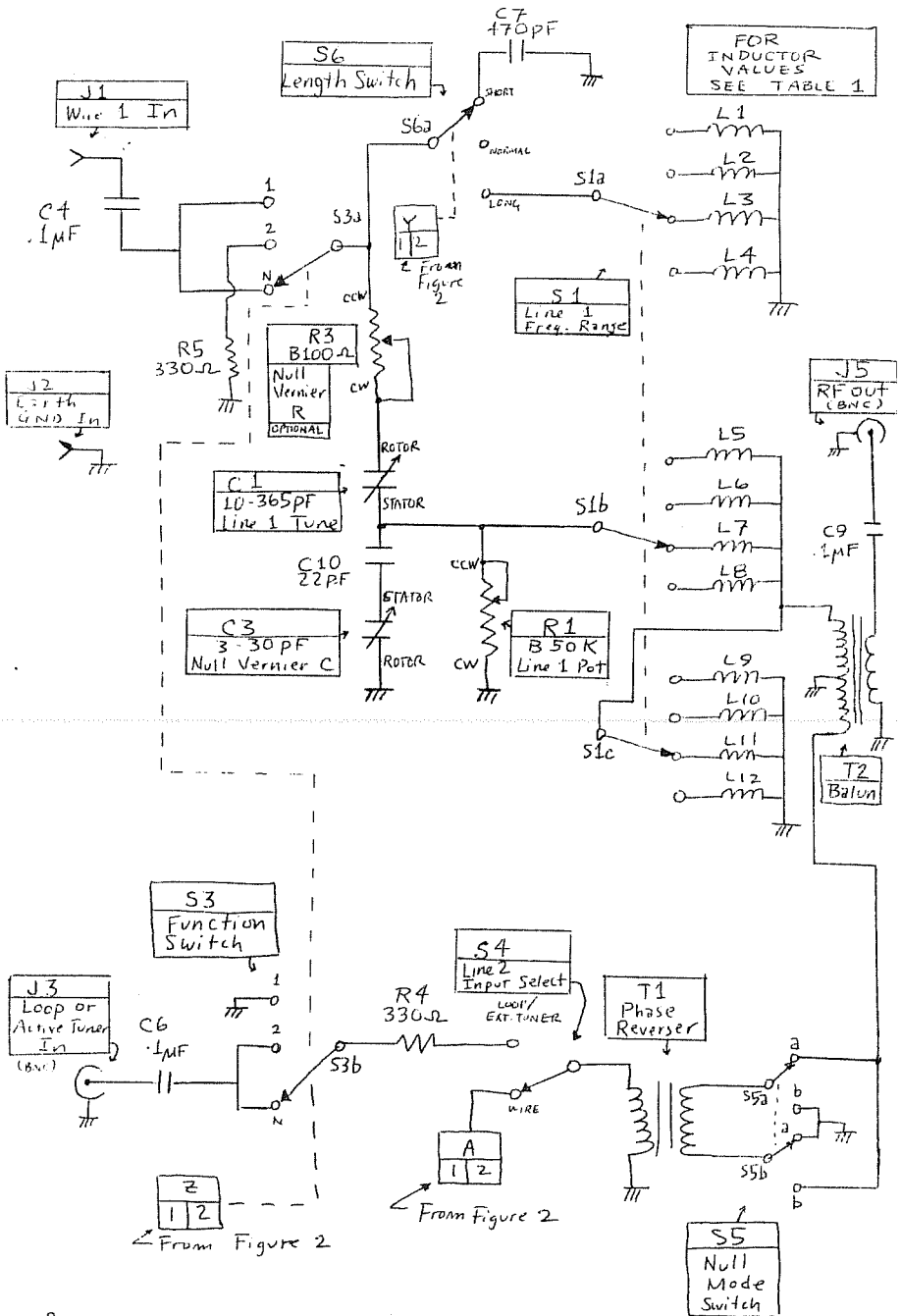
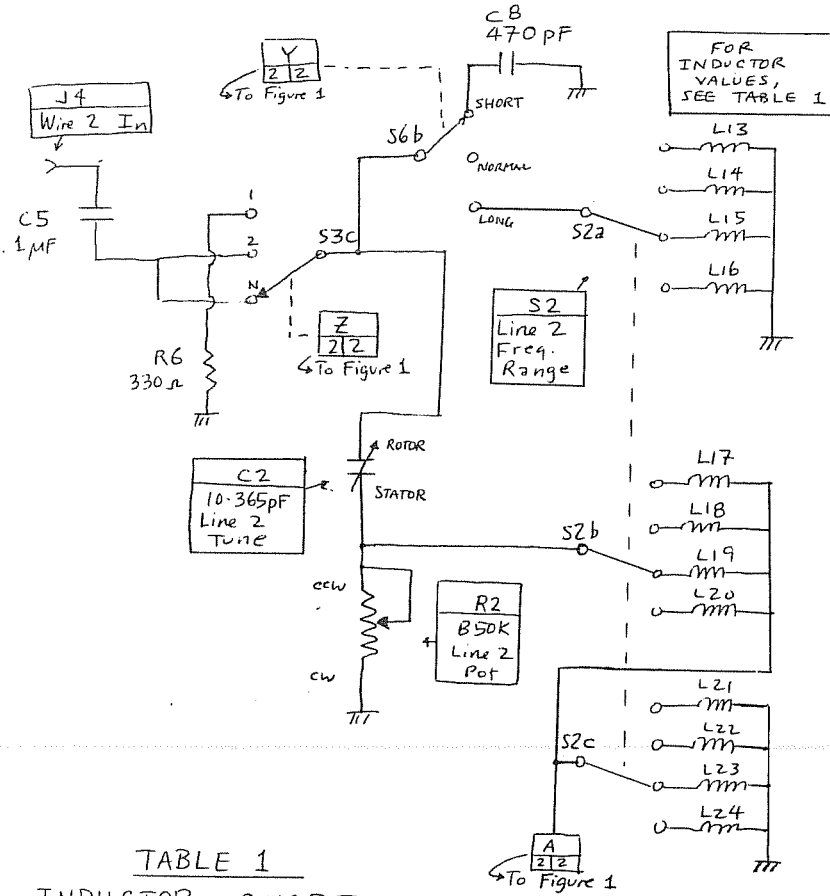


FIGURE 2 (OF 2)

SCHEMATIC, MWDX-2A

PHASING UNIT



FOR INDUCTOR VALUES, SEE TABLE 1

TABLE 1

INDUCTOR CHART

L #	LONGWAVE 150-600 kHz	MEDIUMWAVE 500-2000 kHz	TROPICAL-BANDS 1600-6400 kHz
1, 13	1.5 mH	150 μH	10 μH
2, 14	680 μH	68 "	4.7 "
3, 15	330 "	33 "	2.2 "
4, 16	150 "	15 "	1.0 "
5, 17	4.7 mH	470 "	33 "
6, 18	2.2 "	220 "	15 "
7, 19	1.0 "	100 "	6.8 "
8, 20	470 μH	47 "	3.3 "
9, 21	1.0 mH	100 "	6.8 "
10, 22	470 μH	47 "	3.3 "
11, 23	220 "	22 "	1.5 "
12, 24	100 "	10 "	0.68 "

Sports Networks

Hello everybody and welcome to Sports Networks. A brief introduction before I get into the heart of the matter here, hi. I'm in my mid-20's, a DX'er for ten years and a sports fan for even longer! I've lived here in the Cincinnati area for two years and before that I had lived all of my life in Louisville. Here in Cincinnati I work as a salesman for a temperature controls manufacturer. Besides my interests in BCE DX'ing and sports I also enjoy old radios, SW DX'ing, and am working on passing my novice class license test. Now that I've bored you (hi) on to the column!

I hope to compile information on both major and minor league sports teams, however, I'll also be interested in finding any information on college and other sports that you make available to me. And that's an important point--this column needs your support for it to be up to date and useful to everyone! If you've got any information pass it on. I can only promise putting your name in lights!

OK, let's start out this time with a listing of NFL flagship stations:

Atlanta Falcons	WCST-GA- 920	Miami Dolphins	WTOB-FL- 610
Buffalo Bills	WEEN-NY- 930	(Spanish) WQBA-FL-107.5	
Chicago Bears	WEEM-IL- 790	Minnesota Vikings	WCSC-MN- 830
Cincinnati Bengals	WCRC-OH- 590	New England Patriots	WBBI-MA- 590
Cleveland Browns	WHY -OH-1480	New Orleans Saints	WAF -LA- 870
Dallas Cowboys	KRIB-TX-1080	New York Giants	WNLW-NY-1130
Denver Broncos	KCA -CO- 850	New York Jets	WABC-NY- 770
Detroit Lions	WJR -MI- 760	Philadelphia Eagles	WIF -PA- 710
Green Bay Packers	WTMJ-WI- 620	Pittsburgh Steelers	WTAE-PA-1250
Houston Oilers	KTRH-TX- 740	St. Louis Cardinals	KMOX-MO-1130
Indianapolis Colts	WIBC-IN-1070	San Diego Chargers	KGOO-CA- 600
Kansas City Chiefs	KOMC-MO- 910	San Francisco 49ers	KORO-CA- 740
Los Angeles Raiders	KRLA-CA-1110	Seattle Seahawks	KIRO-WA- 710
(Spanish) KTNQ-CA-1030		Tampa Bay Buccaneers	WTUN-FL- 620
Los Angeles Rams	KMPC-CA- 710	Washington Redskins	WMAJ-DC- 630
(Spanish) KIVE-CA-107.5			

That's a start on the NFL. So far my requests to the teams for network and announcer information has resulted in one reply from the Pittsburgh Steelers, a list of the 1983 network. So I'm especially interested in any help I can get to compile the NFL Networks.

I do have a couple of random notes from the NFL. The Cincinnati Bengals are also heard on WTVM-OH- 610 and WQCH-IN- 99.3 with the announcing team of Phil Semp and Don Burrows. The Indianapolis Colts are also heard on WCWO-IN-1190 and WLIV-KY-1240 with the announcing team of Bob Lamey and Jerry Baker.

Some assorted information from the college scene:

U. of Cincinnati Bearcats	WCAT-OH-1260	Red Pickett, Jim Wood, and John Stoffa
U. of Louisville Cardinals	WEAS-KY- 340 WAMZ-KY- 97.5	Len Varco and Jack Tennant
Miami U. Redskins	WCXY-OH- 97.7	

Besides the assorted flagship stations above there is a little additional information from the colleges. The University of Kentucky Wildcats are heard on WHAS-KY -840 and WCKY-OH-1520. When the wildcats are in action the University of Louisville Cardinals are shifted from WEAS-KY- 840 to WAMZ-KY- 97.5 on the above flagship information. The Indiana University Hoosiers are on WQCH-IN- 99.3. The Notre Dame Fighting Irish are heard on WCLU-KY-1320 and the Purdue Boilermakers are on WTSB-OH-1050.

And a mistake already, hi, as I left out WCIV-KY-1220 are on the Cleveland Browns Network.

WCIN-OH-1480 carries Princeton High School Football while WQCH-OH-1450 broadcasts a regular Friday night game of an area high school team. And WFPB-OH- 910 carries all of the action of the Middletown Middies.

SPORTS SHORTS...An update of a couple of items from last season...the International Hockey League's Fuskegeon Mohawks were heard on WKBZ-MI- 850 and the Peoria Prancers were heard on WTKR-IL- 94.3. 73s.

EASTERN DX FORUM

RICHARD EVANS
P.O. Box 1294
NORTH WALES, PA 19454

Bill Townshend, 4500 Connecticut Ave NW, Apt. 901, Washington, D.C. 20008
(cont. from last week...) As of August 1st, 1700 EDT, WEAM-1390 went "Redneck", going from big band to country, simulcasting with its FM outlet WMZQ-98.7, changing its calls in the process. WGAY-1050 has dropped its EZL format, leaving it to its FM outlet on 99.5, and taking on some of WWRC-980's talk shows under the new call WNTR. While DXing midday during lunch break at work, when I null out WINX-1600, all I get is WPGC-1580 slop, and when WNAV-1430 (if I get tired of the midday oldies, hi) is nulled, I have heavy WOL-1450 splash. However, I did get WIVE-1430, Ashland, Va. when WNAV was off the air. In fact, I have to null out the splatter from WPGC in order to hear WINX, and WOL has an occasional oldie during Midday, usually a Motown record. Fall has set in although summer can't be counted out yet here in the mid-Atlantic region, which means a few more days of trop Cx on FM and TV, but with cooler Wx, less FM/TV DXing and more time on the ECB dials. 73.

Gerry Thomas, P. O. Box 2036, Pensacola, Florida 32513

Well, another season is upon us and, so far, things are looking pretty good. Nightly checks of the band during the middle of September have revealed lots of TA carriers. Very few, however, have resulted in audio at this location. Still, hope reigns eternal. I guess the biggest news around here this summer was my acquisition of a new wife, two new kids, another dog, two hamsters, and an infant squirrel. Needless to say, some adjustments from bachelorhood have had to be made, hi. Nonetheless, I have been able to maintain a fairly consistent DXing schedule here of late (a therapy of sorts, apparently) mainly because everyone goes to bed very early. Another aid to logging some DX time is that I was recently able to get a surplus R390A assigned to the Naval Laboratory I work in. It's now set up in my lab and is connected to a 30-foot-longwire on the roof. It's built like a ship and performs amazingly well considering the use it's seen. At any rate, I'll probably be "working late" quite a bit this winter, hi. My ham upgrade exam in San Diego last May was only partially successful--perfect on the theory, perfectly embarrassing on the code. Anyway, I'm still KB4JFM but a Technician. This really isn't all that devastating because, after several months on the Novice bands, I find that I still enjoy listening for DX more than I enjoy exchanging weather data with other novices on CW, hi. I notice that Kenwood has come out with a new portable SW radio. I think it's called the R-11 and is very similar (if not identical) to the Toshiba portable in last year's WRTH. It's around a hundred bucks but uses analog read-out. Incidentally, 47th Street Photo in NYC still has the Sony ICF-6500W but they've upped their "close-out" price from \$79.95 to \$89.95, apparently due to demand. They also said that the 6500 was still listed in next year's Sony catalog, so maybe Sony has had second thoughts about discontinuing it. That's about it from here, so....73's. (Congrats, Gerry...and best wishes in the marriage--rce)

J.B. Hughes, 13720 Gulf Blvd., Apt. 401, Madeira Beach, Florida 33708

Greetings. Still more on changes in Florida radio. WBSS-980 is U5 5000/1000 with no network affiliations. WTYM-1300 is U4 5000/1000 (not 5000 and daytime only as I reported earlier--please, not the penguin flipper!). Hours are 0600-2400, except Friday night and Saturday night when they're 24 hours. The address for WBAS-1330 is 523 North Summit, Crescent City, and it's affiliated with Florida network and RKO-2. The address for WMGI-1390 is 4908 N.W. 34th Street, Suite 11, and they're affiliated with RKO. The address for WTLN-1520 is Box 17000, Orlando, 32860. WCCZ-1550 is D1 1000. WGTO-540 is U4. WVTY-1470, ex-WFNN, is now country. They're affiliated with UPI and their address is 1437 Springer Drive, New Port Richey, 33568. Finis. That about does it on changes. Let's hear from some more Florida DXers. 73's.

Neil Kazaross, P. O. Box 1908, Ogunquit, Maine 03907

Hello everybody. TA Cx continues to improve here. Many nights now have TA's audible on about 50 channels and carriers detectable on quite a few others. Of course, not all these TA's are audible at the same time. Some are only heard at or shortly after sunset here (before they s/off) or during early morning in Europe, Aftica after they s/on. Quite a few TA's,

mostly Africans, are still on the old, pre-1798 channels. I've sent info to DXWW-II regarding off-channel TA's in hopes that it will be helpful to some DX'ers. DXWW-II says Belize-834 moved to 830 and George Hakiel and I haven't heard it on 834 in a while. There goes a very easy country-- although 830 may be loggable in excellent Cx. Most interestingly, the past two mornings, I noted 3 split carriers which may be of TP origin! The time I was listening was around 0530 to 0550, over 3 hours past sunrise in Europe. Weak carriers were noted on 774, 837 and 1035. Hakiel noted a 1035 carrier at 0700 check yesterday and he has noted this before once or twice. Nothing on 846 or 1017 noted and 738 good possibility Tahiti is off at this time. I do hope that this will be the season that TP's make it this far east! Yesterday, I discovered that I can run a TA Beverage at 40 deg. to 45 deg. and avoid the lots in the growing development on the other side of the river. Thanks to limited rain this summer, I was able to walk across the river and my checking indicates that at least 1/4 mile (400 meters) is available for a new Beverage antenna which should dramatically improve my DX to Europe. I will start putting up this antenna tonight after work. It is no easy task to string great lengths of wire thru dense woods and over varying terrain but it sure helps DX. Once again, I'm happy to correspond with anybody concerning foreign DX and antennas and their accessories. 73.

Karl J. Zuk, 154 Old Post Road North, Croton-on-Hudson, N.Y. 10520

Thank you to all the folks in Seattle for giving me the editor of EDXR position. It is quite interesting getting direct mail from so many club members. It makes you feel like it is more of a club than just a newsletter. Please keep sending me reports! My mailbox is getting cold already! I have recently been transferred to ABC Sports from ABC Radio Net and have become a real jet-setter. Since late July, I have spent 5 weeks in L.A., followed by weekends in Williamsport, Pa, Rutherford, NJ, Seattle, Wash, Anaheim, Calif., Pittsburgh, Penn., and most recently Nebraska. I'm seeing lots of football and baseball, but unfortunately, I'm not a sports fan! It only figures, right? The lifestyle is very strange. You know you are in a strange city because you don't know where you are. You find yourself in a room that looks the same as the last one, with baby soaps in the bathrooms and room service menus, etc. and it all blend together. At times it is fun, but the hours usually run 0600 to 2100 or 2200 each day you are not travelling, so you don't get to see a lot of wherever you land. What is very interesting is hearing all the wild and crazy stations all over the country, without lots of fading and static! I go to the DX now, instead of the DX coming to me! In the State of Washington, I was in a national park, and the only thing I could pick up on the CB radio was a station in Italian or Portuguese with English commercials. How bizarre can you get? Fortunately for all of us, I am home for at least two or three days every week, so there is time to type the column. Finally, the ABC grapevine has rumours flowing that the national Talkradio format is in deep trouble, and WABC is considering canning it and going to MoR "full service" like WCCO or WTIC. Talkradio will be moving its entire studio operation to New York quite soon to economize and take advantage of ABC Radio's new studio complex on West End Avenue in New York City which opens October 15. There have already been a couple of Friday afternoon "bloodbath" mass firings at Talkradio, and things do not look good. (To be continued next week...)

John A. Demmitt, Box A K0848, Bellefonte, Pennsylvania 16823

Lot's of interesting things going on that is allowing us to enjoy excellent reception. With the low solar flux and sun spot activity and the tilting of the earth, propagation is ideal, especially towards those signals coming from the south. One of my greatest expectations was realized on Sept. 17th when I was able to receive KFI from Los Angeles, Calif. I have been trying for this station for years but on that day it came in like a local. Now I must frame my QSL, hi. I received it in just five days! Soon I may be using a Uniden CR-2021. Does anyone know how well this is going to perform on MW? 73.

Richard C. Evans, P. O. Box 1294, North Wales, Pennsylvania 19454

Just a quick note to let you know that I am still doing the EDXF and will be doing it for the next few years. Karl Zuk has had to forward a couple of Forum reports to me recently because someone thought he was now doing the EDXF. T'aint true! My Tigers won the AL championship last night; will my Cubs take the NL tonight or tomorrow? I'll know in a day or so, hi. Gotta run. PTL.



Western DX Forum

★ ★ ★ ★

HQCA—Serving the Broadcast Band DX'er Since 1964

Editor: Ric Heald, 1632 J St., #3, Eureka, CA 95501

DEADLINES - WEEKLY ON TUESDAY

RANDY SEAVER, 1154 VIA TRIESTE, CHULA VISTA, CA 92011 Part I

C.M. Stanbury II recently (11 August DX Monitor, SWNS and CIDXC bulletin) stated that I fail to recognize the "real issue" in the MW propagation debate - that propagation via the F-region is possible with the extraordinary wave mode below the gyrofrequency. I do recognize that the extraordinary mode is possible, and that it will penetrate the E-region below the gyrofrequency (which is about 1400 kHz over North America, but variable down to about 700 kHz at the magnetic equator). My argument against this propagation mode is twofold: First, at magnetic latitudes above 30 degrees (North America is 40-70 degrees) the polarization coupling loss is significantly greater for the extraordinary wave than for the ordinary wave, and this loss occurs each time the wave enters and leaves the ionosphere. Secondly, at frequencies above and below the gyrofrequency, the magnetoionic theory indicates that ionospheric absorption of the extraordinary wave is greater than that of the ordinary wave. These losses in field strength offset any advantage the higher elevation angle of an extraordinary wave would have over an ordinary wave at lower elevation angle.

Dr. P. Knight of the Research Dept. of the BBC, a world recognized expert on Medium Wave propagation, states (in a NATO survey paper): "At the gyro-magnetic frequency, the extraordinary wave of the magneto-ionic theory is so greatly attenuated that it makes a negligible contribution to the received signal; furthermore the attenuation exhibits a broad maximum centred on the gyro-magnetic frequency. As a consequence, the extraordinary wave can be disregarded for all practical purposes within the medium-frequency broadcasting band (approximately 550-1600 kHz)."

Who should we believe? The recognized expert in the field (Dr. Knight), or a DX'er with little physics background? I choose Dr. Knight without hesitation. More next week.

FRANK ADEN JR., 5147 MORRIS HILL #133, BOISE, ID 83706

Looks like Boise is going to have quite a group as we now have/will have four members here. A couple of weeks ago Bruce Bacon, Bill Frahm, Mark Campbell and I had a Saturday night DX session. We didn't hear much, but we're planning a Beverage DX'pedition out south of Boise on the desert. Plans are for it sometime in October.

I've heard that KGSF Kellogg may be coming on after all. It has been reported the owners dropped out after Bunker Hill Mine was closed, but they may be trying it again. The CP has reportedly expired but the FCC is supposed to be granting them an extension.

I have a set of NRC DX News from '77 to '82 and will sell them for the highest bid; send an SASE.

DX has not been too bad. Japan on 828 is almost like a local in the early mornings. I just hope the other splits will be as good this season. 73.

GLEN KIPPEL, 612 WEST AVE., MERCED, CA 95340

Hello again. Not much has been happening here in the way of DX. Keeping up with two jobs, three children and four chickens seems to take up all my time, hi.

Also, I put a ceiling fan in the bedroom and it has a very "dirty" triac controller which obscures the real weak DX. There was a good TP opening on 16 September with Kangnam 657 putting in a humongous signal. (Now if you lived on the North Coast you'd never need a fan--hip boots yes, hi-Rth.)

Also the new CISL 650 is very strong here.

A note on propagation: My intuitive feeling regarding so-called "chordal mode" is that the signal is more lively propagated along a wave guide created by two ionized layers in the F region.

I just learned that Daviln Corporation has just got in a few Racal RA-117's and are letting them go for \$300. Call Dave Casper at 1 (818)-787-3334 if you're interested. He says they appear to be in pretty nice condition.

That's all for now so 73.

ROY H. MILLAR, 13714 30th AVE. NW, MARYSVILLE, WA 98270

One year of retirement under my belt; what a busy one 'twas. Sold the 57th DR NE property and built a new home northwest of Marysville just within the original Tulalip Indian Reservation boundary, and about five miles west of I-5. Have four "stations" set-up for "DX" monitoring on automatic tape recording systems; all have longwire antenna hookups available, but I'll likely use loops on all but one receiver most of the time. Three longwires are up, with the longest one, some 700 feet or so of meandering scrap wire giving me the best daytime signal strengths, at least to NE/E/SE segment. Other wires are a 300-foot E/W and a 190-foot SE/NW, both one-course wires. Need some time for experimentation. As time permits I'm doing a midday band scan, that is 10 AM to 2 PM PLT segment which is clear of LSR/LSS critical hours all 12 months. Am insisting verie in from KFX969 1622 kHz Big Bear Lake, California, who were operating with 60 watts, but only at about 30% modulation when I heard them in March. Mentions that 1606 kHz and 1646 kHz being available for broadcasters along with 1622. Also appreciated QSL card/letter from RF 1, Lautoka 639 kHz; sent along 25th anniversary souvenir as, quote" . . .you have indeed been one of our oldest listeners"- -Ouch! (Don't you love literal translation into English?-hi-Rth.)

Most interesting verie in from KFX969 1622 kHz Big Bear Lake, California, who were operating with 60 watts, but only at about 30% modulation when I heard them in March. Mentions that 1606 kHz and 1646 kHz being available for broadcasters along with 1622. Also appreciated QSL card/letter from RF 1, Lautoka 639 kHz; sent along 25th anniversary souvenir as, quote" . . .you have indeed been one of our oldest listeners"- -Ouch! (Don't you love literal translation into English?-hi-Rth.)

Call changes logged from new location include: KCIS 630, KRIZ 1420, KGRZ 1450, KBSN 1470, KKZU 1510 and KSGO 1520; only report out is to KGRZ.

Is there any regular SP as to KEX 1190 and KFBK 1530 to anyone's knowledge? (Sorry Ray, both are NSP except for rare, unannounced SPs-Rth.)

Would also appreciate a note in DXM as to any known sources for older (and rarer) yubes such as 2X2, 6H6, etc. 73.

DOUG NYHOLM, 2071 CEDAR ST., SAN CARLOS, CA 94070 (415) 593-3330.

Hello (sic) to all. I've had tremendously super DX as of late. And as my wife says, "I've been DX'ing my guts out." Anyway, DX has been coming in from every direction. Most notable was the opening on 17 September here toward Manitoba and the northeast. It seems that I was hearing every station to be heard in Montana and North Dakota and Canada was especially good (See WDXR).

The noise levels have been all but totally quiet too. You know conditions are good here when KPNW is on top of WOAI. This night was also good for TP reception with JJ's heard on my fillings. The week before when I heard Xinglang I didn't think much of it until I looked it up on the map. If you haven't got your headphones on out there thinking it's still awhile yet for good winter DX, think again. The southern tip of northern California anyhow is sounding like what DX was back in 1970. I hope it keeps up. 73.

RICHARD E. WOOD, PhD, P.O. BOX 5074, HILO, HI 96720 (808) 966-7091

Aloha from the Big Island, where I have now settled after my move from Saudi Arabia. I bought a big, two-story fixer-upper house on an acre, at the edge of the forest reserve, half a mile from the ocean. Location is 12 miles southeast of Hilo as the crow flies, but 20 miles' drive from the capital via Keaau. I'm going totally solar here and will have no public powerlines into or near the house. So I hope to be noise-free.

Certainly I have few neighbors, none visible on three sides, and am far from traffic. I'm located on 3rd Street (also called Awa Street) in Pacific Paradise Park, at the Forest Reserve and, a dead end. To get there, head straight toward the ocean from the Keaau to Pahoa Highway, down Maku'u Avenue which is dead straight, up and down the bumps of old lava flows.

Speaking of lava flows, we had a magnificent bright orange lava fountain last Wednesday; it flowed 2,000 feet in the air from afternoon to next morning leaving a hill where none had previously existed.

My solar system isn't complete yet, only a limited arrangement with a few panels and batteries, mainly for 12V DC lights. By the time this appears I hope to have the DC/AC inverter, solar tracker and all batteries operating so I can run my 110V receivers and hopefully never have to pay another utility bill in my life. (Don't try that in California, piggie. . .err PC&E always finds an angle to make you sell to them and they back to you, hi-Rth.)

Equipment here, waiting patiently for that day, includes two HQ-180's, and ICCM R-71A and a Trio (same as Kenwood) R-1000, bought from Dennis Kibbe of Tempe, Arizona. Only DX here is when visiting John Arthur's; at his place at 1600 UTC I heard Saudi Arabia 1440 loud and clear, a beautiful signal crossing 11 time zones.

My Ford Fairmont is stored at "Toyland," Don Erickson's in Riverside, so I hope to get back to the mainland quite often and be free to drive around when I do. First trip back will be for an appearance on the all-night Ray Briam show originating at KABC and on a national network at midnight to 5 AM PST on 15 December; also in the studio will be Stewart MacKenzie of ASWLC and a

New Zealand DX'er will be phone-patched in. So, it'll be a night of national publicity for DX'ing. I hope you'll all listen and phone in.

NRC Colorado Springs was fun; sorry I missed IRCA. Aloha. (Aloha, Richard, and welcome back to WDXF. Last time you were in Hawaii I met you in '70 while you lived at Lanai, Oahu. Remember our MM DX'pedition on the pier in Haleiwa? Say hello to John "Docketor Memory" Arthur; he never writes, hi. Mahalo-RtH.)

GARY LARSON, 2806 LINCOLN, BURBANK, CA 91504 (818) 848-1988

Hi. Finally KWNK 670 is on and has Kings hockey. Signal here is good days and fair nights, but is terrible ay night around Mission Hills near the Golden State/Simi Valley freeways. Seems one of their towers may have problems. They're inviting listeners to call in for free stickers and to decide how to pronounce Simi Valley. They use Hit Radio 67 as a slogan.

I didn't mean 880 in California, Ric, I meant Oregon.

Looks like KZLA/KLAC will be in a new office building in Burbank near the end of 1984. 1540 AM will be SS with a new location for studios. Called KZLA at (213) 520-94FM and spoke to Barbara Barry during her air shift and she mentioned the above.

Too bad KACY 1520 changed to SS and KTRQ. I wonder how they'll compete with KQXR 910. Wish 1540 wouldn't go SS. . .too many SS stations in LA area as it is and now KROQ 1500 will be next to 1540 SS. (And the locals complain about three hours of Portuguese on KATA 1340 Sunday evening, hi-RtH.)

Dennis Kibbe, got the KOY sticker you recently sent. Very nice. Hope everything's better for you.

Yes, Doug P., I've heard of Leo Hamburg. We've traded a few cassettes.

Frank Aden, hope you're enjoying Boise. Guess it's cold there now, right?

Charles George, your grade of 89.3 sounds like an FM frequency, hi. Hope you're doing better. It's good you're with KNON. . .I've been a volunteer for ten years with KCSN. Send a program guide from KNON if you don't mind.

Ric, when you start your new job, send a little bread my way, hi. Maybe you'll happen to get half price on purchase as an employee. (Half price, bull. I get it free, hi-RtH.) Would love an aircheck of KRED, you, or anyone there. No, I don't think "uncle" cares about much now. That's right XEG is in Monterrey, there's also XED. Maybe a typo? (Boy did I blow that one, I meant XEHL 1010. . .just hit me 100 times with the penguin flipper, hi-RtH.)

Better go. . .gotta get my check so I can pay bills like Pac. Bell, hi. 73.

ROB HARRINGTON, P.O. BOX 3434, LITTLETON, CO 80161

Greetings from cold, snowy Colorado. We got our first snow of the season on 27 and 28 September. Temperatures in the low '30s on the 28th. With the first blast of winter, time to turn on the Kenwood R-1000 and see what's happening in the way of DX.

Built a new four-foot box loop antenna and have been testing it out. I can null three or four locals out of the 16 in the metro area. I hope to have a lot of loggings this season.

Received a QSL from JOIB 747 after over nine months from reporting. Sent a follow-up six months after original report. Very pleased to get their QSL. Now I'll try to get a QSL from New Zealand and Australia. Although I log everything I hear, I only report to international DX. I will report to stations with power under 240 watts, especially if they're on PSA or PPSA, and, of course, to Alaska and Hawaii and far eastern Canada.

So far results in testing my new loop have brought in KALL 910 under our local KPOF with the latter 90% nulled.

That's it for this time. Hopefully will be in a new apartment four-to-six miles southeast of Denver in early '85. 73.

RIC HEALD, 1632 J ST., #3, EUREKA, CA 95501

Greetings from the true northern California. It's ironic, more people two states away in Seattle know more about Eureka than fellow Californians in the Bay Area just 280 miles away. We're really the southern end of the Pacific Northwest, and speaking of which, our monsoons have finally begun. And by the way Seattle and Portland, we get more annual rainfall than do you.

I've gotten a few extra hours at KRED. One notable Saturday evening, 29 September, I was scheduled 7 PM to 1 AM. We went off at 10:20 PM per CE and GM orders. Got only a handful of calls (I made it quite clear why we were leaving the air and mentioned possible ET'ing after midnight, which occurred; always the DX'er in mind, hi) asking why we were giving weather for Spokane. Yup, they had KGA 1510. Boring as all get out, I mean the FM went until 0100, so put KP DJ into audition and listened to Nighttime America. Good show.

What with working KRED to 2300 PLT s/off Sunday (and not leaving until 2330) and getting up at 0445 for Monday work, needless to say no time for MM DX. Day off is Wednesday, and did do a little bandscanning this morning (10 October) to get call change of KFIG 1430 (ex-KARM) along with KLO (hadn't heard KLO in ages). Also took copy on KSAI 930 which I presume is Missoula. I looked everywhere for the call change in past DXM's but couldn't find it.

Thanks to KHJ I missed the formal top-of-the-hour ID.

While driving to Lakeport on 22 September to attend the CB Jamboree, stopped in Willits for the all important beer run, checked 1250 and nothing. KBLC Lakeport still on 1270 and when I got around to thinking about it, it was after sundown so didn't call KBLC regarding the frequency change thinking their staff had gone home.

Discovered semi-local KNCR 1090 Fortuna while on the new job. It's between Fortuna and Hydesville on Rohnerville Road one-half mile south of Drake Hill Road. Now I know why they don't get out. First, they're on a hilltop, great for FM, but not AM. Second, their tower at 1090 kHz should be at least 200+ feet for quarter wavelength, and my guesstimation is that they're using about a one-eighth tower. And the station is once again up for sale. Anyone out there interested in a tax write-off? Hi.

Gary, in answer to your question, Oroweat is good to us. We get deliveries from down south on Monday and Thursday. Whatever hasn't been put out on the shelves by the end of Tuesday and Friday, we take home. Just wish it paid better, hi.

Richard Wood, on one of your trips to the mainland, swing by this part of the state. Perfect place for a Beverage DX'pedition.

That's it this time around. See y'all next week, and once again I make the annual offer, with weekly DXM's now, if you wish to save time and postage, go ahead and make up two or three forums and send them together indicating in which order they're to run. Good DX to all and 73 de Rth. .

FLUTTER JAMMING - UPDATER

Adrian M. Peterson
DX Host - "Radio Monitors International"

Although propagation conditions on MW have deteriorated with the arrival of hot weather and longer days in India, a total of 14 flutter jammers are now audible. These unusual MW jammers are believed to be located in Iraq, and are apparently for the purpose of jamming broadcasts from nearby countries mainly Iran. It is quite possible that Iran is now jamming Iraq on two channels.

Here in India, these flutter jammers are best heard now in the time period 1600-1900 UTC. Most of them are at a very low level, except the one on 1276 which comes in loud and clear. The Iranian outlet covered by this jammer is a 200 kW unit on 1278 kHz, at Kermanshah, close to the Iraqi border.

Interestingly, most of the flutter jammers heard now are at the high frequency end of the MW band, whereas in January most of the flutter jammers were noted at the low end of the MW band. It is probable that all of these jammers have been on the air all of this time, but changes in propagation conditions have brought about this cluster observation.

The two regular channels on SW which were noted previously with flutter jammers are 11745 kHz and 15084 kHz. These channels are still intermittently jammed.

Seven of the flutter jammers heard previously are not now audible; five were noted earlier and are still on the air; and eight currently on the air were not audible two months ago. This makes a total of 20 MW channels observed with flutter jammers.

Comments regarding changes since the previous article was written are as follow:-

- 693 There is a 600 kW station at Basra in Iraq on this channel. Is Iran now jamming Iraqi stations with the same type of jammer?
- 783 and 828. No flutter jammers observed now on these channels, but previously it was thought that these were to cover two stations in Syria. Has Iraq stopped jamming Syria?
- 981 100 kW Iranian station at Kermanshah.
- 1035 10 kW at Yazd in Iran, but Iraq has a 1000 kW at Babylon. Maybe Iran is now jamming Iraq on this channel also.
- 1062 10 kW at Kermanshah near Iraq
- 1160 10 kW at Abadan in Iran
- 1276 100 kW Iranian at Kermanshah on 1278.
- 1296 Does this jammer cover the Iranian station 20 kW Bushehr on 1300?
- 1350 10 kW at Bander - Abbas, Iran on the edge of the Persian Gulf.

WESTERN DX ROUNDUP

Nancy Hardy
2301 Pacific Avenue
Aberdeen, WA 98520

All times are
Eastern Local

Phone for hot WDXR tips: (206) 532-6827 till 10pm(PT)

DEADLINES: Tuesdays

REPORTERS FOR THIS ISSUE:

- (DKK) Don Kaskey-465 Burnett St. #1-San Francisco, CA 94131
Hammarlund HQ-140X, SM-2
- (DM) Don Moman-6815 12 Ave.-Edmonton, AB T6K 3J6
DX'ing 300km SW of Edmonton w/R71 & Beverages--2000' NE,
1000' NW, 1000' SW, 600' N
- (BN) Bill Nittler-Box 724-Meeker, CO 81641
- (DN) Doug Nyholm-2071 Cedar St.-San Carlos, CA 94070
- (DP-HI) Dale Park-2253 Kanealii Ave.-Honolulu, HI 96813
Sony ICF-6700W
(DP-CA1) DX'ing from Irvine, CA w/TRF
(DP-CA2) DX'ing from Beverly Hills, CA w/TRF
- (AWP) Art Peterson-851 31st Street-Richmond, CA 94804
PRG-7, R. West loop, 300' longwire configured in a horizontal
square & tuned by a Grove Electronics Signa-match tun II
antenna tuner
(AWP-CA*) At Covelo, CA w/Sony 2002 & an active antenna
- (DP-CA) Doug Pifer-4366 Ocean View Bl. #3-Montrose, CA 91021
PRG-7000, MW-1
- (RT) Rich Toebe-2388 American Ave.-Hayward, CA 94545
Grundig 3400, R. West loop
- (RW) Robert Wien-1309 Dentwood Dr.-San Jose, CA 95118
GE Superadio, GE long-range portable, SM-2

***** OF SPECIAL INTEREST:

- 1450 KMOB UT, Moab 10/1 1720 using new call letters, hrd w/KMKR off the
air for repairs past two days. Annncr hrd giving KURA calls
twice so change must have been recent. (BN-CO)
- 1500 KABR NM, Alamo Community definite ID 9/26 1010 s/on annct. in EE. No
location given, power 1000 watts, brief annct in apparent Indian
language & into "Country Music Time," for Air Force Recruiting.
(BN-CO)
- *****
- 530 KRN984 CA, Los Angeles Airport 8/18 0700 finally hrd (outside of LAX,
that it) in someone else's carrier w/continuous loop tape of
airport info. Weak but clear. (DP-CA1)
- CA, unknown 9/24 2305-0005 apparently a pirate in the Willits/
Ukiah area. No annct, ID, spots, etc., just one old rock tune
after another. No QRM. (AWP-CA*)
- 540 KABC CA, Los Angeles 8/21 1129 spur noted here o/u unID. What freq.
combo caused this? Very poor. (DP-CA1)
- CBK SK, Watrous 8/20 0733 non-stop light mx w/no anncts. Finally at
0755 "O Canada" and ID; "Saskatchewan Today," but lost to XEWA
at 0759. Poor/fair. (DP-CA1)
- 550 KAFY CA, Bakersfield 8/19 1132 many w/country mx plus ads for Dewey
Pest Control, Wrangler Jeans, ABC nx 1200. Poor w/KLAC QRM,
deep fades. (DP-CA1)
- 560 ?KLZ? CO, Denver 8/20 0843 OM w/sports, wx and muddled ID; o/u KSFO.
Very poor. (DP-CA1)
- 580 KMJ CA, Fresno 8/20 0810 farm nx program including prices & features,
wx, ads, nx at 0630 and sports at 0632. Fair w/KLAC-570 QRM,
irregular fading. (DP-CA1)
- ?KFXD? ID, Nampa-Boise 8/20 0824 Paul Simon mx followed by OM DJ w/
5:28 TC. Under KMJ, very poor on brief fade in. (DP-CA1)
- 610 (KFR) CA, San Francisco 9/25 0442 off on rare Tues. morning SP w/
OC/TT's. (RW-CA)
- 650 CISEL BC, Richmond 8/19 0014 good w/C-Isle ID and into rock. Lots of
splash from KFI-640. (AWP-CA)
- 670 *KWNK* CA, Simi Valley 8/18 1030 hrd all morning repeating tape ID
"This is KWNK, Simi Valley, CA on air for testing purposes
pursuant to our CP with the FCC. KWNK, Simi Valley, CA on 670
kHz" followed by tone of G, both 60 sec. I was about to tape
them at 1605 when suddenly they went off the air! XETRA & KFI-
640 QRM. Poor. (DP-CA1)

- 670 KBOI ID, Boise 8/19 0425 Jay Michaels w/adult contemp. mx & talk about Winston Rodeo in Caldwell. NEC nx 0500. Fair, co-channel strn QRM occasionally & KNBR-680. (DP-CA1)
- (KBOI)+10/1 0244 totally off, only WMAQ in strong. Absolutely no trace of KWNK which I still need! (RW-CA)
- WMAQ IL, Chicago 8/19 0428 country mx hrd u/KBOI. New from here, but only in fade ins. (DP-CA1)
- 700 ?KPFAM? UT, North Salt Lake City 8/21 0810 "Songbird" by Streisand, inst. version of "Dreamweaver," ID as "AM 700," ad, then faded out. Poor w/XETRA, KMPC QRM. (DP-CA1)
- 830 KIKI HI, Honolulu 9/8 0254 good, in early tonight then faded & WCCO dominant. This early evening opening noted before KLFH-1040 also in at this time. Must be local sunset enhancement in Hawaii. (DM-AB)
- WCCO MN, Minneapolis-St. Paul 8/21 0300 CES nx, man w/MOR mx, promo for Twins, sports, PSA's. Poor w/WBAP QRM, rapid deep fades. (DP-CA1)
- 840 WHAS KY, Louisville 8/19 0542 top 40 mx aired by YL. Poor w/KOA, WCCO QRM. (DP-CA1)
- 860 KTRB CA, Modesto 8/21 0155 country mx, male DJ w/ID & more country mx. Poor o/u XEMO, ripply signal. (DP-CA1)
- KLTV UT, Salt Lake City uses slogan "K-Light light-hits with less talk." (BN-CO)
- ?KLTQ?+10/1 0918 tent. on fade up well o/KTRB w/YL annrc. Hrd one ment of "Utah" then faded out. Tent. call change, ex-KWHO. Wonder if they're 50kw days yet? Tried calling strn, but no listing for KLTV, and KWHO's phone has been disconnected. (RW-CA)
- CFPR BC, Prince Rupert 10/1 0932 very strong in KTRB null o/XEMO w/ID "Prince Rupert CBC Radio..." into nx. If they're 2500w, they don't sound like it! (RW-CA)
- *XEMO* BCN, Tijuana 8/19 0551 noted w/TT in key of G (how many hertz is that?). (DP-CA1)
- 870 KIEV CA, Glendale now on NSP sked. Tele talk noted 9/19 atop WWL 0337. Mixes w/WWL nightly. (DKK-CA)
- +9/29 0230 noted w/night programming, call-in talk show. Good sig., o/KORD, in WWL null. (RT-CA)
- *KIEV*+8/22 0419 noted w/OC and IDs "This is K-I-E-V testing" by man. (DP-CA2)
- KAIM HI, Honolulu 9/18 0910 good w/relig. programs. (DM-AB)
- WWL LA, New Orleans 8/20 0308 man w/talk, ad, Jim Reeves mx. Fair to poor w/XEMO, KRVN, deep fading. (DP-CA1)
- 880 KKMC CA, Gonzales hrd here the first time 9/28 throughout the day. Signals good but not totally clean & KRVN is still dominant nites. Format is more Inspirational/Relig. than MOR. ID as KKMC Gonzales, Salinas, Monterey, Santa Cruz. I suspect the bulk of their directional power is right at the Monterey Bay. (DN-CA)
- +9/29 1330 first noted w/relig. format (not MOR as listed in new NRC Log), full ID "KKMC Gonzales, Salinas, Monterey, Santa Cruz," into program by Hal Lindsey who welcomed KSPO, KIRV, and KTBI to his network. (RT-CA)
- +9/30 2102 "KKMC, Inspirational Radio" ID. Fair w/bad splash/image from KGO-810. Relig. easy listening mx leading up to the hour. (AWP-CA)
- +Per call to KKMC, power is 5kw days/1kw nights, directional to the north (to reach Salinas audience). They came on the air Sat. 9/22. Address is: 24 4th St., or P.O. Box V, Gonzales, CA 93926. (RW-CA)
- KRVN NE, Lexington 8/20 0201 country mx, wx w/J.D. Cannon at 0220, some ads. Fair w/WWL-870, WLS-890, plus local thunder QRM. (DP-CA1)
- ?KWIP? OR, Dallas 8/20 0221 Steve Forbert mx, nx ment. temp of 610, later Gladys Knight and James Taylor mx, PSA. YL w/"K-W-I-?" nx. Poor u/KRVN. (DP-CA1)
- KMFR OR, Phoenix 8/20 0855 Goodman mx, newsflash & ID, CBS nx, Big Band mx, ads & wx. KIEV QRM from 0859, XEMO and maybe KRVN. Fair to poor. (DP-CA1)
- 890 WLS IL, Chicago 8/21 0159 top 40 mx, kept fading in & out. Poor w/KRVN-880 QRM. (DP-CA1)
- +Not really DX (yet, anyhow w/the clear channel breakdown) but they had a local-like signal 9/28 2200 (7pm local), literally sounded like a local. (DN-CA)

- 930 KSWB OR, Seaside per call to KSWB it'll still be a "couple of weeks" until they move to 840kHz. 10/1 was target date in Aug. (RW-CA)
- 950 KKIC ID, Meridian-Boise 9/28 2139 till s/off at 2200 w/C&W. Very brief s/off and no SSB. Very good signal on top of everybody. (DN-CA)
- 960 KOOL AZ, Phoenix 8/19 0243 big band & vocals o/u KABL-960. Poor to fair w/XEGM-950, KFWB-980. (DP-CA1)
- 970 KUZZ CA, Bakersfield per call to KUZZ it'll be "early next year" when KUZZ-970 becomes KAFY and KAFY-550 becomes KUZZ. Tried calling KAFY, but their number has been disconnected! (RW-CA)
- 980 CKNW BC, New Westminster noted 9/28 even w/KFWB at 2258. Not // to CKAL-1050 which had BC Lions CFL football. (DN-CA) (That's because B.C. Lions now originate on CFUN-14101--NH)
- 990 *KHVH* HI, Honolulu 8/15 0705 noted off & on w/carrier. Pop mx by Commodores noted u/the QRN. Perhaps KKIS? (DP-HI)
- 1000 KOMO WA, Seattle 8/19 0505 wx, MOR mx, promo for UW Huskies football. Fair w/KFWB-980, KKIS-990, KMLD-1000, moderate fading. (DP-CA1)
- 1040 KIFH HI, Honolulu 9/18 0900 good w/ID. (DM-AB)
(KIFH)+8/27 0908 noted off the air again. (DP-HI)
- 1050 CKAL BC, Vernon 9/28 w/BC Lions vs Edmonton Eskimos CFL football game. Powerful signal all alone on top. Where have XED/XEG been lately? (DN-CA)
- 1090 KBOZ MT, Bozeman 9/28 2308 w/CWM mx and a semi-local sounding signal, best ever, again the Mexicans have been oddly silent here for quite some time. (DN-CA)
- CHEC AB, Lethbridge 10/1 0423 good w/ID o/u KBOZ in XEPRS null, thought this was KLSZ, but it wasn't. Only 3rd time hrd. They must've done something to their DA. Were granted 10kw days a while back. (RW-CA)
- 1100 KFAX CA, San Francisco 8/27 0925 SS relig. program w/SF Bay address, annrcr w/EE talk 1329. Very poor, moderate QRN. (DP-HI)
- 1130 KSDD CA, San Diego 8/20 1045 poor, barely audible u/KRLA for some reason. Usual nx, info & ads. (DP-CA1)
- 1140 KRAK CA, Sacramento 8/22 0424 fair w/ads, talk about stn address (P.O. Box 6124), country mx. O/u KMJJ. (DP-CA2)
- KMJJ NV, N. Las Vegas 8/19 1015 surprised to hear this late in summer. DJ w/adult contemp. mx, ads for places like the Silver Nugget, PSA's, ID at 1051 similar to one KSSK uses. Poor w/KIIS-1150 QRN. (DP-CA1)
- 1160 KSL UT, Salt Lake City 8/20 0934 also surprised to hear this so early, in summer; morning show w/Al Carroll "The Super Handy Man," wx, political ads, traffic reports, nx. Fair. (DP-CA1)
- 1180 KERI CA, Wasco-Bakersfield 8/22 0842 farm program including reports from USDA in DC, Nat'l Cattleman's Assoc. ID "It's 5:45 from Kerry," stock market report. (DP-CA2)
- 1190 KEX OR, Portland 8/22 0428 mx by Hollies and Blackbyrds. KEZY barely audible. Fair. (DP-CA2)
- 1210 KREW WA, Sunnyside 9/29 2309 carrying Idaho Vandals football // KFXD-580. Thought at first KLIT Meridian, ID had hit the air, but was disappointed when I hrd the KREW ID! Be careful w/this one! (RW-CA)
- 1230 KXO CA, El Centro 10/3 0912 fair, no ID, w/ment. of Imperial Valley Sign Co., open bowling at El Centro Lanes. Also wx & TC. New. (DP)
- KPRL CA, Paso Robles 10/3 0914 fair faded in o/KXO w/wx, ID "And that's KPRL news." New. (DP-CA)
- KZZR OR, Burns what! Me DX'ing on a GY? Yep and even managed to pull a new catch 9/28 at 2311-2317 on top of the mess w/a high school football game. Burns vs Caldwell, ID. (DN-CA)
- 1240 KELK NV, Elko hrd 9/28 2334 weakly in the mess, this one is quite rare for me here. (DN-CA)
- 1320 KGNR CA, Sacramento 8/20 1005 end of ABC nx, ID & local nx, Sacramento Municipal Airport ad, wx. Poor w/KWKC, KFAC. (DP-CA1)
- 1330 KCLM CA, Redding 9/28 2134 like a local w/C&W mx. I've only hrd this one a handful of times here & was really surprised w/their strong signal. (DN-CA)
- ?KGAK? NM, Gallup 8/21 0832 MBS nx, faded out during ID, back w/nx about NM convention center, Navajo event in Window Rock (near Gallup). Poor w/deep fades. (DP-CA1)
- 1340 KIST CA, Santa Barbara 8/21 1314 Sinatra's "L.A. Is My Lady," ad for The Broadway dept. store, DJ talk and jingles, disco mx. Poor w/KFAC, KCKC. (DP-CA1)
- 1430 KFIG CA, Fresno 8/22 0441 DJ w/ID & asking for votes in song contest, Sheena Easton mx. Fair, o/u Mexican. Hrd as KARM. (DP-CA2)
+9/17 0640 "KFIG AM & FM, Fresno" ID, good and alone. (AWP-CA)

- 1430 KCRX NM, Roswell has dropped SS for C&W and IDs as "Brand X." Hrd here 9/30. (BN-CO)
- 1440 KPRO CA, Riverside 8/19 1440 Angels warm-up show then game w/ Baltimore. Jim Hilliker says they are back on RS. Logged on way to Lake Arrowhead. Fair. (DP-CA1)
- 1480 ?KSBQ? CA, Santa Maria 10/2 0900 poor s/on no ID but address as P.O. Box 442, Santa Maria gave it away. New. (DP-CA)
- 1520 KAMX NM, Albuquerque ID 9/26 as "Rock 108 KFMC" so is apparently simulcast w/FM, or did they change calls? (BN-CO)
- 1560 KLLV CO, Breen leaves the air each night w/song called "I Wish You Jesus." (BN-CO)

Sept. f/c's heard:

- 1st MM 0245-0300 KGHL--790 MT (RW-CA)
- 0300-0315 KQIK-1230 OR (RW-CA)

UNIDs:

- 990 8/22 0821 ad for Bear Mountain Truck Stop, ID as "K-?-?-C into country mx. Poor o/u another unID, KFVB QRM. (DP-CA2)
- 990 9/8 0107 poor u/CBW. Hrd sports nx including CFL Ottawa/Winnipeg game that was played earlier that night. Sounded very Canadian but whoooo... (DM-AB)

Thanks to our reporters this week! ♡

Eastern DX Roundup

 All Times are Karl J. Zuk
 Eastern Local 154 Old Post Road North
 Croton-on-Hudson, New York 10520

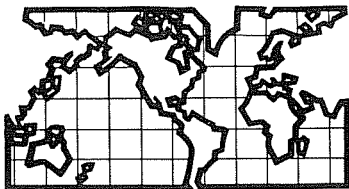


REPORTERS IN THIS ISSUE:

- (JBH-FL)- Jody Hughes, 13720 Gulf Blvd., #401, Madeira Beach, FL 33708 (no receivers or antennae mentioned)
- (RCR-PA)- Robert C. Ritchey, R.D.#1, Box 738, East Freedom, PA 16637
Realistic DX-160 with 200 foot longwire
- (WPT-DC)- William P. (Bill) Townshend, 4500 Connecticut Avenue N.W., #901, Washington, D.C. 20008
- (WPT-MD)- (DXing in Gaithersburg, MD)
Sony ICF-S5W, Realistic 12-660 Portavision

- 560 CFOS ON, Owen Sound 9-18 2316 with weather, PSA, ID as "CFOS-CFPS", MOR type music, good to very good. (RCR-PA)
- 560 CJKL ON, Kirkland Lake. 9-19 0152 Ad for waterbed, ID as "CJKL 560 Musicradio," good with rock music (RCR-PA)
- 910 WLAS NC, Jacksonville. 9-11 2019 Mention of several churches as hurricane shelters by OM and YL, C&W mx, Excellent. (WPT-DC)
- 960 WFTC NC, Kinston. 9-11 2134 News by YL, top 40 music. Apparently on day power because of hurricane. Good. (WPT-DC)
- 1370 WXXI NY, Rochester 9-17 0005 Sign off by man over olympic theme followed by "America" and no SSB, good o/u WSPD, Toledo, Ohio. (RCR-PA)
- 1420 WLNA NY, Peekskill 9-9 1815 ID by male DJ. Fair. (WPT-MD)
- 1440 WGTR FL, Lehigh Acres. 9-25 1815 Noted with ID into C&W "Continuous Country Music." Ex-WOOJ & WSWF. Per call address is Box 107, Cape Coral, FL 33910. NBC affil. (JBH-FL)
- 1460 WBRN MI, Big Rapids. 9-17 0000 with sign off by man, no SSB, fair to poor with much QRM. (RCR-PA) (I have this as daytime, 1000 watts. When did they go fulltime?-kz)
- 1550 WCTW IN, New Castle. 9-16 0300 Good with oldies music, musical ID as "WCTW, New Castle." (RCR-PA)
- 1580 WJIK NC, Camp LeJeune 9-11 1955 Gospel music. On air due to Hurricane Diana. Emergency Tel.No.347-4270. Xlnt. (WPT-DC)

WJIK continues to be the East Coast's most listened to Hurricane Diana station! I hate to beg but, please send in your reports! Think to yourself how many times you've referred to these columns for tips and to postively ID that UNID! Your loggings are very valuable to your fellow DXer. If they didn't write in, what would you use for tips? Sermon over. I found myself in Pittsburgh for Monday Night Football, and as usual, had no time to DX. KDKA is now using "Someplace Special, KDKA," as their slogan. I heard a very loud station playing Blondie's "Rapture" in my hotel room. It turned out to be Cuba's Radio Rebelde; and I found it in several places around the 600's. I'll be in Nebraska tomorrow! Write your loggings in today and have a good DX week! 73s de KJZ.
 20



DX WORLDWIDE - WEST

Pat Martin - Editor

P.O. Box 843, Seaside, Oregon 97138

PHONE: (503) 861-3185

TIME: UTC

There is a fairly good turnout this week with the drastic change in Conditions. It was so poor all Sumer and now conditions are great. The Southeast Asians are showing up again with Philippine stations on several frequencies. 837 DYFM has been quite good several morning of late. Don Moman up in Alberta has been pulling in quite a few TAs too. Not too many changes to report this time. From the FERC and T. Gima-ABI, news on PRC (China) Pingdingshan PBS, Henan Province was noted on 1485 Khz s/off at 1400. Kaifeng PBS now operates from 2130 to 1430. Zhejiang PBS was hrd on 1060 and 1361 Khz. On another note, I forgot to include a verie Ron Harrington gave me the info on (on the phone), so I will include it in this weeks column. Sorry about that Rob. Also the above phone number is the correct one. On with reports:

TRANS-ATLANTIC DX ROUNDUP

200 ENGLAND, Droitwich-9/7 at 0417 poor BBC type pgms (DM-Alberta)
218 UNID, 9/7 at 0419 singing u/beacon QRM (DM-Alberta)
227 POLAND, Konstanynow 1-9/7 at 0420 fair OM in Polish (DM-Alberta)

882 ENGLAND, Washford-(Wales) BBC pgm,pop mx 0426 on 9/7 (DM-Alberta)
1017 WEST GERMANY, Wolfsheim 9/9 at 0331 fair lite inst. mx,OM in GG,soft spoken,did't stay long (DM-Alberta)

1044 EAST GERMANY, Dresden-DDR1 fair YL talk 9/7 at 0404 (DM-Alberta)
1197 WEST GERMANY, Munich -VOA poor faint talk by OM 0406 9/7 (DM-Alberta)
1314 ++NORWAY,Kvitsoy-9/7-0355 1 khz test tones fair 0358 Radio Norway IS and yl s/on at 0400 quickly faded, nicely readable.(DM-Alberta) (Great catch, Don. PM)

1332 t ITALY, Radio 1,poor faint talk 0409 9/7, poss. Italian? (DM-Alberta)
1377 FRANCE, Lille-0410 on 9/7, yl in FF (DM-Alberta)
1467 t MONACO??, 0355, piano mx at 0418 9/7,faded (DM-Alberta)
1593 WEST GERMANY, Langenburg-poor OM talk 9/7-0402 (DM-Alberta)

PAN-AMERICAN DX ROUNDUP

670 t CUBA??, at 1202 OM in SS,rippling u/WMAQ on 8/25,poor(DPKM02-Hi)
860 MEXICO, Tijuana-0951-Noted test tone in G on 8/19 (DPKCA1-Hi)
1050 MEXICO, Monterrey-XEG, man w/ad at 1026.New on 8/26 (DPKM01-HI)

TRANS-PACIFIC DX ROUNDUP

531 t AUSTRALIA, Innisfail-4KZ, poss the one u/2MC w/mention on Northern Queensland at 1356 on 10/6, lost to 2MC soon. (PM-Or)
JAPAN, Morioka-J00G w/JJ talk 10/6 at 1050 //594 (GK-Ca)
UNID on 9/14, heating against local TIS,loop NW (TH-Wa) (Time? PM)

558 PHILIPPINES??, unid station u strong JOCR/KBS w/pop mx and OM ancr at 1435 on 9/9, station lang sounded SS or Tagalog. (PM-Or)

576 PHILIPPINES, unid station here w/EE ID at 1502 on 9/8, playing US MOR mx, Frank Sinatra, Jack Jones,etc. Sounded like Net type ID at 1502 "DY?? Radio 13" then local ancr say D???, then back into mx, taped. Can't find anything listed in WRTH that makes sense. Charlie Taylor any ideas? There are so many mistakes in the WRTH-84 Phil. list, especially address. Will keep trying.(PM-Or)

594 JAPAN, Tokyo-J0AK JJ strong talk 10/6 at 1152 (GK-Ca)
666 JAPAN, Osaka-J0BK good in JJ 10/5 0901 (GK-Ca)
702 AUSTRALIA, Sydney-2BL 9/18 at 1314 fair w/ABC mx,Jazz (DM-Alberta)
720 JAPAN, Kitakyushu-J0IL hrd at 1100 9/24 w/JJ Pop,At least one pip on hour,fair new. (DN-Ca) (Good Catch,Doug PM)

747 JAPAN, Sapporo-J0IB 10/5 0815,Strong and steady as KXL-JJ talk (GK-Ca)
756 NEW ZEALAND, Auckland-1YA-vy good w/orch mx //819 10/5 0843 (GK-Ca)
774 JAPAN, Akita-J0UB-hrd 1030 blasting in 9/17,good JJ nite,many hrd (DN)
+Also noted on 9/14,solid in JJ,talk (TH-Wa)

792 AUSTRALIA, Brisbane-4QG-hrd 10/5 0902 in ABC nx (GK-Ca)
819 UNID, Korean lang I think talk by OM 1255,series of 6 chimes rising in pitch at 1257 -1259 CL mx til 1300,3 low pips followed by high pitch back into KK-9/14 (TH-Wa) (Sound like the MBC-South Korea-they run quite a few beautiful pips near the hour.PM)

- 828 AUSTRALIA, Sale-3GI-9/18-1210 fair w/ABC News (DM-Alberta)
 JAPAN, Osaka-JOBB-hrd on 9/17,best sigs ever (DN-Ca)
- 830 HAWAII, Honolulu-KIKI-at 0654 9/8 good,faded and WCCO dominant. This
 early opening noted before,must be local SS enhancement-Hawaii (DM)
- 837 t AUSTRALIA, Rockhampton-4RK-likely the one w/EE talk 0820-10/5 (GK-Ca)
 JAPAN, Niigata-JOQK 9/17 at 1200 w/strongest JJ sigs (DN-Ca)
 +Also noted stronger than WHAS 10/6 at 1100 w/pips ID (GK-Ca)
- 846 KIRIBATI, Bairiki-strong 10/5 0841 OM talk,island mx,KOA slop (GK-Ca)
- 870 HAWAII, Honolulu-KAIM-1310 good 9/18 rel pgm (DM-Alberta)
- 891 t AUSTRALIA, Adelaide-5AN-10/6 1213-1228 w/soft jazz,EE anc (GK-Ca)
 JAPAN, sendai-JOJK vy strong 10/6 1249 w/JJ talk (GK-Ca)
 SOUTH KOREA, Busan-KBS (HLKB) 9/29 strong in KK over TP (GK-Ca)
- 954 t JAPAN, Tokyo-JOKR poss. the stn hrd 10/6 at 1104,JJ talk (GK-Ca)
- 963 UNID, strong w/RR talk 10/6 1107 USSR? (GK-Ca) (Probably PM)
- 972 SOUTH KOREA, Gimje HLCA strong w/talk in KK 10/6 at 1106 (GK-Ca)
- 990 HAWAII, Honolulu-KVH-1105 8/15, on and off w/carrier (DPK-Hi)
- 1035 UNID, C&W mx and EE DJ good sig DU Heading 10/5 at 0834 (GK-Ca)
 UNID, YL Asia talk 10/6 at 1255,IS at 1300 (GK-Ca)
- 1040 HAWAII, Honolulu-KIFH-at 1300 on 9/18 ID good (DM-Alberta)
 +Also noted off instead of RS 7/23 at 1008 (DPK-Hi)
- 1044 CHINA, Changzhou F5 strong 10/6 at 1228,panel disc in JJ,o/unid Asian(C
 +Also noted at 1309 on 8/27,vy poor CC mx // 7480 SW (DPK-Hi)
- 1134 UNID, Northern path TP hrd 10/6 1123 YL talk,weak mod (GK-Ca)
- 1206 t CHINA, Yanji hrd 10/5 at 0824 talk and mx (GK-Ca)
- 1242 t JAPAN, Tokyo-JOLF talk hrd 10/5 likely at 0826,1240 slop (GK-Ca)
- 1314 UNID, good TP carrier 10/5 at 0829.China? (GK-Ca) (Japan? PM)
- 1332 UNID, strong sigs w/mx 10/5 at 0830 covered by 1330 slop soon)GK-Ca)
- 1413 t JAPAN, Fukuoka-JOIF poss hrd 1154-1159 10/6,JJ talk,good to strong (GK)
- 1512 UNID, fair sig on Aussie heading 10/5 0856,1510 slop (GK-Ca)
- 1566 SOUTH KOREA, Cheju-HLAZ noted w/rel programs and KK talk 1152-10/6 (GK

VERIFICATIONS:

- 747 JAPAN, Sapporo-sent information letter and vq direct from station
 JOIB. Report sent 11/20/83-answer rec 6/14. (RH-Co)
- 765 AUSTRALIA, Bega-2BE sent letter and vq in three weeks for taped rep.
 3.5 KW. (PM-Or)
- 828 AUSTRALIA, Nambour-4SS-sent QSL letter in 3 weeks for taped report,
 this is ex 4NA (PM-Or)

THANKS TO THESE REPORTERS:

- RH-Co Rob Harrington-Littleton, Colorado
- GK-Ca Glen Kippel-612 West Avenue-Merced, Ca 95340
 SP-600, Rax, loops
- DM-A1 Don Moman-6815 12 Avenue-Edmonton, Alberta, Canada T6K 3J6
 ICOM-R71, var. beverages-7 mile Flats Bev 2000' NE, 1000' NW, 1000'SW
 600' North (Sept 7,8,9) Sept 18 logs frm Black Nugget Lake, 1000' SW
 Beverage.
- DN-Ca Doug Nyholm-2071 Cedar Street-San Carlos, Ca 94070
 FRG-7000, Sony ICF-6500W, Radio West Loop
- TH-Wa Tim O'Hare-20023 84th West-Edmonds, Wa 98020
 SPR-4, Space Magnet Loop
- DPK-Hi Dale Park-2253 Kanealii Avenue-Honolulu,Hawaii 96813
 ICF-6700W,TRF
- DPKH02 Dale Park
 DXing at Busch Stadium,St. Louis
- DPKM01 Dale Park
 DXing from Holiday Inn-Clayton,Mo.
- DPKCA1 Dale Park
 DXing from cousins home-Irvine, Ca.
- PM-Or Yer Editor
 SP-600, Term. 700 foot NE, Antenna, 2-1500 East Bev. Ground system

Sunwapta



BROADCASTING CO. LTD.

102 CPM BUILDING
 EDMONTON, ALTA.
 CANADA

RECEIVER: REALISTIC PATROLMAN SW-60 ANTENNA: BUILT-IN FERRITE LOOPSTICK

TAKEN: JUNE 17-28, 1984

- | | | | |
|-----------------|----------------|----------------|-----------------|
| 540--CBK--SK | 920--KYFR--IA | 1260--KGBX--MO | 1560--WPAD--KY |
| 550--KPYR--ND | KDHL--MN | WIBV--IL | KKAA--SD |
| KUSA--MO | 930--WKY--OK | 1270--WHBF--IL | KCJJ--IA |
| WSAU--WI | 940--KIOA--IA | KNWC--SD | 1570--KBRF--MEX |
| 560--KWTO--MO | 950--KWAT--SD | KSSA--TX | CKLQ--MB |
| WIND--IL | XEYJ--MEX | KLXX--ND | CFOR--ON |
| 570--WNAW--SD | WVJ--MI | 1280--WVTC--MN | 1580--XEDM--MEX |
| 580--WIBW--KS | 960--KMA--IA | WGBF--IN | 1590--KVGB--KS |
| CHKY--MB | XEK--MEX | KBRQ--CO | KRRK--MN |
| 590--WOW--NE | CFAC--AB | 1290--KOIL--NE | 1600--KCRG--IA |
| 600--WMT--IA | KNEB--NE | 1300--KGLO--IA | |
| KSJB--ND | 970--WDAY--ND | WKXI--MS | |
| 610--WDAF--MO | XEJ--MEX | KVOR--CO | |
| 620--KMNS--IA | KSYL--LA | KBBJ--OK | |
| CKCK--SK | 980--KMBZ--MO | 1310--KPSB--MO | |
| WVWJ--WI | XENR--MEX | WIBA--WI | |
| WSUN--FL | CKRM--SK | KOKX--IA | |
| 630--KXOK--MO | CKSS--MN | KNOX--ND | |
| KHOU--CO | WCUB--WI | WMLF--IN | |
| CKRC--MB | 990--CBW--MB | 1320--KLEO--SD | |
| 640--WVLS--OK | XET--MEX | KXYZ--TX | |
| CM--CUBA | 1000--KTOK--OK | KOLT--NE | |
| 650--WSM--TN | WCPL--IL | 1330--KWLO--IA | |
| 660--WNBC--NY | 1010--CFRB--ON | KFH--KS | |
| CFPR--AB | CFR--AB | KSJN--MN | |
| 670--WMAQ--IL | 1020--KDKA--PA | 1350--KRNT--IA | |
| 680--KFBC--MO | KBCQ--NM | KIDN--CO | |
| KJOB--MB | 1030--WBZ--MA | 1360--KSGJ--IA | |
| KNBR--CA | KTWO--WY | WGSE--WI | |
| 690--CBF--QU | 1040--WHO--IA | KKBJ--MN | |
| 700--WLW--OH | 1050--XBG--MEX | 1370--KSUM--MN | |
| 710--WHB--MO | CFYN--ON | KDFH--IA | |
| WOR--NY | 1060--KYW--PA | KCBZ--MT | |
| 720--WGN--IL | XSEP--MEX | 1380--KCLM--IA | |
| 730--XEX--MEX | 1070--KFDI--KS | KLIZ--MN | |
| 740--CBL--ON | WFSO--WI | WQHK--IN | |
| 750--WSB--GA | KHMO--MO | KOTA--SD | |
| HTA--NIC | 1080--KRLD--TX | 1390--KMRY--IA | |
| 760--WJR--MI | 1090--KAAV--AR | KKCW--IN | |
| 770--KOB--NM | 1100--WVVE--OH | KKOA--ND | |
| WABC--NY | 1110--KFAB--NE | 1410--WIZM--WI | |
| 780--WBEM--IL | 1120--KNOX--MO | KCLO--KS | |
| 790--WEAQ--WI | 1130--WDGY--MN | 1420--KTOE--MN | |
| KGHL--MP | KVKH--LA | 1430--WIL--MO | |
| 800--XEROK--MEX | 1140--WRVA--VA | KRGI--NE | |
| CKLW--ON | KSOO--SD | CJGL--ON | |
| CHAB--SK | 1150--KWKY--IA | WIRE--IN | |
| 810--CKMO--MO | KSAL--KS | 1440--KSKX--KS | |
| WGY--NY | 1160--KSL--UT | WGEK--IL | |
| CKJS--MB | WJJD--IL | WRBA--IL | |
| 820--WBAP--TX | 1170--KVOC--OK | 1460--KSO--IA | |
| 830--WCGO--MN | KSPT--IA | KDMA--MN | |
| 840--WHAS--KY | 1180--WHAM--NY | KLTC--ND | |
| 850--KO A--CO | 1190--WOFO--IN | 1470--KWSL--IA | |
| 860--CJBC--ON | KJLA--MO | KARE--KS | |
| 870--WVW--LA | 1200--WOAI--TX | WVBD--IL | |
| 880--KRVN--NE | 1210--WCAU--PA | 1480--KLWS--NE | |
| WCBS--NY | WGYN--OK | KMEZ--TX | |
| KIKR--TX | 1220--WGAR--OH | 1500--KSTP--MN | |
| 890--WLS--IL | CJRB--MB | 1510--WLAC--TN | |
| 900--XEW--MEX | XEB--MEX | 1520--KOMA--OK | |
| CHML--ON | 1240--KIGD--IA | 1530--WCKY--OH | |
| CKBI--SK | 1250--WREN--KS | 1540--KXEL--IA | |
| 910--KVAA--SD | KCPT--IA | 1550--KKJO--MO | |
| KPOF--CO | KBRF--MN | KQWB--ND | |
| WSUI--IA | | | |
| KCJB--ND | | | |

Via Robert Wien:

No news is good news

This week's highlight in the people-have-a-right-not-to-know competition:

The only radio station in Gloucester, Mass., broke its tradition of never reporting the news by telling listeners of a court ruling that upheld the station's news-free format.

Once WVCA-FM got its momentum up, it broadcast the story not once, but three times, said Simon Geller, owner and operator of the one-man station.

The U.S. Court of Appeals for the District of Columbia on Friday ordered the Federal Communications Commission to reconsider its denial of license renewal to the station.

The FCC had refused to renew the license, saying WVCA didn't meet the informational needs of the community because it didn't broadcast any news.

Geller, 64, said he celebrated the decision by doing what he has been doing for 24 years from the small studio in his basement — playing classical music. It's a little wild, sure, but who can blame him?

The decision was welcomed by fans such as Ted and Betty Rochow of nearby Rockport, who have listened to the station for 12 years.

"It's wonderful, simply wonderful," gushed Rochow, 76.

Rochow, who is retired, said he and his wife even received an on-the-air "thank you" from Geller for their contribution to the station. That's a big enough dose of excitement to keep a person awake all week.

Geller never disputed the fact that his programming consisted almost entirely of classical music.

"I don't broadcast news because it costs too much money," he said. "I have to either hire someone to gather the news or get it from a wire service, and I simply don't have the money."

Hasn't this guy heard that the press is supposed to be free?

THE INTERNATIONAL RADIO CLUB OF AMERICA

The IRCA is a non-profit organization devoted to the hobby of hearing distant stations on the AM broadcast band (525-1625 kHz). DX Monitor, the official publication of the IRCA, is printed 3 1/2 times a year weekly from October to March, twice in September and April, and monthly from May to August. DX Monitor contains members' loggings, articles on radio stations, receiver reviews, technical articles, DX tips, and other material of interest to radio hobbyists. Opinions expressed in DX Monitor are those of the contributors and not necessarily those of the IRCA, its editors or officers. Unless otherwise noted, permission is given to reprint non-copyrighted material provided credit is given to IRCA and the original contributor.

CLUB ADDRESSES AND OFFICERS

President: Phil Bythekway, 9705 Mary Ave. NW, Seattle WA 98117, 206-784-5145. Secretary-Treasurer: Rich Segalas, PO Box 26254, San Francisco, CA 94126. Editor in Chief: Bruce Portzner, 6546 19th Ave NE, Seattle, WA 98115, 206-522-2521. Board of Directors: Ernest Cooper, Nancy Hardy, Ric Heald, Neil Kazaros, Bruce Portzner, Pete Taylor, Niel Wolfish.

MEMBERSHIP DUES

U.S. - \$20.00 per year. Canada/Mexico - \$26 (one issue mailed every week) or \$20 (two issues every two weeks). Overseas Surface - \$21. Overseas Airmail - \$27 (Central America, Caribbean, Colombia, and Venezuela). \$30 (Europe, North Africa, Middle East), \$34 (rest of the world). Trial Membership - \$7.50 (10 issues of DX Monitor and a new member packet, U.S./Canada/Mexico only). Make checks and money orders payable to IRCA and send dues to P.O. Box 26254, San Francisco, CA 94126. Persons living outside the U.S. make dues payable in U.S. funds. Sample copies of DX Monitor cost 50¢ or three International Reply Coupons.

THE IRCA GOODIE FACTORY

Reprints of more than 300 articles from past issues of DX Monitor are available from the IRCA Goodie Factory. Also available are IRCA stationery and the very popular IRCA publications: The IRCA Almanac, A DXers Technical Guide, and the IRCA Foreign Logs. For a list of available publications and their costs, send a self-addressed stamped envelope to IRCA Goodie Factory, 1017 West Manhattan Drive, Tempe, AZ 85282.

P.O. Box 21074
Seattle, WA 98111

U.S.A.

FIRST CLASS MAIL
U.S. POSTAGE
PAID
Seattle, WA
Permit No. 601

first class

D. A. NYHOLM
2071 CEDAR STREET
SAN CARLOS CA
94070

19