



DX Monitor

Devoted Exclusively to
Broadcast Band DXing

November 10, 1984

Volume 22, Number 8

Issue Number 697

In This Issue

Uniden CR-2021 vs Sony ICF-6500W	2	Radio Stations for the Blind	14
IRCA Want Ads	4	DX Worldwide East	15
Eastern DX Forum	5	DX Worldwide West	17
Summary of Unreported Stations	6	ABC Talkradio Special	21
Eastern DX Roundup	7	Top End	22
Western DX Roundup	10	A Simple High Pass Audio Filter	23

Robert Kramer reports by phone that there is no column this week due to lack of reports. However, he received several reports after the deadline, so expect a large column next week. No word on what happened to WDXF.

News from Headquarters

FLASH TIPS

John Wilkins reports that KYTY-1230 in Hardin Montana has been operating on a very limited schedule in recent weeks. New owners took over the station during the summer and found that the equipment that hadn't been stolen was broken down. They have only been on the air for football game coverage, but once they get the mess cleaned up they plan to be on 24 hours a day, with country music during the morning, light rock in the evening, and a mixture during the afternoon.....Robert Kramer Says WKDC-1530 in Elmhurst, IL, is back on the air after a one year silence.....and XETRA-690 has changed their format to oldies, per a newspaper clipping from Father Jack Pejza.

A CORRECTION (OF SORTS)

Rob Harrington notes the following corrections to the book review which appeared on the front page of the October 20 DXM. The correct name of the publication is the International Listening Guide, and the cost for a sample is \$2.00 (U.S. only). A subscription to anywhere in the world is \$8.00 (US). Subscription copies are mailed by airmail from West Germany during the week following the first Saturday in November, March, May, and September. For more information, write to Rob at P.O. Box 3434, Littleton, CO 80161.

FREE BEVERAGE ANTENNA SUPPORTS

With the elections mercifully at an end, I thought I'd call attention to a free source of supports for your next Beverage antenna: political signs. They're ideal for holding up those long runs of wire, since the wood posts are the right height, nonconductive, reasonably strong, and can easily be pounded into the soil. All you need to do to hold up your antenna is to staple the wire to each signpost after it's been pounded in (leave about 40" worth of signpost above the ground....). The signs, of course, can be found in many yards and at most major intersections. By removing about 20 or 30 you'll also help reduce a significant visual blight from the landscape. But hurry before your friends with wood-burning stoves use them for firewood.

OTHER NEWS FROM HEADQUARTERS

A couple of members have complained about not getting a volume 22, number 4. If you are one of them, check and see if you received two different bulletins numbered Vol 22, No. 3 and dated October 6, 1984. Due to a mixup on my part, two consecutive DXMs went out with that number and date. If you didn't receive two such issues, let me know and I'll send you the Volume 22 No 3 that you didn't get.....

THE UNIDEN CR-2021 vs THE SONY ICF-6500W

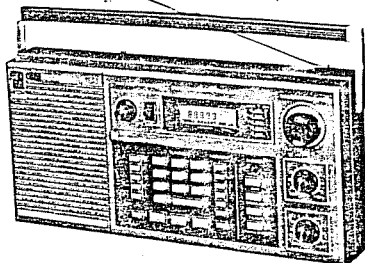
Gerry Thomas

Well, it's happened again---another multi-band portable with digital read-out for under \$100. First the Sony ICF-6500W began selling at bargain basement prices about a year ago; now it's the Uniden CR-2021. (This situation is great for radio fans but try explaining your desperate need for another radio to your wife when she knows you already have seven radios, hi.)

The Uniden CR-2021 is, in reality, a worked over Sony 2001 (originally \$329) and is virtually identical to Radio Shack's DX-400 (\$299.95). The Uniden initially also listed at \$299.95 but was later reduced to \$229.95. It is now available for under \$100 (\$89 from Missouri Radio Center, 2900 NW Vivion Rd., Kansas City, MO, (800) 821-7323; \$99.95 from EEB, 516 Mill St. NE, Vienna, VA, (800) 368-3270) at close-out prices. I called Uniden to see if they were discontinuing the CR-2021 and they said, "No, we're still making them," so they either have a tremendous backlog of the radios or they've found that they can still make a profit at those ridiculously low prices. At any rate, after about 10 seconds of deliberation and rationalization, I was on the phone to Missouri Radio Center and eight days later had a CR-2021.

A Quick Overview of the CR-2021

The Uniden CR-2021 is a microprocessor-controlled, triple conversion portable continuously covering 150 kHz to 29.999 MHz plus FM. It comes with six frequency memories (eight, if you count the scan limit memories), dual selectivity, scanning capability, dial light, sleep function, RF attenuator, antenna trimmer, battery check circuits, and built-in AC transformer. It measures about 12" long by 6" tall (handle down) by 2-3/4" wide and weighs about four and a half pounds with its six C-cells (and two AA's for the memory circuit). Audio shaping is performed by a single tone control knob.



General Operating Considerations

Once you get over "knob withdrawal," entering frequencies by key press and tuning by pushing "up" and "down" buttons should become pretty comfortable. Unfortunately, I constantly catch myself reaching for a knob to turn to fine tune a station (thank goodness for the antenna trimmer, hi). I've always routinely tuned off frequency by one to two kHz for better audio on the radios I've owned; luckily, the Uniden can be "tuned" in 1 kHz (or three or ten kHz) steps so nothing significant has been lost in this regard.

The scan function is really neat; you set the scan limits, press "scan" (or "auto" and "scan" if you want the scanning to stop when a station is encountered) and sit back. This is great but the "auto scan" can skip over weaker stations and scanning on the entire MW band requires concurrent antenna trim adjustment.

One potentially invaluable feature of the CR-2021 is the memory function. Checking for parallels is a cinch and I can see that loading several UNID's in memory and checking back for ID's will be very useful.

Performance on MW

Okay, the bells and whistles are nice but what about performance? After all, it's things like sensitivity, selectivity, and overload susceptibility that determine whether a station is heard or not.

***Sensitivity---This is a potential problem area with the Uniden, particularly on MW (and LW). First of all, background noise (apparently from the microprocessor and IC amps) is much higher than on the Sony ICF-6500W, for example. This noise isn't noticeable on strong locals but approaches the "intrusive" level on semi-locals and can significantly degrade weak signal reception. This problem is compounded by the fact that MW signal levels aren't all that great to begin with. Eventhough there is room in the cabinet for a much longer ferrite

rod, the CR-2021 uses a diminutive 2- $\frac{1}{4}$ " (!) antenna for MW and LW signals. Because the AC transformer and whip antenna are coupled to the RF stage, you are apparently supposed to use them to increase signal strength. This is fine, and they succeed in boosting levels to normal, but by so doing the ability to null is completely destroyed!

This situation can be remedied by adding a larger outboard ferrite antenna, however. I tried a Hot Rod and signals that were reading "1 LED" (the Uniden measures signal strength with five LED's) jumped to four or five LED's. Unfortunately, the folding handle on the Uniden prevents permanently mounting the 15-inch Hot Rod on top; perhaps a smaller version would work. (Incidentally, I'm now completely out of Hot Rod components and, unless popular demand warrants, will not be re-ordering in the near future.)

Given the noise and tiny antenna situation, I suspected that performance on weak signals (especially those on the low end of the band) would be pretty poor. To check this out, I ran a quick side-by-side test with the Sony 6500:

Frequency	Sony	Uniden			
		Batts	AC	Batts+whip	AC+whip
540 kHz	Fair	Nil	Nil	Poor	Fair
1090 "	Fair	Nil/Poor	Poor	Vy Poor	Fair
1250 "	Vy Poor	Nil	Nil	Nil	Vy Poor
1600 "	Poor/Fair	Vy Poor	Poor	Poor	Fair

These were all in-the-clear stations and, as can be seen, the Uniden required AC power and the whip antenna to equal the Sony's bare-foot, battery-powered performance. Several stations, especially on the low end, were simply not present on the Uniden in its other modes.

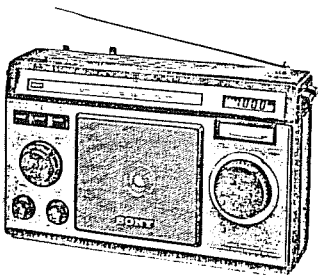
This sensitivity/noise problem is really a shame because the Uniden does quite well on other performance variables; read on...

***Selectivity---Stock selectivity for AM reception is pretty impressive. The CR-2021 uses a muRata CFW-455H (listed at 6 kHz at -6 dB and 18 kHz at -60 dB but sounds much narrower) for the wide position and a muRata CFN-455I (4 kHz at -6 dB and 10 kHz at -60 dB) for the narrow mode. The narrow muRata is equivalent to the Vernitron VID-3-I, a filter used in several portable and table top modifications. In the narrow mode, the Uniden consistently presented interference-free audio on such splits as YSS-655, the Caymans on 1205 and 1555, etc. Deep skirt selectivity is also pretty decent, especially for a portable. At present, I'm sufficiently satisfied with the narrow mode that I don't anticipate making any changes (although SSB and CW SW DX'ing might require a narrower filter).

***Overloading susceptibility---The Uniden is also pretty good in this regard provided the antenna trimmer is accurately adjusted. The first night I had the radio I detected a carrier on 565 kHz and thought I really had something. A check on the R70, FRG-7, and 6500, however, revealed nothing. It turned out that the antenna trimmer was improperly adjusted. I haven't tried a really long antenna with the Uniden yet but my 50-foot inverted-L hasn't presented any problems at all.

The Uniden vs the Sony

I've reviewed the Sony ICF-6500W in the past so I won't go into great detail here. Instead, I'll list some critical feature and performance differences between the Sony and the Uniden.



1. Frequency coverage--Uniden the winner hands down. The Sony covers only MW, SW 3.9 - 10 MHz, 11.7 - 20 MHz, 20 - 28 MHz, and FM. If you DX LW or the tropicals, the choice is easy.

2. Tuning ease--largely a matter of personal taste. Entering a number and adjusting the antenna trimmer isn't really that much faster than using Sony's two-speed knob. Also, the Sony allows tuning between 1 kHz points.

3. Miscellaneous operating features--Again the Uniden with its memory, scan, battery check, and sleep functions. A plus for the Sony is its analog signal strength meter.

4. Sensitivity--Essentially equal on SW and FM; the Sony is decidedly better on MW (if you want to retain nulling ability).

5. Selectivity--The Uniden takes it easily in its stock form. Sony's only selectivity position is far too wide and requires IF filter substitution for good performance (not a difficult or expensive mod).

6. Overloading immunity--The Uniden again, provided the antenna trimmer is properly peaked.

7. Digital read-out accuracy--My Uniden's on the button; my Sony's about 600 Hz high on SW; no biggie.

8. Power consumption--I measured 35 mA current drain on the Sony with the volume set at a comfortable, one meter distant, listening level. The Uniden at a similar setting drew about 105 mA! Similarly, the Sony manual predicts 24 hours of battery life; the Uniden, eight hours. The Sony by three-to-one.

9. Audio quality--The Sony's audio tends to be bassy; the Uniden's is also but less so. Out-of-the-box the Uniden sounds better to me but I've added a cheap high-pass filter to my Sony which I think is superior to both stock passbands.

That about wraps it up. I've only had the Uniden a few days so these initial impressions might change with time. For the MW DX'er, deciding between the two comes down to whether correcting the Uniden's MW deficiencies (i.e., adding an external antenna booster) is easier than correcting the Sony's IF passband (both mods cost about the same) and whether the Uniden's operating niceties make up for its much higher battery drain. The domestic-only MW DX'er would probably find the Sony's IF passband less a problem than the Uniden's noise/insensitivity whereas the foreign DX'er would likely choose the Uniden's narrower passband.

At any rate, either of these radios represents an excellent value and should be given a close look if you're in the market for a digital portable.

Best DX...73's-GT

IRCA WANT ADS

EDITOR:TIM O'HARE
20023 84th W.
EDMONDS,WA 98020

FOR SALE PANASONIC RF-2800 ALL BAND MW/FM/SW WITH DIGITAL READOUT. INCLUDES INST. MANUAL AND VARIOUS CABLES.\$ 100.00 PREPAID. CHARLES A. TAYLOR * P.O. BOX 1413 *OAK HARBOR,WA 98277 OR CALL PREPAID *206*675*5263 6-10 PLT

FOR SALE ICOM IC-R70---VIRTUALLY MINT CONDITION IN ORIGINAL BOX W/MANUAL ETC.NEVER TOUCHED.(I WANT AN R71A).\$ 475.00 POSTAGE PAID*** OR MAKE OFFER. SONY 6500 W.HARDLY USED.ORIGINAL BOX,ETC.\$ 75.00 POSTAGE PAID FRITZ MELLBERG - 1505 CENTRAL (BOX 108) - HAWARDEN,IA. 51023 OR CALL PREPAID 712 - 552 - 2458

FOR SALE HAMMARLUND HQ -180-C. CONDITION VERY GOOD TO EXCELLENT. RECONDITIONED IN 1983.\$ 350.00 CURTIS PETERSON - 1530 MAIN ST. -CRETE,ILL. 60417 OR CALL PREPAID 312-672-7445 ON FRI OR SAT NOT AFTER 8pm LOCAL.

FOR SALE LIKE NEW YAESU FRG-7 WITH DIGITAL READOUT(100 HZ) ,4KHZ CERAMIC FILTER,2.9 KHZ COLLINS MECHANICAL FILTER & MANUAL. EXTRA GLEAN CONDITION - \$ 275.00 POSTPAID. MANY COMPONENTS * PC BOARDS * READOUTS * XTALS * FERRITE RODS * VARIABLE CAPS * ETC. WRITE WANTS & WE CAN WORK IT OUT. RALPH SANSERINO - 8422 GRANE CIRCLE - HUNTINGTON BEACH , CA. 92046.

WANTED ADS FOR THIS COLUMN.YOUR JUNK MAY BE SOMEONE ELSE'S TREASURE. SO TAKE A CHANCE --- GET SOME BREATHING ROOM IN THE SHACK.

EASTERN DX FORUM

RICHARD EVANS
P.O. Box 1294
NORTH WALES, PA 19454

Reports from members living east of the Mississippi River
Deadlines: Saturdays

Gerry Thomas, P. O. Box 2036, Pensacola, Florida 32513

Hi again. DX conditions continue to show promise but the good mid-September TA cx I was experiencing have faded, at least for the time being. Besides DX, I think I'm developing an interest in old radios (my wife's into antiques) and, as a result, have begun researching the area. In my readings, I've come across mention of a "Quality" switch on some of the early "communications" receivers. This switch could have as many as 15 positions and controlled the IF bandwidth and audio stage characteristics. These positions ranged from "Weak DX" (where bass response was severely attenuated, treble slightly cut, and an intermediate IF width chosen) to "Local/Entertainment" where bass was boosted and a wide IF selected). I bring this up because for the past year or so I'd been meaning to do something about the Sony 6500's bassy audio. Dennis Kibbe (if my memory serves) suggested removing a capacitor on the tone control board, which I did and which helped significantly (I've since added a high-pass filter to attenuate the bass). What I find interesting is that designers of radios of 50 years ago were well aware of what researchers in psychoacoustics have since discovered---that low audio frequencies are effective maskers of the higher, information containing, voice frequencies. What all this means is that if you're using a multi-purpose, multi-band radio (especially one with FM and a single tone control), you might have far too much bass present to optimally read weak voice signals. (I've sent an article to HQ's detailing a cheap high-pass filter. Also, I just received a Uniden CR-2021 and have sent in an article comparing it to the Sony ICF-6500W. Finally, it seems I'm always in need of quality ceramic filters so I broke down and satisfied Vernitron's minimum order requirements and now have more than I can use. If you want one, I'll send you a VTD-3-I (4 kHz at -6 dB, 10 kHz at -60 dB) for \$23.50 ppd. That's it from Pensacola. 73's.

S. D. Warren, Rt. 2, Box 285, Nettleton, Mississippi 38858

Hello again. Haven't sent in a Forum recently so I guess it's about time. BCB DXing is slow here during the summer so I do quite a bit of FM-TV DXing. Hope BCB DX is better than FM skip has been this summer. Another new clear channel station has hit the air in our neighboring state of Alabama. WJMW-770 (ex-730) Athens began operating on August 13. "77-WJMW" programs country music 24 hours in stereo. Power is 10000/250, ND days and DA nights beamed SW. This information is courtesy of WJMW's Music Director per phone call. WXSS Memphis, Tenn. is still not on the air although listed in DXM (July 14) to start on July 1. WRTH #84, Broadcasting Information (May 19) and NRC Domestic Log #7 have me thoroughly confused on WXSS's night power. Will it be 10000 or 1000? Have enjoyed J. B. Hughes Forum's on the changing status of Florida's stations. Now all we need is 49 more states and we will be up to date nationwide. I don't think enough is happening in Mississippi to justify a Forum but I will check the NRC Log to make sure. One state I would like to have a progress report from is Arizona. All those new CP's on 610, 700, 830, and 1210 look promising if they manage to get on the air before the channels are blocked in this area. 73 from Mississippi.

Jim Hall, 240 Byron Road, Pittsburgh, Pennsylvania 15237

Hope WWDX-E appears in this issue of DXM - I tried to get it in in time for the last one but it didn't make it. Sure hope everyone enjoys it, I'm very happy to do the column - as Karl Zuk said in last week's Forum, I like to receive direct mail and really do something for the club. Plus, it gives me a chance to observe all WW DX being heard in the area and it gives me a chance to try for any of them. DX lately has been great, especially domestic. Was up all night 10-19/20 DXing, with great results. Cx to the south were very good and I'm very pleased with what I heard, which is not always the case. Have a few UNIDs someone might be able to help me on. One is "AM Stereo Magic 93" which has been driving me crazy. I'm probably wrong, but does anyone know if this is WJAX? They're rock and roll and they always use the slogan and no ID, as least for the period DXed. Another UNID is "CBC Northern Ontario" w/CBC Nx on hour on 930.

Only station I can come up with is CKNS Espanola - but my policy (about 90% at least) is to hear and have on tape a positive call ID from domestics, so I'm not sure if I should take it or not. I finally broke down and took my tentative "C-KAN Country" on 1480 from the August 11 EDXR. I decided there was no other station there that could use such an ID. Can anyone help out with these? Recently at the local supermarket, I took note of a small warning on the cash register. It said something like "This device may cause unnecessary interference to radio and television receivers, etc...", so add this to the list of seemingly hundreds of other types of mad-made QRM. In my last Forum, I asked for an answer to my noise problem. Gardner Smith of D.C. suggests that this may be noise from when the street lights are activated at sunset by photoelectric cells. Sounds reasonable to me Gardner, but I'm in a suburban section (with enough room for a Bev.) and the nearest streetlight is about 1/4 mile away. I don't think the intense QRN could carry that far, but, you may be right as my 400' LW (soon to double in length w/termination when time permits) is pointed directly at it! Still, this may be a little unreasonable. Speaking of my longwire, if possible, I am going to run a parallel wire (about 18" if possible) and use it as a bidirectional null steering Bev. (at 800 to 1000'). Only problem is I'm having trouble figuring out how to do this. The ARRL Antenna Book I borrowed from the library has a schematic for this but darn if I understand what I'm doing! so, Niel Kazaross, George Hakiel, Mark Connelly, or other experienced users PLEASE help if you want. I'd appreciate it greatly as I'm very inexperienced with Bev. antennas. Things like Faraday shields, surge impedance, etc. throws me for a loop. Do you even think a Bev. this far inland is practical? (I think it is). I can only run N-S and I'm ahead at the South end of the wire, so I'd guess a two wire Bev. is the only way I could aim this baby Souty. Well, this is already super-long, so I'll continue next week....73s.

Richard C. Evans, P. O. Box 1294, North Wales, Pennsylvania 19454

Just a few quick words, as the usual time change is leaving me feeling sleepy. I remember when Frank Merrill had a 400' or 500' LW some 20 years ago (near Ann Arbor, Mich) and some of the stuff he heard there still seems unbelievable. I also remember Jerry Starr having good luck with a Beverage in the suburbs north of Youngstown about 15 years ago. I can still recall the comments about his Beverage ending in a cemetery and the couple of comments about the "graveyard" DX Jerry heard. I was able to experiment a little with Jerry's 4' loop, and loved it. Unfortunately, I've never had the space to store a loop that big, and I can't leave it out near the radio since I have a cat who loves to explore things like loops, hi. In re Jim Hall's unid "AM Stero Magic 93", I won't say it was the 920 station in Trenton, New Jersey, but I used to hear them ID at times as "Radio 93", even though they were actually on 920! Gotta run.PTL.

SUMMARY OF UNREPORTED STATIONS
END OF VOLUME 21

The following chart lists the total number of stations in the USA and Canada and the volume they were last reported as being heard:

COUNTRY	V21	V20	V19	V18	V17	V16	V15	V14	V13	V12	Prior	Total
CANADA	222	39	34	33	14	13	5	6	0	2	48	416
U.S.A.	2109	798	465	387	200	203	91	60	34	56	308	4711
TOTAL	2331	837	499	420	214	216	96	66	34	58	356	5127
PCT. %	45.5	16.4	9.7	8.1	4.2	4.2	1.9	1.3	0.7	1.1	6.9	100.0 %

New stations reported as having taken to the air during the period between V21 #33 and V21 #34:

KWXI--670-AR (x-1470)	KKCN--980-AK	WAVS-1170-FL (x-1190)
WJMW--770-AL (x--730)	WBZZ-1640-TH	KTUN-1180-TX
WLWL--770-NC (x-1500)	WDFC-1140-KY	KLNI-1380-NI
KMFR--830-OR (x--860)	WTYN-1160-NC (x-1550)	KKES-1570-GA

Delete station WAWZ-1380 in Zerahoth NJ--went out of existence...

Previously unreported stations noted by IRCA Reporters in DX MONITOR since the last update (V22 #1)....covers V21 #34:

GA---0--KKES-1570 (Wien-GA)
HI---0--KLNI-1380 (Park-NI)
MO---6--KAAN--870 (Kaskey-vac IA)
OH---3--WUCO-1270 (Melicky-PA)
OR---0--KMFR--880 (Hilliker & Wien-GA + Hardy WA)
TX--47--KSJL--760 (Wien-GA), KIKR-880 (Kaskey-vac IA)
BC---2--GISL--650 (Wien & Heald-GA + Campbell WA & Martin-Or)

EASTERN DX ROUNDUP

Karl J. Zuk All Times
154 Old Post Road North Are
Croton-on-Hudson, New York 10520 Eastern Local

Reporters In This Issue:

(DLR-KY) David Reitz, 9332 Fairground Road, Fern Creek, KY 40291
DX-160 and a GE Superadio
(RCR-PA) Robert C. Ritchey, R.D.#1, Box 738, East Freedom, PA 16637
DX-160 and 200 foot long wire.
(GS-DC) Gardner Smith, W9ALZ, 1000 Perry Street, Washington, D.C. 20017
Sony CFM-15
(WW-MA) William Wyllie, 95 Peck Street, Franklin, MA 02038
Sharp GF-450
(KZ-NY) Karl J. Zuk, 154 Old Post Road North, Croton-on-Hudson, NY 10520
GE Superadio

560 UNID ??? 10-6 2215 Station in FF, fair to good signal. Maybe CKCN, Sept-Iles, PQ? (WW-MA) (Maybe..kz)
570 WLLC NC, Raleigh. 10-17 0700 with gospel music, ID as "WLLC Raleigh, Durham, Chapel Hill," into R&B type music. Male announcer. Fair to good signal. D-500. (RCR-PA)
590 CKEY ON, Toronto. 10-7 1905 Strong signal over local WEEI, Boston, and WARM, Scranton, PA., and Cuba. Plays oldies from the 60's. ID at 0017 as "Radio Toronto CKEY 590." (WW-MA)
620 WJDX MS, Jackson. 10-14 2130 Light rocker with sign off. There's a domestic SSer underneath. Who's that? (GS-DC) (WSKQ, ex-W/NJ, Newark, NJ-kz)
620 CFCL ON, Timmins. 10-6 2230 Station in FF with weak signal battling other stations here. (WW-MA)
630 WIRC NC, Hickory 10-19 0707 Local news, weather, and ad for bank. Musical ID, C&W music, D-1000. Fair signal. (RCR-PA)
640 KFI CA, Los Angeles. 10-18 0723 Music: "Cherish," by The Association, ID as "KFI," weather, male announcer. Poor to fair. (RCR-PA)
640 WMSO TN, Collierville. 10-20 0700 Sign on by male, ID as "WMSO, Collierville, Memphis," with good signal. (RCR-PA) (new station?-kz)
790 WWMR ME, Rumford. 9-17 0034 WWMR is also the FM outlet, ID as "96 WMR," at 0057 as "WWMR Rumford." Rock music format, noted only after local WEAN, Providence, RI was off the air. (WW-MA) (Ex-WRUM or is it still WRUM using the FM's calls?-kz)
810 WPED VA, Crozet. 10-16 1945 Sign off by male, no SSB, good. (RCR-PA)
810 WQIZ SC, St. George. 10-16 1946 Sign off by male, no SSB, weaker than WPED's signal before it. (RCR-PA)
850 KOA CO, Denver. 10-26 0710-0730+ Several clear IDs, local news, weather, and sports mentioning Denver, Colorado and surrounding states. Absolutely enormous signal with no fades. New, I'm very happy. (KZ-NY)
940 CBM PQ, Montreal. 10-25 0555 and 10-26 0518 Station seemed to be testing these two mornings. 10-25 light piano music and tones, 10-26 light jazz and tones, both played until sign on at 0558 both mornings. Sign on mentioned studios in Maison du Radio-Canada in Montreal, CBC affiliation, etc. Strong, as usual. Noted Cuba's R.Reloj's time-ticks and morse underneath on 10-25. (KZ-NY)
960 WFIR VA, Roanoke. 10-26 0535 with sports, and local weather. Top 40 format, good signal with fades. (KZ-NY)
960 WSBY MD, Salisbury 10-18 0646 Weather, local ads, ID as "Salisbury 960, WSBY." Very good signal. (RCR-PA)
980 WILK PA, Wilkes-Barre. 10-26 0556 Top 40 format with SID "WILK AM 98." Local news at 0556. Good. (KZ-NY)
980 WWRC DC, Washington. 10-26 0552 with Barbara Streisand record. Good. First time with new call letters. (KZ-NY)
1000 CKBW NS, Bridgewater. 9-16 2130 Strong signal over others here. Some splash from WINS, New York. Plays soft music, not heard too much. (WW-PA)
1020 WJEP GA, Ochlocknee. 10-23 1845-1900 Religious music, ID as "Your in tune with The Voice Of Love, WJEP," weather, more religious music. Another ID, "You've been listening to WJEP Ochlocknee, GA," and signal off. New station. (DLR-KY)
1060 CJRP PQ, Quebec. 10-1 2318 Station in French, with music in FF. Strong signal this night over KYW, Philadelphia. (WW-MA)
1090 CHR8 PQ, Longueuil-St.Jean. 10-4 1900 Very strong signal over WBAL Baltimore with rock songs in French and English. (WW-MA)
1120 KMOX MO, St. Louis 10-25 0530-0610 Usually in there, but big signal this morning with Bernard Meltzer show on NBC Talknet, brief ID and CBS news at 0600. St. Louis weather followed. (KZ-NY)
1150 WRUN NY, Utica 10-17 0545 Over CKOC. New to me. Between monster CKOC and local WJOK (All Joke Radio), we don't hera much. (GS-DC)

(more!!)

More Eastern DX Roundup!!.....

- 1200 WOAI TX, San Antonio. 10-24 0600 Another station with Bernard Meltzer on NBC's Talknet, into ID "Home of The San Antonio Spurs, This is WOAI, Clear Channel Communications, San Antonio.," into CBS news at 0600. Very good signal. Fairly regular. (KZ-NY)
- 1240 WLUV KY, Louisville (no time,date) Now gospel and religious format, ex-MOYL. (DLR-KY) (New calls, ex-WINN. When did they switch calls? -kz)
- 1250 WMTR NJ,Morristown. 10-14 2119 First time noted here after sunset, ex-daytimer. Good to fair signal over WKBR, Manchester, NH. Plays Oldies. ID as "AM Stereo 1250 WMTR." (WW-MA)
- 1280 WYVE VA, Wytheville. 9-12 1845 Sign off announcement u/o two different domestic SSers, one was WADO, New York. Announced power as 2.5 kW. New, station #1090. (GS-DC)
- 1300 WGRC NY, Spring Valley 10-29 1500 with local news. Slogan "Great Radio, WGRC," and "Serving Rockland and Bergen Counties, This is WGRC, Spring Valley, NY." New format, top 40, ex-MOYL. (KZ-NY)
- 1390 WROA MS, Gulfport. 10-23 1947 Local spot, ID and MOYL type music, in with WHMA, Anniston, AL. (DLR-KY)
- 1400 WFOR MS, Hattiesburg 10-22 1920 Atop briefly with local spot and ID into C&W music. (DLR-KY)
- 1440 WRBE MS, Lucedale. 10-22 1928 C&W music, ID and sign-off announcements. (DLR-KY)
- 1540 WSWG MS, Greenwood. 10-23 1924 Pop music, local spots (about seven in a row) then ID and sign off announcements. (DLR-KY)
- 1540 KBXM MO, Kennett 10-23 1930 ID and sign-off announcements and SSB. In with WSWG, Greenwood, MS. D-1000. (DLR-KY)
- 1540 WMDO MD, Weaton. 10-16 1830 with sign off. Mentioned "La Ciudad Weaton," and slogan, "Radio Mundo." SSer. (GS-DC)
- 1540 WPGR PA, Philadelphia. 10-16 1830 Sign off mentioning slogan "Philly Gold Radio." New call sign, ex-WRCP and WSNI, although FM is still WSNI-FM. Doo-wop oldies. (GS-DC)
- 1540 WARD PA, Pittston. 10-16 1830 Caught sign off after WPGR. (GS-DC)
- 1540 WYNC NC, Yanceyville. 10-16 1845. with sign off. (GS-DC)
- 1540 WNRE OH, Circleville. 10-16 1850. Promo for Circleville just prior to sign off. D-1000. (GS-DC)
- 1540 KXEL IA, Waterloo. 10-16 1915 Blasting in on top. Heard all the time, but never so early, just after sunset. Mostly preaching, but now C&W. (GS-DC)
- 1580 WBBR SC, Travelers Rest. 10-7 1850 Announcing that they signed on in 1964 and are celebrating their 20th anniversary. Great signal. D-5000. (GS-DC)
- 1590 KGAS TX, Carthage. 10-22 1940 C&W music by Hank Williams Jr., Weather, SID, in with WCCL, Jackson, MS. KGAS is 2500w. (DLR-KY)
- 1590 WXRS GA, Swainsboro. 10-19 1900 Sign off with SSB. Gave power as 2.5kW. New, 18th station on 1590 for me. WAKR, Akron, OH, nulled. (GS-DC)
- 1590 WVNA AL, Tusculmbia. 10-19 1905 (assumed date and time) ID as "news-talk radio" with call sign. New, 19th station for me on 1590. WAKR, Akron, Ohio nulled. (GS-DC)
- 1590 WJSO TN, Jonesboro 10-17 0550 Alone on channel. Light rocker. WAKR, Akron Ohio nulled. (GS-DC)
- 1590 WGGO NY, Salamanca 10-17 0600 Sign on. I think they said "Christian Radio." About 17 stations signed on all at once at this time. (GS-DC)
- 1590 WARV RI, Warwick. 10-17 0600 Sign on. Supposed to be an ANer. Strongest in the bunch. (GS-DC) (Formally,city of license is Warwick-East Greenwich, RI-kz)
- 1590 WLFA GA,Lafayette. 10-17 0615 Weather for NW Georgia. Briefly on top. Also used slogan "Northern Georgia Radio Sports." (GS-DC)
- 1590 WCSL NC, Cherryville. 10-17 0635 Promo for something on The Jefferson Davis Highway. ID as "Gaston County's only radio station, WCSL." 16 stations logged on 1590 so far! (GS-DC)

Great turnout this week! Thanks to David, Robert, "Smitty", and William. Conditions here are very weird: either dead as a doornail, or very strong in only one narrow direction. I thought my KOA logging was going to be the best until Mr. Ritchey logged KFI, my most wanted. Rats! Robert, consider yourself a friend and don't call me "sir", it'll just go to my head! Great catches everywhere, so it seems. Keep those reports coming! This is an East Coast club, too! Send in your loggings in whatever form is easiest for you. I'm not proud. It seems local WNYC is going to appeal to The Supreme Court to keep its limited night hours, so they will still be on until 2200 EST until the outcome of that appeal is certain. I'm sure that WNYC, with 1kw directional east puts a big dent in WCCO's skywave pattern, hi. Give me a break WCCO, I like NPR on BCB! 73s everyone and enjoy the great cx! KZ.

EASTERN DX ROUNDUP

Karl J. Zuk 154 Old Post Road North Croton-on-Hudson, New York 10520	All Times Are Eastern Local	Send In Your Loggings TODAY!!
--	-----------------------------------	-------------------------------------

REPORTERS IN THIS ISSUE:

(JH-PA) Jim Hall, 240 Byron Road, Pittsburgh, PA 15237
R-600, dual loops (3 and 5 feet), 100' and 400' long wires, 50' vertical wire.

(KZ-NY) Karl J. Zuk, 154 Old Post Road North, Croton-on-Hudson, NY 10520
GE Superadio

- 550 WDRV NC, Statesville. 10-20 0651 On top with many ads, local weather, ID as "55 DRV." Mor music and a darn good signal! D-500. (JH-PA)
- 620 WWLX AL, Lexington. 10-20 0700 Sign on with SSB, IDs and location, right into C&W music, o/u WHJB Greensburg, PA. (JH-PA)
- 630 WIRC NC, Hickory. 10-20 0609 Local weather and mention of "WIRC Cashcall." Also "6-30 Country," o/u R.Rebelde Cuba and WNEG. (JH-PA)
- 630 WNEG GA, Toccoa. 10-20 0612 ID as "AM 63, Radio WNEG," sneaking up through R.Rebelde and WIRC for a few minutes with a surprisingly good signal for low power used (D-500), with C&W music. (JH-PA)
- 770 WEW MO, St.Louis. 10-20 0720 Big Band and symphony music, commercial for show on "Superstation WTBS," very good with signal on top of slop with WABC daylighted by this time, mention of CNN and ID as "WEW Seven-seven." (JH-PA) (Obviously a CNN Radio affiliate, but not in Almanac as such-kz)
- 870 WFLO VA, Farmville. 10-19 0834 Good signal on top of mess, no WWL, SID by YL and C&W music. D-1000. (JH-PA)
- 900 WKDW VA, Staunton. 10-19 0820 Good and sharp, but riddled by QRM with C&W music. D-1000. (JH-PA)
- 930 WPMO MD, Frederick. 10-19 0816 Many ads, local weather, and ID. Very good and on top occasionally. (JH-PA)
- t930 WJAX FL, Jacksonville. 10-20 0521 Constant strong signal. Jazz format and slogan "Magic 93 AM stereo." Jacksonville tentatively mentioned with station on top of frequency. Can anyone help? (JH-PA) (I don't know format of WJAX, does anyone? Jody Hughes to the rescue?-kz)
- 1310 WVIP NY, Mount Kisco. 10-18 1816 Caught late sign off with mention of QTH, power 5 kW, etc. Always a weak signal here for 5kW, but they put out a great harmonic on 2620 kHz, so this might be part of their problem. (KZ-NY)
- 1310 WJLK NJ, Asbury Park. 10-18 1820 In briefly after WVIP sign off. IDs as "1310 WJLK" and "AM-1310." Fair. (KZ-NY)
- 1380 WKDM NY, New York. 10-18 1830 Ex-WAWZ and WBNX (shared hours) with contemporary SS music format. IDs as "KDM-1380" in SS and "Radio Musical." Weaker signal than old WBNX or WAWZ, and lots of compression for continuous 100% modulation. Sounds loud and lousy! (KZ-NY)
- t1550 WSER MD, Elkton. 10-20 0745 Station near Newark and Glasgow DE (these towns mentioned in ads,) heard under WJLY, Braddock PA carrier from 0745 to 0748 when WJLY audio began and wiped it out. Hopefully not WSER, Elkton, MD which is nearby. Any new licenses here? (JH-PA) (I guess WSER, sorry! Any other ideas out there?-kz)
- 1550 WAAY AL, Huntsville. 10-10 1840 Excellent atop SSS jumble with pop music. (JH-PA)
- 1560 WYZD NC, Dobson. 10-15 0650 Blasting in over WQXR NY, NY. with down home C&W music and several very local ads. (JH-PA)
- 1570 UNID ??? 10-20 0743 Station here with slogan "Solid Gold 16-Q." Suggestions? (JH-PA) (WQTW Latrobe, PA has slogan "16-QT" per the almanac and fits the time and place. I'm unsure of format.-kz)
- 1580 WUIV NC, Icard Township. 10-11 1846 with sign off, mention of transmitter location and power, fair in mess. (JH-PA)
- 1580 WEYY AL, Talladega. 10/10 1715 Sign off with mention of location, power, etc., on top in auroral conditions. D-1000. (JH-PA)
- 1580 WPMP MS, Pascagoula-Moss Point 10-10 1845 "The Hot One" with pop music, atop the rest of mess on frequency in auroral conditions. (JH-PA)
- 1600 WEUP AL, Huntsville 10-10 1901 News, fair in mess, lost to others, but peaked up occasionally. (JH-PA)

Thanks, Jim for writing this weeks column! Please send in reports! We need you! I returned from Ft.Lauderdale FL yesterday. I heard a TIS at PTL airport on 1610, what sounded like R.Marti on 1180 on eve. of 10-20 but too weak to be omnidirectional w/50kw. Cubans were in best during the day. Caught R.Relej strong on 570, weak on 730 with time ticks and "RR" in morse. R.Rebelde on 590,600,620,630,640 and different programming, sometimes R.Progresso on 670 and 690. Cubans are frustrating. They mix the different network's programming at will, so you can be listening to Progrsso and suddenly be back with Rebelde. Relej stations did not switch away from Relej, though. Rebelde had a USA rock song every third or so. "I'm so glad to be livin' in the USA" 73s de KZ.

WESTERN DX ROUNDUP

Nancy Hardy
2301 Pacific Avenue
Aberdeen, WA 98520

All times are
Eastern Local

Phone for hot WDXR tips: (206)532-6827 till 10pm(PLT)

DEADLINES: Tuesdays

REPORTERS FOR THIS ISSUE:

- (BB) Bill Block-9307 S.E. Clay St.-Portland, OR 97216
R-390A, Radio West loop
- (NHP) Nick Hall-Patch-1538 Amphion St.-Victoria, BC V8R4Z6
Transmogriified HRO, 3' box loop
(NHP-AB) DX'ing at Pembina River in the Alberta foothills w/
Don Moman & Mick Delmage
Homebrew receiver, various Beverages of 1030+ feet at 2100, 2400,
2700, phasing unit
- (BH) Bill Hardy-2301 Pacific Ave.-Aberdeen, WA 98520
FRG-7, SM-1
(BH-WA1) DX'ing at Grayland Beach State Park, WA w/FRG-7 & SM-1
- (NH) Nancy Hardy-2301 Pacific Ave.-Aberdeen, WA 98520
FRG-7, SM-1
(NH-WA1) DX'ing at Grayland Beach State Park, WA w/FRG-7 & SM-1
- (JH) Jim Hilliker-1502 E. Hedgewood Ave.-Anaheim, CA 92805
Kenwood R-1000, Sanserino loop
(JH-CA1) DX'ing 15 mi. E of Anaheim at Featherly Park w/GE
Superadio
- (JJ) Jef Jaisun-12860 136th Ave. NE-Kirkland, WA 98034
(DKK) Don Kaskey-465 Burnett #1-San Francisco, CA 94131
Hammarlund HQ-140X, SM-2
- (PM) Patrick Martin-F.O. Box 843-Seaside, OR 97138
SP-600, term. 200' NE LW, two 1500' E Beverages
- (DM) Don Moman-DX'ing 220km WSW of Edmonton in the foothills w/Mickey
Delmage and Nick Hall-Patch
ICOM R71, Kenwood TC430; various & assorted Beverages, generally
1300' long on bearings of 210, 240, 270 & 320 degrees
- (DP) Dale Park-2253 Kanealii Avenue-Honolulu, HI 96813
Sony ICF-6700W, TRF
- (RW) Robert Wien-1309 Dentwood Dr.-San Jose, CA 95118
GE Superadio, GE long-range portable, SW-2
- (REW) Richard E. Wood, PhD-P.O. Box 5074-Hilo, HI 96720
R-1000, 100' longwire

***** OF SPECIAL INTEREST:

- 550 KMVI HI, Honolulu 10/17 0615 on for emergency purposes instead of SP
due to brush fire on ridge above Mailuku. DJ Dave Vernon
discussing situation w/fire captain, into cont. Hawaiian mx.
Full ID (stn returns at 1030 EDT) and SSE in Hawaiian w/guitar,
cymbal & cello; off at 0630. Poor to fair. (DP-HI)
- 800 KFRZ UT, Brigham City 10/22 0930-0933 very poor on fade-up through
bad KGO-810 slop w/ad for Mountain Bell, followed by Paul
Harvey, lost immediately to CROK/XEROK, details confirmed via
phone call to stn later in day. Talked w/anncr. on duty at that
time! Call change, ex-KBUH. (RW-CA)
- 1030 KHWY CA, Folsom per follow-up call to KHWY, target date to hit air
has been moved from 10/29 to "November 15th at the earliest,
November 22nd at the absolute latest." (RW-CA)
- 1380 KLNI HI, Pearl City 10/11 "This is KLNI on the air for equipment
adjustment purposes. 1-2-3-4-5-, 1-2-3-4," etc. Open carrier,
1200 Hz test and voice, 0417-0430; and on RS daily from s/on
0400 but not determined yet as mainlanders override. (REW-HI)
- 1450 KACY ID, Payette 10/22 0743 was just flipping across the dial when
hrd this beautiful s/on o/mess in KEST null, s/on ending w/
"...good morning, from KACY, AM radio...", into SSE, then
apparent C&W, but faded out rapidly. Call change, ex-KYET.
These calls look very familiar, hi. (RW-CA)

- *****
530 Pirate10/14 1045 poor mx here mixing w/the Seattle Tacoma Airport
TIS. (DM-AB)
- 540 LPRT BC, ? low key comedy //1440 (CFCP?), noted fair at 0548 10/13,
then mention of CBC stereo. (NHP-AB)

590 KFXM CA, San Bernardino 10/15 0403 w/ID atop KTHO/KHQ. Rock mx. (DKK)

600 KESR CA, Independence 10/24 2110½ song by Air Supply, 2115 s/off w/
full details. Good w/CJOR nulled. Hrd once as KINC. (NH-WA)
+10/27 2113 poor, just barely audible thru CJOR null. Brief
KESR mention, some kind of ad or PSA, s/off 2115 w/two KESR
mentions. (BH-WA)

660 WNEC NY, New York 10/12 2317 w/CFRR phased down to near inaudibility.
This was fair w/pop mx and "million dollar weekend on WNEC."
Only using phasing unit, even the 2700 wires showed just CFRR.
(NHP-AB)
+10/18 0400 NBC nx, PSA for North Shore Animal League, "All
adoptions are free." 0406 NBC three chimes, lively DJ "WNEC,
New York," singing ID "WNEC." Good, alone on channel. Nation-
wide clear channels still live! (REW-HI)

670 KDLG AK, Dillingham 10/21 1155 "BEC Science Magazine," 1200 ID
"Serving Bristol Bay and the Unalaska Peninsula, this is KDLG,
repeating as KIAL Unalaska and KSDP Sand Point." Into live nx
by Dave Nelson. 1209 list morning's programs. 1210 Concert Time
for Bristol Bay, works by Spohr and Respighi. Fine steady
signal for 5kw. I'll probably lose this one when KPUA-970 moves
here. (REW-HI)

670 WMAQ IL, Chicago 10/14 0407 Chicago area wx o/KBOI. (REW-HI)

690 KKUA HI, Honolulu 10/20 0555 w/TC, ID. Rock mx. Alone w/XETRA off.
(DKK-CA)

(XETRA) BCN, Tijuana 10/17 0432 w/OC, TT'ing later on. (RW-CA)

700 WLW OH, Cincinnati 10/10 0215 promo "9 o'clock to midnight, free
legal advice right here on 7, WLW." Ad for Muriel cigars. In
the clear. (REW-HI)

KGRV OR, Winston 10/17 2225-2235 powering in an hour after sunset
w/Jimmy Swaggart etc. ID 2230. Must have forgotten power cut
at 2130. (DKK-CA)

750 WSB GA, Atlanta 10/23 2200 best signal level I've ever hrd this stn
with, they usually don't come in well here, so I was surprised
how loud they were, no sign of KXL in other direction. Good ID
as "50,000 watt clear channel voice of the south, AM 7-50, WSB
Radio. It's 10 o'clock." Into NEC nx. Some QRN and KCBS-740
slop. Also, this is the earliest I've hrd WSB here. (JH-CA)

KMMJ NE, Grand Island 10/16 0747 good sig w/Farm & Cattle rpt. All
alone, still in well at 0810. (DKK-CA)

760(*KFM*) CA, San Diego 10/21 0504 noted w/OC & TTs. Carrier went off a
couple of times. (JH-CA)

KGU HI, Honolulu 10/14 0931 good w/ID, World Series baseball promo.
(DM-AB)

WJR MI, Detroit 10/13 0200 fair w/ID as "Voice of the American
League Champions, the Detroit Tigers." (DM-AB)

770 WAEC NY, New York 10/13 0005 fair w/wx forecast, "Talkradio 77,"
Frequent IDs. KOB QRM. (DM-AB)

?KXA or KKMI? WA, Seattle 10/19 0941 noted w/new ID after pop/rock mx,
then a commute report, ID & local nx items and wx. ID 0943 then
"KKMI news, KKMI weather" IDs & into Elvis song. (DKK-CA)
+10/21 0510 unID TT's and mx o/u KOB. No IDs hrd. Strong at
times. (JH-CA) (Still using KXA-AM & KKMI-FM ID on 10/30. KXA
simulcasts KKMI-FM during drive times, still gives KXA ID at
the top of the hour.--NH)

780 WBBM IL, Chicago 10/21 0545 nx, ID, TC in KROW null. Fair. (JH-CA)

790 KWIL OR, Albany 10/25 0112 atop KABC w/religion. Rare here. (DKK)

820 KCBF AK, Fairbanks 10/5 0955 fair signal w/a string of ads, most
mentioning Fairbanks. (NHP-EC)

830 KABN AK, Long Island-Big Lake 10/5 1001 massive signal w/"60 seconds
of science" from the University of Alaska. Had to null this to
hear KIKI. (NHP-EC)

840 KSWB OR, Seaside 10/13 2104 ID & ads. Monstrous strength. Later, man
asking distant listeners to phone in. As we were untold miles
from the nearest phone, we didn't bother phoning. Since noted
at home w/varying strength. (NHP-AB)
+10/13 2207 good w/football game. New here, must have just moved
here, ex-930. Not hrd last night. (DM-AB) (10/13 was 1st day--NH)
+Ex-930 10/19 w/ID 0950. "It's 10 minutes before 7 on 840, KSWB"
then into pop/rock mx. Fair sig thru locally induced cross
modulation. Also noted pop/rock mx u/WHAS 10/23 2235-2255.
(DKK-CA)

840 +10/27 0440-0510 had been trying 4 nights in a row for this, and finally got them, pretty good signal on the peaks in WHAS null. KSWB
 cont'd Local spot for store selling radios, ghetto-blasters, store called "Coast to Coast, open every day, on Broadway downtown Seaside." TC by DJ "19 minutes before 2am on AM 8-40, KSWB, where we have an 84 hour broadcast marathon going on this weekend." Talk about record give-aways, prizes, trivia contests etc, ment. wx, 440. Into Kenny Rogers song. 0450 same contest info, then into local high school football scores. Seemed to be more fading after 0500, had UPI nx, then more mx. Some QRN & het QRM from 837, but narrow filter made audio OK. Fair. New, OR #25. (JH-CA)
 +Su 10/28 0709-0715 fair to clobbering w/YL DJ & pop/rock mx. Obviously no longer a midnight PLT s/off. Another clear channel bites the dust! (JJ-WA) (They were on AN because of marathon mentioned in Jim's tip above.--NH)

850 KTAC WA, Tacoma 10/21 0432 poor in a partial KOA null, mx faded in, u/KOA mostly, but caught wx & ID by DJ. Pop mx. New, WA #23. (JH-CA)

880 KKMC CA, Gonzales etc 10/29 0300 pleasant surprise to have this atop KWIP in KIXI null, no sign of KMFR. Contemp. Christian mx, full data s/off, no anthem. (BH&NH-WA1)

WCBS NY, New York 10/14 0000 huge signal w/ID. EST TC & CBS nx. Completely dominant, but only for a few moments. (NHP-AB)
 +10/14 0100 good w/nx, ID at 0100. (DM-AB)

900 KBIF CA, Fresno 10/21 2130 s/off, good signal but noisy, no SSB.(JH)
 920 KLOC CA, Ceres-Modesto 10/1 0400 EE ID "This is KLOC Ceres-Modesto," into SS, mariachis, dedications; name day for people named Angel or Angelita. (REW-HI)

?KKAM? CA, Palm Springs 10/22 0947 poss. one w/MYL-type mx (On Mockingbird Hill, and Days of Wine and Roses) fading up briefly o/ KLOC/KOLO then lost through mod. KNEW-910 slop, but can't count yet as call change ex-KDES. (RW-CA)

930 *KHJ* CA, Los Angeles 10/22 0317 w/TT. (RW-CA)
 940 (KDEO) HI, Waipahu 9/11 0200 off the air. DJ on phone said he was waiting for the CE to call. Not on as of 0615. (DP-HI)

1010 ?KBBW? TX, Waco 10/22 0700 poss. the one w/some sort of sports bdst, mention of "Detroit Tigers" & definite mention of "Waco," into AP nx on hour. TC of "It's 6am." KDJW Amarillo listed carrying AP nx, but KBBW (ex-KKIK) isn't listed carrying it. Can any TX DEXer confirm if KBBW does/doesn't carry AP nx on hour? (RW-CA)

1040 (KIFH) HI, Honolulu 9/10 0638 off the air. Erock Whaley says the SP is 0700-1000 Tu-Su, 0500-1000 MM EST. (DP-HI)

1070 KNX CA, Los Angeles 9/10 0657 end of report; recruiting ad for county deputy sheriffs; TC & nx preview (today's Admission Day), CBS nx (1/2 sec. ahead of KGU). Poor, deep fades. (DP-HI)

1090 KING WA, Seattle 9/4 0846 my log last week should have said "0846" and TC "King 10-90 news time is 5:48. Hrd 9/18 in early w/CNN Headline News // local cable. Very poor. (DP-HI)

1110 KFAB NE, Omaha 10/22 alone 0448-0605+ after KRJA s/off 0448. MOR/EZL mx w/NBC nx on hour. WET's sig avoided San Francisco on way to San Jose. (DKK-CA)

WET NC, Charlotte 10/22 0530-0548+ good way o/KFAE/KRCX, hardly faded for 18 minutes w/political spot, ment. of "North Carolina," ID "...68 degrees here at WET, the WET Accuweather forecast..." may have had ABC nx on half hour (Ae?). Tnx tremendously to GS-WN and RK-IL for reporting them blasting in in Midwest in the 10/6 CDXR! They have to be operating ND w/the signal I had them with. State #42, one of my most-wanted states (WI is my most-wanted state!). (RW-CA) (Hearing NC out here deserves a Penguin Pat on the head!--NH)

1130 KWKH LA, Shreveport 10/3 C&N, "A great radio station, KWKH." Dominant. KLEI-HI is not a big problem here. (REW-HI) (Time??--NH)

(KRAK) CA, Sacramento 10/17 0447 totally off. (RW-CA)

1150 KBAI CA, Morro Bay-San Luis Obispo 9/27 2100 ad, ID (giving dual city of license) then nx. Poor to fair, dominating channel. KSPL still off air at this time. (NHP-BC) (KSPL is now KGNW-NH)

KGNW WA, Seattle 10/22 0431-0500 way o/KPRZ/XERM for full half hour, completely unnullable w/"Through the Bible Radio" program, ID on hour "1:58 here at KGNW," promos for other relig. programs, beautiful ID on hour "This is Gospel Radio Northwest, KGNW, Seattle," into "Insight For Living." Never hrd this as KSPL, just as KAYO. They definitely did something to their DA to have

1150 that kind of a signal, even KAYO never came in that good!
 KGNW Call change, ex-KAYO (not hrd as KSPL). (RW-CA)
 cont'd +10/25 0115-0205 noted w/reliq. 0115, missed ID at 0130, more
 relig., ID 0201 after local wx. Noted slogan "Great North West"
 followed by KGNW ID, then relig. mx. In/out w/KPRZ & others.
 (DKK-CA)

1180 KDAN or KEWA? AZ, Williams 10/19 0030 DXing on east side of KEZY
 towers, a little less 1190 slop here than at home. Nulling
 KERRI, hrd C&W mx several times, then got enough audio thru
 slop, talk by female "...call 635....., in Williams, Arizona,"
 back into C&W. New. AZ #54. (JH-CA1)

WHAM NY, Rochester 10/13 0112 good WHAM ID, Olivia song, travelers
 advisory due to fog. (DM-AB)

1190*(KEZY*) CA, Anaheim MM 10/22 0305 noted off, then 0320 CC & TTs. (JH-CA)
 1210 WCAU PA, Philadelphia 10/13 0121 good ID, Foster Parents Plan spot,
 good signal. (DM-AB)

1220 KDFC CA, Palo Alto 10/28 2102 s/off after classical mx. Cut off
 KDFC-FM annrcr for pre-taped s/off plugging FM. Quite loud for
 supposedly being on post-sunset power. (BH&NH-WA1)

1230 KPAK CA, Redding 10/15 0322 atop w/ads o/KCBN. (DKK-CA)
 1250 WREN KS, Topeka 10/14 0000 ID "WREN Topeka," into NEC nx, sports;
 all alone on channel at SSS; my best mainland catch so far. (REW)

1270 KORY NV, Sparks-Reno 10/26 0130-0200 w/oldies rr mx and "use it or
 lose it" (record) promo, spots. Good, finally relogged this
 after call change, ex-KROI. (PM-OR)

1290 ?KCIL? NE, Omaha 10/22 0727 tent. w/YL DJ, apparent C&W, poss. ment. of
 "Omaha" at this time but faded out quickly o/KMEN/KCUB just
 before KOWB's s/on, been after this for years. My most-wanted
 NE station! (RW-CA)

1300 KHUG OR, Phoenix 10/19 CP for U2 5000/5000 is on the air. Dominant
 2349 w/Phoenix High School football; ads for Ray's Country
 Market, Vince Auto Parts, RC Machine Shop, Napa quality,
 Phoenix Pharmacy. 0006 10/20 ID "You're listening to Phoenix
 High School football on KHUG Radio." Is going to be a regular
 here. (REW-HI)

1320 KQDQ OR, Eugene-Springfield 10/28 2120 fair to good, KXRO nullable
 here, blend of pop oldies and Nat King Cole. 2130 s/off,
 evidently not fulltime yet. Must have forgotten to change
 s/off time for standard time as this was one hour after local
 sunset. (BH&NH-WA1)

1330 KOVE WY, Lander 10/12 0210 good w/s/off anncts. (DM-AB)
 1340 KAPA WA, Raymond 10/28 2135+ good atop jumble at this location. KAPA
 format is now country, including much crossover mx, evidently
 to compete w/new Raymond FM stn which is now on the air. Now
 gives KAPA ID's much more often, plugs "First in Pacific
 County," etc. Sunday night s/off 0105. Still no network. Has
 dropped "South Bend" from legal ID's. (BH-WA1)

1360 KZUN CA, Modesto 10/29 1020 atop KUIK in KAMP null, DJ talking
 about contest coming up "on Modesto's new cousin," into C&W
 record "on 1360, KZUN." Similar at 1023, mentioned John
 Madden's sports report, so still has RKO network. Ex-KFIV.
 (BH-WA1)

KUIK OR, Hillsboro-Portland 10/10 0240 C&W, "On Country KUIK."
 Dominant. (REW-HI)

1370 KCEZ ME, Putte 10/12 0131 good w/EZL mx, ID. (DM-AB)
 KWNC WA, Quincy 10/18 1135 average signal atop null'd QRM, "KWNC"
 jingle between Mutual nx & Mutual sports. (BH-WA)

1390 KJCY AZ, Medicine Hat 10/29 0517 good atop KGER w/contemp. hits,
 community calendar, jingle. (BH&NH-WA1)

1400 KRE CA, Berkeley-San Francisco 10/20 2346 finally hrd an ID
 "KRE San Francisco 14 minutes before the hour." This one is
 usually dominant and easily recognized w/its soul and progressive
 programming, but very rarely IDs. (REW-HI)

1420 KMOG AZ, Payson 10/21 0206 first time hrd on night power, fair on
 fade-ups in YEXX partial null. Wx, temp., ID, into C&W mx. (JH)

1430 KFIG CA, Fresno 10/29 0305 jingle & into Kenny Rogers & Dolly Parton
 song. Good, ex-KARM. (BH-WA1)

1480 KPHX AZ, Phoenix 10/15 0451 atop w/SS programming & KWUN off. (DKK-CA)
 1490 *KRKC CA, King City 10/20 0531 ID while on ET. (DKK-CA)
 CKOOL BC, Oliver 10/12 0157 good, relay CKOK w/BC Lions football. (DM)
 +10/23 1937 "C-K-double O" in contest, Charlie Rich song, 1944½
 ad for Osoyoos Husky (gasoline station). Fair o/mess. New.
 (NH-WA)

- 1520 KTRO CA, Port Hueneme 10/24 2003 "Radio Tiro" (w/bullet sound) after SS mx. Excellent o/KSGO. (NH-WA)
- 1540 ?WFTR? NY, Albany 10/13 0131 u/KXEL & someone in SS (who?), hrd Tent. ID "here on 50,000 watt..." & the last sounded like --TR, so... Very good Eastern conditions tonite. (DM-AB)
- 1550 KXEX CA, Fresno 10/26 fair to poor w/SS annor. at 0430 w/Ranchera mx and "Kay-Equi-Eh-Equi" IDs. KKHI QRM. New. (PK-OR)
- 1560 WQXR NY, New York 10/12 2255 creeping thru w/wcman talking u/KPMI on 210 & 240° wires, but studio level on 270° wires w/ID at 2300. The 270° wires showed fine BL response this evening, w/AEC, WHAM, WCAU all thundering in. (NH-AB)
+10/12 2336 excellent w/Wet Opera ads, classical mx, many concert ads & promotions at 0000, ID. Fantastic signal! (DM)
- 1580 CBJ PQ, Chicoutimi 10/12 2316 fair w/talk on hockey players, several "Ici Radio Canada" IDs. (DM-AB)
+10/12 2240 only traces of FF noted, w/YEDM phased out using 210 & 240° wires. Solid FF and ID noted by Mick & Don using 270° wires. (NHP-AB)
- 1600 KUBA CA, Yuba City 10/20 1125 G&W song "I've Always Been Crazy," 1130 local & state mx. Dominant. (REW-FI)
- 1610 TIS WA, Olympia 10/17 2213 hrd w/info on 1-5 by YL, very weak & lots of fading. (EE-OR)

UNIDS:

- 740 10/14 0742 unID burying KTRH w/soft relig. mx. Too early for KTOX. Either KVMF or KRNG? (RW-GA)
- 1300 10/21 0201 & every night 10/22-10/27 various times 0300 to 0800. Loud TT's, continuous w/no ID's o/KROP in KMKW null. Maybe the new KKQA in Nephi, UT ET'ing? (JH-GA)

A few listings of east coast stations this week. I always like to see them! When reporting to JDXR please use only one side of the sheet of paper. Tips are cut apart, so anything on the back of the paper is lost. Use Eastern Local Time (which is EST now). See you next week! ♥

SEPTEMBER 13, 1984

Australia News

HANDICAPPED: RADIO STATION FOR THE BLIND

A radio station in Melbourne, staffed almost entirely by volunteers, has become a prime source of information for blind people and others who have difficulty reading the printed word.

Radio Station 3RPH - Radio for the Print Handicapped - broadcasts the information content of print media.

Most of the program comprises readings from the Melbourne morning and afternoon newspapers and from the main Australian dailies published elsewhere.

There are also programs devoted to specific subjects, such as the arts or education, in which articles are read from magazines, community newspapers and other publications, interspersed with recorded interviews with people involved in the articles.

Station 3RPH provides only one daily music program and weather forecasts.

Instead of advertisements, 3RPH broadcasts many service announcements, such as information about public works activity in a street that might be of special interest to blind pedestrians. Much of this information is supplied each day by Melbourne's municipal councils.

The Association for the Blind, which operates the station, estimates that about 10 percent of the Australian population are print handicapped. They include blind people, illiterates and others with low reading skills, and physically disabled people unable to handle a magazine or newspaper.

DX WORLDWIDE EAST

EDITOR: Jim Hall, 240 Byron Rd., Pgh., PA 15237

As time permits I will eventually include every report from everyone - I was very lucky to have had the time to prepare such a large column last week! Eventually I will get caught up with it all, but for now enjoy the column and send in a report if you can. Times are GMT/UTC.

TRANS-ATLANTIC DX

- 558 PORTUGAL, Faro-0325-9 9/22: Pulled past local WGAN slop thanks to Bev. Fair peaks w/T40 mx, PP ancr, //1035/1062. (Kaz-ME)
- 600 SURINAM, Paramaibo-0004-9 9/23: Good atop SS LAs w/m in strange lang (maybe Hindustani). (Kaz-ME)
- 737 UNID-0259 9/20: Weak carrier below 738 Spain. Also 0258 9/1 in XInt Afro cx. Mozambique listed for 0300 s/on. (Kaz-ME)
- 774 t EGYPT, Abis-0347 9/25: Presumed the one w/slow rhythmic mx. (Thomas-FL)
- 783 PORTUGAL, Miramar-CSB9-0509 9/12: Pop mx, PP tlk, fair. (Hakiel) +2239 1076: Good w/disco, m in PP, also a Sheena Easton ballad. (Connelly-MA)
- 864 EGYPT, Giza-0243 9/20: Fair // 9755 SW (which was well under RCI) w/AA tlk & chants. Also 0225 9/17 fr/gd w/Koranic chants // SW on 9754. This is now best sig from Egypt. Paris & Morocco come or later so channel is clear. (Kaz-ME)
- 891 ALGERIA, Alger-0358 9/25: Fair then w/weird mx. (Thomas-FL)
- 918 SPAIN, Madrid-2340 9/22: V good w/SS opera. Common on TA Bev. (Kaz)
- 944 ANGOLA, Lucinda-0102 9/25: Best Angolan here. V gd peak w/PP tlk & fanfare w/Jackson song, into African lively, //1088/1367/2346. 8/31 w/usual eve format of MoR instr mx accompanied w/vocals in PP. (Kaz-ME)
- 1026 SPAIN, Reus-0100 9/21: SS tlk, 6 SS pips, 'R Reus' ID, into nx. Quite strong w/viscious WEZ slop. Another Spaniard //792 rose atop at 0104. (Kaz-ME)
- 1079.6 t SPAIN-2230-2240: One from 1080 hrd poor w/SS tlk thru bad 400hz growl by using LSB. Lost to WTIC eventually. Not an LA, looped 70 deg., nulled to Venezuela. YVQJ or other YVs no in til 2305. All LAs on 1080 hrd w/WTIC in previous week were right on channel. 400hz growl noted weaker 9/22 same time. Only on Bev. (Kaz-ME)
- 1088 ANGOLA, Luanda-0103-6 9/25: Poor thru WBAL slop // 944/1367 w/Afro mx. (Kaz-ME)
- 1107 EGYPT, Batra-0210 8/24: Poor/fair w/AA moaning & no SS QRM. (Kaz)
- 1115 t ANGOLA, Nanza-0517 8/11: Presumed, weakly in w/African mx & faded by 0517. 1088 carrier was in WEAL slop. This is an old plan chan. like most Angolans. (Kaz-ME)
- 1134 SPAIN-0350 9/20: Two Spaniards battling in WNEW slop. (Kaz-ME)
- 1179 SPAIN-0139 9/21: Here fair/good w/ SS tlk & WHAM slop. (Kaz-ME)
- 1205.2 t STERRA LEONE, Freetown-2202-2210 9/24: Almost certainly the str here w/EE nx w/British African acc. ancr. Fair/good peaks, many fades. Weak at 2230 s/off w/NA + 9/23 s/off at 2300 w/bits of NA hrd. Also 2336 8/31 Afro mx & vernacular tlk. Strong carrier, lousy audio, faded. Carrier not noted much after 0000. (Kaz-ME)
- 1206 FRANCE, Bordeaux-0345 9/19: Poor w/FF m. (Thomas-FL)
- 1215 ALBANIA, Lushnje-0431 9/19: Poor w/ranting, better 0315 9/18 w/ Mid East mx. (Thomas-FL)
- +0347 9/20: Good w/AA prm, m in AA. Common in this time pd. (Kaz)
- 1287 UNID-2321 9/23: In Afro opening w/bits of audio, w/1286 off. (Kaz)
- 1313 UNID-2245 9/23: Carrier weak, Jos Nigeria listed. Also 0524 8/31 hitting Spain-soon faded (near sunrise in Nigeria). (Kaz-ME)
- 1458 ALBANIA, Lushnje-0412 9/16: M & w in Slav tlk, fair. (Hakiel-NY)
- 1467 MONACCO, Monte Carlo-0313 8/26: Music Box I.S., fair. (Hakiel-NY)
- 1476 SPAIN, unk. city-0539 8/24: Poor w/m in SS tlk. (Hakiel-NY)

- 1521 SPAIN, unk. city-0510-35 8/31: SER net nx // 1584 to fr/gd peaks w/WKBW on OC. Weak LA QRM on 1520 notched out. Another stn under Spain at times but too weak to ID lang. (Kaz-ME)
- 1554 t CABON, Libreville-2351 8/26: Presumed w/mx. Other Afro high-banders in also. (Kaz-ME)

PAN-AMERICAN DX

- 705 ST. VINCENT, Kingston-0005 9/18: Very interesting combination of hets w/3kc het from 702 and 5kc het against WLW and WOH, 2kc noted against WLW from Morocco (Morocco logged here on 702 9/12/81). (Smith-DC)
- 735 UNID-0145 9/13: Het here every night for 2 weeks. Logged HCGC-1 Quito here in Sept 81 operating // 3370. (Smith-DC)
- 750 NICARAGUA, Managua-0237 9/7: Xlnt u/WSB w/many 'R. Sandino' IDs, Latin pops & 3 EE calypso songs. (Gerardi-IL)
- 760 CUBA, Guanabacoa-0230 8/31: CMDM in w/'R. Reloj' IDs spoken & in RR CW, pips on min., weak signal. (Wyllie-MA)
- +0230 9/7: Good, alone on freq. w/ID, TC's, RR code. (Gerardi-IL)
- BRAZIL, Fortaleza-ZYH588-0106 7/6: Fair w/'R. Vlraperu' ID in PP into US pop mx, gradually lost to SS LA. (Kaz-ME)
- 820 VENEZUELA, Upata-0230 6/4: YVSH owned chan. much of June/July. Very good & loud, no QRM, w/'R. Guayana' ID. (Kaz-ME)
- 861.4 UNID-0355 9/13: Just a weak carrier. (Thomas-FL)
- 895 COLUMBIA, Santa Marta-0430 9/25: HJPM gd/fr w/'R. Galeon' IDs, EE msge "Welcome visitors. We are here to help you. Come to the stn at 583 17th St." (Thomas-FL)
- t+2237 10/20: Very poor SS in extreme slop, lost by 2240. Most likely Columbia, 4VB very unlikely. (Hall-PA)
- 930 CUBA, Matanzas-CMDD-0030 10/21: Time pips of Reloj present u/mess, pips & CW "RR" only audible, occ tentatively bits of SS. Same thing tentatively hrd on 920. (Hall-PA)
- 1425 UNID-0335 9/13: SS pretty strong but can't get an ID. (Smith-DC) (84 WRTH only has Ecuador listed at 0.5 kw. Chk DXWW II. JH)
- 1160 COLUMBIA, Bagota-HJVA-0502 9/25: Good w/s/off & 'R. 24' ID, no NA. (Thomas-FL)
- VENEZUELA, Merida-2305 9/27: Poor YVOK w/SS 'R. Universidad' ID by w, then lost to Brazil. (Kaz-ME)
- 1170 HAITI, Port Au Prince-0200 9/30: R. Soleil booming in o/WWVA w/ FF patois, right on freq. (Smith-DC)
- VENEZUELA-0200 9/7: Strong sig w/EE songs, IDs as 'R. Mil Satenza'. WRTH lists a 1070 kHz, but no 1170. Positively R. Mil Satenza. (Wyllie-RI) (Could be a new // or a crazy error in printing!JH)
- 1190 BRAZIL-2346-7 9/24: Briefly well atop & good w/futbol // 1180. Max. listed night pwr here is 1kw! Natal on North coast would be most likely. Fortaleza in well at the time. (Kaz-ME)
- 1200 VENEZUELA, Caracas-0218 8/18: LA mx, 'Radiotiempo' IDs (As far as I know William it's one word.JH), good signal. (Wyllie-RI)
- 1220 CUBA, Espana Republicana-CMDM-0145 9/9: ID as 'R. Ventiseis', poor sig and terrible audio. (Smith-DC) (84 WRTH has CMDM, not N.JH)
- CUBA, Holguin-0401 9/29: "R. Reloj Nacional" ID, ticker. U/ other Cuban. (Smith-DC) (Gardner, 84 WRTH has Guantanamo listed, CMMD.JH)
- 1335 t HONDURAS, San Pedro Sula-HRH6-0343 9/20: Poor w/SS MoR mx, only audible on back end of unterm. TA Bev. Hakiel (who gets C. Am. better than I do) says this is R. El Mundo. They used to be on 1338. (Kaz-ME)
- 1430 CUBA, Ciego de Avila-CMIL-0350 9/22: ID as 'R. Surcos' dominating channel. (Smith-DC) (Gardner - 84 WRTH has R. Surco, CMIN, Moron Cuba, w/10kw! Just don't know who to trust anymore, but I'd go w/ most current info.JH)
- 1530 CUBA, Moron-CMIM-0030 9/13: 0030 ID, still R. Moron, w/4 ascending tones, also time. Strong u/WCKY. Also logged 2/1/82. (Smith-DC)
- 1610 ANGUILLA, The Valley-0214 8/26: REL pgm in EE. (Demmitt-PA)
- +2315 10/10: BLASTING in w/REL chatter. (Hall-PA)

THIS WEEK'S REPORTERS:

- (Wyllie-MA) William Wyllie, 95 Peck St., Franklin, MA 02038
- (Wyllie-RI) William Wyllie, DXing at Prudence Island, Rhode Island w/SHARP GF-450 AM/FM/SW1/SW2 on built-in antenna
- (Connelly-MA) Mark Connelly, 30 William Rd., Billerica, MA 01866
- receptions from Rowley, MA w/car rx/whip, APT-2 Regen. Tune!

here is another good turnout this week. I guess everyone has been at the dials. So, lets get with it!

TRANS-ATLANTIC DX ROUNDUP

765 UNID, on 10/13 at 0417-het noted here past 0600, no known TA Hets hrd, but poss. Dakar, Senegal. Vg good LC cx. (DM-Alberta)

PAN-AMERICAN DX ROUNDUP

555 t NICARAGUA, Chinandega-HTS, carrier and bit of audio 10/8 at 0350(BP-Wa)
750 NICARAGUA, Managua-Radio Sandino on 10/13 at 0449 fair, in and out, but ID good at 0500 // 6200 wasn't audiable because of poor SW cx(DH)
760 COLOMBIA, Barranquilla-10/14 at 0300 , excited soccer game commentary 0435 still noted with Radio Colombia IDs (DM-Alberta)
CUBA, Radio Reloj 10/13 at 1112, poor "RR" every minute in code, SS Talks (DM-Alberta)
800 MEXICO, Tijuana-XEMMM all alone w/SS Pops and Radio Ochenta IDs at 0139 10/8 (BP-Wa)
825 ST. KITTS, Radio Paradise-10/14 at 0335 fair w/re1. hymns ID at 0501 TC for 1 min. after Midnight, s/off anmts, anthem mx to 0405 (DM-Alberta)
830 BELIZE, Radio Belize-10/13 at 0430, fair w/YL ancr with ID, but she got all mixed up saying the FM and AM freq! WCCO way down (DM-Alberta)
+Also noted poor w/Prayer and chorus in EE then SS, 1107 10/8 then man in accented EE w/ment. of Radio Belize 1110 into Lucille by Kenny Rogers (BP-Wa)
MEXICO, Culiacan-XEVQ strong w/tuba mx at 1238 10/8 vocal Mexican NA 1240 s/on w/full details on station, into Rancho Alegre program w/nortena mx (BP-Wa)
890 ++++ ECUADOR, Machala-at 0621 to 0702 10/8 good w/Tropical mx, gobs of Radio Superior IDs, many ments of Machala and 2 ments of Ecuador. One ID gave power as 30KW. Strong at peaks but had many deep fades and moderate KIXI splash (BP-Wa) (Great catch Bruce.PM)
UNID 10/14 at 0217 poor-real mess here slow SS talk. No clues (DM-Alb)
895 COLOMBIA, Radio Galeon-10/14 at 0240 fast SS talk faded before ID on beverage, but ID hrd by NHP on other wire (DM-Alberta)
910 MEXICO, Mexicali-XEAG local-like w/SS talk at 0206 10/8 (BP-Wa)
970 MEXICO, Cd. Juarez-Radio Mexicana, ads and ID good u/o unid US at 10/8 (BP-Wa)
980 MEXICO, UNID La Hora Nacional and several others 0438 10/8 at 0502 SS mx, Unid jingles 11:12 TC o/u KFWB/KUPI/CKNW (BP-Wa)
1040 t COLOMBIA, Barraquilla-10/14 at 0300 fair excited Soccer game Commentary likely Colombia vs Brazil (DM-Alberta)
UNID, SS graveyard of stations here 2 or 3 stations noted w/Radio Cinco IDs 0303 10/8 ment. of South America at 0310 Also Caracol nx at 0427 (BP-Wa) (Sound like HJAI. PM)
1070 COLOMBIA, Bogota-HJCC Radio Santa Fe 10/13 at 0513 ID simply as Santa Fe Tropical mx thru KHX (REW-Hi)
1100 BRAZIL, Sao Paulo-Radio Globo 10/13 at 0525 nx thru KFAX and SS stn possibly Colombia (REW-Hi)
1120 UNID at 1108 on 9/10, vgy poor SS station (DPK-Hi)
1280 BRAZIL, Rio de Janeiro-Radio Tupi 10/21 0245 to "11 horas, 45 minutos no Rio" this is just 4"45 PM local time Hawaii. This and 1220 are my two beacons to Brazilian reception 1280 perhaps better because of CKDA/XEB QRM (REW-Hi)
1340 COLOMBIA, Unid 10/18 0758 ending transcription from Radio Nederland ID "RCN" la radio de Colombia. RCN de Colombia presenta programas de las empresas radiales de 27 paises del mundo entero" 0800 into Tropical mx. Is any of the listed 1340 Colombians educational or otherwise more likely to carry European transcriptions? (REW-Hi)
1370 MEXICO, Mexicali-XEHG loud w/Radio Nortena H-G ID and nortena mx 0237 10/8 (BP-Wa).
1378 CHILE, Santiago-CE138 Radio Colo Colo 10/23 0600 nx mentioning "La Universidad de Chile, millones de pesos" nx of US election campaign 0605 into mx. Nominal 1380, and reported last year on 1380 from NZ (REW-Hi)

- 1550 ?? MEXICO, Unid-10/22 at 0735 "Esta es XEB? (X) and ranchera was def. X but KISA splash muffled reception. (REW-Hi) (Richard: This is probably KXEX-Fresno now on 24 hours w/2.5 KW night.PM)
- 1610 ANGUILLA, Radio Carribean Beacon 10/12 at 0340 poor w/re1 pgm, ID at 0400, into "Voice of Power" Pgm (DM-Alberta)
- 1622 ECUADOR, "PAT" Pastaza at 0417 on 10/12, poor (DM-Alberta)

TRANS-PACIFIC DX ROUNDUP

- 531 AUSTRALIA, Kempsey-2MC-10/13 at 1014, fair "2MC Plays your hits"(DM)
NEW ZEALAND, Alexandra-4XA 10/13 at 1054 fair w/wx forecast, followed by 4XA ID at 1105, 2KW (DM-Alberta)
- 540 AUSTRALIA, Longreach-4QL-Fair o/unids w/NA at 1301 on 10/20 (PM-Or)
- 549 JAPAN, Naha-JOAP 10/1 at 1115 w/JJ.good sig (DN-Ca)
- 550 HAWAII, Wailuku-KHVI noted w/OC instead of SP at 1003-9/3 (DPK-Hi)
- 558 UNID, at 1414 on 10/13 poor w/OM talk many poss. Didn't last long For // (DM-Alberta) (At that hour it may have been 6WA, as they have been quite good at times. Keep trying.PM)
- 567 FIJI, Radio One w/YL and OM(NX) at 1030 9/17 (DPK-Hi)
- 567 AUSTRALIA, Julia Creek-4JK noted 10/1 at 1110 on top, weak (DN-Ca)
- 576 t NEW ZEALAND, Wellington-2YA-1023 on 9/10 Interview pgm, KSSK QRM (DPK)
- 576 PHILIPPINES, Unid station here again with USA Pops(old MOR) at 1505 on 10/30, too weak to tell much else(PM-Or)
- 585 UNID, Poss. JOPG/China mixing on 10/2 at 1215 vy weak (DN-Ca)
- 594 AUSTRALIA, Horsham-3WV poor at 1404, tone after s/off 10/14 (DM-Albert)
- JAPAN, Tokyo-JOAK weak w/male JJ talk 1230 9/22 (BP-Wa)
- +Also noted JOAK/NHK 1 is my first IDed eastbound TP. Taped 10/17. at 1359 w/local insert (not wx) then "Juichi arimasu" (Its 11 Oclock) pips then "Juichiji no NHK nyusu desu" (This is the 11 Oclock NHK news") all in male voice. Fair on SM-2 loop noted several other carriers beneath including a low pitched het (CAT-Wa)
- UNID, ARC Station 2UH or 4WP Australia on 10/14 at 1404 poor, tone after s/off 2UH (1KW) or 4WP (500 w) Listed. I'll take either(DM-Alb)
- 603 AUSTRALIA, Hobart-7ZL quite good in passing with Concert mx at 1435 on 10/22. (PM-Or)
- 612 AUSTRALIA, Brisbane-4QR-10/14 at 1350 poor Jazz //6150 (DM-Alberta)
- +++ CUAH, Agana-KUAH-hrd again w/US cr mx at several spots with "KUAH" promos w/OM ancr. Fair to poor at 1510 on 10/30 (PM-Or)
- 630 AUSTRALIA, Townsville-4QN-Pop mx program 4MS //639 u/o Domestics at 1425 on 10/30 (PM-Or)
- 650 HAWAII, Honolulu-KORL at 1002-9/3 noted w/UPI nx and light music, DJ said station is back to 24 hours-9/3 at 1002 (DPK-Hi)
- 657 DEMOCRATIC REPUBLIC OF KOREA, Kangnam-noted w/good signals KK ancr at 1300. Pat have you QSLd North Korea yet? This is on 10/1 (DN-Ca) (Nope, just sent two more reports out recently. I'm keeping my fingers crossed.PM)
- +Also hrd fair to good w/Operatic mx at 1231, YL in KK 1234 9/22 (BP-Wa)
- 670 ALASKA, Dillingham-KDLG 10/21 at 1555 in "BBC Science Magazine" talk on polygamy. "This is NPR, National Public Radio." 1600 "Serving Bristol Bay and the Unalaska Peninsula, this is KDLG-Dillingham, repeating as KIAL-Unalaska and KSDP-San Point. Good morning, its 8 Oclock." (REW-Hi)
- 675 AUSTRALIA, Albury-2CO anthem at 1400, followed by tone 10/14 (DM)
- 684 AUSTRALIA, Kempsey-2KP-10/14 at 1354, poor piano and talk //6150 either 2CO or 2KP, depending on move. (DM-Alberta) (As far as I know, the move hasn't taken place yet. 2CO still on 675, 2KP still on 684.PM)
- 702 AUSTRALIA, Sydney-2BL-10/12 at 1400 good s/off anmts (DM-Alberta)
- JAPAN, JT JofB/JOKU here 10/2 at 1120 (DN-Ca)
- 711 AUSTRALIA/SOUTH KOREA, mixing 10/1 at 1300 sounded funny as man was shouting thru clas. mx (DN-Ca)
- 720 AUSTRALIA, Atherton-4AT-10/14 at 1358 YL w/nx //ABC channels 4AT most likely. My first non-split DU(DM-Alberta)
- 729 AUSTRALIA, Adelaide-5CL-10/13 at 1409 poor //9680 SWtraces of erch. mx (DM-Alberta)
- UNID, strong het on CKLG 1235 9/22 (BP-Wa)
- 738 AUSTRALIA, Grafton-2NR-fair w/Interview at 1052 10/1 (BP-Wa)
- TAHITI, 10/14 at 0417-just a het, but believe it to be Tahiti due to SS path earliest noted here 1017,666, 891 a few minutes later (DM)
- 747 t NEW ZEALAND, Greymouth-3ZA-10/1 at 1200 tent. here vy briefly w/NZBC sounding pgm(Net 2) under JOIB. Don't think it was 4QS (DN-Ca)

756 AUSTRALIA, 2TR or 40A 10/14 1400 poor anthem //ABC net (DM-Alberta)

760 HAWAII, Honolulu-KGU-10/14 at 1331 good ID World Series baseball
prmo (DM-Alberta)

+Also noted good w/telephone talk 1235 10/1 (BP-Wa)

774 AUSTRALIA, Townsville-4TO-1340 good just tuned into 4TO ID, quickly
lost to 3LO (DM-Alberta)

t FIJI, Radio Fiji 10/13 at 1028 fair native singing //891 noted past
1200 (DM-Alberta) (Don, you didn't need to list this as tent. if
def. //891, that is Fiji 2, 891 and 774 are // PM)

JAPAN, Akita-JOUR 10/21 at 0850 poor to fair w/slop from KROW/KOB
Talk by man in JJ //747 and 828. A new one for me (JH-Ca) (Congrats
hope you hear more TPs. Report often. Thanks PH)

790+++ HAWAII, Kealahou-KKON hrd 10/10 at 0717 to 0730 under everybody.
Really a surprise as I wasn't trying for them as I counted them as
pretty close to impossible here. hrd local ad for business in Kona
Hawaiian TC, ID (DM-Ca) (Congrats on this one, as KKON is almost
impossible. Has been hrd here only a couple of times, once fairly
good, also hrd Cook Is-630 the same night. PM)

792 t JAPAN, Takayama-JOCQ 10/1 at 1130 w/JJ ancr weak but all alone. Sus-
pect JOCQ. (DM-Ca)

819 AUSTRALIA, Glen Innes-2GL at 1404 10/14, tone after s/off (DM-Alberta)

NEW ZEALAND, Rotorua-1YZ hrd 10/10 at 1215 w/NZBC Variety pgm (Tonight
show?) (Shouldn't be 1Y7 isn't #2-PM) soon lost (DM-Ca)

828 JAPAN, Osaka-JOBB-10/21 0800-0930 ID, time pips, talk in JJ. Vy loud
by 0930 w/man and woman speaking some EE. Ment. Detroit Tigers and
some players on that team. Loudest signal ever here (JH-Ca)

+Also noted in passing 10/1 at 1100. JOOK 837 much less power, almost
always stronger which is surprising (DM-Ca)

+Also local-like w/JJ male talk 1024 10/8 (BP-Wa)

+Also JOBB/NHK2 my 2nd IDed eastbound TP taped 10/17 at 1459 just
above -ocal noise level. Just barely discernible "JOBB" call sign ID
in female voice, pips "Kamigayo" NA then NHK closedown music box
as with logging of JOAK-594, this is a thrill for me (CAT-Wa)

830 HAWAII, Honolulu-KIKI-10/13 at 0656, good stereo ad (DM-Alberta)

+Also noted KIKI taped at 1327 10/23 is passing. Not expected (altho
obviously possible) but sounded Hawaii-ish, so I stuck around for
an ID. Fair w/someone beneath (WCCO poss) My first Hawaiian this way
(Have KGU and KORL logged from Indianapolis) (CAT-Wa)

837 AUSTRALIA, Rockhampton-4RK-10/13 at 1136 good //4920, comedy record
hrd (DM-Alberta)

JAPAN, Niigata-JOQK hrd almost every night I DXed lately w/good
signals (DM-Ca)

UNID, weak talk in JJ-JOQK?? song by Barry Manilow 10/21 0930-0940
poor, slop from WHAS. Noted many hets that morning (JH-Ca)

864 UNID, carrier 1035 on 10/8 (BP-Wa)

873 AUSTRALIA, Sydney-2GB-10/13 at 1113 fair phone talk pgm (DM-Alberta)

891 AUSTRALIA, Adelaide-5AH-10/13 at 1151 fair ragtime piano ABC 1/3 ID at
1200 Some QRM from Fiji (DM-Alberta)

t FIJI, 10/13 at 1028 native singing //774, noted past 1200 (DM-Alberta)
(Don, Fiji is quite often on late. PM)

JAPAN, Sendai-JOHK 10/2 at 1215 in passing JJs have been very good
this season, but usually by this time of year few DUs are hrd, but
there seems to be a equal number of DUs to Northern TPs this season.
A nice mix tho (DM-Ca)

927 t NEW ZEALAND/JAPAN, tent. signals here mixing 10/1 at 1340 (Wouldn't
this be too late for Fiji? (See 891 PM) Also 4CD is C&W? (Yes. PM)
The accented EE announcer playing Pops?? (DM-Ca)

940 HAWAII, Waipahu-KDFD at 0800 off air by mistake, still off at 1015
recheck on 9/11. (DPK-Hi)

981 t NEW ZEALAND, Kaikohe-1YE-10/13 at 1402 poor traces of audio. All Aussies
should be off, except 6KG (should I be so lucky) so presume this to be
1YE. (DM-Alberta) (Don: 1YE is the Concert net. What type of pgm
did you hear, or could you tell?? PM)

1008 NEW ZEALAND, Tauranga-1ZD-1350 on 10/13 good, 60s mx old rr //1035
and 1044, etc (DM-Alberta)

1017 TONGA, A37-weak signal noted before midnight (0655 UTC) on 10/10
with Native pgm- I've tried about 5 times for a QSL, no luck. Any
tips, Pat? (DM-Ca) (Doug: Try a taped report. They can be a little
slow, but a tape to them with a couple postcards will help. PM)

1035 JAPAN, Synchos-YI and OM in JJ u/o unid 1030 10/8 (BP-Wa)

SOLOMON ISLANDS, Honiara-H4B1-10/13 at 1170 fair QRM from 2ZB noted
w/school infc //5020 (DM-Alberta)

1040 HAWAII, Honolulu-KIFH-1308 noted off the air 8/27 (DPK-Hi)

1044 CHINA, Foreign Service-1101 JJ and CC Lang. lessons 9/10 (DPK-Hi)

+Also noted potent w/YL in JJ then harp mx 1239 9/22 (BP-Wa)

1053 KOREA, a good sig w/male vocal mx easily sep. from 1050 10/8 1036 (BP)

1062 UNID, het fair 1247 on 9/22 (BP-Wa)
 1071 INDIA, Rajkot-10/22 1620 Urdu nx by YL (REW-Hi)
 1089 UNID, het on XEPRS 1038 10/8 (BP-Wa)
 1098 MARSHALL ISLANDS, Majuro-WSZQ-1116 9/10 rr mx, null in KFAZ (DPK-Hi)
 1143 PHILIPPINES, Poro Point-VOA 10/22 at 1620 EE lessons (REW-Hi)
 1152 UNID, het 1206 9/22 (BP-Wa)
 1161 NEW ZEALAND, Wellington-2ZM-10/12 at 1406 poor // 1044 song by the
 Carpenters-2KW (DM-Alberta) (I wonder why 2ZM was // 1044, was there
 the same programming on 1035-2ZB. The ZM Stations are a sep. net. PM)
 1170 t SOUTH KOREA, 1035 9/10 vy poor YL in JJ, hard to read freq on TRF,
 KSL fading in and out on 1160, JJ listed in WRTH 1100-1300 (DPK-Hi)
 1206 CHINA, Yambian PBS-w/orch mx 1215 9/22 (BP-Wa)
 1224 MARSHALL ISLANDS, Kwajalein-AFRTS-10/13 0810 canned Radio Drama (REW)
 1314 UNID, carrier and bits of audio 1220 9/22 (BP-Wa)
 1332 UNID, good het 1346 9/22 (BP-Wa)
 1380 HAWAII, Pearl City-KLMI-still not on RS consistently signs on w/pgm
 at 1600, but goes off early and tests evenings. Tores, open carrier
 (REW-Hi) (Richard: Noted here lately w/Test tones-according to QSL
 Postcard rec. Tom Adams says sign off is at 0830 UTC nightly and
 tests afterwards-PM)
 1386 AUSTRALIA, Sydney-2EA-10/20 1550 Italian Sports "EA" stands for Ethnic
 "Australia" (REW-Hi)
 1431 UNID, het 1216 9/22 (BP-Wa)
 1440 SAUDI ARABIA, Ras al-Zawr 10/22 1615 nice ID. First reception from
 home, other logging at John Arthurs.Good atop JJ (REW-Hi)
 1449 EAST CAROLINE ISLANDS. Kolonia-WSZD 10/13 Ponapean talk on Indedend-
 ence island's history as a colony of Germany at 0805 (REW-Hi)
 1548 AUSTRALIA, Emerald-4QD-10/12 at 1400 poor time pips ID,nx (DM-Alberta)
 1575 AUSTRALIA, Wollongong-200-10/12 at 1304 fair OM w/nx ID and jingle at
 1304. Consistently the last Aussie to fade out. Still audible past
 1500 (Just) (DM-Alberta)
 1629 AUSTRALIA, Sydney-2RPH-1240 on 10/12 YL w/nx,Several IDs and features
 s/off w/anthem 1300 (DM-Alberta)
 1700 TAIWAN, Keelung-Fishery Broadcast Station, weakly here w/YL in
 Amoy. Sim pgm at 1690 (Also hrd), YL reading presumed wxcast and
 lite CC mx at 1425 on 10/27. Report (Taped) sent. (PM-Or)

VERIFICATIONS:

540 WESTERN SAMOA, 2AP vq and letter w/apology for not replying back
 earlier. f/u on 4/21 reception (DN-Ca)
 720 JAPAN, JO1I quick 14 day non. descrip pt QSL card w/infc (DN-Ca)
 927 FIJI, vq in one month for f/u 4/21 reception (DN-Ca)
JAPAN, JOFG quick vq in 9 days (DN-Ca)
 1380 HAWAII, Pearl City-KLMI-Postcard QSL card from Tom Adams owner,
 verifying the test hrd, ment. they are cureently on 3.5 KW, soon
 to be 5 KW directional. I have all Hawaiians QSLd again. (PM-Or)

THANKS TO THESE REPORTERS

JH-Ca Jim Hilliker-1502 East Hedgewood Avenue-Anaheim, Ca.
 R-1000, Sanserino Loop
 DM-Alb. Don Moman-6815 12th Avenue-Edmonton, Alberta,CANADA T6K 3J6
 Icom R71, DXing at 220 km WSW of Edmonton,w/Don Moman,Mickey
 Delmage, Nick-Hall-Patch. Various beverages gen. 1300' long,
 bearings 210, 240, 270, and 320 degrees.
 DN-Ca Doug Nyholm-2071 Cedar Street-San Carlos, Ca 94070
 FRG-7000, Loop
 DPK-Hi Dale Park-2253 Kanealii Avenue-Honolulu, Hawaii 96813
 Sony ICF-6700W and TRF
 BP-Wa Bruce Portzer-6546 19th Avenue,NE-Seattle, Wa 98115
 HQ-180A, 4 foot loop and FRG-7 2000' SE Bev. (10/7 and 8 only)
 CAT-Wa Charles A Taylor-Box 1413-Oak Harbor, Wa. 98277
 R-390A,SM2, 90 foot LW
 REW-Hi Richard E Wood PhD-Post Office Box 5074-Hilo, Hawaii 96720
 R-1000, 100 foot LW
 PM-Or Ver Editor
 SP-6003X, RB0-2, 200 foot NE Term LW, (2) 1500 East Beverages,Grounds.

(Smith-DC) Gardner Smith, 1000 Perry St. Washington DC, 20017
 (Kaz-ME) Sony CFM-15
 Neil Kazaross, PO BOX 1908, Ogunquit, ME 03907
 ICOM R-70, phased Bev.s 1350' at 150 degrees, 1450'
 Bev. at 60 degrees, Bohac-loop, Connelly APT-2,
 BBA-1, proto MWDX3 phasing unit, phased lw's.
 (Hakiel-NY) George Hakiel, 739 Van Buren Ave., W. Islip, NY 11795
 R-71A, lw's, loops, Connelly phasing unit
 (Thomas-FL) Gerry Thomas, PO BOX 2036, Pensacola, FL 32513
 R-70/Superloop - FRG-7/dipole
 (Gerardi-IL) Rob Gerardi, 1421 N. Franklin #7, Benton, IL 62812
 ICOM R-71A, 500' of #22 wire (coiled)
 (Demmitt-PA) John Demmitt, BOX A Ko848, Bellefonte, PA 16823
 (Hall-PA) t Jim Hall, 240 Byron Rd., Pgh. PA 15237
 R-600, duel loops (3' & 5'), 100' & 400' lw's, 50' vert.

-DX SPECIAL-

ABC TALKRADIO/RAY BRIEM SHOW

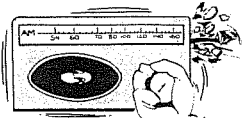
SATURDAY, DECEMBER 15, 1984--0806 utc
 DXING GOES NATIONWIDE! JOIN RAY AND HIS IN-STUDIO GUESTS, DR.
 RICHARD WOOD AND STEWART MACKENZIE AS WE DIVULGE THE VARIOUS WORK-
 INGS OF OUR STRANGE AND WONDROUS HOBBY! WE WANT YOU TO CALL IN AND
 PARTICIPATE--DIAL (800)423-8255 TO SPEAK TO DR. WOOD AND MR. MAC-
 KENZIE (IN CALIFORNIA CALL 800-262-8255). WE ALSO WILL FEATURE
 LIVE "PHONERS" WITH ARTHUR CUSHEN IN INVERCARGILL, NEW ZEALAND;
 AND WITH GLENN HAUSER (OF WRNO) FROM FORT LAUDERDALE!

-AS THE SHOW'S PRODUCER, I WELCOME ANY LITERATURE OR SUGGESTIONS,
 ETC., WHICH MAY MAKE POSITIVE CONTRIBUTIONS TO THE PROGRAM. PLZ
 SEND TO: GREG HARDISON
 C/O KABC
 3321 S. LACIENEGA BLVD.
 LOS ANGELES, CA 90016

WHERE TO TUNE IN YOUR (OR ANY) AREA: (#=TAPE DELAY-CHECK FOR TIMES)		(SHOW STARTS AT 0806 UTC/0306 EST) (*=BROADCAST TILL 0500 EST)	
KABC	LOS ANGELES, CA	790kHz	WOBK ALBANY, NY 1300kHz
KGNR	SACRAMENTO, CA	1320kHz	WSLI JACKSON, MISS. 930kHz
KLCL	LAKE CHARLES, LA	1470kHz	WTKN PITTSBURGH, PA 970kHz
KLIQ	PORTLAND, OR	1290kHz	WTPT NATICK, MA 1060kHz
KMUS	MUSKOGEE, OK	1380kHz	WVNF ALPHARETTA, GA 1400kHz
KOH	RENO, NV	630kHz	#KGU HONOLULU, HI 760kHz
*KPRC	HOUSTON, TX	950kHz	#KRIG ODESSA, TX 950kHz
KPSI	PALM SPRINGS, CA	1450kHz	#KURV EDINBURG, TX 710kHz
KTMS	SANTA BARBARA, CA	1250kHz	
KUHL	SANTA MARIA, CA	1440kHz	
KXOK	ST. LOUIS, MO	630kHz	
*KZIA-FM	ALBUQUERQUE, NM	101.7MHZ	
KZJO	SALT LAKE CITY, UT	630kHz	
WABC	NEW YORK, NY	770kHz	
WBBF	ROCHESTER, NY	950kHz	
*WBBW	YOUNGSTOWN, OH	1240kHz	
WCBM	BALTIMORE, MD	680kHz	
WCVL	CRAWFORDSVILLE, IN	1550kHz	
WEAN	PROVIDENCE, RI	790kHz	
WERC	BIRMINGHAM, AL	960kHz	
WGL	FT. WAYNE, IN	1250kHz	
WBQ	MEMPHIS, TN	560kHz	
WIIN	ATLANTIC CITY, NJ	1450kHz	
WKHM	JACKSON, MICHIGAN	970kHz	
WMER	PORTLAND, ME	1440kHz	
WNIS	NORFOLK-PORTSMOUTH, VA	1350kHz	
WOKV	JACKSONVILLE, FL	600kHz	
WPQZ	CLARKSBURG, WV	1400kHz	

-THIS SEGMENT OF THE SHOW SHOULD LAST AT LEAST TWO HOURS; THE MORE
 CALLS WE RECEIVE, THE LONGER THE SEGMENT WILL CONTINUE--SO DUST OFF
 YOUR TELEPHONES, AND LET US HEAR FROM YOU DXERS!!!!

TOP END



A monthly column of loggings, discussions &
information for the 1600 - 1800 kHz range.
Deadline: The last Saturday of the month
All times are GMT

Craig Healy 66 Cove St Pawtucket, RI 02861.....

•November 1984...A lot of loggings, so right to it.

- 1610 CALIFORNIA Prairie Creek Aug/Sept. Noted w/ elk herd info. Probably operates summer only. Fades at 1/2 mile on car radio. (Peterson)
- 1610 ANGUILLA 0212-0230 10/14 Caribbean Beacon noted. ID, frequencies at 0215, ID at 0230. Religious pgms. (Kemp)
- 1613 GUATEMALA Rabinal 0838 10/1 RAB w/ good carrier, pr modulation. (Healy)
- 1613 GUATEMALA Rabinal 0300 9/26 RAB poor. (Foss)
- 1613 ??? 2346 10/7 KA83767 (Foss)
- 1615 ??? 0128 10/9 KA83411 (Foss)
- 1618 ??? 2340 10/7 KA83413 (Foss)
- 1618 ??? 0107 10/9 KA83771 (Foss)
- 1619 ??? 0315 10/22 KA83773 (Foss)
- 1620 ??? 2343 10/7 KA83316 (Foss)
- 1621 ??? 0302 9/26 KA83774 (Foss)
- 1621 ??? 0407,0411 10/8 KA83774 (Healy)
- 1621 ??? 0407,0411 10/8 KA83316 (Healy)
- 1621 ??? 0406-0411 10/8 UBT (Healy)
- 1622 ??? 0151 9/27 AG07 (Foss)
- 1625 ??? 0149 9/27 KA83779 (Foss)
- 1626 ??? 0428,0432 10/8 KA83779 (Healy)
- 1627 ??? 0347 9/26 KA83321 (Foss)
- 1629 ??? 0424,0427 10/9 KA83782 (Healy)
- 1630 ??? 0117,0130 10/9 111 and dash. (Healy)
- 1630 ??? 0412,0414,0416 10/11 DW03 and dash (Healy)
- 1630 ??? 0416,0419 10/11 KA83326 (Healy)
- 1630 ??? 0133 9/27 KA83782 (Foss)
- 1630 ??? 0137 9/27 KA331 (Foss)
- 1630 ??? 0053 10/8 DW03 (Foss)
- 1631 ??? 0407 9/26 FM309 (Foss)
- 1633 ??? 0239 10/22 KA80051 (Foss)
- 1634 ??? 0319 9/26 KA83329 (Foss)
- 1634 ??? 0317 9/26 KA81191 (Foss)
- 1634 ??? 0244 10/22 S258 (Foss)
- 1634 ??? 0246 10/22 I284 (Foss)
- 1634 ??? 0159,0204 10/9 KA83329 (Healy)
- 1635 ??? 2355 10/2 D382 (Foss)
- 1635 ??? 2355 10/2 G290 (Foss)
- 1635 ??? 0046 10/8 MTTOOE (Foss)
- 1641 ??? 0011 10/8 P340 (Foss)
- 1641 ??? 0211 10/22 S280 (Foss)
- 1641 ??? 0212 10/22 K812 (Foss)
- 1642 ??? 0328 9/26 DT98T (Foss)
- 1642 ??? 0324 9/26 KA83337 (Foss)
- 1642 ??? 0017 10/8 (6)/(2).(2)-/(4)-/(3). (Foss)
- 1645 ??? 0155 10/22 KA83340 (Foss)
- 1648 ??? 0005 10/3 KA83414 (Foss)
- 1650 ??? 1300 9/26 Unid Oriental station, woman anncr. and singer. (Riordan)
- 1654 ??? 0218 10/22 L189 (Foss)
- 1656 ??? 0026 10/8 KA83459 (Foss)
- 1656 ??? 0028 10/8 Y443 (Foss)
- 1660 BELIZE 0235 9/27 Although it's fundamental has moved to 830, the harmonic is still often hrd here. Noted w/ commentary and music. In fact, the harmonic might be easier logged than the fundamental. (Stan)
- 1675 ??? 0134 10/9 KA83827 (Foss)
- 1676 ??? 0004 10/8 KA83828 (Foss)
- 1677 ??? 0005 10/8 KA83831 (Foss)
- 1678 ??? 0336 10/22 KA83832 (Foss)
- 1682 ??? 0147 9/27 KA83837 (Foss)
- 1684 ??? 0051 10/9 KA83738 (Foss)
- 1685 COLOMBIA Mercaderes 0355 9/26 MER poor. (Foss)
- 1685 COLOMBIA Mercaderes 0841 10/1 MER good w/ phone QRM. (Healy)
- 1690 ??? 0303 10/22 KA83842 (Foss)
- 1693 ??? 0311 10/22 KA83847 (Foss)
- 1700 ??? 0057 10/9 KA83854 (Foss)
- 2980 WEST VIRGINIA Sutton 2300 9/21 This 2nd har. of 1490 logged beginning high school football. IDs as "WSGB Central West Virginia". (Stan)
- 2980 WEST VIRGINIA Charleston 2112 9/16 WXIT logged w/ ID and plug for W.V. Univ. football broadcast. So two W.V. harmonics here. (Stan)

Credits:

C. M. Stanbury, Ridgeway, ON R388 90ft. LW
Russ Foss, Hiram, ME FRG7700 600ft. LW
Pete Kemp, Bethel, CT R-2000 Space Magnet 40ft. LW
Mike Riordan, Goleta, CA CRF-1 RF-2200 Radio West Loop
Art Peterson, On-the-road, CA car radio nice postcards
me modified R7A 125ft. LW

Stan sent a letter speculating that many of the navigational stations that we hear could be coming from the George's Bank offshore area. With the recent World Court settlement of that dispute, and the inherent competitions in that area, it is certainly possible that it is the source of many a beacon. He feels that the competitive aspects would explain the dearth of information we have concerning these stations. I have tried to check this out, but no fishermen I've talked to knew anything about radio beacons. The oil supply business has moved out of my area, and I had no contacts anyhow. Is anyone in a position to get any info from these groups?

Tom Farmerie has been doing some DF work on some of the Cubic Argo and Decca HiFix signals. He's looking for some other people to do the same and to compare notes. Maybe that can pinpoint a location for some of these things. I'll be glad to forward the info.

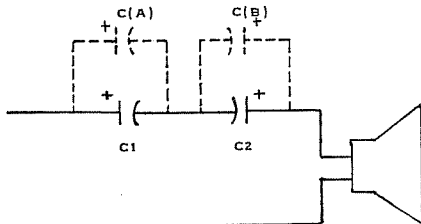
Dust off those rigs! The next month or so will probably be the best reception of the season, if the past seasons are any indicator. 'Til later.

A SIMPLE HIGH-PASS AF FILTER

Gerry Thomas

"Compromise" is the operative word in the design of many of the multi-band portables that are available today ("flexibility" raises costs). As a result, we see radios with single (too-wide) IF passbands, one tone control instead of two, and so on.

In this regard, the Sony ICF-6500W was designed with a speaker with a pronounced low frequency peak which sounds great on the FM band but is murder if you are trying to ID the weak, undermodulated voice signals that often characterize good DX. The single tone control on the 6500 is really a low-pass filter that exerts noticeable control over the treble, but has little effect on the bass. If you are bothered by the excessive bassiness of the 6500 (or, to a lesser extent, the Uniden CR-2021), try the following simple high-pass filter.



C1 & C2 ... 47 UF ELECTROLYTIC 25VDC
C (A & B) .. 10 UF ELECTROLYTIC 25VDC

Installation is easy on the 6500---remove the five screws from the back of the Sony; pull the knobs off the front and remove the front cover; and release the claws holding down the speaker. De-solder one speaker lead and solder one end of the capacitor circuit to the wire and the other end to the speaker terminal.

Try different capacitor values. Start with just the two 47 uF caps; if you want more bass, increase the value; less bass, decrease it. Realize that as you decrease the amount of bass in the audio, the apparent loudness of the signal decreases, so experiment around. For my ears, "perfect audio" resulted with between 50 uF and 60 uF capacitance. A value of 57 uF was attained by adding the 10 uF caps (CA and CB) across (dotted lines) the 47 uF caps.

The improvement in readability is quite satisfying, especially on weak stations that reside under the loud, thumping powerhouses.

THE INTERNATIONAL RADIO CLUB OF AMERICA

THE IRCA IS A NON-PROFIT ORGANIZATION DEVOTED TO THE HOBBY OF LISTENING TO DISTANT STATIONS ON THE AM BROADCAST BAND (535 TO 1635 KHZ). DX MONITOR, THE OFFICIAL PUBLICATION OF THE IRCA, IS PRINTED 34 TIMES PER YEAR: WEEKLY FROM OCTOBER TO MARCH, TWICE A MONTH IN SEPTEMBER AND APRIL, AND MONTHLY FROM MAY TO AUGUST. DX MONITOR CONTAINS MEMBERS' LOGGINGS, INFORMATION AND ARTICLES ON RADIO STATIONS, RECEIVER REVIEWS, TECHNICAL ARTICLES AND CONSTRUCTION PROJECTS, TIPS ON DX'ING, NEWS OF MEMBERS' DX'ING ACTIVITIES, AND OTHER MATERIAL TO HELP MEMBERS ENJOY THEIR HOBBY. IRCA ALSO PUBLISHES VARIOUS BOOKS ON MEDIUM WAVE DX'ING AND HOLDS AN ANNUAL CONVENTION AND OTHER ACTIVITIES.

CLUB ADDRESSES AND OFFICERS

PRESIDENT: PHIL BYTHEWAY, 9705 HARRY AVENUE N.W., SEATTLE, WA 98117. PHONE: 206-784-5145.
SECRETARY-TREASURER: RICH SEGALAS, P. O. BOX 26254, SAN FRANCISCO, CA 94120.
EDITOR-IN-CHIEF: BRUCE PORTZER, 6546 19TH AVENUE N.E., SEATTLE, WA 98115. PHONE: 206-522-2521.
BOARD OF DIRECTORS: ERNEST COOPER, NANCY HARDY, RIC HEALD, NEIL KAZAROSS, BRUCE PORTZER, PETER TAYLOR, AND NIEL WOLFISH.

MEMBERSHIP DUES

U.S.: \$20.00 PER YEAR; CANADA AND MEXICO (ONE ISSUE MAILED EACH WEEK): \$26; (TWO ISSUES EVERY TWO WEEKS); \$20; OVERSEAS: SURFACE MAIL, \$21. AIR MAIL TO CENTRAL AMERICA, COLOMBIA, VENEZUELA, AND THE CARIBBEAN, \$27. AIR MAIL TO LATIN AMERICA, WESTERN EUROPE, NORTH AFRICA, AND THE MIDDLE EAST, \$20. REST OF THE WORLD AIR MAIL, \$34. SPECIAL TRIAL MEMBERSHIP \$7.50 TO U.S., CANADA, AND MEXICO ONLY, INCLUDES 10 ISSUES OF DX MONITOR AND A NEW MEMBER PACKET. MAKE CHECKS AND MONEY ORDERS PAYABLE TO IRCA AND SEND DUES TO: IRCA, P. O. BOX 26254, SAN FRANCISCO, CA 94126. PERSONS LIVING OUTSIDE THE U.S. SHOULD MAKE DUES PAYMENTS BY INTERNATIONAL MONEY ORDER IN U.S. FUNDS. SAMPLE COPIES OF DX MONITOR COST 50¢ EACH OR THREE INTERNATIONAL REPLY COUPONS.

OPINIONS EXPRESSED IN DX MONITOR ARE THOSE OF THE ORIGINAL CONTRIBUTOR AND NOT NECESSARILY THOSE OF THE IRCA, ITS OFFICERS, EDITORS, OR PUBLISHING COMMITTEE. UNLESS OTHERWISE NOTED, PERMISSION IS GIVEN TO RE-PUBLISH NON-COPYRIGHTED MATERIAL PROVIDED CREDIT IS GIVEN TO IRCA AND THE ORIGINAL CONTRIBUTOR.

FIRST CLASS MAIL
U.S. POSTAGE
PAID
Seattle, WA
Permit No. 601

first class

D. A. NYHOLM 19

2071 CEDAR STREET
SAN CARLOS CA
94070

Postmaster: if undeliverable, return to
P. O. Box 21074, Seattle, WA 98111, U.S.A.