

F



DX Monitor

Devoted Exclusively to
Broadcast Band DXing

November 17, 1984

Volume 12, Number 9

Issue Number 698

In This Issue

Western DX Forum	2	Western DX Roundup	14
Kanadian Korner	4	Australian AM Stereo Radio	16
Theories, Extraordinary Waves, & Elevation Angles in MW Prop ..	6	DX Worldwide East	17
Eastern DX Roundup	11	DX Worldwide West	20
Central DX Roundup	12	Sports Networks	22
		Eastern DX Forum	??

Flash Tips

We'll open with several more flash tips and other news:

KHWY-1030 in Folsom, CA will begin testing around November 12, and hopes to begin regular broadcasting sometime between November 15 and 22. Their format will be "contagious country" (maybe that'll be their slogan, too?) Chief Engineer is Richard Green, PD is George Sepulveda, receptionist's first name is Rebecca, phone number is 916-351-1030, address is 409 Glenn Drive, Folsom, CA 95630. This info from Pete Taylor, who apparently forgot to find out the name of the janitor.

The FCC has approved a construction permit for a new station in Orange County, CA on 830 kHz, to be operated by Orange County Broadcasting Co. The station won't be on the air for at least several months, so if you haven't heard KIKI yet, you still have time. This from the LA Times via Steve Mittman.

WSB-750 will drop NBC radio affiliation and replace it with ABC on January 7. WPLO-590 will be dropped by ABC. No word on who will pick up NBC. This from the Atlanta Journal, via Karl Jeter.

WHND-560 replaced their old, structurally unsound tower in late October. The new tower is 410 feet high. This per Fred Vobbe, IRCA member and WHND Chief Operator.

WKKQ-650 in Hibbing, MN is now on their new frequency (ex-1060). Gene Martin reports hearing them during the day with a signal better than WCCO's. Also see this week's CDXR for more details...

CKLW-800 has been making some major cost-cutting moves lately. They recently fired half their staff and new owners have announced they will make CKLW a "good Windsor radio station." During the late 1960's and early 1970's, CKLW was the number one station in Detroit and had a large audience in much of the Great Lakes area. Currently, they have less than one percent of the audience in Detroit and having some major financial problems. This per the Detroit Free Press, via Fred Vobbe.

Odds and Ends

If you are planning to send us a check for some IRC's, as advertised here a few weeks ago --- you're too late. We don't have any more. We'll let you know when our supply is replenished, but it'll probably be a while....

Have you applied for IRCA Achievement Awards yet? If not, send an SASE to our awards chairman Bruce McFadden, 1029 Walden, Ave., Cheektowaga, NY 14225. Find out how you can have several, suitable for framing, on the walls of your DX Shack.

That about does it for this week's front page. Have a good Thanksgiving!



Western DX Forum

★ ★ ★ ★

WCA—Serving the Broadcast Band DX'er Since 1964

Editor: Ric Heald, 1632 J St., #3, Eureka, CA 95501

HEADLINES - WEEKLY ON TUESDAY

W. GEORGE ELLIOTT, P.O. BOX 312, PENTICTON, BC V2A 6K4

Greetings from north of the border. Not much has happened around here. It seems like when summer arrives the radio gets put aside for other activities. Like going to the beach and going to work. And during summer when the other jocks take holidays it seems as though I'm at work more than anything.

For a reminder, I still work at CKOK 800 Penticton. My shift is Monday to Friday 7PM-Midnight PST. But every so often I find myself working more than my assigned shift. For example, I've just completed work 12 nights in a row. The weekend guy didn't work out so I'm doing evenings until a replacement is found, and before that, I went to work three weeks Monday to Friday with the flu. We haven't got any back-up jocks. Oh, how I love small town radio. (Would they consider a Yank? Namely me, hi-RtH.)

Anyway, as I said earlier, I've just finished 12 nights straight during fall BBM's. It's that time of the year again, a sure sign of winter. I don't know how it'll turn out this time because we have up to four different promotions going on and listeners have been phoning expressing dismay and confusion. Of course, CKOK has had a "reputation" around town because of some management/advertiser decisions. It appears as if the listeners aren't important in this market.

This is a weird market. This town has only three radio stations: CKOK (MoR/T40), CKOR FM (EZL) and CJGV-FM (traditional C&W). But there are other area stations that are part of the market: CKSP Summerland (C&W), CKOO and CKOO-1 Osoyoos/Oliver (MoR), CKOV Kelowna, CKIQ Kelowna and numerous cable FM outlets from Seattle (KHQ-FM is popular here with the 18-35 year olds). (Seattle? Spokane maybe?-RtH.)

Wish me luck, eh? My shift is simulcasted on CKSP, CKOO, CKOO-1. Also to be included on CKRP as well.

Good DX to all until next time. 73 de WGE.

BILL HARMS, SUSLAK, APO SAN FRANCISCO, CA 96301

Writing from Mount Sorak near Sokch'o, South Korea located 25 miles south of the DMZ on the east coast.

I've been sightseeing here for the last two days. At night I've been doing some bandscanning. There are few power lines around so the band has been rather quiet (compared to Seoul). Being on the east coast the Japanese stations cram the band on almost every frequency.

South Korea is also much better because there's very little jamming of the North here all of the WRTH listed North Koreans are in the clear. Even the (1053) Voice of Reunification is good here (at least the jamming can be nulled out).

Since I've been back to Korea I've been taping ID's so I'll have a lot of information to draw from as to how South Koreans ID. They have a basic pattern on the hour, but the exact wording varies a bit. All local stations have their own ID, but not every hour. I think Korea would be a good place from which to DX with good equipment (especially a loop antenna) and if one isn't intimidated by the language barrier. I've heard somewhere around 400 or 500 stations in just two months. MM's is the best time for real long distance DX as the JO's are off then. More later.

Ahn-nyoung. 73 de WJH.

MIKE HARDESTER, 175 PEGASUS DR., LITTLE, CO 80124 (Cont. from last issue)

A couple of years ago while driving from California to North Carolina, I investigated many an antenna location and did the same driving from North Carolina to Colorado and back (two round trips in three weeks. . .phew!) and have concluded people (with no connection to broadcasting) erect antennas and then leave them. . .with no forwarding address. In all seriousness, since heading to North Carolina in 1982, I would estimate that I have traveled the back roads of uncountable cities of the USA in search of antennas seen from a freeway and maybe 10% have had the station/letters displayed. The rest? Who knows? (You can usually tell by the over-modulation and bleed-over-RtH.)

Here I'm talking about 40 or 50 antennas sighted and located. . . in farm pastures (where nearby residents know nothing about the antennas), behind cyclone fences on hillsides, along side a road in Kansas where no farm/ranch/building was noted for miles, and the list goes on. There should be a law requiring all antennas (the station owners that is) to display the station call letters at the antenna site, hi. For those in the best industry. . . any reason for call letters not being at the antenna site? Forum report reply would be appreciated (give Ric something to do)! (Simple reason, all those sickoes out there with wire cutters and detonators. . . yes, for real-RtH.)

Anyway, our first day in Littleton (we're actually a subdivision removed (somewhat from same), the in-laws decide to head west on County Line Road and what do my eyes behold but a large five-tower array and on investigation -- no call letters. Can't win.

On a closing note, among the few stations/antennas located was the single tower of KLOE 730 set in the picturesque countryside setting of a barnyard. Well, enough for now. Very 73.

GARY LARSON, 2806 LINCOLN, BURBANK, CA 91504 (818) 848-1880

Hello. It's 21 October, one day after the SCADS GTG. Went to Huntington Beach for almost the entire time. Don Schmidt had a very interesting meeting. Met Steve Mittman, Mark Bixby, Mike Bitner and several others there. Next SCADS GTG is scheduled for february 1985.

Locally, KROQ 1500 is off. Jim Hilliker says they've been off for about three weeks. Seems they've been sold. Was told to call the KROQ FM office and talk to Scott Mason about this change. I called the number, but it was disconnected, but 520-1500 still seems to work but no answer. Wish they's be T40 or similar to KROQ FM.

KWNNK 670 no longer has Kings hockey as of 20 October. The story I sent to Gary Parton regarding this says they (KWNNK) got booted when mentioned at the Forum. (Boy, they're off to a good start, hi-RtH.) So, KGIL 1260 now has the majority of the remaining games.

Frank Aden, hope your DX'pedition goes well.

Yes -- Richard Wood is to be on a DX program on KABC and their net on 15 December. Please support the hobby and use the 800 phone number for questions from listeners.

Yes, Ric, note the stations using same calls on AM/FM: KOIT, KDFC, KKHI and KFIG. (KKHI AM/FM has always used those calls since change from KQBY and before that KOBY and KEAR-RtH.)

I would think these stations are trying to keep calls in listener's minds by having a combo station with the same.

Ric, as to KNCR -- at night who's the pest on 1090, as if I didn't know.

(Yes, it's who you think -- the Tijuana connection, hi-RtH.)

Well, 73 until later on.

STEVE MC GREEVY, 45 ELDA DR., SAN RAFAEL, CA 94903

Hello from Marin County. I haven't been in these pages for quite some time.

The trip to Nevada, Idaho and Oregon was a huge success, unfortunately we had no time to visit any DX'ers in the many towns we passed through. One of the most enjoyable parts of the trip was the two days and nights spent in Monitor Valley in central Nevada. I recall mentioning how empty the dial would be during the daytime on the BCB and it was on hand-held portables except for some strong Reno and Salt Lake stations. But, I set up a 700-foot east wire and the band came alive. Midday reception ALL day of 880 KRVN, 770 KOB, 640 KFI a loud 850 KOA. All Las Vegas and Reno were strong, all the Bay Area including KTIM 1510, 1540 KASA Phoenix, 670 KBOI. The strongest groundwave signal from the Salt Lake area was 700 KFAM. I logged 75% of Utah stations midday. We were located 20 miles east of Austin, Nevada.

During the afternoon of 29 May, Sheldon Remington and I spent five hours hiking to the top of the Simpson Park Range five miles north of our Monitor Valley campsite and 2,500 feet above same, and using my Sony ICF-7600D and a microcassette recorder, heard and taped FM tropo reception from Salt Lake, Reno, Las Vegas and loud aircraft scatter fade-ups of the two Cedar City, Utah FM's, all 200 miles and more. BCB at night was very good, except for thunderstorm QRN. Latins were very strong, especially 750 Nicaragua, 834 Belize and a strong unID 890. At sunrise I heard 819 New Zealand and KIKI 830 Honolulu. So all in all, a very enjoyable stay in the high desert of central Nevada.

Possibly "desert" is a misleading word, because I've noticed how much drier the southern San Joaquin Valley and the Tehachipi's near I-5 are in comparison to the Monitor Valley, plus the surrounding mountains had snow remaining from winter. Central Nevada is quite beautiful and GREEN in the late spring, early summer period. I would recommend a trip along US Hwy 50 through the state from Ely to at least Austin, and plenty of hot DX. We did on the last day just as we were departing for Ely, have some nasty thunderstorms roll in. (I've been there in August, Steve. Makes Bakersfield look green, hi-RtH.)

By the way, several GY's were heard on the 700-footer in the Monitor Valley,

all day long. Such as 1490 KJQN Ogden, KELY 1230 Ely, 1340 KBET, 1450 KBET, 1230 KCBN (all Reno), and a battle between KSUE 1240 Susanville and KELK Elko, Nevada. I suspect a lot of this midday reception was indeed skywave, because I did a lot of rechecking at close intervals and noted how some stations would disappear. I observed 1080 KRXP Price, Utah do several fades at noon-time and ditto 1540 KASA. (That's quite common here in the winter-Rth.)

RIC HEALD, 1632 J ST., #3, EUREKA, CA 95501

First off, seems I've got postal service problems again. No column last week because of no mail, and the two forums that were to run concurrently got misplaced in the "done" file. There's got to be a better filing system, hi.

Yes, it appears KGA 1510 has once again gone NSP, however, they must of had technical problems last Sunday night/Monday morning (4/5 November). When I leave KRED (about 11.30P), I tune to KGA, but last week nothing. Once home I noticed how 1520 Oregon City was making themselves an uninvited guest on 1510, but did hear some faint SS -- Ontario? Also, morning before, 04 November, KGO was off leaving CHQR (which is a pest with KGO on) in the clear.

Got a letter and cassette from member Tuomo Ahonen of Finland. Seems he logged local KINS 980 at s/off. Not bad, Tuomo, as they were using only 500 watts. In fact, a local CB'er who was here helping me reinstall my mobile unit listened to the tape (and you know how non-DX'ers can't hear the same stuff we do), expressed surprise at how clear the ID and s/off was. Excellent catch, Tuomo and I'll see what I can do to get you a verie. By the way, this time of year, we have lots of rain, temperatures at 12-17C daytime, 7-10C at night. For skiing, we have a travel about an hour from Eureka to 1,300 metre high Horse Mountain.

Mike, most stations don't hang their shingle at their transmitter site because most people not only don't care, they don't even see the towers, hi. In fact, KYA used to have their calls emblazoned on their tower at night but lo and behold, they discovered that that was causing their signal to become slightly directional at night, or rather, other stations on 1260 discovered that, hi. But actually, if you sit on front of unnamed towers and tune your car radio, you should be able to instantly pinpoint the stations, unless of course, you're near an antenna farm, like the toll plaza of the San Francisco-Oakland Bay Bridge. And also there is a precaution against vandalism, especially at talk stations. About 20 years ago KNX had their guy wires cut and operated on a longwire until damage could be repaired.

Otta room. Gotta get this down to the post office and off to Seattle, or in journalism terms, put this baby to bed. See y'all in 7. 73 de Rth. .

KANADIAN KORNER! Knews From "The Frozen Knorth" October 10, 1984

530 ON C... Toronto(Pearson Intl. Airport) TIS 47watts UL
 550 AB CJOK Pt. McMurray finally got this ancient CP 10/5kw. U2
 Must protect CBK-540. And this from BV: Drops BNW
 #205 10011 Franklin Avenue T9H 2K7
 590 MB CFAR Flin Flon drops all CBC(now via CBWF-FM)
 600 BC CJOR Vancouver "Newstalk Radio" now has ex BC Premier
 Dave Barrett on AM open line show. Dropped late
 night talk due to poor ratings...just music.
 610 PQ CKCL Mont-Laurier got CRFC OK to drop all SRC(CBC French)
 620 BC CJCI Prince George got OK to cut back on its 9 stations
 local pgms. due to economy. That's CIVH, CFEV, CFLD.
 640 NT CBIA Gjoa Haven 40w. UL lprts gets CFFB-1230 via satellite
 & has local access. From BV. He's probably heard 'em.
 650 BC CISE Richmond is not stereo yet. Slogans: "Sunshine Radio"
 "West Coast Gold" & "C-isle"
 650 SA CKOM Saskatoon wants 10kw. U4...from 1250
 670 MF CHYQ N. gravetown now twins both CJYQ-930 & CFIQ-970
 680 ON CKGB Timmins got CP for 730 then got CP for 750!
 750 ON CKGB Timmins got CP for 50/10kw. but only wants 10/5kw.
 750 SA CJWW Saskatoon wants 10kw. U4 from 1370
 760 SA CJME Regina wants 10/5kw. U2 from 1300
 770 AB CHQR Calgary wants 50kw. U2 from 810
 770 AB CIBQ Brooks wants 10kw. U2 from 1340...I'll bet on QR
 790 ON CIGW Brampton wants 820. CRFC told them no for.-lang. until
 800 BC CKOK Penticton buys CINF-1400 Princeton for a twin. 5pm.
 810 AB CHQR Calgary is stereo. XR for 770 would be 5 miles south.
 820 ON CKGW Brampton wants 50/10kw. from 790
 820 ON CHAM Hamilton wants 50/50kw. from 1280 Moffat Broadcasting U4
 820 ON CFGM Richmond Hill(metro Toronto) wants 50/25kw, U4 from 1320
 850 BC CFVR Abbotsford is "Golden Hits Radio" & is again using pre-
 timed separate IDs when twinning CEWK-1270 nights.

860 BC CWER Prince Rupert has been 10kw. U1 but should be 21kw. It
 870 BC C... Invermere-Windermere 1/11kw. U1 twin wanted by CHAL-1050.
 Doubtful, but CRFC liked it when they put first stns. in
 Falmsp & New Denver. They promised a studio.
 880 AB CKQT Edmonton wants 50kw. U2 from 1110
 880 AB CKFC Stettler wants 10kw. U2 from 1400. Dets are on QT.
 900 PQ CJER St.-Jerome CKRC said OK to temporary twinning of CJSA-
 1050 until the economy gets better...1997???

910 AB CNDQ Drumheller again wants 50kw. U4. Last time CRFC told
 them to at least mention Big D. Now they want the xr
 at Strathmore (just E of Calgary). What's CHUM (owners)
 got to lose (see 880 & 770). Like CPKW-720 has been an
 Edmonton sta. since 1960, hi. Canrose? Who cares?
 Vernon-Fair-John left 40w. U1 r-CPW-1500 is on
 1050 BC CHAL Vernon wants another twin, on 870 Invermere-Windermere
 1060 AB CJAN Calgary. Dan Sys says this is the call. Like CFR-66
 But we'll just hear "AM-106". Phone 240-hits. Ex: CPON?

1110 AB CKRT Edmonton wants CBC.
 1140 PQ CKFC Regina wants AM. U1 lost r-CPW-1500 is on
 1250 AB CJOH Ft. McMurray will finally move to 570
 1250 PQ CPOH Manitoba listed as 11v. Anyone know?
 1240 PQ CJTD feeds its CPWD-1240 but does it twin CHVD-1250 AM?
 1240 MB CJAR The Pas (like in foot, hi) got OK to drop CBC.
 1240 BC CJAV Fort Albert drops all CBC (now via CKFC-FM)
 1240 ON CJEA Wawa got CRFC OK to drop CBC. Twins CKCY-540 (220)
 1240 BC CKGO Hope now "Canyon Radio" & use their own pre-timed
 separate IDs when twinning CHWK-1270.
 1240 AB CBPP Waterton 30w. here ex 1260 says BV. Heard by the Hardys
 They thought they'd be blown away by C-jock 1220.
 1250 SA CKCK Saskatoon wants 650.
 1300 SA CJME Regina wants 760.
 1340 MF CKFK Cornerbrook...Box 1340...not on yet.
 1340 AB CIBQ Brooks wants 770.
 1370 SA CJWW Saskatoon wants 750.
 1370 AB CPOK Westlock. CRFC cried but said OK to new owners going
 mostly automated due to heavy competition from CEN,
 CPKW, CJAX, all country in the same Edmonton market.
 CKNL/CFNL now own it. They also own 50% of CJOI-1440
 which is also in the same market

1370 PQ CPVD Degelis wants (& 2 FM twins) want to twin CJAB-FM Rimouski
 1400 BC CINT Princeton will become a twin of CKOK-800. Call change?
 Sys says will CINT-1 now become CHIL? Two points?

1400 FC CKGR Golden now has a studio (twins CKCR-1340 & CKXR-530)
 1400 AB CKSQ Stettler wants 830.
 1420 MB CKCY Dicky got OK to drop CBC plus a twin at Weymouth 103.3 3kw.
 1450 AB CEKI Hinton moves to 8.1 Note CBC leaves AM on for about a yr.
 after the FM arrives.
 1490 MF CKRH Hopedale moves to 103.3 r-CRGE-1340. Easy DX.
 1490 AB CBPP Waterton ex 1540 says BV. Heard by BH. They thought
 CJPR might blow them away.
 1600 SA CIEN Buffalo Narrows 75% country 25% rock all live 15w. per BV
 I doubt if even Brian's heard this one...well, not yet.

CJMT-1420 is supposed to relay CKAC 145-315 M-F 6-9 Sun "Vie de Couple"
 CRFC asked CEC to please use AM if at all possible for future lpts.
 CRFC OKed use of all 14 Montreal freq. for a tunnel ad-info "thing".
 Note that all those applications for the ex clears have been approved by
 the DCC (Canada's FCC part one). Part two approval is needed (CRFC).

Thanks for CJAN call, Dan Sys & BV-Brian Vernon
 CIEW-960 hired Rafe Nair (ex CKOR-600 hot-liner) for Mid.-2am show.



ON THEORIES, EXTRAORDINARY WAVES AND ELEVATION ANGLES
IN MEDIUM WAVE PROPAGATION

Randall J. Seaver

1. INTRODUCTION

Lankford [1984b] contends that it is impossible for one scientific theory to refute another without some experimental evidence which agrees with one theory and disagrees with the other. He states that, since Seaver [1984] did not present any such experimental evidence, Lankford's theory has not been refuted.

My Webster's New Collegiate Dictionary defines the terms "theory" and "hypothesis" as follows:

- Theory - A plausible or scientifically acceptable general principle or body of principles offered to explain phenomena.
- Hypothesis - A tentative assumption made in order to draw out and test the logical or empirical consequences of a theory.

There are other definitions in other dictionaries, but I consider the above to be reasonable. Within this context, I believe that the "theories" that Lankford [1984b] attributes to himself and myself are really "hypotheses" and in my article I was careful to call them such.

The "Theory" of radio wave propagation that I believe in is the Magnetoionic Theory. It was initially developed by Sir Edward Appleton in the 1920's. Davies [1965] and other books present the derivation of the theory and the complete equations. The equations relate the complex refractive index of the ionosphere to the electron density, Earth's magnetic field characteristics, and to the electron collision rate at a given point in space and time. The equations can be integrated with distance to determine the ray path and the ionospheric absorption of radio waves at Medium Wave and Short Wave frequencies.

Sen and Wyller [1960] formulated the Generalized Magnetoionic Theory, which accounted for several factors that were oversimplified in the classical Appleton theory. Both theories account for the presence of the "ordinary" and "extraordinary" waves which occur when a wave enters the ionosphere.

Experimental data in the form of ionograms have verified the validity and application of the theories. Computer programs have been developed that calculate the ray path and absorption characteristics, assuming representative ionospheric electron densities, a model of the Earth's magnetic field, and an effective electron collision rate (e.g. Jones and Stephenson [1975]).

Since the Booker quartic equations, upon which Lankford [1984a] has chosen to base his studies, are derived from the classical Appleton Magnetoionic Equation, it is evident that Lankford also accepts the basic Theory extant in radio wave propagation. Therefore, Lankford and I seem to agree on the "theory" involved; the difference in opinion is on the "hypotheses" concerning Medium Wave propagation.

Based on medium wave field strength measurements gathered over many years, primarily by the CCIR (International Radio Consultative Committee, which includes the FCC and the BBC), and on the Magnetoionic theory, Knight [1975] has developed a model for Medium Wave field strength prediction. This was published in the 16 July 1984 DX News so that Medium Wave DXers can read a definitive work on Medium Wave propagation. It is clear that the hypotheses in Seaver [1984] agree with the Knight [1975] model, while Lankford's [1984a, 1984b] hypotheses do not agree entirely with the Knight [1975] model.

It is evident that Lankford has chosen to test the Magnetoionic theory and to try to investigate the extraordinary wave aspects of the theory and then to apply it to the study of Medium Wave propagation. However, Lankford [1984a] has not taken account of the influence of absorption at the reflection point (resulting in Equation (24) of Lankford [1984a] in his work). This assumption greatly simplifies the calculation of the critical

frequency at oblique elevation angles. It is my opinion that the inclusion of electron collisions (and therefore absorption) is necessary when considering medium wave propagation below the gyrofrequency, especially when critical E-region frequencies are being determined.

Lankford's [1984b] comments on Seaver [1984] dwell on two major themes; these are:

- a) The existence of the "extraordinary" wave mode and its potential for oblique medium wave propagation
- b) The elevation angle at which long distance medium wave signals arrive.

The basic difference of opinion, as I see it, is that Lankford does not believe that low angle "ordinary" waves refracted from the E region are viable. He believes that higher angle "extraordinary" waves at low (e.g. below 1100 khz) Medium Wave frequencies and "ordinary" waves at higher Medium Wave frequencies refracted from either the E- or the F region are responsible for long distance propagation. On the other hand, I believe that the "extraordinary" wave suffers high polarization coupling and absorption losses and is therefore weaker than the low angle "ordinary" wave, which is propagated over the entire Medium Wave frequency band via the E-region.

The following sections discuss Lankford's [1984b] comments in greater detail.

2. "EXTRAORDINARY" WAVES

There is certainly no "myth" about the extraordinary wave insofar as the Magnetoionic theory or my own beliefs are concerned. It's presence on the many available ionograms confirms the theory itself. That Appleton may have erred in the derivation of the values of the gyrofrequency or in the polarization equation (as pointed out by Lankford [1984b]) is not really germane to the discussion; those errors have long been corrected and the theory is unchallenged in radiophysics circles.

However, seeing "strong extraordinary traces" on vertical ionograms (quasi-longitudinal propagation along magnetic field lines in mid- and high latitudes) and hypothesizing that strong traces exist for oblique extraordinary quasi-transverse waves (nearly across magnetic field lines at mid- and high latitudes) is illogical - it's an "apples and oranges" situation.

The only "experimental" data of real value that Lankford [1984b] offers is the oblique incidence ionograms of Fenwick and Barry [1966]. Unfortunately, I don't have a copy of that paper. However, I do have a representation of the two oblique incidence ionograms from Lankford [1980] in Lankford's own hand, reproduced in Figures 1 and 2 (but without Lankford's notations).

FIGURE 1.
(June 22, 1965, 0934 GMT)

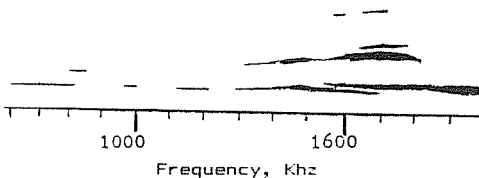
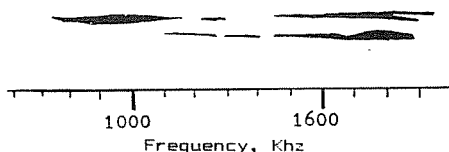


FIGURE 2.
(June 23, 1965, 0830 GMT)



This data was taken over a path from Stanford CA to Lubbock TX, a distance of about 2000 km, on two successive nights in 1965.

Figure 1 shows a trace from about 600 khz to about 2000 khz at one level, and a trace from about 1300 khz to 1800 khz at a second level, with some other traces of short extent. The lower trace has some breaks in it

that may represent interference from local stations or short-term fade-outs at the instant the ionogram was taken. Fenwick and Barry apparently believe that these two major traces are one and two-hop "ordinary" traces showing refraction from the E-region. I agree with that conclusion. Lankford [1984b] does not indicate his belief on this ionogram one way or another. There do not appear to be any characteristic "extraordinary" wave traces on the ionogram of Figure 1.

Figure 2 shows a trace from about 1100 khz to 1900 khz at one level, and a trace from about 700 khz to 2000 khz at a second level, with one short trace at a third level. The two lower traces have some breaks. Fenwick and Barry apparently believe that the two major traces are one and two-hop "ordinary" traces showing refraction from the E-region. I agree with that conclusion. As Lankford [1984b] notes, the bottom trace starts at about 1100 khz; based on this, he hypothesizes that the second trace is an "extraordinary" wave trace below 1100 khz as the "only reasonable explanation".

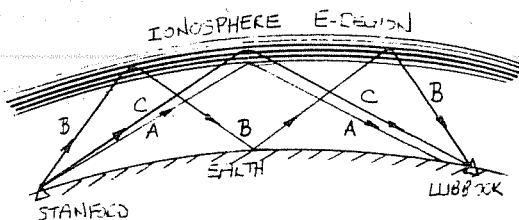
I have another "reasonable explanation", totally consistent with the magnetoionic theory and my own hypothesis:

"The lower trace starts at about 1100 khz because the E-region of the ionosphere was low enough to prevent the one-hop ordinary wave from being received over the distance below 1100 khz. Above 1100 khz, the one-hop wave was refracted from a slightly higher altitude that made reception possible."

Figure 3 illustrates this situation. Curve A is a low frequency (e.g. 1000 khz) single-hop path that falls short of the Stanford to Lubbock distance with a zero degree elevation angle. Curve B is the two-hop path at this same frequency. Curve C is a higher frequency (e.g. 1200 khz) single-hop path at approximately a 1 degree elevation angle that is refracted from a higher altitude than curve A because it requires more electrons to be refracted back to Earth. Such a situation is probably quite common, especially in the early evening and in the summer months when there are more electrons produced in the E-region by solar illumination during the day.

FIGURE 3.

- A. Low frequency, one hop, zero degrees.
- B. Low frequency, two hops, 8 degrees
- C. High frequency, one hop, 1 degree.



It is possible that a one-hop "extraordinary" wave could be received. What would an "extraordinary" wave trace look like on an ionogram? It should steadily increase in altitude (since it would be refracted from the 150-200 km altitude of the ionosphere) and should get gradually weaker due to the increasing absorption as it nears the gyrofrequency, disappearing between 1200-1500 khz due to very high absorption near the gyrofrequency. The second trace on Figure 2 extends across the frequency range (with some breaks) and is at nearly constant altitude, slightly increasing with increasing frequency. This would be characteristic of a two-hop "ordinary" wave trace, rather than a one-hop "extraordinary" trace.

I believe that my hypothesis, stated above, is more reasonable than is Lankford's hypothesis that the lower portion of the second trace is an "extraordinary" mode trace. If my hypothesis is correct (and it agrees with that of the researchers Fenwick and Barry), then Lankford has no apparent experimental data showing oblique "extraordinary" wave traces to support his hypothesis.

In summary, I do recognize that the extraordinary mode is possible, and that it will penetrate the E-region below the gyrofrequency. However, I believe that the polarization coupling loss, which is significantly greater for the extraordinary wave than for the ordinary wave, the high absorption

loss of the extraordinary wave near the gyrofrequency, and the variability of the gyrofrequency over the Earth effectively precludes reception of the extraordinary mode on long-distance paths. I agree with the statement in Knight [1982]:

"At the gyromagnetic frequency, the extraordinary wave of the magneto-ionic theory is so greatly attenuated that it makes a negligible contribution to the received signal; furthermore the attenuation exhibits a broad maximum centred on the gyromagnetic frequency. As a consequence, the extraordinary wave can be disregarded for all practical purposes within the medium-frequency broadcasting band (approximately 550 to 1600 kHz)."

3. ELEVATION ANGLES

The published data that Lankford [1984b] quotes concerning arrival angles of radio waves is for short wave frequencies. To take average arrival angles at short wave frequencies and to extrapolate the data to Medium Wave frequencies would not, in my opinion, be a valid use of the scientific method. A good statistician can make numbers tell whatever story he wants told! For instance, an "average" arrival angle for the stations I might receive over a certain frequency range (for example, the BCB) might well result in a 5-10 degree angle (since most of the frequencies are covered by stations within 1200 km or 750 miles) with a few down to 1 degree.

Short wave stations may have average angles in the range of 5-10 degrees for several reasons, such as:

- a) Short wave antennas are usually targeted (using antenna height and directional patterns) for specific regions of the world, often within 3000 km or less, resulting in optimum elevation angles of 5-10 degrees.
- b) The ground attenuation of low elevation angle waves increases significantly as the wave frequency is increased.
- c) The E-region of the ionosphere can cut off very low elevation angle waves, but permits waves at higher elevation angles to pass through at short wave frequencies. This is especially true on multi-hop paths since the E-region peak electron density can vary widely over a long path.
- d) The F-region of the ionosphere is not nearly as "spherical" as the E-region; on long paths, the short wave rays can be refracted from much different altitudes on each hop and can be deflected from a great circle path by ionospheric tilts, bulges and troughs in the F-region electron density along the ray path.

Lankford [1984b] quotes the Wilkins and Kift [1957] arrival angle data for a Ceylon to England path at 16 mhz and states the average angle was about 7 degrees, with 30% of the measurements below 5 degrees. Over this path, which is about 8500 km in length, and assuming a 300 km F-region virtual height, I estimate that a two-hop path would have an arrival angle of -2 degrees, a three-hop path would have an angle of 5 degrees, and a four-hop path would have an angle of 10 degrees. The average 7 degree angle quoted is very consistent with these estimates.

One piece of published evidence of low arrival angle Medium Wave propagation is provided in the oblique incidence ionograms of Fenwick and Barry [1966]. If, as Fenwick and Barry suggest (and I agree with), the traces are one and two-hop "ordinary" E-region modes, then the one-hop trace should have an angle in the 0-2 degree range (depending on frequency).

Other evidence can be found in the DX bulletins where thousands of receptions are reported each year, including paths over 10,000 km. What is required is a systematic study of field strengths of regularly heard stations, and then to correlate the average field strengths observed with the average field strengths estimated using the Knight [1975] wave-hop method, the CCIR-1978 method (described in PoKempner [1980]), etc. I have done some of the field strength observation work over the last five years and plan to write an article presenting the data and the field strength estimations for correlation.

All of the accepted methods of estimating field strength (e.g. Knight [1975]) indicate that one-hop "ordinary" wave paths at elevation angles down to 0 degrees and multi-hop paths in the range of 1-5 degrees are the predominant mode of Medium Frequency long-distance propagation via the

E-region. Lankford has not presented any firm experimental or theoretical data to refute the accepted methods - he has only hypothesized higher elevation angles, in tandem with his "extraordinary" mode hypothesis, based on data of questionable applicability.

4. CLOSURE

This article has addressed the two major themes that were the basis of Lankford's [1984b] critique of Seaver [1984], namely "extraordinary" wave traces and the elevation angle of oblique waves at Medium Wave frequencies. The Fenwick and Barry [1966] oblique incidence ionograms support the Seaver [1984] hypothesis that "ordinary" waves refracted from the E-region are the major propagation mode throughout the Medium Wave frequency band. If this hypothesis is correct (and it matches the accepted methods of Knight [1975] and others), then Lankford has no published data to support his hypothesis.

I ask the question:

"If the recognized authorities in radio broadcasting accept the Knight model (as indicated in PoKempner [1980]), then why don't Lankford and Stanbury accept it?"

Who would you believe? The broadcasting authorities and radiophysicists on one hand, or two DXers with little physics background on the other? I choose the former with no reservations whatsoever.

5. REFERENCES

- Davies, Kenneth, Ionospheric Radio Propagation, U.S. Dept. of Commerce, National Bureau of Standards Monograph 80, April 1, 1965.
- Fenwick, R. and Barry, G, "Sweep-frequency oblique ionospheric sounding at medium frequencies", IEEE Trans. on Broadcasting BC-12, 1 (June 1966), pg.25-27.
- Jones, R.M. and Stephenson, J.J., "A Versatile three-dimensional ray tracing computer program for radio waves in the ionosphere", U.S. Dept. of Commerce, Report OTR 75-76, October, 1975.
- Knight, P. "M.F. Propagation: a wave-hop method for ionospheric field strength prediction", BBC Engineering, No. 100, June, 1975.
- Knight, P. "Medium Frequency Propagation: A Survey", paper no. 28 in "Medium, Long and Very Long Wave Propagation", edited by J.S. Belrose, NATO Advisory Group for Aerospace Research and Development, Conference Proceedings AGARD-CP-305, February, 1982.
- Lankford, D., "Long Distance Medium Wave Propagation", (postscript 3/15/80) unpublished manuscript, 1980.
- Lankford, D. "On oblique propagation", DX News vol. 51, no. 25, pp. 29-38, April 15, 1984.
- Lankford, D. "On the Nature of Science and Theories of BCB Propagation", DX News vol. 51, no. 28, pp 37-39, July 16, 1984.
- PoKempner, M. "Comparison of Available Methods for Predicting Medium Frequency Sky-Wave Field Strengths", U.S. Dept. of Commerce, NTIA Report 80-42, June 1980.
- Seaver, R.J. "Medium Wave Oblique Propagation - Another View", DX News vol. 51, no 27, pp. 26-33, June 11, 1984.
- Sen, H.K. and Wyller, A.A., "On the generalization of the Appleton-Hartree magnetoionic formulas", Journal of Geophysical Research, vol 65, pp 3931 ff, 1960.
- Wilkins A. and Kift, F. "Characteristics of h. f. signals. Reception in the U.K. of transmissions from India and Ceylon", Electronic & Radio Engineer, Sept 1957, pp 335-341.

ERRATA

One error of substance found its way into Seaver [1984] on page 27 in the bottom paragraph: The listing of KDB-770 in the two-hop path listing should be in one-hop path listing. KDB-770 is definitely a one-hop path from Chula Vista and not a two-hop path as listed. My thanks to C.M. Stanbury II for pointing this out.

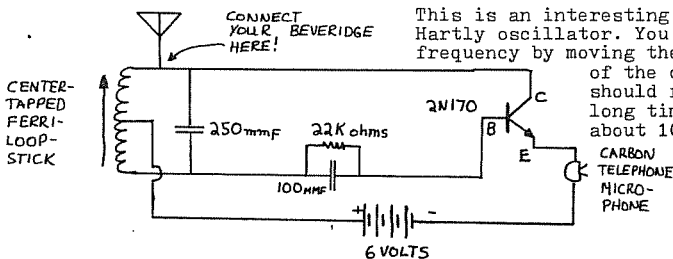
EASTERN DX ROUNDUP

Karl J. Zuk All Times
 154 Old Post Road North Are
 Croton-on-Hudson, New York 10520 Eastern Local

REPORTERS IN THIS ISSUE:

- (KVJ-GA) Karl V. Jeter, 2115 Scarbrough Road, Stone Mountain, GA 30088 Hammarlund HQ-150 with 2000 foot NW Beveridge, 1500 foot W Beveridge, phasing unit.
- (KJZ-NY) Karl J. Zuk, 154 Old Post Road North, Croton-on-Hudson, NY 10520 Stinky Delco car radio (to and from Lodi, NJ)
- *****
- 590 WROW NY, Albany. 11-3 1600 Nice strong signal into Northern NJ and Westchester County, NY. IDs as "AM-59 WROW". Good. (KJZ-NY)
- 880 WEEG GA, Jefferson. 10-30 0721 with modern C&W, ads, and uses slogan "Great 880 Country." (KVJ-GA)
- 910 WPFB OH, Middletown. 10-28 0055 Fair with Larry King, Mutual news, ID, then back to Larry King 1259-0106. ID included slogan, "Serving Southwest Ohio, with real country, 910 AM WPFB." Listed as only 100 watts at night! (KVJ-GA)
- 950 WROL MA, Boston. 11-2 0700 with heavy duty religious format. Fire and Brimstone preaching. Good, way above WPEN, Philadelphia. (KJZ-NY)
- 990 CBW MB, Winnipeg. 10-30 0612 Good with CBC news, ID as "CBC Manitoba," into big-band type music. (KVJ-GA)
- 1010 KXEN MO, Festus-St. Louis. 10-27 1827 with Ernest Tubbs record offer spot, C&W music. (KVJ-GA)
- 1060 KAYR AR, Van Buren. 10-27 1845 with sign off, mentioned FM sister station, "FM-102." D-500. (KVJ-GA)
- 1060 KLSM MO, Springfield. 10-27 1850 with Music of Your Life type format. Slogan "Always your favorites...always." Sign off at 1900 with SSB. D-500. (KVJ-GA)
- 1360 WIXZ PA, McKeesport. 11-3 0740 with C&W music format. ID as "Wick-Zee 1360." Good. (KJZ-NY)
- 1380 WSYB VT, Rutland. 11-3 0730 with MOR pop records, male DJ. Ads for various places in Vermont. Good, way above local WKDM, New York, the weakest 5kW from NYC into this area. (KJZ-NY)
- 1550 WNTN MA, Newton. 11-2 1625 with OM reading race horse results in tired voice, distorted audio. Mention "We have to get off by 430, so we won't be able to bring you the eighth race. Hear the results tomorrow morning on WNTN. Very Strong, with abrupt sign off at 1630. (KJZ-NY)
- 1550 WKBA VA, Vinton. 11-2 1715 with sign off. Christian music format. Good. (KJZ-NY)

Welcome to the Karl and Karl show. Thank you Mr. Jeter, for saving me from dancing with myself. A warning to all other IRCA East Coast members, if you don't send in a report, I will send out my two cats to bite your leg! I will be in the land of Mary Tyler Moore and Prince for three days to cover the outcome of Mr. Mondale's campaign. Maybe I'll pick up some Western Canada DX I've always wanted to hear. Speaking of DX, here's a quicky project to create your own. Using only a handful of parts, you can be the owner of the rarest DX station in North America! All you need is the microphone from a telephone, a ferric loopstick antenna coil, and a few parts. 4 "AA" cells will power this nicely. The antenna should not exceed ten feet, or the FCC will not consider you legal, (and someone might hear you, God forbid!) Have fun, please send in your reports! '73's de KJZ.



This is an interesting grid leak type Hartly oscillator. You change the frequency by moving the slug in or out of the coil. This unit should run for a very long time, since it uses about 10 milliamps of current.

CENTRAL DX ROUNDUP

Robert Kramer
6416 N. Richmond
Chicago, IL 60645

UNIDED, SPECIAL, CHANGES, et. al.

- 650 WKKQ MN NASHVALE? , 10/24 1718, could ne WCKQ and or Grand Rapids, MN, Didn't hear QTH clearly, many ID jx "650 WKKQ, Stereo 65 WKKQ", "Clear Channel Stereo AM 650", many ads for Grand Rapids stores. Some QRM from WSM, fair not listed in my NRC & any 1984 DXM, so whatzit? (It's WKKQ-ex 1060, don't know the city of license though, apparently the CP listed for 1080 was incorrect, ed.) FM-IA
- 760 WURL AL MOODY, 10/31 0730 mixing w/WJR, KMTL, ID, phone #, asking for calls. LEB-IL
790 WFTB TN JOHNSON CITY, 10/15 0315 fair-good on DX Test w/TT & IDs. KDF-IL
810 KXOI? TX CRANE (or KXOY) 2310 10/29 good fade in lotts clutter & KCMO in fades, also CKJS & a Pakistani pgm (who?), KXOI IDs & "AM 81" Texas News, & full ID "810 KXOI Crane, Odessa, Midlands". FM-IA (Fritz, my log shows the calls for this one as KXOI, the night CP must be on., ed.) LEB-IL
- 1090 KLSZ CO AURORA, 10/30 1908 good w/features, Denver Area wx in KAAY null, ex-KKBB//
1170 KKZX IA DAVENPORT, now using these calls, ex-KSTT "KZX" slogan, T40 mx, simulcasts FM 97X mornings. JC-IL, 10/24 0022 w/plenty of clutter o/KVOO "KZX" & "11 KZX" IDs. JJR-WI
- 1260 WNRK DE NEWARK, 10/31 0030 at first very poor, but much stronger by 0100 after WIBV s/off, w/TT, ID & mx. RK-IL, 10/29 poor/fair w/ID, TT on DX Test. KDF-IL, 10/29 0130 thru 0230 good on DX Test w/TT, ID @ 0133 mixing w/WNDE. LEB-IL
- 1290 KPOW? 2243 10/30 fair in clutter, rck mx & OM on "13 KPOW", WHIO faded in, also KOLI & CFW. What's KPOW? Could be KSOW, but it's rather clear on the tape as either. FM-IA
- 1380 UNID 10/29 0225 "Classic Hits on 1380 K-Gold". KCK-IL (KGLD St. Louis, ex-KWK, ed.)
- 1390 UNID 10/29 0220 "Adult Music on AM-1390". KCK-IL (What type of music were they playing? If black oriented, this is WGCI, ed.)
- 1440 WMIA IL NORMAL, 2320 10/27 C&W mx & "AM 1440 WMIA" ID, ex-WRBA. FM-IA
1450 WKEI IL KEWANEE, MoR/adcom, dropping C&W. JC-IL
1550 UNID 10/29 1820 possible ID as WFBR, good signal, ment. of several Wisconsin towns during nx. KCK-IL (probably WEVR, the calls are phonetically similar to those you describe, ed.)

All da Rest

- 550 K TSA TX SAN ANTONIO, 2130 10/25 rck mx, brief ID, good. FM-IA
610 WDAF MO KANSAS CITY, 10/29 0710 good, mx, commentary. KCK-IL
620 KTAR AZ PHOENIX, 10/29 0740 weak u/XENK, lcl KILT slop w/nx block, MST TCs, ID in sportscast. PN-TX
- 640 WWIS OK MOORE, 10/29 0555 xlnt in clear, wx, ID. KCK-IL (Note correct city of license, ed.)
- 680 KKYX TX SAN ANTONIO, good 1845 10/24 ID, PSA, "Great Country 68 KKYX" slogan. FM-IA
CJOB MB WINNIPEG, 1628 10/25 fair OM w/Sportsline "On OB", full ID. FM-IA
690 WTX LA NEW ORLEANS, 10/28 1910 good, traffic rpt, ID. KCK-IL
KHEY TX EL PASO, 1848 10/24 good traffic watch ID & lcl spot, rck mx. FM-IA
KPET TX LAMESA, 1938 10/29 SS fair, SS EZL mx, "Radio 6-90 (sies Noventa) & something like R. Fundamenta, then EE KPET SID. FM-IA
- 740 KBOE IA OSKALOOSA, 1440 10/29 good rck mx & ID. FM-IA
KTRH TX HOUSTON, 1905 10/24 good nx & wx, IDs in context. FM-IA
- 770 KUOM MN MINNEAPOLIS, 10/29 1725 fair, nx, promo, ID. KCK-IL
790 KFYO TX LUBBOCK, 1920 10/24 fair in clutter "Total Radio KFYO" & C&W mx. FM-IA
830 KBOA MO KENNETT, 10/26 1928 good w/ID, extensive area wx, no WCCO or Belize. PN-TX
860 KKOW KS PITTSBURG, 1843 10/25 xlnt "20-20" wx, spots, ID. FM-IA, 10/29 1740 lcl ad, ID by location. KCK-IL
- 980 KMPF MN RICHFIELD, 1720 10/21 fair, pop mx, ID, slogans "Country 980", ex-KKSS. FM-IA
WPRE WI PRAIRIE DU CHIEN, poor in clutter 1705 10/30 some good fade ins w/lcl ads & ID, SID, o/u WCUB, KMBZ. FM-IA
- 1000 WTAK AL HUNTSVILLE, 10/29 0645 weak w/s/on, lost to WZTN s/on. PN-TX
WZTN AL MONTGOMERY, 10/29 0646 good w/short s/on into Gospel mx, apparent format change from oldies. PN-TX
WKBQ NC GARNER, 10/29 0635 poor w/C&W, several "K-One" IDs, wx for Raleigh-Durham, EST TCs, spots & nx. PN-TX
- 1030 KB SM MO BLUE SPRINGS, 10/29 0618 fair fading o/u KHOG, XEQR, w/AC mx, "Suburban 10-30 Radio" IDs, Kansas City wx. PN-TX
- 1070 WAPI AL BIRMINGHAM, 10/31 0654 strong, all alone w/mx & morning features for the great Southeast. LEB-IL

1090 WISS WI BERLIN, 10/29 1720 xlnr, ads, ID, no sign of WGLG. KCK-IL
1130 WASP PA BROWNSVILLE, 10/31 0643 mx, ID & SID, good 5 min then gone. LEB-IL
1150 KSAL KS SALINA, 10/29 0445 good, ID, mx. KCK-IL
WJBO LA BATON ROUGE, 10/29 1916 dominant w/mx, wx, ID. LEB-IL
WTAW TX COLLEGE STATION, 10/29 1939 very weak w/mx, ID. LEB-IL
WELC WV WELCH, 10/31 0637 jumped out of mess for ID then into mx & gone. LEB-IL
1180 KOFT MT KALISPELL, 10/30 1943 weak in WHAM null, mx & wx for NW MT, good opening to
NW, also found KTWO-1030, KIMM-1150 & KADE-1190. LEB-IL
1190 KJEM AR BENTONVILLE, 10/26 1938 good o/KLIF w/lcl promo, spots. PN-TX
1210 WKNX MI SAGINAW, 10/31 0630 very weak w/mx, ID behind nulled WCAU. LEB-IL
1250 WHNY MS MCCOMB, 10/29 1955 xlnr o/all others, multiple IDs, wx. KCK-IL
CBOF? ON OTTAWA, 0010 10/30 FF EZL mx, woman DJ, "icl R. Canada" ID @ 0100, presumed
off 0109 in fade & hrd Canadian National Anthem. Any help on this ? FM-IA
Fritz, this is definately CBOF, ed.)
1260 KGBX MO SPRINGFIELD, 10/28 2100 good, ID, nx. KCK-IL
KIPR TX HUNTINGTON, 10/17 1935 fair w/black mx (format change from C&W), s/off. PN-TX
1270 KABS AR PINE BLUFF, 10/25 0700 weak s/on, lost to jumble. PN-TX
WTNT FL TALLAHASSEE, 10/25 0650 lcl ads, EST TCs, promo, poor-fair. PN-TX
WJJC GA COMMERCE, 10/25 0700 ABC, then GA nx, spot, ID, sports. Poor w/WTMT & the
pack. PN-TX
1280 WMRO IL AURORA, 1720 10/30 fair w/sports tkl show, ID "1280 Radio WMRO", fade. FM-IA
1300 WMTM GA MOULTRIE, 10/29 0650 fair o/WIRL slop ID, wx. KCK-IL
1330 WVHI IN EVANSVILLE, 10/28 2050 good, ID, wx. KCK-IL
1370 WDEF TN CHATTAHOOGA, 10/29 0655 lcl nx, ID, traffic, EST TC, fair-good. PN-TX
1380 WIZO TN FRANKLIN, 10/29 0659 Bluegrass mx, nx promo, ID "AM 13-80 Wy-Zoh Country",
fair o/KAUL, others. PN-TX
1390 WFTW IL FAIRFIELD, 10/29 1810 xlnr, ID, many Duquoin ads. KCK-IL
WJGD IN SEYMOUR, 10/29 0615 fair, ID, lcl nx & wx. KCK-IL
1400 KFCB MO COLUMBIA, 10/29 0321 wx for Columbia, ID then gone, u/KTTS & others. PN-TX
WQZQ WV CLARKSBURG, 10/19 0215 w/Tlk Radio pgn in fade up o/mess. JJR-WI
1410 WDOV DE DOVER, 10/29 0600 fair u/WING, ID by location. KCK-IL
WIZM WI LACROSSE, 10/29 0729 xlnr ID, nx. KCK-IL
1420 WIGG MS WIGGINS, 10/29 0600 brief s/on, very poor, then Rel. PN-TX
CJVR SK MELFORD, 0010 10/28 good, hollow audio or remote, lcl talent show, ID. FM-IA
1440 WRAJ IL ANNA, 10/29 0640 good o/Normal, many IDs. KCK-IL
WJLJ NY NIAGARA FALLS, 9/30 0600 fair-good w/s/on. KDF-IL
WHDM TN MCKENZIE, w/TC in clear fade up 0720 10/23, no WROK or WNFL at all ! JJR-WI
1460 KSO IA DES MOINES, 10/29 0539 C&W, several IDs as "Great Country", contest promo,
u/WACO/WXOK. PN-TX
1470 WBIG NC GREENSBORO, 10/29 0550 weak w/big band mx, EST TC, ID, wx. PN-TX
1490 KPIT TX PARIS, 10/29 0833 briefly fair w/XEMS, KSAM & others, spot, ID. PN-TX
1510 KM00 TX MINEOLA, 10/24 0700 poor w/AM & FM s/on, then lost to KAGO s/on. PN-TX
1520 WKVI IN KNOX, 10/29 0725 good, nx, wx, IDs. KCK-IL
1550 KUAT AZ TUCSON, 10/27 2050-2100 fair in KGBC null u/WOKJ w/jazz, s/off no SSB. PN-TX
KRCO UT WEST VALLEY CITY, 10/27 2055 fading, poor-fair w/minor league hockey, ID &
lcl spots. PN-TX
1560 WYZD NC DOBSON, 10/13 0645 fair w/several IDs, phone #, not s/on. KDF-IL, 10/25
0646 promo & temp. alone. No WPAD or WQXR. JJR-WI
WTNS OH COSHOCOTON, 10/31 0600 u/WPAD w/s/on & gone. LEB-IL
1580 KLOU LA LAKE CHARLES, 10/29 0405 xlnr, mx, many IDs. KCK-IL
1590 WAIK IL GALESBURG, 10/24 1946 suprise, fair-good w/last portion of s/off u/lcl
KYOK, no SSB. PN-TX

BACK FROM VACATION

LEB... Larry Black RR #1, Box 108A Glenarm, IL 62536

(R-1000, SM-1)

JG... John Glemmer 4524 7th St East Moline, IL 61244

KDF... Karl Forth 2714 N. LeClaire Chicago, IL 60639

(HQ-160, IC-R70, ICF-S5W, Loops, IW)

KCK... K.C. Kerchner R.R. 1- Box 91 Edelstein, IL 61526

(DX-100, TRF, S-120, Pegboard Loop)

RK... Mike Hogan's Main Man

(R-1000, HQ-129X, Radio West Loop, Kowalski Loop)

FM... Fritz Mellberg 1505 Central Hawarden, IA 51023

(IC-R70, amplified wedge)

PN... Pete Nolan 100 Market #64 Galveston, TX 77550

(TRF)

JJR... John Rieger 1586 S. 82nd West Allis, WI 53214

(IC-R70, R-1000, RF-2900, Kowalski Loops, Radio West Shotgun)

CADZ XV

The 15th edition of the Chicago Area DXers holiday get together will be held over New

Year's weekend (Dec. 28- Jan. 2) at 6416 N. Richmond in Chicago. Phone 1-312-262-6299.

If you attend, you can see Mike Hogan spin wool into gold, witness Karl Forth's amazing

oil change procedures & experience Mike Jeziorski. Why not attend ?

WESTERN DX ROUNDUP

Nancy Hardy
2301 Pacific Avenue
Aberdeen, WA 98520

All times are
Eastern Local

Phone for hot WDXR tips: (206)532-6827 till 10pm(PLT)

DEADLINES: Tuesdays

REPORTERS FOR THIS ISSUE:

- (BB) Bill Block-9307 S.E. Clay St.-Portland, OR 97216
R-390A w/Radio West loop; FRG-7 w/65' longwire
- (NH) Nancy Hardy-2301 Pacific Ave.-Aberdeen, WA 98520
FRG-7, SM-1
- (JH) Jim Hilliker-1502 E. Hedgewood Ave.-Anaheim, CA 92805
Kenwood R-1000, Radio West loop
- (DKK) Don Kaskey-465 Burnett St. #1-San Francisco, CA 94131
Hammarlund HQ-140X, SM-2
- (DP-HI) Dale Park-2253 Kanealii Ave.-Honolulu, HI 96813
Sony ICF-6700W, TRF
- (DP-CA) Doug Pifer-4366 Ocean View Bl. #3-Montrose, CA 91020
FRG-7000, MW-1
- (RT) Rich Toebe-2388 American Ave.-Hayward, CA 94545
Grundig 3400, Radio West loop
- (RW) Robert Wien-1309 Dentwood Dr.-San Jose, CA 95118
GE Superadio, GE long-range portable, SM-2
- (ØW) John Wilkins-4385 Hoyt St. #205-Wheat Ridge, CO 80033
R-1000, 4' monster loop

OF SPECIAL INTEREST:

- 920 KKAM CA, Palm Springs 10/29 0937 briefly on top thru severe KNEW-910 slop w/sports, jingle ID "KKAM," into MYL, then buried w/KLOC. Call change, ex-KDES. (RW-CA)
- 1080 *KWAI* HI, Honolulu 10/29 0620 as predicted by Brock Whaley, noted back on w/ID by DJ Stan Cook (he joined when it was KIOE!) "This is K-W-A-I on the air for testing purposes only," then carrier. Off 0628, on 0628, then off 0629. Noted 0658 w/mx from "Eddie and the Cruisers," ID as before, Sheena Easton mx, UNID rock, then TT. Obviously a "Hot Hits" type format. Ex-KZHI, ex-KIOE. Very good. (DP-HI)
- 1300 KSWN NE, McCook 10/19 1959 YL w/wx, soon lost to QRM. Hrd briefly in KVOR null. New, #635. (ØW-CO)
- 1400 KEZC AZ, Yuma ex-KVOY 10/30 0503 w/ID, also mentioning KJOK-FM 93.1. In/out all a.m. Had ABC nx 0600 & format was rock. (DKK)
- *****
- 590 KTHO CA, So. Lake Tahoe 10/24 hrd at 2125 w/ad & wx. (BB-OR)
KSUB UT, Cedar City 10/24 hrd at 2136 w/ID "Music that music lovers love best KSUB." (BB-OR)
- 620 KNKS CA, Hanford 10/30 2205 fair to good, not much KFI-640 slop. Out of Ae nx, local spot for "Fantastic Sams, 8 Central Valley locations." Woman DJ "5 after 7, and now another hour of country music...on KNKS." Moderate QRM. Only hrd one other time & that was very poor. (JH-CA)
- 640 KGVW MT, Belgrade 10/31 1909 Montana sports nx, ad, wx, 1912½ TC & call into relig. mx, 1916 "AM 6-40 Radio" into ads. Very good, no sign of KFI yet. New. (NH-WA)
- 650 WSM TN, Nashville 11/2 0041½ ID after C&W mx. Good through nulled CTSL. (NH-WA)
- 680 KFEQ MO, St. Joseph 10/19 1920 political ad, wx, pop mx. Fair, no QRM. (ØW-CO)
- 700 KFAM UT, No. Salt Lake 10/31 1904 EZL mx; ID's 1914, 1928 ("There's so much more to enjoy on AM 700"); 1928 local nx w/Maureen Fitzgerald. Very good at times, presume still on day power. KNUS-710 slop. (ØW-CO)
- 710 KFIA CA, Carmichael 10/24 2101 hrd w/good sigs w/ID and on top of KIRO until KFIA's power change at 2135. (BB-OR)
- 740 KBRT CA, Avalon 10/20 0905 s/on "This is K-B-R-T Avalon, broadcasting on an assigned frequency of 740 kHz with a power output of 10,000 watts, by authority of the FCC, with transmitter located on Santa Catalina Island," into relig. mx. Fair o/QRM until 0915, when KSSS went to day power. (ØW-CO)

750 KXL OR, Portland 10/18 0859 ID "You're listening to...all-news information station...this is K-X-L Portland. It's 6:00." CBS nx, 0905 local wx--traveler's advisory for Cascades. New, Oregon #1111 Poor, KMMJ QRM. (ØW-CO)

760 KGU HI, Honolulu per phone call they no longer carry weekly CBS football game, but will air "the playoffs." Does this include baseball? (DP-HI)

770 KXA WA, Seattle 10/31 0211 o/u KOB, light pop mx, hrd quick "This is KXA, Seattle," back into mx. Fair. Guess that answers my question about their call letter change, hasn't happened yet. (JH-CA)

780 KSPI OK, Stillwater 10/18 0815 ID "This is K-S-P-I and K-S-P-I FM, Stillwater," then "The World This Morning" (nx), local ads. Fair w/KOB-770 splatter; WBBM gone. New, #633. (ØW-CO)

840 ---- CA, local pirate noted 10/28 0140-on w/WHAS far below. Was playing hard rock mx w/Halloween theme. No IDs noted but did intro one song w/"K-Ghoul." Perhaps KDHS returneth? (DKK-CA)

WHAS KY, Louisville 11/1 2349½ ID very weak thru nulled KSWB. (NH)

KSWB OR, Seaside 10/28 2155-2209 fair signal w/pop mx. First time noted. (RT-CA)

850 CKRD AB, Red Deer o/thru KOA 10/25 0155-0215+. Pop mx. ID 0210. KOA is seldom nullable here. (DKK-CA)

860 KLTQ UT, Salt Lake City 10/26 w/ID 0845 u/KTRB. Then SLC wx, followed by ID as "K-Light." KVVA far beneath. Ads & light rock mx. Was atop all at 0856 w/area wx. ID at 0857 was both "K-Light" & KLTQ. (DKK-CA)

+11/5 1958 "K-Light Traffic Report," brief wx, 1959 "KLTQ FM, AM, Salt Lake City, KY-FM 93," into song by The Carpenters. Strong w/KTRB nulled. Logged as KWHO only once, a year ago to the day...11/5/83! (NH-WA)

870 KIEV CA, Glendale 10/23 2130 hrd w/good sigs w/ID "KIEV Glendale serving Southern California." (BB-OR)

910 KNEW CA, Oakland-San Francisco hrd on 10/28 2033 w/ID w/KKSN nulled. (BB-OR)

920 KOLO NV, Reno 10/24 hrd at 2200 w/ID & TC, lots of slop from KKSN-910. (BB-OR)

CKCQ BC, Quesnel 10/31 1927 advice about preventing frozen water pipes "courtesy of the City of Quesnel" ID 1931. Very strong w/KQEU nulled. (NH-WA)

930 *KHJ* CA, Los Angeles 10/29 0442 w/TT. (RW-CA)

990 *KHVH* HI, Honolulu 10/1 0646 noted w/TT's. Per phone call, they were fixing the xmtr. (DP-HI)

1070 CKST AB, St. Albert 10/28 0131 in KNX null, first thought it was CFAK until clear call ID was given; good signal, and a newie, too. (RT-CA)

1130 KBMR ND, Bismarck 10/19 1900 NBC nx; 1905 local nx; 1910 "Dakota Country News." Fair o/weak WDGY. KWKH not in yet. (ØW-CO)

1140 *KCMJ* CA, Palm Springs 10/30 1445, also 11/2 1215 weak, but continuous TT in null of KPRZ-1150 slop. No IDs, just TT. I called KCMJ on 11/2, they confirmed they were testing daytime only so far, for about 3 weeks. Person I talked to was surprised I hrd them, said it was only lkw, but they might've been gradually increasing power. Still on 1010, soon to switch to 1140 though, 10kw day/5kw night. I'm glad I called to confirm my suspicions, hi. New. (JH-CA)

1170 *KOHQ* HI, Honolulu 10/20 0810 noted w/carrier instead of SP. (DP-HI)

1180 KERI CA, Wasco-Bakersfield 11/2 0855 good ID's "Your Calif. Sunshine Station, KERI. AM 1180, K-E-R-I Wasco-Bakersfield." Nx w/NBN. (DP-CA)

1190 KEX OR, Portland 10/1 0648 Streisand's "People," DJ mentioning "Love Line" on "Northwest at Night" Friday. Tom Bosley PSA for Amer. Physical Therapists Assoc. Poor, long deep fades. (DP-HI)

1200 KFNW ND, West Fargo 10/31 u/WOAI 0750. Atop 0757 w/contemp. Christian mx & local talk by female. ID 0759 well atop. UPI nx at 0800. Still atop 0837 w/religion. 1st time hre. (DKK-CA)

1210 KCLG UT, Washington-St. George 11/2 0900 very good w/political wx, ID as "KCLG, Washington-St. George." (DP-CA)

1250 KNEU UT, Roosevelt 10/28 0847 C&W mx, MST TC, local traffic & Roosevelt area nx items. Bad KOIT-1260 slop but finally pulled this one through after a year of trying. Now for KHIL & KUIK. (DKK-CA)

1270 KORY NV, Sparks-Reno hrd at 2147 on 10/23 w/T-40 oldies. (BB-OR)

- 1277 HAJG QR, Brants Pass 10/28 0955 atop w/ID & into mx. In well 10/31 at 0945 too. Am sure it's a peat to anyone 20 miles away from KOIT. (DKR-CA)
- 1360 KOHU QR, Vermiston 10/27 0234 solid atop w/two IDs, then 1/2 hr mx. Stayed atop until s/off at 0259. This is the one w/studios on River Rd. I noted last winter. KEEN-1370 stop usually buries 1360 but was mostly absent on 10/27. (DKR-CA)
- KUEH QR, Hillsboro 10/27 0440R 0244-0247 w/race results from Portland Meadows & one other track. Seen lost to KOHU/RAAT by 0248. (DKR-CA)
- 1370 KQNC EE, Dodge City 10/19 2032 Dodge City Demons vs Great Bend Panther 3P game. Good sig, but fady. Generally dominant, but mixing w/KSOP/KRKS. (24-26)
- 1380 KLM1 EE, Pearl City 10/12 2337 per local columnist Dave Lonnelly. KLM1 signed an officialy Oct. 11 w/Alan "Tom" Adam's morning show. Format is MCR/AC. Initially it was on 0530-1200 MST, but per M, owner would run it until 2230 MST today, to 0000 Su & Mon (it turned out to be 2230 again). As strong as KLEL, meaning it's not as strong as Honolulu stns. KQCN-1420 stop. (DP-MI)
- 1390 KEMW EE, Warrington 10/10 2027 pop mx, local adv. Generally dominant, but fady and QR. From KEM. (44-46)
- 1400 KUNA EA, San Luis Obispo 10/30 w/ID 0443 stop din w/KEK on rare QR. Had L1/L2/L3 type format. In/out until I retired at 0430. (DKR)
- 1410 KRIS EE, Odessa 10/12 2109 Permian Panthers (Odessa) vs Upper Cougars (Abilene) FT game, local adv. Very good signal, dominant. Some mixing w/KWES. Permian won game 27-0. (28-30)
- 1500 KSTP EE, St. Paul-Minneapolis 10/30 2245 strong at times w/North Stars NHL hockey. (28-A)
- 1560 ?KLLV? EQ, Green 11/3 0218-0215 tent. mixing w/KDW, which I can't null out completely here, darn !!! Format seems to fit, reliv., sounds like old time country-gospel singing. Too much QR & fading to get any ID. Sure hope to positively log this one soon. (28-3A)
- KIAC EA, Willows 11/3 0220 poor in mass w/o KDW. End of SEB, full s/on. ID. Only heard two others times Sept. '83. (28-3A)
- 1580 KMTT EE, Pantl 10/28 w/ID 0222 about even w/KLTV. (DKR-CA)

UNIDS:

- 840 10/29 0532 unID or briefly w/a KQWB (now AMR)/KQAS, faded out, wonder if this has anything to do w/my unID I heard last week on this freq? Is KSTP on at this hour? (28-3A)
- 1400 10/30 w/Jerry King Show 0430-0630 in/out. (DKR-CA)
- 1400 10/30 w/Talknet noted around 0515. KQWB? (DKR-CA)
- 1400 10/30 w/AM format in/out 0520-0630. ??? (DKR-CA)
- 1610 UnID sig heard at 0210 on 10/29 w/ID. Only heard the last part of it. I did hear K22-285 by a man. Who is this? (28-3A)

Thanks to all our WDXR reporters this week!

AM radio is set to go stereo

CANBERRA — Australian radio stations will be able to broadcast in stereo on the AM band by the end of the year, after a Government decision announced yesterday.

Communications Minister Mr Duffy said that after consultation with industry, the Government would introduce the Motorola AM stereo system, rather than let all four stereo AM systems compete.

"After lengthy discussions with the Federation of Australian Radio Broadcasters, it was decided that the best solution was to introduce a single system in Australia to avoid the type of confusion which has severely affected AM stereo's introduction in America," Mr Duffy said.

"The problem would have been exacerbated in Australia because some cities would have adopted a completely single-system approach, as is likely in the case of Melbourne, while other cities would have had stations using up to four different systems."

He said a multi-system approach would have had the public confused about what equipment was needed to receive AM stereo.

In the U.S., the trend was towards the Motorola standard and the receiver industry had backed this approach, he said.

He said tests had shown that single-system receivers performed better and were cheaper than the multi-system receivers available.

Mr Duffy said listeners would need special receivers to pick up stereo transmissions, but AM radio would not be affected by the change.

Left
Melbourne Sun
October 9, 1984
via David Headland





WORLDWIDE EAST

EDITOR: Jim Hall, 240 Byron Rd., Pgh., PA 15237

Another big column this week... Most of the Trans-Atlantic loggings are from Neil Kazaross who submitted a fantastic report a few weeks ago. And there's a mighty large Pan-American buildup here - I'll put about half in this week and the rest next week because there's so much. Mark Connelly noted great AU CX on October 28 and sent in a terrific report for us. Also, there's reports lingering from W. Wyllie, G. Thomas, G. Smith and myself. I hope to soon be logging more Latins with a permanent beverage antenna. I asked for construction tips from Neil Kazaross since he offered in a forum, but that certainly does'nt mean anyone else can't help! So for now, read and enjoy.....Times are GMT/UTC.

TRANS-ATLANTIC DX

- 155 WEST GERMANY, Donebach-0216 8/23: Good w/SG pops // 756. (Kaz-ME)
549 UNID-0335 9/25: Middle East mx, two carriers beating. Algeria 531
in at the time, so Algeria likely. (Thomas-FL)
- 630 TUNISIA, Tunis-Djedida-0432-41 9/22: Peaking fr/rd // 7225 w/slow
AA chants. Mixed w/Cuba/WPRO o/WQBS & one other. (Kaz-ME)
- 657 MOROCCO, Laayoune-0219-23 8/27: Peaked v. good w/AA singing & bft1
violins. Slightly growled from presumed Spain, a little WNBC slop.
(Kaz-ME)
- 756 ALGERIA, unlisted outlet-0451 8/31: Poor but clearly // 254/531 w/
AA chants. (Kaz-ME)
- 834 UNID-2340 8/31: Very weak carrier here in superb Afro cx. Possibly
Liberia listed here. Belize on 830 now. Don't think it was TVI -
not getting any other TVI signals. (Kaz-ME) (Liberia is only one
on 834 now according to 84 WRTH.JH)
- 837 AZORES, Ponta Delgada-0100 9/29: Moved here from 836 on 9/20.
Jumped back to 836 twice in the following week & is now settled
(apparently for good) on 837. Way o/Canary Is. w/good clear copy
of 2 NAs at 0100 s/off // 693. Canary Is. is better about 80% of the
time here. Also 2343 9/29 v. good o/Canaries. (Kaz-ME)
- 872 UNID-0257 9/1: V. weak carrier hitting 873 Spain when 746/737 were
in. Mozambique is on this old-plan channel w/listed 0300 s/on.
Another tantalizing off freq. TA carrier. (Kaz-ME)
- 1124 LIBYA, El Beida-2226 9/21: Poor w/AA tlk o/slight 1125 het.
"Everyone" hrd this 10 years ago - now although listed as 500kw it's
sig is much weaker. 827, 1251, 648, 711 in that order are substanti-
ally easier. Also 0406 9/20 poor // 827 w/AA tlk in WNEW slop. (Kaz)
- 1206 FRANCE, Bordeaux-0345 9/19: Poor w/FF male. (Thomas-FL)
- 1286 t SENEGAL, Kaolack-2247 9/23: W in lang. then mx, poor & faded out.
Also 9/24 2215-2300 when off. Very primitive tribal, wild Afro mx
poor & audible occ. Again w/same mx 2242 9/27 v. poor. Weakly hetted
by 1287 at times. 1224, 1304, 1349, 1367 all in really well when
this was hrd. Mx similar to 1224. Can anyone confirm whats on
1286? (Kaz-ME) (As far as I know, Neil, Ireland is here w/350
watts per 84 WRTH.JH)
- 1304 SENEGAL, Dakar-2358 7/5: Quite common. First noted ex-1305 (where
it was since Geneva Plan went into effect). FF tlk, s/off ment
Senegal, NA. Blasting in // 1367 from 2243 til 0000 s/off 9/24.
Also noted occ after 0600 s/on. (Kaz-ME)
- 1313 UNID-2245 9/23: Carrier weak. Jos Nigeria listed. Also 0524 8/31
hitting Spain - soon faded (near sunrise in Nigeria). (Kaz-ME)
- 1341 t CANARY ISLANDS, Santa Cruz-2318-28 9/23: Poor w/SS tlk w/1340
notched, during good Afro cx. Also weak het from 1269 was prob.
Canary. (Kaz-ME)
- 1359 UNID-2252 9/23: Poor in African cx w/mx thru slop, maybe new
Nigerian listed in DXWW II. Also, audio bits 2240 9/27 in slop.
Het other late Sept. rights. Gone shortly after 2300. (Kaz-ME)

- 1367 SPAIN, St. Louis-2243-2307 9/23: Is also on pre- G.P. channel w/occ Xlnt peaks // 1304 w/FF tlk. No break for arnts on hour. Again // on 9/24 at 2245. 9/27 v. good peaks but not // 1304, w/FF/African mx 2244. This must be my FF speaker hrd last season w/ 'LV de la Revolution' ID. This and 1304 both go off at 0000. Is quite a bit stronger than Angola which is also here. (Kaz-ME)
ANGOLA, Luanda-0105 9/25: Poor thru slop // 1088/944 w/Afro mx. At least a carrier is often here on good African nights. (Kaz-ME)
- 1368 UNID-2242 9/23: During Xlnt Afro cx w/bits of mx thru slop w/1367 notched. Gone after 2300. Het here other nights, but weak in late September Afro cx. (Kaz-ME)
- 1404 FRANCE, synchronos-0457 9/22: Fair // strong 1206 w/FF tlk. Conakry is off from 0000-0600. (Kaz-ME)
- 1422 ALGERIA, Alger-0500-5 9/22: Poor/fair w/s/on w/NA, into AA chants. (Kaz-ME)

PAN-AMERICAN DX

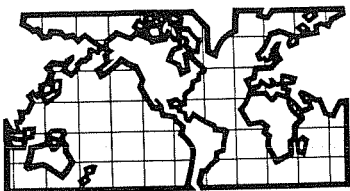
- 530 COSTA RICA, Cartago-TICAL-0257 10/28: SS vocal fr. to gd. w/only a minimal 531 het. This is definitely the easiest Costa Rican here now despite the absence of the splits. (Connelly-CC-MA)
- 540 VENEZUELA, Villa del Rosario-YVOV-0258 10/28: 'R. Perija' ID very good - clearly dominant. (Connelly-CC-MA)
- 550 VENEZUELA, Caracas-YVKE-0259 10/28: Venezuelan ads, 'R. Mundial' & 'R. Placificado' IDs. (Connelly-CC-MA)
- 570 CUBA-0300 9/23: R. Reloj w/time pips on min. & nx by man/woman in SS. Weak but good sig., also noted 9/29. CW'RR' also, o/NY stn here. (Wyllie-MA) (William-Neil Kazaross thinks this is probably just a program switch from the old R. Rebelde previously on this freq.. If so, location is Santa Clara, call is CMEA, pwr is 30kw.JH)
- 580 PUERTO RICO, San Juan-WKAQ-0428 10/28: 'R. Reloj' & 'WKAQ' IDs, nx in SS; way o/Cuba & YV (Venezuela). No trace of any US/Canadian stns. (Connelly-CC-MA)
- 610 t TRINIDAD, Port of Spain-VPL6-0238 10/28: Bits of calypso mx, accented tlk o/v SS LA & WGIR. (Connelly-CC-MA)
- 630 PUERTO RICO, San Juan-WQBS-0233 10/28: Strong & dominant w/salsa mx, ads for companies in Mayaguez. (Connelly-CC-MA) (Mark-Do Puerto Rican stns broadcast in SS and EE?JH)
- 660 UNIDS (no time/date given): Unk SS stns here v. weak, definitely two SSers behind WNBC. (Wyllie-MA) (William-R. Progreso's almost certainly one of them, the other could've been one from Columbia, Venezuela, Nicaragua; others unlikely. Try to ID them.JH)
- 700 COLUMBIA, Cali-HJCK-0325 10/28: Loud w/boisterous 'Sutatenza Cali' ID. (Connelly-CC-MA)
- 740 CUBA, probably Pinar del Rio-0432 10/28: Michael Jackson mx. R. Rebelde // 590 et al. (Connelly-CC-MA)
- 760 COLUMBIA, Barranquilla-HJAJ-0617 10/28: Dominant w/RCN pgm w/ accordians. // 770. (Connelly-CC-MA)
- 780 VENEZUELA, San Cristobal-YVOD-0336 10/28: Loud w/what sounded like an awards pgm - applause sounds noted. Participants were from numerous Venezuelan towns incl. Maracay & Caracas. (Connelly-CC)
- 810 COLUMBIA, Bogota-HJCY-0307 9/29: R. Sutatenza w/good strong sig o/WGY. First Bogota stn here, possible s/off at 0356. (Wyllie-MA)
- 830 COLUMBIA, unk. loc.-0030 10/15: 'R. Sutatenza' net ID. Presumed to be HJDM. Good sig. (Smith-DC) (Gardner-If this is HJEM, location is Medellin. Can anyone confirm this?JH)
- 860 BRAZIL, Rio de Janeiro-ZYJ459-0522 10/28: Xlnt & dominant w/men in PF & PP vocal. Annoying het from something on approx. 859.7. (Connelly-CC-MA) (Possibly someone off frequency?JH)
- 870 ARGENTINA, Buenos Aires-LRA1-0235 6/6: Pr/fr w/'R. Nacional de Argentina' ID by m in SS, cl mx, ID into piano mx. Also 0400 6/3 ----- pips poor w/weak WWL/LA QRM. (Kaz-ME)
- 890 VENEZUELA, Valencia-YVLW-0007/R/14: Pr/fr w/Algeria pest on 891 phased. 'Arru R. America' ID, LA mx. (Kaz-ME)
- 900 UNID-2305 10/14: ID as 'R. Valento, La Ondas de la Melodia'. S/on then at 2305 w/great sig & pizzacato strings, also played Beethoven's 5th Symphony & Mozart's concerto, faded, then Cuban came up. (Smith-DC) (Gardner-Sorry, nothing listed in 84 WRTH. Ideas anyone??JH)
- 920 COLUMBIA, Cartagena-HJAE-0519 10/28: 'Emisora Fuentes' ID just o/ mess. (Connelly-CC-MA)
- 940 MEXICO-XEQ-0550 8/27: V. poor sig w/good but soft audio. Can't figure out slogan. Only possible after CBC FF Canadian s/off. Hrd

- ancr say 'El Q' - listed in WRTH as 'La Q de Mexico' but never hrd that sloan. Seems to go off air at 0600. Many ments of Mexico so must be Mex. (Wyllie-MA)
- +0555 9/21: WoR SS mx, plowing signal xlnt atop mess, sounded like powerdown to 50kw xmtr at 0605 - could hear after pwrdown but barely. (Hall-PA)
- 990 VENEZUELA, Barquisimeto-YVTA-0604 10/28: Dominant w/Barquisimeto ad, 'Mundial Tricolor' ID. (Connelly-CC-MA)
- 1040 COLUMBIA, Barranquilla-HJAT-0446 9/23: 'CARACOL' ID, nx at 0455, pips on hour, SS mx. Also 0240 9/6: 0250 Comedy Show in SS, TC at 0300 w/hourly pips, much splash from WBZ 1030. (Wyllie-MA 9/23, Wyllie-RI 9/6)
- 1060 CUBA-0543 10/28: SS party mx (yeah!JH) // 1070. (Connelly-CC-MA)
- 1070 FR. GUYANA, Cayenne-2323 9/24: Pr/fr w/others, FF m // 3385. Also 0028 8/14 poor w/interesting instr. mx // 3385 w/SS LA QRM, CBA phased. Noted several other times in late Sept. AU, never as good as 4/30 logging. (Kaz-ME)
- 1100 CUBA-0543 10/28: Festive SS mx // 1060. (Connelly-CC-MA)
- COLUMBIA, Barranquilla-HJAT-0210 9/3: IA mx as always, 'R. Reloj' IDs. Popping up all summer at Prudence. (Wyllie-RI) (William- Are you sure you have the right Reloj? There's three to choose from betw. Cuba & Columbia. Just checking. As a matter of fact, I just chkd 84 WRTH & there's no Reloj listed for Cuba. So, you have two to pick from. Did you get a call ID here? Sorry for this bit of confusion folks!JH)
- ANTIGUA, St. Johns-ZDK-0205 10/11: Booming in w/bizarre DJ w/ Rock-n-soul, o/Cuban ticker. No 3WE. (Smith-DC) (Here we go w/ that Cuban ticker again! Maybe there really is a Cuban Reloj here w/Columbian Reloj's, or do the Columbian Reloj's tick also????????? Talk about bizarre, eh Gardner. Any confirmations?JH)
- 1150 VENEZUELA, Punto Fijo-YVMM-0550 10/28: Fast SS vocals, ID as 'Mundial Caribe'. Bombing WHUE into oblivion. (Connelly-CC-MA)
- 1160 BRAZIL, probably Vitoria-2334 9/24: Noted // 1180/1200/etc. w/PP tlk. Pr/fr sfx. Also 7/4 0042-3 w/PP tlk poor but atop. Tentative ment of Espirito Santo hrd, no net pmming at this time. Presumably ZYI202. (Kaz-ME) (Espirito Santo's the most powerful Brazilian here, folks.JH)
- 1170 PUERTO RICO, Ponce-WLEO-0032 6/4: Poor w/'El Leo' & P.R. ment using ECSS to get thru somebody's OC in AU CX. Still 250 watts? (Kaz-ME) (84 WRTH still has 250. Great catch!JH)
- 1180 ***BRAZIL-2309-21 9/27: TWO Brazilians here! One was on the nat'l net, other had m & w in PP seemingly // 1290 which popped thru from time to time. Rapid fading & dominance trading betw these two. Lost to SS IA 2321. Also 2352 9/24: Male PP tlk gd. well atop other Braz. w/futbol net. Talker sd/lk // 4785 which was nearly buried in UTE QRM. If it was // it would be R. Ribomar in Sao Luis on the N. coast. I assume the other is ZYJ463 in Rio which is most powerful listed & is in sometimes when Rio & Sao Paulo (East/Cent. Braz.) is in well, but N. coast (Fortaleza) is not. I wish I could get a listing of which ZY's carry net pgmg as it's nearly impossible to get local IDs when they're on nat'l network & they (1180 incl.) IE only as R Nacional. (Kaz-ME)
- 1200 BRAZIL, Fortaleza-ZYH585: 2329 7/6: Fading in really early w/PP tlk & mx. Good 0121 w/PP tlk. Good on Bev., v. poor on loops 0000-0002 7/4 w/Fortaleza ment, AM/SW freqs., 'Ceara R. Clube' ID, no QRM, peaked to xlnt. 0017 w/lively PP song. Was common early eves in July & usually knocked out by YVOZ by 0030-45. (Kaz)
- 1290 t BRAZIL, Sao Luis-ZYH888-2309 9/27: W/WKNE phased out at 2309. I hrd PP m & w which sd/lk // to the 1180 stn. I presume to be Sao Luis. By 2312 WRCP which is PP was coming in & these 2 PP stns were QRMing along w/WKNE which was growing harder to phase. 1180 had the 2 ZY's wildly trading places. By 2319 WRCP was way atop when WKNE nulled. Two PP stns on two channels - what a mess!!! Very difficult to tell what was what. 9/27 w/N. coast ZY's in exceptionally well. (Kaz-ME)
- 1570 MEXICO, Cd. Acuna-XERF-0245 10/11: EE holy-rolling ("Fraise de Lordi"). W/ all the Canadian jazz now, rarely hear XEKF, but in 1956 they had the channel to themselves. AU CX tonite, about six low grade nets. (Smith-DC)

Turned out to be a great column this time around. Hope no major errors appear here - if so tell me and I'll make sure it gets mentioned sometime. You guys are doing a great job for DXWW-E - keep it up! I want to quickly thank Karl Zuk for the notes of congrats - same to you on the super job on EDXP! Let's all make it a great season - it's already started.

REPORTERS FOR THIS ISSUE:

- (Kaz-MF) Neil Kazaross, PO BOX 1908, Ogunquit, ME 03907
ICOM E-70- phased Revs. 1350' at 150 degrees, 1450'
at 60 degrees, Bohac-loop, Connelly APT-2, BEA-1,
proto-MWDX3 phasing unit, phased lw's.
- (Connelly-CC-MA) Mark Connelly, 7 Trowbridge Path, W. Yarmouth, MA 026
SONY ICF-2001- Two 30-m./100' wires, phased w/MWDX3
phasing unit.
- (Thomas-FL) Gerry Thomas, PO BOX 2036, Pensacola, FL 32513
ICOM E-70/Superloop ; FR3-7/dipole.
- (Smith-DC) Gardner Smith, 1000 Perry St., Washington, DC 20037
SONY CFM-15.
- (Wyllie-MA) William Wyllie, 95 Peck St., Franklin, MA 02038
- (Wyllie-RI) William Wyllie, DXing at Prudence Island, RI
SHARF GP-450 AM/FM/SW1/SW2, built in antenna.
- (Hall-PA) Jim Hall, 240 Byron Rd., Pittsburgh, PA 15237
KERNWOOD H-600, 100'/400' lws., 3'/5' duel loops, 50'
vertical wire.



DX WORLDWIDE - WEST

Pat Martin - Editor

P.O. Box 843, Seaside, Oregon 97138

(503) 861-3185 - deadline Tuesday

DX of late here has slowed down somewhat. A few JJs and South Pacific Stations are still in here but not as good as it has been. We do have a good turnout this week anyway. Lets hope conditions improve back where they were. The Far East Radio Club and Y. Kato reports Radio Moscow has QRTed since early September. With no other news to report, on with reports:

PAN-AMERICAN DX ROUNDUP

- 610 MEXICO, Sabinas, Coah. XEBX 10/19 at 0110. Local ads, several ID's as "X-E-B-X" Generally under, but occ. over KRKE. Hrd past 0200 w/LA mx (ØW-Co)
- 655 EL SALVADOR, San Salvador-YSSS Radio El Salvador. 10/27 at 0036 Pop/romantic vocals. OM ancr after each w/TC one-liners about "Liberty" freedom of thought, etc. Fair at best, long fades // to new frequency 9587.3, strong here nightly. (ØW-Co)
- 730 MEXICO, Mexico City, D.F. XFX 10/20 at 0410 live futbol, Monterrey vs ??? VG signal, alone on freq. (ØW-Co)
- 760 COSTA RICA, San Jose-TIIX "Radio Columbia" 10/20 at 0348 Futbol game Good signal, alone on freq. no WJR!!! // 4850 SW new. (ØW-Co)
- 1370 MEXICO, Mexicali, B.C. XEHG 10/20 at 0030 Ranchera mx, cigarette ad Lots of ads for weekend dances in the area. "H-G" slogans Fair in KSOP/KCNO null (ØW-Co)
- 1470 MEXICO, Tijuana, B.C. XERCN 10/20 at 0117. Local ads, slogans "R-C-N Tijuana" Fair, fady mixing with XECU (ØW-Co)
- 1540 MEXICO, Hermosillo, Son. XEHOS-10/20 0220 LA mx, many ads, fair to good at times, but long fades and mixing w/KXEL and two other SS stations on the frequency (K1UQQ and KEDA) New XE #60. Anyone have the address of XEHOS? I want to ship em a report.

TRANS-PACIFIC DX ROUNDUP

- 558 JAPAN, Kobe-JOCR-heard 11/2 at 1420 with talk in JJ signals weak and lots of slop from 560 (BB-Or)
- 567 JAPAN, Sapporo-JOIK heard with fair signals w/talk in JJ on 11/2 at 1427 (BB-Or)
- 576 PHILIPPINES, Mandawe City (Cebu)-DYIM possibly the one hrd again at 1450 on 11/4 w/ Sports match, either Basketball or Soccer, way u/2FC. Wish I could get an ID on this one! Def. talk in Philippine, some EE words "Persona; Fouls, etc. Will keep trying. (PM-Or)
- 639 t AUSTRALIA, Port Pirie (Crystal Brook) 10/24 at 1415, pop mx 1425-ABC News faded out 1428 to fade up at 1429 with what sounded like a National Anthem, OC at 1430, carrier, het gone 1/2 minute later. Poor to nil KFI nulled (BH+NH-Wa)

- 747 JAPAN, Sapporo-JOIR 1342 11/2 vy good om in JJ (DP-Ca)
 774 JAPAN, Akita-JOUB 1347 on 11/2 Excellent om in JJ. Appeared to be
 // 747 Khz Great signal (DP-Ca)
- 828 PHILIPPINES, Cagayan De Oro-DXCC-good o/u JJ at 1434 on 11/4 w/Old
 U.S. Pops mostly ID's "R-M-N, Radic Mindanao Network, Radio D-X-C-C,
 Cagayan.....D-X-C-C, Radio 8-2-8, R.M.N.-Cagayan de Oro..." Slight
 KIKI splat, no KSWB QRM (PM-Or)
- 840 UNID, on 10/29 at 1030, Unid rr fading up briefly o/u WHAS-KSWB then
 lost, is KSDP AM? (Not that I know of, but KDLG is during the
 Summer months, and KSDP does run some NPR pgms from KDLG. KSDP does
 run a local rr pgm at night.PM) Wonder if this has anything to do
 with the unid FF hrd. Is KTKN Pharr,Texas on? (RW-Ca)
- 990 HAWAII, Honolulu-KHVH at 1046 on 10/1 Noted with Test Tones in
 keys of B-flat and A (DPK-Hi)
- 1017.6 PHILIPPINES, Iloilo-DYRP, fair at 1130 on 11/4 with U.S. Pops and
 ID between records "R-P, D-Y-R-P, Iloilo....R-P". (PM-Or)
- 1035 NEW ZEALAND, Wellington-2ZR 10/29 at 0914 quite good with National
 Phone-in talk show. Mentions of New Zealand Party, phone number
 in Christchurch. KTWO-1030 off MMs so clean signal between the
 Domestics, nearly het free, but long deep fades. 1000 GMT break
 for news, ad for Bank of New Zealand. Zedder #2 for Nancy, Country
 #21 for Bill (BH-NH-Wal)
- 1044 t CHINA, 10/29 at 1032 Tent. w/Oriental language,YL into some type
 of Opera,Oriental mx, in solid for 6 minutes,completely slopping
 XED and WHO,massive hets on both. Can't tell the difference between
 CC,KK: or JJ hi (RW-Ca)
- 1080 HAWAII, Honolulu-KWAI at 1120 on 10/29 vy good Noted back on ex
 KZHI w/ID by DJ "This is KWAI on the air for testing purposes
 only" and carrier off 1128,on at 1128 off at 1129. Later noted
 on at 1158 w/CHR mx, then Test tone (DPK-Hi)
- 1098 MARSHALL ISLANDS, Majuro-WSZ0 at 0730 YL DJ w/by Corey Hart, other
 rr mx,local groups, during KFAK fades,Vy poor on 10/17 (DPK-Hi)
- 1170 HAWAII, Honolulu-KOHO-at 1210 on 10/20 Noted on with carrier instead
 of SP (DPK-Hi)
- 1380 HAWAII, Pearl City-KLNI-at 0437 on 10/14 Per Newspaper KLNI offici-
 ally signed on 10/11. Format is MOR/AC. Initially on 1530-0500 UTC
 current sked is 1530-0830 UTC. As strong as KLEI meaning it's not
 as strong as Honolulu stations,noted 10/14 (DPK-Hi) (Per QSL from
 Tom Adams they are currently 3.5 KW. PM)

VERIFICATIONS:

- 1017 PHILIPPINES, Iloilo-DXRP, nice friendly two page letter in three
 weeks, Mint stamps return postage. Listed most details in letter,
 except time, gave rundown on transmitter and antenna (1965 Phil-
 made)v/s Ernesto G. Flores-Network Eng. Mentioned that recording
 I sent was quite readable. Philippine Verie #4-5 KW (PM-Or)

THANKS TO THESE REPORTERS:

- BR-Or Bill Block-9307 Southeast Clay Street-Portland, Oregon 97216
 R-390A, Radio West Loop
- NH-BH-Wa Nancy and Bill Hardy-2301 Pacific Avenue-Aberdeen,Wa. 98520
 FRG-7, SM-1 Loop
- NH-BH-Wal Nancy and Bill Hardy DXing at Greyland Beach Park
- DP-Ca Doug Pifer-4366 Ocean View Blvd. #3-Montrose, Ca. 91020
 FRG-7000, MW-1 Loop
- DPK-Hi Dale Park-2253 Kanealii Avenue-Honolulu, Hawaii 96813
 SONY ICF-6700W, TRF
- RW-Ca Robert Wien-1309 Dentwood Drive-San Jose, Ca. 95118
 GE Superadio, G.E. TRF (Ca 1962) Loop
- ØW-Co John Wilkins-4385 Hoyt Street #205-Wheat Ridge,Colorado 80033
 R-1000, 4 foot loop
- PM-Or Yer Editor
 SP-600JX, R80-2, 200' Term. LW, (2) 1500 Foot East Beverages,Grounds .

WRTH AM/59

SPORTS
NETWORKS
WEST

Dale Park
2253 Kanealii Avenue
Honolulu, HI 96813

To reflect the addition of "Sports Networks" to the roster of DXM columns as of October 20, this column's name has been changed to the above to reflect its origination. Please contribute to either column by sending information about your favorite team. Meanwhile, this time we will try something different. For the benefit of sports fans without a current Vane Jones, White's, or even NRC Log, cities will be listed for the following CFL stations. So grab a can of Moosehead and some fatbacon pizza, and get ready for endzone putning for singles, eh?

CANADIAN FOOTBALL LEAGUE

BRITISH COLUMBIA LIONS

(via Neil Callagher, CFUV Radio)

J. Paul McConnell, Tom Larscheid, Annis Stukus, Tom Bricker

550 CKPB--BC ⁴	Prince George	1280 CHQB--BC ²	Powell River
570 CKWL--BC ⁴	Williams Lake	1340 CHNL2-BC ²	Ashcroft
610 CHNL--BC	Kamloops	1350 CJDC--BC	Dawson Creek
630 CKOV--BC	Kelowna	1370 CFPO--BC ¹⁰	Parksville-Qualicum
800 CKOK--BC ⁶	Penticton	1400 CFLD--BC ⁵	Burns Lake
850 CFVR--BC ⁷	Abbotsford	CHNL1-BC ²	Clearwater
900 CJVI--BC	Victoria	CINL--BC ² @@	Princeton
920 CKCQ--BC	Quesnel	1410 CFUN--BC	Vancouver
1050 CKAL--BC ²	Vernon	1440 CFCP--BC ⁸	Courtenay
1230 CJNL--BC ²	Merritt	1450 CHET--BC ⁸	Chetwynd
CFBV--BC ⁷	Smithers	CHBV--BC ⁵	Houston
1240 CKGO--BC ⁷	Hope	CKSP--BC ³ @	Summerland
CKMK--BC ¹	MacKenzie	1480 CHLD--BC ⁹	Granisle
CKBX--BC ⁴	100 Mile House	1490 CFWB--BC ⁹	Campbell River
CKOO--BC ³	Osoyoos	CKBV--BC ⁶	Hazleton
CJAV--BC ⁹	Port Alberni	CKOO1-BC ³	Oliver
CFNI--BC ⁹	Port Hardy	1500 CKAY--BC	Duncan
1270 CHWK--BC	Chilliwack	1570 CHUB--BC	Nanaimo
		-FM-	
93.5 CKAL2-BC ⁵	New Denver	???.? CKAL3-BC ⁵	Invermere
100.3 CHNL3-BC ²	Shuswap Falls	CKAL4-BC ⁵	Kaslo
102.1 CISW--BC ⁵	Whistler	CJFW1-BC ¹¹	Kittimat
103.1 CKAL1-BC ⁵	Nakuspo	CJFW2-BC ¹¹	Prince Rupert
104.5 CISP--BC	Pemberton	CJFW3-BC ¹¹	Queen Charlotte Island
104.9 CISQ--BC ⁷	Squamish	CJFW--BC	Terrace
106.1 CKG01-BC ⁷	Boston Bar		

1. Relays 550 CKPG. 2. Relays 610 CHNL. 3. Relays 800 CKOK. 4. Relays 920 CKCQ. 5. Relays 1050 CKAL. 6. Relays 1230 CFBV. 7. Relays 1270 CHWK. 8. Relays 1350 CJDC. 9. Relays 1440 CFWB. 10. Relays 1570 CHUB. 11. Relays CJFW-FM.
@Listed as CKSP Penticton instead of separately. @@Is now CKRP and relays 800 CKOK.

CALGARY STAMPEDEERS Ken Newans

1060 CFCN--AB Calgary 6030 CFVP--AB¹ Calgary
Network: Unknown
1. Relays 1060 CFCN.

HAMILTON TIGER-CATS

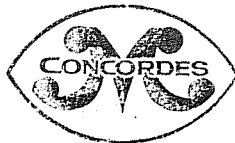
900 CHML--OH Network: Unknown

MONTREAL CONCORDES (en francais)

850 CKVL--PQ Verdun Network: Unknown

(in English)

800 CJAD--PQ Montreal Network: Unknown



SASKATCHEWAN ROUGHRIDERS

(via Willy Cole, CKRM Radio)

570 CKSW--SK	Swift Current	940 CJGX--SK	Yorkton
600 CFQC--SK	Saskatoon	980 CKRM--SK	Regina
FM:		95.7 KCGM--MT	Scobie

TORONTO ARGONAUTS

1010 CFRB--ON	Toronto	6070 CFRX--ON ¹	Toronto
Network: Unknown			
1. Relays 1010 CFRB.			

WINNIPEG BLUE BOMBERS Jeff Sandler, Rob Faulds, Ed Kotowich, Bud Harden

800 CFOB--ON	Fort Frances	1250 CHSM--MB ³	Steinbach
900 CKDR--ON	Dryden	1290 CFRW--MB ²	Winnipeg
950 CFAM--MB	Altona	1340 CKIG--ON ²	Ignace
1150 CKX--MB ³	Brandon	CKRE--ON ²	Red Lake
1220 CJRB--MB ³	Boissevain	1400 CKSI--ON ²	Sicoux Lookout
1240 CJRL--ON	Kenora	1450 CKEF--ON ²	Ear Falls
1240 CFAK--ON ¹	Atikokan	CKHD--ON ²	Mudson
1. Relays 800 CFOB. 2. Relays 900 CKDR. 3. Relays 950 CFAM.			

Saskatchewan Roughriders



NATIONAL FOOTBALL LEAGUE

The following listing is courtesy Broadcasting, August 6, 1984, including size of networks and holder of broadcast rights, which are underlined.

Atlanta	920 WGST-GA	135 to 140 via <u>Mutual Radio Network</u>
Buffalo	930 WBEH-NY	13
Chicago	780 WBBM-IL	None
Cincinnati	550 WKRC-OH	65 to 70
Cleveland	1420 WHK--OH ¹	37
Dallas	1080 KRLD-TX ¹	107 via <u>Metromedia/Texas State Network</u>
(Spanish)	94.1 KESS-TX	25
Denver	850 KOA--CO	45
Detroit	760 WJR--MI	36
Green Bay	620 WTMJ-WI	55
Houston	740 KTRH-TX	Over 65 via <u>Mutual Radio Network</u>
Indianapolis	1070 WIBC-IN	17
Kansas City	810 KCMO-MO ²	70 via <u>Mutual Radio Network</u>
Los Angeles Raiders	1110 KRLA-CA ²	.25
(Spanish)	1020 KTNQ-CA ²	6
Los Angeles Rams	710 KHPC-CA	21
(Spanish)	107.5 KLVE-CA	1
Miami	610 WIOD-FL	30
(Spanish)	107.5 WQBA-FL	None
Minnesota	830 WCCO-MN	30
New England	590 WEET-MA	30
New Orleans	870 WVL--LA	41
New York Giants	1130 WNEW-NY	25 to 30 via <u>MetroSports</u>
New York Jets	770 WABC-NY ³	None
	570 WHCA-NY ³	
Philadelphia	610 WIP--PA	27 via <u>MetroSports</u>
Pittsburgh	1250 WTAE-PA	About 100 via <u>Mutual Radio Network</u>
St. Louis	1020 KMOX-MO ¹	About 50
	630 KXOK-MO ¹	
San Diego	600 KOGO-CA	None
San Francisco	740 KCBS-CA	19
Seattle	710 KIRO-WA ³	52
Tampa Bay	620 WSUN-FL ³	30 via <u>Taft Broadcasting</u>
Washington	630 WMAL-DC	About 100 via <u>MetroSports</u>

1. Metromedia owns both KRLD and TSH.
2. Bob Speck Productions owns broadcast rights.
3. Carries games if conflict on WABC occurs.
4. Carries games if conflict on KMOX occurs.
5. Taft Broadcasting owns WSUN.

Next time, college and pro information. See you in DXM.

INTERNATIONAL RADIO CLUB OF AMERICA

The IRCA is a non-profit organization devoted to the hobby of hearing distant stations on the AM broadcast band (525 - 1625 kHz). **DX Monitor**, the official publication of the IRCA, is printed 34 times a year: weekly from October to March, twice in September and April, and monthly from May to August. **DX Monitor** contains members' loggings, articles on radio stations, receiver reviews, technical articles, DX tips, and other material of interest to radio hobbyists. Opinions expressed in **DX Monitor** are those of the contributors and not necessarily those of the IRCA, its editors or officers. Unless otherwise noted, permission is given to reprint non-copyrighted material provided credit is given to IRCA and the original contributor.

CLUB ADDRESSES AND OFFICERS

President: Phil Bytheway, 9705 Mary Ave. N.W., Seattle, WA 98117, 206-784-5145.
Secretary-Treasurer: Rich Segalas, P. O. Box 262394, San Francisco, CA 94126. Editor-in-Chief: Bruce Portzer, 6546 18th Ave. N. E., Seattle, WA 98115, 206-522-2521. Board of Directors: Ernest Cooper, Nancy Hardy, Ric Heald, Neil Kazanoss, Bruce Portzer, Pete T'York, and Niel Wolfish.

MEMBERSHIP DUES

U.S. - \$20.00 per year. Canada/Mexico - \$26 (one issue mailed every week) or \$20 (two issues every two years). Overseas Surface - \$21. Overseas Airmail - \$27 (Central America, Caribbean, Colombia, and Venezuela), \$30 (Europe, North Africa, Middle East), \$34 (rest of the world). Trial Membership - \$7.50 (10 issues of **DX Monitor** and a New Member Packet, U.S./Canada/Mexico only). Make checks and money orders payable to IRCA and send dues to: IRCA, P. O. Box 26254, San Francisco, CA 94126. Persons living outside the U.S. Please use International Money Order or U.S. funds. Sample copies of **DX Monitor** cost 50 cents or three International Reply Coupons each.

THE IRCA GOODIE FACTORY

Reprints of more than 300 articles from past issues of **DX Monitor** are available from the IRCA Goodie Factory. Also available are IRCA stationery and the very popular IRCA publications: **The IRCA Almanac**, **A DXers Technical Guide**, and the **IRCA Foreign Logs**. For a list of available publications and their costs, send a self-addressed, stamped envelope to: IRCA Goodie Factory, 1017 West Manhattan Drive, Tempe, AZ 85282.

FIRST CLASS MAIL
U.S. POSTAGE
PAID
Seattle, WA
Permit No. 601

first class

D. A. NYHOLM
2071 CEDAR STREET
SAN CARLOS CA
94070

19

Postmaster: if undeliverable, return to
P. O. Box 21074, Seattle, WA 98111, U.S.A.