



Foreign ✓

DX Monitor

Devoted Exclusively to
Broadcast Band DXing

February 23, 1985

Volume 22, Number 23

Issue Number 712

In This Issue

Eastern DX Forum	2	Unreported Stations Update	6
Western DX Forum	3	Western DX Roundup	7
Convention News	4	DX Worldwide East	14
Eastern DX Roundup	5	DX Worldwide West	15
Central DX Roundup	6	"Q" Demystified	17

News from Headquarters

1985 IRCA ELECTIONS FOR OFFICERS AND DIRECTORS

Nominations are open for President, Secretary-Treasurer and the seven members of the Board of Directors. Each IRCA member is allowed to nominate one person each for President and Secretary-Treasurer and seven members for the BoD. All nominations are to be made in writing to the Elections Committee Chairman by April 15.

As soon as possible after April 15, the ECC is to send to the Secretary-Treasurer a list of nominees. The Secretary-Treasurer is to indicate to the ECC those members nominated who are eligible, having been members for one continuous full year.

The ECC will then notify by mail all eligible nominees by May 1. If a person has been nominated for more than one office, he/she must choose which office he/she wishes to run for. He/she must notify the ECC by May 20 of his/her intention to run or not to run.

If a member chooses to run for office, they can submit to the ECC by May 20 a campaign statement, not to exceed 15 typewritten lines. A campaign statement is not required.

A nominee who has indicated his/her intention to run for an office may not be considered as a write-in candidate for another office in the same election.

The ECC shall prepare a ballot and the campaign statements for inclusion in the June issue of DX MONITOR. Ballots shall contain spaces for write-in candidates.

Completed ballots must be received by the ECC no later than 0001 Eastern Local Time, August 1, 1985.

The Election Committee Chairman's address is:

Rich Segalas
P.O. Box 26254
San Francisco, CA 94126

TED VASILOPOULOS AWARD

Who will be the next winner of the Ted Vasilopoulos Award? The person who you think has contributed the most to the club and the hobby for the past year will receive an engraved plaque and a year's free membership in IRCA. Any member in good standing may nominate another member for this award. Previous winners who are ineligible this year are Ric Heald, Bruce Portzer, Nancy Hardy, Nick Hall-Patch, and Bob Curtis. If you would like to nominate someone for this award, send his or her name to Ric Heald, 1632 J St, #3, Eureka, CA 95501. A ballot listing the nominees will appear in the June issue of DXM, and the award winner will be announced in August. So, send your nomination to Ric soon!

EASTERN DX FORUM

RICHARD EVANS
P.C. Box 1294
NORTH WALES, PA 19454

Deadline: 2/27 3/2 3/9 3/16 3/30 4/13 5/4 6/1 6/29 7/27
Anniversary issue deadline: 3/9--you can mail early--just mark it!!

Rob Gerardi, 1421 North Franklin, Apt. 7, Benton, Illinois 62812
WGU-20, the station reported by EDXR editor Karl Zuk in his Jan. 5 column, is operated by the Federal Emergency Management Agency on the frequency of 179 kHz. FEMA, as it is known, is the federal agency that is in charge of "continuing the government in times of national emergency" (i.e., thermonuclear war). It used to be known as the Defense Civil Preparedness Agency in the 70's and many might remember its predecessor "Civil Defense". It is part of the Defense Department. WGU-20 is listed as Gaithersburg, Md., which is N-NW of Washington, D.C. This is FEMA region #3 (which includes D.C.) whose HQ is Olney, Md. I have been told that the station is located somewhere between the two towns. Mt. Weather, the place where all the "biggies" are supposed to go if "the balloon goes up", might be located somewhere up there too. Some say that WGU-20 is part of the EBS system, but I think it would be used to relay important communiques to the other FEMA regions. This is because LQ frequencies would offer better long range propagation, as compared to SW (which FEMA also uses) with a disturbed atmosphere (i.e., charged particles, debris blocking upper layers, etc.). To get a QSL, you could write: Federal Emergency Management Agency, 500 C Street Southwest, Washington, D.C. 20424. This is the national HQ. 73.

Bill Harms, 8327 Perri Drive, Savage, Maryland 20763

This time I would like to relate my experiences with KBS. They centered around Radio Korea, KBS's International service. My point of contact was Miss Han, Hee Joo the head announcer of the English language section. Radio Korea is located at the old TBC (Tong yang Broadcasting Co.) offices on Yo ido Island. It is called the "annex". Offices and studios for KBS Social Education Broadcast are also located in the same building. Radio Korea's office space is very much like the open space type offices at newspapers. The room was divided up by language section. I made several trips to Radio Korea. On one trip I was interviewed for their Bridge of Friendship program. One one trip they showed me some of their reception reports. I saw Pat Martin's report on 972 kHz., Social Education broadcast. Miss Han introduced me to a young man whom I was to work with regarding updating the KBS list in the WRTH. I showed him a list that I had compiled from various sources and pointed out the discrepancies with the WRTH 84. He was surprised as to how comprehensive the list was. He said he would confirm the information and get back with me later. On my next visit he said that he had checked with his bosses and he couldn't confirm my list and handed me another list that he had worked up. That list is the one that will appear in WRTH. They made me promise that I was to send in their own list and to forget about the one I had worked up. They were very emphatic about it. As I explained in a previous forum they changed frequencies of various stations unofficially to suit their own purposes and they continue to list many stations that don't broadcast on their listed frequencies. The Japanese DXers seem to have access to better information as I compiled my list from a list that appeared in a Japanese language DX publication. I don't know what to do exactly. I think I will work up a list that reflects more accurately the KBS stations and submit it for publication. Also they were unable to give me a tour of their domestic service offices and studios, citing security reasons. While I was there I did manage to receive QSL's for all the frequencies on which Radio Korea broadcasts on MW and several of their FM frequencies. One thing I noticed, they were very eager to verify any of their Radio Korea broadcasts but didn't seem to know what to do for other KBS services. It seems that the Domestic Service people in Seoul have no system to verify their own broadcasts and rely on Radio Korea. But Radio Korea people can't verify the Domestic Service because they aren't set up to verify them. So it's a vicious circle. On the other hand, Radio Japan will verify NHK domestic services. I asked Miss Han about the prospects for a change in policy. She said not to be too optimistic about any change in the future. Oh well. More about this in an upcoming article. Gotta go. Next week AFKN and some transmitter sites I saw. Ahn-nyong. Ch'ilship-sahm.



Western DX Forum

★ ★ ★ ★

IRCA—Serving the Broadcast Band DX'er Since 1964

Editor: Ric Heald, 1632 J St., #3, Eureka, CA 95501

DEADLINES- WEEKLY ON TUESDAY/ANNIVERSARY ISSUE-12 MARCH

JIM HILLIKER, 1502 E. HEDGEWOOD DR., ANAHEIM, CA 92805

(Cont. from last issue. . .) On the subject of the GY'ers staying 1 kw at night: Things really haven't changed much here. The same old stations are dominant, especially all the California and Nevada stations on 1450, 1400, 1240 and 1349. Once in awhile, something got through like KSIL or KIKO. Wish I could hear KDRG on a MW. I barely got an ID for KART, Santa Paula's just too dominant. It's still a mess as far as I'm concerned.

The DX show on 15 December was still quite interesting to me, even if it was mostly on SW. But I did get through at 0440 PST (after waiting 45 minutes). I was the one Bill Harms heard giving the plug for IRCA and NRC, and talking about how the average person can hear distant stations on the AM band. Then Ray Briem asked me what I thought about the FCC breaking up the clear channels. I tried to give an honest answer, but I was so nervous I don't think I made much sense. It was a lot of fun anyway, and I feel I did my part to plug the BCB hobby. I fell asleep after that, so I missed Pat Martin's call, which came right after mine. Greg Hardison, Paul Swearingen and Don Erickson said they enjoyed my call, so I guess I sounded OK. Hope they do another show like that next year. (What, a DX'er falling asleep?! Shame, shame, hi-RtH.)

Thanks, Gary Larson for your comment on my very incomplete BCB history of Los Angeles area stations. I actually got the idea from Phil Bytheway. I saw his 'time-line' of the history of Seattle area stations at the '83 convention. I liked it so much that I began to research the history of L.A. Metro area stations. I haven't had much time to work on it lately, and it'll be a long time before it's finished.

I hope to still be an active reporter to DXM in '85, but with work and planning for the wedding, I'll report when possible. Until next time, best of DX and 73. (Just try for the Anniversary issue; that'll make me happy, hi-RtH)

ROY H. MILLAR, 13714 30th AVE. NW, MARYSVILLE, WA 98270

January off to a slow start with first new logging made 14 January (KLSN 590) but closed fast with a total of ten new for the month. Midday loggings from this location now total 120. Veries in from KJDY 1400, #65 thereon, and KACI 1300 (#103 from Oregon). Speaking of veries, and the prerequisite there-to, reception reports, let's not be negative about this and discourage reports; to many of us, that's the challenge. . .verify 'em! Enough to discourage reports in those that are returned by lazy P.O. personnel (such as Medford P.O. which has returned two letters, KRVC and KHUG) and non-answers, although as to the latter, I suspect an occasional theft or otherwise unexplained disappearance of my cassette reports since discovering that my tape to Pat Martin never showed up at his P.O. Box. (And to think they're making \$28K+ annually for this wretched service and have the nerve to ask for an increase-RtH.)

Ooops, I've overlooked the best verie of the month. . .CBF 690 for Quebec verie #7, joining CBJ 1580, CKAC 730, CJAD 800, CBW 940, CJBR 900 and CFLV 1370. (CJBR now CBSL per NRC Log and CFLV was Valleyfield).

On the local scene, KRKO 1380 is now KBAE (K-Bay). Sorry to see this historic call abandoned. I believe KRKO was the oldest station in the state of Washington (Broadcasting shows KRKO and KTW 1250 as opening in 1920). I wasn't aware that KRKO/KBAE wasn't NSP, but newspaper article regarding break-in at studio discloses silent MM from 0300-0900 (ELT) and will check this out. Maybe that MM break-in will cure them of a SP. . .such would be my luck. Would like the opportunity to work 1375-1377-1380-1386 again. It's tips of regular SPs that I scour WDXR for. I was on 670 MM 07 January from 0355-0700 but found KBOI holding forth all the way. Someone did report in WDXR of 26 January that KBOI was "totally off," but earlier, I.e., 0243. I also found no 1st MM SP for KFI; so goes my band search. 73.

FRANK ADEN, JR., 5147 MORRIS HILL, #133, BOISE, ID 83706

On 31 January, Bill Frahm and I noticed a pirate on 530 around 1900 MST. Station played mellow rock tunes back-to-back with no announcements. I called Bill Block in Portland and he reported he had been able on previous receptions to get a bearing on a line running from Portland through Spokane out-

ward, Bill Frahm and I got a bearing to the NE at about 60°. By using Bill Block's calculations and ours I was able to get a triangulation with possible transmitter site in NW Quebec in the area of south of James Bay. Signal was good but moderate fading does make it appear to be distant going along with Frahm's and my guess the stations has to be a great distance away as there was no discernable difference between our separate bearing readings. Does anyone have ideas on this?

Popular Communications February issue mentioned a DX'er in Idaho getting a letter from the Idaho Highway Department about a TIS on 1610. On this, I called the Highway Department here and they reported the two TIS stations in operation near American Falls have been dismantled and moved up north. Has anyone heard them?

Latest word on KKIC 950 is they'll be back on with new owners with a new tower near Star in the near future. 73.

PAUL LA FRENIERE, P.O. BOX 606, GRAND MARAIS, MN 55604

Greetings from the north shore of Lake Superior (which probably is going to freeze over completely if the weather doesn't change). Temperatures anywhere from -20F to -40F nightly have made for rather poor DX conditions. Tried SRS DX many mornings during January only to find the locals blasting in and nothing else of real interest. The only exception being two or three openings in Saskatchewan and Alberta. SSS during January netted only the usual regionals.

Ric, regarding your unID C&W on 980. . . a long shot could be WONE Dayton, Ohio. They're an NSP pest and checking their pattern, they could be putting a weak signal into your area. (Thanks Paul, if it's them, I don't need them, hi. Heard years ago when midwestern and eastern regionals were common on the west coast, but thanks for the tip and will keep trying for an ID-Rth.)

Whatever happened to the Spotlight column? I always found it interesting. Ernie Cooper, I'm with you 100% on your thinking concerning the number of NSP stations. Economics should determine their fate eventually. Maybe what we need is more stations like CBJ blasting away with tone all night long. 73.

RIC HEALD, 1632 J ST., #3, EUREKA, CA 95501

Have actually been doing some DX lately. My workshift compliments SSS DX and, of course, the wee hours. Finally bagged KrIR 1370 Sweet Home, Oregon. Also finally heard KODL 1440 The Dalles, Oregon, well over (what should be) semi-local KMED. Also, who's SS on 1280? Did KKAL go SS? Had spot for music group ("directamente de Hermosillo"). Unfortunately, KIT decided to rule the roost on 1280 at the time.

On 13 February noticed a decided path to the north and east. Noted that usual pest KROW 780 Reno was off and WBEM was rolling in. And all is not lost due to duplication of the clears. WGN was really eating away at KDWN, KFAM 700 (normally a pest) was clobbered by WLW, and the best of the morning, 550 went to CKPG Prince George, virtually alone on the frequency.

Paul, your comments, along with Rick Evans about cold weather amuse me. It so seldom drops below freezing here that one night when it did, I was giving instructions on KRED how to remove ice from windshields without cracking or breaking the glass, hi. Completely forgetting my own car was parked in front of the station and ran out during news to cover windshield with newspaper, hi.

Robert Wien, I noticed in a year-old DXM your possible reception of KIVR 1400 Cave Junction, Oregon. You mentioned Wallowa Valley. That might have been a newscast as Wallowa Valley and K-illinois Valley Radio are as far apart in Oregon as you can get, about 400 miles. Wallowa is in extreme northeastern Oregon and Cave Junction southwestern Oregon, about 100 miles from here, and KIVR is a daytime pest, hi. Nighttime is KQMS and a hodge-podge of others.

Don't forget the Anniversary deadline. Best of DX de Rth. .

CONVENTION NEWS



THE 1985 IRCA ANNUAL CONVENTION WILL BE HELD IN PORTLAND, OREGON THE WEEKEND OF JULY 26, 27, AND 28, AT THE COSMOPOLITAN MOTOR HOTEL. WE WERE GOING TO HOST THE CONVENTION IN SEASIDE, BUT THE ROOM RATES DURING THE TOURIST SEASON (JUNE-JULY-AUGUST) WERE \$55.00 TO \$125.00 PER NIGHT. MORE INFORMATION LATER. START MAKING YOUR PLANS NOW TO ATTEND THE 1985 IRCA CONVENTION IN THE CITY OF ROSES, PORTLAND OREGON.
YOUR CONVENTION HOSTS, PATRICK MARTIN AND BILL BLOCK.

Karl J. Zuk, 154 Old Post Road North,
Croton-on-Hudson, New York 10520
All times are Eastern Local.....

Eastern DX Roundup

REPORTERS IN THIS ISSUE:

- (DLR-KY) David Reitz, 9332 Fairground Road, Fern Creek, KY 40291
Kenwood R-1000, Ge Superadio, Radio West Loop.
(RCR-PA) Robert C. Ritchey, R.D.#1, Box 738, East Freedom, PA 16637
Realistic DX-160, 200 foot longwire.
(GS-DC) Gardner Smith, W9ALZ, 1000 Perry Street, Washington, DC 20017
Toshiba F-11 and HQ-145X

- 580 WGAC GA, Augusta. 1-30 1740 Local ads, mention of Augusta, R&B type music, PSA by Lucille Ball, ID "58 GAC," promo for talk show. Good. (RCR-PA)
710 CKVM PQ, Ville-Marie. 2-3 2359 End of Classical Music program under WOR, New York, NY. (GS-DC)
730 WJOR GA, Thomasville. 2-1 1830 Sign off by man, no SSB, Good. (RCR-PA)
770 WLWL NC, Rockingham. 2-4 0735 ID as "77 Radio, WLWL, Rockingham, NC." Followed by weather, good to very good. (RCR-PA)
850 WKIX NC, Raleigh. 2-4 0740 with Elvis Presley medley, ID as "85 Country, WKIX, Kicks Country," then weather. Good. (RCR-PA)
860 WDMG GA, Douglas. 1-30 1810 Local news, ID "WDMG", weather, into rock music. Good. (RCR-PA)
870 WWL LA, New Orleans. 2-4 0115 First time in recent history not obliterated by HJSB. Playing old-old-time fiddle and yodel music from the 1930's, including the 1935 hit "I Want To Be A Cowboy's Sweetheart" by Patsy Montana. Awww Mama! (GS-DC)
900 WWJD GA, Savannah. 2-2 1816 Sign off by man, no SSB. Very good to excellent. (RCR-PA)
930 WSEV TN, Sevierville. 2-4 1801 C&W music, ID "It's 6:02 at 93 WSEV, Sevierville, TN," then local news, spot for radio advertising, local sports, weather forecast, C&W music, IDs, sign off announcements at 1813 with Star Spangled Banner. (DLR-KY)
930 KWOC MO, Poplar Bluff. 2-4 1835 Local news, PSA, ID, more local items. (DLR)
940 WKYK NC, Burnsville. 1-28 1732 ID as "94 KYK Keeping It Country, " into C&W music, briefly on top. (RCR-PA)
1000 WSFP NC, Hickory. 1-30 1730 Sign off by man, musical ID "WSFP Hickory," no SSB, good signals. (RCR-PA)
1000 WTAK AL, Huntsville. 1-30 1802 Long sign off by man including comments on having to modify transmitter to stay on seven minutes longer leaving frequency to the yankees, etc,etc,no SSB, fair to good. (RCR-PA)
+2-3 0605 with emergency broadcast due to weather, ID "This is WTAK, Huntsville," into rock music, briefly over WCFL, Chicago,IL. (RCR-PA)
+2-2 2205 on emergency broadcast with IDs "WTAK Huntsville, AL, on the air with the authority of the Huntsville/Madison County Emergency Mngement Agency, due to traveler's advisory and major power outages." Oldies and pop music, weather forecast, power outage updates and safety tips. DJ mentioned calls from Roanoke VA and Carlisle, PA. Excellent, way over WCFL, Chicago, IL. (DLR-KY)
1050 WROS FL, Jacksonville. 2-1 1815 Sign off by man, no SSB, fair with WHGI, Augusta, GA, sign off. (RCR-PA)
1050 WHGI GA, Augusta. 2-1 1815 Sign off by man, no SSB, weaker than WROS, Jacksonville, FL. (RCR-PA)
1110 WBT NC, Charlotte. 1-31 0050 Silent again. Great opportunity for DXing the channel, but all I hear is the Cuban. (GS-DC)
1410 WHAG MD, Halfway. 1-29 1715 Quick sign off by man, ID "This is WHAG, Halfway," no SSB, Good. (RCR-PA)
1440 WAJR WV, Morgantown. 2-3 1945 C&W music, singing ID "WAJR 1440," more music. (DLR-KY)
1440 WNFL WI, Green Bay. 2-4 2258 with Milwaukee Bucks basketball. ID "1440 WNFL, Green Bay," local spots, Fair. (DLR-KY)
1520 KMPL MO, Sikeston. 2-3 1830 with local spot, weather forecast, ID "Your Information Leader, 1520, KMPL," into music. (DLR-KY)
1540 WNIO OH, Niles. 2-1 1800 Sign off by man, ID "We are WNIO, Niles, Ohio," no SSB, very good. (RCR-PA)
1540 WPGR PA, Philadelphia. 1-29 1800 Testing with rock music, ID "This is WPGR, Philadelphia...WPGR,Philadelphia conducting programming tests," etc., variable signal strength: fair to excellent. (RCR-PA)
1550 WAAY AL, Huntsville. 2-3 0240 with "Emergency Weather Broadcast" (but just an excuse to play music) running 50 kW. Announcer sounded like a little kid: "Boy! We are really getting out!" bragging about DX calls from Minnesota, etc., and asking for more. Good signal, but no great shakes. A common sunset skip station here. (GS-DC)
+2-2 2240 Pop rock music, IDs, with mention of being on 50 kW. (DLR-KY)
1570 KGCR OK, Pryor. 2-4 1900 with list of school and business closings, ID, sign off announcements, owned and operated by Shamrock Communications Inc. Ex-KMYZ. (DLR-KY)

A little more EDXR follows.....

Eastern DX Roundup continues.....

- 1570 WCRL AL, Oneonta. 2-3 1830 with sign off including a choral hymn. Excellent sunset skip signal. (GS-DC)
- 1570 WKYR KY, Burkesville. 2-3 1900 Sign off with SSB done as a C&W song (by The Statler Brothers, I think). Transmitter site on Highway 90. Mentioned returning at 0600. (GS-DC)
- 1580 CBJ PQ, Chicotimi. 1-30 0200 Playing the Antonio Vivaldi "Four Seasons" concertos performed by a Japanese Koto band! (Would I kid you?)(GS-DC)
- 1590 WLFA GA, Lafayette. 2-3 1830 Sign off by man, no SSB, very good. (RCR-PA)

As Porky Pig always says..."That's All Folks!" A shortie this week. I think it is just too cold to brave the basement and the dials! Thanks to David, Rob, and Smitty for some interesting loggings of stations we don't get too often, like Green Bay on 1440. David just got a new Kenwood R-1000 and a Radio West loop. Enjoy! Remember E.T.? "Bee Good...and send in those tips!"-73s de KZ.

Robert Kramer
 6416 N. Richmond
 Chicago, IL 60645

CENTRAL DX ROUNDUP

- 600 GFGC SK SASKATOON, 1/24 0834 good w/wx & spots, sports. PAL-MN
- 640 WWIS OK MOORE, 1/24 1905 fair w/C&W mx, ID as 640-WWIS. PAL-MN
- 680 CHFA AB EDMONTON, 1/24 0839 fair w/FF tlk & mx PAL-MN
- 730 KURL MT BILLINGS, 1/18 0825 fair w/Rel mx, ID, MST TC farm rpt. PAL-MN
- WJMT WI MERRILLE, 2/4 1500 noted w/CNN mx. PAL-MN
- 790 GFGW AB CAMROSE, 2/2 0830 good w/AB mx PAL-MN
- 870 KUUY WY CHEYENNE, 1/22 1748 fair w/C&W mx, spots. PAL-MN
- 890 KQLX ND LISBON, 1/18 1013 C&W mx, Q Country ID, wx for Tri-state area, fair o/WIS. PAL-MN
- 900 CFBR ON SUDBURY, 1/30 0607 fair w/FF tlk & pop mx PAL-MN
- 910 CHDQ AB DRUMHELLER, 2/2 0843 good w/wx . PAL-MN
- 930 CKNS ON ESPANOLA, 1/30 0550 good w/promo for Charity Bowling. PAL-MN
- 1000 CFLP PQ RIMOUSKI, 1/30 0610 fair w/FF MoR mx, hockey scorss. PAL-MN
- 1030 WXSJ TN MEMPHIS, 1/26 0940 good w/pop mx & sports PAL-MN
- 1190 KLIF TX DALLAS, 2/2 1834 fair w/promo for pgn. PAL-MN
- 1460 CJOY ON CHELSEH, 1/22 1846 good w/mx, "Your Music Connection C-JOY. PAL-MN
- 1490 KBRU IA BURLINGTON, 1/24 0910 fair w/Paul Harvey "The Rest of the Story", spot. PAL
- 1520 KWWK MN ROCHESTER, 1/30 1628 fair w/C&W mx, ID & sports. PAL-MN
- 1540 CHIN ON TORONTO, 1/24 0844 blasting in w/II tlk call in show. PAL-MN
- 1580 KLOU LA LAKE CHARLES, 1/28 0330 poor w/pop mx & ID u/CBJ TT. PAL-MN
- KOKB OK BLACKWELL, 1/28 0940 poor w/Super Country KOKB slogan, C&W mx. PAL-MN
- 1590 WSMA MI MARINE CITY, 1/26 1027 fair w/C&W mx, spot, wx, ID. PAL-MN

A REAL Pal:
 PAL,.. Paul LaFreniere Box 606 Grand Marais, MN 55604
 (Dymek DR22)

SUMMARY OF UNREPORTED STATIONS
 Through Volume 22 #20 dated February 2, 1985
 compiled by Don Kaskey, 465 Burnett St. #1, San Francisco CA
 94131

The following chart lists the total number of stations in the USA and CANADA and the volume they were last reported as being heard in DX MONITOR.

COUNTRY	V22	V21	V20	V19	V18	V17	V16	V15	V14	V13	V12	Prior	Total
CANADA	186	75	28	26	20	12	13	5	6	0	2	46	= 419
U.S.A.	1606	950	605	383	337	166	185	77	53	29	49	296	=4736
TOTAL	1792	1025	633	409	357	178	198	82	59	29	51	342	=5155

New stations reported as having taken the air during the period between V22 #18 through #20:

- 730--KTOX-ID (x-740)
1400--KLCK-WA
- 770--WAIS-OH
1570--WVVW-WV
- 870--CKIR-BG

Delete station WPOW-1330-New York NY from list. Has ceased to exist as of 1/1/85. WNYW-1330-New York is now full time.

WESTERN DX ROUNDUP

Nancy Hardy
2301 Pacific Avenue
Aberdeen, WA 98520

All times are
Eastern Local

Phone for hot WDXR tips: (206)532-6827 till 10pm(PT)

DEADLINES: Tuesdays 2/26, 3/5, 3/12 (Anniversary Issue), 3/19, 4/2, 4/16

REPORTERS FOR THIS ISSUE:

- (FA) Frank Aden-5147 Morris Hill 133-Boise, ID 83706
Modified FRG-7, MW-1, box loop
- (BB) Bill Block-9307 S.E. Clay-Portland, OR 97216
R-390A, Radio West loop
(BB-OR1) DX'ing at Cape Lookout State Park near Tillamook, OR
w/FRG-7 & Radio West loop
- (WGE) W. George Elliott-544 Christleton Avenue-Kelowna, BC V1Y 5J2
DX-160, FRG-7000, longwire
- (TRH) Tim Hall-350 G St. F-1-Chula Vista, CA 92010
DX-150B, longwire
- (NHP) Nick Hall-Patch-1538 Amphion St.-Victoria, BC V8R 4Z6
Transmogified HRO, 3' box loop
- (MH) Mike Hardester-401 Birchwood Court-Modesto, CA 95350
R-1000, R. West Active
- (EH) Bill Hardy-2301 Pacific Ave.-Aberdeen, WA 98520
FRG-7, SM-1, wedge
- (NH) Nancy Hardy-2301 Pacific Ave.-Aberdeen, WA 98520
FRG-7, SM-1, wedge, Realistic TRF
- (DKK) Don Kaskey-465 Burnett St. #1-San Francisco, CA 94131
Hammarlund HQ-140X, SM-2
- (PM) Patrick Martin-P.O. Box 843-Seaside, OR 97138
SP-600, two 1500' east Beverages
- (DM) Don Moman-6815 12 Ave.-Edmonton, AB T6K 3J6
DX'ing at South Cooking Lake (20 mi. east of Edmonton)
ICOM R71, various Beverages
- (DP) Dale Park-2253 Kanealii Avenue-Honolulu, HI 96813
Sony ICF-6700W
(DP-H15) DX'ing from Kailua Beach Park using TRF
- (RW) Robert Wien-1309 Dentwood Dr.-San Jose, CA 95118
GE Superadio, GE long-range portable, SM-2
- (JW) John Wilkins-4385 Hoyt St. #205-Wheat Ridge, CO 80033
R-1000, 4' box loop
- (REW) Richard E. Wood-P.O. Box 5074-Hilo, HI 96720
R-1000, two Beverages (most domestic DX on ENE 2200' w/500
ohm termination)
- (WP-CO) Rich Toebe, Ted Fleischaker & Leonard Kesteven-DX'ing at
Winter Park, CO
Sony WA-200 AM-FM Cassette-Corder, Sony ICF-2001
- *****
- OF SPECIAL INTEREST:
- 770 KPLA CA, Riverbank per letter from Jack Gardner, president of
Radio Riverbank, KPLA will commence construction this summer
or fall & be on the air Dec. 1985 or Jan. 1986. Power will be
50,000/1,000 (initially), Motorola stereo, 3-tower array. (MH)
- 1360 KRGL OR, Myrtle Creek 2/8 hrd C&W mx, spots o/all at 1215. Ex-KROR.
Very slight KAST-1370 slop. (PM-OR)
- *****
- 515 PKV TX, Port Lavaca 1/9 0207 briefly poor w/"PKV" in code over &
over; needed to peak up w/audio filter to read it. Not bad for
listed 25 watts. (NHP-BC)
- 516 YWA ON, Petawawa 1/7 0401 poor but steady w/"YWA" in code. Might
be a good indicator of eastern cx, as the channel's always
clear. (NHP-BC)
- 530 WNAG556 CA, Coronado per PPC signed by police chief, power is 7.5
watts. (TRH-CA)
- Pirate 1/31 2100 playing mellow rock w/no anncts. Signal was very
good at times. Is believed to be the one hrd off & on for the
last couple of years. Using triangulation and previous
information from Bill Block we (also hrd by Bill Frahm) got
the impression it is in NW Quebec near James Bay. Signal was
suffering from some moderate to fast fades. (PA-ID)
- 540 KNOE LA, Monroe 2/4 0245 poor w/C&W, ID. KAFY-550 slop. (RW-CA)

- 550 KAFY CA, Bakersfield 1/31 1039-1047 poor w/C&W mx, ID "7:40 here on KAFY" into "Word of the Day" feature. Ad for local Chevrolet dealer. (TRH-CA)
- KBOW MT, Butte 2/7 very good way o/KOAC w/spots & TC's at 1130. C&W mx. (PM-OR)
- KOAC OR, Corvallis 1/30 0035-0105 fair, OM w/classical mx program, ID at 0059. Pleasant change from usual KOY-Phoenix. (TRH-CA)
- 560 KBLU AZ, Yuma 2/4 0340 good o/mess w/ID, YL DJ. (RW-CA)
- *KSFO* CA, San Francisco 2/4 0536 noted w/OC. (RW-CA)
- KMON MT, Great Falls 2/7 1206 good to fair way o/mess w/C&W mx, "Stereo 5-60" ID's. (PM-OR)
- 570 WNAX SD, Yankton 1/29 0345 running long jingle about "when you need a friend on the radio," ID, into country song; in KRQX null. (WP-CO)
- KRQX TX, Dallas-Ft. Worth 1/29 0347 mx by Creedence Clearwater, good signal, "K-Rocks" slogan. (WP-CO)
- 600 (KLZZ) CA, San Diego 2/4 0408 totally off. (RW-CA)
- *KLZZ*+2/4 0441 noted w/ID "This is KLZZ, San Diego, testing our emergency transmitter," into "Sing, Sing a Song." (RW-CA)
- ?WMT? IA, Cedar Rapids 2/4 0430 tent. w/"Best of King" mostly u/KSJB w/CJOR nulled, KFRC also nulled. Mutual nx on half hour, but faded out at ID time. Best of King // KGBS-740, broke away from King at 0500. Coupla possibilities--WMT, WREG-TN, WOKV-FL and even KCLS-AZ. KCLS carries Mutual nx, but don't think they're on at this time, WREG also listed off at this time, WOKV highly unlikely. Per call to WMT, they do carry Best of King at this time, they do break away from network at 0500, but secretary didn't think they carry Mutual nx on half hour! However, this may be part of the Larry King package. (RW-CA) (It is, per Almanac.--NH)
- 610 KRKE NM, Albuquerque 1/28 0152 "The source for your favorite songs," format change to CHR, excellent signal just overpowering the frequency. (WP-CO)
- 620 KNKS CA, Hanford 1/30 0017-0026 poor to fair, OM w/country mx. "Your station for country, 62 KNKS" ID by OM. Under KPAR. (TRH-CA)
- KIPA HI, Hilo 1/28 noted airing "Solid Gold Special" until 2300 instead of usual "AT40" yesterday and "Nighttime America" instead of their excellent progressive mx show today. Now I'm really mad! (DP-HI)
- 630 KBEY OR, Coquille-Coos Bay ex-KSHR 2/5 2042 C&W mx suddenly thru KOH/KIDD. Into s/off annct. 2044. Sounded like a dual ID, Coquille & somewhere else but QRM garbled it. (DKK-CA) (It's Coos Bay, Don.--NH)
- +2/11 1958 C&W tune, ID at 2000 "The south coast's Country K-Bay, K-B-E-Y, Coquille-Coos Bay," into Satellite News Network. Excellent w/KCIS nulled. (BH&NH-WA)
- 660 CFFR AB, Calgary 2/4 0430 ID "Calgary's Family Radio, 66-CFR," spot for Tahoe ski trip. Powerful, alone. (REW-HI)
- 680 KNBR CA, San Francisco 1/28 0155 w/Talknet. Fascinating to finally hear this channel w/another stn (KKYX) interfering w/the signal, hi!!! (WP-CO)
- 690 KZKZ AZ, Flagstaff 2/1 0158 w/CHR mx, clear KZKZ ID's, some interference from CBU w/CBC mentions. (WP-CO)
- KGGF KS, Coffeyville 1/28 2100 ID at hour "Radio 69" slogan, into net mx; on top of channel. (WP-CO)
- ?CBF? PQ, Montreal 1/7 0600 recorder mx hrd in presumed XETRA null, then "Ici Radio Canada" by man & CBC IS. No call or mention of location, so will have to be tentative. Did log a Quebec LW beacon earlier in the evening, so CBF does seem possible. Poor to fair strength. (NHP-BC)
- 700 WLW OH, Cincinnati 1/22 0720 good w/priority two weather alerts & then into school closure anncts. (DM-AB)
- KGRV OR, Winston 2/4 0130 lots of very laid back mx, some relig. in tone. Woman gave ID & location, then more mx. Good strength w/KFAM nulled. Forgot to switch to night power? Haven't hrd them days yet, as nulling CBU-690's splatter usually gives me KFAM. (NHP-BC)
- KFAM UT, S. Salt Lake City 1/31 1500 "At AM 700, this is KFAM" by man. Easy listening mx before & after his words of wisdom. Fair strength, not bad for midday. (NHP-BC)
- 710 KMPC CA, Los Angeles airs Billy Graham's "Hour of Decision" Mondays at 0205-0230 per L.A. Times ad. (DP-HI)

- 730 KTOX ID, Boise TT hrd at 2330 on 2/6, per phone call from Bruce Bacon, thanks for tip. Signal very weak on 1500' east Beverage. Probably still 500 watts. (PM-OR)
- KSVN UT, Ogden 2/7 good w/oldies format, change from earlier log of C&W mx. "K-7" ID's at 1140. (PM-OR)
- 740 CBL ON, Toronto 1/22 0643 good w/CBC programs & nx at 0700. Very good signal at times, then lost to local CBC OC at 0711. (DM)
- 750 KERR MT, Polson 2/1 0822-0840 w/C&W mx, "seven-fifty country KERR" slogans, and "Currently zero degrees at Country KERR." KCBS-740 slop w/KXL dominance by 0840. (MH-CA)
- 760 *KGU* HI, Honolulu 2/7 0000 noted testing w/xmtr on & off and instrumental mx. RS at 0003 (CBS nx & Larry King). (DP-HI)
- 780 WBBM IL, Chicago 1/28 0205 in like gangbusters, no sign whatsoever of KROW. However, next night 1/28 2130, only KROW could be hrd. Interesting how the cx changed as the Arctic air mass moved south. (WP-CO)
- 790 *KKON* HI, Kealahakua 1/28 0514 noted w/OC instead of SP. KIKI/KAIM mixing product noted on top. (DP-HI)
- 800 (CKOK) BC, Penticton 1/29 0359-0440 totally off. While I was preping newscast, FM's off air siren went, then they went back on the air while I was reading nx. Little did I know CKOK was off & that my 'cast was hrd only on FM and satellites. Power outage at xmtr as per West Kootenay Power Co. Back on at time noted above. (WGE-BC)
- 810 KGO CA, San Francisco 1/28 0207 w/Wattenberg talk show, better received here in CO than it was in Reno, NV. No other stations on channel. (WP-CO)
- 820 KCBF AK, Fairbanks hrd on 1/26 w/nx at 0003 and ID at 0015 "This is KCBF where we have gold for Alaska." (BB-OR1)
- 870 KIEV CA, Glendale 1/11 drops coverage of the NBA L.A. Clippers as of today, per L.A. Times. (DP-HI)
- KUUV WY, Orchard Valley-Cheyenne 1/22 0754 good w/wx report and ID. Ex-1530 kHz. (DM-AB)
- (KUUV)-1/28 0210 no sign of this newie. Does it go off at midnight or has it even moved yet? WWL totally dominating channel. (WP-CO) (Yes, it has moved!--NH)
- 880 (KRVN) NE, Lexington seemed to be off the air much or all of 2/3 & 2/4; normally overwhelming here but not noted. So, some much-wanted DX on 880. (REW-HI)
- KWIP OR, Dallas 2/3 2155 promo "We are #1 among adults age 25-54 M-F; above all 26 stations which are listened to in the Salem area, including stations in Portland, Albany, Corvallis, Lebanon and Eugene-Springfield." Oldies. (REW-HI)
- KMFR OR, Phoenix 1/30 0540 apparently AN now w/MYL-type mx, bombing in in KRVN null. Did they drop Larry King (or Talknet, whatever they carried)? (RW-CA)
- +1/31 0627-0640 poor w/MOR mx, PSA for "Healthy Back Class." (TRH)
- +2/3 0307 single, very clear, slow ID "This is AM 88, KMFR, Phoenix-Medford." Test? No more hrd. O/u KIXI, Cuba. (REW-HI)
- KIXI WA, Mercer Island-Seattle 2/3 0345 ID "AM 88, the only spot on the dial for the music you remember." Oldies, mostly easy-listening. O/u Cuba. (REW-HI)
- 900 ?KGRB? CA, W. Covina 1/31 1048-1100 poor, presumed this one w/syndicated relig. programs. ID 1100 garbled, QSB. (TRH-CA)
- 910 KNEW CA, Oakland-San Francisco 1/30 0531-0540 good OM w/ID's "This Date in History, Part One" w/birthdays of famous people, etc. (TRH-CA)
- KOXR CA, Oxnard 2/3 2310 SS/EE ID "This is KOXR Oxnard. En sintonfa con La Consentida, KOXR Oxnard." Ranchera mx and one Venezuelan group, requests for Oxnard, Santa Paula. ID by female in very slow SS "Mi Consentida es K-O-X-R." Dominant o/KNEW. (REW-HI)
- 930 KHJ CA, Los Angeles 1/11 picks up coverage of the Clippers from KIEV-870 as of today, per L.A. Times, even though sister stn KHJ-TV channel 9 airs the L.A. Lakers! (DP-HI)
- WKY OK, Oklahoma City 2/1 1917 C&W mx, rodeo ad, phone caller w/an imitation of a cow. Real class stn here, hi. (ØW-CO)
- 970 KUZZ CA, Bakersfield 1/30 0113-0122 fair w/OM w/C&W mx. "KUZZ, one country song after another" ID. XEJ usually here. (TRH-CA)
- KPUA HI, Hilo recently got my NRC Log, and for some reason they're not listed! So here's the updated info: 5kw UI 24 hr (possible MM SP). Net unknown (probably CNN). They recently moved from their quonset hut in Kaumana Heights to 1177 Kilauea Ave., Hilo 97620. Airs Big Band at night & reportedly Hawaiian/MOR daytimes. (DP-HI)

- 970 KJLT NE, North Platte 2/1 1905 nx, wx, s/off at 1913. Fair to poor in QRM. (~~W~~-CO)
- KNUU NV, Paradise 2/1 1959 ID "This is K-N-U-U, Paradise-Las Vegas," then CBS nx, local nx. Very good at first, but soon faded. (~~W~~)
- 980 KMBZ MO, Kansas City 1/29 0330 excellent signal. Uses old KCBS-740 jingles, into Talknet. (WP-CO)
- 1000 KXRB SD, Sioux Falls 1/22 0905 fair w/ad for pig auction, ID, and more ads. Heavy QRM from KOMO as usual. (DM-AB)
- 1010 KXEG AZ, Tolleson 1/29 0314 "Praise 100" slogan, on top of channel. (WP-CO)
- WINS NY, New York 1/22 0659 good. Seeing CBL-740 in so well, thought I'd try for CFRB-Toronto as well. Instead hrd WINS w/wx report, on the spot report from a large fire scene. Accuweather and several IDs. New one & only listed as 5000 watts! (DM-AB) (I'm pretty sure they are 50,000 watts.--NH)
- 1020 KTNQ CA, Los Angeles 1/27 2317 man w/Herb Alpert mx, ads, talk. Fair to very poor w/KIFH-1040 QRM, QRN, deep fades. (DP-HI)
- KDKA PA, Pittsburgh 1/22 0053 fair w/"Voice of the Penguins" hockey promo then back to talk program. O/KYXE-Selah, WA tonite! (DM-AB) (Dan, you get several pats on the head w/the WDXR penguin flipper for reporting a tip on my favorite hockey team--the Penguins!--NH)
- KWIQ WA, Moses Lake North 2/10 0001 finally got a proper ID out of this semi-regular that rarely ID's. About even w/KYXE/KBCQ, had dead air at 0000 when ID should have aired during Satellite Music Network oldies show. ID came out of the clear blue sky about 50 seconds into an oldie; I think the anncr just cut into the feed to ID! Good to fair, new. (BH&NH-WA)
- 1030 KHWW CA, Folsom-Sacramento 1/28 0320 first noted on reg. sked w/MCRN C&W format w/only a fair sig & KTWO off MW. Is almost lost beneath KTWO nights since. Day signal is no 50kw either, more like 1kw. Suspect problems still exist. (DKK-CA) (They come in very strong up here!--NH)
- +1/29 2357 w/ID & into C&W mx very poor sigs w/KTWO looped out and lots of interference from KMAS. (BB-OR)
- 1040 WHBO FL, Pinellas Park-Tampa 1/23 0730 s/on u/WHO, soon above WHO for about 10-12 minutes then faded out. (DKK-CA)
- +2/4 0725 good o/u WHO w/ID. (RW-CA)
- 1050 ?KSPO? WA, Dishman 2/4 1054 poss. one w/"Back to the Bible" program well w/KOBY which I had partially nulled. Could've been KORE or KBLE as well, doubt CKAL. This fits KSPO's format. (RW-CA)
- 1060 *KPAY* CA, Chico 2/4 0316 noted w/TT. (RW-CA)
- CJAM AB, Calgary 2/4 0433 ID only as "AM 106," country mx, PSA for zoo open house. Clear. (REW-HI)
- 1070 KNX CA, Los Angeles 1/28 0212 surprised by how strongly "KNX Newsradio" was bombarding frequency! (WP-CO)
- 1080 KSCO CA, Santa Cruz 1/31 0945-0951 poor w/wx, sports, ad for local restaurant. XEPRS-1090 off. (TRH-CA)
- KRLD TX, Dallas 2/5 0202 very good w/nx o/KWJJ. Best hrd in a while, a reg. u/KWJJ nights, but rarely on top. (PM-OR)
- 1090 KBOZ MT, Bozeman 2/4 0500 C&W, Bozeman engine repair spot, ID "1090 KBOZ," jingle ID's, Skoal ad. Clear o/u XEPRS in SS. (REW-HI)
- (XEPRS) BCN, Rosarito 1/31 off again 0930-1017. All I can get w/XEPRS off is a mixing product of KSDO-1130 & KCBQ-1170 (also audible on 1210). (TRH-CA)
- 1100 KFAF CA, San Francisco 1/27 2323 relig. program w/man w/south-western accent. Poor w/QRN from KWAI-1080 & KHEI-1110. (DP-HI5)
- WWWE OH, Cleveland 1/22 0105 fair w/list of school closures due to bad weather. Mentioned Lakewood, Lorraine, and Lake counties. Faded down & lost to KII0-Grand Junction, CO. Also new for me. (DM-AB)
- +2/5 0350 "Yours truly on the 3WE all-night show, Jack Reynolds," standards; o/u KFAF, R. Reloj de Barranquilla. (REW-HI)
- 1110 KHEI HI, Kihai 1/27 2318 noted w/its first syndicated show since "Golden Age of Radio Theater," "The Pat Boone Show," a sponsored program (incl. Hoffy Products) of Christian contemp. mx. Affiliates mentioned included KCRO-NE & WEZE-MA. Address in NRC Log is missing; they're at 296 Alamaha St., Kahului 96732. They're 24 hrs. w/irregular SP. (DP-HI)
- 1130 KLEI HI, Kailua address in NRC Log is wrong. Actually it's 32 Kainehe St., Suite 202, Kailua 96734. Their sked is 1100-0400EST. (DP-HI5)
- KWKH LA, Shreveport 2/5 hrd again w/C&W mx, trucker stop info at 0216 o/u CKWX, Tom T. Hall song. This is getting semi-reg. on good east cx w/Beverage. (PM-OR)

1130 CKWX BC, Vancouver 2/1 0200 in strongly but o/u KWGH w/usual country mx, wx, nx. (WP-CO)

1150 KPLS CA, Santa Rosa 2/3 1145 SS, spot for Mexican restaurant. NRC Log doesn't show this one as having SS. Appears to be SS a.m.'s, EE p.m.'s. (REW-HI)

1170 KSGR CO, Windsor 1/29 1015 in loud & clear w/country song "Pistol Packin' Mama"(hi!), ID's as "Northern Colorado's & Southern Wyoming's favorite station," "Light n' Lively," "We've brought back the best because you asked for it." It's a MYL-type strn despite mention of the above song, hi! (WP-CO) (The song is from the 1940's, Bill says.--NH)

1180 KOPI MT, Kalispell 2/9 first noted at 1145, and in all day long on TRF. Possibly now using 50kw. (NH-WA)

1190 KEX OR, Portland NRC Log shows this as having MM SP 0400-0700, but not so observed MM 2/4. (REW-HI)

KLIF TX, Dallas 2/4 0337 C&W, area code 817 phone, ID's as "KLIF" (Cliff), o/u KEX. (REW-HI)

1220 KDFC CA, Palo Alto 2/3 1145 Wagner "Radio Concert Hall," ID "This is the Radio Concert Hall on AM KDFC Palo Alto and KDFC-FM San Francisco." Trace of an unID SS (too late for XEB). This is my #3 U.S. daytimer (There are no daytimers in HI). (REW)

CKDA BC, Victoria 1/27 2333 Dr. Hook's "Better Love Next Time Baby" aired. Very poor w/QRM from K200-1210, ripply signal.(DP-HI5)

1230 KIBS CA, Bishop 2/6 0215 above QRM until 0258 s/off. Has not changed calls to KBOV yet. (DKK-CA)

1250 KKFY WA, Seattle noted 2/1 0520-0525 w/pop mx, "K-Fox" ID's & local sports report. UnID co-channel QRM w/increasing QSB. Still, fair signal. (MH-CA)

1290 KAZA CA, Gilroy 2/4 1200 SS ID "Radio KAZA" (Casa = house), "la mäs actual en música." Spot for Restaurant La Fuente. o/u KHSL-CA. (REW-HI)

KMEN CA, San Bernardino-Riverside 2/4 0145 "Get the latest ski reports every weekend on the new 12-90, K-Men." (REW-HI)

KRGV TX, Weslaco 2/4 0140 Michael Jackson, ID "Continuous music, AM 12-90, KRGV," o/u KHSL & KMEN. (REW-HI)

1300 ?KHUG? OR, Phoenix 1/27 2330 Earl Thomas Conlee's "Heavenly Bodies" and other C&W hrd. No ID. Away from KNUI-1310 splash and right next to KFYI, so freq. is correct. Very poor. (DP-HI5) (KMPS?-NH)

1310 KFYI CA, Oakland 1/27 2325 man w/Calif. nx incl. report from "KFYI's Bill Harris." Later ID'ing as "All-News 13" & PST TC. Ripply QRM. Previously logged as KDIA, now I'll have to send them a longer reception report! Very poor to fair. (DP-HI5)

1320 KGNR CA, Sacramento 1/27 2334 promo for "Trivial Pursuit Challenge" w/March of Dimes co-sponsored by KGNR. Very poor, ripply co-channel QRM & KFYI-1310 splash. (DP-HI5)

1350 WSMB LA, New Orleans 2/4 0350 dominant o/unID SS, local phone talk show, "right here in New Orleans." Into nx 0400. LA #3. (REW)

1370 KCEZ MT, Butte 1/28 0408-0424 ex-KXLF good w/continuous mx (automated?) and no TC's. Into promo for "Live at the Metropolitan Opera" radio series at 0415. ID at end of it as "...on 13-70, K-C-E-Zee." Finally got this new call. (WGE-BC)

CJWW SK, Saskatoon they recently sent their hockey team, the CJWW Country Connectors (hint, Mark Strickert!), to play in the Aloha Cup oldtimers tournament here. (Please lash me for going overboard w/the "tips"!). (DP-HI) (Gee, people are now requesting to be lashed! OK Dale, we'll give you 100 lashes w/the stiff penguin flipper for sending so many tips.--NH)

1380 KLNI HI, Pearl City now airs the zany "Dr. Demento Show" Mondays 0100-0300 as of 1/28. In fact, the second show aired here featured Hawaiian comedy! KLNI now known as "Goodtimes Radio." (DP-HI)

KBAE WA, Everett 2/6 0410 ex-KRKO, hrd w/Nighttime America, local spot & promo. Thanks for the tip on this. (PM-OR)

1389.6 KCRC OK, Enid 2/1 2301 first noted as a het on 1390 & thought I had a rare Latin at first! Fair sig w/some 1390 QRM, but nicely separable on LSB. Played complete Pink Floyd album. 2343 ID "You're listening to KCRC, a division of the Chisolm Trail Broadcasting Co." Back on freq. the following nite. (PW-CO)

1390 KGER CA, Long Beach airs Billy Graham's "Hour of Decision" Sundays 2000-2030 per L.A. Times ad. (DP-HI)

- 1390 KBLQ UT, Logan 2/1 0333-0340 w/a DX'er's nightmare due to 3 stns dominating freq. at various times. "Everything you need to get your Friday morning started off right -- right here on K-B-L-Q," and into inst. mx to fade. Gradual fade-in of a "Nighttime America" stn, a fade-out & in w/a "Wall Street" ad and KGER dropped by to add to the QRM. A mess! (MH-CA)
- 1400 KEZC AZ, Yuma per verification from KEZC, they've been operating w/lkw night power since 1/15/85. (RW-CA)
- KRPL ID, Moscow 1/28 0526-0536 good on top of everyone else here. I first thought it was CKRP until I checked CKOK-800 on the DX-160. Top 40 mx w/ID by male at 0530 as "Paul McCartney from 'Wings Over America' on K-R-P-L." Into Moscow-Pullman wx forecast. New. (WGE-BC)
- 1410 WMMI AL, Mobile 2/4 0308 DJ show "In the Sunny South, 42° at 14-MMI," into rock oldies. State #33. Mostly o/KERN-CA on the new Beverage which favors U.S. east & south. Perhaps my best U.S. catch along w/WRVA-1140 VA. (REW-HI)
- 1420 (KCCN) HI, Honolulu 2/4 2230 noted off the air, but back on at 2252 recheck, due to transformer explosion downtown, which also knocked off KHVH-990. Doug Martin says they were off later this week & he was able to get CFUN-1410, KSTN & XEXX-1420, and KARM-1430. (DP-HI) (KARM is now KFIG!--NH)
- WOC IA, Davenport 2/1 2146 West High Falcons BKB game. Local ads. Game ended around 2230, a romp for West. Poor in QRM from KTOE & others. (BW-CO)
- KTOE MN, Mankato 2/1 2210 Beach Boys' "Wendy," other pops, U. of Minnesota hockey score (4-1 o/Mich. Tech). Fair, mixing w/WOC. (BW-CO)
- 1460 KTYM CA, Inglewood 2/4 0404 Black gospel, auto dealer ads. Clear. (REW-HI)
- (KDON) CA, Salinas 2/4 0330 totally off. KTYM/KMWX mix. Still looking for KARR. (RW-CA)
- 1470 ?WLAM? ME, Lewiston 2/8 possibly the stn at 0230 w/blip ID after wx-cast, 21°, low of 10? Lost by 0231. Will keep checking. Also possible TC as 5,30? (PM-OR) (Had to stop & think what the Maine abbreviation was. I've had WDXR 10 years & Maine has never been reported in that time. Hope you get a positive ID on this one, Pat!--NH)
- KFPX TX, Abilene 2/8 0500 fair o/mess w/ABC nx, wx-cast. QRM from unID stns. (PM-OR)
- 1490 KBAS AZ, Bullhead City 1/20 0600-0605 w/Satellite News Network nx. Jingle ID at 0605 & into C&W mx. Still atop 0608 w/ads & SID at 0609. First time I've hrd this one. (DKK-CA)
- 1510 WLAC TN, Nashville 1/28 0352-0405 fair w/KGA off. Relig. mx w/male anncr. giving out American tour dates of relig. singing groups. ID at 0400 as "...at 15-10, W-L-A-C, Nashville." Into uptempo spiritual mx w/a guy calling himself Reverend Ike. New, state #24. (WGE-BC)
- (KGA) WA, Spokane 1/28 0328-0342 noted totally off. There was something there, but couldn't catch anything due to slop from KSGO-1520. Will try again later. (WGE-BC)
- 1540 KXEL IA, Waterloo 1/29 0319 noted w/"15-40 Country" slogan. (WP-CO)
- 1570 KCVR CA, Lodi-Stockton 1/31 1026-1031 poor o/u KMAy w/"Nighttime," ad, ID, ad for Bank of Lodi, into S.W. Radio Church program. (TRH-CA)
- KMAy CA, Riverside 1/31 1031-1036 poor o/u KCVR w/ID "KMAy, Riverside--Inspirational Radio for the Inland Empire at 1570 on your AM radio dial" into "International Prison Broadcast" w/Chaplain Ray." (TRH-CA)
- 1580 KNIX AZ, Tempe-Phoenix 1/28 0549-0604 fair w/KJET-1590 slop, and no sign of KDAY. C&W mx. Name ment. of Tempe as well as area wx forecast. ID at 0600 by female as "It's 4 o'clock at K-N-I-X, Tempe-Phoenix..." Into more C&W. New. State #25. (WGE-BC)
- CBJ QU, Chicoutimi 1/8 2102 good w/Islanders hockey game. Very strong signal, nice East coast ex. (DM-AB)
- 1610 TIS CO, Winter Park noted the whole time we were there, continuous loop w/info on Winter Park Ski Area, female voice, no call ID given. (WP-CO)
- TIS WA, Chief Joseph Dam hrd 1/26 at 2126 w/info on dam, on top of all other TIS stations. (BB-OR1)
- TIS WA, Port Townsend 1/26 2143 talking about the Hood Canal, way u/Chief Joseph Dam. (BB-OR1)

February f/c heard:
1st MM 0315-0330 KSKR-1450 MT (RW-CA)

Help with UNIDs:

- 1340 KCNN Oklahoma City, OK is probably RW's unID w/LKS, as they added the show on 12/30, or was it 1/14? Both dates were announced as "coming aboard" dates. Ex-KXXY. Also check CDXR. (DP-HI)
- 1400 Re ØW's 1/7 log of KAYS Hays, KS, the reason why Fort Hays SC played at 0115CST was that they were at the Brother Aiu Classic, where they beat host Chaminade (who beat Davidson, Louisville & SMU) to win tourney, in Honolulu! (DP-HI)

UNIDs:

- 700 1/22 0716 good on other Beverage than WLW. "The easy place to be -- AM seventy," PSA for the Statue of Liberty fund, EZL mx, Carpenters etc. Nx at 0730 w/many mentions of Utah. KFAM N. Salt Lake? (DM-AB)
- 710 1/29 0335 who's carrying Talknet? Denver, or someone else? Not all Denver can be hrd here, day or night. (WF-CO) (KIRO or KNUS.--NH)
- 830 2/4 0250 unID fair in WCCO null w/some type of phone-in talk show. KABN? (RW-CA)
- 840 2/4 0310 unID OG very strong o/WHAS, looping east, not towards KSWB. No sensible CP's in my NRC Log. KJTA-TX or KWPN-NE wouldn't have that strength. Pirate? (RW-CA)
- 840 1/29 2344-0000 u/WHAS. OM w/postgame show (basketball?) sponsored by plumbing & heating company. Many ments of "Highway 101 South" in ads. KBLC? Poor. (TRH-CA) (Sounds like KSWB Seaside, OR to me.--NH)
- 930 1/29 2215 who's playing classical mx o/u WKY? (WF-CO)
- 1000 1/22 0542 poor, Talknet just audible u/KOMO. (DM-AB)
- 1000 KKMx? 1/22 0838 fair, faded up w/wx "temp 15 degrees here at KKMx" more Wyoming area wx, ment. what sounded like "Craig & Moffat" country. KOMO QRM too. (DM-AB) (KKMx Hayden, CO, ex-KRDZ.--NH)
- 1260 2/4 0200-0201 unID TT very weak in KOIT null, looping ENE. TT ended promptly at 0201. KFGQ-IA's f/c listed 0200-0215, but w/mx, not tones. KFGQ had a CP for 5kw days, don't know if in effect yet. (RW-CA)
- 1370 2/7 2207 tuned in to ads for businesses "in Quincy." Doubt if KWNC-Quincy, WA. Is KPCO Quincy, CA now fulltime? (NH-WA)

Wow! Great job everyone! In the past few weeks I've had two reporters ask if they should cut their tips up when they send them to WDXR. Please do not cut up tips. I'd rather have the tips out of frequency order, than have them cut up. Hope everyone will DX and be able to report to the Anniversary Issue WDXR (deadline is March 12 here). ♥

Previously unreported stations noted by IRCA Reporters in DX MONITOR since the last update (V22 #19)....Covers V52 #18 through #20:

GA--0--KHwy-1030 (Kaskey-CA)
ID--0--KTOX--730 (Bacon-ID)
OH--3--WAIS--770 (Ross-ON), WJTB-1040 (Kramer-IL)
TN--17--WXRQ-1460 (Jeter-GA)
WA--1--KLCK-1400 (B & N Hardy-WA)
BC--3--CKIR--870 (N Hardy-WA)
NF--13--CBNA--600, CKYQ--610, CKGA--730, CFYQ-1010 (all-Kazaross-ME)

The following stations have been noted as being off the air or "SILENT". If any IRGans have information as to the current status of any of these stations please notify us via DX MONITOR or drop me a line. The number following each station is the volume of DX MONITOR that station was last reported as being heard by an IRCA member.

580--KIKX-AZ-18	1240--KJML-AZ-21	1430--WBRB-MI-20	1500-KROQ-CA-21
600--WFST-ME-21	1240--WJDQ-MS-**	1440--WRHX-VA-20	1520-KRSS-SD-19
730--KULE-WA-21	1340--CPOM-QU-15	1450--WELY-MN-21	1520-WIDD-TN-18
950--KKIC-ID-22	1370--KMAP-MN-18	1460--WRLB-NJ-**	1530-WRXV-ME-21
1070--CKST-AB-22	1380--WNVF-CT-21	1470--CKPB-QU-16	1540-KZRK-AR-16
1130--WWCM-IN-14	1380--KCKO-WA-19	1490--WZOR-FL-15	1580-WAJE-PA-21
1150--KDEF-NM-21	1380--CHLR-NB-**	1490--WTIQ-MI-14	1590-WASB-NY-18
1230--KESE-AZ-**	1400--KSUN-AZ-20	1490--KRTR-WY-16	1600-WAST-OH-12
1230--KPRD-GA-21	1400--KPMA-WA-22	1490--CKEM-QU-14	
1230--KKER-WA-20	1400--CKRV-QU-**	1500--KIEL-AR-20	

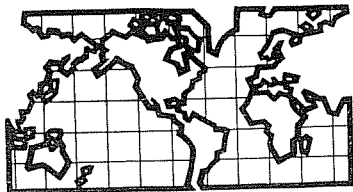
DX WORLDWIDE EAST

EDITOR: Jim Hall, 240 Byron Rd., Pgh., PA 15237

PAN-AMERICAN DX

- 650 DOMINICAN REPUBLIC, Santo Domingo-HIAT-0600 2/3: Full str ID on hour using IS rising tones on elec. organ 2 times. "Transmite la estacion HIAT, Radio Universal desde Sto. Domingo, Republica Dominicana". Xlnt audio, a smooth str, really booming in 10 db o/S-9. Rurs 50 kw.
- 700 COLOMBIA, Cali-4JCK-0610 2/3: Radio Sutatenza w/xlnt prgm of Classical SS guitar mx, alone on channel.
- 726 UNID-0130 1/31: Really strong het, unable to get audio or DF fix, but vaguely Carib...Surinam has moved, right? (Yes, as far as I know they should be on 600 now.JH)
- 730 DOMINICAN REPUBLIC, Santo Domingo-HIZ-0115 1/31: Using slogan "La Nueve". Positive ID from ments of "Republica Dominicana". Official slogan not hrd. Great mx. Alone on chan at this time, late replaced w/EXX.
- 740 VENEZUELA, Maracaibo-YVNC-0515 1/31: Radio Maracaibo, easy to ID, even in heavy traffic, because they really shout out the slogan.
- 750 NICARAGUA, Managua-0610 2/4: R. Sandino playing EE reggae mx. Thought it was Jamaica but waited for ID. I've noticed the Cubans on the Jamaican chans. playing a lot of EE reggae lately.
- 810 BAHAMAS, Freeport-ZNS-3-0515 2/4: Strong o/HJCC/WGY w/audio that sds/lk VOA -you know, designed to cut through 6 Polish jammers. In fact, I thought it was a new VOA outlet, but frequent ments of Nassau. Apparently new audio for this station.
- 815 UNID-Weak het 0525 1/31, used to be an Ecuadoran here.
- 850 COLOMBIA, Bogota-HJKC-0530 2/4: // Sutatenza outlet on 810. Normally Caracol.
- 870 CUBA, Sancti Spiritus-CMCB-0430 1/30: o/u HJSB. Progreso net // 850, etc. This Cuban is rarely hrd here, chan. dominated by HJSB/WWL.
COLOMBIA, Barranquilla-HJSB-0430 1/30: A wild & crazy str. HJSB is worse than CJSP-almost always dominates over WWL.
- 910 CUBA, Camaguey-CMHL-0530 1/31: "Radio Cadena Agramente" ID, on top of chan. Even the Cuban is a welcome change from CHLY!
- 1020 VENEZUELA, Margarita Island-YVRS-0530 2/4: On top o/KDKA w/ "Mundial Margarita" IDs. They have a special time zone here: "La hora Margarita".
- 1030.5 CUBA, La Palma-CMAN-0400 2/4: Radio Gauma net // 1010. Het obliterating WBZ.
- 1050 CUBA, Las Tunas-CMLL-0400 2/4: "Radio Victoria" ID on top over some HJs. AU cx, no WHN or Canadians.
- 1120 DOMINICAN REPUBLIC, Santo Domingo-HICN-0215 2/3: SID "R. Antillas" but slurred together like one word, sung 3 times fast. It sds/lk "Barranquilla" & had me stumped until s/off when they gave call, QTH and slogan, and NA at 0500. Also 0215 2/4 w/great mx, wild and frantic beebop. Hure sigs, easy copy in AU cx. New catch here, Dominican Republic # 21.
- 1180 CUBA, Nueva Gerona-CMOD-0700 2/3: R. Reloj ticktock. Fair sig, no sign of running-dog Imperialists (VOA).
- 1425 UNID-0540 1/31: Strong but....loops HC. Got good copy from HCMB 11/26/83.
- 1530 CUBA, Moron-CMIM-0330 1/30: "R. Moron" IDs under WCKY.
- 1540 BAHAMAS, Freeport-ZNS-1-0305 1/30: Briefly o/a strong Cuban w/ local mx.
CUBA, Sagua la Grande-CMES-0300 1/30: Dominating chan but awful audio, bassy & muddy. "R. Sagua" IDs, EZL-type mx, some SS, some US. New Cuban here, no sign of WPTR/KXEL.

All reports this week are from Gardner Smith, W9ALZ, 1000 Perry St., Washington DC, 20017. Gardner's equipment includes a Toshiba F-11 and an HQ 145-X. Next week I hope to have more reports!!!!!!!, including some from myself, if I can find the time!



DX WORLDWIDE - WEST

Pat Martin - Editor

P.O. Box 843, Seaside, Oregon 97138

PHONE: (503) 861-3185

We have a pretty good turnout this week, even though conditions are not the greatest. Quite a few LAs have been showing up here this past week under domestics on 820, 840, and even 600 KHZ. No IDs though. Well on with the reports:

TRANS-ATLANTIC DX ROUNDUP

765 UNID, Just a weak fading carrier here 0608 1/8, but seemed to loop about 80 degrees. Dakar is at 69 degrees from here. A more common carrier on this channel as at 110 degrees, possibly YSKLD, not logged for some years. (NHP-BC)

PAN-AMERICAN DX ROUNDUP

600 COLOMBIA???, an unid SS Station way under Domestics at 0554 on 2/12, sounded like Colombia was mentioned at one point. Anyone else hear this? (PM-Or)

700 COLOMBIA, Cali-HJCX, Radio Sutatenza-2/3 at 0630 ID "Sutatenza, la red informativa de Colombia" neatly blended in BBC transcription material on Henry VIII w/studeo public info show. This over/under WLW (REW-Hi)

750 NICARAGUA, Managua-HTA750 at 0430 2/3. Sandino promo after wild shouting mx, almost sounded like the stuff Radio Peninsula-825 played when I could hear them. Poor to fair in KXL null. This one's a lot harder to get since KXL raised its night power. (NHP-BC)

820 NICARAGUA, Managua-HTA820 at 0440 2/3 "Este es Ondas de Luz..desde Managua Nicaragua" by woman. Man had mentioned HTA earlier. Signal nil to fair, with hum on channel. WBAP somewhere in the muck. Program was mostly man talking, low key, but hard to read. New (NHP-BC)

UNIDS, 0435 2/3 Sci-fi gun noises then ???torino...minuto" and more gun noises. A TC? hrd again a few minutes later, but really far down in the muck. Big hum on channel most of the evening. By 0630, WBAP was dominant again, but with hum still. Hum abruptly off at 0630. Who signs off then? I wonder? (NHP-BC) (Anyone have any ideas on this? PM)

825 ST. KITTS, Basseterre-0350 12/21. Presumed Radio Paradise w/man talking and choral mx. Poor at best, and often nil. S/off amnt at 0359 (NHP-BC)

830 BELIZE, Belize City-2/4 at 0330 classical piano EE ID "This is Radio Belize. The time is 10 Oclock" With new beverage KIKI no problem, only QRM was XELA and WCCO //910 Country 55 (REW-Hi)

ECUADOR, Guayaquil HCRH2 at 0616 12/29. Light mx, poor to fair, then distinctive "Huancavilca" ID These guys are about the most regular LA on this channel here, but nobody else reports them. (NHP-BC) (Send the signal down this way, I haven't hrd an Ecuador station in years. PM)

MEXICO, Navolato XEVO 0540 12/30 LA Pops w/amnts sounding like "Radio Sistema pagate and ?ereh zah? jingle. Other Radio Sistema spots sounded like "sacape" La Voz de las Estrellas and Mexican call letters and slogans were hrd, including "XEVO R? Pregubio? and XENK La NK, so presumably XEVO on late w/some net, unheard of here. Signals generally fair on top of XELA, with occ. fades up from WCCO (NHP-BC)

860 MEXICO, Mexico City-XEUN Radio Universidad 2/5 full ID 1308 "XEUN, 860 KHz OL; XEUN 89.1 Mhz frecuencia modulada; XEUN 96.1 Mhz FM estereo XEYU 960 KHz banda internacional de 31 metros, onda corta. Radio Universidad Nacional Autonoma de Mexico, en Mexico D.F. capital de la Republica" Avant garde mx Dominant. (REW-Hi)

880 CUBA, Pinar del Rio, Radio Progreso CHAB 2/3 0815 PSA "el ahorro de energia es el asunto de todos los companeros." Cuban mx 0900 more IDs, Dominant. (REW-Hi)

900 CUBA, Cacoicum-CHKB Radio Progreso 2/2 0600 RP ID dominant over XEW and CJVI (REW-Hi)

910 BELIZE, Punta Gorda 2/4 0330-0430 // 830 o/u KOXR and KNEW. Have others reported this? (REW-Hi) (Not that I know of. PM)

940 CUBA, Holguin Radio Reloj CMKD 2/2 0500 usual alternate male/female nxcasters, second pips. Thru KFRE, KDEO disappears on new Bev. (REW-Hi)

1015 PANAMA, Radio Nacional, Bocas del Toro 2/2 0530-0600 Tropical mx "Panama en el Mar de las Antillas" t/cs, many IDs. Country #54 (REW-Hi)

1060 MEXICO, Mexico City-XEEP Radio Educacion 2/2 0515 ID "en Radio Educacion", breakdown 0517 appeared to be slightly off frequency as low rumble ceased when it went off leaving KYW. (REW-Hi)

- 1210 COLOMBIA, Cucuta Radio El Sol HJTL 2/4 0730 brief ID "en Radio El Sol HJTL" but not enough for report. Tropical mx o/u WCAU, no KZ00 (REW-Hi)
- 1425 COLOMBIA, still UNID 2/2 0430 mixed grab bag of LA styles including Cumbias, Mexican, romantic ballads, off/w Colombian anthem 0459 (REW-Hi) (Any help on this? PM)
- 1500 MEXICO, Mexico Radio A-I 2/3 0700 tropical mx, PSA on obligatory school attendance "Radio A-I" I remember when this was XERH with two excellent SW transmitters 11880 and 15110. (REW-Hi)

TRANS-PACIFIC DX ROUNDUP

- 531 AUSTRALIA, West Kempsey-2MC-1/25 1500 Vy weak w/6 pips and familiar "CQ" nx into. These sounds cut the crud, everything else was unreadable, on 1/25. (NHP-BC)
- 720 U.S.S.R., Yuzhno-Sakhalinsk 1/7 at 1100 w/Radio Moscow" bells topping WGN very nicely. Haven't seen this reported in a while. Bet they push that ½ megawatt to Japan! (RHM-Wa)
- 760 HAWAII, Honolulu-KGU-at 1120 on 1/14, off briefly (DPK-Hi)
- 790 HAWAII, Kealakekua-KKON at 1016 on 12/17, noted w/carrier (DPK-Hi)
- 940 HAWAII, Waipahu-KDEO at 0631, noted with weak signal same level as KMVI-550. Per news stories, vandels clipped its towers supporting guy wires, causing it to crash into a neighbors yard. Should be back to normal soon. Noted on 1/3 (DPK-Hi)
- 1026 t AUSTRALIA, MacKay-4MK-2/5 at 110 w/news briefly rising out of nowhere, YL reporter ID "...News Canberra" Don't think it to be NZ, could have been 3DB but tape to 4MK should prove one way or another. Guess I'm hundry! (RHM-Wa) (Likely 4MK, as 3DB is fairly rare. Has only been heard here a few times. 4MK is in almost every morning here, especially since they are directional this way and their towers are right on the coast.PM)
- 1110 HAWAII, Kihei-KHEI noted off. the air at 1128 1/14 (DPK-Hi)
- 1242 t JAPAN, Tokyo at 1322 JJ talk by man 1/10. (DPK-Hi)
- 1566 SOUTH KOREA, Jeju-HLAZ, 2/2 1620 sermon in GC/slight US accent. (REW-Hi)
- 1620 AUSTRALIA, Hobart-7RPH-all alone w/man reading story of some kind. ID at 1159, giving wx for Tasmania on 2/9. No sign of 4RPH. (PM-Or)
- 1629 AUSTRALIA, Sydney-2RPH-also fair and o/growl (3RPH off freq.?) at 1103 w/nx, 2/9. (PM-Or)
- UNID, 0915 1/28 carrier here w/erratic audio traces, vy fadey and static prone. Traces were woman talking, so likely one of the RPH stations. I'll pass out if I hear an ID! Presumed NZ on 1476 was fadey but often quite good at this time and there was a carrier on 1692. (NHP-BC)
- 1692 t AUSTRALIA, Kensington-VL2UV, presumed the station w/low key ancr talking in passing at 1030 on 2/9. (PM-Or)

THANKS TO THESE REPORTERS:

- RHM-Wa Roy H. Millar-13714 30th Avenue, N.W.-Marysville, Wa. 98270
FRG7, Sanserino Loop, DAK3 SM-1
- DPK-Hi Dale Park-2253 Kanealii Avenue-Honolulu, Hawaii 96813-1345
Sony ICF-6700W
- NHP-BC Nick Hall-Patch-1538 Amphion Street-Victoria, B.C. V8R 4Z6
Transmogriified HRO, 3 foot Box Loop
- REW-Hi Richard E. Wood-Post Office Box 5074-Hilo, Hawaii 96720
R-1000, two 2200 term. beverages
- PM-Or Yer Editor
SP-600JX, 2 1500 foot East Beverages, 200 foot Terminated NE LW.



LR1 - RADIO EL MUNDO
DIFUSORA BAIRES S. A.

1580 WHEX

TALKRADIO

WTKN 970AM

Pittsburgh's only 24-Hour
TALK STATION

Important Loop, Tuner, & Phaser Design Considerations
(Q Demystified) - a DX Engineering discussion & program

Mark Connelly -- WALION DX Labs -- 29 JAN 1985

Often technical articles in the DX press mention a parameter known as "Q"; seldom is there any mathematical description of what this quantity is - the DXer reading the article usually does get the idea that Q has something to do with selectivity, be it of a receiver, a loop antenna, or of a preselector / tuner used on random length wires. Q is also mentioned with regards to coils: a coil with higher Q allows greater selectivity and gain when used in a tuned circuit than does a coil with low Q. "Q spoiling" is also mentioned, chiefly with regards to tuned circuits employed in phasing systems. This may confuse some - (why, after all, should we want to spoil Q? .. doesn't that reduce gain & selectivity?) Hopefully, when you finish this article and get a chance to run the BASIC program contained therein, some of these questions will be answered.

What is Q, anyway?

The letter Q, derived from Quality Factor, is applied to a parameter which describes the efficiency of a tuned LC (inductor / capacitor) tank circuit, an assemblage of several such circuits (as in a filter), or a single inductive element to be used in a tuned circuit. Capacitors use a similar loss-describing parameter (D, Dissipation Factor) but, as capacitors are generally several orders of magnitude less lossy than inductors in tank circuits used at frequencies below 30 MHz, their loss contributions won't be dealt with in this article.

Q of a single inductor

Q of a single inductor is calculated by $Q = (F * L) / (R * 159.15495)$, where F is in kHz, L is in microhenries (uH), and R is in ohms. Conversely, effective resistance of an inductor may be calculated by $R = (F * L) / (Q * 159.15495)$. A J. W. Miller # 9250-224 (220 uH molded inductor), with a listed Q of 55 at 790 kHz would therefore have an effective series resistance of about 20 ohms. Coils used for loop antennae generally have a considerably higher Q than the small molded inductors used in tuner bandswitches.

Q of a parallel-tuned LC circuit

The need for the tank Q parameter arises from the fact that components used in tuned circuits are not purely reactive (inductive or capacitive) - resistance (both series & parallel) may be present. Furthermore, loads imposed upon the tuned circuit may also possess resistive impedance characteristics. The greater the amount of loss caused by resistance, the lower the Q of the tank in question will be; tuning sharpness will decrease.

Resonance in an LC tuned circuit occurs at $F = (159154.95) / \sqrt{(L*C)}$ where F is in kHz, L is in microhenries (uH), and C is in picofarads (pF). A parallel-tuned LC circuit, such as a loop antenna tuned with a variable capacitor, if comprised of perfect components, should have infinite gain at the one frequency to which it is tuned and zero signal present at all other frequencies.

Of course, no such loop exists. Gain which is finite and bandwidth which is not infinitesimally small describe real-life conditions. Many factors contribute to resistive losses, but the two major contributors (at frequencies below 30 MHz) are effective series resistance of the inductive element and effective parallel resistance of the load. Note the use of the word "effective".

Effective series resistance of the coil in question is derived from actual DC resistance of the winding and from core losses - the latter part of this effective resistance may be somewhat frequency-dependent, but, for the purposes of this introductory article, we'll consider it to be constant over the frequency range of interest. Effective series resistance of a coil can be calculated if the coil Q at a frequency near that of operation is specified (as in the case of the previously-mentioned 220 uH Miller miniature molded inductor).

Effective parallel load resistance is the actual load resistance in the case of a high-impedance load such as a FET amp. input directly fed from the "tank high" and "tank low" (e. g. ground) points or a multiplied-up value of the load's resistance if the load is loosely-coupled to the tank by means of a tap on the tank coil, a link coil near the tank coil, a small-value coupling capacitor, or a large-value coupling inductor.

Q is a selectivity measurement which is defined as the ratio of the resonant frequency of a tuned circuit to the 3 dB bandwidth of that circuit. The RLO (BASIC) program takes as operator input the effective shunt (parallel) resistance contributed by the load, the effective series resistance of the coil, the value of the inductor (in uH), and either the frequency or the value of the capacitor. Output generated includes a swept-frequency table giving the magnitude of impedance in ohms (to which signal voltage is proportional), ratio of complex to resistive impedance, required tuning capacitance at each frequency given, and phase shift from the zero-degree reference phase at resonance. Other output information includes 3 dB bandwidth, phase shift caused by a 5 pF shift in tuning capacitance from resonance (an important parameter for phasing unit design), resonant frequency shift caused by a 5 pF shift from resonance, and, of course, the Q for the circuit whose characteristics were inputted.

Output is in a write-to-diskfile format; the program may be modified for direct transferral to paper. Three sample output files are reproduced after the program listing. In each case, a very-high- Q inductance (such as would be used on a loop antenna) of 220 uH is used. The first file uses a 330K load impedance, such as one would have at the input of a FET "front end card": the tuning is very sharp and phase angle changes very rapidly with any shift in the tuning capacitance. The first file demonstrates a desirable situation for a loop antenna or wire tuner whose output is connected directly to a receiver or to a broadband amplifier ahead of a receiver; conversely, this case is undesirable for a tuner used in a phasing system because the change in phase angle per unit change in capacitance is so great that adjustment required to produce a null is exceedingly touchy and narrow-banded - nulling attempts are virtually useless. On the other hand, the only detriment to such high Q in a standalone active-loop is the possibility of the FET amp. going into oscillation. Reducing the gate-to-ground resistor to about 100K usually provides just enough Q -spoiling to stop undesired regeneration without wreaking havoc with gain & selectivity. The second and third files demonstrate (at 600 kHz and 1200 kHz respectively) the characteristics of the tank circuit of the first output file when loaded by a 15K Q -spoiling resistor. 15K has been established as a value which works well in phasing applications: it allows enough Q -spoiling to make null achievement manageable and null bandwidth sufficient without reducing signal level excessively and without reducing phase-shift-per-capacitance-shift to a point that not enough shift for nulls can be produced with modest variations in tuning capacitance.

The program and sample outputs which follow should help the loop, tuner, and phaser designer to simulate many tuned circuits without the need to build them first and without the need to make hours of exhaustive measurements.

(program listing) (DEC PDP-11 BASIC-PLUS-2 $\sqrt{2-2-\emptyset\emptyset}$)

```

1 DIM G(10),FX(10)
2 STARS="*****"
5 P=3.1415927\K=100/P
6 B=(2^.5)/2\EL=E-.0001\EH=E+.0001
7 PRINT"PROGRAM TITLE = RLC\B2S"\PRINT"Parallel R-L-C Tank Analyser"\PRINT
8 FL=0\FH=0
9 INPUT "DATA OUTPUT FILE TITLE";SS\OPEN SS FOR OUTPUT AS FILE #1%
10 PRINT #1,STARS\PRINT #1\PRINT #1," This is file: ";SS\PRINT #1
14 INPUT "(min. = 25) shunt R, ohms";R1
15 IF R1<25 THEN PRINT"illegal value"\GO TO 14
18 INPUT "(max. = 500) series R of inductor, ohms";R2
19 IF R2>500 THEN PRINT"illegal value"\GO TO 18
20 INPUT "(min. = .1 / max. = 50000) L, uH";L
21 IF L>50000 OR L<.1 THEN PRINT"illegal value"\GO TO 20
22 ANSWER=0\INPUT "Resonant freq. in kHz if known (else enter 0)";ANSWER
23 IF ANSWER<>0 THEN C=25330/(((ANSWER/1000)^2)*L)\GO TO 25
24 INPUT "(min. = 10 / max. = 1000) C, pF";C
25 IF C<10 OR C>1000 THEN PRINT"illegal value"\GO TO 22
26 FOR I=1 TO 3
27 IF I=1 THEN C=C-5
28 IF I=2 THEN C=C+10\REM ORIGINAL C + 5
29 IF I=3 THEN C=C-5 \REM ORIGINAL C
32 LA=L*1E-6 \ CA= C*1E-12
33 FR=1/((2000*P)*((LA*CA)^.5))
35 IF I=1 THEN XFH=FR
36 IF I=2 THEN XFL=FR
37 NEXT I
38 PRINT #1," shunt R = ";R1;" ohms / coil R = ";R2;" ohms"
39 PRINT #1," L = ";L;" uH / C = ";C;" pF"
40 PRINT #1," Resonant Frequency = ";FR;" kHz"
41 F=FR\GOSUB 900\R=A
42 F=XFL\GOSUB 600\XBL=B
44 F=XFH\GOSUB 600\XBH=B
50 SB=0\S=0
100 FOR N=1 TO 10
105 IF SB=0 THEN F=FR*(1-(((10-N)^2)/101.25))
110 IF SB=2 THEN F=FR*(((N-1)^2)/20.25)+1)
120 GOSUB 600 \ REM MATH
160 G(N)=A/R\FX(N)=F
170 IF N=1 AND SB=2 THEN 300
180 IF S<>0 THEN 210
185 FOS=" #####.##   #####.##   #.###   #####.#   #####.###"
190 PRINT #1
192 PRINT #1,"      F, kHz      MAG.%, ohms      MAG Z/R      CE,pF      PHASE, DEG"
200 PRINT #1," _____"
210 S=1
250 PRINT #1% USING FOS,F,A,A/R,CE,B
300 NEXT N
301 SB=SB+1
302 IF SB=1 THEN GOSUB 700\SB=SB+1
303 IF SB=2 THEN 100
304 IF SB=3 THEN GOSUB 800\GO TO 1000
500 REM >>>>      Parallel Impedance SUBROUTINE      <<<<<
510 US=(U1*U2)-(V1*V2)
520 VS=(V1*U2)+(V2*U1)
530 UU=U1+U2\VV=V1+V2
540 DE=(UU^2)+(VV^2)
550 IF DE=0 THEN DE=1E-9
560 U3=((US*UU)+(VS*VV))/DE
570 V3=((VS*UU)-(US*VV))/DE
580 RETURN
600 REM >>>>      Math SUBROUTINE      <<<<<
610 W=F*2000*P
615 U1=R1\V1=0
620 U2=0.0001\V2=-1/(W*CA)
625 GOSUB 500

```

```

630 U1=U3\|V1=V3
635 U2=R2\|V2=I*LA
638 GOSUB 500
640 IF U3=0 THEN U3=.0001\ REM PREVENT DIVIDE-BY-ZERO ERROR
650 A=((U3^2)+(V3^2))^.5\ REM MAGNITUDE OF IMPEDANCE
670 B=(ATN(V3/U3))*K\ REM PHASE ANGLE IN DEGREES
675 CE=25330/(((F/1000)^2)*L)\REM EQUIV. RESONATING C IN PF
690 RETURN
700 REM >>>>          -3 dB Low Side Point SUBROUTINE <<<<<
710 FOR M=1 TO 9
715 IF G(1)>EH THEN GL=1\GO TO 797 ELSE GL=0
717 IF G(M)>EL AND G(M)<EH THEN FL=FX(M)\GO TO 795
720 IF G(M)<E AND G(M+1)>E THEN F1=FX(M)\F2=FX(M+1)\GO TO 730
725 NEXT M
730 F=(F1+F2)/2
740 GOSUB 600
750 IF A/R>EH THEN F2=F\GO TO 730
760 IF A/R<EL THEN F1=F\GO TO 730
770 FL=F
795 BL=B
797 RETURN
800 REM >>>>          -3 dB High Side Point SUBROUTINE <<<<<
810 FOR M=1 TO 9
815 IF G(10)>EH THEN GH=1\GO TO 897 ELSE GH=0
817 IF G(M)>EL AND G(M)<EH THEN FH=FX(M)\GO TO 895
820 IF G(M)>E AND G(M+1)<E THEN F1=FX(M)\F2=FX(M+1)\GO TO 830
825 NEXT M
830 F=(F1+F2)/2
840 GOSUB 600
850 IF A/R>EH THEN F1=F\GO TO 830
860 IF A/R<EL THEN F2=F\GO TO 830
870 FH=F
895 BH=B
897 RETURN
900 REM >>>>          Peakfind SUBROUTINE <<<<<
910 GOSUB 600
920 AL=A
930 F=F-.01\GOSUB 600\REM TEST FOR INCREASING MAG. Z @ DECREASING F
940 IF A<AL THEN 990\REM NO SHIFT IN PEAK
945 AL=A
950 F=F-10\GOSUB 600\REM 10 kHz DOWNWARD INCREMENT
955 IF A>AL THEN AL=A\GO TO 950
960 F=F+.001\GOSUB 600\REM 'HOME IN' ON SOLUTION
965 IF A>AL THEN AL=A\GO TO 960
990 RETURN
999 REM ***** PROGRAM OUTPUT CONCLUSION *****
1000 BW=FH-FL\PRINT #1
1002 TXT$=" Average Phase Shift (+/- 5 pF from resonance) = "
1003 PRINT #1,TXT$;(XBL-XBH)/2;" deg"
1004 TXT$=" Avg.Res.Freq. Shift (+/- 5 pF from resonance) = "
1005 PRINT #1,TXT$;(XFH-XFL)/2;" kHz"
1006 PRINT #1
1007 IF GL=1 OR GH=1 THEN 1009
1008 PRINT #1,"          3 dB Bandwidth = ";BW;" kHz"
1009 IF GL=1 THEN 1011
1010 PRINT #1,"          Low Side -3 dB point = ";FL;" kHz";" Phase = ";BL;" deg"
1011 IF GH=1 THEN 1013
1012 PRINT #1,"          High Side -3 dB point = ";FH;" kHz";" Phase = ";BH;" deg"
1013 IF GL=1 OR GH=1 THEN 1020
1014 PRINT #1,"          Tank Circuit Q = ";FR/BW
1020 S=0\PRINT #1\PRINT #1,STAR$CLOSE #1%
1025 PRINT INPUT"(1=YES) MORE CALCULATIONS";S
1030 IF S=1 THEN PRINT\PRINT\PRINT\GO TO 7
1050 END

```

(end of program listing; output files follow)

This is file: 06220330K.TXT

shunt R = 330000 ohms / coil R = 1 ohms
 L = 220 uH / C = 319.823 pF
 Resonant Frequency = 600.003 kHz

F, kHz	MAG.Z, ohms	MAG Z/R	CE,pF	PHASE, DEG
120.00	172.79	0.001	7995.5	89.610
220.74	352.90	0.002	2362.9	89.722
309.63	583.35	0.003	1200.9	89.716
386.67	914.13	0.004	770.1	89.658
451.85	1442.92	0.006	563.9	89.538
505.19	2398.93	0.011	451.1	89.302
546.67	4447.34	0.020	385.3	88.781
576.30	10274.10	0.046	346.7	87.287
594.08	41058.80	0.184	326.2	79.321
600.00	223006.00	1.000	319.8	-0.025
629.63	8593.74	0.039	290.4	-87.857
718.52	2287.99	0.010	223.0	-89.470
866.67	1102.70	0.005	153.3	-89.764
1074.08	673.47	0.003	99.8	-89.866
1340.75	464.11	0.002	64.0	-89.912
1666.68	343.04	0.002	41.4	-89.937
2051.86	265.21	0.001	27.3	-89.952
2496.31	211.57	0.001	18.5	-89.962
3000.02	172.79	0.001	12.8	-89.969

Average Phase Shift (+/- 5 pF from resonance) = 76.6183 deg
 Avg.Res.Freq. Shift (+/- 5 pF from resonance) = 4.6908 kHz

3 dB Bandwidth = 2.23169 kHz
 Low Side -3 dB point = 598.889 kHz Phase = 44.9352 deg
 High Side -3 dB point = 601.121 kHz Phase = -45.0722 deg
 Tank Circuit Q = 268.856

This is file: 0622015K.TXT

shunt R = 15000 ohms / coil R = 1 ohms
 L = 220 uH / C = 319.823 pF
 Resonant Frequency = 600.003 kHz

F, kHz	MAG.Z, ohms	MAG Z/R	CE,pF	PHASE, DEG
120.00	172.77	0.012	7995.5	88.980
220.74	352.77	0.024	2362.9	88.435
309.63	582.84	0.040	1200.9	87.591
386.67	912.28	0.062	770.1	86.330
451.85	1435.82	0.098	563.9	84.295
505.19	2367.16	0.161	451.1	80.638
546.67	4255.63	0.290	385.3	73.073
576.30	8418.71	0.573	346.7	54.934
594.08	13844.60	0.943	326.2	19.351
600.00	14679.80	1.000	319.8	-0.002
629.63	7423.97	0.506	290.4	-59.686
718.52	2261.13	0.154	223.0	-81.197
866.67	1099.67	0.075	153.3	-85.752
1074.08	672.79	0.046	99.8	-87.412
1340.75	463.88	0.032	64.0	-88.220
1666.68	342.95	0.023	41.4	-88.686
2051.86	265.16	0.018	27.3	-88.985
2496.31	211.55	0.014	18.5	-89.191
3000.02	172.78	0.012	12.8	-89.339

Average Phase Shift (+/- 5 pF from resonance) = 15.4684 deg
 Avg.Res.Freq. Shift (+/- 5 pF from resonance) = 4.6908 kHz
 3 dB Bandwidth = 33.8992 kHz
 Low Side -3 dB point = 583.314 kHz Phase = 44.9282 deg
 High Side -3 dB point = 617.213 kHz Phase = -45.068 deg
 Tank Circuit Q = 17.6996

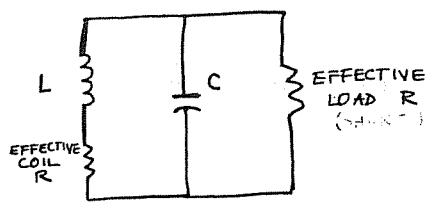
This is file: 1222015K.TXT

shunt R = 15000 ohms / coil R = 1 ohms
 L = 220 uH / C = 79.9558 pF
 Resonant Frequency = 1200.01 kHz

F, kHz	MAG.Z, ohms	MAG Z/R	CE,pF	PHASE, DEG
240.00	345.46	0.023	1998.9	88.500
441.48	704.95	0.047	590.7	87.198
619.26	1163.06	0.078	300.2	85.462
773.34	1814.51	0.122	192.5	82.960
903.71	2832.97	0.190	141.0	79.008
1010.38	4566.82	0.306	112.8	72.134
1093.34	7638.92	0.512	96.3	59.162
1152.60	12073.40	0.809	86.7	35.938
1188.16	14684.90	0.984	81.6	10.121
1200.01	14918.70	1.000	80.0	-0.001
1259.27	11273.00	0.756	72.6	-40.952
1437.05	4375.59	0.293	55.8	-72.973
1733.34	2181.83	0.146	38.3	-81.614
2140.16	1341.53	0.090	25.0	-84.860
2681.50	926.44	0.062	16.0	-86.455
3333.35	685.35	0.046	10.4	-87.379
4103.73	530.08	0.036	6.8	-87.974
4992.62	422.97	0.028	4.6	-88.384
6000.04	345.48	0.023	3.2	-88.680

Average Phase Shift (+/- 5 pF from resonance) = 29.3848 deg
 Avg.Res.Freq. Shift (+/- 5 pF from resonance) = 37.613 kHz
 3 dB Bandwidth = 133.418 kHz
 Low Side -3 dB point = 1135.18 kHz Phase = 44.9662 deg
 High Side -3 dB point = 1268.6 kHz Phase = -45.0271 deg
 Tank Circuit Q = 8.99434

CIRCUIT MODEL



This is file AMIDON.DAT

M CONNELLY
30 WILLIAM RD
BILLERICA MA 01866

Amidon Toroidal Core Data
=====

FT-114-72 u=2000 AL = 1270 mH / 1000T \$1.70
(use for 100 - 500 kHz inductors)

L (uH)	Turns
10000	89
4700	60
2200	41
1000	28
470	19
220	13

T-106-1 u=20 AL = 325 uH / 100T \$1.65
(use for 475 - 1100 kHz inductors)

L (uH)	Turns
470	120
220	82
100	55
47	38

T-106-2 u=10 AL = 135 uH / 100T \$1.65
(use for 1100 - 3500 kHz inductors)

L (uH)	Turns
100	86
47	59
22	40
10	27

T-50-6 u=8 AL = 40 uH / 100T \$0.60
(use for 3000 - 7500 kHz inductors)

L (uH)	Turns
22	74
10	50
4.7	34
2.2	23

FT-82-77 u=2000 AL = 1060 mH / 1000T \$0.90
(use for 100 - 2500 kHz transformers)

FT-82-43 u=850 AL = 557 mH / 1000T \$0.90
(use for 2000 - 7500 kHz transformers)

Inductances were calculated by the following program:

```

5 PRINT"COIL.B2S"
10 PRINT\INPUT"(1=IRON, 2=FERRITE) CORE MATERIAL";CORE
20 IF CORE<>1 AND CORE<>2 THEN 10
30 PRINT\INPUT"AL";AL
40 PRINT\INPUT"INDUCTANCE, UH";L\PRINT
50 IF CORE=1 THEN PRINT"IRON CORE"\T=100*((L/AL)^.5)\GO TO 100
60 IF CORE=2 THEN PRINT "FERRITE CORE"\T=1000*((L/(1000*AL))^.5)
100 PRINT "AL = ";AL;" * L = ";L;" UH * # TURNS = ";T
110 Q=0\PRINT\INPUT"(SAME CORE, NEW L) (1=YES) RUN AGAIN";Q
120 IF Q=1 THEN 40
200 END

```

THE INTERNATIONAL RADIO CLUB OF AMERICA

The IRCA is a non-profit organization devoted to the hobby of listening to distant stations on the AM broadcast band (535 to 1635 kHz). DX Monitor, the official publication of the IRCA, is printed 34 times per year: weekly from October to March, twice a month in September and April, and monthly from May to August. DX Monitor contains members' loggings, information and articles on radio stations, receiver reviews, technical articles and construction projects, tips on DXing, news of members' DXing activities, and other material to help members enjoy their hobby. IRCA also publishes various books on medium wave DXing and holds an annual convention and other activities.

CLUB ADDRESSES AND OFFICERS

President: Phil Bytheway, 9705 Mary Avenue N.W., Seattle, WA 98117. Phone: 206-784-5145.
Secretary-Treasurer: Rich Segalas, P. O. Box 26254, San Francisco, CA 94126.
Editor-in-Chief: Bruce Portzer, 6546 19th Avenue N.E., Seattle, WA 98115. Phone: 206-522-2521.
Board of Directors: Ernest Cooper, Nancy Hardy, Ric Heald, Neil Kazaroos, Bruce Portzer, Peter Taylor, and Niel Wolfish.

MEMBERSHIP DUES

U.S.: \$20.00 per year; Canada and Mexico (one issue mailed each week): \$26; (two issues every two weeks): \$30; Overseas: surface mail, \$21; Air Mail to Central America, Colombia, Venezuela, and the Caribbean, \$27; Air Mail to Latin America, Western Europe, North Africa, and the Middle East, \$30; rest of the world Air Mail, \$34. Special trial membership \$7.50 to U.S., Canada, and Mexico only, includes 10 issues of DX Monitor and a New Member Packet. Make checks and money orders payable to IRCA and send dues to: **IRCA, P. O. Box 26254, San Francisco, CA 94126.** Persons living outside the U.S. should make dues payments by International Money Order in U.S. funds. Sample copies of DX Monitor cost 50¢ each or three International Reply Coupons.

Opinions expressed in DX Monitor are those of the original contributor and not necessarily those of the IRCA, its officers, editors, or publishing committee. Unless otherwise noted, permission is given to re-publish non-copyrighted material provided credit is given to IRCA and the original contributor.

Irca
po box 21074
Seattle, wa 98111

FIRST CLASS MAIL
U. S. POSTAGE
PAID
Seattle, WA
Permit No. 601

first class

D. A. NYHOLM
2071 CEDAR STREET
SAN CARLOS CA
94070