



DX Monitor

Devoted Exclusively to
Broadcast Band DXing

April 13, 1985

Volume 22, Number 29

Issue Number 718

In This Issue

Western DX Forum	2	Central DX Roundup	13
Convention News	5	Eastern DX Roundup	14
Eastern DX Forum	6	DX Worldwide West	16
Solar Cycle Modelling	7	IRCA Want Ads	19
Theories, Extraordinary Waves, Z-type Waves, ad nauseum	8	DX Worldwide East	20
Western DX Roundup	9	Top End	22
		KFAT's Back!	22

Flash Tips

Roy Millar recently received a letter from CBC Regina saying "as of June 1984, CBKF1 (690 kHz) has been operating on a 24 hour basis. From 0000 to 0600 CST, we broadcast CBF FM direct from Montreal. Local programming begins at 0600." This means, of course, that any western reception of CBF since June 1984 was, in all likelihood, not CBF, but CBKF1. Even if a CBF ID was heard. I would assume CBKF2 on 860 kHz also relays CBF late at night, although a "CBF" ID on 560 would be less likely to be mistaken for something it isn't.....in other news, Rob Harrington says KFLJ-1380's tower blew down in a recent windstorm. They're currently operating with a longwire strung between a tree and what's left of the tower.

What's Happening?

As most of you probably figured out, last DXM was the April Fool's Issue and some of the material was fitting to the occasion. Our thanks go out to Gardner Smith for the movie ad, Nick Hall-Patch for the receiver review, and John Oldfield for Kanuck Kapers. Not to mention the last two items on page one, which were concocted by a certain person at club headquarters. April Fool's day has passed for another year, but its spirit lives on. You may think it's safe to read DX Monitor again, but beware of a couple of items in this week's DXM.....

ENJOYING RADIO

We're thrilled to announce a new publication for people who like to tinker with radios. It's called "Enjoying Radio" and it's aimed at those of us who like to tinker around with receiving equipment (and to some extent transmitting equipment). It will be published 12 times per year and each issue will have 20 pages of articles on receiver, transmitters, antennas, etc. in the form of reviews, commentary, construction/modification articles, etc. Publisher is Dave Newkirk. Subscriptions are \$19.50 per year in the U.S. (add 7.9% if you live in Washington, and \$3 if you live in Canada), samples are \$1.75 to North America. Write Dave for costs to other parts of the world. Address: Box 85024, Seattle, WA 98145.

WRITING ARTICLES FOR DXM

Recently, some members have either asked about the correct format for typing DXM articles, or submitted something that wasn't quite the right format. So, it would seem timely to briefly mention how to go about it. First, a new or relatively dark ribbon is needed. Carbon film ribbons (like I'm using) are best, but good quality cloth ribbons (like Nancy Hardy uses) are quite acceptable. We prefer you use 8 $\frac{1}{2}$ x14 paper, but if it's a short article, 8 $\frac{1}{2}$ x11 is okay. Keep your articles less than 8" wide (i.e. a $\frac{1}{4}$ " margin on each side if using 8 $\frac{1}{2}$ " wide paper). If using 8 $\frac{1}{2}$ x14 paper, try to avoid using less than 12 $\frac{1}{2}$ " or more than 13" per sheet. Diagrams, graphs, etc should be in ink, if hand drawn, or have good contrast, if copied from another source. We seem to have a perpetual backlog of about 50 pages of stuff, so it sometimes takes a while for some material to be published. However, articles are always welcome and encouraged.



Western DX Forum

★ ★ ★ ★

IRCA—Serving the Broadcast Band DX'er Since 1964

Editor: Ric Heald, 1632 J St., #3, Eureka, CA 95501

DEADLINES - 16 & 30 APR, 07 MAY, 04 JUN, 02 JUL

DAN d. RECEIVER, 180 HAMMARLUND WAY, HARMONY, CA 99999

Well, I've moved again, out of the backwoods right down to the sea - I took Randy Seaver's advice in the 3/32/84 DX Monitor and built a house on a cliff overlooking the ocean with an open horizon to the northwest and south-east. I wish I could understand Seaver's propagation stuff - he sure has a high fog factor in his articles and forums.

A little more about myself. I'm married to a very understanding lady named Cathy, and we have three transmogrified children, Amy May, Effie May, Tommy Vernon and a great dog, Shortie, who loves Radio Moscow. I don't work any longer - just collect income that my DX computer programs brought in last year, along with my 1978 investment in microchip futures.

Woe, woe, woe. Last year I told about my great DX software and how I had automated all of my DX'ing, and heard so many stations, sent so many reports, received so many veries, etc. Well, I lost my database when we had a lightning strike on the DX shack - all of the disks were wiped out, the computer suffered a zapped CPU, and the receivers and veries were burned to a crisp.

When we moved here, we bought a new computer (another JCN, but the AT model) and my wife took a Computer Literacy class at the local JC. She got so hooked on computing that she started writing automated romance novels - you know, the ones with a set formula with only the names and settings different - and now I can't get near that damn thing (the computer, that is) because it does all of her writing at night. On the bright side, it puts bread on the table and a certain spark to our love life because she doesn't believe in writing what she hasn't experienced. On the down side, I'm way too exhausted to DX much after 9 PM. DX is nice, but Candy is dandy, I always say.

If any of you are in the area, please drop by - turn off Highway 1 at Harmony Village Road and go west, we're the last house on the left, the one mounted on a turntable with the wedge-shaped roof. You're almost there when you cross the railroad tracks. I have strung up two longwire antennas out my third story window with a remote control train on a 3,000-foot radius to change the antenna direction when I want to. This gives me tremendous phasing possibilities, not to mention a side income for the kids during the summer running the train and the sky-ride.

See you again next year at this time. Best.

JIM HILLIER, 1502 E. HEDGEWOOD, ANAHEIM, CA 92805 (Cont. from last issue)

I also nabbed KTOX 730 a couple of times, MM 04 March brought KBND 1110 with KRLA off earlier than usual, much wanted KLLV 1560 has been heard three times now, the other was XEF 1420. As for veries, five more have trickled in recently. Follow-ups helped on a few. A v/l and card from KHQ 590 just before the call change for a year-old report. They also sent a history profile of the station. A short v/l from KIKO 1340. Don Kaskey says this station hasn't been reported to DXM in four years. The other three, KHQH 1480 on a f/up sent a v/l and stickers, and KBAD 740 on a f/up sent a friendly v/l, map and sticker. CE said the first report was still in the back of the PD's desk.

KEZY 1190 is now 10kw directional to the northwest daytime. CE says the whole transmitter site will be moved when they start on the 2500-watt night power and pattern. It'll be a four-tower array, not the current five. KEZY is also Harris stereo now.

SCADS meet on 16 February was fun, but turnout was small. I gave a DX quiz to interested BCB DX'ers, sort of a trivial pursuit of DX'ing, focusing on the west and SoCal. Steve Mittman won the prize, a 1942 coverage map/promo item from KGER when the raised the power from 1 to 5 kw. Matthew Shuggart came in second, Paul Swearingen third and a SW DX'er took fourth. They won some extra stickers I had come across. It was nice to see Grant Manning and the Radio West gang also, but Jom Fedor wasn't there.

To Les Carpenter of El Toro, per your logging of WREN 1250 in DXM 16 February, their new address per my verie from last summer is: 1001 Fillmore Topeka, KS 66604. Give me a call sometime.

Well, IRCA, here's to another great year of serving the BCB hobby. You're my favorite club and the friendliest. I hope to see forums from a lot of my friends through the pages of DXM. 'Til next time, 73 and best of DX.

GENE MARTIN, 3303 E. EVANS AVE., DENVER, CO 80210

I suspect there are a good many unregenerate old-timers out there, like me, who have eschewed the new state-of-the-art radio receivers and carry on with the tried and true communications receivers that were state-of-the-art 20 or 30 years ago.

These remarks are inspired by my recent experience of purchasing five new tubes for my HQ180 for \$47.43, and that sum was reduced 40 percent from the listed total for the five. Can you imagine finding the 6C4 listed for \$17.45 before the discount? The 6BA6 for \$14.10 and the 6BE6 for \$14.20? (Those tubes sure bring back memories. . . boy how I still wish I had the Hammarlund in spite of the expensive tubes-RtH.)

This experience made me realize that I must have a treasure-trove of old radio tubes kicking around the office, perhaps 40 or 50 retired from service years ago, yet none of them truly bad tubes. Over the years with whatever radio I was using at the time, I was always replacing tubes seeking better performance, and most of the time, the replacements turned out to be no better than the older tubes. Yet I never throw away the old ones, but kept them on hand and I've got a slew of them now. For example, I have a Philco 80 bought in Cincinnati, still in the carton, never used, brand new, and I think I paid 39 cents for it. My years in Cincinnati were 1944-50. I got it figuring I might use it someday inasmuch as just about all the radios of that era used this 80 rectifier. I wonder how much an 80 would cost today if one could be located. In my next report, I'll try to list all the tubes I have which I don't need and are most likely still serviceable. I always made it a practice to throw away sure-enough bad tubes, such as the one 6BA6 rejected in the recent testing. By the way, the old HQ180 is operating in splendid form now with its \$47 worth of new tubes, and I've given up my thought that it needed a general overhaul.

In the belief there must be many oldtimers out there who want to find replacement tubes for their receivers, I would greatly appreciate hearing about with less than extortionist prices for tubes. There must be a number of these around the country, and DX'ers need to know about them. 73.

ALBERT S. LOBEL, P.O. BOX 26762, SAN DIEGO, CA 92126 (619) 484-0604 (Call between 1900 and 2100 PLT)

DX here still hasn't picked up. Mainly because of a lack of much time. This may be the slow time for my business, but do have plenty of shopwork presently. My wife and I are planning our vacation already and plan to go to Vancouver, BC this year. I'll bring along a piece of DX gear and see what I can hear from up there. That is if I remember it. Next year we're thinking of going to Europe. We've been trying to do that for the last three years but just have not had the money. Maybe by next year we will. Most of you know that my father was retired from the Army and that I was in Germany for five-and-a-half years with him and in France for two-and-a-half years. I've been all over most of western Europe and parts of eastern Europe (East Germany, and I've put one foot over the Czechoslovakian border). My wife has never been to Europe. In fact, the only place outside the US that she's been has been to Tijuana. She's not a native San Diegan, but has lived here all but four years of her life (born in Johnstown, Pennsylvania), so she's almost a native.

Padres all the way in '85. Yes, Ric, I know you're still an A's fan, so maybe Oakland can lose to San Diego in the World Series. (Put away your rose-colored glasses, ASC, hi-RtH.) Would be interesting, huh? Actually I'd like to see the Tigers lose in the Series to the Padres so we can get even. 73 and good DX de ASL. (Let's keep it on the West Coast so we can see it at a time convenient for us and make East Coast stay up late!-RtH.)

W. GEORGE ELLIOTT, P.O. BOX 312, PENTICTON, BC V2A 6K4

Hello again from the South Okanagan Valley. I twisted the dials the weekend 24 February while in Kelowna for the three-day weekend and had a pretty good time DX'ing. New on this end were CKIR 870, KVNI 1180 and 1220 KCCS. If it weren't for new calls, I'd have hardly anything to report to Nancy, hi. New calls heard were, KBAE (ex-KRKO), KLSY (ex-KJZZ), KLHT (ex-KREW) and KLSN (ex-KHQ). Otherwise, pretty quiet on the radios. . . more unIDs to hunt for next time as well as a lot of QRN from kitchen appliances and such around dinnertime. I was going to try some SRS but the hours would affect me once I got back to work and decided against it.

As far as work is concerned, things are starting to stabilize a little. There was a large staff meeting in late January where a number of cost-cutting actions were outlined for us. CKOK has dropped membership in a number of things to save a buck or two. The strangest cutback is the release of the janitor. . . the GM is in once a night to empty the garbage (true). (WHAT?! That job belongs to the outgoing jock at midnight. Sorry WGE, but I have to do it, hi-RtH.) Also, the Newsroom isn't going to replace a newsie who left to go back to school. . . also, a delay in finding a replacement for the afternoon drive jock who has gone on to bigger and better things. On the whole, CKOK is still around. . . sales are up, way up, and morale is still down, way

down. The winter doldrums even hit radio people, hi.

My shift has me doing some weekend work until we hire an afternoon guy, but I should be back to evenings M-F by the time this appears in DXM. The frequency change to 780 and power increase from 10000/1000 to 20000/10000 is on hold. The station wants to try to get an extension put on the decision as it's not feasible at the moment.

On an unrelated note, CKNW is waiting for CRTC approval for sending its own satellite music program to WIN stations that take the Rafe Mair show (I think CKIQ is the only one not using the show). It'll be much like the SMN with windows for breaks activated by tones sent down the net. (And hopefully sub-audible, hi-Rth.) CKOK and CFJC have the capabilities to receive the music feed right now. The only thing holding it up is the CRTC.

That's all for now. . .until next time, 3' de WGE. (This forum arrived a day late for issue prior to Anniversary issue and was held over until this issue because of WGE's Anniversary forum-Rth.)

GARY LARSON, 2806 LINCOLN, BURBANK, CA 91504 (818) 846-3081

Hello again. It's 1745 PLT here at work and listening to KIRV 1510 with a decent signal with some fades with REL programming. They were the same several years ago when Gary Parton and I stopped by in Fresno. Aren't they 10 kw now? They were 500 watts when we were there, and were live assist. It's good to hear a central California station.

Sorry to hear 790 KXTC is off. I once heard them when KABC was able to be nulled during local sunset. EZL as I recall.

Los Angeles times ran a story on KBLA moving and of the history connected with the Pasadena location. I never heard KXLA as C&W, but wish I had. Looks like the Real Don Steele is afternoon drive on KRLA now.

Does anyone have information on the transmitter site of 910 Hesperia. I assume if they use KVVQ, the AM will be at the FM in Victorville.

Just heard KIRV s/off at 1800 PLT. Owned by New Life Broadcasting, 3636 N. 1st St., Fresno. No transmitter site given, but think the towers are SE of Fresno near KFIG transmitter. After the KIRV carrier dropped, I got BBD. Is this the one in the Phoenix area? (Could be, but as mentioned numerous times in DXM, KTIM San Rafael is BBD-Rth.)

Won't comment on 770 KPLA. I'll just wait to see if they make it here. I like to listen to KOB at times.

Oh yes, I thought the 1510 Phoenix was all news, day only. Now at 1808 KHMT is coming in strong. KCLG 1210 is good too.

Am hoping to get any old KRLA materials, the stuff they might get rid of. New business phone number is: (213) 383-4222 and if one calls the old numbers the recorded referral will be heard. 73 to all.

PAT MARTIN, P.O. BOX 843, SEASIDE, OR 97138

DX this week has been rather slow, not too much to report. Last week with the TAs that showed up briefly, one night, I've been trying every night since, but no hets. I guess the EC's really heard 'em.

Reports out to: KTOL 1280, KFXD 580, KZZR 1230, Switzerland 1566; West Germany 1593, HJHJ 600, KBAE 1380, KHWY 1030, C&F 660, CHED 630, KDYL 1280, KPRK 1340, Grenada 535 and Vietnam 1010.

QSLs in: WIL 1430, WMBD 1470, KFQX 1470, KSTN 1420, KRKK 1360, DXRE 837, KEIN 1310, KBAY 630 (ex-KSHR), and KEND 1590. Good DX and 73.

ROY H. MILLAR, 13714 30th AVE., NW, MARYSVILLE, WA 98270

It's been fun reading Richard Wood's doings from the Big Island and I read Gene Martin's forum in 02 March DXM with a great deal of interest. Across time zones is an interesting measure of DX; easterly from here, Lebanon is ten time zones east I believe and Thailand nine zones westerly, for my contrition. Believe India was heard in California a number of years ago (830 kHz if I recollect correctly); wouldn't that be the ultimate - 12 zones? Also, Gene's comments regarding the Swiss/Hawaii path is interesting; aren't we dealing with the "doughnut effect" theory of propagation here? Gene, take a look at the Seattle to northern Europe path; Murmansk, Vilnius, Tallin, Horby and for that matter, Lebanon, don't miss the North Magnetic Pole by far, nor does Thule with their twins of the early '60s, KBIC and KOLD (1210 and 1425 respectively). As far as my own experience is concerned, true TA paths to Iberia and Africa are much rarer than the more northerly routes.

Recent varies in from: KRKS 990, KHUG 1300, KFLS 1450 and KLITQ 860, the latter on PSA of 186 watts. Bried midday reception of CBW 990 brought to 13 total provinces/states logged at midday from this QRA; except for the state of Alaska, that's equal to all provinces/states logged at midday since starting this season. KFMB when on 540 is my most distant midday and KINY 1460 (or it might have been 1290, not sure) sole Alaskan, and those babies go back a few years.

Finally junked the Hitachi reel-to-reel stereo recorder; no one would re-

pair it, so replaced with a Proformance (Sears) auto-reverse cassette deck. It's different, but seems practical; I team it up with the six-xyxle Micronta timer giving me six ten-minute recording sessions, or can stretch out one or more sessions as am using 90-minute cassettes; I'd hoped to be able to use 120-minute cassettes, but not recommended by salesperson. (Correct for music, but you're using them for DX, right? Try one for comparison-RtH.) I feed the Grundig 5077 with SM-2 antenna into this set-up, primarily domestic DX oriented. 73 and good DX.

RIC HEALD, 1632 J ST., #3, EUREKA, CA 95501

You guys really surprised me for an issue so close to the Anniversary one; normally things get pretty slow. Thanks all for your contributions.

Noted a real combo on 21 March at 1056 PST, KFMB, KGU and WJR all mixing and taking turns being dominant. Noted KFI with OC and TT on 20 March at 0219 PST - Cuba nice and loud during KFI's OC. Also, KGRV 700 with OC and TT on 22 March 0338 PST - had to be day power judging from the S meter.

On to some comments. Jim Hilliker, congrats on KBLF 1490 Red Bluff - good catch. They're my nearest 1490, but for obvious reasons I don't hear 'em, hi. And even after LSS, they're lost to a very dominant KOWL. What do I have to do to get rid of that pest. I'm twice the distance as I was from the Bay Area. Also, found your comment regarding KMPC off and KLAC's spur even with KMPC's OC. You must live VERY close to KFI, who, of course is responsible for the spur.

As I predicted about three or so years ago, deregulation of the FCC and with it all the new stations, there would be prosperity for a while and then one-by-one, many would start leaving the air. Recent articles in DXM have proven me right in my prediction as the trickle is now beginning. Many simply cannot compete with FM which is number one in most markets now. The advertising dollar can only go so far.

Well, thanks to a vacationer and another vacationer who quit upon his return, I actually got in 11 hours of OT at KRED last two weeks of March. Just in time - my car's been sitting in the parking lot last five days broke down and allegedly fixed today, so we'll see tonight when I attempt to drive home, hi. Thank God for the CB'ers who've been giving me rides, especially at 0115 PST every morning. 10-4?

WGE, found your comments regarding your staff meeting interesting. Don't you know, ownership is never satisfied with operating costs? I mean, they seem to make enough, no matter how much cutting they do, hi. And was it CKOK I heard on the overnight with a Texaco/Baskin-Robbins trade followed by three minutes of dead air followed by MoR'ish music. Was that net feed?

As I listen to KRED while typing this, I keep hearing us going from high power to low power and back. We're having gusty northerly winds today and I'm hoping this nonsense is being done by the CE rather than weather related. I don't deal well with tech problems, hi.

In closing, it was on the radio, so I feel I can put it in here. Our morning crazy man (and good friend), "Derranged, ding-a-ling, dancin' " Dana Hall told this one in prime morning drive. He said he got a rabbit for Easter one year as a child and kept waiting for it to lay eggs but all it laid were raisins! Better go before I get into trouble, hi. See ya in 14. 73 de RtH. .

THE 1985 IRCA CONVENTION

DUE TO A CHANGE OF MANAGEMENT AT THE COSMOPOLITAN HOTEL WE FOUND IT NECESSARY TO CHANGE THE 1985 IRCA CONVENTION LOCATION AND DATE. THE CONVENTION WILL BE HELD THE WEEKEND OF AUGUST 23, 24, 25 AT THE KINGSWAY BEST WESTERN HOTEL (ACROSS THE STREET FROM THE COSMOPOLITAN). WE HOPE NO ONE HAS BEEN INCONVENIENCED BY THIS CHANGE.

ROOM RATES ARE AS FOLLOWS: SINGLE \$38.00; DOUBLE OR QUEEN \$42.00; KING \$45.00. PAID RESERVATIONS MUST BE MADE TO THE KINGSWAY BEST WESTERN BY JULY 23, 1985. A REGISTRATION FORM WILL FOLLOW IN THE BULLETIN.

SEND ALL ITEMS FOR THE AUCTION (PREPAID) TO: BILL BLOCK - C/O BYERS PHOTO-6955 SOUTHWEST SANDBURG STREET-PORTLAND, OREGON 97223.

MAKE YOUR PLANS NOW TO ATTEND THE 1985 IRCA CONVENTION IN THE CITY OF ROSES, PORTLAND OREGON!

YOUR CONVENTION HOSTS: PATRICK MARTIN (PHONE 861-3185 EVES-HOME)
BILL BLOCK (PHONE 639-0620 8AM-3:30 PM)
(PHONE 256-2354 EVES-HOME)

EASTERN DX FORUM

RICHARD EVANS
P.O. Box 1294
NORTH WALES, PA 19454

Deadlines: 4/13 5/4 6/1 6/29 7/27

Bill Townshend, 4500 Connecticut Ave, #901, Washington, D.C. 20008
202-966-8046. Time for another Forum. Maybe I'm getting lazy, hi.
I bagged WQCM-1300 Princeton, Minn. tentatively during the bitter cold
snap which scrubbed the Inaugural Parade for the first time ever. The
catch was tentative since I got no ID, but I did call up the station's
CE. The thermometer on my window read -6 F/-21 C, the coldest Wx I ever
saw in D.C. You'd have to have a few diodes shorted if you were out in
the extreme cold listening to seemingly unintelligible garbage for several
hours. This cold jolt came four weeks after 77 F/25 C on the weekend
after Christmas and five weeks before 78 F/26 C on the weekend after Pres-
ident's Day, when I "chased bikinis" (people were sunbathing) on the roof
of my building, just 16 steps up and directly over my apartment. With
the warm late Feb. Wx, the auroral Cx which lasted for several weeks lifted
somewhat, giving openings to the west and north. Maybe we're thru with con-
sistent Au Cx for this season as openings to west and north occur more in
the spring and fall. Next year Halley's comet will pay us a visit in
late winter and spring, making DX interesting, especially if there is a
meteor scatter. I may go on a comet expedition to the Argentina-Chile
area (DSA) next spring, since the southern hemisphere will have better
viewing Cx since the comet will be higher up. I saw west's comet from the
roof of my apartment house on several mornings in March, 1976. Judging
from reports and forecasts about Halley's, I think Halley's will be a let-
down, even in the southern hemisphere, from West's. I took my Sony ICF-55W
back to the repair shop as it developed an intermittent in the audio cir-
cuitry. I'd rather have it go stone cold dead than go intermittent. I
might miss an ID just at the wrong time in accordance with Murphy's Law. I
used my old standby, the DX-160, which still works beautifully after eight
years (the Sony is only 3½ years old but it had almost continuous use).
By the time this hits DXK, the Hoyas may have another NCAA title under
their belt. I went to Georgetown Univ. for several semesters around 1950.
I still have my Nov., 1949 DX log (I was a freshman at Hoyaland), when my
main DXing rig was an RCA Victor five-tube table model set. Enough for
now CUN 14 or 28. 73 and good DX.

Mark Connelly, 30 William Road, Billerica, Massachusetts 01866

A familiar old call, WMEX, has returned to the Boston airwaves. Unlike
the WMEX of '50s & '60s fame, this version of WMEX is on 1150 kHz instead
of 1510 kHz. Broadcasting on 1150 stated on Sat. (16 March): the channel
had been quiet since the demise of WHUE about two weeks earlier. During
the daytime while 1150 was vacant, I could get a mix of WCNX (CT), CHSJ
(NB), and WQMR (ME) from Billerica and CHSJ (NB) over WDEL (DE) & WQMR (ME)
from West Yarmouth. At night several Canadians shared dominance at Bill-
erica and the Venezuelan "Mundial Caribe" was tops at West Yarmouth. The
"new" WMEX uses the former WCOP/WACQ/WSNY/WHUE-1150 facility on Concord
Avenue in Lexington, Mass. near the Belmont town line. It is a fresh-
water marsh area with a fairly low horizon to the southeast towards Boston
but with varying degrees of hill blockage in other directions. The trans-
mitter site is about 9 miles from downtown Boston. Three towers are used
to beam a strong signal to the southeast; little signal goes in any other
direction. A fourth (yaller) tower was used for 100.7 FM, but the present
100.7 (WKKF) emanates from a different site, probably from the Needham
Heights TV tower farm. Today's WMEX features oldies of the '50's & '60s.
Although the DJ's don't offer much in terms of personality, it's still
good to hear rock 'n' roll on a Boston AM station once again. Popular
slogans like "the heart & soul of rock 'n' roll" and "music you grew up
with" are banded about. In general, the philosophy is maximize the music
and minimize the talk. The old WMEX operated on 1510 from North Quincy,
Mass. (a coastal site) and could be heard regularly in Europe. Arnie
"Woo Woo" Ginsberg was the best-known WMEX DJ in the late '50s & early to
mid '60s. 1510 later became WITS. It moved its transmitter to Waltham
(about 6 miles inland) when high-rise buildings rendered the N. Quincy site
ineffective. WITS-1510 then changed calls to its present WMRE. With 50 kw,
WMRE still gets to Europe and Africa. The new WMEX-1150, on the other hand,
is not likely to be logged in any foreign countries except, perhaps, Bermuda

and Canada. 1150 is a rather crowded regional channel and 5 kw doesn't get too far on it. Because of WMEX's deep null to the west, getting WMEX -1150 should be quite a challenge for most US DXers.

John H. Demmitt, Box A K0848, Bellefonte, Pennsylvania 16823

Radio history is being made at WLW-700, Cincinnati, Ohio as the station tries to defuse the bank run situation. It began when announcer Bill Cunningham reported on his show that depositors were camping outside many of the banks throughout Cincinnati and on the following morning instead of giving traffic reports, the chopper instead hovered over the banks and reported the huge lines of people running several blocks around each of the banks. Government officials stated that WLW created the panic and filed protests with the station. The Governor's office asked the station to turn over tapes of the programs which discussed the banking situation. To date the station has not decided if they will comply with the request. The station on its own invited bank presidents to the studio and called others who could not get away and discussed the banking problems with listeners calling in with questions and comments. Bill Cunningham held a special edition each night from 2100-2300 from March 13th attempting to restore confidence in the banking system by having bank officials pledge to invest large sums of money in banks other than their own. He invited businessmen and government officials to do the same and form a separate line outside each of the banks which would be for making deposits only. He even contacted the governor and asked him to stand in line at a bank to make a deposit to assure the people of the community that the banks are safe. A few businessmen went further and said they would donate pizza to all who would stand in line and make deposits at local banks. Bankers even donated money which was awarded to callers of the Bill Cunningham Show at random. Other radio stations followed suit and formed their own drives to get people to go to the banks to make deposits. WLW stated that they did not want their name used in the promotion fearing other radio stations might consider individual promotions instead of doing what they were currently doing, working as a team for the good of the community. 73's. (John, I trust you were meaning S&L's instead of banks in your report--rce)

SOLAR CYCLE MODELING

The figure printed below is taken from a paper recently published in the journal Solar Physics. The sunspot number for the next two cycles has been predicted using a "nonlinear oscillator model". The interesting result is that the upcoming solar cycle may be the lowest in the last 260 years. In addition, the next two solar cycle minima should be very low compared with the last two cycles. Both of these results could have interesting implications for radio propagation during the next 25 years. This type of model is still quite controversial but it will be interesting to see how well it reflects reality.

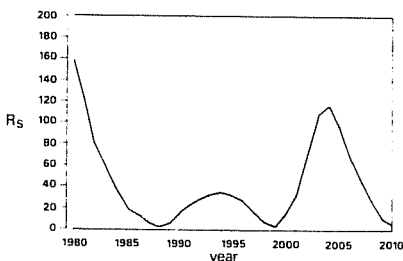


Fig. 5. Annual mean sunspot numbers, R_s , forecast with the nonlinear oscillator model. The forecast is averaged from a number of simulation runs with small parameter variations.

From: D.P. Gregg, A nonlinear solar cycle model with potential for forecasting on a decadal time scale, Solar Physics, 90, 185-194, 1984.

Richard Eckman
Boulder, CO

1. Introduction: There have been many theories presented postulating the scientific phenomenon and reasons heretofore and thereafter regarding long distance radio reception. I know I know better. Let's get serious. All this stuff about extraordinary waves should be in a surfing magazine. I have been studying radio for many years and have only seen waves while at the beach. Beaver (Figure A) theorized that radio travels a long way when magnetoionic particles are frustrated by the ionosphere. The classic theory of Newton (1680) confirms the thoughts of Mr. Beaver. Let's face it. Apples and radios have a lot in common. If you throw them up in the air, they are going to fall on your head. Mr. Beaver's archival is a used car salesman in Seattle, WA named Mr. Bang-Ford. He was introduced into the club several years ago when he was trying to sell a used Falcon to Nancy Hardy. She would only settle for a Penguin, and to get him off her back about used cars, she changed the conversation to radio, and the rest is history. Mr. Bang-Ford, after studying the

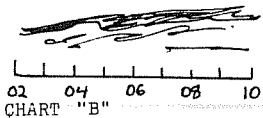
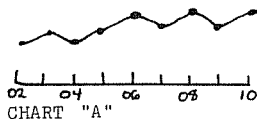


FIGURE "R"



FIGURE "A"

many theories of radio propagation, came up with a new and revolutionary concept. He studied the oblique incidence ionograms created by Ignatz and Kat (1964) when they charted the propagation of cartoon signals sent out on Channel 3 across the country. Mr. Bang-Ford did not realize that shortly before publication in The Journal Of Propagation Sciences, Mr. Ignatz and Kat's dog "peed" on their chart recorder plots and distorted the information irreparably. Chart "A" is the original information described by Ignatz and Kat, and Chart "B" (reproduced by permission) is what appeared in The Journal. The chart that went to print looked more like a Rorschach Test than a chart.



Therefore the information studied by Bang-Ford really had nothing to do with radio reception at all. He could not understand why these images resembled clouds, and how they had anything to do with radio. He knew that clouds had little effect on radio, because he could use his radio on a cloudy day without any trouble. He did remember an episode of Captain Video he saw as a child that mentioned intergalactic space clouds he called the "Eeee Layer". Sadly, his endless studies and research on how cartoons went through the air took its toll on Mr. Bang-Ford. It had a great effect on his looks and personality. (see Figure "B") This leads us to the most accurate 2. Theory of Z-type waves. This theory,

which I know to be true, (so clam up Beaver and Bang-Ford), is based on the truly remarkable discovery of the wonderful Z-wave. I, Norton Static, PhDX, thought that radio signals on medium wave went a long way all the time, not just at night. I took a day off from work one day and found that I could not regular pest Namibia on 747 kHz at all. I spent countless dollar on tests and came up with the true theory of radio reception: the concept of the Z-wave. I knew there must be a reason for radio to differ between the day and night. After long thought and consideration, and at least one trip to the local library, it dawned on me. It was a simple relationship with nature! It all has to do with radio's relationship in the electromagnetic spectrum to light! FIGURE "C" Map "A" shows North America in the daytime, and Map "B" shows North America at night. It's so obvious! You'll say "Why didn't I think of that?" Most of nature is logical and practical as brought out by the great Greek DXers like Pythagoras (505 B.C.) Just like geometry, so goes radio. Radio waves are like anything else. In the daytime they can see where they are going, and stay close by to where they are transmitted from, because they know where they belong. At night, those poor radio waves simply get lost in the dark and stumble all over the place. That's why you hear all that stuff stepping all over each other.



What is this nonsense about waves and angles? If someone turned on all the lights, no one would pick anything up. Don't let your wife read this article, or she will really know what you mean when you go down to your basement and radio at 0200 to "Catch some Z s!" If you don't get your



MAP "A"

MAP "B"

8 me in Figure "C"! 4. Closure:

Z s, you'll look like Pay your mortgage, or this will happen.

RECEPTION OF "Z-WAVES"



WESTERN

DX ROUNDUP

Nancy Hardy
2301 Pacific Avenue
Aberdeen, WA 98520

All times are
Eastern Local

Phone for hot WDXR tips: (206)532-6827 till 10pm (PLT)

DEADLINES: Tuesdays May 7, June 4, July 2

REPORTERS FOR THIS ISSUE:

- (TRH) Tim Hall-350 G St. F-1-Chula Vista, CA 92010
DX-150B, longwire
- (BH) Bill Hardy-2301 Pacific Ave.-Aberdeen, WA 98520
FRG-7, SM-1
- (NH) Nancy Hardy-2301 Pacific Ave.-Aberdeen, WA 98520
FRG-7, SM-1
- (JH) Jim Hilliker-1502 E. Hedgewood Ave.-Anaheim, CA 92805
Kenwood R-1000, Radio West loop
- (ASL) Albert Lobel-P.O. Box 26762-San Diego, CA 92126
- (PM) Patrick Martin-P.O. Box 843-Seaside, OR 97138
SP-600, two 1500' east Beverages, ground system
- (RHM) Roy H. Millar-13714 30th Ave. N.W.-Marysville, WA 98270
FRG-7 w/Sanserino loop; Airline 3980 w/RW "Shotgun"; DAK3 w/SM-1
- (DP) Dale Park-2253 Kanealii Ave.-Honolulu, HI 96813
TRF
- (MPS) Matthew Shugart-408 1/2 Third St.-Laguna Beach, CA 92651
Kenwood R-1000, Radio West loop
- (RW) Robert Wien-1309 Dentwood Dr.-San Jose, CA 95118
GE Superadio, GE long-range portable, SM-2
- (REW) Richard E. Wood-P.O. Box 5074-Hilo, HI 96720
R-1000, three Beverages

***** OF SPECIAL INTEREST:

- 1230 KEZD NV, Las Vegas 3/25 0332 good, way on top w/PSA, ID "The easy one, KEZD," EZL mx. Call change, ex-KLAV. Tried calling station 3/22 to find out when they were changing calls, station refused to tell me, probably running a contest similar to KUUY-870 (guess the day we change frequencies!). (RW-CA)
- 1270 KWTR CA, Lakeport while listening to A's exhib. baseball game, noted anncr. mention "we'd like to welcome KWTR to our network." Called station, confirmed they're now KWTR. Changed calls in Jan., ex-KBLC. (RW-CA)
- KPLY NY, Sparks-Reno 3/18 0439 usual good signal o/KCOK w/mix of assorted mx, mainly standards, ID "Your favorites are on 12-70, K-Play." ID on hour "Your favorites are on the 12-70, K-Play, KPLY, Sparks-Reno." Call change, ex-KORY. (RW-CA)
+3/19 Nevada nx, ID at 2200 "This is 12-70, K-Play, K-P-L-Y, Sparks-Reno. We play favorites," into mx. Excellent o/nullled CHWK. (NH-WA)
- 1380 KSMJ CA, Sacramento per call to station, format now Top 40. (RW-CA)
- 1400 KUNA CA, San Luis Obispo per call to station, will change calls to KLTW on 4/1. (RW-CA)
- 1470 (KDUN) OR, Reedsport is silent. Coos Bay contact says they hope to return to the air shortly. Airchecked 3/21 on Highway 101. (RHM)
- 1600 KEED OR, Eugene 4/1 0715 noted C&W mx, 0718 DJ talked about their move to 1600 & requested to hear from listeners. (BH&NH-WA)
- *****
- 540 KNOE LA, Monroe 3/17 fair w/C&W mx at 0450. (PM-OR)
- CBXQ BC, Ucluelet 3/16 approx. 0402 ID as "CBC English Service--Vancouver," then "This concludes our program schedule for today, and we now join the 'exterior' (?) network for the program 'Nightline' from Winnipeg." This is, to me, a new LPRT format. (RHM-WA) (How about "Stereo Network?" i.e. FM?--NH)
- CJSB ON, Ottawa 3/18 0620-0626 a real shocker! Thought this was BC LPRT when heard beautiful ID at 0621 "The MOYL continues, on CJSB..." TC of "21 minutes after 6 at CJSB," Randy Moore w/nx at 0625. Ottawa SR is 0615 per March SRS map, so must've been on 50k day pattern this time. Haven't seen this reported on WC before! 3/23 0618 good w/ID o/u CBXQ. New, ON #4. (RW-CA)
- 544 "KDX" CA, Stanton 3/22 0400-0430+ this pirate on again "for testing purposes" per anncr. ID recorded "The rhythm of southern Calif. KDX, Stanton, AM 54." Then, began simulcasting w/pirate on 833kHz using ID "KYL." Anncr gave name as Mike. KDX & KYL anncrs were sounding like a CB conversation, some mx, but not very entertaining. Audio better on 544 than 833. KDX also in 3/28 0200 out of some type of recorded rock mx program. Very strong. (JH-CA)

- 560 KBLU AZ, Yuma 3/24 2120 poor to fair, fighting KLAC-570 slop in KSFO null. "56, K-Blue" ID, ment. Commodore's song, promo for a new DJ. (JH-CA)
- 610 KONA WA, Kennewick-Richland-Pasco 3/20 0600 good w/ID in KFRC null, well o/KRKE. Nulling KFRC is no problem. (RW-CA)
- 640 *KFI* CA, Los Angeles 3/21 0510 off on rare weekday SP w/OC & TT. (RW) +3/21 0510 found them ET'ing, most likely a "proof," many different tones, still ET'ing past 0530. (JH-CA)
- 650 WSM TN, Nashville 3/19 0053 promo for "Oldies, Box 388, Nashville," C&W. Dominant. (REW-HI)
- CISL BC, Richmond 3/10 0631-0640 fair w/oldies "Dream a Little Dream of Me," "Daddy's Home." IDs "Golden Music 24 hours a day from Sunshine Radio C-Isle," "Golden Memories 24 hours a day--CISL 650, Sunshine Radio. (TRH-CA)
- +3/21 0533 caught quick ID during break in KFI's TTs, end of song, ID by man as "C-Isle 650, Sunshine Radio." Good, then wiped out by KFI again. Much wanted, new, BC #7, Canada #15. (JH)
- 690 CBKFI SK, Gravelbourg 3/18 0700 definitely the FF here; virtually certain same station at 0600 & earlier; may be AN now which really jeopardizes CBF ID. Inquiry off to CBC-Regina, will advise as to any information that I receive. (RHM-WA)
- 700 *KFAM* UT, North Salt Lake City 3/22 0608 w/TT, OC o/WLW. (RW-CA)
- 720 WGN IL, Chicago MM 3/25 0530 still hrd thanks to reg. KDWN SP. Classical mx, IDs, wx. Fair w/some KMPC-710 slop. (JH-CA)
- 750 KERR MT, Polson 3/19 0040-0100 hrd well o/KXL w/C&W mx, "Country Kerr" IDs, ment. ex in Polson. Lots of KCBS-740 slop at times. Surprising how good they were at times o/KXL. Only 3rd time heard here. (JH-CA)
- +3/18 2345-0000 dominant on channel w/C&W, ID & nx at top of hour. No sign of KXL. WSB in null. (MFS-CA)
- 780 KAZM AZ, Sedona 3/20 0913 call letters, into ad for jewelry store. Much stronger than old owner of this freq., KROW. (MFS-CA)
- 790 (KABC) CA, Los Angeles MM 3/18 0605 off the air, only noted KGHL and unID SS station. (JH-CA)
- 830 KIKI HI, Honolulu 3/25 0725-0800 weak, in mud, w/loud het from JOBB, much weaker than JOBB till 0743, then strong. Usual rock mx. Used to be regular, hadn't heard this one in a while. (MFS-CA)
- *WCCO* MN, Minneapolis-St. Paul 3/18 0445 apparently w/TT, KIKI good under. (RW-CA)
- WCCO +3/21 2100 in loud before CA SS, rarely heard this strong at any time. (MFS-CA)
- 833 "KYL" CA, Orange County?? 3/22 0400-0430+ pirate simulcasting w/"KDX"-544, see 544-KDX for details. Haven't heard since. (JH-CA)
- 850 KOA CO, Denver 3/17 1956 w/an ID followed by nx about the St. Patrick's Day Parade that was held in Denver. This is the earliest that I ever heard KOA in the past. 850 was the only non-local freq. that wasn't noisy. The noise levels on other frequencies were horrendous. (ASL-CA)
- 860 CJEC ON, Toronto 3/14 0455 FF talk on "les maladies" (illnesses). Very good. (REW-HI)
- 870 WWL LA, New Orleans 3/18 0525 excellent w/ o/KORD, w/C&W mx, trucker info. Best I've heard in years. (PM-OR)
- 880 WCBS NY, New York 3/13 0515 ID as "WCBS Newsradio," sports; level w/KRVN. (REW-HI)
- 890 KQLX ND, Lisbon 3/19 0712 o/WLS w/"Q Country 89" IDs. Many spots in surrounding towns. Fair at best, QRM from Korea-891 het (severe at times, even w/phasing). Taped & reported. Are they only 500 watts? (PM-OR)
- 900 KBIF CA, Fresno finally able to confirm Jim Hilliker's suspicion about my mixing of KBIF, KGRB ID. The reason this has taken so long to "fix" is that every morning, local KMJC-910 (which puts out some bad audio) momentarily slops o/the whole channel at 1100 w/the noisy theme song of some daily program. Finally got some clear KBIF IDs at 1100 3/5-3/10. As for KGRB, I'm lucky if they fade in for a few seconds. Thanks to Jim H. on this one. (TRH-CA)
- 920 KOLO NY, Reno 3/15 2112-2117 poor to fair w/ad for Western Thrift in Reno, ID sung, into song "I Know a Heartache When I See One." Antenna switch and/or power cut at 2115 left room for KORK to take over. (TRH-CA)
- 940 (KFRE) CA, Fresno 3/25 0310 totally off. (RW-CA)
- 980 (KFWB) CA, Los Angeles 3/19 0510 off on extremely rare weekday SP. (RW)
- 1010 KXEG AZ, Tolleson 3/25 0659 ID after mx, talk. Fair, CBR not on till 0730. New. (NH-WA)

- 1010 KDJW TX, Amarillo 3/18 0515 good o/u CFRB, w/C&W mx, promo for Cabbage Patch Doll contest, wx. (PM-OR)
CFRB ON, Toronto fair w/nx & sports report at 0517 on 3/18. Haven't heard this in a while. (PM-OR)
- 1020 KDKA PA, Pittsburgh 3/16 0308 nx well atop KTNQ-CA. (REW-HI)
+3/18 good o/KYXE w/nx & ID at 0500. Best heard in a long time. (PM-OR)
- 1030 KHXY CA, Folsom MM 3/25 0606 finally got ID on this, after wondering who was using Music Country Network! Missed legal ID due to KTNQ-1020 slop, then out of AP nx, got definite ID at end of RAB commercial "For all the facts call this station or the Radio Advertising Bureau. KHXY makes radio affordable. Call KHXY at 916-351-1111" lost to 1020 slop. Into C&W MCN. Fair to good. New. CA #197, #531 total. (JH-CA)
+3/25 0700 singing ID, UPI nx. Alone on channel w/good signal (able to fight KTNQ-1020 slop) until KTWO s/on at 0704. KHXY, KTWO even for 3 mins., then KTWO wiping out KHXY. (MFS-CA)
WBZ MA, Boston all alone after 0200 on 3/18. Hardly any QRM on any antenna used. Usual talk show. (PM-OR)
- 1040 WHBO FL, Pinellas Park-Tampa 3/18 0647 wiping out WHO w/"AM 104" ID, het QRM from China-1044? (RW-CA)
- 1050 *KTBA* AZ, Tuba City 3/21 0341 very strong covering up XED on 1050, playing relig. mx, then ID "KTBA, Tuba City, Arizona," into more mx. Never hrd them ET'ing before. I checked freq. again at 0350 & they were off. (JH-CA)
KBBV CA, Big Bear Lake per call to station 3/30, they're still using very low power through a temp. antenna. They're moving into newly built studios in town in late April, and the new 2-tower site will be either at "the far end of the valley, or not far from the present site." Was a reg. daytime catch here till they took the towers down. (JH-CA)
- 1070 (KNX) CA, Los Angeles 3/18 0434 totally off, ET'ing w/TT & OC. (RW-CA)
+MM 3/18 0610 noted off air, nothing heard except XEPRS-1090 slop. (JH-CA)
WTSO WI, Madison 3/18 fair to poor w/Music Country Net. First noted at 0545, KNX off & on w/TT. ID at 0559:50 "WTSO-Madison" into net nx. New. (PM-OR) (Great catch, Pat!-NH)
KRLD TX, Dallas very strong AN 3/18 w/nx o/KWJJ. Also a 3rd station way behind w/mx--WTIC? Noted at 0535. (PM-OR)
- 1110 KBND OR, Bend 3/18 0508 good in KRLA TT null w/sports. (RW-CA)
- 1120 KPNW OR, Eugene-Springfield 3/21 0602 Ai nx, promo for meteorologist Leon Hunsaker, Ian Crawford w/local wx and Billy Joel mx. Very poor w/KWAI-1080 & KHEI-1110 QRM, deep fades. (DP-HI)
(KPNW)+3/26 0408 totally off. (RW-CA)
- 1170 *KOHO* HI, Honolulu 3/11 0554 OC instead of SP. KWAI-1080 image noted underneath. (DP-HI)
- 1180 KERI CA, Wasco-Bakersfield 3/20 0858-0900 ad for alfalfa pest control, ID. No sign of KOFI, some trouble from KEZY-1190. Never heard of this one before. (MFS-CA)
KOFI MT, Kalispell 3/21 0612 Marines ad, MOR mx, PSA on mail fraud, DJ w/ID, TC & MOR mx. My first Montanan from anywhere! Very poor w/KEX-1190 QRM, unID 1170 & local QRM. (DP-HI)
- 1190 KEZY CA, Anaheim MM 4/1 0300 per front page story in the Orange County Register, this local will switch its format at this date & time from rock mx to a mix of Christian praise mx and Bible lesson programs. Slogan will be "The praise of 1190." Richard McIntosh will be GM for the AM, he was GM of KPRZ-1150 from '79 to '81 when they were religion. They (KEZY) plan to change call letters also. KEZY-AM's third format change since 1983. Station originally went on the air in 1959 from the Disneyland Hotel & was somewhat of a tourist attraction until they moved in '68 or '69 to 1190 E. Bell Road. (JH-CA)
KEX OR, Portland 3/21 0555 Otis Redding & Anne Murray oldies, local nx, ID "News on the hour, 24 hours a day, KEX Portland" and Ai nx in synch w/KHVH. Poor w/slow fades. (DP-HI)
- 1200 KPNW ND, W. Fargo 4/1 0659 1/2 ID after 10 min. of contemp. Christian nx. Fair to good w/WOAI. New for us both. (NH&BH-WA)
- 1210 WCAU PA, Philadelphia 3/21 0551 report from Wash. by local reporter, ment. of upcoming wx report "on W-C-A-U" after ad, TC & wx. My 1st transPac, transcon reception & PA #1 from Hawaii! Penguin Pats all around, please! Very poor w/KNDI slop. (DP-HI)

- 1220 KLIP CA, Fowler 3/14 0901-0906 poor s/on "Good morning. This is KLIP, Fowler, CA. KLIP operates on 1220 kHz with 250 watts by the authorization of the FCC," songs, quickly faded. New.(TRH)
- KDFC CA, Palo Alto 3/14 0900 poor w/s/on, straight into classical mx o/u KLIP. (TRH-CA)
- 1230 KFLR AZ, Phoenix 3/14 0955 local church nx; first time heard topping channel on a weeknight. (REW-HI)
+3/21 0502 dominant w/ID, gospel mx. (RW-CA)
- KTDO OR, Toledo 3/10 0406 s/off w/KWYZ included "Serving all of Lincoln County" so I guess that settles my question as to who this baby is. If I'd had an FM log I might have caught that KCEL parallel too! (I now have White's Log; overall, a poor log).(RHM)
- 1240 KENZ CA, Sacramento 3/17 0500 on top as if they were the only station on the freq. w/ID "Serving California's Capitol, this is KENZ, Sacramento, Ken's, all music, all memories." (JH-CA)
- KSUE CA, Susanville 3/25 0307 way o/all w/s/off. (RW-CA)
- 1320 KQDQ OR, Eugene 3/20 1930 ID between AdCon songs, 1935 NEC promo. Very strong w/CHQM, local KXRO off because of power failure in south Aberdeen. (NH-WA)
- 1360 KRGL OR, Myrtle Creek 4/1 2159 $\frac{1}{2}$ full data s/off excellent w/KAMT nulls. "Douglas County's Country." (NH&EH-WA)
- 1380 *KLNI* HI, Waipahu 3/11 0552 noted w/OC instead of SP. (DP-HI)
KFSM TX, El Paso 3/18 0818 good o/KTOM in KEEN null w/YL doing nx. 2nd time heard, while looking for KBAE or KSMJ call changes! KSMJ changed calls from KGMS 3/15 at noon, PLT per phone call.(RW)
- 1390 *KGER* CA, Long Beach 3/25 0518 noted ET'ing, TT's. (RW-CA)
- 1400 KART ID, Jerome 3/21 0400 out of MEN w/ID that was very clear o/KAAP "This is KART, Jerome, time now for another information update... first, here's news from RKO." 4th time logged, I'd like to hear something a bit more distant here, hi. (JH-CA)
- KBCH OR, Lincoln City 3/14 1148 nx of Lincoln City Water District. Only sent me a bumper sticker, no verie. I've traded the Suzuki I stuck it on, so now I have nothing. (REW-HI)
- 1420 (KCCN) HI, Honolulu 3/11 0255 noted off the air, the 3rd time this year, a record! KSKK-590 mixing product noted for some reason. (DP-HI)
- XEXX BCN, Tijuana 3/18 0600 noted AN'ing. NSP now? (RW-CA)
- 1430 WIRE IN, Indianapolis 3/18 0340 very strong w/usual C&W mx, above presumed Toronto. (PM-OR)
- 1450 KVSL AZ, Show Low 3/21 0440 poor in the mess w/KPSI. Noted C&W mx, ID by female. (JH-CA)
- KONE NV, Reno 3/21 0412 new format, ex-C&W. Now using pop mx & recent oldies w/IDs as "1450, the new K-One." Fairly dominant still, here. (JH-CA)
- 1470 KWSL IA, Sioux City 3/18 very strong at 0705 w/farm reports, wx, jingle. (PM-OR)
- CJVB BC, Vancouver 3/18 0343 s/off w/full s/off wording, no anthem, off 0344 & carrier appeared to stay on; said would return at 0730. Change sked in NRC Log. (REW-HI)
- 1480 KLMS NE, Lincoln 3/18 very strong o/mess w/Nebraska nx at 0707.(PM-OR)
CKER AB, Edmonton 4/1 0740 put this freq. on & promptly heard "This is Cosmopolitan Radio, C-K-E-R, 14-80 in Edmonton." We were lucky to hear this before KGHO-1490 (located 5 blocks away) goes fulltime! (NH&BH-WA)
- 1490 KCID ID, Caldwell 3/18 very strong at 0800 w/ID going into nx, promo and jingle ID. (PM-OR)
- 1560 WQXR NY, New York has become almost a regular, 3/13 0500 nx, 0505 into 20th century classical mx, good, some YE and 2 other U.S.; again 3/14 0312 at a steady S-7, Chopin or similar, still good 0445; 3/19 0015 almost topping KPMC, violin. (REW-HI)
- KTXZ TX, West Lake Hills 3/18 0314 rock oldies, quiet DJ, giving away passes to Austin show, mentions of Austin. In clear. Anyone have address for this? West Lake Hills isn't in Zip Code Directory. Phone is 327-1560. (REW-HI)
- 1590 KEND TX, Lubbock 3/18 0510 very good w/KEND contest promo, "KEND, your Gold Country Station." Strongest ever heard--at times totally dominating frequency! (PM-OR)
- 1600 KBBX UT, Centerville 3/18 fair o/mess at 0810 w/relig. program, ID at 0815 into Voice of Prophecy. (PM-OR)

UNIDs:

- 650 3/25 around 0745 looping N-S. I was nodding off at the time, so don't recall the format, but clearly too late for W3M. Maybe KORL, but direction didn't seem right. (WFS-CA) (How about CISL?--NH)

- 840 3/18 0744 UNID C&W fading up briefly o/XEIO, then lost u/XEIO. WHAS had already faded out, and it was definitely 840. Not KSDP, as they're off at this time, and Mobile, AL station is relig. 0745 SR zone corresponds to middle Great Plains in March. A new CP on the air? KTPR-KS? KWPN-NE? KJTA-TX? Doubt it was a pirate. (RW-CA)
- 840 3/24 0723 UNID C&W fading up briefly, then gone, after WHAS fadeout. Ideas? (RW-CA)
- 890 3/18, 3/19, 3/25 0745-0800 puzzling, can't get ID, sometimes so weak I can't even tell what the format is. Some kind of mx, much talk too. Loops roughly F-W. A bit weaker each time I try. KEYE or KQLX presumed. Seems to s/on at 0745. (MFS-CA)
- 940 3/25 0330 UNID o/mess w/"American Country Countdown," local spot w/545 prefix. ID "You're listening to American Country Countdown, on the all-new, stereo AM 94," in CJIB null. KIXZ/KIOA/KDEO? (RW-CA)
- 1070 3/18 w/SSP at 0600, mixing w/WTSO. KXW still testing. (PM-OR)
- 1070 3/18 station w/wx after nx at 0606, sounded like WEEP? Faded u/mess at 0608. Has WEEP moved as yet? (PM-CR)
- 1190 3/26 2159 someone very weak u/nullled KEX. At 2200 went into Broadcast News Voice. CHTN-PEI only one listed on 1190 as carrying ENV. Has CFCL picked it up? (NH&BH-WA)
- 1390 3/18 mx of your life-type station w/McGuire Sisters mx at 0445 u/o mess. WFBL? (PM-CR)
- 1390 3/18 NBC station getting into nx late at 0503. Apparently taped. Again, signal looped east. (PM-OR)
- 1460 UNIDs, a complete mumble-jumble AN 3/18. No sign of KMWX. (PM-OR)

Welcome back to WDXR, Matthew. A nice group of east coast stations reported this time. Good work everyone! ♡

Robert Kramer

6416 N. Richmond

Chicago, IL 60645

CENTRAL DX ROUNDUP

UNID, SPECIAL, CHANGES, et. al.

- 870 UNID 2/25 0016 stn w/TT u/WWL. CR-IL
- 1470 KFQX TX ABILENE, 2/16 1900 ex-KRBC, Satellite Country, ID, into ABC nx. PN-TX
- 1530 UNID 2/25 0109-0115 stn u/WIAC(? ed.) w/TT. CR-IL
- 1540 WZAL GA MCDONOUGH, 2/25 0100 u/KXEL w/ID TT & mx on DX Test. CR-IL
- 540 KMXL NM LAS VEGAS, 3/4 2011 good w/Mexican Ranchero mx, SS tlk & s/off. CR-IL
- 620 KWFY TX WICHITA FALLS, 2/9 1909 poor/fair w/CBS nx, sports promo, EZL mx. PN-TX
- 670 KWXI AR GLENWOOD, 2/18 1843 blasting WHA4 w/C&W, ID, horse race, s/off. PN-TX
- 870 KUUY WY ORCHARD VALLEY, 3/4 1951 fair-poor o/u WWL w/C&W mx & ID. CR-IL
- 940 CEM PQ MONTREAL, 2/18 0111 fading in o/Cuba end of CBC nx, PSA, s/off. PN-TX
- 1030 WXSS TN MEMPHIS, 2/5 2034 Memphis State items, wx, ID. PN-TX
- 1160 WAMB TN DONELSON, 2/18 1823 xint o/WJJD w/similar NOYL mx, ID. PN-TX
- 1350 KCAR TX CLARKSVILLE, 2/9 1800 C&W, spot, ID, fair u/WSMB. PN-TX
- 1400 WDUZ WI GREEN BAY, 3/4 0026 briefly w/ID. CR-IL

FREQUENCY CHECK

- 940 KVSH NE VALENTINE, fair-good 2/18 0107 w/ID, TT u/Cuban, CHM. PN-TX

TWO FOR YOU:

- PN... Pete Nolan 100 Market St. #64 Galveston, TX 77550
CR... Christos Rigas 4832 N. Drake Chicago, IL 60625
(R-2000, ICF-2002, Kowalski Loop

My apologies to Pete Nolan. His report got lost in with my NRC Contest stuff, so it was delayed in getting printed.

CADX SPRING GET TOGETHER

The 15th annual Chicago Area DXers spring get together will take place over Memorial Day Weekend (May 24-27) at 6416 N. Richmond in Chicago, IL. Events to take place include DX Chat, the annual whistle ball game, some bowling & planning for the 1986 CADX wilderness camping DXpedition to the Northwest Territories. For more info call 1-312-262-6299.



Eastern DX Roundup zapping radios with those Z-Rays!!!

Karl J. Zuk, 154 Old Post Road North, Croton-on-Hudson, New York 10520

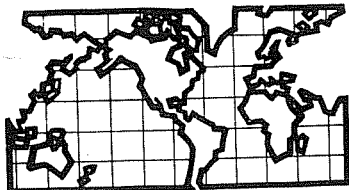
REPORTERS IN THIS ISSUE:

- (RB-A-NY) Richard E. Berg-Andersson, 47-11 48th Avenue, #1, Woodside, NY 11377
GE Superadio, Sony ICF-6500W, built-in antennae, #7 train.
- (MC-MA) Mark Connelly, 30 William Road, Billerica, MA 01866
- (JHD-PA) John H. Demmitt, K0848, Box A, Bellefonte, PA 16823
Sony ICF-S5W
- (KVJ-GA) Karl V. Jeter, 2115 Scarbrough Road, Stone Mountain, GA 30088
HQ-150 and several Beverages.
- (DLR-KY) David Reitz, 9332 Fairground Road, Fern Creek, KY 40291
R-1000 with Radio West loop
- (GS-DC) Gardner Smith, W9ALZ, 1000 Perry Street, Washington, DC 20017
Toshiba F-11, Alligators, fleeing native women!
- (WPT-DC) William P. "Bill" Townshend, 4500 Connecticut Avenue NW, #901,
Washington, DC 20008.....Realistic DX-160
- (KJZ-NY) Karl J. Zuk, 154 Old Post Road North, Croton-on-Hudson, NY 10520
GE Superadio, attack cats, I'll have a pizza with no anchovies...

- 580 WCHS WV, Charleston. 3-18 1905 Excellent with "The Comedy Shop". Rodney Dangerfield talking about kids. (JHD-PA)
- 680 WCAW WV, Charleston. 3-10 0703 with ID by OM, weather, assorted songs including "Convoy." (JHD-PA)
- 710 WFNR VA, Christianburg. 3-18 1830 ID with sign off announcements, also mention of writing to the FCC to allow WFNR to go 24 hours. (DLR-KY)
- 730 CHYR-7 ON, Leamington. 3-18 2127 Good, relaying CHYR, 710, Leamington, ON, with rock music and ID as "CHYR." (JHD-PA)
- 770 WJMW AL, Athens. 3-10 2243 Good with ID as "Stereo 77, WJMW," Ad for Money Magazine, PSA for The Red Cross, C&W music and musical ID. (JHD-PA)
- 820 WBAP TX, Fort Worth-Dallas. 3-10 2233 ID and contest info, song: "Lay You Down," sports promo and ID. (JHD-PA)
*3-17 1814 Good, with bluegrass music mixing with WOSU, Columbus, OH, which also had bluegrass music! (JHD-PA)
- 860 CJBC ON, Toronto. 3-17 1800 Good with technical error. Had BBC news in English, mentioning Iraq's warning against aircraft over Iran, then back to promo in French at 1802. (JHD-PA)
- 870 WHCU NY, Ithaca. 3-17 0715 Fair with sign on, weather. In with WWL, New Orleans, LA and a station in Spanish. (JHD-PA)
- 870 WKAR MI, East Lansing. 3-17 1756 with "All Things Considered", promo, credits, and a promo for "Morning Edition." ID as "WKAR." (JHD-PA)
- 870 KUUY WY, Orchard Valley. 3-16 2350 Tentatively heard with high school basketball tourney in Laramie, with mention of teams from Laramie and Sheridan. Also noted C&W music. All this under strong WWL, New Orleans, LA. (KVJ-GA)
+3-16 2110-2210 with Silver Eagle Radio Show with Tammy Wynette. Local spots, ID. Fair with WWL, New Orleans, LA. (DLR-KY)
+3-17 2101 with high school basketball, Laramie vs. Sheridan, local spots, ID as "K-U-U-Y Orchard Valley-Cheyenne." Way over WWL, New Orleans, LA. (DLR-KY) (Karl, you heard 'em, no question!-kz)
- 910 WSBA PA, York. 3-9 1959 Heard through much noise. ID at top of hour into news. Not the best signal-fair. (RB-A-NY)
- 910 CKLY ON, Lindsay. 3-9 2002 Heard after nulling WSBA. Country music followed by local news and weather with what sounded like Donna Jessup. Faded into the din at 2007 and did not revive within a reasonable length of time. Fair. (RB-A-NY)
+3-8 2025 Celebrating 30 years on the air and asking listeners to mail in old news clips, photos, etc. pertaining to the station. Congratulations! May a camel squat on your final amplifier! 999 db over S-9, per usual. (GS-DC)
- 920 WHJJ RI, Providence. 3-17 0740 Good with winning "Lotto" number, ID, weather and sports. (JHD-PA)
- 920 WMMN WV, Fairmont. 3-10 2216 with ID. Man kept saying "WMMN", pausing slightly on the "M". Song: "Maybe." Promo and ID as "WMMN." (JHD-PA)
- 940 WKGM VA, Smithfield. 3-17 0748 Good with ID as "KGM", song "Falling In Love", weather was windy, and ad for book store. (JHD-PA)
- 950 WROL MA, Boston. 3-17 0758 with religious program, ID, and another religious program after a alcohol PSA. In with WWJ, Detroit, MI. (JHD-PA)
- 960 WELI CT, New Haven. 3-17 0805 Fair with local news, interview with local writer affected by writers strike, and item on seat belt laws. (JHD-PA)
- 980 WONE OH, Dayton. 3-17 0811 with discussion concerning bank run throughout Ohio. Good. (JHD-PA)
- 990 WNOX TN, Knoxville. 3-10 2207 with time check, ID and songs: "Mama warned you about.." and "Two Doors Down." IDed as "99". Good. (JHD-PA)

Eastern DX Roundup never fools with your chances to win the big ones! (Huh?)

- 1030 KTWO WY, Casper. 3-17 2007 with CBA basketball: Wyoming vs. Wisconsin. Local spots for Country Club Texaco and Marks Boot Warehouse. Lost at 2015. (DLR-KY)
- 1040 WJTB OH, North Ridgeville-Cleveland. 3-17 0830 Good with song "Jesus, my soul." ID as "WJTB North Ridgeville-Cleveland." (JHD-PA)
- 1110 CKJD ON, Sarnia. 3-17 0857 Good with song "Save My Soul." ID as "CKJD", Ad for Coal Fire Heating System, and news of a department store strike. Weather was 5 degrees centigrade. (JHD-PA)
- 1130 WAMG TN, Gallatin. 3-12 1859 with sign off mentioning 2500 watts and being owned and operated by Southern Broadcasters. Fair with interference from KWKH, Shreveport, LA. (KVJ-GA)
- 1140 KSOO SD, Sioux Falls. 3-12 1907 Much wanted here, finally heard with country and western music, promo for new Oak Ridge Bays album, and later at 1920 with sports report on high school basketball tournament. Very good signal overall! (KVJ-GA)
- ore 1150
elow!)
1150 CKOC ON, Hamilton. 3-19 2239 Fair to good, usually. Heard with Ad Con (or is it CHR?) music. Clear with ID at 2241. Tended to fade into the surrounding jumble for lengthy periods as I listened until 2300. (RB-A-NY)
- 1190 CHTN PEI, Charlottetown. 3-9 1940 Fair with adult contemporary music followed by DJ announcing that they were switching live to Ottawa in a few minutes, but not before IDing. (Thank you!) Heard in a long WOWO, Fort Wayne, IN. Fade out. Good thing too, a new province for me at this location, bringing my meagre BCB total to four! (RB-A-NY)
- 1200 WOAI TX, San Antonio. 3-10 2149 Good to excellent with sports interview with George Curbin, ad for home insulation, sports scores and ad for Lone Star Beer. (JHD-PA)
- 1200 KPNW ND, Fargo. 3-17 1905 IDs, local news, local spots. Good over WOAI, San Antonio, TX. (DLR-KY)
- 1220 WVLE MN, Stillwater. 3-17 1915 Briefly over WGAR, Cleveland, OH, with ID and sign off announcements. (DLR-KY)
- 1260 WWDC DC, Washington. 2-17 0040 Noted off air, on again and up to speed at 0059. (Aw shucks!) (WPT-DC)
- 1280 WJAY SC, Mullins. 3-13 1830 Sign off by man. I logged this bird precisely eight years ago this minute! Fair to good. (WPT-DC)
- 1420 WDBF FL, Delray Beach. 3-6 1845 ID by OM DJ, with mention of mystery voice. Fair to good. (WPT-DC)
- 1440 WRRO OH, Warren. 3-19 2320 Fair with Adult Contemporary music in a sea of noise. (RB-A-NY)
- 1460 WCMB PA, Harrisburg. 3-19 2330 Fair to good. I had to listen to a ½ hour of CHR mixed with oldies before getting call at the top of the hour (2400). Used the slogan "Fourteen-sixty hits" about six or seven times in that ½ hour, but no call or city until 2400. Here's one for your killer cats, Karl: stations that don't use call letters for long periods of time. (RB-A-NY) (On the bus to PA right now! Grrr!-kz)
- 1520 WARR NC, Warrenton. 3-8 1730 Sunset skip with black english bump and grind music. Probably the source of the 300 hz het present. I believe they are now 5 kW, ex-1 kW. (GS-DC) (I have WAMR, who's right?-kz)
- 1520 WIBG NJ, Ocean City. 3-8 1735 1 kW daytimer with wimp rock over WARR. (GS-DC) (Remember the old Wib-edge when it was cool?-kz)
- 1520 WXIB PA, Indiana. 3-8 1800 with spot for First Federal of Indiana, local Indiana County news. Station located halfway between Indiana and Homer City. Another station that thinks "AM-1520" is sufficient as an ID. Didn't get call until sign off. Announced they were in stereo. (GS-DC) (New to me, my list says "New Homer PA", smitty. -kz)
- 1560 KTXZ TX, West Lake Hills. 3-18 0243-0301 with rock oldies, promo as "Austin's All-Star Rock'n'Roll Radio is KTXZ" and AP news. (KVJ-GA)
- 1560 KCAA SD, Aberdeen. 3-17 2110 Local spots and ID "We give you total news rundowns seven days a week - KK double-A." C&W music, NCAA scores, weather and singing ID. Very good. (DLR-KY)
- 1570 CHLO ON, St.Thomas. 3-10 2130 Good with song "Paper Roses", ID and song "Sweet Georgia Brown." In with CFOR, Orilla, ON. (JHD-PA)
- 1580 WPSK VA, Pulaski. 3-18 1950 C&W music, time check, ID "750 at WPSK", mentioned FM 107. Left transmitter on?? (DLR-KY)
- 1590 WQIQ PA, Chester. 2-18 0110 Test tone of 1 kHz and 3 kHz. Fair with and under WAKR, Akron, OH. (WPT-DC)
- 1600 CHNR ON, Simcoe. 3-10 2119 Good with Frequent IDs, music, musical jingle IDs and soft rock. (JHD-PA)
- Quicky news: From MC-MA and KJZ-NY. New on 1150, WMEX, Boston, MA. I logged it on 3-20 at 1755 under WRUN, Utica, NY. Mark says they are using the old WHUE facility, Concord Ave, Lexington, MA. 3 towers directional SE. Woo-Woo Ginsberg is not on the new WMEX, but does feature oldies of the 50's and 60's. David Reitz, using his new R-1000, had a great opening to the mid northwest. Two from Wyoming! Great! Toyota, the Japanese car maker, is featuring AM stereo radios with two position bandwidth switches in their 1985 spotscar models. The radio is made by Fuzitsu-Ten, the Delco of Japan. Does anyone have one of these? Happy April Fools everyone. Randall Seaver, will you ever forgive me? 73s kz.



DX WORLDWIDE - WEST

Pat Martin - Editor

P.O. Box 843, Seaside, Oregon 97138

PHONE: (503) 861-3185

DX this week has been quite good for some people. I got a nice long report from Bruce Portzer DXing at Kalaloch, Washington. He heard some good ones including a Low Power JJ on 1584 KHZ and JJ on 990 KHZ. Also I received some good catches in a report from Richard Wood. In other news: From The New Zealand Radio DX League comes news of a 1 KW station on 855 KHZ at Eureka, New Zealand. One of the Short Term stations opening June 10th at 6AM NZ Time and closing June 16th at 5 PM NZ Time. That might be possible from North America. Now on with reports:

TRANS-ATLANTIC DX ROUNDUP

- 1161 IRAQ, Jammer 3/18 at 1610 usual bubbler sound on this new frequency where Abadan an Iranian port is listed, near the Iraqi border. (REW-Hi)
- 1296 ENGLAND, Orfordness BBC European Service 3/15 at 0515 ending Polish nx and going into Czech. Fair, not enough for a report. Country #69. And my lowest frequency European catch. (REW-Hi)
- 1305 SENEGAL, Dakar-Senegal-Inter. 3/16 at 0700 FF nx quite readable, YL nxcaster // also hrd on 765. Africa #5 and my first African Country w/ more than one station hrd. (REW-Hi)
- 1368 ITALY, Synchro net 3/16 Classical violin II anmts. Good (REW-Hi)
- 1404 FRANCE, Synchro net. 3/15 at 0508 pleased to hear an ID actually ment. The country name-something quite rare among European state bcers. AA ID. // Nice 1557. Good France #2 here. (REW-Hi)
- GUINEA, Conakry-3/16 at 0555 open carrier. 0558 IS on stringed Inst. 0600 s/on. Steady s9 here. (REW-Hi)
- 1467 MONACO, Monte Carlo-TWR 3/15 at 0505 GG sermon, perfectly readable, solid S-7 on R-1000's meter. 0525 FF ID, light Piano mx. 0530 into other lang. Unid, because of fading by then. This is the loudest European here lately, excelling DW-Malta on 1557. (REW-Hi)

PAN-AMERICAN DX ROUNDUP

- 660 HONDURAS, La Ceiba listed HRN 3/15 at 0500 full ID and s/off without anthem. Contrary to WRTH 1985 which no longer lists the name HRN, used only that ID at s/off. To judge from strength, and absence of a // on fairly clear 670, I suspect the 10KW main Tegucigalpa tx has moved from 670 to 660. Any comments from Thomas or others? Dominant, revealed Cuba after s/off. (REW-Hi)
- CUBA, Santa Clara-CMEB Radio Progreso-3/15 at 0500 formal end of days programming, to for midnight, into next days pgm. Power of 10KW listed in WRTH 1985 seems about right. Clear after HRNs s/off. (REW-Hi)
- 770 COLOMBIA Bogota-HJKX-RCN 3/14 0435-0500 RCN nx pgm, reporters checked in from various cities and gave their license numbers after their reports. WRTH 1985 has switched R. Tequendama, formerly listed on 770 with Emisora Nueva Granada, formerly on 610. No name ID hrd, only RCN Network. Comments? (REW-Hi)
- 820 COLOMBIA, Cartagena Radio Bolivar HJAD 3/15 0435 typical ID "Somos profesionales, somos R. Bolivar. Somos Todelar, lo moderno en radio." Exc. dominant o/WBAP. (REW-Hi)
- 920 ECUADOR, Machala C.R.O. HC... 3/17 0807 full s/off text. said it would return at 5:30 local (=1030). Anthem off 0810. Dominant as so often. (Rf)
- 1070 COLOMBIA, Bogota-Radio Santa Fe-HJCG 3/15 at 0325 Banco de Colombia ad: RSFs usual late evening show of Argentine Tangos. So beware--- tangos on 1070 don't necessarily mean LRI-Radio El Mundo. Dominating KNX (REW)
- 1180 COLOMBIA, Manizales Caracol 3/14 at 0500. typical Caracol nx show with check-ins from various cities. Later into tangos. (REW-Hi)
- 1200 PERU, Arequipa-Radio Radial Andina OBX4L-3/14 0915 morning show, many IDs. mentions of Dept. de Arequipa. Beer ads. Strong o/WOAI. (REW-Hi)
- BRAZIL, Sao Paulo-Radio Cultura ZYK520. 3/27 0457 PP nx, 0500 complete ID. Topping WOAI much of the time Brazil #14. (REW-Hi)
- CUBA, Palma Soriano CMJQ (WRTH 1985) 3/25 at 0932 "Radio Revolucion" ID. In and out most of the 0800-1000 time period w/WOAI off. (RHM-Wa)
- PERU, a 2nd Peru station hrd o/u Arequipa when Radio Radial began to weaken 3/14 mentioning Depto. de Ayacucho nx and furniture store ads. Radio Tawantinsuyo Cusco is the closest to Ayacucho reported on 1200 (no. 1190) will keep checking. (REW-Hi)

- 1200 PERU, Cusco-Radio Tawantinsuyo OAX7B 3/25 0810-0840 bilingual morning show in SS/Quechua "Songs and Legends of my Land." TCs between every record, full ID by female at 0830. Fairly clear thru WOAI. After WOAI s/off 0831 only another Latin prob. Cuba. This is my Unid I has mixed with other Peru on 3/14. So my 2nd Peru on 1200 and a total of #9 from Peru. (REW-Hi)
- 1270 CUBA, Camaguey-Radio Reloj CMHD 3/18 0355 second ticks and SS nx o/u KNDI. Cuba also dominant on 1360 then. (REW-Hi)
- 1440 MEXICO, Villa Constitucion B.C. Sur XEVS0 0600 ID simply as "XEVS0" time tone time check in MST. into mixed nortena and dance mx. Good clear signal. All info says power was just 150 watts then. Reported and asked what power they were operating at. If correct this will be my lowest powered catch from here. Note that B.C. Sur is MST and B.C. Norte is PST 3/17. (REW-Hi)
- 1460 CHILE, Santiago-Radio Yungay CB146 3/17 0534 briefly atop w/promo and call letter ID. Romantic mx, then lost. (REW-Hi)
- 1580 MEXICO, Hermosillo-XEDM 3/17 0545 well atop KDAY/KNIX many IDs as "La Grande de Sonora" greeting listeners in B.C. Norte. (REW-Hi)

TRANS-PACIFIC DX ROUNDUP

- 531 JAPAN, Morioka-JOQG fair in with 2MC/4XA with talk in JJ at 1015 on 4/1. (PM-Or)
- 549 JAPAN, Maha-JOAP fair w/JJ talk in KMVI splash at 1017 on 4/1 (PM-Or)
- 558 FIJI, Suva 3/16 Fijian talk 0750 Improving South Pacific cx these days as Winter approaches there. (REW-Hi)
- 567 JAPAN, Sapporo-JOIK, JJ talk in passing at 1021 on 4/1 (PM-Or)
- 594 JAPAN, Tokyo-JOAK- strong w/JJ talk at 1222 3/24 (BPa-Wa)
- 650 ALASKA, Anchorage-KYAK vy good o/all with C&W mx and TCs and wx report +5 degrees in Anchorage at 0950 on 3/31. (PM-Or)
Also noted at 0920 on 4/1 with C&W mx o/CISL. (PM-Or)
- 657 NORTH KOREA, Pyongyang-KK Woman talk, good 1354 3/23. (BPa-Wa)
- 660 ALASKA, Fairbanks-KFAR-all alone for a time, but soon some CFFR QRM at 0915. Barry Manilow song played Promo for Dinner at Elks? at 0917 on 4/1. (PM-Or)
- 666 JAPAN, Osaka-JO9K-1353 on 3/23 jair JJ talk (BPa-Wa)
- 670 ALASKA, Dillingham-KDLG-vy good at 0827 with Space mx pgm from NPR, followed at 0829 w/ID giving KIAL-Unalaska and KSDP-Sand Point, followed by wxreport and into Pop mx by 0838. Strong, with only slight WMAQ on 4/1. (PM-Or)
- 711 UNID, 1353 3/23 male talk and het. Too much KIRO splat to tell. (BPa)
- 729 UNID, het on CKLG 1350 3/23. (BPa-Wa)
- JAPAN, Nagoya-JOCK-3/25 at 1153 good briefly w/OM and YL in JJ, OM singing sad songs at 1153. New (RW-Ca)
- 750 ALASKA, Anchorage-KFQD-good w/old Gold mx o/u KXL for a time, TCs best hrd in quite a while "KFQD-75" Ids. at 0750 on 4/1. (PM-Or)
- 774 JAPAN, Akita-JOUB good w/drama // 747 1349 3/23. (BPa-Wa)
- INDIA, Simla 3/16 1620 tabla mx, North Regional service // 1395 Simla is a "hil" station in the Himalayas. My first Indian catch below 1071 KHZ. Quite good. (REW-Hi)
- 783 JAPAN, NHK 2 station in JJ atop of USSR? 1347 3/23. (BPa-Wa)
(Bruce there is no NHK station here-JOXR a private Rock JJ station. This is what you must have hrd in JJ. PM)
- 819 UNID, KK talk weak to fair 1322 3/24. Probably North Korea. (BPa-Wa)
(South Korea has also been hrd here. PM)
- 820 ALASKA, Fairbanks-KCBF-good w/MOR mx and ads for Fairbanks, in the clear w/no WBAP, some KGO splash at times at 0730-4/1. (PM-Or)
- 828 JAPAN, Osaka-JOBB 1321 3/24 strong w/JJ talk (BPa-Wa)
- 830 ALASKA, Big Lake-KABN, hrd fair o/u KIKI with Folk mx and some local sounding mx, Alaskan Folk mx at 0645 on 4/1. (PM-Or)
- 840 ALASKA, Sand Point-KSDP-good to poor with NPR pgm at 0815 // 670, then into local mx pgm at 0830 after Net breakaway. S/off with Alaskas Flag at 0900 on 4/1. KSWB off (PM-Or)
- 875 NORTH KOREA, Wonsan-3/15 1630 Pyongyang ID in Korean, almost Soviet Sounding Inst. mx a kind never hrd in South Korea. (REW-Hi)
- 876 NORTH KOREA, Wonsan-fair w/Man and Woman in KK 1342 3/23 (BPa-Wa)
- 891 JAPAN, Sendai-JO9K-good w/JJ Drama 1320 3/24 (BPa-Wa)
- THAILAND, Bangkok-good over all with YL in Thai, Chimes and ID in Thai at 1300 at 1301 sounded like Temple music" faded u/JJ lost by 1310 on 4/1. (PM-Or)
- 927 UNID, carrier noisy, possible more than one 1355 3/23. (BPa-Wa)
- 936 UNID, noisy carriers at 1356 3/23. (BPa-Wa)

- 945 UNID, man in what seemed like JJ 1358 3/23, lost in KJR splat. (BPa-Wa)
- 954 JAPAN, Tokyo-JOKR-good w/2 DJs and pop mx 1404 3/23 Again 1349 3/24 w/man and woman talking. Much better by 1410 w/JJ Inst. mx stronger than KJR-950! (BPa-Wa)
- 972 SOUTH KOREA, vy good w/alternating YL and OM ancrs in KK at 1350 on 4/2. (PM-Or)
- 990 UNID, JJ talk all alone 1410 3/24 Probably JORK, tho KHVH also possible (BPa-Wa) (I believe KHVH in all nx all the time, so you probably did hear JORK. Good catch, Bruce. PM)
- 1008 JAPAN, Osaka-JONR-good w/pops and JJ DJ 1157 3/24. Tone and possible SID 1200 then nx? w/many ments. of Yokohama. (BPa-Wa)
U.S.S.R., Magadan-piano mx briefly o/JONR 1155 3/24 IS and man in RR u/JONR 1200 (BPa-Wa)
- + Also noted with Man in RR on 4/1 at 1120 in passing. (PM-Or)
- 1017 JAPAN, Fukuoka-JOLB fair w/talk in JJ //1152 3/24 at 1301 (BPa-Wa)
- 1044 CHINA, Shanghai loud w/choral mx 1201 3/24 (BPa-Wa)
- 1116 U.S.S.R., Unknown YL in RR over what sounded like a bubbling type jammer. Was quite good at 0840 on 4/1. Wasn't quite as good after 0900 w/KPNW returned, but holding its own. Weaker than 621 or 1251, so may be lower powered. Anyone else hear this? REW have you hrd this? (PM-Or)
- 1134 JAPAN, Tokyo-JOQR-good to nil w/CKWX splat at 1256 3/24 w/Kind of a Hush" by Herman Hermits, string of ads, ment. of Tokyo. Had ...— pips at top of hour, then single Tone followed by woman in JJ (BPa-Wa)
- 1152 JAPAN, NHK 2-JJ Male talk // 1017 at 1302 3/24 fair w/CKIQ slop(BPa)
- 1179 JAPAN, Osaka-JOOR-JONR 3/24 strong JJ talk o/KOFI 1180 (BPa-Wa)
- 1206 CHINA, Yambian-blasting in w/KK talk 1204 3/24 (BPa-Wa)
- 1233 THAILAND, Unid. 3/18 at 1620 Thai talk hrd, 3 stations listed inc. 2 at 10 KW all diff. nets no // observed. (REW-Hi)
- 1242 JAPAN, Tokyo-JOLF-good w/JJ phone convensation 1435 3/23 (BPa-Wa)
- 1287 JAPAN, Sapporo-JOHR-man and woman in JJ fair 1206 3/24 (BPa-Wa)
- 1305 UNID, woman in what sounded KK weak 1208 3/24 (BPa-Wa)
- 1332 JAPAN, Nagoya-JOSF 1210 3/24 JJ Male and JJ mx briefly good o/1330 splat. (BPa-Wa)
- 1325 INDIA, Bikaner, North Regional Service 3/16 Sitar mx vocal duets // 774 Simla Quite good 1625-1635. (REW-Hi)
- 1422 JAPAN, Yokohama-JORF good w/US Pops ads, JJ DJ 1430 3/23 and 1431 3/24. Easily separable from 1422. Not noted on earlier checks on both AMs. (BPa-Wa)
- 1458 UNID, CC talk at 1408 3/24, fair thru splat. (BPa-Wa)
- 1467 UNID, KK male o/Unid mx at 1247 3/24, fair thru slop. (BPa-Wa)
- 1476 U.S.S.R., Vlsdivostok-CC Service strong w/buzz QRM (jammer?) 1218 3/24 assumed this is due to muffled sound typical of RR txs. (BPa-Wa)
- 1557 NEW ZEALAND, Howera-2ZH 3/18 0717 to, light rr, relating 2ZP. (REW-Hi)
- 1575 CHINA, CC talk briefly o/VOA 1335 3/24 (BPa-Wa)
THAILAND, Bangkok-VOA(Ban Pachi), fair in EE pgm 1330 3/24 much better by 1357 recheck. EE ID and start of Thai pgm 1400.05. Note that this contradicts WRTH 85-Sked. (BPa-Wa)
- 1584+++ JAPAN, NHK Time pips weak at 1400 3/24 resurfaced 1405 w/weak JJ talk o/Unid mx WRTH says 25 stations here w/50-100 watts each! (BPa-Wa)
(Good catch Bruce, I hrd JOKP-1188 relay here a couple year back with an ID at 1500 at 100 watts. JOKP confirmed the taped ID report, if you hear them again try at ID time if you can. PM)
- 1593 JAPAN, NHK2-JJ talk fair in splat 1414 3/23. (BPa-Wa)
- 1602 JAPAN, NHK2-JJ talk at 1415, fair in splat 3/23-9 1Kers listed. (BPa)
- 1700 t TAIWAN, woman in CC 1310-1318 and 1352-1356 3/24, weak w/unid OC (BPa)
(OC could have been the RR in CC. PM)

VERIFICATIONS:

- 765 SENEGAL, Dakar-ORTS QSL card showing map of Africa on globe, tower and antennas in light blue with full details, unsigned in 5 wks. Seems to replace the former black card showing cora (Stringed Inst) leaning against tree. My 1st African verie here. (REW-Hi)
- 830 BELIZE, Belize City-Radio Belize usual QSL card, gave date and freq printed power on card 20KW, changed to 10KW 834 changed to 830. Signed by Cheong, Chief Broadcast Officer. 6 weeks. (REW-Hi)
- 850 ALASKA, Home-KICY-specific letter and sked from Jim Brewer station manager in 6 weeks. (REW-Hi) (They used to have a card. PM)
- 930 URUGUAY, Montevideo-Radio Monte Carlo CX20 formally worded detailed letter from Gloria Gasperini on Airmail weight letterhead using worded "930 Kilociclos" 5 weeks. First South American verie here. (REV)
- 920 ECUADOR, Machala C.R.O.-Partial data letter explaining that their current 920 freq. replaced 915 and name C.R.O. replaced Ondas Orenses. Included dark blue and yellow silk pennant-5 wks by Reg. mail. Signed Jose Ugarte Aguilar, Gerente General. (REW-Hi)

- 1330 MEXICO, Irapuato, Gto. Radio Variedades XEBO pleasant letter and 4 stickers from Alejandro Martinez Duran, Subgerente in 3 weeks Said they once received a report from the South Pacific Islands not specified which. (REW-Hi)
- 1521 PEOPLES REPUBLIC OF CHINA, Urumqi (VIA Beijing), sent reg. QSL card, with all details. And sep. card enclosed thanking me for the report, talked about Urumqi in Northern China. And invited me over in visit China!!! QSL card signed by Chen Yu-English Dept. Radio Beijing- in 4 weeks. QSL #19 PR China. (PM-Or)
- 1593 WEST GERMANY, Langenburg-WDR, sent large colorful QSL card in 3 wks for taped report. No v/s. West German #6 QSL'd. (PM-Or)

THANKS TO THESE REPORTERS:

- RHM-Wa ROY H. MILLAR-13714 30th Avenue, Northwest-Marrysville, Wa. 98270
DAK-3/ SM-1
- BPa-Wa BRUCE PORTZER-6546 19th Avenue, Northeast-Seattle, Wa. 98115
DXING at Kalaloch, Wa. FRG7 70 foot LW.
- RW-Ca ROBERT WIEN-1309 Dentwood Drive-San Jose, Ca. 95118
GE Super Radio-Loop.
- REW-Hi RICHARD E. WOOD. PHD-Post Office Box 5074-Hilo, Hawaii 96720
R-1000, R-71A, 3 beverages.
- PM-Or YER EDITOR
SP-600, ICF-6500 Sony (Modified w/4 KHZ filter), RBO-2.
2-1500 East Beverages, 1-Terminated 200 foot NE Longwire, Grounds.

IRCA WANT ADS

EDITOR:TIM O'HARE
20023 81th W.
EDMONDS,WA -98020

FOR SALE ICOM R-70 mint condx - 1 week old \$ 400.00
MFJ 901 ant tuner - mint \$ 25.00
Morse rtty conv-aes-mbs-rc.32 characters per line - exclnt \$100.00 or \$500.00 for all. - Jon E. Simmel - 409 E. 10th St. Bottineau N.D. 58318 - or call 701-477-6471 X 235 days or 701-228-3944 eves prepaid.

WANTED DRAKE R7A recvr with gilfer mods - if possible. IRA RICHOLSON
1600 S. Eads - 1030N - Arlington, Va. - 22202

FOR SALE SM-2 loop - works well - 9v model - \$ 65.00
RICK KRZEMIAN - 814 Minnesota Circle - Carol Stream, Ill
60188 - or call prepaid after 1600 local 312-653-3057

FOR SALE ICOM R-70 ---\$430.00. Willing to trade for cash and your recvr or Radio West loop, etc.Call & we'll work out a deal.
FRITZ MELBERG - 1505 Central - Hawarden, Iowa - 51023
or call prepaid 712-552-2458

FOR SALE KENWOOD R-600 - like new in orig box with manual - 1 yr old.
Repl with R7A so don't need - \$ 275.00.Many Heath educational courses - write or call for list. Palomar loop w/hf 1 -VLF converter- call or write & we can deal. J.R. HALL - 240 Byron Rd. - Pittsburg, Pa. - 15237 - or call prepaid 412-486-9484

FOR SALE Selectivity mod for Sony ICF-6500w - includes a Vernitron VTD-3-1 (4 Khz @ -6db - 10 Khz @ -60 db) ceramic filter.
Also a DPDT switch & RG-174U cable. Kits are \$ 25 PPD & installed \$ 35 PPD. SASE for details. GERRY THOMAS - P.O. Box 2036 - Pensacola, Fl. - 32513

FOR SALE SONY ICF 2001 digital portable receiver W/AC supply- \$ 125.00
REALISTIC DX-150 recvr - \$ 65.00
DRAKE 2-B recvr with Q-mult/spkr - \$ 115.00
DRAKE R-4c recvr with \$-NB noise blanker - \$ 200.00
LARRY R. JOHNSON - 21742 olive Ave. - Cupertino, Ca - 95014

FOR SALE COLLINS R-388/URR (51J3) - very good condx - works well.
\$ 175.00 plus shipping. GLEN KIPPEL - 612 West Ave. - MERCED, Ca. - 95340 or call prepaid 209-722-1783

FOR SALE Radio West loop with LW/Mw/SW coils - Drake AL-4 loop for SPR-4 recvr-Uniden 2021 digital recvr- sell all the above for best offer.
JOE COLEMAN - 157 Walton Pl. - Landsdowne, Pa. 19050 or call prepaid 215-626-3376

WANTED Broadcasting Yearbook 1984 or other recent issue - state price.
Richard E. Wood - P.O. box 5074 - Hilo, HI - 96720

DX WORLDWIDE EAST

EDITOR: Jim Hall, 240 Byron Rd., Pgh., PA 15237

Nice to hear from Robert S. Ross and William Wyllie this week. As this week's column shows, things are slowing down. Guess it's time to get outside and repair winter-damaged antennas, huh? But, if you all will look back to the July 14, 1984 DXW-E and read Mark Connelly's introduction (the editor of DXW-E at the time), maybe you'll be inspired to DX. For those of you who don't have that issue, Mark says: "...As I've noted in previous summers from Cape Cod, many Iberian peninsula high-band stations can be heard during the hot months, especially just before dawn at the xmtr site. Darkness lingers longer in Spain than in Germany during summer, so many flea-powered Iberians can be heard on channels owned by the German/British powerhouses during winter. A coastal receiving site certainly helps but even inland reception should be possible in Eastern Canada/USA if good rx's and Beverages are used.....", so don't think the season's over. Thanks, Mark, for unknowingly providing this week's Introduction. All times are expressed in UTC.

I R A N S - A T L A N T I C D X

- 549 t ALGERIA, 0205 3/26 : Very strong het, Oran presumed with Algeria-891 in well. Low-band TA cx were fair/good with N. Africa good also. (Hall-PA)
 666 unID, 0210 3/26 : Mostly a wailing het but thought I heard a man in speech. Lost, however, very quickly to adjacent splash. (Hall-PA)
 675 unID, 0212 3/26 : Fragmented music strong but couldn't determine style through heavy slop. (Hall-PA)
 774 SPAIN, synchros 0137 3/26 : Man and woman in SS, very strong but fadey, heavy 770 splash. (Hall-PA)
 827-8 LIBYA / unID, two stations badly hetting each other 0130 through 0400+, neither with any audio. With Morocco back on 828 (per Kaz report) I suspect Libya for 827, and possibly Morocco for 828 since North African stations were in well at the time. (Hall-PA)
 855 SPAIN, synchros 0225 3/26 : Strong with woman in SS. Six Spain pips at 0200 into news, followed by contemporary Spanish mx. (Hall-PA)
 882 unID, poor audio sounded SS. Bounced in and out all night but never good enough for identification. This at 0109-0215 3/26. (Hall-PA)
 891 ALGERIA, Algiers 0045 3/26 : Nicely separable from 890 on term. lw. AA moaning and chanting accompanied by flute/pipe and drums, also interesting echo effects on various phrases. (Hall-PA)
 1134 t SPAIN, Extreme het but minimal audio surfaced in muck. Synchros suspected with other Spains in well. (Hall-PA)

P A N - A M E R I C A N D X

- 720 JAMAICA, Kingston RJR 0719 3/19 : Radio Jamaica with rock music, contest promo, and ID, fair under WGN. New here. (Ross-ON)
 790 CUBA, 0100 3/26 : Strong SS mixing with WNWS and others in quagmire. Bad fades. Anti-Marti station or just another Cuban sister? (Hall-PA)
 810 BAHAMAS, Freeport ZNS3 0024 3/16 : Fair/good w/ads, nx, current events, obituaries, and ID as "Radio Bahamas" - YL DJ. In WGY null. New. (Ross-ON)
 825 ST. KITTS, Basseterre 2340 3/19 : Good with religious program and ID as "Radio Paradise". (Ross-ON)
 895 COLOMBIA, Santa Marta 0800 3/26 : Fair/good with man in SS and dinner music (LA style). (Hall-PA)
 1100 COLOMBIA, Barranquilla HJAT 0455 3/2 : SS mx and "Radio Reloj" IDs. Very good signal over WWE. (Wyllie-MA)
COLOMBIA, Bogota HJCN 0820 3/19 : SID as "Radio Reloj". Spanish music and tx good under 3WE. (Ross-ON)
 1425 ECUADOR ran het good 0437 3/26. No trace of audio. May have been OC - does anybody know if they're AN or do they have a scheduled sign off? (Hall-PA)
 1610 ANGUILLA, the Valley 0415 3/2 : "Caribbean Beacon" IDs. Religious programs and mention of broadcasting 20 hours/day. Signal strong to fair. (Wyllie-MA)

CREDITS:

- (Ross-ON) Robert S. Ross, Box 4373, Stn. C, London, ON N5W 5J2
 (Kenwood TS430S, Panasonic RF1115, RealisticTRF, dipole, 4'box loop, and built-in antennas)
 (Wyllie-MA) William Wyllie, 95 Peck Street, Franklin, MA 02038
 SHARP GF-450 with indoor antenna)
 (Hall-PA) Jim Hall, 240 Byron Road, Pittsburgh, PA 15237
 (R7A, longwires and beverages)

T R A N S - A T L A N T I C D X

- 531 ALGERIA, Ain Beida 0300 3/11: Weak (o/SAH) w/AA mx. // 549. (Connelly-MA)
549 ALGERIA, Oran 0328 3/10: AA singing, excellent. (Connelly-MA)
576 ALGERIA, Bechar 0258 3/11: Poor w/AA talk by man. (Connelly-MA)
666 PORTUGAL, Lisboa 0301 3/11: Man reading nx. in PP - signal fair to good.
Many hets were noted at the time throughout the lower part of the band from Iberian Peninsula and North African stations. If I'd used the HQ-180A or R-390A, many more loggings would have resulted. Belmont definately beats Billerica for DX from the mouth-of-the-Mediterranean area. (Connelly-MA)
774 SPAIN, synchros 0350 3/10: SS talk to fair peaks through WABC slop. (Connelly)
891 ALGERIA, Algiers 0312 3/11: Fair w/AA moaning. (Connelly-MA)
+Het often noted here many eves but still no audio, excessive 890 splash. (Hall)
1044 t MOROCCO, 0315 3/11: Bits of talk and mx., dogged by WHN & WBZ slop. (Connelly)
1251 t LIBYA, 0522 3/12: Big het against 1250 domestics. (Connelly-MA)
1440 LUXEMBOURG, Harnach 0520 3/12: GG talk bouncing in & out of the co-channel domestic pile. On this channel, a TRF is as good as an R-71A or R-390A. (Connelly-MA)
1467 MONACO, Monte Carlo 0511 3/12: ABSOLUTELY LOCAL-LIKE w/GG talk by man, then religious choir mx. Loudest TA tonight. (Connelly-MA) (What happens at 0515 with TWR? I've noticed many times after the single 0515 pip they seem to disappear and reported it as a s/off. Am I mistaken?ed.)
1557 unID (FRANCE or MALTA) 0510 3/12: Fragments of AA mx. & talk. (Connelly-MA)
1575 t PORTUGAL, 0506 3/12: Rock mx. in bad CKLM slop. (Connelly-MA)
1584 SPAIN, 0504 3/12: SS nx. w/pronounced fast SAH. (Connelly-MA)
+0530 3/25: Good w/SS talk by man. (Hall-PA)
1593 WEST GERMANY, Langenberg 0503 3/12: Fair w/GG nx. about new USSR leader Gorbachev. Some WUNR-1600 slop. (Connelly-MA)
+0525 3/25: Noted good in passing w/GG contemp. Is at least common anymore. (Hall-PA)

P A N - A M E R I C A N D X

- 640 CUBA, 3/19: DXers beware - I listened for 1/2 hour when I heard repeated "Exitos" ments and thought I had Honduras for sure, but not so. What does "Exitos" mean in SS? (Hall-PA)
655 EL SALVADOR, 0405 3/19: YSS here good w/slow SS & EZL mx (LA tainted). (Hall)
740 CUBA, 0437 3/19: Usually Rebelde but // Progresos other than 640 tonight.
Cubans do it to ya every time. (Hall-PA)
825 ST. KITTS, 0135 3/18: Radio Paradise w/congregation singing hymn until 0141. Plenty of co-channel QRM. (Demmitt-PA) (You mean even channel?ed.)
1505 t ANGUILLA, the VALLEY - Pr/fr carrier 0143 3/19 but no audio. Only occ noted in decent LA cx. Cx ruled out Ecuador for this particular night. (Hall-PA)
1610 ANGUILLA, 0100 3/18: Caribbean Beacon w/local nx after religious program & 10. Told of 16 gun salute to official & visit by Prime Minister. (Demmitt-PA)

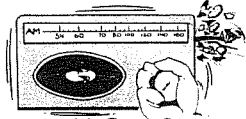
Matt Stutterheim asked me if there was a Chilean or Bolivian or something on 1565. Matt, I know of CA156 - 1560 R. Parinacota (ex - R. Putre) being reported on 1564.9 but I can't say if they're still there - have you been hearing something here? Matt extends more assistance on G. Smith's 1566 Korean/unID - I mentioned Matt's loggings in olde DXM's already, but a few more notes: Matt definately got EE one morning, & a religious program. He says Bill Harms told him the Korean is owned by FEBS, a religious BC Co. in Korea. However, Neil Kazaross says Azores can be heard until after 1000 GHT. So, the only thing do do is keep checking there and REPORT IF YOU HEAR SOMETHING.

TA's keep fluctuating - some nights now F layer skip allows the high-banders to plow in, and then other nights I can't get a peep from anyone. Keep an eye (or an ear) open Midwesterners, if you need TAs it is possible - Gardner Smith did hear the 1593 German in Chicago, on a train yet.

CREDITS:

(Connelly-MA) Mark Connelly, DXing from Belmont, MA (@ wife's parent's house)
(Realistic TRF w/added PCI digital readout, internal rod ant.)
(Demmitt-PA) John H. Demmitt, Box A K0848, Bellefonte, PA 16823
(Hall-PA) Jim Hall, 240 Byron Road, Pittsburgh, PA 15237
(R7A, loops, 1w's, two // Bevs. soon to be phased)

TOP END



A monthly column of loggings, discussions & information for the 1600 - 1800 kHz range. Deadline: The last Saturday of the month All times are GMT

Craig Healy 66 Cove St Pawtucket, RI 02861.....

April 1985...Loggings:

- 1613 GUATEMALA Rabinal 0931 1/25 RAB (Neal)
1616 ??? 2300 2/23 KA83348 poor w/ 3 IDs every 3 mins. (White)
1619.5 ??? 0934 1/25 UBT (Neal)
1622 NEW YORK Yonkers 0215 3/4 KPF-941 Fair w/ male anncr. and oldies. QSL received already for this! (Demmitt)
1629 ??? 0459 1/24 KA81126 (Neal)
1632t PAPUA NEW GUINEA Ok Tedi?? 1927 3/4 OKT not listed but possibly this. (Thew)
1632 ??? 2050 2/22 BRNJ good w/ continuous IDs (White)
1632 ??? 2009 2/23 BRN good w/ continuous IDs (White)
1632 ??? 2113 2/24 RRP fair w/ continuous IDs (White)
1633 ??? 0442 1/24 HSN (Neal)
1635 ??? 0246 3/12 R372 weak w/ beacon format (Ramsey)
1635 ??? 0247 3/12 R110 fair w/ beacon format (Ramsey)
1637 ??? 0245 3/12 S446 fair w/ ID every 5 mins. (Ramsey)
1647 ??? 0330 1/31 KA83901 (Neal)
1651 ??? 0929 1/25 KA83M, also w/ dash 0450 1/24 (Neal)
1684 COLOMBIA Mercaderes 0936 1/25 MER (Neal)
1689 PAPUA NEW GUINEA Mount Hagen 1929 3/4 MH (Thew)
1689.8 ??? 0926 1/25 E396 (Neal)
1703 ??? 0323 1/31 KA83756 (Neal)
1725 ??? 1980 2/23 Carrier pulsing 80 times/minute. Each pulse seemed to be divided into about 5-10 parts. (White)
1769 ??? 2022 3/4 2AAV (Thew)
1784 ??? 1941 3/4 2AAV and dash (Thew)

Credits:

John Demmitt Bellefonte, PA Receiver, Antenna
John Ramsey W. Hartford, CT ICOM R-71A, 60' LW, TUN-3
Eric Thew Mt. Lawley, Western Australia FRG-7700, FRT-7700, random wire
Sam Neal Cleveland, TX TS930S, 132' vert., 5 beverages-SE,E,NE,NW,W
Thomas White Arlington, VA Receiver, Antenna

The FCC has stopped taking applications for broadcast station remote pickup stations on 1606, 1622, and 1646 kHz. This is in preparation for the deletion of the service in this part of the band, due to the coming expansion to 1700.

John Demmitt's logging on 1622 is interesting. It appears that they are going to run the thing every now and then. I should have requested a test from them earlier in the year. Getting too noisy now.

Top End Yearbook is still available for First Class postage and a couple of loggings. About 400 listings and very handy!

KFAT's back

San Jose Mercury News
via Robert Wien

By Bill Strobel
Mercury News Staff Writer

HOLLISTER — Listen up, Fatheads!

KFAT — the late, lamented, off-the-wall radio station — has been off the air for two years.

But there's good news. The folks who made KFAT are back in business in Hollister, affectionately dubbed "The Earthquake Capital of the World" by station disc jockeys.

And they are providing the same brand of comedy and music you probably won't hear anywhere

else. That includes "Moose Turd Pie," an offbeat country-style monologue by Utah Phillips that became a theme song of sorts of KFAT and a symbol of its irreverence.

Most of the crew members have regrouped under a new call sign, KHIP (93.5 FM), broadcasting 18 hours a day from the first floor of a two-story house, which seems to be midway between repair and disrepair on a residential side street.

"It is an austere operation," said Amy Airheart, who serves as general manager of the station when

she isn't on the air — or answering the phone, typing letters, trying to line up accounts, sweeping up and opening the door for "Pigface," a large, blue-eyed dog who wanders in and out of the studio.

"We're all radio junkies — and we'll do what we have to to make it work," said John Sandidge, who holds the title of promotion director and takes his turn behind the mike.

"We're tossing automated rock 'n' roll in the garbage heap, hiring real people to play real music," said Sherman "Uncle Sherm"

Caughman, who wears coveralls, a flannel shirt and a cap that identifies him as "Top Horse."

When he and the others left the Gilroy station, Uncle Sherm said, he bought a team of draft horses and learned how to plow, figuring he'd become a farmer. He still has the horses and may use them for hayrides the station is planning as part of its promotional program.

He and Airheart (whose real last name is Blanco) gathered up members of the old crew and started putting the pieces back together after KFAT was sold, the crew put out to pasture and the station adopted a new top-40 format and the call letters KWSS.

They began by establishing a library of their own — more than 2,000 records and tapes, including songs that listeners are unable to hear on other stations because their managements have concluded that they don't appeal to whatever audience they are trying to capture.

The KHIPers disagree. Their music, they say, appeals to all age groups.

"You never know what's coming up," Sherm said. "If you listen for five minutes, you're hearing something you like and perhaps a few things you don't like. You're liable to hear some rock, some country, a comedy routine, maybe some Big Band sound and a Hawaiian war chant."

Terrell Lynn Thomas, who concentrated on gigs with his band, the Radar Rangers, after he left the Gilroy station, now lives on the second floor of the studio. Pigface the dog belongs to him.

Exactly what direction the station will take isn't quite certain.



Tom Van Dyke — Mercury News

BACK IN BUSINESS — Sherman "Uncle Sherm" Caughman turns on the lights, manually, at station KHIP in Hollister.

KHIP's staff members emphasize that they aren't going back to the KFAT days. And Airheart says they may look into public subscriptions to do their thing.

Airheart said the KHIPers plan to make numerous public appearances. They also expect to use tapes and live performances of area musicians and their songs and add live shows with audience participation to the broadcasting schedule.

"We'll have discussions on instructive subjects, like how to pick your horse's hoofs," Uncle Sherm said.

They're also playing commentaries by Trampus T. Hipp?

Who is Trampus T. Hipp? "He is so far to the right that he's far left," said Uncle Sherm. "Or, maybe it's the other way around."

At any rate, the station plans to play what one member of the staff called "real American music, not what some program director tells you to play because that's what demographic studies say the audience wants."

Thus, KHIP listeners will be entertained by such ballads as "Sixteen Little Red Noses and a

Horse that Sweats," and tunes by the Austin Lounge Lizards, whose latest hit is "Creatures from the Black Saloon."

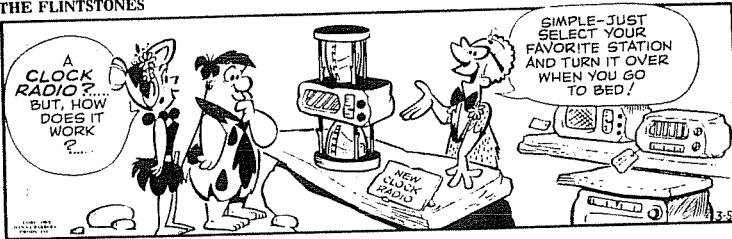
The biggest problem is that KHIP's transmitter, located on nearby Fremont Peak, isn't powerful enough to reach all the old KFAT fans. The range of the 3,000-watt station is roughly most of Monterey and San Benito counties, parts of Santa Cruz County and the southern portion of San Jose.

KFAT, with 50,000 watts, had reached a good chunk of Northern California.

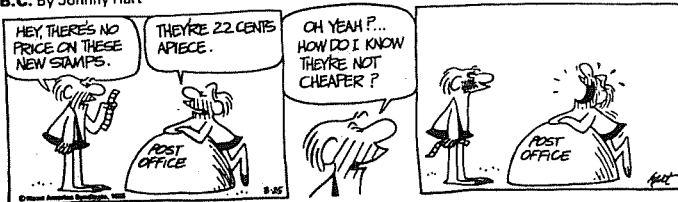
While KHIP lacks power, the staff says it's loaded with personality.

"Surveys show that we appeal to men and women in the 18-to-54 age group and that about two-thirds of them earn more than \$30,000 a year," Airheart said. "The people who love our sounds don't live in the hills; they live next door."

THE FLINTSTONES



B.C. By Johnny Hart



THE INTERNATIONAL RADIO CLUB OF AMERICA

The IRCA is a non-profit organization devoted to the hobby of listening to distant radio stations on the AM broadcast band (535 to 1635 KHz). DX Monitor, the official publication of the IRCA, is printed 34 times per year; weekly from October to March, twice a month in April and September, and monthly from May to August. DX Monitor contains members' loggings, information and articles on radio stations, receiver reviews, technical articles and construction projects, tips on DXing, and other material to help members enjoy their hobby. IRCA also publishes books on medium wave DXing and holds an annual convention. IRCA is a member of ANARC, the Association of North American Radio Clubs.

Club Addresses and Officers: President - Phil Bytheway, 9705 Mary Avenue NW, Seattle, WA 98117 (206)784-5145. Secretary-Treasurer - Rich Segalas, P.O. Box 26254, San Francisco, CA 94126. Editor in Chief - Bruce Portzer, 6546 19th Avenue N.E., Seattle, WA 98115 (206)522-2521. Board of Directors: Ernest Cooper, Nancy Hardy, Ric Heald, Neil Kazaroos, Bruce Portzer, Peter Taylor, and Niel Wolfish.

Membership Dues: U.S. \$20.00 per year. Canada and Mexico (one issue mailed per week) \$26.00, (two issues every two weeks) \$20.00. Overseas surface mail \$21, airmail to Central America, Colombia, Venezuela, and the Caribbean \$27; airmail to Latin America, Western Europe, North Africa and the Middle East \$30; rest of the world \$34 airmail. Special Trial Membership: 10 issues of DX Monitor and a new member packet for \$7.50. Make checks and money orders payable to IRCA and send dues to: P.O. Box 26254, San Francisco, CA 94126. Foreign members must make dues payable in U.S. funds.

The IRCA Goodie Factory, the IRCA has a number of items for sale, including hundreds of past DX Monitor articles, A DXers Technical Guide, The IRCA Almanac, IRCA Foreign Logs, and other publications. For details and prices send an SASE to 1017 W. Manhattan Drive, Tempe, AZ 85282.

Opinions expressed in DX Monitor are those of the original contributor and not necessarily those of the IRCA, its officers, editors, or publishing committee. Unless otherwise noted, permission is given to republish non-copy-righted material if credit is given to IRCA & the originator.

FIRST CLASS MAIL
U.S. POSTAGE
PAID
Seattle, WA
Permit No. 601

first class

19

D. A. NYHOLM
2071 CEDAR STREET
SAN CARLOS CA
94070

Postmaster: if undeliverable, return to
P.O. Box 21074, Seattle, WA 98117, U.S.A.