



DX Monitor

Devoted Exclusively to
Broadcast Band DXing

March 15, 1986

Volume 23, Number 25

Issue Number 748

In This Issue

Eastern DX Forum	2	Stationsfortegnelse	12
Western DX Forum	3	Talking Signs Fine Tuned to Sell ..	12
Wise Up	5	Status of Domestic Stations	14
Eastern DX Roundup	6	Stations Temporarily off the Air ..	16
Western DX Roundup	7	Ex-San Diego Mayor a Talkshow Host	17
DX Worldwide East	9	Voice of Barbados Ad	18
DX Worldwide West	10	The Sounds of Silence at KHJ	18
Info on GFYZ-530	11	Pirate invited to air Protest	19

DX Test

Monday
March 31, 1986

KPCR-1530, Bowling Green, MO, will test from 0300 ELP to whenever, with voice and morse code IDs, plus music. This station was heard coast to coast on a DX test in the mid 70's, so it's possible they may be widely heard again this time around. Send reception reports to J. Paul Salais, President, KPCR Radio, Box One, Bowling Green, MO 63334. Arranged for NRC by Wayne Heinen and Dan Bartek.

Also, not exactly a DX Test, but there's a new powerhouse station here on the west coast --- KTNN-660 in Window Rock, Arizona. Listed for 50 kw at night and they sure as heck sound like it! They are LOUD here, in a class with KFI and KNER. Format (nighttime at least) is heavy duty rock music, with IDs as the Superstation and weather for the western U.S., plus hype about serving western America. I'm not sure what their antenna pattern is like, but they probably have to protect WNBC. Overall, this looks like the best bet for Arizona from much of North America. Can you guys in the midwest and east hear them?

Odds and Ends

The Ted Vasilopoulos Award --- Each year, the IRCA presents the TVA award to the member who has contributed the most to the club and the hobby. The winner is determined by a vote of the club membership, and the award consists of an engraved plaque and a year's free membership. Any member in good standing may nominate any other member for the award. Past winners have included editors, regular reporters, and others who have selflessly contributed to the IRCA. Those who have won the award in the past five years are ineligible - they include Ric Heald, Pat Martin, Bruce Portzer, Nancy Hardy, and Nick Hall-Patch. If you would like to nominate someone for the award, send a brief statement about them to this year's TVA chairman, Pat Martin, Box 873, Seaside, OR, 97138. The ballot will be enclosed with the June issue of DXM.

Next week, we'll have the anniversary issue. See you then!

1986 World Radio TV Handbook Effective 31 March 1986, until 1 September 1986, or until supply is exhausted, Century Print Shop will sell all remaining copies of the 1986 WRTH at \$13 each or 2/\$25. CA sales tax is 6% for residents only. All copies postpaid Book Rate only. Please call for First Class Mail rates. Orders, with check or money order payable to CENTURY PRINT SHOP, should be mailed to: Century Print Shop, Don Erickson, 6059 Essex St., Riverside, CA 92504-1599. Inquiries welcome at (714) 687-5910.

EASTERN DX FORUM

RICHARD EVANS
English Village Apts, Bldg 23 Apt. B-6
NORTH WALES, PA 19454

Deadlines: 3/8 3/15 3/29 4/12 4/26 5/10 5/31 6/28 7/26

Bill Townshend, 4500 Connecticut Ave. NW, #901, Washington, DC 20008
As if there aren't enough people kicking the time zone question around, I may as well put in my two cents worth. GMT (or UTC) belongs only in DXWW and local standard or daylight time (in my case, EDT/EST since I live in the Eastern time zone). EDXR could be in EST/EDT. CXXR in CST/CDT or MST/MDT according to the time zone of the DXer, and WDXR in EST/PDT. On Saturday 2/8, the WADXA had a GTG at Bob Horwite and Ken Mason's pad in midtown D.C., with fourteen including Greg Monti and yours truly attending. WPKX-730 (105.9 on FM), which had a country format, changed its call to WCXR and its format to classic rock, going from "hillbilly" to "chainsaw". On Monday 1/27 at 1305 EST, the last country song was retired and the Doors' classic "Light My Fire" hit the air. That station came on the air in 1946 as WPIK "The Sunshine Station for the Nation's Capital", the D.C. area's first daytimer. Stations in the area with multiple changes: WPIK/WRMR/WPKX/WCXR-730; WARL/WAVA/WABS-780; WGAY/WQMR/WGAY/WNTR-1050; WHMC/WJOK/WMTG-1150; WFCK/WEEL/WDCT-1340; WINK/WOOK/WFAN/WYCB-1340; and WTFJ/WJSV/WTOP-1500. WPIK became WRMR in 1979 with MYL format, then went "Radneck" as WPKX. As for counting new stations for logging purposes, I count a newbie only if the station starts from scratch. I don't count call letter or frequency or format changes as newbies. Out at WDXF-HQ (Venice, hi), the worst flood in 30 years has now begun to recede. This should make for great DX with daytimers on at night in that area and some pests knocked off the air. 73 and good DX.

John H. Demmitt, Box A K0848, Bellefonte, Pennsylvania 16823
An author of technical books in the field of electronics who lives in Pa. sent me a copy of a QSL he just received from WFNC... the station I first thought was WFMC (blush blush). In that letter to Ed Will, the chief engineer, Terry Jordan, confirmed his reception of WFNC on 640 kHz on Jan. 15, 1986 from 1705-1737 EST. He went on to say that the station now operates with 10,000 watts daytime and 1000 watts nighttime using a non-directional antenna. He also mentioned that Ed was the first BC band DX'er to send the station a reception report and thanked him for sending the taped reception report. Lately WRSC-1390 has been having problems again. This time the spurs are going out on 10 kHz to either side of 1390 kHz. I have informed the CE so maybe a couple of additional condensers will correct the problem. The pirates are active on 1620 and 1622 kHz on Friday nights and can be heard well...providing you can null out the beacons. 73.

Richard C. Evans, English Village Apts. 23-B-6, North Wales, Penn. 19454
I've noticed WPEN-950 now using the slogan "Music of your Life", but it apparently is not the syndicated program. It's local programming with the nostalgia touch, at least on weekends when I get to hear it, plus at night when I'm trying to go to sleep. I see where the time issue won't go away. I've yet had anyone tell me why it is to everyone's advantage for each DX'er to report to the columns in that DX'er's own time zone. That is, why is to my advantage, or to Bruce Portzer, or to Ric Heald, or Don Kaskey, or Bill Wittler, or S.D. Warren in Mississippi, or anyone else in this club to have so many different time zones in the club. I see reports from guys who feel they should be allowed to use their own zone or that we all should our own time zone, but nobody spells out why it would be advantageous to the others in the club. Those of us who advocate one uniform time zone give our reasons but I've yet to see it rebutted. However, in the spirit of club unity, if it is best for everyone to use different time zones, why not consider the obvious, and what might be the best solution yet? List all the times in the station's time zone usage? That is, use EST for WCBZ, CST for WLS, MST for KOA, and PST for KABC, even if the reporter is the same person. This should keep most people happy in that we will have a standard to work against, while the people who like to feel independent and not tied down can have a measure of freedom also. After all, the NRC Log does show the time zone for each station, and presumably if a person has listened to the station, he is aware of what time zone the station is using, right?....PTL.



Western DX Forum

★★★★

IRCA—Serving the Broadcast Band DX'er Since 1964

Editor: Ric Heald, 8539 Bellamy Way, Sacramento, CA 95828 USA

1986 DEADLINES — WEEKLY ON TUESDAY, 12 DAYS PRIOR TO PUBLICATION DATE

GREG HARDISON, 14435 FLUMMER ST., #11, PANDRAMA CITY, CA 91402

So far, the month of February has been rather productive, as far as publicizing our wonderful pursuits on national radio. I got word this week from both Arthur Cushen and Ian Macfarland (host of R. Canada International's DX program) of their intentions to visit our fair and smoggy city during the weekend of 01 August - which means, a mid-year DX Special on the Ray Briem Show - involving these two fine gentlemen. We're planning to go live with this on Saturday morning, 02 August 1986, on ABC Talkradio.

As it stands now, you folks in the Northwest will have a chance to hear it, this time, as KFBK 1530 has joined the net. KFBK picks up the Ray Briem Show at 0100 PLT - and we've already heard from a couple of listeners in Anchorage - so, allowing for splatter from KSGD and KLSY, we should blast a pretty clear path up to the frozen Northlands.

I appreciated the scope of Karl Zuk's comments in his column, about the shuttle tragedy. I worked the phone-board for Ira Fistell and Ray Briem that week - and have never seen an event have such a widespread effect on the American people. May the Lord bless and keep the seven brave souls. 73.

RON HARRINGTON, P.O. BOX 21564, DENVER, CO 80221

An update on my forthcoming marriage. Joyce and I will be married at Noon MLT 02 August 1986 with reception to follow and departure for the airport around 3:30 PM. Flight departs Denver at 5:00 PM, arriving Los Angeles at 6:15 PM PLT.

Joyce and I will be at the SCADS GTG 03 August and any IRCAn's who wish to meet my new wife and me can meet us at the GTG. For information regarding the SCADS GTG, send a SASE to ASWLC, 16182 Ballad Lane, Huntington Beach, California 92649.

Joyce and I will be staying at Motel Six in the area.

Why should I get Joyce to join IRCA or any other club? I get the issues and she can read mine. I'm teaching Joyce all about shortwave DX'ing first. After six months of SW she should be ready for MW DX. She enjoys listening to Moscow.

Well, that's it for now. 73 de Rob and Joyce.

RANDY SEAVER, 1154 VIA TRIESTE, CHULA VISTA, CA 92011

I noticed Jack Woods' inquiry about the effect of weather on ionospheric propagation, and have some comments. The E-region of the ionosphere controls nighttime MW propagation, and signals are refracted back to Earth from 80-100 km altitude. The D-region essentially disappears at night, except in the auroral zone; this is good, because high absorption would occur if it were present in the typical nighttime ionosphere. The D-region is present during the day as a result of solar radiation ionizing some of the molecules above 50 km altitude. This results in absorption of almost all daytime skywave signals, with absorption decreasing with decreasing sun angle. The c layer is seen on some electron density profile at sunrise in the lower part of the D region, but soon is submerged within the typical daytime D-region electron density profile.

As for weather effects, they are minimal on long distance MW propagation characteristics. An increase in ground conductivity due to a saturated soil may reduce ground reflection losses or ground loss at the receiver. Lightning will increase static levels for hundred of miles around. Low temperatures will reduce the noise level. High geomagnetic activity can increase noise levels thousands of miles from the auroral zones, and long periods of low geomagnetic activity can reduce noise levels. Noise level is very important because it affects the signal-to-noise ratio of any received signal, and hence its readability.

The sun's radiation, especially solar flares, affects the earth's geomagnetic field, resulting in cyclic reception phenomena such as excellent high latitude conditions (low geomagnetic activity) or auroral conditions (high geomagnetic activity) for some locations. The solar radiation period is 27 days, so sunspot clusters tend to reappear on a regular basis until they gradually disappear, or until new sunspot clusters dominate the solar radiation output and cause increased geomagnetic

activity.

A correlation between European-North American reception and weather characteristics (including moon phase) was done in the mid-'60s by Gordon Nelson; the results were that there was no statistical correlation for weather or the moon phase. There can be coincidences, because the solar rotation period is 27 days and the lunar period is 28 days, and some weather phenomena seems to be on six-to-seven day cycles. In summary, there doesn't seem to be any statistical evidence for weather affecting MW ionospheric propagation. However, if DX'ers think they have a good correlation with weather, by all means test it!

For the specific instance that Jack quoted, 03 December having much improved conditions to the Midwest, but no improved TP conditions, a review of the A index data show that a minor geomagnetic storm ended on 01 December, leading to five days of relative geomagnetic quiet starting on 05 December. This is an almost classic example of the reception of DX conditions to the geomagnetic field activity. The message here is that is pays to check out the "ionospheric weather" map on WWV on a regular basis. 73.

BILL HARDY, 2301 PACIFIC AVE., ABERDEEN, WA 98520

This will be a serious forum, because it concerns a serious issue: Whether the President of IRCA has the right to dictate the content of DX Monitor.

In December, Nancy received a letter from Dr. Wood. Among other things, he complained that WDXR was "becoming a repository for general station info, background info which belongs in the Almanac, the NRC Log, feature articles, etc. In general I would like to see the column contain loggings - DX - so that when we see a station with the initials of a reporter, we know she/he has heard it." Dr. Wood complained that many news items were of stations the reporter had not actually heard, and asked Nancy to "please omit such or reroute them to the appropriate editor."

Beginning with the 21 December WDXR, Nancy has been omitting such items at Dr. Wood's request. I feel that this has hurt the usefulness of WDXR.

Many of the best tips in WDXR have been obtained by DX'ers such as Jim Hilliker and Robert Wien, who have been telephoning stations at their own expense to obtain current information. I consider information about a station's format, schedule, slogan, etc., obtained by telephone is often more accurate than program details heard via a weak signal subjected to interference at the DX'ers location!

I feel that any information that could help another DX'er hear or identify a given station should be printed in the DX Roundups. It would be nice if material for Almanac Updaters, Radio Programming Notes, the Stereo Lost, Slogans, etc. could be sent directly to the proper editors, but all of us pick up this information from DX Monitor, and it's better to have it appear there than not to receive it at all.

What's more, I believe that the IRCA President has no more authority than any other member of IRCA to dictate the content of the bulletin. The IRCA Editorial Policy, Section III.B. is very specific: "Editors shall have sole authority over the content of their columns, including filler material, subject to the provisions of the IRCA Bylaws dealing with irregularities." Section II.B.1.b. defines the content of the DX Roundups: "Each DXR column will contain reports of domestic loggings and tips, such as sign-on and sign-off time, frequency checks, and any other useful station schedule or reception information." So it's clear that the Roundups are not to be limited to "loggings" but may include any useful "tips." The Editorial Policy cannot be changed without a vote of the Board of Directors; the President has no vote except in the case of a tie!

If you feel as I do, that tips "per phone call" to a station are an important part of the DX Roundups, please tell Nancy, Bruce Fortzer, your Board of Directors, and especially Dr. Wood! Thank you. 73 and good DX.

RIC HEALD, 8539 BELLAMY WAY, SACRAMENTO, CA 95828 Tele-Forum: (916) 386-8477 to 2200 PLT & ppp

Well I see the UTC versus local time zone debate has come to a screeching halt, hi. Bill, I couldn't agree with you more. Well said. You and I have both been on the BoD and Nancy now currently serves on the BoD. The Bylaws make it perfectly clear that the President must go through the BoD and any action taken regarding policy changes must be approved by a majority vote. The President cannot make policy under any circumstances, he can only make recommendations, where upon the BoD votes, he doesn't. unless, as stated, in case of a tie. I highly value the tips from dedicated DX'ers who, at their own expense, call all over the country, usually to new stations trying to obtain valuable information such as start-up date, schedule, power, pattern, etc. In these days with a deluge of new stations cropping up on the former Clears, this information gives us a chance to try to catch a new station on their first day of broadcasting.

Speaking of new stations (we were talking about that weren't we?-hi), I

called Bill and Nancy 01 March with a hot new tip only to learn Tim Hall had beat me to the punch, hi. Noted KTNN 660 Window Rock, Arizona at 0638 FLT, 01 March, with current C&W and Navajo- talking DJ. Lots of ID's sprinkled all around. Solid, and I do mean, solid signal. There goes another channel.

The usual boring stuff on 1050 as KOFY continues to be silent. Mostly KORE and XED. Which reminds me, when Eugene stations KASH 1600 and KEED 1450 swapped frequencies, that was not a first for Eugene/Springfield, or for that matter, KEED. Many years ago KORE 1450 and KEED 1050 swapped frequencies. Remember when?

In trying for something besides KORE/KBLE/XED, started dial twisting and was rewarded with several minutes of KLSC 1090 on SSS. Good "On the new 10-90, KLSC," with YL DJ.

Noted new calls from KRTH 930 ex-KHJ. And no, for all of you who've been writing those cute notes at the bottom of your forums, I had nothing to do with that one, hi.

Thanks to Art Peterson for furnishing location of KFBK's transmitter site. As I mentioned before, old verie said near Lincoln, and so it is, about eight miles west and just east of US 99 about midway between Sacramento and Marysville/Yuba City. Now just KFIA and KHWY to go, and then I'll start in on the suburbs like Auburn and Roseville, hi.

Thanks for all the notes regarding our recent floods. Funny thing, right afterward until now we've been enjoying 10-to-20 degrees above normal weather. Now then, what do you get with warm weather and hundreds of thousands of acres of farmland with standing water? Uh huh. I feel like I'm in a bombing raid every evening, hi.

Anniversary issue is next week. See y'all then and best of DX. 73 de Rth.

Wise Up

Dear RW:

Let's face it, the once high and mighty AM broadcast band has been in a state of decline over the past several years. In just the past five years we've seen great perennial AM music giants fall by the wayside and, rather quickly, I may add, have totally segued into the overly redundant world of satellite fed or locally produced talk-formatted radio.

What happened?

The answer today is clear, *FM stereo*. Why listen to music on a band whose technology dates back to the late 1940s, and sounds like it, too, when you can listen to the modern, crystal-clear sound of stereo music on the FM band?

As a result of this stereo phenomenon, radio manufacturers have been hustling over the past few years to find the cheapest, yet not the most high quality, way of enabling AM stations to transmit in stereo. The technology to transmit *high quality* AM stereo has been around since the early 1960s, when Leonard Kahn (the father of AM stereo radio) submitted his Independent Sideband AM Stereo system for approval to the FCC.

Unfortunately, Kahn's proposal fell upon deaf ears and was subsequently rejected so that FM would have a "fighting chance" to survive.

As a result of this bureaucratic blunder, the once stagnant and secondary FM band has all but devoured AM listenership.

Now the receiver manufacturers of the world, with the exception of Sony and

Sansui, are trying to pawn off an inferior AM system known as C-QUAM to the consumer as the "winning" or "defacto" standard by selling one-system C-QUAM radios.

I say *bull* to the receiver manufacturers and the station managers who allow this AM system to get into the hands of the unsuspecting public. The C-QUAM system will in no way save the sagging AM band from oblivion. In fact, it could spell its doom.

Recently I visited the Lake Placid region in upstate New York. Naturally my Sony SRF-A100 came along, too. With the exception of a 5000 watt daytimer (WIRD/920 kHz), Lake Placid almost completely relies on skywave for AM reception.

On 16 November 1985 at 8 PM I placed my SRF-A100 into the "B" mode for Kahn/Hazeltine AM stereo reception and tuned into Clear Channel WNBC/New York (660 kHz). Despite the inherent selective fading due to skywave propagation, WNBC suffered no platform motion whatsoever.

Next, I tuned into Zaven Masoomian's WQXR/New York (1560 kHz) and heard crisp, clear platform-motion-free classical music in stereo.

Next, I put the Kahn system to its toughest test by tuning into WBT/Charlotte, North Carolina (1110 kHz) on a frequency which is subject to interference from Canadian as well as West Coast AM stations. Despite the deep fading and overtaking from other stations on the frequency, not once did WBT's program of "Solid Gold Saturday Night" move from side to side due to platform motion. It just simply faded and returned.

I switched over to the "A" mode for C-QUAM reception and tuned to Clear Channel WLS/Chicago (890 kHz). WLS suffered from severe platform motion,

plus the fact that a 1000 Hz offset went from a Third World broadcaster seemed to superimpose itself on WLS's signal and also shifted from left to right and back again.

Next, I tuned to WPTP/Albany, New York (1540 kHz) and got more of the same lovely platform motion. Finally, I tuned to 1010 kHz to CFRB/Toronto. Not only did I hear very severe platform motion, but I also heard WINS/New York—a *mono station*—that seemed to be presenting its All News format complete with platform motion to boot. Not only does C-QUAM make AM stereo stations sound stereo, but it makes co-channel AM mono stations sound "stereo" too, complete with platform motion.

Putting Motorola C-QUAM "pseudo-stereo" on the air and labeling it as the "winning" or "defacto" system despite the warnings of 11 out of 12 engineers surveyed, despite its lack of high fidelity, despite its vulnerability to heavy platform motion, seems, just for the sake of saving a few measly pennies per IC chip—highly illogical if not totally asinine to me. I am not a CE at an AM station, but I do know the difference between the real high fidelity/discrete stereo available through the Kahn system and the poor fidelity and platform motion of the C-QUAM pseudo-stereo.

If wishy-washy station managers do not begin to listen to their CEs and continue to bow to the pressure of the receiver manufacturers, they may as well use their AM transmitters as boat anchors because, in the end, the people just won't listen to inferior audio music.

Station managers, *WISE UP!* Or you can just kiss your AM audience goodbye.

Peter Quentin George (KAINHI)
CE, WSHL-FM Easton, MA

From RadioWorld
February 1986



Eastern DX Roundup

Karl J. Zuk, 154 Old Post Road North, Croton-on-Hudson, New York 10520 "Where Attack Cats Can't Figure Out Where The Whistles Come From" 2-26



REPORTERS IN THIS WEEK'S ISSUE:

- (JHD-PA) John H. Demmitt, Box A, K0848, Bellefonte, PA 16823...Sony ICF-85W
(DLR-KY) David L. Reitz, 9332 Fairground Road, Fern Creek, KY 40291...R-1000, Radio West Loop, GE Superadio.
(RCR-PA) Robert C. Ritchey, R.D. #1, Box 738, East Freedom, PA 16637...DX-160 and 100 ft. Longwire.
(WPT-DC) William P. "Bill" Townshend, 4500 Connecticut Avenue NW, #901, Washington, DC 20008... Patrolman SW-60, TRF 12-650
(WPT-MD) Bill DXing at work in Maryland.
(KJZ-NY) Karl J. Zuk, 154 Old Post Road North, Croton-on-Hudson, New York 10520...Delco car radio.

- 600 WRTV NY, Yonkers. 2-20 1500 This is a carrier current station located on Elizabeth Seton College in Yonkers, NY, that is leaking with decent signal strength, at times, within about a 5 mile radius of Yonkers. I've heard it, with WTCF, Bridgeport, CT muted, on occasion in Croton, about ten miles away. Rock and Urban Contemp. format. (KJZ-NY)
685 WSJU NY, Jamaica. 2-25 1800 Another carrier current station that is leaking. They transmit for about 15 miles, and must be using some sort of illegal radiator to produce this signal. Lots of Rap records and college news and sports. Puts in a good sized het in most of the NYC metropolitan area. (KJZ-NY)
790 WWSM FL, South Miami. 2-15 0623 Poor with ID as "N-News", with weather, ads, legal ID, frequent mentions of "news desk." Interference from Cuba's Radio Reloj. (JHD-PA)
790 WISG VA, Mt. Jackson. 2-11 1745 Sign off by man, musical ID, no SSB, fair. (RCR-PA)
840 WHAS KY, Louisville. 2-17 0020 Noted off the air this morning. (DLR-KY)
920 WMMN WV, Faimont. 2-16 2142 Good with ID, IDs by celebrities, reference to "Super Sports Station," song "Don't Fence Me In," by Harold Almond. (JHD-PA) + 2-16 2358 with local sports news, weather, ID with sign off announcements, then the SSB. (DLR-KY)
930 WJAX FL, Jacksonville. 2-10 2117 Music by Dionne Warwick, ID "Magic 93 WJAX AM Stereo," very good to excellent. (RCR-PA)
930 WMCR GA, Bainbridge. 2-11 2015 Bainbridge Bearcats vs. Cairo Syrupmakers HS basketball, local spots, IDs. (DLR-KY)
1000 WIFX KY, Jenkins. 2-11 0302 DX test with bluegrass music and ID by man "WIFX AM 1000..." faded up enough to hear a bit of music and ID, generally nil. (RCR-PA)
1080 WKGX NC, Lenoir. 2-14 2058 C&W music, emergency broadcast due to snowstorm, ID "K-Country WKGX," weather, v.good. (RCR-PA)
1150 WMTG MD, Gaithersburg. 2-10 1230 Noted off air. (WPT-MD)
1170 WCLN NC, Clinton. 2-10 1755 ID by man, news by woman and man, no sign of WVA, Wheeling, WV. Good. (WPT-DC)
1200 WAGE VA, Leesburg. 2-17 1950 Fair with ID and record "He's Mine." (JHD-PA)
1260 WMDG DC, Washington. 2-17 1940 Excellent with big band music, ID as "AM-1260". (JHD-PA)
1290 CJBK ON, London. 2-17 1931 Good with Katrina and the Waves "Walking On Sunshine." ID as "Rocking London CJBK." (JHD-PA)
1290 WQIN PA, Lykens. 2-11 0730 Poor with ID , news, school closings, sports. 0753 some C&W records, then ad for Lumberger Furniture in Valley View. More closings at 0800. (JHD-PA)
1300 WFBP MD, Baltimore. 2-11 0725 Fair with record "Dear Hearts and Gentle People," ID and ad for an auto shop. (JHD-PA)
1320 CFOP ON, Richmond Hill. 2-17 1927 Excellent with ad for "Newmarket," record "Oxie Dokie Oklahoma Blues," ID, "Focus on the Family" promo and record "I Walk The Line." (JHD-PA)
1340 WYCB DC, Washington. 2-13 1310 Noted off air. (WPT-MD)
1340 WMOG VA, Orange. 2-13 1315 ID by man, fair under WEMP, Martinsburg, WV. Tentative of 5-4-78 now positive. (WPT-MD)
1360 WKAT FL, Miami Beach. 2-10 1806 News, weather, Latino tune. Fair. (WPT-DC)
1380 WRBQ FL, St. Petersburg 2-11 1814-1815 Music by Billy Ocean, ID as "Q-105", traffic check for Tampa and St.Pete., very good until 1815 when signal dropped off to almost nothing. Ex-WNSI. (RCR-PA)
1370 WMOG PA, Roaring Spring. 2-11 0713 Excellent with record "Soth Of The Border", "USA City Weather", record "Everybody Loves My Baby," strong het on the high side of the frequency. (JHD-PA)
1390 WPMJ OH, Youngstown. 2-17 1910 Fair with "Love Letters In The Sand," ID by Dick Clark, in null of WRSC, State College, PA. (JHD-PA)
1420 CKPT ON, Peterborough. 2-17 1901 ID "CKPT" by man, in fade of WHK, Cleveland, OH. Poor. (JHD-PA)
1420 WHK OH, Cleveland. (no date) 1900 ID as "14K-Solid Gold" with records "Sherry" and "Stop In The Name Of Love." (JHD-PA)
1430 WMSD FL, Panama City. 2-11 1855 ID, MOXL music, Satellite News Network, ex-WMAQ. (DLR-KY)
1430 CJCL ON, Toronto. 2-17 1849 ID and program highlights, restaurant ad, ID and record. (JHD-PA)
1430 WEIR WV, Weirton. 2-11 0700 Fair with ID, ad for water softener, local news, bank ad, ID, school closings. (JHD-PA)
1430 WCOH TX, Houston. 2-11 1853 Ads for 1986 Houston Livestock and Rodeo Show, Tax Facts show, ID into local sports, lost to WRSB, Panama City, FL. (DLR-KY)
1430 KRSD TX, Gladewater. 2-10 0000 Texas Network News, ID "The Great Voice Of Northeast Texas K-E-E-S Gladewater-Longview, 5000 watts of power," into C&W music. "Keys Country" IDs. (DLR-KY)
1440 WREO OH, Warren. 2-17 1853 Good with pop records nad ID. (JHD-PA)
1440 CHOW ON, Welland. 2-17 1745 ID and record "Falling In Love." Interference from WMCZ, Farrell, PA, signing off. Fair.(JH)
1470 KLCL LA, Lake Charles. 2-9 2353 Weather, ID as "Total Radio KLCL," into C&W music. (DLR-KY)
1500 KANI TX, Wharton. 2-11 1905 Talk on High School Basketball, ID into weather forecast. Poor. (DLR-KY)
1510 CJRS PA, Sherbrooke. 2-17 1843 Fair with call-in show in French. Ads at 1845. (JHD-PA)
1520 KRJH TX, Hallettsville. 2-11 1915 C&W music, ID with sign off announcements. (DLR-KY)
1530 WYFC PA, McConnellsburg. 2-17 0035 Test tones over WKCY, Cincinnati, OH. ID "W-V-P-C McConnellsburg-Mercerburg, PA."(DLR-PA)
1540 CHIN ON, Toronto. 2-17 1754 with ethnic program in Italian (?) and ID. Interference from many stations including WBIC, Uhrichsville, OH. Fair. (JHD-PA)
1550 CBE ON, Windsor. 2-17 1818 CBC's "The World At Six." Good. (JHD-PA)
1550 WOKJ MS, Jackson. 2-17 0200 ID by man "WOKJ Jackson," into black gospel music, weak. (RCR-PA)
1570 CFOR ON, Orilla 2-17 1823 Good with promo on CFOR contest winner, ID, time, record. Interference from CHLO, St.Thomas, ON. (JHD-PA)
1570 WVVV WV, St.Marys 2-17 0105 DX test with instrumental Xmas corol, ID "This is 1570 WVVV St.Marys" by female, into test tone. Fair to good over UNID station. (RCR-PA)+2-17 0100 DX test with tones, voice IDs. Poor with heavy interference from XERF. (DLR-KY)
1590 WQQW CT, Waterbury. 2-17 1830 Fair. ID. local news, ID jingle. (JHD-PA)
1600 WNGA CA, Nashville. 2-9 1815 Sign off by man, no SSB, fair to good. (RCR-PA)

A quick sign off...WNYC, New York, NY will be moving to 820 kHz, 10kw/5kw nights with new transmitter site in NJ swamps, B. DIRECTORIAL FAST OPERATING HOURS 0600-2400 TO START. NO START DATE YET. THANKS ALL!! KZ

WESTERN

Nancy Hardy

2301 Pacific Avenue
Aberdeen, WA 98520

DX ROUNDUP

All times are
Eastern Local

Phone for hot WDXR tips: (206)532-6827 till 10pm(PLT)

DEADLINES: Tuesdays March 18, April 1, April 15, April 29, May 13, June 3

REPORTERS FOR THIS ISSUE:

- (TRH) Tim Hall-350 G St. F-1-Chula Vista, CA 92010
ICF2010, Radio West loop
- (BH) Bill Hardy-2301 Pacific Ave.-Aberdeen, WA 98520
FRG-7, Radio West loop
- (NH) Nancy Hardy-2301 Pacific Ave.-Aberdeen, WA 98520
FRG-7, Radio West loop
- (RtH) Ric Heald-8539 Bellamy Way-Sacramento, CA 95828
FRG-7, SM-1
- (RW) Robert Wien-1309 Dentwood Dr.-San Jose, CA 95118
GE Superadio, GE long-range portable, SM-2

OF SPECIAL INTEREST:

- *****
- 660 KTNN AZ, Window Rock 3/1 0937-0951 current country music w/Navajo talk, 0951 ment. mail from places in New Mexico & Arizona. Solid copy, S-9 +20. Friday 2/28 was their first day. (RtH-CA)
+3/1 2028-2049 good signal, a bit weak for 50kw. Adult cont., "The Mighty 660," "For all of western America, we are 660, KTNN." Ad for Navajo business. Weather 2045. Address Box 2569 (?), Window Rock 86515. (TRH-CA)
+3/1 2151-2221 adult contemp./hit rock music, 2200 NBC News. 2204 ad for motel in Gallup, NM, TC & ID. 2217 weather for entire nation. Many "66-AM KTNN Window Rock" IDs and address given frequently. Extremely strong, no CFFR. (NH-WA)
+3/1 2155 first noted w/pop music, 2200 legal ID, address for requests, NBC News. Night format is a blend of uptempo adult contemporary & current rock hits. Very strong signal, equal to KBOI-670, no sign of CFFR tonight. Morning format is completely different: English-language country music w/announcements in Navajo language! 3/2 0720 C&W, 0725 Navajo announcements, then a 4-minute recording of Navajo chanting & drums! 0730 announcements in Navajo w/a punctuation of English phrases, including "K-T-N-N," "660 A-M," "50 thousand watts of power," "third day of broadcasting," "rock and roll." 0733 C&W song "Cherokee Fiddle." 3/3 0700 full-data sign on, "owned & operated by The Navajo Nation," xmtr at Sawmill, AZ. Not 24 hours; schedule is 0700-0200 seven days per week. (BH-WA)
- 1470 KKVU UT, Tremonton 2/24 0815 fair at s/on thru mess, ment. of owned and operated by Golden Spike Broadcasting Co., and 5000 watts. Wonder why they didn't s/on at 0800 like normal, since they have a PSA? Call change, ex-KBCM. IDs as "The New View" later on. Changed calls 2/17. (RW-CA)
- *****
- 590 KSUB UT, Cedar City 2/18 0056-0117 poor-fair o/KPXM, KLZZ-600 slop nulled, o/u Cuba which dominates the channel later at night. CWM mx, OM ID "We are Color Country, 59 KSUB, Cedar City." Into CBS News, ads. DJ Greg Thomas. New, UT #22. (TRH-CA)
- 600 KSYO CA, Redding 2/18 0117-0127 poor-fair in KLZZ null. Switched to day pattern for EBS broadcast from Nat'l Weather Service at Red Bluff--flood watch extended, seek higher ground, etc. ID/TC at 0120, then back to night pattern w/songs, quickly faded. CE Mark Oldham sent me a copy of the station log showing the switch to day power/pattern, as well as the teletype copy of the weather bulletin I heard. New, CA #160. (TRH-CA)
- 770 KXA WA, Seattle 2/24 0218 strong in KOB null w/"Easy Lovin' 77" ID. (RW-CA)
- 860 *KTRB* CA, Modesto 2/24 0310 loud w/TT. (RW-CA)
- 890 KBYE OK, Oklahoma City 2/24 0752 strong, alone w/ID, no trace of WLS, looking for WQIS. (RW-CA)
- 980 KINS CA, Eureka MM 2/17 0256-0301 poor u/KFWB on day power (5kw ND) due to flooding, per CE Art Seymour. ID on hour into CBS News. Also weather by YL. New, CA #159. (TRH-CA)
- 1030 *KTWO* WY, Casper 2/24 0620 strong w/OC, o/KHWY. (RW-CA)
- 1050 *KOPY* CA, San Mateo 2/26 1654 ET'ing w/TT. (RW-CA)

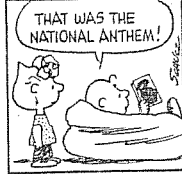
- 1180 ---- FL, Marathon R. Marti MM 2/24 0630 full ID by OM into world news. This time I noted QRM from a Reloj station (CMOD listed). Regarding Richard Wood's recent comments re WFLA-970, I'd have to say that this is the easiest Florida station from S. Calif. (at least S. of Anaheim--KEZY-1190 puts out almost nothing to the south, and KCBQ-1170 takes a lot of MM SP's). My only other FL station is WHB0-1040. (TRH-CA)
- 1260 KPIN AZ, Casa Grande 2/23 0836-0843 poor-fair in KGIL null, XEMW apparently not on yet. C&W mx, wx for "Casa Grande Valley," ID by OM. New, AZ #49. (TRH-CA)
- (KOIT) CA, San Francisco 2/14 2050 totally off air due to fierce storm, several FM's also off air, back on later w/low power (KGIL o/u them!). (RW-CA)
- 1300 KMPS WA, Seattle MM 2/17 0611-0617 briefly dominating, then sank below KYNO, KWKW. C&W mx, ID by OM "1300, KMPS," weather, promo for Bill Walsh (?) "Weekdays on KMPS." New, WA #10. (TRH-CA)
- 1310 KFKA CO, Greeley MM 2/24 0452-0501 poor-fair u/KZZP, KDIA. Larry King Show (Best of King), then ID/s/off by OM ending w/"Sweet dreams and goodnight." New, CO #16. (TRH-CA)
- 1400 KRPL ID, Moscow 3/3 0630 just atop the mess w/"Today's country for the Palouse Empire on KRPL," then C&W. A format change from previously-heard top 40. (BH-WA)
- 1450 KTIP CA, Porterville 2/26 0900 poor w/YL ID, NEC News. New, CA #161. (TRH-CA)
- KATJ UT, St. George 2/23 0759-0809 fair-good w/OM s/on ment. studios at 568 E. St. George Blvd., into rx. New, UT #23. Never logged KDXU when they were here--odd. (TRH-CA)
- 1560 WPAD KY, Paducah MM 2/17 0446-0500 very poor u/XEFAJ/XEJVP w/AdCon mx, jingle ID (Glad I had the recorder on!). Killed by WQXR s/on at 0500. New, KY #2. (TRH-CA)
- WQXR NY, New York MM 2/17 0500-0541 very poor, QRM from XEFAJ/XEJVP. SSB, OM ID, s/on. News, talk about 1969 Mets, weather, into classical music. New. (TRH-CA)
- 1570 CKTA AB, Taber 3/3 0636 1/2 promo for CKTA morning show, CKTA jingle, country music. This confirms someone's report that they've split from CHEC-1090, which they relayed on the all-night show for many years. "1090 Check" ID's were always easier to hear on 1570 than 1090 here! CKTA is country, so the all-night top 40 show from CHEC was a contrast. Now it's all C&W. Very good, almost no CHUB audible. (BH-WA) (It's a first--Bill gets 100 lashes with a stiff penguin flipper!!! He left the date off this tip, so I had to go look at his notes to find it. It will take him awhile to live this one down, hi.--NH)
- 1600 KZON CA, Santa Maria 2/26 0924 poor-fair u/KWOW, KVRD, KBEX, KGST. OM SS ID "Kah-Zeta-0-Ene," brief SS talk, into song. Quickly faded. New. (TRH-CA)
- KUBA CA, Yuba City 2/23 0330 poor u/KWOW. OM's talk which businesses were reopening after floods. Urged listeners to support local businesses, "Keep your money in this area." (TRH-CA)

UNIDS:

- 550 3/2 0755-0910+ somebody ending Jim Bohannon (Larry King) Show, 0800 Mutual news with no ID, 0805 "Reporter's Roundup," 0830 Mutual news, 0835 dead air w/faint pulses each second like a clock ticking, 0854 network ad, Mutual Lifestyle Reports, ad, 0900 Mutual news, 0905 Mutual sports, 0910 more dead air! Sounded like somebody put on Jim Bohannon earlier & left the Mutual feed unattended, no ID's, Mutual tones ahead of newscasts. Loop direction suggests Hawaii. Does KMVI cont. do this, Dale Park? Fair in KBOW null. (BH-WA)
- 600 2/23 0415-0423 unID TT'er u/KLZZ w/tones. No ID heard. (TRH-CA)
- 810 MM 2/24 0330 very weak station u/KGO w/Best of King. Probably KCMO? (TRH-CA)

I just realized why the lack of reporters this week. Everyone is saving their report for next week--the anniversary issue! ♥

PEANUTS By Schulz



DX WORLDWIDE EAST

EDITOR: JIM HALL # 240 BYRON ROAD # PITTSBURGH
PENNSYLVANIA 15237, U.S.A.

* * times are GMT/UTC * *

TRANS-ATLANTIC DX

- 1521 t SAUDI ARABIA, Duba 2347 2/4 : Poor seemingly w/chanting but poor separation. The time would indicate Duba -- Spain fades in later. (Hall-PA)
1566 t AZORES, 0822 3/4 : Continues to be heard although only a poor/fair carrier usually. A report was sent with the last reception. (Hall-PA)

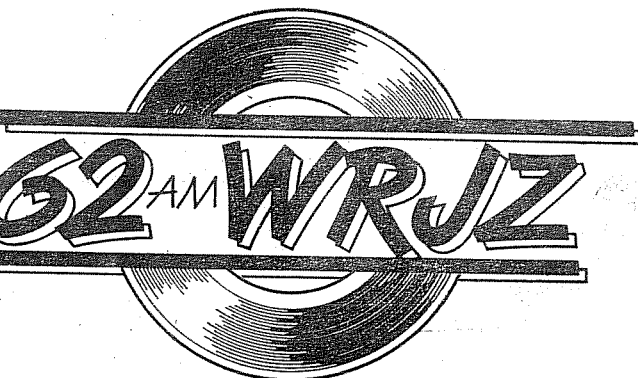
PAN-AMERICAN DX

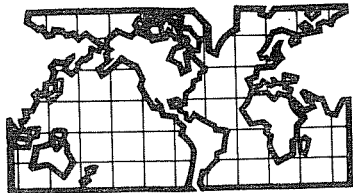
- 535 GRENADA, 0002 3/2 : Good w/ID by accented man, into Carib. mx. (Hall-PA)
595 DOMINICA, Roseau 0028 3/2 : Best ever heard, man w/EE mx selections. About this time it seemed like there were going to be AU cx, but 1/2 hr later not one LA was heard. (Hall-PA)
690 unID, 0528 2/3 : Weak SS stn after CBF goes off. No ID heard but believe it might be Colombia. Can pick this up now that the Cuban has moved to 710. (Wyllie-MA) (I'll bet you're right, William- ed)
760 CUBA, Guanabacoa CMDB 0545 2/3 : Strong sig w/splash from WABC. R. Rejoj w/man/woman giving ID's and news. (Wyllie-MA)
825 ST. KITTS, Basseterre 2320 2/23 : Man w/EE gospel. (Gilbert-NY)
880 CUBA, Progreso in well //weak 900, in o/KRVN (until KRVN changed their pattern at 2333) leaving feeble WCBS. 3/2 (Hall-PA)
940 CUBA, Holguin CMKD 0500 1/25 : Weak behind CBC stn, code ID's hrd best on this R. Rejoj. (Wyllie-MA) (Try 1270 for same effn- ed)
1080 CUBA, Guines 0542 1/26 : Weak o/WTIC w/SS mx + "Hello" Lionel Richie. ID 0558 sd/1k "R. Cadena Habana, transmitting from Cuba". Have hrd this before, but first timenoted the ID. (Wyllie-MA)
1095 t DOMINICAN REPUBLIC, 2347 3/2 : Fair/poor audio cutting through, looping LA. Tnx to Hakiel for this tip. (Hall-PA)
1127.1 t COSTA RICA, still being heard in good LA cx, can't pull out an ID though. Hope to at least ID before the seasons over - they may move by next winter. (Hall)
1165 ANTIGUA, 2330 2/23 : Man w/gospel, weak. (Gilbert-NY)
1199.5 VENEZUELA, 2340 2/23 : YVOZ w/mx, ID 2348 "Radiotiempo" weak. Rec'd on Sony w/sync detector. (Gilbert-NY)

CREDITS:

- (Gilbert-NY) Bill Gilbert, 33 Main Street, West Sayville, NY 11796
(Sony 2010)
(Wyllie-MA) William Wyllie, 95 Peck Street, Franklin, MA 02038
(SHARP GF-450 w/built-in ant)
(Hall-PA) Jim Hall, 240 Byron Road, Pittsburgh, PA 15237
(R-71, Bev's, several longwires, 2 mini-Bev's)

Good to hear from new reporter Bill Gilbert this week. I received word of a lone report still in Erie - please be patient, it will not be forgotten (whoever it is!). As of 3/4 the AU cx of the beginning of Feb. have not showed signs of being repeated.





DX WORLDWIDE - WEST

Pat Martin - Editor

P.O. Box 843, Seaside, Oregon 97138

PHONE: (503) 861-3185
TIME: UTC

PAN AMERICAN DX ROUNDUP

- 660 UNID, With Mexican NA, faded out immediately on 2/24 at 1215. I have no Mexican stations listed signing on at this time. XEACB, XERPM? (RW)
- 710 UNID, 2/24 at 1032 SS man in KMPC null, wierd sound sweep tone similar to other time tones I've hrd on SS stations. Mexico City? (JJ-Wa) MEXICO, Cuauhtemoc-XEDP 2/24 at 1213 Excellent reception. Couldn't have been better if it would have been a local. Blasting in with a continuous flood of commercial spots, broken up only by full ID "XEDP, La Ranchera de Cuauhtemoc, con cinco mil watts de potencia, Ciudad Cuauhtemoc, Chihuahua!" (JJ-Wa)(Good catch, Jef.PM)
- 760 UNID, 2/24 at 1208 fast talking SS person, sounded like a husky-voiced woman ancr. Mixing with KFMB and maybe KGU. (JJ-Wa)

TRANS-PACIFIC DX ROUNDUP

- 684 UNID, 2/24 first noted at 1043 with strong het, audio that sounded like mx. Man talking in what sounded like EE at 1050. Mx at 1054 sounded sort of "Island Pop" inst. for about 30 seconds, segue, then more mx but this time vocal group. I went to 702 for ID, but back at 1101 when I hrd weak mx that sounded either classical of s/off anthem. According to BP, this corresponds to Fiji s/off time. (JJ-Wa) (Yes Jef, this sounds like Radio Fiji. Recently Radio Fiji has boosted power on several of their 2KW TXs, possibly including this one to 10KW. I believe 810 KHZ has also been boosted and moved back on frequency from about 811, as they are under KGO quite often now here. PM)
- 693 UNID, 2/24 at 1042 strong het, muffled audio, too much 690 slop. (JJ-Wa)
- 702 AUSTRALIA, Sydney-2BL-first noted at 1037 on 2/24 w/KIRO off. Man and woman in accented EE. Sounded like a call-in show signal vy strong and steady, but audio abit muffled. Lots of QRN at this time. At 1056, same two hosts chatting and giggling, signal getting vy strong at 1058. We'll be back after the news here at (or till?) eleven." 6 pips that nearly blew my eardrums out and "This is ABC...news.Tonight headlines...(etc)" Still strong at 1201 (JJ-Wa)
- 711 UNID, weak mixing w/Aussie. Maybe JJ cl.mx 2/24 at 1106 (JJ-Wa)
- UNID, strong het again 710 (KIRO off, KMPC in) at 1035. No audio, all night despite consistant het 2/24. (JJ-Wa) (Sounds like it may have been 7NT, as I hrd them here.PM)
- 792 UNID, 2/24 1134 woman talking in accented EE, fluctuating strength till 1200 when ID/TOH was blasted out by by 790 QRN (KGMI/CFCW) 40G-Brisbane? (JJ-Wa) (Probably.PM)

Jef also hrd strong hets on 612, 648, 657, 655, 675 at 1044 UTC.

THANKS TO THESE REPORTERS:

- JJ-WA JEF JAISUN-Post Office Box 92-Bothell, Washington 98041
SP-600-JX1, Wedge Loop
- RW-Ca ROBERT WIEN-1309 Dentwood Drive-San Jose, California 95118
GE SuperRadio, Loop

KIXI / CBS
RADIO NETWORK
 91 AM · 96 FM STEREO

KLIF 1190
 FAIRCHILD KLIF INC. • 2120 COMMERCE • DALLAS, TEXAS 75201
 BROADCAST SUBSIDIARY OF
 FAIRCHILD INDUSTRIES



Transport Transports
Canada Canada

Toronto-Lester B. Pearson International Airport
P.O. Box 6003
Toronto A.M.F., Ontario
L5P 1B5

Mr. J.R. Hall
240 Byron Road
Pittsburgh, PA.
U.S.A. 15237

Dear Sir:

Thank you for your letter relating to a reception report on CFYZ Airport Information Radio.

A technical information sheet is attached which outlines some details relating to the station. Lester B. Pearson International Airport Information Radio commenced operations on July 26th, 1985. The purpose of the system is to broadcast information to assist motorists to reach appropriate areas of the Airport, and also to alert them of possible traffic conditions they may encounter. The messages are changed dependent upon Airport conditions at broadcast time. The message which you outlined in your letter is a standard normal conditions one. The message is repeated on a continuous loop unless a different message is inserted. There are at this time five separate messages which are selected dependent on traffic conditions.

It is interesting to have received your letter indicating reception of the signal of CFYZ in Pittsburgh. The system is designed to have an approximate 5-mile broadcast range from the antenna location at Terminal 1, and therefore, as you can understand, such reception is unusual.

We hope in the near future to have QSL cards, and I will ensure you receive one when they become available. Thank you for your letter on this matter.

Yours truly,

R.P. MacLachlan
Superintendent
Airport Operations

TECHNICAL INFORMATION

Radiating Antenna System

The antenna structure consists of a freestanding tubular mast, 35 feet high, topped by a hexagon-shaped capacitive loading structure, or top hat. Both mast and top hat are constructed of lightweight aluminum alloy, capable of withstanding a maximum wind velocity of 100 miles per hour.

The antenna is centrally located on the Airport property, on a four-storey building 250 feet long by 88 feet wide. The grounded metal roof of the building provides the rf current return path and completes the system.

Antenna type is a Polestar, PA35D, manufactured by Nautical Electronics Laboratories Ltd.

Transmitter System

The transmitter is a totally solid state, medium wave, amplitude modulated broadcast transmitter. Power output is adjustable from 25 to 400 Watts into a nominal 50 ohm unbalanced transmission line. In this installation the power is adjusted to deliver 35 Watts into the antenna system.

Remote control facilities have been incorporated to allow operation at the transmitter site remotely located from the station studio.

Transmitter type AmpFET, P400, manufactured by Nautical Electronics Laboratories Ltd.

Stationsfortegnelse

Salge- længde m.	Frec- kvens k. per.	Station	Kalde- signal	Afst. km.	KW.
186	1615	Monte Pelles		1480	
196	1530	Karlskrona			
199	1505	Jönköping	SMZD	245	0.3
202	1447	Kristinehamn			
221	1355	Karlstad	SMIG	420	0.29
230	1360	Kiel (R)		210	1.5
233	1290	Uleåborg (R)			0.2
237	1265	Örebro	SMTI	420	0.15
241	1245	Stettin (R)		280	1.5
245	1225	Säffle (R)			
250	1200	Eskestuna (R)		470	0.29
251	1190	Gleitwits (R)		720	1.9
253	1185	Kalmar			
259	1160	Elberfeld (R)		600	1.9
260	1155	Norrköping	SMVV	385	1.25
263	1140	Bryssel	SRB	760	1.5
271	1110	Malmö	SASC	20	0.5
274	1090	Cassel (R)		520	0.5
279	1075	Bremen (R)		380	1.5
280	1070	Radio Lyon		1240	2.0
283	1060	Dortmund (R)		570	1.5
288	1040	Göteborg	SASB	220	0.9
294	1030	Dresden (R)		520	1.9
297	1020	Hannover (R)		445	0.7
300	1000	Barcelona	EAJ 18	1770	1.0
301	990	Sheffield (R)	5 FL	930	1.2
306	980	Stoke on Trent (R)	6 ST	990	0.2
309	968	Westinghouse Elec.	KDKA	6200	1.5
310	970	Bradford (R)	2 LS	940	0.2
315	955	Liverpool (R)	6 LV	1030	0.2
318	945	Helsingfors			
320	938	Milano	1 MI	1160	1.9
321	935	Leeds (R)	2 LS	920	0.5
322	930	Trollhättan	SMXQ	295	0.12
324	925	Nottingham (R)	5 NG	930	0.2
324	925	Barcelona	EAJ 1	1770	1.0
324	925	Edinburgh (R)	2 EH	950	0.2
325	923	Gävle (R)	SMXF	610	0.25
331	910	Dundee (R)	2 DE	960	0.2
335	896	Hull (R)	6 KH	850	0.2
338	888	Plymouth	9 PY	1260	0.2
340	883	Nürnberg (R)		708	0.7
344	872	San Sebastian	EAJ 8	1700	4.0
348	860	København			1.0
350	858	Bergen			
353	850	Cardiff	5 WA	1120	1.9
357	840	Sevilla	EAJ 5	2360	1.5
358	837	Petit Parisien		1030	0.8
365	820	London	2 LO	950	3.0
368	815	Prag (Straanzitz)		630	5.0
370	810	Falun	SMZK	570	0.4
373	805	Madrid	EAJ 7	2080	6.0
378	795	Manchester	2 ZY	980	1.5
380	790	Warschau		670	0.7

Left: A list of radi stations audible in Denmark, from "Radio lytteren", 13 March 1926. Via Jef Jaist Note the listing of two U.S. Stations, KDKA and WEAF.

Below: Los Angeles Times, via Gary Larsen.

Radio 'Network'

Talking Signs Fine-Tuned to Sell Property

By BOB POOL,
Times Staff Writer

Three houses along Entrada Avenue, a short street in Porter Ranch, had "for sale" signs in their front yards on Thursday.

Only one shouted, "Buy Me!"

That was the sign with the radio transmitter attached to its top. It was broadcasting a sales pitch to passers-by whose car radios were tuned to 820 AM.

A Northridge real estate firm has scattered low-power transmitters around the north San Fernando Valley at houses it has listed to sell. The transmitters are plugged into tape recorders that continuously play 30-second commercials telling how many bedrooms, baths and second mortgages the houses have.

The broadcast signal can be picked up on ordinary radios within 75 feet of the sign—the range for curb-side looky-loos who listen, too.

Detailed Descriptions

When the R.R. Gable realty company switched on its 150 front-yard radio stations five days ago, it immediately became one of this country's largest broadcast networks.

On Entrada Avenue, the transmitter in front of a two-story, \$280,000 home promised that "your guests will be very impressed as you greet them at the door and lead them through the marble-floored entry, past the spiral stairway, to the step-down living room."

In front of a four-bedroom house on Sonoma Way in Northridge, another transmitter advised that "there's also a maid's room and an office room—perfect for conduct-

382	785	Oslo		490	1.5
383	784	Bilbao	EAJ11		2.0
386	780	Bournemouth	6 BM	1110	1.9
390	770	Dublin	2 RN		
392	765	Radio Iberica	EAJ 6	2080	3.0
393	763	Hamburg	la	290	10.0
397	755	Graz		970	0.5
400	750	Moskwa		1560	2.0
404	740	Newcastle	5 NO	890	1.5
410	735	Münster	ms	520	3.0
415	730	Bilbao	EAJ 9	1760	2.0
416	722	Breslau		610	4.0
422	718	Glasgow	5 SC	1060	1.9
425	710	Rom	1 RO	1540	1.5
428	705	Stockholm	SASA	530	0.7
435	690	Bern		1040	6.0
440	700	Belfast	2 BE	1180	0.5
441	680	Toulouse		1560	2.0
446	673	Stuttgart		800	1.9
452	665	Leipzig		490	1.9
458	655	Telegrafak. Paris	FPTT	1030	0.9
460	652	Barcelona	EAJ 13	1770	1.0
463	648	Königsberg		510	1.0
467	642	Linköping (R)		350	0.25
470	640	Frankfurt a/M		660	1.5
479	627	Birmingham	5 IT	1010	1.1
482	622	Swansea (R)	5 SW	1160	0.2
485	618	München		820	1.5
488	615	Riga			2.0
492	610	New York	WEAF		2.0
495	606	Aberdeen	5 BD	920	1.5
505	595	Berlin (Witzlabau)	b	370	4.5
515	582	Aalesund		830	
515	582	Zürich		960	0.9
522	575	Helsingfors		890	1.0
530	566	Wien		860	1.9
545	551	Sundsvall	SASD	780	0.5
546	550	Budapest	MTI	1010	2.0
576	522	Berlin (Magdeb. Fl.)	b	370	2.0
590	508	Rosenhügel (Wien)		860	5.0
750	400	Brünn	OKB	770	1.0
760	395	Genève	HB 1	1150	1.9
850	353	Lausanne	HB 2	1100	0.6
940	319	Leningrad			2.0
950	316	Odense (R)		140	1.9
1050	286	Hilversum	HDO	620	0.5
1070	280	Haag	PCGG	670	1.0
1160	273	Ryvangen			1.0
1160	258	Kbely	PRK	670	1.0
1200	261	Boden	SASE	1230	1.5
1250	240	Hjørring (R)		250	0.9
1300	230	Königswusterh.	AFT	380	8.0
1350	222	Karlsborg		305	0.2
1450	206	Moskwa	RDW	1560	12.0
1600	187	Daventry	5 XX	980	25.0
1650	182	Belgrad		1330	2.0
1780	163	Radio-Paris	CFR	1030	4.0
1800	167	Norddeich			
2400	125	Sors			
2650	113	Elfelmann	B	1030	4.0

ing a business from this house.

In Chatsworth the broadcast from a Lassen Street house said that "Bob bought this 2,000 square-foot house because of its quality lath-and-plaster construction and its many built-in features."

The radio script is written from interviews that realty agents conduct with the house's seller. A professional announcer delivers the taped message.

"We're trying to find out what appealed to the seller when they bought the house," said Roger Hance, R. R. Gable's owner. "Sometimes people in real estate become insensitive about the emotions that motivate people to buy a house."

Hance, a 22-year-old electronics enthusiast, said he has formed a company to develop computer and electronic technology for the real estate business. The invention, called Gable Technologies, is working with two Arizona engineers-turned-rockers who developed and patented the sub-band radio system.

He is now looking for other uses for the radios, such as drive-in banks, car dealers and fast-food restaurants, Hance said.

Previous attempts at such broadcasting have generally failed because the short-range transmitters were placed inside houses, said John Cooper, one of the Arizona radio designers. That made them susceptible to electrical and structural interference that interrupted the signals.

"Putting the unit actually on the street overcomes all the problems," Cooper said Thursday by telephone from his office in Tempe, Ariz. Cooper said the transmitters operate with one-tenth of a watt of power and are built to Federal Communications Commission specifications.

FCC specialist Grace Poterand Long Beach said such low-power radio stations are not required to have licenses. She said they can operate on any broadcast band that does not interfere with a commercial radio station.

R. R. Gable agent Dotty Wiechman said sales people at the firm have been taught to install the transmitters, which are hidden inside a wedge-shaped piece of plastic attached to the post of the "for sale" sign with tamper-resistant bolts. She said tape recorders are hidden inside the house and connected by wire to the transmitters.

Wiechman said the radio system should save salesmen time.

"If people have driven by the house, they've seen it and heard about it, too," she said Thursday.

Mariene Friedman has had one of the talking signs in front of her \$400,000 house on Amestoy Avenue in Northridge. She said Thursday that a "parade" of cars has stopped to listen to the radio message this week.

Her transmitter advises that her home has a maid's quarters and "public transportation for the kids and domestic help, is within walking distance."

"It gives a good idea of what the house is like," Friedman said. "At night, we can hear the motors and see the lights from cars parked out front to listen."

STATUS OF DOMESTIC STATIONS (100 watts or more)

As of February 2, 1986

Key: A= Total number of licensed stations currently operating
 B= Construction Permits for New Stations.
 C= Construction Permits for Change of Frequency.
 D= Stations temporarily "off the air". (SILENT)

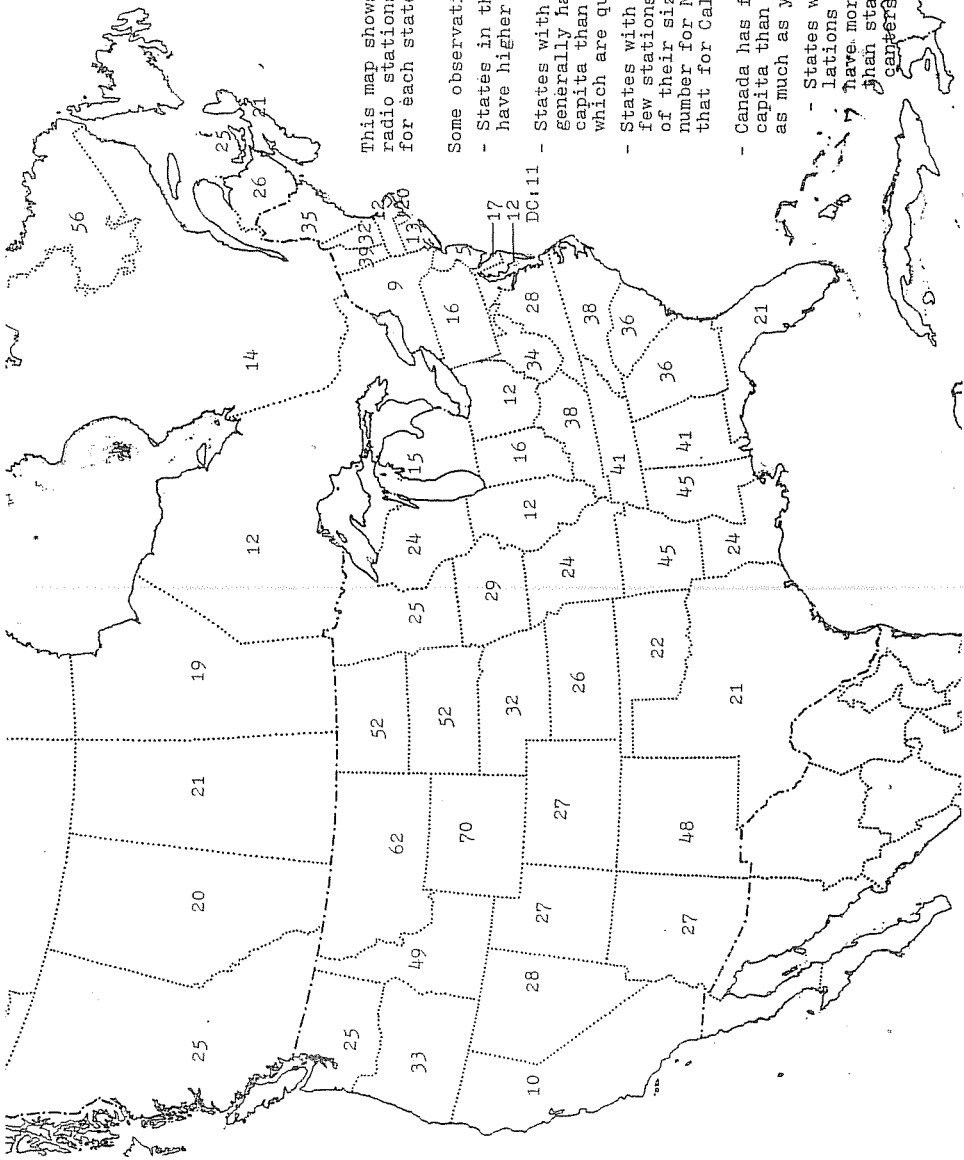
STATE/PROVINCE	A	B	C	D
1--TEXAS	301	9	3	0
2--CALIFORNIA	243	13	1	2
3--NORTH CAROLINA	224	7	2	0
4--FLORIDA	208	16	3	2
5--GEORGIA	194	5	1	1
6--PENNSYLVANIA	189	4	3	0
--TENNESSEE	189	7	2	2
8--NEW YORK	166	4	1	1
9--ALABAMA	158	9	0	1
10--VIRGINIA	147	3	1	2
11--KENTUCKY	139	8	1	1
12--MICHIGAN	137	5	1	2
13--ILLINOIS	131	4	0	0
--OHIO	131	2	0	1
15--MISSOURI	117	2	1	2
16--MISSISSIPPI	113	2	1	5
--SOUTH CAROLINA	113	2	1	0
--WISCONSIN	113	1	0	0
19--WASHINGTON	104	5	0	4
20--ARKANSAS	103	1	0	1
--ONTARIO	103	0	3	2
22--MINNESOTA	101	3	2	1
23--LOUISIANA	100	3	0	1
24--INDIANA	89	3	0	1
25--OREGON	87	3	0	0
--QUEBEC	87	1	0	3
27--IOWA	85	0	0	1
28--COLORADO	79	9	1	2
29--ARIZONA	74	7	1	1
30--MASSACHUSETTS	68	4	0	1
--OKLAHOMA	68	1	0	0
--BRITISH COLUMBIA	68	1	4	0
33--WEST VIRGINIA	67	2	0	0
34--KANSAS	62	1	0	0
--NEW MEXICO	62	2	1	0
36--MARYLAND	51	2	1	0
37--NEBRASKA	50	2	0	0
38--MONTANA	49	0	0	1
39--IDAHO	46	2	1	1
40--ALBERTA	45	0	4	1
41--CONNECTICUT	41	1	2	1
--UTAH	41	3	3	0
43--ALASKA	39	8	2	0
--MAINE	39	0	2	2
45--NEW JERSEY	38	1	1	1
46--SOUTH DAKOTA	36	1	0	0
47--NORTH DAKOTA	34	2	0	0
48--WYOMING	33	1	0	1
49--NEWFOUNDLAND	32	0	1	0
50--NEW HAMPSHIRE	29	0	0	2
51--HAWAII	27	2	0	2
52--NEVADA	22	5	0	0
53--VERMONT	20	0	1	0
--SASKATCHEWAN	20	0	0	0
55--MANITOBA	19	0	0	0
56--NEW BRUNSWICK	18	0	1	1
--NOVA SCOTIA	18	0	0	0
58--RHODE ISLAND	16	0	0	0
59--DELAWARE	10	0	0	0
60--DISTRICT OF COLOMBIA	7	0	0	0
61--NORTHWEST TERRITORIES	5	0	0	1
62--PRINCE EDWARD ISLAND	3	0	0	0
63--YUKON TERRITORY	2	0	0	0
TOTALS	5209	179	53	54

Table on previous page compiled by Don Kaskey. Map on this page prepared by Bruce Portzer

This map shows the number of AM radio stations per-million population for each state and province.

Some observations:

- States in the southeastern U.S. have higher numbers than average.
- States with small populations generally have more stations per capita than average, even those which are quite small (ie Vermont)
- States with large populations have few stations per capita, regardless of their size. For example, the number for New York is similar to that for California.
- Canada has fewer stations per capita than the U.S., but not by as much as you'd think.
- States with mostly rural populations (Montana, Mississippi, Utah) have more stations per capita than states with large urban centers (Illinois, New York)



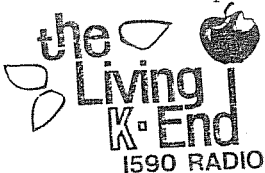
AK: 97
HI: 28

STATIONS KNOWN TO BE TEMPORARILY OFF THE AIR...As of February 2, 1986

FREQ.	CALL	STATE	CITY	Last Volume reported in	
				IRCA	NRC
580	KIKX	AZ	Tucson	18	46
630	KKPL	WA	Opportunity (*)	20	50
600	CFCT	NWT	Tukttoyatuk	**	50
840	WBHY	AL	Mobile	23	52
850	KWOF	IA	Waterloo	21	49
900	WOTW	NH	Nashua	22	52
910	KOYN	MT	Billings	22	51
950	KKIC	ID	Boise	22	49
980	WRIP	GA	Rossville	14	49
	WLPQ	KY	Pittsburg	21	50
1070	CKST	AB	St. Albert's	22	52
1080	KWAI	HI	Honolulu	22	52
1110	KKLC	LA	Pineville	22	50
1130	KLEI	HI	Kailua	22	52
1170	WRTT	CT	Vernon	22	52
	CFML	ON	Cornwall	18	51
1230	KSZL	CA	Barstow	21	51
	WBME	ME	Belfast	18	48
	WNHX	NH	Berlin	19	50
1240	CJNH	ON	Bancroft	20	50
1270	WWES	VA	Hot Springs	20	**
1310	WKQJ	MS	Hattiesburg	**	51
1320	WKPG	MS	Port Gibson	18	**
1330	WBAS	FL	Crescent City	21	51
1370	KMAP	MN	Center City	18	**
1380	KCKO	WA	Spokane	19	50
	CHLR	NB	Moncton	**	51
1390	KPLL	CO	Denver	22	52
1400	CKRV	QU	Drummondville	**	49
1410	WATD	MA	Brockton	22	51
1430	WLAU	MS	Laurel	18	50
	WBRB	MI	Mt. Clemons	20	51
	WBMK	TN	Knoxville	18	51
1440	KFPB	MO	Salem	**	**
	WRHX	VA	Herndon/Reston	20	50
1450	KDRW	CO	Silverton	21	**
1460	WRLB	NJ	Mt. Holly	**	50
	KARR	WA	Kirkland	22	52
1470	KGNG	MO	Brookfield	20	51
	CKPB	QU	Ville-de-la-Baie	15	50
1490	WZOR	FL	Immokalee	15	50
	KRTR	WY	Thermopolis	16	**
	CKBM	QU	Montmagny	14	50
1500	KRCK	CA	Burbank	21	50
	WKPO	MS	Prentice	20	50
1510	KKZU	WA	Mountlake Terrace	22	52
1520	WIDD	TN	Elizabethton	18	51
1530	WDEY	MI	Lapeer	22	52
1540	KZRK	AR	Ozark	16	46
	WADM	IN	Decatur	19	48
1580	WLL	MS	Centreville	**	50
1590	WASY	ME	Gorham	22	52
	WASB	NY	Brockport	18	52
1600	WAST	OH	Ashtabula	12	51

* - KKPL was on the air when I was in Spokane last summer. Did they go off again or did nobody report their return?

Above list compiled by Don Kaskey



10006 - 107 STREET, EDMONTON, ALBERTA T5J 1J2, CANADA

Ex-San Diego mayor a talk show host

San Jose Mercury
News, 1-27-86

via Robert Wien

By Bob Dorn
Special to the Mercury News

SAN DIEGO — The show is like lots of others. A bright chorale offers a jingle — "Roger Hedgecock, talks to you-o-o-o-o" — and the station announcer advises, "Roger Hedgecock's opinions are not necessarily those of KSDO."

But behind the mike sits the lanky 39-year-old who less than two months ago was San Diego's mayor. In place of the pin stripes that he wore to court through two trials totaling four months last year is a rock 'n' roll-style sateen jacket. The former mayor intones, quite professionally: "Good afternoon to all of you in San Diego. This is Roger Hedgecock, and this is AM 1130, KSDO. We want to ask you to call in this first hour for our open phone segment. In San Diego, the number is ..."

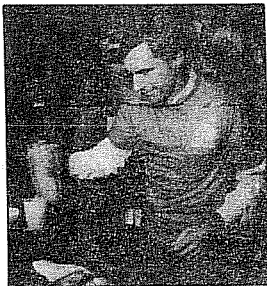
On Jan. 20, Hedgecock opened what he calls his "electronic salon," a three-hour live, afternoon call-in radio talk show, which seems to live up to the predictions of the ex-mayor and station management that the show would be, at its outset anyway, the city's most listened-to radio program.

"The lines are full all the time. It's the heaviest volume of calls we've ever had in this time slot, and he's already neck and neck with Dave Dawson," says Doug Young, the program's producer.

Dawson is the often curt, insulting host of a morning talk show on the same station that repeatedly outdraws all other AM programs, including those on rock stations.

For the first five days, Hedgecock never had to ad lib or resort to station promos to fill dead air time.

Susan in Spring Valley wanted to know how she and her neighbors could



Roger Hedgecock
... As San Diego mayor

get the county to put in street lights. "Have you talked to your county supervisor, George Bailey? Get together a group and draft a letter and send it off to him," Hedgecock replied.

Mohammed in East San Diego wanted to know how blacks can help "see that there is no cover-up" by San Diego police of the background of an officer involved in a shooting incident that left another officer dead and a young black man on trial for the killing. The case, Hedgecock said, is difficult, but he hints the trial's testimony may result in the disciplining of the surviving officer for his role in the incident.

Tom from Clairemont wants to say that Ozzie Osborne shouldn't be held liable for the suicide death of a teenager who listened to the singer's provocative lyrics just before killing himself. Perhaps because Hedgecock promoted rock 'n' roll shows as a means of working his way through college, he let the caller ramble on a full four minutes before saying, "It depends not on what the person is getting from the records but from the person's own value structure and how he reacts to them."

But by and large, the callers are complaining about potholes in their streets, a lack of underground utilities, why tickets to the Padres games are becoming more expensive. It's not the kind of fireworks that close followers of the city's politics might have expected.

In fact, Hedgecock's even-handed responses and his refusal to declare who among the four major candidates campaigning to succeed him he will vote for prompted a writer for the San Diego Union, one of his most lethal opponents, to write, "Hedgecock often seemed to be playing more the politi-

cian than the radio host, more likely to turn down the fire than keep the pot boiling."

That, Hedgecock says, suits him fine.

"Ordinary people with everyday problems may become the major function of the show," he said. "I'm going to downplay the adversarial tone that people expect from talk show hosts. I think it will work."

"Besides, they used to say I was too controversial to be mayor, and now they're saying I'm not controversial enough to be a talk show host."

Hedgecock was sentenced Dec. 10 to a year in county custody, three years' probation and fined \$1,000 after his conviction on charges that he failed to report up to \$350,000 in illegal campaign contributions to his 1984 mayoral campaign. The sentence has been suspended while he pursues an appeal.

He resigned his office an hour before the sentencing. Less than a week later, the station announced that it had signed him for the three-hour afternoon slot. That raised howls of protest from his enemies, and station talk show hosts fielded tough calls from the protesters.

But few protesters have come in to Hedgecock.

Instead, every third caller seems to preface remarks with exhortations for Hedgecock to stay in the limelight. "Roger," said one caller, "I've always admired your, uh, assertiveness," and Hedgecock answered, "Well, thanks whatever it's called, I intend to keep it up."

For the first few weeks, Hedgecock and his producers say they will concentrate on social rather than political issues. The former mayor vows not to succumb to temptations to "get back at my persecutors and so on."

But soon enough the show will move back into the former mayor's area of expertise. He's asked Gov. George Deukmejian, Sen. Alan Cranston, (who arranged to be the first caller on the first day), Los Angeles Mayor Tom Bradley and local politicians onto the show in coming weeks. "I'll work back into it," he says.

The guests on the first show, which was dedicated to Martin Luther King Jr., included several black businessmen, and subsequent guests have been activists on abortion and child abuse. These guests, together with Hedgecock's own soliciting of calls about neighborhood problems, have given the program a Donahue-like flavor.

But isn't it tempting to discard that format and jump back into local political issues? "No, no," Hedgecock says, "I'm cured. I'm a recovering politician."

This Is To Confirm
Your Reception On

February 24, 1978

of **KFI 104** RADIO

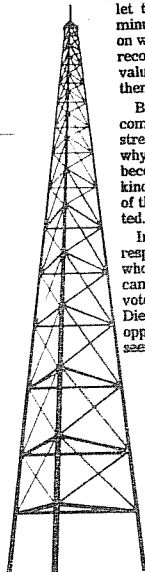
Los Angeles, California

Power: 50 Kw
640 kHz

Transmitter: La Mirada
California

Antenna: 750 Feet
KFI Radio operates
24 hours daily
Non-Directional
Since 1922

73's
Bernard Koval
Chief Engineer



THE 1ST FAMILY OF BAJAN RADIO!


**REDIFFUSION
 STAR RADIO**

and


RADIO ACTIVE

"GOOD MORNING BARBADOS"

Rediffusion, Star Radio's special welcome to our visitors.

COME BACK AGAIN

— a chance to win another holiday in Barbados, this time at the height of our Crop-Over season.

BAJAN WELCOME MAT

— puts us directly in touch with visitors.

REDIFFUSION GOLDEN ANNIVERSARY 1935 - 1985

It's our Golden Anniversary year! 50 years after our modest beginning in 1935 (as Radio Distribution) we today cover Barbados with our wired network — and some 20 000 subscribers.

17 hours of planned programming is provided every day — for the

housewife, businessman, teenager, senior citizen. With news, music, entertainment and information. As critic Desmond Bourne says: "Barbados best radio station. Rediffusion — quality, dedication, professionalism and sheer variety". Sunday Sun, January 20, 1985.

Patrick Gollop and Bawkey Roach head out in the RoadRunner across VOB Country to surprise birthday and anniversary celebrants.

Both VOB and STAR RADIO join forces in the new year to introduce another winning current affairs special.

VOB's POINT AT ISSUE is the top current affairs show on Bajan Radio. It's produced by award winning journalist David Ellis.



is making circles around its competition.

Newer, brighter programming ideas. Professional presentation. Lively personalities. Innovative involvement with the community. That is how VOB has earned the respect and now enjoys a radio listenership popularity that is second to none and bigger than ever before.

This is reflected not only in the overall numbers produced by the latest Systems Survey (October-December 1984), but also in the demographics of age, sex and socio-economic groups.

The advertiser benefits too because his message can be aimed at a larger "target audience" with a lower "cost per thousand".

THE JCC Network — FIRST CLASS!

Los Angeles Times.

Friday, January 31, 1986

THE SOUND OF SILENCE AT KHJ RADIO

By DENNIS McDOUGAL,
 Times Staff Writer

KHJ-AM (930), the venerated home of "Boss Radio" during the '60s and '70s, will disappear from the airwaves after today.

Beginning Saturday, KHJ listeners who switch to the middle of their AM dial will hear the same basic "Smokin' Oldies" format it has been playing in recent weeks as well as some of the same deejays.

But the 5,000-watt RKO station, which has used the same call letters for more than 63 years, will be known henceforth as KRTH-AM, the weaker AM sister of KRTH-FM (101.1). Ron Thompson, KHJ general manager, will continue to manage KRTH-AM,

but 23 employees of KRTH-AM and FM have been terminated along with the KHJ call letters.

"It's the end of an era, man," said 26-year-old KRTH deejay Rick Scott, one of those RKO employees given walking papers this week in the station shuffle. "Half of Los Angeles grew up with Boss Radio."

Since the late 1970s, KRTH-FM has overshadowed KHJ in the quarterly Arbitron listener ratings, clearly becoming the more popular and powerful of the two RKO-owned-and-operated radio stations in the Los Angeles market. A number of format experiments began with an abortive attempt to climb on the short-lived "Urban Cowboy" bandwagon in 1981 with a switch to country music that lasted less than a year.

Its latest attempt to win listeners was a mix of frequent traffic reports and Top 40 music that the station called "Car Radio." The format was designed to win over freeway drivers who wanted to know what traffic jams to avoid at the same time they wanted to hear the Pointer Sisters.

Car Radio never caught on, though, and has been phased out.

During its prime in the late 1960s and early 1970s, KHJ occupied the top position among Los Angeles radio stations, just as KJIS-FM (102.7) does today. Ironically, KJIS' top-rated morning deejay Rick Dees held his first Los Angeles job with KHJ during its brief attempt to return to a "Boss Radio" format in 1982. He moved over to KJIS within a year where he has

By John H. Demmitt, PA

Shortly before Christmas 1985, agents of the Federal Communications Commission conducted a raid at a home of the mother of a pirate radio operator in Remmus, PA which is located near the city of Reading and caught pirate operator, David Laudenslager in the act of transmitting without a license.

One of the FCC agents from the Langhorne, PA field office took the microphones from David while the transmitter was still on the air and announced politely that the FCC was closing the station and gave the call letters the pirate had been using... WDIA-FM.

The FM transmitter on the frequency of 88.3 MHz only had a range of approx. ten miles but the operator failed to realize that he was causing interference to off the air viewers of channel 6 in the area. It took one complaint from a woman who could not hear her TV shows to bring the agents of the FCC into action.

The FCC field office which conducted the investigation said David was easy to find because he used a fixed schedule for his transmission time and would make frequent ID's and requested people to write or call with their music requests. He also stayed on the same frequency which allowed the FCC agents to get a positive location with their Radio Direction Finding equipment.

The operator of the illegal station was fined \$750 for operating a pirate radio station. In spite of the \$1,000 maximum fine that could have been imposed, the pirate felt it was too high and has appealed the decision in an attempt of receiving a lighter fine. The FCC stated that recently, higher fines are given in an attempt to discourage the illegal pirate activity. One spokesman from the FCC said that the pirates are not just on shortwave, AM and FM but microwave and satellite frequencies as well!

David Laudenslager has too much enthusiasm to give up after being shut down by the FCC. He stated that his community needs their own radio station and with his past experience of working at three radio stations for eight years and the fact that he built his very own transmitter, he feels he is qualified to operate a station. David decided to file for a license to operate a radio station in Remmus and is seeking support and financial backers.

News of David's intentions spread fast and on Jan. 10, 1986 he was given the chance to use a 50,000 watt transmitter to tell his story and answer questions the listeners had. The airtime was granted by WWPE, a licensed 50,000 watt AM station operating on the frequency of 1100 KHZ from Cleveland, Ohio over the Joel Rose Show.

The talk show generated a lot of interest from the listeners who wanted to know why radio stations which were licensed were so expensive, how such an inexpensive homebrew transmitter could sound as good as a professional station and how listeners could help the pirate to get a license. As a result of that talk show, letters of support have been received from over ten states and Canada as well. At this rate, you soon may hear David over his own licensed radio station. Special thanks to Carol Urtholder for assisting me with this article.

been given ~~considerable credit~~ for building that station's listenership to its present No. 1 position in the highly competitive Los Angeles market, where 85 stations vie for listeners.

KHJ made a similar attempt to return to its Boss days this fall when it hired veteran Los Angeles deejay Dave Hull to anchor the morning drive-time slot. The "Hullabalooer's" antics with sound effects, one-liners and good-time patter failed to boost the KHJ ratings quickly enough to satisfy RKO Radio president Jerry Lyman, who formally announced the demise of the station on Thursday.

Boss Radio was the brainchild of Atlanta deejay Bill Drake who took over as program director at KHJ in 1965. In his definitive book on the history of radio and pop music, "Music in the Air" (Hastings House, 1982), Philip Eberly described the "Drake Formula" this way:

"Starting with the station's location, 'Boss-Angles,' everything was Boss." Bill Drake distilled the essence of Top 40:

- He declared dead air a felony;
- He decreed more rapid-fire talk by disc jockeys;
- He dropped the traditional 40-song play list down 10 to 30. (That is, 'Boss 30').
- He reduced the allowable 18 commercials per hour (the FCC quota) to an ironclad 12."

Within a year, Los Angeles teen listeners responded so intensely to the Drake Formula that RKO began using it at its stations across the country, including KFRC-AM in San Francisco. Boss Radio alumni include the Real Don Steele, Robert W. Morgan and Machine Gun Kelly.

"Bill Drake enforced time limits for deejay patter between records and other program elements," Eberly wrote. "KHJ's claim that it played 'much more music' could hardly be met, Drake felt, if disc jockey yakked on endlessly. From the enemy camp, where had risen such unflattering cries as 'Dreck Radio,' came word that Bill Drake had gone so far as to install a studio light to flash when a disc jockey, overcome with even a mild case of

~~fur de bouche, chattered on beyond seven seconds. . . ."~~

Eberly cites the following statement as an example of Boss Radio babble. It was delivered by Don Steele (currently afternoon deejay on KRLA-AM) between records that he played on his afternoon KHJ show 15 years ago:

"Three o'clock in Boss Angeles! And gee, HEY, thiz me, the Real Don Steele, a billion dollar weekend-er there, and you're looking out of sidewalk call. I got nothing but groovy those groovy gods. We're gonna fit Chuck out here on a fractious Friday boy, got to get a set outside that (unintelligible word resembling blowing bubbles in a glass of water) jumbo city. (Pause). Take a trip. When you chase 'em, daylight!"

Steele delivered it all in 16 seconds.
Then he went to the next record.

via Gary Larsen and Steve Mittman

