

DX MONITOR

THE OFFICIAL PUBLICATION OF THE **IRCA** INTERNATIONAL RADIO CLUB OF AMERICA

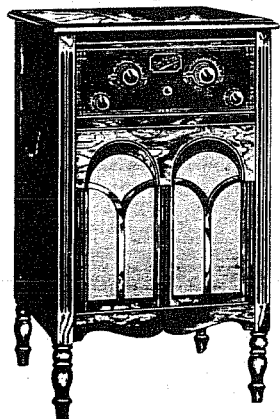
DEVOTED EXCLUSIVELY TO BROADCAST BAND DXING

March 14, 1987

Volume 24, Number 25

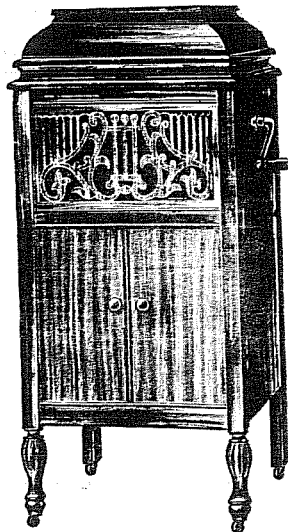
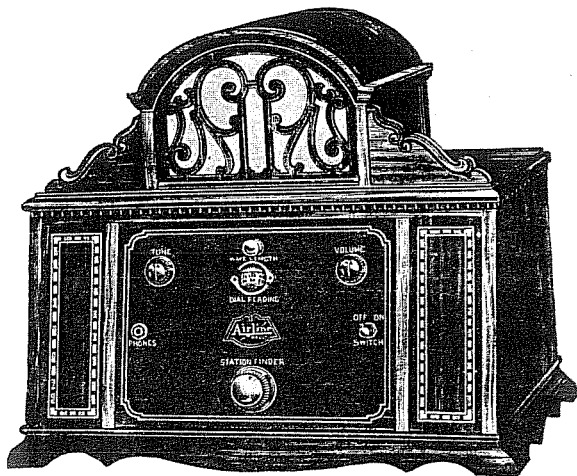
ISSUE 782

The Great American T-Shirt Auction, Update # 1	2
The Next IRCA Almanac	3
Eastern DX Roundup	4
Central DX Roundup	6
IRCA Classifieds	8
Western DX Roundup	9
DX Worldwide West	12
Unreported Stations Update	13
Eastern DX Forum	14
Western DX Forum	15
Propaganda on Radio Tirana	17
Veri-Signers	18
IRCA SportsCentre	19



A CALIFORNIA BEVERAGE

Greg Hardison and Paul Swearingen are planning another Beverage DXpedition March 20-21 and maybe March 22 at the Ironage Road antenna site, approximately 26 miles east of Twentynine Palms, CA on state highway 62 (turn north on Ironage Road, drive 1.2 miles and you're there). This site may be the oldest continuously operated Beverage antenna site for hobbyists in the world. It was first laid out in 1971. DXers planning to spend a night or two should bring folding chairs, normal camping equipment, plenty of water and fluids, DC power (such as a spare car battery and converter), shade, and food, as the nearest "facilities" are 26 miles or so away. They plan to erect an ENE Beverage to replace one which disappeared a year or so ago, and to add a new NW antenna. For more details, contact Paul at P.O. Box 4812, Panorama City, CA 91402.



The Great American T-Shirt Auction, Update #1

Here's the update I promised you. A bit late, but before the deadline! There have been as many as 3 bids on a single shirt! The highest bid is listed along with the name of the person holding that bid. "No bid" means I get to keep it!! There is still plenty of time to make the deadline of March 31, 1987. Thanks for your support.

For those who missed it, the rules. Minimum bid is \$2.00 per shirt. Postage costs will be added to the price of the shirt. The winners will be announced sometime in April 1987. Please include the number of the shirt you are bidding on. Send all bids to: Phil Bytheway, 9705 Mary North West, Seattle, WA 98117, or phone (206) 784-5145 (no collect calls).

1. Size M. 50% cotton/50% polyester. Dark blue with yellow sleeve inserts and neck ring. "KSOK" and "1280" with KSOK underlined in yellow on front. Slightly worn. No bid!
2. Size XL. 50% cotton/50% polyester. Light blue with dark blue rectangle on front with "Seattle's Hit Radio" in white and "K-PLUS FM" in yellow and pink and "101.5" in white inside rectangle. Almost new. \$7.50 from David Allen.
3. Size M. 50% cotton/50% polyester. Light blue with dark blue rectangle on front with "Seattle's Hit Radio" in white and "K-PLUS FM" in yellow and pink and "101.5" in white inside rectangle. Almost new. No bid!
4. Size M. 50% cotton/50% polyester. Blue with "KEED 1450" in red and white on back. "Wrangler" and "COUNTRY SHOWDOWN" in yellow outline on front. Also on front, yellow outline of horse and picture of band. Almost new. No bid!
5. Size XL(46-48). 50% cotton/50% polyester. Yellow with brown chicken wearing a "KOMO" T-Shirt. Also brown "KOMO DOES THE", "PUYALLUP", "AM RADIO 1000" and "TV4" below chicken. New. \$7.50 from David Allen.
6. Size M(38-40). 50% cotton/50% polyester. Yellow with "KMPS", "FM 94.1" and "AM 1300" in black and "REGISTERED LISTENER" in red on front. Slightly worn. No bid!
7. Size M(38-40). 50% cotton/50% Kodel. Blue with light blue mountains and trees on front. Also "KJZZ", "1540 AM" and "REI" in light blue and "1983", "Run for" and "the hills" in white on front. Almost new. No bid!
8. Size L. 100% polyester. Blue grey baseball shirt with red and blue neck ring and "el paso", "diablos" and "7" in red on front. "NEWS" and "KVIA TV EL PASO" in blue and large "7" in blue and yellow on back. New. \$5.00 from Wilhelm Herbst.
9. Size L. Red with yellow go-cart with "Radio 123" license and "Herfy's" and "MARYSVILLE ROADRACE" in yellow on front. Similar go-cart with "Herfy's" license and "I've Been To The Big One!", "Radio", "123", "KWXYZ" and "MARYSVILLE ROADRACE" in yellow on back. Almost new. No bid!
10. Size L(42-44). 50% cotton/50% polyester. Brown with picture of wave and "WWRC" in yellow on front. New. \$3.00 from David Reitz.
11. Size L(42-44). 50% cotton/50% polyester. White with yellow-orange sun and "Stereo Rock" in orange on front. Also "KSNR 96 FM" in yellow with red trim on front. Almost new. No bid!
12. Size L(42-44). 75% cotton/25% polyester. White with yellow sleeves and neck ring. A "Squirt" can in yellow, red and green and "I'm a big SQUIRT", "from", "KRKO" and "RADIO 14" in black on front. The "KRKO" is slightly faded, otherwise good. \$5.00 from David Reitz.
13. Size S(34-36). 50% cotton/50% polyester. Grey short shirt with dark brown 3/4 length sleeves. "KZOK 102.5 FM" in black and orange on front. "KZOK ... all rock and roll and no B.S." in black on back. Good. No bid!
14. Size M. 50% cotton/50% polyester. Beige with "I love chocolate. K-Lite 95.7 FM FACTORIA SQUARE" in brown on front. Good. No bid!
15. Size M. 100% cotton. Peach shirt made in Guatemala. Large brown bull with "KFM 92 1/2" in orange below bull and "Texas Radio" in orange below that on front. Good. No bid!
16. Size M(38-40). 50% cotton/50% polyester. Light orange with picture of "KTAC 85 Treasure Card" in blue on front. Good. No bid!
17. Size L(42-44). 100% cotton. Dark yellow with black sun and "KJRB 790" in the shirt color inside of sun on front. Also "SPOKANE'S BEST MUSIC" in black on front. In 6 lines "KJRB's trip to Seattle to see the Bee Gees in concert July 13, 1979" in black on back. \$2.00 from Paul Choroszy.
18. Size M(38-40). 100% cotton. White with "Rainier Beer's 1986 R-rated Mountain Fresh Softball Tournament" in red with Rainier "R-BO Invitational" in red on front. Also "KUTI 980/KXDD FM 104" logo in black and blue and picture of glove, ball, hat and bat on black on front. No bid!
19. Size L(42-44). 100% kodel polyester. Light blue with "KSOP" in dark blue and red fancy lettering, "25TH" and "ANNIVERSARY" in red, "1955" and "1980" in dark blue on front. Also, picture of KSOP guitar in red and dark blue with "AM/1370" and "FM/104" over and under on front. New. \$3.00 from David Reitz.
20. Size L. 100% cotton. Light blue with color picture of Pele playing soccer on front. "KIRO Newsradio" and large "71" in dark blue on back. New. \$7.50 from David Allen.
21. Size M(38-40). 50% cotton/50% polyester. Black with "I GOT", "KAYO'd" and "PUNCH 1150am" in white on front. Practically new. No bid!
22. Pull over knit ski hat with white pom pom on top. White and green with "92 KZAM" in white on green top and "SEATTLE*" in green on white bottom. New. \$4.00 from Frank Aden.

IRCA ALMANAC PROGRESS REPORT -- March 1, 1987
from Bill Hardy, 2301 Pacific Ave., Aberdeen, Wash., 98520

As mentioned in DX Forum recently, IRCA will be publishing Volume 5 of our popular IRCA ALMANAC this fall.

I hope to make this the best edition ever. I need your ideas for sections to include in the new edition!

All of the most popular sections - networks, talk shows, music programs, slogans, sports - will be back, completely revised and up to date.

But I'd like to know what else you readers would like to have included in your Almanac! There are two reasons. One, it takes a lot of time to compile and type some of the sections, and if it is of no value to most readers, we'd rather spend the time on something worthwhile. Two, if we actually include every section in the following list, the Almanac could run more than 300 pages, which will raise its cost a lot, and that could hurt overall sales - supply and demand, you know.

So I'd appreciate comments from everyone who uses their IRCA Almanac, and especially from those of you who use it a lot. Any ideas not on this list are especially welcome! Thanks. --Bill.

• WHICH LISTS SHOULD CONTINUE?

The following lists have all appeared in past editions of the Almanac (Volume number in parentheses). Which would be most helpful to you in your DXing?

- ▶ Sunrise-sunset maps (Volumes 1-2-4) - should we run this each time?
- ▶ Sunset time chart (1-2-4) -- would you like to see this omitted, left as is, or expanded to include more cities? Should sunrise times also be included in a chart?
- ▶ Schedules for "limited time" stations (1-2)
- ▶ Network newscast formats, "How to Identify a Network" (1-2-3)
- ▶ Network news anchors (2)
- ▶ State and regional networks (1-2-3)
- ▶ AM-FM simulcasters (1-2)
- ▶ Canadian networks (1-2-3)
- ▶ Canadian broadcasting station updater (3)
- ▶ College football and basketball (1-2)
- ▶ Allocations information on the AM band (1-2)
- ▶ Formats of 50,000-watt clear channel stations (2)
- ▶ Unreported station update, "America's Rarest DX" (3-4)
- ▶ DX programs on the air, reporting AM broadcast band and/or shortwave (3)
- ▶ DX references (NRC Log, Vane Jones, World Radio-TV Handbook, etc.) and how to buy them (3)
- ▶ Morse Code chart (1-2)
- ▶ Index to the Almanac (3-4)

• WHICH LISTS SHOULD WE ADD?

The following lists have been suggested by at least one member each. Which new listings would you like to see?

- ▶ Foreign Log information. Some have suggested an abbreviated listing of foreign stations reported to the DX Worldwide columns the past season or two, included in the Almanac rather than in a separate Foreign Log as in the past. I like the idea.
 - ▶ Sunrise-sunset time chart. As noted above, we could expand the sunset time chart which appeared in Volumes 1-2-4 to include sunrise, and add more cities (the information is on hand, if there is support for it.
 - ▶ Canadian sunrise-sunset time chart. With some research, we could also include major Canadian cities in the above project.
 - ▶ New fulltime stations (formerly daytimers) on the Canadian and Mexican clear channels (similar to 1/31/87 DXM, page 17, adding Canada).
 - ▶ Stations using post-sunset service authority (PSSA) after sunset for as much as two hours, not counting the new fulltimers.
 - ▶ Stations giving "dual" and "multiple city" ID's on the hour, for cities not listed in their license or in logbooks (NRC, VJ, etc.).
 - ▶ U.S. and Canadian stations broadcasting in foreign languages; "domestic" stations that could be confused with "foreign."
 - ▶ Minor-league sports networks.
- The following lists will definitely be included, as before:
Frequency check list, U.S. broadcasting station updater, national networks (ABC, CBS, NBC, etc.), talk programs (Larry King, Talkradio, Talknet), music programs like American Top 40 as available, religious programs as available, station slogans, Canadian twins, AM stereo, major league sports, utility and TIS stations, glossary, and abbreviations.

• WHAT ABOUT FM??

We have included limited FM data in the Almanac recently, such as in the Larry King and sports sections. Would including FM in other sections such as networks, music shows, and religion help the FM DXers out there? It would greatly expand the page count, so if you have an opinion, let me know!3

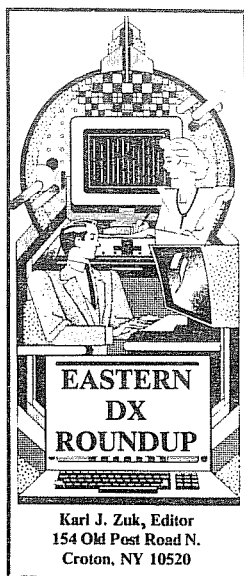
Welcome to this week's Eastern DX Roundup!
 It's the last week of February, and the snow
 keeps coming down! David Reitz reports he
 caught a couple of daytimers on past their
 bedtime, and is also enjoying good daytime DX.
 Some examples: WDBGY, 1130, Minneapolis, and WSDM,
 710, Superior, WI. Bill Townshend is now a
 Sony ICF-2010 owner, along with millions of
 IRCans. This is this year's Realistic TRF,
 only much better. And Gary Heisey sends us all
 sorts of low band DX. On to the tips!...

.....
 This week's contributors:

GH-PA Gary Heisey, Box 310F, R.D.#1, Osterburg,
 PA 16667. (What sort of rig do you have?)
 DLR-KY David L. Reitz, 9332 Fairground Road,
 Fern Creek, KY 40291...R-1000, Radio West
 loop and a GE Superadio.
 WPT-DC William P. Townshend, 4500 Connecticut Avenue
 NW, #901, Washington, DC 20008...Realistic
 Portavision-40 (12-648) and a Sony ICF-2010

560 WJLS WV, Beckley 2-12 1755 Fair in WFRB,
 Frostburg, MD, null. C&W music. (GH-PA)
 570 WGMS MD, Bethesda 2-12 1732 Fair, came up for
 legal and proper ID, then classical music.
 Mixing with WKBW, Youngstown, OH. (GH-PA)
 600 WSJS NC, Winston Salem 2-11 1900 Poor with flutter
 fades, with basketball pre-game show. Spot
 for cellular phones. Mixing with UNID
 Canadian station. (CFCF, Montreal?-kz)(GH)
 610 WTVN OH, Columbus. 2-11 1745 Very loud with
 pop music, then a WTVN editorial. (GH-PA)

- 610 WSLC VA, Roanoke 2-11 1725 C&W music, with good signal, in WIP,
 Philadelphia, PA, null. (GH-PA)
- 610 WIOD FL, Miami 2-13 0500 Faint, heard man giving weather for
 several towns in South Florida. Too much WIP, Philadelphia,
 in jumble to hear clearly. (GH-PA)(Sounds like WIOD to me-kz)
- 620 WHEN NY, Syracuse. 2-14 1730 Fair with ID "Stereo 62 WHEN". Also
 a singing ID. Weather....(GH-PA)
- 620 WWLX AL, Lexington 2-8 1850 Local spots for Elkins and Sons Funeral
 Home and Triple A Florist and Outpost 72. ID "The New Sound
 of AM 62" into C&W music. Good through local WTMT, Louisville,
 KY. (DLR-KY) (Where is Ted Flytrap lately?-kz)
- 650 UNID 2-14 1800 In partial null of WSM, faint station with YL DJ and
 C&W music. She gave time as 5pm, so this was Central Time Zone.
 (My guess-KIKK, Pasadena (Houston), Texas-kz)
- 680 CFTR ON, Toronto 2-11 1902 Weather, ID by man and top 40 song. Good
 over WCBM, Baltimore and WPTF, Raleigh, NC. (WPT-DC)
- 690 WVOK AL, Birmingham 2-11 1825 Traffic report, spot, DJ mentioned
 "another beautiful day in Alabama." Weather, mentioning
 Birmingham Airport, then "Today In Business" with Doug Polling.
 ID as "Full Service Radio." Signal fadey but readable, gone
 by 1830 leaving only CBF, Montreal, and WLW, 700, Cincy, splatter.
 Pop oldies format, I think. A real surprise. (GH-PA)
- 690 WJAX FL, Jacksonville 2-11 1815 Weak with spot for Harris Lawncare
 and Landscaping. A lot of talk about power change, mentioning
 10 kW. Flutter fade and signal gone at 1820. Religious format.
 CBF, Montreal was left on freq. Thanks to several tips. (GH-PA)
- 730 UNID 2-14 1835 Loud, with a dozen spots for New Wax Records, call
 WCCT heard several times, but no location. Black DJ mentioned
 Rhode Island Avenue. Used slogan "The station that gives you
 heart and soul" and "Motown and more, 24 hours a day, only on
 WCCT." Signal gone at 1900. Ideas?(GH-PA)
- 780 WCKB NC, Dunn 2-12 0745 Fair with WBBM, Chicago, nulled, with moldy
 oldies and sports. (GH-PA)
- 870 WQRX AL, Valley Head 2-3 1820 Good with C&W music and ID "AM stereo
 RX-87." Local spots, weather forecast, more music. ID with
 sign off. Announcements and dual ID "WQRX 870 Valley Head,
 Fort Payne. (DLR-KY)(New to us-kz)
- 930 WMGR GA, Bainbridge 2-14 1900 ID "You're in touch with Southwest
 Georgia's music and information station, Country 93 W-M-G-R
 Bainbridge." into C&W music. Very good. (DLR-KY)
- 1950 WQBE WV, Charleston 2-14 2145 Fair with C&W music. Calls heard
 several times, but no location given. Strong at times. (GH-PA)





EASTERN DX ROUNDUP continues...

- 1960 WWGR TN, LaFollette 2-14 0206 Test tones, (1kHz, 500 hz) etc., couldn't hear ID because of heavy CKWS, Kingston, ON interference. Fair to poor. (WPT-DC)
- 1000 UNID 2-15 1115 Poor to fair with moldy oldies on Sunday Morning. Mention of Elmira, with local WVSC, 990 kHz, splash from Somerset, PA. By 1130 the signal vanished. Show was called "The Music Show." Did WIQT, Horseheads, NY change calls? (it's near Elmira, NY-kz) (GH-PA)
- 1010 WCST WV, Berkeley Springs 2-15 1205 Fair with Sunday services, then local news and current affairs program. (GH-PA)
- 1280 WADO NY, New York 2-15 0645 Poor and fadey with wild Black gospel program in progress. (GH-PA)
- 1350 WSLR OH, Akron. 2-11 2000 Poor with lots of IDs: "First in sports, first in news, first in weather. When you need to know, Wissler radio, W-S-L-R, Akron." Then ABC news, weather, C&W music. (GH-PA) (What ever happened to Rachel Sweet?-kz)
- 1380 WYNK LA, Baton Rouge 2-14 1840 C&W music, ID and sign off announcements, mentioning tuning to FM 101.5. (DLR-KY)
- 1380 WGUS GA, North Augusta 2-1 1954 with American Country Countdown, "US-102" IDs, local spots, WGUS sung ID, into more Country Countdown. Forgot to turn AM off? (DLR-KY)
- 1440 WRRO OH, Warren 2-11 1600 ID by OM. ABC news. Fair after nulling WOL, 1450 kHz, Washington, DC splash. (WPT-MD, at work)
- 1500 KSTP MN, St. Paul 2-14 0845 Poor in WTOP, Washington, null. ID as "KSTP Talkradio 1500" Stronger by 0850 with ABC news. Heard on my cheap 5 tube radio, but could not get on my larger DX radio with more tubes and larger antenna. (GH-PA)
- 1580 WPMP MS, Pascagoula-Moss Point 2-14 2010 with American Country Countdown, network spot, local spots for J&R Bait and Tackle Shop (one of ABC-TV's biggest sponsors-hi-kz) Lonnie's Ceramics, and Smith's Full Service Chevron. More C&W music. Good on PSSA? (DLR-KY)
- 1600 WKGK VA, Saltville 2-12 1800 End of gospel program, then mention of 500 watt PSA power while signing off. Good in null of WINX Rockville, MD. (WPT-DC..on the streets)

Well, that's all this week. Please keep in mind that I return to work at ABC on February 28 and will have to give up the column fairly soon. You can be a star! This could be your column! Write to Bruce if you are interested! It's not a job...It's an adventure! See you in 7-kz

A DXer's TECHNICAL GUIDE

Second Edition

Would you like to know how a receiver works? Would you like to improve yours to make it better? Do you like experimenting with antennas? Do you like to tinker with radios? Would you like to see a review of a particular receiver?

If you answered yes to any of these questions, then you should get a copy of *A DXer's Technical Guide*. The book is 120 pages long and filled with valuable information on receivers, antennas, and accessories, including the following:

- * Receiver performance;
- * Receiver reviews (more than 30 of them);
- * Audio filters;
- * Tape recording;
- * Loop antennas (ferrite and air core);
- * Beverage and longwire antennas;
- * Tuners and phasing units;
- * Receiver construction and modification.

Although intended for the medium wave DXer, the book is also useful to the longwave DXer, shortwave listener, and ham.

A DXer's Technical Guide can be purchased for \$5.50 (members); or \$6.50 (nonmembers) from IRCA, P.O. Box 21074, Seattle, WA 98111. U.S. funds, please. Add \$2.00 for overseas airmail.

1230 CJLB ON Thunder Bay, 2/19 fair w/KTRF. 0835 Matthews & Associates Insurance spot, man w/sports. [WOLF-MB]

KGHS MN International Falls, 2/19 fair, briefly above KTRF. 1337 w/ "it's time to check the world of sports on KGHS", man w/ sports news. [WOLF-MB]

WJBC IL Bloomington, 2/21 fair w/KWIX. 0452 w/Luther Vandross mx, 0500 ID: "We're WJBC, Bloomington, Normal, 32 degrees, it's 4 am." [NJW-MB]

WNRZ IL Moline, 2/18 fair w/KTRF. 0219 w/mx by Beatles, Atlanta Rhythm Section. 0222 spot for store in Watchtower Plaza, jingle. [NJW-MB]

1240 KLTZ MT Glasgow, 2/18 fair. 2157 w/C&W. 2200 ID: "Great country is KLTZ, Glasgow". Into ABC news. [WOLF-MB]

1290 KDIL NE Omaha, 2/18 poor w/WIRL & CFRW. 2310 w/mx by Toto & Huey Lewis. Man w/ID and temps for Lincoln & "The River City". [WOLF-MB]

WIRL IL Peoria, 2/18 poor u/CFRW on the "Brazil" antenna. 2204 w/ lottery numbers, weather, ID. [WOLF-MB]

1320 CFGM ON Richmond Hill, 2/19 fair w/CHOM. 0632 spot for Ontario Chrysler in Mississauga. ID as "CFGM 13-20" C&W. [WOLF-MB]

CHOM BC Vancouver, 2/19 fair w/CFGM. 0024 EZ-listening mx, ID by man, spot for travel agency. [WOLF-MB]

1340 KDEN CO Denver, 2/21 fair. 0356 Feature on CO Div. Wildlife. Local restaurant spot. ID. [SA-MB]

WJOL IL Joliet, 2/21 poor w/KCKM (C&W oldies). Surfaced briefly at 0442 w/2 IDs by a man and a contest promo. [NJW-MB]

WNCO OH Ashland, 2/21 good. 0535 "AM 13-40 North Ohio's Stardust Music WNCO, Ashland, Mansfield" Carpenters music. [SA-MB]

1380 KDIM IA Carroll, 2/23 poor. 1918 w/farm reports, local spots, many mentions of Shelby county. [SA-MB]

1390 KPPL CO Denver, 2/28 good o/KBLB, CJCY pulled. 1900 w/elevator mx, legal ID. New for me, CO#83. [JCJ-MT]

1400 KCID ID Caldwell, 2/28 good on top 6Y mess. 1125 w/spots. [JCJ-MT]

KDRG MT Deer Lodge, 2/19 fair. 0957 w/Steely Dan rock mx, 0100 ID by man then into Chicago rock oldie. [WOLF-MB]

KEYE TX Perryton, 2/21 poor w/KVOP. 2144 w/Toyota spot. SID into C&W syndicated program. [NJW-MB]

KPLG CO Delta, 2/21 good. 0704 w/C&W mx, wx: "KPLG Delta" ID [SA-MB]

KVOP TX Elainview, 2/21 fair. 2043 w/Michelob spot, woman w/promo for KVOP programs "Manic Monday", "Rock Connection" & "Top 30 USA". ID "Your music connection, KVOP". [NJW-MB]

WATW WI Ashland, 2/19 fair w/KDDJ. 0935 w/weather, ID by woman as "North Country WATW". C&W, spot for Video To Go. [WOLF-MB]

WBAT IN Marion, 2/21 poor for IN logging. 0530 male w/"WBAT weekend weathertrack" mx by stn meteorologist. IN#10. [NJW-MB]

1410 CFUN BC Vancouver, 2/19 very good o/KCOL. 0015 man w/"14, C-Fun light rock, less talk" ID. AdCon mx. [WOLF-MB]

WING OH Dayton, 2/21 fair w/CKSL. 0524 w/mx by Stampede. ID by DJ Jerry Halas as "Stereo 14-10 WING" [NJW-MB]

1420 WIMS IN Michigan City, 2/21 fair to poor. 0550 w/Marakash Express & ID "WIMS in Indiana". [SA-MB]

1430 KNSP MN Staples. 2/22 poor. 0841 w/PSA for Minnesota Highway Drunk Driving. Easy listening music. [SA-MB]

1440 KMED OR Medford. 2/28 briefly good o/CJDI. 1100 w/news. [JCJ-MT]

KODL OR The Dalles, 3/2 good mix w/KMED. 1030. IDs "Super Country Radio KODL" C&W, spots. New for me, OR#38. [JCJ-MT]

KPUR TX Amarillo. 2/21 no sign of KKXL. 2228 ID "The switch is on to Amarillo's first and only stereo AM, 14-KPUR". Rock mx. Female w/"Stereo KPUR" & more mx. Poor to fair until at least 2250 w/some interference from unID Latin. [NJW-MB]

+2/21 good. 1922 w/wx, "Stereo AM 1440 KPUR" ID. [SA-MB]

WRDK IL Rockford, 2/21 fair. 0427 w/"WRDK" ID. Song by Lionel Richie. [SA-MB]

1450 KIRX MO Kirkville, 2/22 fair. 0724 w/contest w/wheel spin for \$20, ID 0627 by woman, "KIRX". [SA-MB]

KQDI MT Great Falls, 2/22 fair. 0805 w/news, weather, ID as "KQDI" Oldies music. [SA-MB] (I still need this one! John)

KVCI MI Wolf Point, 2/19 fair, dominated the east-west beverage most of the evening. 0747 w/C&W, 0751 w/local news, ID as "14-50, KVCI". [WOLF-MB]

KWBE NE Beatrice, 2/21 good. 0700 s/on, wx. ID "KWBE". [SA-MB]

KWHW OK Altus, 2/21 poor. 2046 w/spot for Town & Country Lanes in Altus & a paint store. Male announcer w/"47 degrees in downtown Altus". Crystal Gayle C&W mx. [NJW-MB]

1450 WMOH OH Hamilton, 2/21 fair to good. 0452-0538 dominating w/oldies by Steely Dan, Paul McCartney, etc. ID as "14-MOH", DJ Fred Hart, promo for CNN n: at 0600. [NJW-MB]

1470 CKO PQ Pte Claire, 2/21 fair to poor. 2206 w/woman w/sports, cross Canada weather, "CKO" ID. [SA-MB]

KWIV WY Douglas, 2/20 fair w/KWSL. 1933-1958 w/weather read by a female anncr., C&W, ID sounding like "Quivy". 1957 TC and WY Information Update by woman. WY#15. [NJW-MB]

1480 KAVS MN Austin, 2/21 fair. 0630 w/news, "14-80 KAVS" ID. [SA-MB]

WHBC OH Canton, 2/21 good. 0452. "27 in Canton, James Taylor with news on 14-80 WHBC" Into Music by Chicago. [SA-MB]

1490 WDAN IL Danville, 2/21 poor w/WLXR (C&W). 0458 & 0506 surfaced w/ ID "This is talk radio 14-90, WDAN" [NJW-MB]

WLXR WI LaCrosse, 2/21 fair. 0607 ID as "15-Country WLXR". [NJW-MB]

1510 KGA WA Spokane, 2/18 fair w/KZZI. 1935 w/C&W. 1942 Yamaha West spot, ID, snowmobile report by woman. KGA was still audible at 0005 on 2/19, I've never heard KGA after Spokane sunset before. [WOLF-MB] (You should live here! John)

1530 KFBK CA Sacramento, 2/19 poor w/CISV & WCKY. 0727 ID: "This is news talk 15-30, KFBK". [WOLF-MB]

1540 KXEL IA Waterloo, 2/18 noted off the air 0306-0318 leaving behind CHIN and WPTR. [NJW-MB]

1600 KEED OR Eugene, 2/27 weak w/noise, KBBX nulled. 1045 w/C&W, spots, ID as "1600 KEED". New for me, OR#37. [JCJ-MT]

KLLR MN Walker, 2/19 fair w/usually dominating KLGA. 1420 woman mentioning contest sponsored by Walker Electric of Walker. Ann Murray mx, 1428 ID "KLLR AM & FM". MN#75. [WOLF-MB]

760 ???? ?? 2222, 2/19 0841 somebody way u/WJR w/rock oldie "Hold Me Now" by Thompson Twins from 1985. [WOLF-MB]

870 ???? ?? 2222, 2/19 0622-0633 somebody played 3 rock oldies. No ID or anything else heard. Poor w/WWL. I was looking for one of the BC stations on 870, CFBV or CKIR. [WOLF-MB]

990 ???? ?? 2222, 2/19 0543-0550 w/mx by Corey Hart & Roberta Flack; poor & killed by CBW s/on. My guess KTKT. [WOLF-MB]

1110 ???? ?? 2222, 2/19 0633 French news by woman, very weak u/KFAB. The only thing that fits is CHPR, but no ID heard. [WOLF-MB]

1140 ???? ?? 2222, 2/18 poor w/CKXL. 1951 TC by man as 5:51 (MST strn), C&W mx, lost 1955. Could this be KBEM? [WOLF-MB]

1400 ???? ?? 2222, 2/21 poor briefly. 0420 mx by man, ID sounded like: "AM-14 KW", into what sounded like syndicated oldies show w/mx: "Down In The Boondocks". [NJW-MB]

???? ?? 2222, 2/21 poor. 0557 black gospel mx, female gave EST TC, sounded like "WR-1400" mentioned mx was from gospel choir in Columbus, OH. Maybe WQBH, Detroit? [NJW-MB]

Make each day a critic of the last. 73s, John.

=====

IRCA CLASSIFIEDS

Mike Stonebridge
Box 511, Fox Creek
Alberta, T0H 1P0
Canada
403-622-3892

=====

This is the first time that I have written this column, so I don't have very much to offer. To do more in the future, I need contributions from you. It has been suggested that I put out this column on a regular monthly basis. To enable me to do this I would like to have your letters and postcards in my mail box by the last Saturday of the month. Please remember that mail to this part of the world takes on average 10 days from the east coast of the continent, and about a week from the west. Thanks.

FOR SALE: Grundig Satellite 3400 all wave receiver with digital readout in excellent condition. \$850.00
Oscar J. Anderson, 5910 Penfield Ave., Woodland Hills, CA 91367
818-347-9920

WANTED: Postcards (not QSL unless they are postcards) which display or feature the picture, call sign and/or logo of domestic or foreign radio stations (past or present) relating to AM, FM, shortwave or coastal radio stations or similarly related areas. Also promo postcards for radio manufacturers (eg. Hammarlund, Hallicrafters, Atwater-Kent, etc). Please do NOT send cards. Would appreciate a list of what you have and the asking price. Thanks.

Mike Hardester, PO Box 119, N. Versailles, PA 15127-0119



WESTERN DX ROUNDUP

2301 PACIFIC AVE., ABERDEEN WA 98520

 To phone in WDXR tips: (206)532-6827

DEADLINES: Tuesdays March 31, April 14, April 28, May 12, June 2, June 30

REPORTERS FOR THIS ISSUE:

- (AD) Alan Davidson-8121 E. Balfour Dr.-Tucson, AZ 85710
- (WCF) W. George Elliott-P.O. Box 956-Princeton, BC VOX1W0
Hitachi KH-1080H 3-band portable with built-in antenna
- (TRH) Tim Hall-350 G St. #F-1-Chula Vista, CA 92010
ICP-2010, Radio West loop
- (GL) Gary Larson-1017 Highland-Glendale, CA 97138
- (PM) Patrick Martin-P.O. Box 843-Seaside, OR 97138
SP-600, 1500' E Beverage, 200' NW/SE LW
- (JSM) J.S. McDonald-3319 Glasgow St.-Port Coquitlam, BC V3B4K8
R-71A & HB 5' AZ-EL loop
- (5F) Dale Park-2253 Kanealii Ave.-Honolulu, HI 96813
Realistic Minisette 16
- (RW) Robert Wien-1309 Dentwood Dr.-San Jose, CA 95118
GF Superadio, GE long-range portable, SM-2
- (ØW) John Wilkins-4385 Hoyt St. #205-Wheat Ridge, CO 80033
Kenwood R-1000, R-390A, 4' box loop

 OF SPECIAL INTEREST:

- 870 KPRM MN, Park rapids 2/17 0826 sports, with results from Pine River, Walker, & other area towns. weak w/QRM from new Mexican on the freq. New, MN #13. (ØW-CO) (Ex-1270.--NH)
- KAAN MO, Bethany 2/19 0756 detailed weather for NW Missouri, ad for Bethany Trust CO. 0800 AM-FM ID, ABC News. Rather weak; only heard for a few minutes. New, MO #29. 870 becoming quite productive since KUUY vacated, with 4 newies bagged in the last week. (ØW-CO)
- 1450 KKPW AZ, Tucson changed calls from KFKX in Dec. 1986, same r&b/soul format. (AD-AZ)

 DX TESTS:

- 800 KQCV OK, Oklahoma City MM 2/23 0244 fair-poor in XEROK null with IRCA Test. Tones, voice ID's, and special touch-tone telephone "ID's." Ended, seemingly, at 0317. New, OK #28. (ØW-CO)
- (KQCV)-2/23 0115-0215 not a trace of them on DX test. XEROK is usually off 0100-0145, but tonight of all nights they had to stay on! (TRH-CA)
- +2/23 0130 DX test tried but not heard (didn't expect to!), XEROK/KNKK overwhelming. KQCV only 250 watts. (RW-CA)
- 1330 KMBI WA, Spokane 2/21 0400 poor with NRC test. Many CW ID's, voice ID's. Little else discernable except a couple of brief segments of Sousa marches. New, WA #8. (ØW-CO)
- 540 KSHG CA, Hesperia-Los Angeles 2/21 2013 fair with some fading. Show tunes, LA weather, ID/slogan "Your Show-tunes station, K-Show." First time heard since they got their directional pattern working. (TRH-CA)
- 550 KUZZ CA, Bakersfield 2/13 0200 network news into C&W at 0205; good in KARI null. (JSM-BC)
- CKPG BC, Prince George 2/13 0200 with local news under KARI & KUZZ. (JSM-BC)
- 540 KSFO CA, San Francisco 2/23 0416 in fair, some KUZZ-550 slop. Local KLAC-570 off. (GL-CA)

- 570 (KLAC) CA, Los Angeles 2/23 0335 with OC, then off for awhile and back on. (GL-CA)
- *KLAC*+MM 2/23 0340 noted with TTs. (TRH-CA)
- KQNG HI, Lihue 2/27 in good to fair with rock music at 0220, ID's "KQNG (KONG) of Hawaii," etc. Thanks to Dale Park for the tip. Reported. (PM-OR)
- KLUB UT, Salt Lake City 2/13 0250 network news at 0300; good in KVI null. (JSM-BC)
- 580 KFYD ID, Nampa 2/13 0225 "Music of Your Life--KFYD 580 AM." (JSM-BC)
- KCMY OR, Ashland 2/13 0222 with Computerland ad, "You're tuned to 58 Country," good under dominant KFYD. (JSM-BC)
- 610 KZSS NM, Albuquerque 2/22 0014 fair with 70's music, PSA & slogan "The new 610 K-Star." New, ex-KRKE. (AD-AZ)
- 620 KWSD CA, Mt. Shasta 2/23 0900 fair at s/on with SSB, full details over KGW. (RW-CA)
- ?KSTR? CO, Grand Junction 2/23 0850 tent. with weather forecast "...and 35 degrees in Montrose," buried u/KGW/KNGS/HTAR. Montrose is in western Colorado. (RW-CA)
- 650 KUUU WY, Orchard Valley 2/11 1310 wanted no time moving here, ex-879. Same format (C&W). No noticeable change in signal performance at this QTH 90 miles away. Strong days, poor at night. Power, per Verie, is 5800/500. (ØW-CO)
- 700 CKRD AE, Red Deer 2/15 2013-2025 fair with unID. "Radio ?" ID's, and Red Deer ment. during Love Weekend Contest spot. ID finally at 2023 as "In stereo from Radio ?, C-K-R-D." Ex-850 and wanted here. (WGE-BC)
- 710 (KMPC) CA, Los Angeles 2/23 0419 noted off with faint music under, unable to copy music. (GL-CA)
- 720 (KUA1) HI, Eleele 2/7 0250 noted off the air; still off at 1210 recheck. I called KQNG on their Inward-WATS line & asked the DJ to find out what was wrong. A few minutes later he came on the air & said the KUA1 xmtr malfunctioned and the back-up blew up! Back on the air at 2300 recheck. (5P-HI)
- 750 KOAL UT, Price 2/22 0106 poor with KAMA QRM. Mutual News, into local sports news, ad, into Jim Bohannon Show. New. (AD-AZ)
- 800 KNKK UT, Brigham City 2/23 0134 ad for Canyon Lincoln-Mercury, C&W music. AM now, I guess. Briefly good, but long fades. New, UT #28. Bagged while hunting for KQCV test. (ØW-CO)
- 830 (KIKI) HI, Honolulu 2/15 0809 off the air on rare SP. (5P-HI)
- 840 CKBY BC, 100 Mile House 2/13 0255 food in WHAS null, AdCon relay of CKWL into "Satellite Radio Network News" at 0300. (JSM-BC)
- 860 KUTR UT, Salt Lake City 2/24 0500-0534 now on 24 hours, night power unknown. Fair sigs with KVVA. LDS music, promo for request program, lots of ID's, slogan "Sounds like Utah..." New. Station #700! (TRH-CA)
- 870 KROL NV, Laughlin-Las Vegas 2/24 2029 "Sports Profile," a 2-min. biography of the Vikings' Jim Marshall. 2033 ID as "K-R-Q-L Laughlin-East Las Vegas," then into "Sporting Edge" program, with odds on various sporting events. New, NV #11. (ØW-CO)
- 880 CHQT AE, Edmonton 2/26 1410 finally heard o/u KIKI. Fair with sports, weather & spot. First time logged on 880, normally too much other QRM. Was easy on 1110 kHz. (PM-OR)
- 890 CJDC BC, Dawson Creek MM 2/23 0233-0304 fair in WLS null, with KDMU off. Grab bag format--AdCon, oldies & occasional C&w song thrown in. SPCA ad, ID on hour "Radio 89, CJDC, Dawson Creek" into Broadcast News & weather. Slogan is "The Peace Connection" referring to the Peace River area. New, BC #13. (TRH-CA)
- + Finally heard this thing 2/1 0247-0305. Deep fades but good on peaks in WLS null, KDMU off. Strange mix of music, ID on hour "CJDC, Dawson Creek," into Canadian news, Kevin Clark announc., full detailed road report, s/off at 0305 with ment. of 0800 s/on (I thought they were AN!). GSQ after s/off. (RW-CA)
- 940 (KDEO) HI, Waipahu 2/15 0422 off the air again; called DJ who said the xmtr broke down again. Faint traces of C&W audio, probably KPFE. KDEO back on at 0440 recheck. (5P-HI)
- 990 (KHVH) HI, Honolulu 2/15 0809 off the air, probably regular SP. I've noticed lately KHVH forming a mixing product with K8U-760, putting KGU also on 1220 (490-760-990=1220). (5P-HI)
- 1050 KBEV CA, Big Bear Lake 2/23 per phone call, station is 100 watts, using a long wire at end of road where they had 2 towers. They are planning to move to a new studio & maybe relocate xmtr to Baldwin Lake. (GL-CA)

- 1060 KPAY CA, Chico 2/16 2043-2046 good with station promo for Openline Show which ended with ID "On 10-60, K-P-A-Y." Weather for North Valley, ID, then music. This one is rare in Kelowna due to CFUN which was nowhere to be found. (WGE-BC)
- 1170 (KCEBQ) CA, San Diego 2/23 0425 no sign of them on. (GL-CA)
 KLOK CA, San Jose 2/16 2028-2034 good with AdCon music, ID by male at bottom of hour as "Yes, no radio. 11-70, K-L-O-K." Gave phone number for listeners to vote yes or no to keep a particular song playlisted. Many "KLOK, San Francisco" ID's. Is this right or was I not hearing them correctly? (WGE-BC)
- 1180 KERI CA, Bakersfield 2/23 per call with GM of KBBV-1050, they are 50kw days. Heard a faint trace near LSS. 2/23 0428 fading in and out with contemporary Christian music. (GL-CA)
- 1220 ?KTSJ? CA, Pomona 2/23 0329 suspected with fire & brimstone preacher ~~way o/NE~~, looping SE. (RW-CA)
- 1230 KLAU NY, Las Vegas 2/23 0510 promo for KLAU Poster Contest; 0540 ad for Plying Carpet Travel. Only verifiable material in 50 minutes of monitoring. Call change, ex-KEZD. (ØW-CO)
 ?KYKO? SD, Sioux Falls 2/23 0523 heard in QRM "K-Y-U-C, where the Good Songs come out to play, 24 hours a day," then into muck. The "U" was slurred, suspect it was a "K" instead, with loop pointed SW/NE while monitoring KLAU. (ØW-CO)
- 1240 KFLY OR, Corvallis 2/16 2305 briefly on top with local weather. (JSM)
 1270 (KNNDI) HI, Honolulu 2/15 0810 off the air, on extremely rare SP. (SP)
 1290 KVIJ OR, Lake Oswego 2/23 0600 call change, ex-KMJK very weak in HBNB/SCUE null but o/KCVO, with old standards. ID on hour "This is AM 1290, KVIJ, Lake Oswego." KHSI off as normal MM. (RW-CA)
- 1300 KHUG OR, Phoenix 2/15 2108-2128 poor with KMPS. Portland Trailblazers & Atlanta Hawks NBA Halftime Show. Many regional spots & ID at 2118 as "K--G, Medford." Then back to game. New. (WGE-BC)
- 1310 KNPT OR, Newport 2/16 2347 briefly atop with local weather. (JSM-BC)
 WIBA WI, Madison 2/23 0459 weak in QRM with "Win a trip to the NCAA Tournament" contest promo. Only 2nd time logged. (ØW-CO)
- 1340 CHNL2 BC, Ashcroft-Cache Creek 2/18 2035 briefly with Billy Joel "on Radio NL," relay of CHNL. (JSM-BC)
- 1360 KUIK OR, Hillsboro-Portland 2/16 2116 fair-good with C&W. Sports promo for Univ. of Portland Pilots on Westside Sports Station. ID at end "13-60, K-U-I-K." More ID's in next spot. Some CKRP-1400 slop. New. (WGE-BC)
- 1380 (KLNI) HI, Pearl City-Honolulu 2/15 0810 noted running OC. Completely off at 1200 check. Phoned station 1735 & talked to new station owner, who assumed control today from Alan "Tom" Adams, seller. He said KLNI was off from 0500 today, pending change in format and hopes to return next week. Station is jettisoning the syndicated shows (e.g. Dr. Demento, Soupy Sales, Dick Bartley). (SP-HI)
- 1400 KEDO WA, Longview 2/15 2300 with weather for Longview-Kelso into network news; poor. (JSM-BC)
 CKRP BC, Princeton 2/15 2030 briefly on top with legal ID "Radio 1400 CKRP Princeton" into AdCon then into the GY. (JSM-BC)
- 1470 *KDHN* TX, Dimmit Th 2/26 0657 noted with brief tone, then s/on by woman 0700. Unsure if this is a regularly scheduled f/c or just how they warm up their transmitter in the morning. (TRH-CA)
- 1490 KBST TX, Big Spring 2/23 0239 plug for KBST News "Winner of more awards than any other radio or TV station in West Texas...", then nostalgia format to 0300 ID, ABC News. O/u QRM. New, TX #78. I've logged more TX stations than any other state, including Colorado! (ØW-CO)
- 1530 *KFBK* CA, Sacramento 2/23 0325 with TT. (RW-CA)
 +MM 2/23 0345 noted with TT's. (TRH-CA)
- 1540 ?KNZS? CA, Aptos-Capitola tent. 2/15 0811 with Mutual's "America in the Morning" with quite a visually-oriented weather report ("...as you can see on this map"): Fred Lowery with sports, Jim Bohannon with time check "15 past the hour," into net ad. Extremely weak under local QRM. (SP-HI)

UNID:

- 1050 2/24 0351-0448 very weak u/XED/YEG/KOPY. Grab bag format, ID on hour, which I taped, sounds like "Your ---- Connection, WYL (?) AM & FM, --- Group W." Then into local news. Also heard one "AM 10-50" ID. Seemed to loop east. (TRH-CA)

Next week is the anniversary issue. Hope you are looking forward to it as much as I am! ☺

DX Worldwide - West



PAT MARTIN

P.O. BOX 843

SEASIDE, OR 97138

Time: UTC phone (503) 861-3185

DEADLINES: 3/10, 3/17, 3/24, 3/31

Conditions beefed up somewhat on 2/25 with several DUs in with good signals, especially 2BL-702. It sounded like the old days. Plus quite a few others, including a good signal from Houmea-666 KHZ. The carrier had hum in it, the signal was so strong, plus a man in FF. So on with reports:

PAN-AMERICAN DX ROUNDUP

- 710 CUBA, Radio Rebelde-fair to good in KHPC null w/LA Pops, various anmts, Radio Rebelde IDs, EST TCs 0525=553 2/23. (BP-WA)
- 730 GUATEMALA, Guatemala City-2/23 at 0727. Caught s/off anmts in SS with TGN call, Radio Cultural ID w/freq. of 730, 3300, 5955, and FM announced as well as address per S7 WRTH. S/off time differs from one listed in WRTH. Not strong, mixing w/XEX. (ØW-CO) UNID, light LA Pops u/o unusually weak CKLG 0722 2/23. (BP-WA)
- 800 NETHERLAND ANTILLES, Bonaire PJB 2/23 0720 Noted w/re1. pgm. Fair in XEROK null w/slight CKLW/KNKK QRH. (ØW-CO)
- 870 MEXICO, Guachochic, Chihuahua-XEKR 2/19 1302 ID in SS "La Vox de la Sierra Tarahumara(?) con 5000 watts de potencia en los 570 de su radio. Cubre todas partes indigenas de Chihuahua desde Guachochic" Then into Indian language w/talks by man. rustic fiddle mx. Quite interesting, but can't find it listed anywhere. I'm about 90% of the call, 75% of QTH. 870 becoming quite interesting since KUUY vacated in mid-Feb. (ØW-CO) I I can't find anything listed either... maybe a new station?-(PH)
- 970 t MEXICO, Ciudad Juarez-XEJ, possibly the one in SS, at 1005 on 2/25 no sign of KYTE, KZZU, or other nearby stations (possibly off?) man in SS in mush mostly with Mexican MOR and some Ranchero mx, several mentions of what sounded like XEJ in SS, and Chihuahua. About everytime they would ID the signal would fade. i did catch "La Mexicana" slogan once, per WRTH 87 that is correct. I'm going to try a taped report to them in SS and see what happens. After getting QSLs from XEX and XEDH recently, maybe I'm on a roll for XEs. Hi:Not much else on freq. for a time. Strange ex. (PH-OR)
- 1050 MEXICO, Mexicali, BCH XED 2/5 at 0220 Hice Mariachi violins, ad for movie "Lobos, Creature del Diablo" (Lobos, Creature of the Devil) VG sig in XEG null. (ØW-CO) (John, did you ever get a ver-e out of XED? I have tried several times without any luck.(PH) MEXICO, Monterrey-XEG 2/5 0210 Typical norteña accordians, phone calls from listeners. "La Ranchera de Monterrey" slogans. VG sig in XEDs null. (ØW-CO)

TRANS-PACIFIC DX ROUNDUP

- 657 D.R. KOREA, Kanqnam (Pyongyang) poor w/KK talk 2/16 1252 (GK-CA)
- 666 NEW CALEDONIA, Houmea-FR3 vy good w/man in FF at 0940 on 2/25. Best heard in several years. (PH-OR)
- 720 t HAWAII, Eleele-KUAI 0508 to 0517 2/23 Assume this was the one w/WGN w/Hawaiian mx (BP-WA)
- 765 UNID, vy poor fadey signal 2/27 1347 w/orch mx, 1401 in FF. poss mx. (GK-CA)
- 901 t AUSTRALIA, carrier hrd 2/27, off and on from 1355 to 1432, 40Y? (GK)

- 819 UNID, pretty orch mx (harp and flute) hrd at tune in 2/27 at 1337 EE anc and more orch mx 1340. EE nx hrd fade in 1402, then at 1408 vocal version of Stardust. Suspect Aust. of New Zealand, or both. (GK-CA)
- 819.1 UNID, hrd on NW heading 2/27. 1429 w/lady talking in Ort. language not good enough to copy, but suspect the N. Korean. Caught this when switching between antennas and the heterodyne frequency changed! (GK-CA)
- 846 t AUSTRALIA, Orch mx fair/good 2/27 1345, in general direction of Queensland. (GK-CA) (Sounds more like Canberra by format. 4CA is a Commercial Pop mx station. 2CY is normally Concert mx.PM)
- 855 t AUSTRALIA, Eidsvoid/Maryborough-400/40B good 2/27 1346-1356 w/Orch. mx (GK-CA)
- 891 JAPAN, Sendai-JOHK fair 2/16 1255 w/JJ (GK-CA)
- 1476 UNIDS, usual mess of audio/jammer, etc. 1002 2/15, Inst. mx on top (BP-WA)
- 1566 REPUBLIC OF KOREA, Cheju-HLAZ 1001 2/15 fair w/CC talk. (BP-WA)
- 1620 AUSTRALIA, Brisbane-4RPH-fair w/light Pops and 4RPH ID at 0930 on 2/28. Best hrd in a while. Weak signal on 1629, presume 2RPH.(PM)

THANKS TO THESE REPORTERS:

- GK-CA GLEN KIPPEL-612 WEST AVENUE-MERCED, CALIFORNIA 95340
SP-600JX, Loops
- BP-WA BRUCE PORTZER-6546 19TH AVENUE, N.E.-SEATTLE, WASHINGTON 98115
RA-17, Radio West Loop
- ØW-CO JOHN WILKINS-4385 HOYT STREET #205-WHEAT RIDGE, COLORADO 80033
R-1000, R-390A, 4 Foot Box Loop
- PM-OR YER EDITOR
SP-600JX, 1500 East Beverage, 200' NE/SW LW, Ground system
- ~~~~~

UNREPORTED STATIONS UPDATE

Through Volume 24 # 20 dated February 7, 1987

Compiled by Don Kaskey, 654 35th Ave., San Francisco CA 94121

The following chart lists the total number of stations in the USA and Canada and the volume they were last reported as being heard in DX MONITOR.

COUNTRY	V24	V23	V22	V21	V20	V19	V18	V17	V16	V15	V14	V13	V12	Prior	Total
CANADA	204	45	38	17	10	15	14	9	12	4	5	0	2	45	== 420
U.S.A.	1573	933	486	359	332	231	224	105	141	65	43	26	35	280	==4833
TOTAL	1777	978	524	376	342	246	238	114	153	69	48	26	37	325	==5253

New Stations reported as having taken the air during the period covering V24 # 11 through #20:

- | | | |
|----------------------|-----------------------|-----------------------|
| 590-WCSP-MS (x-1520) | 930-WYNI-AL (x-1510) | 1090-WKLI-FL |
| 600-WKLV-KY | 990-WWCM-MI (x-1520) | 1090-KJJK-MN |
| 630-KIAM-AK (x-1270) | 1020-KCFA-AK | 1160-WYNS-PA (x-1150) |
| 630-WVVW-WV (x-1570) | 1020-WKZE-CT | 1200-WAYD-AL (x-1190) |
| 800-CFDR-ON (x--900) | 1030-WYSL-NY | 1200-WEZY-PA (x-1140) |
| 820-WZYQ-MD (x-1370) | 1040-KAIN-LA | 1240-WDFL-FL |
| 890-CJDC-PC (x-1350) | 1040-CHRS-QU (x-1090) | 1330-WKZD-GA |
| 890-KBBI-AK (x-1250) | 1050-KMTA-MT | |

Previously unreported stations noted by IRCA reporters in DX MONITOR since the last update (V24 #14)...Covers V24 #11 through #20:

- AL--30 WAYD-1200 (Jeter-GA)
- AK---1 KCFA-1020 (O'Connor-AK), KIPW-1230 (Merrill-vac-BC)
- FL--20 WONO-1140 & WPXE-1490 (Jeter-GA)
- KY---9 WKLV--600 (Reitz-KY)
- LA--17 KWDF--840 (McKinney-IL)
- MD---0 WZYQ--820 (Townshend-DC & Ritchey-PA)
- MN---2 WVAL--660 (Brooker-ON), KJJK-1090 (Wolfish-MD)
- MT---0 KMTA-1050 (Johnson-MT)
- NM---0 KLEA--630 (Connolly-vac-TX), KMIN-1400 (Nittler-CO)

Continued on next page

EASTERN DX FORUM

RICHARD EVANS
P.O. Box 1294
NORTH WALES, PA 19454

Deadlines: 3/14 3/28 4/11 4/25 5/9 5/30 6/27 7/25 ...

Bill Townshend, 4500 Connecticut Ave, NW, #901, Washington, D.C. 20008 202-966-8046. Time for another Forum. I guess I'm getting too lazy or too old, hi. I finally invested in a Sony ICF-2010 via mail from Grove Enterprises, and am getting my dough's (\$320) worth out of that son-of-a-gun. Before this winter (we got zonked by heavy snow three times with at least nine inches in each storm; this last storm knocked NSP pest WCPT-730 off the air) is over, I expect to log several TA catches (my only one so far was Algiers-891 at winter solstice in 1981, using the Sony ICF-55W, which has been in the repair shop for a distressingly long time). By the time this is in print, the midwinter anomaly (MWA) should be over. Tnx to Gardner Smith, I am learning the fine points of LW and TA DXing, especially with the Sync, LSB-CW, and USB buttons. I logged over 140 beacons in the month since it arrived. My old portavision (12-660) fell down on concrete and broke outright. It was beginning to go, with a worn-out volume control and relatively poor performance on the FM and TV1 bands. It turned out to be a blessing in disguise, as I bought a Portavision-40 (12-648) and does super on all four bands (AM, FM, TV1, TV2). Two newbies were bagged on AM and one on FM. The set cost \$40 and is worth every enny of it. On Super Bowl Sunday, I found 13 stations carrying the Giants-Broncos game during a special bandscan. Time for SP. CUN 28 or whenever. 1001001 (binary) and good DX.

John H. Demmitt, Box A K0848, Bellefonte, Pennsylvania 16823

After doing the book review on the 8th ed. of the NRC AM Radio Log, I have had contact with several members of the NRC and feel I should update my review in all fairness. The 4th paragraph does not belong in my review as I misunderstood the objective of the arrangement. They were referring to the alphabetization of certain columns while I was looking at the arrangement of the columns. Although I was missing a page of the log, I later learned that most purchasers of the log received the entire log and those who were missing pages had them replaced right away. After hearing the printing procedure, I can appreciate how those errors occurred. The errors I mentioned in my review are indeed errors in the Log, however, I have since discovered that I carried a great many errors as I corrected and updated the old log with listings reported in Broadcasting Magazine. It seems that Broadcasting Magazine has more than their share of errors and of course each time it is taken from that publication and placed in other publications, the chance for additional errors are greater. Since NRC takes most of their material direct from the FCC files, it would seem that their information would be more accurate.

Continued from page 13

PA---4 WKOW-1120 (Forth-IL), WJQZ-1310 (Zuk-NY)
SC---16 WXPY-1480 (Jeter-GA)
TX---37 KPST--860 (Hall-CA), KSAH-720 (Reitz-KY), KULP-1390 (Warren-MO)
VT---1 WDOT-1390 (Willie-MA)
BC---4 CJDC--890 (Johnson-MT)
ON---5 CKDR--800 (Wolfish-MB)
QU---18 CHRS-1040 (E. Cooper-MA)

NOTE: Stations WMOO-660 & WGRR-960 in Alabama both previously reported as being on the air, were confirmed by a visit to the area by Pete Nolan to NOT be active on these frequencies. WMOO is still on 1550. Also WJGH-1120-MO was previously reported as ON the air in error, it is NOT on as yet....dkk

OFF THE AIR STATIONS: 1230-KLES-MO, 1250-KHOG-AR, 1280-WAOP-IN, 1340-CFBO-TX
1340-CKDK-ON, 1390-WFPL-NY, 1400-KVLA-LA, 1460-KZUE-OR, 1470-WPIS-NC,
1510-WMPY-MA, 1560-KXXA-AR, 1570-KSRB-AR, 1600-PTNS-TX.....

BACK ON THE AIR: 820-KGNI-VA, 840-WBHY-AL, 850-WKOF-IA, 1110-KKLC-LA, 1150-WKST-MD, 1150-WQUE-ON, 1390-KPPL-CA.....



Western DX Forum

★ ★ ★ ★

IRCA — The #1 Choice of the Broadcast Band DX'er

Editor: Ric Heald • 8539 Bellamy Way • Sacramento, CA 95828 USA • (916) 386-8677

1986 DEADLINES — WEEKLY ON TUESDAY 11 DAYS PRIOR TO PUBLICATION DATE

□ □ □ □ □ □ □ □ □ □

NIEL J. WOLFISH, 807 WICKLOW ST., WINNIPEG, MANITOBA R3T 0H9 CANADA

DX has almost ground to a halt recently. Conditions haven't been all that thrilling lately at sunset, when the majority of my listening takes place. I also have to contend with TVI at that time. My roommate is hooked on those "Taxi" and "Family Ties" reruns, hi. (Good shows; I'd be watching them too, hi-Rth.) Naturally, a fair amount of studying has been done. Fortunately, I've been able to catch quite a few Winnipeg Jets NHL games at the Arena. Ah, the exciting life of a Canadian Law student. . .

Recent reception reports have netted veries from CKY 580, KSJB 600, CFQC 600, CJOB 680, KATL 770, KROW 780, KREW 1210 and Atlantic Beacon (Turks and Caicos) 1570. I also veried R. Uganda (4976) after several attempts. Perhaps I should send more SW f/ups from Winnipeg, rather than Toronto? I still have a pretty good percentage rate from here, with 85% of my reports veried since Roctober 1985. I should mention that the veries from locals CKY and CJOB were for reception in Ontario, but mailed from here. Way back in 1978 CKY never veried a Toronto report made in the back yard of former IRCAn Douglas Miske's home. I recall we had better luck with WKTY 580 and WCNC 1240 from that DX session. The aforementioned KREW 1210 verie mentioned several "BCL reports" from Lapland this season. I wish I could hear Sweden or Finland. (We got several at KRED, Niel. They're also using 2,500-foot Beverages-Rth.)

Before I s/off, I should welcome fellow Winnipegger Shawn Axelrod to IRCA. Now we have somebody else in the club who can complain about CKRC splatter and CJOB spurs, hi. Shawn is the editor of the excellent Ham Bands column in CIDX, and has an impressive Ham QSL collection to boot. I don't know anybody else who has three QSL's from Tristan da Cunha, let alone one! Shawn lives about ten minutes east of me on the other side of the Red River, but still close to the local splatter monsters.

Well, it's time to return to Baker vs. Baker and the Marital Property Act. 73 and good DX.

W. GEORGE ELLIOTT, P.O. BOX 956, PRINCETON, BC VOX 1W0 CANADA

It seems that I'm always DX'ing at LSS these days, something I'm not used to as I was always an 'after-midnight' dial twister for the longest time. I kind of like the change.

On 15 February I finally for CKRD Alberta on 700 (ex-850) and all alone. Also added newie KHUG Oregon 1300 to the list. On 16 February another newie, KLOK California 1300 and napped upon KPAY California 1060 which I hadn't heard in years. It was rare in Kelowna because of CFBK.

One thing I noticed from DX'ing in Princeton is that I'm now one valley closer to the West Coast, all of Vancouver is a pest. CIOF 1040 in particular with CKWX 1130 a close second. Living across the valley from the CKRP 1400 transmitter doesn't help either, as 1330 to about 1460 is lost. I'm guessing as the radio I use has a pretty vague dial and I'm in the market for a neat looking Sony I saw in a Toronto Stereo Catalogue that was sent to CKRP, and I'm pretty sure it has LED so I don't have to keep trying to figure out where I am on the dial.

Ric, you surprised me with your SE reference. I only have "ears" in the Honda and the radio is rarely on. The same goes for the base in Kelowna. One thing though, when it talked, IT TALKED. I'm talking a Moonraker 6 Quad 40-feet from the ground, with rotor of course. (Drool. Wanna sell it?-Rth.) Besides California was too easy when I talked skip (only on SSE). Which reminds me, the license is due the end of March.

Will be in touch. . .3's de WGE.

RANDY SEAVER, 1154 VIA TRIESTE, CHULA VISTA, CA 92011

Last year I made some comments about weather effects on MW propagation in response to Jack Woods forum. I think I was a bit cavalier in those remarks, and would like to apologize to Jack for any offense to him.

In reviewing some of the available data and information, I find that weather phenomena does play some part in MW propagation, most notably in mid-latitude regions around the winter solstice, the so-called Mid-Winter Anomaly (or Winter Anomalous Absorption in most reports I've seen). The MWA is related to stratospheric warmings, which causes increased absorption due to an influx of ions and free electrons into the D-region of the ionosphere, coupled with increased temperatures at these altitudes. The MWA is also apparently related to strong ionospheric winds in the D-region near the winter solstice.

Jack has sent me information on his research into the subject, and has found some correlations with weather phenomena -- but I'll let him tell you the details. If there are these effects, then the absorption on one or more hops may be reduced or enhanced. My guess is that you could best tell the effects on a short one-hop path, similar to the instances Jack has described in his recent forum.

For long-distance paths near the auroral zone, the geomagnetic field activity (or lack of it) is dominant, but stratospheric warmings that bring about increased absorption must be considered, and other weather-related phenomena may play some role, especially if they result in ionospheric tilts at one or more ionospheric refraction points.

I've said it before and I'll say it again -- we don't have any experts in the field of MW propagation. I encourage Jack and other to delve into the mysteries of the subject. 73.

GLEN KIPPEL, 612 WEST AVE., MERCED, CA 95340

Hello once again. What's new from the FCC is a proposal to eliminate the tradition of assigning K calls to the Western US and W to the area nominally east of the Missississippi River. Even more strange is their idea of allowing any station to use an unassigned call for that class, i.e. AM, FM or TV. For example, KABC-FM could be assigned to somewhere in the Far East, like Boston or Punxsutawney, PA. Like one writer in Electronic Media said, "WCBS-FM in Denver." I dunno about this. Maybe Mark Fowler is leaving the Commission just in time.

Regarding the current discussion about "what is DX" -- to me, anything within 1,000 miles or so isn't DX. But with the glut of new stations on the air I may have to scale that back to ten miles, hi. The question we should be asking, at least for the DX Monitor is not, "is it DX," but "is it news." If my local KYOS 1480 should happen to move to, say 840 with 50 kw, it wouldn't be DX -- for me -- but it would be news, and DX for others.

Anyway, the DX environment has changed drastically even in the past five years. It was just that long ago when Cuba was heard nightly on 880, Colombia on 890, Venezuela on 1210, Peru was frequently heard on 880. Thirty years ago, British Guyana on 660, Uruguay on 1090, Bermuda on 1235 and lots of 1 kw Latins were pretty common in Denver, and even Japan 670 and Australia on 840. If the rest of the world weren't on a 9 kHz spacing, it's likely that foreign DX would be just a memory for us.

I think Phil Bytheway's "DX Techniques" column is a definite step in the right direction. DX'ing hardware and techniques probably will have to become more sophisticated to enable us to log more than a couple of hundred stations amid the increasing QRM. Sorry to sound so pessimistic. It's just that MW DX has always been difficult and with the escalating levels of interference it's getting even more so. We need all the help we can get. 73.

GENE MARTIN, 3303 E. EVANS AVE., DENVER, CO 80210

As club members may remember, I've been afflicted the past year or so with the habit of waking up every morning in the area of 0300 to 0400 MLT (1000 to 1100 in terms of UTC). Along in March 1990 I began monitoring JOIK 747 on a daily basis, my number one JO as heard here. Within a few days, I also extended this daily checking out to 1YA Auckland, New Zealand on 756, the next higher TP frequency.

But I made JOIK my main interest, setting out to determine how often its signal could be found here on my HQ 180 with its loop antenna. JOIK is easy to recognize: A signal from the north, and when good generating a het signal against the 750 stations, WSE, YNX and CJNW. After about 1230, the het is against KMMJ Grand Island, Nebraska. The EP

Pasc station on 750 isn't conspicuous here.

So about two weeks ago, I completed more than three pages of information on the general subject of when JOIK puts a signal into Denver. By that time I was only up to January 1987, having begun with October 1986. I finally realized my entire approach to the subject was going at it backwards. What I needed to do instead was to report month-by-month on the days when JOIK does NOT put any kind of signal into Denver. That would make my report much shorter and cover the same subject.

So I began with October 1986, the same month where my previous report on JOIK left off.

In October, I couldn't detect any signal from JOIK on 04, 14-17, 28 October. JOIK was missing six days in October. For the month of November, there was no trace of JOIK on the 6th to the 10th, 14th and the 27th. Was missing seven days in November.

I didn't find JOIK missing any day during the first ten days of December, nor the last three days of the month. Between these times, I was in Dallas for family reasons, actually the Dallas suburb of Richardson, 14 miles to the north. (Travel DX from Dallas and January and February JOIK monitoring from Denver next issue-RtR.)

RIC HEALD, 8539 BELLAMY WAY, SACRAMENTO, CA 95828 Tele-Forum: (916) EVergreen 6-8677 to 2200 PLT and ppd

Whew! It's the California-Canada connection this week, via Colorado, hi. Good hearing from, as John Oldfield puts it, the frozen north.

Haven't done a lick of DX the last week, have twisted the dials at LSR, but nothing to write home about.

I'll add my 25-cents worth (inflation has made 2-cents slightly obsolete, hi) regarding "what is DX." I tend to agree with Glen, however, (you knew that was coming didn't you, Glen? hi), not everyone has a Hammarlund or SPR-4 or Collins, etc. So DX is really something you don't hear on a regular basis. Example, I'm less than 50 miles from Concord, but if I were to hear KWUN 1480 at night, I would consider it DX because they simply don't put any power this direction at night and I've never heard them. On the other hand, should I hear KSL 600 miles to the east, to me it wouldn't be DX as they're a powerhouse regular. And remember when we first began DX'ing? What did we count as exciting catches? I thought hearing Fresno from Oakland was a big deal, hi. But you're right about the 9 kHz spacing. That's actually revitalized foreign DX and came along just as the glut of new stations began. Couldn't have been better timing. Yes, I remember the Latin DX, and Peru 880, Belize 835, and really prize the two TA catches I've heard, but radio has been changing steadily over the years and we simply have to adjust to what's happening now. And really, like you said, it's whatever makes "news." That's what DXM is really about, descminating information to the readership.

Speaking of KYOS, I'm surprised they didn't contest KCEY changing calls to KYES. Aren't Merced and Turlock same market? Just 90 kHz away I see a problem come ratings time with confused listeners. And I already got a copy of the "K" & "W" calls deregulation from John Johnson and it makes me want to run, not walk for cover. Then again when you think of it, Fowler is one of the few appointees to have lasted all six years, hi.

Finally, for those of you who've turned hard pan (adobe) into a garden, you have my total sympathy, hi. I mean two days later it still hurts to walk, bend or stretch, hi. At least the cool-weather veggies are in. Now, for the bug patrol.

Anniversary issue next week. Hope your DX is better than mine, and that wouldn't take much, hi. 73 de RtR. .

PROPAGANDA ON RADIO TIRANA

By WARREN CARAGATA
The Canadian Press

ATHENS — Albania may be shy about letting people into the country but it's not shy about advertising its presence through the powerful transmitter of Radio Tirana.

Even with a small portable radio, it comes in loud and clear at about 1300 on the FM dial throughout most of southern Europe. When you can't get a clear signal from the U.S. armed forces network or the BBC to listen to the news, you can bet that Radio Tirana will be there.

Radio Moscow's propaganda is slick and the announcers sound as if they were in the front of a school in the U.S. or Europe. Not so Radio Tirana. Worse for the U.S. announcers, they don't speak English.

Winnipeg Sun, March 1, 1987

via Shawn Axelrod

The party is like a second mother with the four life with it.

The broadcast was devoted to a biography of delegates to the ninth congress of the Party of Labor of Albania. Just to make sure the party was not missed, the announcer constantly repeated the full name of the party.

There is some music but this is not light-hearted Radio Monte Carlo. Radio Tirana's playlist is made up almost entirely of heavy martial music of the type that, from Radio Moscow, might presage an announcement of an important death in the Kremlin.

Some of the feature topics on the Albanian station in recent months have included a report on bringing electricity to the countryside and a discussion of art and socialist realism.

veri-signers

Editor: TIM HALL 350 S St. #F-1, Chula Vista, CA 92010-4505

Deadlines: Fridays 3/27 4/24 5/29 (tentative)

FREQ	CALL	VERI-SIGNER & TITLE	ADDRESS	WHAT	WHEN	WHO	
540	CBK	Stan Ewert, Coord. Systems Technologist	Regina, SK	EVBW	99	DA	
620	KIFA	Bill Barnett, OpMgr	688 Kinooie St. Hilo, HI	96720 P	324	TRH	
690	CBU	D.J. Harner	Vancouver, BC	Q	4	DA	
720	WBN	Ronald R. Cone, Eng	435 N. Michigan Ave. Chicago, IL	60611 QV	4a	TRH	
730	KBOY	Robert Eely, Owner/GM	197 E. Main, Suite 12 Medford, OR	97501 V	8	TRH	
740	CBY	Ken Anholt, Tech Mgr	Edmonton, AB	QR	11	DA	
750	KAMA	Kevin L. Jenkins, CE	4150 Pinnacle St. #120 El Paso, TX	79902 VB	7	TRH	
750	KDAL	Tom Anderson, PD	PO Box 875 Price, UT	84501 VB	73	TRH	
780	KROW	Lois Robinson, Sec'y	PO Box 11920 Reno, NV	89510 VB	8	DA	
790	CFCW	Lyndon W. Olson, CE	4752 99th St. Edmonton, AB	T6E5H5 VMB	1314	TRH	
810	WGY	(unsigned)	1410 Balltown Rd Hamilton, ONT	12109 Q	3	DA	
820	CHAN	Ron Neuser, Tech Dir	2 King St. West Hamilton, ONT	L8P1A1 VB	14	BF	
830	NCCO	(unsigned)	625 2nd Ave. South Minneapolis, MN	55402 Q	55	TRH	
840	CRBY	Terry Shepherd, GM	PO Box 939 100 Mt. House, BC	V0K2E0 V	214	TRH	
860	CJBC	Mrs. Marie Caloz	Toronto, ONT	Q	72	DA	
870	CHIR	Garry Irving, Sta Mgr	Box 1407 Golden, BC	V0A1H0 V	15	JCJ	
870	KROL	Gordon N. Alsua, DirEng	3950 S. Eastern #180 Las Vegas	89119 V	1124	TRH	
880	KIXI	Gerry Greenfield, CE	113 Dexter Ave. North Seattle, WA	98109 P	47	TRH	
890	KBB1	Scott Morton, CE	215 E. Main Ct. Homer, AK	99603 VB	9	TRH	
900	KNUJ	Judy E. Anderson, OffMgr	Kahului, HI	96732 P	7	TRH	
930	WKY	Mike Chambers, ProgAsst	PO Box 14930 Duluth, GA	31713 P	16	TRH	
930	R. Antilles	Chief Eng.	PO Box 35/930 Ft. de France, MONTSEERRAT	W.I.	06	18	TRH
960	KABL	Dennis Gooch, CE	1925 Battery St. San Francisco, CA	94111 Q	74	TRH	
1080	WTIC	(unsigned)	Hartford, CT	Q	9	DA	
1090	KAAV	Shawn Peper, CE	Little Rock, AR	Q	10	DA	
1140	KWJZ	Bob Berzins, Op Mgr	3510 N. Hacienda Las Vegas, NV	89118 VB	5	TRH	
1210	WCAU	(unsigned)	Philadelphia, PA	V	120	DA	
1250	KUUV	Ann Blackford, GM	Drawer "Y" Nickenburg, AZ	85358 P	68	TRH	
1290	KAZA	Filiberto Arteaga, CE	PO Box 1290 San Jose, CA	95108 P	10	TRH	
1340	KSFE	DeLana Black, Tfc Mgr	PO Box 738 Needles, CA	92363 P	6	TRH	
1390	C3CY	Al Crandlemire, TechDir	457 3rd St. SE Medicine Hat, AB	T1A0G8 V	15	JCJ	
1390	KRRZ	Charlie Ferguson, Pres/GM	Box 10 Minot, ND	58702 V	36	JCJ	
1400	KE2D	John Gaboury, CE	PO Box 228 Yuma, AZ	85364 PV	5	TRH	
1400	KTUC	Dale Lopez	76 S. Stone Ave. Tucson, AZ	85701 P	14	TRH	
1410	KCOL	Wil Huett, Op Mgr	Box 1339 Fort Collins, CO	80522 V	30	JCJ	
1410	KERN	Carol Ferguson	PO Box 2700 Bakersfield, CA	93303 P	54	TRH	
1410	KFMS	Dan S. Peluso, CE	PO Box 15227 Las Vegas, NV	89114 VBM	254	TRH	
1440	KUHL	Will Dalley, Eng	PO Box 166 Santa Maria, CA	93456 PV	274	TRH	
1450	KRBT	Michael Gollinwe, Eng	PO Box 151 Prescott, AZ	86301 VB	31	TRH	
1490	KBAS	John Wiman	2332 Hwy 95 Bullhead, AZ	86442 V	244	TRH	
1510	KIRV	Chuck B. Wesley, Sr Ann	3636 N. First, Ste.142 Fresno, CA	93726 P	7	TRH	
1540	KXEL	John A. Bauer	Waterloo, IA	Q	11	DA	
1550	KNTR	Richard Ellison, Pres/GM	Box 308 Ferndale, WA	98248 V	7	JCJ	
1570	Beacon	Jerry Kiefe (?), CE	PO Box 5221 Pt. Lauderdale, FL	33310 Q	21	TRH	

WHAT was received: Q=OSL card, V=Veri-letter, P=Prepared card, B=Busperstickers, M=Coverage Map, R=Rate Card
WHEN did the reply come: Number of days elapsed. F= Follow-up report (or phone call) was necessary.

HELP WANTED SECTION: Having trouble verifying a station? Here's where to ask the membership for help!

Can anyone supply a current veri-signer for any of the following stations?

550	WGM-TN (TRH)	740	KRMS-OK (TRH)	1180	WHAH-NV (TRH)	1510	WLAC-TN (TRH)	
Contributors:	Thank you for your support !!!							
DA - Dave Allen, 2633(A) S. Michigan Ave., Chicago, IL	60616-2615						This column will appear about once a month, depending on the number of tips received.	
JCJ - John C. Johnson, 979 Neptune Blvd., Billings, MT	59105-2129							
BF - Bruce Fortner, 6546 19th Ave. N.E., Seattle, WA	98115							

Thanks to Dave, John, and Bruce for being so quick to support this new column. As for the rest of you, I welcome your tips, "help wanted" ideas, and suggestions. By the way, you don't have to use any particular format when you send your tips in. Just write them down any way you feel like it. The "WHAT" and "WHEN" columns are optional, so if you don't keep track of those details, don't worry about it.

IRCA SportsCentre



Dale Park, KH6DX5P
2253 Kanealii Avenue
Honolulu HI 96813-1345

"Holy cow!" "Boom! off the wall!" "Root root root for the Cubbies..." "They're easternmost in quality, westernmost in flavor..." Yes, folks, baseball season is almost here, and the voices of America's Pastime will once again waft from the speakers of radio sets throughout the continent. So if you have those radio lists for your favorite teams, send them in! And you may get credit in the upcoming IRCA Almanac later this year. Meanwhile though, let's find out who are the flagship stations and announcers for members of the National Hockey League...



NATIONAL HOCKEY LEAGUE

Boston BRUINS	1390 WPLM-MA+	Bob Wilson, John Bucyk
	99.1 WPLM-MA+	
Buffalo SABRES	930 WBEN-NY	Rick Jeanneret, Mike Robitaille
Calgary FLAMES	770 CHQP-AB	Peter Maher, Doug Barkley
Chicago BLACK HAWKS	780 WBBM-IL ₁	Pat Foley, Dale Tallon
	97.1 WNIB-IL ₁	
Detroit RED WINGS	760 WJR--MI	Bruce Martin, Paul Chapman
Edmonton OILERS	1260 CFRN-AB	Rod Phillips, Jim Matheson
Hartford WHALERS	1080 WTIC-CT	Chuck Kaiton, Andre Lacroix
Los Angeles KINGS	570 KLAC-CA ₁	Bob Miller, Nick Nickson
	1260 KGIL-CA ₁	
Minnesota NORTH STARS	1500 KSTP-MN	Al Shaver, Tom Reid
Montreal CANADIENS	600 CFCF-QU ₂	Dick Irvin, Mario Tremblay
	690 CBF--QU ₂	Claude Quenneville, Gilles Tremblay
New Jersey DEVILS	570 WMCA-NY	Dale Arnold, Fred Shero
New York ISLANDERS	710 WOR--NY	Barry Landers, Jean Potvin
New York RANGERS	660 WHBC-NY	Marv Albert, Sal Messina
Philadelphia FLYERS	610 WIP--PA	Gene Hart, Bobby Taylor
Pittsburgh PENQUINS	1020 KDKA-PA ₂	Mike Lange, Paul Steigerwald
Quebec NORDIQUES	800 CHRC-QU ₂	Alain Crete, Andre Belisle
St. Louis BLUES	630 KXOK-MO	Dan Kelly, Joe Micheletti
Toronto MAPLE LEAFS	1430 CJCL-ON	Joe Bowen, Bill Watters
Vancouver CANUCKS	980 CKNW-BC	Jim Robson, Garry Monahan
Washington CAPITALS	630 WMAL-DC	Ron Weber
Winnipeg JETS	580 CKY--MB	Curt Keilback, Ken Nicolson

NOTES: 1. Carries game when conflict on flagship occurs. 2. French coverage.

COLLEGE BASKETBALL



University of Idaho

IDAHO VANDALS Bob Curtis

620 KWAL-ID	1080 KVNI-ID	1230 KORT-ID	<u>1400 KRPL-ID</u>	-FM-
630 KIDO-ID	1230 KBAR-ID	1240 KMCL-ID	KSPT-ID	96.5 KOZE-ID

VILLANOVA U. WILDCATS

<u>1210 WCAU-PA</u>	1420 WCOJ-PA	1440 WNPV-PA
---------------------	--------------	--------------

PLAYERS OF THE WEEK: Janis Stoehr, ASWLC; Standard Rates and Data Service.

This was typed 24 Feb. 1997. Next time, let's play ball! See you in DXM.

IRCA FOREIGN DX REFERENCE, VOLUME 23

Phil Bytheway has just compiled a cross reference listing of all the stations reported to DXWW-W and DXWW-E during volume 23 (9/85-8/86). There are three versions available: Trans-Atlantic, Latin American, and Trans-Pacific. Each has a frequency listing and a country listing showing the stations reported, and the column and issue number they appeared in.

Each listing is about 5 or 6 pages long. You can order any one of the three (TA, TP, or LA) for 75¢ each, or all three for \$2.00. Make checks payable to Phil Bytheway. His address is 9705 Mary Avenue NW, Seattle, WA 98117. Be sure to specify which one(s) you want.

THE INTERNATIONAL RADIO CLUB OF AMERICA (IRCA)

International Radio Club of America
P. O. Box 21074
Seattle WA 98111

The IRCA is a non-profit organization devoted to the hobby of hearing distant stations on the AM Broadcast Band (510 - 1630 KHz). "DX Monitor", the official publication of the IRCA, is published 34 times a year, weekly from October to March, twice in September and April, and monthly from May to August. "DX Monitor" contains members' loggings, articles on radio stations, receiver reviews, technical articles, DX tips, and other material of interest to Broadcast Band DX hobbyists. IRCA is a member of ANARC, the Association of North American Radio Clubs.

CLUB ADDRESSES AND OFFICERS



President: Bruce Portzer, 6546 19th Ave. N.E., Seattle, WA 98115 (206) 522-2521.
Secretary-Treasurer: John Clemmer, P.O. Box 482, E. Moline, IL 61244.
Board of Directors: Ernest R. Cooper, Nancy Hardy, Bill Harris, Patrick Martin, Rich Toebe, Niel Wolfish, Karl Zuk.
Editor-in-Chief: Bruce Portzer, 6546 19th Ave. N.E., Seattle, WA 98115.

MEMBERSHIP DUES

U.S. - \$20.00 per year Canada/Mexico - \$26 (one issue mailed every week) or \$20 (two issues every two weeks). Overseas Surface - \$21. Overseas Airmail - \$30.
(Central America, Caribbean, Colombia and Venezuela), \$33 (Europe, North Africa, Middle East), \$37 (rest of the world). Trial Membership - \$7.50 (10 issues of "DX Monitor" and a New Member Packet, U.S./Canada/Mexico only). Make checks and money orders payable to IRCA, and send all dues to: IRCA, P.O. Box 482, E. Moline, IL 61244. Persons living outside the U.S., please use International Money Order in U.S. funds. Sample copies of "DX Monitor" are 50 cents or three International Reply Coupons each and are available from: IRCA, P.O. Box 21074, Seattle, WA 98111.

THE IRCA GOODIE FACTORY

Reprints of more than 400 articles from past issues of "DX Monitor" are available from the IRCA Goodie Factory. Also available is IRCA stationery and the very popular IRCA publications: "IRCA Almanac", "A DXers Technical Guide", and the "IRCA Foreign Logs". For a complete list of available publications and their costs, send a self-addressed, stamped envelope to: IRCA Goodie Factory, P.O. Box 21074, Seattle, WA 98111.

Unless otherwise noted, permission is granted to publish, broadcast, or otherwise reproduce non-copyrighted material appearing in "DX Monitor" provided credit is given to the IRCA and the original contributor. Opinions expressed in "DX Monitor" are those of the original contributors and do not necessarily reflect those of the IRCA, its publishing staff, editors or officers.

FIRST CLASS

FIRST CLASS MAIL
US POSTAGE
PAID
Seattle WA
Permit No. 601

D. A. NYHOLM
2071 CEDAR STREET
SAN CARLOS CA
94070

19