

DX MONITOR

THE OFFICIAL PUBLICATION OF THE IRCA INTERNATIONAL RADIO CLUB OF AMERICA

DEVOTED EXCLUSIVELY TO BROADCAST BAND DXING

December 5, 1987

Volume 25, Number 11

Edition 801

Eastern DX Roundup	2
Propagation article	
References	3
Central DX Roundup	4
Radio Programming Notes	5
Western DX Roundup	7
Radio Moscow MW Sked	10
DX Worldwide East	11
DX Worldwide West	14
Eastern DX Forum	16
The IRCA Technical Column	18

AFTER 50 YEARS KGER RADIO IS STILL THE LEADER IN RELIGIOUS BROADCASTING IN SOUTHERN CALIFORNIA

Odds and Ends

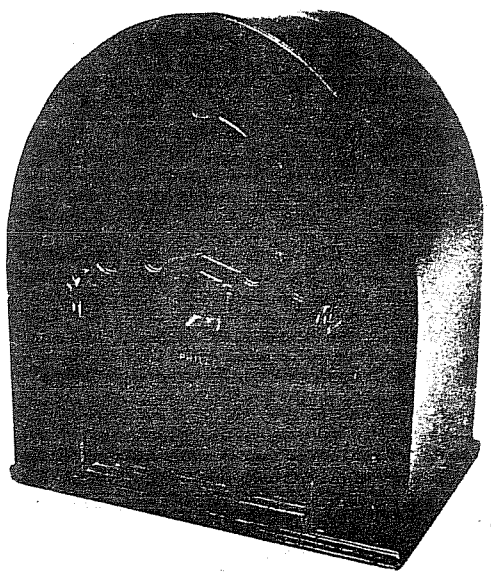
We've accumulated another large pile of International Reply Coupons, so once again we're offering them for sale on a first come, first served basis. You can get them for 60¢ each, plus an SASE from club headquarters (P.O. Box 21074 Seattle, WA 98111).

IRCA member Ted Fleischaker is now hosting a weekly do-it-yourself show on WHAS-840 every Friday from 9 to 10 pm (Eastern). They have a toll-free number 1-800-444-8484, so give him a call if your house is falling apart.

Don't forget the ABC Talkradio special on DXing and shortwave listening on the morning of Saturday, January 9. We ran details a couple of issues back, and we'll run them again just before the show.

Our ANARC rep, Albert Lobel, has sent some info on the 1988 ANARC Convention. It will be held July 13-16 in Huntington Beach, CA. We'll have complete details in the weeks to come. 73, bp.

**TIMES HAVE CHANGED ...
TECHNOLOGIES HAVE CHANGED ...
BUT THE MESSAGE IS STILL THE SAME!**



Editor: Tim Kridal
Box 147
Middle Island, NY 11955

Greetings! The weather here at my QTH has gone from bad to worse, with a little snow and alot of cold. Gary Heisey writes that he's snowed in, with much snowing and blowing outside. As I write this, the wind is whipping my longwires all over the place. With some luck, they should hold.
Jim Hall of DXWW-E fame checks in to confirm my logging of WTAE-1250 in Vol 25/#8. Jim writes that WTAE Pittsburgh is an all-talk station, and is 5 kW NSP. Many thanks for the help, Jim.
Tim Noonan of Milwaukee also checks in to ID Gary Heisey's logging of WSBQ-740 in Vol 25/#6. He writes "740 WSBQ is WSVQ Harrogate, TN...near Middlesboro, KY and Tazewell, TN." Thanks for your support, Tim.

With that, here's this week's Big Three...

(RB-NY) Raymond Bauernhuber; 141-12 243 Street; Rosedale, NY; 11422
Sony ICF-2010, shotgun loop, Palomar loop, Eavesdropper antenna

(GH-PA) Gary A. Heisey; Box 310F RDL; Osterburg, PA; 16667
Philco radio, GE Superadio II, 4' floppy loop

(WPT-DC) Bill Townshend; 4500 Conn. Ave NW #901; Washington DC; 20008
Realistic Portavision 40 (12-648), Realistic TRF (12-650A)

(WPT-DC1) Bill Townshend
DXing at 18th and K streets NW

EASTERN

DX ROUNDUP

- 580 UNID 11-8 2005 Fair in WHP null, w/ FF Canadian. FF rock mx, male and female FF annors, out of NX. (GH-PA) (Maybe CKY-Winnipeg? Readers? -TK)
- 620 WVMT VT, Burlington 11-10 0528 Poor, brief w/ local WHJB mixing, w/ "It's 5:30 on 62 WVMT" by man, into local nx. (GH-PA)
- 660 WXIC OH, Waverly 11-9 0730 Poor to fair in WNEC null, w/ old 740 mx. "AM ?? WXIC" by man, into local nx. Ments of Wheeling, Tri-county area. (GH-PA)
- 740 WMBG VA, Williamsburg 11-1 1800 Fair to good w/ s/off by YL, no SSB. (WPT-DC)
- 780 WHNC NC, Forest City 11-6 1710 Fair w/ many spots for stores in downtown Forest City. Mx, then faded. No ID. (GH-PA)
- 780 WPTN TN, Cookeville 11-6 1728 Fair, fadey w/ many ments of Cookeville. Rock song, "WPTN 780 clear channel, Cookeville, TN" by man. Gone at 1730. (GH-PA)
- 780 WZZX AL, Lineville 11-6 1745 Vpoor w/ mx by black artists. Vpoor, muddy ID by man in lengthy s/off at 1745, ment of AL. Barely got ID. Followed by another weak stn, but lost in snow at 1800, WAEC, WBEM splash. (GH-PA)
- 790 WNWS FL, S. Miami 11-2 1916 Fair u/ WPAR, w/ nx by YL. (WPT-DC)
- 840 WHAS KY, Louisville 11-15 1815 Good w/ oldies/R&R mx. Wx w/ Gary Rizzo, Dixie Furniture ad. (RB-NY)
- 850 KFUC MO, Clayton 11-6 1819 Vpoor w/ "Wx for St. Louis...It's 5:19. Here's today's business report from UPI" by man. May have s/off at 1830. Man gave FM call and address at Founder's Lane. Too much local WJAC to be sure. (GH-PA) (If I remember correctly, KFUC s/off is early to protect a Denver stn, KOA. KFUC-FM is on 99.1 FM. -TK)
- 850 UNID 11-10 0515 Good in WJAC null w/ FF Canadian. Ments of Air Canada. CKVL? (GH)
- 860 WBGR MD, Baltimore 11-9 1558 Poor, mixing w/ many others, w/ WBGR ID by man, into relig program. (GH-PA)
- 870 WGTL NC, Kannapolis 11-5 1714 Fair w/ s/off w/ ment of 1 kW. Tentative (7-30-79), now definite. (WPT-DC1)
- 880 WBKZ GA, Jefferson 11-5 1728 Fair to good o/ WCBS, w/ s/off. Temp 76. (WPT-DC1)
- 880 WBKZ GA, Jefferson 11-8 1730 Vpoor w/ "ZB AM" ID, oldies mx. "WBKZ studios in Jefferson" s/off by man. (GH-PA)
- 900 CHML ON, Hamilton 11-15 1830 Poor to fair w/ heavy QRN/QSB. Pop (AG) mx. (RB-NY)
- 920 KDHL MN, Faribault 11-9 2110 Vpoor w/ KDHL calls by man, ment of some "reward". Sounded like a s/off, can anyone confirm their s/off time? CKNX null. (GH-PA) I have KDHL listed as 5 kW/ 5 kW. Readers? -TK)
- 930 WRRF NC, Washington 11-10 0730 Poor w/ "AM 930 WRRF," ment of Washington. Faded. (GH-PA)
- 930 WWNH NH, Rochester 11-10 0625 Poor, fadey, brief w/ spot for Granite State Natl Bank, ment of NH. Song "Will Power" by Gary Pucket. (GH-PA)
- 940 CBM QU, Montreal 11-15 1840 Excel w/ "Cross Country Checkup" w/ host John Proctor, guest Chairman of Economic Council Judith Maxwell. (RB-NY)
- 1000 WSPF NC, Hickory 11-10 0725 Fair w/ "WSPF Channel 1 wx." DJ Mike Roberts. C&W mx. (GH-PA)

SDXR and Old Milwaukee beer...It just doesn't get any better than this!!

- 1010 WFGW NC, Black Mtn 11-9 1732 Poor, brief w/ "WFGW/WMIG Christian radio" by man, out of Paul Harvey. (GH-PA)
- 1020 WRIX SC, Homeland Park 11-8 1658 Fair, fadey w/ WRIX ID, wx, ment of Ringold area. Nx from SC Radio Net. "AM gospel 1020 WRIX" by man. (GH-PA)
- 1130 WDGY MN, Minneapolis 11-6 2010 Poor w/ "WDGY" by man, C&W mx. "WDGY w/ the best country hits of yesterday and today." (GH-PA)
- 1170 KVOO OK, Tulsa 11-11 0832 Vpoor in WWVA null, w/ "It's 7:32 traffic Golden Eagle copter" by YL. "KVOO color radar wx," sports, wx. C&W mx. (GH-PA)
- 1170 WCLN NC, Clinton 11-9 0815 Fair, brief w/ "Your kind of mx on WCLN FM 107." T40 mx. (GH-PA)
- 1300 WFBR MD, Baltimore 11-15 1910 Good w/ "Talk radio 13, WFBR." Pop listening mx.(RB)
- 1380 WFCL WI, Clintonville 11-9 1940 Fair w/ "Mx for New London and Shawano, we're WFCL AM 1380." Oldies song. (GH-PA)
- 1440 WBLA NC, Elizabethtown 11-1 1744 Fair u/ WRRO, w/ s/off by man, SSB. Tentative (1-6-78), now definite. (WPT-DC)
- 1520 KOLM MN, Rochester 11-9 1800 Fair in partial null of strong WWKB, w/ "KOLM, serving southern MN and northern IA" by man, into local mx. "Oldies but good-ies" slogan. (GH-PA)
- 1550 WKVL TN, Clarksville 11-9 1854 Vpoor u/ strong Canadian, het, w/ song by Kool and the Gang, wx. WKVL ID by man. (GH-PA)
- 1580 WJIK NC, Camp LeJuene 11-7 0820 Fair, brief w/ ID by man, relig mx. (GH-PA)
- 1580 WLIM NY, Patchogue 11-7 0830 Big band mx, local mx. Ment of Patchogue and parade. Spot for Pat and Jim's Restaurant. "AM stereo 1580 WLIM." (GH-PA) (WLIM is located about 20 miles from me. Owned by Jack Ellsworth, who is also the GM. He has a show called "Memories and Melodies" which I believe is still on. -TK)
- 1580 WZKY NC, Albemarle 11-4 1747 Good w/ spots for auto dealer, ment of high school football game. #29 on this channel. (WPT-DC)
- 1580 UNID NC 11-8 0625 "More country 95.1 WRNS plays the hottest country in the east" and "Remember, if it happens in NC, it's on WRNS." Suddenly blocked by WPGC at 0645. (GH-PA) (WRNS is on 95.1 FM in Kingston, NC. -TK)
- 1600 WTZQ NC, Hendersonville 10-22 1842 Fair in pile w/ ID by man and unknown program content. (WPT-DC1)

Many thanks to this week's crew for a fine selection of loggings. Get your firewood or fill your tank, 'cause winter's a comin'. Best of DX, and 73s de TK...

9. REFERENCES

- Bai, T. and Sturrock, P.A., "On The 152-Day Periodicity of the Solar Flare Occurrence Rate", Stanford University, NASA CR-180519, November 1986.
- Davies, K., Ionospheric Radio Propagation, National Bureau of Standards Monograph 80, November 1965 (Reprinted).
- Nelson, G.P. "MW Signal Paths, Parts I-IV", DX News, 3/8/69, 2/28/70, 3/21/70, 4/25/70.
- Nelson, G.P. "Geographical Patterns in BCB DX Reception During Periods of High Auroral Activity", DX News, 6/13/71.
- Nelson, G.P., "Limitations in the Use of the A Index for MW DX Purposes", DX News, 10/30/72.
- Nelson, G.P., "Auroral/Geomagnetic Activity and Its Effect on MW DX Reception", IRCA Foreign Log, Volume 5, 1977.
- Ratcliffe, J.A., Sun, Earth and Radio, McGraw-Hill Book Company, New York, 1970.
- Rishbeth, H. and Garriott, O., Introduction to Ionospheric Physics, Academic Press, New York, 1969.
- Scrimgeour, K.G., "Relation Between Geomagnetic Measurements and MW DX Conditions", DX Monitor, February, 1968.

CENTRAL DX ROUNDUP

John C. Johnson 979 Neptune Boulevard Billings, Montana 59105-2129
All times are Eastern. Deadline: Saturdays

[[SA-MB]] = Shawn Axelrod, 21 Knightsbridge Dr., Winnipeg, Manitoba R2M 4E7
ICOM IC-R70, loop.

[KDF-IL] = Karl Forth, 2714 North LeClaire, Chicago, Illinois 60639
Hammarlund HQ-160, spiral loop.

[TMJ-IL] = Tom Jasinski, 503 Jensen Street, Shorewood, Illinois 60436
FRG-7, 2 1/2 foot loop.

[WMC-MB] = Wayne McRae, 103 Donegal Bay, Winnipeg, Manitoba
Emerson ATS-803, Superadio.

[JCJ-MT] = Your editor using an ICOM IC-R71A with a Radio West Loop.

540 KMMX NM Las Vegas, 11/22 weak in CBK null. 1845 w/SS music, talk, then
1850 with spot in English, back to SS programming. 1902 sign
off in English. New for me, NM#42. [JCJ-MT]

560 CFOS ON Owen Sound, 11/2 u/WFLL, WIND just went off air. 0108 caught
end of sign off. SSB played. [KDF-IL]

750 KOAL UT Price, NRC DX TEST, 11/14 weak in WSB null. 0100-0130 heard
only weak rock music, not sure if KOAL. Too tired to stay up
for full test period! [TMJ-IL]

940 WMKC MI St. Ignace, 11/11 all alone w/weak signal. 0130 w/C&W music up
until 0159 sign off. [TMJ-IL]

1150 CKIQ BC Kelowna, 11/21 briefly good, CKX & KREN nulled. 0905 with "IQ"
Sports, promo for Kelowna Packers BC Junior Hockey game today
on CKIQ. Lost to KSEN. New for me, BC#27. [JCJ-MT]

1160 KSL UT Salt Lake City, 11/11 fair in WJJD null. 0008 w/News. Still a
regular here despite congestion on this frequency. [TMJ-IL]

1180 KOPI MT Kalispell, 11/10 good, fades. 1800 w/Spots for Kalispell area
merchants, ID. [WMC-MB]

1230 WCUZ MI Grand Rapids, 11/11 good. 0301 w/CBS News, weather, "WCUZ, AM,
12-30, Music country for West Michigan". C&W music. [SA-MB]

1290 CIFX MB Winnipeg, 11/14 OFF AIR for emergency transmitter repairs for
a period from about 0830-0930. [SA-MB]

KBMO MN Benson, 11/14 fair w/CIFX off. 0905 w/Minnesota News Network
news, local spots, weather. New for me, MN#86. [SA-MB]

KOIL NE Omaha, 11/14 fair w/CIFX off. 0830 w/"KOIL" ID, oldies music,
local weather. [SA-MB]

WCBL KY Benton, 11/14 poor w/CIFX off. 0850 w/local spot for Downtown
Benton, C&W music. New for me. [SA-MB]

WCOW WI Sparta, 11/14 fair w/CIFX off. 0845 with announcer ".it's 29
degrees at WCOW". New for me. [SA-MB]

1380 WFCL WI Clintonville, 11/13 fair. 0640 w/local spots, Enjoy Wisconsin
promo, local sports. Into "La Bamba". New for me. [SA-MB]

1460 CJOY ON Guelph, 11/13 fair. 2210 ID as "CJOY" & "C-joy". Weather for
Guelph, into song by Herb Alpert. [WMC-MB]

1490 KRIB IA Mason City, 11/8 poor u/WESL. 0201 w/sign off. [KDF-IL]

KTTR MO Rolla, 11/8. 0105 w/end of Ai News, weather, sign off and God
Bless America tune. Not heard in many years. [KDF-IL]

WABJ MI Adrian, 11/15 common here when WPNA off, but very strong at
times this morning. 0122 w/PSA, ID, music. [KDF-IL]

WPNA IL Oak Park, 11/8, 0100 noted w/sign off & SSB. This is a regular
Sunday AM SP. [KDF-IL]

1520 KMPL MO Sikeston, 11/7 fair. 0830 w/Jefferson City car dealer spot,
KMPL news, into MOB type music. New for me. [SA-MB]

KCLM MN Rochester, 11/10 very good. 1720 w/"Playing the music you grew
up with" & "The Oldies Channel". Oldies music. New for me,
are they using higher night power now? [WMC-MB]

1530 KCLR TX Ralls, 11/15 good. 0749 w/accordian latin music, man with good
morning and "15-30 AM" in English, "KCLR, Ralls, Lubbock" ID
in Spanish. New for me now CISV has moved. [SA-MB]

???? ?? 2222, 11/14 fair. 0820 w/C&W, no IDs, no spots. Help. [SA-MB]

1550 WBCV TN Bristol, 11/12 poor over mess. 0701 with sign on, into Gospel
music. Faded at 0710. [TMJ-IL]

1570 CISV MB Morden-Winkler, EX-1530, 11/9 moved to 1570, Using slogan
"Your country music station, AM, 15-70". C&W music. Often
mentions "Pembina Valley" area. Excellent here w/10,000 watts
But nulleable at night, Atlantic Beacon receiveable. [WMC-MB]
+11/9 strong, 1800 w/C&W. "v-Country" slogan. 1st day. [SA-MB]
+11/16 very poor in tight CKTA null, then many complete fades.
Not enough for a report yet. [JCJ-MT]

WHCC 1400 NC WAYNESVILLE was adult contemporary, now SMN CHR
 WJJK 1400 WI EAU CLAIRE was country, now adult contemporary (Clemmer-IL)
 WRPZ 1440 KY PARIS was black to Lexington, now silent
 WRGM 1440 OH ONTARIO new, easy listening
 KPUR 1440 TX AMARILLO was black, now album rock // KATF-107.1 "The Cat"
 WDNW 1450 AL ANNISTON was adult contemporary, now rock oldies
 KDRW 1450 CO SILVERTON was country, now silent
 KEZJ 1450 ID TWIN FALLS was KEEP, ad. con., now country // FM (Wien-CA)
 KSKR 1450 MT WHITEFISH was adult contemporary, now silent, KJJR-880 has
 purchased all their old equipment (including studios &
 tower) so this one may be off for a long, long time
 WTMH 1460 WI TOMAH was SMN adult standards, now country (Clemmer-IL)
 W DUR 1490 NC DURHAM was black, now black gospel
 KCLEF 1500 LA NEW ROADS was silent, now SMN rock oldies
 WTKS 1510 SC BURNETTOWN was WWA, country, now silent, has new owners
 so they may be back on soon
 WBDS 1520 GA EATONTON was country, now silent
 KADI 1520 MO CAMDENTON new, to be AC/CHR mix
 WCLY 1550 NC RALEIGH was black, now black gospel
 WHEZ 1560 MI PORTAGE was SMN ad. stds, now Transtar oldies to Kalamazoo
 WOKG 1570 OH WARREN was AC/country mix, now news-talk
 KIIQ 1590 NV SUN VALLEY was KSRN, country to Reno, still country

Proposed Station Sales (* means check the format listings for more info)

WYLO-540-WI, KCMX-580-OR, KSLR-630-TX, WLOR-730-GA, WCPS-760-NC, WIKX-
 770-FL, WSMJ-800-KY, KFJZ-870-TX, KAVR-960-CA, WJCM-960-FL, KBLS-990-CA,
 WGML-990-GA, KNDC-1080-ND, WUHN-1110-MA, KTEK-1110-TX, KVOJ-1130-TX,
 WDAO-1210-OH, WWCO-1240-CT, WJIM-1240-MI, KOFC-1250-AR, WRKQ-1250-TN*,
 KIMB-1260-NE, WORL-1270-FL, WGBF-1280-IN*, WHCM-1290-AL, WAJO-1310-AL,
 WDCT-1310-VA, WAGG-1320-AL, WDMJ-1320-MI, WOYK-1350-PA, KSPG-1360-KS,
 KWJS-1360-TX, KWRT-1370-MO, KAWL-1370-NE, WRAB-1380-AL, KCNW-1380-KS,
 WRAQ-1380-NC, KQMS-1400-CA, KPLG-1400-CO, KRIG-1410-TX, WLET-1420-GA,
 WCRE-1420-SC, KPAR-1420-TX, KJWH-1450-AR, KENA-1450-AR, WIBM-1450-MI,
 KZZJ-1450-ND, KUUX-1480-NM, WNFO-1480-NC, WSVN-1490-NC, WXIT-1490-WV,
 KMOO-1510-TX, KCMN-1530-CO, KTCR-1530-OK, KMIA-1540-TX, KINC-1550-KS,
 WIRV-1550-KY, WKIY-1560-FL, KUXL-1570-MN, KBOR-1600-TX

Station Sales That Failed: KXOI-810-TX, WOKA-850-NY, KTWO-1030-WY,
 WFLZ-1200-FL (CP not on yet), WBBG-1260-OH*, KFLJ-1380-CO, WRDC-1410-MS,
 KKIP-1440-AR (CP not on yet), WNOS-1450-NC, KZZJ-1450-ND, WGAB-1550-CT
 (now silent)

Tim Noonan notes that WLUM-1590-WI is soon to be sold by its FM (102.1),
 who will in turn buy WMVP-1290. So, look for the 1590 to change owners,
 calls and formats soon. Also, says Tim, a correction to last month's
 WISN-1130-WI listing: it's now mostly talk, with only a little news.

The sales of WYLO, KTEK, WDCT, KWJS, KCNW and KUXL mark the beginning of
 the breakup of maybe the most unique broadcasting chain in the country.
 The six stations are being sold by Universal Broadcasting to UB's GM,
 Dick Marsh, as part of a move by the station to move toward more "main-
 stream" facilities in major market; the recent format change by WWCS-540
 in suburban Pittsburgh was also part of that trend. For 20+ years
 Universal has built a chain of mostly suburban AMs with bad signals in
 larger cities, run religious and brokered ethnic programming, and made
 the stations profitable. They still have AM stations like KEST-CA,
 KPCC-CA, WGRT-IN, WNDZ-IN, WTBE-NY and others; look for some of these
 to either be sold or switch to more popular formats in coming months.

Dan Sys passes along word that in September CKNW-980-BC and their entire
 province-wide network of stations dropped their own overnight talk show
 and picked up Larry King instead. Just what Canada needed. Another
 Canadian note: contrary to some reports, the CKO/CKEY facility switch
 (in which CKO, an all news FM, proposes to trade frequencies with CKEY-
 590 and its music format) has not taken place. The switch requires CRTC
 approval, which will take some time and which may not be forthcoming
 (the CRTC is notorious for refusing to allow listenable formats on FM).



WESTERN DX ROUNDUP

2301 PACIFIC AVE., ABERDEEN WA 98520

DEADLINES: Mon. 12/14, Mon. 12/21, Tues. 12/29, Tues. 1/5

REPORTERS FOR THIS ISSUE:

- (TRH) Tim Hall-350 G St. #F-1-Chula Vista, CA 92010
ICF-2010, Radio West loop
(TRH-CA1) DX'ing in Anaheim, CA w/Kenwood car radio
- (BH) Bill Hardy-2301 Pacific Ave.-Aberdeen, WA 98520
FRG-7, Radio West loop
- (DK) David Klopfenstein-2915 SE 58th Avenue-Portland, OR 97206
Kenwood R-1000, three 60' longwires & a Grove Minituner 3
- (GL) Gary Larson-DX'ing in San Fernando, CA
- (PM) Patrick Martin-P.O. Box 843-Seaside, OR 97138
SP-600, 1500' E Beverage, 200' NE/SW longwire
- (JSM) Steve McDonald-3319 Glasgow St.-Port Coquitlam, BC V3B 4K8
Sony ICF-2010, Radio West loop
- (CM) Curtis McMenamin-2917 Georgia St.-Vallejo, CA 94591
GE Superadio
- (BN) Bill Nittler-Box 824-Mancos, CO 81328
- (RW) Robert Wlen-1309 Dentwood Dr.-San Jose, CA 95118
GE Superadio, GE long-range portable, SM-2
- (øW) John Wilkins-4385 Hoyt St. #205-Wheat Ridge, CO 80033
R-1000, R-390A, 4' box loop

OF SPECIAL INTEREST

- 1030 KKSA CA, Folsom 11/16 0930 KIOQ has come back on the air as KKSA, apparent 1st day of broadcast. Big band music, ID on hour "The legends, on 1030, KKSA, Sacramento." Call change, ex-KIOQ.(RW) +11/21 1000-1015 in & out, fair to nil, in partial KMAS null while looking for KDUN. Nonstop big band & nostalgia music, nice promo 1015 for Monday's afternoon show on KKSA, back to music. Also in 11/22 0900 with full data s/on giving power as 12,500 watts day, 250 watts night. Ex-KIOQ/KHWY; just logged as KIOQ on 9/22! (BH-WA)
- KDUN OR, Reedsport 11/19 1034 now here, ex-1470 kHz. Local news, ads for a furniture store in North Bend & a Texaco station. Triple-A road report, weather, easy listening music. Mixing with KMAS. Per call to station, using 10,000 watts day, 650 watts night, 0900-0100 Eastern time. (PM-OR)
- 7KDUN?+11/21 1011 probably them with local ad for Umpqua Shopping Center and at 1030 going into CNN News sponsored by car dealer in North Bend. Too much KMAS/KKSA to get a firm ID, poor to nil signal. Tried 11/20 1930 but way too much KTW0 on sunset skip. (BH-WA)
- 1250 KQMD CA, Madera 11/16 1000 faded over mess with ID "Your classic hits station, KQMD, Madera," into CHR. No longer Spanish. Call change, ex-KHOT. (RW-CA)
- 1270 KFIY CA, Tulare 11/16 0400 usual good signal in KPLY null, splash from KKAL-1280. ID "...send your news announcement to 'FYI' 1270. This is KFIY, Tulare," into Mutual News, back into Larry King at 0405. Call change, ex-KCOK. (RW-CA)
- 1360 KWJS TX, Ft. Worth 11/12 1755 ad for Kenneth Hagen Crusade at local cathedral, traffic, "WJS Weather," 1800 USA Network news. Fair/good at times, but eventually losing to KRKK. Ex-KXOL, finally logged this old call change. (øW-CO)
- 1490 KBSO MT, Laurel "Rock oldies the way they were meant to be on KBSO" ID 11/9 1020. 1030 ads for "Billings community." Ex-KLYC. (BN)

1570 CISW MB, Morden v/1 for 1530 kHz says they moved to 1570 on 11/9 with 10kw fulltime. (BN-CO)

530 (WNFG219) CA, Anaheim 10/29 0905 & 1310 off the air both times I passed through their coverage area. Only faint KRN984. (TRH-CA1)

540 *KSHO* CA, Hesperia MM 11/2 0500 LOUD with pub. service program on drunk driving, man with KSHO-KKGO ID, etc. I'm right on their major null line -- did they get their 25,000 watts approved? (TRH-CA)

KVIP CA, Redding 10/27 2026 good with full data s/off & SSB/Lord's Prayer. No sign of usual CBK, unID Spanish took over freq. at s/off...any ideas? New, CA #26. (JSM-BC)

KNAK UT, Delta 10/27 0822 strong with 3 in-a-row into Central Utah Updater, TC on "K-N-A-K Country Music at its Best." New. (JSM)

580 KJMM AZ, Tucson 11/13 1923 ID, PSA for Tucson Chrale & ad for North-ridge subdivision. (BN-CO) (Chrale??--NH)

590 KAQQ WA, Spokane 11/17 2300 atop KUGN with ad giving KAQQ mailing address twice. Promo for Spokane Chiefs hockey ending "KAQQ, Spokane," then NBC News. New for me, ex-KHQ/KLSN but didn't log the KLSN calls here. (BH-WA)

610 CHNL BC, Kamloops 10/28 2005 good with network news. New. (JSM-BC)

620 KTAR AZ, Phoenix 10/26 2100 coming in good with "This is KTAR 62 Phoenix," then ABC News. (CM-CA)

KIPA HI, Hilo 10/28 0700 has been very loud lately, could be their synch xmtrs, or just that KCLQ is no longer AN. Puts a dent in mega-pest KTAR every night with talk program. (TRH-CA)

KGW OR, Portland 10/28 0700 now a nightly regular with KCLQ off. Fair in KTAR/KIPA null with rock oldies, few if any ads. Tough to get details for a report. (TRH-CA)

630 KIDO ID, Boise 10/27 0857 poor with sports news into network news at 0900 u/o KCIS. New. (JSM-BC)

690 WTIK LA, New Orleans 11/18 0537-0616 fair with KHEY, CEKFP1, with local XETRA off (most of their SPs are on weeknights). Rock oldies, ads, male DJ, WTIK Weathercenter forecast with meteorologist Alan Archer. Contest promo for LSU tickets. New, LA #4. (TRH)

760 (KFMB) CA, San Diego MM 10/26 0350 OC, man with IDs, TTs, leaving mostly CMBD Radio Reloj. WJR not noted for some time now. (TRH)

790 KFLI CA, Eureka 10/26 1730 coming in fair with man giving KFLI ID, Mutual News, "This is KFLI Eureka." (CM-CA)

810 KMIK NM, Santa Fe 11/15 1918 Spanish lang. talk show hosted by man & woman. Today's topic: "Communications." 2009 s/off of news, talk portion of programming, then cont. with simulcast of KLSK-FM. Seemed much stronger after SS during simulcast - wonder what nite power is? Ex-KAFE. (#W-CO)

820 CHAM ON, Hamilton 11/10 0720 fair in KGNW null with female DJ and C&W; temp. -20! (JSM-BC)

850 KOA CO, Denver 11/15 0000 with psychic talk show & "85 K-O-A" ID, "Kellen & Co." promo, then Susan Winfield with the news, "85, KOA News." (DK-OR)

860 (KVVA) AZ, Phoenix 10/28 0745 is apparently no longer AN; noted off the air every night I've checked this month. (TRH-CA)

KFST TX, Fort Stockton 10/28 0753-0800 fair, dominated channel until local XEMO s/on. Lots of ads, IDs, Texas State Network news at 0755. (TRH-CA)

890 CJDC BC, Dawson Creek MM 11/9 0320 good, level with WLS. Vancouver Canucks sweepstakes promo. Not heard much lately. (TRH-CA)

930 KTLD CO, Granby 11/7 1957 "KTLD Update" with item on Grand County and then clear ID for station; KSEI/WKY/KIUP all mixed in. (BN-CO)

940 KFRE CA, Fresno 11/15 0356 Dolly Parton song, and "510 at KFRE." (DK)

950 KMTX MT, Helena 10/29 0400 on top with XEPA during SP of local XEGM. AP News, live DJ with weather, EZL. (TRH-CA)

960 KAVR CA, Apple Valley 10/26 1700 coming in good with KABL nulled. "This is KAVR, AM 96." I heard them s/off the air. (CM-CA)

1020 KTNQ CA, Los Angeles 11/12 0758-0830 completely in clear for 30 min. with no sign of KCKN which is normally audible in daytime here. First time I've positively ID'd them in a long time. (BN-CO)

1030 KTWO WY, Casper MM 10/26 0310 as noted by others, no more MM SP for this station. Stronger than ever with KKSA (KIOQ) off the air. Rats! (TRH-CA)

1050 KNXX NM, Los Ranchos de Albuquerque now on air fulltime as of 11/16. Heard with oldies 1145 under KTBA. (BN-CO)

- 1060 KPAY CA, Chico 10/27 0111 strong, female DJ with oldies and TC/ID. New. (JSM-BC)
- *KPAY*+11/16 0334 noted with TT. (RW-CA)
- 1090 CHEC AB, Lethbridge 10/29 0745 AdCon, male DJ, nice to hear this one whenever local XEPRS takes one of their "don't-blink-or-you'll-miss-it" SPs. (TRH-CA)
- 1100 KFAX CA, San Francisco 11/17 0011 with morally sound (hi) talk show, sort of, about money & marriage. (DK-CA)
- 1130 CKWX BC, Vancouver 11/17 0013 country music with much noise. (DK-CA)
- 1140 CISS AB, Calgary "The New Kiss AM" heard completely in clear for a surprise 11/7 1930-1950 rock music & freq. IDs. (BN-CA)
- +11/10 0101 news by woman with many audio cuts; "Accu-weather," then "Nine in a Row," pop music that is...ad string at 0146. New, AB #19. Ex-CKXL, never logged as CKXL. Fine signal almost every nite - power or antenna change? Seems I would have heard them before with such strength. (ØW-CO)
- 1160 KSL UT, Salt Lake City 11/15 0356 with Lionel Ritchie song, male DJ with news & ID. (DK-CA)
- 1180 KERI CA, Wasco 10/14 2300 coming in very good with contemporary Christian music. (CM-CA)
- 1210 KONY UT, Washington 11/18 1900 area news read by Barbara something. Good signal, but mixing with several, so tough copy. At 1928 played "KONY \$100 Giveaway" phone game. Ex-KCLG. (ØW-CO)
- 1250 KLLK CA, Willits 11/16 1005 faded over KTMS/KQMD/KWSU/KKFX with ID, not that common here. (RW-CA)
- KKFX WA, Seattle 11/15 0353 soul music, ads for nightclubs, "K-Fox concert information" including LL Cool J (sic-NH) with male announcer, "Keep it here Seattle, on the Fox" then more soul music. (DK-OR)
- 1260 KPIN AZ, Casa Grande 10/31 1939 briefly over KGIL with weather, "K-Pin Country" slogan. Still need a report. Rare here. (TRH)
- WIBV IL, Belleville 11/11 1845 pop/C&W music, 1900 ID & CNN News. More music followed. Semi-regular here, but still need to get it verified--report sent. (ØW-CO)
- *KFGQ* IA, Boone 11/2 0159 great signal over KVSF with reg. f/c, lasting all of 1½ minutes. ID by man, giving call phonetically ("Kilo, Foxtrot, Golf, Quebec"), then TT for a minute. ID & off at 0201. New, IA #22. (ØW-CO)
- KCYX OR, McMinnville 10/27 0133 poor under CFRN & two others; ID only. New, OR #35. (JSM-BC)
- 1300 KMPS WA, Seattle 11/17 0014 "Washingtonian" with request, "Can I make a request on KMPS?" with full ID (AM & FM) by male DJ, more music. (DK-OR)
- 1310 KCRE CA, Crescent City 11/4 1700 heard with KDIA nulled, coming in good. "This is AM 1310 KCRE and FM 94.3." "1310 KCRE covering the north coast." Light rock music. (CM-CA)
- 1320 (KRDD) NM, Roswell someone cut their guy wires on Halloween and their tower came crashing down. Will be off the air for a few days. (BN-CO)
- 1340 KSFE CA, Needles 11/16 0500 the last CA station I needed on 1340 finally heard with ID "...Needles radio, KSFE," several local spots, then buried by KRAM, no comeback, so possibly a fluke fade-up. Right spot at the right time! New. (RW-CA)
- 1360 KSCJ IA, Sioux City 11/12 1731 "Radio Iowa" news (state network), then assorted pop music, ads, weather, eventually submerged by SSS QRM. This is always one of the first midwest stations to fade in, usually around 1700 (3pm local), well before sunset. (ØW-CO)
- 1420 KTAN AZ, Sierra Vista 11/2 0015 Country Radio Network break 0125 & ID as "Your Country Giant, K-Tan," brief news summary and back into MCRN. (BN-CO)
- KUJ WA, Walla Walla 11/17 0017 with folk music then ID "....on a cool valley night with music you remember, 14-20, KUJ" by female DJ. (DK-OR)
- 1440 KUHL CA, Santa Maria 11/4 1900 coming in good with KVON nulled, "This is newstalk 1440 KUHL." (CM-CA)
- 1450 KXXL MT, Bozeman 11/9 1005 news & good ID. (BN-CO)
- KAYO WA, Aberdeen 10/28 1958 fair with weather check for Harbor Country into ABC News at 2000. New, WA #48. (JSM-BC)
- KCLX WA, Colfax 10/28 1958 poor with female DJ and rock; "1450 K-C-L-X" ID. New, WA #47. (JSM-BC)

- 1460 KDON CA, Salinas 11/15 0410 with AT&T ad, then carted ID "14-60, KDON," then into music. (DK-OR)
- 1470 (KUTY) CA, Palmdale 10/31 0700 no trace of them; local XERCN not running usual OC tonight. (TRH-CA)
- KDHN TX, Dimmitt 10/31 0700 fair-good with XECU. Man with ID, ABC News, ID/slogan "More great American music from KDHN Radio." (TRH-CA)
- 1480 KRED CA, Eureka 11/17 0007 ABC News, local news, weather (gale warnings), "McMurray-n-sons" ad, "Here's...on Big Red AM & FM Eureka." (DK-CA)
- 1490 KRNR OR, Roseburg 11/1 0313 fair thru mess with ID "K-R-N-R Roseburg Oregon, best in country," new, Oregon #30. (JSM-BC)
- 1510 KZZI UT, Jordan 11/10 ID 0915 "New Talk Station KZZI" with part-time Spanish programming, asking for mail to Box 339, West Valley City. Station has been in news with Aryan Nations programming. (BN-CO)
- 1530 *KFBK* CA, Sacramento 11/16 0317 song "You Can Do Magic." Seemed to be test period. Song cut on & off, then OC. A bit later, ID "This is KFBK Sacramento," carrier off. (GL-CA)
- 1560 KPMC CA, Bakersfield 11/11 2128 fair at best with long fades. Santa Anita track results, "Frost Report" (area weather), jingle, Mutual features, etc. (BW-CO)
- 1570 CHUB BC, Nantiamo 11/15 0403 female DJ, then "via satellite, the Night Shift on 15-70 CHUB. (DK-OR)
- +11/16 0940 blasting in over CKTA with Cutting Crew song, ID, rarely that strong. (RW-CA)
- 1580 KNIX AZ, Tempe-Phoenix 11/16 2359 both AM & FM IDs, then male DJ "I'm George **crackle sputter** stick around on KNIX," into country music. (DK-OR)
- 1600 KGST CA, Fresno 11/4 2135 fair with English ID, then back to Spanish language programming. (CM-CA)

UNIDS

- 790 MM 11/16 unID TTs looping ENE under KABC. Maybe KUTA or KFYO? Seemed too weak to be XESU. (TRH-CA)
- 1470 11/13 0926 unID with MYL, possibly KXOA. Clobbered by KUTY switch to day pattern at 0930. (TRH-CA)

Welcome to WDKR, David. We can always use another reporter from Oregon! I think I'll quit while I'm ahead. When I was typing the KRNR tip, the "one" key came flying at me and landed on the floor. Bill couldn't fix it, so I've had to use the small L instead. It really throws my typing off, as I touch type. ♡

SCHEDULE FOR RADIO MOSCOW WORLD SERVICE (IN ENGLISH)

MEDIUM WAVE FREQUENCIES IN USE TO EUROPE
SEPTEMBER 27, 1987 to MARCH 26 1987

936 Lvov	2200-0200	
1143 Kaliningrad	2200-0400	Until 31 Dec
	1900-2000, 2100-0000	After 1 Jan
1170 Krasnodar(?)	2200-2300	
*1215 Site Unknown	2200-0200	After 1 Jan
@1323 Leipzig	2200-0400	
@1386 Kaliningrad	2200-0400	
1431 Odessa (?)	2200-0200	
1494 Leningrad	2100-0600	

- * - QSL card site says Nauen, but WRTH says Leipzig
@ - QSL card site says Kanuas, but WRTH says Kaliningrad.

NOTE: The frequency of 1548 (site unknown) is used on occasion. Also the above broadcasts may be pre-empted by domestic service broadcasts.

SOURCES: Radio Moscow World Service's printed schedule, 1987 World Radio and Television Handbook, personal monitoring, and DX publications.

DX WORLDWIDE EAST

EDITOR: Jim Hall, 240 Byron Rd., Pittsburgh, PA 15237 usa

■ Things have been rather slow lately. I did get time to erect an 875' (approx) ant at about 80° for TA's. It works great, but still the only TA's showing are the biggies. I'm still looking for the 981 but nothing as of yet -- coupled with the poor TAcx I'll probably have to wait awhile. Re the 1574.8 Dominican logging in the 11/14 DXM, change the last sentence to read "I suspect they've drifted to combat the QRM from the Turks & Calcos" (operating in D.R.'s backyard with 50kw). Only report this week is a card from Dan Sheedy in Encinitas, CA with some help with previous loggings. Reports this week are from the editor using an ICOM R71A, several Beverage, mini-Bev, longwire, and loop antennas. Times are UT:

+ + + + + + + + +

TRANS - PACIFIC DX ?

- 738 unID, carrier as early as 0816 several Nov. mornings checked. Almost always very weak and fragile.
- 756 unID, hrd as early as 0818 (11/21), slightly fadey. Occ hrd. Others missing most every morning checked, so may have to wait til next year for these TP's.

TRANS - ATLANTIC DX

- 1107 t SPAIN, 0018 11/23 : Seemingly SS talk by man.
- 1125 t YUGOSLAVIA, Tovarnik 2322 11/22 : Briefly strong enough to sound //1134, but this just isn't strong enough to kill off the slop, esp. @LSS with all the skip slop.
- 1134 YUGOSLAVIA, Zadar/Biograd 0334 11/21 : Almost good on peaks o/slop w/folk-like vocals. +@2259 11/22, sd/1k 3 long pips (unsure) at 2300, Slav-sounding talk into "Banjo On My Knee" mountain-style banjo sound, no vocal. This fol/by vocal mx.
- 1206 FRANCE, Bordeaux 0630 11/23 : Occ just o/slop enough to determine as //1557's Home Service pgm. Nice to hear this one again.
- 1467 MONACO, Monte Carlo TWR 0552 11/20 : TWR actually is audible in NAM after their 0415 antenna beam switch, but strength is greatly affected. Poor/nll this eve - hymns and choral mx occ audible but lang. unID (possible AA but I can't tell yet) in slop. Is this on 400kw at this time? Wouldn't think, as the 400kw is prob. used on 1466 day freq. if 1466 is still used. Bill Harms was right about this from an issue or two ago 0600 another possible beam change/other as the carrier suddenly became inaudible. Exact same next eve, but a bit better signal, again gone at 0600. +@2252 11/22 : V. good, very readable at times in EE - hymns and m talk. As usual, best TA at LSS.
- 1521 t SPAIN, 0642 11/23 : Seemed like SS-sounding talk amidst 1520 slop.
- SAUDI ARABIA, Duba Surprised to be able to hear again at LSS. 2251 11/22 male AA call chant. Using ECSS-USB the slop from 1520 has the deep "Donald Duck" sound.
- 1557 FRANCE, Nice 0627 11/23 : Folk-like vocal, later beer-pub like song. Lang unID but sounded Arabic. //weaker 1206.
- 1584 SPAIN, synchronos. 0119 11/19 : In briefly @ this time w/SS talk, poor in slop. Also 0643 11/23 fair at times w/fast SS talk by m, ECSS showed 2 or 3 carriers, creating possible fast SAH, but hard to tell at this freq.
- 1593 WEST GERMANY, Langenberg WDR 0123 11/19 : Fadey, GG talk poor. TA's not usually hi well mid-evenings here (0100-0300a).

PAN - AMERICANA DX

- 690 ANGUILLA, The Valley C.B. 0256 11/24 : //1610, good at times w/QRM desde Cuban. Hymns and rigs talk.
- 705 ST. VINCENT, Kingstown 0348 11/21 : Radio St. Vincent fr w/m talk, Afro-beat song. Usually difficult to pull out audio from this one - mod is low. Also good at 0249 11/24 w/talk.
- 780 COLOMBIA, Riohacha HJZW 0240 11/24 : On top o/WBBM/YV on Bev's. w/colombiano vocal several "R. Almirante" ID's by announcers and in promos.
- 885 MONTERRAT, Plymouth 0236 11/24 : ZJB in quite well w/UST40 song. V readable at times, best on Bev. S/off 0301 w/apparant rigs verses or similar.
- 1165 ANTIGUA, St. John's CRL 0210 11/21 : In very well w/gospel pgm.
- 1560 CUBA, 0803 11/23 : WQXR off leaving several stn's incl. Cuban w/SS girl, TC's and facts, lite jazz and mx'al US/Latin songs. Some mx bordered on classical type, like hrd on QXR. QRM from possible Mex, unID w/Best of King, another unID w/C&W/pop, and KTUI testing w/rigs tape at 0816z.

HELP w/unID's etc.: (D. Sheedy-CA)

1050 Re Hall's tent. XED-1050 in DXM's Halloween issue, XED does use "La Gran 'D' de Mexico!" as a slogan.

Thanks also for the help re the tent. 925 Guatemalan, Dan, and thanks for taking the time to drop DXMW-E a card! Dan's address is: Box 31, Encinitas, CA 92024. 73 til next time. 11

DXW-E CONTINUES:

Once again, the P.O. delivered mail twice again on this deadline day, so we have a couple more reports. Good to hear from William and Bill this week, and thanks for the Free R. Svce. info, Bill! On with these reports:

P A N - A M E R I C A N D X (Wyllie-MA)

- 640 CUBA, Guanabacoa CMBB 0627 11/2 & 0217 11/8 : Strong both nights, 0630 noted ID w/ rooster crowing. R. Progreso
- 650 unID, 0250 10/11 : Weak signal, SS, some kind of sporting event. (Possibly DR. ed)
- 670 VENEZUELA, CaracasYVLL 0345 10/11 : Radio Rumbos booming in, then Cuba boomed in - kept going back and forth.
- 720 VENEZUELA, Portlamar YVQL 0353 10/11 : Strong w/SS mx, ID as "Radio Vision Oriente" - first time logged here.
- 730 MEXICO, XEX 0640-0700 10/5 : SS mx, no ID hrd but many ments Mexico so I'm sure it's them - have gotten this many times.
- 740 CUBA, Camaguey 0710 10/5 : V. good signal w/Progreso pgmning, //640 kHz.
- 760 COLOMBIA, Barranquilla HAAJ 0510 10/12 : SS mx, goo signal, ID "LV de Barranquilla".
- 1610 ANGUILLA, The Valley 0605 10/5 : Caribbean Beacon, good signal at 0604, news, then s/off at 0605. Strong at all times.

REPORT FROM BAVARIA : (Harms-FRG)

- 819 INTERNATIONAL WATERS, (?), Radio Caroline (?). 11/16 1919-2200*. Heard various rigs pgms. But, because of severe interference from Italy on the same freq. I was unable to get pgm details 100% of the time. I did hear the following, though: 1919-1958 talk show - m w/British accent took calls from listeners. I don't know if the pgm was live or not. W called re a "moral dilemma" with her husband. There was a tape offer and an address in the US and the UK was given. The UK address sd/1k Box 66, London WPl. 2000-2030 Italy took over chan completely. 2030-2100 a black preacher gave a sermon w/ a Wash. D.C. address. At the end of the segment an ancr gave the UK address & I thought I hrd the ment of "BCN" or the phonetic equivalent as the name of the broadcaster. The rigs pgm continued until 2159. I hrd a Costa Mesa, CA address at 2124. 2130-2159 The program "Viewpoint" was aired. This pgm aired previously on R. Caroline. 2159-2200* I hrd a s/off anmt. The male announcer said to tune in tomorrow evening at 6 PM. I don't know if that was Central European Time or UTC, he also gave the same P.O. Box 66 address from above. I listened to 963 and R. Caroline was not there. According to Free Radio Service Holland, Radio Caroline has been looking at changing their freq. to 981, but it looks like they decided on 819 instead (or maybe a typo? I will try to research this for you Bill, if I can get my hands on some data. ed). The signal strength for this station on 819 was about the same as R. Caroline on 963, so with all this circumstantial evidence I have to conclude that this is likely the same transmitter that was used for the 963. (Sure sds/1k them. ed)
- 1188 BELGIUM, Kuume, BRT. It looks like another channel is biting the dust. Heard mx (mostly pop oides and some current stuff) (US? ed) and talk in Dutch here beginning on 10/25 at several times from 2300 to 0400. Now apparently NSP. Fr to good signal here. Now it blocks Radio Dublin which I have been trying for on this channel. Argh! (When I joined IRCA I rec'd a pamphlet that said there'd be some frustrating times in DXing. ed)
- 1359 GERMAN DR., Berlin, Radio Berlin International. 2334 11/8 : Heard RBI English lang. European Service with a talk about research in Anarctica. The first time since last winter I have noticed RBI pgmning on this freq. Probably started on 11/1. Good signal as usual. NOTE: This channel is no mally used for DDR-1 pgmning in the daytime. I don't know the entire RBI schedule for this freq. yet.

/ / / / / / / / / / / / / / / /

CREDITS:

- (Wyllie-MA) William Wyllie, 95 Peck Street, Franklin, MA 02038-2217
(OCT loggings on Fisher PH-418 w/indoor ant. NOV 8 logging on Realistic Modulaire 2200 in Franklin. OCT loggings from Prudence IS, Rhode Island)
- (Harms-FRG) Bill Harms, Box 961, Bad Aibling Station, APO New York, NY 09098
(FRG-7, R-2000, 3 foot high wedge)

A DXer's TECHNICAL GUIDE

Now in its 2nd edition, this 120-page book answers questions on how receivers work, how to make them work better, what audio filters and loop antennas will do for you, how to build a beverage and phasing unit, and much more. Only \$5.50 for members, \$6.50 for nonmembers (\$2.00 extra for overseas airmail). Write IRCA, P.O. Box 21074, Seattle, WA 98111.

DXWW-E UPDATE:

■ A couple reports made it in to DXWW-E after the deadline (this address often gets mail delivery twice daily); I'll try to get them in for this week's DXWW-E column, since they are good ones. Thanks to Ray and John for their reports. Remember, as us editors have said and like John and others have done, you need not live in the geographical reporting boundaries in order to submit help with unID's or similar information.

T R A N S - P A C I F I C D X (postcard copied verbatim) (Moore-MA all)

■ Glad someone else out there is listening (for TP's. ed). Hope you persevered because 1629k reappeared 11/12 and 11/13. On the dates you listened (ed loggings. ed) my log shows: 1629k trace of carrier 10/27, NIL 10/28. 738k good carrier 10/27 with 1-2 Hz SAH, good carrier 10/28.

765k Ur unID probably NZ. Carrier w/DF 230-260 deg often noted here 1045-1115.

1575k unID : Fair carrier noted arnd 1115 11/12 and 11/13. Also noted by Bill Bailey 10/19 Probably Australia.

1629k AUSTRALIA. Bill Bailey got audio on this one on 10/19. (the only AM I missed in Oct.). Poor to NIL last half of Oct. and first Nov, except for some audio 1105, 10/31. Returned 11/12 with traces of audio and 11/13 peaked 1120-1126 w/woman talking. 11/14, 11/15 NIL.

HELP w/unIDs: (all #W-CO) re. editor's possibly Mexican loggings in previous issues

580 XEFl and XEMU are both pretty regular here. I've never logged XEAV, and I don't recall ever seeing a logging of it. The inland Mexicans are quite difficult here, and would be at your QTH, too, except for the fact that your Beverages make anything possible! With such antennae, and southern propagation (auroral cx), anything's possible, and my loggings here are basically irrelevant, to a large degree, as far as your QTH is concerned.

1050 XEG and XED are both quite good here, and conveniently 90° apart, enabling me to easily null one in favor of the other. XED still uses "La Gran D de Mexico!" as their slogan, and XEG is "La Ranchera de Monterrey". So, looks like you got XED, although their format is mostly mariachi. (I'll have to review my tapes if I can locate them. I know I heard a "La Gran D" ID so there's no doubt I had XED then. I'll also have to reassess what type of mx it was, although I'd have to say it was indeed mariachi if I'm recalling the tune correctly in my mind. ed)

1110 No ideas, although I once logged XERED in AU cx. "Ay" is not a real SS word, although I think it is used as an exclamatory remark, but certainly not the name of newspaper, I wouldn't think. (The ad heard was seemingly a "field" type, that is, on the spot on a busy street corner setting at a nstand with the vendor calling "Ay _____!", the blank line representing the newspaper name, in an effort to sell them, with vehicles passing by in the background. I have the ad on tape from several years ago when I also heard it on XEX-730, so I'll have to review it to see if this is indeed a newspaper ad or something else. In any case, there's something in Mexico that's referred to as "Nacional" ! Thanks for your thoughts on these XE's, John. ed)

+ + + + + + + + + + + + + + + +

Thanks Ray for the interesting TP report. Some carriers have still been showing at my listening, but they seemed better through October. I'll keep trying when possible, of course, and we look forward to hearing more from you on your receptions. Per John (and propagation forecasts) as Solar Cycle #22 continues to rise rapidly we should be experiencing continued and more intense auroral situations that will affect the BCB. I sure hope so, John. John also mentioned a logging he made while vacationing in Iowa in October using a SuperRadio II. Yes John, the DXWW-E boundary is east of the Mississippi, but you were close enough to the boundary so here it is:

1610 ANGUILLA, The Valley 0400 10/1 : "Caribbean Beacon" ID, announcing freq's of 690 and 1610, then into "V. of Power" pgm. Minor QRM from TIS at Saylorville Dam, near Des Moines. Can't hear this at home in CO, due to slop from local KRXY-1600. (Wilkins-IA)

CREDITS:

- (Moore-MA) Raymond S. Moore, 116 Walnut Street, Walpole, MA 02081
(Homebuilt rx, 22' ferrite loop, 200' "low wire")
- (#W/Wilkins) John Wilkins, 4385 Hoyt Street #205, Wheat Ridge, CO 80033
(Help w/unID's, rpt. from IA w/SuperRadio II)

DX Worldwide - West



PAT MARTIN
P.O. BOX 843
SEASIDE, OR 97138

DEADLINES: 12/15, 12/22, 12/29

Very little to report this week as conditions continue to be rather poor. A couple tips from Tim Hall:

PAN-AMERICAN DX ROUNDUP

- 820 Glen Kippels Unid in 10/17 DXM issue is my semi-local XEYX-Mexicali. Grabaciones B.C. is a regular sponcer on that station. (TRH-CA) (Thx for the info on that, Tim.PM)
- 860 MEXICO, Cd. Juarez-XEZOL 10/28 1245' good but some fading. Lots of slogan IDs "Musica en espanol, La mejor en Radio ZOL--86" New XE #107. (TRH-CA)

THANKS TO THIS REPORTER:

TRH-CA TIM HALL-350 G Street F-1--Chula Vista, Ca. 92010-4505
ICF-2010 Radio West Loop

VERIFICATIONS:

- 980 KENY ALASKA, Kenai, QSL letter in 45 days for taped report. (PM-OR)



Western DX Forum

★★★★

IRCA - The #1 Choice of the Broadcast Band DX'er

Editor: Ric Heald • 8639 Bellamy Way • Sacramento, CA 95828 USA • (916) 386-8677

DEADLINES - WEEKLY ON TUESDAY 11 DAYS PRIOR TO PUBLICATION DATE

□ □ □ □ □ □ □ □ □ □

NIEL J. WOLFISH, 867 WICKLOW ST., WINNIPEG, MANITOBA R3T 0H9 CANADA

DX season number three in Winnipeg has been a moderate success. 47 new stations have been added to the log bringing me closer to 800 heard from Manitoba. I wonder where I'll finish when I return to Toronto for good in April? The logging of the season thus far goes to KWNA 1400, my first GY from Nevada. Now if they would only verify.

CISV 1530 Winkler-Morden has moved to 1570. I'm glad I got my Turks and Caicos (Atlantic Beacon) QSL last year. CISV leaves 1530 DX'ers with WCKY, KKCM and occasionally KFBK. (Good show; at least they still get out-RtH.) WCKY usually killed CISV at night anyway. Lost in action on 1570 are CKTA, XERF, CFOR, CHLO, WFRL and the Atlantic Beacon. 1580, which is fairly useless up here anyway, gets a tiny bit of splatter now. CKLQ Brandon used to be heard on MM in Toronto back when they were on 1570. Maybe CISV will be a possibility, although it would take three or four simultaneous SPs to do it. Another "bonus" courtesy CISV's move: CIFX 1290 leaves an image right on 1530 (CIFX 1290 - CKSB 1050 + 1290 = 1530).

What a fantastic job Tim Hall has done with the Verification Signers column. For my part I'm two for four this season, with QSLs from WSBT 960 and KRXR 1480. Most of the stations I've logged don't seem to be worth writing to for veries. It's hard to get adequate program details on a GY station that lasts two minutes.

Well, enough complaining for now. Before I sign off, a belated welcome to Wayne McRae, Winnipeg's newest IRCA member. With Shawn Axelrod leading the way, Winnipeg will soon be known as the DX capital of Canada, hi. (Or maybe Manitoba?) 73. (Written like a true lawyer-to-be. Folks he wrote it on legal size paper, hi-RtH.)

ROBERT WIEN, 1390 DENTWOOD DR., SAN JOSE, CA 95118

RtH, I guess you were interested in how strong KPLA 770 comes in here at night. Well, I can tell you they usually override KQOB totally in the early evening, but by later in the evening, they are mixing with KQOB and then eventually under KQOB. After KPLA signs off, KQOB dominates with CHQR and KRPM underneath. (That verifies what I thought. KPLA is sending it all west at night. I hear KQOB, KRPM and CHQR in that order of strength-RtH.)

Had a fabulous MM yesterday (16 November) netting four new stations. Netted KKSA 1030 Folsom ex-KIOQ at 0630, probably first day on the air, KQMD 1250 Madera for call change ex-KHOT, KFIY 1270 Tulare ex-KCOK, and for a solid newie, KSFE 1340 Needles, the last 1340 station needed to complete California. So, three of the newies were Valley stations, too. KKSA's signal here seems stronger than before, but they're buried under KTWO at night. Their new format seems to be pretty good, a little like KLIV's. (They're going head-to-head with KXOA 1470, and neither get out at night, hi-RtH.)

Hot tip: KSRN 1590 Sun Valley, Nevada granted KIIQ, easy one for you, RtH. (Nope, not a trace thanks to KLIV. And they're KICK per thier FM, KIIQ, which I'm listening to as I type this, and that's not theoretically correct, hi-RtH.)

Two MM's back, logged CISS 1140 Calgary actually overriding KRAK at times. (RW, see my forum-RtH.) KRAK's signal here seems worse than it used to be since they altered their DA pattern. Other Sacramento stations and how they're received here: KGNR 1320 is usually well underneath KCPX Utah, KSMJ 1380 is rare here because of heavy slop from KEEN 1370 and KTOM totally dominates 1380 here, KSAC 1240 is occasional in the mess, KJAY 1430 logged one day at SSS about ten years ago with local KNTA off, not heard since. Sacramento FM penetrates San Jose fairly well, I enjoy listening to KROY-FM and occasionally listen to KCTC. Farthest FM DX here is KRUZ Santa Barbara heard once as well as KREO Healdsburg.

Noticed a lot of ex-San Jose announcers joining KKSA, including KEEN newscaster John Clark Fortner. My favorite station in this area is KWSS 94.5 followed by KATD 95.3 with KIOI coming in third. 73.

RIC HEALD, 9539 BELLAMY WAY, SACRAMENTO, CA 95828 (916) 386-8677 FRI/SAT

This column being typed under duress; not my typewriter, hi. It's doing what it wants to do, hi. Oh yeah, greetings, etc.

RW, KRAK changed their DA pattern to better serve the rapidly growing foothill region, thus less signal going toward the Bay Area. The Mother Lode area is experiencing explosive growth from retirees and artistic types bailing out of L.A. and Bay Area, so KRAK changed their DA pattern to better serve the area. I was also listening MM 02 November and noticed 1150 and 1130 listenable. RW, KRAK was running their 5 kw standby transmitter.

I'm a little confused. The 14 November DXM listed KKSA 1030 as 50/10 kw. Did they indeed get a power increase at night? Last I knew they were 50/1 kw. Was it maybe a typo? Gee, I thought that was MY department, hi. Yes, KKSA is indeed on the air and sounding just as bland as KXOA. When KIOQ announced they were shutting down for adjustments to their towers, I knew they had bit the dust. Let's see how long KKSA lasts.

Now then, our prez says a bid for the '88 convention has been received from Louisville. That's nice. Of course '88 is west-of-the-Mississippi year, you know. Therefor, how 'bout it gang, Bay Area types and the other two Valley members, Sacramento in '88? I suggest Sac. because our hotel rates are about one-third that of the Bay Area or Monterey and we are bordering on international status at Metro Airport and I can guarantee summer weather. I'm willing to help with it, but can't do it alone. Peterson, Kippel, Nyholm, McGreevy, Kaskey, Toebe, RW, et al, I'd like to hear from you. We can do it!

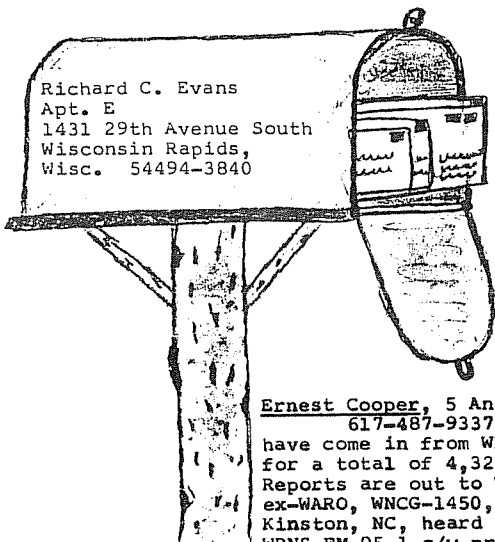
KSGO 1520 Oregon City must have been off MM 23 November. On my TRF, mind you, while checking to see if KF'BK was off (and they were), I heard a very clear, "KOMA weather for Oklahoma City. . . ." I haven't heard those guys in years. Fired up the FRG-7 and heard SS under WCKY. Too much WCKY and 1540 slop prevented me from checking it out any further. Ideas? Also off was KXOA 1470, but with OC. No matter, Tijuana clobbers 'em when they are on, hi. But who's the C&W in there, Moses Lake? And speaking of C&W, when did KTWO go country? Good show, guys. Another station to listen to.

Well, that's a wrap for this week. Keep those cards and letters coming. Until next week, best of DX de RtH. . .

IRCA Foreign DX Reference, Volume 24

Phil Bytheway is completing the cross-reference listing of all the stations reported to DXWW-W and DXWW-E during volume 24 of "DX Monitor" (9/86-8/87). There are three sections available: Trans-Atlantic, Pan American, and Trans-Pacific. Each section contains a frequency listing (countries reported for each frequency) and a country listing (frequencies reported for each country) showing the "DX Monitor" issue number in which they were reported. These guides are a valuable reference to what was heard last year, and where to look to find specific information about the receptions.

Each listing is 5 or 6 pages long. You can order any one of the three (TA, PA or TP) for \$1.00 each, or all three for \$2.50. Make checks out to Phil Bytheway and send them to: 9705 Mary N.W., Seattle, WA 98117. 15



Richard C. Evans
Apt. E
1431 29th Avenue South
Wisconsin Rapids,
Wis. 54494-3840

EASTERN DX FORUM

Reports from members living
east of the Mississippi River

Deadlines: Fridays

This column typed: 11/21/87

Ernest Cooper, 5 Anthony St., Provincetown, Mass.
617-487-9337. Only AM veries 02657
have come in from WNNR-1220 (Winner!) and WXXI-1370,
for a total of 4,323, dating back to 12/28/32.
Reports are out to WXTC-1390 (ex-WCSC), WWCS-540,
ex-WARO, WNCG-1450, ex-WCEA, to new WRNS-1590,
Kinston, NC, heard 11/8 at 0230-0300 carrying
WRNS-FM-95.1 c/w programming and battling CBJ, and
giving their address as Box 609, Kinston, 28501, and

their ID at 0301 went: WRNS, 95.1, Kinston - Jacksonville - Morehead
City." And a report will go to new WOKO-1460, Albany, NY, ex-WWCN, which
had been silent for at least six months, just as soon as I get their
correct mailing address. (Ernie, I veried them as WOKO back in 1971--rce)
I think Gary Heisey's 740 WSBO-VA might be WSVQ, Box 224, Harrogate, TN,
which should serve a bit of Kentucky and Virginia also. Tim Kridel, WSGN
used to be the calls for Birmingham on 610, but they are now WZZX and
have been for at least 1½ years. Who is the French Canadian ANING on 610
these mornings, CHNC? Shawn Axelrod, I believe the Calgary station on
1140, ex-CIOF, is CKXY, "Kicks-106". No, I haven't heard 'em, hi! In
the discussion of changing the dates for the IRCA Conventions, those of
us at the Peoria Convention all seemed to have Columbus Day as a holiday.
I think it'd be worth a try for one year, and Ted Fleischaker thinks so
too - so much so that he is willing to host such an event in 1988. I'd
enjoy reading more reports in this section, gang - how about it? The
CDXR column is looking so much better now with the new type and new sup-
port - keep it up, John! In case I don't check in again before Christmas,
watch for French Canadians on 12/25 running AN w/midnight Mass, folo by
festive Christmas music, phone calls, and carols, and few IDs! Also many
LAS stay on AN that morning that don't ordinarily. And of course, that
goes for many USA stations as well, so a crowded dial is to be expected
then and on New Year's morning - hic! Happy Trails, Merry Christmas,
and Forward - March!

Gary A. Heisey, Box 310F RD 1, Osterburg, Pennsylvania 16667

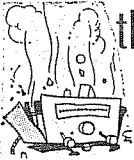
Tim Kridel, in edition 798 your 1200 unID which sounded like WBTY
would suggest WBZY in New Castle, PA. NRC lists 1 kw night but I'm not
sure if they have Larry King. Edition 789 DXM shows WMLI with Larry King.
WBZY not often heard here, mostly WAGE and WOAI. Your 1250 unID was most
likely WTAE as they are Nx Talk format. A few days ago I located the
source of a weak buzz I was hearing on my radio for sometime. Turned out
to be my nightlight. This is a small, sealed, white plastic disc shaped
2" dia, with no bulb to replace, but glows orange when lit. I had this
light almost eight years and wondered why I didn't notice it sooner. DX
conditions have gotten worse here with no defineable window just before
SRS, like I had last Sept. and Oct. Now I hear all the stations rushing
in at once and before I know it my locals have s/on. Could I be appro-
aching DX burnout already? I sent a recpt. report to the pirate, RNI
last July, but still waiting for my uSL card. Does anyone know where
WLS afternoon personality Larry LuJack is? Seems like Landecker is in
his place. Glenn Kippel, I noticed your WFCV tip in WDXF, many thanks.
Tim Hall, I think I've IDed my unID French station on 1170. Thanks to
the info in DXWW-E (edition 798) it may have been 4VRS in Haiti and not
a Canadian after all.

Jim Hall, 240 Byron Road, Pittsburgh, Pennsylvania 15237-4015

Domestically speaking, some rather good DX has been heard here so far this season with a few nice openings to the West. EDXR DXers may want to look for the following: With WQXR's regular MM SP 1560 often opens up for DX - 10/26 had KCJJ Iowa City, IA occ topping off the channel. Same morning a nice relog of KAAK-870 Bethany/New Hampton, MO, giving WWL a rough time much of the morning. Nice to hear them again. Several TIS's heard here lately which I need information on (mostly calls/powers): Jamestown, VA on 1610 at Yorktown Nat'l Historical Park/Yorktown Battleground; 1610 @ Harper's Ferry Nat'l Historical Park, WV. Which one of the 10-watt Chicago area 1610 TIS's am I occ hearing giving north to south highway/lane information for the Edens, Kennedy, Eisenhower, Stevenson, Ryan and Calumet Expressways and a wx update every 5-min? Is this Ill. Dept. of Transportation's KMB824 along I-94? Also logged KID702 at Appomattox, VA's Highway 24 Park area, and KNEB723 at Cleveland Hopkins Int'l Airport. Also, tentative heard a "WJZU719" call given from a 1610 TIS - anyone know if this is indeed a TIS call on the freq.? Information concerning these would be appreciated. Finally, after years of trying, heard much wanted WKKD-1500 Aurora, IL w/N. IL high school football on Halloween eve. Has there been a list of U.S. station's night authorized powers on Mexican and Canadian Clears published yet? Perhaps one of the best domestic catches here so far this season has to be 500w WKWF-1600 Key West, FL, thanks to a call from Ron Trotto of St. Cloud, FL on 5 Nov. Ron put his reception of WKWF's Ray Charles song and "Mx for the Key's" slogan up over the phone and I could pick out only bits of its "parallel" in what I was hearing on 1600 via the LA mini-bev's and bev. Absolutely no way I could have known these bits of audio (intermixed with the signal fluctuations/variances of combined audio from probably 5 or 10 other stations) were WKWF's if it hadn't been for Ron's phoned audio of a much clearer WKWF signal and my confirming of a "///" in the pile on my 1600 reception - Thanks Ron! A few days previous to this I confirmed for Ron by phone his daytime reception of WLW-700 Cincinnati, OH - his noise-ridden audio at just after midday was // my armchair level copy of WLW. An extraordinary 900-mile distant daytime reception, Ron. This is an interesting but sometimes costly method of IDing stations. Perhaps we could establish a list of members who would be willing to accept prepaid calls from Distant DXers wanting to "verify" local stations heard by the person called. Just a thought -- some DXers may not consider this true DXing, but "true DXing" basically consists of a distant signal propagating to a distant location and somehow being identified. These criteria are present in these receptions, of course. Comments, anyone? (continued next week...)

Rick Evans, 1431-E 29th Avenue South, Wisconsin Rapids, Wisconsin 54494

Well, the goal for the end of the year is to hear 250 stations, but thru SSS on 11/21, I'm up to 247 heard with 25 veries. No veries this week, but more reports going out, with 4 ready to be typed when this column is finished. Because I work so late, I normally get to bed about 0230 only to wake up around 0800 CLT. I've been getting up, listening to the radio for late SRS for an hour or so, then going back to bed. That's how last weekend I had the KRNV/CKLQ-880 mix at 0900 CLT. I usually get two or three stations, but that's alright with me. I'm willing to work up the numbers on a "nickel and dime" basis, hi. Only two new stations on MM 11/16 but one of them was KSL-1160 for state #28. Gary, your comment about the nightlite reminded me of an incident Roger Winsor had about 20 years ago. He had a bad noise problem around Christmas time, and he finally tracked it down to the lights on his neighbor's Christmas tree. Several weeks ago, John Stephens mentioned an envy of northern DXers who could talk more often on the phone without running up the phone bills -- I think he has a point. DXers helping other DXers is a win/win situation, and hindering another DXer does not gain anything for a person. I have fond memories of the season I took my radio out to Roger Winsor's house every MM, and then later, when he could call my apartment as a local call, we spent many hours on the phone DXing that way. We were only 10 or 12 miles apart so most of what we heard was the same but he could be checking one end of the dial while I checked another. The only different frequency was 1420 where WIMS put their main lobe at night over his house but didn't make it to my place, so I could have my run there during SSS while Roger had a choice of one station (WIMS). We did run into some problems at times reporting to the same stations for the same time period as our addresses were similar, and the station would verify one of us but not the other thinking he had answered both letters. I wouldn't trade those days for anything, even though there were non-DX experiences then I would just as soon not remember. Two of my more wanted stations now are WQXR-1560 and WKKB-1520. Believe it or now, KOMA-1520 Okla. is solid as a rock here. Back in Gary, it was always a mix of KOMA and WKBW. 1560 is usually just a jumble here. CFFX-960 Ont. has been noted here on SSS over WTCB-WI. 73.



the irca technical column

Editor: Nick Hall-Patch
1538 Amphion St.
Victoria, B.C. V8R 4Z6
Canada

Kenwood R-5000 Modifications

by Don Moman

MW Sensitivity Increase

Stock MW sensitivity is adequate for most users, but with an unamplified loop, or while DXing in very quiet locations, more gain could be used to advantage. All mods are performed on the RF board, which is located on the underside of the set, on the side nearest the antenna connections. The MW bandpass input filter contains a fixed attenuator, consisting of R9, R10 and R11. Jumper R10 with a short length of wire, and cut R11. Then simply cut R9 and put a 470 ohm resistor in series to increase the resistance. Values aren't critical but there must be a DC path for the switching control voltage. The 470 ohm resistor allows the DC switching voltage to pass but introduces very little attenuation to the RF signal. A quick version of this mod. is to clip either one (not both) of R9 or R11. This gives quite an increase in gain, with minimum effort.

LW Sensitivity Increase

The LW bandpass filter has no fixed attenuator, but R7 can be increased by installing a 470 ohm resistor in series with it. This brings up the sensitivity somewhat but there still is some loss through the lowpass filter components (L7-L9, C19-C26). I don't suggest changing or altering this at all, since it provides a large degree of rejection to local signals above 500 kHz.

Diode Front End Protection

RF protection is afforded by D6 and D7, which conduct if excessive RF voltage is applied to the input. They may also conduct on strong MW signals, causing severe overload. To prevent this, front panel switchable 10, 20 or 30 dB attenuators are provided. Since the diodes are placed after the attenuators, strong signals can easily be reduced below the conduction level. D6 and D7 should not be removed unless you replace them with an alternate form of RF protection.

SSB Level Increase

The R-5000 is an excellent performer for non-synchronous heterodyne detection (NSHD), a fancy name for tuning an AM signal in the SSB mode, often inaccurately referred to as ECSS tuning. Whatever mode you choose to call it, the R-5000 does it very well with its extremely accurate and stable tuning, good filter options and pleasant audio. However there is a considerable difference in level when switching between AM and either SSB position. A simple cure is to increase the SSB detector output by paralleling R148 on the IF board with a 22k resistor. R148 is pretty small, physically, and you may wish to lift the IF board and unsolder it, and replace it with a 27k resistor. Again, the value isn't that critical.

Beep Tone Adjustment

If you get tired of listening to all those beeps and morse code letters as you attack the furious front panel keys, there is an easy way to change it. VR8 on the IF board adjusts the "beep" level from very loud to completely off. Guess where I adjusted mine! The audible beep and morse identifiers can be of use in some situations, as in a dark room or if you are visually handicapped, since they indicate which mode you have selected, or if you have made some sort of error (four quick beeps). On the CONTROL board (X53-3020-XX) there are additional ways of controlling and modifying the beep tone. Diode D9 enables the "Beep" oscillator. D66 selects between Morse and a single beep for the mode annunciator.

* * * * *

The Lowe HF-125

via Ben Peters

This British receiver was described in the March 7, 1987 Technical Column. Since then, articles describing its circuit design have appeared in the British magazines Practical Wireless (March and April 1987) and Electronics and Wireless World (April 1987). What is really stunning is how little of the space on the circuit board actually processes the signal. It is a dual conversion set using two Plessey SL6440 mixers, while the IF amplifier/AGC and detection circuitry are on a Plessey SL6700 IC, i.e. there are three active devices between the antenna and the audio amplifier! Mind you, there are RF and IF filters and an RF attenuator controlled by the AGC line

in there too, but the bulk of the board is taken up with the synthesized oscillator, memory circuitry, and the large amount of electronic switching necessary to make a receiver like this function. The Plessey IC's are described in QST of April 1981, and the SL6700 is covered in the DXM of April 16, 1983.

Unfortunately, a review of performance appears only in the Practical Wireless article, and it mostly states that laboratory tests verify that the given specs are accurate. It does point out the the 2.5, 4 and 7 kHz IF filters have a shape factor of better than 1.6, and that the S-meter is quite accurate. The keyboard tuning option is recommended, especially as the reviewer had difficulty in getting the tuning knob to zero in on a signal due to overshoot, a not unusual problem with electronic tuning knobs which automatically speed up tuning as you turn the knob more quickly. The optional synchronous AM detector worked best on signals suffering some types of selective fades, but was not always effective.

An extensive review of the Lowe HF-125 is available from IBS, Box 300, Penn's Park, PA 18943 for US\$4 (overseas US\$6). The set is sold in the USA by Universal Shortwave, 1280 Aida Drive, Reynoldsburg, OH 43068.

* * * * *

More on Sloping Random Wire Antennas

by NHP

In DXM #719, dated April 27, 1985, Jim Herkimer gives a brief description of his use of a random wire antenna which sloped down to ground level. The antenna was directional from the low end, whether the receiver was fed by the high end or the low end of the wire. He also found that grounding the low end of a 120' long sloper (receiver was fed at the high end) meant increased antenna directionality.

I used an 85' sloper during the day at Pender Island, B.C. which was pointed at 275°, and could be grounded in salt water. The receiver used was a SONY 2010 with a step attenuator. As most of my test stations were off the back of the antenna, it wasn't too surprising that a 15' high vertical gave better signal strengths (up to +12 or 14 dB, though most were in the 3-4 dB range), than the ungrounded sloper, on all but the few signals within 50° of the end of the sloper. These signals were about equal on the sloper and the vertical. An anomaly was that a couple of signals directly off the back of the sloping antenna were also about equal in strength of the vertical and the sloper.

Below about 1350 kHz, there were not really significant signal strength differences between the grounded and ungrounded sloping antennas. However, there were no signals in this frequency range which were really off the end of the antenna, not within 90°. Above 1350 kHz, there were stations located off the end of the wire, and these increased in strength about 8 to 10 dB when the end of the wire was grounded in salt water.

I was not able to try the sloper and vertical at night on skywave (antenna comparisons are often difficult on such signals anyway), nor on any Australians which may have been coming in at dawn. My results were not too spectacular in favor of the grounded sloper, but such results may have been due to the less than optimum angle of the sloper (about 30°) and relative shortness of the wire. Perhaps Jim will be able to give us some conclusions from his own sloper observations at some future date.

In the meantime, Jim offers a few words on the "snake" antenna: "The snake antenna is quickly gaining popularity among 160 meter amateur radio operators as a simple, yet effective low noise receiving antenna and as a makeshift transmitting antenna. It consists of 130 to 150 feet of coaxial cable, of which any type of coax will work fine. The far end of the coax has the center conductor tied to the braided shield. The other end, where it is connected to the receiver, has the braided shield broken approximately an inch back from the end, leaving only the center conductor connected to the receiver. Amateur radio operators claim that the coax is simply stretched out on the ground, in a straight line, and the antenna is directional off its far end. (Therefore, the longer the better). It is generally used with a matching device to accept power from a transmitter. However, I'm not sure if a matching device is necessary for receiving purposes only. A fellow in Florida worked another ham in Italy with such an antenna, running a transceiver "barefoot", i.e. no linear amplifier, so it does indeed work"

* * * * *

Thanks to Don, Ben and Jim for contributions this time. 73

NHP

THE INTERNATIONAL RADIO CLUB OF AMERICA (IRCA)

International Radio Club of America
P.O. Box 21074
Seattle WA 98111

The IRCA is a non-profit organization devoted to the hobby of hearing distant stations on the AM Broadcast Band (510 - 1630 kHz). "DX Monitor", the official publication of the IRCA, is published 34 times a year, weekly from October to March, twice in September and April, and monthly from May to August. "DX Monitor" contains members' loggings, articles on radio stations, receiver reviews, technical articles, DX tips, and other material of interest to Broadcast Band DX hobbyists. IRCA is a member of ANARC, the Association of North American Radio Clubs.



CLUB ADDRESSES AND OFFICERS

President: Karl Zink, 154 Old Post Road North, Croton, NY 10520-1932.
Secretary-Treasurer: John Clemmer, P.O. Box 482, E. Moline, IL 61244.
Board of Directors: Ernest R. Cooper, Richard Evans, Ric Heald, John C. Johnson, Patrick Marin, Bruce Portzer, Rich Toebe.
Editor-in-Chief: Bruce Portzer, 6546 19th Ave. N.E., Seattle, WA 98115.

MEMBERSHIP DUES

U.S. - \$20.00 per year. Canada/Mexico - \$26 (one issue mailed every week) or \$20 (two issues every two weeks). Overseas Surface - \$21. Overseas Airmail - \$30 (Central America, Caribbean, Colombia and Venezuela), \$33 (Europe, North Africa, Middle East), \$37 (rest of the world). Trial Membership - \$7.50 (10 issues of "DX Monitor" and a New Member Packet, U.S./Canada/Mexico only). Make checks and money orders payable to IRCA and send all dues to: IRCA, P.O. Box 482, E. Moline, IL 61244. Persons living outside the U.S., please use International Money Order in U.S. funds. Sample copies of "DX Monitor" are 50 cents or three International Reply Coupons each and are available from: IRCA, P.O. Box 21074, Seattle, WA 98111.

THE IRCA GOODIE FACTORY

Reprints of more than 400 articles from past issues of "DX Monitor" are available from the IRCA Goodie Factory. Also available is IRCA stationery and the very popular IRCA publications: "IRCA Almanac", "A DXer's Technical Guide", and the "IRCA Foreign Logs". For a complete list of available publications and their costs, send a self-addressed, stamped envelope to: IRCA Goodie Factory, P.O. Box 21074, Seattle, WA 98111.

Unless otherwise noted, permission is granted to publish, broadcast, or otherwise reproduce non-copyrighted material appearing in "DX Monitor" provided credit is given to the IRCA and the original contributor. Opinions expressed in "DX Monitor" are those of the original contributors and do not necessarily reflect those of the IRCA, its publishing staff, editors or officers.

FIRST CLASS

FIRST CLASS MAIL
US POSTAGE
PAID
Seattle WA
Permit No. 601

D. A. NYHOLM
2071 CEDAR STREET
SAN CARLOS CA
94070

19