

DX MONITOR

THE OFFICIAL PUBLICATION OF THE **IRCA** INTERNATIONAL RADIO CLUB OF AMERICA

DEVOTED EXCLUSIVELY TO BROADCAST BAND DXING

February 13, 1988

Volume 25, Number 21

Edition 811

In This Issue

Eastern DX Roundup	2
Central DX Roundup	5
Western DX Roundup	7
DX Worldwide West	9
Eastern DX Forum	10
Western DX Forum	11
Antennas For Standard Broadcast Stn Reception ..	12
Verification Signers	15
Word For Today Station List	18

No DXWWE this week, but we have some good Roundup sections and an outstanding Verification Signers column.



Odds and Ends

ARTICLES WANTED

We're a little short of articles for DX Monitor right now. If you'd like to write or submit some, please do. Here are some suggestions and guidelines.

- Newspaper articles are fine if they are of general interest to the club. We don't print all the ones we receive, but all are appreciated.
- Short articles, about a half page long, would be great! They come in handy as filler material at the end of the columns. You might want to write a short article on a station, or a list of stations carrying a particular program, or a very brief receiver review, or whatever. Type it up and send it in. If you can't type, send us a handwritten copy and we'll find a way to get it typed.
- Longer, feature type articles are even better! We'd prefer to see them typed on 8½x14, but 8½x11 is

acceptable. Drawings should be done with black ink (not blue ink or pencil). Leave a ½ inch margin on each side of the page and ¾ inch at top and bottom. Articles from other sources, such as the antenna article in this issue, are also good.

RADIO ANNUAL

The M-Street Journal will soon publish its first Radio Annual, listing over 11000 AM & FM stations in the US, Canada, and northern Mexico. It will include detailed information on each station, and a summary of the stations in the top 375 radio markets. Prepaid orders received prior to publication are \$20. After that it's \$24.95. Send orders to PO Box 3568, Alexandria, VA 22302.

OLD RADIO SHACK PARTS

Need replacement parts for your Radio Shack whatever? You can get them from Tandy National Parts, per an item in the latest QST magazine. The place stocks 71000 parts for stuff sold at Radio Shack stores. Inventory is based on the following guidelines: cosmetic parts, 3 yrs; mechanical parts, 5 yrs; electronic parts, 7 yrs; service & owner's manuals indefinite. For more info, or to order parts, write to Tandy National Parts, 900 E. Northside Dr, Ft Worth TX 76102, or call 817-870-5600.

THE IRCA GOODIE FACTORY

Need some good reading material? Thinking about building a better antenna? Want to buy a new radio, or modify the one you have? If so, then don't forget the IRCA Goodie Factory. It's the world's largest collection of BCB DX articles, with over 350 of them from past issues of DX Monitor. To get a goodie factory catalog, send an SASE to PO Box 21074, Seattle, WA 98111.

EASTERN DX ROUNDUP

Editor: Tim Kridel; Box 147; Middle Island, NY; 11953

Deadline: Saturdays

- (MB-ON) Mike Brooker; 99 Wychcrest Ave.; Toronto, ON; M6G 3X8
Sony ICF-7600D, Panasonic RF-2200
- (GH-PA) Gary A. Heisey; Box 310F RDL; Osterburg, PA; 16667
Philco radio, GE Superadio
- (DLR-KY) David Reitz; 9332 Fairground Rd.; Fern Creek, KY; 40291
R-1000, GE Superadio, Radio West loop
- (RCR-PA) Robert C. Ritchey; RD#1 Box 738; East Freedom, PA; 16637
DX-160, 130' longwire
- (JDS-AL) J.D. Stephens; 3605-8 Chasewood; Huntsville, AL; 35805
Panasonic RF-B300, built-in ferrite
- (WW-MA) William Wyllie; 95 Peck Street; Franklin, MA; 02038-2217
Realistic Modulaire 2200, built-in antenna

-
- 550 WASG AL, Atmore 1-23 1810 Poor in mud w/ local spots, "WASG" ID, possible C&W mx. Ex-1140. (JDS-AL)
- 560 WOOF AL, Dothan 1-23 1943 Good w/ good southern AL opening w/ "Community Memorandum," "Victory Gospel Program," gospel mx. (JDS-AL)
- 590 WKZO MI, Kalamazoo 12-9 1640 Fair/poor w/ PSA, spot for Meyer Stores. Wx for MI, many IDs, song by Neal Diamond, one of my favorites. (GH-PA)
- 600 WOKV FL, Jacksonville 1-18 1725 Good out of GBS nx, stocks, wx (67!!), traffic. "The nx station, WOKV 60," "Afternoon Edition" @ 1730. (GH-PA)
- 640 WJTZ TN, Blountsville 1-17 1720 Pop/rock mx, "64 JTZ" ID, Tri-City wx, local spots, sports, into more mx. (DLR-KY)
- 660 KSKY TX, Dallas 1-19 1828 Contemp Christian mx, ID "Christian classic, 66 k-sky." Wx, local spots, into more mx. (DLR-KY)
- 670 WYIS AL, York 1-19 1928 Oldies mx, ID "WYIS, your memories station." Wx, s/off annmcnts "WYIS York-Livingston." (DLR-KY)
- 720 CHTN PEI, Charlottetown 1-10 2326 Good, fadey w/ song "Girl Watcher," ID "7-20 CHTN." First time noted on this freq. (WW-MA)
- 720 KSAH TX, Universal City 1-20 1832 ID in SS, then EE "KSAH, Universal City-San Antonio," into SS mx, "Radio Festiva" IDs. (DLR-KY)
- 720 WWII PA, Shiremanstown 12-31 1725 Fair in WGN null, w/ Guy Lombardo's version of "Auld Lane Syne." S/off annmcnt ment "Due to current federal regulations, WWII must terminate our transmissions @ sunset." Off w/ SSB @ 1730. Calls pronounced as "WW2." (MB-ON)
- 730 WARB LA, Covington 1-20 1857 US Radio Net sports, local spot for Heritage Lounge, ID, then gone. (DLR-KY)
- 730 WLLI TN, Lenoir City 12-10 1730 Fair, alone w/ CNN nx, C&W mx, ID. Soon faded. (GH-PA)
- 800 CHRC QU, Quebec 12-30 1719 Fair/poor u/ CKLW, CJBQ, w/ sports trivia show asking "Who wore #10 for the Canadiens before Guy Lafleur?" Spot, fade out by 1723. (MB-ON)
- 810 WQIZ SC, St. George 1-19 1730 Good w/ s/off by YL, ment of 5 kW, back @ 0600. No SSB. (RCR-PA)
- 820 WBAP TX, Ft. Worth 1-3 2256 Fair, brief w/ C&W mx, ID. Lost to WZYQ. Not heard in a long time. (WW-MA)
- 820 WRFA FL, Largo 1-9 1755 Vgood w/ ID, C&W mx. (GH-PA)
- 820 WZYQ MD, Fredrick 1-3 2251 Good w/ C&W mx, ID "Hit country 82Q." "Live @ Gilleys" @ 2310. NRC Log lists as 500w @ night. New address is: PO Box 1129; Frederick, MD; 21701-1002. First time logged here. (WW-MA)
- 830 CFJR ON, Brockville 12-30 2020 Fair/poor w/ much background noise. (WW-MA)
- 830 KBOA MO, Kennett 1-22 1802 Fair w/ ID "KBOA," radar wx, ment of Kennett, into Neil Diamond mx. (RCR-PA)
- 830 WADU LA, Norco 1-19 1756 Good, alone w/ Beach Boys, Neil Sadaka. "Gold rush radio WADU," United Stns Radio Net nx. (GH-PA)

- 830 WADU LA, Norco 1-22 1805 Fair/good w/ local nx w/ man, ad for local IGA, wx, ID "WADU AM 830 Norco," Gordon Lightfoot mx. (RCR-PA)
- 840 WHGH GA, Thomasville 1-15 1800 Poor/vpoor w/ bits of s/off "serv SW GA" and "Staff and mgmt wish you and yours a pleasant good night." Data, no SSB. Mx by black artists, possible NBW nx. (GH-PA)
- 840 WHGH GA, Thomasville 1-19 1717 Weak, steady w/ concert promo, ment of Thomasville. R&B type mx by Marlon ?Johnson?, ID "WHGH." (RCR-PA)
- 860 WSON KY, Henderson 1-21 1918 Good w/ local spots, Coach Eddie Sutton Show. "You're tuned in to the sports home of the Cards and the Cats. Sports 860, WSON Henderson, KY." (JDS-AL)
- 870 WHCU NY, Ithaca 12-30 2015 Strong, then lost to FF stns, w/ song "Mother in Law." Heard only a few times before. (WW-MA)
- 870 WWL LA, New Orleans 1-3 0000 Fair/good w/ ID as "Radio 8-70 WWL." (WW-MA)
- 890 WHNC NC, Henderson 1-7 1713 Poor in WLS null, w/ run-down of cancellations due to snow, followed by local obituaries @ 1717. (MB-ON)
- 890 WQIS MS, Laurel 1-13 1800 Fair in vtight WLS null, w/ "AM stereo WQIS Laurel-Hattisburg Q89" by man. Aretha Franklin song, YL DJ, EBS test @ 1810, ID, then gone. Format seems similar to WHNC. (GH-PA)
- 900 WEAS GA, Savannah 1-19 1900 Good w/ mx by black artist, ABC Direction Pk. "Classic 900 WEAS in Savannah." Ex-WWJD. (GH-PA)
- 910 WRNL VA, Richmond 1-12 1703 Fair/good in CKLY null, w/ "Richmond's new oldies stn, playing classic hits from the 50s and 60s," jx, into Box Tops and Leslie Gore. Lost @ 1714 pattern change. (MB-ON)
- 930 WJBY AL, Rainbow City 1-23 2055 Local spots, Auburn Tigers basketball. No ID. (DLR-KY)
- 950 KXJC AR, Forrest City 1-18 1743 Fair w/ Hunter Supple spot, wx, "95 AM KXJC" ID, T40 mx. (JDS-AL)
- 960 KMA IA, Shenandoah 1-21 0052 Good o/ KZIM, w/ promo for the Waxford Show, PSA for Foster Parents Plan, "96 KMA" ID. (JDS-AL)
- 970 WTKN PA, Pittsburgh 1-23 2125 Good w/ local WAVG off for 5 mins, w/ Talk net, ID "It's 9:27 @ WTKN talkradio," into network spots. (DLR-KY)
- 990 WAL? VA, Vpoor w/ WZZD, w/ ID and not much else. Call letters heard were WAL?. Lost in mess. (WW-MA)
- 990 WZZD PA, Philadelphia 1-15 2135 Poor/good w/ ID. Lost to UNID stn. (WW)
- 1030 WXSS TN, Memphis 1-16 2100 Poor, deep fades w/ SS, no WBZ, w/ NBW nx, mx by black artist. Spot for Johnny Taylor show, ID, ment of Memphis. Still no sign of WNOW, WBZN. (GH-PA)
- 1030 WXSS TN, Memphis 1-17 0048 ID "The mid-south's blues capitol, WXSS," into mx countdown. (DLR-KY)
- 1050 WTPO GA, Conyers 1-22 2004 Good w/ local spots, ID, into Atlanta Hawks game. (DLR-KY)
- 1080 KRLD TX, Dallas 1-15 0710 Good w/ local nx, wx. ID "KRLD nx" by man, many ment of Dallas. (RCR-PA)
- 1080 WPIV FL, Kissimmee 1-19 1740 Good w/ s/off by man, owned and operated by Radio FL Broadcasting. Ment of 10 kW directional. No SSB. (RCR-PA)
- 1100 WGPA PA, Bethlehem 1-24 1730 Fair o/u WWWE, w/ mild rock mx. S/off by man, ment of 250 w. No SSB. (RCR-PA)
- 1100 WYKR VT, Wells River 1-23 1620 Good thru WJSM hash, w/ C&W mx. ID "WYKR" by man, ment of Dolly Parton Show. (RCR-PA)
- 1130 WDGY MN, Minneapolis 1-24 0006 Tentative, weak w/ Radarscan wx, ment of -5. Possible ment of MN. Call sounded like WDGY, into Larry King. (JDS-AL)
- 1130 WNEW NY, New York 1-23 2103 Fair o/ WSJP, KWKH, WCXI, WBZL, w/ Super Bowl promo "Who will win? Find out here on AM 11-3-0, New York," into big band mx. (JDS-AL)
- 1140 WRVA VA, Richmond 12-30 2006 Strong w/ end of nx, into talk show "Viewpoint." (WW-MA)
- 1160 UNID 1-15 2120 Fair/good w/ oldies. ID "Classic rock and roll atereo..." (WW-MA)
- 1160 WTYN NC, Tryon 1-15 1745 Good, brief w/ "WTYN AM 1160. Thank you for listening." No SSB. Almost missed this. (GH-PA)
- 1180 WSAF GA, Trion 1-15 1750 Poor, brief w/ WWVA slop, w/ wx, ID by YL DJ. Rock disco type mx. Fade to WHAM. (GH-PA)

1190 WHIY AL, Moulton 1-19 1900 EBS(?) wx updates, ID, C&W mx. ID w/ s/off @ 1907. (DLR-KY)

1200 WBZY PA, New Castle 1-24 1650 Vgood w/ local spots, PA lotto #s, "BZY" ID, "30 years of hits on AM 1200 WBZY New Castle-Sharon-Youngstown." AP nx, local nx, IDs. (DLR-KY)

1210 WDGR GA, Dahlonega 1-22 1651 Fair o/u WCAU, w/ PSAs for winter driving, skiing. ID "WDGR AM 1210." (RCR-PA)

1230 WCOL OH, Columbus 1-16 1653 Promo for CBS NFL football on "AM 1230 WCOL." Local spots, wx. (DLR-KY)

1250 CBGA QU, Matane 12-30 Good w/ FF songs on a FF stn. (WW-MA)

1250 CBOF ON, Ottawa 12-23 1750 Poor w/ WTAE in CHWO null, w/ FF sports report. // CJBC-860. (MB-ON)

1270 WHYD GA, Columbus 1-19 1850 ID "I'm Wendy Williams. This is WHYD, your contemporary mx stn," into rock/pop mx. (DLR-KY)

1280 WHVR PA, Hanover 1-24 1635 Wx, "1280 WHVR" IDs, into pop/rock mx. (DLR-KY)

1280 WKST PA, New Castle 1-16 1707 PSA, Paul Harvey's "Rest of the Story," jx "WKST." Sports update, ID, into "State Farm Sports Flashback." (DLR-KY)

1280 WONW OH, Defiance 1-16 1715 C&W mx, ID, promo for Defiance County High School basketball on "AM 1290 WONW." (DLR-KY)

1290 WKLB KY, Manchester 12-6 1805 Fair w/ "The music's on us, on WKLB." C&W mx out of ABC nx. (GH-PA)

1300 WFFG FL, Marathon 12-10 1645 Fair, alone w/ C&W mx, spot for Domino's pizza. Wx, ABC nx @ T of hour, then local nx w/ man. (GH-PA)

1310 WTTL KY, Madisonville 1-18 2002 Local nx, local spots, ID. (DLR-KY)

1350 KDIO MN, Ortonville 1-21 0050 Poor in mud w/ "...right here on AM stereo KDIO." (JDS-AL)

1350 WRAP VA, Norfolk 1-18 1750 Good w/ disco mx, natl spots, "Chuck Meyers metro traffic," "Gash Call" by DJ. Ex-WNIS. (GH-PA)

1360 WCHL NC, Chapel Hill 1-16 1625 Good w/ "Here are the Jets at CHL," wx for Chapel Hill. (GH-PA)

1360 WWBZ NJ, Vineland 1-24 1749 Fair w/ oldies rock mx, ID by man "1360 WWBZ," back into mx. (RCR-PA)

1380 WRAB AL, Arab 1-19 1932 EBS(?) wx warnings, reports of Tornado touchdowns, ID, into C&W mx. (DLR-KY)

1390 WXTC SC, Charleston 12-30 2009 Good in mess w/ "1390 WXTC Charleston" in middle of game. Ex-WCSC, first time noted w/ new call. (WW-MA)

1410 WEIM NY, Elmira 1-24 1800 Fair w/ local ad, ID by man "1410 WEIM," into mx. (RCR-PA)

1420 CJMT QU, Chicoutimi 12-30 2018 Strong w/ FF talk. (WW-MA)

1430 WTGR TN, Knoxville 1-25 1855 Local spot, "Power 14" IDs, promo for Feb. 13 concert @ Knoxville Hyatt Regency. Wx, into urban contemp mx. Stn back on air after being silent. (DLR-KY)

1440 UNID 1-19 1725 Peaking fair o/ mess, w/ "Power hits Y102" slogans, rock mx. "Tornado watch 'til 10 pm." No ID @ bottom of hour, local spots. (GH)

1460 CKRB QU, St. Georges de Beauce 12-3 2025 FF mx. (WW-MA)

1470 WRBD FL, Pompano Beach 1-19 1944 Fair w/ "WRBD dance @ YMCA." #731-4800 and #735-WRBD, disco mx by black artists. Whistle pips noted here and on 1510. (GH-PA)

1480 WMAX MI, Kentwood 1-22 1700 Fair/poor in CKAN/WHBC null, w/ "WMAX, serving Grand Rapids," into relig "Talkback" w/ Bob Larson. "We're talking w/ people who have been involved in orgies and other Biblically condemned acts." (MB-ON)

1480 WSAY VA, Salem 1-24 1930 Vgood w/ s/off by man. ID "Inspirational 1480 WSAY," no SSB, OC for about one min. (RCR-PA)

1520 WVOI OH, Toledo 1-14 0210 Poor u/ WWKB, w/ mx by black artist, some jazz type mx. ID by man, lucky to get. (GH-PA)

1520 WVOI OH, Toledo 1-18 2222 Wx, "1520 WVOI" ID, into urban contemp mx. (DLR)

1540 KXEL IA, Waterloo 1-15 2104 Good behind WPTV w/ vclear ID. (WW-MA)

1540 WABQ OH, Cleveland 1-18 1800 Fair w/ CHIN, w/ "Celebrating Martin Luther King." Spot for auto body shop, black gospel relig format. S/off w/ data, no SSB. (GH-PA)



WESTERN DX ROUNDUP

2301 PACIFIC AVE., ABERDEEN WA 98520

DEADLINES: Tuesdays through March 8, Mon. March 14 (Anniv. Issue.) 3/21

REPORTERS FOR THIS ISSUE:

- (SMM) Steve Mittman-2248 West 37th St.-San Pedro, CA 90732
 Realistic TRF, 3' wedge; Kenwood KRC-939 AM stereo car radio.
 (BN) Bill Nittler-Box 824-Mancos, CO 81328
 (RW) Robert Wien-1309 Dentwood Dr.-San Jose, CA 95118
 GE Superadio, GE long-range portable, SM-2

- *****
- 540 KSHO CA, Hesperia correction to 1/2/88 WDKR: KSHO stereo simulcasts their FM, KKG0-105.1, nightly 2000-1200 ELT (or 5pm-9am ELT). (SMM-CA)
- 730 KSVN UT, Ogden 1/27 1930 "La Mexicana, KSVN" in SS, then "KSVN Ogden-Salt Lake City in EE, into Spanish programming. SS format went in but not call change. (BN-CO)
- 810 KWSS CO, Rifle 1/21 2235 with Rifle-Eagle Valley BKB game, so now on at night. Well over KGO. (BN-CO)
- 830 KIKI HI, Honolulu Sa 1/16 0620 very good signal during WCCO fades. IDs as "AM stereo KIKI" & "The Oldies Channel." Promo with female: "I listen to my Oldies Channel," into song "Johnny Angel." (SMM)
- 890 *KDXU* UT, St. George Th 12/24 testing stereo during RS of Christmas music on Christmas Eve. Kept alternating stereo-mono-stereo-mono every 30 seconds or so! However, except for this test, still mono as of 1/25/88. (SMM-CA)
- KDXU +Correction to 10/31/87 WDKR: during MM simulcast with FM, legal IDs are "This is KDXU and KZEZ, St. George." (Not "KEZE," hii!) (SMM-CA)
- 950 KIMN CO, Denver Th 12/17 1930 good through two SS stations QRM with local Denver news. Traffic report from airborne reporter 1933. ID at 1934, "Kim news time: 5:35." Then lost to Mexicans. First time heard since XEGM's 58-day SP back in 12/79-2/80! (SMM-CA)
- (XEGM) BCN, Tijuana Th 12/17 1930-Fr 12/18 1958 noted off the air late Thurs. afternoon, the entire evening, and daytime Friday. Returned with OC & TT's Fri. evening at 1958. First time noted off midday since their 2-month-plus SP in early 1980. Frequency completely dead midday. Only KIMN & two unID SS at night. (SMM)
- 980 KVLV NV, Fallon 1/28 1120 surprise logging with C&W. Dialing across I heard "Just west of Fallon" mentioned & they were putting in an incredible signal. Had thought it was KSVG. First time I've ever heard this one! (BN-CO)
- 1090 KNCR CA, Fortuna 1/18 started fading in at SSS, about 10 minutes after KANN cut power (see below). Probably the one at 1941 very poor under KNX-1070 splash with financial news. Two unID SS stations took over for next 30 min. In again 2013 with song "Hummingbird," then voice-over: "Thank you for sharing the day of music with Fortuna's 1090 KNCR. More coming your way again tomorrow, starting at 7:45..." XEPRS off due to storm. New. (SMM-CA)
- KANN UT, Ogden 1/18 1855 started fading in at SSS with "The Bible Answer Man." Legal ID 1858 "Christian Radio--KANN, Ogden." Into "Focus on the Family" at 1900. Ad at 1928 for "School of Evangelism" in Ogden. Power cut 1930. Fair signal overall, but KNX-1070 splashing. XEPRS off due to storm. New. (SMM-CA)
- (XEPRS) BCN, Rosarito off the air (apparently due to a very severe storm) MM 1/18, all day 1/18, and most of Tu 1/19. Was still off at check Tu 1/19 1700, but back on RS at SSS 1910 check. Only second time ever heard off in 10 years of DX'ing! (SMM-CA)

- 1130 KLKY AZ, Prescott Valley 12/21 1908 a surprise SSS catch with Prescott Valley news (which included ment. of a 2-hour citywide power-outage tomorrow to install new equipment!). "Mystery Voice" contest, then weather and ads. "God Bless America" at 1915; then off. Used both "K-Lucky" and "1130 KLKY" ID's. Good with KSDO looped out. New station, and new for me. (SMM-CA)
- 1180 KERI CA, Wasco-Bakersfield ex-KWSO and daytime power increase to 50kw. Heard Wed 1/6 1952 with promo-ID "50,000 watt 1180 KERI," into CBN News. 2000 into "Focus on the Family," then power cut (still audible, though). Also midday 1/7 1400 with legal ID. (SMM-CA)
- 1310 KZZP AZ, Mesa 1/25 0434 fair in KEIN null, heavy KCPX-KMPS slop, ID "KZZP, 104.7 FM, your #1 hit music station." No trace of KIVA.(RW)
- (KDIA) CA, Oakland 1/25 0433 totally off, back on RS 0900. (RW-CA)
- 1390 KMDK CO, Denver ex-KPPL 1/25 0900 on first day of broadcasting with "KMDK Bulletin Board" and then talk show on divorce. Well on top of frequency until 0915. (BN-CO)
- 1450 KOWA CA, Escondido ex-KGWN legal ID's: Sat. 1/16 1400:15, "When Friends ask, tell them you're listening to Country Classics 1450 KOWA, Escondido," and Sun 1/17 1658 "Country Classics exclusively for San Diego County, KOWA, Escondido." All other IDs throughout the hour are "1450 KOW-AM" & "Country Classics 1450KOW-AM." Per promo, carries many Los Angeles teams sports (UCLA Bruins, etc). Incidentally, for those interested, KOWN-FM is now KOWF. (SMM)
- 7KOWA?+1/25 0515-0625 tent. under KVEN & KEST with MCRN, but no definite IDs heard. Per tip from Tim Hall, KOWA may now be carrying MCRN. Still needed here... (RW-CA) (MCRN list dated 10/12/87 shows KOWN, now KOWA, as well as KIRX-MO, WDAD-PA, & WSMG-TN on 1450.--NH)
- 1530 KFBK CA, Sacramento Th 1/7 1402 rare midday reception. Signal very poor with local KSKQ-1540 slop. Haven't heard here midday in many years. Cold, wet weather no doubt a factor! (SMM-CA)
- 1550 KZQQ UT, West Valley City 1/19 2130 "KZQQ is Z Rock" ID for call change, and into heavy rock music. (BN-CO)

Help with an unID:

- 1470 KNX CA, Los Angeles In reference to RW's report in 1/23/88 WDXR of hearing KNX-1070 on 1470 on 1/4 (he asked, "was KNX feeding XERCN (OC) their signal, possibly???", I don't have that answer, but this may be of interest,.. on Sun. 1/17, a severe storm hit So. Cal, knocking XEPRS-1090 off the air. While DX'ing 1090 MM 1/18, I heard KNX report (via splash!) that XERCN in Tijuana had been knocked off the air, and that they hoped to be back on "by morning." Sure enough, no usual MM OC, hi! Perhaps KNX & XERCN are "connected" in some way (i.e., they trade news). That would explain how KNX knew that XERCN was off, and perhaps XERCN uses the KNX audio for testing purposes when their studio is closed (??). (SMM-CA)

UNIDS

- 1470 1/25 0937 unID fading up under XERCN-KUTY with weather for the "Treasure Valley," then gone. KMFI??? (RW-CA)

The Anniversary issue deadline is Monday March 14 this year. Try to DX in late February-early March so that you will have a report in that special WDXR! ♥

DX Worldwide West --- continued from next page

THANKS TO THESE REPORTERS:

- TRH-CA TIM HALL-350 G. STREET-F-1-CHULA VISTA, CA. 92010-4505
ICF-2010, Radio West Loop
- DL-HI1 DOUG LAMERSON-1777 EAST-WEST ROAD-HONOLULU, HI. 96848
Superadio II, IRCA Loop
- DL-HI2 DXing from Makapu'u Point O'ahu/ Superadio II and 100' Wire
ØW-CO JOHN WILKINS-4385 HOYT STREET-#205-WHEAT RIDGE, CO. 80033
R-1000, R-390A, 4 FOOT BOX LOOP

DX Worldwide - West



PAT MARTIN

P.O. BOX 843

SEASIDE, OR 97138

Time: UTC phone (503) 861-3185

DEADLINES: 2/9, 2/16,
2/23, 3/1, 3/8, 3/15.

PAN- AMERICAN DX ROUNDUP

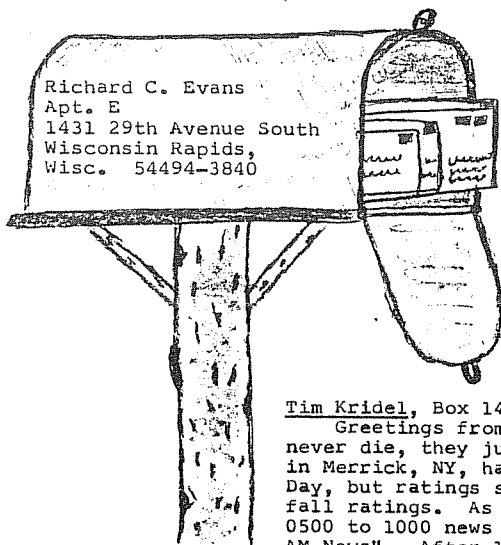
- 760 MEXICO, Nogales, XENY-1/3 at 1203 XE Anthem, s/on amnt, then pgm "Domingo Romantico" (romantic songs) Gave address as Av. Obregon 38 altos in Nogales. Very Good peaks w/WJR deteriorating. New XE #75 (ØW-CO)
- 790 MEXICO, Chihuahua, Chih. XERPC 12/16 0230. MOR SS pops, 0233 ID "Esta es XERPC, Radio Ranchito, 790 KHZ, 5000 w de potencia, 1000 w... (prob night power) then local PSA, o/u QRM. (ØW-CO)
- 940 t MEXICO, Mexicali, BC XEWV 1/8 0200 A variety of mx on pgm "Radio Correo Musical" local ads, most from Mexicali. Fair on peaks w/ KIOA QRM, but long fades. Listened for 6 hours and never once did they use call letters! The onda 94 slogan was given after each song so undoubtedly the Mexicali station, but I would like to confirm the call to count it officially. TRH or anyone else help?? Finally signed off at 0755 no/data amnt. Listed as 1KW daytimer. (ØW-CO)
- 1070 MEXICO, Cd. Obregon, XEOBS 1/19 1400 Finally sure of their calls, now that XEPRS-1090 silent period allows me to try and null KNX (TRH-CO)
- 1080 MEXICO, Cd. Morelos XEDY 1/18 1300 Good with s/on over KWJJ. Ads for businesses in Mexicali, San Luis, and Yuma. Lots of IDs. Midday req. from Palm Springs and Indio areas, not here because of XEPRS slop. New XE #114. Relogged at 2000 for new-midday catch. (TRH-CA)
- 1080 CUBA, Cuines-CMCU 1/18 1030 Man and woman with traditional Cuban mx and "LaCadena Habana" IDs. New Cuba #17 (TRH-CA)
- 1090 MEXICO, Monterrey XEAU 1/18 1215-28 ADs and wx forecast for Monterrey couple of IDs, mostly "la-A-U" slogans, though. New XE #113 (TRH-CA)
- 1090 MEXICO, Rosarito-XEPRS 1/18 0445 Noted off the air, presumably due to rain, winds and power outages. Remained off my 1½ days. Back on around 2100 UTC 1/19. Another local station, XEGM was off for the same period of time. (TRH-CA)
- 1090 UNID, 1/18 0830 and 1040. SS songs and long speeches by little boy The only similar programming I've ever heard would have to be by a Honduran or maybe Cuban stations. (TRH-CA)
- 1210 MEXICO, Colima, XE?? 1/18. A Powerhouse hrd at 1155 s/on w/many mentions of Colima. My SS is so abyssmal I missed the call even tho they mentioned it several times. Sounded like XEUU. Is this a freq. change? Noticed here for over two months now. Any more on this?? (DL-HI2)
- 1260 MEXICO, Ojinaga, Chih. XEOG 12/23 0241 Ranchera mx, "Radio Ranchito" slogans, ad for local doctor, Strong on peaks o/u KVSF (ØW-CO)

TRANS PACIFIC DX ROUNDUP

- 1143 PHILIPPINES, Poro Point-VOA 12/19 1315 in Vietnamese til 1330 s/off for Country #23. (DL-HI1)
- 1206 AUSTRALIA, Grafton-2GF 12/20 1015 solid for ½ hour w/pops and plenty of Spots. QSL and stickers back in 3 weeks. Also QRM from Unid CC and another EE which I guess to be 4X0. (DL-HI1) (Doug, if you would like you can send me info on your QSLs and I would be glad to add from at the end of the column and/or send them to Tim Hall for the Verie Signers column. PH)
- 1242 JAPAN, Tokyo-JØLF 12/19 1410 lots of chatter w/2 men and woman and commercial sounding stuff altho they could have been promos. Very Solid in and out for an hour or so. (DL-HI1)

QSLs

- 670 GUATEMALA, Guatemala City-TGRT-F/D postcard verie for 86 reception Picked up in person by Don Moore visiting the stn. (ØW-CO)
(Good going on that one. PM)



EASTERN DX FORUM

Reports from members living east of the Mississippi River

Deadlines: Fridays
Anniv. Issue: 3/11

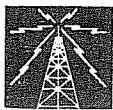
This column typed: 1/31/88

Tim Kridel, Box 147, Middle Island, New York 11953
Greetings from Long Island, where bad stations never die, they just change format. Local WGBB-1240 in Merrick, NY, had switched to all talk on Memorial Day, but ratings shrank from 0.3 to diddly in the fall ratings. As a result, the semi-listened-to 0500 to 1000 news show will be kept, become "1240 AM News". After 1000, WGBB will metamorphosize into WBAB-AM, relaying sister station WBAB-FM's

highly rated rock music. According to station manager Rich Sutton and WBAB PD Bob Buchmann, they are shooting for a wider audience. Both stations were purchased by Noble Broadcast Group for a Long Island record \$13 million. Another local, WNYG-1440 of Babylon, NY, has initiated a new 24 hour schedule with a switch from pop to 50s/60s oldies. The new PM, Warren Greene, will be the morning man come Feb. 1st. Owned by Babylon Bay Shore Broadcasting Corp, this is the same station that gave air time to pirate station RNI announcers. In a Suffolk Life interview, Greene said that he once worked at WNDY-1420 in Gloucester, VA, which sat over a Coca-Cola bottling plant. Every time he turned a dial when it rained, he got a shock. Sounds like a safe operation. WPRE-FM (ex-WLIR) may have a competitor if Phoenix Media Corp, its former owner, buys WRHD-1570 and WRON-FM, both of Riverhead, NY. The \$4.5 million price tag and FCC approval are all that stands in the way. That's kind of like the Ragù-Francesco Rinaldi commercial: Sell your company and then start up a competitor. Either way you make money. I see my 930 unit in EDXR that I'd as "Kost-Coast AM 930" is really ex-WWNH in Rochester, NH. They are now WKOS. I was hoping it was a real K-call. Veries in from KTCB-1470, KSTP-1500, KBOA-830, WCNX-1150, and WEEU-850. Not bad, considering I haven't QSLed in about a year or so after being discouraged by poor returns. Postal service here has been unusual, with DXM not arriving for a week-plus at a time, then showing up in pairs, one after the other. Also, many of the POs on Long Island are closing on Saturdays to save cash, due to Washington's trimming of the overall budget. And they want to raise prices. That's it from the world's largest suburb. 73s, and best of DX...

Rick Evans, 1431-E 29th Avenue South, Wisconsin Rapids, Wisconsin 54494

Not too much to say this week. I listened last MM (1/25) but only two new stations to add to the list: WFDF-910 MI and WHBC-1480 OH. Looks like the conditions took a turn for the sour in late January. Saturday 1/30 was up to almost 50 degrees here (at least it help melt the snow off the roofs) and the relative humidity up to at least 95% (per the cable screen) so I switched to FM instead and find a small opening to Illinois and the quad Cities, so I added state #5 to that log. Veries: v/q WPTF-680 NC for state #17, and v/1 CHUR-840 ONT, who remarked that he remembered the conditions that night because WHAS could be heard 6 miles east of their transmitter! That must be a sick feeling for a station to know their signal is being walked on that close to their towers. One request for my reporters: Please double-space your reports. I didn't realize how bad my reading vision had gotten until I was given some reading glasses. What a difference two small pieces of plastic can make, hi. I am already holding one report for the anniversary issue--I'd like to hold a lot more, so how about it? Deadline is 3/11 but there's no early date. Gotta run. 73.



Western DX Forum

★ ★ ★ ★

IRCA — The #1 Choice of the Broadcast Band DX'er

Editor: Ric Heald • 8539 Bellamy Way • Sacramento, CA 95828 USA • (916) 386-8677

1988 DEADLINES — WEEKLY ON TUESDAY 11 DAYS PRIOR TO PUBLICATION DATE
ANNIVERSARY ISSUE — 07 MARCH

MARK STRICKERT, P.O. BOX 355, BERKELEY, CA 94701

KRPQ 104.9 Rohnert Park is not new. . .has been on since October '86, as "Q 105 country." Main man there, Rick Castro, worked at KSAN for awhile and decided he could do better on his own. KRPQ and KBRG Fremont come in about even most of the time except during the coldest months.

From what I've read on the KSRO 1350 situation, KZST 100.1 was really hurting them since shifting to a similar AdCon/Personality format. KSRO is essentially talk, too often NBC Talknet, with drive time news blocks.

Have noticed no change in KRBK 1530 since McClatchy sold it, except for the obvious "Group W, a Westinghouse Broadcasting station" tacked on to hourly ID. I know that when WMAQ 670 adds the same in mid-February, that will be the least of the changes. . .will be nice to hear a real "all-news" station go after WBMM 780, though the WMAQ call and the current slightly daffy local talk shows will be missed.

Speaking of Chicago radio history, anyone know which station used to be KYW? My guess would've been WIND (a longtime former Group W station), but thought I'd seen where both calls existed at the same time in the market. WIND, by the way, came not from the city's nickname, but from formerly being licensed to Gary, INdiana (transmitter is still there). It's been real tough finding old station lists. 73.

RIC HEALD, 8539 BELLAMY WAY, SACRAMENTO, CA 95828 (916) 386-8677 FRI/SAT

Howdee. Not much done on the DX scene as practically without warning, my hours got changed (as an experiment, hah!) to 1000-1800 PLT, so no more post midnight DX for now, I miss LSS and LSR is early, but a possibility. For those of you who have/do work shift work, you know it's not easy rearranging sleeping habits.

Mark, you brought up an interesting question. I knew that KYW was in Philadelphia for years, then calls traveled to 1220 Cleveland, then back to Philly. Before the construction of BART, there were a couple of surplus (read junk, hi) radio stores on Market Street in San Francisco and one store had old Radex publications plus other assorted radio related publication. I bought a '58 White's Radio Log for pocket change; interesting reading. And I do now remember someone saying a year or so ago that Rick Castro had gone to a new station in Rohnert Park. I believe he was at KSAN before their switch to C&W.

When I was at KPLS 1150 Santa Rosa in the early '80s, KZST was BFL and KSRO was unbeatable in the ratings, especially in morning drive. However, we did give KSRO serious competition during midday. For AM drive, we didn't even try to knock 'em off, hi. Their AM jock (KSRO) had been there over 20 years, was a local popular fixture and now a second generation was listening to him. But in the fall '81 book, KGO came in second. So much for local market, hi.

bp, enjoyed your comments regarding DX while on the road. That's one thing I miss not being in the travel biz. I had either my hot Sony AM/FM or the TRF along, the Sony having traveled to London, Amsterdam, Greece and Istanbul and the TRF to Monte Carlo, Nice, Hawaii, Mexico, Houston, El Paso, etc. Of course hearing many more states east of the Rockies makes sense because they're much smaller in land size than western states. That's what blew me away when I moved to upstate New York (Rockland County) was hearing 30 states in less than a month plus Canada and the Caribbean. But then again, all the Caribbean countries are less distance to New York than West Coast to Hawaii. It was really bazare to be listening to a Turkish station with their MoR music and right in the middle of a set, English disco singer Tina Charles. A little out of place, hi.

Deadline for the Anniversary issue is closer than you think. Larson has already sent his. And when you send in a regular forum, why not include a separate anniversary forum? Will save you some postage.

A short one this week. See y'all next time around. 73 de Rth. .

ANTENNAS FOR STANDARD BROADCAST STATION RECEPTION

GENERAL

The Commission has received many requests from radio stations as well as individuals requesting information regarding antennas for broadcast station reception of CONELRAD ALERTS.

OBJECT

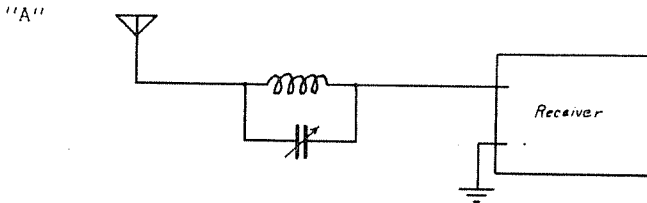
This document describes various types of antennas and auxiliary equipment that may improve reception in fringe areas or may reduce co-channel or adjacent channel interference.

DISCUSSION

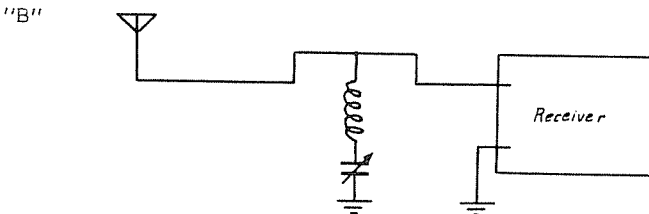
In all cases it is advisable to locate the receiving antenna as far from a source of interference (such as radio transmitters or transmitting antennas) as possible and to use coaxial or shielded transmission line to the receiver antenna terminals, as shown in Fig. 1.

If the receiver is used in close proximity to a radio transmitter it may be necessary to install the receiver in a shielding compartment, as indicated in Fig. 1, and to provide a shielded trap at the input to the receiver. Such a trap should resonate at the frequency of the interfering transmitter.

The trap may be of the type shown at "A"



or of the type shown at "B"



If the receiver has a high impedance input it will often be found that the trap connected across the receiver antenna and ground posts (type "B") will be superior for eliminating the undesired signal.

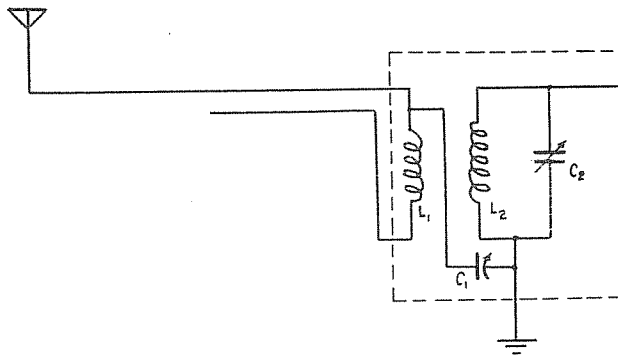
Traps, of course, are only suitable when the desired signal and the undesired signal are on different frequencies.

If the undesired signal is on the same frequency as the desired signal a directive antenna is usually necessary provided both stations are not in the same direction.

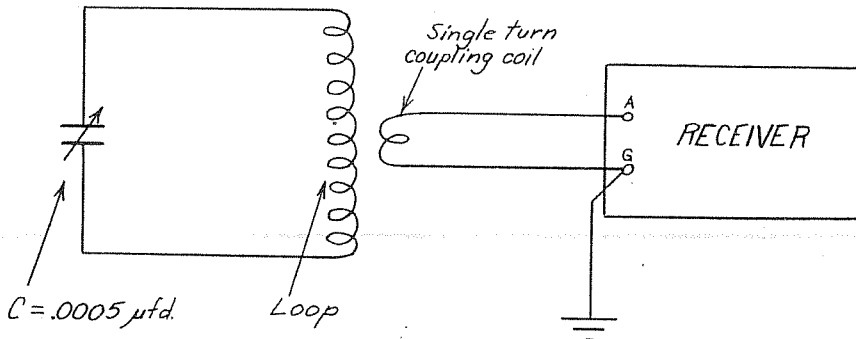
If the interfering signal has groundwave characteristics a loop antenna may prove suitable (see Fig. 2 for dimensions) by orienting the null towards the undesired station. If the interfering signal has skywave characteristics, a loop will not be as effective but might improve reception.

In cases where the desired signal is weak or where skywave interference is severe a "Beverage" antenna may produce a worthwhile improvement in reception (see appendix for details).

The "Beverage" antenna is probably the best antenna for standard broadcast reception where high gain and/or high directivity are necessary. It does, however, require considerable space and is costly.



The antenna can be a piece of wire approximately 80' long, supported in any convenient open location. The counterpoise should parallel the antenna about half the antenna length and spaced about six inches from the antenna. L_1 should be a broadcast high impedance primary coil, about 50 to 60 turns; C_1 is the "balancing" condenser and should be a small variable, probably 0.00035 mfd will prove suitable in most cases. L_2 should be inductively coupled to the tuned input circuit of the receiver. In use, the desired signal is tuned in by the input circuit, and the balance condenser adjusted for best reduction in noise. When properly adjusted, this circuit will make a very marked improvement in the signal to noise ratio.



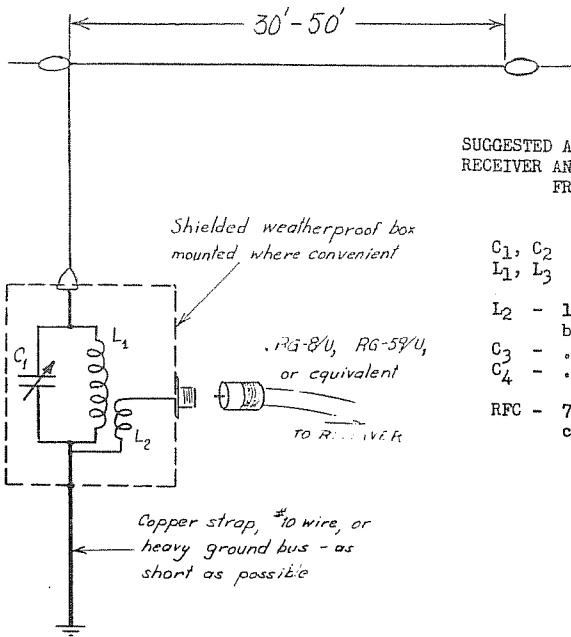
LOOP DIMENSIONS

13 turns #20 wire, wound on a square form 12 inches on a side, 1/8 inch spacing between turns.

COUPLING COIL

1 turn #20 wire, wound inside loop and spaced approximately 1 inch from loop winding.

Note: Lead from coupling turn to receiver may be short length of flexible, twisted wire.



SUGGESTED ARRANGEMENT FOR LOCATING RECEIVER AND ANTENNA AT A DISTANCE FROM EACH OTHER

- C₁, C₂ - 350 mmfd variable
- L₁, L₃ - 20 - 40 microhenry (broadcast band coil)
- L₂ - 10 turns #26 around bottom end of L₁
- C₃ - .005 600v ceramic by-pass
- C₄ - .002 600v feed-thru type capacitor
- RFC - 70 turns #18 enam. wire, closewound on 2½" d. form

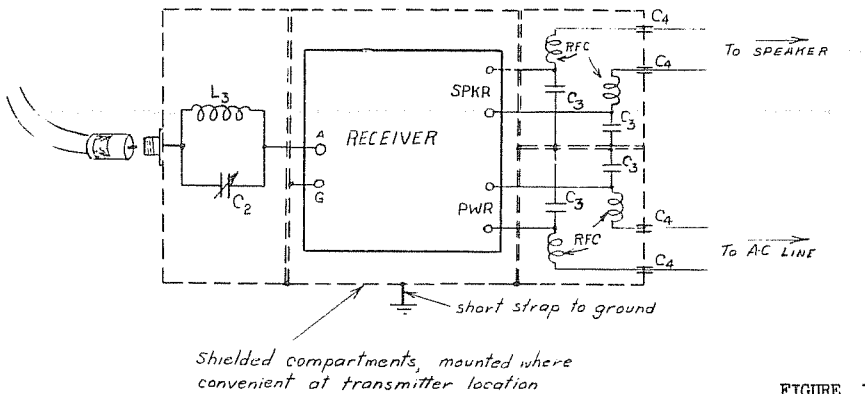


FIGURE 1

Vertical receiving antennas with properly tuned and phased reflectors and directors are a possibility for improving reception but the cost is usually prohibitive.

For an article on methods of noise reduction, see Proceedings of the Institute of Radio Engineers, March 1939, page 188, for a paper on "A New Antenna System for Noise Reduction", by V. D. Landon J. D. Reid. The authors suggest the following simple diagram as a typical circuit that is effective in the reduction of man made noise entering the receiver through the power cord.

The preceding article was taken from a hard to find FCC publication dated April 1, 1958. Thanks to Glenn Kippel for sending it.



Verification Signers

TIM HALL, 350 G St. F-1 Chula Vista CA 92010

Deadlines: Last Fri of the Month - 2/26 3/25



FREQ	CALL	SIGNER'S NAME / TITLE	ADDRESS	CITY	STATE	ZIP	CLASS	WHA	WHEN	WHO
540	CJSB	JOHN R. PITCHER, CE	1504 MERIVALE RD.	OTTAWA, ON		K2E 6Z5	LN	584		TK
	KNAK	CHARLOTTE LEAVITT, OFF MGR.	PO BOX 636	DELTA, UT		84624	L+	24		SBP
	KSHO	ROBERT F. TURNER, CE	10880 NILSGIRE BLVD.	LOS ANGELES, CA		90024	L	18		JCJ
550	KUSA	BILL R. SCHMIDT, ENG SUPV.	10155 CORPORATE SQ, BOX 12430	ST. LOUIS, MO		63132	LB	12		TK
560	KSFO	MARK MANUELIAN, CE	300 BROADWAY	SAN FRANCISCO, CA		94133	QHD+	26		SEP
570	KLDD	HUE BEAVERS, CE	PO BOX 50189	DALLAS, TX		75250	LN	17-23		JD/BH/RS
	WVMI	ROBERT THORNTON, CE	PO BOX 4565	BILOXI, MS		39531	LB	5		J+
580	CKAP	STEVE ROGERS	24 BYNG AVE.	KAPUSKASING, ON		PSW 1X5	PL	30		RS-
	CKUA	GLEN FOISY, ENG.	4TH FL, 10526 JASPER AVE.	EDMONTON, AB		TSJ 1Z7	PLD++	21f		TR-
	KJMH	RICH HEATLEY, OWNER	4701 N. SWAN	TUCSON, AZ		85718	L	26		P.
	KZMX	TRACY BASTIAN, OWNER/GM/CE	BOX 611	HOT SPRINGS, SD		57747	L	21f		TR-
	KZMX	NICKIE HANSON, OFC MGR.	BOX 611	HOT SPRINGS, SD		57747	P	8f		TR-
	HDBO	BEN DICKERSON, GM	4192 JOHN YOUNG PKWY	ORLANDO, FL		32804	L	10		KV-
	NHP	MAURICE BANNAWAY, DIR ENG.	3300 N. 6TH ST., BOX 1507	HARRISBURG, PA		17105	LN	4		J+
	HTAG	(UNSIGNED)	20 FRANKLIN ST.	WORCESTER, MA		01613	Q	7		T-
590	KAGQ	BARRY A. WATKINS, PD	PO BOX 1549	SPOKANE, WA			P	16f		TR-
	KTD	KELLY BECKSTEAD, PD	PO BOX 1549	IDAHO FALLS, ID		83403	P+	8f		TR-
		[ALTERNATE ADDRESS:]	1748 JEPSSON	IDAHO FALLS, ID		83401				
	NEE1	JOHN CONWAY, CE	4450 PRUDENTIAL TOWER	BOSTON, MA		02199	Q	6		TK
600	KSJB	HARVEY VAN EREM, CE	PO BOX 400	JAMESTOWN, MD		58402	QL	7		J+
	KTBB	WAYNE BLACKWELDER, CE	PO BOX 7935	TYLER, TX		75711	LN+	32		JD
	WICC	(UNSIGNED)	177 STATE ST.	BRIDGEPORT, CT		06604	QB	4		TK
610	KCSR	DOUG ABBOTT, OP MGR.	BOX 931	CHADRON, NE		68337	P	17f		TR-
	KFCR	PHILLIP ???? , CE	500 WASHINGTON ST.	SAN FRANCISCO, CA			Q	4		SBP
630	CHED	GLENN TRACY, CE	[* MAY '85]	EDMONTON, AB			QL	fff		PI
	KXDK	ARTHUR A. JABLONSKY, CE	[*] 7777 BONHOMME AVE.	ST. LOUIS, MO		63105	Q	8		TK
	KXDK	KEH MEACHAM, CE	[SAYS HE'LL SEND THE CARDS OUT 'SOMEDAY', PER PHONE CALL]							JD
	MNAL	DON CULP, CE	4400 JENNIFER ST. NW	WASHINGTON, DC		20015	Q	44		JD
640	MCRV	JULIA MESTERHACHER, EX SECY	4554 FLEHING RD.	CULLIERSVILLE, TN		38017	LN+	8		JD
	MNAZ	CURTIS H. HAHN, PRES.		WESTFIELD, MA			LN	15		NB
650	WKQK	DAVID W. ACALEY, GM	BOX 1060	HIBBING, MN		55746	LBW	19		JCJ
	WSM	TOM BRYANT, - PROD. MGR.	BOX 65	NASHVILLE, TN		37202	Q	5		TK
660	KTNW	DELFRID SMITH, CE	PO BOX 2569	WINDOW ROCK, AZ		86515	LNH	31		SBP
	WESC	ALLEN POWER, PD	PO BOX 660	GREENVILLE, SC		29602	LB	8		JD
	WHDC	(UNSIGNED)	30 ROCKEFELLER PLAZA	NEW YORK, NY		10020	QB	9		TK
670	TGRT	JAVIER MALDONADO, ANMCR.	[* PICKED UP IN PERSON BY DON MOORE, VISITING STATION]	GUATEMALA CITY		GUAT.	Q	0f*		WH
	WHAQ	(UNSIGNED)		CHICAGO, IL		60654	Q	15		TK
680	WCMH	BOB MAYBEN, CE, &								
		JOHN TALBERT, ASST. CE	209 CNH CENTER	ATLANTA, GA		30303	QL	5		JD
	WRKO	ROBERT M. SMITH, CE	3 FENWAY PLAZA	BOSTON, MA		02215	L	8		TK
690	WAPE	JIM HENRY, DIR. ENGINEERING	9487 REGENCY SQ BLVD. 895	JACKSONVILLE, FL		32225	LN	6f		JD
700	WLN	(UNSIGNED)	3 EAST 4TH ST., SUITE 700	CINCINNATI, OH		45202	QB			TK
710	CHYR	P.E. CRIBBLE, CE		LEAMINGTON, ON			L+	16		NB
740	KHEO	MS. TONIE STANLEY, ENG MGR.	3719 N. 32ND AVE.	PHOENIX, AZ		85017	LB	50		JCJ
750	NSB	WALT WILLIAMS, PROG MGR.		ATLANTA, GA		30309	Q	68		TK
760	WJR	(UNSIGNED)	2100 FISHER BLDG.	DETROIT, MI		48202	QB	25		TK
770	HABC	WINSTON H. LOYD, CE	1330 AVE. OF THE AMERICAS	NEW YORK, NY		10019	Q	6		TK
	HYRV	BART MICHAELS		CEDAR BLUFF, VA			LNH	118		NB
780	WZZX	SISSY CAMPBELL	PO BOX 597	LINEVILLE, AL		36266	L			KVJ
790	WGRA	JEFF LOVETT, OP MGR.	PO BOX 120	CAIRO, GA		31728	L	6		KVJ
800	CKLN	MALLY DOWHAN, CE	1640 OULETTE - BOX 400	WINDSOR, ON		N9A 6N6	LB	19		TK
	PJB	JANET LUDLAM	TWR, ENGLISH MAIL SERVICE	BONNAIRE, NETH ANT		W.I.	QL+	27		JH
810	KCMO	LLOYD COLLINS, CE	508 WESTPORT RD.	KANSAS CITY, MO		64111	L	11		JD
	KWNS	DEAN H. ANGELL	BOX 1210	RIFLE, CO		81650	L	45		JCJ
	WGY	LOUIS H. CORREIA	BOX 1410	SCHENECTADY, NY		12301	Q+	7		TK
	WJXL	WILLIAM E. BUSSEY	PO BOX 1029	JACKSONVILLE, AL		36265	L	24		KVJ
820	WAPD	PHIL PATTON, OWNER / GM	29 W. MAIN ST.	JASPER, TN		37347	L	21		KVJ
		MIKE JACKSON, CE	29 W. MAIN ST.	JASPER, TN		37347	L	21		KVJ
830	KBOA	JOHNNIE R. NEWTON, CE	BOX 509	KENNETT, MO		63857	LNH	12		TK
	WABU	VIRGIE DU TREIL, CO-OWNER	1535 E. AIRLINE HWY.	LA PLACE, LA		70068	L	10		JD
	WCCO	(UNSIGNED)	625 2ND AVE. SOUTH	MINNEAPOLIS, MN		55402	Q	34		TK
850	WEEU	(UNSIGNED)	34 N. 4TH ST.	READING, PA		19601	NB++	12		TK

FREQ	CALL	SIGNER'S NAME / TITLE	ADDRESS		WHAT	WHEN	WHO	
860	KWPC WSON	DAVID HETZ, CE LEE ANN WILLIAMS OLIVER, MGR	3218 MULBERRY AVE. PO BOX 418	MUSCATINE, IA HENDERSOIN, KY	52761 42420	L L+	12 14	JH KVJ
			[+ GLASS COOKIE JAR !]					
870	WKAR WHL	JOHN HAWKINS, CE HUGH R. BURNEY, DIR TECH SVCS	283 COMMUNIC. ARTS, NSU 1024 N. RAHPART ST.	E. LANSING, MI NEW ORLEANS, LA	48824 70116	LH+ QLB	134 19	TRH TK
880	KKNC	JOHN DICK, GM BARBARA SIMONS	[* NOV '84] [* DEC '84]	GONZALES, CA GONZALES, CA		L P		PH PH
	WCBS	(UNSIGNED)	51 W. 52ND ST.	NEW YORK, NY	10019	Q	26	TK
900	WKXV	TED LOWE, JR.	1518 BROADWAY @ LEONARD PL	KNOXVILLE, TN	37917	L	9	KVJ
910	WHSB	BRENT CHRISTENSEN, CE	[HAM CALL = WAOSTS]	HAYWARD, MI		LHB	25	HB
920	KDHL	J.E. HYDE, CE	601 CENTRAL AVE.	FARIBAULT, MN	55021	Q	7	JD
	WGST	MILTON THURLOW, CE		ATLANTA, GA		QMB+	13	HB
	WKYD	MISS PEGGY EILAND, STM MGR.	PO BOX 8	ANDALUSIA, AL	36420	L	6	KVJ
930	KEWB	AUDREY ROSE	PO BOX 2020	PARADISE, CA		LP	14	SBP
	KSEI	RON PRICE, CE	PO BOX 40	POCATELLO, ID		L#H	8	SBP
		[* VERIE-STATEMENT WAS SCRIBBLED ON A TORN PIECE OF YELLOW NOTE PAPER !]						
	WTAD	LEE GRAY, CE	510 MAIN ST. / WCU BLDG.	QUINCY, IL	62301	P	9+	TRH
940	WIDB	KERIN C. BARNETT, STM MGR.		ST. IGNACE, MI		LHB	15	NB
	WKYK	MICHAEL THORNHILL, PD	PO BOX 744	BURNSVILLE, NC	28714	LHB	16+	JD
950	WDBX	BARBARA MARAHORE, TFC MGR.	1524 ADELINE	HATTIESBURG, MS	39401	LH	5	JD
	WXLW	WILLIAM POORMAN, OWNER/CE	PO BOX 22300	INDIANAPOLIS, IN	46222	LH+	8	JD
960	KCBS	KEVIN FLETCHER, STM MGR.	BOX 368	MARSHALL, AR	72650	L+	7	JD
	KBIR	[now 1220] CHUCK MARTIN	BOX 611 - 324 BROADWAY	CAPE GIRARDEAU, MO	63701	Lr+B	56	TK
980	WITY	(ILLEGIBLE), PRES.	PO BOX 142	DANVILLE, IL	61834	PB	8f	TRH
1020	KDKA	DIANA FAYE HAUSER, INTERN	ONE GATEWAY CENTER	PITTSBURGH, PA	15222	LB	15	TK
		ROBERT TAYLOR, R. PROG ASST.	ONE GATEWAY CENTER	PITTSBURGH, PA	15222	L(2)	10, 13f	TRH
	KWIQ	W.E. LAWRENCE, GM	[* NOV '84]	MOSES LAKE, WA		P	ff	PH
	WPED	LINDA BUTLER, COMM REL DIR.	1708 HIGHWAY RD.	EAST PEDRIA, IL	61611	L	130	TRH
1030	WBZ	(UNSIGNED)	1170 SOLDIERS FIELD RD.	BOSTON, MA	02134	Q	30	TK
1040	WHD	(UNSIGNED)	1801 GRAND AVE.	DES MOINES, IA	50308	Q	16	TK
1050	WHN	THOMAS FRANKLIN, ENG. SUPV.	34-12 N. 36TH ST. [ALSO RECEIVED A NEW (WFN) QSL CARD]	ASTORIA, NY	11106	Q+	218f	JD
		(UNSIGNED)	INDEPENDENCE MALL EAST	PHILDELPHIA, PA	19106	Q	8	TK
1060	CBA	S. ROY	BOX 450	MONCTON, NB	EIC 888	QBN+	22	TK
	KFDI	CLIFFORD KOCH, CE	PO BOX 1402	WICHITA, KS	67201	QLH	7	JD
	KNX	ERIK DISEN, DIR TECH OPS.	6121 SUNSET BLVD.	LOS ANGELES, CA	90028	Q/QM	6-8	JD/THL
	WIBC	(ILLEGIBLE), TECH DIR.	9292 N. MERIDIAN ST.	INDIANAPOLIS, IN	46260	QB	7f	JD
1080	KSCD	DAVID E. HARBAUGH [W6WU]	BOX 1080	SANTA CRUZ, CA	95061	L	20	JCJ
1090	WMFL	JACK HYDEN, GM	1275 S. JEFFERSON ST. [* VERIE ON COVERAGE MAP]	MONTECELLO, FL	32344	M*	11	KVJ
1100	WYNE	D.A. WALSH, ENG.	1250 SUPERIOR AVE.	CLEVELAND, OH	44114	L	22	TK
1110	WBIA	W.H. PHILLIPS, GM	PO BOX 426	BAY MINNETTE, AL	36507	L	12	JD
	WBFI	JIM WAGNER, ASST TECH DIR.		CHICAGO, IL		Q+	123	KB
1120	KNOX	JIM BUTLER, DIR TECH OPS.	ONE MEMORIAL DR.	ST. LOUIS, MO	63102	L	31	TK
1140	CISS	(ILLEGIBLE), TECH DIR.	804 16TH AVE. SW	CALGARY, AB	12R 059	L	27	BN
	KRSR	BOB BERZINS, OP MGR.	BOX 14805	LAS VEGAS, NV	89114	LrB	7	BN
	KSOO	GERRY VAN LOH, CE	2600 S. SPRING AVE.	SIOUX FALLS, SD	57105	P	23f	TRH
1150	KSEN	ROBERT MORRIS, PD	830 DILFIELD AVE.	SHELBY, MT	59474	P	8f	TRH
	KCNX	JOHN PARKS, CE	BOX 359, RIVER RD.	MIDDLETON, CT		L	7	TK
1160	WJJD	BETH BARCOCK, PROG. ASST.	180 N. MICHIGAN AVE. #120	CHICAGO, IL	60601	QLB	17	TK
1170	WVVA	PAULA ANDERSON, ADMIN ASST.	CAPITOL MUSIC HALL	WHEELING, WV	26003	QLB+	11	TK
1190	KBCO	JOHN BRADLEY, PD	4801 RIVERBEND RD.	BOLDBER, CO	80301	PLB	9f	TRH
	WDCO	(UNSIGNED)	203 W. WAYNE	FORT WAYNE, IN	46802	QB	11	TK
	WULD	EDWIN P. ALLEN III, ENG.	5205 S. ORANGE AVE.	ORLANDO, FL	32809	L	130f	KVJ
1200	WAYD	CHARLES BERRY	PO BOX 1331	OTZAK, AL	36361	Lr	130f	KVJ
1210	KOHY	ERIC KEHEW, CE	PO BOX 2588	ST. GEORGE, UT	84770	L	58	SBP
	KREW	DDN BENNETT, [W7VE]	BOX 149	SUNNYSIDE, WA	98944	L	35	JCJ
	WCAU	(UNSIGNED)	CITY AVE. & MONUMENT RD.	PHILADELPHIA, PA	19131	LB	611	TK
1220	WKMT	JONAS BRIDGES, GM	PO BOX 1220	KINGS MOUNTAIN, NC	28068	L+	8	JD
1230	KNBR	PAT GRAY, PD	5382 S. 320 WEST, #D-272	SALT LAKE CITY, UT	84107	L	8	BN
1250	KCIW	ANN BLACKFORD, GM	DRAWER 'Y'	WICKENBURG, AZ	85358	LB	7-10	BN/BN
	KIXC	CLARK FLETCHER, GM	BOX 1250	FORSYTH, MT	59327	P	10f	TRH
	LLK	BRIAN HENRY, OWNER	PO BOX 1520	WILLITS, CA		L+	8	SBP
	KWSU	DENNIS HAARSAGER, GM		PULLMAN, WA		Q	88	BN
	WIZZ	AL HOLL, GM	PO BOX 377	STREATOR, IL	61364	L	9	KVJ
1270	KAJO	MARVIN PANGBURN, CE	[* JAN '82]	GRANTS PASS, OR		L		PH
	HLBR	GLENH WAPBRIGHT, CE	BOX 1270	LEBANON, PA	17042	QB	10	TK
1280	KXKL	RICHARD E. DOUGLAS, ENG.	1165 DELAWARE	DENVER, CO	80204	L	108	BN
1290	KBVO	VERN ARGO, ENG.	PO BOX 5023	HISSOULA, MT	59806	P	15f	TRH
	WHIO	R. GAJER, CE	[* MAR '87]	DAYTON, OH		Q		JD

FREQ	CALL	SIGNER'S NAME / TITLE	ADDRESS		WHAT	WHEN	WHO	
1290	WKY	JEFFREY B. LONG	PO BOX 1059	HICKORY, NC	28603	L	8	KVJ
	WKLB	LARRY BARKER, PRES.	106 RICHMOND RD / BOX 448	MANCHESTER, KY	40962	Lr	12	KVJ
	WTX	JIM BROWNELL	RTE 2, PO BOX 96	LYNCHBURG, TN	37352	L	8	KVJ
1300	KAKC	STEVE DAVIS, CE	5001 E. 41ST ST., #900	TULSA, OK	74135	LB	21	JD
	WOOD	DON MISSAD, CE	180 N. DIVISION	GRAND RAPIDS, MI	49503	LMB+	8f	JD
1310	WIDA	LEONARD CHARLES, CE	PO BOX 99	MADISON, WI	53701	L+P	9-13f	JD/TRH
1320	KZAM	KAY SLATON, PROMO DIR.	BOX 1123	EUGENE, OR	97440	L	45	PH
1340	CIBZ	MORTE SOLBERG, GM	POSTAL BOX 180	BROOKS, AB	TOJ 030	P	20f	TRH
	KACH	ROBERT ELLIS, GM	BOX 235	PRESTON, ID	83263	P	21f	BM/TRH
	KCEM	DAVE WATTS, MGR.	BOX 1360	AZTEC, NH	87410	P	25	TRH
	KTHP	KOLLEEN DAVIS, MGR.	[*] 94 S. MAIN ST. #3	HEBER CITY, UT	84032			B*
	WBAU	LARRY ENGLAND, OP MGR.	850 BOBBIN HILL RD.	ATHENS, GA	30610	L	8	KVJ
	WNSA	VICTOR PERRY, STN MGR.		MALONE, NY		LMB	12	B*
1350	W6IA	JAMES HOORE, GM	PO DRAWER 619	BLACKSHEAR, GA	31516	LB	11	JD
1370	KCRV	TOM HILL, CE		CAROTHERSVILLE, MO		L	62f	KVJ
	KDTH	MARC KARRMANN, CE	EIGHTH AND BLUFF	DUBUQUE, IA	52001	LB	142	TRH
	KGNO	JERRY MILLER, CE	908 FRONTVIEW / BOX 1398	DODGE CITY, KS	67801+	L+	12	TRH
	KXYL	ANDRE MARTELL-STEEL, OFF MGR.	BOX 3788	DUTTE, MT	59702	LMB+	13	B*
	WOTC	GREGORY LAMB, ASST CE	400 ONE CITY SQUARE	BLOOMINGTON, IN	47401	LB	75	J*
1390	KMIY	FRED COMPTON, CE	PO BOX 170	TURLOCK, CA	95381	LB	23	SEP
	KMRV	BOB BIFFORD, PD	1551 NE 66TH AVE.	DES MOINES, IA	50313	P	11f	TRH
	KRRZ	CHARLIE FERGUSON, PRES/GM	216 S. BROADWAY / BOX 10	MINDT, MD	58702	P	8f	TRH
1400	KDRG	MIKE MAY(?), PD	BOX 811	DEER LODGE, MT	59722	P	8f	TRH
	KLIN	CHARLIE MICHAELS, STN MGR.	BOX 30181	LINCOLN, NE	68503	L	7	B*
	KSRR	RAY BISHOP, OP MGR.	1400 W. 400 NORTH	OREN, UT	84057	L	7	B*
	WDMY	DAVID MANCIE, GM		DANSVILLE, NY		LMB++	19	MB
		I PLUS A LOCAL NEWSPAPER CLIPPING ABOUT HIS RECEPTION		REPORT ! EXCELLENT, MIKE !		--	TRH	J*
1410	WMLL	J.C. BURNS, CE	PO BOX 2657	MOBILE, AL	36652	LB	67	JD
1420	WVJS	JEFF ARNETT, CE	BOX 1828	OWENSBORO, KY	42302	LMB+	72f	KVJ
1430	WNGS	NIKE LEVINE	PO BOX 1466	TIFTON, GA	31794	L	83f	J*
1440	WFTQ	DOM BORDONARD, CE	19 MORWICH ST.	WORCESTER, MA	01608	LB	11	TK
1450	KATR	LARRY SELZLE, CE	[* JAN '87]	GREELEY, CO				B*
	KEZJ	KELLY KLAAS	BOX 346	TWIN FALLS, ID	83303	L	5	B*
	KDDI	W.R. BURCKHARD, CE	BOX 6760	GREAT FALLS, MT	59406	Lr	5	JCJ
	KXLL	TOM WEIR, CE	1450 W. KAGY BLVD.	BOZEMAN, MT	59715	P+	28f	TRH
1460	KKCS	FRANK MARTINEZ, HX DIR.	[* SEPT '86]	COLORADO SPRS, CO				B*
1470	KBSN	D. MICHAEL SHUETT, HX DIR.	PO DRAWER D / 2241 W.MAIN	MOSES LAKE, WA	98837	P	15f	TRH
	KTCB	DEWISE EVANS, TFC DIR.	BOX 379	MALDEN, MA	63863	LMB	7	TK
1480	WVCF	WAYNE BURDICK, GM		OCDEE, FL		P	260f	KVJ
1490	WTRL	JACK CARON, OP MGR.	PO BOX 1490	BRADENTON, FL	33506	L	262f	KVJ
1500	KSTP	NORM PAETZNICK, ENG SUPV.	2792 HAPLEWOOD DR.	ST. PAUL, MN	55109	L	9	TK
	WTOP	(UNSIGNED)	4646 40TH ST. NW	WASHINGTON, DC	20016	Q	9	TK
1510	KHSE	(ILLEGIBLE), GM	BOX 5000	ONTARIO, CA	91761	P	9	B*
	HLAC	NICK FORLIDAS (FORM LETTER	SIGNED NH. WATT HAIRSTON)	NASHVILLE, TN	37203	L	46f	TRH
	WHRE	ELIZABETH A. SCHULENBERG,						
		PROGRAM COORDINATOR	74 LANSDOWNE ST.	BOSTON, MA	02215	LB	16	TK
1520	WTKB	[& WKBW] TOM ATKINS, CE	695 DELAWARE AVE.	BUFFALO, NY	14209	LB	18-21	TK
	WVSL	PATTY CORD, OP MGR.	PO BOX 338	SHELBYVILLE, IN	46176	LMB	11f	JD
1530	CISV	JIM WILLIAMS, ENG.	BOX 1570 [now 1570 kHz]	HINKLER, MB	RO6 210	L	68	B*
	KCTT	SCOTT J. MILLER	PO BOX 100	YELLVILLE, AR	72687	L	160f	KVJ
	WCKY	TED K????, CE	501 CAREW TOWER	CINCINNATI, OH	45202	Q	17	TK
1540	KXEL	JOHN A. BAUER	BOX 1540	WATERLOO, IA	50704	QB	8	TK
	WPTR	JAMES SEAMEN, CE [WAZAJH]	BOX 12279	ALBANY, NY	12212	LH	13	TK
1570	WFRL	CARL PLASTER(?), CE	BOX 810 / 834 N. TOWER RD.	FREEPORT, IL	61032	P/L	8-9f	JD/TRH
1580	WKKD	BILL BAKER, GM		AURORA, IL		LB	15	MB
	WKUN	BERAL MORRIS, PRES / GM	702 E. SPRING ST.	HONROE, GA	30655	LH+	7	JD
	WPMO	HANS ATWOOD, CE	5115 TELEPHONE RD.	PASCAGOULA, MS	39567	LMB+	7	JD
	WVKO	JOHN MAROCCHI, CE	4401 CARRIAGE HILL LAKE	COLUMBUS, OH	43220	LH+	6	PH
1590	KJET	CATHY KELLER, PROMO DIR.	[* NOV '83]	SEATTLE, WA				B*
	KKAY	MICHAEL P. LEBLANC, MGR.	PO BOX 797	DONALDSONVILLE, LA	70346	L	23	KVJ
	KVGB	G.H. SHIMERMAN, CE	PO BOX 609	GREAT BEND, KS	67530	QP	27f	TRH
	KYDE	JERRY NASON, GM	818 N. UNIVERSITY DR.	PINE BLUFF, AR	71601	L	148	KVJ
1600	KHNY	MARK E. POMPEY, CE	233 S. BEAUDRY AV. #1220	LOS ANGELES, CA	90012	L	30-31	SBP/TRH
	WTRV	ROBERT ?, ASST ENG [KAZWL]	I THANKS FOR YOUR HELP WITH THIS, TOM !!	--	TRH]			J*
		ROBERT ?, ASST ENGINEER	I THE VERIE EVEN ARRIVED IN TIME FOR THIS COLUMN !!			P	9f	TRH
1610	TIS	JOHN JENSEN, CHIEF RANGER	MT. RAINIER NATIONAL PARK	ASHFORD, WA	98304	L	6	PH

WHAT was received: Q=QSL card, L=Letter, P=Prepared card, Lr=rpt used as verie, B=Buferstickers, M=Map.
WHEN did the reply come: Number of days elapsed. f = Follow-up report (or phone call) was necessary.

HELP WANTED SECTION: (Having trouble verifying a station ? Here's where to ask the membership for help !)

Can anyone supply a current signer for any of these stations ?

540 WDAK-BA (JD,TRH)	550 KTSB-TX (JD)	560 KLVI-TX (JD)	560 KWTB-HO (JD)
610 WTVH-DH (JD)	820 WOSU-DH (JD)	910 KGLC-OK (JH)	920 CKCY-ON (JD)
940 WTNZ-FL (JD)	960 KZIH-HO (JD)	970 WKLS-GA (JD)	1000 KTOK-OK (JD)
1030 KFAY-AR (JD)	1070 WDAI-TN (JD)	1120 WQXM-GA (JD)	1130 WBZL-TN (JD)
1160 WKCM-KY (JD)	1210 WBIU-LA (JD)	1320 KELO-SD (KVVJ)	1370 KCRV-HO (JD)
1370 WDEF-TN (JD)	1380 WAGG-BA (JD)	1390 WHER-MS (JD)	1390 WTJS-TN (JD)
1420 WRCB-GA (JD)	1470 KLEL-LA (JD)	1490 KNET-CA (TRH)	1580 KFNN-IA (JH)

TIPS MARKED WITH AN ASTERISK(*) ABOVE ARE PAT MARTIN'S, BILL NITTLER'S, J.D. STEPHENS' & TIM KRIDEL'S RESPONSES TO RECENT HELP-WANTED ITEMS. ALSO, NY VORIES FROM WIBA & WFLR ARRIVED SHORTLY AFTER J.D. CALLED THE STATIONS TO FOLLOW UP ON HIS REPORTS THERE. THANKS !

Contributors:

- MB --- MIKE BROOKER, 99 Wychcrest Ave., Toronto, ON M4G 3X8
- JH --- JIM HALL, 240 Byron Rd., Pittsburgh, PA 15237
- TJ --- TOM JASINSKI, 503 Jensen St., Shorewood, IL 60434
- KVJ --- KARL JETER, 2115 Scarborough Rd., Stone Mtn, GA 30088
- JCJ --- JOHN C. JOHNSON, 979 Neptune Blvd., Billings MT 59105
- TK --- TIM KRIDEL, Box 147, Middle Island, NY 11953
- TML --- TOM LASKOWSKI, 223 Hawkins Grad Hs, W.Lafayette, IN 47906
- PM --- PAT MARTIN, PO Box 843, Seaside, OR 97138
- BN --- BILL NITTLER, PO Box 824, Mancos, CO 81328
- SBP --- STEVEN B. PUCCI, 6143 Corte Trancas, Pleasanton, CA 94566
- RSR --- ROBERT S. ROSS, Box 4373 Stn. "C", London, ON N5W 5J2
- JD --- J. D. STEPHENS, 3605-B Chasewood, Huntsville, AL 35805
- OW --- JOHN WILKINS, 4385 Hoyt St. #205, Wheat Ridge, CO 80033

WELCOME to first-time reporters TOM JASINSKI and TIM KRIDEL. Over 180 signers this month from 13 contributors. Excellent !

I've just purchased a KAYPRO 286 (AT) computer, and I'm starting a rather extensive database of AM information. More about this in an upcoming Forum. Hope to see you all again next month. --- Tim

THE WORD FOR TODAY

Station List
via Doug Nyholm

ALABAMA

Montgomery	WAPZ	9:30 AM	1250 AM
Mobile	WMOB	10:30 AM	1360 AM

ALASKA

Eagle River	KCFA	8:30 PM	1020 AM
-------------	------	---------	---------

ARIZONA

Phoenix	KMLE	11:30 AM	108 FM
Lake Havasu City	KSLB	10:00 PM	91 FM
Tucson	KVOI	7:30 AM	690 AM

CALIFORNIA

Merced	KAMB	9:00 PM Mon.	101.5 FM
Rosemead	KAVC	9:30 AM	105.5 FM
Stockton	KCHJ	5:00 AM/9:30 PM	90.1 FM
Wasco	KERI	1:30 PM Sun. only	1180 AM
San Francisco	KFAX	11:00 AM	1100 AM
Sacramento	KFA	9:00 AM	710 AM
Mammoth Lakes	KMMT	7:30 AM	106.3 FM
Quincy	KNLF	7:00 AM	103 FM
Thousand Oaks	KRCL	12:00 PM Sun. only	101.5 FM
San Clemente	KWVE	1:30 AM/7:30 AM/12:00 PM	108 FM
Santa Maria	KCFM	8:00 AM	99 FM
Carpinteria	KGFT	9:00 AM	102 FM
Grass Valley	KNCO	7:30 AM	94.3
Fresno	KIRV	7:00 AM/6:00 PM	1510 AM

COLORADO

Pueblo	KFEL	7:30 AM/10:00	970 AM
--------	------	---------------	--------

CONNECTICUT

Milford	WTFP	9:30 AM	1500 AM
---------	------	---------	---------

FLORIDA

Tallahassee	WCVC	8:30 AM	1330 AM
Tallahassee	WKQE	9:00 AM	1410 AM
Maitson	WMAF	10:30 AM	1230 AM
Fort Myers	WSOR	10:30 AM	95.3 FM
Sarasota	WJIS	3:30 PM	88.1 FM
Cypress Garden	WGTO	7:30 AM	540 AM

GEORGIA

Carverville	WCCV	10:00 AM	91.7 FM
Makin	WBML	1:30 PM	900 AM

HAWAII

Honolulu	KLIT	9:00 AM/9:30 PM	1040 AM
----------	------	-----------------	---------

IDAHO

Caldwell	KDGN	11:00 AM	1060 AM
Twin Falls	KCIR	3:30 PM	95 FM
Boise	KSPD	7:30 AM	790 AM

ILLINOIS

Champaign	WBGL	10:00 AM	91.7 FM
Pekin	WCIC	10:30 PM	91.5 FM
Carlinville	WBIJ	11:00 AM	91.1 FM
Peoria	WVEL	7:00 AM	1140 AM

INDIANA

Indianapolis	WBRI	7:00 AM	1500AM
Indianapolis	WXIR	10:00 PM	98.3 FM

IOWA

Des Moines	KDMI	1:30 PM	97.3 FM
------------	------	---------	---------

KENTUCKY			OREGON		
Louisville	WXLN	10:00 AM	104 FM	Newburg	KFOK 7:00 PM Sun. & Thurs 90 FM
MARYLAND			John Day		
Grantsville	WAB	6:30 PM	90.3 FM	Bend	KGNR 12:00 PM 90.1 FM
Baltimore	WFEL	8:30 AM/8:00 PM	1570 AM	Portland	KWLR 8:30 AM/7:30 PM 97.5 FM
MASSACHUSETTS			Coos Bay		
Springfield	WACE	8:00 AM	730 AM	PENNSYLVANIA	
Boston	WZEZ	9:30 AM/5:00 AM/7:30 PM	1260 AM	Union City	WCTL 10:30 AM/9:30 PM 106.3 FM
MICHIGAN			Pittsburgh		
Hancock	WMPL	5:00 PM	920 AM	Philadelphia	WZZD 6:00 PM 101 FM
Ypsilanti	WWCM	10:00 AM	990 AM	Russell	WGSJ 7:30 AM 990 AM
Detroit	WLQV	9:30 AM	1500 AM	Pittsburgh	WPLW 9:00 AM 103.1 FM
MINNESOTA			10:30 AM 1590 AM		
Minneapolis	KULX	8:30 AM/7:00 PM	1570 AM	SO. CAROLINA	
Osakis	KBHL	7:00 PM	103.9 FM	Goose Creek	WKCL 2:00 PM 91.5 FM
MISSISSIPPI			Greenville		
Clinton	WTWZ	8:00 AM/9:30 AM Sat.	1120 AM	WLFJ	11:00 AM Sun. only 89.3 FM
MISSOURI			TENNESSEE		
Centralia	KMFC	11:00 AM	92 FM	Collierville	WCRV 9:30 AM/8:00 PM 640 AM
St. Louis	KSTV	9:30 AM	1320 AM	Nashville	WWGM 6:45 AM/7:30 PM 1560 AM
Independence (Kansas City)	KCCV	9:30 AM	1510 AM	Jackson	WIAK 10:00 AM 1463 AM
MONTANA			TEXAS		
Kalispell	KALS	8:30 AM	97.1 FM	El Paso	KELP 7:30 AM 1500 AM
NEBRASKA			Ablene		
Omaha	KCRO	7:00 AM	660 AM	Austin	KGNZ 5:30 PM 87 FM
NEVADA			Tyler		
Las Vegas	KLA	9:30 AM/12:30 PM/3:30 PM	95 FM	Dallas	KXLD 7:00 AM 970 AM
Carson City	KNIS	6:30 PM	94.7 FM	Crece	KVNE 12:00 AM 99.5 FM
NEW HAMPSHIRE			KXOI 8:30 AM 99.3 AM		
Nashua	WOTW	8:30 AM	900 AM	UTAH	
NEW JERSEY			Ogden		
Hackensack	WWDJ	7:30 PM	970 AM	KANN	9:00 AM 90 AM
NEW MEXICO			VERMONT		
Albuquerque	KQDM	7:00-7:30 PM	100 AM	Waterbury	WGLY 7:00 AM/4:30 PM 103 FM
Farmington	KNMI	5:00 PM	88.9 FM	VIRGINIA	
NEW YORK			Arlington		
Champlain	WCHP	11:30 AM	760 AM	Richmond	WABS 9:30 AM 780 AM
Buffalo	WDCX	1:00 PM	760 AM	Smithfield	WDYL 6:45 AM 92.1 FM
Cherry Valley	WTV	8:00 AM/7:30 PM	101.9 FM	Portsmouth	WKGM 8:00 AM 940 AM
Day Shore	WLX	9:00 AM	540 AM	WXRJ	7:00 PM 105 FM
East Syracuse	WOIV	8:00 AM/8:30 PM	1540 FM	WEST VIRGINIA	
Rochester	WWWG	7:30 AM	1460 AM	Charleston	WSCW 1:00 PM 1410 AM
NO. CAROLINA			WASHINGTON		
Farmville	WGHB	7:00 AM/12:30 AM	1250 AM	Seattle	KCIS 5:00 AM 630 AM
Winston-Salem	WBFB	8:30 AM	1550 AM	Seattle	KGNW 2:30 PM/7:30 PM/3:30 PM 1150 AM
High Point	WOKX	8:30 PM	1590 AM	Lynden	KLYN 7:30 PM 106.5 FM
Raleigh	WFIL	1:30 PM	1240 AM	Spokane	KRSS 11:30 AM 1230 AM
Roanoke Rapids	WPGT	9:30 AM	90.1 FM	WISCONSIN	
OHIO			Menasha		
New Albany	WCVO	12:30 PM	105 FM	WEMT	8:00 AM 100 FM
Zanesville	WCVZ	7:30 PM	93 FM	PHILIPPINES	
Bowling Green	WYFM	8:00 AM	730 AM	DWRT	7:00 AM/6:00 PM 99.5 KHz
Cleveland	WCOD	8:30 AM	1000 AM	<i>europe</i>	
Lima	WTGN	7:30 PM	97.7 FM	RADIO CAROLINE - 962 KHZ - 9:00 PM London Time for following Countries:	
Cincinnati	WTSJ	7:30 AM	1050 AM	England	
OKLAHOMA			Scotland		
Oklahoma City	KRMC	1:30 PM	1220 AM	Ireland	
			France		
			Belgium		
			Holland		

IRCA Foreign DX Reference, Volume 24

Phil Bytheway is completing the cross reference listing of all the stations reported to DXWW-W and DXWW-E during volume 24 of "DX Monitor" (9/86-8/87). There are three sections available: Trans-Atlantic, Pan American, and Trans-Pacific. Each section contains a frequency listing (countries reported for each frequency) and a country listing (frequencies reported for each country) showing the "DX Monitor" issue number in which they were reported. These guides are a valuable reference to what was heard last year, and where to look to find specific information about the receptions.

Each listing is 5 or 6 pages long. You can order any one of the three (TA, PA or TP) for \$1.00 each, or all three for \$2.50. Make checks out to Phil Bytheway and send them to: 9705 Mary N.W., Seattle, WA 98117.

THE INTERNATIONAL RADIO CLUB OF AMERICA (IRCA)

The IRCA is a non-profit organization devoted to the hobby of hearing distant stations on the AM Broadcast Band (510 - 1630 kHz). "DX Monitor", the official publication of the IRCA, is published 34 times a year, weekly from October to March, twice in September and April, and monthly from May to August. "DX Monitor" contains members' loggings, articles on radio stations, receiver reviews, technical articles, DX tips, and other material of interest to Broadcast Band DX hobbyists. IRCA is a member of ANARC, the Association of North American Radio Clubs.



CLUB ADDRESSES AND OFFICERS

President: Karl Zuk, 154 Old Post Road North, Croton, NY 10520-1932.
Secretary-Treasurer: John Clemmer, P.O. Box 482, E. Moline, IL 61244.
Board of Directors: Ernest R. Cooper, Richard Evans, Ric Head, John C. Johnson, Patrick Martin, Bruce Portzer, Rich Toebe.
Editor-in-Chief: Bruce Portzer, 6546 19th Ave. N.E., Seattle, WA 98115.

MEMBERSHIP DUES

U.S. - \$20.00 per year. Canada/Mexico - \$26 (one issue mailed every week) or \$20 (two issues every two weeks). Overseas Surface - \$21. Overseas Airmail - \$30 (Central America, Caribbean, Colombia and Venezuela), \$33 (Europe, North Africa, Middle East), \$37 (rest of the world). Trial Membership - \$7.50 (10 issues of "DX Monitor" and a New Member Packet, U.S./Canada/Mexico only). Make checks and money orders payable to IRCA and send all dues to: IRCA, P.O. Box 482, E. Moline, IL 61244. Persons living outside the U.S., please use International Money Order in U.S. funds. Sample copies of "DX Monitor" are 50 cents or three International Reply Coupons each and are available from: IRCA, P.O. Box 21074, Seattle, WA 98111.

THE IRCA GOODIE FACTORY

Reprints of more than 400 articles from past issues of "DX Monitor" are available from the IRCA Goodie Factory. Also available is IRCA stationery and the very popular IRCA publications: "IRCA Almanac", "A DXers Technical Guide", and the "IRCA Foreign Logs". For a complete list of available publications and their costs, send a self-addressed, stamped envelope to: IRCA Goodie Factory, P.O. Box 21074, Seattle, WA 98111.

Unless otherwise noted, permission is granted to publish, broadcast, or otherwise reproduce non-copyrighted material appearing in "DX Monitor" provided credit is given to the IRCA and the original contributor. Opinions expressed in "DX Monitor" are those of the original contributors and do not necessarily reflect those of the IRCA, its publishing staff, editors or officers.

International Radio Club of America
P.O. Box 21074
Seattle WA 98111

FIRST CLASS

FIRST CLASS MAIL
US POSTAGE
PAID
Seattle WA
Permit No. 601

D. A. NYHOLM
207 CEDAR STREET
SAN CARLOS CA 94070

19