

DX MONITOR

THE OFFICIAL PUBLICATION OF THE IRCA INTERNATIONAL RADIO CLUB OF AMERICA

DEVOTED EXCLUSIVELY TO BROADCAST BAND DXING

April 2, 1988

Volume 25, Number 28

Edition 818

IN THIS ISSUE

EASTERN DX ROUNDUP	2
CENTRAL DX ROUNDUP	3
SCUFFLE STOPS AT ALL-NEWS STNS .	3
WESTERN DX ROUNDUP	4
HEARING 50 STATES IN THE NORTHWEST	6
KPOF CELEBRATES 60 YEARS	10
IRCA SPORTSCENTRE	11
MORE ON KZRZ-1010	11
ANARC REPORT	12
WESTERN DX FORUM	13
MUMBLINGS OF THE MEMBERS	14
PHONE BOOK TIPS	16
A DXERS TOUR OF POLAND	16
COUNTRY OF THE MONTH - BRITISH COLUMBIA	17
BROADCAST BAND STRESS RELATED SYNDROME	18
THE NOT SO FAMOUS PERMISTABLE MULTIVIBRATOR	19

BITS & PIECES

AS PART OF AN ONGOING MOVE TO "PRIVATIZE" U.S. GOVERNMENT OPERATIONS, THE REAGAN ADMINISTRATION RECENTLY PUT SEVERAL FEDERAL AGENCIES AND DEPARTMENTS UP FOR SALE. WE'RE THRILLED TO REPORT THAT IRCA WAS THE SUCCESSFUL BIDDER FOR THE U.S. POSTAL SERVICE AND THE FCC'S BROADCAST BUREAU. THE TWO WERE PURCHASED FOR A COMBINED PRICE OF \$3.5 BILLION DOLLARS, WHICH WILL BE PAID FOR WITH SURPLUS CASH FROM THE CLUB TREASURY.

THE PURCHASE OF THE POST OFFICE WILL HAVE SEVERAL ADVANTAGES:

1. WE'LL FINALLY BE ABLE TO CONTROL THE QUALITY, SPEED AND COST OF THE CLUB'S MAIL SERVICE.
2. WE'LL BE ABLE TO PAY OUR EDITORS & CLUB OFFICERS A HANDSOME SALARY FOR THEIR EFFORTS.
3. WITH THE PROFITS FROM MAIL DELIVERY, WE'LL BE ABLE TO PAY IRCA MEMBERS SEVERAL THOUSAND DOLLARS A YEAR --- AN EXCELLENT RETURN FROM THE \$20 ANNUAL DUES.
4. WHEN POSTAGE RATES GO UP, WE'LL MAKE EVEN MORE MONEY, INSTEAD OF SCRAPING TO MAKE ENDS MEET.
5. THE NEXT TIME NRC BADMOUTHS US, WE'LL BE ABLE TO SINGLE OUT THEIR BULLETINS FOR "SPECIAL" TREATMENT.

THE PURCHASE OF THE BROADCAST BUREAU HAS OTHER EXCITING POSSIBILITIES. WE PLAN TO REQUIRE ALL AM STATIONS IN THE US TO SIGN OFF AT MIDNIGHT EVERY NIGHT. THEY WILL ALSO BE REQUIRED TO RUN DX TESTS ON A REGULAR BASIS. WE WILL WORK UP A TESTING SCHEDULE FOR THE TESTING, SUCH AS HAVING ALL AM STATIONS IN MAINE TEST ON A MORNING WHEN CONDITIONS ARE GOOD TO THE NORTH. ALL STATIONS WILL BE REQUIRED TO RUN VOICE AND MORSE CODE IDS AT LEAST ONCE EVERY TWO MINUTES. THEY'LL ALSO BE REQUIRED TO VERIFY ALL RECEPTION REPORTS.

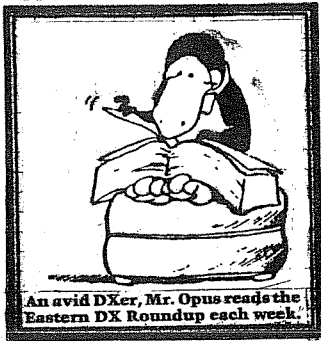
WE'RE LOOKING FORWARD TO THIS NEW ERA IN IRCAS HISTORY, WHEN WE CAN CONTROL OUR OWN DESTINY, PLUS THE FATE OF EVERYONE ELSE'S RADIO RECEPTION AND MAIL SERVICE. WE CAN HARDLY WAIT... THIS IS GOING TO BE FUN.... TEE HEE.....

WE'VE GOT A SHORTAGE OF REAL COLUMNS THIS WEEK. NO DX WORLDWIDES BECAUSE OF NO TIPS. I KNOW CONDITIONS ARE THE PITS THIS SEASON, BUT SOMEBODY MUST BE HEARING SOMETHING. IF YOU'RE ONE OF THEM, SEND YOUR CATCHES TO PAT OR JIM. NO EDXF BECAUSE OF POST ANNIVERSARY ISSUE DEARTH, AND ONLY TWO WDXF REPORTS BECAUSE RIC HAD THE FLU. FORTUNATELY, THIS IS THE APRIL FOOLS EDITION OF DX MONITOR, SO WE HAVE SOME FEEBLE ATTEMPTS AT HUMOR TO MAKE UP FOR IT. JUST DON'T BELIEVE EVERYTHING YOU READ, HI.

THE DAYTON, OHIO HAMVENTION WILL BE HELD APRIL 29-30 & MAY 1 AT THE HARA ARENA AND EXHIBITION CENTER. IT WILL INCLUDE A HUGE THREE-DAY FLEA MARKET PLUS COMMERCIAL EXHIBITS, SEMINARS, AND OTHER ACTIVITIES. ALTHOUGH AIMED AT HAMS, THE EVENT HAS SOME OBVIOUS INTEREST TO BCB AND SHORTWAVE DXERS. ADMISSION IS \$10 AT THE DOOR.

ALBERT LOBEL SAYS THE SCADS MEETING ON 20 APRIL WON'T BE AT THE LUTHERAN CHURCH. INSTEAD THERE WILL BE A SCADS PICNIC. IF YOU'RE INTERESTED CONTACT DON SCHMIDT AT 215-424-4634.

WE HAVE ONE MORE ISSUE ON OUR WEEKLY SCHEDULE. THEN WE WILL EASE OFF FOR ANOTHER SEASON. CUN7. BP.



-EASTERN DX ROUNDUP-

-EASTERN DX ROUNDUP-

Editor: Tim Kridel
Box 147
Middle Island, NY 11953

Deadline: Saturdays

Greetings! This week's first item of business is clearing up an earlier UNID, with help from Jim Hall of DKWW-E fame. He writes "RE: UNID-1590 from Mike Brooker-ON in 2-13 DXM, this was most likely Chicago's SS WOXN (licensed to Evanston, a suburb)...Occ IDs in EE at top of hour, but not always." Many thanks for the help, Jim.

(GH-PA) Gary A. Heisey
Box 310F RDL; Osterburg, PA; 16667
Philco radio, GE Superadio

(LH-AL) Lynn Holleraan; 1237 Willowbrook Drive, Apt. 5; Huntsville, AL; 35802
Toyota car radio

-
- 660 WMIC MI, Sandusky 3-15 1815 Briefly fair w/ WNBC, w/ wx for Lake Huron, Sandusky area, Peter Jennings @ 1816. Calls were "WMIC, W___," w/ second set unclear. (GH-PA)
- 750 WWAX PA, Olyphant 3-14 1720 Poor, brief on fade-ups w/ many "WAX radio" IDs. Spot for IGA, soft T40 songs. (GH-PA)
3-15 1700 Vpoor w/ "WWAX" by YL after Whitney Houston song. New stn. (GH-PA)
- 790 WFIC PA, Sharon 3-14 0730 Poor in mess w/ ID by man, ment of Pittsburgh area. (GH-PA)
- 1000 GFLP PQ, Rimouski 3-10 1930 Poor w/ jx ID, mx, talk in FF. Ment of Quebec. Tentative. (GH-PA)
- 1000 WLNL NY, Horseheads 3-14 1630 Fair w/ "NY's lighthouse WLNL Horseheads, also serves north central PA," relig program. Replaces WIQT. (GH-PA)
- 1030 UNID IL, Vernon Hills 3-13 1846 Vweak in WBZ null, w/ "Vernon Hills" by man @ end of relig program. Calls sounded like WGGI. (GH-PA)
- 1040 WSKE PA, Everett 3-15 1430 Man ment that WSKE 104.3 FM is in very first day of operation, giving prize for farthest FM listener, who turned out to be in State College, PA. New FM will be simo w/ C&W AM. (GH)
- 1110 WSPW NY, Seneca Falls 3-5 1810 Fair w/ "FM 99 WSPW," old/new T40. (GH)
- 1220 WENC NC, Whiteville 3-10 0800 Poor w/ promo for NC nx net. "This is WENC Whiteville" by man. (GH-PA)
- 1330 WFBC SC, Greenville 3-1 2045 Fairly strong w/ Talknet w/ Bruce Williams. Ads, NBC nx, ID. (LH-AL)
- 1360 UNID 3-3 1859 Fading fast w/ C&W mx, "WWHY, solid gold country" ID. (LH) (I have a WWHY, Huntington, WV, listed on 1470. May have switched frequencies. -TK)
- 1360 WWNK OH, Cincinnati 3-3 1856 Heavy static w/ 50s, current mx. SNN nx @ 1910, "K-rock" ID, jx. (LH-AL)
- 1370 WCOA FL, Pensacola 3-1 1858 Fading w/ Gulf temps, wx, ID, CBS nx. "The World Tonight" @ 1915. (LH-AL)
- 1380 KGLD MO, St. Louis 3-3 1852 Quick fade w/ St. Louis wx, ID. (LH-AL)
- 1380 WYNK LA, Baton Rouge 3-1 1854 Strong, then quick fade w/ ID, simul of FM 101.5 "Continuous country." (LH-AL)
- 1470 CKO PQ, Pointe Claire 3-2 2010 Fair o/ noise w/o usual CHOW, w/ "This is nx radio CKO," "CKO radio net" nx and talk followed. (GH-PA)

Congratulations on your Master's, Lynn...That's quite an accomplishment!...Best of DX and 73s de TK...



WESTERN DX ROUNDUP

2301 PACIFIC AVE., ABERDEEN WA 98520

Deadlines for WDXR tips: Mon. 4/11, Mon. 5/2, Sat. 5/28, Mon. 6/27

REPORTERS FOR THIS ISSUE:

- (TRH) Tim Hall-350 G St. #F-1-Chula Vista, CA 92010
ICF-2010, Radio West loop
- (PM) Patrick Martin-P.O. Box 843-Seaside, OR 97138
SP-600JX, 1500' E Beverage, 200' NE-SW wire
- (RHM) Roy H. Millar-Marysville, WA 98270
HQ-180A, Sanserino loop
- (RW) Robert Wien-1309 Dentwood Dr.-San Jose, CA 95118
GE Superadio, GE long-range portable, SM-2

OF SPECIAL INTEREST:

- 970 KCTR MT, Billings 3/14 0542 faded up nicely over KYTE/KHYV/KAFY with several local ads, ID as KCTR, and "Cat Country," into C&W. Call change, ex-KBIT. (RW-CA)
- 1330 KMRR AZ, Tucson MM 3/14 0106 good over KFAC with MYL-type music, ID by male DJ; "KMRR, AM 13-30, the desert's memory maker, with 40 years of great music." Ex-KHYT. (TRH-CA)
- *****
- 560 ?KLVI? TX, Beaumont MM 3/14 0300 thought I caught their legal ID, but tape was too garbled to confirm it. Mixing with KLZ in KSFO null. (TRH-CA)
- 660 WNBC NY, New York 3/11 0420 very weak under CFFR with what seemed to be local news or talk. Managed to catch their ID on tape. Not heard since 1977, so wasn't in my current totals; NY #5. (TRH)
- 710 KIRO WA, Seattle MM 3/7 0400 poor, just caught legal ID with KMPC off. Seemed to be running Talknet with KNUS, mixing with KGNC (Larry King) and usual XEDP. Rare here. (TRH-CA)
- 870 WWL/ LA, New Orleans & NE, Lexington 3/11 0530-0542 noted simulcasting
880 KRVN with the "Road Gang Truck Radio Network" C&W music show. Male DJ gave dual IDs. Great idea, since a trucker leaving one station's coverage area could just tune 10 kHz over to get the other station. (TRH-CA)
- 940 KBRE UT, Cedar City 3/10 2032 strong over KFRE with local spots, "94, KBRE" ID. (RW-CA)
- 950 ?KOZE? ID, Lewiston 3/10 2120 tent. good o/u KAHI with high school game between the ?Tuna? Cavemen & the Shelley High Apes (Shelly is a suburb of Idaho Falls), several ment's of Idaho. Possibly KJHY/KKIC also? (RW-CA)
- 1030 KJDJ CA, San Luis Obispo 3/10 0359:55 good with Larry King Show, ID "KJDJ, San Luis Obispo," into NBC News. (PM-OR)
- WBZ MA, Boston 3/15 0410 fair o/u Calif., with talk. (PM-OR)
- 1150 KSAL KS, Salina 3/15 0407 with spot for "Get your tickets for," sports event "on KSAL," into Talknet. (PM-OR)
- 1190 KPZE CA, Anaheim 3/15 0345 fair with KEX off. Relig.-pop music, ID. (PM-OR)
- (KEX) OR, Portland 3/14 0300-0715 off this period, back on RS 0715.(RW)
- KLIF TX, Dallas MM 3/14 0347-0410 fair-good with KPZE with Talknet, local ads & promos, and a couple of nice clear legal IDs. Only heard once or twice before, with lousy signals. Was KEX off? (TRH-CA) (Tim, see Robert's tip above!--NH)

- 1190 CFSL SK, Weyburn 3/14 0400-0500 in good at times in varying KPZE null, heavy KLOK-1170 slop. BN news on hour, woman DJ, several clear "CFSL" IDs during hour of monitoring, apparent soft rock format. Signal losing out eventually to unID Larry King (KLIF?). New! (RW-CA)
 +3/15 0340 with "Coast to Coast" net, local break. (PM-OR)
- 1200 *WOAI* TX, San Antonio 3/14 0442 good with OC. (RW-CA)
- 1220 WGAR OH, Cleveland 3/14 0338 briefly good over KTSJ with promo, ID "1220, WGAR." Uncommon here. (RW-CA)
- 1230 KRSY NM, Roswell MM 3/14 0157-0217 fair with KLAV with SMN country music, SNN news on the hour, and taped IDs: "12-30 on your Roswell radio dial, KRSY." Best reception ever--local pest KSON-1240 has lost some signal strength in the past few months! (TRH-CA)
- 1280 KDUK OR, Eugene 3/10 2149-2200 good over mess with Portland Trailblazers BKB game, several network ads. ID on hour "Trailblazers basketball on AM 1280, KDUK, Eugene-Springfield," gone by 2205. Call change, ex-KQAK, last logged in '85. (RW-CA)
- 1310 KIVA NM, Corrales MM 3/7 0310 good, dominating channel tonight with rock music, "New Mexico's hot-rockin' FM 105" slogan. Rarely this strong. (TRH-CA)
- 1320 ?KAVI? CO, Rocky Ford MM 3/7 0300 may have caught their ID, but tape recorder wasn't on at the time. Per NRC, they have been granted 98 watt night power. Would be new if I were sure about it. (TRH)
- 1370 ?KWNC? WA, Quincy 3/5, 3/8 & 3/10 SSB circa 0902 and intermittent SS, particularly after 0915, Quincy LSR/March. Just might be my closest "unlogged," but far from definite. (RHM-WA)
- 1390 KLGK UT, Logan 3/10 2055 loud over KMIX with Utah State Aggies-San Jose State Spartans BKB game. (RW-CA)
- 1470 KHND ND, Harvey MM 3/14 0700 s/on, announced 151 (?) watts prior to sunrise & 161 (?) watts after sunset. Hope will verify PSA reception! (RHM-WA)
- KAPS WA, Mt. Vernon MM 3/14 0600-0605 IDs sounded like RS, and sounded about 17 watts! Would think this foolishness if indeed RS with 50kw CJVB only about 60 miles away (but silent at this MM hour). (RHM-WA)
- 1530 WCKY OH, Cincinnati 3/15 0351 with discussion on universities in Ohio. KFEK off. (PM-OR)
- 1560 ?WPAD? KY, Paducah 3/10 0435 Larry King, this after news on half hour. Is WPAD AN now? (RHM-WA)
- WQXR NY, New York 3/11 0559 fair with classical music over all with ID, spot. (PM-OR)
- 1600 KATZ MO, St. Louis 3/11 0440 ID up from jumble "Better music on KATZ." (PM-OR)

UNIDs:

- 650 3/14 0710 interesting unID TT. Regular pattern of 1 kHz TT for 10 sec. then 1 sec. SP, continued for 20 minutes then off with no ID. Under CISEL/KORL. SE loop suggests XETNT? (RW-CA) (Do Mexican stations run tests???)--NH)
- 980 MM 3/14 0330 unID Talknet under KFVB/CKRM. Maybe KMBZ? (TRH-CA)
- 990 MM 3/14 0324-0506 unID Larry King mixing with KTKT. KGTM or KHVH?(TRH)
- 1130 3/15 0405 relig. program o/u CKWX, off Beverage. Ideas? (PM-OR)
- 1490 3/15 0254-0310 two unID stations, both with Larry King, with significant delay between the two. None of the stations I've logged on 1490 supposedly run LK, so I may have had two new ones here! Both looped NNE. (TRH-CA)

Not too many eastern stations reported this week. I was beginning to get used to typing the W calls, hi. ♡

IRCA Foreign DX Reference, Volume 24

Phil Bytheway is completing the cross reference listing of all the stations reported to DXWW-W and DXWW-E during volume 24 of "DX Monitor" (9/86-8/87). There are three sections available: Trans-Atlantic, Pan American, and Trans-Pacific. Each section contains a frequency listing (countries reported for each frequency) and a country listing (frequencies reported for each country) showing the "DX Monitor" issue number in which they were reported. These guides are a valuable reference to what was heard last year, and where to look to find specific information about the receptions.

Each listing is 5 or 6 pages long. You can order any one of the three (TA, PA or TP) for \$1.00 each, or all three for \$2.50. Make checks out to Phil Bytheway and send them to: 9705 Mary N.W., Seattle, WA 98117.

HEARING 50 STATES IN THE NORTHWEST

BY PATRICK MARTIN

I can hear what many of you are saying, "That can't be done.... Maybe 20 years ago but not now.....Those days are gone." Well... maybe, maybe not. I don't think it is going to be as easy as it once was and it wasn't easy then.

In the past few years I have been lucky enough to hear several stations from the East I thought I would never hear. A few years back I also felt the days of hearing all 50 states are gone. Now I am not too sure of it, especially if conditions do improve.

Living on the Northern Oregon coast away from strong locals and using a 1500 foot beverage antenna pointed East does help alot, and that may be what it takes to hear 50 states. A good Grounds help doesn't hurt to increase the signal and cut down on noise.

I have found in the past few years when conditions are good several new catches can be heard. Since 1984 I have heard WAKR-1590-Akron, Ohio; WHOO-990-Orlando, Florida; WJIK-1580-Jacksonville, North Carolina; WPGC-1580-Morningside, Maryland; and WHEZ-1560-Portage, Michigan just to name a few. That isn't Maine or Rhode Island, but if those stations come in why not others?

The crowding of frequencies in recent years have caused a lot of channels to be useless unless someone is off. Counting the useable frequencies at this location, I came up with quite a few that are fairly clear much of the time. 530 (unless you have a local TIS-CJFT is heard often here), 540- After CBK is off, KNOE and CJSB have been heard. 550 KHZ, I have trouble with Hawaii, as I live near the ocean. 550 KHZ may be clearer inland. 670 KHZ is fairly clear when KBOI is off some MMs, as WMAQ isn't that strong most of the time. 680 is good when KNBR is off, 690 is fairly clear when XETRA is off, 720-MMs when KDWN is off. Then there is 830 and 840 KHZ. WHAS is still a pest and WCCO is still very strong on 830 KHZ at times. 890 KHZ is fairly clear when St. George, Utah is off and the Canadian is weak. Even 900 KHZ isn't too bad at times as CJVI isn't that strong. 990 KHZ, as I heard WHOO a few months back and WNOX also comes in at times along with the Texan. 1030 KHZ is getting tougher, but WBZ still makes it in at times on MMs. About a year ago WTSO came in with KNX one morning. I think WTIC-Conn. still should make it in when KWJJ is off, which is rare. KRLL-Dallas tops 1080/KWJJ alot of the time. 1090 KHZ may be good when XEPRS/KING are off, 1130 has netted KWKH when CKWX isn't too strong. 1150 has brought in KSAL-Kansas when Seattle is off. Then there is 1180 which still isn't too bad on MMs bring in WHAM regularly here, 1190 KHZ when KEX is off, 1210 KHZ brought in WCAU last year one evening over the mess, Most of the frequencies up to about 1360 KHZ are pretty well blocked NSP at this time. 1360 has brought in Green Bay, Wisconsin (WGEE) and KOTA-South Dakota has been heard on 1380 KHZ. 1410 KHZ still is a good frequency here, even with KKUL-Portland on, as I don't hear them at night. WIZM-LaCrosse, Wisconsin has been heard several times in recent months. When KLO-1430-Ogden, Utah is off (Occasionally on MMs) WIRE-Indianapolis is heard along with CJCL. 1440 has brought in Kansas and Texas. 1470 is clear on MMs (after CJVB s/off), 1480 is great after KRED is off every night after Midnight or one. KSTP-1500 is regular on 1500, 1510 is good when KGA is off, KOMA mixes with KSGO on 1520, WKCY is heard when KFBK is off on MMs, KXEL is heard mixing with Bellevue, Wa, nightly, and 1560 is open after Midnight, when KPNC goes off nightly. 1580 is open alot of the time if Arizona isn't too strong, and many catches have been heard on both 1590 and 1600 KHZ. So there you are. There still is good DX if conditions are good.

Following is a list of your most possible stations to hear from all 50 states and the Canadian provinces from the Northwest. Of course this list can and probably will change as frequencies fill up and other stations go off. Good luck. You will need it.

Included with the list is also a A through D- rating I give each State or Province on how easy it is to hear. I would like to thank Bruce Portzer on this idea. He also contributed to the station list.

ALABAMA - A "C" rating..With the beverage here, one station that has been heard often is WXVI-1600-Montgomery. This is a Black Gospel station which pops through quite often after 0300 EST. KEED doesn't give me much trouble most of the time. Other stations to try for are: WLWI-740 when KCBS/CBX are off, WHOB-1360 on MMs, or WSKR-1590 when conditions are good.

ALASKA - A "B-" rating. A would rate this higher if it wasn't for the QRM on the frequencies these days. The signals from KFQD-750 and KYAK-650 do pop through in the Fall, Winter, and Spring. KABN-830 also is heard.

ARIZONA - "A" Rating. Your best bets here are 50,000 watters KTNN-660 and KNIX-1580. KOY-550 also pops through at times.

ARKANSAS - I give this a "D" rating as few stations from this state are heard these days. KAAY-1090 has been heard by Californians in recent years and KLRA-1010 also used to be heard. Good luck on this one.

CALIFORNIA - Another "A" rating here with many stations a regular day or night on the coast. KGO-810, KCBS-740, KNBR-680, KFI-640 just to name a few.

COLORADO- Another "A" rating here with two stations that are strong in the NW, KOA-850 and KVEE-1100. KOA is much stronger than KVEE most of the time, but if you are near KTAC-Tacoma the 1100 frequency might be better for you.

CONNECTICUT - Another "D" rating here as WTIC-1080 is about the only station heard in recent years and you will have to wait for KWJJ to shut down, which they do on MMs occasionally. KRLD-Dallas also causes QRM.

DELAWARE - Bruce Portzer gave this an F, but I'm changing it to a "D-" rating as I feel all 50 states are possible, but this is really one of the toughies, with either WDOV-1410 or WKEN-1600 being possible. This has been one of the hardest states for years. Good luck here also.

DISTRICT OF COLUMBIA- "D-" rating here also, with WTOP-1500 being about the only thing ever heard from D.C. and KSTP blocks the frequency, but some Californian got a tentative of WTOP a couple years back, so who knows.

FLORIDA - "C-" rating. Your chances of hearing this state is much better, as WHOO-990, Radio Marti-1180 both have been heard in the past couple of years. WGBS-710 also has been heard during times of the station being non-directional.

GEORGIA - "C-" rating. A state that used to be easy before everyone went AH or NSP on 750 KHZ. WSB might still pop through when conditions are good and also WEDM-1580 might pop through.

HAWAII - "B+" rating. I would give it an "A" rating here on the coast, but the Hawaiian signals are quite abit weaker inland. Still several Hawaiians are heard in the NW, KMVI-550, KORL-650, KUAI-720 (MMs), KGU-760, KIKI-830, and KAIM-870 just to name a few.

IDAHO - "A" rating as KBOI-670 comes in very well. Also others are KFXD-580, KIDO-630, and KGEM-1140 that are heard well.

ILLINOIS - "B" rating. Another state that used to be A rating, but all the QRM the state isn't as strong these days. Several stations from Chicago are still heard often WHAQ-670, WGN-720 (every MM), WBBM-780, and WLS-890. 1000 KHZ is also heard at times when KOMO is off.

INDIANA - "C" rating. This state also isn't as easy to hear these days, but stations do pop through at times. WIRE-1430 when KLO is off, WOWO-1190 (when KEX is off), WSLM-1220, if you can get past CJOC. WIBC might also pop in if KNX was off.

IOWA - "B" rating, another one that has dropped a notch in recent years, but WHO-1040 and KXEL-1540 are heard often.

KANSAS - "B-" rating. The most common station here is KLEO-1460, in quite often. KGGF-690 and KBUF-1030 also can be heard.

KENTUCKY - "B+" rating. With a beverage it is almost a A rating here, as WHAS-840 is almost in every night. WPAD-1560 also is fairly regular.

LOUISIANA - "C" rating. A few years ago this was an A rating but with 870 KHZ filling up the job of hear WWL is harder. It does pop through KORD at times here. KNOE-540 and KWKH-1130 also are heard.

MAINE - Another "D-" state here. The station on 970 used to be heard on MMs, but with KYTE NSP, those days are pretty much gone. WYNZ-970 still would be possible if everyone was off, or maybe WJBQ-1590 or WLAM-1470. You will need a lot of luck on this one.

MARYLAND - A state that always has been hard. I give this just a "D" rating as WPGC-1580 has been heard here recently. WBAL-1090 also was reported a few years back on a MM.

MASSACHUSETTS - "C" rating from a state that used to be an A or B, since 1030 has filled up, about the only time the frequency is clear enough is on a MM. WBZ pops through every once in a while.

MICHIGAN - Another "C" rating. Best bet for Michigan is either WJR-760 or WHEZ-1560. The Canadian on 760 causes quite a bit of QRM these days. WHEZ has been logged around 0600 EST sign on.

MINNESOTA - This is a "B+" state, as WCCO-830 is still in the clear much of the time and KSTP-1500 also can be had without much work.

MISSISSIPPI - Alabama is a C state, but I'll have to give Mississippi a "D" as there isn't much from this state that does get out to the West. WOKJ-1550 used to be common but with all the QRM, that might be tough. Other stations that have been heard are: WMOX-1010, WJNT-1180, and WSJC-810 (When KGO is off).

MISSOURI - I'll give this a "B-" as KMOX-1120 isn't quite as easy to hear with KPNW-Eugene on, but KMOX is heard under KPNW often here. KJLA-1190 is heard at times when KEX is off and WHB-710 pops through when KIRO is off.

MONTANA - This is an easy state from the NW. "A" rating. KOFI-1180 comes in quite strong if you are away from KPUG-1170 or KEX-1190. KGHL-790, KBOW-550, KMOM-560 are all stations that are heard.

NEBRASKA - "B" rating here. Try KFAB-1110 if you are away from KBND, or wait for KBND to s/off. KRVN-880 also pops through the mess on the frequency at times. KLMS-1480 also is heard after 0300.

NEVADA - "A" rating. A real easy one here with 50 KW powerhouses KROW-780-Reno or KBDW-720-Las Vegas.

NEW HAMPSHIRE - "D-" rating here on another Eastern state that always has been hard. WKBR-1250 was heard in the West years ago. Possibly WHSN-1590 on a great night. You will need an extra good luck here.

NEW JERSEY - "D-" rating here also. If you can get New Hampshire on some night, maybe you will also hear New Jersey. The state has always been very hard to hear especially if you wanted a direct New Jersey station and not a NYC transmitter site. WABC-770-NYC used to be fairly easy, but with all the QRM you might have to wait on this. Direct NJ stations, WERA-1590 or WSRR-1580 on a good night. A very Good Luck on this one.

NEW MEXICO - "B+" rating here, as KKOB-770 and KCKN-1020 do make showings most nights, if you are away from KRPM-770 or KWIO-1020, you might try these. KUUX-1480 also makes a showing at times.

NEW YORK - "B-" rating here, as WHAM-1180 makes a showing most MMs. WQXR-1560 also has been showing up more often than before after 0300 EST with Classical music.

NORTH CAROLINA - "D" rating here. WJIK-1580 was heard a couple years back, but plan on moving to 830 with a directional antenna and that is going to be hard as little signal goes West. WBT-1110 was also reported a few years back non directional, but that also is rare. Maybe WJRQ-1560 or WFGW-1010. Good luck here.

NORTH DAKOTA - "C+" rating, KFYZ-550 pops in occasionally and KQLX-890 has been heard at 0700 EST s/on. Maybe KEYZ-1360 also.

OHIO - "B-" rating. This state has been reported quite often in recent years on the Westcoast. There is WLW-700, WCKY-1530 (when KFBK is off, many MMs), WWWE-1100 pops through KFAX often. WAKR-1590, WOHO-1470, and WHBC-1480 also have been reported.

OKLAHOMA - "B+" rating. Try KOMA-1520 under KSCG or KV00-1170, if you are away from KPUG. Both are regular here.

OREGON - "A" rating. Many stations to be heard, KEX-1190, KGW-620, KPNW-1120 just to name a few.

PENNSYLVANIA - "C-" rating. This state is another that used to be easy but no more clear frequencies, so the QRM will have to be dealt with. KDKA-1020 and WCAU-1210 both have been heard in the last year here.

RHODE ISLAND - "D-" here as another state that little has ever been reported on the WestCoast. Craig Healy got a DX test from the station on 1110 with 50KW many years back and that was heard on the WC. Maybe another DX test?

SOUTH CAROLINA - "D-" here also as little is reported from this state. WESC-660 has been reported, but years ago.

SOUTH DAKOTA - "B-" rating, with KAAA-1560 heard often after 0300 EST (KPMC off). Then there is KOTA-1380 and KBMR-1130. KBMR has been heard during the day in the Wintertime here.

TENNESSEE - "C" rating. A state that also used to be higher on the list is a little more rare these days. WSM-650 used to be common but with all the QRM the catch is harder to here now. WLAC-1510 has been heard when KGA is off. WNOX-990 also makes a showing at times.

TEXAS - "B" rating with WOAI-1200, KRLD-1080, and WBAP-820 still showing up fairly regular. KLIF-1190 also is there when KEX is off.

UTAH - "A" rating here with KSL-1160 like a ton of bricks at night. KLO-1430 also is regular along with KDXU-890, just to name a few.

VERMONT - Back with the hard ones again with a "D-" rating. Possible WYKR-1100 might show up or WCFR-1480. This is another one of the states that never has been easy. Good luck here.

VIRGINIA - "D-" rating here also with WRVA-1140 possible, but haven't been reported in years. Also try WPSK-1580, WTVR-1380, and WFTH-1590, if conditions are fantastic. You will need it.

WASHINGTON - "A" rating here, like Oregon many stations to be heard, KOMO-1000, KING-1090, KIRO-710, or KGA-1510.

WEST VIRGINIA - Another "D-" rating here with WCAW-680, but that hasn't been reported in the NW for years. Good luck again.

WISCONSIN - "C" rating. Another tough one but WIZM-1410 makes a showing a lot of the time in the early morning. This state has always been one of the tougher Mid-West catches with no clear channel stations that are heard out here often. WTSO-1070 and WGEE-1360 both have been heard in recent years also.

WYOMING - "A" rating here too with KTWO-1030 the winner. They are in about every night.

THE PROVINCES

ALBERTA - An "A" rating here with several to pick from. CBK-1010 is one of the strongest. CBX-740 mixes with KCBS and CFAC-960 or CFCN-1060.

BRITISH COLUMBIA - "A" rating also with CBU-690, CKWX-1130, CJVB-1470, CJOR-600, CKLG-730, and the list goes on.

MANITOBA - "A-" rating, slightly lower than Alberta or BC. CBW-990 is fairly regular here.

NEW BRUNSWICK - A "D-" rating here as nothing from New Brunswick has been reported on the West Coast in years. CBA-1070 used to be reported back in the 50s and 60's on occasion. Good luck here.

NEWFOUNDLAND - Another "D-" here as the same as above, no stations have been reported in many years. If conditions are great maybe CBT-540 might make a showing as the frequency is fairly clear.

NORTH WEST TERRITORIES - This is a touch one mainly because there are no powerhouses in the area. Maybe CHAK-860 might make a showing if you can get around CFPR. CHAK is only 1KW but is regular in Alaska.

NOVA SCOTIA - "D-" rating here too. CBH-860 might be possible if every thing was in your favor including a fairly clear frequency and good conditions.

ONTARIO - "C+" rating or maybe a little better. Several stations from this Province have been reported in recent years. Infact as I type this, CJFT-530 is being heard. CBL-740 isn't as common as it used to be, but when CBX/KCBS are off it pops in at times. Also CHAM-820, CHUR-840, and CJCL-1430 pop through at times.

PRINCE EDWARD ISLAND - Another "D-" rating here too, but your chances of hearing this little island might be better these days as CHTN has made a move to 720 KHZ of late and it might be possible on MM.

QUEBEC - I'll give this a "C-" rating, as CBJ-150 has been reported in the past few months. CKAC-730 in FF was heard a few years back too.

SASKATCHEWAN - "A" rating here also with CBK-540 the winner by far.

YUKON - "D-" here too as there are really only two stations, CFWH-570 and CKRW-610. Bruce Portzer was lucky enough to get the one on 610 a few years back. Any takers for CFWH-570? Good luck here also.

Well there they are. Now it is time to get to work and see how many you can hear.

Again I would like to thank Bruce Portzer for his help. Remember to report your tips to the Western DX Roundup and DX Worldwide-West.

KPOF celebrates 60 years, still blazes remarkable trails

via Bill Nittler

When KPOF went on the air, rock was something that mothers did to soothe their newborn babies.

The Federal Communications Commission, which frantically attempts to regulate the crowded radio dial, didn't exist. There weren't enough radio stations to regulate.

Stereo sound? Most radio listeners were trying to eliminate static from crude Atwater-Kent receivers. Commercials? KPOF didn't have any.

KPOF, 910 on the AM dial, celebrates its 60th birthday today as one of the premier religious stations in the country and the third oldest outlet in the crowded (39 stations) Denver radio market. Only two other stations — KLZ and KOA — are older.

But KPOF has important distinctions. It's the only Denver station that has retained its original ownership and programming format. And KPOF still doesn't have commercials. Its yearly operating budget (around \$275,000) is produced entirely by donations from its relatively small but loyal audience and participating religious broadcasters.

KPOF, operated by the Pillar of Fire Church, signed on March 9, 1928, in broadcasting facilities at its Westminster landmark — the familiar Pillar of Fire tower on a hill at 3455 W. 83rd Ave.

A driving force in those early days was the Rev. L.S. Wolfgang, station trustee and treasurer. Wolfgang, 93, was on hand Sunday when KPOF celebrated its 60th birthday in ceremonies at Alma Temple, 1340 Sherman St., which serves as an auxiliary broadcasting outlet. Sixty years with one station? In this electronic age, most radio executives are lucky to spend 60 days at one broadcasting company.

"Reverend Wolfgang still has the title of trustee," says the Rev. Robert B. Dallenbach, KPOF's manager for the past 24 years. "He did a marvelous job in those early days, acquiring the equipment and managing the funds." Wolfgang collected the first \$1,250 to put the station on the air.

Another honored guest Sunday was Dallenbach's wife, the former Pauline White, granddaughter of Bishop Alma White, founder of the Pillar of Fire Church and the station. Pauline White Dallenbach was 2½ when she sang in the church choir during the first broadcast.

Alma White also founded three other Pillar of Fire radio stations — two in New Jersey and one in Ohio — that still operate successfully.

In this high-energy broadcasting era, KPOF keeps a low, if successful, profile. While accurately described as a religious station, that type of programming makes up only 68% of KPOF's 24-hour-a-day schedule. The remainder is filled with a mix of news, public affairs and classical music. KPOF offers a regular schedule of public service announcements, including information about other religious organizations. It also airs



Dusty Saunders

a complete *Community Arts Calendar*, which covers events in the Denver area.

In its early days, KPOF was on the air for only a few hours weekly. Later, while sharing time with KFKA in Greeley, KPOF moved to a 40-hour broadcast week. Within a year, it was a full-time operation. Now, with its 5,000 watts of power in daytime, KPOF can be heard through much of Colorado and parts of Wyoming, Kansas and Nebraska. (At night, the station operates on 1,000 watts.)

For obvious reasons, KPOF doesn't feature radio personalities like Hal and Charley. But it does have a star — Jeanna Wearing, who hosts *Masters of Music* (12:30 to 3:30 p.m. Monday-Friday; 12:15 to 3:30 p.m. Saturday), a superb classical-music program.

While billed as a host, Wearing is an entertaining, informed guide who takes listeners through a varied world of music she knows intimately.

An accomplished pianist and singer who speaks several languages, Wearing brings a personal insight to the music she plays.

"I look at classical music as something that touches the heart, not necessarily just the mind," she says. "On air, I never discuss music from an elitist, highbrow perspective. I want listeners to understand the classics in human, melodic terms, not from an academic view."

Wearing, now entering her fifth year at the station, was hired for her musical and broadcasting talents, not because her religious convictions coincide with church management.

Before joining KPOF, she worked at KTCU-FM, a commercial station in Fort Worth, Texas, where she had a similar program. The station is not a religious outlet, concentrating on classical, jazz and soft rock.

"The folks at KPOF wanted someone who could follow the tradition of being the only AM classical outlet in Denver," she said. "Our relationship has been excellent."

Wearing grew up in San Francisco with a musical background (her parents, John and Elsa Replogle, still are active on the Denver music scene). She was a voice major at the University of Denver and then studied in Europe. In addition to hosting her music series, Wearing works with the Denver Symphony Orchestra, providing children's lecture programs.

"I discovered several years ago that I had gone about as far as I could with my music talents," she says. "When my marriage fell apart, I turned to broadcasting as a lark. Then I discovered I could mix a career of music and radio. I don't know where this will take me."

As her loyal listeners know, Wearing has more than a passing musical acquaintance with the great composers. Her favorite? "Mozart. He did everything."

Her affinity for Mozart led Wearing to write a radio script that she plays on her show annually. Wearing re-creates the setting at Prague, Czechoslovakia, when Mozart wrote *Don Giovanni*. In her script, she's with the composer.

Obviously Jeanna Wearing is an unusual radio personality, just as KPOF is an unusual radio station.

THE TRAVELLER'S INFORMATION STATION AND HIGHWAY ADVISORY RADIO GUIDE

This comprehensive guide delves into the TIS stations you can hear at the extreme ends of your AM radio. It features listings of the stations by state/province, along with texts of prerecorded messages, technical data, addresses, locations, call signs, and lots of other information. To obtain your copy, send \$10.00 to IRCA Goodie Factory, P.O. Box 21074, Seattle, WA 98111.



IRCA SportsCentre

DEADLINES: 4/10, 5/1, 5/29

Dale Park
1516 Hinman Av #705
Evanston IL 60201-4659

It could be, it might be...yes! It's the second anniversary of the IRCA SportsCentre. The column that's Easternmost in quality, Westernmost in flavor. Right here in Chicago land it's in the low sixties, just four days after it snowed, so ya gotta believe that baseball's in full swing. I even have listings of baseball networks; holy cow! I still would like to have more, so send them in. Let's go in the ozone with that can of corn...

NATIONAL LEAGUE

CHICAGO CUBS (English) Dewayne Staats, Steve Stone, Harry Caray, Davey Nelson

590 WJMS-MI	1080 WPOK-IL*	1350 WIOU-IN	1450 WEZR-IN	1550 WJIL-IL+
720 WGN--IL\$	1090 KBYG-CO	1370 KLBA-IA	WASK-IN	WCSJ-IL+
870 KROL-NV	1130 WJTP-NC	KDTH-IA	1460 WRTL-IL	KAPE-MO
910 WAKO-IL+	1150 KCKY-AZ	1380 KCLM-IA	WKAM-IN	1560 WRIN-IN*+
920 WMOK-IL\$	1170 WACV-AL	1390 KCLN-IA	1470 WHUT-IN	KLNG-IA
940 KNST-AZ	1230 WXCO-WI	1400 WBAT-IN	WQSN-MI\$	1570 WJFF-IN
950 WKTS-WI	1250 WIZZ-IL	KADR-IA	WCHJ-MS+	1580 WAMJ-IN
1020 WCIL-IL*	1310 WGH--VA	1420 WOC--IA	1480 WRSW-IN+	1590 WPCC-IN
1040 WHO--IA	1320 WNGO-KY	1440 WMLA-IL	1490 WDAN-IL	KWBG-IA+
1050 WDZ--IL	1330 WRAM-IL+	WGEM-IL\$	1600 KCRG-IA	
1060 WRHL-IL*+	1340 WTAN-FL	WPGW-IN*+	1510 WINU-IL* ¹	WCWC-WI
	WLAW-MI		1540 WBNL-IN+	
		-FM-		
92.1 WFPS-IL	95.3 KOKX-IA	96.9 WLBH-IL	98.3 KZBA-IA+	104.7 WCSJ-IL+
92.7 KOSG-IA	WBKN-MS+	97.7 WMOL-IL+	KEMB-IA	104.9 WAXI-IN
94.3 WBZM-IL	95.9 WKUZ-IN	WFRX-IL	100.9 WPGW-IN+	105.5 WJVO-IL+
WJNZ-IN	96.7 WRVI-IN	WLQI-IN+	102.3 WRHL-IL+	107.1 WBNL-IN+
WNZE-IN	WCOE-IN		103.1 WAKO-IL+	107.3 WRSW-IN+

Spanish: Hector Armando Molina, Leon Martinez

FM: 105.1 WOJO-IL² No Affiliates

Syndicator: Tribune Radio Networks. NOTES: Announcers rotate between radio and WGN-TV Ch. 9. 1. Has a CP for 880 kHz fulltime. 2. 30 selected home games only.

LOS ANGELES DODGERS (English) Vin Scully, Ross Porter, Don Drysdale

550 KOY--AZ\$	920 KVBC-CA	1250 KTMS-CA\$	1370 KWRM-CA\$	1450 KJMB-CA
610 KAVL-CA	940 KDEO-HI	1290 KMEN-CA	1400 KTUC-AZ	1490 KYCA-AZ
720 KDWN-NV	1140 KCMJ-CA\$	1300 KRCP-CA	KVIS-CA	KMET-CA
790 <u>KABC-CA\$</u>	1230 KBOV-CA		1440 KUHL-CA	1560 KPMC-CA
		-FM-		
92.7 KZIQ-CA	93.7 KCHV-CA	101.7 KTOT-CA	103.1 KTIPI-CA	105.5 KHVE-CA ¹

Spanish: Jaime Jarrin, Rene Cardenas(?)

910 KOXR-CA	950 XEGM-BCN	960 KNEZ-CA	1300 <u>KMKW-CA\$</u>	1510 KNSE-CA
		970 KVIM-CA		

Satellite: Westar IV in SCPC mode. NOTES: Announcers rotate between radio and KTTV-TV Ch. 11. 1. Has a CP for 105.7 mHz.

NATIONAL HOCKEY LEAGUE

MINNESOTA NORTH STARS

610 KDAL-MN	1230 KTRF-MN	1270 KWEB-MN	1400 WJJK-WI	1450 WELY-MN
970 KCHR-MN	KWNO-MN	1320 KOZY-MN	1410 KRWB-MN	KNST-MN\$
1230 KGHs-MN	1250 KBRF-MN	1340 KDLM-MN	1450 KBUN-MN	1490 KLGR-MN
KYSM-MN		1380 KLIZ-MN		1500 <u>KSTP-MN</u>
		-FM-		
93.5 KSCR-MN	97.1 KYCK-MN	100.1 KLKS-MN	105.5 KXLV-MN	106.3 WMFG-MN

PLAYERS OF THE WEEK: Mike Setsuda and Greg S. Hardison, KABC Radio; Tribune Radio Network.

Typed 23 March. Well, I'm off to Detroit for the weekend. Why Detroit? Because sometimes you need a little eye contact in order to get contributions for this column. If you like, I'll come to your home for some contact. Don't let this happen; get your submission in by the deadline. I'm Dale Park, speaking off sports. See you in DXM.

ANARC REPORT __ MARCH 1988

BY: Albert S. Lobe
Post Office Box 26762
San Diego, CA USA 92126

The time is fast approaching for ANARCON'88. This years Association of North American Radio Club Convention will be held in Southern California at the Holiday Inn, Irvine. The address is: 17941 Von Karman, Irvine CA 92714. The Holiday Inn, Irvine is just minutes from the John Wayne/Orange County Airport. Most major airlines serve the John Wayne/Orange County Airport. Los Angeles International Airport is about 70 minutes away and most major airlines also serve LAX. I would strongly suggest flying to Orange County instead of LAX. Orange County is closer and more convenient to the site of ANARCON'88.

Those of you planning on attending should get your reservations in now. The deadline is fast approaching. For hotel reservations contact the hotel directly. Be sure to mention that you are attending ANARCON'88. Room rates are shown elsewhere in DXM. You should also contact ASWLC the sponsor of ANARCON'88. ASWLC's address is: 16182 Ballard Lane, Huntington Beach, CA 92649. If you don't attend you will miss the DX'ing event of the year. I can assure you that this will not just be a shortwave convention as ANARCON Conventions have been in the past. Atleast two BCB related seminars are to be held. One will be on BCB DX'ing in Europe. The other will be on AM-Stereo. Yours truly will be hosting these two seminars. Make your plans now to attend the best ANARC Convention ever! You won't be disappointed!

ONE LAST ITEM OF IMPORTANCE IN THIS LATEST ANARC REPORT. I still would like some volunteers to help with the IRCA Table at ANARCON'88. So far, I have had one IRCA Member step forward to volunteer. It will not take very much of your time and you will still be able to enjoy ANARCON'88. Besides being your ANARC Rep. I am also on the ANARCON'88 Convention Committe and I will have very limited time to help run ANARCON'88, attend ANARCON Representative meetings, run two seminars and still devote 100+% of my time with manning the IRCA Table. The more volunteers the better. I will be stopping in Seattle the last week of May during my vacation to pick up lots of goodies from IRCA HQ's for the IRCA Table.

73 & Good DX -- Albert

FROM THE PORTLAND OREGONIAN 3/11, VIA FRANK ADEN: THERE'S A NEW RADIO STATION IN THE PORTLAND AREA, AND WHILE IT DEFINITELY IS NOT KEEPING ITSELF QUIET - IT PLAYS SOME OF THE LOUDEST ROCK AROUND - IT IS KEEPING QUIET ABOUT ITSELF.

KZRZ APPEARED ON THE AIR AT 1010 ON THE AM BAND LAST WEEK, PLAYING A STRICT DIET OF HEAVY METAL MUSIC FROM A TEXAS SATELLITE PROGRAMMING SERVICE. EXCEPT FOR THE LEGAL MINIMUM OF ONCE-AN-HOUR IDENTIFICATIONS THAT IT SERVES MILWAUKIE AND PORTLAND, THE STATION HAS HAD LITTLE TO SAY FOR ITSELF. RECORDS SAY THE DAYTIME STATION IS OWNED BY JOHN E. GRANT OF LAKE OSWEGO, BUT SO FAR CALLS CAN GET ONLY AS FAR AS HIS ANSWERING MACHINE. OTHER RADIO PEOPLE, WHO WERE ALSO SURPRISED WHEN THE STATION SUDDENLY POPPED UP ON THEIR RADIOS, SAY HE IS THE SAME GRANT WHO YEARS AGO WAS A PARTNER IN KRDR.

THERE ARE REPORTS THAT THE NEW STATION IS USING KRDRS OLD TOWER, AND BROADCASTS ON THE NOW DARK GRESHAM STATION'S RETUNED TRANSMITTER OPERATING AT ABOUT 5000 WATTS. PRESUMABLY THE SURRENT PROGRAMMING IS MOSTLY A TEST SIGNAL, IN WHICH CASE GRANT WILL BE PLEASED TO KNOW A READER CALLED IN WITH A STRONG SIGNAL STRENGTH REPORT FROM CORVALLIS.

I HAVE SPENT SEVERAL FRUITLESS HOURS LISTENING TO HEAVY METAL MUSIC I TRULY CAN'T STAND IN HOPES THE STATION WOULD SAY MORE ABOUT ITSELF. IT IS ALL RATHER UNUSUAL. USUALLY A NEW STATION WILL HAVE MORE PRESS RELEASES THAN LISTENERS.

FCC RECORDS INDICATE IT WAS ALWAYS GOING TO BE A ROCK STATION; THE ORIGINAL CALL LETTERS FOR THE PROPOSED STATION WERE KRXX. THE STATION IS LICENSED TO MILWAUKIE.



Western DX Forum

★ ★ ★ ★

IRCA — The #1 Choice of the Broadcast Band DX'er

Editor: Ric Heald • 8539 Bellamy Way • Sacramento, CA 95828 USA • (916) 386-8677

DEADLINES — : DOES ANYONE REALLY CARE?

DAN d. RECEIVER, 180 HAMMARLUND WAY, HARMONY, CA 99999

Forgive me, O YAWN, the DX God, for I have SINNED! I have broken all of your commandments laid down in your Great Book (the IRCA New Member Packet.) I confess, right here in the DX Monitor before hundreds of kindred souls and DX'ers to the following:

I've lusted in my heart after great receptions, lo even to the point of fantasizing hearing radio programs in my earphones that were not really there. Forgive me, O YAWN.

I've coveted the DX of my neighbor and my neighbor's wife (and even the editor's) wishing that I had the equipment, the receptions that he has heard, and veries that he has received. I especially coveted his reception of the Virgin Islands, his verification of Easter Island (I still think he cheated!) and his FRG-7 receiver.

I have stolen DX from my neighbor's longwire while he was sleeping in his tent on the beach. Yea, verily, I stole onto his property and attached my antenna to his, then DX'ed all night - what a night of carnal DX knowledge!

I have debauched myself at various and gregarious places of ill repute, especially the El Rancho Motel in Sacramento, on many occasions. (That's WEST Sacramento - that's YOLO county - and don't forget it, boy, hi-RtH.) Yea, I cannot remember all of the times I've sat in a bar tasting distilled spirits rather than being in my DX shack experiencing the fulfilling spirits of DX in my trusty earphones. Forgive me, YAWN.

I have spent nights in campers and vans with other DX'ers in far-off places away from the high powered transmitters of the world, spreading antennas along the road amidst the wonders of nature. Oh the sweet fruit of illicit DX'ing turned sour after I lost the notes I took!

I have not been a good correspondent to my fellow DX'ers, forgetting to write letters, to submit forums or even, yea verily, DX reports. Forgive me, O YAWN.

I have even committed the ultimate sin of a CCB DX'er - I've listened in on the conversations of my neighbors on their cordless telephone (WOW! Are they sinning against some other gods!)

I was sorely tempted to DX other radio frequencies, especially in times of poor reception conditions, but I resisted listening to shortwave and longwave. Bless me, O YAWN.

O YAWN, you have made me to lie in my bed (not to mention green pastures) and not awake at the appointed time to enjoy your benefits as punishment for my sins. As atonement for my transgressions, I have not DX'ed once since the New Year began. But my heart yearns for the thrill and excitement of hearing the ephemeral and ethereal waves of DX from afar - please release me from my burden and guilt. I promise to fiddle with my own receiver's knobs, to diligently drink of the cup of DX truth and wisdom, and to help my fellow DX'ers.

JORGE "DUKE" MAME, GREYHOUND BUS STATION, W. SACRAMENTO, CA KRAP1140

Looks like the Anniversary issue done snuck up on me again this year so I'll do a little re-intro, a little late, but what the hey?

I got real intersted in this thing called DX thanks to this strange guy that used to "work" at a motel here in West Sacramenna. He said he worked here but his ex-boss said all he did was set up ERBA loops and sing the National Anthem (he wasn't sure which country, but sounded like a national anthem) every weekend at 2 AM closing time!

Anyway, this guy at the motel went into a storage closet to bring out a thing that hadn't been used in years - called an ERBA loop. He said when it was used, DX'ers did strange things and heard strange stations and countries. When I first got a whiff of it, and when I finally came to, I wondered what year it was brewed. . .err. . .made.

Tried calling my neighbor a few miles away, Heald, to get advice on how I could improve my DX on this here ERBA loop, but all he would tell me was to call me back in the morning when I felt better. Wonder what he meant?

Well, seeings as how the local bus has pulled into the station, time for me to get 40-winks, or more, depending on how good this here ERBA loop works. That's a wrap from Yolo (rhymes with "you're low") County for another year. 73 de JDM. .

MUMBLINGS OF THE MEMBERS

WELLAND DOWD - 21 Virile Drive - Big Sandy WV 24816

I've done a little checking, and I learned that the latest NRC log was not done in Milwaukee or Youngstown. It was actually let out as a project to the Tibetan Monks who are famous for inscribing the Lord's Prayer on the head of a pin. Each copy was done by a different Monk, all of whom have practiced over the years in tiny writing and printing. The long delay in getting the work done and out of Tibet was due to severe winter conditions, socking in the airport over there. And I've made a startling discovery as to the identity of that religious station many have been hearing early mornings on 1160 kHz. You know they do not ID at all during those wee hours, so I deduced it must be a Canadian. And the only Canadian on that frequency is CBQR, Rankin Inlet, NWT, a 40 watter. On one of their religious programs, I established proof that it had to be this station - Oral Roberts was on, and telling the audience that he is doomed to die by March 31 if the native Eskimos don't send him at least 4 1/2 million pounds of whale blubber, which the natives use instead of money! Scanning my dial around noontime one day, I caught a station on a graveyard channel reading the death notices! That figures, I guess. Back to the NRC Tibetan Log, it is very confusing for me, for there are many errors in the format column. Some DXers count veries by call letters, some reverify if they change, some if the station changes frequency, some if it moves - but I count format changes. With so many inaccuracies in this log, I'm having a difficult time knowing what I have and have not correctly verified. I realize this is a different way of counting veries - does anyone else out there count 'em this way? I know one DXer who counts a station over again if he hears a different DJ, so I can't consider myself too peculiar. It takes all kinds to make a world, and it takes all kinds to make a DX club. Oops - gotta go; I'm being put back in my room for the evening. I also like to walk in backwards so - Hello!

JIM E. STAGNANT - General Delivery - Corn, Oklahoma 73024

I am a former TV and Radio Evangelist - retired, by popular demand. I am new to the hobby of DXing, and can use all the tips and hints I can garner. I am not familiar with the way the club is run, but if there is any fund-raising to be done, I feel I am experienced in this field. If you can get me air time, I am sure I can raise a couple million dollars in a year's time. But a question or two. I heard a station on 1340 playing popular music at 8:45 pm. Who could this be? It sounded to me as though there might have been another station on the same frequency - is this possible? I note a lot of members like to DX in the early morning hours, so I gave it a whirl, but it seemed all I could hear, all over the dial, somebody calling himself Larry the King or some such. Is he a Messiah? Then there's some woman calling herself Sally Jesse Rafael, and a Doctor Reuben. I hear them on almost every frequency. Is there something wrong with my receiver? Or is there something wrong with Dr. Reuben? I'd like to offer to send in for each issue, a sermon, which I feel would help every member. I would keep it short - no more than eight pages per sermon. To whom shall I send it? There would be no charge for my efforts. I would do it out of love for my fellow man. I caught a station giving the stock market information the other night; a very strange commentary. He said that American BVDs have split, and that Universal Window Shades are going up in the morning. He mentioned that TNT is booming, and Otis Elevators are coming down, and Alkaseltzer is fizzling. He also pointed out that Scott Toilet Tissue was wiped out. And for us radio fans, there were of special interest: He said Sony was in the hands of the receivers, and Hallicrafters has gone down the tubes. So until next time. Hallelujah.

RADIO ROUNDUP

Pete Hemp KX2X, Box 88, House of God, RI 01345

Greetings all.....Bertha Jones, cashier at the Mr. Donut on U.S. 2 across from KKBj, Bemidji MN, has joined the staff of Dunkin Donuts on Paul Bunyan Drive next door to KBUN.....The latest Arbitron ratings for Truth or Consequences, NM show 1400-KCHS dropping from a 63.7 share to a 62.4 share in the book....WDEA Ellsworth ME is planning to change their studio phone number in early 1989.....WMSA has edged out WYBG as the top AM'er in Massena, NY for the first time since August 8, 1947....Former CIFX Winnipeg, MB newscaster Linda Smith has been hired by crosstown rival CKY to make the coffee during AM Drive....Chief Engineer Cliff Mobar at WBUT in Butler, PA recently purchased a 160 acre farm. He apparently applied years of accumulated mint stamps towards the purchase price....Carl Cyan, owner of WAKN in Aiken SC, plans to change the station's calls during the next year when his son Chris needs one more station to reach 2000 verified....KMOX St. Louis plans to begin actually reading the reception reports that arrive daily in June to commemorate the 5000th KXOK report that was erroneously delivered to KMOX....KFAB in Lincoln, NE plans to change formats to "Stone Age", electronic instrumental versions of Rolling Stones classics, to combat the success of KLMS' "New Age" format....Billy West, son of KCDR Cedar Rapids, IA midday announcer Norm West, got a B+ on his Biology paper last week.... Former "Beatle Radio" station KYST in Texas City, TX has switched formats to "All Hamilton Joe, Frank & Reynolds"; KGBC in Galveston, TX is thinking of following suit and becoming Texas' first 'Spanish All Gilbert O'Sullivan/Sports Talk' outlet, now that the format has worked wonders at WDEY in Lapeer, MI.... George Ridgely, bookkeeper at WHLO, Akron, has a '77 Dodge Valiant for sale. Make him an offer in your next reception report....Good news for salad bar fans: a new Wendy's Drive-Through is opening up on Highway 6 across from KTIIL in Tillamok Oregon.....so much for now.

Suggestion Time

Lou Poisson 768 Deepcandle St. Zev Falls, OH 43852

A prominent member has suggested that a DXer who doesn't verify stations is only half a DXer. Does this mean that people who don't send away for verifications only have to pay \$11.00, as opposed to \$22.00, when they renew their membership? What about somebody who imagines everything they hear and doesn't write reception reports? Is he only one-tenth of a DXer? My own personal calculations show that I have verified roughly 30% of the stations that I have heard. This makes me 65% of a DXer. Accordingly, I'll be renewing next year for \$14.30.

Perhaps next year's NRC Convention Quiz should be replaced by a Spelling Bee? I am appalled at the number of DXers who misspell "epiphenomenalism", "please" and "verification" in their reception reports! Not only can "Johnny not read", but he can't write either!

Since the Tower Tip feature has become the most popular column in DX NEWS why not expand its coverage? This is what I think could be provided in the future: {1} Directions to the station can be provided. Why write for a verification when you can rudely demand one in person? {2} Provide directions to the home of the station's Chief Engineer, just in case the visit to the station fails. {3} Provide information on nearby Pinball Arcades, Waterslides, Shopping Malls and Fireworks Stands! Make Tower Hunting a family outing!

73. Backward - April!

COUNTRY OF THE MONTH: BRITISH COLOMBIA

This week's country of the month is British Colombia. British Colombia (or "B.C." as it is known to the natives) is an island off the northern coast of (you guessed it) Colombia. Together with Gibraltar, Hong Kong, and the Falkland Islands, it is one of the last outposts of British colonialism.

The island was uninhabited until the late 1700s when it became the main base for Spanish pirates lurking in the area. It fell into British hands in the early 1800s when the noted British naval commander, Sir Admiral Lord Horatio Yardarm, won it in a poker game from the notorious Spanish pirate, Juan Valdez Superior Dos Equis Corona Tecate (after whom several popular Mexican beers were named). Being a no-nonsense naval officer, Yardarm had no use for a lush and beautiful tropical paradise, so he turned it over to Her Majesty's government. The Royal Cartographers were at a loss for a name for the place, so they went through the usual cop-out of taking the name of a nearby country and putting the name British in front of it. Thus, British Colombia was named in the same manner as British Honduras, British Guiana, and the British Virgin Islands.

Today British Colombia has a rich cultural heritage and vibrant economy. Officially bilingual, the natives speak a colorful mixture of Spanish, Elizabethan English, and West Indian jargon.

While rarely heard in North America, British Colombia has several radio stations. The largest is the government network, Cadena British Colombia or "CBC Radio" which operates on 690 and 860 kHz, providing an interesting mixture of talk programs, serious music, and eclectic rock music. Another popular station is Radio Victoria on 1200 kHz.

The B.C. government has an unusual practice of assigning call letters consisting of an arbitrary letter followed by the first two or three digits of the frequency. Call letters are rarely used on the air. The only known exception is the Spanish language station, 673 on 730 kHz. They have a rather oddbilingual ID as "El G-73" with the G-73 in English!

Most of the stations broadcast for the native population, but at least two stations program almost exclusively for tourists on the fabulously beautiful Caribbean beach resorts. Appropriately enough, they are "Sea Isle Radio" on 650 kHz, and "Radio Sea Fun" on 1410.

British Colombia can be very difficult to hear. I had my best success on my GE Superradio by standing in the bathroom doorway at 3 am, pointing the radio south and holding it about a foot from my head, grabbing the cold water tap on the sink, and holding my right foot about six inches off the floor. The stations went away if I deviated much from that position, but after about two hours, I was able to hear several of the above stations. You might want to experiment with other radios in other parts of the house to see if you get better results. Otherwise, be patient and keep at it. You'll probably hear them eventually.

BROADCAST BAND STRESS-RELATED SYNDROME

BY: DR. A.F. GAINES

Over the years I have spent many hours researching ailments that are related to the electronics field. Over the last two years I have devoted virtually all of my time to the study of those dedicated listeners of the AM or as it is more appropriately called the Broadcast Band. As it turns out many of these dedicated listeners so crave more than what their local stations can give them, that they begin to tune around the band to search for something new. Thus is born the DX'er.

This person once hooked on this pursuit of distant Broadcast Band (Or BCB stations) can develop what I have called Broadcast Band Stress Related Syndrome or BCBSRS. BCBSRS can take on several forms ranging from a mild ringing in the ears to a full blown case of dependency on the fine art of DX'ing. Taking away the radio from such a person can lead to shakes depression and possibly violence. These are the same symptoms found in people suffering from drug dependencies who try to kick their habit Cold Turkey.

In this report I will not deal with the results of BCBSRS but more with its causes. Perhaps an avoidance of these causes will help the spread of this frightening syndrome from becoming too wide spread in the DX community. The following are some of the major symptoms:
IDUS NEVERITIS

This symptom is a very common one. It seems that the DX'er will listen and listen to a particular station and they will never give their callign. This can lead to extreme frustration and anger in the DX'er.
FADE-OUTUS ON-HOURUS

This is an equally frustrating occurrence that can lead to DX ailments. As the radio waves travel from the transmitter through the air something interesting occurs. As the top of the hour approaches it seems that the radio station's engineer takes a reading of how far the signal is going. If it is anywhere near a DX'er's location the engineer will turn the power down. This will cause the signal to fade out and make an ID impossible. The reason for this power reduction has never been explained but I feel that it is linked to some obscure FCC rule.
KINGUS PROLIFERATIONUS

This problem stems from the fact that more and more stations are carrying all-night talk shows. During these shows the station usually ID's only on the hour. Unfortunately it is at this very time that Fade-Outus On-Hourus will occur. This will make ID'ing the station hard if not totally impossible, leading to a rapid and dangerous rise in the DX'ers blood pressure.

CUBANUS OVERPOWERUS

This condition flares up from time to time on the Broadcast Band. It is most common on the Clear Channels. The problem is particularly bad in the Southern USA with Florida at times being a nightmare. The condition can however cover the whole of the USA and the southern area of Canada from time to time. The Cuban stations will decide to go on the air with high powered transmitters, in order to allow the people of the USA and Canada the priveledge of sharing their stations' very interesting formats. It seems that once you have heard a live broadcast from a Radio Reloj station, you can never go back to an ordinary all news station.

Well that is all for this year's report. I hope that in some small way that I have been able to help you understand your feelings. Just try to remember that you are not alone in your feelings. There are thousands of others out in the world that are trying to overcome their Broadcast Band Stress Related Syndrome along with you. If you should see or hear of such a person try to help him or her out, before it is too late to save them. In the worst cases a BCB DX'er will give up the hobby and Yes dare I say it here actually spend the rest of his days DX'ing in the Shortwave sections of the bands. Here he is apt to fall into all sorts of unknown traps too horrible to think of. So take care and DX with caution.

Dr. A. F. GAINES

THE NOT-SO-FAMOUS PERMISTABLE MULTIVIBRATOR

Being a dyed-in-the-wool do-it-yourself electronics experimenter, I have built, all too often to no avail, many small electronic gadgets. The failures that are the most discouraging are those involving simple circuits *anyone can build*, where *neither lead dress nor circuit layout is critical*.

Those misleading phrases take for granted that the hobbyist is completely familiar with diode, capacitor and battery polarity markings, can get every part on the carefully prepared parts list and knows from some hereditary instinct that all base, collector, signal, HV, LV, RF and a-c leads should be kept to the absolute minimum length without overcrowding.

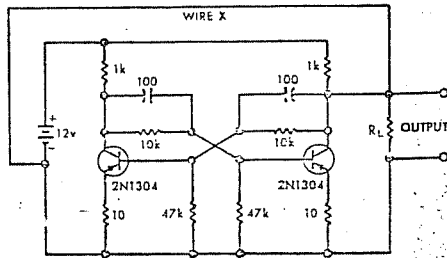
Murphy's Law

Not being an electronics engineer, and hardly knowing the difference between pnp and npn transistors, without fail I make at least one small error. According to Murphy's First Law concerning mistakes, that small error "causes ruin in the direction of the destruction of the greatest number of highest priced components". Being a man of modest means, the wife isn't about to sacrifice another trip to the beauty shop to enable me to try again, so the junk box gets fatter and I get gray hair.

In order to preserve both wife and electronic interests, I decided to find some practical application for all of my zotted transistors, melted transformers and not-so-pretty black resistors. That is when I chanced onto the permistable multivibrator.

The Permistable Multivibrator

The name permistable multivibrator comes from the unexpected observation that no matter what I did to it, it would not change states. To those of you who are not familiar with the Monary Logic System, this may seem useless but the permistable multivibrator has ushered in new frontiers in reliability and circuit simplification. It has unlimited applications in any monary logic system. Monary logic, as we all know, is one step simpler than the binary system, which, until now, has been the language of computers. The binary system has two digits, which may be expressed electronically as



Permistable multivibrator. Notice the similarity to the astable multivibrator. Closer inspection, however, will reveal how wire X keeps the output constant, making the permistable multivibrator ideal for monary logic use.

on-off, high-low, or voltage-no voltage. The monary logic system is far more reliable with but one state such as high, low, on, off, voltage or no voltage. The permistable multivibrator is readily adaptable for use in a monary computer as a counter, control flip-flop, shift register, memory storage or most any other data processing function.

Construction Techniques

Construction is simple and parts are easy to obtain—even the newest junk box will yield enough parts to build several permistable circuits. A complete parts list is supplied for those who need a list but is intended only as a guide and a tolerance of ± 90 percent is well within the design minimum. The circuit uses only two transistors, which may be pnp, npn, nnn (shorted) or open, while the capacitors are more critical and should be only shorted, open or leaky.

Lead dress couldn't be less critical with the exception of wire X in the drawing. This should be size No. 6 or larger, tinned and well soldered at both ends and must be wired as shown. Cold solder joints are completely acceptable at other points. In fact I accidentally built over half of mine without having the soldering iron plugged in. The only limits to the practical applications that are possible will be determined by imagination and common sense. ■

E. NORBERT SMITH, Semiconductor Components Div.,
Texas Instruments Incorporated, Dallas, Tex.

Free reprints of this article are available on
8-1/2-inch by 11-inch prepunched pages. CIRCLE NO. 773.

THE INTERNATIONAL RADIO CLUB OF AMERICA (IRCA)

International Radio Club of America
P. O. Box 21074
Seattle WA 98111

The IRCA is a non-profit organization devoted to the hobby of hearing distant stations on the AM Broadcast Band (510 - 1630 KHz). "DX Monitor", the official publication of the IRCA, is published 34 times a year, weekly from October to March, twice in September and April, and monthly from May to August. "DX Monitor" contains members' loggings, articles on radio stations, receiver reviews, technical articles, DX tips, and other material of interest to Broadcast Band DX hobbyists. IRCA is a member of ANARC, the Association of North American Radio Clubs.



CLUB ADDRESSES AND OFFICERS

President: Karl Zak, 154 Old Post Road North, Croton, NY 10520-1932.
Secretary-Treasurer: John Clemmer, P.O. Box 482, E. Moline, IL 61244.
Board of Directors: Ernest R. Cooper, Richard Evans, Ric Heald, John C. Johnson, Patrick Martin, Bruce Portzer, Rich Toebe.
Editor-in-Chief: Bruce Portzer, 6546 19th Ave. N.E., Seattle, WA 98115.

MEMBERSHIP DUES

U.S. - \$20.00 per year. Canada/Mexico - \$26 (one issue mailed every week) or \$20 (two issues every two weeks). Overseas Surface - \$21. Overseas Airmail - \$30 (Central America, Caribbean, Colombia and Venezuela), \$33 (Europe, North Africa, Middle East), \$37 (rest of the world). Trial Membership - \$7.50 (10 issues of "DX Monitor" and a New Member Packet, U.S./Canada/Mexico only). Make checks and money orders payable to IRCA and send all dues to: IRCA, P.O. Box 482, E. Moline, IL 61244. Persons living outside the U.S., please use International Money Order in U.S. funds. Sample copies of "DX Monitor" are 50 cents or three International Reply Coupons each and are available from: IRCA, P.O. Box 21074, Seattle, WA 98111.

THE IRCA GOODIE FACTORY

Reprints of more than 400 articles from past issues of "DX Monitor" are available from the IRCA Goodie Factory. Also available is IRCA stationery and the very popular IRCA publications: "IRCA Almanac", "A DXer's Technical Guide", and the "IRCA Foreign Logs". For a complete list of available publications and their costs, send a self-addressed, stamped envelope to: IRCA Goodie Factory, P.O. Box 21074, Seattle, WA 98111.

Unless otherwise noted, permission is granted to publish, broadcast, or otherwise reproduce non-copyrighted material appearing in "DX Monitor" provided credit is given to the IRCA and the original contributor. Opinions expressed in "DX Monitor" are those of the original contributors and do not necessarily reflect those of the IRCA, its publishing staff, editors or officers.

FIRST CLASS

FIRST CLASS MAIL
US POSTAGE
PAID
Seattle WA
Permit No. 601

D. A. NYHOLM
2071 CEDAR STREET
SAN CARLOS, CA
94070

19