

# DX MONITOR

THE OFFICIAL PUBLICATION OF THE  INTERNATIONAL RADIO CLUB OF AMERICA

DEVOTED EXCLUSIVELY TO BROADCAST BAND DXING

SEPTEMBER 14, 1991 - VOLUME 29 - NUMBER 01 - EDITION 926-ISSN 0899-9732

BROADCASTING INFORMATION.....	2-5	WESTERN DX FORUM.....	17-18
DX WORLDWIDE WEST.....	6-7	EASTERN DX FORUM.....	19
WESTERN DX ROUNDUP.....	8-12	VERIFICATION SIGNERS.....	20-21
CENTRAL DX ROUNDUP.....	13-14	ARTICLE: FUTURE OF AM RADIO..	22
EASTERN DX ROUNDUP.....	15-16	TECHNICAL TOPICS.....	26-39

RENEWALS & ADDRESS CHANGES TO: RALPH SANSENERO 11300 MAGNOLIA #43 RIVERSIDE CA 92505

REPRINTS: STEVE RATZLAFF 295 PETTIS AVENUE MOUNTAIN VIEW CA 94041

BOOK STORE: PHIL BYTHEWAY 9705 MARY AVENUE SEATTLE WA 98117

FCC: THE MENTION IN THE LAST DXM ABOUT THE FEDERAL HEARING IN WASHINGTON DC BETWEEN MADOLYN O'HAIR AND THE FCC WAS FALSE. THE PETITION IS A FALSE PETITION ACCORDING TO THE FCC AND THIS FALSE PETITION INFORMATION HAS BEEN AROUND SINCE 1976. I CALLED THE FCC INFORMATION CENTER AND WAS GIVEN THIS INFORMATION. I APOLOGIZE FOR PUTTING OUT THIS FALSE INFORMATION..PUB

CLIPPINGS: NEWSPAPER AND MAGAZINE CLIPPINGS FOR FILLER MATERIAL CANNOT BE USED IN THE DXM IF YOU DO NOT HAVE PERMISSION FROM THE SOURCE OR HOLDER OF THE COPYRIGHT PER IRCA EDITORIAL POLICY III-I. SO PLEASE SAVE YOUR POSTAGE. MOST OF THE CLIPPINGS ARE VERY INTERESTING, MAYBE YOU COULD MENTION SOMETHING IN A FORUM REPORT. THANKS FOR YOUR INTEREST.....PUB

EDITOR NEEDED: WESTERN DX FORUM. IF YOU LIVE WEST OF THE MISSISSIPPI RIVER, HAVE A TYPEWRITER THAT HAS GOOD-LOOKING TYPE, AND CAN SPEND A FEW HOURS EACH WEEK HELPING IRCA, WRITE TO IRCA PRESIDENT PHIL BYTHEWAY 9705 MARY AVENUE NW SEATTLE WA 98117. BILL HARDY WILL TYPE THE COLUMN UNTIL A PERMANENT EDITOR IS FOUND. THANKS BILL.

DX GET-TOGETHER: FORMER MEMBER RICK DAU IS HOSTING A GET-TOGETHER AT THE HOWARD JOHNSON'S MOTOR LODGE IN SIOUX CITY, IOWA ON FRIDAY-SATURDAY, OCTOBER 25TH & 26TH. IT WILL START AROUND 3 PM ON THE 25TH. ALL IRCA MEMBERS ARE INVITED TO ATTEND. THIS SOUNDS OK TRY TO MAKE IT IRCA MEMBERS.

IRCA AM-FM ALMANAC UPDATERS: YOU WILL FIND INFORMATION ON UPDATERS ELSEWHERE IN THIS ISSUE OF THE DXM.

CONTEST: IRCA ALMANAC UPDATER: THIS IS ANOTHER YOU WILL FIND IT ELSEWHERE IN THIS ISSUE OF THE DXM.

## \*\*\* IRCA AM-FM ALMANAC, 5th Edition 1991 \*\*\*

The fifth edition of the IRCA AM-FM Almanac is now available! This 240 page book is a must have cross reference for the serious AM DXer. Within it you will find the current frequency check list, affiliates for news and talk show networks, syndicated music and religious programs, AM-FM simulcasts, station slogans, broadcasting in Canada, AM stereo, sports networks, utility stations and many articles on AM broadcasting. In addition, Volume V contains a section focusing on AM band foreign DXing (including a compressed IRCA Foreign DX Reference). Each list is in frequency order and many include the FM frequencies as well as the AM (great for FM DXers).

The IRCA AM-FM Almanac is available in large comb bound or loose leaf (please state preference when ordering). Post-publication prices are:

IRCA member: US - \$13.00 Canada - \$14.00 Overseas Sea Mail - \$14.00 Overseas Air-Mail - \$17.00  
non-members: US - \$15.00 Canada - \$16.00 Overseas Sea Mail - \$16.00 Overseas Air-Mail - \$19.00

The IRCA AM-FM Almanac is available from: Phil Bytheway, 9705 Mary NW, Seattle, WA 98117.

# BROADCASTING INFORMATION

EDITOR: ROBERT WIEN 1309 DENTWOOD DR SAN JOSE CA 95118

Deadlines: 2nd & 4th Saturdays

Compiled: 8/27/91

Much of this information was compiled from M Street Journal and other sources.

## FORMAT CHANGES

AL. Jasper	WZPQ-1360	was AC, now CHR //FM
Mobile	WLVV-1410	was WMML, silent, now black gospel "Love"
Prattville	WKKN-1410	was WRNB, silent, now urban
Tuscaloosa	WNPT-1280	was AS, now urban AC // FM
AZ. Phoenix	KAMJ-1230	was talk/sports, now KISP, SMN-urban AC
CO. Pueblo	KRRU-1480	was rel., now silent
FL. Lakeland	WIPC-1280	was SS, now AC/Sun Talk
Orlando	WBZS-1270	was urban AC, now SS
GA. Buford	WHOO-990	was C&W, now rock //WHTQ
	WXEM-1460	was WLKQ, oldies //FM, now SS// WAOSW
ID. Boise	KBOI-670	was AC, adds DCJ-soft AC
Nampa	KFXD-580	was rel./SS, now rel. only
IL. Chicago	WPNT-820	was silent, now sports talk (September)
Ottawa	WCMY-1430	was nx/talk/AC, adds SMN-ACF
MA. Boston	WEEI-590	was nx/sports, now sports
Needham	WLVG-740	was silent, now black gospel
Worcester	WFTQ-1440	was rock //FM, now sports // WEEI-590
MD. Baltimore	WYST-1010	was AC-CHR//FM, now dance-CHR //FM
MN. St. Paul	KDWB-630	was oldies, now WDGy, oldies/talk
Walker	KLLR-1600	was AC, now Unis. standards
MO. Warrenton	KWRE-730	was C&W, adds DCJ-C&W
MT. Hardin	KKUL-1230	was oldies //FM, rptd. silent
NY. Howell	WHMI-1350	new, religion // WHMR
Huntington	WGSM-740	was stds., adds nx 6-10AM
NC. Yanceyville	WYNC-1540	was C&W, rptd. silent
OH. Canton	WINW-1520	was AS, now temp. silent
East Liverpool	WOHI-1490	was SMN-oldies, now SMN-stds.
OR. Dallas	KWIP-880	was silent, now SMN-AC
Lincoln City	KBCH-1400	was stds., adds SMN-stds.
Lake Oswego	KLVS-1290	was talk, now religion

## A DXers TECHNICAL GUIDE

Now in its 2nd edition, this 120 page book answers questions on how receivers work, how to make them work better, what audio filters and loop antennas will do for you, how to build a beverage and phasing unit, and much more. Only \$5.50 for IRCA members, \$6.50 for non-members (add \$2.50 for overseas airmail). Write: Phil Bytheway, 9705 Mary N.W., Seattle, WA 98117.

PA. Altoona	WFBG-1290	was AC, adds DCJ-soft AC
Reading	WRAW-1340	was oldies, now SMN-stds.
PR. Vega Baja	WEGA-1350	was SS, rptd. silent
TX. Creedmore	KGTV-1530	was C&W, now silent
Cuero	KQRO-1600	was C&W // FM, now local C&W
Dallas	KLIF-570	was nx/talk, drops Talknet nights
	KUII-1190	was nx, adds Talknet nights
El Paso	KFNA-1060	was silent, now SS
Galveston	KGBC-1540	was variety, adds DCJ-oldies
Houston	KKBQ-790	was CHR// FM, now rock-CHR // FM
	KERV-1230	was soft AC, now Unis. stds.
Kerrville	KNET-1450	was C&W, now C&W //FM
Palestine	KOAL-750	was C&W, adds DCJ-C&W
UT. Price	WXGM-1420	was AC, adds SMN-AC
VA. Gloucester	WSVG-790	was C&W //FM, now gospel
Mount Jackson	WIZM-1410	was AC/talk, adds Sun talk
WI. La Crosse	WLZR-1340	was hard rock, now rock //FM
Milwaukee	WIBU-1240	was polka, now SMN-standards
Poynette	WTTN-1580	was AC, now C&W
Watertown		

#### NEW STATION APPLICATIONS

(NONE)

#### NEW STATION GRANTS

(NONE)

#### CONSTRUCTION PERMIT ACTIVITY

(NONE)

#### FACILITY AND PARAMETER APPLICATIONS

CO. Monument	KBCR-1040	reduce pwr. to 1900 w.
LA. Lake Charles	KAOK-1400	reduce pwr. to 900 w.

#### FACILITY AND PARAMETER GRANTS

AL. Eufaula	WULA-1240	reduce power to 600 w.
VA. Leesburg	WAGE-1200	increase to 10 kw. days

#### CALL LETTER CHANGES

AL. Pepperell	WXTN-910	becomes WDAK
AZ. Phoenix	KAMJ-1230	requests KISP
Williams	KDAN-1180	becomes KYET (KTRN not used)
CA. Apple Valley	KITH-1550	requests KAPL
Soledad	KOJY-700	becomes KSUR (again)
CO. Cortez	KISZ-740	requests KVFC
KS. Winfield	KVFW-1550	becomes KKLE
MA. Fitchburg	WFGL-960	becomes WXLO
MI. Bay City	WBCM-1440	becomes WUNI
MN. Litchfield	KLMC-1410	requests KLFD (KQIV not used)
St. Paul	KDWB-630	requests WDGY
SC. Lake City	WJOT-1260	becomes WVLC
Orangeburg	WORG-1150	becomes WJZS
TN. Centerville	WHLP-1570	becomes WNKX
Chattanooga	WDXB-1490	becomes WJOC

Note: KGW-620 Portland, OR. changes format to eclectic jazz but has decided not to drop their 69-year old calls and become KINK. A 3-letter call is intact!

This is being typed on a brand new word processor, similar to the WDXR column. It sure makes typing this easier!!!

# BROADCASTING INFORMATION

EDITOR: ROBERT WIEN 1309 DENTWOOD DR SAN JOSE CA 95118

DEADLINES: 2nd & 4th Saturdays

Compiled: 9/1/91

Most of this information was compiled from M Street Journal, DXM, and various other columns.

Note: this column will now go bi-weekly vice tri-weekly now that DX season has begun. Thanks to Bill Hardy for some additional info in this column. I'm still fine-tuning the column, so pardon the mess, hi.

## FORMAT CHANGES

AZ. Phoenix	KAMJ-1230	was talk/sports, now KISP, SMN urb.AC
CO. Pueblo	KRRU-1480	was religion, now silent
FL. Orlando	WBZS-1270	was urb.AC/talk, now brokered SS
	WHOO-990	was C&W, now rock //WHTQ
GA. Buford	WXEM-1460	was WLKQ, oldies, now SS //WAOS
IL. Ottaws	WCMY-1430	was nx/talk/AC, adds SMN-AC
LA. DeRidder	KDLA-1010	was AC//KEAZ, rptd. silent
Mansfield	KDXI-1360	was AC//KJVC, rptd. silent
MD. Baltimore	WYST-1010	was AC-CHR//FM, now dance-CHR //FM
MA. Needham	WLVG-740	was silent, now black gospel
MN. St. Paul	WDGY-630	was KDWB, oldies/talk, now C&W/talk
MS. Indianola	WNLA-1380	was AC, now black gospel
MO. Warrenton	KWRE-730	was C&W, adds DCJ-C&W
MT. Bozeman	KMMS-1450	was AS, now Unis. CNN headlines
Hardin	KKUL-1230	was oldies //FM, rptd. silent
NY. Huntington	WGSM-740	was stds., adds nx block 6-10AM
North Syracuse	WNSS-1200	was WXRA, stds., now Unis. CNN head.
NC. Yanceyville	WYNG-1540	was C&W, rptd. silent
OH. East Liverpool	WOHI-1490	was SMN-olides, now SMN stds.
OR. Dallas	KWIP-880	was AC, adds SMN-AC
Grants Pass	KAGI-930	was C&W/talk, now info/var.//KSOR
Lincoln City	KBCH-1400	was stds., adds SMN-stds.
PA. Altoona	WFBG-1230	was AC, adds DCJ-soft AC
Easton	WEEX-1230	was oldies, now oldies //WXHT
Philadelphia	WEAZ-560	was soft AC//FM, now EZL (in Sept.)
Reading	WRAW-1340	was oldies, now SMN-stds.
PR. Vega Baja	WEGA-1350	was SS, rptd. silent
TN. Bristol	WOPI-1490	was C&W, now EZL //WKPT
Columbia	WQZZ-910	was WCMG, silent, now urban
Memphis	WHBQ-560	was C&W/rock, now C&W//WGKX (Nov.)
TX. Dallas	KLIF-570	was nx/talk, drops Talknet nights
Dallas	KUII-1190	was nx, adds Talknet nights
El Paso	KFNA-1060	was silent, now SS
Houston	KKBQ-790	was CHR/FM, now rock-CHR //FM
Palestine	KNET-1450	was C&W, now C&W //FM
UT. Price	KOAL-750	was C&W, adds DCJ-C&W
WA. Lakewood	KDFL-1480	was rel. Sundays, now rel. all days
	KTGN-1480	was rel. Mon.-Sat. now silent
WI. Watertown	WTTN-1580	was AC, now C&W

NEW STATION APPLICATIONS

(NONE)

NEW STATION GRANTS

(NONE)

CONSTRUCTION PERMIT ACTIVITY

(NONE)

FACILITY AND PARAMETER APPLICATIONS

NC. Winston-Salem WSMX-1500 reduce day pwr. to 1 kw., change DA  
VA. Gloucester WXGM-1420 reduce day pwr. to 740 w.

FACILITY AND PARAMETER GRANTS

AL. Eufalfa WULA-1240 reduce pwr. to 600 w.  
MA. Southbridge WESO-970 500/500 DA-1  
VA. Leesburg WAGE-1200 increase to 10 kw. days

CALL LETTER CHANGES

AL. Madison was WDKT-730, now WKMW  
AZ. Phoenix was KAMJ-1230, now KISP  
FL. Cantonment was WRBK-1090, now WJBW  
LA. Pineville was KKLC-1110, requests KTLD  
MA. Worcester was WFTQ-1440, now WVEI  
MN. St. Paul was KDWB-630, now WDGY  
NV. Winchester new-620, now KZTY  
NM. Alamogordo was KZZX-1270, now KINN  
NY. North Syracuse was WXRA-1200, now WNSS (W-news)  
OR. Eugene new-860, now KZTZ  
Junction City new-650, now KZTU  
Troutdale new-860, now KZTW  
SC. Charleston was WCSE-1390, now WXTC  
Elloree was WMMY-1370, now WORG  
Spartanburg was WKDY-1400, requests WYYR  
TX. San Antonio was KFHM-1160, now KVAR  
UT. Brigham City was KNKK-800, now KSCS  
WV. Huntington was WRVC-930, now WTKZ

Bill Hardy sends along the following info from his recent trip:

WA. Grand Coulee KEYF-1490 was SMN C&W, now local nost.,  
still //FM  
Seattle KVI-570 was local oldies, now satt. oldies  
except morning Drive w/EFM talk  
(Limbaugh-Edell) 9 AM-1PM  
AB. Banff CFHC1-1340 same as CFHC-1450 Canmore (see  
next tip)  
Canmore CFHC-1450 was local ad con days, C&W  
// CFAC-960 Calgary nights, now  
all oldies (local days, satt.  
nights)

Also, KSPQ-740 is not on the air yet, and KHDL-630 Opportunity is still on 630 and hasn't moved to 840 khz. yet.

Your comments are always welcome, and to quote a famous commercial : "Thank you for your support....". 73's.



PAT MARTIN P.O. BOX 843 SEASIDE. OR 97138

# DX Worldwide - West

Time: UTC phone (503) 861-3185

DEADLINES: 9/17, then weekly

We have a good turnout for you this time and even a report from Larry Godwin! Welcome back Larry. I hope you hear alot of good DX there in Montana and report often.

## PAN-AMERICAN DX ROUNDUP

- 590 MEXICO, Durango-XEE SM 7/14 1025 Fair w/local KKLQ off. Lots of Radio ACIR promos. (TRH-CA)  
MEXICO, UNID SM 7/14 1057 XE anthem u/XEE. Male DJ at 1100 mentioned "..... de la frontera". Mx and rooster crows. This almost has to be needed XEFD. (TRH-CA)
- 620 MEXICO, Chihuahua-XEBU 8/14 1100 Back to 24h schedule. (TRH-CA2)
- 680 MEXICO, Hermosillo-XESON 8/13 Station is now 24 hr w/Radio ACIR programming. (TRH-CA2)
- 690 MEXICO, Tijuana-XETRA-MM 8/5 0805 OC, then off. (TRH-CA)  
MEXICO, Manzanillo-XECS MM 8/5 Excellent signals w/"La Grande de Manzanillo" slogans, excellent full ID except for the power, which was unintelligible (rats)! (Trh-CA)
- 740 MEXICO, UNID SM 8/11 1056 and every night since. Station with SS AC "Radio Energia" slogan 24hr NSP w/no local mentions. Probably a schedule and slogan change foe XEQN, but can't confirm it as yet. (TRH-CA)
- 820 MEXICO, Guadalajara-XEBA 7/28 at 0728 Fair w/trad Mexican mx, "La Consentida" slogans. Not hrd in a while. (TRH-CA)
- 870 MEXICO, Guachachic XETAR 8/14 1209 Sign on by female ancr, mentioned power is now 10KW. Sch sill 1200-0100 SS/Indian programming. (TRH-CA2)
- 990 MEXICO, Cd. Guzman XEBC? 8/14 1105 Believe this is the station using "Radio Alegria" slogans here. (TRH-CA2)  
MEXICO, Cd. Cuauhtemoc XEER 8/14 1133 Loud s/on into SS/GG/Indian language morning program. S/on is now 1132 GMT +/- 1 or 2 minutes either way. (TRH-CA2)
- 1000 MEXICO, Los Mochis-XEMIL 8/13 1130 Station is apparently no longer 25hr, has been conspicuously absent several nights. Tried for XEMMS and XEOY, no luck. (TRH-CA2)
- 1040 MEXICO, Guadalajara-XEBBB 8/14 1201 S/on and "Energia 10-40" slogans. (TRH-CA2)
- 1070 MEXICO, Cd. Obregon XEOBS-8/14 1200 S/on with very long XE anthem. Eventually got around to IDing. (TRH-CA2)
- 1090 MEXICO, UNID 8/14 1157 UNID SS way u/local XEPRS. (TRH-CA2)
- 1110 MEXICO, Mexico City-XERED "Radio Red, La Super-Estacion" nice ID 1158 8/28 atop all. Mentioned satellites "Radio Red"-1540 Monterrey and 700-Guadalajara. (LBG-MT)
- 1240 MEXICO, UNID 8/13 and 8/14 1301 XE anthem on SE wire, probably unneeded XEBQ. (TRH-CA2)
- 1440 MEXICO, Mexico City-XEEST 8/14 0925 Fair o/QRM "Radio Alegria" ID hrd EZ/POP mx (Mexican) Tropical and Ranchera, SS amnts. (CB-HI)
- 2390 MEXICO, Huayacocotla, Veracruz 8/9 1100 anthem Good with music and ID. First time hrd and many yrs of trying. Taped rep sent. (CB-HI) (Great catch Chuck.PM)

## TRANS-PACIFIC DX ROUNDUP

- 540 WESTERN SAMOA, good with man in Samoan, not//747. Hrd quite often after 0700 on top of domestics. Sem like just talk talk talk and little mx of this service, at least at this time, while 747 plays alot of U.S. Pops. 9/1 Used to be rare, but now 10KW! (PM-OR)
- 558 FIJI-Good with talk in Fijian at 0715 9/1. (PM-OR)

- 621 TUVALU, weak in KIPA/KGW slop, strong het w/woman in Tuvaluan (presumed), soft Island mx followed at 0715 9/1. (PM-OR)
- 666 NEW CALEDONIA, Noumea-FR3-fair carrier (KPUA-670 off) with very weak female in FF at 0812 8/29. First time hrd for a long time. Normally with the move of KPUA to 670, they splatter awful!!!! Many nights no sign of Boise! The last few nights, the mod seems to be down. Hope it stays that way. (PM-OR)
- 702 AUSTRALIA, Sydney-2BL 8/10 Oldies w/commentary about the artists. ABC nx at 1100. Good level w/no QRM. (CB-HI)
- 738 HET, fairly strong (but no audio) 1210-1230 8/24. Looped DU (LBG-MT) (An Aussie or Tahiti that is now 24 hrs-PM)
- 756 NEW ZEALAND, Auckland-1YA good with MOR mx and male ancr, TCs at 1123 9/1 (PM-OR)
- 774 AUSTRALIA, Townsville-4TO good o/u Fiji (Hindi prog) with U.S. Pops ads, TCs, 1135 9/1. (PM-OR)
- 810 FIJI, u/o KGO with Hindi program. Nice to hear, but wasn't really DXing was just listening to KGOs talk! 0812 9/2. (PM-OR)
- 837 AUSTRALIA, Rockhampton-4RK-good with ABC Pops 0845 9/1. (PM-OR)
- 846 KIRIBATI, good with woman in Island talk, music at 0645 9/1 (PM-OR)
- 873 AUSTRALIA, Sydney-2GB-fair w/tele talk in splat from 870 (KAIM) 2GB mentioned at 0840 9/1. (PM-OR)
- 1035 HET, fairly strong (no audio) several AMs in late August Best 1215-1230. Looped DU. (LBG-MT) (Poss. NZ.PM)
- 1044 CHINA, Radio Beijing FS 8/15 at 1035 JJ program, good. (CB-HI)
- 1503 UNID, very strong carrier, not little of now audio 8/30 0934, most of the night. (PM-OR)
- 1584 UNID, another carrier, but too much KBLA at 0941 8/30. (PM-OR)
- 1593 PAUPA NEW GUINEA, Vanimo-Radio West Sepik 8/11 0940 Fair in QRM // SW 3205, which was weaker, Island mx Pidgin anmts. This is our most reg PNG station. (CB-HI)
- 1620 t AUSTRALIA, Canberra-1PPP presumed w/talk and ending mx at 0959. ID at 1001, but too weak to understand 9/1. (PM-OR)

#### THANKS TO THESE REPORTERS:

- CB-HI CHUCK BOEHNKE-POST OFFICE BOX 488-KEAAU, HI 96749  
Icom R71A, FRT 7700 tuner 175' LW
- LBG-MT LARRY GODWIN-2390 CLYDES DALE LANE-MISSOULA, MT 59801  
HQ-150, Space Magnet Loop
- TRH-CA TIM HALL-350 G STREET #F-1-CHULA VISTA, CA 91910-4559  
SONY ICF-2010, Radio West Loop
- TRH-CA2 TIM HALL DXING WITH NEIL KAZAROSS AT SD BEV SITE POWAY, CA  
ICF-2010, 800' and 1000 foot aimed E, 1600' aimed SE.
- PM-OR YOUR EDITOR  
SP-600-JX17, 200' DU wire SW, 1500' East Bev, 45' vertical, Ground system.

## IRCA Mexican List, 2nd edition

The IRCA Mexican List, 2nd edition, is now available from the IRCA Reprint Service! This comprehensive guide lists calls, frequencies, locations, powers, schedules, networks, slogans and formats of AM stations throughout Mexico. It contains a wealth of never-before-published information received direct from Mexico City, and has been updated by listener tips though September 15, 1990. AM radio in Mexico has undergone an extensive shuffle in the past year. If you DX Mexico (or want to), you need this publication.

The IRCA Mexican List is available in four convenient formats:

- |  |           |               |                |
|--|-----------|---------------|----------------|
| Volume I - Sorted by Frequency, State, City (24 pages)       | US \$3.75 | Canada \$4.75 | Foreign \$6.00 |
| Volume II - Sorted by State, City, Frequency (21 pages)      | US \$3.25 | Canada \$4.25 | Foreign \$5.25 |
| Volume III - Sorted by State, Frequency, City (22 pages)     | US \$3.50 | Canada \$4.50 | Foreign \$5.50 |
| Volume IV - Call Index (Call/State/City/Freq only) (6 pages) | US \$1.00 | Canada \$1.25 | Foreign \$1.50 |

Send your order to: IRCA Reprint Service, c/o Steve Ratzlaff, 295 Pettis Ave., Mountain View, CA 94041  
Please be sure to specify the volume(s) desired.



WESTERN  
DX  
ROUNDUP

Nancy Hardy  
2301 Pacific Ave.  
Aberdeen, WA 98520

DEADLINE FOR WDXR TIPS IS MONDAY. PLEASE USE EASTERN TIME.

REPORTERS FOR THIS ISSUE:

- (TRH) Tim Hall-350 G St. #F-1- Chula Vista, CA 91910  
Sony ICF-2010, Radio West loop, Delco car radio  
(TRH-CA2) DX'ing with Neil Kazaross at San Diego Beverage site, Poway, CA  
ICF-2010, 800' & 1000' aimed east, 1600' aimed SE
- (BH) Bill Hardy-2301 Pacific Ave.-Aberdeen, WA 98520  
FRG-7, Radio West loop, Delco car radio  
(BH-WA1) DX'ing on I-90 between Ellensburg & Spokane, WA  
(BH-WA2) DX'ing east of Spokane, WA  
(BH-AB) DX'ing near Banff & Canmore, AB
- (NH) Nancy Hardy-2301 Pacific Ave.-Aberdeen, WA 98520  
FRG-7, Radio West loop  
(NH-WA1) DX'ing on I-90 between Ellensburg & Spokane, WA
- (JH) Jim Hilliker-1705 Withers Ave. #12-Monterey, CA 93940  
GE Superadio
- (JJ) Jef Jaisun-3636 Magnolia Blvd. W.-Seattle, WA 98199  
GE Superadio II
- (PM) Patrick Martin-P.O. Box 843-Seaside, OR 97138  
SP-600JX, longwire with ground system
- (SMM) Steve Mittman-2248 West 37th Street-San Pedro, CA 90732  
Realistic TRF #12-656A
- (MR) Mike Riordan-P.O. Box 1195-Goleta, CA 93116  
DX-440, Select-A-Tenna; old AM only Blaupunkt car radio with 5' whip
- (MS-CA) Mike Sanburn-P.O. Box 1256-Bellflower, CA 90707  
GE Superadio
- (MS-AB) Mike Stonebridge-Box 511-Fox Creek, AB T0H 1P0
- (RW) Robert Wien-1309 Dentwood Dr.-San Jose, CA 95118  
GE Superadio, GE long-range portable, SM-2  
(RW-NV) DX'ing in Reno, NV

\*\*\*\*\*  
OF SPECIAL INTEREST:

- 880 KWIP OR, Dallas is back on the air with an adult contemporary music format after being silent for two years. (PM-OR)
- 1230 (KKGR) OR, Gresham has gone silent. (PM-OR)
- 1290 (KLVS) OR, Lake Oswego has gone silent again. (PM-OR)  
\*\*\*\*\*
- 530 WNR5428 CA, Oceanside 8/23 new station is on with CA-78 HAR info. Message similar to, but not // WNR5426 (Vista) and WNR5427 (Escondido). WNR5427 gets out the best. (TRH-CA)
- KNEC996 CA, Santa Ana-Irvine (HAR for the 5, 55, & 57 Fwys. construction area) Su 8/18 has begun mentioning a "city of license" in its ID "KNEC996, Santa Ana-Irvine." Transmitter is actually on the Santa Ana-Tustin border. Also included announcement "This is Mark Dennis. Dial the Cal-Trans helpline...and get answers to your construction questions..." (SMM-CA)
- WNED2844 WA, Moses Lake 7/28 1802 saw highway sign in Moses Lake to tune 530. "Highway Advisory Radio" with various announcements for attractions & services. Call sounded like WNED2844, which probably has one extra letter or number in it. (BH&NH-WA1)
- 550 KMVI HI, Wailuku 8/14 0920 fair-good on top of channel with Hawaiian music, "55 KMVI" IDs off back of E wires. (TRH-CA2)
- 600 CHRX BC, Vancouver 8/24 0810 mostly oldies with ID "...on your classic rock station, AM-600, CHRX." New. (JH-CA)



- 610 KYJC OR, Medford 8/25 0315 mostly strong atop KFRC's Bohannon with SMN adcon, local ads 0332, "Stereo Magic KFMCJ-KYJC" slogans. 0400 legal AM-FM ID, "Star Spangled Banner" (Whitney Houston version?), 0406 full-data AM-FM s/off, to return "at 5 a.m." Definitely not silent, but not 24 hours either. (BH-WA)
- 620 KGW OR, Portland 8/12 0330 noted with new soft jazz format apparently // KINK-FM, but legal ID on hour as "KGW Portland." (RW-CA)
- 630 KHDL WA, Opportunity 7/29 1005 noted while in Spokane still on 630 kHz with CNN Headline News, no hint of CP to 840. (BH-WA2)
- 650 KMCE CA, Rancho Cordova 7/11 0500+ with numerous references to "X" in Spanish, and a rather diversified mix of music. Over CISL most of the time. KRCX/KMCE ID at 0500 in English, or I never would have figured this one out. (JJ-WA) (Jef, you heard them on one of their last days as KMCE. Robert Wien reported them as using KRDX on 7/15.-NH)
- KRDX +Wed. 8/28 2300 fair to good in KFI-640 null (their talk format helps, hi) with Spanish music, then English legal ID at 2302: "This is KRCX, Roseville-Sacramento, and KRDX, Rancho Cordova, and all of Northern California." New. 650 #3, but first 650 with KFI on! (SMM-CA)
- 670 ?KPWA? HI, Hilo 8/14 0923 tentative with AC under KWNK. KIPA and KHLO in very well at this time. (TRH-CA)
- 690 ?CBKF1? SK, Gravelbourg MM 8/5 0353 presumed them with interview program in French under XECS. Local XETRA off. Morning program of meditative music heard later (0455-0500) may actually have been CBF. (TRH-CA)
- (XETRA) BCN, Tijuana 8/5 0500 off leaving KVNA. (MS-CA)
- 700 KOJY CA, Soledad 8/19 0942 good with local spots, ID "You find relaxing music, at 99.5 FM, and KSUR, 700-AM." (RW-CA) (Robert, you had this listed as KSUR. KSUR is just a slogan--they use KOJY as legal ID at top of the hour--see Jim Hiliker's tip in "Local Changes."--NH)
- 720 KDWN NV, Las Vegas 7/26 1745 in with talk program. Lots of occasional splash from KMPC-710. (MR-CA)
- \*KDWN\*+8/19 0431 noted with OC. (RW-CA)
- 740 (KSPO) WA, Dishman 7/29 no sign of this CP yet. (BH-WA2)
- 750 ?KMMJ? NE, Grand Island or WGN? 8/24 0810-0830 fair-good in KXL null. Big band & soft jazz music with male announcer, many Chicago mentions & ads, promo for "Chicago Cubs baseball today on WGN," & "25 after 7 on WGN" TC & ID. KMMJ relaying WGN or ??? Weird. KDWN was on 720! (JH-CA)
- 830 KFLT AZ, Tucson 7/26 1715-1735 in with relig. programming midday with poor audible signal. At 1735 heard "The word of God and KFLT." (MR-CA)
- +8/25 1200 still clearly audible at this time, with relig. program. (MS-CA)
- 840 ?KVJY? TX, Pharr 7/22 0736 tent. with nostalgia music fading up briefly with "Do You Remember (The Kind of September)," then gone. Looped ESE. (RW-CA)
- 850 KHLO HI, Hilo 8/14 0918 good with C&W, DJ Ron Thompson with "Big Island favorites from KHLO." (TRH-CA2)
- 870 ?KAIM? HI, Honolulu 8/14 0926 tentative over KIEV with relig. Needed for follow-up report. (TRH-CA2)
- KROL NV, Laughlin 8/5 0330 good with ID into "Sports Final," not KOWA yet. (RW-CA)
- 930 KRYK CO, Granby 8/14 0703 fair through KKHJ with SNN news and SMN AC. (TRH-CA2)
- 990 KSVP NM, Artesia 8/14 0731 fair-good through XECL OC with promos, IDs, slogan "Artesia's very own KSVP," PSAs and local talk. New, NM #44, have been trying for this for years! Killed by XEER which signed on at 0733, a minute later than usual. (TRH-CA2)
- 1020 (KTNQ) CA, Los Angeles Fr 7/19 0330 off, leaving CCKN and unID (probably KWIQ). (TRH-CA)
- 1040 KLHT HI, Honolulu 8/14 0916 good with relig. programming off back end of E wires. (TRH-CA2)

- 1050 KORE OR, Springfield 8/18 0356 fair with USA news, full ID with XED. Gets out very well for 161 watts. (TRH-CA)
- KEYF WA, Dishman 7/29 1022 nostalgia music followed by announcement of song "on K-E-Y, Key." Format on local tape with IDs included; in fact, these are the same tapes we heard in 1988 before the call/format change to KFVR. This matches what Mike Sanburn reported in 7/25 WDXR. (BH-WA2)
- 1140 KRAC CA, Sacramento 7/26 1740 in with country music, poor readable signal. Lots of splash from KSDO-1130 & KIIS-1150. (MR-CA)
- 1210 KONY UT, Washington 8/25 0430 very good over KGYN & KPRZ with ID and Interstate Road Report. (MS-CA)
- 1230 KQIK OR, Lakeview 8/31 0704 fair atop jumble, ending ABC-E news, Unistar satellite country, 0706 brief Paul Harvey promo and more C&W, local IDs as "Quick Country, KQIK." (BH-WA)
- KSBN WA, Spokane 7/29 1015 definitely using BRN feed with "Business Radio 12-30" slogans inserted. Not many local ads. This is much wanted at home. Ex-KRSS. (BH-WA2)
- 1240 KPOD CA, Crescent City MM 8/5 0339 surfaced briefly over KSUE/KSMA/KLFE with C&W music, 24h mention, K-Pod slogans. Unneeded but rare. (TRH-CA)
- +8/31 0742 atop as usual with C&W, "KPOD" mention and local ads. (BH-WA)
- (KSON) CA, San Diego MM 8/5 0240 off before local midnight. Possible xmtr troubles -- weak OC, badly distorted signal when testing. Drifted to 1237.8 at times. (TRH-CA)
- +Fr 8/16 0326 both AM & FM broadcasting terribly distorted relay of XHKY-FM 95.7. Went undetected (or uncorrected) by station almost all night. (TRH-CA)
- KSUE CA, Susanville MM 8/5 0257 fair with NOS music, sports promo, IDs, promo for Hugh Hardaway morning show. AP News on the hour. S/off 0307 with instrumental SSB. Schedule 0800-0308. New, CA #231. (TRH-CA)
- KELK NV, Elko MM 8/5 0321 SNN news, singing ID, into oldie "Stand by Me." Extremely rare here. (TRH-CA)
- 1260 KGIL CA, San Fernando per announcement, carries Tom Snyder Show from ABC, don't know if it's the live feed 2200-0100. (JH)
- 1270 KZZX NM, Alamogordo 8/13 0757 fair through local XEAX with SMN C&W, legal ID by man into SNN news. (TRH-CA2)
- 1290 (KMN) CA, San Bernardino 8/5 0345 off leaving KCUB. (MS-CA)
- 1300 KMPS WA, Seattle 8/14 0715 fair off back end of SE wire with farm report and IDs, back to C&W //FM. (TRH-CA2)
- 1310 KEIN MT, Great Falls 8/5 0814 loud in KDIA null with ID "Kool Gold is 13 Keen." (RW-CA)
- 1340 CFHC1 AB, Banff 8/3-8/6 no longer relays CFAC-960 Calgary at night. See CFHC-1450 tip below. (BH-AB)
- 1360 KLFF AZ, Glandale 8/28 0510 promo with ID "on 13-60 AM, KLFF." Into Big Band and EZL music, satellite possibly. Other similar music from another station under. New. (JH-CA)
- KZIQ CA, Ridgecrest poor-fair through local KPOP with AdCon/OLD, ID on the hour. Seemed to mention FM 104.9 a few times. Have KLOA & KZIQ swapped FMs? New, CA #232. (TRH-CA2)
- 1380 KHJJ CA, Lancaster 9/1 2335 good, armchair copy for 5 minutes then gone. Ad for auto parts store with two locations, one on Yucca, one on Lancaster Blvd. Also mention of Antelope Valley, then into "Sports Final." Called station and ads matched up, said they were running 11½ watts! (PM-OR)
- 1400 KEZC AZ, Yuma 7/21 0500 good with ID, into ABC news, faded out. Haven't heard in a long time. Faded to KSUN-AZ, in KBLX null. (RW-CA)
- KKZZ CA, Santa Paula Wed 8/23 1123 midday in KGER-1390 null with C&W music and ID "One great country song after another -- KKZZ 1400 AM stereo." Ex-KZTR. (SMM-CA)
- (KHTZ) CA, Truckee still silent as of 8/1 while driving thru town. (RW-CA)
- 1430 KLO UT, Ogden 8/28 0825 fair with local talk show, mentioning local issues, ID. New. (JH-CA)

- CJXX AB, Grande Prairie 8/3 2200 Broadcast News, followed by TSN Sportsradio News and local weather. Male voice then said "More great country with Wendy Gardener on CJXX," into C&W record. I check 840 regularly & I haven't heard them testing yet, so guess the move to 840 won't be very soon. (MS-AB)
- 1450 KNOT AZ, Prescott 8/12 0215 briefly on top with ID, promo for show on Aug. 24 at Sheraton ballroom. C&W tunes by Nitty Gritty Dirt Band and Hal Ketcham. First logged in 1976 during freq. check. (MS-CA)
- CFHC AB, Canmore 7/31-8/6 now has split completely from CFAC-960 Calgary. Local studio time now 0800-2100, then Oldies Coast to Coast all night. Format "hits of the 60's, 70's and 80's." Per phone call will pick up satellite feed at 1700 beginning in September. (BH-AB)
- 1480 KZSN KS, Wichita 8/12 0430 my best catch in ages. Faded out of the blue o/u suspected KDBN & KHPX with nice ID "The country leader in Wichita, KZSN, FM 102," then gone with no comeback. Right place at the right time! Call change, ex-KLEO for me (last heard in 1977). (RW-CA)
- KDBN TX, Dallas 8/19 0500 fading up good over KHPX in KRED null with BRN, ID on hour into BRN news. Call change, ex-KBOX for me. Not heard in many years! (RW-CA)
- KHQN UT, Spanish Fork 8/19 0800 good at s/on over KYOS into Hari Krishna music. (RW-CA)
- 1490 KRUI NM, Ruidoso Downs 8/16 0357 fair with new C&W format, male DJ "We've got just what you're lookin' for -- more country and less talk, KRUI." Practically alone on channel. This one usually only heard at the Beverage site. (TRH-CA)
- KEYF WA, Grand Coulee 7/28 1830 format this year is locally-done nostalgia with 1490 & 98.3 IDs. Last year they had SMN country. In the past they've had SMN and Unistar adcon. Trying to get it right? (BH-WA1)
- 1520 KFFX OR, Oregon City 8/31 0729 good as usual with "KSL time is 10:59"! Turned out to be a relay of the 8/29 BYU football post-game at this odd hour, with Utah ads! (BH-WA)
- 1530 (KFBK) CA, Sacramento 8/5 0326 totally off, WCKY in weak. (RW-CA)  
+8/5 0430 noted with OC. (MS-CA)
- 1550 KXTO NV, Reno 7/22 0908-0930 xint way over KKHI after KXEX fadeout, didn't start fading until 0930! Numerous "Radio Exitos" IDs, caught on tape. New. (RW-CA)  
+On at night but apparently off after midnight. Noted on before 5am (PLT) in San Jose the other night. (RW-NV)
- 1560 KZIZ WA, Sumner 8/5 0336 good in KPMC null with ID "1420, KRIZ."  
ET, or are they now NSP? (RW-CA)
- 1610 KNEC996 CA, Harbor Freeway Tu 8/27 this HAR began announcing a call sign today with these calls. Note that KNEC996 is also the call for 530 Santa Ana-Irvine. Both are operated by Cal-Trans. (SMM-CA)
- TIS CA, Santa Monica Mountains Nat. Recreation Area (Malibu) 8/23 1945 new TIS station apparently located somewhere between Malibu and US-101. Frequent mentions of Malibu, recreation area, state park, and US-101. (TRH-CA)  
+Tim Hall phoned that he was hearing a new TIS with mentions of "Malibu," & "Nat'l Park." Couldn't hear at my location due to local Harbor Fwy. HAR, so drove out to Malibu Tues. 8/27 & confirmed new TIS on the air (no road signs seen). (Later, per call to park, learned that there are actually 2 TIS's on the air--the second at Mt. Mugu near Oxnard; with 2 more coming on soon.) 3-min. tape loop began "Welcome to Santa Monica Mountains National Recreational Area. As you wind your way through the busy traffic of Malibu, you may not realize that you are in a national park..." Arriving home, amazingly Harbor Fwy. HAR was off, and I caught ments of "Malibu" & "Santa Monica Mountains"! Unbelievably, a mere 15 seconds later, Harbor Fwy. came back on, obliterating it! New. (SMM-CA)

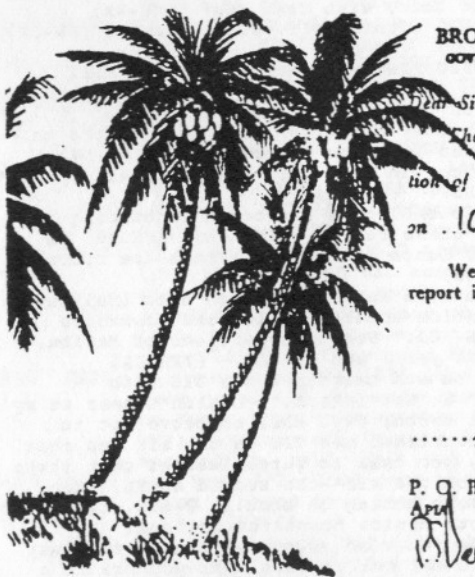
LOCAL CHANGES

- 700 KOJY CA, Soledad local silent again from 0300-0800. Also, IDs as "KSR FM & AM 700," except for legal ID on the hour. (JH-CA)
- 980 KFVB CA, Los Angeles dropped NBC News, and added ABC News. Also has CNN & AP news. (SMM-CA)
- 1080 KSCO CA, Santa Cruz local now has s/on at 0800 Monday-Friday for Mutual's "America in the Morning." Still 0900 s/on Sat. & Sun. (JH-CA)
- 1230 KVAS OR, Astoria is now 24 hour NSP, country music. (PM-OR)

UNIDs

- 530 8/5 0200 male announcer with tape loop mentioning I-405. Possibly needed Mission Viejo - El Toro HAR station. (TRH-CA)
- 880 7/22 0508 unID TT over KMFR, looping N-S. (RW-CA)
- 1290 8/19 0626 unID with "Real Country" format looping ENE. KCUB? (RW-CA)
- 1310 Wed. 8/28 2229 momentarily fair in mess at SSS with C&W music. ID from lady sounded like "K-Mix," or something similar. Does KLIX-Idaho ID as "K-Licks"? (SMM-CA) (Last we knew they were "Clicks," not "K-Licks."--NH)
- 1340 8/17 0325 unID C&W station, calls sounded like KCIK? or KPIK? Female announcer. KCEM-NM in earlier with C&W //FM, male DJ. (TRH-CA)
- 1480 8/12 0317 unID TT weak under mess, looping ESE. (RW-CA)

We had a wonderful time last month camping in the Canadian Rockies. No snow this year, but a lot of rain the three days we were near Chilliwack, BC. As I type this on Labor Day Weekend, I can't help but think how close we are to the new DX season. I hope that you will support the various columns!



BROADCASTING DEPARTMENT  
GOVERNMENT OF WESTERN SAMOA

Dear Sir,

Thank you for your report on the reception of station Ch2...1062 KHZ on 10 September 1982.....

We have pleasure in advising that your report is confirmed.



P. O. Box 200.

*[Signature]* Technical Supervisor.

2  
A  
P



# Central DX Roundup

Editor: **John C. Johnson**  
979 Neptune Boulevard  
Billings, Montana 59105-2129

## FOR THE RECORD

Report in Eastern time.

Deadline: Saturdays.

CDXR accepts reports via computer through Prodigy, my address: MPNN49A.

## RIDING GAIN

[TML-IN] = Tom Laskowski, 1334 E. Miner St., South Bend, IN 46617

[WMC-MB] = Wayne McRae, 103 Donegal Bay, Winnipeg, MB  
Icom IC-R70, 400' south, 1000' east. Mobile DX Bus.

[JcJ-MT] = Your editor using an Icom IC-R71A with Radio West Loop.

[JcJ-MT1] = On the road in Bozeman, MT.

[JcJ-MT2] = On the road in West Yellowstone, MT

[JcJ-ID] = On the road in Idaho Falls, ID

[JcJ-UT] = On the road in Salt Lake City, UT

## SPECIAL INTEREST

690 KICN ID Blackfoot. EX-KBLI. 8/11 noted with CNN Headline News. ID on hour as "KICN Idaho Falls, Rexburg." Also IDing as "690 and 1260." //KECN-1260. Was interesting as they didn't take the break-aways for local news and weather, or spots. Long periods of dead air! [JcJ-ID]

930 WTKZ WV Huntington. EX-WRVC. 8/24. 0530 with detailed baseball scores. ID "An old friend with a new name, Talkradio 9-30 WTKZ." [TML-IN]

1260 KECN ID Idaho Falls. EX-KTEE. 8/11 noted with CNN Headline News //KICN-690. ID on hour: "KECN 1260 Blackfoot, Pocatello." Other IDs the "690 and 1260" ones. [JcJ-ID]

1450 KMMS MT Bozeman, EX-KUUB. 8/11. Now using new call and format changed to satellite fed adult standards from 40s-50s-60s. IDing as "Montana's Music Station." Noted KUUB-FM is now KMMS-FM but programmed separate with rock oldies from the 70s and 80s. Same slogan. [JcJ-MT1]

1490 KBSR MT Laurel, 8/11. Noted back on the air after being silent for about a month. Reason unknown. Format still same satellite fed adult standards from 40s-50s-60s. [JcJ-MT]

## DOWN THE DIAL

730 WPAL SC Charleston, 7/31 good to fair. 0325 With Gospel music. Woman with church and civic notes. More music. First time heard. [TML-IN]

800 KNKK UT Brigham City, 8/24. 0945 w/sports show, 1000 ID mentioned both "KSOS" and "KNKK" into ABC News. 1005 w/Paul Harvey. Also using the slogan "The Big 800." Noted not //KSOS-FM which was airing rock oldies. [JcJ-UT]

880 WBKZ GA Jefferson, 8/14 good. 0538 w/Gospel-type music, weather forecast followed by ID. Community notes. First time heard. [TML-IN]

910 WRNL VA Richmond, 8/14 good. 0552 with spot for IGA stores, VA Cavalier promo. DJs Jeff & Jeff. Weather, "XL-102 FM" ID and "WRNL AM 910" ID. New for me. [TML-IN]

920 KWYS MT West Yellowstone, 8/11. Noted still with a mixed format of C&W and Rock. Numerous spots. [JcJ-MT2]

930 WSEV TN Sevierville, 8/14. 0559 with C&W song followed by "WSEV Sevierville, Gatlinburg." into CBS News. New for me, and my #1200 station! [TML-IN]

990 WCAZ IL Carthage, 7/29 good. 0200 w/"WCAZ Carthage, Fort Madison" ID. Rock oldies. [WMC-MB]

1150 WJBO LA Baton Rouge, 7/14. 0230 w/Jim Bohannon, PI spots. ID as "11-50 WJBO Baton Rouge." Mutual News. New. [TML-IN]

1160 WMVI NY Clifton Knolls, 8/19 weak u/WJJD, WAMB. 0031 With SID "WMVI" and song by Orleans. [TML-IN]

1230 KSTC CO Sterling, 8/2 brief. 0245 w/ID. Rock music. [WMC-MB]

CDXR Continues....

- 1340 CHLW-1 AB Grand Centre, 8/1 good. 0000 w/AB news, "...you're up to date on Radio LW." Song by Canned Heat. [WMC-MB]
  - 1400 CKSQ AB Stettler, 8/2 good. 0030 with ID "CKDQ 910, Q-91 Serving North-Central Alberta." [WMC-MB]
  - KCOW NE Alliance, 8/1 good. 2230 w/promo for Larry King, ID into Larry King. [WMC-MB]
  - 1460 CJMH AB Medicine Hat, 8/2 good. 0030 with "This is CBC Radio Calgary." [WMC-MB]
  - 1490 CJPR AB Blairmore, 8/2 good. 0130 w/"Sit back and listen to the great country sounds on Crow's Nest Radio." [WMC-MB]
  - 1550 KZQQ UT West Valley City, 8/6 strong. 0820 w/SS format, IDing as "Radio Exito." EE ID "KZQQ West Valley, Salt Lake City." at 0830. Not needed. Don't confuse this one with KXTO Reno, NV "Radio Exitos." [JcJ-MT]
- TIS
- 1610 ---- MT West Yellowstone, 8/11. TIS at West Yellowstone entrance to Yellowstone National Park with 5 minute loop with welcome message, etc. Also mentioned 911 service at all Yellowstone phones. No ID heard. [JcJ-MT2]

UNIDS

- 640 unID 8/10. 0800 with someone relaying KVEG-840. Many IDs and Las Vegas spots. Sports Entertainment Network programs. Looped SW/NE. WWLS? Who? [TML-IN]
- 900 unID 8/4 fair to good. 0200 with Christian-type music. No ID heard. Relayed news from CBN. Not CHML. Looped E-W. Any ideas? [TML-IN]

25 YEARS AGO

September 10, 1966 issue of DX Monitor...New membership list was included, showed 229 members.....Some forum reports talked about the Milwaukee convention....Talk of the Denver convention in '67 appeared in other forum reports.....Rick Evans attended, said he came back with all sorts of plans for DX that winter....One other article told about frequency checks and how to report them.



OPEN MIKE



You can't hold a man down without staying down with him.  
Warm up those receivers, the new season is starting!

73, John.

URUSAN KERAJAA

Date: 5th. Nov, 1984.

Radio Television Malaysia Sarawak takes great pleasure in confirming your reception of our Sibu station on

Frequency: 1062 KHz 283 Meters

Time: 2235 Malaysian Time

Date: 21st. Oct, 1984.



To: Patrick Martin,  
P.O. Box 843 Seaside,  
Oregon 97138,  
U.S.A.

Best wishes and happy DXing

*[Signature]*  
Director of Broadcasting Sarawak.

BROADCASTING HOUSE

PRINTED BY SEE HUA DAILY NEWS



## Eastern DX Roundup

Ray Bauernhuber  
141-12 243rd Street  
Rosedale, NY 11422

- (TEW-NC) Thomas H. White, 1007-H Village Greenway,  
Cary, N.C. 27511-4246
- (RB-NY) Ray Bauernhuber, home QTH w/GE Superadio
- 
- 600 WICC CT, BRIDGEPORT 9/1 0810 GOOD ID as "Service 60 - WICC",  
Wx, Sports, AC mx. (RB-NY)
- 790 WAEB PA, ALLENTOWN 9/1 0815 F-G w/promo for Tuesday's "Drive  
Time" snow; ad for pools; ID as "WAEB AM - 790"; oldies.  
(RB-NY)
- 910 WRKL NY, NEW CITY 9/1 1310 GOOD "It's 1:10 P.M. on 910 -  
WRKL"; Barry Manilow song. (RB-NY)
- 950 WPEN PA, PHILADELPHIA 9/1 1315 VERY GOOD w/ ID, Ford ad and  
nostalgia music from "this date in 1945." (RB-NY)
- 1070 WKMB NJ, STIRLING 9/1 1330 F-G c/w; promo and 800 # for  
Medicare help; ID. (RB-NY)
- 1250 WMTB NJ, MORRISTOWN 9/1 1630 P-F 800# given for tax advice;  
after school program for children; ID; Pat Boone song.  
(RB-NY)
- 1300 WAVZ CT, NEW HAVEN 9/2 0735 POOR w/promo for blood drive; Gene  
Kelly's "Singing in the Rain"; ID as "AM 1300 - WAVZ"; Ad  
for One a Day vitamins. (RB-NY)
- 1320 WKAP PA, ALLENTOWN 9/2 0745 POOR w/oldies and ID as "Oldies  
1320 - WKAP." (RB-NY)
- 1340 WMID NJ, ATLANTIC CITY 9/2 0800 POOR w/ ID, MYL format and  
NBC mx at ToH. (RB-NY)
- 1350 WWHH NJ, PRINCETON 9/2 0805 POOR nx at ToH, copier ad; ad for  
an air transport service at Mercer County Airport and  
into AC mx. (RB-NY)
- 1370 WALK NY, PATCHOGUE 9/2 0812 POOR w/Chrysler ad; SID as "97.5  
WALK; oldies mx; many mentions of the Patchogue area  
(strictly a Long Island station serving it's immediate  
area with plenty of promos for bazaars, local shops,  
etc.). (RB-NY)
- 1400 WSTC CT, STAMFORD 9/2 0820 GOOD w/ID as "1400 -WSTC"; oldies;  
"WSTC New England Weather Forecast." (RB-NY)
- 1410 WHTG NJ, EATONTOWN 9/2 0830 GOOD w/ID as "AM - 1410 WHTG in  
Eatontown"; nx on the 1/2 hour and into a Jerry Vale  
song. (RB-NY)
- 1500 WKER NJ, POMPTON LAKES 9/2 0839 VP-P w/sports report and SID  
as "1500 - WKER". (RB-NY)
- 1530 WJDM NJ, ELIZABETH 9/2 1025 POOR w/ID as "WJDM - Solid Gold -  
1530"; PSA from Gov.Florio; oldies format and SID as  
"WJDM." (RB-NY)

### HELP W/UNIDENTIFIED'S

- 1610 WNDR226 NC, RALEIGH-DURNAM 8/26 1500 TIS reported off by Mike  
Hardester in the 8/17 MONITOR has been noted regularly  
since I moved to Cary on 8/15 w/a good signal at 8 km / 5  
mi., so must have been only temporarily off. Standard  
airport info including the call. (TEW-NC)

TENTATIVES & unID's

1610 unID NC, RALEIGH 8/26 1500 TIS for N.C. State University noted for the first time with a long message on parking for returning students, so it was probably off for the summer. No call mentioned; good signal u/WNDR226 nulled at about 7 km / 4.5 mi. (THW-NC)

COMMENTS

Well, it's the start of Volume #29 and I guess everyone is still on vacation. Hopefully I'll get some loggings in the mail for the next issue. Thanks go to Thomas White for his help with Mike Hardester's TIS. Till next time, CONTINUED GOOD DX MY FRIENDS and 73 de Mr. B

CONTEST: IRCA ALMANAC UPDATER

Bill Hardy announces a contest to gather material for updating the IRCA AM-FM Almanac! Between now and Oct. 31, hit the dials and gather as much information as you can that is not in the 1991 IRCA AM-FM Almanac. All Almanac sections will count (except Broadcasting Updater): network lists, talk shows, music shows, simulcasts, slogans, AM stereo, foreign language, sports, TIS, frequency checks, silent stations, daytimers using fulltime authority.

Prize: A free copy of the next two Almanac Updaters (value \$2 each!)

Scoring: One point for each station for each list. Also one point for each station that should not be on a list (changed or incorrect). You must hear the station being reported.  $\frac{1}{2}$  point for each station announced on a program as carrying that program (AT40, Larry King, etc.). AM and FM count equally. Information from publications, written lists from networks and programs, etc. are welcome but will not count for scoring.

Eligibility: IRCA members in good standing, except those who worked on major sections of the Almanac, who may not report changes to their own sections. Entries are subject to verification by other DXers in the area, and incorrect entries may be disqualified.

Deadline: Log between July 1 and Oct. 31, 1991 (midnight your local time). Information you heard before June 30th counts for 50% credit. Report as often as you wish, but final reports must be postmarked by Nov. 10, 1991. Send to Bill Hardy, 2301 Pacific Ave., Aberdeen, Wash., 98520. Keep listening after Nov. 1; a second contest is a good possibility if this succeeds!

WDXR/CDXR/EDXR: You are encouraged to report details of your catches to your DX Roundup editor (in DX Roundup format). It is unlikely that they will use every item, but they may choose to use the most valuable tips in their column. This will not affect scoring, but will help DX Monitor provide valuable station info. DX Roundup appears weekly so send your loggings in promptly and often. (For WDXR, write a separate report for Nancy, but you may mail it in the same envelope with your entry to Bill.)

All correct tips in each entry will be included in the first Almanac updater after receipt. And you will find yourself logging quite a few new stations in the process of listening to your "semi-regulars" for Almanac information. Have fun!





# Western DX Forum

★ ★ ★ ★

**TEMPORARY EDITOR:** Bill Hardy, 2301 Pacific Ave., Aberdeen, WA 98520.  
**DEADLINES:** Beginning Sat. 14 Sept., then each Saturday until Phil Bytheway appoints a permanent WDXF editor. Volunteers for editor apply to Phil at 9705 Mary N.W., Seattle, WA 98115.

**STEVE MITTMAN, 2248 WEST 37th STREET, SAN PEDRO, CA 90732-4506**  
(213) 833-1010 Hello, everyone. Haven't forumed in awhile, so I have some catching up to do. First off, for those of you who like keeping up with such things, here are some (short-lived) changes and developments which occurred with the Persian Gulf war. Just prior to the outbreak of the war, all-news KFWB 980 dumped ABC and very wisely picked up CNN - a move which proved to be tremendously successful. KFWB, which is also an NBC affiliate, kept NBC and carried the network's :20 updates/bulletins. (In Nancy's column this week, Steve updates: KFWB drops NBC, rejoins ABC, still has CNN and also AP-BH.) Meanwhile, all-news rival KNX 1070 began carrying every CBS newscast, update, etc. that the network broadcast, without fail. At times, it seemed as though KNX had lost its own identity, and judging by their subsequent ratings plunge, apparently other listeners felt so, too. KNX's FM station, oldies KODJ 93.1, also carried live CBS newscasts every hour at :20 and :50, // KNX. NBC suddenly gained seemingly tons of new affiliates. Normally, in Los Angeles only KFWB and KMPC 710 are NBC (KFWB carrying only selected newscasts, and KMPC carrying hourly newscasts only overnights). Suddenly, the market jumped from having two "semi" NBC affiliates to having FOUR: In addition to KFWB and KMPC, there were also now KMPC's FM, KLIT 101.9 (EZL), and Westwood One's (which owns NBC Radio) KQLZ 100.3, a rock station which ID's as "Pirate Radio." Right! A pirate station with NBC affiliation, hi! I also noted that down in San Diego, sportstalk station XETRA 690 also carried NBC. These three stations, KLIT, KQLZ, and XETRA did not carry NBC before the war, nor have they since. Also during the war, many, many stations were noted carrying AP Network News. Tuning around the night the war broke out (16 Jan.-BH), and at subsequent top-of-the-hours thereafter, C&W KLAC 570, CHR KKLQ 600/106.5 (Q-106) San Diego, and talk KFI 640 were all carrying AP news, making the entire left side of the band seemingly be one giant AP affiliate!  
(Continued next issue-BH.)

**LARRY GODWIN, 2390 CLYDES DALE LANE, MISSOULA, MT 59801**  
Greetings! I recently rejoined the IRCA and am glad to be back. I'm 49 years old and teach accounting at the University of Montana. My wife Cathy and I moved to Missoula a year ago and this area is more conducive to DX'ing than Santa Rosa, CA, our previous home. My receivers are both 100%-tube Hammarlunds: HQ-150, bought in about 1957, and HQ-180, circa 1968. I've just had them cleaned up and checked out, and they're working fine. I have two Space Magnet antennas that are both still working, and give pretty good nulls. However, they generate a little signal of their own, and also it's tedious to tune the antenna every time I change frequencies on the receivers. Could someone tell me about any new inventions available on the market that are considered better than the Space Magnet? I notice Gilfer has a couple in its catalog. I'm curious about the Radio West Loop and the Select-a-Tenna, too. My main interest is foreign BCB DX and I hope to be able to report some worthwhile tips to DXWW this coming season. I'd especially like to hear some South American and Asian stations. Art Peterson and I used to hear a lot of hot stations from China, both Koreans, Japan, and even Thailand back around 1967 from the Berkeley area. Hopefully some of these are still able to make their way over here. I'll miss the convention this year; it's an inconvenient time for me. But hopefully in 1992 I'll make it. I'd like to say a special hello to my old DX'ing buddies. 73. (Welcome back, Larry, and please feel welcome to report when you can! Larry is a founding charter member of IRCA-BH.)

**RANDY STEWART, 4225 W. LA CASA, SPRINGFIELD, MO 65802-5615**

Ric's "burnout" is perfectly understandable - he deserves a rest. So thanks once again to Bill for editing the column. It was fun reading all the forums in Vol. 28 #34 - in fact, that was one of the best DX Monitors I've seen since I joined in the fall of '89. I agree with Marc Connelly - it's wonderful to see serious research into MW antennas and receiving techniques appearing in the club bulletins again, even if most of the really technical stuff is about a light-year over my head, hi. Not much MW DX this summer - noisy, mediocre band conditions most times I tried. There was FM/TV DX galore in July, though, including my first-ever Mexicans on FM and a busy afternoon logging about a half-dozen Florida stations (a new state for me on FM) - I don't know about you, but when major DX can be logged full quieting, in stereo, while mobile, on your car FM radio, it almost ceases to be "DX," hi! Local news: The owner of now-silent KICK 1340 hopes to reactivate the 1340 license soon with an all-kids format; she's applied for new calls, "KIDS". . .no target date as yet. KWTO 560 took a drubbing in the local Arbitrons with their new talk format (though showing gains in Birch), and rumors are flying of financial troubles. . .management refused to fill an open news position, the Operations Manager pressed the matter - and got canned for his efforts. So KWTO's "Total Information" format is basically all-talk and very little news. As of 26 August they're running Dr. Marshall Saper's call-in show via satellite from KCMO 810 at 1100 Central weekdays (had been doing local talk at that time). I still have a follow-up report out to JBC 700 Jamaica. . .it's been four months. But I saw in a recent Monitoring Times QSL column that somebody got a verie out of them, so I guess there's still hope. By the way, I've submitted an article to Ralph - an interview with my boss, KSMU-FM manager Dr. Arlen Diamond, discussing his AM-radio research experiment which was funded by the NAB. Look for it in a DX Monitor near you. Congratulations to the winners of the recent IRCA elections, and special kudos to Bill for winning the Vasilopoulos award. Time to stop - 73 and good DX this season!

**BILL HARDY, 2301 PACIFIC AVE., ABERDEEN, WA 98520**

Those are all the forums thru 3 September. Hopefully none of you fell for the incorrect zip code of "985520" in the August WDXF! We had a fabulous time on vacation, and I made lots of notes to update the Almanac, which gave me an idea for an IRCA contest to gather info to update the Almanac. Basically, listen to your radios for information to update any list in the Almanac (except Broadcasting Updater). One point for each item you hear that is not in the Almanac. One point for each item in the Almanac which needs to be changed or deleted.  $\frac{1}{2}$  point if you hear Larry King, Casey Kasem, etc. announce stations they're heard on. Material from DX bulletins, magazines like M Street Journal, newspapers, lists from networks and programs, etc. are welcome but do not count for scoring. AM and FM count equally. All IRCA members in good standing may participate, except Nancy and I are ineligible, and those who work on the Almanac are ineligible for changes to sections they work on. Anything you've heard since 1 July 1991 can be counted, and anything before that counts for 50% credit, so go through last season's notes if you wish, and hit the dials between now and 31 October. The person with the most points wins the next two Almanac updaters for free, which will include their contribution. And by all means, report details of the changes, whether local or DX, to the Roundups. Ray, John and Nancy would love to hear from you, and will use the most helpful tips in their columns. Of course, if you don't have an Almanac, get one now from the IRCA Bookstore. DX Monitor is going weekly! The editors will have weekly deadlines by the time you read this. No DX Monitor next week, and then we're weekly until March 28! So support your favorite columns! 73 and good DX.

# EASTERN DX FORUM

RICHARD C. EVANS  
PO BOX 21883  
MILWAUKEE WI 53221

Reports from members living east of the Mississippi River  
Deadlines: every Saturday.

Gerry Thomas, 3635 Chastain Way, Pensacola, Florida 32504

To answer Mark Connelly's question about PJB-800 and Radio Paradise-825, yes, they are both still audible here. Radio Paradise has never been a pest at this QTH but they have been pretty continuously audible since last winter. PJB-800 too is audible nightly but seems to be at a reduced level. I don't know whether this is due to the PJB tx, propagation cx, or the fact that my local WSWL-790 has been AN since January and is probably de-sensitizing 800 kHz. On other matters, I'm sorry to hear that the early reports of the Drake R-8 have been a little negative. Personally, I'm willing to put up with a few operating inconveniences to patronize an American company and keep American workers gainfully employed. (Good, I'm not the only who feels this way--rce) As I perceive it, the perfect radio has yet to be produced (I could write an article on the shortcomings of the ICOM R-71A). At any rate, I'm hoping to purchase an R-8 sometime this fall (if I can talk my wife out of flying the whole family to upstate NY to attend her niece's wedding in October (which is going to cost me the price of an R-8, hi)). (Yeah, but the colors up there in October are worth it, hi--rce) Also, I'm enjoying the resurgence of technical articles of late; they pique interest and promote experimentation--keep them coming! DXing the past month has been virtually nil due mostly to my relocating my DX shack to a new room over the garage. I'll have a lot more space but have been busy restringing antennas and re-arranging things but should be ready to go by the time the TAs start rolling in again. Speaking of TAs, I, like Mark Connelly, noticed surprisingly good TA cx around mid-June with numerous carriers detectable and quite a few stations with readable audio. I didn't, however, notice any improved cx to the south at all this spring/summer. In fact, cx seemed to be poorer than usual...who can figure? That's about it from here for now. 73s...GT.

R.C. Watts, 4109 Graf Drive, Louisville, Kentucky 40220-3016

Went to the Kentucky State Fair with my friend A.J. She for the pig and Armadillo races--me to visit broadcast station booths. It was senior citizens day so we got in for 25¢ each (with a drug store coupon) plus \$2 parking. Price was right! The WVEZ booth was vacant and WKVW was running a canned foods promotion. WHAS/WAMZ had plenty of goodies and I also got a little from WLKY (TV32). WRKA and some other stations were sponsoring music or events, but no other mementos were to be found. Not a big day for the radio hobby, but we enjoyed food and the races. No time lately for much listening.

Rick Evans, 4841 South 26th Street, Milwaukee, Wisconsin 53221

Now that it's Labor Day, perhaps it'll cool off enough to make listening to the radio pleasant again. Just too hot here with it up in the 90's during the day and 70's during the night last week. This, for me, is the start of the DX season. In the 9/1 Milw. Journal's radio column was this gem: "Confidential to D.L. who complains that 'I like your column but I hate the Journal': I don't really think I can take the time to read my column to you over the phone." I'm sorry to see Ric Heald leaving as WDXP editor--he's done a fantastic job over the years amid several big controversies. Few editors go 5-8 years on the job, but he went 15. As you read this, the new president and directors are in office. Let's give them our support. Let's also give all the editors the support they need for the columns. 73.

# Verification Signers



Editor: TIM HALL, 350 G St. #F-1, Chula Vista, CA 91910-4559  
 Deadline: Last Friday of the month

CONTRIBUTORS TO COLUMN #56 (08/30/91):

KVJ - KARL JETER, 2115 Scarborough Rd., Stone Mountain, GA 30088  
 MS - MIKE SANBURN, P.O. Box 1256, Bellflower, CA 90707  
 OW - JOHN WILKINS, 3250 Garrison St., Wheat Ridge, CO 80033

FREQ	CALL	SIGNER'S NAME / TITLE	ADDRESS	WHAT	WHEN	WHO
660	KTNN	Michael Moore, PD	P.O. Box 2569 Window Rock, AZ 86515	L	83f	KVJ
730	KKDA	Paul Strickland, CE	P.O. Box 530860 Grand Prairie, TX 75053	L	17	KVJ
760	KFMB	Miguel Rountree, RADIO ENG MGR. [NOTE #1]	7677 Engineer Rd. San Diego, CA 92111-1582	L		MS
810	KSWV	Anthony Gonzales, PD	P.O. Box 1088 Santa Fe, NM 87501	L	29f	OW
820	KEYX	Manuel Hurtado S., GERENTE GENERAL	Prolong. Alfareros 253 Centro Civico 21000 Mexicali, BCN	L	19f	OW
840	KVEG	Cameron Archbold, OP MGR.	4180 S. Pecos #100 Las Vegas, NV 89121	LB	68	OW
	KWDF	Rich Dupree, STN MGR.	3735 Rigolette Rd. Pineville, LA 71360	L	229ff	KVJ
880	WMDB	Michael W. Babb, OFC MGR.	3051 Stokers Lane Nashville, TN 37218	L	162f	KVJ
940	XEWV	[ SAME AS KEYX-820 ABOVE ]	Mexicali, BCN	L	19f	OW
970	XEEZ	[ TONS OF STUFF, BUT NO VERIEI ]	Av. Morelos y Calle Obregon Col. Centro CP 83600 Caborca, SON.	B++++		OW
1000	KPLG	Art Crane, CE	1343 Hancock Rd. Bullhead City, AZ 86442	LB	85	OW
1070	WHYZ	Yolanda Morton, OFC MGR.	P.O. Box 4309 Greenville, SC	L	143f	KVJ
1100	WSGI	Billy B. Gray, GEN MGR.	P.O. Box 909 Springfield, TN 37172	L	15	KVJ
1130	WJTP	Mark Ferguson, STN MGR.	P.O. Box 1130 Newlands, NC 28657	L	8	KVJ
1140	KCMJ	Tim Cline, CE	490 S. Farrell, #202 Palm Springs, CA 92262	L		MS
1170	KUGT	Barbara England	P.O. Box 546 Jackson, MO 63755	L	192ff	KVJ
	WPLX	Sandy Mack	P.O. Box 610 Cordova, TN 38018	Lr	170f	KVJ
	WRJL	Rolland E. French, CO-OWNER	P.O. Box 290 Hanceville, AL 35077	L	84f	KVJ
	WVZN	D. Mark Allen, STN COORD.	Norlyn Bldg. Suite 205 2702 Amherst Hwy. Madison Heights, VA 24572	L	17	KVJ
1200	WSML	Olin D. Campbell	P.O. Box 900, Graham, NC 27253	L	177f	KVJ
1220	KBET	Carl Goldman	27565 Sierra Highway Santa Clarita, CA 91351-0220	LrM	5	TRH
1240	KSON	Jack Dobbs [WB6AXW], ASST. CE	1615 Murray Canyon Rd. #710 San Diego, CA 92108-9004	LB		MS
1280	WJAY	Forrest Ramsey, PRES/GM [ ALTERNATE ADDRESS: ]	Drawer 310, Marion, SC 29571 Drawer 1005, Mullins, SC 29574	L	7	KVJ
1340	KIKO	Willard Shoecraft, O/MGR.	401 Broad St., Miami, AZ 85539	L		MS

FREQ	CALL	SIGNER'S NAME / TITLE	ADDRESS	WHAT	WHEN	WHO
	KMTW	[ UNSIGNED ]	925 E. Desert Inn Rd. Las Vegas, NV	Lr		MS
	KVOY	Chris Compton, CE	190 Sierra Court B-2 Lancaster, CA 93534	L		MS
1360	KLFF	Gary Jacques, ENG. [ NOTE #2 ]	7401 W. Camelback Rd. Phoenix, AZ 85033	L		MS
	WLCM	Bill Curry, OP MGR.	103 S. Catawba St. Lancaster, SC 29720	L	7	KVJ
1380	KSRV	Dave Adams, TECH OPS.	P.O. Box 129, Ontario OR 97914	LB	5f	OW
1400	KEYX	[ NO VERIE! ]	Visalia, CA	M+		MS
	WIEL	Charles P. Harper, GM	P.O. Box "L" Elizabethtown, KY 42701	L	12	KVJ
1460	WELZ	Gene W. Luster, PD	P.O. Box 299 Belzoni, MS 39038	L	14	KVJ
1470	KRKI	Steven R. Coffin, GM	P.O. Box 2677 Estes Park, CO 80517	Lr	6	OW
1520	WKZQ	Bill Files, CE	P.O. Box 2389 Myrtle Beach, SC 29577	L	6	KVJ
1540	CHIN	Cathy-Ann Percy, EXEC SEC, ENG DEPT.	622 College St. Toronto, ON M6G 1B4	L	193ff	KVJ
	WYNC	Gene Ward, PRES.	Yanceyville, NC [ NOTE #3 ]	P	164f	KVJ
1570	WOBS	Bill Lawson	220 Potters Lane Jeffersonville, IN 47130	L	26	KVJ

WHAT was received: Q=QSL card; L=Letter; B=Bumpersticker/other sticker; P=PPC.  
WHEN the reply came: Number of days elapsed; f=Follow-up (report/phone call/visit).

NOTES: 1) TRH: Station will be raising night power to 50kW in March or April.  
2) This signer is also the engineer for KOPA-1440.  
3) Karl says his verie mentioned WYNC has been silent since 12/31/90.

The VERIFICATION SIGNERS ANNUAL is now available through the IRCA Reprint Service. This publication lists verification signers for approximately 800 different stations, as submitted to this column over the past year. Column numbers and masthead dates are listed so you can look up the addresses in DXM. Typefont is the same one used here, but will appear LARGER because we didn't have to reduce it so much for printing purposes (same as the Mexican list updater). Prices are \$2.00 to U.S. addresses, \$2.25 U.S. to Canadian addresses, and \$2.75 U.S. to foreign addresses.

Send your order to: IRCA Reprint Service, Steve Ratzlaff, 295 Pettis Ave.,  
Mountain View, CA 94041.

UPDATER #2 to the IRCA MEXICAN LIST, 2nd EDITION is now available from the IRCA Reprint Service. This updater contains new information for over 130 stations. It includes information gathered by Neil Kazaross, who drove along the Mexican border from San Diego to West Texas collecting information on the stations most likely to be logged by U.S. DXers.

UPDATER #1, which contains information on Mexican networks as well as station information actually gathered from within Western Mexico, is also still available.

Updaters #1 and #2 are each available for \$1.00 to the U.S., \$1.25 to Canada, \$1.75 overseas.

Send your order to: IRCA Reprint Service, Steve Ratzlaff, 295 Pettis Ave.,  
Mountain View, CA 94041

THE FUTURE OF AM RADIO: SOME STATISTICAL STUDIES  
by Randy Stewart

Dr. Arlen Diamond is a professor of Electronic Media Communications at Southwest Missouri State University in Springfield, MO, the Station Manager of the University's NPR station KSMU-FM... and my boss for the past 13 years. During the past year Arlen and another SMSU communications professor, Dr. Jim Sneegas, have conducted experimental studies of *public perceptions* of AM radio vs. FM, the results of which were presented at the NAB convention last spring. I managed to coerce Arlen into sitting down with me to discuss his findings. That discussion follows.

RS: Even though you're an FM station manager, you've had a lifelong interest in the AM BCB...

AD: Well, I grew up listening to AM radio in the '50s and '60s, and like a lot of people in the Midwest, we didn't have any FM stations around to listen to, so *everybody* listened to AM radio. And particularly at night it was nice to be able to listen to all the distant stations coming in, like KOMA-1520 -- I'll never forget that "Kissing Tone"!

[Arlen had a ham license at the time, and did a lot of SWling and BCB DXing as well.]

RS: Before you started this research project, what did you perceive the major problems of the AM BCB to be? Obviously there are many....

AD: I think those problems boil down to two things: 1) the AM band is awfully crowded and full of mutual interference, especially at night when the ionosphere shifts; and 2) there's a lot of *MAN-MADE* noise on AM which just increases every year. Now, those are areas we can't do too much about personally, but one of the assumptions I made as I began to look at this whole area of research is that maybe people can't really *hear* the difference between a *good* AM signal and an FM signal ... they just *assume* that AM is "bad" because of years of experience dealing with all the interference problems, etc.

RS: Then too, AM receiver manufacturers haven't paid much attention to the problems of the band in recent years... there's certainly justification for people thinking AM is "bad" because they have little or no chance to hear "good" AM!

AD: Right, the typical consumer AM receiver of today--even when part of an expensive component AM/FM tuner--has about \$1.86 worth of circuitry in it! Then we had the whole debacle with AM stereo... I think a lot of industry people felt that stereo would save AM--but stereo didn't bring anything *new* to AM. People were already used to stereo, and so they saw stereo AM as simply a cheap imitation of FM. So the question becomes, "if people were presented with good-sounding audio and told it was originating on an AM station over an AM radio, would they be able to appreciate, and clearly and objectively evaluate, the signal?" With that question in mind, Dr. Sneegas and I set out to take a look at peoples' preconceived notions about the AM broadcast band.

RS: You actually conducted two experimental studies within a six-month period.

AD: Yes, with large sample sizes--several hundred individuals were involved in these listening tests, using students here in the Communications Dept. The first study we did was a lot like the "auditorium testing" that's done by many stations to test their music formats. We had four large groups of students in a lecture class in basic communications, and we played all four of these sections the same piece of music--a segment of a pop song--and each group who heard it was told it was something different. We had that song actually played from a compact disc on an FM station and recorded off-the-air on a cassette tape; we had it actually played on an AM station and recorded off-air; then we had a straight CD-to-cassette dub. So one group heard the AM aircheck; one heard the FM aircheck; the third group heard the CD-to-tape transfer but was *told* it was an FM broadcast; and the fourth group heard the CD-to-tape dub but was told it was an AM broadcast. The rating sheet used by the students contained five rating scales that dealt with hiss; noise & distortion; stereo separation; fidelity; and overall sound quality. It was a seven-point bipolar scale, and all they had to do was make a checkmark along the scale. We also gathered a little information about their radio

listening habits and the importance of good audio, etc. But the scale itself was simply one set of five scale responses; they had ample opportunity to listen for a couple of minutes to this music cut and then to check the points on the scale. What we found was that the CD-to-tape dub that we called "FM" rated highest on our scales of fidelity and other technical measures, but very, very close behind it was the *actual* FM aircheck. And then a ways down on the rating scale was the CD-to-tape dub we called "AM"--even though it was *IDENTICAL* to the one that rated highest! And the real AM aircheck was way at the bottom.

RS: So this initial experiment indicated that no matter what they were *actually* hearing, if you *labeled* it "AM" they automatically thought it was lo-fi.

AD: Right. There was good news in the study, in that the "simulated" AM (again, a direct CD-to-tape transfer) did rate much higher than the actual AM aircheck--they *could* hear the difference--but it was still rated significantly lower than either of the "FM" tapes. What we found was a negative predisposition toward AM radio, or what I term the "psychological barrier" to MW BCB listening: "if it's AM it *can't* be as good as FM."

RS: Then you received a research grant from the NAB to conduct further studies...

AD: We submitted a proposal to the National Assoc. of Broadcasters under their Academic Research Grant program--a competitive program--and we were very pleased to be one of six grants funded out of more than 80 applicants. We then pursued the same idea, trying to determine that if AM were called something different--if we changed the label "AM" to something else--would it therefore get rid of that negative "baggage" that AM radio carries, and allow people to develop a new attitude that would reduce or eliminate this "psychological barrier" that, we hypothesize, exists in regard to AM radio listening.

RS: Your methodology was quite a bit different the second time around.

AD: The second time, instead of using four very large groups, we used twelve smaller groups of approximately 25 people per group, so we still had roughly 300 individuals involved. But we were able to get away from the "auditorium" setting, which allowed us to manipulate several other variables concurrently. Once again, we looked at the effect of *label*--in this case, "AM," "FM," and something we called "Radio 2000," which we described very simply as "a new broadcast technology," just to provide a third (and different) label. Also this time, instead of just one song we had eight different cuts--a couple of Adcon selections (such as Bette Midler), a couple of hard-rock cuts, a couple of country selections, and this time we added *voice* cuts--a news clip and a clip from NPR's *Car Talk*. The voice cuts didn't work well, though. Essentially what we did was make up several versions of each cut and not only look at the effects of the *labels* on the listeners' perceptions, but also we attempted to find out how people perceived "stereo" vs. "mono," and "high fidelity (frequency response out to about 12.5 or 15 kHz) vs. "low fidelity"--which was actually better than most current AM radios can reproduce, but approximating what the new AM standards might produce on a "high fidelity" MW receiver--a frequency response out to about 7.5 or 8 kHz.

RS: Now, this time you did *not* use airchecks; instead, you manipulated the music cuts with a one-third-octave graphic equalizer.

AD: We went from CD to DAT (Digital Audio Tape), and then manipulated the signal through equalizers and an audio console onto a second DAT tape to create four versions of each cut: "high fidelity stereo," "high fidelity mono," "low fidelity (7.5 kHz-bandwidth) stereo" and "low fidelity mono." Each one of those treatments was heard by three different groups of people. However, we also split up the 12 overall groups in such a way that four of the groups thought they were listening to FM radio, four thought they were hearing AM radio, and the other four groups were told they were listening to "Radio 2000." As you can tell, it was a rather complex experimental design, but it allowed us to collapse these "cells" of people around whatever variable we wanted to look at, whether it was stereo vs. mono, hi-fi vs. lo-fi, or the "label effect."

Frankly, the results were *not* as striking as they were in our first study. We found some *limited* support for the hypothesis that giving "AM" a different name might help it. In virtually every instance, "FM" was rated most positively, "Radio 2000" in the middle, and "AM" was rated lowest. However, we found that real statistical significance came into play only on the "fidelity" scale: people did think that there was a difference between FM and AM in terms of fidelity.

- RS: So even when you played them the high-fidelity DAT tape, in stereo, they still *thought* they were hearing low-fidelity if you labeled it "AM"?
- AD: Yes, they perceived the fidelity to be not as good. Admittedly this is an area that we can't substantiate statistically, but I have a gut feeling that something else has to be done other than simply continuing to call AM "AM" as technical improvements are being made. One step in that direction is that the NAB, in cooperation with the Equipment Manufacturing Association, has come up with a certification mark with a kind of catchy logo, "AMax" [pronounced "A-M-Max"]...
- RS: This is for the new higher performance "super" MW receivers that are being developed?
- AD: Right, a new radio that will be able to adequately process the new NRSC standards, allow you to select wide or narrow bandwidth as reception conditions warrant, etc. So hopefully, the public can be educated... the thing we found among college-age students is that they all place a high premium on "good audio quality." It's just that they need a little help in discovering what good audio quality *is*. Part of that is a learning process in order to discriminate between good audio and poor audio.
- RS: Just how "good" is the audio quality possible on the AM BCB, vis-a-vis FM, or compact discs and other digital sound formats?
- AD: I think if we can get an AM signal with at least a 7.5 kHz bandwidth or so, most people will consider that pretty decent sonically, simply because if you look at the audio spectrum, there's not a lot that happens in the upper frequency ranges. Certainly you have harmonics up there which add a dimension to music reproduction, but when you consider the kind of listening environment most people are in anyway (unless they're using headphones in a quiet environment), there's usually enough background noise to diminish one's ability to hear those subtle overtones and softer dynamic levels.
- RS: Does the AM broadcast band have a future? A lot of people, including DXers, think it's a dying medium.
- AD: I think it does--I've always believed that the BCB has a future. This is just pure conjecture on my part, I have no support for this at all, but there's a lot of talk right now about Digital Audio Broadcasting ... the NAB, in an attempt to get things off the dime and to try to come up with some kind of standard, initially supported the "Eureka 147" digital broadcast system developed in Europe, simply because it's farther along experimentally than other systems. It's a system that may well work, but there are certainly a lot of questions about where to put it in the RF spectrum... it seems to me, rather than developing a whole *new* frequency band for DAB, that *IN-BAND* solutions present a much, much better way to go. And I think those in-band solutions will be developed for both AM and FM--first on FM, certainly, but I think as digital bit-compression technology continues to develop, we'll be able to find a way to pack a fairly wideband digital signal right on an AM carrier with a 10, 9, or even 5 kHz frequency spacing, and in such a manner that it's not subject to the kinds of interference that plague the mediumwave band today. It may be a decade away... but we're at least a decade away from full implementation of something like a "Eureka" system anyway.
- RS: Can the nation's current AM stations survive that long?
- AD: Well, I don't know... of course the "free-market" question is "*should*" all of them survive?" We still even today have more AM stations than FM in this country, and certainly there's an AM station available for sale somewhere for anybody who wants to get into any kind of specialized broadcasting, and for not much money: church groups, foreign-language broadcasts, whatever. There's no significant barrier of



entry to get into AM broadcasting right now. I think we can probably afford to clean some stations out; some stations are going to have to go broke. Many are dark right now, and a lot of the remaining ones are losing money. The expanded AM band may decompress a little bit the crowding, as stations begin to move into it--and by the way, the new "AMax" receivers will have to be able to tune the expanded band too. But I really believe that AM can survive... however, I think it will probably be a carrier mostly for *digital* audio sometime within the next decade.

**IRCA AM-FM ALMANAC UPDATERS ARE NOW AVAILABLE!**

Updater 5.1 - 6 page Almanac index, 11 page slogan updater, silent station update, network updates (CBS, NBC, Cadena Radio Centro).

Updater 5.2 - complete 1991 baseball (8 pages of major leagues, 4 pages of minor leagues), network updates (BRN, CNN, etc.), talk show updates, revisions of Satellite Music Network and Unistar/Transtar.

Future updaters will appear as needed, 3 to 4 times per year. An updater this fall will cover NFL and college football. Another updater this winter will include college and NBA basketball, plus NHL and junior hockey.

Revisions are in the works for major networks. You'll be able to get these in the updaters in advance of the next Almanac revision.

Readers interested in particular items (sports, slogans, FM, etc.) can choose to order the updaters covering their choice of items.

20 pages each, \$2 each to U.S. or Canada, \$3 elsewhere, U.S. funds, payable to IRCA. You may order as many as you wish, past, present, or future. Order from Bill Hardy, 2301 Pacific Ave., Aberdeen, WA, 98520.

**DEUTSCHLANDFUNK**

Postfach 510640  
5000 Köln 51  
Bundesrepublik  
Deutschland



den 25. März 1980 dr/kr

Wir danken Ihnen für Ihren Empfangsbericht und bestätigen Ihnen gern die Richtigkeit Ihrer Beobachtung. Sie hörten uns:

am: 13. März 1980  
um: 04.10 - 04.38 GMT  
auf: 756 kc/s.

Thank you for your reception report which has been checked with our schedules and found to be correct. We are very glad to verify herewith your report.



Mr.  
Patrick Martin  
Post Office Box 149  
Warrenton, Oregon 97146  
USA



An obvious question, at this point, would be "How can I null anything with a remotely-sited loop?" Short of employing tilting and rotating servo-motors (a project not for the faint of heart), nulls are most readily obtained by phasing the remote loop against a varactor-tuned whip or against a second remote loop. The ideal set-up would be two remote loops at right angles and a remote whip. The DXer could then pick the pair of remote antennae that would throw the stiffest null on the "pest" station while simultaneously passing the greatest amount of desired DX station signal. Remote loop versus remote whip phasing is done here regularly; it works quite well, providing a nulling scene better suited to DXing from "field" sites (beaches, etc.) than longwires that can get in the way of vehicular and pedestrian traffic. A subsequent article on a Dual Controller / Phaser for two remotely-tuned antennae will go into this subject more deeply.

Besides remote loop operation, the RTL-1 may be used for remote whip and remote longwire operation in areas without strong local stations. The Radio Shack 20-008 whip works well. Whip / wire operation is discussed in the following section on control usage.

#### RTL-1 Control Usage

Although the RTL-1 is a remotely-controlled antenna system in most respects, three switches and one potentiometer reside on the RTL-1 box. These controls are, in typical circumstances, rarely adjusted from the operator's "normal" set-ups. If necessary, the RTL-1 box could be overhauled for completely automated operation; of course this would require a considerable increase in the complexity of both the RTL-1 box and the controller unit (e. g. MWT-2 Option 5). This article does not address that scenario.

**S1 (Function Switch):** This switch selects one of the two operating modes: Loop or Whip / Wire. In the Loop mode, a loop head coil is plugged into RTL-1 J1. The signal across the tank circuit formed by this coil and the varactors on the VAR-A card is amplified by the BFE-A card in a balanced in / unbalanced out configuration. The BFE-A's output is given a further boost by the BBA-C broadband amplifier card. In the Whip / Wire mode, a whip installed at J2 or a longwire installed at J3 is coupled to a tank circuit comprised of the VAR-A card varactors and an inductor selected by bandswitch S2. The signal thus developed is amplified by the BFE-A and BBA-C cards in an unbalanced in / out configuration. J1 should not have a loop head coil plugged into it if the Whip / Wire operating mode has been selected. In situations where a longwire causes overload, R1 may be used.

**S2 (Bandswitch):** This switch selects one of the twelve frequency ranges by selecting an inductor to place in parallel with the capacitance developed by the VAR-A varactor card. S2 is only used when S1 has been set to the Whip / Wire mode. See Table 3 of this article for approximate frequency ranges.

**S3 (Q Switch):** This switch selects Normal Q or Low Q. Normal Q is generally used because it provides the best sensitivity and selectivity. Low Q may be usable in some phasing applications to ensure more thorough nulling of a "pest" station's sidebands as well as its carrier.

**R1 (Wire Attenuator):** When remotely-tuning a longwire aerial, use of this pot. may be necessary to prevent overloading of the RTL-1's amplifiers. This is likely to happen in urban areas. Set R1 so that wanted-frequency signals are at their best levels, consistent with the absence of objectionable spurious responses.



3. Assemble each of the four circuit card subassemblies - these are:
  - \* BFE-A Balanced Front End Card (Fig's 2&3; Table 4)
  - \* RLY-A Relay Card (Fig's 4&5; Table 6)
  - \* VAR-A Varactor Card (Fig's 6&7; Table 7)
  - \* BBA-C Broadband Amplifier Card (Fig's 8&9; Table 8)
4. Mount each of the circuit cards at the hole locations noted in Table 1.
5. Install jacks, pots, and switches. Solder inductors onto S1 per Figure 1 and Tables 2 & 3.
6. Install wiring and other components per Figure 1 and Tables 1 & 2. Install knobs on S1 and R1. Place labels near controls and jacks.
7. Connect controller (MWT-2 Option 5 or equivalent) to the RTL-1: control cable to J6, RF/power cable to J5. Connect controller output to the receiver.
8. Install Palomar medium wave loop head (or homebrew head - see appendix) at RTL-1 J1. The RTL-1 may now be tested and operated.

\*\*\*\*\*  
Table 1: RTL-1 hole-drilling list  
 \*\*\*\*\*

X = Horizontal distance, in inches, from the vertical centerline (VCL) on the side observed. Negative values of X are left of VCL, positive values of X are right of VCL.

Y = Vertical distance, in inches, from the bottom horizontal edge of the side observed.

D = Hole diameter in inches.

Hole loci are first marked on the box with a scribe and are then drilled with a .125" bit. Subsequently, as required, the holes are enlarged to the proper size by using progressively larger bits up to that corresponding to the final desired diameter.

\*\*\*\*\*  
 Box = 7" X 5" X 3"  
 \*\*\*\*\*

LEFT SIDE

Hole #	Comp. Desig.	Description	X	Y	D
1	J4	GND In - black banana jack	-0.375	0.5	0.3125
2	G1	GND H/W - internal lug	0.0	1.25	0.125
3	J3	Wire Ant.In-red banana jack	0.375	0.5	0.3125

\*\*\*\*\*  
FRONT SIDE

Hole #	Comp. Desig.	Description	X	Y	D
1	R1	Wire Atten. pot. - shaft	-2.0625	1.0	0.3125
2	R1	Wire Atten. pot. - tab	-1.75	1.0	0.144
3	S1	Function switch - shaft	-1.25	1.0	0.25
4	S1	Function switch - tab	-1.25	0.75	0.125
5	S2	Bandswitch - shaft	0.1875	1.125	0.375
6	S2	Bandswitch - tab	0.1875	0.625	0.144
7	S3	Q switch - shaft	1.625	1.0	0.25
8	S3	Q switch - tab	1.625	0.75	0.125

\*\*\*\*\*

(Table 1 -cont.)

T O P   S I D E

Hole #	Comp. Desig.	Description	X	Y	D
1	J2	Whip Input - BNC jack	-2.5	1.0	0.375
2	M1	Varactor Card - H/W 2	-2.0	3.5	0.125
3	M1	Varactor Card - H/W 1	-1.0	3.5	0.125
4	M2	Relay Card - H/W 2	-1.25	0.5	0.125
5	M2	Relay Card - H/W 1	-1.25	2.0	0.125
6	J1	Loop In.- stereo phone jack	0.0	2.5	0.375
7	A1	Bal. Front End Card - H/W 2	1.0	4.0	0.125
8	A1	Bal. Front End Card - H/W 4	1.0	3.0	0.125
9	A1	Bal. Front End Card - H/W 1	2.5	4.0	0.125
10	A1	Bal. Front End Card - H/W 3	2.5	3.0	0.125
11	A2	Broadband Amp. Card - H/W 4	1.5	2.0	0.125
12	A2	Broadband Amp. Card - H/W 3	1.5	1.0	0.125
13	A2	Broadband Amp. Card - H/W 2	2.5	2.0	0.125
14	A2	Broadband Amp. Card - H/W 1	2.5	1.0	0.125

+++++

R I G H T   S I D E

Hole #	Comp. Desig.	Description	X	Y	D
1	G2	GND H/W - internal lug	0.0	1.125	0.125
2	J5	RF Out / DC In - BNC jack	0.0	0.5	0.375
3	J6	Control In-stereo phone jack	1.25	1.125	0.375

+++++

R E A R   S I D E

Hole #	Comp. Desig.	Description	X	Y	D
1	-	Loop Board mounting H/W 1	-2.25	1.25	0.25
2	-	Loop Board mounting H/W 2	2.25	1.25	0.25

+++++

Table 2: RTL-1 "upper level" parts list

Vendor codes for this and other parts lists:

- AB = Abbott Electronics /Woburn, MA
- ACT = Active Electronics /11 Cummings Park /Woburn, MA 01801 /Tel. 1-800-677-8899
- DK = Digi-Key /P. O. Box 677 /Thief River Falls, MN 56701-0677 /Tel. 1-800-344-4539
- MCL = Mini-Circuits / P. O. Box 350166 / Brooklyn, NY 11235-0003
- MOU = Mouser Electronics / 11433 Woodside Ave. / Santee, CA 92071 /Tel. 1-800-346-6873
- RS = Radio Shack / Many locations worldwide
- TVH = True-Value Hardware / Numerous USA locations

(Table 2 -cont.)

Item	Designator	Description/Value	Vendor	Vendor Stock #	QTY
1	-	chassis box	AB	Bud # AC-429	1
2	-	chassis box cover	AB	Bud # BPA-1589	1
3	A1	BFE-A balanced front-end card		(see Table 4)	
4	A2	BBA-C broadband amplifier card		(see Table 8)	
5	M1	VAR-A varactor card		(see Table 7)	
6	M2	RLY-A relay card		(see Table 6)	
7	(for R1, S2)	knob	MOU	45KN013	2
8	C1,C4,C5,C6	capacitor, 0.1 uF	RS	272-109	4
9	C2	capacitor, 39 pF	MOU	232-1000-039	1
10	C3	capacitor, 10uF tant.	MOU	581-10M35	1
11	DS1	NE2 neon bulb	RS	272-1101	1
12	J1,J6	stereo headphone jack	RS	272-312	2
13	J2,J5	BNC jack	RS	278-105	2
14	J3	red banana jack	RS	274-662	1
15	J4	black banana jack	RS	274-662	1
16	L1	inductor, 10000 uH	MOU	434-1120-104K	1
17	L2	inductor, 3900 uH	MOU	434-1120-393K	1
18	L3	inductor, 1500 uH	MOU	434-1120-153K	1
19	L4	inductor, 560 uH	MOU	43LR564	1
20	L5	inductor, 220 uH	MOU	43LR224	1
21	L6	inductor, 82 uH	MOU	43LR825	1
22	L7	inductor, 33 uH	MOU	43LR335	1
23	L8	inductor, 12 uH	MOU	43LR125	1
24	L9	inductor, 4.7 uH	MOU	43LR476	1
25	L10	inductor, 1.8 uH	MOU	43LQ186	1
26	L11	inductor, 0.68 uH	MOU	43LR687	1
27	L12	inductor, 0.27 uH	DK	M8006	1
28	R1	pot., 500 ohm, linear	MOU	31CT205	1
29	R2	resistor, 150 ohm	RS	271-013	1
30	R3	resistor, 1K	RS	271-1321	1
31	R4,R5	resistor, 62 ohm	MOU	29SJ500-62	2
32	R6,R7	resistor, 15K	RS	271-1337	2
33	R8,R9	resistor, 10 ohm	RS	271-001	2
34	RFC1	inductor, 2.2 uH	MOU	43LR226	1
35	RFC2	inductor, 3300 uH	MOU	43LH233	1
36	S1	switch,DPDT,on-on	RS	275-614	1
37	S2	switch/1pole/12pos.rotary	MOU	10WW112	1
38	S3	switch,SPDT,on-on	RS	275-662	1

**Small hardware items (for A1, A2, G1, G2, M1, M2)**

39	-	screw, 4-40 X .25"	MOU	572-01880	14
40	-	split lockwasher, #4	MOU	572-00649	12
41	-	solder lug, #4	MOU	534-7311	2
42	-	hex nut, 4-40	MOU	572-00486	2

**Small hardware items (for mounting loop-holding boards)**  
Refer to Figures 10 and 11. These are "local hardware store" items. Comparable metric hardware may be substituted.

43	-	screw, 1/4-20X1.5"	TVH or Sears		2
44	-	split lockwasher, 1/4-20	TVH or Sears		2
45	-	flat washer, 1/4-20	TVH or Sears		2
46	-	hex nut, 1/4-20	TVH or Sears		4

\*\*\*\*\*

**Table 3: S2 frequency ranges (Whip / Wire operation)**  
 (Ranges are usually a bit greater than those shown.)

S2 Position #	S2 Knob Pointer "o'clock"	Min. Freq. kHz	Max. Freq. kHz	Tank Inductor #	Values uH
1	6:00	90	140	L1	10000
2	7:00	135	180	L2	3900
3	8:00	165	230	L3	1500
4	9:00	200	340	L4	560
5	10:00	300	530	L5	220
6	11:00	400	800	L6	82
7	12:00	520	1300	L7	33
8	1:00	900	2100	L8	12
9	2:00	1400	3600	L9	4.7
10	3:00	2000	5000	L10	1.8
11	4:00	3500	8700	L11	0.68
12	5:00	4800	12000	L12	0.27

**BFE-A (/BFE-B)**

**Balanced Front-End Card**

(refer to Fig's 2 & 3; Tables 4 & 5)

The input section (comprised of Q1, Q2, and ancillary components) converts the high-impedance balanced tank-circuit signal at P1 & P2 to a medium impedance unbalanced signal at P5 / P7. This signal is passed to the output section (Q3, T1, and other components) that acts to produce an output at P11 capable of driving loads in the 50 to 100 ohm range. DC power, applied at P10, is filtered by R7, C2, C3, R6, and C1.

**FIGURE 2 : BFE - A (BALANCED FRONT END CARD) SCHEMATIC**

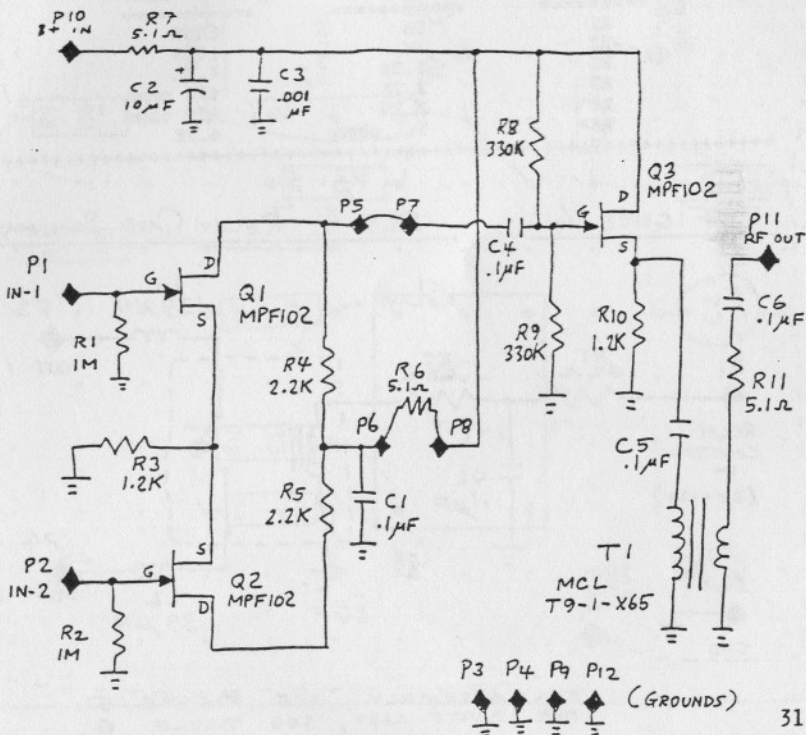


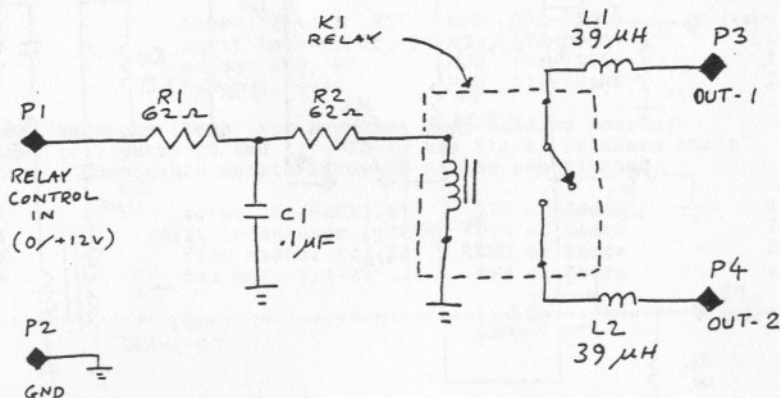
Table 4: (A1) BFE-A balanced front-end card parts list  
See Table 2 for vendor codes.

Item	Designator	Description/Value	Vendor	Vendor Stock #	QTY
1	BD	perfboard(1.9"X1.4")	RS	276-1396 (cut)	1
2	C1,C4,C5,C6	capacitor, 0.1 uF	RS	272-109	4
3	C2	capacitor, 10uF tant.	MOU	581-10M35	1
4	C3	capacitor, 0.001 uF	RS	272-126	1
5	H1,H2,H3,H4	screw, 4-40 X .25"	MOU	572-01880	4
6	H1,H2,H3,H4	spacer, 4-40 X .5"	MOU	534-1450C	4
7	H1,H2,H3	split lockwasher, #4	MOU	572-00649	3
8	H4	solder lug, #4	MOU	534-7311	1
9	P1-P12	flea-clip for .042 hole	MOU	574-T42-1/100	12
10	Q1,Q2,Q3	FET, MPF102	RS	276-2062	3
11	R1,R2	resistor, 1 megohm	RS	271-1356	2
12	R3,R10	resistor, 1.2K	RS	271-024	2
13	R4,R5	resistor, 2.2K	RS	271-1325	2
14	R6,R7,R11	resistor, 5.1 ohm	MOU	29SJ500-5.1	3
15	R8,R9	resistor, 330K	MOU	29SJ250-330K	2
16	T1	RF transformer 9:1	MCL	T9-1-X65	1
17	W	buss wire	RS	278-1341	approx.1'

Table 5: Modifying the BFE-A card to be a lower gain BFE-B  
(Of possible value if large loop heads are used: see the article "What's Wrong with Present-Day Loop Antennas" by Dallas Lankford - March 1991. Article appeared in NRC DX News and IRCA DX Monitor.)

Component	BFE-A value	BFE-B value
R1	1M	100K
R2	1M	100K
R3	1.2K	4.7K
R4	2.2K	470 ohms
R5	2.2K	470 ohms
R6	5.1 ohms	4.7K

FIGURE 4 RLY-A RELAY CARD SCHEMATIC

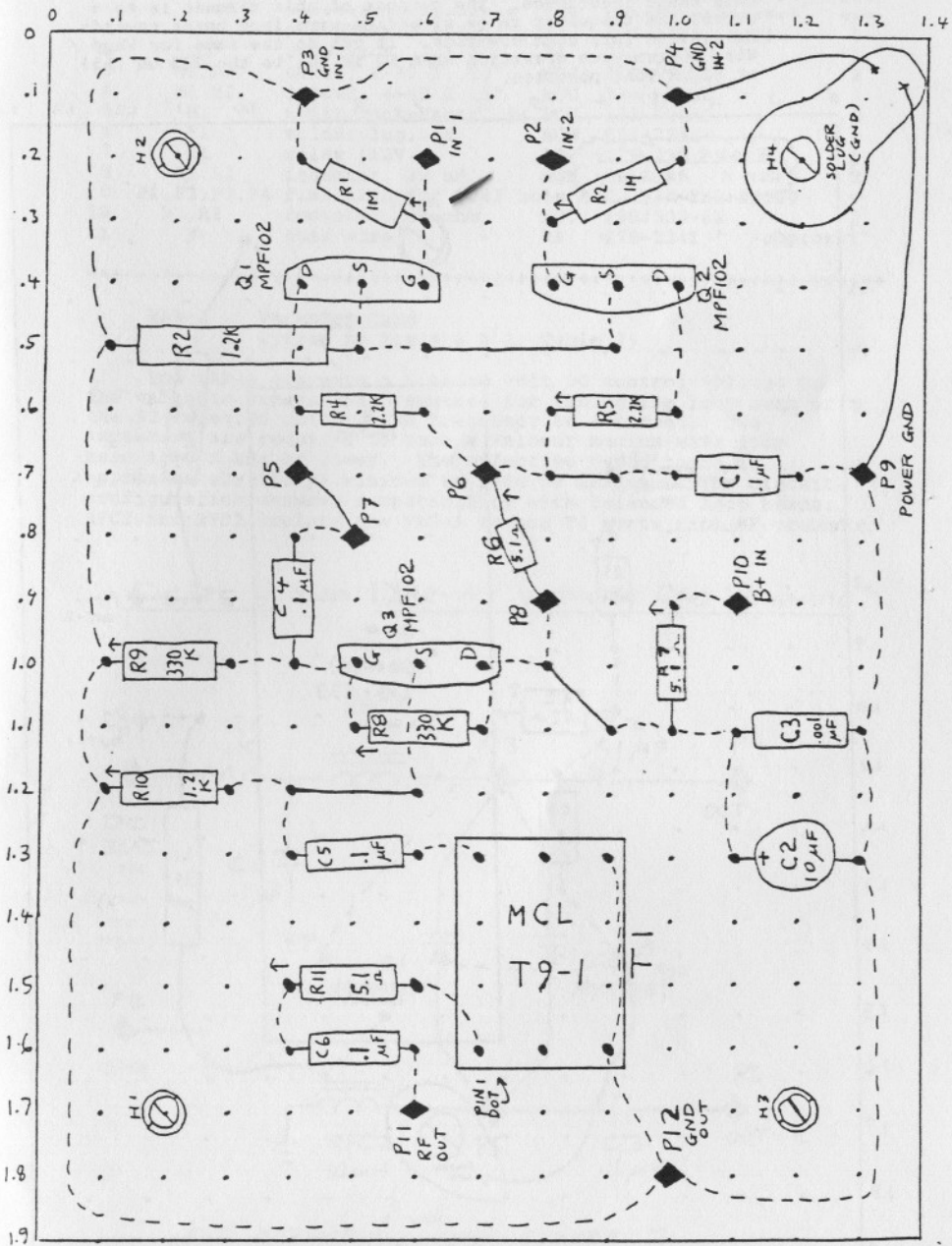


FOR ASSEMBLY, SEE FIGURE 5.  
FOR PARTS LIST, SEE TABLE 6.



# BALANCED FRONT END CARD

FIGURE 3: BFE - A COMPONENTS LAYOUT (ASSEMBLY)



**RLY-A Relay Card**  
(refer to Fig's 4 & 5; Table 6)

RLY-A applies, via relay K1, two 39 uH inductors - total inductance 78 uH - across the loop head (if in the Loop operating mode) or across the S2-selected inductor (if in the Whip / Wire operating mode). Disabling the relay removes this shunt inductance. The purpose of this circuit is to extend the frequency range of medium-wave loop heads upwards to provide full band coverage. It can do the same for Whip / Wire medium-wave operation when S2 is set to the 220 uH (L5) or 82 uH (L6) position.

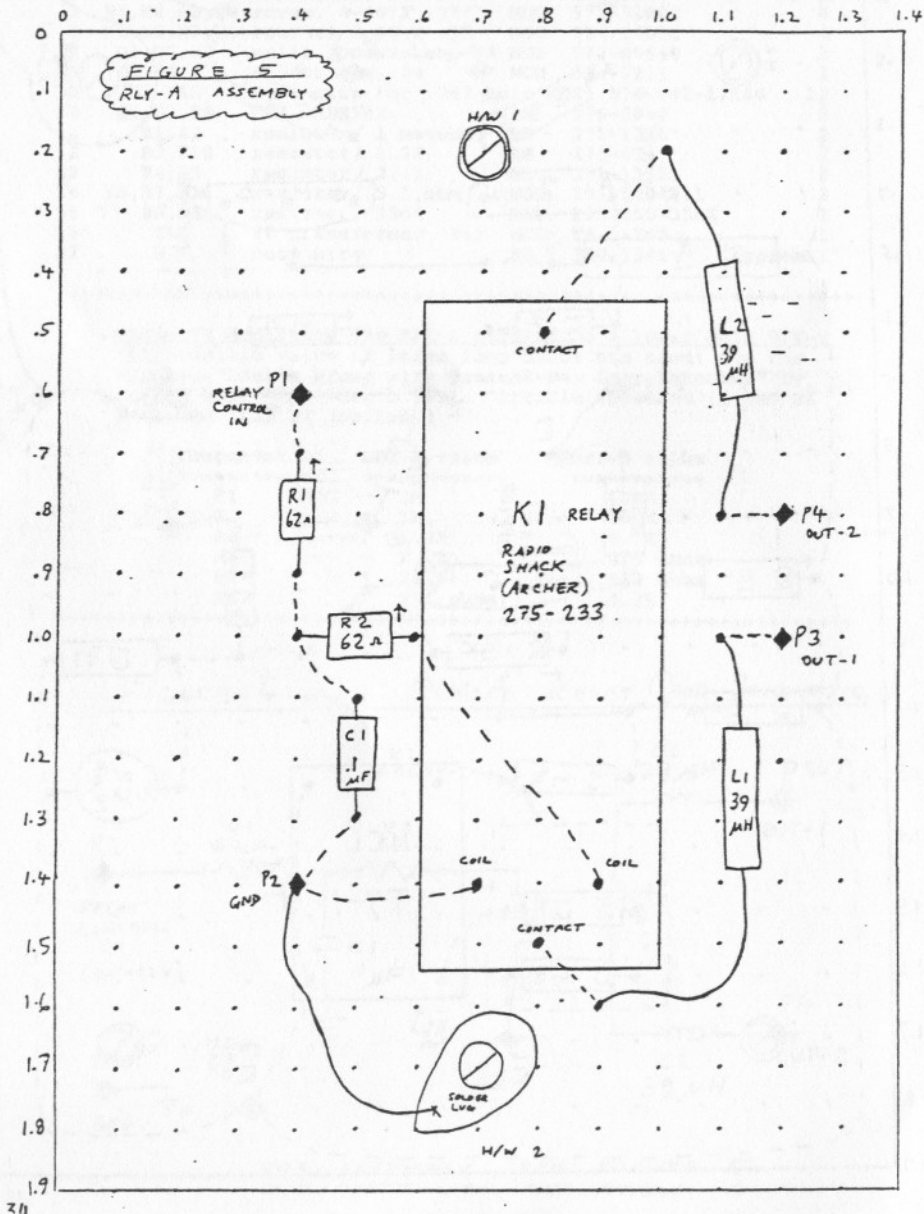


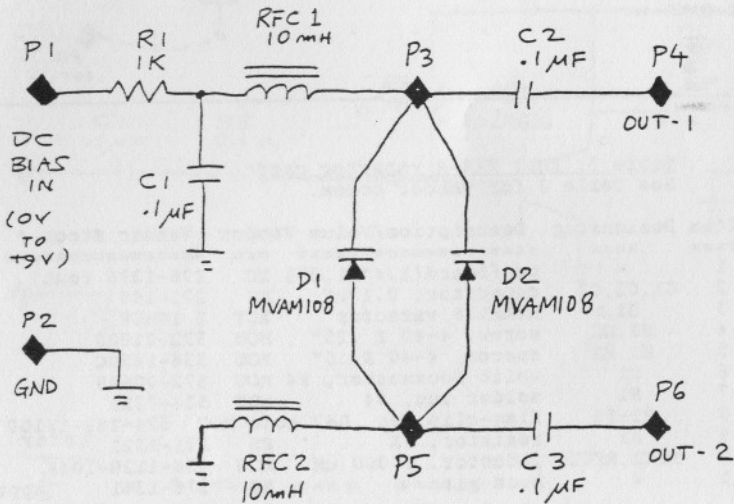
Table 6: (M2) RLY-A relay card  
See Table 2 for vendor codes.

Item	Designator	Description/Value	Vendor	Vendor Stock #	QTY
1	-	perfboard(1.9"X1.4")	RS	276-1396 (cut)	1
2	C1	capacitor, 0.1 uF	RS	272-109	1
3	H1,H2	screw, 4-40 X .25"	MOU	572-01880	2
4	H1,H2	spacer, 4-40 X .5"	MOU	534-1450C	2
5	H1	split lockwasher, #4	MOU	572-00649	1
6	H1	solder lug, #4	MOU	534-7311	1
7	K1	relay (12V)	RS	275-233	1
8	L1,L2	inductor, 39 uH	MOU	43LS395	2
9	P1,P2,P3,P4	flea-clip for .042 hole	MOU	574-T42-1/100	4
10	R1,R2	resistor, 62 ohm	MOU	29SJ500-62	2
11	W	buss wire	RS	278-1341	approx.1'

VAR-A Varactor Card  
(refer to Fig's 6 & 7; Table 7)

The VAR-A converts a 0 to +9 volt DC control voltage to the variable capacitance required for tuning the loop head or the S2-selected coil to the frequency of interest. Two varactors are required to tune a Palomar medium-wave loop head to 500 kHz or lower. The effective capacitance is approximately 100 pF minimum to 1000 pF maximum. The circuit configuration ensures compatibility with balanced loop heads: RFC1 and RFC2 isolate the VAR-A P4 and P6 ports from RF ground.

FIGURE 6 VAR-A VARACTOR CARD SCHEMATIC



FOR ASSEMBLY, SEE FIGURE 7.  
FOR PARTS LIST, SEE TABLE 7.

FIGURE 7  
VAR-A VARACTOR CARD SUBASSEMBLY

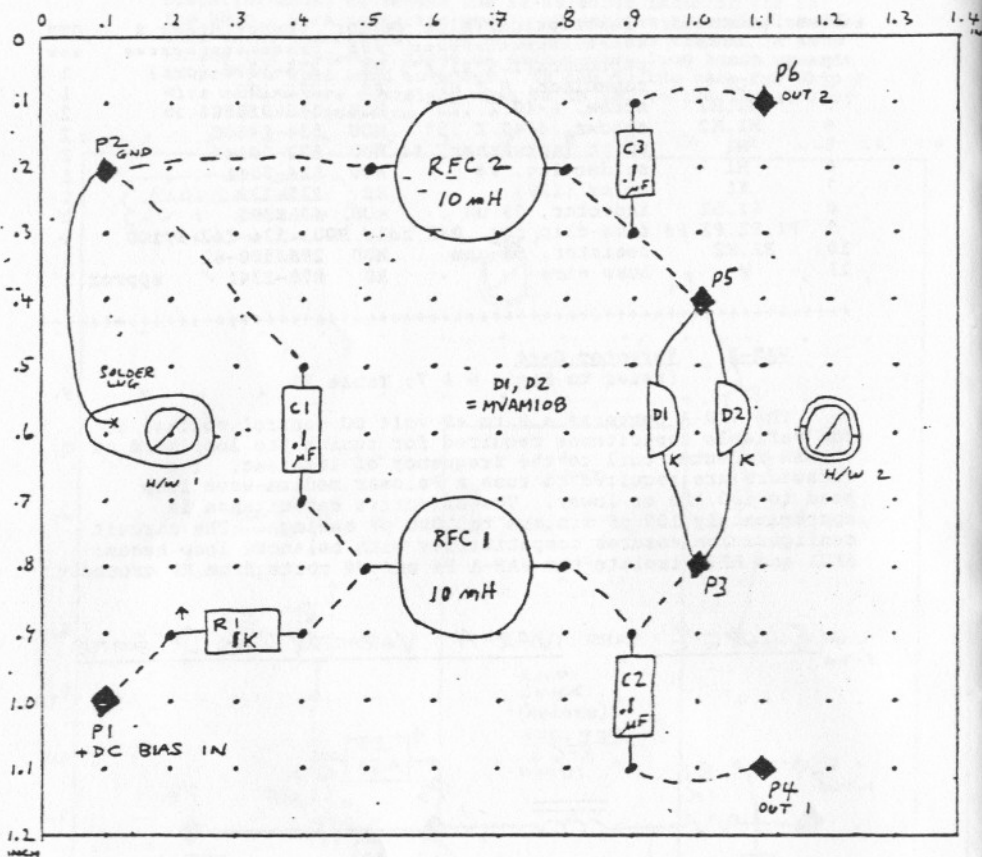


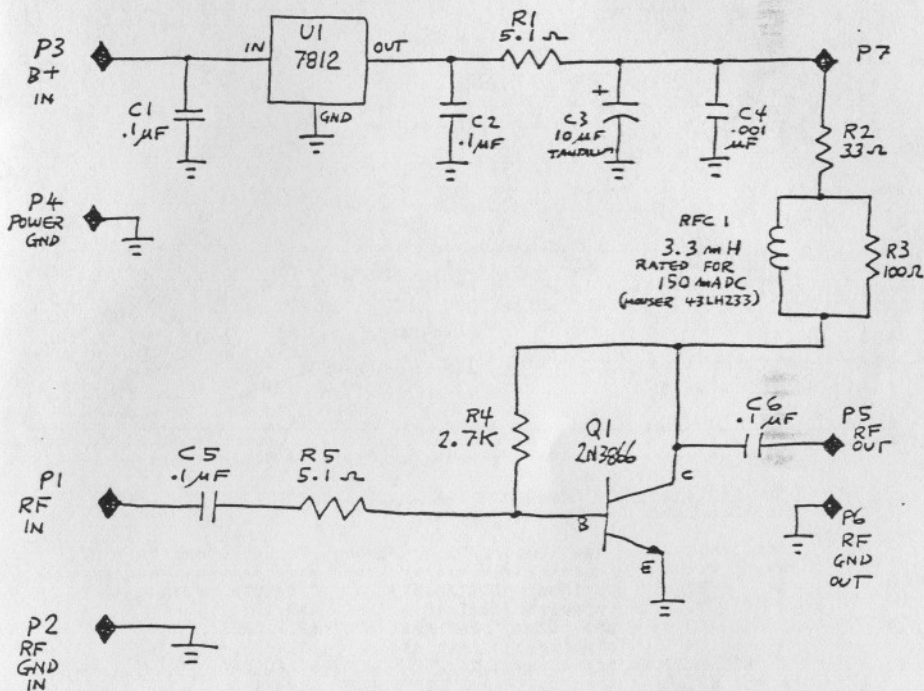
Table 7: (M1) VAR-A varactor card  
See Table 2 for vendor codes.

Item	Designator	Description/Value	Vendor	Vendor Stock #	QTY
1	-	perfboard(1.4"X1.2")	RS	276-1396 (cut)	1
2	C1,C2,C3	capacitor, 0.1 uF	RS	272-109	3
3	D1,D2	MVAM108 varactor	ACT	2 10MOR	2
4	H1,H2	screw, 4-40 X .25"	MOU	572-01880	2
5	H1,H2	spacer, 4-40 X .5"	MOU	534-1450C	2
6	H1	split lockwasher, #4	MOU	572-00649	1
7	H1	solder lug, #4	MOU	534-7311	1
8	P1-P6	flea-clip for .042 hole	MOU	574-T42-1/100	6
9	R1	resistor, 1K	RS	271-1321	1
10	RFC1,RFC2	inductor, 10000 uH	MOU	434-1120-104K	2
11	W	buss wire	RS	278-1341	approx.1'

**BBA-C Broadband Amplifier Card**  
(refer to Fig's 8 & 9; Table 8)

The BBA-C provides 20 dB of gain between the output of the BFE-A Balanced Front-End card and the transmission line back to the receiving position. This gain is necessary with the rather anemic output of Palomar loop heads. Conceivably this amplifier could be eliminated if air-core loops of 1-foot square or larger are used. Power consumption would thereby be reduced and dynamic range enhanced. Converting the front-end from BFE-A to BFE-B, as noted before, could also help dynamic range if a big loop is used.

**FIGURE 8**  
BBA - C BROADBAND AMPLIFIER CARD SCHEMATIC  
FOR CONNECTIONS, SEE FIGURE 1.



**NOTES**

$\frac{1}{=}$  = CIRCUIT CARD GROUND

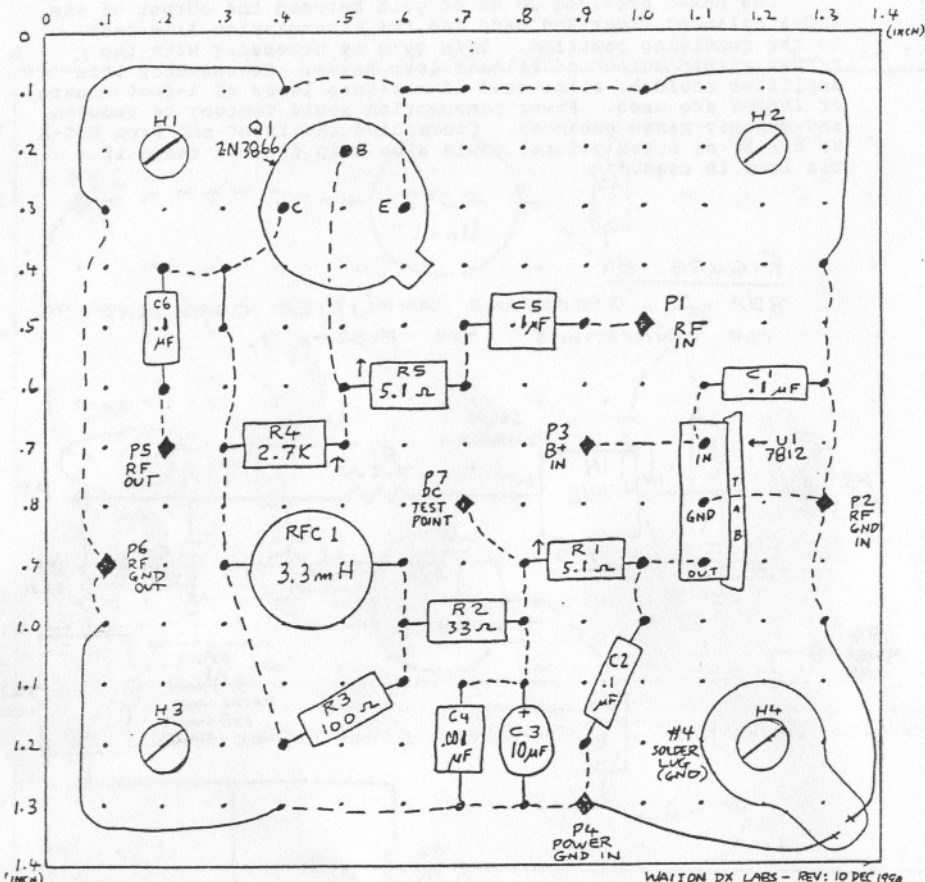
FOR ASSEMBLY DRAWING, SEE FIGURE 9.

FOR PARTS LIST, SEE TABLE 8.

THIS IS "A2" OF RTL-1.

FIGURE 7

BBA-C BROADBAND AMP. CARD : ASSEMBLY



WAITON DX LABS - REV: 10 DEC 1968

Table 8: (A1) BBA-C broadband amplifier card parts list  
See Table 2 for vendor codes.

Item	Designator	Description/Value	Vendor	Vendor Stock #	QTY
1	BD	perfboard(1.4"x1.4")	RS	276-1396 (cut)	1
2	C1,C2,C5,C6	capacitor, 0.1 uF	RS	272-109	4
3	C3	capacitor, 10uF tant.	MOU	581-10M35	1
4	C4	capacitor, 0.001 uF	RS	272-126	1
5	H1,H2,H3,H4	screw, 4-40 X .25"	MOU	572-01880	4
6	H1,H2,H3,H4	spacer, 4-40 X .5"	MOU	534-1450C	4
7	H1,H2,H3	split lockwasher, #4	MOU	572-00649	3
8	H4	solder lug, #4	MOU	534-7311	1
9	P1-P7	flea-clip for .042 hole	MOU	574-T42-1/100	7
10	Q1	transistor, 2N3866	MOU	511-2N3866	1
11	R1,R5	resistor, 5.1 ohm	MOU	298J500-5.1	2
12	R2	resistor, 33 ohm	RS	271-007	1
13	R3	resistor, 100 ohm	RS	274-1311	1
14	R4	resistor, 2.7K	MOU	298J250-2.7K	1
15	RFC1	inductor, 3300 uH	MOU	43LH233	1
16	U1	voltage regulator, 7812	RS	276-1771	1
17	W	buss wire	RS	278-1341	approx.1'

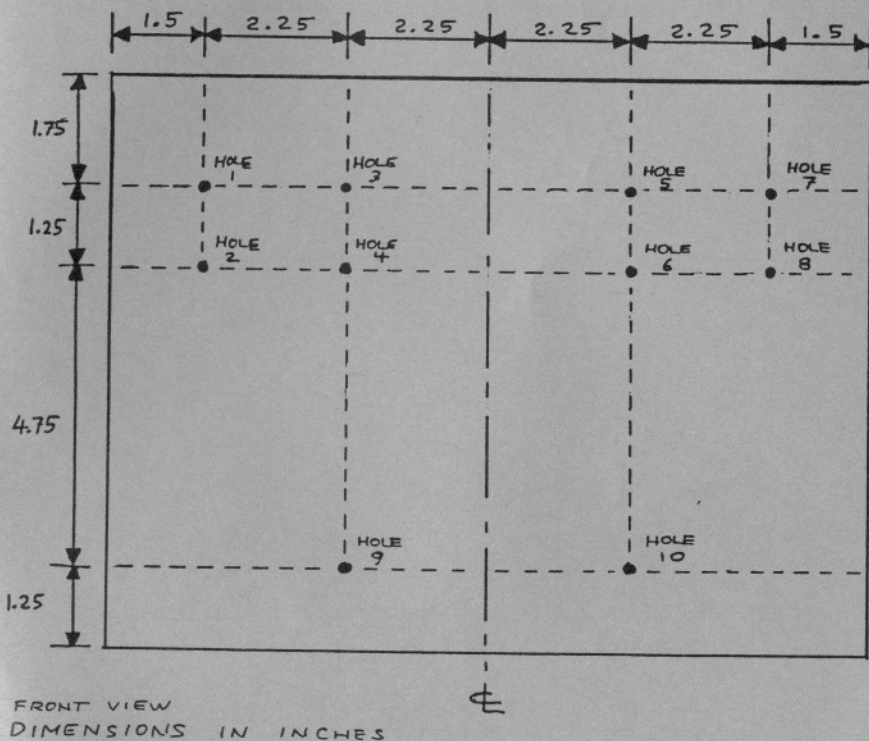
# APPENDIX

## A Sample Loop Head Board

Figures 10 and 11 illustrate the construction of a sample Loop Head board assembly that can be mounted to the rear of the RTU-1 box. The assembly shown, which uses a 15" (0.38m) long / approx. 0.7" (0.018m) diameter cluster of ferrite rods, provides about 10 to 15 dB more gain than the comparable Palomar medium-wave head. Despite the increased gain, the fairly high Q of the loop tends to prevent spurious responses if the loop is tuned properly. Varactor diodes used to tune the head actually seem to be less of a factor in the total IMD picture than the Balanced Front-End (BFE-A) card. This sample Loop Head board is presented as a starting point for the experimenter. As noted earlier, a larger such board could accommodate an air-core loop of 1-ft. square or greater size. For a treatment of an air-core remotely-tuned loop (for shortwave use), see Joe Farley's excellent article "A Remotely Tuned Loop Antenna" in Fine Tuning's Proceedings 1989. NRC Reprint A30, "A Remotely Tuned Directional Loop Antenna" by E. L. Cummins, is also a worthwhile article.

**FIGURE 10**      LOOP HEAD MOUNTING BOARD

MATERIAL = WOOD: 9" H x 12" W x 0.75" THICK  
EACH OF THE 10 HOLES IS 0.25" DIAMETER.



## THE INTERNATIONAL RADIO CLUB OF AMERICA (IRCA)

The IRCA is a non-profit organization devoted to the hobby of hearing distant stations on the AM Broadcast Band (510 - 1630 khz). **DX Monitor**, the official publication of the IRCA, is published 34 times a year, weekly from October to March, twice in September and April, and monthly from May to August. **DX Monitor** contains members' loggings, articles on radio stations, receiver reviews, technical articles, DX tips, and other material of interest to Broadcast Band DX hobbyists. IRCA is a member of ANARC, the Association of North American Radio Clubs.

### CLUB ADDRESSES AND OFFICERS

President: Phil Bytheway, 9705 Mary NW, Seattle, WA 98117 (206) 356-3927 (proposals)  
Secretary-Treasurer: Ralph Sanserino, 11300 Magnolia #43, Riverside, CA 92505 (dues/address changes)  
Board of Directors: Shawn M Axelrod, Michael S Hardester, Bill Hardy (chairman), Ric Heald, Albert S Lobel, Patrick Martin and Robert Wien  
Editor-in-Chief/Publisher: Ralph Sanserino, 11300 Magnolia #43, Riverside, CA 92505  
Publishing Coordinator: Phil Bytheway, 9705 Mary NW, Seattle, WA 98117

### MEMBERSHIP DUES

U.S. - \$25.00 per year. Canada - \$27.00. Overseas Surface - \$28.50. Overseas Airmail - \$35.00 (Central America, Caribbean, Colombia and Venezuela), \$38.00 (Europe, North Africa, Middle East), \$41.00 (rest of the world). One time charge for New Member Packet - \$2.00 (first year only). Trial Membership - \$9.50 (10 issues of **DX Monitor** and a New Member Packet, U.S. / Canada / Mexico only). Installment rate: two payments of 1/2 dues plus \$1.00 (\$13.50/payment for U.S. members). Make checks and money orders payable to IRCA and send all dues (and address changes) to: IRCA, 11300 Magnolia, #43, Riverside, CA 92505. Persons living outside the U.S., please use International Money Order in U.S. funds. Sample copies of **DX Monitor** are \$1.00 (U.S. or Canadian) or two International Reply Coupons each and are available from: IRCA, 11300 Magnolia #43, Riverside, CA 92505.

Unless otherwise noted, permission is granted to publish, broadcast, or otherwise reproduce non-copyrighted material appearing in **DX Monitor** provided credit is given to the IRCA and the original contributor. Opinions expressed in **DX Monitor** are those of the original contributors and do not necessarily reflect those of the IRCA, its publishing staff, editors or officers.

**IRCA**  
INTERNATIONAL RADIO  
CLUB OF AMERICA  
11300 MAGNOLIA #43  
RIVERSIDE, CA 92505



**FIRST CLASS MAIL**

29-09  
J D STEPHENS  
122 BRAWLEY DRIVE  
LOENS CROSS ROADS AL 35763  
USA

FIRST CLASS  
U.S. POSTAGE  
PAID  
RIVERSIDE, CA  
PERMIT NO. 5214