

DX MONITOR

THE OFFICIAL PUBLICATION OF THE **IRCA** INTERNATIONAL RADIO CLUB OF AMERICA

DEVOTED EXCLUSIVELY TO BROADCAST BAND DXING

SEPTEMBER 28, 1991 - VOLUME 29 - NUMBER 02 - EDITION 927-ISSN 0899-9732

BROADCASTING INFORMATION.....	2-3	NATIONAL PARKS TIS LETTER.....	16-17
DX WORLDWIDE II.....	4-7	WESTERN DX FORUM.....	18-19
DX WORLDWIDE-WEST.....	8-12	EASTERN DX FORUM.....	20
WESTERN DX ROUNDUP.....	13-15	TECHNICAL TOPICS.....	21-22
CENTRAL DX ROUNDUP.....	16	COLLEGE FOOTBALL NET.....	23

RENEW-ADDRESS CHANGES: RALPH SANSERINO 11300 MAGNOLIA #43 RIVERSIDE CA 92505

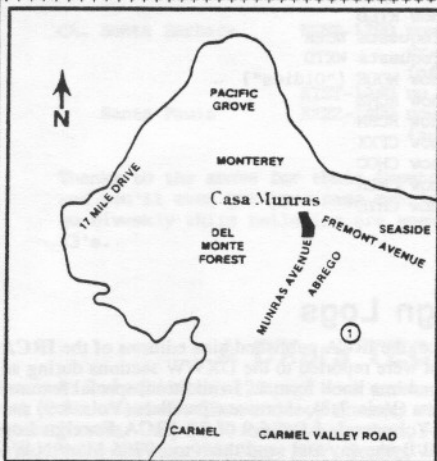
REPRINTS: STEVE RATZLAFF 295 PETTIS AVENUE MOUNTAIN VIEW CA 94041

BOOK STORE: PHIL BYTHEWAY 9705 MARY AVENUE NW SEATTLE WA 98117

CONVENTION: I HAVE A REQUEST OF YOU PEOPLE COMING TO THE CONVENTION. IF AT ALL POSSIBLE COULD YOU SEND IN YOUR REGISTRATION FEE OF \$16.00 AND BANQUET FEE OF 15.95 AS SOON AS YOU CAN SO WE CAN GET A FEEL ON HOW MANY ARE GOING TO SHOW UP OR LET JIM HILLIKER OR ME KNOW. RESERVATION PHONE NUMBERS FOR THE HOTEL ARE (800) 222-2446 WITHIN CALIFORNIA, AND NATIONWIDE (800) 222-2558 MAKE YOUR RESERVATIONS EARLY SO AS NOT TO GET SHUT-OUT. JUST RECEIVED A HOTEL PHAMPLET, NICE LOCATION AND VERY NICE LOOKING THEY PROBABLY WILL LEAVE THE LIGHT ON FOR YOU. I WILL HAVE SOME LOOPS AT THE CONVENTION TO AUCTION OFF TO THE HIGHEST BIDDER. SEE YOU THERE.

VOLUME 28: I HAVE A FEW COMPLETE VOLUME 28 BULLETINS LEFT OVER AND YOU ARE WELCOME TO THEM FOR POSTAGE, LET ME KNOW WHICH ONES YOU WANT OR THEY GO IN THE TRASH BIN.

DRAKE R8: A REVIEW AND HORROR STORY. HOLD OFF BUYING YOUR R8 UNTIL YOU READ THIS REVIEW. I CLEARED OFF A SPOT ON MY DESK FOR THE R8 BUT I AM GOING TO WAIT TILL THEY ARE SQUARED AWAY, MAYBE THE R8A. SEE THE NEXT ISSUE OF DX MONITOR. WILL KEEP YOU POSTED ON ALL THE HAPPENINGS.



Monterey, California

Casa Munras GARDEN HOTEL

700 Munras Avenue • Monterey, California 93940

(408) 375-2411

(800) 222-2446 California

(800) 222-2558 Nationwide

BROADCASTING INFORMATION

EDITOR: ROBERT WIEN 1309 DENTWOOD DR SAN JOSE CA 95118

DEADLINES: 2nd & 4th Saturdays.

Compiled: 9/11/91

Much of this information was compiled from M Street Journal, DXM, and various other sources.

Note: in this column, I'm trying a new experimental format, listing station changes first and format changes last. Let me know if you prefer it this way or the original way.

NEW STATION APPLICATIONS:

(NONE)

NEW STATION GRANTS:

(NONE)

CONSTRUCTION PERMIT ACTIVITY:

(NONE)

FACILITY AND PARAMETER APPLICATIONS:

CA. Bakersfield KZPM-1100 (CP) reduce to 5 kw. days, non-dir.
OH. Cincinnati WCIN-1480 1000/114 w.

FACILITY AND PARAMETER GRANTS:

(NONE)

CALL LETTER CHANGES:

AK. Seward	was KRXA-950,	now KSWD
CA. Santa Barbara	was KESP-1290,	now KKSJ
LA. Pineville	was KKLC-1110,	now KTLJ
OH. Canton	was WBXT-900,	requests WCER
Cortland	was WKTJ-830,	requests WXTD
PA. Easton	was WEEX-1230,	now WODE ("Oldies")
TX. Dallas	was KDBN-1480,	now KCMZ
San Angelo	was KTEO-1340,	now KCRN
AB. Calgary	was CISS-1140,	now CFXX
ON. Heyst	was CFLH-1340,	now CHOC
Kapuskasing	was CFLK-1230,	now CHLK
Sudbury	was CFBR-900,	now CHYC

IRCA Foreign Logs

Before the creation of the IRCA Foreign DX Reference, the IRCA published nine editions of the IRCA Foreign log. Each edition contained the actual tips that were reported to the DXWW sections during an entire year (2 years in Volume 9), recompiled and retyped in a book format. In addition, special features include: articles on foreign DXing (Vols. 6-9), utility lists (Vols. 7-8), shortwave parallels (Vols. 8-9) and BCB propagation (Vols. 6-8). IRCA archives still has Volumes 3, 4 and 6-9 of the IRCA Foreign Log available to all for \$2.50 each. Make checks out to Phil Bytheway and send them to: 9705 Mary N.W., Seattle, WA 98117

FORMAT CHANGES:

CA. Fowler Santa Barbara	KRGO-1220 was silent, now nx/talk KKSB-1290 was KESP, silent, now DCJ-C&W KTUN-990 was all musicals, now AS/jazz
FL. Perry Port St. Joe	WPRY-1400 was C&W, now AC//WNEK WJOE-1080 was SMN C&W, now SMN Trad. C&W
GA. Conyers	WPBE-1050 was AC, now BRN business
IN. South Bend	WNJU-1490 was oldies, adds Unis. oldies
KY. Owensboro	WOMI-1490 was C&W, now BRN business
LA. Baton Rouge	WTKL-1260 was AS, now silent
ME. Millinocket	WSYY-1240 was AC // FM, adds DCJ-AC
MA. North Adams	WNAW-1230 was AC, adds DCJ-AC
MD. Kansas City	KJLA-1190 was silent, now AS
NE. Columbus	RTTT-1510 was soft AC, now Unis. stds.
NM. Clovis	KICA-980 was silent, now SS
NY. Freeport Horseheads	WGGB-1240 was nx/talk, adds nx /WGSM mornings WJQT-820 was soft AC/talk, now classic country
NC. Lenoir Winston-Salem	WKGX-1080 was C&W, adds DCJ-C&W WTOB-1380 was AS, now Unis. CNN headline nx
OH. Cleveland	WKNR-1220 was oldies/sports, now all-sports
OK. Frederick	KTAT-1570 was C&W, rptd. silent
PA. Lykens	WQIN-1290 was AC, now DCJ-oldies
SC. Columbia Lake City Orangeburg	WCOS-1400 was C&W, adds SMN Trad. C&W WVLC-1260 was WJOT, C&W, now AC/country WJZS-1150 was WORG, AC, now gospel
TN. Chattanooga	WJOC-1490 was silent, now all-sports
TX. Liberty	KPXE-1050 was country/AC, now soft AC//KSHN
UT. Ogden	KLO-1430 was soft AC, adds DCJ-soft AC
VA. Lynchburg Roanoke	WLLL-930 was AS, now BRN business WWR-910 was silent, now contemp. Christian
WI. Park Falls	WNBI-980 was AC, adds SMN-AC
AB. Calgary	CFXX-1140 was CISS, oldies, now classic rock

Pat Martin sends on the following tips, courtesy of Bill Hardy:

OR. Dallas	KWIP-880 was silent, now on with AC
Gresham	KKGR-1230 was CNN to Portland, now silent
Lake Oswego	KLVS-1290 was talk to Portland, now silent

Mike Riordan passes on the following tips:

CA. Santa Barbara	KKSB-1290 now on air with C&W as of 9/7, ex-KESP (augments above format info)
Santa Paula	KIST-1340 no longer sim. KMGQ midnight-6AM KKZZ-1400 now Unis. C&W as of 7/20, ex-CHR (augments info in prio columns)

Thanks to the above for their inputs. Any and all tips are welcome, and you'll even get your name mentioned, hi. This column will now go biweekly while bulletins are weekly, then triweekly thereafter. 73's.

A DXers TECHNICAL GUIDE

Now in its 2nd edition, this 120 page book answers questions on how receivers work, how to make them work better, what audio filters and loop antennas will do for you, how to build a beverage and phasing unit, and much more. Only \$5.50 for IRCA members, \$6.50 for non-members (add \$2.50 for overseas airmail). Write: Phil Bytheway, 9705 Mary N.W., Seattle, WA 98117.

DX WORLDWIDE II

Editor: Bruce Portzer - 6546 19th Avenue N.E. - Seattle, WA 98115

Greetings. Autumn will soon be here, and with it the start of the DX season. This is the best time of year for high latitude (TA and TP) DX. If you live on the west coast, the strongest TP signals will come from JOAB-693, JOIB-747, JOUB-774, JOBB-828, and JOGB-873 in Japan, HLAZ-1566 in South Korea, and the Russian and Chinese outlets on 1476 just before local sunrise. On the east coast, your best TA bets include Germany-1593, Spain-684/774, Norway-1314, Senegal-765 and Algeria-891 during the evening. For other targets, refer to the Foreign DX Reference periodically "advertised" in DX Monitor. It lists all the foreign stations reported to DXWW during the last 3 seasons. In recent few years, TA and TP reception has been downright awful, except for a few fortuitous DXpeditions with coastal Beverage antennas. However, with the sunspot count dropping (I hope) there's a chance the situation will improve. Give it a try, and report your results to Pat and Jim. Now on to this month's news:

WESTERN HEMISPHERE

COLOMBIA:

HJCU-730 is 50kw //SW6045/FM96.9
HJJX-770 ex-HJKH per on-air anmt
HJLA-870 now LV de l Tolima, 24hr
//6040SW/96.3FM
HJCE-890 now Todolar Bogota
HJJN-920 now 30kw
HJCS-930 now LV de Bogota
HJ...-1000 Cajibío, R Cultural, ex-
1570 as of 6/29
HJZD-1010 R Panzenú still here (not
1000) now 20 kw, sked:
1000-0400. Addr: Aptdo
Aereo 450, Montería.
HJOL-1030 is Ondas del Cesar, not R
Gentil, 15 kw, addr:
Calle 7a, No 16-39,
Aguachica (Cesar).
HJCJ-1040 Sked:1100-0600
HJSY-1040 Sked 0900(0930SaSu)-0400

HJAT-1100 ex-HJSA
HJMK-1100 Emis. Ideal, ex-1110
HJDI-1110 R Bolivariana now 24hr
HJGZ-1110 apparently off air
HJAU-1160 Sked:1030-0300 15kw, SW
is 4975 (rep 4976.2) 1kw
HJOH-1190 now 10kw
HJKR-1220 now 24hr
HJNM-1220 sked:1100-0200
HJLJ-1500 R Mil 500, ex LV de Cana,
testing 1000-0500, plans
to be 24hr, Addr: Calle
4/D Numero 34-23, Cali
HJZH-1500 now 24hr
HJSH-1500 now 24hr, 10kw
HJTW-1500 R Sumapaz 10/5kw 24hr
HJGJ-1550 apparently off air
HJIP-1590 Sked:1100-0455
[WRTHNL(Gavarira,Rodriguez)/Arctic]
COSTA RICA: TIFC-1080 is 24 hr w/19
kw, Addr for TIJC-700: Aptdo 1999,
1002 San Jose, TIAC-1040 sked:
1000-0400, Delete TIOS-850 TIASI-
960 & TIASD-1560, now FM only, R
Fabulosa-890 is TIHOT, New is
TIVAL-1100 R Guapiles 2kw on 1100-
0200. [WRTHNL]
CUBA: Radio Progreso network is now
off 0500-0900. [Arctic]
DOMINICAN REPUBLIC: HIRB-1090 ex-
1100 1/.25kw, HIMR-1200 Azua is
1/.25, ID as R.Caracol (don't
confuse it w/Colombians.bp), HICJ-
1210 is 5/1kw, HIPK-1580 is
1/.25kw, [Arctic] HICJ-1210 is 24h,
HIOS sked 0930-0200 [WRTHNL]
EL SALVADOR: YSAX-800 power is 20kw
Sked:1100-0400, YSKT-570 sked 1000-
0600 (0800 SatSun), YSCF-1150 is
La Romantica de Oriente 1100-0400
[WRTH NL]
GUATEMALA: TGMK-1110 correct slogan
is R Marianala, TGRN-1460 power is
5 kw, [Arctic] TGW-640/6180/9760
sked:1100-0500, TGO-660 sked 1100-
0400, TGR-670 1000-0400, TGRN-
1460 is 5kw 1100-0300, TGU-1330
sked 1100-0300. [WRTHNL]
HAITI: Due to electricity shortage,
4VEH has curtailed sked to 0930-
1400, Normal sked:1030 in EE 1100-
1400 2300-2400, SS 1000-1100 2000-
2300; 840 1000-0300 & 4930 LSR-1400
in FF/Creole [Alm.WRTHNL]

YVMM/VRZ1: nrkn-740 Radio /-40. ex
 HRLA R. Diana. addr: Aptdo 9
 Juticalpa. Olancho; Sked:1200-0400.
 Some addresses:
 HRKN-710 Aptdo 30046. Tegucigalpa
 DC (Sked:1100-0300)
 HRXW-760 Aptdo 3448. Tegucigalpa.
 DC (Sked:1200-0600)
 HRTL-970 Aptdo 771. Tegucigalpa DC
 HRCD-1010 R Constelacion. 2kw Sked:
 1200-0400. Addr:Barrio El
 Centro.Juticalpa.Olancho.
 Listed on 1370 in WRTH
 HRFX-1040 Same as HRKN-710
 (Sked:1200-0200)
 HRTL1-1120 Same as HRTL-970 (Not
 HRTL2 as in 1991 WRTH)
 HRQN-1160 12 Calle 2a Ave. Barrio
 Copen. Pto Cortes. Move
 to 1340 planned.
 HRZC-1240 Aptdo 914. Tegucigalpa.
 [Arctic and WRTHNL]

PANAMA: R Reforma sked:1000-0300
 [WRTHNL]

PUERTO RICO: WEMJ-1190 new owner is
 Calvary Evangelistic Mission, 1409
 Ponce de Leon. Suite 400. Santurce
 PR 00907. Rigs format [Play-dx]
 WPAB-550 Slogan:"La Emis de la
 Gente Alegria"

WAEL-600 Slogan:"R 600 AM"
 WQII-1140 Addr:POB3779. Hato Rey
 00919

WALO-1240 Addr:POB 1240. Humacao
 00661. Pwr: 1/5kw.
 Slogan: Radio Oriental
 WEGA-1330 silent

WIVV-1370 Slogan "W Indies V of
 Victory". Addr: POB 338.
 Viequez Island 00765

WZBS-1490 "R Senorial" 5kw

WUPR-1530 slogan "Exitos 1530.
 somos un hit en tu Radio"

WKFE-1550 slogan "R Cafe, la
 dinamico 1550" [Arctic]

WQBS-610. WORA-760. WPRP-910 are
 now mostly // "La Gran Cadena" as
 of 6/3 w/SS newstalk. WAPA-680

"Wapa Notiradio" //WZBS-1490/WMTI-
 1580 during drive time. WUNO-1320.

WXEW-840.WEKO-930.WLEO-1170.WCMN-
 1280 have formed the NotiUno net &
 are // w/nx 5:30-9:00/16:00-18:00
 local time. WKAQ-580is relayed by

WKJB-710.WABA-850.WMSW-1120.WISO-
 1260 during AM/PM drive time. [NRC]

VENEZUELA:

YVMH-700 R Popular. "la emisora
 grande de Maracaibo"
 1000-0400 //4810kHz

YVKC-790 Change of slogan listed
 last time didn't take
 place. new slogan likely
 "Venezuela 790 AM"

YVKU-820 R Altura Sked:1000-0400

YVVE-860 AM stereo w/25kw

YVVO-890 R Oriente sked:0900-0300
 1kw soon to be 20kw

5 YVMD-900 slogan "Mara Ritmo 900"

YVKG-950 R Vision, now "Rumbo (or
 Rumba, conflicting info.
 bp) 950"

YVQM-980 20kw

YVQY-1030 R Onda is 20kw 24hr.
 plans boost to 50kw

YVKQ-1130 Exitos 11-30 will
 probably change name to R
 Mundial Larense.

YVNS-1300 R Reloj, rock mx. "la
 emisora de la juventud"
 1000-0400

YVNE-1340 R Uno is 24hr w/50/20kw

YVST-1370 R Portuguesa Sked:1000-
 0400 10kw

YVRW-1420 Sked:1000-0400.

YVKW-1530 R Metropolitana 10/5kw.
 sked:0900-0400.

[TRN/Arctic/WRTHNL]

TRANS-PACIFIC

CHINA: New CPBS addr: Broadcasting
 House. 2 Fuxingmenwai Dajie.
 Beijing 100866. New Beijing PBS

addr: 14 Jianguomenwai Dajie.
 Beijing 100022. Xr's near Beijing

for C2 on 603/747/900 & C1 on 846.
 not listed in 91 WRTH. [Arctic]

JAPAN: JOWF-1440 has new relays on
 882 in Kita Hiyama (0.1kw) & Esashi
 (1kw). JOCF-1107 has a new synchro

relay in Okuchi. JOOR-1179 new
 address: 17-1. Chaya-machi. Osaka-
 City 530-04. [Arctic]

MARIANA ISLANDS: KSAI-936 has
 applied to reduce to 5kw & move xr
 site. [Broadcasting Magazine]

MICRONESIA: Possible QSL route for
 V6AK-1593 is Assembly of God. Box
 609. Chuuk State 96942, if you hear

an AOG pgm. A DXA member recently
 rx'ed a QSL this way. the v/s said
 he thought a reply from the stn was

"unlikely". Stn may use slogan "AK
 Radio". [DXA]

USSR: Irkutsk-234 has local pgm
 1100-1200. Murmansk-657 is on air
 0300-2100 w/Radio One & local pgms.

[Arctic]

VANUATU: The Australian government
 is assisting the Vanuatu government
 with an upgrade of R Vanuatu xr
 site at Port Vila and new ones on
 Santo and Tanna. The plan includes
 a new site at Efate (Port Vila)
 with a 10 kW solid state variable
 frequency HF xr with high vertical
 radiation antenna. and a new 2 kW
 MF xr. The existing transmitters
 will become standby units. At Santo
 a new 2 kW MF unit will replace the
 existing xr. while a new 1 kW xr
 will be constructed at Tanna. In
 each case the medium wave freq is
 projected to be around 600 kHz.
 Completion will probably be late
 1992. [SW Echol]

TRANS-ATLANTIC

ALGERIA: Algerian Radio has started a program called Noble Koran Radio, currently on 254 at 0300-0500 & 1422 at 0800-1000 & 1300-1500, with plans for 24hr operation. 981 was FF, now Berber. [BDXC]

AUSTRIA: New 50kw xrs are operating at Scharnitz on 1026 & 1314. [EBU]

BULGARIA: New: Blagoevgrad-702/963 40kw, Vidin-1017 40kw, Varna-1143 50kw, Vidin-576 now 500kw. [EBU]

EGYPT: Beni Suf or Kash El Farafara-1008 has apparently increased power, based on improved reception in Europe. [Arctic]

FINLAND: Pori-963 seems to s/off around 2200 some nights. [Arctic]

GERMANY: AFN Munich will cease broadcasting in 4/92 & transfer operations to AFN Nurnberg (not sure if this means the xr will go off the air or just the studios. bp) [Arctic]

IRAN: A foreign service site is being constructed at Sirjan, 800km SE of Tehran w/400/150/100kw MW xrs. [BDXC]

MOROCCO: Oujda 2 has been heard on 827 instead of 828. Saif-1325 off air as of 4/91. [EBU]

POLAND: The transmitting "mast" for the 2000kw xr on 225 kHz collapsed recently. The stn is now operating at reduced power on a restricted schedule with a "fill-in" xr. Stn noted with much lower strength in Germany. [R. Austria via SW Echo]

SUDAN: Omdurman has reactivated the high power xr on 1296 at Rebia 0300-0500 1700-2000. [Arctic]

PRINT HANDICAPPED RADIO STATIONS

(The following article is excerpted from an Australian government leaflet on the stations. Until recently they all operated on 1620 and 1629 kHz. Most have now moved to standard broadcast frequencies, the remaining two on 1620 (1PPP Canberra & 7RPH Hobart) plan to do so in the near future. Although now more difficult to hear, I suspect it's still possible to pick up most of them on the west coast with a Beverage antenna near the ocean. Thanks to John Bryant for the article)

Print Handicapped radio stations in Australia have been established in Brisbane, Sydney, Canberra, Hobart, Melbourne, Adelaide, and Perth. Transmission hours for the stations vary from 72 to 130 hours per week.

depending on the financial, volunteer, and technical situation at each station.

Although scattered across the nation, the stations are bonded together by being members of the Australian Council for Radio for Print Handicapped, an organization made up of delegates from each station. The council represents the stations in negotiations with the Government and determines policy matters relating to the provision of a radio service to the print handicapped.

On the whole, a PH station is a spoken word station, a provider of information. At the forefront of the service is the reading of newspapers. Local, national, and, in some cases, international papers, magazines, and books, plays, poetry, health, religion, business, fashion, education, radio and television programs, the arts, hi-fi news, gardening, travel, short stories, and so on, are the key elements of each day's programs. There are some music programs, but these include information about the music, artist, composer that commercial stations wouldn't as a rule include.

The number of volunteers per station varies greatly. Some stations broadcast longer hours than others. Melbourne, for instance, broadcasts around 126 hours per week and has about 350 people on its roster. Sydney ranks next, while Canberra and Hobart have around 72 active volunteers for about 70 hours per week.

To give some idea of a typical PH station, Canberra's days usually run like this: The station opens Monday to Friday at 7 am and runs until 9 am with Readings from the Newspaper. The newspaper readers themselves select the items to be read, but the matter is watched over by the Program Director who divides the reading time into sections such as national, international, sports, finance, and the lighter side of the news.

Other bits and pieces are slipped in to give variety. For example, weather, a little music, the stars, a bit of comedy. At 9 am, it's women's magazines, gardening, travel and interviews until 12 noon when the station closes down.

Transmission resumes at 5:45 with

"What's on Around Town" and at 6 pm announcers settle into the evening papers until 7:45 when there is a 15 minute tape on a different subject each night. Topics include information for senior citizens, better living, and modern science. The readers return at 8 with book reviews, letters to the editor and feature articles. At 8:30 the presenter plays prerecorded tapes on just about any subject until 11 pm, closing time for the station.

Saturday broadcasts commence at 6 pm, the earlier part of the day taken up most times with production and/or training. Sundays commence around 8 am and run until 11 pm.

Although most PH stations do not command a large audience share they have been increasingly attracting listeners who want an alternative to commercial AM programming.

RADIO IN THE USSR DURING THE COUP

(The following report was posted on the ANARC BBS. Although of little practical value to North American DXers, it's interesting reading. The stations noted in the article probably were back to normal a day or two after this was written. bp)

Finland offers an excellent place to monitor broadcasts from the USSR as we are their closest neighbour. Here is a short summary of what I heard yesterday (8/19. bp) here in Tampere (receiver: Icom IC-R71E + long-wire antenna).

None of the new private stations could be heard: i.e. news about closing Radio Echo of Moscow seem to be correct. This station was heard daily here in Finland on 1206 KHz. It is possible that all private stations have been closed. (Several news accounts during the uprising were attributed to the "Moscow Echo" station, and a BBC report later in the week included a brief recording of them made by the BBC Monitoring Service. From what I gather, they used a ham rig & makeshift antenna to operate on shortwave from atop the Russian Parliament Bldg. bp)

In the Russian Federation, regional broadcasts seemed to cease. Only one national programme was aired on the normal main channels 171, 198, 234, 549 and 612 KHz. Serious mx was played and announcers read declarations of the new junta.

R Leningrad 801, R Petrozavodsk 765 and R Kiev 940 KHz also relayed this only national radio channel.

The foreign service of R Moscow was under the control of hard-liners.

Lithuanian radio was not heard.

Latvian radio was heard with normal programming on 576, 1350 and 1422 KHz. Today (8/20) the Finnish news agency reported that army troops have occupied Latvian radio last night. I believe that this evening we'll hear declarations of the junta also from the Latvian radio which has now changed ownership.

Estonian radio was heard normally on 1035 and 5925 KHz with their programme in Finnish at 1500 UTC. I wonder if the normal Finnish and Estonian services are heard any more today. It seems that the junta is going to take over all media in the USSR, and the Estonian radio & TV station is now the last station still under the control of local authorities.

No serious jamming noted. People in the USSR are able to hear Western radio stations. Finnish TV reported yesterday that people in Estonia and Vyborg region are watching Finnish TV as they don't believe in the declarations of the junta.

Submitted by Jorma Mantyla, Univ. of Tampere, Finland

MISCELLANEOUS

Those of you who like propagation reports might want to check out a computer bulletin board operated by Solar Terrestrial Dispatch in Alberta. It features massive reports and forecasts on current solar and ionospheric activity, far more than you'll ever hear on WWV. Their number is (403) 756-3008, use 300 1200 or 2400 baud with 8 bit words, no parity, one stop bit.

SOURCES

Sources are shown in brackets []: Arctic Radio Club, DX Australia (DXA), British DX Club (BDXC), The Radio News (TRN), European Broadcast Union (EBU), Play-DX, WRTH Latin American Newsletters #8 9 & 10 (WRTHNL), Shortwave Echo, ANARC BBS.

73, good DX, and keep the contributions coming in.



PAT MARTIN P.O. BOX 843 SEASIDE, OR 97138

DX Worldwide - West

Time: UTC phone (503) 861-3185

DEADLINE: MONDAYS

We're back to weekly now and Winter cx are on their way. Really they are here now by the reports I got this week! So on with reports:

PAN-AMERICAN DX ROUNDUP

- 760 MEXICO, Nogales 9/2 1251 Strong way o/KFMB w/partial ID "esta en la Genie (pronounced Hee-nee) then faded rapidly, gone by 1300. New. (RW-CA)
- 820 t MEXICO, Mexicali-XEYX-tent. the weak one mentioning "Cadena Baja California" at 0258 9/11. (LBG-MT)
- 830 MEXICO, Culiacan-XEVQ with Ranchera mx 1155-1202, then presumed XE National anthem and full s/on 1204 9/2. Ment. 5KW. Not noted in 9/90 IRCA XE list. This station suspected the SS alternating between 829-831 KHZ around 1230 9/11 (LBG-MT)

TRANS-PACIFIC DX ROUNDUP (THE BIG ONE!!!)

- 531 AUSTRALIA, Kempsey-2MC good w/time pips, ID, woman w/nx at 1200 9/2 (BP-BC)
+Also noted good most AMs lately, noted 9/12 at 1350 w/pops and 2MC IDs. (PM-OR)
UNID, 1404 9/8 end of nx in EE, possible start of MOR mx, Probably one one of the Aussies. (RET-CA)
UNID, rr mx u/2MC at 1356 9/12, Prob. 4XA. (PM-OR)
- 540 AUSTRALIA, Longreach-4QL-good w/pips to the hour at 1300 9/12, ABC Nx followed above others. (PM-OR)
WESTERN SAMOA, fair with woman in presumed Samoan at 0715 9/9 faded under jumble by 0740. This getting regular. Sometimes better than 747, as 750 splatter is there. (PM-OR)
- 549 AUSTRALIA, Orange-2CR good with ABC nx, some splatter via KMVI-550 at 0902 9/12 (PM-OR)
- 550 HAWAII, Wailuku-KMVI-I don't list Hawaiians too often as many are every night that they really aren't DX here, but I thought I would put them in this time along with all the rest. Noted local-like 9/12 with Larry King at 0835. (PM-OR)
- 558 FIJI, fair in KMVI/KSFO splat with Island mx with woman ancr in Fijian 0815 9/11. (PM-OR)
AUSTRALIA, Atherton-4AM-weak in splat with "4AM" ID out to pop song, possible 6WA in there at 1357 9/12. (PM-OR)
UNID, chorale mx 1158 9/2. (BP-BC)
- 567 AUSTRALIA, Julia Creek-4JK-good w/ABC nx 1201 9/2. (BP-BC)
+Also noted with ABC nx at 1102 9/9. Good w/NZ(?) QRM. (PM-OR)
- 570 HAWAII, Lihue-KQNG-way o/KVI w/Ballgame (High School) reg. Friday night game, now with school underway 0610 9/7. (PM-OR)
- 576 tAUSTRALIA, Sydney-2PC-notsure if call change has happened as yet for the ABC 2 stations, but //576,603/792 Clas. mx in passing at 1240 9/9. (PM-OR)
- 585 tAUSTRALIA, Hobart-7ZL-presumed to ABC nx in passing at 1203 on 9/9. (PM-OR)
- 590 HAWAII, Honolulu-KSSK-good with Pop mx and "59-KSSK" IDs, lots of personally like the old KGMB noted at 0634 9/14. (PM-OR)
- 594 AUSTRALIA, Horsham-3WV-good with ment. of ABC at 1231 9/13. Haven't hrd this as good for a while. (PM-OR)
JAPAN, Tokyo-JOAK-woman ancr in JJ/o unid inst. 1345 9/6. (BP-WA)
- 603 tAUSTRALIA, UNID sounded ABC w/NX at 1301 on 9/9 (PM-OR)
- 612 AUSTRALIA, Brisbane-4QR-1150 9/2 massive signal w/slight het from weaker 610 domestics. (BP-BC)
+Also noted with excellent signal at 1349 9/12. (PM-OR)
- 620 HAWAII, Hilo-KIPA-0700 9/2 talk pgm u/KGW AD>Your 24 hr nx connection KIPA" into NBC nx. (BP-BC)
+Good most nights with Talknet Bruce Williams, etc. at 0715 o/u KGW. (PM-OR)

- 621 TUVALU, Funafuti-fair in KIPA/KGW splat with woman ancr reading something in unid language at 0650 9/8. (PM-OR)
TAUSTRALIA, 3AR(?) presumed to Clas. mx in passing 1323 9/9.(PM)
- 630 AUSTRALIA, Townsville-4QN-good with ABC nx //540 1301 9/12.(PM-OR)
- 631+ COOK ISLANDS, Rarotonga-ZK1ZC-is the source of the weak Island mx and het against 630 hrd on 9/8 0735. This per Chuck Boehnke-Hawaii. (PM-OR)
- 639 ++AUSTRALIA, either 8KN-Katherine,NT or 5CK Port Pirie w/ABC pgm //2310 1339 9/2. Pgm at the time was a half hr off from what I had hrd earlier on 4RK-837, so not 4MS. There was a slight delay between 639 and 2310 (apparently one was fed by satellite and the other by landline) Would be nice to know which one it was.(BC-BC)
AUSTRALIA, Coffs Harbour-2CS-good with "2CS" ment into pop song, a couple spots at 1409 9/14. (PM-OR)
AUSTRALIA, Mossman-4MS w/ABC news at 1300 after pips on 9/10.QRM from 2CS? (PM-OR)
- 648 TAMERICAN SAMOA-Pago Pago-WVUV-presumed the U.S. rr mx at 0850 on 9/7 in passing. (PM-OR)
- 657 AUSTRALIA, Byrock-2BY-w/ABC nx at 1202 9/9. (PM-OR)
- 666 NEW CALEDONIA, Noumea-FR3 still here w/weak FF talk, w/KPUA off. (just KPUA carrier off and on) on 9/8 0912. Get FR3 while you can, as I have hrd they plan to be only on FM in the future.(PM-OR)
AUSTRALIA, Canberra-2CN -fair w/ABC nx at 1203 in passing 9/11 (PM)
UNID, strong carrier very weak audio w/vocal mx and talk in unid language at 1355 9/8. New Caledonia?? (RET-CA) (Sounds like them, as they mod about 20-40 percent.PM)
- 670 HAWAII, Hilo-KPUA-great o/KBOI w/AM&FM ID and mx 1210 9/2(BP-BC)
 +Noted good 9/14 at 0715 with KWXX FM and KPUA AM IDs. KHLO-850 is really the strongest Hawaiian here, followed closely by KMVI, KIPA,KPUA. With Hilo on the East coast of Hawaii and being the closest Island to the mainland, they really are strong! (PM-OR)
- 675 TAUSTRALIA, Albury-2CO- w/ABC nx //549 0903 9/12. (PM-OR)
NEW ZEALAND, Christchurch- 3YA //720 1341 9/6 (BP-WA)
- 684 TAUSTRALIA,Kempsey-2KP w/ABC nx //549 0904 9/12. (PM-OR)
- 690 HAWAII, Honolulu-KQMG-fair in mess XETRA/CBU with rr mx and gave Burger King spot and 922-prefix spot (phone #) which is Honolulu at 0735 9/14. This is rough now with CBU AN too. (PM-OR)
- 693 JAPAN, Tokyo-JOAB-fair w/JJ talk at 1357 9/13. (PM-OR)
- 702 AUSTRALIA, Sydney-2BL-exc signal briefly w/talk show //828 KHZ at 1345 9/8. (RET-CA)
 +Also noted exc. w/talk show mixing with Radio Pacific at 1340 9/9. (PM-OR)
NEW ZEALAND, Auckland-1XP-Radio Pacific w/telephone talk show w/R. Pacific ment. u/2BL mostly 1341 9/9. (PM-OR)
- 711 UNID, inst. mx at 1350, sounded like two stations but hard to w/KIRO/KMPC QRM 9/12. (PM-OR)
- 720 HAWAII, Eleele-KUAL o/u KDWN with old Hawaiian guy ancr playing Hawaiian standards mx 9/9 at 0815. (PM-OR)
NEW ZEALAND, Invercargill-4YZ chorale mx //756 1340 9/6 (BP-WA)
 +Also noted 9/9 at 1334 //756 mx (PM-OR)
UNID, 1400 9/7 and 9/8 weak talk covered by jammer. (RET-CA)
- 729 UNID, het here in passing 1337 9/9 (PM-OR)
- 738 AUSTRALIA, Grafton-2NR weak w/MOR vocals //828 (RET-CA)
 +Also logged w/good signals //549 with ABC nx 1302 9/9 (PM-OR)
TAHITI, Papeete-FR3 1207 9/6 strong carrier fair audio w/FF talk Polynesian mx //11827 (BP-WA)
 +Noted most nights after 0600 w/FF talk (PM-OR)
UNID, w/moderately strong carrier but oddly no audio 1230-1300 9/11. Looped DU. Could this be Tahiti or Tonga that already off? Help. (LBG-MT) (So far to Tonga, haven't s/on as yet-but Tahiti as all the FR3 stations on MW have strong carriers and weak audio. Sounds like Tahiti alright.PM)
- 747 AUSTRALIA, Toowoomba-4QS-good w/teletalk female host 1026 on 9/2 (BP-BC)
 +Also noted strong with talk in passing at 1120 9/9. (PM-OR)
WESTERN SAMOA, Apia-Good w/older U.S. Pops.woman ancr in Samoan not //540 0742 9/9. KXL Splat. (PM-OR)
JAPAN, Sapporo-JOIB -great w/EE lessons 1323 9/6 (BP-WA)
 +Noted weakly w/lessons in EE 1345 9/9 (PM-OR)
- 9 756 NEW ZEALAND, Auckland-1YA good w/EZL mx 1333 9/6 (BP-BC)

- 756 NEW ZEALAND, Auckland-1YA good w/EZL mx and man ancr 1120 on 9/14. (PM-OR)
- 760 HAWAII, Honolulu-KGU-good with wx out of NX at 1105 on 9/13. KFMB QRM (PM-OR)
- 765 NEW ZEALAND, Hastings-2ZK-presumed the source of the rr mx in passing at 1340 9/12. May have been an Aussie, tho. (PM-OR)
- 774 AUSTRALIA, Melbourne-3LO-good with ABC nx at 1400 after pips on 9/13. (PM-OR)
 +Also logged good o/JOUB w/NX 1334 9/6 (BP-BC)
FIJI, Good w/Hindi mx //891 at 0738 9/11. (PM-OR)
JAPAN, Akita-JOUB-fair //747 1324 9/6 (BP-WA)
- 783 +AUSTRALIA, Alice Springs-8AL good-nil 1315-1322 9/2 w/pop mx //ABC Northern Territory Service on 2310/2325/2485. (BP-BC)
 +Also hrd 9/14 at 1328 w/pop mx // 2310. No chance of local ID had faded by 1400. Surprising signal for 2KW! (PM-OR)
U.S.S.R., Fair in 780 splat w/m&f in RR 1335 9/6 (BP-WA)
UNID, acapella mx w/male voice-over in unid lang 1359-1404 9/6 fair-weak, no pips on hour (BP-WA)
- 792 AUSTRALIA, Brisbane-4QG good w/Aussie mx 1352 9/6 (BP-WA)
 +Also logged w/clas. mx at 1255 9/14 (PM-OR)
- 801 AUSTRALIA, Gosford-2GO-fair w/pop mx "2GO"ID and TC at 1332 9/9. 800 QRM. Soon faded. New (PM-OR)
 +Logged 1323 9/2 Call ID during contest promo into Troggs "Wild Thing" (BP-BC)
- 810 AUSTRALIA, Bega-2BA-fair o/KGO at 1347 9/14. No sign of Fiji at this time. (PM-OR)
FIJI, fair u/KGO with Hindi //891,774 at 0733 9/13 (PM-OR)
- 819 AUSTRALIA, Glen Innes-2GL-good w/some 810 Splat at 1236 9/11, NZ underneath. (PM-OR)
NEW ZEALAND, Rotorua-1YZ briefly good o/KGNW-820 w/Inst mx // 756 1333 9/6 (BP-WA)
UNID, weak audio 1245-1300 9/8 had me panting. Looped DU (LBG-MT)
- 828 AUSTRALIA, Sale-3GI w/ABC news at 1201 9/11. (PM-OR)
 +Also logged fair 1400 9/7 w/ID News,MOR mx 1405. Hrd talk 1345 9/8 // 4920 SW on 9/8, w/6 pips on the hr, while MW outlets don't seem to have the pips. (RET-CA) (Randy, some do and some don't.PM)
JAPAN, Osaka-JOBB- fair EE lessons 1125 9/6 (BP-WA)
- 830 HAWAII, Honolulu-KIKI-good most nights w/oldies. (PM-OR)
- 837 AUSTRALIA, Rockhampton-4RR-hrd at 1400 9/5,9/6,9/7,9/8 w/ABC pgm //828 weak sigs. (RET-CA)
NEW ZEALAND, good w/violin mx 0757 9/2,6 pips and Radio New Zealand nx //756 0800 (BP-BC)
- 846 KIRIBATI, good w/KHLO splat woman in lang at 0645 9/9 (PM-OR)
UNID, 1415 9/7 very weak w/mx EE talk. Possibly 2CY not //828 KHZ. (RET-CA)
- 850 HAWAII, Hilo-KHLO-good most nights with C&W mx (PM-OR)
- 855 AUSTRALIA, Maryborough/Eidsvoid-4QB/4QO 1413 9/7 MOR mx //828 fair (RET-CA)
 +Also logged //837 w/MOR mx 0950 9/11 (PM-OR)
- 864 AUSTRALIA, Hobart-7HO-good signals o/unid w/pop mx and "7HO" jingle into Rod Stewart song 1345 9/11 (PM-OR)
- 870 HAWAII, Honolulu-KAIM-good most night rel. pgm (PM-OR)
- 873 AUSTRALIA, Sydney-2GB-fair w/male talk 1141 9/2 (BP-BC)
 +Also hrd good w/teletalk at 1321 9/11 (PM-OR)
- 882 AUSTRALIA, Brisbane-4BH-fair w/4BH ID into song 1308 9/11 (PM-OR)
UNID, station behind 4BH w/pop mx, another Aussie 1310 9/11(PM)
UNID, male EZL vocal briefly good,lost in KIXI splat 1306 9/2 4BH? (BP-BC)
- 890 ALASKA, Homer-KBBI-marine wx thru Fiji splat fair-poor at 1329 9/6 (BP-WA)
- 891 FIJI, Lautoka- Hindi mx good after KDXU fadeout 1325 9/6 (BP-BC)
 +Also noted 9/14 1332 w/Hindi mx (PM-OR)
 +Also noted good sigs w/Hindi mx and talk 1410 9/7 (RET-CA)
AUSTRALIA, Townsville-4RR 1253 9/2 "Better mx 4 double R" ID into Beach Boys song 5AN/CJVI QRM (BP-BC)
 +Also noted w/ "Better mx 4 double R" jingle into song at 1322 9/11. (PM-OR)
- 900 HAWAII, Kahului-KNUI-great way o/CJVI w/Hawaiian pops mixed w/AC songs, several "KNUI" IDs. Another regular. (PM-OR)

909 UNID, het here AN 9/9, no audio. (PM-OR)
 918 UNID, Pop mx caught at 1009 9/9, too much KGAL splat. (PM-OR)
 927 AUSTRALIA, Gladstone-4CC-1303 9/2 contest promo "4 double C"
 ID (BP-BC)
 +Also noted w/ "4 double C" ID at 1323 9/14, ex 4CD. (PM-OR)
 936 tAUSTRALIA, unid DU talk at 1309 9/9 (PM-OR)
 940 HAWAII, Waipahu-KDEO-fair mixing w/KFRE with C&W mx and ID at
 "K-D-EO" TC at 0712 9/10. (PM-OR)
 945 UNID, weak audio/carrier AN 9/9. (PM-OR)
 954 AUSTRALIA, Sydney-2UE-fair w/teletalk in splat 1256 9/2 (BP-BC)
 +Also heard 9/9 at 1340 w/teletalk (PM-OR)
 963 tNEW ZEALAND, Christchurch-3YC-poss the one w/clas mx in passing
 didn't check //s at 1245 9/9 (PM-OR)
 972 UNID, weak rr mx at 1234 9/9 (PM-OR)
 981 AUSTRALIA, Hamilton-3HA-fair in 980 splat with "3HA" ID into
 music at 1333 9/9. Haven't hrd this in a while. (PM-OR)
 990 HAWAII, Honolulu-KHVH-good with news and ID "News Radio 99"
 KKIS QRM at 0640 9/13 (PM-OR)
 999 UNID, het on KOMO at 1010 9/9 (PM-OR)
 1008 AUSTRALIA, Brisbane-4IP-with "4IP" ID into song, lost in splat
 from 1010 at 0945 9/10 (PM-OR)
 NEW ZEALAND, Tauranga-1ZD-good with pop mx //1035 0740 9/10 (PM)
 1017 AUSTRALIA, Sydney-2KY-good with teletalk at 1123 9/9. (PM-OR)
 TONGA, Nuku'alofa-A3Z good w/m&f //5030 0556 9/2 (BP-BC)
 +Also noted good with female talk in presumed Tongan 0645 9/9 (PM)
 1026 AUSTRALIA, MacKay-4MK-STRONG! even after 30 dBattenuation
 cranked in w/rr mx 1145 9/2 (BP-BC)
 +Also noted very good with rr mx, 4MK into record at 1331 on
 9/13. (PM-OR)
 NEW ZEALAND, 1ZN/1ZK-fair //1008 at 0746 9/10 (PM-OR)
 +Also noted good w/rr mx //1008 et al 1315 9/6 (BP-WA)
 1035 NEW ZEALAND, Wellington-2ZB-good w/rr mx //1008 1315 9/6 (BP-WA)
 +Good most mornings w/rr mx (PM-OR)
 1040 HAWAII, Honolulu-KLHT-fair o/u Vancouver w/hymn and rel pgm
 at 0915 9/9 (PM-OR)
 1044 NEW ZEALAND, Dunedin-4ZB in splat 1316 9/6 //1008/1026/1035
 but much weaker. (BP-WA)
 +Weak signal at 0840 on 9/9 with pops //1035. Wonder if they
 are running lower power now? Weaker than 1026 with 2KW. (PM-OR)
 1053 KOREA, jammer weak 1347 9/6 (BP-WA)
 +Also noted 1331 9/9 w/presumed 2ZP. (PM-OR)
 1062 tAUSTRALIA, Thursday Island-4TI-// with 855 1333 9/9 (PM-OR)
 1071 UNID, weak pop mx in 1070 het at 1344 9/9 (PM-OR)
 1089 UNID, weak het on 1090 1346 9/9 (PM-OR)
 1098 UNID, weak pop mx in KFAX splat at 1354 9/9 (PM-OR)
 1107 AUSTRALIA, Sydney-2UW-good w/pop song at 1320 some 1110 splat
 and "2UW" ment (PM-OR)
 1116 UNID, poss 4BC weak pops at 1321 also 9/9 (PM-OR)
 1125 UNID, weak signal (music) 9/9 1322 (PM-OR)
 1134 UNID weak signal (music) 9/9 1322.30 (PM-OR)
 1143 tAUSTRALIA, Emerald-4HI poss pop music station and call ID into
 song, too much KRAK QRM 1327 9/9 (PM-OR)
 1152 UNID, music 1324 9/9 (PM-OR)
 1161 AUSTRALIA, Maryborough-4MB-weak with Rod Stewart song, ID w/
 "4MB-music of today plus the 60s and the 70s" 1346 9/12 (PM-OR)
 1179 UNID, looking for 3RPH, but just a strong het 1359 9/13 (PM-OR)
 1188 UNID, weak music in KEX splat 1349 9/9 (PM-OR)
 1197 UNID, het here 1349.30 9/9 (PM-OR)
 1206 AUSTRALIA, Grafton-2GF-good with pop song, gave phone number
 (contest?) at 1319 9/9 (PM-OR)
 1215 UNID, weak music 1313 9/9 (PM-OR)
 1242 UNID, weak music 1314 9/9 (PM-OR)
 1251 UNID, het here AN 9/9 (PM-OR)
 1269 UNID, het here AN 9/9 (PM-OR)
 1278 UNID, het here AN 9/9 (PM-OR)
 1287 UNID, music 9/9 1311 (PM-OR)
 JAPAN, Sapporo-JOHK 1347 9/6 ads and woman DJ in JJ (BP-WA)
 1296 UNID, fading pop music 1315 9/9 (PM-OR)

- 1314 AUSTRALIA, Wollongong-2WL-fair w/pop music and 2WL ID into spot 1358 9/9 (PM-OR)
- 1323 FIJI, Rakiraki-weak with Samoan woman, Island mx 0640 9/9 (PM)
- 1332 UNID, het 1007 9/9 (PM-OR)
- 1341 UNID, het 1008 9/9 (PM-OR)
- 1359 UNID, het only on NZ wire 1130 9/2 (BP-BC)
- 1368 UNID, very weak het 1010 9/9 (PM-OR)
- 1377 UNID very weak het 1010.30 (PM-OR)
- 1386 AUSTRALIA, Sydney -2EA-presumed the source of the low keyed female ancr in splat at 1312 9/9 (PM-OR)
- 1395 UNID, weak mx at 1011.30 9/9 (PM-OR)
- 1413 AUSTRALIA, Newcastle-2KO-w/Macquarrie News(?) at 1201 9/9, fade weathercast at 1205(tune back in),2KO ID 9/9 (PM-OR)
- 1422 UNID, het here while checking out 2KO 1202 9/9 (PM-OR)
- 1467 UNID, het on CJVB 1313 9/6 (BP-WA)
- 1476 AUSTRALIA, Roma-4ZR fair w/rr mx 1414 9/2 (BP-BC)
- 1485 UNID, very weak mx in cluster of carriers (some off freq, causing a hum on channel 1339 9/9. (PM-OR)
- 1500 HAWAII, Honolulu-KUMU-fair o/mess with E2L mx "KUMU ID" 1330 9/14, lost by 1332 (PM-OR)
- 1503 UNID, het and male talk in bad splat 0810 9/2. Not hrd the rest of the night (BP-BC) (poss. NZ.PM)
- 1548 AUSTRALIA, Emerald-4QD-poss. w/Clas mx in passing at 0911 on 9/9 (PM-OR)
- 1566 REPUBLIC OF KOREA, Cheju 1312 9/6 good w/KK talk (BP-WA)
+Also noted w/KK talk at 1317 9/13 (PM-OR)
- 1575 AUSTRALIA, Wollongong-200- with "Two Double O" jingle into Brian Adams song at 1322 9/10 (PM-OR)
UNID, good carrier weak audio 1311 9/6 (BP-WA)
- 1584 UNID, mess of carriers with hum on channel 1339.30 9/9. No audio hrd (PM-OR)
- 1602 UNID, het on 1600 1341 9/9 (PM-OR)
- 1615 NEW ZEALAND, Ohura "OR" beacon good w/morse IDs 0736 9/2 (BP-BC)
- 1620 AUSTRALIA, Canberra-1PPP-very good battling 7RPH w/man and woman reading nx 9/2 0828-0900+ two "One Triple P" IDs around 0845 (BP-BC)
AUSTRALIA, Hobart-7RPH strong o/1PPP 0957 w/nx reading, 0758 inst mx, 0802 ID "7RPH you information station" (BP-BC)
- 1630 NEW ZEALAND, Tamaruni-1005 9/2 "TM" beacon fair (BP-BC)
- 1640 UNID, RR beacon 1041 9/2 (BP-BC)

WOW What a column!!! Alot of great catches guys. Keep up the good work!

THANKS TO THESE REPORTERS:

- LBG-MT LARRY GODWIN-2390 Clydes Dale Lane-Missoula, MT 59801
HQ-150, SM2 Loop
- BP-BC BRUCE PORTZER-6546 19TH Avenue, N.E.--Seattle, WA 98115
DXing at Sombrio Beach FRG-7 w/2000 EW unterminated Bev.
1200' terminated Bev at NZ
- BP-WA DXing at Twin Harbors State Park, WA FRG-7 w/150' LW
- RET-CA RANDY TOMER-50 Thistle Ridge-Eureka, CA 95501
DXing using R-390A w/400' wire N/S, Kenwood R-2000 for SW //s.
- RW-CA ROBERT WIEN-1309 Dentwood Drive-San Jose, CA 95118
Superadio, SM2 Loop
- PM-OR YOUR EDITOR
SP-600, Term 200' DU wire, Ground system

A DXers TECHNICAL GUIDE

Now in its 2nd edition, this 120 page book answers questions on how receivers work, how to make them work better, what audio filters and loop antennas will do for you, how to build a beverage and phasing unit, and much more. Only \$5.50 for IRCA members, \$6.50 for non-members (add \$2.50 for overseas airmail). Write: Phil Bytheway, 9705 Mary N.W., Seattle, WA 98117.



**WESTERN
DX
ROUNDUP**

Nancy Hardy
2301 Pacific Ave.
Aberdeen, WA 98520

DEADLINE FOR WDXR TIPS IS MONDAY. PLEASE USE EASTERN TIME.

REPORTERS FOR THIS ISSUE:

- (LG) Larry Godwin-2390 Clydes Dale Lane-Missoula, MT 59801
Hammarlund HQ-150, SM-2 antenna
- (PM) Patrick Martin-P.O. Box 843-Seaside, OR 97138
SP-600, term. 200' longwire, ground system
- (bp) Bruce Portzer-6546 19th Avenue NE-Seattle, WA 98115
(bp-WA1) DX'ing at Twin Harbors State Park, Westport, WA
FRG-7 with 150' longwire
(bp-BC) DX'ing at Sombrio Beach, BC with FRG-7 with 2000' EW
unterminated Beverage & 1200' terminated wire pointed at
New Zealand
- (MR) Mike Riordan-P.O. Box 1195-Goleta, CA 93116
Panasonic 2200
- (MS) Mike Sanburn-P.O. Box 1256-Bellflower, CA 90707
GE Superadio
- (RT) Rich Toebe-2550 Hilborn Rd. #264-Fairfield, CA 94533
Sony ICF-2010, Delco car radio
- (RW) Robert Wien-1309 Dentwood Dr.-San Jose, CA 95118
GE Superadio, GE long-range portable, SM-2

OF SPECIAL INTEREST:

- 870 KOWA NV, Laughlin-Las Vegas 9/2 0730 good over KIEV/WWL with ID
"This is the Cow, KOWA, AM 870, Laughlin-Las Vegas, the
Million Dollar Cow," C&W music. Call change, ex-KROL.
Changed to KOWA 9/1. (RW-CA)
- 1250 KCST OR, Florence 9/2 1019 good over KKFJ with Paul Harvey,
local ads, then woman with ID. Had been silent. (bp-BC)
- 1290 KKSJ CA, Santa Barbara ex-KESP back on the air with country as
of 9/7/91. (MR-CA)
- 530 TIS CA, Martinez 9/14 0300 fair to poor with general info, what
to do in case of emergency, "dial 911," operated by city of
Martinez. (PM-OR)
- KOD773 WA, Olympic Nat. Park--Port Angeles 9/2 0012 good with
usual messages about Olympic National Park. (bp-BC)
- 540 KPUP CA, Carmel Valley 9/2 0308 oldies, "K-Pup, your oldies
station," SMN news, back to SMN oldies //KVI-570. Good on
NZ wire. (bp-BC)
- CBK SK, Regina 9/2 0305 s/off to return at 6am, then O Canada.
(bp-BC)
- 590 KRSO CA, San Bernardino 9/13 2330 Cal Angels baseball game, ID
"Follow the California Angels on KRSO, San Bernardino.
Your sports leader." (PM-OR)
- 610 KYJC OR, Medford 9/6 0920 strong over unID with "Magic Stereo
KFMJ & KYJC" ID and adcon music. (bp-WA1)
- 620 ?KGW? OR, Portland 9/1 0103 heard several songs in a row by Van
Morrison, fading up over KTAR & KIGS. (MS-CA)
- 700 KOJY CA, Soledad 9/2 0020 EZ instrumental music good & dominant
on NZ wire, inaudible on E-W wire. ID as "K-Sur FM 99.5
and AM 700." (bp-BC)
- +Very strong atop all 9/10 0847. NRC log listed daytime
power of 330 watts must be wrong. (LG-MT)
- 800 ?KSOS? UT, Brigham City 9/2 0551 tent. call change ex-KNKK. ID
"This is the Oldies Channel," oldies music but no ID. Not
sure if changed calls, was scheduled to become KSOS on 9/1.
(RW-CA)
- 830 KNCO CA, Grass Valley non-stop R&R 8/31 2245-2300, then ID and
ABC news. (LG-MT)

- ?KIKI? HI, Honolulu possibly the one all alone, looping due E-W with oldies 9/9 0840-0900. Will keep trying. (LG-MT)
- KUYO WY, Evansville s/on (no anthem) 9/10 0800. ID'd as Evansville-Casper, "an Enterprise Network station." CBN program began immediately. (LG-MT)
- 840 KSWB OR, Seaside 9/6 0900 s/on into adcon music. (bp-WA1)
- 870 KORD WA, Pasco 8/31 0800 announced "You've got the pure gold fever of AM-87, KORD" followed by R&R oldies. Listed as C&W in NRC log. (LG-MT)
- 960 KQKL CA, Apple Valley 9/9 "Kool Gold" ID, "KQKL Apple Valley" ID at 2230, then spot for Health Clinic in Victorville. (PM-OR)
- 990 KTUN CA, Santa Barbara 8/26 0900 logged at good level with Mutual news, ID "990 KTUN Santa Barbara, play it again Sam." Music, then TC by Mark St. James. Ex-KBBQ for me. (MS-CA)
- 1050 KOPY CA, San Mateo 9/2 0029 blasting in on NZ wire, inaudible on E-W wire, with local ads, oldies "Kool Gold" and "Coffee 1050" IDs. (bp-BC)
- 1060 *KPAY* CA, Chico 9/2 0632 good with TT over mess. (RW-CA)
- 1070 KATQ MT, Plentywood is in financial difficulty, per local newspaper. Seeks to raise \$250,000 through sale of stock at \$200 per share & donations. (LG-MT)
- 1170 KVVS CO, Windsor 8/31 s/on at 0756, woman announcer in English, then Spanish. Noted with Spanish news 0800-0805 8/27 before English ID. (LG-MT)
- 1220 KDFC CA, Palo Alto 9/2 0037 dominant on NZ wire with classical music, not heard on E-W wire. (bp-BC)
- 1240 KJAA AZ, Globe 8/26 0752-0829 new here. Mostly dominant with KNRY & KSMA. ID "...24 hour radio station, KJAA." C&W music by Diamond Rio, ID "Listen for Sunday Night Gold only on KJAA Globe." 0800 Mutual news, then PSA from American Lung Assoc. AZ #61 for me. Not heard as KTOR. (MS-CA)
- KSAC CA, Sacramento 9/2 format change from classical to sports-talk, affiliated with American Radio Network. IDs as "KSAC Sacramento, Radio 12-40 Sports." (RT-CA)
- 1290 *KHSJ* CA, Chico 9/2 0640 good with ID mentioning being on air for engineering tests, but nothing after that! (RW-CA)
- 1320 KHSJ CA, Hemet 9/2 0644 good, surprise in KUTR-KCTC nulls with ID "The home of the entertainers, KHSJ," very rare here! (RW-CA)
- 1340 KATA CA, Arcata 9/2 0040 local-like on NZ wire with oldies "All Gold 13-40, the Oldies Channel, KATA" ID, weak in mess on E-W wire. (bp-BC)
- 1370 KXTL MT, Butte 9/2 0207 ID "KXTL Butte," Talknet jingle. Loud in KWRM null. (MS-CA)
- 1400 ?KBLX? CA, Berkeley 9/2 0101 likely the one with jazz/black music, possible ID with mention of "1400 AM & 102.9 FM." Format and FM freq. both fit & was dominant on NZ wire. (bp-BC)
- 1470 CJVB BC, Vancouver has lately been quite good during the day, used to be inaudible. Apparently made a pattern change after KAPS moved to 660. (bp-WA)
- 1490 (KSPE) CA, Santa Barbara 9/1 0300-0700 noted off. (MR-CA)
- KVAC WA, Forks 9/2 0050 C&W and KVAC/KLLM ID very dominant on NZ wire, inaudible on E-W wire. (bp-BC)
- 1610 KNEC996 CA, Sacramento 9/2 TIS, probably temporary, reporting on traffic delays caused by rebuilding of I-5 bridge over the American River. Short loop message includes ID "KNEC996, Cal Radio AM 16-10." Noted in car after seeing highway sign for AM 1610 near intersection of I-5. (RT-CA)
- TIS CA, 9/6 0854 TIS at an agricultural inspection station with message by man advising motorists to stop for inspection & giving explanation of why inspections are made, ments of "California Department of Food & Agriculture" & "exit off the old Interstate," then woman with "Caltrans Highway Advisory" about construction 4 miles south of the inspection station. Fair over jumble of others. Most likely location is along I-5 near Oregon border. (bp-WA1)

WNVQ843 WA, Port Angeles 9/2 0010 TIS operated by City of Port Angeles good over Lake Crescent TIS. Also noted 9/10 while in Port Angeles with 5-minute repeated annct. ID at beginning as "City of Port Angeles Traveller's Information Radio WNVQ843," at end said for more info "tune to 1450 KONP, 1290 KAPY or 530 Olympic National Park Radio." This explains why Olympic Nat. Park TIS moved to 530. (bp-BC)

LOCAL CHANGES

- 950 KJR WA, Seattle has dropped oldies & now 100% sportstalk. (bp-WA)
- 1340 (KIST) CA, Santa Barbara no longer simulcasts with KMGQ 106.3 from midnite to 6am. Noted off 9/1 0300-0900. (MR-CA)
- 1360 KKMO WA, Tacoma now off daily 0300-0900 leaving KUIK dominant. Current weekday format is adcon 0900-1600, Spanish 1600-1900 (or 2000), then Japanese until 0300. Weekends mostly Spanish with a few other ethnic programs. (bp-WA)
- 1400 KKZZ CA, Santa Paula now Unistar country as of 7/20/91. Was CHR with KCAQ 104.7 Oxnard, CA. (MR-CA)

UNIDS

- 820 Almost every AM, strong OC comes on between 0800-0815 and continues through fade-out around 0850. Loops N-S. Who? (LG-MT)
- 900 KBIF-CA? 9/1 1103-1200 good daytime signal coming through KGRB vocals. Sports at 1103, then light music "Eres Tu," "Chimney-sweep." Did KBIF change relig. format, or is this someone else? Possibly Hawaii? (Perhaps, but should have faded out by 1200-NH) (MS-CA)
- 1610 9/9 0650 unID TIS with loop tape "testing 1,2,3, testing 1," mention of "emergency message." Seems very close by, unable to null, way over Newark TIS. Seems to loop NW/SE. Ideas?? (RW-CA)

A big welcome this week to Larry. I'm looking forward to receiving tips from Montana! This is the beginning of the weekly issues, so I hope everyone will send reports, even if there are only one or two tips. Seeing Bruce's DX from Westport, WA reminded me of something. Some of you may remember Bill & I hosted a DX-pedition at Westport back in the mid 70's. I'll never forget Bruce, Bill and Nick Hall-Patch stringing out all that Beverage wire! Well, two months ago (mid-July) the beach house burned to the ground. Bill's brother who had been living there, lost everything. On a happier note, see you next week.

EDITOR NEEDED: Western DX Forum. If you live west of the Mississippi River, have a good-looking typewriter, and can spend a few hours each week helping IRCA, write to IRCA President Phil Bytheway, 9705 Mary N.W., Seattle, WA 98117. Bill Hardy will type the column until a permanent editor is found.

IRCA AM-FM ALMANAC UPDATERS ARE NOW AVAILABLE!

Updater 5.1 - 6 page Almanac index, 11 page slogan updater, silent station update, network updates (CBS, NBC, Cadena Radio Centro).

Updater 5.2 - complete 1991 baseball (8 pages of major leagues, 4 pages of minor leagues), network updates (BRN, CNN, etc.), talk show updates, revisions of Satellite Music Network and Unistar/Transtar.

Future updaters will appear as needed, 3 to 4 times per year. An updater this fall will cover NFL and college football. Another updater this winter will include college and NBA basketball, plus NHL hockey.

Readers interested in particular items (sports, slogans, FM, etc.) can choose to order the updaters covering their choice of items.

20 pages each, \$2 each to U.S. or Canada, \$3 elsewhere, U.S. funds, payable to IRCA. You may order as many as you wish, past, present, or future. Order from Bill Hardy, 2301 Pacific Ave., Aberdeen, WA, 98520.



Central DX Roundup

Editor: **John C. Johnson**
379 Neptune Boulevard
Billings, Montana 59105-2129

FOR THE RECORD

Report in Eastern time. Deadline: Saturday.
CDXR accepts reports via computer through Prodigy, my address: MPNN49A.

RIDING GAIN

[JcJ-MT] = Your editor using an Icom IC-R71A with Radio West Loop.

SPECIAL INTEREST

1470 KBXN UT Tremonton, 9/16 briefly good. 0330 w/70s rock, IDing as "Your first choice radio, AM 14-70 KBXN." I still show this as KZZK? Note KBXN calls were used when station first came on the air in 1982. Call history: KBXN to KBCW to KKVU to KZZK. Not enough for a report, but is needed if indeed they are now KBXN. (Almost an unID entry at this point. Any ideas?) [JcJ-MT]

DOWN THE DIAL


1370 CPOK AB Westlock, 9/16 good, on top. 0315 w/spot cluster with mentions of Westlock. C&W format "Star Country" slogan. Not needed. [JcJ-MT]

25 YEARS AGO

September 24, 1966 issue of DX Monitor.....New members included Bruce Portzer.....Bill Hardy dropped the "Jr." from his name now that he is a famous radio announcer at KWSC....Rick Evans said he has added 44 new stations so far in September....Tom Jasinski was now on the USS Brumby....Randy Seaver took over as DXWW editor.



OPEN MIKE

 When contentment enters, progress ceases. We're weekly now, be sure to send in your DX and tips (if you don't then the column looks like this one!) 73, John.



United States Department of the Interior

NATIONAL PARK SERVICE

SANTA MONICA MOUNTAINS NATIONAL RECREATION AREA
30401 Agours Road, Suite 100
Agours Hills, California 95011

IN REPLY REFER TO:

September 10, 1991

Steven M. Mittman
2248 West 37th Street
San Pedro, CA 90732-4506

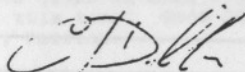
Dear Mr. Mittman:

I am surprised you received our radio message. The system is designed for a range of five miles!

In answer to your questions, the station has no call sign. It is licensed as a Travelers Information Station for Santa Monica Mountains National Recreation Area. There are currently two stations broadcasting, one at Pt. Mugu and one at Malibu Lagoon. Two more will be added at the intersection of Mulholland Highway and Las Virgenes Road and Mulholland Highway and Kanan Road. All will provide visitors with information about Santa Monica Mountains National Recreation Area. All are on the same frequency. I do not have a figure for the wattage but my guess is that it is less than 20 watts.

I am enclosing a copy of the text that is being broadcast. You have an interesting hobby! Thanks for taking the time to write.

Sincerely,



Constantine J. Dillon
Chief of Interpretation

Station 2 - Malibu Lagoon
Welcome to Santa Monica Mountains National Recreation Area.

As you wind your way through the busy traffic of Malibu you may not realize you are in a National Park, yet indeed you are. Look up at the steep slopes that frame the coastline. These are the Santa Monica Mountains. Home to more than 50 species of mammals, 260 species of birds, and 870 species of plants.

Stretching for nearly forty miles along Pacific Coast Highway, the National Recreation Area begins at the Santa Monica Pier and continues up to Mugu Lagoon. A short drive off the highway will bring you into the secluded canyons and ravines that provide an escape from city life. Within a few miles numerous public recreation opportunities await your discovery including Malibu Lagoon State Beach, Malibu Creek State Park, Solstice Canyon, and the National Park Service areas of Castro Crest and Zuma Canyon.

Santa Monica Mountains National Recreation Area is a cooperative effort between many different park agencies. Federal, state, county, and private parks can be found throughout the 150,000 acres of the recreation area. Campgrounds, picnic areas, historic sites, outdoor theaters, and more than 570 miles of trail offer unlimited recreation opportunities.

To obtain more information about any of the mountain parks visit the National Park Service visitor center in Agoura Hills located at Highway 101 at the Reyes Adobe Road exit. For information by phone call the National Park Service visitor center at (818) 597-9192. Or the mountains information number 1-800-533-7275.

Para obtener informacion sobre actividade recreativas en las Montanas de Santa Monica llame al 1-800-533-7275.

During this season of high fire danger please be careful with cigarettes and barbecues. Santa Monica Mountains National Recreation Area is yours to enjoy. Explore the parks in your own back yard.

This is the National Park Service Travelers Information Station broadcasting at 1610 khz.

IRCA Foreign Logs

Before the creation of the IRCA Foreign DX Reference, the IRCA published nine editions of the IRCA Foreign log. Each edition contained the actual tips that were reported to the DXWW sections during an entire year (2 years in Volume 9), recompiled and retyped in a book format. In addition, special features include: articles on foreign DXing (Vols. 6-9), utility lists (Vols. 7-8), shortwave parallels (Vols. 8-9) and BCB propagation (Vols. 6-8). IRCA archives still has Volumes 3, 4 and 6-9 of the IRCA Foreign Log available to all for \$2.50 each. Make checks out to Phil Bytheway and send them to: 9705 Mary N.W.,

17 Seattle, WA 98117



TEMPORARY EDITOR: Bill Hardy, 2301 Pacific Ave., Aberdeen, WA 98520.
DEADLINES: Each Saturday until Phil Bytheway appoints a permanent WDXF editor. Volunteers for editor apply to Phil at 9705 Mary N.W., Seattle, WA 98115.

STEVE NITTMAN, 2246 WEST 37th STREET, SAN PEDRO, CA 90732-4506
(213) 833-1010 (Continued from last issue-BH.) In July, the spring ratings for the Los Angeles market were released. KOST 103.5 (KFI's EZL FM) was #1. Talkradio KABC 790 was #2, thanks to Dodger baseball. Rival KFI 640 is promoting that they are actually #1 among talk formats. CHR KIIS 102.7/1150 was #3, and their arch-rival, Power 106 (KNPR 105.9), longtime #1, was now tied for #8 with Spanish KWKW 1330. All-news KPWB 980, which was #4 during the Persian Gulf War, dropped to #10, while rival KNX 1070 dropped from #6 to tie for #16 with Spanish KTNQ 1020. KNX now has CBS's top anchors promoting, "When I'm in Los Angeles, I listen to KNX - because KNX has the professionalism I expect from a radio station!" Oldies K-Earth 101 (KRTH 101.1) was #7, blowing away CBS's identically-formatted 2-year-old KODJ 93.1, which placed in the mid-20's. KODJ had recently hired many popular ex-KHJ 930 DJ's, including the Real Don Steele, Charlie Tuna, and Machinegun Kelly, so its low ratings are very surprising. Apparently, KRTH has strong listener loyalties. Just two days after the ratings were released, KODJ suddenly became KCBS-FM, with all ID's now as "CBS-FM." The on-air personalities were saying that the change was made because people identify CBS with tradition and professionalism. (Sounds like KNX's promos!) So now Los Angeles has KCBS-TV and KCBS-FM. Finally, to briefly mention another FM development which might be of interest to some, the former owners of KROQ (AM 1500 or FM?-BH.) have purchased KSRF 103.1 Santa Monica (covers L.A. County) and KOCN 103.1 Newport Beach (covers Orange County) and, as is now permitted with the elimination of the duopoly rule, the two stations now simulcast, and are seemingly one station. The format is new wave/alternative rock, with bizarre ID's as "103.1 Mars-FM"! 73 de SMM.

PATRICK MARTIN, P.O. BOX 843, SEASIDE, OR 97138-0843

Hi everybody. Thought I would send in a forum as I haven't in a while. Had some health problems over the winter, but am much better now. I would like to thank everyone who voted for me for the BoD. My door is always open if anyone has any suggestions. Glad to hear the IRCA's debt is about all paid off. My hat goes off to Ralph, Phil, and everyone else who helped. It is good to have IRCA back on its feet. I finally got my "down under" wire back to great order after fighting with it for over 3 years! In 1988 I traded in my old single-wide mobile home for a new double-wide. My DX room ended up in the front end of the new house instead of the back end, where the antenna was about 10 feet away, so very little lead-in had been used. Well, running 70 feet of lead-in on a 200+ foot DU wire really fouled it up. I never could get the wire to work well. It would only work to a point. I tried co-ax and moving the lead-in and about everything I could think of. Well, a few weeks ago, I came up with the idea of using the toroid coil matching transformer idea that Nick Hall-Patch uses, as I already was using that on the 1500' Beverage, and a super ground system, which I was using on a new vertical antenna. It took me about 10 minutes to check it out and wow, the DU wire is back better than ever. Hawaiians are in every night again, plus Aussies many nights again. I also recently logged KHJJ 1380 Lancaster, CA one night (see Western DX Roundup) with 11½ watts, directional to the northeast, putting very little of the 11½ watts in this direction! Plus KHJJ is 10 kHz from my local KAST 1370, six miles away, and KAST was on the air at the time! Quite a catch, one of my better West Coast catches. So I am quite pleased with the antenna, to say the least. Hope to do quite

a bit of DX'ing this winter. Sorry to hear about Ric Heald. Hope everything is OK, Ric. The column looks good, Bill, keep up the good work. I don't know what IRCA would do without you and Nancy. You two have given so much time and work to the club through the years. That's it this time. Good DX and hope to see a lot of you at the convention. 73, Patrick.

LARRY GODWIN, 2390 CLYDES DALE LANE, MISSOULA, MT 59801

Greetings! I've been DX'ing almost every AM in late August and early September from 0600-0700 MDT and am getting hooked all over again. It's amazing how much conditions vary from day to day. I've been concentrating on the split frequencies, hunting for DU's, and thus far have noted hets (only) on 702, 738, 819, 828, 1008 and 1035 during this time interval. My biggest thrill was hearing faint audio on 819 around 0700 MDT Sunday morning 8 Sept. I'm enjoying the DXM and it was good to read Glen Kippel's report. I believe Glen was the one who set his clock radio to VOA 1178 Okinawa to wake up in the morning. Looks like many (most?) of the columns are written on word processors. Do any of the editors use scanners? It would seem they would greatly reduce the time necessary to edit the DXF's, especially. Are there any other DX'ers in western Montana? I'm happy to see John Johnson is in Billings, but reception on the eastern side of the divide is probably very different from Missoula, which is only about 100 miles from the Idaho border. The season has started; let's hit the RX's! 73.

BILL HARDY, 2301 PACIFIC AVE., ABERDEEN, WA 98520

Thanks to this week's reporters. This is our first weekly issue. We have a 30-line limit per forum per issue, but if you have more than that to say, send in multiple forums in the same envelope, or let me split your comments into more than one issue. I realized recently that members out West could really save postage. You could send a WDXR report to Nancy, a forum or two to me, order an Almanac Updater, enter the Almanac Updater contest, and give your opinions on upcoming Board of Directors matters, all in the same envelope!! Forums will be coming here only temporarily, of course. For now, I'm just "helping out" by editing WDXF, and as noted atop the column, if you are able to take over as permanent WDXF editor, please apply to Phil. Thanks to Patrick for his kind words about Nancy and me. We still enjoy DX'ing and helping the club after all these years. And without IRCA, we never would have met. 73 and good DX.

CONTEST: IRCA ALMANAC UPDATER

Here's a contest to gather material for updating the IRCA AM-FM Almanac! Between now and Oct. 31, hit the dials and gather as much information as you can that is not in the 1991 IRCA AM-FM Almanac. All Almanac sections will count (except Broadcasting Updater): network lists, talk shows, music shows, simulcasts, slogans, AM stereo, foreign language, sports, TIS, frequency checks, silent stations, daytimers using fulltime authority.

Prize: A free copy of the next two Almanac Updaters (value \$2 each!)

Scoring: One point for each station for each list. Also one point for each station that should not be on a list (changed or incorrect). You must hear the station being reported. $\frac{1}{2}$ point for each station announced on a program as carrying that program (AT40, Larry King, etc.). AM and FM count equally. Information from publications, written lists from networks and programs, etc. are welcome but will not count for scoring.

Eligibility: IRCA members in good standing, except those who worked on major sections of the Almanac, who may not report changes to their own sections. Entries are subject to verification by other DXers in the area, and incorrect entries may be disqualified.

Deadline: Log between July 1 and Oct. 31, 1991 (midnight your local time). Information you heard before June 30th counts for 50% credit. Report as often as you wish, but final reports must be postmarked by Nov. 10, 1991. Send to Bill Hardy, 2301 Pacific Ave., Aberdeen, Wash., 98520.

EASTERN DX FORUM

RICHARD C. EVANS
PO BOX 21883
MILWAUKEE WI 53221

Reports from members living east of the Mississippi River
Deadlines: Saturdays

Gerry Thomas, 3635 Chastain Way, Pensacola, Florida 32504

I had been waiting for this day for over two years: the two 1000-foot spools of wire had been sitting on the shelf above my workbench all that time constantly reminding me of my desire to finally erect a NE Beverage. And now, the day had finally come — the two neighbors who property I had to cross to reach the 1200-foot stretch of vacant field were both gone for the Labor Day weekend! I suppose I could have asked for permission to string a wire across their property but I remembered their reaction when my 250-foot SE longwire skirted their backyards — "What if it falls down and my dogs get electrocuted?" Despite my assurances that it was a receiving and not a transmitting antenna, I could sense their uneasiness at the prospect of having a wire so close to their property. So I knew my chances of hearing "A 1500-foot antenna across my property? Why sure, Gerry, do you need any help?" were pretty remote. So I figured the best thing was to bury the wire along the lengths of their property until I got to the field, then I would have clear sailing for another 1200 feet. But for two years, the two neighbors never took vacations at the same time; that is, until Labor Day weekend, 1991. I was up at 0500 Sunday morning, light just beginning to show in the east, burdened with two spools of wire, a manual grass edger, step ladder, and a pocketful of milk bones for the neighbor's dogs. The going was slow but I finally had the wire buried behind their houses in the track scratched by the edger and set out through the 1200 feet of blackberry bramble. By 0900 it was done, and I walked back to the house covered with dew, blackberry stickers and blood thinking of the TAs I'd hear this season maybe even Maine or New Hampshire! All I had to do was run the wire up to my second-story radio room and I'd be done, but that could wait until after a shower and bite to eat. Over breakfast I proudly told my wife and daughter about my early morning exploits and the fantastic DX I expected to hear that night but was received with the usual lowered gaze and sympathetic head shaking I get when I talk to them about DX. Oh well, I don't get excited about new sofas or stuffed animals either, so I guess we're even. Anyway, I charged outside to run the wire upstairs just in time to see it disappear around the corner of the fence — SOMEONE WAS PULLING MY ANTENNA! I ran to the end of the fence and came face-to-face with five 10-year-old boys sheepishly holding a huge coil of wire (1500 feet, to be exact). It seemed like 10 minutes passed before one of them said, "We found it in the woods and just wanted to see where it went." I didn't say anything; in fact, I just stood there. One of the boys laid the coil of wire at my feet as I stared into the distance. Sometime later my wife came and led me home. Sooooo...how was your Labor Day weekend? '73's.

A DXers TECHNICAL GUIDE

Now in its 2nd edition, this 120 page book answers questions on how receivers work, how to make them work better, what audio filters and loop antennas will do for you, how to build a beverage and phasing unit, and much more. Only \$5.50 for IRCA members, \$6.50 for non-members (add \$2.50 for overseas airmail). Write: Phil Bytheway, 9705 Mary N.W., Seattle, WA 98117.

DETAIL

MOUNTING THE LOOP HEAD BOARD TO THE RTL-1 BOX

[RTL - 1 REAR HOLE 1 ↔ LOOP BOARD HOLE 9]
 [RTL - 1 REAR HOLE 2 ↔ LOOP BOARD HOLE 10]

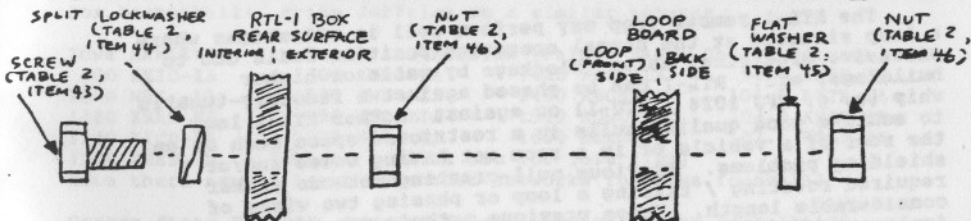
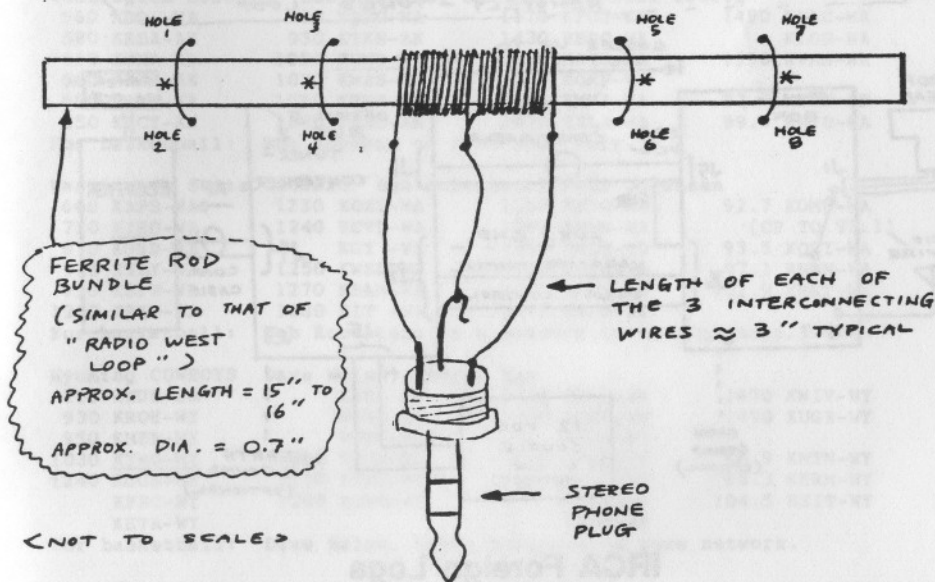


FIGURE 11

MW LOOP HEAD FOR RTL-1

COIL = 24 TURNS TOTAL (12 EACH SIDE OF CENTER TAP)
 OF RADIO SHACK 278-1215 #22 INSULATED SOLID HOOK-UP WIRE
 WRAP COIL WITH ELECTRICAL TAPE AFTER ASSEMBLY.



* = ATTACH FERRITE ROD BUNDLE TO LOOP HEAD MOUNTING BOARD HOLES AS SHOWN. USE HEAVY-DUTY NYLON WIRE TIES OR USE TIES MADE FROM STRONG INSULATED, STRANDED WIRE.

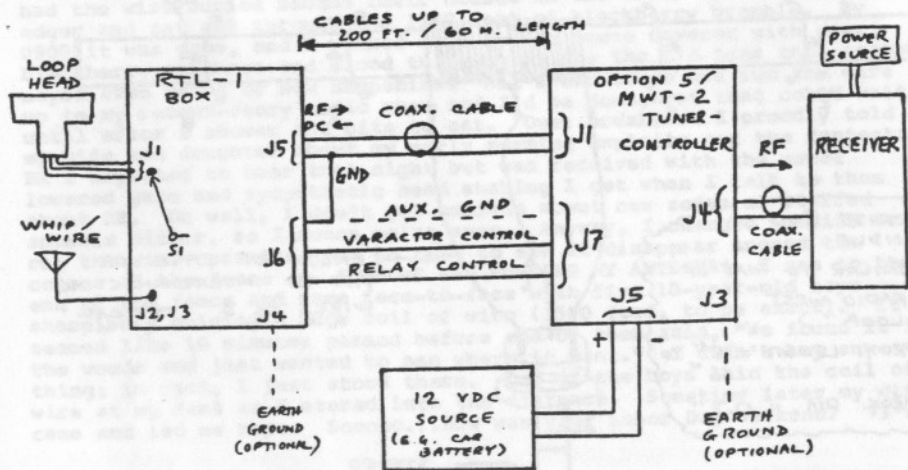
Conclusion

The RTL-1 remote loop may perform well in situations where a loop situated at the normal operating position fails due to excessive electrical noise, blockage by walls or higher buildings, etc. RTL-1 can be phased against a remotely-tunable whip (e. g. MFJ 1024 / RTU-1) or against another RTL-1 loop to achieve good quality nulls in a restricted space such as on the roof of a vehicle or in a room not having noise and/or shielding problems. Previous null-creating methods either required rotating / tilting a loop or phasing two wires of considerable length. These previous methods are not always implementable because of space constraints or poor reception quality in the vicinity of a movable-by-hand loop.

The RTL-1, by virtue of its modularization, can serve as a platform for improvements. It is the author's intention that others will freely "tweak" the design and present their findings in the pages of the major DX journals.

FIGURE 12

BLOCK DIAGRAM
DXING SYSTEM WITH RTL-1
REMOTELY-TUNED LOOP



IRCA Foreign Logs

Before the creation of the IRCA Foreign DX Reference, the IRCA published nine editions of the IRCA Foreign log. Each edition contained the actual tips that were reported to the DXWW sections during an entire year (2 years in Volume 9), recompiled and retyped in a book format. In addition, special features include: articles on foreign DXing (Vols. 6-9), utility lists (Vols. 7-8), shortwave parallels (Vols. 8-9) and BCB propagation (Vols. 6-8). IRCA archives still has Volumes 3, 4 and 6-9 of the IRCA Foreign Log available to all for \$2.50 each. Make checks out to Phil Bytheway and send them to: 9705 Mary N.W., 22 Seattle, WA 98117

COLLEGE FOOTBALL 1991 via Bill Hardy

Arizona WILDCATS Brian Jeffries, Les Josephson
 910 KFYI-AZ 1230 KATO-AZ 1340 KFBR-AZ 93.5 KVWM-AZ
 940 KNST-AZ KINO-AZ 1450 KNOT-AZ 95.3 KKRK-AZ
 970 KVWM-AZ 1240 KJAA-AZ 1470 KMFI-AZ 102.9 KQST-AZ
 1150 KCKY-AZ 1250 KHIL-AZ
 For basketball: Brian Jeffries on a similar network.

Iowa HAWKEYES Jim Zabel, Ed Podolak (Palmer Radio Sports Network)
 800 KYIC-IA 1300 KGLO-IA 1420 WOC -IA 94.5 KKEZ-IA
 1040 WHO -IA 1330 KWLO-IA 1490 KBUR-IA 101.7 KITR-IA
 1180 KKAR-NE 1360 KSCJ-IA 1570 KQWC-IA 103.9 KUOO-IA
 1240 KICD-IA 1370 KDTH-IA 1600 KCRG-IA 107.1 KTLR-TX
 1270 KWEB-MN (thanks to Rick Dau for Iowa list)
 Note there are at least TWO other networks for Iowa football!

Oregon State BEAVERS Darrell Aune (also valid for basketball)
 730 KRVC-OR 1240 KFLY-OR 1340 KWVR-OR 1440 KODL-OR
 1150 KAGO-OR KQEN-OR KBBR-OR 1450 KLBM-OR
 1190 KEX -OR 1280 KDUK-OR 1360 KOHU-OR 1490 KBKR-OR¹
 1230 KVAS-OR 1290 KUMA-OR 1400 KJDY-OR 1590 KTLI-OR
 1310 KNPT-OR 1600 KCRG-OR 96.5 KTWI-OR

1. KBKR-1490 was not on Oregon State list, but usually relays KLBM-1450 so could be on the network.

Stanford CARDINALS Hal Ramey (football), Bob Murphy (basketball)
 740 KCBS-CA 90.1 KZSU-CA

UNLV (Nevada-Las Vegas) RUNNIN' REBELS Ross Porter, Tony Cordasco
 720 KDWN-NV only

Washington HUSKIES Bob Rondeau, Sam Adkins, Bill Swartz
 560 KPQ -WA 920 KQEU-WA 1170 KPUG-WA 1490 KVAC-WA
 580 KRSA-AK 930 KTKN-AK 1430 KBRC-WA KLOG-WA
 610 KONA-WA 1000 KOMO-WA 1450 KAYO-WA 1550 KVAN-WA
 660 KFAR-AK 1030 KMAS-WA KONP-WA
 680 KOMW-WA 1050 KEYF-WA 1460 KMWX-WA 92.9 KAST-OR
 850 KICY-AK 1080 KKSD-AK 1470 KELA-WA 99.3 KAYO-WA
 For basketball: Bob Rondeau on KOMO-1000 only.

Washington State COUGARS Bob Robertson, Paul Sorensen
 660 KAPS-WA 1230 KOZI-WA 1320 KXRO-WA 92.7 KOMW-WA
 710 KIRO-WA 1240 KCVL-WA 1340 KWWW-WA (CP TO 93.1)
 870 KORD-WA KGY -WA 1350 KRLC-ID 93.5 KOZI-WA
 920 KXLY-WA 1250 KWSU-WA 1400 KLCK-WA 97.1 KNSN-WA
 930 KBFW-WA 1270 KBAM-WA 1450 KCLX-WA 102.9 KMNT-WA
 1210 KREW-WA 1280 KIT -WA 1470 KBSN-WA
 For basketball: Bob Robertson on a network to be announced.

Wyoming COWBOYS Dave Walsh, George Ray
 710 KNUS-CO KASL-WY 1330 KOVE-WY 1470 KWIV-WY
 930 KROE-WY KRAL-WY 1340 KYCN-WY 1490 KUGR-WY
 950 KMER-WY KTHE-WY KWOR-WY
 1030 KTWO-WY 1260 KPOW-WY 1400 KODI-WY 96.9 KMTN-WY
 1240 KUUS-MT 1270 KIML-WY 1450 KBFS-SD 98.3 KERM-WY
 KFBC-WY 1290 KOWB-WY KBBS-WY 104.5 KSIT-WY
 KEVA-WY KVOW-WY
 For basketball: Dave Walsh, Kevin McKinney on same network.

A DXers TECHNICAL GUIDE

Now in its 2nd edition, this 120 page book answers questions on how receivers work, how to make them work better, what audio filters and loop antennas will do for you, how to build a beverage and phasing unit, and much more. Only \$5.50 for IRCÁ members, \$6.50 for non-members (add \$2.50 for overseas airmail).
 23 Write: Phil Bytheway, 9705 Mary N.W., Seattle, WA 98117.

THE INTERNATIONAL RADIO CLUB OF AMERICA (IRCA)

The IRCA is a non-profit organization devoted to the hobby of hearing distant stations on the AM Broadcast Band (510 - 1630 khz). **DX Monitor**, the official publication of the IRCA, is published 34 times a year, weekly from October to March, twice in September and April, and monthly from May to August. **DX Monitor** contains members' loggings, articles on radio stations, receiver reviews, technical articles, DX tips, and other material of interest to Broadcast Band DX hobbyists. IRCA is a member of ANARC, the Association of North American Radio Clubs.

CLUB ADDRESSES AND OFFICERS

President: Phil Bytheway, 9705 Mary NW, Seattle, WA 98117 (206) 356-3927 (proposals)
Secretary-Treasurer: Ralph Sanserino, 11300 Magnolia #43, Riverside, CA 92505 (dues/address changes)
Board of Directors: Shawn M Axelrod, Michael S Hardester, Bill Hardy (chairman), Ric Heald, Albert S Lobel, Patrick Martin and Robert Wien
Editor-in-Chief/Publisher: Ralph Sanserino, 11300 Magnolia #43, Riverside, CA 92505
Publishing Coordinator: Phil Bytheway, 9705 Mary NW, Seattle, WA 98117

MEMBERSHIP DUES

U.S. - \$25.00 per year. Canada - \$27.00. Overseas Surface - \$28.50. Overseas Airmail - \$35.00 (Central America, Caribbean, Colombia and Venezuela), \$38.00 (Europe, North Africa, Middle East), \$41.00 (rest of the world). One time charge for New Member Packet - \$2.00 (first year only). Trial Membership - \$9.50 (10 issues of **DX Monitor** and a New Member Packet, U.S. / Canada / Mexico only). Installment rate: two payments of 1/2 dues plus \$1.00 (\$13.50/payment for U.S. members). Make checks and money orders payable to IRCA and send all dues (and address changes) to: IRCA, 11300 Magnolia, #43, Riverside, CA 92505. Persons living outside the U.S., please use International Money Order in U.S. funds. Sample copies of **DX Monitor** are \$1.00 (U.S. or Canadian) or two International Reply Coupons each and are available from: IRCA, 11300 Magnolia #43, Riverside, CA 92505.

Unless otherwise noted, permission is granted to publish, broadcast, or otherwise reproduce non-copyrighted material appearing in **DX Monitor** provided credit is given to the IRCA and the original contributor. Opinions expressed in **DX Monitor** are those of the original contributors and do not necessarily reflect those of the IRCA, its publishing staff, editors or officers.

IRCA

INTERNATIONAL RADIO
CLUB OF AMERICA
11300 MAGNOLIA #43
RIVERSIDE, CA 92505



FIRST CLASS MAIL

29-09
J D STEPHENS
122 BRAWLEY DRIVE
OWENS CROSS ROADS
USA AL 35763

FIRST CLASS
U.S. POSTAGE
PAID
RIVERSIDE, CA
PERMIT NO. 5214