

# DX MONITOR

THE OFFICIAL PUBLICATION OF THE **IRCA** INTERNATIONAL RADIO CLUB OF AMERICA

DEVOTED EXCLUSIVELY TO BROADCAST BAND DXING

JUNE 13, 1992 - VOLUME 29 - NUMBER 32 - EDITION 957 - ISSN 0899 - 9732

\*\*\*\*\*  
**NEW MEMBER:** ROBERT GREEN. **RENEWALS:** GEORGE KESTEVEN, WOLFGANG SCHNEITER, DAVE WILLIAMS, JIM NALL, MICHAEL STONEBRIDGE, JASON DOLAN.....THANK YOU.  
\*\*\*\*\*

**REPRINT SERVICE:** STEVE RATZLAFF 1885 E BAYSHORE #90 E PALO ALTO CA 94303  
\*\*\*\*\*

**BOOKSTORE:** PHIL BYTHEWAY 9705 MARY AVE NW SEATTLE WA 98117.  
\*\*\*\*\*

**PUBLISHER NEEDED:** SOME NICE PERSON TO TAKE OVER MY DUTIES AS PUBLISHER.  
\*\*\*\*\*

**IRCA POSITIONS AVAILABLE:** VERIFICATION SIGNERS, ACHIEVEMENT AWARDS CHAIRMAN, CONTEST CHAIRMAN, GRAVEYARD/HEARD/VERIFIED DX RECORDS EDITORS, NEW MEMBER PACKET REVISION COMMITTEE AND PUBLICITY CHAIRMAN. INTERESTED IN FILLING ANY OF THESE POSITIONS ??? CONTACT PRESIDENT PHIL BYTHEWAY.  
\*\*\*\*\*

**MEMBERSHIP LIST:** A MEMBERSHIP LIST WILL BE PUBLISHED IN SEPTEMBER. I WILL PUBLISH IT IN VOLUME 30 NUMBER 1. **IF YOU DO NOT WANT YOUR NAME LISTED LET ME KNOW PRONTO.** IRCA PUBLISHER 11300 MAGNOLIA #43 RIVERSIDE CA 92505.  
\*\*\*\*\*

## CONVENTIONS / MEETINGS

**IRCA** - will be held in Huntsville AL on August 21-23 at the Holiday Inn Research Park, 5903 University Dr, Huntsville AL 35816 ((205) 830-0600). Hosts are JD Stephens, 3715 Conger Rd SW, Huntsville AL 35805 - (205) 650-0642 (evenings) and Lynn Hollerman. Room rates: \$45 + 10% tax for either (1) room with 2 double beds or (2) room with 1 king size bed. Reservations can be made by phoning 1-800-845-7275, M-F, 8:30 AM - 4:30 PM (CDT)... please mention IRCA. The hotel has a free shuttle to and from the airport.

**DecalcoMania '92 Meeting** - will be held in Detroit-Windsor on July 11-13. John Clemmer is the coordinator. Contact him for more information. John Clemmer, 4524 7th St #2303, E Moline IL 61244 (309) 796-0684.

**NRC** - will be held in Omaha NE on Labor Day weekend, September 4-7 at the Days Inn, 3001 Chicago St, Omaha NE 68131. Host is Ernie Wesolowski, 13312 Westwood Ln, Omaha NE 68144-3543. Room rates, \$53.52/night (1-4 people/room - 2 double beds). To reserve call (402) 345-2222 and be sure to mention the National Radio Club.

## \*\*\*\*\* IRCA AM-FM ALMANAC UPDATERS:

### UPDATER 5.4 NOW OUT; UPDATER 5.5 COMING THIS MONTH!!

Updater 5.4 just off the press - updated NBA and college basketball, ABC-AP-UPI-USA network updates, ESPN and SEN sports talk, Canadian music networks, and more.

Updater 5.5 will be available this month - 7 pages of 1992 baseball, and 11 pages of AM slogan updates! Order now for immediate shipment.

There will be an Updater 5.6 sometime this summer, featuring talk programs and new network updates - order now if you wish.

Still available: Updater 5.1 - Almanac index, AM slogans. Updater 5.2 - Satellite Music Network, Unistar/Transtar, talk updates, BRN, 1991 baseball. Updater 5.3 - Rush Limbaugh, TIS/Highway Radio update, NHL hockey, NFL and college football.

20 pages each, \$2 U.S. and Canada, \$3 elsewhere, payable to IRCA, from Bill Hardy, 2301 Pacific Ave., Aberdeen, WA 98520. Thank you!

\*\*\*\*\*  
NO ROOM FOR CONTENTS INFO. THIS DXM IS LATE FOR MANY REASONS.....73 PUB.

## VOLUNTEERS NEEDED FOR 1993 IRCA AM-FM ALMANAC!!

### **Computer users especially needed!**

#### **Information needed too!**

We are planning to publish the 1993 edition of the Almanac in fall 1992. We hope it will be the biggest and best yet. We plan to have about 300 pages, 25% bigger than the 1991 edition.

To produce the new Almanac, we need a few volunteers with access to computers (IBM or McIntosh compatible). The person who sorted many of the lists for the 1991 Almanac has lost the use of his computer, so we have some "big shoes to fill." Some of the networks and programs have several hundred stations. A few have 1000 to 2000, and we shouldn't "manually sort" those! I'd like to have the computer sort any list longer than 50 stations. And that's where we need your help.

We have sent more than 100 letters to networks and program suppliers this month. As station lists begin to roll in, we need to enter the lists onto disks for sorting.

We need: 1. Volunteers with computers. If you have access to a computer, and some time to enter short, medium, or long station lists (your choice) onto disks, please write to Bill Hardy. We have one volunteer who wishes to enter and sort all the talk shows. If you have a special interest such as that, please let Bill know.

2. Volunteers with access to 1992 Broadcasting Yearbook or SRDS. If you have access to either reference and a computer, and can take the time to enter information from those books onto disk for sorting by IRCA, please let Bill know. This allows us to generate lists for those networks that do not release their station lists.

3. An editor for Broadcasting Updater. Unless someone volunteers, we will not have a Broadcasting Updater in the 6th edition. If you have access to all issues of DX Monitor from Jan. 1990 to present and could enter all station changes since 1990 onto disk, please write to Bill. We would then sort it and print it. I'd love to have an FM Updater too, if anyone with access to WTFDA bulletins since 1990 is able to enter that data!

**Information needed:** To gather information not available elsewhere, such as slogans, program airtimes, etc., we've run some contests. We're running a contest each month this summer, May thru September, with Almanac Updaters as prizes. See details elsewhere in DXM. But even if you wish to send info and aren't interested in winning, you can still help. Here is some information we especially need:

Networks carried by AM and FM stations you hear.

State and regional networks. If you can send an address or a complete list, wonderful!

Talk and music programs carried by stations you hear, AM and FM, with airtime if known.

Formats of AM and FM stations carrying satellite programming.

Indicate the service if you can determine it - i.e., Satellite News Network is heard only on SMN; CNN News often indicates Unistar.

All simulcasts heard - AM-FM, AM-AM, FM-FM, multi-city.

Simulcasts of TV news audio heard on the radio.

Slogans heard, old or new - both AM and FM.

AM Stereo you hear, with service if known (i.e., GM car radios pick up only C-Quam, not Kahn).

Foreign languages in use on U.S. and Canada stations. In Quebec, we list English and other non-French stations.

Any and all sports broadcasts (except high school).

Any and all TIS stations, especially on 530 and 1610 kHz.

For the contest, we give 1 point for each station you hear that updates or confirms the above, or any other Almanac listing.  $\frac{1}{2}$  point for items from newspapers and other print sources (clippings, photocopies, even written/typed summaries are all okay).  $\frac{1}{2}$  point for stations announced on the air as carrying a particular program. And 3 points if you hear a station when you are at least 50 miles from home, so vacationers can do especially well (try not to drive the family batty, hi!).

If you wish to send information, or volunteer to help enter Almanac information onto computer disks, please write today to Bill Hardy, 2301 Pacific Avenue, Aberdeen, WA 98520. Thanks! 73 and good DX.

# BROADCASTING INFORMATION

EDITOR: ROBERT WIEN 1309 DENTWOOD DR SAN JOSE CA 95118

DEADLINES: 2nd & 4th Saturdays.

Compiled: 5/16/92

Much of this information was compiled from M Street Journal, DXM, and various other sources.

## NEW STATION APPLICATIONS:

(NONE)

## NEW STATION GRANTS\*

(NONE)

## CONSTRUCTION PERMIT ACTIVITY:

(NONE)

## FACILITY & PARAMETER APPLICATIONS:

CA. San Mateo	KOFY-1050	10000-N
West Covina	KGRB-900	1000-N
LA. Bogalusa	WBOX-920	change to daytime only
OR. Lake Oswego	KLVS-1290	incr. to 25000-D
NC. Franklin	WAJA-1480	54 w-N
VA. Richmond	WRNL-910	1500 w-N

## FACILITY & PARAMETER GRANTS:

AZ. Black Canyon City	KUET-710	4200-w N
IN. Union City	WBNN-1030	330-w. (CP)
MO. Camdenton	KFXE-1520	10000/4200 (CP)
WA. Mt. Vernon	KAPS-660	10000/1000 DA-2

## CALL LETTER CHANGES:

AR. Benton	KBBA-690	requests KEWI
CA. San Diego	KIRS-1040	becomes KURS (CP)
GA. Decatur	WAVO-1420	becomes WVEV
NM. Aztec	KCEM-1340	becomes KCQL
OR. Gresham	KKGR-1230	becomes KMUZ
PA. Mount Pocono	WPCN-960	becomes WPMR
PR. San Juan	WQBS-630	becomes WSKN
WY. Douglas	KKIC-1470	becomes KKTY
ON. Oshawa	CKAR-1350	becomes CKDO

## \*\*\* A DXers TECHNICAL GUIDE \*\*\*

Now in its 2nd edition, this 120 page book answers questions on how receivers work, how to make them work better, what audio filters and loop antennas will do for you, how to build a beverage and phasing unit, and much more. Only \$5.50 for IRCA members, \$6.50 for non-members (add \$2.50 for overseas airmail). Write: Phil Bytheway, 9705 Mary N.W., Seattle, WA 98117.

FORMAT CHANGES:

AL. Anniston	WHMA-1390	was	Unis. oldies, now Unis. Hot C&W//FM
Birmingham	WYDE-850	was	EZL, adds JSA EZL
AR. De Witt	KDEW-1470	was	country //FM, rptd. silent
CA. San Luis Obispo	KKCB-1400	was	country, adds SMN country
Santa Rosa	KMXN-1150	was	SS, now oldies "Mixin' 1150"
Thousand Oaks	KCTQ-850	was	KMDY, AC//KNJO, now SS //KPLS
CT. New Britain	WNEZ-910	was	oldies, now Unis. CNN Headline nx
Waterbury	WQQW-1590	was	AS, rptd. silent
DE. Milford	WYUS-930	was	nx/talk, adds IEN talk
FL. Ft. Walton Beach	WNUE-1400	was	talk, adds IEN talk
Palmetto	WERD-1420	was	talk, adds IEN talk
Tallahassee	WANN-1070	was	urban, now Unis. CNN Headline nx
HI. Honolulu	KULA-1460	was	AC//FM, now Unis. stds.
IL. Granite City	WGND-920	was	talk/variety, adds IEN talk
IN. Ft. Wayne	WLYV-1450	was	oldies, now oldies //FM
IA. New Orleans	WQUE-1280	was	sports, adds SEN sports
Winnfield	KVCL-1270	was	variety //FM, now JSA country//FM
ME. Gardiner	WABK-1280	was	AC/talk, adds IEN talk
Westbrook	WLPZ-1440	was	rock, now BRN bus. nx
MD. Baltimore	WERQ-1010	was	urban//FM, now Unis. CNN Headline nx, will continue to sim. FM nights/weekends
Gaithersburg	WMET-1150	was	silent, now bus. //WPGC
MA. Gardner	WGAW-1340	was	AC/talk, adds IEN talk
MI. Albion	WALM-1260	was	stds.//WELL, now silent
Battle Creek	WELL-1400	was	stds.//FM, now silent
Detroit	WXYT-1270	was	talk, adds SUN talk
Petoskey	WJML-1110	was	silent, now Unis. CNN Headline nx
Taylor	WCHB-1200	was	urban, now talk
MT. Wolf Point	KTYZ-1450	was	country, adds SMN country
NH. Nashua	WSMN-1590	was	AC, now country 'country 1590'
NJ. Trenton	WTTM-920	was	nx/talk, adds SEN sports
NC. Beaufort	WBTB-1400	was	talk, adds IEN talk
Laurinburg	WEWO-1460	was	WMXF, Unis. AC, now Unis. oldies
OH. Cincinnati	WSAI-1360	was	oldies, now SEN sports
OR. Gresham	KMOZ-1230	was	KKGR, silent, now AC
PA. Annville	WAHT-1510	was	EZL, temp. silent due to fire
Coudersport	WFRM-600	was	oldies, adds IEN talk
Hughesville	WMRE-1190	was	silent, now Unis. stds.
Pittston	WARD-1550	was	talk, adds IEN talk
Wilkes-Barre	WILK-980	was	nx/talk, adds IEN talk
Williamsport	WRAK-1400	was	nx/talk, adds CNN Headline nx
SC. Lancaster	WLCM-1360	was	country, rptd. silent
Mullins	WJAY-1280	was	country, adds IEN talk
TX. Abilene	KNFS-1470	was	nx/talk, adds SEN sports
Colorado City	KVMC-1320	was	country, adds SMN Real country
UT. Sandy	KTKK-630	was	talk, adds IEN talk
VA. Richmond	WRNL-910	was	rock//FM, sports, adds SEN sports
WA. Kennewick	KTCR-1340	was	nx/talk, adds IEN talk

DX has slowed to a crawl, I'm on permanent dayshift UFN, so DX is severely limited, but it's almost summer, and not much to try for, hopefully it will pick up down the road, happy Memorial Day! 73's.

\*\*\* IRCA Foreign Logs \*\*\*

Before the creation of the IRCA Foreign DX Reference, the IRCA published nine editions of the IRCA Foreign log. Each edition contained the actual tips that were reported to the DXWW sections during an entire year, recompiled and retyped in a book format. In addition, special features include: articles on foreign DXing (Vols. 6-8), utility lists (Vols. 7-8), shortwave parallels (Vol. 8) and BCB propagation (Vols. 6-8). IRCA archives still has Volumes 3, 4 and 6-8 of the IRCA Foreign Log available to all for \$2.50 each. Make checks out to Phil Bytheway and send them to: 9705 Mary N.W., Seattle, WA 98117

# BROADCASTING INFORMATION

EDITOR: ROBERT WIEN 1309 DENTWOOD DR SAN JOSE CA 95118

DEADLINES: 2nd & 4th Saturdays.

Compiled: 6/02/92

Much of this information was compiled from M Street Journal, DXM, and various other sources.

NEW STATION APPLICATIONS:

(NONE)

NEW STATION GRANTS\*

(NONE)

CONSTRUCTION PERMIT ACTIVITY:

MA. Middleborough WCEG-1530 on the air

FACILITY & PARAMETER APPLICATIONS:

IL. Evanston WKTA-1330 change PSSA/PSRA to 24 w. ND  
MA. Denham WBMA-890 3500/25000 (currently CP only)

FACILITY AND PARAMETER GRANTS:

CT. Hartford WCCC-1290 decrease to 490 w.  
NY. Bath WABH-1380 5000/350  
SC. Ridgeland WNFO-1430 decrease to 630 w.

CALL LETTER CHANGES:

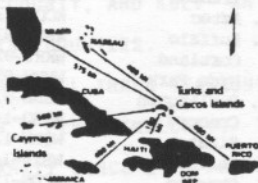
CA. Carmel Valley KHRN-540 becomes KIEZ



## Atlantic Beacon

1570 KHZ - 50,000 WATTS  
The Communications Bridge from the Caribbean  
to the Southeastern U.S.

TURKS & CAICOS BEACON LIMITED  
South Caicos  
Turks & Caicos Islands  
British West Indies



The Turks & Caicos Islands, long the Caribbean's "secret", have been discovered as an ideal resort destination. Beautiful beach areas have been earmarked for major hotel development.

GREETINGS:  
WE ARE PLEASED TO VERIFY RECEPTION OF THE ATLANTIC BEACON  
ON Feb. 30 AT 1045 PM EST THE ATLANTIC BEACON OPERATES  
A 50KW NAUTEL TRANSMITTER INTO A TWO 5/8 WAVE TOWER ARRAY.

THANK YOU FOR YOUR DETAILED REPORT.

73'S & GOOD-DXING

*J. Ruf* C.E.

FORMAT CHANGES:

AK. Fairbanks	KIAK-970	was country/talk, adds IBN talk
AL. Lexington	WKNI-620	was silent, now news/talk
AZ. Coolidge	KCKY-1150	was talk/sports, adds AFR sports
AR. Pine Bluff	KCLA-1400	was country, now country //KPBO-FM
CA. Banning	KMET-1490	was SMN Kool oldies, now SMN AS
Carmel Valley	KHKQ-540	was contry //FM, now KIEZ, SMN AS
Fort Bragg	KDAC-1230	was silent, now AC
Needles	KTOX-1340	was nx/talk, adds SUN talk
Ukiah	KUKI-1400	was country//FM, now nx/talk
CO. Denver	KNOS-710	was nx/talk, adds SUN talk
DE. Milford	WYUS-930	was nx/talk, adds AFR talk
FL. Arcadia	WKGF-1480	was country, now Southern gospel
Atlantic Beach	WQBR-1600	was silent, to be religion
De Funiak Springs	WGTX-1280	was talk/gospel, now country/talk
Jacksonville	WCRJ-1530	was silent, now Southern gospel
Key West	WKWF-1600	was talk, adds AFR talk
Melbourne	WTAI-1560	was talk, adds IBN talk
Mims	WPGS-840	was religion, now AS
North Ft. Myers	WVCN-770	was nx/talk, adds AFR talk
Saint Augustine	WACC-1420	was country/talk, adds SUN talk
GA. Albany	WALG-1590	was nx/talk, adds AFR/SUN talk
Brunswick	WHLX-790	was urban//FM, now silent pending sale
Clarksville	WCHM-1490	was AC, now nx/talk
Douglas	WOKA-1310	was country, adds AFR talk
ID. Rexburg	KRXK-1230	was Unis. C&W//FM, now Unis. Hot C&W//FM
IL. Brookport	WRIT-750	was religion/talk, now talk
Decatur	WSOY-1340	was AC/talk, now nx/talk
IN. Newburgh	WGAB-1180	was talk, adds IBN talk
IA. Sioux City	KSCJ-1360	was AC/talk, now nx/talk
LA. Farmerville	KIDL-1470	was CHR, now silent
New Orleans	WQUE-1280	was sports, adds AFR sports
	WITX-690	was nx/talk, now AS
ME. Biddeford	WIDE-1400	was nx/talk, adds IBN talk
MD. Lexington Park	WPTX-920	was nx/talk/AC, now nx/C&W/talk
MA. Fall River	WSAR-1480	was talk/sports, adds AFR talk
Middleborough	WCEG-1530	is new, AC
MI. Ann Arbor	WPZA-1050	was AC/talk, adds AFR sports
Grand Rapids	WLAV-1340	was rock//FM, now modern rock//FM
MS. Gulfport	WQFX-1130	was black gospel, now silent
Starkville	WKOR-980	was country//FM, talk, now nx/talk
NV. Carson City	KPTL-1300	was AC, to be AS
Las Vegas	KENO-1460	was Unis. oldies, now Unis. CNN nx
NJ. Newark	WNJR-1430	was urban AC, now brokered ethnic
Trenton	WTTM-920	was nx/talk, adds AFR sports
NM. Aztec	KCQL-1340	was country, now Unis. oldies
NY. Buffalo	WBEN-930	was nx/talk, adds IBN talk
Cortland	WKRT-920	was oldies, adds JSA oldies
Hyde Park	WHVW-950	was oldies, now SMN real country
NC. Burlington	WBBB-920	was nx/talk, adds AFR talk
Concord	WEGO-1410	was country, now oldies
Kinston	WQDW-1230	was urban AC//FM, rptd. silent
Salisbury	WSTP-1490	was nx/talk, adds AFR talk
OH. Chardon	WCIN-1560	was oldies, to be nx/talk 6/1
Cincinnati	WKRC-550	was AC/talk, adds ESPN sports
Jackson	WLMJ-1280	was country//FM, adds SMN Real C&W
New Boston	WIOI-1010	was country/talk, now EZL
Van Wert	WERT-1220	was variety, now oldies //FM
Youngstown	WBBW-1240	was nx/talk, adds CNN Headline nx
OK. Blackwell	KOKB-1580	was nx/talk, adds IBN talk
Clinton	KXOL-1320	was sports//WWLS, adds SUN sports
Moore	WWLS-640	was sports, adds SUN sports
Muskogee	KMUS-1380	was oldies, now contemp. Xtian
Oklahoma City	KTOK-1000	was nx/talk, adds SUN talk
Wagoner	KXTD-1530	was sports//WWLS, adds SUN sports
OR. Ashland	KCMX-580	was nx/talk, adds IBN talk
Reedsport	KDUN-1030	was silent, now country

FORMAT CHANGES (CONTINUED):

PA. Ambridge	WMBA-1460	was AC/talk, adds AFR talk
Scranton	WTSS-1320	was religion, now silent
Wilkes-Barre	WTSW-1340	was relig. //WTSS, now silent
SC. Waiteboro	WRIT-1080	was country, now black gospel
TN. Etowah	WCPH-1220	was silent, now country
TX. Denton	KDNT-1440	was nx/talk, adds AFR talk
Merkel	KMKO-1500	was Spanish, now silent
San Angelo	KCRN-1340	was silent, now religion//FM
	KGKL-960	was AC, now rock "Rock 96"
Temple	KTEM-1400	was talk, adds AFR talk
VA. Newport News	WGH-1310	was country, now sports
Rural Retreat	WCRR-660	was country, now Southern gospel
Staunton	WTON-1240	was full service AC, adds AFR sports
WA. Lakewood	KLAY-1180	was talk, adds IEN talk
WI. Green Bay	WNFL-1440	was nx/talk, adds IEN talk
Stevens Point	WSP0-1010	was nx/talk, adds IEN talk
ECN Tijuana	XEKAM-950	was talk, now silent
NS. Halifax	CHNS-960	was AC, now oldies

Mike Hardester of Jacksonville, NC. passes on the following info:

NC. Jacksonville      WLAS-910      was silent, to be on air 6/21,  
nx/talk/sports format, incl. ESPN &  
CBS sports.

Rick Newman of Las Vegas, NV. also confirms the above listed info  
for KENO-1460.

Thanks, Mike and Rick! I'm going in for some foot surgery and will  
be off work for a coupla weeks, I'll be able to get in some DX'ing  
again, after typing this long column, my fingers will need surgery,  
too (hi)! Guess the FCC waited till after Memorial Day to publish  
this overflow of info, making it the longest column I've typed to  
date! Have a happy June, Father's Day and Summer Solstice... 73's.



# KJUN

KJUN AM 1450 ANNOUNCES THEIR EXPANSION THAT INCLUDES TWO MORE  
RADIO STATIONS: KTOL AM 1280, THURSTON COUNTY, AND KBLV AM 1540  
(FORMERLY KLSY AM), KING AND SO. SNOHOMISH COUNTIES.

NOW KNOWN AS THE COUNTRY GOLD NETWORK, ALL THREE STATIONS WILL AIR  
THE SAME CLASSIC COUNTRY MUSIC FORMAT IN A LIVE SIMULCAST. THE NETWORK  
HAS BEEN ENJOYING EVER-INCREASING POPULARITY SINCE IT'S FROMAT CHANGE  
TO COUNTRY GOLD MUSIC FROM THE 1920'S TO PRESENT. THE COUNTRY GOLD  
NETWORK ALSO FEATURES PROGRAMMING SUCH AS: "HIGH NOON WESTERN THEATER"  
ORIGINAL RADIO WESTERNS - "THE LONE RANGER", "THE CISCO KID", "HOP-ALONG  
CASSIDY", "GUNSMOKE", ETC., AND THE SPECIAL NEW "LOUIS L'AMOUR THEATER".  
THE NEW NETWORK WILL BE A TREMENDOUS ASSET TO BUSINESSES THAT WISH TO  
ADVERTISE IN ANY OR ALL THREE COUNTIES.



PAT MARTIN P.O. BOX 843 SEASIDE. OR 97138

# DX Worldwide - West

Time: UTC phone (503) 861-3185

DEADLINES: 7/6

Here we are with another column. Not too much to report this time around except I just added a new Drake R8 to the shack. It works very well, and a very quiet receiver. Reports this time from Shawn Axelrod, Robert Wien, and Chuck Boenneke.

## PAN-AMERICAN DX ROUNDUP

- 590 CUBA, Santa Clara-Radio Reloj-5/8 at 0945 fair, man doing News in SS, RR on the minute and clock in background. (SA-MB)
- 620 CUBA, Colon-Radio Rebelde 4/24 0902 fair in CKRC null, man and woman in SS, mentions of Cuba. New. (SA-MB)
- 770 UNID, SS fading up good briefly 5/25 1204-1213, after KKOB fade-out, then gone by 0813, no ID, but laser blasts between every song. Is this XEIH? (RW-CA)
- 900 MEXICO, Mexico City-XEW 4/26 0243 Good, totally dominating the freq.-w/Mexican mx, very good the last 3 days. Echo on the signal, so prob. XEWB Veracruz, just out of sync. (SA-MB)
- 940 MEXICO, Mexico City-XEQ 5/9 0939 man w/SS talk, into Mexican mx good, dominating the freq. (SA-MB)
- 1080 UNID, w/female anr. on syn talk show, faded after good signal in KWJJ null, KSCO off til 1300. This hrd at 1238 5/25. KWAJ or KRPX? (RW-CA)

## TRANS-PACIFIC DX ROUNDUP

- 1008 AUSTRALIA, Brisbane-4TAB-fair with racing, ex 4IP, 4IO at 1240 on 5/16. Reported, new under this call. (PM-OR)
- 1210 HAWAII, Honolulu-KZOO-now with 10 KW days, sometimes 1 or 5 at night. Too much QRM in Honolulu area, so may not be 10 KW nights. According to Chuck Boehnke/Alan Roycroft. Station with JJ programming is much stronger over the the Big Island. (CB-HI)
- 1620 AUSTRALIA, Canberra-1PPP- fair to good with ID "1PPP" by man at 1246 5/18, gave Sydney adrs. Finally got enough info for a report under 1PPP. Already have QSL under 1PHR. (PM-OR)

## THANKS TO THESE REPORTERS

- CB-HI CHUCK BOEHNKE-Post Office Box 488-Keeau, HI 96749  
R71A, Kuhuna Dipole
- SA-MB Shawn Axelrod-30 Becontree Bay-Winnipeg, MB R2N 2X9 (CANADA)  
R70, Plam Board/4KHZ filter-4 foot Box Loop
- RW-CA Robert Wien-1309 Dentwood Drive-San Jose, CA 95118  
Superradio
- PM-OR Your Editor  
Drake R8, Term. 200' DU wire-Ground system

## VERIFICATIONS

- 650 HAWAII, Honolulu-KHNR-verie letter in 45 days from Bernie Armstrong VP/GM-adrs: Penthouse Ste.-850 Richards St.- Honolulu, HI 96813 (PM-OR)
- 801 AUSTRALIA, Gosford-2GO-verie letter and cd in 89d after f/up from Shayne Bartlett-CE-Station now on FM only. (PM-OR)
- 1190 MEXICO, Guadalajara-XEWK-nice letter in SS and XEW pennant in 55d from Lic Rodrigo Cabello Wallace-Dir. (PM-OR)



# DX WORLDWIDE EAST

EDITOR: JAMES R. HALL

9839 PRESIDENTIAL DRIVE #103  
ALLISON PARK PA 15101-1841 USA

The June edition of DXWV-E is usually slim due to the summertime DX doldrums, but 1992's is certainly an exception. After some miscellaneous comments we'll get right to the reports. Jean's April logs will interest you seeing that when he was there a sudden blizzard curtailed the activity (St. Francis). Congrats Jean on your first Bolivian. Carl passes along information obtained on a visit to XEPV-1170. XEPV intends to go to 3kw and 1kw nights (currently 250w). XEPV's new QTH is Gonzales Ortega, 200, C.P. 93400, Papantla, Veracruz, and the engineer/announcer is Juan H. Cao Romero Ibanez. Papantla is 'old Veracruz' and most people use two given and three family names.

## TRANS-ATLANTIC DX (Burnell-NF) unless noted for DX-MA

- 747 SPAIN, Cadiz 0141 4/19 Pop mx fr/gd, SS teletalk 0144. (DX-MA)  
 765 SENEGAL, Dakar 0150 4/19 Big OC (well after end of reg. pgmng) (DX-MA)  
 783 PORTUGAL, Miramar 2237-2243 4/26\* PP anc'r intros mx by Nelson Eddy & Jeanette MacDonald, then tunes from "Guys & Dolls". Not // either Antena 1 or R. Comercial nets. S10 343  
 792 SPAIN, R. Sevilla 0048-0052 5/10 SER net pgm, ads, SS pops, phone rpt about a museum. VOWR spl atter bothered. S10 232  
 819 MOROCCO et al 0136 4/19 AA mx pr in jumble of carriers. (DX-MA)  
 837 AZORES/CANARY ISLANDS 0134 4/19 PP talk o/u SS mx. (DX-MA)  
 +(AZORES RDP) Barroasa 0055 5/10 Instru jazz //828. Well o/Spain for once! S10 433  
 882 CANARY ISLANDS 0030 4/19 SS male talk pr/fr w/WCBS phased. (DX-MA)  
 891 ALGERIA Algiers 0027 4/19 Loyd w/m & w in FF. )DX-MA)  
 954 SPAIN R. Espana Madrid 2238 5/9 Romantic SS pops, clear IDs. S10 244  
 963 PORTUGAL RRE Seixal 0104 5/9 PP ads, 0105 TC, more ads, PP ballad from 0107. //1251. S10 333  
 990 SPAIN R. Bilbao 0126 4/29 SER net pgm //1026 o/u CBY, w talking in SS, pips at 0130. S10 322  
 1008 CANARY ISLANDS R. Las Palmas 2302 5/9 W w/nx, Cadena SER ID 2304<sup>1</sup>/<sub>2</sub>, entertainment nx, ads, rock mx. S10 233  
 1044 MOROCCO Sebaa-Aïoun 0025 4/19 W in AA fr/gd despite occ slop from WBZ/WEVD. (DX-MA)  
 1088 ANGOLA R. Nacional, Mulenvas 2302-2309 5/9 Man in PP ment. Angola often, pop & disco mx. //1367 audible also but not as strong. S10 333  
 1098 t CANARY ISLANDS 0022 4/19 The most likely source of the MoR mx noted here. (DX-MA)  
 1098 CZECHOSLOVAKIA Nitra-Jarok 5/5 0156-0205 IS, w in Slavic lang 0200, polka mx. S10 322 w/Spain partially phased out.  
 1107 EGYPT Batra 0126 4/19 AA chant briefly to gd peak. (DX-MA)  
 1107 SPAIN RNE-5 2259 5/5 Grand mx, pips, ID & nx. S10 244. These are generally well sync'd and this sig. was weak but v. clear. In contrast the COPE synchros are poorly sync'd so their audio is sometimes tricky to follow due to the echo.  
 1134 SPAIN COPE synchros 2330 5/16 pips, net ID, nx summary //1224.  
 1187.9 MOROCCO Casablanca 2315-28 5/8 FF pgm about the blues, lots of mx //1197. Seemed slightly off freq. which I suspect was the reason for the muddy audio. S10 343  
 1197 LESOTHO BBC Lancer's Gap 5/8 2329-31 Snatches of BBC WS pgm, Hrd 'BBC' 2330, punk mx. Sig badly mauled by cochannel Morocco (dominant) & Spain. S10 322 Also 2317-22 5/16 BBC WS request pgm, absolutely ALONE on freq. S10 253  
 1215 SPAIN Radio Popular de Castellon/Lorca 2254-2302 5/8 Voth evident w/COPE net pgm -- 2 stns // byut not synchronous (approx. 1/2-sec separation) -- tribute to Marlene Dietrich, pips at ToH, COPE ID, nx. Ea stn S10 322 w/VOAR 1210 splat.  
 1259 AZORES RDP Faial 0035 5/9 Antena 1 pgm, w in PP intros light mx // mainland stn's. S10 243  
 1295 ANGOLA Emissora Provincial do Uige 2307 5/8 Weak in Af p lang w/talk re. Angola, faded out 2311. Seemed exactly on freq. S10 232  
 1296 ENGLAND BBC WS Orfordness 2302 4/26\* WS nx (EE) v clear on 30 degree wire -- S10 444, w/Spain bothersome on 95 degree wire.

- 1349 MAURITANIA Nouakchott 0005 4/19 Strong het against domestics, only very fragmentary audio. (DX-MA)
- 1395 Lushnje 4/22 2146-57 FF pgm, C&W mx! "Ici Tirana" ID. One of the earliest TA's to come in. S10 252 (ALBANIA)
- 1404 unID 4/26-27\* 2358-0000 Pops, 4 in a row FF & lost of US hits too. 0/weaker stn in Slavic lang - Ukraine prob. Pretty sure this isn't Guinea! S10 333
- 1422 ALGERIA Alger 2150-2210 5/8 FF pgm w/FF rap, political interview. WRTH says Holy Koran Svce but this was secular pgm. Deq fades to nil from strong. Peak S10 was 343
- 1422 GERMANY Saarlandischer Rundfunk 4/26 0239 GG ballad & w ancr. US pop tune.
- 1431 UKRAINE Nikolayev 5/9-10 2359-0007 R. Moscow IS, pips on hour, w w/pos. 12 & m w/Slav. lang mx. Found Kiev 4940SW // w/operatic mx. S10 242
- 1440 LUXEMBOURG RTL 2317 4/22 Pop mx w/GG DJ - seems to play more oldies than when pgm was in EE. S10 333
- 1449 unID 5/9 2227 Mid East mx not //1251. Sd/1k Koran at 2245. Was looking for Iran. Hets from 1450 & 1448. At best S10 242
- 1467 FRANCE (MONACO) TWR Roumoules 5/8 2148 W interviewed in EE re AIDs in Romanian orphans. S10 344
- 1492.7 COTE D'IVOIRE Abidjan 4/26\* 2212-28 Repetitive local mx, from 2222 lots of talk in AA sdng lang. S10 322
- 1494 JORDAN Al Kanarah 4/26\* 2203 AA nx, recitations "Huna Amman" 2210. QRMed at 2211. S10 322 w/het from 1492.7
- 1494 RUSSIA R. Ala, Sankt-Peterburg 2/26-27\* 2348 & 0008 Russian 'barda' mx -- sort of folk song. Unequivocal //5040. S10 343
- 1502 ANGOLA Emissora Provincial de Benguela 5/9 2204 M in PP re Angolan Central Committee, official interviewed by "R. Nacional de Angola" so prob. a nat'l pgm, but just hets on other Angolan freq's (incl SW). Faded quickly. S10 243
- 1503 AZORES AFR, Lajes 4/26\* 2322 "Pizza at the commissary" ad, ID "On fifteen oh three AM this is AFR Lajes", C&W song. S10 333
- 1530 VATICAN 4/25 2344 Nauseating Muzak versions of Albinoni's "Adagio" and "La Bamba" - I'm sure the Pope wasn't listening. S10 343
- 1530 MADEIRA Posto Em. de Radiodif. do Funchal 5/8 2240 m&w in PP, alone on frreq. initially, but Vaticana up quickly and Funchal u/ 2248. S10 343 @2240.
- 1539 SPAIN R. Valladolid 4/25 2355-7 SS chat, song "Noche Blanca" S10 333
- 1548 ENGLAND BBC R. Bristol 4/26\* 2136-42 Limericks, "Late Night West" rock mx pgm. S10 333
- 1557 MALTA Deutsche Welle, Cyclops 2351 5/9 Definate DW pgm in GG w/chat and GG songs. S10 243
- 1566 t AZORES 0015 4/19 Het, bits of PP-sounding talk Inmerciless WQXR sllp. (DX-MA) + Clube Asas do Atlantico 2308 5/16 In passing w/PP songs, Best sig ever: S10 was 444
- 1566 TUNISIA Sfax 2220 4/25 Noted o/Azores w/AA talk then AA mx, S10 333
- 1566 BELORUS? "R. Moscow" 0029-0030 5/17 Moscow IS hrd/taped, u/dominant stn, but weak. Belorus synchros listed at this time. See below! S10 211
- 1566 t IRAN, Bandar-Abbas 0029-0034 5/17 Funny story: I was concentrating on hearing the above CIS stn by trying to phase out the dominant signal. Without thinking I assumed the dominant stn was Tunisia. However on tape review I realized the lang was not AA but prob. Farsi. M & w talking (possibly nx), bit of Jean-Michel Jarre mx then ID 0033 that was garbled but started "Inja ---", which is consistent w/Farsi and Dari (not Hindi). In the ID I didn't hear anything that sd either like "Tehran" or "Iran", though. I'll be trying to get this again! S10 343 (I'll say, Jean! This would be a good one alright... ed)
- 1575 PORTUGAL R. Comercial, porto 4/26\* 2133 PP ancr, faded up briefly o/ Spain. S10 322  
Also hrd at 0030-3 5/10 w/R. Comercial pgm, Louis Armstrong tune, ad about Brazil 0032, pop mx, //1062. Dominating Spain. S10 333
- 1615 unID 0015 5/9 Tiny amount of audio w/pop mx. Carriers detected on 1604 and 161/, also. Possibly Dutch pirates. S10 241

P A N - A M E R I C A N A D X

- 590 MEXICO, Rio Bravo XEFD 0332 5/18 Strong w/shallow fading (rapid), ranchera mx, "La Consentida" S10's, sign "Por los grandes exitos musicales, La F-D, La Consentida". Still just 250-watts night? (Stewart-MO)
- 780 BRITISH VIRGIN ISLANDS Roadtown ZBVI 0139 4/19 Fr w/calypto & soca mx, Carib. EE ancr. (DX-MA)
- 825 ST. KITTS, Basseterre 0135 4/19 EE preaching, excellent. (DX-MA)
- 840 ST. LUCIA, Castries 0104 4/19 Loud/dominant w/Creole FF pgm. (DX-MA)

- 880 MEXICO XEIG Iguala, Gro. Here from 1340. At 2340 4/19 request pgm, "880" signs. Reduces powr 0000 when XEEM come in for s/off anmt/NA. (Huffaker-MEX)
- 890 MEXICO XEPOR Oaxaca "LV de Amistad" 0255-0309 3/2b s/off w/prayer, ID, Mex NA.
- 895 NEVIS 0132 4/19 Pop mx, fr. (DX-MA)
- 1070 MEXICO XESP Guadalajara, Jal. 4/20 0041 "R. Juventud", non-stop mx. (Huffaker-MEXICO) (Thanks for the additional information here, Carl. ed)
- 1090 ST. LUCIA or MARTINIQUE 0021 4/19 FF political discussion, gd w/WBAL phased. (DX-MA)
- 1100 t CUBA 0345 5/18 Football play-by-play, distinctive FF accents. S10 @232 (Burnell-NF)  
200Hz. (Stewart-MO)
- 1100 BRAZIL R. Globo (ZYK694) Sao Paulo 2328-31 5/12 1st ZY signl hrd just after sunset here, PP m ment "Globo", Braz mx 2331. Bad QRN, S10 242 (Burnell-NF)
- 1130 MEXICO XEPN Uruapan, Mich. "R. Moderna" 4/18 0630 regular history feature, instru. mx pgm, Woody Woodpecker sound effects foollowed by s/off 0700-6 w/NA good in KWKH null. (Huffaker-MEXICO)
- 1170 COLOMBIA CARACOL HJNW Cartagena 5/2 050, Jx ID in mess, 2 men talking. Another SS had mainly time pips w/female ancr (Does Cuba have a Reloj here now?). WWA reduced w/phasing. S10 232 (Burnell-NF)  
+ (tent) 0350 5/18 Presumed w/all-mx fnt. Briefly o/KV00 & soon faded. NO ID but sd/1k usual CARACOL fnt. (Stewart-MO)
- 1185 unID 0356 5/18 Who's the source of the 5kc hot here? Noted at fr level (& stronger than 1205) but no audio pulled. (Stewart-MO) (I don't know, but perhaps Mark Connelly of another will turn it up some time. ed)
- 1210 CUBA CMHT 0400 5/18 In well, //much weaker 1200 (buried u/WOAI), w/compl. s/off by m & w. Ment FM & AM but gave no freq's of xmr QTH's, just desde el centro de isla de Cuba en el Corazon del Mar Caribe" call & sign ID w/city (Sancti-Spiritus). Ment ret at 6am, political signs and choir NA. (Stewart-MO) (Nice report on this one, Randy - I can't remember that any Cubans had a det. s/off. ed)
- 1280 BRAZIL R. Tupi (ZYJ455 Rio de Janeiro 5/14 002y fairly clear but huge amplitude p fading. PP talk, ads. S10 343. (Burnell-NF)
- 1290 BRAZIL T. Timbira do Maranhao ZYH888 Sao Luis 5/13 0012-39 PP hyper male DJ ment "Maranhao" oft, local mx w/lots of drums. 4y/6 SW inaudible. S10 242 (Burnell-NF)
- 1350 ARGENTINA R. Buenos Aires LS6 5/13 0200 "loteria nacional" #'s list. QRM from a domestic stn increased out at 0200 was S10 333. (Burnell-NF)
- 1420 URUGUAY R. Lavelleja CW43 Minas 5/13 0108 Ads for Minas stores, UTC-3 TCs fol/ something like "toda la Republica Oriental del Uruguay", mellow ballads, 0130 mx. Great sig for 500-watts! S10 332. (Burnell-NF) (Excellent logging! ed)
- 1430 BRAZIL unID stn's 5/13-14 2350 Jumble of at least 3 ZYs, ea giving so much QRM that it was hard to decipher ID's. (Burnell-NF)
- 1450 BRAZIL unID stn 5/13 2330 Mainly PP talk, "R. ? ". S10 232 (Burnell)
- 1470 BRAZIL unID stn(s) 5/8 2356 A mess w/aBrazilian fading in/out w/PP talk & echoed anmts. Tent "Primavera" 2356 so pos "R. Primavera" Porto Ferreira. S10 322-1.
- VENEZUELA R. Vibracion YVSY Carupano 5/8-9 2359 Emerged o/ZY stn(s) w/rel talk, ad string, clear ID 0006 before SS version or Rolling Stones song. S10 333 at 0006. (Burnell-NF)
- BRAZIL R. AM de Pareinas 5/9 2325-39 Amazingly alone on freq. w/Brazilian songs until 2333 when hrd "AM Parellhas" then ad string. Brief jx for "hora festa" (pgm name?). Anyone have call letters for this stn? This is a ZY gy freq so must be only 250-watts night. (Burnell-NF)
- 1530 unID 5/13 0058-0106 2 men in ss, tlk about some "campeonato" but never ment place/country, just "de la Patria". Thus frustratingly little to help ID. Prob NOT YV/HJ due to the propagation. Initially S10 333 but increasingly QRMed. (Burnell-NF)
- 1550 BOLIVIA R. Emisora Canari CP115 2335-0007 5/ 12-13 Essentially the only usable signal betw 1500-1600 on a southern wire! "Noticiero 1992", TC's, quick ID 2357, cholera PB PSA's, pgm "Correo del Oyente" from 0001. Unequivocal ID w/La Paz mailing address 0002. At peak around 2355 S10 343! (Burnell-NF) (Keep up these exceptional loggings, Jean! ed)
- 1610 ANGUILLA The Valley 0005 4/19 EE preaching absolutely blasting in. (DX-MA)

EDITOR'S CORNER: I must first apologize for the column this month - sure we had some EXCEPTIONAL loggings! But, there were numerous typing errors that occurred, as well as some shoddy print appearing. Near the end of the column I re-repaired this thing & have it working ok. Some dated material was edited (not my usual way to do the column) only because of just getting back from vacation and trying to beat the deadline! But Rick Evans & especially Ernie Cooper would be proud to know that I'm still pounding the keys of a manual typewriter for this!! What next? Well, now that I mentioned it, next month a NEW (sorry, Phil) address will be announced. Finally, it will be permanent! ed

CREDITS:

(Huffaker-MEXICO) Ing. Carl Huffaker, Domocilio Conocido, Huasca de Ocampo, Hidalgo MEXICO C. P. 43500  
 (Stewart-MO) Randy Stewart, 4225 W. La Casa, Springfield, Missouri 65802-5615 (TRF & 4-ft spiral loop)  
 (DX-MA) Mark Connelly on DXpedition w/Tom Beaton, Jean Burnell, Bruce Connti to Rockport, MA Granite Pier Site  
 (2 DX-440's aa position: Position 1=homebrew active whip phased against RTL-1A 11op w/DCP-1 Controller/Phaser. Position 2=two 30-m (100-ft) wires phased w/MWDX-5)  
 (Burnell-NF) Dr. Jean Burnell, c/o Dept. of Chemistry, Memorial University, St. John's, Newfoundland, CANA DA A1B 3X7

## Geomagnetic Indices

+	high point	mas	major storm	SA	solar activity
-	low point	mif	minor flare	spe	satellite proton event
GEO	geomagnetic activity	mis	minor storm	ss	severe storm
maf	major flare	pca	polar cap absorption		

Geomagnetic Summary April 13 1992 through May 9 1992

Date	FLUX	A	K	SA	GEO	ETC
4/13	146	5	0	very low	quiet	-
14	154	5	2	low	quiet	-
15	149	8	1	low	quiet	-
16	158	- 2	0	low	quiet	-
17	184	4	2	moderate	quiet	-
18	203	15	3	low	quiet-active	-
19	+206	12	3	low	quiet-unsettled	-
20	205	18	4	low	quiet-active	-
21	195	8	2	moderate	quiet	-
22	183	11	2	low	quiet-unsettled	-
23	173	9	3	low	quiet-unsettled	-
24	161	10	2	moderate	quiet-unsettled	-
25	154	10	2	low	unsettled	-
26	143	6	2	low	quiet	-
27	137	3	2	low	quiet	-
28	129	7	2	low	quiet-unsettled	-
29	131	6	2	low	quiet	-
4/30	128	7	1	low	quiet	-
5/ 1	131	11	5	low	quiet-mis	-
2	136	16	2	low	quiet-mis	-
3	126	8	3	moderate	quiet-unsettled	-
4	135	10	1	moderate	quiet-unsettled	-
5	133	5	0	moderate	quiet	-
6	131	5	2	low	quiet	-
7	129	7	3	low	quiet	-
8	143	+26	4	high	active-mis	maf
5/ 9	-127	6	5	very low	active-mis	spe/pca



WESTERN  
DX  
ROUNDUP

Nancy Hardy  
2301 Pacific Ave.  
Aberdeen, WA 98520

DEADLINES FOR WDXR TIPS: Monday July 6, Wednesday July 22, Monday August 31, and Monday Sept. 14. PLEASE USE EASTERN TIME.

REPORTERS FOR THIS ISSUE:

- (DG) Dennis Gibson-442 Ellwood Beach Dr. #3-Goleta, CA 93117  
Sony ICF-2010, GE Superadio II, Select-a-tenna
- (LG) Larry Godwin-2390 Clydes Dale Lane-Missoula, MT 59801  
Hammarlund HQ-150, SM-2
- (JH) Jim Hilliker-1705 Withers Ave. #12-Monterey, CA 93940  
GE Superadio
- (PM) Patrick Martin-P.O. Box 843-Seaside, OR 97138  
Drake R8E, 50' loaded vertical, ground system
- (GP) Gary Pifer-2356 Caddie Ct.-Oceanside, CA 92056  
Superadio  
(GP-CA) DX'ing in L.A. during riots, with Chrysler car radio
- (RW) Robert Wien-1309 Dentwood Dr.-San Jose, CA 95118  
GE Superadio, GE long-range portable, SM-2

\*\*\*\*\*  
OF SPECIAL INTEREST

- 540 KIEZ CA, Carmel Valley call change, ex-KHKN. Noticed new IDs first on 5/29 0648, "You're listening to America's greatest classics on KIEZ, Carmel Valley ..." and at 0655 "Good time favorites come alive on KIEZ, 24 hours a day, Easy 54-AM," then legal ID 0700 "KIEZ, Easy-54-AM, Carmel Valley, for the music you remember, 24 hours a day." Slightly illegal isn't it, to mention calls & not the city of license immediately following? Still SMN Stardust, into SMN news. Called station, they say call change happened Fri. 5/22, but thought I heard KHKN calls as late as Wed. 5/27. 5/29 1325 ID "KIEZ, 54-AM-Stereo, with great American classics for California's Central Coast." (JH-CA)
- \*\*\*\*\*
- 610 KFRC CA, San Francisco now carries Tom Snyder Show 0200-0500 tape-delayed after Larry King Show. Magic 61 then goes back to music at 0500 instead of replay of King show. Don't know date this started. (JH-CA)
- 640 (KFI) CA, Los Angeles 4/30 local IRCA member Mike Riordan notified me by phone at 221? that KFI's GM had just announced they'd be evacuating the studios because the rioting was just down the street. KFI off at 2215 (45 min. before local sunset), back on at 2259. 2220-2245 some kind of sporting event in Spanish looping SE/NW, XEYQ?? (DG-CA) +4/30 2227 noted off the air. (GP-CA)
- 680 (KNBR) CA, San Francisco 5/12 0440 totally off, back on at 0520. Two Spanish stations mixing, suspect unneeded XELG and needed XEFO. (RW-CA)
- 720 (KDWN) NV, Las Vegas MM 5/4 silent 0743, then OC 0751. (LG-MT)
- 740 KCBS CA, San Francisco 4/26 0725 earlier than normal (0500 local) sign on due to earthquake at 0421 local. (GP-CA)
- 770 KULL WA, Seattle 5/4 0837 loud, alone, with KPLA off. Ad for Washington Natural Gas, "Cool" ID, faded rapidly. (RW-CA)
- 810 (KGO) CA, San Francisco 5/24 0536 totally off. UNID Spanish dominating freq., then preacher in English took over freq. Heavy T-storm QRN. (RW-CA)
- 1190 KXKS NM, Albuquerque 5/4 0817-0822 pleasant surprise very good pver KORG/KRDS in KEX null with Spanish, ID "La Super Equis, Kah-Equis-Kah-Esse," couple of IDs later on after ranchera music. Faded by 0822. New! (RW-CA)
- 1200 CKDA BC, Victoria 5/10 0320 weak with ID & oldies format. (DG-CA)

- 1230 KGFJ CA, Los Angeles 4/30 0315 special edition of "Perspectives" (talk show) in attempt to calm public during L.A. riots. (GP-CA)  
 +5/1 2100 unusual format of Gospel music and special edition of "Perspectives." (GP-CA1)
- 1240 KNRV CA, Monterey 4/30 0215 running simulcast of KNX-1070 coverage of L.A. riots. KNRV ID at quarter past the hour. Over KSON. (GP-CA)
- 1250 KTMS CA, Santa Barbara 4/30 0200 running simulcast of KFI-640 coverage of L.A. riots. KTMS ID at top of hour. (GP-CA)
- 1260 ~~KGIL?~~ CA, San Fernando 4/30 2005 caught tail end of Emergency Broadcasting System providing info on L.A. riots (I'm not 100% sure on this one, I know FM stations were on EBS). (GP-CA)
- 1350 KBAD CA, Bakersfield 5/11 0839 loud way over KSRO with big band music, ID. (RW-CA)
- 1460 (KTYM) CA, Inglewood 5/1 1725 noted off the air. (GP-CA1)
- 1490 KRKC CA, King City 5/14 a thrill at s/on 0800. Enthusiastic man concluded, "You're tuned to the Mighty 1490, KRKC, King City-Greenfield-Soledad." CNN news followed. (LG-MT)
- KDBM MT, Dillon 5/5 0758 s/on, ment. AM & FM, followed by SSB. (LG-MT)
- KEYG WA, Grand Coulee with oldies rock music & ID 0300 "This is your radio station, KEYG & KEYG-FM Grand Coulee." Fair. (PM-OR) (Date?--NH)
- KENE WA, Toppenish 5/4 0800 popped up through the hash with an ID. (LG-MT)
- KTEL WA, Walla Walla 5/7 with C&W music, then ID jingle 0800, followed by ABC news. (LG-MT)
- 1500 (KSJX) CA, San Jose 5/10 0523 totally off, unID OC good looping N-S (CKAY?). (RW-CA)
- 1540 KBLV WA, Bellevue 5/18 0804 faded up briefly over KLAU in KSKQ null with ID on hour "You're listening to the Country Gold Network," then list of stations, ID "KBLV 1540, Bellevue-Seattle." Call change, ex-KLSY for me. (RW-CA)
- 1550 KQWB ND, Fargo 5/4 0437 surprisingly very good in KKHI null with "1550, KQWB" ID. Not heard very often anymore. (RW-CA)
- 1610 KNEC996 CA, Los Angeles 5/1 1720 Los Angeles Harbor Freeway 110 information on which on & off ramps were closed due to L.A. riots. (GP-CA1)
- (TIS) WA, Bridgeport (Chief Joseph Dam) formerly a regular, I haven't heard for several months. Not listed in Almanac Updater 5.3. Is it silent? (LG-MT) (Bill tried for this station 5/31 0300 and it was in as usual. Bill says Updater 5.3 listed only the changes to the Almanac.--NH)
- TIS WY/MT, Yellowstone National Park with man & woman alternating on loop. Moderately strong 5/5 0750. (LG-MT)

#### LOCAL CHANGES

- 540 KHKN CA, Carmel Valley changed format 5/11 to SMN Stardust. Was SMN Country. New slogan is "Easy 54 AM Stereo." One ID says "Easy 54 AM Stereo, with Stardust memories for the Central Coast." Legal ID says "KHKN, Carmel Valley. Easy listening for the Central Coast." (JH-CA)
- 1410 KRML CA, Carmel no longer 24 hours, at least temporarily. Local cable TV company dropped KJAZ (FM), so KRML lost that feed and is no longer // with that station. So, till KRML gets a studio-to-transmitter link with KJAZ, they s/on at 0900 and go off at sunset. Went off at 2300 on 5/25. (JH-CA)

#### UNIDs

- 770 5/25 0804-0813 unID Spanish fading up after KKOB fadeout, then gone by 0813. Laser blasts between songs. KPLA off as usual till 0900. Domestic or Mexican? (RW-CA)
- 1080 5/25 0838 unID talk show, seemed nationally syndicated, female announcer. Good at first, but faded rapidly in KWJJ null, KSCO off till 0900. KWAI or KRPX? (RW-CA)
- 1210 5/18 0113 unID TT good looping SE, KGYN? (RW-CA)

- 1250 5/4 0550 unID again heard with satellite C&W // local KEEN-1370. Seems to be Unistar Country, under KHOT/KTMS, looping SE. Is this KDHI or is this KTIM-AZ? (RW-CA)
- 1300 5/20 0440 unID TT good looping ENE. Possibly KPTL? (RW-CA)
- 1470 5/10 0526 unID TT noted last two nights under KUTY, looping SE. TTs both days about this time. (RW-CA)
- 1470 5/26 0705 woman spoke in what sounded like Mandarin. Who? (LG-MT) (CJVB, Vancouver, BC.--NH)
- 1490 Spanish station with ranchera music, woman announcer, and PDT TC's 5/14 0735-0755. KWAC, KICO and KSPE are all listed as Spanish. Can any of you CA members help? (LG-MT)
- 1490 UnID Canadian with "Oldies Coast to Coast" spot, then news 5/27 0800. Who here carries this program? (LG-MT) (Per late 1991 list, CJPR-AB and CFWB, CKBV and CJOR1 in BC.--NH)
- 1680 (Freq. approx.) unID Spanish pretty strong 5/27 0703-0745 with news, commercials, ranchera music; surely Mexico or CA. Could it be a harmonic of 840? KVEG wouldn't permit a comparison of freqs. (LG-MT)

Welcome to WDXR, Gary. We hope to hear from you often! Hope everyone noted the summer deadlines at the beginning of the column. There is a Wednesday deadline among them. We are leaving for our family vacation to Glacier Park, Montana after Bill gets home from work on Sat. July 25. Happy summer!

---

**VOLUNTEERS NEEDED FOR 1993 IRCA AM-FM ALMANAC!!**

**Computer users especially needed!**

**Information needed too!**

We are planning to publish the 1993 edition of the Almanac in fall 1992. We hope it will be the biggest and best yet. We plan to have about 300 pages, 25% bigger than the 1991 edition.

To produce the new Almanac, we need a few volunteers with access to computers (IBM or McIntosh compatible). The person who sorted many of the lists for the 1991 Almanac has lost the use of his computer, so we have some "big shoes to fill." Some of the networks and programs have several hundred stations. A few have 1000 to 2000, and we shouldn't "manually sort" those! I'd like to have the computer sort any list longer than 50 stations. And that's where we need your help.

We have sent more than 100 letters to networks and program suppliers this spring. As station lists begin to roll in, we need to enter the lists onto disks for sorting.

We need: 1. Volunteers with computers. If you have access to a computer, and some time to enter short, medium, or long station lists (your choice) onto disks, please write to Bill Hardy. We have one volunteer who wishes to enter and sort all the talk shows. If you have a special interest such as that, please let Bill know.

2. Volunteers with access to 1992 Broadcasting Yearbook or SRDS. If you have access to either reference and a computer, and can take the time to enter information from those books onto disk for sorting by IRCA, please let Bill know. This allows us to generate lists for those networks that do not release their station lists.

3. An editor for Broadcasting Updater. Unless someone volunteers, we will not have a Broadcasting Updater in the 6th edition. If you have access to all issues of DX Monitor from Jan. 1990 to present and could enter all station changes since 1990 onto disk, please write to Bill. We would then sort it and print it. I'd love to have an FM Updater too, if anyone with access to WTFDA bulletins since 1990 is able to enter that data!

Information needed: To gather information not available elsewhere, such as slogans, program airtimes, etc., we've run some contests. We're running a contest each month this summer, May thru September, with Almanac Updaters as prizes. Details appeared in May DXM. But even if you wish to send info and aren't interested in winning, you can still help.

If you wish to send information, or volunteer to help enter Almanac information onto computer disks, please write today to Bill Hardy, 2301 Pacific Avenue, Aberdeen, WA 98520. Thanks! 73 and good DX.

# Central DX Roundup

 **PRODIGY**  
MPNN49A

EDITOR: John C. Johnson

979 Neptune Boulevard Billings, Montana 59105-2129 FAX: 406-252-9938

## FOR THE RECORD

REPORT ALL TIMES AS EASTERN.

COMPUTER & FAX ACCEPTED.

DEADLINES: 6/30, 8/1, 8/29.

## RIDING GAIN

- [SA-MB] = Shawn Axelrod, 30 Becontree Bay, Winnipeg, Manitoba R2N 2X9  
Icom IC-R70 with PLAM board and 4KHz filter, 4-foot box loop, 100' wire.
- [TMJ-IL] = Tom Jasinski, 419 North Raven, Shorewood, Illinois 60435-9640  
FRG-7, 2½ foot loop.
- [SS-WI] = Steve Schreiter, 104 Brookdale Drive, South Milwaukee, WI.  
Car radio ('91 Olds) on SH 41 near museum.
- [JcJ-MT] = Your editor using an Icom IC-R71A with a "Radio West" loop.

## SPECIAL INTEREST

- 1470 **KKTY** WY, Douglas. **EX-KWIV**. 5/18 weak w/KRKL. 0800 Sign on. Mentioned KKTY AM and KKTY FM. Also mentioned owner Fireside Broadcasting Company. Not sure of format, they started out with a C&W song, but awhile later were playing rock oldies. WY#43, quick verie. BI recently listed call change KWIV to KKIC. Letterhead on verie had the KKIC call crossed off and KKTY written above. Not sure if they were KKIC "on air." I show KKIC as being 950 Meridan, ID. Perhaps someone can clear this. They are KKTY now. [JcJ-MT]

## DOWN THE DIAL

- 540 **CJSB** ON, Ottawa. 5/3 fair, alone on frequency. 0418 with "54 Rock. Ottawa's Best Rock." Rock music. [SA-MB]
- 570 **KVI** WA, Seattle. 5/7 good. 0655 with "KVI" ID into Rush Limblah!! [SA-MB]
- 590 **KAQQ** WA, Spokane. 5/6 good in CKY null. 0532 with NOS/EZL music. "KAQQ" ID. First time logged from Winnipeg. [SA-MB]
- 620 **KMNS** IA, Sioux City. 5/2 fair in CKRC null. Faded up u/WTMJ. 0540 with C&W music and "KMNS" ID. First time logged from Winnipeg. [SA-MB]
- 640 **CFOB** ON, Ft. Francis. 5/7 good in CKRC null. 0517 with "6-4-0 CFOB" and "64-CFOB" IDs. AC Music. [SA-MB]
- 650 **CISL** BC, Vancouver. 5/7 good. 0637 with oldies music on "Coast To Coast" program. New for me, BC#21. [SA-MB]
- 750 **KXL** OR, Portland. 5/7 good. 0628 with "KXL NewsRadio 75" ID. Very rare here. [SA-MB]
- 800 **WDUX** VI, Waupaca. 4/22 fair o/u/CKLW in CKJS null. 0600 with sign on for WDUX AM and FM. [SA-MB]
- 820 **WBAP** TX, Fort Worth. 4/22 fair. CHAM off for a change. 0610 with weather, farm market report. "WBAP" ID. [SA-MB]
- 940 **WFAW** WI, Ft. Atkinson. 4/28 good in CJGX null. 0500 with "WFAW Ft. Atkinson" ID. [SA-MB]
- 990 **KRKS** CO, Denver. 4/28 fair. 0455 with "KRKS" ID into religious program. [SA-MB]
- WIVK** TN, Knoxville. 5/5 good, alone on frequency. 0512 with "107.7 WIVK" ID. C&W music. [SA-MB]
- 1010 **KDJW** TX, Amarillo. 4/22 good. 0702 with "Y-94" ID, weather, C&W music. "KBUY 94-FM" ID. [SA-MB]
- 1040 **CKST** BC, Vancouver. 5/18 briefly weak, WOW missing. 0715 with "Coast 10-40 is building the stage." Lost quickly. Needed, but not enough for a report. [JcJ-MT]



CDXR Continues....

- 1070 **KNX** CA, Los Angeles. 5/1 good. 0640 with reports on closures due to riots. [SA-MB]  
1090 **WGLC** IL, Mendota. 5/1 clobbering KAAV. 0400 noted on air all night w/C&W music. Net news on the hour. Presumed on for coverage of the turmoil in LA and other cities. Not heard on the following night. WGLC is about 40 miles away and a daytimer here. [TMJ-IL]  
1100 **KKLL** MO, Webb City. 4/23 good w/KNZZ. 0700 with "KKLL 1100 AM 97.9 FM" ID. [SA-MB]  
1170 **KSTT** IA, Davenport. 4/25 fair w/KOWO. 0733 with "KSTT All Sports Radio" ID and "AM 11-70 Sports." [SA-MB]  
1290 **WMVP** WI, Greenfield. 5/3 poor mixing w/KOIL. No CIFX. 0538 with UC music. Local spots for Milwaukee. New for me, WI#83. Not heard since WLZZ days. [SA-MB]  
1300 **KGLO** IA, Mason City. 5/3 strong. 0540 with CNN News. Promo for Twins game. Must be 24 hours now. [SA-MB]  
1470 **KBSN** WA, Moses Lake. 5/18 weak, but alone on frequency. 0645 with rock oldies. [JcJ-MT]  
**KRKI** CO, Estes Park. 5/18 weak w/KKTY. 0800 w/ID into AP Network News. 0805 with local weather. Mentions of "K-Rocky" as well as "KRKI." Much needed. Never verified by report when they were KSIR. CO#104. Quick verie from KRKI. Actually sent 2 letters of verification. Also sent a K-Rocky T-shirt! Plus sent a rate card. Very friendly station. [JcJ-MT]

### TIS

530 **WNQN692** WI, Oshkosh. 5/10, Good signal for 1 mile north or south of the museum. 1343 with announcements about the EAA Air Adventure Museum. [SS-WI]

### unIDs

- 620 unID 4/26 poor w/CKCK. 0509 with mention of AM/FM and "...the most extensive...music leader...southern...". Weather, C&W. [SA-MB]  
690 unID 5/7 good o/u/CBKF1. 0530 with mix of music. "CBC Stereo" ID at 0545. No ID on the hour. [SA-MB]  
1440 unID 5/5 fair. 0540 with CNN Headline News. Faded, partial ID at 0600 mentioned Topeka? [SA-MB]

TIP: How about KMAJ-1440 Topeka, KS?

### 25 YEARS AGO

June 17, 1967 issue of DX Monitor....Larry Godwin had moved from Berkeley, CA to Denver, CO....Ernest Wesolowski of Omaha, NE reflected on the past DX season stating he had received over 100 veries....Bruce Portzer of Seattle, WA received a verie from KEWI for state #23 verified....Dave Verbil of Scottsdale, AZ built a loop antenna too big to roatate in his shack....Ronald Schatz of Great Lakes, IL met Vane Jones.

### OPEN MIKE

Trifles make perfection, but perfection is no trifle. Shawn modified his Icom IC-R70 with a PLAM (Phase Locked AM) board and replaced the 6KHz filter with a 4KHz filter. He says this is the BEST option for a 70 or 71. Contact him for more details if you are interested. 73, John.



OGDEN'S NEWSTALK STATION

KJCN-AM SUN RADIO  
1506 Gibson Avenue Ogden, Utah 84404  
(801) 392-7535

E  
D  
X  
R

Ray Bauernhuber  
141-12 243rd St.  
Rosedale, NY 11422

FM DX

- (MB-ON) Mike Brooker 99 Wychcrest Avenue, Toronto M6G 3X8, Ontario, Canada; Panasonic RF-2200, SONY-7600D.  
(LLH-VA) Leonard L. Hyde 1805 Whipple Drive #26, Blacksburg, VA 24060; DX-440, Autek QF-1, 2" box loop.  
(LLH-DX1) Leonard L. Hyde DX'ing on Brush Mt. near Catawba, VA; DX-440, Autek QF-1, Beverage 1725' NNE, 2' Loop, phaser.  
(LLH-DX2) Leonard L. Hyde as LLH-DX1 but with beverage to the SSW.

\*\*\* SPECIAL INTEREST \*\*\*

- 880 WCBS NEW YORK, NY 5/1 0030 noted simulcasting KNX-1070 with live reports on the riots in Los Angeles, complete with PLT time checks. In 1989 I heard WCBS simulcast KCBS-740 after the World Series earthquake. (MB-ON)  
1010 WKZK SC, NORTH AUGUSTA 4/20 2032 Good w/WINS phased. RO mx, ID as "FM 103-WKZK." Listed on 1600 kHz with UC/REL format in NRC Log. (LLH-DX2)  
1470 WRBD FL, POMPANO BEACH 4/26 1945 Fair-good with UC mx by request. Programming EE not SS as listed in NRC Log. (LLH-VA)

\*\*\* REGULAR LOGGINGS \*\*\*

- 900 WCPA PA, CLEARFIELD 4/28 0630-0635 Poor in CHML null w/local nx, ad for a Chevy-Geo dealer in Clearfield, 0633 ID as "WCPA news time is 6:33" into local wx and ABC news report on the Pennsylvania primary at 0635. (MB-ON)  
940 WMAZ GA, MACON 5/20 1939 in/out w/Braves baseball. (LLH-DX2)  
1030 WNTL MD, INDIAN HEAD 5/10 1959 in/out w/East Indian mx. EE ID at 2000 as "This is WNTL - Washington's International Radio." Obviously my unID SS station I thought might be WOSO-PR. (LH-DX1)  
1070 CHOK ON, SARNIA 4/26 0155 in/out in WIBC null w/ad for Sarnia Propane, others. Into "Oldies coast to Coast." (LLH-VA)  
1090 CKKW ON, KITCHENER 4/26 0230 Poor w/WBAL phased w/AC mx. (LLH-VA)  
1540 WRBN VA, RICHMOND 5/20 1920 Fair w/BRN, local nx at 1930. New. (LLH-DX2)

1600 WIZQ

NC, HENDERSONVILLE 5/20 1916 Poor in/out w/ads.  
Mixing with unID black preacher which I have been  
trying to ID for months now. (LLH-DX2)

---

EDITOR'S DESK

---

Thanks to this issue's reporters. All IRCA DX TESTS are arranged by J.D. Stephens. All expenses are "out of pocket" for J.D. so cash or stamp donations sent to J.D. are sincerely appreciated. References used for EXDR are M Street Radio Directory (1991), NRC AM Radio Log (1992) and the IRCA AM-FM Almanac, 5th Edition (1991). The dead line for the July 18th issue is July 6th. "Until next time ...  
CONTINUED GOOD DX MY FRIENDS and 73 de Mr. B

---



## Western DX Forum

★★★★

---

REID WHEELER 5910 BOULEVARD LOOP SE OLYMPIA WA 98501

---

See Vol 29, No. 30 for deadlines

[24]

Albert (NOT "AL", PLEASE) S. Lobel, PO Box 26762, San Diego, CA 92196-0000

[5/13] A BIG HELLO TO EVERYONE IN IRCA! The TVA voting is coming along just fine. I will not give any hints as to who the winner might be. The announcement will be made at the convention. I will not be in attendance to make the announcement but someone will be designated by me to make the announcement in my place. I am seeking a volunteer who will be at the convention. If you'd like to be that lucky person let me know a.s.a.p. I will send you a copy of the ballot with the winner plainly marked. You can then make the official announcement at the IRCA Convention. The first volunteer whose letter gets to me will be selected. On another matter pertaining to IRCA, anyone can actually make a proposal for a change in the way things are done in IRCA directly. It does not have to come from a board member. However, I do feel it is a good idea to let a board member or two or even all know what you want. Certain changes can be made without the membership approval. However, most do require a full vote of the membership, especially constitutional and bylaw changes. While I may not personally agree with every one of you on everything, I do believe that the majority should rule. If there is something the majority of IRCA members want changed I'll vote in favor of it regardless of what my personal opinion may be. Send your comments to me at the above address. And, please, do me an extremely big favor - do not call me "Al"! My given name is "Albert" and that is what I prefer to be called. I despise being called by the nickname "Al" and quite often ignore people who call my by that nickname. Several of you have addressed letters to me that way in the past. I will not mention names, you all know who you are. A B-I-G 73 and good DX from ALBERT.

Randy Stewart, 4225 W LaCasa, Springfield, MO 65802-5615

The prodigal DXer returns, hi. Haven't done any DXing of late, and I diddled around and missed the Anniversary issue, so a brief re-intro: I'm 35, married, and have been a member of IRCA for about 3 years after a LONG absence from MW DXing. I'm still using my little TRF and a gigantic home-built 4-foot spiral loop. Despite my absence from the dials, it has been a really good season for me -- I broke the 600 mark in stations logged, though verie returns have been a bit disappointing. Local news: KTWO-560 has picked up the new ESPN radio service on weekends; carrying K.C. Royals baseball. KIDS-1340 (one of the only all-children's stations in the country) is expanding their broadcast day to 6:30am-6:30 pm CLT seven days a week (currently signs off at 1 pm); takes effect 5/10. Still struggling to attract advertisers, but listener/community response has been quite good. Some interesting stuff in the 5/6/92 issue of the trade journal Radio World: Alex Zavistovich's "Earwaves" column talks about a tape compiled by Herb Squire, CE of WQXR-1560 NY, which includes a segment of Sheena Easton's

"For Your Eyes Only", recorded off-air from a common AM-FM headset portable, and from an RCA Radiola 3, circa 1923... "the RCA radio beat its 1988 grandson by a country mile. The frequency response, the dynamic range -- there was just no real comparison." So what have DXers been saying all along? Manufacturers (and that includes makers of "communications" gear) are turning out absolute JUNK and calling it "AM Radio"... Along this same line, in the same issue is an article about how Japanese MW stations are using C-QUAM (the Japanese government selected it as the standard for AM stereo in 1991 ... too bad the FCC couldn't have been as decisive one way or the other a few years ago!) and receiver manufacturers are planning to increase production of AM stereo receivers & tuners -- "the potential demand for AM stereo seems to be huge" (in Japan, anyway) ... the U.S. AM-stereo folks (Delta Electronics, Motorola, etc.) are hoping so. Japan has shown a great interest in the U.S.-developed AMAX tuner standards as well. So like it or not, the Japanese may help America AM jump-start itself. 73.

**Gary Larson, 2806 Lincoln, Burbank, CA 91504**

(818) 843-2221

It's May 18 here at work. Seems May 6 was last day Duncun Shaw was at USC. Guess he'll be news director of campus station in fall. I know he'll be a real good one with his experience and interest in radio. I've noticed 950 silent lately. Called two office numbers I had but they are disconnected. They may be off due to money problems. Called and left message on a Glendale CA # but so far no call returned. I see 1530 KHPY is supposed to be on w/SS right next to 1540 here as well as 1550 Tijuana BC. I've noted KFMB in strong here nights now probably because of new trans. w/increase to 50 Kw. Sorry to see Tim Hall exit as editor of verie signers column. You've done a fine job. On May 16 I gave 3-1/2 hours of time to USC radio answering calls during a pledge drive. Some were from Couchella Valley areas; Yucca Valley, too. I wish I could have asked some of the callers about 1010 KPSL classical as to its popularity versus FM there. I, too, have noticed 850 KCTQ simulcasting KPLS 830. Too bad comedy is gone. I've noticed at times KJQI 540 on low power days or off occasionally, with XETIM in fair. Still need to go by KJQI/KKGO offices to get a media kit. Work is near them. I'm in Brentwood doing school security-10p-6a and have heard a trace of 540 here late at night on a small radio I have in car. Work site is basically quiet but who knows how long I'll be here at the job. Nothing new yet on 1500 here. 73.

**Larry Godwin, 2390 Clydes Dale Ln, Missoula, MT 59801**

(406) 721-5131

[6/25] Greetings! Summer is here and wisely I'm not teaching. I'd hoped to attend the IRCA convention, but I've decided Alabama is too far away to go. Maybe next year. My Sanserino box loop is proving to be by far my best antenna. Gain is higher than with the ferrite loops, and I'm able to tune in distant stations that would otherwise be inaudible. I'm very pleased. Cathy's candid comment about the piece is that it would make a dandy drying rack for socks. I'm sad and a little anxious that Ralph is resigning as Publisher after this coming season. I hope we get a team of volunteers as dedicated to the club as he and past publishers have been. Thanks for the extensive advance notice, Ralph. I think it's been great that J.D. Stephens and apparently other easterners heard the KUAL-720 test. That seems a fitting reward to the person who arranged most (if not all) our tests this past season. I like the idea of scheduling Canadian CPC programs, especially in hard-to-get places like the territories. I also like Leonard Hyde's new column "DX Techniques". I hope everyone who listens this summer gets three or four gold nuggets. 73

**Jim Hilliker, 1705 Withers Ave #12, Monterey, CA 93940-1569**

(408) 375-4872

Hi everyone! Not much DX done here. I did get two newbies in mid-April: CJCA-930 with KSEI silent on a Sunday morn., and KEZC-1400, Yuma, AZ. I somehow never got around to sending it in to WDXR. Since my last forum, KHKN-540 has changed format from SMN Country to SMN Stardust. Slogan used in "Easy-54 AM Stereo". Their FM, 104.3 remains Country. Format change took place on 5/11. Also in May, KRML-1410 lost their cable feed from KJAZ (FM), so until a studio-to-transmitter link is in place between the two stations, KRML is no longer 24 hours. I'm not sure of s/off time, but s/on is 0900 ELT. KIDD-630's SP is not always consistent. I've noticed it mainly now to be 0400-0800 weekdays and a s/on of 0900

weekends. But on a couple of Saturday mornings in May, they remained on all night. New member John Ryer's forum regarding his catches from AK was interesting. Nice to know my local KNRY-1240 is still getting out up there, hi. Since my last forum, I've learned that the three partners who now own KNRY also own KLAV-1230 in Las Vegas and KWAI-1080 in HI. KTOM-1380/100.7 station manager, Bob Sherry, who spoke at the IRCA convention here last November, retired in early May after 53 years in broadcasting. I wasn't able to attend the party for him, but was told that he mentioned that when he started at his hometown station of WDDO in 1939 in Chattanooga, TN, the calls stood for "Wonderful Dynamo Of Dixie." Bob also played a tape recording of the "Archie Andrews" show on which he was the announcer. It was heard on NBC radio in 1948. He was reunited with many of the people he worked with: when he owned KIDD-630 here from 1958-1972. Others at the party were people Bob worked with at KTOM and KDON. One of those was Johnny Hicks. He had done an old-time Country Music show for many years on KTOM-1380 once-a-week. Also, he was host in the '50s of the "Big D Jamboree" show over KRLD-1080 in Dallas, TX. Bill Hardy's forum on license plates reminded me that a few blocks from here, there's a car with a CA personalized license plate which says "ONZNEWS", with some KNZS-1270 newstalk stickers on the rear bumper. Maybe someday I'll get the nerve to knock on the door and ask if they used to work at that station, which I've DXed several times before. As for Humboldt County stns. being off the air during their quake and aftershocks, that's hard to believe. Seems like they should have generators, since that area has gone through floods and quakes in the past. Our main EBS stn., KSCO-1080 did a great job in the '89 7.1 quake here, and the epicenter was in Santa Cruz County. Till next time, 73 and good DX.

EASTERN  
DX FORUM

RICHARD C. EVANS  
PO BOX 21883  
MILWAUKEE WI 53221

Tom Jasinski, 419 North Raven, Shorewood, Illinois 60435

Back on March 4th, I had the opportunity to be in South Bend, Indiana on business. Later that day I spent an enjoyable evening at Tom Laskowski's place. He has a very neat DX Den, and a nice QSL collection. We have a get together scheduled later this summer either at Kankakee River State Park or here in Shorewood (or both!). He definitely has a 60hz buzz and a real tough TVI problem! I recall a comment from Larry Godwin about the computer program PCUSA. (from PCGlobe, Inc). I bought a copy for the family for Christmas. With this program you can generate custom maps for anywhere in the USA (including Puerto Rico, Hawaii and Alaska). You can select locations from a list of the 15 largest cities in each state. With a distance/bearing option the program will determine the bearing and distance between these points. If your town or the destination location is not one of the 15 largest in the state you can plug in the coordinates from an atlas. The program will then determine bearing/distance from these coordinates. It will also allow you to generate a custom map on your printer. This program also includes tons of census and geographical data. I am now including a custom map with reception reports for DX catches. Recent DX here was the WTRI DX Test (NRC). I had a very faint reception which was captured on tape. I can make out a faint female voice with a "GOOD MORNING...?...WTRI...???". My reception report was answered by a hand written letter from Ms. Roberts (the owner). "Thank you for your letter. It's a pity the signal was not stronger...!". Nothing mentioned about a confirmation. She mentioned their power is 500 watts. Soon to be 6000 watts if the budget will allow. Maybe the IRCA could arrange another DX test with plenty of Code and Tones! Received a verification and gift pack from KHVN-970. How many of you have a "KHVN HEAVEN 97AM Tee Shirt? I am looking for any information anyone may have on radio

station WWAE. The station was in operation in Plainfield, Ill. back around 1922-1924. I have a letter from the Plainfield Historical Society that mentions this station. May have city of license as Joliet. Frequency listed as 227 (meters?) (1320 kHz). This station was located in Electric Park in Plainfield. The remains of this park was destroyed during the big tornado 2 years ago. Have a good summer. 73'3.

R.C.Watts, 4109 Graf Drive, Louisville, Kentucky 40220-3016

A.J. and I went to the Kentucky Colonels Barbeque in Bardstown the Sunday after the Derby. A lot of hawgs was et which done my ole hart gud. Remote broadcasting by WBRT-1320/WCK4-96.7. BPT naturally stands for Bardstown while DKH is (my) Old Kentucky Home of Stephen Foster and state park fame. WBRT is a neat 1000 watter that's been on since the 50's. Good quite often during the day in Louisville. Many thanks to LLH for the additional beverage info in his DXM column. Hope to repair my camp this year and may go for it this fall. We painted the picnic shelter today (5/16). Sold a short article to Monitoring Times magazine. Meager proceeds went to Radio Shack for some rechargeable batteries and a charger. Hope they do the job as my portable radios eat alkalines. Much lighter to pack around too. Rec'd a sort of QSL note from Jeff Galas, Comm. Design Tech. with IL DOT for a 1610 H.A.R. last 1/24. Says most likely KMB824 at junction of Kennedy and Edens Expressways in Chicago, operating with a power waiver to increase signal.

Mark Connelly, 30 William Road, Billerica, Massachusetts 01821

(cont. from last issue) ...This was followed by a sunset DXpedition to Granite Pier in Rockport, a site I've used often. We ran a DXing position in each of the two cars. DX-440 receivers were used exclusively. The DX-440 in my car was connected to the RTL-1A loop phased against a homebrew remotely-tuned active whip with the DCP-1 controller / phaser. The antenna set-up going to Tom's car consisted of two 100-ft. wires on the ground; these were phased with the MWDX-5. The loop vs. whip set-up did a bit better for North Africa, southwest Europe, and Jean's NF "home stations" CHCM-740, CBT-540, CBN-640, and VOVM-590. Nulling WEEI to get VOVM was easy! Tom's phased wires set-up worked better to the Caribbean and South America. Conditions were slightly on the auroral side; mainland Europe was only represented by Spain and Portugal. The loudest TA's were from Algeria and Morocco. Egypt-1107 came in well, Azores / Canaries battled it out on 837, and WBSK/CKAD-1350 was hetted loudly by Mauritania-1349. Numerous Caribbean stations came in well - St. Lucia on 840 (in Creole FF) had the best signal I've heard from it at a QTH other than Cape Cod. It was blowing WHAS away. Overall, I'd rate conditions as average for April: short-skip domestic QRM worse than during the winter, TA signals not up to peak until an hour after sunset. Nonetheless, a good time was had by all four of the New England / Maritime Canada region DXers involved. Some of us heard new stations.

Rick Evans, 4841 South 26th Street, Milwaukee, Wisconsin 53221

For better or for worse, I'm giving the computer a shot this week for doing the column. It's felt strange not using the trusty old typewriter that I've done columns on since late 1970, but it's been fun also since I don't have to get out the bottle of Liquid Paper. The program I have has a spell checker in it--which has really been exciting. Turns out it doesn't recognize the words DX, IRCA, or 73, among others. Didn't listen to the radio much while I was south. I ran into Dothan, AL one afternoon by myself and listened to W00F-560. Some nice oldies and it was an oldies format but it sounded satellite to me, not a locally originated program. Deadlines for this summer are the same as shown in the last bulletin. This is being typed on June 1st, and it already feels like summer here. I was out this morning planting some corn. 73.

# Hearing It Through The Grape Vine

SHAWN AXELROD, 30 Becontree Bay, Winnipeg, MB R2N 2X9 Canada (204) 253-8644 before 2300 E.I.T.

## CONTRIBUTORS

Mike Brooker 99 Wychcrest Ave Toronto ON M6G 3X8

Mike Hardester 3118 Gaitway Court Jacksonville NC 28546

Ye Olde Editor as above

## STATES OF THE MONTH

Mike Brooker VERMONT

620	WVMT	Burlington	SSS 1987	910	WNHV	White River	SSS 1987
1000	WHWB	Rutland	SSS 1986	1100	WYKR	Wells River	SSS 1986
1240	WSKI	Montpelier	DX Test 1978	1320	WWWT	Randolph	SSS 1988
1380	WSYB	Rutland	SSS1987				

Mike Brooker NEW HAMPSHIRE

750	WHEB	Portsmouth	SSS 1986	1270	WTSN	Dover	SSS 1980
1370	WFEA	Manchester	Rare nites & SSS	1450	WKXL	Concord	DX Test 1979
1110	WNNW	Salem	SRS & SSS 1990				

Ye OLDE EDITOR DX'ing in Ottawa

620 WVMT Burlington VT SRS most days

## FREQUENCY OF THE MONTH NDB's & MEDFERS 510-1700

Mike Hardester various sites as named

516	YWA	Petawawa ON	Frequently at nite from NC/PA
521	GM	Greenville SC	Afternoons/nights from NC
521	INE	Missoula MT	Nights 1980's from CA/CO
530	NB	North Bay ON	CA/PA once each site, NC infrequent in '80's

## YE Olde Editor

513	PP	Omaha NE	Rare catch
515	RRQ	Rock Rapids IA	Infrequent at SRS
515	SAK	Kalispell MT	Very rare at SRS
516	YWA	Petawawa ON	Rare days
517	GQ	Kansas City	Heard only once
521	INE	Missoula MT	Rare at SRS
521	ORC	Orange City IA	Heard once
521	TO	Topeka KS	Heard Once
524	UOC	Iowa City	Rare at SRS/SSS
526	ZLS	Stella Maris Bahamas	Heard once on DX'pedition Arnes MB
530	NB	North Bay ON	Was common until CIAO moved here
1615	OR	Ohura New Zealand	Heard once on DX'pedition
1685	MER	Mercaderes Columbia	Heard Once on DX'pedition

## NEXT MONTH WE WILL DO:

PROVINCE OF THE MONTH: SASKATCHEWAN

FREQUENCY OF THE MONTH: 850 KHZ

DEADLINE: One Month After This Is Published

Not a big column this go around. Probably serves me right for experimenting with a good thing. Hope your summer is a good one and that you do get some new DX through all the static.

REMEMBER ON A CLEAR DAY YOU CAN HEAR FOREVER.

73

Shawn

# DX TECHNIQUES

LEONARD L. HYDE -- 1805 WHIPPLE DR. #26 -- BLACKSBURG, VA 24060

## DXING WITH A WINNING GAMEPLAN

By Leonard Hyde

### PART 1: NON-TARGETING DX METHODS

1. The "Scattergun" or random approach: Most new (and some longtime) DXers use this approach. The DXer turns on the radio when he feels like it, and scans the band looking for new stations. This is not the same as what I call a "bandcheck." Most DXers probably do a bandscan every time the radio is turned on, to see "what's out there." Unusual conditions and band openings become quickly apparent. The DXer knows that certain times and frequencies are likely to reveal such openings, and checks to get a quick read on conditions.

The "scattergun" DXer really has no such plan. He merely tunes up and down the band looking for previously unheard stations. Any new ones are logged, possibly taped for verie purposes, and he moves on.

This is not a bad technique, merely a low level approach. Some of my most enjoyable hours at the dial have been spent this way, and a large percentage of my loggings gotten in this manner. There are, however, better ways to get to know the band from your QTH. In order to spot potential band openings and good conditions, a DXer must know his band inside and out.

"Scattergunning" may allow a DXer to log several hundred stations at the beginning of his involvement in the hobby. Yet, after a while, the number of new stations logged each sitting will become fewer. To keep the logbook growing, the DXer will have to learn new techniques. He may use all of the following approaches simultaneously while continuing to "scattergun", or he may adopt one or more new techniques as his favorites.

"Bandscanning" - the DXer starts each session at the bottom of the band, and tunes upward, checking each channel for something new, or out of the ordinary. This is fine for the SRS DXer, or middle of the night listening, but for successful SSS DXing, just the opposite is in order - you should start at the top and work down. Why? The MUF, or Maximum Usable Frequency for skip conditions gets progressively lower as sunset progresses. Starting at the top of the band allows for full use of the unique SSS conditions. My experience is that skip will be noted at 1600 kHz as much as one hour before it is apparent at 540. At sunrise, the opposite is true.

"Bandscanning" is really just a variation of the scattergun method. No targeting is involved - it is still a random process. It will allow for more new stations to be logged than the scattergun method alone. I use it extensively at SSS. The DXer quickly learns that band openings to certain areas will occur at certain times, and learns to look for these. This will allow more specific techniques to be put to use to take full advantage of such openings.

To progress past random methods of DXing, a target approach must be developed. A number of schemes exist - adoption of one or more of these will allow more stations to be heard than any random method. A discussion of some of these techniques follows. (To be continued.)

NEXT ISSUE: TOPIC: "EFFECTIVE SUMMERTIME DXING." Deadline: JUNE 30  
AUGUST 15 ISSUE: DXING WITH A WINNING GAMEPLAN. (CONTINUED)  
73 de LLH.



## THE BARGAIN BASEMENT - PART 2

Easy, inexpensive hints and kinks for the BCB DXer

By Leonard Hyde

### 1. CAR VOLTAGE FOR THE AUTEK QF-1

The Autek QF-1 may be operated from 12 volts DC. Take the cover off the QF-1, and locate the main filter capacitor. This is a round black cylinder about 2 inches high, and stands upright on top of the circuit board. Going under the board, solder a wire to the board at the spot where the (+) terminal of the capacitor is connected. This wire goes to the positive leg of the 12 VDC source. The (-) leg may be hooked to any available ground on the QF-1. A good place to tie it is under any screw on the QF-1 case. Use a socket that matches the plug on your 12 VDC source. For use in the auto, a cigarette lighter plug may be used to connect to the vehicle's electrical system. I use a phono plug and socket for connection to the QF-1. Just make sure that the polarity doesn't get crossed, and everything will be fine. The QF-1 normally operates at 16 VDC, but I have successfully used it at voltages as low as 9. The "tuning" will be different, but the unit will still work just fine.

### 2. SLIP RING CONNECTORS FOR LARGER LOOPS

Headphone jacks and plugs may work fine for rotating ferrite bar antennas, but what about larger air core loops? A cord winder from an old canister vacuum cleaner solves the problem. Disassemble the cord winder by drilling out the rivets that hold it together. Watch the spring - it is coiled and may unwind itself violently when tampered with. Remove the slip contacts. There are two sections, rotor and stator. Don't cut off the attached wires - you'll need them. The contacts themselves are almost impossible to solder to. (If the contacts are burned, get another winder. Many times, these vacuums are junked because the cord winder contacts burn up, thus interrupting the current flow to the motor.) After obtaining the slip ring connector assembly, you will have to figure out how to adapt it to your loop. A simplified diagram of my loop design appears below. With the slip ring contacts installed, your loop will spin with the best of them, and you can now enjoy DXing sans that confounded coax swinging around everytime you rotate the loop.

### 3. SHIELDING FOR AIR CORE LOOPS

I find that my loop is far less sensitive to TVI and electrical GRN when shielded on three sides. I use aluminum foil, taped to the loop along three edges. Wires are taped to the foil in several places, and tied to the shield (or ground) of the coax leading to the receiver. Noise pickup is reduced noticeably, with no apparent effect on sensitivity or directivity.

### 4. CAR VOLTAGE FOR THE DX-440

I tried Radio Shack's 9 volt cigarette plug adapter, which is rated at 300 mA. No dice. A check of the instruction booklet showed why - the DX-440 requires 400 mA. Here's the fix. Use a standard auto cigarette lighter plug, putting a 50 ohm, 10 watt resistor in the positive leg between the car and the DX-440. In my car, I obtain 8.87 volts, fine for the DX-440. If you want to get fancy, put a 9 volt, 1 watt Zener diode in for voltage regulation. I didn't - with a current draw of only 400 ma, there is no heating of the resistor, so the voltage stays constant. If you plan to use the receiver with the engine running, the Zener might be a good idea. I don't know what the voltage limit for the DX-440 is, but why take chances? Depending on the car itself, the voltage could increase by 1 to 2 volts with the alternator turning. Of course, this will work for any device requiring 9 VDC at a similar mA rating.

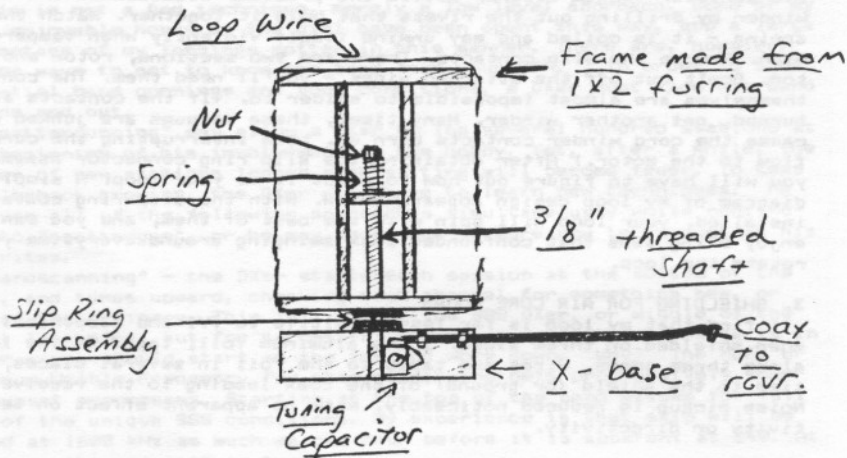
### 5. LOW BATTERIES CAUSE PROBLEMS

Low "D" batteries in the DX-440 will dim the display and pull down the two "AA" microprocessor batteries, even with the radio OFF. Why? I don't know. The microprocessor should operate independently of the receiver. Yet, when replacement of the AA batteries did nothing to cure the dim display in my DX-440, I found that pulling out the weak "D" batteries restored the display to it's normal state. Moral: keep 'em fresh, or get 'em outta there!

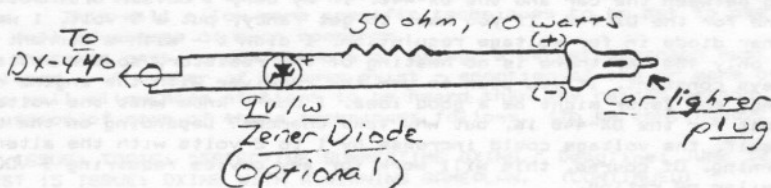
### 6. TWIN LEAD FOR AIR LOOPS

I have found that winding air core loops with twin lead TV lead-in gives appreciable gain over loops wound with a single wire. Also, the twin lead may be closewound in spiral fashion, with each turn directly over the last. This allows for an unbelievably thin loop. After years of using box loops that were nearly as wide as they were high, my loop is now a svelte 1 inch in width. Portability and appearance are much enhanced, with no apparent effect on the loop's performance. Just twist the two wires together at each end. I have experimented with double tuned loops, using each wire in the twin lead as a separate circuit, but found no advantage in doing so.

## SIMPLIFIED LOOP ANTENNA (not to scale)



## CAR ADAPTER FOR DX-440



## QUANTUM LOOP UPDATE

Gerry Thomas

Since the publication of the original *Quantum Loop* article, several things have transpired including notification of errors in the article, suggested improvements in the circuit, availability of the *Quantum Loop*, and pricing.

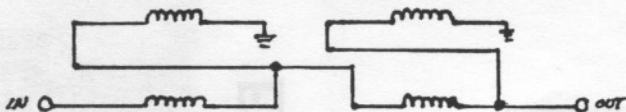
### ERRATA

1. The stock number of VC1 from Mouser Electronics is 24TR218 (the number cited in the article was an old stock number).
2. R12 in the circuit diagram was unlabeled; it should be 270 Ohms.

### SUGGESTED IMPROVEMENTS

1. MOSFET 40673 is nearly impossible to find these days. I've switched to the 3N201 (or ECG 454/NTE454) and these direct substitutes work fine.
2. The Mini-Circuits T16-1 or T16-6T work well as RF transformers to lower the output impedance of the loop (and thereby more closely match the standard 50 Ohm input impedance of most non-portable receivers). These run between \$4.45 and \$5.65 direct from Mini-Circuits (P.O. Box 166, Brooklyn, NY 11235).

If you don't want to purchase one of these commercial models, you can wind your own 16:1 unbalanced-to-unbalanced transformer. You'll need two FT50-43 ferrite toroids (Amidon Associates, 2216 East Gladwick St., Dominquez Hills, CA 90220) and four, nine-inch lengths of 28 gauge (about) wire. Create two bifilar windings (i.e., twist two wires together) and wind nine turns, evenly spaced, around one toroid and repeat the process for the second toroid. Connect the wires as described in the schematic below.



3. Mark's other suggested improvements also are effective and are incorporated in all future *Quantum Loops*.

### QUANTUM LOOP AVAILABILITY

By the time this update appears, all 20 of the initial run of *Quantum Loops* will be gone. I have ordered the necessary parts for more *Quantum Loops* but I don't expect to be ready to ship more until mid-July at the earliest.

### QUANTUM LOOP PRICING

As I was ordering parts for more loops, I was dismayed to discover that many of the components had increased significantly in price (e.g., cabinets—up \$5.00). Combined with the Mark Connelly improvements and the necessity to have new printed circuit boards made (with their accompanying set-up fees), I must raise the price of the *Quantum Loop* to \$135 (plus \$5.00 UPS). Fortunately, I've ordered enough parts so that this should remain the price for the foreseeable future (i.e., the next DX season).

Thanks for your understanding (and response to the *Quantum Loop*)...

Gerry Thomas, 3635 Chastain Way, Pensacola, FL 32504

## THE INTERNATIONAL RADIO CLUB OF AMERICA (IRCA)

The IRCA is a non-profit organization devoted to the hobby of hearing distant stations on the AM Broadcast Band (510 - 1630 khz). **DX Monitor**, the official publication of the IRCA, is published 34 times a year, weekly from October to March, twice in September and April, and monthly from May to August. **DX Monitor** contains members' loggings, articles on radio stations, receiver reviews, technical articles, DX tips, and other material of interest to Broadcast Band DX hobbyists. IRCA is a member of ANARC, the Association of North American Radio Clubs.

### CLUB ADDRESSES AND OFFICERS

President: Phil Bytheway, 9705 Mary NW, Seattle, WA 98117 (206) 356-3927 (proposals)

Secretary-Treasurer: Ralph Sanserino, 11300 Magnolia #43, Riverside, CA 92505 (dues/address changes)

Board of Directors: Shawn M Axelrod, Michael S Hardester, Bill Hardy (chairman), Ric Heald, Albert S Lobel, Patrick Martin and Robert Wien

Editor-in-Chief/Publisher: Ralph Sanserino, 11300 Magnolia #43, Riverside, CA 92505

Publishing Coordinator: Phil Bytheway, 9705 Mary NW, Seattle, WA 98117

### MEMBERSHIP DUES

U.S. - \$25.00 per year. Canada - \$27.00. Overseas Surface - \$28.50. Overseas Airmail - \$35.00 (Central America, Caribbean, Colombia and Venezuela), \$38.00 (Europe, North Africa, Middle East), \$41.00 (rest of the world). One time charge for New Member Packet - \$2.00 (first year only). Trial Membership - \$9.50 (10 issues of **DX Monitor** and a New Member Packet, U.S. / Canada / Mexico only). Installment rate: two payments of 1/2 dues plus \$1.00 (\$13.50/payment for U.S. members). Make checks and money orders payable to IRCA and send all dues (and address changes) to: IRCA, 11300 Magnolia, #43, Riverside, CA 92505. Persons living outside the U.S., please use International Money Order in U.S. funds. Sample copies of **DX Monitor** are \$1.00 (U.S. or Canadian) or two International Reply Coupons each and are available from: IRCA, 11300 Magnolia #43, Riverside, CA 92505.

Unless otherwise noted, permission is granted to publish, broadcast, or otherwise reproduce non-copyrighted material appearing in **DX Monitor** provided credit is given to the IRCA and the original contributor. Opinions expressed in **DX Monitor** are those of the original contributors and do not necessarily reflect those of the IRCA, its publishing staff, editors or officers.



**IRCA**  
INTERNATIONAL RADIO  
CLUB OF AMERICA  
11300 MAGNOLIA #43  
RIVERSIDE, CA 92505

**FIRST CLASS MAIL**

30-09  
J D STEPHENS  
3715 CONGER RD SW  
HUNTSVILLE AL 35805  
USA

FIRST CLASS  
U.S. POSTAGE  
PAID  
RIVERSIDE, CA  
PERMIT NO. 5214