

# DX MONITOR

THE OFFICIAL PUBLICATION OF THE  INTERNATIONAL RADIO CLUB OF AMERICA

DEVOTED EXCLUSIVELY TO BROADCAST BAND DXING

JANUARY 23, 1993 - VOLUME 30 - NUMBER 19 - EDITION 977 - ISSN 0899 - 9732

**NEW MEMBER:** Terry Ward. **RENEWALS:** Steve Ratzlaff, Ed Grossman, Gary Siegel, George Phillips, Kermit Geary, Donald Chepurna, Robert Yentema, Mike Riordan, Welcome Terry and thank you all very much for the support...Pub.

**IN THIS ISSUE:** IRCA and NRC DX Test info, DX Worldwide West, DX Worldwide East, Western DX Roundup, Central DX Roundup, Eastern DX Roundup, Western DX Forum, Eastern DX Forum, Hearing It Through The Grapevine, Radio Business Report on GM's new Delco AMAX radio, and the last of the BUF-A Amplifier Card, the back cover with officers, dues and the new IRCA address.

**ALSO IN THIS ISSUE:** DX Worldwide East Extra from Jean Burnell and the Geomagnetic Indices from Phil Bytheway. Thank you very much.

**DXM:** You will note that this is a large DXM. I do not like to publish big DXM's when we are weekly, it is harder on me and it cost more money but sometimes you got to go with the flow. Some bigger sections this time. All so the IRCA may need a new Sportcenter Editor, check with Phil Bytheway..

**ANNIVERSARY ISSUE:** Just a reminder it is the MARCH 13th issue of the DXM.

**MONDAY, JANUARY 25, 1993 - KEYZ-660, P.O. BOX 2048, WILLISTON, ND 58802-2048 WILL CONDUCT A DX TEST FROM 1:30 - 2:00 AM EST. THE TEST WILL INCLUDE MORSE CODE ID'S AND WILL BE CONDUCTED IN AM STEREO. SO, FOR THOSE OF YOU WITH AM STEREO RECEIVERS, BE SURE TO REPORT ANY STEREO RECEPTION. RECEPTION REPORTS MAY BE SENT TO: MR. EARL GROSS (WDOAPE) - NEWS DIRECTOR. (ARRANGED BY J.D. STEPHENS FOR IRCA CPC)**

**MONDAY, JANUARY 25, 1993 - KAZM-780, P.O. BOX 1525, SEDONA, AZ 86336-1525 WILL CONDUCT A DX TEST FROM 2:00 - 2:30 AM EST. THE TEST WILL INCLUDE MORSE CODE ID'S, TONES, AND MARCH AND POLKA MUSIC. RECEPTION REPORTS MAY BE SENT TO: MR. JOE TABBACK - GENERAL MANAGER. (ARRANGED BY J.D. STEPHENS FOR IRCA CPC)**

**WEDNESDAY, JANUARY 27, 1992 - WSMI-1540, P.O. BOX 10, LITCHFIELD, IL 62056 WILL CONDUCT A DX TEST BETWEEN 1:00 & 1:10 AM EST. THE TEST WILL INCLUDE MORSE CODE, TONES, AND VOICE ID'S AND WILL BE PART OF THE STATION'S MONTHLY FREQUENCY CHECK. RECEPTION REPORTS MAY BE SENT TO: MR. BRIAN TALLEY (N90WV) - CHIEF ENGINEER. MR. TALLEY REQUESTS AN SASE BE INCLUDED WITH ALL REPORTS. (ARRANGED BY J.D. STEPHENS FOR IRCA CPC)**

**MONDAY, FEBRUARY 1, 1992 - KOFI-1180, KALISPELL, MT WILL CONDUCT A DX TEST BETWEEN 4:00 & 5:00 AM EST. THE TEST WILL INCLUDE MORSE CODE. POWER WILL BE 10 KW. RECEPTION REPORTS MAY BE SENT TO: MR. BILL ROBERTS (AA7HM) - ANNOUNCER. MR. ROBERTS REQUESTS THAT RECEPTION REPORTS BE SENT TO HIS HOME ADDRESS OF: 130 10TH STREET EAST, KALISPELL, MT 59901. (ARRANGED BY J.D. STEPHENS FOR IRCA CPC)**

**SATURDAY, FEBRUARY 6, 1992 - WANM-1070, P.O. BOX 10174, TALLAHASSEE, FL WILL CONDUCT A DX TEST BETWEEN 12:00 & 12:30 AM EST. THE TEST WILL INCLUDE MORSE CODE. POWER WILL BE 10 KW USING AN OMNIDIRECTIONAL ANTENNA PATTERN. RECEPTION REPORTS MAY BE SENT TO: MR. CHARLES KINNEY - CHIEF ENGINEER. (ARRANGED BY J.D. STEPHENS FOR IRCA CPC)**

KEWI-690 115 W. South St. Benton. AR 72015 will conduct a DX Test Saturday Morning January 23 from 0300-0330 Eastern Standard time. This test will contain Morse Code ID's. Our thanks and your reports to Charlie Bottenberg Director of Engineering. This test arranged by the National Radio Club CPC.

WARV-1590 19 Luther Ave., Warwick RI 02886 will conduct a DX TEST on Monday Morning January 25 from 0330-0430 Eastern Time with voice and code ID's. Our thanks and your reports to Mr. Lincoln W. Hubbard NIATU Chief Engineer. This test arranged by the National Radio Club CPC.

WMT-600 P.O. Box 2147, Cedar Rapids, IA 52406 will conduct a DX TEST on Sunday Morning January 31 from 0100-0200 Eastern Time. This test will include voice and Code ID's. Code ID's will identify the Non directional Pattern as "WMT 1" and the directional pattern as WMT 3". Calls will be appreciated at 1-800-332-5401, but all listeners who wish a verification must write to Rick Sellers VP Operation/Programming. This test arranged by the National Radio Club CPC.

KLEE-1480 212 East Main St., Ottumwa, IA 52501 will conduct a special DX TEST on Sunday Morning February 7, 1993 from 0100-0200 Eastern time with 500 watts non-directional. The program will consist of 1 kHz test tones, voice and code ID's. Reports to Bill Bishop Program Director. This test arranged by the National Radio Club CPC.

WMUS-1090 3565 Green St., Norton Shores MI 49441 will conduct a Special DX TEST on Friday February 5, 1993 from 0400-0430 Eastern Standard Time. This test will consist of Morse Code ID's and Country & Western Music. Our thanks and your reception reports to Mr. Chris Roberts VP/Engineering for this test. This test arranged by the National Radio Club CPC.



PAT MARTIN P.O. BOX 843 SEASIDE, OR 97138

## DX Worldwide - West

Time: UTC phone (503) 861-3185

DEADLINE: MONDAYS

A good turnout this week. Reports from Larry Godwin, Mike Sanburn, and Guy Atkins, who went out to the Washington coast for a DXpedition and heard alot of long path Africans on 60 Meters and some pretty good MW DX too. On with reports:

### PAN-AMERICAN DX ROUNDUP

- 640 t MEXICO, Fresno-XEVQ-prob the one with SS ranchera mx and s/off at 0700 on 1/10. Have been hearing this alot lately u/ KFI until s/off at 0700 w/Mex. NA (PM-OR)
- 1260 MEXICO, Culiacan-XESA 1/3 0055 logged at huge level in KGIL silence. Call letters given at 0055/0132/0149. Also mx and "S.A" slogan (MS-CA)
- 1260 MEXICO, San Luis R. Colorado-XEMW 1/3 1130 numerous mentions of Radio San Luis. Have hrd this before, even w/KGIL on. Has been shuffling for dominance between XESA, KPOW, and KOIT. (MS-CA)
- 1610 UNID, beacon seemed to repeat the letter "I" (..) briefly atop Anguilla at 0622 12/30. Not listed could be domestic of a foreign. (LBG-MT)
- 1685 COLOMBIA, Mercaderes has repaired its Morse code loop. Now it's MER, not EMER or MERE. First noted 0406 12/24. (LBG-MT)  
UNID, beacon underneath MER repeated the number "5" (.....) in rather low CPS Morse code 12/30 0603-0618. Not listed, could be domestic or foreign. (LBG-MT)

## TRANS-PACIFIC DX ROUNDUP

- 738 SOCIETY ISLANDS, Tahiti-FRO Papeete at 0633-poor to fair with FF ancurs and soothing island mx. When this station is audible it is much stronger on 1/3 (GA-WA\*)
- 747 AUSTRALIA, Toowoomba-4QS 0510-Early fade-in of Aussies on MW! Soft Jazz at 0510, man and woman talk about Australia at 0613. Song "Mona Lisa" at 0620 followed by more romanis mx. This station was playing real elevator quality mx at every recheck up to 0656 TC "4 befor 5PM" Mostly good signal, some long fades on 1/3 (GA-WA\*)
- 830 HAWAII, Honolulu-KIKI-"83-KIKI" ID at 0441 Heard u/SS station Fair but noted at strong level during 0630 recheck 1/3 (GA-WA\*)
- 846 KIRIBATI, Radio Kiribati 0638-0730 Church service in EE, Island mx, Talk in Kiribatese at 0715. C&W mx (amusing S. Pacific style) at 0718. Old timey gospel mx and nx items of Pacific region heard at 0730. Mostly good signal, and very enjoyable listening! on 1/3 (GA-WA\*) (Guy: Most of the time Radio Kiribati does have a good signal here at the coast, but does suffer from splash from KHLO-850.PM)
- 891 FIJI, Lautoka-Radio 2-0802-0810-Woman in Hindi with what sounded like International nx. Indian style mx during recheck at 0830. Poor to fair on 1/3 (GA-WA\*)
- 1017 AUSTRALIA, Sydney-2KY-0645-0703 Faint talk in EE at 0645. Signal improved at 0703 w/news about cyclone disaster in Solomon Is. ABC news //747 and 1098. Fair to good, 1/3. (GA-WA\*)
- TONGA, Nuku'alofa-A3Z 0729-0733-Fair signal. Woman in Tongan at 0729. hymn or native song 0733. Mentions of Tonga 1/3 (GA-WA\*)
- 1035 SOLOMON ISLANDS, Honiara-0812 to 0815-SIBC-Island mx and talk in EE w/prob. mention of Honiara. Poor to fair on 1/3 (GA-WA\*)
- 1098 AUSTRALIA, Longreach-4LG-0700 1/3-Fair to good w/ABC regional and world nx, R. Aust. ID at 0710. (GA-WA\*)
- MARSHALL ISLANDS, Majuro-WSZO-0805-Distinctive island mx at 0805 but poor signal. Slightly better w/accented EE at 0830 recheck. Wish these guys would return to SW! on 1/3 (GA-WA\*)
- 1494 PAUPA NEW GUINEA-Radio Enga-0835-weak and noted briefly with Melanesian mx //2410 (much stronger) on 1/3 (GA-WA\*)
- 2310 AUSTRALIA, Alice Springs-VL8A at 1514 C&W mx, noted //2325 & 2485. All very good signals on 1/3 (GA-WA\*)
- 2325 AUSTRALIA, Tennant Creek-VL8T at 1514 C&W mx, noted //2310 & 2485. All very good signals on 1/3 (GA-WA\*)
- 2340 P.R. CHINA, Fujian PBS-1516-1520 Good signal w/EE lesson-"It might snow in November, because November is a gray month. It is not a pretty month..." on 1/3 (GA-WA\*)
- 2410 PAUPA NEW GUINEA, R. Enga-0830 to 0840 1/3-Man in Pidgin with IDs and sing-sing. Good signal. MW // 1494 briefly noted and was very weak. PNG bandscan, all tropical frequencies noted except 3235 (FAX QRM), 3290 (RTTY QRM) and 3385, clear freq. not even a het on 1/3 (GA-WA\*)
- 2485 AUSTRALIA, Katherine-VL8K at 1514 C&W mx, noted //2325 & 2310. All very good signals on 1/3 (GA-WA\*)

## THANKS TO THESE REPORTERS

- GA-WA\* GUY ATKINS-5323 SOUTH ISLAND DRIVE-BONNEY LAKE, WA 98390-8624  
DXing with Drake R8 with beverages at 260 and 310 degrees at Midway Beach, Wa.
- LBG-MT LARRY B. GODWIN-2390 CLYDES DALE LANE-MISSOULA, MT 59801  
Hammarlund HQ-150, Sanserino Air-Core Box Loop
- MS-CA MIKE SANBURN-POST OFFICE BOX 1256-BELLFLOWER, CA 90707
- PM-OR YOUR EDITOR  
Drake R8, Hammarlund SP-600-JX17, 1500' East Beverage, Term. 1600' NNW Beverage, Term., 200' SW/NE Term. Wire. 1500' East Ground radial, Term, 5 rods in Ground system.

## **IRCA Stationery**

Red and black masthead with the IRCA logo and name. Great for using when writing for verifications. 100 sheets, \$5.00.  
Order yours today from: IRCA Bookstore, 9705 Mary Ave NW, Seattle WA 98117

# DX WORLDWIDE EAST

**EDITOR: Jim Hall, 3176 Cheltenham Ct., Gibsonia PA 15044-8435 USA**

A few reports in for the first column of 1993. Here's to an excellent year for all. Mark commented that his working third shift had really "croaked" his DXing time. Many of us can relate to that - I myself am so busy the only thing keeping me in touch at times is the column. Unfortunately, I have opted to pursue even more education and am going for some degrees that will keep me busy for a couple more years - hopefully it will pay off! For now, on with reports:

## T R A N S - A T L A N T I C D X (Connelly-MA) all

- 612 MOROCCO Sebba-Aiou 2330 12/15/92 Gd w/AA vocal mx.  
 621 CANARY ISLANDS Santa Cruz, Tenerife 0637 12/6/92 Man in SS - LOUD!  
 765 SENEGAL Dakar 0047 12/4/92 LOUD w/chanting, African mx.  
 774 SPAIN 0048 12/4/92 to gd peaks w/SS talk by m & w interspersed w/piano mx.  
 882 ENGLAND Washford 0036 12/4/92 BBC gd (w/WCBS phased): EE talk, then Bobby Vee o'die "The Night Has a Thousand Eyes". (DXer's eyes? ed)  
CANARY ISLANDS La Laguna 0649 12/6/92 Fr w/SS talk.  
 891 ALGERIA Algiers 0033 12/4/92 XLNT w/AA male vocal & drumming.  
 1044 MOROCCO Sebba-Aiou 0026 12/4/92 Man in AA.  
 1098 SPAIN / CANARY ISLANDS 0022 12/4/92 synchros. fr w/w in SS; SAH about 3Hz.  
 1107 SPAIN 0019 12/4/92 Fr w/SS talk.  
 1251 LIBYA Tripoli 2340 12/3/92 AA talk, gd.  
 1467 FRANCE Roumoules 2345 12/3/92 Christmas trumpet mx, then EE talk to gd peaks.  
 1521 SAUDI ARABIA Duba 2348 12/3/92 Man in AA.  
 1530 VATICAN 0001 12/4/92 Woman in II (It alian), then classical mx; excellent w/WCKY phased.  
 1544 NORTH AFRICAN CLANDESTINE 0004 12/4/92 AA talk, flute mx; through WPTR slop.

## P A N - A M E R I C A N A D X

- 560 JAMAICA Kingston 0645 12/21/92 Fr/pr w/deep-voiced DJ //700 R. One. (Wyllie)  
 600 CUBA Urbano Noris CMKA 0533 12/20/92 Fr/gd R. Rebelde pgm. (Wyllie-MA)  
 700 JAMAICA Montego Bay 0536 12/20/92 Gd but fadey w/reggae mx, mixing w/Nxradio WLW. (Wyllie-MA)  
 760 CUBA Guanabacoa CMBD 0634 12/21/92 Weak voice but strong code ID "R-R" Radio Reloj. (Wyllie-MA)  
 940 CUBA Colon CMDI 0630 12/21/92 Weak, R. Reloj, only noted the "R-R" code IDs. (Wyllie-MA) (An excellent way to ID these guys on any freq. they're on - sit there a few minutes and listen for the piercing code. Try 1270 also. ed)  
 1090 ST. Lucia 0024 12/4/92 Man in FF' o/WBAL. (Connelly-MA)

## CREDITS:

- (Connelly-MA) MARK CONNELLY WALLON, 30 William Road, Billerica, Massachusetts 01821  
 (Drake RB w/20m. & 37m. wires w/noise-reducing xformers to MWDX-5 Phasing Unit & MWT-3 Regenerative Preselctor)  
 (Wyllie-MA) WILLIAM WYLLIE, 95 Peck Street, Franklin, Massachusetts 02038  
 (Realistic Modulaire 2200 w/internal antenna)

## IRCA Reprints

The IRCA maintains a large file of articles which have appeared in past issues of **DX Monitor**. These articles cover a wide variety of topics, including: antenna theory and construction, tips for the foreign BCB DXer, how to improve your DXing skills, history of DXing and broadcasting, lists of stations by subject, construction projects and receiver modification, receiver reviews, medium wave propagation, and more. Copies are available for a nominal charge. For a list of reprints, send \$1.00 to:

IRCA Reprints, c/o Steve Ratzlaff, 1885 E Bayshore Rd Sp 90, E Palo Alto CA 94303.

## A DXers TECHNICAL GUIDE

Now in its 2nd edition, this 120 page book answers questions on receiver and antenna theory, how to make them work better, what audio filters and loop antennas will do for you (and hints on their construction), how to build a beverage and phasing unit, and much more. Only \$5.50 for IRCA members, \$6.50 for non-members (overseas airmail add \$2.50). Order your copy today from: IRCA Bookstore, 9705 Mary Ave NW, Seattle WA 98117

# DX WORLDWIDE EAST

## EXTRA!

\* \* \* \* \*

Owing to the extensive report filed by Jean this week, I have included it as an Extra section because of its interest (and the fact that it needed very little mark-up or correction!). Jean also included it on floppy disk which is fine for your reports as long as it is in ASCII format so I can retrieve it since I have several different word processing systems at my disposal at various times (none at home yet). Mark Connelly has been doing this also. If this becomes expensive for contributors please include return postage and disks will be returned.

Jean's report for this DXW-E Extra includes loggings from his QTH or from various sites within a 10-minute drive from the home QTH. Away from the Q H phased 125-meter wires were used, and at home it was the ICOM IC-R71A as well, using Connelly's MWT-2 and RTL-1A loop. Now, on with some excellent DX:

### TRANS-ATLANTIC

- 531 MADEIRA RDP, Porto Santo, 12/13, 0247-0252: Old US pops // 720. Announcer in PP says very few words between the songs. Over the RNE Radio 5 stations, which is unusual these days. SIO 233 (Burnell-NF)
- 603 SPAIN RNE Radio 5, Sevilla & Palencia, 12/6, 0110-0113: Pop song ended then an official of RNE Radio 2 was interviewed. SIO 333 (Burnell-NF)
- 612 MOROCCO R Mediterranée, Sebba Aloun, 12/12, 2029-2032: AA tk, pop mx, woman in AA and in FF w/ a series of numbers...perhaps lottery numbers. SIO 343 (Burnell-NF)
- 621 CANARY IS RNE Radio 1, Santa Cruz, 12/18, 0000-0002: pips, RNE ID, nx. Puzzle: why is there an "echo" on this one? I thought that this was the only RNE stn on this freq, but there was definitely a weaker signal w/same pgm but about 1 sec ahead of the Canary Is signal. Does Onda Cero relay RNE at times? SIO 444 (Burnell-NF)
- 729 IRELAND RTE Cork, 12/18, 2324-2328: under Spain w/ a story, then ad for the new Foster and Allen album and PSA re renewing TV licences, pop mx. SIO 322 (Burnell-NF)
- 756 SPAIN R. Euskadi, Bilbao, 12/13, 2203-2207: Nx in SS, football scores, lottery numbers, symphonic mx from 2206. Suffered from DLF QRM. SIO 232 (Burnell-NF)
- 765 SWITZERLAND? presume Sottens, 12/18, 2320-2322: I thought this was a FF channel, but the announcer introed a string quartet in high German SIO 343 (Burnell-NF)
- 774 UNID, 12/17, 2241-2245: man and woman chat in AA, popular AA mx, and more chat. Almost certainly Morocco, as Egypt was not audible at the time on 1107. SIO 333 (Burnell-NF)
- 819 prob FRANCE Sud Radio, Toulouse & Tarbes, 12/13, 2154-2201: In a mess w/AA stn -- mellow FF ballads, male announcer in FF, too much QRM for the ID at 2200. SIO 322 (Burnell-NF)
- 864 SPAIN RNE Radio 1, Socuéllamos (and Ciudad Real? -- I need a recent list, the material RNE sent me 2 weeks ago is a couple of years old!), 12/12, 2235-2247: Sports rpts // 855. Fading down to zero over couple of minutes, SIO 242 (Burnell-NF)
- 873 SPAIN R. Zaragoza, 12/12, 2219-2232: SS tks including rpt on trials and tribulations of the British royals, ad for encyclopedia just before nx at 2230...all SER net programming. SIO 243 (Burnell-NF)
- 873 GERMANY AFN, Frankfurt, 12/13, 2127-2129: Washington vs Dallas football play-by-play. QRM from Spain. SIO 333 (Burnell-NF)

- 999 MOROCCO RTVM, Ad-Dakhla, 12/12, 2035: lively AA mx // 1044 but QRM from Spain. SIO 322 (Burnell-NF)
- 1008 NETHERLANDS NOS Radio 5, Flevoland, 12/13, 2039-2045: Dutch ID, religious tk. Bad fading and Canary Is QRM increasing fast! SIO 332 (Burnell-NF)
- 1017 SPAIN RNE Radio 5, Burgos & Granada, 12/12, 2107-2110: two "Radio Cinco" IDs, usual TC for Spain and the Canaries, jazzy mx. SIO 333 (Burnell-NF)
- 1017 GERMANY SWF, Rheinsender, 12/18, 1928-1931: Fast clarinet mx -- sounded like Bavarian mx, woman ancr in German. SIO 333 (Burnell-NF)
- 1035 ITALY RAI, synchros, 12/13, 1932-1934: Classical mx, male announcer in Italian, more symphonic mx. Under RDP R Comercial, SIO 322 (Burnell-NF)
- 1080 prob POLAND Polskie Radio, Katowice, 12/13, 2136-2140: Slavic lang w/European nx, sounded like a rebroadcast of a BBC pgm. Deep fades and QRM from Spain and WTIC, the latter took over at 2140. SIO 322-0 (Burnell-NF)
- 1098 SPAIN RNE Radio 5, Lugo, 12/16, 1952-2001: Regional pgm w/news from Galicia. QRM from other Radio 5 outlets w/different pgms, but all semisynchronized w/nx after pips at 2000. SIO 333 (Burnell-NF)
- 1107 SPAIN RNE Radio 5, many stations, 12/17, 1939-2000: Mess of at least 3 Radio 5 stns all w/separate programs, but unable to ID any one of them! Came together for the news at 2000. SIO 222 each. (Burnell-NF)
- 1107 GERMANY AFN synchros, 12/18, 2001: US nx coming through the Spanish jumble. SIO 222 (Burnell-NF)
- 1116 CHANNEL IS, BBC Radio Guernsey, 12/18, 2002-2014: Mixing w/Italy, nx and wx ending w/ "from South-West Radio News" ... this is important as the other possible BBC outlet on this freq is Derby, which carries the "Midlands" nx ... then TC at 2005, and Brian Lewis presented a feature about films. SIO 322 (Burnell-NF)
- 1125 CROATIA Hrvatski Radio, 12/18, 1937-1946: Interview w/man in EE w/translation into presumed Croatian, then German pop song, ID at 1945 at which time noted //1134, which was marginally stronger. Is this Tovarnik (300 kw) returning to 1125 from 1557? SIO 322 (Burnell-NF)
- 1152 SPAIN RNE Radio 5, synchros, 12/12, 2301-2311: Now these are unsynchronized making an unintended reverb of the audio. At least 3, maybe all 4 stns discernable...nx, lottery numbers, promo, "Radio Cinco" IDs. SIO 222 each! (Burnell-NF)
- 1152 UK unID station, 12/17, 2155-2202: audible under Spain w/Brit accented presenter then choral Christmas carols. If there was an ID at the top of the hour it was obliterated by QRM. SIO 222 (Burnell-NF)
- 1161 ENGLAND Great Yorkshire Radio, Hull, 12/13, 2312: mess of signals here w/France, possibly Spain (in Basque) and at least 2 Brits. At 2312 heard clearly ads for shop in Hull. SIO 222 (Burnell-NF)
- 1161 SCOTLAND Radio Tay, Dundee, 12/13, 2326: woman w/lists of goods and telephone numbers "in Dundee". This wrapped up at about 2327 with two statements about "Radio Tay Classified" and even a "Radio Tay Classified" jingle! In a real mess...SIO 222 (Burnell-NF)
- 1180 BELGIUM BRTN, Kuurne, 12/13, 2050-2052: woman talking in Flemish, ballad in FF. QRM from Casablanca and another, SIO 322 (Burnell-NF)
- 1233 CZECHOSLOVAKIA, Ceskoslovensky Rozhlas, synchros, 12/13, 2305-2310: Woman w/ nx in Slavic lang, pop and rap mx from 2306:20 at which time established // 1521. SIO 343 (Burnell-NF)
- 1278 IRELAND RTE, Cork & Dublin, 12/14, 0015: pop mx, Irish-accented DJ said to "put the kettle on", more pop mx. SIO 343 (Burnell-NF)

- 1325 MOROCCO RTVM, Safi, 12/17, 2001: Man and woman with news in French, items about Somalia. Unusually clear signal, SIO 344. (Burnell-NF)
- 1341 SPAIN R. Terrassa, 12/12, 2055: pgm about football -- SER net pgm. Placed CKXX 1340 in the loop's null to reduce nasty splatter, SIO 242 (Burnell-NF)
- 1341 NORTHERN IRELAND BBC Ulster, Lisnagarvey, 12/13, 2220-2222: Interview of a rock band, // 693. Splatter from CKXX 1340. SIO 332 (Burnell-NF)
- 1359 SPANISH MOROCCO RNE Radio 1, Melilla, 12/12, 2103: two men reading RNE nx. Deep fades, SIO 242 (Burnell-NF)
- 1368 ENGLAND BBC Radio Lincolnshire, Lincoln, 12/18, 2025: Song "All Night Long" then ID as "BBC local radio in Lincoln", lost to QRM almost immediately. SIO 222 (Burnell-NF)
- 1395 prob ALBANIA R. Tirana, Lushnjë, 12/12, 2102: almost certainly this in unID lang, but some sort of ID at 2102; was not "Tirana" -- someone buying transmitter time I'll bet. SIO 353 (Burnell-NF)
- 1404 FRANCE R. Francia Internacional, synchro?, 12/13, 2225-2227: SS pgm, ID x 2, rock mx in FF. (Does anyone know which, or if all, the French transmitters on 1404 carry this pgm?) SIO 332 (Burnell-NF)
- 1440 LUXEMBOURG R. Luxembourg, 12/12, 2203-2205: woman w/bundes-league football nx, wx for Germany, Shocking Blue's "Venus". SIO 242 (Burnell-NF)
- 1458 ENGLAND, prob R. WM, Birmingham, 12/13, 2028: mess of local BBC stns, one popped up w/an address for requests to "BBC in the Midlands". I think R.WM from Birmingham is likely, as Manchester was supposed to leave MW some months ago... SIO 222 (Burnell-NF)
- 1485 ENGLAND BBC Radio Humberside, Hull, 12/18, 2110-2130: mixing w/at least 1 other Brit, grim nx of a toddler in Grimsby (near Hull) "who was apparently suffocated when the family's three-stone dog layed on top of her in bed", and other items. Possibly mx later, unequivocal ID at 2121. SIO 222 (Burnell-NF)
- 1494 RUSSIA/FRANCE R. Ala, St. Petersburg, and French synchros, 12/18, 2106-2109: R. Ala had the usual folk ("barda") mx, France had me fooled for a while in PP, but w/nx about France, which seemed // to 1404 (but this freq was very poor indeed). SIO 322 each. (Burnell-NF)
- 1503 POLAND R. Polonia, Stargard, 2031: Nx "from Poland" in EE: mainly about an inquiry into Martial Law in the early 80's. SIO 333 (Burnell-NF) 12/13/92
- 1503 AZORES AFN, Lajes, 12/13, 2145: briefly above the din w/football play-by-play //Frankfurt on 873. SIO 322 (Burnell-NF)
- 1503 UNID, 12/17, 2247-2301: Koran recitation right through the top of the hour. Egypt is not supposed to be on at this time, perhaps Libya? SIO 343 (Burnell-NF)
- 1530 ENGLAND unID stn, 12/13, 1954-2002: 1 or maybe 2 Brits under Vaticana... w/children's song, male announcer w/ Brit accent, a samba at 1957W, nx read by a woman at 2000, first item re a rocket attack (!!) in Belfast. SIO 222-1 (Burnell-NF)
- 1530 ENGLAND Great Yorkshire Radio, Huddersfield, 12/17, 2318-2351: under Vaticana, at least 2 Brits, only this one IDed...ID at 2322 and "Mystery Box" contest, ... oldies, canned ID at 2329 and more "Mystery Box" contest ... 2344 fade up w/Gordon Lightfoot, nice ID, answers to the "Mystery Box", ad for Barry Manilow concert. SIO 222 (Burnell-NF)
- 1539 GERMANY DLF, Mainflingen, 12/13, 2034-2037: FF nx about Germany, wx for Germany. Under/over Valladolid, SIO 322 (Burnell-NF)
- 1548 ENGLAND Capital Gold, London, 12/17, 2215: many Brit signals fading in and out on this freq, disco hit "Do the Hustle", ads including Intercity Trains and a shop in London, Beatles "Daytripper" SIO 222; also 12/18, 2200: weak under 3 other Brits, ID a few secs before the others at the TOH "This is Capital Gold". SIO 222-1 (Burnell-NF)

- 1548 ENGLAND BBC Radio Bristol, 12/17, 2219-2239: QTH-identifying material in the mess w/chat w/listener "In Taunton" (Somerset I believe), and regional pgm ID "Late Night West" at 2238. SIO 222; also 12/18, 2200-2237: "BBC Radio Bristol Nx" at TOH, read by a woman, "Late Night West" pgm w/Ian Barclay from 2205. SIO 222 (Burnell-NF)
- 1548 SCOTLAND ILR "Max AM", Edinburgh, 12/18, 2205-2232: many IDs and jingles after woman read nx and vx, beginning of "Country Corner" w/Ken Haines...C&W mx, ad for Scottish Daily Express at 2222. SIO 222 (Burnell-NF)
- 1548t ENGLAND BBC Radio Cleveland, Stockton-on-Tees, 12/18, 2208: only useful material was reference to the pgm name "Friday Late Show ...Radio North". This is the only BBC outlet on this freq that carries the North pgm. SIO 222-1 (Burnell-NF)
- 1557 ENGLAND BBC Radio Lancashire, Oxcliffe, 12/18, 2046-2104: freq mostly a mess w/more than 1 Brit here, Indian film mx, some Hindi spoken but faded up for clear ID but only the frequencies of the 3 FM outlets, nx read by Stuart Whalley at 2100. Had faded away completely by 2104. SIO 222 (Burnell-NF)
- 1557 LITHUANIA Radio Vilnius, 12/18, 2237-2300: EE pgm w/nx about Latvia and Estonia, many IDs, list of cultural happenings in Vilnius, sports rpt, end of pgm at 2256W, jazz mx to top-of-hour, but freq dominated at that time by BBC Radio Lancashire Deep fades, SIO 322 (Burnell-NF)
- 1566 AZORES Em. do Clube Asas do Atlântico, Vila de Porto, 12/12, 2045-2050: current pops, ads in PP. Increasing QRM from Tunisia, SIO 243 (Burnell-NF)
- 1584 SPAIN R. Castilla, Burgos, 12/13, 2004-2020: caught w/local pgm... all tk: was about the football team, mentioned "R. Castilla" a couple of times, went to the SER net pgm at 2025...mixed w/other SER stns, especially R. Zamora SIO 322 (Burnell-NF)
- 1584 SPAIN R. Zamora, 12/13, 2004-2020: clearest of the SER stns during the local pgm, all tk about the great goals the Zamora football team scored, into SER net pgm at 2025. SIO 322 (Burnell-NF)
- 1602 SPAIN R. Vitoria, 12/16, 2002: IDs for R. Vitoria and R. Euskadi, then nx by 2 men. Over SER net stations, SIO 333. Also: 12/18, 2337-2339: this stn plays the most unexpected mx...this time a weepy Irish ballad, SS talk afterwards. Over the SER net stns, as usual. SIO 433 (Burnell-NF)
- 1635 UNID almost certainly a pirate, 12/18, 2314: pop music, too weak to comprehend any of the talk. SIO 131 (Burnell-NF)
- 1636 HOLLAND Radio Nooitgedacht (Pirate), 12/18, 2306-2311 and 2332-2334 : sentimental German mx, IDs at 2308 and talk all in Dutch. Ute QRM. SIO 232 (Burnell-NF)

#### PAN-AMERICAN

- 660 ST. LUCIA, R. St. Lucia, Castries, 12/6, 0122-0125: Calypso in WFAN null, at 0124 football scores from the Caribbean, TC, said cricket was coming up at 10:30, mx again at 0125. SIO 333 (Burnell-NF)
- 1400 GRENADA Harbour Light of the Windwards, Carriacou, 12/17, 2200-2211: BBC WS nx, vx, then syndicated rel pgm "Viewpoint"; also 2302-2311: BBC nx to 2305 then "Fisherman's Five Minutes". CBG phased, SIO 333 (Burnell-NF)
- 1500 VENEZUELA R. Dos Mil (YVRZ), Cumana, 12/6, 0135-0143: Mx by "Los Panchos", TCs between every song, at 0143: "Dos Mil -- la emisora de la loteria" then mentioned the Loteria de Zulia. SIO 333 (Burnell-NF)

ADDENDUM: Note that R. Cleveland on 1548 is tentative. Jean mentioned that he thought this stn. was supposed to go off the air many months ago. Thanks, Jean, for the outstanding report - hope to hear from you again soon. Jim Hall-0XW-E.





# WESTERN DX ROUNDUP

Nancy Hardy  
2301 Pacific Ave.  
Aberdeen, WA 98520

DEADLINE FOR WDXR TIPS IS MONDAY. PLEASE USE EASTERN TIME.

REPORTERS FOR THIS ISSUE:

- (LG) Larry Godwin-2390 Clydes Dale Lane-Missoula, MT 59801  
Hammarlund HQ-150, Sanserino air-core box loop
- (TRH) Tim Hall-350 G St. #F-1-Chula Vista, CA 91910  
Sony ICF-2010, Radio West loop
- (NH) Nancy Hardy-2301 Pacific Ave.-Aberdeen, WA 98520  
FRG-7, Radio West loop
- (GJ) Gary Jackson-7735 Center Park Way-Sacramento, CA 95823  
FRG-8800, Dymek DA5
- (GL) Gary Larson-2806 Lincoln-Burbank, CA 91504
- (PM) Patrick Martin-P.O. Box 843-Seaside, OR 97138  
Drake R8, SP-600-JX17, term. 200' SW/NE wire, term. 1550'  
east wire, term. 1600' NNW wire, ground system
- (bp) Bruce Portzer-6546 19th Ave. NE-Seattle, WA 98115  
FRG-7, Radio West loop
- (MS) Mike Sanburn-P.O. Box 1256-Bellflower, CA 90707  
GE Superadio II & III
- (PT) Pete Taylor-2614 Jackson Street-San Francisco, CA 94115  
Radio Patrolman SW60
- (RCW) Reid Wheeler-5910 Boulevard Lp SE-Olympia, WA 98501  
R70, 4' NRC loop
- (RW) Robert Wien-1309 Dentwood Dr.-San Jose, CA 95118  
GE Superadio, GE long-range portable, SM-2

\*\*\*\*\*  
OF SPECIAL INTEREST

- 1180 KYET AZ, Williams 1/4 0910 so loud that I was hearing KERI. Spot for Northern Arizona Christian Directory, ID, temperature of 5 degrees, "Billboard" (15 minutes of solid PSA's!), in stereo. New. (MS-CA)  
+1/8 0853 loud, good signal, with s/on with Kate Smith's "God Bless America." Signal strength level with KERI. Full service Christian format, USA news on the hour, lots of local ads. Uses slogan "The Quiet Choice." 10,000 watts. Ex-1240. Thanks to Doug Martin for tip confirming that they were indeed on. (TRH)
- \*\*\*\*\*
- 570 CKWL BC, Burns Lake 1/6 fair under KVI with Cariboo Radio ID at 0745. (PM-OR)
- 590 KSUB UT, Cedar City 1/5 0034 weak & heavy QRN with newstalk. Per phone call to station op, format is now NWS/TLK with C&W on their FM outlet KSSD 92.5. // FM midnite to 6am. (RCW-WA)
- ?CFTK? BC, Terrace 1/6 unID "Oldies Coast to Coast," possible "T-K" ID in jumble 0830. (PM-OR)
- 610 KFRC CA, San Francisco 1/6 0950 fair with NOS music, "Magic 61." (RCW-WA)
- CKYL AB, Peace River 1/6 0835 fair in jumble with Canadian news, Peace River & High Level weather. (PM-OR)
- 630 CKOV BC, Kelowna 1/6 fair above jumble with "Oldies OV 63" ID, gave local address for concert, back into "Oldies Coast to Coast" at 0753. (PM-OR)
- 730 KBSU ID, Boise 1/7 heard weakly with BBC program at 0145, s/off 0200. Per phone call to station, they are 500 watts day/84 watts night, running a lot of BBC programming, educational, affil. with National Public Radio. No mention of Spanish programming. So, if you hear the BBC, you probably have KBSU. They operate 0800-0200. (PM-OR)

760 KRZN CO, Thornton 1/8 2217 fair u/o others with "AM only" format // KKSX-910, spots for Tire Service in Denver. (PM-OR)

800 KHIS CA, Bakersfield 1/2 strong 1330 with relig. programming. (GJ-CA)

CJAB SK, Moose Jaw 1/8 0930 good over all, now C&W and have FM 94.7 "Country 800 and 94.7" ID's, and spots for Moose Jaw, time checks. (PM-OR)

830 KPLS/ CA, Orange/Grass Valley 1/6 two station mixing here all day, logged at 1515. Haven't noticed KPLS here midday before. KNCO is a regular here during the winter. (PM-OR)

840 CKBX BC, 100 Mile House 1/6 0907 fair above jumble with -35 at Quesnel airport and spots for business in 100 Mile House. (PM-OR)

850 KHLO HI, Hilo 1/4 2212 promo for "Rush Limbaugh on KHLO." (PM)  
 ?CKBA? AB, Athabasca 1/6 0802 unID station playing C&W, directional to the north. Ment. Alberta during the top of the hour break, a lot of KMTT QRM. News on Canadian Airlines. Have been looking for this for quite some time. (PM-OR)

860 KLZX UT, Salt Lake City 1/4 1010 logged at decent level in XEMO null. Music by the Doors, Rolling Stones, John Cougar Mellencamp. // Z-93 ID's. I suspect they go to full power at 1000 (after critical hours). Never heard as ex-KCNR, KUTR, KLTQ, KWHO, etc. (MS-CA)

CFPR BC, Prince Rupert 1/9 good all day using north wire at several rechecks. CBC // 690 at 1520, 1540, etc. (PM-OR)

870 CFBV BC, Smithers 1/6 0909 good on top with "BV" ID's, into Chicago song. (PM-OR)

890 CJDC BC, Dawson Creek 1/9 good to fair all day on north wire with pop music, CJDC ID's. (PM-OR)

910 CKDQ AB, Drumheller 1/9 1517 fair mixing with KKSX on north wire. C&W music and "DQ" mention. Haven't heard this in a couple of years. (PM-OR)

920 CKCQ BC, Quesnel 1/6 0755 above jumble with Cariboo Radio ID. (PM-OR)

940 CJIB BC, Vernon 1/9 1528 good on top using north wire at midday with promo for "Farm Report on CJIB." (PM-OR)

1040 ?KURS? CA, San Diego 1/4 2206 possible Spanish in jumble, good conditions to south. QRM from CKST & KLHT (relig.). (PM)

1110 KAOI HI, Kihei 1/4 2209 good on top with rock music, ID's for KAOI, KKON-790, using SW wire. (PM-OR)

1130 KWKH LA, Shreveport 1/5 0033 weathercast, cold tonight down to 34 degrees. Three or four stations on freq., CKWX weak tonight. (PM-OR)

1180 KERI CA, Wasco 1/2 1114 "Back to the Bible" program strong. (GJ)

1210 KPRZ CA, San Marcos 1/4 2155 with promo for John MacArthur's Grace to You, KEBR QRM, using SW wire. (PM-OR)

KGYN OK, Guymon 1/7 0415 weather for different parts of country on "Interstate Radio Network," local western Oklahoma forecast "on 1210, KGYN." Haven't heard this for years. Lots of QRM. (PM-OR)

1230 KISP AZ, Phoenix 1/7 0254 ID "The station with the (long) songs, and no rap. Kiss 12-30." So they still have not changed to KYOT (I wish they would go back to KRIZ again...) (MS)

1240 KNRY CA, Monterey 1/4 2125 promo for "KNRY & KSUR." (PM-OR)

1250 KIKC MT, Forsyth 1/6 0822 fair to good with C&W music "Kick Country" ID's. (PM-OR)

KCST OR, Florence 12/11 0110 good with adcon music, "The Coast KCST" ID with KWSU nulled. Local KKFV off due to snow. Apparently now has full time authorization. (bp-WA)  
 +1/5 2045 fair with local spots "Your local Coast Radio." Wonder how much power they have at night. (PM-OR) (Listed as 68 watts night in NRC AM Log.--NH)

KZEP TX, San Antonio 1/9 0359:55 promo for 24 hour sports--Texas college basketball, "1250, KZEP" "San Antonio, 24 hour sports." New. (PM-OR)

KNEU UT, Roosevelt 1/5 fair with C&W music, "KNEU" call ID at 0431. Listed at 130 watts at night. (PM-OR)

- 1260 KOIT CA, San Francisco 1/2 1940 excellent but fadey in KGIL absence with music by Air Supply, "Coit" ID, PSA for Oceanic Society. // FM 96.5. Former KYA call letters are missed. (MS-CA)
- KPOW WY, Powell 1/4 0022 I've heard these guys before on day power at SRS, but this was the first time at night. Plenty of C&W music, ID's, slogans, ABC news on the hour. Occasionally dominant--trading off with KOIT, XESA, XEMW. (MS-CA)
- 1290?\*KHSL?\*CA, Chico 1/4 0728 apparently one with OC good looping NE. (RW-CA)
- 1310 \*KDIA\* CA, Oakland 1/1 0510 with OC. (RW-CA)
- 1340 KBOS CA, Fresno 1/4 2122 with spot for party in Fresno. (PM-OR)
- 1360 KOHU OR, Hermiston 1/6 2100 first heard in Tacoma, WA two weeks ago and now heard here at good level with ID & news. (PT)
- KUIK OR, Hillsboro 1/4 1046-1050 fading out of nowhere in GY-like mess on freq. after fadeout, apparent switch to day power. Oregon news, local spots, ID "KUIK Daybreak." New, most wanted! (RW-CA)
- KKMO WA, Tacoma 12/27 0305 Spanish program, then recorded s/off giving frequency as "1300 kHz"(!). (bp-WA)
- KRKK WY, Rock Springs 1/9 0345 with "The heart of rock n' roll, KRKK, Rock Springs" and into oldies. (PM-OR)
- 1370 KPCO CA, Quincy 1/9 2009 message telling people to shovel snow off their roofs to avoid collapse from expected heavy snow-fall! 2010-2015 weather, ID, road report and ads. At 2015 into "Sportsline." Excellent. (NH-WA)
- KGEN CA, Tulare 1/4 1018 good over KWRM with promo for GED, ID in Spanish "KGEN, Radio Popular de Tulare y Visalia, Radio Popular." Last heard as KTUL in 1983, call change ex-KTUL. (RW-CA)
- KXTL MT, Butte generally on top at night with KEEN off. Strong ID 1/7 0000 in the middle of Larry King. (PT-CA)
- KSOP UT, So. Salt Lake City 1/4 1115 still coming in powerfully while looking for KAST-OR (not heard), loud with ID. (RW) +1/7 0433 with ID under KXTL with "Country 104.3 KSOP" ID, into more C&W, sometimes topping Butte. (PM-OR)
- 1390 KMIX CA, Turlock 1/5 "AM 13-90 KMIX" ID at 2312. Best heard in a while. (PM-OR)
- 1400 KQMS CA, Redding 1/5 good with spots at 2023. (PM-OR)
- KUKI CA, Ukiah 1/4 2158 ID, spot for Nitty Gritty Dirt Band in concert, using SW wire. (PM-OR)
- 1440 KVON CA, Napa 1/6 2033 fair above KMED with KVON weathercast. (PM-OR)
- KDIF CA, Riverside 1/5 2310 good on top of freq. with Spanish music, "KDIF" ID in English. (PM-OR)
- 1450 KEST CA, San Francisco 1/5 2315 good over all with Middle East programming. (PM-OR)
- KFLS OR, Klamath Falls 1/5 2032 with spots into Blazers basketball game, local spots. (PM-OR)
- KAYO WA, Aberdeen returned to the air 1/6, just after I mailed last week's WDXR. Was off at 1900 when Bill mailed the column, and was on by 2100. (NH-WA)
- +1/9 noted back on at 1510 with usual C&W, sounds a little stronger than in the past couple of years. KGHO-1490 has improved a lot in the past several weeks, but for some reason KXRO-1320 is weaker than in the past. KGHO & KXRO are now about equal, KAYO still is the weakest at 50-60 air miles. (PM-OR)
- 1470 KUTY CA, Palmdale 1/6 0031 fair with C&W mixing with Tijuana. (PM-OR)
- 1480 KCMZ TX, Dallas 1/5 0045 fair above jumble with ID into MOR music // KKSJ-910, using east wire. Again 1/7 0404 good with ID out of news into music (AM Only) // KKSJ. (PM-OR)
- ?KDFL? WA, Lakewood 1/8 1010 probably the one with relig. programming, Gospel music, and promo sounding like phone number given, mentioning Thurston county, and time check. Tentative taped report sent. Hope this was KDFL. If so,

- all I need is Opportunity on 630 to have all of WA, except for a call change or two. A lot of KBMS/KRED QRM off northern Beverage. (PM-OR)
- 1490 KRKC CA, King City 1/4 2116 with PSA tagged "KRKC." (PM-OR)  
 KVAC WA, Forks 1/6 0934 with ID "KVAC newstime is 6:34" in jumble. (PM-OR)  
 KUGR WY, Green River 12/28 with clear ID 1805 after CBS news, then ad for Outlaw Inn and local news. (LG-MT)  
 CJSN SK, Shaunavon became my 12th on this freq. 12/21 at 0900, when gave report from Regina weather office; I phoned station to confirm. Then a powerhouse 12/29 1814; ad for H&R Block, relig. promo, ID "CJSN, your brand of country," then back to C&W. (LG-MT)
- 1550 KAPL CA, Victorville 1/10 1110 NOS format (probably satellite fed), through local XEBG, on car radio. New, one of my closest unheards. (TRH-CA)
- 1600 KATZ MO, St. Louis 1/7 0425 talk show o/u KSSA with help for Blacks, Black Press, etc. (PM-OR)  
 KSSA TX, Cockrill Hill 1/7 0359:55 ID in English "KSSA Cockrill Hill-Dallas," back into Spanish programming. (PM-OR)
- 1610 TIS CA, ??? new CALTRANS TIS mentioning conditions on highway 50 & highway 80, and mentioning updates would be provided as conditions changed. No location or call letters given. (GJ-CA)  
 +1/4 2345 thanks to Gary Jackson for phone tip. CAL-TRANS info on Interstate highway 80 east, ice on roadway, etc. Didn't catch call, if given. New, QRM from Stevens Pass TIS and others. (PM-OR)
- TIS WA, Port Angeles 1/6 0914 "Welcome to Port Angeles." Is this a new one? Gave info on visiting historic area of Vancouver Island, Port Angeles. Gave KAPY-1290 and KONP-1450 stations to tune. (PM-OR)
- TIS WA, Port Angeles 1/6 0920 not sure if another TIS was in there, as "Olympic National Park" was talked about. Maybe this is the one heard a few minutes before with "Welcome to Port Angeles." Ideas? (PM-OR)
- TIS WA, Stevens Pass 1/6 0914 mixing with Port Angeles, giving road conditions, etc. (PM-OR)
- 1620 TIS CA, Pebble Beach 1/2 0757 in weakly mentioning new library location (woman announcer). Male announcer giving dates for Pebble Beach golf tournament. (GJ-CA)  
 +1/4 2110 fair to good with emergency info, address info, Christmas tree drop off, using SW wire. (PM-OR)
- 1690 CKWX BC, Vancouver moderately strong 12/31 2342-0000, //-1130. (1130 spur) At 2355 ID'd as "1130 CKWX" then at 2359 "Country 1130, CKWX Vancouver." Not heard before or since on this freq. (LG-MT)

LOCAL NEWS

- 840 (KSWB) OR, Seaside per call to FCC, apparently KSWB has permission to be off the air for an indefinite period of time, as the station does not have an engineer and cannot operate without one. (PM-OR)
- 1260 (KGIL) CA, San Fernando 1/4 has been silent since 12/30 or 12/31. Called but no one there could tell me much. AM under ownership control of KKGO-FM. FM 94.3 KMGX now is only one using business lines KGIL used. Have heard KOIT nights here but little else. Very strange to not hear a signal on 1260. Supposed to be back in mid-January as KJQI with NOS. (GL-CA) (1/9/93 Broadcasting Info column says 1260 will be KJOI, simulcasting KJQI-540.--NH)  
 +1/2 this long-time local silent pending changes. Went off around year end. Had recently been simulcasting KMGX-FM 94.3. (MS-CA)
- 1370 (KEEN) CA, San Jose 1/1 0258-0301 last few minutes of local, ID on hour, played "Turn Out the Lights, The Party's Over," OC cut, off since. Will come back in "July or August" with possible news/talk format, will retain current call letters. (PW-CA)

## DX TESTS

- 540 KNAK UT, Delta 1/4 good mixing with CBK 0200-0230 with ID's, code ID's. Unneeded, QSL'd in 1983, but nice to hear. 1kw with C&W music. (PM-OR)  
 +1/4 0205 in good with voice and Morse code ID's and C&W music. (RCW-WA)  
 +1/4 0206+ DX test heard well through KJQI. Heard several code ID's and a voice ID "KNAK Delta Utah conducting a test for the International Radio Club..." Sporadic dashes and Morse code ID's noted at 0237 and possibly beyond. Ex-KDLT for me. Very reminiscent of their testing in 1974. First station logged on my Superadio III. (MS-CA)  
 +1/4 0227-0232+ fair in KIEZ null with rapid-fire code ID's, C&W music, ran past sked end time. Unneeded. (RW-CA)  
 1020 (WTNK) NH, New London DX test tried, not heard. (MS-CA)  
 1280 (KEAN) TX, Abilene 1/4 0330-0400 DX test tried, not heard. (RW)  
 +DX test tried, not heard. (MS-CA)

## FREQUENCY CHECKS

- 1260 (KRKE) CO, Aspen 1/7 0200-0210 this former regular frequency check seemed to cease about the time they switched call letters from KSN0. Not heard. (MS-CA)  
 ?KFGQ? IA, Boone 1/4 0205 from f/c list, this may be who I heard with a test tone being alternately switched on & off. Will try to contact station. (MS-CA)

## UNIDS

- 540 1/4 0215 unID C&W station under KNAK test, weakly. KNOE? (PM)  
 1250 1/9 0455 Black oldies station in jumble on east wire. Port Arthur? (PM-OR)  
 1250 1/9 ID at 0459:50. Too much QRM. CBS news opening jingle in jumble, using east Beverage. (PM-OR)  
 1250 1/9 jazz station at 0502. Non-stop jazz, KKF? Using east wire--couldn't hear them on northern wire. (PM-OR)  
 1250 1/9 0507 unID Spanish in jumble using east wire. Domestic or Mexican? (PM-OR)  
 1360 1/9 unID with ABC news promo at 0340. Too weak and too much QRM tonight to get ID. KRKK in like a ton of bricks, wonder if they dropped power? (PM-OR)  
 1370 5 seconds of 1 kHz tone and then 2 seconds unmodulated, repeating under KXTL, 1/6 0055 and again 1/6 2355 through 1/7 0030. Steady level, with only KXTL strength varying. Disappeared promptly at 0300 1/9. Awfully early for ET. KEEN testing its exciter? (PT)  
 1410 1/9 0240 sounded like all news station under CFUN to the east. (PM-OR)  
 1460 1/3 0845 WKKV?? Station with PSA for Bloodmobile in Kenosha at 10am Monday. Any other Kenosha, except WI? Racine is near Kenosha. Using 1500' east Beverage. (PM-OR)  
 1490 12/28 1847 station seemed to ID as KRLT. (LG-MT)  
 1490 Spanish program Sunday 1/3 1800-1818. Looped SE. KUGR? (LG)  
 1610 Beacon seemed to repeat the letter "I" (...) briefly atop Anguilla at 0122 12/30. Not listed, could be domestic or foreign. (LG-MT)  
 1685 12/30 0103-0118 beacon underneath MER repeated the number "5" (.....) in rather low-CPS Morse code. Not listed; could be domestic or foreign. (LG-MT)

This is one of the more interesting columns of late. There are some good catches, including Pat's possible Wisconsin on 1460. It is nice to see some frequency checks listed too (I just realized this is the month to hear tests for the contest, hi). Maybe in the next few weeks there will be more frequency checks reported!

# Central DX Roundup

John C. Johnson  
979 Neptune Boulevard  
Billings, Montana 59105-2129

 **PRODIGY**  
MPNN49A

## FOR THE RECORD

REPORT ALL TIMES AS EASTERN. DEADLINES: MAIL: SATURDAYS. PRODIGY: SUNDAYS.  
FAX REPORTS ACCEPTED. 406-259-9210. CONTACT EDITOR FOR TIME TO SEND.

## RIDING GAIN

- [SA-MB] = Shawn Axelrod, 30 Becontree Bay, Winnipeg, Manitoba R2N 2X9  
Icom IC-R70 with PLAM board and 4kHz filter, 4-foot box loop, 100' wire.
- [TMJ-IL] = Tom Jasinski, 419 North Raven, Shorewood, Illinois 60435-9640  
FRG-7 and Quantum loop, R390 and 2½ foot loop. Sharp QT50.
- [TML-IN] = Tom Laskowski, 1334 East Miner Street, South Bend, Indiana 46617  
Icom IC-725, 60 foot inverted "L".
- [WMc-MB] = Wayne McRae, 103 Donegal Bay, Winnipeg, Manitoba R2K 2B5  
Icom IC-R70 with PLAM board and 4kHz filter, 3 foot loop, Quantum loop.
- [JJR-WI] = John J. Rieger, 801 Sherman Avenue, South Milwaukee, WI 53172  
Panasonic RF2200.
- [SDW-MS] = Serrell David Warren, 1253 CR 90, New Albany, MS 38652  
JRC NRD 515, Palomer loop.
- [JcJ-MT] = Your editor using an Icom IC-R71A with a "Radio West" loop.

## SPECIAL INTEREST

- 1450 **KATR** CO, Greeley. EX-KGRE. 1/2 fair. 0829 with lots of local spots, talk of Greeley. "KATR" ID. New for me. [SA-MB]  
*{JcJ- Change must have been very recent, heard and veried as KGRE a month ago. John}*
- 1560 **WQEW** NY, New York. EX-WQXR. 12/27 o/w/KKAA. 2345 with BBD/NOS music. ID "One great song after another, it's not just a figure of speech, it's 12-60 WQEW." New for me. [SA-MB]



## DOWN THE DIAL

- 640 **WBOW** IN, Terre Haute. EX-1230. 12/16. 0130 with NOS. "640 WBOW" ID. New for me, not heard on 1230 here. [SDW-MS]
- 690 **WPDQ** FL, Jacksonville. EX-WAPE. 1/1 fair. 0306 with SID and sports talk. [JJR-WI]
- 730 **KSUD** AR, West Memphis. 1/1 poor with others. 1850 with promo for basketball games. Contemp. Christian format. New for me, station #2025 heard! [JJR-WI]
- 810 **KCHG** TX, Somerset, San Antonio. 1/2 weak to poor. 0759 with slogan "Good News Radio" and full ID. [JJR-WI]
- 910 **WLLJ** MI, Cassopolis. 1/2 fair w/others. 0753 w/SOL music. "AM 910 WLLJ." [JJR-WI]
- 930 **WAVR** IL, Sandwich. 12/25 good in mess. 0055 fade up with ID "Your home of the classics, WAVR." [SA-MB]
- 980 **WCUB** WI, Two Rivers. 12/28 w/WYFN. 0530 with C&W, "WCUB" ID. [SDW-MS]
- 990 **KRKS** CO, Denver. 1/4 fair to good. 0230 with "AM 990 KRKS" ID by woman into Bible program. After years of trying, I finally IDed this one. [WMc-MB]
- 1030 **WNVR** IL, Vernon Hills. 12/20 fair. 1700 with sign off, legal ID. [SDW-MS]
- 1060 **WKNG** GA, Tallapoosa. 1/3 poor, in and out quickly in mess. 0720 w/"WKNG." [JJR-WI]
- 1250 **KBRF** MN, Fergus Falls. 12/12 w/WHNY interference. 1815-1845 with football game, several local spots including mention of highway 210 in Fergus Falls. [SDW-MS]

CDXR Continued....

- 1320 **WQIK** FL, Jacksonville. EX-WVOJ. 1/3 fair to strong with others. 1820 with C&W music and "99 WQIK" IDs. [JJR-WI]
- 1330 **KDOK** TX, Tyler. 12/26 w/WFBC interference. No sign of pest KVOL. 0315 with NOS, IDing as "kay doc". SID. [SDW-MS]
- 1380 **CFDA** PQ, Victoriaville. TENTATIVE. 12/28 fair. 1600 heard no ID, man in FF talking. Then man and woman reading news in FF. I believe I heard mentions of Victoriaville. Lost by 1610 to CKLC. [WMC-MB]
- KQKD** SD, Redfield. 12/26 good. 0825 with ID and "The official KQKD weather forecast." No longer silent as per log. [SA-MB]
- 1400 **KSPT** ID, Sandpoint. 1/3 good. 0840 with PI spot Hooked On Phonics. ID "AM 1400 KSPT" into C&W music. Not a 1000 sign on anymore. [SA-MB]
- 1420 **KBTN** MO, Neosho. 12/14 barely above GY-like mess. 1915 with C&W. Several mentions of Neosho and Ozark. Call ID also heard before signal faded. [SDW-MS]
- 1450 **KBBS** WY, Buffalo. 1/2 poor w/KATR. 0830 with local weather report, TC and "KBBS Radio" ID. New for me. [SA-MB]
- KMMS** MT, Bozeman. 12/26 good. 0909 with TC and local news and weather. New for me. [SA-MB]
- 1470 **WWWMOH** OH, Toledo. 1/3 good. 1902 with "Toledo's new magic" slogan. AOR format. No ID. [WMC-MB]
- 1480 **KFMQ** NE, Lincoln. 12/14. 2215 with C&W music and "101.9 KYNN" IDs. [SDW-MS]
- KKCQ** MN, Fosston. 1/2 good. 0900 with Ai News, not USR as per log. [SA-MB]
- KLVL** TX, Pasadena. 12/28. 0200 with SID in EE then back to SS with Rancho music. [SDW-MS]
- WGVU** MI, Kentwood. 12/28 good mixing w/KFMQ, WMBC, and WTDY. 0220 with Jazz, ID at 0230 "WGVU." Last heard as WMAX. Got this new one instead of WKGF DX Test. [SA-MB]
- 1490 **WOMI** KY, Owensboro. 12/29. 0500 with what sounded like a sign on, "Good morning and welcome to another day....AM 14-40 WOMI." Had another station earlier with TalkNet, so not sure which one I heard with call ID. [SDW-MS]
- 1590 **KWBG** IA, Boone. 12/29 fair. 2115 with Iowa State vs Minnesota football game. Two "AM 15-90 KWBG" IDs. Spot for Ames. [SDW-MS]
- WCSL** NC, Cherryville. TENTATIVE. 12/29 with KYOK. 0125 with sports program on "Tarheels Sports Network." Local spots for Kings Mountain, Belmont, and Gastonia, but no ID heard. Used my atlas and '93 logbook, and this appears to be the station. Relays WGNC-1450 Gastonia. [SDW-MS]
- 1600 **KGST** CA, Fresno. 12/28 fair. 0100 with legal ID "KGST Fresno, California" by man with Spanish accent, then back into SS programming. Not sure how long they stayed in, was too busy checking my logbook to see if I was hearing it right. Haven't heard a "new" CA since 1973 until KCNO DX Test and now KGST. DX is great in MS this year. [SDW-MS]
- KOGT** TX, Orange. 12/28. 0050 with C&W and sign off. Mentioned 1000 ND days and 250 ND nights, 500 PSRA. Noted logbook #135 lists them 1000/1000/500. [SDW-MS]

#### DX TESTS

- 540 **KNAK** UT, Delta. 1/4 DX Test. CBK very strong until their sign off at 0210. Under CBK heard code ID at 0205. After sign off KNAK good to weak. 0210 fade up with country music. 0211 with code ID again. Followed by voice ID. More country music and numerous IDs and promos. Mentioned on air 24 hours a day. Much weaker after 0230 and completely gone by 0234. This is the first time I've been able to log KNAK! Thanks to J.D. Stephens for arranging this test. UT#67. [JcJ-MT]
- +1/4 DX Test good w/CBK, better after CBK sign off. 0206 and 0211 code IDs. [WMC-MB]
- +1/4 DX Test. Very poor. 0105 and 0116 possible code IDs, but not sure. Lost of CBK, CBFE, XEWA. [SA-MB]

CDXR Continued

- +1/4 DX Test. Weak u/KWMT and unID with symphony music. 0205 and 0210 code ID. Code made it, nothing else. [TMJ-IL]
- +1/4 DX Test not heard here. KWMT and unID heard amid local electrical noise. [TML-IN]
- 570 KCNO CA, Alturas. 11/30 DX Test. Heard thru KLIF and partially nulled WKYX. 0330-0405 with code at 0330, 0340, and 0404. [SDW-MS]
- 960 KGWA OK, Enid. 12/21 DX Test very poor. 0112-0128. Heard code 0112, 0116, and best at 0128. "VVV DE KGWA ENID." First time heard. [TML-IN]
- +12/21 DX Test not heard here. Too much noise. [SDW-MS]
- +12/21 DX Test not heard here. KNEB and WTCH only in CFAM split. [SA-MB]
- 960(KNEB) NE, Scottsbluff. 12/14 DX Test not heard here. Only WERC. [SDW-MS]
- 1020 WNTK NH, New London. 1/4 DX Test good to poor u/KDKA. 0259-0329 with code IDs repeated over and over throughout DX Test! Test started about 0259:30. [TMJ-IL]
- +1/4 DX Test tough u/KDKA. 0230-0259 test ran continuously, was able to copy words like WNTK, Newport, NH, 1020, and TESTING. NH#2. [TML-IN]
- +1/4 DX Test not heard here. KDKA, KTNQ only. [SA-MB]
- +1/4 DX Test u/KDKA in KTNQ null Noted KWIQ earlier. No sign of this until 0326 code ID. First NH for me, thanks to J.D.S. and CPC. [WMC-MB]
- 1150(KNED) OK, McAlester. 12/21 DX Test not heard. Only KLRG and WGOW. [SDW-MS]
- +12/21 DX Test not heard here. KSAL, CKX, & KCUV heard. [SA-MB]
- 1280 KEAN TX, Abilene. 1/4 DX Test fair in heavy CIFX-1290 slop. 0330 with very fast code ID. Another new one for me, thanks to J.D.S. & CPC. [WMC-MB]
- +1/4 DX Test not heard here. Too much KXKL and KDYL. [JcJ-MT]
- +1/4 DX Test not heard here. 0330-0400 with WBIG nulled and several others with music. No sign of test, rechecked tape. [TMJ-IL]
- 1280(WABK) ME, Gardiner. 12/14 DX Test not heard. Only very loud WWOK. [SDW-MS]
- 1370(WDEA) ME, Ellsworth. 12/14 DX Test not heard. Too much noise. [SDW-MS]
- 1480(WKGF) EL, Arcadia. 12/28 DX Test not heard. WTHI in that direction. [SDW-MS]
- +12/28 DX Test not heard. KFMQ, WHBC, WTDY, & WGVU only. [SA-MB]

unIDs

- 1440 unID Station heard awhile back with "These are the 10,000 watt stations of the Interstate Radio Network.....in the northwest. In the southwest....AM 1140....AM 1440." Loooped NW or SE. Station faded in and out. Could this be CJOI? No USA 10kW's on 1440. Any ideas? Semi-local WSEL was off for a brief period. [SDW-MS]

25 YEARS AGO

January 27, 1968 issue of IRCA's DX Monitor....Patrick Martin of Seaside, OR logged YSM-1100, Managua, Nicaragua....Bill Hardy of Pullman, WA mentioned KGA-1510 started airing rock 1/16....Ernie J. Wesolowski of Omaha, NE commented he couldn't remember a January so bad for DX....Starting with this issue, the IRCA Publishing Crew consisted of Bob Jacoby, Richard Brazier, and Don Erickson. They met and printed Friday evenings, mailed Saturday morning.

OPEN MIKE

Troubles are like babies; they only grow by nursing. Ernie Cooper was wondering about a mention by Frank Merrill in the 12/5 CDXR. Frank's logging of KCHG-810 mentioned a KBSN Crane, TX. I didn't catch the error, I'm sure Frank meant KXOI-810. David mentioned he hasn't DXed for over 5 years and had recently re-joined IRCA. Welcome back! Just noticed a newspaper ad, local KGHL-790 is now airing CNN newscasts -- were airing CBS. More later. BILLINGS '93! 73, John.

1993 IRCA Convention Update

The 1993 IRCA Convention will be held in Billings, Montana on June 25, 26, and 27th. Two DX'peditions are planned. Larry will be hosting the Friday night jaunt. Following the convention on Sunday night you may want to stay over and join Shawn Axelrod and John for a Monday Morning DX experience. 1993 Montana Travel Guides will be sent to those interested. Watch for this space weekly for updates on the 1993 IRCA Convention. 73, John & Larry.



~~~~~  
**EDXR EASTERN DX ROUNDUP EDXR**  
Leonard Hyde - 1805 Whipple Dr #26 - Blacksburg VA 24060-2436  
~~~~~

**\* THE REPORTERS \***

- (MB) MIKE BROOKER-99 Wychrest Avenue-Toronto ON M6G 3X8  
Panasonic RF-2200, Sony ICF-7600D
- (MH) MIKE HARDESTER-3118 Gateway Court-Jacksonville NC 28546-6973  
ICOM R-70, Radio West 22" Ferrite Loop
- (JD) J.D. STEPHENS-3715 Conger Road SW-Huntsville AL 35805  
Panasonic RF-2600, Sony ICF-2001, several longwires
- (WPT) WILLIAM P. TOWNSHEND-4500 Connecticut Avenue #901-Washington DC  
20008-4326 - Sony ICF-2010
- (ed) The editor at home with modified Philco-Ford car radio,  
DX-440, 2' box loop, Autek QF-1
- (\*ed) at Beverage site on Sinking Creek Mt. in Jefferson Nat'l Forest  
above equipment plus wire 1725' NNE, homebrew phaser

**\* OF SPECIAL INTEREST \***

- 1130 WNEW NY, NEW YORK 1/3 2110 still // 1560. Is all BUS NX WBBR  
ever going to happen? // operation makes NO SENSE. (\*ed)

**\* THE REPORT \***

- 540 CJSB ON, OTTAWA 1/4 0215 dominant w/"Overnight" on "The Rock  
Radio Network." No sign of KNAK DX Test. (\*ed)
- 560 WISH PA, PHILADELPHIA 1/3 2130 "You're enjoying relaxing favo-  
rites w/Terry Brennan on "WISH"-Stereo 560." Into Sedaka  
song. Mellow rock mx. Needed for call change. (\*ed)
- 570 WMCA NY, NEW YORK 1/3 2120 finally got this one w/REL program  
"The Calvary Hour." Invited to listen "every Sunday night  
at this time on WMCA." New. (\*ed)
- 600 ?CFCM? ON, NORTH BAY 1/4 0210 in/out w/Oldies Coast to Coast. No  
ID, but who else? (\*ed)
- 680 WCBM MD, BALTIMORE 1/3 2110 good w/baseball projections (base-  
ball already? I heard a NUMBER of stations discussing it!)  
A big surprise to hear ID as "WCBM" as I thought it was reg  
WPTF-NC. New. (\*ed)
- 800 CKLW ON, WINDSOR 12/28 2358 fair w/Music Of Your Life. "Real  
Radio" pgm. Nx, ID ment calls & "Detroit." I thought this  
was to have changed to CKWW months ago. (JD)
- 850 KOA CO, DENVER 1/4 0100 booming in w/nx and tx, frqt "85 KOA"  
signs. Never heard this well before. (JD)
- 930 ?WSEV? TN, SEVIERVILLE 1/3 1900 poor w/"You're listening to  
American Country Countdown on ???? 930 AM, ???? FM, WVLY,  
Gatlinburg." Call not clearly heard. WSEV listed // 105.5-  
is this WVLY? Would be at 148 watts night power. (\*ed)
- 940 KIOA IA, DES MOINES 12/21 1806 fr o/CBM w/"More music...KIOA  
all oldies" jx, into "it's Too Late" by Carole King. (MB)
- 1000 WMUF IN, PARIS 12/22 1748 gd after WTAK s/off w/C&W mx, "WMUF  
Paris" jx, s/off w/anncr ment address & staff person to di-  
rect comments to. (JD)
- 1090 CKWW ON, KITCHENER 1/4 0230 poor behind WBAL with CHR mx. ID  
as "your all night music stn - AM 109." (\*ed)
- 1200 WCHB MI, TAYLOR 12/25 0830-0845 fr o/mess that included WAGE &  
CFGO w/local nx, Xmas greetings from GM of Bell B'casting  
Co. IDs "WCHB News-Talk Radio" & "WCHB, the voice of pro-  
gress in Detroit." Call-in show w/f/host, tx about caller's  
most memorable Xmas. (MB)
- 1210 WKNX MI, FRANKENMUTH 12/26 0740-0800 fr-gd. really chewing up  
WOGL (good! -ed) w/SS ogm mostly of Xmas mx. No legal ID at

TOH, but heard ad for New Year's Eve party at the Tropicana Banquet Hall in Bridgeport, MI. (MB)

- 1230 WTIV PA, TITUSVILLE 12/30 0740 Noted "AM 1230 WTIV, 20 minutes from 8 o'clock" in GY junk, then lost to semi-local pest WECK. (MB)
- WBVP PA, BEAVER FALLS 12/31 0805 fr-pr in WECK null w/local nx & many ments of Beaver County. 0809 ID anmt "WBVP news time is 8:09" - into sports. (MB)
- 1240 WCEM MD, CAMBRIDGE 12/28 0800-0805 pr in GY junk w/CJCS nulled w/ABC nx, local nx introduced as "From the WCEM newsroom.." (MB) (xint GY logging, Mike! -ed)
- 1360 WMNS NY, OLEAN 12/22 1759 fr o/usually dominant WIXZ & WSAI, w/local nx, then ID as "You can depend on the "talk of the valley," 1360 WMNS Olean." Into CBS' "The World Tonight" nx w/Doug Poling. (MB)
- 1470 WXXW PA, ALLENTOWN 1/3 1945 in/out w/C&W mx. "1470 WXXW - This is the place for ... (something unintelligible). New. (\*ed)
- 1480 WTOY VA, SALEM 1/3 1950 a surprise on 20 watts night power w/REL. Only 25 miles away, but never heard at night before. I wondered if any stns EVER used low night power! (\*ed)
- 1510 WSMH MA, BOSTON 1/3 1930 xint o/WLAC w/Latina mx, m/anrcr in SS call letters pronounced in accented EE "W-S-M-H." (\*ed)

\* unIDs \*

- 930 unID 1/3 1915 good w/"People's Radio Network." (PRN) A new one on me. General interest tx show. Gone by 1930. (\*ed)
- 960 unID 1/3 2045-2215 in/out in fight w/local WFIR with EZ RO mx. Many IDs as "Kiss 98.7 FM." "We've got more music and less talk - Kiss FM." At two TOH, no AM ID, no FM ID, not even a break in the music. I thought a Canadian, until I heard a phone number given w/a 922 prefix, which just happens to match WAAK-NC. Haven't seen any fmt change or // operation anmt for this stn. Help? (\*ed)

\* DX TESTS \*

- 540 KNAK UT, DELTA 1/4 0200-0230 fr w/code & tones. Mx not heard. New, UT # 3. (JD)
- (KNAK) 1/4 0218-0230 not heard, CJSB atop channel. (WPT)
- & 1/4 0220-0228 not hrd. Only stn noted was WGTO in like the proverbial ton of bricks. (MH)
- & 1/4 0200-0230 no sign, just CJSB. (\*ed)
- 1020 WNTK NH, NEW LONDON 1/4 0300-0330 in at fr lvl w/near constant code IDs. Main GRM was KDKA, but even so, no trouble copying/taping the test. State #48. (MH)
- & 1/4 0300-0330 fr to v gd w/almost continuous Morse Code. Heard for the full 30 minutes, w/the signal peaking between 0315-0330. New, NH #1. (JD)
- & 1/4 0300-0316 fr u/KDKA. Morse Code, TT. (WPT)
- & 1/4 0258-0320 Noted steady tone u/strong KDKA at abt 0255. Began slow Morse Code IDs at about 0258. Code heard continuously until 0320, when I crawled back in the sack! New, NH #1, state #46. (\*ed)
- 1150 (KNED) OK, McALESTER 12/21 0210 not heard, too much WMET. (WPT)
- 1280 KEAN TX, ABILENE 1/4 0330-0400 weak w/slow Morse Code and C&W mx. (JD)
- (KEAN) 1/4 0330-0345 tried, couldn't hear because of WPXY. (WPT)
- & 1/4 0332-0400 not hrd. A couple of stns mixing (thought I heard an ID for WDNT, but not positive.) (MH)
- 1480 WGBF FL, ARCADIA 12/28 0200-0230 weak code just after beginning of test. Into voice ID, but too weak to copy. Nothing else heard. (JD)

18

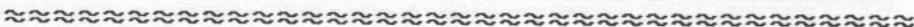
(WGKF) 12/28 0205-0228 a no show here. (WPT)  
 1540 WSMI IL, LITCHFIELD 12/23 0100-0105 very strong w/code IDs,  
 voice anmts, short tones, followed by a period of OC. (JD)

**\* EDITOR'S DESK \***

Thanks to both MIKES, BILL and J.D. for this week's column.

A number of you have received postcards from me with 6 cents postage due. I apologize. Where I EVER got it in my head that postcards mail for 13 cents is beyond me! Once again, I apologize, and there will be no more "Postage Due" postcards.

I certainly share Mike Hardester's frustration w/FM // operations that never give AM IDs, as per my "Kiss FM" logging this issue. The FCC is undermanned, and the policy seems to be to "crack down big time" on a few shoddy operators occasionally to put fear into the others, rather than across the board enforcement. We DXers could report stations that break the rules, but we need all the good will we can get, and that's no way to get it. Wonder if the FCC reads club bulletins for tips? 73.



**SPECIFICATIONS**

**Frequency range:**

50 kHz - 30 MHz

**Reception modes:**

USB, LSB, CW, AM, FM (optional)

**Frequency stability:**

< ±10 ppm, from -10 ~ +50°C  
 < ±2 ppm, from 0 ~ +50°C (w/TCXO-4 option)

**Standard tuning steps:**

10 Hz/100 Hz (CW, SSB)  
 100 Hz/1 kHz (AM, FM)

**Sensitivity:**

(for 10 dB S/N, 0 dBμ = 1 μV FM 12 dB SINAD)

Frequency Mode (BW)	100-250 kHz	250-500 kHz	0.5-1.8 MHz	1.8-30 MHz
SSB, CW (2.4 kHz)	< 1 μV	< 1 μV	< 1 μV	< 0.25 μV
AM (6 kHz)	< 10 μV	< 2 μV	< 4 μV	< 1 μV
FM (28-30 MHz) (15 kHz)				< 0.5 μV

**Selectivity: (-6/-60 dB)**

Modes	Minimum -6 dB BW	Maximum -60 dB BW
CW narrow (optional)	1500 Hz	1.8 kHz
SSB, CW	2.4 kHz	4.5 kHz
AM Narrow	4 kHz	15 kHz (-60 dB)
AM	9 kHz	18 kHz (-60 dB)
FM (optional)	15 kHz	30 kHz

**Circuit type:**

dual-conversion superheterodyne

**Intermediate frequencies:**

1st : 47.21 MHz  
 2nd : 455 kHz

**Squelch sensitivity:**

1.8 - 30 MHz (CW, SSB, AM): < 2.0 μV  
 28 - 30 MHz (FM): < 0.32 μV

**IF rejection (1.8 - 30 MHz):**

70 dB or better

**Image rejection:**

(1.8 - 30 MHz): 60 dB or better

**Maximum audio power output:**

at least 1.5 watts into 4 Ω with < 10% THD

**Audio output impedance:**

4 to 8 Ω

**Antenna impedance:**

Lo-Z 50 Ω unbalanced  
 Hi-Z 450 Ω unbalanced

**Supply voltage:**

DC11 - 13.5 V, negative ground

**Power consumption:**

1.2A maximum

**Dimensions (WHD):**

238 x 93 x 243 mm

**Weight:**

approx. 3 kg (6.6 lb.)

**FRG-100**



# Western DX Forum ★ ★ ★ ★ ★

Reid Wheeler 5910 Boulevard Loop SE Olympia, WA 98501

Deadline: Saturday 2 weeks before publication

## Mike Sanburn, P.O.Box 1256, Bellflower, CA 90707

Hello you people. It's the last day of the year, and I'm looking forward to 1993. Looking back 20 years, 1973 was the first year that I DXed from remote locations such as Fresno, CA and Phoenix, AZ. Also that year I remember calling talkshow host Ray Briem of KABC to discuss my armchair receptions of CBR, KDKA, and WBZ. Back then I would listen to all night trucker shows on KOB, WWL, and KRVN. Things haven't changed all that much. I do feel that anyone who has DXed for over 2 decades should be entitled to an honorary PhD in Music, Geography, and Political Science, hi. In the local irony department, does anyone else find humor in the fact that announcer Gary Owens, of TV's "Laugh In" fame, left KMPC when they became all sports, took a new job at KLAC, only to end up hosting - you guessed it - "Sports Nuts". On that show he replaced Gabe Kaplan of TV's "Welcome Back Kotter" fame. KLAC DJ Stan Cambell is reputed to take a high-performance Walkman with him on jet flights between Lakers games, and tell the other announcers what stations he's hearing. After learning this, I felt compelled to have a DX Monitor sample copy sent to him. KLAC plays some great country music, but unfortunately they were on the night of the KCNO test so I didn't get to log it. Congrats to Karl Jetter for catching that one! Also congrats to TRH for the excellent catch of WR1X-1020! If there's a most impressive QSL award, it should go to Pat Martin for his India verie (no new veries for me this week...). KPSL-1010 returned to the air Nov 15th, and I'm still trying to log them (I wish KSES would do the same) KCKC is no longer simulcasting their FM as of 12/28 (AM is country, FM is CHR). I read about the fire at KXVQ. If anybody has a KXVQ business card they'd care to sell, please contact me. IRCA lives! 73

## John C. Johnson, 979 Neptune Blvd, Billings, MT 59105-2129

(406) 259-9210

[1/3] 1993 is hear and the IRCA Convention is less than 6 months away! Convention updates will appear at the end of CDXR from now until June. I hope many of you will be able to attend. Glen Kippel: nice to hear from you via FAX. For those of you who keep track of such things, local KOUS-TV channel 4 (actually licensed to Hardin) moved to channel 6 with the call letters KSVI-TV on January 8th. This is a big improvement as channel 4 was broadcast from a tower 18 miles from Billings. Channel 6 broadcasts from a new tower here in Billings. This change took some 4 years and involved moving channel 6 from Miles City, etc. BILLINGS '93. 73, John.

## Gary Larson, 2806 Lincoln, Burbank, CA 91504

(818) 843-8222

[1/4] Hope you all had some nice holidays. Locally 1260 has been silent since about Dec 30 but unsure when sign-off occurred - wasn't listening much. Was to go off Jan 5 per newspaper story. A silent period while equipment is upgraded was to be a couple of weeks. Believe call is to be KJQI and 540 KJQI will go to KOJY (thought it was on 98.9 in Dinuba CA). Music is to be nostalgia similar to old KMPC one. Also found out Saul Levine owns KJQI 1260 as well as KKGO FM. AM 540 will be paired up w/1260 giving at least daytime, a huge coverage but nights 1260 coverage pulls in some plus 540 uses 360 w. nights. Phone number for KKGO-KJQI again is 310-478-5540. I support IRCA continuing separately as a club. Hope someone will take over as publisher. Thanks to Ralph for a great job over the years he's done it. 950 silent as usual but some nights back I did hear a faint Spanish signal. Unsure if former owner is still in LA area or if they'll return to air with proper permits or if station was even sold. Duncan Shaw, how about an update on what's going on in news dept. and in general at KSCR? Hope '93 gets many of you good dx. 73.

Patrick Martin, P.O.Box 843, Seaside, OR 97138-0843

[1/5] Hope everybody had a nice holiday season. I thought I would also say how pleased I am that Ralph Sanserino has decided to continue doing the bulletin. Everyone should take their hats off for Ralph! An many of you know, I am quite the experimenter with antennas. Lately I have made a new change. I have been using mainly 3 antennas for about 8 years now: (1) a 200' SW/NE terminated wire for the South and South Pacific areas; (2) a 1600' NNW wire toward Alaska and Northern BC, also terminated; and (3) a 1500' eastern wire also terminated. I thought I would try a new Beverage antenna to the east, right on the ground directly under the eastern Beverage I already use. The eastern wire runs about 5-6 feet off the ground on top of a barbed wire fence. The fence wire doesn't seem to affect the Beverage much, as it is quite directional to the east. After I terminated the wire, it even got more directional. I was disappointed with the results of the Beverage antenna right on the ground. It was about 10 db down from the Beverage 5 feet off the ground and it was noisy. I thought, why not try the 1500' Beverage on the ground as a ground radial? I disconnected the ground rods to the toroid matching unit and connected the 1500' to the ground side of the coil. It made quite a difference. The wire does add a little noise, but the wire has now become more directional and has many interesting lobes. Many nights an unid SS was way over CKWX-Vancouver (50 KW-directional this way-1130 Khz). Very interesting effects to say the least. Quite a few frequencies do not have the dominant station on them. 1460 Khz is an example. It used to be the KMWX-Yakima would always be at least 20 db/S9. Now quite often it is in a mumble-jumble at night, even though KMWX is directional right at me. One night recently I logged in 12 minutes, KENO-Las Vegas, KGGO-Des Moines, and WACO-Waco. I have it hooked up so I can easily hook up the old ground rods to the system if needed. I don't know if anyone else has ever tried such a system, but on a DXpedition it might be interesting to try it. That's it for this time. Good DX to all and the best throughout 1993! 73s Patrick

Jerry H. Neves, 3951 Colby Way, San Bruno, CA 94066

[12/30] Greetings to all club members. About 8 or maybe 10 years ago I belonged to IRCA but somehow lost interest in MW DXing. Well, I'm back again. Rigs here incl. Sony 2010, HQ-180A, FRG-7, Kenwood TS440S/AT, GE Superadio II + a few others... Well, I convinced my wife to give me the new GE Superadio III for Xmas. Well, the radio went back for a refund the following Monday. Stations audible on the Super II are not even audible on the Super III! KGO in S.F. on 810 kHz looks on the dial as being on 760 kHz (off by about 50 to 60 kHz, calibration wise!) Noticed a bad spur on 1350 kHz making channel impossible to listen to! The wide/normal filter switch, when you have a weak station on, with the filter switch to normal is OK. Switch selectivity to wide and station is totally gone!!! Period! I'll stick with the Super III Maybe I got a bad unit! Also I may want to mention that the new Sony ICF SW55 works very good except on the MW band. Very poor sensitivity!! The Sony 2010 is much more sensitive on MW. Heard recently that Yaesu is coming out with a new General Coverage receiver soon... the FRG-100. Hope everyone has an excellent holiday and happy new year. P.S. I notice a couple of members have the PLAM Board on their ICOM R-70's. What is it and where can you get it, price, etc. Anyone that can give me info regarding above would be appreciated. 77's de Jerry. *[Welcome back to IRCA and the Forum - ...and you're not the only one who has had less than enthusiastic comments on the Superadio III - rcw]*

#### Your Editor

*I'm not complaining, but it seems that most WDXF contributions only come from a few of you. Why don't some of you other readers let the rest of us get to know you a little better?? Why wait for the Anniversary Issue? Regarding DX, conditions here have taken a marked improvement with the recent very cold weather - nite temperatures have been in the mid-teens. Many of the regular regional channel-cloggers are way down and providing good opportunities for the more distant ones. These are the best conditions I have experienced in the last 18 months.*

## **A DXers TECHNICAL GUIDE**

Now in its 2nd edition, this 120 page book answers questions on receiver and antenna theory, how to make them work better, what audio filters and loop antennas will do for you (and hints on their construction), how to build a beverage and phasing unit, and much more. Only \$5.50 for IRCA members, \$6.50 for non-members (overseas airmail add \$2.50). Order your copy today from: IRCA Bookstore, 9705 Mary Ave NW, Seattle WA 98117

EASTERN

DX

FORUM

Richard C. Evans  
P.O. Box 21883  
Milwaukee, WI 53221-0883

Deadlines: Saturdays Phone: 414-Atlantic 2-9035

The deadline in Milwaukee for the Anniversary Issue will be 2/27. You can send it in early with another Forum. Just mark it for the anniversary issue and I will hold it.

R.C. Watts, 4109 Graf Drive, Louisville, Kentucky 40220-3016

A couple Europe expedition QSLs arrived: Belgium-1512 and Switzerland-1566. Nothing special, but welcome anyway. The European AMs are fewer than they used to be, but still difficult to hear well on a portable in a noisy environment. Last 1992 QSL is WWNC-570, Asheville. Stix, coverage map, business card and personal note from Frank Byrd, Program and Music Director. Checking the log, first 1992 QSL was KRMG-740 in Tulsa, followed closely by CIAO-530. Didn't send out many reports and rate of return was on the poor side, so not a lot in between. A couple good ones made up for it though. Got some stickers, magnets, key chains and buttons from local stations for the Chinese broadcasters I hope to meet in Beijing. Am looking to get good pix of the CRI studios plus off the air tape of Easy FM and other domestic service for us foreign devils. If we make it there and back will try to have something interesting for you. I had a pretty good radio year. Hope you did too and that we all have good reception conditions with little static and no QRM in 1993. My New Years Resolution is to quit QSLs and take up collecting something else. Does anyone out there want to trade banana stickers? (I don't, but I once heard of a guy who collected tags from tea bags and found they run in series--rce

Ernest Cooper, 5 Anthony Street, Provincetown, Massachusetts 02657

No AM veries have come in since my last Forum report. All those twilight receptions I mentioned having sent reports to haven't replied! I've had two decidedly unexpected FM openings into IL and WI in December: very welcome indeed. I'm pleased to see that Ralph Sanserino is going to stay on as our Publisher. It would be a sad day if we were to have to merge with the NRC - it's great to be receiving publications each week from two clubs! Since I've been able to participate in sunset DXing this autumn and winter, I've noticed that some days reception can actually be TOO good! That is, the big boys are already rolling in long before sunset, like WBBM, WOWO, WSB, etc., spoiling any chance of hearing the lower-powered daytimers on clear channels around their sign/off times. I tried hard to pull in the TEST from WKGF-1480-FL, but no soap. I feel certain they were not on, for I figure they would have made it here with 1 kw non-directional, as 1480 is quite workable here. Other recent special tests have either been too far away, or buried on crowded channels. I've finally corralled enough info on WMRV-1430-NY for a report, this on 12/28 @ 0150+. On 12/18 at 1620, I happened on my first loggable "Tizzy" (TIS) with one not giving call letters, and located in Falmouth, MA, with info on how to find parking space for those taking the ferry to Nantucket, and a report sent to the steamship company in hopes for a verie. A report also to WLWX-1550-CT, rather tough here due to an infernal TV sweep whistle which is there day and night, night and day, logged after WNTN-MA's 1615 s/off in December, and after WARD's 1630 power-pattern switch, to 1645. The last day of the year was quite Auroral, and I was surprised to find Bermuda rolling o/WADO & others on 1280 all morning w/REL talk 0135-0202, and a report is off to them. And, at long last I was able to get a log on Caribbean Beacon-690 0245-0306. Their 1610 50kw job comes in here every evening and morning, but the 690 is tough, due to CBF, a couple of SS stations, and WRKO-680 slopover, but on 12/31, the Beacon had enough oomph to make it for a logging and report, with a very slow-talking minister. If anyone would like a copy of my "Forward - March" program (an hour of all marches) just send me a 60-minutes cassette and I'll send one to you, complete with a dedication

to you during the show. And hey, Chicago - where do you come off claiming the title of "The Windy City" hi! We're applying for that honor here at the Tip of the Cape! Brrr! (Ernie, Chicago was named "The Windy City" because of the politicians, not the weather, but the lakeshore can get pretty windy there--rce)

S.D. Warren, 1253 CR 90, New Albany, Mississippi 38652

Hello again from Mississippi. It has been over 5 years since I've contributed to EDXF or been in IRCA. I am a former member of IRCA (1983-1987) and NRC (1985-89). Although I haven't been in any DX club since 1989, I have remained active in the hobby. My main interest has been shortwave and FM though. Last year a new Palomar loop antenna helped turn my attention toward BCB DX again. For the re-intro, I'm 45, single but my girl friend thinks otherwise (hi) and have been DXing BCB and TV since the late 50's and FM and shortwave since the mid 60's. I don't have a permanent job at present but am working temporary assignments thru Manpower. I was employed in November and most of December but that job has now ended. Maybe I can catch a few of those DX tests before I return to work. When I was in IRCA before, I lived at Nettleton and I now reside at New Albany, a small town about 20 miles NW of Tupelo in the northern part of the state. I gained one local when I moved to New Albany WNAU-1470 500 watts fulltime. Has anyone ever heard it? (hi) (I haven't-rce) WNAU programs gospel music and leaves the air at night but leaves its OC on all night. I can still hear WWWW (OH) and WMBD (IL) but other than those 1470 is useless for DXing. WTUP-1490 Tupelo has been off the air since July or August. I have heard about 12 new ones on 1490 since then from as far west as Oklahoma (KOKC) to as far north as Iowa (KRIB). WSEL-1440 Pontotoc was back on in December but has been off again recently. Maybe their xmtr burned out because it couldn't take NSP programming after being shut down since 1991. WVLY-1320 Water Valley is not being heard here with WAGG (AL) and KRLW (AR) being the only stations audible there during the day. WCSA-1260 Ripley is not operating at present but was on again last spring or summer. This has been a good season so far with 45-50 new stations heard and I do not count call changes as new stations. My 12 year old NRD-515 is doing great with that new Palomar loop. I have tried several of IRCA's and a few of NRC's DX tests with only 1 heard so far. KCNO-570 came in well with the code. If KLIF-TX had been off, I think I may have heard voice IDs from them. Keep those tests coming from ME and NH and don't leave out VT and DE! J.D. Stephens, you are doing a fine job this season. Keep up the good work! It's great to be back in IRCA. I hope it lasts forever. I expect to have some catches in CDXR soon. It's time for a SP. 73 from MS. (Good to have you back, S.D. I was thinking about you the other day and wondering what had happened to you--rce)

Tom Jasinski, 419 North Raven, Shorewood, Illinois 60435

Belated New Years Greetings to all. First of all many thanks to J.D. Stephens for the many fine DX Tests we have been able to enjoy this season. Have tried for nearly all of them. Some were heard and some didn't make it. Veries are slowly trickling in. The biggest disappointment came from the KCNO test. Weak morse code was heard between 0333 and 0338 EST on Nov. 30th. Only a few characters were heard clearly. There was considerable interference including slop from WIND-560. WIND is in the opposite direction from KCNO and could not get rid of them. A copy of my reception tape was sent along with my reception report. The reply came in the mail today. Scribbled in pencil on the back of my reception report I am in so many words told that I faked the morse code heard on the tape.!!! Is this what we stay up half of the night and miss valuable sleep for? This is a bad way to start a new year and my 30th year of DX'ing. In this case I would have been better off not sending the tape and saving all this grief, and a few bucks on the new cassette, mailer and postage! Am planning on sending another taped report. This tape will be for one minute around 0338. During this time the signal was the strongest with the best code. Even then there are only a few characters in the clear. I believe the CE at KCNO confused garbage slop from WIND as code characters. The only DX test verified so far this season is WBHY. Nothing back yet from WLYN, KNED or KNZZ. So far only 24 veries

for 44 reports back for 1992. That's a 54% return and the poorest since 19082! '73's.

Rick Evans, 4841 South 26th Street, Milwaukee, Wisconsin 53221-2937

Some odds and ends here. An article in the Milwaukee Sentinel for 12/16/92 said that WTMJ-620 had asked that its power be increased from 5000 watts to 50,000 watts. It didn't say if they had applied for another frequency but, as far as I know, 620 is still limited to 5000 watts, or is the FCC now winking at power limits. The article did say that they hoped to move their transmitters from Brookfield in suburban Waukesha County south to a 150 acre site in Racine County. The existing towers date back to 1926, and are a landmark in the area apparently. One tower is 685 feet high and two more are 400 feet high. The application was made to the FCC on 12/3/92. (I sure hope they lose!) Also, in December, I was at a men's breakfast where the guest speaker was Jim Corbett, one of the announcers for WKSH-1370 in Sussex, Wisc. I had a chance to ask a few questions and mentioned that I am interested in long distance reception of AM stations. He mentioned that they are 500 watts day and night from four towers. It's non-directional days, but at night, they have two "balloons" due north-south his words. I would assume a figure eight pattern from a site in the northwest corner of Brookfield. All the announcers are volunteers. He was an interesting person to listen to, but it was more about himself than about the station. I was probably the only one there interested in AM DX. As I type this at midnight 1/10, I've picked up two new ones for the weekend (and 5 for the new year). So far, 44 new ones since the first of August. Latest one was KTWO-1030 Casper, Wyoming under WBZ. I guess that's a perfect combination--hearing Wyoming under Mass., hi. With Maine and Wyoming as new states this season, I definitely can rate this a good year. I can remember 20 years ago when WBZ would be off on MMs, and KTWO would be in. I can also remember 26 years ago when WSPD-1370 would off MMs and Montana would be in. Guess who didn't bother to verie the Montana? hi. In reply to Leonard Hyde asking if I called WRIX-1020 from South Milwaukee, the answer would be no. I live in Milwaukee, not South Milwaukee, which is a separate village. It might have been John Reiger. Veries in this week (both letters) from KSTP-1500 and WGEZ-1490, meaning that both stations I reported to so far in 1993 have veried. Now up to 265/13. I found the 1/9 DXM very interesting, especially the new column "DX Records". I feel like I know Leonard a little better because of his listing. One question I did have: were the totals listed across all 6 locations or just there in W.VA./Va.? Also, how does one decide what his all time best catches are? After 30 years, it has to be more than just the distance involved. Ah, the memories that came back just looking over his best catches and wondering what I would boil 1585 stations down to if I could only say one best. That's it. Only 15 more DXMs before Labor Day. Where does the season go? '73.



24

**ALL SPORTS. ALL HOURS.**



# Hearing It Through The Grape Vine

SHAWN AXELROD, 30 Becontree Bay, Winnipeg, MB R2N 2X9 Canada (204) 253-8644 before 2300 E.L.T.

### CONTRIBUTORS THIS TIME

MIKE HARDESTER 3118GAITWAY COURT JACKSONVILLE NC 28546  
 MIKE SANBURN P O BOX 1256 BELLFLOWER CA 90707  
 NIGEL PIMBLETT 1146 QUEEN ST SE MEDICINE HAT AB T1A 1B4  
 LEONARD HYDE 1805 WHIPPLE DR #26 BLACKSBURG VA 24060  
 JOHN JOHNSON 979 NEPTUNE BILLINGS MT 59105  
 PHIL BYTHEWAY 9705 MAY NW SEATTLE WA 98117  
 KARL ZUK 154 OLD POST RD N CROTON-on-HUDSON NY 10520

### CLASSIFIEDS

PHIL BYTHEWAY IS "INTO COLLECTING RADIO/TV STICKERS". HE IS INTERESTED IN ESTABLISHING TRADES WITH ANYONE THAT HAS EXTRA STICKERS. HE CLAIMS TO HAVE 3000 DIFFERENT TYPES TO OFFER IN RETURN AND IS "INTERESTED IN STRIKING A DEAL WITH ANYONE THAT HAS STICKERS THEY NO LONGER WANT"

### BANDSCAN

THIS BANDSCAN COMES FROM KARL ZUK VIA THE DETROIT FREE PRESS

540	CBEF French/Variety	560	WHND Oldies
580	CKWW Contemp./Talk	630	CFCO Adult contemp.
690	WNZK Ethnic	710	CHYR Country
760	WJR Personality	800	CKLW Nostalgia
950	WWJ News	990	WWCM Inspirational
1030	WUFL Inspirational	1050	WPZA News/Music
1090	WCAR Talk/Ethnic	1130	WWWV Country
1160	WCXI Country	1200	WCHB News/Talk
1270	WXYT News/Talk	1310	WMTG Motown Gold
1340	WEXL Inspirational	1350	WHMI Contemp.
1400	WQBH Black Adult	1440	WMKM Gospel
1460	WPON Country/Ethnic	1480	WSDS Country
1500	WLQV Inspirational	1550	CBE Variety
1600	WAAM News/Info		

All this is their wording not that of Karl or myself.

### STATE OF THE MONTH ARKANSAS

PHIL BYTHEWAY ALL LOGGED IN THE EARLY 70's

920	KARN Little Rock	occasionally	1010	KLRA Little Rock	MM occ.
1020	KAAY Little Rock	MM occ.	1150	KXLR N Little Rock	Once in SP
1340	KBTA Batesville	Once on a test	1420	KXOW Hot Springs	Once
1480	KTHS Berryville	Freq Check	1560	KDDA Dumas	Sign on

KARL ZUK

1090 KAAY Little Rock u/WBAL once in a very blue moon!

MIKE HARDESTER

1090 KAAY Little Rock Once in LA; Ccc in North CA; Once from NC  
 1480 KTHS Berryville Freq Check in '71 from Modesto CA one of my best logs

JOHN JOHNSON SHERIDAN WY 1962-64

730	KSUD West Memphis	1010	KLRA Little Rock
1090	KTHS Little Rock	1090	KAAY Little Rock
1480	KTHS Berryville	1500	KGMR Jacksonville

NIGEL PIMBLETT

1090 KAAY Little Rock Once in CHEC SP

LEONARD HYDE

1090 KAAY Little Rock Occ at nite 1010 KBIS Little Rock Occ at nite  
 1300 KWCK Searcy Occ at nite

There is more to come on the next page so read on!

YE OLDE EDITOR

760 KMITL Sherwood	Rare SRS	860 KOSE Osecola	Rare SRS
1010 KBIS Little Rock	Most nites	1030 KFAY Farmington	Once
1090 KAAV Little Rock	Big Pest nites	1300 KWCK Searcy	DX Test
1390 KAMD Rogers	Once SRS	1420 KXOW Hot Springs	Once SRS
1490 KRDS Paragould	Once	1530 KXQR Truman	Once
1580 KFDF Van Buren	Rare SRS		

FREQUENCY OF THE MONTH 1520

PHIL BYTHEWAY			
KMPG Hollister CA	Occ SSS	KTRO Port Hueneme CA	Occ SRS SSS
WKBW Buffalo NY	In SP of everyone!	KMAV Mayville ND	Freq Check
KOMA Oklahoma City OK	u/KFXX semi reg	KFXX Oregon City OR	Reg day/nite
XEEH S.L.Rio Colorado	Once when everyone else was off!!		

KARL ZUK			
WKWB Buffalo NY	Dominant nites	WTHE Mineola NY	Days
WTGR Myrtle Bch. SC	Once at SSS		

MIKE SANBURN			
KOMA Oklahoma City OK	Pest at nite	KTRO Port Hueneme CA	Reg. days
KMPG Hollister CA	SRS or S/on	KYXI Oregon City OR	Rare
WKBW Buffalo NY	70's in KOMA SP		

MIKE HARDESTER CENTRAL CALIFORNIA			
KACY Port Hueneme CA	Nites reg in '70's	KMPG Hollister CA	Reg days
KOMA Oklahoma City OK	Occ nites	KYXI Oregon City OR	Once in '69

JOHN JOHNSON SHERIDAN WY 1962-64			
WHOW Clinton IL		KRSS Souix Falls SD	
WKBW Buffalo NY		WDGL Douglasville GA	
KSIB Creston IA			

JOHN JOHNSON BILLINGS MT			
KOMA Oklahoma City OK	Dominant nites	KMAV Mayville ND	SSS
KTRO Port Hueneme CA	Occ SSS	KSGO Oregon City OR	Rare at nite

NIGEL PIMBLETT			
KOLM Rochester MN	Rare at SSS	KMAV Mayville ND	Rare at SSS
WKWB Buffalo NY	Once	KOMA Oklahoma City OK	Dominant
KFXX Oregon City OR	SRS	KTRO Port Hueneme CA	Once

LEONARD HYDE			
KOMA Oklahoma City	Occ SSS/nites	WVOI Toledo OH	Occ SSS/nites
KACY Lafayette LA	Occ SSS/nites	WTCV Greenup KY	Occ SSS/nites
WKZQ Myrtle Bch. SC	Occ SSS/nites	WCHE W Chester PA	Occ SSS/nites
WDSL Mocksville NC	Reg days	WKWB Buffalo NY	Reg nites

YE OLDE EDITOR			
WLJUV Loves Park IL	Once SRS	W000 Shelbyville IN	Once SRS
KSIB Creston IA	rare SRS	W0WQ Muskegon MI	Rare nites
WMLM St Louis MI	rare SRS	KOLM Rochester MN	SRS/SSS reg
KMPL Sikeston MO	Rare SRS	KMAV Mayville ND	Dominant days
KOMA Oklahoma City OK	PEST nites	WKWB Buffalo NY	Most nites u/KOMA
KJIA Souix Falls SD	Rare SSS		

Well that is all for now. Thanks to all of you for your past support and I hope to hear from many of you in 1993.

NEXT TIME AROUND WE WILL LOOK AT:

STATE OF THE MONTH INDIANA

FREQUENCY OF THE MONTH 620 KHZ

REMEMBER ON A CLEAR DAY YOU CAN HEAR FOREVER!

73 + Best in 1993

Shawn

26

# RADIO BUSINESS REPORT

## It just sounds better: GM's new Delco AMAX radio

the only, radios to meet the new AMAX ("AM MAXimum") reception standards set forth by the NAB's AM Improvement Committee. Last month, we got a chance to spend another week with this fine radio, and we continue to be amazed at its performance.

This new Delco is at least a full magnitude better than any AM we've heard up to now including the AM stereo units which have been available for several years in some cars from GM, Ford, Chrysler, Toyota, Nissan and Acura.

### "Dynamic signal processing" attacks AM interference

Its frequency response runs out to 6.5 kHz, about as wide as will be practical to include in any mass-produced AM radio.

The new Delco has "smart" circuits which constantly monitor reception conditions and the quality of the incoming signal. The radio adjusts itself for the best possible sound under those circumstances. Operation of these circuits is completely "hands-off;" the radio makes all the adjustments by itself. Delco calls it "dynamic signal processing."

If the radio encounters interference from a strong station on an adjacent channel, a circuit reduces the frequency bandwidth to make the noise less intrusive. If you're listening to an AM stereo station, and the stereo quality drops off as you drive further from the station, the radio "blends" the two stereo channels to make reception less noisy. If you're driving under power lines, the radio's new noise blanker circuits cut the buzzing to a minimum.

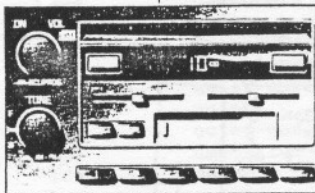
What's most amazing of all is that the processing circuitry is so well thought out — so "gentle" in its action, that the listener is almost completely unaware of what's going on.

### Designed to deal with worst reception conditions

Delco engineer Bill Gilbert told

We'll cut right to the quick—GM/Delco's new AMAX makes almost every AM station sound much better, stereo or not. Plus, stations come in loud and clear where other AM radios are too noisy to listen to.

The new Delcos new radios are the first, and so far



Cadillac Seville optional radio includes AMAX, FM, CD and cassette player.

### RBR observation:

Let's hear it for GM. GM/Delco's new AMAX AM radios are the best-sounding AM radios we've ever heard. This is as good as a standard AM is going to sound, folks. If you haven't, we urge you to listen.

If you have a stake in AM radio, this is good news. Talk sounds more lifelike, ball games take on a "you're almost in the stands" kind of sound and needless to say, music sounds great.

Stereo, as good as it sounds, isn't the biggest story here. It's the way this radio deals with interference and noise, and the improved frequency response. This radio is at its best under really difficult reception situations.

How good is the reception? On a recent evening as we drove through North Carolina, we found this radio could separate distant clear channel AM stations only one notch apart on the dial. We could listen to perfect stereo on WJR Detroit (760) even in the presence of strong reception from WABC New York (770) and an even stronger signal from WSB Atlanta (750). The live broadcast of the Grand Ole Opry on WSM (650) Nashville sounded so much like FM it was hard to believe it was AM. While visiting the Louisiana Association of Broadcasters in Baton Rouge last month, we heard fabulous AM sound on Black AC station WXOK. We wonder if that great sound has anything to do with the 9.1 share they just got in the Spring book?

Many broadcasters have visited their local GM dealers to point out how good this radio sounds. Take a test drive to demonstrate how salesmen can use it as a selling point. Tell them that a lot of people who buy Buicks (or other GM lines) listen to News and Talk. One station owner, John Quinn in Elizabeth, New Jersey, took some Cadillac sales people out for a test listen. Not only were they impressed, but the dealer wound up buying a schedule on Quinn's WJDM-AM to promote the car stereos!

RBR the radio was designed for real world reception circumstances. "This radio grew out of our involvement with AM stereo testing back in 1979," Gilbert said. Delco was very involved with the National Radio Systems Committee (NRSC), which got the FCC to adopt new processing standards in an effort to reduce interference. Gilbert said Delco makes frequent road trips to test new radio designs, taking eight or ten cars out, each with a different radio. "We actively look for the worst reception situations, and then design circuits to deal with the problems we find."

Gilbert says Delco also studies the kinds of audio processing stations use and designs the radios accordingly. "Almost every station we monitored was using a lot of high-end boost to compensate for the poor frequency response of average AM radios. Our high end response was so good we had to boost the lows to balance the sound," said Gilbert.

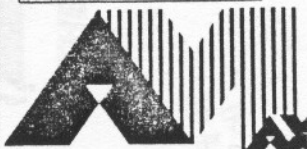
### Joint effort with Motorola

GM worked closely with Motorola on development of the signal processing circuits. Motorola is now working with other car manufacturers to develop similar advanced AM tuners.

Lest we sound too gushy, there are downsides and limitations. Static from lightning is still a problem. Distant lightning bursts are a bit gentler, but there's very little difference with this radio when the lightning is really severe and close by. Also, noise from the most powerful transmission lines is still present, though it's softer than on other radios. Even Delco can't defy those pesky laws of physics. Also, performance in "overload" areas, very close to a station's transmitter, doesn't seem to be any better or worse than an average AM car radio.

The radio is standard in all Cadillac models, and many of GM's upscale models like the Pontiac Bonneville SSE and SSEi Grand Prix STE, Olds 98 Touring Sedan and Buick Park Avenue Ultra. It's also available in many other models. If the radio in a '92 GM car has an equalizer, it has the new AM circuitry.

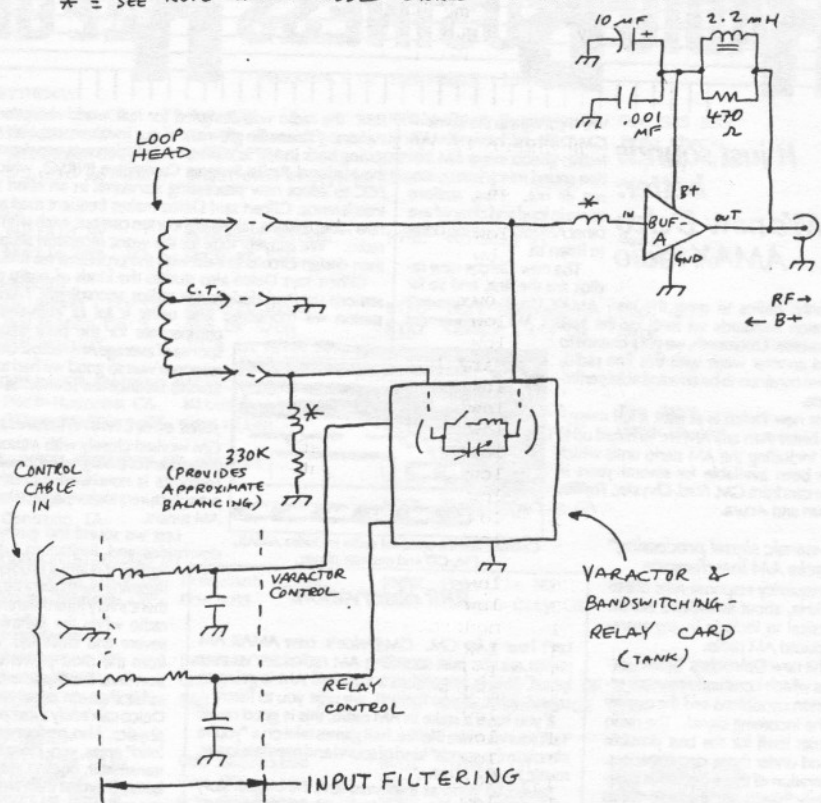
At the Radio Show:  
Be sure to go by the AMAX and Motorola booths to hear these radios.



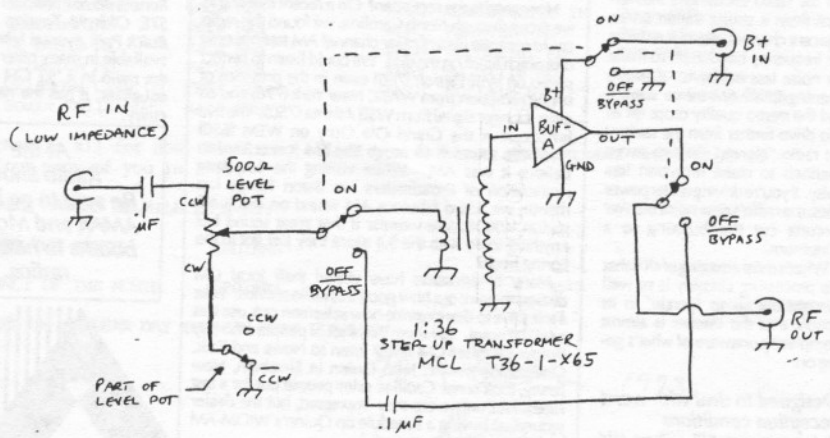
BUF-A AMPLIFIER  
CARD CONT:

APPENDIX C : REMOTELY - TUNED LOOP

\* = SEE NOTE ABOUT ADDED CHOKES ON THE APPENDIX B DRAWING.



APPENDIX D : BROADBAND AMPLIFIER



# Geomagnetic Indices

+	high point	mas	major storm	SA	solar activi
-	low point	mif	minor flare	spe	satellite pr
GEO	geomagnetic activity	mis	minor storm	ss	severe stor
maf	major flare	pca	polar cap absorption		

Geomagnetic Summary December 12 1992 through January 7 1993

Date	FLUX	A	K	SA	GEO	ETC
12/12	166	4	4	low	quiet	-
13	173	8	2	low	quiet	-
14	167	6	2	low	quiet	-
15	156	10	2	low	quiet-unsettled	swa
16	151	5	1	low	quiet	swa
17	150	16	2	low	quiet-mis	swa
18	150	4	2	very low	quiet	swa
19	147	7	2	low	quiet-unsettled	swa
20	148	11	1	low	quiet-unsettled	-
21	145	7	1	low	quiet-unsettled	-
22	142	5	3	low	quiet	-
23	144	7	2	low	quiet-unsettled	-
24	136	7	0	low	unsettled-quiet	-
25	136	2	1	low	quiet	-
26	131	2	0	low	quiet	-
27	-	-	-	-	-	-
25	127	22	6	low	quiet-mas	-
29	125	37	3	low	unsettled-mis	-
30	126	9	1	moderate	quiet-unsettled	-
12/31	130	10	3	low	quiet-unsettled	-
1/ 1	122	8	3	low	quiet-unsettled	-
2	121	12	4	moderate	quiet-mis	-
3	125	24	3	low	unsettled-mis	-
4	121	18	4	low	unsettled-active	-
5	125	14	4	low	unsettled	-
6	131	11	3	very low	unsettled	-
1/ 7	131	17	1	low	quiet-mis	-

**RADIO**

**CJEM - 57**

Edmundston (N.B.)

**CKMV - 149**

Grand-Falls, (N.B.)



**THE FIRST CHOICE**

Dallas Lankford, 1 XII 92

Recently I did my AGC mod (remove R104 and jump pins 3 & 4 and jump pins 8 & 9 of IC7) to a very late model NRD-525 and I was surprised to find that the mod in this late model NRD-525 did not perform like the mod I did to Russ' 1987 model NRD-525. In the late model NRD-525 the modified AM FAST release time was slower than for the earlier model NRD-525, and in the late model NRD-525 the modified AM FAST AGC was not as immune to static crash and noise pulse hanging as the modified earlier model NRD-525 had been. This curious situation was traced to what seem to be some production changes in late model NRD-525's. In the late model NRD-525 C77 was 0.47 mF (0.22 mF in the earlier model), and R107 was 22K ohms (10K ohms in the earlier model). The R107 change effects only SSB/CW SLOW release, but the C77 change effects FAST release in all modes; it doubles SSB/CW FAST release and lengthens AM FAST release about 60%. This explains why the mod in the late model NRD-525 was not as immune to static crash and noise pulse hanging as the mod had been in an early model NRD-525: in FAST AGC the modified late model NRD-525 was not releasing as quickly from desensitizing noise spikes. To make matters worse, more extensive listening tests revealed that my original mod has a subtle but annoying defect: in AM mode using the WIDE filter, some distortion is observed on strong AM signals when the AM carrier is tuned to about the center of the filter passband. And finally, more extensive measurements revealed that the SSB/CW AGC was not as well-defined as I had previously concluded. Both the AM and SSB/CW AGC circuits are amplified AGC circuits, and both exhibit variable release times: the release times depend on how far the signal levels drop. For these reasons, I spent several days rethinking possible AGC mods for the NRD-525 and testing my ideas.

If you already did my original mod to your NRD-525, there is a simple change which greatly improves immunity to static crash and noise pulse hanging, and which also eliminates the distortion on strong AM signals when the AM carrier is tuned near the center of the WIDE filter passband. Remove the jumper between pins 3 and 4 of IC7, and install a 100K ohm 1/4 watt resistor between pins 3 and 4 of IC7. A 1/4 watt Radio Shack resistor is suitable for this change, although the leads seem somewhat larger than #24 solid, and so it is somewhat more difficult to attach the ends of the leads to the IC pin tips. There is a slight disadvantage to this solution. The 100K ohm resistor slows the SLOW AM AGC attack time so much that you get momentary distortion when tuning from a weaker signal to a stronger signal using SLOW AM AGC. The SSB/CW AGC performance is not changed from stock by this or the previous mod.

Because I did not like the momentary distortion in SLOW AM AGC when tuning from a weaker to a stronger signal, and because there was also momentary distortion when changing from AGC FAST to AGC SLOW in AM mode, I spent some time peering at the NRD-525 schematic and at the IF PC board, hoping to find a way to make the AM mode FAST and SLOW attack times about equal. At least for this late model NRD-525 there was a wonderfully simple and elegant way to accomplish this. In this late model NRD-525, IC8 has an unused section, pins 3, 4, and 5, and the control pin, pin 5, was joined by a PC board trace to pin 6 of IC8, which in turn was controlled by the AGC FAST control line (to P27-13); see the simplified schematic below. Thus by removing my previous mod entirely, replacing R104 (which had been removed for the previous mod) with a suitable SMD resistor for AM FAST attack, and adding a second resistor (which is switched by IC8 pins 3 and 4 via the AGC FAST control voltage at pin 5 of IC8), the AM attack times for FAST and SLOW can be made more-or-less the same. As with the previous mod, this mod requires no PC board hole drilling or trace cutting, so that you can restore your NRD-525 to original if you are ever inclined to do so.

I spent a lot of time listening with different values for R104, and finally settled on 220K ohms. With a 220K ohm resistor in place of R104 the AM FAST attack time constant is about 140 milliseconds, and the measured AM FAST attack time is about 14 milliseconds for a 10 dB increase in signal level. This puts

the attack time constant within the range of values recommended by the classic radio design handbook, Radiotron Designer's Handbook, edited by F. Langford-Smith, and published in at least four editions between 1934 and 1952. According to this source, attack and release time constants between 100 and 500 milliseconds are suitable for AM signals, and the low end of that range is recommended for SW AM signals. Within the range of values I tested, 1K to 220K ohms, the steady state AGC line voltage measured at test point 3 was the same (for a given signal level, for "no signal" up to 100K microvolts input at the antenna terminal) regardless of what value was used in place of R104. In other words, my mod does not change S-meter readings or AGC line voltages from the original.

If your NRD-525 is an early model with 0.22 mF for C77, it is probably not necessary to change C77 to 0.47 mF, 25 or 35 volts, tantalum. But to be on the safe side, you should make that change anyway.

In summary, my NRD-525 AM AGC mod 2 requires that you (1) remove R104, (2) replace R104 with a 220K ohm 1/8 watt surface mount resistor (I bought a package of assorted SMD's from Radio Shack), (3) add a 22K ohm 1/4 watt resistor between pin 2 of IC7 and pin 4 of IC8, and (4) add a jumper between pin 3 of IC8 and pin 3 of IC9. If you do the mod yourself, you will need to inspect your work with a magnifying glass to be sure you have not formed any solder bridges between the IC pins and nearby traces. I strongly recommend that you use Teflon insulation on the resistor leads and on the jumper because ordinary insulation melts with soldering iron heat, and it will make a mess and perhaps allow the lead ends to short to nearby traces. To attach the lead ends to the IC pin ends you will need to form some small loops in the lead ends; see my sketch below. I used a piece of bare #24 solid wire and a small hemostat to form these small loops. The idea is to make the loops so that they will slip over the IC pin ends (using gentle finger pressure) and stay there while you solder them. Notice that the loops in the lead ends should finish on top. This minimizes the possibility of bridging to a nearby trace. In addition, the Teflon insulation should touch the loops in the ends of the leads, which also helps in preventing bridges to nearby PC board traces.

It may be possible to do a similar mod to the NRD-535. Except for some component value changes, and some minor circuit changes involving the switching IC's, the NRD-535 AM AGC circuit is fundamentally the same as the NRD-525 AM AGC circuit. One of the changes to the NRD-535 AM AGC involves increasing the value of R104 (same numbering in both) to slow the AM attack time. The AM attack time constant is about 12 milliseconds for FAST and about 84 milliseconds for SLOW. In the case of AM SLOW, that is about half the attack time constant I used above. According to the NRD-535 schematic, there is an unused section of IC5, but pins 11 and 12 of this section are shown grounded. However, if pins 11 and 12 of IC5 are not grounded, or if they can be easily ungrounded (say, by removing a zero resistance surface mount resistor), and if pin 10 of IC5 is not connected to anything, then it should be possible to adapt my mod to the NRD-535. For IC5, pins 10 and 11 are the switch, and pin 12 is the control voltage. Thus, assuming that pins 10, 11, and 12 of IC5 are isolated from the rest of the PC board, the corresponding NRD-535 AGC mod would be (1) remove R104, (2) replace R104 with a 100K ohm SMD resistor, (3) add a 15K 1/4 watt resistor between pin 1 of IC5 and pin 10 of IC5, (4) add a jumper between pin 11 of IC5 and pin 3 of IC7, and (5) add a jumper between pin 12 of IC5 and pin 12 of IC6. This would give a FAST AM attack time of about 110 milliseconds and a SLOW AM attack time of about 100 milliseconds. Depending on the PC board layout, it might be a better layout to go to pin 11 of IC5 in step (3) and to pin 10 of IC5 in step (4).

Unfortunately, my AGC mod does not eliminate the rather bad overshoot in the case of the NRD-525. Of course, not having an NRD-535, I cannot verify that my proposed NRD-535 mod will do what it is intended to do, namely eliminate AGC hanging in AM FAST due to static crashes and other noise pulses. Fortunately, as I remarked in my previous article, the AGC overshoot does not seem to cause any problems, either audible or otherwise.

# THE INTERNATIONAL RADIO CLUB OF AMERICA (IRCA)

The IRCA is a non-profit organization devoted to the hobby of hearing distant stations on the AM Broadcast Band (510 - 1630 khz). **DX Monitor**, the official publication of the IRCA, is published 34 times a year, weekly from October to March, twice in September and April, and monthly from May to August. **DX Monitor** contains members' loggings, articles on radio stations, receiver reviews, technical articles, DX tips, and other material of interest to Broadcast Band DX hobbyists. IRCA is a member of ANARC, the Association of North American Radio Clubs.

## CLUB ADDRESSES AND OFFICERS

President: Phil Bytheway, 9705 Mary NW, Seattle, WA 98117 (206) 356-3927 (proposals)  
Secretary-Treasurer: Ralph Sanserino, PO Box 70223, Riverside, CA 92513-0223 (dues/address changes)  
Board of Directors: Shawn M Axelrod, Michael S Hardester, Bill Hardy (chairman), Ric Heald, Albert S Lobel, Patrick Martin and Robert Wien  
Editor-in-Chief/Publisher: Ralph Sanserino, PO Box 70223, Riverside, CA 92513-0223  
Publishing Coordinator: Phil Bytheway, 9705 Mary NW, Seattle, WA 98117

## MEMBERSHIP DUES

U.S. - \$25.00 per year. Canada - \$27.00. Overseas Surface - \$28.50. Overseas Airmail - \$35.00 (Central America, Caribbean, Colombia and Venezuela), \$38.00 (Europe, North Africa, Middle East), \$41.00 (rest of the world). One time charge for New Member Packet - \$2.00 (first year only). Trial Membership - \$9.50 (10 issues of **DX Monitor** and a New Member Packet, U.S. / Canada / Mexico only). Installment rate: two payments of 1/2 dues plus \$1.00 (\$13.50/payment for U.S. members). Make checks and money orders payable to IRCA and send all dues (and address changes) to: IRCA, PO Box 70223, Riverside, CA 92513-0223. Persons living outside the U.S., please use International Money Order in U.S. funds. Sample copies of **DX Monitor** are \$1.00 (U.S. or Canadian) or two International Reply Coupons each and are available from: IRCA, PO Box 70223, Riverside, CA 92513-0223.

Unless otherwise noted, permission is granted to publish, broadcast, or otherwise reproduce non-copyrighted material appearing in **DX Monitor** provided credit is given to the IRCA and the original contributor. Opinions expressed in **DX Monitor** are those of the original contributors and do not necessarily reflect those of the IRCA, its publishing staff, editors or officers.

**IRCA**  
INTERNATIONAL RADIO  
CLUB OF AMERICA  
P O BOX 70223  
RIVERSIDE CA 92513-0223  
USA

**FIRST CLASS MAIL**

30-23  
J D STEPHENS  
3715 CONGER RD SW  
HUNTSVILLE AL  
35805-5725  
USA

FIRST CLASS  
U.S. POSTAGE  
PAID  
RIVERSIDE, CA  
PERMIT NO. 5214