

May 14, 2005 - Volume 42, Number 27 - Edition 1349 - ISSN 899-9733

IRCA welcomes **James Ronda** of Tulsa, OK, **Jim Pogue** in Memphis, TN and **William O. Beeman** from Bellbrook, OH!! Another action packed issue...pb

The **IRCA Bookstore** is looking for someone to take over the duties as "Slogan's List" editor. Duties will include taking over Rich Toebe's database and producing a new list for the next DX season (August-September time frame). Contact **Phil Bytheway** - phil_tekno@yahoo.com for details.

HQ NOTES

via Pat Martin: On a sad note, sent to me by Jason Brose, that the owner of KBRD (K-BIRD) and KLDY (K-LADY) (Olympia WA) has passed away of lung cancer at 68. Skip Marrow had owned the two stations for quite a few years. He ran classical music on KLDY and mostly big band on KBRD. Quite interesting stations. I had talked with Skip quite a few times on the phone and he QSL'd both stations for me. He did his own formats too. He was really a local Icon in the area. He will be greatly missed.

via IRCA e-Group: Per Morris Sorensen, Winnipeg MB, a new Winnipeg radio station, CJML-580 will be on for 2 weeks starting May 1 to commemorate the 60th Anniversary of VE Day in the Second World War. As well as war-time memories, the broadcasts will feature events leading up to and immediately following the war, big band and other period music, and appearances by veteran Winnipeg radio personalities. The calls stand for "Come Journey Down Memory Lane."

I will enjoy this as long as it ONLY lasts two weeks. I had surmised that they might use CKY's old 50kw. transmitter and facilities but Shawn Axelrod has found out that they will only be running 99 watts so it will probably take quite a combination of luck and skill to hear them at any distance.

Temporary nostalgia station CJML-580 here in Winnipeg now has a website. You can find it at cjml.cjb.net. There is no live audio but you can get schedules, info on announcers etc. They will be on until May 14 but per website only from 0700-2200 CDT, Power is 99 watts.

CJML can also be reached by phone at (204)-895-2565. I phoned them to let them know that I was receiving them with a somewhat scratchy signal in West Kildonan (Northern part of Winnipeg). The lady I talked to said some people across the Red River from me in North Kildonan were not getting them at all! She seemed interested in the fact that I was using tube era radios (Hallicrafters S-38 and Zenith Trans-Oceanic) to listen to them. Station is located at Deer Park Lodge, Portage Avenue in Winnipeg's west end.

via IRCA e-Group: The ARRL has applied to the FCC for a Part 5 Experimental license on behalf of a group of amateurs interested in operating in the vicinity of 500 kHz. ARRL General Counsel Chris Imlay, W3KD, announced the filing during a meeting of the ARRL Executive Committee April 9 in Denver. The experimental application was among several items the EC dealt with in addition to its recommendations <http://www.arrl.org/news/stories/2005/04/13/1/>. to the ARRL Board of Directors regarding a planned regulation-by-bandwidth petition.

If granted, the two-year Part 5 license would permit experimentation and research between 495 and 510 kHz using CW and PSK31 at power levels of up to 20 W effective radiated power. ARRL Member Fred Raab, W1FR, of Burlington, Vermont, would manage the project, which calls for 23 discrete fixed sites from New England to California and Minnesota to Louisiana.

via IRCA e-Group: (Steve Whitt) Dear 2010ers

I have now finished preparing the archive CD and it is now available.

This year is the 21st Anniversary of Sony creating the amazing ICF2010/2001D radio and I am now offering a special compendium CD-ROM containing a massive archive of material related to this radio.

Over the 21 years that the 2001D/2010 has been around, a huge amount of information has appeared in print & on the web.

When I wrote "Get the Best from your Sony ICF2001D" I collected lots of stuff. And over the years I've accumulated more material.

In This Issue:

HQ Notes...	1
Broadcasting Information...	2
Western DX Roundup...	9
Central DX Roundup...	12
Eastern DX Roundup...	13
DXWW-West...	16
DXWW-East...	19
DX Forum...	22
Hearing it Through the Grape...	23
Verification Signers...	25
Website Wanderings...	26
2004-2005 Contests...	27
DXing the Graveyard...	27
Sports on Radio...	33

Recently I archived my own files onto CD as a personal archive and I realised that I had material that was no longer available in print and which had vanished off the Internet!

Over the years people have asked me if my booklets were available electronically, but the answer at the time was always "no". Now however I included them on this archive CD.

It then dawned on me that maybe other people would be interested in such a CD. I'm happy to reproduce it for anyone who wants it for their personal use and enjoyment - this is not a commercial enterprise.

CD ARCHIVE

The CD contains the following

- 1) Get The Best from Your Sony ICF2010/2001D
- 2) Get Even more from Your Sony ICF2010/2001D
- 3) Adverts (a selection promoting the 2010)
- 4) HotRodding (various items on how to modify/improve)
- 5) Miscellaneous
- 6) Photo Gallery: including photos of different versions from different areas of the world
- 7) Repair: Repair tips, Parts: sources and spec sheets, Repairers
- 8) Reviews: Solo, Comparative, International (non-English)
- 9) Service Manuals: 2 different Editions including high resolution colour images of circuit boards and circuitry
- 10) More Sony Stuff (Including User Guide)
- 11) Bibliography

In total there are over 500MB of files on the Archive CD. Different files are in a variety of formats including .doc, .pdf, .bmp, .jpg, .txt and .xls

ORDERING

There are two ways of ordering a copy of this CD

1) By post.

Write to me enclosing payment, and your mailing address and I will send you the CD by return post. Write to me at: Landsvale, High Catton, York YO41 1EH, England. Cash payment can be \$11US; 10 Euro or £5 Sterling notes well concealed inside an ordinary letter envelope. If you don't want the risk of sending cash in the post, I recommend registered post. Non-cash payments such as cheques, Postal Orders or International Money Orders must be £5.00 Sterling.

2) Over the Internet

You can pay by PayPal by sending payment to: icf2010@uk2.net. The PayPal prices are \$11.75; 10.75 Euro or £5.50 Sterling due to the charges levied by PayPal.

Prices include post and packing. All orders will be dispatched by post in a protective envelope and overseas orders will go airmail. I only use high quality CDs such as TDK to ensure you have a reliable and long lasting archive.

A GREAT DEAL

This unique CD contains a valuable archive of material, some of it rare, all of it interesting. I hope you don't mind me publicising it via this group. If you have any further questions please don't hesitate to ask.

The **2005 IRCA/DecalcoMania** convention will be held on Thu. Aug. 25 through Sat. Aug 27, 2005 at the Days Inn, 1111 S. Harbor Blvd. Anaheim CA 92805 (1 block North of Disneyland) www.the.daysinn.com/anaheim04986. Phone number for reservations is 714-533-8830 (request the special \$49 room rate.) Registration fee (not including banquet) is \$25 payable to Mike Sanburn, PO Box 1256, Bellflower CA 90707-1256 - mikesanburn@hotmail.com. Activities will include station tours, business meeting, auction, and banquet -view menu at www.jagerhaus.net. Should have lots of stickers and airchecks. Looking forward to seeing everybody.

Here's the list of websites for sites in the area of this year's convention: www.disneyland.com, www.downtowndisney.com, www.knotts.com, www.universalstudioshollywood.com, www.sixflags.com, www.movielandwaxmuseum.com, www.seaworld.com, www.medievaltimes.com, www.catalinaexpress.com, www.irvinemuseum.org, www.visitorangecounty.net, www.planesoffame.org.

BROADCASTING INFORMATION

Robert Wien – 7190 Abigail Pl – Fontana, CA 92336-5752

Email: wienbob@aol.com phone: 909-350-4898 Ham calls: KG6RJW

CALL CHANGES

FREQ	OLD CALL	CITY	NEW CALL
590	KOMJ	Omaha, NE	KXSP
820	WCSN	Chicago, IL	WAIT
850	WAIT	Crystal Lake, IL	WCPT

910	KOTK	Vancouver, WA	KKSN
1050	KMAP	Frazier Park, CA	KJPG
1220	WHKZ	Cleveland, OH	WHKW
1360	WTSH	Rome, GA	WGJK
1380	KJLJ	Cheyenne, WY	KJUA
1410	KMYR	Wichita, KS	KGSO
1440	WHKW	Warren, OH	WHKZ
1450	KOPT	Eugene, OR	KLZS
1490	KOSR	Omaha, NE	KOMJ
1600	KEED	Eugene, OR	KOPT
1630	KKWY	Fox Farm, WY	KRND

FORMAT CHANGES

FREQ	CALL	CITY	OLD INFO	NEW INFO
590	KXSP	Omaha, NE	adult standards	sports 'Big Sports 590'
610	KFRC	San Francisco, CA	oldies	rel. teaching (Family Radio)
620	KIPA	Hilo, HI	silent	ABC Stardust adult stds.
650	KIKK	Pasadena, TX	talk	CNN Headline news
700	KALL	North Salt Lake City, UT	sports	Fox sports radio
700	WGZS	Dothan, AL	soft AC	Spanish
740	WGSM	Huntington, NY	ethnic	silent
750	WBMD	Baltimore, MD	religious teaching	Family Radio rel. teaching
840	KSWB	Seaside, OR	WW1 adult stds.	WW1 oldies
850	WCPT	Crystal Lake, IL	ethnic	oldies
860	WBGR	Baltimore, MD	black gospel	religious teaching
890	WHNC	Henderson, NC	gospel	black gospel//WCBQ
900	KSGL	Wichita, KS	religious teaching	adult standards
910	KOTK	Vancouver, WA	talk	oldies 'Kissin' 910'
910	WNDC	Baton Rouge, LA	black gospel	silent
980	KCAB	Dardanelle, AR	news	talk
980	KGLN	Glenwood Springs, CO	news	ABC Young AC hot AC
980	WBZK	York, SC	regional Mexican	Spanish
980	WSUB	Groton, CT	news/talk	talk //WXLM
1060	WXNC	Monroe, NC	talk	Spanish //WGSP
1080	WALD	Walterboro, SC	country	silent
1090	WWGC	Albertville, AL	silent	regional Mexican
1140	KHTK	Sacramento, CA	sports	sports, Fox Sports radio
1170	WLGO	Lexington, SC	black gospel	Spanish hits
1230	WTCJ	Tell City, IN	ABC Memories AS	ABC Memories soft AC
1240	KVSO	Ardmore, OK	sports	talk
1250	WKBR	Manchester, NH	news/talk	ABC Pure Gold oldies
1330	WANG	Havelock, NC	WW1 adult stds.	WW1 oldies //WKOO
1340	WCBQ	Oxford, NC	gospel	black gospel
1360	KBKB	Ft. Madison, IA	talk	sports, Fox Sports radio
1360	KELE	Mountain Grove, MO	sports	talk
1360	WGJK	Rome, GA	regional Mexican	classic country
1370	WBTN	Bennington, VT	variety	talk
1370	WFDR	Manchester, GA	adult stds//J-93 FM	cont. Xtian //WVJ-FM
1380	KJUA	Cheyenne, WY	KJLJ, soft AC	Spanish oldies
1390	KSLM	Salem, OR	talk	oldies //KOTK 'Kissin' 910"
1400	WSAM	Saginaw, MI	adult standards	soft AC //WSAG
1410	KGSO	Wichita, KS	KMYR, AS	sports
1410	WIQR	Prattville, AL	silent	sports, SNR sports
1420	WVJS	Owensboro, KY	ABC Memories AS	ABC Mem. Soft AC //WTCJ
1450	KMHT	Marshall, TX	southern gospel	ABC Stardust adult stds.
1450	WLAY	Muscle Shoals, AL	sports	ABC Pure Gold oldies
1460	KIRL	St. Charles, MO	black gospel	silent
1460	WBUC	Buckhannon, WY	talk	ABC Stardust adult stds.
1460	WKAM	Goshen, IN	soft AC	regional Mexican 'R. Canon'
1490	KOMJ	Omaha, NE	adult stds/Fox spts	WW1 adult standards
1490	WDUR	Durham, NC	black gospel	ESPN sports //WTSB
1500	WWFN	Macon, GA	sports	oldies
1520	KRHW	Sikeston, MO	southern gospel	classic country
1520	WJMP	Kent, OH	Jones adult stds.	Talk
1560	KNGR	Daingerfield, TX	Spanish	southern gospel
1560	WMBH	Joplin, MO	sports	Jones adult stds MOYL
1570	KTAT	Frederick, OK	tejano	adult contemporary
1580	WVZN	Columbia, PA	silent	Spanish
1590	WPUL	Daytona Beach, FL	gospel	talk
1600	WMCV	Harvard, IL	soft AC	talk, health radio //1580

1620	WNRP	Gulf Breeze, FL	classic C&W//FM	classic country
1630	KRND	Fox Farm, WY	KKWY, classic C&W	regional Mex. "La Grande"
1680	KTFH	Seattle, WA	regional Mexican	ethnic

CONSTRUCTION PERMIT ACTIVITY

810	WDMF	Dodgeville, WI	250 ND-D to 250/10 ND2
820	KUTR	Taylorville, UT	50000/2500 DA-2 to DA-N (new CP)
890	KDJQ	Meridian, ID	50000/250 DA-N to 250/250 DA-N (new CP)
1030	WEBS	Calhoun, GA	3000/3 ND2 to 3/5000 ND2 (?)
1310	WGSP	Charlotte, NC	1000/44 ND to 5000 ND-D
1340	WITS	Sebring, FL	ND to ND2
1350	WKCU	Corinth, MS	1000/68 ND to 900/44 ND2
1450	KZNU	St. George, UT	ND to ND2
1520	WDMN	Toledo, OH	1000/1000 DA-2 to 500/400 DA-2

FACILITY AND PARAMETER APPLICATIONS

660	KGDP	Orcutt, CA	10000/1000 to 2500/2500
720	WVOA	Decitt, NY	2500/390 DA-N to 10000/390 DA-2 (new CP)
750	WNDZ	Portage, IN	5000 DA-D to 15000 DA-2
960	WGGT	North Palm Beach, FL	500/500 DA-2 to 1200/250 DA-D (new CP)
970	WTBF	Troy, AL	5000/500 DA-N to 5000/45 ND2
1150	WMST	Mt. Sterling, KY	500/53 ND to 2500/53 ND2
1160	KBIS	Highland Park, TX	1000/500 DA-2 to 35000 DA-2
1170	WLGO	Lexington, SC	DA-D to 10000 ND3
1240	WALO	Humacao, PR	ND to ND2
1280	KZNS	Salt Lake City, UT	10000/600 DA-2 to 50000/600 DA-3
1310	WGSP	Charlotte, NC	5000 ND-D to 5000/240 DA-N
1340	KRMD	Shreveport, LA	ND to ND2
1370	KPCO	Quincy, CA	5000/500 DA-2 to 500/500 DA2
1400	KTMC	McAlester, OK	ND to ND3
1420	KGIM	Aberdeen, SC	ND to ND2
1430	WATB	Decatur, GA	1000/51 DA-2 to 50000/160 DA-D
1460	WTKT	Harrisburg, PA	5000/5000 DA-N to 5000/4200 DA-N
1480	KKCQ	Fosston, MN	ND to ND2
1530	KPCR	Bowling Green, MO	1000-D to 1400-D
1540	WSIV	East Syracuse, NY	ND-D to 1000/57 ND3
1550	WAZX	Smyrna, GA	50000/5000 DA-2 to 50000/16 DA-D
1560	WBYS	Canton, IL	250 ND-D to 250/18 ND2
1560	WTOD	Toledo, OH	5000 DA-D to 2500 DA-D
1570	KAKK	Walker, MN	1000/47 ND to 9500/250 ND2
1570	WNSH	Beverly, MA	500/85 DA-D to 50000/85 DA-D

FACILITY AND PARAMETER GRANTS

580	WLES	Lawrenceville, VA	500 to 1000
810	KLDC	Brighton, CO	1000/7 to 2200/430
810	WEUS	Orlovista, FL	1000/400 to 5000/400
1040	WYSL	Avon, NY	2500/500 to 20000/500
1060	WQMV	Waverly, TN	1000 ND-D to 1000/4 ND2
1070	WNCT	Greenville, NC	10000/10000 to 50000/10000
1150	WMST	Mt. Sterling, KY	500/53 to 2500/53
1160	KBIS	Highland Park, TX	1000/500 to 35000
1170	KOWZ	Waseca, MN	2500/60 to 2500/5
1240	WOBT	Rhineland, WI	1000/1000 to 950/1000
1280	WDNT	Dayton, TN	1000/31 to 2200/31
1330	WPJS	Conway, SC	5000/500 to 3200/23
1350	WBLT	Bedford, VA	1000/47 to 5000/47
1390	WEGP	Presque Isle, ME	5000/5000 to 50000/10000
1400	KLCK	Goldendale, WA	1000/1000 to 1000/250
1420	KUJ	Walla Walla, WA	5000/5000 DA-N to 5000/900 ND2
1440	WFNY	Gloversville, NY	800/500 to 3600
1530	KVDW	England, AR	250 to 2500 w.
1560	KILE	Bellaire, TX	800 to 50000/2500
1570	KUAU	Haiku, HI	1000/500 to 50000/20000
1570	WNSH	Beverly, MA	500/85 to 50000/85

ADDITIONAL NOTES: (CONTRIBUTOR IN PARANTHESES)

PUBLIC LISTINGS:

WNRP 1620 Gulf Breeze/Pensacola FL flips from "Cat Country" (simulcasting WYCT 98.7 Pensacola) to classic country as "1620 AM Classic Country."

KKSN 97.1 Portland OR changes calls to KYCH ("Charlie"); the KKSN calls replace KOTK on 910 Vancouver WA/Portland OR, which takes the "KISN" oldies format from 97.1.

WAIT 850 Crystal Lake/Chicago IL flips to progressive talk Wednesday, reapplying for new calls WCPT (which were earlier requested and withdrawn); WCSN 820 Chicago IL will return to its heritage calls of WAIT.

WAYS 105.5 Macon GA drops oldies for ESPN sports as "The Fan," trading formats with WWFN 1500 Macon GA, which flips to oldies.

WXNC 1060 Monroe NC drops talk for Spanish AC "La Tremenda"; up the road in Durham, WDUR 1490 Durham NC drops "Rejoice" black gospel and picks up "Triangle Sports Talk" sports programming from WTSB 1090 Selma NC.

KIRL 1460 St. Charles MO goes silent for repairs; it'll return with a simulcast of Catholic religious WRYT 1080 Edwardsville IL.

KMYR 1410 Wichita KS changes calls to KGSO and flips from standards to sports; standards move to KSGI 900 Wichita KS, replacing southern gospel.

WJMP 1520 Kent/Akron OH flips from standards to Air America talk; some Air America talk is also now on WANR 1570 Warren OH.

WMBH 1560 Joplin MO flips from sports to standards.

WNOX 990 Knoxville/WNOX-FM 99.1 Loudon/Knoxville TN/WNRX 99.3 Jefferson City TN move their "NewsTalk 99" news-talk format over to WOKI-FM 100.3 Oak Ridge/Knoxville TN, a full-market 100kw FM signal, becoming "NewsTalk 100." The former AAA "River" format that was on WOKI-FM moves to WYIL-FM 98.7 Oliver Springs/Knoxville TN, replacing rhythmic top 40 "Wild" there. The 990/99.1/99.3 simulcast becomes sports "Sports Animal," with plenty of calls shuffling soon.

WBMD 750 Baltimore MD and WBGR 860 Baltimore MD flip to Family Radio religion, simulcasting with WFSI 107.9 Annapolis MD.

KFRC 610 San Francisco CA flips from oldies // KFRC-FM 99.7 San Francisco to Family Radio religious // KEAR 106.9 San Francisco. (KEAR is being sold to former KFRC owner Infinity Broadcasting and will change format.)

WGZS 700 Dothan AL flips from southern gospel to Spanish AC "Tropicana Radio."

KELE 1360 Mountain Grove AR has flipped from ESPN sports to news/talk.

WLGO 1170 Lexington SC flips from black gospel to Spanish AC "Ritmo 1170."

WCLI 1450 Corning NY changes calls to WENI.

WKBR 1250 Manchester NH has flipped from talk/sports to oldies.

WMCW 1600 Harvard IL flips to a simulcast of "Health Radio" WKKD 1580 Aurora IL.

KEED 1600 Eugene OR changes calls to KOPT and adds progressive talk; KOPT 1450 Eugene OR changes calls to KLZS.

WTSH 1360 Rome GA changes calls to WGJK and drops regional Mexican "Radio Activa" for classic country.

WIQR 1410 Prattville AL returns to the air with Sporting News Radio sports.

KXSP 590 Omaha NE relaunches today with Fox sports as "Big Sports 590"; "Magic" standards KOMJ moves to 1490, formerly sports KOSR.

KJUA 1380 Cheyenne WY flips from soft AC to Spanish oldies "Ajuaa"; sister station KRND 1630 Fox Farm/Cheyenne WY (formerly KKWY) flips from classic country to regional Mexican "La Grande."

KKSN-FM 97.1 Portland OR drops oldies "KISN" and flips to classic hits/hot AC "Charlie FM"; oldies "KISN" moves to sister stations KOTK 910 Vancouver WA/Portland OR and KSLM 1390 Salem OR, which drop their talk "Maxx 910" format.

WSAG 104.1 Pinconning/Saginaw MI returns to the air as soft AC "The Bay," simulcasting with WWSM 1400 Saginaw MI, which drops its standards format.

KKWY 1630 Fox Farm/Cheyenne WY changes calls to KRND.

KJLL 1370 Cheyenne WY changes calls to KJUA.

WCSN 820 Chicago IL and WAIT 850 Crystal Lake IL will keep their current calls for now; a request to move the WAIT calls (back) to 820 and change 850's calls to WCPT has been withdrawn.

WKAM 1460 Goshen IN flips from soft AC to regional Mexican "Radio Kanon."

KIPA 620 Hilo HI returns to the air with standards.

WZMJ 93.1 Batesburg/Columbia SC flips from country "93.1 the Hound" to ESPN sports, simulcasting with sister WOIC 1230 Columbia SC.

KOMJ 590 Omaha NE requests new calls KXSP for its switch 4/25 to sports; sports KOSR 1490 Omaha NE will take the KOMJ calls and flip to standards.

WMUS 1090 Muskegon MI changes calls to WKBZ.

WGMY 940 South Haven MI changes calls to WSPZ.

WFDR 1370 Manchester GA flips from standards to contemporary Christian "J93.3", simulcasting WVFJ 93.3 Manchester/Atlanta GA.

WHKZ 1220 Cleveland OH changes calls to WHKW, trading with 1440 Warren OH, which becomes WHKZ.

WKOO 105.1 Havelock NC/WANG 1330 Havelock NC flip from standards to oldies as "Kool Oldies."

WCSN 820 Chicago IL returns to its heritage WAIT calls, with WAIT 850 Crystal Lake IL changing calls to WCPT.

KMAP 1050 Frazier Park/Bakersfield CA takes new calls KJPG.

KIKK 650 Pasadena/Houston TX will drop hot talk "KIKK-Ass Talk" and flip to CNN news; Howard Stern remains in mornings through year's end.

KBKB 1360 Fort Madison IA flips from news/talk to Fox sports "1360 the Ticket."

WIQR 1410 Prattville AL has gone silent.

KOMJ 590 Omaha NE and KOSR 1490 Omaha NE will swap calls and formats later this month. Fox sports will move to 590, while "Magic" standards will go to 1490. (Journal Broadcasting is selling a third Omaha station, advice talk KHLP 1420 Omaha NE, to Salem.)

KSUR 1260 Beverly Hills/Los Angeles CA adds All Comedy Network for evenings and overnights.

WXML 102.3 Stonington/New London CT drops hot AC "Mix" and flips to news/talk, simulcasting WSUB 980 Groton CT. (WSUB will change formats in a month or so.)

KNGR 1560 Daingerfield TX flips from Spanish to southern gospel/country.

CONTRIBUTOR LISTINGS:

Charles Onorato (non-IRCA member) sends along the following:

KSXT 1570 AM Loveland seems to have flipped from Gospel to conservative talk with second tier talk shows common to KRLA and KOGO. (CO-CO)

Pat Martin sends along the following from Deane McIntyre of Calgary, AB.:

The move of CJAV-1240 Port Alberni BC to FM (93.3 MHz, 6kW) has been approved by the CRTC: <http://www.crtc.gc.ca/archives/ENG/Decisions/2005/db2005-160.htm>

CJAV Port Alberni - Conversion to FM band

The Commission approves the application by Island Radio Ltd.1, formerly CJAV Limited, (Island Radio) for a broadcasting licence to operate a new English-language FM radio programming undertaking at Port Alberni to replace its AM station CJAV. The new station will operate at 93.3 MHz (channel 227A) with an effective radiated power of 6,000 watts. The new station will provide a broad mix of contemporary music from the past and present. The local programming will include news, weather, sports and community information. The Commission received one intervention in support of this application. Island Radio confirmed that it would participate in the plan developed by the Canadian Association of Broadcasters (CAB) for contributions by radio licensees to Canadian talent development. Under this plan, a radio licensee serving a market the size of Port Alberni would be expected to contribute a minimum of \$400 in each broadcast year to eligible third parties for the development of Canadian musical and other artistic talent. The licence will expire 31 August 2011 and will be subject to the conditions of licence set out in New licence form for commercial radio stations, Public Notice CRTC 1999-137, 24 August 1999, as well as the following condition of licence: The licensee is authorized to simulcast the programming of the new FM station on CJAV for a transition period of three months following the commencement of operations of the FM station. The licensee must surrender the AM licence for revocation by the Commission at the end of this period. (PM-OR)

Art Blair passes on the link for all Infinity Stations to see if a station is an affiliate:

<http://www.infinitybroadcasting.com/station/> (AB-CA)

Pat Martin sends along the following re KRAM-1070 OR (note: portions edited for content-ye ed):

The 1070 in West Klamath, Oregon (Falls not included) as KWSA and now KRAM -- are owned by two individuals, including a former medical Doctor who lost an MD permit for selling drugs out of a LA County clinic and shooting a firearm at the former owner of the clinic. The owner of the OLD KLAD tower that sits at 1415 Lavern - will NOT rent to the KRAM individuals. That is the tower that KWSA first used: a 320 foot tower on the O'Conner farm. Individual applied to move to a new tower -- but was denied a Klamath County permit and now has no cash to re-locate elsewhere. KRAM was on the silent list and had an STA to use a "CB" antenna with very low power -- KRAM is for sale. 1070 is DEAD and gone -- (PM-OR)

Pat Martin sends along the following from Dale Park of Honolulu, HI:

And in local news, 620 KIPA-HI Hilo returned to the air late night on 4/15, using the ABC Stardust format of adult standards, oldies and big band mx, with some Hawaiian oldies mixed in. (The network slogan is "Timeless Classics.") Per station manager, all three transmitters are on the air, though I can confirm only two, in Kalaoa-Kona and Hilo. As you know, KIPA is unique in operating three synchronous transmitters on the same frequency in order to serve the Big Island (Mauna Kea and Mauna Loa block Hilo MW signals from reaching the Kona side in the daytime). (PM-OR)

Dale Park passes along the following:

620 KIPA-HI Hilo * WAS Silent * NOW ABC Stardust adult standards/oldies/big band plus Hawaiian oldies * AS OF 4/15

860 KTRB-CA Modesto * WAS News-talk // KMPH-FM Fresno * NOW ?? as KMPH-FM switched to Rhythmic AC * AS OF 4/01 per Fresno Bee

1110 KAOI-HI Kihei * WAS News-talk * NOW Talk * AS OF 2003! (around then when they dropped CNN Headline News)

1190 KFXX-TX Dallas * WAS Fox sports * NOW All-Beatles * AS OF 3/31 per Fort Worth Star-Telegram

1270 WKBF-IL Rock Island * WAS Classic country * NOW Progressive talk (Air America, Jones R., WOR Network) * AS OF 4/04 per Quad-City Times

1520 WJMP-OH Kent * IS Jones MOYL Nostalgia * TO BE Progressive talk (Air America) * AS OF 5/02 per Cleveland Plain Dealer

1570 WANR-OH Warren * IS Talk * ADDS Air America * per airamericaradio.com, Cleveland Plain Dealer. (DP-HI)

1270 WMPM

Pat Martin sends along the following:

910 KKSJ (presumed calls) WA, Vancouver, now "playing the greatest hits ever made", ex KOTK, Old rock with promo for "Dave Record" Stone at 0115 EDT 4/22. Have to check TOH for calls. (PM-OR)

Only the format from 97.1 moved to 910. ID at TOH 0359 EDT 4/22 as KISN is KOTK AM 910 Portland. Probably a call change will follow. (PM-OR)

Pat Martin sends along the following from Barry McLarnon of Ottawa, ON. re. list of IBOC stations:

By my count, there are currently 44 AM stations using IBOC/IBAC.

Details at: <http://topazdesigns.com/iboc/station-list.html>

For you technogeeks out there, I put together a page showing the salient parameters of the AM IBOC/IBAC system, including frequencies, power levels, data rates, etc. It's at: <http://topazdesigns.com/iboc/AM-IBOC-Parameters.html> (PM-OR)

Dave Gordon sends along the following:

910 in Portland, Oregon switched to the oldies format that was on 97.1 which now has the "Jack" format. Also, Infinity is selling their San Jose area stations (KBAY and KEZR) and Susquehanna is selling their stations (KNBR, KTCT, KFOG, KSAN). I'm sure there will be some format changes. (DG-CA)

Ye editor passes along the following from Kevin Redding of Gilbert, AZ.:

KYCY (1550-San Francisco-ye ed.) is now going to be KYOU. Here's what they say about their programming. It will fit a niche audience and they are at least trying to be innovative.

<http://www.kyouradio.com/website.php>

Do you have the feeling that things are moving faster than they were a year ago, or even a few months ago? That keeping up with the latest trends in culture and technology is almost a full time job? In 1965, the co-founder of Intel, a guy named Gordon Moore, outlined a theory that said the number of transistors on a memory chip would double every 18 months: Moore's Law. Turned out he was right. Take podcasting for example. It didn't exist 10 months ago. Now it seems that a day doesn't go by without an article appearing somewhere talking about something related to podcasting. If you believe everything you read, and who doesn't, podcasting is being championed as the great equalizer. KYOURADIO is the first radio station in the world to get all of its programming from podcasts. Everyday we'll feature new, innovative and cutting edge programs produced by people like you. Your original thoughts and sounds will be broadcast in San Francisco on the revolutionary 1550 KYCY-AM and streamed worldwide at [KYOURADIO.com](http://www.kyouradio.com). We envision KYOURADIO as a station for the people. We think you have something to say and we want to hear it. You're out there creating, riffing, ranting and raving and Infinity is going to give voice to your vision. In fact, we want to share it with the world. KYOURADIO will no doubt evolve over time, but our intention is to make the experience as real as possible. Input from the world at large will provide lots of inspiration and plenty of constructive criticism. Doesn't everyone have a streak of genius waiting to be heard? Welcome to OPEN SOURCE RADIO. (RW-CA)

Pat Martin sends along the following:

1190 KEX. This evening just before 7 PM (PDT), I was tuning by 1190 and heard KEX, as I got to 1200, I heard an S9 signal of the whooshing which had to be IBOC. After 8 PM, when I tuned back it was gone. I am not 100% sure, but it sure sounded like it. KLAY-1180 was buried in the noise, but audible. I did not try to phase it. Nothing was noted as yet on 1200. (PM-OR)

I hooked up the MFJ 1026 using my 40' vertical for phasing. In using the EWE for KLAY-1180 signal (The beverage aims to the East nulling KLAY for the most part, and KEX is stronger). After fiddling around and knocking KEX's S9+15 DB signal down to S5 or less, the IBOC sideband hash is pretty much gone, leaving a weaker but pretty much clean KLAY 1180. So the daytime groundwave signal from IBOC can be phased, but even with all of my equipment, it takes a bit of work. I can tell you right now, that "if" IBOC gets to be all over the AM dial (In other words catches on and goes 24/7), you can pretty much kiss long distance AM DX gone. Unless you live away from it all, like the West side of Kauai, NFD, Northern AK, etc. You will not be able to phase the noise enough at night to get splits, unless the signals from the splits overpower the domestics. I just hope and pray that AM IBOC will not work out and it will go the way of Quad, at least on the AM band. FM, I think they may stick with it there. But DXing the way we know it, will be a thing of the past. Now DXpeditions to remote locations will probably increase and some DX will be had that way as the signals will be much stronger. I think of how many stations I have logged through the 40 years I have been at the dials that were flea power S1/S2 signals. But they were logged because the noise level was low, but with IBOC having an S8 signal on each side of KEX which is S9+15, forget it. I just had to add my 2 cents. I have not had much IBOC noise here in the NW. A bit of it on 730/750 from KCBS CA, but that is it until now. I still don't see IBOC working out as the QRM will be terrible on any adjacent station. Just think, when you get two powerhouses side by side running IBOC. Neither will be heard outside their local area. On my next trip to Portland, I will check out the KEX IBOC signal in Portland. The nearest adjacents are 1150 and 1230. 1220 Salem also. But out here the IBOC hash is gone by the time you reach 1170 or 1210. But I am 75 air miles from KEX and over the Coast Range. (PM-OR)

Dave Gordon passes along the following:

KFRC-AM switched to KEAR's religious format last night at midnight. The last song before the switch was "Laugh Laugh" by the Beau Brummels. KFRC-AM will still carry the A's games for the rest of the season. (DG-CA)

Dale Park sends along the following:

Dale confirms earlier information on 910 Vancouver now oldies KKSJ. Thanks, Dale. (DP-HI)

Tim Noonan sends along the following:

Tim sends along the latest list of FCC call letter changes. Thanks, Tim! (TN-WI)

Nancy Johnson sends along the following:

Today I received a WDXR report from Larry Godwin with a logging of KRND Fox Farm, WY. Guess they have made the change from KKWY. He didn't hear a call ID, just "La Grande." However, he phoned the station to confirm the KRND calls. I listened tonight, but only heard Spanish music, no ID. (NJ-MT)

(continued from last issue-pb)

Pat Martin sends along the following:

1600, KOPT, OR, Eugene, now on 1600, ex 1450 with "Progressive Talk 1600", Air American promos, mentioning now on 1600 at 2146 EDT 4/7. I did not see this posted anywhere. (PM-OR)

Pat Martin sends along the following (from **Mike Hardester**):

CKOT-1510 has applied to the CRTC to move to FM (104.7 MHz, 2.3 kW): <http://www.crtc.gc.ca/archive/ENG/Hearings/2005/n2005-4.htm#7> It looks like this might be the end of the last Canadian daytimer. (PM-OR)

Pat Martin sends along the following from Scott Fybush of NRC:

1220 is Salem's Cleveland 50 kW-er, WHK.

1440 is Salem's Warren (Ohio) 5 kW-er, WHKW, a booster for WHK.

This has been a consistent source of confusion for some time. Salem, you see, is an EXTREMELY conservative company. I speak not of its politics (though the statement's reasonably true there as well) but of its policies on preserving historic callsigns, especially three-letter ones that are gone for good if they go away. So follow the bouncing ball that is "WHK" as we take a little trip through recent Cleveland radio history... WHK, of course, was the heritage call on 1390, later 1420, under a series of owners that ended up with Malrite (in tandem with WMMS, ex-WHK-FM) and eventually Salem. In 2001, there was a complex three-way exchange of stations in northeast Ohio that went down thusly: Bob Conrad, who owned stand-alone classical FM station WCLV 95.5 in Cleveland, needed cash to keep the station alive. Salem wanted an FM signal for its "Fish" contemporary Christian music programming. Clear Channel wanted to strengthen its cluster of stations in Cleveland and nearby Akron-Canton. So Conrad sold the 95.5 facility (a full 50,000-watt class B) to Clear Channel, which promptly traded it to Salem. In exchange, Conrad got Clear Channel's 104.9 Lorain OH, a class A rimshotter from the west side of the market, along with Salem's 1420 signal (the original WHK) and the intellectual property (adult-standards format and staff) of Salem's 850, which had been WRMR. (This was the old WJW, years ago.) Salem got 95.5. Clear Channel got Salem's 98.1 in Canton, another big class B signal covering Canton and Akron. (It had been WHK-FM under Salem.) All at once in July 2001, WCLV's classical music went from 95.5 to 104.9. The standards went from WRMR 850 to what was now WCLV (AM) 1420. Salem reshuffled the rest of its AM lineup, moving the WHK religious format to 1220 (ex-WKNR, and WGAR before that) and moving WKNR's calls and sports format to 850. 95.5 became "the Fish," WFHM. 98.1 became top 40 WKDD, targeting Akron. And the former home of WKDD, the Akron-licensed 96.5 signal that had recently moved to a tower giving it full Cleveland coverage, became the new home of "Kiss" WAKS, which had been on 104.9. Complicated? Confusing? Heck, yeah. But it was actually even MORE complex than that, because Salem was bound and determined never to put the actual three-letter WHK callsign on a signal that it didn't have complete control over. (Remember that in the process of doing these deals, there were a lot of LMA-until-closing agreements, in which the buyer of the station would operate it even before all the paperwork was done to legally transfer ownership.) So a couple of months before the July 1 switchover date, Salem quietly changed a few of its AM calls. WHK 1420 became WHKK and WCCD 1000 Parma OH (a Salem station that was not otherwise involved in the switches) took the WHK calls. And here's a key point: the stations' branding DID NOT CHANGE - they were still "WHK 1420" and "WCCD 1000" at all times except the legal ID. When the formats switched on July 1, WHKK 1420 became WCLV. WKNR 1220 temporarily became WHKC, though it only used those calls once an hour and was otherwise "WHK 1220." It took several months for all the paperwork to change hands and for Salem to become the official licensee of 1220, and it was only then that 1000 went back to WCCD and the WHK calls moved to 1220. (There was also a brief period right after the switch when 95.5 Cleveland was legally WHK-FM, though it didn't last long.) Peter is correct that 1440 in Warren (ex-WRRO) became WHKW around this time as well, serving as the Youngstown-market simulcast of whichever Cleveland station was religious "WHK," whether 1420 or 1220. Complicated? Confusing? It gets WORSE. Last year, Bob Conrad decided to pull the plug on the standards format on 1420 (which had in the interim dropped the WCLV calls and gone back to the old WRMR calls from 850), and he entered a deal with Salem to sell 1420 to them. Salem promptly began operating 1420 under an LMA, and in the process tweaked its formats and branding. 1220 kept the religious preaching and teaching that had been identified as "WHK," but it was now branded as "WHKW," which - yes - are still the legal calls on 1440 Warren OH, which is still simulcasting. The "WHK" branding moved back to 1420 along with Salem's talk network (Hugh Hewitt, Dennis Prager, etc.) But this is Salem, and Salem doesn't put a valuable three-letter call on a facility it does not fully own. So the actual WHK calls remained - and still remain - on 1220. 1420 identifies as "WHK Cleveland" for most of the hour, and

you have to listen very carefully at :06, after the news, to hear them say the legal calls of "WRMR Cleveland." 1220 identifies as "WHKW 1220," and it's only once an hour that you hear the legal calls "WHK Cleveland, WHKW Warren-Youngstown." At some point Salem will finally close the circle on all this and put the WHK calls back on 1420, WHKW on 1220 and something else on 1440 Warren. Until then, though, log 'em with "WHK" for 1220, "WRMR" for 1420 and "WHKW" for 1440. Everything else is just a slogan, in the eyes of the FCC. (PM-OR)

Art Blair passes along the following:

Local Briefs, Broadcaster to expand into Raleigh-Durham market, JOURNAL STAFF AND WIRE REPORT, Tuesday, March 29, 2005

Truth Broadcasting Corp., a Winston-Salem company that operates several Christian radio stations in the Triad, plans to expand into the Raleigh-Durham market. The company is trading two of its local Spanish-language stations -WTOB 1380 AM and WWBG 1470 AM - to the Davidson Media Group, which is based in New York. In return for those stations, Truth Broadcasting will take over WFTK 1030 AM in Durham and will get about \$1.25 million from Davidson Media. WFTK carries Spanish-language programming; it will change to a Christian-talk format similar to that of WTRU 830 AM, a Christian-talk station run by Truth Broadcasting. That station's format began about four years ago. "WTRU has really been well-received here," said Stuart Epperson Jr., the president of Truth Broadcasting. "A lot of people wanted to hear positive faith-based, uplifting programming. We've sensed a real hunger for that in the Raleigh and Durham areas too." WTOB and WWBG are expected to keep their current formats, Epperson said. The ownership change is pending approval from the Federal Communications Commission, which Epperson said he expects by early May. Truth Broadcasting also runs WZRH 960 AM, a news-talk station based in Charlotte/Gastonia; and two Gospel stations, WPOL 1340 AM in Winston-Salem and WKEW 1400 AM in Greensboro. (AB-CA)

Art Blair also passes along the following from Radio Daily News.com:

AM 1160 WYLL announced that it now broadcasts at 50,000 watts day and night. Previously, the radio station's signal strength was limited at night. With this major tower improvement, WYLL joins a short list of powerful Chicago radio stations on the AM band. (AB-CA)

Tim Noonan sends along the usual list of FCC daily call changes. Thanks, Tim! (TN-WI)

Contributors:

- Frank Aden**, Boise, ID (FA-ID)
- Art Blair**, Folsom, CA (AB-CA)
- Dennis Gibson**, Santa Barbara, CA (DG1-CA)
- Dave Gordon**, San Jose, CA (DG-CA)
- Jim Hilliker**, Monterey, CA (JH-CA)
- Nancy Johnson**, Billings, MT (NJ-MT)
- Pat Martin**, Seaside, OR (PM-OR)
- Tim Noonan**, Madison, WI (TN-WI)
- Charles Onorato**, Longmont, CO (CO-CO)
- Dale Park**, Honolulu, HI (DP-HI)
- Robert Wien**, Fontana, CA (RW-CA) (Ye editor)

Have a real bad case of pneumonia currently, family also has bouts of bronchitis, and my dad is still being checked for advanced prostate cancer, so sickness is running rampant here in Fontana in early May, had to cancel my Las Vegas trip with Mike Sanburn as a result of my illness, hope to be healthy again within a few weeks, may reschedule our trip to mid-late June. My Kiwa loop came back from Kiwa Electronics in Minnesota all nice and repaired, trying it out right now! Only 3 1/2 months till the IRCA convention in Anaheim, be sure to make your reservations, convention is German-themed. Maybe we can get Arnold Schwarzenegger to show up, hi. 73's and good DX.

WESTERN DX ROUNDUP

Nancy Johnson – 265 Waterton Wy – Billings, MT 59102-7755

E-mail: NancyJohnson@prodigy.net

WDXR DEADLINES: May 20, June 3, June 17, July 1, July 15. Please use Eastern Time.

REPORTERS FOR THIS ISSUE:

- (RA) **René E. Auvray**-Henderson, NV
2005 Mercury Grand Marquis car radio with external antenna, Grundig Yacht Boy 400
- (BB) **Bill Block**-7716 E. Thelma Dr.-Prescott Valley, AZ 86314 billwblock@msn.com
R-390A, HQ-140, FRG-7, 150, 100 and 55 foot long wires
- (MF) **Martin Foltz**-25102 Pradera Drive-Mission Viejo, CA martin.foltz@qlogic.com
HQ-180A & Collins 51J-2 with 1 foot air core loop
- (LG) **Larry Godwin**-2390 Clydes Dale Lane-Missoula, MT 59804 lbg@mtwi.net
Hammarlund HQ-150, Sanserino air-core box loop & Kiwa loop

- (GH) **Glen Hansen**-1925 Tualatin St.-St. Helens, OR 97051 skinner@columbia-center.org
Hammarlund SP-600, R-390A, Drake R8B, various longwires, Radio Shack loop, amplified Sanserino air core loop
- (PM) **Patrick Martin**-P.O. Box 843-Seaside, OR 97138-0843 mwdxer@webtv.net
Drake R8, 1500' Eastern Beverage
- (CM) **Curtis McMenamin**-153 Calle Tepic-Vacaville, CA 95687-6530
Funkiecurtis@juno.com
Sony ICF-2010,Kiwa loop
- (BN) **Bill Nittler**-108 El Mundo Road-Belen, NM 87002 nittlers2@scdial.com
Drake R8A
- (5P) **Dale Park**-P.O. Box 10640-Honolulu, HI 96816 DXFool@aol.com
Sangean ATS-818CS, Terk AM1000 loop
(5P-HI1) DX'ing in East Honolulu
Honda car radio
- (NP) **Nigel Pimblett**-Box 168-Dunmore, AB ntp@shockware.com
Kenwood R-5000, Beverage antenna
- (NP-AB1) DX'ing at Lamont, AB also with Kenwood R-500, Beverages
- (RW) **Robert Wien**-7190 Abigail Pl.-Fontana, CA 92336-5752 rjwmail@webtv.net
GE Superadio, Select-A-Tenna

OF SPECIAL INTEREST

- 620 KIPA [HI](#), Hilo 4/16 1942 noted back on the air with satellite-fed song by the Fifth Dimension, net ads, slogan "Timeless Classics on KIPA, Hawaii's memory station," local ads back to music. ID 1959 "Hawaii's memories, AM 6-20 KIPA Hilo," one minute of ABC news, Big Island weather, back to DJ Bob Lawrence. Last noted on 12/5/04 testing with relay of sister station KKOA-FM. Per phone call to the station manager, KIPA returned to air late night 4/15 and uses ABC's Stardust network of adult standards, oldies & big band music, plus a sprinkling of Hawaiian oldies. (5P-HI1)
- 910 KKSX [WA](#), Vancouver (presumed calls 4/22 now "Playing the greatest hits ever made," ex-KOTK. Old rock with promo for "Dave Record" Stone at 0115. Have to check top of the hour for calls. (PM-OR)
- 1600 KRKE [NM](#), Milan is the new call ex-KANM, "Real Oldies 1600," daytime log. Ex-1100. 1100 not on the air. (BN-NM)
- 1630 KRND [WY](#), Fox Farm 4/17 0754 first heard in Spanish with ranchera music and ID as "La Grande." There was no ID at 0800. I phoned station to confirm new call and format. (LG-MT)
- 1640 KFXV [OK](#), Enid ex-KFNY 4/11 0925 with "KFXV Fox Sports Radio." (BN-NM)
- 1700 KKLK [TX](#), Sherman ex-KTBK 4/12 ID into Fresno Rough Riders baseball. (BN-NM)
- 610 KRTA [OR](#), Medford 4/17 0805 dual English/Spanish ID, then back into Mexican vocals, with slogan ID's "Radio Sensacion." Faded back under regular CHNL by 1215. (NP-AB1)
- 610 KVNU [UT](#), Logan 3/27 2204-2207 ABC news followed by Army National Guard and approved by the Utah Broadcasters Assoc., into Coast to Coast with Art Bell. Fair. (RA-NV)
- 620 KPOJ [OR](#), Portland 4/8 0703 ABC news (not Information network), woman with weather, Ed Schultz Show promo, PSA, announcement "Welcome to AM 6-20 KPOJ Portland's Progressive talk..." into Randi Rhodes Show replay. Poor. (5P-HI)
- 690 (XETRA) [BCN](#), Tijuana 4/24 0710 with open carrier, CBU weak under with 2 Mexicans fighting it out very weakly in their null, couldn't ID either one. (RW-CA)
- 720 (KDWN) [NV](#), Las Vegas 4/24 0715 with open carrier, WGN audible very weakly underneath, Mexican in open carrier null. (RW-CA)
- 740 KBRT [CA](#), Avalon 3/28 0941 a preacher reading the Bible. Fair, but weakening, fighting against KCBS San Francisco. First time heard in Nevada. (RA-NV)
- 760 KFMB [CA](#), San Diego 3/27 2236 community ad followed by ID, into the Satellite Sisters. Fair with QRM. However, unID Spanish station trying to overtake. (RA-NV)
- 800 CKOR [BC](#), Penticton 4/17 2315 ad for Classic Lifestyles and weather report by female DJ. Many "Easy Rock" ID's. Fair to good over unID. (GH-OR)
- 840 KMAX [WA](#), Colfax 4/17 2300 legal ID and CNN news, ad for ??? insurance company. Really weak in the jumble and soon lost. New log. (GH-OR)
- 850 KOA [CO](#), Denver 3/27 0358-0400 local ads, very rare, KXNT-840 not on the air (emitting a high definition (HD) signal carryover. (RA-NV)
- 860 KTRB [CA](#), Modesto 4/5 0400 in very poor, usually strong at night. (CM-CA)
+Tentative 4/18 0730 underneath then atop tentative XEMO with Bloomberg Business News before lost to KAIM-870 returning to the air at 0733. (5P-HI)
- 880 KCMX [OR](#), Phoenix 4/12 very strong at 0800 with ID "Your hometown radio station, KCMX, Phoenix-Medford, Newstalk 880," then ABC news. (LG-MT)

910 KOTK OR, Portland 4/22 0359 with a format change. Moved the 97.1 oldies format to 910 with the slogan KISN, but still ID's on the hour as KOTK. Per web site, in the future to be IBOC too. (PM-OR)

930 CJCA AB, Edmonton 4/17 0030 man said "AM 930 CJCA, your southern Gospel station." Fair signal 80% on top of unID's, with religious music. (GH-OR)

1020 KINF NM, Roswell 4/17 0015 weak ID in the jumble with Spanish unID and unknown sports talker. Surprisingly, not often heard. (GH-OR)

1080 KSCO CA, Santa Cruz 3/28 0007 suddenly came out with call ID with Coast to Coast with Art Bell. Varying with fair, strong to weak signal. (RA-NV)

KRLD TX, Dallas 3/28 2306 ID came up suddenly and faded away. (RA-NV)

1120 KPNW OR, Eugene 4/7 0659 tail end of ad, ID "Depend on us for news & information 24 hours a day, Newsradio 11-20 KPNW Eugene-Springfield" into ABC-I news //KHBZ-990. Poor to fair. Also noted 4/8 0545 with papal funeral coverage //KHBZ. (5P-HI)

1150 KTLK CA, Los Angeles 3/27 22022204 "KTLK newstime is 7:02." Reception fair to weak with QRM. First time heard with new call. (RA-NV)

KSEN MI, Shelby 5/1 0757 on top with oldies and ID "KSEN, Good as Gold." (LG-MT)

1170 KFAQ OK, Tulsa 3/27 2305 Scott Landis mentioning weather (from TV Fox News Channel 4), Listener's Club form KFAQ noted. Extremely weak. (RA-NV)
+4/18 0702 quick ID "11-70 KFAQ," woman with announcement, Fox Newsradio Update, 6:06 time check, man with KFAQ traffic center and weather, slogan "Talkradio 11-70 KFAQ" and promo for listeners club. No sign of KHCM. Very poor. (5P-HI)

1200 WOAI TX, San Antonio 3/27 2306 news events read, getting through QRM. Website mentioned, www.TexasRCC.com. (RA-NV)

1220 WHK OH, Cleveland 4/23 0030 heard "The Voice AM 1220" ID and ad for Survival of the Fittest call in talk show. Very weak in/out of the static. (GH-OR)

1230 KBAR ID, Burley 5/5 on top at 2300 with ID "???" talk and cool classics, 1230 KBAR Burley, a Lee Family Broadcasting station." (LG-MT)

KSBN WA, Spokane 4/16 0059 ID in mix of stations. (NP-AB1)

1240 KEJO OR, Corvallis 4/16 ID at the hour "KEJO Corvallis" and reference to "1240 Joe," then into ABC news. (NP-AB1)

KQEN OR, Roseburg 4/16 0905 promo for Rush Limbaugh "every weekday morning at nine, right here on KQEN," then into home improvement talk show. (NP-AB1)

KEVA WY, Evanston 4/12 0659 ID as "Keeva Country, AM Stereo, 1240 KEVA" into ABC news. (NP-AB)

1250 KKDZ WA, Seattle 4/7 0358 poor with "KKDZ Seattle Radio Disney" ID. (CM-CA)

1260 KTRC NM, Santa Fe now talk // KAGM 106.3 but still giving KTRC call on hour. (BN-NM)

1270 KBZZ NV, Sparks 4/7 0350 good with "The Buzz" ID. (CM-CA)
+4/21 0000 sports talk with several "The Buzz" ID's. Barely atop the pile with weak signal. Some CHAT and KTFI (I think) in there too. (GH-OR)

1290 KAZA CA, Gilroy 4/5 0500 in fair with "KAZA Gilroy" ID. I can't hear them during the day, did not know they are on at night. What is their power at night? (CM-CA)

1300 KAPL OR, Phoenix 4/19 and 4/20 0030 Active Word religious program, "Overflowing with the living water, this is KAPL AM 1300, Phoenix-Jacksonville, the broadcast ministry of the Applegate Christian Fellowship." (MF-CA)

1320 KCTC CA, Sacramento 4/18 in CHMB null, ended a NOS song and gave legal ID at 0900. (LG-MT)

1330 KKPZ OR, Portland 4/18 had a good signal at 0757 with vocal SSB by a woman, then ID at 0800 "KKPZ, the Voice of Reconciliation." I don't know if this was s/on. (LG-MT)

1340 KTMM CO, Grand Junction 4/17 rarely heard and a surprise was barely audible with brief call and location ID at 0800. (LG-MT)

1430 KLO UT, Ogden 4/7 0325 in good with KLO ID and talk about Utah. (CM-CA)

1450 KWFM AZ, Tucson 4/17 0705 good on top of everything with "Cool 1450" slogan, oldies. (RW-CA)

1450 KFLS OR, Klamath Falls 4/18 0000 dominant in the mix with fair to poor signal and ESPN sports talk. Last heard 7/11/04. (GH-OR)

1460 KABL CA, Salinas 4/17 0712 faded up nicely after KUTI fadeout with ID "Playing America's favorite music, Cable KABL." Then faded out just as fast, both KUTI and KABL replaced by KENO. XECB off this morning. (RW-CA)

KUTI WA, Yakima 4/6 0432 "1460 KUTI" ID in fair. Also heard C&W music. (CM-CA)
+4/17 0710 total surprise, came over everything briefly for a few minutes with ID "1460 Country Cutie," then faded under KENO-KABL-KTYM. First time logged in S. CA, was common in Bay Area. Good conditions to WA this AM. KGA-1510 in very strong as well as KEX-1190. (RW-CA)

1490 KZZZ AZ, Bullhead City 4/9 0'40 Phil Hendrie show, ads, "K-triple Z? ID. (MF-CA)

KFFN AZ, Tucson 4/18 0501 "This is Tucson's only all sports station The Fan." (BB-AZ)

1540 KMPC CA, Los Angeles 3/27 2257-2300 ID, "The Ticket" slogan, mentioned sports shows and the NCAA. UnID Spanish station trying to override. First time heard from Nevada. (RA-NV)

1560 KNZR CA, Bakersfield 4/7 0300 in good with KNZR ID. (CM-CA)

1580 KBLA CA, Santa Monica 4/8 0558 Spanish man with romantica or praise music, interrupted briefly by man with voiceover ID "This is KBLA Santa Monica" before resuming. Note, it was not a dual ID with its mother station KALI-900. Poor to fair, ripply fading at times. (5P-HI)

1590 KCNN MN, East Grand Forks 5/5 was amazingly on top with call ID and local weather at 2257. (LG-MT)

1600 (KAHZ) CA, Pomona 4/24 0655 noted apparently totally off, frequency a real mess (I can null them usually to hear KXEW/KSGT). (RW-CA)

KTAP CA, Santa Maria 4/24 0700 big surprise with KAHZ apparently off, coming up over KGST/KXEW with ID "Kah-the-ah-peh, 1600 AM, Santa Maria-San Luis Obispo, Radio Ranchito." Heard once in San Jose. (RW-CA)

KUBA CA, Yuba City 4/16 0845 ID "Where have all the good songs gone? They're right here on AM 1600 KUBA." (NP-AB1)

1640 KDZR OR, Lake Oswego 4/4 0130 poor under KDIA with Radio Disney announcement. (CM-CA)

1650 KFOX CA, Torrance 4/4 0200 in good with Fox ID. (CM-CA)

KHRO TX, El Paso now hard rock "Hero Rock." (BN-NM)

1680 KAVT CA, Fresno 4/5 0435 in good with Radio Disney mention. (CM-CA)

1700 XEPE BCN, Tecate 4/6 0230 in good with Fox Sports. Must have changed format, from Spanish to sports. (CM-CA)

UNIDS

580 UNID 4/6 0400 in poor with AdCon music. Who is this under KMJ? (CM-CA)

670 UNID 3/27 1841 slogan "Radio Numero Uno," strong. Where from? (RA-NV)

710 UNID 3/27 1854 unID Spanish station fighting through KDWN carryover. From the U.S. or Mexico? (RA-NV)

1460 ?KION? CA, Salinas 4/6 0445 in poor to fair with KABL ID's. Are the call letters KION or KABL? (CM-CA) (I would say KABL, see Bob's 1460-KABL tip above. -- NJ)

1650 UNID 3/27 2316 sports talk station and a C&W station competing. No KFOX heard. Any clues? (RA-NV)

Thanks to our reporters this week. Nancy 5/6 2100

CENTRAL DX ROUNDUP

John C. Johnson – 265 Waterton Wy – Billings, MT 59102-7755

E-mail: John_Johnson@prodigy.net CDXR reports ONLY: cdxr@prodigy.net

RIDING GAIN

[NJ-MT] **Nancy Johnson**, Billings, MT NancyJohnson@Prodigy.net
Drake R8B, Kiwa loop.

DOWN THE DIAL

580 WIBW KS, Topeka. 5-2 good with KUBC nulled. 23:00 with mention of Royals baseball, ID into news. [NJ-MT]

950 KMTX MT, Helena. 4-20 in and out with deep fades under KKFN. 22:06 with promo for AP News, weather, and "...unforgettable music on AM 9-50 KMTX." [NJ-MT]

990 KRKS CO, Denver. 4-21 fair with CBW nulled. 22:00 with ID into "Insight for Living" program. [NJ-MT]

1210 KHAT WY, Laramie. 4-20 very good until fade out. 21:04 with ID into "Health Minute." Spot, weather, oldies format. [NJ-MT]

1270 KIML WY, Gillette. 4-19 good with CHAT nulled. 20:01 with Wyoming news, weather. "News talk 12-50" slogan. Spot for a car dealer, station promo, and legal ID into AP Network News. Extremely rare here despite its closeness. [NJ-MT]

25 YEARS AGO

April 26, 1980 issue of IRCA's "DX Monitor" ... **C. M. Stanbury** of Ridgeway, ON continued discussion about Radio Swan ... **Niel Wolfish** of Toronto, ON enjoyed the April Fools's DX Monitor ... **Gerry Thomas** of Pensacola, FL told about the city changing his address and street name ... **Ernest R. Cooper** of Provincetown, MA was wanting to buy last years Broadcasting Yearbook. May 17, 1980 issue of IRCA's "DX Monitor" ... **Jack Lattemann** of Seattle, WA said he was 33 and bought produce for the Puget Consumers Coop ... **Ernest R. Cooper** of Provincetown, MA told about how he met **Ray Geller** who happened to run a newsstand outside the Wall Street building where he

worked ... **Pat Martin** of Seaside, OR received a verie from Deutschland 756 ... **Neil Wolfish** of Toronto, ON logged 10 new stations during April.

OPEN MIKE

Not much for this week's sDXM. The season is ending. This column was typed 4-23-05. 73, John For those that keep track of such information, I complete 33 years at Channel 2 here on May 8th. I start my 34th year on Monday. This column was typed 5-7-05. 73, John

EASTERN DX ROUNDUP

Lee J. Freshwater – 414 SE 3rd St. – Ocala, FL 34471

E-mail: lfreshwater@cox.net

Deadlines: 0800 5/21, 6/04, 6/18

STARS OF THE WEEK

(MH-NC)	Mike Hardester	3118 Gaitway Ct Jacksonville, NC DX4evr@earthlink.net
(WJH-MD)	Bill Harms	Icom R-70 2x 75' random wires, Quantum Phasor & Patience Elkridge, MD
(WM-MD)	William McGuire	R8B – Homebrew K9AY – 300' l.w., Quantum Phasor 2412 59th Place, Cheverly MD
(IEN-GA)	Ira Elbert New	DX-398 Watkinsville, GA Drake R8B, 135' N/S LW, Sangean ATS 909

LOGGINGS

540	PA	WWCS	Canonsburg 4/4 1848 Radio Disney. (WM-MD)
550	NC	WAME	Statesville 4/16 2214 ID as "The Home of the Braves. AM 5-50 WAME" This was followed by the song "Sentimental Journey." Popped through the co-channel interference. (WJH-MD)
560	WV	WJLS	Beckley 4/10 0651 ID by a male into a talk program. Heard through nulled WFIL and with WFRB. (WJH-MD)
580	VA	WLES	Lawrenceville 4/6 0656 Ad for a local grocery store, ID as "5-80 WLES into a soft oldies selection. (WJH-MD)
610	AL	WAGG	Birmingham 4/10 0627 ID as "Meet your family in Birmingham and WAGG ad for Army National Guard, local ads, and another ad this time as "6-10 WAGG." Over WIP et al. (WJH-MD)
620	FL	WDAE	Saint Petersburg 04/12 0745 Traffic for the Tampa/St. Pete area. Good, steady signal. "620, WDAE, The Sports Animal". (IEN-GA)
630	PA	WEJL	Scranton 4/10 0657 Was one of my most wanted stations. Spot for Mike and Mike, talk about the Red Sox, and ID at 0700 as "All Sports WEJL, Scranton." (WJH-MD)
660	PA	WPYT	Wilkesburg 4/10 2000 Sign off announcement u/WFAN. (WJH-MD)
680	ON	CFTR	Toronto 05/01 0120 Noted even with and occ. Over normally dominant WPTF (Raleigh) with weather report for Toronto and Pearson Airport, and spot for Roger's Wireless Cell phone. (MH-NC)
	AL	WJOX	Birmingham 05/01 2200 in with ESPN Sunday night Baseball. ID at 2202 and back to game. Poor/fair in mix with UNIDs. (MH-NC)
790	VA	WNIS	Norfolk 04/24 2245 Drudge Report. Dominant signal in a sea of others. "NewsRadio 790, WNIS". (IEN-GA)
910	TN	WEPG	South Pittsburg 4/10 2149 ID as "WEPG, the River". The signal faded out right after. (WJH-MD)
940	TN	WECO	Wartburg 04/24 1930 Gospel music. Good signal (S9), but would fade under WKYK in Burnsville, NC at times. "Solid Gospel, WECO." (IEN-GA)
	NC	WKYK	Burnsville 04/24 1932 Country music. Good signal (S9), but would fade under WECO in Wartburg, TN at times. "Real COUNTRY 940, WKYK". (IEN-GA)
	VA	WNRG	Grundy 04/18 2258 Ad for Internet Banking at Grundy National Mentions of happenings in Buchanan County during a local news & Community Calendar segment. Country Gspl music heard after that. Good signal with slight static that would fade away from time-to-time. "You're listening to WNRG, 940AM, Grundy" and "Solid Gospel, WNRG 940AM, Grundy" and "Solid Gospel, WNRG". (IEN-GA)
	WI	WFAW	Fort Atkinson 04/18 2237 Sports Scores and News. Signal buried in the mix for the most part, but would rise above the din from time to-time. "Jefferson County's News and Talk, 940, WFAW". (IEN-GA)

950	KY	WYWY	Barbourville 04/18 2212 Religious music buried in the mix. "AM 950, WYWY". (IEN-GA)
960	AL	WERC	Birmingham 04/24 2345 Drudge Report. Good signal in the null of WRFC in Athens, GA. "NewsRadio 960 WERC." (IEN-GA)
1000	IL	WMVP	Chicago 04/30 0025 fair to occasionally good level w/ Whits Sox game. Normally, this frequency is a jumble. (MH-NC)
1010	GA	WGUN	Atlanta 4/6 0745 Spot for a program at 5:15 PM and ID as "the Big Gun WGUN", Over WOLB. (WJH-MD)
	NC	WFGW	Black Mountain 4/6 0625 Popped in with ID as "Gospel Music WFGW" blowing away my local WOLB. (WJH-MD)
1050	NY	WSEN	Atlanta 4/6 0745 Spot for a program at 5:15 PM and ID as a musical selection which could have been from WSEN. (WJH-MD)
1090	ON	CKKW	Kitchener 04/18 2245 Oldies mixed with a few others (ie: WBAL Baltimore). "Oldies 1090" & "Oldies 1090.COM". (IEN-GA)
1200	NY	WTLA	North Syracuse 4/7 2221 A tax tip show "WTIP." Not much else heard. (WJH-MD)
1210	OK	KGYN	Guymon 04/15 2307 Weather forecast for the High Plains and then country music. Weak, but steady in the null of WPHT. "KGYN Forecast..." (IEN-GA)
1230	NC	WMFR	High Point 4/24 0500 Clear TOH ID. Nothing else heard. (WJH-MD)
	OH	WTPG	Columbus 4/23 2259:45 Popped in with TOH ID as "AM 12-30 WTPG Columbus." (WJH-MD)
1240	GA	WBHB	Fitzgerald 3/31 1800 TOH ID. Nothing else heard. (WJH-MD)
	VT	WSKI	Montpelier 3/31 1808 Beach Music, Bush's job approval numbers and ID. This was followed by a long string of oldies. They stayed on top of the channel for about one hour. (WJH-MD)
1250	WI	WSSP	Milwaukee 4/16 0724 This was a complete surprise out of the blue. A spot for an upcoming program. ID as "Great moments in sports, sports radio 12-50 WSSP, the Jam. FSR." (WJH-MD)
1270	NH	WTSN	Dover 4/16 0712 Heard during good post sunrise conditions. Spots for broadcasting scholarships, passports, program review, and ID. Surprisingly strong. (WJH-MD)
1280	PA	WJST	New Caste 4/19 1906 ID as "The Great Oldies from the 50's, 60's, and 70's, back-to-back on Just Oldies, 12-80." (WJH-MD)
1290	KY	WKLB	Manchester 4/23 0621 Spot for Swap shop, local weather, and Jingle ID. Holding its own against the co-channel interference. (WJH-MD)
1300	NC	WSSG	Goldsboro 4/17 0612 Popped in with ID as "Hi, you are listening to AM 1300 WSSG Goldsboro, N.C." WJFK nulled. (WJH-MD)
1310	FL	WYND	De Land 04/14 2305 Religious music. Signal was buried in the mix along with a few others "This is your Christian Voice, WYND, the Light." (IEN-GA)
	NC	WGSP	Charlotte 4/12 2000 TOH ID as "WGSP Charlotte, WCEO Columbia. (WBOJ-FM) and as "La Tremenda." Has become a pest. (WJH-MD)
	NY	WTLB	Utica 4/3 0715 ID as "We would like to thank you for all of your wonderful comments. We're pleased to be bringing you, music of your Life. We're 13-10 WTLB." Fair, but alone on channel. (WJH-MD)
1320	GA	WHIE	Griffin 04/11 1715 Local news and ads for shops in Griffin. Good steady signal. "WHIE News" & "You're listening to WHIE, AM 1320, in Griffin, Georgia". (IEN-GA)
	VA	WVNZ	Richmond 3-29 1810 Spanish Music heard. (WM-MD)
1340	MA	WBRK	Pittsfield 4/2 2000 TOH ID as "The Berkshires Best, WBRK in Pittsfield." Heard a singing jingle and CBS News which could have been from them or from another station. (WJH-MD)
	NC	WLSG	Knoxville 4/27 2057 Popped in with a ID as "AM 13-40." (WJH-MD)
	NY	WWLF	Auburn 4/3 1958:30 Heard Radio Disney programming throughout the evening, but ID only once as "WOLF Syracuse, WOLF-FM Oswego, WWLF Auburn, (and a fourth station which I could not make out. (WJH-MD)
	NY	WENT	Gloversville 4/2 0555 Man with Mega Ball Lottery Numbers, "National Weather Service Forecast for the WENT listening area," and information about a flood watch. (WJH-MD)
	NY	WLVL	Lockport 4/2 0637 ID and TC as "13-40 WLVL News time is 6:37." Good for a few moments. (WJH-MD)
	NY	WIRY	Plattsburgh 4/3 0500:30 TOH ID as "...Great Songs WIRY Plattsburgh." Also heard local weather forecast with ID at 0558 after a string of ads and possible TOH ID at 0601. (WJH-MD)
	OH	WNCO	Ashland 4/26 0159:45 TOH ID as "You are listening to... AM 13-40 WNCO." (WJH-MD)
	OH	WSTV	Steubenville 4/2 2021 Local weather forecast and ID as "13-40 WSTV." (WJH-MD)

1340 PA WWPA Williamsport 4/2 1713 Popped in with ID as "Here at AM 13-40 WWPA, we're proud to make..." (WJH-MD)
 PA WYCK Plains 4/2 1620 ID as WICK. Played several oldies. String of ads beginning at 1627 which was interrupted in the middle by a Delaware River flood alert at 1628. Resumed regular programming at 1629 // 1550. (WJH-MD)
 TN WKGN Knoxville 4/27 2057 Popped in with a quick ID as "AM 13-40 WKGN." (WJH-MD)
 VT WSTJ St. Johnsbury 4/29 0300 Clear TOH ID as "WSTJ 13-40 St. Johnsbury." (WJH-MD)
 VA WKEY Covington 4/25 2359:45 TOH ID as "You are listening to WKEY Covington." On top for a few seconds. (WJH-MD)
 1350 NC WZNN Black Mountain 04/24 2100 TOH ID into CNN News. Very Good clean signal (30 over S9), but with fading. "SuperTalk 1350, WZNN". (IEN-GA)
 VA WVNA Norton 4/11 2000 TOH ID as "WVNA Norton." On top. (WJH-MD)
 1400 SC WGTN Georgetown 4/17 0200 ID as "You are listening to Georgetown's Heritage Station, Newstalk 1400 WGTN", into net news. (WJH-MD)
 1410 VA WRIS Roanoke 4/19 1928 Virginia Network News, a quick "WRIS" ID, and into Back to the Bible. (WJH-MD)
 1440 MA WVEI Worcester 3/31 1743 ID as "Great things about plain old sports radio 8-50 WEEI" Over all. (WJH-MD)
 NC WLXN Lexington 4/18 1950 ID in the mess as "14-40 WLXN." Nothing else from this station noted. (WJH-MD)
 1450 CT WCUM Bridgeport 4/5 2359:45 ID as "14-50 AM WCUM Bridgeport" into a Spanish language program. (WJH-MD)
 NY WCLI Corning 4/7 1900 TOH ID "Two-way radio at its best, 12-30 WENY Elmira, 14-50 Corning, Radio America." (WJH-MD)
 NY WKIP Poughkeepsie 4/5 1900 TOH ID as a singing jungle "WKIP 14-50." Into network news. (WJH-MD)
 NC WIZS Henderson 4/5 0359 Heard an ID as "Be a participant on SportsTalk with Ken (Collins) (phone number) WIZS Henderson." (WJH-MD)
 PA WFRA Franklin 4/5 0600 TOH ID "WFRA Franklin, WOYLOil City." (WJH-MD)
 PA WJPA Washington 4/4 2358 Singing ID as "Radio 14-50 WJPA." (WJH-MD)
 VA WFTR Front Royal 4/4 2027 Popped in w/ ID as "14-50 WFTR". Nothing else heard. (WJH-MD)
 1480 AL WABB Mobile 04/24 2330 BOH ID into CNN News. Good signal fading in and out with WGUS in Augusta, GA. "Mobile's NewsTalk 1480." (IEN-GA)
 GA WGUS Augusta 04/24 2333 Country Gospel Music. Good signal that would fade in and out with WABB in Mobile, AL. "1480, WGUS." (IEN-GA)
 1490 ON CFPS Port Elgin 4/16 0307 Local ads, spot for "Trivial Pursuit" on CFOS, ID as "5-60 CFOS." Into Oldie. On Top! (WJH-MD)
 SC WJDJ Hartsville 4/12 1850 In w/D as "Racing Radio on WJDJ." (WJH-MD)
 VT WIKE Newport 4/15 0100 TOH ID as "Broadcasting... Northeastern Vermont... AM stereo." Really rough reception in the mess. (WJH-MD)
 1500 CT WFIF Milford 4/16 1916 A male announcer talking with someone on phone, he gave a phone numbers. This was followed by a singing ID "WFIF." Fair under a tightly nulled WTOP. (WJH-MD)
 1520 OK WOKC Oklahoma City 4/4 2218 Ad for a chain drug store, AmVets, and local businesses. ID at 2222 into a talk show with a phone number given. Good over nulled WWWKB. (WJH-MD)
 1550 FL WAMA Tampa 4/10 0800 At TOH in the middle of a Spanish program heard an ID "You are listening to WAMA Tampa." Over all. (WJH-MD)
 1600 VA WXMY Saltville 04/21 0803 TOH ID. Signal was buried in the mix along with some Preachin' from somewhere. "Classic Country, AM 1600 WXMY, Saltville". (IEN-GA)
 1620 FL WNRP Gulf Breeze 04/12 2300 Country Music. Good signal with slight fading and interference from a nearby thunderstorm. "You're listening to Classic Country on AM 1620, Gulf Breeze" & "Cat Country, 98.7 FM." (IEN-GA)
 1680 LA KRJO LA Monroe 05/02 0755 Gospel music. Local like signal for the most part, but it would fade every five-minutes or so and WDSS in Ada, would take it's place. "Rejoice 1680 AM." (IEN-GA)

D X TESTS

1230 VA WODI Brookneal 05/01 0002 noted here with bits and pieces of code (a couple clear enough for a solid ID) and sweep tones, under severe adjacent channel from local WJNC-1240 (a little under 3 miles away.) At 0018:05 noted a 1 to 2 second signal that sounded like an atmospheric sounder/sweep (or whatever it's called) at a fair to good level inconsistent with the signal from WODI. Was this WODI or something else? Overall, poor reception. (MH-NC)

1230 +05/01 0002 Sweep Tones heard here in Watkinsville, GA at 0007 and again at 0013 on my Drake R8B with the 135' Wire running North-to-South. They punched through the clutter very well. However, I have heard nothing else. (IEN-GA)

UN IDEN

1680 ?? ??? 5/1 0202 Radio Disney noted with fair signal and moderate QRM from (presumed) WTTM with Asian lang. Signal lasted until WTTM dominated @ 0216. Probably WDSS, and unlikely KAVT, but I'm not picky, I'll take either one!! (MH-NC)

 That is it for this week. Sending this in a bit early as Penny and I are off for New York for a LONG weekend. Have some friends appearing off Broadway so going to see them. Then it's back for a week, then off to Dayton for the Ham Radio Convention. Then back for ONE day before leaving for San Francisco for a couple of days... WOW. It's busy!!! Thanks to you all 5/04 2300.....

DX WORLDWIDE – WEST / TROPICAL BAND DX
Patrick Martin – P.O. Box 843 – Seaside OR 97138
 E-mail: mwdxer@webtv.net all times UTC

A little bit of everything this time around. Even some European Long Wave. So away we go.

TRANS-ATLANTIC DX ROUNDUP

162 **FRANCE** at 0404 UTC 4/29, poor. (SR-OR)
 189 **ICELAND** at 0405 UTC 4/29, weak/medium At 0530 weak. (SR-OR)

PAN-AMERICAN DX ROUNDUP

860t **MEXICO**, Tijuana, BCN XEMO 4/18 1125 Poor with 6/8-time oompah mx, ranchera mx, soon overridden by tent KTRB at 1130 which itself was QRMed by KAIM returning to the air at 1133. (5P-HI)
 1200 **MEXICO**, Hermosillo, SON XEYF believed the strong station at 1200 on 4/20 with NA. Then anc gave clear ID for XERFR FM and many Radio Formula IDs. The IRCA Mexican log lists only this affiliate on 1200. I heard Radio Formula here at this same hour 8/26/02, but again, no local ID. KR in AZ heard XEYF with Radio Formula IDs and local program content on 2/18/04. (LG-MT)
 1430 **MEXICO**, Cd Obregon XEOX 4/24 1135. Good briefly o/KFIG-KLO-KMRB w/nice "equis-eh-oh-equis, catorce-treinte Ah-emme, Ciudad Obregon" ID, Splash from KDIF 1440. Unneeded. (RW-CA)

TRANS-PACIFIC DX ROUNDUP

702 **AUSTRALIA**, Sydney 2BL 4/19 1058, poor to very poor with talk show, woman ment. "ABC Radio Sydney, New South Wales, and teaser for upcoming show ID "2BL ABC Sydney..."6 time pips, news theme and ABC News, before fading out. Used to hear 2BL when it relayed on 6090 SW back in the 20th Century. QRM KORL 690. (5P-HI) (Dale, I remember those regionals. I have most QSL'd too. Ah the good ol' days. PM)

THANKS TO THESE REPORTERS

LG-MT - **LARRY GODWIN**, 2390 Clydes Dale Lane, Missoula MT 59804 lb@mtwi.net
 DXing with Hammarlund HQ-150, Sanserino air-core box loop + KIWA Loop
 5P-HI - **DALE PARK**, PO Box 10640, Honolulu HI 96816 dxfool@aol.com
 DXing with Sangean ATS-818CS, Terk AM1000 loop
 SR-OR - **STEVE RATZLAFF**, Elgin Oregon steveratz@eoni.com
 DXing with AR-7030, longwires
 RW-CA - **ROBERT WIEN**, Fontana CA rjwmail@webtv.net

REPORT FROM NICK HALL-PATCH IN JAPAN

Here's a few loggings from Japan. Not enough time to DX, often electrically noisy locations, and only a barefoot ICF-2010. Overall impression was a surprising clarity of stations even with several on a channel. Not as many off channel as I thought there might be, so with a decent loop or phasing system, and a quiet location, probably many interesting stations could have been logged if enough time was available. Surprising lack of Hawaiian hets at dawn in the one town that we were on the Pacific, though there was a carrier on 1580....
 I still have some recordings to listen to. Will send results later if anything worthwhile turns up.



Nick Hall-Patch, 1538 Amphion St. Victoria, BC, Canada V8R 4Z6 (nhp@ieee.org) using ICF-2010.
(NHP-JP1) – in Kyoto, Japan (NHP-JP3) – in Tsuwano, Japan
(NHP-JP2) – in Nara, Japan (NHP-JP4) – in Kagoshima, Japan

- 567 **S. KOREA**, Jeonju, HLKF. 1201 31 Mar. KK talk //756, mixing with JJ talk //594 (JOIK, which was more distant than Korea from here). KK talk heard on many channels at this location, including 558, 603, 621, 630 etc., though usually with JJ co-channel. (NHP-JP3)
- 621 **SOUTH KOREA**, Sammaebong, HLCF 1500 4/8, HLKS ID (sounded like it, this is supposed to relay HLKS-963) by woman followed by pips on hour. Odd that this dominated with the powerful North Koreans also listed here. (NHP-JP4)
- 648t **JAPAN**, Naha, AFN. 1230 8 Apr. Presumably the one with "NPR Worldwide" program, dominant with good strength. (NHP-JP4)
- 657 **N. KOREA**, Kangnam. 1230 Mar 31. Ruled the frequency pretty much anywhere in southern Japan with portentous mx and KK talk //3320. (NHP-JP3)
- 702 **N. KOREA**, Chongjin. 1409 8 Apr. seemed //819 w/classical sounding mx, then faded u/NHK2 EE nx. (NHP-JP4)
- 756 **S. KOREA**, Yaoju, HLKA. 27 Mar 1331. Logged in many locations. This was //1305 w/KK talk at fair strength. Both had other stations on channel as well, but were easily listenable. (NHP-JP2)
- 801 **N. KOREA**, Hwadae. 1410 8 Apr. Man intoning KK talk, almost a chant //855 w/fair strength. (NHP-JP4)
- 810t **JAPAN**, Tokyo, AFN. 1425 22 Mar. country mx, fair, //648. If 648 was AFN Naha, then it gets out quite well. (NHP-JP1)
- 819 **N. KOREA**, Pyongyang. Ruled the channel, 1240 Mar 31 //2850. Nothing else audible. (NHP-JP3)
- 873 **N. KOREA**, 1416 Mar 31. Classical violin mx //2850 u/NHK2. Not listed in PAL, but heard in other locations in Japan. Possibly the listing from 882, as nothing heard there from N. Korea, even when listening in Kagoshima where this one gave fits to NHK2-873 in Kumamoto. (NHP-JP3)
- 1044 **CHINA**, Changzhou. 27 Mar 1317. Strong JJ talk by man and woman; dominant on channel. No ID across hour at 1300. Not //9855, but //7190 which was very strong. (NHP-JP2)
- 1080 **unID**, jammer 1224UT 8 Apr. Whooshing sound very similar to the old Korean regular on 1053. Is the N. Korean being blocked here? (NHP-JP4)
- 1080 **CHINA**, UNID 1400 4/8. Two stations in // about 1/2 sec out of sync with woman talking CC quickly over long CC pips on the hour, couldn't get any ID however. Likely channel, as 3 pips and 1 pips there at this time, and all sorts of other things heard here on other days. (NHP-JP4)
- 1080 **N. KOREA**, Haeju. 1412 8 Apr. Good strength w/orchestral mx //819. (NHP-JP4)
- 1080 **SOUTH KOREA**, Daegu AFN, 1307 3/30. "Broadcasting to American Forces in Korea for over 50 years, this is AFN", after news in EE. Fighting with a jammer and at least one other station. Thought I had Saipan for a moment or two. (NHP-JP1) (Nick, these AFN stations seem to not get out all that well. I have never logged one on any MW frequency, even though I have tried. PM)
- 1089 **CHINA**, Fujian, CNR6. 1249 8 Apr. Two CC stations battling it out here, one was a woman speaking excitedly, but this was a man talking //9170 and delayed by under a second. Both at fair strength. (NHP-JP4)
- 1134 **S. KOREA**, Kimp'o. 1329 27 Mar. Slow vocal mx //972 w/JOQR nulled. 972 was very strong, this was quite a bit weaker. (NHP-JP2)
- 1143t **JAPAN**, Kyoto, JOBR. 1221 8 Apr. Presumably the one with JJ baseball //1332 (perhaps All Night Nippon), not always dominant on channel. (NHP-JP4)
- 1170 **S. KOREA**, Gimje, HLSR. 1200 8 Apr. Strong signal w/KBS ID in JJ, after RR broadcast. (NHP-JP4)
- 1467 **S. KOREA**, Mokpo, HLKN. 27 Mar 1409. KK talk by man, good strength //756, both heard with co-channel stations. (NHP-JP2)
- 1548 **CHINA**, UNID 1500 4/6. Two stations here in // and fairly equal, separated by less than a second, which made things unreadable. Not even sure if it was CC talk, except for the pips on the hour, which, though "5 and 1" seemed faster than other CC pips I'd heard. (NHP-JP4)

GRAYLAND DX REPORT by Bruce Portzer

On the weekend of April 8-10, Chuck Hutton and I made a DXpedition to Grayland, WA. We were able to put up two Beverages, one aimed at Asia and the other at Australia and New Zealand.

Conditions to Asia on April 9 were OK for this time of year, but not all that exciting. Mostly, we heard some of the Japanese and other stations that can be heard on most any DXpedition. The morning of April 10 was much better, with many Japanese and Chinese stations, plus a few Koreans and Russians. Alaskans were also good, with KFQD-750 and KUDO-1080 topping the co-channel Portland powerhouses. The high point for me was a local ID from 1000 watt JODD-1602.

I heard many more stations than the highlights listed here. Going from memory, I heard Asian audio on 594, 666, 675, 693, 747, 774, 828, 891, 918, 954, 972, 981, 999, 1008, 1017, 1026, 1035, 1044, 1053, 1062, 1071, 1098, 1107, 1125, 1134, 1143, 1152, 1170, 1179, 1188, 1197, 1206, 1215, 1242, 1251, 1269, 1278, 1287, 1305, 1314, 1323, 1332, 1368, 1377, 1386, 1395, 1413, 1422, 1431, 1440, 1458, 1467, 1475, 1485, 1494, 1503, 1521, 1530, 1539, 1557, 1566, 1575, 1584, 1593, and 1602, plus hets on a few others. Most of the DX was in the upper part of the band, with only a few high powered stations below 900.

DUs were poor both nights, with only brief appearances on 738, 774, 1116, and 1548. Island stations were mostly non-existent, except for good but brief receptions of Hawaii-830, Marshalls-1098, and Micronesia-1503.

Equipment: Drake R8A, Icom R-75, 1000' NW (315 degree) & 750' SW (220 degree) Beverages

- 153 **RUSSIA**, 1235 4/9, fair w/man & woman in Russian, excerpts from various songs.
- 529 **ALASKA**, Level Island, 0547 4/9 SQM beacon good hetting 530.
- 530 **TURKS & CAICOS**, RVCI, 0547 4/9 good w/Spanish religion.
- 750 **ALASKA**, Anchorage, KFQD, 1031 4/10 strong w/news item, "AM 750 KFQD" ID, promos & local weather o/KXL.
- 774 **JAPAN**, Akita, JOUB 1100 4/9, good w/time signal. Fair-strong at several rechecks both nights.
- 774 **AUSTRALIA**, Melbourne, 3LO, 0923 4/10, fair-poor English talk & pop music dominant on SW wire, JOUB all alone on NW wire.
- 830 **HAWAII**, Honolulu, KHVH, 0600 4/9, mixing w/mainland stations, "Newstalk 8-30 KHVH Honolulu" ID, ABC news.
- 890 **ALASKA**, Homer, KBB1, 1059 4/9 loud w/ music & ID "KBB1 AM 890 Homer, Listener-supported Public Radio" ID, strong at many rechecks both nights with various sorts of music (mostly jazz.)
- 930 **ALASKA**, Ketchikan, KTKN, 0540 4/9 dominant w/local ads, IDs, light oldies.
- 981 **CHINA**, CNR1, 1113 4/10, Chinese talk fair in splatter.
- 999 **UNID**, 1156 4/10, talk in what sounded like Chinese, but too much KOMO QRM.
- 1044 **SOUTH KOREA**, 1300 4/10, Korean talk, ...- pips fair-poor, 2 KBS stations listed.
- 1053 **SOUTH KOREA**, 1115 4/10 jammer mixing w/Japan.
- 1080 **ALASKA**, Anchorage, KUDO, 1019 4/10 "Air America" Randi Rhodes show, local break w/ads, "KUDO Anchorage, celebrating the people ... Alaska", then weather "for Kudo & Vicinity", mostly dominant o/KOTK.
- 1107 **JAPAN**, 1324-1340 4/10 JOCF or JOMR good w/pop music, woman DJ, male talk at times too. Good, but didn't catch an ID.
- 1125 **UNID**, 1208-1225+ 4/10, someone w/Chinese discussion program, seemed to have a woman moderator with phone & studio conversations. Good at times mixing with 1-2 other stations. Will replay the recording for possible ID.
- 1152 **JAPAN**, Unid, 1319 4/10, weather fair-poor. Was hoping for local ID at 1320, but had woman saying "NHK Daini hoso desu". I suspect this was an unattended repeater with no call letters of its own; maybe the parent station didn't want its calls going out on the "wrong" freq.
- 1170 **SOUTH KOREA**, 1149 4/10, RKI mixing with domestics, talk in Russian with Korean accent. Japanese talk 1228 o/u KPUG.
- 1188 **SOUTH KOREA**, Seoul, HLKX, 1148 4/10, probably the religious program in English, matches what's listed. Good-fair w/heavy KEX splatter.
- 1206 **CHINA**, Yanbian, 1142 & 1207 4/9, loud w/Korean talk. Strong w/Korean talk 1147 4/10.
- 1215 **CHINA**, CNR7, 1144 4/10, good w/female vocal tune, then man & woman alternating in Mandarin & Cantonese.
- 1251 **CHINA**, unid, 1058 4/10 ads in Chinese, 1059:50 instrumental theme music ("Edelweiss" or similar song), then- time pips at 1100:15, into what might have been news (man & woman). Good-nil with plenty of 1250 splatter. Lots of possibilities listed. Also, 1249 4/10 with phone interview in Chinese.
- 1377 **RUSSIA**, Vladivostok, 1133 4/10, Radio Yunost probably the one with pop music and woman DJ in Russian. No ID heard, mixing with China.
- 1422 **JAPAN**, Yokohama, JORF 1130 4/9 good w/sports broadcast, drums beating in background. 1224 4/9 good w/string of ads, including one with Bill Haley's "Rock Around the Clock."
- 1440 **JAPAN**, Sapporo, JOWF, 1247 4/10, Japanese talk mixing with domestics.
- 1458 **CHINA**, Nei Menggu, 1203 4/9, interesting throaty vocal music //4525.
- 1467 **JAPAN**, 1331 4/10, NHK2 weak //774 mixing w/Korea(?)
- 1503 **MICRONESIA**, Kosrae, 0915 4/10, good w/chorale music in KGA splatter.
- 1548 **AUSTRALIA**, Emerald 4QD, 1126 4/9, sports event in Aussie English, briefly good. One of the few DUs audible either night.
- 1566 **SOUTH KOREA**, Cheju, HLAZ, 1055 4/9 good in Korean. Was its usual good-strong self both nights at many rechecks.
- 1575 **JAPAN**, 1221 4/9, apparently one of the AFN stations fair-poor giving phone # 1-800-227-7685, which matches the request line for a syndicated R&B format called "The Touch". AFN-

Iwakuni's website says they carry The Touch's programming at this time, but I don't know if it's aired on AFN Sasebo or Misawa.

- 1575 **THAILAND**, VOA, 1122 4/10, fair in English with mentions of voanews.com and postal address. 1238 4/10 fair in unid SE Asian language similar to Tagalog mentioning "VOA Washington DC".
- 1584 **JAPAN**, 1200 4/9, NHK time signal weak atop jumble of carriers.
- 1584 **UNID**, 1240 4/10, woman in Chinese, fair-poor atop jumble.
- 1584 **PALAU**, 1325 4/9, possibly the one fair-nil w/non stop pop tunes, no anmts heard.
- 1602 **JAPAN**, Fukuyama, JODD, 1318 4/10 weather, local ID "JODD, NHK Fukuyama Daini Hoso", good signal, listed as 1 kw.

DXWW-W-shorts - pb

The 3rd edition of the Brazilian Medium Wave List, compiled by the DXCB (Dx Clube do Brasil), is online. You may download freely as a PDF document at:

<http://www.ondascurtas.com/listasemissorasmw.asp>.

Finally I've put the first of 3 DXpedition stories out, new job and interstate relocation are delaying things, but that's life. Story, logs and photo's at

http://www.dxing.info/dxpeditions/mountisa_2005_02.dx

Cheers, **Craig Edwards**, ex Townsville, Queensland, Australia, now Adelaide, South Australia, nutritionandsports@bigpond.com. Other DXpeditions at:

<http://www.dxing.info/dxpeditions/townsville2004.dx>

http://www.dxing.info/dxpeditions/townsville_2004_09.dx

http://www.dxing.info/dxpeditions/townsville_2004_10.dx

http://www.dxing.info/dxpeditions/mountisa_2004_10.dx

http://www.dxing.info/dxpeditions/townsville_2005_01.dx

http://www.dxing.info/dxpeditions/mountisa_2005_02.dx

DX WORLDWIDE - EAST

Brandon Jordan – 4920 Park Ave. – Memphis, TN 38117

E-mail: bjordan@bcdx.org all times UTC

Mark Connelly reporting in with a batch of loggings and details of an amazing reception of Radio Nanduti -1020 in Paraguay!

*** TRANS-ATLANTIC DX ***

- 558 **SPAIN** RNE R.5 synchros, APR 5 0344 - Spanish teletalk; getting by WGAN. [Connelly*B-MA]
- 612 **MOROCCO** RTM A, Sebbaa-Aioun, APR 26 0121 - male Arabic vocal; fair through WGIR slop. [Connelly*B-MA]
- 621 **CANARY ISLANDS // SPAIN** RNE R.1 synchros, Santa Cruz de Tenerife et al., APR 27 0209 - // 774 with man in Spanish; in WZON slop. [Connelly*B-MA]
- 774 **SPAIN** RNE R.1 synchros, APR 27 0208 - man in Spanish; some echo. [Connelly*B-MA]
- 783 **MAURITANIA** R. Mauritanie, Nouakchott, APR 29 0050 - // 4845 with tribal chanting & drumming; good. [Connelly*B-MA]
- 792 **FRANCE** France Info, Limoges, APR 27 0207 - // 1206 with French male rock vocal; fair. [Connelly*B-MA]
- 837 **CANARY ISLANDS // SPAIN** COPE synchros, APR 7 0348 - Spanish talk; poor. [Connelly*B-MA]
- 837 **FRANCE** France Info, Nancy, APR 26 0110 - // 1377 with instrumental music; poor to fair over Spain-Canaries. [Connelly*B-MA]
- 855 **SPAIN** RNE R.1 synchros, APR 26 0208 - Chuck Mangione style jazz, then man in Spanish; fair to good with WEEI phased. [Connelly*B-MA]
- 873 **SPAIN** SER synchros, APR 7 0217 - Spanish news, phone interview; fair. [Connelly*B-MA]
- 882 **UNITED KINGDOM** BBC R. Wales, Washford, APR 29 0308 - English newstalk / discussion; through WCBS slop. [Connelly*B-MA]
- 890.98 **ALGERIA** Chaîne 1, Algiers, APR 7 0217 - pop Arabic male vocal; good. [Connelly*B-MA]
- + APR 28 0046 - female Arabic talk at fair audio level on massive carrier. [Connelly*B-MA]
- 945 **FRANCE** France Info, Toulouse, APR 29 0319 - French talk by woman; fair. [Connelly*B-MA]
- 999 **SPAIN** COPE, Madrid, APR 7 0230 - Spanish talk mentioned Valencia, then there were pips on the half-hour; loud, far stronger than the adjacent 1000 jumble. [Connelly*B-MA]
- + APR 25 2343 - Spanish talk by man, then a bit of music; good.
- + APR 28 0045 - fast Spanish talk by man & woman; huge with barely a trace of a 1000 het. [Connelly*B-MA]

- 1017 **SPAIN** RNE R.5 synchros, APR 7 0230 - Spanish news; fair. [Connelly*B-MA]
- 1044 **SPAIN** SER synchros, APR 7 0142 - Spanish telephone interview. [Connelly*B-MA]
- 1062 **DENMARK** Danmarks R., Kalundborg, APR 29 0307 - rock music, man in Danish; fair. [Connelly*B-MA]
- 1098 **SPAIN** RNE R.5 synchros, APR 7 0042 - // 1107 with Spanish vocal; loud. [Connelly*B-MA]
- + APR 17 0337 - // 1107 with woman in Spanish; fair.
- + APR 27 0212 - // 1107 with man in Spanish; good, echoey. [Connelly*B-MA]
- 1107 **SPAIN** RNE R.5 synchros, APR 7 0042 - // 1098 with Spanish vocal; fair. [Connelly*B-MA]
- + APR 17 0335 - Spanish talk by woman, then sad-sounding vocal; fair.
- + APR 27 0212 - // 1098 with man in Spanish; good, some echo. Weak growl from something on about 1106.8. [Connelly*B-MA]
- 1116 **SPAIN** SER synchros, APR 25 2333 - fast Spanish news by man. [Connelly*B-MA]
- 1134 **CROATIA** Glas Hrvatske, Zadar, APR 26 0054 - Slavic female dance-style vocal; fair.
- + APR 26 0214 - clear English talk mentioning "on the Voice of Croatia". [Connelly*B-MA]
- 1169 **IRAN** IRIB Sarasary, Semnan, APR 9 2359 - bits of choral vocal; through WSKW-1160 slop and Farda/WVVA-1170 het. [Connelly*B-MA]
- 1170 **UNITED ARAB EMIRATES** R. Farda, Dabiya, APR 9 2359 - mideast disco/dance music; briefly through WVVA. [Connelly*B-MA]
- + APR 28 0018 - // 1575 with "Like a Prayer" by Madonna; booming in, way over WVVA and the Iran-1169 het. [Connelly*B-MA]
- 1172 **unID** APR 26 0052 - man in unID language on this odd channel. [Connelly*B-MA]
- 1179 **CANARY ISLANDS // SPAIN** SER synchros, APR 7 0044 - fast Spanish talk. [Connelly*B-MA]
- 1197 **SPAIN** Euskadi Irratia, Vitoria, APR 8 0156 - Spanish teletalk; fair. [Connelly*B-MA]
- 1206 **FRANCE** France Info, Bordeaux, APR 5 0338 - jazz piano; excellent.
- + APR 10 0003 - French news by woman; to good peak. [Connelly*B-MA]
- + APR 25 2339 - tropical jazz; good.
- + APR 27 0202 - // 792 with rock vocal; good, stronger than 1210 WPHT/VOAR. [Connelly*B-MA]
- + MAY 3 0411 - French news by man; fair. [Connelly*B-MA]
- 1215 **SPAIN** COPE synchros, APR 8 0156 - Spanish talk momentarily over generally-stronger UK. [Connelly*B-MA]
- 1215 **UNITED KINGDOM** Virgin R. synchros, APR 5 0337 - '70s hit "Dancing in the Moonlight" by King Harvest; fair to good.
- + APR 8 0152 - "Don't You Forget About Me" by Simple Minds, a few words from the DJ, then "Leather and Lace" by Nicks & Henley; good.
- + APR 10 0005 - fair with "Bohemian Rhapsody" by Queen. [Connelly*B-MA]
- + APR 29 0302 - "It's a Beautiful Day" by U2; good. [Connelly*B-MA]
- 1287 **SPAIN** SER synchros, APR 7 0235 - man in Spanish; to fair peak. [Connelly*B-MA]
- + MAY 3 0410 - woman with Spanish teletalk show; poor to fair. [Connelly*B-MA]
- 1296 **SPAIN** COPE, Valencia, APR 7 0122 - man in Spanish; fair. [Connelly*B-MA]
- + MAY 3 0410 - Spanish newstalk; loud. [Connelly*B-MA]
- 1296 **SUDAN (t)** Reba, APR 28 0101 - maybe this with gravelly-voiced Arabic sounding talk by man; briefly to good strength over low pitched rumble and a pile of other stations. [Connelly*B-MA]
- 1305 **SPAIN** RNE R.5 synchros, MAY 3 0339 - Spanish teletalk; fair. [Connelly*B-MA]
- 1314 **NORWAY** NRK, Kvitsoy, APR 27 0202 - man with news in Norwegian; good. [Connelly*B-MA]
- + APR 29 0258-0300 - country-rock group vocal, electronic sound, then news by man in Norwegian; loud. [Connelly*B-MA]
- 1341 **NORTHERN IRELAND** BBC R. Ulster, Lisnagarvey, MAY 3 0408 - BBC news by woman mentioned status of nuclear development in Iran and North Korea; fair. [Connelly*B-MA]
- 1359 **SPAIN** RNE, Arganda del Rey, APR 5 0334 - Bob Marley reggae hit "No Woman No Cry"; fair. [Connelly*B-MA]
- + MAY 3 0341 - woman in Spanish; fair. [Connelly*B-MA]
- 1368 **UNITED KINGDOM** MAY 3 0405 - Manx Radio strongly suspected as the one here with "Upside Down" by Diana Ross, then female English DJ. Too much WFEA slop for a clear ID (and too late on a work night to play around with DXTuners sites). [Connelly*B-MA]
- 1377 **FRANCE** France Info, Lille, APR 7 0131 - man in French; loud.
- + APR 8 0200 - rock music, French talk; excellent. [Connelly*B-MA]
- + APR 25 2312 - rock music; fair on pre-sunset fade-up.
- + APR 26 0008 - a cappella blues / black gospel male chorus; good.
- + APR 29 0257 - '40s Chicago-style blues vocal with harmonica, piano, drums; good. [Connelly*B-MA]
- 1422 **GERMANY** Deutschlandfunk, Heusweiler, APR 5 0333 - two men in German.
- + APR 7 0124 - operatic male vocal; poor to fair. [Connelly*B-MA]
- + APR 26 0219 - classical music; very good.

- + MAY 3 0342 - man in German; loud peaks, fast / bouncy fades. [Connelly*B-MA]
 1431 **DJIBOUTI** R. Sawa, Arta, APR 7 0130 - Arabic dance style music; in WXKS slop. [Connelly*B-MA]
 + APR 26 0009 - Arabic female vocal; in slop. [Connelly*B-MA]
 1458 **UNITED KINGDOM** MAY 3 0342 - two stations mixing: one with BBC talk, one with Hindu music. [Connelly*B-MA]
 1467 **FRANCE** TWR, Roumoules, MAY 3 0344 - TWR musical box interval signal repeating; over WAZN slop. [Connelly*B-MA]
 1503 **SPAIN** RNE R.5 synchros, MAY 3 0345 - Spanish interview; fair. [Connelly*B-MA]
 1530 **SAO TOME E PRINCIPE** VOA Relay, Pinheira, APR 5 0330 - // 7290 with man in African-accented English talking about Robert Mugabe. Afropop music then played. Under WCKY, ripply fading apparent (semi-auroral). [Connelly*B-MA]
 1530 **VATICAN CITY** R. Vaticana, MAY 3 0346 - eastern European talk by woman; way over WCKY. [Connelly*B-MA]
 1548 **KUWAIT** R. Sawa, Kabd - Kuwait City, APR 26 0010 - Arabic talk; fair.
 + APR 28 0034 - US pop female vocal, then Arabic teletalk; fair to good. [Connelly*B-MA]
 1557 **FRANCE** France Info, Fontbonne, APR 5 0332 - French talk by man, mention of Iraq; good (though with bouncy fades). [Connelly*B-MA]
 + MAY 3 0401 - news by man in French; good, over WQEW slop. [Connelly*B-MA]
 1575 **UNITED ARAB EMIRATES** R. Farda, APR 28 0018 - // 1170 with "Like a Prayer" by Madonna, Farda mention; excellent. [Connelly*B-MA]
 1584 **CEUTA** RadiOle, APR 7 0127 - plaintive Spanish female vocal & guitar; strong, over SER Spain.
 + APR 8 0222 - merengue-influenced uptempo group vocal; over SER. [Connelly*B-MA]
 1584 **SPAIN** SER synchros, APR 8 0222 - Spanish newstalk by woman; under Ceuta. [Connelly*B-MA]
- *** **PAN-AMERICAN DX** ***
- 530 **TURKS & CAICOS** R. Vision Cristiana Internacional, South Caicos, APR 7 0342 - ID "Radio Vision Cristiana Internacional", mention of a college in "El Bronx"; local-like, 531 het in background. [Connelly*B-MA]
 555 **ST. KITTS & NEVIS** R. ZIZ, Basseterre, APR 7 0151 - old-time country-western vocal; fair. [Connelly*B-MA]
 + APR 27 0210 - reggae male vocal with electric organ and percussion, then Caribbean English male DJ and ZIZ ID; fair. [Connelly*B-MA]
 760 **COLOMBIA** RCN, HJAJ, Barranquilla, APR 7 0146 - RCN, Cali, Bucaramanga, & Barranquilla mentions in reverberated sports-related Spanish talk; atop pile.
 + APR 9 0101 - man shouted "RCN presenta informativa deportiva"; good. [Connelly*B-MA]
 820 **CUBA** R. Reloj, APR 7 0346 - Reloj program; way under St. Kitts preacher. [Connelly*B-MA]
 820 **ST. KITTS & NEVIS** Trinity Broadcast Network / R. Paradise, Charlestown, APR 7 0109 - //7505 with gospel vocal "hallelujah and praise the Lord", then preacher; good, over WNYC. [Connelly*B-MA]
 895 **ST. KITTS & NEVIS** V. of Nevis, Bath Village, APR 9 0028 - US-accented man talking about wireless broadband Internet service; to good peak. [Connelly*B-MA]
 1000 **BRAZIL** R. Record, ZYK522, Sao Paulo, APR 10 0353 - emotional talk, possibly preaching, by man in Portuguese. Briefly over 2 unID Spanish-speaking stations. Brazil is fairly common at shore sites, but scarcer here at home 24 km inland. [Connelly*B-MA]
 1020 **CUBA** R. Reloj, APR 7 0118 - Reloj program, alone on the channel. [Connelly*B-MA]
 1039.6 **VENEZUELA** La Voz de Carabobo, YVLB, Valencia, APR 7 0119 - het, fragments of Spanish talk. [Connelly*B-MA]
 1100 **BRAZIL** R. Globo, ZYK694, Sao Paulo, APR 7 0040 - Portuguese "futebol" talk including a "gooooooooo!" scream; fair. This was noted right after repositioning the Flag antenna from the previous southwest null to a due west null instead. This clobbered WTAM and improved the southeast pick-up as an added bonus. [Connelly*B-MA]
 1110 **VENEZUELA** R. Carupano, YVQT, Carupano, APR 10 0356 - end of song, Carupano mention; mixed with WBT and another Spanish speaker. [Connelly*B-MA]
 1180 **CUBA** R. Rebelde, Villa Maria, APR 7 0211 - // 5025 with spirited Spanish political speech before a noisy crowd; over WHAM & 1179 het. [Connelly*B-MA]

*** **CONTRIBUTOR** ***

Mark Connelly - MarkWA1ION@aol.com

[Connelly*B-MA] = Billerica, MA (GC= 71.221 W / 42.533 N) (home).

Receiver: Drake R8A, Palstar R30, Drake SW8

Antenna systems: *Flag*: 5 m vert. x 10.6 m horiz., base ht. 5 m, peak 90°, null 270°;

Broadband loop in vertical plane: total length 24 m, peak 150/330°, null 60/240°; *Horizontal*

broadband loop: total length 60 m, ht. 1.5 m, high-angle skip (NVIS) non-directional; *Sloper*

(feedline of ham dipole): 20 m at 60° angle to earth, slight null at 225°

Accessories: matching transformers, DXP-6 phasing unit

Mark speaks... "Recent good weather and longer hours of daylight have allowed me to add a couple more antennas behind the house and to move around some of the existing ones. It is hoped that Latin American coverage, never that great previously from this QTH, will be enhanced by the changes and that Europe-Africa-Middle East coverage will be maintained at, or improved from, prior acceptable levels. Antennas can be used singly (against low-noise and/or mains ground) or phased in many different combinations. The best set-up for TA DX would differ from what I'd use during an aurora."
Mark speaks... "A review of my "1020 LA dogfight" tape from Wed. night 4 MAY at 9:15 p.m. EDT (UTC 5 MAY @ 0115) shows a "Nanduti" mention on the reverberated accented Spanish talker. This was just before Mundial Margarita popped up with ID, followed by Radio Calendario's fade-up and ID. Cuban "RR" beeps on the minute were also chugging along in the background most of the time. This was one serious 1020 "shooting gallery" session out at the Granite Pier DXpedition site in Rockport, MA. KDKA? Rendered inaudible by the stronger Latins (AU CX) and the null from the car-top loop/whip cardioid array."

DXWW-E-shorts - pb

My latest "Nudists" DXpedition at: http://www.dxing.info/dxpeditions/seefontein_2005_04.dx

John Plimmer, Montagu, Western Cape Province, South Africa South 33 d 47 m 32 s, East 20 d 07 m 32 s, Icom IC-756 PRO III with MW mods, RX Drake R8B, SW8 & ERGO software, Sony 7600D GE SR III, BW XCR 30, Braun T1000, Sangean 818 & 803A. Hallicrafters SX-100, Eddystone 940, GE circa 50's radiogram, Antenna's RF Systems DX 1 Pro, Datong AD-270, Kiwa MW Loop: <http://www.dxing.info/about/dxers/plimmer.dx>.

For youRR listening pleasure (R Reloj outlets):

Location	kHz	Iw		
Villa Clara	570	30	La Jaiba, Matanzas	930 1
Trinidad	610	1	Santiago de Cuba	930 1
Caney de las Mercedes,			Central España, Matanzas	940 10
Granma	760	10	Holguín	940 10
Ciudad de La Habana			Ciudad de La Habana	950 10
(Emergente*)	760	1	Mayari Arriba, Santiago	
Pinar del Río	790	30	de Cuba	950 1
Isla de la Juventud	850	1	Cienfuegos	960 1
Baracoa, Guantánamo	860	1	Guantánamo	960 10
Sancti Spíritus	870	1	Bayamo, Granma	980 1
Bolondrón, Matanzas	910	5	Las Tunas	1010 5
Moa, Holguín	920	1	Camagüey	1270 10
Ciego de Ávila	930	10		

*Emergency (stand-by, probably)

Mike Hardester, Jacksonville, NC. (34.47 N — 77.23 W)

ICOM R-70 - 2 x 75 foot (23 meter) random wires, Quantum Phaser and Patience.

That's all for this issue. 73, Brandon.

DX FORUM

Richard C. Evans – 7416 Hearthstone Wy – Indianapolis IN 46227-7923

E-mail: REvans5435@aol.com

DEADLINES: Sundays

Deadlines: 5/22, 6/5, 6/19, 7/3, 7/17, 7/31 and 8/28

R. C. Watts, 4109 Graf Drive, Louisville, Kentucky 40220-3016

A website recalling the glory days of WAKY, the Big Seven-Nine-O, was featured in the 4/11 Courier-Journal. Now WXXX-790, it used to be one of the legendary stations in this neck of the woods and beyond. John Quincy, who works at WSUY-FM in Charleston, SC, runs the site and is still a fan after 30 years. WKLO, another Louisville favorite, is now WKJK-1080 and has a website too after fans asked Quincy to build one. WAKY and WKLO were going strong when I came to Louisville in 1973. It didn't last much longer but even today several DJs and other station personalities are still around. Check out www.790waky.com and www.1080wklo.com if you like the old stuff. Didn't think I would bother writing another report, but I heard the Superpower 1020 DX Test from Turks and Caicos. Already have a QSL card and another QSL didn't hurt my hand much. Guess I am just getting old and hate to see the good things go away. Something else interesting is sure to come along. Or so sez Col. DX!

Richard Evans, 7416 Hearthstone Way, Indianapolis, Indiana 46227-7923

A big thank you to the Col. for the report so that we have a column this week. I mailed out a check to Lynn this Saturday to cover another year in IRCA. As I mentioned to her, I can't believe that I have

been a member of this club for a full two-thirds of my life... and I joined 11 months after it was founding. I can't help but wonder if Bill, Larry and the others had any idea at that time that the club would be around for this long and that they would still be members of it. I know Bill was a member of the Junior Chamber of Commerce back then. I have only listened to the radio once or twice, other than for pleasure listening, since the end of January. Now that the tax season is done and I have more time on my hands, I hope to listen more. My wife was sick back in Feb., but is doing somewhat better now which will help a little. See you in two weeks, so don't forget to send in a report. 73.

HEARING IT THROUGH THE GRAPEVINE

Raymond Bauernhuber – 151-64 18th Ave – Whitestone NY 11357-3102

E-mail: DXRADIO@Webtv.net

Greetings fellow IRCAN's and welcome to another edition of "Hearing It Through The Grapevine." This one features 1590 kHz and the State of Alabama. Let's see what our reporters have heard recently and over the years.

Mike Hawkins, Ventura, CA

Equipment has varied over time, but the basic combinations have been:

1. Philco 38-2 console with a window screen antenna (1960s until mid-70s)
2. Stewart-Warner R-390/URR with Palomar loop (mid-70s)
3. Collins R-388/URR with Palomar loop (since mid-70s)

Featured frequency 1590 kHz:

KLIV San Jose, California	KIKN Sinton, Texas
KUDU/KOGO/KAHS/KUNX/KKZZ Ventura, CA	KCIN/KATJ Victorville, California
KSND Seattle, Washington	KYOK Houston, Texas
KCBD/KEND Lubbock, Texas	KHIT/KQLO Sun Valley, Nevada
KINT El Paso, Texas	KMBD Tillamook, Oregon

Featured State of Alabama:

1070 WAPI, Birmingham	1460 WPNX, Phenix City
1410 WUNI, Mobile	1620 WPHG, Atmore

Doug Pifer, 3410 Marion St. SE, Albany, OR 97322
Drake R8B, Kiwa Loop

Featured frequency 1590 kHz:

KLIV CA, San Jose - News -Talk. "San Jose's News Station". Common.
 KLFE WA, Seattle - "Today's Christian talk KLFE". Common.
 KKZZ CA, Ventura - Nostalgia. "Music with Style". ex. KKOM, KUNX, KXFS, KXSP, KBUH, KOGO, KBBY (hi). Heard periodically.
 KMBD OR, Tillamook – Talk "The Alternative". Usually hear in the daytime.

Patrick Martin, Seaside, Oregon

Featured frequency of 1590 kHz:

WGYJ Atmore, AL once in 1994 for DX test. (now silent)
 WVNI Tuscumbia, AL once in 1997
 KLIV San Jose, CA reg at night
 KXSP (now KKZZ) Ventura, CA very rare, but hrd under AU cx on occasion
 WPSP Port Saint Lucie, FL hrd once in 1999
 WONX Evanston, IL hrd occ in the late 90s
 KVGB Great Bend, KS hrd most nights off Eastern beverage in jumble
 KCNN E. Grand Forks, MN occ heard in jumble
 KIHM NV (Now KQLO), hrd occ during AU cx
 WAKR Akron, OH hrd many times through the years during good CX to the East
 KTIL/KMBD Tillamook, OR reg days and lost in jumble at night (50 miles)
 WARV Warwick, RI hrd once during DX test in 90s
 KEAS Eastland, TX hrd once on s/on in the 90s
 KYOK (now KMIC) Houston, TX hrd a couple times in the 90s
 KJEL El Paso, TX hrd in 2000
 KJET/KOOL/KZOK/KPOZ/KLFE Seattle, WA a reg through the years under many call changes

Featured State of Alabama

570 WAAX Gadsden once in 1966 when they were ND with 138 watts
1070 WAPI Birmingham occ with KNX phased especially if WAPI is ND
1290 WOPP Opp once in 1996 with DX test

1390 WHMA Anniston once in 1999 with DX test
1410 WUNI Mobile reg. on MM in the 60s/early 70s
1460 WPNX Phenix City reg on MM in the 60s/early 70s.
1480 WABB Mobile once in 1997
1590 WGYJ Atmore once in 1994 for DX test (now silent)
1590 WVNA Tuscumbia once in 1997
1600 WXVI Montgomery a reg in the late 80s. 1620 WPHG Atmore, reg. in 1998 before the X Band got so crowded.
1700 WEUP Huntsville hrd a couple times in 2000. Very rare.

Mike Hardester, Jacksonville, NC. (34.47 N — 77.23 W)

ICOM R-70 - 2 x 75 foot random wires, Quantum Phaser and Patience

Featured frequency 1590:

KLIV CA, San Jose 1969 CA, Modesto. Semi-local
KUDU CA, Ventura 1969 CA, Modesto. Semi-local
KMTI UT, Manti 1981 CA, San Marcos.
KVGB KS, Great Bend 1985 CO, Littleton.
WARV RI, Warwick 1991 NC, Jacksonville. Hrd on DX Test
WKTP TN, Jonesborough 1996 NC, Jacksonville. Hrd once

Featured State of Alabama:

560 WOOF Dothan, AL 1994 NC Jacksonville. Heard during KSD DX Test
690 WVOK Birmingham, AL 1992 NC, Jacksonville.
770 WVNN Athens, AL 1993 NC, Jacksonville.
840 WBHY Mobile, AL 1992 NC Jacksonville.
930 WYNI Monroeville, AL 1994 NC, Jacksonville.
1000 WTAK Huntsville, AL 1991 NC, Jacksonville
1170 WCOV Montgomery, AL 1976 LA, New Orleans.
1700 WEUV Huntsville, AL 2005 NC, Jacksonville.

Eric Bueneman, Hazelwood, MO

Featured Frequency 1590 kHz:

WONX Evanston, IL (December 15, 1993-night)	WVNA Tuscumbia, AL (December 17, 1996-night)
KCNN East Grand Forks, MN (DX test on March 14, 1994)	WNTS Beech Grove, IN (February 21, 2000-night)
KWBG Boone, IA (October 24, 1994-night)	KGAS Carthage, TX (January 11, 2002-night)
WAIK Galesburg, IL (daytime regular and nighttime semi-regular)	KKAY White Castle, LA (semi-regular at night)
KMOZ Rolla, MO (December 14, 1996-midday)	WZRZ Jackson, MS (December 23, 2004-night)

Featured State of Alabama:

WAPI 1070 Birmingham (October 26, 1992-sunset)	WMOB 1360 Mobile (semi-regular at night)
WABB 1480 Mobile (October 28, 1992-night)	WVNA 1590 Tuscumbia (semi-regular at night)
WVNN 770 Athens (September 29, 1993-night)	WHHY 1440 Montgomery (semi-regular at night during the 1980s and 1990s)
WBLX/WDLT 660 Fairhope (November 3, 1993-sunset/December 31, 2004-sunrise)	WPHG 1620 Atmore (February 12, 1998-late afternoon)
WERC 960 Birmingham (November 18, 1993-night)	WYDE 850 Birmingham (October 30, 1998-night)
WAAX 570 Gasden (December 6, 1993-night)	WIZB 700 Dothan (November 26, 1998-someone left this on overnight!)
WATV 900 Birmingham (January 4, 1994-night)	WQLS 1210 Ozark (January 8, 1999-night)
WWPG 1280 Tuscaloosa (January 14, 1994-night)	WDJL 1000 Huntsville (February 21, 2000-sunrise)
WTSK 790 Tuscaloosa (January 18, 1994-night)	WKXM 1300 Winfield (December 26, 2001-night)
WYNI 930 Monroeville (February 1, 1994-DX test)	WBCA 1110 Bay Minette (January 4, 2002-sunrise)
WAVU 630 Albertville (April 9, 1994-sunset, local off)	WEUV 1700 Huntsville (semi-regular at sunset since 2002)
WJDB 630 Thomasville (April 9, 1994-sunset, local off)	WLDX 990 Fayette (March 29, 2003-night)
WGEA 1150 Geneva (October 17, 1994-DX test)	WLVV 1410 Mobile (semi-regular at night since the late 1990s)
WKNI 620 Lexington (October 14, 1996-night)	WZZX 780 Lineville (December 17, 2003-someone left this on after sunset!)
WBIL 580 Tuskegee (October 29, 1996-night)	WMCJ 1460 Cullman (January 3, 2004-night)
WZZK/WEZN/WAGG 610 Birmingham (regular at night)	WGAD 1350 Gadsden (semi-regular at night)

WJRD 1150 Tuscaloosa (November 8, 2004-night)
 WBHP 1230 Huntsville (November 23, 2004-sunset)
 WZPQ 1360 Jasper (December 24, 2004-night)

=====
Martin Foltz, Mission Viejo CA
 Hammarlund HQ-180A & Collins 51J-2, 1 foot air core loop

Featured frequency 1590 kHz:

KLIV San Jose, CA
 KKZZ Ventura, CA
 KCIN Victorville, CA (used to be reg, now not hrd)

=====
Ken Wilson, Georgetown KY

NRD525/SE-3, 756 Pro, Wellbrook K9AY, Wellbrook ALA1530

Feared frequency 1590 kHz:

WTVB MI, Coldwater 3/18/05 17:15 HS
 Basketball
 WAKR OH, Akron 3/18/05 17:28 Akron's News Authority
 WVNA AL, Tusculumbia 3/28/05 18:30
 WAIK IL, Galesburg 3/31/05 19:01 Oldies
 WNTS IN, Beech Grove 4/1/05 06:20 GOS MX

=====
Dennis Vroom, Vancouver WA

HQ 180 5' Loop; CC Radio

Featured Frequency 1590 kHz

KLFE Seattle WA Fair w/religious program
 KLIV San Jose CA Fair mornings w/traffic reports
 KMBD Tillamook OR Fair

=====
 Thanks to everyone for these great reports! For the next issue of the 'Grapevine' let's see what's been heard on 540 kHz and in the State of Colorado, which was 1st settled in 1858 and was admitted to the Union on August 1, 1876. Their State bird is the Lark Bunting and the State flower is the Rocky Mountain Columbine. The 'popular' name for Colorado is "Centennial State."

The deadline for this will be Saturday, June 4th at 1500 hours EST for Vol. 42, No. 27. This is the 2nd double issue of the 'Monitor' so hopefully we'll see a lot of your great reports. Until then be well my friends and --- 73 de DX de NY, Ray

VERIFICATION SIGNERS

Stephen S. Howe – 9 Warner Drive – St. Albans, VT 05478-1575
 E-mail: showe@csc.albany.edu

Next month's deadline will be 5/23/05, one week earlier than normal due to the Memorial Day holiday.

CONTRIBUTORS

CE **Craig Edwards**, Adelaide, South Australia; nutritionandsports@bigpond.com
 MF **Martin Foltz**, 25102 Pradera Dr, Mission Viejo CA 92691; martinfoltz@cox.net
 MH **Mike Hardester**, Jacksonville NC; dx4evr@earthlink.net
 BN **Bill Nittler**; nittlers2@scdial.com

FREQ CALL NAME, TITLE; ADDRESS; WHAT; WHEN; WHO

690 KZNR Bill Traue, CE; Box 699, Blackfoot ID 83221; P; 5; BN
 710 KIRO [Illegible], Entercom Corporate Engineering*; L; 28f; CE
 1060 CKMX Ken Pasolli, Technical Mgr; P O Box 2750, Station M, Calgary AB T2P 4P8; L; 35f; CE
 1130 KSDO Phil Guthrie, P; 2310 Ponderosa Dr, Suite 28, Camarillo CA 93010; LPB; 5; MF
 1150 WCRK Anisa Croxdale, PD; 204 Brown St, P O Box 220, Morristown TN 37815-0220; L; 10; MH
 1240 KEZY Phil Guthrie, P; 2310 Ponderosa Dr, Suite 28, Camarillo CA 93010; LPB; 5; MF
 1260 KSSL Bill Traue, CE; Box 699, Blackfoot ID 83221; P; 5f; BN
 1270 KBZZ Stephen R Weber, CE; 300 East Second St, Suite 1410, Reno NV 89501; P; 88f; MF
 1290 KWFS Scott Maingi; 2525 Kell Blvd, Suite 200, Wichita Falls TX 76308; L; 10; BN
 1380 KZFX Mike Blankenbecler, CE; 903 North Main St, Salinas CA 93906; LM+; 208f; MF**
 1390 KLTX Phil Guthrie, P; 2310 Ponderosa Dr, Suite 28, Camarillo CA 93010; LPB; 5; MF
 1450 XECU Ing. Gamaliel Robles C; OIR Mochis, Hidalgo #755 PTE, C P 81200, Los Mochis, Sinaloa, Mexico; L+; 39; MF
 1470 KYYW Gary Smith, CE; 3911 South 1st St, Abilene TX 79605; P; 5f; BN

1520 KMPG Veldon (?) Leverich, CE; P O Box 369, Hollister CA 95024; P; 70f; MF
 1550 KRPI Andrew J Stuikisma, ChiefOp; P O Box 3213, Ferndale WA 98248; L; 21f; CE
 1550 KKAD Dave Bischoff, CE; 888 SW 5th Ave, Suite 790, Portland OR 97204; Q; 60f; CE
 1600 KYBC David J Kessel, GM; Box 187, Cottonwood AZ 86326; L; 6; BN
 1640 KFX Y Hiram Champlin, O; Box 952, Enid OK 73702; P; 5; BN
 1650 KCNZ Janelle Rench, OffMgr; Box 248, Cedar Falls IA 50613; L; 7; BN
 1690 KSFG Len Harris, Engineering Mgr; 3463 Ramona Ave, Suite 15, Sacramento CA 95826; E; 59f; MF
 1700 KKL F Hue Beavers, Tech Dept; 3500 Maple Ave, #1310, Dallas TX 75219; cf; BN

WHAT was received: L = Letter with personalized statement; F = Form letter; Q = QSL card, commercially printed; C = Postcard or similar card supplied by station; P = Prepared card or form supplied by DXer; R = DXer's report returned with statement; cf = Certificate; E = Verification by e-mail; fx = Verification by FAX; M = Coverage map; B = Bumper or other sticker; bc = Business card; + = Extra goodies

WHEN the reply came: Number of days elapsed; f = Follow-up, by mail, FAX, e-mail, or visit; n = Return postage not used; r = Return postage returned

NOTES: * [For this column] = See comment below; ** [For this column] = See comment below

Tips from Craig and Mike were gleaned from the IRCA ListServ and used with their permission. The address for KIRO-710 is listed on their website as 1820 Eastlake Avenue East, Seattle WA 98102. Martin gratefully acknowledges the assistance of Jim Hilliker, former KZFX-1380 employee, in securing a verie from this station. Please note next month's early deadline. This column was prepared on 4/25/05. 73, SSH.

WEBSITE WANDERINGS

Raymond Bauernhuber – 151-64 18th Ave – Whitestone NY 11357-3102
 E-mail: DXRADIO@Webtv.net

Hi everyone and welcome to another edition of "Website Wanderings." If anyone comes across a radio related website kindly forward it to me at: DXRADIO@webtv.net. ~ I will be most grateful.

And remember to access and enjoy IRCA's own website at: <http://www.ircaonline.org/irca1.htm>.

This edition of 'Website Wanderings' features a website that's off-topic as far as radio related links go but very interesting nonetheless. It features links to on-line newspapers from all around the world. Give it a try - I think up to date news on today's world events from news sources OTHER than our own can be very informative and from a comparative standpoint, stimulating. You can find it at: <http://www.thepaperboy.com.au/welcome.html>.

This edition of 'Website Wanderings' features 3 websites that will offer fascinating reading for everyone; the BCB fan and the SW enthusiast as well. The first link can be a bit technical but there's a lot of information that can educate everyone about the radio industry. Here's what I found for this issue of the 'Monitor':

1. <http://www.radiolinks.net/>. Designed for people who "work" in radio, this site offers a lot of interesting reading for the radio hobbyist as well.
2. <http://www.oidar.com/POTH.htm>. "Puttin' On The Hits" by John Long. An e-book account of his experiences as a record promoter and radio program director. 20 chapters of fascinating reading.
3. <http://www.dxing.com/clandest.htm>. This will enlighten all who are curious about Clandestine Radio (PIRATES). Put together by Universal Radio, the blue sidebar on the left side of the screen offers quite a few interesting links for the shortwave listener.

And that wraps up this edition of the 'Wanderings'. Although IRCA is dedicated to BCB listening and DXing, I know there are quite a few members that enjoy all of the radio genres. Therefore I will mix up the 'Wanderings' to explore the various paths we take in our wonderful hobby.

 On a side note, new member Jim Ronda was recently reading a site on the BBC and found a really terrific quote from a British journalist in 1925. I will let you, the reader, determine if this is as great a quote about our hobby as "I" think it is:

"Here, outside in the night air, all was quiet. Silence ... and yet one felt the mystery of these invisible waves, the miracle of the hidden voices, sweeping out through the night."
 ~ Journalist Leslie Baily ~ 1925

 I hope everyone enjoys this double issue's sites as much as I did discovering them. Until our next get together I bid you all good health and good DX until the next issue of the 'Monitor' and say: "73 de DX de NY" ~ Ray

2004-2005 DX CONTESTS

Manager: Nancy Johnson – 265 Waterton Wy – Billings, MT 59102-7755

E-mail: NancyJohnson@prodigy.net

Standings as of April 15, 2005

1. Michael Hawkins	458	7. David Braun	103
2. Bill Nittler	336	8. Nigel Pimblett	96
3. Paul Swearingen	286	9. Bill Block	52
4. Doug Pifer	260	10. John C. Johnson	9
5. Nancy Johnson*	236	11. Mike Sanburn	5
6. John Tudenham	146		

*Contest manager is not eligible to win.

This years contest will end 2359 on May 31, 2005.

Send your contest entries to the address or email above.



DXing the Graveyard Channels
By Les Rayburn, N1LF

The most crowded channels are the AM broadcast band are the so called "Graveyard" channels of 1230, 1240, 1340, 1400, 1450, and 1490khz. On average, there are 150+ stations operating on each frequency. The majority of them run 1000 watts day and night into non-directional antenna arrays. Listening to any of these frequencies after sunset can sound like a crowd at a baseball game, making reception of individual stations very difficult.

Newcomers to the hobby might well think it was impossible to hear any single station at great distances, but in fact, many of these stations have been heard at distances of over 2,000 miles or even more. Receptions of 600+ miles are commonplace.

Spend some time looking over the Graveyard DX Achievements web site maintained by Bill Hale at: <http://www.angelfire.com/tx2/phantom2/>. You'll quickly notice that the names of certain DX'ers appear over and over again in the record books. In an effort to log more stations on these crowded frequencies, I've sought the advice of some of most successful among that group. In the process, some knowledge has been shared that may be of use to others.

This article will share some of the questions posed, and then highlight the answers given. In some cases, I'll also share some of my own thoughts, though I have far less experience than most.

In your experience, what is the most productive time of day for hearing DX on the graveyard channels?

Although my recordings at the top of the hour overnight have been quite productive, I still think sunrise and sunset are the best times on any frequency, including graveyards. **–Paul LaFreniere**

Early morning prior to sunrise because no two mornings are the same and DX can come from any direction. **–Mike Stonebridge**

I haven't done an analysis of the times of my loggings, but they are fairly well spread through the nighttime hours. Basically, the best times are those in which propagation is abnormal in some way, favoring certain directions and/or distances, and thus stirring up the GY mix. This includes sunrise/sunset of course, as well as times when there are auroral or other disturbances. Sunrise has been particularly fruitful here - so much so, that I often record and check BOH intervals that occur within an hour or two of sunrise. **–Barry McLarnon**

Definitely the use of overnight, unattended recording is the big boon for me. It's responsible for my GY totals increasing from one local per channel (total 6) to my current total of 95 across the 6 frequencies. I never realized that, by parking on a frequency, something would actually pop out of the noise at ID time :-). My personal best is three different station IDs at one TOH. **–Brett Saylor**

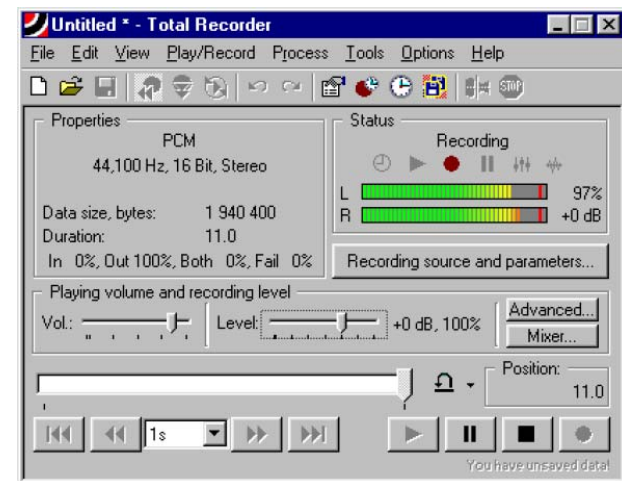
That has changed over the years. It used to be between 2300 and 0105 local time. Second best would be 0100-0300 for then-common frequency checks. Today, I'm not sure if there is a 'best time', but sunrise and sunset enhancements apply to all channels equally, so that might be the best shot today. **–Russ Edmunds**

That is a question I ask myself often. After about a year of this, I have concluded that about an hour before sunrise to two hours after and one hour before sunset to two hours after are the most productive for me. **–Russ Johnson**

A bit after local sunrise in order to grab ones that are not too far away (e.g. Virginia from Ontario), but at the same time while a channel sounds less cluttered. After local midnight or 1AM some stations still sign off, leaving less clutter on the channel. And sign offs stick out! **–Neil Wolfish**

Use some sort of overnight unattended recording equipment. I use Total Recorder and it has enabled me to increase me GY totals from 25-30 GYers logged to my current 73 GYers in the log. **–Bruce Winkelman**

Most DX'ers seemed to be in agreement that there was no "best" time of day, other than SRS/SSS, when it comes to logging new ones on the graveyard channels. It's more a matter of being at the right place at the right time. The one tool most often cited to make this possible is the use of the "Total Recorder" software by High Criteria. At a cost of only \$11.95 for their basic software, it may be the best value in DXing. Most DX'ers seem to record a period of about two minutes prior to the top of the hour (TOH) until about seven minutes after. Experience indicates that at least 1/3 of all loggings will come just after network news at around five minutes after TOH.



Total Recorder has a "schedule" feature that allows you to set up TOH recordings for the entire day. With a few more clicks, you can convert these files into smaller compressed .MP3 files. Most DX'ers will then review these recordings during the next day.

Some burn the files to CD's and listen to them during their commute times. Others will steal a few minutes during their lunch break. But all agree that this one tool is responsible for a lot of new loggings.

You can download a trial copy for free at: <http://www.highcriteria.com>

Some comments about this software are in order:

I've been recording for over a year, and I record TOH from xx:58-xx:03 every hour from before local sunset to after local sunrise the next morning. I record xx:29-xx:35 on the BOH for the "critical" hours, too. I try to review the recordings the next morning, but usually don't get to it until the weekend (if ever!). I usually will drill directly to the xx:59:50 mark to catch the few seconds before TOH where most ID's occur. I know I miss the other possible times for ID's, but since I don't have a lot of time that's all I can afford. Oh yes, by the way, I sync my PC clock daily using NISTtime [software] to make sure it's within a second or two of actual time. **–Brett Saylor**

I no longer have the patience to sit on the graveyard channels for long periods any more unless I'm receiving a solid signal, which isn't very often. Just too much of a jumble, so all my graveyard DXing is done by timer and recorder. It's quite amazing how the channel can be a mass of stations and right at the TOH I hear a clear full ID, and then it's gone. Most nights everything is set for the period two minutes before to three minutes after every hour from midnight to sunrise. This method has produced 13 new graveyard loggings so far this winter. **–Mike Stonebridge**

Is there a season of the year that seems to result in more new loggings on the graveyard channels?

Summer has definitely been more productive for me. My own opinion on this is that in the winter it is still nighttime conditions at 0500 & 0600. In the summer it is SRS conditions at those hours.

Nearly all of my loggings have been from March or April through September. I have never bothered to determine the length of time any one station dominated the frequency or the weather conditions at the time [pressure reading, temp, whether it is cloudy etc].

I was always thinking of determining what the average distance is for these loggings. I do know that many times a station will show up for two or three nights consecutively and then disappear for good. Also—there are graveyard pests. I have found that two or three stations on each frequency are in often. —**Paul LaFreniere**

I find that spring and summer are best for GY; however, I can't provide you with an explanation. —**John Vervoort**

Absolutely! Many of my best GY catches have been in the summer months. Propagation conditions are different than in the winter, so the "mix" tends to be different. I'm also convinced that sporadic E plays a part in MW propagation, and Es is obviously more common in those months. With fewer interesting catches available on the other frequencies, summertime is a great time to concentrate on the GYs. —**Barry McLarnon**

Summer static is less of an issue on a frequency where 50 stations are piling up to produce a constant S9+40db signal. Though I check in with the GY frequencies throughout the year as conditions are always changing. —**Rick Kenneally**

A DX season of any kind is pure myth, especially nowadays, with modern receivers and antennas successful MW DXing can be anytime of year. The only difference between the warm and cold weather months will be that local thunderstorm activity can cause temporary shutdowns. (Examples: Thunderstorms in New Hampshire made DXing impossible during the recent WTAM downtime, yet one summer while visiting Tampa, Florida, I could DX between storms to log some interesting Cuban signals.)

The best time to DX during the summer months will be at local sunset when atmospheric conditions are varying widely (although thunderstorms tend to be strongest before local sunset), and during the pre-dawn hours when thunderstorm activity cools off for the most quiet noise levels. —**Bruce Conti**

I agree [that summer can be more productive] Atmospheric conditions are more variable and not as good, often resulting in more surprises. That said, however, I've also found, as Bob Foxworth mentioned, that conditions to New England from the Middle Atlantic States are best then. The final reason is the existence of extensive networks for both major and minor league baseball. —**Russ Edmunds**

How do auroral (AU) conditions affect the graveyard channels? Do you find these periods to be more productive?

Being this far north aural conditions usually wipe out all DX at this location. During a high aural period I consider myself lucky if I can hear any station outside of Alberta. —**Mike Stonebridge**

Only if there are stations 100+ miles or so to the North which normally dominate the frequency. —**Russ Edmunds**

AU conditions are a good time to check out the GYs, if you can tear yourself away from the other stuff. My logging of WFOY was in AU conditions, and there are quite a few more like that in the log. It's hard to imagine hearing a Florida station essentially alone on a GY channel under any other conditions from this location. (Ontario, Canada) —**Barry McLarnon**

They bring in neat stuff for Ontario DXers, like SC, FL, AL... as long as the AU isn't too severe. If that happens, then all I get is ground wave from the nearest GY station to me. —**Neil Wolfish**

Answers to this question seemed to vary a lot by the location of the receiver. Here in the Southern US, I find that AU conditions can have the effect of reducing some of the clutter on the crowded local channels, by attenuating signals from Northern stations. Many of my new loggings from Florida GY's have come during periods of severe AU conditions.

Are there any types of antennas, equipment or receiver settings that you find helpful on these crowded channels?

ECSS [Single Sideband] is about the only way I DX these days. It is much easier to pull an ID out of the jumble. That is one way the Drake R8 really "sings" in the ECSS mode. Many catches I would never had heard without it. —**Patrick Martin**

One technique I use is to tune off frequency 1-2 kHz. Sometimes stations can be heard out of the hash. Then I de-tune my loop (variable capacitor) and then tune back into the frequency until a station is audible. I don't completely peak the signal. This is how I heard KSMA on Saturday, in for about 8 minutes before they faded down. —**Martin Foltz**

The passband tuning on my R8 makes it possible to choose a sideband and peak it for the best sounding audio on the graveyards, which is important - I find that getting rid of the bassy "rumble" of the GYs makes the ID's stand out better. —**Brett Saylor**

I use an AOR-7030+ receiver set on b/w of 4 kHz and my K9AY antenna. I find this antenna is superior to my EWE because it has much lower noise levels. I usually adjust the null against one of the regulars, if one is on top. —**Mike Stonebridge**

For unattended recording, the Sony 2010 is my choice. With its mechanical on/off switch, it works great with digital timer and mini-disc recorder - plus the synch detect is very helpful. For live listening, my choice is a modified Icom R75. Copying in ECSS mode is a dream with the R75. Passband tuning is very effective. I am also a big fan of the little Koss EQ-30 or EQ-50 portable equalizer. Some adjustments with that can make the difference in understanding an ID or not. Of course, good headphones are essential. My current favorites are the Telex Airman 760 (aviation use). —**Russ Johnson**

The Quantum Phaser has been valuable as well, allowing me to null the semi-local GY'ers and with luck, my one local on 1340. On all GY frequencies except 1340, I can set the phaser to enhance reception to the north or south. I haven't had as much success peaking reception to the east or west for some reason... perhaps it is due to the configuration of the wires. —**Bruce Winkleman**

I always use SSB mode, choosing whichever sideband has the least adjacent channel splatter, along with a 4 kHz IF filter. —**Barry McLarnon**

One type of antenna that has shown some promise on the graveyard channels is the use of NVIS [Near Vertical Incidence Signals] antennas. Most of these are common antennas mounted close to the ground so that they favor high angle skywave signals.

Usually DX'ers seek to receive low angle signals, since these represent the stations farther away from the receiver. But with graveyards, using a NVIS antenna can have the effect of "turning down the noise" on the frequency by reducing the signal levels from those more distant stations.

My NVIS antenna is a simple dipole cut for the 80 meter ham band, mounted only ten feet above the ground. Since erecting it, loggings of "medium distance" GY stations has improved, adding several new ones in the 400-600 mile distance range. The NVIS antenna also seems to work wonders when used as a source antenna for my Quantum Phaser. Using it in combination with a whip or beverage on the ground (BOG) can dramatically affect null levels.

Other antennas such as loops seem to be less useful on GY channels due to the number of signals coming from multiple directions. They can be very helpful if you have a local station on one or more of the frequencies.

Do you use software to process your recordings of graveyard ID's and what results have you seen? Is there other software that you find useful?

Cool Edit [Now marketed as Adobe Audition] is essential for normalizing, filtering, and slowing down the playback to determine IDs. Probably half of what I've added to the log is the result of this tool. I would not have WKDK's DX test (where this all began) or Poynette's WHFA without Cool Edit. —**Gerry Bishop**

<http://www.adobe.com/products/audition/main.html>

Regarding other software I do use TrueTime WinSync which keeps my computer (with cable modem) within a second or so of accurate time! —**Tom Kenney**

<http://www.truetime.net/software-winsync.html>

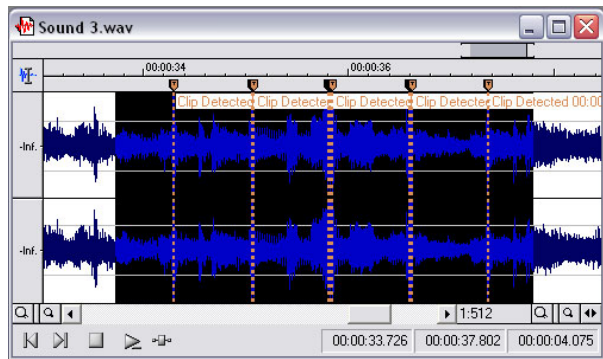


I play back in WinAmp, but if I need to edit I'll use CoolEdit. I don't do nearly the slow-down/clean-up that Gerry Bishop or Russ Edmunds do, but will occasionally tweak a file for better readability. I recently downloaded a trial version of Adobe Audition (which is what they renamed CoolEdit when they took it over) but I don't see many reasons to consider switching to it (considering the price). —**Brett Saylor**

<http://www.winamp.com>

My personal experience is with Sony's Sound Forge 7.0 software. Similar to Adobe's Audition software, this software has a lot of uses when dealing with recorded computer files. I import my files one at a time from Total Recorder.





Right away, you can see a very detailed waveform of the recorded file, sometimes allowing you to visually see where events such as a TOH ID take place. You can slow down portions of the file (such as an ID) to make it easier to separate consonants, you can apply advance noise reduction algorithms, and apply EQ to help pick up key words. Both Sound Forge and Adobe Audition are expensive, but they're also very powerful. I'll echo Gerry Bishop's comment; there are quite a few new ones in my log that I wouldn't have gotten without the software.

<http://mediasoftware.sonypictures.com/Products/>

Any thoughts on why some nights the GY channels seem to just be a jumble of noise with few clear ID's, while other nights yield lots of clear ID's?

I've never timed it out, but my experience has been shorter periods of one station dominating - more like 3 to 5 minutes. But I've noticed no particular patterns of note other than the 'usual' ones such as severe aurora or the approach of a very strong weather pattern in winter. **-Russ Edmunds**

When the GY stations were 250/500 w at night... the situation was VERY different than it is today. As others have noted, stations would fade in and out and listening to a GY frequency produced many new loggings for me. However, since they all are now 1kw day/night, the situation has changed, at least for me! There is typically one dominant station... and a bit of a jumble underneath. Very occasionally, a 2nd or 3rd station will fade in for a bit... but with IDs being what they are these days (perhaps once an hour) it is very difficult to LOG anything. And the fade ups tend to only last for 2-3 minutes vs. the 15-20 minutes of the past. **-Phil Bytheway**

This has always been a mystery. And more the mystery when three TOH pass with just a jumble, and the next hour will bring four ID's in 15 seconds, each clear. I'll offer that when signals are much jumbled, propagation is quite good to the point of overwhelming. I have no evidence, just a hunch. **-Gerry Bishop**

Those of us who like to hang around on the GY channels often remark on the way they are usually a total jumble, and then, inexplicably, sometimes they magically become un-jumbled and provide some good loggings.

Last night I had a good example of this phenomenon. I trolled 1230 with timed recordings overnight. For the TOHs at 0100 and 0200, there was mostly a jumble with IDs.

Then the veil lifted, and I had a remarkable series of TOH catches. At 0300, a crystal clear ID from WGRY Grayling MI, nearly alone. At 0400, the same thing, but this time it was WMSH Sturgis MI. Ditto at 0500, only this time it was WTKG Grand Rapids MI doing the honors. WTKG was still holding on at 0600.

At 0700, the dominant station went through TOH with music, but at 0701 provided a nice clear ID as WCWA Toledo OH. At 0800, WCRO Johnstown PA stepped up to the plate. WCOL Columbus OH also slipped in there at times, so that's 8 good IDs in one session, and I could probably find a few more if I had time to listen to more of the recordings. **-Barry McLarnon**

Yes, GY DXing isn't exactly what it used to be. I have the same situation both in Azusa here and also back in San Jose. One station tends to dominate for the most part with hash underneath; though there are some frequencies where two or three will try to equally dominate (1490 is a good example).

1340 is a very interesting frequency, it tends to sound like a pure 'rumble', no one really dominates except when I get decent conditions to northern Baja then XEAA will totally dominate. 1450 is a beautiful frequency down here, I had Reno dominating the other night, some nights it's Escondido, some nights Porterville, even Tucson. Depends on conditions particularly if AU. **-Robert Wein**

This phenomenon is widely reported, but after over a year of coordinated monitoring by DX'ers of the same channel overnight, we're no closer to explaining how it works. It is what adds to the thrill of DXing these crowded channels. You'll review recordings of five or six hours in a row with only a jumble of noise and the occasional pest that you've logged ten times before, and then suddenly be

rewarded with a station that you've never heard a single trace of before...and it may even be crystal clear.

What advice would you give to other DX'ers about the graveyard channels, especially to newcomers?

Patience, patience, patience. It is so much harder today for so many reasons - more stations, more full time operations, no special tests (frequency checks) increased noise. Other than unattended recordings, I don't spend a lot of time on GY's any more because the 'return on investment' of time is so low in terms of new loggings. **-Russ Edmunds**

Two words: timed recording. Whether I'm at the receiver or not, I try not to ever let a TOH slip by without recording on some channel, and I often leave the receiver on a GY channel if I'm not chasing something else.

Recording onto a PC makes it easy to review them, and you can try various processing to enhance the recordings if you're into that, not to mention archiving your catches and getting help with UNIDs by sharing audio clips with others. My PC is on 24/7 and is near my receiver, so it's easy to set up timed recording and just let it run. I usually record 8 minute segments around both TOH and BOH, starting at :29 and :59 minutes past the hour. The recording period extends at least an hour on either side of sunset/sunrise. It doesn't take long to review a bunch of TOHs (if I'm short of time, I don't bother with the less-productive BOHs). If I hear something interesting but I can't ID it right away, I make a clip, label it, and store it away in a UNID directory. Some rainy day when propagation is lousy, I can listen to them again, and occasionally am able to dig out an ID that I missed previously. In addition to listening to the time right around TOH, it's also very worthwhile to check around 4 or 5 minutes past TOH, when many stations are coming out of their news break.

Even if you don't do timed recording, it's essential to have good recording capabilities. Without it, GY DXing would just be frustration. And if you want to be truly successful at it, timed recording is a must. **-Barry McLarnon**

What I used to do is to "sit" on the GY freq. near the top of the hour. I used to run a timer to turn the recorder on from :58 to :02 or :58 to :07. Sometimes an ID will run between the spots out of the news and the programming which is mostly satellite talk on the AM dial now.

The GYers can be a lot of fun. Any person new to DXing should spend time on these channels. You never know what might pop in! **-Patrick Martin**

When listening, use head phones, and an audio recorder. Spend time at the dials. Graveyard stations are a lot of fun. **-Doug Pifer**

I'm fascinated that we're all parked on the same frequencies at the same time, and we so often don't even seem to experience similar propagation. There's a lot to be said for being in the right place, right time, and knowing what to do with the sound that comes through the headphones. **-Gerry Bishop**

Use some sort of overnight unattended recording equipment. I use Total Recorder and it has enabled me to increase my GY totals from 25-30 GY Stations logged to my current 73 in the log.

Definitely rig up some unattended recording method. Let your top of hour recording sessions go at least till: 07 past the hour. I use the Russ Edmunds :58-:07 method. This will let you catch some local programming (ads, weather, ID, local news, etc) after the network news is over.

If pressed for time, fast forward though the network news - you are unlikely to catch anything new during that. Set up multiple antennas if possible and alternate during the week to improve chances of snagging something. For me, having a manageable number of tracks to listen to each day (six or so) is preferable to letting a huge number build up.

When the frustration of not logging anything new for a long time gets the better of you, take a break on a non-GY frequency at least until you log a new one! **-Russ Johnson**

Don't trust your ears, at least at first... listen, re-listen, re-listen and re-listen again. Go back later and re-listen again to the recording. **-Bruce Winkleman**

You must have at least a few months of experience and also a great deal of patience. The more you practice, the better you'll become. **-John Vervoort**

Learn the format of your local/regulars; Grab a good book or a crossword puzzle and park yourself on a frequency until you determine who is dominating. Then move on to the next frequency. If you have an "opening" to one area, capitalize! If you hear Green Bay on 1400, look for other Wisconsin Graveyard stations too. Don't be fooled by a strong signal with something like Jim Bohannon or Art Bell... you might discover that you are hearing three stations all carrying the same thing until they break for news and ID. And then you have 3 weak signals; have a tape recorder running to play back IDs and spots (especially when "E" can sound like "B", etc.) Have some familiarity with professional and college sports nicknames. Patience. **-Neil Wolfish**

I wouldn't do a session with the web site www.10000watts.com. It seems to be the most up to date listing of stations, their formats, etc. available on the web. For portable operations, I always carry a copy of the latest NRC AM Log. **-Les Rayburn**

So, you've gotten the bug and want to become a "gravedigger"... where should you turn for even more information about logging these elusive stations.

There is an e-mail list devoted solely to DXing the Graveyard Channels. Usually we pick a channel to concentrate on during the coming week... then exchange notes on what we heard. Frequently

members will post short sound files of stations they are having troubling Identifying. Often just getting another set of ears to listen can help clear it up.

We also exchange information about the stations, and have limited discussions about the technical side, usually software dominates those topics.

To subscribe, visit this web site: <http://topazdesigns.com/mailman/listinfo/gy>.

Another great source of information is the original article on the subject, written by the master, Bob Foxworth. This reprint is available from the **National Radio Club**. Ask for C Reprint is D11, "Successful Long-Distance Reception on the Class-IV Channels".

Written in early 1974, but much of the information is still very valid. I highly recommend it to anyone serious about this part of the hobby.

NATIONAL RADIO CLUB, INC.

Publications Center Order Form
PO Box 164 Dept W
Mannsville NY 13661 USA

Bill Hale's excellent web site is also a vital source of information. Bill keeps track of the record reported reception distance for each station. He even divides it into two types, Prior to 1960 and after. One check of the records indicates that things were much easier to log in good ole days. <http://www.angelfire.com/tx2/phantom2/>.

Listening to the graveyard channels holds other rewards as well, especially early in the morning. You can still find quite a few locally owned and operated stations. You'll get school closing, lost puppies, and a lot of the regional charm that always made it so interesting to listen to distant radio stations.

It's still possible to hear the national anthem or phrases like, "WBAC now concludes another broadcast day"... Perhaps that's why these channels earned the nickname "Graveyard" to begin with. This is the way radio used to be...and perhaps someday will be again.

The author wishes to thank all the DX'ers listed in the article for sharing their wisdom with all of us. Any mistakes are mine, any credit should rightly be theirs.

SPORTS ON RADIO

Compiled by: O Howit Hertz

E-mail: artngwen@calweb.com

ARIZONA DIAMONDBACKS

Broadcast Team: Greg Schulte, Ken Phelps, and Jeff Munn

600 KROD El Paso, TX	1340 KIKO Miami, AZ
600 KVNA Flagstaff, AZ	1400 KJOK Yuma, AZ
620 KTAR Phoenix, AZ (Flagship)	1400 KSHP North Las Vegas, NV
780 KAZM Sedona, AZ	1420 KTAN Sierra Vista, AZ
950 KNFT Bayard, NM	1490 KFFN Tucson, AZ
980 KNTR Lake Havasu City, AZ	1490 KRSN Los Alamos, NM (Nights and Weekends Only)
990 KSVP Artesia, NM	92.1 KZUA Holbrook, AZ
1050 KNML Albuquerque, NM	106.7 KPPV Prescott Valley, AZ
1130 KQNA Prescott Valley, AZ	
1230 KAAA Kingman, AZ	
1230 KATO Safford, AZ	

CINCINNATI REDS

Broadcast Team: Marty Brennaman & Steve Stewart.

580 WCHS Charleston, WV	1230 WTPG Columbus, OH
620 WWNR Beckley, WV	1240 WFTM Maysville, KY
630 WLAP Lexington, KY	1240 WHIZ Zanesville, OH
680 WCTT Corbin, KY	1240 WSFC Somerset, KY
700 WLW Cincinnati, OH (Flagship)	1250 WCHO Washington Court House, OH
740 WRNR Martinsburg, WV	1260 WNDE Indianapolis, IN
910 WKEQ Burnside, KY	1260 WNXT Portsmouth, OH
930 WHON Centerville, IN	1270 WXGO Madison, IN
930 WRVC Huntington, WV	1290 WVOW Logan, WV
970 WATH Athens, OH	1320 WKIN Kingsport, TN
980 WONE Dayton, OH	1340 WBIW Bedford, IN
990 WTIG Massillon, OH	1340 WCMI Ashland, KY
1080 WKJK Louisville, KY	1340 WEKY Richmond, KY
1150 WIMA Lima, OH	1390 WMPO Pomeroy, OH
1230 WHIR Danville, KY	1440 WMDJ Martin, KY
1230 WIRO Ironton, OH	1440 WPGW Portland, IN

1450 WHNK Parkersburg, WV (?)
1450 WWXL Manchester, KY
1490 WBEX Chillicothe, OH
1490 WMOA Marietta, OH
1490 WSWW Charleston, WV
1520 WKWH Shelbyville, IN (?)
1550 WNDI Sullivan, IN
1590 WSRW Hillsboro, OH
1600 WAIA Hartford, KY (?)
1600 WARU Peru, IN
1600 WZZW Milton, WV

92.7 WJCP Austin, IN
92.7 WRVC Catlettsburg, WV

"I don't see why you reporters keep confusing Brooks (Robinson) and me. Can't you see that we wear different numbers?" - Frank Robinson

HOUSTON ASTROS

Broadcast Team: Milo Hamilton, Alan Ashby, Francisco Ernesto Ruiz, and Alex Trevino.

740 KTRH Houston, TX (Flagship)	1340 KRBA Lufkin, TX
760 KTKR San Antonio, TX	1400 KTEM Temple, TX
910 KNAF Fredricksburg, TX	1420 KGNB New Braunfels, TX
1010 KBBW Waco-Marlin, TX	1440 KETX Livingston, TX
1010 KLAT Houston, TX (Spanish)	1450 KCTI Gonzales, TX
1150 KZNF College Station, TX	1450 KMHT Marshall, TX
1220 KMVL Madisonville TX	1490 KBST Big Spring, TX
1220 KSXX Raymondville, TX	1490 KWUD Woodville, TX
1230 KSIX Corpus Christi, TX	1490 KYZS Tyler, TX
1240 KASO Minden, TX	1550 KZRK Canyon, TX
1240 KSXX Raymondville, TX	1560 WSLA New Orleans, LA
1240 KVLFP Alpine, TX	1590 KGAS Carthage, TX
1280 KWHI Brenham, TX	1600 KOGT Orange, TX
1290 KIVY Crockett, TX	
1300 KSYB Shreveport, LA	98.3 KULM Columbus, TX
1300 KVET Austin, TX	103.9 KMHT Marshall, TX
1310 KEZM Sulphur, LA	104.7 KOR1 Mansfield, LA
1340 KNAL Victoria, TX	

KANSAS CITY ROYALS

Broadcast Team: Denny Matthews, Ryan Lefebvre, and Don Free.

580 WIBW Topeka, KS	1370 KGN0 Dodge City, KS
590 KOMJ Omaha, NE	1400 KAYS Hays, KS
680 KFEQ St. Joseph, MO	1400 KVFD Fort Dodge, IA
690 KGGF Coffeyville, KS	1400 KVOE Emporia, KS
790 KXXX Colby, KS	1410 KOOQ North Platte, NE
810 WHB Kansas City, MO (Flagship)	1420 KJCK Junction City, KS
860 KKOW Pittsburg, KS	1420 KRLL California, MO
900 KFAL Fulton, MO	1420 KULY Ulysses, KS
940 KPSZ Des Moines, IA	1430 KKOZ Ava, MO
960 KMA Shenandoah, IA	1450 KBFS Belle Fourche, SD
990 KRMO Monett, MO	1450 KOKO Warrensburg, MO
990 KRSL Russell, KS	1450 KWBW Hutchinson, KS
1130 KLEY Wellington, KS (?)	1450 KYNT Yankton, SD
1150 KSAL Salina, KS	1460 KKOY Chanute, KS
1190 KREB Bentonville, AR	1480 KLMS Lincoln, NE
1190 KVSU Beloit, KS	1510 KNNS Larned, KS
1230 KLWT Lebanon, MO	1530 KMAM Butler, MO
1240 KIUL Garden City, KS	1540 KLKC Parsons, KS
1270 KOZQ Waynesville, MO	1540 KNGL McPherson, KS
1280 KDKD Clinton, MO	1550 KKLE Winfield, KS
1290 KWLS Pratt, KS	1580 KNIM Cassville, MO
1300 KGMT Fairbury, NE	1580 KTGR Columbia, MO
1300 KMMO Marshall, MO	1600 KMDO Ft. Scott, KS
1300 KWCK Searcy, AR	1600 KTTN Trenton, MO
1310 KFLA Scott City, KS	
1310 KOCR Joplin, MO	92.1 KKOZ Ava, MO
1320 KLWN Lawrence, KS	92.1 KMOE Butler, MO
1350 KMAN Manhattan, KS	92.7 KASR Conway, AR
1370 KALN Iola, KS	93.5 KLKC Parsons, KS
1370 KAWL York, NE	95.1 KTKS Versailles, MO
	95.3 KDKD Clinton, MO

95.9 KCAY Russell, KS
 95.9 KTRI Mansfield, MO
 96.3 KTTG Mena, AR
 96.7 KNGL McPherson, KS
 96.7 KNNS Larned, KS
 97.3 KZPL Lee's South Summit, MO
 97.7 KMTY Holdrege, NE
 97.7 KQMO Shell Knob, MO
 97.7 KSNP Burlington, KS
 98.1 KOZX Cabool, MO

99.1 KYOO Half Way, MO
 99.5 KUTT Fairbury, NE
 100.1 KKWK Cameron, MO
 100.9 KCLY Clay Center, KS
 101.3 KARV Ola, AR
 102.9 KMMO Marshall, MO
 103.1 KYDT Sundance, WY
 103.9 KNZA Hiawatha, KS
 106.9 KHK Rock Valley, IA

"If a tie is like kissing your sister, losing is like kissing your grandmother with her teeth out." - George Brett

LOS ANGELES ANGELS OF ANAHEIM

Broadcast Team: Steve Physioc, Rex Hudler, Rory Markas, Terry Smith, Jose Mota, and Ivan Lara.

600 KSJB Jamestown, ND
 710 KSPN Los Angeles, CA (Flagship)
 800 XEMMM Tijuana, RS
 960 KIXW Apple Valley, CA
 1020 KTNQ Los Angeles, CA (Spanish)

1240 KLOA Ridgecrest, CA
 1350 KBID Bakersfield, CA
 1450 KGAM Palm Springs, CA
 1520 KVTA Ventura, CA

MINNESOTA TWINS

Broadcast Team: Herb Carneal, John Gordon, and Dan Gladden.

570 WNAX Yankton, SD
 610 KDAL Duluth, MN
 710 KXMR Bismark, ND
 790 KFGO Fargo, ND
 830 WCCO Minneapolis, MN (Flagship)
 860 KNUJ New Ulm, MN
 910 KCJB Minot, ND
 920 KWAD Wadena, MN
 930 KSDN Aberdeen, SD
 950 KWAT Watertown, SD
 1020 KJJK Fergus Falls, MN
 1060 KGFX Pierre, SD
 1080 KYMN Northfield, MN
 1140 KSOO Sioux Falls, SD
 1210 KOKK Huron, SD
 1220 KDDR Oakes, ND
 1230 KGHS International Falls, MN
 1230 KMRS Morris, MN
 1230 KTRF Thief River Falls, MN
 1230 KWNO Winona, MN
 1240 KDLR Devils Lake, ND
 1240 WJON St. Cloud, MN
 1260 KDUZ Hutchinson, MN
 1260 KROX Crookston, MN
 1270 WWWW Baxter, MN
 1290 KBMO Benson, MN
 1300 KGLD Mason City, IA
 1310 KNOX Grand Forks, ND
 1320 KOZY Grand Rapids, MN

1340 KDLM Detroit Lakes, MN
 1340 KROC Rochester, MN
 1350 KDIO Ortonville, MN
 1380 KQKD Redfield, SD
 1390 KRFO Owatonna, MN
 1400 KEYL Long Prairie, MN
 1400 KQDJ Jamestown, ND
 1410 KRWB Roseau, MN
 1420 KTOE Mankato, MN
 1430 KNSP Staples, MN
 1450 KATE Albert Lea, MN
 1450 KBMW Breckenridge, ND
 1450 KBUN Bemidji, MN
 1450 WELY Ely, MN
 1460 KLTC Dickinson, ND
 1480 KAUS Austin, MN
 1490 KOVC Valley City, ND
 1570 KAKK Walker, MN
 1580 KDOM Windom, MN
 1590 KDJS Willmar, MN
 1600 KDAK Carrington, ND

92.1 WYRQ Little Falls, MN
 94.3 KDOM Windom, MN
 94.3 KKIN Aitkin, MN
 104.1 WNAX Yankton, SD
 105.5 KMGM Montevideo, MN
 107.1 KMGK Glenwood, MN

NEW YORK YANKEES UNOFFICIAL

Broadcast Team: John Sterling, Charley Steiner, Beto Villa, and Armando Talavera.

550 WGR Buffalo, NY
 550 WLKW West Warwick, RI
 600 WICC Bridgeport, CT
 620 WHEN Syracuse, NY
 630 WEJL Scranton, PA
 640 WNNZ Westfield, MA
 790 WTNV Watertown, NY
 800 WLAD Danbury, CT
 880 WCBS New York, NY (Flagship)
 1010 WBZZ Seffner, FL (?)
 1150 KDEF Albuquerque, NM
 1150 WRUN Utica, NY
 1160 WPIE Trumansburg, NY
 1230 WEEX Easton, PA
 1240 WBAX Wilkes-Barre, PA

1240 WJTN Jamestown, NY
 1240 WWCO Waterbury, CT
 1270 WTSN Dover, NH
 1300 WTMM Rensselaer, NY
 1340 WALL Middletown, NY (Spanish)
 1340 WBRK Pittsfield, MA
 1340 WENT Gloversville, NY
 1340 WIRY Plattsburgh, NY
 1390 WEOK Poughkeepsie, NY (Spanish)
 1390 WVAA Burlington, VT (?)
 1410 WELM Elmira, NY
 1410 WPOP Hartford, CT
 1420 WACK Newark, NY
 1430 WENE Endicott, NY
 1440 WVEI Worcester, MA (?)

1450 WPAM Pottsville, PA
 1490 WKNY Kingston, NY

93.5 WBGF Belle Glade, FL

"Nobody goes there anymore; it's too crowded." - Yogi Berra.

OAKLAND ATHLETICS 2005

Broadcast Team: Marty Lurie, Bill King, Ken Korach, Ray Fosse, and Robert Baun.

580 KTMT Ashland, OR
 590 KTHO South Lake Tahoe, CA
 610 KFRC San Francisco, CA (Flagship)
 630 KPTT Reno, NV
 790 KWSW Eureka, CA
 950 KAH1 Auburn, CA
 970 KESP Modesto, CA
 1110 KAOI Kihei, HI (Nights & weekends only)
 1270 KXBX Lakeport, CA
 1340 KTSN Elko, NV
 1340 KYNS San Luis Obispo, CA
 1380 KZFX Salinas, CA
 1410 KMYC Marysville, CA (Nights only)
 1410 KTME Lompoc, CA

1430 KFIG Fresno, CA (Nights & weekends only)
 1440 KUHL Santa Maria, CA
 1450 KVML Sonora, CA
 1480 KYOS Merced, CA (Nights & weekends only)
 1490 KBLF Red Bluff, CA (Nights & weekends only)
 1490 KRKC King City, CA
 1490 KRNR Roseburg, OR
 1560 KIQS Willows, CA (Days only)
 102.3 KNTK Weed, CA

"After Jackie Robinson the most important black in baseball is Reggie Jackson, I really mean that." - Reggie Jackson

The IRCA is a non-profit organization devoted to the hobby of hearing distant stations on the Broadcast Band (510-1720 kHz). **DX Monitor**, the official publication of the IRCA, is published in "soft" form 35 times a year (weekly from November through March, twice monthly from April to November) and in printed form 30 times a year (weekly November through March, monthly April to November). **DX Monitor** contains members' loggings, articles on radio stations, receiver reviews, technical articles, DX tips, and other material of interest to Broadcast Band DX hobbyists.



CLUB OFFICERS AND CONTACT INFORMATION

President: Nick Hall-Patch – 1538 Amphion St., Victoria, BC V8R4Z6 CANADA
 e-mail: nhp@ieee.org - (proposals/gripes)
Secretary-Treasurer: Lynn Hollerman, PO Box 60241, Lafayette LA 70596
 e-mail: lynn@eatel.net - (dues, address changes, IRCA mailing list sign-ups)

Board of Directors: Karl Zuk (chairman) – karlzuk@hotmail.com,
 Phil Bytheway – phil_tekno@yahoo.com, Patrick Martin – mwdxer@webtv.net,
 Mike Sanburn – mikesanburn@hotmail.com, Pete Taylor – ptdx@comcast.net,
 John C. Johnson – John_Johnson@prodigy.net and Tim Noonan – Dxing2@aol.com
Editor-in-Chief: Phil Bytheway, 9705 Mary Ave NW, Seattle WA 98117-2334
 e-mail: phil_tekno@yahoo.com – (all material for publication goes here)

MEMBERSHIP DUES (DXM=printed DX Monitor, SDXM=soft e-mailed version)

Destination	SDXM	DXM	DXM+SDXM
USA	\$10	\$30	\$35
Canada & Mexico (group 2)	\$10	\$36	\$41
Western Europe (group 3)	\$10	\$50	\$55
Australia/NZ/Japan (group 4)	\$10	\$51	\$56
Rest of world (group 5)	\$10	\$48	\$53

TRIAL MEMBERSHIP (10 issues) TO USA-CANADA-MEXICO only: \$10 DXM, \$12 DXM / SDXM Installment Rate: 2 payments a year of one-half dues plus \$1.

Make checks and Money Orders in US funds payable to IRCA.

All dues and address changes go to: **IRCA, PO Box 60241, Lafayette LA 70596**

Pay electronically with **PayPal**—add \$1 to all prices above. Go to www.paypal.com, then send your dues to ircamember@ircaonline.org —contact Lynn Hollerman for more information.

Sample copies of DX Monitor are available. Along with your request, please include first class postage of: **37c** for USA addresses, **60c** for Canada and Mexico or **2-International Reply Coupons** each, for other countries. Send to: **IRCA— 3410 Marion St. SE, Albany, OR 97322-3871.**

For information on **subscribing to the IRCA mailing list** at Hard-Core-DX, a group e-mail service, contact the moderator, Lynn Hollerman at lynn@eatel.net.

Unless otherwise noted, permission is granted to publish, broadcast, or otherwise reproduce non-copyrighted material appearing in **DX Monitor** provided credit is given to the IRCA and the original contributor. Opinions in **DX Monitor** are those of the original contributors and do not necessarily reflect those of the IRCA, its publishing staff, editors or officers.

©2005 International Radio Club of America

THE INTERNATIONAL RADIO CLUB OF AMERICA
 P.O. Box 60241, Lafayette LA 70596
<http://www.ircaonline.org>