

DX News

Serving DX'ers since 1933



Volume 82, No. 14 • April 6, 2015 • (ISSN 0737-1639)

Inside this issue . . .

- | | | |
|-------------------------------|--------------------------------|---|
| 2 ... AM Switch | 13 ... International DX Digest | 22 ... Ultralight Radio Shootout Review |
| 5 ... Domestic DX Digest East | 20 ... College Sports Networks | |
| 7 ... Domestic DX Digest West | | 36 ... Club Information Page |

For Sale: ELAM FDM-S2 software defined receiver, almost new; was \$580 from ELAD US in September, 2014. This package includes SMA/BNC/PL259 conversion hardware so that it can be used with most antenna setups. Also included are a three-ring binder containing the documentation, purchase information from ELAD, a sheet with info of extra software downloads from ELAD, the FDM-S2 in the original carton, and a separate ziplock bag containing connectors and two software flash cards with software for the unit. You can access more information on this receiver from <http://ecom.eladit.com/> Shipping extra; shipped USPS Priority mail with insurance approximately \$30.00 for USA addresses. Contact Wayne Heinen at sales@nrdcdxas.org. We are unable to ship overseas at this time.

Joint NRC/IRCA/WTFDA Convention: Don't forget to save July 10-12 in Fort Wayne, Indiana for the DX Convention 2015, a joint project of the NRC, IRCA, WTFDA, and Decalcomania!

We have station tours and a baseball game on Friday, July 10; educational sessions, the banquet, and the auction on Saturday, July 11; and then the DX Quiz before we head out on Sunday, July 12.

Stay tuned for all the registration details, coming soon – and in the meantime, get your vacation schedules in place and start making your plans to join us in Fort Wayne for a WO-WO-wonderful weekend of DX fun!

FCC TIS Rulings: In 2013, the FCC revised the rules governing Travelers' Information Stations (TIS). Among the new rules were a clarification that TIS stations can only broadcast content "with a nexus to travel, an emergency, or an imminent threat of danger," and therefore the routine rebroadcast of weather information by TIS stations is NOT permitted. Several entities requested that the FCC reconsider this rule. The FCC announced on March 26 that it will not reconsider the 2013 rule, but noted that "the TIS rules allow TIS licensees to integrate weather broadcasts into their TIS feeds during times of hazardous or potentially hazardous conditions and that the Commission affords TIS licensees substantial discretion to determine what

information is relevant to such conditions." That sounds like a lot of wiggle room, so perhaps we can still expect to hear NOAA weather rebroadcasts on TIS stations.

The FCC also loosened the rules on the filtering of audio frequencies from the current minimum of 3 kHz to a new minimum of 5 kHz. The FCC believes this rule "could improve TIS audio quality to match that of AM broadcast stations, while still retaining a sufficient filtering requirement to minimize adjacent channel interference." So maybe Iding those TIS stations will get easier (at least when they're not relaying NOAA weather).

NRC AM Log Sold Out: The 35th Edition of the NRC AM Log is now sold out. Wayne has begun working on the 36th Edition and we'll be updating you on how you can help make the 36th the best and most accurate AM Log ever, in time for the next DX season. In the meantime, updates to the Log will continue to be available in AM Switch here in *DX News*.

Membership Report

"Like my good friend Perry W3HQX, I have decided to renew with the e-DXN.com edition this year. It is a great way to keep up on the DXing." – Robert Cole.

Rejoining Member – Welcome back to Ken Onyschuk, Lockport, IL.

Renewing Members – Thanks for the continued support of Robert Cole; Mike Cook; Mike Cooper; Scott Fybush; David E. Fox; Roger Gravelle; Karl Kastner; Brent Taylor; John Tudenham; and Jon Weinbrum.

VOL. 82 DX NEWS SCHEDULE

No	In By	Date	No	In By	Date
15	Apr. 17	Apr. 27	18	July 17	July 27
16	May 15	May 25	19	Aug. 21	Aug. 31
17	June 12	June 22	20	Sept. 11	Sept. 21

From the Publisher: ¿Argentina? ¡Sí! Auroral conditions have been remarkable lately with some historic loggings! See our columns this issue. This is our last biweekly issue; back in 3 weeks with MLB baseball network lists from Barry Finkel and the latest in DX News!

AM Switch



Info to David Yocis, 1245 13th St. N.W., #105, Washington DC 2005, NRCDXNews@gmail.com
 Canadian information from CRTC complied by Shawn Axelrod and Dan Sys
 NRC AM Log updates from Wayne Heinen, amradiolog@nrcdxas.org

Don't forget to check e-DXN.com on the weekends that *DX News* is not published; we have an Interim AM Switch posted there on Friday night or Saturday morning each week with the latest FCC and CRTC news and *AM Log* updates.

CALL CHANGES

- 570 KQNG HI **Ele'ele** – Call change to KUAI (Mar. 17).
 720 KUAI HI **Kekaha** – Call change to KQNG (Mar. 17; station is silent).
 970 WMPW VA **Danville** – Call change to WZDV (Mar. 27).
 WGEE WI **Superior** – Call change to WDUL (Mar. 16).



NEW STATION WATCH

- 1540 CP FL **Southchase** – CP for new station (U4 7000/300) expired and deleted.
 1580 CP UT **Springville** – CP granted for new station (U1 10000/570), single tower at 40-10-49/111-38-34.

STATIONS GOING DARK

- 1260 KIMB NE **Kimball** – License cancelled; silent more than a year (since Mar. 21, 2014).

CONSTRUCTION PERMITS (CPs) FOR EXISTING STATIONS

CP on the air:

- 1580 KGAL OR **Lebanon** – CP for U2 5000/1000 is on the air.

CPs built, nearing final licensing

- 1410 WZBR MA **Dedham** – Applies for (another) license to cover CP for U1 2300/25, moving from Brockton MA. License to cover was granted, then rescinded in Feb. 2014.

CPs granted:

- 590 WARM PA **Scranton** – Granted CP for U4 1800/430, modifying patterns.
 600 KVNA AZ **Flagstaff** – Granted CP for U1 1000/70, moving to KAFF-930 site (35-11-26/111-40-37).
 1460 KLTC ND **Dickinson** – Granted CP for U2 5000/770, going from 4 towers at night to simpler 2-tower pattern, recentering at 46-50-56/102-49-47.
 1590 WSMN NH **Nashua** – Granted CP for U4 5000/5000 from a new site at 42-43-20/71-32-07; replaces identical CP that has expired.

SPECIAL TEMPORARY AUTHORITY (STA)

- 790 KOSY AR **Texarkana** – Granted STA with parameters at variance; has fixed antenna monitor problems but has discovered it needs to correct coordinates and perhaps adjust the licensed pattern to conform license to actual operations.
 1080 WHOO FL **Kissimmee** – Granted STA with U1 1500/11 from a temporary site.
 1150 WTMP FL **Egypt Lake** – Granted STA with antenna monitor parameters at variance pending completion of CP.
 1200 WEMM WV **Huntington** – Granted STA with U1 1000/19; was granted an STA with this power in April 2014 after transmitter site was vandalized; was granted an STA for 5 kW days with the intent of using an alternate transmitter but this was never used, so STA reverts to U1 1000/19 while continuing to search for a better transmitter.
 1260 KSGF MO **Springfield** – Granted STA with U1 5000/1250, can't operate night pattern due to vandalism to antenna coupling unit.
 1350 WNVA VA **Norton** – Applies for STA with U1 37/37 from a temporary antenna; prior owner went bankrupt and station was purchased at auction but tower is gone.
 1530 WLLQ NC **Chapel Hill** – Applies for STA with D3 5000 due to transmitter damage.
 1600 KAHZ CA **Pomona** – Granted STA with U1 1000/332 from a backup transmitter.



Applications to extend existing STAs were received from KKAT-860 Salt Lake City UT (U1 200/200); WKY-930 Oklahoma City OK (U1 1000/1000); WKLF-980 Clanton AL (temporary antenna); WOFX-980 Troy NY (night parameters at variance); KTMS-990 Santa Barbara CA (U4? 1500/100);

WPSP-1190 Royal Palm Beach FL (higher power, unspecified, due to Cuba-1180 QRM); WSHU-1260 Westport CT (telephone pole as temporary sloping dipole antenna); WIBR-1300 Baton Rouge LA (U1 150/150); WNJC-1360 Washington Township NJ (U1 1250/200); KSTN-1420 Stockton CA (U1 1250/250 during repairs to phasing unit); KPUR-1440 Amarillo TX (reduced power, unspecified); KPHX-1480 Phoenix AZ (night parameters at variance); WASN-1500 Youngstown OH (D1 105); KGA-1510 Spokane WA (reduced night power, unspecified); WVZN-1580 Columbia PA (temporary antenna at 40-01-28/76-28-31); and WTTM-1680 Lindenwold NJ (antenna impedance at variance).

Previously reported applications to extend existing STAs were granted to WDAE-620 St. Petersburg FL, WHYF-720 Shiremanstown PA, KARN-920 Little Rock AR, WINZ-940 Miami FL, KTCT-1050 San Mateo CA, WADB-1310 Asbury Park NJ, WYRD-1330 Greenville SC, KBBO-1390 Yakima WA, KWSL-1470 Sioux City IA, WOBX-1530 Wanchese NC, and WLXE-1600 Rockville MD.

SILENT STATIONS

Stations informing the FCC that they are silent:

- 920 KARN AR Little Rock – Silent 3/13, transmission line cut in attempted copper theft.
- 990 WDYZ FL Orlando – Silent 3/18 pending sale of station (scheduled to be complete 3/27).
- 1000 WCCD OH Parma – Silent 3/2, frozen water pipes burst and killed the transmitter.
- 1090 KAAZ AR Little Rock – Silent 3/13, transmission line cut in attempted copper theft.
- 1230 WLNR NC Kinston – Silent 3/2, power lines to the tower are out, seem to have been cut.
- 1340 KJMU OK Sand Springs – Silent 3/17 to search for replacement staff and new programming. (Anybody looking for a job? – DY)
- 1390 WABB SC Belton – Silent 3/18, the ubiquitous copper thieves strike again.
- 1530 KKHI CO Colorado Springs – Silent 3/23 while new owners relocate main studio.

Formerly silent stations informing the FCC that they are no longer silent:

- 1020 WRIX SC Homeland Park – Silent Nov. 28 (2014), returned to the air Mar. 19.
- 1440 WDXQ GA Cochran – Silent Apr. 15 (2014), returned to the air Mar. 3.
- 1450 WBVA VA Bayside – Silent Mar. 25 (2014), returned to the air with STA Mar. 19.

Several DXers in MW Circle (UK) report that WEGP-1390 Presque Isle ME (well heard in the UK) is silent; FCC says they applied for an STA but there's no application available. Station web site is inactive as of Mar. 25. And Glenn Hauser reports that KOKC-1520 Oklahoma City OK lost its towers in a tornado and was silent Mar. 25; although back on Mar. 26 per Wayne Heinen.

COORDINATE CORRECTION

- 1460 WKAM IN Goshen – Applies for CP to correct coordinates to 41-35-14/85-49-10.

CANADA

- 570 CBML QC Val d'Or – LPRT would leave the air if/when CBMN-1230 moves to FM.
- 1230 CBMN QC Malartic – LPRT applies to move to 101.1 MHz FM.

AM Radio Log updates from Wayne Heinen:

- 600 KVNA AZ Flagstaff – Format to AC (ex-TLK/SPT); slogan to "Sunny 104.7," nets to C.
- 900 WJWL DE Georgetown – Slogan to "Juan," adds // W242AV-96.3, deletes // WXXH-106.1.
- 940 KIXZ TX Amarillo – Networks to C/SRN/TRN/P/WW1.
- 950 KXJK AR Forrest City – Adds // K293BS-106.5. (JF)
- 960 WHYL PA Carlisle – Format to OLD (ex-NOS); slogan "Good Time Oldies 960," networks to A/WW1.
- 970 WDUL WI Superior – Slogan to "Sports Radio."
- 1250 WYKM WV Rupert – Networks to C/WW1.
- 1260 WSHU CT Westport – Group to // Fairfield County Public Radio (ex-// WSHU Fairfield County Public Radio).
- WSUA FL Miami – Slogan to "Radio Caracol" or "Radio y Televisión Marti." (TK)
- 1270 WMLC MS Monticello – Format to GOS (ex-UC:GOS).
- 1280 WFYC MI Alma – Slogan to "Sports Radio AM 1280."
- 1300 KSYB LA Shreveport – Slogan to "The Gospel Powerhouse." (GH)
- WMVO OH Mount Vernon – Format to OLD (ex-TLK); delete slogan, networks.
- 1310 WJUS AL Marion – Format to UC:GOS/Blues (ex-UC:OLD/GOS/Blues).
- WXMC NJ Parsippany-Troy Hills – Delete // WTOC-1360.
- WNAE PA Warren – Networks to A/P/Ru/WW1/TRN.
- 1320 WJNJ FL Jacksonville – Slogan to "Pure Radio."
- 1330 WKDP KY Corbin – Format to TLK/C&W (ex-TLK); slogan to "KD Country," adds // WKDP-FM-99.5 at times. (KK)
- WGFT OH Campbell – Slogan to "Star 94.7."

- 1340 WAML MS Laurel – Format to GOS (ex-UC:GOS/SPT).
 1350 WNLK CT Norwalk – Group to // Fairfield County Public Radio (ex-// WSHU Fairfield County Public Radio).
 1370 WPAZ PA Pottstown – Group & Slogan to // The Word FM.
 1390 WZHF VA Arlington – Format to SS (ex-EE/ETH); delete slogan.
 1400 WSTC CT Stamford – Group to // Fairfield County Public Radio (ex-// WSHU Fairfield County Public Radio).
 1410 WHBT FL Tallahassee – Adds // W252BN-98.3. (JB)
 1430 WFHK AL Pell City – Slogan to “94.1 The River,” adds // W231CW-94.1.
 1440 KETX TX Livingston – Format to SPT (ex-Silent), slogan to “The Score,” nets to Tx/CS/Jr.
 1450 WDXR KY Paducah – Slogan to “Life Talk 102.5,” adds // W273CH-102.5.
 WDLB WI Marshfield – Slogan to “Good Time Oldies.”
 1490 WTJV FL DeLand – Slogan to “AM 1230 & AM 1490 The Great Voice.”
 WSFB GA Quitman – Format to TLK (ex-NOS), slogan to “Talk 92.1,” adds // WDDQ-92.1; networks to RA/Ing/WW1/CM/TRN/SRN/RER.
 WOMI KY Owensboro – Adds // W256CF-99.1. (MH)
 WOLF NY Syracuse – Format to Rock/OLD (ex-KID), Group and Slogan to // The Dinosaur, drop networks.
 WLPA PA Lancaster – Format to NOS (ex-SPT); slogan to “America’s Best Music,” networks to WW1.
 1510 KWJB TX Canton – Slogan to “The Bee, One Honey of a Radio Station.”
 1520 WLGC KY Greenup – Adds // WLGC-FM-105.7.
 1570 WBGZ IL Alton – Adds // W232CR-94.3.
 WKKS KY Vanceburg – Slogan to “Classic Country.”
 1580 KAMI NE Cozad – Slogan to “Cammy Radio.”



Question for the Club

- 1420 KJDL TX Lubbock – This one is listed in various sources with a variety of formats and as // 102.3, 98.5, or 105.7. Anyone have a clue what is really going on?

Group Changes

// The Dinosaur – WNDR-FM-103.9, WOLF-1490, W231CS-94.1, WMBO-1340, W237AY-95.3.
 // Fairfield County Public Radio – WSTC-1400, WNLK-1350, W291AU-106.5, WSHU-1260, WSHU-FM-91.1 (HD2). This was // WSHU FM Fairfield County Public Radio; other stations are owned by the WSHU Public Radio Group but are not part of this simulcast. Thanks to Tony Fitzherbert for calling attention to the ownership update.

New Group

// The Word FM – WEVW-90.9, WPAZ-1370, W278BR-103.5.

News from Radio Insight

ESPN Radio Sets New Evening Lineup. With Mark Schlereth exiting and Bomani Jones coming, ESPN Radio is resetting their weekday evening schedule starting Monday, March 30. Jorge Sedano, who has co-hosted with Schlereth since 2013, will be going solo from 7-9pm Eastern. “The Right Time” with Bomani Jones will air from 9pm-11pm. Jones will continue as co-host of Highly Questionable on ESPN TV at 4:30pm and as a writer for ESPN.com. Freddie Coleman will drop an hour from his program and air from 11pm-2am.

ESPN Radio will debut an enhanced weekday evening lineup beginning Monday, March 30, with shows hosted by three distinct ESPN voices with disparate takes on the sports world – Jorge Sedano, Bomani Jones and Freddie Coleman. The new lineup will kick off at 7 p.m. ET with The Sedano Show, followed by an evocative new program The Right Time with Bomani Jones at 9 p.m. and continuing with the three-hour The Freddie Coleman Show at 11 p.m.

The restructured lineup will provide sports fans the opportunity to listen to three dynamic individuals who all offer thought-provoking opinions on the most impactful topics of the day. “The new weeknight lineup underscores our commitment to serve sports fans by offering the most compelling, interesting, informative and entertaining content from an on-air team that is dynamic, distinctive and diverse all week long,” said David Roberts, vice president, ESPN Audio network content.

Thanks to Shawn Axelrod; Bill Hale; Glenn Hauser; Kraig Krist (KK); Terry Krueger (TK); Mike Hutchens Regional Engineer, Townsquare Media (MH); Jeff Fogg GM KXJK (JF); John H. Baker, Operations Manager, Cumulus Tallahassee (JB).

Domestic DX Digest - EAST

Editor: **Mike Brooker**, 99 Wychrest Avenue, Toronto ON M6G 3X8 Canada, patria1818@yahoo.com
 Loggings of U.S./Canadian stations heard in the Eastern or Atlantic time zones; all times Eastern

REPORTERS

TF-NH **Tony Fitzherbert, Campton** – Grundig S-450DX, Grundig AR 200 loop
HF-MI **Harold Frodge, Midland** – Drake R8B + 125 ft. bow-tie; 85 ft. RW & 180 ft. center-fed RW
TLK-FL **Terry Krueger, Clearwater** – Sony 600GR
KK-VA **Kraig Krist, Manassas** – Winradio G33DDC SDR, Wellbrook ALA-1530S+ Imperium Loop
JRM-PA **John R. Malicky, Pittsburgh** – Superadio III, Delco car radio
MKB-ON **Mike Brooker, Toronto** – Grundig G5, Grundig YB-400PE, Sony SRF-39FP, Panasonic RF-2200 (receiver emeritus)

Follow me on Twitter! @patria1818 DX-related tweets will be hash-tagged #MWDX.

Friend me on Facebook! www.facebook.com/keval.mike

LOGGINGS

600 **CKAT** **ON** **North Bay** – 3/5 2130 – Way over WICC with North Bay v. Belleville Bulls OHL hockey, Mobil post-game show with player interviews. **(TF-NH)**

610 **WTEL** **PA** **Philadelphia** – 3/5 2015 – CBS Sports feed, “WTEL Philadelphia, all things sports all of the time” ID and slogan, back to sports talk, alone on frequency with WGIR in night pattern. **(TF-NH)**

740 **KRMG** **OK** **Tulsa** – 3/17 2300 – Mainly over CFZM with “TU basketball 102.3 KRMG” FM-only ID into University of Tulsa basketball game. **(HF-MI)**

820 **WWBA** **FL** **Largo** – 3/17 1933 – Florida High School Athletic Association ad into Savage Nation. Easily beating CHAM. Not new but very rare; last logged as WMGG. **(HF-MI)**

880 **WPIP** **NC** **Winston-Salem** – 3/17 1930* – Old time gospel tune into orchestral instrumental, sign-off announcement: “WPIP...Berea Baptist Church Winston-Salem... conservative Christian programming.” Well on top and left nobody dominant after sign-off. **(HF-MI)**

1150 **WHUN** **PA** **Huntingdon** – 3/16 1905 – ESPN Sports feed for five minutes, weak signal lost under WWDJ and others. **(TF-NH)**

1180 **WSKP** **RI** **Hope Valley** – 3/24 1910 – “Mrs. Robinson,” “Gambling Man,” “You say Goodbye, I say Hello,” among others in long cluster of oldies, signal overwhelming usual WHAM. **(TF-NH)**

1220 **WQUN** **CT** **Hamden** – 3/6 2057 – Oldies, at ToH: “This is WQUN AM 1220 Hamden, a service of Quinnipiac University,” into CBS News, way atop with 305 watts! **(TF-NH)**

1230 **WJOY** **VT** **Burlington** – 3/16 1925 – Nostalgia stuff, identical feed as to nearby WFTN-1240 and local WPNH-1300, soon gone. **(TF-NH)**

1270 **WDLA** **NY** **Walton** – 3/26 1943 – Atop frequency with ESPN Sports, “CNY Weather,” ads for Dr. Dennis Black, call 848-Dr. Black, and for “Texas Super Foods,” back to ESPN talk about the Sweet Sixteen. **(TF-NH)**

1290 **WHKY** **NC** **Hickory** – 3/14 2157 – Going into Fox News Radio at odd timing just at tune-in, promo for something public affairs topic in Hickory, then legal ID. Presume on listed 1000 watts (50 kW day). **(TLK-FL)**

1340 **WYBC** **CT** **New Haven** – 3/24 1902 – “NPR News from Washington,” news items, then “You are listening to NPR News in Washington,” WYBC carries NPR feed and is the only station on 1340 in the east to do so, it is now programmed by Sacred Heart University in nearby Fairfield. NEW here! **(TF-NH)**

WMID **NJ** **Atlantic City** – 3/13 1935 – “Come Softly to Me” by the Fleetwoods, ID as “Classic Oldies WMID,” more oldies, soon into mush mixed with WSTJ and many others. **(TF-NH)**



- 1350 WNLK CT **Norwalk** – 3/26 1950 – In WINY mix with NPR feed, program notes on WSHU, many WSHU references as WNLK simulcasts WSHU-1260 in nearby Westport. NEW logging here! **(TF-NH)**
- 1380 WFNW CT **Naugatuck** – 3/24 1840 – Spanish ballads, weak signal, mixed with WSYB, WNRI, gone by 1900. WFNW is directional toward NH, similar ethnic broadcaster WKDM's multi tower cluster in New Jersey's Meadowlands (next to the NJT commuter rail spur to Met Life Stadium) is directional out across the Atlantic. **(TF-NH)**
- 1400 WKBI PA **St. Marys** – 3/13 1900 – In multi-station mix (WINC, UNID talk, gospel and Fox sports) with "You're listening to 94.5 FM and 1400 AM WKBI Saint Marys. News is next, then we're back with America's best music" ToH ID into ABC news. New station for me. **(KK-VA)**
- 1410 WNER NY **Watertown** – 3/13 1859 – In multi-station mix with male "Fox Sports radio 14-10 WNER Watertown" ID. **(KK-VA)**
- WRTZ VA **Roanoke** – 3/13 1921 – In multi-station mix (KQV, WNER, CKSL, UNID Fox sports) with "the greatest oldies are played on WRTZ" station promo. New station for me. **(KK-VA)**
- 1420 WNRS NY **Herkimer** – 3/6 2020 – "All your greatest hits on 1420 AM" slogan, into "Little Darling" by the Diamonds, other oldies, non-ID "Central New York's Good Time Oldies," 64 watts visiting NH. **(TF-NH)**
- WCED PA **Du Bois** – 3/13 1902 – In multi-station mix (WKCW, WHK, UNID basketball game and oldies) with male "News talk radio WCED Du Bois" ID. **(KK-VA)**
- 1480 WDJO OH **Cincinnati** – 3/20 1841 – In multi-station mix (WPWC, UNID preaching and basketball game) with oldies, male "...14-80 WDJO" ID. **(KK-VA)**
- 1490 WWNB NC **New Bern** – 3/20 1919 – In multi-station mix with station promo: "...weekdays 'The Herd' 10 to 1 103.9 FM 14-90 FM. New Bern's radio home for sports." **(KK-VA)**
- WNTJ PA **Johnstown** – 3/20 1859 – In multi-station mix with promo for "...Laurel Highlands Monday thru Saturday noon to 3 on news talk 14-90 WNTJ." **(KK-VA)**
- WMGW PA **Meadville** – 3/20 1834 – In multi-station mix (WCVA, WXTG, WNTJ, WWNB, WSGB) with station promo: "Your home for Pirates baseball right here...Allegheny Sports Network." New station for me. **(KK-VA)**
- WSGB WV **Sutton** – 3/20 1959 – In multi-station mix with ID as "West Virginia's classic hits radio, WVAR Richland...WSGB Sutton." **(KK-VA)**
- 1570 WFLR NY **Dundee** – 3/3 2045 – WFLR ID, country music, atop frequency with CJLV nulled. **(TF-NH)**
- WSCO WI **Appleton** – 3/15 0759 – Over gospel and sports talkers with "WSCO Appleton ... 95.3, 1570" ID, Motel 6 ad. **(MKB-ON)**
- 1590 WCGO IL **Evanston** – 3/17 0800 – In very briefly with "the opinions expressed are not necessarily those of WCGO or our..." disclaimer, then into a program which quickly faded. **(JRM-PA)**
- WCSL NC **Cherryville** – 3/27 0737 – On an overcast cool morning, upper frequencies were buzzing as WCSL was battling WHGT with local announcements, ad for a business with a 704 area code, and the DJ chatting on the phone about this morning's weather. Listed at 10 kW days, this station is sporadic here during mornings. **(JRM-PA)**
- WARV RI **Warwick** – 3/15 0600 – Unlike most stations that fade for that top of the hour ID when you're crossing your fingers, your heart is pounding, and hanging on to that dial with anticipating excitement, out of nowhere this station shot in like a cannonball for the first time with "WARV Warwick Providence" into a few seconds of a religious program then gone. **(JRM-PA)**
- 1670 CJEU QC **Gatineau** – 3/14 0000 – FF music and talk, "Enfant" slogan. Mixing about equally with Fox Sports, presumably WPLA Dry Branch, GA. A Free Radio Net poster thought he was hearing a pirate here with rap music. **(HF-MI)**



Domestic DX Digest - WEST

Editor: **Jim Tedford**, 20310 Bothell-Everett Hwy. B4, Bothell WA 98012-8133,
Radio_Enthusiast@hotmail.com All times Eastern Local Time (ELT)

Loggings of U.S./Canadian stations heard by DXers in the Central, Mountain, and Pacific time zones

REPORTERS

- BD-WI** **Bill Dvorak, Madison, WI.** Drake R8B, 140-foot Double Kaz antenna bearing 280 or 100 degrees.
- GH-OK** **Glenn Hauser, Enid, OK.** Mostly DX-398 with internal antenna only; or Sony SRF-59 as specified; Nissan stock car radio as specified; FRG-7 as specified. Glenn's complete reports, with extensive commentary, are originally published in *DX Listening Digest*.
- JEL-MO** **J.E. Lewis, Kansas City MO.** Honda Odyssey car radio.
- JJR-WI** **John J. Rieger, So. Milwaukee, WI.** Icom IC-R75 MFJ-959B tuner, preamp Kiwa loop
- JW-CO** **John Wilkins, Wheat Ridge, CO.** Drake R-8, 4-foot box loop.
- NK-IL** **Neil Kazaross, Barrington IL.** Perseus and DKAZ south and DKAZ array with the beam steered WSW.
- SMA-MB** **Shawn M. Axelrod, VE4DX1SMA, VEPC4SWL Winnipeg MB.** ICOM ICR70, Drake R8, 3-foot unamplified box loop/Quantum QX LOOP v2.0/155-foot U-shaped outdoor wire/100-foot indoor wire run around the basement walls/MFJ-1026 phasing unit.
- WH-CO** **Wayne Heinen, Aurora.** Drake R8B, E/W Flag, TG-1 Termination Gizmo and Mini DXP5.

STATION NEWS

- 1520 KOKC OK Oklahoma City** – 3/25 – KFOR TV Oklahoma City reported today that a tornado destroyed two of the three towers and heavily damaged a third. There was also damage to some structures but no deaths or serious injuries. This is an area (Moore) that has had a number of much more serious storms in past years with fatalities and devastating damage. The Tulsa area was also hit 3/25 with one fatality and spotty damage. **(JEL-MO)**

DX LOGS

- 570 KWML NM Las Cruces** – 3/13 0221 – Open carrier, dead air and some hum, loops NE/SW, much stronger than KLIF with Bohannon. Very likely it's the only US station which fits, Las Cruces NM, currently called KWML with 5 kW day power rather than 155 watts night, both non-directional. **(GH-OK)**
- 570 KLIF TX Dallas** – 3/18 0627 – Poor KLIF traffic, KLIF weather. Logged in 1968 as WFAA. Rare. **(JJR-WI)**
- 590 KLBJ TX Austin** – 3/18 0748 – Poor; steady, alone. No calls, but 512-XXX-0590 for teletalk. **(JJR-WI)**
- 660 KTNN AZ Window Rock** – 3/22 2118 – Fair and alone with drums and Navajo chanting. **(JEL-MO)**
- 670 WSCR IL Chicago** – 3/12 1352 – Sports talk is also dominant here instead of groundwave remnant of KLTT Denver, so WSCR is also making it though as always not as well as WGN. Something's screwing with the D-layer which should be blocking skywave on a bright sunny almost-spring day. I reset my destination to the powerless kite field but by the time I get there at 1400, WGN has faded to JBA, and nothing else unusual, no 1690 WVON Chicago either. After lunch nearby, I check 720 again at 1430 and WGN is reaudible with sports talk, also a SAH (San Antonio?) and fading down again. Local mean noon here is always 1432 EDT. When I get home again a few minutes later, before local noise overtakes, WGN can be heard, now with some musical CCI, KSAH? **(GH-OK)**
- 700 KHSE(t) TX Wylie** – 3/10 0758 – Poor though steady in WLW null. SS slower paced talk. Assumed. **(JJR-WI)**
- 720 WGN IL Chicago** – 3/12 1352 – As I turn on the car radio, there is WGN Chicago IL, and it's almost noon! Poor signal but completely readable; stronger than it ever gets by groundwave at midsummer. A reminder of the city-to-city distance, Chicago-Enid: 667 statute miles, 1074 km. **(GH-OK)**
- 730 KWRE MO Warrenton** – 3/17 0729 – Poor; t/c, temp, KWRE news at 6:30. No CKDM. **(JJR-WI)**

- 760 KCCV KS **Overland Park** – 3/21 2136 – Gospel; surely not WJR in the subauroral zone as even Chicagoans are blacked out. That leaves nothing but KCCV Overland Park KS, BOTTly religious. Night power is supposedly only 200 watts, but day power 10 kW has a lobe right at us (which is quite marginal on groundwave, almost 300 miles). **(GH-OK)**
- 760 WETR TN **Knoxville** – 3/19 0705 – Poor; steady, WJR nulled. Storm Team weather, WETR Talk Radio 760. TN#110, 760 #10, NEW! **(JJR-WI)**
- 800 WSHO LA **New Orleans** – 3/19 0729 – Poor; clear “SHO” ...“good life...WSHO” over UNID SS. CKLW nowhere. **(JJR-WI)**
- 830 WFNO LA **Norco** – 3/21 0150 – Spanish ID as “830 AM, La que sorprende,” and loops SE, so presumably WFNO in Norco LA. Looking up its listing in NRC AM Log, I may have misheard the slogan shown there, “La Caliente 830 AM.” Is 5000/750 U4. Used to be a nuisance for WCCO but mutually nullable from this angle. Now WCCO is gone with the aurora, and with WFNO nulled instead hear another SS, no doubt a Mexican. XEIK Piedras Negras is closest, but allegedly a 5 kW daytimer; biggest one is 25/5 kW, XEITE, R. Capital in the DF. **(GH-OK)**
- 840 KVJY TX **Pharr** – 3/13 0914 – Spanish station alone on frequency talking about Valle de Tejas, Hidalgo and other localities, no doubt KVJY Pharr again. SRS is now favoring the San Antonio to Monterrey area, not further west in Mexico, perhaps because the equinoxial terminator is now almost due north-south. **(GH-OK)**
- 890 KYWN ID **Meridian** – 3/16 0821 – A mix of stuff, all in SS, including religious messages, Fútbol Mexicano results, mariachi music, PSA on school violence, and ads or announcements for area church services. Fair with fading; WLS somewhat nulled. **(JW-CO)**
- 890 KVOZ TX **Del Mar Hills** – 3/20 0027 – Spanish music, probably praise, dominant instead of WLS, nevertheless English non-ID as “You are listening to the Christian Radio Network,” i.e. KVOZ, Laredo market. So I see if I can make a // on sibling station, KUBR-1210, see below. **(GH-OK)**
- 900 CHML ON **Hamilton** – 3/16 2036 – Good and in the clear with local ads, CL, into discussion of local music content requirements by CRTC in Canada. They run a 50 kW complicated directional pattern and we are in a minor lobe. New! **(JEL-MO)**
- 910 WUBR LA **Baton Rouge** – 3/19 2000 – Poor but alone in severe auroral conditions with ID and sport radio announcement. New! **(NK-IL)**
- 920 KYST TX **Texas City** – 3/20 2258-2303 – Very good; almost alone with SS religious oriented talk. No ID, but phone number matched. **(NK-IL)**
- 930 KAFF AZ **Flagstaff** – 3/11 0859 – Weather forecast, then legal ID: “From the world-famous Museum Club studios, it’s KAFF Flagstaff Country 93.5, AM 930”; ABC news was next; heard a few minutes later (0909) with area news and weather (“Right now 33 degrees on Route 66”). Fair in QRM; probably on 500-watt PSRA. **(JW-CO)**
- 930 KSEI ID **Pocatello** – 3/11 0856 – Man with ID: “The Idaho Oldies Channel, this is the Voice of the Bengals, KSEI AM 930 and FM 106-7,” followed by more Oldies music. Fair with QRM. **(JW-CO)**
- 950 KRWZ CO **Parker** – 3/9 0743 – Poor, others nulled tightly. “Crusin’950” sweeper. Oldies. **(JJR-WI)**
- 950 KWOS MO **Jefferson City** – 3/17 0807 – Fair! News Talk KWOS “now on 100.9 FM.” No WWJ, others. **(JJR-WI)**
- 960 WERC AL **Birmingham** – 3/18 0715 – Poor; NewsRadio 105-5 WERC. WSBT tightly nulled. **(JJR-WI)**
- 980 KICA NM **Clovis** – 3/20 0800 – Fair-good, alone with dual ID for KTNZ and KICA and mention of “ESPN for eastern NM and the panhandle” // KTNZ 1010. New! **(NK-IL)** 3/22 0908 – Woman with sports talk from ENE/WSW, and a word or two behind stronger // 1010. Per KAZ tip, it’s KICA, reactivated and now a satellite of KTNZ Amarillo with ESPN. Constant QRM from 2 or 3 other stations in other directions, but several minutes later at 0930 kept getting the delayed // with 1010. **(GH-OK)**
- 980 CFPL ON **London** – 3/10 0710 – Poor, “AM 980, traffic & weather on the 2s is next.” **(JJR-WI)**

- 1060 KRCN CO **Longmont** – 3/22 0157 – EWTN programming in English, loops NW/SE, no doubt KRCN, and also noticed a few hours earlier around 2140, so on 50 kW day power again instead of 111 watts night. Plenty of QRM, notably off-frequency KIJN and XERDO, but holds its own unless nulled. **(GH-OK)**
- 1070 CHOK ON **Sarnia** – 3/10 0759 – Poor, CHOK weather jingle, no WTSS. News at :01 after calls. Oldies. **(JJR-WI)**
- 1090 KULF TX **Bellville** – 3/20 2000 – Poor-fair, basically alone with ID and back into Asian programming. Very good early conditions to TX tonight. Rare. **(NK-IL)**
- 1090 KVOP TX **Plainview** – 3/19 0205 – I have tuned in slightly earlier than 24 hours ago to the weak station audible here in the absence of KAAY: PSA for an event sponsored by the Edmonson Fire Department! Edmonson is a small suburb just northwest of Plainview TX, which is roughly halfway between Amarillo and Lubbock. Then the weather forecast is sponsored by West Texas Farm Credit, on “The Mighty 10-90.” So absolutely positive it’s KVOP. At 0224 I’m back on 1090 to compare programming of ‘Texas Overnight’ to adjacent originator, 1080 KRLD. They are ‘way out of synch, with KVOP about 21 seconds *ahead* of KRLD which must be imposing a significant delay upon itself for some reason. Ironic that KRLD QRMs its own affiliate with awful IBOC. I hear ESPN mentioned, but it’s not CCI from WBAL, rather current topic of discussion on TX show about what’s on Dish TV. **(GH-OK)**
- 1100 KDRY TX **Alamo Heights** – 3/20 2000 – Fair-good, completely alone with ID and religious programming. **(NK-IL)**
- 1110 WTOF AL **Bay Minette** – 3/18 1954 – Poor but in the clear with a religious program just ending followed by a dual station legal ID // WMOB 1360, then a separate WTOF LID. Very auroral conditions due to a huge geomagnetic storm the previous day. Needed call change, ex-WBCA, a change dating back to November 2006. **(BD-WI)**
- 1120 KTXW TX **Manor** – 3/20 2000 – Fair, mostly over KMOX in AU conditions with ID and location given as Manor/Austin and religious programming. **(NK-IL)**
- 1140 KLTK AR **Centerton** – 3/24 0857 – Spanish from E/W, 0903 ID as “Radio Las Américas, 11-40”; 0906 news about plane crash in Alps, 0908 back to romantic music. **(GH-OK)**
- 1150 WJRD AL **Tuscaloosa** – 3/18 0814 – Poor. Hearing oldies, I thought CKOC. Luckily “104.1 ... WJRD.” **(JJR-WI)**
- 1170 KFAQ OK **Tulsa** – 3/14 0852 – Out of order: carrier breaking up with modulation peaks, sounds bad on AM, and obvious with BFO; recheck at 1030, it’s back in whack. This has happened before. **(GH-OK)**
- 1180 WUMY AR **Turell** – 3/22 0840 – One clue in the CCI, mention of “105.5,” loops E/W, definitely not N/S as in Omaha. A very good clue leading to the very first entry in the NRC AM Log for 1180, WUMY (Memphis TN market), // W288BJ-105.5, slogans as “Y-105.5” and “Big Country.” No other 105.5 matches on 1180. **(GH-OK)**
- 1190 WAFS GA **Atlanta** – 3/18 0805 – Poor; steady BIZnews1190.com News. No WOWO. No KQQZ. 1190 #22! NEW! **(JJR-WI)**
- 1190 KQQZ MO **De Soto** – 3/25 0210 – Slightly atop heavy QRM and peaking roughly E-W, “Killer Kountry 11-90”; call which followed sounded like KKGD, but obviously that slogan was really KQQZ, De Soto (St Louis) MO, 10000/22 watts, transmitter probably in IL. What, 22 watts at night? No way. **(GH-OK)**
- 1210 KGYN OK **Guymon** – 3/19 0239 – “Today’s Country for Perryton, 12-10 KGYN”. As usual, much more signal at night than there should be, if Guymon is really protecting Philadelphia. Perryton is a smaller town across the line in the NE TX Panhandle. Last time I was there it stank from hog farming, nixed a motel stay. I also used to have a cousin of some sort in Perryton. **(GH-OK)**
- 1210 KUBR TX **San Juan** – 3/20 0027 – Nulling KGYN with a silly ballgame as much as possible, can barely make music // 890, i.e. KUBR. By 0035 recheck, KUBR’s peppy music overcomes KGYN, now stronger than 890 and not synchronized. **(GH-OK)**
- 1230 WBOK LA **New Orleans** – 3/20 2258-2302 – Fair-good; peaks almost totally dominant with black M&W talk and WBOK calls given a couple of times. This one gets out well. **(NK-IL)**
- 1240 KDSK NM **Los Ranchos de Albuquerque** – 3/21 0917 – Ad for Sky City Casino (in Acoma Pueblo), then more ads and an ID: “The rhythm of western New Mexico, K-D-

The MIGHTY 1090

KVOP

1090 AM Plainview, Texas

S-K" spoken slowly; Oldies music ensued. Heard later with "New Mexico's Sound Souvenir Radio" slogan. Fair signal and on top of the pileup with conditions somewhat auroral. **(JW-CO)**

- 1250 KHIL AZ **Willcox** – 3/22 0940 – Segued Oldies with no ads or announcements; gal with legal ID at 0956:25: "KHIL 1250 AM Willcox, Arizona. Ready for a magic carpet ride? Let's go back to the 60's," which they did with a Monkees song. Fair/good signal and all alone! **(JW-CO)**
- 1250 KIKZ TX **Seminole** – 3/19 0821 – Spot for West Texas National Bank, followed by community calendar. Fair, mixing with KNEU. **(JW-CO)**
- 1270 KIML WY **Gillette** – 3/16 2048 – Good and in the clear with local ads, CL, into Dave Ramsey. They run 5 kW non-directional during the day which I think it still was there. Anything in Wyoming is very rare around here. New! **(JEL-MO)**
- 1300 KSYB LA **Shreveport** – 3/14 2129 – Soul/gospel music, loops NW/SE, 2130 maybe sung ID unreadable; go-to-church promo, plug Sunday 6 am show on "the Gospel Powerhouse", 2131 American Optometric Association PSA/ad?, then "KSYB, Shreveport's Premier Station." It's 5000/30 watts non-directional; guess which? Neither slogan is in NRC AM Log. Can't find any own website, just numerous streaming aggregators. **(GH-OK)**
- 1310 KOKX IA **Keokuk** – 3/10 0807 – Poor with local announcements, KOKX news time 7:07, from Radio Iowa. WIBA nulled. **(JJR-WI)**
- 1320 KRDD NM **Roswell** – 3/19 0905 – Spanish ID with call letters, power (1000 watts), and "La Doble D" slogan; spotty over the next half-hour with music, ads, etc. Heard next day, too, in auroral conditions. Fair at best, mixing with other SS on the frequency. **(JW-CO)**
- 1340 WTAN FL **Clearwater** – 3/20 2259-2301:30 – Poor/fair but mostly atop with gal talking and finally a man with their 3 station network ID giving location as Clearwater/Tampa Bay. No trace of either of the other two network stations was found. New and FL GY #1 and my GY distance record from here at 1025 miles! **(NK-IL)**
- 1370 WOCA FL **Ocala** – 3/20 2300 – Poor with ID mentioning Ocala and Gainesville and someplace else. Mixed with another station and no trace of pest WSPD. New! **(NK-IL)**
- 1380 KCIM IA **Carroll** – 3/17 0700 – Poor; LID, CBS news in tight null of others. Oldies. **(JJR-WI)**
- 1380 WKJV NC **Ashville** – 3/18 0800 – Poor; steady, USA news LID +1010// Kings radio network, weather @ :57 **(JJR-WI)**
- 1380 KKRX OK **Lawton** – 3/19 2101 – Poor to fair, mostly overcoming QRM from semilocal WBEL, with UC:AC music, legal ID including slogan "Heart and Soul Radio 1380." NEW! Very auroral conditions. Station is 1 kW directional day and night with NW/SE lobes. **(BD-WI)**
- 1390 KULP TX **El Campo** – 3/21 2200 – Fair, well atop with C&W mx and Texas accented announcer, "There's only one real hometown radio station and you're listening to it!" Confirmed by phone call to station. New in superb conditions to TX! **(NK-IL)**
- 1400 KCHS NM **Truth or Consequences** – 3/22 1000 – Basic legal ID at 1000:50 by man: "AM 1400 KCS Truth or Consequences" and not much else discernable. Rare here. **(JW-CO)**
- 1400 KQDJ ND **Jamestown** – 3/14 2359 – Poor with light to moderate unID QRM, with ESPN promos, legal ID into *ESPN SportsCenter*. LID read "The Buffalo City's home for ESPN Radio is AM 1400 KQDJ Jamestown, translated on 97.1" (K246AM). NEW! My first ever ND graveyard station, distance 525 miles. **(BD-WI)**
- 1400 KHCB TX **League City** – 3/20 1957-2000 – Poor with SS religious gal and then some music and then ID for 3 stations by SS man barely audible. League City-Houston heard. I listened to their ID online the next hour and the music leading into the ID's was the same to remove any doubt I had. New and at 962 miles, my 2nd furthest GY from here! 3/21 2027-2032 – Fair-good peaks mostly alone and very listenable for 5 minutes! SS religious stuff and into "Mujeres de Esperanza" program just after 2030. Lots better on the array aimed WSW than on the single antenna aimed south the previous night. **(NK-IL)**
- 1420 KTAN AZ **Sierra Vista** – 3/22 0959 – Weather "for Cochise County and southeastern Arizona;" LID at 0959:51 by man: "KTAN Sierra Vista, broadcasting from ... is

AM 1420 K-tan, the Talk of the Town," followed by CBS news. Generally fair signal. (JW-CO)

- 1440 WZYX TN **Cowan** – 3/18 0606 – Poor; woman with news, WZYX 94.5 +..., WZYX app, WZYX news. Alone. (JJR-WI)
- 1440 KEYS TX **Corpus Christi** – 3/21 2159 – Fair but in the clear, with ESPN promos, legal ID into *ESPN SportsCenter*. NEW! Very auroral conditions tonight, the fifth night of such conditions since a huge geomagnetic storm hit on 3/17. Station is 1 kW with a night directional pattern that sends most of its signal into the Gulf of Mexico. (BD-WI)
- 1470 KDHN TX **Dimmit** – 3/19 0825 – "KDHN, Voice of the Great High Plains," Texas weather. Perfect match for slogan as in the NRC AM Log Dimmitt is in the Panhandle, next town south of Hereford; not to be confused with Dimmit (one T) county, which is way down in South Texas around Carrizo Springs. (GH-OK)
- 1480 WGFY NC **Charlotte** – 3/18 0758 – Poor; Your Music, Your Station, Radio Disney. Disney promos, app, etc. (JJR-WI)
- 1490 WKLQ MI **Whitehall** – 3/24 2359 – Poor, fadey below other GY's but in at LID time, with *The John Batchelor Show*, ads, legal ID into unID network newscast. NEW! This one has evaded me for years, largely due to slop from local adjacent WLMV, and at 152 miles was one of my closest unheards. (BD-WI)
- 1520 KOLM MN **Rochester** – 3/26 0500 – Over presumed KKXA with local weather and ToH ID. KOKC off after tornado damage. (WH-CO)
- 1520 KMSR ND **Mayville** – 3/26 0900 – Up briefly "Sports radio KMSR." (WH-CO)
- 1520 KOKC OK **Oklahoma City** – 3/26 2048-2100 – Fair to excellent with deep gradual fades mostly over CBS Sports Radio UNID, probably KOLM Rochester, with political commentary, ads, CL, into CBS news on the hour. I was surprised to hear them at all after two of their three towers were destroyed and a third heavily damaged during a tornado 3/25 (see "Station News"). They must be using auxiliary facilities. (JE-MO)
- 1520 KYND TX **Cypress** – 3/26 0903 – Over horn fanfare, "This is AM 1520 KYND Cypress and AM 1540 KGBC Galveston." A new one for me. (WH-CO)
- 1530 KVDW AR **England** – 3/17 2316 – "You are listening to Victory 100.9 FM, keep it locked," more music, loops E-W and nothing from WCKY, propped out. This is again 2500-watt "daytimer" KVDW in England AR, Iding only for its FM translator on 100.9, which is K265EO, per NRC AM Log which lists the slogan as "Victory 1530." (GH-OK)
- 1550 WPFC LA **Baton Rouge** – 3/21 2126 – Poor to fair and in the clear on a normally very crowded frequency, with UC:GOS music, call letter ID with the slogan "Your Urban Alternative" and ads. NEW! Very auroral conditions. Station's night power is 42w ND, and there is no reason to believe that it was anything other with the strength of tonight's aurora. (BD-WI)
- 1560 KBEW MN **Blue Earth** – 3/17 0736 – Poor; MN, Blue Earth, Northern IA news, calls. Atop freq. (JJR-WI)
- 1580 KREL CO **Colorado Springs** – 3/17 0729 – Poor; Fox Sports content. Light fades, no CKDO. Still in 1 hour later. Assumed. (JJR-WI)
- 1590 WAIK IL **Galesburg** – 3/17 0800 – Poor; *America In The Morning*, ads, LID, newscast. Atop frequency. (JJR-WI)
- 1590 KCTY NE **Wayne** – 3/15 2045 – Poor signals mixing with KVGB with AC music selections and "The City" ID's. This one has been on my target list for a very long time. Yes once again perseverance does pay off with a new one at sunset. NEW! (SMA-MB)

UNID

- 690 UNID -- 3/19 0231 – Amid the CCI I hear a station in Spanish mentioning Tejas and 5 mil watts. But those clues lead nowhere as neither Tejano is Spanish or 5 kW. Could KTSM El Paso or KPET Lamesa have flipped from English? Not according to their web sites, nor does any 690 Mexican find itself upon the TX border, closest being Monterrey. (GH-OK)
- 870 UNID -- 3/17 0224 – Open carrier with WWL nulled, maybe ~10 Hz SAH. Most likely daytimer KFJZ Fort Worth TX. (GH-OK)
- 1240+ UNID -- 3/20 0010 – I am still detecting a low audio het from some off-frequency graveyarder, looping WNW/ESE, a prime suspect being KCRT Trinidad CO. First noticed this in early January, and no one has replied to my inquiries. At

this time 1240 caught my attention since some station had momentarily peaked covering some silly ballgame in English, maybe only Wichita. **(GH-OK)** *KCRT has been reported off-frequency by JW-CO for years, most recently on 1240.19 kHz in Vol. 81 Issue 30. – DY.*

- 1290 UNID** -- 3/17 0207 – Choice of Jimbo from NE/SW, or C2CAM from NW/SE, mutually nullable, both vs lots of CCI. Most likely closest are KOIL Omaha NE and KOWB Laramie WY, respectively. **(GH-OK)**
- 1340 UNID** -- 3/21 2119 – Traditional beer/tear country song atop the jumble, such that I can get a pretty good bearing on it, NNW/SSE. 2120 overtaken by CBS Sports Radio with an 855 number. The two are virtually the same DF, or opposites. I figure the CBS SR is KGHM in OKC, my nearest and daytime occupant, but I have never paid attention to which network it's on, and NRC AM Log shows FSR and NBC. CBS Sports station finder which searches well once it loads, for 1340 unshows any Okie, and only one close to the proper DF: KRMD Shreveport / Bossier City LA. Now how about the country music? Assuming it's from an adjacent or second adjacent state, in the NRC AM Log, the only such Texan is KAND in Corsicana, "Real Country". Second choice, but certainly less likely considering the auroral conditions, is from the NNW, KSID in Sidney, Nebraska. KRMD and KAND are neighbors on the 1340 map, nothing between them, and also the closest ones beyond OKC (Hugo being silent). All this of course is not enough for a definite ID of either. **(GH-OK)**
- 1410 UNID** -- 3/14 2027 – ESPN Radio in English, loops NW/SE so not Wichita which anyway is Fox Sports. ESPN roster has two likelies: KDBS, 1000/30 watts in Alexandria LA; and KOOQ, 5000/500 watts from North Platte NE. **(GH-OK)**
- 1500 UNID** -- 3/14 2126 – I get some music, Mexican? Bass beat with SBG from KSTP nulled as much as possible. Also at 2140; at 2145, slow vocal music, DF seems NW/SE to NNW/SSE but no chance of copying it except when aimed WNW/ESE at KSTP null. Computing the SAH between them, about 108/minute = 1.8 Hz, but hard to count with a third weak off-frequency signal in the mix. 2148 maybe a Spanish ID as it fades; stay with it another dekamminute but no more peaks vs KSTP. There are only 3 Mexicans on 1500, prime one being XEDF, México DF, 50 kW Cadena Radio Uno per IRCA and Aoki; R. Fórmula 1500, Segunda Cadena per WRTH. Only Cantú shows a reduced night power of 5 kW. But the DF does not fit for any XE. So how about US SS on 1500? NRC AM Log has two in AL, one in FL, one in IL, two in TX, all daytimers or with negligible night power. Texans are not a DF fit either. By direxion and distance, one of the Alabamans is most likely: WQCR Alabaster, 2300/3 watts or WKAX Russellville, 1000/- watts; either of these known to cheat, and confirmed as Spanish? At least there are no Cubans on 1500. **(GH-OK)**
- 1500 UNID** -- 3/24 0842 – Weak monolog in Spanish loops about N/S, and a LAH. In the NRC AM Log, two of the four Texans are SS: KBRN Boerne (Corpus), news/talk; and KMXO Merkel (between Abilene & Sweetwater), religion: both 250 watt daytimers. There are also three Mexicans, closest being XEJQ, la Explosiva, Parras de la Fuente, Coahuila, 400 watt daytimer, but very likely it's one of the tejanas. Aha: official FCC sunrise in March for KBRN is not until 0845, ditto KMXO, so that's no help in separating them. **(GH-OK)**

Lots of interesting auroral logs this time. Thanks to all our contributors. See you next time. **(JDT-WA)**

Unreported Stations Update

Three stations – WUBR-910, WOCA-1370, and KHCB-1400 – are reported to DDXD in this issue for the first time since Volume 67 (1999-2000). We are now down to 486 unreported stations during this time. The latest full version of the list is in Issue #2 (available on e-DXN.com).

Remember these are *unreported* stations, not necessarily *unheard* stations. We must have members who have *heard* many of these stations, but who never reported them. I know I've heard quite a few of these stations, although unfortunately not recently. But if you hear one, why not report one next issue? Don't worry, we haven't read about the station in these pages for at least 15 years – we won't be bored!




International DX Digest

Editor: **Bruce Conti**, 46 Ridgely Drive, Nashua NH 03062-1174, contiba@gmail.com
 Loggings of stations outside the continental U.S. and Canada, all times UTC.

TRANS-ATLANTIC DX

- 855 **SPAIN** *RNE1 Murcia et al.* MAR 14 2333 – Good on fade in with a woman in Spanish, then faded down to a mix with Romania. [Conti-NH]
 864 **EGYPT** *ERTU Santah* MAR 14 2348 – Fair; Koranic acappella vocal, continued through the hour. [Conti-NH]
 1089 **UNITED KINGDOM** *TalkSport synchros* MAR 15 0105 – Big het but no audio on the ICF-7600GR portable while sitting on the porch. Confirmed right on 1089 on the NRD-535, so presume one or both of the 400 kW sites. [Krueger-FL] MAR 15 2303 – Good; update ending with promo for TalkSport dot com. [Conti-NH]
 1179 **ROMANIA** *România Actualitati, Galbeni-Bacau et al.* MAR 14 2340 – Fair over *SER* synchros; pop music parallel 855 kHz. [Conti-NH]
 1215 **UNITED KINGDOM** *Absolute Radio synchros* MAR 14 2355 – Good; “Jack & Diane” by John Cougar Mellencamp. [Conti-NH]

PAN-AMERICAN DX

- 530 **CUBA** *R.Enciclopedia, La Habana-Villa María* MAR 21 0500 – Over *R.Rebelde*; “Radio Enciclopedia presento Interludio...” [Conti-NH]
 540 **DOMINICAN REPUBLIC** *Radio ABC, Santo Domingo* MAR 20 1001 – Over/under *WLIE R.Adonai* and Nicaragua het; “Esta es Radio ABC... Santo Domingo...” New log. [Conti-NH]
 539.86 **NICARAGUA** *R.Corporación, Managua* MAR 18 0411-0435 – Man in Spanish with calm but exhortive speech, many mentions of Managua, also Nicaraguense. 4 and 3 minute peaks on top giving way to *CBK*. Different man in Spanish at 0432 peak with tentative *R.Corporación* promo at 0434; second Spanish there this time. YN #6. [Frodge-MI]

 MAR 19 0458 – Good on low side to avoid 540 *WFLF* het; sign-off with choral national anthem, then open carrier through the hour, measured 539.864 kHz. [Conti-NH] MAR 22 1057 – Carrier up and immediately into truncated choral anthem, brief inspirational words by man then, “Esta es nuestra programación nicaragüense... Desde la capital de Nicaragua, Radio Corporación...” This is the usual Sunday sign-on time. Good via LSB. [Krueger-FL] MAR 26 0500 – Fair; sounded like a canned promo, “...en Radio Corporación,” then a brief announcement by a woman. [Conti-NH]
 550 **COLOMBIA** *HJHF Señal R.Colombia, Marinilla* MAR 21 0500 – Over *WSJW* and *R.Rebelde*; tropical vocal through the hour parallel 680 kHz. [Conti-NH]
 550 **PUERTO RICO** *WPAB Ponce* MAR 20 2330-2340 – Time checks for Puerto Rico, “en Puerto Rico hoy...” [Wilkner-FL]
 570 **COLOMBIA** *HJND Señal R.Colombia, Bogotá* MAR 25 0500 – Over *WMCA* and *R.Reloj*; folk music featuring flute through the hour, parallel 550 and 680 kHz. [Conti-NH]
 570 **CUBA** *R.Reloj, Santa Clara* MAR 18 0015 – Weak code RR under *WKBN*; only hear the RR. [Frodge-MI]
 570 **MEXICO** *XEBJB Monterrey, NL* MAR 18 0550 – Romantic crooner in Spanish but American-style, 0551 full ID for “XEBJB, Nueva Vida 570 AM” (no FM mentioned), street address, and into kid choral national anthem way early before local midnight in Monterrey; makes slow SAH of 90/minute = 1.5 Hz with *KLIF Dallas*. Somewhat enhanced auroral conditions. Must be change of name and format for XEBJB: ‘Nueva Vida’ implies Christian, and that song may have been praise. *WRTH 2015* has XEBJB as *Noti Radio 570* as does *IRCA Log 2014* with FM on 95.7; Cantú merely as *Radio 570*, all as 5/0.5 kW. www.epsilonmedia.mx for the group a.k.a. Grupo Radio Alegría with a bunch of other stations agrees on the *Nueva Vida* branding now on 570: “Nueva Vida 570 es una estación cuyo propósito es fomentar valores y principios para la edificación personal familiar y social” – probably stealth Christian. [Hauser-OK]
 590 **CUBA** *R.Rebelde, Guantánamo* MAR 21 0500 – Under local *WEZE Boston*; end of “Portada Rebelde,” canned ID, time marker and nostalgic music intro to “música nuestra” program, the distinctive time marker easy to parallel with 530, 540, 550, 560, 600, 620, 670, 710, 1140, 1180, 1210, 1550, and 1620 kHz. [Conti-NH]
 590 **MEXICO** *XEPH Sabrosita 590, México, DF* MAR 19 1001 – Under *WEZE*; *Sabrosita 590* promo. [Conti-NH]

- 600 **PUERTO RICO** WYEL Mayagüez MAR 19 0500 – Under *R.Rebelde*; canned multi-station network ID. [Conti-NH]
- 610 **MEXICO** XEGS Guasave, Sin. MAR 21 1220 – Banda music; canned “La G-S” slogans; no ads or announcements heard to 1240 tune-out. Fair signal underneath KNML. [Wilkins-CO]
- 620 **COLOMBIA** *Colmundo*, HJEL Cali//HJVP Cartegena MAR 22 1000 – Noisy signal through an unID domestic; choral national anthem. [Conti-NH]
- 630 **COLOMBIA** unID MAR 22 0235 – Under another unID Latin station with Santa Fe fútbol play-by-play and mentions of Bogotá. [Saylor-PA]
- 640 **MEXICO** XENQ La NQ, Tulancingo, Hgo. MAR 21 1103 – Mexi-tunes, male at 1110, “...la NQ, la radio.” Fair-poor under semi-nulled *R.Progreso*. [Krueger-FL]
- 650 **COLOMBIA** HJKH RCN Antena 2, Bogotá MAR 19 0058 – Fútbol play by play by two male announcers, similar but not parallel to 760, played instrumental national anthem at 0058. [Saylor-PA]
- 650 **CUBA** *R.Progreso*, Ciego de Avila MAR 19 0959 – Under WSRO and WSM; ‘A Primera Hora’ parallel 640 kHz. [Conti-NH]
- 650 **MEXICO** XETNT Los Mochis, Sin. MAR 20 0445 – Spanish is totally dominant, maybe a trace of WSM if I null it. Auroral conditions are still blocking many but not all of the USA big ‘uns. Loops southwest so suspect usual XETNT. Información segment is historical about Topolobampo (right near Los Mochis) and Don Miguel Ángel Carillo, interviewing woman on phone for a few minutes; 0449 time check for “11 para las 10,” i.e. UTC-7, and “sigue con nosotros, Guardián de la Noche” (program title?), 0450 PSA for Tribunal Estatal Electoral, de Sinaloa. [Hauser-OK]
- 660 **CUBA** *R.Progreso*, Jovellanos MAR 17 0900 – Under WFAN; theme song and chime with cinco de mañana time check into ‘A Primera Hora’ parallel 640, 720, 730, 750, and 810 kHz. [Conti-NH]
- 660 **MEXICO** XEFZ Monterrey, NL MAR 21 0209 – On car radio, dominant signal IDs in Spanish as “ABC Radio,” plays Queen. Guess its format is classic rock in English. MAR 21 0541 – It’s still dominant on home radios, “ABC Radio 660 AM,” rock in English. [Hauser-OK]
- 670 **CUBA** *R.Rebelde*, multiple sites MAR 22 0111 – Dominant, and nulling it, just no WSCR at all with auroral conditions continuing another night. At 0135 I survey: the following ‘clears’ from northerly U.S. stations are inaudible or maybe a trace: 670 WSCR, 700 WLW, 720 WGN, 780 WBBM, 830 WCCO, 890 WLS. The following are still audible, mostly from slightly lower latitudes: 650 WSM, 750 WSB, 840 WHAS, 850 KOA, 1110 KFAB, 1120 KMOX. On 680 I strained to hear any *R.Progreso* parallel 4765 or *R.Rebelde* parallel 5025 but nothing. [Hauser-OK]
- 680 **COLOMBIA** Señal *R.Colombia*, Barranquilla MAR 21 0500 – Under local WRKO Boston; tropical vocal through the hour parallel 550 kHz. [Conti-NH]
- 680 **CUBA** *R.Rebelde*, unknown location MAR 20 0420 – I decide to try to hear a *R.Rebelde* here next to main frequency 670. I think I do have a very weak parallel to it and/or 5025, but uplooked later, WRTH shows no Cuban on 680. Rebelde website is no help with no frequency list, and even searching on 670, let alone 680, goes nowhere. Terry Krueger’s online historical roster by frequency shows there used to be three *R.Progreso* outlets on 680, and in 2001-2007 one *R.Rebelde* on 680 in Ciego de Avila. [Hauser-OK]
- 680 **MEXICO** XEORO Guasave, Sin. MAR 20 0421 – Spanish from southwest with ad for Pancho el mecánico; “arriba Sinaloa – la radio que nunca” slogan, maybe a word missing there, 0422 into polca with thumping tuba in the lead. Surely no other state would promote Sinaloa, so this is XEORO, 1000/500 watts per IRCA. Then I null it and try for Cuba. [Hauser-OK]
- 690 **COLOMBIA** HJCZ *W Radio*, Bogotá MAR 20 0901 – Over *R.Progreso*; “La W...” mentioned several times in canned promo/ID. MAR 21 0500 – Over *R.Progreso*; echoing “W Radio, W Radio, W Radio... un momento muy especial, muy especial, muy especial,” and ‘70s pop music clips (Temptations, Stevie Wonder, Seals & Crofts), “En la W, la W, la W.” [Conti-NH]
- 690 **MEXICO** XEN México, DF MAR 19 1000 – Over *R.Progreso*; Jacobo Zab Ludovsky program with phone-in reports. [Conti-NH]
- 700 **COLOMBIA** HJCX *W Radio*, Cali MAR 22 0152 – Continuous Latin music under WLW, mentions “en Bogotá” and “en Colombia” between songs. [Saylor-PA] MAR 22 0231 – Fair; tropical music concert, “Nueve en la noche, treinta uno minutos, sistema... en Colombia,” parallel 690 kHz. [Conti-NH]
- 700.5 **VENEZUELA** YVMH *R.Popular*, Maracaibo MAR 21 0900-1000 – Strong het against 700.000 WLW; measured 700.546 kHz. Mark Connelly noted YVMH unstable, previously

- measured at 700.53 kHz. MAR 24 0400 – Loud het against 700 WLW; tropical music, measured 700.614 kHz. [Conti-NH] MAR 22 0330 – Heard every night with music, often better as night went on – didn't seem to sign off at 0430 per WRTH. Frequency seemed to climb from 700.5 up to 700.58 during week. ID as “Radio Popular con... (pause for music), desde Maracaibo en para todo provincia de Maracaibo, transmite Radio Popular desde la... 700 kilocyclos en amplitud modulada. Emisora... antenna... AM. Radio Popular, la emisora en...” (Thanks to Dave Valko for transcription.) [Saylor-PA]
- 720 **COLOMBIA** HJAN *Emisoras Unidas*, Barranquilla MAR 19 0100 – Latin music, “Emisoras Unidas... nacional de la Republica Colombia” by man into instrumental national anthem. [Saylor-PA] MAR 20 0100 – Over/under *R.Progreso*; choral national anthem. MAR 21 0100 – Under *R.Progreso*; choral national anthem. [Conti-NH]
- 720 **CUBA** *R.Progreso*, Mabujabo MAR 21 0500 – Good; canned ID, “Radio Progreso, cadena nacional, la onda de la alegría, transmite desde la Habana, Cuba, primer territorio libre en América,” parallel 640, 660, 690, 730, 750, 760, and 810 kHz. [Conti-NH]
- 720 **NICARAGUA** *R.Católica*, Managua MAR 21 1045 – Latin choir, male Spanish priest from 1047. Very good over WGN. [Krueger-FL]
- 720 **VENEZUELA** YVQE *R.Venezuela Oriente*, Porlamar MAR 22 0159 – Noisy, no sign of WGN; “La hora de Venezuela” time check. [Conti-NH]
- 730 **COLOMBIA** HJCU *Melodía Stereo*, Bogotá MAR 19 0100 – Nine-note echoing ascending chimes “aquí Bogotá...” then chimes again. [Saylor-PA] MAR 19 0500 – Fair; long multi AM and FM station ID, “En Bogotá, Melodia 730 AM... en Cali, Radio Viva 1290 AM... La cadena Melodía de Colombia...” and easy listening music. [Conti-NH]
- 730 **MEXICO** XEX México, DF MAR 19 0900 – Over *R.Progreso*; rapid-fire sports headlines including “fútbol americano,” TDW Morse code ID, and “la mejor de W.” [Conti-NH]
- 740 **CUBA** *R.Angulo*, Sagua de Tánamo MAR 21 0400 – Under CFZM; choral national anthem parallel 1100 kHz. [Conti-NH]
- 740 **MEXICO** XEQN Torreón, Coah. MAR 20 0423 – Overcoming KRMG, easily nulled, with that awful low audible heterodyne, women conversing on phone in Spanish; already ID'ed as from XEQN. [Hauser-OK]
- 750 **VENEZUELA** YVKS *RCR* Caracas MAR 21 0100 – Good; promos, “...por RCR, 750 AM.” [Conti-NH] MAR 23 0158 – “RCR presento...” into talk in Spanish by woman, under Cuba and domestic. [Saylor-PA]
- 760 **COLOMBIA** HJAJ *RCN La Radio*, Barranquilla MAR 19 0058 – Colombian national anthem, six time pips (last one long) then “Fútbol en RCN” and long “goooooaaaaaallll” by male announcer. Dominant on frequency with very loud signal. [Saylor-PA] MAR 21 0059 – Noisy but alone with no sign of WJR; promo, “Cada día... RCN.” [Conti-NH]
- 760 **MEXICO** XEABC México, DF MAR 20 0451 – Seldom-heard “Guadalajara” song looping slightly clockwise from north/south, dominant with a JBA trace of WJR if I null it. There is a tapatía station on 760, XEZZ with 5/1 kW, *R.Gallito*, but as expected this is really from the DF, since followed at 0454 by ID as *ABC Radio*, 70/10 kW XEABC really in the adjacent Edo.Mex. [Hauser-OK]
- 770 **COLOMBIA** HJJX *RCN La Radio*, Bogotá MAR 19 0100 – Fútbol play by play parallel 760, many mentions of Santa Fe (presume Independiente Santa Fe Bogotá team). [Saylor-PA]
- 770 **VENEZUELA** YVKK *RNV* Valencia MAR 19 0900 – Under WABC; llanera jingle, singing “...por Radio Nacional,” and llanera music through the hour. MAR 21 0500 – Over WABC; llanera music through the hour. Distinctive rhythmic ‘cuatro’ guitar plucking is prominent in Venezuelan llanera music. [Conti-NH] MAR 22 0305 – RNV ID in a jumble of Latin stations. [Saylor-PA]
- 780 **MEXICO** XEWGR Monclova, Coah. MAR 20 0455 – Spanish talk, then music dominating, making that awful low audible heterodyne ruining WBBM reception at night, even tho WBBM is now JBA if I null it. Also would beat against any other USA 780's such as Colorado (and Stillwater if on). The het here is of a slightly higher pitch than the one against 740 KRMG. It was tracked by John Wilkins to XEWGR on 779.93 kHz last year. [Hauser-OK]
- 780 **VENEZUELA** YVMN *R.Coro*, Coro MAR 18 1000 – Over/under WBBM; repeating message about Cristo Salvadores with phone number and URL. MAR 20 0859 – Fair; “Radio Coro 780... patrimonio de la comunidad” with “Radio Coro 780” jingle. [Conti-NH] MAR 22 0430 – Venezuelan national anthem and ID, under WBBM. [Saylor-PA]
- 790 **CUBA** *R.Reloj*, Pinar del Río//Holguín MAR 25 0459 – Under WPRV; double time marker and RR Morse code with delay between two stations. Presume Pinar Del Río (25 kW) first and the stronger of the two, followed by a weak and delayed Holguín signal. [Conti-NH]

- 800 **NICARAGUA** *Radio 800*, Managua MAR 16 1109 – Male phoned-in sports roundup, mostly Nicaraguan teams, folk ballad from 1111, “...música en Radio 800” at 1113 into vocal with canned ID atop song at 1115. Very good on sunrise line. [Krueger-FL]
- 810 **BAHAMAS** ZNS3 Freeport MAR 19 0100 – Mentions of 104.5 and Freeport Bahamas by Caribbean-accented man, rhythmic reggae music. [Saylor-PA]
- 810 **COLOMBIA** HJCY *Caracol Radio*, Bogotá MAR 19 0100 – Talk by man in Spanish under ZNS3 with mentions of Caracol. MAR 22 0150 – Coverage of fútbol, lots of mentions of Monterrey and Santa Fe teams; in like a local. [Saylor-PA]
- 820 **CUBA** *R.Ciudad de la Habana*, La Habana-Arroyo Arenas MAR 19 0100 – Stylized synthesizer version of the Ciudad theme, ID by man “Radio Ciudad de la Habana, le emisora (cultura?)” into drums and a military-sounding announcement “Señor e Señores...” [Saylor-PA] MAR 22 1000 – Over/under WNYC; *Ciudad* jingle. [Conti-NH]
- 830 **DOMINICAN REPUBLIC** HIJB Santo Domingo MAR 20 0400 – Presumed this with Dominican Republic national anthem. [Saylor-PA]
- 840 **CUBA** CMHW *DobleVé*, Santa Clara MAR 21 1000 – Over/under WHAS; canned ID, “Esta es DobleVé, desde Santa Clara, en el centro de Cuba.” [Conti-NH] MAR 24 0102 – Spanish talk and music, mentions “música cubana” and loops southeast, so not Mexican. No doubt Radio CMHW, 10 kW in Santa Clara, central Cuba rather than 1 kW *R.Revolución* in further Santiago de Cuba. And not Spanish KVJY in the RGV either. No WHAS or anything else audible now: still auroral conditions. [Hauser-OK]
- 840 **CUBA** *R.Revolución*, Palma Soriano MAR 20 0400 – Choral national anthem, “CMKC Radio Revolución...” then CMHW *DobleVé* faded up with choral national anthem and canned ID. MAR 21 0100 – Good; “Desde Santiago, ciudad... de Cuba, CMKC Radio Revolución, cadena provincial.” [Conti-NH]
- 840 **HAITI** *Radio 4VEH*, Cap Haitien MAR 24 0200 – Through Cuba and WRYM; ‘dashing through the snow’ interval signal. [Conti-NH]
- 870 **ARGENTINA** LRA1 Buenos Aires MAR 21 0300 – Poor mixed with Cuban *R.Reloj*, well under basketball game on WWL. Man and woman talk and clear 6 hourly time pips. New! [Kazaross-IL]
- 870 **CUBA** *R.Reloj*, Baracoa//Bueycito//Sanctí Spíritus MAR 20 0101 – Successive RR Morse code from delay between three stations. MAR 21 0100 – Excellent; “Radio Reloj, (beep), nueve de la noche, en el año 57 de la revolución transmite Radio Reloj desde la Habana, Cuba.” Syncopated clock, time marker, and RR Morse code also noted on 570, 790, 820, 860, 930, 950, and 960 kHz. [Conti-NH]
- 890 **CUBA** *R.Progreso*, Chambas MAR 20 0427 – Once I have nulled KVOZ in the RGV, nothing from aurorally-blocked WLS, but instead *R.Progreso* mentioning radioprogreso.cu and onda corta 4765 (which would have signed off at 0400, but unchecked tonight); nothing much on 900 from further Progreso outlet as often audible. [Hauser-OK]
- 900 **CUBA** *R.Progreso*, San Germán-Urbano Noris MAR 16 0900 – Under local WGHM Nashua; canned ID into ‘A Primera Hora’ parallel 640, 690, 750, 810, and 880 kHz. [Conti-NH]
- 900 **MEXICO** XEOK Monterrey, NL MAR 13 1317 – Spanish with PSAs about Nuevo León, no doubt XEOK; tuning on up, 990 XET and 1050 XEG are still in with good signals. [Hauser-OK]
- 900 **MEXICO** XEDT Cd. Cuauhtémoc, MAR 20 0430 – String of PSAs: Encuentro Social; Instituto Electoral del Estado de Chihuahua, Tránsito trans-fronterizo from SCT; so it’s XEDT. Separable from *W Radio* further east, i.e. XEW in the DF, no stronger despite 167 times the listed night power, though almost twice as far. [Hauser-OK]
- 910 **VENEZUELA** YVRQ Caracas MAR 19 0902 – Over *R.Cadena Agramonte*; llanera folk vocal, doorbells with 4:32 time check. [Conti-NH]
- 940 **CUBA** *R.Progreso*, Sancti Spíritus MAR 20 0359 – Fair; man and woman with titulares, “Muy buenos noches,” canned ID with theme song, and choral national anthem parallel 640 kHz. [Conti-NH]
- 939.88 **MEXICO** XEQ Mexico, DF MAR 18 1000 – Good; telephone talk, then morning prayer or devotional. [Conti-NH] MAR 22 1110 – Presumed the one with Mexi-tunes, on the secondary transmitter that is not on the low side today. [Krueger-FL]
- 940 **PUERTO RICO** WIPR *Máxima 940*, San Juan MAR 20 1002 – Over/under an unID Latin American; nostalgia, “Escuchas WIPR AM San Juan, Máxima 940, la cultura... Máxima 940 porque somos...” [Conti-NH]
- 940 **VENEZUELA** YVNN *R.Punto Fijo*, Punto Fijo MAR 23 0053 – Tuned across an ID, “Radio Punto Fijo, nueve cuarenta AM... las señales de la de (quarto?)” into Kenny G-type saxophone with vocals. [Saylor-PA]

- 960 **CUBA** *R.Reloj*, Guantánamo MAR 14 0500 – Good; “Radio Reloj, una de la madrugada,” along with time marker, RR Morse code, and syncopated clock. [Conti-NH]
- 970 **CUBA** *R.Guamá*, Los Palacios-Andresia MAR 21 0100 – Under WNYM; 4-note chimes marking the hour, parallel 990 kHz. [Conti-NH]
- 990 **CUBA** *R.Guamá*, Pinar del Río MAR 20 0359 – Under WDCX; choral national anthem, then signature 4-note chimes. MAR 21 0100 – Fair; chimes, canned ID, “Esta es Guamá, la señal sonora de la familia pinareña.” [Conti-NH] MAR 22 0100 – In a jumble of several Latins and domestics, it rose above with Guamá tune. [Saylor-PA]
- 1000 **COLOMBIA** HJAQ RCN *La Radio*, Cartagena MAR 19 0100 – Parallel 760 fútbol play by play with national anthem under unID domestic. [Saylor-PA] MAR 22 0200 – Good; fútbol coverage, Copa América promo, parallel 760 kHz. [Conti-NH]
- 1000 **CUBA** *R.Granma*, Media Luna MAR 20 0959 – Melodic music box time marker breaking through a jumble of signals. MAR 21 0100 – Over unID Spanish; “La... Radio Granma” canned ID by a woman and time marker parallel 970 kHz. [Conti-NH]
- 1000 **MEXICO** XEOY *R.Mil*, México, DF MAR 19 0900 – Over/under WMVP; jingle with announced “Radio Mil,” and nostalgia. [Conti-NH]
- 1010 **MEXICO** XEVK Torreón, Coah. MAR 20 0414 – Romantic music in Spanish from south/southwest; 0416 “Tu Recuerdo, 106.7,” phone numbers, promo for Radiorama publicidad, Que Buena, mentions serving La Laguna y el país; noticiero Radiorama promo, which is at 1 a 2 de la tarde en 106.7 y 101.1; 0418 “Tu Recuerdo, siempre contigo, 106.7.” On MW via XEVK, transmitter in adjacent Durango. Laguna refers to local landmark of an ex-lake dried up. [Hauser-OK]
- 1030 **ARGENTINA** LS10 Buenos Aires MAR 21 0300-0301:30 – Poor to fair; clear 6 pips at 0300 mixed with Spanish interference that I think was mostly XELJ. Nice ID during news at 0301:30 by deep voiced man. “Radio Noticias Del Plata.” Pips only were heard here in MAR 2012 AU. [Kazaross-IL] MAR 22 0302 – Intellectual-sounding discussion in Spanish between two men through the top of the hour incl mention of Cuba, six time pips on the hour (last one long), then quick “Radio Noticias del Plata” ID at 0302 UTC. On top of frequency over WBZ, but WBZ came back soon after. [Saylor-PA]
- 1040 **MEXICO** XEHES Chihuahua, Chih. MAR 15 0136 – With WHO nulled, Spanish news about Papa Francisco, quick hi pip sounders, “nuestras noticias,” website in .com; fades for full? ID; 0137 middle of the road music; 0142 time check “son las 6 con 42 minutos” and ID as *R.Sensación*, and then 94.1 *Stereo Sensación* y 1040 AM, more music. So this is in a state with UTC-7 MST still in effect, like Sonora or non-border Chihuahua: As in Cantú and IRCA, everything matches for XEHES, 5000/250 watts. MAR 20 0433 – “Estéreo Sensación, Chihuahua, Chihuahua, una señal Radiorama,” noticias about World Water Day; dominant with no WHO audible. Recheck at 0500, now WHO is back way on top. WWV says from 03 to 06 UTC the K-index declined from 5 to 3. [Hauser-OK]
- 1040 **MEXICO** unID MAR 26 1319 – Very poor signal, woman in Spanish with temps and predicted highs for several cities including Hidalgo del Parral, then listing today’s (Catholic) saints. No 1040 in Parral, but one in Chihuahua city, XEHES, *Estéreo Sensación* which I have Ided recently, maybe this. [Hauser-OK]
- 1050 **MEXICO** XEG Monterrey, NL MAR 20 0548 – I notice that XEG runs political ads for El Partido Humanista, and then for El Partido Verde! Imagine such a diversity north of the border. [Hauser-OK]
- 1060 **CUBA** *Radio 26*, Jovellanos MAR 26 0501 – Under KYW; time marker and choral national anthem. [Conti-NH]
- 1060 **MEXICO** XEEP *R.Educación*, México, DF MAR 20 0500 – Mexican national anthem, LAH vs KIJN with Spanish praise music, presumed XERDO where it’s midnight already on the border. 0501 INE PSA, mentions Ciudad de México, 0502 another INE PSA, 0503 low-key introducing a bunch of songs with English titles, accompanied by the London Sifonietta. This is very much in the style of *R.Educación* as heard on 6185 XEPPM, but that is not parallel. XEEP must have replaced XERDO without notice, since it’s still an hour from midnight in the DF. First song is “You Are My Love” and sounds like Sinatra. Exhaustive XEEP playlist uplooked later www.radioeducacion.edu.mx/jueves-19-de-marzo-de-2015 does show this for MAR 19: 23:03:31 NAC-0176-Frank Sinatra, The Love Collection, 13 You Are My Love, 23 Fools Rush In, 26 East Of The Sun.” So at this hour, anyway, shortwave is separate. 6185 currently stays on until 0600v, but when DST finally arrives in April, will be 0500v. [Hauser-OK]
- 1070 **CUBA** *R.Guamá*, Guane MAR 20 0100 – Fair; time marker and canned ID, “Esta es Guamá, la señal sonora de la familia pinareña.” [Conti-NH]
- 1070 **CUBA** *Cadena* CMKS, Guantánamo MAR 21 0500 – In jumble including CHOK, WNCT, and off-frequency HJCG; Guantanamera interval signal. [Conti-NH]



- 1080 **CUBA** *R.Cadena Habana/R.Ciudad de la Habana, La Habana-Villa María* MAR 16 0900 – Under WTIC; *Ciudad* jingle. MAR 26 0501 – Under WTIC; interval signal-like melody, then *Ciudad* jingle. [Conti-NH]
- 1090 **VENEZUELA** *YVSZ Deportes Unión Radio, Caracas* MAR 21 0100 – Over/under WBAL; coverage of Caracas sports event. [Conti-NH]
- 1100 **COLOMBIA** *HJAT Caracol Radio, Barranquilla* MAR 22 0226 – Fútbol play-by-play by two male announcers, similar but not parallel to 650, bank ads every few minutes. [Saylor-PA]
- 1100 **CUBA** *R.Angulo, Mayarí* MAR 21 0400 – Under WTAM; presumed this with choral national anthem parallel 740 kHz. [Conti-NH]
- 1100 **MEXICO** unID MAR 19 0607 – No WTAM as its northerly signal is still depressed by lingering auroral effects. Dominant is instead Spanish music looping south/southwest. At 0617 and once earlier between songs, a quick liner is inserted, but can't understand the super-hype voice actor. Yet it's beating with something at approx. 170/minute making SAH of 2.83 Hz (probably KDRY Álamo Heights TX). There are 8 Mexicans on 1100, of which four are likely by looping toward central Mexico, and of those, three are on at night per IRCA Log. More recent Cantú lists only six on 1100, as AM stations are dropping like flies onto FM, but still the four like IRCA, i.e. in Guanajuato, Guerrero, SLP and Zacatecas. Per Cantú, Guerrero is a daytimer, narrowing it down to three, if we can rely on that. No USA Spanish on 1100 around here. [Hauser-OK]
- 1110 **CUBA** *R.Angulo, Holguín* MAR 21 0059 – Under WBT; urban contemporary music clip and reverb, 0102 female R&B vocal, parallel 1100 kHz. [Conti-NH]
- 1110 **MEXICO** *XEWR Cd. Juárez, Chih.* MAR 15 0134 – Rosary in Spanish with KFAB nulled, presumed XEWR. [Hauser-OK]
- 1110 **VENEZUELA** *YVQT R.Carúpano, Carúpano* MAR 22 0130 – Good; “La hora de Venezuela” time check and nostalgic llanera. [Conti-NH]
- 1130 **MEXICO** *XETOL Toluca, Edo.Mex.* MAR 17 0548 – I'm getting music in Spanish, tropical? Peaking somewhat counterclockwise from KWKH sports talk, which is to the southeast. Makes medium SAH with KWKH, whose signal is not very strong, way off its westward lobe here. Also need to null IBOC from KMOX 1120 as much as possible, and it's to the northeast, so that means least of it aiming southeast. I have dozed off, but awaken at 0604 UTC when a choral Mexican national anthem is playing. May be different station, as now it's less separable from KWKH. Anthem soon finished, and it's overcoming KWKH, so manage to pull ID as “La Comadre, la nueva 1130 AM,” which means it is XETOL, 10/5 kW in Toluca, Estado de México (next to DF). Comadre literally means midwife (co-mother), maybe alluding to helping to birth wonderful new programming? [Hauser-OK]
- 1130 **VENEZUELA** *YVRL R.Ideal, Maiquetia* MAR 18 0310 – Good, in a band full of LA signals in high auroral conditions, with down tempo contemporary Christian music. Matched with web stream. Finally a short break with a mention of “Idea” by announcer at 0312. Easy to null weakened WBBR to zero with the loop. [Taylor-PE]
- 1140 **CUBA** *R.Mayabeque, La Salud* MAR 18 1000 – Over WRVA; sign-on with theme music and choral national anthem. [Conti-NH]
- 1140 **CUBA** *R.Musical Nacional, Santa Clara* MAR 26 0200 – Fair; canned ID by a woman with classical harp into program intro. [Conti-NH]
- 1140 **CUBA** *R.Rebelde, Cárdenas (Circunvalación)* MAR 17 0900 – Good; “Rebelde, la Habana, emisora de la revolución,” parallel 530, 600, 670, 710, and 1180 kHz. [Conti-NH]
- 1140 **CUBA** *R.Surco, Morón* MAR 20 1001 – Fair; canned ID, “Transmite CMIP Radio Surco, desde Ciego de Avila, capital de la locución cubana.” [Conti-NH]
- 1140 **MEXICO** *XEMR R.Esperanza, Monterrey* MAR 22 0130 – Fair; “Escuchas de Radio Esperanza, 1140 AM, la estación...” [Conti-NH]
- 1150 **CUBA** *R.Bayamo, Bueycito* MAR 26 0500 – Through momentarily quiet WWDJ Boston; chimes parallel 1620 kHz. [Conti-NH]
- 1170 **COLOMBIA** *HJNW Caracol Radio, Cartagena* MAR 21 0500 – Over/under WWVA; *Caracol Radio* promos with *Caracol Radio* jingle. [Conti-NH]
- 1170 **MEXICO** *XERT Reynosa, Tamps.* MAR 13 at 1323, manage to null KFAQ Tulsa tightly for something in Spanish, making SAH of 80/minute = one and one third Hz; plugging something at 10 a.m., “Ke Buena” in passing, so it's XERT, closest Mexican in keeping with SRS opening from this area on lower frequencies. One must always take care not to be fooled by KJJJ Windsor CO, daytimer also listed as Spanish, slogan *La Ley*. Further confusion could arise since a Mexican also is “La Ley” on 1170, per Cantú and IRCA, XEMDA Monclova; surely not all-legal formats, but implying some kind of leadership. MAR 20 0411 – KFAQ Tulsa is getting Spanish co-channel interference, SAH of 127/minute, 2.12 Hz, presumably usual XERT, the closest and the rightest angle in KFAQ null.

- However, a week ago at SRS the SAH between them was calculated as 80/minute = 1.333 Hz. [Hauser-OK]
- 1170 **MEXICO** unID MAR 22 1255 – Woman gospel huxter speaks good Spanish, but still with an American accent, goes thru hourtop, seems wrapping up at 1302 UTC with hymn “Nada es imposible,” address as PO Box 2693, McAllen, Texas. Until this thought it might be KJJD Colorado, but RGV station XERT Reynosa is still propagating (and others on 840, 890). With KFAQ Tulsa almost nulled, SAH of 116/minute = almost 2 Hz. Today’s Enid sunrise: 1232; Reynosa: 1235 UTC. [Hauser-OK]
- 1210 **CUBA** *R.Rebelde*, unknown site MAR 21 0500 – Under WPHT; end of “Portada Rebelde,” canned ID, time marker and nostalgic music intro to “música nuestra” program, the distinctive time marker easy to parallel with 530, 540, 550, 560, 590, 600, 620, 670, 710, 1140, 1180, 1550, and 1620 kHz. [Conti-NH]
- 1230 **CUBA** *R.Progreso*, La Palma MAR 20 0400 – Cuban national anthem parallel other *R.Progreso* frequencies. [Saylor-PA]
- 1290 **VENEZUELA** YVLF *R.Puerto Cabello*, Puerto Cabello MAR 22 0256 – Romantic music, enthusiastic *R.Puerto Cabello* ID, quick cuts of people on the phone and phone number, then back to music. [Saylor-PA]
- 1300 **MEXICO** XEP Cd. Juarez, Chih. MAR 22 1336 – “Estas en el 1300, Radio México Noticias,” followed by two songs; at 1344, a promo for Grupo Radio México; heard the “Radio México Noticias” ID a couple more times, but not the traditional *Radio Trece* – new slogan? Has always been part of the GRM group. Signal fair/good and on top. [Wilkins-CO]
- 1310 **MEXICO** XEVB Monterrey, NL MAR 20 0407 – Song in Spanish, south/southwest, “1310, la frecuencia de la mujer de hoy, Mujer 1310” ID by man, another upbeat female song. IRCA shows it’s XEVB, 5 kW. Cantú adds a night power of 250 watts, both with entire station name the single word *Mujer*. WRTH puts this all together. At 0557 I happen to retune to 1310 and find the Mexican choral national anthem playing, stops at 0559 and nothing further heard, apparently closedown rather than a quick fadeout. May or may not be same station; IRCA shows XEVB as 24 hours, and of the 13 stations on 1310, the only one scheduled until 0600 is *Mia*, XEHY Villa Corregidora, Querétaro. [Hauser-OK]
- 1410 **MEXICO** XECF Los Mochis, Sin. MAR 24 1250 – Banda tunes, man announcer, “La Mexicana” slogans, mentions of 93.3 FM; faded after a 1255 PSA; had been fair. [Wilkins-CO]
- 1620 **CUBA** *R.Bayamo*, Bayamo MAR 20 1000 – Over/under *R.Rebelde*; doorbells and six chimes marking the hour. [Conti-NH]

TRANS-PACIFIC DX

- 702 unID MAR 18 1241 – Carrier search finds one here from the west, which would be 2BL Sydney NSW; also one on 684: there are a 10 kW in NSW and a 5 kW in NZ. Nothing on other hi-latitude paths such as 774 Japan. Something on 882 too but I can’t get a bearing on it and possibly of local origin. LSR here was 1238 UTC. MAR 19 1219 – Well before sunrise, JBA carrier the only sign of TP, looping west, so likely reliable 2BL Sydney NSW again. [Hauser-OK]
- 774 unID MAR 14 1246 – JBA carrier looping northwest/southeast, no doubt the 500 kW NHK-2 from Akita, #1 TP penetrator to deep North America, if any. Used to be that companion 747 Sapporo would also show up, but not lately. It does suffer more adjacent channel splash, from 50 kW 740 KRMG. Nothing on several other TP 9-kHz channels checked. Our sunrise today: 1244. In only one week at equinox it will be 10 minutes earlier. [Hauser-OK]

CONTRIBUTORS

- Bruce Conti WPC1CAT, Nashua NH; WinRADiO Excalibur, MWDX-5 phasing unit, 15 x 23-m variable termination SuperLoop antennas at 60° northeast and 180° south.
- Harold Frodge, Midland MI; Drake R8B, 125-ft bow-tie, 85-ft random wire, 180-ft center-fed random wire.
- Glenn Hauser, Enid OK; DX-398 or PL-880 with internal antenna only.
- Neil Kazaross, Barrington IL; Perseus and DKAZ south.
- Terry L. Krueger, Clearwater FL; NRD-535, IC-R75, HQ-180A, ICF-7600GR, roof dipole, custom active loop.
- Brett Saylor, Central PA; Perseus SDR, outdoor south-pointed SuperLoop with Wellbrook amp, outdoor split Delta antenna with Wellbrook amp.
- Brent Taylor, Stratford PE; SDR-IQ with Pixel AM-2 loop.
- John Wilkins, Wheat Ridge CO; Drake R8, 4-foot box loop.
- Robert Wilkner, Pompano Beach FL; 746Pro, Drake R8, NRD 525, Sony 2010XA.
- 73 and Good DX!

College Sports Networks

Editor: Rick Dau, 2302 South 14th Street, Omaha NE 68108 drummer1965us@hotmail.com

These will be the last networks published here for this year's college basketball season. Thanks to Todd Brandenburg for sending in the Kansas and Kansas State lists (the stations marked with * carry both KU and K-State games). The next edition of this column will contain the first baseball networks for this season. 73 de RWD.

DUKE BLUE DEVILS Bob Harris, John Roth

http://www.goduke.com/fls/4200/media-guides/mbb/2014-15/Preview%201-10.pdf?DB_OEM_ID=4200

620	<u>WDNC-NC</u>	1150	WBAG-NC	1590	WCSL-NC	102.9	WKIX-NC
920	WPTL-NC	1240	WHVN-NC			103.7	WTIB-NC
980	WAAV-NC	1390	WOHS-NC	94.5	WKXS-NC	104.3	WHVN-NC
990	WEEB-NC	1490	WSTP-NC	96.7	WKRX-NC	104.5	WCCG-NC
1050	WLON-NC	1580	WZKY-NC	98.3	WIST-NC		

GONZAGA ZAGS Tom Hudson, Mark Santangelo

<http://www.gozags.com/fls/26400//MEN%27s%20BASKETBALL/2014-15%20MBB%20Record%20Book.pdf>

880	KIXI-WA	1030	KMAS-WA	1490	KTEL-WA	101.1	KEYF-WA
900	KKRT-WA	1240	KOFE-ID	1510	<u>KGA-WA</u>		
1020	KWIQ-WA	1360	KUIK-OR				

KANSAS JAYHAWKS Bob Davis, Greg Gurley

http://www.kuathletics.com/sports/2013/6/21/GEN_0621132622.aspx

610	KCSP-MO	1440	KMAJ-KS		KWME-KS	98.7	KFH-KS
990	KRSL-KS*	1490	KKAN-KS*	93.9	KZRD-KS	99.3	KWIC-KS
1240	KFH-KS	1540	KLKC-KS	94.7	KSKU-KS	99.9	KWKR-KS
1270	KSCB-KS	1550	KKLE-KS	94.9	KNCK-KS	102.3	KDSP-CO
1320	<u>KLWN-KS</u>	1600	KMDO-KS	95.5	KNDY-KS	103.9	KOMB-KS
1370	KIOL-KS			96.3	KZDY-KS	105.5	KJAC-CO
1400	KVOE-KS	92.5	KQMA-KS*	97.9	KWGB-KS	105.9	KKSW-KS
	KAYS-KS	93.5	KLKC-KS	98.5	KSAJ-KS	106.9	KBGL-KS

KANSAS STATE WILDCATS Wyatt Thompson, Stan Weber, Matt Walters

<http://www.kstatesports.com/sports/m-baskbl/spec-rel/mediaguide.html>

690	KGGF-KS	1470	KSMM-KS	93.1	KHMY-KS	101.5	KMKF-KS
810	WHB-MO	1480	KQAM-KS	93.5	KKDT-KS	101.7	KVOE-KS
990	KRSL-KS*	1490	KKAN-KS*	94.5	KSKL-KS	102.5	KBLS-KS
1150	KSAL-KS		KTOP-KS	95.3	KINZ-KS	102.9	KQTP-KS
1190	KVSV-KS	1530	KQNK-KS	95.5	KAHE-KS	103.9	KNZA-KS
1340	KSEK-KS	1570	KNDY-KS	98.3	KNCK-KS	106.7	KQNK-KS
1350	<u>KMAN-KS</u>				KQZQ-KS	107.9	KWLS-KS
1390	KNCK-KS	92.1	KMZA-KS	100.3	KRDQ-KS		
1420	KJCK-KS	92.5	KQMA-KS*	100.9	KCLY-KS		

KENTUCKY WILDCATS Tom Leach, Mike Pratt

http://issuu.com/ukaaweb/docs/mbb_fact_book_combined#signin

630	<u>WLAP-KY</u>	1320	WKYX-KY	94.3	WIFX-KY	101.3	WMSK-KY
680	WCTT-KY	1340	WCMI-KY		WKYX-KY	101.7	WKYM-KY
840	WHAS-KY	1490	WOMI-KY	95.1	WGGC-KY	102.1	WLLE-KY
860	WSON-KY	1530	WSAI-OH	95.5	WQHY-KY	102.3	WUGO-KY
910	WSFE-KY	1550	WMSK-KY	95.9	WFTM-KY	102.7	WEKX-KY
920	WTCW-KY			96.3	WIVY-KY	103.1	WPKE-KY
1110	WKDZ-KY	92.5	WBKR-KY	97.7	WWKY-KY	103.5	WAKY-KY
1230	WHOP-KY	92.7	WCMI-WV	98.1	WBUL-KY	103.9	WWEL-KY
1240	WFTM-KY	93.1	WDHR-KY	98.7	WHOP-KY		WXKQ-KY
1270	WAIN-KY	93.5	WAIN-KY	98.9	WSIP-KY	104.1	WCKQ-KY
1290	WKLB-KY	93.9	WKTG-KY	99.1	WCBL-KY	104.3	WXBC-KY
1310	WDOC-KY		WSEK-KY	101.1	WSGS-KY		WEZJ-KY

104.9 WJRS-KY	105.1 WTUK-KY	105.7 WLGC-KY
WKHG-KY	WRNZ-KY	106.5 WKDZ-KY
WAVJ-KY	105.5 WKYA-KY	106.7 WNKR-KY

MICHIGAN STATE SPARTANS Will Tieman, Gus Ganakas, Matt Steigenga

<http://www.spartansportsnetwork.com/Affiliates>

590 WKZO-MI	1340 WLEW-MI	WMMQ-MI	101.5 WMJZ-MI
760 WJR-MI	1380 WPHM-MI	95.3 WBCK-MI	101.9 WLDR-MI
1110 WJML-MI	1450 WMIQ-MI	96.7 WUPG-MI	103.3 WQLB-MI
1220 WBCH-MI	WIBM-MI	WMJT-MI	103.7 WCSY-MI
1240 <u>WJIM-MI</u>	1570 WWCK-MI	98.7 WLDN-MI	104.5 WILZ-MI
1260 WPNW-MI		100.1 WBCH-MI	106.3 WGLM-MI
1280 WFYL-MI	92.1 WGHN-MI	100.9 WLUN-MI	107.3 WUPF-MI
1290 WLBY-MI	94.9 WJKZ-MI	101.1 WUPY-MI	WBBL-MI

NOTRE DAME FIGHTING IRISH Jack Nolan, LaPhonso Ellis, Jordan Cornette

http://grfx.cstv.com/photos/schools/nd/sports/m-baskbl/auto_pdf/2014-15/misc_non_event/2014-15-nd-mbb-media-guide.pdf

890 WLS-IL	1480 WRSW-IN	106.7 WFGA-IN
960 <u>WSBT-IN</u>	1520 WLUV-IL	95.9 WEFM-IN
1430 WXNT-IN	1600 WKKX-WV	96.1 WSBT-IN

OKLAHOMA SOONERS Toby Rowland, Mike Houck

http://issuu.com/soonersports.com/docs/mediaguide14-15_color?DB_OEM_ID=31000

750 KSEO-OK	1450 KGFF-OK	95.9 KYBE-OK	100.9 KGLC-OK
1150 KNED-OK	1520 KOKC-OK	97.5 KMOD-OK	101.1 KWOX-OK
1240 KVSO-OK	1580 KHGG-AR	97.9 KJMZ-OK	101.7 KTFX-OK
1320 KCLI-OK		99.3 KADA-OK	102.3 KDOE-OK
1410 KGSO-KS	93.5 KWHW-OK	KCLI-OK	105.3 KDDQ-OK
1420 KTJS-OK	94.3 KXOO-OK	KLOR-OK	106.1 KKBI-OK
1430 KTBZ-OK	95.7 KXLS-OK	100.1 KYFM-OK	107.7 <u>KRXO-OK</u>

UCLA BRUINS Chris Roberts, Tracy Murray

http://www.uclabruins.com/fls/30500/pdf/MBKB_15MG_183_206.pdf?DB_OEM_ID=30500

570 <u>KLAC-CA</u>	1550 KXEX-CA	96.1 KSLK-CA
--------------------	--------------	--------------

WISCONSIN BADGERS Matt Lepay, Mike Lucas

<http://sportsaffiliates.learfieldsports.com/affiliates/wisconsin9>

550 WSAU-WI	1230 WCLO-WI	1430 WBEV-WI	95.7 WRIT-WI
570 WMAM-WI	1240 WOMT-WI	1450 KFIZ-WI	96.5 WTCH-WI
590 WJMS-MI	WJMC-WI	WDLB-WI	97.3 WISS-WI
710 WDSM-WI	1260 WXCE-WI	WRCO-WI	99.3 WKEB-WI
800 WDUX-WI	1280 WGLR-WI	1490 WIGM-WI	99.7 WIMI-MI
810 WDMP-WI	1290 WKLJ-WI	1550 WEVR-WI	WWIS-WI
900 WATK-WI	1310 <u>WIBA-WI</u>	1590 WPVL-WI	99.9 WSAU-WI
WDLS-WI	1320 WFHR-WI		100.7 WBIZ-WI
910 WDOR-WI	1330 WHBL-WI	92.3 WRLS-WI	100.9 WRCO-WI
920 WOKY-WI	1360 WVRQ-WI	WOSQ-WI	101.5 WIBA-WI
940 WFAW-WI	1390 WRIG-WI	92.7 WDUX-WI	105.5 WFBZ-WI
960 WTCH-WI	1400 WBIZ-WI	93.7 WCYE-WI	106.1 WACD-WI
980 WPRE-WI	WDUZ-WI	93.9 WDOR-WI	106.3 WEVR-WI
1100 WISS-WI	WRJN-WI	94.3 WPRE-WI	107.5 WDUZ-WI
1150 WHBY-WI	WRDB-WI	95.3 WXRO-WI	

Follow @NRCDXNews on Twitter!

Twitter can be used to disseminate hot MW DX tips to the DX community

To read tips: go to www.twitter.com and search for #mwdx

To send tips, write a tweet (140 characters max) and include the tag #mwdx

Visit the NRC on Facebook: <https://www.facebook.com/groups/509246815818550/>

2015 Ultralight Radio Shootout Review

The Most Advanced Pocket Radios Compete for DXing Supremacy

By Gary DeBock, Puyallup WA, USA February 2015

Introduction: What began as a wildly enthusiastic SRF-59 user group back in late 2007 has managed to sustain worldwide growth for over 7 years, becoming one of the major creative and innovative forces in the AM-DXing community. With foundations laid by the late John Bryant, the Ultralight Radio Yahoo group now boasts over 1,500 members on all continents – united in the challenge of chasing exotic DX with highly advanced pocket radios. Responsible for most of the Ferrite Sleeve Loop antenna experimentation and the spin off sport of ocean cliff transoceanic DXing, the Group's creative enthusiasm has helped to provide positive momentum for the future of the AM-DXing hobby.

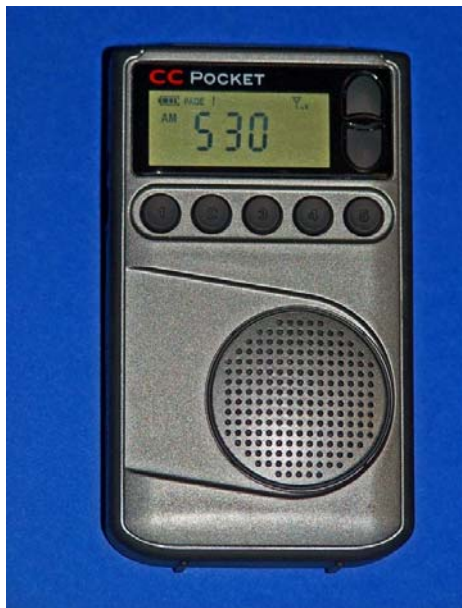
Fueled by highly innovative DSP chips, today's Ultralight Radios can run circles around the pocket transistors that many of us grew up with as teenagers in the 60's and 70's. Great improvements in both AM band sensitivity and selectivity have made this class one of the most competitive in the industry, and manufacturers have gone all-out to tap this booming market. After Silicon Labs' innovative Si4734 DSP chips were introduced by the Kchibo and Tecsun companies in 2009 the AM band selectivity of pocket radios was dramatically increased, although such models came with congenital quirks such as internally-generated heterodynes. For about four years DXers wondered when a manufacturer would solve this problem, and introduce a pocket radio with both excellent DSP selectivity and freedom from bogus heterodynes. That wait is now over – such a radio is now an exciting reality.

One of the unique advantages of Ultralight Radio DXing is the opportunity to sample the latest in innovative technology at a very reasonable cost – and the five pocket radio models chosen for this review include some second generation DSP chip models with astonishing capabilities. Whether your interest is in domestic or split-frequency AM-DXing, FM or Shortwave, the pocket radio manufacturers have designed a breakthrough model for you – and you can try out any (or all) of them at a cost far less than that of a single table receiver. So get ready for some exciting introductions... and an even more exciting three band DXing competition!



SECTION ONE – MEET THE CONTESTANTS

C.CRANE "CC POCKET": The CC Pocket radio is a vertical form receiver with styling, ergonomics and functions very similar to those of the popular Sangean DT-400W model (the next radio introduced in this Shootout review). Introduced after the DT-400W, the model also includes a few special features which C.Crane obviously hopes will tip the balance for those who are considering which of the two models to choose.



The radio includes coverage of the AM (520-1710 kHz), FM (76-108 MHz) and 7 Weather Band frequencies (162.400, 162.425, 162.450, 162.475, 162.500, 162.525 and 162.550 MHz). It is powered by two "AA" size batteries, and has a 1.25" speaker capable of 500 mw output. Like most of these vertical form radios the model uses the headphone cable as an FM antenna when the headphones are plugged in, although a plug-in wire antenna is also included to provide FM band reception when the speaker is used. At 2.5" wide x 4.25" high x .9" thick the radio slips easily into almost any pocket, and weighs 3.5 ounces without batteries. A rubber-like trim around the edge of the radio provides a comfortable grip, and a belt clip is attached to the back panel for those who prefer such a mounting system.

The radio includes "CC Bud" type earphones, and comes with a one-year warranty. It may be ordered for \$64.95 directly from C.Crane <http://www.ccrane.com/Pocket-Radios/CC-Pocket-Radio-w-AMFMWX-55-Presets> or from Amazon [http://www.amazon.com/Crane-Pocket-Weather-](http://www.amazon.com/Crane-Pocket-Weather)

Radio-Clock/dp/B00BSYCZZ0/ref=sr_1_1?s=electronics&ie=UTF8&qid=1424587864&sr=1-1&keywords=c.crane+cc+pocket.

As mentioned previously, the CC Pocket model comes with many added features designed to entice purchasers away from its obvious competition – the Sangean DT-400W model. Some of these features are selectable 1 kHz step tuning, a choice of 2.5 kHz or 4 kHz AM selectivity filters, a choice of time or frequency display, an alarm function, far more memory presets (50 versus 19), a more powerful speaker (500 mw versus 70 mw), wider FM band coverage (76-108 MHz versus 87.5-108 MHz), a longer warranty (one year versus 90 days), and the rubber-like trim around the edge of the radio for a more comfortable grip. On paper, the choice between the models sounds like an obvious one – but how do these additional features stack up in the competitive world of AM and FM weak signal reception?

CC Pocket – MW-DXing Test Drive: The first step in any radio test is to install the batteries, which is normally a routine operation. Not quite so in the CC Pocket... after trying to slide, pry or coax the battery cover off with my fingers, I finally gave up and grabbed a tool. The CC Pocket's own instructions say to "Remove the battery cover using your fingernail or small tool." If you purchase this radio, be prepared to use a tool like a small flat screwdriver whenever you change the two AA batteries. When you turn on the radio and search around for fringe daytime DX stations, the lack of a direct entry keypad means that you must use the up or down frequency buttons to tune in stations (as in the DT-400W), which in the case of the CC Pocket goes a little more slowly than in the DT-400W because of the slower tuning rate. Although the CC Pocket has far more audio power through the speaker than the DT-400W, the radio also seems quite a bit more susceptible to indoor RF pollution than the Sangean. For some reason the DT-400W can chase fringe AM-DX stations without any problem adjacent to this computer while I type, while the CC Pocket tends to blank out with computer hash on the same frequencies. Taking the radios outside in the back yard I was curious to test the CC Pocket's narrow filter function, and see how much it would limit splatter from pest stations. Selecting the 1 kHz tuning steps (which the Sangean does not have) I tuned in the local pest 1450-KSUH, which was splattering all the way to 1438 kHz in the 4 kHz filter setting. Switching to the 2.5 kHz filter setting (by pressing memory buttons 1 and 3 simultaneously) I was kind of surprised to find that 1450-KSUH was still splattering all the way to 1438 kHz, even with the narrow filter setting. I did notice that the CC Pocket did provide slightly better reception of weak stations with the 2.5 kHz filter setting, though, so I used it for the CC Pocket's reception in the MW Sensitivity and MW Selectivity portions of this 2015 Shootout Review. My impression is that the radio's narrow filter is more useful for changing the audio tone than it is for limiting serious pest station splatter, which requires an advanced DSP chip. Despite this, even the wide (4 kHz) setting sounds somewhat harsh in comparison to the mellow-sounding DT-400W audio. Like in the DT-400W (and the new C.Crane Skywave), the lack of a selectable display light for continuous illumination in the dark makes DXing at night somewhat inconvenient, although changing any of the controls (except for the volume) will give you about 12 seconds of temporary display lighting. Finally, the CC Pocket has a strange function to disable the display screen "to improve AM radio reception." After trying out this "feature" in multiple situations, I'm convinced that the only thing it really does is to blank out the display screen. As for the detailed MW-DXing performance of the CC Pocket against the other four radios in this Shootout review, the MW Sensitivity and MW Selectivity portions of the competition will provide all the information that you desire. In general my "test drive" of the CC Pocket was pleasant one, although none of the radio's added features seemed to give it an edge over the DT-400W in the categories that really count – weak signal MW sensitivity or selectivity. Chasing MW fringe stations with either the CC Pocket or the DT-400W will pretty quickly convince you that these vertical form pocket radios do have some limitations – In order to get the loopsticks away from the digital displays the antennas must be located at the bottom of the cabinets, with their length limited to the width of the cabinet. One of the DXing tricks that sometimes will boost weak MW signals on these radios is to invert the cabinets and hold the bottom sides up, getting the loopsticks up in the air (and away from the grip of your hand).

CC Pocket – FM-DXing Test Drive: Never shy about promoting its products, C.Crane proclaims the CC Pocket "is able to bring in a weak FM station better than perhaps any other pocket radio." That is a pretty dramatic claim, and to be charitable to C.Crane, I assume that whoever wrote this had not yet tried out the Tecsun Si4734 DSP chip models like the PL-310ET (covered later in this Shootout review) with their astonishing FM-DXing capabilities. My home location in the valley of Puyallup, Washington is one of the worst possible for fringe FM reception – with high hills on the



north, east and south and a mountain range not very far to the west. C.Crane's FM-DXing claims for the CC Pocket were about to get the acid test!

Like the DT-400W the CC Pocket uses the plug-in earphone cable as an FM antenna, although it also includes a plug-in wire antenna for FM reception when the speaker is used. The drawback with this system is that FM reception may be either good, bad or ugly depending upon how the cable is oriented toward the station. During my FM test drive with the radio I had two other competing models along for the ride – the DT-400W and the Tecsun PL-310ET. Plugging in the supplied “CC bud” earphones I starting checking reception of the usual FM fringe stations here in Puyallup, especially the two Victoria (BC) stations on 98.5 and 100.3 MHz. The CC Pocket had average reception of 98.5-CIOC when the earphone cable was ideally oriented, but reception dropped off quickly whenever the cable was moved to another position. By way of reference the DT-400W has the same FM reception issue (with slightly better overall reception of 98.5-CIOC), although the Tecsun PL-310ET was able to seriously outperform both of these vertical form receivers when its whip antenna was fully extended and positioned at an ideal angle. Checking the reception of 100.3-CKKQ confirmed that the previous situation was typical for FM fringe stations, and that neither the CC Pocket nor the DT-400W could really compete with the PL-310ET in the reception of weak FM signals. The CC Pocket could sometimes compete with the DT-400W however – with roughly equal reception of weak FM stations. Plugging in the supplied wire antennas and switching to speaker use made no difference. On audio quality, though, the Sangean was a runaway winner. Even without the DBB (deep bass boost) feature its audio quality was superior to that of the CC Pocket, with relatively balanced high and low frequencies. With the DBB feature the Sangean's FM stereo audio quality was truly in another league compared to the somewhat harsh-sounding CC Pocket. For those DXers who also enjoy listening to FM stereo music on their Ultralight Radios, the choice between these two models is no contest.

Other Bands: Like the DT-400W the CC Pocket has coverage of the 7 Weather Band Frequencies, and a NOAA Weather Alert function selectable for 4, 8 or 16 hour long periods. The CC Pocket's reception of Weather Band #2 here in Puyallup is similar that of the DT-400W, although not in the same league as that of another C.Crane product – the new CC Skywave (reviewed later).

SANGEAN DT-400W: This bright yellow pocket radio has been a very popular seller since early 2008, in production continuously because of sensible design, good sensitivity and excellent ergonomics. At the time of its introduction it was the first Ultralight radio to offer superb MW sensitivity across the entire band – something that the competing Eton E100 and Sony SRF-T615 models couldn't quite seem to manage. The bonus inclusion of a Deep Bass Boost (DBB) function added to the radio's unique appeal. It was first reviewed in the 2008 Summertime Shootout article <http://www.mediafire.com/view/2t5godzzyaw/2008UltralightAMRadioSummertimeShootout.doc> where its MW sensitivity was then judged to be at the top of the Ultralight Radio class. Although dramatic improvements in DSP chips have enabled newer pocket radios to surpass it in this aspect the appeal of the vertical form receiver remains high, and other manufacturers (like C.Crane, with its CC Pocket) have done their best to introduce similar competing models.

The DT-400W includes coverage of the AM (520-1710 kHz), FM (87.5-108 MHz) and 7 Weather Band frequencies. It is powered by two AA batteries, and has a 1 3/8" speaker capable of 70 mw output. The size of the radio is almost exactly the same as the CC Pocket – 2.5" wide x 4.2" high x 1.2" thick, and it weighs 3.8 ounces without batteries. The radio comes with earphones, an FM wire antenna, a belt clip and a 90 day warranty. Like the CC Pocket the DT-400W uses the earphone cable as a plug-in FM antenna, but the supplied wire antenna may be plugged in to provide FM reception whenever the speaker is used. The radio may be purchased from Sears for \$57.67 at the following link: http://www.sears.com/sangean-america-digital-am-fm-weather-alert-pocket-radio/p-05725489000P?sid=Idx20070921x00003h&srcode=cii_5784816&cpncode=45-33692472-2&redirectType=SRDT.



DT-400W – MW-DXing Test Drive: Unlike the CC Pocket installation of the two AA batteries (with fingers) is a breeze in the Sangean, and the battery cover even has a hinge system to keep it attached to the radio (see photo at right). As with the CC Pocket all tuning must be done with the up or down frequency buttons, but this process goes a little more quickly in the Sangean because of a faster tuning rate. Ergonomically the radio is well designed, and although it lacks the CC Pocket's rubber side trim the radio feels very comfortable to hold and operate. Even without the DBB (deep bass boost) engaged the DT-400W has very mellow audio, and although the audio amp and speaker are not especially powerful the high audio quality makes DXing with the radio a very enjoyable activity. The DT-400W was at the top of the Ultralight Radio class in MW sensitivity when it was

first introduced in early 2008, and it still has very respectable weak signal reception all across the band in consideration of its vertical form and relatively short loopstick (similar to that of the CC Pocket, but with higher audio quality). The DT-400W lacks the dual selectivity filters and 1 kHz step tuning option of the C.Crane model but definitely holds its own in both MW sensitivity and selectivity – even when the CC Pocket is set in the 2.5 kHz selectivity option. The CC Pocket has a much more powerful audio amp and speaker than this model, but the DT-400W's higher audio quality provides somewhat of a tradeoff in the enjoyment of tracking down weak signals. In the indescribable “fun factor” the bright yellow Sangean seems to have a charm all its own – with popular features and styling that have kept it in steady demand for almost 7 years.

DT-400W – FM-DXing Test Drive: Using the Sangean for FM reception will pretty quickly demonstrate to you why this radio has been so popular since its introduction in 2008 – when augmented by its DBB (deep bass boost) function, the radio's stereo audio quality is superb – and as good as it gets in the Ultralight class. Although the enjoyment of stereo FM music may not be the highest priority for FM-DXers, it is a very unusual bonus in pocket radios this size.

As detailed in the previous comments about the CC Pocket, the DT-400W's FM sensitivity and selectivity are roughly comparable to that of the C.Crane model, both with the plug-in earphones and with the supplied plug-in wire antenna (during speaker usage). And as with the CC Pocket, the FM reception on the DT-400W using these plug-in wire antennas will vary from fairly good to nonexistent, depending upon how well the wires are oriented toward the broadcasting station. This type of FM wire antenna is cheap and convenient, but DXers shouldn't expect to chase serious E-Skip or Tropo with such a humble setup. As during the CC Pocket's FM test drive a new Tecsun PL-310ET was along for the ride, and when its whip antenna was fully extended and ideally oriented it had no trouble demonstrating a serious FM sensitivity edge over the Sangean – regardless of which FM fringe station was the target. When a local FM stereo station was received at good strength on both radios, however, the DT-400W turned the tables somewhat by trouncing the PL-310ET in the audio quality of its stereo music reception. Overall the Sangean model is a lot of fun to use on FM, even if its FM sensitivity isn't quite at the top of the Shootout class.

Other Bands: The DT-400W's Weather Band reception and Alert function is identical to that of the CC Pocket, right down to the selectable 4, 8 or 16 hour Alert periods (somebody at C.Crane must have had a sense of humor, in order to copy this function of the DT-400W so closely). The reception of the Weather Bands and Alerts is through the plug-in wire antenna, which must be oriented properly for good reception. And as with the CC Pocket the DT-400W is only capable of receiving Weather Band #2 here in Puyallup, at a signal level identical to its competing model. C.Crane's new Skywave model (reviewed later in this Shootout) provides Weather Band reception far superior to either of these models, however.

TECSUN PL-310ET: At the time of its introduction in September of 2009 the Tecsun PL-310 model was an immediate DXing sensation – providing not only Ultralight Class-leading MW, FM and SW sensitivity but also breakthrough MW selectivity as well. The new PL-310ET model includes coverage of the AM (520-1710 kHz), LW (153-513 kHz), FM (64-108 MHz) and SW (2.3-21.95 MHz) bands, with multiple digital search functions, 550 memories, multiple display options and many other features. The radio typically comes with a carrying case, owner's manual, earphones, 3 rechargeable AA batteries and a USB cable. It is available from multiple Chinese and Hong Kong eBay sellers, as well as from Amazon for \$49.89 (plus free shipping) at (http://www.amazon.com/Tecsun-PL-310-Stereo-World-Receiver/dp/B00D1QRPHG/ref=sr_1_1?s=electronics&ie=UTF8&qid=1424588058&sr=1-1&keywords=tecsun+pl-310.)



Back in late 2008, the innovative Si4734 DSP chip in the PL-310 (and in the related PL-380, PL-606 and PL-505 models) provided a new level of DSP filtering, S/N and RSSI displays and many other advanced features – bringing a basic level of transoceanic DXing capability to the Ultralight Class. Although the PL-310 came with several DSP chip-related quirks like internally generated MW heterodynes, relatively muffled 1 kHz DSP audio and a dubious “soft mute” function to mute weak signals whenever they fell below a certain threshold, DXers were generally willing to tolerate these irritating quirks in order to experience the best MW, FM and



SW sensitivity and selectivity that the pocket radio class had to offer. My own 4-Band performance review of the PL-310 at the time (posted at <http://www.mediafire.com/view/yennzd1iu0i/The%20Tecsun%20PL.doc>) was typical of the original glowing praise for the breakthrough model, and like other DXers, I was hopeful that Tecsun and/or Silicon Labs would correct the irritating Si4734 DSP chip quirks in order to make the PL-310 model a true pocket radio DXing legend.

Unfortunately, though, it seems like Tecsun had other priorities for this model. Geared toward the huge Chinese market (with very little DXing tradition or interest), the PL-310 and its related models have already been a big success for Tecsun in the aspect that seems to matter most to them – profit. Instead of working with SiLabs to improve the DSP chip design and address the quirks in the PL-310 and related models, Tecsun seems to have gone in the opposite direction by cutting manufacturing corners in order to increase profits. This has left DXers with even more digital quirks in the newer PL-310 and PL-380 models – and opened up a major new market in Ultralight radios designed to correct these original PL-310 type quirks (like the new C.Crane Skywave and the Eton Traveler III). The new PL-310ET model has all the quirks of the original PL-310 plus a few more... but it also still has very competitive performance (for the price) on FM and SW – and also for MW-DXers who don't mind dodging the heterodynes, living with "soft mute" and tolerating muffled 1 kHz DSP audio.

PL-310ET – MW-DXing Test Drive: While DXing with the PL-310ET on MW you basically have a choice between high sensitivity and relatively muffled audio (1 kHz DSP filtering) or lower sensitivity and higher audio quality (2, 3, 4 or 6 kHz DSP filtering). Unfortunately, you cannot have both. With the PL-310ET you can either enter a frequency into the keypad, turn the rotary tuning knob (with the tuning rate switching between 1 KHz and 10 kHz steps depending upon you speed of rotation) or use one of the multiple digital search modes (Easy Tuning Mode, Auto Tuning Storage, Auto Browse, Direct Key in Memory Address, etc.). There are 100 memories available for MW stations (as well as 100 for both FM and LW, and 250 for SW stations). No other Ultralight radio has such advanced tuning capabilities, except for recent similar Tecsun models.

Unfortunately, though, the PL-310ET has all of the digital quirks of the original PL-310 on MW, plus a few more. As shown in the photo at right, the model is a complete redesign of the 2009 model, and Tecsun's cost-cutting shows up in new MW-related issues. The Si4734 chip-generated tuning heterodynes are still on frequencies like 1420, 1430 and 1440, and there is a new issue of digital hash noise whenever you press one of the front panel buttons (like the frequency numerals). When you grasp the original PL-310 with your palm on the display and your fingers tightly gripping the top of the cabinet you will only have an increase in background static – but if you try this with the new PL-310ET you will get a low-level digital whine. The 1 kHz DSP DX station audio in the PL-310 models (both old and new) sounds somewhat muffled, with the higher audio frequencies clipped off by the Si4734 DSP chip. This has been a long-term issue with transoceanic DXers, who frequently record DX station MP3's during Dxpeditions.



Side by side comparisons of the PL-310ET and two new competing models (the C.Crane Skywave and Eton Traveler III) provide convincing proof that all of these issues can be either corrected or improved – with both new models correcting the PL-310's internally generated heterodyne issue, and the C.Crane Skywave providing improved DX station audio in the 1 kHz DSP setting (when the default "Music" tone setting is used). As such, MW DXers in need of 1 kHz DSP selectivity no longer need to tolerate the Tecsun's bogus heterodynes, muffled audio and digital whine quirks any longer. For transoceanic DXers especially, this is a major breakthrough.

Domestic DXers will quickly discover that the PL-310 does have some good points, with selectable displays of RSSI, S/N, temperature (Fahrenheit or Centigrade), time, an alarm function, a selectable light for the display and many other features. The basic question for interested MW-DXers is whether or not they can tolerate the PL-310ET's internally generated heterodynes, relatively muffled 1 kHz DSP audio, soft mute and moderate digital whine issues. If not, they should direct their attention to one of the new competing models – the C.Crane Skywave (optimized for transoceanic DXers), or the Eton Traveler III (optimized for domestic DXers). How these three models shake out in weak signal MW-DXing will be fully revealed in the Shootout portion of this review.

PL-310ET – FM-DXing Test Drive: Although the MW performance of the PL-310ET is no longer top of the line, the good news is that the FM performance of the PL-310ET is as good as ever. The Si4734 DSP chip has earned a very impressive reputation in FM sensitivity and selectivity since it was introduced in 2009, and the PL-310ET continues to dominate the Ultralight radio field in this

capability (along with its brother PL-606 model, which has the extended whip antenna). The new models which compete so successfully with the PL-310 in MW-DXing fall flat in FM competition, limited either by their shorter whip antennas, less sensitive DSP chips or both. On any fringe FM test station the PL-310ET easily demonstrates its superiority in FM sensitivity – so long as its whip antenna is ideally directed at the fringe station. This does take a little bit of experimentation, but once the PL-310ET's whip antenna is oriented properly it can almost always humble any of the other competing Shootout models in weak signal FM reception. The radio's FM stereo audio quality is acceptable, but for true music lovers it will not come close to the superb audio fidelity of the Deep Bass Boost-enhanced Sangean DT-400W.

PL-310ET – SW-DXing Test Drive: Once again, the Tecsun model demonstrates that it still has a lot to offer. None of the competing models can match the PL-310ET in Shortwave sensitivity, where the radio has a weak signal reception edge all its own. The competing models seem limited (once again) by shorter whip antennas, less sensitive DSP chips or both. One gets the distinct impression that C.Crane and Eton included Shortwave coverage in the Skywave and Traveler III models primarily because it is expected by purchasers, but neither manufacturer seems to have made a serious effort to improve upon the excellent Shortwave performance of the Si4734 DSP chip in the PL-310 and related models. Their competitive effort seems to have been concentrated (successfully) in Medium Wave performance – leaving the PL-310ET the champion of Ultralight Shortwave reception. The 250 Shortwave memories and multiple digital search functions only add to the radio's appeal in this popular capability.

Other Bands: The PL-310ET does not have Weather or Air Band coverage, but it does offer Longwave coverage from 153-513 kHz. The radio is a real clunker in Longwave reception, however, with a loopstick obviously designed for the MW frequencies. Nobody should purchase this radio (or the new Eton Traveler III) with hopes of receiving serious Longwave DX. As an example, the radio cannot even receive a trace of my local NDB pests on 216 and 328 kHz at any time of the day or night. There is an effective Longwave loopstick designed especially for the Tecsun DSP Ultralight radio models, however (with details posted at <http://www.mediafire.com/view/845snah2h4ek9z9/7.5inLWLS.doc>) that will transform any of the Tecsun Longwave models into serious DXing performers.

C.CRANE SKYWAVE: Although Tecsun has shown no interest in correcting the MW-DXing digital quirks in the PL-310, PL-380 and related models, the excellent news is that another major manufacturer has definitely been paying attention to DXers' wishes – creating a new model that succeeds in correcting them all. The C.Crane Skywave almost seems custom-designed for serious MW-Dxers – solving the internally-generated heterodynes and soft mute issues of the PL-310, and improving upon the muffled 1 kHz DSP audio problem as well. It also offers wide-band FM coverage, outstanding Weather Band sensitivity and bonus Air Band coverage – at a price. The new Skywave model appears to be a custom project of C.Crane, and the \$89.95 price (before shipping) probably reflects the company's high research and development costs in creating such an innovative model.



The C.Crane Skywave's appearance might seem similar to that of the Digitech AR-1733, but interested purchasers should not be misled by this fact. The Skywave is a total redesign of that earlier model – which C.Crane apparently used as a starting point for their custom Skywave project. It has custom circuit boards (designed by C.Crane, and assembled by its Redsun partner, in China), two DSP chips, strong build quality and weather-resistant construction. The model includes coverage of the AM (520-1710 kHz), FM (76-108 MHz), SW (2.3-26.1 MHz), AIR (118-137 MHz) and 7 Weather Band frequencies (with a Weather Alert function, selectable for 4, 8 or 16 hours). The radio comes with an owner's manual, carrying case, warranty card (one year) and CC Bud earphones. The C.Crane Skywave model is available for \$89.95 plus shipping from either from Amazon

(http://www.amazon.com/Skywave-Shortwave-Weather-Airband-Portable/dp/B00QMTI6YK/ref=sr_1_1?s=electronics&ie=UTF8&qid=1424587969&sr=1-1&keywords=c.crane+cc+skywave or directly from C.Crane (<http://www.ccrane.com/Radios/CC-Skywave-AM-FM-Shortwave-Weather-and-AirBand-Portable-Travel-Radio.>)

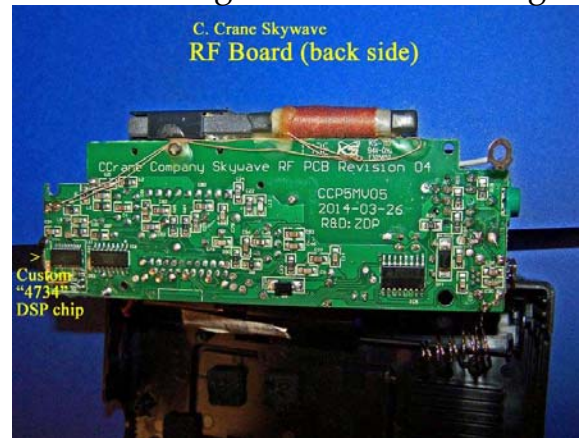
Although the Skywave includes several digital improvements over the PL-310 and other Tecsun DSP radios C.Crane makes no attempt to match the multiple digital search functions and display options offered by the PL-310 and related units – and the user will quickly discover that simplicity and basic function is the order of the day. There is only one digital search mode (ATS), no selectable display light (although pressing one of the controls will get you about 12 seconds of temporary lighting), no volume level display, only 100 memories (which the owner's manual does not tell you) and a very basic bar graph display of signal strength. Of course, none of these limitations will matter very

much to MW-DXers (especially split-frequency DX enthusiasts) who have waited many years for a manufacturer to correct the digital quirks degrading the Tecsun DSP Ultralight models. The Skywave and the competing Eton Traveler III model (reviewed next) set new MW-DXing standards for those hobbyists who want class-leading sensitivity, no “soft mute” signal dropouts and complete freedom from bogus heterodynes.

C.Crane Skywave – MW DXing Test Drive: C.Crane’s target group for this new model includes transoceanic and domestic MW-DXers who love the Tecsun PL-310’s (and PL-380’s) breakthrough DSP selectivity but hate the model’s digital quirks – and if you fall into this category, then you are in for a real treat! The Skywave’s excellent MW sensitivity is augmented by its complete freedom from bogus heterodynes and “soft mute,” and it provides 1 kHz DSP selectivity every bit as effective as the Tecsun radios – with improved audio clarity as well. Chasing the same MW fringe stations with the Skywave and PL-310ET model side by side immediately reveals a significant gap in overall performance... wide enough to convince most MW-DXers that the PL-310ET has become second rate. When both models are set in the 1 kHz DSP setting (which also provides maximum MW sensitivity on both models) the PL-310ET seems bogged down by its muffled audio, mystery heterodynes and bizarre tendency to silence a fringe station when it becomes too weak (which is a particularly irritating quirk for dedicated DXers). The Skywave excels in correcting all these issues, but as mentioned before, the emphasis is on simplicity – and the model lacks several of the PL-310ET’s display functions (RSSI, S/N, temperature in F or C, volume level and a selectable display light), digital search functions and memory capacity. The Skywave’s audio amplifier is also slightly underpowered in comparison to the competing models, and does tend to max out on weak stations more readily than that of the PL-310ET or the Eton Traveler III. In combination with the Skywave’s lack of any volume level display, this can mean quite a few trips to the upper stops of the analog volume control. Finally, it does need to be emphasized that C.Crane’s Skywave is not the only new Ultralight radio designed to correct the Tecsun models’ DSP chip quirks – the new Eton Traveler III also corrects them, and does so quite effectively at a price lower than that of the Skywave. For MW-DXers interested in both of these new models, the deciding factor will probably be whether 1 kHz DSP selectivity is a high priority. The Skywave provides it very effectively, while the Traveler III lacks any selectivity choices. In summary, though, for Medium Wave transoceanic DXers eager to push their Ultralight DXing luck for all it is worth, the new CC Skywave is the radio that we have been waiting for – despite its weak points.

C.Crane Skywave – FM DXing Test Drive: Although C.Crane’s refinements really provide a DXing edge for the Skywave over the PL-310ET on Medium Wave, it seems that superior FM performance was not part of C.Crane’s research and development program. The FM sensitivity and selectivity of the Skywave fall somewhat short of the PL-310ET’s standard, leaving the model with average performance in fringe station reception. As with the PL-310ET it is necessary to orient the whip antenna in the optimal direction for best reception, but even with the utmost effort in doing so the model’s weak signal reception never quite matches that of the Si4734 DSP chip in the PL-310ET. The Tecsun’s 100 FM memories matches the entire total for the Skywave model, and the PL-310ET’s multiple display functions make the Skywave look pretty rudimentary. The PL-310ET offers wideband (64-108 MHz) FM coverage, while the Skywave offers only the domestic North American frequencies (87.5-108 MHz). The PL-310ET’s superior audio amp also makes a difference when signals get really weak, and its digital search modes are superior. Since the MW band advantages detailed above are irrelevant on FM frequencies, the model really falls short of the PL-310ET’s standard in FM-DXing performance. It does compete quite effectively with the other contestants in this competition, however.

C.Crane Skywave – SW DXing Test Drive: In competition with the PL-310ET the Skywave’s Shortwave sensitivity also falls short of the mark, although the C.Crane model does have some minor advantages on these bands. It offers wider frequency coverage (2.3-26.1 MHz, compared to 2.3-21.95 MHz for the PL-310ET), and its 1 kHz DSP audio sounds superior to the somewhat muffled 1 kHz DSP audio in the PL-310ET. With the sad situation of fewer and fewer Shortwave stations continuing to broadcast, however, the need for superior selectivity on the Shortwave bands isn’t so important anymore. Because fewer stations are broadcasting the PL-310ET can almost always be set in the 2 kHz DSP setting for improved DX station audio without facing the drawback of side channel interference. The Skywave’s Shortwave sensitivity allows it to receive most of the same stations but at less signal strength than that of the PL-310ET. Similar to the situation on the FM band, the PL-310ET has far more display options, memories (250 on Shortwave alone, versus 100



total in the Skywave) and digital search modes – as well as a more powerful audio amplifier. Dedicated Shortwave DXers will probably find the Skywave to be a little too basic to meet their needs, despite the wider coverage on the higher frequencies. Once again, though, the Skywave's Shortwave performance is in the same ballpark as that of the new Eton Traveler III – the next model up for review in this article. Either one of these new models should have acceptable Shortwave sensitivity for the reception of typically strong SW station parallels of MW mystery stations.

Other Bands: The CC Skywave really excels on two other bands – one of which is unique in the Ultralight radio class. Its Weather Band sensitivity is far superior to that of the CC Pocket and DT-400W models, and it has the same Weather Alert function and selectable time periods (4, 8 or 16 hours) as those vertical-form models. Weather Band reception which is dicey on the smaller models is usually crystal clear on the Skywave – most likely because of the dedicated DSP chip for Weather and Air Band reception in the model. If any reader places an extremely high priority on the stable reception of Weather Band alerts during emergencies, this is definitely the Ultralight radio of choice. Not only is the whip antenna far superior to the makeshift wire antenna system of the vertical-form models, but the DSP chip-provided sensitivity is in an entirely different league.

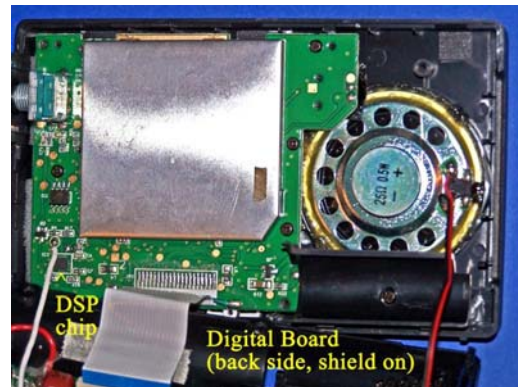
Finally, one of the obvious attractions of the CC Skywave model is its AIR Band coverage from 118-137 MHz – unique in the Ultralight radio class. According to information from C.Crane, the Si4736 DSP chip on the digital board is used strictly for Weather and AIR Band reception – and it definitely provides excellent sensitivity on both of those bands. To get started in listening to communication between airports and airplanes the owner's manual instructs the user to check the internet for airport frequency listings, specifically mentioning the <http://www.flightradio.com> site. After checking that site (and paying a \$10 fee for "lifetime membership") I was able to download a file with airport communication frequencies for the entire USA, which is posted at <http://www.mediafire.com/view/dtoad7nfjodnw5y/FlightRadioBook.pdf>. My home town of Puyallup, WA is along the direct southerly approach route for Seattle-Tacoma International Airport – a pretty busy site with lots of air traffic. The frequency listings mentioned a SeaTac tower frequency of 119.900 MHz, which is used by the tower to receive communication from airplanes approaching the airport and requesting a runway assignment. Depending upon air traffic, the time of day and luck, the CC Skywave can receive either a lot, a little or almost no communication on this tower frequency. Since only communication from airplanes is heard, the signal strengths can vary from a thunderous level (for planes directly overhead) down to a ghostly wisp (for airplanes many miles away). A sample MP3 of the Skywave's reception on this 119.900 MHz SeaTac tower frequency (with communication from three airplanes within two minutes) is posted at <http://www.mediafire.com/listen/byhdj4cs51daa7s/119.9-SeaTacTower-030815CCSW.MP3>.

The CC Skywave has a Squelch function which will mute the background noise on the AIR band frequencies while you await voice traffic – which is engaged by pushing in the tuning control for two seconds, then rotating the control to choose your desired threshold level. This is a nice feature for those who only wish to hear the voice communication, but it does reduce the radio's reception sensitivity somewhat. In general the Skywave's AIR Band coverage is a major plus for those interested in airport communication, although these types of transmissions are almost always brief, businesslike, and to the point. Listeners should not expect any of the emotion and drama typical in airport disaster movies!

ETON TRAVELER III: Another innovative model providing breakthrough MW-DXing performance is the new Traveler III – which in stock form is quite possibly the most capable domestic DXing pocket radio on the planet. Although Eton has also managed to correct the most troublesome digital quirks of the PL-310 and related Tecsun DSP models on Medium Wave (bogus heterodynes and soft mute), unlike the CC Skywave the Traveler III makes no attempt to offer



improved DSP selectivity. Instead it takes innovation in a different direction – by concentrating on the best possible MW sensitivity, and by its breakthrough inclusion of an RDS display on the FM Band (an Ultralight radio first). With only a single selectivity choice on the MW band (which is roughly equivalent to the CC Skywave's 2 kHz DSP setting in filtering performance) the Traveler III is unlikely to attract much interest from split-frequency transoceanic DXers. But its breakthrough MW sensitivity makes it a very formidable contender for the attention of all other Medium Wave DXers – especially those who



appreciate its unique, stylish appearance. There is only one digital search choice (ATS), and like the CC Skywave, the manual doesn't tell you how many memories the radio provides (apparently 100, like the Skywave). But it does include a selectable display light – with a duration of up to 10 minutes.

The Traveler III includes coverage of the AM (520-1710 kHz), LW (153-513 kHz), FM (87-108 MHz) and SW (2.3-26.1 MHz) Bands. Provided with the radio is an owner's manual (in five different languages) and carrying case. There are no earphones or warranty card provided, although when you check at the manufacturer's web site you are informed that the Traveler III's warranty is for one year. The radio may be purchased for \$59.99 (with free shipping) from Amazon at the following link: http://www.amazon.com/Eton-NGWTIIIB-Traveler-Radio-Black/dp/B00MZ88YGC/ref=sr_1_1?s=electronics&ie=UTF8&qid=1426039985&sr=1-1&keywords=eton+traveler+iii.

In general the Traveler III has an appearance and function quite unique among recently introduced pocket radios, with an attractive aluminum-colored trim around the cabinet edge, and a whip antenna mounting post extending horizontally from the back cabinet. It has a front panel world time selector switch hidden behind a hinged door (opening downwards), and a unique display with orange characters on a dark gray background. The model is the only Ultralight radio to use four AA batteries – surely giving it unparalleled DXing endurance. Perhaps the most unusual point is the lack of any selectivity choice – putting the radio at a competitive disadvantage with the Tecsun 1 kHz DSP Ultralights and the new CC Skywave in this aspect. However the Traveler III does have quite a lot going for it, especially for domestic MW-DXers who don't need to chase split-frequency DX targets. Both the MW sensitivity and tone quality are first rate – and the stylish appearance and reasonable price should attract quite a dedicated audience. Its new Si4735 DSP chip also provides FM-DXers with an Ultralight radio class breakthrough – an RDS display with multiple data choices.

Eton Traveler III – MW-DXing Test Drive: The Traveler III's target group includes those MW-DXers who place a high priority on both excellent sensitivity and audio quality. The radio provides an outstanding combination of both – and although there are a few digital quirks that need to be tolerated, in general the Traveler III makes it a real pleasure to track down weak MW signals. First we will cover the quirks. Since there is no direct entry keypad you will need to rotate the tuning knob to choose your frequencies. The knob is capable of covering wide ranges quickly if you rotate it with some speed, and it is also capable of accurately tuning in 9 or 10 kHz steps if you rotate it slowly. The volume control has a digital display level, but each time you adjust the volume control you will get a short burst of soft digital hash noise whenever the volume level changes a step (i.e., don't try to change the volume level during recordings). Finally, changing the frequency will cause the audio to drop out for about one second, then come back in a rush. If you can tolerate these digital quirks, though, you will discover that the radio has a great deal to offer the MW-DXer. Sensitivity is exceptional (the specifications list it as less than or equal to 1mv/m), and although there is no choice of audio tone, the radio's tone is almost high fidelity as delivered from the factory. Like the PL-310ET the radio has both a pretty powerful audio amp and a volume level display, and in combination with the excellent audio fidelity this feature really helps to dig out the weak stations (although advancing the volume knob up to the maximum will give you those soft digital hash sounds, as mentioned previously). The Traveler III also has exceptional nulling ability for a stock pocket radio – and is the first one ever tested here which is able to null out the semi-local pests on 570 and 710 kHz to pull in weak stations on the same frequency.

So how much does the single selectivity choice limit the Traveler III's ability to go after weak MW stations next to strong locals? For domestic DXers (and for transoceanic DXers lucky enough to live on an isolated ocean beach in Carbonear, Newfoundland) probably not so much. As mentioned before, the single selectivity choice provides filtering roughly equivalent to the 2 KHz DSP setting in the CC Skywave, which in combination with the radio's exceptional nulling ability provides a decent chance to go after almost any domestic station (please refer to the MW Selectivity Shootout MP3's for further details). For most of the transoceanic DXers who routinely push their luck chasing 9 kHz-split targets adjacent to troublesome domestic pests, however, the Traveler III's single selectivity choice will probably be unacceptable. In most parts of North America (and Europe, for that matter) there is simply too much domestic splatter across the band to have much success in chasing weak transoceanic DX without effective 1 kHz DSP filtering – such as is provided by the new CC Skywave or the Tecsun PL-310ET (and PL-380). Even with this 1 kHz filtering, traces of domestic splatter still show up on most of the transoceanic DX MP3's recorded here at this western



Washington location. In the very rough mission of pocket radio transoceanic DXing, you need every possible advantage – including the best possible 1 kHz DSP filtering. Continually trying to chase split-frequency DX without it will probably bring you a serious case of grief.

Eton Traveler III – FM-DXing Test Drive: First, the good news. As mentioned previously, the Traveler III is the first Ultralight radio to feature an RDS display on FM, provided by its Si4735 DSP chip. When an FM station is transmitting RDS data and is of sufficient strength, the radio is capable of providing a display of either “PS” (program name), “PTY” (program type), “RT” (program text) or “DATA” (time, date, weekly program and call sign). A quick press of the “RDS” button allows you to toggle between these displays – assuming that the FM station is transmitting all the data. In practice, many FM stations either do not transmit all of this data, or may not transmit any RDS data at all. You need to wait for a small “RDS” icon to show up on the display prior to using the system. In any case, solid FM reception is required for the Traveler III to display any RDS data – a factor which limits the system further.

Unlike on the MW band, changing the radio’s volume control on the FM band does not result in short bursts of digital hash between the volume level steps. The radio’s FM audio quality sounds fairly average through the speaker, with the emphasis on treble response. The whip antenna’s mounting post extends horizontally from the back cabinet, and has an unusual double-hinge system which may either be convenient or tricky, depending upon your personal preference (see photo above). My own impression is that this type of antenna may not survive a careless owner.



Finally, at only 16” the whip antenna is unusually short, in comparison to the 19” of the CC Skywave and the 21.5” of the PL-310ET. Along with DSP chip differences this translates into weaker FM sensitivity than that of the PL-310ET, although the Traveler III is pretty competitive with the other review models in this aspect. If a dedicated FM-DXer augmented the radio with an effective external antenna the Traveler III’s RDS system might become a major plus, but in stock form the radio’s limited FM sensitivity makes this new feature seem rather compromised.

Eton Traveler III – SW-DXing Test Drive: Like the CC Skywave (and unlike the PL-310ET) the Traveler III provides Shortwave coverage all the way up to 26.1 MHz – although like the Skywave, breakthrough Shortwave sensitivity doesn’t seem to be part of the radio’s master plan. With the shorter whip antenna and single selectivity choice the Traveler III’s Shortwave performance ends up below that of the PL-310ET, but it can compete with the CC Skywave and most other Ultralight radios fairly well on the SW bands. Changing the volume control steps does not generate the short bursts of digital hash like it does on the MW frequencies, and the audio amplifier is powerful enough to check out most of the weak SW stations. Like on the FM band, the short (16”) whip antenna is hardly optimum for good Shortwave sensitivity, and any serious SW-DXer would wish to either upgrade the antenna or opt for a different model to begin with (like the PL-310ET, or one of its 1 kHz DSP siblings like the PL-380, PL-505 or PL-606). In general the Traveler III provides acceptable Shortwave sensitivity for checking powerful parallel stations of mystery MW-DX signals, but Shortwave performance is not this model’s strong point.

Other Bands: The Traveler III has no Weather Band reception, but it does include Longwave Band coverage from 153-513 kHz. Unfortunately (like the PL-310ET), the loopstick is optimized for the Medium Wave frequencies – resulting in deaf sensitivity across the entire Longwave spectrum. Neither the Traveler III nor the PL-310ET can receive a trace of my local NDB pests on 216 or 328 kHz (or any other Longwave stations) – even around local midnight. Unless you have the technical ability to replace the loopstick or connect an effective Longwave external antenna to the model, you should consider this Longwave “coverage” to be completely useless.

SECTION TWO – THE SHOOTOUT

For the first time in any competitive radio review, multiple test signal MP3’s were recorded to give each reader a chance to listen to accurate evidence of the relative performance of each model in important categories. These categories were MW sensitivity, MW selectivity, FM sensitivity, Shortwave sensitivity and Weather Band sensitivity.

MW Sensitivity Shootout. For the MW Sensitivity test MP3’s weak daytime DX fringe stations were chosen and recorded during hours close to local noon, emphasizing stable ground wave propagation. The daytime DX stations were chosen because of the challenging nature of their signals, which cannot be received on pocket radios without above average sensitivity. Each radio had an equal chance to demonstrate its sensitivity, with all the test signals being recorded within a 5

minute period (during which a stable test signal was ensured), and all loopsticks were oriented in the same direction. Finally, the radios were switched around to ensure that no position was inferior or superior to any other position. The CC Pocket was placed in its narrow (2.5 kHz) filter setting and the Tecsun PL-310ET and C.Crane Skywave models were placed in their 1 kHz DSP settings (all of which were found to provide the best sensitivity and selectivity for the three models). The Skywave was set in its default "Music" tone selection.

In all the Medium Wave test signal reception MP3's, the CC Pocket is recorded for the first 15 seconds, followed by the Sangean DT-400W for approximately 15 seconds, followed by the Tecsun PL-310ET for approximately 15 seconds, followed by the C.Crane Skywave for approximately 15 seconds, followed by the Eton Traveler III for 15 seconds.

620 KPOJ Portland, Oregon (25 kW at 116 miles)

<http://www.mediafire.com/listen/r1m28jgo3dnmoyd/620-KPOJ-CCPvsDT400WvsPL310vsCCSWvsTravIII.MP3>

650 CISL Vancouver, BC (10 kW at 148 miles)

<http://www.mediafire.com/listen/luc0wu20t448kso/650-CISL-CCPvsDT400WvsPL310vsCCSWvsTravIII.mp3>

750 KXTG Tigard, Oregon (50 kW at 123 miles)

<http://www.mediafire.com/listen/osy29hihuzrkm1t/750-KXTG-CCPvsDT400WvsPL310vsCCSWvsTravIII.MP3>

1070 CFAV Victoria, BC (10 kW at 100 miles)

<http://www.mediafire.com/listen/ml4wesojkr9c4kd/1070-CFAV-CCPvsDT400WvsPL310vsCCSWvsTravIII.MP3>

1320 CHMB Vancouver, BC (50 kW at 148 miles)

<http://www.mediafire.com/listen/oe7824bjdbcd2dx/1320-CHMB-CCPvsDT400WvsPL310vsCCSWvsTravIII.MP3>

1470 KELA Centralia, WA (5 kW at 45 miles)

<http://www.mediafire.com/listen/wjupdefdj0e315w/1470-KELA-CCPvsDT400WvsPL310vsCCSWvsTravIII.MP3>

1650 Vashon TIS Vashon Island, WA (15 watts at 15 miles)

<http://www.mediafire.com/listen/kx4qi0r9vfa6dr/1650-VashonTIS-CCPvsDT400WvsPL310vsCCSWvsTravIII.MP3>

Comments: The CC Skywave and the Traveler III tend to break away from the pack receiving the weaker stations, with the edge going to the latter because of its superior audio clarity. The Eton's combination of excellent reception and high audio fidelity makes it the new Sensitivity Champion in the Ultralight radio class, although the CC Skywave is right behind it. The PL-310ET has fairly good sensitivity but is limited by its relatively muffled audio in the 1 kHz DSP setting, while the CC Pocket and DT-400W can't quite keep up with these larger models because of their shorter loopsticks. My own impression was that the DT-400W had a slight edge over the CC Pocket, but neither of these models are paragons of sensitivity in the current Shootout group. The CC Pocket's poor reception of 1070-CFAV was a puzzle – the DT-400W had it at a fairly good level. The Sangean also clearly outperformed the CC Pocket in the 1470-KELA reception. Overall any of these models would be acceptable for routine DXing, but the Eton provides superior weak signal reception at a superior price.

MW SENSITIVITY GRADES:

Eton Traveler III	A
C.Crane Skywave	A-
Tecsun PL-310ET	B+
Sangean DT-400W	B
C.Crane Pocket	B-



MW Selectivity Shootout. During this competition the five competing models were given the very challenging task of receiving weak daytime DX stations very close in frequency to strong local stations. Because some of these stations were quite weak around local noon the test was run a few hours later in the afternoon, but stable daytime DX test signals were still ensured prior to each runoff. In order to maximize reception of the weak fringe stations, the loopsticks of all the competing models were oriented to null the local pest station as much as possible.

Once again, in each MP3 the first 15 seconds are recorded on the C.Crane Pocket, followed by approximately 15 seconds on the Sangean DT-400W, then approximately 15 seconds on the Tecsun PL-310ET, followed by approximately 15 seconds on the C.Crane Skywave, followed by 15 seconds on the Eton Traveler III.

560 KPQ Wenatchee, WA (5 kW at 94 miles) with splatter from 570-KVI (5 kW at 15 miles)

<http://www.mediafire.com/listen/d86y50v3dwz7ytt/560-KPQ-CCPvsDT400WvsPL310vsCCSWvsTravIII.mp3>

690 CBU Vancouver, WA (50 kW at 148 miles) with splatter from 710-KIRO (50 kW at 30 miles)

<http://www.mediafire.com/view/2kkwo0utoqfajw6/690-CBU-CCPvsDT400WvsPL310vsCCSWvsTravIII.mp3>

700 KXLX Airway Heights, WA (10 kW at 222 miles), splatter from 710-KIRO (50 kW at 30 miles)

<http://www.mediafire.com/listen/5nrnej5bxyb9b4l/700-KXLX-CCPvsDT400WvsPL310vsCCSWvsTravIII.MP3>

860 KPAM Troutdale, OR (50 kW at 114 miles) with splatter from 850-KHHO (10 kW at 5 miles)

<http://www.mediafire.com/listen/kid0a8yaec1bvd/860-KPAM-CCPvsDT400WvsPL310vsCCSWvsTravIII.mp3>

1010 KOOR Milwaukee, OR (4.5 kW at 116 miles), splatter from 1000-KOMO (50 kW at 30 miles)

<http://www.mediafire.com/listen/1z80k1mbve7kmlm/1010-KOOR-CCPvsDT400WvsPL310vsCCSWvsTravIII.mp3>

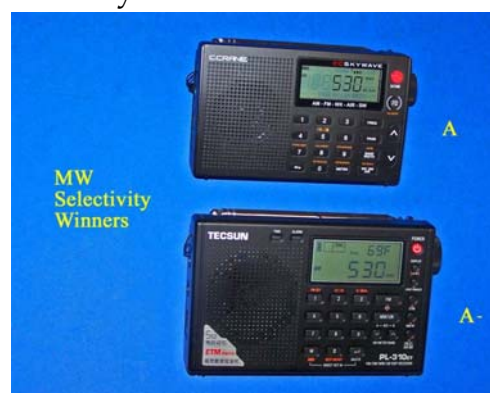
1550 KKOY Vancouver, WA (50 kW at 108 miles) with splatter from 1560-KZIZ (5 kW at 6 miles)

<http://www.mediafire.com/listen/b6vx1oqf73bd8f0/1550-KKOY-CCPvsDT400WvsPL310vsCCSWvsTravIII.mp3>

Comments: Both the CC Skywave and the Tecsun PL-310ET excelled in the twin tasks of rejecting local splatter and digging out weak audio, but the CC Skywave had the edge in the 1010 and 1550 kHz receptions. The PL-310ET also came up with weak, bogus heterodynes on 690 and 1010 – not exactly helpful. The radios without 1 kHz DSP selectivity were generally outclassed in this competition, although the Traveler III's outstanding nulling capability gave it unexpectedly good performance in the 700, 860 and 1010 receptions. Even without 1 kHz DSP filtering, the Eton can generally survive these rough tests when the pest station is about 90 degrees away from the DX station, and its superior nulling capability can be brought into play. The DT-400W generally had a rough time, although its selectivity was clearly superior to that of the CC Pocket – despite the latter's 2.5 kHz "narrow filter." Curiously, although the C.Crane Skywave is the new MW Selectivity Champion, its CC Pocket sibling brings up the rear.

MW SELECTIVITY GRADES:

C.Crane Skywave	A
Tecsun PL-310ET	A-
Eton Traveler III	B
Sangean DT-400W	C+
C.Crane Pocket	C-



FM Sensitivity Shootout. For this competition weak FM fringe stations were chosen to provide a challenging test for each model's FM sensitivity. The tests were conducted in the open back yard, with each model's FM antenna carefully oriented to provide the best possible reception of each FM fringe station (i.e. the wire antennas for the CC Pocket and DT-400W, and the whip antennas for the PL-310ET, CC Skywave and Traveler III). Although the tests were not conducted at local noon, stable FM conditions were ensured to provide accurate test results for relative FM sensitivity.

As in the Medium Wave test MP3's, the first 15 seconds of each MP3 was recorded on the C.Crane Pocket, followed by approximately 15 seconds on the Sangean DT-400W, then approximately 15 seconds on the Tecsun PL-310ET, followed by approximately 15 seconds on the C.Crane Skywave, then finally 15 seconds on the Eton Traveler III.

95.3 CKZZ Vancouver, BC (148 miles)

<http://www.mediafire.com/listen/n5ppfzj51jqds5z/95.3-CKZZ-CCPvsDT400WvsPL310vsCCSWvsTRavIII.MP3>

98.5 CIOC Victoria, BC (100 miles)

<http://www.mediafire.com/listen/acjtgb3dq5n5t9u/98.5-CIOC-CCPvsDT400WvsPL310vsCCSWvsTravIII.MP3>

100.3 CKKQ Victoria, BC (100 miles)

<http://www.mediafire.com/listen/j565bpdutj9644r/100.3-CKKQ-CCPvsDT400WvsPL310vsCCSWvsTravIII.MP3>

102.1 KPQ Wenatchee, WA (94 miles)

<http://www.mediafire.com/listen/a1j9j2cfoegedhj/102.1-KPQ-CCPvsDT400WvsPL310vsCCSWvsTravIII.MP3>

106.5 KWPZ Lynden, WA (122 miles)

<http://www.mediafire.com/listen/dxshsnmc3da1vbf/106.5-KWPZ-CCPvsDT400WvsPL310vsCCSWvsTravIII.MP3>

Comments: Not much of a contest – the PL-310ET trounces the other radios on all five test signals. Whether the FM fringe station is weak, fair or moderate, the Tecsun's Si4734 DSP chip provides unequalled reception. None of the other contenders come close, although the Traveler III does lead the rest of the pack in the 102.1 and 106.5 MHz tests. The DT-400W sounds competitive with the Traveler III in the 98.5 and 100.3 tests, though, and probably deserves third place in this competition. Neither the CC Pocket nor the CC Skywave sound very impressive in receiving any of the test signals, though, and deserve to be judged accordingly. The Tecsun PL-310ET's absolute superiority in FM reception among the Ultralight radio class extends to its sibling Si4734 DSP chip models that were not part of this competition – ie the PL-380, PL-606, PL-505 etc.

FM SENSITIVITY GRADES:

Tecsun PL-310ET	A
Eton Traveler III	B-
Sangean DT-400W	C+
C.Crane Skywave	C
C.Crane Pocket	C

Shortwave Sensitivity Shootout. For this test the three models with Shortwave coverage (PL-310ET, CC Skywave and Traveler III) were tested in the reception of relatively weak Shortwave broadcast stations, chosen over a wide spectrum of the Shortwave spectrum. Whip antennas were fully extended, and placed in the optimal position for best possible reception. The PL-310ET and CC Skywave models were set in the 1 kHz DSP filter position, and the Skywave's tone was set in the default "Music" selection.

For these MP3's the first 15 seconds were recorded on the Tecsun PL-310ET, then approximately 15 seconds on the C.Crane Skywave, followed by 15 seconds on the Eton Traveler III.

5920 WHRI (Furman, SC)

<http://www.mediafire.com/listen/xyyqg9lmt9y85bb/5.920-WHRI-PL310vsCCSWvsTravIII.MP3>

6090 Caribbean Beacon (The Valley, Anguilla)

<http://www.mediafire.com/listen/hoamjq16hp6bpm8/6.090-Anguilla-PL310vsCCSWvsTravIII.MP3>

9525 UnID

<http://www.mediafire.com/listen/l84mo8lwknv68j1/9.525-UnID-PL310vsCCSWvsTravIII.MP3>

11750 Cuba

<http://www.mediafire.com/listen/gjeg5kvklp4d8i3/11.750-Cuba-PL310vsCCSWvsTravIII.MP3>

15120 Spanish UnID

<http://www.mediafire.com/listen/6j5y1yb3i9fxy3/15.120-Spanish-PL310vsCCSWvsTravIII.MP3>

Comments: Once again, the PL-310ET trounces the other models in a very convincing fashion – on each of the five Shortwave test signals. Although the CC Skywave and Traveler III both have extended Shortwave band coverage (up to 26.1 MHz) their lack of Shortwave sensitivity competitive with the PL-310ET makes this minor advantage seem irrelevant. The Tecsun's Si4734 DSP chip not only provides better sensitivity but better image rejection across the Shortwave spectrum as well, making it the runaway winner in this category. The engineers designing both the CC Skywave and the Traveler III have introduced breakthrough MW-DXing capabilities with the two new models – but improvements in Shortwave performance obviously weren't part of the design master plan. The Tecsun's mastery in this category also applies to its Si4734 DSP chip siblings – the PL-380, PL-606, PL-505 and related models. Although most of those models have a whip antenna slightly shorter than that of the PL-310ET, the excellent Shortwave performance of their Si4734 chips still makes them formidable competitors against these new models.

SW SENSITIVITY GRADES:

Tecsun PL-310ET	A
C.Crane Skywave	B-
Eton Traveler III	B-

Weather Band Sensitivity Shootout. For this competition the three models with Weather Band coverage (CC Pocket, DT-400W and CC Skywave) were tested in the relative reception of any Weather Band stations. Weather Band frequency 2 was received on all models – but it was the only Weather Band station received at this somewhat poor location for FM reception. For this single test MP3 the wire antennas for the CC Pocket and DT-400W models and the whip antenna for the CC Skywave were oriented for the best possible reception of this Weather Band 2 station.

The first 15 seconds were recorded on the C.Crane Pocket, followed by approximately 15 seconds on the Sangean DT-400W, and finally 15 seconds on the C.Crane Skywave.

Weather Band Frequency 2

<http://www.mediafire.com/listen/32oqwet8lt8298p/WX-Channel2-CCPvsDT400WvsCCSW.MP3>

Comment: The CC Skywave's excellent reception of Weather Band 2 is in an entirely different league than that of its two wispy competitors – probably because of the advanced Si4736 DSP chip that C.Crane chose for the Skywave's Air Band and Weather Band reception. The CC Pocket and DT-400W can compete with each other in Weather Band reception, but have no hope of even



FM Sensitivity Winner A



Shortwave Sensitivity Winner A

coming close to the Skywave. For those DXers who consider Weather Band reception and Alerts extremely important in case of emergencies, the CC Skywave is the obvious choice.

SW SENSITIVITY GRADES:

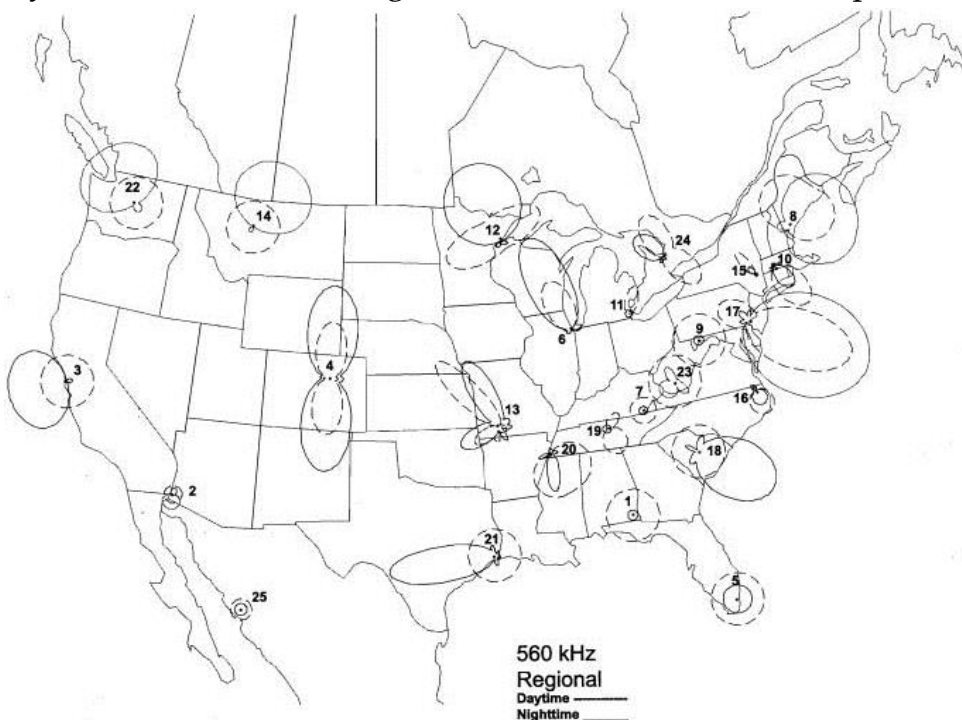
C.Crane Pocket	B-
Sangean DT-400W	B-
C.Crane Skywave	A

Section Three – “Final Verdicts” – will appear in the next issue of DX News.



NRC Antenna Pattern Book, 7th Edition

The 7th Edition of the *NRC Antenna Pattern Book* is now available. This all new edition prepared by NRC'er Paul Swearingen is an all-inclusive book of patterns for both Day and Night operation of stations in the USA, Canada and selected foreign stations. The data for the book comes from the 34th Edition of the *AM Radio Log* and NRC'er John Callerman's comprehensive Mexican station listing.



The book comes shrink wrapped in 8½ by 11 three hole punch format for placement in your own three ring binder. There are 240 pages and the book has maps covering 530 through 1700 kHz depicting the lower USA, Canada and Mexico. Hawaii and Alaska are shown on separate maps at the of the book.

Price/ordering info: To the United States, \$22.95 for members, \$28.95 for non-members (add \$4.00 for

Priority Mail delivery to U.S. addresses only). To Canada \$35.00; airmail outside of U.S. and Canada \$39.00. For those outside the U.S., use PayPal or a postal money order in U.S. funds only. Order from NRC, P.O. Box 473251, Aurora CO 80047-3251 or www.nrcdxas.org. Colorado residents, please add 3.5% sales tax.



DX News is printed by

Peak Printing, Inc.
 716 S. 9th Street, Cañon City CO 81212
 (719) 275-2136 info@peakprintingonline.com

All your printing needs – including SWL and Amateur QSL Cards

National Radio Club

Founded in September, 1933, the National Radio Club is a non-profit organization devoted to the medium wave DX hobby. It is operated solely by uncompensated volunteers. Subscription costs cover printing, postage, and operational costs and are subject to change without prior notice. The opinions expressed in this magazine are those of the individual writer and do not necessarily reflect those of the Publisher or the Board of Directors of the National Radio Club, Inc. Any reproduction of material contained in DX News/e-DXN without permission of the National Radio Club or the author is prohibited. All published material in DX News/e-DXN may be reprinted by the National Radio Club at a later date. DX News/e-DXN published material reprinted in other publications should include an attribution naming the author and DX News/e-DXN as the original source. Construction projects described herein may be hazardous and are to be undertaken at the assembler's risk; the NRC, its officers, and author(s) will not be responsible for any injuries or losses arising during these projects. Tool usage and electricity can be dangerous.

NRC Board of Directors: Shawn Axelrod <amandx@mymts.net> – 30

Becontree Bay – Winnipeg MB R2N 2X9 Canada; Wayne Heinen <amradiolog@nrcdxas.org>; NRC AM Radio Log Editor – 4131 S. Andes

Way – Aurora, CO 80013-3831; Dave Schmidt <NRCMusings@aol.com>

– 55 N. Main St., Shrewsbury PA 17361; Paul Swearingen <plsbedxer@aol.com>; Chairman; Dick Truax <K9RT@aol.com>; NRC

Treasurer – P. O. Box 39451 – Louisville, KY 40233-9451.

NRC on the World Wide Web: The NRC web site is www.nrcdxas.org; e-DXN is at www.e-dxn.com (Kraig Krist, webmaster).

National Radio Club members may choose to receive our print publication (DX News), our audio program (DX Audio Service), e-DXN (including online access to both DX News and the DX Audio Service), or any combination of these.

• **DX News – David Yocis, Publisher/Editor**<NRCDXNews@gmail.com> – 1245 Thirteenth St. NW, #105 – Washington DC 20005; 202-415-3011 [leave voice mail]. (Send only material for publication in DX News.)

Subscriptions and Renewals to DX News: Yearly subscription (20 issues, biweekly in DX season): To a U.S. Address: US\$45.00; to a Canadian Address: US\$55.00; to all other countries: US\$70.00.

• **DX Audio Service – Fred Vobbe, Publisher/Producer** – 706 Mackenzie Drive – Lima, OH 45805-1835. 419-228-6223 <fvobbe@realoldiesradio.com> (\$30.00 for subscriptions; DXAS address changes).

Subscriptions and Renewals to DX Audio Service: yearly subscription (twelve audio CDs, mailed on or about the 20th of each month) (send new and renewal subscriptions to Fred Vobbe): One-year First-Class Mail subscription to DX Audio Service to USA, Canada addresses: US\$30.00; all other addresses: US\$40.00.)

Subscriptions and Renewals to e-DXN: Annual registration: \$5.00 for subscribers to DXN or DXAS; \$15.00 for an e-DXN-only membership. Access the e-DXN web site <www.e-dxn.com> and follow the links.

National Radio Club

P.O. Box 473251

Aurora, CO 80047 – 3251

*Send all payments to NRC Headquarters at:
National Radio Club*

PO Box 473251

Aurora, CO 80047-3251

<sales@nrcdxas.org>

Please send all of the following to NRC Headquarters in Aurora:

• **New subscriptions and renewals** for DX News, the DX Audio Service, and e-DXN.com.

• **Subscription or delivery problems** for DX News or DXAS.

• **Changes of address** for DX News.

• **All NRC Publications** orders.

For multiple items, there's no need to send separate checks or in separate envelopes. It all goes to the same National Radio Club HQ.

Payment options for any item: US\$ funds only: check, money order, or credit card (via PayPal: access <www.nrcdxas.org> ONLY and follow the links), or cash at your risk. (Out of USA: Postal money order or PayPal only; NO checks.)

All checks and money orders should be made out to: **National Radio Club**.

DX News is printed by Peak Printing – 716 South 9th Street – Cañon City

CO 81212 – (719) 275-2136 – <info@peakprintingonline.com>

First-Class Mail
U.S. Postage
PAID
Cañon City, CO
Permit # 22