

# DX News

*Serving DX'ers since 1933*



Volume 83, No. 5 • November 30, 2015 • (ISSN 0737-1639)

## Inside this issue . . .

2 ... AM Switch	13 ... Musings of the Members	21 ... Tower Calendar / DXtreme
5 ... Domestic DX Digest West	14 ... International DX Digest	22 ... KC 2016 Call for Papers
9 ... Domestic DX Digest East	17 ... FCC CP Status Report	23 ... Space Wx / FCC Silent List

**2016 DXers Gathering:** DXers in AM, FM, and TV, including the NRC, IRCA, WTFDA, and DecaloMania will gather on September 9-11, 2016 in Kansas City, MO. It will be held at the Hyatt Place Kansas City Airport, 7600 NW 97th Terrace. Information on registration will be made available starting in January. Rates are \$99.00 per night for 1 to 3 persons per room, plus taxes and fees. Plan to arrive on Thursday for 3 nights, and we end Sunday at noon. Free airport transfers and breakfast each morning. Registration: \$55 per person which includes a free Friday evening pizza party and Saturday evening banquet. Checks made payable to "National Radio Club" and sent to Ernest J. Wesolowski, 13312 Westwood Lane, Omaha, NE 68144-3543. Please mention which club(s) you belong to for club treasury info. Dale Hamm W5LN and Ernie are your hosts.

Interested in the educational part of the DXers Gathering? Check out the initial "Call for Papers" on page 22.

**Your Holiday Gift List:** See pages 21-22 for information on Scott Fybush's 2016 Tower Site Calendar and the new DXtreme10 logging program now available.

Just FYI, as a nonprofit club run entirely by uncompensated volunteers, NRC policy is not to take advertising in *DX News*. However, we will publish free announcements of commercial products that may be of interest to members – no more than once a year, on a "space available" basis. Contact [NRCDXNews@gmail.com](mailto:NRCDXNews@gmail.com) for more info.

## Membership Report

"Please renew my membership in the NRC for another year." – Dave Bright.

**New Members:** Welcome to Antoine Gamet, Coatesville, PA; and Joseph Kremer, Bridgeport, WV.

**Rejoining Members:** Welcome back to Dave Freeman, Howard Beach, NY.

**Renewing Members:** Thanks for the continued support of Park Barton; Steven Branch; Ralph Brandi; Dave Braun; Dave Bright; Francesco Clemente; Robert Coomler; David Cox; Thomas Dunham; Robert L. Foxworth; George B. Holland Jr.; Jerry Kiefer; Thomas Mahaney; Jimmy Marmack; Paul V. McDonough; Gary Nuthals; Douglas E. Orf; David Potter; Henry Stratmann Jr. ; Sean Welsh; and Bruce Wickert.

## 36th Edition of the National Radio Club's AM Radio Log Is Available and Shipping!



The NRC *AM Log* is a comprehensive list of AM radio stations in the United States and Canada, with all the information a DXer needs – power, schedule, format, slogan, networks, address, and more. And it's continually updated through the AM Switch column here in *DX News* (and Interim AM Switch weekly on e-DXN.com).

Order by snail mail by check or money order in U.S. funds to National Radio Club, P.O. Box 473251, Aurora, CO 80047-3251 or order using your Pay Pal account at [www.nrcdxas.org](http://www.nrcdxas.org). To U.S. addresses, \$22.95 to members, \$28.95 to non-members, add \$4.00 for Priority Mail delivery; to Canadian addresses it's US\$36.25 and overseas US\$41.75.

## Volume 83 DX News Schedule

No	Deadline	Date	No	Deadline	Date	No	Deadline	Date
6	Dec. 4	Dec. 14	11	Feb. 12	Feb. 22	16	May 27	June 6
7	Dec. 18	Dec. 28	12	Feb. 26	Mar. 7	17	June 24	July 4
8	Jan. 1	Jan. 11	13	Mar. 18	Mar. 28	18	July 22	Aug. 1
8	Jan. 15	Jan. 25	14	Apr. 8	Apr. 18	19	Aug. 19	Aug. 29
10	Jan. 29	Feb. 8	15	Apr. 29	May 9	20	Sept. 9	Sept. 19

Publishers' deadline is 2400 ELT on Friday nights – *DX News* posted that weekend to e-DXN.com, and in most U.S. mailboxes on or around the Monday masthead date.

# AM Switch

Info to David Yocis, 1245 13th St. N.W., #105, Washington DC 2005, [NRCDXNews@gmail.com](mailto:NRCDXNews@gmail.com)  
 Canadian information from CRTC complied by Shawn Axelrod and Dan Sys  
 NRC AM Log updates from Wayne Heinen, [amradiolog@nrcdxas.org](mailto:amradiolog@nrcdxas.org)

## Official updates from the FCC and the CRTC

### CALL CHANGES

The prospective new owners of WMEL-1300 Cocoa Beach FL have reserved WFCB.

### NEW STATION WATCH

1540 CP NV **Enterprise** – Recently issued CP for new station assigned calls KENT.

### STATIONS GOING DARK

1430 KCRX NM **Roswell** – License was cancelled in 2013 but maintained on CDBS “Licensed and Silent” list, presumably pending some sort of appeal, but now dropped.  
 1470 WCFJ IL **Chicago Heights** – License surrendered by licensee and cancelled Nov. 9.

### CONSTRUCTION PERMITS FOR EXISTING STATIONS

CPs fully licensed and on the air:

1120 WUST DC **Washington** – CP for D3 50000 (ch 2000) from WJFK-1580 site is on the air.  
 1580 KLFE WA **Seattle** – CP for U4 20000/5000 is on the air.

CPs built, approaching final licensing:

1450 WASK IN **Lafayette** – Applies for license to cover CP for new tower.  
 1470 KWSL IA **Sioux City** – Applies for license to cover CP for U1 2300/69.  
 1500 KCLF LA **New Roads** – Applies for license to cover CP for U1 850/18.



Applications for CPs granted:

970 KTTO WA **Spokane** – Granted CP for U2 5300/750.  
 1550 WRHC FL **Coral Gables** – Granted CP for U4 8000/1000, CoL to Doral FL.

Applications for CPs filed:

1490 WCHM GA **Clarkesville** – Applies for CP with U1 790/790 from a taller tower, same site.  
 1530 WCKG IL **Elmhurst** – Applies for CP with D3 4000.  
 1530 WJDM NJ **Elizabeth** – Applies for CP with D3 10000, to be triplexed with WPAT-930 and WNSW-1430.

Auxiliary facilities:

560 WIND IL **Chicago** – Granted CP for auxiliary facilities of U1 1000/580 from a WYLL-1160 tower.

CPs expired:

780 WIIN MS **Ridgeland** – CP to move to new site has expired and is deleted.  
 950 WAKM TN **Franklin** – CP for U1 5000/75, new site, has expired and is deleted.

### SPECIAL TEMPORARY AUTHORITY (STA)

1240 KNRY CA **Monterey** – Granted STA with parameters at variance; tower base insulators damaged after fire caused by epoxy during high surf.  
 1320 WGET PA **Gettysburg** – Applies for STA to operate without antenna monitor.  
 1380 WWMI FL **St. Petersburg** – Granted STA with U1 9800/1625, night phasor problems.  
 1540 WKXG MS **Greenwood** – Granted STA with U1 250/1 from temporary longwire; licensed tower taken down after fire at transmitter site.  
 1570 WHTX OH **Warren** – Applies for STA with U1 125/40; one tower collapsed on Nov. 14.

Applications to extend existing STAs were received from WREC-600 Memphis TN (U1 1250/1250 or parameters at variance while phasing system is replaced); KOAL-750 Price UT (U1 4000/1700, but new replacement tower is now up); WAEB-790 Allentown PA (parameters at variance); WFDF-910 Farmington Hills MI (parameters at variance); WDMC-920 Melbourne FL (U1 1250/500); KXEN-1010 St. Louis MO (temporary night antenna); KWAH-1080 Honolulu HI (operate from CP site); WBIG-1280 Aurora LA (parameters at variance); WOAD-1300 Jackson MS (U1 5000/95); KWWJ-1360 Baytown TX (parameters at variance); WELE-1380 Ormond Beach FL (U4 1000/1000 with backup transmitter); WINI-1420 Murphysboro IL (U4 300/300); and KAIR-1470 Atchison KS (U1 250/250).

Previously reported applications to extend existing STAs were granted to KKAT-860 Salt Lake City UT, WWL-870 New Orleans LA, WKY-930 Oklahoma City OK, WSHU-1260 Westport CT, WIBR-1300 Baton Rouge LA, WGBN-1360 McKeesport PA, and KPUR-1440 Amarillo TX.

### SILENT STATIONS

Formerly silent stations informing the FCC that they are no longer silent:

- 590 KFNS IL Wood River – Silent Nov. 12, 2014; back on the air Nov. 5.
- 1220 KQMG IA Independence – Silent Sept. 2, 2014; back on the air Aug. 3.
- 1230 KLWT MO Lebanon – Silent Jan. 13; back on the air Nov. 12 with 50% power.
- 1230 KOZA TX Odessa – Silent Nov. 24, 2014; back on the air Nov. 9.
- 1310 KEIN MT Great Falls – Silent Nov. 11, 2014; back on the air Nov. 11 with emergency antenna.
- 1330 WMOR KY Morehead – Silent Nov. 25, 2014; back on the air Nov. 12 with 50 watts.
- 1350 WFNS GA Blackshear – Silent Nov. 14, 2014; back on the air Nov. 3 with D1 500 STA.
- 1350 WEGA PR Vega Baja – Silent Nov. 10, 2014; back on the air Nov. 6 with U1 625/625 STA.
- 1480 KNTB WA Lakewood – Silent Mar. 30; back on the air Nov. 10 with U1 250/65 STA.
- 1490 WSYL GA Sylvania – Silent Aug. 27, 2014; back on the air July 15.
- 1560 WRSJ PR Bayamon – Silent July 8, 2014; back on the air July 24 with STA; station has asked for a waiver of the one-year silence license cancellation rule.

Stations informing the FCC that they are silent:

- 700 WCNF AL Dothan – Silent Nov. 1, power issues at existing site, needs to move tower.
- 1300 WRDZ IL La Grange – Silent Oct. 30 pending transfer to new owners.
- 1420 WRSA VT St. Albans – Silent Oct. 30, transmitter problems.
- 1450 KCTI TX Gonazles – Silent Sept. 30 pending sale.
- 1490 WFAD VT Middlebury – Silent Nov. 6, transmitter problems.
- 1540 KTGG MI Spring Arbor – Silent Nov. 12 pending transfer to new owners.
- 1540 WREJ VA Richmond – Silent Nov. 6, transmitter site has been sold.



### COORDINATE CORRECTION

- 750 KOAL UT Price – Applies for CP to correct coordinates to 39-34-01/110-48-02.
- 780 WPTN TN Cookeville – CP to correct coordinates to 36-09-48/85-31-29 is on the air.
- 1480 WPFJ NC Franklin – CP to correct coordinates to 35-10-46/83-21-10 is on the air.
- 1560 WSEZ IN Paoli – Applies for CP to correct coordinates to 38-32-17/86-28-44.

*Fines:* WOAP-1080 Owosso MI, cancelled \$4000 fine proposed in 2012 for operating daytime-only station at night.

### CANADA

- 940 CBXU BC Hudson's Hope – LPRT granted CP to move to 103.1 MHz FM.
- 1610 CHRN QC Montréal – CP for new station applies to move planned transmitter site; turns out they can't make work the original plan to duplex with CJLO-1690.

## *NRC AM Log Updates*

- 590 KFNS IL Wood River – Format to SPT (ex-Silent, ex-SPT); delete slogan; networks to CS/Jr; adds // KXFN-1380. (WB)
- WROW NY Albany – Slogan to "Magic 590 AM/100.5 FM," adds // W263CG-100.5.
- 630 KIDD CA Monterey – Format to CLA (ex-SPT); slogan "K-Mozart," adds // K236BK-95.9.
- 850 KOA CO Denver – Delete // K300CP-107.9; Group to // NewsRadio KOA.
- 920 KXLY WA Spokane – Adds // K262AG-100.7.
- 930 WGAD AL Rainbow City – Format to Rock/OLD (ex-AC). (BD)
- CJYQ NL St. John's – Format to C&W (ex-Newfoundland Music); slogan to "930 KIXX Country."
- 940 WKGM VA Smithfield – Adds // W272CC-102.5.
- 990 WLEE VA Richmond – Format UC:GOS (ex-NWS/TLK); slogan "Rejoice 990," drop nets.
- 1030 WEBS GA Calhoun – Slogan to "Classic Hits FM 99.7 & AM 1030."
- KMAS WA Shelton – Delete slogan and // K277CZ-103.3; Group to // Newsradio 1030 & 103.3.
- 1060 KBFL MO Springfield – Slogan to "Music of Your Life 99.9."
- 1080 KVNI ID Coeur d'Alene – Format to XMAS (ex-SPT); slogan to "Kootenai FM," adds // K223AN-92.5; delete networks.

- 1170 KOWZ MN Waseca – Networks to Li. (BD)  
 KJXX MO Jackson – Format AC:OLD/REL (ex-NOS/REL); slogan “92.3 the Dove.” (BD)
- 1240 WFTN NH Franklin – Format to OLD (ex-NOS); delete // WPNH-1300; Group to // Oldies 92.9. (TF)  
 WDNE WV Elkins – Networks to Fox/WW1.
- 1260 KROX MN Crookston – Adds // K289CE-105.7. (BD)
- 1270 WTLY FL Tallahassee – Format to XMAS (ex-AC); add // W287CO-105.3; drop slogan.  
 KGNM MO St. Joseph – Format to OLD (ex-REL/REL:AC); slogan to “Classic Hits Cool 102.5,” add // K273BF-102.5; delete networks.
- KRXO OK Claremore – Slogan to “The Fan,” add // K300CY-107.9, drop // KTUZ-FM-106.7. (GH)
- 1290 KOUU ID Pocatello – Slogan to “Country Cow.”
- 1300 WRDZ IL La Grange – Format to TBA (ex-KID).  
 WPNH NH Portsmouth – Format to OLD (ex-NOS); drop slogan; delete // WFTN-1240; Group to // Oldies 92.9. (TF)
- 1310 WEMG NJ Camden – Slogan to “La Mega 105.7,” adds // W289AZ-105.7.
- 1320 WGOX TN Kingsport – Format to TLK/BIZ (ex-TLK); slogan to “Business Talk for the Tri-Cities.” (BD)
- 1340 KWXV CA Cathedral City – Format to TLK (ex-NOS); delete slogan and // K297BO-107.3.  
 WALL NY Middletown – Format to Rock/OLD (ex-SS:MEX); slogan to “The Hudson Valley’s Hometown Station”; delete // WEOK-1390; Group to // WALL Radio.
- 1350 WPDR WI Portage – Slogan to “Your Radio Friend.” (BD)
- 1380 KXFN MO St. Louis – Networks to CS/Jr; adds // KFNS-590. (WB)  
 WTOB NC Winston-Salem – Format to SS:MEX (ex-Rock/OLD); delete slogan.
- 1390 WEOK NY Poughkeepsie – Format to SS:NOS (ex-SS:MEX); slogan to “Juan AM,” drop // WALL-1340.
- 1400 KART ID Jerome – Format to SPT (ex-C&W); slogan to “The Game,” networks to CS/Jr.  
 KTNM NM Tucumcari – Format to C&W (ex-C&W/TLK); slogan to “Legendary Country.”
- 1420 WAOC FL St. Augustine – Format to Tourist/SPT (ex-SPT); slogans “Sports Radio 96.5 FM and AM 1420,” “Air 96.5,” “Augustine Interactive Radio,” nets CS/Jr. (TK)
- 1450 KBUN MN Bemidji – Networks to Mn/ESPN.
- 1460 KKAQ MN Thief River Falls – Slogan to “Classic Rock.” (BD)
- 1470 WBFC KY Stanton – Slogan to “Mountain Gospel,” adds // WMTC-FM-99.9.
- 1490 WTIQ MI Manistique – Format to C&W (ex-OLD); slogan to “The Maverick,” networks to A/Mi/WW1.
- 1520 WRCI MI Three Rivers – Format to C&W; slogan to “Nash Icon,” nets to Mi/Mf/WW1.
- 1540 KTGG MI Spring Arbor – Slogan to “Strong Tower Radio.”
- 1580 KHEP AZ Tempe – Format to TBA (ex-KID); delete networks.  
 KFCS CO Colorado Springs – Format to TBA (ex-OLD/Shopping, ex-SS:MEX). *Noted so weak I couldn’t copy it today, 11/20. (WH)*
- 1590 WBHN NC Bryson City – Slogan to “Real Country.”  
 WIXK WI New Richmond – Format to C&W (ex-ETH/Hmong).



### New Groups

// Newsradio 1030 & 103.3 – KMAS-1030, K277CZ-103.3, K225BY-92.9.  
 // Oldies 92.9 – W225CB-92.9, WFTN-1240, WPNH-1300. (TF)  
 // WALL Radio – WALL-1340, W231BP-94.1, W235BI-94.9, W289BE-105.7.



### Revised Group

// NewsRadio KOA – KOA-850, K231AA-94.1, K231BQ-94.1.

Thanks to Shawn Axelrod, Bill Hale, Tony Fitzherbert (TF), Walt Breville (WB), Bill Dvorak (BD), Glenn Hauser (GH), and Terry Krueger (TK).

### Membership Renewals

Your subscription expiration date is on the back cover. Renewals go to NRC Headquarters, P.O. Box 473251, Aurora, CO 80047-3251. Rates are also on the back page. You can also order online using PayPal – go to <[www.nrcdxas.org](http://www.nrcdxas.org)>.

Order e-DXN in addition to (or instead of) your subscription to the paper edition, and get DX News in PDF form (and in full living color!) a full week before the masthead publication date.

# Domestic DX Digest – West

Jim Tedford, Editor

20310 Bothell-Everett Hwy. B4, Bothell WA 98012-8133, [Radio\\_Enthusiast@hotmail.com](mailto:Radio_Enthusiast@hotmail.com)

Loggings of U.S. and Canadian stations by DXers located in the Central, Mountain, and Pacific Time Zones. All times are Eastern Local Time (ELT).

## REPORTERS

- GH-OK** **Glenn Hauser, Enid, OK.** Mostly DX-398 or PL-880 with internal antenna only; NRD-545 with ALA-330S inside or N-S random wire; Nissan stock car radio as specified; FRG-7 with E/W longwire as specified. Glenn's complete reports, with extensive commentary, are originally published in *DX Listening Digest*.
- JEL-MO** **J.E. Lewis, Kansas City MO.** Honda Odyssey car radio.
- JN-TX** **James Niven, Cedar Creek (Austin) TX.** ELAD S2 and Drake R8 with DKAZ 140-foot and 150-foot longwire.
- JJR-WI** **John J. Rieger, South Milwaukee, WI.** Icom IC-R75 MFJ-959B tuner, preamp Kiwa loop; Grundig S450DLX stock.
- JW-CO** **John Wilkins, Wheat Ridge, CO.** Drake R-8, 4-foot box loop.
- KDF-IL** **Karl D. Forth, Chicago, IL.** ATS-909

## STATION NEWS

- 1300 WRDZ IL** **La Grange** – 10/30 1745 – Noted off the air and silent. I believe they were on either 10/28 or 10/29. WOOD in Grand Rapids is the dominant here. **(KDF-IL)**
- 1550 KBUD CO** **Golden** – Has been silent for several days. Guess they smoked themselves into oblivion with their all-Pot format. **(JW-CO)** Now, that's funny! **(JDT-WA)**

## DX LOGS

- 600 WMT IA** **Cedar Rapids** – 11/7 2027 – Ad for Kelowna Auto! Has me going, but isn't the BC station on 600, CKBD, in Vancouver, and also gone for good? No, it must be merely WMT, as they continue with "on highway 1 south of Iowa City". However, I don't find any such highway around Iowa City, but the Trans-Canada Highway is not too far (north) of Kelowna; hmm. I must suppose this Auto business in IA is otherwise spelt too. **(GH-OK)**
- 670 KHGZ AR** **Glenwood** – 11/09 2048 – "Caddo Country, FM 98.9 and AM 670" IDs, country music. Dominating WSCR Chicago unless I null this daytimer, resuming on late and maybe to be all-night again. The name probably derives from the Caddo River in the area, as the Caddo Nation/Tribe HQ is in Binger OK. I've yet to hear them utter KHGZ, but presumably do so at top of the hour legal ID time only. **(GH-OK)**
- 680 KFEQ MO** **St. Joseph** – 11/12 2306 – On car radio north of OKC, 'Jim Bohannon' from presumed KFEQ, in and out, and it's not // JimBo on 690, KGGF Coffeyville KS. KGGF carries him live starting at 2206, while the sked on KFEQ is 2306-0200, so I had assumed KFEQ would also be live for two hours, and play back the first hour at 0106 (as presumably continues all night on the WW1 network feed). Instead, KFEQ apparently delays the whole thing by one hour, so don't try calling in while tuning 680! The 2300+ topic on KFEQ is the University of Missouri situation, something else on KGGF. **(GH-OK)**
- 750 KAMA TX** **El Paso** – 11/19 0758 – 'Univisión América 750 AM, una estación euforia[?]', i.e. KAMA. Also in middle of the night sometimes QRMs WSB when it should not, but situation not as bad as it was earlier this year. **(GH-OK)**
- 770 KKOB NM** **Albuquerque** – 11/9 2047 – Mention of Sandoval County, i.e. KKOB, and with a light reverb, again implying I am getting both transmitters, the 50 kW main one in the north valley of Albuquerque, with a null toward WABC and almost toward me; and the ND 230-watt night-only fill-in for Santa Fe. Unless, of course, they are deliberately introducing reverb for effect in the studio, but I doubt it. **(GH-OK)**
- 780 KCEG CO** **Fountain** – 11/10 2353 – Country music, but on 780-LSB, no country music, just WBBM without QRM, unlike on the hi side. Therefore KCEG Fountain CO is another station with suppressed LSB (but full carrier, presumably), like KHAC

**KFEQ**  
680 AM

880 NM. 2359-2400 going from bluegrass to country tune, pause but no ID at all. Does anyone know of others? Guess we always need to switch LSB/USB with any new catch. Yes, I made sure the passband tuning on the NRD-545 was neutral, and adjusted lower and upper passband several times to be certain. **(GH-OK)**

- 900 KHOZ AR **Harrison** – 11/10 0707 – Poor; alone! Staples, ARN news (Arkansas news) stories. **(JJR-WI)**
- 930 WGAD AL **Rainbow City** – 11/19 0026 – Classic rock roughly east-west, vs JimBo on the N/S antenna. 0057 a John Denver song; 0100 ID for WGAD Rainbow City, and 103.9 FM W2. That's on the newly acquired ICR-75 with ALA-330 antenna. This is facilitated by the lack of any audible signal from WKY OKC, but which may be on but at very puny power. An hour later I've switched to the DX-398 with internal ferrite only: 0158, country song runs over 0200; finally 0202, clear ID for "WGAD, Rainbow City-Gadsden and W280ER, 103.9" and jingle as "The greatest hits of all time, WGAD," then disco tune. Imagine that: top billing to the AM, not FM translator. FCC shows W280ER is licensed to Anniston, but with a CP for Gadsden --- another one of those move-in deals for AMs desperate to get on FM. Before and after, the translator is separately owned/licensed. Per NRC Pattern Book, 500-watt night pattern is supposed to go south with essentially no signal to the west! 5 kW day is non-directional. Station obviously identifies with larger city Gadsden of which Rainbow City is a suburb, on I-59 in northeast AL. WGAD is probably also one of my un-IDs from yesterday, rather than KCCC NM. **(GH-OK)**
- 930 WKY OK **Oklahoma City** – 11/11 0700 – Fair at 30/9 in fade up over WKBM. LID in EE after slower SS song. In past few mornings. Thanks to Sheryl Paszkiewicz. Heard first in 1968 when it was a Top40 station fighting (then) KOMA. **(JJR-WI)**
- 980 WTEM DC **Washington** – 11/8 0715 – Poor; "Get closer to DC sports; ESPN 980," atop. **(JJR-WI)**
- 990 WNTP PA **Philadelphia** – 11/9 0634 – Poor. Military Bible, Australian Dream@Walgreens, NewsTalk 990 WNTP, Bill Bennett. Alone. Rare! **(JJR-WI)**
- 1020 KCKN NM **Roswell** – 11/9 0655 – Fair! Ads with phone numbers, music LID for several stations :00. Atop frequency. **(JJR-WI)**
- 1100 KNZZ CO **Grand Junction** – 11/15 2252 – "In defense of liberty, News Radio 1100, KNZZ." Somewhat atop WTAM Cleveland, roughly equal on average, so again/still on 50 kW day pattern. **(GH-OK)**
- 1150 WHBY WI **Kimberley** – 11/7 2022 – Promos for programs on "Newstalk 1150, WHBY," at least three of them so three such IDs, then mentions Wisconsin Badgers; surprised to hear this dominating 1150 as I tune across, rather than KSAL-KS. NRC AM Log shows WHBY is 20/25 kW (yes, more at night), so no wonder it gets out, from Kimberley (Appleton) WI, U4. NRC Pattern Book shows very tight day and night patterns with huge lobe to the northeast! Must be out of whack, like non-directional, now; no wonder I haven't heard it before. Looks like it should barrel into Europe if on proper patterns. **(GH-OK)**
- 1260 KEIR ID **Idaho Falls** – 11/12 0921 – News, ads, features, and "East Idaho weather" on morning drive-time show. Good peaks between fades. **(JW-CO)**
- 1270 KGNM MO **St. Joseph** – 11/6 0724 – Poor; "in Missouri. Classic Hits Cool 102.5 KGNM." WKBF in weeds. Rare. **(JJR-WI)**
- 1310 WTLC IN **Indianapolis** – 11/16 1722-1725 – Fair with long Kroger ad, then Macys ad, mention of 1310 The Light. New! **(JEL-MO)**
- 1319.96 KCLI OK **Clinton** – 11/13 0902 – Fox news (short version), then area news, weather, ads, ID. Fair and briefly on top. Umpteenth year in a row on this frequency. **(JW-CO)**
- 1320 KELO SD **Sioux Falls** – 11/15 0859 – Legal ID for KELO 1320 AM and "KELQ 107.9 Flandreau-Sioux Falls"; also mentioned kelo.com; Fox News followed. Fair. **(JW-CO)**
- 1330 KTON TX **Cameron** – 11/7 2335 – Fair on top of channel with local ad spots and back into sports broadcast at 2335. **(JN-TX)**
- 1330 KOVE WY **Lander** – 11/7 0833 – C&W tunes, "KOVE 1330 AM" ID, then more music. Fair/poor in QRM. Local 1340 IBOC still off. **(JW-CO)**
- 1350 KTIK ID **Nampa** – 11/5 0959 – Legal ID at 0959:50: "From the Jay Hotel(?) studios, this is Sports Radio 93-1 FM KTIK New Plymouth-Boise, 1350 AM KTIK Nampa-



Boise, The Ticket"; CBS Sports Minute followed. Fair in QRM. Semi-regular lately after sunrise. (JW-CO)

- 1380 WLRM TN **Millington** – 11/10 2302 – As I have just IDed WKJV in Asheville NC, I catch another ID (nothing but) underneath, for WLRM. (GH-OK)
- 1400 WGIL IL **Galesburg** – 11/11 0636 – Very poor, though clear "WGIL" while listening to semi local WRJN newscast. Also heard clear "Illinois" and "Galesburg" when commercials failed to fire on 'RJN! (JJR-WI)
- 1420 KGNB TX **New Braunfels** – 11/7 1820 – Fair to good signal with Country music, ID as "Real Country KGNB." (JN-TX)
- 1430 WCMY IL **Ottawa** – 11/10 0725 – Poor; "Full service 1430 WCMY," IL farm report in fade up. (JJR-WI)
- 1440 KRZD CO **Wray** – 11/10 0727 – Poor, "in Colorado, the place to be," fade, and "Classic Hits 1440 KRAY" OLDie (JJR-WI)
- 1480 KLVL TX **Pasadena** – 11/7 1815 – Talk between two males about the Ethnic community of Houston. Fair level. (JN-TX)
- 1500 WFED DC **Washington** – 11/11 0730 – Fair in brief fade up, "Federal News Radio at :30 minutes after the hour." No KSTP or WLQV. Unusual. (JJR-WI)
- 1510 KMSD SD **Milbank** – 11/13 0216 – "Our colorful musical portfolio on KMSD," classic rock, medium SAH from WLAC? Loops NNE/SSW. Wasn't certain of call at first, KNST? KNSB? But now I'm sure it's this, 5000/14 watts in Milbank SD. Site appears misplaced in the NRC AM Pattern Book, circa Sioux Falls in SE SD. Daytime coverage map on radio-locator as "Mibank" shows site is in NE SD, NE of Watertown barely on the SD side of the border, i.e. where Milbank really is; but with address in Valley City ND, which is not even within the fringe contour! So much for being the "Hometown Station"; or rather, plenty ambiguous. (GH-OK)
- 1550 KXEX CA **Fresno** – 11/9 0759 – Man with LID: "KXEX Fresno, La Misionera, el regalo de Dios," and into morning Mass in English with Spanish voiceover translations. Fair and on top with local KBUD silent. (JW-CO)
- 1560 KGOW TX **Bellaire** – 11/16 1710-1715 – Excellent, like a local, with Coors ad, mention of I-10, Yahoo Sports Houston. (JEL-MO)
- 1580 KAMI NE **Conrad** – 11/19 0847 – Nulling KOKB-OK, I get something from the NW/SE, mentioning "northeast Colorado/southwest Nebraska", so that's KAMI; making 3.5 Hz SAH. (GH-OK)
- 1590 KELP TX **El Paso** – 11/4 0800 – Singing ID "El Paso's Christian station KELP," followed by a prayer. Fair in KVGB null. (JW-CO)
- 1610 CHHA ON **Toronto** – 11/9 2040 – Ads in Italian including one for cheeses, with 905 area code. My phone book doesn't list it, but internet check leads right to S Ontario, Mississauga, Niagara Falls, etc., new? Getting this instead of Anguilla, i.e. CHHA Toronto, Voces Latinas. This page has a program schedule in embedded pdf format: <http://chha1610am.ca/programming/> As before, the language I'm hearing does not match up with what is shown: Mondays at 8-9 pm ET, 'A Drink of Water [ENG]'. They do allegedly have Italian at other times: Bella Italia at 11 pm-midnight M-F and 9-10 pm Sunday. (GH-OK)
- 1630 KCJJ IA **Iowa City** – 11/6 0201 – News all about Iowa, how strange in the night middle rather than plugging into some national network at hour top; I bet it's recorded. 0202 weather from some TV station; 0203 "The Mighty 1630, loud & clear, KCJJ," and rock music. Split format from Iowa City of TLK/AC per NRC AM Log. (GH-OK)



#### UNIDENTIFIED

- 930 UNID -- 11/19 0752 – Just after confirming that WKY OKC is on the air but at severely reduced power, I'm briefly hearing another weak SS station, counterclockwise from WKY, "los éxitos de hoy, Qué Suave" (or Ke Suabe?) – trouble is I'm not certain of the last word, and don't find any listings for such a slogan or anything similar in western US or Mexico. If Mexican, the only likely 930s this late are XESHT in Saltillo, Coahuila, but it's supposed to be "La Poderosa" or "La Más Buena"; or XEQS in Fresnillo, Zacatecas, which is "Romántica". Could it be KCCC Carlsbad NM in a recent flip? Well, there is a 'Que Suave' in Carlsbad, but it's a hair/nail salon. Searching on that slogan mainly hits on KSWV 810 Santa Fe. How about KAPR Douglas AZ, listed as SS? Could be, except it's allegedly // KVOI 1030 which is NewsTalk in English. (GH-OK)

- 1190v UNID** -- 11/13 before 0028 – Low audible heterodyne on car radio south of Enid, roughly 0.1 kHz? and also noted for some time. Which station is off-frequency? At home I wasn't certain whether it was due to a local device. **(GH-OK)**
- 1220 UNID** -- 11/11 0853 – Ad for something on "Highway 95 in Athens," soon fade-out, long past sunrise here. This should be easy to pinpoint, but not: first of all, there are no 1220s actually in any community of license called Athens. The Wikipedia entry for Athens (Greece) has a handy list of "Other locations named after Athens" in the USA. I've looked up most of those on atlas maps and so far haven't found any highway 95, US or state, in their vicinities. Ideas? Perhaps I will keep searching more minutely. No idea of the direction on this one. **(GH-OK)**
- 1510 UNID** -- 11/13 0023 – On car radio at Dover OK, "spooky" music over WLAC in & out, 0030 Spanish announcement; more spooky at 0051 on car radio almost to Enid. Probably XEQI, Monterrey NL, which I haven't logged from home since Feb 24; but the music could have been another. **(GH-OK)**
- 1550 UNID** -- 0024 – On car radio south of Enid, soul/gospel music often atop. Looks like WPMC Baton Rouge LA is most likely, heard before, 5000/42 watts. And if I recall, KLFJ Springfield MO, the Branson barker, is still silent; forever? **(GH-OK)**

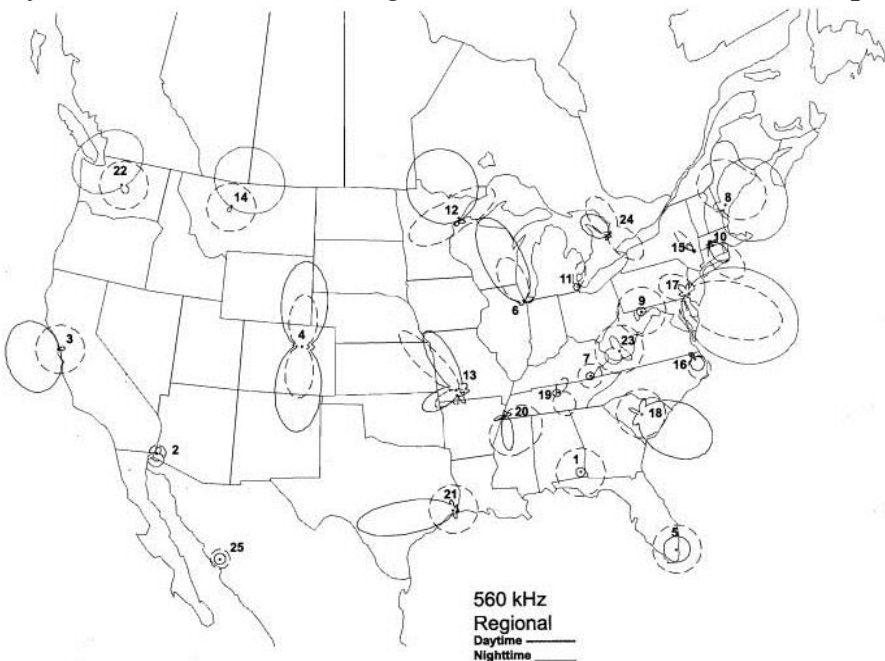
Thanks for all this issue's contributors. See you next time. **(JDT-WA)**

## Unreported Domestic Stations

Two more previously unreported stations were reported to DDXD this issue for the first time since at least Volume 67: WHSR-980 and WMCH-1260. There are still 457 stations on the unreported list. Can you hear one and report it for next issue? The most recent full list was printed in Issue 82-20.

### NRC Antenna Pattern Book, 7th Edition

The 7th Edition of the NRC *Antenna Pattern Book* is now available. This all new edition prepared by NRC'er Paul Swearingen is an all-inclusive book of patterns for both Day and Night operation of



stations in the USA, Canada and selected foreign stations. The data for the book comes from the 34<sup>th</sup> Edition of the *AM Radio Log* and NRC'er John Callerman's comprehensive Mexican station listing.

The book comes shrink wrapped in 8½ by 11 three hole punch format for placement in your own three ring binder. There are 240 pages and the book has maps covering 530 through 1700 kHz depicting the lower USA, Canada and Mexico. Hawaii and Alaska are shown on separate maps at the of the book.

Price/ordering info: To the United States, \$22.95 for members, \$28.95 for non-members (add \$4.00 for Priority Mail delivery to U.S. addresses only). To Canada \$36.25; airmail outside of U.S. and Canada \$41.75. For those outside the U.S., use PayPal or a postal money order in U.S. funds only. Order from NRC, P.O. Box 473251, Aurora CO 80047-3251 or [www.nrcdxas.org](http://www.nrcdxas.org). Colorado residents, please add 3.5% sales tax.

Visit the NRC on Facebook: <https://www.facebook.com/groups/509246815818550/>

**Chicago baseball moves:** According to examiner.com, the Chicago White Sox have signed a six-year deal to move their broadcasts from WSCR-670 to WLS-890, beginning in 2016. As a result, the Chicago Cubs will move from WBBM-780 to WSCR. The Cubs broadcast on WBBM lasted only one year, after a decades-long run on WGN-720 ended after the 2014 season.



# Domestic DX Digest – East

Mike Brooker, Editor

99 Wychrest Avenue, Toronto ON M6G 3X8 (Canada), [patria1818@yahoo.com](mailto:patria1818@yahoo.com)

Loggings of U.S. and Canadian stations by DXers located in the Eastern and Atlantic Time Zones. All times are Eastern Local Time (ELT).

## REPORTERS

**HF-MI** **Harold Frodge, Midland** – Drake R8B + 125 ft. bow-tie; 60 ft. RW & 185 ft. center-fed RW  
**HJH-PA** **Harry Hayes, Wilkes-Barre** – C. Crane Skywave, Q-Stick Plus ferrite rod  
**KK-VA** **Kraig Krist, Manassas** – Winradio G33DDC SDR, Wellbrook ALA-1530S+ Imperium Loop  
**TLK-FL** **Terry Krueger, Clearwater** – NRD-535, IC-R75, active loop, roof dipole  
**JRM-PA** **John R. Malicky, Pittsburgh** – Delco Car Radio, Superadio III  
**RM-NJ** **Richard Merkel, Union** – Yaesu FT-767GX transceiver, GE Superadio II  
**PS-ON** **Paul Snider, Welland** – ICOM R75, Pixel RF Pro-1B loop, MFJ-1020C tuner  
**NjW-ON** **Niel Wolfish, Toronto** – WinRadio Excalibur G31DDC + Wellbrook Loop  
**MKB-ON** **Mike Brooker, Toronto** – Grundig G5, Grundig YB-400PE, Sony SRF-39FP, Panasonic RF-2200 (receiver emeritus)

Follow me on Twitter! @patria1818 DX-related tweets will be hash-tagged #MWDX.

Friend me on Facebook! [www.facebook.com/keval.mike](http://www.facebook.com/keval.mike)

## UNID

**1310 unID** -- - 1/15 0628 – Promo briefly up, "... weekday mornings... Mike & Mike on ESPN Radio and ESPN2." Suspect either WISE, Ashville, NC or WDKD, Kingstree, SC, as pointing that way. Quickly lost to WYND, DeLand. **(TLK-FL)**

**1400 unID** -- - 11/15 0615 – Someone here with Haitian kreyòl preaching in the jumble of other graveyard stations. This format often heard and presumed to be WFL, Fort Lauderdale, however the latest NRC DXN 83-4 reports the station as silent from Oct. 24 due to licensed and STA sites lost and new owners are applying for a CP for a new permanent site. So, back on, or something else all along here? Something brokered from WSDO, Sanford a possibility, too, though they're supposedly still Spanish. **(TLK-FL)**

**1510 unID** -- - 11/11 0730 – In multi-station mix (WLKR, WLAC, WFAI, WMEX, WWBC) with Morse code, "\*\*\* TAOSNE" was sent twice. What is this? **(KK-VA)**

**1540 unID** -- - 11/11 0712 – In multi-station mix (ZNS-1, WNWR, CHIN, KXEL, and others), male with what sounded like "You're listening to... Original City WIBC"? **(KK-VA)**

## LOGGINGS

**720 WRZN FL** **Hernando** – 11/7 0600 – End of Family Talk broadcast and disclaimer that Family Talk is not associated with Focus On The Family. ToH ID: "1430 WTMN-Gainesville and 720 WRZN Hernando-Ocala... hear his words every hour, here on The Shepherd". Fair with WGN-Chicago way off in the distance. **(NjW-ON)**

**730 WLTQ SC** **Charleston** – 11/11 1658 – PSA for the ARRL with phone number given and ID: "this is Catholic Radio for South Carolina." ID also mentions 1300-WCKI in Greer. Followed by EWTN programming. **(NjW-ON)**

**780 WCKB NC** **Dunn** – 11/7 0658 – All alone with gospel music. ID: "serving Erwin, Coats ... and your town! This is WCKB AM 780 Dunn-Fayetteville-Wilson." Poor with no sign of WBBM-Chicago. **(NjW-ON)**

**790 WBLO NC** **Thomasville** – 11/7 0659 – Presumed with Mexican music, non-ID in Spanish: "ranchero ... Pepe siete noventa...pone lo que quieres!" All alone at this time. **(NjW-ON)**

**800 WDSC SC** **Dillon** -11/9 0559 – NBC Sports Radio programming and ToH ID: "Every play, every day on AM 800, WDSC Dillon-Florence." **(NjW-ON)**


**810 WHB MO** **Kansas City** – 11/14 0628 – Ad for the Gaslight Grill on 137th St. which their website confirms, into ESPN sports junk. **(TLK-FL)**

- 820 WBAP TX **Fort Worth** – 11/14 2150 – Ad for orthotics store in Ft. Worth then call ID. Mention of “the Metroplex.” Weak through IBOC hiss. **(HJH-PA)**
- 850 WPTK NC **Raleigh** – 11/7 0701 – Bellamy Brothers’ “Let Your Love Flow” followed by ID that mentions 104.7 FM and slogan “Just Right Radio,” into another oldie. **(NjW-ON)**
- 880 KRVN NE **Lexington** – 11/18 1805 – “KRVN Weather Watch” local weather, ads for KRVN.com and Lamar Fertilizer, “This Day in History” feature including the Jonestown massacre/suicides. Over WCBS for 2 minutes. **(HF-MI)**
- WMEQ WI **Menomonie** – 11/14 1737 – “News-Talk AM 8-80 WMEQ” ID, Whitewater Warhawks high school football game. On top for 2 minutes before giving way to WCBS and presumed WRFD with gospel music. **(HF-MI)**
- 890 WHJA MS **Laurel** – 11/14 0636 – Urban Gospel, including Vicki Yoh’s “He’s Been Faithful” (thanks, SoundHound), “Gospel 890 AM” slogan, quickly faded out. **(TLK-FL)**
- 910 WSUI IA **Iowa City** – 11/18 1658 – Over IBOC-like hiss and CHML-900 slop with local weather, “you’re listening to Iowa Public Radio WSUI Iowa City” ID. **(MKB-ON)**
- KCJB ND **Minot** – 11/15 0659 – Man with weather forecast who said it was coming up to 6 o’clock. ID and Fox news. Out of news at 0705 with ID: “The Magic City’s news and information station, your home for classic county, 91 KCJB” followed by C&W. **(NjW-ON)**
- WPFB OH **Middletown** – 11/17 0632 – Playing The Style Council’s “My Ever Changing Moods,” matching the WNKU webstream. **(NjW-ON)**
- 920 WMNI OH **Columbus** – 11/12 2340 – NOS music, ID at 2347 “... memories, WMNI.” Poor to very poor, mixing with unknown oldies and SS stations. **(PS-ON)**
- 950 WPET NC **Greensboro** – 11/12 1658 – Weak with gospel music. ID just past ToH sounding like “American best Southern gospel ... WPET AM 950” and USA Radio Network news. **(NjW-ON)**
- WJKB SC **Moncks Corners** – 11/13 1800 – CBS news preceded by dual ID for 1340-WQSC. ID mentions “a Kirkman Broadcasting Station.” **(NjW-ON)**
- WXGI VA **Richmond** – 11/7 0700 – ToH ID and the Ask Tommy Show with talk about the new Wegmans store opening up. No sign of WWJ or WROC at this time. **(NjW-ON)**
- 980 WHSR FL **Pompano Beach** – 11/14 0557 – Presumed the one with very proper French (not Haitian kreyòl) female, seemingly something block brokered. Guess the Haitians can still figure out most of it. **(TLK-FL)**
- 1040 WYSL NY **Avon** – 11/12 2259 – Talk show, ToH ID “News Power 1040, News Talk 92.1, WYSL,” into news. Poor, mixing with unknown Spanish language station. WHO nulled. **(PS-ON)**
- 1070 WTWK NY **Plattsburgh** – 11/11 2340 – 11/12 0106 – Presumed, as I heard no ID, WTWK is not supposed to be on this time of night and it’s the only Bloomberg Radio station on 1070. Talk show talking about Italian-Americans, Bloomberg Radio news break, Staples ad, Bloomberglive.com promo, back to the talk show, University of Mount Olive ad, promo for a Christmas event on Nov 13, 14 & 15 in Newburgh, NY, Highway Traffic PSA, recycling PSA, lots of mentions on Bloomberg Radio, Bloomberg.com etc during the time I was listening. Fair at times, but mostly poor mixing with WNCT, an unknown Spanish station. No sign of CHOK. **(PS-ON)**
- WNCT NC **Greenville** – 11/10 1753 – Slogan, “Beach, Boogie and Blues start right now on the 5 o’clock cruise”. Strong to fair signal. **(HJH-PA)**
- 1100 WHLI NY **Hempstead** – 11/14 1616 – “The Hits are back on the radio, tell your friends, 1100 WHLI.” Nostalgia music format. Good with fades. **(HJH-PA)**
- 1120 WKQW PA **Oil City** – 11/21 1657 – Over nulled KMOX with ESPN NFL talk, “ESPN Radio 1120, this is WKQW Oil City” near-ToH legal ID. **(MKB-ON)**
- 1150 WAVO SC **Rock Hill** – 11/10 1700 – Caught ID during dead air in CKOC-Hamilton programming: “wave-oh 1150 AM, the best music ever made, WAVO Rock Hill-Charlotte.” **(NjW-ON)**
- WCRK TN **Morristown** – 11/12 2248 – ID as “105.7 WCRK FM.” Fair signal with almost no fades. They do ID as 1150 on the top of the hour. **(HJH-PA)**
- 1190 KQQZ MO **De Soto** – 11/11 2318 – Country music, ID at 2331 “... the all new KQQZ,” ad for Adrianna’s on the Hill restaurant (in St. Louis), St. Clair County Coalition



promo, promo for "The Grim Reaper of Radio on the all new KQQZ" followed by KQQZ jingle. Fair to poor mixing with WOWO & WLIB. **(PS-ON)**

- 1200 **WXKS MA Newton** – 11/7 0657 – Over usual CFGO/WCHB mix with local sports (Patriots, Bruins), "Bloomberg 1200" slogan. **(MKB-ON)**
- WAMB TN Nashville** – 11/7 0637 – Weather forecast and spot for something in Lebanon. ID as "Real Country 98.9." Followed by C&W music. All alone at this time with no sign of WCHB or anybody else. **(NjW-ON)**
- 1210 **WILY IL Centralia** – 11/8 0804 – "For more than sixty years in Centralia, this is AM 1210 WILY" ID followed by "Sunglasses At Night" performed by Corey Hart. Then faded under WPHT-Philadelphia. **(NjW-ON)**
- 1230 **WCLO WI Janesville** – 11/16 0558 – "News radio 12-3-Oh WCLO, Southern Wisconsin's news leader ... WCLO Janesville-Beloit." Time check as 1 minute in front of 5 o'clock and local weather. CBS news at 0600. **(NjW-ON)**
- 1240 **WSDR IL Sterling** – 11/17 0700 – ToH ID: "your station for information everyday, WSDR Sterling." **(NjW-ON)**
- WBAS MA West Yarmouth** – 11/10 1700 – ToH ID: "AM 1240 WBAS West Yarmouth-Cape Cod." **(NjW-ON)**
- WJMC WI Rice Lake** – 11/6 1700 – ToH ID: "your first choice for good times and great information, AM 1240 WJMC Rice Lake" into CBS news. **(NjW-ON)**
- 1260 **WPNW MI Zeeland** – 11/9 2259 – Religious talk, ToH ID "1260 WPNW Zeeland, Grand Rapids," into news. Very poor mixing with WSKO and others. **(PS-ON)**
- WMCH TN Church Hill** – 11/13 0600 – ID by woman: "The Voice, AM 1260 WMCH Church Hill" and promo for a Christian on-line forum. **(NjW-ON)**
- 1290 **WJCV NC Jacksonville** – 11/11 1700 – ToH ID: "your home for southern gospel music 1290 AM WJCV ... and 98.3 FM." Mixing with WDZY. **(NjW-ON)**
- WDZY VA Colonial Heights** – 11/7 0701 – ToH ID a minute late after religious talk. No sign of CJBK-London. **(NjW-ON)** *Another ex-Radio Disney affiliate that has found Jesus but still has call letters evoking their old format. Mike.*
- 1300 **KGLO IA Mason City** – 11/19 1659 – In dogfight with WXRL groundwave and WOOD, caught partial "...on AM 1300 KGLO" ID into CBS news. **(MKB-ON)**
- WGDJ NY Rensselaer** – 11/9 2231 – News, weather, "Talk 1300" non IDs, John Bachelor show with talk on Kristallnacht in 1938 Nazi Germany. Fair to poor mixing with WJZ and a few others. // with internet stream. **(PS-ON)**
- 1310 **WIBA WI Madison** – 11/17 1643 – Up suddenly with good peaks (pattern change?), "News-Talk 13-10 WIBA" ID, political talk show. **(HF-MI)**
- CIWW ON Ottawa** – 11/17 1604 – "13-10 News" slogan with local news, ad for Ontario Toyota dealers. Peaks barely over jumble and gave way to WIBA; not new but rare visitor. **(HF-MI)**
- 1320 **WKAN IL Kankakee** – 11/1 0019 – "1320 WKAN" ID, into talk show talking about transgenders, equality etc., Talk Radio 1320 promo, ads, more promos, veteranscare.org promo, Primary Care ad. Fair to poor mixing with possibly CJMR, WJAS and others. **(PS-ON)**
- WDER NH Derry** – 11/19 1930 – Governor's interview on terrorism, clear "WDER" ID, C&W music interfering underneath. Faded out after 1950. **(RM-NJ)**
- 1330 **KNSS KS Wichita** – 11/17 1903 – ABC News to local ads, "13-30 KNSS" and "Wichita 13-30 KNSS" IDs into Mark Levin. On top of jumble; last logged as KFH. **(HF-MI)** *Why they would want to dump a 1920s legacy three-letter call is beyond me. Mike.*
- 1340 **KROC MN Rochester** – 11/12 0659 – Man with local weather and time check. Followed by carted ToH ID: "for eighty years, this is news-talk 1340 KROC" followed by ABC news. **(NjW-ON)**
- 1360 **WYOS NY Binghamton** – 11/11 2228 – Listening to a jumble of stations when I heard a clear ID at 2231 by female announcer "... on 1360 WYOS" and then faded back into mess. Very poor mixing with probably WSAI, an unknown gospel station and others. **(PS-ON)**
- WELP SC Easley** – 11/13 0600 – Appeared in the middle of the weather forecast (probably when they switched to day power). Forecast sponsored by Blue Ridge Electric Co-Operative. Followed by ID and mention of "radio that changes the way you live." **(NjW-ON)**
- WTAQ WI Green Bay** – 11/9 1700 – Over all comers with "News, talk, sports, WTAQ Green Bay and WTAQ-FM 97.5" ToH ID into Fox Report. **(MKB-ON)**
- 1370 **WVMR WV Frost** – 11/11 1700\* – Woman with weather forecast and then lengthy sign-off announcement read by man. **(NjW-ON)**

- WVLY WV Moundsville** – 11/8 2243 – Weather for 11/8 evening & 11/9 morning, ID at 2244 “...on WVLY & WVLY.com...”, back into The Twilight Zone radio show. Poor to very poor mixing with WTAB and a few others. // WVLY stream on Tune In Radio. **(PS-ON)**
- 1380 WWMI FL St. Petersburg** – 11/14 2320 – Assumed as this is the only Radio Disney station on 1380. Pop music, Radio Disney promo with plenty of R. Disney mentions, into more music, including “Baby I” by Isaac Elliot. Soon lost to the mess. Fair to very poor mixing with CKPC and unknown Spanish station. **(PS-ON)** *So there are still some Radio Disney outlets? I thought Radio Disney was completely deep-sixed and all the former Disney affiliates went silent or changed format, usually to religion. Mike.*
- 
- 1390 WFBL NY Syracuse** – 10/31 2358 – Ads, ToH ID at 0000: “This is Central NY Talk Radio, 1390 WFBL Syracuse, WMCR 1600 Oneida, NY ....” Fair to poor mixing with WXAT and others. **(PS-ON)**
- 1410 WING OH Dayton** – 11/16 1659 – Over other sports talkers with ESPN sports, ID as “1410 WING [‘wing’, not spelled out ‘W-I-N-G’] Dayton’s home for the Cincinnati Reds” and [www.wingam.com](http://www.wingam.com) web promo. **(MKB-ON)**  
 +++ – 11/16 1659 – Farmers Insurance spot and ID: “1410 wing AM is ESPN 1410 ... Dayton’s home for your Cincinnati Reds.” **(NjW-ON)**
- WCMT TN Martin** – 11/7 0700 – ToH ID: “WCMT Martin ... find us on Facebook ... and wcmt.com.” CBS news followed. Poor signal. **(NjW-ON)**
- 1440 WAJR WV Morgantown** – 11/14 1830 – “Start your morning with WAJR News” then into ESPN programming. Strong briefly among many others. **(HJH-PA)**
- 1450 WFRA PA Franklin** – 11/6 0721 – Mixing with two ESPN stations causing echo, along with UNID preaching and oldies stations, male “Join me... at 7 for the... WFRA.” **(KK-VA)**
- KFIZ WI Fond du Lac** -11/14 0600 – ToH ID: “News-talk 1450 KFIZ Fond du Lac, a Mountain Dog Media station.” Fox news followed. **(NjW-ON)**
- 1470 WMMW CT Meriden** – 11/6 0645 – In multi-station mix (WMBD, WTZE, WQXL, several UNIDs: comedy, rock music, other singing, preaching and rap songs) with station promo: “The Brad Davis radio program is on AM 1360, 610, 1240 and 1470 ‘The Talk of Connecticut.’” **(KK-VA)**
- WQXL SC Columbia** – 11/6 0706 – In multi-station mix with station promos: “Jay Harper South Carolina radio network for continuing updates on news from ... around ... be sure to check out our website at southcarolinaradionetwork.com.” 0715: “Listen ... every Friday morning from 9AM to 10AM on ‘The Point’ 95.9 FM and 14-70 AM.” **(KK-VA)**
- WTZE VA Tazewell** – 11/6 0700 – In multi-station mix with male “... on AM WTZE ... modern Christian rock.” **(KK-VA)**
- 1480 WHBC OH Canton** – 11/6 0718 – In multi-station mix with local auto dealer ad: “Waikem Hyundai or visit the showroom at 3748 Lincoln Way ... Massillon,” “News talk 14-80 WHBC” ID. **(KK-VA)**
- WDJO OH Cincinnati** – 11/6 0553 – In multi-station mix (WHBC, WZDY, UNID oldies and religious singing) with station promo: “...the man with the music plan. The voice of ... on good times, great oldies 14-80 WDJO,” 0600 Imus in the Morning show. **(KK-VA)**
- 1490 WCDO NY Sidney** – 11/6 0706 – In multi-station mix with male “I’m ... reporting WCDO news.” **(KK-VA)**
- WWIL NC Wilmington** – 11/6 0640 – In multi-station mix (WCDO, WCVA, UNID C&W, talk and sports) with “Let us rejoice on the all new Gospel Joy 14-90 AM” slogan, 0700 ToH ID: “You’re listening to ... 14-90 WWIL Wilmington ....” **(KK-VA)**
- WCVA VA Culpepper** – 11/11 1758 – Bee Gees’ “How Deep Is Your Love” and ToH ID: “AM 1340 and 1490 ... America’s Best Music from WVCV Orange and WCVA Culpepper.” **(NjW-ON)**
- 1500 WGHT NJ Pompton Lakes** – 11/7 1657 – Chicago oldie “No Tell Lover” and ToH ID. Faded out leaving behind religious-formatted WFIF. **(NjW-ON)**
- 1510 WWBC FL Cocoa** – 11/11 0636 – In multi-station mix with male mentioning “... W264AS Melbourne-West Palm Bay.” **(KK-VA)**
- WMEX MA Boston** – 11/11 0536 – In multi-station mix (WLAC, WLKR, WWBC, WFAI) with station promo “... Saturday’s from 4 to 5 PM right here on 15-10 WMEX.” **(KK-VA)**

- WFAI NJ Salem** – 11/11 0651 – In multi-station mix with ID by male as “Faith 15-10 AM WFAI.” (KK-VA)
- WLKR OH Norwalk** – 11/11 0726 – In multi-station mix with “... WLKR Weston’s cool gold” slogan. (KK-VA)
- KMSD SD Milbank** – 11/14 0701 – Over usual WLAC with “Jet Airliner” by Steve Miller, “Big Stone Radio 1510 AM and 98.3 FM KMSD” slogan. (MKB-ON)
- 1540 WNWR PA Philadelphia** – 11/11 \*0645 – in ZNS-1/CHIN/KXEL mix with sign-on: “Good morning and welcome to another broadcasting day. You’re listening to AM 15-40 WNWR Philadelphia” into National Anthem. (KK-VA)
- 1570 WFRL IL Freeport** – 11/16 0856 – Lee Michael’s “Do You Know What I Mean” followed by “it’s time for a news update on WFRL.” (NjW-ON)
- WNCA NC Siler City** – 11/12 1702 – Pretty much alone on frequency with “this is WNCA Siler City” ID into North Carolina News Network detailed weather report for entire state. (MKB-ON)
- 1590 WCGO IL Evanston** – 11/15 0559 – In very briefly with ad for North Shore Car Wash and ID as “AM 1590 WCGO Evanston-Chicago” then gone. Rarely heard. Veried years ago as WONX. (JRM-PA)
- WTVB MI Coldwater** – 11/12 0737 – With western wind gusts throwing this my way, first heard over the din was the old ABC News musical theme for Southern Michigan (local) News and a weather wind advisory then fading into the mess. May be a new logging. (JRM-PA)
- 1600 WHNP MA East Longmeadow** – 11/2 1800 – “WHMP News, Information and the Arts” slogan. Repeats WHMP-1400 and WHMQ-1240. Also mentioned 96.9 FM. Had CBS News. Fair signal. (HJH-PA)
- 1660 WQLR MI Kalamazoo** – 11/6 2232 – Sports talk, Fox Sports promos, at 2234 promo mentioning kalamazoo.com multiple times. Poor, mixing with WWRU and others. (PS-ON)

# Musings of the Members

Dave Schmidt, Editor

49 N. Sumner Street, York PA 17404, [NRCMusings@aol.com](mailto:NRCMusings@aol.com)

Walt Fair, Jr.

Well, I’m back again. I was in NRC back in the mid 1960’s, then college and family got in the way. I was back again after spending 12 years working in Venezuela, then laid low again when life happened again. Last October I had a stroke and that knocked a big hole in my plans, but while recovering, I did manage to get a radio into the hospital and rekindled my mw dx bug. In August, we moved to a new house in central Texas and I’m wrapping up my PhD in Petroleum Engineering at U of Texas and wondering how I’m going to get a reasonable antenna up in the air. I’ve added a couple new stations to my list, but nothing very rare.

It’s sort of exciting to start over with blank loggings and see how fast I can log new ones.

On another note, we’re going to spend Christmas and New Years in Bolivia and also working out the details to retire down there next year. So once down there I’ll tryt to report anything new. I also plan on visiting some of the stations in rural Bolivia and report on what I learn. In Maracaibo, Venezuela, I was surprised at how little activity there was on the AM band; just a few locals from Venezuela and Colombia and not much else to be heard. 73 and good DX.

## The Challenging Crystal Set – Ray Cole – Order Item CCS

This book details a variety of Crystal Set circuits from the simplest to those that are the most sophisticated. It contains complete detailed instructions on building a crystal set that is capable of real DX. In 42 pages, you will be introduced to the circuits that were developed to enhance the performance of crystal sets and techniques that can be used give you many hours of interesting building and listening. This book also contains former NRC Reprint R22 “The Lyonodyne Crystal Wireless Receiver.”

Member Price \$8.95 Non Member Price \$11.95 Order from NRC Headquarters

# International DX Digest

Bruce Conti, Editor

46 Ridgfield Drive, Nashua NH 03062-1174, [contiba@gmail.com](mailto:contiba@gmail.com)

Loggings of stations outside the U.S. and Canada. All times are Universal Coordinated Time (UTC).

## TRANS-ATLANTIC DX

- 153 **ALGERIA** *Chaîne 1, Béchar* NOV 19 0537 – Heard a long talk by a female, then she was in conversation with a man. Presumed the one with fairly strong signal but poorly modulated and hard to understand in noise from nearby storms. [Funkenhauser-FL]
- 189 **ICELAND** *Ríkisútvarpid, Gufuskálar* NOV 19 0530 – Rock/bubble gum music played by an Icelandic male. Despite good signal, thunderstorm noise made for difficult reception. [Funkenhauser-FL]
- 595 **MOROCCO** *SNRT Oujda* NOV 20 2320 – Fair; steady signal but as usual the modulation too weak for readable audio. [Conti-NH]
- 693 **UNITED KINGDOM** *BBC Radio 5, Droitwich et al.* OCT 31 0221- Very poor in slop, but English talk appeared to be in parallel with 909 kHz. [Funkenhauser-NY]
- 711 **FRANCE** *France Info, Rennes* OCT 28 0149 – French man and woman, then then two men conversing at 0152, confirmed via web parallel. [Funkenhauser-NY]
- 747 **CANARY ISLANDS//SPAIN** *RNE5 synchros* NOV 7 2200 – Good; bumper music to marker and time check, “Radio Nacional de España, servicios informativos.” [Conti-NH]
- 756 **GERMANY** *Deutschlandfunk, Braunschweig & Ravensburg* OCT 31 0215 – German female commenting on music, mentioning Los Angeles, then played a nice jazz instrumental. Fair signal also heard via delayed web parallel. [Funkenhauser-NY]
- 864 **EGYPT** *ERTU Qur’an Program, Santah* OCT 27 0100 – Fair signal but fading in CJBC slop. Easily apparent Qur’an recitations/chants interrupted by occasional short talks by an iman. Heard this variously to 0223 without a discernible ID, nor web parallel so tentative. [Funkenhauser-NY]
- 909 **UNITED KINGDOM** *BBC Radio 5 synchros* OCT 29 0039 – Poor; male/female English conversation or interview. OCT 31 0208 – Good; two men discussing FIFA. At 0221 I used this one to verify parallel 693 kHz. [Funkenhauser-NY]
- 954 **SPAIN** *Onda Cero, Ctra Humera (Madrid)* NOV 8 0500 – Fair; marker and time check, “Noticias de Onda Cero,” and “Buenos dias...” into news. [Conti-NH]
- 954 **unID** OCT 27 0137 – Weak flute music but no discernible spoken audio in highly noisy conditions, Arabic talk at 0144 UTC. [Funkenhauser-NY]
- 1008 **unID** OCT 27 0148 – Brief period of Arabic Qur’an chanting heard with/under Spanish female speaker in CFRB slop. Very poor. OCT 30 0045 – Spanish female speaker, likely *SER*. Poor. [Funkenhauser-NY]
- 1053.1 **LIBYA** *R.Libya, Tripoli* OCT 30 0202 – Qur’an chanting and brief talks by a (presumed) iman, with 1053 sideband quacks, periodic fading and slop from both adjacent channels. Rose above the combined noise at times so that talk/chants were more clear. Best heard around 0226 and then faded to *TalkSport* on 1053 kHz. Measured 1053.104 kHz. OCT 31 0314 – Qur’an chanting briefly heard but faded by 0317 UTC. [Funkenhauser-NY]
- 1053 **UNITED KINGDOM** *TalkSport synchros* OCT 30 0202 – Providing sideband interference to 1053.104 Libya on which I was concentrating. Heard at 0229 in parallel to 1089 with English sports talk, albeit poorly. OCT 31 0319 – *TalkSport* programming, fair and parallel with a better 1089 kHz. [Funkenhauser-NY]
- 1089 **UNITED KINGDOM** *TalkSport synchros* OCT 27 0156 – English sports conversation/talk. OCT 28 0239 – Same format; very poor. OCT 29 0104 – Poor. OCT 30 0202 – Man in English sports talk with a female. At 0229 used it to confirm parallel on 1053 kHz. OCT 31 0230 – Fair to good with sports talk. At 0258 music of some kind then at 0308 bits of jazz, on a weak, unID co-channel station. No ID heard on the hour but a 0301 dramatized ad included a car horn, mentioning “Now available with... (unclear) in the West of England,” followed by football scores and at 0304, “Welcome to TalkSport.” OCT 31 0319 – Good; regular TalkSport format and parallel 1053 kHz. [Funkenhauser-NY]
- 1215 **UNITED KINGDOM** *Absolute Radio synchros* OCT 29 0107 – Rock music with a male announcer, also heard via web parallel. OCT 30 0339 – Male announcer playing rock vocals and also heard in web parallel with considerable delay. OCT 31 0321 – Fair with wailing



rock, including U2 with "Still Haven't Found What I'm Looking For" also via web. Last year, I lamented the fact that Absolute had locked out non-UK IP's from accessing their web stream, but some of the radio apps, like Streema, still provide FM 105.8, London. Several others like Tunein seem to have blocked non-UK IP access, however. [Funkenhauser-NY]

1467 **FRANCE** TWR Roumoules NOV 20 2300 – Poor; sign-off and carrier cut after what sounded like contact info a couple minutes earlier, leaving unID weak signals at 1467.000 kHz and 1467.356 kHz. [Conti-NH]

1521 **SAUDI ARABIA** BSKSA Duba NOV 18 0000 – Only smatterings of Arabic talk, possibly a conversation or tele-talk in excessive slop. Poor. [Funkenhauser-FL]

*Transatlantic carrier search:* NOV 6 0643-0651 – 711 from east/northeast, Morocco? 783 from about 80 degrees, Mauritania? 738, probably transpacific Tahiti. [Hauser-OK]

#### PAN-AMERICAN DX

590 **COLOMBIA** HJCR, *W Radio*, Medellín NOV 8 0330 – Caught in passing with "...Radio! La Doble U" ID, but not entirely clear. Recheck at 0445 showed two men in a political commentary heard in parallel via web stream at [www.wradio.com.co/player.aspx](http://www.wradio.com.co/player.aspx). [Funkenhauser-FL]

600 **COLOMBIA** HJHJ *R.Libertad*, Barranquilla NOV 19 0208 – Lively singing under strong co-channel *R.Rebelde*. At 0211 caught reference to "Doble U" and mentions of últimas noticias, comentarios, and deportes followed by "Radio...(unclear) potencia" then a program of fast-paced Latin vocals with lots of percussion, and at 0225 a female vocal in Portuguese. There was no delay on the web feed at [www.colombia.com/radio/i2374/radio-libertad-600-am-barranquilla-atlantico](http://www.colombia.com/radio/i2374/radio-libertad-600-am-barranquilla-atlantico) so it was easy to follow despite being under a very strong *R.Rebelde*. Still there during a 0504 recheck, under *Rebelde* and with more lively music. [Funkenhauser-FL]

610 **MEXICO** XEBX Sabinas, Coah. NOV 16 0411 – 'La Hora Nacional' about some lake in Michoacán; quick bandscan on north/south antenna wire finds this is the best 'LHN' outlet, no doubt XEBX. Second best is 770, but not parallel, probably XEACH Monterrey NL. Another, 1060.04 at 0416, i.e. XERDO Tamaulipas (atop XEEP DF). And on 1320 at 0419, 'LHN' is likely XECPN Piedras Negras, Coahuila, but no 100 watts! As for major stations, forget it, nothing readable in Spanish on 540, 730, 800, 900, 940, 990, 1050, 1140, 1220 or even 1570 – station in English atop XERF. [Hauser-OK]

660 **MEXICO** XECPR *R.Chan Santa Cruz*, Felipe Carillo Puerto, Q.Roo NOV 13 0320 – Poor with a wobbly *R.Progreso* and another. Fútbol commentary, "veinte y cinco minutos" time check at 0325 tough the hour was unclear. At 0345 another unclear ID mentioned Santa Cruz, Caribe and Systema Radio under the Cuban wobbler, fading to reappear at 0400 with the Quintana Roo state anthem (long), followed by the Mexican national anthem. [Funkenhauser-FL]

700 **COLOMBIA** HJCX, *W Radio*, Cali NOV 8 0237 – Two men in a political talk about Colombian matters, mentioning "pregunta por Colombia y Colombianos" in context. Poor with a second unID Latin station, both under WLW. NOV 9 0336 – Pop music including Boney Maroney, "You Learn" by Alanis Morissette, and "Private Dancer". Solid "Doble U" ID at 0348. NOV 13 0518 – Male playing Santana and a Spanish version of Humperdink's "Quando Quando" also heard delayed via [www.wradio.com.co/player.aspx](http://www.wradio.com.co/player.aspx). NOV 15 0358 – Good with Bad Boys Blue "I Totally Miss You", a 0359 "Doble U Radio" ID and "Todos por W Radio Colombia" then two "Boogie Night" announcements at 0400, good enough by itself not to require confirmation via web. [Funkenhauser-FL]

709.9 **MEXICO** XEDP Cd. Cuauhtémoc, Chih. NOV 16 0358 – Approximately 709.90 kHz, Spanish music making het to 710 stations, no doubt XEDP running its off-frequency transmitter site tonight; yes, at 0359 so sung-ID'ing, "XEDP, La Ranchera de Cuauhtémoc." Separable and readable with LSB, narrow bandwidth and passband tuning boost on the NRD-545. [Hauser-OK]

780 **MEXICO** XESFT San Fernando, Tamps. NOV 9 0038 – Presumed the one; lively ranchera and vocals with heavy tuba accompaniment, numerous "La Poderosa" quasi-ID's and several mentions at 0049 of La Hora Nacional. [Funkenhauser-FL]

810 **COLOMBIA** HJCY *Caracol Radio*, Bogotá NOV 16 0430 – Fair under *R.Progreso*; parallel 1100 kHz. NOV 19 0145 – Just fair with ZNS3 Bahamas and *R.Progreso* Cuba there, but in parallel with 1170 kHz. [Funkenhauser-FL]

900 **MEXICO** XEDT Cd. Cuauhtémoc, Chih. NOV 19 0707 – Noise of open FM STL from the southwest, presumably the usual XEDT, but stops at 0708 uncovering a weaker station in Spanish CCW, probably XEOK. [Hauser-OK]

- 920 **CUBA** *R.Progreso*, Pilon NOV 8 0350 – Music program hosted by a male, also heard in parallel on 900 kHz. [Funkenhauser-FL]
- 930 **unID** NOV 19 1252 – Just after confirming that WKY is on the air but at severely reduced power, I'm briefly hearing a weak Spanish station, counterclockwise from WKY, "los éxitos de hoy, Qué Suave" (or Ke Suabe?) – trouble is I'm not certain of the last word, and don't find any listings for such a slogan or anything similar in western U.S. or Mexico. If Mexican, the only likely 930's this late are XESHT Saltillo, Coahuila, but it's supposed to be *La Poderosa* or *La Más Buena*; or XEQS Fresnillo, Zacatecas, which is *Romántica*. Could it be KCCC Carlsbad in a recent flip? Well, there is a 'Que Suave' in Carlsbad, but it's a hair/nail salon. Searching on that slogan mainly hits on 810 KSWV Santa Fe. How about KAPR Douglas, listed as Spanish? Could be, except it's allegedly parallel 1030 KVOI which is news/talk in English. [Hauser-OK]
- 1060 **MEXICO** XEEP *R.Educación*, México, DF OCT 24 0436 – Modern/experimental orchestral music under KYW, heard in parallel on their web feed. [Funkenhauser-NY]
- 1100 **COLOMBIA** HJAT *Caracol Radio*, Barranquilla NOV 16 – First noticed as interference to co-channel *R.Angulo* which it dominated by 0420. Heard two men discussing higher business education and spent some time discussing MBA, "educación de negocios (business education)," and the like. Parallel heard on 810. At 0433 also heard a Caracol ID and 0435, "En Caracol Radio, once y treinta cinco minutos!" accompanied by a ticking clock sounds. [Funkenhauser-FL]
- 1100 **CUBA** *R.Angulo*, Mayarí NOV 16 0414 – Fair with a smooth 30's style vocal by a male, for the most part actually better than stronger parallel 1110. By 0420 tele-talk from co-channel Caracol was dominant. [Funkenhauser-FL]
- 1140 **CUBA** *R.Surco*, Morón NOV 7 2300 – Under WRVA; canned ID, "Transmite CMIP Radio Surco..." [Conti-NH]
- 1170 **COLOMBIA** HJNW *Caracol Radio*, Cartagena NOV 19 0144 – Several people discussing terrorism and ISIS, and made reference to French elections, followed by Deportivas Caracol fútbol. At 0159 several *Caracol Radio* ID's and an advertisement for the Chevrolet Aveo, then more Caracol mentions with a Caracol jingle followed by "La Hora en Caracol." At this time it was heard marginally better on parallel 1100. Then good with a Banco Popular ad complete with a jingle, numerous *Caracol Radio* references such as "más información Caracol" then a discussion of "tráfico de cocaine" and "tráfico de marihuana" which was also heard on parallel 810. At 0204 "La Hora en Caracol Radio," also heard on parallel 1100 kHz. [Funkenhauser-FL]
- 1190 **unID** NOV 13 0528 – Low audible heterodyne on car radio, roughly 0.1 kHz? Also noted for some time. Which station is off-frequency? At home I wasn't certain whether it was from a local device. [Hauser-OK]
- 1510 **MEXICO** XEQI Monterrey, NL NOV 14 0155 – Woman in monolog, about self-help? Spanish from north/south, not east/west. Fades at 0158, but soon back enough to copy, "Radio NL, XEQI, 1510 AM, la radio alternativa, servicio (?) de radio y televisión de Nuevo León." Seems like a local public radio station for Monterrey. [Hauser-OK]
- 1510 **unID** NOV 13 0523 – On car radio at Dover, Oklahoma, "spooky" music over WLAC in and out, 0530 Spanish announcement; more spooky at 0551 on car radio almost to Enid. Probably XEQI; but the music could have been another. [Hauser-OK]
- 1650 **MEXICO** XEARZ México, DF NOV 6 0655 – As KYHN is not too strong at the moment (really 1 kW night power?), I null it and try to pull something else thru, aiming north/south, especially some Spanish music. 0656 tentative ID in passing as *Radio Zer*, which would finally get me XEARZ, 5/5 kW, which has been eluding me. Trouble is, there are also two U.S. Spanish stations on 1650, and adding to the mix is KCNZ. I can forget about the two Canadians and other U.S. stations. [Hauser-OK]



#### CONTRIBUTORS

Bruce Conti WPC1CAT, Nashua NH; WiNRADiO Excalibur, MWDX-5 phasing unit, 15 x 23-m variable termination SuperLoop antennas at 60° northeast and 180° south.

Werner Funkenhauser, Cheektowaga NY; WiNRADiO Excalibur, Wellbrook System K9AY 30-ft equilateral triangle loops at 0, 90, 180 and 270 degrees.

Werner Funkenhauser, Sebring FL; WiNRADiO Excalibur, experimental Wellbrook System Mini-K9AY loops (approximately 13-ft triangles) at 0, 90, 180 and 270 degrees.

Glenn Hauser, Enid OK; NRD-545 with ALA-330S or north/south not very long wire, DX-398 or PL-880 with internal antenna only, sometimes FRG-7 with ~100-ft east/west longwire.



## U.S. NEW STATION CONSTRUCTION PERMITS – STATUS REPORT

The FCC accepts applications for new station CPs only during specified application windows. The last such application window on the AM band was in 2004. Initially, applicants submit only a “short form” application. Where multiple applicants propose mutually incompatible stations on the same or adjacent frequencies, there is a further window for the applicants to negotiate a solution (i.e., one pays the rest to withdraw their applications). Otherwise, the FCC applies a set of criteria to determine if it has a preference for any one of the applications, and if not it conducts an auction among the remaining applications.

Once the preferred applicant is identified, it must then fill out a “long form” application and go through the regular CP process. When the CP is granted, the station must complete construction within 3 years absent exceptional circumstances. After the station is constructed (but before the 3-year window expires), the applicant must file a “license to cover” (LTC) the CP. Tests of the new facility then confirm its conformity with the CP. Occasionally there are minor problems requiring further adjustments or amendments to the CP, and stations can be on the air broadcasting with a pending LTC, sometimes for years, before the final license is granted.

As of November 20, 2015, the FCC online database shows **18** outstanding CPs for new stations.

**Two** of these CPs have applied for their LTC. Stations in this category are often heard on the air (sometimes with “program test authority” or PTA) before final licensing is granted.

1380 KVSM Santa Maria CA (U2 650/500) – Applied for LTC 11/4/2013; granted PTA 12/24/2013.

1490 KHTC Malmstrom AFB MT (U1 1000/580) – Applied for LTC 1/20/2011; reported on the air.

The following **3** CPs have expired and are presumably being maintained in the database due to pending appeals or other administrative review procedures: KUCU-1060 Farmington NM, WWNH-1340 Madbury NH, and 1590 Paradise NV.

The following **13** CPs are within their original 3-year window. Permittees must complete construction and submit an LTC application within three years of the CP being granted (and any appeals of the grant being resolved).

1340 -- Rothschild WI (U1 1000/1000), expires 11/29/2015.

1470 -- Anchorage AK (U1 10000/10000), expires 1/31/2016.

1310 -- Anchorage AK (U1 10000/8100), expires 6/28/2016.

1040 -- Sanger CA (U4 250/1000), expires 12/3/2016.

860 -- Black Hawk SD (U7 50000/350 (ch 22000), expires 2/27/2017.

1340 KSDG Fairbanks AK (U1 1000/1000), expires 4/8/2017.

1020 -- Blue Diamond NV (U4 5000/250), expires 7/26/2017.

1200 -- Chugiak AK (U1 50000/9600), expires 1/28/2018.

1490 -- Bozeman MT (U1 1000/900), expires 1/28/2018.

1580 KWLO Springville UT (U1 10000/570), expires 3/23/2018.

1210 -- Pine River MN (U2 5500/250), expires 4/23/2018.

780 -- Draper UT (U4 1000/250), expires 6/9/2018.

1540 KENT Enterprise NV (U7 10000/270 (ch 3700)), expires 11/6/2018.



## U.S. EXISTING STATION CONSTRUCTION PERMITS – STATUS REPORT

For existing stations, the FCC distinguishes between “minor change” CPs and “major change” CPs, with the difference being that a “minor change” is one where the existing license and the new CP could not both be granted to two different stations due to mutual interference. So relatively short moves of community of license (CoL) or moves of frequency of up to 30 kHz can be considered “minor changes,” if mutual interference concerns would normally prevent a new station from operating with the proposed CP simultaneously with the old station.

A “major change” CP is therefore, for practical purposes, like an application for a new station, and is therefore subject to new station rules. Major change applications can only be filed within windows for new station applications, and must compete with any mutually exclusive new station applications. Currently there are no “major change” CPs outstanding.

Applications for “minor change” CPs can be filed at any time. Uncontroversial applications are usually granted within 90 days. Like construction permits for new stations, CPs to modify existing stations must be completed within 3 years of grant (absent exceptional circumstances). Because “minor change” CPs can be filed at any time, stations that don’t complete CPs within the 3-year

window can immediately refile for a new CP – unlike unfinished new station CPs, which have to wait for the next application window. Also like new stations, existing stations must file an application for a “license to cover” the CP after it is built, but before it expires. The station then tests the new facility to ensure it meets the license; if it does not and additional work is required, the station may remain in this category for years. (The current longest open LTC application, for WFTL-850, is being held up due to objections from a Mexican station, although it is using much of the CP under special temporary authority.)

As of November 20, 2015, the FCC database showed **145** pending CPs from existing stations, including 127 involving substantive changes to a station’s power, pattern, or transmitter site.

Of these, **20** CPs have been completed and have filed LTC applications:

- 600 WBOB Jacksonville FL – CP for U4 50000/9700, applied for LTC 8/26/2015, granted PTA 9/3/2015.
- 850 WFTL West Palm Beach FL – CP for U4 50000/24000, applied for LTC 1/25/2005.
- 910 WLAT New Britain CT – CP for U2 5000/2800, applied for LTC 10/16/2015.
- 970 KNWZ Coachella CA – CP for U4 5000/360, applied for LTC 10/5/2015, granted PTA 11/6/2015.
- 1060 KFOY Sparks NV – CP for U4 5000/500, new site, applied for LTC 8/3/2015, granted PTA 8/20/2015.
- 1190 KREB Bentonville-Bella AR – CP for U1 5000/14, applied for LTC 8/14/2012.
- 1190 KQQZ De Soto MO – CP for U4 10000/650, CoL to Fairview Heights IL, applied for LTC 5/11/2012.
- 1200 WAMB Donelson TN – CP for D1 10000 (ch 3800); applies for LTC 6/29/2015.
- 1260 WFJS Trenton NJ – CP for U4 5900/2500; applied for LTC 10/1/2015.
- 1330 WNIX Greenville MS – CP for U1 3800/55, applied for LTC 4/3/2015.
- 1340 KIKO Miami AZ – CP for U1 1000/930, new site, CoL to Apache Junction AZ, applied for LTC 12/15/2014. (Has been heard on the air from Apache Junction.)
- 1380 KRCM Shenandoah TX – CP for U4 22000/50, 2 new sites; applied for LTC 7/24/2015, granted PTA 10/9/2015 (has applied to make it U5 22000/43 from a single new site).
- 1390 WZHF Arlington VA – CP for U4 9000/1000, new site, CoL to Capitol Heights MD; applies for LTC 10/23/2015.
- 1440 WNYG Medford NY – CP for U2 1000/196, applies for LTC 7/9/2015; granted PTA 8/21/2015.
- 1440 WLXN Lexington NC – CP for U2 5300/1000, new day site, applies for LTC 8/28/2015, amended 9/15/2015.
- 1450 WASK Lafayette IN – CP for new tower; applies for LTC 11/12/2015.
- 1470 KWSL Sioux City IA – CP for U1 2300/69, applied for LTC 11/9/2015.
- 1500 KCLF New Roads LA – CP for U1 850/18, applied for LTC 11/18/2015.
- 1590 WALG Albany GA – CP for U1 2500/40, corrected coordinates, applied for LTC 10/2/2015.
- 1600 WXYM Saltville VA – CP for U1 23000/11, new site, applied for LTC 11/18/2011.



There are an additional **107** substantive CPs still outstanding and within the 3-year window:

- 540 WETC Wendell-Zebulon NC – CP for U4 10000/500 (expires 12/18/2015).
- 590 WARM Scranton PA – CP for U4 1800/430, modifying patterns (expires 3/18/2018).
- 600 KVNA Flagstaff AZ – CP for U1 1000/70, moving to KAFF-930 site (expires 3/17/2018).
- 600 WKYH Paintsville KY – CP for U1 4500/40, new site (expires 8/27/2016).
- 630 KIDD Monterey CA – CP to replace towers, adjust pattern (expires 10/22/2017).
- 640 WMFN Zeeland MI – CP for U4 4400/1600, CoL to Peotone IL (expires 4/13/2018).
- 650 WSRO Ashland MA – CP for U4 1500/187 (expires 12/18/2016).
- 670 KMZQ Las Vegas NV – CP for U4 25000/600 (expires 3/27/2017).
- 690 WQNO New Orleans LA – CP for U2 9100/2100 (expires 11/6/2017).
- 710 WAQI Miami FL – CP for U4 50000/6300, new site (expires 10/30/2017).
- 720 KFIR Sweet Home OR – CP for U1 10000/184, new site (expires 5/21/2017).
- 820 WCPT Willow Springs IL – CP for U2 5800/1500, new day site (expires 10/19/2018).
- 820 WNYC New York NY – CP for U4 10000/930 (expires 4/8/2017).
- 840 KXNT North Las Vegas NV – CP for U4 50000/10000, new site (expires 5/27/2017).
- 850 WQRM Duluth MN – CP for D1 50000 (ch 14000) (expires 3/31/2018).
- 860 KTRB San Francisco CA – CP for U2 50000/5000, existing day site (expired 10/27/2015).
- 860 WTZX Sparta TN – CP for U1 950/10, new site (expires 4/30/2017).
- 880 KLRG Sheridan AR – CP for U2 50000/200 (ch 31000), consolidate at day site (expires 10/22/2016).
- 910 WGTO Cassopolis MI – CP for U4 3000/26 (expires 3/13/2016).



- 920 WDMC Melbourne FL – CP for U4 8000/4000, new site (expires 12/23/2017).
- 930 WEZZ Monroeville AL – CP for D1 450 on 920 kHz, CoL to Brantley AL, new site (expires 4/22/2017).
- 970 KTTO Spokane WA – CP for U2 5300/750 (expires 11/20/2018).
- 980 KMBZ Kansas City MO – CP for U2 9000/5000 (expires 1/14/2018).
- 980 WHAW Lost Creek WV – CP for new site (expires 2/22/2016).
- 990 WISK Lawrenceville GA – CP for D1 2500 (expires 4/30/2017).
- 990 WGSO New Orleans LA – CP for U1 600/310, new site (expires 6/2/2017).
- 1000 WIOO Carlisle PA – CP for D1 15000 (ch 2700) (expires 4/11/2018).
- 1030 WNVR Vernon Hills IL – CP for U7 27000/210 (ch 8000) (expires 4/30/2017).
- 1040 WZSK Everett PA – CP for D1 2500 (expires 1/8/2017).
- 1100 WISS Berlin WI – CP for D4 50000 (ch 20000) (expires 12/19/2017).
- 1110 WTIS Tampa FL – CP for U4 10000/150 on 1100 kHz (expires 6/19/2017).
- 1110 WOMN Franklinton LA – CP for U4 50000/120 on 1100 kHz, new site (expires 10/21/2016).
- 1120 WNWF Destin FL – CP for U1 3000/12 (ch 2400) on 1140 kHz (expires 11/29/2016).
- 1130 WEAJ Camden SC – CP for D1 390 on 1120 kHz, CoL to St. Stephen SC, new site (expires 1/17/2016).
- 1140 KYOK Conroe TX – CP for U4 800/9, CoL to Katy TX, new site (expires 4/16/2016).
- 1150 KDEF Albuquerque NM – CP for U1 1500/105, new site (expires 4/22/2018).
- 1150 KLPF Midland TX – CP for U1 30000/207 on 1180 kHz (expires 9/18/2016).
- 1160 WIWA St. Cloud FL – CP for U4 14000/500 (expires 8/28/2016).
- 1160 WCXI Fenton MI – CP to U4 15000/215, new site (expires 10/21/2016).
- 1170 WQHC Hanceville AL – CP to D1 1000, new site (expires 10/28/2018).
- 1170 KLOK San Jose CA – CP for U4 50000/9000, new site (expires 8/31/2018).
- 1170 WWLE Cornwall NY – CP for U4 2500/500 on 1150 kHz (expires 1/8/2017).
- 1180 KCKQ Sparks NV – CP for U2 4000/600 (expires 10/28/2018).
- 1190 WWIO St. Mary's GA – CP for U1 2500/85, new site (expires 1/28/2018).
- 1190 WCRW Leesburg VA – CP for U4 50000/1000, new night site (expires 11/29/2016).
- 1200 WXIT Blowing Rock NC – CP for D1 4200, new site (expires 10/22/2017).
- 1210 KGYN Guymon OK – CP for U7 50000/10000 (ch 39000) (expires 10/22/2016).
- 1210 KHKR Washington UT – CP for U1 10000/231, new site (expires 11/26/2016).
- 1220 WSRQ Sarasota FL – CP for U1 1000/4, new site (expired 10/27/2015).
- 1230 KPRL Paso Robles CA – CP for new site, remains U1 1000/1000 (expires 8/14/2018).
- 1230 KLAV Las Vegas NV – CP for U1 900/1000, new site (expires 9/11/2016).
- 1230 WMOU Berlin NH – CP for U1 1000/930, new site (expires 7/2/2016).
- 1240 KFOR Lincoln NE – CP for new site, remains U1 1000/1000 (expires 10/28/2018).
- 1260 WSHU Westport CT – CP for U1 650/17, CoL to Seymour CT (expires 6/18/2018).
- 1260 WISO Ponce PR – CP for U1 2300/2300, new site (expires 10/16/2018).
- 1280 WMXB Tuscaloosa AL – CP for U1 5000/35 (expires 7/18/2017).
- 1290 WTKS Savannah GA – CP for U2 5300/5000 (expires 6/25/2016).
- 1300 KCMY Carson City NV – CP for U1 5000/120 (expires 7/31/2018).
- 1300 WTIL Mayaguez PR – CP for U1 960/960, new site (expires 2/15/2016).
- 1310 WTTL Madisonville KY – CP for U1 1500/40 (expires 12/3/2017)
- 1310 WDTW Dearborn MI – CP to rebuild towers (expires 5/29/2018).
- 1310 WTLB Utica NY – CP for U1 2600/38 (expires 2/26/2017).
- 1320 KSCR Eugene OR – CP for U1 600/40, new site (expires 1/15/2016).
- 1340 WNBH New Bedford MA – CP for U1 1000/960, new site (expires 4/15/2018).
- 1340 KRLV Las Vegas NV – CP for U1 1000/88 (expires 12/30/2016).
- 1360 WKAT North Miami FL – CP for U1 9300/400, new site (expires 12/10/2017).
- 1380 WKDM New York NY – CP for U4 5000/13000 (expires 8/5/2017).
- 1400 KCOG Centerville IA – CP for U1 420/840, new site (expires 10/27/2018).
- 1400 WIEL Elizabethtown KY – CP for new site (expires 4/11/2016).
- 1410 KCAL Redlands CA – CP for U4 3000/2200, CoL to Grand Terrace CA (expires 10/28/2018).
- 1420 WINI Murphysboro IL – CP for U1 420/53 (expires 5/28/2018).
- 1440 WKPR Kalamazoo MI – CP for U4 4000/24 (expires 11/3/2018).
- 1450 KIKR Beaumont TX – CP for new tower (expires 3/13/2016).
- 1450 WBVA Bayside VA – CP for new site (expires 6/27/2016).
- 1460 WPON Walled Lake MI – CP for U4 670/175, new site (expires 5/15/2018).
- 1460 KLTC Dickinson ND – CP for U2 5000/770, dropping from 4 night towers to 2 (expires 3/17/2018).
- 1470 WMGG Dunedin FL – CP for U4 2800/800, new site, CoL to Egypt Lake FL (expires 6/19/2016).



- 1470 WLQR Toledo OH – CP for U4 1000/69, new site (expires 6/17/2018).  
 1470 WKUM Orocovis PR – CP for U1 2400/3700 (expires 8/28/2016).  
 1480 WSAR Fall River MA – CP for U4 25000/5000 (expires 1/28/2018).  
 1480 KRAE Cheyenne WY – CP for U1 500/72 (expires 3/21/2016).  
 1490 WSIP Paintsville KY – CP for new tower (expires 12/31/2016).  
 1490 WTQS Camden SC – CP for D1 5000 (ch 730) on 1500 kHz (expires 5/11/2018).  
 1490 KJNT Jackson WY – CP for U1 1000/300 on 1480 kHz, CoL to Etna WY, new site (expires 9/25/2018).  
 1490 WDEP Ponce PR – CP for new site (expires 12/24/2017).  
 1510 KSPA Ontario CA – CP for U4 10000/6000 (expires 2/19/2016).  
 1510 KLLB West Jordan UT – CP for U1 10000/26 (expires 8/27/2016).  
 1520 WDCY Douglasville GA – CP for D1 2500 (ch 890) (expires 7/29/2018).  
 1530 KQSP Shakopee MN – CP for D4 24000 (ch 17000) (expires 11/26/2016).  
 1540 KTGG Spring Arbor MI – CP for D1 400 (ch 185), new site, CoL to Okemos MI; expired 6/5/2012 but administrative review pending.  
 1550 KBUD Golden CO – CP for U2 5000/350 (expires 4/30/2018).  
 1550 WRHC Coral Gables FL – CP for U4 8000/1000, CoL to Doral FL (expires 11/16/2018).  
 1550 KXTO Reno NV – CP for U1 2400/70, new site (expires 1/10/2013).  
 1550 WVAB Virginia Beach VA – CP for U1 4500/8, new site (expires 6/27/2016).  
 1550 KRPI Ferndale WA – CP for U4 50000/5000, new site, CoL to Point Roberts WA (expiration date currently waived; has been losing zoning requests for the site).  
 1560 WPAD Paducah KY – CP for U1 1000/35 (expires 10/22/2017).  
 1560 WGLB Elm Grove WI – CP for U7 2500/250 (ch 700) (expires 4/20/2018).  
 1570 WMVX Beverly MA – CP for U1 50000/85 (expires 1/4/2016).  
 1580 WIOL Columbus GA – CP for U1 2100/45, new site (expires 3/31/2018).  
 1580 WVKO Columbus OH – CP for D3 5000 (expires 1/3/2016).  
 1590 WSMN Nashua NH – CP for U4 5000/5000, new site (expires 3/18/2018).  
 1600 KUSH Cushing OK – CP for U1 5000/70 (expires 1/15/2016).  
 1600 WHOL Allentown PA – CP for U4 1000/56 (expires 7/17/2018).  
 1630 KRND Fox Farm WY – CP for new site (expires 10/21/2016).  
 1660 KWOD Kansas City KS – CP for new site (expires 12/15/2017).  
 1660 WWRU Jersey City NJ – CP to modify day pattern (expires 7/31/2016).  
 1700 KKLK Richardson TX – CP to consolidate operations at night site (expires 9/25/2017).



Finally, there are **18** pending CPs to make changes to the station's license to conform to the actual facilities being used, usually due to errors in the transmitter site coordinates. An error of more than 3 seconds of latitude or longitude requires a CP, including a license to cover. So these CPs can be just paperwork, or – if substantive problems are uncovered during the LTC process – can drag on. Usually in “AM Switch,” we only publish the CP application and the final grant of the LTC for these applications.

- 810 WZYN Hahira GA – CP to correct coordinates (expires 11/20/2015).  
 810 WGY Schenectady NY – CP to correct coordinates (expires 1/15/2017).  
 950 KJTV Lubbock TX – CP to correct coordinates (expires 12/31/2016).  
 960 KOVO Provo UT – CP to correct coordinates (expires 12/10/2017).  
 980 KOKA Shreveport LA – CP to correct coordinates (expires 8/14/2018).  
 1010 WSPC Albemarle NC – CP to correct coordinates, applied for LTC 11/18/2015.  
 1070 WINA Charlottesville VA – CP to correct coordinates (expires 10/10/2017).  
 1080 KWAH Honolulu HI – CP to correct coordinates (expires 9/25/2018).  
 1110 KRPA Oak Harbor WA – CP to correct coordinates (expires 7/31/2018).  
 1160 WYDU Red Springs NC – CP to correct coordinates (expires 10/10/2017).  
 1230 WSOO Sault Ste. Marie MI – CP to correct coordinates (expires 5/20/2017).  
 1230 WXCO Wausau WI – CP to correct coordinates (expires 2/19/2018).  
 1310 KZYP Malvern AR – CP to correct coordinates (expires 9/30/2018).  
 1400 WSJM St. Joseph MI – CP to correct coordinates (expires 5/28/2018).  
 1420 WIMS Michigan City IN – CP to correct coordinates, applied for LTC 10/28/2015.  
 1440 WWCL Lehigh Acres FL – CP to correct coordinates, applied for LTC 3/27/2015.  
 1460 WKAM Goshen IN – CP to correct coordinates (expires 7/8/2018).  
 1550 KZDG San Francisco CA – CP to correct coordinates (expires 1/15/2017).

## CALENDAR READY TO ADORN ENGINEERS' WALLS EVERYWHERE

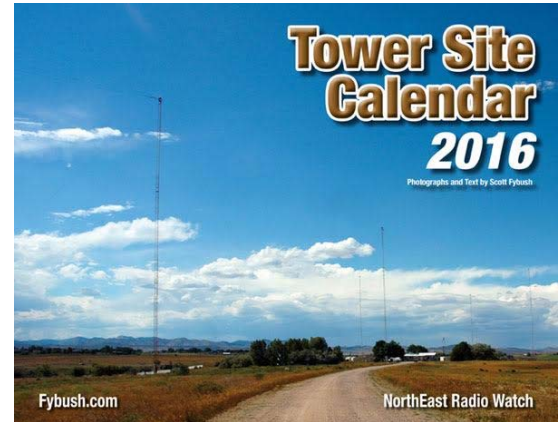
*Tower Site Calendar marks 16th year of publication*

ROCHESTER, NY – It started as a lark in 2002. Scott Fybush, the publisher of NorthEast Radio Watch, had so many tower photos that he launched a new feature, "Tower Site of the Week." Its readers suggested a calendar highlighting tower photos.

Sixteen editions later, Fybush's annual *Tower Site Calendar* has become a must-have item for radio and TV lovers everywhere.

"Some people may think all radio towers look alike, but the *Tower Site Calendar* shows every year that that's not the case," says Fybush, who has worked in radio and television news for more than two decades. "Engineers are notoriously underappreciated for the hard work they do. The calendar is one way I can help show some recognition for their design and maintenance of the infrastructure that allows all of us to have easy access to radio, TV and cellphones."

The 2016 edition, now shipping from the Fybush Media store ([fybush.com/shop](http://fybush.com/shop)) features thematic page designs, durable coil binding and pictures taken from Fybush's travels all over North America and beyond. Some of the highlights this year:



- **WWV and WWVB.** The National Bureau of Standards' Fort Collins, Colorado site.
- **WIOD in Miami.** The "Wonderful Isle of Dreams" station signed on in 1926.
- **WBTA in Batavia, New York.** One of the last pre-World War II AM stations.
- **A tower farm in Grimsby, Ontario.** The site overlooks Lake Ontario and the Queen Elizabeth Way.
- **South Mountain, above downtown Phoenix.** Home of the city's TV and most FM stations.
- **WAKR.** The voice of Akron, Ohio since 1940.
- **The former Blaw-Knox site of KWAC, Bakersfield, California.** The station turns 60 this year.
- **KSGF, Springfield, Missouri.** A former mobile AM station, settled here in the 1930s.
- **Atlantic City's broadcast towers.** The site off US 30 includes WPG, named for the "World's Play Ground."
- **The former WBZA, Springfield, Massachusetts.** Demolished in 2011.
- **WABC in Lodi, New Jersey.** This tower overlooks the Satin Doll, used as the location for the "Bada Bing" in *The Sopranos*.
- **WYSB, Rutland, Vermont.** A fixture since the late 1950s.
- **The Empire State Building.** A broadcast facility since its construction and home to nearly all of New York City's FM and TV signals.

In addition to the photos, the calendar's monthly pages include significant dates in radio and television history, as well as civil and religious holidays.

The 2016 calendars cost \$19 each (\$20.55 including sales tax for New York State residents) plus \$3.50 shipping first class or \$6.50 Priority Mail, and can be purchased by check (payable to "Fybush Media") or money order to 92 Bonnie Brae Avenue, Rochester NY 14618, or at [www.fybush.com](http://www.fybush.com).



Peak Printing, Inc.  
716 S. 9th Street, Cañon City CO 81212  
(719) 275-2136 [info@peakprintingonline.com](mailto:info@peakprintingonline.com)

All your printing needs – including SWL and Amateur QSL Cards

## DXtreme Reception Log X (Version 10.0)

DXtreme Software™ has released a new version of its popular logging program for radio monitoring enthusiasts: **DXtreme Reception Log X™ (Version 10.0)**.

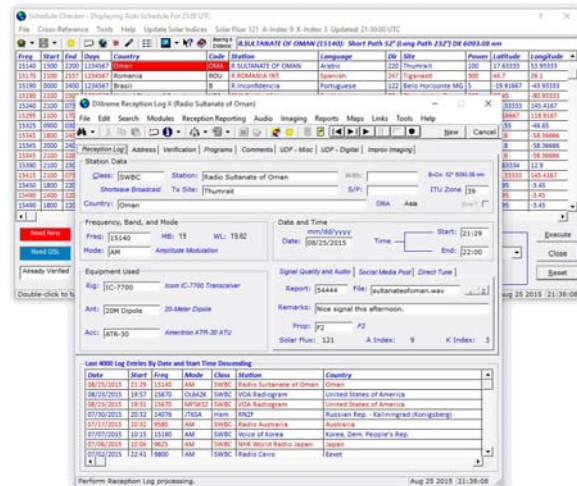
Like other logging programs, **DXtreme Reception Log X** lets listeners and DXers log the stations they've heard. But unlike other logging programs, **Reception Log X** provides advanced features that can add a new dimension to logging activities.

### New Features in Version 10.0

- **Afreet Ham CAP Integration** — Lets licensed Afreet Ham CAP and Omni-Rig users run short- and long-path propagation predictions from the **Schedule Checker**, **Reception Log**, **Countries**, and **Transmitter Sites** windows. **Reception Log X** sends key data to Ham CAP which, in turn, displays a chart showing the signal-to-noise-ratio prediction by time and frequency and a Mercator projection showing the current propagation prediction for the path between the user and the target station.
- **Improv Imaging™** — A dedicated tab on the **Reception Log** window, **Improv Imaging** lets users associate ad hoc images with log entries. Users can capture from their screen, scan from their image scanner, or paste from the Clipboard any images they want to associate with a displayed log entry, such as screen captures of stations received on digital applications, waterfall displays, Amateur TV pictures, Ham CAP maps showing propagation conditions at the time of reception, etc. An **Improv Image Explorer** lets users peruse their collection of Improv images, and call up the log entries with which they are associated.
- **Preview QSL Image Viewer** — Is now larger and expandable on the **Verification** tab of the **Reception Log** window, and the new **QSL Image Explorer** lets users peruse their collection of QSL images, and call up the log entries with which they are associated.
- **Colorful User Experience Enhancements** — Lets users set the foreground and background colors of heading and data rows on grids throughout the program — one set of foreground and background colors for odd data rows, and another for even data rows — making it easier to view schedules on the **Schedule Checker**, log entries on the **Last Log Entries** grid and window, and data in **Reports**.

### Advanced Features:

- Schedule Checker™
- Last Log Entries Grid
- Reception Reports
- Social Media Posting
- Direct Print SWL and Address Labels
- Rig Control
- Multimedia Features
- Performance Reporting
- Support for Monitoring Amateur Radio Operators
- Documentation



DXtreme Reception Log X runs in 32- and 64-bit versions of Microsoft Windows® 10, 8.1, 8, 7, Vista®, and XP. It retails for \$89.95 USD worldwide for electronic distribution.

Pricing for CD versions and upgrading users is available on our Web site. All prices include product support by Internet e-mail. For more information, visit [www.dxtreme.com](http://www.dxtreme.com) or contact Bob Raymond at [bobraymond@dxtreme.com](mailto:bobraymond@dxtreme.com).

## Kansas City 2016 – First Call for Papers/Talks – Sharing Your Ideas

Have you had some fun DX experiences you'd like to share with the rest of the club members? Ideas for new techniques or antenna-design? Thoughts about ways to make the hobby even better?

The Kansas City joint DX Convention will be a good place to do that. We're thinking about restructuring our "tech talks" programs, to include less-formal presentations with the longer 'papers.'

If you don't have enough for a full-blown talk, we'd still like to hear your ideas, so consider this your first opportunity to express your interest in doing so. Regardless of the length of your comments, we can support your presentation with full audio and video playback as well as slide projection.

Please let me know if you have some DX-related ideas you'd like to contribute!

Mark Durenberger [Mark4@durenberger.com](mailto:Mark4@durenberger.com)

# NOAA Space Weather Outlook

Issued November 16, 2015 – For the period November 16-December 12, 2015

Now at <http://www.swpc.noaa.gov/products/weekly-highlights-and-27-day-forecast>

Solar activity is expected to be at very low to low levels with a chance for M-class (R1-R2, minor-moderate) flares from 22 November through 05 December with the return of old Region 2443 (N07, L=316).

No proton events are expected at geosynchronous orbit.

The greater than 2 MeV electron flux at geosynchronous orbit is expected to be at high levels from 16-18 November and again from 01-12 December due to recurrent coronal hole high speed stream (CH HSS) influence. Normal to moderate levels are expected from 19-30 November.

Geomagnetic field activity is expected to be at unsettled to active levels from 16-19 November due to prolonged southward Bz as well as a negative polarity CH HSS on 18-19 November. Multiple recurrent positive polarity CH HSSs are expected to influence the geomagnetic field from 30 November-02 December, 05-08 December, and 10-12 December causing unsettled to active levels with (G1-minor) storm periods likely on 30 November-01 December, and 06-08 December.

The eruptive filaments on 15-16 November are not in the present forecast as we are waiting on further imagery to model these events.

## FCC SILENT STATION LIST

On FCC site as of November 20, 2015 (93 stations), often less than 100% accurate:

560	WCKL-NY	WLNO-LA	1370	KTPA-AR	KYZS-TX
580	KZMX-SD	WGSB-NC		WLLN-NC	WFAD-VT
620	KHNU-HI	1110 WOMN-LA	1380	KDXE-AR	WPAK-VA
700	WCNF-AL	1120 WKCE-TN	1390	WJWF-MS	KJNT-WY
710	WUFF-GA	1130 WRRL-WV		WABB-SC	1500 WMJL-KY
720	KQNG-HI	1190 WWIO-GA		KBBO-WA	1510 WBSG-PR
750	KHWG-NV	1220 WREV-NC	1400	WFLN-FL	1520 KKZZ-CA
790	KEJY-CA	1230 WLNR-NC	1410	WYIS-GA	WLGC-KY
850	WKGE-PA	KJQS-UT		WVCB-NC	1530 WLAK-WI
	WKVL-TN	WAMM-VA	1420	WRSA-VT	1540 WJZI-IN
890	KMVG-MO	1240 WGRM-MS	1440	KPTO-ID	KTGG-MI
910	KIYU-AK	KBLT-MT		KETX-TX	WREJ-VA
	WAEI-ME	KRAL-WY	1450	WLAY-AL	1550 KLFJ-MO
	WSRP-NC	1270 WHGS-SC		WPAM-PA	KQNM-NM
	WAVL-PA	1280 WGLR-WI		KCTI-TX	WUSP-NY
	KWDZ-UT	1300 WRDZ-IL		WBVA-VA	WVAB-VA
930	WEZZ-AL	WBZQ-IN		WHNK-WV	1570 KKCL-CO
	WSEV-TN	1310 KIQQ-CA	1460	WXBR-MA	1580 KHEP-AZ
940	WNRG-VA	WDTW-MI		WPON-MI	WTCL-FL
950	(KSEW)-AK	WSLW-WV	1480	WRCK-NY	1590 WVNA-AL
1010	KDLA-LA	1340 KJMU-OK		WQTM-NC	1600 WXYM-VA
1030	WOSO-PR	KSGT-WY		KBXD-TX	
1060	KRUZ-AR	1360 KELE-MO		KHQN-UT	
	KTNS-CA	WHJC-WV	1490	KFCR-SD	

From the *DX News* archives ....

**75 Years Ago** – From the November 23, 1940 issue of *DX News*: The Cleveland Radio Club's weekly broadcast on WTAM will begin on November 30 at 11:15-11:30 p.m.; shortwave schedules included Lord Haw-Haw's English broadcasts from Germany at 8:30 p.m. (Eastern) Sunday, Tuesday, and Friday on 9520 and 11770 kHz.

**50 Years Ago** – From the November 27, 1965 issue of *DX News*: Gordon Nelson (Watertown, Mass.) reported only one new verification, from KZOO Honolulu (1 kW); Ben Dangerfield (Chester, Pa.) reported a new logging of Kiev on 1169.

**25 Years Ago** – From the November 26, 1990 issue of *DX News*: Radio Eko-1206 is the first legal independent station in the Moscow area, now on the air; Karl Forth reported enjoying the partial breakup of the clear channels, with new Maine station WKZN-870 heard several mornings in Chicago.

**10 Years Ago** – From the November 28, 2005 issue of *DX News*: Jim Renfrew's highlights of the 2005 Cappahayden, Newfoundland DXpedition included Radio Orfrey, Russia on 1125 and 1161, Lesotho on 1197, Armenia on 1377, Guinea on 1385.9, Kenya on 1386, and Sri Lanka on 1548 for a new country, plus post-sunrise logs of KOMO-1000 and XEKTT-1700.

## National Radio Club

Founded in September, 1933, the National Radio Club is a non-profit organization devoted to the medium wave DX hobby. It is operated solely by uncompensated volunteers. Subscription costs cover printing, postage, and operational costs and are subject to change without prior notice. The opinions expressed in this magazine are those of the individual writer and do not necessarily reflect those of the Publisher or the Board of Directors of the National Radio Club, Inc. Any reproduction of material contained in DX News/e-DXN without permission of the National Radio Club or the author is prohibited. All published material in DX News/e-DXN may be reprinted by the National Radio Club at a later date. DX News/e-DXN published material reprinted in other publications should include an attribution naming the author and DX News/e-DXN as the original source. Construction projects described herein may be hazardous and are to be undertaken at the assembler's risk; the NRC, its officers, and author(s) will not be responsible for any injuries or losses arising during these projects. Tool usage and electricity can be dangerous.

NRC Board of Directors: Shawn Axelrod <amandx@mymts.net> – 30 Becontree Bay – Winnipeg MB R2N 2X9 Canada; Wayne Heinen <amradiolog@nrcdxas.org>; NRC AM Radio Log Editor – 4131 S. Andes Way – Aurora, CO 80013-3831; Dave Schmidt <NRCMusings@aol.com> – 49 N. Sumner St., York PA 17404; Paul Swearingen <plsbdxer@aol.com>; Chairman; Dick Truax <K9RT@aol.com>; NRC Treasurer – P. O. Box 39451 – Louisville, KY 40233-9451.

NRC on the World Wide Web: The NRC web site is [www.nrcdxas.org](http://www.nrcdxas.org); e-DXN is at [www.e-dxn.com](http://www.e-dxn.com) (Craig Krist, webmaster).

**National Radio Club members may choose to receive our print publication (DX News), e-DXN (including online access to the .pdf version of DX News), or any combination of these.**

• **DX News – David Yocis, Publisher/Editor**<NRCDXNews@gmail.com> – 1245 Thirteenth St. NW, #105 – Washington DC 20005; 202-415-3011 [leave voice mail]. (Send only material for publication in *DX News*.)

• **Subscriptions and Renewals to DX News:** Yearly subscription (20 issues, biweekly in DX season): To a U.S. Address: US\$45.00; to a Canadian Address: US\$55.00; to all other countries: US\$70.00.

• **Subscriptions and Renewals to e-DXN:** Annual registration: \$5.00 for subscribers to DXN; \$15.00 for an e-DXN-only membership. Access the e-DXN web site <[www.e-dxn.com](http://www.e-dxn.com)> and follow the links.

**Send all payments to NRC Headquarters at:**

**National Radio Club**

**PO Box 473251**

**Aurora, CO 80047-3251**

<[sales@nrcdxas.org](mailto:sales@nrcdxas.org)>

**National Radio Club**

**P.O. Box 473251**

**Aurora, CO 80047 – 3251**

Please send all of the following to NRC Headquarters in Aurora:

- **New subscriptions and renewals** for DX News, the DX Audio Service, and e-DXN.com.

- **Subscription or delivery problems** for DX News or DXAS.

- **Changes of address** for DX News.

- **All NRC Publications** orders.

For multiple items, there's no need to send separate checks or in separate envelopes. It all goes to the same National Radio Club HQ.

Payment options for any item: US\$ funds only: check, money order, or credit card (via PayPal: access <[www.nrcdxas.org](http://www.nrcdxas.org)> ONLY and follow the links), or cash at your risk. (Out of USA: Postal money order or PayPal only; NO checks.)

All checks and money orders should be made out to: **National Radio Club**.

DX News is printed by Peak Printing – 716 South 9th Street – Cañon City CO 81212 – (719) 275-2136 – <[info@peakprintingonline.com](mailto:info@peakprintingonline.com)>

**First-Class Mail**  
**U.S. Postage**  
**PAID**  
**Cañon City, CO**  
**Permit # 22**